



**DEPARTMENT OF NATURAL RESOURCES  
STATE OF MICHIGAN**

**TIMBER SALE PROSPECTUS #6023**

SCHEDULED SALE DATE AND TIME: 10:00 a.m. (local time) on October 31, 2017.

LOCATION: ATLANTA MGMT UNIT, 13501 M-33, ATLANTA, MI 49709.

PROSPECTUS NOTE: The bidder is advised to inspect the sale area and review the location, estimated volumes, operating costs and contract terms of proposed sales. Please be aware that some landowners may request 60 days or more notice for access across their land.

Notice is hereby given that bids will be received by the Unit Manager, ATLANTA MANAGEMENT UNIT, for certain timber on the following described lands:

Tear Gas Red Pine (54-008-17)

Presque Isle County, Advertised Price \$412,277.70, 254.4 Acres, Red Oak, Red Pine.

SALE NOTE: A recreation site such as a trail, pathway, or campground is within the sale area or the vicinity. Certain restrictions/specifications may be applicable including time restrictions.

Monster Within (54-009-17)

Presque Isle County, Advertised Price \$199,355.70, 193.9 Acres, Red Oak, Red Pine.

SALE NOTE: A recreation site such as a trail, pathway, or campground is within the sale area or the vicinity. Certain restrictions/specifications may be applicable including time restrictions.

Peltz Semi-Lowland Mix (54-010-17)

Presque Isle County, Advertised Price \$34,094.25, 47.3 Acres, N White Cedar, Spruce/Fir/Tamarack.

SALE NOTE: A recreation site such as a trail, pathway, or campground is within the sale area or the vicinity. Certain restrictions/specifications may be applicable including time restrictions.

## BID INSTRUCTIONS (VER. 09/02/2016):

### 1. Scheduled Bid Location, Date, and Time (2/11)

Bids must be received by the Unit Manager, ATLANTA OFFICE, 13501 M-33, ATLANTA, MI 49709, no later than 10:00 a.m. (local time) on October 31, 2017. For further information concerning this sale, contact Cody Stevens at 989-785-4251 extension 5240.

### 2. Bidder's Qualifications (5/16)

Purchaser shall obtain workers compensation insurance to cover claims under Michigan's Worker's Disability Compensation Act of 1969 or similar employee benefit act of any other state applicable to an employee. If all or part of a timber sale was prepared by a private contractor, the contractor and that contractor's company are not permitted to bid on the timber sale contract. Bids will not be accepted from individuals or companies appearing on the DNR/FRD No-Bid List. This list contains the names of purchasers who previously failed to execute a contract within 21-days or who have a history of poor performance.

### 3. Preparation of Sealed Bids (5/16)

Bid Forms may be completed online thru Michigan DNR Timber Sale Online Bidding (OLB) at [www.michigan.gov/timberbidding](http://www.michigan.gov/timberbidding) or by completing the hardcopy Bid Form found in the Timber Sale Prospectus. Hardcopy Bid Forms shall be manually signed in ink. Registration in OLB is considered your 'signature' for all bids submitted thru that system. Bid prices must be entered for each species and product in the Bid Price column for all material subject to bidding and all fill-in blanks must be completed. If erasures or other changes appear on the hardcopy Bid Form, each erasure or change must be initialed by the person signing the bid.

### 4. Submission of Sealed Bids (5/16)

Bid forms may be obtained from the Unit Manager or thru OLB. Bids may be submitted hardcopy or thru OLB. All hardcopy bids must be submitted on the bid form and in an envelope clearly identified as described in this section. NOTE: Only one bid form per bid envelope. Sealed bids must be submitted to the Unit office designated in the prospectus and must be submitted at or prior to the time established in the prospectus. The envelope should show on the outside (a) the sale name or number and (b) the date and time of bid opening, as shown in the prospectus. Bids received after the time specified in the sale prospectus are late bids and will be rejected.

It is possible for a bidder to submit multiple bids on a single sale. For example, a bid may be submitted hardcopy and a bid may be submitted thru OLB. Or, two bidders from the same company could both submit bids on the same sale. If this were to happen, the State would accept all bids received and award the contract accordingly. All bidding and contractual requirements would apply to all bids received.

### 5. Public Opening of Sealed Bids (7/16)

If conditions permit, the sealed bids will be publicly opened and posted at the time and place set in the prospectus.

If a bidder, present at a bid opening, has submitted bids on more than one sale, that bidder may withdraw their unopened bid envelopes or announce the withdrawal of their online bid after being declared the successful bidder on one sale.

### 6. Award of Contract (1/11)

Award of the contract will be made to the Bidder whose bid, conforming to the prospectus, is most advantageous to the State of Michigan on the basis of total value at rates bid for the estimated quantities. The State reserves the right to reject any bid or waive any minor irregularity in bids received. A written award mailed (or otherwise furnished) to the successful Bidder shall be deemed to result in a binding contract without further action by either party.

### 7. Down Payment (1/11)

The Bidder to whom award is made must make a down payment within 21 days of the sale award. The amount of the down payment will be calculated as shown in the Bond and Payment Schedule of this prospectus. Only cash may be used to meet this requirement.

### 8. Performance Security (1/11)

As guarantee of faithful performance, a cash bond, certificate of deposit, surety bond or irrevocable letter of credit (LOC) is required within 21 days of the sale award. The amount of the performance security is shown in the Bond and

Payment Schedule of this prospectus. If an LOC or surety is used, the coverage must extend for at least 6 months beyond the contract expiration.

#### 9. Timber Sale Contract (9/14)

Additional conditions and requirements common to all timber sales are listed on the timber sale contract (R4031) and are available on line at [www.michigan.gov/timber](http://www.michigan.gov/timber). Contact the Unit Manager for additional information or a sample contract. Within 21 days of the date of the award letter, the bidder must sign the contract and provide the required down payment, performance security, and verification of worker's disability compensation. The down payment and performance security shall be in accordance with the provisions of the timber sale contract, in the sums stated in this prospectus. If these actions are not taken, then the Bidder, the Bidder's corporation, and the corporation's principals may not be permitted to bid on State timber sales for a period of 1 year. In addition, the Bidder certifies that if awarded this contract, the Bidder will complete the timber sale contract in accordance with its terms and any modifications thereof including requirements to purchase, cut, and remove the included timber by the expiration date.

#### 10. Disclaimer of Estimates and Bidder's Warranty of Inspection (7/16)

Before submitting this bid, the Bidder is advised and cautioned to inspect the sale area, review the requirements of the sale contract, and take other steps as may be reasonably necessary to ascertain the location, estimated volumes, construction estimates, and operating costs of the proposed sale. Failure to do so will not relieve the Bidder from responsibility for completing the contract.

The Bidder warrants that this bid is submitted solely on the basis of the Bidder's examination and inspection of the quality and quantity of the timber offered for sale and the Bidder's opinion of the value thereof and the costs of recovery. No reliance should be placed on the State of Michigan's estimates of timber quality, quantity or costs of recovery. Bidder further acknowledges that the State of Michigan: (i) expressly disclaims any warranty of fitness of timber for any purpose; (ii) offers this timber as is without any warranty of quality (merchantability) or quantity and (iii) expressly disclaims any warranty as to the quantity or quality of timber sold.

#### 11. Certification and Chain-of-Custody (10/14)

Unless otherwise indicated in the contract under section 7 – Other Conditions of the Sale Specific Conditions & Requirements, the area encompassed by this timber sale is certified to the standards of the Forest Stewardship Council (FSC) - Certificate #SCS-FM/COC-00090N and the Sustainable Forestry Initiative (SFI) - Certificate # NSF-SFIS-5Y031-SF5. Forest products from this sale may be delivered to the mill as "FSC 100% and / or SFI certified" as long as the contractor hauling the forest products is chain-of-custody (COC) certified or covered under a COC certificate from the destination mill. The purchaser is responsible for maintaining COC after leaving the sale area.

#### 12. Good Neighbor Authority (GNA) Requirements (7/16)

If the name of this timber sales contains the acronym GNA, it is authorized by the Good Neighbor Authority (GNA) and covered by various agreements between the U.S. Forest Service and the State. The timber sale occurs on federal land and the following conditions apply:

GNA contracts on US Forest Service land will not be awarded to purchasers on the Federal list of excluded parties. The System for Award Management (SAM) will be checked for active excluded parties prior to award of contract. In addition, the Bidder to whom award is made must complete an Assurance Regarding Felony Conviction or Tax Delinquent Status for Corporate Applicants (AD-3031).

#### 13. Good Neighbor Authority (GNA) Requirements, con't (9/16)

Bidder certifies, by signing this bid form, that to the best of Bidder's knowledge that the following representations are accurate and complete.

- a. That the Bidder and its principals are not presently debarred, suspended, proposed for debarment, declared ineligible, or voluntary excluded from timber sales (covered transactions) by any Federal department or agency.
- b. That the Bidder and its principals have not within a 3-year period preceding this bid been convicted of or had a civil judgment rendered against them for commission of fraud or a criminal offense in connection with obtaining, attempting to obtain, or performing a public (Federal, State, or local) transaction or contract under a public transaction; violation of Federal or State antitrust statutes or commission of embezzlement, theft, forgery, bribery, falsification or destruction of records, making false statements, or receiving stolen property.

c. That the Bidder and its principals are not presently indicted for or otherwise criminally or civilly charged by a governmental entity (Federal, State, or local) with commission of any of the offenses enumerated in paragraph b of this certification.

d. That the Bidder and its principals have not within a 3-year period preceding this bid had one or more public transactions (Federal, State, or local) terminated for breach or default of a timber or forest product contract.

Bidders that cannot certify this requirement, in whole or in part, shall submit an explanation with their bid.

KEITH CREAGH

Director

# TIMBER SALE INFORMATION

## Tear Gas Red Pine (54-008-17)

Presque Isle County (Advertised Price \$412,277.70)

SALE NOTE: A recreation site such as a trail, pathway, or campground is within the sale area or the vicinity. Certain restrictions/specifications may be applicable including time restrictions.

A timber sale contract for this lump sum, sealed bid timber sale will be awarded to the responsible bidder offering the highest sealed bid price. Bids must be at or above the following advertised price for each species:

<u>PRODUCTS &amp; SPECIES</u>	<u>ESTIMATED UNITS*</u>	<u>ADVERTISED PRICE</u>
Sawtimber		
B. T. Aspen	10.60 MBF	\$ 85.00 / MBF
Red Oak	114.60 MBF	\$ 161.00 / MBF
Red Pine	1,756.70 MBF	\$ 128.00 / MBF
White Pine	8.60 MBF	\$ 86.00 / MBF
Pulpwood		
B. T. Aspen	145.00 Cords	\$ 21.70 / Cord
Black Spruce	3.00 Cords	\$ 39.35 / Cord
Jack Pine	182.00 Cords	\$ 25.15 / Cord
Red Maple	23.00 Cords	\$ 19.35 / Cord
Red Oak	472.00 Cords	\$ 20.85 / Cord
Red Pine	2,940.00 Cords	\$ 50.35 / Cord
White Pine	28.00 Cords	\$ 41.85 / Cord

\* The total volume is statistically estimated within plus (+) or minus (-) 8.52 percent. The estimated units are final and not subject to adjustment. Prospective bidders are urged to examine this timber and to make their own estimates of quantity and quality.

### **BOND AND PAYMENT SCHEDULE:**

1. A bond in the amount of \$20,614.00 to insure faithful performance of the conditions of the contract will be deposited by the successful bidder within 21 days of the sale award.
2. Cutting in any sale or unit without the required advance payment would be considered a trespass.
3. Total payment must be paid in advance or according to the following schedule:
  - (a) Ten percent (10%) of the sale value must be paid within 21 days of the sale award.
  - (b) The 10% down payment will be credited towards the first unit cut.
4. If no cutting takes place, the 10% down payment will not be refunded.
5. Operations on the contract issued will terminate on 06/30/2020.

**Description of Timber by Payment Unit (PU)**

PU	MARKET GROUP	PRODUCT	QUANTITY	UNIT	ACRES	ADVERTISE PRICE
1	B. T. Aspen	Sawtimber	0.6	MBF	21.4	\$32,520.60
	Red Oak		6.0	MBF		
	<i>Red Oak</i>		6.0	<i>MBF</i>		
	Red Pine		144.5	MBF		
	White Pine		0.7	MBF		
	B. T. Aspen	Pulpwood	1.0	Cords		
	Black Spruce		1.0	Cords		
	Jack Pine		12.0	Cords		
	<i>Jack Pine</i>	<i>Sawtimber</i>	0.2	<i>MBF</i>		
	<i>Jack Pine</i>	<i>Pulpwood</i>	12.0	<i>Cords</i>		
	Red Oak		22.0	Cords		
	<i>Red Oak</i>		22.0	<i>Cords</i>		
	Red Pine		240.0	Cords		
	White Pine		1.0	Cords		
2	B. T. Aspen	Sawtimber	0.7	MBF	27.4	\$41,624.00
	Red Oak		7.7	MBF		
	<i>Red Oak</i>		7.7	<i>MBF</i>		
	Red Pine		185.0	MBF		
	White Pine		0.9	MBF		
	B. T. Aspen	Pulpwood	1.0	Cords		
	Black Spruce		1.0	Cords		
	Jack Pine		16.0	Cords		
	<i>Jack Pine</i>	<i>Sawtimber</i>	0.3	<i>MBF</i>		
	<i>Jack Pine</i>	<i>Pulpwood</i>	15.0	<i>Cords</i>		
	Red Oak		29.0	Cords		
	<i>Red Oak</i>		29.0	<i>Cords</i>		
	Red Pine		307.0	Cords		
	White Pine		1.0	Cords		
3	B. T. Aspen	Sawtimber	0.3	MBF	18.3	\$43,141.95
	Red Oak		2.9	MBF		
	<i>Red Oak</i>		2.9	<i>MBF</i>		
	Red Pine		219.1	MBF		
	White Pine		0.3	MBF		
	Jack Pine	Pulpwood	6.0	Cords		
	<i>Jack Pine</i>	<i>Sawtimber</i>	0.1	<i>MBF</i>		
	<i>Jack Pine</i>	<i>Pulpwood</i>	6.0	<i>Cords</i>		
	Red Oak		11.0	Cords		
	<i>Red Oak</i>		11.0	<i>Cords</i>		
	Red Pine		282.0	Cords		
4	B. T. Aspen	Sawtimber	0.4	MBF	16.1	\$27,147.45
	Red Oak		4.1	MBF		
	<i>Red Oak</i>		4.1	<i>MBF</i>		
	Red Pine		125.2	MBF		
	White Pine		0.5	MBF		
	B. T. Aspen	Pulpwood	1.0	Cords		
	Black Spruce		1.0	Cords		
	Jack Pine		8.0	Cords		
	<i>Jack Pine</i>	<i>Sawtimber</i>	0.2	<i>MBF</i>		
	<i>Jack Pine</i>	<i>Pulpwood</i>	8.0	<i>Cords</i>		
	Red Oak		15.0	Cords		
	<i>Red Oak</i>		15.0	<i>Cords</i>		
	Red Pine		194.0	Cords		
White Pine		1.0	Cords			
5	Red Oak	Sawtimber	1.4	MBF	36.7	\$26,700.10
	<i>Cottonwood</i>		0.7	<i>MBF</i>		
	<i>Red Oak</i>		0.7	<i>MBF</i>		

Description of Timber by Payment Unit (PU), con't

PU	MARKET GROUP	PRODUCT	QUANTITY	UNIT	ACRES	ADVERTISE PRICE
5 con't	Red Pine	Sawtimber	124.9	MBF		
	White Pine		0.5	MBF		
	B. T. Aspen	Pulpwood	4.0	Cords		
	Jack Pine		13.0	Cords		
	<i>Jack Pine</i>		13.0	<i>Cords</i>		
	Red Oak		9.0	Cords		
	<i>Cottonwood</i>		5.0	<i>Cords</i>		
	<i>Red Oak</i>		4.0	<i>Cords</i>		
	Red Pine		193.0	Cords		
	White Pine		3.0	Cords		
6	Red Pine	Sawtimber	8.1	MBF	8.1	\$6,650.80
	Jack Pine	Pulpwood	1.0	Cords		
	<i>Jack Pine</i>		1.0	<i>Cords</i>		
	Red Pine		111.0	Cords		
7	Red Oak	Sawtimber	13.6	MBF	28.8	\$57,493.45
	<i>Red Oak</i>		13.6	<i>MBF</i>		
	Red Pine		250.7	MBF		
	White Pine		1.0	MBF		
	B. T. Aspen	Pulpwood	2.0	Cords		
	Jack Pine		38.0	Cords		
	<i>Jack Pine</i>	Sawtimber	1.0	<i>MBF</i>		
	<i>Jack Pine</i>	Pulpwood	36.0	<i>Cords</i>		
	Red Maple		5.0	Cords		
	Red Oak		61.0	Cords		
	<i>Red Oak</i>		61.0	<i>Cords</i>		
	Red Pine		409.0	Cords		
	White Pine		4.0	Cords		
8	B. T. Aspen	Sawtimber	2.1	MBF	28.8	\$56,519.75
	Red Oak		19.8	MBF		
	<i>Red Oak</i>		19.8	<i>MBF</i>		
	Red Pine		239.5	MBF		
	White Pine		1.1	MBF		
	B. T. Aspen	Pulpwood	5.0	Cords		
	Jack Pine		33.0	Cords		
	<i>Jack Pine</i>	Sawtimber	0.9	<i>MBF</i>		
	<i>Jack Pine</i>	Pulpwood	31.0	<i>Cords</i>		
	Red Maple		5.0	Cords		
	Red Oak		75.0	Cords		
	<i>Red Oak</i>		75.0	<i>Cords</i>		
	Red Pine		390.0	Cords		
White Pine		4.0	Cords			
9	Red Oak	Sawtimber	17.5	MBF	20.5	\$26,797.25
	<i>Red Oak</i>		17.5	<i>MBF</i>		
	Red Pine		72.5	MBF		
	White Pine		1.5	MBF		
	B. T. Aspen	Pulpwood	119.0	Cords		
	Jack Pine		5.0	Cords		
	<i>Jack Pine</i>		5.0	<i>Cords</i>		
	Red Maple		6.0	Cords		
	Red Oak		105.0	Cords		
	<i>Red Oak</i>		105.0	<i>Cords</i>		
Red Pine		184.0	Cords			
White Pine		7.0	Cords			
10	Red Oak	Sawtimber	10.5	MBF	22.3	\$44,668.85
	<i>Red Oak</i>		10.5	<i>MBF</i>		
	Red Pine		195.4	MBF		

**Description of Timber by Payment Unit (PU), con't**

PU	MARKET GROUP	PRODUCT	QUANTITY	UNIT	ACRES	ADVERTISE PRICE
10 con't	White Pine	Sawtimber	0.8	MBF		
	Jack Pine	Pulpwood	30.0	Cords		
	<i>Jack Pine</i>	<i>Sawtimber</i>	<i>0.8</i>	<i>MBF</i>		
	<i>Jack Pine</i>	<i>Pulpwood</i>	<i>28.0</i>	<i>Cords</i>		
	Red Maple		4.0	Cords		
	Red Oak		47.0	Cords		
	<i>Red Oak</i>		<i>47.0</i>	<i>Cords</i>		
	Red Pine		317.0	Cords		
	White Pine		3.0	Cords		
11	B. T. Aspen	Sawtimber	6.5	MBF	26.0	\$49,013.50
	Red Oak		31.1	MBF		
	<i>Red Oak</i>		<i>31.1</i>	<i>MBF</i>		
	Red Pine		191.8	MBF		
	White Pine		1.3	MBF		
	B. T. Aspen	Pulpwood	12.0	Cords		
	Jack Pine		20.0	Cords		
	<i>Jack Pine</i>	<i>Sawtimber</i>	<i>0.5</i>	<i>MBF</i>		
	<i>Jack Pine</i>	<i>Pulpwood</i>	<i>19.0</i>	<i>Cords</i>		
	Red Maple		3.0	Cords		
	Red Oak		98.0	Cords		
	<i>Red Oak</i>		<i>98.0</i>	<i>Cords</i>		
	Red Pine		313.0	Cords		
	White Pine		4.0	Cords		
	TOTAL:			1,890.5		
TOTAL:			3,793.0	Cords		



# Sale Specific Conditions & Requirements

**Sale Name: Tear Gas Red Pine**

**Sale Number: 54-008-17 Seq#: 1**

## 1 - Sale Area

### 1.2 - Boundaries

#### 1.2.1 - Painted boundaries (1/14)

The sale boundary and Payment Unit boundaries are marked and identified by blue, red and yellow paint. Exterior sale boundary lines against private property are marked with blue paint. Exterior sale boundary lines against state are marked with red paint. Interior Payment Unit boundaries are marked with yellow paint. The painted boundary line trees are not Included Timber and are to be protected. Yellow painted trees designating an interior Payment Unit boundary are only to be cut when all surrounding Payment Units have been paid.

## 2 - Timber Specifications

### 2.1 - Included Timber

#### 2.1.1 - Clearcut unit(s) with unmerchantable trees (6/14)

Within Payment Unit(s) 1-5 and 7-11, cut all trees that are two (2) inches or more at DBH except, do not cut purple marked trees in Payment Unit 9. Special protection trees identified in accordance with condition 3.4.2, within clearcutting unit boundaries, are not Included Timber and are to be protected.

#### 2.1.3 - Cut tree marked unit(s) (12/08)

Within Payment Unit(s) 6, all trees are designated for cutting when marked with orange paint above and below stump height, regardless of merchantability. Also, cut all jack pine.

### 2.2 - Utilization

#### 2.2.2 - Chipping required (5/14)

Payment Units 1-5, 7-8, 10, and 11 must be chip harvested to facilitate subsequent planting operations. The Purchaser has the option to produce sawlogs or pulpwood bolts, but the remaining portion of the trees must be chipped and hauled. Do not chip 1/6 to 1/3 of the slash from harvested trees (tree tops and limbs less than four inches in diameter).

#### 2.2.3 - Stump heights (4/07)

Stump heights within Payment units 1-5, 7-8, 10, and 11 shall not exceed 6 inches for all trees. This is in order to facilitate planting operations.

## 3 - Payments

### 3.3 - Pre-measured Sales

#### 3.3.4 - Dividing payment units (7/14)

Payment Unit(s) exceeding \$20,000 may be divided at the request of the Purchaser and upon approval of the Unit Manager. Dividing Payment Units is a contract modification which requires a Timber Sale Contract Supplement.

### 3.4 - Damaged Timber

#### 3.4.2 - Special Protection Trees (4/14)

The Purchaser shall not cut live or dead special protection trees within cutting units or clearings. Special protection trees are marked with purple paint. If the Purchaser's operations have cut or damaged special protection trees through carelessness, the Purchaser shall pay \$100 as fixed, agreed and liquidated damages for each special protection tree cut or damaged. Such payment does not constitute ownership of the undesignated timber.

## 4 - Transportation

### 4.1 - Construction

#### 4.1.3 - Slash and earthen piles (8/04)

Piles or windrows of earth along roads and landings that have been widened or constructed shall be leveled. Slash from road maintenance or construction, including stumps, shall be chipped, utilized or otherwise removed from the sale.

#### 4.1.6 - Road construction (1/09)

Construction of new roads or improvements of existing roads shall be done in such a way as to minimize the environmental and visual impacts. Merchantable trees shall be cut and utilized unless otherwise directed. Non-merchantable trees shall be severed and laid flat on the ground. Slash shall be chipped, utilized or otherwise removed from the sale. Stumps shall be set upright, not left on edge, and be moved at least 10 feet away from the road edge. Disturbed soil shall be feathered into the woods and not left in berms or windrows.

#### 4.1.7 - Road closure (10/11)

All new roads built into the sale must be blocked to vehicle traffic upon completion of the sale. Overgrown roads that are reopened shall be considered new roads. In general, this will require constructing a four (4') foot high berm of stumps and logs covered with earth. These roads must be rendered impassable to cars and trucks. All stumps from road building and landing construction must be reserved to block any newly constructed roads upon completion of the sale. These stumps must be scattered along the road system to prohibit vehicular movement. Contact the sale administrator for specific details of design and placement.

### 4.2 - Maintenance

#### 4.2.5 - Two wheel drive condition (2/04)

All existing trail roads on and adjacent to the sale area must be passable by two-wheel drive traffic for the duration of the sale.

## 5 - Operations

### 5.2 - Conduct of Operations

#### 5.2.1 - Slash

##### 5.2.1.8 - Slash height (12/08)

No slash or tree tops may exceed 24 inches in height.

#### 5.2.2 - Hazard Trees/Snags

##### 5.2.2.1 - Den trees (10/16)

Obvious hollow and/or den trees shall be protected and left standing unless they are a safety hazard.

#### 5.2.3 - Operating Restrictions

##### 5.2.3.3 - Bark slippage restriction (3/09)

Within Payment Unit(s) 6, unless changed by written agreement, cutting and skidding are not permitted during the period of April 15 to July 15. This restriction is because of bark slippage.

##### 5.2.3.4 - Oak wilt restriction (4/17)

Within Payment Unit(s) 8, 9, and 11, unless changed by written agreement, cutting, skidding, and hauling are not permitted during the period of April 15 to July 15. Operations may be allowed if specific steps are taken to prevent damaging uncut oak during the high risk period. Those steps include completing all road brushing before April 15th, clearing a tree-length buffer along uncut oak cover before April 15th or leaving an uncut buffer there until after July 15th. This is necessary to reduce the spread of oak wilt. For more information, contact the Unit Manager or his/her representative.

##### 5.2.3.6 - Bark beetle restriction (12/08)

In the event drought creates a high risk of pine bark beetle infestation, pine is not to be cut during the period March 1 through July 1, unless all portions of trees greater than two inches in diameter are removed from the sale area, reduced to chips, or treated to the satisfaction of the Unit Manager or his/her representative, within fifteen days of being severed from the stump. Pine log decks, pulpwood piles and treetops that are piled for chipping in the fall or winter within a 1/4 mile of susceptible sites must be removed before March 15. Residual slash must not be placed in piles or rows and must be spread over the site for quick drying. The Department of Natural Resources will exercise this specification if the risk of damage warrants.

##### 5.2.3.11 - Coppice regeneration protection (4/10)

Timber harvesting in Payment Unit 9 must be completed before significant aspen sprouting occurs in that Payment Unit so as to minimize damage to the new regeneration. Any post harvest operations, such as chipping, must be completed

before sprouting of regeneration occurs. If it is anticipated that chipping will be delayed, then tops shall be carried to one central location or left unchipped. The Unit Manager or his/her representative may cease such operations if sprouting occurs before the operation is complete.

#### 5.2.20 - Equipment width (2/04)

Equipment used to remove designated rows must be capable of moving through cut rows without damaging residual trees.

#### 5.2.32 - Decking/landing restoration (9/13)

All decking and landing areas must have the surface area restored to a condition equal to or better than before. This is to ensure the proper regeneration of the stand. Wood debris, chips and "cookies" from trimmings must be removed or scattered away from landing and loading areas and may not be windrowed on the edge.

#### 5.2.38 - No decking against live trees (2/04)

Cut products may not be decked against unmarked or designated leave trees.

#### 5.2.41 - Snowmobile trail protection (9/11)

The snowmobile trail is shown on the Timber Sale Map. Do not cut or damage posts with orange trail markers or traffic control signs. If the trail is used, it must be maintained and restored to a condition equal to or better than before the sale. The road maintenance/restoration must be done prior to December 1. If the trail is used for hauling, it must be graded to the satisfaction of the Unit Manager or his/her representative prior to December 1st. The snowmobile trail may not be used for any timber sale operations from December 1 to March 31. Maintain a 20 foot wide slash, debris, and rut free zone daily using the snowmobile trail as the centerline. No decking of forest products will be permitted along the snowmobile trail. All stumps within 20 feet of the snowmobile trail must be cut at ground level.

### 5.4 - Soil Protection

#### 5.4.1 - Rutting restriction, general (7/16)

Operations are to cease immediately if equipment and weather conditions result in rutting of roads and/or skid trails which is 12 inches or greater in depth and 50 feet in length. The Unit Manager or his/her representative may restrict hauling and/or skidding if ruts exceed the specified depth. With the Unit Manager or his/her representative's approval, the Purchaser may return to the area when the risk of rutting has decreased.

### 5.8 - Protection of Endangered Species

#### 5.8.5 - Protection of raptor nests (3/13)

All trees with raptor nests will be protected if found during harvesting operations. Notification will be made to the Unit Manager or his/her representative who will notify the Wildlife Biologist so an on-site evaluation and recommendation can be made, if necessary.

## 6 - Safety and Fire Prevention

### 6.2 - Signing

#### 6.2.1 - Road posting (9/09)

The Purchaser is responsible for posting and maintaining caution signs on forest roads used for operations prior to beginning operations. The road must be posted at appropriate distances from the sale area to warn of logging activity and truck traffic. Signs must be removed when harvest operations are suspended or completed. The Purchaser will provide these signs.

#### 6.2.2 - Snowmobile trail posting (8/09)

The Purchaser is responsible for posting and maintaining caution signs on the snowmobile trail prior to beginning operations during the snowmobile season (approximately December 1 to March 31). The trail must be posted at appropriate distances from the sale area to warn of logging activity and truck traffic. Signs must be removed when harvest operations are suspended or completed. The Purchaser will provide these signs.

## 8 - Performance and Settlement

### 8.3 - Uncompleted or Terminated Contracts

#### 8.3.1 - Completion of contract, chipping (1/16)

In addition to cutting, all chipping must be completed by the contract expiration date. If chipping has not been completed, an extension fee or damages may be charged per General Condition & Requirement 7.2 and 8.3.





Sale Number	Year
54 - 008	17

# TIMBER SALE MAP

This information provided by authority of Part 525, 1994 PA 451, as amended.

Forest Management Unit Atlanta Management Unit	County Presque Isle	Mapped By A Krugh	Date 08/17/2017	Page 1	of 2
Township 34N & 35N	Range 04E	Section(s) and Subdivision(s) Sec 5 S2NW SWSW Sec 6 S2NE S2SE SESW Sec 7 NE E2NW E2SW N2SE Sec 31 S2SE Sec 32 S2SW	Cruised By A Krugh & D Coy	Scale 1:15,840	

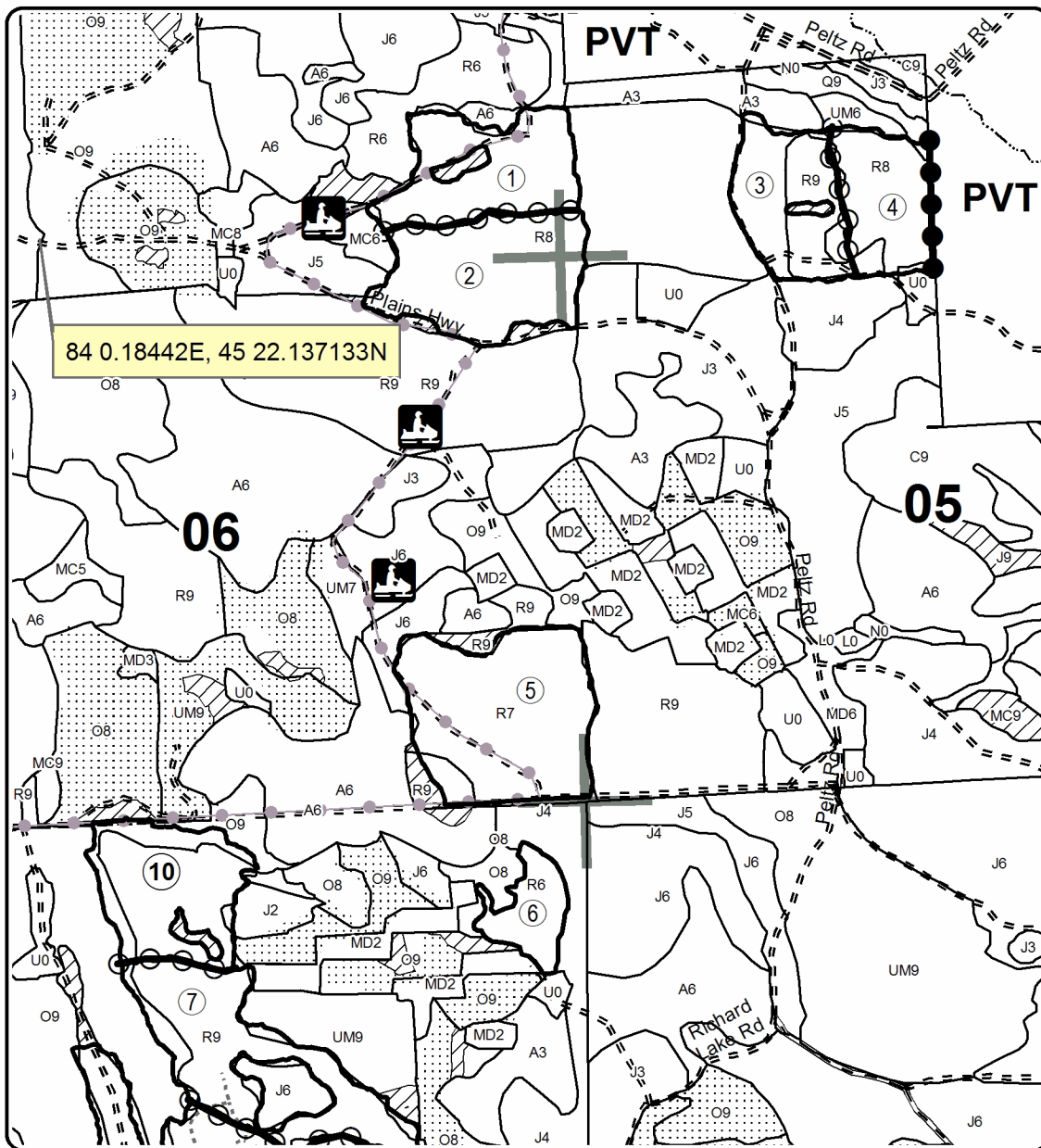
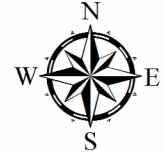
Cover Type				Density			
A = Aspen	H = Hemlock	N = Marsh	U = Upland Brush	0 = Non Stocked	5 = Pole Timber Medium		
B = Paper Birch	J = Jack Pine	O = Oak	UM = Upland Mixed	1 = Seedling Sapling Poor	6 = Pole Timber Well		
C = Cedar	L = Lowland Brush	P = Lowland Poplar	V = Bog or Marsh	2 = Seedling Sapling Medium	7 = Saw Timber Poor		
D = Treed Bog	LM = Lowland Mixed	Q = Mixed Swamp Conifer	W = White Pine	3 = Seedling Sapling Well	8 = Saw Timber Medium		
E = Swamp Hdwoods	M = Mpl, Bch, Brch	R = Red Pine	X = Non Stocked	4 = Pole Timber Poor	9 = Saw Timber Well		
F = Spruce Fir	MC = Mixed Conifer	S = Black Spruce	Z = Water				
G = Grass	MD = Mixed Deciduous	T = Tamarack					

## Tear Gas Red Pine

Compartment 137  
254.4 Acres



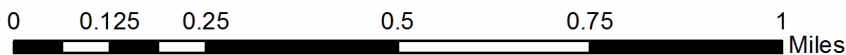
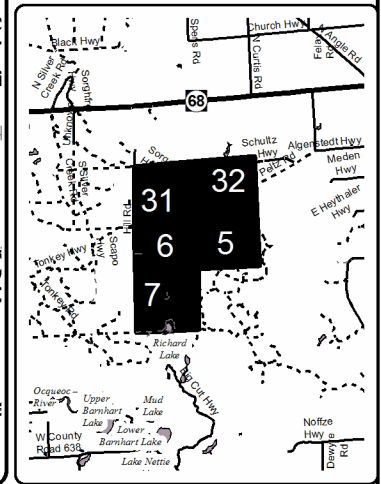
PU	Acres	PU	Acres
1	21.4	7	28.8
2	27.4	8	28.8
3	18.3	9	20.5
4	16.1	10	22.3
5	36.7	11	26
6	8.1		



### Legend

- Against State (Red)
- Payment Unit (Yellow)
- Private Line (Blue)
- Payment Unit
- ▨ Retention Area
- ⋯ Nearby Timber Sale
- ▭ Stand Boundaries
- Section Corners
- Gravel Roads
- - - Poor Dirt Roads
- ⋯ Closed Roads
- Recreational Trail
- ⋯ Streams

Locator Map  
1:200,000





# TIMBER SALE INFORMATION

## Monster Within (54-009-17)

Presque Isle County (Advertised Price \$199,355.70)

SALE NOTE: A recreation site such as a trail, pathway, or campground is within the sale area or the vicinity. Certain restrictions/specifications may be applicable including time restrictions.

A timber sale contract for this lump sum, sealed bid timber sale will be awarded to the responsible bidder offering the highest sealed bid price. Bids must be at or above the following advertised price for each species:

<u>PRODUCTS &amp; SPECIES</u>	<u>ESTIMATED UNITS*</u>	<u>ADVERTISED PRICE</u>
Sawtimber		
Red Oak	602.00 MBF	\$ 161.00 / MBF
Red Pine	168.70 MBF	\$ 128.00 / MBF
White Pine	8.00 MBF	\$ 86.00 / MBF
Pulpwood		
B. T. Aspen	99.00 Cords	\$ 21.70 / Cord
Jack Pine	114.00 Cords	\$ 25.15 / Cord
Red Maple	32.00 Cords	\$ 19.35 / Cord
Red Oak	2,208.00 Cords	\$ 20.85 / Cord
Red Pine	538.00 Cords	\$ 50.35 / Cord
Scotch Pine	2.00 Cords	\$ 26.60 / Cord
White Pine	32.00 Cords	\$ 41.85 / Cord

\* The total volume is statistically estimated within plus (+) or minus (-) 7.53 percent. The estimated units are final and not subject to adjustment. Prospective bidders are urged to examine this timber and to make their own estimates of quantity and quality.

### **BOND AND PAYMENT SCHEDULE:**

1. A bond in the amount of \$9,968.00 to insure faithful performance of the conditions of the contract will be deposited by the successful bidder within 21 days of the sale award.
2. Cutting in any sale or unit without the required advance payment would be considered a trespass.
3. Total payment must be paid in advance or according to the following schedule:
  - (a) Ten percent (10%) of the sale value must be paid within 21 days of the sale award.
  - (b) The 10% down payment will be credited towards the first unit cut.
4. If no cutting takes place, the 10% down payment will not be refunded.
5. Operations on the contract issued will terminate on 12/31/2019.

**Description of Timber by Payment Unit (PU)**

PU	MARKET GROUP	PRODUCT	QUANTITY	UNIT	ACRES	ADVERTISE PRICE
1	Red Oak	Sawtimber	135.0	MBF	33.8	\$35,414.30
	Red Pine		13.2	MBF		
	B. T. Aspen	Pulpwood	5.0	Cords		
	<i>B. T. Aspen</i>		5.0	<i>Cords</i>		
	Jack Pine		3.0	Cords		
	<i>Jack Pine</i>	<i>Sawtimber</i>	0.3	<i>MBF</i>		
	<i>Jack Pine</i>	<i>Pulpwood</i>	2.0	<i>Cords</i>		
	Red Maple		13.0	Cords		
	<i>Red Maple</i>	<i>Sawtimber</i>	0.5	<i>MBF</i>		
	<i>Red Maple</i>	<i>Pulpwood</i>	12.0	<i>Cords</i>		
	Red Oak		431.0	Cords		
	Red Pine		51.0	Cords		
2	Red Oak	Sawtimber	112.1	MBF	21.7	\$29,905.70
	Red Pine		15.1	MBF		
	B. T. Aspen	Pulpwood	5.0	Cords		
	<i>B. T. Aspen</i>		5.0	<i>Cords</i>		
	Jack Pine		4.0	Cords		
	<i>Jack Pine</i>	<i>Sawtimber</i>	0.4	<i>MBF</i>		
	<i>Jack Pine</i>	<i>Pulpwood</i>	3.0	<i>Cords</i>		
	Red Maple		14.0	Cords		
	<i>Red Maple</i>	<i>Sawtimber</i>	0.6	<i>MBF</i>		
	<i>Red Maple</i>	<i>Pulpwood</i>	13.0	<i>Cords</i>		
	Red Oak		325.0	Cords		
	Red Pine		53.0	Cords		
3	Red Oak	Sawtimber	44.0	MBF	20.2	\$20,885.20
	Red Pine		27.7	MBF		
	White Pine		3.2	MBF		
	B. T. Aspen	Pulpwood	33.0	Cords		
	<i>B. T. Aspen</i>		33.0	<i>Cords</i>		
	Jack Pine		50.0	Cords		
	<i>Jack Pine</i>	<i>Sawtimber</i>	1.2	<i>MBF</i>		
	<i>Jack Pine</i>	<i>Pulpwood</i>	48.0	<i>Cords</i>		
	Red Oak		163.0	Cords		
	Red Pine		78.0	Cords		
	Scotch Pine		2.0	Cords		
	White Pine		15.0	Cords		
4	Red Oak	Sawtimber	44.1	MBF	19.9	\$17,296.80
	Red Pine		7.3	MBF		
	White Pine		1.9	MBF		
	B. T. Aspen	Pulpwood	39.0	Cords		
	<i>B. T. Aspen</i>	<i>Sawtimber</i>	1.9	<i>MBF</i>		
	<i>B. T. Aspen</i>	<i>Pulpwood</i>	35.0	<i>Cords</i>		
	Jack Pine		51.0	Cords		
	<i>Jack Pine</i>	<i>Sawtimber</i>	6.3	<i>MBF</i>		
	<i>Jack Pine</i>	<i>Pulpwood</i>	38.0	<i>Cords</i>		
	Red Oak		218.0	Cords		
	Red Pine		44.0	Cords		
	White Pine		5.0	Cords		
5	Red Oak	Sawtimber	80.0	MBF	13.4	\$19,511.00
	Red Pine		11.1	MBF		
	Red Maple	Pulpwood	3.0	Cords		
	<i>Red Maple</i>		3.0	<i>Cords</i>		
	Red Oak		165.0	Cords		
	Red Pine		34.0	Cords		
6	Red Oak	Sawtimber	50.5	MBF	16.3	\$24,940.50
	Red Pine		53.2	MBF		



**Description of Timber by Payment Unit (PU), con't**

PU	MARKET GROUP	PRODUCT	QUANTITY	UNIT	ACRES	ADVERTISE PRICE
6 con't	B. T. Aspen	Pulpwood	3.0	Cords		
	<i>B. T. Aspen</i>		3.0	<i>Cords</i>		
	Jack Pine		4.0	Cords		
	<i>Jack Pine</i>		4.0	<i>Cords</i>		
	Red Oak		165.0	Cords		
	Red Pine		127.0	Cords		
7	Red Oak	Sawtimber	42.5	MBF	21.1	\$17,600.40
	Red Pine		22.9	MBF		
	Red Oak	Pulpwood	216.0	Cords		
	Red Pine		66.0	Cords		
8	Red Oak	Sawtimber	29.1	MBF	16.7	\$9,655.85
	Red Pine		5.3	MBF		
	B. T. Aspen	Pulpwood	2.0	Cords		
	<i>B. T. Aspen</i>	<i>Sawtimber</i>	<i>0.4</i>	<i>MBF</i>		
	<i>B. T. Aspen</i>	<i>Pulpwood</i>	<i>1.0</i>	<i>Cords</i>		
	Red Oak		141.0	Cords		
	Red Pine		26.0	Cords		
9	Red Oak	Sawtimber	30.4	MBF	17.1	\$12,958.35
	Red Pine		8.0	MBF		
	B. T. Aspen	Pulpwood	10.0	Cords		
	<i>B. T. Aspen</i>		<i>10.0</i>	<i>Cords</i>		
	Jack Pine		3.0	Cords		
	<i>Jack Pine</i>		<i>3.0</i>	<i>Cords</i>		
	Red Maple		2.0	Cords		
	<i>Red Maple</i>		<i>2.0</i>	<i>Cords</i>		
	Red Oak		230.0	Cords		
	Red Pine		38.0	Cords		
10	Red Oak	Sawtimber	34.3	MBF	13.7	\$10,486.30
	Red Pine		4.9	MBF		
	B. T. Aspen	Pulpwood	2.0	Cords		
	<i>B. T. Aspen</i>		<i>2.0</i>	<i>Cords</i>		
	Jack Pine		1.0	Cords		
	<i>Jack Pine</i>		<i>1.0</i>	<i>Cords</i>		
	Red Oak		154.0	Cords		
	Red Pine		21.0	Cords		
TOTAL:			775.8	MBF		
TOTAL:			3,015.0	Cords		

# Sale Specific Conditions & Requirements

**Sale Name: Monster Within**

**Sale Number: 54-009-17 Seq#: 1**

## 1 - Sale Area

### 1.2 - Boundaries

#### 1.2.1 - Painted boundaries (1/14)

The sale boundary and Payment Unit boundaries are marked and identified by blue, red and yellow paint. Exterior sale boundary lines against private property are marked with blue paint. Exterior sale boundary lines against state are marked with red paint. Interior Payment Unit boundaries are marked with yellow paint. The painted boundary line trees are not Included Timber and are to be protected. Yellow painted trees designating an interior Payment Unit boundary are only to be cut when all surrounding Payment Units have been paid.

## 2 - Timber Specifications

### 2.1 - Included Timber

#### 2.1.1 - Clearcut unit(s) with unmerchantable trees (6/14)

Within Payment Unit(s) 1-10, cut all trees that are two (2) inches or more at DBH, except do not cut any trees marked with pink paint. In addition, within Payment Unit(s) 1-2, 5, and 7-10, do not cut white pine.

### 2.2 - Utilization

#### 2.2.3 - Stump heights (4/07)

Stump heights within the Sale Area shall not exceed 12 inches for trees greater than 10 inches DBH and 4 inches for trees smaller than 10 inches DBH. This is in order to facilitate possible planting operations. A written waiver of this requirement may be obtained if wet summer weather makes winter logging necessary.

#### 2.2.4 - Skidding length (2/14)

Unless approved by the Unit Manager or his/her representative, tree length skidding is required within Payment Unit(s) 1, 5, 7-8, and 10. This is to eliminate red maple saplings.

## 3 - Payments

### 3.3 - Pre-measured Sales

#### 3.3.4 - Dividing payment units (7/14)

Payment Unit(s) that exceed \$25,000 may be divided at the request of the Purchaser and upon approval of the Unit Manager. Dividing Payment Units is a contract modification which requires a Timber Sale Contract Supplement. There will be only one division per Payment Unit.

### 3.4 - Damaged Timber

#### 3.4.1 - Damaged timber (6/14)

General Condition and Requirement 3.4 Damaged Timber, defines liquidated damages for undesignated live merchantable trees which are cut or injured. In addition, extreme care should be taken to avoid damage to white pine and oak seedlings and saplings.

Within Payment Unit 3, if more than 25% of the oak/pine seedlings or saplings (1/4" to 4.5" DBH) within a specified portion of the sale area are damaged, liquidated damages will be assessed at \$150 per acre for all acreage within that specified portion of the sale area that was damaged.

#### 3.4.2 - Special Protection Trees (4/14)

The Purchaser shall not cut live or dead special protection trees within cutting units or clearings. Special protection trees are marked with pink paint. If the Purchaser's operations have cut or damaged special protection trees through carelessness, the Purchaser shall pay \$100 as fixed, agreed and liquidated damages for each special protection tree cut or damaged. Such payment does not constitute ownership of the undesignated timber.

## 4 - Transportation

## 4.1 - Construction

### 4.1.3 - Slash and earthen piles (8/04)

Piles or windrows of earth along roads and landings that have been widened or constructed shall be leveled. Slash from road maintenance or construction, including stumps, shall be dispersed throughout the sale.

### 4.1.6 - Road construction (1/09)

Construction of new roads or improvements of existing roads shall be done in such a way as to minimize the environmental and visual impacts. Merchantable trees shall be cut and utilized unless otherwise directed. Non-merchantable trees shall be severed and laid flat on the ground. Slash shall be scattered, and not left in windrows and kept a minimum of 10 feet back from the road edge. Stumps shall be set upright, not left on edge, and be moved at least 10 feet away from the road edge. Disturbed soil shall be feathered into the woods and not left in berms or windrows.

### 4.1.7 - Road closure (10/11)

All new roads built into the sale must be blocked to vehicle traffic upon completion of the sale. Overgrown roads that are reopened shall be considered new roads. In general, this will require constructing a four (4') foot high berm of stumps and logs covered with earth. Stumps and brush must be placed along the remainder of the trail. These roads must be rendered impassable to cars and trucks. Contact the sale administrator for specific details of design and placement.

## 4.2 - Maintenance

### 4.2.5 - Two wheel drive condition (2/04)

All existing trail roads on and adjacent to the sale area must be passable by two-wheel drive traffic for the duration of the sale.

## 5 - Operations

### 5.2 - Conduct of Operations

#### 5.2.1 - Slash

##### 5.2.1.8 - Slash height (12/08)

No slash or tree tops may exceed 24 inches in height. This is for facilitate possible future plantings.

#### 5.2.2 - Hazard Trees/Snags

##### 5.2.2.1 - Den trees (10/16)

Obvious hollow and/or den trees shall be protected and left standing unless they are a safety hazard.

#### 5.2.3 - Operating Restrictions

##### 5.2.3.4 - Oak wilt restriction (4/17)

Within Payment Unit(s) 1-10, unless changed by written agreement, cutting, skidding, and hauling are not permitted during the period of April 15 to July 15. Operations may be allowed if specific steps are taken to prevent damaging uncut oak during the high risk period. Those steps include completing all road brushing before April 15th, clearing a tree-length buffer along uncut oak cover before April 15th or leaving an uncut buffer there until after July 15th. This is necessary to reduce the spread of oak wilt. For more information, contact the Unit Manager or his/her representative.

##### 5.2.3.11 - Coppice regeneration protection (4/10)

Timber harvesting in any Payment Unit must be completed before significant deciduous sprouting occurs in that Payment Unit so as to minimize damage to the new regeneration. Any post harvest operations, such as chipping, must be completed before sprouting of regeneration occurs. If it is anticipated that chipping will be delayed, then tops shall be carried to one central location or left unchipped. The Unit Manager or his/her representative may cease such operations if sprouting occurs before the operation is complete.

#### 5.2.32 - Decking/landing restoration (9/13)

All decking and landing areas must have the surface area restored to a condition equal to or better than before. This is to ensure the proper regeneration of the stand. Wood debris, chips and "cookies" from trimmings must be removed or scattered away from landing and loading areas and may not be windrowed on the edge.

#### 5.2.38 - No decking against live trees (2/04)

Cut products may not be decked against unmarked or designated leave trees.

#### 5.2.41 - Snowmobile trail protection (9/11)

The snowmobile trail is shown on the Timber Sale Map. Do not cut or damage posts with orange trail markers or traffic control signs. If the trail is used, it must be maintained and restored to a condition equal to or better than before the sale. The road maintenance/restoration must be done prior to December 1. If the trail is used for hauling, it must be graded to the satisfaction of the Unit Manager or his/her representative prior to December 1st. The snowmobile trail may not be used for any timber sale operations from December 1 to March 31. Maintain a 20 foot wide slash, debris, and rut free zone daily using the snowmobile trail as the centerline. All stumps within 20 feet of the snowmobile trail must be cut at ground level.

### 5.4 - Soil Protection

#### 5.4.1 - Rutting restriction, general (7/16)

Operations are to cease immediately if equipment and weather conditions result in rutting of roads and/or skid trails which is 12 inches or greater in depth and 50 feet in length. The Unit Manager or his/her representative may restrict hauling and/or skidding if ruts exceed the specified depth. With the Unit Manager or his/her representative's approval, the Purchaser may return to the area when the risk of rutting has decreased.

#### 5.4.2 - Skid trails (2/04)

Skid trails up and down slopes should be avoided. If however this is unavoidable, these trails will be left in a non-erodible condition using water bars, logs, and slash. Placing of slash on these skid trails while logging is ongoing may alleviate need for any further action. At the direction of the sale administrator, seed, fertilizer, and mulch may also be required.

### 5.8 - Protection of Endangered Species

#### 5.8.5 - Protection of raptor nests (3/13)

All trees with raptor nests will be protected if found during harvesting operations. Notification will be made to the Unit Manager or his/her representative who will notify the Wildlife Biologist so an on-site evaluation and recommendation can be made, if necessary.

## 6 - Safety and Fire Prevention

### 6.2 - Signing

#### 6.2.1 - Road posting (9/09)

The Purchaser is responsible for posting and maintaining caution signs on forest roads used for operations prior to beginning operations. The road must be posted at appropriate distances from the sale area to warn of logging activity and truck traffic. Signs must be removed when harvest operations are suspended or completed. The Purchaser will provide these signs.

#### 6.2.2 - Snowmobile trail posting (8/09)

The Purchaser is responsible for posting and maintaining caution signs on the snowmobile trail prior to beginning operations during the snowmobile season (approximately December 1 to March 31). The trail must be posted at appropriate distances from the sale area to warn of logging activity and truck traffic. Signs must be removed when harvest operations are suspended or completed. The Purchaser will provide these signs.



# TIMBER SALE MAP

This information provided by authority of Part 525, 1994 PA 451, as amended.

Forest Management Unit Atlanta Management Unit	County Presque Isle	Mapped By A Krugh	Date 01/11/2017	Page 1	of 2
Township 35N & 34N	Range 04E	Section(s) and Subdivision(s) Sec 31 SENW SWSE N2SW SESW Sec 5 SW Sec 6 SWNE SENW N2SE E2SW Sec 7 N2NE SENE W2NW NESE	Cruised By A Krugh, D Coy	Scale 1:15,840	

### Cover Type

A = Aspen	H = Hemlock	N = Marsh	U = Upland Brush
B = Paper Birch	J = Jack Pine	O = Oak	UM = Upland Mixed
C = Cedar	L = Lowland Brush	P = Lowland Poplar	V = Bog or Marsh
D = Treed Bog	LM = Lowland Mixed	Q = Mixed Swamp Conifer	W = White Pine
E = Swamp Hdwoods	M = Mpl, Bch, Brch	R = Red Pine	X = Non Stocked
F = Spruce Fir	MC = Mixed Conifer	S = Black Spruce	Z = Water
G = Grass	MD = Mixed Deciduous	T = Tamarack	

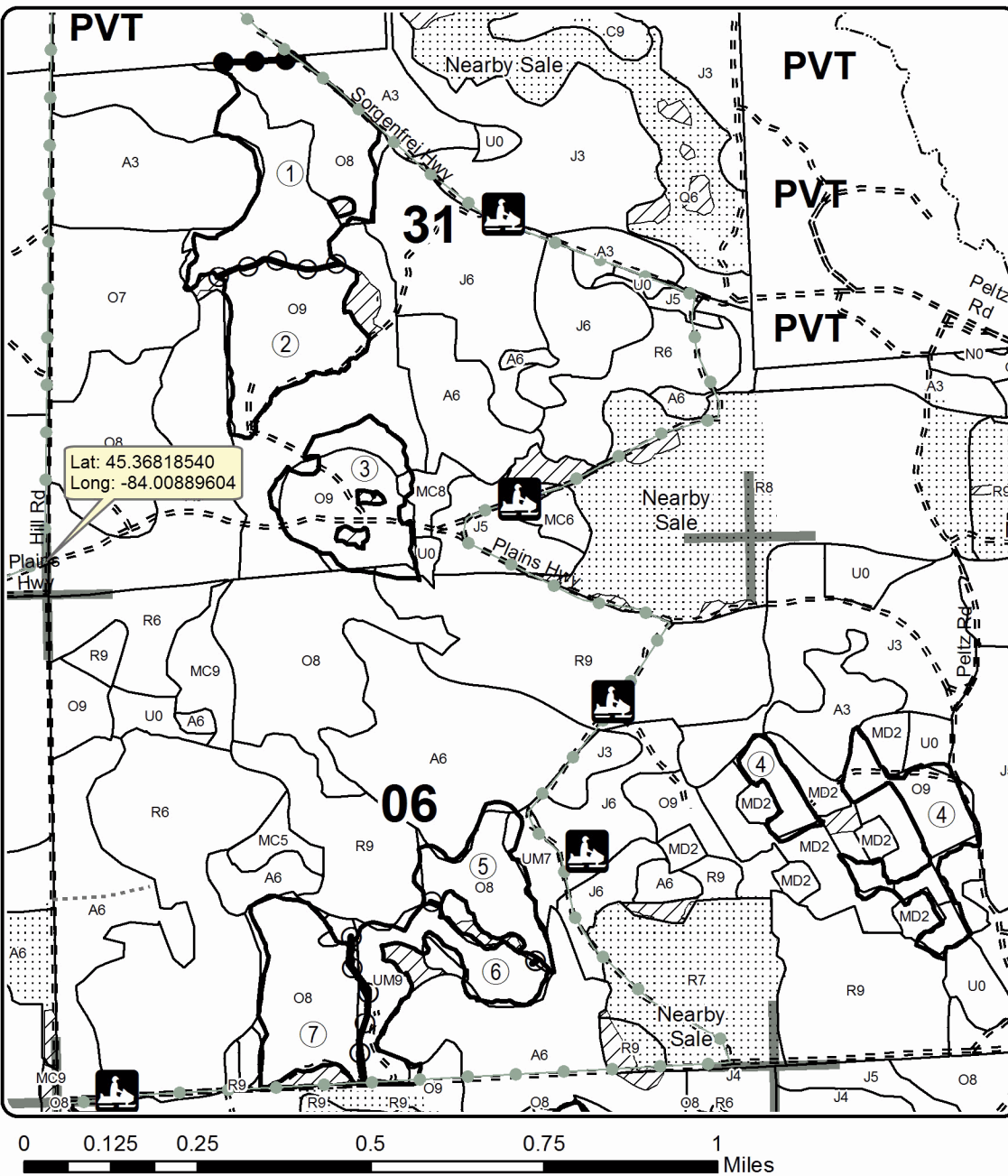
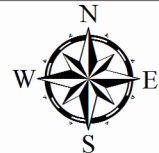
### Density

0 = Non Stocked	5 = Pole Timber Medium
1 = Seedling Sapling Poor	6 = Pole Timber Well
2 = Seedling Sapling Medium	7 = Saw Timber Poor
3 = Seedling Sapling Well	8 = Saw Timber Medium
4 = Pole Timber Poor	9 = Saw Timber Well

## Monster Within

Compartment 137  
193.9 Acres

PU	Acres	PU	Acres
1	33.8	6	16.3
2	21.7	7	21.1
3	20.2	8	16.7
4	19.9	9	17.1
5	13.4	10	13.7

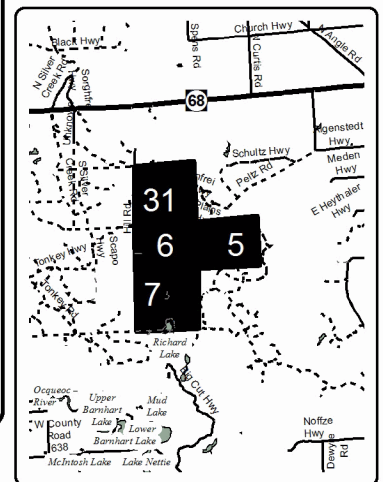


### Legend

- Against State (Red)
- Payment Unit (Yellow)
- Private Line (Blue)
- Stand Boundaries
- PU\_Label
- Retention Area
- Section Corners
- Poor Dirt Roads
- Closed Roads
- Recreational Trail
- Streams



Locator Map  
1:200,000





Sale Number	Year
54 - 009	17

# TIMBER SALE MAP

This information provided by authority of Part 525, 1994 PA 451, as amended.

Forest Management Unit Atlanta Management Unit	County Presque Isle	Mapped By A Krugh	Date 01/11/2017	Page 2	of 2
Township 35N & 34N	Range 04E	Section(s) and Subdivision(s) Sec 31 SENW SWSE N2SW SESW Sec 5 SW Sec 6 SWNE SENW N2SE SWSE E2SW Sec 7 N2NE SENE W2NW NESE	Cruised By A Krugh, D Coy	Scale 1:15,840	

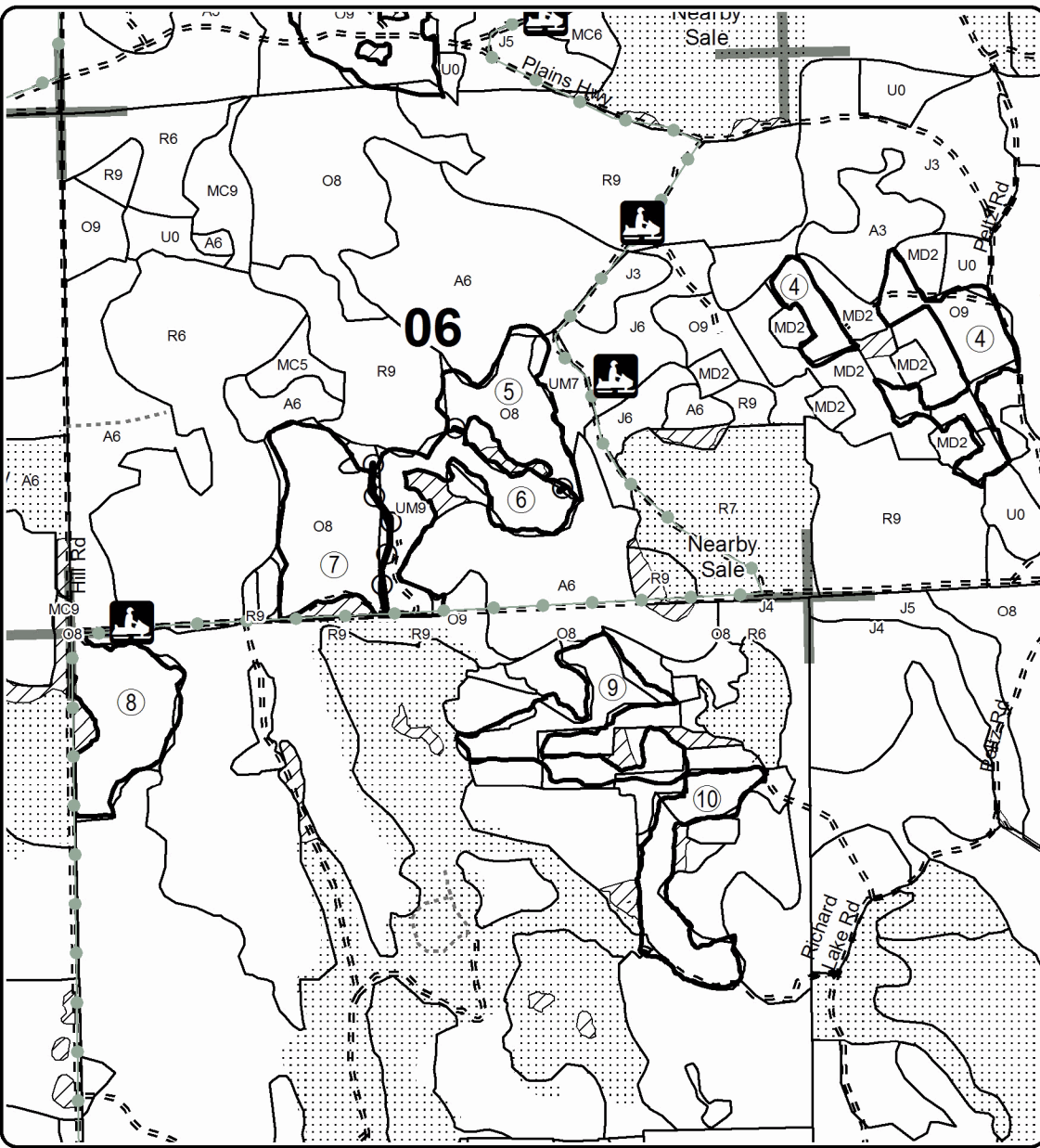
Cover Type				Density			
A = Aspen	H = Hemlock	N = Marsh	U = Upland Brush	0 = Non Stocked	5 = Pole Timber Medium		
B = Paper Birch	J = Jack Pine	O = Oak	UM = Upland Mixed	1 = Seedling Sapling Poor	6 = Pole Timber Well		
C = Cedar	L = Lowland Brush	P = Lowland Poplar	V = Bog or Marsh	2 = Seedling Sapling Medium	7 = Saw Timber Poor		
D = Treed Bog	LM = Lowland Mixed	Q = Mixed Swamp Conifer	W = White Pine	3 = Seedling Sapling Well	8 = Saw Timber Medium		
E = Swamp Hdwoods	M = Mpl, Bch, Brch	R = Red Pine	X = Non Stocked	4 = Pole Timber Poor	9 = Saw Timber Well		
F = Spruce Fir	MC = Mixed Conifer	S = Black Spruce	Z = Water				
G = Grass	MD = Mixed Deciduous	T = Tamarack					

## Monster Within

### Compartment 137

193.9 Acres

PU	Acres	PU	Acres
1	33.8	6	16.3
2	21.7	7	21.1
3	20.2	8	16.7
4	19.9	9	17.1
5	13.4	10	13.7

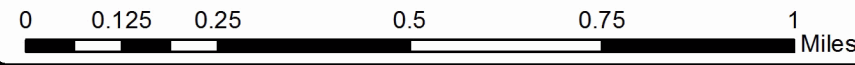
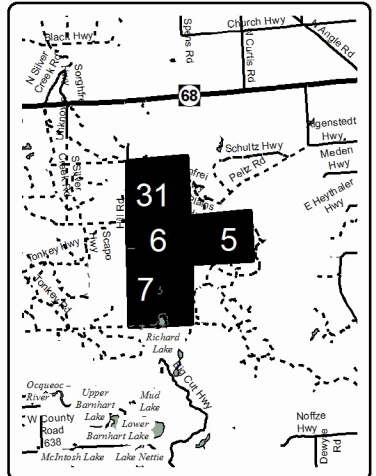


### Legend

- Against State (Red)
- Payment Unit (Yellow)
- Private Line (Blue)
- Stand Boundaries
- PU\_Label
- Retention Area
- Section Corners
- Gravel Roads
- Poor Dirt Roads
- Closed Roads
- Recreational Trail
- Streams



Locator Map  
1:200,000



## TIMBER SALE INFORMATION

### Peltz Semi-Lowland Mix (54-010-17)

Presque Isle County (Advertised Price \$34,094.25)

SALE NOTE: A recreation site such as a trail, pathway, or campground is within the sale area or the vicinity. Certain restrictions/specifications may be applicable including time restrictions.

A timber sale contract for this lump sum, sealed bid timber sale will be awarded to the responsible bidder offering the highest sealed bid price. Bids must be at or above the following advertised price for each species:

<u>PRODUCTS &amp; SPECIES</u>	<u>ESTIMATED UNITS*</u>		<u>ADVERTISED PRICE</u>
Sawtimber			
Mixed Spruce	26.80	MBF	\$ 81.00 / MBF
N. White Cedar	23.90	MBF	\$ 52.00 / MBF
Red Maple	8.00	MBF	\$ 121.00 / MBF
Tamarack	30.80	MBF	\$ 66.00 / MBF
Pulpwood			
Balsam Fir	130.00	Cords	\$ 28.35 / Cord
Jack Pine	171.00	Cords	\$ 23.45 / Cord
Mixed Aspen	22.00	Cords	\$ 20.25 / Cord
Mixed Spruce	282.00	Cords	\$ 36.75 / Cord
N. White Cedar	145.00	Cords	\$ 19.15 / Cord
Paper Birch	20.00	Cords	\$ 20.65 / Cord
Red Maple	87.00	Cords	\$ 18.05 / Cord
Tamarack	134.00	Cords	\$ 32.95 / Cord

\* The total volume is statistically estimated within plus (+) or minus (-) 15.81 percent. The estimated units are final and not subject to adjustment. Prospective bidders are urged to examine this timber and to make their own estimates of quantity and quality.

#### **BOND AND PAYMENT SCHEDULE:**

1. A bond in the amount of \$1,705.00 to insure faithful performance of the conditions of the contract will be deposited by the successful bidder within 21 days of the sale award.
2. Cutting in any sale or unit without the required advance payment would be considered a trespass.
3. Total payment must be paid in advance or according to the following schedule:
  - (a) Ten percent (10%) of the sale value must be paid within 21 days of the sale award.
  - (b) The remainder is due before cutting begins.
4. If no cutting takes place, the 10% down payment will not be refunded.
5. Operations on the contract issued will terminate on 06/30/2021.



**Description of Timber by Payment Unit (PU)**

PU	MARKET GROUP	PRODUCT	QUANTITY	UNIT	ACRES	ADVERTISE PRICE
1	Mixed Spruce	Sawtimber	26.8	MBF	47.3	\$34,094.25
	<i>Black Spruce</i>		26.8	<i>MBF</i>		
	N. White Cedar		23.9	MBF		
	Red Maple		8.0	MBF		
	Tamarack		30.8	MBF		
	Balsam Fir	Pulpwood	130.0	Cords		
	<i>Balsam Fir</i>	<i>Sawtimber</i>	8.3	<i>MBF</i>		
	<i>Balsam Fir</i>	<i>Pulpwood</i>	113.0	<i>Cords</i>		
	Jack Pine		171.0	Cords		
	<i>Jack Pine</i>	<i>Sawtimber</i>	18.5	<i>MBF</i>		
	<i>Jack Pine</i>	<i>Pulpwood</i>	134.0	<i>Cords</i>		
	Mixed Aspen		22.0	Cords		
	<i>Quaking Aspen</i>	<i>Sawtimber</i>	2.8	<i>MBF</i>		
	<i>Quaking Aspen</i>	<i>Pulpwood</i>	16.0	<i>Cords</i>		
	Mixed Spruce		282.0	Cords		
	<i>Black Spruce</i>		282.0	<i>Cords</i>		
	N. White Cedar		145.0	Cords		
	Paper Birch		20.0	Cords		
	<i>Paper Birch</i>	<i>Sawtimber</i>	0.7	<i>MBF</i>		
	<i>Paper Birch</i>	<i>Pulpwood</i>	19.0	<i>Cords</i>		
Red Maple		87.0	Cords			
Tamarack		134.0	Cords			
TOTAL:			89.5	MBF		
TOTAL:			991.0	Cords		



# Sale Specific Conditions & Requirements

**Sale Name: Peltz Semi-Lowland Mix**

**Sale Number: 54-010-17 Seq#: 1**

## 1 - Sale Area

### 1.2 - Boundaries

#### 1.2.1 - Painted boundaries (1/14)

The sale boundaries are marked and identified by blue and red paint. Exterior sale boundary lines against private property are marked with blue paint. Exterior sale boundary lines against state are marked with red paint. Interior retention area boundaries are marked with purple paint and are not to be entered. The painted boundary line trees are not Included Timber and are to be protected.

## 2 - Timber Specifications

### 2.1 - Included Timber

#### 2.1.1 - Clearcut unit(s) with unmerchantable trees (6/14)

Within Payment Unit(s) 1, cut all trees that are two (2) inches or more at DBH, except do not cut any red pine, white pine, or oak trees.

## 3 - Payments

### 3.3 - Pre-measured Sales

#### 3.3.4 - Dividing payment units (7/14)

Payment Unit(s) 1 may be divided at the request of the Purchaser and upon approval of the Unit Manager. Dividing Payment Units is a contract modification which requires a Timber Sale Contract Supplement. There will be only one division per Payment Unit.

### 3.4 - Damaged Timber

#### 3.4.1 - Damaged timber (6/14)

General Condition and Requirement 3.4 Damaged Timber, defines liquidated damages for undesignated live merchantable trees which are cut or injured. No damage is acceptable to undesignated merchantable trees. Within the sale area, if more than 5% of trees (> 4.5" DBH) within a specified area of the sale are damaged, liquidated damages will be assessed for all trees damaged. Rates will be in accordance with General Condition and Requirement 3.4 Damaged Timber.

#### 3.4.2 - Special Protection Trees (4/14)

The Purchaser shall not cut live or dead special protection trees within cutting units or clearings. Special protection trees are red pine and white pine trees greater than 26" at DBH. If the Purchaser's operations have cut or damaged special protection trees through carelessness, the Purchaser shall pay \$150 as fixed, agreed and liquidated damages for each special protection tree cut or damaged. Such payment does not constitute ownership of the undesignated timber.

## 4 - Transportation

### 4.1 - Construction

#### 4.1.3 - Slash and earthen piles (8/04)

Piles or windrows of earth along roads and landings that have been widened or constructed shall be leveled. Slash from road maintenance or construction, including stumps, shall be dispersed throughout the sale.

#### 4.1.6 - Road construction (1/09)

Construction or improvements of existing roads shall be done in such a way as to minimize the environmental and visual impacts. Merchantable trees shall be cut and utilized unless otherwise directed. Non-merchantable trees shall be severed and laid flat on the ground. Slash shall be scattered, and not left in windrows and kept a minimum of 10 feet back from the road edge. Stumps shall be set upright, not left on edge, and be moved at least 10 feet away from the road edge. Disturbed soil shall be feathered into the woods and not left in berms or windrows.

#### 4.1.7 - Road closure (10/11)

All new roads built into the sale must be blocked to vehicle traffic upon completion of the sale. Overgrown roads that are

reopened shall be considered new roads. In general, this will require constructing a four (4') foot high berm of stumps and logs covered with earth. These roads must be rendered impassable to cars and trucks. Contact the sale administrator for specific details of design and placement.

#### 4.2 - Maintenance

##### 4.2.5 - Two wheel drive condition (2/04)

All existing trail roads on and adjacent to the sale area must be passable by two-wheel drive traffic for the duration of the sale.

### 5 - Operations

#### 5.1 - Notification

##### 5.1.1 - Pre-sale conference (10/16)

A pre-sale conference between the Purchaser and sale administrator is required prior to beginning any operations to determine landing and road locations. The Unit Manager or his/her representative must be contacted at least 10 days in advance to schedule the conference.

##### 5.1.4 - Post-sale conference (10/16)

A post-sale conference on site between the Purchaser and sale administrator is required 5 days prior to the completion of active logging operations to determine clean-up and repair of landings, road edges, and the fulfillment of other contract specifications.

#### 5.2 - Conduct of Operations

##### 5.2.1 - Slash

###### 5.2.1.11 - Slash for reforestation (5/07)

To facilitate reforestation, the sale area shall be left with slash evenly distributed. Bunched tops within the cutting area shall be broken up and scattered. Stumps shall be cut low to the ground. Processing sites shall not be left with a compacted layer of slash; tops from these sites shall be hauled back into the cut area and scattered.

##### 5.2.2 - Hazard Trees/Snags

###### 5.2.2.1 - Den trees (10/16)

Obvious hollow and/or den trees shall be protected and left standing unless they are a safety hazard.

##### 5.2.3 - Operating Restrictions

###### 5.2.3.1 - Operating restrictions (9/11)

Within Payment Unit(s) 1, unless changed by written agreement, cutting, skidding, and hauling are not permitted during the period of March 15 to July 1. This restriction is due to protect seasonally wet soils within the treatment area.

##### 5.2.4 - Dead and Down Creation

###### 5.2.4.4 - Dead and down creation, grouse (8/13)

To encourage grouse and other wildlife, in Payment Unit(s) 1, leave one, 10" diameter or larger log-length (8 foot minimum) piece on the ground for every 2 acres. This can be an unmerchantable piece or a full tree.

##### 5.2.18 - Equipment requirements (1/09)

Harvesting equipment must be approved by the sale administrator before operations begin and be capable of operating in lowlands without causing significant soil damage.

##### 5.2.31 - Landing locations (9/13)

Landing areas are marked on the Timber Sale Map with the letter "L". Landing access must be pre-designated by the sale administrator before any work begins. Landings must be confined to these designated sites unless otherwise authorized by the Unit Manager or his/her representative.

##### 5.2.32 - Decking/landing restoration (9/13)

All decking and landing areas must have the surface area restored to a condition equal to or better than before. This is to ensure the proper regeneration of the stand. Wood debris, chips and "cookies" from trimmings must be removed or scattered

away from landing and loading areas and may not be windrowed on the edge.

#### 5.2.38 - No decking against live trees (2/04)

Cut products may not be decked against unmarked or designated leave trees.

#### 5.2.41 - Snowmobile trail protection (9/11)

Snowmobile trail 99 is shown on the Timber Sale Map. Do not cut or damage posts with orange trail markers or traffic control signs. If the trail is used, it must be maintained and restored to a condition equal to or better than before the sale. The road maintenance/restoration must be done prior to December 1. If the trail is used for hauling, it must be graded to the satisfaction of the Unit Manager or his/her representative prior to December 1st. If the trail road is to be used for hauling during the snowmobile season, then a snow covered base must be left on the trail. The snowmobile trail may only be crossed at right angles. No decking of forest products will be permitted along the snowmobile trail.

### 5.4 - Soil Protection

#### 5.4.1 - Rutting restriction, general (7/16)

Operations are to cease immediately if equipment and weather conditions result in rutting of roads and/or skid trails which is 12 inches or greater in depth and 50 feet in length. The Unit Manager or his/her representative may restrict hauling and/or skidding if ruts exceed the specified depth. With the Unit Manager or his/her representative's approval, the Purchaser may return to the area when the risk of rutting has decreased.

#### 5.4.5 - Soil caution (11/04)

Care must be taken to minimize soil damage due to the poorly drained and saturated organic soils present in some areas of the treatment. Corduroying skid routes with roundwood, brush, or slash may be needed in areas with weak/wet soil to minimize rutting.

### 5.8 - Protection of Endangered Species

#### 5.8.5 - Protection of raptor nests (3/13)

All trees with raptor nests will be protected if found during harvesting operations. Notification will be made to the Unit Manager or his/her representative who will notify the Wildlife Biologist so an on-site evaluation and recommendation can be made, if necessary.

## 6 - Safety and Fire Prevention

### 6.2 - Signing

#### 6.2.2 - Snowmobile trail posting (8/09)

The Purchaser is responsible for posting and maintaining caution signs on snowmobile trail 99 prior to beginning operations during the snowmobile season (approximately December 1 to March 31). The trail must be posted at appropriate distances from the sale area to warn of logging activity and truck traffic. Signs must be removed when harvest operations are suspended or completed. The Purchaser will provide these signs.



# TIMBER SALE MAP

This information provided by authority of Part 525, 1994 PA 451, as amended.

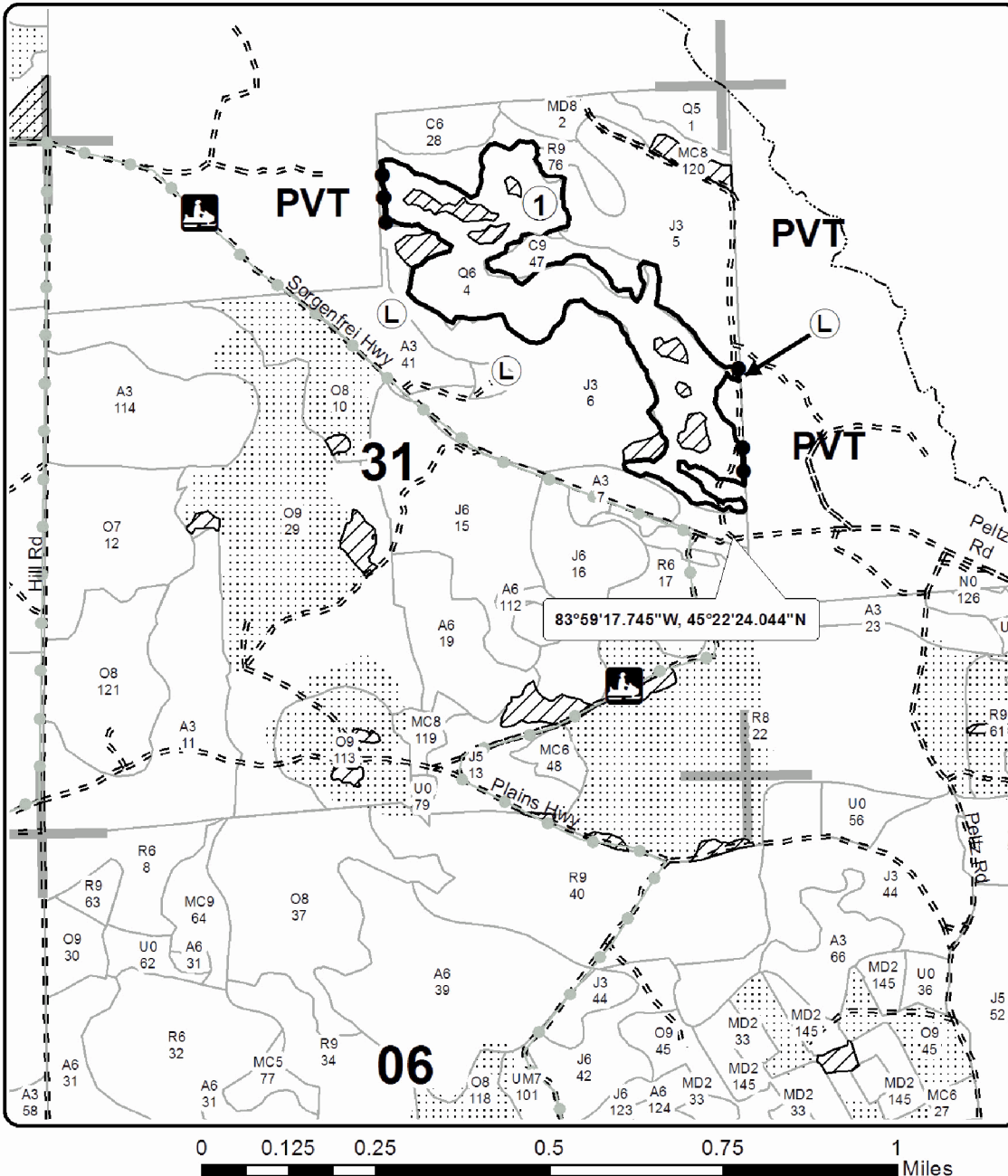
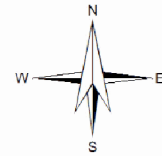
Forest Management Unit <b>Atlanta Management Unit</b>		County <b>Presque Isle</b>	Mapped By <b>D. Coy</b>	Date <b>01/17/2017</b>	Page <b>1</b>	of <b>1</b>
Township <b>35N</b>	Range <b>04E</b>	Section(s) and Subdivision(s) <b>31- NE4 &amp; NE5E</b>		Scale <b>1:15,840</b>		

Cover Type				Density	
A = Aspen	H = Hemlock	N = Marsh	U = Upland Brush	0 = Non Stocked	5 = Pole Timber Medium
B = Paper Birch	J = Jack Pine	O = Oak	UM = Upland Mixed	1 = Seedling Sapling Poor	6 = Pole Timber Well
C = Cedar	L = Lowland Brush	P = Lowland Poplar	V = Bog or Marsh	2 = Seedling Sapling Medium	7 = Saw Timber Poor
D = Tread Bog	LM = Lowland Mixed	Q = Mixed Swamp Conifer	W = White Pine	3 = Seedling Sapling Well	8 = Saw Timber Medium
E = Swamp Hdwoods	M = Mpl, Bch, Brch	R = Red Pine	X = Non Stocked	4 = Pole Timber Poor	9 = Saw Timber Well
F = Spruce Fir	MC = Mixed Conifer	S = Black Spruce	Z = Water		
G = Grass	MD = Mixed Deciduous	T = Tamarack			

**PU Acres**  
**1 47.3**

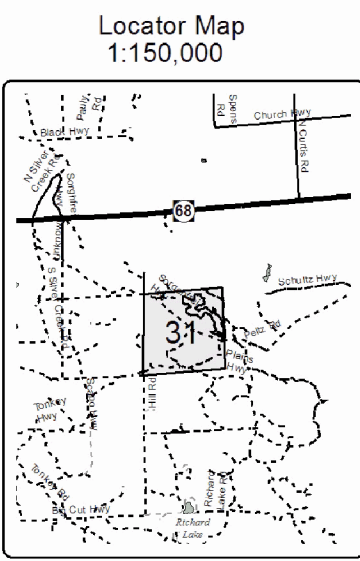
## Peltz Semi-Lowland Mix

Compartment 137  
47.3 Acres



### Legend

- Against State (Red)
- Private Line (Blue)
- ▨ Retention Area (Purple)
- ⋯ Adjacent Timber Sale
- Adjacent Stand Boundaries
- Ⓛ Landing
- Section Corners
- Recreational Trail
- - - Poor Dirt Roads
- ⋯ Streams



Peltz Semi-Lowland Mix (54-010-17)  
; Presque Isle COUNTY

In response to the notice of sale to be held 10:00 a.m. (local time) on October 31, 2017, I am hereby submitting my sealed bid (firm offer) for the following forest products to be cut. Bids for individual species must be at or above the advertised price. All non-responsive bid forms may be rejected.

<u>PRODUCTS &amp; SPECIES</u>	<u>ESTIMATED VOLUME*</u>	<u>ADVERTISED PRICE</u>	<u>BID PRICE/UNIT</u>
<b>Sawtimber</b>			
Mixed Spruce	26.80 MBF	\$ 81.00/MBF	\$ _____
N. White Cedar	23.90 MBF	\$ 52.00/MBF	\$ _____
Red Maple	8.00 MBF	\$ 121.00/MBF	\$ _____
Tamarack	30.80 MBF	\$ 66.00/MBF	\$ _____
<b>Pulpwood</b>			
Balsam Fir	130.00 Cords	\$ 28.35/Cord	\$ _____
Jack Pine	171.00 Cords	\$ 23.45/Cord	\$ _____
Mixed Aspen	22.00 Cords	\$ 20.25/Cord	\$ _____
Mixed Spruce	282.00 Cords	\$ 36.75/Cord	\$ _____
N. White Cedar	145.00 Cords	\$ 19.15/Cord	\$ _____
Paper Birch	20.00 Cords	\$ 20.65/Cord	\$ _____
Red Maple	87.00 Cords	\$ 18.05/Cord	\$ _____
Tamarack	134.00 Cords	\$ 32.95/Cord	\$ _____

\*The volumes are statistically estimated within plus (+) or minus (-) 15.81 percent. These estimated volumes are final and not subject to adjustment. Prospective bidders are urged to examine this timber and to make their own estimates of quantity and quality.

I understand that any or all bids may be rejected. All bids must be signed and all bid items must be bid or the bid form may be rejected. I also understand that consideration and awarding a contract will be based upon my past performance and ability to complete the contract based upon equipment and staffing subject to my control.

FEDERAL ID: \_\_\_\_ - \_\_\_\_ - \_\_\_\_ or SOCIAL SECURITY NUMBER: \_\_\_\_ - \_\_\_\_ - \_\_\_\_

Company or individual bidding: \_\_\_\_\_

Company representative's name: \_\_\_\_\_

Address: \_\_\_\_\_

City: \_\_\_\_\_ State: \_\_\_\_\_ Zip: \_\_\_\_\_

IF AVAILABLE, PLEASE PLACE THE PERSONALIZED LABEL FROM YOUR PROSPECTUS IN THE ABOVE BOX.

Individual or company representative's signature: \_\_\_\_\_ Date: \_\_\_\_\_

Phone number : \_\_\_\_\_ Email (optional): \_\_\_\_\_

**THE WINNING BIDDER MUST COMPLETE THE VERIFICATION OF WORKER'S DISABILITY COMPENSATION ACT COMPLIANCE (ON REVERSE SIDE IF DOUBLE SIDED) WITHIN 21 DAYS OF SALE AWARD DATE**



<b>FOR DEPARTMENT USE ONLY</b>	
Sale Number (XX - XXX - XX - XX)	
Forest Management Unit:	

## TIMBER SALE VERIFICATION OF WORKER'S DISABILITY COMPENSATION ACT COMPLIANCE

As required by Act 317, P.A. 1969 (Worker's Compensation) and  
Part 5 of Act 451 of 1994, as amended.

### VERIFICATION OF WORKER'S DISABILITY COMPENSATION ACT COMPLIANCE

- This verification must be completed and submitted within 21 days of contract award and prior to the issuance of the timber sale contract.
- In addition, if boxes 2B or 2C are checked, then Notice of Exclusion or Certificate of Insurance must be submitted within twenty-one (21) days of the contract award and prior to the issuance of the timber sale contract.
- All information must be typed or printed except for written signatures.

Please Check Appropriate Categories:

1. My business is organized as (you **must** check one of the boxes below):
  - A.  Sole Proprietorship (individual)
  - B.  Partnership
  - C.  Corporation
2. You **must** check one of the boxes below:
  - A.  I certify my business is a sole proprietorship and it has no employees but the sole proprietor. I am not subject to the Worker's Compensation Laws.
  - B.  I certify my business has satisfied its obligation to the Worker's Compensation Act through the use of an approved Notice of Exclusion (BWC-337, Rev. 5/96). I will provide a copy of the Notice of Exclusion within 21 days of the contract award. (For questions or a copy of the BWC-337, please call the Worker's Compensation Bureau at 517-322-1195).
  - C.  I certify my business has a Worker's Compensation Policy. I will provide an original Certificate of Insurance within twenty-one (21) days of the contract award.
3. If you have checked item 2(A) or 2(B), you **must** indicate the number of **both** full-time and part-time employees, other than yourself, including family members and active partners (if none, you must enter "0").

\_\_\_\_\_ Full-time Employees

\_\_\_\_\_ Part-time Employees

Name of Business		Federal ID (or) Social Security No.	
Address		Telephone (       )	
City	State	ZIP	

*I hereby certify that the above information is true and correct. I agree to notify the Michigan DNR of any changes that occur in factors affecting my coverage during any of my present and future operations.*

\_\_\_\_\_  
Signature of Owner or Authorized Representative

\_\_\_\_\_  
Title

\_\_\_\_\_  
Date

Please complete the "SEALED BID" information on the next page

Monster Within (54-009-17)  
; Presque Isle COUNTY

In response to the notice of sale to be held 10:00 a.m. (local time) on October 31, 2017, I am hereby submitting my sealed bid (firm offer) for the following forest products to be cut. Bids for individual species must be at or above the advertised price. All non-responsive bid forms may be rejected.

<u>PRODUCTS &amp; SPECIES</u>	<u>ESTIMATED VOLUME*</u>	<u>ADVERTISED PRICE</u>	<u>BID PRICE/UNIT</u>
<b>Sawtimber</b>			
Red Oak	602.00 MBF	\$ 161.00/MBF	\$ _____
Red Pine	168.70 MBF	\$ 128.00/MBF	\$ _____
White Pine	8.00 MBF	\$ 86.00/MBF	\$ _____
<b>Pulpwood</b>			
B. T. Aspen	99.00 Cords	\$ 21.70/Cord	\$ _____
Jack Pine	114.00 Cords	\$ 25.15/Cord	\$ _____
Red Maple	32.00 Cords	\$ 19.35/Cord	\$ _____
Red Oak	2,208.00 Cords	\$ 20.85/Cord	\$ _____
Red Pine	538.00 Cords	\$ 50.35/Cord	\$ _____
Scotch Pine	2.00 Cords	\$ 26.60/Cord	\$ _____
White Pine	32.00 Cords	\$ 41.85/Cord	\$ _____

\*The volumes are statistically estimated within plus (+) or minus (-) 7.53 percent. These estimated volumes are final and not subject to adjustment. Prospective bidders are urged to examine this timber and to make their own estimates of quantity and quality.

I understand that any or all bids may be rejected. All bids must be signed and all bid items must be bid or the bid form may be rejected. I also understand that consideration and awarding a contract will be based upon my past performance and ability to complete the contract based upon equipment and staffing subject to my control.

FEDERAL ID: \_\_\_\_\_ or SOCIAL SECURITY NUMBER: \_\_\_\_\_

Company or individual bidding: \_\_\_\_\_

Company representative's name: \_\_\_\_\_

Address: \_\_\_\_\_

City: \_\_\_\_\_ State: \_\_\_\_\_ Zip: \_\_\_\_\_

IF AVAILABLE, PLEASE PLACE THE PERSONALIZED LABEL FROM YOUR PROSPECTUS IN THE ABOVE BOX.

Individual or company representative's signature: \_\_\_\_\_ Date: \_\_\_\_\_

Phone number : \_\_\_\_\_ Email (optional): \_\_\_\_\_

**THE WINNING BIDDER MUST COMPLETE THE VERIFICATION OF WORKER'S DISABILITY COMPENSATION ACT COMPLIANCE (ON REVERSE SIDE IF DOUBLE SIDED) WITHIN 21 DAYS OF SALE AWARD DATE**



<b>FOR DEPARTMENT USE ONLY</b>
Sale Number (XX - XXX - XX - XX)
Forest Management Unit:

## TIMBER SALE VERIFICATION OF WORKER'S DISABILITY COMPENSATION ACT COMPLIANCE

*As required by Act 317, P.A. 1969 (Worker's Compensation) and  
Part 5 of Act 451 of 1994, as amended.*

### VERIFICATION OF WORKER'S DISABILITY COMPENSATION ACT COMPLIANCE

- This verification must be completed and submitted within 21 days of contract award and prior to the issuance of the timber sale contract.
- In addition, if boxes 2B or 2C are checked, then Notice of Exclusion or Certificate of Insurance must be submitted within twenty-one (21) days of the contract award and prior to the issuance of the timber sale contract.
- All information must be typed or printed except for written signatures.

Please Check Appropriate Categories:

1. My business is organized as (you **must** check one of the boxes below):
  - A.  Sole Proprietorship (individual)
  - B.  Partnership
  - C.  Corporation
2. You **must** check one of the boxes below:
  - A.  I certify my business is a sole proprietorship and it has no employees but the sole proprietor. I am not subject to the Worker's Compensation Laws.
  - B.  I certify my business has satisfied its obligation to the Worker's Compensation Act through the use of an approved Notice of Exclusion (BWC-337, Rev. 5/96). I will provide a copy of the Notice of Exclusion within 21 days of the contract award. (For questions or a copy of the BWC-337, please call the Worker's Compensation Bureau at 517-322-1195).
  - C.  I certify my business has a Worker's Compensation Policy. I will provide an original Certificate of Insurance within twenty-one (21) days of the contract award.
3. If you have checked item 2(A) or 2(B), you **must** indicate the number of **both** full-time and part-time employees, other than yourself, including family members and active partners (if none, you must enter "0").

\_\_\_\_\_ Full-time Employees

\_\_\_\_\_ Part-time Employees

Name of Business		Federal ID (or) Social Security No.	
Address		Telephone (       )	
City	State	ZIP	

*I hereby certify that the above information is true and correct. I agree to notify the Michigan DNR of any changes that occur in factors affecting my coverage during any of my present and future operations.*

\_\_\_\_\_  
Signature of Owner or Authorized Representative

\_\_\_\_\_  
Title

\_\_\_\_\_  
Date

**Please complete the "SEALED BID" information on the next page**



Tear Gas Red Pine (54-008-17)  
; Presque Isle COUNTY

In response to the notice of sale to be held 10:00 a.m. (local time) on October 31, 2017, I am hereby submitting my sealed bid (firm offer) for the following forest products to be cut. Bids for individual species must be at or above the advertised price. All non-responsive bid forms may be rejected.

<u>PRODUCTS &amp; SPECIES</u>	<u>ESTIMATED VOLUME*</u>	<u>ADVERTISED PRICE</u>	<u>BID PRICE/UNIT</u>
<b>Sawtimber</b>			
B. T. Aspen	10.60 MBF	\$ 85.00/MBF	\$ _____
Red Oak	114.60 MBF	\$ 161.00/MBF	\$ _____
Red Pine	1,756.70 MBF	\$ 128.00/MBF	\$ _____
White Pine	8.60 MBF	\$ 86.00/MBF	\$ _____
<b>Pulpwood</b>			
B. T. Aspen	145.00 Cords	\$ 21.70/Cord	\$ _____
Black Spruce	3.00 Cords	\$ 39.35/Cord	\$ _____
Jack Pine	182.00 Cords	\$ 25.15/Cord	\$ _____
Red Maple	23.00 Cords	\$ 19.35/Cord	\$ _____
Red Oak	472.00 Cords	\$ 20.85/Cord	\$ _____
Red Pine	2,940.00 Cords	\$ 50.35/Cord	\$ _____
White Pine	28.00 Cords	\$ 41.85/Cord	\$ _____

\*The volumes are statistically estimated within plus (+) or minus (-) 8.52 percent. These estimated volumes are final and not subject to adjustment. Prospective bidders are urged to examine this timber and to make their own estimates of quantity and quality.

I understand that any or all bids may be rejected. All bids must be signed and all bid items must be bid or the bid form may be rejected. I also understand that consideration and awarding a contract will be based upon my past performance and ability to complete the contract based upon equipment and staffing subject to my control.

FEDERAL ID: \_\_\_\_\_ or SOCIAL SECURITY NUMBER: \_\_\_\_\_

Company or individual bidding: \_\_\_\_\_

Company representative's name: \_\_\_\_\_

Address: \_\_\_\_\_

City: \_\_\_\_\_ State: \_\_\_\_\_ Zip: \_\_\_\_\_

IF AVAILABLE, PLEASE PLACE THE PERSONALIZED LABEL FROM YOUR PROSPECTUS IN THE ABOVE BOX.

Individual or company representative's signature: \_\_\_\_\_ Date: \_\_\_\_\_

Phone number : \_\_\_\_\_ Email (optional): \_\_\_\_\_

**THE WINNING BIDDER MUST COMPLETE THE VERIFICATION OF WORKER'S DISABILITY COMPENSATION ACT COMPLIANCE (ON REVERSE SIDE IF DOUBLE SIDED) WITHIN 21 DAYS OF SALE AWARD DATE**



<b>FOR DEPARTMENT USE ONLY</b>
Sale Number (XX - XXX - XX - XX)
Forest Management Unit:

## TIMBER SALE VERIFICATION OF WORKER'S DISABILITY COMPENSATION ACT COMPLIANCE

*As required by Act 317, P.A. 1969 (Worker's Compensation) and  
Part 5 of Act 451 of 1994, as amended.*

### VERIFICATION OF WORKER'S DISABILITY COMPENSATION ACT COMPLIANCE

- This verification must be completed and submitted within 21 days of contract award and prior to the issuance of the timber sale contract.
- In addition, if boxes 2B or 2C are checked, then Notice of Exclusion or Certificate of Insurance must be submitted within twenty-one (21) days of the contract award and prior to the issuance of the timber sale contract.
- All information must be typed or printed except for written signatures.

Please Check Appropriate Categories:

1. My business is organized as (you **must** check one of the boxes below):
  - A.  Sole Proprietorship (individual)
  - B.  Partnership
  - C.  Corporation
2. You **must** check one of the boxes below:
  - A.  I certify my business is a sole proprietorship and it has no employees but the sole proprietor. I am not subject to the Worker's Compensation Laws.
  - B.  I certify my business has satisfied its obligation to the Worker's Compensation Act through the use of an approved Notice of Exclusion (BWC-337, Rev. 5/96). I will provide a copy of the Notice of Exclusion within 21 days of the contract award. (For questions or a copy of the BWC-337, please call the Worker's Compensation Bureau at 517-322-1195).
  - C.  I certify my business has a Worker's Compensation Policy. I will provide an original Certificate of Insurance within twenty-one (21) days of the contract award.
3. If you have checked item 2(A) or 2(B), you **must** indicate the number of **both** full-time and part-time employees, other than yourself, including family members and active partners (if none, you must enter "0").

\_\_\_\_\_ Full-time Employees

\_\_\_\_\_ Part-time Employees

Name of Business		Federal ID (or) Social Security No.	
Address		Telephone (       )	
City	State	ZIP	

*I hereby certify that the above information is true and correct. I agree to notify the Michigan DNR of any changes that occur in factors affecting my coverage during any of my present and future operations.*

\_\_\_\_\_  
Signature of Owner or Authorized Representative

\_\_\_\_\_  
Title

\_\_\_\_\_  
Date

**Please complete the "SEALED BID" information on the next page**