



**DEPARTMENT OF NATURAL RESOURCES  
STATE OF MICHIGAN**

**TIMBER SALE PROSPECTUS #6057**

SCHEDULED SALE DATE AND TIME: 8:30 a.m. (local time) on December 13, 2017.

LOCATION: CRYSTAL FALLS MGT UNIT, 1420 US-2 WEST, CRYSTAL FALLS, MI 49920.

PROSPECTUS NOTE: The bidder is advised to inspect the sale area and review the location, estimated volumes, operating costs and contract terms of proposed sales. Please be aware that some landowners may request 60 days or more notice for access across their land.

Notice is hereby given that bids will be received by the Unit Manager, CRYSTAL FALLS MANAGEMENT UNIT, for certain timber on the following described lands:

Feed A Bear SBW (12-002-17)

Dickinson County, Advertised Price \$35,527.55, 56.2 Acres, Aspen, Spruce/Fir/Tamarack.

SALE NOTE: Two culverts will need to be replaced for this sale. Access will be south off of Leeman Road. A power line and snowmobile trail must be crossed and/or driven on to access this sale. If access road is shaped to allow proper drainage, this sale can be cut entirely in summer to avoid conflicts with the snowmobile trail.

A recreation site such as a trail, pathway, or campground is within the sale area or the vicinity. Certain restrictions/specifications may be applicable including time restrictions.

Popeye (12-016-17)

Dickinson County, Advertised Price \$66,520.40, 64.5 Acres, Aspen, Hardwood.

SALE NOTE: This sale can be accessed through a state forest road, west off of the Norway Truck Trail. Vernal ponds, drainages, and/or saturated soils are found within areas of payment unit 2 during wet seasons, see spec (5.4.6 - Wet Area Protection). A culvert installation is required for this sale. The culvert installation location may be difficult to cross during wet seasons.

Two Line Mix (12-017-17)

Dickinson County, Advertised Price \$123,634.70, 158.9 Acres, Aspen, Red Pine.

SALE NOTE: Aspen Payment Units are winter cut only.

Little Log Island (12-018-17)

Dickinson County, Advertised Price \$15,573.90, 23.8 Acres, Hardwood, Sugar Maple.

SALE NOTE: Access will be north out of Norway up Bentons Lake Road. The sale may also be accessed by an alternative route from the north with permission from a private landowner through a gate. Softer spots are found on the access road between the berm and the sale during wetter seasons.

Mixed SBW (12-028-17)

Dickinson County, Advertised Price \$36,627.50, 53.8 Acres, Aspen, Spruce/Fir/Tamarack.

SALE NOTE: Most of this sale requires winter only operations.

## BID INSTRUCTIONS (VER. 09/02/2016):

### 1. Scheduled Bid Location, Date, and Time (2/11)

Bids must be received by the Unit Manager, CRYSTAL FALLS OFFICE, 1420 US-2 WEST, CRYSTAL FALLS, MI 49920, no later than 8:30 a.m. (local time) on December 13, 2017. For further information concerning this sale, contact Dan McNamee at 906-875-6622 extension 105.

### 2. Bidder's Qualifications (5/16)

Purchaser shall obtain workers compensation insurance to cover claims under Michigan's Worker's Disability Compensation Act of 1969 or similar employee benefit act of any other state applicable to an employee. If all or part of a timber sale was prepared by a private contractor, the contractor and that contractor's company are not permitted to bid on the timber sale contract. Bids will not be accepted from individuals or companies appearing on the DNR/FRD No-Bid List. This list contains the names of purchasers who previously failed to execute a contract within 21-days or who have a history of poor performance.

### 3. Preparation of Sealed Bids (5/16)

Bid Forms may be completed online thru Michigan DNR Timber Sale Online Bidding (OLB) at [www.michigan.gov/timberbidding](http://www.michigan.gov/timberbidding) or by completing the hardcopy Bid Form found in the Timber Sale Prospectus. Hardcopy Bid Forms shall be manually signed in ink. Registration in OLB is considered your 'signature' for all bids submitted thru that system. Bid prices must be entered for each species and product in the Bid Price column for all material subject to bidding and all fill-in blanks must be completed. If erasures or other changes appear on the hardcopy Bid Form, each erasure or change must be initialed by the person signing the bid.

### 4. Submission of Sealed Bids (5/16)

Bid forms may be obtained from the Unit Manager or thru OLB. Bids may be submitted hardcopy or thru OLB. All hardcopy bids must be submitted on the bid form and in an envelope clearly identified as described in this section. NOTE: Only one bid form per bid envelope. Sealed bids must be submitted to the Unit office designated in the prospectus and must be submitted at or prior to the time established in the prospectus. The envelope should show on the outside (a) the sale name or number and (b) the date and time of bid opening, as shown in the prospectus. Bids received after the time specified in the sale prospectus are late bids and will be rejected.

It is possible for a bidder to submit multiple bids on a single sale. For example, a bid may be submitted hardcopy and a bid may be submitted thru OLB. Or, two bidders from the same company could both submit bids on the same sale. If this were to happen, the State would accept all bids received and award the contract accordingly. All bidding and contractual requirements would apply to all bids received.

### 5. Public Opening of Sealed Bids (7/16)

If conditions permit, the sealed bids will be publicly opened and posted at the time and place set in the prospectus.

If a bidder, present at a bid opening, has submitted bids on more than one sale, that bidder may withdraw their unopened bid envelopes or announce the withdrawal of their online bid after being declared the successful bidder on one sale.

### 6. Award of Contract (1/11)

Award of the contract will be made to the Bidder whose bid, conforming to the prospectus, is most advantageous to the State of Michigan on the basis of total value at rates bid for the estimated quantities. The State reserves the right to reject any bid or waive any minor irregularity in bids received. A written award mailed (or otherwise furnished) to the successful Bidder shall be deemed to result in a binding contract without further action by either party.

### 7. Down Payment (1/11)

The Bidder to whom award is made must make a down payment within 21 days of the sale award. The amount of the down payment will be calculated as shown in the Bond and Payment Schedule of this prospectus. Only cash may be used to meet this requirement.

### 8. Performance Security (1/11)

As guarantee of faithful performance, a cash bond, certificate of deposit, surety bond or irrevocable letter of credit (LOC) is required within 21 days of the sale award. The amount of the performance security is shown in the Bond and

Payment Schedule of this prospectus. If an LOC or surety is used, the coverage must extend for at least 6 months beyond the contract expiration.

#### 9. Timber Sale Contract (9/14)

Additional conditions and requirements common to all timber sales are listed on the timber sale contract (R4031) and are available on line at [www.michigan.gov/timber](http://www.michigan.gov/timber). Contact the Unit Manager for additional information or a sample contract. Within 21 days of the date of the award letter, the bidder must sign the contract and provide the required down payment, performance security, and verification of worker's disability compensation. The down payment and performance security shall be in accordance with the provisions of the timber sale contract, in the sums stated in this prospectus. If these actions are not taken, then the Bidder, the Bidder's corporation, and the corporation's principals may not be permitted to bid on State timber sales for a period of 1 year. In addition, the Bidder certifies that if awarded this contract, the Bidder will complete the timber sale contract in accordance with its terms and any modifications thereof including requirements to purchase, cut, and remove the included timber by the expiration date.

#### 10. Disclaimer of Estimates and Bidder's Warranty of Inspection (7/16)

Before submitting this bid, the Bidder is advised and cautioned to inspect the sale area, review the requirements of the sale contract, and take other steps as may be reasonably necessary to ascertain the location, estimated volumes, construction estimates, and operating costs of the proposed sale. Failure to do so will not relieve the Bidder from responsibility for completing the contract.

The Bidder warrants that this bid is submitted solely on the basis of the Bidder's examination and inspection of the quality and quantity of the timber offered for sale and the Bidder's opinion of the value thereof and the costs of recovery. No reliance should be placed on the State of Michigan's estimates of timber quality, quantity or costs of recovery. Bidder further acknowledges that the State of Michigan: (i) expressly disclaims any warranty of fitness of timber for any purpose; (ii) offers this timber as is without any warranty of quality (merchantability) or quantity and (iii) expressly disclaims any warranty as to the quantity or quality of timber sold.

#### 11. Certification and Chain-of-Custody (10/14)

Unless otherwise indicated in the contract under section 7 – Other Conditions of the Sale Specific Conditions & Requirements, the area encompassed by this timber sale is certified to the standards of the Forest Stewardship Council (FSC) - Certificate #SCS-FM/COC-00090N and the Sustainable Forestry Initiative (SFI) - Certificate # NSF-SFIS-5Y031-SF5. Forest products from this sale may be delivered to the mill as "FSC 100% and / or SFI certified" as long as the contractor hauling the forest products is chain-of-custody (COC) certified or covered under a COC certificate from the destination mill. The purchaser is responsible for maintaining COC after leaving the sale area.

#### 12. Good Neighbor Authority (GNA) Requirements (7/16)

If the name of this timber sales contains the acronym GNA, it is authorized by the Good Neighbor Authority (GNA) and covered by various agreements between the U.S. Forest Service and the State. The timber sale occurs on federal land and the following conditions apply:

GNA contracts on US Forest Service land will not be awarded to purchasers on the Federal list of excluded parties. The System for Award Management (SAM) will be checked for active excluded parties prior to award of contract. In addition, the Bidder to whom award is made must complete an Assurance Regarding Felony Conviction or Tax Delinquent Status for Corporate Applicants (AD-3031).

#### 13. Good Neighbor Authority (GNA) Requirements, con't (9/16)

Bidder certifies, by signing this bid form, that to the best of Bidder's knowledge that the following representations are accurate and complete.

- a. That the Bidder and its principals are not presently debarred, suspended, proposed for debarment, declared ineligible, or voluntary excluded from timber sales (covered transactions) by any Federal department or agency.
- b. That the Bidder and its principals have not within a 3-year period preceding this bid been convicted of or had a civil judgment rendered against them for commission of fraud or a criminal offense in connection with obtaining, attempting to obtain, or performing a public (Federal, State, or local) transaction or contract under a public transaction; violation of Federal or State antitrust statutes or commission of embezzlement, theft, forgery, bribery, falsification or destruction of records, making false statements, or receiving stolen property.

c. That the Bidder and its principals are not presently indicted for or otherwise criminally or civilly charged by a governmental entity (Federal, State, or local) with commission of any of the offenses enumerated in paragraph b of this certification.

d. That the Bidder and its principals have not within a 3-year period preceding this bid had one or more public transactions (Federal, State, or local) terminated for breach or default of a timber or forest product contract.

Bidders that cannot certify this requirement, in whole or in part, shall submit an explanation with their bid.

KEITH CREAGH

Director

TIMBER SALE INFORMATION

Feed A Bear SBW (12-002-17)

Dickinson County (Advertised Price \$35,527.55)

SALE NOTE: Two culverts will need to be replaced for this sale. Access will be south off of Leeman Road. A power line and snowmobile trail must be crossed and/or driven on to access this sale. If access road is shaped to allow proper drainage, this sale can be cut entirely in summer to avoid conflicts with the snowmobile trail.

A recreation site such as a trail, pathway, or campground is within the sale area or the vicinity. Certain restrictions/specifications may be applicable including time restrictions.

A timber sale contract for this lump sum, sealed bid timber sale will be awarded to the responsible bidder offering the highest sealed bid price. Bids must be at or above the following advertised price for each species:

<u>PRODUCTS &amp; SPECIES</u>	<u>ESTIMATED UNITS*</u>	<u>ADVERTISED PRICE</u>
Pulpwood		
Balsam Fir	185.00 Cords	\$ 17.85 / Cord
Mixed Hardwood	190.00 Cords	\$ 23.95 / Cord
Mixed Spruce	160.00 Cords	\$ 23.20 / Cord
Quaking Aspen	740.00 Cords	\$ 32.35 / Cord
Tamarack	2.00 Cords	\$ 11.90 / Cord

\* The total volume is statistically estimated within plus (+) or minus (-) 15.52 percent. The estimated units are final and not subject to adjustment. Prospective bidders are urged to examine this timber and to make their own estimates of quantity and quality.

**BOND AND PAYMENT SCHEDULE:**

1. A bond in the amount of \$1,776.00 to insure faithful performance of the conditions of the contract will be deposited by the successful bidder within 21 days of the sale award.
2. Cutting in any sale or unit without the required advance payment would be considered a trespass.
3. Total payment must be paid in advance or according to the following schedule:
  - (a) Ten percent (10%) of the sale value must be paid within 21 days of the sale award.
  - (b) The 10% down payment will be credited towards the first unit cut.
4. If no cutting takes place, the 10% down payment will not be refunded.
5. Operations on the contract issued will terminate on 12/31/2018.

**Description of Timber by Payment Unit (PU)**

PU	MARKET GROUP	PRODUCT	QUANTITY	UNIT	ACRES	ADVERTISE PRICE
1	Mixed Hardwood	Pulpwood	55.0	Cords	9.2	\$1,673.10
	<i>Basswood</i>	<i>Sawtimber</i>	0.6	<i>MBF</i>		
	<i>Paper Birch</i>		3.5	<i>MBF</i>		
	<i>Basswood</i>	<i>Pulpwood</i>	2.0	<i>Cords</i>		
	<i>Paper Birch</i>		21.0	<i>Cords</i>		
	<i>Red Maple</i>		3.0	<i>Cords</i>		
	<i>Sugar Maple</i>		21.0	<i>Cords</i>		
	Quaking Aspen		11.0	Cords		
2	Balsam Fir	Pulpwood	103.0	Cords	25.9	\$17,593.10
	Mixed Hardwood		42.0	Cords		
	<i>Paper Birch</i>	<i>Sawtimber</i>	3.3	<i>MBF</i>		
	<i>Red Maple</i>		1.0	<i>MBF</i>		
	<i>Paper Birch</i>	<i>Pulpwood</i>	15.0	<i>Cords</i>		
	<i>Red Maple</i>		10.0	<i>Cords</i>		
	<i>Sugar Maple</i>		8.0	<i>Cords</i>		
	Mixed Spruce		18.0	Cords		
	<i>White Spruce</i>		18.0	<i>Cords</i>		
	Quaking Aspen		443.0	Cords		
3	Balsam Fir	Pulpwood	82.0	Cords	21.1	\$16,261.35
	Mixed Hardwood		93.0	Cords		
	<i>Paper Birch</i>	<i>Sawtimber</i>	1.7	<i>MBF</i>		
	<i>Ironwood</i>	<i>Pulpwood</i>	1.0	<i>Cords</i>		
	<i>Paper Birch</i>		17.0	<i>Cords</i>		
	<i>Red Maple</i>		71.0	<i>Cords</i>		
	<i>Sugar Maple</i>		1.0	<i>Cords</i>		
	Mixed Spruce		142.0	Cords		
	<i>Black Spruce</i>		47.0	<i>Cords</i>		
	<i>White Spruce</i>		95.0	<i>Cords</i>		
	Quaking Aspen		286.0	Cords		
	Tamarack		2.0	Cords		
TOTAL:			1,277.0	Cords		

# Sale Specific Conditions & Requirements

**Sale Name: Feed A Bear SBW**

**Sale Number: 12-002-17 Seq#: 1**

## 1 - Sale Area

### 1.2 - Boundaries

#### 1.2.1 - Painted boundaries (1/14)

The sale boundaries are marked and identified by red paint. The painted boundary line trees are not Included Timber and are to be protected.

## 2 - Timber Specifications

### 2.1 - Included Timber

#### 2.1.1 - Clearcut unit(s) with unmerchantable trees (6/14)

Within Payment Unit(s) 2 and 3, cut all trees that are two 2 inches or more at DBH except cedar, hemlock, red pine, white pine, cherry, elm, oak, balsam fir and spruce. In addition, within Payment Unit 2, cut all balsam fir and spruce that is 6" or greater in diameter at a 4" stump height. Also, within Payment Unit 3, cut all merchantable balsam fir and spruce.

#### 2.1.3 - Cut tree marked unit(s) (12/08)

Within Payment Unit(s) 1, all trees are designated for cutting when marked with orange paint above and below stump height, regardless of merchantability.

## 4 - Transportation

### 4.1 - Construction

#### 4.1.5 - Culverts (5/14)

Roads require the installation of new culverts for cross drainage or at natural drainage-ways. Their placement is specified by the sale administrator on the Timber Sale Map and they shall be installed prior to hauling. Culverts will be 24" in diameter and 24' feet in length. The culverts will be purchased and installed by the Purchaser, and must have a minimum of 12" of gravel placed over it. Fill material may be available locally from state property. Permits will be obtained and provided by the DNR.

#### 4.1.6 - Road construction (1/09)

Improvements of existing roads shall be done in such a way as to minimize the environmental and visual impacts. Merchantable trees shall be cut and utilized unless otherwise directed. Non-merchantable trees shall be severed and laid flat on the ground. Slash shall be scattered, and not left in windrows and kept a minimum of 10 feet back from the road edge. Stumps shall be set upright, not left on edge, and be moved at least 10 feet away from the road edge. Disturbed soil shall be feathered into the woods and not left in berms or windrows.

#### 4.1.12 - No new roads (1/12)

No new roads will be permitted in any Payment Unit. All operations are limited to existing roads. Skid trails only will be allowed.

### 4.2 - Maintenance

#### 4.2.2 - Fill material (4/07)

To maintain roads, fill material may be needed in areas where "holes" exist or may be expected to develop. This fill material should be placed before trucking begins. Culvert replacement sites will also require fill material. Contact the sale administrator regarding the availability of onsite sand or gravel from adjacent State-owned lands.

## 5 - Operations

### 5.1 - Notification

#### 5.1.6 - Utility R.O.W. (1/15)

It is the responsibility of the Purchaser to obtain permission from the utility company to utilize the power line R.O.W. for operations.

### 5.2 - Conduct of Operations

## 5.2.1 - Slash

### 5.2.1.11 - Slash for reforestation (5/07)

To facilitate reforestation, Payment Units 2 and 3 shall be left with slash evenly distributed. Bunched tops within the cutting area shall be broken up and scattered. Stumps shall be cut low to the ground. Processing sites shall not be left with a compacted layer of slash; tops from these sites shall be hauled back into the cut area and scattered.

## 5.2.2 - Hazard Trees/Snags

### 5.2.2.1 - Den trees (10/16)

Obvious hollow and/or den trees shall be protected and left standing unless they are a safety hazard.

## 5.2.3 - Operating Restrictions

### 5.2.3.3 - Bark slippage restriction (3/09)

Within Payment Unit(s) 1, cutting and skidding are not permitted during the period of April 15 to July 15. This restriction is because of bark slippage.

### 5.2.41 - Snowmobile trail protection (9/11)

The snowmobile trail is shown on the Timber Sale Map. Do not cut or damage posts with orange trail markers or traffic control signs. The trail must be maintained and restored to a condition equal to or better than before the sale prior to December 1st following completion of the sale. If the trail road is to be used for hauling during the snowmobile season, then a snow covered base must be left on the trail. Maintain a 20 foot wide slash, debris, and rut free zone daily using the snowmobile trail as the centerline. No decking of forest products will be permitted along the snowmobile trail. All stumps within 20 feet of the snowmobile trail must be cut at ground level.

## 5.4 - Soil Protection

### 5.4.1 - Rutting restriction, general (7/16)

Operations are to cease immediately if equipment and weather conditions result in rutting of roads and/or skid trails which is 12 inches or greater in depth and 50 feet in length. The Unit Manager or his/her representative may restrict hauling and/or skidding if ruts exceed the specified depth. With the Unit Manager or his/her representative's approval, the Purchaser may return to the area when the risk of rutting has decreased.

## 6 - Safety and Fire Prevention

### 6.2 - Signing

#### 6.2.2 - Snowmobile trail posting (8/09)

The Purchaser is responsible for posting and maintaining caution signs on the snowmobile trail prior to beginning operations during the snowmobile season (approximately December 1 to March 31). The trail must be posted 200 feet from the sale area to warn of logging activity and truck traffic. Signs must be removed when harvest operations are suspended or completed. The Purchaser will provide these signs.

## 7 - Other Conditions

### 7.2 - Extensions

#### 7.2.3 - Salvage extension (6/13)

This is a salvage sale with a short contract length. The sale must be harvested promptly. One (1), twelve (12) month extension can be applied to one (1) other State Forest Timber Sale Contract owned by the purchaser or owned by one (1) designated sub-contractor of the Purchaser that works this contract. To qualify, the contract expiration date of the contract to be extended must be within twelve (12) months from the issue date of this contract. If this is the first extension on the other State Forest Timber Sale Contract, then the 5% extension fee will be waived. If this is an additional extension, the 10% fee will be reduced to 5%. The salvage extension must be used before this contract is closed-out. This specification does not alleviate the purchaser from any contractual obligations of the extended State Forest Timber Sale Contract. Per General Condition & Requirement 7.2, extensions are at the sole discretion of the DNR.

### 7.5 - Loss

#### 7.5.1 - Deteriorating timber (7/09)



The sale area has received damage from spruce budworm. The Purchaser should harvest the wood as soon as possible. The Department of Natural Resources is held free of responsibility of any further damage or deterioration due to delay in harvesting.



# TIMBER SALE MAP

This information provided by authority of Part 525, 1994 PA 451, as amended.

Forest Management Unit Crystal Falls	County Dickinson	Mapped By Brolin	Date 05/18/2017	Page 1	of 1
Township 42, 43N	Range 29W	Section(s) and Subdivision(s) E1/2 SE1/4 Section 31, and W1/2 SW1/4 and SE1/4 SW1/4 and S1/2 SE1/4 Section 32, and N1/2 NE1/4 and E1/2 NW1/4 and SW1/4 NE1/4 Sections5	Scale 1:15,840		

### Cover Type

A = Aspen	H = Hemlock	N = Marsh	U = Upland Brush
B = Paper Birch	J = Jack Pine	O = Oak	UM = Upland Mixed
C = Cedar	L = Lowland Brush	P = Lowland Poplar	V = Bog or Marsh
D = Tread Bog	LM = Lowland Mixed	Q = Mixed Swamp Conifer	W = White Pine
E = Swamp Hdwoods	M = Mpl, Bch, Brch	R = Red Pine	X = Non Stocked
F = Spruce Fir	MC = Mixed Conifer	S = Black Spruce	Z = Water
G = Grass	MD = Mixed Deciduous	T = Tamarack	

### Density

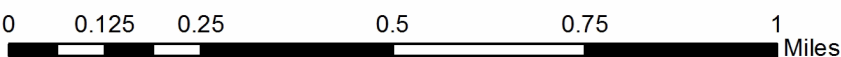
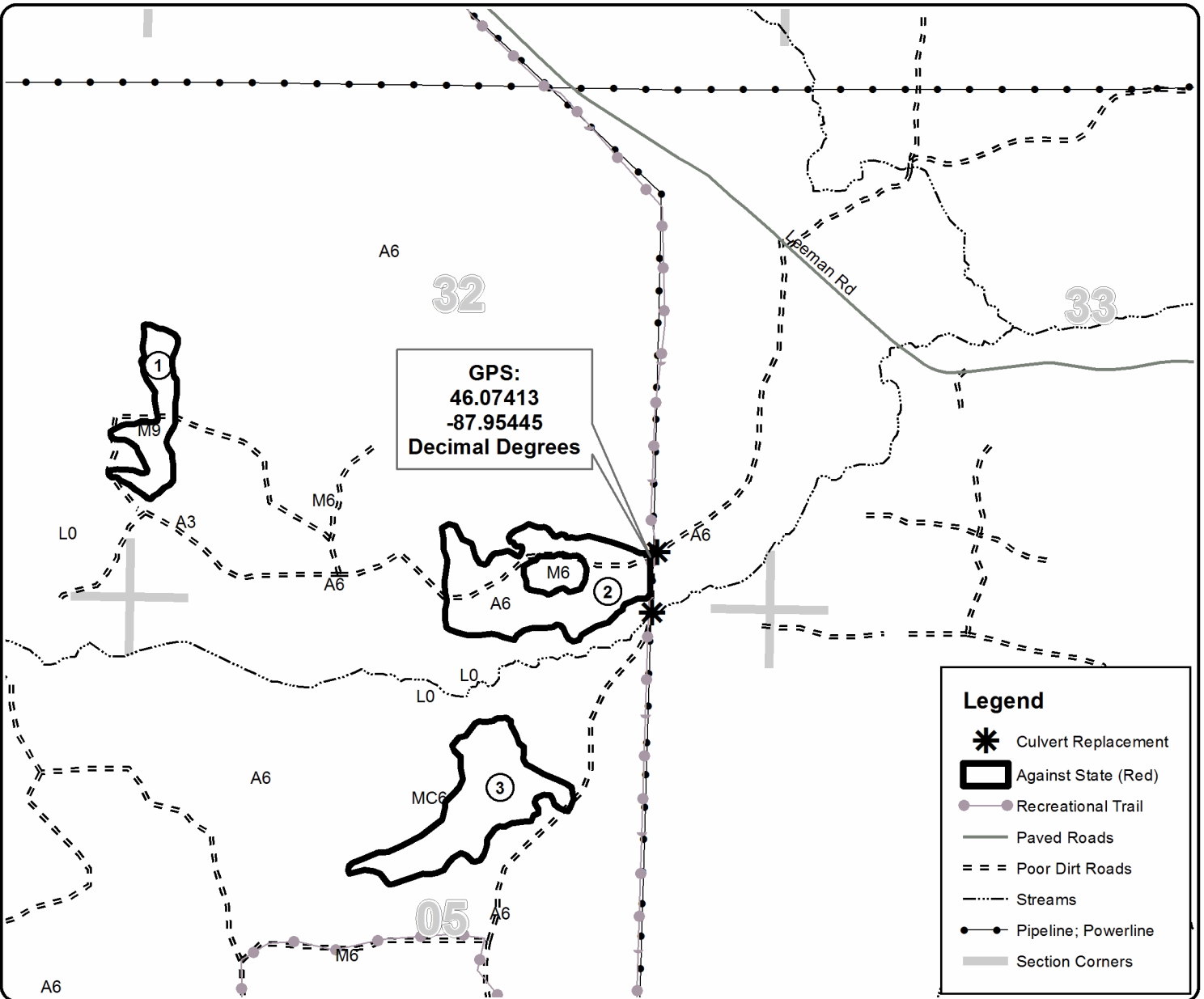
0 = Non Stocked	5 = Pole Timber Medium
1 = Seedling Sapling Poor	6 = Pole Timber Well
2 = Seedling Sapling Medium	7 = Saw Timber Poor
3 = Seedling Sapling Well	8 = Saw Timber Medium
4 = Pole Timber Poor	9 = Saw Timber Well

PU	Acres
1	9.2
2	25.9
3	21.1

## Feed A Bear SBW

### Compartment 49 and 53

56.2 Acres



# TIMBER SALE INFORMATION

Popeye (12-016-17)

Dickinson County (Advertised Price \$66,520.40)

SALE NOTE: This sale can be accessed through a state forest road, west off of the Norway Truck Trail. Vernal ponds, drainages, and/or saturated soils are found within areas of payment unit 2 during wet seasons, see spec (5.4.6 - Wet Area Protection). A culvert installation is required for this sale. The culvert installation location may be difficult to cross during wet seasons.

A timber sale contract for this lump sum, sealed bid timber sale will be awarded to the responsible bidder offering the highest sealed bid price. Bids must be at or above the following advertised price for each species:

<u>PRODUCTS &amp; SPECIES</u>	<u>ESTIMATED UNITS*</u>	<u>ADVERTISED PRICE</u>
Sawtimber		
Basswood	2.30 MBF	\$ 239.00 / MBF
Paper Birch	13.20 MBF	\$ 93.00 / MBF
Red Maple	26.80 MBF	\$ 220.00 / MBF
Sugar Maple	9.00 MBF	\$ 465.00 / MBF
Yellow Birch	2.50 MBF	\$ 155.00 / MBF
Pulpwood		
Balsam Fir	68.00 Cords	\$ 20.60 / Cord
Mixed Aspen	618.00 Cords	\$ 37.30 / Cord
Mixed Hardwood	1,036.00 Cords	\$ 27.65 / Cord
White Spruce	44.00 Cords	\$ 26.75 / Cord

\* The total volume is statistically estimated within plus (+) or minus (-) 10.71 percent. The estimated units are final and not subject to adjustment. Prospective bidders are urged to examine this timber and to make their own estimates of quantity and quality.

## **BOND AND PAYMENT SCHEDULE:**

1. A bond in the amount of \$3,326.00 to insure faithful performance of the conditions of the contract will be deposited by the successful bidder within 21 days of the sale award.
2. Cutting in any sale or unit without the required advance payment would be considered a trespass.
3. Total payment must be paid in advance or according to the following schedule:
  - (a) Ten percent (10%) of the sale value must be paid within 21 days of the sale award.
  - (b) The 10% down payment will be credited towards the first unit cut.
4. If no cutting takes place, the 10% down payment will not be refunded.
5. Operations on the contract issued will terminate on 12/31/2019.

**Description of Timber by Payment Unit (PU)**

PU	MARKET GROUP	PRODUCT	QUANTITY	UNIT	ACRES	ADVERTISE PRICE			
1	Paper Birch	Sawtimber	1.3	MBF	8.1	\$4,555.85			
	Balsam Fir	Pulpwood	26.0	Cords					
	Mixed Aspen		67.0	Cords					
	<i>Quaking Aspen</i>		67.0	<i>Cords</i>					
	Mixed Hardwood		40.0	Cords					
	<i>Paper Birch</i>		11.0	<i>Cords</i>					
	<i>Red Maple</i>		18.0	<i>Cords</i>					
	<i>White Ash</i>		11.0	<i>Cords</i>					
	White Spruce		11.0	Cords					
	2	Basswood	Sawtimber	2.3			MBF	26.3	\$32,872.45
Paper Birch			8.5	MBF					
Red Maple			16.7	MBF					
Sugar Maple			5.9	MBF					
Yellow Birch			1.1	MBF					
Balsam Fir		Pulpwood	9.0	Cords					
Mixed Aspen			334.0	Cords					
<i>B. T. Aspen</i>			72.0	<i>Cords</i>					
<i>Quaking Aspen</i>			262.0	<i>Cords</i>					
Mixed Hardwood			441.0	Cords					
<i>Basswood</i>			25.0	<i>Cords</i>					
<i>Ironwood</i>			4.0	<i>Cords</i>					
<i>Paper Birch</i>			42.0	<i>Cords</i>					
<i>Red Maple</i>			203.0	<i>Cords</i>					
<i>Sugar Maple</i>			135.0	<i>Cords</i>					
<i>White Ash</i>			23.0	<i>Cords</i>					
<i>Yellow Birch</i>			9.0	<i>Cords</i>					
White Spruce			4.0	Cords					
3		Paper Birch	Sawtimber	1.9	MBF	21.5	\$20,325.70		
		Red Maple		8.6	MBF				
	Sugar Maple		3.1	MBF					
	Yellow Birch		1.4	MBF					
	Balsam Fir	Pulpwood	17.0	Cords					
	Mixed Aspen		138.0	Cords					
	<i>B. T. Aspen</i>		28.0	<i>Cords</i>					
	<i>Quaking Aspen</i>		110.0	<i>Cords</i>					
	Mixed Hardwood		386.0	Cords					
	<i>Basswood</i>		13.0	<i>Cords</i>					
	<i>Ironwood</i>		4.0	<i>Cords</i>					
	<i>Paper Birch</i>		28.0	<i>Cords</i>					
	<i>Red Maple</i>		134.0	<i>Cords</i>					
	<i>Sugar Maple</i>		184.0	<i>Cords</i>					
	<i>White Ash</i>		18.0	<i>Cords</i>					
	<i>Yellow Birch</i>		5.0	<i>Cords</i>					
	White Spruce		16.0	Cords					
4	Paper Birch	Sawtimber	1.5	MBF	8.6	\$8,766.40			
	Red Maple		1.5	MBF					
	Balsam Fir	Pulpwood	16.0	Cords					
	Mixed Aspen		79.0	Cords					
	<i>Quaking Aspen</i>		79.0	<i>Cords</i>					
	Mixed Hardwood		169.0	Cords					
	<i>Balsam Poplar</i>		17.0	<i>Cords</i>					
	<i>Basswood</i>		3.0	<i>Cords</i>					
	<i>Black Ash</i>		19.0	<i>Cords</i>					
	<i>Paper Birch</i>		23.0	<i>Cords</i>					
	<i>Red Maple</i>		35.0	<i>Cords</i>					
	<i>Sugar Maple</i>		68.0	<i>Cords</i>					

**Description of Timber by Payment Unit (PU), con't**

PU	MARKET GROUP	PRODUCT	QUANTITY	UNIT	ACRES	ADVERTISE PRICE
4 con't	<i>Yellow Birch</i>	<i>Pulpwood</i>	4.0	<i>Cords</i>		
	White Spruce		13.0	Cords		
TOTAL:			53.8	MBF		
TOTAL:			1,766.0	Cords		

## Sale Specific Conditions & Requirements

**Sale Name: Popeye**

**Sale Number: 12-016-17 Seq#: 1**

### 1 - Sale Area

#### 1.2 - Boundaries

##### 1.2.1 - Painted boundaries (1/14)

The sale boundary and Payment Unit boundaries are marked and identified by blue, red, and yellow paint. Exterior sale boundary lines against private property are marked with blue paint. Exterior sale boundary lines against state property are marked with red paint. Interior Payment Unit boundaries are marked with yellow paint. The painted boundary line trees are not Included Timber and are to be protected. Yellow painted trees designating an interior Payment Unit boundary are only to be cut when all surrounding Payment Units have been paid.

### 2 - Timber Specifications

#### 2.1 - Included Timber

##### 2.1.1 - Clearcut unit(s) with unmerchantable trees (6/14)

Within Payment Unit(s) 1, 3, and 4, cut all trees that are 2" or more at DBH except cedar, hemlock, red pine, white pine, cherry, elm, oak, balsam fir and spruce. In addition, cut balsam fir and spruce that are 6" or greater in diameter at a 4" sump height.

Within Payment Unit(s) 2, cut all merchantable trees except cedar, hemlock, red pine, white pine, cherry, elm, and oak.

### 4 - Transportation

#### 4.1 - Construction

##### 4.1.6 - Road construction (1/09)

Improvements of existing roads shall be done in such a way as to minimize the environmental and visual impacts. Merchantable trees shall be cut and utilized unless otherwise directed. Non-merchantable trees shall be severed and laid flat on the ground. Slash shall be scattered, and not left in windrows and kept a minimum of 10 feet back from the road edge. Stumps shall be set upright, not left on edge, and be moved at least 10 feet away from the road edge. Disturbed soil shall be feathered into the woods and not left in berms or windrows.

##### 4.1.8 - Road work (1) (8/07)

The following road work is required prior to closing this sale: The road between Payment Unit 1 and 2 will require the installation of a culvert for a natural drainage way. The culvert will be 24" in diameter and 24' in length. The culvert will be purchased and installed by the Purchaser, and must have a minimum of 12" of gravel placed over it. The location will be specified by the sale administrator and found on the Timber Sale Map. Fill material may be available locally from state property.

##### 4.1.12 - No new roads (1/12)

No new roads will be permitted in any Payment Unit. All operations are limited to existing roads. Skid trails only will be allowed.

### 5 - Operations

#### 5.2 - Conduct of Operations

##### 5.2.1 - Slash

###### 5.2.1.11 - Slash for reforestation (5/07)

To facilitate reforestation, the sale area shall be left with slash evenly distributed. Bunched tops within the cutting area shall be broken up and scattered. Stumps shall be cut low to the ground. Processing sites shall not be left with a compacted layer of slash; tops from these sites shall be hauled back into the cut area and scattered.

##### 5.2.2 - Hazard Trees/Snags

#### 5.2.2.1 - Den trees (10/16)

Obvious hollow and/or den trees shall be protected and left standing unless they are a safety hazard.

#### 5.2.32 - Decking/landing restoration (9/13)

All decking and landing areas must have the surface area restored to a condition equal to or better than before. This is to ensure the proper regeneration of the stand. Wood debris, chips and "cookies" from trimmings must be removed or scattered away from landing and loading areas and may not be windrowed on the edge.

### 5.4 - Soil Protection

#### 5.4.1 - Rutting restriction, general (7/16)

Operations are to cease immediately if equipment and weather conditions result in rutting of roads and/or skid trails which is 12 inches or greater in depth and 50 feet in length. The Unit Manager or his/her representative may restrict hauling and/or skidding if ruts exceed the specified depth. With the Unit Manager or his/her representative's approval, the Purchaser may return to the area when the risk of rutting has decreased.

#### 5.4.6 - Wet area protection (5/10)

No harvesting operations, including skidding and felling, are to take place within the vernal pond areas or drainages. When harvesting occurs, there should be no disturbance to the vernal pond depression. All equipment, trees and tops should be kept out of this area. Within 100 feet of the pond, equipment should only be used when the soil is in a dry or frozen condition. Care must be taken by the Purchaser to identify and avoid operating in these areas of the timber sale.

## 6 - Safety and Fire Prevention

### 6.2 - Signing

#### 6.2.1 - Road posting (9/09)

The Purchaser is responsible for posting and maintaining caution signs on the Norway Truck Trail prior to beginning operations. The road must be posted while hauling out on to the Norway Truck Trail, at appropriate distances from the sale area to warn of logging activity and truck traffic. Signs must be removed when harvest operations are suspended or completed. The Purchaser will provide these signs.



Sale Number	Year
12-016-17	17

# TIMBER SALE MAP

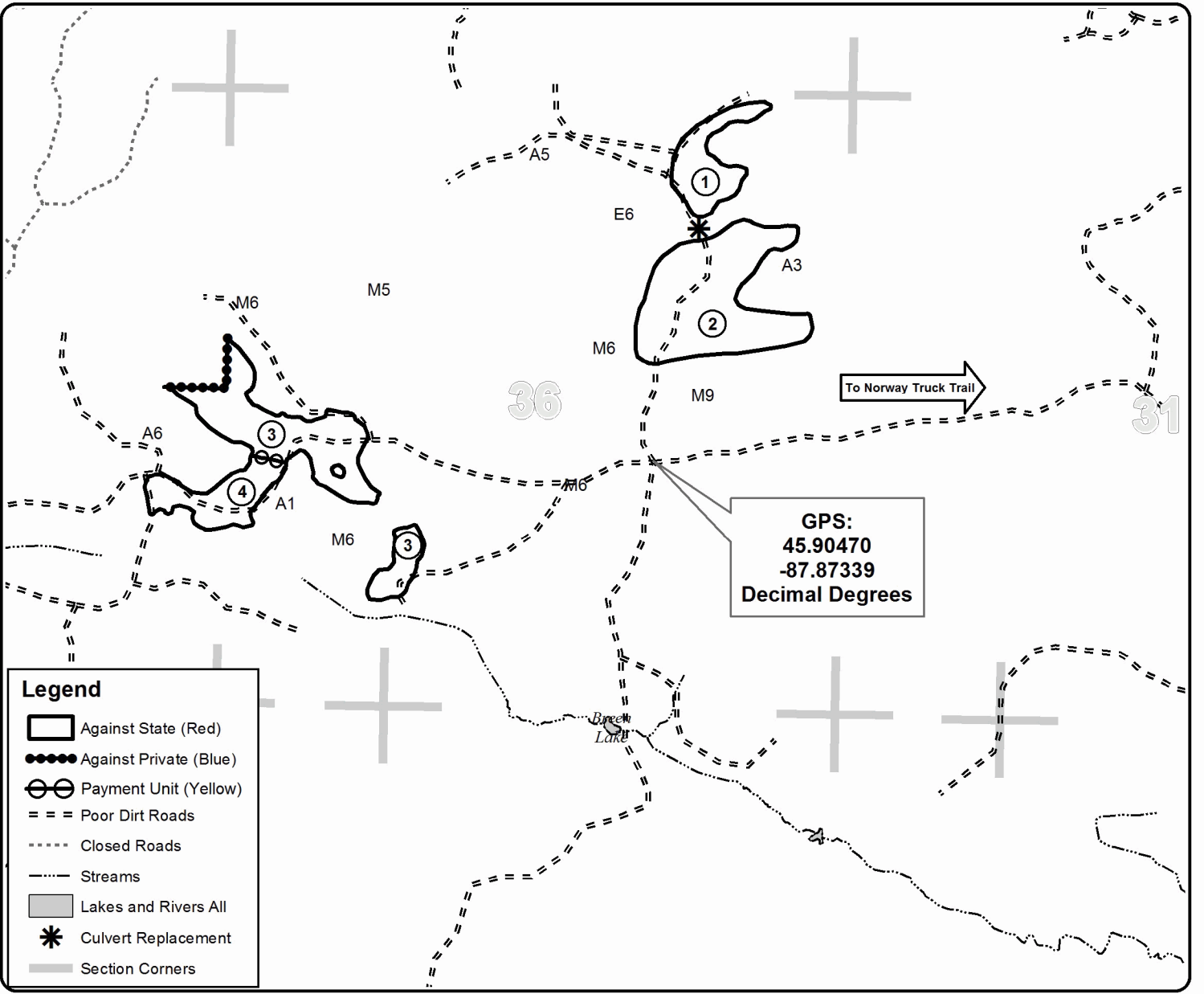
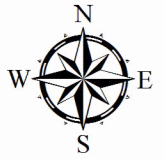
This information provided by authority of Part 525, 1994 PA 451, as amended.

Forest Management Unit Crystal Falls	County Dickinson	Mapped By Brolin	Date 05/01/2017	Page 1	of 1
Township 41N	Range 29W	Section(s) and Subdivision(s) NE1/4 and SW 1/4 and SW1/4 NW1/4 Section36, and NE1/4 SE1/4 Section 35	Scale 1:15,840		

Cover Type				Density	
A = Aspen	H = Hemlock	N = Marsh	U = Upland Brush	0 = Non Stocked	5 = Pole Timber Medium
B = Paper Birch	J = Jack Pine	O = Oak	UM = Upland Mixed	1 = Seedling Sapling Poor	6 = Pole Timber Well
C = Cedar	L = Lowland Brush	P = Lowland Poplar	V = Bog or Marsh	2 = Seedling Sapling Medium	7 = Saw Timber Poor
D = Tread Bog	LM = Lowland Mixed	Q = Mixed Swamp Conifer	W = White Pine	3 = Seedling Sapling Well	8 = Saw Timber Medium
E = Swamp Hdwoods	M = Mpl, Bch, Brch	R = Red Pine	X = Non Stocked	4 = Pole Timber Poor	9 = Saw Timber Well
F = Spruce Fir	MC = Mixed Conifer	S = Black Spruce	Z = Water		
G = Grass	MD = Mixed Deciduous	T = Tamarack			

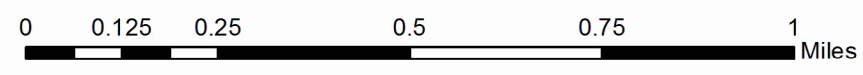
PU	Acres
1	8.1
2	26.3
3	21.5
4	8.6

## Popeye Compartment 86 64.5 Acres



**Legend**

- Against State (Red)
- Against Private (Blue)
- Payment Unit (Yellow)
- Poor Dirt Roads
- Closed Roads
- Streams
- Lakes and Rivers All
- Culvert Replacement
- Section Corners





# TIMBER SALE INFORMATION

## Two Line Mix (12-017-17)

Dickinson County (Advertised Price \$123,634.70)

SALE NOTE: Aspen Payment Units are winter cut only.

A timber sale contract for this lump sum, sealed bid timber sale will be awarded to the responsible bidder offering the highest sealed bid price. Bids must be at or above the following advertised price for each species:

<u>PRODUCTS &amp; SPECIES</u>	<u>ESTIMATED UNITS*</u>	<u>ADVERTISED PRICE</u>
Sawtimber		
Red Pine	38.50 MBF	\$ 164.00 / MBF
Pulpwood		
Mixed Aspen	2,259.00 Cords	\$ 37.30 / Cord
Mixed Hardwood	265.00 Cords	\$ 27.65 / Cord
Red Pine	505.00 Cords	\$ 50.85 / Cord
White Spruce	2.00 Cords	\$ 26.75 / Cord

\* The total volume is statistically estimated within plus (+) or minus (-) 7.36 percent. The estimated units are final and not subject to adjustment. Prospective bidders are urged to examine this timber and to make their own estimates of quantity and quality.

### **BOND AND PAYMENT SCHEDULE:**

1. A bond in the amount of \$7,000.00 to insure faithful performance of the conditions of the contract will be deposited by the successful bidder within 21 days of the sale award.
2. Cutting in any sale or unit without the required advance payment would be considered a trespass.
3. Total payment must be paid in advance or according to the following schedule:
  - (a) Ten percent (10%) of the sale value must be paid within 21 days of the sale award.
  - (b) The 10% down payment will be credited towards the first unit cut.
4. If no cutting takes place, the 10% down payment will not be refunded.
5. Operations on the contract issued will terminate on 06/30/2019.

**Description of Timber by Payment Unit (PU)**

PU	MARKET GROUP	PRODUCT	QUANTITY	UNIT	ACRES	ADVERTISE PRICE
1	Mixed Aspen	Pulpwood	729.0	Cords	32.2	\$29,596.35
	<i>B. T. Aspen</i>		2.0	<i>Cords</i>		
	<i>Quaking Aspen</i>		727.0	<i>Cords</i>		
	Mixed Hardwood		86.0	Cords		
	<i>Black Cherry</i>		3.0	<i>Cords</i>		
	<i>Paper Birch</i>		6.0	<i>Cords</i>		
	<i>Red Maple</i>		77.0	<i>Cords</i>		
	White Spruce		1.0	Cords		
2	Mixed Aspen	Pulpwood	830.0	Cords	36.7	\$33,641.05
	<i>B. T. Aspen</i>		1.0	<i>Cords</i>		
	<i>Quaking Aspen</i>		829.0	<i>Cords</i>		
	Mixed Hardwood		97.0	Cords		
	<i>Black Cherry</i>		3.0	<i>Cords</i>		
	<i>Paper Birch</i>		7.0	<i>Cords</i>		
	<i>Red Maple</i>		87.0	<i>Cords</i>		
3	Mixed Aspen	Pulpwood	700.0	Cords	30.9	\$28,404.05
	<i>B. T. Aspen</i>		2.0	<i>Cords</i>		
	<i>Quaking Aspen</i>		698.0	<i>Cords</i>		
	Mixed Hardwood		82.0	Cords		
	<i>Black Cherry</i>		2.0	<i>Cords</i>		
	<i>Paper Birch</i>		6.0	<i>Cords</i>		
	<i>Red Maple</i>		74.0	<i>Cords</i>		
	White Spruce		1.0	Cords		
4	Red Pine	Sawtimber	38.5	MBF	59.1	\$31,993.25
	Red Pine	Pulpwood	505.0	Cords		
TOTAL:			38.5	MBF		
TOTAL:			3,031.0	Cords		

## Sale Specific Conditions & Requirements

Sale Name: Two Line Mix

Sale Number: 12-017-17 Seq#: 1

### 1 - Sale Area

#### 1.2 - Boundaries

##### 1.2.1 - Painted boundaries (1/14)

Exterior sale boundary lines against state land are marked with double red paint dots. Interior Payment Unit boundaries are marked with double red paint slashes.

### 2 - Timber Specifications

#### 2.1 - Included Timber

##### 2.1.1 - Clearcut unit(s) with unmerchantable trees (6/14)

Within Payment Unit(s) 1, 2 & 3, cut all trees that are 2" or more at DBH, except do not cut red pine, white pine, hemlock, cedar or oak.

##### 2.1.3 - Cut tree marked unit(s) (12/08)

Within Payment Unit(s) 4, all trees are designated for cutting when marked with orange paint above and below stump height, regardless of merchantability.

#### 2.2 - Utilization

##### 2.2.10 - No chipping tops and limbs (8/16)

Within Payment Unit(s) 1, 2 & 3, chipping of the bole, 4 inches in diameter or greater, is allowed. Chipping of limbs or portions of the tree less than 4 inches in diameter is not permitted. Limbs and the remaining top must be left on site and scattered.

#### 2.3 - Log Rule

##### 2.3.1 - Log rule (12/08)

All board foot volumes of sawlog size products in this contract have been determined by the Scribner Decimal C Log Rule.

### 4 - Transportation

#### 4.1 - Construction

##### 4.1.6 - Road construction (1/09)

Improvements of existing roads shall be done in such a way as to minimize the environmental and visual impacts. Merchantable trees shall be cut and utilized unless otherwise directed. Non-merchantable trees shall be severed and laid flat on the ground. Slash shall be scattered, and not left in windrows. Stumps shall be set upright, not left on edge, and be moved at least 10 feet away from the road edge. Disturbed soil shall be feathered into the woods and not left in berms or windrows.

##### 4.1.7 - Road closure (10/11)

All new roads built into the sale must be blocked to vehicle traffic within 60 days of the sale expiration. Overgrown roads that are reopened shall be considered new roads. In general, this will require constructing a four foot high berm of stumps and logs covered with dirt. Contact the sale administrator for specific design and placement.

### 5 - Operations

#### 5.2 - Conduct of Operations

##### 5.2.1 - Slash

###### 5.2.1.1 - Slash within sale area (9/16)

No trees are to be felled outside the sale area and all slash is to be kept at least 10 feet back from the red paint line. If sale boundary lines are along a public road or highway, then slash must be removed 50' from these lines per General Condition & Requirement 5.2.1.

###### 5.2.1.8 - Slash height (12/08)

No slash or tree tops may exceed 36 inches in height.

#### 5.2.3 - Operating Restrictions

##### 5.2.3.1 - Operating restrictions (9/11)

Within Payment Unit(s) 1, 2 & 3, unless changed by written agreement, cutting, skidding, and hauling are limited to the period of December 1st to March 31. This restriction is because of wintering deer.

##### 5.2.38 - No decking against live trees (2/04)

Cut products may not be decked against unmarked or designated leave trees.

#### 5.4 - Soil Protection

##### 5.4.1 - Rutting restriction, general (7/16)

Operations are to cease immediately if equipment and weather conditions result in rutting of roads and/or skid trails which is 12 inches or greater in depth and 50 feet in length. The Unit Manager or his/her representative may restrict hauling and/or skidding if ruts exceed the specified depth. With the Unit Manager or his/her representative's approval, the Purchaser may return to the area when the risk of rutting has decreased.

#### 5.8 - Protection of Endangered Species

##### 5.8.5 - Protection of raptor nests (3/13)

All trees with raptor nests will be protected if found during harvesting operations. Notification will be made to the Unit Manager or his/her representative who will notify the Wildlife Biologist so an on-site evaluation and recommendation can be made, if necessary.



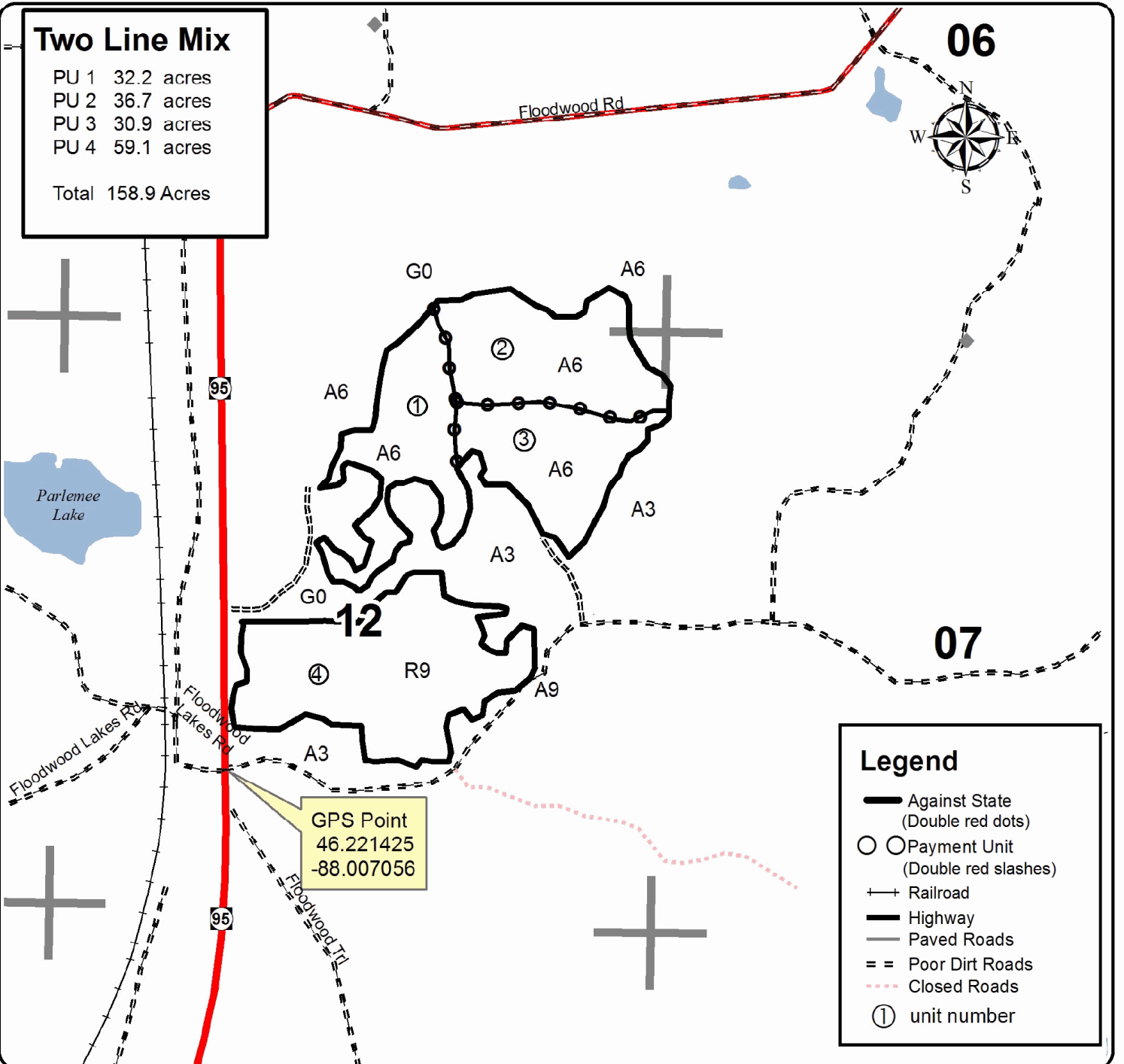
# TIMBER SALE MAP

This information provided by authority of Part 525, 1994 PA 451, as amended.

Sale Number	Year
12-017-17	2017

Forest Management Unit <b>CRYSTAL FALLS</b>	County Dickinson	Mapped By <b>SCOTT SEBERO</b>	Date 05/17/2017	Page 1	of 1
Township 44 N	Range 30W	Section(s) and Subdivision(s) 1 S1/2SE, 12 NE1/4, E1/2NW, N1/2SE, NESW	Scale 1:15,840		
Cruised By <b>SCOTT SEBERO</b>					

Cover Type				Density			
A = Aspen	H = Hemlock	N = Marsh	U = Upland Brush	0 = Non Stocked	5 = Pole Timber Medium		
B = Paper Birch	J = Jack Pine	O = Oak	UM = Upland Mixed	1 = Seedling Sapling Poor	6 = Pole Timber Well		
C = Cedar	L = Lowland Brush	P = Lowland Poplar	V = Bog or Marsh	2 = Seedling Sapling Medium	7 = Saw Timber Poor		
D = Treed Bog	LM = Lowland Mixed	Q = Mixed Swamp Conifer	W = White Pine	3 = Seedling Sapling Well	8 = Saw Timber Medium		
E = Swamp Hdwoods	M = Mpl, Bch, Brch	R = Red Pine	X = Non Stocked	4 = Pole Timber Poor	9 = Saw Timber Well		
F = Spruce Fir	MC = Mixed Conifer	S = Black Spruce	Z = Water				
G = Grass	MD = Mixed Deciduous	T = Tamarack					





**TIMBER SALE INFORMATION**

Little Log Island (12-018-17)

Dickinson County (Advertised Price \$15,573.90)

SALE NOTE: Access will be north out of Norway up Bentons Lake Road. The sale may also be accessed by an alternative route from the north with permission from a private landowner through a gate. Softer spots are found on the access road between the berm and the sale during wetter seasons.

A timber sale contract for this lump sum, sealed bid timber sale will be awarded to the responsible bidder offering the highest sealed bid price. Bids must be at or above the following advertised price for each species:

<u>PRODUCTS &amp; SPECIES</u>	<u>ESTIMATED UNITS*</u>	<u>ADVERTISED PRICE</u>
Sawtimber		
Basswood	8.80 MBF	\$ 239.00 / MBF
Red Maple	3.70 MBF	\$ 220.00 / MBF
Sugar Maple	19.40 MBF	\$ 465.00 / MBF
Pulpwood		
Balsam Fir	2.00 Cords	\$ 20.60 / Cord
Mixed Hardwood	130.00 Cords	\$ 27.65 / Cord

\* The total volume is statistically estimated within plus (+) or minus (-) 30.85 percent. The estimated units are final and not subject to adjustment. Prospective bidders are urged to examine this timber and to make their own estimates of quantity and quality.

**BOND AND PAYMENT SCHEDULE:**

1. A bond in the amount of \$779.00 to insure faithful performance of the conditions of the contract will be deposited by the successful bidder within 21 days of the sale award.
2. Cutting in any sale or unit without the required advance payment would be considered a trespass.
3. Total payment must be paid in advance or according to the following schedule:
  - (a) Ten percent (10%) of the sale value must be paid within 21 days of the sale award.
  - (b) The remainder is due before cutting begins.
4. If no cutting takes place, the 10% down payment will not be refunded.
5. Operations on the contract issued will terminate on 12/31/2019.

**Description of Timber by Payment Unit (PU)**

PU	MARKET GROUP	PRODUCT	QUANTITY	UNIT	ACRES	ADVERTISE PRICE
1	Basswood	Sawtimber	8.8	MBF	23.8	\$15,573.90
	Red Maple		3.7	MBF		
	Sugar Maple		19.4	MBF		
	Balsam Fir	Pulpwood	2.0	Cords		
	Mixed Hardwood		130.0	Cords		
	<i>Basswood</i>		24.0	<i>Cords</i>		
	<i>Black Cherry</i>		7.0	<i>Cords</i>		
	<i>Red Maple</i>		13.0	<i>Cords</i>		
	<i>Sugar Maple</i>		85.0	<i>Cords</i>		
	<i>Yellow Birch</i>		1.0	<i>Cords</i>		
TOTAL:			31.9	MBF		
TOTAL:			132.0	Cords		

## Sale Specific Conditions & Requirements

**Sale Name: Little Log Island**

**Sale Number: 12-018-17 Seq#: 1**

### 1 - Sale Area

#### 1.2 - Boundaries

##### 1.2.1 - Painted boundaries (1/14)

The sale boundary is marked and identified by red paint. Exterior sale boundary lines against state are marked with red paint.

### 2 - Timber Specifications

#### 2.1 - Included Timber

##### 2.1.3 - Cut tree marked unit(s) (12/08)

Within Payment Unit(s) 1, all trees are designated for cutting when marked with orange paint above and below stump height, regardless of merchantability.

#### 2.3 - Log Rule

##### 2.3.1 - Log rule (12/08)

All board foot volumes of sawlog size products in this contract have been determined by the Scribner Decimal C Log Rule.

### 3 - Payments

#### 3.4 - Damaged Timber

##### 3.4.1 - Damaged timber (6/14)

General Condition and Requirement 3.4 Damaged Timber, defines liquidated damages for undesignated live merchantable trees which are cut or injured. In addition, extreme care should be taken to avoid damage to hardwood tree seedlings and saplings.

### 4 - Transportation

#### 4.1 - Construction

##### 4.1.6 - Road construction (1/09)

Improvements of existing roads shall be done in such a way as to minimize the environmental and visual impacts. Merchantable trees shall be cut and utilized unless otherwise directed. Non-merchantable trees shall be severed and laid flat on the ground. Slash shall be scattered, and not left in windrows and kept a minimum of 10 feet back from the road edge. Stumps shall be set upright, not left on edge, and be moved at least 10 feet away from the road edge. Disturbed soil shall be feathered into the woods and not left in berms or windrows.

##### 4.1.7 - Road closure (10/11)

A berm (shown on the Timber Sale Map) will have to be removed to access this sale. The bermed road must be blocked to vehicle traffic upon completion of the sale. In general, this will require re-constructing a four (4') foot high berm of stumps and logs covered with earth where the previous berm exists now. This berm must be rendered impassable to cars and trucks.

##### 4.1.12 - No new roads (1/12)

No new roads will be permitted in any Payment Unit. All operations are limited to existing roads. Skid trails only will be allowed.

#### 4.4 - Access

##### 4.4.2 - Alternate route on private property (2/04)

It is the Purchaser's responsibility to obtain access across private land for any routes other than the route shown on the sale map.

### 5 - Operations

#### 5.2 - Conduct of Operations



## 5.2.2 - Hazard Trees/Snags

### 5.2.2.1 - Den trees (10/16)

Obvious hollow and/or den trees shall be protected and left standing unless they are a safety hazard.

## 5.2.3 - Operating Restrictions

### 5.2.3.3 - Bark slippage restriction (3/09)

Within Payment Unit(s) 1, cutting and skidding are not permitted during the period of April 15 to July 15. This restriction is because of bark slippage.

### 5.2.41 - Snowmobile trail protection (9/11)

There is a snowmobile trail shown on the timber sale map which uses a section of Bentons Lake Road. Do not cut or damage posts with orange trail markers or traffic control signs. If the trail is used, it must be maintained and restored to a condition equal to or better than before the sale. The road maintenance/restoration must be done prior to December 1 following completion of the sale. If the trail road is to be used for hauling during the snowmobile season, then a snow covered base must be left on the trail.

## 5.4 - Soil Protection

### 5.4.1 - Rutting restriction, general (7/16)

Operations are to cease immediately if equipment and weather conditions result in rutting of roads and/or skid trails which is 12 inches or greater in depth and 50 feet in length. The Unit Manager or his/her representative may restrict hauling and/or skidding if ruts exceed the specified depth. With the Unit Manager or his/her representative's approval, the Purchaser may return to the area when the risk of rutting has decreased.

## 6 - Safety and Fire Prevention

### 6.2 - Signing

#### 6.2.2 - Snowmobile trail posting (8/09)

The Purchaser is responsible for posting and maintaining caution signs on the snowmobile trail (Bentons Lake Road) prior to beginning operations during the snowmobile season (approximately December 1 to March 31). The trail must be posted at appropriate distances from the sale area to warn of logging activity and truck traffic. Signs must be removed when harvest operations are suspended or completed. The Purchaser will provide these signs.



# TIMBER SALE MAP

This information provided by authority of Part 525, 1994 PA 451, as amended.

Forest Management Unit Crystal Falls		County Dickinson	Mapped By Brolin		Date 06/26/2017	Page 1	of 1
Township 40N	Range 29W	Section(s) and Subdivision(s) S1/2 SE1/4 Section 9, and N1/2 NE1/4 Section 16			Scale 1:15,840		

Cover Type				Density	
A = Aspen	H = Hemlock	N = Marsh	U = Upland Brush	0 = Non Stocked	5 = Pole Timber Medium
B = Paper Birch	J = Jack Pine	O = Oak	UM = Upland Mixed	1 = Seedling Sapling Poor	6 = Pole Timber Well
C = Cedar	L = Lowland Brush	P = Lowland Poplar	V = Bog or Marsh	2 = Seedling Sapling Medium	7 = Saw Timber Poor
LM = Lowland Mixed	M = Mpl, Bch, Brch	Q = Mixed Swamp Conifer	W = White Pine	3 = Seedling Sapling Well	8 = Saw Timber Medium
D = Treed Bog	MC = Mixed Conifer	R = Red Pine	X = Non Stocked	4 = Pole Timber Poor	9 = Saw Timber Well
E = Swamp Hdwoods	MD = Mixed Deciduous	S = Black Spruce	Z = Water		
F = Spruce Fir		T = Tamarack			
G = Grass					

**PU Acres**  
1 23.8

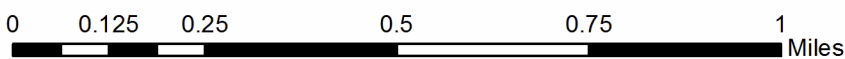
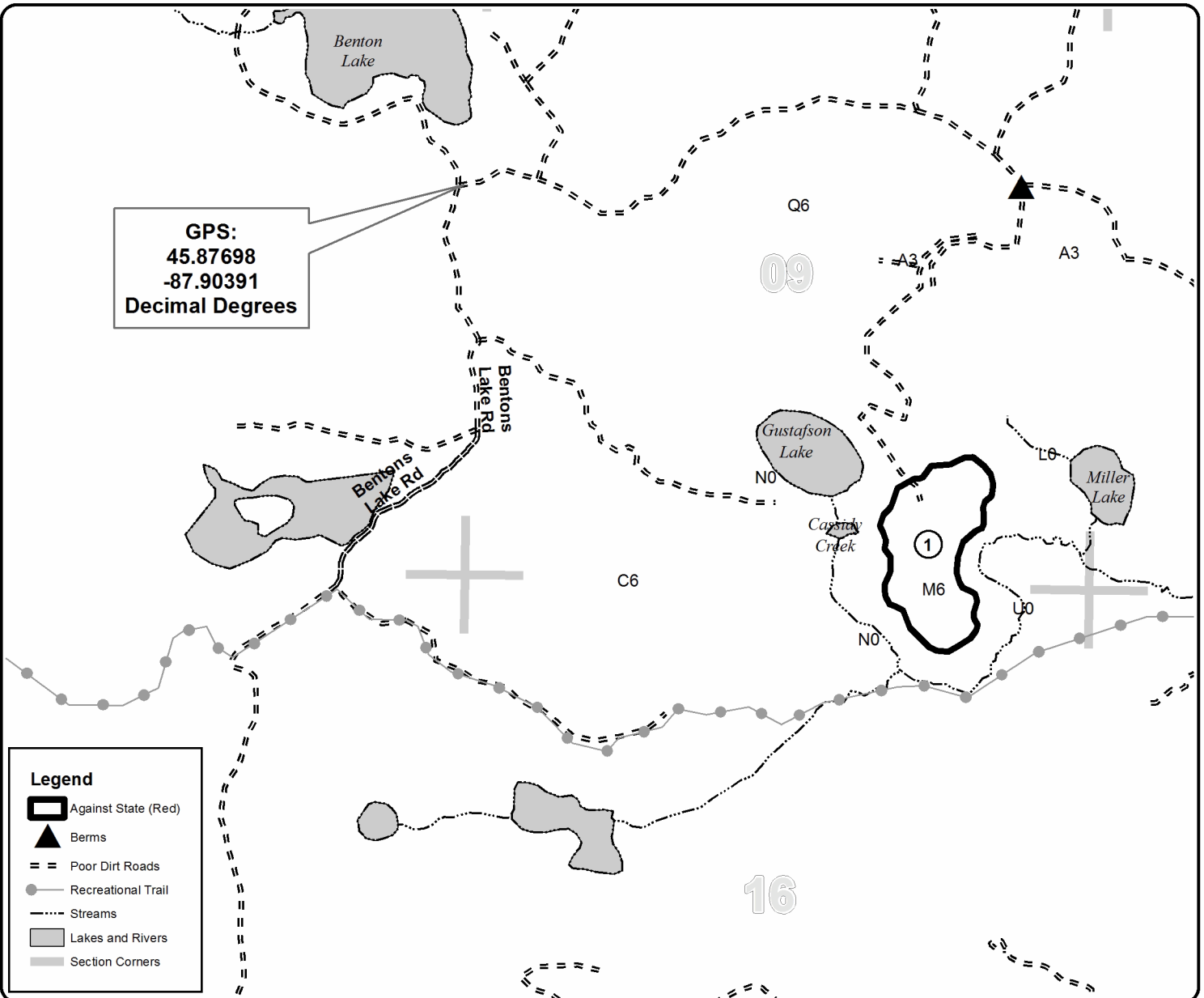
## Little Log Island

### Compartment 98

23.8 Acres



**GPS:**  
45.87698  
-87.90391  
Decimal Degrees



**TIMBER SALE INFORMATION**

Mixed SBW (12-028-17)

Dickinson County (Advertised Price \$36,627.50)

SALE NOTE: Most of this sale requires winter only operations.

A timber sale contract for this lump sum, sealed bid timber sale will be awarded to the responsible bidder offering the highest sealed bid price. Bids must be at or above the following advertised price for each species:

<u>PRODUCTS &amp; SPECIES</u>	<u>ESTIMATED UNITS*</u>	<u>ADVERTISED PRICE</u>
<b>Sawtimber</b>		
Basswood	7.00 MBF	\$ 239.00 / MBF
Paper Birch	13.80 MBF	\$ 93.00 / MBF
Red Maple	1.40 MBF	\$ 220.00 / MBF
Sugar Maple	0.70 MBF	\$ 465.00 / MBF
White Ash	3.60 MBF	\$ 92.00 / MBF
<b>Pulpwood</b>		
Balsam Fir	124.00 Cords	\$ 20.60 / Cord
Mixed Aspen	351.00 Cords	\$ 37.30 / Cord
Mixed Hardwood	263.00 Cords	\$ 27.65 / Cord
Mixed Spruce	307.00 Cords	\$ 26.75 / Cord
Tamarack	115.00 Cords	\$ 13.70 / Cord

\* The total volume is statistically estimated within plus (+) or minus (-) 19.42 percent. The estimated units are final and not subject to adjustment. Prospective bidders are urged to examine this timber and to make their own estimates of quantity and quality.

**BOND AND PAYMENT SCHEDULE:**

1. A bond in the amount of \$1,831.00 to insure faithful performance of the conditions of the contract will be deposited by the successful bidder within 21 days of the sale award.
2. Cutting in any sale or unit without the required advance payment would be considered a trespass.
3. Total payment must be paid in advance or according to the following schedule:
  - (a) Ten percent (10%) of the sale value must be paid within 21 days of the sale award.
  - (b) The 10% down payment will be credited towards the first unit cut.
4. If no cutting takes place, the 10% down payment will not be refunded.
5. Operations on the contract issued will terminate on 06/30/2019.

**Description of Timber by Payment Unit (PU)**

PU	MARKET GROUP	PRODUCT	QUANTITY	UNIT	ACRES	ADVERTISE PRICE
1	Paper Birch	Sawtimber	11.4	MBF	22.1	\$13,726.50
	Red Maple		1.0	MBF		
	Balsam Fir	Pulpwood	35.0	Cords		
	Mixed Aspen		198.0	Cords		
	<i>Quaking Aspen</i>		198.0	<i>Cords</i>		
	Mixed Hardwood		126.0	Cords		
	<i>Paper Birch</i>		97.0	<i>Cords</i>		
	<i>Red Maple</i>		29.0	<i>Cords</i>		
	Mixed Spruce		32.0	Cords		
	<i>White Spruce</i>		32.0	<i>Cords</i>		
2	Balsam Fir	Pulpwood	2.0	Cords	3.1	\$1,288.20
	Mixed Aspen		14.0	Cords		
	<i>Balsam Poplar</i>		14.0	<i>Cords</i>		
	Mixed Spruce		2.0	Cords		
	<i>White Spruce</i>		2.0	<i>Cords</i>		
	Tamarack		49.0	Cords		
3	Paper Birch	Sawtimber	0.9	MBF	2.9	\$2,315.20
	Balsam Fir	Pulpwood	22.0	Cords		
	Mixed Aspen		33.0	Cords		
	<i>Balsam Poplar</i>		1.0	<i>Cords</i>		
	<i>Quaking Aspen</i>		32.0	<i>Cords</i>		
	Mixed Hardwood		8.0	Cords		
	<i>Paper Birch</i>		8.0	<i>Cords</i>		
	Mixed Spruce		4.0	Cords		
	<i>Black Spruce</i>		2.0	<i>Cords</i>		
	<i>White Spruce</i>		2.0	<i>Cords</i>		
Tamarack		16.0	Cords			
4	Paper Birch	Sawtimber	1.5	MBF	15.8	\$14,085.20
	Balsam Fir	Pulpwood	64.0	Cords		
	Mixed Aspen		85.0	Cords		
	<i>Balsam Poplar</i>		42.0	<i>Cords</i>		
	<i>Quaking Aspen</i>		43.0	<i>Cords</i>		
	Mixed Hardwood		57.0	Cords		
	<i>Black Ash</i>		12.0	<i>Cords</i>		
	<i>Paper Birch</i>		42.0	<i>Cords</i>		
	<i>Red Maple</i>		3.0	<i>Cords</i>		
	Mixed Spruce		269.0	Cords		
	<i>Black Spruce</i>		234.0	<i>Cords</i>		
	<i>White Spruce</i>		35.0	<i>Cords</i>		
Tamarack		50.0	Cords			
5	Basswood	Sawtimber	7.0	MBF	9.9	\$5,212.40
	Red Maple		0.4	MBF		
	Sugar Maple		0.7	MBF		
	White Ash		3.6	MBF		
	Balsam Fir	Pulpwood	1.0	Cords		
	Mixed Aspen		21.0	Cords		
	<i>Quaking Aspen</i>		21.0	<i>Cords</i>		
	Mixed Hardwood		72.0	Cords		
	<i>Basswood</i>		14.0	<i>Cords</i>		
	<i>Ironwood</i>		2.0	<i>Cords</i>		
	<i>Red Maple</i>		34.0	<i>Cords</i>		
	<i>Sugar Maple</i>		14.0	<i>Cords</i>		
<i>White Ash</i>		8.0	<i>Cords</i>			
TOTAL:			26.5	MBF		

TOTAL:	1,160.0	Cords
--------	---------	-------

## Sale Specific Conditions & Requirements

**Sale Name: Mixed SBW**

**Sale Number: 12-028-17 Seq#: 1**

### 1 - Sale Area

#### 1.2 - Boundaries

##### 1.2.1 - Painted boundaries (1/14)

The sale boundary and Payment Unit boundaries are marked and identified by red and yellow paint. Exterior sale boundary lines against state are marked with red paint. Interior Payment Unit boundaries are marked with yellow paint. The painted boundary line trees are not Included Timber and are to be protected. Yellow painted trees designating an interior Payment Unit boundary are only to be cut when all surrounding Payment Units have been paid.

### 2 - Timber Specifications

#### 2.1 - Included Timber

##### 2.1.1 - Clearcut unit(s) with unmerchantable trees (6/14)

Within Payment Unit(s) #'s 1-4, cut all trees that are two (2) inches or more at DBH EXCEPT red pine, white pine, cedar, hemlock, oak, cherry, and elm. In addition, do not cut balsam fir and spruce trees that have a stump diameter less than 6 inches measured at a point 4 inches above ground level within Payment Units #'s 2 and 3. Also, do not cut green marked trees within Payment Unit #1.

##### 2.1.3 - Cut tree marked unit(s) (12/08)

Within Payment Unit(s) #5, all trees are designated for cutting when marked with orange paint above and below stump height, regardless of merchantability.

##### 2.1.11 - Description of timber note (2/04)

Note that Mixed Aspen includes quaking aspen and balsam poplar, Mixed Spruce includes black and white spruce, Mixed Hardwood Pulp includes sugar maple, red maple, basswood, white ash, black ash, paper birch, and ironwood.

#### 2.2 - Utilization

##### 2.2.11 - Chipping restriction (9/14)

If chipping occurs on this sale, then no woody debris present on the ground at the start of the sale may be chipped. In addition, brush or chips may not be stored or stockpiled on-site for more than 60 days.

### 3 - Payments

#### 3.3 - Pre-measured Sales

##### 3.3.4 - Dividing payment units (7/14)

Payment Unit(s) may be divided at the request of the Purchaser and upon approval of the Unit Manager. Dividing Payment Units is a contract modification which requires a Timber Sale Contract Supplement. There will be only one division per Payment Unit.

### 4 - Transportation

#### 4.1 - Construction

##### 4.1.3 - Slash and earthen piles (8/04)

Piles or windrows of earth along roads and landings that have been widened or constructed shall be leveled. Slash from road maintenance or construction, including stumps, shall be dispersed throughout the sale, chipped, utilized or otherwise removed from the sale.

##### 4.1.4 - Timber removed for construction (12/09)

Trees cut or damaged in the process of pre-approved road, landing or skid trail construction will be decked in an area separate from other Designated Timber and not removed until measured by the sale administrator. Payment will be made at the specified Purchase Unit Price.

##### 4.1.6 - Road construction (1/09)

Construction of new roads or improvements of existing roads shall be done in such a way as to minimize the environmental and visual impacts. Merchantable trees shall be cut and utilized unless otherwise directed. Non-merchantable trees shall be severed and laid flat on the ground. Slash shall be scattered and not left in windrows and kept a minimum of 10 feet back from the road edge or be chipped, utilized or otherwise removed from the sale. Stumps shall be set upright, not left on edge, and be moved at least 10 feet away from the road edge. Disturbed soil shall be feathered into the woods and not left in berms or windrows.

#### 4.1.7 - Road closure (10/11)

All new roads built into the sale must be blocked to vehicle traffic upon completion of the sale. Overgrown roads that are reopened shall be considered new roads. In general, this will require constructing a four (4') foot high berm of stumps and logs covered with earth. These roads must be rendered impassable to cars and trucks. Temporary berms may be required if no sale activity occurs for 30 or more consecutive days. Contact the sale administrator for specific details of design and placement.

### 4.2 - Maintenance

#### 4.2.1 - Hauling restriction (12/08)

Hauling may be restricted on forest roads by the Unit Manager or his/her representative. The restriction may occur during spring breakup or wet weather conditions.

## 5 - Operations

### 5.1 - Notification

#### 5.1.1 - Pre-sale conference (10/16)

A pre-sale conference between the Purchaser and sale administrator is required prior to beginning any operations to determine landing and road locations and general operations. The Unit Manager or his/her representative must be contacted at least 5 days in advance to schedule the conference.

#### 5.1.4 - Post-sale conference (10/16)

A post-sale conference on site between the Purchaser and sale administrator is required 3 days prior to the completion of active logging operations to determine clean-up and repair of landings, road edges, and the fulfillment of other contract specifications.

### 5.2 - Conduct of Operations

#### 5.2.1 - Slash

##### 5.2.1.8 - Slash height (12/08)

No slash or tree tops may exceed 24 inches in height.

#### 5.2.2 - Hazard Trees/Snags

##### 5.2.2.1 - Den trees (10/16)

Obvious hollow and/or den trees shall be protected and left standing unless they are a safety hazard.

#### 5.2.3 - Operating Restrictions

##### 5.2.3.3 - Bark slippage restriction (3/09)

Within Payment Unit(s) #5, unless changed by written agreement, cutting and skidding are not permitted during the period of April 15 to July 15. This restriction is because of bark slippage.

#### 5.2.17 - Crane Mats/Timber Mats (9/17)

Some roads or skid trails may require extra protection such as that afforded by Crane Mats/Timber Mats. If available, Crane Mats/Timber Mats may be borrowed from the DNR and are located at the Marquette ICC, the Newberry Field Office and the Grayling Field Office. Contact the sale administrator for specific details. A Timber Sale Contract Supplement will be used to document the Purchaser's use of the DNR's Crane Mats/Timber Mats. It is the responsibility of the Purchaser to contact the sale administrator to schedule pick up and drop off. In addition, all mats must be cleaned prior to drop off. A charge of 125.00 will be assessed for all damaged or non-returned mats. Damage is defined as misuse resulting in three or more broken cants.

#### 5.2.32 - Decking/landing restoration (9/13)

All decking and landing areas must have the surface area restored to a condition equal to or better than before. This is to ensure the proper regeneration of the stand. Wood debris, chips and "cookies" from trimmings must be removed or scattered away from landing and loading areas and may not be windrowed on the edge.

### 5.4 - Soil Protection

#### 5.4.1 - Rutting restriction, general (7/16)

Operations are to cease immediately if equipment and weather conditions result in rutting of roads and/or skid trails which is 12 inches or greater in depth and 50 feet in length. The Unit Manager or his/her representative may restrict hauling and/or skidding if ruts exceed the specified depth. With the Unit Manager or his/her representative's approval, the Purchaser may return to the area when the risk of rutting has decreased.

#### 5.4.2 - Skid trails (2/04)

Skid trails up and down slopes should be avoided. If however this is unavoidable, these trails will be left in a non-erodible condition using water bars, logs, and slash. Placing of slash on these skid trails while logging is ongoing may alleviate need for any further action. At the direction of the sale administrator, seed, fertilizer, and mulch may also be required.

### 5.8 - Protection of Endangered Species

#### 5.8.5 - Protection of raptor nests (3/13)

All trees with raptor nests will be protected if found during harvesting operations. Notification will be made to the Unit Manager or his/her representative who will notify the Wildlife Biologist so an on-site evaluation and recommendation can be made, if necessary.

## 6 - Safety and Fire Prevention

### 6.2 - Signing

#### 6.2.1 - Road posting (9/09)

The Purchaser is responsible for posting and maintaining caution signs on the Leeman Rd and Sturgeon Rd prior to beginning operations. The road must be posted at appropriate distances from the sale area to warn of logging activity and truck traffic. Signs must be removed when harvest operations are suspended or completed.

## 7 - Other Conditions

### 7.2 - Extensions

#### 7.2.5 - Weather related extension (1/13)

If weather conditions during the operating period of this contract prevent harvesting, this sale may qualify for a weather related extension. If approved, the normal extension fee would be waived. To qualify, there must be a documented attempt each year to harvest in the difficult portion of the sale.

### 7.5 - Loss

#### 7.5.1 - Deteriorating timber (7/09)

The sale area has received damage from spruce budworm. The Purchaser should harvest the wood as soon as possible. The Department of Natural Resources is held free of responsibility of any further damage or deterioration due to delay in harvesting.





# TIMBER SALE MAP

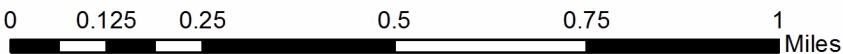
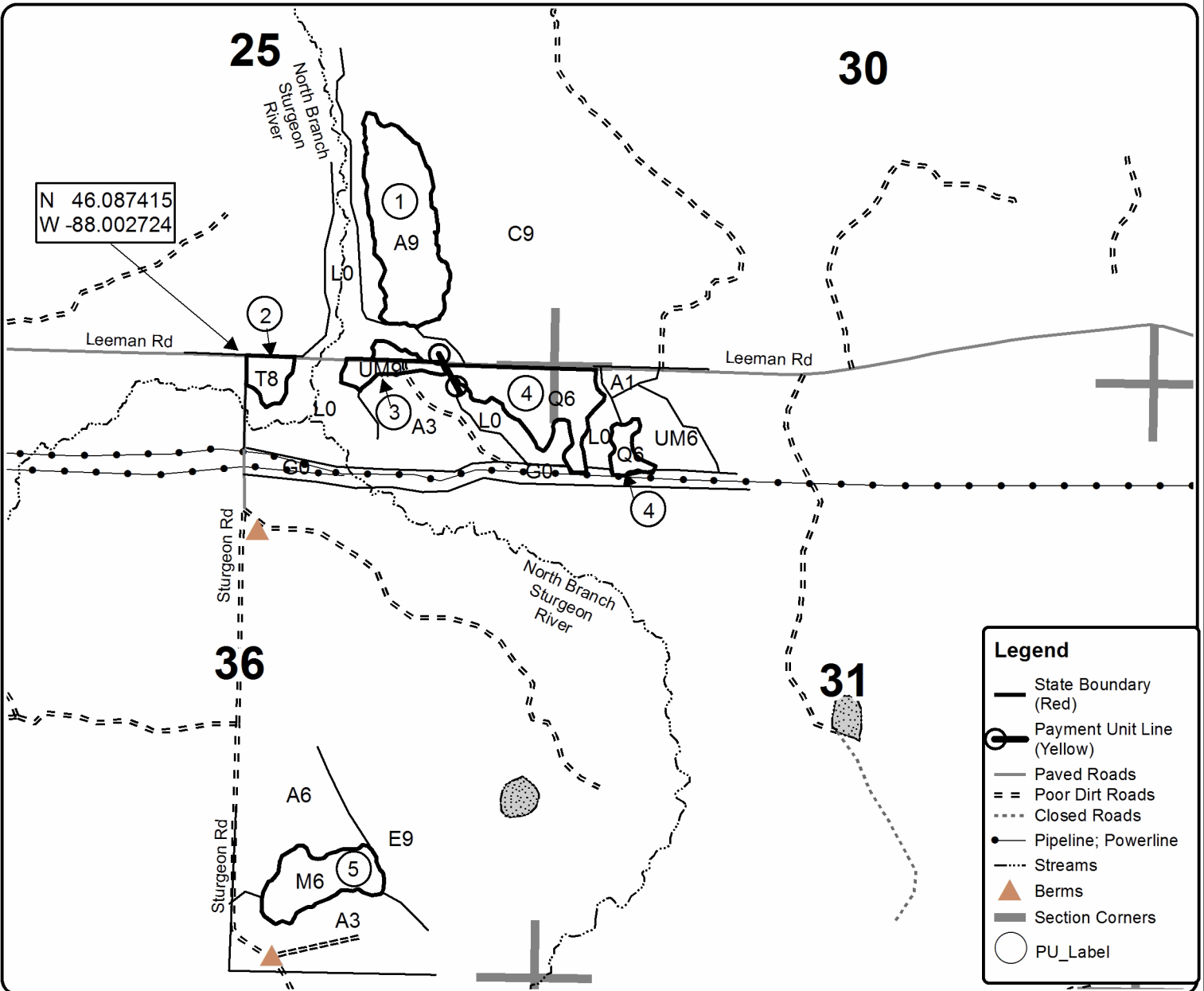
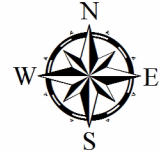
This information provided by authority of Part 525, 1994 PA 451, as amended.

Forest Management Unit <b>Crystal Falls</b>		County <b>Dickinson</b>	Mapped By <b>Matt Modlin</b>		Date <b>09/06/2017</b>	Page <b>1</b>	of <b>1</b>
Township <b>43N</b>	Range <b>29, 30W</b>	Section(s) and Subdivision(s) <b>R30W SE1/4 Sec 25, N1/2NE1/4, SW1/4SE1/4 Sec 36; R29W NW1/4NW1/4 Sec 31</b>			Scale <b>1:15,840</b>		

Cover Type				Density			
A = Aspen	H = Hemlock	N = Marsh	U = Upland Brush	0 = Non Stocked	5 = Pole Timber Medium		
B = Paper Birch	J = Jack Pine	O = Oak	UM = Upland Mixed	1 = Seedling Sapling Poor	6 = Pole Timber Well		
C = Cedar	L = Lowland Brush	P = Lowland Poplar	V = Bog or Marsh	2 = Seedling Sapling Medium	7 = Saw Timber Poor		
D = Treed Bog	LM = Lowland Mixed	Q = Mixed Swamp Conifer	W = White Pine	3 = Seedling Sapling Well	8 = Saw Timber Medium		
E = Swamp Hdwoods	M = Mpl, Bch, Brch	R = Red Pine	X = Non Stocked	4 = Pole Timber Poor	9 = Saw Timber Well		
F = Spruce Fir	MC = Mixed Conifer	S = Black Spruce	Z = Water				
G = Grass	MD = Mixed Deciduous	T = Tamarack					

PU	Acres	PU	Acres
1	22.1	4	15.8
2	3.1	5	9.9
3	2.9		

**Mixed SBW**  
**Compartment 47 and 49**  
**53.8 Acres**





Feed A Bear SBW (12-002-17)  
; Dickinson COUNTY

In response to the notice of sale to be held 8:30 a.m. (local time) on December 13, 2017, I am hereby submitting my sealed bid (firm offer) for the following forest products to be cut. Bids for individual species must be at or above the advertised price. All non-responsive bid forms may be rejected.

<u>PRODUCTS &amp; SPECIES</u>	<u>ESTIMATED VOLUME*</u>	<u>ADVERTISED PRICE</u>	<u>BID PRICE/UNIT</u>
Pulpwood			
Balsam Fir	185.00 Cords	\$ 17.85/Cord	\$ _____
Mixed Hardwood	190.00 Cords	\$ 23.95/Cord	\$ _____
Mixed Spruce	160.00 Cords	\$ 23.20/Cord	\$ _____
Quaking Aspen	740.00 Cords	\$ 32.35/Cord	\$ _____
Tamarack	2.00 Cords	\$ 11.90/Cord	\$ _____

\*The volumes are statistically estimated within plus (+) or minus (-) 15.52 percent. These estimated volumes are final and not subject to adjustment. Prospective bidders are urged to examine this timber and to make their own estimates of quantity and quality.

I understand that any or all bids may be rejected. All bids must be signed and all bid items must be bid or the bid form may be rejected. I also understand that consideration and awarding a contract will be based upon my past performance and ability to complete the contract based upon equipment and staffing subject to my control.

FEDERAL ID: \_\_\_\_\_ - \_\_\_\_\_ or SOCIAL SECURITY NUMBER: \_\_\_\_\_ - \_\_\_\_\_ - \_\_\_\_\_

Company or individual bidding: \_\_\_\_\_

Company representative's name: \_\_\_\_\_

Address: \_\_\_\_\_

City: \_\_\_\_\_ State: \_\_\_\_\_ Zip: \_\_\_\_\_

IF AVAILABLE, PLEASE PLACE THE PERSONALIZED LABEL FROM YOUR PROSPECTUS IN THE ABOVE BOX.

Individual or company representative's signature: \_\_\_\_\_ Date: \_\_\_\_\_

Phone number : \_\_\_\_\_ Email (optional): \_\_\_\_\_

**THE WINNING BIDDER MUST COMPLETE THE VERIFICATION OF WORKER'S DISABILITY COMPENSATION ACT COMPLIANCE (ON REVERSE SIDE IF DOUBLE SIDED) WITHIN 21 DAYS OF SALE AWARD DATE**



<b>FOR DEPARTMENT USE ONLY</b>
Sale Number (XX - XXX - XX - XX)
Forest Management Unit:

## TIMBER SALE VERIFICATION OF WORKER'S DISABILITY COMPENSATION ACT COMPLIANCE

*As required by Act 317, P.A. 1969 (Worker's Compensation) and  
Part 5 of Act 451 of 1994, as amended.*

### VERIFICATION OF WORKER'S DISABILITY COMPENSATION ACT COMPLIANCE

- This verification must be completed and submitted within 21 days of contract award and prior to the issuance of the timber sale contract.
- In addition, if boxes 2B or 2C are checked, then Notice of Exclusion or Certificate of Insurance must be submitted within twenty-one (21) days of the contract award and prior to the issuance of the timber sale contract.
- All information must be typed or printed except for written signatures.

Please Check Appropriate Categories:

1. My business is organized as (you **must** check one of the boxes below):
  - A.  Sole Proprietorship (individual)
  - B.  Partnership
  - C.  Corporation
2. You **must** check one of the boxes below:
  - A.  I certify my business is a sole proprietorship and it has no employees but the sole proprietor. I am not subject to the Worker's Compensation Laws.
  - B.  I certify my business has satisfied its obligation to the Worker's Compensation Act through the use of an approved Notice of Exclusion (BWC-337, Rev. 5/96). I will provide a copy of the Notice of Exclusion within 21 days of the contract award. (For questions or a copy of the BWC-337, please call the Worker's Compensation Bureau at 517-322-1195).
  - C.  I certify my business has a Worker's Compensation Policy. I will provide an original Certificate of Insurance within twenty-one (21) days of the contract award.
3. If you have checked item 2(A) or 2(B), you **must** indicate the number of **both** full-time and part-time employees, other than yourself, including family members and active partners (if none, you must enter "0").

\_\_\_\_\_ Full-time Employees

\_\_\_\_\_ Part-time Employees

Name of Business		Federal ID (or) Social Security No.	
Address		Telephone (       )	
City	State	ZIP	

*I hereby certify that the above information is true and correct. I agree to notify the Michigan DNR of any changes that occur in factors affecting my coverage during any of my present and future operations.*

\_\_\_\_\_  
Signature of Owner or Authorized Representative

\_\_\_\_\_  
Title

\_\_\_\_\_  
Date

**Please complete the "SEALED BID" information on the next page**

Popeye (12-016-17)  
; Dickinson COUNTY

In response to the notice of sale to be held 8:30 a.m. (local time) on December 13, 2017, I am hereby submitting my sealed bid (firm offer) for the following forest products to be cut. Bids for individual species must be at or above the advertised price. All non-responsive bid forms may be rejected.

<u>PRODUCTS &amp; SPECIES</u>	<u>ESTIMATED VOLUME*</u>	<u>ADVERTISED PRICE</u>	<u>BID PRICE/UNIT</u>
<b>Sawtimber</b>			
Basswood	2.30 MBF	\$ 239.00/MBF	\$ _____
Paper Birch	13.20 MBF	\$ 93.00/MBF	\$ _____
Red Maple	26.80 MBF	\$ 220.00/MBF	\$ _____
Sugar Maple	9.00 MBF	\$ 465.00/MBF	\$ _____
Yellow Birch	2.50 MBF	\$ 155.00/MBF	\$ _____
<b>Pulpwood</b>			
Balsam Fir	68.00 Cords	\$ 20.60/Cord	\$ _____
Mixed Aspen	618.00 Cords	\$ 37.30/Cord	\$ _____
Mixed Hardwood	1,036.00 Cords	\$ 27.65/Cord	\$ _____
White Spruce	44.00 Cords	\$ 26.75/Cord	\$ _____

\*The volumes are statistically estimated within plus (+) or minus (-) 10.71 percent. These estimated volumes are final and not subject to adjustment. Prospective bidders are urged to examine this timber and to make their own estimates of quantity and quality.

I understand that any or all bids may be rejected. All bids must be signed and all bid items must be bid or the bid form may be rejected. I also understand that consideration and awarding a contract will be based upon my past performance and ability to complete the contract based upon equipment and staffing subject to my control.

FEDERAL ID: \_\_\_\_ - \_\_\_\_ - \_\_\_\_ or SOCIAL SECURITY NUMBER: \_\_\_\_ - \_\_\_\_ - \_\_\_\_

Company or individual bidding: \_\_\_\_\_

Company representative's name: \_\_\_\_\_

Address: \_\_\_\_\_

City: \_\_\_\_\_ State: \_\_\_\_\_ Zip: \_\_\_\_\_

IF AVAILABLE, PLEASE PLACE THE PERSONALIZED LABEL FROM YOUR PROSPECTUS IN THE ABOVE BOX.

Individual or company representative's signature: \_\_\_\_\_ Date: \_\_\_\_\_  
Phone number : \_\_\_\_\_ Email (optional): \_\_\_\_\_

**THE WINNING BIDDER MUST COMPLETE THE VERIFICATION OF WORKER'S DISABILITY COMPENSATION ACT COMPLIANCE (ON REVERSE SIDE IF DOUBLE SIDED) WITHIN 21 DAYS OF SALE AWARD DATE**



Two Line Mix (12-017-17)  
; Dickinson COUNTY

In response to the notice of sale to be held 8:30 a.m. (local time) on December 13, 2017, I am hereby submitting my sealed bid (firm offer) for the following forest products to be cut. Bids for individual species must be at or above the advertised price. All non-responsive bid forms may be rejected.

<u>PRODUCTS &amp; SPECIES</u>	<u>ESTIMATED VOLUME*</u>	<u>ADVERTISED PRICE</u>	<u>BID PRICE/UNIT</u>
Sawtimber			
Red Pine	38.50 MBF	\$ 164.00/MBF	\$ _____
Pulpwood			
Mixed Aspen	2,259.00 Cords	\$ 37.30/Cord	\$ _____
Mixed Hardwood	265.00 Cords	\$ 27.65/Cord	\$ _____
Red Pine	505.00 Cords	\$ 50.85/Cord	\$ _____
White Spruce	2.00 Cords	\$ 26.75/Cord	\$ _____

\*The volumes are statistically estimated within plus (+) or minus (-) 7.36 percent. These estimated volumes are final and not subject to adjustment. Prospective bidders are urged to examine this timber and to make their own estimates of quantity and quality.

I understand that any or all bids may be rejected. All bids must be signed and all bid items must be bid or the bid form may be rejected. I also understand that consideration and awarding a contract will be based upon my past performance and ability to complete the contract based upon equipment and staffing subject to my control.

FEDERAL ID: \_\_\_\_ - \_\_\_\_ - \_\_\_\_ or SOCIAL SECURITY NUMBER: \_\_\_\_ - \_\_\_\_ - \_\_\_\_

Company or individual bidding: \_\_\_\_\_

Company representative's name: \_\_\_\_\_

Address: \_\_\_\_\_

City: \_\_\_\_\_ State: \_\_\_\_\_ Zip: \_\_\_\_\_

IF AVAILABLE, PLEASE PLACE THE PERSONALIZED LABEL FROM YOUR PROSPECTUS IN THE ABOVE BOX.

Individual or company representative's signature: \_\_\_\_\_ Date: \_\_\_\_\_

Phone number : \_\_\_\_\_ Email (optional): \_\_\_\_\_

**THE WINNING BIDDER MUST COMPLETE THE VERIFICATION OF WORKER'S DISABILITY COMPENSATION ACT COMPLIANCE (ON REVERSE SIDE IF DOUBLE SIDED) WITHIN 21 DAYS OF SALE AWARD DATE**



<b>FOR DEPARTMENT USE ONLY</b>
Sale Number (XX - XXX - XX - XX)
Forest Management Unit:

## TIMBER SALE VERIFICATION OF WORKER'S DISABILITY COMPENSATION ACT COMPLIANCE

*As required by Act 317, P.A. 1969 (Worker's Compensation) and  
Part 5 of Act 451 of 1994, as amended.*

### VERIFICATION OF WORKER'S DISABILITY COMPENSATION ACT COMPLIANCE

- This verification must be completed and submitted within 21 days of contract award and prior to the issuance of the timber sale contract.
- In addition, if boxes 2B or 2C are checked, then Notice of Exclusion or Certificate of Insurance must be submitted within twenty-one (21) days of the contract award and prior to the issuance of the timber sale contract.
- All information must be typed or printed except for written signatures.

Please Check Appropriate Categories:

1. My business is organized as (you **must** check one of the boxes below):
  - A.  Sole Proprietorship (individual)
  - B.  Partnership
  - C.  Corporation
2. You **must** check one of the boxes below:
  - A.  I certify my business is a sole proprietorship and it has no employees but the sole proprietor. I am not subject to the Worker's Compensation Laws.
  - B.  I certify my business has satisfied its obligation to the Worker's Compensation Act through the use of an approved Notice of Exclusion (BWC-337, Rev. 5/96). I will provide a copy of the Notice of Exclusion within 21 days of the contract award. (For questions or a copy of the BWC-337, please call the Worker's Compensation Bureau at 517-322-1195).
  - C.  I certify my business has a Worker's Compensation Policy. I will provide an original Certificate of Insurance within twenty-one (21) days of the contract award.
3. If you have checked item 2(A) or 2(B), you **must** indicate the number of **both** full-time and part-time employees, other than yourself, including family members and active partners (if none, you must enter "0").

\_\_\_\_\_ Full-time Employees

\_\_\_\_\_ Part-time Employees

Name of Business		Federal ID (or) Social Security No.	
Address		Telephone (       )	
City	State	ZIP	

*I hereby certify that the above information is true and correct. I agree to notify the Michigan DNR of any changes that occur in factors affecting my coverage during any of my present and future operations.*

\_\_\_\_\_  
Signature of Owner or Authorized Representative

\_\_\_\_\_  
Title

\_\_\_\_\_  
Date

**Please complete the "SEALED BID" information on the next page**



Little Log Island (12-018-17)  
; Dickinson COUNTY

In response to the notice of sale to be held 8:30 a.m. (local time) on December 13, 2017, I am hereby submitting my sealed bid (firm offer) for the following forest products to be cut. Bids for individual species must be at or above the advertised price. All non-responsive bid forms may be rejected.

<u>PRODUCTS &amp; SPECIES</u>	<u>ESTIMATED VOLUME*</u>	<u>ADVERTISED PRICE</u>	<u>BID PRICE/UNIT</u>
<b>Sawtimber</b>			
Basswood	8.80 MBF	\$ 239.00/MBF	\$ _____
Red Maple	3.70 MBF	\$ 220.00/MBF	\$ _____
Sugar Maple	19.40 MBF	\$ 465.00/MBF	\$ _____
<b>Pulpwood</b>			
Balsam Fir	2.00 Cords	\$ 20.60/Cord	\$ _____
Mixed Hardwood	130.00 Cords	\$ 27.65/Cord	\$ _____

\*The volumes are statistically estimated within plus (+) or minus (-) 30.85 percent. These estimated volumes are final and not subject to adjustment. Prospective bidders are urged to examine this timber and to make their own estimates of quantity and quality.

I understand that any or all bids may be rejected. All bids must be signed and all bid items must be bid or the bid form may be rejected. I also understand that consideration and awarding a contract will be based upon my past performance and ability to complete the contract based upon equipment and staffing subject to my control.

FEDERAL ID: \_\_\_\_ - \_\_\_\_ - \_\_\_\_ or SOCIAL SECURITY NUMBER: \_\_\_\_ - \_\_\_\_ - \_\_\_\_

Company or individual bidding: \_\_\_\_\_

Company representative's name: \_\_\_\_\_

Address: \_\_\_\_\_

City: \_\_\_\_\_ State: \_\_\_\_\_ Zip: \_\_\_\_\_

IF AVAILABLE, PLEASE PLACE THE PERSONALIZED LABEL FROM YOUR PROSPECTUS IN THE ABOVE BOX.

Individual or company representative's signature: \_\_\_\_\_ Date: \_\_\_\_\_

Phone number : \_\_\_\_\_ Email (optional): \_\_\_\_\_

**THE WINNING BIDDER MUST COMPLETE THE VERIFICATION OF WORKER'S DISABILITY COMPENSATION ACT COMPLIANCE (ON REVERSE SIDE IF DOUBLE SIDED) WITHIN 21 DAYS OF SALE AWARD DATE**



<b>FOR DEPARTMENT USE ONLY</b>
Sale Number (XX - XXX - XX - XX)
Forest Management Unit:

## TIMBER SALE VERIFICATION OF WORKER'S DISABILITY COMPENSATION ACT COMPLIANCE

*As required by Act 317, P.A. 1969 (Worker's Compensation) and  
Part 5 of Act 451 of 1994, as amended.*

### VERIFICATION OF WORKER'S DISABILITY COMPENSATION ACT COMPLIANCE

- This verification must be completed and submitted within 21 days of contract award and prior to the issuance of the timber sale contract.
- In addition, if boxes 2B or 2C are checked, then Notice of Exclusion or Certificate of Insurance must be submitted within twenty-one (21) days of the contract award and prior to the issuance of the timber sale contract.
- All information must be typed or printed except for written signatures.

Please Check Appropriate Categories:

1. My business is organized as (you **must** check one of the boxes below):
  - A.  Sole Proprietorship (individual)
  - B.  Partnership
  - C.  Corporation
  
2. You **must** check one of the boxes below:
  - A.  I certify my business is a sole proprietorship and it has no employees but the sole proprietor. I am not subject to the Worker's Compensation Laws.
  - B.  I certify my business has satisfied its obligation to the Worker's Compensation Act through the use of an approved Notice of Exclusion (BWC-337, Rev. 5/96). I will provide a copy of the Notice of Exclusion within 21 days of the contract award. (For questions or a copy of the BWC-337, please call the Worker's Compensation Bureau at 517-322-1195).
  - C.  I certify my business has a Worker's Compensation Policy. I will provide an original Certificate of Insurance within twenty-one (21) days of the contract award.
  
3. If you have checked item 2(A) or 2(B), you **must** indicate the number of **both** full-time and part-time employees, other than yourself, including family members and active partners (if none, you must enter "0").

\_\_\_\_\_ Full-time Employees

\_\_\_\_\_ Part-time Employees

Name of Business		Federal ID (or) Social Security No.	
Address		Telephone (       )	
City	State	ZIP	

*I hereby certify that the above information is true and correct. I agree to notify the Michigan DNR of any changes that occur in factors affecting my coverage during any of my present and future operations.*

\_\_\_\_\_  
Signature of Owner or Authorized Representative

\_\_\_\_\_  
Title

\_\_\_\_\_  
Date

**Please complete the "SEALED BID" information on the next page**

Mixed SBW (12-028-17)  
; Dickinson COUNTY

In response to the notice of sale to be held 8:30 a.m. (local time) on December 13, 2017, I am hereby submitting my sealed bid (firm offer) for the following forest products to be cut. Bids for individual species must be at or above the advertised price. All non-responsive bid forms may be rejected.

<u>PRODUCTS &amp; SPECIES</u>	<u>ESTIMATED VOLUME*</u>	<u>ADVERTISED PRICE</u>	<u>BID PRICE/UNIT</u>
<b>Sawtimber</b>			
Basswood	7.00 MBF	\$ 239.00/MBF	\$ _____
Paper Birch	13.80 MBF	\$ 93.00/MBF	\$ _____
Red Maple	1.40 MBF	\$ 220.00/MBF	\$ _____
Sugar Maple	0.70 MBF	\$ 465.00/MBF	\$ _____
White Ash	3.60 MBF	\$ 92.00/MBF	\$ _____
<b>Pulpwood</b>			
Balsam Fir	124.00 Cords	\$ 20.60/Cord	\$ _____
Mixed Aspen	351.00 Cords	\$ 37.30/Cord	\$ _____
Mixed Hardwood	263.00 Cords	\$ 27.65/Cord	\$ _____
Mixed Spruce	307.00 Cords	\$ 26.75/Cord	\$ _____
Tamarack	115.00 Cords	\$ 13.70/Cord	\$ _____

\*The volumes are statistically estimated within plus (+) or minus (-) 19.42 percent. These estimated volumes are final and not subject to adjustment. Prospective bidders are urged to examine this timber and to make their own estimates of quantity and quality.

I understand that any or all bids may be rejected. All bids must be signed and all bid items must be bid or the bid form may be rejected. I also understand that consideration and awarding a contract will be based upon my past performance and ability to complete the contract based upon equipment and staffing subject to my control.

FEDERAL ID: \_\_\_\_\_ or SOCIAL SECURITY NUMBER: \_\_\_\_\_

Company or individual bidding: \_\_\_\_\_

Company representative's name: \_\_\_\_\_

Address: \_\_\_\_\_

City: \_\_\_\_\_ State: \_\_\_\_\_ Zip: \_\_\_\_\_

IF AVAILABLE, PLEASE PLACE THE PERSONALIZED LABEL FROM YOUR PROSPECTUS IN THE ABOVE BOX.

Individual or company representative's signature: \_\_\_\_\_ Date: \_\_\_\_\_

Phone number : \_\_\_\_\_ Email (optional): \_\_\_\_\_

**THE WINNING BIDDER MUST COMPLETE THE VERIFICATION OF WORKER'S DISABILITY COMPENSATION ACT COMPLIANCE (ON REVERSE SIDE IF DOUBLE SIDED) WITHIN 21 DAYS OF SALE AWARD DATE**



FOR DEPARTMENT USE ONLY	
Sale Number (XX - XXX - XX - XX)	
Forest Management Unit:	

# TIMBER SALE VERIFICATION OF WORKER'S DISABILITY COMPENSATION ACT COMPLIANCE

As required by Act 317, P.A. 1969 (Worker's Compensation) and  
Part 5 of Act 451 of 1994, as amended.

## VERIFICATION OF WORKER'S DISABILITY COMPENSATION ACT COMPLIANCE

- This verification must be completed and submitted within 21 days of contract award and prior to the issuance of the timber sale contract.
- In addition, if boxes 2B or 2C are checked, then Notice of Exclusion or Certificate of Insurance must be submitted within twenty-one (21) days of the contract award and prior to the issuance of the timber sale contract.
- All information must be typed or printed except for written signatures.

Please Check Appropriate Categories:

1. My business is organized as (you **must** check one of the boxes below):
  - A.  Sole Proprietorship (individual)
  - B.  Partnership
  - C.  Corporation
2. You **must** check one of the boxes below:
  - A.  I certify my business is a sole proprietorship and it has no employees but the sole proprietor. I am not subject to the Worker's Compensation Laws.
  - B.  I certify my business has satisfied its obligation to the Worker's Compensation Act through the use of an approved Notice of Exclusion (BWC-337, Rev. 5/96). I will provide a copy of the Notice of Exclusion within 21 days of the contract award. (For questions or a copy of the BWC-337, please call the Worker's Compensation Bureau at 517-322-1195).
  - C.  I certify my business has a Worker's Compensation Policy. I will provide an original Certificate of Insurance within twenty-one (21) days of the contract award.
3. If you have checked item 2(A) or 2(B), you **must** indicate the number of **both** full-time and part-time employees, other than yourself, including family members and active partners (if none, you must enter "0").

\_\_\_\_\_ Full-time Employees

\_\_\_\_\_ Part-time Employees

Name of Business		Federal ID (or) Social Security No.	
Address		Telephone (       )	
City	State	ZIP	

*I hereby certify that the above information is true and correct. I agree to notify the Michigan DNR of any changes that occur in factors affecting my coverage during any of my present and future operations.*

\_\_\_\_\_  
Signature of Owner or Authorized Representative

\_\_\_\_\_  
Title

\_\_\_\_\_  
Date

Please complete the "SEALED BID" information on the next page