



**DEPARTMENT OF NATURAL RESOURCES  
STATE OF MICHIGAN**

**TIMBER SALE PROSPECTUS #6124**

SCHEDULED SALE DATE AND TIME: 10:00 a.m. (local time) on December 18, 2017.

LOCATION: GLADWIN MGMT UNIT, 801 N SILVERLEAF, GLADWIN, MI 48624.

PROSPECTUS NOTE: The bidder is advised to inspect the sale area and review the location, estimated volumes, operating costs and contract terms of proposed sales. Please be aware that some landowners may request 60 days or more notice for access across their land.

Notice is hereby given that bids will be received by the Unit Manager, GLADWIN MANAGEMENT UNIT, for certain timber on the following described lands:

Kirby Pine (73-002-17)

Clare County, Advertised Price \$329,810.70, 295.2 Acres, Hardwood, Red Pine.

SALE NOTE: This sale consists of 108 acres of second & third time red pine thinning's and 187 acres of red pine shelterwood harvest. Much of the red pine in the thinning units is above average quality.

C126 Mix (73-008-16)

Arenac County, Advertised Price \$117,006.95, 577.1 Acres, Aspen, Hardwood, Red Pine.

SALE NOTE: The sale is accessible off seasonal county roads. Portions of the sale can only be harvested during dry/frozen conditions because of wet soils. There is a stream crossing that will need to be installed to access the north eastern portion of the sale. The DEQ permit has been acquired by the DNR. The crane mats needed to make the crossing as per the crossing permit can be borrowed from the DNR.

## BID INSTRUCTIONS (VER. 11/28/2017):

### 1. Scheduled Bid Location, Date, and Time (2/11)

Bids must be received by the Unit Manager, GLADWIN OFFICE, 801 N SILVERLEAF, GLADWIN, MI 48624, no later than 10:00 a.m. (local time) on December 18, 2017. For further information concerning this sale, contact PATRICK MOHNEY at 989-426-9205 extension 7640.

### 2. Bidder's Qualifications (5/16)

Purchaser shall obtain workers compensation insurance to cover claims under Michigan's Worker's Disability Compensation Act of 1969 or similar employee benefit act of any other state applicable to an employee. If all or part of a timber sale was prepared by a private contractor, the contractor and that contractor's company are not permitted to bid on the timber sale contract. Bids will not be accepted from individuals or companies appearing on the DNR/FRD No-Bid List. This list contains the names of purchasers who previously failed to execute a contract within 21-days or who have a history of poor performance.

### 3. Preparation of Sealed Bids (5/16)

Bid Forms may be completed online thru Michigan DNR Timber Sale Online Bidding (OLB) at [www.michigan.gov/timberbidding](http://www.michigan.gov/timberbidding) or by completing the hardcopy Bid Form found in the Timber Sale Prospectus. Hardcopy Bid Forms shall be manually signed in ink. Registration in OLB is considered your 'signature' for all bids submitted thru that system. Bid prices must be entered for each species and product in the Bid Price column for all material subject to bidding and all fill-in blanks must be completed. If erasures or other changes appear on the hardcopy Bid Form, each erasure or change must be initialed by the person signing the bid.

### 4. Submission of Sealed Bids (5/16)

Bid forms may be obtained from the Unit Manager or thru OLB. Bids may be submitted hardcopy or thru OLB. All hardcopy bids must be submitted on the bid form and in an envelope clearly identified as described in this section. NOTE: Only one bid form per bid envelope. Sealed bids must be submitted to the Unit office designated in the prospectus and must be submitted at or prior to the time established in the prospectus. The envelope should show on the outside (a) the sale name or number and (b) the date and time of bid opening, as shown in the prospectus. Bids received after the time specified in the sale prospectus are late bids and will be rejected.

It is possible for a bidder to submit multiple bids on a single sale. For example, a bid may be submitted hardcopy and a bid may be submitted thru OLB. Or, two bidders from the same company could both submit bids on the same sale. If this were to happen, the State would accept all bids received and award the contract accordingly. All bidding and contractual requirements would apply to all bids received.

### 5. Public Opening of Sealed Bids (7/16)

If conditions permit, the sealed bids will be publicly opened and posted at the time and place set in the prospectus.

If a bidder, present at a bid opening, has submitted bids on more than one sale, that bidder may withdraw their unopened bid envelopes or announce the withdrawal of their online bid after being declared the successful bidder on one sale.

### 6. Award of Contract (1/11)

Award of the contract will be made to the Bidder whose bid, conforming to the prospectus, is most advantageous to the State of Michigan on the basis of total value at rates bid for the estimated quantities. The State reserves the right to reject any bid or waive any minor irregularity in bids received. A written award mailed (or otherwise furnished) to the successful Bidder shall be deemed to result in a binding contract without further action by either party.

### 7. Down Payment (1/11)

The Bidder to whom award is made must make a down payment within 21 days of the sale award. The amount of the down payment will be calculated as shown in the Bond and Payment Schedule of this prospectus. Only cash may be used to meet this requirement.

### 8. Performance Security (1/11)

As guarantee of faithful performance, a cash bond, certificate of deposit, surety bond or irrevocable letter of credit (LOC) is required within 21 days of the sale award. The amount of the performance security is shown in the Bond and

Payment Schedule of this prospectus. If an LOC or surety is used, the coverage must extend for at least 6 months beyond the contract expiration.

#### 9. Timber Sale Contract (11/17)

Additional conditions and requirements common to all timber sales are listed on the timber sale contract (R4031) and are available on line at [www.michigan.gov/timber](http://www.michigan.gov/timber). Contact the Unit Manager for additional information or a sample contract. Within 21 days of the date of the award letter, the bidder must sign the contract and provide the required down payment, performance security, and verification of worker's disability compensation. The down payment and performance security shall be in accordance with the provisions of the timber sale contract, in the sums stated in this prospectus. If these actions are not taken, then the Bidder, the Bidder's corporation, and the corporation's principals may not be permitted to bid on State timber sales for a period of 1 year. In addition, the Bidder certifies that if awarded this contract, the Bidder will complete the timber sale contract in accordance with its terms and any modifications thereof including requirements to purchase, cut, and remove the included timber by the expiration date.

Payment Unit values in the State Forest Timber Sale Contract are calculated based on the advertised value of the Payment Unit as a percentage of the total advertised value of the contract. The advertised value of each Payment Unit is given in the Description of Timber by Payment Unit table on the Timber Sale Information page. For example, if the value of Payment Unit 1 is advertised as \$1,500 and the total Timber Sale value is advertised as \$10,000, the contract price for Payment Unit 1 will be 15% of the total bid price ( $\$1,500/\$10,000 * 100$ ).

#### 10. Disclaimer of Estimates and Bidder's Warranty of Inspection (7/16)

Before submitting this bid, the Bidder is advised and cautioned to inspect the sale area, review the requirements of the sale contract, and take other steps as may be reasonably necessary to ascertain the location, estimated volumes, construction estimates, and operating costs of the proposed sale. Failure to do so will not relieve the Bidder from responsibility for completing the contract.

The Bidder warrants that this bid is submitted solely on the basis of the Bidder's examination and inspection of the quality and quantity of the timber offered for sale and the Bidder's opinion of the value thereof and the costs of recovery. No reliance should be placed on the State of Michigan's estimates of timber quality, quantity or costs of recovery. Bidder further acknowledges that the State of Michigan: (i) expressly disclaims any warranty of fitness of timber for any purpose; (ii) offers this timber as is without any warranty of quality (merchantability) or quantity and (iii) expressly disclaims any warranty as to the quantity or quality of timber sold.

#### 11. Certification and Chain-of-Custody (10/14)

Unless otherwise indicated in the contract under section 7 – Other Conditions of the Sale Specific Conditions & Requirements, the area encompassed by this timber sale is certified to the standards of the Forest Stewardship Council (FSC) - Certificate #SCS-FM/COC-00090N and the Sustainable Forestry Initiative (SFI) - Certificate # NSF-SFIS-5Y031-SF5. Forest products from this sale may be delivered to the mill as "FSC 100% and / or SFI certified" as long as the contractor hauling the forest products is chain-of-custody (COC) certified or covered under a COC certificate from the destination mill. The purchaser is responsible for maintaining COC after leaving the sale area.

#### 12. Good Neighbor Authority (GNA) Requirements (7/16)

If the name of this timber sales contains the acronym GNA, it is authorized by the Good Neighbor Authority (GNA) and covered by various agreements between the U.S. Forest Service and the State. The timber sale occurs on federal land and the following conditions apply:

GNA contracts on US Forest Service land will not be awarded to purchasers on the Federal list of excluded parties. The System for Award Management (SAM) will be checked for active excluded parties prior to award of contract. In addition, the Bidder to whom award is made must complete an Assurance Regarding Felony Conviction or Tax Delinquent Status for Corporate Applicants (AD-3031).

#### 13. Good Neighbor Authority (GNA) Requirements, con't (9/16)

Bidder certifies, by signing this bid form, that to the best of Bidder's knowledge that the following representations are accurate and complete.

a. That the Bidder and its principals are not presently debarred, suspended, proposed for debarment, declared ineligible, or voluntary excluded from timber sales (covered transactions) by any Federal department or agency.

b. That the Bidder and its principals have not within a 3-year period preceding this bid been convicted of or had a civil judgment rendered against them for commission of fraud or a criminal offense in connection with obtaining, attempting to obtain, or performing a public (Federal, State, or local) transaction or contract under a public transaction; violation of Federal or State antitrust statutes or commission of embezzlement, theft, forgery, bribery, falsification or destruction of records, making false statements, or receiving stolen property.

c. That the Bidder and its principals are not presently indicted for or otherwise criminally or civilly charged by a governmental entity (Federal, State, or local) with commission of any of the offenses enumerated in paragraph b of this certification.

d. That the Bidder and its principals have not within a 3-year period preceding this bid had one or more public transactions (Federal, State, or local) terminated for breach or default of a timber or forest product contract.

Bidders that cannot certify this requirement, in whole or in part, shall submit an explanation with their bid.

KEITH CREAGH

Director

TIMBER SALE INFORMATION

Kirby Pine (73-002-17)

Clare County (Advertised Price \$329,810.70)

SALE NOTE: This sale consists of 108 acres of second & third time red pine thinning's and 187 acres of red pine shelterwood harvest. Much of the red pine in the thinning units is above average quality.

A timber sale contract for this lump sum, sealed bid timber sale will be awarded to the responsible bidder offering the highest sealed bid price. Bids must be at or above the following advertised price for each species:

<u>PRODUCTS &amp; SPECIES</u>	<u>ESTIMATED UNITS*</u>	<u>ADVERTISED PRICE</u>
Sawtimber		
BI/R/Hybrid Oak	351.90 MBF	\$ 157.00 / MBF
Jack Pine	12.60 MBF	\$ 32.00 / MBF
Red Pine	1,245.40 MBF	\$ 120.00 / MBF
Pulpwood		
BI/R/Hybrid Oak	1,226.00 Cords	\$ 12.20 / Cord
Jack Pine	190.00 Cords	\$ 15.80 / Cord
Red Pine	2,560.00 Cords	\$ 41.70 / Cord

\* The total volume is statistically estimated within plus (+) or minus (-) 7.08 percent. The estimated units are final and not subject to adjustment. Prospective bidders are urged to examine this timber and to make their own estimates of quantity and quality.

**BOND AND PAYMENT SCHEDULE:**

1. A bond in the amount of \$16,491.00 to insure faithful performance of the conditions of the contract will be deposited by the successful bidder within 21 days of the sale award.
2. Cutting in any sale or unit without the required advance payment would be considered a trespass.
3. Total payment must be paid in advance or according to the following schedule:
  - (a) Ten percent (10%) of the sale value must be paid within 21 days of the sale award.
  - (b) The 10% down payment will be credited towards the first unit cut.
4. If no cutting takes place, the 10% down payment will not be refunded.
5. Operations on the contract issued will terminate on 12/31/2020.

**Description of Timber by Payment Unit (PU)**

PU	MARKET GROUP	PRODUCT	QUANTITY	UNIT	ACRES	ADVERTISE PRICE
1	Red Pine	Sawtimber	112.9	MBF	19.6	\$22,346.70
	Red Pine	Pulpwood	211.0	Cords		
2	Red Pine	Sawtimber	285.8	MBF	41.4	\$58,648.80
	Red Pine	Pulpwood	584.0	Cords		
3	Red Pine	Sawtimber	73.7	MBF	12.5	\$15,140.70
	Red Pine	Pulpwood	151.0	Cords		
4	Red Pine	Sawtimber	89.9	MBF	20.7	\$15,124.80
	Red Pine	Pulpwood	104.0	Cords		
5	Red Pine	Sawtimber	54.1	MBF	13.8	\$8,785.50
	Red Pine	Pulpwood	55.0	Cords		
6	Red Pine	Sawtimber	153.9	MBF	29.8	\$32,520.90
	Red Pine	Pulpwood	337.0	Cords		
7	Bl/R/Hybrid Oak	Sawtimber	204.6	MBF	91.5	\$103,041.40
	Jack Pine		7.3	MBF		
	Red Pine		276.2	MBF		
	Bl/R/Hybrid Oak	Pulpwood	713.0	Cords		
	Jack Pine		110.0	Cords		
	Red Pine		650.0	Cords		
8	Bl/R/Hybrid Oak	Sawtimber	147.3	MBF	65.9	\$74,201.90
	Jack Pine		5.3	MBF		
	Red Pine		198.9	MBF		
	Bl/R/Hybrid Oak	Pulpwood	513.0	Cords		
	Jack Pine		80.0	Cords		
	Red Pine		468.0	Cords		
TOTAL:			1,609.9	MBF		
TOTAL:			3,976.0	Cords		

## Sale Specific Conditions & Requirements

**Sale Name: Kirby Pine**

**Sale Number: 73-002-17 Seq#: 1**

### 1 - Sale Area

#### 1.2 - Boundaries

##### 1.2.1 - Painted boundaries (1/14)

The sale boundary and Payment Unit boundaries are marked and identified by blue, red and yellow paint. Exterior sale boundary lines against private property are marked with blue paint. Exterior sale boundary lines against state are marked with red paint. Interior Payment Unit boundaries are marked with yellow paint.

### 2 - Timber Specifications

#### 2.1 - Included Timber

##### 2.1.1 - Clearcut unit(s) with unmerchantable trees (6/14)

Within Payment Unit(s) 7 & 8, cut all red pine and jack pine trees that are two (2) inches or more at DBH, except do not cut any trees marked with green paint.

##### 2.1.2 - Clearcut unit(s) w/o unmerchantable trees (8/11)

Within Payment Unit(s) 6, cut all red pine and jack pine trees which meet minimum piece specifications in 2.2 Utilization, except do not cut any trees marked with green paint.

##### 2.1.3 - Cut tree marked unit(s) (12/08)

Within Payment Unit(s) 1 - 5, all red pine trees are designated for cutting when marked with orange paint above and below stump height, regardless of merchantability.

#### 2.2 - Utilization

##### 2.2.3 - Stump heights (4/07)

Stump heights within the Sale Area shall be cut as low to the ground as possible. Unless approved by the Unit Manager or his/her representative, stump heights shall not exceed 6 inches for trees greater than 10 inches DBH and 4 inches for trees smaller than 10 inches DBH.

##### 2.2.11 - Chipping restriction (9/14)

If chipping occurs on this sale, then two piles of tops must be left per one acre in locations as directed by the sale administrator. This specification contributes towards the requirements for biomass retention.

### 3 - Payments

#### 3.4 - Damaged Timber

##### 3.4.1 - Damaged timber (6/14)

General Condition and Requirement 3.4 Damaged Timber, defines liquidated damages for undesignated live merchantable trees which are cut or injured. In addition, extreme care should be taken to avoid damage to tree seedlings and saplings.

Within the sale area, if more than 25% of the tree seedlings or saplings (1/4" to 4.5" DBH) within a specified portion of the sale area are damaged, liquidated damages will be assessed at \$300.00 per acre for all acreage within that specified portion of the sale area that was damaged.

No damage is acceptable to merchantable trees. Within the sale area, if more than 5% of trees (> 4.5" DBH) within a specified area of the sale are damaged, liquidated damages will be assessed for all trees damaged. Rates will be in accordance with General Condition and Requirement 3.4 Damaged Timber.

### 4 - Transportation

#### 4.1 - Construction

##### 4.1.3 - Slash and earthen piles (8/04)

Piles or windrows of earth along roads and landings that have been widened or constructed shall be leveled. Slash from road

maintenance or construction, including stumps, shall be dispersed throughout the sale.

#### 4.1.7 - Road closure (10/11)

Overgrown roads that are reopened must be blocked to vehicle traffic upon completion of the sale. In general, this will require the placement of stumps and slash into the road, throughout the length of routes to be closed. Contact the sale administrator for specific details of design and placement.

#### 4.1.12 - No new roads (1/12)

No new roads will be permitted within the Sale Area. All operations are limited to existing roads.

## 5 - Operations

### 5.1 - Notification

#### 5.1.1 - Pre-sale conference (10/16)

A pre-sale conference on site between the Purchaser and sale administrator is required prior to beginning any operations to determine landing and road locations, and to ensure all pipelines and injection wells have been identified. The Unit Manager or his/her representative must be contacted at least 3 days in advance to schedule the conference.

#### 5.1.3 - Well heads and natural gas pipelines (11/15)

The Purchaser is responsible for contacting the gas and pipeline company prior to operating equipment in the vicinity of well heads or natural gas pipelines. Contact Jim Wade or Kevin Andrews with Consumers Energy / Michigan Gas Storage Company at 231-590-2917 or 231-743-2341. In addition, contact Roger Freed with Dart Oil at 231-620-8690.

### 5.2 - Conduct of Operations

#### 5.2.1 - Slash

##### 5.2.1.2 - Slash Removal

###### 5.2.1.2.1 - Slash removal, right-of-way (9/16)

All slash must be removed at least 15 feet from the cleared right-of-way of forest roads, pipelines and injection wells.

###### 5.2.1.11 - Slash for reforestation (5/07)

To facilitate reforestation, the sale area shall be left with slash evenly distributed. Bunched tops within the cutting area shall be broken up and scattered. Stumps shall be cut low to the ground. Processing sites shall not be left with a compacted layer of slash; tops from these sites shall be hauled back into the cut area and scattered.

#### 5.2.2 - Hazard Trees/Snags

##### 5.2.2.1 - Den trees (10/16)

Obvious hollow and/or den trees shall be protected and left standing unless they are a safety hazard.

#### 5.2.3 - Operating Restrictions

##### 5.2.3.3 - Bark slippage restriction (3/09)

Within Payment Unit(s) 1 - 5, unless changed by written agreement, cutting and skidding are not permitted during the period of April 15 to July 15. This restriction is because of bark slippage.

##### 5.2.3.6 - Bark beetle restriction (12/08)

In the event drought creates a high risk of pine bark beetle infestation, pine is not to be cut during the period March 1 through July 1, unless all portions of trees greater than two inches in diameter are removed from the sale area, reduced to chips, or treated to the satisfaction of the Unit Manager or his/her representative, within fifteen days of being severed from the stump. Pine log decks, pulpwood piles and treetops that are piled for chipping in the fall or winter within a 1/4 mile of susceptible sites must be removed before March 15. Residual slash must not be placed in piles or rows and must be spread over the site for quick drying. The Department of Natural Resources will exercise this specification if the risk of damage warrants.

##### 5.2.31 - Landing locations (9/13)

Recommended landing areas are marked on the timber sale map with the letter "L".

### 5.4 - Soil Protection



5.4.1 - Rutting restriction, general (7/16)

Operations are to cease immediately if equipment and weather conditions result in rutting of roads and/or skid trails which is 12 inches or greater in depth and 50 feet in length. The Unit Manager or his/her representative may restrict hauling and/or skidding if ruts exceed the specified depth. With the Unit Manager or his/her representative's approval, the Purchaser may return to the area when the risk of rutting has decreased.



**TIMBER SALE MAP**

This information provided by authority of Part 525 of Act 451, PA 1994, as amended.

Sale Number	Year
73-002-17-01	2017

Forest Management Unit GLADWIN UNIT	County CLARE	Marked & Cruised By: DAVE NEFF & TODD GREEN	Date 09/18/2017	Page 1	of 3
Township T19N	Range R06W	Section(s) and Subdivision(s) Sec.4 NESW, NWSW, SENW, SESW, SWNW, SWSW: Sec.6 NENE, NENW, NESW, NWNW, NWNW, SENW, SWNE, SWSE: Sec.7 SENE: Sec.9 NENW, NWNW: Sec.19 NESW, SESW: Sec.30 NENW:	Scale: [...1 inch.....] = 1/4 mile		

Cover Type				Density	
A = Aspen	G = Grass	O = Oak	U = Upland Brush	0 = Non Stocked	5 = Pole Timber Medium
B = Paper Birch	H = Hemlock	P = Lowland Poplar	V = Bog or Marsh	1 = Seedling Sapling Poor	6 = Pole Timber Well
C = Cedar	J = Jack Pine	Q = Mixed Swamp Cnfr	W = White Pine	2 = Seedling Sapling Medium	7 = Saw Timber Poor
D = Treed Bog	L = Lowland Brush	R = Red Pine	X = Non Stocked	3 = Seedling Sapling Well	8 = Saw Timber Medium
E = Swamp Hdwoods	M = Mpl, Bch, Brch	S = Black Spruce	Z = Water	4 = Pole Timber Poor	9 = Saw Timber Well
F = Spruce Fir	N = Marsh	T = Tamarack			

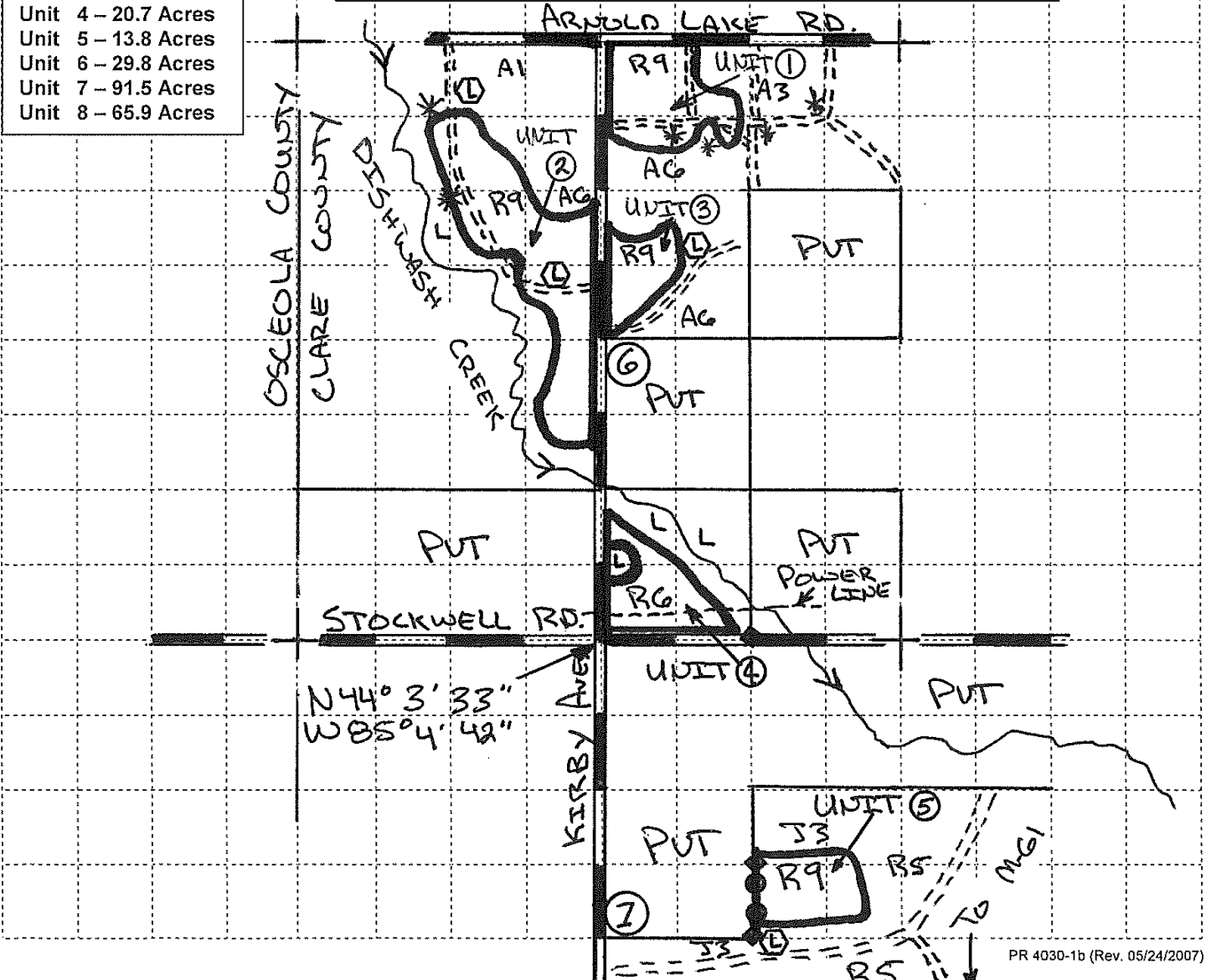
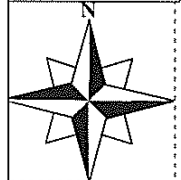
**Kirby Pine**  
**Clare County**  
**Acres: 295.2**  
**Compartment: 15**

**ACRES:**

Unit 1	19.6 Acres
Unit 2	41.4 Acres
Unit 3	12.5 Acres
Unit 4	20.7 Acres
Unit 5	13.8 Acres
Unit 6	29.8 Acres
Unit 7	91.5 Acres
Unit 8	65.9 Acres

**LEGEND:**

- Sale Boundary - Red Paint
- Sale Boundary - Blue Paint
- Unit Boundary - Yellow Paint
- Possible Landing Location
- County Road Black Top
- Oil Well / Injection Wells
- County Road Gravel
- Poor Dirt State
- Section Corners
- Adjacent Sale
- Payment Unit #



PR 4030-1b (Rev. 05/24/2007)



### TIMBER SALE MAP

This information provided by authority of Part 525 of Act 451, PA 1994, as amended.

Sale Number	Year
73-002-17-01	2017

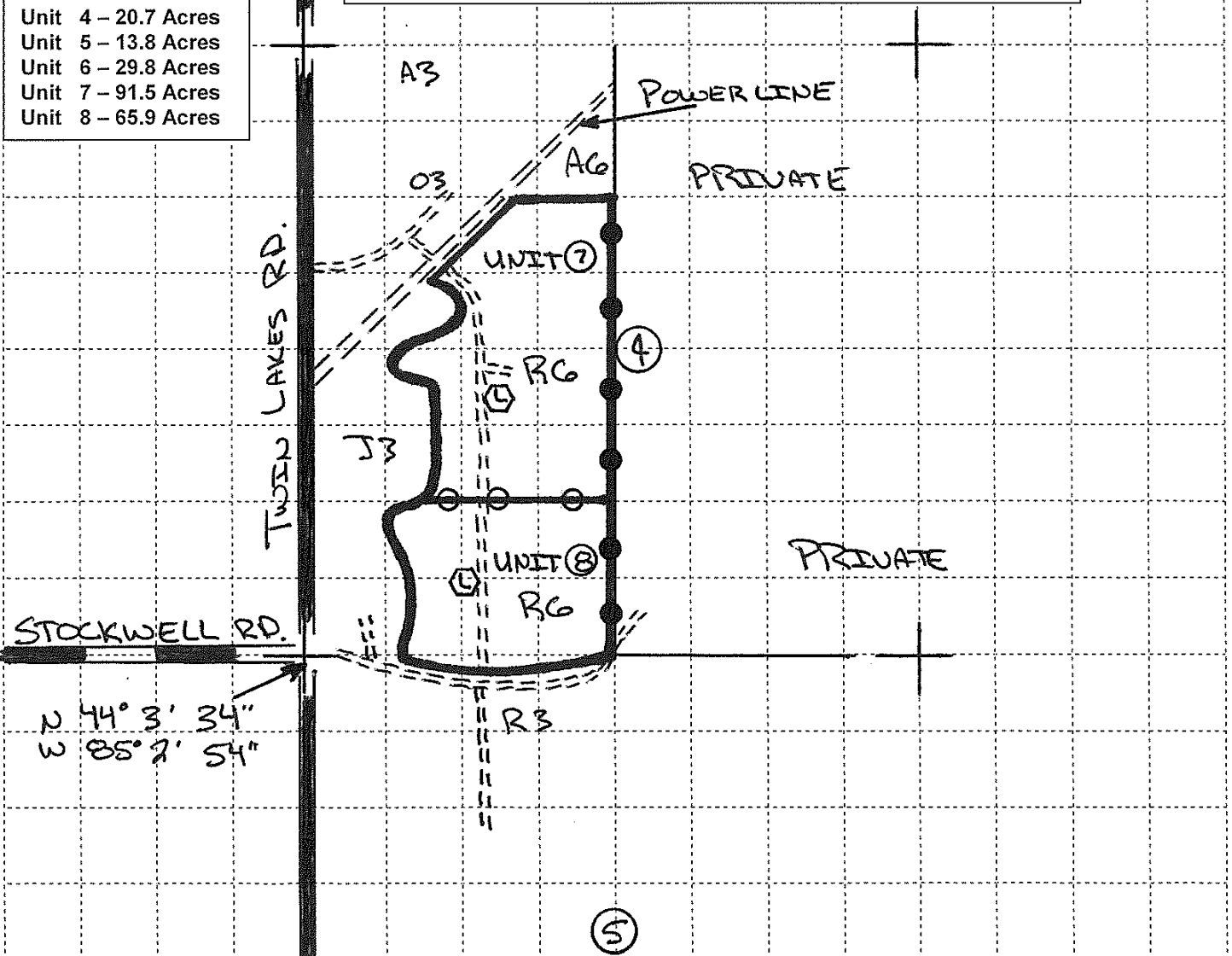
Forest Management Unit GLADWIN UNIT	County CLARE	Marked & Cruised By: DAVE NEFF & TODD GREEN Mapped By: T. GALLAGHER	Date 09/18/2017	Page of 2 3
Township T19N	Range R06W	Section(s) and Subdivision(s) Sec.4 NESW, NWSW, SENW, SESW, SWNW, SWSW: Sec.6 NENE, NENW, NESW, NWNW, NWNW, SENW, SWNE, SWSE: Sec.7 SENE: Sec.9 NENW, NWNW: Sec.19 NESW, SESW: Sec.30 NENW:	Scale: [...1 inch.....] = 1/4 mile	

Cover Type				Density	
A = Aspen	G = Grass	O = Oak	U = Upland Brush	0 = Non Stocked	5 = Pole Timber Medium
B = Paper Birch	H = Hemlock	P = Lowland Poplar	V = Bog or Marsh	1 = Seedling Sapling Poor	6 = Pole Timber Well
C = Cedar	J = Jack Pine	Q = Mixed Swamp Cnfr	W = White Pine	2 = Seedling Sapling Medium	7 = Saw Timber Poor
D = Treed Bog	L = Lowland Brush	R = Red Pine	X = Non Stocked	3 = Seedling Sapling Well	8 = Saw Timber Medium
E = Swamp Hdwoods	M = Mpl, Bch, Brch	S = Black Spruce	Z = Water	4 = Pole Timber Poor	9 = Saw Timber Well
F = Spruce Fir	N = Marsh	T = Tamarack			

**Kirby Pine**  
Clare County  
Acres: 295.2  
Compartment: 15

**LEGEND:**

- Sale Boundary - Red Paint
- Sale Boundary - Blue Paint
- Unit Boundary - Yellow Paint
- Possible Landing Location
- County Road Black Top
- Oil Well / Injection Wells
- County Road Gravel
- Poor Dirt State
- Section Corners
- Adjacent Sale
- Payment Unit #





**TIMBER SALE MAP**

This information provided by authority of Part 525 of Act 451, PA 1994, as amended.

Sale Number	Year
73-002-17-01	2017

Forest Management Unit <b>GLADWIN UNIT</b>	County <b>CLARE</b>	Marked & Cruised By: <b>DAVE NEFF &amp; TODD GREEN</b>	Date 09/18/2017	Page of 3 of 3
Township <b>T19N</b>	Range <b>R06W</b>	Mapped By <b>T. GALLAGHER</b>	Scale: [...1 inch.....] = 1/4 mile	
Section(s) and Subdivision(s) Sec.4 NESW, NWSW, SENW, SESW, SWNW, SWSW: Sec.6 NENE, NENW, NESW, NWNE, NWNW, SENW, SWNE, SWSE: Sec.7 SENE: Sec.9 NENW, NWNW: Sec.19 NESW, SESW: Sec.30 NENW:				

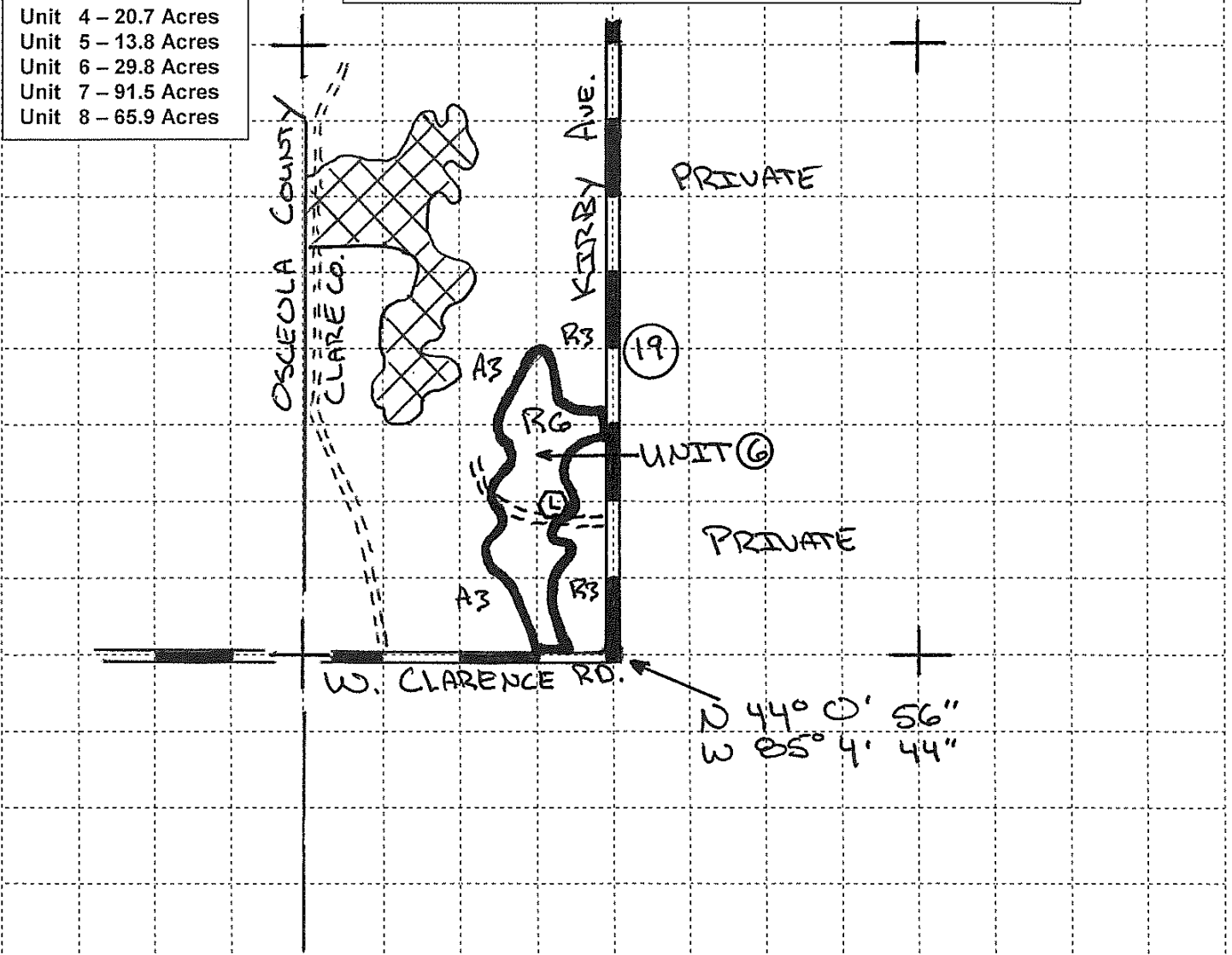
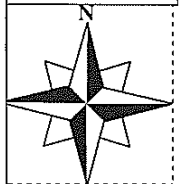
Cover Type				Density	
A = Aspen	G = Grass	O = Oak	U = Upland Brush	0 = Non Stocked	5 = Pole Timber Medium
B = Paper Birch	H = Hemlock	P = Lowland Poplar	V = Bog or Marsh	1 = Seedling Sapling Poor	6 = Pole Timber Well
C = Cedar	J = Jack Pine	Q = Mixed Swamp Cnfr	W = White Pine	2 = Seedling Sapling Medium	7 = Saw Timber Poor
D = Treed Bog	L = Lowland Brush	R = Red Pine	X = Non Stocked	3 = Seedling Sapling Well	8 = Saw Timber Medium
E = Swamp Hdwoods	M = Mpl, Bch, Brch	S = Black Spruce	Z = Water	4 = Pole Timber Poor	9 = Saw Timber Well
F = Spruce Fir	N = Marsh	T = Tamarack			

**Kirby Pine**  
Clare County  
Acres: 295.2  
Compartment: 15

**ACRES:**  
Unit 1 - 19.6 Acres  
Unit 2 - 41.4 Acres  
Unit 3 - 12.5 Acres  
Unit 4 - 20.7 Acres  
Unit 5 - 13.8 Acres  
Unit 6 - 29.8 Acres  
Unit 7 - 91.5 Acres  
Unit 8 - 65.9 Acres

**LEGEND:**

- Sale Boundary - Red Paint
- Sale Boundary - Blue Paint
- Unit Boundary - Yellow Paint
- Possible Landing Location
- County Road Black Top
- Oil Well / Injection Wells
- County Road Gravel
- Poor Dirt State
- Section Corners
- Adjacent Sale
- Payment Unit #



## TIMBER SALE INFORMATION

### C126 Mix (73-008-16)

Arenac County (Advertised Price \$117,006.95)

SALE NOTE: The sale is accessible off seasonal county roads.

Portions of the sale can only be harvested during dry/frozen conditions because of wet soils.

There is a stream crossing that will need to be installed to access the north eastern portion of the sale. The DEQ permit has been acquired by the DNR. The crane mats needed to make the crossing as per the crossing permit can be borrowed from the DNR.

A timber sale contract for this lump sum, sealed bid timber sale will be awarded to the responsible bidder offering the highest sealed bid price. Bids must be at or above the following advertised price for each species:

<u>PRODUCTS &amp; SPECIES</u>	<u>ESTIMATED UNITS*</u>		<u>ADVERTISED PRICE</u>
<b>Sawtimber</b>			
BI/R/Hybrid Oak	131.70	MBF	\$ 79.00 / MBF
Black Cherry	4.00	MBF	\$ 93.00 / MBF
Mixed Aspen	57.80	MBF	\$ 33.00 / MBF
Red Maple	80.00	MBF	\$ 24.00 / MBF
Red Pine	132.40	MBF	\$ 60.00 / MBF
White Oak	30.60	MBF	\$ 36.00 / MBF
White Pine	80.80	MBF	\$ 49.00 / MBF
<b>Pulpwood</b>			
Balsam Fir	4.00	Cords	\$ 6.65 / Cord
Black Spruce	13.00	Cords	\$ 16.05 / Cord
Jack Pine	741.00	Cords	\$ 7.90 / Cord
Mixed Aspen	2,197.00	Cords	\$ 13.90 / Cord
Mixed Hardwood	841.00	Cords	\$ 12.70 / Cord
Mixed Oak	859.00	Cords	\$ 6.10 / Cord
Paper Birch	38.00	Cords	\$ 9.50 / Cord
Red Pine	1,173.00	Cords	\$ 20.85 / Cord
Tamarack	314.00	Cords	\$ 14.30 / Cord
White Pine	653.00	Cords	\$ 11.55 / Cord

\* The estimated units are final and not subject to adjustment. Prospective bidders are urged to examine this timber and to make their own estimates of quantity and quality.

#### **BOND AND PAYMENT SCHEDULE:**

1. A bond in the amount of \$5,850.00 to insure faithful performance of the conditions of the contract will be deposited by the successful bidder within 21 days of the sale award.
2. Cutting in any sale or unit without the required advance payment would be considered a trespass.
3. Total payment must be paid in advance or according to the following schedule:
  - (a) Ten percent (10%) of the sale value must be paid within 21 days of the sale award.
  - (b) The 10% down payment will be credited towards the first unit cut.
4. If no cutting takes place, the 10% down payment will not be refunded.
5. Operations on the contract issued will terminate on 12/31/2020.

Description of Timber by Payment Unit (PU)

PU	MARKET GROUP	PRODUCT	QUANTITY	UNIT	ACRES	ADVERTISE PRICE			
1	BI/R/Hybrid Oak	Sawtimber	8.9	MBF	19.8	\$5,583.25			
	<i>Red Oak</i>		8.9	<i>MBF</i>					
	Mixed Aspen		3.0	MBF					
	<i>Quaking Aspen</i>		3.0	<i>MBF</i>					
	Red Maple		10.4	MBF					
	White Pine		9.7	MBF					
	Jack Pine		Pulpwood	3.0			Cords		
	<i>Jack Pine</i>			3.0			<i>Cords</i>		
	Mixed Aspen			155.0			Cords		
	<i>Quaking Aspen</i>			155.0			<i>Cords</i>		
	Mixed Hardwood			96.0			Cords		
	<i>Black Cherry</i>			5.0			<i>Cords</i>		
	<i>Red Maple</i>			91.0			<i>Cords</i>		
	Mixed Oak			48.0			Cords		
	<i>Red Oak</i>			48.0			<i>Cords</i>		
	Paper Birch			13.0			Cords		
	<i>Paper Birch</i>			<i>Sawtimber</i>			0.4	<i>MBF</i>	
<i>Paper Birch</i>	<i>Pulpwood</i>	12.0			<i>Cords</i>				
White Pine		21.0			Cords				
2	BI/R/Hybrid Oak	Sawtimber		5.0	MBF	34.1	\$6,913.90		
	<i>Red Oak</i>			5.0	<i>MBF</i>				
	Red Pine			6.3	MBF				
	White Pine			6.6	MBF				
	Balsam Fir		Pulpwood	1.0	Cords				
	Black Spruce			10.0	Cords				
	Jack Pine			457.0	Cords				
	<i>Jack Pine</i>			<i>Sawtimber</i>	11.5			<i>MBF</i>	
	<i>Jack Pine</i>				<i>Pulpwood</i>			434.0	<i>Cords</i>
	Mixed Aspen			16.0				Cords	
	<i>Quaking Aspen</i>			16.0				<i>Cords</i>	
	Mixed Oak			26.0				Cords	
	<i>Red Oak</i>			26.0				<i>Cords</i>	
	Red Pine			6.0				Cords	
	Tamarack			37.0				Cords	
	<i>Tamarack</i>			<i>Sawtimber</i>				0.8	<i>MBF</i>
	<i>Tamarack</i>							<i>Pulpwood</i>	35.0
White Pine	87.0	Cords							
3	Mixed Aspen	Sawtimber		10.6		MBF	36.8	\$5,282.40	
	<i>Quaking Aspen</i>			10.6		<i>MBF</i>			
	Red Maple			1.9		MBF			
	Red Pine		0.7	MBF					
	White Pine		8.2	MBF					
	Jack Pine		Pulpwood	76.0		Cords			
	<i>Jack Pine</i>			<i>Sawtimber</i>		6.4			<i>MBF</i>
	<i>Jack Pine</i>				<i>Pulpwood</i>	63.0			<i>Cords</i>
	Mixed Aspen			73.0		Cords			
	<i>Quaking Aspen</i>			73.0		<i>Cords</i>			
	Mixed Hardwood			20.0		Cords			
	<i>Black Cherry</i>			2.0		<i>Cords</i>			
	<i>Red Maple</i>			18.0		<i>Cords</i>			
	Mixed Oak			2.0		Cords			
	<i>Red Oak</i>			2.0		<i>Cords</i>			
	Red Pine			11.0		Cords			
	Tamarack			4.0		Cords			
<i>Tamarack</i>	4.0	<i>Cords</i>							
White Pine	197.0	Cords							

Description of Timber by Payment Unit (PU), con't

PU	MARKET GROUP	PRODUCT	QUANTITY	UNIT	ACRES	ADVERTISE PRICE
4	BI/R/Hybrid Oak	Sawtimber	1.4	MBF	21.5	\$3,641.70
	<i>Red Oak</i>		1.4	<i>MBF</i>		
	Mixed Aspen	Pulpwood	17.0	Cords		
	<i>Quaking Aspen</i>		17.0	<i>Cords</i>		
	Mixed Hardwood		14.0	Cords		
	<i>Red Maple</i>		14.0	<i>Cords</i>		
	Mixed Oak		14.0	Cords		
	<i>Red Oak</i>		14.0	<i>Cords</i>		
	Tamarack		212.0	Cords		
	<i>Tamarack</i>	<i>Sawtimber</i>	1.4	<i>MBF</i>		
<i>Tamarack</i>	<i>Pulpwood</i>	209.0	<i>Cords</i>			
5	BI/R/Hybrid Oak	Sawtimber	1.0	MBF	5.1	\$700.00
	<i>Red Oak</i>		1.0	<i>MBF</i>		
	Red Maple		0.5	MBF		
	Mixed Hardwood	Pulpwood	10.0	Cords		
	<i>Red Maple</i>		10.0	<i>Cords</i>		
	Mixed Oak		4.0	Cords		
	<i>Red Oak</i>		4.0	<i>Cords</i>		
	Tamarack		32.0	Cords		
<i>Tamarack</i>		32.0	<i>Cords</i>			
6	Mixed Aspen	Sawtimber	1.1	MBF	11.1	\$1,105.10
	<i>Quaking Aspen</i>		1.1	<i>MBF</i>		
	Mixed Aspen	Pulpwood	54.0	Cords		
	<i>Quaking Aspen</i>		54.0	<i>Cords</i>		
	Mixed Hardwood		5.0	Cords		
	<i>Red Maple</i>		5.0	<i>Cords</i>		
	Mixed Oak		17.0	Cords		
	<i>Red Oak</i>		17.0	<i>Cords</i>		
	Paper Birch		2.0	Cords		
	<i>Paper Birch</i>		2.0	<i>Cords</i>		
	Tamarack		6.0	Cords		
<i>Tamarack</i>	<i>Sawtimber</i>	0.8	<i>MBF</i>			
<i>Tamarack</i>	<i>Pulpwood</i>	4.0	<i>Cords</i>			
White Pine		4.0	Cords			
7	BI/R/Hybrid Oak	Sawtimber	19.4	MBF	39.5	\$6,382.25
	<i>Red Oak</i>		19.4	<i>MBF</i>		
	Red Maple		6.0	MBF		
	Balsam Fir	Pulpwood	3.0	Cords		
	Mixed Aspen		238.0	Cords		
	<i>B. T. Aspen</i>		108.0	<i>Cords</i>		
	<i>Quaking Aspen</i>		130.0	<i>Cords</i>		
	Mixed Hardwood		53.0	Cords		
	<i>Black Cherry</i>		13.0	<i>Cords</i>		
	<i>Red Maple</i>		40.0	<i>Cords</i>		
	Mixed Oak		85.0	Cords		
	<i>Red Oak</i>		85.0	<i>Cords</i>		
	Tamarack		13.0	Cords		
<i>Tamarack</i>		13.0	<i>Cords</i>			
8	Mixed Aspen	Sawtimber	2.6	MBF	27.3	\$1,753.20
	<i>Quaking Aspen</i>		2.6	<i>MBF</i>		
	Red Maple		12.1	MBF		
	Mixed Aspen	Pulpwood	14.0	Cords		
	<i>Quaking Aspen</i>		14.0	<i>Cords</i>		
	Mixed Hardwood		71.0	Cords		
	<i>Red Maple</i>		71.0	<i>Cords</i>		
Paper Birch		16.0	Cords			

Description of Timber by Payment Unit (PU), con't

PU	MARKET GROUP	PRODUCT	QUANTITY	UNIT	ACRES	ADVERTISE PRICE
8 con't	<i>Paper Birch</i>	<i>Pulpwood</i>	16.0	<i>Cords</i>		
	Tamarack		9.0	Cords		
	<i>Tamarack</i>	<i>Sawtimber</i>	2.0	<i>MBF</i>		
	<i>Tamarack</i>	<i>Pulpwood</i>	5.0	<i>Cords</i>		
9	BI/R/Hybrid Oak	Sawtimber	6.6	MBF	33.6	\$3,496.60
	<i>Red Oak</i>		6.6	<i>MBF</i>		
	Red Maple		4.4	MBF		
	Mixed Aspen	Pulpwood	164.0	Cords		
	<i>Quaking Aspen</i>		164.0	<i>Cords</i>		
	Mixed Hardwood		21.0	Cords		
	<i>Black Cherry</i>		2.0	<i>Cords</i>		
	<i>Red Maple</i>		19.0	<i>Cords</i>		
	Mixed Oak		53.0	Cords		
	<i>Red Oak</i>		53.0	<i>Cords</i>		
10	Mixed Aspen	Sawtimber	32.6	MBF	20.2	\$3,722.85
	<i>B. T. Aspen</i>		0.9	<i>MBF</i>		
	<i>Quaking Aspen</i>		31.7	<i>MBF</i>		
	Black Spruce	Pulpwood	3.0	Cords		
	Mixed Aspen		162.0	Cords		
	<i>B. T. Aspen</i>		77.0	<i>Cords</i>		
	<i>Quaking Aspen</i>		85.0	<i>Cords</i>		
	Mixed Hardwood		10.0	Cords		
	<i>Black Cherry</i>		3.0	<i>Cords</i>		
	<i>Red Maple</i>		7.0	<i>Cords</i>		
	Mixed Oak		2.0	Cords		
	<i>Red Oak</i>		2.0	<i>Cords</i>		
	White Pine		18.0	Cords		
11	BI/R/Hybrid Oak	Sawtimber	5.5	MBF	30.0	\$4,094.60
	<i>Red Oak</i>		5.5	<i>MBF</i>		
	Red Maple		1.5	MBF		
	White Oak		0.7	MBF		
	Jack Pine	Pulpwood	4.0	Cords		
	<i>Jack Pine</i>		4.0	<i>Cords</i>		
	Mixed Aspen		195.0	Cords		
	<i>B. T. Aspen</i>		28.0	<i>Cords</i>		
	<i>Quaking Aspen</i>		167.0	<i>Cords</i>		
	Mixed Hardwood		36.0	Cords		
	<i>Black Cherry</i>		20.0	<i>Cords</i>		
	<i>Red Maple</i>		16.0	<i>Cords</i>		
	Mixed Oak		39.0	Cords		
	<i>Red Oak</i>		28.0	<i>Cords</i>		
<i>White Oak</i>		11.0	<i>Cords</i>			
White Pine		14.0	Cords			
12	BI/R/Hybrid Oak	Sawtimber	12.2	MBF	46.7	\$9,130.85
	<i>Red Oak</i>		12.2	<i>MBF</i>		
	Black Cherry		1.8	MBF		
	Red Pine		23.5	MBF		
	White Oak		6.4	MBF		
	White Pine		1.3	MBF		
	Mixed Aspen	Pulpwood	328.0	Cords		
	<i>B. T. Aspen</i>		234.0	<i>Cords</i>		
	<i>Quaking Aspen</i>		94.0	<i>Cords</i>		
	Mixed Hardwood		32.0	Cords		
	<i>Black Cherry</i>		24.0	<i>Cords</i>		
	<i>Red Maple</i>		8.0	<i>Cords</i>		
	Mixed Oak		80.0	Cords		



Description of Timber by Payment Unit (PU), con't

PU	MARKET GROUP	PRODUCT	QUANTITY	UNIT	ACRES	ADVERTISE PRICE
12 con't	<i>Red Oak</i>	<i>Pulpwood</i>	59.0	<i>Cords</i>		
	<i>White Oak</i>		21.0	<i>Cords</i>		
	Paper Birch		6.0	<i>Cords</i>		
	<i>Paper Birch</i>		6.0	<i>Cords</i>		
	Red Pine		31.0	<i>Cords</i>		
	White Pine		12.0	<i>Cords</i>		
13	Red Pine	Sawtimber	3.2	MBF	17.7	\$5,764.20
	Mixed Aspen	Pulpwood	4.0	<i>Cords</i>		
	<i>B. T. Aspen</i>		4.0	<i>Cords</i>		
	Mixed Oak		2.0	<i>Cords</i>		
	<i>Red Oak</i>		2.0	<i>Cords</i>		
	Red Pine		264.0	<i>Cords</i>		
14	Red Maple	Sawtimber	0.4	MBF	22.6	\$5,195.25
	Red Pine		11.3	MBF		
	Mixed Aspen	Pulpwood	9.0	<i>Cords</i>		
	<i>B. T. Aspen</i>		9.0	<i>Cords</i>		
	Mixed Hardwood		1.0	<i>Cords</i>		
	<i>Red Maple</i>		1.0	<i>Cords</i>		
	Mixed Oak		2.0	<i>Cords</i>		
	<i>Red Oak</i>		2.0	<i>Cords</i>		
	Red Pine		209.0	<i>Cords</i>		
	15	Bl/R/Hybrid Oak	Sawtimber	0.8		
<i>Red Oak</i>			0.8	<i>MBF</i>		
Red Pine			3.0	MBF		
White Oak			0.8	MBF		
White Pine			17.3	MBF		
Mixed Aspen		Pulpwood	207.0	<i>Cords</i>		
<i>B. T. Aspen</i>			96.0	<i>Cords</i>		
<i>Quaking Aspen</i>			111.0	<i>Cords</i>		
Mixed Hardwood			56.0	<i>Cords</i>		
<i>Black Cherry</i>			45.0	<i>Cords</i>		
<i>Red Maple</i>			11.0	<i>Cords</i>		
Mixed Oak			17.0	<i>Cords</i>		
<i>Red Oak</i>			15.0	<i>Cords</i>		
<i>White Oak</i>			2.0	<i>Cords</i>		
Red Pine			7.0	<i>Cords</i>		
White Pine		124.0	<i>Cords</i>			
16	Bl/R/Hybrid Oak	Sawtimber	14.6	MBF	26.3	\$5,496.35
	<i>Red Oak</i>		14.6	<i>MBF</i>		
	Red Maple		0.6	MBF		
	White Oak		6.6	MBF		
	White Pine		0.7	MBF		
	Jack Pine	Pulpwood	3.0	<i>Cords</i>		
	<i>Jack Pine</i>		3.0	<i>Cords</i>		
	Mixed Aspen		204.0	<i>Cords</i>		
	<i>B. T. Aspen</i>		153.0	<i>Cords</i>		
	<i>Quaking Aspen</i>		51.0	<i>Cords</i>		
	Mixed Hardwood		36.0	<i>Cords</i>		
	<i>Black Cherry</i>		8.0	<i>Cords</i>		
	<i>Red Maple</i>		28.0	<i>Cords</i>		
	Mixed Oak		74.0	<i>Cords</i>		
	<i>Red Oak</i>		64.0	<i>Cords</i>		
<i>White Oak</i>		10.0	<i>Cords</i>			
White Pine		25.0	<i>Cords</i>			
17	Bl/R/Hybrid Oak	Sawtimber	6.5	MBF	19.9	\$6,925.80
	<i>Red Oak</i>		6.5	<i>MBF</i>		

Description of Timber by Payment Unit (PU), con't

PU	MARKET GROUP	PRODUCT	QUANTITY	UNIT	ACRES	ADVERTISE PRICE
17 con't	Black Cherry	Sawtimber	1.3	MBF		
	Red Maple		3.1	MBF		
	White Oak		6.3	MBF		
	White Pine		33.0	MBF		
	Mixed Aspen	Pulpwood	136.0	Cords		
	<i>B. T. Aspen</i>		<i>136.0</i>	<i>Cords</i>		
	Mixed Hardwood		55.0	Cords		
	<i>Black Cherry</i>		<i>27.0</i>	<i>Cords</i>		
	<i>Red Maple</i>		<i>28.0</i>	<i>Cords</i>		
	Mixed Oak		35.0	Cords		
	<i>Red Oak</i>		<i>26.0</i>	<i>Cords</i>		
	<i>White Oak</i>		<i>9.0</i>	<i>Cords</i>		
	White Pine		136.0	Cords		
18	BI/R/Hybrid Oak	Sawtimber	26.8	MBF	33.8	\$5,735.15
	<i>Red Oak</i>		<i>26.8</i>	<i>MBF</i>		
	Red Maple		0.7	MBF		
	Red Pine		9.8	MBF		
	White Oak		9.8	MBF		
	White Pine		4.0	MBF		
	Jack Pine	Pulpwood	43.0	Cords		
	<i>Jack Pine</i>	<i>Sawtimber</i>	<i>1.0</i>	<i>MBF</i>		
	<i>Jack Pine</i>	<i>Pulpwood</i>	<i>41.0</i>	<i>Cords</i>		
	Mixed Aspen		2.0	Cords		
	<i>Quaking Aspen</i>		<i>2.0</i>	<i>Cords</i>		
	Mixed Hardwood		20.0	Cords		
	<i>Black Cherry</i>		<i>9.0</i>	<i>Cords</i>		
	<i>Red Maple</i>		<i>11.0</i>	<i>Cords</i>		
	Mixed Oak		238.0	Cords		
	<i>Red Oak</i>		<i>199.0</i>	<i>Cords</i>		
	<i>White Oak</i>		<i>39.0</i>	<i>Cords</i>		
	Red Pine		11.0	Cords		
White Pine		14.0	Cords			
19	Red Maple	Sawtimber	1.7	MBF	36.2	\$2,282.70
	Jack Pine	Pulpwood	51.0	Cords		
	<i>Jack Pine</i>	<i>Sawtimber</i>	<i>0.9</i>	<i>MBF</i>		
	<i>Jack Pine</i>	<i>Pulpwood</i>	<i>49.0</i>	<i>Cords</i>		
	Mixed Aspen		113.0	Cords		
	<i>Quaking Aspen</i>		<i>113.0</i>	<i>Cords</i>		
	Mixed Hardwood		20.0	Cords		
	<i>Black Cherry</i>		<i>8.0</i>	<i>Cords</i>		
	<i>Red Maple</i>		<i>12.0</i>	<i>Cords</i>		
	Tamarack		1.0	Cords		
	<i>Tamarack</i>		<i>1.0</i>	<i>Cords</i>		
20	BI/R/Hybrid Oak	Sawtimber	11.6	MBF	23.3	\$3,783.00
	<i>Red Oak</i>		<i>11.6</i>	<i>MBF</i>		
	Red Maple		20.0	MBF		
	Jack Pine	Pulpwood	2.0	Cords		
	<i>Jack Pine</i>		<i>2.0</i>	<i>Cords</i>		
	Mixed Aspen		23.0	Cords		
	<i>Quaking Aspen</i>		<i>23.0</i>	<i>Cords</i>		
	Mixed Hardwood		125.0	Cords		
	<i>Black Cherry</i>		<i>3.0</i>	<i>Cords</i>		
	<i>Red Maple</i>		<i>122.0</i>	<i>Cords</i>		
	Mixed Oak		76.0	Cords		
	<i>Red Oak</i>		<i>76.0</i>	<i>Cords</i>		
21	BI/R/Hybrid Oak	Sawtimber	8.8	MBF	14.0	\$3,382.30

Description of Timber by Payment Unit (PU), con't

PU	MARKET GROUP	PRODUCT	QUANTITY	UNIT	ACRES	ADVERTISE PRICE
21 con't	<i>Red Oak</i>	<i>Sawtimber</i>	8.8	<i>MBF</i>		
	Black Cherry		0.9	MBF		
	Red Maple		8.5	MBF		
	Red Pine		1.1	MBF		
	Mixed Aspen	Pulpwood	41.0	Cords		
	<i>Quaking Aspen</i>		41.0	<i>Cords</i>		
	Mixed Hardwood		115.0	Cords		
	<i>Black Cherry</i>		4.0	<i>Cords</i>		
	<i>Red Maple</i>		111.0	<i>Cords</i>		
	Mixed Oak		36.0	Cords		
	<i>Red Oak</i>		36.0	<i>Cords</i>		
	Red Pine		4.0	Cords		
	22	Bl/R/Hybrid Oak	Sawtimber	1.5	MBF	14.5
<i>Red Oak</i>			1.5	<i>MBF</i>		
Red Maple			2.7	MBF		
Red Pine			72.7	MBF		
Jack Pine		Pulpwood	100.0	Cords		
<i>Jack Pine</i>		<i>Sawtimber</i>	5.1	<i>MBF</i>		
<i>Jack Pine</i>		<i>Pulpwood</i>	90.0	<i>Cords</i>		
Mixed Hardwood			20.0	Cords		
<i>Black Cherry</i>			11.0	<i>Cords</i>		
<i>Red Maple</i>			9.0	<i>Cords</i>		
Mixed Oak			4.0	Cords		
<i>Red Oak</i>			4.0	<i>Cords</i>		
Red Pine			522.0	Cords		
23		Bl/R/Hybrid Oak	Sawtimber	0.4	MBF	
	<i>Red Oak</i>		0.4	<i>MBF</i>		
	Mixed Aspen		4.3	MBF		
	<i>B. T. Aspen</i>		4.3	<i>MBF</i>		
	Red Maple		5.5	MBF		
	Mixed Aspen	Pulpwood	4.0	Cords		
	<i>B. T. Aspen</i>		4.0	<i>Cords</i>		
	Mixed Hardwood		20.0	Cords		
	<i>Red Maple</i>		20.0	<i>Cords</i>		
	Mixed Oak		1.0	Cords		
	<i>Red Oak</i>		1.0	<i>Cords</i>		
	Paper Birch		1.0	Cords		
	<i>Paper Birch</i>		1.0	<i>Cords</i>		
24	Mixed Aspen	Sawtimber	3.6	MBF	3.1	\$750.05
	<i>B. T. Aspen</i>		3.6	<i>MBF</i>		
	Jack Pine	Pulpwood	2.0	Cords		
	<i>Jack Pine</i>		2.0	<i>Cords</i>		
	Mixed Aspen		38.0	Cords		
	<i>B. T. Aspen</i>		38.0	<i>Cords</i>		
	Mixed Hardwood		5.0	Cords		
	<i>Red Maple</i>		5.0	<i>Cords</i>		
	Mixed Oak		2.0	Cords		
	<i>Red Oak</i>		2.0	<i>Cords</i>		
White Pine		1.0	Cords			
25	Bl/R/Hybrid Oak	Sawtimber	0.7	MBF	3.9	\$2,367.30
	<i>Red Oak</i>		0.7	<i>MBF</i>		
	Red Pine		0.8	MBF		
	Mixed Oak	Pulpwood	2.0	Cords		
	<i>Red Oak</i>		2.0	<i>Cords</i>		
	Red Pine		108.0	Cords		

TOTAL:	517.3	MBF
--------	-------	-----

TOTAL:	6,833.0	Cords
--------	---------	-------

## Sale Specific Conditions & Requirements

**Sale Name: C126 Mix**

**Sale Number: 73-008-16 Seq#: 3**

### 1 - Sale Area

#### 1.2 - Boundaries

##### 1.2.1 - Painted boundaries (1/14)

The sale boundary and Payment Unit boundaries are marked and identified by blue, red and yellow paint. Exterior sale boundary lines against private property are marked with blue paint. Exterior sale boundary lines against state are marked with red paint. Interior Payment Unit boundaries are marked with yellow paint.

### 2 - Timber Specifications

#### 2.1 - Included Timber

##### 2.1.1 - Clearcut unit(s) with unmerchantable trees (6/14)

Within Payment Unit(s) 1, 2, 4, 6, 7, 9, 11, 12, 15, 16, 17, 18, 19, 20, 21, 22, and 24, cut all trees that are two (2) inches or more at DBH. Exception: Do not cut any trees marked with a green slash above and below stump height. Trees marked with a green X are to be cut and left on site for grouse drumming logs. In addition, within Payment Units 19, do not cut any red pine, white pine, oak or birch trees. Within Payment Unit 20, do not cut any red or white pine trees.

##### 2.1.2 - Clearcut unit(s) w/o unmerchantable trees (8/11)

Within Payment Unit(s) 5, cut all trees which meet minimum piece specifications in 2.2 Utilization. In addition, all trees between the county road and the yellow painted trees are to be cut regardless of merchantability.

##### 2.1.3 - Cut tree marked unit(s) (12/08)

Within Payment Unit(s) 8, 13, 14, 23, and 25, all trees are designated for cutting when marked with orange paint above and below stump height, regardless of merchantability.

##### 2.1.4 - Designated timber unit(s) (6/17)

Within Payment Unit(s) 3 and 10, all aspen, jack pine, birch, and trees marked with orange paint above and below stump height are designated for cutting regardless of merchantability. In addition, within Payment Unit 3, all trees between the county road and the yellow painted trees are to be cut regardless of merchantability.

#### 2.2 - Utilization

##### 2.2.3 - Stump heights (4/07)

Stump heights within the Sale Area shall be cut as low to the ground as possible. Unless approved by the Unit Manager or his/her representative, stump heights shall not exceed 6 inches for trees greater than 10 inches DBH and 4 inches for trees smaller than 10 inches DBH.

### 3 - Payments

#### 3.3 - Pre-measured Sales

##### 3.3.4 - Dividing payment units (7/14)

Payment Unit(s) may be divided at the request of the Purchaser and upon approval of the Unit Manager. Dividing Payment Units is a contract modification which requires a Timber Sale Contract Supplement.

#### 3.4 - Damaged Timber

##### 3.4.1 - Damaged timber (6/14)

General Condition and Requirement 3.4 Damaged Timber, defines liquidated damages for undesignated live merchantable trees which are cut or injured. In addition, extreme care should be taken to avoid damage to tree seedlings and saplings.

Within Payment Units 3, 5, 8, 10, 13, 14, 18, 20, 22, 23, and 25, if more than 25% of the tree seedlings or saplings (1/4" to 4.5" DBH) within a specified portion of the sale area are damaged, liquidated damages will be assessed at \$300 per acre for all acreage within that specified portion of the sale area that was damaged.

No damage is acceptable to merchantable trees. Within the sale area, if more than 5% of trees (> 4.5" DBH) within a specified area of the sale are damaged, liquidated damages will be assessed for all trees damaged. Rates will be in accordance with General Condition and Requirement 3.4 Damaged Timber.

#### **4 - Transportation**

##### 4.1 - Construction

###### 4.1.2 - Stream crossings, specific (3/11)

The creek crossing (Timber Sale Map pg. 4) will require the installation of a crane mat bridge which may be borrowed from the DNR. This installation will be performed in accordance with the specifications on the appropriate permits which shall be provided by the DNR.

###### 4.1.6 - Road construction (1/09)

Construction of new roads or improvements of existing roads shall be done in such a way as to minimize the environmental and visual impacts. Merchantable trees shall be cut and utilized unless otherwise directed. Non-merchantable trees shall be severed and laid flat on the ground. Slash shall be scattered, and not left in windrows and kept a minimum of 10 feet back from the road edge. Stumps shall be set upright, not left on edge, and be moved at least 10 feet away from the road edge. Disturbed soil shall be feathered into the woods and not left in berms or windrows.

##### 4.2 - Maintenance

###### 4.2.1 - Hauling restriction (12/08)

Hauling may be restricted on forest roads by the Unit Manager or his/her representative. The restriction may occur during spring breakup.

###### 4.2.3 - Road maintenance (8/13)

The following road maintenance is required: Within 60 days of completion of hauling, or if no hauling occurs for 60 days, the road must be maintained and graded. This includes cleaning of drainage areas, grading, crowning and filling with gravel, if necessary. Damages will be assessed if grading/repair does not occur.

##### 4.3 - Public Right-of-Way

###### 4.3.2 - County R-O-W (12/06)

The county must be contacted prior to harvesting in the county road R-O-W. This applies to Payment Units 3 and 5 and the Sterling Truck Trail.

#### **5 - Operations**

##### 5.1 - Notification

###### 5.1.1 - Pre-sale conference (10/11)

A pre-sale conference between the Purchaser and sale administrator is required prior to beginning each Payment Unit. These conferences can occur on site or over the phone.

###### 5.1.4 - Post-sale conference (6/11)

A post-sale conference on site between the Purchaser and sale administrator is required prior to the completion of active logging operations to determine clean-up and repair of landings, road edges, and the fulfillment of other contract specifications. The conference can occur on site or over the phone.

##### 5.2 - Conduct of Operations

###### 5.2.2 - Hazard Trees/Snags

###### 5.2.2.1 - Den trees (2/04)

Obvious hollow and/or den trees shall be protected and left standing unless they are a safety hazard.

###### 5.2.3 - Operating Restrictions

###### 5.2.3.1 - Operating restrictions (9/11)

Within Payment Unit(s) 1, 2, 3, 4, 5, 8, 19, 20, 21, and 23, unless approved by the Unit Manager or his/her representative, cutting and skidding are limited to dry or frozen conditions. This restriction is because of seasonal wet soil conditions.

#### 5.2.3.2 - Operating restrictions (9/11)

Within Payment Unit(s) 2 - 5, unless changed by written agreement, cutting, skidding, and hauling are not permitted during the period of November 13 to November 16. This restriction is because these units are located in the Lame Duck Foot Access Area.

#### 5.2.3.3 - Bark slippage restriction (3/09)

Within Payment Unit(s) 3, 13, 14, 20, 22, and 25, unless changed by written agreement, cutting and skidding are not permitted during the period of April 15 to July 15. This restriction is because of bark slippage.

#### 5.2.3.4 - Oak wilt restriction (6/10)

Within Payment Unit(s) 10, 18, and 19, unless changed by written agreement, cutting, skidding, and hauling are not permitted during the period of April 15 to July 15. This is necessary to reduce the spread of oak wilt. For more information, contact the Unit Manager or his/her representative.

#### 5.2.3.6 - Bark beetle restriction (12/08)

In the event drought creates a high risk of pine bark beetle infestation, pine is not to be cut during the period March 1 through July 1, unless all portions of trees greater than two inches in diameter are removed from the sale area, reduced to chips, or treated to the satisfaction of the Unit Manager or his/her representative, within fifteen days of being severed from the stump. Pine log decks, pulpwood piles and treetops that are piled for chipping in the fall or winter within a 1/4 mile of susceptible sites must be removed before March 15. Residual slash must not be placed in piles or rows and must be spread over the site for quick drying. The Department of Natural Resources will exercise this specification if the risk of damage warrants.

#### 5.2.4 - Dead and Down Creation

##### 5.2.4.6 - Dead and down creation, other (9/09)

To create grouse habitat, within Payment Unit(s) 1, 2, 4, 6, 7, 9, 11, 12, 15, 16, 17, 18, 19, 20, 21, 22, and 24, all trees marked with a green X will be cut and left on site. These are for drumming logs.

#### 5.4 - Soil Protection

##### 5.4.1 - Rutting restriction, general (7/16)

Operations are to cease immediately if equipment and weather conditions result in rutting of roads and/or skid trails which is 12 inches or greater in depth and 50 feet in length. The Unit Manager or his/her representative may restrict hauling and/or skidding if ruts exceed the specified depth. With the Unit Manager or his/her representative's approval, the Purchaser may return to the area when the risk of rutting has decreased.



Sale Number	Year
73 - 008	16

# TIMBER SALE MAP

This information provided by authority of Part 525, 1994 PA 451, as amended.

Forest Management Unit Gladwin Management Unit	County Arenac	Mapped By Steven Nyhoff	Date 09/27/2016	Page 1	of 4
Township 19 & 20N	Range 03E	Section(s) and Subdivision(s) Various	Lead Insp: Steven Nyhoff	Scale 1:15,840	

### Cover Type

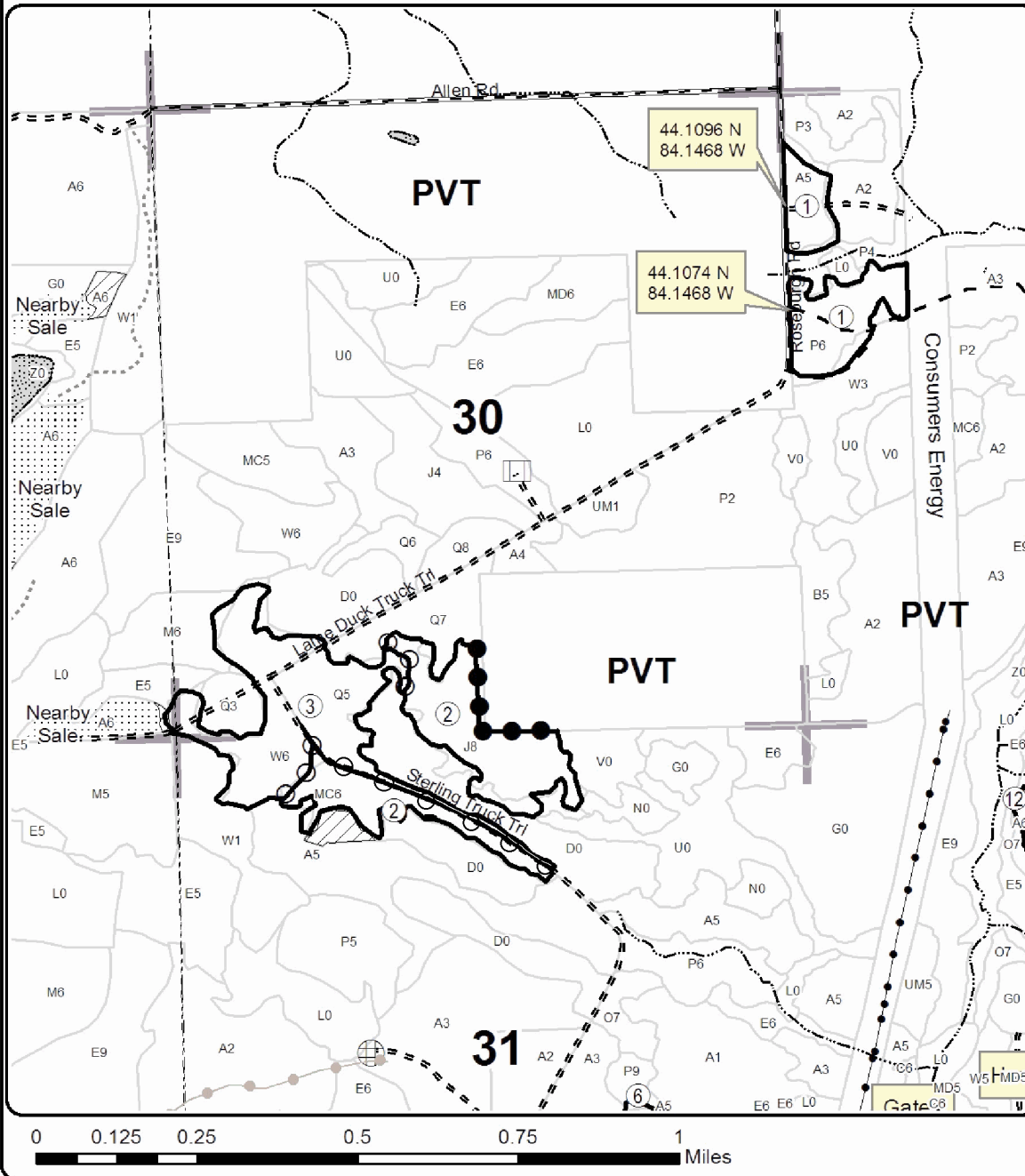
A = Aspen	H = Hemlock	N = Marsh	U = Upland Brush
B = Paper Birch	J = Jack Pine	O = Oak	UM = Upland Mixed
C = Cedar	L = Lowland Brush	P = Lowland Poplar	V = Bog or Marsh
D = Treed Bog	LM = Lowland Mixed	R = Mixed Swamp Conifer	W = White Pine
E = Swamp Hdwoods	M = Mpl. Bch, Brch	S = Red Pine	X = Non Stocked
F = Spruce Fir	MC = Mixed Conifer	T = Tamarack	Z = Water
G = Grass	MD = Mixed Deciduous		

### Density

0 = Non Stocked	5 = Pole Timber Medium
1 = Seedling Sapling Poor	6 = Pole Timber Well
2 = Seedling Sapling Medium	7 = Saw Timber Poor
3 = Seedling Sapling Well	8 = Saw Timber Medium
4 = Pole Timber Poor	9 = Saw Timber Well

PU	Acres	PU	Acres	PU	Acres	PU	Acres	PU	Acres
1	19.8	6	11.1	11	30.0	16	26.3	21	14.0
2	34.1	7	39.5	12	46.7	17	19.9	22	14.5
3	36.8	8	27.3	13	17.7	18	33.8	23	2.9
4	21.5	9	33.6	14	22.6	19	36.2	24	3.1
5	5.1	10	20.2	15	33.2	20	23.3	25	3.9

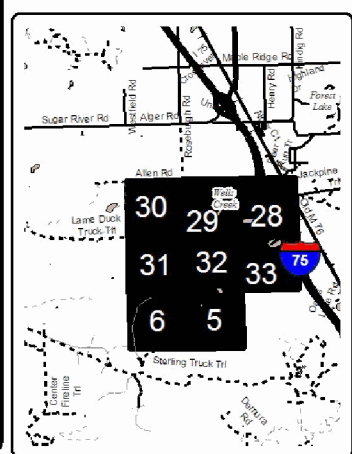
**C126 Mix**  
**Compartment 126**  
**577.1 Acres**



### Legend

- Against State (Red)
- Payment Unit (Yellow)
- Private Line (Blue)
- Nearby Timber Sale
- Section Corners
- Retention Area
- Stand Boundaries
- Highway
- Paved Roads
- Poor Dirt Roads
- Streams
- Gate
- Berms
- Pipeline; Powerline
- Recreational Trail
- Railroads

Locator Map  
1:200,000







# TIMBER SALE MAP

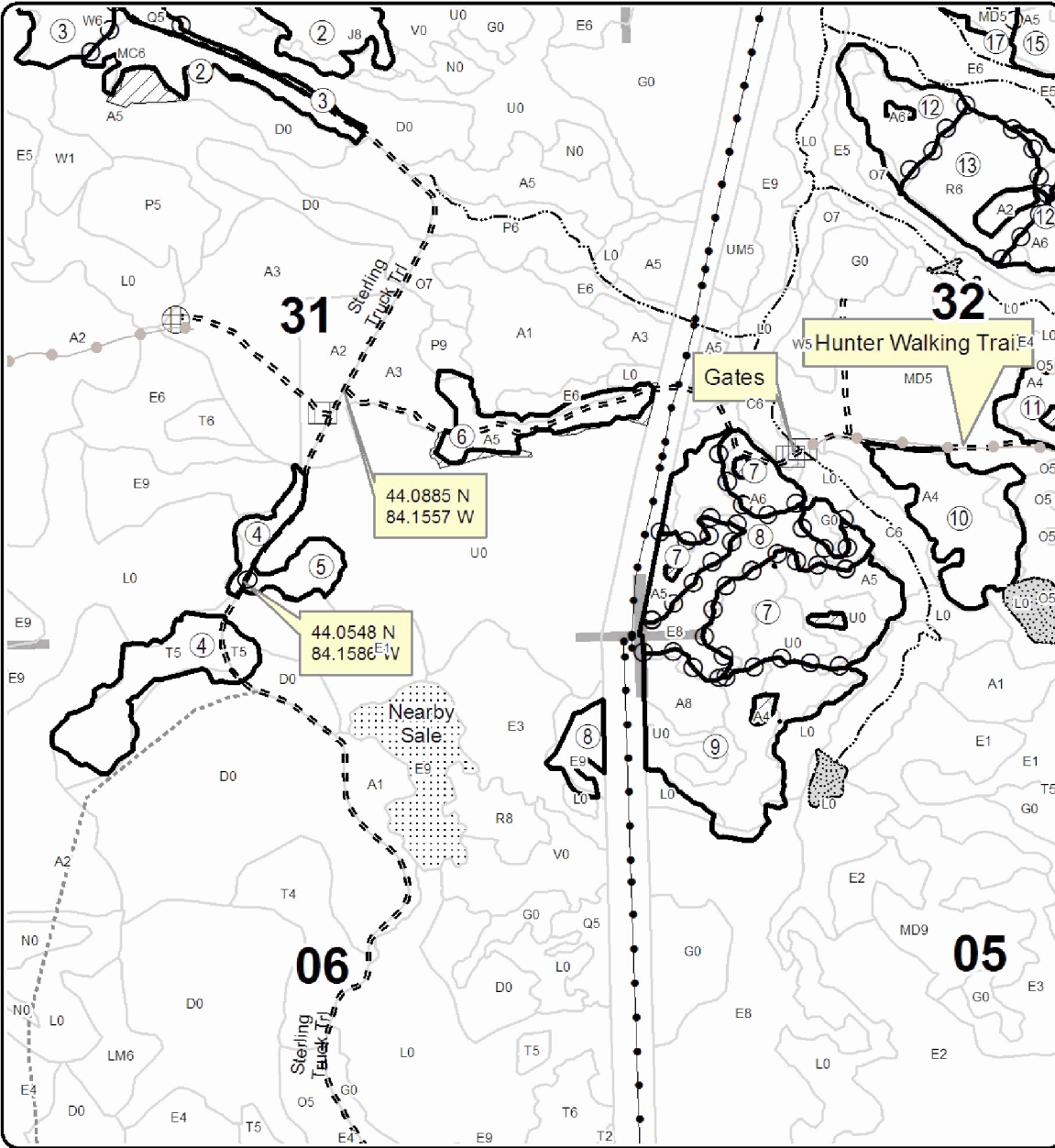
This information provided by authority of Part 525, 1994 PA 451, as amended.

Forest Management Unit		County	Mapped By		Date	Page	of
Gladwin Management Unit		Arenac	Steven Nyhoff		09/27/2016	2	4
Township	Range	Section(s) and Subdivision(s)		Lead Insp:	Scale		
19 & 20N	03E	Various		Steven Nyhoff	1:15,840		

Cover Type				Density			
A = Aspen	H = Hemlock	N = Marsh	U = Upland Brush	0 = Non Stocked	5 = Pole Timber Medium		
B = Paper Birch	J = Jack Pine	O = Oak	UM = Upland Mixed	1 = Seedling Sapling Poor	6 = Pole Timber Well		
C = Cedar	L = Lowland Brush	P = Lowland Poplar	V = Bog or Marsh	2 = Seedling Sapling Medium	7 = Saw Timber Poor		
D = Treed Bog	LM = Lowland Mixed	Q = Mixed Swamp Conifer	W = White Pine	3 = Seedling Sapling Well	8 = Saw Timber Medium		
E = Swamp Hdwoods	M = Mpl. Bch, Brch	R = Red Pine	X = Non Stocked	4 = Pole Timber Poor	9 = Saw Timber Well		
F = Spruce Fir	MC = Mixed Conifer	S = Black Spruce	Z = Water				
G = Grass	MD = Mixed Deciduous	T = Tamarack					

PU	Acres	PU	Acres	PU	Acres	PU	Acres	PU	Acres
1	19.8	6	11.1	11	30.0	16	26.3	21	14.0
2	34.1	7	39.5	12	46.7	17	19.9	22	14.5
3	36.8	8	27.3	13	17.7	18	33.8	23	2.9
4	21.5	9	33.6	14	22.6	19	36.2	24	3.1
5	5.1	10	20.2	15	33.2	20	23.3	25	3.9

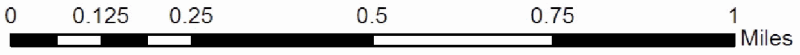
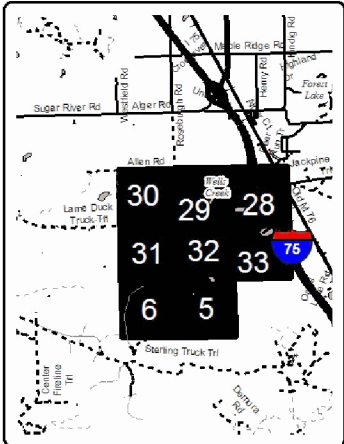
**C126 Mix**  
**Compartment 126**  
**577.1 Acres**



**Legend**

- Against State (Red)
- Payment Unit (Yellow)
- Private Line (Blue)
- Nearby Timber Sale
- Section Corners
- Retention Area
- Stand Boundaries
- Highway
- Paved Roads
- Poor Dirt Roads
- Streams
- Gate
- Berms
- Pipeline; Powerline
- Recreational Trail
- Railroads

**Locator Map**  
 1:200,000





# TIMBER SALE MAP

This information provided by authority of Part 525, 1994 PA 451, as amended.

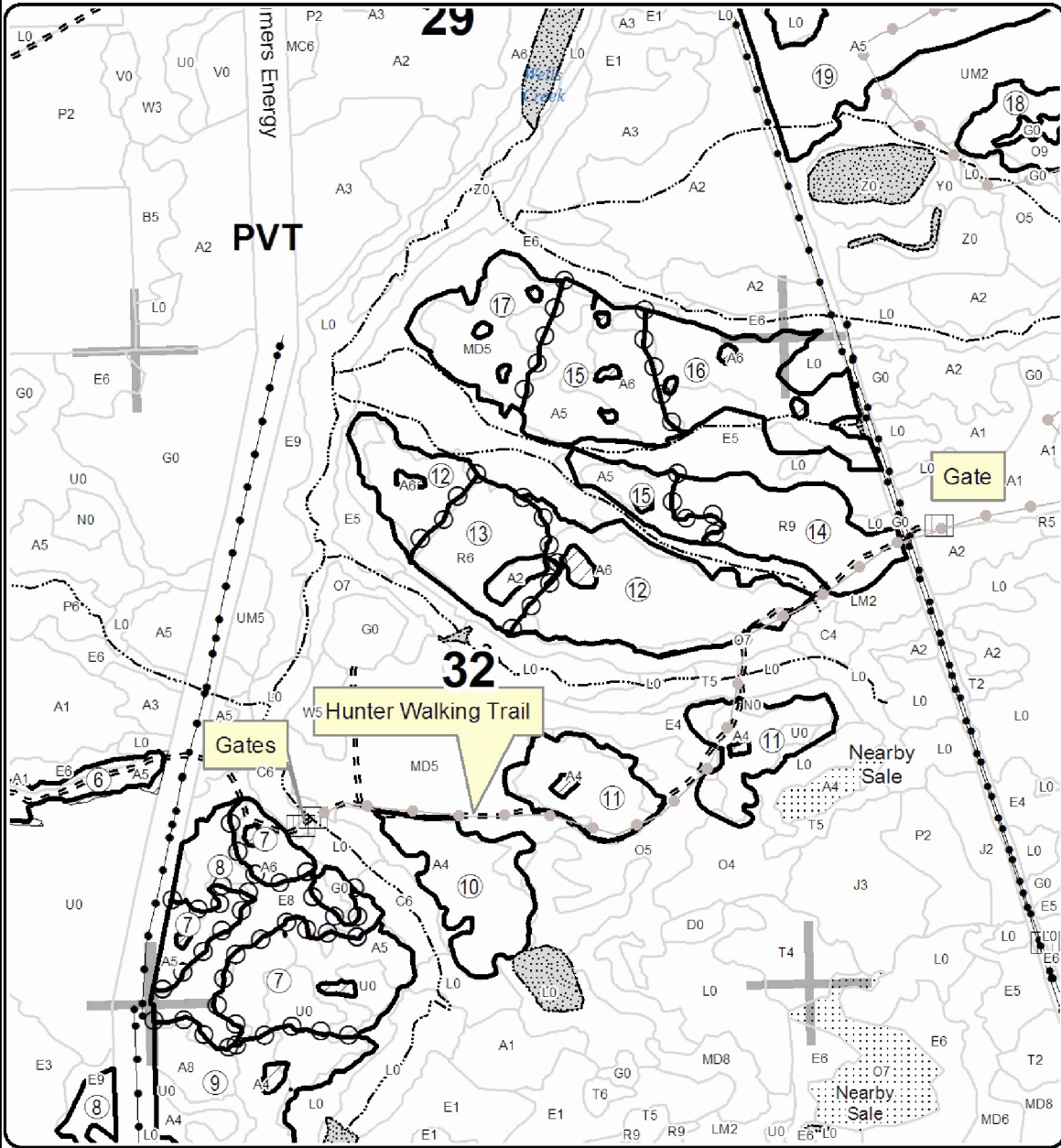
Sale Number	Year
73 - 008	16

Forest Management Unit		County	Mapped By		Date	Page	of
Gladwin Management Unit		Arenac	Steven Nyhoff		09/27/2016	3	4
Township	Range	Section(s) and Subdivision(s)		Lead Insp:	Scale		
19 & 20N	03E	Various		Steven Nyhoff	1:15,840		

Cover Type				Density			
A = Aspen	H = Hemlock	N = Marsh	U = Upland Brush	0 = Non Stocked	5 = Pole Timber Medium		
B = Paper Birch	J = Jack Pine	O = Oak	UM = Upland Mixed	1 = Seedling Sapling Poor	6 = Pole Timber Well		
C = Cedar	L = Lowland Brush	P = Lowland Poplar	V = Bog or Marsh	2 = Seedling Sapling Medium	7 = Saw Timber Poor		
D = Treed Bog	LM = Lowland Mixed	Q = Mixed Swamp Conifer	W = White Pine	3 = Seedling Sapling Well	8 = Saw Timber Medium		
E = Swamp Hdwoods	M = Mpl. Bch, Brch	R = Red Pine	X = Non Stocked	4 = Pole Timber Poor	9 = Saw Timber Well		
F = Spruce Fir	MC = Mixed Conifer	S = Black Spruce	Z = Water				
G = Grass	MD = Mixed Deciduous	T = Tamarack					

PU	Acres	PU	Acres	PU	Acres	PU	Acres	PU	Acres
1	19.8	6	11.1	11	30.0	16	26.3	21	14.0
2	34.1	7	39.5	12	46.7	17	19.9	22	14.5
3	36.8	8	27.3	13	17.7	18	33.8	23	2.9
4	21.5	9	33.6	14	22.6	19	36.2	24	3.1
5	5.1	10	20.2	15	33.2	20	23.3	25	3.9

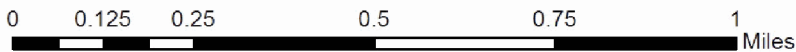
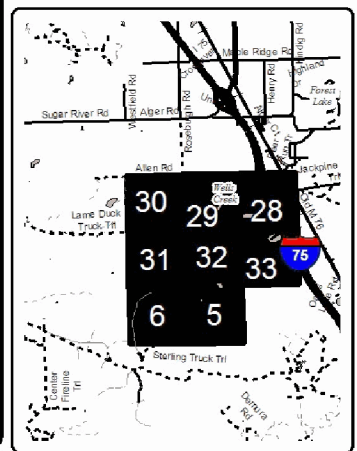
**C126 Mix**  
**Compartment 126**  
**577.1 Acres**



**Legend**

- Against State (Red)
- Payment Unit (Yellow)
- Private Line (Blue)
- ⋯ Nearby Timber Sale
- ▭ Section Corners
- ▨ Retention Area
- ▭ Stand Boundaries
- Highway
- Paved Roads
- == Poor Dirt Roads
- Streams
- Gate
- ⊕ Berms
- Pipeline; Powerline
- Recreational Trail
- Railroads

**Locator Map**  
1:200,000





# TIMBER SALE MAP

This information provided by authority of Part 525, 1994 PA 451, as amended.

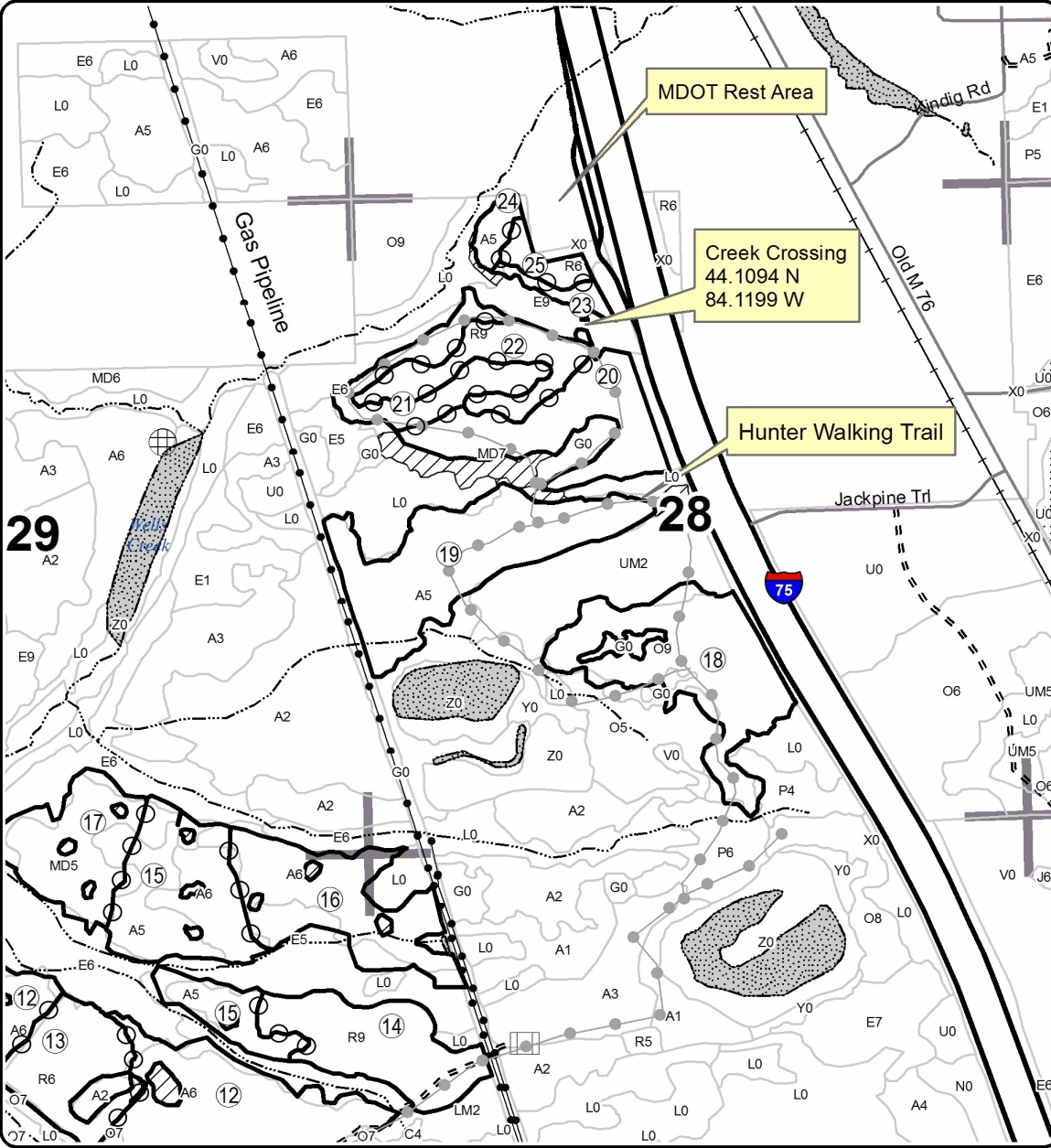
Sale Number	Year
73 - 008	16

Forest Management Unit		County	Mapped By	Date	Page of	
Gladwin Management Unit		Arenac	Steven Nyhoff	09/27/2016	4	4
Township	Range	Section(s) and Subdivision(s)	Lead Insp:	Scale		
19 & 20N	03E	Various	Steven Nyhoff	1:15,840		

Cover Type				Density			
A = Aspen	H = Hemlock	N = Marsh	U = Upland Brush	0 = Non Stocked	5 = Pole Timber Medium		
B = Paper Birch	J = Jack Pine	O = Oak	UM = Upland Mixed	1 = Seedling Sapling Poor	6 = Pole Timber Well		
C = Cedar	L = Lowland Brush	P = Lowland Poplar	V = Bog or Marsh	2 = Seedling Sapling Medium	7 = Saw Timber Poor		
D = Treed Bog	LM = Lowland Mixed	Q = Mixed Swamp Conifer	W = White Pine	3 = Seedling Sapling Well	8 = Saw Timber Medium		
E = Swamp Hdwoods	M = Mpl, Bch, Brch	R = Red Pine	X = Non Stocked	4 = Pole Timber Poor	9 = Saw Timber Well		
F = Spruce Fir	MC = Mixed Conifer	S = Black Spruce	Z = Water				
G = Grass	MD = Mixed Deciduous	T = Tamarack					

PU	Acres	PU	Acres	PU	Acres	PU	Acres	PU	Acres
1	19.8	6	11.1	11	30.0	16	26.3	21	14.0
2	34.1	7	39.5	12	46.7	17	19.9	22	14.5
3	36.8	8	27.3	13	17.7	18	33.8	23	2.9
4	21.5	9	33.6	14	22.6	19	36.2	24	3.1
5	5.1	10	20.2	15	33.2	20	23.3	25	3.9

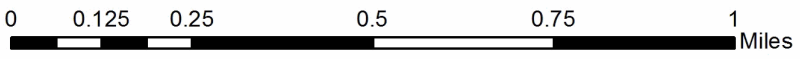
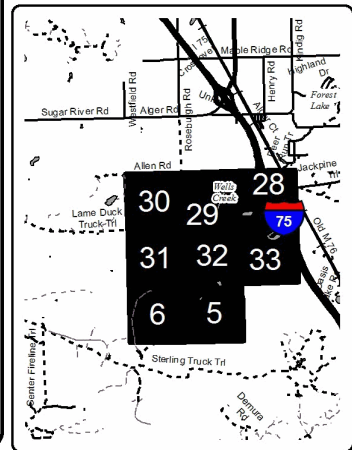
**C126 Mix**  
**Compartment 126**  
**577.1 Acres**



**Legend**

- Against State (Red)
- Payment Unit (Yellow)
- Private Line (Blue)
- ⋯ Nearby Timber Sale
- Section Corners
- ▨ Retention Area
- Stand Boundaries
- Highway
- Paved Roads
- == Poor Dirt Roads
- Streams
- ⊠ Gate
- ⊕ Berms
- Pipeline; Powerline
- Recreational Trail
- Railroads

**Locator Map**  
 1:200,000





C126 Mix (73-008-16)  
; Arenac COUNTY

In response to the notice of sale to be held 10:00 a.m. (local time) on December 18, 2017, I am hereby submitting my sealed bid (firm offer) for the following forest products to be cut. Bids for individual species must be at or above the advertised price. All non-responsive bid forms may be rejected.

<u>PRODUCTS &amp; SPECIES</u>	<u>ESTIMATED VOLUME*</u>	<u>ADVERTISED PRICE</u>	<u>BID PRICE/UNIT</u>
<b>Sawtimber</b>			
BI/R/Hybrid Oak	131.70 MBF	\$ 79.00/MBF	\$ _____
Black Cherry	4.00 MBF	\$ 93.00/MBF	\$ _____
Mixed Aspen	57.80 MBF	\$ 33.00/MBF	\$ _____
Red Maple	80.00 MBF	\$ 24.00/MBF	\$ _____
Red Pine	132.40 MBF	\$ 60.00/MBF	\$ _____
White Oak	30.60 MBF	\$ 36.00/MBF	\$ _____
White Pine	80.80 MBF	\$ 49.00/MBF	\$ _____
<b>Pulpwood</b>			
Balsam Fir	4.00 Cords	\$ 6.65/Cord	\$ _____
Black Spruce	13.00 Cords	\$ 16.05/Cord	\$ _____
Jack Pine	741.00 Cords	\$ 7.90/Cord	\$ _____
Mixed Aspen	2,197.00 Cords	\$ 13.90/Cord	\$ _____
Mixed Hardwood	841.00 Cords	\$ 12.70/Cord	\$ _____
Mixed Oak	859.00 Cords	\$ 6.10/Cord	\$ _____
Paper Birch	38.00 Cords	\$ 9.50/Cord	\$ _____
Red Pine	1,173.00 Cords	\$ 20.85/Cord	\$ _____
Tamarack	314.00 Cords	\$ 14.30/Cord	\$ _____
White Pine	653.00 Cords	\$ 11.55/Cord	\$ _____

\*These estimated volumes are final and not subject to adjustment. Prospective bidders are urged to examine this timber and to make their own estimates of quantity and quality.

I understand that any or all bids may be rejected. All bids must be signed and all bid items must be bid or the bid form may be rejected. I also understand that consideration and awarding a contract will be based upon my past performance and ability to complete the contract based upon equipment and staffing subject to my control.

FEDERAL ID: \_\_\_\_\_ or SOCIAL SECURITY NUMBER: \_\_\_\_\_

Company or individual bidding: \_\_\_\_\_

Company representative's name: \_\_\_\_\_

Address: \_\_\_\_\_

City: \_\_\_\_\_ State: \_\_\_\_\_ Zip: \_\_\_\_\_

IF AVAILABLE, PLEASE PLACE THE PERSONALIZED LABEL FROM YOUR PROSPECTUS IN THE ABOVE BOX.

Individual or company representative's signature: \_\_\_\_\_ Date: \_\_\_\_\_

Phone number : \_\_\_\_\_ Email (optional): \_\_\_\_\_

**THE WINNING BIDDER MUST COMPLETE THE VERIFICATION OF WORKER'S DISABILITY COMPENSATION ACT COMPLIANCE (ON REVERSE SIDE IF DOUBLE SIDED) WITHIN 21 DAYS OF SALE AWARD DATE**



<b>FOR DEPARTMENT USE ONLY</b>
Sale Number (XX - XXX - XX - XX)
Forest Management Unit:

## TIMBER SALE VERIFICATION OF WORKER'S DISABILITY COMPENSATION ACT COMPLIANCE

*As required by Act 317, P.A. 1969 (Worker's Compensation) and  
Part 5 of Act 451 of 1994, as amended.*

### VERIFICATION OF WORKER'S DISABILITY COMPENSATION ACT COMPLIANCE

- This verification must be completed and submitted within 21 days of contract award and prior to the issuance of the timber sale contract.
- In addition, if boxes 2B or 2C are checked, then Notice of Exclusion or Certificate of Insurance must be submitted within twenty-one (21) days of the contract award and prior to the issuance of the timber sale contract.
- All information must be typed or printed except for written signatures.

Please Check Appropriate Categories:

1. My business is organized as (you **must** check one of the boxes below):
  - A.  Sole Proprietorship (individual)
  - B.  Partnership
  - C.  Corporation
2. You **must** check one of the boxes below:
  - A.  I certify my business is a sole proprietorship and it has no employees but the sole proprietor. I am not subject to the Worker's Compensation Laws.
  - B.  I certify my business has satisfied its obligation to the Worker's Compensation Act through the use of an approved Notice of Exclusion (BWC-337, Rev. 5/96). I will provide a copy of the Notice of Exclusion within 21 days of the contract award. (For questions or a copy of the BWC-337, please call the Worker's Compensation Bureau at 517-322-1195).
  - C.  I certify my business has a Worker's Compensation Policy. I will provide an original Certificate of Insurance within twenty-one (21) days of the contract award.
3. If you have checked item 2(A) or 2(B), you **must** indicate the number of **both** full-time and part-time employees, other than yourself, including family members and active partners (if none, you must enter "0").

\_\_\_\_\_ Full-time Employees

\_\_\_\_\_ Part-time Employees

Name of Business		Federal ID (or) Social Security No.	
Address		Telephone (        )	
City	State	ZIP	

*I hereby certify that the above information is true and correct. I agree to notify the Michigan DNR of any changes that occur in factors affecting my coverage during any of my present and future operations.*

\_\_\_\_\_  
Signature of Owner or Authorized Representative

\_\_\_\_\_  
Title

\_\_\_\_\_  
Date

**Please complete the "SEALED BID" information on the next page**

Kirby Pine (73-002-17)  
; Clare COUNTY

In response to the notice of sale to be held 10:00 a.m. (local time) on December 18, 2017, I am hereby submitting my sealed bid (firm offer) for the following forest products to be cut. Bids for individual species must be at or above the advertised price. All non-responsive bid forms may be rejected.

<u>PRODUCTS &amp; SPECIES</u>	<u>ESTIMATED VOLUME*</u>	<u>ADVERTISED PRICE</u>	<u>BID PRICE/UNIT</u>
<b>Sawtimber</b>			
BI/R/Hybrid Oak	351.90 MBF	\$ 157.00/MBF	\$ _____
Jack Pine	12.60 MBF	\$ 32.00/MBF	\$ _____
Red Pine	1,245.40 MBF	\$ 120.00/MBF	\$ _____
<b>Pulpwood</b>			
BI/R/Hybrid Oak	1,226.00 Cords	\$ 12.20/Cord	\$ _____
Jack Pine	190.00 Cords	\$ 15.80/Cord	\$ _____
Red Pine	2,560.00 Cords	\$ 41.70/Cord	\$ _____

\*The volumes are statistically estimated within plus (+) or minus (-) 7.08 percent. These estimated volumes are final and not subject to adjustment. Prospective bidders are urged to examine this timber and to make their own estimates of quantity and quality.

I understand that any or all bids may be rejected. All bids must be signed and all bid items must be bid or the bid form may be rejected. I also understand that consideration and awarding a contract will be based upon my past performance and ability to complete the contract based upon equipment and staffing subject to my control.

FEDERAL ID: \_\_\_\_\_ or SOCIAL SECURITY NUMBER: \_\_\_\_\_

Company or individual bidding: \_\_\_\_\_

Company representative's name: \_\_\_\_\_

Address: \_\_\_\_\_

City: \_\_\_\_\_ State: \_\_\_\_\_ Zip: \_\_\_\_\_

IF AVAILABLE, PLEASE PLACE THE PERSONALIZED LABEL FROM YOUR PROSPECTUS IN THE ABOVE BOX.

Individual or company representative's signature: \_\_\_\_\_ Date: \_\_\_\_\_

Phone number : \_\_\_\_\_ Email (optional): \_\_\_\_\_

**THE WINNING BIDDER MUST COMPLETE THE VERIFICATION OF WORKER'S DISABILITY COMPENSATION ACT COMPLIANCE (ON REVERSE SIDE IF DOUBLE SIDED) WITHIN 21 DAYS OF SALE AWARD DATE**



<b>FOR DEPARTMENT USE ONLY</b>
Sale Number (XX - XXX - XX - XX)
Forest Management Unit:

## TIMBER SALE VERIFICATION OF WORKER'S DISABILITY COMPENSATION ACT COMPLIANCE

*As required by Act 317, P.A. 1969 (Worker's Compensation) and  
Part 5 of Act 451 of 1994, as amended.*

### VERIFICATION OF WORKER'S DISABILITY COMPENSATION ACT COMPLIANCE

- This verification must be completed and submitted within 21 days of contract award and prior to the issuance of the timber sale contract.
- In addition, if boxes 2B or 2C are checked, then Notice of Exclusion or Certificate of Insurance must be submitted within twenty-one (21) days of the contract award and prior to the issuance of the timber sale contract.
- All information must be typed or printed except for written signatures.

Please Check Appropriate Categories:

1. My business is organized as (you **must** check one of the boxes below):
  - A.  Sole Proprietorship (individual)
  - B.  Partnership
  - C.  Corporation
  
2. You **must** check one of the boxes below:
  - A.  I certify my business is a sole proprietorship and it has no employees but the sole proprietor. I am not subject to the Worker's Compensation Laws.
  - B.  I certify my business has satisfied its obligation to the Worker's Compensation Act through the use of an approved Notice of Exclusion (BWC-337, Rev. 5/96). I will provide a copy of the Notice of Exclusion within 21 days of the contract award. (For questions or a copy of the BWC-337, please call the Worker's Compensation Bureau at 517-322-1195).
  - C.  I certify my business has a Worker's Compensation Policy. I will provide an original Certificate of Insurance within twenty-one (21) days of the contract award.
  
3. If you have checked item 2(A) or 2(B), you **must** indicate the number of **both** full-time and part-time employees, other than yourself, including family members and active partners (if none, you must enter "0").

\_\_\_\_\_ Full-time Employees

\_\_\_\_\_ Part-time Employees

Name of Business		Federal ID (or) Social Security No.	
Address		Telephone (       )	
City	State	ZIP	

*I hereby certify that the above information is true and correct. I agree to notify the Michigan DNR of any changes that occur in factors affecting my coverage during any of my present and future operations.*

\_\_\_\_\_  
Signature of Owner or Authorized Representative

\_\_\_\_\_  
Title

\_\_\_\_\_  
Date

**Please complete the "SEALED BID" information on the next page**