



**DEPARTMENT OF NATURAL RESOURCES
STATE OF MICHIGAN**

TIMBER SALE PROSPECTUS #6049

SCHEDULED SALE DATE AND TIME: 4:00 p.m. (local time) on December 19, 2017.

LOCATION: KALKASKA FIELD OFFICE, 2089 N BIRCH ST, KALKASKA, MI 49646.

PROSPECTUS NOTE: The bidder is advised to inspect the sale area and review the location, estimated volumes, operating costs and contract terms of proposed sales. Please be aware that some landowners may request 60 days or more notice for access across their land.

Notice is hereby given that bids will be received by the Unit Manager, TRAVERSE CITY MANAGEMENT UNIT, for certain timber on the following described lands:

153 Thayer Block (61-125-17)

Kalkaska County, Advertised Price \$92,252.35, 118.8 Acres, Aspen, Hardwood.

SALE NOTE: This sale has several areas of low ground and should be cut in dry or frozen conditions.

Bogged Down Mix (61-129-17)

Kalkaska County, Advertised Price \$77,595.70, 175.4 Acres, Spruce/Fir/Tamarack, White Pine.

SALE NOTE: Certain units within the sale will need to be cut in dry or frozen weather conditions (with the approval of the sale administrator) due to the wet ground conditions. See spec 5.2.3.1 for details.

In addition, crane mats might be needed for skidding across some areas of wet ground. See spec 5.2.17 for details.

A recreation site such as a trail, pathway, or campground is within the sale area or the vicinity. Certain restrictions/specifications may be applicable including time restrictions.

Apple Tree (61-165-17)

Kalkaska County, Advertised Price \$99,426.25, 232.3 Acres, Aspen, Hardwood.

153 West Sharon Block (61-168-17)

Kalkaska County, Advertised Price \$209,063.20, 198.2 Acres, Hardwood, Red Pine.

Yotta Oak (61-654-17)

Crawford County, Advertised Price \$129,813.50, 270.1 Acres, Aspen, Hardwood.

SALE NOTE: Please note that this sale is on Military Board Land and is NOT certified. Timing restrictions and chipping requirements will apply.

BID INSTRUCTIONS (VER. 11/28/2017):

1. Scheduled Bid Location, Date, and Time (2/11)

Bids must be received by the Unit Manager, KALKASKA OFFICE, 2089 N BIRCH ST, KALKASKA, MI 49646, no later than 4:00 p.m. (local time) on December 19, 2017. For further information concerning this sale, contact David Lemmien at 231-922-5280 extension 6840.

2. Bidder's Qualifications (5/16)

Purchaser shall obtain workers compensation insurance to cover claims under Michigan's Worker's Disability Compensation Act of 1969 or similar employee benefit act of any other state applicable to an employee. If all or part of a timber sale was prepared by a private contractor, the contractor and that contractor's company are not permitted to bid on the timber sale contract. Bids will not be accepted from individuals or companies appearing on the DNR/FRD No-Bid List. This list contains the names of purchasers who previously failed to execute a contract within 21-days or who have a history of poor performance.

3. Preparation of Sealed Bids (5/16)

Bid Forms may be completed online thru Michigan DNR Timber Sale Online Bidding (OLB) at www.michigan.gov/timberbidding or by completing the hardcopy Bid Form found in the Timber Sale Prospectus. Hardcopy Bid Forms shall be manually signed in ink. Registration in OLB is considered your 'signature' for all bids submitted thru that system. Bid prices must be entered for each species and product in the Bid Price column for all material subject to bidding and all fill-in blanks must be completed. If erasures or other changes appear on the hardcopy Bid Form, each erasure or change must be initialed by the person signing the bid.

4. Submission of Sealed Bids (5/16)

Bid forms may be obtained from the Unit Manager or thru OLB. Bids may be submitted hardcopy or thru OLB. All hardcopy bids must be submitted on the bid form and in an envelope clearly identified as described in this section. NOTE: Only one bid form per bid envelope. Sealed bids must be submitted to the Unit office designated in the prospectus and must be submitted at or prior to the time established in the prospectus. The envelope should show on the outside (a) the sale name or number and (b) the date and time of bid opening, as shown in the prospectus. Bids received after the time specified in the sale prospectus are late bids and will be rejected.

It is possible for a bidder to submit multiple bids on a single sale. For example, a bid may be submitted hardcopy and a bid may be submitted thru OLB. Or, two bidders from the same company could both submit bids on the same sale. If this were to happen, the State would accept all bids received and award the contract accordingly. All bidding and contractual requirements would apply to all bids received.

5. Public Opening of Sealed Bids (7/16)

If conditions permit, the sealed bids will be publicly opened and posted at the time and place set in the prospectus.

If a bidder, present at a bid opening, has submitted bids on more than one sale, that bidder may withdraw their unopened bid envelopes or announce the withdrawal of their online bid after being declared the successful bidder on one sale.

6. Award of Contract (1/11)

Award of the contract will be made to the Bidder whose bid, conforming to the prospectus, is most advantageous to the State of Michigan on the basis of total value at rates bid for the estimated quantities. The State reserves the right to reject any bid or waive any minor irregularity in bids received. A written award mailed (or otherwise furnished) to the successful Bidder shall be deemed to result in a binding contract without further action by either party.

7. Down Payment (1/11)

The Bidder to whom award is made must make a down payment within 21 days of the sale award. The amount of the down payment will be calculated as shown in the Bond and Payment Schedule of this prospectus. Only cash may be used to meet this requirement.

8. Performance Security (1/11)

As guarantee of faithful performance, a cash bond, certificate of deposit, surety bond or irrevocable letter of credit (LOC) is required within 21 days of the sale award. The amount of the performance security is shown in the Bond and

Payment Schedule of this prospectus. If an LOC or surety is used, the coverage must extend for at least 6 months beyond the contract expiration.

9. Timber Sale Contract (11/17)

Additional conditions and requirements common to all timber sales are listed on the timber sale contract (R4031) and are available on line at www.michigan.gov/timber. Contact the Unit Manager for additional information or a sample contract. Within 21 days of the date of the award letter, the bidder must sign the contract and provide the required down payment, performance security, and verification of worker's disability compensation. The down payment and performance security shall be in accordance with the provisions of the timber sale contract, in the sums stated in this prospectus. If these actions are not taken, then the Bidder, the Bidder's corporation, and the corporation's principals may not be permitted to bid on State timber sales for a period of 1 year. In addition, the Bidder certifies that if awarded this contract, the Bidder will complete the timber sale contract in accordance with its terms and any modifications thereof including requirements to purchase, cut, and remove the included timber by the expiration date.

Payment Unit values in the State Forest Timber Sale Contract are calculated based on the advertised value of the Payment Unit as a percentage of the total advertised value of the contract. The advertised value of each Payment Unit is given in the Description of Timber by Payment Unit table on the Timber Sale Information page. For example, if the value of Payment Unit 1 is advertised as \$1,500 and the total Timber Sale value is advertised as \$10,000, the contract price for Payment Unit 1 will be 15% of the total bid price ($\$1,500/\$10,000 * 100$).

10. Disclaimer of Estimates and Bidder's Warranty of Inspection (7/16)

Before submitting this bid, the Bidder is advised and cautioned to inspect the sale area, review the requirements of the sale contract, and take other steps as may be reasonably necessary to ascertain the location, estimated volumes, construction estimates, and operating costs of the proposed sale. Failure to do so will not relieve the Bidder from responsibility for completing the contract.

The Bidder warrants that this bid is submitted solely on the basis of the Bidder's examination and inspection of the quality and quantity of the timber offered for sale and the Bidder's opinion of the value thereof and the costs of recovery. No reliance should be placed on the State of Michigan's estimates of timber quality, quantity or costs of recovery. Bidder further acknowledges that the State of Michigan: (i) expressly disclaims any warranty of fitness of timber for any purpose; (ii) offers this timber as is without any warranty of quality (merchantability) or quantity and (iii) expressly disclaims any warranty as to the quantity or quality of timber sold.

11. Certification and Chain-of-Custody (10/14)

Unless otherwise indicated in the contract under section 7 – Other Conditions of the Sale Specific Conditions & Requirements, the area encompassed by this timber sale is certified to the standards of the Forest Stewardship Council (FSC) - Certificate #SCS-FM/COC-00090N and the Sustainable Forestry Initiative (SFI) - Certificate # NSF-SFIS-5Y031-SF5. Forest products from this sale may be delivered to the mill as "FSC 100% and / or SFI certified" as long as the contractor hauling the forest products is chain-of-custody (COC) certified or covered under a COC certificate from the destination mill. The purchaser is responsible for maintaining COC after leaving the sale area.

12. Good Neighbor Authority (GNA) Requirements (7/16)

If the name of this timber sales contains the acronym GNA, it is authorized by the Good Neighbor Authority (GNA) and covered by various agreements between the U.S. Forest Service and the State. The timber sale occurs on federal land and the following conditions apply:

GNA contracts on US Forest Service land will not be awarded to purchasers on the Federal list of excluded parties. The System for Award Management (SAM) will be checked for active excluded parties prior to award of contract. In addition, the Bidder to whom award is made must complete an Assurance Regarding Felony Conviction or Tax Delinquent Status for Corporate Applicants (AD-3031).

13. Good Neighbor Authority (GNA) Requirements, con't (9/16)

Bidder certifies, by signing this bid form, that to the best of Bidder's knowledge that the following representations are accurate and complete.

a. That the Bidder and its principals are not presently debarred, suspended, proposed for debarment, declared ineligible, or voluntary excluded from timber sales (covered transactions) by any Federal department or agency.

b. That the Bidder and its principals have not within a 3-year period preceding this bid been convicted of or had a civil judgment rendered against them for commission of fraud or a criminal offense in connection with obtaining, attempting to obtain, or performing a public (Federal, State, or local) transaction or contract under a public transaction; violation of Federal or State antitrust statutes or commission of embezzlement, theft, forgery, bribery, falsification or destruction of records, making false statements, or receiving stolen property.

c. That the Bidder and its principals are not presently indicted for or otherwise criminally or civilly charged by a governmental entity (Federal, State, or local) with commission of any of the offenses enumerated in paragraph b of this certification.

d. That the Bidder and its principals have not within a 3-year period preceding this bid had one or more public transactions (Federal, State, or local) terminated for breach or default of a timber or forest product contract.

Bidders that cannot certify this requirement, in whole or in part, shall submit an explanation with their bid.

KEITH CREAGH

Director

TIMBER SALE INFORMATION

153 Thayer Block (61-125-17)

Kalkaska County (Advertised Price \$92,252.35)

SALE NOTE: This sale has several areas of low ground and should be cut in dry or frozen conditions.

A timber sale contract for this lump sum, sealed bid timber sale will be awarded to the responsible bidder offering the highest sealed bid price. Bids must be at or above the following advertised price for each species:

<u>PRODUCTS & SPECIES</u>	<u>ESTIMATED UNITS*</u>	<u>ADVERTISED PRICE</u>
Sawtimber		
Black Cherry	0.80 MBF	\$ 192.00 / MBF
Mixed Aspen	124.50 MBF	\$ 105.00 / MBF
Paper Birch	0.80 MBF	\$ 28.00 / MBF
Red Maple	89.40 MBF	\$ 127.00 / MBF
Red Pine	115.40 MBF	\$ 115.00 / MBF
White Pine	20.30 MBF	\$ 65.00 / MBF
Pulpwood		
Balsam Fir	82.00 Cords	\$ 12.80 / Cord
Black Spruce	3.00 Cords	\$ 24.45 / Cord
Jack Pine	22.00 Cords	\$ 13.90 / Cord
Mixed Aspen	1,629.00 Cords	\$ 19.55 / Cord
Mixed Hardwood	35.00 Cords	\$ 18.05 / Cord
Red Maple	511.00 Cords	\$ 18.05 / Cord
Red Pine	235.00 Cords	\$ 40.05 / Cord
White Pine	38.00 Cords	\$ 13.60 / Cord

* The total volume is statistically estimated within plus (+) or minus (-) 8.78 percent. The estimated units are final and not subject to adjustment. Prospective bidders are urged to examine this timber and to make their own estimates of quantity and quality.

BOND AND PAYMENT SCHEDULE:

1. A bond in the amount of \$4,613.00 to insure faithful performance of the conditions of the contract will be deposited by the successful bidder within 21 days of the sale award.
2. Cutting in any sale or unit without the required advance payment would be considered a trespass.
3. Total payment must be paid in advance or according to the following schedule:
 - (a) Ten percent (10%) of the sale value must be paid within 21 days of the sale award.
 - (b) The 10% down payment will be credited towards the first unit cut.
4. If no cutting takes place, the 10% down payment will not be refunded.
5. Operations on the contract issued will terminate on 12/31/2020.

Description of Timber by Payment Unit (PU)

PU	MARKET GROUP	PRODUCT	QUANTITY	UNIT	ACRES	ADVERTISE PRICE	
1	Black Cherry	Sawtimber	0.8	MBF	17.1	\$12,152.50	
	Mixed Aspen		16.0	MBF			
	<i>B. T. Aspen</i>		1.1	<i>MBF</i>			
	<i>Quaking Aspen</i>		14.9	<i>MBF</i>			
	Paper Birch		0.8	MBF			
	Red Maple		20.1	MBF			
	White Pine		5.6	MBF			
	Balsam Fir		Pulpwood	19.0			Cords
	Black Spruce			3.0			Cords
	Mixed Aspen			226.0			Cords
	<i>B. T. Aspen</i>			2.0			<i>Cords</i>
	<i>Quaking Aspen</i>			224.0			<i>Cords</i>
	Mixed Hardwood			11.0			Cords
	<i>Black Cherry</i>			5.0			<i>Cords</i>
	<i>Paper Birch</i>			6.0			<i>Cords</i>
	Red Maple			128.0			Cords
	White Pine	10.0		Cords			
2	Mixed Aspen	Sawtimber	9.2	MBF	21.2	\$25,910.10	
	<i>Quaking Aspen</i>		9.2	<i>MBF</i>			
	Red Maple		1.5	MBF			
	Red Pine		115.4	MBF			
	Mixed Aspen		Pulpwood	93.0			Cords
	<i>Quaking Aspen</i>			93.0			<i>Cords</i>
	Red Maple			14.0			Cords
	Red Pine			235.0			Cords
3	Mixed Aspen	Sawtimber	39.9	MBF	14.5	\$12,967.30	
	<i>B. T. Aspen</i>		2.1	<i>MBF</i>			
	<i>Quaking Aspen</i>		37.8	<i>MBF</i>			
	Red Maple		6.0	MBF			
	White Pine		4.0	MBF			
	Balsam Fir		Pulpwood	34.0			Cords
	Jack Pine			6.0			Cords
	Mixed Aspen			294.0			Cords
	<i>B. T. Aspen</i>			16.0			<i>Cords</i>
	<i>Quaking Aspen</i>			278.0			<i>Cords</i>
	Mixed Hardwood			24.0			Cords
	<i>Paper Birch</i>			24.0			<i>Cords</i>
	Red Maple			54.0			Cords
White Pine	6.0	Cords					
4	Mixed Aspen	Sawtimber		18.4	MBF	29.2	\$19,985.90
	<i>B. T. Aspen</i>		3.1	<i>MBF</i>			
	<i>Quaking Aspen</i>		15.3	<i>MBF</i>			
	Red Maple		49.9	MBF			
	Balsam Fir		Pulpwood	9.0	Cords		
	Mixed Aspen			418.0	Cords		
	<i>B. T. Aspen</i>			13.0	<i>Cords</i>		
	<i>Quaking Aspen</i>			405.0	<i>Cords</i>		
	Red Maple			190.0	Cords		
5	Mixed Aspen	Sawtimber	8.0	MBF	7.4	\$3,276.30	
	<i>B. T. Aspen</i>		2.1	<i>MBF</i>			
	<i>Quaking Aspen</i>		5.9	<i>MBF</i>			
	Balsam Fir		Pulpwood	4.0			Cords
	Mixed Aspen			122.0			Cords
	<i>B. T. Aspen</i>			23.0			<i>Cords</i>
	<i>Quaking Aspen</i>			99.0			<i>Cords</i>
6	Mixed Aspen	Sawtimber	8.5	MBF	4.2	\$3,646.70	

Description of Timber by Payment Unit (PU), con't

PU	MARKET GROUP	PRODUCT	QUANTITY	UNIT	ACRES	ADVERTISE PRICE
6 con't	<i>Quaking Aspen</i>	<i>Sawtimber</i>	8.5	<i>MBF</i>		
	White Pine		10.7	MBF		
	Mixed Aspen	Pulpwood	90.0	Cords		
	<i>Quaking Aspen</i>		90.0	<i>Cords</i>		
	White Pine		22.0	Cords		
7	Mixed Aspen	Sawtimber	24.5	MBF	25.2	\$14,313.55
	<i>Quaking Aspen</i>		24.5	<i>MBF</i>		
	Red Maple		11.9	MBF		
	Balsam Fir	Pulpwood	16.0	Cords		
	Jack Pine		16.0	Cords		
	Mixed Aspen		386.0	Cords		
	<i>Quaking Aspen</i>		386.0	<i>Cords</i>		
	Red Maple		125.0	Cords		
TOTAL:			351.2	MBF		
TOTAL:			2,555.0	Cords		

Sale Specific Conditions & Requirements

Sale Name: 153 Thayer Block

Sale Number: 61-125-17 Seq#: 1

1 - Sale Area

1.2 - Boundaries

1.2.1 - Painted boundaries (1/14)

The sale boundary and Payment Unit boundaries are marked and identified by blue and red paint, along with a timber type change. Exterior sale boundary lines against private property are marked with blue paint. Exterior sale boundary lines against state are marked with red paint. The interior Payment Unit boundary between Payment Units 1 and 2 is unpainted and identified by the timber type change. The painted boundary line trees are not Included Timber and are to be protected unless marked with orange paint.

2 - Timber Specifications

2.1 - Included Timber

2.1.1 - Clearcut unit(s) with unmerchantable trees (6/14)

Within Payment Unit(s) 1, 3, 4, 5 and 7, cut all trees that are two (2) inches or more at DBH, except do not cut oak, cedar, hemlock or trees marked with green paint. In addition, do not cut white pine or balsam fir less than four (4) inches at DBH.

2.1.3 - Cut tree marked unit(s) (12/08)

Within Payment Unit(s) 6, all trees are designated for cutting when marked with orange paint above and below stump height, regardless of merchantability. In addition, cut all aspen and balsam fir.

2.1.8 - Designated plantation row unit(s) (12/08)

Within Payment Unit(s) 2, all trees which meet minimum piece specifications in 2.2 Utilization, within designated plantation rows are designated for cutting. In addition, cut all aspen, red maple and balsam fir. Designated plantation rows are every third row. Begin with the third row in from the outside of the plantation, then continue cutting every third row. Because of the variability of row direction, it shall be the responsibility of the producer to maintain the third row sequence.

3 - Payments

3.3 - Pre-measured Sales

3.3.4 - Dividing payment units (7/14)

Payment Unit(s) with a value of over \$15,000 may be divided at the request of the Purchaser and upon approval of the Unit Manager. Dividing Payment Units is a contract modification which requires a Timber Sale Contract Supplement. There will be only one division per Payment Unit.

4 - Transportation

4.1 - Construction

4.1.6 - Road construction (1/09)

Improvements of existing roads shall be done in such a way as to minimize the environmental and visual impacts. Merchantable trees shall be cut and utilized unless otherwise directed. Non-merchantable trees shall be severed and laid flat on the ground. Slash shall be scattered, and not left in windrows and kept a minimum of 10 feet back from the road edge. Stumps shall be set upright, not left on edge, and be moved at least 10 feet away from the road edge. Disturbed soil shall be feathered into the woods and not left in berms or windrows.

4.1.12 - No new roads (1/12)

No new roads will be permitted. All operations are limited to existing roads. Skid trails only will be allowed.

5 - Operations

5.1 - Notification

5.1.3 - Well heads and natural gas pipelines (11/15)

The Purchaser is responsible for contacting the TransCanada gas/pipeline company prior to operating equipment in the vicinity

of well heads or natural gas pipelines.

5.2 - Conduct of Operations

5.2.1 - Slash

5.2.1.8 - Slash height (12/08)

No slash may exceed 36 inches in height.

5.2.2 - Hazard Trees/Snags

5.2.2.1 - Den trees (10/16)

Obvious hollow and/or den trees shall be protected and left standing unless they are a safety hazard.

5.2.3 - Operating Restrictions

5.2.3.6 - Bark beetle restriction (12/08)

In the event drought creates a high risk of pine bark beetle infestation, pine is not to be cut during the period March 1 through July 1, unless all portions of trees greater than two inches in diameter are removed from the sale area, reduced to chips, or treated to the satisfaction of the Unit Manager or his/her representative, within fifteen days of being severed from the stump. Pine log decks, pulpwood piles and treetops that are piled for chipping in the fall or winter within a 1/4 mile of susceptible sites must be removed before March 15. Residual slash must not be placed in piles or rows and must be spread over the site for quick drying. The Department of Natural Resources will exercise this specification if the risk of damage warrants.

5.2.3.11 - Coppice regeneration protection (4/10)

Timber harvesting in Payment Units 1, 2, 3, 4, 5 and 7 must be completed before significant aspen sprouting occurs in that Payment Unit so as to minimize damage to the new regeneration. Any post harvest operations, such as chipping, must be completed before sprouting of regeneration occurs. If it is anticipated that chipping will be delayed, then tops shall be carried to one central location or left unchipped. The Unit Manager or his/her representative may cease such operations if sprouting occurs before the operation is complete.

5.2.4 - Dead and Down Creation

5.2.4.4 - Dead and down creation, grouse (8/13)

To encourage grouse and other wildlife, in Payment Unit(s) 1, 3, 4, 5 and 7, leave at least six (6) large tops in a single pile and at least one pile for every 2 acres. These will be evenly scattered throughout the unit.

5.2.17 - Crane Mats/Timber Mats (9/17)

Some skid trails may require extra protection such as that afforded by Crane Mats/Timber Mats. If available, Crane Mats/Timber Mats may be borrowed from the DNR and are located at the Marquette ICC, the Newberry Field Office and the Grayling Field Office. Contact the sale administrator for specific details. A Timber Sale Contract Supplement will be used to document the Purchaser's use of the DNR's Crane Mats/Timber Mats. It is the responsibility of the Purchaser to contact the sale administrator to schedule pick up and drop off. In addition, all mats must be cleaned prior to drop off. A charge of \$350.00 NLP will be assessed for all damaged or non-returned mats. Damage is defined as misuse resulting in three or more broken cants.

5.2.22 - Operating Caution

5.2.22.1 - Operating caution (6/11)

It is recommended, but not required, that within Payment Unit(s) 1, 3, 4, 5, and 7, cutting and skidding occur during dry summer or frozen winter conditions. The reason for the recommendation is because of wet ground conditions.

5.2.32 - Decking/landing restoration (9/13)

All decking and landing areas must have the surface area restored to a condition equal to or better than before. This is to ensure the proper regeneration of the stand.

5.4 - Soil Protection

5.4.1 - Rutting restriction, general (7/16)

Operations are to cease immediately if equipment and weather conditions result in rutting of roads and/or skid trails which is 12 inches or greater in depth and 50 feet in length. The Unit Manager or his/her representative may restrict hauling and/or

skidding if ruts exceed the specified depth. With the Unit Manager or his/her representative's approval, the Purchaser may return to the area when the risk of rutting has decreased.

5.4.6 - Wet area protection (5/10)

No harvesting operations, including skidding and felling, are to take place within the vernal pond areas or drainages. Payment Units 1, 3, and 7 have areas with vernal ponds or drainages. When harvesting occurs, there should be no disturbance to the vernal pond depression. All equipment, trees and tops should be kept out of this area. Within 100 feet of the pond, equipment should only be used when the soil is in a dry or frozen condition. Care must be taken by the Purchaser to identify and avoid operating in these areas of the timber sale.

5.8 - Protection of Endangered Species

5.8.5 - Protection of raptor nests (3/13)

All trees with raptor nests will be protected if found during harvesting operations. Notification will be made to the Unit Manager or his/her representative who will notify the Wildlife Biologist so an on-site evaluation and recommendation can be made, if necessary.

6 - Safety and Fire Prevention

6.2 - Signing

6.2.1 - Road posting (9/09)

The Purchaser is responsible for posting and maintaining caution signs on West Sharon Rd. and Thayer Rd. prior to beginning operations. The road must be posted at appropriate distances from the sale area to warn of logging activity and truck traffic. Signs must be removed when harvest operations are suspended or completed. The Purchaser will provide these signs.



TIMBER SALE MAP

This information provided by authority of Part 5, 1994 PA 451, as amended.

Sale Number	Year
61-125	17

Forest Management Unit <i>Traverse City</i>	County <i>Kalkaska</i>	Mapped By <i>Standerfer</i>	Date <i>8/22</i>	Page <i>1</i>	of <i>1</i>
Compartement Number <i>153</i>	Township <i>25N</i>	Range <i>07W</i>	Section(s) and Subdivision(s) <i>1 - SW1/4, SE1/4, N1/2NE, SENE</i>		Scale: ... <i>4"</i> = 1 mile

Cover Type				Density	
A = Aspen	J = Jack Pine	O = Oak	U = Upland Brush	0 = Non Stocked	5 = Pole Timber Medium
B = Paper Birch	K = Rock	P = Lowland Poplar	UM = Upland Mix Forest	1 = Seedling Sapling Poor	6 = Pole Timber Well
C = Cedar	L = Lowland Brush	Q = Mixed Swamp Conifer	V = Bog or Marsh	2 = Seedling Sapling Medium	7 = Saw Timber Poor
D = Treed Bog	LM = Lowland Mix Forest	R = Red Pine	W = White Pine	3 = Seedling Sapling Well	8 = Saw Timber Medium
E = Swamp Hardwoods	M = Maple, Beech, Birch	S = Black Spruce	X = Non Stocked	4 = Pole Timber Poor	9 = Saw Timber Well
F = Spruce/Fir	MC = Mixed Conifer	T = Tamarack	Y = Sand		
G = Grass	MD = Mixed Deciduous		Z = Water		
H = Hemlock	N = Marsh				



TIMBER SALE INFORMATION

Bogged Down Mix (61-129-17)

Kalkaska County (Advertised Price \$77,595.70)

SALE NOTE: Certain units within the sale will need to be cut in dry or frozen weather conditions (with the approval of the sale administrator) due to the wet ground conditions. See spec 5.2.3.1 for details.

In addition, crane mats might be needed for skidding across some areas of wet ground. See spec 5.2.17 for details.

A recreation site such as a trail, pathway, or campground is within the sale area or the vicinity. Certain restrictions/specifications may be applicable including time restrictions.

A timber sale contract for this lump sum, sealed bid timber sale will be awarded to the responsible bidder offering the highest sealed bid price. Bids must be at or above the following advertised price for each species:

<u>PRODUCTS & SPECIES</u>	<u>ESTIMATED UNITS*</u>	<u>ADVERTISED PRICE</u>
Sawtimber		
Black Cherry	8.40 MBF	\$ 164.00 / MBF
Mixed Aspen	24.50 MBF	\$ 90.00 / MBF
Paper Birch	3.90 MBF	\$ 24.00 / MBF
Red Maple	52.20 MBF	\$ 109.00 / MBF
Red Pine	118.80 MBF	\$ 98.00 / MBF
White Pine	146.30 MBF	\$ 56.00 / MBF
Pulpwood		
Balsam Fir	85.00 Cords	\$ 10.95 / Cord
Black Spruce	813.00 Cords	\$ 20.95 / Cord
Mixed Aspen	660.00 Cords	\$ 16.75 / Cord
Mixed Hardwood	631.00 Cords	\$ 15.45 / Cord
N. White Cedar	7.00 Cords	\$ 16.30 / Cord
Red Pine	62.00 Cords	\$ 34.35 / Cord
Tamarack	26.00 Cords	\$ 24.55 / Cord
White Pine	579.00 Cords	\$ 11.65 / Cord

* The total volume is statistically estimated within plus (+) or minus (-) 8.10 percent. The estimated units are final and not subject to adjustment. Prospective bidders are urged to examine this timber and to make their own estimates of quantity and quality.

BOND AND PAYMENT SCHEDULE:

1. A bond in the amount of \$3,880.00 to insure faithful performance of the conditions of the contract will be deposited by the successful bidder within 21 days of the sale award.
2. Cutting in any sale or unit without the required advance payment would be considered a trespass.
3. Total payment must be paid in advance or according to the following schedule:
 - (a) Ten percent (10%) of the sale value must be paid within 21 days of the sale award.
 - (b) The 10% down payment will be credited towards the first unit cut.
4. If no cutting takes place, the 10% down payment will not be refunded.
5. Operations on the contract issued will terminate on 12/31/2020.

Description of Timber by Payment Unit (PU)

PU	MARKET GROUP	PRODUCT	QUANTITY	UNIT	ACRES	ADVERTISE PRICE	
1	Mixed Aspen	Sawtimber	1.0	MBF	6.0	\$2,417.40	
	<i>B. T. Aspen</i>		1.0	<i>MBF</i>			
	Paper Birch		1.7	MBF			
	Red Maple		0.9	MBF			
	Red Pine		8.7	MBF			
	White Pine		1.3	MBF			
	Mixed Aspen	Pulpwood	13.0	Cords			
	<i>B. T. Aspen</i>		13.0	<i>Cords</i>			
	Mixed Hardwood		34.0	Cords			
	<i>Paper Birch</i>		3.0	<i>Cords</i>			
	<i>Red Maple</i>		31.0	<i>Cords</i>			
	Red Pine		7.0	Cords			
	White Pine		24.0	Cords			
2	Mixed Aspen	Sawtimber	0.7	MBF	29.1	\$18,107.60	
	<i>Quaking Aspen</i>		0.7	<i>MBF</i>			
	Paper Birch		0.7	MBF			
	Red Maple		10.0	MBF			
	Red Pine		89.4	MBF			
	White Pine		35.1	MBF			
	Black Spruce	Pulpwood	23.0	Cords			
	<i>Black Spruce</i>		23.0	<i>Cords</i>			
	Mixed Aspen		96.0	Cords			
	<i>Quaking Aspen</i>		96.0	<i>Cords</i>			
	Mixed Hardwood		77.0	Cords			
	<i>Paper Birch</i>		15.0	<i>Cords</i>			
	<i>Red Maple</i>		62.0	<i>Cords</i>			
Red Pine	46.0	Cords					
White Pine	116.0	Cords					
3	Mixed Aspen	Sawtimber	0.2	MBF	22.3	\$7,614.15	
	<i>Quaking Aspen</i>		0.2	<i>MBF</i>			
	Paper Birch		0.3	MBF			
	Red Maple		7.8	MBF			
	Red Pine		10.2	MBF			
	White Pine		26.0	MBF			
	Balsam Fir	Pulpwood	6.0	Cords			
	Black Spruce		56.0	Cords			
	<i>White Spruce</i>		<i>Sawtimber</i>	0.9			<i>MBF</i>
	<i>Black Spruce</i>		<i>Pulpwood</i>	53.0			<i>Cords</i>
	<i>White Spruce</i>		1.0	<i>Cords</i>			
	Mixed Aspen		18.0	Cords			
	<i>Quaking Aspen</i>		18.0	<i>Cords</i>			
	Mixed Hardwood		118.0	Cords			
	<i>Black Cherry</i>		3.0	<i>Cords</i>			
	<i>Paper Birch</i>		19.0	<i>Cords</i>			
	<i>Red Maple</i>		96.0	<i>Cords</i>			
	N. White Cedar		3.0	Cords			
	Red Pine		5.0	Cords			
White Pine	60.0	Cords					
4	Mixed Aspen	Sawtimber	0.2	MBF	29.1	\$9,956.45	
	<i>Quaking Aspen</i>		0.2	<i>MBF</i>			
	Paper Birch		0.3	MBF			
	Red Maple		11.1	MBF			
	Red Pine	10.5	MBF				
	White Pine	34.1	MBF				
	Balsam Fir	Pulpwood	10.0	Cords			
	Black Spruce		86.0	Cords			

Description of Timber by Payment Unit (PU), con't

PU	MARKET GROUP	PRODUCT	QUANTITY	UNIT	ACRES	ADVERTISE PRICE
4 con't	<i>White Spruce</i>	<i>Sawtimber</i>	1.4	<i>MBF</i>		
	<i>Black Spruce</i>	<i>Pulpwood</i>	81.0	<i>Cords</i>		
	<i>White Spruce</i>		2.0	<i>Cords</i>		
	Mixed Aspen		23.0	<i>Cords</i>		
	<i>Quaking Aspen</i>		23.0	<i>Cords</i>		
	Mixed Hardwood		159.0	<i>Cords</i>		
	<i>Black Cherry</i>		5.0	<i>Cords</i>		
	<i>Paper Birch</i>		23.0	<i>Cords</i>		
	<i>Red Maple</i>		131.0	<i>Cords</i>		
	N. White Cedar		4.0	<i>Cords</i>		
	Red Pine		4.0	<i>Cords</i>		
	White Pine		71.0	<i>Cords</i>		
	5	Paper Birch	Sawtimber	0.4	MBF	21.5
Red Maple			10.4	MBF		
White Pine			11.2	MBF		
Balsam Fir		Pulpwood	34.0	Cords		
Black Spruce			317.0	Cords		
<i>Black Spruce</i>			317.0	<i>Cords</i>		
Mixed Aspen			4.0	Cords		
<i>Quaking Aspen</i>			4.0	<i>Cords</i>		
Mixed Hardwood			60.0	Cords		
<i>Black Cherry</i>			8.0	<i>Cords</i>		
<i>Paper Birch</i>			9.0	<i>Cords</i>		
<i>Red Maple</i>			43.0	<i>Cords</i>		
Tamarack			13.0	Cords		
White Pine			15.0	Cords		
6		Black Cherry	Sawtimber	1.3	MBF	
	Paper Birch		0.5	MBF		
	Red Maple		10.9	MBF		
	White Pine		20.3	MBF		
	Balsam Fir	Pulpwood	35.0	Cords		
	Black Spruce		331.0	Cords		
	<i>Black Spruce</i>		331.0	<i>Cords</i>		
	Mixed Aspen		25.0	Cords		
	<i>Quaking Aspen</i>		25.0	<i>Cords</i>		
	Mixed Hardwood		74.0	Cords		
	<i>Black Cherry</i>		18.0	<i>Cords</i>		
	<i>Paper Birch</i>		10.0	<i>Cords</i>		
	<i>Red Maple</i>		46.0	<i>Cords</i>		
	Tamarack		13.0	Cords		
	White Pine		77.0	Cords		
7	Black Cherry	Sawtimber	7.1	MBF	9.9	\$6,615.20
	Mixed Aspen		4.7	MBF		
	<i>Quaking Aspen</i>		4.7	<i>MBF</i>		
	Red Maple		1.1	MBF		
	White Pine		12.9	MBF		
	Mixed Aspen	Pulpwood	82.0	Cords		
	<i>Quaking Aspen</i>		82.0	<i>Cords</i>		
	Mixed Hardwood		41.0	Cords		
	<i>Black Cherry</i>		39.0	<i>Cords</i>		
	<i>Red Maple</i>		2.0	<i>Cords</i>		
White Pine		187.0	Cords			
8	Mixed Aspen	Sawtimber	17.7	MBF	32.0	\$9,967.10
	<i>B. T. Aspen</i>		16.0	<i>MBF</i>		
	<i>Quaking Aspen</i>		1.7	<i>MBF</i>		
	White Pine		5.4	MBF		

Description of Timber by Payment Unit (PU), con't

PU	MARKET GROUP	PRODUCT	QUANTITY	UNIT	ACRES	ADVERTISE PRICE
8 con't	Mixed Aspen	Pulpwood	399.0	Cords		
	<i>B. T. Aspen</i>		251.0	<i>Cords</i>		
	<i>Quaking Aspen</i>		148.0	<i>Cords</i>		
	Mixed Hardwood		68.0	Cords		
	<i>Basswood</i>		2.0	<i>Cords</i>		
	<i>Black Cherry</i>		34.0	<i>Cords</i>		
	<i>Ironwood</i>		21.0	<i>Cords</i>		
	<i>Red Maple</i>		6.0	<i>Cords</i>		
	<i>Red Oak</i>		1.0	<i>Cords</i>		
	<i>Sugar Maple</i>		4.0	<i>Cords</i>		
	White Pine		29.0	Cords		
TOTAL:			354.1	MBF		
TOTAL:			2,863.0	Cords		

Sale Specific Conditions & Requirements

Sale Name: Bogged Down Mix

Sale Number: 61-129-17 Seq#: 1

1 - Sale Area

1.2 - Boundaries

1.2.1 - Painted boundaries (1/14)

The sale boundary and Payment Unit boundaries are marked and identified by blue, red and yellow paint. Exterior sale boundary lines against private property are marked with blue paint. Exterior sale boundary lines against state are marked with red paint. Interior Payment Unit boundaries are marked with yellow paint. The painted boundary line trees are not Included Timber and are to be protected. Yellow painted trees designating an interior Payment Unit boundary are only to be cut when all surrounding Payment Units have been paid.

2 - Timber Specifications

2.1 - Included Timber

2.1.1 - Clearcut unit(s) with unmerchantable trees (6/14)

Within Payment Unit(s) 8, cut all trees that are two (2) inches or more at DBH, except do not cut white pine and sugar maple that are less than four (4) inches at DBH.

2.1.3 - Cut tree marked unit(s) (12/08)

Within Payment Unit(s) 1, 2, 3, 4, all trees are designated for cutting when marked with orange paint above and below stump height, regardless of merchantability. In addition cut all aspen, balsam fir and black spruce which meet minimum piece specifications in 2.2 Utilization. Also, cut all paper birch greater than six (6) inches at DBH, unless marked with an orange 'X'.

2.1.7 - Leave tree marked unit(s) (6/14)

Within Payment Unit(s) 5, 6, 7, cut all trees that are four (4) inches or more at DBH, except do not cut cedar, hemlock, oak or trees marked with green paint above and below stump height.

2.2 - Utilization

2.2.6 - Roundwood operation required (5/07)

The skidding of whole trees or tree segments with limbs attached is prohibited in Payment Units 1, 2, 3, 4, 5 and 6. All products must be produced as roundwood and forwarded to existing roads or landing areas in final product length.

3 - Payments

3.4 - Damaged Timber

3.4.1 - Damaged timber (6/14)

General Condition and Requirement 3.4 Damaged Timber, defines liquidated damages for undesignated live merchantable trees which are cut or injured. In addition, extreme care should be taken to avoid damage to tree seedlings and saplings.

Within the sale area, if more than 25% of the tree seedlings or saplings (1/4" to 4.5" DBH) within a specified portion of the sale area are damaged, liquidated damages will be assessed at \$200 per acre for all acreage within that specified portion of the sale area that was damaged.

No damage is acceptable to merchantable trees. Within the sale area, if more than 10% of trees (> 4.5" DBH) within a specified area of the sale are damaged, liquidated damages will be assessed for all trees damaged. Rates will be in accordance with General Condition and Requirement 3.4 Damaged Timber.

4 - Transportation

4.1 - Construction

4.1.6 - Road construction (1/09)

Construction of new roads or improvements of existing roads shall be done in such a way as to minimize the environmental

and visual impacts. Merchantable trees shall be cut and utilized unless otherwise directed. Non-merchantable trees shall be severed and laid flat on the ground. Slash shall be scattered, and not left in windrows and kept a minimum of 10 feet back from the road edge. Stumps shall be set upright, not left on edge, and be moved at least 10 feet away from the road edge. Disturbed soil shall be feathered into the woods and not left in berms or windrows.

4.1.7 - Road closure (10/11)

All new roads built into the sale must be blocked to vehicle traffic within 30 days of completion of hauling. Overgrown roads that are reopened shall be considered new roads. In general, this will require constructing a four (4') foot high berm of stumps and logs covered with earth. Stumps and brush must be placed along the remainder of the trail. These roads must be rendered impassable to cars and trucks. Temporary berms may be required if no sale activity occurs for 30 or more consecutive days. Contact the sale administrator for specific details of design and placement.

5 - Operations

5.2 - Conduct of Operations

5.2.1 - Slash

5.2.1.8 - Slash height (12/08)

No slash may exceed 36 inches in height.

5.2.2 - Hazard Trees/Snags

5.2.2.1 - Den trees (10/16)

Obvious hollow and/or den trees shall be protected and left standing unless they are a safety hazard.

5.2.3 - Operating Restrictions

5.2.3.1 - Operating restrictions (9/11)

Within Payment Unit(s) 5 and 6, cutting and skidding are limited to frozen ground conditions and will need to be pre-approved by the sale administrator. This restriction is because of wet ground conditions.

Within Payment Unit(s) 2, 3 and 4, cutting and skidding are limited to dry or frozen conditions that will need to be pre-approved by the sale administrator. This restriction is because of wet ground conditions.

5.2.3.6 - Bark beetle restriction (12/08)

In the event drought creates a high risk of pine bark beetle infestation, pine is not to be cut during the period March 1 through July 1, unless all portions of trees greater than two inches in diameter are removed from the sale area, reduced to chips, or treated to the satisfaction of the Unit Manager or his/her representative, within fifteen days of being severed from the stump. Pine log decks, pulpwood piles and treetops that are piled for chipping in the fall or winter within a 1/4 mile of susceptible sites must be removed before March 15. Residual slash must not be placed in piles or rows and must be spread over the site for quick drying. The Department of Natural Resources will exercise this specification if the risk of damage warrants.

5.2.3.11 - Coppice regeneration protection (4/10)

Timber harvesting in Payment Units 7 and 8 must be completed before significant aspen sprouting occurs in that Payment Unit so as to minimize damage to the new regeneration. Any post harvest operations, such as chipping, must be completed before sprouting of regeneration occurs. If it is anticipated that chipping will be delayed, then tops shall be carried to one central location or left unchipped. The Unit Manager or his/her representative may cease such operations if sprouting occurs before the operation is complete.

5.2.17 - Crane Mats/Timber Mats (9/17)

Some roads or skid trails may require extra protection such as that afforded by Crane Mats/Timber Mats. If available, Crane Mats/Timber Mats may be borrowed from the DNR and are located at the Marquette ICC, the Newberry Field Office and the Grayling Field Office. Contact the sale administrator for specific details. A Timber Sale Contract Supplement will be used to document the Purchaser's use of the DNR's Crane Mats/Timber Mats. It is the responsibility of the Purchaser to contact the sale administrator to schedule pick up and drop off. In addition, all mats must be cleaned prior to drop off. A charge of \$350.00 will be assessed for all damaged or non-returned mats. Damage is defined as misuse resulting in three or more broken cants.

5.2.32 - Decking/landing restoration (9/13)

All decking and landing areas must have the surface area restored to a condition equal to or better than before. This is to ensure the proper regeneration of the stand.

5.2.39 - ORV trail/route protection (12/12)

There is an ORV trail and it is shown on the Timber Sale Map. Do not cut trees or damage posts with orange ORV markers. All stumps within 5 feet of the trail must be cut flush with the ground. Maintain a 10 foot wide slash, debris, and rut free zone daily using the ORV trail as the centerline. Do not run equipment down the ORV trail. Skidding across the trail may only occur in locations approved by the sale administrator.

5.2.41 - Snowmobile trail protection (9/11)

There is a snowmobile trail and it is shown on the Timber Sale Map. Do not cut or damage posts with orange trail markers or traffic control signs. If the trail is used, it must be maintained and restored to a condition equal to or better than before the sale. If the trail road is to be used for hauling during the snowmobile season, then a snow covered base must be left on the trail. The snowmobile trail may only be crossed at right angles. Maintain a 20 foot wide slash, debris, and rut free zone daily using the snowmobile trail as the centerline. No decking of forest products will be permitted along the snowmobile trail. All stumps within 10 feet of the snowmobile trail must be cut at ground level.

5.4 - Soil Protection

5.4.1 - Rutting restriction, general (7/16)

Operations are to cease immediately if equipment and weather conditions result in rutting of roads and/or skid trails which is 12 inches or greater in depth and 50 feet in length. The Unit Manager or his/her representative may restrict hauling and/or skidding if ruts exceed the specified depth. With the Unit Manager or his/her representative's approval, the Purchaser may return to the area when the risk of rutting has decreased.

5.4.6 - Wet area protection (5/10)

No harvesting operations, including skidding and felling, are to take place within the vernal pond areas or drainages. When harvesting occurs, there should be no disturbance to the vernal pond depression. All equipment, trees and tops should be kept out of this area. Within 100 feet of the pond, equipment should only be used when the soil is in a dry or frozen condition. Care must be taken by the Purchaser to identify and avoid operating in these areas of the timber sale.

5.8 - Protection of Endangered Species

5.8.5 - Protection of raptor nests (3/13)

All trees with raptor nests will be protected if found during harvesting operations. Notification will be made to the Unit Manager or his/her representative who will notify the Wildlife Biologist so an on-site evaluation and recommendation can be made, if necessary.

6 - Safety and Fire Prevention

6.2 - Signing

6.2.1 - Road posting (9/09)

The Purchaser is responsible for posting and maintaining caution signs on any haul roads prior to beginning operations. The road must be posted at appropriate distances from the sale area to warn of logging activity and truck traffic. Signs must be removed when harvest operations are suspended or completed. The Purchaser will provide these signs.

6.2.3 - Recreational trail posting (2/10)

The Purchaser is responsible for posting and maintaining caution signs on the ORV and snowmobile trail prior to beginning operations. The trail must be posted at appropriate distances from the sale area to warn of logging activity and truck traffic at both ends of the trail. Signs must be removed when harvest operations are suspended or completed. The Purchaser will provide these signs.



TIMBER SALE MAP

This information provided by authority of Part 525, 1994 PA 451, as amended.

Forest Management Unit Traverse City		County Kalkaska	Mapped By Crigier	Date 9/18/2017	Page 1	of 1
Township 26N	Range 05W (sec 6 & 7) 06W (sec 1)	Section(s) and Subdivision(s)	6: W1/2NE, SENE, N1/2SE, SW1/4, S1/2NW, NENW 7: SENE, NESE 1: NWNW	Cruised By Kalkaska Crew		
Scale 1:15,840						

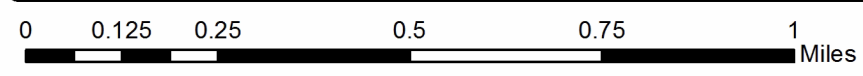
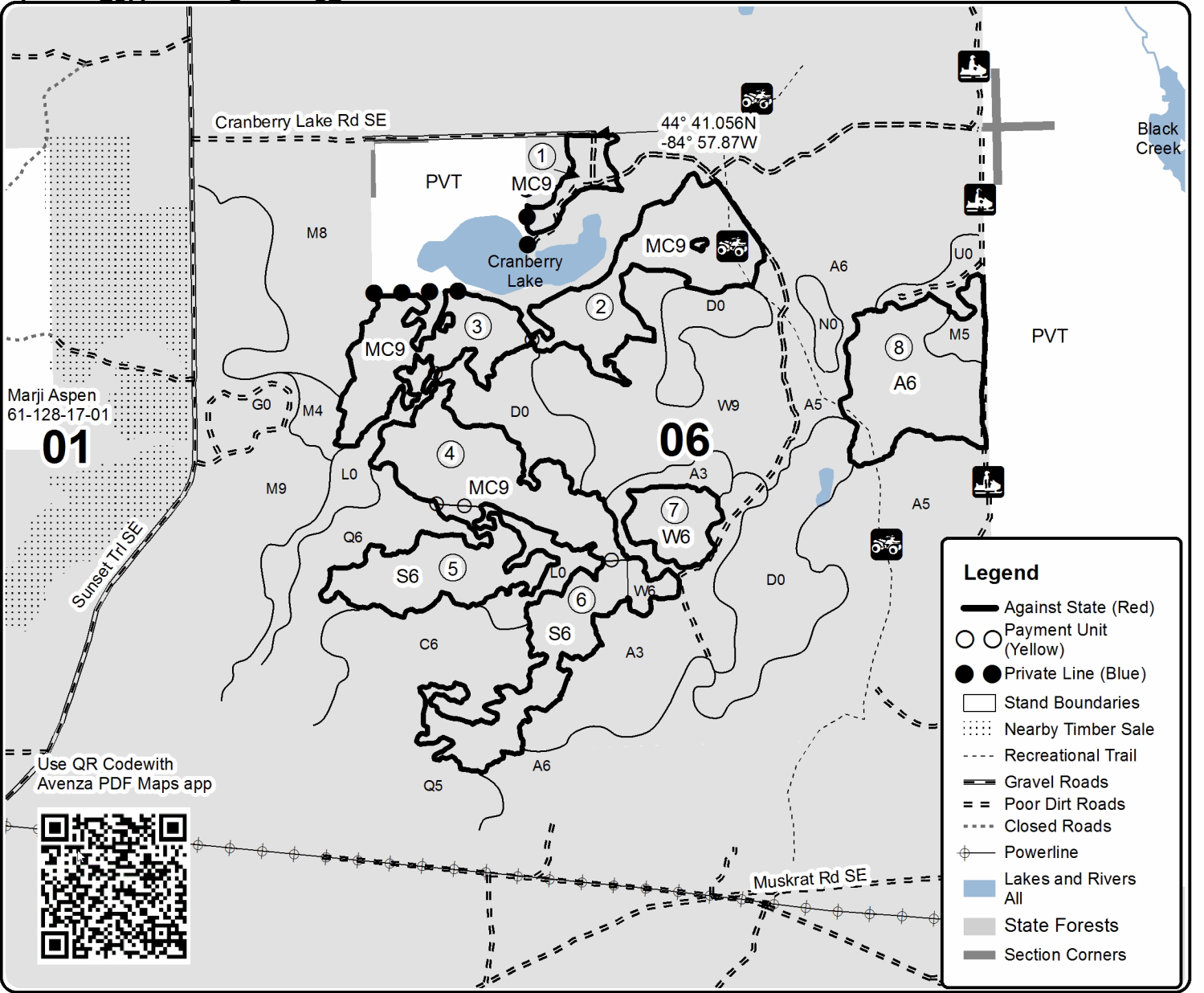
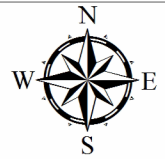
Cover Type				Density	
A = Aspen	H = Hemlock	N = Marsh	U = Upland Brush	0 = Non Stocked	5 = Pole Timber Medium
B = Paper Birch	J = Jack Pine	O = Oak	UM = Upland Mixed	1 = Seedling Sapling Poor	6 = Pole Timber Well
C = Cedar	L = Lowland Brush	P = Lowland Poplar	V = Bog or Marsh	2 = Seedling Sapling Medium	7 = Saw Timber Poor
D = Treed Bog	LM = Lowland Mixed	Q = Mixed Swamp Conifer	W = White Pine	3 = Seedling Sapling Well	8 = Saw Timber Medium
E = Swamp Hdwoods	M = Mpl, Bch, Brch	R = Red Pine	X = Non Stocked	4 = Pole Timber Poor	9 = Saw Timber Well
F = Spruce Fir	MC = Mixed Conifer	S = Black Spruce	Z = Water		
G = Grass	MD = Mixed Deciduous	T = Tamarack			

PU	Acres	PU	Acres
1	6	5	21.5
2	29.1	6	25.5
3	22.3	7	9.9
4	29.1	8	32

Bogged Down Mix

Compartment 120

175.4 Acres



TIMBER SALE INFORMATION

Apple Tree (61-165-17)

Kalkaska County (Advertised Price \$99,426.25)

A timber sale contract for this lump sum, sealed bid timber sale will be awarded to the responsible bidder offering the highest sealed bid price. Bids must be at or above the following advertised price for each species:

<u>PRODUCTS & SPECIES</u>	<u>ESTIMATED UNITS*</u>	<u>ADVERTISED PRICE</u>
Sawtimber		
Black Cherry	5.40 MBF	\$ 164.00 / MBF
Mixed Aspen	171.20 MBF	\$ 90.00 / MBF
Red Maple	63.50 MBF	\$ 109.00 / MBF
Red Pine	63.50 MBF	\$ 98.00 / MBF
White Pine	58.80 MBF	\$ 56.00 / MBF
Pulpwood		
Balsam Fir	120.00 Cords	\$ 10.95 / Cord
Mixed Aspen	2,265.00 Cords	\$ 16.75 / Cord
Mixed Hardwood	1,124.00 Cords	\$ 15.45 / Cord
Red Pine	168.00 Cords	\$ 34.35 / Cord
Scotch Pine	103.00 Cords	\$ 2.40 / Cord
White Pine	343.00 Cords	\$ 11.65 / Cord
White Spruce	3.00 Cords	\$ 20.95 / Cord

* The total volume is statistically estimated within plus (+) or minus (-) 13.24 percent. The estimated units are final and not subject to adjustment. Prospective bidders are urged to examine this timber and to make their own estimates of quantity and quality.

BOND AND PAYMENT SCHEDULE:

1. A bond in the amount of \$4,971.00 to insure faithful performance of the conditions of the contract will be deposited by the successful bidder within 21 days of the sale award.
2. Cutting in any sale or unit without the required advance payment would be considered a trespass.
3. Total payment must be paid in advance or according to the following schedule:
 - (a) Ten percent (10%) of the sale value must be paid within 21 days of the sale award.
 - (b) The 10% down payment will be credited towards the first unit cut.
4. If no cutting takes place, the 10% down payment will not be refunded.
5. Operations on the contract issued will terminate on 12/31/2020.

Description of Timber by Payment Unit (PU)

PU	MARKET GROUP	PRODUCT	QUANTITY	UNIT	ACRES	ADVERTISE PRICE
1	Red Pine	Sawtimber	39.4	MBF	4.0	\$7,710.65
	White Pine		3.8	MBF		
	Red Pine	Pulpwood	94.0	Cords		
	White Pine		35.0	Cords		
2	Black Cherry	Sawtimber	1.9	MBF	60.2	\$29,987.25
	Mixed Aspen		42.6	MBF		
	<i>B. T. Aspen</i>		4.3	<i>MBF</i>		
	<i>Quaking Aspen</i>		38.3	<i>MBF</i>		
	Red Maple		35.8	MBF		
	Balsam Fir	Pulpwood	111.0	Cords		
	<i>Balsam Fir</i>	<i>Sawtimber</i>	11.3	<i>MBF</i>		
	<i>Balsam Fir</i>	<i>Pulpwood</i>	88.0	<i>Cords</i>		
	Mixed Aspen		732.0	Cords		
	<i>B. T. Aspen</i>		23.0	<i>Cords</i>		
	<i>Quaking Aspen</i>		709.0	<i>Cords</i>		
	Mixed Hardwood		498.0	Cords		
	<i>Black Cherry</i>		94.0	<i>Cords</i>		
	<i>Red Maple</i>		404.0	<i>Cords</i>		
	White Pine		66.0	Cords		
	3	Black Cherry	Sawtimber	3.5		
Mixed Aspen			37.0	MBF		
<i>B. T. Aspen</i>			11.7	<i>MBF</i>		
<i>Quaking Aspen</i>			25.3	<i>MBF</i>		
Red Maple			6.3	MBF		
White Pine			2.0	MBF		
Mixed Aspen		Pulpwood	565.0	Cords		
<i>B. T. Aspen</i>			105.0	<i>Cords</i>		
<i>Quaking Aspen</i>			460.0	<i>Cords</i>		
Mixed Hardwood			219.0	Cords		
<i>Black Cherry</i>			48.0	<i>Cords</i>		
<i>Paper Birch</i>			16.0	<i>Cords</i>		
<i>Red Maple</i>			155.0	<i>Cords</i>		
White Pine		7.0	Cords			
4	Mixed Aspen	Sawtimber	6.8	MBF	4.4	\$1,812.90
	<i>Quaking Aspen</i>		6.8	<i>MBF</i>		
	Red Maple		5.7	MBF		
	Mixed Aspen	Pulpwood	18.0	Cords		
	<i>Quaking Aspen</i>		18.0	<i>Cords</i>		
	Mixed Hardwood		18.0	Cords		
<i>Red Maple</i>		18.0	<i>Cords</i>			
5	Mixed Aspen	Sawtimber	34.4	MBF	34.5	\$16,959.80
	<i>B. T. Aspen</i>		10.3	<i>MBF</i>		
	<i>Quaking Aspen</i>		24.1	<i>MBF</i>		
	Red Maple		2.2	MBF		
	Red Pine		19.4	MBF		
	White Pine		33.6	MBF		
	Mixed Aspen	Pulpwood	312.0	Cords		
	<i>B. T. Aspen</i>		46.0	<i>Cords</i>		
	<i>Quaking Aspen</i>		266.0	<i>Cords</i>		
	Mixed Hardwood		48.0	Cords		
	<i>Paper Birch</i>	<i>Sawtimber</i>	1.6	<i>MBF</i>		
	<i>Paper Birch</i>	<i>Pulpwood</i>	18.0	<i>Cords</i>		
	<i>Red Maple</i>		27.0	<i>Cords</i>		
Red Pine		68.0	Cords			
White Pine		132.0	Cords			
6	Mixed Aspen	Sawtimber	42.2	MBF	57.7	\$20,511.85

Description of Timber by Payment Unit (PU), con't

PU	MARKET GROUP	PRODUCT	QUANTITY	UNIT	ACRES	ADVERTISE PRICE
6 con't	<i>Quaking Aspen</i>	<i>Sawtimber</i>	42.2	<i>MBF</i>		
	Red Maple		13.5	MBF		
	Red Pine		4.7	MBF		
	White Pine		19.4	MBF		
	Balsam Fir	Pulpwood	7.0	Cords		
	<i>Balsam Fir</i>		7.0	<i>Cords</i>		
	Mixed Aspen		469.0	Cords		
	<i>Quaking Aspen</i>		469.0	<i>Cords</i>		
	Mixed Hardwood		282.0	Cords		
	<i>Paper Birch</i>		11.0	<i>Cords</i>		
	<i>Red Maple</i>		271.0	<i>Cords</i>		
	Red Pine		6.0	Cords		
	White Pine		103.0	Cords		
7	Mixed Aspen	Sawtimber	8.2	MBF	32.4	\$4,823.20
	<i>Quaking Aspen</i>		8.2	<i>MBF</i>		
	Balsam Fir	Pulpwood	3.0	Cords		
	<i>Balsam Fir</i>		3.0	<i>Cords</i>		
	Mixed Aspen		169.0	Cords		
	<i>Quaking Aspen</i>		169.0	<i>Cords</i>		
	Mixed Hardwood		59.0	Cords		
	<i>Paper Birch</i>		21.0	<i>Cords</i>		
	<i>Red Maple</i>		38.0	<i>Cords</i>		
	Scotch Pine		103.0	Cords		
	White Spruce		3.0	Cords		
TOTAL:			362.4	MBF		
TOTAL:			4,127.0	Cords		

Sale Specific Conditions & Requirements

Sale Name: Apple Tree

Sale Number: 61-165-17 Seq#: 1

1 - Sale Area

1.2 - Boundaries

1.2.1 - Painted boundaries (1/14)

The sale boundary and Payment Unit boundaries are marked and identified by blue and red paint. Exterior sale boundary lines against private property are marked with blue paint. Exterior sale boundary lines against state are marked with red paint. Interior Payment Unit boundaries are marked with red paint.

2 - Timber Specifications

2.1 - Included Timber

2.1.1 - Clearcut unit(s) with unmerchantable trees (6/14)

Within Payment Unit(s) 2 - 7, cut all trees that are two (2) inches or more at DBH except trees marked with green paint above and below stump height regardless of merchantability, along with the following exceptions:

Within Payment Unit 2, do not cut any cedar.

Within Payment Unit 3, do not cut any pine over 18 inches at DBH.

Within Payment Unit 4, do not cut any pine.

Within Payment Unit 7, do not cut any red pine or white pine.

2.1.3 - Cut tree marked unit(s) (12/08)

Within Payment Unit(s) 1, all trees are designated for cutting when marked with orange paint above and below stump height, regardless of merchantability.

2.1.16 - Timber along county or forest roads (6/14)

Cut and remove all standing trees 4.6" DBH or greater within 33 feet of the center line on the east side of county road N Sharon Rd SE. This will extend from the southwest corner of Payment Unit 7 to the northwest corner of Payment Unit 1. All roundwood is to be utilized and is included timber in this contract. Contact the sale administrator for further details.

2.2 - Utilization

2.2.2 - Chipping required (5/14)

Payment Unit 7 must be chip harvested to facilitate future silvicultural activities. The Purchaser has the option to produce sawlogs or pulpwood bolts, but the remaining portion of the trees must be chipped and hauled. The requirement to retain approximately 1/6 to 1/3 of tree tops and limbs less than four inches in diameter does not apply (G. C. & R. 2.2). This is because we want to minimize scotch pine regeneration.

3 - Payments

3.3 - Pre-measured Sales

3.3.4 - Dividing payment units (7/14)

Payment Unit(s) may be divided at the request of the Purchaser and upon approval of the Unit Manager. Dividing Payment Units is a contract modification which requires a Timber Sale Contract Supplement. There will be only one division per Payment Unit.

4 - Transportation

4.1 - Construction

4.1.6 - Road construction (1/09)

Construction of new roads or improvements of existing roads shall be done in such a way as to minimize the environmental

and visual impacts. Merchantable trees shall be cut and utilized unless otherwise directed. Non-merchantable trees shall be severed and laid flat on the ground. Slash shall be scattered, and not left in windrows and kept a minimum of 10 feet back from the road edge. Stumps shall be set upright, not left on edge, and be moved at least 10 feet away from the road edge. Disturbed soil shall be feathered into the woods and not left in berms or windrows.

4.1.7 - Road closure (10/11)

All new roads built into the sale must be blocked to vehicle traffic upon completion of the sale. Overgrown roads that are reopened shall be considered new roads. In general, this will require constructing a four (4') foot high berm of stumps and logs covered with earth. These roads must be rendered impassable to cars and trucks. Temporary berms may be required if no sale activity occurs for 30 or more consecutive days.

5 - Operations

5.2 - Conduct of Operations

5.2.2 - Hazard Trees/Snags

5.2.2.1 - Den trees (10/16)

Obvious hollow and/or den trees shall be protected and left standing unless they are a safety hazard.

5.2.4 - Dead and Down Creation

5.2.4.4 - Dead and down creation, grouse (8/13)

To encourage grouse and other wildlife, in Payment Unit(s) 2, 3, 4, 5, 6, and 7, leave at least six (6) large tops in a single pile and at least one pile for every two acres. Larger cull pieces should be mixed into the brush piles when they are readily available. These will be evenly scattered throughout the unit.

5.2.4.7 - Dead and down creation: hare, grouse, deer and other species (5/15)

To improve horizontal cover habitat for snowshoe hare, grouse, deer, and other species, the Purchaser is to push over red painted boundary trees over 8 inches at DBH as cutting progresses through the Payment Unit. These trees should be tipped over with the root ball still attached so the base of the tree is suspended off the ground. The crown of the fallen tree should be at or near ground level after it is pushed over. Note that this only applies for the red painted boundaries - not along county roads, and not along the drain area painted out of Payment Unit 6. No trees should be pushed over within 50' of the private property boundary, and pushed over trees should be at a spacing of no closer than one every 50'. Contact the sale administrator for further details.

5.2.22 - Operating Caution

5.2.22.1 - Operating caution (6/11)

It is recommended, but not required, that within Payment Unit(s) 2, 3, 4, 5, 6, and 7, cutting, skidding, and hauling occur during dry summer or frozen winter conditions. The reason for the recommendation is due to seasonally wet soil.

5.2.29 - Shrub protection (9/07)

Do not cut or damage hawthorn, witch-hazel, dogwood, apple trees or junberry. These woody-shrub plants are highly beneficial to various wildlife species.

5.2.38 - No decking against live trees (2/04)

Cut products may not be decked against unmarked or designated leave trees.

5.4 - Soil Protection

5.4.1 - Rutting restriction, general (7/16)

Operations are to cease immediately if equipment and weather conditions result in rutting of roads and/or skid trails which is 12 inches or greater in depth and 50 feet in length. The Unit Manager or his/her representative may restrict hauling and/or skidding if ruts exceed the specified depth. With the Unit Manager or his/her representative's approval, the Purchaser may return to the area when the risk of rutting has decreased.

6 - Safety and Fire Prevention

6.2 - Signing

6.2.1 - Road posting (9/09)

The Purchaser is responsible for posting and maintaining caution signs on N Sharon Rd SE prior to beginning operations. The road must be posted at appropriate distances from the sale area to warn of logging activity and truck traffic. Signs must be removed when harvest operations are suspended or completed. The Purchaser will provide these signs.

8 - Performance and Settlement

8.3 - Uncompleted or Terminated Contracts

8.3.1 - Completion of contract, chipping (1/16)

In addition to cutting, all chipping must be completed by the contract expiration date. If chipping has not been completed, an extension fee or damages may be charged per General Condition & Requirement 7.2 and 8.3.



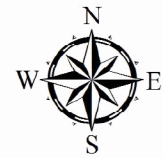
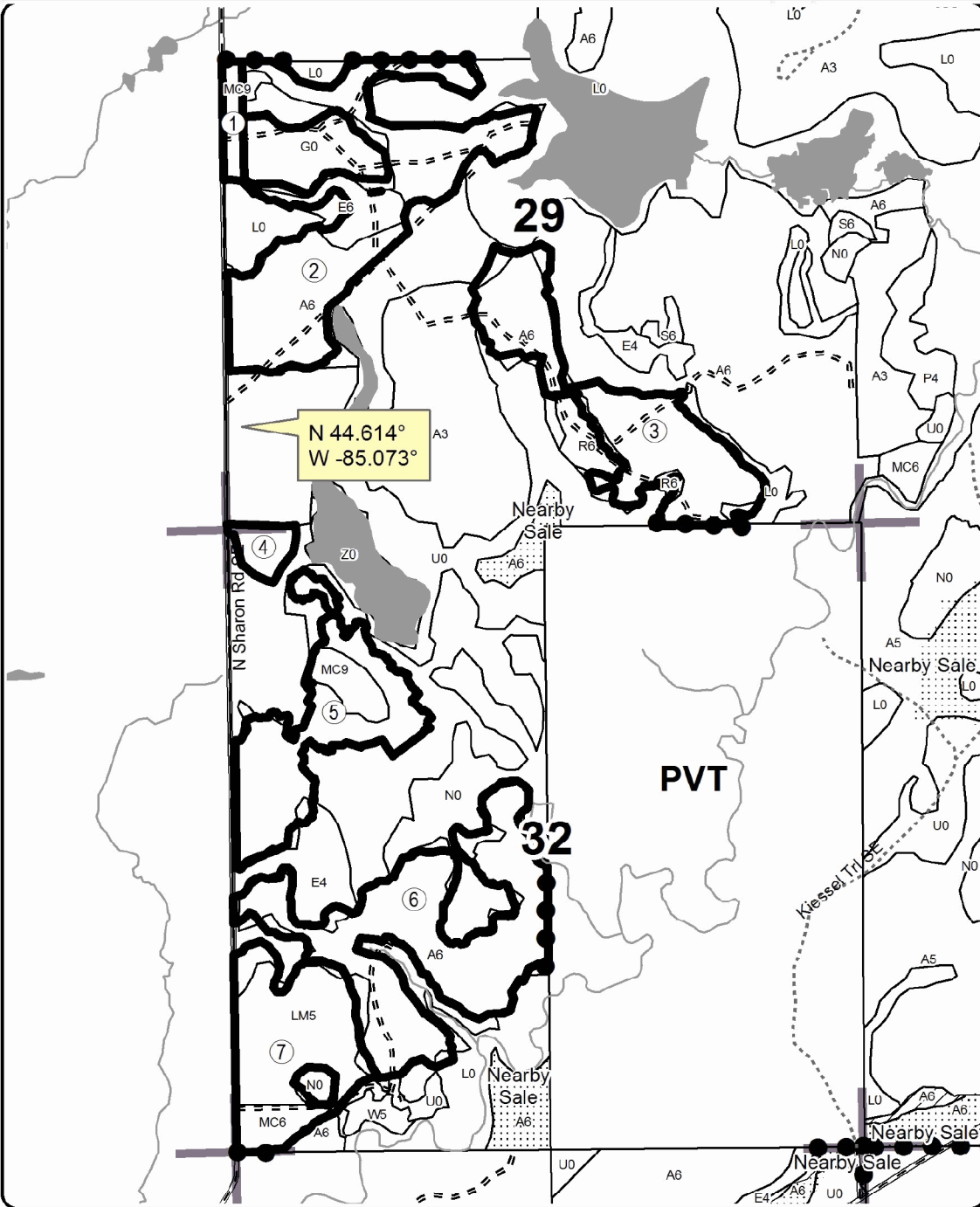
TIMBER SALE MAP

This information provided by authority of Part 525, 1994 PA 451, as amended.

Sale Number	Year
61 - 165	17

Forest Management Unit Traverse City	County Kalkaska	Mapped By Ritchie	Date 09/18/2017	Page 1	of 1
Township 26N	Range 06W	Section(s) and Subdivision(s) Sec 29 and 32	Scale 1:15,840		

Cover Type				Density	
A = Aspen	H = Hemlock	N = Marsh	U = Upland Brush	0 = Non Stocked	5 = Pole Timber Medium
B = Paper Birch	J = Jack Pine	O = Oak	UM = Upland Mixed	1 = Seedling Sapling Poor	6 = Pole Timber Well
C = Cedar	L = Lowland Brush	P = Lowland Poplar	V = Bog or Marsh	2 = Seedling Sapling Medium	7 = Saw Timber Poor
D = Tread Bog	LM = Lowland Mixed	Q = Mixed Swamp Conifer	W = White Pine	3 = Seedling Sapling Well	8 = Saw Timber Medium
E = Swamp Hdwoods	M = Mpl, Bch, Brch	R = Red Pine	X = Non Stocked	4 = Pole Timber Poor	9 = Saw Timber Well
F = Spruce Fir	MC = Mixed Conifer	S = Black Spruce	Z = Water		
G = Grass	MD = Mixed Deciduous	T = Tamarack			

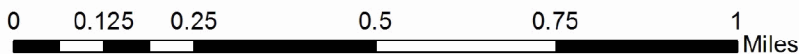


Apple Tree Compartment 127 232.3 Acres

PU	Acres
1	4.0
2	60.2
3	31.9
4	4.4
5	34.5
6	57.7
7	32.4

Legend

- Against State (Red)
- Private Line (Blue)
- Section Corners
- Lakes and Rivers All
- Gravel Roads
- Poor Dirt Roads
- Closed Roads



TIMBER SALE INFORMATION

153 West Sharon Block (61-168-17)

Kalkaska County (Advertised Price \$209,063.20)

A timber sale contract for this lump sum, sealed bid timber sale will be awarded to the responsible bidder offering the highest sealed bid price. Bids must be at or above the following advertised price for each species:

<u>PRODUCTS & SPECIES</u>	<u>ESTIMATED UNITS*</u>		<u>ADVERTISED PRICE</u>
Sawtimber			
Basswood	64.80	MBF	\$ 108.00 / MBF
Beech	5.30	MBF	\$ 91.00 / MBF
Black Cherry	9.40	MBF	\$ 192.00 / MBF
Mixed Aspen	168.30	MBF	\$ 105.00 / MBF
Red Maple	51.70	MBF	\$ 127.00 / MBF
Red Oak	1.50	MBF	\$ 168.00 / MBF
Red Pine	572.30	MBF	\$ 115.00 / MBF
Sugar Maple	66.30	MBF	\$ 282.00 / MBF
White Pine	29.60	MBF	\$ 65.00 / MBF
Pulpwood			
Balsam Fir	32.00	Cords	\$ 12.80 / Cord
Basswood	176.00	Cords	\$ 27.65 / Cord
Black Spruce	6.00	Cords	\$ 24.45 / Cord
Jack Pine	11.00	Cords	\$ 13.90 / Cord
Mixed Aspen	1,192.00	Cords	\$ 19.55 / Cord
Mixed Hardwood	1,091.00	Cords	\$ 18.05 / Cord
Red Pine	909.00	Cords	\$ 40.05 / Cord
White Pine	285.00	Cords	\$ 13.60 / Cord

* The total volume is statistically estimated within plus (+) or minus (-) 9.48 percent. The estimated units are final and not subject to adjustment. Prospective bidders are urged to examine this timber and to make their own estimates of quantity and quality.

BOND AND PAYMENT SCHEDULE:

1. A bond in the amount of \$10,453.00 to insure faithful performance of the conditions of the contract will be deposited by the successful bidder within 21 days of the sale award.
2. Cutting in any sale or unit without the required advance payment would be considered a trespass.
3. Total payment must be paid in advance or according to the following schedule:
 - (a) Ten percent (10%) of the sale value must be paid within 21 days of the sale award.
 - (b) The 10% down payment will be credited towards the first unit cut.
4. If no cutting takes place, the 10% down payment will not be refunded.
5. Operations on the contract issued will terminate on 12/31/2020.

Description of Timber by Payment Unit (PU)

PU	MARKET GROUP	PRODUCT	QUANTITY	UNIT	ACRES	ADVERTISE PRICE
1	Black Cherry	Sawtimber	2.5	MBF	25.1	\$21,865.70
	Mixed Aspen		26.0	MBF		
	<i>B. T. Aspen</i>		20.7	<i>MBF</i>		
	<i>Quaking Aspen</i>		5.3	<i>MBF</i>		
	Red Maple		23.2	MBF		
	Red Pine		10.2	MBF		
	White Pine		27.0	MBF		
	Balsam Fir	Pulpwood	18.0	Cords		
	<i>Balsam Fir</i>	<i>Sawtimber</i>	2.2	<i>MBF</i>		
	<i>Balsam Fir</i>	<i>Pulpwood</i>	14.0	<i>Cords</i>		
	Black Spruce		6.0	Cords		
	<i>Black Spruce</i>	<i>Sawtimber</i>	0.8	<i>MBF</i>		
	<i>Black Spruce</i>	<i>Pulpwood</i>	4.0	<i>Cords</i>		
	Jack Pine		11.0	Cords		
	Mixed Aspen		182.0	Cords		
	<i>B. T. Aspen</i>		86.0	<i>Cords</i>		
	<i>Quaking Aspen</i>		96.0	<i>Cords</i>		
	Mixed Hardwood		240.0	Cords		
	<i>Black Cherry</i>		72.0	<i>Cords</i>		
	<i>Red Maple</i>		168.0	<i>Cords</i>		
	Red Pine		24.0	Cords		
	White Pine		250.0	Cords		
	2	Basswood	Sawtimber	2.8		
Beech			2.0	MBF		
Red Pine			6.8	MBF		
Sugar Maple			29.7	MBF		
Basswood		Pulpwood	11.0	Cords		
Mixed Hardwood			187.0	Cords		
<i>Beech</i>			7.0	<i>Cords</i>		
<i>Ironwood</i>			7.0	<i>Cords</i>		
<i>Sugar Maple</i>			138.0	<i>Cords</i>		
<i>White Ash</i>			35.0	<i>Cords</i>		
Red Pine			2.0	Cords		
3	Mixed Aspen	Sawtimber	19.6	MBF	14.9	\$9,377.95
	<i>B. T. Aspen</i>		7.3	<i>MBF</i>		
	<i>Quaking Aspen</i>		12.3	<i>MBF</i>		
	Sugar Maple		5.8	MBF		
	Balsam Fir	Pulpwood	3.0	Cords		
	<i>Balsam Fir</i>		3.0	<i>Cords</i>		
	Mixed Aspen		166.0	Cords		
	<i>B. T. Aspen</i>		38.0	<i>Cords</i>		
	<i>Quaking Aspen</i>		128.0	<i>Cords</i>		
	Mixed Hardwood		133.0	Cords		
	<i>Black Cherry</i>		13.0	<i>Cords</i>		
<i>Red Maple</i>		30.0	<i>Cords</i>			
<i>Sugar Maple</i>		90.0	<i>Cords</i>			
4	Black Cherry	Sawtimber	5.5	MBF	24.9	\$26,942.90
	Mixed Aspen		7.2	MBF		
	<i>B. T. Aspen</i>		7.2	<i>MBF</i>		
	Red Pine		124.8	MBF		
	Mixed Aspen	Pulpwood	65.0	Cords		
	<i>B. T. Aspen</i>		41.0	<i>Cords</i>		
	<i>Quaking Aspen</i>		24.0	<i>Cords</i>		
	Mixed Hardwood		83.0	Cords		
	<i>Black Cherry</i>		37.0	<i>Cords</i>		
	<i>Red Maple</i>		25.0	<i>Cords</i>		

Description of Timber by Payment Unit (PU), con't

PU	MARKET GROUP	PRODUCT	QUANTITY	UNIT	ACRES	ADVERTISE PRICE
4 con't	<i>Sugar Maple</i>	<i>Pulpwood</i>	21.0	<i>Cords</i>		
	Red Pine		200.0	Cords		
5	Mixed Aspen	Sawtimber	40.4	MBF	9.6	\$10,645.70
	<i>B. T. Aspen</i>		40.4	<i>MBF</i>		
	Red Maple		4.3	MBF		
	Red Oak		1.5	MBF		
	White Pine		1.0	MBF		
	Mixed Aspen	Pulpwood	209.0	Cords		
	<i>B. T. Aspen</i>		189.0	<i>Cords</i>		
	<i>Quaking Aspen</i>		20.0	<i>Cords</i>		
	Mixed Hardwood		61.0	Cords		
	<i>Paper Birch</i>	<i>Sawtimber</i>	2.1	<i>MBF</i>		
	<i>Paper Birch</i>	<i>Pulpwood</i>	2.0	<i>Cords</i>		
	<i>Red Maple</i>		51.0	<i>Cords</i>		
	<i>Red Oak</i>		4.0	<i>Cords</i>		
	White Pine		26.0	Cords		
6	Basswood	Sawtimber	2.0	MBF	11.8	\$18,417.45
	Red Pine		99.8	MBF		
	Basswood	Pulpwood	4.0	Cords		
	Mixed Hardwood		58.0	Cords		
	<i>Black Cherry</i>		25.0	<i>Cords</i>		
	<i>Red Maple</i>		33.0	<i>Cords</i>		
	Red Pine		139.0	Cords		
	Red Pine		139.0	Cords		
7	Red Pine	Sawtimber	42.8	MBF	17.8	\$12,483.55
	Mixed Hardwood	Pulpwood	4.0	Cords		
	<i>Black Cherry</i>		4.0	<i>Cords</i>		
	Red Pine		187.0	Cords		
8	Basswood	Sawtimber	5.7	MBF	11.7	\$6,269.60
	Black Cherry		0.7	MBF		
	Mixed Aspen		7.4	MBF		
	<i>B. T. Aspen</i>		7.4	<i>MBF</i>		
	Red Maple		11.0	MBF		
	Sugar Maple		4.8	MBF		
	White Pine		0.8	MBF		
	Basswood	Pulpwood	10.0	Cords		
	Mixed Aspen		26.0	Cords		
	<i>B. T. Aspen</i>		26.0	<i>Cords</i>		
	Mixed Hardwood		64.0	Cords		
	<i>Black Cherry</i>		10.0	<i>Cords</i>		
	<i>Red Maple</i>		46.0	<i>Cords</i>		
	<i>Sugar Maple</i>		8.0	<i>Cords</i>		
9	Basswood	Sawtimber	5.8	MBF	14.2	\$16,651.30
	Mixed Aspen		67.7	MBF		
	<i>B. T. Aspen</i>		57.2	<i>MBF</i>		
	<i>Quaking Aspen</i>		10.5	<i>MBF</i>		
	Red Maple		1.5	MBF		
	Sugar Maple		2.4	MBF		
	Basswood	Pulpwood	6.0	Cords		
	Mixed Aspen		394.0	Cords		
	<i>B. T. Aspen</i>		345.0	<i>Cords</i>		
	<i>Quaking Aspen</i>		49.0	<i>Cords</i>		
	Mixed Hardwood		10.0	Cords		
	<i>Red Maple</i>		4.0	<i>Cords</i>		
	<i>Sugar Maple</i>		6.0	<i>Cords</i>		
	10	Basswood	Sawtimber	46.3		
Beech			3.3	MBF		

Description of Timber by Payment Unit (PU), con't

PU	MARKET GROUP	PRODUCT	QUANTITY	UNIT	ACRES	ADVERTISE PRICE
	Sugar Maple Basswood Mixed Aspen <i>B. T. Aspen</i> <i>Quaking Aspen</i> Mixed Hardwood <i>Beech</i> <i>Black Cherry</i> <i>Ironwood</i> <i>Red Maple</i> <i>Sugar Maple</i>	Pulpwood	15.8 137.0 55.0 10.0 45.0 147.0 29.0 12.0 5.0 5.0 96.0	MBF Cords Cords <i>Cords</i> <i>Cords</i> Cords <i>Cords</i> <i>Cords</i> <i>Cords</i> <i>Cords</i> <i>Cords</i>		
11	Basswood Black Cherry Red Pine Sugar Maple White Pine Basswood Mixed Aspen <i>Quaking Aspen</i> Mixed Hardwood <i>Black Cherry</i> <i>Ironwood</i> <i>Sugar Maple</i> Red Pine White Pine	Sawtimber Pulpwood Red Pine White Pine	0.8 0.3 158.4 0.4 0.3 3.0 1.0 1.0 13.0 11.0 1.0 1.0 196.0 3.0	MBF MBF MBF MBF MBF Cords Cords <i>Cords</i> Cords <i>Cords</i> <i>Cords</i> <i>Cords</i> Cords Cords	11.4	\$26,720.05
12	Basswood Black Cherry Red Maple Red Pine Sugar Maple White Pine Balsam Fir <i>Balsam Fir</i> Basswood Mixed Aspen <i>Quaking Aspen</i> Mixed Hardwood <i>Black Cherry</i> <i>Ironwood</i> <i>Red Maple</i> <i>Sugar Maple</i> Red Pine White Pine	Sawtimber Pulpwood Red Pine White Pine	1.4 0.4 3.5 129.5 0.7 0.5 11.0 11.0 5.0 60.0 60.0 44.0 23.0 1.0 19.0 1.0 161.0 6.0	MBF MBF MBF MBF MBF MBF Cords <i>Cords</i> Cords Cords <i>Cords</i> Cords <i>Cords</i> <i>Cords</i> <i>Cords</i> <i>Cords</i> Cords Cords	12.3	\$24,570.80
13	Red Maple Sugar Maple Mixed Aspen <i>Quaking Aspen</i> Mixed Hardwood <i>Ironwood</i> <i>Red Maple</i> <i>Sugar Maple</i>	Sawtimber Pulpwood Red Maple <i>Sugar Maple</i>	8.2 6.7 34.0 34.0 47.0 1.0 18.0 28.0	MBF MBF Cords <i>Cords</i> Cords <i>Cords</i> <i>Cords</i> <i>Cords</i>	4.9	\$4,443.85
TOTAL:			969.2	MBF		
TOTAL:			3,702.0	Cords		

Sale Specific Conditions & Requirements

Sale Name: 153 West Sharon Block

Sale Number: 61-168-17 Seq#: 1

1 - Sale Area

1.2 - Boundaries

1.2.1 - Painted boundaries (1/14)

The sale boundary and Payment Unit boundaries are marked and identified by blue, red and yellow paint. Exterior sale boundary lines against private property are marked with blue paint. Exterior sale boundary lines against state are marked with red paint. Interior Payment Unit boundaries are marked with yellow paint. The painted boundary line trees are not Included Timber and are to be protected unless marked with orange paint.

2 - Timber Specifications

2.1 - Included Timber

2.1.1 - Clearcut unit(s) with unmerchantable trees (6/14)

Within Payment Unit(s) 1, 3, 5, 9, 11 and 12, cut all trees that are two (2) inches or more at DBH, with the following exceptions:

Within Payment Unit(s) 1, leave all cedar, hemlock, yellow birch and trees marked with green paint.

Within Payment Unit(s) 3 and 9, leave all white pine.

Within Payment Unit(s) 5, leave all cedar, hemlock and trees marked with green paint.

2.1.3 - Cut tree marked unit(s) (12/08)

Within Payment Unit(s) 2, 7, 8, 10, 13, all trees are designated for cutting when marked with orange paint above and below stump height, regardless of merchantability. In addition cut all aspen, beech, ironwood and ash, unless marked with an orange 'X'. Also, within Payment Unit 2, cut all red pine.

2.1.8 - Designated plantation row unit(s) (12/08)

Within Payment Unit(s) 4 and 6, all red pine trees which meet minimum piece specifications in 2.2 Utilization, within designated plantation rows are designated for cutting. In addition, cut all aspen, red maple and cherry. Designated plantation rows are every third row. Begin with the third row in from the outside of the plantation, then continue every third row. Because of the variability of row direction, it shall be the responsibility of the producer to maintain the third row sequence.

2.2 - Utilization

2.2.2 - Chipping required (5/14)

Payment Units 11 and 12 must be chip harvested to facilitate subsequent planting operations. The Purchaser has the option to produce sawlogs or pulpwood bolts, but the remaining portion of the trees must be chipped and hauled. Do not chip 1/6 to 1/3 of the slash from harvested trees (tree tops and limbs less than four inches in diameter).

2.2.3 - Stump heights (4/07)

Stump heights within Payment Unit(s) 11 and 12 shall not exceed 6 inches for all trees. This is in order to facilitate planting operations.

3 - Payments

3.4 - Damaged Timber

3.4.1 - Damaged timber (6/14)

General Condition and Requirement 3.4 Damaged Timber, defines liquidated damages for undesignated live merchantable trees which are cut or injured. No damage is acceptable to merchantable trees. Within the sale area, if more than 10% of trees (> 4.5" DBH) within a specified area of the sale are damaged, liquidated damages will be assessed for all trees damaged. Rates will be in accordance with General Condition and Requirement 3.4 Damaged Timber.

4 - Transportation

4.1 - Construction

4.1.6 - Road construction (1/09)

Construction of new roads or improvements of existing roads shall be done in such a way as to minimize the environmental and visual impacts. Merchantable trees shall be cut and utilized unless otherwise directed. Non-merchantable trees shall be severed and laid flat on the ground. Slash shall be scattered, and not left in windrows and kept a minimum of 10 feet back from the road edge. Stumps shall be set upright, not left on edge, and be moved at least 10 feet away from the road edge. Disturbed soil shall be feathered into the woods and not left in berms or windrows.

4.1.7 - Road closure (10/11)

All new roads built into the sale must be blocked to vehicle traffic within 30 days of completion of hauling. Overgrown roads that are reopened shall be considered new roads. In general, this will require constructing a four (4') foot high berm of stumps and logs covered with earth. Stumps and brush must be placed along the remainder of the trail. These roads must be rendered impassable to cars and trucks. Contact the sale administrator for specific details of design and placement.

5 - Operations

5.2 - Conduct of Operations

5.2.1 - Slash

5.2.1.8 - Slash height (12/08)

No slash or tree tops may exceed 36 inches in height.

5.2.2 - Hazard Trees/Snags

5.2.2.1 - Den trees (10/16)

Obvious hollow and/or den trees shall be protected and left standing unless they are a safety hazard.

5.2.3 - Operating Restrictions

5.2.3.3 - Bark slippage restriction (3/09)

Within Payment Unit(s) 2, 4, 6, 8, 10, and 13, cutting and skidding are not permitted during the period of April 15 to July 15. This restriction is because of bark slippage.

5.2.3.11 - Coppice regeneration protection (4/10)

Timber harvesting in Payment Units 1, 3, 5, and 9 must be completed before significant aspen sprouting occurs in that Payment Unit so as to minimize damage to the new regeneration. Any post harvest operations, such as chipping, must be completed before sprouting of regeneration occurs. If it is anticipated that chipping will be delayed, then tops shall be carried to one central location or left unchipped. The Unit Manager or his/her representative may cease such operations if sprouting occurs before the operation is complete.

5.2.22 - Operating Caution

5.2.22.1 - Operating caution (6/11)

It is recommended, but not required, that within Payment Unit(s) 1 and 9, cutting and skidding occur during dry summer or frozen winter conditions. The reason for the recommendation is because of areas of wet ground within the units.

5.2.29 - Shrub protection (9/07)

Do not cut or damage hawthorn, witch-hazel, dogwood or juneberry. These woody-shrub plants are highly beneficial to various wildlife species.

5.2.32 - Decking/landing restoration (9/13)

All decking and landing areas must have the surface area restored to a condition equal to or better than before. This is to ensure the proper regeneration of the stand.

5.2.38 - No decking against live trees (2/04)

Cut products may not be decked against unmarked or designated leave trees.

5.4 - Soil Protection

5.4.1 - Rutting restriction, general (7/16)

Operations are to cease immediately if equipment and weather conditions result in rutting of roads and/or skid trails which is 12 inches or greater in depth and 50 feet in length. The Unit Manager or his/her representative may restrict hauling and/or skidding if ruts exceed the specified depth. With the Unit Manager or his/her representative's approval, the Purchaser may return to the area when the risk of rutting has decreased.

5.4.6 - Wet area protection (5/10)

No harvesting operations, including skidding and felling, are to take place within the vernal pond areas or drainages. When harvesting occurs, there should be no disturbance to the vernal pond depression. All equipment, trees and tops should be kept out of this area. Within 100 feet of the pond, equipment should only be used when the soil is in a dry or frozen condition. Care must be taken by the Purchaser to identify and avoid operating in these areas of the timber sale.

6 - Safety and Fire Prevention

6.2 - Signing

6.2.1 - Road posting (9/09)

The Purchaser is responsible for posting and maintaining caution signs on West Sharon Rd. prior to beginning operations. The road must be posted at appropriate distances from the sale area 200 feet from the sale area to warn of logging activity and truck traffic. Signs must be removed when harvest operations are suspended or completed. The Purchaser will provide these signs.



TIMBER SALE MAP

This information provided by authority of Part 525, 1994 PA 451, as amended.

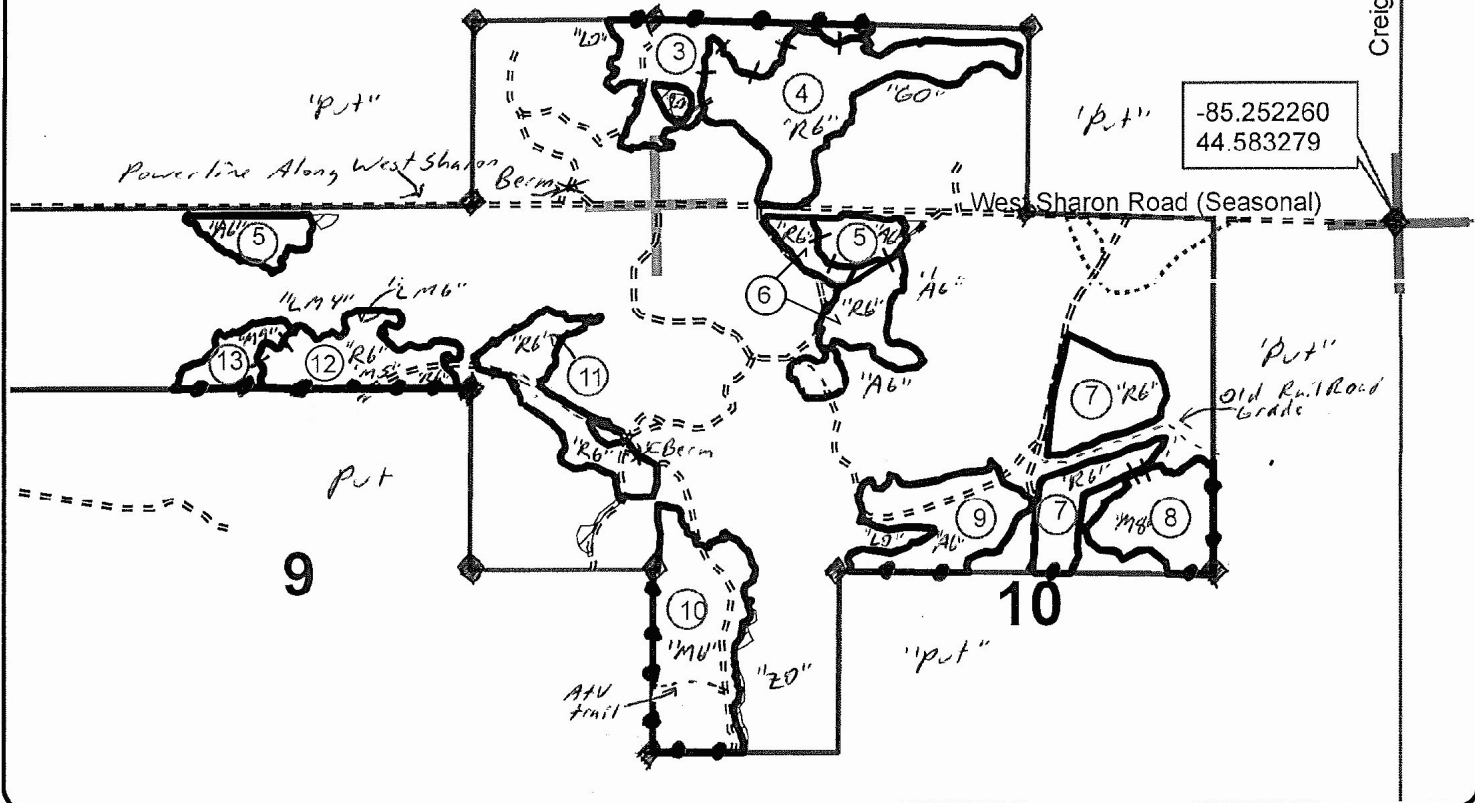
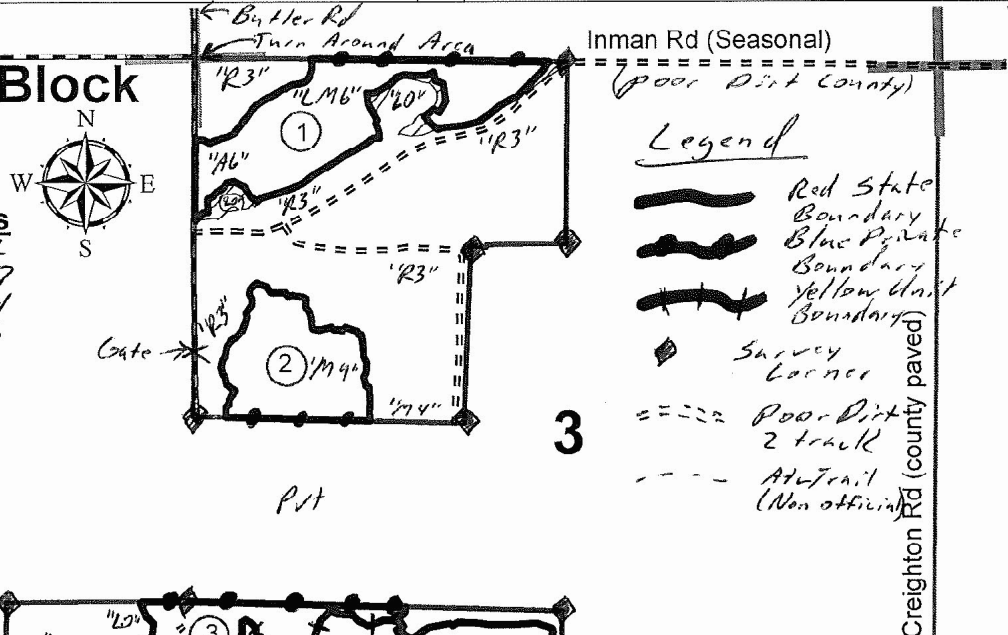
Forest Management Unit Traverse City Mgmt Unit	County Kalkaska	Mapped By K. Standerfer	Date 09/26/2017	Page 1	of 1
Township 25N	Range 08W	Section(s) and Subdivision(s) Various in sections 3, 4, 9 & 10 (See Map Below)	Scale 1:15,840		

Cover Type				Density	
A = Aspen	H = Hemlock	N = Marsh	U = Upland Brush	0 = Non Stocked	5 = Pole Timber Medium
B = Paper Birch	J = Jack Pine	O = Oak	UM = Upland Mixed	1 = Seedling Sapling Poor	6 = Pole Timber Well
C = Cedar	L = Lowland Brush	P = Lowland Poplar	V = Bog or Marsh	2 = Seedling Sapling Medium	7 = Saw Timber Poor
D = Treed Bog	LM = Lowland Mixed	Q = Mixed Swamp Conifer	W = White Pine	3 = Seedling Sapling Well	8 = Saw Timber Medium
E = Swamp Hdwoods	M = Mpl, Bch, Brch	R = Red Pine	X = Non Stocked	4 = Pole Timber Poor	9 = Saw Timber Well
F = Spruce Fir	MC = Mixed Conifer	S = Black Spruce	Z = Water		
G = Grass	MD = Mixed Deciduous	T = Tamarack			

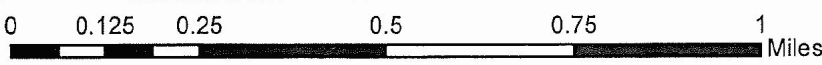
153 West Sharon Block

Compartment 153
198.2 Acres

PU	Acres	PU	Acres
1	25.1	9	14.2
2	16.9	10	22.7
3	14.9	11	11.4
4	24.9	12	12.3
5	9.6	13	4.9
6	11.8	4	
7	17.8		
8	11.7		



-85.252260
44.583279



TIMBER SALE INFORMATION

Yotta Oak (61-654-17)

Crawford County (Advertised Price \$129,813.50)

SALE NOTE: Please note that this sale is on Military Board Land and is NOT certified. Timing restrictions and chipping requirements will apply.

A timber sale contract for this lump sum, sealed bid timber sale will be awarded to the responsible bidder offering the highest sealed bid price. Bids must be at or above the following advertised price for each species:

<u>PRODUCTS & SPECIES</u>	<u>ESTIMATED UNITS*</u>		<u>ADVERTISED PRICE</u>
Sawtimber			
B. T. Aspen	32.60	MBF	\$ 98.00 / MBF
Bl/R/Hybrid Oak	639.50	MBF	\$ 97.00 / MBF
Red Maple	2.60	MBF	\$ 118.00 / MBF
Red Pine	46.50	MBF	\$ 106.00 / MBF
White Oak	4.00	MBF	\$ 45.00 / MBF
Pulpwood			
B. T. Aspen	548.00	Cords	\$ 18.15 / Cord
Bl/R/Hybrid Oak	2,925.00	Cords	\$ 12.10 / Cord
Jack Pine	168.00	Cords	\$ 12.90 / Cord
Misc. Species 1	413.00	Cords	\$ 6.50 / Cord
Red Maple	240.00	Cords	\$ 16.75 / Cord
Red Pine	121.00	Cords	\$ 37.20 / Cord
White Oak	38.00	Cords	\$ 12.10 / Cord

* The total volume is statistically estimated within plus (+) or minus (-) 7.52 percent. The estimated units are final and not subject to adjustment. Prospective bidders are urged to examine this timber and to make their own estimates of quantity and quality.

BOND AND PAYMENT SCHEDULE:

1. A bond in the amount of \$12,981.00 to insure faithful performance of the conditions of the contract will be deposited by the successful bidder within 21 days of the sale award.
2. Cutting in any sale or unit without the required advance payment would be considered a trespass.
3. Total payment must be paid in advance or according to the following schedule:
 - (a) Ten percent (10%) of the sale value must be paid within 21 days of the sale award.
 - (b) The 10% down payment will be credited towards the first unit cut.
4. If no cutting takes place, the 10% down payment will not be refunded.
5. Operations on the contract issued will terminate on 12/31/2020.

Description of Timber by Payment Unit (PU)

PU	MARKET GROUP	PRODUCT	QUANTITY	UNIT	ACRES	ADVERTISE PRICE
1	B. T. Aspen	Sawtimber	9.4	MBF	42.3	\$20,217.60
	BI/R/Hybrid Oak		99.4	MBF		
	<i>BI/R/Hybrid Oak</i>		75.4	<i>MBF</i>		
	<i>Red Oak</i>		24.0	<i>MBF</i>		
	Red Maple	0.8	MBF			
	B. T. Aspen	Pulpwood	124.0	Cords		
	BI/R/Hybrid Oak		487.0	Cords		
	<i>BI/R/Hybrid Oak</i>		405.0	<i>Cords</i>		
	<i>Red Oak</i>		82.0	<i>Cords</i>		
	Jack Pine		6.0	Cords		
	<i>Jack Pine</i>		6.0	<i>Cords</i>		
	Misc. Species 1		36.0	Cords		
	<i>Misc. Species 1</i>		23.0	<i>Cords</i>		
	<i>Misc. Species 2</i>		13.0	<i>Cords</i>		
Red Maple	66.0		Cords			
2	B. T. Aspen	Sawtimber	13.5	MBF	51.5	\$24,476.45
	BI/R/Hybrid Oak		129.0	MBF		
	<i>BI/R/Hybrid Oak</i>		64.7	<i>MBF</i>		
	<i>Red Oak</i>	64.3	<i>MBF</i>			
	B. T. Aspen	Pulpwood	149.0	Cords		
	BI/R/Hybrid Oak		566.0	Cords		
	<i>BI/R/Hybrid Oak</i>		305.0	<i>Cords</i>		
	<i>Red Oak</i>		261.0	<i>Cords</i>		
	Misc. Species 1		90.0	Cords		
	<i>Misc. Species 1</i>		40.0	<i>Cords</i>		
	<i>Misc. Species 2</i>		50.0	<i>Cords</i>		
Red Maple	30.0		Cords			
3	BI/R/Hybrid Oak	Sawtimber	82.2	MBF	38.6	\$15,994.50
	<i>BI/R/Hybrid Oak</i>		82.2	<i>MBF</i>		
	B. T. Aspen	Pulpwood	16.0	Cords		
	BI/R/Hybrid Oak		562.0	Cords		
	<i>BI/R/Hybrid Oak</i>		562.0	<i>Cords</i>		
	Jack Pine		10.0	Cords		
	<i>Jack Pine</i>		10.0	<i>Cords</i>		
	Misc. Species 1		46.0	Cords		
<i>Misc. Species 1</i>	46.0	<i>Cords</i>				
Red Maple	30.0	Cords				
4	B. T. Aspen	Sawtimber	9.7	MBF	117.4	\$56,996.75
	BI/R/Hybrid Oak		320.9	MBF		
	<i>BI/R/Hybrid Oak</i>		91.9	<i>MBF</i>		
	<i>Red Oak</i>	229.0	<i>MBF</i>			
	Red Maple	1.8	MBF			
	B. T. Aspen	Pulpwood	259.0	Cords		
	BI/R/Hybrid Oak		1,244.0	Cords		
	<i>BI/R/Hybrid Oak</i>		545.0	<i>Cords</i>		
	<i>Red Oak</i>		699.0	<i>Cords</i>		
	Jack Pine		36.0	Cords		
	<i>Jack Pine</i>		36.0	<i>Cords</i>		
	Misc. Species 1		236.0	Cords		
	<i>Misc. Species 1</i>		93.0	<i>Cords</i>		
	<i>Misc. Species 2</i>		143.0	<i>Cords</i>		
Red Maple	112.0		Cords			
Red Pine	29.0	Cords				
5	BI/R/Hybrid Oak	Sawtimber	8.0	MBF	20.3	\$12,128.20
	<i>Red Oak</i>		8.0	<i>MBF</i>		
	Red Pine		46.5	MBF		

Description of Timber by Payment Unit (PU), con't

PU	MARKET GROUP	PRODUCT	QUANTITY	UNIT	ACRES	ADVERTISE PRICE
5 con't	White Oak	Sawtimber	4.0	MBF		
	BI/R/Hybrid Oak	Pulpwood	66.0	Cords		
	<i>Red Oak</i>		66.0	<i>Cords</i>		
	Jack Pine		116.0	Cords		
	<i>Jack Pine</i>	<i>Sawtimber</i>	4.5	<i>MBF</i>		
	<i>Jack Pine</i>	<i>Pulpwood</i>	107.0	<i>Cords</i>		
	Misc. Species 1		5.0	Cords		
	<i>Misc. Species 2</i>		5.0	<i>Cords</i>		
	Red Maple		2.0	Cords		
	Red Pine		92.0	Cords		
	White Oak		38.0	Cords		
TOTAL:			725.2	MBF		
TOTAL:			4,453.0	Cords		

Sale Specific Conditions & Requirements

Sale Name: Yotta Oak

Sale Number: 61-654-17 Seq#: 1

1 - Sale Area

1.2 - Boundaries

1.2.1 - Painted boundaries (1/14)

The sale boundary and Payment Unit boundaries are marked and identified by red and yellow paint. Exterior sale boundary lines against state are marked with red paint. Interior Payment Unit boundaries are marked with yellow paint. The painted boundary line and Payment Unit line trees are not Included Timber and are to be protected.

2 - Timber Specifications

2.1 - Included Timber

2.1.4 - Designated timber unit(s) (6/17)

Within Payment Unit(s) 1, 2, and 3, all aspen, black/red/hybrid oak, red maple, and jack pine trees are designated for cutting regardless of merchantability. Do not cut any red pine, white pine, or white oak.

2.1.7 - Leave tree marked unit(s) (6/14)

Within Payment Unit(s) 4 and 5, all aspen, red maple and jack pine trees, which meet minimum piece specifications in 2.2 Utilization, are designated for cutting.

In addition, cut all black/red/hybrid oak, all red pine, and white oak greater than 4" at DBH, except do not cut trees marked with green paint above and below stump height.

2.1.11 - Description of timber note (2/04)

Note that Misc. Species 1 is dead oak, which may be cut throughout the sale.

2.2 - Utilization

2.2.2 - Chipping required (5/14)

This area must be chip harvested to meet National Guard requirements. Products may be produced as roundwood and forwarded to decking areas in final product length, but the tops must be left intact and skidded to the landing for chipping in order to minimize the amount of residual slash left in Military training areas. The requirement to retain approximately 1/6 to 1/3 of tree tops and limbs less than four inches in diameter does not apply (G. C. & R. 2.2). This is because this sale is not certified.

2.2.3 - Stump heights (4/07)

Stump heights within the Sale Area shall not exceed 6 inches for all trees. This is in order to accommodate military requirements. A written waiver of this requirement may be obtained if wet weather, sandy roads, or training restrictions make winter logging necessary.

4 - Transportation

4.1 - Construction

4.1.6 - Road construction (1/09)

Construction of new roads or improvements of existing roads shall be done in such a way as to minimize the environmental and visual impacts. Merchantable trees shall be cut and utilized unless otherwise directed. Non-merchantable trees shall be severed and laid flat on the ground. Slash shall be chipped, utilized or otherwise removed from the sale. Stumps shall be set upright, not left on edge, and be moved at least 10 feet away from the road edge. Disturbed soil shall be feathered into the woods and not left in berms or windrows.

4.1.7 - Road closure (10/11)

All new roads and overgrown roads that are reopened must be blocked to vehicle traffic within 30 days of completion of hauling. In general, this will require constructing a four (4') foot high berm of stumps and logs covered with earth. These roads must be rendered impassable to cars, trucks and ORVs. Contact the sale administrator for specific details of design and placement.

4.1.11 - Permits (2/12)

The Purchaser will secure any necessary Kalkaska County Road Commission driveway permits that may be required.

4.4 - Access

4.4.3 - Access gate (12/08)

Some access roads around the ranges are blocked by locked gates. Camp Grayling Range Control may allow use of a gate key. Range Control may be contacted at 989-344-6156. Gates must be locked at all times to prevent someone other than the Purchaser from going through the gate and being locked in.

5 - Operations

5.1 - Notification

5.1.1 - Pre-sale conference (10/16)

A pre-sale conference on site between the Purchaser and sale administrator is required prior to beginning any operations to determine landing and road locations. The Sale Administrator must be contacted at least 5 days in advance to schedule the conference.

5.1.5 - National Guard notification (2/15)

This sale is upon lands utilized for training by the Michigan National Guard - Camp Grayling. A minimum of five (5) business days prior to opening this sale, the producer must request that the sale administrator contact the military for information regarding training plans that may impact sale operations.

5.2 - Conduct of Operations

5.2.3 - Operating Restrictions

5.2.3.4 - Oak wilt restriction (9/17)

Within Payment Units 1, 2, 3, 4, and 5, unless changed by written agreement, cutting, skidding, hauling and brushing of access roads are not permitted during the period of April 15 to July 15. Operations may be allowed if specific steps are taken to prevent damaging uncut oak during the high risk period. Those steps include completing all road brushing before April 15th, clearing a tree-length buffer along uncut oak cover before April 15th or leaving an uncut buffer there until after July 15th. This is necessary to reduce the spread of oak wilt. For more information, contact the Unit Manager or his/her representative.

5.2.3.7 - National Guard training restriction (1/09)

Operations on this contract may not be allowed during National Guard training operations. Typically, the restricted period is from May 1 to October 31. The Purchaser must check with the Sale Administrator who will coordinate the cutting schedule with the Military. All harvest equipment and timber products must be removed from the sale area during the restricted period.

5.2.32 - Decking/landing restoration (9/13)

All decking and landing areas must have the surface area restored to a condition equal to or better than before. This is to ensure the proper regeneration of the stand. Wood debris, chips and "cookies" from trimmings must be removed or scattered away from landing and loading areas and may not be windrowed on the edge.

5.2.38 - No decking against live trees (2/04)

Cut products may not be decked against unmarked or designated leave trees.

5.4 - Soil Protection

5.4.1 - Rutting restriction, general (7/16)

Operations are to cease immediately if equipment and weather conditions result in rutting of roads and/or skid trails which is 12 inches or greater in depth and 50 feet in length. The Unit Manager or his/her representative may restrict hauling and/or skidding if ruts exceed the specified depth. With the Unit Manager or his/her representative's approval, the Purchaser may return to the area when the risk of rutting has decreased.

5.4.4 - Slope protection (5/15)

Skid trails and roads on slopes shall be water barred with slash, stumps, and/or clean straw bales native to the area as soon as use is complete to prevent erosion.

6 - Safety and Fire Prevention

6.2 - Signing

6.2.1 - Road posting (9/09)

The Purchaser is responsible for posting and maintaining caution signs on major haul roads prior to beginning operations. The road must be posted at appropriate distances from the sale area to warn of logging activity and truck traffic. Signs must be removed when harvest operations are suspended or completed. The Purchaser will provide these signs.

SKIP

6.4 - Unexploded ordinance (7/15)

Be aware that the sale area could contain UXO (unexploded ordinances). Do not touch, or drive over any metal objects. If any objects are found, please flag the area and notify the Unit Manager or his/her representative, so that they can make arrangements with the Military.

7 - Other Conditions

7.5 - Loss

7.5.1 - Deteriorating timber (7/09)

The sale area has received damage from age-related oak decline. The Purchaser should harvest the wood as soon as possible. The Department of Natural Resources is held free of responsibility of any further damage or deterioration due to delay in harvesting.

7.10 - Certified Timber

7.10.1 - Non-certified timber (2/16)

The area encompassed by this timber sale is not certified to the standards of the Forest Stewardship Council (FSC) or the Sustainable Forestry Initiative (SFI). Forest products from this sale may not be delivered to the mill as "FSC and / or SFI certified". The lands within this sale are managed for military training.



TIMBER SALE MAP

This information provided by authority of Part 525, 1994 PA 451, as amended.

Forest Management Unit Traverse City		County Kalkaska	Mapped By Armstrong	Date 9/26/2017	Page 1	of 1
Township 26N	Range 4W	Section(s) and Subdivision(s) Sec. 30: NWNW, SWNW		Scale 1:15,840		
26N	5W	25: N1/2, SWSW, E1/2SW, SE1/4; 26: SENE; 36: N1/2NW, N1/2NE				

Cover Type

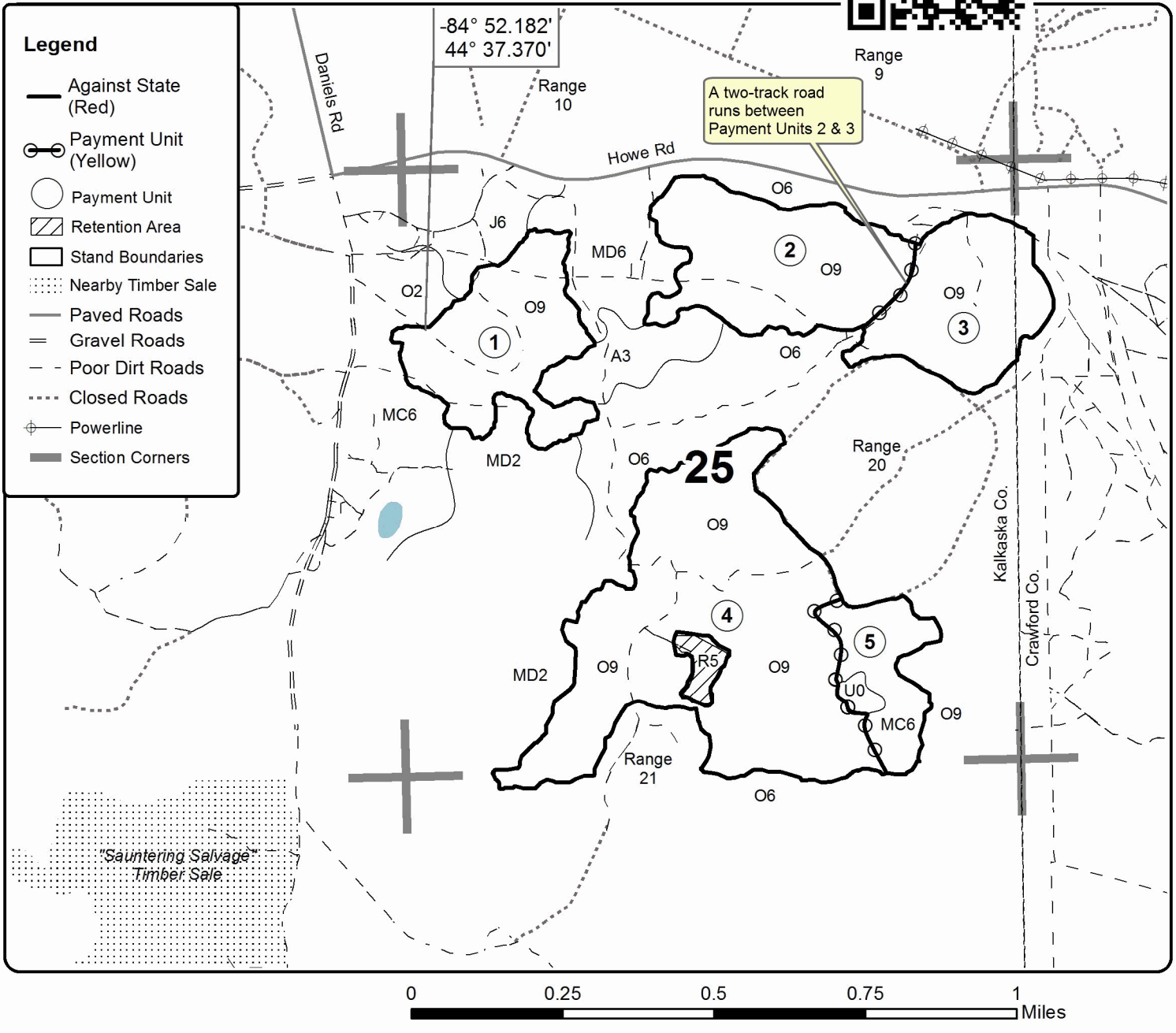
A = Aspen	H = Hemlock	N = Marsh	U = Upland Brush
B = Paper Birch	J = Jack Pine	O = Oak	UM = Upland Mixed
C = Cedar	L = Lowland Brush	P = Lowland Poplar	V = Bog or Marsh
D = Treed Bog	LM = Lowland Mixed	Q = Mixed Swamp Conifer	W = White Pine
E = Swamp Hdwoods	M = Mpl, Bch, Brch	R = Red Pine	X = Non Stocked
F = Spruce Fir	MC = Mixed Conifer	S = Black Spruce	Z = Water
G = Grass	MD = Mixed Deciduous	T = Tamarack	

Density

0 = Non Stocked	5 = Pole Timber Medium
1 = Seedling Sapling Poor	6 = Pole Timber Well
2 = Seedling Sapling Medium	7 = Saw Timber Poor
3 = Seedling Sapling Well	8 = Saw Timber Medium
4 = Pole Timber Poor	9 = Saw Timber Well

Unit	Acres	Unit	Acres
1	42.3	4	117.4
2	51.5	5	20.3
3	38.6		

Yotta Oak Compartment 230 270.1 acres



Yotta Oak (61-654-17)
; Crawford COUNTY

In response to the notice of sale to be held 4:00 p.m. (local time) on December 19, 2017, I am hereby submitting my sealed bid (firm offer) for the following forest products to be cut. Bids for individual species must be at or above the advertised price. All non-responsive bid forms may be rejected.

<u>PRODUCTS & SPECIES</u>	<u>ESTIMATED VOLUME*</u>	<u>ADVERTISED PRICE</u>	<u>BID PRICE/UNIT</u>
Sawtimber			
B. T. Aspen	32.60 MBF	\$ 98.00/MBF	\$ _____
Bl/R/Hybrid Oak	639.50 MBF	\$ 97.00/MBF	\$ _____
Red Maple	2.60 MBF	\$ 118.00/MBF	\$ _____
Red Pine	46.50 MBF	\$ 106.00/MBF	\$ _____
White Oak	4.00 MBF	\$ 45.00/MBF	\$ _____
Pulpwood			
B. T. Aspen	548.00 Cords	\$ 18.15/Cord	\$ _____
Bl/R/Hybrid Oak	2,925.00 Cords	\$ 12.10/Cord	\$ _____
Jack Pine	168.00 Cords	\$ 12.90/Cord	\$ _____
Misc. Species 1	413.00 Cords	\$ 6.50/Cord	\$ _____
Red Maple	240.00 Cords	\$ 16.75/Cord	\$ _____
Red Pine	121.00 Cords	\$ 37.20/Cord	\$ _____
White Oak	38.00 Cords	\$ 12.10/Cord	\$ _____

*The volumes are statistically estimated within plus (+) or minus (-) 7.52 percent. These estimated volumes are final and not subject to adjustment. Prospective bidders are urged to examine this timber and to make their own estimates of quantity and quality.

I understand that any or all bids may be rejected. All bids must be signed and all bid items must be bid or the bid form may be rejected. I also understand that consideration and awarding a contract will be based upon my past performance and ability to complete the contract based upon equipment and staffing subject to my control.

FEDERAL ID: _____ or SOCIAL SECURITY NUMBER: _____

Company or individual bidding: _____

Company representative's name: _____

Address: _____

City: _____ State: _____ Zip: _____

IF AVAILABLE, PLEASE PLACE THE PERSONALIZED LABEL FROM YOUR PROSPECTUS IN THE ABOVE BOX.

Individual or company representative's signature: _____ Date: _____

Phone number : _____ Email (optional): _____

THE WINNING BIDDER MUST COMPLETE THE VERIFICATION OF WORKER'S DISABILITY COMPENSATION ACT COMPLIANCE (ON REVERSE SIDE IF DOUBLE SIDED) WITHIN 21 DAYS OF SALE AWARD DATE



FOR DEPARTMENT USE ONLY	
Sale Number (XX - XXX - XX - XX)	
Forest Management Unit:	

TIMBER SALE VERIFICATION OF WORKER'S DISABILITY COMPENSATION ACT COMPLIANCE

As required by Act 317, P.A. 1969 (Worker's Compensation) and
Part 5 of Act 451 of 1994, as amended.

VERIFICATION OF WORKER'S DISABILITY COMPENSATION ACT COMPLIANCE

- This verification must be completed and submitted within 21 days of contract award and prior to the issuance of the timber sale contract.
- In addition, if boxes 2B or 2C are checked, then Notice of Exclusion or Certificate of Insurance must be submitted within twenty-one (21) days of the contract award and prior to the issuance of the timber sale contract.
- All information must be typed or printed except for written signatures.

Please Check Appropriate Categories:

1. My business is organized as (you **must** check one of the boxes below):
 - A. Sole Proprietorship (individual)
 - B. Partnership
 - C. Corporation
2. You **must** check one of the boxes below:
 - A. I certify my business is a sole proprietorship and it has no employees but the sole proprietor. I am not subject to the Worker's Compensation Laws.
 - B. I certify my business has satisfied its obligation to the Worker's Compensation Act through the use of an approved Notice of Exclusion (BWC-337, Rev. 5/96). I will provide a copy of the Notice of Exclusion within 21 days of the contract award. (For questions or a copy of the BWC-337, please call the Worker's Compensation Bureau at 517-322-1195).
 - C. I certify my business has a Worker's Compensation Policy. I will provide an original Certificate of Insurance within twenty-one (21) days of the contract award.
3. If you have checked item 2(A) or 2(B), you **must** indicate the number of **both** full-time and part-time employees, other than yourself, including family members and active partners (if none, you must enter "0").

_____ Full-time Employees

_____ Part-time Employees

Name of Business		Federal ID (or) Social Security No.	
Address		Telephone ()	
City	State	ZIP	

I hereby certify that the above information is true and correct. I agree to notify the Michigan DNR of any changes that occur in factors affecting my coverage during any of my present and future operations.

Signature of Owner or Authorized Representative

Title

Date

Please complete the "SEALED BID" information on the next page

Apple Tree (61-165-17)
; Kalkaska COUNTY

In response to the notice of sale to be held 4:00 p.m. (local time) on December 19, 2017, I am hereby submitting my sealed bid (firm offer) for the following forest products to be cut. Bids for individual species must be at or above the advertised price. All non-responsive bid forms may be rejected.

<u>PRODUCTS & SPECIES</u>	<u>ESTIMATED VOLUME*</u>	<u>ADVERTISED PRICE</u>	<u>BID PRICE/UNIT</u>
Sawtimber			
Black Cherry	5.40 MBF	\$ 164.00/MBF	\$ _____
Mixed Aspen	171.20 MBF	\$ 90.00/MBF	\$ _____
Red Maple	63.50 MBF	\$ 109.00/MBF	\$ _____
Red Pine	63.50 MBF	\$ 98.00/MBF	\$ _____
White Pine	58.80 MBF	\$ 56.00/MBF	\$ _____
Pulpwood			
Balsam Fir	120.00 Cords	\$ 10.95/Cord	\$ _____
Mixed Aspen	2,265.00 Cords	\$ 16.75/Cord	\$ _____
Mixed Hardwood	1,124.00 Cords	\$ 15.45/Cord	\$ _____
Red Pine	168.00 Cords	\$ 34.35/Cord	\$ _____
Scotch Pine	103.00 Cords	\$ 2.40/Cord	\$ _____
White Pine	343.00 Cords	\$ 11.65/Cord	\$ _____
White Spruce	3.00 Cords	\$ 20.95/Cord	\$ _____

*The volumes are statistically estimated within plus (+) or minus (-) 13.24 percent. These estimated volumes are final and not subject to adjustment. Prospective bidders are urged to examine this timber and to make their own estimates of quantity and quality.

I understand that any or all bids may be rejected. All bids must be signed and all bid items must be bid or the bid form may be rejected. I also understand that consideration and awarding a contract will be based upon my past performance and ability to complete the contract based upon equipment and staffing subject to my control.

FEDERAL ID: ____ - ____ - ____ or SOCIAL SECURITY NUMBER: ____ - ____ - ____

Company or individual bidding: _____

Company representative's name: _____

Address: _____

City: _____ State: _____ Zip: _____

IF AVAILABLE, PLEASE PLACE THE PERSONALIZED LABEL FROM YOUR PROSPECTUS IN THE ABOVE BOX.

Individual or company representative's signature: _____ Date: _____

Phone number : _____ Email (optional): _____

THE WINNING BIDDER MUST COMPLETE THE VERIFICATION OF WORKER'S DISABILITY COMPENSATION ACT COMPLIANCE (ON REVERSE SIDE IF DOUBLE SIDED) WITHIN 21 DAYS OF SALE AWARD DATE



FOR DEPARTMENT USE ONLY
Sale Number (XX – XXX – XX – XX)
Forest Management Unit:

TIMBER SALE VERIFICATION OF WORKER'S DISABILITY COMPENSATION ACT COMPLIANCE

As required by Act 317, P.A. 1969 (Worker's Compensation) and
Part 5 of Act 451 of 1994, as amended.

VERIFICATION OF WORKER'S DISABILITY COMPENSATION ACT COMPLIANCE

- This verification must be completed and submitted within 21 days of contract award and prior to the issuance of the timber sale contract.
- In addition, if boxes 2B or 2C are checked, then Notice of Exclusion or Certificate of Insurance must be submitted within twenty-one (21) days of the contract award and prior to the issuance of the timber sale contract.
- All information must be typed or printed except for written signatures.

Please Check Appropriate Categories:

- My business is organized as (you **must** check one of the boxes below):
 - Sole Proprietorship (individual)
 - Partnership
 - Corporation
- You **must** check one of the boxes below:
 - I certify my business is a sole proprietorship and it has no employees but the sole proprietor. I am not subject to the Worker's Compensation Laws.
 - I certify my business has satisfied its obligation to the Worker's Compensation Act through the use of an approved Notice of Exclusion (BWC-337, Rev. 5/96). I will provide a copy of the Notice of Exclusion within 21 days of the contract award. (For questions or a copy of the BWC-337, please call the Worker's Compensation Bureau at 517-322-1195).
 - I certify my business has a Worker's Compensation Policy. I will provide an original Certificate of Insurance within twenty-one (21) days of the contract award.
- If you have checked item 2(A) or 2(B), you **must** indicate the number of **both** full-time and part-time employees, other than yourself, including family members and active partners (if none, you must enter "0").

_____ Full-time Employees

_____ Part-time Employees

Name of Business		Federal ID (or) Social Security No.
Address		Telephone ()
City	State	ZIP

I hereby certify that the above information is true and correct. I agree to notify the Michigan DNR of any changes that occur in factors affecting my coverage during any of my present and future operations.

Signature of Owner or Authorized Representative

Title

Date

Please complete the "SEALED BID" information on the next page

Bogged Down Mix (61-129-17)
; Kalkaska COUNTY

In response to the notice of sale to be held 4:00 p.m. (local time) on December 19, 2017, I am hereby submitting my sealed bid (firm offer) for the following forest products to be cut. Bids for individual species must be at or above the advertised price. All non-responsive bid forms may be rejected.

<u>PRODUCTS & SPECIES</u>	<u>ESTIMATED VOLUME*</u>	<u>ADVERTISED PRICE</u>	<u>BID PRICE/UNIT</u>
Sawtimber			
Black Cherry	8.40 MBF	\$ 164.00/MBF	\$ _____
Mixed Aspen	24.50 MBF	\$ 90.00/MBF	\$ _____
Paper Birch	3.90 MBF	\$ 24.00/MBF	\$ _____
Red Maple	52.20 MBF	\$ 109.00/MBF	\$ _____
Red Pine	118.80 MBF	\$ 98.00/MBF	\$ _____
White Pine	146.30 MBF	\$ 56.00/MBF	\$ _____
Pulpwood			
Balsam Fir	85.00 Cords	\$ 10.95/Cord	\$ _____
Black Spruce	813.00 Cords	\$ 20.95/Cord	\$ _____
Mixed Aspen	660.00 Cords	\$ 16.75/Cord	\$ _____
Mixed Hardwood	631.00 Cords	\$ 15.45/Cord	\$ _____
N. White Cedar	7.00 Cords	\$ 16.30/Cord	\$ _____
Red Pine	62.00 Cords	\$ 34.35/Cord	\$ _____
Tamarack	26.00 Cords	\$ 24.55/Cord	\$ _____
White Pine	579.00 Cords	\$ 11.65/Cord	\$ _____

*The volumes are statistically estimated within plus (+) or minus (-) 8.10 percent. These estimated volumes are final and not subject to adjustment. Prospective bidders are urged to examine this timber and to make their own estimates of quantity and quality.

I understand that any or all bids may be rejected. All bids must be signed and all bid items must be bid or the bid form may be rejected. I also understand that consideration and awarding a contract will be based upon my past performance and ability to complete the contract based upon equipment and staffing subject to my control.

FEDERAL ID: _____ or SOCIAL SECURITY NUMBER: _____

Company or individual bidding: _____

Company representative's name: _____

Address: _____

City: _____ State: _____ Zip: _____

IF AVAILABLE, PLEASE PLACE THE PERSONALIZED LABEL FROM YOUR PROSPECTUS IN THE ABOVE BOX.

Individual or company representative's signature: _____ Date: _____

Phone number : _____ Email (optional): _____

THE WINNING BIDDER MUST COMPLETE THE VERIFICATION OF WORKER'S DISABILITY COMPENSATION ACT COMPLIANCE (ON REVERSE SIDE IF DOUBLE SIDED) WITHIN 21 DAYS OF SALE AWARD DATE



FOR DEPARTMENT USE ONLY
Sale Number (XX - XXX - XX - XX)
Forest Management Unit:

TIMBER SALE VERIFICATION OF WORKER'S DISABILITY COMPENSATION ACT COMPLIANCE

*As required by Act 317, P.A. 1969 (Worker's Compensation) and
Part 5 of Act 451 of 1994, as amended.*

VERIFICATION OF WORKER'S DISABILITY COMPENSATION ACT COMPLIANCE

- This verification must be completed and submitted within 21 days of contract award and prior to the issuance of the timber sale contract.
- In addition, if boxes 2B or 2C are checked, then Notice of Exclusion or Certificate of Insurance must be submitted within twenty-one (21) days of the contract award and prior to the issuance of the timber sale contract.
- All information must be typed or printed except for written signatures.

Please Check Appropriate Categories:

1. My business is organized as (you **must** check one of the boxes below):
 - A. Sole Proprietorship (individual)
 - B. Partnership
 - C. Corporation

2. You **must** check one of the boxes below:
 - A. I certify my business is a sole proprietorship and it has no employees but the sole proprietor. I am not subject to the Worker's Compensation Laws.
 - B. I certify my business has satisfied its obligation to the Worker's Compensation Act through the use of an approved Notice of Exclusion (BWC-337, Rev. 5/96). I will provide a copy of the Notice of Exclusion within 21 days of the contract award. (For questions or a copy of the BWC-337, please call the Worker's Compensation Bureau at 517-322-1195).
 - C. I certify my business has a Worker's Compensation Policy. I will provide an original Certificate of Insurance within twenty-one (21) days of the contract award.

3. If you have checked item 2(A) or 2(B), you **must** indicate the number of **both** full-time and part-time employees, other than yourself, including family members and active partners (if none, you must enter "0").

_____ Full-time Employees

_____ Part-time Employees

Name of Business		Federal ID (or) Social Security No.	
Address		Telephone ()	
City	State	ZIP	

I hereby certify that the above information is true and correct. I agree to notify the Michigan DNR of any changes that occur in factors affecting my coverage during any of my present and future operations.

Signature of Owner or Authorized Representative

Title

Date

Please complete the "SEALED BID" information on the next page

153 West Sharon Block (61-168-17)
; Kalkaska COUNTY

In response to the notice of sale to be held 4:00 p.m. (local time) on December 19, 2017, I am hereby submitting my sealed bid (firm offer) for the following forest products to be cut. Bids for individual species must be at or above the advertised price. All non-responsive bid forms may be rejected.

<u>PRODUCTS & SPECIES</u>	<u>ESTIMATED VOLUME*</u>	<u>ADVERTISED PRICE</u>	<u>BID PRICE/UNIT</u>
Sawtimber			
Basswood	64.80 MBF	\$ 108.00/MBF	\$ _____
Beech	5.30 MBF	\$ 91.00/MBF	\$ _____
Black Cherry	9.40 MBF	\$ 192.00/MBF	\$ _____
Mixed Aspen	168.30 MBF	\$ 105.00/MBF	\$ _____
Red Maple	51.70 MBF	\$ 127.00/MBF	\$ _____
Red Oak	1.50 MBF	\$ 168.00/MBF	\$ _____
Red Pine	572.30 MBF	\$ 115.00/MBF	\$ _____
Sugar Maple	66.30 MBF	\$ 282.00/MBF	\$ _____
White Pine	29.60 MBF	\$ 65.00/MBF	\$ _____
Pulpwood			
Balsam Fir	32.00 Cords	\$ 12.80/Cord	\$ _____
Basswood	176.00 Cords	\$ 27.65/Cord	\$ _____
Black Spruce	6.00 Cords	\$ 24.45/Cord	\$ _____
Jack Pine	11.00 Cords	\$ 13.90/Cord	\$ _____
Mixed Aspen	1,192.00 Cords	\$ 19.55/Cord	\$ _____
Mixed Hardwood	1,091.00 Cords	\$ 18.05/Cord	\$ _____
Red Pine	909.00 Cords	\$ 40.05/Cord	\$ _____
White Pine	285.00 Cords	\$ 13.60/Cord	\$ _____

*The volumes are statistically estimated within plus (+) or minus (-) 9.48 percent. These estimated volumes are final and not subject to adjustment. Prospective bidders are urged to examine this timber and to make their own estimates of quantity and quality.

I understand that any or all bids may be rejected. All bids must be signed and all bid items must be bid or the bid form may be rejected. I also understand that consideration and awarding a contract will be based upon my past performance and ability to complete the contract based upon equipment and staffing subject to my control.

FEDERAL ID: _____ or SOCIAL SECURITY NUMBER: _____

Company or individual bidding: _____

Company representative's name: _____

Address: _____

City: _____ State: _____ Zip: _____

IF AVAILABLE, PLEASE PLACE THE PERSONALIZED LABEL FROM YOUR PROSPECTUS IN THE ABOVE BOX.

Individual or company representative's signature: _____ Date: _____

Phone number : _____ Email (optional): _____

THE WINNING BIDDER MUST COMPLETE THE VERIFICATION OF WORKER'S DISABILITY COMPENSATION ACT COMPLIANCE (ON REVERSE SIDE IF DOUBLE SIDED) WITHIN 21 DAYS OF SALE AWARD DATE



FOR DEPARTMENT USE ONLY
Sale Number (XX - XXX - XX - XX)
Forest Management Unit:

TIMBER SALE VERIFICATION OF WORKER'S DISABILITY COMPENSATION ACT COMPLIANCE

*As required by Act 317, P.A. 1969 (Worker's Compensation) and
Part 5 of Act 451 of 1994, as amended.*

VERIFICATION OF WORKER'S DISABILITY COMPENSATION ACT COMPLIANCE

- This verification must be completed and submitted within 21 days of contract award and prior to the issuance of the timber sale contract.
- In addition, if boxes 2B or 2C are checked, then Notice of Exclusion or Certificate of Insurance must be submitted within twenty-one (21) days of the contract award and prior to the issuance of the timber sale contract.
- All information must be typed or printed except for written signatures.

Please Check Appropriate Categories:

1. My business is organized as (you **must** check one of the boxes below):
 - A. Sole Proprietorship (individual)
 - B. Partnership
 - C. Corporation

2. You **must** check one of the boxes below:
 - A. I certify my business is a sole proprietorship and it has no employees but the sole proprietor. I am not subject to the Worker's Compensation Laws.
 - B. I certify my business has satisfied its obligation to the Worker's Compensation Act through the use of an approved Notice of Exclusion (BWC-337, Rev. 5/96). I will provide a copy of the Notice of Exclusion within 21 days of the contract award. (For questions or a copy of the BWC-337, please call the Worker's Compensation Bureau at 517-322-1195).
 - C. I certify my business has a Worker's Compensation Policy. I will provide an original Certificate of Insurance within twenty-one (21) days of the contract award.

3. If you have checked item 2(A) or 2(B), you **must** indicate the number of **both** full-time and part-time employees, other than yourself, including family members and active partners (if none, you must enter "0").

_____ Full-time Employees

_____ Part-time Employees

Name of Business		Federal ID (or) Social Security No.	
Address		Telephone ()	
City	State	ZIP	

I hereby certify that the above information is true and correct. I agree to notify the Michigan DNR of any changes that occur in factors affecting my coverage during any of my present and future operations.

Signature of Owner or Authorized Representative

Title

Date

Please complete the "SEALED BID" information on the next page

153 Thayer Block (61-125-17)
; Kalkaska COUNTY

In response to the notice of sale to be held 4:00 p.m. (local time) on December 19, 2017, I am hereby submitting my sealed bid (firm offer) for the following forest products to be cut. Bids for individual species must be at or above the advertised price. All non-responsive bid forms may be rejected.

<u>PRODUCTS & SPECIES</u>	<u>ESTIMATED VOLUME*</u>	<u>ADVERTISED PRICE</u>	<u>BID PRICE/UNIT</u>
Sawtimber			
Black Cherry	0.80 MBF	\$ 192.00/MBF	\$ _____
Mixed Aspen	124.50 MBF	\$ 105.00/MBF	\$ _____
Paper Birch	0.80 MBF	\$ 28.00/MBF	\$ _____
Red Maple	89.40 MBF	\$ 127.00/MBF	\$ _____
Red Pine	115.40 MBF	\$ 115.00/MBF	\$ _____
White Pine	20.30 MBF	\$ 65.00/MBF	\$ _____
Pulpwood			
Balsam Fir	82.00 Cords	\$ 12.80/Cord	\$ _____
Black Spruce	3.00 Cords	\$ 24.45/Cord	\$ _____
Jack Pine	22.00 Cords	\$ 13.90/Cord	\$ _____
Mixed Aspen	1,629.00 Cords	\$ 19.55/Cord	\$ _____
Mixed Hardwood	35.00 Cords	\$ 18.05/Cord	\$ _____
Red Maple	511.00 Cords	\$ 18.05/Cord	\$ _____
Red Pine	235.00 Cords	\$ 40.05/Cord	\$ _____
White Pine	38.00 Cords	\$ 13.60/Cord	\$ _____

*The volumes are statistically estimated within plus (+) or minus (-) 8.78 percent. These estimated volumes are final and not subject to adjustment. Prospective bidders are urged to examine this timber and to make their own estimates of quantity and quality.

I understand that any or all bids may be rejected. All bids must be signed and all bid items must be bid or the bid form may be rejected. I also understand that consideration and awarding a contract will be based upon my past performance and ability to complete the contract based upon equipment and staffing subject to my control.

FEDERAL ID: _____ or SOCIAL SECURITY NUMBER: _____

Company or individual bidding: _____

Company representative's name: _____

Address: _____

City: _____ State: _____ Zip: _____

IF AVAILABLE, PLEASE PLACE THE PERSONALIZED LABEL FROM YOUR PROSPECTUS IN THE ABOVE BOX.

Individual or company representative's signature: _____ Date: _____

Phone number : _____ Email (optional): _____

THE WINNING BIDDER MUST COMPLETE THE VERIFICATION OF WORKER'S DISABILITY COMPENSATION ACT COMPLIANCE (ON REVERSE SIDE IF DOUBLE SIDED) WITHIN 21 DAYS OF SALE AWARD DATE



FOR DEPARTMENT USE ONLY
Sale Number (XX - XXX - XX - XX)
Forest Management Unit:

TIMBER SALE VERIFICATION OF WORKER'S DISABILITY COMPENSATION ACT COMPLIANCE

*As required by Act 317, P.A. 1969 (Worker's Compensation) and
Part 5 of Act 451 of 1994, as amended.*

VERIFICATION OF WORKER'S DISABILITY COMPENSATION ACT COMPLIANCE

- This verification must be completed and submitted within 21 days of contract award and prior to the issuance of the timber sale contract.
- In addition, if boxes 2B or 2C are checked, then Notice of Exclusion or Certificate of Insurance must be submitted within twenty-one (21) days of the contract award and prior to the issuance of the timber sale contract.
- All information must be typed or printed except for written signatures.

Please Check Appropriate Categories:

1. My business is organized as (you **must** check one of the boxes below):
 - A. Sole Proprietorship (individual)
 - B. Partnership
 - C. Corporation

2. You **must** check one of the boxes below:
 - A. I certify my business is a sole proprietorship and it has no employees but the sole proprietor. I am not subject to the Worker's Compensation Laws.
 - B. I certify my business has satisfied its obligation to the Worker's Compensation Act through the use of an approved Notice of Exclusion (BWC-337, Rev. 5/96). I will provide a copy of the Notice of Exclusion within 21 days of the contract award. (For questions or a copy of the BWC-337, please call the Worker's Compensation Bureau at 517-322-1195).
 - C. I certify my business has a Worker's Compensation Policy. I will provide an original Certificate of Insurance within twenty-one (21) days of the contract award.

3. If you have checked item 2(A) or 2(B), you **must** indicate the number of **both** full-time and part-time employees, other than yourself, including family members and active partners (if none, you must enter "0").

_____ Full-time Employees

_____ Part-time Employees

Name of Business		Federal ID (or) Social Security No.	
Address		Telephone ()	
City	State	ZIP	

I hereby certify that the above information is true and correct. I agree to notify the Michigan DNR of any changes that occur in factors affecting my coverage during any of my present and future operations.

Signature of Owner or Authorized Representative

Title

Date

Please complete the "SEALED BID" information on the next page