



**DEPARTMENT OF NATURAL RESOURCES  
STATE OF MICHIGAN**

**TIMBER SALE PROSPECTUS #6087**

SCHEDULED SALE DATE AND TIME: 3:00 p.m. (local time) on January 9, 2018.

LOCATION: ESCANABA OFFICE, 6833 HWY 2, 41 & M-35, GLADSTONE, MI 49837.

PROSPECTUS NOTE: The bidder is advised to inspect the sale area and review the location, estimated volumes, operating costs and contract terms of proposed sales. Please be aware that some landowners may request 60 days or more notice for access across their land.

Notice is hereby given that bids will be received by the Unit Manager, ESCANABA MANAGEMENT UNIT, for certain timber on the following described lands:

Jumpy Frog (33-014-17)

Menominee County, Advertised Price \$219,163.75, 268.5 Acres, Aspen, Hardwood.

SALE NOTE: Eastern Larch beetle (ELB) and Spruce Budworm (SBW) have impacted this sale and surrounding areas. It is recommended to harvest some portions of the sale this winter. The best access to this sale is through private from the south or north. Contact the Escanaba Forest Resources Division Office for the landowner contact names and numbers. Potential access through state land if necessary.

Access may be through private land.

Devil's Creek SBW (33-038-17)

Menominee County, Advertised Price \$232,657.35, 329.6 Acres, Aspen, Hardwood.

SALE NOTE: The Forest Island ORV Trail runs through Payment Units 12 and 13, see specs 5.2.39 and 6.2.3 for details on how to protect the trail. 140 yards of gravel will need to be hauled and spread by the Purchaser. The spruce budworm is present and has caused some defoliation, but no mortality at this time.

A recreation site such as a trail, pathway, or campground is within the sale area or the vicinity. Certain restrictions/specifications may be applicable including time restrictions.

Big Cedar River SBW (33-039-17)

Menominee County, Advertised Price \$70,160.50, 77.6 Acres, Hardwood, Spruce/Fir/Tamarack.

SALE NOTE: The spruce budworm is present and has caused defoliation, but only a very limited amount of mortality. Some roadwork will need to be done by the Purchaser to access Payment Units 2 and 3.

A recreation site such as a trail, pathway, or campground is within the sale area or the vicinity. Certain restrictions/specifications may be applicable including time restrictions.

Pathways SBW (33-043-17)

Menominee County, Advertised Price \$83,294.75, 132.5 Acres, Aspen, Hardwood.

SALE NOTE: The Cedar River Pathway runs through most of the Payment Units on the sale. The pathway needs to be signed and protected, see specs 5.2.40 and 6.2.3 for further details. The spruce budworm has caused some spruce/fir defoliation, but no mortality at this time.

A recreation site such as a trail, pathway, or campground is within the sale area or the vicinity. Certain restrictions/specifications may be applicable including time restrictions.

D 4 Road SBW (33-044-17)

Menominee County, Advertised Price \$116,810.00, 183.6 Acres, Hardwood, Spruce/Fir/Tamarack.

SALE NOTE: The Forest Island ORV Trail runs along the eastern edge of Payment Unit 9. Spruce budworm is present and has caused some defoliation of the spruce/fir, but no mortality has occurred. Eastern Larch beetle is present as well, and has caused some tamarack mortality.

A recreation site such as a trail, pathway, or campground is within the sale area or the vicinity. Certain restrictions/specifications may be applicable including time restrictions.

Boy-Ar-Dee SBW (33-045-17)

Menominee County, Advertised Price \$103,604.20, 158.8 Acres, N White Cedar, Spruce/Fir/Tamarack.

SALE NOTE: The eastern larch beetle has caused some tamarack mortality within the sale area. The spruce budworm has also caused some fir/spruce mortality within Payment Unit 1, but only some defoliation in other Payment Units.

## BID INSTRUCTIONS (VER. 11/28/2017):

### 1. Scheduled Bid Location, Date, and Time (2/11)

Bids must be received by the Unit Manager, ESCANABA OFFICE, 6833 HWY 2, 41 & M-35, GLADSTONE, MI 49837, no later than 3:00 p.m. (local time) on January 9, 2018. For further information concerning this sale, contact Eric Thompson at 906-786-2354.

### 2. Bidder's Qualifications (5/16)

Purchaser shall obtain workers compensation insurance to cover claims under Michigan's Worker's Disability Compensation Act of 1969 or similar employee benefit act of any other state applicable to an employee. If all or part of a timber sale was prepared by a private contractor, the contractor and that contractor's company are not permitted to bid on the timber sale contract. Bids will not be accepted from individuals or companies appearing on the DNR/FRD No-Bid List. This list contains the names of purchasers who previously failed to execute a contract within 21-days or who have a history of poor performance.

### 3. Preparation of Sealed Bids (5/16)

Bid Forms may be completed online thru Michigan DNR Timber Sale Online Bidding (OLB) at [www.michigan.gov/timberbidding](http://www.michigan.gov/timberbidding) or by completing the hardcopy Bid Form found in the Timber Sale Prospectus. Hardcopy Bid Forms shall be manually signed in ink. Registration in OLB is considered your 'signature' for all bids submitted thru that system. Bid prices must be entered for each species and product in the Bid Price column for all material subject to bidding and all fill-in blanks must be completed. If erasures or other changes appear on the hardcopy Bid Form, each erasure or change must be initialed by the person signing the bid.

### 4. Submission of Sealed Bids (5/16)

Bid forms may be obtained from the Unit Manager or thru OLB. Bids may be submitted hardcopy or thru OLB. All hardcopy bids must be submitted on the bid form and in an envelope clearly identified as described in this section. NOTE: Only one bid form per bid envelope. Sealed bids must be submitted to the Unit office designated in the prospectus and must be submitted at or prior to the time established in the prospectus. The envelope should show on the outside (a) the sale name or number and (b) the date and time of bid opening, as shown in the prospectus. Bids received after the time specified in the sale prospectus are late bids and will be rejected.

It is possible for a bidder to submit multiple bids on a single sale. For example, a bid may be submitted hardcopy and a bid may be submitted thru OLB. Or, two bidders from the same company could both submit bids on the same sale. If this were to happen, the State would accept all bids received and award the contract accordingly. All bidding and contractual requirements would apply to all bids received.

### 5. Public Opening of Sealed Bids (7/16)

If conditions permit, the sealed bids will be publicly opened and posted at the time and place set in the prospectus.

If a bidder, present at a bid opening, has submitted bids on more than one sale, that bidder may withdraw their unopened bid envelopes or announce the withdrawal of their online bid after being declared the successful bidder on one sale.

### 6. Award of Contract (1/11)

Award of the contract will be made to the Bidder whose bid, conforming to the prospectus, is most advantageous to the State of Michigan on the basis of total value at rates bid for the estimated quantities. The State reserves the right to reject any bid or waive any minor irregularity in bids received. A written award mailed (or otherwise furnished) to the successful Bidder shall be deemed to result in a binding contract without further action by either party.

### 7. Down Payment (1/11)

The Bidder to whom award is made must make a down payment within 21 days of the sale award. The amount of the down payment will be calculated as shown in the Bond and Payment Schedule of this prospectus. Only cash may be used to meet this requirement.

### 8. Performance Security (1/11)

As guarantee of faithful performance, a cash bond, certificate of deposit, surety bond or irrevocable letter of credit (LOC) is required within 21 days of the sale award. The amount of the performance security is shown in the Bond and

Payment Schedule of this prospectus. If an LOC or surety is used, the coverage must extend for at least 6 months beyond the contract expiration.

#### 9. Timber Sale Contract (11/17)

Additional conditions and requirements common to all timber sales are listed on the timber sale contract (R4031) and are available on line at [www.michigan.gov/timber](http://www.michigan.gov/timber). Contact the Unit Manager for additional information or a sample contract. Within 21 days of the date of the award letter, the bidder must sign the contract and provide the required down payment, performance security, and verification of worker's disability compensation. The down payment and performance security shall be in accordance with the provisions of the timber sale contract, in the sums stated in this prospectus. If these actions are not taken, then the Bidder, the Bidder's corporation, and the corporation's principals may not be permitted to bid on State timber sales for a period of 1 year. In addition, the Bidder certifies that if awarded this contract, the Bidder will complete the timber sale contract in accordance with its terms and any modifications thereof including requirements to purchase, cut, and remove the included timber by the expiration date.

Payment Unit values in the State Forest Timber Sale Contract are calculated based on the advertised value of the Payment Unit as a percentage of the total advertised value of the contract. The advertised value of each Payment Unit is given in the Description of Timber by Payment Unit table on the Timber Sale Information page. For example, if the value of Payment Unit 1 is advertised as \$1,500 and the total Timber Sale value is advertised as \$10,000, the contract price for Payment Unit 1 will be 15% of the total bid price ( $\$1,500/\$10,000 * 100$ ).

#### 10. Disclaimer of Estimates and Bidder's Warranty of Inspection (7/16)

Before submitting this bid, the Bidder is advised and cautioned to inspect the sale area, review the requirements of the sale contract, and take other steps as may be reasonably necessary to ascertain the location, estimated volumes, construction estimates, and operating costs of the proposed sale. Failure to do so will not relieve the Bidder from responsibility for completing the contract.

The Bidder warrants that this bid is submitted solely on the basis of the Bidder's examination and inspection of the quality and quantity of the timber offered for sale and the Bidder's opinion of the value thereof and the costs of recovery. No reliance should be placed on the State of Michigan's estimates of timber quality, quantity or costs of recovery. Bidder further acknowledges that the State of Michigan: (i) expressly disclaims any warranty of fitness of timber for any purpose; (ii) offers this timber as is without any warranty of quality (merchantability) or quantity and (iii) expressly disclaims any warranty as to the quantity or quality of timber sold.

#### 11. Certification and Chain-of-Custody (10/14)

Unless otherwise indicated in the contract under section 7 – Other Conditions of the Sale Specific Conditions & Requirements, the area encompassed by this timber sale is certified to the standards of the Forest Stewardship Council (FSC) - Certificate #SCS-FM/COC-00090N and the Sustainable Forestry Initiative (SFI) - Certificate # NSF-SFIS-5Y031-SF5. Forest products from this sale may be delivered to the mill as "FSC 100% and / or SFI certified" as long as the contractor hauling the forest products is chain-of-custody (COC) certified or covered under a COC certificate from the destination mill. The purchaser is responsible for maintaining COC after leaving the sale area.

#### 12. Good Neighbor Authority (GNA) Requirements (7/16)

If the name of this timber sales contains the acronym GNA, it is authorized by the Good Neighbor Authority (GNA) and covered by various agreements between the U.S. Forest Service and the State. The timber sale occurs on federal land and the following conditions apply:

GNA contracts on US Forest Service land will not be awarded to purchasers on the Federal list of excluded parties. The System for Award Management (SAM) will be checked for active excluded parties prior to award of contract. In addition, the Bidder to whom award is made must complete an Assurance Regarding Felony Conviction or Tax Delinquent Status for Corporate Applicants (AD-3031).

#### 13. Good Neighbor Authority (GNA) Requirements, con't (9/16)

Bidder certifies, by signing this bid form, that to the best of Bidder's knowledge that the following representations are accurate and complete.

a. That the Bidder and its principals are not presently debarred, suspended, proposed for debarment, declared ineligible, or voluntary excluded from timber sales (covered transactions) by any Federal department or agency.

b. That the Bidder and its principals have not within a 3-year period preceding this bid been convicted of or had a civil judgment rendered against them for commission of fraud or a criminal offense in connection with obtaining, attempting to obtain, or performing a public (Federal, State, or local) transaction or contract under a public transaction; violation of Federal or State antitrust statutes or commission of embezzlement, theft, forgery, bribery, falsification or destruction of records, making false statements, or receiving stolen property.

c. That the Bidder and its principals are not presently indicted for or otherwise criminally or civilly charged by a governmental entity (Federal, State, or local) with commission of any of the offenses enumerated in paragraph b of this certification.

d. That the Bidder and its principals have not within a 3-year period preceding this bid had one or more public transactions (Federal, State, or local) terminated for breach or default of a timber or forest product contract.

Bidders that cannot certify this requirement, in whole or in part, shall submit an explanation with their bid.

KEITH CREAGH  
Director



# TIMBER SALE INFORMATION

Jumpy Frog (33-014-17)

Menominee County (Advertised Price \$219,163.75)

SALE NOTE: Eastern Larch beetle (ELB) and Spruce Budworm (SBW) have impacted this sale and surrounding areas. It is recommended to harvest some portions of the sale this winter. The best access to this sale is through private from the south or north. Contact the Escanaba Forest Resources Division Office for the landowner contact names and numbers. Potential access through state land if necessary.

Access may be through private land.

A timber sale contract for this lump sum, sealed bid timber sale will be awarded to the responsible bidder offering the highest sealed bid price. Bids must be at or above the following advertised price for each species:

<u>PRODUCTS &amp; SPECIES</u>	<u>ESTIMATED UNITS*</u>	<u>ADVERTISED PRICE</u>
Sawtimber		
Basswood	14.10 MBF	\$ 124.00 / MBF
Black Ash	4.20 MBF	\$ 88.00 / MBF
Black Cherry	3.00 MBF	\$ 153.00 / MBF
Green Ash	2.70 MBF	\$ 97.00 / MBF
Paper Birch	18.00 MBF	\$ 87.00 / MBF
Red Maple	95.20 MBF	\$ 247.00 / MBF
Sugar Maple	23.50 MBF	\$ 356.00 / MBF
White Ash	4.90 MBF	\$ 72.00 / MBF
Yellow Birch	8.90 MBF	\$ 137.00 / MBF
Pulpwood		
Balsam Fir	945.00 Cords	\$ 18.75 / Cord
Mixed Hardwood	1,924.00 Cords	\$ 32.55 / Cord
Mixed Spruce	611.00 Cords	\$ 18.75 / Cord
N. White Cedar	883.00 Cords	\$ 25.25 / Cord
Quaking Aspen	1,952.00 Cords	\$ 32.25 / Cord
Tamarack	213.00 Cords	\$ 15.00 / Cord
White Pine	32.00 Cords	\$ 33.20 / Cord

\* The estimated units are final and not subject to adjustment. Prospective bidders are urged to examine this timber and to make their own estimates of quantity and quality.

## **BOND AND PAYMENT SCHEDULE:**

1. A bond in the amount of \$10,958.00 to insure faithful performance of the conditions of the contract will be deposited by the successful bidder within 21 days of the sale award.
2. Cutting in any sale or unit without the required advance payment would be considered a trespass.
3. Total payment must be paid in advance or according to the following schedule:
  - (a) Ten percent (10%) of the sale value must be paid within 21 days of the sale award.
  - (b) The 10% down payment will be credited towards the first unit cut.
4. If no cutting takes place, the 10% down payment will not be refunded.
5. Operations on the contract issued will terminate on 03/31/2021.

**Description of Timber by Payment Unit (PU)**

PU	MARKET GROUP	PRODUCT	QUANTITY	UNIT	ACRES	ADVERTISE PRICE
1	Paper Birch	Sawtimber	1.6	MBF	17.9	\$8,571.80
	Balsam Fir	Pulpwood	17.0	Cords		
	Mixed Hardwood		47.0	Cords		
	<i>Black Ash</i>		14.0	<i>Cords</i>		
	<i>Paper Birch</i>		15.0	<i>Cords</i>		
	<i>Red Maple</i>		18.0	<i>Cords</i>		
	Mixed Spruce		93.0	Cords		
	<i>Black Spruce</i>		93.0	<i>Cords</i>		
	N. White Cedar		127.0	Cords		
	Quaking Aspen		6.0	Cords		
	Tamarack		96.0	Cords		
2	Paper Birch	Sawtimber	1.5	MBF	12.6	\$13,340.25
	Red Maple		16.3	MBF		
	Yellow Birch		1.5	MBF		
	Balsam Fir	Pulpwood	67.0	Cords		
	Mixed Hardwood		83.0	Cords		
	<i>Black Ash</i>		3.0	<i>Cords</i>		
	<i>Paper Birch</i>		9.0	<i>Cords</i>		
	<i>Red Maple</i>		67.0	<i>Cords</i>		
	<i>Yellow Birch</i>		4.0	<i>Cords</i>		
	Mixed Spruce		37.0	Cords		
	<i>Black Spruce</i>		23.0	<i>Cords</i>		
	<i>White Spruce</i>		14.0	<i>Cords</i>		
	N. White Cedar		73.0	Cords		
	Quaking Aspen		77.0	Cords		
3	Mixed Spruce	Pulpwood	31.0	Cords	4.3	\$740.85
	<i>Black Spruce</i>		31.0	<i>Cords</i>		
	Tamarack		4.0	Cords		
	White Pine		3.0	Cords		
4	Black Ash	Sawtimber	3.3	MBF	57.5	\$36,829.40
	Paper Birch		1.8	MBF		
	Red Maple		15.3	MBF		
	Balsam Fir	Pulpwood	86.0	Cords		
	Mixed Hardwood		293.0	Cords		
	<i>Black Ash</i>		129.0	<i>Cords</i>		
	<i>Paper Birch</i>		23.0	<i>Cords</i>		
	<i>Red Maple</i>		120.0	<i>Cords</i>		
	<i>Yellow Birch</i>		21.0	<i>Cords</i>		
	Mixed Spruce		324.0	Cords		
	<i>Black Spruce</i>		276.0	<i>Cords</i>		
	<i>White Spruce</i>		48.0	<i>Cords</i>		
	N. White Cedar		498.0	Cords		
	Quaking Aspen		15.0	Cords		
	Tamarack		106.0	Cords		
White Pine		22.0	Cords			
5	Black Ash	Sawtimber	0.9	MBF	18.7	\$15,488.40
	Paper Birch		1.5	MBF		
	Red Maple		5.8	MBF		
	Yellow Birch		0.9	MBF		
	Balsam Fir	Pulpwood	22.0	Cords		
	Mixed Hardwood		318.0	Cords		
	<i>Black Ash</i>		265.0	<i>Cords</i>		
	<i>Paper Birch</i>		4.0	<i>Cords</i>		
	<i>Red Maple</i>		29.0	<i>Cords</i>		
	<i>Yellow Birch</i>		20.0	<i>Cords</i>		
	N. White Cedar		108.0	Cords		



Description of Timber by Payment Unit (PU), con't

PU	MARKET GROUP	PRODUCT	QUANTITY	UNIT	ACRES	ADVERTISE PRICE		
5 con't	White Pine	Pulpwood	7.0	Cords				
6	Basswood	Sawtimber	3.8	MBF	40.4	\$46,061.05		
	Paper Birch		5.3	MBF				
	Red Maple		33.5	MBF				
	Sugar Maple		8.5	MBF				
	Balsam Fir	Pulpwood	330.0	Cords				
	Mixed Hardwood		445.0	Cords				
	<i>Basswood</i>		9.0	<i>Cords</i>				
	<i>Ironwood</i>		11.0	<i>Cords</i>				
	<i>Paper Birch</i>		33.0	<i>Cords</i>				
	<i>Red Maple</i>		339.0	<i>Cords</i>				
	<i>Sugar Maple</i>		22.0	<i>Cords</i>				
	<i>White Ash</i>		31.0	<i>Cords</i>				
	Mixed Spruce		84.0	Cords				
	<i>Black Spruce</i>		68.0	<i>Cords</i>				
	<i>White Spruce</i>		16.0	<i>Cords</i>				
	N. White Cedar		56.0	Cords				
	Quaking Aspen		312.0	Cords				
	Tamarack		7.0	Cords				
7	Basswood	Sawtimber	8.4	MBF			17.0	\$6,145.10
	Sugar Maple		4.9	MBF				
	White Ash		3.0	MBF				
	Balsam Fir	Pulpwood	3.0	Cords				
	Mixed Hardwood		77.0	Cords				
	<i>Basswood</i>		25.0	<i>Cords</i>				
	<i>Beech</i>		2.0	<i>Cords</i>				
	<i>Red Maple</i>		4.0	<i>Cords</i>				
	<i>Sugar Maple</i>		36.0	<i>Cords</i>				
	<i>White Ash</i>		10.0	<i>Cords</i>				
	Quaking Aspen		18.0	Cords				
8	Basswood	Sawtimber	1.9	MBF	9.0	\$4,324.55		
	Paper Birch		1.0	MBF				
	Red Maple		2.8	MBF				
	Sugar Maple		1.8	MBF				
	White Ash		1.9	MBF				
	Balsam Fir	Pulpwood	2.0	Cords				
	Mixed Hardwood		40.0	Cords				
	<i>Basswood</i>		3.0	<i>Cords</i>				
	<i>Paper Birch</i>		1.0	<i>Cords</i>				
	<i>Red Maple</i>		14.0	<i>Cords</i>				
	<i>Sugar Maple</i>		12.0	<i>Cords</i>				
	<i>White Ash</i>		10.0	<i>Cords</i>				
	Quaking Aspen		37.0	Cords				
9	Black Cherry	Sawtimber	1.1	MBF			32.9	\$31,677.95
	Green Ash		1.0	MBF				
	Paper Birch		1.9	MBF				
	Red Maple		7.8	MBF				
	Sugar Maple		3.0	MBF				
	Yellow Birch		2.4	MBF				
	Balsam Fir	Pulpwood	151.0	Cords				
	Mixed Hardwood		224.0	Cords				
	<i>American Elm</i>		1.0	<i>Cords</i>				
	<i>Balsam Poplar</i>		8.0	<i>Cords</i>				
	<i>Beech</i>		3.0	<i>Cords</i>				
	<i>Black Ash</i>		60.0	<i>Cords</i>				
	<i>Black Cherry</i>		25.0	<i>Cords</i>				

Description of Timber by Payment Unit (PU), con't

PU	MARKET GROUP	PRODUCT	QUANTITY	UNIT	ACRES	ADVERTISE PRICE			
9 con't	<i>Green Ash</i>	<i>Pulpwood</i>	13.0	<i>Cords</i>					
	<i>Ironwood</i>		1.0	<i>Cords</i>					
	<i>Paper Birch</i>		7.0	<i>Cords</i>					
	<i>Red Maple</i>		57.0	<i>Cords</i>					
	<i>Sugar Maple</i>		27.0	<i>Cords</i>					
	<i>White Ash</i>		4.0	<i>Cords</i>					
	<i>Yellow Birch</i>		18.0	<i>Cords</i>					
	Mixed Spruce		15.0	<i>Cords</i>					
	<i>White Spruce</i>		15.0	<i>Cords</i>					
	N. White Cedar		8.0	<i>Cords</i>					
	Quaking Aspen		537.0	<i>Cords</i>					
10	Black Cherry	<i>Sawtimber</i>	0.6	MBF	18.8	\$18,065.20			
	Green Ash		0.6	MBF					
	Paper Birch		1.1	MBF					
	Red Maple		4.4	MBF					
	Sugar Maple		1.7	MBF					
	Yellow Birch		1.3	MBF					
	Balsam Fir		<i>Pulpwood</i>	86.0			<i>Cords</i>		
	Mixed Hardwood			128.0			<i>Cords</i>		
	<i>American Elm</i>			1.0			<i>Cords</i>		
	<i>Balsam Poplar</i>			4.0			<i>Cords</i>		
	<i>Beech</i>			1.0			<i>Cords</i>		
	<i>Black Ash</i>			34.0			<i>Cords</i>		
	<i>Black Cherry</i>			15.0			<i>Cords</i>		
	<i>Green Ash</i>	7.0		<i>Cords</i>					
	<i>Ironwood</i>	1.0		<i>Cords</i>					
	<i>Paper Birch</i>	4.0		<i>Cords</i>					
	<i>Red Maple</i>	33.0		<i>Cords</i>					
	<i>Sugar Maple</i>	16.0		<i>Cords</i>					
	<i>White Ash</i>	2.0		<i>Cords</i>					
	<i>Yellow Birch</i>	10.0	<i>Cords</i>						
	Mixed Spruce	9.0	<i>Cords</i>						
	<i>White Spruce</i>	9.0	<i>Cords</i>						
	N. White Cedar	4.0	<i>Cords</i>						
	Quaking Aspen	307.0	<i>Cords</i>						
	11	Black Cherry	<i>Sawtimber</i>	0.8			MBF	24.3	\$23,400.40
		Green Ash		0.7			MBF		
Paper Birch		1.4		MBF					
Red Maple		5.7		MBF					
Sugar Maple		2.2		MBF					
Yellow Birch		1.7		MBF					
Balsam Fir		<i>Pulpwood</i>		112.0	<i>Cords</i>				
Mixed Hardwood				166.0	<i>Cords</i>				
<i>American Elm</i>				1.0	<i>Cords</i>				
<i>Balsam Poplar</i>				6.0	<i>Cords</i>				
<i>Beech</i>				2.0	<i>Cords</i>				
<i>Black Ash</i>				45.0	<i>Cords</i>				
<i>Black Cherry</i>				19.0	<i>Cords</i>				
<i>Green Ash</i>			9.0	<i>Cords</i>					
<i>Ironwood</i>			1.0	<i>Cords</i>					
<i>Paper Birch</i>			5.0	<i>Cords</i>					
<i>Red Maple</i>			42.0	<i>Cords</i>					
<i>Sugar Maple</i>			20.0	<i>Cords</i>					
<i>White Ash</i>			3.0	<i>Cords</i>					
<i>Yellow Birch</i>		13.0	<i>Cords</i>						
Mixed Spruce		11.0	<i>Cords</i>						

**Description of Timber by Payment Unit (PU), con't**

PU	MARKET GROUP	PRODUCT	QUANTITY	UNIT	ACRES	ADVERTISE PRICE			
11 con't	<i>White Spruce</i>	<i>Pulpwood</i>	11.0	<i>Cords</i>					
	N. White Cedar		6.0	Cords					
	Quaking Aspen		397.0	Cords					
12	Black Cherry	Sawtimber	0.5	MBF	15.1	\$14,518.80			
	Green Ash		0.4	MBF					
	Paper Birch		0.9	MBF					
	Red Maple		3.6	MBF					
	Sugar Maple		1.4	MBF					
	Yellow Birch		1.1	MBF					
	Balsam Fir		Pulpwood	69.0			Cords		
	Mixed Hardwood			103.0			Cords		
	<i>Balsam Poplar</i>			3.0			<i>Cords</i>		
	<i>Beech</i>			1.0			<i>Cords</i>		
	<i>Black Ash</i>	28.0		<i>Cords</i>					
	<i>Black Cherry</i>	12.0		<i>Cords</i>					
	<i>Green Ash</i>	6.0		<i>Cords</i>					
	<i>Ironwood</i>	1.0		<i>Cords</i>					
	<i>Paper Birch</i>	3.0		<i>Cords</i>					
	<i>Red Maple</i>	26.0		<i>Cords</i>					
	<i>Sugar Maple</i>	13.0		<i>Cords</i>					
	<i>White Ash</i>	2.0		<i>Cords</i>					
	<i>Yellow Birch</i>	8.0		<i>Cords</i>					
	Mixed Spruce	7.0		Cords					
	<i>White Spruce</i>	7.0		<i>Cords</i>					
	N. White Cedar	3.0		Cords					
	Quaking Aspen	246.0		Cords					
	TOTAL:			174.5			MBF		
	TOTAL:			6,560.0			Cords		

## Sale Specific Conditions & Requirements

**Sale Name: Jumpy Frog**

**Sale Number: 33-014-17 Seq#: 1**

### 1 - Sale Area

#### 1.2 - Boundaries

##### 1.2.1 - Painted boundaries (1/14)

The sale boundary and Payment Unit boundaries are marked and identified by blue, red and yellow paint. Exterior sale boundary lines against private property are marked with blue paint. Exterior sale boundary lines against state are marked with red paint. Retention areas are identified by red painted x marks and no operations are to occur within these areas. Interior Payment Unit boundaries are marked with yellow paint. The painted boundary line trees are not Included Timber and are to be protected unless marked with orange paint. Yellow painted trees designating an interior Payment Unit boundary are only to be cut when all surrounding Payment Units have been paid.

### 2 - Timber Specifications

#### 2.1 - Included Timber

##### 2.1.1 - Clearcut unit(s) with unmerchantable trees (6/14)

Within Payment Unit(s) 2, 3, 5, 6, 9, 10, 11, and 12, cut all trees that are three (3) inches or more at DBH, except do not cut any beech in Payment Unit 6.

##### 2.1.3 - Cut tree marked unit(s) (12/08)

Within Payment Unit(s) 7 and 8, all trees are designated for cutting when marked with orange paint above and below stump height, regardless of merchantability.

##### 2.1.7 - Leave tree marked unit(s) (6/14)

Within Payment Unit(s) 1 and 4, cut all trees that are three (3) inches or more at DBH, except do not cut any trees marked with green paint above and below stump height. In addition, within Payment Unit 4, do not cut any hemlock trees.

### 3 - Payments

#### 3.3 - Pre-measured Sales

##### 3.3.4 - Dividing payment units (7/14)

Payment Unit(s) with a contract purchase value of \$15,000 dollars or greater may be divided at the request of the Purchaser and upon approval of the Unit Manager. Dividing Payment Units is a contract modification which requires a Timber Sale Contract Supplement.

### 4 - Transportation

#### 4.1 - Construction

##### 4.1.5 - Culverts (5/14)

Roads may require the installation of culverts for cross drainage or at natural drainage-ways. If culverts are needed in these locations, their placement will be specified by the sale administrator and they shall be installed prior to hauling. The culverts shall be new, corrugated metal or plastic gauge. Culverts will be a minimum of 18 inches in diameter and 24 feet in length. If culverts are removed, fill shall be removed from wetland soils as specified. Soils shall be maintained and left in a non-erodible condition, with water bars, seed, fertilizer, mulch, and slash installed as directed by the sale administrator and as specified in the BMP manual. Stream crossing permits, if needed, will be obtained by the DNR.

##### 4.1.6 - Road construction (1/09)

Construction of new roads or improvements of existing roads shall be done in such a way as to minimize the environmental and visual impacts. Merchantable trees shall be cut and utilized unless otherwise directed. Non-merchantable trees shall be severed and laid flat on the ground. Slash shall be scattered, and not left in windrows and kept a minimum of 10 feet back from the road edge. Stumps shall be set upright, not left on edge, and be moved at least 10 feet away from the road edge. Disturbed soil shall be feathered into the woods and not left in berms or windrows.

##### 4.1.7 - Road closure (10/11)

All new roads built into the sale must be blocked to vehicle traffic upon completion of the sale. In general, this will require constructing a four (4') foot high berm of stumps and logs covered with earth. Contact the sale administrator for specific details of design and placement.

#### 4.2 - Maintenance

##### 4.2.2 - Fill material (4/07)

To maintain roads, fill material may be needed in areas where "holes" exist or may be expected to develop. This fill material should be placed before trucking begins. Contact the sale administrator regarding the availability of onsite sand or gravel from adjacent State-owned lands.

##### 4.2.4 - Grading (10/16)

For completion of the sale, state forest roads must be graded. In general, this will require a road grader or bull dozer to shape up the roads after forest products have been hauled off site. This includes cleaning of drainage areas, grading, crowning and filling with gravel, if necessary. The grading equipment to be used must be approved by the Unit Manager or his/her representative.

#### 4.4 - Access

##### 4.4.1 - Private property access (3/11)

Permission for access across private land is the responsibility of the Purchaser.

### 5 - Operations

#### 5.2 - Conduct of Operations

##### 5.2.2 - Hazard Trees/Snags

###### 5.2.2.1 - Den trees (10/16)

Obvious hollow and/or den trees shall be protected and left standing unless they are a safety hazard.

##### 5.2.3 - Operating Restrictions

###### 5.2.3.1 - Operating restrictions (9/11)

Within Payment Unit(s) 1, 3, 4, and 5, unless changed by written agreement, cutting, skidding, and hauling are limited to the period of December 1 to March 31. This restriction is because the timber types are lowland ash and lowland conifer with swales.

###### 5.2.3.3 - Bark slippage restriction (3/09)

Within Payment Unit(s) 7 and 8, unless changed by written agreement, cutting and skidding are not permitted during the period of April 15 to July 15. This restriction is because of bark slippage.

##### 5.2.17 - Crane Mats/Timber Mats (9/17)

Some skid trails may require extra protection such as that afforded by Crane Mats/Timber Mats. If available, Crane Mats/Timber Mats may be borrowed from the DNR and are located at the Marquette ICC, the Newberry Field Office and the Grayling Field Office. Contact the sale administrator for specific details. A Timber Sale Contract Supplement will be used to document the Purchaser's use of the DNR's Crane Mats/Timber Mats. It is the responsibility of the Purchaser to contact the sale administrator to schedule pick up and drop off. In addition, all mats must be cleaned prior to drop off. A charge of \$125.00 dollars will be assessed for all damaged or non-returned mats. Damage is defined as misuse resulting in three or more broken cants.

##### 5.2.22 - Operating Caution

###### 5.2.22.1 - Operating caution (6/11)

It is recommended, but not required, that within Payment Unit(s) 6, cutting, skidding, and hauling occur during dry summer or frozen winter conditions. The reason for the recommendation is because some portions of this unit are low swales.

#### 5.4 - Soil Protection

##### 5.4.1 - Rutting restriction, general (7/16)

Operations are to cease immediately if equipment and weather conditions result in rutting of roads and/or skid trails which is 12 inches or greater in depth and 50 feet in length. The Unit Manager or his/her representative may restrict hauling and/or

skidding if ruts exceed the specified depth. With the Unit Manager or his/her representative's approval, the Purchaser may return to the area when the risk of rutting has decreased.

## **7 - Other Conditions**

### 7.5 - Loss

#### 7.5.1 - Deteriorating timber (7/09)

The sale area has received damage from Eastern Larch Beetle (ELB) and Spruce Budworm (SBW). The Purchaser should harvest the wood as soon as possible. The Department of Natural Resources is held free of responsibility of any further damage or deterioration due to delay in harvesting.



# TIMBER SALE MAP

This information provided by authority of Part 525, 1994 PA 451, as amended.

Forest Management Unit Escanaba Management Unit	County Menominee County	Mapped By Collins	Date 09/27/2017	Page 1	of 1
Township 36N & 37N	Range 25W	Section(s) and Subdivision(s) 36N 25W sec 3 - NWNE, NENW, NWNW, SENW, SWNW, NWSW & SWSW sec 4 - NENE, NWNE, SWNE, NENW, NWNW & SWNW 37N 25W sec 33 - SESE, SWSE & SESW	Scale 1:15,840		

### Cover Type

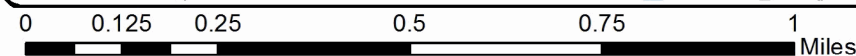
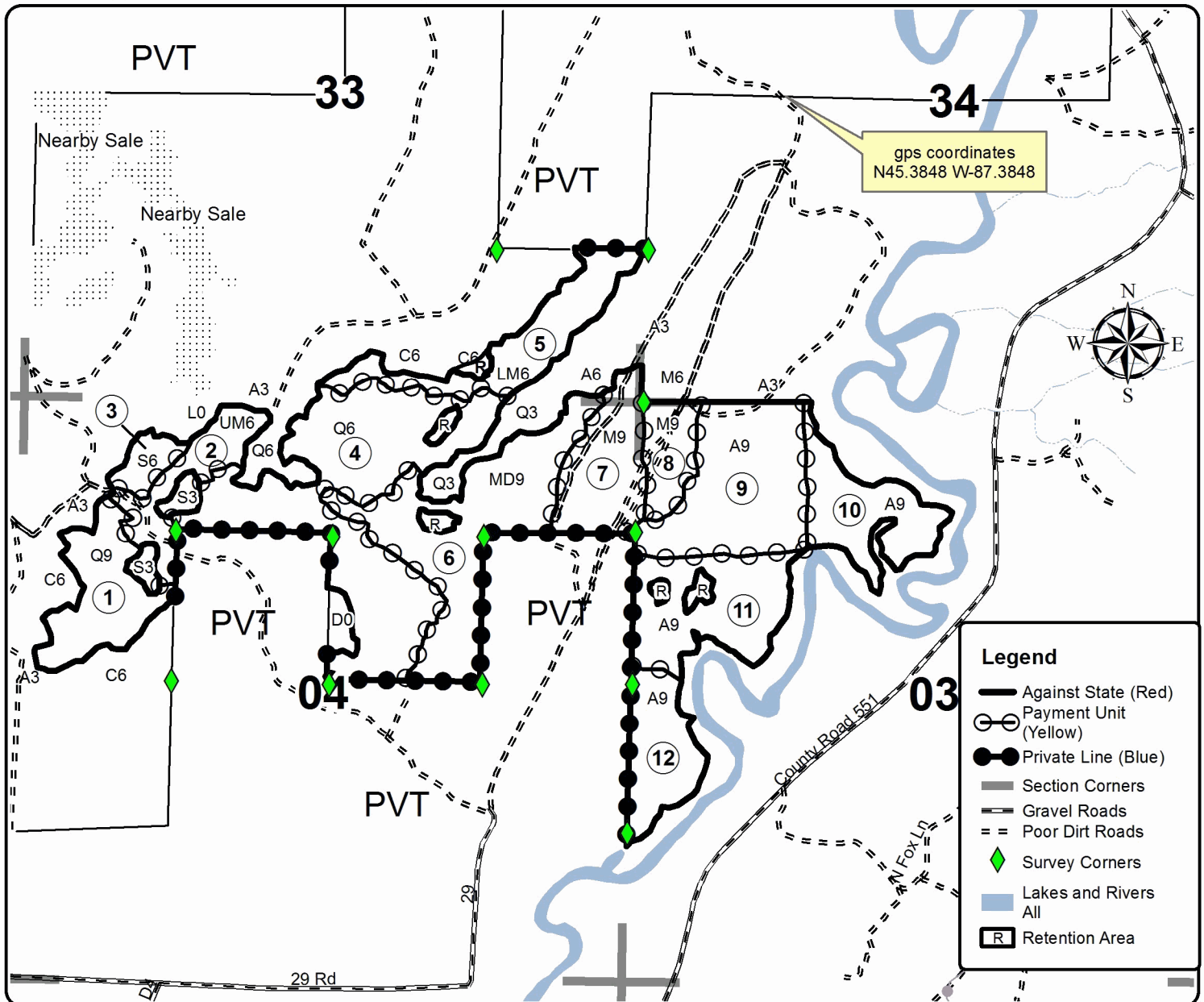
A = Aspen	H = Hemlock	N = Marsh	U = Upland Brush
B = Paper Birch	J = Jack Pine	O = Oak	UM = Upland Mixed
C = Cedar	L = Lowland Brush	P = Lowland Poplar	V = Bog or Marsh
D = Treed Bog	LM = Lowland Mixed	Q = Mixed Swamp Conifer	W = White Pine
E = Swamp Hdwoods	M = Mpl, Bch, Brch	R = Red Pine	X = Non Stocked
F = Spruce Fir	MC = Mixed Conifer	S = Black Spruce	Z = Water
G = Grass	MD = Mixed Deciduous	T = Tamarack	

### Density

0 = Non Stocked	5 = Pole Timber Medium
1 = Seedling Sapling Poor	6 = Pole Timber Well
2 = Seedling Sapling Medium	7 = Saw Timber Poor
3 = Seedling Sapling Well	8 = Saw Timber Medium
4 = Pole Timber Poor	9 = Saw Timber Well

PU	Acres	PU	Acres	PU	Acres
1	17.9	5	18.7	9	32.9
2	12.6	6	40.4	10	18.8
3	4.3	7	17	11	24.3
4	57.5	8	9	12	15.1

**Jumpy Frog**  
 Compartment 36, 39 & 42  
 268.5 Acres







## TIMBER SALE INFORMATION

### Devil's Creek SBW (33-038-17)

Menominee County (Advertised Price \$232,657.35)

SALE NOTE: The Forest Island ORV Trail runs through Payment Units 12 and 13, see specs 5.2.39 and 6.2.3 for details on how to protect the trail. 140 yards of gravel will need to be hauled and spread by the Purchaser. The spruce budworm is present and has caused some defoliation, but no mortality at this time.

A recreation site such as a trail, pathway, or campground is within the sale area or the vicinity. Certain restrictions/specifications may be applicable including time restrictions.

A timber sale contract for this lump sum, sealed bid timber sale will be awarded to the responsible bidder offering the highest sealed bid price. Bids must be at or above the following advertised price for each species:

<u>PRODUCTS &amp; SPECIES</u>	<u>ESTIMATED UNITS*</u>		<u>ADVERTISED PRICE</u>
<b>Sawtimber</b>			
Basswood	15.40	MBF	\$ 124.00 / MBF
Beech	2.90	MBF	\$ 82.00 / MBF
Green Ash	30.40	MBF	\$ 97.00 / MBF
Paper Birch	0.80	MBF	\$ 87.00 / MBF
Red Maple	59.80	MBF	\$ 247.00 / MBF
Sugar Maple	20.70	MBF	\$ 356.00 / MBF
White Ash	9.70	MBF	\$ 72.00 / MBF
Yellow Birch	0.80	MBF	\$ 137.00 / MBF
<b>Pulpwood</b>			
Balsam Fir	511.00	Cords	\$ 29.45 / Cord
Hemlock	1.00	Cords	\$ 11.85 / Cord
Mixed Aspen	2,011.00	Cords	\$ 32.25 / Cord
Mixed Hardwood	3,220.00	Cords	\$ 32.55 / Cord
Mixed Spruce	221.00	Cords	\$ 25.90 / Cord
N. White Cedar	252.00	Cords	\$ 25.25 / Cord
Red Pine	107.00	Cords	\$ 65.10 / Cord
Tamarack	10.00	Cords	\$ 16.70 / Cord
White Pine	18.00	Cords	\$ 33.20 / Cord

\* The estimated units are final and not subject to adjustment. Prospective bidders are urged to examine this timber and to make their own estimates of quantity and quality.

#### **BOND AND PAYMENT SCHEDULE:**

1. A bond in the amount of \$11,633.00 to insure faithful performance of the conditions of the contract will be deposited by the successful bidder within 21 days of the sale award.
2. Cutting in any sale or unit without the required advance payment would be considered a trespass.
3. Total payment must be paid in advance or according to the following schedule:
  - (a) Ten percent (10%) of the sale value must be paid within 21 days of the sale award.
  - (b) The 10% down payment will be credited towards the first unit cut.
4. If no cutting takes place, the 10% down payment will not be refunded.
5. Operations on the contract issued will terminate on 09/30/2020.

**Description of Timber by Payment Unit (PU)**

PU	MARKET GROUP	PRODUCT	QUANTITY	UNIT	ACRES	ADVERTISE PRICE
1	Basswood	Sawtimber	8.0	MBF	32.6	\$14,238.45
	Beech		2.4	MBF		
	Red Maple		3.3	MBF		
	Sugar Maple		8.7	MBF		
	White Ash		6.3	MBF		
	Balsam Fir		Pulpwood	2.0		
	Mixed Aspen	3.0		Cords		
	<i>B. T. Aspen</i>	3.0		<i>Cords</i>		
	Mixed Hardwood	262.0		Cords		
	<i>Basswood</i>	34.0		<i>Cords</i>		
	<i>Beech</i>	41.0		<i>Cords</i>		
	<i>Ironwood</i>	2.0		<i>Cords</i>		
	<i>Red Maple</i>	12.0		<i>Cords</i>		
	<i>Sugar Maple</i>	135.0		<i>Cords</i>		
	<i>White Ash</i>	38.0	<i>Cords</i>			
2	Basswood	Sawtimber	0.5	MBF	24.1	\$9,098.30
	Sugar Maple		10.8	MBF		
	White Ash		3.4	MBF		
	Mixed Aspen	Pulpwood	3.0	Cords		
	<i>Quaking Aspen</i>		3.0	<i>Cords</i>		
	Mixed Hardwood		149.0	Cords		
	<i>Basswood</i>		6.0	<i>Cords</i>		
	<i>Beech</i>		13.0	<i>Cords</i>		
	<i>Red Maple</i>		3.0	<i>Cords</i>		
	<i>Sugar Maple</i>		118.0	<i>Cords</i>		
	<i>White Ash</i>		9.0	<i>Cords</i>		
	3		Basswood	Sawtimber		
Green Ash		6.1	MBF			
Paper Birch		0.2	MBF			
Red Maple		9.3	MBF			
Yellow Birch		0.2	MBF			
Balsam Fir		Pulpwood	50.0	Cords		
Mixed Aspen			96.0	Cords		
<i>Quaking Aspen</i>			96.0	<i>Cords</i>		
Mixed Hardwood			494.0	Cords		
<i>American Elm</i>			3.0	<i>Cords</i>		
<i>Balsam Poplar</i>			8.0	<i>Cords</i>		
<i>Basswood</i>			17.0	<i>Cords</i>		
<i>Black Ash</i>			95.0	<i>Cords</i>		
<i>Black Cherry</i>			3.0	<i>Cords</i>		
<i>Green Ash</i>			118.0	<i>Cords</i>		
<i>Paper Birch</i>			16.0	<i>Cords</i>		
<i>Red Maple</i>			223.0	<i>Cords</i>		
<i>Sugar Maple</i>			5.0	<i>Cords</i>		
<i>Yellow Birch</i>			6.0	<i>Cords</i>		
Mixed Spruce			24.0	Cords		
<i>Black Spruce</i>			13.0	<i>Cords</i>		
<i>White Spruce</i>			11.0	<i>Cords</i>		
N. White Cedar			48.0	Cords		
Tamarack			2.0	Cords		
4		Basswood	Sawtimber	1.6	MBF	39.2
	Green Ash	7.7		MBF		
	Paper Birch	0.2		MBF		
	Red Maple	11.9		MBF		
	Yellow Birch	0.2		MBF		
	Balsam Fir	Pulpwood	64.0	Cords		

Description of Timber by Payment Unit (PU), con't

PU	MARKET GROUP	PRODUCT	QUANTITY	UNIT	ACRES	ADVERTISE PRICE	
4 con't	Mixed Aspen	Pulpwood	122.0	Cords			
	<i>Quaking Aspen</i>		122.0	<i>Cords</i>			
	Mixed Hardwood		628.0	Cords			
	<i>American Elm</i>		4.0	<i>Cords</i>			
	<i>Balsam Poplar</i>		10.0	<i>Cords</i>			
	<i>Basswood</i>		22.0	<i>Cords</i>			
	<i>Black Ash</i>		121.0	<i>Cords</i>			
	<i>Black Cherry</i>		4.0	<i>Cords</i>			
	<i>Green Ash</i>		150.0	<i>Cords</i>			
	<i>Paper Birch</i>		20.0	<i>Cords</i>			
	<i>Red Maple</i>		283.0	<i>Cords</i>			
	<i>Sugar Maple</i>		7.0	<i>Cords</i>			
	<i>Yellow Birch</i>		7.0	<i>Cords</i>			
	Mixed Spruce		31.0	Cords			
	<i>Black Spruce</i>		17.0	<i>Cords</i>			
	<i>White Spruce</i>		14.0	<i>Cords</i>			
	N. White Cedar		60.0	Cords			
Tamarack	3.0	Cords					
5	Basswood	Sawtimber	1.6	MBF	39.7	\$33,101.70	
	Green Ash		7.7	MBF			
	Paper Birch		0.3	MBF			
	Red Maple		12.0	MBF			
	Yellow Birch		0.3	MBF			
	Balsam Fir		Pulpwood	65.0			Cords
	Mixed Aspen			124.0			Cords
	<i>Quaking Aspen</i>			124.0			<i>Cords</i>
	Mixed Hardwood			638.0			Cords
	<i>American Elm</i>			5.0			<i>Cords</i>
	<i>Balsam Poplar</i>			8.0			<i>Cords</i>
	<i>Basswood</i>			22.0			<i>Cords</i>
	<i>Black Ash</i>			122.0			<i>Cords</i>
	<i>Black Cherry</i>			4.0			<i>Cords</i>
	<i>Green Ash</i>			152.0			<i>Cords</i>
	<i>Paper Birch</i>			21.0			<i>Cords</i>
	<i>Red Maple</i>			289.0			<i>Cords</i>
	<i>Sugar Maple</i>			7.0			<i>Cords</i>
	<i>Yellow Birch</i>			8.0			<i>Cords</i>
	Mixed Spruce			33.0			Cords
	<i>Black Spruce</i>			18.0			<i>Cords</i>
	<i>White Spruce</i>			15.0			<i>Cords</i>
	N. White Cedar			61.0			Cords
Tamarack	3.0	Cords					
6	Basswood	Sawtimber		1.0	MBF	23.8	\$19,744.50
	Green Ash			4.7	MBF		
	Paper Birch			0.1	MBF		
	Red Maple			7.2	MBF		
	Yellow Birch		0.1	MBF			
	Balsam Fir		Pulpwood	39.0	Cords		
	Mixed Aspen			74.0	Cords		
	<i>Quaking Aspen</i>			74.0	<i>Cords</i>		
	Mixed Hardwood			380.0	Cords		
	<i>American Elm</i>			2.0	<i>Cords</i>		
	<i>Balsam Poplar</i>			6.0	<i>Cords</i>		
	<i>Basswood</i>			13.0	<i>Cords</i>		
	<i>Black Ash</i>			73.0	<i>Cords</i>		
	<i>Black Cherry</i>			3.0	<i>Cords</i>		

Description of Timber by Payment Unit (PU), con't

PU	MARKET GROUP	PRODUCT	QUANTITY	UNIT	ACRES	ADVERTISE PRICE	
6 con't	<i>Green Ash</i>	<i>Pulpwood</i>	91.0	<i>Cords</i>			
	<i>Paper Birch</i>		12.0	<i>Cords</i>			
	<i>Red Maple</i>		172.0	<i>Cords</i>			
	<i>Sugar Maple</i>		4.0	<i>Cords</i>			
	<i>Yellow Birch</i>		4.0	<i>Cords</i>			
	Mixed Spruce		19.0	<i>Cords</i>			
	<i>Black Spruce</i>		10.0	<i>Cords</i>			
	<i>White Spruce</i>		9.0	<i>Cords</i>			
	N. White Cedar		37.0	<i>Cords</i>			
	Tamarack		2.0	<i>Cords</i>			
7	Red Maple	Sawtimber	0.8	MBF	12.6	\$11,981.10	
	Balsam Fir	<i>Pulpwood</i>	127.0	<i>Cords</i>			
	Hemlock		1.0	<i>Cords</i>			
	Mixed Aspen		123.0	<i>Cords</i>			
	<i>Quaking Aspen</i>		123.0	<i>Cords</i>			
	Mixed Hardwood		59.0	<i>Cords</i>			
	<i>Balsam Poplar</i>		3.0	<i>Cords</i>			
	<i>Paper Birch</i>		4.0	<i>Cords</i>			
	<i>Red Maple</i>		32.0	<i>Cords</i>			
	<i>Sugar Maple</i>		15.0	<i>Cords</i>			
	<i>Yellow Birch</i>		5.0	<i>Cords</i>			
	Mixed Spruce		20.0	<i>Cords</i>			
	<i>Black Spruce</i>		14.0	<i>Cords</i>			
	<i>White Spruce</i>		6.0	<i>Cords</i>			
	N. White Cedar		46.0	<i>Cords</i>			
	White Pine		14.0	<i>Cords</i>			
	8		Basswood	Sawtimber			1.5
Beech			<i>Pulpwood</i>	0.5	MBF		
Sugar Maple		1.2		MBF			
Mixed Aspen		5.0		<i>Cords</i>			
<i>B. T. Aspen</i>		5.0		<i>Cords</i>			
Mixed Hardwood		34.0		<i>Cords</i>			
<i>Basswood</i>		14.0		<i>Cords</i>			
<i>Beech</i>		2.0		<i>Cords</i>			
<i>Ironwood</i>		1.0		<i>Cords</i>			
<i>Sugar Maple</i>		17.0		<i>Cords</i>			
9		Green Ash		Sawtimber	0.9	MBF	22.0
	Red Maple	<i>Pulpwood</i>		3.1	MBF		
	Balsam Fir		33.0	<i>Cords</i>			
	Mixed Aspen		291.0	<i>Cords</i>			
	<i>B. T. Aspen</i>		30.0	<i>Cords</i>			
	<i>Quaking Aspen</i>		261.0	<i>Cords</i>			
	Mixed Hardwood		114.0	<i>Cords</i>			
	<i>Balsam Poplar</i>		2.0	<i>Cords</i>			
	<i>Beech</i>		1.0	<i>Cords</i>			
	<i>Black Ash</i>		4.0	<i>Cords</i>			
	<i>Black Cherry</i>		13.0	<i>Cords</i>			
	<i>Green Ash</i>		13.0	<i>Cords</i>			
	<i>Ironwood</i>		2.0	<i>Cords</i>			
	<i>Paper Birch</i>		4.0	<i>Cords</i>			
	<i>Red Maple</i>		68.0	<i>Cords</i>			
	<i>Sugar Maple</i>		7.0	<i>Cords</i>			
	Mixed Spruce		7.0	<i>Cords</i>			
	<i>Black Spruce</i>		1.0	<i>Cords</i>			
	<i>White Spruce</i>		6.0	<i>Cords</i>			
	White Pine		1.0	<i>Cords</i>			

Description of Timber by Payment Unit (PU), con't

PU	MARKET GROUP	PRODUCT	QUANTITY	UNIT	ACRES	ADVERTISE PRICE
10	Green Ash	Sawtimber	0.8	MBF	21.1	\$14,553.75
	Red Maple		3.0	MBF		
	Balsam Fir	Pulpwood	32.0	Cords		
	Mixed Aspen		279.0	Cords		
	<i>B. T. Aspen</i>		29.0	<i>Cords</i>		
	<i>Quaking Aspen</i>		250.0	<i>Cords</i>		
	Mixed Hardwood		110.0	Cords		
	<i>Balsam Poplar</i>		2.0	<i>Cords</i>		
	<i>Beech</i>		1.0	<i>Cords</i>		
	<i>Black Ash</i>		3.0	<i>Cords</i>		
	<i>Black Cherry</i>		13.0	<i>Cords</i>		
	<i>Green Ash</i>		12.0	<i>Cords</i>		
	<i>Ironwood</i>		2.0	<i>Cords</i>		
	<i>Paper Birch</i>		4.0	<i>Cords</i>		
	<i>Red Maple</i>		66.0	<i>Cords</i>		
	<i>Sugar Maple</i>		7.0	<i>Cords</i>		
	Mixed Spruce		7.0	Cords		
	<i>Black Spruce</i>		1.0	<i>Cords</i>		
	<i>White Spruce</i>		6.0	<i>Cords</i>		
	White Pine		1.0	Cords		
11	Green Ash	Sawtimber	1.1	MBF	29.1	\$20,045.65
	Red Maple		4.1	MBF		
	Balsam Fir	Pulpwood	44.0	Cords		
	Mixed Aspen		384.0	Cords		
	<i>B. T. Aspen</i>		39.0	<i>Cords</i>		
	<i>Quaking Aspen</i>		345.0	<i>Cords</i>		
	Mixed Hardwood		153.0	Cords		
	<i>American Elm</i>		1.0	<i>Cords</i>		
	<i>Balsam Poplar</i>		2.0	<i>Cords</i>		
	<i>Basswood</i>		1.0	<i>Cords</i>		
	<i>Beech</i>		1.0	<i>Cords</i>		
	<i>Black Ash</i>		5.0	<i>Cords</i>		
	<i>Black Cherry</i>		18.0	<i>Cords</i>		
	<i>Green Ash</i>		17.0	<i>Cords</i>		
	<i>Ironwood</i>		3.0	<i>Cords</i>		
	<i>Paper Birch</i>		6.0	<i>Cords</i>		
	<i>Red Maple</i>		90.0	<i>Cords</i>		
	<i>Sugar Maple</i>		9.0	<i>Cords</i>		
	Mixed Spruce		9.0	Cords		
	<i>Black Spruce</i>		1.0	<i>Cords</i>		
<i>White Spruce</i>		8.0	<i>Cords</i>			
White Pine		1.0	Cords			
12	Green Ash	Sawtimber	1.4	MBF	36.5	\$25,160.00
	Red Maple		5.1	MBF		
	Balsam Fir	Pulpwood	55.0	Cords		
	Mixed Aspen		482.0	Cords		
	<i>B. T. Aspen</i>		49.0	<i>Cords</i>		
	<i>Quaking Aspen</i>		433.0	<i>Cords</i>		
	Mixed Hardwood		193.0	Cords		
	<i>American Elm</i>		1.0	<i>Cords</i>		
	<i>Balsam Poplar</i>		3.0	<i>Cords</i>		
	<i>Basswood</i>		1.0	<i>Cords</i>		
	<i>Beech</i>		2.0	<i>Cords</i>		
	<i>Black Ash</i>		6.0	<i>Cords</i>		
	<i>Black Cherry</i>		23.0	<i>Cords</i>		
	<i>Green Ash</i>		21.0	<i>Cords</i>		

**Description of Timber by Payment Unit (PU), con't**

PU	MARKET GROUP	PRODUCT	QUANTITY	UNIT	ACRES	ADVERTISE PRICE
12 con't	<i>Ironwood</i>	<i>Pulpwood</i>	4.0	<i>Cords</i>		
	<i>Paper Birch</i>		7.0	<i>Cords</i>		
	<i>Red Maple</i>		113.0	<i>Cords</i>		
	<i>Sugar Maple</i>		12.0	<i>Cords</i>		
	Mixed Spruce		11.0	<i>Cords</i>		
	<i>Black Spruce</i>		1.0	<i>Cords</i>		
	<i>White Spruce</i>		10.0	<i>Cords</i>		
	White Pine		1.0	<i>Cords</i>		
	13		Mixed Aspen	Pulpwood		
<i>Quaking Aspen</i>		25.0	<i>Cords</i>			
Mixed Hardwood		6.0	<i>Cords</i>			
<i>Black Cherry</i>		6.0	<i>Cords</i>			
Mixed Spruce		60.0	<i>Cords</i>			
<i>White Spruce</i>		60.0	<i>Cords</i>			
Red Pine		107.0	<i>Cords</i>			
TOTAL:			140.5		MBF	
TOTAL:			6,351.0	Cords		

## Sale Specific Conditions & Requirements

**Sale Name: Devil's Creek SBW**

**Sale Number: 33-038-17 Seq#: 1**

### 1 - Sale Area

#### 1.2 - Boundaries

##### 1.2.1 - Painted boundaries (1/14)

The sale boundary and Payment Unit boundaries are marked and identified by red and yellow paint. Exterior sale boundary lines against state are marked with red paint. There is a double dot red paint line along County Road 366, along the north boundary of Payment Units 5 and 7. These double dot red painted trees are Included Timber and designated for cutting. Retention patches are marked with red paint and are to be protected; no harvesting activities may occur within these areas.

Interior Payment Unit boundaries are marked with yellow paint. The painted boundary line trees are not Included Timber and are to be protected, unless marked with orange paint. Yellow painted trees designating an interior Payment Unit boundary are only to be cut when all surrounding Payment Units have been paid for.

### 2 - Timber Specifications

#### 2.1 - Included Timber

##### 2.1.1 - Clearcut unit(s) with unmerchantable trees (6/14)

Within Payment Unit(s) 3 - 7, cut all trees that are three (3) inches or more at DBH, except within Payment Units 3 - 6, do not cut hemlock, beech, oak, and white pine. In addition, within Payment Units 5 and 7, do not cut sub-merchantable stems within 120' of County Road 366.

Within Payment Unit(s) 9 - 12, cut all trees that are two (2) inches or more at DBH.

##### 2.1.3 - Cut tree marked unit(s) (12/08)

Within Payment Unit(s) 1, 2, and 8, all trees are designated for cutting when marked with orange paint above and below stump height, regardless of merchantability. In addition, cut all ironwood three (3) inches or more at DBH. Also, within Payment Units 1 and 2, cut all aspen trees which meet minimum piece specifications in 2.2 Utilization.

Within Payment Unit(s) 13, all red pine that are marked with orange paint are designated for cutting. In addition, cut all other species which meet minimum piece specifications in 2.2 Utilization.

#### 2.2 - Utilization

##### 2.2.3 - Stump heights (4/07)

Stump heights within Payment Unit(s) 9, 10, and 12 shall not exceed 10 inches for trees greater than 10 inches DBH and 4 inches for trees smaller than 10 inches DBH. This is in order to facilitate planting operations.

##### 2.2.4 - Skidding length (2/14)

Skidding of unlimbed tops or lengths over 17 feet is not permissible within Payment Units 1, 2, 8, and 13, unless approved by the Unit Manager or his/her representative.

### 3 - Payments

#### 3.3 - Pre-measured Sales

##### 3.3.4 - Dividing payment units (7/14)

Payment Unit(s) \$18,000 in value or greater may be divided at the request of the Purchaser and upon approval of the Unit Manager. Dividing Payment Units is a contract modification which requires a Timber Sale Contract Supplement. There will be only one division per Payment Unit.

### 4 - Transportation

#### 4.1 - Construction

##### 4.1.8 - Road work (1) (8/07)

The following road work is required: 140 yards of pit run gravel will need to be hauled and spread by the Purchaser. Gravel will be placed on the road along the east side of Payment Units 1 and 2, and also within Payment Unit 12. The specific locations will be identified at the pre-sale meeting. The gravel is available from a state pit on the south end of Payment Unit 2. All roadwork must be completed prior to cutting any of the adjacent Payment Units.

#### 4.2 - Maintenance

##### 4.2.1 - Hauling restriction (12/08)

Hauling may be restricted on forest roads by the Unit Manager or his/her representative. The restriction may occur during spring breakup or during other wet weather conditions.

##### 4.2.4 - Grading (10/16)

For completion of the sale, state forest roads must be graded. In general, this will require a road grader or bull dozer to shape up the roads after forest products have been hauled off site. This includes cleaning of drainage areas, grading, crowning and filling with gravel, if necessary. The grading equipment to be used must be approved by the Unit Manager or his/her representative.

### 5 - Operations

#### 5.2 - Conduct of Operations

##### 5.2.3 - Operating Restrictions

###### 5.2.3.1 - Operating restrictions (9/11)

Within Payment Unit(s) 3, 4, 5, and 6, cutting and skidding are limited to the period of December 1 to March 31, unless there is an extended dry or frozen period and the sale administrator approves of harvesting during that time period. This restriction is because of low wet ground throughout the Payment Units.

###### 5.2.3.3 - Bark slippage restriction (3/09)

Within Payment Unit(s) 1, 2, and 8, cutting and skidding are not permitted during the period of April 15 to July 15. This restriction is because of bark slippage.

##### 5.2.37 - No decking areas (12/08)

No decking is allowed within 50 feet of County Road 366 without permission of the Menominee County Road Commission. Also, if any new access trails/roads are wanted/needed by the Purchaser to access Payment Units 5 and 7, they must obtain permission from the Menominee Road Commission.

##### 5.2.39 - ORV trail/route protection (12/12)

The Forest Island ORV Trail is shown on the Timber Sale Map. It runs within Payment Units 12 and 13. Trees with ORV markers shall be cut off above the markers and at least 5 feet above ground. All stumps within 5 feet of the trail must be cut flush with the ground. Maintain a 20 foot wide slash, debris, and rut free zone daily using the ORV trail or route as the centerline.

#### 5.4 - Soil Protection

##### 5.4.1 - Rutting restriction, general (7/16)

Operations are to cease immediately if equipment and weather conditions result in rutting of roads and/or skid trails which is 12 inches or greater in depth and 50 feet in length. The Unit Manager or his/her representative may restrict hauling and/or skidding if ruts exceed the specified depth. With the Unit Manager or his/her representative's approval, the Purchaser may return to the area when the risk of rutting has decreased.

### 6 - Safety and Fire Prevention

#### 6.2 - Signing

##### 6.2.1 - Road posting (9/09)

The Purchaser is responsible for posting and maintaining caution signs on County Road 366 and Devil's Creek Road prior to beginning operations. The road must be posted at appropriate distances from the sale area to warn of logging activity and truck traffic. Signs must be removed when harvest operations are suspended or completed. The Purchaser will provide these signs.



### 6.2.3 - Recreational trail posting (2/10)

The Purchaser is responsible for posting and maintaining caution signs on the Forest Island ORV Trail prior to beginning operations. The trail must be posted at appropriate distances from the sale area to warn of logging activity and truck traffic at both ends of the trail. Signs must be removed when harvest operations are suspended or completed. The Purchaser will provide these signs.

## **7 - Other Conditions**

### 7.3 - Contract Modifications

#### 7.3.3 - Modification for reforestation (8/05)

When contractual work of Purchaser has been accepted for any Payment Unit identified on Sale Area Map, Payment Unit will be eliminated from the Sale Area on written notice so that reforestation operations can begin.



# TIMBER SALE MAP

This information provided by authority of Part 525, 1994 PA 451, as amended.

Sale Number	Year
33-038	17

Forest Management Unit Escanaba Management Unit	County Menominee County	Mapped By Beaudo	Date 7/20/2017	Page 1	of 1
Township 36N	Range 25W	Section(s) and Subdivision(s) Sec 16 - NENW, NESW, NVNW, NWSE, NWSW, SENW, SESW, SWNW, SWSE, SWSW; Sec 17 - NENE, NESE, NESW, NWNE, NWSE, SENE, SENW, SESE, SWNE & SWSE	Scale 1:15,840		

Cover Type				Density	
A = Aspen	H = Hemlock	N = Marsh	U = Upland Brush	0 = Non Stocked	5 = Pole Timber Medium
B = Paper Birch	J = Jack Pine	O = Oak	UM = Upland Mixed	1 = Seedling Sapling Poor	6 = Pole Timber Well
C = Cedar	L = Lowland Brush	P = Lowland Poplar	V = Bog or Marsh	2 = Seedling Sapling Medium	7 = Saw Timber Poor
D = Tread Bog	LM = Lowland Mixed	Q = Mixed Swamp Conifer	W = White Pine	3 = Seedling Sapling Well	8 = Saw Timber Medium
E = Swamp Hdwoods	M = Mpl, Bch, Brch	R = Red Pine	X = Non Stocked	4 = Pole Timber Poor	9 = Saw Timber Well
F = Spruce Fir	MC = Mixed Conifer	S = Black Spruce	Z = Water		
G = Grass	MD = Mixed Deciduous	T = Tamarack			

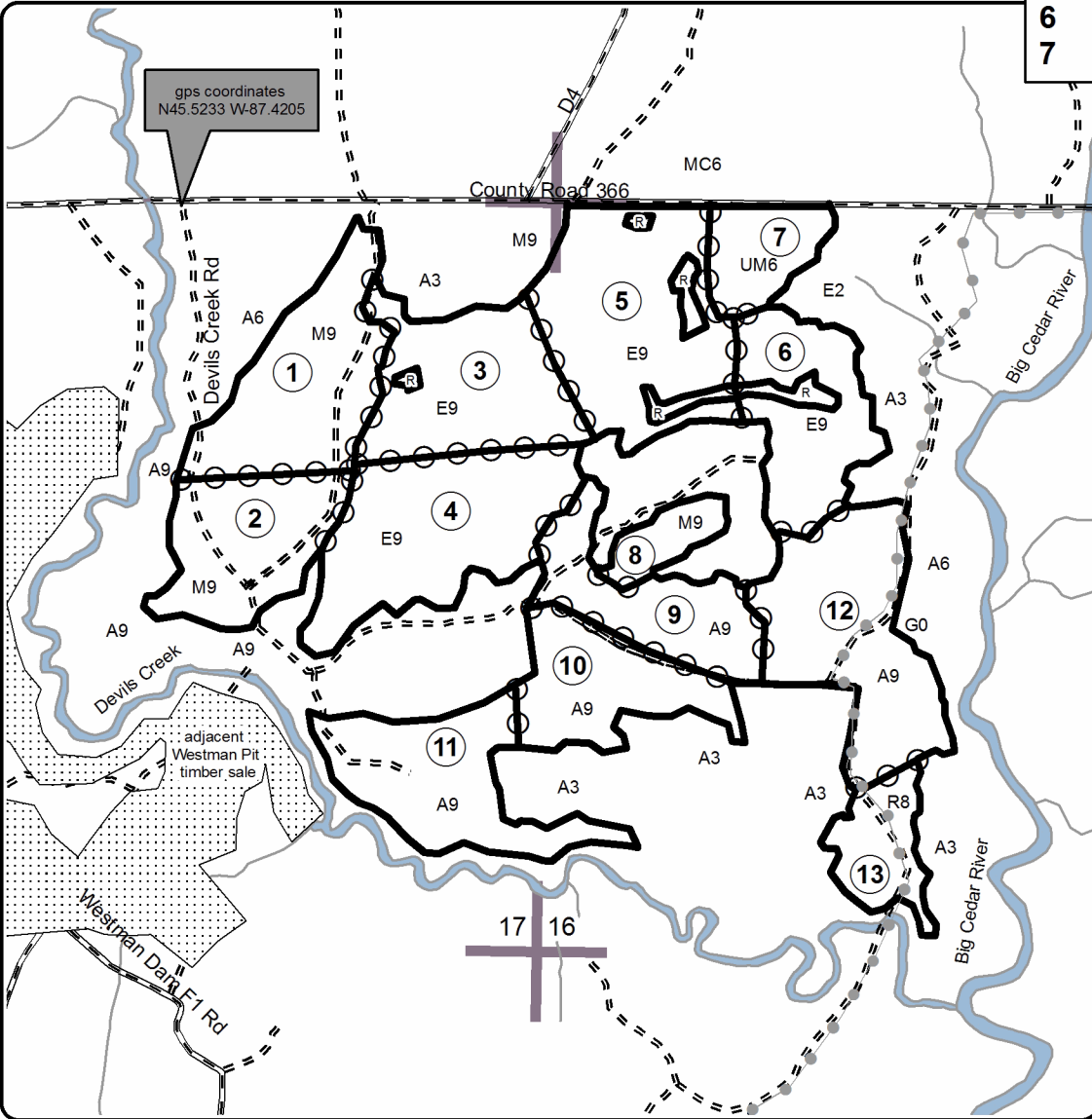


QR Code opens PDF map viewer



**Devil's Creek SBW**  
**Compartment 42**  
**329.6 Acres**

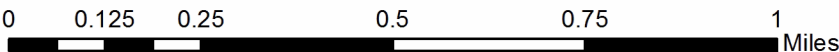
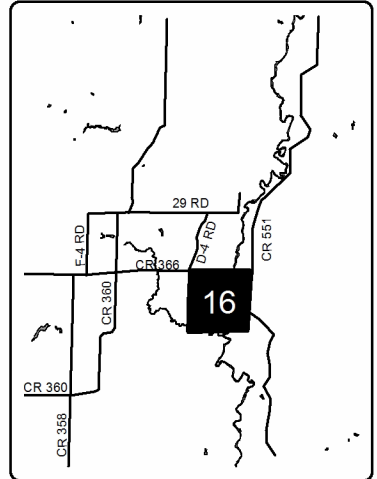
PU	Acres	PU	Acres
1	32.6	8	6.6
2	24.1	9	22.0
3	30.9	10	21.1
4	39.2	11	29.1
5	39.7	12	36.5
6	23.8	13	11.4
7	12.6		



**Legend**

- Against State (Red)
- Payment Unit (Yellow)
- Section Corners
- 16 Section Number
- Paved Roads
- Gravel Roads
- - - Poor Dirt Roads
- ① Payment Unit
- R Retention Patch
- ~ Creek/Seasonal Drainage
- River
- Forest Island ORV Trail

Locator Map  
1:200,000



# TIMBER SALE INFORMATION

## Big Cedar River SBW (33-039-17)

Menominee County (Advertised Price \$70,160.50)

SALE NOTE: The spruce budworm is present and has caused defoliation, but only a very limited amount of mortality. Some roadwork will need to be done by the Purchaser to access Payment Units 2 and 3.

A recreation site such as a trail, pathway, or campground is within the sale area or the vicinity. Certain restrictions/specifications may be applicable including time restrictions.

A timber sale contract for this lump sum, sealed bid timber sale will be awarded to the responsible bidder offering the highest sealed bid price. Bids must be at or above the following advertised price for each species:

<u>PRODUCTS &amp; SPECIES</u>	<u>ESTIMATED UNITS*</u>	<u>ADVERTISED PRICE</u>
Sawtimber		
Basswood	1.10 MBF	\$ 116.00 / MBF
Black Ash	3.30 MBF	\$ 83.00 / MBF
Green Ash	12.00 MBF	\$ 91.00 / MBF
Paper Birch	8.40 MBF	\$ 81.00 / MBF
Red Maple	10.50 MBF	\$ 231.00 / MBF
Sugar Maple	4.50 MBF	\$ 332.00 / MBF
White Pine	1.40 MBF	\$ 62.00 / MBF
Yellow Birch	1.70 MBF	\$ 127.00 / MBF
Pulpwood		
Balsam Fir	242.00 Cords	\$ 27.50 / Cord
Mixed Aspen	294.00 Cords	\$ 30.10 / Cord
Mixed Hardwood	1,390.00 Cords	\$ 30.35 / Cord
N. White Cedar	169.00 Cords	\$ 23.55 / Cord
White Pine	6.00 Cords	\$ 30.95 / Cord
White Spruce	79.00 Cords	\$ 24.15 / Cord

\* The total volume is statistically estimated within plus (+) or minus (-) 10.47 percent. The estimated units are final and not subject to adjustment. Prospective bidders are urged to examine this timber and to make their own estimates of quantity and quality.

### **BOND AND PAYMENT SCHEDULE:**

1. A bond in the amount of \$3,508.00 to insure faithful performance of the conditions of the contract will be deposited by the successful bidder within 21 days of the sale award.
2. Cutting in any sale or unit without the required advance payment would be considered a trespass.
3. Total payment must be paid in advance or according to the following schedule:
  - (a) Ten percent (10%) of the sale value must be paid within 21 days of the sale award.
  - (b) The 10% down payment will be credited towards the first unit cut.
4. If no cutting takes place, the 10% down payment will not be refunded.
5. Operations on the contract issued will terminate on 09/30/2020.

**Description of Timber by Payment Unit (PU)**

PU	MARKET GROUP	PRODUCT	QUANTITY	UNIT	ACRES	ADVERTISE PRICE	
1	Black Ash	Sawtimber	0.5	MBF	18.5	\$19,840.80	
	Green Ash		1.8	MBF			
	Paper Birch		5.4	MBF			
	Red Maple		0.5	MBF			
	Sugar Maple		3.4	MBF			
	Balsam Fir		Pulpwood	72.0			Cords
	Mixed Aspen			111.0			Cords
	<i>B. T. Aspen</i>			28.0			<i>Cords</i>
	<i>Quaking Aspen</i>			83.0			<i>Cords</i>
	Mixed Hardwood			381.0			Cords
	<i>Black Ash</i>			10.0			<i>Cords</i>
	<i>Green Ash</i>			16.0			<i>Cords</i>
	<i>Ironwood</i>			2.0			<i>Cords</i>
	<i>Paper Birch</i>			101.0			<i>Cords</i>
	<i>Red Maple</i>			184.0			<i>Cords</i>
	<i>Sugar Maple</i>		68.0	<i>Cords</i>			
	N. White Cedar		29.0	Cords			
	White Spruce		16.0	Cords			
	2		Black Ash	Sawtimber			0.7
Green Ash		9.1	MBF				
Paper Birch		1.1	MBF				
Red Maple		2.4	MBF				
Yellow Birch		0.7	MBF				
Balsam Fir		Pulpwood	63.0		Cords		
Mixed Aspen			45.0		Cords		
<i>B. T. Aspen</i>			4.0		<i>Cords</i>		
<i>Quaking Aspen</i>			41.0		<i>Cords</i>		
Mixed Hardwood			337.0		Cords		
<i>Balsam Poplar</i>			3.0		<i>Cords</i>		
<i>Black Ash</i>			12.0		<i>Cords</i>		
<i>Green Ash</i>			43.0		<i>Cords</i>		
<i>Paper Birch</i>			17.0		<i>Cords</i>		
<i>Red Maple</i>			233.0		<i>Cords</i>		
<i>Sugar Maple</i>		12.0	<i>Cords</i>				
<i>Yellow Birch</i>		17.0	<i>Cords</i>				
N. White Cedar		18.0	Cords				
White Spruce		35.0	Cords				
3	Black Ash	Sawtimber	2.1	MBF	17.3	\$17,318.55	
	Green Ash		0.6	MBF			
	Paper Birch		1.9	MBF			
	Red Maple		6.6	MBF			
	Sugar Maple		0.6	MBF			
	White Pine		1.4	MBF			
	Yellow Birch		1.0	MBF			
	Balsam Fir		Pulpwood	39.0			Cords
	Mixed Aspen			7.0			Cords
	<i>Quaking Aspen</i>			7.0			<i>Cords</i>
	Mixed Hardwood			441.0			Cords
	<i>Basswood</i>			16.0			<i>Cords</i>
	<i>Black Ash</i>			35.0			<i>Cords</i>
	<i>Green Ash</i>			13.0			<i>Cords</i>
	<i>Ironwood</i>			2.0			<i>Cords</i>
	<i>Paper Birch</i>			15.0			<i>Cords</i>
	<i>Red Maple</i>			313.0			<i>Cords</i>
	<i>Sugar Maple</i>		19.0	<i>Cords</i>			
	<i>Yellow Birch</i>		28.0	<i>Cords</i>			

**Description of Timber by Payment Unit (PU), con't**

PU	MARKET GROUP	PRODUCT	QUANTITY	UNIT	ACRES	ADVERTISE PRICE
3 con't	White Pine	Pulpwood	6.0	Cords		
	White Spruce		6.0	Cords		
4	Green Ash	Sawtimber	0.5	MBF	15.1	\$15,385.00
	Red Maple		1.0	MBF		
	Balsam Fir	Pulpwood	67.0	Cords		
	Mixed Aspen		130.0	Cords		
	<i>B. T. Aspen</i>		33.0	<i>Cords</i>		
	<i>Quaking Aspen</i>		97.0	<i>Cords</i>		
	Mixed Hardwood		196.0	Cords		
	<i>Balsam Poplar</i>		11.0	<i>Cords</i>		
	<i>Basswood</i>		3.0	<i>Cords</i>		
	<i>Black Ash</i>		60.0	<i>Cords</i>		
	<i>Green Ash</i>		16.0	<i>Cords</i>		
	<i>Red Maple</i>		67.0	<i>Cords</i>		
	<i>Sugar Maple</i>		27.0	<i>Cords</i>		
	<i>Yellow Birch</i>		12.0	<i>Cords</i>		
	N. White Cedar		122.0	Cords		
	White Spruce		22.0	Cords		
	5		Basswood	Sawtimber		
Sugar Maple		0.5	MBF			
Balsam Fir		Pulpwood	1.0	Cords		
Mixed Aspen			1.0	Cords		
<i>B. T. Aspen</i>			1.0	<i>Cords</i>		
Mixed Hardwood			35.0	Cords		
<i>Basswood</i>			2.0	<i>Cords</i>		
<i>Butternut</i>			3.0	<i>Cords</i>		
<i>Ironwood</i>			1.0	<i>Cords</i>		
<i>Red Maple</i>			2.0	<i>Cords</i>		
<i>Sugar Maple</i>			27.0	<i>Cords</i>		
TOTAL:			42.9	MBF		
TOTAL:			2,180.0	Cords		

## Sale Specific Conditions & Requirements

**Sale Name: Big Cedar River SBW**

**Sale Number: 33-039-17 Seq#: 1**

### 1 - Sale Area

#### 1.2 - Boundaries

##### 1.2.1 - Painted boundaries (1/14)

The sale boundary and Payment Unit boundaries are marked and identified by blue, red and yellow paint. Exterior sale boundary lines against private property are marked with blue paint. Exterior sale boundary lines against state are marked with red paint. There is a double dot red paint line along County Roads 551 and 366. These double dot red painted trees are Included Timber and designated for cutting. Retention patches are marked with red paint and need to be protected; no harvesting activities may occur within these areas. Interior Payment Unit boundaries are marked with yellow paint. Yellow painted trees designating an interior Payment Unit boundary are only to be cut when all surrounding Payment Units have been paid for.

### 2 - Timber Specifications

#### 2.1 - Included Timber

##### 2.1.1 - Clearcut unit(s) with unmerchantable trees (6/14)

Within Payment Unit(s) 1 - 4, cut all trees that are three (3) inches or more at DBH, except do not cut hemlock or trees marked with green paint. In addition, do not cut cedar within Payment Unit 3.

##### 2.1.3 - Cut tree marked unit(s) (12/08)

Within Payment Unit(s) 5, all trees are designated for cutting when marked with orange paint above and below stump height, regardless of merchantability.

##### 2.1.16 - Timber along county or forest roads (6/14)

Cut and remove all cedar and hemlock three (3) inches or greater at DBH within 33 feet of the center line of County Roads 366 and 551, within Payment Units 2, 3, and 4. This wood will be piled separately and scaled by the sale administrator. The Purchaser will pay the contract price for the cedar and the hemlock will be paid for at the average district rate.

#### 2.2 - Utilization

##### 2.2.4 - Skidding length (2/14)

Skidding of unlimbed tops or lengths over 17 feet is not permissible within Payment Unit 5, unless approved by the Unit Manager or his/her representative.

### 3 - Payments

#### 3.3 - Pre-measured Sales

##### 3.3.4 - Dividing payment units (7/14)

Payment Unit(s) \$18,000 in value or greater may be divided at the request of the Purchaser and upon approval of the Unit Manager. Dividing Payment Units is a contract modification which requires a Timber Sale Contract Supplement. There will be only one division per Payment Unit.

### 4 - Transportation

#### 4.1 - Construction

##### 4.1.8 - Road work (1) (8/07)

The following road work is required: the Purchaser must haul and spread 50 yards of pit run gravel onto the access road into Payment Unit 2, prior to using the road. Gravel is available from a state pit that is approximately 2 miles away.

#### 4.2 - Maintenance

##### 4.2.1 - Hauling restriction (12/08)

Hauling may be restricted on forest roads by the Unit Manager or his/her representative. The restriction may occur during spring breakup or during wet weather conditions.

#### 4.2.4 - Grading (10/16)

For completion of the sale, state forest roads must be graded. In general, this will require a road grader or bull dozer to shape up the roads after forest products have been hauled off site. This includes cleaning of drainage areas, grading, crowning and filling with gravel, if necessary. The grading equipment to be used must be approved by the Unit Manager or his/her representative.

### 5 - Operations

#### 5.2 - Conduct of Operations

##### 5.2.3 - Operating Restrictions

###### 5.2.3.3 - Bark slippage restriction (3/09)

Within Payment Unit(s) 5, unless changed by written agreement, cutting and skidding are not permitted during the period of April 15 to July 15. This restriction is because of bark slippage.

##### 5.2.22 - Operating Caution

###### 5.2.22.1 - Operating caution (6/11)

It is recommended, but not required, that within Payment Unit(s) 1 - 4, cutting and skidding occur during dry summer or frozen winter conditions. The reason for the recommendation is because there are wet pockets/drains within each of the Payment Units.

##### 5.2.37 - No decking areas (12/08)

No decking is allowed within 50 feet of County Roads 551 and 366 without permission of the Menominee County Road Commission. If the Purchaser wants to build any more access roads into the sale area from off the county roads, they must get permission from the Menominee County Road Commission. Also, MISS DIG must be contacted.

#### 5.4 - Soil Protection

##### 5.4.1 - Rutting restriction, general (7/16)

Operations are to cease immediately if equipment and weather conditions result in rutting of roads and/or skid trails which is 12 inches or greater in depth and 50 feet in length. The Unit Manager or his/her representative may restrict hauling and/or skidding if ruts exceed the specified depth. With the Unit Manager or his/her representative's approval, the Purchaser may return to the area when the risk of rutting has decreased.

### 6 - Safety and Fire Prevention

#### 6.2 - Signing

##### 6.2.1 - Road posting (9/09)

The Purchaser is responsible for posting and maintaining caution signs on County Roads 551 and 366 prior to beginning operations. The road must be posted at appropriate distances from the sale area to warn of logging activity and truck traffic. Signs must be removed when harvest operations are suspended or completed. The Purchaser will provide these signs.

### 7 - Other Conditions

#### 7.5 - Loss

##### 7.5.1 - Deteriorating timber (7/09)

The sale area has received damage from the spruce budworm. There has been some defoliation, but no mortality at this time. The Purchaser should harvest the wood as soon as possible. The Department of Natural Resources is held free of responsibility of any further damage or deterioration due to delay in harvesting.



# TIMBER SALE MAP

This information provided by authority of Part 525, 1994 PA 451, as amended.

Sale Number	Year
33 - 039	17
Date	Page of
8/15/2017	1 1

Forest Management Unit	County	Mapped By
Escanaba Management Unit	Menominee County	Beudo
Township	Range	Section(s) and Subdivision(s)
36N	25W	Sec 9 - NENE, NESE, SENE & SESE; Sec 10 - NWSW & SWSW
Cruised By	Scale	
Salter, Beudo	1:15,840	

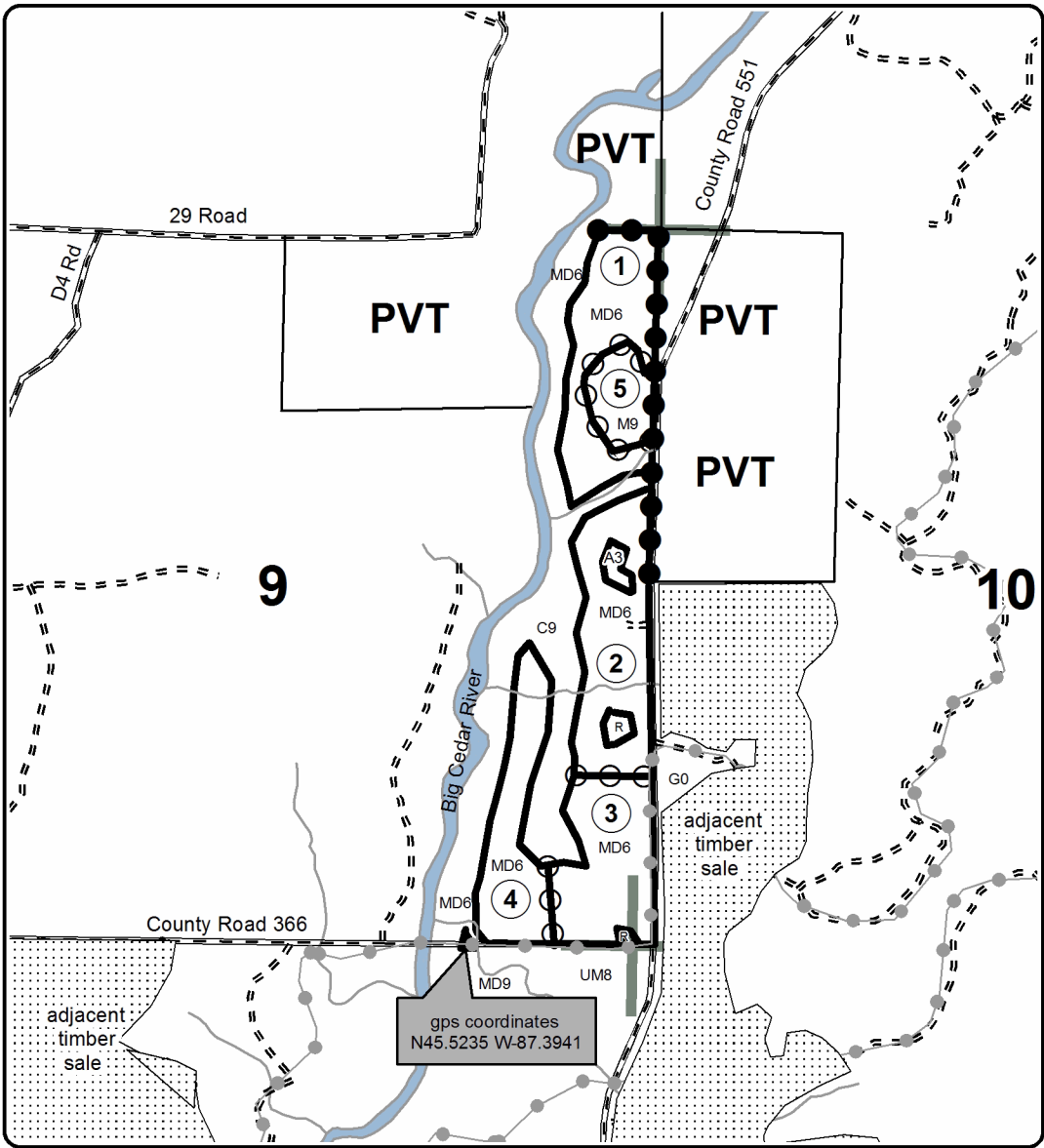
Cover Type				Density	
A = Aspen	H = Hemlock	N = Marsh	U = Upland Brush	0 = Non Stocked	5 = Pole Timber Medium
B = Paper Birch	J = Jack Pine	O = Oak	UM = Upland Mixed	1 = Seedling Sapling Poor	6 = Pole Timber Well
C = Cedar	L = Lowland Brush	P = Lowland Poplar	V = Bog or Marsh	2 = Seedling Sapling Medium	7 = Saw Timber Poor
D = Treed Bog	LM = Lowland Mixed	Q = Mixed Swamp Conifer	W = White Pine	3 = Seedling Sapling Well	8 = Saw Timber Medium
E = Swamp Hdwoods	M = Mpl, Bch, Brch	R = Red Pine	X = Non Stocked	4 = Pole Timber Poor	9 = Saw Timber Well
F = Spruce Fir	MC = Mixed Conifer	S = Black Spruce	Z = Water		
G = Grass	MD = Mixed Deciduous	T = Tamarack			

PU	Acres	PU	Acres
1	18.5	4	15.1
2	20.4	5	6.3
3	17.3		

**Big Cedar River SBW**  
 Compartment 42  
 77.6 Acres



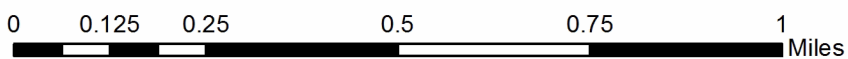
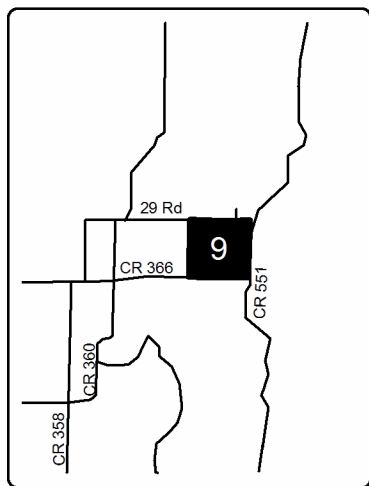
QR Code opens map in PDF Maps App



**Legend**

- Against State (Red)
- Payment Unit (Yellow)
- Private Line (Blue)
- Section Corners
- 9 Section Number
- ORV Trail
- Gravel Roads
- - - Poor Dirt Roads
- ① Payment Unit
- R Retention Patch
- ~ Creek/Seasonal Drain
- River

Locator Map  
1:200,000





# TIMBER SALE INFORMATION

## Pathways SBW (33-043-17)

Menominee County (Advertised Price \$83,294.75)

SALE NOTE: The Cedar River Pathway runs through most of the Payment Units on the sale. The pathway needs to be signed and protected, see specs 5.2.40 and 6.2.3 for further details. The spruce budworm has caused some spruce/fir defoliation, but no mortality at this time.

A recreation site such as a trail, pathway, or campground is within the sale area or the vicinity. Certain restrictions/specifications may be applicable including time restrictions.

A timber sale contract for this lump sum, sealed bid timber sale will be awarded to the responsible bidder offering the highest sealed bid price. Bids must be at or above the following advertised price for each species:

<u>PRODUCTS &amp; SPECIES</u>	<u>ESTIMATED UNITS*</u>	<u>ADVERTISED PRICE</u>
Sawtimber		
Green Ash	2.70 MBF	\$ 91.00 / MBF
Paper Birch	4.60 MBF	\$ 81.00 / MBF
Red Maple	17.60 MBF	\$ 231.00 / MBF
Sugar Maple	1.30 MBF	\$ 332.00 / MBF
White Pine	41.50 MBF	\$ 62.00 / MBF
Yellow Birch	0.50 MBF	\$ 127.00 / MBF
Pulpwood		
Balsam Fir	211.00 Cords	\$ 27.50 / Cord
Mixed Aspen	541.00 Cords	\$ 30.10 / Cord
Mixed Hardwood	1,420.00 Cords	\$ 30.35 / Cord
N. White Cedar	59.00 Cords	\$ 23.55 / Cord
Red Pine	3.00 Cords	\$ 60.75 / Cord
White Pine	273.00 Cords	\$ 30.95 / Cord
White Spruce	14.00 Cords	\$ 24.15 / Cord

\* The total volume is statistically estimated within plus (+) or minus (-) 8.25 percent. The estimated units are final and not subject to adjustment. Prospective bidders are urged to examine this timber and to make their own estimates of quantity and quality.

### **BOND AND PAYMENT SCHEDULE:**

1. A bond in the amount of \$4,165.00 to insure faithful performance of the conditions of the contract will be deposited by the successful bidder within 21 days of the sale award.
2. Cutting in any sale or unit without the required advance payment would be considered a trespass.
3. Total payment must be paid in advance or according to the following schedule:
  - (a) Ten percent (10%) of the sale value must be paid within 21 days of the sale award.
  - (b) The 10% down payment will be credited towards the first unit cut.
4. If no cutting takes place, the 10% down payment will not be refunded.
5. Operations on the contract issued will terminate on 09/30/2020.

**Description of Timber by Payment Unit (PU)**

PU	MARKET GROUP	PRODUCT	QUANTITY	UNIT	ACRES	ADVERTISE PRICE
1	Paper Birch	Sawtimber	1.3	MBF	16.3	\$13,610.45
	Red Maple		6.4	MBF		
	Sugar Maple		1.3	MBF		
	Balsam Fir	Pulpwood	31.0	Cords		
	Mixed Aspen		93.0	Cords		
	<i>Quaking Aspen</i>		93.0	<i>Cords</i>		
	Mixed Hardwood		232.0	Cords		
	<i>Basswood</i>		5.0	<i>Cords</i>		
	<i>Green Ash</i>		3.0	<i>Cords</i>		
	<i>Paper Birch</i>		9.0	<i>Cords</i>		
	<i>Red Maple</i>		170.0	<i>Cords</i>		
	<i>Sugar Maple</i>		45.0	<i>Cords</i>		
	N. White Cedar		31.0	Cords		
	White Pine		4.0	Cords		
	White Spruce		2.0	Cords		
2	Paper Birch	Sawtimber	3.3	MBF	18.5	\$15,202.15
	Red Maple		1.0	MBF		
	White Pine		1.1	MBF		
	Balsam Fir	Pulpwood	53.0	Cords		
	Mixed Aspen		129.0	Cords		
	<i>Quaking Aspen</i>		129.0	<i>Cords</i>		
	Mixed Hardwood		281.0	Cords		
	<i>Black Cherry</i>		3.0	<i>Cords</i>		
	<i>Green Ash</i>		8.0	<i>Cords</i>		
	<i>Paper Birch</i>		24.0	<i>Cords</i>		
	<i>Red Maple</i>		216.0	<i>Cords</i>		
	<i>Sugar Maple</i>		28.0	<i>Cords</i>		
	<i>Yellow Birch</i>		2.0	<i>Cords</i>		
	N. White Cedar		20.0	Cords		
	White Pine		8.0	Cords		
White Spruce		2.0	Cords			
3	Red Maple	Sawtimber	3.5	MBF	25.8	\$18,514.45
	Balsam Fir	Pulpwood	55.0	Cords		
	Mixed Aspen		304.0	Cords		
	<i>B. T. Aspen</i>		47.0	<i>Cords</i>		
	<i>Quaking Aspen</i>		257.0	<i>Cords</i>		
	Mixed Hardwood		217.0	Cords		
	<i>Balsam Poplar</i>		9.0	<i>Cords</i>		
	<i>Basswood</i>		4.0	<i>Cords</i>		
	<i>Beech</i>		1.0	<i>Cords</i>		
	<i>Black Cherry</i>		13.0	<i>Cords</i>		
	<i>Green Ash</i>		13.0	<i>Cords</i>		
	<i>Paper Birch</i>		3.0	<i>Cords</i>		
	<i>Red Maple</i>		133.0	<i>Cords</i>		
	<i>Sugar Maple</i>		41.0	<i>Cords</i>		
	N. White Cedar		8.0	Cords		
	White Pine		4.0	Cords		
	White Spruce		6.0	Cords		
4	Red Maple	Sawtimber	3.2	MBF	13.5	\$6,668.60
	White Pine		3.9	MBF		
	Balsam Fir	Pulpwood	16.0	Cords		
	Mixed Aspen		15.0	Cords		
	<i>Quaking Aspen</i>		15.0	<i>Cords</i>		
	Mixed Hardwood		134.0	Cords		
	<i>Black Ash</i>		26.0	<i>Cords</i>		
	<i>Green Ash</i>		1.0	<i>Cords</i>		

**Description of Timber by Payment Unit (PU), con't**

PU	MARKET GROUP	PRODUCT	QUANTITY	UNIT	ACRES	ADVERTISE PRICE
4 con't	<i>Red Maple</i>	<i>Pulpwood</i>	104.0	<i>Cords</i>		
	<i>Yellow Birch</i>		3.0	<i>Cords</i>		
	White Pine		22.0	Cords		
	White Spruce		2.0	Cords		
5	Red Maple	Sawtimber	1.4	MBF	14.5	\$7,287.20
	White Pine		9.4	MBF		
	Balsam Fir	Pulpwood	10.0	Cords		
	Mixed Hardwood		140.0	Cords		
	<i>Beech</i>		2.0	<i>Cords</i>		
	<i>Black Ash</i>		7.0	<i>Cords</i>		
	<i>Red Maple</i>		129.0	<i>Cords</i>		
	<i>Sugar Maple</i>		2.0	<i>Cords</i>		
	White Pine		60.0	Cords		
	Green Ash		Sawtimber	1.0		
Red Maple		1.4	MBF			
White Pine		4.4	MBF			
Yellow Birch		0.5	MBF			
Balsam Fir	Pulpwood	5.0	Cords			
Mixed Hardwood		91.0	Cords			
<i>Black Ash</i>		10.0	<i>Cords</i>			
<i>Green Ash</i>		9.0	<i>Cords</i>			
<i>Paper Birch</i>		7.0	<i>Cords</i>			
<i>Red Maple</i>		62.0	<i>Cords</i>			
<i>Yellow Birch</i>		3.0	<i>Cords</i>			
Red Pine		3.0	Cords			
White Pine		31.0	Cords			
7		Red Maple	Sawtimber	0.7	MBF	30.0
	White Pine		22.7	MBF		
	Balsam Fir	Pulpwood	38.0	Cords		
	Mixed Hardwood		258.0	Cords		
	<i>Basswood</i>		3.0	<i>Cords</i>		
	<i>Beech</i>		1.0	<i>Cords</i>		
	<i>Black Cherry</i>		1.0	<i>Cords</i>		
	<i>Green Ash</i>		6.0	<i>Cords</i>		
	<i>Red Maple</i>		233.0	<i>Cords</i>		
	<i>Sugar Maple</i>		8.0	<i>Cords</i>		
	<i>Yellow Birch</i>		6.0	<i>Cords</i>		
	White Pine		144.0	Cords		
	8		Green Ash	Sawtimber	1.7	
Balsam Fir		Pulpwood	3.0	Cords		
Mixed Hardwood			67.0	Cords		
<i>Black Ash</i>			4.0	<i>Cords</i>		
<i>Green Ash</i>			41.0	<i>Cords</i>		
<i>Red Maple</i>			22.0	<i>Cords</i>		
White Spruce			2.0	Cords		
TOTAL:			68.2	MBF		
TOTAL:			2,521.0	Cords		

## Sale Specific Conditions & Requirements

**Sale Name: Pathways SBW**

**Sale Number: 33-043-17 Seq#: 1**

### 1 - Sale Area

#### 1.2 - Boundaries

##### 1.2.1 - Painted boundaries (1/14)

The sale boundary and Payment Unit boundaries are marked and identified by red and yellow paint. Exterior sale boundary lines against state are marked with red paint. There is a double dot red paint line along County Roads 366 and 551. These double dot red painted trees are Included Timber and designated for cutting. Retention patches are marked with red paint and need to be protected; no harvesting activities may occur within these areas.

Interior Payment Unit boundaries are marked with yellow paint. The painted boundary line trees are not Included Timber and are to be protected. Yellow painted trees designating an interior Payment Unit boundary are only to be cut when all surrounding Payment Units have been paid for.

### 2 - Timber Specifications

#### 2.1 - Included Timber

##### 2.1.1 - Clearcut unit(s) with unmerchantable trees (6/14)

Within Payment Unit(s) 1, 2, 3, and 8, cut all trees that are three (3) inches or more at DBH, except do not cut hemlock and trees marked with green paint within Payment Units 1, 2, and 3.

##### 2.1.2 - Clearcut unit(s) w/o unmerchantable trees (8/11)

Within Payment Unit(s) 4, 5, 6, and 7, cut all trees which meet minimum piece specifications in 2.2 Utilization; except cedar, hemlock, and trees marked with green paint.

##### 2.1.16 - Timber along county or forest roads (6/14)

Cut and remove all cedar and hemlock three (3) inches or greater at DBH within 33 feet of the center line of county roads 366 and 551, within Payment Units 4, 5, 6, and 7. This wood will be piled separately and scaled by the sale administrator. The purchaser will pay the contract price for the cedar and the hemlock will be paid for at the average district rate.

#### 2.2 - Utilization

##### 2.2.4 - Skidding length (2/14)

Skidding of lengths over 17 feet is permissible as long as the timber sale administrator approves the method and machinery used. If at any point damage exceeds specification 3.4.1, all of the remaining wood must be skid in lengths less than 17 feet.

### 3 - Payments

#### 3.3 - Pre-measured Sales

##### 3.3.4 - Dividing payment units (7/14)

Payment Unit(s) \$18,000 in value or greater may be divided at the request of the Purchaser and upon approval of the Unit Manager. Dividing Payment Units is a contract modification which requires a Timber Sale Contract Supplement. There will be only one division per Payment Unit.

#### 3.4 - Damaged Timber

##### 3.4.1 - Damaged timber (6/14)

General Condition and Requirement 3.4 Damaged Timber, defines liquidated damages for undesignated live merchantable trees which are cut or injured.

Within the sale area, if more than 40% of the tree seedlings or saplings (1/4" to 4.5" DBH) within a specified portion of the sale area are damaged, liquidated damages will be assessed at \$500 per acre for all acreage within that specified portion of the sale area that was damaged.

### 4 - Transportation

## 4.1 - Construction

### 4.1.6 - Road construction (1/09)

Construction of new roads or improvements of existing roads shall be done in such a way as to minimize the environmental and visual impacts. Merchantable trees shall be cut and utilized unless otherwise directed. Non-merchantable trees shall be severed and laid flat on the ground. Slash shall be scattered, and not left in windrows and kept a minimum of 10 feet back from the road edge. Stumps shall be set upright, not left on edge, and be moved at least 10 feet away from the road edge. Disturbed soil shall be feathered into the woods and not left in berms or windrows.

### 4.1.7 - Road closure (10/11)

All new roads built into the sale must be blocked to vehicle traffic upon completion of the sale. Overgrown roads that are reopened shall be considered new roads. In general, this will require constructing a four (4') foot high berm of stumps and logs covered with earth. These roads must be rendered impassable to cars and trucks. Contact the sale administrator for specific details of design and placement.

## 4.2 - Maintenance

### 4.2.4 - Grading (10/16)

For completion of the sale, state forest roads must be graded. In general, this will require a road grader or bull dozer to shape up the roads after forest products have been hauled off site. This includes cleaning of drainage areas, grading, crowning and filling with gravel, if necessary. The grading equipment to be used must be approved by the Unit Manager or his/her representative.

## 5 - Operations

### 5.2 - Conduct of Operations

#### 5.2.3 - Operating Restrictions

##### 5.2.3.1 - Operating restrictions (9/11)

Within Payment Unit(s) 8, cutting and skidding are limited to the period of December 1st to March 31st, unless there is an extended dry or frozen period and the sale administrator allows harvesting during that time period. This restriction is because of low wet ground throughout the Payment Unit.

#### 5.2.22 - Operating Caution

##### 5.2.22.1 - Operating caution (6/11)

It is recommended, but not required, that within Payment Unit(s) 4, 5, 6, and 7, cutting and skidding occur during dry summer or frozen winter conditions. The reason for the recommendation is because of some low wet ground within each of the Payment Units.

#### 5.2.40 - Pathway protection (10/10)

The Cedar River Pathway is a [ski and horse] trail and is shown on the Timber Sale Map. Maintain a 20-foot wide slash, debris, and rut free zone daily, using the pathway as the centerline. Do not run equipment down the pathway. Skidding across the trail may only occur in locations approved by the sale administrator.

### 5.4 - Soil Protection

#### 5.4.1 - Rutting restriction, general (7/16)

Operations are to cease immediately if equipment and weather conditions result in rutting of roads and/or skid trails which is 12 inches or greater in depth and 50 feet in length. The Unit Manager or his/her representative may restrict hauling and/or skidding if ruts exceed the specified depth. With the Unit Manager or his/her representative's approval, the Purchaser may return to the area when the risk of rutting has decreased.

## 6 - Safety and Fire Prevention

### 6.2 - Signing

#### 6.2.1 - Road posting (9/09)

The Purchaser is responsible for posting and maintaining caution signs on County Roads 366 and 551 prior to beginning operations. The road must be posted at appropriate distances from the sale area to warn of logging activity and truck traffic.

Signs must be removed when harvest operations are suspended or completed. The Purchaser will provide these signs.

#### 6.2.3 - Recreational trail posting (2/10)

The Purchaser is responsible for posting and maintaining caution signs on the Cedar River Pathway prior to beginning operations. The trail must be posted at appropriate distances from the sale area to warn of logging activity and truck traffic at both ends of the trail. Signs must be removed when harvest operations are suspended or completed. The Purchaser will provide these signs.

### **7 - Other Conditions**

#### 7.5 - Loss

##### 7.5.1 - Deteriorating timber (7/09)

The sale area has received damage from the spruce budworm. There is some spruce/fir defoliation, but no mortality at this time. The Purchaser should harvest the wood as soon as possible. The Department of Natural Resources is held free of responsibility of any further damage or deterioration due to delay in harvesting.



# TIMBER SALE MAP

This information provided by authority of Part 525, 1994 PA 451, as amended.

Sale Number	Year
33-043	17

Forest Management Unit Escanaba Management Unit	County Menominee County	Mapped By Bealdo	Date 9/22/2017	Page 1	of 1
Cruised By Salter, Bealdo					

Township 36N	Range 25W	Section(s) and Subdivision(s) Sec 15 - NWNW, NWSW, SWSW; Sec 16 - NENE, NESE, NWSE, SENE, SESE, SWNE, SWSE; Sec 21 - NENE	Scale 1:15,840
-----------------	--------------	---	-------------------

### Cover Type

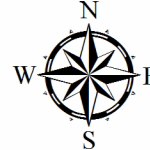
A = Aspen	H = Hemlock	N = Marsh	U = Upland Brush
B = Paper Birch	J = Jack Pine	O = Oak	UM = Upland Mixed
C = Cedar	L = Lowland Brush	P = Lowland Poplar	V = Bog or Marsh
D = Treed Bog	LM = Lowland Mixed	Q = Mixed Swamp Conifer	W = White Pine
E = Swamp Hdwoods	M = Mpl, Bch, Brch	R = Red Pine	X = Non Stocked
F = Spruce Fir	MC = Mixed Conifer	S = Black Spruce	Z = Water
G = Grass	MD = Mixed Deciduous	T = Tamarack	

### Density

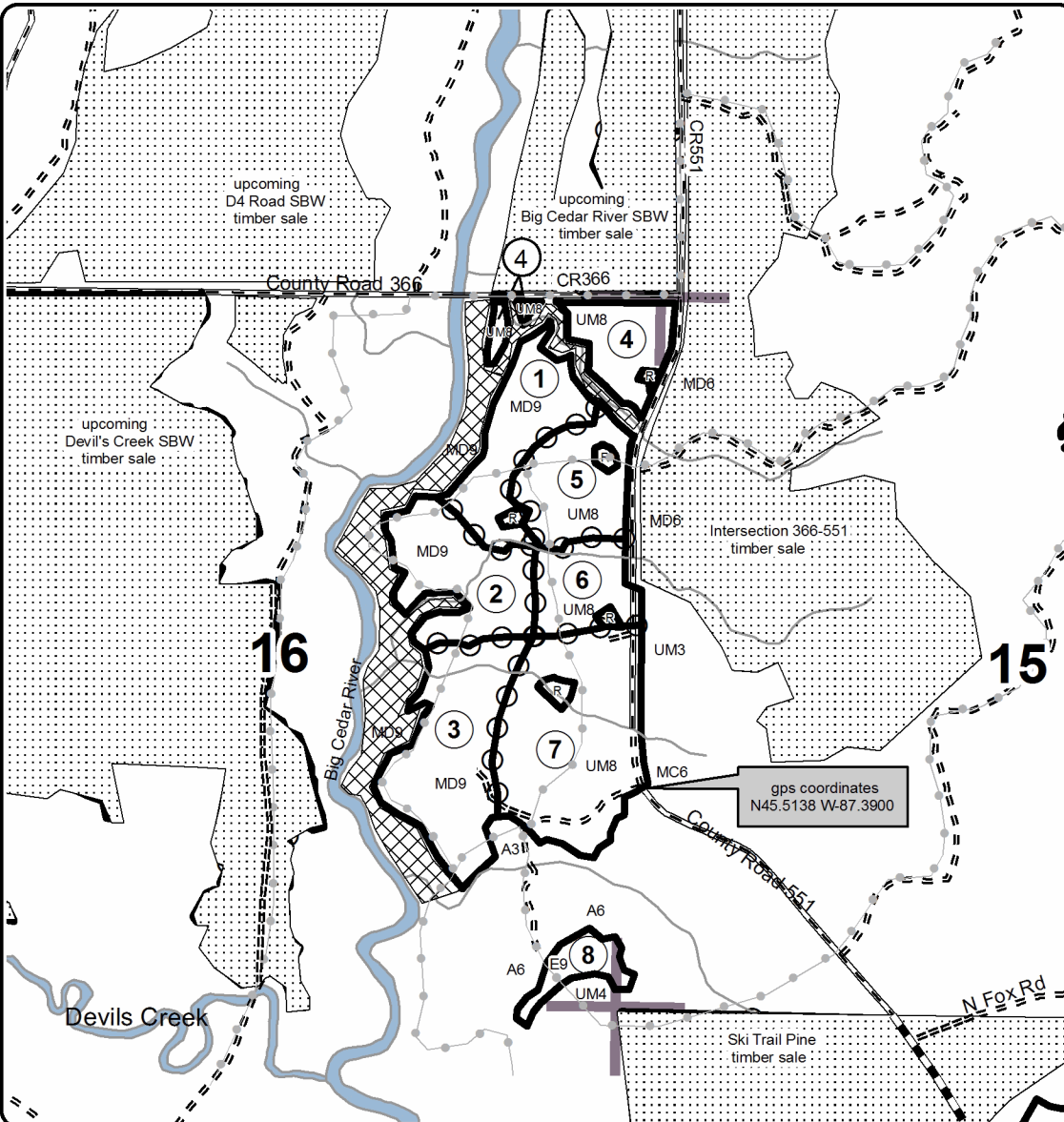
0 = Non Stocked	5 = Pole Timber Medium
1 = Seedling Sapling Poor	6 = Pole Timber Well
2 = Seedling Sapling Medium	7 = Saw Timber Poor
3 = Seedling Sapling Well	8 = Saw Timber Medium
4 = Pole Timber Poor	9 = Saw Timber Well

PU	Acres	PU	Acres
1	16.3	5	14.5
2	18.5	6	9.6
3	25.8	7	30.0
4	13.5	8	4.3

**Pathways SBW**  
**Compartment 42**  
**132.5 Acres**



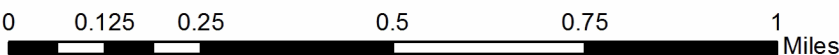
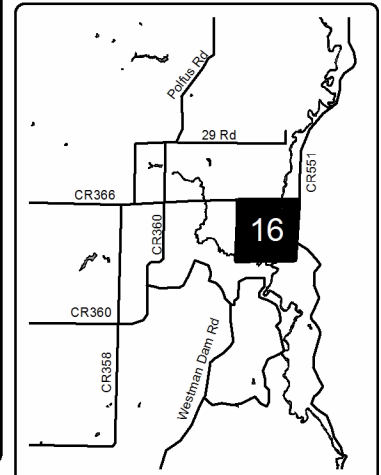
QR Code opens PDF map viewer



### Legend

- Against State (Red)
- Payment Unit (Yellow)
- Section Corners
- 16** Section Number
- Recreational Trail
- Gravel Roads
- Poor Dirt Roads
- Closed Roads
- State Land Boundary
- R Retention Patch
- Payment Unit
- Creek/Seasonal Drain

Locator Map  
1:200,000







# TIMBER SALE INFORMATION

## D 4 Road SBW (33-044-17)

Menominee County (Advertised Price \$116,810.00)

SALE NOTE: The Forest Island ORV Trail runs along the eastern edge of Payment Unit 9. Spruce budworm is present and has caused some defoliation of the spruce/fir, but no mortality has occurred. Eastern Larch beetle is present as well, and has caused some tamarack mortality.

A recreation site such as a trail, pathway, or campground is within the sale area or the vicinity. Certain restrictions/specifications may be applicable including time restrictions.

A timber sale contract for this lump sum, sealed bid timber sale will be awarded to the responsible bidder offering the highest sealed bid price. Bids must be at or above the following advertised price for each species:

<u>PRODUCTS &amp; SPECIES</u>	<u>ESTIMATED UNITS*</u>	<u>ADVERTISED PRICE</u>
Sawtimber		
Green Ash	4.10 MBF	\$ 97.00 / MBF
Paper Birch	1.00 MBF	\$ 87.00 / MBF
Red Maple	7.60 MBF	\$ 247.00 / MBF
Sugar Maple	0.80 MBF	\$ 356.00 / MBF
White Ash	0.50 MBF	\$ 72.00 / MBF
Pulpwood		
Balsam Fir	813.00 Cords	\$ 29.45 / Cord
Mixed Aspen	880.00 Cords	\$ 32.25 / Cord
Mixed Hardwood	1,135.00 Cords	\$ 32.55 / Cord
Mixed Spruce	188.00 Cords	\$ 25.90 / Cord
N. White Cedar	760.00 Cords	\$ 25.25 / Cord
Tamarack	42.00 Cords	\$ 16.70 / Cord
White Pine	3.00 Cords	\$ 33.20 / Cord

\* The estimated units are final and not subject to adjustment. Prospective bidders are urged to examine this timber and to make their own estimates of quantity and quality.

### **BOND AND PAYMENT SCHEDULE:**

1. A bond in the amount of \$5,841.00 to insure faithful performance of the conditions of the contract will be deposited by the successful bidder within 21 days of the sale award.
2. Cutting in any sale or unit without the required advance payment would be considered a trespass.
3. Total payment must be paid in advance or according to the following schedule:
  - (a) Ten percent (10%) of the sale value must be paid within 21 days of the sale award.
  - (b) The 10% down payment will be credited towards the first unit cut.
4. If no cutting takes place, the 10% down payment will not be refunded.
5. Operations on the contract issued will terminate on 09/30/2020.

**Description of Timber by Payment Unit (PU)**

PU	MARKET GROUP	PRODUCT	QUANTITY	UNIT	ACRES	ADVERTISE PRICE
1	Green Ash	Sawtimber	0.5	MBF	12.4	\$13,512.05
	Red Maple		3.3	MBF		
	Sugar Maple		0.8	MBF		
	Balsam Fir	Pulpwood	34.0	Cords		
	Mixed Aspen		157.0	Cords		
	<i>B. T. Aspen</i>		39.0	<i>Cords</i>		
	<i>Quaking Aspen</i>		118.0	<i>Cords</i>		
	Mixed Hardwood		139.0	Cords		
	<i>Basswood</i>		3.0	<i>Cords</i>		
	<i>Beech</i>		5.0	<i>Cords</i>		
	<i>Green Ash</i>		14.0	<i>Cords</i>		
	<i>Ironwood</i>		2.0	<i>Cords</i>		
	<i>Red Maple</i>		81.0	<i>Cords</i>		
	<i>Sugar Maple</i>		11.0	<i>Cords</i>		
	<i>Yellow Birch</i>		23.0	<i>Cords</i>		
	Mixed Spruce		11.0	Cords		
	<i>White Spruce</i>		11.0	<i>Cords</i>		
	N. White Cedar		59.0	Cords		
2	White Ash	Sawtimber	0.5	MBF	21.3	\$14,521.65
	Balsam Fir	Pulpwood	217.0	Cords		
	Mixed Aspen		149.0	Cords		
	<i>Balsam Poplar</i>		23.0	<i>Cords</i>		
	<i>Quaking Aspen</i>		126.0	<i>Cords</i>		
	Mixed Hardwood		66.0	Cords		
	<i>American Elm</i>		4.0	<i>Cords</i>		
	<i>Basswood</i>		4.0	<i>Cords</i>		
	<i>Black Ash</i>		20.0	<i>Cords</i>		
	<i>Black Cherry</i>		4.0	<i>Cords</i>		
	<i>Red Maple</i>		21.0	<i>Cords</i>		
	<i>Sugar Maple</i>		2.0	<i>Cords</i>		
	<i>White Ash</i>		11.0	<i>Cords</i>		
	Mixed Spruce		8.0	Cords		
	<i>White Spruce</i>		8.0	<i>Cords</i>		
	N. White Cedar		37.0	Cords		
3	Balsam Fir	Pulpwood	85.0	Cords	20.0	\$15,386.60
	Mixed Aspen		69.0	Cords		
	<i>Balsam Poplar</i>		15.0	<i>Cords</i>		
	<i>Quaking Aspen</i>		54.0	<i>Cords</i>		
	Mixed Hardwood		51.0	Cords		
	<i>Black Ash</i>		30.0	<i>Cords</i>		
	<i>Black Cherry</i>		2.0	<i>Cords</i>		
	<i>Green Ash</i>		7.0	<i>Cords</i>		
	<i>Paper Birch</i>		7.0	<i>Cords</i>		
	<i>Red Maple</i>		5.0	<i>Cords</i>		
	Mixed Spruce		17.0	Cords		
	<i>White Spruce</i>		17.0	<i>Cords</i>		
	N. White Cedar		329.0	Cords		
	Tamarack		15.0	Cords		
4	Red Maple	Sawtimber	1.7	MBF	14.7	\$12,351.00
	Balsam Fir	Pulpwood	104.0	Cords		
	Mixed Aspen		143.0	Cords		
	<i>Balsam Poplar</i>		7.0	<i>Cords</i>		
	<i>Quaking Aspen</i>		136.0	<i>Cords</i>		
	Mixed Hardwood		45.0	Cords		
	<i>Black Ash</i>		7.0	<i>Cords</i>		
	<i>Black Cherry</i>		2.0	<i>Cords</i>		

Description of Timber by Payment Unit (PU), con't

PU	MARKET GROUP	PRODUCT	QUANTITY	UNIT	ACRES	ADVERTISE PRICE				
4 con't	<i>Green Ash</i>	<i>Pulpwood</i>	9.0	<i>Cords</i>						
	<i>Paper Birch</i>		8.0	<i>Cords</i>						
	<i>Red Maple</i>		19.0	<i>Cords</i>						
	Mixed Spruce		22.0	<i>Cords</i>						
	<i>White Spruce</i>		22.0	<i>Cords</i>						
	N. White Cedar		88.0	<i>Cords</i>						
	5		Balsam Fir	Pulpwood			195.0	<i>Cords</i>	34.5	\$14,429.35
Mixed Aspen		80.0	<i>Cords</i>							
<i>Balsam Poplar</i>		31.0	<i>Cords</i>							
<i>Quaking Aspen</i>		49.0	<i>Cords</i>							
Mixed Hardwood		83.0	<i>Cords</i>							
<i>Basswood</i>		9.0	<i>Cords</i>							
<i>Black Ash</i>		1.0	<i>Cords</i>							
<i>Black Cherry</i>		2.0	<i>Cords</i>							
<i>Green Ash</i>		28.0	<i>Cords</i>							
<i>Ironwood</i>		2.0	<i>Cords</i>							
<i>Paper Birch</i>		3.0	<i>Cords</i>							
<i>Red Maple</i>		6.0	<i>Cords</i>							
<i>Sugar Maple</i>		12.0	<i>Cords</i>							
<i>White Ash</i>		20.0	<i>Cords</i>							
Mixed Spruce		33.0	<i>Cords</i>							
<i>White Spruce</i>		33.0	<i>Cords</i>							
N. White Cedar		101.0	<i>Cords</i>							
6		Green Ash	Sawtimber		0.5	MBF	25.6	\$12,033.45		
		Paper Birch			1.0	MBF				
		Balsam Fir	Pulpwood		36.0	<i>Cords</i>				
	Mixed Aspen	36.0		<i>Cords</i>						
	<i>Balsam Poplar</i>	14.0		<i>Cords</i>						
	<i>Quaking Aspen</i>	22.0		<i>Cords</i>						
	Mixed Hardwood	252.0		<i>Cords</i>						
	<i>American Elm</i>	2.0		<i>Cords</i>						
	<i>Basswood</i>	4.0		<i>Cords</i>						
	<i>Black Ash</i>	70.0		<i>Cords</i>						
	<i>Green Ash</i>	126.0		<i>Cords</i>						
	<i>Paper Birch</i>	19.0		<i>Cords</i>						
	<i>Red Maple</i>	29.0		<i>Cords</i>						
	<i>Yellow Birch</i>	2.0		<i>Cords</i>						
	Mixed Spruce	17.0		<i>Cords</i>						
	<i>Black Spruce</i>	4.0		<i>Cords</i>						
	<i>White Spruce</i>	13.0		<i>Cords</i>						
	N. White Cedar	37.0		<i>Cords</i>						
	White Pine	3.0		<i>Cords</i>						
	7	Green Ash		Sawtimber	1.9	MBF			29.0	\$14,975.80
Red Maple			1.0	MBF						
Balsam Fir		Pulpwood	40.0	<i>Cords</i>						
Mixed Aspen			36.0	<i>Cords</i>						
<i>Balsam Poplar</i>			25.0	<i>Cords</i>						
<i>Quaking Aspen</i>			11.0	<i>Cords</i>						
Mixed Hardwood			271.0	<i>Cords</i>						
<i>Black Ash</i>			76.0	<i>Cords</i>						
<i>Green Ash</i>			96.0	<i>Cords</i>						
<i>Paper Birch</i>			7.0	<i>Cords</i>						
<i>Red Maple</i>			90.0	<i>Cords</i>						
<i>Yellow Birch</i>			2.0	<i>Cords</i>						
Mixed Spruce			7.0	<i>Cords</i>						
<i>Black Spruce</i>			4.0	<i>Cords</i>						

**Description of Timber by Payment Unit (PU), con't**

PU	MARKET GROUP	PRODUCT	QUANTITY	UNIT	ACRES	ADVERTISE PRICE
7 con't	<i>White Spruce</i> N. White Cedar Tamarack	<i>Pulpwood</i>	3.0 109.0 27.0	<i>Cords</i> Cords Cords		
8	Green Ash Red Maple Balsam Fir Mixed Aspen <i>B. T. Aspen</i> <i>Balsam Poplar</i> <i>Quaking Aspen</i> Mixed Hardwood <i>American Elm</i> <i>Black Cherry</i> <i>Green Ash</i> <i>Paper Birch</i> <i>Red Maple</i> Mixed Spruce <i>Black Spruce</i> <i>White Spruce</i>	Sawtimber  Pulpwood	1.2 1.6 46.0 126.0 23.0 7.0 96.0 176.0 1.0 6.0 67.0 10.0 92.0 69.0 45.0 24.0	MBF MBF Cords Cords <i>Cords</i> <i>Cords</i> <i>Cords</i> Cords <i>Cords</i> <i>Cords</i> <i>Cords</i> <i>Cords</i> <i>Cords</i> Cords <i>Cords</i> <i>Cords</i>	17.8	\$13,445.70
9	Balsam Fir Mixed Aspen <i>Quaking Aspen</i> Mixed Hardwood <i>Green Ash</i> <i>Red Maple</i> Mixed Spruce <i>White Spruce</i>	Pulpwood	56.0 84.0 84.0 52.0 5.0 47.0 4.0 4.0	Cords Cords <i>Cords</i> Cords <i>Cords</i> <i>Cords</i> Cords <i>Cords</i>	8.3	\$6,154.40
TOTAL:			14.0	MBF		
TOTAL:			3,821.0	Cords		

# Sale Specific Conditions & Requirements

**Sale Name: D 4 Road SBW**

**Sale Number: 33-044-17 Seq#: 1**

## 1 - Sale Area

### 1.2 - Boundaries

#### 1.2.1 - Painted boundaries (1/14)

The sale boundary and Payment Unit boundaries are marked and identified by blue, red, and yellow paint, along with a county road. Exterior sale boundary lines against private property are marked with blue paint. Exterior sale boundary lines against state are marked with red paint. There is a double dot red paint line along County Road 366, on the south ends of Payment Units 5, 6, and 7, and also along the north edge of Payment Unit 1, along 29 Road. These double dot red painted trees are Included Timber and designated for cutting. Retention patches are marked with red paint and need to be protected; no harvesting activities may occur within these areas.

Interior Payment Unit boundaries are marked with yellow paint, with the exception of the line between Payment Units 8 and 9, which is identified by County Road 366. The painted boundary line trees are not Included Timber and are to be protected. Yellow painted trees designating an interior Payment Unit boundary are only to be cut when all surrounding Payment Units have been paid for.

## 2 - Timber Specifications

### 2.1 - Included Timber

#### 2.1.1 - Clearcut unit(s) with unmerchantable trees (6/14)

Within Payment Unit(s) 1 - 9, cut all trees that are three (3) inches or more at DBH; except do not cut hemlock. In addition, please note the following exceptions:

Within Payment Unit 5, do not cut cedar marked with green paint and sub-merchantable trees within 120' of County Road 366.

Within Payment Units 8 and 9, do not cut pine.

## 3 - Payments

### 3.3 - Pre-measured Sales

#### 3.3.4 - Dividing payment units (7/14)

Payment Unit(s) \$18,000 in value and greater may be divided at the request of the Purchaser and upon approval of the Unit Manager. Dividing Payment Units is a contract modification which requires a Timber Sale Contract Supplement. There will be only one division per Payment Unit.

## 4 - Transportation

### 4.1 - Construction

#### 4.1.6 - Road construction (1/09)

Construction of new roads or improvements of existing roads shall be done in such a way as to minimize the environmental and visual impacts. Merchantable trees shall be cut and utilized unless otherwise directed. Non-merchantable trees shall be severed and laid flat on the ground. Slash shall be scattered, and not left in windrows and kept a minimum of 10 feet back from the road edge. Stumps shall be set upright, not left on edge, and be moved at least 10 feet away from the road edge. Disturbed soil shall be feathered into the woods and not left in berms or windrows.

#### 4.1.8 - Road work (1) (8/07)

The following road work is required: the purchaser must purchase and install an 18" x 32' new corrugated steel culvert on the access road heading to Payment Unit 4. The culvert will be placed in the ditch, just off of County Road 366. A minimum of 12" inches of gravel will be placed over the culvert. Additional gravel will need to be placed on this access road, along with the access road into Payment Unit 2. A total of 100 yards of pit run gavel will need to be hauled and spread by the purchaser. Gravel is available from a state pit about one mile from the sale. A permit has been obtained from the Menominee County

Road Commission to install the culvert. MISS DIG must be contacted prior to setting the culvert.

#### 4.2 - Maintenance

##### 4.2.1 - Hauling restriction (12/08)

Hauling may be restricted on forest roads by the Unit Manager or his/her representative. The restriction may occur during spring breakup or during other wet weather conditions.

##### 4.2.4 - Grading (10/16)

For completion of the sale, state forest roads must be graded. In general, this will require a road grader or bull dozer to shape up the roads after forest products have been hauled off site. This includes cleaning of drainage areas, grading, crowning and filling with gravel, if necessary. The grading equipment to be used must be approved by the Unit Manager or his/her representative.

### 5 - Operations

#### 5.2 - Conduct of Operations

##### 5.2.3 - Operating Restrictions

###### 5.2.3.1 - Operating restrictions (9/11)

Within Payment Unit(s) 3, 6, and 7, cutting and skidding are limited to the period of December 1st to March 31st, unless there is an extended dry or frozen period of time and the sale administrator allows harvesting during that time period.

This restriction is because of low wet ground throughout the Payment Units.

##### 5.2.22 - Operating Caution

###### 5.2.22.1 - Operating caution (6/11)

It is recommended, but not required, that within Payment Unit(s) 4 and 5, cutting and skidding occur during dry summer or frozen winter conditions. The reason for the recommendation is because of some pockets of low wet ground.

##### 5.2.37 - No decking areas (12/08)

No decking is allowed along County Roads 366 and 29 Road without permission from the Menominee County Road Commission.

##### 5.2.39 - ORV trail/route protection (12/12)

The Forest Island ORV Trail is an ORV trail or route and is shown on the Timber Sale Map. Do not cut trees or damage posts with orange ORV markers. All stumps within 5 feet of the trail must be cut flush with the ground. Maintain a 20 foot wide slash, debris, and rut free zone daily using the ORV trail or route as the centerline. Do not run equipment down the ORV trail or route. Skidding across the trail or route may only occur in locations approved by the sale administrator.

#### 5.4 - Soil Protection

##### 5.4.1 - Rutting restriction, general (7/16)

Operations are to cease immediately if equipment and weather conditions result in rutting of roads and/or skid trails which is 12 inches or greater in depth and 50 feet in length. The Unit Manager or his/her representative may restrict hauling and/or skidding if ruts exceed the specified depth. With the Unit Manager or his/her representative's approval, the Purchaser may return to the area when the risk of rutting has decreased.

### 6 - Safety and Fire Prevention

#### 6.2 - Signing

##### 6.2.1 - Road posting (9/09)

The Purchaser is responsible for posting and maintaining caution signs on County Roads 366 and 29 Road prior to beginning operations. The road must be posted at appropriate distances from the sale area to warn of logging activity and truck traffic. Signs must be removed when harvest operations are suspended or completed. The Purchaser will provide these signs.

##### 6.2.3 - Recreational trail posting (2/10)

The Purchaser is responsible for posting and maintaining caution signs on the Forest Island ORV Trail prior to beginning operations. The trail must be posted at appropriate distances from the sale area to warn of logging activity and truck traffic at both ends of the trail. Signs must be removed when harvest operations are suspended or completed. The Purchaser will

provide these signs.

## **7 - Other Conditions**

### 7.5 - Loss

#### 7.5.1 - Deteriorating timber (7/09)

The sale area has received damage from the spruce budworm. The budworm has caused spruce/fir defoliation, but no mortality at this time. The eastern larch beetle is present and has caused some tamarack mortality. The Purchaser should harvest the wood as soon as possible. The Department of Natural Resources is held free of responsibility of any further damage or deterioration due to delay in harvesting.



# TIMBER SALE MAP

This information provided by authority of Part 525, 1994 PA 451, as amended.

Forest Management Unit Escanaba Management Unit	County Menominee County	Mapped By Beaudo	Date 9/27/2017	Page 1	of 1
Township 36N	Range 25W	Section(s) and Subdivision(s) Sec 9 - NENW, NESE, NESW, NWSE, NWSW, SENE, SENW, SESW, SWNE, SWSE, SWSW; Sec 16 - NENW, NWNE	Scale 1:15,840		

### Cover Type

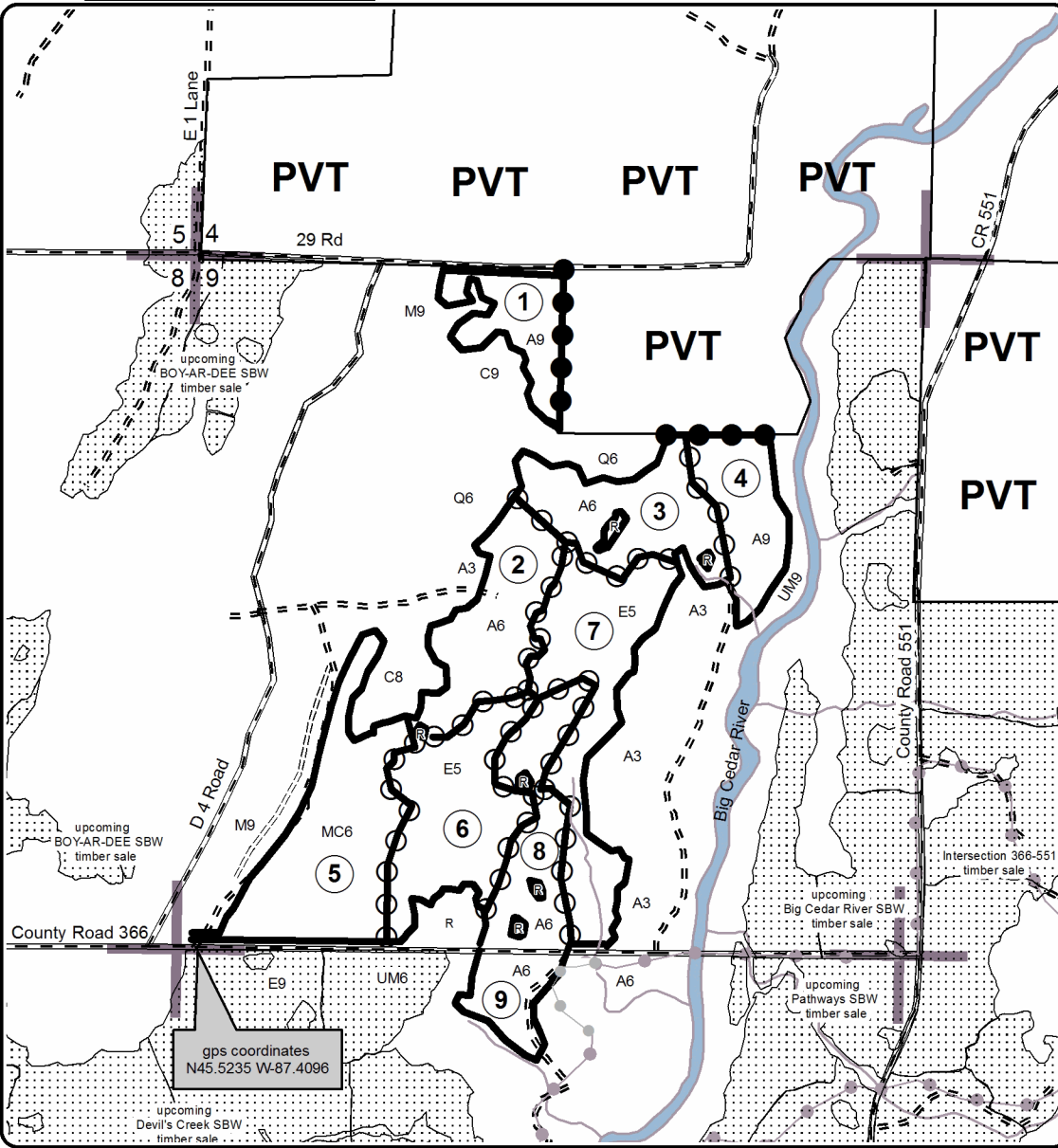
A = Aspen	H = Hemlock	N = Marsh	U = Upland Brush
B = Paper Birch	J = Jack Pine	O = Oak	UM = Upland Mixed
C = Cedar	L = Lowland Brush	P = Lowland Poplar	V = Bog or Marsh
D = Tread Bog	LM = Lowland Mixed	Q = Mixed Swamp Conifer	W = White Pine
E = Swamp Hdwoods	M = Mpl, Bch, Brch	R = Red Pine	X = Non Stocked
F = Spruce Fir	MC = Mixed Conifer	S = Black Spruce	Z = Water
G = Grass	MD = Mixed Deciduous	T = Tamarack	

### Density

0 = Non Stocked	5 = Pole Timber Medium
1 = Seedling Sapling Poor	6 = Pole Timber Well
2 = Seedling Sapling Medium	7 = Saw Timber Poor
3 = Seedling Sapling Well	8 = Saw Timber Medium
4 = Pole Timber Poor	9 = Saw Timber Well

PU	Acres	PU	Acres
1	12.4	6	25.6
2	21.3	7	29.0
3	20.0	8	17.8
4	14.7	9	8.3
5	34.5		

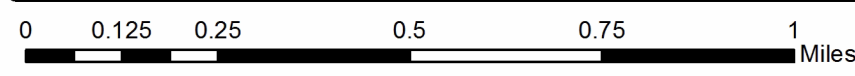
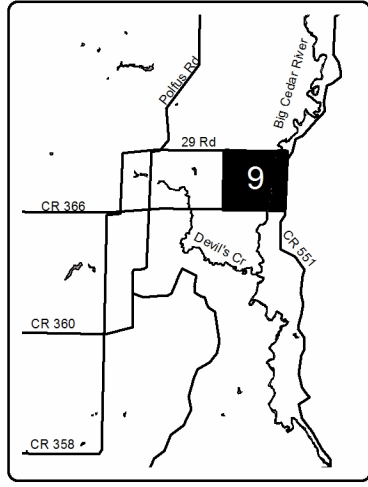
**D 4 Road SBW**  
**Compartment 42**  
**183.6 Acres**



### Legend

- Against State (Red)
- Payment Unit (Yellow)
- Private Line (Blue)
- Section Corners
- 9 Section Number
- Paved Roads
- Gravel Roads
- - - Poor Dirt Roads
- Recreational Trail
- State Land Boundary
- ① Payment Unit
- ~ Creek/Seasonal Drainage
- R Retention Patch
- PVT Private Property

Locator Map  
1:200,000





# TIMBER SALE INFORMATION

## Boy-Ar-Dee SBW (33-045-17)

Menominee County (Advertised Price \$103,604.20)

SALE NOTE: The eastern larch beetle has caused some tamarack mortality within the sale area. The spruce budworm has also caused some fir/spruce mortality within Payment Unit 1, but only some defoliation in other Payment Units.

A timber sale contract for this lump sum, sealed bid timber sale will be awarded to the responsible bidder offering the highest sealed bid price. Bids must be at or above the following advertised price for each species:

<u>PRODUCTS &amp; SPECIES</u>	<u>ESTIMATED UNITS*</u>	<u>ADVERTISED PRICE</u>
Sawtimber		
Paper Birch	2.00 MBF	\$ 87.00 / MBF
Red Maple	6.40 MBF	\$ 247.00 / MBF
White Pine	5.10 MBF	\$ 66.00 / MBF
Pulpwood		
Balsam Fir	453.00 Cords	\$ 29.45 / Cord
Mixed Aspen	373.00 Cords	\$ 32.25 / Cord
Mixed Hardwood	765.00 Cords	\$ 32.55 / Cord
Mixed Spruce	433.00 Cords	\$ 25.90 / Cord
N. White Cedar	1,357.00 Cords	\$ 25.25 / Cord
Tamarack	194.00 Cords	\$ 16.70 / Cord
White Pine	76.00 Cords	\$ 33.20 / Cord

\* The total volume is statistically estimated within plus (+) or minus (-) 8.80 percent. The estimated units are final and not subject to adjustment. Prospective bidders are urged to examine this timber and to make their own estimates of quantity and quality.

### **BOND AND PAYMENT SCHEDULE:**

1. A bond in the amount of \$5,180.00 to insure faithful performance of the conditions of the contract will be deposited by the successful bidder within 21 days of the sale award.
2. Cutting in any sale or unit without the required advance payment would be considered a trespass.
3. Total payment must be paid in advance or according to the following schedule:
  - (a) Ten percent (10%) of the sale value must be paid within 21 days of the sale award.
  - (b) The 10% down payment will be credited towards the first unit cut.
4. If no cutting takes place, the 10% down payment will not be refunded.
5. Operations on the contract issued will terminate on 09/30/2020.

**Description of Timber by Payment Unit (PU)**

PU	MARKET GROUP	PRODUCT	QUANTITY	UNIT	ACRES	ADVERTISE PRICE
1	Balsam Fir	Pulpwood	98.0	Cords	20.7	\$12,834.05
	Mixed Aspen		104.0	Cords		
	<i>B. T. Aspen</i>		3.0	<i>Cords</i>		
	<i>Quaking Aspen</i>		101.0	<i>Cords</i>		
	Mixed Hardwood		20.0	Cords		
	<i>Balsam Poplar</i>		5.0	<i>Cords</i>		
	<i>Black Cherry</i>		6.0	<i>Cords</i>		
	<i>Ironwood</i>		1.0	<i>Cords</i>		
	<i>Paper Birch</i>		7.0	<i>Cords</i>		
	<i>Red Maple</i>		1.0	<i>Cords</i>		
	Mixed Spruce		53.0	Cords		
	<i>White Spruce</i>		53.0	<i>Cords</i>		
	N. White Cedar		181.0	Cords		
	2		Balsam Fir	Pulpwood		
Mixed Aspen		16.0	Cords			
<i>Quaking Aspen</i>		16.0	<i>Cords</i>			
Mixed Hardwood		41.0	Cords			
<i>Black Ash</i>		30.0	<i>Cords</i>			
<i>Paper Birch</i>		7.0	<i>Cords</i>			
<i>Red Maple</i>		4.0	<i>Cords</i>			
Mixed Spruce		84.0	Cords			
<i>Black Spruce</i>		84.0	<i>Cords</i>			
N. White Cedar		262.0	Cords			
Tamarack		18.0	Cords			
3		Paper Birch	Sawtimber		0.5	MBF
	Red Maple		2.5	MBF		
	White Pine		2.7	MBF		
	Balsam Fir	Pulpwood	56.0	Cords		
	Mixed Aspen		27.0	Cords		
	<i>Quaking Aspen</i>		27.0	<i>Cords</i>		
	Mixed Hardwood		254.0	Cords		
	<i>American Elm</i>		2.0	<i>Cords</i>		
	<i>Balsam Poplar</i>		8.0	<i>Cords</i>		
	<i>Black Ash</i>		59.0	<i>Cords</i>		
	<i>Green Ash</i>		22.0	<i>Cords</i>		
	<i>Paper Birch</i>		44.0	<i>Cords</i>		
	<i>Red Maple</i>		109.0	<i>Cords</i>		
	<i>Yellow Birch</i>		10.0	<i>Cords</i>		
	Mixed Spruce		26.0	Cords		
	<i>Black Spruce</i>		6.0	<i>Cords</i>		
	<i>White Spruce</i>		20.0	<i>Cords</i>		
	N. White Cedar		476.0	Cords		
	Tamarack		28.0	Cords		
	White Pine		14.0	Cords		
4	Red Maple	Sawtimber	3.1	MBF	23.7	\$11,604.90
	Balsam Fir	Pulpwood	71.0	Cords		
	Mixed Hardwood		233.0	Cords		
	<i>Balsam Poplar</i>		13.0	<i>Cords</i>		
	<i>Black Ash</i>		101.0	<i>Cords</i>		
	<i>Black Cherry</i>		7.0	<i>Cords</i>		
	<i>Green Ash</i>		4.0	<i>Cords</i>		
	<i>Paper Birch</i>		1.0	<i>Cords</i>		
	<i>Red Maple</i>		105.0	<i>Cords</i>		
	<i>Yellow Birch</i>		2.0	<i>Cords</i>		
	Mixed Spruce		4.0	Cords		
	<i>White Spruce</i>		4.0	<i>Cords</i>		

**Description of Timber by Payment Unit (PU), con't**

PU	MARKET GROUP	PRODUCT	QUANTITY	UNIT	ACRES	ADVERTISE PRICE
4 con't	N. White Cedar	Pulpwood	42.0	Cords		
5	Red Maple	Sawtimber	0.8	MBF	13.9	\$10,692.40
	Balsam Fir	Pulpwood	128.0	Cords		
	Mixed Aspen		83.0	Cords		
	<i>B. T. Aspen</i>		24.0	<i>Cords</i>		
	<i>Quaking Aspen</i>		59.0	<i>Cords</i>		
	Mixed Hardwood		83.0	Cords		
	<i>Black Cherry</i>		1.0	<i>Cords</i>		
	<i>Red Maple</i>		82.0	<i>Cords</i>		
	Mixed Spruce		52.0	Cords		
	<i>Black Spruce</i>		38.0	<i>Cords</i>		
	<i>White Spruce</i>		14.0	<i>Cords</i>		
6	White Pine	Sawtimber	1.3	MBF	17.7	\$9,721.10
	Balsam Fir	Pulpwood	61.0	Cords		
	Mixed Aspen		119.0	Cords		
	<i>B. T. Aspen</i>		32.0	<i>Cords</i>		
	<i>Quaking Aspen</i>		87.0	<i>Cords</i>		
	Mixed Hardwood		34.0	Cords		
	<i>Black Cherry</i>		1.0	<i>Cords</i>		
	<i>Red Maple</i>		33.0	<i>Cords</i>		
	Mixed Spruce		47.0	Cords		
	<i>Black Spruce</i>		30.0	<i>Cords</i>		
	<i>White Spruce</i>		17.0	<i>Cords</i>		
	Tamarack		5.0	Cords		
	White Pine		48.0	Cords		
7	White Pine	Sawtimber	1.1	MBF	13.9	\$9,670.30
	Balsam Fir	Pulpwood	11.0	Cords		
	Mixed Aspen		19.0	Cords		
	<i>B. T. Aspen</i>		3.0	<i>Cords</i>		
	<i>Quaking Aspen</i>		16.0	<i>Cords</i>		
	Mixed Hardwood		60.0	Cords		
	<i>Black Ash</i>		13.0	<i>Cords</i>		
	<i>Paper Birch</i>		2.0	<i>Cords</i>		
	<i>Red Maple</i>		42.0	<i>Cords</i>		
	<i>Yellow Birch</i>		3.0	<i>Cords</i>		
	Mixed Spruce		147.0	Cords		
	<i>Black Spruce</i>		141.0	<i>Cords</i>		
	<i>White Spruce</i>		6.0	<i>Cords</i>		
	N. White Cedar		72.0	Cords		
	Tamarack		37.0	Cords		
	White Pine		14.0	Cords		
8	Paper Birch	Sawtimber	1.5	MBF	20.9	\$12,593.05
	Balsam Fir	Pulpwood	18.0	Cords		
	Mixed Aspen		5.0	Cords		
	<i>Quaking Aspen</i>		5.0	<i>Cords</i>		
	Mixed Hardwood		40.0	Cords		
	<i>Black Ash</i>		8.0	<i>Cords</i>		
	<i>Paper Birch</i>		28.0	<i>Cords</i>		
	<i>Yellow Birch</i>		4.0	<i>Cords</i>		
	Mixed Spruce		20.0	Cords		
	<i>Black Spruce</i>		20.0	<i>Cords</i>		
	N. White Cedar		324.0	Cords		
	Tamarack		106.0	Cords		
TOTAL:			13.5	MBF		

TOTAL:	3,651.0	Cords
--------	---------	-------

## Sale Specific Conditions & Requirements

**Sale Name: Boy-Ar-Dee SBW**

**Sale Number: 33-045-17 Seq#: 1**

### 1 - Sale Area

#### 1.2 - Boundaries

##### 1.2.1 - Painted boundaries (1/14)

The sale boundary and Payment Unit boundaries are marked and identified by blue, red, and yellow paint. Exterior sale boundary lines against private property are marked with blue paint. Exterior sale boundary lines against state are marked with red paint. There is a double dot red paint line along 29 Road in Payment Units 1 and 2, and County Road 366 within Payment Unit 6. These double dot red painted trees are Included Timber and designated for cutting. Retention patches are marked with red paint and need to be protected; no harvesting activities may occur within these areas.

Interior Payment Unit boundaries are marked with yellow paint. The painted boundary line trees are not Included Timber and are to be protected. Yellow painted trees designating an interior Payment Unit boundary are only to be cut when all surrounding Payment Units have been paid for.

### 2 - Timber Specifications

#### 2.1 - Included Timber

##### 2.1.1 - Clearcut unit(s) with unmerchantable trees (6/14)

Within Payment Unit(s) 1 - 8, cut all trees that are three (3) inches or more at DBH; except do not cut hemlock. In addition, within Payment Units 2, 3, 4, 6, and 7, do not cut trees marked with green paint.

### 3 - Payments

#### 3.3 - Pre-measured Sales

##### 3.3.4 - Dividing payment units (7/14)

Payment Unit(s) \$18,000 in value or greater may be divided at the request of the Purchaser and upon approval of the Unit Manager. Dividing Payment Units is a contract modification which requires a Timber Sale Contract Supplement. There will be only one division per Payment Unit.

### 4 - Transportation

#### 4.1 - Construction

##### 4.1.6 - Road construction (1/09)

Construction of new roads or improvements of existing roads shall be done in such a way as to minimize the environmental and visual impacts. Merchantable trees shall be cut and utilized unless otherwise directed. Non-merchantable trees shall be severed and laid flat on the ground. Slash shall be scattered, and not left in windrows and kept a minimum of 10 feet back from the road edge. Stumps shall be set upright, not left on edge, and be moved at least 10 feet away from the road edge. Disturbed soil shall be feathered into the woods and not left in berms or windrows.

#### 4.2 - Maintenance

##### 4.2.1 - Hauling restriction (12/08)

Hauling may be restricted on forest roads by the Unit Manager or his/her representative. The restriction may occur during spring breakup or during other wet weather conditions.

##### 4.2.4 - Grading (10/16)

For completion of the sale, state forest roads must be graded. In general, this will require a road grader or bull dozer to shape up the roads after forest products have been hauled off site. This includes cleaning of drainage areas, grading, crowning and filling with gravel, if necessary. The grading equipment to be used must be approved by the Unit Manager or his/her representative.

### 5 - Operations

## 5.2 - Conduct of Operations

### 5.2.3 - Operating Restrictions

#### 5.2.3.1 - Operating restrictions (9/11)

Within Payment Unit(s) 2, 3, 4, and 8, cutting and skidding are limited to the period of December 1st to March 31st, unless there is an extended dry or frozen period of time and the sale administrator allows harvesting during that time period.

This restriction is because of low wet ground throughout the Payment Units. Also, the access back to Payment Unit 8 is best during frozen conditions.

#### 5.2.3.11 - Coppice regeneration protection (4/10)

To promote aspen regeneration, within Payment Unit(s) 1, harvesting is limited to the period of October 1st to April 15th.

### 5.2.22 - Operating Caution

#### 5.2.22.1 - Operating caution (6/11)

It is recommended, but not required, that within Payment Unit(s) 7, cutting and skidding occur during dry summer or frozen winter conditions. The reason for the recommendation is because there is low ground within the Payment Unit, especially in the eastern half.

## 5.4 - Soil Protection

### 5.4.1 - Rutting restriction, general (7/16)

Operations are to cease immediately if equipment and weather conditions result in rutting of roads and/or skid trails which is 12 inches or greater in depth and 50 feet in length. The Unit Manager or his/her representative may restrict hauling and/or skidding if ruts exceed the specified depth. With the Unit Manager or his/her representative's approval, the Purchaser may return to the area when the risk of rutting has decreased.

## 6 - Safety and Fire Prevention

### 6.2 - Signing

#### 6.2.1 - Road posting (9/09)

The Purchaser is responsible for posting and maintaining caution signs on 29 Road and County Road 366 prior to beginning operations. The road must be posted at appropriate distances from the sale area to warn of logging activity and truck traffic.

Signs must be removed when harvest operations are suspended or completed. The Purchaser will provide these signs.

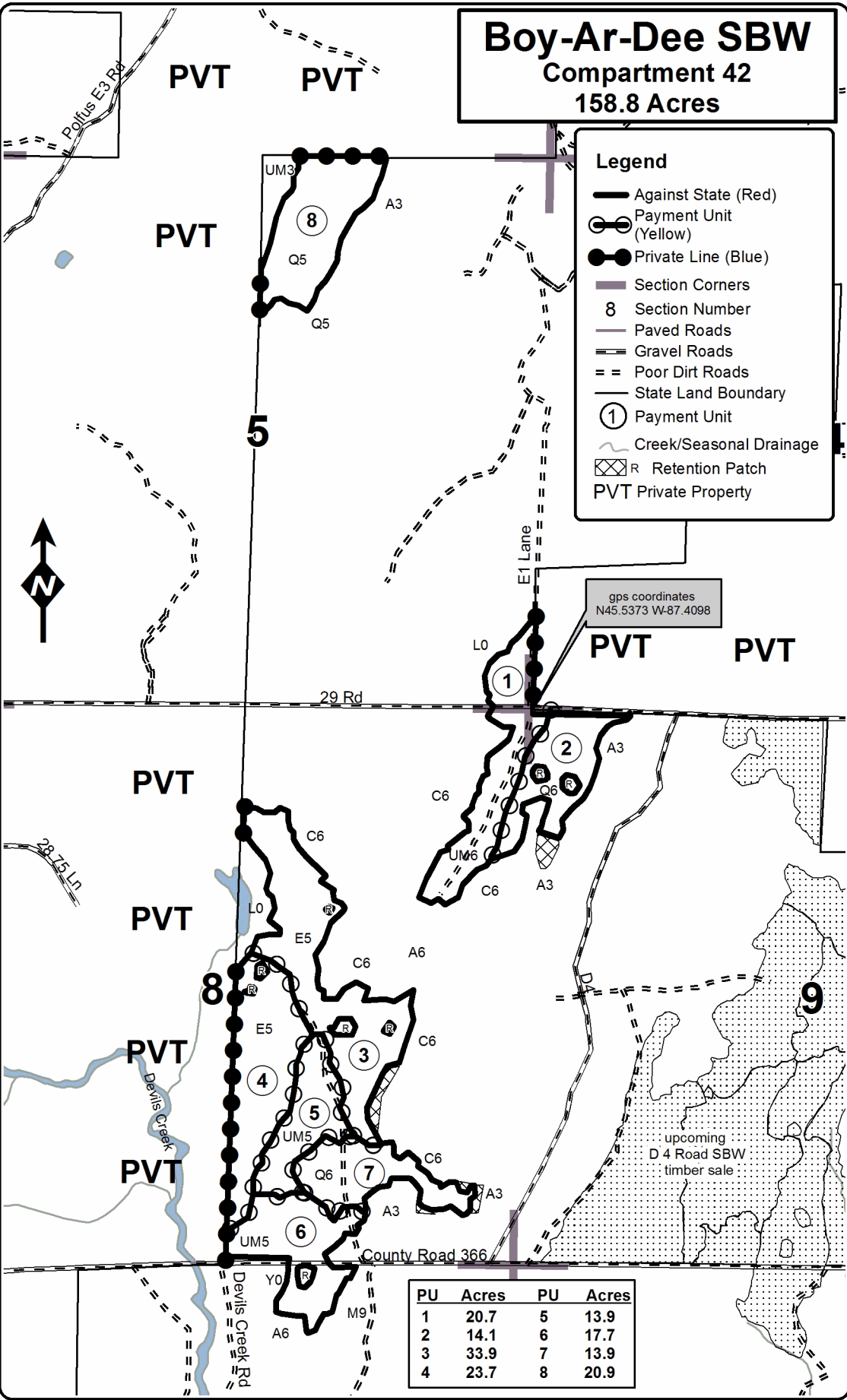
## 7 - Other Conditions

### 7.5 - Loss

#### 7.5.1 - Deteriorating timber (7/09)

The sale area has received damage from the spruce budworm and the eastern larch beetle. There is some spruce/fir mortality within Payment Unit 1, but the other Payment Units only have some defoliation. There is also some tamarack mortality throughout the sale area. The Purchaser should harvest the wood as soon as possible. The Department of Natural Resources is held free of responsibility of any further damage or deterioration due to delay in harvesting.

# Boy-Ar-Dee SBW Compartment 42 158.8 Acres

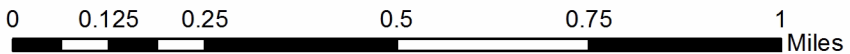


**Legend**

- Against State (Red)
- Payment Unit (Yellow)
- Private Line (Blue)
- Section Corners
- Section Number
- Paved Roads
- Gravel Roads
- Poor Dirt Roads
- State Land Boundary
- Payment Unit
- Creek/Seasonal Drainage
- R Retention Patch
- PVT Private Property

gps coordinates  
N45.5373 W-87.4098

PU	Acres	PU	Acres
1	20.7	5	13.9
2	14.1	6	17.7
3	33.9	7	13.9
4	23.7	8	20.9



Michigan Department of Natural Resources - Forest Resources Division

## TIMBER SALE MAP

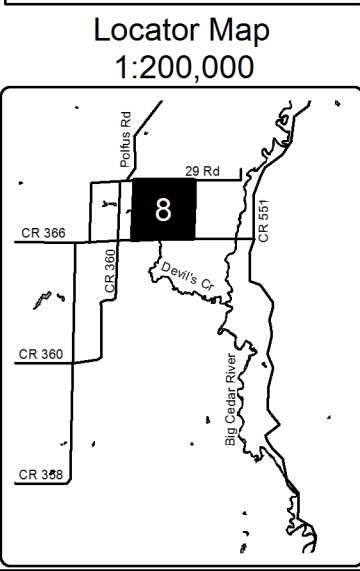
*This information provided by authority of Part 525, 1994 PA 451, as amended.*

Forest Management Unit <b>Escanaba Management Unit</b>	County <b>Menominee County</b>	Mapped By <b>Beaudou</b>	Date <b>9/28/2017</b>
Township <b>36N</b>	Section(s) and Subdivision(s) <b>Sec 5 - NWNE, SESE, SWNE, Sec 8 - NENE, NENE, NWNE, NWSE, SENE, SESE, SWNE, SWSE, Sec 9 - NWNW, Sec 17 NWNE</b>	Cruised By <b>Salter, Beaudou</b>	Page of <b>1 1</b>
Range <b>25W</b>	Scale <b>1:15,840</b>		Year <b>17</b>
<b>Cover Type</b>		<b>Density</b>	

A = Aspen  
B = Paper Birch  
C = Cedar  
D = Tread Bog  
E = Swamp Hardwoods  
F = Spruce Fir  
G = Grass  
H = Hemlock  
J = Jack Pine  
L = Lowland Birch  
M = Lowland Mixed  
N = Marsh  
O = Oak  
P = Lowland Poplar  
Q = Mixed Swamp Conifer  
R = Red Pine  
S = Black Spruce  
T = Tamarack  
U = Upland Birch  
UM = Upland Mixed  
V = Bog or Marsh  
W = White Pine  
X = Non Stocked  
Z = Water

0 = Non Stocked  
1 = Seeding Sapling Poor  
2 = Seeding Sapling Medium  
3 = Seeding Sapling Well  
4 = Pole Timber Poor  
5 = Pole Timber Medium  
6 = Pole Timber Well  
7 = Saw Timber Poor  
8 = Saw Timber Medium  
9 = Saw Timber Well

QR Code opens PDF map viewer







Devil's Creek SBW (33-038-17)  
; Menominee COUNTY

In response to the notice of sale to be held 3:00 p.m. (local time) on January 9, 2018, I am hereby submitting my sealed bid (firm offer) for the following forest products to be cut. Bids for individual species must be at or above the advertised price. All non-responsive bid forms may be rejected.

<u>PRODUCTS &amp; SPECIES</u>	<u>ESTIMATED VOLUME*</u>	<u>ADVERTISED PRICE</u>	<u>BID PRICE/UNIT</u>
<b>Sawtimber</b>			
Basswood	15.40 MBF	\$ 124.00/MBF	\$ _____
Beech	2.90 MBF	\$ 82.00/MBF	\$ _____
Green Ash	30.40 MBF	\$ 97.00/MBF	\$ _____
Paper Birch	0.80 MBF	\$ 87.00/MBF	\$ _____
Red Maple	59.80 MBF	\$ 247.00/MBF	\$ _____
Sugar Maple	20.70 MBF	\$ 356.00/MBF	\$ _____
White Ash	9.70 MBF	\$ 72.00/MBF	\$ _____
Yellow Birch	0.80 MBF	\$ 137.00/MBF	\$ _____
<b>Pulpwood</b>			
Balsam Fir	511.00 Cords	\$ 29.45/Cord	\$ _____
Hemlock	1.00 Cords	\$ 11.85/Cord	\$ _____
Mixed Aspen	2,011.00 Cords	\$ 32.25/Cord	\$ _____
Mixed Hardwood	3,220.00 Cords	\$ 32.55/Cord	\$ _____
Mixed Spruce	221.00 Cords	\$ 25.90/Cord	\$ _____
N. White Cedar	252.00 Cords	\$ 25.25/Cord	\$ _____
Red Pine	107.00 Cords	\$ 65.10/Cord	\$ _____
Tamarack	10.00 Cords	\$ 16.70/Cord	\$ _____
White Pine	18.00 Cords	\$ 33.20/Cord	\$ _____

\*These estimated volumes are final and not subject to adjustment. Prospective bidders are urged to examine this timber and to make their own estimates of quantity and quality.

I understand that any or all bids may be rejected. All bids must be signed and all bid items must be bid or the bid form may be rejected. I also understand that consideration and awarding a contract will be based upon my past performance and ability to complete the contract based upon equipment and staffing subject to my control.

FEDERAL ID: \_\_\_\_\_ or SOCIAL SECURITY NUMBER: \_\_\_\_\_

Company or individual bidding: \_\_\_\_\_

Company representative's name: \_\_\_\_\_

Address: \_\_\_\_\_

City: \_\_\_\_\_ State: \_\_\_\_\_ Zip: \_\_\_\_\_

IF AVAILABLE, PLEASE PLACE THE PERSONALIZED LABEL FROM YOUR PROSPECTUS IN THE ABOVE BOX.

Individual or company representative's signature: \_\_\_\_\_ Date: \_\_\_\_\_

Phone number : \_\_\_\_\_ Email (optional): \_\_\_\_\_

**THE WINNING BIDDER MUST COMPLETE THE VERIFICATION OF WORKER'S DISABILITY COMPENSATION ACT COMPLIANCE (ON REVERSE SIDE IF DOUBLE SIDED) WITHIN 21 DAYS OF SALE AWARD DATE**



<b>FOR DEPARTMENT USE ONLY</b>
Sale Number (XX - XXX - XX - XX)
Forest Management Unit:

## TIMBER SALE VERIFICATION OF WORKER'S DISABILITY COMPENSATION ACT COMPLIANCE

*As required by Act 317, P.A. 1969 (Worker's Compensation) and  
Part 5 of Act 451 of 1994, as amended.*

### VERIFICATION OF WORKER'S DISABILITY COMPENSATION ACT COMPLIANCE

- This verification must be completed and submitted within 21 days of contract award and prior to the issuance of the timber sale contract.
- In addition, if boxes 2B or 2C are checked, then Notice of Exclusion or Certificate of Insurance must be submitted within twenty-one (21) days of the contract award and prior to the issuance of the timber sale contract.
- All information must be typed or printed except for written signatures.

Please Check Appropriate Categories:

1. My business is organized as (you **must** check one of the boxes below):
  - A.  Sole Proprietorship (individual)
  - B.  Partnership
  - C.  Corporation
  
2. You **must** check one of the boxes below:
  - A.  I certify my business is a sole proprietorship and it has no employees but the sole proprietor. I am not subject to the Worker's Compensation Laws.
  - B.  I certify my business has satisfied its obligation to the Worker's Compensation Act through the use of an approved Notice of Exclusion (BWC-337, Rev. 5/96). I will provide a copy of the Notice of Exclusion within 21 days of the contract award. (For questions or a copy of the BWC-337, please call the Worker's Compensation Bureau at 517-322-1195).
  - C.  I certify my business has a Worker's Compensation Policy. I will provide an original Certificate of Insurance within twenty-one (21) days of the contract award.
  
3. If you have checked item 2(A) or 2(B), you **must** indicate the number of **both** full-time and part-time employees, other than yourself, including family members and active partners (if none, you must enter "0").

\_\_\_\_\_ Full-time Employees

\_\_\_\_\_ Part-time Employees

Name of Business		Federal ID (or) Social Security No.	
Address		Telephone (       )	
City	State	ZIP	

*I hereby certify that the above information is true and correct. I agree to notify the Michigan DNR of any changes that occur in factors affecting my coverage during any of my present and future operations.*

\_\_\_\_\_  
Signature of Owner or Authorized Representative

\_\_\_\_\_  
Title

\_\_\_\_\_  
Date

**Please complete the "SEALED BID" information on the next page**

Big Cedar River SBW (33-039-17)  
; Menominee COUNTY

In response to the notice of sale to be held 3:00 p.m. (local time) on January 9, 2018, I am hereby submitting my sealed bid (firm offer) for the following forest products to be cut. Bids for individual species must be at or above the advertised price. All non-responsive bid forms may be rejected.

<u>PRODUCTS &amp; SPECIES</u>	<u>ESTIMATED VOLUME*</u>	<u>ADVERTISED PRICE</u>	<u>BID PRICE/UNIT</u>
<b>Sawtimber</b>			
Basswood	1.10 MBF	\$ 116.00/MBF	\$ _____
Black Ash	3.30 MBF	\$ 83.00/MBF	\$ _____
Green Ash	12.00 MBF	\$ 91.00/MBF	\$ _____
Paper Birch	8.40 MBF	\$ 81.00/MBF	\$ _____
Red Maple	10.50 MBF	\$ 231.00/MBF	\$ _____
Sugar Maple	4.50 MBF	\$ 332.00/MBF	\$ _____
White Pine	1.40 MBF	\$ 62.00/MBF	\$ _____
Yellow Birch	1.70 MBF	\$ 127.00/MBF	\$ _____
<b>Pulpwood</b>			
Balsam Fir	242.00 Cords	\$ 27.50/Cord	\$ _____
Mixed Aspen	294.00 Cords	\$ 30.10/Cord	\$ _____
Mixed Hardwood	1,390.00 Cords	\$ 30.35/Cord	\$ _____
N. White Cedar	169.00 Cords	\$ 23.55/Cord	\$ _____
White Pine	6.00 Cords	\$ 30.95/Cord	\$ _____
White Spruce	79.00 Cords	\$ 24.15/Cord	\$ _____

\*The volumes are statistically estimated within plus (+) or minus (-) 10.47 percent. These estimated volumes are final and not subject to adjustment. Prospective bidders are urged to examine this timber and to make their own estimates of quantity and quality.

I understand that any or all bids may be rejected. All bids must be signed and all bid items must be bid or the bid form may be rejected. I also understand that consideration and awarding a contract will be based upon my past performance and ability to complete the contract based upon equipment and staffing subject to my control.

FEDERAL ID: \_\_\_\_\_ or SOCIAL SECURITY NUMBER: \_\_\_\_\_

Company or individual bidding: \_\_\_\_\_

Company representative's name: \_\_\_\_\_

Address: \_\_\_\_\_

City: \_\_\_\_\_ State: \_\_\_\_\_ Zip: \_\_\_\_\_

IF AVAILABLE, PLEASE PLACE THE PERSONALIZED LABEL FROM YOUR PROSPECTUS IN THE ABOVE BOX.

Individual or company representative's signature: \_\_\_\_\_ Date: \_\_\_\_\_

Phone number : \_\_\_\_\_ Email (optional): \_\_\_\_\_

**THE WINNING BIDDER MUST COMPLETE THE VERIFICATION OF WORKER'S DISABILITY COMPENSATION ACT COMPLIANCE (ON REVERSE SIDE IF DOUBLE SIDED) WITHIN 21 DAYS OF SALE AWARD DATE**



<b>FOR DEPARTMENT USE ONLY</b>
Sale Number (XX - XXX - XX - XX)
Forest Management Unit:

## TIMBER SALE VERIFICATION OF WORKER'S DISABILITY COMPENSATION ACT COMPLIANCE

*As required by Act 317, P.A. 1969 (Worker's Compensation) and  
Part 5 of Act 451 of 1994, as amended.*

### VERIFICATION OF WORKER'S DISABILITY COMPENSATION ACT COMPLIANCE

- This verification must be completed and submitted within 21 days of contract award and prior to the issuance of the timber sale contract.
- In addition, if boxes 2B or 2C are checked, then Notice of Exclusion or Certificate of Insurance must be submitted within twenty-one (21) days of the contract award and prior to the issuance of the timber sale contract.
- All information must be typed or printed except for written signatures.

Please Check Appropriate Categories:

1. My business is organized as (you **must** check one of the boxes below):
  - A.  Sole Proprietorship (individual)
  - B.  Partnership
  - C.  Corporation
  
2. You **must** check one of the boxes below:
  - A.  I certify my business is a sole proprietorship and it has no employees but the sole proprietor. I am not subject to the Worker's Compensation Laws.
  - B.  I certify my business has satisfied its obligation to the Worker's Compensation Act through the use of an approved Notice of Exclusion (BWC-337, Rev. 5/96). I will provide a copy of the Notice of Exclusion within 21 days of the contract award. (For questions or a copy of the BWC-337, please call the Worker's Compensation Bureau at 517-322-1195).
  - C.  I certify my business has a Worker's Compensation Policy. I will provide an original Certificate of Insurance within twenty-one (21) days of the contract award.
  
3. If you have checked item 2(A) or 2(B), you **must** indicate the number of **both** full-time and part-time employees, other than yourself, including family members and active partners (if none, you must enter "0").

\_\_\_\_\_ Full-time Employees

\_\_\_\_\_ Part-time Employees

Name of Business		Federal ID (or) Social Security No.	
Address		Telephone (       )	
City	State	ZIP	

*I hereby certify that the above information is true and correct. I agree to notify the Michigan DNR of any changes that occur in factors affecting my coverage during any of my present and future operations.*

\_\_\_\_\_  
Signature of Owner or Authorized Representative

\_\_\_\_\_  
Title

\_\_\_\_\_  
Date

**Please complete the "SEALED BID" information on the next page**

Pathways SBW (33-043-17)  
; Menominee COUNTY

In response to the notice of sale to be held 3:00 p.m. (local time) on January 9, 2018, I am hereby submitting my sealed bid (firm offer) for the following forest products to be cut. Bids for individual species must be at or above the advertised price. All non-responsive bid forms may be rejected.

<u>PRODUCTS &amp; SPECIES</u>	<u>ESTIMATED VOLUME*</u>	<u>ADVERTISED PRICE</u>	<u>BID PRICE/UNIT</u>
<b>Sawtimber</b>			
Green Ash	2.70 MBF	\$ 91.00/MBF	\$ _____
Paper Birch	4.60 MBF	\$ 81.00/MBF	\$ _____
Red Maple	17.60 MBF	\$ 231.00/MBF	\$ _____
Sugar Maple	1.30 MBF	\$ 332.00/MBF	\$ _____
White Pine	41.50 MBF	\$ 62.00/MBF	\$ _____
Yellow Birch	0.50 MBF	\$ 127.00/MBF	\$ _____
<b>Pulpwood</b>			
Balsam Fir	211.00 Cords	\$ 27.50/Cord	\$ _____
Mixed Aspen	541.00 Cords	\$ 30.10/Cord	\$ _____
Mixed Hardwood	1,420.00 Cords	\$ 30.35/Cord	\$ _____
N. White Cedar	59.00 Cords	\$ 23.55/Cord	\$ _____
Red Pine	3.00 Cords	\$ 60.75/Cord	\$ _____
White Pine	273.00 Cords	\$ 30.95/Cord	\$ _____
White Spruce	14.00 Cords	\$ 24.15/Cord	\$ _____

\*The volumes are statistically estimated within plus (+) or minus (-) 8.25 percent. These estimated volumes are final and not subject to adjustment. Prospective bidders are urged to examine this timber and to make their own estimates of quantity and quality.

I understand that any or all bids may be rejected. All bids must be signed and all bid items must be bid or the bid form may be rejected. I also understand that consideration and awarding a contract will be based upon my past performance and ability to complete the contract based upon equipment and staffing subject to my control.

FEDERAL ID: \_\_\_\_\_ or SOCIAL SECURITY NUMBER: \_\_\_\_\_

Company or individual bidding: \_\_\_\_\_

Company representative's name: \_\_\_\_\_

Address: \_\_\_\_\_

City: \_\_\_\_\_ State: \_\_\_\_\_ Zip: \_\_\_\_\_

IF AVAILABLE, PLEASE PLACE THE PERSONALIZED LABEL FROM YOUR PROSPECTUS IN THE ABOVE BOX.

Individual or company representative's signature: \_\_\_\_\_ Date: \_\_\_\_\_

Phone number : \_\_\_\_\_ Email (optional): \_\_\_\_\_

**THE WINNING BIDDER MUST COMPLETE THE VERIFICATION OF WORKER'S DISABILITY COMPENSATION ACT COMPLIANCE (ON REVERSE SIDE IF DOUBLE SIDED) WITHIN 21 DAYS OF SALE AWARD DATE**



<b>FOR DEPARTMENT USE ONLY</b>
Sale Number (XX – XXX – XX – XX)
Forest Management Unit:

## TIMBER SALE VERIFICATION OF WORKER'S DISABILITY COMPENSATION ACT COMPLIANCE

*As required by Act 317, P.A. 1969 (Worker's Compensation) and  
Part 5 of Act 451 of 1994, as amended.*

### VERIFICATION OF WORKER'S DISABILITY COMPENSATION ACT COMPLIANCE

- This verification must be completed and submitted within 21 days of contract award and prior to the issuance of the timber sale contract.
- In addition, if boxes 2B or 2C are checked, then Notice of Exclusion or Certificate of Insurance must be submitted within twenty-one (21) days of the contract award and prior to the issuance of the timber sale contract.
- All information must be typed or printed except for written signatures.

Please Check Appropriate Categories:

1. My business is organized as (you **must** check one of the boxes below):
  - A.  Sole Proprietorship (individual)
  - B.  Partnership
  - C.  Corporation
2. You **must** check one of the boxes below:
  - A.  I certify my business is a sole proprietorship and it has no employees but the sole proprietor. I am not subject to the Worker's Compensation Laws.
  - B.  I certify my business has satisfied its obligation to the Worker's Compensation Act through the use of an approved Notice of Exclusion (BWC-337, Rev. 5/96). I will provide a copy of the Notice of Exclusion within 21 days of the contract award. (For questions or a copy of the BWC-337, please call the Worker's Compensation Bureau at 517-322-1195).
  - C.  I certify my business has a Worker's Compensation Policy. I will provide an original Certificate of Insurance within twenty-one (21) days of the contract award.
3. If you have checked item 2(A) or 2(B), you **must** indicate the number of **both** full-time and part-time employees, other than yourself, including family members and active partners (if none, you must enter "0").

\_\_\_\_\_ Full-time Employees

\_\_\_\_\_ Part-time Employees

Name of Business		Federal ID (or) Social Security No.	
Address		Telephone (       )	
City	State	ZIP	

*I hereby certify that the above information is true and correct. I agree to notify the Michigan DNR of any changes that occur in factors affecting my coverage during any of my present and future operations.*

\_\_\_\_\_  
Signature of Owner or Authorized Representative

\_\_\_\_\_  
Title

\_\_\_\_\_  
Date

**Please complete the "SEALED BID" information on the next page**

Jumpy Frog (33-014-17)  
; Menominee COUNTY

In response to the notice of sale to be held 3:00 p.m. (local time) on January 9, 2018, I am hereby submitting my sealed bid (firm offer) for the following forest products to be cut. Bids for individual species must be at or above the advertised price. All non-responsive bid forms may be rejected.

<u>PRODUCTS &amp; SPECIES</u>	<u>ESTIMATED VOLUME*</u>	<u>ADVERTISED PRICE</u>	<u>BID PRICE/UNIT</u>
<b>Sawtimber</b>			
Basswood	14.10 MBF	\$ 124.00/MBF	\$ _____
Black Ash	4.20 MBF	\$ 88.00/MBF	\$ _____
Black Cherry	3.00 MBF	\$ 153.00/MBF	\$ _____
Green Ash	2.70 MBF	\$ 97.00/MBF	\$ _____
Paper Birch	18.00 MBF	\$ 87.00/MBF	\$ _____
Red Maple	95.20 MBF	\$ 247.00/MBF	\$ _____
Sugar Maple	23.50 MBF	\$ 356.00/MBF	\$ _____
White Ash	4.90 MBF	\$ 72.00/MBF	\$ _____
Yellow Birch	8.90 MBF	\$ 137.00/MBF	\$ _____
<b>Pulpwood</b>			
Balsam Fir	945.00 Cords	\$ 18.75/Cord	\$ _____
Mixed Hardwood	1,924.00 Cords	\$ 32.55/Cord	\$ _____
Mixed Spruce	611.00 Cords	\$ 18.75/Cord	\$ _____
N. White Cedar	883.00 Cords	\$ 25.25/Cord	\$ _____
Quaking Aspen	1,952.00 Cords	\$ 32.25/Cord	\$ _____
Tamarack	213.00 Cords	\$ 15.00/Cord	\$ _____
White Pine	32.00 Cords	\$ 33.20/Cord	\$ _____

\*These estimated volumes are final and not subject to adjustment. Prospective bidders are urged to examine this timber and to make their own estimates of quantity and quality.

I understand that any or all bids may be rejected. All bids must be signed and all bid items must be bid or the bid form may be rejected. I also understand that consideration and awarding a contract will be based upon my past performance and ability to complete the contract based upon equipment and staffing subject to my control.

FEDERAL ID: \_\_\_\_ - \_\_\_\_ - \_\_\_\_ or SOCIAL SECURITY NUMBER: \_\_\_\_ - \_\_\_\_ - \_\_\_\_

Company or individual bidding: \_\_\_\_\_

Company representative's name: \_\_\_\_\_

Address: \_\_\_\_\_

City: \_\_\_\_\_ State: \_\_\_\_\_ Zip: \_\_\_\_\_

IF AVAILABLE, PLEASE PLACE THE PERSONALIZED LABEL FROM YOUR PROSPECTUS IN THE ABOVE BOX.

Individual or company representative's signature: \_\_\_\_\_ Date: \_\_\_\_\_

Phone number : \_\_\_\_\_ Email (optional): \_\_\_\_\_

**THE WINNING BIDDER MUST COMPLETE THE VERIFICATION OF WORKER'S DISABILITY COMPENSATION ACT COMPLIANCE (ON REVERSE SIDE IF DOUBLE SIDED) WITHIN 21 DAYS OF SALE AWARD DATE**



FOR DEPARTMENT USE ONLY	
Sale Number (XX - XXX - XX - XX)	
Forest Management Unit:	

## TIMBER SALE VERIFICATION OF WORKER'S DISABILITY COMPENSATION ACT COMPLIANCE

As required by Act 317, P.A. 1969 (Worker's Compensation) and  
Part 5 of Act 451 of 1994, as amended.

### VERIFICATION OF WORKER'S DISABILITY COMPENSATION ACT COMPLIANCE

- This verification must be completed and submitted within 21 days of contract award and prior to the issuance of the timber sale contract.
- In addition, if boxes 2B or 2C are checked, then Notice of Exclusion or Certificate of Insurance must be submitted within twenty-one (21) days of the contract award and prior to the issuance of the timber sale contract.
- All information must be typed or printed except for written signatures.

Please Check Appropriate Categories:

1. My business is organized as (you **must** check one of the boxes below):
  - A.  Sole Proprietorship (individual)
  - B.  Partnership
  - C.  Corporation
2. You **must** check one of the boxes below:
  - A.  I certify my business is a sole proprietorship and it has no employees but the sole proprietor. I am not subject to the Worker's Compensation Laws.
  - B.  I certify my business has satisfied its obligation to the Worker's Compensation Act through the use of an approved Notice of Exclusion (BWC-337, Rev. 5/96). I will provide a copy of the Notice of Exclusion within 21 days of the contract award. (For questions or a copy of the BWC-337, please call the Worker's Compensation Bureau at 517-322-1195).
  - C.  I certify my business has a Worker's Compensation Policy. I will provide an original Certificate of Insurance within twenty-one (21) days of the contract award.
3. If you have checked item 2(A) or 2(B), you **must** indicate the number of **both** full-time and part-time employees, other than yourself, including family members and active partners (if none, you must enter "0").

\_\_\_\_\_ Full-time Employees

\_\_\_\_\_ Part-time Employees

Name of Business		Federal ID (or) Social Security No.	
Address		Telephone (       )	
City	State	ZIP	

*I hereby certify that the above information is true and correct. I agree to notify the Michigan DNR of any changes that occur in factors affecting my coverage during any of my present and future operations.*

\_\_\_\_\_  
Signature of Owner or Authorized Representative

\_\_\_\_\_  
Title

\_\_\_\_\_  
Date

Please complete the "SEALED BID" information on the next page



D 4 Road SBW (33-044-17)  
; Menominee COUNTY

In response to the notice of sale to be held 3:00 p.m. (local time) on January 9, 2018, I am hereby submitting my sealed bid (firm offer) for the following forest products to be cut. Bids for individual species must be at or above the advertised price. All non-responsive bid forms may be rejected.

<u>PRODUCTS &amp; SPECIES</u>	<u>ESTIMATED VOLUME*</u>	<u>ADVERTISED PRICE</u>	<u>BID PRICE/UNIT</u>
<b>Sawtimber</b>			
Green Ash	4.10 MBF	\$ 97.00/MBF	\$ _____
Paper Birch	1.00 MBF	\$ 87.00/MBF	\$ _____
Red Maple	7.60 MBF	\$ 247.00/MBF	\$ _____
Sugar Maple	0.80 MBF	\$ 356.00/MBF	\$ _____
White Ash	0.50 MBF	\$ 72.00/MBF	\$ _____
<b>Pulpwood</b>			
Balsam Fir	813.00 Cords	\$ 29.45/Cord	\$ _____
Mixed Aspen	880.00 Cords	\$ 32.25/Cord	\$ _____
Mixed Hardwood	1,135.00 Cords	\$ 32.55/Cord	\$ _____
Mixed Spruce	188.00 Cords	\$ 25.90/Cord	\$ _____
N. White Cedar	760.00 Cords	\$ 25.25/Cord	\$ _____
Tamarack	42.00 Cords	\$ 16.70/Cord	\$ _____
White Pine	3.00 Cords	\$ 33.20/Cord	\$ _____

\*These estimated volumes are final and not subject to adjustment. Prospective bidders are urged to examine this timber and to make their own estimates of quantity and quality.

I understand that any or all bids may be rejected. All bids must be signed and all bid items must be bid or the bid form may be rejected. I also understand that consideration and awarding a contract will be based upon my past performance and ability to complete the contract based upon equipment and staffing subject to my control.

FEDERAL ID: \_\_\_\_\_ - \_\_\_\_\_ or SOCIAL SECURITY NUMBER: \_\_\_\_\_ - \_\_\_\_\_ - \_\_\_\_\_

Company or individual bidding: \_\_\_\_\_

Company representative's name: \_\_\_\_\_

Address: \_\_\_\_\_

City: \_\_\_\_\_ State: \_\_\_\_\_ Zip: \_\_\_\_\_

IF AVAILABLE, PLEASE PLACE THE PERSONALIZED LABEL FROM YOUR PROSPECTUS IN THE ABOVE BOX.

Individual or company representative's signature: \_\_\_\_\_ Date: \_\_\_\_\_

Phone number : \_\_\_\_\_ Email (optional): \_\_\_\_\_

**THE WINNING BIDDER MUST COMPLETE THE VERIFICATION OF WORKER'S DISABILITY COMPENSATION ACT COMPLIANCE (ON REVERSE SIDE IF DOUBLE SIDED) WITHIN 21 DAYS OF SALE AWARD DATE**



<b>FOR DEPARTMENT USE ONLY</b>	
Sale Number (XX - XXX - XX - XX)	
Forest Management Unit:	

# TIMBER SALE VERIFICATION OF WORKER'S DISABILITY COMPENSATION ACT COMPLIANCE

As required by Act 317, P.A. 1969 (Worker's Compensation) and  
Part 5 of Act 451 of 1994, as amended.

## VERIFICATION OF WORKER'S DISABILITY COMPENSATION ACT COMPLIANCE

- This verification must be completed and submitted within 21 days of contract award and prior to the issuance of the timber sale contract.
- In addition, if boxes 2B or 2C are checked, then Notice of Exclusion or Certificate of Insurance must be submitted within twenty-one (21) days of the contract award and prior to the issuance of the timber sale contract.
- All information must be typed or printed except for written signatures.

Please Check Appropriate Categories:

1. My business is organized as (you **must** check one of the boxes below):
  - A.  Sole Proprietorship (individual)
  - B.  Partnership
  - C.  Corporation
2. You **must** check one of the boxes below:
  - A.  I certify my business is a sole proprietorship and it has no employees but the sole proprietor. I am not subject to the Worker's Compensation Laws.
  - B.  I certify my business has satisfied its obligation to the Worker's Compensation Act through the use of an approved Notice of Exclusion (BWC-337, Rev. 5/96). I will provide a copy of the Notice of Exclusion within 21 days of the contract award. (For questions or a copy of the BWC-337, please call the Worker's Compensation Bureau at 517-322-1195).
  - C.  I certify my business has a Worker's Compensation Policy. I will provide an original Certificate of Insurance within twenty-one (21) days of the contract award.
3. If you have checked item 2(A) or 2(B), you **must** indicate the number of **both** full-time and part-time employees, other than yourself, including family members and active partners (if none, you must enter "0").

\_\_\_\_\_ Full-time Employees

\_\_\_\_\_ Part-time Employees

Name of Business		Federal ID (or) Social Security No.	
Address		Telephone (       )	
City	State	ZIP	

*I hereby certify that the above information is true and correct. I agree to notify the Michigan DNR of any changes that occur in factors affecting my coverage during any of my present and future operations.*

\_\_\_\_\_  
Signature of Owner or Authorized Representative

\_\_\_\_\_  
Title

\_\_\_\_\_  
Date

Please complete the "SEALED BID" information on the next page

Boy-Ar-Dee SBW (33-045-17)  
; Menominee COUNTY

In response to the notice of sale to be held 3:00 p.m. (local time) on January 9, 2018, I am hereby submitting my sealed bid (firm offer) for the following forest products to be cut. Bids for individual species must be at or above the advertised price. All non-responsive bid forms may be rejected.

<u>PRODUCTS &amp; SPECIES</u>	<u>ESTIMATED VOLUME*</u>	<u>ADVERTISED PRICE</u>	<u>BID PRICE/UNIT</u>
<b>Sawtimber</b>			
Paper Birch	2.00 MBF	\$ 87.00/MBF	\$ _____
Red Maple	6.40 MBF	\$ 247.00/MBF	\$ _____
White Pine	5.10 MBF	\$ 66.00/MBF	\$ _____
<b>Pulpwood</b>			
Balsam Fir	453.00 Cords	\$ 29.45/Cord	\$ _____
Mixed Aspen	373.00 Cords	\$ 32.25/Cord	\$ _____
Mixed Hardwood	765.00 Cords	\$ 32.55/Cord	\$ _____
Mixed Spruce	433.00 Cords	\$ 25.90/Cord	\$ _____
N. White Cedar	1,357.00 Cords	\$ 25.25/Cord	\$ _____
Tamarack	194.00 Cords	\$ 16.70/Cord	\$ _____
White Pine	76.00 Cords	\$ 33.20/Cord	\$ _____

\*The volumes are statistically estimated within plus (+) or minus (-) 8.80 percent. These estimated volumes are final and not subject to adjustment. Prospective bidders are urged to examine this timber and to make their own estimates of quantity and quality.

I understand that any or all bids may be rejected. All bids must be signed and all bid items must be bid or the bid form may be rejected. I also understand that consideration and awarding a contract will be based upon my past performance and ability to complete the contract based upon equipment and staffing subject to my control.

FEDERAL ID: \_\_\_\_\_ or SOCIAL SECURITY NUMBER: \_\_\_\_\_

Company or individual bidding: \_\_\_\_\_

Company representative's name: \_\_\_\_\_

Address: \_\_\_\_\_

City: \_\_\_\_\_ State: \_\_\_\_\_ Zip: \_\_\_\_\_

IF AVAILABLE, PLEASE PLACE THE PERSONALIZED LABEL FROM YOUR PROSPECTUS IN THE ABOVE BOX.

Individual or company representative's signature: \_\_\_\_\_ Date: \_\_\_\_\_

Phone number : \_\_\_\_\_ Email (optional): \_\_\_\_\_

**THE WINNING BIDDER MUST COMPLETE THE VERIFICATION OF WORKER'S DISABILITY COMPENSATION ACT COMPLIANCE (ON REVERSE SIDE IF DOUBLE SIDED) WITHIN 21 DAYS OF SALE AWARD DATE**



# TIMBER SALE VERIFICATION OF WORKER'S DISABILITY COMPENSATION ACT COMPLIANCE

As required by Act 317, P.A. 1969 (Worker's Compensation) and  
Part 5 of Act 451 of 1994, as amended.

FOR DEPARTMENT USE ONLY	
Sale Number (XX - XXX - XX - XX)	
Forest Management Unit:	

## VERIFICATION OF WORKER'S DISABILITY COMPENSATION ACT COMPLIANCE

- This verification must be completed and submitted within 21 days of contract award and prior to the issuance of the timber sale contract.
- In addition, if boxes 2B or 2C are checked, then Notice of Exclusion or Certificate of Insurance must be submitted within twenty-one (21) days of the contract award and prior to the issuance of the timber sale contract.
- All information must be typed or printed except for written signatures.

Please Check Appropriate Categories:

1. My business is organized as (you **must** check one of the boxes below):
  - A.  Sole Proprietorship (individual)
  - B.  Partnership
  - C.  Corporation
2. You **must** check one of the boxes below:
  - A.  I certify my business is a sole proprietorship and it has no employees but the sole proprietor. I am not subject to the Worker's Compensation Laws.
  - B.  I certify my business has satisfied its obligation to the Worker's Compensation Act through the use of an approved Notice of Exclusion (BWC-337, Rev. 5/96). I will provide a copy of the Notice of Exclusion within 21 days of the contract award. (For questions or a copy of the BWC-337, please call the Worker's Compensation Bureau at 517-322-1195).
  - C.  I certify my business has a Worker's Compensation Policy. I will provide an original Certificate of Insurance within twenty-one (21) days of the contract award.
3. If you have checked item 2(A) or 2(B), you **must** indicate the number of **both** full-time and part-time employees, other than yourself, including family members and active partners (if none, you must enter "0").

\_\_\_\_\_ Full-time Employees

\_\_\_\_\_ Part-time Employees

Name of Business		Federal ID (or) Social Security No.	
Address		Telephone (      )	
City	State	ZIP	

*I hereby certify that the above information is true and correct. I agree to notify the Michigan DNR of any changes that occur in factors affecting my coverage during any of my present and future operations.*

\_\_\_\_\_  
Signature of Owner or Authorized Representative

\_\_\_\_\_  
Title

\_\_\_\_\_  
Date

Please complete the "SEALED BID" information on the next page