



**DEPARTMENT OF NATURAL RESOURCES  
STATE OF MICHIGAN**

**TIMBER SALE PROSPECTUS #6036**

SCHEDULED SALE DATE AND TIME: 4:00 p.m. (local time) on January 18, 2018.

LOCATION: TRAVERSE CITY MGMT UNIT, 2122 M 37 SOUTH, TRAVERSE CITY, MI 49685.

PROSPECTUS NOTE: The bidder is advised to inspect the sale area and review the location, estimated volumes, operating costs and contract terms of proposed sales. Please be aware that some landowners may request 60 days or more notice for access across their land.

Notice is hereby given that bids will be received by the Unit Manager, TRAVERSE CITY MANAGEMENT UNIT, for certain timber on the following described lands:

Strombolis Mix (61-078-17)

Grand Traverse County, Advertised Price \$30,735.60, 62.1 Acres, Hardwood, Red Oak.

SALE NOTE: Sale prepared by VanOss Forestry Services. Oak stand with some red maple, aspen and pine. Stand is expected to convert to pine/oak/red maple mix over time. Treatment is designed to open canopy to allow understory pine to develop. Snowmobile and bike trail through stand. Both trails are buffered by sale set-up and specifications.

A recreation site such as a trail, pathway, or campground is within the sale area or the vicinity. Certain restrictions/specifications may be applicable including time restrictions.

Scout's Honor Hardwood (61-079-17)

Benzie County, Advertised Price \$44,257.45, 84.5 Acres, Aspen, Hardwood.

SALE NOTE: A recreation site such as a trail, pathway, or campground is within the sale area or the vicinity. Certain restrictions/specifications may be applicable including time restrictions.

Ransom Lake Mix (61-080-17)

Benzie County, Advertised Price \$65,631.45, 126.8 Acres, Aspen, Hardwood.

Hook Set Red Pine (61-081-17)

Benzie County, Advertised Price \$164,758.15, 78.2 Acres, Aspen, Red Pine.

SALE NOTE: The Shore-to-Shore riding/hiking trail is adjacent to the southern boundary of Payment Units 2, 3, and 4, and is to be protected throughout sale operations. See spec 5.2.40 for details.

A recreation site such as a trail, pathway, or campground is within the sale area or the vicinity. Certain restrictions/specifications may be applicable including time restrictions.

## BID INSTRUCTIONS (VER. 11/28/2017):

### 1. Scheduled Bid Location, Date, and Time (2/11)

Bids must be received by the Unit Manager, TRAVERSE CITY OFFICE, 2122 M 37 SOUTH, TRAVERSE CITY, MI 49685, no later than 4:00 p.m. (local time) on January 18, 2018. For further information concerning this sale, contact David Lemmien at 231-922-5280 extension 6840.

### 2. Bidder's Qualifications (5/16)

Purchaser shall obtain workers compensation insurance to cover claims under Michigan's Worker's Disability Compensation Act of 1969 or similar employee benefit act of any other state applicable to an employee. If all or part of a timber sale was prepared by a private contractor, the contractor and that contractor's company are not permitted to bid on the timber sale contract. Bids will not be accepted from individuals or companies appearing on the DNR/FRD No-Bid List. This list contains the names of purchasers who previously failed to execute a contract within 21-days or who have a history of poor performance.

### 3. Preparation of Sealed Bids (5/16)

Bid Forms may be completed online thru Michigan DNR Timber Sale Online Bidding (OLB) at [www.michigan.gov/timberbidding](http://www.michigan.gov/timberbidding) or by completing the hardcopy Bid Form found in the Timber Sale Prospectus. Hardcopy Bid Forms shall be manually signed in ink. Registration in OLB is considered your 'signature' for all bids submitted thru that system. Bid prices must be entered for each species and product in the Bid Price column for all material subject to bidding and all fill-in blanks must be completed. If erasures or other changes appear on the hardcopy Bid Form, each erasure or change must be initialed by the person signing the bid.

### 4. Submission of Sealed Bids (5/16)

Bid forms may be obtained from the Unit Manager or thru OLB. Bids may be submitted hardcopy or thru OLB. All hardcopy bids must be submitted on the bid form and in an envelope clearly identified as described in this section. NOTE: Only one bid form per bid envelope. Sealed bids must be submitted to the Unit office designated in the prospectus and must be submitted at or prior to the time established in the prospectus. The envelope should show on the outside (a) the sale name or number and (b) the date and time of bid opening, as shown in the prospectus. Bids received after the time specified in the sale prospectus are late bids and will be rejected.

It is possible for a bidder to submit multiple bids on a single sale. For example, a bid may be submitted hardcopy and a bid may be submitted thru OLB. Or, two bidders from the same company could both submit bids on the same sale. If this were to happen, the State would accept all bids received and award the contract accordingly. All bidding and contractual requirements would apply to all bids received.

### 5. Public Opening of Sealed Bids (7/16)

If conditions permit, the sealed bids will be publicly opened and posted at the time and place set in the prospectus.

If a bidder, present at a bid opening, has submitted bids on more than one sale, that bidder may withdraw their unopened bid envelopes or announce the withdrawal of their online bid after being declared the successful bidder on one sale.

### 6. Award of Contract (1/11)

Award of the contract will be made to the Bidder whose bid, conforming to the prospectus, is most advantageous to the State of Michigan on the basis of total value at rates bid for the estimated quantities. The State reserves the right to reject any bid or waive any minor irregularity in bids received. A written award mailed (or otherwise furnished) to the successful Bidder shall be deemed to result in a binding contract without further action by either party.

### 7. Down Payment (1/11)

The Bidder to whom award is made must make a down payment within 21 days of the sale award. The amount of the down payment will be calculated as shown in the Bond and Payment Schedule of this prospectus. Only cash may be used to meet this requirement.

### 8. Performance Security (1/11)

As guarantee of faithful performance, a cash bond, certificate of deposit, surety bond or irrevocable letter of credit (LOC) is required within 21 days of the sale award. The amount of the performance security is shown in the Bond and

Payment Schedule of this prospectus. If an LOC or surety is used, the coverage must extend for at least 6 months beyond the contract expiration.

#### 9. Timber Sale Contract (11/17)

Additional conditions and requirements common to all timber sales are listed on the timber sale contract (R4031) and are available on line at [www.michigan.gov/timber](http://www.michigan.gov/timber). Contact the Unit Manager for additional information or a sample contract. Within 21 days of the date of the award letter, the bidder must sign the contract and provide the required down payment, performance security, and verification of worker's disability compensation. The down payment and performance security shall be in accordance with the provisions of the timber sale contract, in the sums stated in this prospectus. If these actions are not taken, then the Bidder, the Bidder's corporation, and the corporation's principals may not be permitted to bid on State timber sales for a period of 1 year. In addition, the Bidder certifies that if awarded this contract, the Bidder will complete the timber sale contract in accordance with its terms and any modifications thereof including requirements to purchase, cut, and remove the included timber by the expiration date.

Payment Unit values in the State Forest Timber Sale Contract are calculated based on the advertised value of the Payment Unit as a percentage of the total advertised value of the contract. The advertised value of each Payment Unit is given in the Description of Timber by Payment Unit table on the Timber Sale Information page. For example, if the value of Payment Unit 1 is advertised as \$1,500 and the total Timber Sale value is advertised as \$10,000, the contract price for Payment Unit 1 will be 15% of the total bid price ( $\$1,500/\$10,000 * 100$ ).

#### 10. Disclaimer of Estimates and Bidder's Warranty of Inspection (7/16)

Before submitting this bid, the Bidder is advised and cautioned to inspect the sale area, review the requirements of the sale contract, and take other steps as may be reasonably necessary to ascertain the location, estimated volumes, construction estimates, and operating costs of the proposed sale. Failure to do so will not relieve the Bidder from responsibility for completing the contract.

The Bidder warrants that this bid is submitted solely on the basis of the Bidder's examination and inspection of the quality and quantity of the timber offered for sale and the Bidder's opinion of the value thereof and the costs of recovery. No reliance should be placed on the State of Michigan's estimates of timber quality, quantity or costs of recovery. Bidder further acknowledges that the State of Michigan: (i) expressly disclaims any warranty of fitness of timber for any purpose; (ii) offers this timber as is without any warranty of quality (merchantability) or quantity and (iii) expressly disclaims any warranty as to the quantity or quality of timber sold.

#### 11. Certification and Chain-of-Custody (10/14)

Unless otherwise indicated in the contract under section 7 – Other Conditions of the Sale Specific Conditions & Requirements, the area encompassed by this timber sale is certified to the standards of the Forest Stewardship Council (FSC) - Certificate #SCS-FM/COC-00090N and the Sustainable Forestry Initiative (SFI) - Certificate # NSF-SFIS-5Y031-SF5. Forest products from this sale may be delivered to the mill as "FSC 100% and / or SFI certified" as long as the contractor hauling the forest products is chain-of-custody (COC) certified or covered under a COC certificate from the destination mill. The purchaser is responsible for maintaining COC after leaving the sale area.

#### 12. Good Neighbor Authority (GNA) Requirements (7/16)

If the name of this timber sales contains the acronym GNA, it is authorized by the Good Neighbor Authority (GNA) and covered by various agreements between the U.S. Forest Service and the State. The timber sale occurs on federal land and the following conditions apply:

GNA contracts on US Forest Service land will not be awarded to purchasers on the Federal list of excluded parties. The System for Award Management (SAM) will be checked for active excluded parties prior to award of contract. In addition, the Bidder to whom award is made must complete an Assurance Regarding Felony Conviction or Tax Delinquent Status for Corporate Applicants (AD-3031).

#### 13. Good Neighbor Authority (GNA) Requirements, con't (9/16)

Bidder certifies, by signing this bid form, that to the best of Bidder's knowledge that the following representations are accurate and complete.

a. That the Bidder and its principals are not presently debarred, suspended, proposed for debarment, declared ineligible, or voluntary excluded from timber sales (covered transactions) by any Federal department or agency.

b. That the Bidder and its principals have not within a 3-year period preceding this bid been convicted of or had a civil judgment rendered against them for commission of fraud or a criminal offense in connection with obtaining, attempting to obtain, or performing a public (Federal, State, or local) transaction or contract under a public transaction; violation of Federal or State antitrust statutes or commission of embezzlement, theft, forgery, bribery, falsification or destruction of records, making false statements, or receiving stolen property.

c. That the Bidder and its principals are not presently indicted for or otherwise criminally or civilly charged by a governmental entity (Federal, State, or local) with commission of any of the offenses enumerated in paragraph b of this certification.

d. That the Bidder and its principals have not within a 3-year period preceding this bid had one or more public transactions (Federal, State, or local) terminated for breach or default of a timber or forest product contract.

Bidders that cannot certify this requirement, in whole or in part, shall submit an explanation with their bid.

KEITH CREAGH

Director

# TIMBER SALE INFORMATION

## Strombolis Mix (61-078-17)

Grand Traverse County (Advertised Price \$30,735.60)

SALE NOTE: Sale prepared by VanOss Forestry Services. Oak stand with some red maple, aspen and pine. Stand is expected to convert to pine/oak/red maple mix over time. Treatment is designed to open canopy to allow understory pine to develop. Snowmobile and bike trail through stand. Both trails are buffered by sale set-up and specifications.

A recreation site such as a trail, pathway, or campground is within the sale area or the vicinity. Certain restrictions/specifications may be applicable including time restrictions.

A timber sale contract for this lump sum, sealed bid timber sale will be awarded to the responsible bidder offering the highest sealed bid price. Bids must be at or above the following advertised price for each species:

<u>PRODUCTS &amp; SPECIES</u>	<u>ESTIMATED UNITS*</u>	<u>ADVERTISED PRICE</u>
Sawtimber		
B. T. Aspen	11.10 MBF	\$ 109.00 / MBF
Red Maple	9.70 MBF	\$ 128.00 / MBF
Red Oak	67.50 MBF	\$ 204.00 / MBF
White Oak	42.40 MBF	\$ 52.00 / MBF
Pulpwood		
B. T. Aspen	34.00 Cords	\$ 20.75 / Cord
Jack Pine	1.00 Cords	\$ 15.05 / Cord
Mixed Oak	555.00 Cords	\$ 17.15 / Cord
Red Maple	101.00 Cords	\$ 20.50 / Cord

\* The total volume is statistically estimated within plus (+) or minus (-) 12.37 percent. The estimated units are final and not subject to adjustment. Prospective bidders are urged to examine this timber and to make their own estimates of quantity and quality.

### **BOND AND PAYMENT SCHEDULE:**

1. A bond in the amount of \$1,537.00 to insure faithful performance of the conditions of the contract will be deposited by the successful bidder within 21 days of the sale award.
2. Cutting in any sale or unit without the required advance payment would be considered a trespass.
3. Total payment must be paid in advance or according to the following schedule:
  - (a) Ten percent (10%) of the sale value must be paid within 21 days of the sale award.
  - (b) The 10% down payment will be credited towards the first unit cut.
4. If no cutting takes place, the 10% down payment will not be refunded.
5. Operations on the contract issued will terminate on 03/31/2020.

**Description of Timber by Payment Unit (PU)**

PU	MARKET GROUP	PRODUCT	QUANTITY	UNIT	ACRES	ADVERTISE PRICE
1	B. T. Aspen	Sawtimber	5.7	MBF	11.1	\$6,011.35
	Red Maple		2.2	MBF		
	Red Oak		10.2	MBF		
	White Oak		12.5	MBF		
	B. T. Aspen		Pulpwood	18.0		
	Mixed Oak	81.0		Cords		
	<i>Red Oak</i>	25.0		<i>Cords</i>		
	<i>White Oak</i>	56.0		<i>Cords</i>		
	Red Maple	30.0		Cords		
	2	B. T. Aspen	Sawtimber	1.9		
Red Maple		5.9		MBF		
Red Oak		17.4		MBF		
White Oak		6.4		MBF		
B. T. Aspen		Pulpwood		8.0	Cords	
Mixed Oak			134.0	Cords		
<i>Red Oak</i>			60.0	<i>Cords</i>		
<i>White Oak</i>			74.0	<i>Cords</i>		
Red Maple			35.0	Cords		
3		B. T. Aspen	Sawtimber	3.5	MBF	30.5
	Red Maple	1.6		MBF		
	Red Oak	39.9		MBF		
	White Oak	23.5		MBF		
	B. T. Aspen	Pulpwood		8.0	Cords	
	Jack Pine		1.0	Cords		
	Mixed Oak		340.0	Cords		
	<i>Red Oak</i>		122.0	<i>Cords</i>		
	<i>White Oak</i>		218.0	<i>Cords</i>		
	Red Maple	36.0	Cords			
TOTAL:			130.7	MBF		
TOTAL:			691.0	Cords		

## Sale Specific Conditions & Requirements

**Sale Name: Strombolis Mix**

**Sale Number: 61-078-17 Seq#: 1**

### 1 - Sale Area

#### 1.2 - Boundaries

##### 1.2.1 - Painted boundaries (1/14)

The sale boundary and Payment Unit boundaries are marked and identified by red paint. Exterior sale boundary lines against state are marked with red paint dots. Interior Payment Unit boundaries are marked with red paint slashes. The painted boundary and payment unit line trees are not Included Timber and are to be protected.

### 2 - Timber Specifications

#### 2.1 - Included Timber

##### 2.1.7 - Leave tree marked unit(s) (6/14)

Within Payment Unit(s) 1, 2, and 3, all trees which meet minimum piece specifications in 2.2 Utilization, are designated for cutting except red pine, white pine, and trees marked with green paint above and below stump height.

Exclusion: Do not cut any trees within 20' of the bike trail. In addition, do not cut any trees within 10' of the snowmobile trail. See specs 5.2.40 and 5.2.41 for additional details.

Special protection trees identified in accordance with condition 3.4.2, within clearcutting unit boundaries, are not Included Timber and are to be protected.

#### 2.2 - Utilization

##### 2.2.6 - Roundwood operation required (5/07)

The skidding of whole trees or tree segments with limbs attached is prohibited. All products must be produced as roundwood and forwarded to existing roads or landing areas in final product length.

### 3 - Payments

#### 3.4 - Damaged Timber

##### 3.4.1 - Damaged timber (6/14)

General Condition and Requirement 3.4 Damaged Timber, defines liquidated damages for undesigned live merchantable trees which are cut or injured. In addition, extreme care should be taken to avoid damage to tree seedlings and saplings. Advanced white pine regeneration is present in the understory and is desirable. Care should be taken to protect this understory pine as possible.

##### 3.4.2 - Special Protection Trees (4/14)

The Purchaser shall not cut live or dead special protection trees within cutting units or clearings. Special protection trees are marked with green paint. If the Purchaser's operations have cut or damaged special protection trees through carelessness, the Purchaser shall pay \$25 as fixed, agreed and liquidated damages for each special protection tree cut or damaged. Such payment does not constitute ownership of the undesigned timber.

### 4 - Transportation

#### 4.1 - Construction

##### 4.1.12 - No new roads (1/12)

No new roads will be permitted in any Payment Unit. All operations are limited to existing roads. Skid trails only will be allowed.

#### 4.2 - Maintenance

##### 4.2.5 - Two wheel drive condition (2/04)

All existing trail roads on and adjacent to the sale area must be passable by two-wheel drive traffic for the duration of the

sale.

## **5 - Operations**

### 5.1 - Notification

#### 5.1.1 - Pre-sale conference (10/16)

A pre-sale conference on site between the Purchaser and sale administrator is required prior to beginning any operations to determine landing and road locations. The Unit Manager or his/her representative must be contacted at least 3 days in advance to schedule the conference.

#### 5.1.4 - Post-sale conference (10/16)

A post-sale conference on site between the Purchaser and sale administrator is required 3 days prior to the completion of active logging operations to determine clean-up and repair of landings, road edges, and the fulfillment of other contract specifications.

### 5.2 - Conduct of Operations

#### 5.2.1 - Slash

##### 5.2.1.8 - Slash height (12/08)

No slash or tree tops may exceed 30 inches in height.

#### 5.2.3 - Operating Restrictions

##### 5.2.3.4 - Oak wilt restriction (9/17)

Within Payment Unit(s) 1, 2, and 3, cutting, skidding and hauling are not permitted during the period of April 15 to July 15. This is necessary to reduce the spread of oak wilt. For more information, contact the Unit Manager or his/her representative.

#### 5.2.38 - No decking against live trees (2/04)

Cut products may not be decked against unmarked or designated leave trees.

#### 5.2.40 - Pathway protection (10/10)

The single track bike trail is shown on the Timber Sale Map. Do not cut any trees within 20' on each side of the trail. The trail must be kept clean from debris (branches, tops, etc.). Skidding across the trail may only occur in locations approved by the sale administrator.

#### 5.2.41 - Snowmobile trail protection (9/11)

The snowmobile trail is shown on the Timber Sale Map. Do not cut or damage posts with orange trail markers or traffic control signs. If the trail is used, it must be maintained and restored to a condition equal to or better than before the sale. The road maintenance/restoration must be done prior to December 1. If the trail is used for hauling, it must be graded to the satisfaction of the Unit Manager or his/her representative prior to December 1st. The snowmobile trail may not be used for any timber sale operations from December 1 to March 31. The snowmobile trail may only be crossed at right angles. Maintain a 20 foot wide slash, debris, and rut free zone daily using the snowmobile trail as the centerline and do not cut any tree within 10 feet of the edge of the trail. No decking of forest products will be permitted along the snowmobile trail. All stumps within 20 feet of the snowmobile trail must be cut at ground level. Do not cut an tree within 10' of the edge of the snowmobile trail.

### 5.4 - Soil Protection

#### 5.4.1 - Rutting restriction, general (7/16)

Operations are to cease immediately if equipment and weather conditions result in rutting of roads and/or skid trails which is 12 inches or greater in depth and 50 feet in length. The Unit Manager or his/her representative may restrict hauling and/or skidding if ruts exceed the specified depth. With the Unit Manager or his/her representative's approval, the Purchaser may return to the area when the risk of rutting has decreased.

## **6 - Safety and Fire Prevention**

### 6.2 - Signing

#### 6.2.1 - Road posting (9/09)



The Purchaser is responsible for posting and maintaining caution signs on Strombolis Road prior to beginning operations. The road must be posted at appropriate distances from the sale area to warn of logging activity and truck traffic. Signs must be removed when harvest operations are suspended or completed. The Purchaser will provide these signs.

#### 6.2.3 - Recreational trail posting (2/10)

The Purchaser is responsible for posting and maintaining caution signs on the bike trail prior to beginning operations. The trail must be posted at appropriate distances from the sale area to warn of logging activity and truck traffic at both ends of the trail. Signs must be removed when harvest operations are suspended or completed. The Purchaser will provide these signs.



# TIMBER SALE MAP

This information provided by authority of Par 525, 1994 PA 451, as amended.

Sale Number	Year
61-078	17

Forest Management Unit Traverse City	County Grand Traverse	Mapped By Ruppen	Date 9/25/2017	Page 1	of 1
---	--------------------------	---------------------	-------------------	-----------	---------

Township 27N	Range 9W	Section(s) and Subdivision(s) Sec 29 NW1/4 Sec 30 SWNE	Scale 1:15,840
-----------------	-------------	---	-------------------

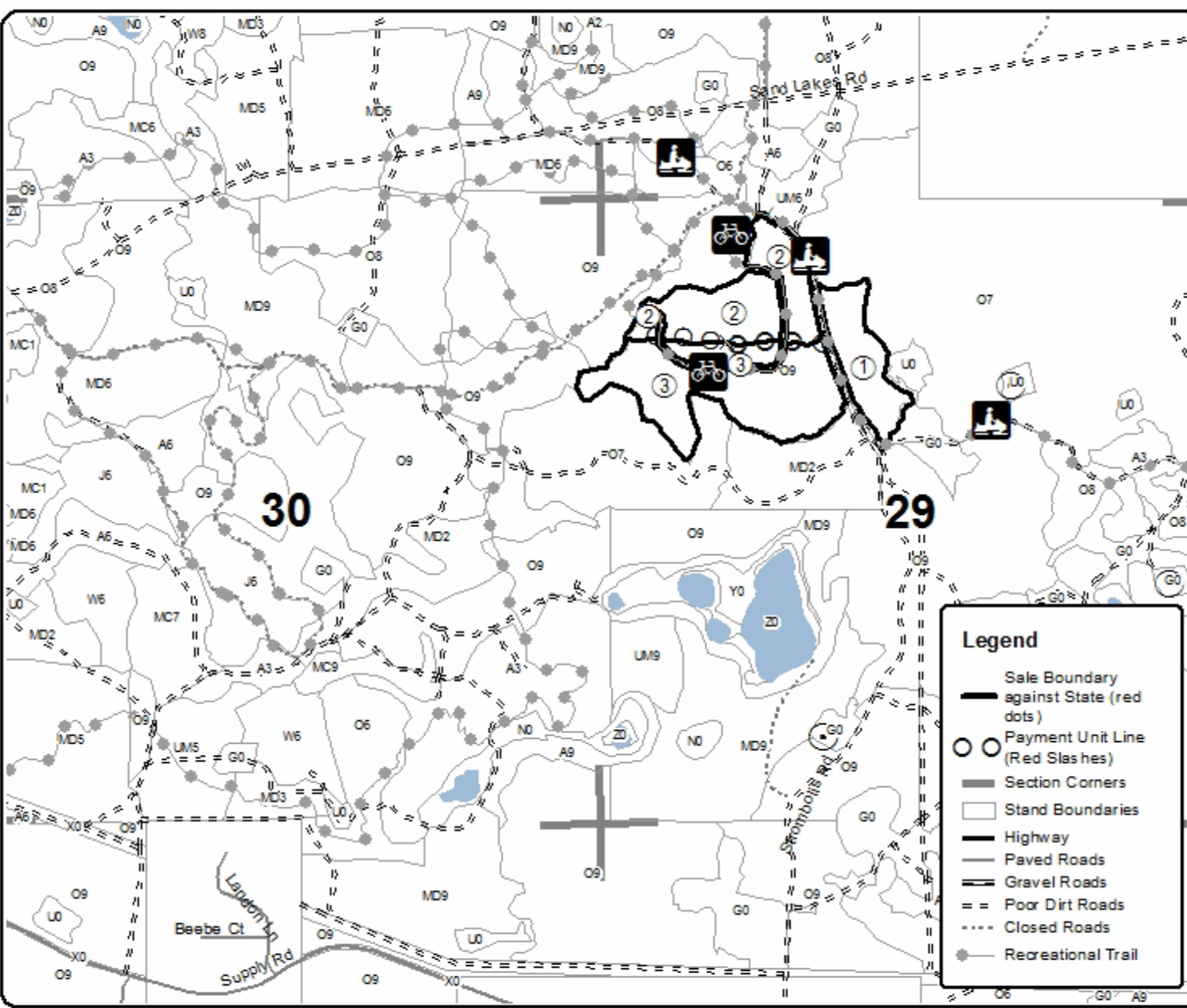
Cover Type				Density	
A = Aspen	H = Hemlock	N = Marsh	U = Upland Brush	0 = Non Stocked	5 = Pole Timber Medium
B = Paper Birch	J = Jack Pine	O = Oak	UM = Upland Mixed	1 = Seeding Sapling Poor	6 = Pole Timber Well
C = Cedar	L = Lowland Brush	P = Lowland Poplar	V = Bog or Marsh	2 = Seeding Sapling Medium	7 = Saw Timber Poor
D = Tread Bog	LM = Lowland Mixed	Q = Mixed Swamp Conifer	W = White Pine	3 = Seeding Sapling Well	8 = Saw Timber Medium
E = Swamp Hdwoods	M = Mpl, Bch, Bich	R = Red Pine	X = Non Stocked	4 = Pole Timber Poor	9 = Saw Timber Well
F = Spruce Fir	MC = Mixed Conifer	S = Black Spruce	Z = Water		
G = Grass	MD = Mixed Deciduous	T = Tamarack			

PU	Acres
1	11.1
2	20.5
3	30.5

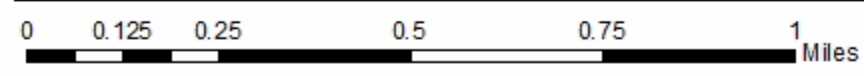
## Strombolis Mix

### Compartment 043

### 62.1 Acres



Legend	
	Sale Boundary against State (red dots)
	Payment Unit Line (Red Slashes)
	Section Corners
	Stand Boundaries
	Highway
	Paved Roads
	Gravel Roads
	Poor Dirt Roads
	Closed Roads
	Recreational Trail



## TIMBER SALE INFORMATION

Scout's Honor Hardwood (61-079-17)

Benzie County (Advertised Price \$44,257.45)

SALE NOTE: A recreation site such as a trail, pathway, or campground is within the sale area or the vicinity. Certain restrictions/specifications may be applicable including time restrictions.

A timber sale contract for this lump sum, sealed bid timber sale will be awarded to the responsible bidder offering the highest sealed bid price. Bids must be at or above the following advertised price for each species:

<u>PRODUCTS &amp; SPECIES</u>	<u>ESTIMATED UNITS*</u>	<u>ADVERTISED PRICE</u>
Sawtimber		
Basswood	57.90 MBF	\$ 115.00 / MBF
Beech	9.60 MBF	\$ 93.00 / MBF
Black Cherry	0.90 MBF	\$ 187.00 / MBF
Mixed Aspen	38.40 MBF	\$ 109.00 / MBF
Red Maple	0.70 MBF	\$ 128.00 / MBF
Red Oak	1.00 MBF	\$ 204.00 / MBF
Sugar Maple	56.60 MBF	\$ 280.00 / MBF
Pulpwood		
Basswood	115.00 Cords	\$ 29.80 / Cord
Mixed Aspen	211.00 Cords	\$ 20.75 / Cord
Mixed Hardwood	405.00 Cords	\$ 20.50 / Cord
Red Oak	6.00 Cords	\$ 17.15 / Cord

\* The total volume is statistically estimated within plus (+) or minus (-) 12.06 percent. The estimated units are final and not subject to adjustment. Prospective bidders are urged to examine this timber and to make their own estimates of quantity and quality.

### **BOND AND PAYMENT SCHEDULE:**

1. A bond in the amount of \$2,213.00 to insure faithful performance of the conditions of the contract will be deposited by the successful bidder within 21 days of the sale award.
2. Cutting in any sale or unit without the required advance payment would be considered a trespass.
3. Total payment must be paid in advance or according to the following schedule:
  - (a) Ten percent (10%) of the sale value must be paid within 21 days of the sale award.
  - (b) The 10% down payment will be credited towards the first unit cut.
4. If no cutting takes place, the 10% down payment will not be refunded.
5. Operations on the contract issued will terminate on 03/31/2020.

**Description of Timber by Payment Unit (PU)**

PU	MARKET GROUP	PRODUCT	QUANTITY	UNIT	ACRES	ADVERTISE PRICE	
1	Basswood	Sawtimber	13.7	MBF	12.8	\$8,049.40	
	Beech		0.8	MBF			
	Sugar Maple		14.8	MBF			
	Basswood		Pulpwood	14.0			Cords
	Mixed Hardwood			88.0			Cords
	<i>Beech</i>			9.0			<i>Cords</i>
	<i>Ironwood</i>			6.0			<i>Cords</i>
	<i>Sugar Maple</i>			73.0			<i>Cords</i>
	Red Oak			2.0			Cords
2	Basswood	Sawtimber	22.2	MBF	34.0	\$18,976.50	
	Beech		1.3	MBF			
	Black Cherry		0.9	MBF			
	Mixed Aspen		6.6	MBF			
	<i>B. T. Aspen</i>		6.2	<i>MBF</i>			
	<i>Quaking Aspen</i>		0.4	<i>MBF</i>			
	Red Maple		0.7	MBF			
	Sugar Maple		34.4	MBF			
	Basswood		Pulpwood	41.0			Cords
	Mixed Aspen			10.0			Cords
	<i>B. T. Aspen</i>			9.0			<i>Cords</i>
	<i>Quaking Aspen</i>			1.0			<i>Cords</i>
	Mixed Hardwood			208.0			Cords
	<i>Beech</i>			2.0			<i>Cords</i>
	<i>Black Cherry</i>			7.0			<i>Cords</i>
	<i>Ironwood</i>			19.0			<i>Cords</i>
	<i>Red Maple</i>			4.0			<i>Cords</i>
	<i>Sugar Maple</i>			176.0			<i>Cords</i>
3	Basswood	Sawtimber	22.0	MBF	30.2	\$12,440.85	
	Beech		7.5	MBF			
	Mixed Aspen		20.0	MBF			
	<i>B. T. Aspen</i>		20.0	<i>MBF</i>			
	Red Oak		1.0	MBF			
	Sugar Maple		7.4	MBF			
	Basswood		Pulpwood	60.0			Cords
	Mixed Aspen			41.0			Cords
	<i>B. T. Aspen</i>			41.0			<i>Cords</i>
	Mixed Hardwood			100.0			Cords
	<i>Beech</i>			29.0			<i>Cords</i>
<i>Sugar Maple</i>	71.0	<i>Cords</i>					
Red Oak	4.0	Cords					
4	Mixed Aspen	Sawtimber	11.8	MBF	7.5	\$4,790.70	
	<i>B. T. Aspen</i>		11.8	<i>MBF</i>			
	Mixed Aspen	Pulpwood	160.0	Cords			
	<i>B. T. Aspen</i>		160.0	<i>Cords</i>			
	Mixed Hardwood		9.0	Cords			
	<i>Black Cherry</i>		2.0	<i>Cords</i>			
<i>Red Maple</i>	7.0	<i>Cords</i>					
TOTAL:			165.1	MBF			
TOTAL:			737.0	Cords			

## Sale Specific Conditions & Requirements

**Sale Name: Scout's Honor Hardwood**

**Sale Number: 61-079-17 Seq#: 1**

### 1 - Sale Area

#### 1.2 - Boundaries

##### 1.2.1 - Painted boundaries (1/14)

The sale boundary and Payment Unit boundaries are marked and identified by blue and red paint. Exterior sale boundary lines against private property are marked with blue paint. Exterior sale boundary lines against state land are marked with red paint. The painted boundary line trees are not Included Timber and are to be protected unless marked with orange paint.

### 2 - Timber Specifications

#### 2.1 - Included Timber

##### 2.1.1 - Clearcut unit(s) with unmerchantable trees (6/14)

Within Payment Unit(s) 4, cut all trees that are two (2) inches or more at DBH except any oaks, conifers, or any trees marked with green paint.

##### 2.1.3 - Cut tree marked unit(s) (12/08)

Within Payment Unit(s) 1, 2, and 3, all trees are designated for cutting when marked with orange paint above and below stump height, regardless of merchantability. In addition, within Payment Unit 2, cut all ironwood, aspen, and beech greater than 4 inches at DBH.

#### 2.2 - Utilization

##### 2.2.4 - Skidding length (2/14)

Skidding of unlimbed tops or lengths over 17 feet is not permissible.

### 4 - Transportation

#### 4.1 - Construction

##### 4.1.3 - Slash and earthen piles (8/04)

Piles or windrows of earth along roads and landings that have been widened or constructed shall be leveled. Slash from road maintenance or construction, including stumps, shall be dispersed throughout the sale.

##### 4.1.7 - Road closure (10/11)

All new roads built into the sale must be blocked to vehicle traffic upon completion of the sale. In general, this will require constructing a four (4') foot high berm of stumps and logs covered with earth. Contact the sale administrator for specific details of design and placement.

### 5 - Operations

#### 5.2 - Conduct of Operations

##### 5.2.1 - Slash

###### 5.2.1.8 - Slash height (12/08)

No slash or tree tops may exceed 36 inches in height.

##### 5.2.3 - Operating Restrictions

###### 5.2.3.4 - Oak wilt restriction (4/17)

Within Payment Unit(s) 1 - 4, cutting, skidding, and hauling are not permitted during the period of April 15 to July 15. This is necessary to reduce the spread of oak wilt. For more information, contact the Unit Manager or his/her representative.

##### 5.2.4 - Dead and Down Creation

###### 5.2.4.1 - Dead and down creation, marked trees (10/13)

All trees marked with an "X" must be felled and left on site for wildlife.

#### 5.2.38 - No decking against live trees (2/04)

Cut products may not be decked against unmarked or designated leave trees.

#### 5.2.40 - Pathway protection (10/10)

The Shore to Shore Riding/Hiking Trail is shown on the Timber Sale Map. Do not cut trees or damage posts with blue pathway markers. Maintain a 20-foot wide slash, debris, and rut free zone daily, using the pathway as the centerline. Do not run equipment down the pathway within Payment Unit 3. Skidding across the trail may only occur in locations approved by the sale administrator. The trail follows a dirt road abutting the south side of Payment Unit 2 - this stretch of road may not be used for any sale operations.

### 5.4 - Soil Protection

#### 5.4.3 - Erosion control (12/08)

Skid trails or haul roads may require erosion control structures or berms per direction of the Unit Manager or his/her representative.

#### 5.4.6 - Wet area protection (5/10)

No harvesting operations, including skidding and felling, are to take place within the bog ("V" cover type on the Timber Sale Map) along the west edge of Payment Unit 4. All equipment, felled trees and tops should be kept out of this area. Care must be taken by the Purchaser to identify and avoid operating in these areas of the timber sale.

## 6 - Safety and Fire Prevention

### 6.2 - Signing

#### 6.2.3 - Recreational trail posting (2/10)

The Purchaser is responsible for posting and maintaining caution signs on the Shore to Shore Trail prior to beginning operations. The trail must be posted at appropriate distances from the sale area to warn of logging activity and truck traffic at both ends of the trail. Signs must be removed when harvest operations are suspended or completed. The Purchaser will provide these signs.



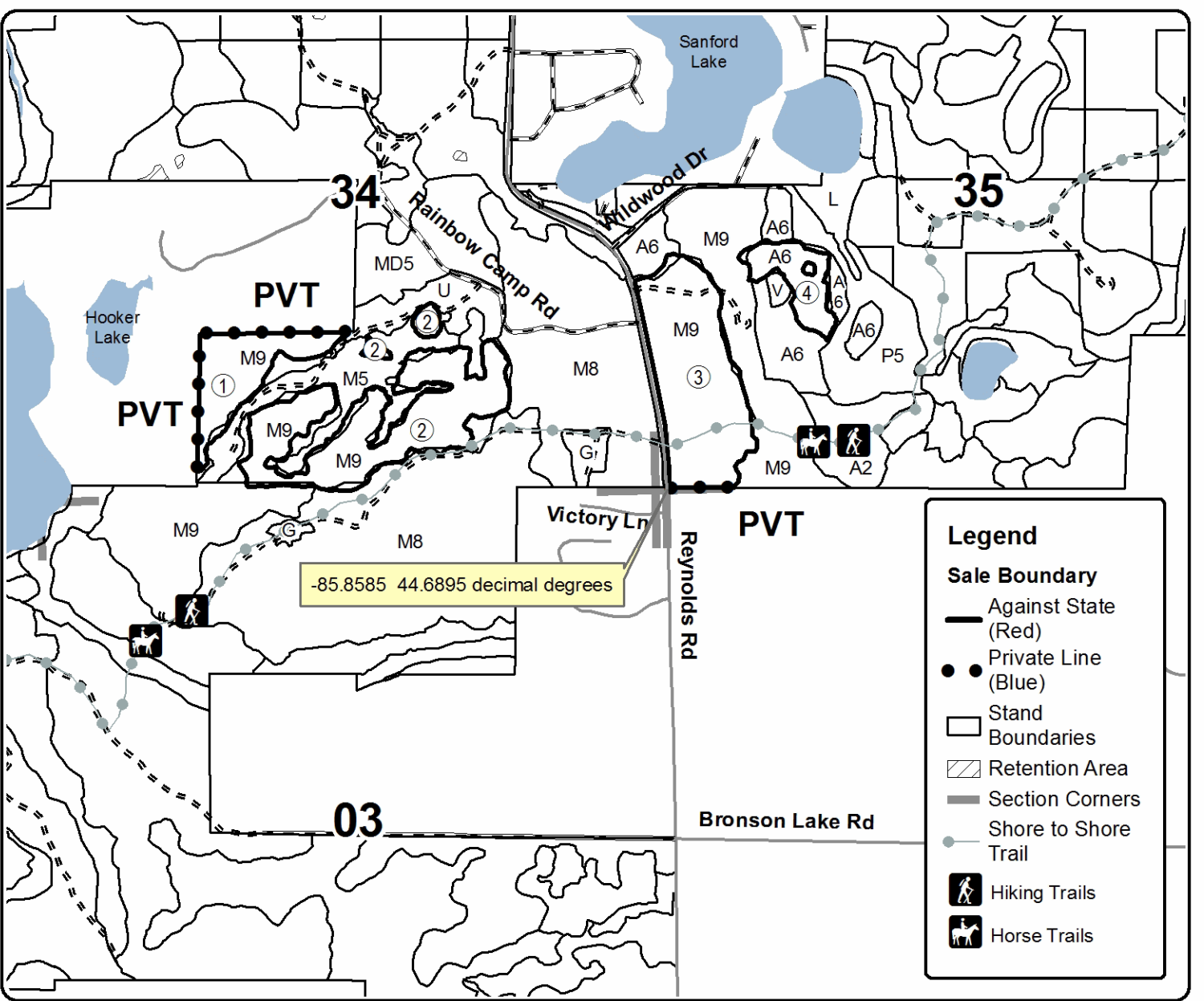
# TIMBER SALE MAP

This information provided by authority of Part 525, 1994 PA 451, as amended.

Forest Management Unit Traverse City	County Benzie	Mapped By Tim Webb	Date 8/28/2017	Page 1	of 1
Township 26N, 27N	Range 13W	Section(s) and Subdivision(s) 27-13-34: SE1/4, SESW; 27-13-35: W1/2SW, NESW	Scale 1:15,840		

Cover Type				Density	
A = Aspen	H = Hemlock	N = Marsh	U = Upland Brush	0 = Non Stocked	5 = Pole Timber Medium
B = Paper Birch	J = Jack Pine	O = Oak	UM = Upland Mixed	1 = Seedling Sapling Poor	6 = Pole Timber Well
C = Cedar	L = Lowland Brush	P = Lowland Poplar	V = Bog or Marsh	2 = Seedling Sapling Medium	7 = Saw Timber Poor
D = Treed Bog	LM = Lowland Mixed	Q = Mixed Swamp Conifer	W = White Pine	3 = Seedling Sapling Well	8 = Saw Timber Medium
E = Swamp Hdwoods	M = Mpl, Bch, Brch	R = Red Pine	X = Non Stocked	4 = Pole Timber Poor	9 = Saw Timber Well
F = Spruce Fir	MC = Mixed Conifer	S = Black Spruce	Z = Water		
G = Grass	MD = Mixed Deciduous	T = Tamarack			

PU	Acres	PU	Acres	<b>Scout's Honor Hardwood</b>		N W E S Compass
1	12.8	4	7.5			
2	34.0			<b>84.5 acres</b>		
3	30.2					







## TIMBER SALE INFORMATION

### Ransom Lake Mix (61-080-17)

Benzie County (Advertised Price \$65,631.45)

A timber sale contract for this lump sum, sealed bid timber sale will be awarded to the responsible bidder offering the highest sealed bid price. Bids must be at or above the following advertised price for each species:

<u>PRODUCTS &amp; SPECIES</u>	<u>ESTIMATED UNITS*</u>		<u>ADVERTISED PRICE</u>
<b>Sawtimber</b>			
B. T. Aspen	117.50	MBF	\$ 109.00 / MBF
Beech	9.70	MBF	\$ 93.00 / MBF
Red Maple	41.60	MBF	\$ 128.00 / MBF
Red Oak	22.30	MBF	\$ 204.00 / MBF
Red Pine	37.30	MBF	\$ 122.00 / MBF
White Oak	3.00	MBF	\$ 52.00 / MBF
White Pine	50.90	MBF	\$ 69.00 / MBF
<b>Pulpwood</b>			
B. T. Aspen	770.00	Cords	\$ 20.75 / Cord
Beech	34.00	Cords	\$ 20.50 / Cord
Red Maple	258.00	Cords	\$ 20.50 / Cord
Red Oak	96.00	Cords	\$ 17.15 / Cord
Red Pine	145.00	Cords	\$ 43.65 / Cord
White Oak	13.00	Cords	\$ 17.15 / Cord
White Pine	261.00	Cords	\$ 14.05 / Cord

\* The total volume is statistically estimated within plus (+) or minus (-) 9.09 percent. The estimated units are final and not subject to adjustment. Prospective bidders are urged to examine this timber and to make their own estimates of quantity and quality.

#### **BOND AND PAYMENT SCHEDULE:**

1. A bond in the amount of \$3,282.00 to insure faithful performance of the conditions of the contract will be deposited by the successful bidder within 21 days of the sale award.
2. Cutting in any sale or unit without the required advance payment would be considered a trespass.
3. Total payment must be paid in advance or according to the following schedule:
  - (a) Ten percent (10%) of the sale value must be paid within 21 days of the sale award.
  - (b) The 10% down payment will be credited towards the first unit cut.
4. If no cutting takes place, the 10% down payment will not be refunded.
5. Operations on the contract issued will terminate on 03/31/2020.

**Description of Timber by Payment Unit (PU)**

PU	MARKET GROUP	PRODUCT	QUANTITY	UNIT	ACRES	ADVERTISE PRICE	
1	B. T. Aspen	Sawtimber	18.0	MBF	23.0	\$5,236.40	
	Red Maple		1.3	MBF			
	Red Oak		3.3	MBF			
	White Pine		0.5	MBF			
	B. T. Aspen		Pulpwood	74.0			Cords
	<i>B. T. Aspen</i>			74.0			<i>Cords</i>
	Beech			4.0			Cords
	Red Maple			13.0			Cords
	Red Oak			11.0			Cords
	Red Pine			3.0			Cords
	White Pine			14.0			Cords
2	Red Oak	Sawtimber	0.6	MBF	2.0	\$1,131.45	
	Red Pine		3.0	MBF			
	White Pine		0.9	MBF			
	B. T. Aspen		Pulpwood	2.0			Cords
	<i>B. T. Aspen</i>			2.0			<i>Cords</i>
	Red Oak			1.0			Cords
	Red Pine			11.0			Cords
	White Pine		3.0	Cords			
3	B. T. Aspen	Sawtimber	8.2	MBF	32.4	\$6,109.15	
	Beech		1.5	MBF			
	Red Oak		2.1	MBF			
	Red Pine		4.5	MBF			
	White Pine		11.0	MBF			
	B. T. Aspen		Pulpwood	62.0			Cords
	<i>B. T. Aspen</i>			60.0			<i>Cords</i>
	<i>Quaking Aspen</i>			2.0			<i>Cords</i>
	Beech			4.0			Cords
	Red Maple			11.0			Cords
	Red Oak			12.0			Cords
	Red Pine			18.0			Cords
	White Oak		3.0	Cords			
	White Pine		50.0	Cords			
4	B. T. Aspen	Sawtimber	33.3	MBF	21.0	\$16,148.90	
	Beech		5.4	MBF			
	Red Maple		15.3	MBF			
	White Pine		26.2	MBF			
	B. T. Aspen		Pulpwood	220.0			Cords
	<i>B. T. Aspen</i>			220.0			<i>Cords</i>
	Beech			16.0			Cords
	Red Maple			98.0			Cords
White Pine	96.0	Cords					
5	B. T. Aspen	Sawtimber	15.9	MBF	6.7	\$3,332.30	
	Red Maple		0.4	MBF			
	Red Pine		1.0	MBF			
	White Pine		1.5	MBF			
	B. T. Aspen		Pulpwood	37.0			Cords
	<i>B. T. Aspen</i>			37.0			<i>Cords</i>
	Red Maple			11.0			Cords
	Red Oak			1.0			Cords
	Red Pine			2.0			Cords
	White Pine			16.0			Cords
6	B. T. Aspen	Sawtimber	16.2	MBF	13.8	\$13,357.90	
	Beech		2.8	MBF			
	Red Maple		20.4	MBF			
	Red Oak		3.2	MBF			

**Description of Timber by Payment Unit (PU), con't**

PU	MARKET GROUP	PRODUCT	QUANTITY	UNIT	ACRES	ADVERTISE PRICE
6 con't	White Oak	Sawtimber	1.4	MBF		
	White Pine		6.6	MBF		
	B. T. Aspen	Pulpwood	215.0	Cords		
	<i>B. T. Aspen</i>		215.0	<i>Cords</i>		
	Beech		10.0	Cords		
	Red Maple		69.0	Cords		
	Red Oak		37.0	Cords		
	White Oak		3.0	Cords		
	White Pine		55.0	Cords		
7	B. T. Aspen	Sawtimber	25.9	MBF	15.5	\$11,838.30
	Red Maple		4.2	MBF		
	Red Oak		13.1	MBF		
	White Oak		1.6	MBF		
	White Pine		3.3	MBF		
	B. T. Aspen	Pulpwood	160.0	Cords		
	<i>B. T. Aspen</i>		160.0	<i>Cords</i>		
	Red Maple		56.0	Cords		
	Red Oak		34.0	Cords		
	White Oak		7.0	Cords		
	White Pine		23.0	Cords		
8	Red Pine	Sawtimber	18.6	MBF	7.4	\$5,630.25
	Red Pine	Pulpwood	77.0	Cords		
9	Red Pine	Sawtimber	10.2	MBF	5.0	\$2,846.80
	White Pine		0.9	MBF		
	Red Pine	Pulpwood	34.0	Cords		
	White Pine		4.0	Cords		
TOTAL:			282.3	MBF		
TOTAL:			1,577.0	Cords		

# Sale Specific Conditions & Requirements

**Sale Name: Ransom Lake Mix**

**Sale Number: 61-080-17 Seq#: 1**

## 1 - Sale Area

### 1.2 - Boundaries

#### 1.2.1 - Painted boundaries (1/14)

The sale boundary and Payment Unit boundaries are marked and identified by blue, red and yellow paint. Exterior sale boundary lines against private property are marked with blue paint. Exterior sale boundary lines against state land are marked with red paint. Retention islands within Payment Units 4, 6, and 7 are marked with double red paint marks; equipment must be kept out of these areas. Interior Payment Unit boundaries are marked with yellow paint. The painted boundary line trees are not Included Timber and are to be protected unless marked with orange paint.

## 2 - Timber Specifications

### 2.1 - Included Timber

#### 2.1.1 - Clearcut unit(s) with unmerchantable trees (6/14)

Within Payment Unit(s) 4, 6, and 7, cut all trees that are two (2) inches or more at DBH, except for trees marked with green paint. In addition, within Payment Unit 4, do not cut any white pine greater than 18 inches at DBH, any oak, or any red pine.

#### 2.1.3 - Cut tree marked unit(s) (12/08)

Within Payment Unit(s) 1, 2, 3, 5, 8, and 9, all trees are designated for cutting when marked with orange paint above and below stump height, regardless of merchantability.

### 2.2 - Utilization

#### 2.2.4 - Skidding length (2/14)

Skidding of unlimbed tops or lengths over 17 feet is not permissible within Payment Units 1, 2, 3, 5, 8, and 9, unless approved by the Unit Manager or his/her representative.

## 4 - Transportation

### 4.1 - Construction

#### 4.1.3 - Slash and earthen piles (8/04)

Piles or windrows of earth along roads and landings that have been widened or constructed shall be leveled. Slash from road maintenance or construction, including stumps, shall be dispersed throughout the sale.

#### 4.1.7 - Road closure (10/11)

All new roads built into the sale must be blocked to vehicle traffic upon completion of the sale. In general, this will require constructing a four (4') foot high berm of stumps and logs covered with earth. Contact the sale administrator for specific details of design and placement.

## 5 - Operations

### 5.2 - Conduct of Operations

#### 5.2.1 - Slash

##### 5.2.1.8 - Slash height (12/08)

No slash or tree tops may exceed 24 inches in height.

#### 5.2.3 - Operating Restrictions

##### 5.2.3.4 - Oak wilt restriction (9/17)

Within Payment Unit(s) 1-9, cutting, skidding, hauling and brushing of access roads are not permitted during the period of April 15 to July 15. This is necessary to reduce the spread of oak wilt. For more information, contact the Unit Manager or his/her representative.

##### 5.2.3.6 - Bark beetle restriction (12/08)

In the event drought creates a high risk of pine bark beetle infestation, pine is not to be cut during the period March 1 through July 1, unless all portions of trees greater than two inches in diameter are removed from the sale area, reduced to chips, or treated to the satisfaction of the Unit Manager or his/her representative, within fifteen days of being severed from the stump. Pine log decks, pulpwood piles and treetops that are piled for chipping in the fall or winter within a 1/4 mile of susceptible sites must be removed before March 15. Residual slash must not be placed in piles or rows and must be spread over the site for quick drying. The Department of Natural Resources will exercise this specification if the risk of damage warrants.

#### 5.2.4 - Dead and Down Creation

##### 5.2.4.1 - Dead and down creation, marked trees (10/13)

All trees marked with an orange "X" must be felled and left on site for wildlife. Within Payment Units 4, 6, and 7, leave a nearby 2 to 5 inch DBH tree standing and place the felled "X" tree alongside it on the ground.

##### 5.2.38 - No decking against live trees (2/04)

Cut products may not be decked against unmarked or designated leave trees.

#### 5.4 - Soil Protection

##### 5.4.3 - Erosion control (12/08)

Skid trails or haul roads may require erosion control structures or berms per direction of the Unit Manager or his/her representative.

##### 5.4.6 - Wet area protection (5/10)

No harvesting operations, including skidding and felling, are to take place within the conifer swamp ("Q7") between Payment Units 4 and 5, the bog ("D") west of Payment Unit 3, the bog ("V") southwest of Payment Unit 3, the bog ("V") east of Payment Unit 7, or within 100 feet of Ransom Lake. Care must be taken by the Purchaser to identify and avoid operating in these areas of the timber sale.

### 6 - Safety and Fire Prevention

#### 6.2 - Signing

##### 6.2.1 - Road posting (9/09)

The Purchaser is responsible for posting and maintaining caution signs on Lake Ann Road prior to beginning operations. The road must be posted at appropriate distances from the sale area to warn of logging activity and truck traffic. Signs must be removed when harvest operations are suspended or completed. The Purchaser will provide these signs.

### 7 - Other Conditions

#### 7.3 - Contract Modifications

##### 7.3.2 - Modification for oak wilt (2/05)

Within the sale area, there may be patches of oak wilt. If oak wilt is identified within the sale area, this contract may be modified. The following modifications could occur: time of cutting, species to cut, volume to harvest, or various others dealing with the treatment of oak wilt. If a species is not specified in this contract, it shall be paid for at the average price received for that species and product.



# TIMBER SALE MAP

This information provided by authority of Part 525, 1994 PA 451, as amended.

Forest Management Unit Traverse City FMU		County Benzie	Mapped By Tim Webb	Date 09/22/2017	Page 1	of 1
Township 27N	Range 13W	Section(s) and Subdivision(s) Sec. 25: SENE, SE1/4, N1/2SW, SESW; Sec. 36: N1/2NE		Scale 1:15,840		

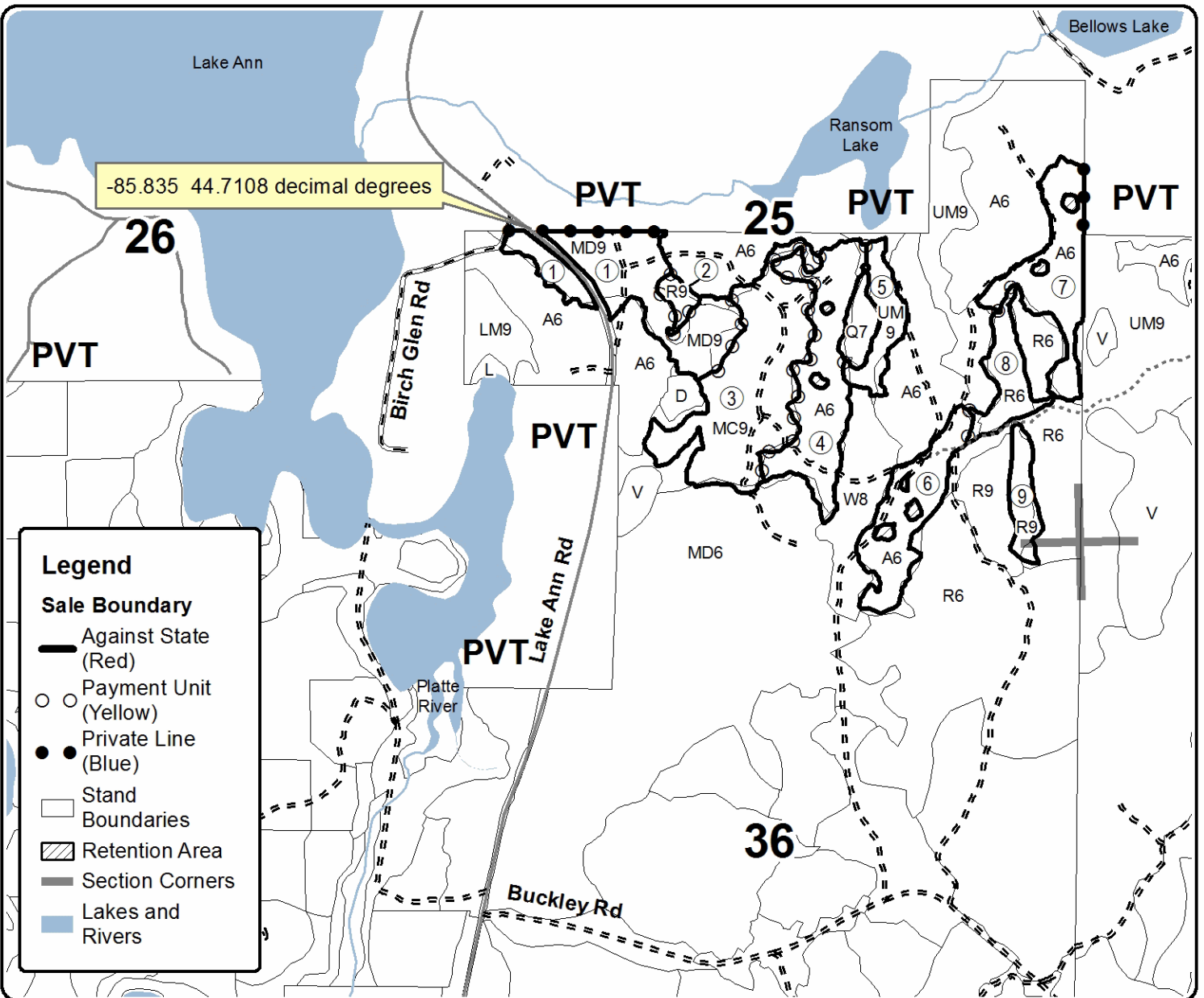
Cover Type				Density				
A = Aspen	H = Hemlock	N = Marsh	U = Upland Brush	0 = Non Stocked	5 = Pole Timber Medium			
B = Paper Birch	J = Jack Pine	O = Oak	UM = Upland Mixed	1 = Seedling Sapling Poor	6 = Pole Timber Well			
C = Cedar	L = Lowland Brush	P = Lowland Poplar	V = Bog or Marsh	2 = Seedling Sapling Medium	7 = Saw Timber Poor			
D = Treed Bog	LM = Lowland Mixed	Q = Mixed Swamp Conifer	W = White Pine	3 = Seedling Sapling Well	8 = Saw Timber Medium			
E = Swamp Hdwoods	M = Mpl, Bch, Brch	R = Red Pine	X = Non Stocked	4 = Pole Timber Poor	9 = Saw Timber Well			
F = Spruce Fir	MC = Mixed Conifer	S = Black Spruce	Z = Water					
G = Grass	MD = Mixed Deciduous	T = Tamarack						

PU	Acres	PU	Acres	PU	Acres
1	23.0	4	21.0	7	15.5
2	2.0	5	6.7	8	7.4
3	32.4	6	13.8	9	5.0

## Ransom Lake Mix

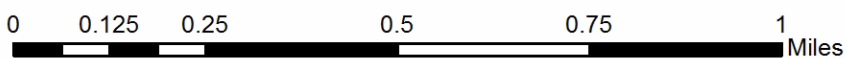
### Compartment 11

126.8 acres



**Legend**

- Sale Boundary**
  - Against State (Red)
- Payment Unit (Yellow)
- Private Line (Blue)
- Stand Boundaries
- ▨ Retention Area
- Section Corners
- Lakes and Rivers



# TIMBER SALE INFORMATION

## Hook Set Red Pine (61-081-17)

Benzie County (Advertised Price \$164,758.15)

SALE NOTE: The Shore-to-Shore riding/hiking trail is adjacent to the southern boundary of Payment Units 2, 3, and 4, and is to be protected throughout sale operations. See spec 5.2.40 for details.

A recreation site such as a trail, pathway, or campground is within the sale area or the vicinity. Certain restrictions/specifications may be applicable including time restrictions.

A timber sale contract for this lump sum, sealed bid timber sale will be awarded to the responsible bidder offering the highest sealed bid price. Bids must be at or above the following advertised price for each species:

<u>PRODUCTS &amp; SPECIES</u>	<u>ESTIMATED UNITS*</u>	<u>ADVERTISED PRICE</u>
Sawtimber		
B. T. Aspen	7.00 MBF	\$ 109.00 / MBF
Red Pine	1,055.70 MBF	\$ 122.00 / MBF
White Pine	1.80 MBF	\$ 69.00 / MBF
Pulpwood		
B. T. Aspen	28.00 Cords	\$ 20.75 / Cord
Red Pine	788.00 Cords	\$ 43.65 / Cord
White Pine	7.00 Cords	\$ 14.05 / Cord

\* The total volume is statistically estimated within plus (+) or minus (-) 14.21 percent. The estimated units are final and not subject to adjustment. Prospective bidders are urged to examine this timber and to make their own estimates of quantity and quality.

### **BOND AND PAYMENT SCHEDULE:**

1. A bond in the amount of \$8,238.00 to insure faithful performance of the conditions of the contract will be deposited by the successful bidder within 21 days of the sale award.
2. Cutting in any sale or unit without the required advance payment would be considered a trespass.
3. Total payment must be paid in advance or according to the following schedule:
  - (a) Ten percent (10%) of the sale value must be paid within 21 days of the sale award.
  - (b) The 10% down payment will be credited towards the first unit cut.
4. If no cutting takes place, the 10% down payment will not be refunded.
5. Operations on the contract issued will terminate on 03/31/2020.

**Description of Timber by Payment Unit (PU)**

PU	MARKET GROUP	PRODUCT	QUANTITY	UNIT	ACRES	ADVERTISE PRICE
1	Red Pine	Sawtimber	59.4	MBF	9.6	\$10,038.25
	B. T. Aspen	Pulpwood	2.0	Cords		
	Red Pine		63.0	Cords		
2	B. T. Aspen	Sawtimber	3.6	MBF	24.1	\$72,636.20
	Red Pine		487.2	MBF		
	White Pine		0.9	MBF		
	B. T. Aspen	Pulpwood	14.0	Cords		
	Red Pine		284.0	Cords		
	White Pine		4.0	Cords		
3	B. T. Aspen	Sawtimber	3.4	MBF	22.3	\$67,169.95
	Red Pine		450.9	MBF		
	White Pine		0.9	MBF		
	B. T. Aspen	Pulpwood	12.0	Cords		
	Red Pine		262.0	Cords		
	White Pine		3.0	Cords		
4	Red Pine	Sawtimber	34.7	MBF	12.0	\$7,114.30
	Red Pine	Pulpwood	66.0	Cords		
5	Red Pine	Sawtimber	23.5	MBF	10.2	\$7,799.45
	Red Pine	Pulpwood	113.0	Cords		
TOTAL:			1,064.5	MBF		
TOTAL:			823.0	Cords		



## Sale Specific Conditions & Requirements

**Sale Name: Hook Set Red Pine**

**Sale Number: 61-081-17 Seq#: 1**

### 1 - Sale Area

#### 1.2 - Boundaries

##### 1.2.1 - Painted boundaries (1/14)

The sale boundary and Payment Unit boundaries are marked and identified by blue, red and yellow paint. Exterior sale boundary lines against private property are marked with blue paint. Exterior sale boundary lines against state land are marked with red paint. Interior Payment Unit boundaries are marked with yellow paint. The painted boundary line trees are not Included Timber and are to be protected unless marked with orange paint.

### 2 - Timber Specifications

#### 2.1 - Included Timber

##### 2.1.2 - Clearcut unit(s) w/o unmerchantable trees (8/11)

Within Payment Unit(s) 2 & 3, cut all red pine, white pine and aspen trees which meet minimum piece specifications in 2.2 Utilization, except do not cut green marked red pine trees. In addition, do not cut any hardwood trees regardless of size, and protect all hardwood regeneration as outlined in spec 3.4.1.

##### 2.1.3 - Cut tree marked unit(s) (12/08)

Within Payment Unit(s) 1, 4, & 5, all trees are designated for cutting when marked with orange paint above and below stump height, regardless of merchantability. In addition, all aspen trees are to be harvested.

#### 2.2 - Utilization

##### 2.2.5 - Limbed tree skidding (1/09)

The skidding of whole trees or tree segments with limbs attached is prohibited in Payment Units 1, 4, & 5, unless approved by the Unit Manager or his/her representative. All trees must be produced as roundwood in order to avoid damage to residual trees.

##### 2.2.6 - Roundwood operation required (5/07)

The skidding of whole trees or tree segments with limbs attached is prohibited within Payment Unit(s) 2 & 3. All products must be produced as roundwood and forwarded to existing roads or landing areas in final product length. Utility pole production may be allowed if poles are identified. This will need to be approved by the Unit Manager or his/her representative.

### 3 - Payments

#### 3.3 - Pre-measured Sales

##### 3.3.4 - Dividing payment units (7/14)

Payment Unit(s) 2 & 3 may be divided at the request of the Purchaser and upon approval of the Unit Manager. Dividing Payment Units is a contract modification which requires a Timber Sale Contract Supplement. There will be only one division per Payment Unit.

#### 3.4 - Damaged Timber

##### 3.4.1 - Damaged timber (6/14)

General Condition and Requirement 3.4 Damaged Timber, defines liquidated damages for undesignated live merchantable trees which are cut or injured. In addition, extreme care should be taken to avoid damage to tree seedlings and saplings.

Within Payment Units 2 & 3, if more than 25% of the tree seedlings or saplings (1/4" to 4.5" DBH) within a specified portion of the sale area are damaged, liquidated damages will be assessed at \$150 per acre for all acreage within that specified portion of the sale area that was damaged.

No damage is acceptable to merchantable trees. Within the sale area, if more than 10% of trees (> 4.5" DBH) within a specified area of the sale are damaged, liquidated damages will be assessed for all trees damaged. Rates will be in

accordance with General Condition and Requirement 3.4 Damaged Timber.

## 4 - Transportation

### 4.1 - Construction

#### 4.1.3 - Slash and earthen piles (8/04)

Piles or windrows of earth along roads and landings that have been widened or constructed shall be leveled. Slash from road maintenance or construction, including stumps, shall be dispersed throughout the sale.

#### 4.1.7 - Road closure (10/11)

All new roads built into the sale must be blocked to vehicle traffic upon completion of the sale. In general, this will require constructing a four (4') foot high berm of stumps and logs covered with earth. Contact the sale administrator for specific details of design and placement.

## 5 - Operations

### 5.2 - Conduct of Operations

#### 5.2.1 - Slash

##### 5.2.1.8 - Slash height (12/08)

No slash or tree tops may exceed 24 inches in height.

#### 5.2.3 - Operating Restrictions

##### 5.2.3.3 - Bark slippage restriction (3/09)

Within Payment Unit(s) 1, 4, & 5, unless changed by written agreement, cutting and skidding are not permitted during the period of April 15 to July 15. This restriction is because of bark slippage.

##### 5.2.3.6 - Bark beetle restriction (12/08)

In the event drought creates a high risk of pine bark beetle infestation, pine is not to be cut during the period March 1 through July 1, unless all portions of trees greater than two inches in diameter are removed from the sale area, reduced to chips, or treated to the satisfaction of the Unit Manager or his/her representative, within fifteen days of being severed from the stump. Pine log decks, pulpwood piles and treetops that are piled for chipping in the fall or winter within a 1/4 mile of susceptible sites must be removed before March 15. Residual slash must not be placed in piles or rows and must be spread over the site for quick drying. The Department of Natural Resources will exercise this specification if the risk of damage warrants.

#### 5.2.38 - No decking against live trees (2/04)

Cut products may not be decked against unmarked or designated leave trees.

#### 5.2.40 - Pathway protection (10/10)

The Shore to Shore riding/hiking trail is shown on the Timber Sale Map. Do not cut trees or damage posts with blue pathway markers. Maintain a 20-foot wide slash, debris, and rut free zone daily, using the trail as the centerline. The trail lies on a forest road and will be used for hauling. The trail must be graded periodically during the sale. In addition, if an organized trail ride is to occur while the sale is active, the sale administrator has the authority to limit harvest and hauling activities on the day of the ride. The sale administrator will provide at least 1 week notice if this is to occur.

#### 5.2.41 - Snowmobile trail protection (9/11)

The Platte River snowmobile trail, running on Haze Road, is shown on the Timber Sale Map. Do not cut or damage posts with orange trail markers or traffic control signs. If the trail is used, it must be maintained and restored to a condition equal to or better than before the sale. If the trail road is to be used for hauling during the snowmobile season, then a snow covered base must be left on the trail. Maintain a 20 foot wide slash, debris, and rut free zone daily using the snowmobile trail as the centerline.

### 5.4 - Soil Protection

#### 5.4.3 - Erosion control (12/08)

Skid trails or haul roads may require erosion control structures or berms per direction of the Unit Manager or his/her representative.

## **6 - Safety and Fire Prevention**

### **6.2 - Signing**

#### **6.2.3 - Recreational trail posting (2/10)**

The Purchaser is responsible for posting and maintaining caution signs on the Shore-to-Shore trail and the snowmobile trail prior to beginning operations. The trail must be posted at appropriate distances from the sale area to warn of logging activity and truck traffic at both ends of the trail. Signs must be removed when harvest operations are suspended or completed. The Purchaser will provide these signs.



# TIMBER SALE MAP

This information provided by authority of Part 525, 1994 PA 451, as amended.

Forest Management Unit Traverse City FMU		County Benzie	Mapped By Cotant & Webb	Date 09/22/2017	Page 1	of 1
Township 27N	Range 14W	Section(s) and Subdivision(s) Sec. 25: W1/2SE, SWNE, SWSW; Sec. 36: E1/2NW		Scale 1:15,840		

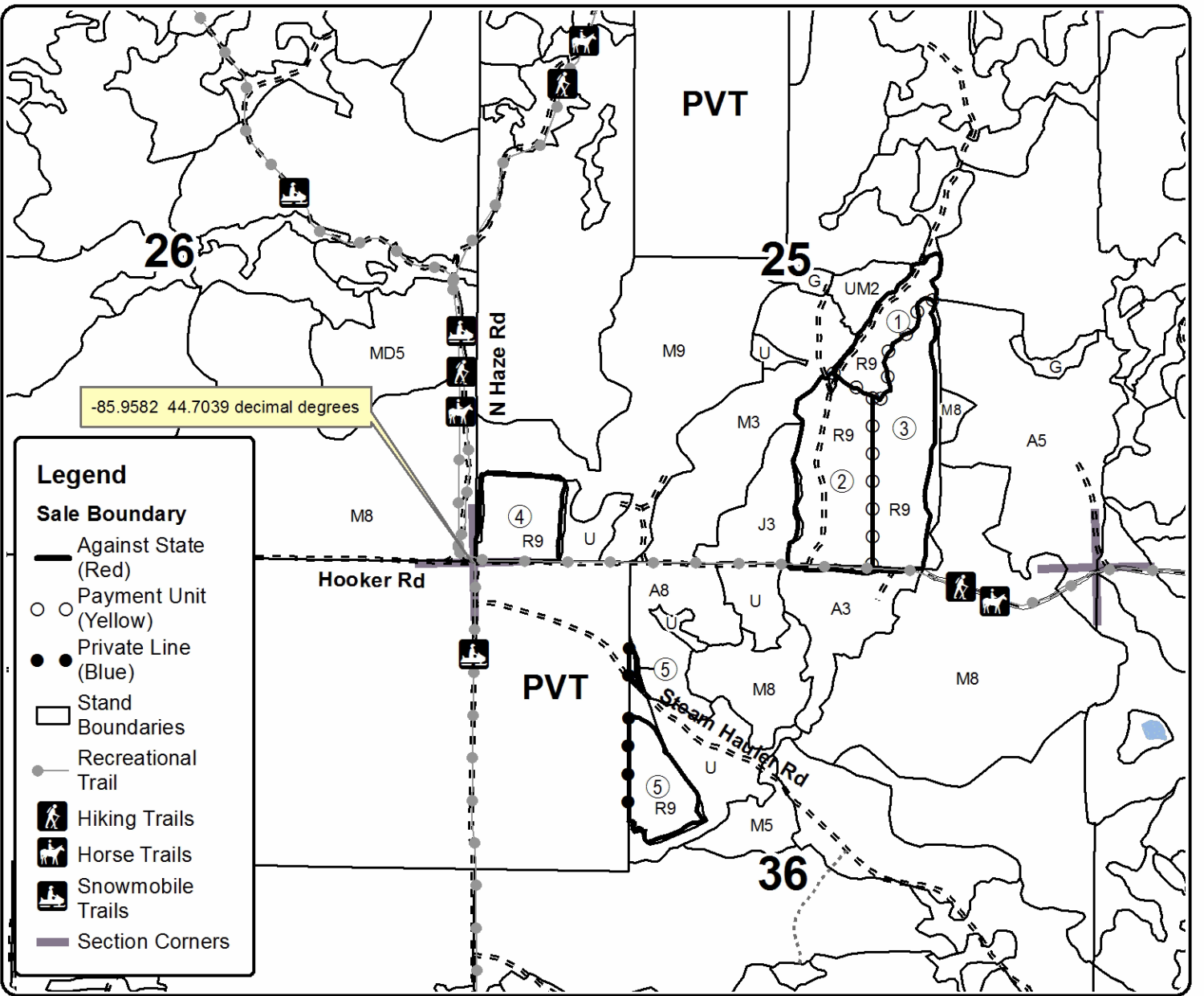
Cover Type				Density	
A = Aspen	H = Hemlock	N = Marsh	U = Upland Brush	0 = Non Stocked	5 = Pole Timber Medium
B = Paper Birch	J = Jack Pine	O = Oak	UM = Upland Mixed	1 = Seedling Sapling Poor	6 = Pole Timber Well
C = Cedar	L = Lowland Brush	P = Lowland Poplar	V = Bog or Marsh	2 = Seedling Sapling Medium	7 = Saw Timber Poor
D = Treed Bog	LM = Lowland Mixed	Q = Mixed Swamp Conifer	W = White Pine	3 = Seedling Sapling Well	8 = Saw Timber Medium
E = Swamp Hdwoods	M = Mpl, Bch, Brch	R = Red Pine	X = Non Stocked	4 = Pole Timber Poor	9 = Saw Timber Well
F = Spruce Fir	MC = Mixed Conifer	S = Black Spruce	Z = Water		
G = Grass	MD = Mixed Deciduous	T = Tamarack			

PU	Acres	PU	Acres
1	9.6	4	12.0
2	24.1	5	10.2
3	22.3		

## Hook Set Red Pine

### Compartment 9

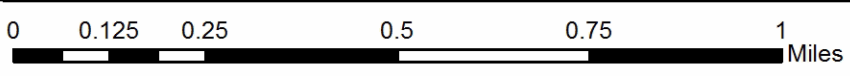
78.2 acres



**Legend**

**Sale Boundary**

- Against State (Red)
- Payment Unit (Yellow)
- Private Line (Blue)
- Stand Boundaries
- Recreational Trail
- 🚶 Hiking Trails
- 🐎 Horse Trails
- 🚙 Snowmobile Trails
- Section Corners



Strombolis Mix (61-078-17)  
; Grand Traverse COUNTY

In response to the notice of sale to be held 4:00 p.m. (local time) on January 18, 2018, I am hereby submitting my sealed bid (firm offer) for the following forest products to be cut. Bids for individual species must be at or above the advertised price. All non-responsive bid forms may be rejected.

<u>PRODUCTS &amp; SPECIES</u>	<u>ESTIMATED VOLUME*</u>	<u>ADVERTISED PRICE</u>	<u>BID PRICE/UNIT</u>
<b>Sawtimber</b>			
B. T. Aspen	11.10 MBF	\$ 109.00/MBF	\$ _____
Red Maple	9.70 MBF	\$ 128.00/MBF	\$ _____
Red Oak	67.50 MBF	\$ 204.00/MBF	\$ _____
White Oak	42.40 MBF	\$ 52.00/MBF	\$ _____
<b>Pulpwood</b>			
B. T. Aspen	34.00 Cords	\$ 20.75/Cord	\$ _____
Jack Pine	1.00 Cords	\$ 15.05/Cord	\$ _____
Mixed Oak	555.00 Cords	\$ 17.15/Cord	\$ _____
Red Maple	101.00 Cords	\$ 20.50/Cord	\$ _____

\*The volumes are statistically estimated within plus (+) or minus (-) 12.37 percent. These estimated volumes are final and not subject to adjustment. Prospective bidders are urged to examine this timber and to make their own estimates of quantity and quality.

I understand that any or all bids may be rejected. All bids must be signed and all bid items must be bid or the bid form may be rejected. I also understand that consideration and awarding a contract will be based upon my past performance and ability to complete the contract based upon equipment and staffing subject to my control.

FEDERAL ID: \_\_\_\_\_ - \_\_\_\_\_ or SOCIAL SECURITY NUMBER: \_\_\_\_\_ - \_\_\_\_\_ - \_\_\_\_\_

Company or individual bidding: \_\_\_\_\_

Company representative's name: \_\_\_\_\_

Address: \_\_\_\_\_

City: \_\_\_\_\_ State: \_\_\_\_\_ Zip: \_\_\_\_\_

IF AVAILABLE, PLEASE PLACE THE PERSONALIZED LABEL FROM YOUR PROSPECTUS IN THE ABOVE BOX.

Individual or company representative's signature: \_\_\_\_\_ Date: \_\_\_\_\_

Phone number : \_\_\_\_\_ Email (optional): \_\_\_\_\_

**THE WINNING BIDDER MUST COMPLETE THE VERIFICATION OF WORKER'S DISABILITY COMPENSATION ACT COMPLIANCE (ON REVERSE SIDE IF DOUBLE SIDED) WITHIN 21 DAYS OF SALE AWARD DATE**



FOR DEPARTMENT USE ONLY	
Sale Number (XX - XXX - XX - XX)	
Forest Management Unit:	

# TIMBER SALE VERIFICATION OF WORKER'S DISABILITY COMPENSATION ACT COMPLIANCE

As required by Act 317, P.A. 1969 (Worker's Compensation) and  
Part 5 of Act 451 of 1994, as amended.

## VERIFICATION OF WORKER'S DISABILITY COMPENSATION ACT COMPLIANCE

- This verification must be completed and submitted within 21 days of contract award and prior to the issuance of the timber sale contract.
- In addition, if boxes 2B or 2C are checked, then Notice of Exclusion or Certificate of Insurance must be submitted within twenty-one (21) days of the contract award and prior to the issuance of the timber sale contract.
- All information must be typed or printed except for written signatures.

Please Check Appropriate Categories:

1. My business is organized as (you **must** check one of the boxes below):
  - A.  Sole Proprietorship (individual)
  - B.  Partnership
  - C.  Corporation
2. You **must** check one of the boxes below:
  - A.  I certify my business is a sole proprietorship and it has no employees but the sole proprietor. I am not subject to the Worker's Compensation Laws.
  - B.  I certify my business has satisfied its obligation to the Worker's Compensation Act through the use of an approved Notice of Exclusion (BWC-337, Rev. 5/96). I will provide a copy of the Notice of Exclusion within 21 days of the contract award. (For questions or a copy of the BWC-337, please call the Worker's Compensation Bureau at 517-322-1195).
  - C.  I certify my business has a Worker's Compensation Policy. I will provide an original Certificate of Insurance within twenty-one (21) days of the contract award.
3. If you have checked item 2(A) or 2(B), you **must** indicate the number of **both** full-time and part-time employees, other than yourself, including family members and active partners (if none, you must enter "0").

\_\_\_\_\_ Full-time Employees

\_\_\_\_\_ Part-time Employees

Name of Business		Federal ID (or) Social Security No.	
Address		Telephone (       )	
City	State	ZIP	

*I hereby certify that the above information is true and correct. I agree to notify the Michigan DNR of any changes that occur in factors affecting my coverage during any of my present and future operations.*

\_\_\_\_\_  
Signature of Owner or Authorized Representative

\_\_\_\_\_  
Title

\_\_\_\_\_  
Date

Please complete the "SEALED BID" information on the next page

Scout's Honor Hardwood (61-079-17)  
; Benzie COUNTY

In response to the notice of sale to be held 4:00 p.m. (local time) on January 18, 2018, I am hereby submitting my sealed bid (firm offer) for the following forest products to be cut. Bids for individual species must be at or above the advertised price. All non-responsive bid forms may be rejected.

<u>PRODUCTS &amp; SPECIES</u>	<u>ESTIMATED VOLUME*</u>	<u>ADVERTISED PRICE</u>	<u>BID PRICE/UNIT</u>
<b>Sawtimber</b>			
Basswood	57.90 MBF	\$ 115.00/MBF	\$ _____
Beech	9.60 MBF	\$ 93.00/MBF	\$ _____
Black Cherry	0.90 MBF	\$ 187.00/MBF	\$ _____
Mixed Aspen	38.40 MBF	\$ 109.00/MBF	\$ _____
Red Maple	0.70 MBF	\$ 128.00/MBF	\$ _____
Red Oak	1.00 MBF	\$ 204.00/MBF	\$ _____
Sugar Maple	56.60 MBF	\$ 280.00/MBF	\$ _____
<b>Pulpwood</b>			
Basswood	115.00 Cords	\$ 29.80/Cord	\$ _____
Mixed Aspen	211.00 Cords	\$ 20.75/Cord	\$ _____
Mixed Hardwood	405.00 Cords	\$ 20.50/Cord	\$ _____
Red Oak	6.00 Cords	\$ 17.15/Cord	\$ _____

\*The volumes are statistically estimated within plus (+) or minus (-) 12.06 percent. These estimated volumes are final and not subject to adjustment. Prospective bidders are urged to examine this timber and to make their own estimates of quantity and quality.

I understand that any or all bids may be rejected. All bids must be signed and all bid items must be bid or the bid form may be rejected. I also understand that consideration and awarding a contract will be based upon my past performance and ability to complete the contract based upon equipment and staffing subject to my control.

FEDERAL ID: \_\_\_\_\_ or SOCIAL SECURITY NUMBER: \_\_\_\_\_

Company or individual bidding: \_\_\_\_\_

Company representative's name: \_\_\_\_\_

Address: \_\_\_\_\_

City: \_\_\_\_\_ State: \_\_\_\_\_ Zip: \_\_\_\_\_

IF AVAILABLE, PLEASE PLACE THE PERSONALIZED LABEL FROM YOUR PROSPECTUS IN THE ABOVE BOX.

Individual or company representative's signature: \_\_\_\_\_ Date: \_\_\_\_\_

Phone number : \_\_\_\_\_ Email (optional): \_\_\_\_\_

**THE WINNING BIDDER MUST COMPLETE THE VERIFICATION OF WORKER'S DISABILITY COMPENSATION ACT COMPLIANCE (ON REVERSE SIDE IF DOUBLE SIDED) WITHIN 21 DAYS OF SALE AWARD DATE**



FOR DEPARTMENT USE ONLY	
Sale Number (XX – XXX – XX – XX)	
Forest Management Unit:	

## TIMBER SALE VERIFICATION OF WORKER'S DISABILITY COMPENSATION ACT COMPLIANCE

As required by Act 317, P.A. 1969 (Worker's Compensation) and  
Part 5 of Act 451 of 1994, as amended.

- VERIFICATION OF WORKER'S DISABILITY COMPENSATION ACT COMPLIANCE**
- This verification must be completed and submitted within 21 days of contract award and prior to the issuance of the timber sale contract.
  - In addition, if boxes 2B or 2C are checked, then Notice of Exclusion or Certificate of Insurance must be submitted within twenty-one (21) days of the contract award and prior to the issuance of the timber sale contract.
  - All information must be typed or printed except for written signatures.

Please Check Appropriate Categories:

1. My business is organized as (you **must** check one of the boxes below):
  - A.  Sole Proprietorship (individual)
  - B.  Partnership
  - C.  Corporation
2. You **must** check one of the boxes below:
  - A.  I certify my business is a sole proprietorship and it has no employees but the sole proprietor. I am not subject to the Worker's Compensation Laws.
  - B.  I certify my business has satisfied its obligation to the Worker's Compensation Act through the use of an approved Notice of Exclusion (BWC-337, Rev. 5/96). I will provide a copy of the Notice of Exclusion within 21 days of the contract award. (For questions or a copy of the BWC-337, please call the Worker's Compensation Bureau at 517-322-1195).
  - C.  I certify my business has a Worker's Compensation Policy. I will provide an original Certificate of Insurance within twenty-one (21) days of the contract award.
3. If you have checked item 2(A) or 2(B), you **must** indicate the number of **both** full-time and part-time employees, other than yourself, including family members and active partners (if none, you must enter "0").

\_\_\_\_\_ Full-time Employees

\_\_\_\_\_ Part-time Employees

Name of Business		Federal ID (or) Social Security No.	
Address		Telephone (       )	
City	State	ZIP	

*I hereby certify that the above information is true and correct. I agree to notify the Michigan DNR of any changes that occur in factors affecting my coverage during any of my present and future operations.*

\_\_\_\_\_  
Signature of Owner or Authorized Representative

\_\_\_\_\_  
Title

\_\_\_\_\_  
Date

Please complete the "SEALED BID" information on the next page



Ransom Lake Mix (61-080-17)  
; Benzie COUNTY

In response to the notice of sale to be held 4:00 p.m. (local time) on January 18, 2018, I am hereby submitting my sealed bid (firm offer) for the following forest products to be cut. Bids for individual species must be at or above the advertised price. All non-responsive bid forms may be rejected.

<u>PRODUCTS &amp; SPECIES</u>	<u>ESTIMATED VOLUME*</u>	<u>ADVERTISED PRICE</u>	<u>BID PRICE/UNIT</u>
<b>Sawtimber</b>			
B. T. Aspen	117.50 MBF	\$ 109.00/MBF	\$ _____
Beech	9.70 MBF	\$ 93.00/MBF	\$ _____
Red Maple	41.60 MBF	\$ 128.00/MBF	\$ _____
Red Oak	22.30 MBF	\$ 204.00/MBF	\$ _____
Red Pine	37.30 MBF	\$ 122.00/MBF	\$ _____
White Oak	3.00 MBF	\$ 52.00/MBF	\$ _____
White Pine	50.90 MBF	\$ 69.00/MBF	\$ _____
<b>Pulpwood</b>			
B. T. Aspen	770.00 Cords	\$ 20.75/Cord	\$ _____
Beech	34.00 Cords	\$ 20.50/Cord	\$ _____
Red Maple	258.00 Cords	\$ 20.50/Cord	\$ _____
Red Oak	96.00 Cords	\$ 17.15/Cord	\$ _____
Red Pine	145.00 Cords	\$ 43.65/Cord	\$ _____
White Oak	13.00 Cords	\$ 17.15/Cord	\$ _____
White Pine	261.00 Cords	\$ 14.05/Cord	\$ _____

\*The volumes are statistically estimated within plus (+) or minus (-) 9.09 percent. These estimated volumes are final and not subject to adjustment. Prospective bidders are urged to examine this timber and to make their own estimates of quantity and quality.

I understand that any or all bids may be rejected. All bids must be signed and all bid items must be bid or the bid form may be rejected. I also understand that consideration and awarding a contract will be based upon my past performance and ability to complete the contract based upon equipment and staffing subject to my control.

FEDERAL ID: \_\_\_\_\_ or SOCIAL SECURITY NUMBER: \_\_\_\_\_

Company or individual bidding: \_\_\_\_\_

Company representative's name: \_\_\_\_\_

Address: \_\_\_\_\_

City: \_\_\_\_\_ State: \_\_\_\_\_ Zip: \_\_\_\_\_

IF AVAILABLE, PLEASE PLACE THE PERSONALIZED LABEL FROM YOUR PROSPECTUS IN THE ABOVE BOX.

Individual or company representative's signature: \_\_\_\_\_ Date: \_\_\_\_\_

Phone number : \_\_\_\_\_ Email (optional): \_\_\_\_\_

**THE WINNING BIDDER MUST COMPLETE THE VERIFICATION OF WORKER'S DISABILITY COMPENSATION ACT COMPLIANCE (ON REVERSE SIDE IF DOUBLE SIDED) WITHIN 21 DAYS OF SALE AWARD DATE**



<b>FOR DEPARTMENT USE ONLY</b>
Sale Number (XX - XXX - XX - XX)
Forest Management Unit:

## TIMBER SALE VERIFICATION OF WORKER'S DISABILITY COMPENSATION ACT COMPLIANCE

*As required by Act 317, P.A. 1969 (Worker's Compensation) and  
Part 5 of Act 451 of 1994, as amended.*

### VERIFICATION OF WORKER'S DISABILITY COMPENSATION ACT COMPLIANCE

- This verification must be completed and submitted within 21 days of contract award and prior to the issuance of the timber sale contract.
- In addition, if boxes 2B or 2C are checked, then Notice of Exclusion or Certificate of Insurance must be submitted within twenty-one (21) days of the contract award and prior to the issuance of the timber sale contract.
- All information must be typed or printed except for written signatures.

Please Check Appropriate Categories:

1. My business is organized as (you **must** check one of the boxes below):
  - A.  Sole Proprietorship (individual)
  - B.  Partnership
  - C.  Corporation
2. You **must** check one of the boxes below:
  - A.  I certify my business is a sole proprietorship and it has no employees but the sole proprietor. I am not subject to the Worker's Compensation Laws.
  - B.  I certify my business has satisfied its obligation to the Worker's Compensation Act through the use of an approved Notice of Exclusion (BWC-337, Rev. 5/96). I will provide a copy of the Notice of Exclusion within 21 days of the contract award. (For questions or a copy of the BWC-337, please call the Worker's Compensation Bureau at 517-322-1195).
  - C.  I certify my business has a Worker's Compensation Policy. I will provide an original Certificate of Insurance within twenty-one (21) days of the contract award.
3. If you have checked item 2(A) or 2(B), you **must** indicate the number of **both** full-time and part-time employees, other than yourself, including family members and active partners (if none, you must enter "0").

\_\_\_\_\_ Full-time Employees

\_\_\_\_\_ Part-time Employees

Name of Business		Federal ID (or) Social Security No.	
Address		Telephone (       )	
City	State	ZIP	

*I hereby certify that the above information is true and correct. I agree to notify the Michigan DNR of any changes that occur in factors affecting my coverage during any of my present and future operations.*

\_\_\_\_\_  
Signature of Owner or Authorized Representative

\_\_\_\_\_  
Title

\_\_\_\_\_  
Date

**Please complete the "SEALED BID" information on the next page**

Hook Set Red Pine (61-081-17)  
; Benzie COUNTY

In response to the notice of sale to be held 4:00 p.m. (local time) on January 18, 2018, I am hereby submitting my sealed bid (firm offer) for the following forest products to be cut. Bids for individual species must be at or above the advertised price. All non-responsive bid forms may be rejected.

<u>PRODUCTS &amp; SPECIES</u>	<u>ESTIMATED VOLUME*</u>	<u>ADVERTISED PRICE</u>	<u>BID PRICE/UNIT</u>
<b>Sawtimber</b>			
B. T. Aspen	7.00 MBF	\$ 109.00/MBF	\$ _____
Red Pine	1,055.70 MBF	\$ 122.00/MBF	\$ _____
White Pine	1.80 MBF	\$ 69.00/MBF	\$ _____
<b>Pulpwood</b>			
B. T. Aspen	28.00 Cords	\$ 20.75/Cord	\$ _____
Red Pine	788.00 Cords	\$ 43.65/Cord	\$ _____
White Pine	7.00 Cords	\$ 14.05/Cord	\$ _____

\*The volumes are statistically estimated within plus (+) or minus (-) 14.21 percent. These estimated volumes are final and not subject to adjustment. Prospective bidders are urged to examine this timber and to make their own estimates of quantity and quality.

I understand that any or all bids may be rejected. All bids must be signed and all bid items must be bid or the bid form may be rejected. I also understand that consideration and awarding a contract will be based upon my past performance and ability to complete the contract based upon equipment and staffing subject to my control.

FEDERAL ID: \_\_\_\_\_ or SOCIAL SECURITY NUMBER: \_\_\_\_\_

Company or individual bidding: \_\_\_\_\_

Company representative's name: \_\_\_\_\_

Address: \_\_\_\_\_

City: \_\_\_\_\_ State: \_\_\_\_\_ Zip: \_\_\_\_\_

IF AVAILABLE, PLEASE PLACE THE PERSONALIZED LABEL FROM YOUR PROSPECTUS IN THE ABOVE BOX.

Individual or company representative's signature: \_\_\_\_\_ Date: \_\_\_\_\_

Phone number : \_\_\_\_\_ Email (optional): \_\_\_\_\_

**THE WINNING BIDDER MUST COMPLETE THE VERIFICATION OF WORKER'S DISABILITY COMPENSATION ACT COMPLIANCE (ON REVERSE SIDE IF DOUBLE SIDED) WITHIN 21 DAYS OF SALE AWARD DATE**



FOR DEPARTMENT USE ONLY	
Sale Number (XX - XXX - XX - XX)	
Forest Management Unit:	

## TIMBER SALE VERIFICATION OF WORKER'S DISABILITY COMPENSATION ACT COMPLIANCE

As required by Act 317, P.A. 1969 (Worker's Compensation) and  
Part 5 of Act 451 of 1994, as amended.

### VERIFICATION OF WORKER'S DISABILITY COMPENSATION ACT COMPLIANCE

- This verification must be completed and submitted within 21 days of contract award and prior to the issuance of the timber sale contract.
- In addition, if boxes 2B or 2C are checked, then Notice of Exclusion or Certificate of Insurance must be submitted within twenty-one (21) days of the contract award and prior to the issuance of the timber sale contract.
- All information must be typed or printed except for written signatures.

Please Check Appropriate Categories:

1. My business is organized as (you **must** check one of the boxes below):
  - A.  Sole Proprietorship (individual)
  - B.  Partnership
  - C.  Corporation
2. You **must** check one of the boxes below:
  - A.  I certify my business is a sole proprietorship and it has no employees but the sole proprietor. I am not subject to the Worker's Compensation Laws.
  - B.  I certify my business has satisfied its obligation to the Worker's Compensation Act through the use of an approved Notice of Exclusion (BWC-337, Rev. 5/96). I will provide a copy of the Notice of Exclusion within 21 days of the contract award. (For questions or a copy of the BWC-337, please call the Worker's Compensation Bureau at 517-322-1195).
  - C.  I certify my business has a Worker's Compensation Policy. I will provide an original Certificate of Insurance within twenty-one (21) days of the contract award.
3. If you have checked item 2(A) or 2(B), you **must** indicate the number of **both** full-time and part-time employees, other than yourself, including family members and active partners (if none, you must enter "0").

\_\_\_\_\_ Full-time Employees

\_\_\_\_\_ Part-time Employees

Name of Business		Federal ID (or) Social Security No.	
Address		Telephone (       )	
City	State	ZIP	

*I hereby certify that the above information is true and correct. I agree to notify the Michigan DNR of any changes that occur in factors affecting my coverage during any of my present and future operations.*

\_\_\_\_\_  
Signature of Owner or Authorized Representative

\_\_\_\_\_  
Title

\_\_\_\_\_  
Date

Please complete the "SEALED BID" information on the next page