



**DEPARTMENT OF NATURAL RESOURCES  
STATE OF MICHIGAN**

**TIMBER SALE PROSPECTUS #6090**

SCHEDULED SALE DATE AND TIME: 8:30 a.m. (local time) on February 14, 2018.

LOCATION: CRYSTAL FALLS MGT UNIT, 1420 US-2 WEST, CRYSTAL FALLS, MI 49920.

PROSPECTUS NOTE: The bidder is advised to inspect the sale area and review the location, estimated volumes, operating costs and contract terms of proposed sales. Please be aware that some landowners may request 60 days or more notice for access across their land.

Notice is hereby given that bids will be received by the Unit Manager, CRYSTAL FALLS MANAGEMENT UNIT, for certain timber on the following described lands:

Hipster Hardwoods (12-001-17)

Dickinson County, Advertised Price \$350,596.85, 345.7 Acres, Aspen, Hardwood.

SALE NOTE: Installation of culverts is required before hauling. DNR will obtain DEQ permits. The culverts and installation will be the responsibility of the Purchaser. No harvesting between April 1 - July 15 due to bark slip and oak wilt considerations. Recommend very dry or frozen ground conditions in Payment Unit 9.

T-Bone SBW (12-020-17)

Dickinson County, Advertised Price \$70,860.20, 92.4 Acres, Aspen, Hardwood.

SALE NOTE: A recreation site such as a trail, pathway, or campground is within the sale area or the vicinity. Certain restrictions/specifications may be applicable including time restrictions.

Mucho Pine (12-027-17)

Dickinson County, Advertised Price \$525,690.80, 342.4 Acres, Aspen, Red Pine.

SALE NOTE: A small area in the NE part of Payment Unit 16 was not marked to protect a vernal pond. Cutting and skidding are not permitted during the period of April 1 to July 15 due to bark slip.

581 SBW (12-029-17)

Dickinson County, Advertised Price \$36,250.40, 48.1 Acres, Aspen, Spruce/Fir/Tamarack.

SALE NOTE: This is a SBW sale and has deteriorating timber. See spec 7.5.1 for details.

A recreation site such as a trail, pathway, or campground is within the sale area or the vicinity. Certain restrictions/specifications may be applicable including time restrictions.

West Branch Pine (12-031-17)

Dickinson County, Advertised Price \$105,874.25, 60.1 Acres, Red Pine, White Pine.

## BID INSTRUCTIONS (VER. 11/28/2017):

### 1. Scheduled Bid Location, Date, and Time (2/11)

Bids must be received by the Unit Manager, CRYSTAL FALLS OFFICE, 1420 US-2 WEST, CRYSTAL FALLS, MI 49920, no later than 8:30 a.m. (local time) on February 14, 2018. For further information concerning this sale, contact Dan McNamee at 906-875-6622.

### 2. Bidder's Qualifications (5/16)

Purchaser shall obtain workers compensation insurance to cover claims under Michigan's Worker's Disability Compensation Act of 1969 or similar employee benefit act of any other state applicable to an employee. If all or part of a timber sale was prepared by a private contractor, the contractor and that contractor's company are not permitted to bid on the timber sale contract. Bids will not be accepted from individuals or companies appearing on the DNR/FRD No-Bid List. This list contains the names of purchasers who previously failed to execute a contract within 21-days or who have a history of poor performance.

### 3. Preparation of Sealed Bids (5/16)

Bid Forms may be completed online thru Michigan DNR Timber Sale Online Bidding (OLB) at [www.michigan.gov/timberbidding](http://www.michigan.gov/timberbidding) or by completing the hardcopy Bid Form found in the Timber Sale Prospectus. Hardcopy Bid Forms shall be manually signed in ink. Registration in OLB is considered your 'signature' for all bids submitted thru that system. Bid prices must be entered for each species and product in the Bid Price column for all material subject to bidding and all fill-in blanks must be completed. If erasures or other changes appear on the hardcopy Bid Form, each erasure or change must be initialed by the person signing the bid.

### 4. Submission of Sealed Bids (5/16)

Bid forms may be obtained from the Unit Manager or thru OLB. Bids may be submitted hardcopy or thru OLB. All hardcopy bids must be submitted on the bid form and in an envelope clearly identified as described in this section. NOTE: Only one bid form per bid envelope. Sealed bids must be submitted to the Unit office designated in the prospectus and must be submitted at or prior to the time established in the prospectus. The envelope should show on the outside (a) the sale name or number and (b) the date and time of bid opening, as shown in the prospectus. Bids received after the time specified in the sale prospectus are late bids and will be rejected.

It is possible for a bidder to submit multiple bids on a single sale. For example, a bid may be submitted hardcopy and a bid may be submitted thru OLB. Or, two bidders from the same company could both submit bids on the same sale. If this were to happen, the State would accept all bids received and award the contract accordingly. All bidding and contractual requirements would apply to all bids received.

### 5. Public Opening of Sealed Bids (7/16)

If conditions permit, the sealed bids will be publicly opened and posted at the time and place set in the prospectus.

If a bidder, present at a bid opening, has submitted bids on more than one sale, that bidder may withdraw their unopened bid envelopes or announce the withdrawal of their online bid after being declared the successful bidder on one sale.

### 6. Award of Contract (1/11)

Award of the contract will be made to the Bidder whose bid, conforming to the prospectus, is most advantageous to the State of Michigan on the basis of total value at rates bid for the estimated quantities. The State reserves the right to reject any bid or waive any minor irregularity in bids received. A written award mailed (or otherwise furnished) to the successful Bidder shall be deemed to result in a binding contract without further action by either party.

### 7. Down Payment (1/11)

The Bidder to whom award is made must make a down payment within 21 days of the sale award. The amount of the down payment will be calculated as shown in the Bond and Payment Schedule of this prospectus. Only cash may be used to meet this requirement.

### 8. Performance Security (1/11)

As guarantee of faithful performance, a cash bond, certificate of deposit, surety bond or irrevocable letter of credit (LOC) is required within 21 days of the sale award. The amount of the performance security is shown in the Bond and

Payment Schedule of this prospectus. If an LOC or surety is used, the coverage must extend for at least 6 months beyond the contract expiration.

#### 9. Timber Sale Contract (11/17)

Additional conditions and requirements common to all timber sales are listed on the timber sale contract (R4031) and are available on line at [www.michigan.gov/timber](http://www.michigan.gov/timber). Contact the Unit Manager for additional information or a sample contract. Within 21 days of the date of the award letter, the bidder must sign the contract and provide the required down payment, performance security, and verification of worker's disability compensation. The down payment and performance security shall be in accordance with the provisions of the timber sale contract, in the sums stated in this prospectus. If these actions are not taken, then the Bidder, the Bidder's corporation, and the corporation's principals may not be permitted to bid on State timber sales for a period of 1 year. In addition, the Bidder certifies that if awarded this contract, the Bidder will complete the timber sale contract in accordance with its terms and any modifications thereof including requirements to purchase, cut, and remove the included timber by the expiration date.

Payment Unit values in the State Forest Timber Sale Contract are calculated based on the advertised value of the Payment Unit as a percentage of the total advertised value of the contract. The advertised value of each Payment Unit is given in the Description of Timber by Payment Unit table on the Timber Sale Information page. For example, if the value of Payment Unit 1 is advertised as \$1,500 and the total Timber Sale value is advertised as \$10,000, the contract price for Payment Unit 1 will be 15% of the total bid price ( $\$1,500/\$10,000 * 100$ ).

#### 10. Disclaimer of Estimates and Bidder's Warranty of Inspection (7/16)

Before submitting this bid, the Bidder is advised and cautioned to inspect the sale area, review the requirements of the sale contract, and take other steps as may be reasonably necessary to ascertain the location, estimated volumes, construction estimates, and operating costs of the proposed sale. Failure to do so will not relieve the Bidder from responsibility for completing the contract.

The Bidder warrants that this bid is submitted solely on the basis of the Bidder's examination and inspection of the quality and quantity of the timber offered for sale and the Bidder's opinion of the value thereof and the costs of recovery. No reliance should be placed on the State of Michigan's estimates of timber quality, quantity or costs of recovery. Bidder further acknowledges that the State of Michigan: (i) expressly disclaims any warranty of fitness of timber for any purpose; (ii) offers this timber as is without any warranty of quality (merchantability) or quantity and (iii) expressly disclaims any warranty as to the quantity or quality of timber sold.

#### 11. Certification and Chain-of-Custody (10/14)

Unless otherwise indicated in the contract under section 7 – Other Conditions of the Sale Specific Conditions & Requirements, the area encompassed by this timber sale is certified to the standards of the Forest Stewardship Council (FSC) - Certificate #SCS-FM/COC-00090N and the Sustainable Forestry Initiative (SFI) - Certificate # NSF-SFIS-5Y031-SF5. Forest products from this sale may be delivered to the mill as "FSC 100% and / or SFI certified" as long as the contractor hauling the forest products is chain-of-custody (COC) certified or covered under a COC certificate from the destination mill. The purchaser is responsible for maintaining COC after leaving the sale area.

#### 12. Good Neighbor Authority (GNA) Requirements (7/16)

If the name of this timber sales contains the acronym GNA, it is authorized by the Good Neighbor Authority (GNA) and covered by various agreements between the U.S. Forest Service and the State. The timber sale occurs on federal land and the following conditions apply:

GNA contracts on US Forest Service land will not be awarded to purchasers on the Federal list of excluded parties. The System for Award Management (SAM) will be checked for active excluded parties prior to award of contract. In addition, the Bidder to whom award is made must complete an Assurance Regarding Felony Conviction or Tax Delinquent Status for Corporate Applicants (AD-3031).

#### 13. Good Neighbor Authority (GNA) Requirements, con't (9/16)

Bidder certifies, by signing this bid form, that to the best of Bidder's knowledge that the following representations are accurate and complete.

a. That the Bidder and its principals are not presently debarred, suspended, proposed for debarment, declared ineligible, or voluntary excluded from timber sales (covered transactions) by any Federal department or agency.

b. That the Bidder and its principals have not within a 3-year period preceding this bid been convicted of or had a civil judgment rendered against them for commission of fraud or a criminal offense in connection with obtaining, attempting to obtain, or performing a public (Federal, State, or local) transaction or contract under a public transaction; violation of Federal or State antitrust statutes or commission of embezzlement, theft, forgery, bribery, falsification or destruction of records, making false statements, or receiving stolen property.

c. That the Bidder and its principals are not presently indicted for or otherwise criminally or civilly charged by a governmental entity (Federal, State, or local) with commission of any of the offenses enumerated in paragraph b of this certification.

d. That the Bidder and its principals have not within a 3-year period preceding this bid had one or more public transactions (Federal, State, or local) terminated for breach or default of a timber or forest product contract.

Bidders that cannot certify this requirement, in whole or in part, shall submit an explanation with their bid.

KEITH CREAGH

Director

# TIMBER SALE INFORMATION

## Hipster Hardwoods (12-001-17)

Dickinson County (Advertised Price \$350,596.85)

SALE NOTE: Installation of culverts is required before hauling. DNR will obtain DEQ permits. The culverts and installation will be the responsibility of the Purchaser. No harvesting between April 1 - July 15 due to bark slip and oak wilt considerations. Recommend very dry or frozen ground conditions in Payment Unit 9.

A timber sale contract for this lump sum, sealed bid timber sale will be awarded to the responsible bidder offering the highest sealed bid price. Bids must be at or above the following advertised price for each species:

<u>PRODUCTS &amp; SPECIES</u>	<u>ESTIMATED UNITS*</u>	<u>ADVERTISED PRICE</u>
Sawtimber		
Basswood	700.30 MBF	\$ 239.00 / MBF
Red Oak	12.50 MBF	\$ 155.00 / MBF
Sugar Maple	150.80 MBF	\$ 453.00 / MBF
White Ash	30.70 MBF	\$ 90.00 / MBF
Pulpwood		
Balsam Fir	62.00 Cords	\$ 20.60 / Cord
Basswood	1,144.00 Cords	\$ 12.00 / Cord
Mixed Hardwood	1,756.00 Cords	\$ 24.85 / Cord
Mixed Spruce	54.00 Cords	\$ 24.55 / Cord
Quaking Aspen	1,337.00 Cords	\$ 35.80 / Cord
Tamarack	181.00 Cords	\$ 13.15 / Cord

\* The total volume is statistically estimated within plus (+) or minus (-) 7.79 percent. The estimated units are final and not subject to adjustment. Prospective bidders are urged to examine this timber and to make their own estimates of quantity and quality.

### **BOND AND PAYMENT SCHEDULE:**

1. A bond in the amount of \$28,048.00 to insure faithful performance of the conditions of the contract will be deposited by the successful bidder within 21 days of the sale award.
2. Cutting in any sale or unit without the required advance payment would be considered a trespass.
3. Total payment must be paid in advance or according to the following schedule:
  - (a) Ten percent (10%) of the sale value must be paid within 21 days of the sale award.
  - (b) The 10% down payment will be credited towards the first unit cut.
4. If no cutting takes place, the 10% down payment will not be refunded.
5. Operations on the contract issued will terminate on 06/30/2021.

**Description of Timber by Payment Unit (PU)**

PU	MARKET GROUP	PRODUCT	QUANTITY	UNIT	ACRES	ADVERTISE PRICE
1	Basswood	Sawtimber	37.6	MBF	8.7	\$11,007.45
	Red Oak		1.2	MBF		
	Basswood	Pulpwood	126.0	Cords		
	Mixed Hardwood		13.0	Cords		
	<i>Red Oak</i>		8.0	<i>Cords</i>		
	<i>Sugar Maple</i>		5.0	<i>Cords</i>		
2	Basswood	Sawtimber	238.0	MBF	55.1	\$70,387.60
	Sugar Maple		3.5	MBF		
	White Ash		30.7	MBF		
	Balsam Fir	Pulpwood	1.0	Cords		
	Basswood		353.0	Cords		
	Mixed Hardwood		190.0	Cords		
	<i>Red Maple</i>		10.0	<i>Cords</i>		
	<i>Sugar Maple</i>		104.0	<i>Cords</i>		
	<i>White Ash</i>		76.0	<i>Cords</i>		
	Quaking Aspen		5.0	Cords		
3	Basswood	Sawtimber	3.2	MBF	19.6	\$17,713.75
	Sugar Maple		2.6	MBF		
	Balsam Fir	Pulpwood	13.0	Cords		
	Basswood		28.0	Cords		
	Mixed Hardwood		205.0	Cords		
	<i>Red Maple</i>	<i>Sawtimber</i>	3.0	<i>MBF</i>		
	<i>Yellow Birch</i>		1.0	<i>MBF</i>		
	<i>Black Ash</i>	<i>Pulpwood</i>	35.0	<i>Cords</i>		
	<i>Paper Birch</i>		3.0	<i>Cords</i>		
	<i>Red Maple</i>		67.0	<i>Cords</i>		
	<i>Sugar Maple</i>		89.0	<i>Cords</i>		
	<i>Yellow Birch</i>		3.0	<i>Cords</i>		
	Mixed Spruce		2.0	Cords		
	<i>White Spruce</i>		2.0	<i>Cords</i>		
	Quaking Aspen		280.0	Cords		
4	Basswood	Sawtimber	0.9	MBF	4.8	\$7,903.55
	Sugar Maple		1.8	MBF		
	Basswood	Pulpwood	5.0	Cords		
	Mixed Hardwood		40.0	Cords		
	<i>Red Maple</i>	<i>Sawtimber</i>	0.9	<i>MBF</i>		
	<i>Black Ash</i>	<i>Pulpwood</i>	7.0	<i>Cords</i>		
	<i>Red Maple</i>		19.0	<i>Cords</i>		
	<i>Sugar Maple</i>		12.0	<i>Cords</i>		
	Mixed Spruce		11.0	Cords		
	<i>White Spruce</i>		11.0	<i>Cords</i>		
Quaking Aspen		155.0	Cords			
5	Basswood	Sawtimber	84.6	MBF	42.2	\$42,147.25
	Red Oak		2.3	MBF		
	Sugar Maple		28.7	MBF		
	Basswood	Pulpwood	123.0	Cords		
	Mixed Hardwood		223.0	Cords		
	<i>Black Ash</i>		8.0	<i>Cords</i>		
	<i>Ironwood</i>		3.0	<i>Cords</i>		
	<i>Red Maple</i>		14.0	<i>Cords</i>		
	<i>Red Oak</i>		4.0	<i>Cords</i>		
	<i>Sugar Maple</i>		194.0	<i>Cords</i>		
	Mixed Spruce		2.0	Cords		
	<i>White Spruce</i>		2.0	<i>Cords</i>		
	Quaking Aspen		42.0	Cords		
6	Basswood	Sawtimber	112.2	MBF	56.0	\$55,844.65

Description of Timber by Payment Unit (PU), con't

PU	MARKET GROUP	PRODUCT	QUANTITY	UNIT	ACRES	ADVERTISE PRICE
6 con't	Red Oak	Sawtimber	3.0	MBF		
	Sugar Maple		38.1	MBF		
	Basswood	Pulpwood	163.0	Cords		
	Mixed Hardwood		294.0	Cords		
	<i>Black Ash</i>		10.0	<i>Cords</i>		
	<i>Ironwood</i>		4.0	<i>Cords</i>		
	<i>Red Maple</i>		18.0	<i>Cords</i>		
	<i>Red Oak</i>		5.0	<i>Cords</i>		
	<i>Sugar Maple</i>		257.0	<i>Cords</i>		
	Mixed Spruce		3.0	Cords		
	<i>White Spruce</i>		3.0	<i>Cords</i>		
	Quaking Aspen		55.0	Cords		
	7	Basswood	Sawtimber	126.0		
Red Oak			3.4	MBF		
Sugar Maple			42.9	MBF		
Basswood		Pulpwood	183.0	Cords		
Mixed Hardwood			332.0	Cords		
<i>Black Ash</i>			12.0	<i>Cords</i>		
<i>Ironwood</i>			5.0	<i>Cords</i>		
<i>Red Maple</i>			21.0	<i>Cords</i>		
<i>Red Oak</i>			5.0	<i>Cords</i>		
<i>Sugar Maple</i>			289.0	<i>Cords</i>		
Mixed Spruce			3.0	Cords		
<i>White Spruce</i>			3.0	<i>Cords</i>		
Quaking Aspen			62.0	Cords		
8	Basswood	Sawtimber	97.8	MBF	48.8	\$48,674.45
	Red Oak		2.6	MBF		
	Sugar Maple		33.2	MBF		
	Basswood	Pulpwood	142.0	Cords		
	Mixed Hardwood		256.0	Cords		
	<i>Black Ash</i>		9.0	<i>Cords</i>		
	<i>Ironwood</i>		3.0	<i>Cords</i>		
	<i>Red Maple</i>		16.0	<i>Cords</i>		
	<i>Red Oak</i>		4.0	<i>Cords</i>		
	<i>Sugar Maple</i>		224.0	<i>Cords</i>		
	Mixed Spruce		3.0	Cords		
	<i>White Spruce</i>		3.0	<i>Cords</i>		
	Quaking Aspen		48.0	Cords		
9	Balsam Fir	Pulpwood	12.0	Cords	24.7	\$10,636.50
	Basswood		21.0	Cords		
	Mixed Hardwood		118.0	Cords		
	<i>Paper Birch</i>		6.0	<i>Cords</i>		
	<i>Red Maple</i>		70.0	<i>Cords</i>		
	<i>Sugar Maple</i>		42.0	<i>Cords</i>		
	Mixed Spruce		23.0	Cords		
	<i>Black Spruce</i>		2.0	<i>Cords</i>		
	<i>White Spruce</i>		21.0	<i>Cords</i>		
	Quaking Aspen		119.0	Cords		
	Tamarack		181.0	Cords		
	10	Balsam Fir	Pulpwood	36.0		
Mixed Hardwood			85.0	Cords		
<i>Paper Birch</i>			10.0	<i>Cords</i>		
<i>Red Maple</i>			75.0	<i>Cords</i>		
Mixed Spruce			7.0	Cords		
<i>White Spruce</i>			7.0	<i>Cords</i>		
Quaking Aspen			571.0	Cords		

TOTAL:	894.3	MBF
--------	-------	-----

TOTAL:	4,534.0	Cords
--------	---------	-------



## Sale Specific Conditions & Requirements

**Sale Name: Hipster Hardwoods**

**Sale Number: 12-001-17 Seq#: 1**

### 1 - Sale Area

#### 1.2 - Boundaries

##### 1.2.1 - Painted boundaries (1/14)

The sale boundary and Payment Unit boundaries are marked and identified by red and yellow paint. Exterior sale boundary lines against state are marked with red paint. Interior Payment Unit boundaries are marked with yellow paint. The painted boundary line trees are not Included Timber and are to be protected. Yellow painted trees designating an interior Payment Unit boundary are only to be cut when all surrounding Payment Units have been paid.

### 2 - Timber Specifications

#### 2.1 - Included Timber

##### 2.1.1 - Clearcut unit(s) with unmerchantable trees (6/14)

Within Payment Unit(s) 3, 4, 9, and 10, cut all trees that are two (2) inches or more at DBH, except oak, red pine, white pine, cedar, and trees marked with green paint.

##### 2.1.3 - Cut tree marked unit(s) (12/08)

Within Payment Unit(s) 1, 2, 5, 6, 7, and 8, all trees are designated for cutting when marked with orange paint above and below stump height, regardless of merchantability.

### 3 - Payments

#### 3.3 - Pre-measured Sales

##### 3.3.4 - Dividing payment units (7/14)

Payment Unit(s) 2, 5, 6, 7, and 8 may be divided at the request of the Purchaser and upon approval of the Unit Manager. Dividing Payment Units is a contract modification which requires a Timber Sale Contract Supplement. There will be only one division per Payment Unit.

#### 3.4 - Damaged Timber

##### 3.4.1 - Damaged timber (6/14)

General Condition and Requirement 3.4 Damaged Timber, defines liquidated damages for undesignated live merchantable trees which are cut or injured. No damage is acceptable to merchantable trees. Within the sale area, if more than 10% of trees (> 4.5" DBH) within a specified area of the sale are damaged, liquidated damages will be assessed for all trees damaged. Rates will be in accordance with General Condition and Requirement 3.4 Damaged Timber.

### 4 - Transportation

#### 4.1 - Construction

##### 4.1.5 - Culverts (5/14)

Roads will require the installation of 3 culverts for cross drainages and stream crossings at locations on the Timber Sale Map. Culvert placement will be specified by the sale administrator and they shall be installed prior to hauling. The culverts shall be new plastic gauge. Culvert size for stream crossing locations will be specified according to DEQ permit. Culverts needed for cross drainages will be a minimum of 18 inches in diameter and 24 feet in length. All culverts will be permanent. Stream crossing permits will be obtained by the DNR. Culverts and installation will be the responsibility of the Purchaser.

##### 4.1.6 - Road construction (1/09)

Construction of new roads or improvements of existing roads shall be done in such a way as to minimize the environmental and visual impacts. Merchantable trees shall be cut and utilized unless otherwise directed. Non-merchantable trees shall be severed and laid flat on the ground. Slash shall be scattered, and not left in windrows and kept a minimum of 10 feet back from the road edge. Stumps shall be set upright, not left on edge, and be moved at least 10 feet away from the road edge. Disturbed soil shall be feathered into the woods and not left in berms or windrows.

#### 4.1.7 - Road closure (10/11)

All new roads built into the sale must be blocked to vehicle traffic upon completion of the sale. Overgrown roads that are reopened shall be considered new roads. Contact the sale administrator for specific details of design and placement.

#### 4.1.11 - Permits (2/12)

The DNR will secure any necessary stream crossing permits that may be required.

### 4.3 - Public Right-of-Way

#### 4.3.2 - County R-O-W (12/06)

The county must be contacted prior to operating near the county road R-O-W. This applies to Payment Units 5-7 and the Tower Road.

## 5 - Operations

### 5.2 - Conduct of Operations

#### 5.2.1 - Slash

##### 5.2.1.13 - Dispose of slash as directed (12/05)

Slash is to be disposed of as directed by the sale administrator.

#### 5.2.2 - Hazard Trees/Snags

##### 5.2.2.1 - Den trees (10/16)

Obvious hollow and/or den trees shall be protected and left standing unless they are a safety hazard.

#### 5.2.3 - Operating Restrictions

##### 5.2.3.3 - Bark slippage restriction (3/09)

Within Payment Unit(s) 1-10, unless changed by written agreement, cutting and skidding are not permitted during the period of April 1 to July 15. This restriction is because of bark slippage.

##### 5.2.3.4 - Oak wilt restriction (9/17)

Within Payment Unit(s) 1-10, unless changed by written agreement, cutting, skidding, hauling and brushing of access roads are not permitted during the period of April 15 to July 15. Operations may be allowed if specific steps are taken to prevent damaging uncut oak during the high risk period. Those steps include completing all road brushing before April 15th, clearing a tree-length buffer along uncut oak cover before April 15th or leaving an uncut buffer there until after July 15th. This is necessary to reduce the spread of oak wilt. For more information, contact the Unit Manager or his/her representative.

#### 5.2.22 - Operating Caution

##### 5.2.22.1 - Operating caution (6/11)

It is recommended, but not required, that within Payment Unit(s) 9, cutting and skidding occur during frozen ground conditions. The reason for the recommendation is due to the wet soils.

#### 5.2.32 - Decking/landing restoration (9/13)

All decking and landing areas must have the surface area restored to a condition equal to or better than before. This is to ensure the proper regeneration of the stand.

### 5.4 - Soil Protection

#### 5.4.1 - Rutting restriction, general (7/16)

Operations are to cease immediately if equipment and weather conditions result in rutting of roads and/or skid trails which is 12 inches or greater in depth and 50 feet in length. The Unit Manager or his/her representative may restrict hauling and/or skidding if ruts exceed the specified depth. With the Unit Manager or his/her representative's approval, the Purchaser may return to the area when the risk of rutting has decreased.



# TIMBER SALE MAP

This information provided by authority of Part 525, 1994 PA 451, as amended.

Sale Number	Year
12 - 001	17

Forest Management Unit <b>Crystal Falls</b>	County <b>Dickinson</b>	Mapped By <b>Goupell</b>	Date <b>09/28/2017</b>	Page <b>1</b>	of <b>2</b>
Township <b>44N</b>	Range <b>27W &amp; 28W</b>	Section(s) and Subdivision(s) T44N R28W Sec1:N1/2NE, SE, NESW Sec12:N1/2SW, NE, NW T44N R27W Sec5: W1/2SW Sec6:E1/2, NW, SESW Sec7:N1/2NE Sec8: NWNW	Scale <b>1:15,840</b>		
Cruised By <b>Dave Neph, Goupell</b>					

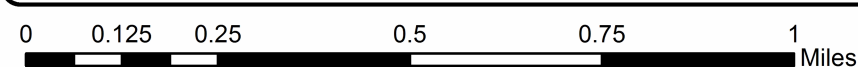
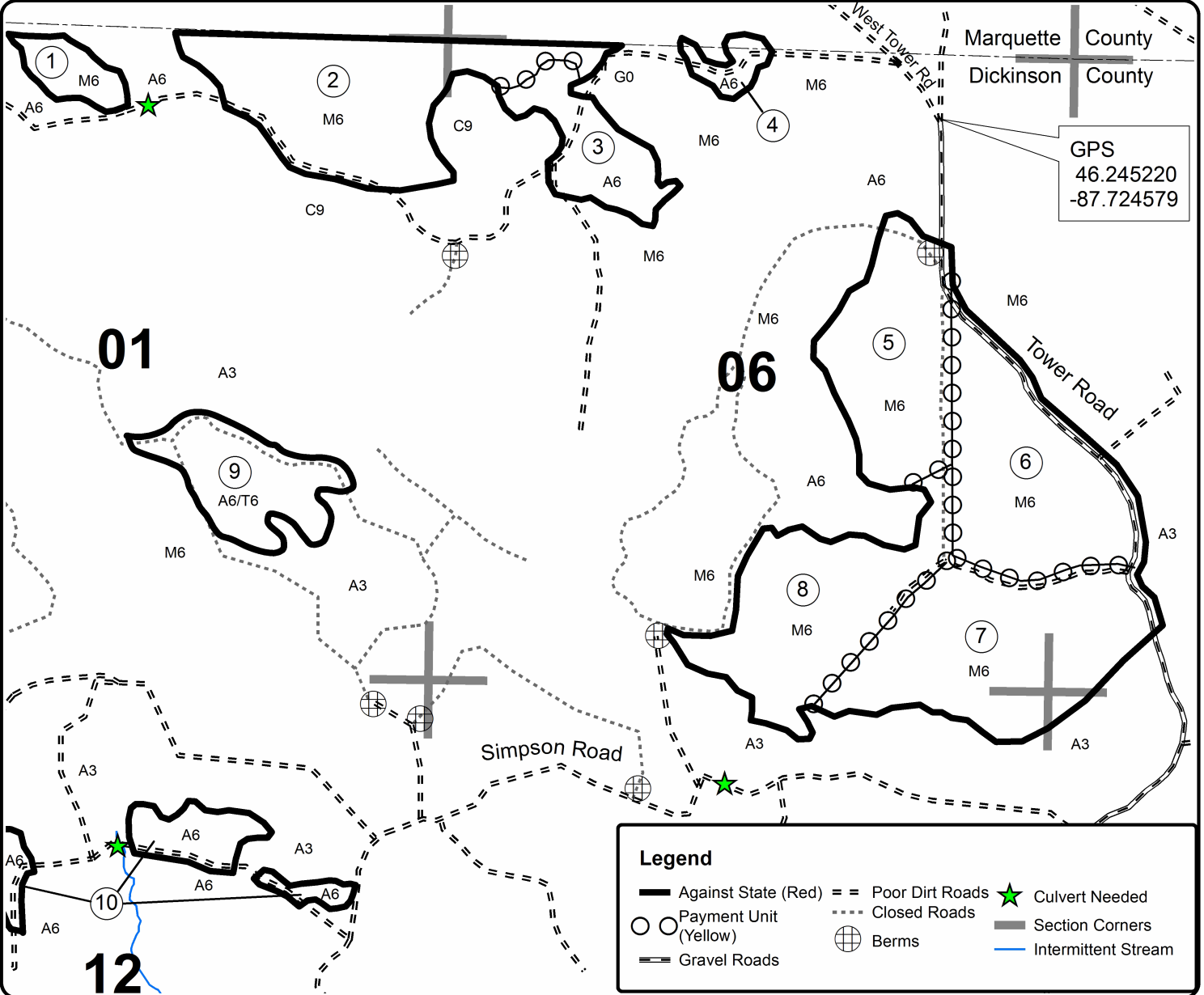
Cover Type				Density	
A = Aspen	H = Hemlock	N = Marsh	U = Upland Brush	0 = Non Stocked	5 = Pole Timber Medium
B = Paper Birch	J = Jack Pine	O = Oak	UM = Upland Mixed	1 = Seedling Sapling Poor	6 = Pole Timber Well
C = Cedar	L = Lowland Brush	P = Lowland Poplar	V = Bog or Marsh	2 = Seedling Sapling Medium	7 = Saw Timber Poor
D = Treed Bog	LM = Lowland Mixed	Q = Mixed Swamp Conifer	W = White Pine	3 = Seedling Sapling Well	8 = Saw Timber Medium
E = Swamp Hdwoods	M = Mpl, Bch, Brch	R = Red Pine	X = Non Stocked	4 = Pole Timber Poor	9 = Saw Timber Well
F = Spruce Fir	MC = Mixed Conifer	S = Black Spruce	Z = Water		
G = Grass	MD = Mixed Deciduous	T = Tamarack			

PU	Acres	PU	Acres
1	8.7	6	56.0
2	55.1	7	62.9
3	19.6	8	48.8
4	4.8	9	24.7
5	42.2	10	22.9



QR Code for GeoRef PDF

## Hipster Hardwoods Compartment 19 345.7 Acres





# TIMBER SALE MAP

This information provided by authority of Part 525, 1994 PA 451, as amended.

Forest Management Unit Crystal Falls	County Dickinson	Mapped By Goupell	Date 09/28/2017	Page 2	of 2
Township 44N	Range 27W & 28W	Section(s) and Subdivision(s) T44N R28W Sec1:N1/2NE,SE,NESW Sec12:N1/2SW,NE,NW T44N R27W Sec5: W1/2SW Sec6:E1/2,NW,SESW Sec7:N1/2NE Sec8:NWNW	Scale 1:15,840		

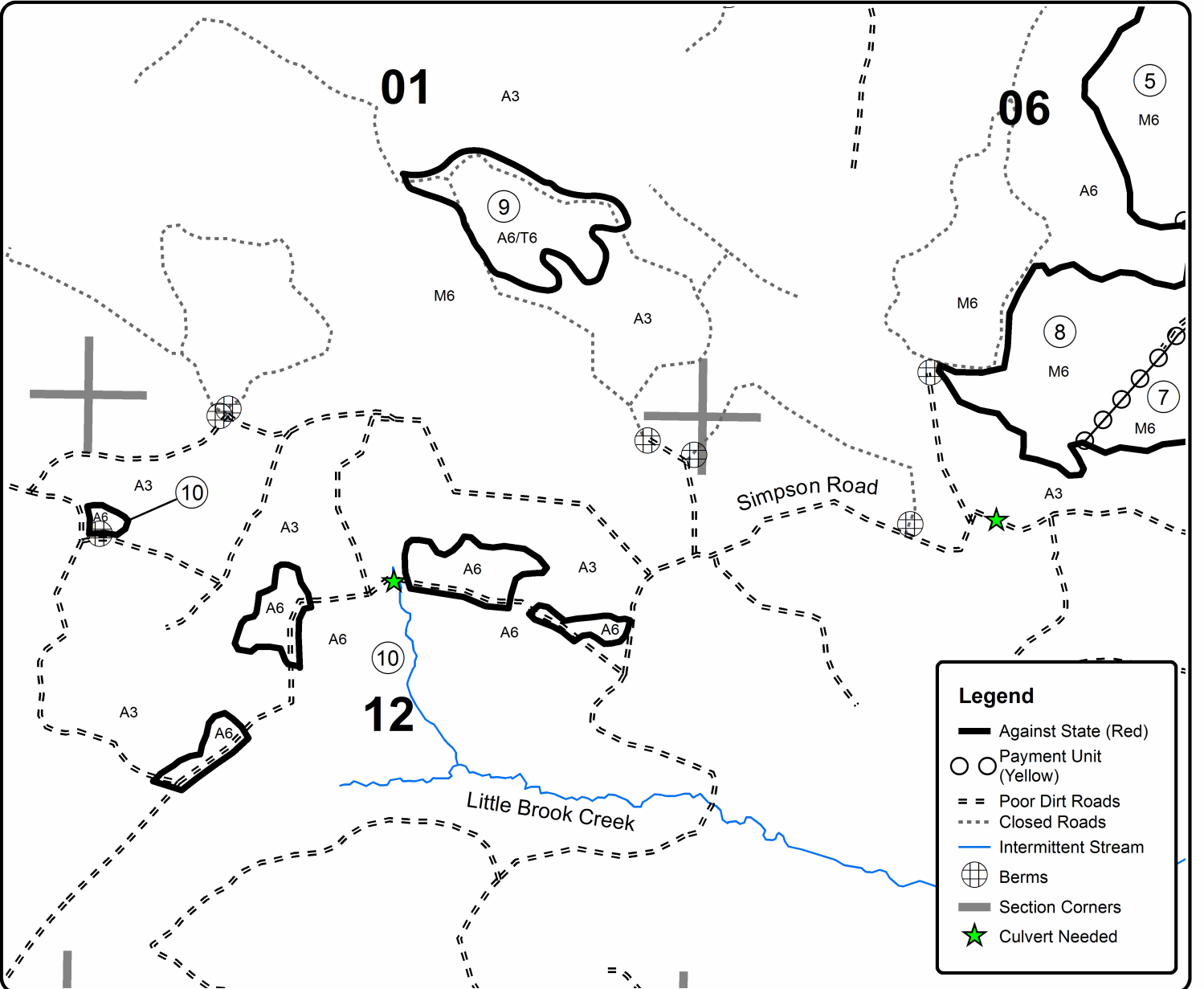
Cover Type				Density	
A = Aspen	H = Hemlock	N = Marsh	U = Upland Brush	0 = Non Stocked	5 = Pole Timber Medium
B = Paper Birch	J = Jack Pine	O = Oak	UM = Upland Mixed	1 = Seedling Sapling Poor	6 = Pole Timber Well
C = Cedar	L = Lowland Brush	P = Lowland Poplar	V = Bog or Marsh	2 = Seedling Sapling Medium	7 = Saw Timber Poor
D = Treed Bog	LM = Lowland Mixed	Q = Mixed Swamp Conifer	W = White Pine	3 = Seedling Sapling Well	8 = Saw Timber Medium
E = Swamp Hdwoods	M = Mpl, Bch, Brch	R = Red Pine	X = Non Stocked	4 = Pole Timber Poor	9 = Saw Timber Well
F = Spruce Fir	MC = Mixed Conifer	S = Black Spruce	Z = Water		
G = Grass	MD = Mixed Deciduous	T = Tamarack			

PU	Acres	PU	Acres
1	8.7	6	56.0
2	55.1	7	62.9
3	19.6	8	48.8
4	4.8	9	24.7
5	42.2	10	22.9

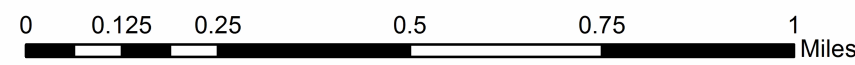


QR Code for GeoRef PDF

## Hipster Hardwoods Compartment 19 345.7 Acres



Legend	
	Against State (Red)
	Payment Unit (Yellow)
	Poor Dirt Roads
	Closed Roads
	Intermittent Stream
	Berms
	Section Corners
	Culvert Needed



TIMBER SALE INFORMATION

T-Bone SBW (12-020-17)

Dickinson County (Advertised Price \$70,860.20)

SALE NOTE: A recreation site such as a trail, pathway, or campground is within the sale area or the vicinity. Certain restrictions/specifications may be applicable including time restrictions.

A timber sale contract for this lump sum, sealed bid timber sale will be awarded to the responsible bidder offering the highest sealed bid price. Bids must be at or above the following advertised price for each species:

<u>PRODUCTS &amp; SPECIES</u>	<u>ESTIMATED UNITS*</u>	<u>ADVERTISED PRICE</u>
Sawtimber		
Paper Birch	12.30 MBF	\$ 74.00 / MBF
Pulpwood		
Balsam Fir	524.00 Cords	\$ 16.55 / Cord
Mixed Hardwood	728.00 Cords	\$ 20.00 / Cord
Mixed Spruce	124.00 Cords	\$ 19.70 / Cord
Quaking Aspen	1,540.00 Cords	\$ 28.75 / Cord

\* The total volume is statistically estimated within plus (+) or minus (-) 9.35 percent. The estimated units are final and not subject to adjustment. Prospective bidders are urged to examine this timber and to make their own estimates of quantity and quality.

**BOND AND PAYMENT SCHEDULE:**

1. A bond in the amount of \$5,669.00 to insure faithful performance of the conditions of the contract will be deposited by the successful bidder within 21 days of the sale award.
2. Cutting in any sale or unit without the required advance payment would be considered a trespass.
3. Total payment must be paid in advance or according to the following schedule:
  - (a) Ten percent (10%) of the sale value must be paid within 21 days of the sale award.
  - (b) The 10% down payment will be credited towards the first unit cut.
4. If no cutting takes place, the 10% down payment will not be refunded.
5. Operations on the contract issued will terminate on 06/30/2020.

**Description of Timber by Payment Unit (PU)**

PU	MARKET GROUP	PRODUCT	QUANTITY	UNIT	ACRES	ADVERTISE PRICE	
1	Balsam Fir	Pulpwood	176.0	Cords	23.5	\$21,311.55	
	Mixed Hardwood		40.0	Cords			
	<i>Red Maple</i>		14.0	<i>Cords</i>			
	<i>Sugar Maple</i>		26.0	<i>Cords</i>			
	Mixed Spruce		25.0	Cords			
	<i>Black Spruce</i>		13.0	<i>Cords</i>			
	<i>White Spruce</i>		12.0	<i>Cords</i>			
	Quaking Aspen		595.0	Cords			
	2		Paper Birch	Sawtimber			9.5
Balsam Fir		Pulpwood	68.0	Cords			
Mixed Hardwood			180.0	Cords			
<i>Balsam Poplar</i>			52.0	<i>Cords</i>			
<i>Basswood</i>			7.0	<i>Cords</i>			
<i>Paper Birch</i>			43.0	<i>Cords</i>			
<i>Red Maple</i>			22.0	<i>Cords</i>			
<i>Sugar Maple</i>			56.0	<i>Cords</i>			
Quaking Aspen			259.0	Cords			
3			Paper Birch	Sawtimber	1.1	MBF	25.2
	Balsam Fir		Pulpwood	93.0	Cords		
	Mixed Hardwood	370.0		Cords			
	<i>Red Maple</i>	<i>Sawtimber</i>		3.1	<i>MBF</i>		
	<i>Balsam Poplar</i>	<i>Pulpwood</i>		5.0	<i>Cords</i>		
	<i>Black Ash</i>			3.0	<i>Cords</i>		
	<i>Black Cherry</i>			16.0	<i>Cords</i>		
	<i>Paper Birch</i>			42.0	<i>Cords</i>		
	<i>Red Maple</i>			230.0	<i>Cords</i>		
	<i>Sugar Maple</i>			68.0	<i>Cords</i>		
	Mixed Spruce			66.0	Cords		
	<i>Black Spruce</i>			22.0	<i>Cords</i>		
	<i>White Spruce</i>			44.0	<i>Cords</i>		
	Quaking Aspen			244.0	Cords		
4	Paper Birch	Sawtimber		1.7	MBF	24.9	\$19,338.25
	Balsam Fir	Pulpwood	187.0	Cords			
	Mixed Hardwood		138.0	Cords			
	<i>Sugar Maple</i>		<i>Sawtimber</i>	1.7	<i>MBF</i>		
	<i>Black Cherry</i>		<i>Pulpwood</i>	10.0	<i>Cords</i>		
	<i>Paper Birch</i>			56.0	<i>Cords</i>		
	<i>Red Maple</i>			28.0	<i>Cords</i>		
	<i>Sugar Maple</i>			41.0	<i>Cords</i>		
	Mixed Spruce			33.0	Cords		
	<i>Black Spruce</i>			3.0	<i>Cords</i>		
	<i>White Spruce</i>			30.0	<i>Cords</i>		
	Quaking Aspen			442.0	Cords		
	TOTAL:			12.3	MBF		
TOTAL:			2,916.0	Cords			

# Sale Specific Conditions & Requirements

**Sale Name: T-Bone SBW**

**Sale Number: 12-020-17 Seq#: 1**

## 1 - Sale Area

### 1.2 - Boundaries

#### 1.2.1 - Painted boundaries (1/14)

The sale boundary and Payment Unit boundaries are marked and identified by blue, red and yellow paint. Exterior sale boundary lines against private property are marked with blue paint. Exterior sale boundary lines against state are marked with red paint. Interior Payment Unit boundaries are marked with yellow paint. Yellow painted trees designating an interior Payment Unit boundary are only to be cut when all surrounding Payment Units have been paid.

## 2 - Timber Specifications

### 2.1 - Included Timber

#### 2.1.1 - Clearcut unit(s) with unmerchantable trees (6/14)

Within Payment Unit(s) 1-4, cut all trees that are two (2) inches or more at DBH, except cedar and pine. In addition, leave all conifers that are 1 stick and less.

## 4 - Transportation

### 4.1 - Construction

#### 4.1.6 - Road construction (1/09)

Construction of new roads or improvements of existing roads shall be done in such a way as to minimize the environmental and visual impacts. Merchantable trees shall be cut and utilized unless otherwise directed. Non-merchantable trees shall be severed and laid flat on the ground. Slash shall be scattered, and not left in windrows and kept a minimum of 10 feet back from the road edge. Stumps shall be set upright, not left on edge, and be moved at least 5 feet away from the road edge. Disturbed soil shall be feathered into the woods and not left in berms or windrows.

#### 4.1.7 - Road closure (10/11)

All new roads built into the sale must be blocked to vehicle traffic upon completion of the sale. Overgrown roads that are reopened shall be considered new roads. In general, this will require constructing a four (4') foot high berm of stumps and logs covered with earth. Contact the sale administrator for specific details of design and placement.

### 4.3 - Public Right-of-Way

#### 4.3.2 - County R-O-W (12/06)

The county must be contacted prior to decking along the county road R-O-W. This applies to all units and the Aimone Road. The Dickinson County Road Commission may require pre-notification and a permit.

## 5 - Operations

### 5.2 - Conduct of Operations

#### 5.2.1 - Slash

##### 5.2.1.13 - Dispose of slash as directed (12/05)

Slash is to be disposed of as directed by the sale administrator.

### 5.4 - Soil Protection

#### 5.4.1 - Rutting restriction, general (7/16)

Operations are to cease immediately if equipment and weather conditions result in rutting of roads and/or skid trails which is 12 inches or greater in depth and 50 feet in length. The Unit Manager or his/her representative may restrict hauling and/or skidding if ruts exceed the specified depth. With the Unit Manager or his/her representative's approval, the Purchaser may return to the area when the risk of rutting has decreased.

## 6 - Safety and Fire Prevention

## 6.2 - Signing

### 6.2.2 - Snowmobile trail posting (8/09)

The Purchaser is responsible for posting and maintaining caution signs on the snowmobile trail prior to beginning operations during the snowmobile season (approximately December 1 to March 31). The trail must be posted at appropriate distances from the sale area to warn of logging activity and truck traffic. Signs must be removed when harvest operations are suspended or completed. The Purchaser will provide these signs.

## 7 - Other Conditions

### 7.5 - Loss

#### 7.5.1 - Deteriorating timber (7/09)

The sale area has received damage from spruce budworm. The Purchaser should harvest the wood as soon as possible. The Department of Natural Resources is held free of responsibility of any further damage or deterioration due to delay in harvesting.





# TIMBER SALE MAP

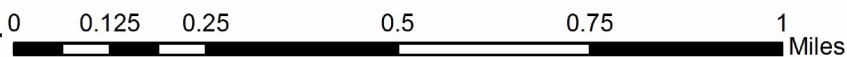
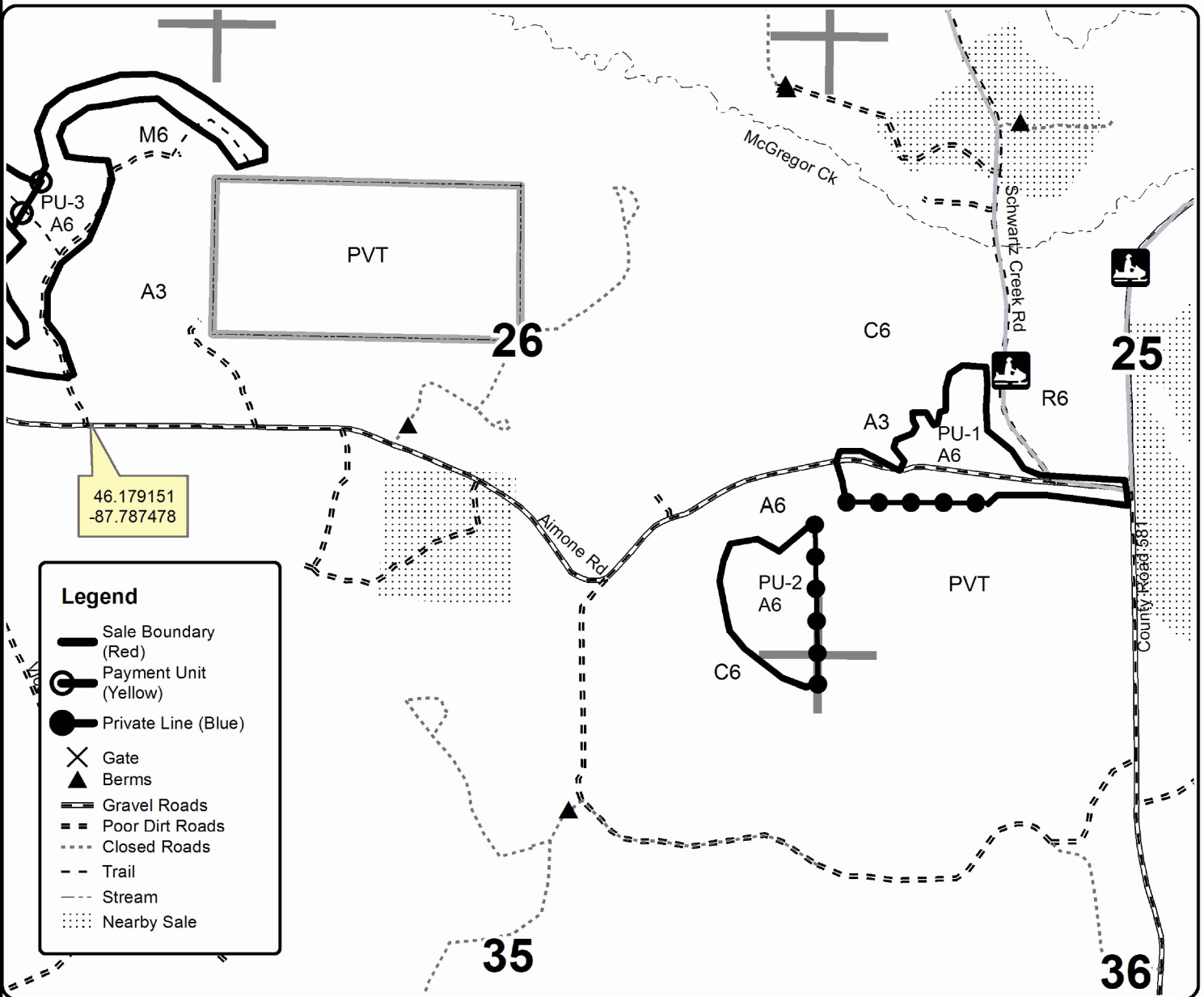
This information provided by authority of Part 525, 1994 PA 451, as amended.

Forest Management Unit Crystal Falls Management Unit	County Dickinson Co.	Mapped By Andy Church	Date 07/21/2017	Page 1	of 2
Township 44N	Range 28W	Section(s) and Subdivision(s) Sec 25: N1/2SW Sec 26: NWNW,SESE Sec 27: NE1/4,E1/2NW,N1/2SE Sec 35: NENE	Scale 1:15,840		

Cover Type				Density	
A = Aspen	H = Hemlock	N = Marsh	U = Upland Brush	0 = Non Stocked	5 = Pole Timber Medium
B = Paper Birch	J = Jack Pine	O = Oak	UM = Upland Mixed	1 = Seedling Sapling Poor	6 = Pole Timber Well
C = Cedar	L = Lowland Brush	P = Lowland Poplar	V = Bog or Marsh	2 = Seedling Sapling Medium	7 = Saw Timber Poor
D = Tread Bog	LM = Lowland Mixed	Q = Mixed Swamp Conifer	W = White Pine	3 = Seedling Sapling Well	8 = Saw Timber Medium
E = Swamp Hdwoods	M = Mpl, Bch, Brch	R = Red Pine	X = Non Stocked	4 = Pole Timber Poor	9 = Saw Timber Well
F = Spruce Fir	MC = Mixed Conifer	S = Black Spruce	Z = Water		
G = Grass	MD = Mixed Deciduous	T = Tamarack			

PU	Acres	PU	Acres
1	23.5	3	25.2
2	18.8	4	24.9

**T-Bone SBW**  
 Compartment 34  
 92.4 Acres





# TIMBER SALE MAP

This information provided by authority of Part 525, 1994 PA 451, as amended.

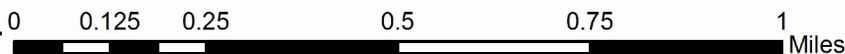
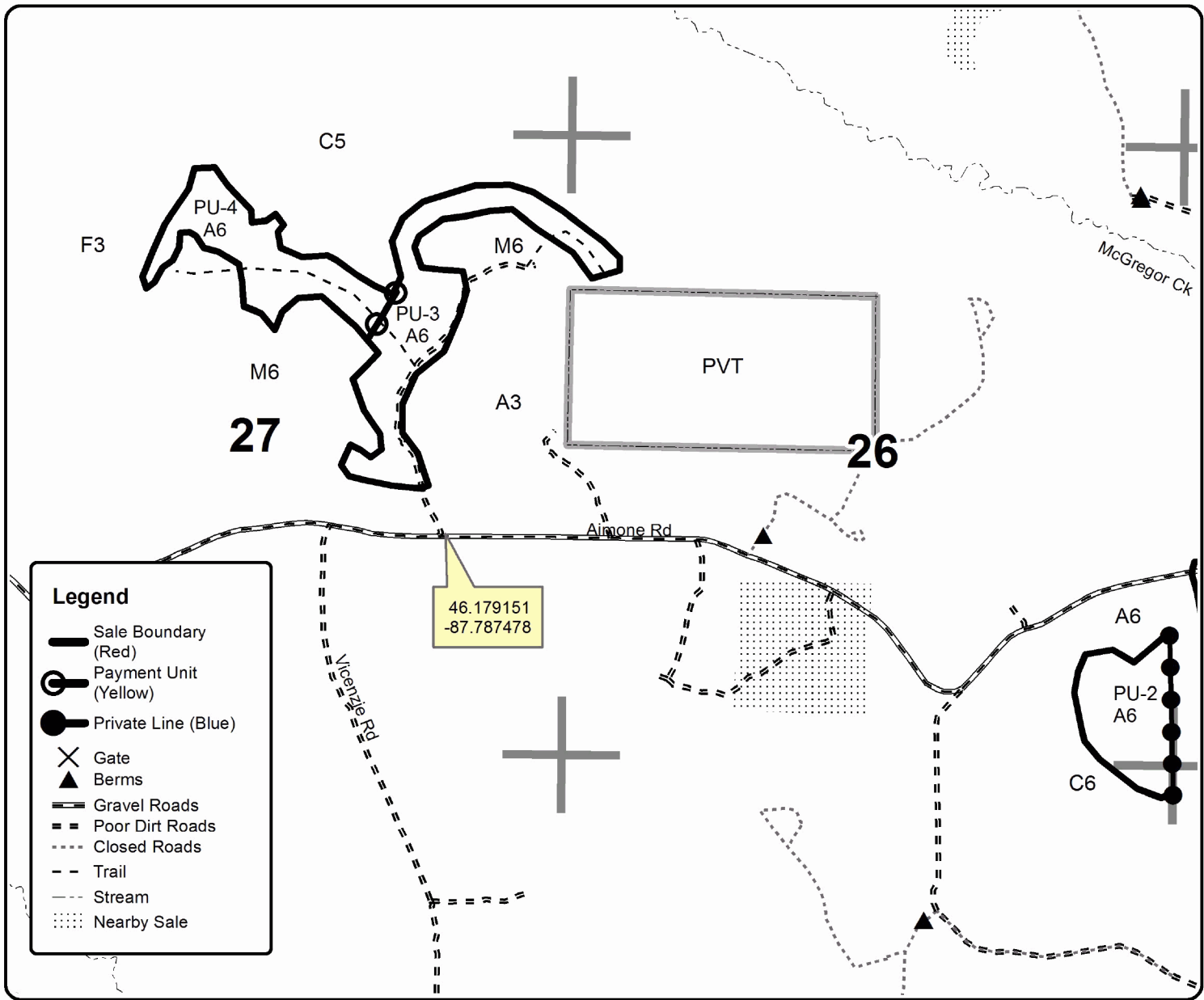
Forest Management Unit Crystal Falls Management Unit	County Dickinson Co.	Mapped By Andy Church	Date 07/21/2017	Page 2	of 2
Township 44N	Range 28W	Section(s) and Subdivision(s) Sec 25: N1/2SW Sec 26: NWNW,SESE Sec 27: NE1/4,E1/2NW,N1/2SE Sec 35: NENE	Scale 1:15,840		

Cover Type				Density			
A = Aspen	H = Hemlock	N = Marsh	U = Upland Brush	0 = Non Stocked	5 = Pole Timber Medium		
B = Paper Birch	J = Jack Pine	O = Oak	UM = Upland Mixed	1 = Seedling Sapling Poor	6 = Pole Timber Well		
C = Cedar	L = Lowland Brush	P = Lowland Poplar	V = Bog or Marsh	2 = Seedling Sapling Medium	7 = Saw Timber Poor		
D = Treed Bog	LM = Lowland Mixed	Q = Mixed Swamp Conifer	W = White Pine	3 = Seedling Sapling Well	8 = Saw Timber Medium		
E = Swamp Hdwoods	M = Mpl, Bch, Brch	R = Red Pine	X = Non Stocked	4 = Pole Timber Poor	9 = Saw Timber Well		
F = Spruce Fir	MC = Mixed Conifer	S = Black Spruce	Z = Water				
G = Grass	MD = Mixed Deciduous	T = Tamarack					

PU	Acres	PU	Acres
1	23.5	3	25.2
2	18.8	4	24.9

## T-Bone SBW

Compartment 34  
92.4 Acres



# TIMBER SALE INFORMATION

## Mucho Pine (12-027-17)

Dickinson County (Advertised Price \$525,690.80)

SALE NOTE: A small area in the NE part of Payment Unit 16 was not marked to protect a vernal pond. Cutting and skidding are not permitted during the period of April 1 to July 15 due to bark slip.

A timber sale contract for this lump sum, sealed bid timber sale will be awarded to the responsible bidder offering the highest sealed bid price. Bids must be at or above the following advertised price for each species:

<u>PRODUCTS &amp; SPECIES</u>	<u>ESTIMATED UNITS*</u>		<u>ADVERTISED PRICE</u>
Sawtimber			
Red Pine	1,087.20	MBF	\$ 122.00 / MBF
White Pine	6.40	MBF	\$ 59.00 / MBF
Pulpwood			
Balsam Fir	67.00	Cords	\$ 20.70 / Cord
Jack Pine	2.00	Cords	\$ 43.15 / Cord
Mixed Hardwood	199.00	Cords	\$ 24.95 / Cord
Mixed Spruce	329.00	Cords	\$ 24.65 / Cord
Quaking Aspen	1,936.00	Cords	\$ 35.95 / Cord
Red Pine	5,163.00	Cords	\$ 59.30 / Cord
White Pine	82.00	Cords	\$ 28.80 / Cord

\* The total volume is statistically estimated within plus (+) or minus (-) 8.90 percent. The estimated units are final and not subject to adjustment. Prospective bidders are urged to examine this timber and to make their own estimates of quantity and quality.

### **BOND AND PAYMENT SCHEDULE:**

1. A bond in the amount of \$26,285.00 to insure faithful performance of the conditions of the contract will be deposited by the successful bidder within 21 days of the sale award.
2. Cutting in any sale or unit without the required advance payment would be considered a trespass.
3. Total payment must be paid in advance or according to the following schedule:
  - (a) Ten percent (10%) of the sale value must be paid within 21 days of the sale award.
  - (b) The 10% down payment will be credited towards the first unit cut.
4. If no cutting takes place, the 10% down payment will not be refunded.
5. Operations on the contract issued will terminate on 06/30/2021.

**Description of Timber by Payment Unit (PU)**

PU	MARKET GROUP	PRODUCT	QUANTITY	UNIT	ACRES	ADVERTISE PRICE
1	Red Pine	Sawtimber	65.5	MBF	28.3	\$45,082.70
	Balsam Fir	Pulpwood	14.0	Cords		
	Mixed Spruce		107.0	Cords		
	<i>White Spruce</i>		107.0	Cords		
	Quaking Aspen		245.0	Cords		
	Red Pine		414.0	Cords		
	White Pine		28.0	Cords		
	2	Red Pine	Sawtimber	33.6		
Balsam Fir		Pulpwood	4.0	Cords		
Red Pine			307.0	Cords		
3		Red Pine	Sawtimber	201.4	MBF	25.8
	Balsam Fir	Pulpwood	4.0	Cords		
	Mixed Spruce		19.0	Cords		
	<i>White Spruce</i>		19.0	Cords		
	Quaking Aspen		67.0	Cords		
	Red Pine		980.0	Cords		
	4	Red Pine	Sawtimber	97.7	MBF	
Balsam Fir		Pulpwood	13.0	Cords		
Mixed Spruce			13.0	Cords		
<i>White Spruce</i>			13.0	Cords		
Quaking Aspen			8.0	Cords		
Red Pine			543.0	Cords		
White Pine			10.0	Cords		
5		Red Pine	Sawtimber	144.9	MBF	17.7
	Balsam Fir	Pulpwood	3.0	Cords		
	Mixed Spruce		4.0	Cords		
	<i>White Spruce</i>		4.0	Cords		
	Quaking Aspen		66.0	Cords		
	Red Pine		675.0	Cords		
	6	Red Pine	Sawtimber	25.9	MBF	
Balsam Fir		Pulpwood	6.0	Cords		
Mixed Hardwood			16.0	Cords		
<i>Red Maple</i>			16.0	Cords		
Mixed Spruce			24.0	Cords		
<i>White Spruce</i>			24.0	Cords		
Quaking Aspen			287.0	Cords		
Red Pine			148.0	Cords		
7	Red Pine	Sawtimber	204.2	MBF	49.9	\$91,065.55
	Balsam Fir	Pulpwood	18.0	Cords		
	Mixed Hardwood		118.0	Cords		
	<i>Black Cherry</i>		8.0	Cords		
	<i>Red Maple</i>		72.0	Cords		
	<i>White Ash</i>		38.0	Cords		
	Mixed Spruce		9.0	Cords		
	<i>White Spruce</i>		9.0	Cords		
	Quaking Aspen		432.0	Cords		
	Red Pine		794.0	Cords		
	8	Red Pine	Sawtimber	101.2		
White Pine			1.2	MBF		
Mixed Hardwood		Pulpwood	32.0	Cords		
<i>Black Cherry</i>			10.0	Cords		
<i>Paper Birch</i>			5.0	Cords		
<i>Red Maple</i>			17.0	Cords		
Mixed Spruce			110.0	Cords		
<i>White Spruce</i>			110.0	Cords		
Quaking Aspen			202.0	Cords		

**Description of Timber by Payment Unit (PU), con't**

PU	MARKET GROUP	PRODUCT	QUANTITY	UNIT	ACRES	ADVERTISE PRICE
	Red Pine		402.0	Cords		
	White Pine		10.0	Cords		
9	Red Pine	Sawtimber	22.4	MBF	8.1	\$10,799.45
	Quaking Aspen	Pulpwood	5.0	Cords		
	Red Pine		133.0	Cords		
10	Red Pine	Sawtimber	44.4	MBF	10.8	\$12,947.90
	Red Pine	Pulpwood	127.0	Cords		
11	Red Pine	Sawtimber	33.0	MBF	14.2	\$20,732.95
	Mixed Spruce	Pulpwood	14.0	Cords		
	<i>White Spruce</i>		14.0	<i>Cords</i>		
	Quaking Aspen		211.0	Cords		
	Red Pine		148.0	Cords		
12	Red Pine	Sawtimber	47.9	MBF	25.0	\$18,820.50
	Mixed Spruce	Pulpwood	2.0	Cords		
	<i>White Spruce</i>		2.0	<i>Cords</i>		
	Red Pine		218.0	Cords		
13	Balsam Fir	Pulpwood	5.0	Cords	7.1	\$5,668.50
	Mixed Hardwood		17.0	Cords		
	<i>Red Maple</i>		17.0	<i>Cords</i>		
	Quaking Aspen		143.0	Cords		
14	Red Pine	Sawtimber	4.1	MBF	13.8	\$12,539.70
	Mixed Hardwood	Pulpwood	8.0	Cords		
	<i>Paper Birch</i>		8.0	<i>Cords</i>		
	Mixed Spruce		24.0	Cords		
	<i>Black Spruce</i>		15.0	<i>Cords</i>		
	<i>White Spruce</i>		9.0	<i>Cords</i>		
	Quaking Aspen		270.0	Cords		
	Red Pine		26.0	Cords		
15	Red Pine	Sawtimber	22.9	MBF	11.1	\$11,110.45
	Mixed Spruce	Pulpwood	3.0	Cords		
	<i>White Spruce</i>		3.0	<i>Cords</i>		
	Red Pine		139.0	Cords		
16	Red Pine	Sawtimber	38.1	MBF	38.1	\$12,683.80
	White Pine		5.2	MBF		
	Jack Pine	Pulpwood	2.0	Cords		
	Mixed Hardwood		8.0	Cords		
	<i>Paper Birch</i>		3.0	<i>Cords</i>		
	<i>Red Maple</i>		5.0	<i>Cords</i>		
	Red Pine		109.0	Cords		
	White Pine		34.0	Cords		
TOTAL:			1,093.6	MBF		
TOTAL:			7,778.0	Cords		

## Sale Specific Conditions & Requirements

**Sale Name: Mucho Pine**

**Sale Number: 12-027-17 Seq#: 1**

### 1 - Sale Area

#### 1.2 - Boundaries

##### 1.2.1 - Painted boundaries (1/14)

The sale boundary and Payment Unit boundaries are marked and identified by blue, red and yellow paint. Exterior sale boundary lines against private property are marked with blue paint. Exterior sale boundary lines against state are marked with red paint. Interior Payment Unit boundaries are marked with yellow paint. The painted boundary line trees are not Included Timber and are to be protected. Yellow painted trees designating an interior Payment Unit boundary are only to be cut when all surrounding Payment Units have been paid.

### 2 - Timber Specifications

#### 2.1 - Included Timber

##### 2.1.1 - Clearcut unit(s) with unmerchantable trees (6/14)

Within Payment Unit(s) 1 - 6, cut all trees that are two (2) inches or more at DBH.

Within Payment Unit(s) 11, 13, and 14, cut all trees that are two (2) inches or more at DBH, except cedar, hemlock, white pine, cherry, and oak.

Within Payment Unit(s) 7 and 8, cut all trees that are two (2) inches or more at DBH, except cedar, hemlock, and oak.

##### 2.1.3 - Cut tree marked unit(s) (12/08)

Within Payment Unit(s) 9, 10, 12, 15, and 16, all trees are designated for cutting when marked with orange paint above and below stump height, regardless of merchantability.

### 4 - Transportation

#### 4.1 - Construction

##### 4.1.3 - Slash and earthen piles (8/04)

Piles or windrows of earth along roads and landings that have been widened or constructed shall be leveled. Slash from road maintenance or construction, including stumps, shall be dispersed throughout the sale.

##### 4.1.6 - Road construction (1/09)

Improvements of existing roads shall be done in such a way as to minimize the environmental and visual impacts. Merchantable trees shall be cut and utilized unless otherwise directed. Non-merchantable trees shall be severed and laid flat on the ground. Slash shall be scattered, and not left in windrows and kept a minimum of 10 feet back from the road edge. Stumps shall be set upright, not left on edge, and be moved at least 10 feet away from the road edge. Disturbed soil shall be feathered into the woods and not left in berms or windrows.

##### 4.1.7 - Road closure (10/11)

Any overgrown roads which are reopened into the sale must be blocked to vehicle traffic upon completion of the sale. This includes removal of existing berms which must be reconstructed prior to completion of the sale. Overgrown roads that are reopened are not considered to be new roads. In general, this will require constructing a 4' high berm of stumps and logs covered with earth. These roads must be rendered impassable to cars and trucks.

##### 4.1.12 - No new roads (1/12)

No new roads will be permitted in any Payment Unit. All operations are limited to existing roads including roads currently with berms and/or overgrown roads.

### 5 - Operations

#### 5.2 - Conduct of Operations

##### 5.2.1 - Slash

#### 5.2.1.8 - Slash height (12/08)

No slash or tree tops may exceed 24 inches in height. This applies to Payment Units 1 - 6 for replanting operations in the future.

#### 5.2.1.11 - Slash for reforestation (5/07)

To facilitate reforestation, clear-cut units shall be left with slash evenly distributed. Bunched tops within the cutting area shall be broken up and scattered. Stumps shall be cut low to the ground. Processing sites shall not be left with a compacted layer of slash; tops from these sites shall be hauled back into the cut area and scattered.

### 5.2.2 - Hazard Trees/Snags

#### 5.2.2.1 - Den trees (10/16)

Obvious hollow and/or den trees shall be protected and left standing unless they are a safety hazard. No standing hollow and/or den trees shall be left in Payment Units 1 - 6.

### 5.2.3 - Operating Restrictions

#### 5.2.3.3 - Bark slippage restriction (3/09)

Within Payment Unit(s) 9, 10, 12, 15, and 16, unless changed by written agreement, cutting and skidding are not permitted during the period of April 1 to July 15. This restriction is because of bark slippage.

## 5.4 - Soil Protection

#### 5.4.1 - Rutting restriction, general (7/16)

Operations are to cease immediately if equipment and weather conditions result in rutting of roads and/or skid trails which is 12 inches or greater in depth and 50 feet in length. The Unit Manager or his/her representative may restrict hauling and/or skidding if ruts exceed the specified depth. With the Unit Manager or his/her representative's approval, the Purchaser may return to the area when the risk of rutting has decreased.

#### 5.4.6 - Wet area protection (5/10)

No harvesting operations, including skidding and felling, are to take place within the vernal pond areas or drainages which may be present in Payment Unit 16. When harvesting occurs, there should be no disturbance to the vernal pond depression. All equipment, trees and tops should be kept out of this area. Within 100 feet of the pond, equipment should only be used when the soil is in a dry or frozen condition. Care must be taken by the Purchaser to identify and avoid operating in these areas of the timber sale.

## 5.8 - Protection of Endangered Species

#### 5.8.5 - Protection of raptor nests (3/13)

All trees with raptor nests will be protected if found during harvesting operations. Notification will be made to the Unit Manager or his/her representative who will notify the Wildlife Biologist so an on-site evaluation and recommendation can be made, if necessary.



Sale Number	Year
027-17-01	17

# TIMBER SALE MAP

This information provided by authority of Part 525, 1994 PA 451, as amended.

Forest Management Unit Crystal Falls	County Dickinson	Mapped By Brolin	Date 09/18/2017	Page 1	of 1
Township 41N	Range 29W	Section(s) and Subdivision(s) SW1/4 and W1/2 SE1/4 Sec. 14, and N1/2 NW1/4 and SE1/4 NW1/4 and NE1/4 Sec. 23, and W1/2 NW1/4 and SE1/4 NW1/4 and N1/2 SW1/4 and N1/2 SE1/4 and SW1/4 NE1/4 Sec. 24	Scale 1:15,840		

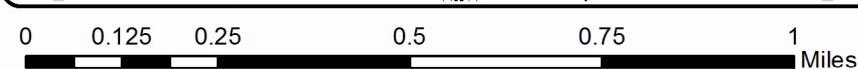
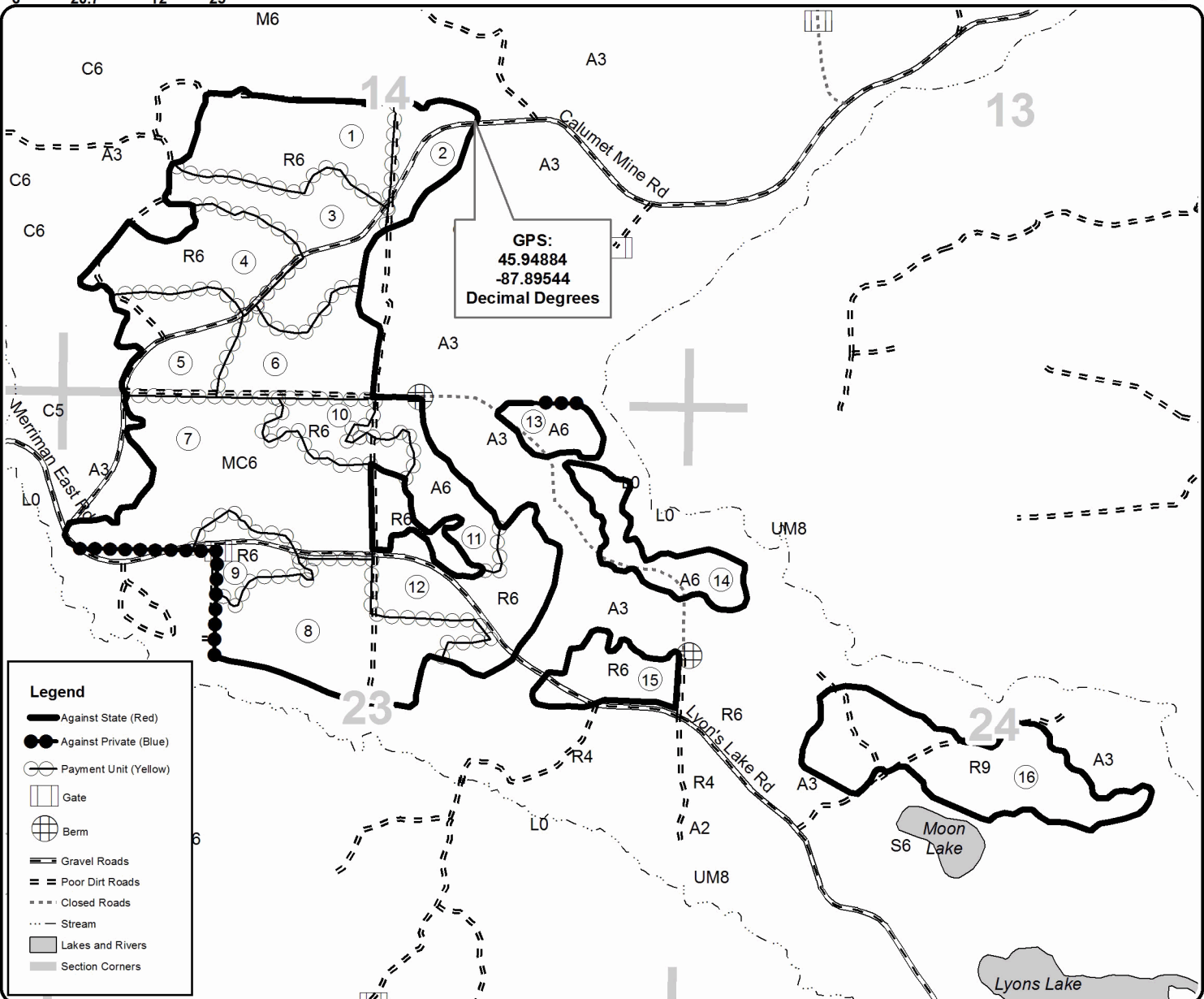
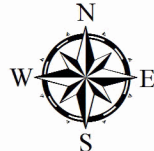
Cover Type				Density			
A = Aspen	H = Hemlock	N = Marsh	U = Upland Brush	0 = Non Stocked	5 = Pole Timber Medium		
B = Paper Birch	J = Jack Pine	O = Oak	UM = Upland Mixed	1 = Seedling Sapling Poor	6 = Pole Timber Well		
C = Cedar	L = Lowland Brush	P = Lowland Poplar	V = Bog or Marsh	2 = Seedling Sapling Medium	7 = Saw Timber Poor		
D = Tread Bog	LM = Lowland Mixed	Q = Mixed Swamp Conifer	W = White Pine	3 = Seedling Sapling Well	8 = Saw Timber Medium		
E = Swamp Hdwoods	M = Mpl, Bch, Brch	R = Red Pine	X = Non Stocked	4 = Pole Timber Poor	9 = Saw Timber Well		
F = Spruce Fir	MC = Mixed Conifer	S = Black Spruce	Z = Water				
G = Grass	MD = Mixed Deciduous	T = Tamarack					

PU Acres	PU Acres	PU Acres
1 28.3	7 49.9	13 7.1
2 11.3	8 38.1	14 13.8
3 25.8	9 8.1	15 11.1
4 22.4	10 10.8	16 38.1
5 17.7	11 14.2	
6 20.7	12 25	

## Mucho Pine Compartment 77 and 79 342.4 Acres



QR code for PDF Map app





**TIMBER SALE INFORMATION**

581 SBW (12-029-17)

Dickinson County (Advertised Price \$36,250.40)

SALE NOTE: This is a SBW sale and has deteriorating timber. See spec 7.5.1 for details.

A recreation site such as a trail, pathway, or campground is within the sale area or the vicinity. Certain restrictions/specifications may be applicable including time restrictions.

A timber sale contract for this lump sum, sealed bid timber sale will be awarded to the responsible bidder offering the highest sealed bid price. Bids must be at or above the following advertised price for each species:

<u>PRODUCTS &amp; SPECIES</u>	<u>ESTIMATED UNITS*</u>	<u>ADVERTISED PRICE</u>
Sawtimber		
Paper Birch	5.30 MBF	\$ 92.00 / MBF
Pulpwood		
Balsam Fir	117.00 Cords	\$ 20.70 / Cord
Mixed Hardwood	165.00 Cords	\$ 24.95 / Cord
Quaking Aspen	756.00 Cords	\$ 35.95 / Cord
White Spruce	83.00 Cords	\$ 24.65 / Cord

\* The total volume is statistically estimated within plus (+) or minus (-) 17.09 percent. The estimated units are final and not subject to adjustment. Prospective bidders are urged to examine this timber and to make their own estimates of quantity and quality.

**BOND AND PAYMENT SCHEDULE:**

1. A bond in the amount of \$1,813.00 to insure faithful performance of the conditions of the contract will be deposited by the successful bidder within 21 days of the sale award.
2. Cutting in any sale or unit without the required advance payment would be considered a trespass.
3. Total payment must be paid in advance or according to the following schedule:
  - (a) Ten percent (10%) of the sale value must be paid within 21 days of the sale award.
  - (b) The 10% down payment will be credited towards the first unit cut.
4. If no cutting takes place, the 10% down payment will not be refunded.
5. Operations on the contract issued will terminate on 06/30/2019.

**Description of Timber by Payment Unit (PU)**

PU	MARKET GROUP	PRODUCT	QUANTITY	UNIT	ACRES	ADVERTISE PRICE
1	Paper Birch	Sawtimber	5.3	MBF	25.3	\$19,723.55
	Balsam Fir	Pulpwood	79.0	Cords		
	Mixed Hardwood		157.0	Cords		
	Red Maple	Sawtimber	1.0	MBF		
	Sugar Maple		1.0	MBF		
	Black Cherry	Pulpwood	4.0	Cords		
	Paper Birch		69.0	Cords		
	Red Maple		33.0	Cords		
	Sugar Maple		47.0	Cords		
	Quaking Aspen		334.0	Cords		
	White Spruce		68.0	Cords		
	2	Balsam Fir	Pulpwood	38.0		
Mixed Hardwood			8.0	Cords		
Paper Birch			8.0	Cords		
Quaking Aspen			422.0	Cords		
White Spruce			15.0	Cords		
TOTAL:			5.3	MBF		
TOTAL:			1,121.0	Cords		

## Sale Specific Conditions & Requirements

**Sale Name: 581 SBW**

**Sale Number: 12-029-17 Seq#: 1**

### 1 - Sale Area

#### 1.2 - Boundaries

##### 1.2.1 - Painted boundaries (1/14)

The sale boundary and Payment Unit boundaries are marked and identified by blue and red paint. Exterior sale boundary lines against private property are marked with blue paint. Exterior sale boundary lines against state are marked with red paint. The painted boundary line trees are not Included Timber and are to be protected.

### 2 - Timber Specifications

#### 2.1 - Included Timber

##### 2.1.1 - Clearcut unit(s) with unmerchantable trees (6/14)

Within Payment Unit(s) 1 and 2, cut all trees that are two (2) inches or more at DBH, except cedar, hemlock, red pine, oak, and white pine. In addition, leave all sub-merchantable spruce/fir.

##### 2.1.15 - Hazard trees near roads (7/13)

Cut and remove all standing dead trees within 100 feet of the cleared portion of County Road 581. These trees may be utilized or must be scattered back into the sale area.

### 4 - Transportation

#### 4.1 - Construction

##### 4.1.6 - Road construction (1/09)

Construction of new roads or improvements of existing roads shall be done in such a way as to minimize the environmental and visual impacts. Merchantable trees shall be cut and utilized unless otherwise directed. Non-merchantable trees shall be severed and laid flat on the ground. Slash shall be scattered, and not left in windrows and kept a minimum of 10 feet back from the road edge. Stumps shall be set upright, not left on edge, and be moved at least 10 feet away from the road edge. Disturbed soil shall be feathered into the woods and not left in berms or windrows.

##### 4.1.7 - Road closure (10/11)

All new roads built into the sale must be blocked to vehicle traffic upon completion of the sale. Overgrown roads that are reopened shall be considered new roads. Contact the sale administrator for specific details of design and placement.

#### 4.3 - Public Right-of-Way

##### 4.3.2 - County R-O-W (12/06)

The county must be contacted prior to crossing or harvesting in the county road R-O-W. This applies to Payment Unit 2 and County Road 581.

### 5 - Operations

#### 5.2 - Conduct of Operations

##### 5.2.1 - Slash

###### 5.2.1.13 - Dispose of slash as directed (12/05)

Slash is to be disposed of as directed by the Sale Administrator.

##### 5.2.2 - Hazard Trees/Snags

###### 5.2.2.1 - Den trees (10/16)

Obvious hollow and/or den trees shall be protected and left standing unless they are a safety hazard.

##### 5.2.3 - Operating Restrictions

###### 5.2.3.1 - Operating restrictions (9/11)

Within Payment Unit(s) 1 and 2, unless changed by written agreement, hauling is limited to the period of Monday through Thursday, when snow is present. This restriction is to limit conflict with snowmobile trail.

#### 5.2.41 - Snowmobile trail protection (9/11)

The Simpson Road is a snowmobile trail and is shown on the Timber Sale Map. Do not cut or damage posts with orange trail markers or traffic control signs. If the trail is used, it must be maintained and restored to a condition equal to or better than before the sale. The road maintenance/restoration must be done to the satisfaction of the Unit Manager or his/her representative prior to December 1. If the trail is to be used for hauling during the snowmobile season, then a snow covered base must be left on the trail. Maintain a 20 foot wide slash, debris, and rut free zone daily using the snowmobile trail as the centerline. All stumps within 20 feet of the snowmobile trail must be cut at ground level.

### 5.4 - Soil Protection

#### 5.4.1 - Rutting restriction, general (7/16)

Operations are to cease immediately if equipment and weather conditions result in rutting of roads and/or skid trails which is 12 inches or greater in depth and 50 feet in length. The Unit Manager or his/her representative may restrict hauling and/or skidding if ruts exceed the specified depth. With the Unit Manager or his/her representative's approval, the Purchaser may return to the area when the risk of rutting has decreased.

## 6 - Safety and Fire Prevention

### 6.2 - Signing

#### 6.2.1 - Road posting (9/09)

The Purchaser is responsible for posting and maintaining caution signs on County Road 581 prior to beginning operations. The road must be posted at appropriate distances from the sale area to warn of logging activity and truck traffic. Signs must be removed when harvest operations are suspended or completed. The Purchaser will provide these signs.

#### 6.2.2 - Snowmobile trail posting (8/09)

The Purchaser is responsible for posting and maintaining caution signs on the snowmobile trail (Simpson Road) prior to beginning operations during the snowmobile season (approximately December 1 to March 31). The trail must be posted at appropriate distances from the sale area to warn of logging activity and truck traffic. Signs must be removed when harvest operations are suspended or completed. The Purchaser will provide these signs.

## 7 - Other Conditions

### 7.2 - Extensions

#### 7.2.6 - Forest health extension (6/13)

This sale contains trees infected with Spruce Budworm. It is considered at high risk for mortality and/or loss of timber value. The sale must be harvested promptly. One (1), twelve (12) month extension can be applied to one (1) other State Forest Timber Sale Contract owned by the purchaser or owned by one (1) designated sub-contractor of the Purchaser that works this contract. To qualify, the contract expiration date of the contract to be extended must be within twelve (12) months from the issue date of this contract. If this is the first extension on the other State Forest Timber Sale Contract, then the 5% extension fee will be waived. If this is an additional extension, the 10% fee will be reduced to 5%. The forest health extension must be used before this contract is closed-out. This specification does not alleviate the purchaser from any contractual obligations of the extended State Forest Timber Sale Contract. Per General Condition & Requirement 7.2, extensions are at the sole discretion of the DNR.

### 7.5 - Loss

#### 7.5.1 - Deteriorating timber (7/09)

The sale area has received damage from Spruce Budworm. The Purchaser should harvest the wood as soon as possible. The Department of Natural Resources is held free of responsibility of any further damage or deterioration due to delay in harvesting.



# TIMBER SALE MAP

This information provided by authority of Part 525, 1994 PA 451, as amended.

Forest Management Unit Crystal Falls	County Dickinson	Mapped By Jacob Siler	Date 09/27/2017	Page 1	of 1
Township 44N	Range 27W, 28W	Section(s) and Subdivision(s) NE1/4 SW1/4 & NW1/4 SE1/4 & S1/2 SE1/4 Section 13, & W1/2 SW1/4 & NE1/4 SW1/2 Section 19	Scale 1:15,840		

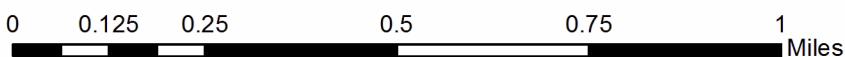
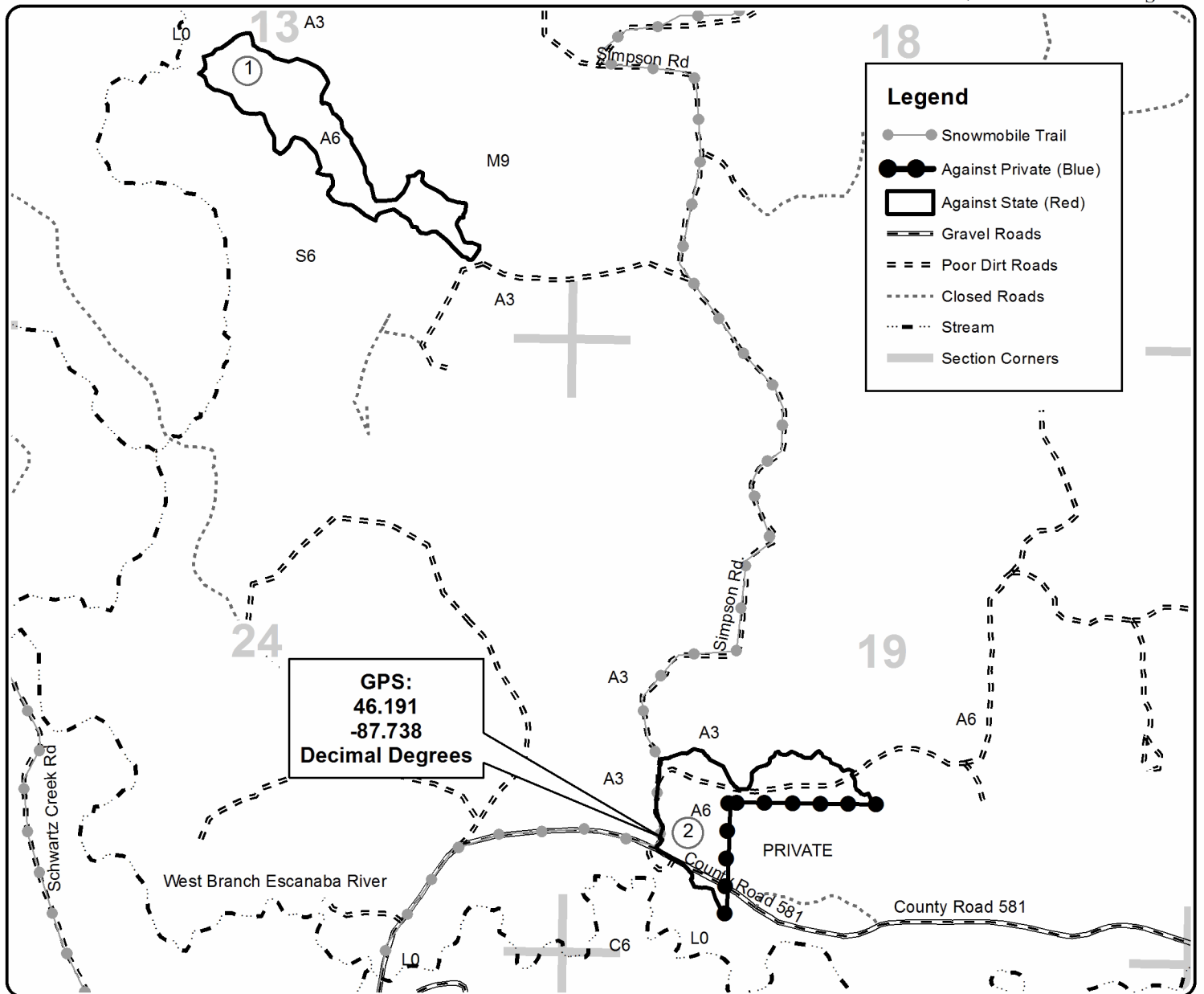
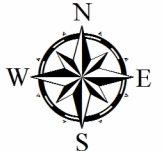
Cover Type				Density	
A = Aspen	H = Hemlock	N = Marsh	U = Upland Brush	0 = Non Stocked	5 = Pole Timber Medium
B = Paper Birch	J = Jack Pine	O = Oak	UM = Upland Mixed	1 = Seedling Sapling Poor	6 = Pole Timber Well
C = Cedar	L = Lowland Brush	P = Lowland Poplar	V = Bog or Marsh	2 = Seedling Sapling Medium	7 = Saw Timber Poor
D = Treed Bog	LM = Lowland Mixed	Q = Mixed Swamp Conifer	W = White Pine	3 = Seedling Sapling Well	8 = Saw Timber Medium
E = Swamp Hdwoods	M = Mpl, Bch, Brch	R = Red Pine	X = Non Stocked	4 = Pole Timber Poor	9 = Saw Timber Well
F = Spruce Fir	MC = Mixed Conifer	S = Black Spruce	Z = Water		
G = Grass	MD = Mixed Deciduous	T = Tamarack			

PU	Acres
1	25.3
2	22.8

## 581 SBW

### Compartment 18 & 20

### Acres 48.1



**TIMBER SALE INFORMATION**

West Branch Pine (12-031-17)

Dickinson County (Advertised Price \$105,874.25)

A timber sale contract for this lump sum, sealed bid timber sale will be awarded to the responsible bidder offering the highest sealed bid price. Bids must be at or above the following advertised price for each species:

<u>PRODUCTS &amp; SPECIES</u>	<u>ESTIMATED UNITS*</u>	<u>ADVERTISED PRICE</u>
Sawtimber		
Red Pine	641.40 MBF	\$ 122.00 / MBF
White Pine	109.60 MBF	\$ 59.00 / MBF
Pulpwood		
Red Pine	284.00 Cords	\$ 59.30 / Cord
White Pine	149.00 Cords	\$ 28.80 / Cord
White Spruce	1.00 Cords	\$ 24.65 / Cord

\* The total volume is statistically estimated within plus (+) or minus (-) 12.87 percent. The estimated units are final and not subject to adjustment. Prospective bidders are urged to examine this timber and to make their own estimates of quantity and quality.

**BOND AND PAYMENT SCHEDULE:**

1. A bond in the amount of \$5,294.00 to insure faithful performance of the conditions of the contract will be deposited by the successful bidder within 21 days of the sale award.
2. Cutting in any sale or unit without the required advance payment would be considered a trespass.
3. Total payment must be paid in advance or according to the following schedule:
  - (a) Ten percent (10%) of the sale value must be paid within 21 days of the sale award.
  - (b) The 10% down payment will be credited towards the first unit cut.
4. If no cutting takes place, the 10% down payment will not be refunded.
5. Operations on the contract issued will terminate on 06/30/2020.

**Description of Timber by Payment Unit (PU)**

PU	MARKET GROUP	PRODUCT	QUANTITY	UNIT	ACRES	ADVERTISE PRICE
1	Red Pine	Sawtimber	314.8	MBF	29.5	\$51,978.35
	White Pine		53.8	MBF		
	Red Pine	Pulpwood	139.0	Cords		
	White Pine		74.0	Cords		
	White Spruce		1.0	Cords		
2	Red Pine	Sawtimber	174.0	MBF	16.3	\$28,698.40
	White Pine		29.7	MBF		
	Red Pine	Pulpwood	77.0	Cords		
	White Pine		40.0	Cords		
3	Red Pine	Sawtimber	152.6	MBF	14.3	\$25,197.50
	White Pine		26.1	MBF		
	Red Pine	Pulpwood	68.0	Cords		
	White Pine		35.0	Cords		
TOTAL:			751.0	MBF		
TOTAL:			434.0	Cords		

# Sale Specific Conditions & Requirements

**Sale Name: West Branch Pine**

**Sale Number: 12-031-17 Seq#: 1**

## 1 - Sale Area

### 1.2 - Boundaries

#### 1.2.1 - Painted boundaries (1/14)

The sale boundary and Payment Unit boundaries are marked and identified by blue, red and yellow paint. Exterior sale boundary lines against private property are marked with blue paint. Exterior sale boundary lines against state are marked with red paint. Interior Payment Unit boundaries are marked with yellow paint. The painted boundary line trees are not Included Timber and are to be protected. Yellow painted trees designating an interior Payment Unit boundary are only to be cut when all surrounding Payment Units have been paid.

## 2 - Timber Specifications

### 2.1 - Included Timber

#### 2.1.7 - Leave tree marked unit(s) (6/14)

Within Payment Unit(s) 1 - 3, cut all trees that are two (2) inches or more at DBH, except do not cut trees marked with green paint above and below stump height. In addition, do not cut cedar and hemlock if present.

## 4 - Transportation

### 4.1 - Construction

#### 4.1.6 - Road construction (1/09)

Improvements of existing roads shall be done in such a way as to minimize the environmental and visual impacts. Merchantable trees shall be cut and utilized unless otherwise directed. Non-merchantable trees shall be severed and laid flat on the ground. Slash shall be scattered, and not left in windrows and kept a minimum of 10 feet back from the road edge. Stumps shall be set upright, not left on edge, and be moved at least 10 feet away from the road edge. Disturbed soil shall be feathered into the woods and not left in berms or windrows.

#### 4.1.12 - No new roads (1/12)

No new roads will be permitted in any Payment Unit. All operations are limited to existing roads. Skid trails only will be allowed.

### 4.3 - Public Right-of-Way

#### 4.3.2 - County R-O-W (12/06)

The county must be contacted prior to crossing or harvesting in the county road R-O-W. This applies to Payment Units 2 and County Road 581.

## 5 - Operations

### 5.2 - Conduct of Operations

#### 5.2.1 - Slash

##### 5.2.1.8 - Slash height (12/08)

No slash or tree tops may exceed 48 inches in height.

##### 5.2.1.13 - Dispose of slash as directed (12/05)

Slash is to be disposed of as directed by the Sale Administrator.

#### 5.2.2 - Hazard Trees/Snags

##### 5.2.2.1 - Den trees (10/16)

Obvious hollow and/or den trees shall be protected and left standing unless they are a safety hazard.

### 5.4 - Soil Protection

#### 5.4.1 - Rutting restriction, general (7/16)

Operations are to cease immediately if equipment and weather conditions result in rutting of roads and/or skid trails which is 12 inches or greater in depth and 50 feet in length. The Unit Manager or his/her representative may restrict hauling and/or skidding if ruts exceed the specified depth. With the Unit Manager or his/her representative's approval, the Purchaser may return to the area when the risk of rutting has decreased.

### **6 - Safety and Fire Prevention**

#### 6.2 - Signing

##### 6.2.1 - Road posting (9/09)

The Purchaser is responsible for posting and maintaining caution signs on County Road 581 prior to beginning operations. The road must be posted at appropriate distances from the sale area to warn of logging activity and truck traffic. Signs must be removed when harvest operations are suspended or completed. The Purchaser will provide these signs.



# TIMBER SALE MAP

This information provided by authority of Part 525, 1994 PA 451, as amended.

Forest Management Unit Crystal Falls		County Dickinson	Mapped By Jacob Siler	Date 09/26/2017	Page 1	of 1
Township 44N	Range 27W	Section(s) and Subdivision(s) S1/2 SE1/4, NE1/4 SE1/4 Section 22 and N1/2 NE1/4 Section 27		Scale 1:15,840		

Cover Type				Density	
A = Aspen	H = Hemlock	N = Marsh	U = Upland Brush	0 = Non Stocked	5 = Pole Timber Medium
B = Paper Birch	J = Jack Pine	O = Oak	UM = Upland Mixed	1 = Seedling Sapling Poor	6 = Pole Timber Well
C = Cedar	L = Lowland Brush	P = Lowland Poplar	V = Bog or Marsh	2 = Seedling Sapling Medium	7 = Saw Timber Poor
D = Treed Bog	LM = Lowland Mixed	Q = Mixed Swamp Conifer	W = White Pine	3 = Seedling Sapling Well	8 = Saw Timber Medium
E = Swamp Hdwoods	M = Mpl, Bch, Brch	R = Red Pine	X = Non Stocked	4 = Pole Timber Poor	9 = Saw Timber Well
F = Spruce Fir	MC = Mixed Conifer	S = Black Spruce	Z = Water		
G = Grass	MD = Mixed Deciduous	T = Tamarack			

PU	Acres
1	29.5
2	16.3
3	14.3

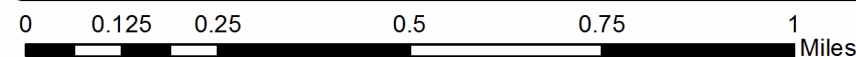
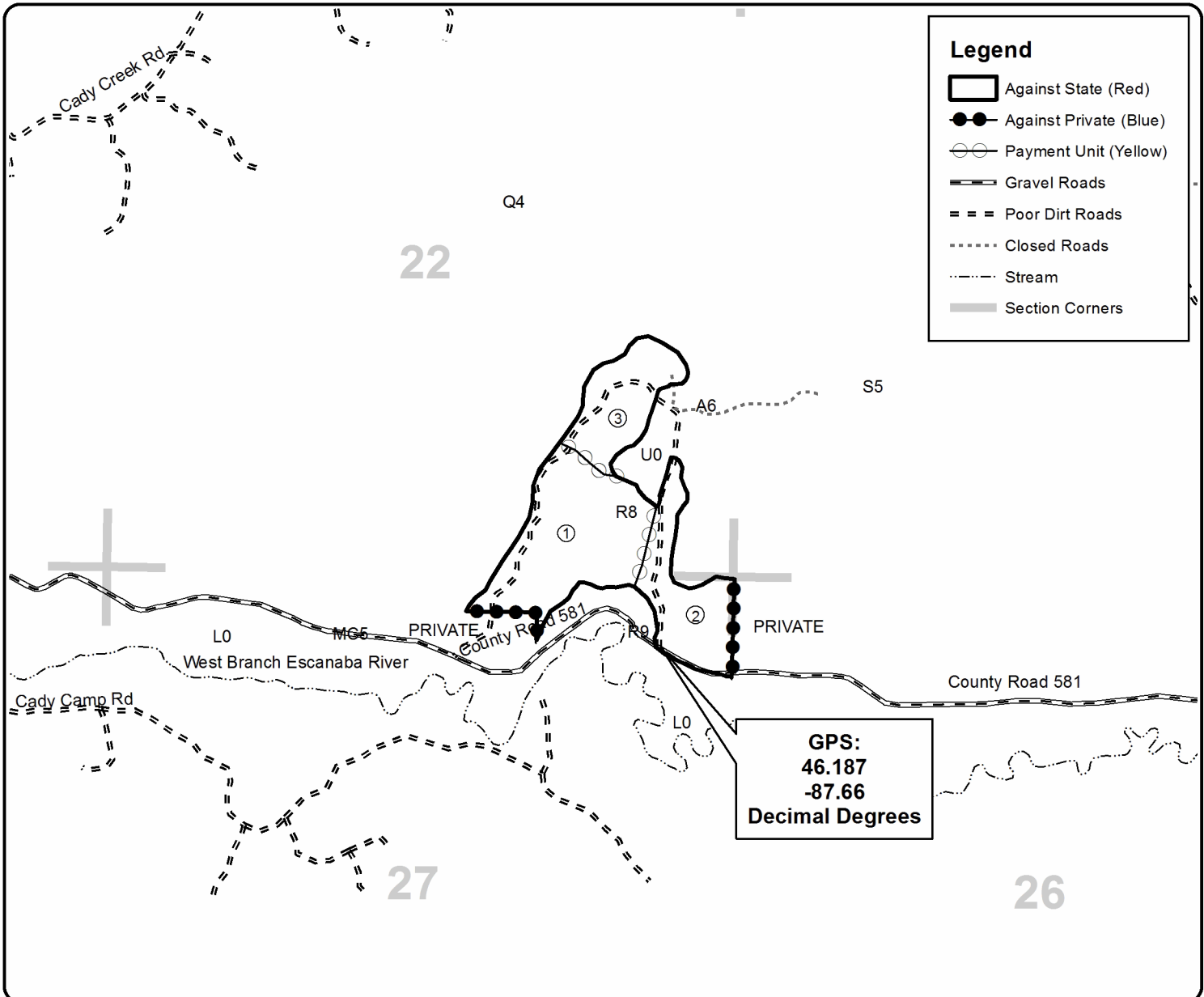
## West Branch Pine

### Compartment 24

60.1 Acres



QR Code for PDF Map





T-Bone SBW (12-020-17)  
; Dickinson COUNTY

In response to the notice of sale to be held 8:30 a.m. (local time) on February 14, 2018, I am hereby submitting my sealed bid (firm offer) for the following forest products to be cut. Bids for individual species must be at or above the advertised price. All non-responsive bid forms may be rejected.

<u>PRODUCTS &amp; SPECIES</u>	<u>ESTIMATED VOLUME*</u>	<u>ADVERTISED PRICE</u>	<u>BID PRICE/UNIT</u>
Sawtimber			
Paper Birch	12.30 MBF	\$ 74.00/MBF	\$ _____
Pulpwood			
Balsam Fir	524.00 Cords	\$ 16.55/Cord	\$ _____
Mixed Hardwood	728.00 Cords	\$ 20.00/Cord	\$ _____
Mixed Spruce	124.00 Cords	\$ 19.70/Cord	\$ _____
Quaking Aspen	1,540.00 Cords	\$ 28.75/Cord	\$ _____

\*The volumes are statistically estimated within plus (+) or minus (-) 9.35 percent. These estimated volumes are final and not subject to adjustment. Prospective bidders are urged to examine this timber and to make their own estimates of quantity and quality.

I understand that any or all bids may be rejected. All bids must be signed and all bid items must be bid or the bid form may be rejected. I also understand that consideration and awarding a contract will be based upon my past performance and ability to complete the contract based upon equipment and staffing subject to my control.

FEDERAL ID: \_\_\_\_ - \_\_\_\_ - \_\_\_\_ or SOCIAL SECURITY NUMBER: \_\_\_\_ - \_\_\_\_ - \_\_\_\_

Company or individual bidding: \_\_\_\_\_

Company representative's name: \_\_\_\_\_

Address: \_\_\_\_\_

City: \_\_\_\_\_ State: \_\_\_\_\_ Zip: \_\_\_\_\_

IF AVAILABLE, PLEASE PLACE THE PERSONALIZED LABEL FROM YOUR PROSPECTUS IN THE ABOVE BOX.

Individual or company representative's signature: \_\_\_\_\_ Date: \_\_\_\_\_

Phone number : \_\_\_\_\_ Email (optional): \_\_\_\_\_

**THE WINNING BIDDER MUST COMPLETE THE VERIFICATION OF WORKER'S DISABILITY COMPENSATION ACT COMPLIANCE (ON REVERSE SIDE IF DOUBLE SIDED) WITHIN 21 DAYS OF SALE AWARD DATE**



FOR DEPARTMENT USE ONLY	
Sale Number (XX - XXX - XX - XX)	
Forest Management Unit:	

# TIMBER SALE VERIFICATION OF WORKER'S DISABILITY COMPENSATION ACT COMPLIANCE

As required by Act 317, P.A. 1969 (Worker's Compensation) and  
Part 5 of Act 451 of 1994, as amended.

## VERIFICATION OF WORKER'S DISABILITY COMPENSATION ACT COMPLIANCE

- This verification must be completed and submitted within 21 days of contract award and prior to the issuance of the timber sale contract.
- In addition, if boxes 2B or 2C are checked, then Notice of Exclusion or Certificate of Insurance must be submitted within twenty-one (21) days of the contract award and prior to the issuance of the timber sale contract.
- All information must be typed or printed except for written signatures.

Please Check Appropriate Categories:

1. My business is organized as (you **must** check one of the boxes below):
  - A.  Sole Proprietorship (individual)
  - B.  Partnership
  - C.  Corporation
2. You **must** check one of the boxes below:
  - A.  I certify my business is a sole proprietorship and it has no employees but the sole proprietor. I am not subject to the Worker's Compensation Laws.
  - B.  I certify my business has satisfied its obligation to the Worker's Compensation Act through the use of an approved Notice of Exclusion (BWC-337, Rev. 5/96). I will provide a copy of the Notice of Exclusion within 21 days of the contract award. (For questions or a copy of the BWC-337, please call the Worker's Compensation Bureau at 517-322-1195).
  - C.  I certify my business has a Worker's Compensation Policy. I will provide an original Certificate of Insurance within twenty-one (21) days of the contract award.
3. If you have checked item 2(A) or 2(B), you **must** indicate the number of **both** full-time and part-time employees, other than yourself, including family members and active partners (if none, you must enter "0").

\_\_\_\_\_ Full-time Employees

\_\_\_\_\_ Part-time Employees

Name of Business		Federal ID (or) Social Security No.	
Address		Telephone (       )	
City	State	ZIP	

*I hereby certify that the above information is true and correct. I agree to notify the Michigan DNR of any changes that occur in factors affecting my coverage during any of my present and future operations.*

\_\_\_\_\_  
Signature of Owner or Authorized Representative

\_\_\_\_\_  
Title

\_\_\_\_\_  
Date

Please complete the "SEALED BID" information on the next page

Mucho Pine (12-027-17)  
; Dickinson COUNTY

In response to the notice of sale to be held 8:30 a.m. (local time) on February 14, 2018, I am hereby submitting my sealed bid (firm offer) for the following forest products to be cut. Bids for individual species must be at or above the advertised price. All non-responsive bid forms may be rejected.

<u>PRODUCTS &amp; SPECIES</u>	<u>ESTIMATED VOLUME*</u>	<u>ADVERTISED PRICE</u>	<u>BID PRICE/UNIT</u>
<b>Sawtimber</b>			
Red Pine	1,087.20 MBF	\$ 122.00/MBF	\$ _____
White Pine	6.40 MBF	\$ 59.00/MBF	\$ _____
<b>Pulpwood</b>			
Balsam Fir	67.00 Cords	\$ 20.70/Cord	\$ _____
Jack Pine	2.00 Cords	\$ 43.15/Cord	\$ _____
Mixed Hardwood	199.00 Cords	\$ 24.95/Cord	\$ _____
Mixed Spruce	329.00 Cords	\$ 24.65/Cord	\$ _____
Quaking Aspen	1,936.00 Cords	\$ 35.95/Cord	\$ _____
Red Pine	5,163.00 Cords	\$ 59.30/Cord	\$ _____
White Pine	82.00 Cords	\$ 28.80/Cord	\$ _____

\*The volumes are statistically estimated within plus (+) or minus (-) 8.90 percent. These estimated volumes are final and not subject to adjustment. Prospective bidders are urged to examine this timber and to make their own estimates of quantity and quality.

I understand that any or all bids may be rejected. All bids must be signed and all bid items must be bid or the bid form may be rejected. I also understand that consideration and awarding a contract will be based upon my past performance and ability to complete the contract based upon equipment and staffing subject to my control.

FEDERAL ID: \_\_\_\_ - \_\_\_\_ - \_\_\_\_ or SOCIAL SECURITY NUMBER: \_\_\_\_ - \_\_\_\_ - \_\_\_\_

Company or individual bidding: \_\_\_\_\_

Company representative's name: \_\_\_\_\_

Address: \_\_\_\_\_

City: \_\_\_\_\_ State: \_\_\_\_\_ Zip: \_\_\_\_\_

IF AVAILABLE, PLEASE PLACE THE PERSONALIZED LABEL FROM YOUR PROSPECTUS IN THE ABOVE BOX.

Individual or company representative's signature: \_\_\_\_\_ Date: \_\_\_\_\_

Phone number : \_\_\_\_\_ Email (optional): \_\_\_\_\_

**THE WINNING BIDDER MUST COMPLETE THE VERIFICATION OF WORKER'S DISABILITY COMPENSATION ACT COMPLIANCE (ON REVERSE SIDE IF DOUBLE SIDED) WITHIN 21 DAYS OF SALE AWARD DATE**



<b>FOR DEPARTMENT USE ONLY</b>
Sale Number (XX - XXX - XX - XX)
Forest Management Unit:

## TIMBER SALE VERIFICATION OF WORKER'S DISABILITY COMPENSATION ACT COMPLIANCE

*As required by Act 317, P.A. 1969 (Worker's Compensation) and  
Part 5 of Act 451 of 1994, as amended.*

### VERIFICATION OF WORKER'S DISABILITY COMPENSATION ACT COMPLIANCE

- This verification must be completed and submitted within 21 days of contract award and prior to the issuance of the timber sale contract.
- In addition, if boxes 2B or 2C are checked, then Notice of Exclusion or Certificate of Insurance must be submitted within twenty-one (21) days of the contract award and prior to the issuance of the timber sale contract.
- All information must be typed or printed except for written signatures.

Please Check Appropriate Categories:

1. My business is organized as (you **must** check one of the boxes below):
  - A.  Sole Proprietorship (individual)
  - B.  Partnership
  - C.  Corporation
2. You **must** check one of the boxes below:
  - A.  I certify my business is a sole proprietorship and it has no employees but the sole proprietor. I am not subject to the Worker's Compensation Laws.
  - B.  I certify my business has satisfied its obligation to the Worker's Compensation Act through the use of an approved Notice of Exclusion (BWC-337, Rev. 5/96). I will provide a copy of the Notice of Exclusion within 21 days of the contract award. (For questions or a copy of the BWC-337, please call the Worker's Compensation Bureau at 517-322-1195).
  - C.  I certify my business has a Worker's Compensation Policy. I will provide an original Certificate of Insurance within twenty-one (21) days of the contract award.
3. If you have checked item 2(A) or 2(B), you **must** indicate the number of **both** full-time and part-time employees, other than yourself, including family members and active partners (if none, you must enter "0").

\_\_\_\_\_ Full-time Employees

\_\_\_\_\_ Part-time Employees

Name of Business		Federal ID (or) Social Security No.	
Address		Telephone (        )	
City	State	ZIP	

*I hereby certify that the above information is true and correct. I agree to notify the Michigan DNR of any changes that occur in factors affecting my coverage during any of my present and future operations.*

\_\_\_\_\_  
Signature of Owner or Authorized Representative

\_\_\_\_\_  
Title

\_\_\_\_\_  
Date

**Please complete the "SEALED BID" information on the next page**

581 SBW (12-029-17)  
; Dickinson COUNTY

In response to the notice of sale to be held 8:30 a.m. (local time) on February 14, 2018, I am hereby submitting my sealed bid (firm offer) for the following forest products to be cut. Bids for individual species must be at or above the advertised price. All non-responsive bid forms may be rejected.

<u>PRODUCTS &amp; SPECIES</u>	<u>ESTIMATED VOLUME*</u>	<u>ADVERTISED PRICE</u>	<u>BID PRICE/UNIT</u>
Sawtimber			
Paper Birch	5.30 MBF	\$ 92.00/MBF	\$ _____
Pulpwood			
Balsam Fir	117.00 Cords	\$ 20.70/Cord	\$ _____
Mixed Hardwood	165.00 Cords	\$ 24.95/Cord	\$ _____
Quaking Aspen	756.00 Cords	\$ 35.95/Cord	\$ _____
White Spruce	83.00 Cords	\$ 24.65/Cord	\$ _____

\*The volumes are statistically estimated within plus (+) or minus (-) 17.09 percent. These estimated volumes are final and not subject to adjustment. Prospective bidders are urged to examine this timber and to make their own estimates of quantity and quality.

I understand that any or all bids may be rejected. All bids must be signed and all bid items must be bid or the bid form may be rejected. I also understand that consideration and awarding a contract will be based upon my past performance and ability to complete the contract based upon equipment and staffing subject to my control.

FEDERAL ID: \_\_\_\_ - \_\_\_\_ - \_\_\_\_ or SOCIAL SECURITY NUMBER: \_\_\_\_ - \_\_\_\_ - \_\_\_\_

Company or individual bidding: \_\_\_\_\_

Company representative's name: \_\_\_\_\_

Address: \_\_\_\_\_

City: \_\_\_\_\_ State: \_\_\_\_\_ Zip: \_\_\_\_\_

IF AVAILABLE, PLEASE PLACE THE PERSONALIZED LABEL FROM YOUR PROSPECTUS IN THE ABOVE BOX.

Individual or company representative's signature: \_\_\_\_\_ Date: \_\_\_\_\_

Phone number : \_\_\_\_\_ Email (optional): \_\_\_\_\_

**THE WINNING BIDDER MUST COMPLETE THE VERIFICATION OF WORKER'S DISABILITY COMPENSATION ACT COMPLIANCE (ON REVERSE SIDE IF DOUBLE SIDED) WITHIN 21 DAYS OF SALE AWARD DATE**



<b>FOR DEPARTMENT USE ONLY</b>
Sale Number (XX - XXX - XX - XX)
Forest Management Unit:

## TIMBER SALE VERIFICATION OF WORKER'S DISABILITY COMPENSATION ACT COMPLIANCE

*As required by Act 317, P.A. 1969 (Worker's Compensation) and  
Part 5 of Act 451 of 1994, as amended.*

### VERIFICATION OF WORKER'S DISABILITY COMPENSATION ACT COMPLIANCE

- This verification must be completed and submitted within 21 days of contract award and prior to the issuance of the timber sale contract.
- In addition, if boxes 2B or 2C are checked, then Notice of Exclusion or Certificate of Insurance must be submitted within twenty-one (21) days of the contract award and prior to the issuance of the timber sale contract.
- All information must be typed or printed except for written signatures.

Please Check Appropriate Categories:

1. My business is organized as (you **must** check one of the boxes below):
  - A.  Sole Proprietorship (individual)
  - B.  Partnership
  - C.  Corporation
2. You **must** check one of the boxes below:
  - A.  I certify my business is a sole proprietorship and it has no employees but the sole proprietor. I am not subject to the Worker's Compensation Laws.
  - B.  I certify my business has satisfied its obligation to the Worker's Compensation Act through the use of an approved Notice of Exclusion (BWC-337, Rev. 5/96). I will provide a copy of the Notice of Exclusion within 21 days of the contract award. (For questions or a copy of the BWC-337, please call the Worker's Compensation Bureau at 517-322-1195).
  - C.  I certify my business has a Worker's Compensation Policy. I will provide an original Certificate of Insurance within twenty-one (21) days of the contract award.
3. If you have checked item 2(A) or 2(B), you **must** indicate the number of **both** full-time and part-time employees, other than yourself, including family members and active partners (if none, you must enter "0").

\_\_\_\_\_ Full-time Employees

\_\_\_\_\_ Part-time Employees

Name of Business		Federal ID (or) Social Security No.	
Address		Telephone (       )	
City	State	ZIP	

*I hereby certify that the above information is true and correct. I agree to notify the Michigan DNR of any changes that occur in factors affecting my coverage during any of my present and future operations.*

\_\_\_\_\_  
Signature of Owner or Authorized Representative

\_\_\_\_\_  
Title

\_\_\_\_\_  
Date

**Please complete the "SEALED BID" information on the next page**

West Branch Pine (12-031-17)  
; Dickinson COUNTY

In response to the notice of sale to be held 8:30 a.m. (local time) on February 14, 2018, I am hereby submitting my sealed bid (firm offer) for the following forest products to be cut. Bids for individual species must be at or above the advertised price. All non-responsive bid forms may be rejected.

<u>PRODUCTS &amp; SPECIES</u>	<u>ESTIMATED VOLUME*</u>	<u>ADVERTISED PRICE</u>	<u>BID PRICE/UNIT</u>
<b>Sawtimber</b>			
Red Pine	641.40 MBF	\$ 122.00/MBF	\$ _____
White Pine	109.60 MBF	\$ 59.00/MBF	\$ _____
<b>Pulpwood</b>			
Red Pine	284.00 Cords	\$ 59.30/Cord	\$ _____
White Pine	149.00 Cords	\$ 28.80/Cord	\$ _____
White Spruce	1.00 Cords	\$ 24.65/Cord	\$ _____

\*The volumes are statistically estimated within plus (+) or minus (-) 12.87 percent. These estimated volumes are final and not subject to adjustment. Prospective bidders are urged to examine this timber and to make their own estimates of quantity and quality.

I understand that any or all bids may be rejected. All bids must be signed and all bid items must be bid or the bid form may be rejected. I also understand that consideration and awarding a contract will be based upon my past performance and ability to complete the contract based upon equipment and staffing subject to my control.

FEDERAL ID: \_\_\_\_ - \_\_\_\_ - \_\_\_\_ or SOCIAL SECURITY NUMBER: \_\_\_\_ - \_\_\_\_ - \_\_\_\_

Company or individual bidding: \_\_\_\_\_

Company representative's name: \_\_\_\_\_

Address: \_\_\_\_\_

City: \_\_\_\_\_ State: \_\_\_\_\_ Zip: \_\_\_\_\_

IF AVAILABLE, PLEASE PLACE THE PERSONALIZED LABEL FROM YOUR PROSPECTUS IN THE ABOVE BOX.

Individual or company representative's signature: \_\_\_\_\_ Date: \_\_\_\_\_

Phone number : \_\_\_\_\_ Email (optional): \_\_\_\_\_

**THE WINNING BIDDER MUST COMPLETE THE VERIFICATION OF WORKER'S DISABILITY COMPENSATION ACT COMPLIANCE (ON REVERSE SIDE IF DOUBLE SIDED) WITHIN 21 DAYS OF SALE AWARD DATE**



<b>FOR DEPARTMENT USE ONLY</b>
Sale Number (XX - XXX - XX - XX)
Forest Management Unit:

## TIMBER SALE VERIFICATION OF WORKER'S DISABILITY COMPENSATION ACT COMPLIANCE

*As required by Act 317, P.A. 1969 (Worker's Compensation) and  
Part 5 of Act 451 of 1994, as amended.*

### VERIFICATION OF WORKER'S DISABILITY COMPENSATION ACT COMPLIANCE

- This verification must be completed and submitted within 21 days of contract award and prior to the issuance of the timber sale contract.
- In addition, if boxes 2B or 2C are checked, then Notice of Exclusion or Certificate of Insurance must be submitted within twenty-one (21) days of the contract award and prior to the issuance of the timber sale contract.
- All information must be typed or printed except for written signatures.

Please Check Appropriate Categories:

1. My business is organized as (you **must** check one of the boxes below):
  - A.  Sole Proprietorship (individual)
  - B.  Partnership
  - C.  Corporation
  
2. You **must** check one of the boxes below:
  - A.  I certify my business is a sole proprietorship and it has no employees but the sole proprietor. I am not subject to the Worker's Compensation Laws.
  - B.  I certify my business has satisfied its obligation to the Worker's Compensation Act through the use of an approved Notice of Exclusion (BWC-337, Rev. 5/96). I will provide a copy of the Notice of Exclusion within 21 days of the contract award. (For questions or a copy of the BWC-337, please call the Worker's Compensation Bureau at 517-322-1195).
  - C.  I certify my business has a Worker's Compensation Policy. I will provide an original Certificate of Insurance within twenty-one (21) days of the contract award.
  
3. If you have checked item 2(A) or 2(B), you **must** indicate the number of **both** full-time and part-time employees, other than yourself, including family members and active partners (if none, you must enter "0").

\_\_\_\_\_ Full-time Employees

\_\_\_\_\_ Part-time Employees

Name of Business		Federal ID (or) Social Security No.	
Address		Telephone (       )	
City	State	ZIP	

*I hereby certify that the above information is true and correct. I agree to notify the Michigan DNR of any changes that occur in factors affecting my coverage during any of my present and future operations.*

\_\_\_\_\_  
Signature of Owner or Authorized Representative

\_\_\_\_\_  
Title

\_\_\_\_\_  
Date

**Please complete the "SEALED BID" information on the next page**



Hipster Hardwoods (12-001-17)  
; Dickinson COUNTY

In response to the notice of sale to be held 8:30 a.m. (local time) on February 14, 2018, I am hereby submitting my sealed bid (firm offer) for the following forest products to be cut. Bids for individual species must be at or above the advertised price. All non-responsive bid forms may be rejected.

<u>PRODUCTS &amp; SPECIES</u>	<u>ESTIMATED VOLUME*</u>	<u>ADVERTISED PRICE</u>	<u>BID PRICE/UNIT</u>
<b>Sawtimber</b>			
Basswood	700.30 MBF	\$ 239.00/MBF	\$ _____
Red Oak	12.50 MBF	\$ 155.00/MBF	\$ _____
Sugar Maple	150.80 MBF	\$ 453.00/MBF	\$ _____
White Ash	30.70 MBF	\$ 90.00/MBF	\$ _____
<b>Pulpwood</b>			
Balsam Fir	62.00 Cords	\$ 20.60/Cord	\$ _____
Basswood	1,144.00 Cords	\$ 12.00/Cord	\$ _____
Mixed Hardwood	1,756.00 Cords	\$ 24.85/Cord	\$ _____
Mixed Spruce	54.00 Cords	\$ 24.55/Cord	\$ _____
Quaking Aspen	1,337.00 Cords	\$ 35.80/Cord	\$ _____
Tamarack	181.00 Cords	\$ 13.15/Cord	\$ _____

\*The volumes are statistically estimated within plus (+) or minus (-) 7.79 percent. These estimated volumes are final and not subject to adjustment. Prospective bidders are urged to examine this timber and to make their own estimates of quantity and quality.

I understand that any or all bids may be rejected. All bids must be signed and all bid items must be bid or the bid form may be rejected. I also understand that consideration and awarding a contract will be based upon my past performance and ability to complete the contract based upon equipment and staffing subject to my control.

FEDERAL ID: \_\_\_\_\_ or SOCIAL SECURITY NUMBER: \_\_\_\_\_

Company or individual bidding: \_\_\_\_\_

Company representative's name: \_\_\_\_\_

Address: \_\_\_\_\_

City: \_\_\_\_\_ State: \_\_\_\_\_ Zip: \_\_\_\_\_

IF AVAILABLE, PLEASE PLACE THE PERSONALIZED LABEL FROM YOUR PROSPECTUS IN THE ABOVE BOX.

Individual or company representative's signature: \_\_\_\_\_ Date: \_\_\_\_\_

Phone number : \_\_\_\_\_ Email (optional): \_\_\_\_\_

**THE WINNING BIDDER MUST COMPLETE THE VERIFICATION OF WORKER'S DISABILITY COMPENSATION ACT COMPLIANCE (ON REVERSE SIDE IF DOUBLE SIDED) WITHIN 21 DAYS OF SALE AWARD DATE**



<b>FOR DEPARTMENT USE ONLY</b>
Sale Number (XX - XXX - XX - XX)
Forest Management Unit:

## TIMBER SALE VERIFICATION OF WORKER'S DISABILITY COMPENSATION ACT COMPLIANCE

*As required by Act 317, P.A. 1969 (Worker's Compensation) and  
Part 5 of Act 451 of 1994, as amended.*

### VERIFICATION OF WORKER'S DISABILITY COMPENSATION ACT COMPLIANCE

- This verification must be completed and submitted within 21 days of contract award and prior to the issuance of the timber sale contract.
- In addition, if boxes 2B or 2C are checked, then Notice of Exclusion or Certificate of Insurance must be submitted within twenty-one (21) days of the contract award and prior to the issuance of the timber sale contract.
- All information must be typed or printed except for written signatures.

Please Check Appropriate Categories:

1. My business is organized as (you **must** check one of the boxes below):
  - A.  Sole Proprietorship (individual)
  - B.  Partnership
  - C.  Corporation
2. You **must** check one of the boxes below:
  - A.  I certify my business is a sole proprietorship and it has no employees but the sole proprietor. I am not subject to the Worker's Compensation Laws.
  - B.  I certify my business has satisfied its obligation to the Worker's Compensation Act through the use of an approved Notice of Exclusion (BWC-337, Rev. 5/96). I will provide a copy of the Notice of Exclusion within 21 days of the contract award. (For questions or a copy of the BWC-337, please call the Worker's Compensation Bureau at 517-322-1195).
  - C.  I certify my business has a Worker's Compensation Policy. I will provide an original Certificate of Insurance within twenty-one (21) days of the contract award.
3. If you have checked item 2(A) or 2(B), you **must** indicate the number of **both** full-time and part-time employees, other than yourself, including family members and active partners (if none, you must enter "0").

\_\_\_\_\_ Full-time Employees

\_\_\_\_\_ Part-time Employees

Name of Business		Federal ID (or) Social Security No.	
Address		Telephone (       )	
City	State	ZIP	

*I hereby certify that the above information is true and correct. I agree to notify the Michigan DNR of any changes that occur in factors affecting my coverage during any of my present and future operations.*

\_\_\_\_\_  
Signature of Owner or Authorized Representative

\_\_\_\_\_  
Title

\_\_\_\_\_  
Date

**Please complete the "SEALED BID" information on the next page**