



**DEPARTMENT OF NATURAL RESOURCES  
STATE OF MICHIGAN**

**TIMBER SALE PROSPECTUS #6043**

SCHEDULED SALE DATE AND TIME: 3:00 p.m. (local time) on February 26, 2018.

LOCATION: MANTON FIELD OFFICE, 521 N MICHIGAN, MANTON, MI 49663.

PROSPECTUS NOTE: The bidder is advised to inspect the sale area and review the location, estimated volumes, operating costs and contract terms of proposed sales. Please be aware that some landowners may request 60 days or more notice for access across their land.

Notice is hereby given that bids will be received by the Unit Manager, CADILLAC MANAGEMENT UNIT, for certain timber on the following described lands:

86 Mix (63-010-17)

Missaukee County, Advertised Price \$4,779.15, 42.0 Acres, Red Oak, White Pine.

Shotgun Hardwoods (63-030-17)

Wexford County, Advertised Price \$49,797.30, 111.8 Acres, Aspen, Hardwood.

Pipeline Aspen (63-033-17)

Missaukee County, Advertised Price \$70,763.60, 133.3 Acres, Aspen, Hardwood.

SALE NOTE: Large aspen clearcut. Sale is spread out over three sections and includes 4 Payment Units. All oak being left, as well as conifers under 10 inches at DBH. In addition, leave trees marked with green paint throughout the sale area.

## BID INSTRUCTIONS (VER. 11/28/2017):

### 1. Scheduled Bid Location, Date, and Time (2/11)

Bids must be received by the Unit Manager, MANTON OFFICE, 521 N MICHIGAN, MANTON, MI 49663, no later than 3:00 p.m. (local time) on February 26, 2018. For further information concerning this sale, contact Joe Ventinglia at 231-824-3591 extension 11.

### 2. Bidder's Qualifications (5/16)

Purchaser shall obtain workers compensation insurance to cover claims under Michigan's Worker's Disability Compensation Act of 1969 or similar employee benefit act of any other state applicable to an employee. If all or part of a timber sale was prepared by a private contractor, the contractor and that contractor's company are not permitted to bid on the timber sale contract. Bids will not be accepted from individuals or companies appearing on the DNR/FRD No-Bid List. This list contains the names of purchasers who previously failed to execute a contract within 21-days or who have a history of poor performance.

### 3. Preparation of Sealed Bids (5/16)

Bid Forms may be completed online thru Michigan DNR Timber Sale Online Bidding (OLB) at [www.michigan.gov/timberbidding](http://www.michigan.gov/timberbidding) or by completing the hardcopy Bid Form found in the Timber Sale Prospectus. Hardcopy Bid Forms shall be manually signed in ink. Registration in OLB is considered your 'signature' for all bids submitted thru that system. Bid prices must be entered for each species and product in the Bid Price column for all material subject to bidding and all fill-in blanks must be completed. If erasures or other changes appear on the hardcopy Bid Form, each erasure or change must be initialed by the person signing the bid.

### 4. Submission of Sealed Bids (5/16)

Bid forms may be obtained from the Unit Manager or thru OLB. Bids may be submitted hardcopy or thru OLB. All hardcopy bids must be submitted on the bid form and in an envelope clearly identified as described in this section. NOTE: Only one bid form per bid envelope. Sealed bids must be submitted to the Unit office designated in the prospectus and must be submitted at or prior to the time established in the prospectus. The envelope should show on the outside (a) the sale name or number and (b) the date and time of bid opening, as shown in the prospectus. Bids received after the time specified in the sale prospectus are late bids and will be rejected.

It is possible for a bidder to submit multiple bids on a single sale. For example, a bid may be submitted hardcopy and a bid may be submitted thru OLB. Or, two bidders from the same company could both submit bids on the same sale. If this were to happen, the State would accept all bids received and award the contract accordingly. All bidding and contractual requirements would apply to all bids received.

### 5. Public Opening of Sealed Bids (7/16)

If conditions permit, the sealed bids will be publicly opened and posted at the time and place set in the prospectus.

If a bidder, present at a bid opening, has submitted bids on more than one sale, that bidder may withdraw their unopened bid envelopes or announce the withdrawal of their online bid after being declared the successful bidder on one sale.

### 6. Award of Contract (1/11)

Award of the contract will be made to the Bidder whose bid, conforming to the prospectus, is most advantageous to the State of Michigan on the basis of total value at rates bid for the estimated quantities. The State reserves the right to reject any bid or waive any minor irregularity in bids received. A written award mailed (or otherwise furnished) to the successful Bidder shall be deemed to result in a binding contract without further action by either party.

### 7. Down Payment (1/11)

The Bidder to whom award is made must make a down payment within 21 days of the sale award. The amount of the down payment will be calculated as shown in the Bond and Payment Schedule of this prospectus. Only cash may be used to meet this requirement.

### 8. Performance Security (1/11)

As guarantee of faithful performance, a cash bond, certificate of deposit, surety bond or irrevocable letter of credit (LOC) is required within 21 days of the sale award. The amount of the performance security is shown in the Bond and

Payment Schedule of this prospectus. If an LOC or surety is used, the coverage must extend for at least 6 months beyond the contract expiration.

#### 9. Timber Sale Contract (11/17)

Additional conditions and requirements common to all timber sales are listed on the timber sale contract (R4031) and are available on line at [www.michigan.gov/timber](http://www.michigan.gov/timber). Contact the Unit Manager for additional information or a sample contract. Within 21 days of the date of the award letter, the bidder must sign the contract and provide the required down payment, performance security, and verification of worker's disability compensation. The down payment and performance security shall be in accordance with the provisions of the timber sale contract, in the sums stated in this prospectus. If these actions are not taken, then the Bidder, the Bidder's corporation, and the corporation's principals may not be permitted to bid on State timber sales for a period of 1 year. In addition, the Bidder certifies that if awarded this contract, the Bidder will complete the timber sale contract in accordance with its terms and any modifications thereof including requirements to purchase, cut, and remove the included timber by the expiration date.

Payment Unit values in the State Forest Timber Sale Contract are calculated based on the advertised value of the Payment Unit as a percentage of the total advertised value of the contract. The advertised value of each Payment Unit is given in the Description of Timber by Payment Unit table on the Timber Sale Information page. For example, if the value of Payment Unit 1 is advertised as \$1,500 and the total Timber Sale value is advertised as \$10,000, the contract price for Payment Unit 1 will be 15% of the total bid price ( $\$1,500/\$10,000 * 100$ ).

#### 10. Disclaimer of Estimates and Bidder's Warranty of Inspection (7/16)

Before submitting this bid, the Bidder is advised and cautioned to inspect the sale area, review the requirements of the sale contract, and take other steps as may be reasonably necessary to ascertain the location, estimated volumes, construction estimates, and operating costs of the proposed sale. Failure to do so will not relieve the Bidder from responsibility for completing the contract.

The Bidder warrants that this bid is submitted solely on the basis of the Bidder's examination and inspection of the quality and quantity of the timber offered for sale and the Bidder's opinion of the value thereof and the costs of recovery. No reliance should be placed on the State of Michigan's estimates of timber quality, quantity or costs of recovery. Bidder further acknowledges that the State of Michigan: (i) expressly disclaims any warranty of fitness of timber for any purpose; (ii) offers this timber as is without any warranty of quality (merchantability) or quantity and (iii) expressly disclaims any warranty as to the quantity or quality of timber sold.

#### 11. Certification and Chain-of-Custody (10/14)

Unless otherwise indicated in the contract under section 7 – Other Conditions of the Sale Specific Conditions & Requirements, the area encompassed by this timber sale is certified to the standards of the Forest Stewardship Council (FSC) - Certificate #SCS-FM/COC-00090N and the Sustainable Forestry Initiative (SFI) - Certificate # NSF-SFIS-5Y031-SF5. Forest products from this sale may be delivered to the mill as "FSC 100% and / or SFI certified" as long as the contractor hauling the forest products is chain-of-custody (COC) certified or covered under a COC certificate from the destination mill. The purchaser is responsible for maintaining COC after leaving the sale area.

#### 12. Good Neighbor Authority (GNA) Requirements (7/16)

If the name of this timber sales contains the acronym GNA, it is authorized by the Good Neighbor Authority (GNA) and covered by various agreements between the U.S. Forest Service and the State. The timber sale occurs on federal land and the following conditions apply:

GNA contracts on US Forest Service land will not be awarded to purchasers on the Federal list of excluded parties. The System for Award Management (SAM) will be checked for active excluded parties prior to award of contract. In addition, the Bidder to whom award is made must complete an Assurance Regarding Felony Conviction or Tax Delinquent Status for Corporate Applicants (AD-3031).

#### 13. Good Neighbor Authority (GNA) Requirements, con't (9/16)

Bidder certifies, by signing this bid form, that to the best of Bidder's knowledge that the following representations are accurate and complete.

a. That the Bidder and its principals are not presently debarred, suspended, proposed for debarment, declared ineligible, or voluntary excluded from timber sales (covered transactions) by any Federal department or agency.

b. That the Bidder and its principals have not within a 3-year period preceding this bid been convicted of or had a civil judgment rendered against them for commission of fraud or a criminal offense in connection with obtaining, attempting to obtain, or performing a public (Federal, State, or local) transaction or contract under a public transaction; violation of Federal or State antitrust statutes or commission of embezzlement, theft, forgery, bribery, falsification or destruction of records, making false statements, or receiving stolen property.

c. That the Bidder and its principals are not presently indicted for or otherwise criminally or civilly charged by a governmental entity (Federal, State, or local) with commission of any of the offenses enumerated in paragraph b of this certification.

d. That the Bidder and its principals have not within a 3-year period preceding this bid had one or more public transactions (Federal, State, or local) terminated for breach or default of a timber or forest product contract.

Bidders that cannot certify this requirement, in whole or in part, shall submit an explanation with their bid.

KEITH CREAGH

Director

**TIMBER SALE INFORMATION**

86 Mix (63-010-17)

Missaukee County (Advertised Price \$4,779.15)

A timber sale contract for this lump sum, sealed bid timber sale will be awarded to the responsible bidder offering the highest sealed bid price. Bids must be at or above the following advertised price for each species:

<u>PRODUCTS &amp; SPECIES</u>	<u>ESTIMATED UNITS*</u>	<u>ADVERTISED PRICE</u>
<b>Sawtimber</b>		
B. T. Aspen	7.00 MBF	\$ 27.00 / MBF
Red Maple	1.80 MBF	\$ 28.00 / MBF
Red Oak	40.70 MBF	\$ 47.00 / MBF
Red Pine	6.90 MBF	\$ 23.00 / MBF
White Pine	19.80 MBF	\$ 17.00 / MBF
<b>Pulpwood</b>		
B. T. Aspen	76.00 Cords	\$ 3.65 / Cord
Balsam Fir	30.00 Cords	\$ 2.20 / Cord
Beech	2.00 Cords	\$ 3.95 / Cord
Paper Birch	5.00 Cords	\$ 4.05 / Cord
Red Maple	107.00 Cords	\$ 3.95 / Cord
Red Oak	164.00 Cords	\$ 3.70 / Cord
Red Pine	21.00 Cords	\$ 8.60 / Cord
White Oak	14.00 Cords	\$ 3.70 / Cord
White Pine	123.00 Cords	\$ 4.05 / Cord

\* The total volume is statistically estimated within plus (+) or minus (-) 12.25 percent. The estimated units are final and not subject to adjustment. Prospective bidders are urged to examine this timber and to make their own estimates of quantity and quality.

**BOND AND PAYMENT SCHEDULE:**

1. A bond in the amount of \$239.00 to insure faithful performance of the conditions of the contract will be deposited by the successful bidder within 21 days of the sale award.
2. Cutting in any sale or unit without the required advance payment would be considered a trespass.
3. Total payment must be paid in advance or according to the following schedule:
  - (a) Ten percent (10%) of the sale value must be paid within 21 days of the sale award.
  - (b) The 10% down payment will be credited towards the first unit cut.
4. If no cutting takes place, the 10% down payment will not be refunded.
5. Operations on the contract issued will terminate on 03/31/2020.

**Description of Timber by Payment Unit (PU)**

PU	MARKET GROUP	PRODUCT	QUANTITY	UNIT	ACRES	ADVERTISE PRICE
1	B. T. Aspen	Sawtimber	2.7	MBF	16.9	\$1,511.10
	Red Maple		0.9	MBF		
	Red Oak		11.8	MBF		
	Red Pine		3.6	MBF		
	White Pine		3.6	MBF		
	B. T. Aspen		Pulpwood	16.0		
	Beech	2.0		Cords		
	Red Maple	34.0		Cords		
	Red Oak	52.0		Cords		
	Red Pine	11.0		Cords		
	White Pine	56.0		Cords		
	2	Red Oak	Sawtimber	18.1		
White Pine		7.6		MBF		
Red Maple		Pulpwood	17.0	Cords		
Red Oak			81.0	Cords		
White Oak			14.0	Cords		
White Pine			20.0	Cords		
3	Red Pine	Sawtimber	3.3	MBF	5.4	\$449.65
	White Pine		7.8	MBF		
	B. T. Aspen	Pulpwood	3.0	Cords		
	Red Maple		2.0	Cords		
	Red Oak		4.0	Cords		
	Red Pine		10.0	Cords		
	White Pine		30.0	Cords		
4	B. T. Aspen	Sawtimber	4.3	MBF	8.4	\$1,084.55
	Red Oak		10.8	MBF		
	B. T. Aspen	Pulpwood	47.0	Cords		
	Balsam Fir		14.0	Cords		
	Red Maple		34.0	Cords		
	Red Oak		27.0	Cords		
	White Pine		6.0	Cords		
5	Red Maple	Sawtimber	0.9	MBF	4.3	\$254.30
	White Pine		0.8	MBF		
	B. T. Aspen	Pulpwood	10.0	Cords		
	Balsam Fir		16.0	Cords		
	Paper Birch		5.0	Cords		
	Red Maple		20.0	Cords		
	White Pine		11.0	Cords		
TOTAL:			76.2	MBF		
TOTAL:			542.0	Cords		

## Sale Specific Conditions & Requirements

**Sale Name: 86 Mix**

**Sale Number: 63-010-17 Seq#: 3**

### 1 - Sale Area

#### 1.2 - Boundaries

##### 1.2.1 - Painted boundaries (1/14)

The sale boundary is marked and identified by red paint. Exterior sale boundary lines against state are marked with red paint. The painted boundary line trees are not Included Timber and are to be protected.

### 2 - Timber Specifications

#### 2.1 - Included Timber

##### 2.1.1 - Clearcut unit(s) with unmerchantable trees (6/14)

Within Payment Unit(s) 1-5, cut all aspen, maple, beech, and jack pine trees that are two (2) inches or more at DBH. Do not cut any trees marked with green paint. In addition:

Within Payment Unit(s) 1, cut all orange marked red pine and oak; cut all white pine down to a two (2) inch DBH.

Within Payment Unit(s) 2, 3 and 4, cut all oak and pine larger than ten (10) inches DBH.

Within Payment Unit(s) 5, do not cut any oak or cedar.

#### 2.2 - Utilization

##### 2.2.6 - Roundwood operation required (5/07)

The skidding of whole trees or tree segments with limbs attached is prohibited within Payment Unit(s) 1-5. All products must be produced as roundwood and forwarded to existing roads or landing areas in final product length.

### 3 - Payments

#### 3.4 - Damaged Timber

##### 3.4.1 - Damaged timber (6/14)

General Condition and Requirement 3.4 Damaged Timber, defines liquidated damages for undesignated live merchantable trees which are cut or injured. In addition, extreme care should be taken to avoid damage to tree seedlings and saplings.

Within the sale area, if more than 25% of the tree seedlings or saplings (1/4" to 4.5" DBH) within a specified portion of the sale area are damaged, liquidated damages will be assessed at \$300 per acre for all acreage within that specified portion of the sale area that was damaged.

No damage is acceptable to merchantable trees. Within the sale area, if more than 5 % of trees (> 4.5" DBH) within a specified area of the sale are damaged, liquidated damages will be assessed for all trees damaged. Rates will be in accordance with General Condition and Requirement 3.4 Damaged Timber.

### 4 - Transportation

#### 4.1 - Construction

##### 4.1.12 - No new roads (1/12)

No new roads will be permitted in any Payment Unit. All operations are limited to existing roads. Skid trails only will be allowed. A new skid trail will have to be established to access Payment Unit 2.

#### 4.2 - Maintenance

##### 4.2.3 - Road maintenance (8/13)

The following road maintenance is required: Within 30 days of completion of hauling, or if no hauling occurs for 30 days, the road must be maintained and graded. This includes cleaning of drainage areas, grading, crowning and filling with gravel, if

necessary. Damages will be assessed if grading/repair does not occur.

#### 4.2.5 - Two wheel drive condition (2/04)

All existing trail roads on and adjacent to the sale area must be passable by two-wheel drive traffic for the duration of the sale.

## 5 - Operations

### 5.2 - Conduct of Operations

#### 5.2.1 - Slash

##### 5.2.1.8 - Slash height (12/08)

No slash or tree tops may exceed 24 inches in height.

#### 5.2.3 - Operating Restrictions

##### 5.2.3.4 - Oak wilt restriction (4/17)

Within Payment Unit(s) 1-5, unless changed by written agreement, cutting and skidding, are not permitted during the period of April 15 to July 15. Operations may be allowed if specific steps are taken to prevent damaging uncut oak during the high risk period. Those steps include completing all road brushing before April 15th, clearing a tree-length buffer along uncut oak cover before April 15th or leaving an uncut buffer there until after July 15th. This is necessary to reduce the spread of oak wilt. For more information, contact the Unit Manager or his/her representative.

#### 5.2.4 - Dead and Down Creation

##### 5.2.4.5 - Dead and down creation, reptiles and amphibians (2/05)

To encourage reptiles and amphibians, within unit(s) 1-5 leave one, 14 inch DBH or greater full-length tree on the ground, with the top still intact, per 5 acres. These trees shall be evenly scattered through out the unit(s) and identified by blue flagging.

#### 5.2.22 - Operating Caution

##### 5.2.22.1 - Operating caution (6/11)

It is recommended, but not required, that within Payment Unit(s) 1-5, cutting, skidding, and hauling occur during dry summer or frozen winter conditions. The reason for the recommendation is because of wet areas and sensitive soils.

#### 5.2.41 - Snowmobile trail protection (9/11)

The Miss Kal is a snowmobile trail and is shown on the Timber Sale Map. Do not cut or damage posts with orange trail markers or traffic control signs. If the trail is used, it must be maintained and restored to a condition equal to or better than before the sale. The road maintenance/restoration must be done prior to December 1. If the trail is used for hauling, it must be graded to the satisfaction of the Unit Manager or his/her representative prior to December 1st. If the trail road is to be used for hauling during the snowmobile season, then a snow covered base must be left on the trail. The snowmobile trail may only be crossed at right angles. No decking of forest products will be permitted along the snowmobile trail. All stumps within 20 feet of the snowmobile trail must be cut at ground level. In addition, any trees cut within 5 feet of the trail must have the stumps removed and be disposed of according to the direction of the Unit Manager or his/her representative.

### 5.4 - Soil Protection

#### 5.4.1 - Rutting restriction, general (7/16)

Operations are to cease immediately if equipment and weather conditions result in rutting of roads and/or skid trails which is 12 inches or greater in depth and 50 feet in length. The Unit Manager or his/her representative may restrict hauling and/or skidding if ruts exceed the specified depth. With the Unit Manager or his/her representative's approval, the Purchaser may return to the area when the risk of rutting has decreased.

#### 5.4.5 - Soil caution (11/04)

Care must be taken to minimize soil damage due to the wet soils.

## 6 - Safety and Fire Prevention

### 6.2 - Signing



#### 6.2.2 - Snowmobile trail posting (8/09)

The Purchaser is responsible for posting and maintaining caution signs on the Miss Kal snowmobile trail prior to beginning operations during the snowmobile season (approximately December 1 to March 31). The trail must be posted at appropriate distances from the sale area to warn of logging activity and truck traffic. Signs must be removed when harvest operations are suspended or completed. The Purchaser will provide these signs.



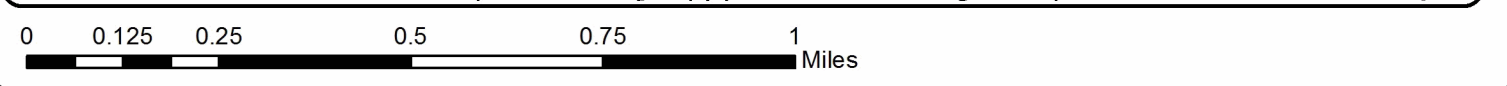
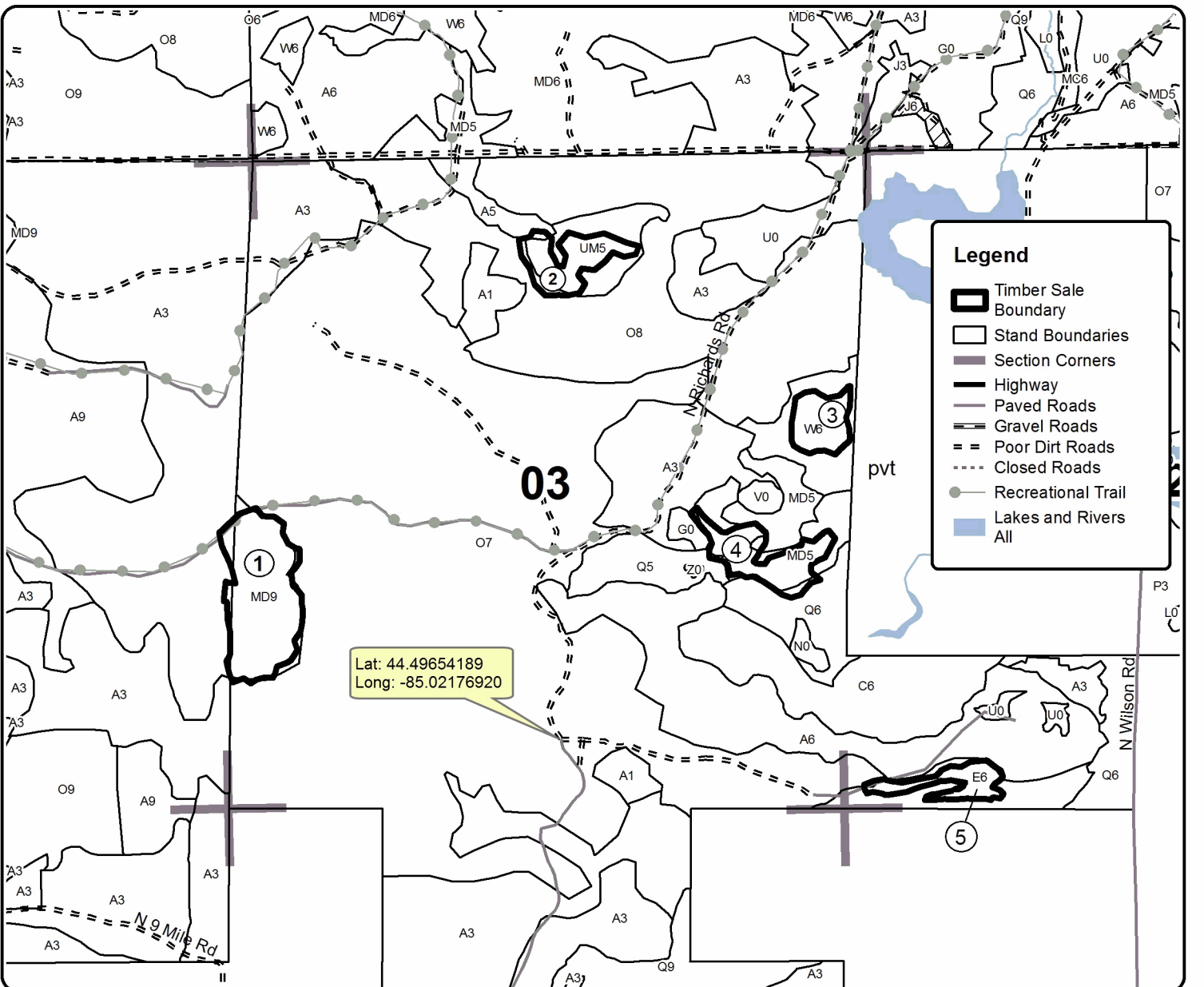
# TIMBER SALE MAP

This information provided by authority of Part 525, 1994 PA 451, as amended.

Forest Management Unit Cadillac		County Missaukee	Mapped By Eisele	Date 03/28/2017	Page 1	of 1
Township T24N	Range R6W	Section(s) and Subdivision(s) 2-SWSW 3-NWSW, NESE, SENE, NWNE		Scale 1:15,840		

Cover Type				Density	
A = Aspen	H = Hemlock	N = Marsh	U = Upland Brush	0 = Non Stocked	5 = Pole Timber Medium
B = Paper Birch	J = Jack Pine	O = Oak	UM = Upland Mixed	1 = Seedling Sapling Poor	6 = Pole Timber Well
C = Cedar	L = Lowland Brush	P = Lowland Poplar	V = Bog or Marsh	2 = Seedling Sapling Medium	7 = Saw Timber Poor
D = Tread Bog	LM = Lowland Mixed	Q = Mixed Swamp Conifer	W = White Pine	3 = Seedling Sapling Well	8 = Saw Timber Medium
E = Swamp Hdwoods	M = Mpl, Bch, Brch	R = Red Pine	X = Non Stocked	4 = Pole Timber Poor	9 = Saw Timber Well
F = Spruce Fir	MC = Mixed Conifer	S = Black Spruce	Z = Water		
G = Grass	MD = Mixed Deciduous	T = Tamarack			

PU	Acres	PU	Acres	<b>86 Mix</b> <b>Compartment 86</b> <b>42 Acres</b>	
1	16.9	4	8.4		
2	7.0	5	4.3		
3	5.4				



## TIMBER SALE INFORMATION

### Shotgun Hardwoods (63-030-17)

Wexford County (Advertised Price \$49,797.30)

A timber sale contract for this lump sum, sealed bid timber sale will be awarded to the responsible bidder offering the highest sealed bid price. Bids must be at or above the following advertised price for each species:

<u>PRODUCTS &amp; SPECIES</u>	<u>ESTIMATED UNITS*</u>	<u>ADVERTISED PRICE</u>
Sawtimber		
American Elm	2.40 MBF	\$ 59.00 / MBF
B. T. Aspen	44.70 MBF	\$ 108.00 / MBF
Basswood	42.60 MBF	\$ 91.00 / MBF
Beech	69.10 MBF	\$ 76.00 / MBF
Black Cherry	6.20 MBF	\$ 103.00 / MBF
Red Maple	9.90 MBF	\$ 112.00 / MBF
Red Oak	5.00 MBF	\$ 190.00 / MBF
Sugar Maple	51.40 MBF	\$ 202.00 / MBF
Pulpwood		
B. T. Aspen	229.00 Cords	\$ 14.50 / Cord
Basswood	86.00 Cords	\$ 13.90 / Cord
Misc. Species 1	110.00 Cords	\$ 6.00 / Cord
Mixed Hardwood	1,064.00 Cords	\$ 15.80 / Cord
Red Oak	18.00 Cords	\$ 14.85 / Cord
Red Pine	5.00 Cords	\$ 34.30 / Cord
White Pine	12.00 Cords	\$ 16.15 / Cord

\* The total volume is statistically estimated within plus (+) or minus (-) 12.30 percent. The estimated units are final and not subject to adjustment. Prospective bidders are urged to examine this timber and to make their own estimates of quantity and quality.

#### **BOND AND PAYMENT SCHEDULE:**

1. A bond in the amount of \$2,490.00 to insure faithful performance of the conditions of the contract will be deposited by the successful bidder within 21 days of the sale award.
2. Cutting in any sale or unit without the required advance payment would be considered a trespass.
3. Total payment must be paid in advance or according to the following schedule:
  - (a) Ten percent (10%) of the sale value must be paid within 21 days of the sale award.
  - (b) The 10% down payment will be credited towards the first unit cut.
4. If no cutting takes place, the 10% down payment will not be refunded.
5. Operations on the contract issued will terminate on 03/31/2020.

**Description of Timber by Payment Unit (PU)**

PU	MARKET GROUP	PRODUCT	QUANTITY	UNIT	ACRES	ADVERTISE PRICE	
1	B. T. Aspen	Sawtimber	16.2	MBF	24.2	\$10,618.60	
	Basswood		5.2	MBF			
	Beech		16.0	MBF			
	Black Cherry		1.6	MBF			
	Red Maple		1.8	MBF			
	Sugar Maple		6.0	MBF			
	B. T. Aspen		Pulpwood	60.0			Cords
	Basswood			6.0			Cords
	Misc. Species 1			34.0			Cords
	<i>White Ash</i>			<i>Sawtimber</i>			1.4
	<i>White Ash</i>	<i>Pulpwood</i>		31.0			<i>Cords</i>
	Mixed Hardwood	269.0		Cords			
	<i>American Elm</i>	13.0		<i>Cords</i>			
	<i>Beech</i>	58.0		<i>Cords</i>			
	<i>Black Cherry</i>	17.0		<i>Cords</i>			
	<i>Ironwood</i>	5.0		<i>Cords</i>			
	<i>Red Maple</i>	29.0	<i>Cords</i>				
	<i>Sugar Maple</i>	147.0	<i>Cords</i>				
	White Pine		12.0	Cords			
	2	Basswood	Sawtimber	28.3			MBF
Beech		43.9		MBF			
Red Maple		2.1		MBF			
Sugar Maple		21.1		MBF			
Basswood		Pulpwood	61.0	Cords			
Misc. Species 1			67.0	Cords			
<i>White Ash</i>			67.0	<i>Cords</i>			
Mixed Hardwood			412.0	Cords			
<i>Beech</i>			194.0	<i>Cords</i>			
<i>Black Cherry</i>			11.0	<i>Cords</i>			
<i>Red Maple</i>			8.0	<i>Cords</i>			
<i>Sugar Maple</i>			199.0	<i>Cords</i>			
3	American Elm	Sawtimber	2.4	MBF	26.8	\$11,816.40	
	Basswood		8.6	MBF			
	Beech		9.2	MBF			
	Black Cherry		4.6	MBF			
	Sugar Maple		24.3	MBF			
	Basswood		Pulpwood	15.0			Cords
	Misc. Species 1			9.0			Cords
	<i>White Ash</i>			9.0			<i>Cords</i>
	Mixed Hardwood			277.0			Cords
	<i>American Elm</i>			23.0			<i>Cords</i>
	<i>Beech</i>	56.0		<i>Cords</i>			
	<i>Black Cherry</i>	11.0	<i>Cords</i>				
	<i>Ironwood</i>	13.0	<i>Cords</i>				
	<i>Sugar Maple</i>	174.0	<i>Cords</i>				
	Red Pine		5.0	Cords			
	<i>Red Pine</i>	<i>Sawtimber</i>	1.4	<i>MBF</i>			
<i>Red Pine</i>	<i>Pulpwood</i>	2.0	<i>Cords</i>				
4	B. T. Aspen	Sawtimber	28.5	MBF	19.5	\$9,193.70	
	Basswood		0.5	MBF			
	Red Maple		6.0	MBF			
	Red Oak		5.0	MBF			
	B. T. Aspen	Pulpwood	169.0	Cords			
	Basswood		4.0	Cords			
	Mixed Hardwood		106.0	Cords			
	<i>Red Maple</i>		106.0	<i>Cords</i>			

**Description of Timber by Payment Unit (PU), con't**

PU	MARKET GROUP	PRODUCT	QUANTITY	UNIT	ACRES	ADVERTISE PRICE
4 con't	Red Oak	Pulpwood	18.0	Cords		
TOTAL:			231.3	MBF		
TOTAL:			1,524.0	Cords		

## Sale Specific Conditions & Requirements

**Sale Name: Shotgun Hardwoods**

**Sale Number: 63-030-17 Seq#: 1**

### 1 - Sale Area

#### 1.2 - Boundaries

##### 1.2.1 - Painted boundaries (1/14)

The sale boundary and Payment Unit boundaries are marked and identified by blue and red paint. Exterior sale boundary lines against private property are marked with blue paint. Exterior sale boundary lines against state are marked with red paint.

### 2 - Timber Specifications

#### 2.1 - Included Timber

##### 2.1.2 - Clearcut unit(s) w/o unmerchantable trees (8/11)

Within Payment Unit(s) 4, cut all trees which meet minimum piece specifications in 2.2 Utilization, except do not cut oak unless marked with orange paint.

##### 2.1.3 - Cut tree marked unit(s) (12/08)

Within Payment Unit(s) 1, 2 and 3, all trees are designated for cutting when marked with orange paint above and below stump height, regardless of merchantability. In addition, cut all beech, ironwood, ash and aspen, regardless of merchantability, unless marked with green paint. Also, within Payment Unit 3, cut all red pine.

##### 2.1.11 - Description of timber note (2/04)

Note that Misc. Species 1 = dead ash, which is designated for cutting.

### 3 - Payments

#### 3.3 - Pre-measured Sales

##### 3.3.4 - Dividing payment units (7/14)

Payment Unit(s) may be divided at the request of the Purchaser and upon approval of the Unit Manager. Dividing Payment Units is a contract modification which requires a Timber Sale Contract Supplement. There will be only one division per Payment Unit.

#### 3.4 - Damaged Timber

##### 3.4.1 - Damaged timber (6/14)

General Condition and Requirement 3.4 Damaged Timber, defines liquidated damages for undesignated live merchantable trees which are cut or injured. In addition, extreme care should be taken to avoid damage to sugar maple seedlings and saplings.

### 4 - Transportation

#### 4.1 - Construction

##### 4.1.6 - Road construction (1/09)

Construction of new roads or improvements of existing roads shall be done in such a way as to minimize the environmental and visual impacts. Merchantable trees shall be cut and utilized unless otherwise directed. Non-merchantable trees shall be severed and laid flat on the ground. Slash shall be scattered, and not left in windrows and kept a minimum of 10 feet back from the road edge. Stumps shall be set upright, not left on edge, and be moved at least 10 feet away from the road edge. Disturbed soil shall be feathered into the woods and not left in berms or windrows.

##### 4.1.7 - Road closure (10/11)

All new roads built into the sale must be blocked to vehicle traffic upon completion of the sale. Overgrown roads that are reopened shall be considered new roads. In general, this will require constructing double earthen berms at strategic locations. Stumps and brush must be placed along the remainder of the trail. These roads must be rendered impassable to cars and trucks.

#### 4.4 - Access

#### 4.4.1 - Private property access (3/11)

Permission for access across private land has been obtained by the DNR. This applies to the access into Payment Unit 2 from the north. Should the Purchaser desire to cross private land, a copy of the written permission from the private land-owner may be required by the DNR.

### 5 - Operations

#### 5.1 - Notification

##### 5.1.1 - Pre-sale conference (10/16)

A pre-sale conference on site between the Purchaser and sale administrator is required prior to beginning any operations to determine landing and road locations. The Unit Manager or his/her representative must be contacted at least 5 days in advance to schedule the conference.

##### 5.1.4 - Post-sale conference (10/16)

A post-sale conference on site between the Purchaser and sale administrator is required 5 days prior to the completion of active logging operations to determine clean-up and repair of landings, road edges, and the fulfillment of other contract specifications.

#### 5.2 - Conduct of Operations

##### 5.2.3 - Operating Restrictions

###### 5.2.3.1 - Operating restrictions (9/11)

Within Payment Unit(s) 3, unless changed by written agreement, cutting, skidding, and hauling are limited to the period of September 1 to March 31. This restriction is to accommodate the USFS road access permit that has been obtained. The Purchaser may obtain an additional permit from the USFS to expand the operational period.

###### 5.2.3.4 - Oak wilt restriction (9/17)

Within Payment Unit(s) 1, 2, 3 and 4, unless changed by written agreement, cutting, skidding, hauling and brushing of access roads are not permitted during the period of April 15 to July 15. This is necessary to reduce the spread of oak wilt. For more information, contact the Unit Manager or his/her representative.

#### 5.4 - Soil Protection

##### 5.4.1 - Rutting restriction, general (7/16)

Operations are to cease immediately if equipment and weather conditions result in rutting of roads and/or skid trails which is 12 inches or greater in depth and 50 feet in length. In addition, operations are to cease immediately if equipment and weather conditions result in rutting on skid trails which is 12 inches or greater in depth and 50 feet in length. The Unit Manager or his/her representative may restrict hauling and/or skidding if ruts exceed the specified depth. With the Unit Manager or his/her representative's approval, the Purchaser may return to the area when the risk of rutting has decreased.

##### 5.4.4 - Slope protection (5/15)

Skid trails and roads on slopes shall be water barred with slash, stumps, and/or clean straw bales native to the area as soon as use is complete to prevent erosion.

### 6 - Safety and Fire Prevention

#### 6.2 - Signing

##### 6.2.1 - Road posting (9/09)

The Purchaser is responsible for posting and maintaining caution signs on all County maintained roads prior to beginning operations. The road must be posted 200 feet from the sale area or access road to warn of logging activity and truck traffic. Signs must be removed when harvest operations are suspended or completed. The Purchaser will provide these signs.



# TIMBER SALE MAP

This information provided by authority of Part 525, 1994 PA 451, as amended.

Forest Management Unit Cadillac		County Wexford	Mapped By Tweedale	Date 09/20/2017	Page 1	of 2
Township 23N		Range 10W,9W	Section(s) and Subdivision(s) Sec. 13 NWSE,SWSE Sec. 14 SENE,SWNE,SWSW Sec. 15 NESE,SESE T23N R09W Sec 19 SWSW	Cruised By Tweedale/Ventimiglia	Scale 1:15,840	

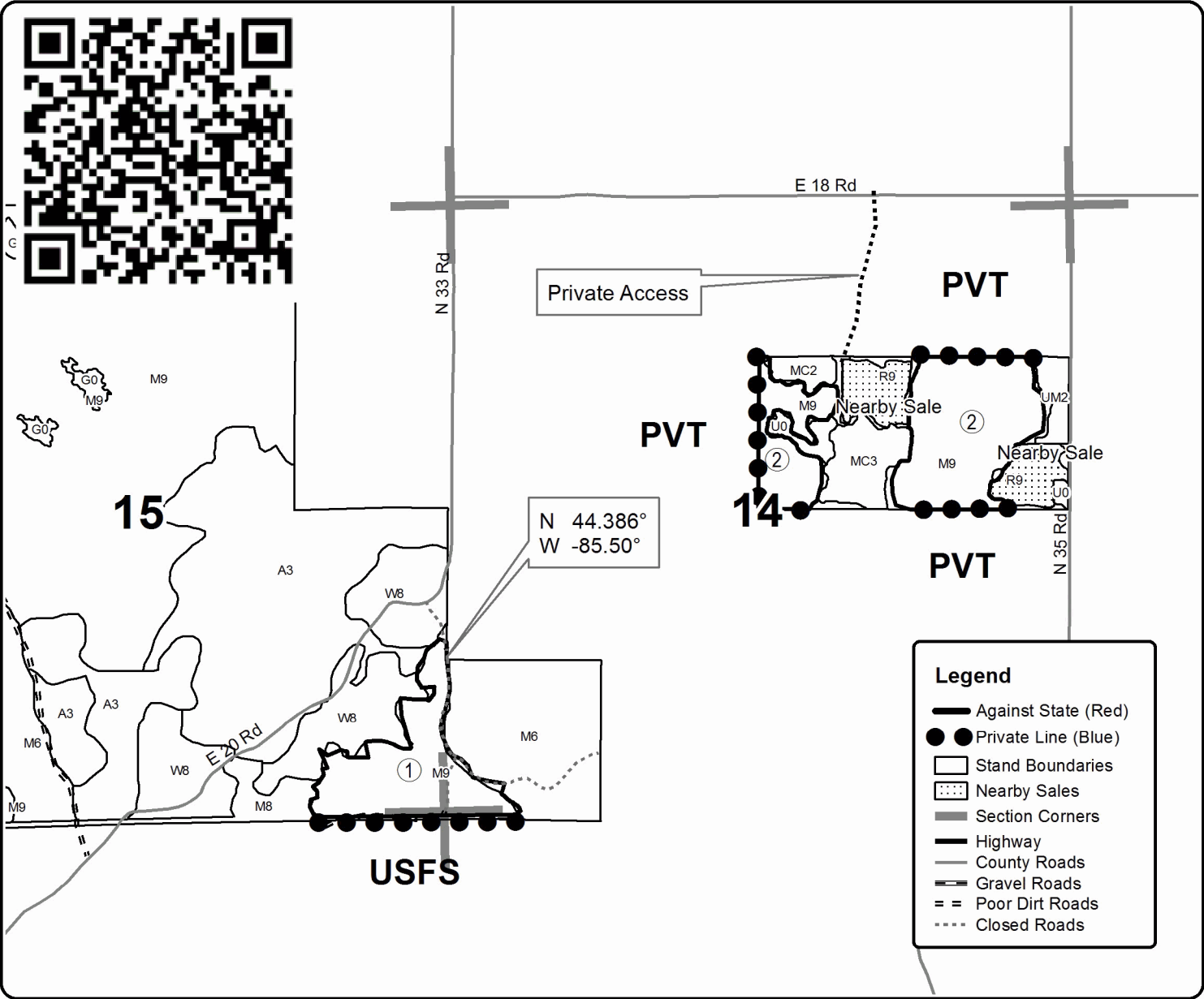
Cover Type				Density			
A = Aspen	H = Hemlock	N = Marsh	U = Upland Brush	0 = Non Stocked	5 = Pole Timber Medium		
B = Paper Birch	J = Jack Pine	O = Oak	UM = Upland Mixed	1 = Seedling Sapling Poor	6 = Pole Timber Well		
C = Cedar	L = Lowland Brush	P = Lowland Poplar	V = Bog or Marsh	2 = Seedling Sapling Medium	7 = Saw Timber Poor		
D = Tread Bog	LM = Lowland Mixed	Q = Mixed Swamp Conifer	W = White Pine	3 = Seedling Sapling Well	8 = Saw Timber Medium		
E = Swamp Hdwoods	M = Mpl, Bch, Brch	R = Red Pine	X = Non Stocked	4 = Pole Timber Poor	9 = Saw Timber Well		
F = Spruce Fir	MC = Mixed Conifer	S = Black Spruce	Z = Water				
G = Grass	MD = Mixed Deciduous	T = Tamarack					

PU	Acres	PU	Acres
1	24.2	4	19.5
2	41.3		
3	26.8		

## Shotgun Hardwoods

### Compartment 139

111.8 Acres







Sale Number	Year
63-030	17

# TIMBER SALE MAP

This information provided by authority of Part 525, 1994 PA 451, as amended.

Forest Management Unit Cadillac		County Wexford	Mapped By Tweedale	Date 09/20/2017	Page 2	of 2
Township 23N	Range 10W;9W	Section(s) and Subdivision(s) Sec. 13 NWSE,SWSE Sec. 14 SENE,SWNE,SWSW Sec. 15 NESE,SESE T23N R09W ; Sec 19 SWSW		Scale 1:15,840		

### Cover Type

A = Aspen	H = Hemlock	N = Marsh	U = Upland Brush
B = Paper Birch	J = Jack Pine	O = Oak	UM = Upland Mixed
C = Cedar	L = Lowland Brush	P = Lowland Poplar	V = Bog or Marsh
D = Treed Bog	LM = Lowland Mixed	Q = Mixed Swamp Conifer	W = White Pine
E = Swamp Hdwoods	M = Mpl, Bch, Brch	R = Red Pine	X = Non Stocked
F = Spruce Fir	MC = Mixed Conifer	S = Black Spruce	Z = Water
G = Grass	MD = Mixed Deciduous	T = Tamarack	

### Density

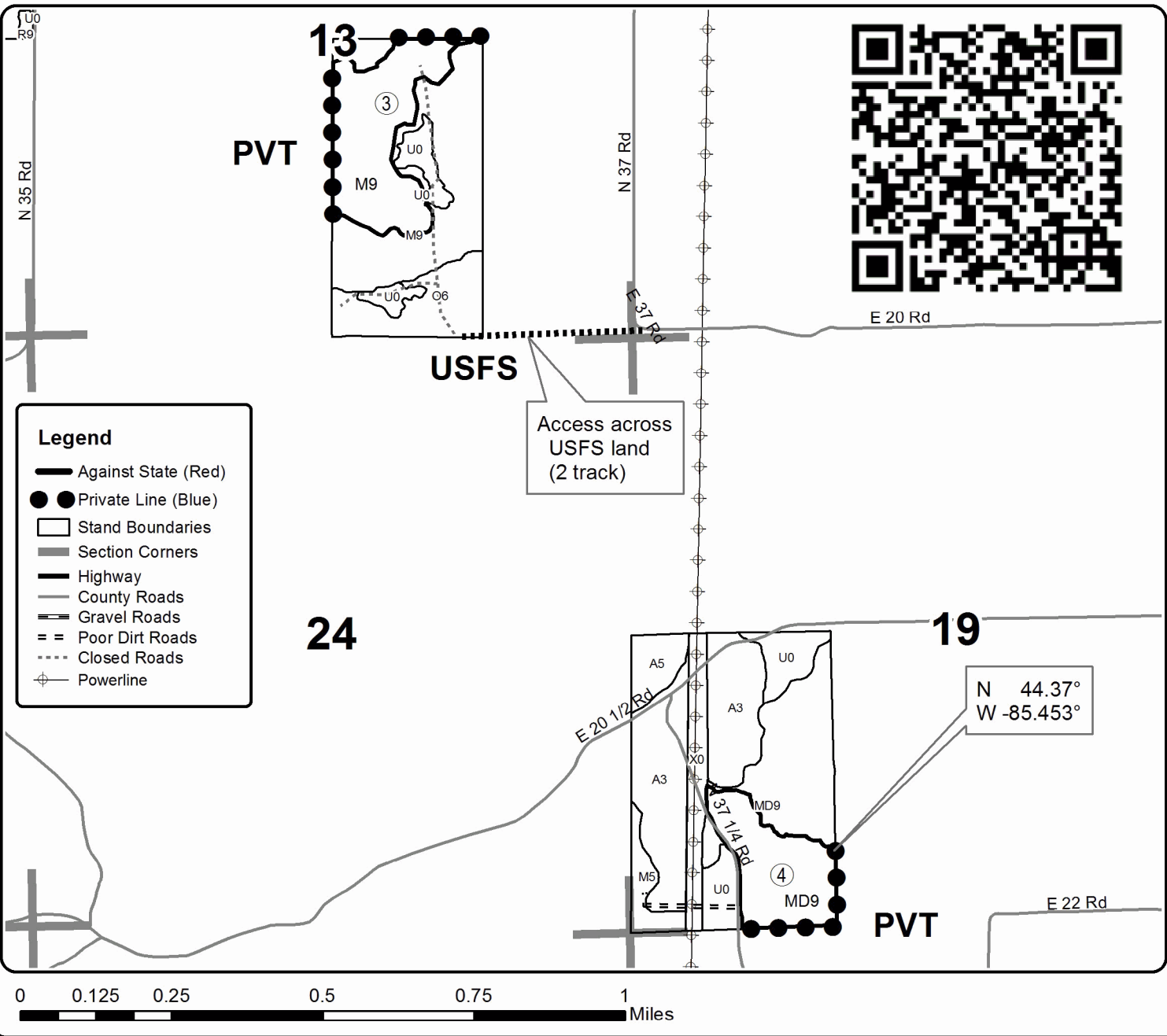
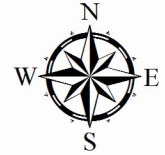
0 = Non Stocked	5 = Pole Timber Medium
1 = Seedling Sapling Poor	6 = Pole Timber Well
2 = Seedling Sapling Medium	7 = Saw Timber Poor
3 = Seedling Sapling Well	8 = Saw Timber Medium
4 = Pole Timber Poor	9 = Saw Timber Well

PU	Acres	PU	Acres
1	24.2	4	19.5
2	41.3		
3	26.8		

## Shotgun Hardwoods

### Compartment 139

111.8 Acres





TIMBER SALE INFORMATION

Pipeline Aspen (63-033-17)

Missaukee County (Advertised Price \$70,763.60)

SALE NOTE: Large aspen clearcut. Sale is spread out over three sections and includes 4 Payment Units. All oak being left, as well as conifers under 10 inches at DBH. In addition, leave trees marked with green paint throughout the sale area.

A timber sale contract for this lump sum, sealed bid timber sale will be awarded to the responsible bidder offering the highest sealed bid price. Bids must be at or above the following advertised price for each species:

<u>PRODUCTS &amp; SPECIES</u>	<u>ESTIMATED UNITS*</u>	<u>ADVERTISED PRICE</u>
Sawtimber		
B. T. Aspen	184.90 MBF	\$ 125.00 / MBF
Red Maple	33.10 MBF	\$ 131.00 / MBF
Sugar Maple	3.90 MBF	\$ 236.00 / MBF
White Pine	7.10 MBF	\$ 78.00 / MBF
Pulpwood		
B. T. Aspen	1,794.00 Cords	\$ 16.95 / Cord
Balsam Fir	6.00 Cords	\$ 10.35 / Cord
Mixed Hardwood	573.00 Cords	\$ 18.40 / Cord
White Pine	44.00 Cords	\$ 18.80 / Cord

\* The total volume is statistically estimated within plus (+) or minus (-) 5.57 percent. The estimated units are final and not subject to adjustment. Prospective bidders are urged to examine this timber and to make their own estimates of quantity and quality.

**BOND AND PAYMENT SCHEDULE:**

1. A bond in the amount of \$3,538.00 to insure faithful performance of the conditions of the contract will be deposited by the successful bidder within 21 days of the sale award.
2. Cutting in any sale or unit without the required advance payment would be considered a trespass.
3. Total payment must be paid in advance or according to the following schedule:
  - (a) Ten percent (10%) of the sale value must be paid within 21 days of the sale award.
  - (b) The 10% down payment will be credited towards the first unit cut.
4. If no cutting takes place, the 10% down payment will not be refunded.
5. Operations on the contract issued will terminate on 03/31/2020.

**Description of Timber by Payment Unit (PU)**

PU	MARKET GROUP	PRODUCT	QUANTITY	UNIT	ACRES	ADVERTISE PRICE
1	B. T. Aspen	Sawtimber	60.2	MBF	35.4	\$19,254.90
	Red Maple		6.5	MBF		
	Sugar Maple		0.5	MBF		
	B. T. Aspen	Pulpwood	472.0	Cords		
	Mixed Hardwood		150.0	Cords		
	<i>Beech</i>		3.0	<i>Cords</i>		
	<i>Black Cherry</i>		30.0	<i>Cords</i>		
	<i>Red Maple</i>		109.0	<i>Cords</i>		
	<i>Sugar Maple</i>		8.0	<i>Cords</i>		
2	B. T. Aspen	Sawtimber	79.5	MBF	46.7	\$25,378.60
	Red Maple		8.6	MBF		
	Sugar Maple		0.7	MBF		
	B. T. Aspen	Pulpwood	622.0	Cords		
	Mixed Hardwood		196.0	Cords		
	<i>Beech</i>		3.0	<i>Cords</i>		
	<i>Black Cherry</i>		40.0	<i>Cords</i>		
	<i>Red Maple</i>		143.0	<i>Cords</i>		
	<i>Sugar Maple</i>		10.0	<i>Cords</i>		
3	B. T. Aspen	Sawtimber	14.6	MBF	21.1	\$9,385.40
	Red Maple		6.4	MBF		
	White Pine		1.3	MBF		
	B. T. Aspen	Pulpwood	278.0	Cords		
	Balsam Fir		6.0	Cords		
	Mixed Hardwood		84.0	Cords		
	<i>Black Cherry</i>		13.0	<i>Cords</i>		
	<i>Red Maple</i>		71.0	<i>Cords</i>		
	White Pine		16.0	Cords		
4	B. T. Aspen	Sawtimber	30.6	MBF	30.1	\$16,744.70
	Red Maple		11.6	MBF		
	Sugar Maple		2.7	MBF		
	White Pine	5.8	MBF			
	B. T. Aspen	Pulpwood	422.0	Cords		
	Mixed Hardwood		143.0	Cords		
	<i>Beech</i>		23.0	<i>Cords</i>		
	<i>Red Maple</i>		105.0	<i>Cords</i>		
	<i>Sugar Maple</i>		15.0	<i>Cords</i>		
	White Pine		28.0	Cords		
TOTAL:			229.0	MBF		
TOTAL:			2,417.0	Cords		

## Sale Specific Conditions & Requirements

**Sale Name: Pipeline Aspen**

**Sale Number: 63-033-17 Seq#: 1**

### 1 - Sale Area

#### 1.2 - Boundaries

##### 1.2.1 - Painted boundaries (1/14)

The sale boundary is marked and identified by red paint. Exterior sale boundary lines against state are marked with red paint. The painted boundary line trees are not Included Timber and are to be protected.

### 2 - Timber Specifications

#### 2.1 - Included Timber

##### 2.1.1 - Clearcut unit(s) with unmerchantable trees (6/14)

Within Payment Unit(s) 1-4, cut all aspen, maple, beech and ironwood trees that are two (2) inches or more at DBH, except do not cut any trees marked with green paint. In addition, cut all conifers that are ten (10) inches or greater at DBH.

### 3 - Payments

#### 3.4 - Damaged Timber

##### 3.4.1 - Damaged timber (6/14)

General Condition and Requirement 3.4 Damaged Timber, defines liquidated damages for undesignated live merchantable trees which are cut or injured. In addition, extreme care should be taken to avoid damage to tree seedlings and saplings.

Within the sale area, if more than 25% of the tree seedlings or saplings (1/4" to 4.5" DBH) within a specified portion of the sale area are damaged, liquidated damages will be assessed at \$300 per acre for all acreage within that specified portion of the sale area that was damaged.

No damage is acceptable to merchantable trees. Within the sale area, if more than 5% of trees (> 4.5" DBH) within a specified area of the sale are damaged, liquidated damages will be assessed for all trees damaged. Rates will be in accordance with General Condition and Requirement 3.4 Damaged Timber.

#### 3.6 - Payment Unit Cutting Schedule

##### 3.6.2 - One active unit (12/08)

Each Payment Unit must be completed to the satisfaction of the Unit Manager or his/her representative before the next unit may be opened.

### 4 - Transportation

#### 4.1 - Construction

##### 4.1.12 - No new roads (1/12)

No new roads will be permitted in any Payment Unit. All operations are limited to existing roads. Skid trails only will be allowed.

#### 4.2 - Maintenance

##### 4.2.5 - Two wheel drive condition (2/04)

All existing trail roads on and adjacent to the sale area must be passable by two-wheel drive traffic for the duration of the sale.

### 5 - Operations

#### 5.1 - Notification

##### 5.1.3 - Well heads and natural gas pipelines (11/15)

The Purchaser is responsible for contacting the gas or pipeline company 30 days prior to operating equipment in the vicinity of

well heads or natural gas pipelines. Contact Consumers Energy @ 866-789-6811. Written permission is required before harvest operations begin and must be submitted to the Unit Manager or his/her representative.

## 5.2 - Conduct of Operations

### 5.2.1 - Slash

#### 5.2.1.8 - Slash height (12/08)

No slash or tree tops may exceed 24 inches in height.

#### 5.2.1.10 - No slash in openings (5/10)

No brush or logging debris is to be left in the maintained wildlife opening which is indicated by G0 on the Timber Sale Map. Any damage to the opening shall be repaired according to specifications of the Unit Manager or his/her representative.

### 5.2.3 - Operating Restrictions

#### 5.2.3.11 - Coppice regeneration protection (4/10)

Timber harvesting in any Payment Unit must be completed before significant aspen sprouting occurs in that Payment Unit so as to minimize damage to the new regeneration. Any post harvest operations, such as chipping, must be completed before sprouting of regeneration occurs. If it is anticipated that chipping will be delayed, then tops shall be carried to one central location or left unchipped. The Unit Manager or his/her representative may cease such operations if sprouting occurs before the operation is complete.

### 5.2.4 - Dead and Down Creation

#### 5.2.4.4 - Dead and down creation, grouse (8/13)

To encourage grouse and other wildlife, in Payment Unit(s) 1-4, leave one, 12" diameter or larger log-length (8 foot minimum) piece on the ground for every 2 acres. In addition, leave at least six (6) large tops per acre. These will be evenly scattered throughout the unit. This can be an unmerchantable piece or a full tree.

#### 5.2.29 - Shrub protection (9/07)

Do not cut or damage hawthorn, witch-hazel, dogwood or juneberry. These woody-shrub plants are highly beneficial to various wildlife species.

## 5.4 - Soil Protection

### 5.4.1 - Rutting restriction, general (7/16)

Operations are to cease immediately if equipment and weather conditions result in rutting of roads and/or skid trails which is 12 inches or greater in depth and 50 feet in length. The Unit Manager or his/her representative may restrict hauling and/or skidding if ruts exceed the specified depth. With the Unit Manager or his/her representative's approval, the Purchaser may return to the area when the risk of rutting has decreased.



# TIMBER SALE MAP

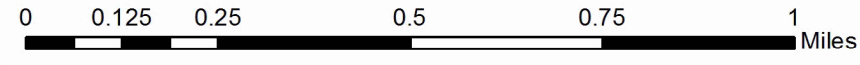
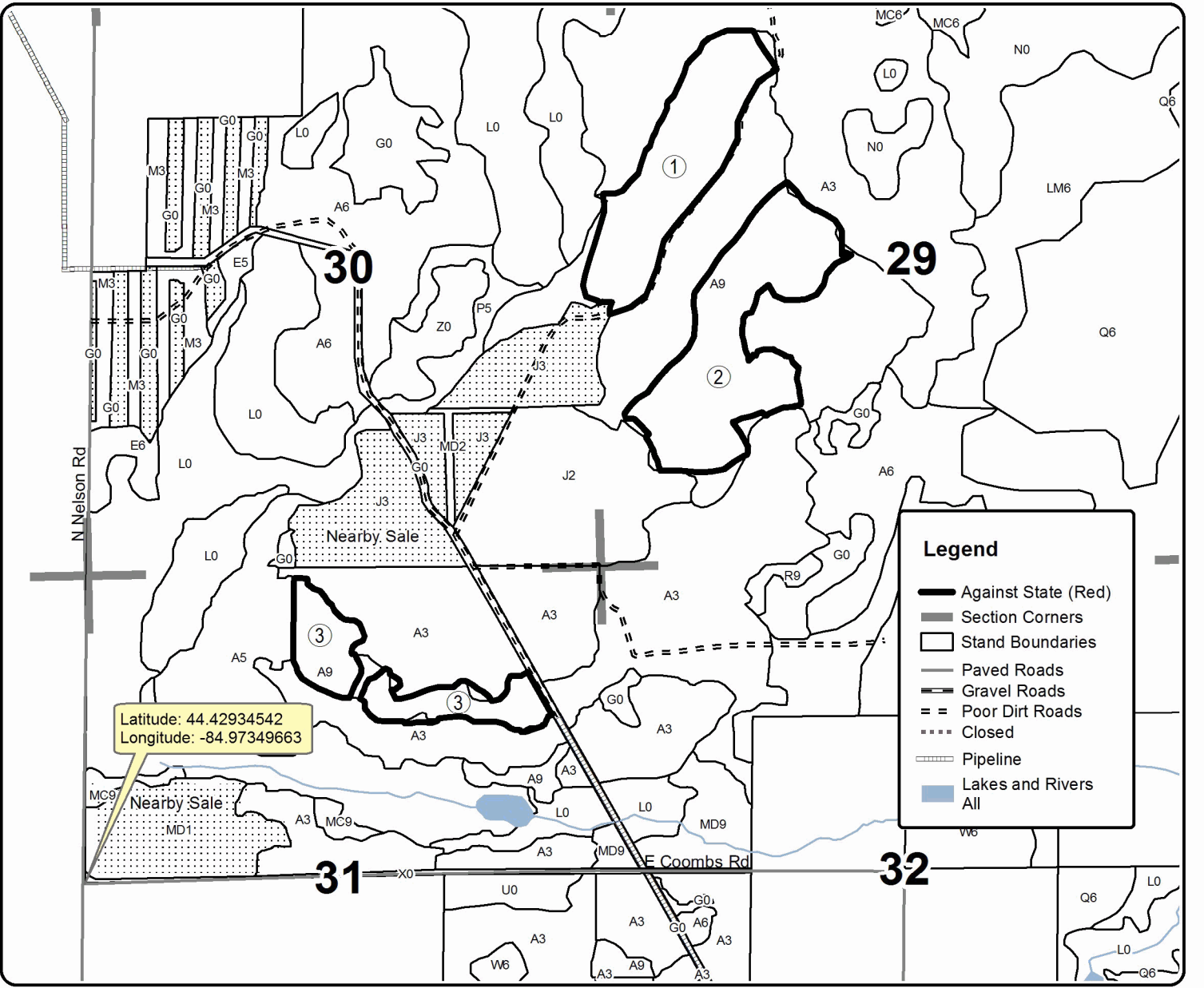
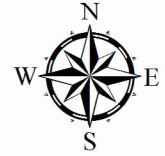
This information provided by authority of Part 525, 1994 PA 451, as amended.

Forest Management Unit Cadillac		County Missaukee	Mapped By Eisele	Date 09/25/2017	Page 1	of 2
Township T24N	Range R05W	Section(s) and Subdivision(s) 29-W 1/2 31-NENW,SWNE		Scale 1:15,840		

Cover Type				Density			
A = Aspen	H = Hemlock	N = Marsh	U = Upland Brush	0 = Non Stocked	5 = Pole Timber Medium		
B = Paper Birch	J = Jack Pine	O = Oak	UM = Upland Mixed	1 = Seedling Sapling Poor	6 = Pole Timber Well		
C = Cedar	L = Lowland Brush	P = Lowland Poplar	V = Bog or Marsh	2 = Seedling Sapling Medium	7 = Saw Timber Poor		
D = Treed Bog	LM = Lowland Mixed	Q = Mixed Swamp Conifer	W = White Pine	3 = Seedling Sapling Well	8 = Saw Timber Medium		
E = Swamp Hdwoods	M = Mpl, Bch, Brch	R = Red Pine	X = Non Stocked	4 = Pole Timber Poor	9 = Saw Timber Well		
F = Spruce Fir	MC = Mixed Conifer	S = Black Spruce	Z = Water				
G = Grass	MD = Mixed Deciduous	T = Tamarack					

PU	Acres
1	35.3
2	46.8
3	21.1

## Pipeline Aspen Compartment 082 133.3 Acres







Sale Number	Year
63-033-17-01	2017

# TIMBER SALE MAP

This information provided by authority of Part 525, 1994 PA 451, as amended.

Forest Management Unit Cadillac		County Missaukee	Mapped By Eisele	Date 09/25/2017	Page 2	of 2
Township T24N	Range R05W	Section(s) and Subdivision(s) 31-SESE 32-SWSW		Scale 1:15,840		

### Cover Type

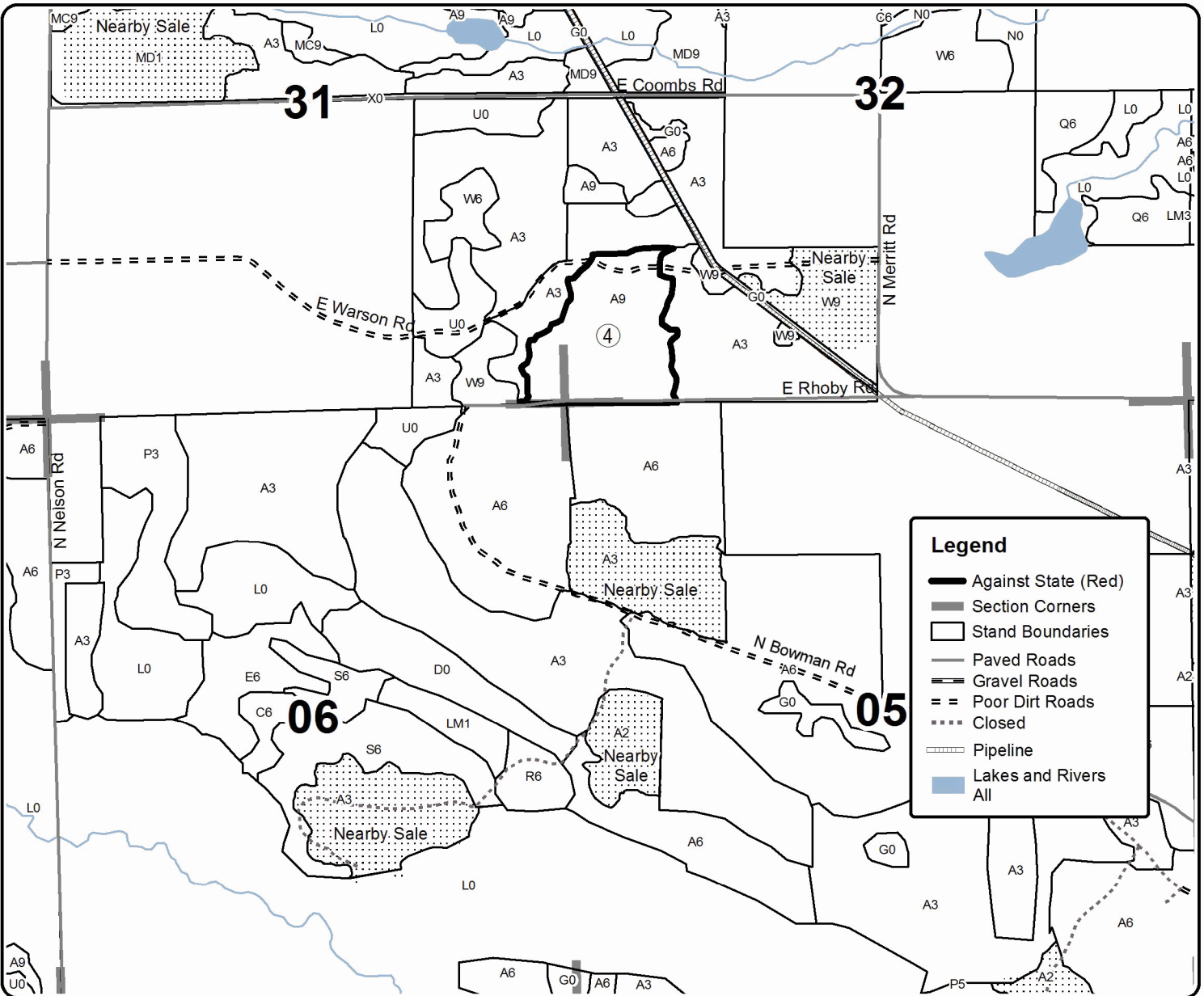
A = Aspen	H = Hemlock	N = Marsh	U = Upland Brush
B = Paper Birch	J = Jack Pine	O = Oak	UM = Upland Mixed
C = Cedar	L = Lowland Brush	P = Lowland Poplar	V = Bog or Marsh
D = Tread Bog	LM = Lowland Mixed	Q = Mixed Swamp Conifer	W = White Pine
E = Swamp Hdwoods	M = Mpl, Bch, Brch	R = Red Pine	X = Non Stocked
F = Spruce Fir	MC = Mixed Conifer	S = Black Spruce	Z = Water
G = Grass	MD = Mixed Deciduous	T = Tamarack	

### Density

0 = Non Stocked	5 = Pole Timber Medium
1 = Seedling Sapling Poor	6 = Pole Timber Well
2 = Seedling Sapling Medium	7 = Saw Timber Poor
3 = Seedling Sapling Well	8 = Saw Timber Medium
4 = Pole Timber Poor	9 = Saw Timber Well

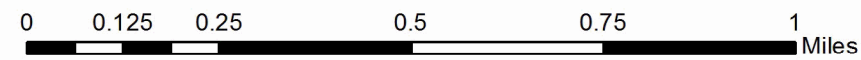
**PU Acres**  
4 30.1

## Pipeline Aspen Compartment 082 133.3 Acres



**Legend**

- Against State (Red)
- Section Corners
- Stand Boundaries
- Paved Roads
- Gravel Roads
- Poor Dirt Roads
- Closed
- Pipeline
- Lakes and Rivers
- All





Pipeline Aspen (63-033-17)  
; Missaukee COUNTY

In response to the notice of sale to be held 3:00 p.m. (local time) on February 26, 2018, I am hereby submitting my sealed bid (firm offer) for the following forest products to be cut. Bids for individual species must be at or above the advertised price. All non-responsive bid forms may be rejected.

<u>PRODUCTS &amp; SPECIES</u>	<u>ESTIMATED VOLUME*</u>	<u>ADVERTISED PRICE</u>	<u>BID PRICE/UNIT</u>
<b>Sawtimber</b>			
B. T. Aspen	184.90 MBF	\$ 125.00/MBF	\$ _____
Red Maple	33.10 MBF	\$ 131.00/MBF	\$ _____
Sugar Maple	3.90 MBF	\$ 236.00/MBF	\$ _____
White Pine	7.10 MBF	\$ 78.00/MBF	\$ _____
<b>Pulpwood</b>			
B. T. Aspen	1,794.00 Cords	\$ 16.95/Cord	\$ _____
Balsam Fir	6.00 Cords	\$ 10.35/Cord	\$ _____
Mixed Hardwood	573.00 Cords	\$ 18.40/Cord	\$ _____
White Pine	44.00 Cords	\$ 18.80/Cord	\$ _____

\*The volumes are statistically estimated within plus (+) or minus (-) 5.57 percent. These estimated volumes are final and not subject to adjustment. Prospective bidders are urged to examine this timber and to make their own estimates of quantity and quality.

I understand that any or all bids may be rejected. All bids must be signed and all bid items must be bid or the bid form may be rejected. I also understand that consideration and awarding a contract will be based upon my past performance and ability to complete the contract based upon equipment and staffing subject to my control.

FEDERAL ID: \_\_\_\_ - \_\_\_\_ - \_\_\_\_ or SOCIAL SECURITY NUMBER: \_\_\_\_ - \_\_\_\_ - \_\_\_\_

Company or individual bidding: \_\_\_\_\_

Company representative's name: \_\_\_\_\_

Address: \_\_\_\_\_

City: \_\_\_\_\_ State: \_\_\_\_\_ Zip: \_\_\_\_\_

IF AVAILABLE, PLEASE PLACE THE PERSONALIZED LABEL FROM YOUR PROSPECTUS IN THE ABOVE BOX.

Individual or company representative's signature: \_\_\_\_\_ Date: \_\_\_\_\_

Phone number : \_\_\_\_\_ Email (optional): \_\_\_\_\_

**THE WINNING BIDDER MUST COMPLETE THE VERIFICATION OF WORKER'S DISABILITY COMPENSATION ACT COMPLIANCE (ON REVERSE SIDE IF DOUBLE SIDED) WITHIN 21 DAYS OF SALE AWARD DATE**



FOR DEPARTMENT USE ONLY	
Sale Number (XX - XXX - XX - XX)	
Forest Management Unit:	

## TIMBER SALE VERIFICATION OF WORKER'S DISABILITY COMPENSATION ACT COMPLIANCE

As required by Act 317, P.A. 1969 (Worker's Compensation) and  
Part 5 of Act 451 of 1994, as amended.

### VERIFICATION OF WORKER'S DISABILITY COMPENSATION ACT COMPLIANCE

- This verification must be completed and submitted within 21 days of contract award and prior to the issuance of the timber sale contract.
- In addition, if boxes 2B or 2C are checked, then Notice of Exclusion or Certificate of Insurance must be submitted within twenty-one (21) days of the contract award and prior to the issuance of the timber sale contract.
- All information must be typed or printed except for written signatures.

Please Check Appropriate Categories:

1. My business is organized as (you **must** check one of the boxes below):
  - A.  Sole Proprietorship (individual)
  - B.  Partnership
  - C.  Corporation
2. You **must** check one of the boxes below:
  - A.  I certify my business is a sole proprietorship and it has no employees but the sole proprietor. I am not subject to the Worker's Compensation Laws.
  - B.  I certify my business has satisfied its obligation to the Worker's Compensation Act through the use of an approved Notice of Exclusion (BWC-337, Rev. 5/96). I will provide a copy of the Notice of Exclusion within 21 days of the contract award. (For questions or a copy of the BWC-337, please call the Worker's Compensation Bureau at 517-322-1195).
  - C.  I certify my business has a Worker's Compensation Policy. I will provide an original Certificate of Insurance within twenty-one (21) days of the contract award.
3. If you have checked item 2(A) or 2(B), you **must** indicate the number of **both** full-time and part-time employees, other than yourself, including family members and active partners (if none, you must enter "0").

\_\_\_\_\_ Full-time Employees

\_\_\_\_\_ Part-time Employees

Name of Business		Federal ID (or) Social Security No.	
Address		Telephone (       )	
City	State	ZIP	

*I hereby certify that the above information is true and correct. I agree to notify the Michigan DNR of any changes that occur in factors affecting my coverage during any of my present and future operations.*

\_\_\_\_\_  
Signature of Owner or Authorized Representative

\_\_\_\_\_  
Title

\_\_\_\_\_  
Date

Please complete the "SEALED BID" information on the next page

Shotgun Hardwoods (63-030-17)  
; Wexford COUNTY

In response to the notice of sale to be held 3:00 p.m. (local time) on February 26, 2018, I am hereby submitting my sealed bid (firm offer) for the following forest products to be cut. Bids for individual species must be at or above the advertised price. All non-responsive bid forms may be rejected.

<u>PRODUCTS &amp; SPECIES</u>	<u>ESTIMATED VOLUME*</u>	<u>ADVERTISED PRICE</u>	<u>BID PRICE/UNIT</u>
<b>Sawtimber</b>			
American Elm	2.40 MBF	\$ 59.00/MBF	\$ _____
B. T. Aspen	44.70 MBF	\$ 108.00/MBF	\$ _____
Basswood	42.60 MBF	\$ 91.00/MBF	\$ _____
Beech	69.10 MBF	\$ 76.00/MBF	\$ _____
Black Cherry	6.20 MBF	\$ 103.00/MBF	\$ _____
Red Maple	9.90 MBF	\$ 112.00/MBF	\$ _____
Red Oak	5.00 MBF	\$ 190.00/MBF	\$ _____
Sugar Maple	51.40 MBF	\$ 202.00/MBF	\$ _____
<b>Pulpwood</b>			
B. T. Aspen	229.00 Cords	\$ 14.50/Cord	\$ _____
Basswood	86.00 Cords	\$ 13.90/Cord	\$ _____
Misc. Species 1	110.00 Cords	\$ 6.00/Cord	\$ _____
Mixed Hardwood	1,064.00 Cords	\$ 15.80/Cord	\$ _____
Red Oak	18.00 Cords	\$ 14.85/Cord	\$ _____
Red Pine	5.00 Cords	\$ 34.30/Cord	\$ _____
White Pine	12.00 Cords	\$ 16.15/Cord	\$ _____

\*The volumes are statistically estimated within plus (+) or minus (-) 12.30 percent. These estimated volumes are final and not subject to adjustment. Prospective bidders are urged to examine this timber and to make their own estimates of quantity and quality.

I understand that any or all bids may be rejected. All bids must be signed and all bid items must be bid or the bid form may be rejected. I also understand that consideration and awarding a contract will be based upon my past performance and ability to complete the contract based upon equipment and staffing subject to my control.

FEDERAL ID: \_\_\_\_\_ or SOCIAL SECURITY NUMBER: \_\_\_\_\_

Company or individual bidding: \_\_\_\_\_

Company representative's name: \_\_\_\_\_

Address: \_\_\_\_\_

City: \_\_\_\_\_ State: \_\_\_\_\_ Zip: \_\_\_\_\_

IF AVAILABLE, PLEASE PLACE THE PERSONALIZED LABEL FROM YOUR PROSPECTUS IN THE ABOVE BOX.

Individual or company representative's signature: \_\_\_\_\_ Date: \_\_\_\_\_

Phone number : \_\_\_\_\_ Email (optional): \_\_\_\_\_

**THE WINNING BIDDER MUST COMPLETE THE VERIFICATION OF WORKER'S DISABILITY COMPENSATION ACT COMPLIANCE (ON REVERSE SIDE IF DOUBLE SIDED) WITHIN 21 DAYS OF SALE AWARD DATE**



FOR DEPARTMENT USE ONLY	
Sale Number (XX - XXX - XX - XX)	
Forest Management Unit:	

## TIMBER SALE VERIFICATION OF WORKER'S DISABILITY COMPENSATION ACT COMPLIANCE

As required by Act 317, P.A. 1969 (Worker's Compensation) and  
Part 5 of Act 451 of 1994, as amended.

### VERIFICATION OF WORKER'S DISABILITY COMPENSATION ACT COMPLIANCE

- This verification must be completed and submitted within 21 days of contract award and prior to the issuance of the timber sale contract.
- In addition, if boxes 2B or 2C are checked, then Notice of Exclusion or Certificate of Insurance must be submitted within twenty-one (21) days of the contract award and prior to the issuance of the timber sale contract.
- All information must be typed or printed except for written signatures.

Please Check Appropriate Categories:

1. My business is organized as (you **must** check one of the boxes below):
  - A.  Sole Proprietorship (individual)
  - B.  Partnership
  - C.  Corporation
2. You **must** check one of the boxes below:
  - A.  I certify my business is a sole proprietorship and it has no employees but the sole proprietor. I am not subject to the Worker's Compensation Laws.
  - B.  I certify my business has satisfied its obligation to the Worker's Compensation Act through the use of an approved Notice of Exclusion (BWC-337, Rev. 5/96). I will provide a copy of the Notice of Exclusion within 21 days of the contract award. (For questions or a copy of the BWC-337, please call the Worker's Compensation Bureau at 517-322-1195).
  - C.  I certify my business has a Worker's Compensation Policy. I will provide an original Certificate of Insurance within twenty-one (21) days of the contract award.
3. If you have checked item 2(A) or 2(B), you **must** indicate the number of **both** full-time and part-time employees, other than yourself, including family members and active partners (if none, you must enter "0").

\_\_\_\_\_ Full-time Employees

\_\_\_\_\_ Part-time Employees

Name of Business		Federal ID (or) Social Security No.	
Address		Telephone (       )	
City	State	ZIP	

*I hereby certify that the above information is true and correct. I agree to notify the Michigan DNR of any changes that occur in factors affecting my coverage during any of my present and future operations.*

\_\_\_\_\_  
Signature of Owner or Authorized Representative

\_\_\_\_\_  
Title

\_\_\_\_\_  
Date

Please complete the "SEALED BID" information on the next page

86 Mix (63-010-17)  
; Missaukee COUNTY

In response to the notice of sale to be held 3:00 p.m. (local time) on February 26, 2018, I am hereby submitting my sealed bid (firm offer) for the following forest products to be cut. Bids for individual species must be at or above the advertised price. All non-responsive bid forms may be rejected.

<u>PRODUCTS &amp; SPECIES</u>	<u>ESTIMATED VOLUME*</u>	<u>ADVERTISED PRICE</u>	<u>BID PRICE/UNIT</u>
<b>Sawtimber</b>			
B. T. Aspen	7.00 MBF	\$ 27.00/MBF	\$ _____
Red Maple	1.80 MBF	\$ 28.00/MBF	\$ _____
Red Oak	40.70 MBF	\$ 47.00/MBF	\$ _____
Red Pine	6.90 MBF	\$ 23.00/MBF	\$ _____
White Pine	19.80 MBF	\$ 17.00/MBF	\$ _____
<b>Pulpwood</b>			
B. T. Aspen	76.00 Cords	\$ 3.65/Cord	\$ _____
Balsam Fir	30.00 Cords	\$ 2.20/Cord	\$ _____
Beech	2.00 Cords	\$ 3.95/Cord	\$ _____
Paper Birch	5.00 Cords	\$ 4.05/Cord	\$ _____
Red Maple	107.00 Cords	\$ 3.95/Cord	\$ _____
Red Oak	164.00 Cords	\$ 3.70/Cord	\$ _____
Red Pine	21.00 Cords	\$ 8.60/Cord	\$ _____
White Oak	14.00 Cords	\$ 3.70/Cord	\$ _____
White Pine	123.00 Cords	\$ 4.05/Cord	\$ _____

\*The volumes are statistically estimated within plus (+) or minus (-) 12.25 percent. These estimated volumes are final and not subject to adjustment. Prospective bidders are urged to examine this timber and to make their own estimates of quantity and quality.

I understand that any or all bids may be rejected. All bids must be signed and all bid items must be bid or the bid form may be rejected. I also understand that consideration and awarding a contract will be based upon my past performance and ability to complete the contract based upon equipment and staffing subject to my control.

FEDERAL ID: \_\_\_\_\_ or SOCIAL SECURITY NUMBER: \_\_\_\_\_

Company or individual bidding: \_\_\_\_\_

Company representative's name: \_\_\_\_\_

Address: \_\_\_\_\_

City: \_\_\_\_\_ State: \_\_\_\_\_ Zip: \_\_\_\_\_

IF AVAILABLE, PLEASE PLACE THE PERSONALIZED LABEL FROM YOUR PROSPECTUS IN THE ABOVE BOX.

Individual or company representative's signature: \_\_\_\_\_ Date: \_\_\_\_\_

Phone number : \_\_\_\_\_ Email (optional): \_\_\_\_\_

**THE WINNING BIDDER MUST COMPLETE THE VERIFICATION OF WORKER'S DISABILITY COMPENSATION ACT COMPLIANCE (ON REVERSE SIDE IF DOUBLE SIDED) WITHIN 21 DAYS OF SALE AWARD DATE**



FOR DEPARTMENT USE ONLY	
Sale Number (XX - XXX - XX - XX)	
Forest Management Unit:	

# TIMBER SALE VERIFICATION OF WORKER'S DISABILITY COMPENSATION ACT COMPLIANCE

As required by Act 317, P.A. 1969 (Worker's Compensation) and  
Part 5 of Act 451 of 1994, as amended.

## VERIFICATION OF WORKER'S DISABILITY COMPENSATION ACT COMPLIANCE

- This verification must be completed and submitted within 21 days of contract award and prior to the issuance of the timber sale contract.
- In addition, if boxes 2B or 2C are checked, then Notice of Exclusion or Certificate of Insurance must be submitted within twenty-one (21) days of the contract award and prior to the issuance of the timber sale contract.
- All information must be typed or printed except for written signatures.

Please Check Appropriate Categories:

- My business is organized as (you **must** check one of the boxes below):
  - Sole Proprietorship (individual)
  - Partnership
  - Corporation
- You **must** check one of the boxes below:
  - I certify my business is a sole proprietorship and it has no employees but the sole proprietor. I am not subject to the Worker's Compensation Laws.
  - I certify my business has satisfied its obligation to the Worker's Compensation Act through the use of an approved Notice of Exclusion (BWC-337, Rev. 5/96). I will provide a copy of the Notice of Exclusion within 21 days of the contract award. (For questions or a copy of the BWC-337, please call the Worker's Compensation Bureau at 517-322-1195).
  - I certify my business has a Worker's Compensation Policy. I will provide an original Certificate of Insurance within twenty-one (21) days of the contract award.
- If you have checked item 2(A) or 2(B), you **must** indicate the number of **both** full-time and part-time employees, other than yourself, including family members and active partners (if none, you must enter "0").

\_\_\_\_\_ Full-time Employees

\_\_\_\_\_ Part-time Employees

Name of Business		Federal ID (or) Social Security No.	
Address		Telephone (       )	
City	State	ZIP	

*I hereby certify that the above information is true and correct. I agree to notify the Michigan DNR of any changes that occur in factors affecting my coverage during any of my present and future operations.*

\_\_\_\_\_  
Signature of Owner or Authorized Representative

\_\_\_\_\_  
Title

\_\_\_\_\_  
Date

Please complete the "SEALED BID" information on the next page