



**DEPARTMENT OF NATURAL RESOURCES
STATE OF MICHIGAN**

TIMBER SALE PROSPECTUS #6171

SCHEDULED SALE DATE AND TIME: 10:00 a.m. (local time) on March 14, 2018.

LOCATION: GLADWIN MGMT UNIT, 801 N SILVERLEAF, GLADWIN, MI 48624.

PROSPECTUS NOTE: The bidder is advised to inspect the sale area and review the location, estimated volumes, operating costs and contract terms of proposed sales. Please be aware that some landowners may request 60 days or more notice for access across their land.

Notice is hereby given that bids will be received by the Unit Manager, GLADWIN MANAGEMENT UNIT, for certain timber on the following described lands:

Town Line Creek Mix (73-001-17)

Clare County, Advertised Price \$89,075.45, 228.8 Acres, Hardwood, Red Pine.

SALE NOTE: Within Payment Units 1-3, harvesting is not permitted during the period of April 15 - July 15 due to bark slippage. See spec 5.2.3.3.

Payment Units 1, 5, 6, and 8 must be chip harvested. See spec 2.2.2.

Within Payment Units 1, 2, 5, and 6, snowmobile and ORV trail specifications apply. See specs 5.2.39 and 5.2.41.

A recreation site such as a trail, pathway, or campground is within the sale area or the vicinity. Certain restrictions/specifications may be applicable including time restrictions.

County Line Mix (73-016-17)

Clare County, Advertised Price \$180,059.55, 213.5 Acres, Aspen, Red Pine.

SALE NOTE: Access to Unit 7 maybe be across private land. Contact DNR for landowner information.

Access may be through private or other public land.

BID INSTRUCTIONS (VER. 11/28/2017):

1. Scheduled Bid Location, Date, and Time (2/11)

Bids must be received by the Unit Manager, GLADWIN OFFICE, 801 N SILVERLEAF, GLADWIN, MI 48624, no later than 10:00 a.m. (local time) on March 14, 2018. For further information concerning this sale, contact PATRICK MOHNEY at 989-426-9205 extension 7640.

2. Bidder's Qualifications (5/16)

Purchaser shall obtain workers compensation insurance to cover claims under Michigan's Worker's Disability Compensation Act of 1969 or similar employee benefit act of any other state applicable to an employee. If all or part of a timber sale was prepared by a private contractor, the contractor and that contractor's company are not permitted to bid on the timber sale contract. Bids will not be accepted from individuals or companies appearing on the DNR/FRD No-Bid List. This list contains the names of purchasers who previously failed to execute a contract within 21-days or who have a history of poor performance.

3. Preparation of Sealed Bids (5/16)

Bid Forms may be completed online thru Michigan DNR Timber Sale Online Bidding (OLB) at www.michigan.gov/timberbidding or by completing the hardcopy Bid Form found in the Timber Sale Prospectus. Hardcopy Bid Forms shall be manually signed in ink. Registration in OLB is considered your 'signature' for all bids submitted thru that system. Bid prices must be entered for each species and product in the Bid Price column for all material subject to bidding and all fill-in blanks must be completed. If erasures or other changes appear on the hardcopy Bid Form, each erasure or change must be initialed by the person signing the bid.

4. Submission of Sealed Bids (5/16)

Bid forms may be obtained from the Unit Manager or thru OLB. Bids may be submitted hardcopy or thru OLB. All hardcopy bids must be submitted on the bid form and in an envelope clearly identified as described in this section. NOTE: Only one bid form per bid envelope. Sealed bids must be submitted to the Unit office designated in the prospectus and must be submitted at or prior to the time established in the prospectus. The envelope should show on the outside (a) the sale name or number and (b) the date and time of bid opening, as shown in the prospectus. Bids received after the time specified in the sale prospectus are late bids and will be rejected.

It is possible for a bidder to submit multiple bids on a single sale. For example, a bid may be submitted hardcopy and a bid may be submitted thru OLB. Or, two bidders from the same company could both submit bids on the same sale. If this were to happen, the State would accept all bids received and award the contract accordingly. All bidding and contractual requirements would apply to all bids received.

5. Public Opening of Sealed Bids (7/16)

If conditions permit, the sealed bids will be publicly opened and posted at the time and place set in the prospectus.

If a bidder, present at a bid opening, has submitted bids on more than one sale, that bidder may withdraw their unopened bid envelopes or announce the withdrawal of their online bid after being declared the successful bidder on one sale.

6. Award of Contract (1/11)

Award of the contract will be made to the Bidder whose bid, conforming to the prospectus, is most advantageous to the State of Michigan on the basis of total value at rates bid for the estimated quantities. The State reserves the right to reject any bid or waive any minor irregularity in bids received. A written award mailed (or otherwise furnished) to the successful Bidder shall be deemed to result in a binding contract without further action by either party.

7. Down Payment (1/11)

The Bidder to whom award is made must make a down payment within 21 days of the sale award. The amount of the down payment will be calculated as shown in the Bond and Payment Schedule of this prospectus. Only cash may be used to meet this requirement.

8. Performance Security (1/11)

As guarantee of faithful performance, a cash bond, certificate of deposit, surety bond or irrevocable letter of credit (LOC) is required within 21 days of the sale award. The amount of the performance security is shown in the Bond and

Payment Schedule of this prospectus. If an LOC or surety is used, the coverage must extend for at least 6 months beyond the contract expiration.

9. Timber Sale Contract (11/17)

Additional conditions and requirements common to all timber sales are listed on the timber sale contract (R4031) and are available on line at www.michigan.gov/timber. Contact the Unit Manager for additional information or a sample contract. Within 21 days of the date of the award letter, the bidder must sign the contract and provide the required down payment, performance security, and verification of worker's disability compensation. The down payment and performance security shall be in accordance with the provisions of the timber sale contract, in the sums stated in this prospectus. If these actions are not taken, then the Bidder, the Bidder's corporation, and the corporation's principals may not be permitted to bid on State timber sales for a period of 1 year. In addition, the Bidder certifies that if awarded this contract, the Bidder will complete the timber sale contract in accordance with its terms and any modifications thereof including requirements to purchase, cut, and remove the included timber by the expiration date.

Payment Unit values in the State Forest Timber Sale Contract are calculated based on the advertised value of the Payment Unit as a percentage of the total advertised value of the contract. The advertised value of each Payment Unit is given in the Description of Timber by Payment Unit table on the Timber Sale Information page. For example, if the value of Payment Unit 1 is advertised as \$1,500 and the total Timber Sale value is advertised as \$10,000, the contract price for Payment Unit 1 will be 15% of the total bid price ($\$1,500/\$10,000 * 100$).

10. Disclaimer of Estimates and Bidder's Warranty of Inspection (7/16)

Before submitting this bid, the Bidder is advised and cautioned to inspect the sale area, review the requirements of the sale contract, and take other steps as may be reasonably necessary to ascertain the location, estimated volumes, construction estimates, and operating costs of the proposed sale. Failure to do so will not relieve the Bidder from responsibility for completing the contract.

The Bidder warrants that this bid is submitted solely on the basis of the Bidder's examination and inspection of the quality and quantity of the timber offered for sale and the Bidder's opinion of the value thereof and the costs of recovery. No reliance should be placed on the State of Michigan's estimates of timber quality, quantity or costs of recovery. Bidder further acknowledges that the State of Michigan: (i) expressly disclaims any warranty of fitness of timber for any purpose; (ii) offers this timber as is without any warranty of quality (merchantability) or quantity and (iii) expressly disclaims any warranty as to the quantity or quality of timber sold.

11. Certification and Chain-of-Custody (10/14)

Unless otherwise indicated in the contract under section 7 – Other Conditions of the Sale Specific Conditions & Requirements, the area encompassed by this timber sale is certified to the standards of the Forest Stewardship Council (FSC) - Certificate #SCS-FM/COC-00090N and the Sustainable Forestry Initiative (SFI) - Certificate # NSF-SFIS-5Y031-SF5. Forest products from this sale may be delivered to the mill as "FSC 100% and / or SFI certified" as long as the contractor hauling the forest products is chain-of-custody (COC) certified or covered under a COC certificate from the destination mill. The purchaser is responsible for maintaining COC after leaving the sale area.

12. Good Neighbor Authority (GNA) Requirements (7/16)

If the name of this timber sales contains the acronym GNA, it is authorized by the Good Neighbor Authority (GNA) and covered by various agreements between the U.S. Forest Service and the State. The timber sale occurs on federal land and the following conditions apply:

GNA contracts on US Forest Service land will not be awarded to purchasers on the Federal list of excluded parties. The System for Award Management (SAM) will be checked for active excluded parties prior to award of contract. In addition, the Bidder to whom award is made must complete an Assurance Regarding Felony Conviction or Tax Delinquent Status for Corporate Applicants (AD-3031).

13. Good Neighbor Authority (GNA) Requirements, con't (9/16)

Bidder certifies, by signing this bid form, that to the best of Bidder's knowledge that the following representations are accurate and complete.

a. That the Bidder and its principals are not presently debarred, suspended, proposed for debarment, declared ineligible, or voluntary excluded from timber sales (covered transactions) by any Federal department or agency.

b. That the Bidder and its principals have not within a 3-year period preceding this bid been convicted of or had a civil judgment rendered against them for commission of fraud or a criminal offense in connection with obtaining, attempting to obtain, or performing a public (Federal, State, or local) transaction or contract under a public transaction; violation of Federal or State antitrust statutes or commission of embezzlement, theft, forgery, bribery, falsification or destruction of records, making false statements, or receiving stolen property.

c. That the Bidder and its principals are not presently indicted for or otherwise criminally or civilly charged by a governmental entity (Federal, State, or local) with commission of any of the offenses enumerated in paragraph b of this certification.

d. That the Bidder and its principals have not within a 3-year period preceding this bid had one or more public transactions (Federal, State, or local) terminated for breach or default of a timber or forest product contract.

Bidders that cannot certify this requirement, in whole or in part, shall submit an explanation with their bid.

KEITH CREAGH

Director

TIMBER SALE INFORMATION

Town Line Creek Mix (73-001-17)

Clare County (Advertised Price \$89,075.45)

SALE NOTE: Within Payment Units 1-3, harvesting is not permitted during the period of April 15 - July 15 due to bark slippage. See spec 5.2.3.3.

Payment Units 1, 5, 6, and 8 must be chip harvested. See spec 2.2.2.

Within Payment Units 1, 2, 5, and 6, snowmobile and ORV trail specifications apply. See specs 5.2.39 and 5.2.41.

A recreation site such as a trail, pathway, or campground is within the sale area or the vicinity. Certain restrictions/specifications may be applicable including time restrictions.

A timber sale contract for this lump sum, sealed bid timber sale will be awarded to the responsible bidder offering the highest sealed bid price. Bids must be at or above the following advertised price for each species:

<u>PRODUCTS & SPECIES</u>	<u>ESTIMATED UNITS*</u>	<u>ADVERTISED PRICE</u>
Sawtimber		
Black Cherry	0.90 MBF	\$ 167.00 / MBF
Mixed Aspen	13.50 MBF	\$ 66.00 / MBF
Mixed Oak	22.30 MBF	\$ 148.00 / MBF
Red Maple	19.10 MBF	\$ 43.00 / MBF
Red Pine	193.80 MBF	\$ 115.00 / MBF
White Pine	10.30 MBF	\$ 82.00 / MBF
Pulpwood		
Balsam Fir	54.00 Cords	\$ 12.95 / Cord
Jack Pine	486.00 Cords	\$ 16.05 / Cord
Mixed Aspen	267.00 Cords	\$ 25.30 / Cord
Mixed Hardwood	277.00 Cords	\$ 21.55 / Cord
Mixed Oak	517.00 Cords	\$ 10.45 / Cord
N. White Cedar	9.00 Cords	\$ 19.40 / Cord
Red Pine	791.00 Cords	\$ 32.65 / Cord
White Pine	381.00 Cords	\$ 21.40 / Cord

* The estimated units are final and not subject to adjustment. Prospective bidders are urged to examine this timber and to make their own estimates of quantity and quality.

BOND AND PAYMENT SCHEDULE:

1. A bond in the amount of \$4,454.00 to insure faithful performance of the conditions of the contract will be deposited by the successful bidder within 21 days of the sale award.
2. Cutting in any sale or unit without the required advance payment would be considered a trespass.
3. Total payment must be paid in advance or according to the following schedule:
 - (a) Ten percent (10%) of the sale value must be paid within 21 days of the sale award.
 - (b) The 10% down payment will be credited towards the first unit cut.
4. If no cutting takes place, the 10% down payment will not be refunded.
5. Operations on the contract issued will terminate on 03/31/2020.

Description of Timber by Payment Unit (PU)

PU	MARKET GROUP	PRODUCT	QUANTITY	UNIT	ACRES	ADVERTISE PRICE
1	Red Pine	Sawtimber	99.3	MBF	45.9	\$21,414.20
	White Pine		2.5	MBF		
	Balsam Fir	Pulpwood	44.0	Cords		
	Red Pine		266.0	Cords		
	White Pine		25.0	Cords		
2	Red Pine	Sawtimber	57.0	MBF	18.3	\$11,387.20
	Red Pine	Pulpwood	148.0	Cords		
3	Mixed Oak	Sawtimber	6.3	MBF	7.5	\$2,730.15
	<i>BI/R/Hybrid Oak</i>		4.1	<i>MBF</i>		
	<i>White Oak</i>		2.2	<i>MBF</i>		
	Red Pine		2.9	MBF		
	Jack Pine	Pulpwood	26.0	Cords		
	<i>Jack Pine</i>	<i>Sawtimber</i>	1.6	<i>MBF</i>		
	<i>Jack Pine</i>	<i>Pulpwood</i>	23.0	<i>Cords</i>		
	Mixed Oak		67.0	Cords		
	<i>BI/R/Hybrid Oak</i>		59.0	<i>Cords</i>		
	<i>White Oak</i>		8.0	<i>Cords</i>		
	Red Pine		8.0	Cords		
	White Pine		4.0	Cords		
	4	White Pine	Sawtimber	4.9		
Jack Pine		Pulpwood	17.0	Cords		
<i>Jack Pine</i>			17.0	<i>Cords</i>		
Mixed Aspen			2.0	Cords		
<i>B. T. Aspen</i>			2.0	<i>Cords</i>		
Mixed Oak			3.0	Cords		
<i>BI/R/Hybrid Oak</i>			3.0	<i>Cords</i>		
White Pine			168.0	Cords		
5	Mixed Aspen	Sawtimber	0.8	MBF	63.1	\$13,922.35
	<i>B. T. Aspen</i>		0.8	<i>MBF</i>		
	Mixed Oak		5.4	MBF		
	<i>BI/R/Hybrid Oak</i>		5.4	<i>MBF</i>		
	Red Pine		10.4	MBF		
	Jack Pine	Pulpwood	305.0	Cords		
	<i>Jack Pine</i>		305.0	<i>Cords</i>		
	Mixed Aspen		49.0	Cords		
	<i>B. T. Aspen</i>		49.0	<i>Cords</i>		
	Mixed Hardwood		4.0	Cords		
	<i>Red Maple</i>		4.0	<i>Cords</i>		
	Mixed Oak		258.0	Cords		
	<i>BI/R/Hybrid Oak</i>		228.0	<i>Cords</i>		
	<i>Red Oak</i>		30.0	<i>Cords</i>		
Red Pine		46.0	Cords			
White Pine		68.0	Cords			
6	Mixed Aspen	Sawtimber	6.5	MBF	31.3	\$7,010.75
	<i>B. T. Aspen</i>		6.5	<i>MBF</i>		
	Red Pine		1.3	MBF		
	Jack Pine	Pulpwood	138.0	Cords		
	<i>Jack Pine</i>	<i>Sawtimber</i>	0.9	<i>MBF</i>		
	<i>Jack Pine</i>	<i>Pulpwood</i>	136.0	<i>Cords</i>		
	Mixed Aspen		113.0	Cords		
	<i>B. T. Aspen</i>		113.0	<i>Cords</i>		
	Mixed Hardwood		10.0	Cords		
	<i>American Elm</i>		4.0	<i>Cords</i>		
	<i>Black Cherry</i>		6.0	<i>Cords</i>		
	Mixed Oak		100.0	Cords		
<i>BI/R/Hybrid Oak</i>		85.0	<i>Cords</i>			

Description of Timber by Payment Unit (PU), con't

PU	MARKET GROUP	PRODUCT	QUANTITY	UNIT	ACRES	ADVERTISE PRICE
6 con't	<i>Red Oak</i>	<i>Pulpwood</i>	15.0	<i>Cords</i>		
	Red Pine		3.0	Cords		
7	Black Cherry	Sawtimber	0.9	MBF	21.9	\$6,838.15
	Mixed Aspen		2.5	MBF		
	<i>B. T. Aspen</i>		1.1	<i>MBF</i>		
	<i>Quaking Aspen</i>		1.4	<i>MBF</i>		
	Mixed Oak		0.7	MBF		
	<i>BI/R/Hybrid Oak</i>		0.7	<i>MBF</i>		
	Red Maple		15.0	MBF		
	Balsam Fir	Pulpwood	10.0	Cords		
	Mixed Aspen		60.0	Cords		
	<i>B. T. Aspen</i>		8.0	<i>Cords</i>		
	<i>Quaking Aspen</i>		52.0	<i>Cords</i>		
	Mixed Hardwood		180.0	Cords		
	<i>Black Cherry</i>		5.0	<i>Cords</i>		
	<i>Paper Birch</i>		3.0	<i>Cords</i>		
	<i>Red Maple</i>		172.0	<i>Cords</i>		
	Mixed Oak		7.0	Cords		
	<i>BI/R/Hybrid Oak</i>		7.0	<i>Cords</i>		
	N. White Cedar		9.0	Cords		
	<i>N. White Cedar</i>	<i>Sawtimber</i>	0.9	<i>MBF</i>		
	<i>N. White Cedar</i>	<i>Pulpwood</i>	7.0	<i>Cords</i>		
8	Mixed Oak	Sawtimber	0.9	MBF	18.8	\$16,943.45
	<i>BI/R/Hybrid Oak</i>		0.9	<i>MBF</i>		
	Red Pine		22.4	MBF		
	White Pine		2.9	MBF		
	Mixed Aspen	Pulpwood	16.0	Cords		
	<i>B. T. Aspen</i>		16.0	<i>Cords</i>		
	Mixed Hardwood		12.0	Cords		
	<i>Black Cherry</i>		2.0	<i>Cords</i>		
	<i>Paper Birch</i>		3.0	<i>Cords</i>		
	<i>Red Maple</i>		7.0	<i>Cords</i>		
	Mixed Oak		52.0	Cords		
	<i>BI/R/Hybrid Oak</i>		46.0	<i>Cords</i>		
	<i>Red Oak</i>		6.0	<i>Cords</i>		
	Red Pine		317.0	Cords		
	White Pine		114.0	Cords		
9	Mixed Aspen	Sawtimber	3.7	MBF	6.7	\$4,477.40
	<i>B. T. Aspen</i>		3.7	<i>MBF</i>		
	Mixed Oak		9.0	MBF		
	<i>BI/R/Hybrid Oak</i>		5.4	<i>MBF</i>		
	<i>Red Oak</i>		1.4	<i>MBF</i>		
	<i>White Oak</i>		2.2	<i>MBF</i>		
	Red Maple		4.1	MBF		
	Red Pine		0.5	MBF		
	Mixed Aspen	Pulpwood	27.0	Cords		
	<i>B. T. Aspen</i>		27.0	<i>Cords</i>		
	Mixed Hardwood		71.0	Cords		
	<i>Red Maple</i>		71.0	<i>Cords</i>		
	Mixed Oak		30.0	Cords		
	<i>BI/R/Hybrid Oak</i>		14.0	<i>Cords</i>		
	<i>Red Oak</i>		13.0	<i>Cords</i>		
	<i>White Oak</i>		3.0	<i>Cords</i>		
	Red Pine		3.0	Cords		
	White Pine		2.0	Cords		

TOTAL:	259.9	MBF
--------	-------	-----

TOTAL:	2,782.0	Cords
--------	---------	-------

Sale Specific Conditions & Requirements

Sale Name: Town Line Creek Mix

Sale Number: 73-001-17 Seq#: 2

1 - Sale Area

1.2 - Boundaries

1.2.1 - Painted boundaries (1/14)

The sale boundary and Payment Unit boundaries are marked and identified by blue, red and yellow paint. Exterior sale boundary lines against private property are marked with blue paint. Exterior sale boundary lines against state are marked with red paint. Interior Payment Unit boundaries are marked with yellow paint.

2 - Timber Specifications

2.1 - Included Timber

2.1.1 - Clearcut unit(s) with unmerchantable trees (6/14)

Within Payment Unit(s) 5 - 9, cut all trees that are two (2) inches or more at DBH, except do not cut any green painted trees.

2.1.3 - Cut tree marked unit(s) (12/08)

Within Payment Unit(s) 1 and 2, all red pine and white pine trees are designated for cutting when marked with orange paint above and below stump height, regardless of merchantability. In addition, cut all balsam fir that are two (2) inches or more at DBH.

2.1.4 - Designated timber unit(s) (6/17)

Within Payment Unit(s) 3, all oak, jack pine, aspen, and red maple trees that are two (2) inches or more at DBH, are designated for cutting. In addition, cut all orange painted red pine and white pine trees.

2.1.5 - Overstory removal unit(s) (8/11)

Within Payment Unit(s) 4, all trees with a DBH equal to or greater than eight (8) inches which meet minimum piece specifications in 2.2 Utilization, are designated for cutting.

2.2 - Utilization

2.2.2 - Chipping required (5/14)

Payment Units 1, 5, 6, and 8 must be chip harvested to facilitate post harvest prescribed burning and to facilitate reforestation operations. The Purchaser has the option to produce sawlogs or pulpwood bolts, but the remaining portion of the trees must be chipped and hauled. Do not chip 1/6 to 1/3 of the slash from harvested trees (tree tops and limbs less than four inches in diameter).

2.2.3 - Stump heights (4/07)

Stump heights within the Sale Area shall be cut as low to the ground as possible. Unless approved by the Unit Manager or his/her representative, stump heights shall not exceed 6 inches for trees greater than 10 inches DBH and 4 inches for trees smaller than 10 inches DBH. Within Payment Unit(s) 6 and 8, all stumps shall be cut at ground level in order to facilitate reforestation.

2.2.11 - Chipping restriction (9/14)

If chipping occurs on this sale, then 2 bunch piles per 1 acre must be left evenly distributed throughout the sale area in locations as directed by the sale administrator. This specification contributes towards the requirements for biomass retention.

3 - Payments

3.4 - Damaged Timber

3.4.1 - Damaged timber (6/14)

General Condition and Requirement 3.4 Damaged Timber, defines liquidated damages for undesignated live merchantable trees which are cut or injured. In addition, extreme care should be taken to avoid damage to tree seedlings and saplings.

Within Payment Units 1 - 4, if more than 25% of the tree seedlings or saplings (1/4" to 4.5" DBH) within a specified portion of the sale area are damaged, liquidated damages will be assessed at \$300 per acre for all acreage within that specified portion

of the sale area that was damaged.

No damage is acceptable to merchantable undesignated trees. Within the sale area, if more than 5% of undesignated trees (> 4.5" DBH) within a specified area of the sale are damaged, liquidated damages will be assessed for all trees damaged. Rates will be in accordance with General Condition and Requirement 3.4 Damaged Timber.

4 - Transportation

4.1 - Construction

4.1.3 - Slash and earthen piles (8/04)

Piles or windrows of earth along roads and landings that have been widened or constructed shall be leveled. Slash from road maintenance or construction, including stumps, shall be dispersed throughout the sale.

4.1.7 - Road closure (10/11)

Closed and overgrown roads that are reopened must be blocked to vehicle traffic upon completion of the sale. In general, this will require the placement of stumps and slash into the road, throughout the length of routes to be closed. Contact the sale administrator for specific details of design and placement.

4.1.12 - No new roads (1/12)

No new roads will be permitted in any Payment Unit. All operations are limited to existing roads, closed roads and overgrown roads. Skid trails only will be allowed.

5 - Operations

5.1 - Notification

5.1.1 - Pre-sale conference (10/16)

A pre-sale conference on site between the Purchaser and sale administrator is required prior to beginning any operations to determine landing and haul road locations, and to ensure all recreation trail concerns are identified. The Unit Manager or his/her representative must be contacted at least 3 days in advance to schedule the conference.

5.2 - Conduct of Operations

5.2.1 - Slash

5.2.1.2 - Slash Removal

5.2.1.2.1 - Slash removal, right-of-way (9/16)

All slash must be removed at least 15 feet from the cleared right-of-way of forest roads and blue painted lines.

5.2.1.11 - Slash for reforestation (5/07)

To facilitate reforestation, all payment units shall be left with slash evenly distributed. Bunched tops within the cutting area shall be broken up and scattered. Stumps shall be cut low to the ground. Processing sites shall not be left with a compacted layer of slash; tops from these sites shall be hauled back into the cut area and scattered.

5.2.2 - Hazard Trees/Snags

5.2.2.1 - Den trees (10/16)

Obvious hollow and/or den trees shall be protected and left standing unless they are a safety hazard.

5.2.3 - Operating Restrictions

5.2.3.3 - Bark slippage restriction (3/09)

Within Payment Unit(s) 1 - 3, unless changed by written agreement, cutting and skidding are not permitted during the period of April 15 to July 15. This restriction is because of bark slippage.

5.2.3.6 - Bark beetle restriction (12/08)

In the event drought creates a high risk of pine bark beetle infestation, pine is not to be cut during the period March 1 through July 1, unless all portions of trees greater than two inches in diameter are removed from the sale area, reduced to chips, or treated to the satisfaction of the Unit Manager or his/her representative, within fifteen days of being severed from the stump. Pine log decks, pulpwood piles and treetops that are piled for chipping in the fall or winter within a 1/4

mile of susceptible sites must be removed before March 15. Residual slash must not be placed in piles or rows and must be spread over the site for quick drying. The Department of Natural Resources will exercise this specification if the risk of damage warrants.

5.2.4 - Dead and Down Creation

5.2.4.3 - Dead and down creation, dead trees (6/07)

Except as provided for in General Condition and Requirement 5.2.2, no dead trees, standing or down, are to be cut, skidded, or processed.

5.2.4.4 - Dead and down creation, grouse (8/13)

To encourage grouse and other wildlife, in Payment Unit(s) 7 and 9, leave one, 8" diameter tree on the ground per 2 acres. These trees should be felled and left in place with the top intact. These leave trees should be left evenly distributed throughout the unit. The stumps for these trees should be left at 24" in height.

5.2.22 - Operating Caution

5.2.22.1 - Operating caution (6/11)

It is recommended, but not required, that within Payment Unit(s) 7, cutting, skidding, and hauling occur during dry summer or frozen winter conditions. The reason for the recommendation is because of wet soil conditions.

5.2.31 - Landing locations (9/13)

Recommended landing areas are marked on the timber sale map with the letter "L".

5.2.39 - ORV trail/route protection (12/12)

The Leota ORV Trail is shown on the Timber Sale Map. Do not cut trees or damage posts with orange ORV markers. All stumps within 20 feet of the trail must be cut flush with the ground. Maintain a 20 foot wide slash, debris, and rut free zone daily using the ORV trail or route as the centerline. Do not run equipment down the ORV trail or route. Skidding across the trail or route may only occur in locations approved by the sale administrator.

5.2.41 - Snowmobile trail protection (9/11)

The Leota Snowmobile Trail is shown on the Timber Sale Map. Do not cut or damage posts with orange trail markers or traffic control signs. If the trail is used, it must be maintained and restored to a condition equal to or better than before the sale. The road maintenance/restoration must be done prior to December 1. If the trail road is to be used for hauling during the snowmobile season, then a snow covered base must be left on the trail. The snowmobile trail may only be crossed at right angles. Maintain a 20 foot wide slash, debris, and rut free zone daily using the snowmobile trail as the centerline. No decking of forest products will be permitted along the snowmobile trail between December 1 and March 31. All stumps within 20 feet of the snowmobile trail must be cut at ground level.

5.4 - Soil Protection

5.4.1 - Rutting restriction, general (7/16)

Operations are to cease immediately if equipment and weather conditions result in rutting of roads and/or skid trails which is 12 inches or greater in depth and 50 feet in length. The Unit Manager or his/her representative may restrict hauling and/or skidding if ruts exceed the specified depth. With the Unit Manager or his/her representative's approval, the Purchaser may return to the area when the risk of rutting has decreased.

6 - Safety and Fire Prevention

6.2 - Signing

6.2.2 - Snowmobile trail posting (8/09)

The Purchaser is responsible for posting and maintaining caution signs on the Leota Snowmobile Trail prior to beginning operations during the snowmobile season (approximately December 1 to March 31). The trail must be posted at appropriate distances from the sale area to warn of logging activity and truck traffic. Signs must be removed when harvest operations are suspended or completed. In addition the Leota ORV trail must also have caution signs posted during harvesting operations.



TIMBER SALE MAP

This information provided by authority of Part 525, 1994 PA 451, as amended.

Sale Number	Year
73-001	17

Forest Management Unit Gladwin Management Unit	County Clare	Mapped By Fanelli	Date 09/15/2017	Page 1	of 4
Township 20N	Range 04W 05W	Section(s) and Subdivision(s) 5,6,7,8 Various 1,12,13 Various	Cruised By Fanelli/Brock VaNoss	Scale 1:15,840	

Cover Type

A = Aspen	H = Hemlock	N = Marsh	U = Upland Brush
B = Paper Birch	J = Jack Pine	O = Oak	UM = Upland Mixed
C = Cedar	L = Lowland Brush	P = Lowland Poplar	V = Bog or Marsh
D = Treed Bog	LM = Lowland Mixed	Q = Mixed Swamp Conifer	W = White Pine
E = Swamp Hdwoods	M = Mpl, Bch, Brch	R = Red Pine	X = Non Stocked
F = Spruce Fir	MC = Mixed Conifer	S = Black Spruce	Z = Water
G = Grass	MD = Mixed Deciduous	T = Tamarack	

Density

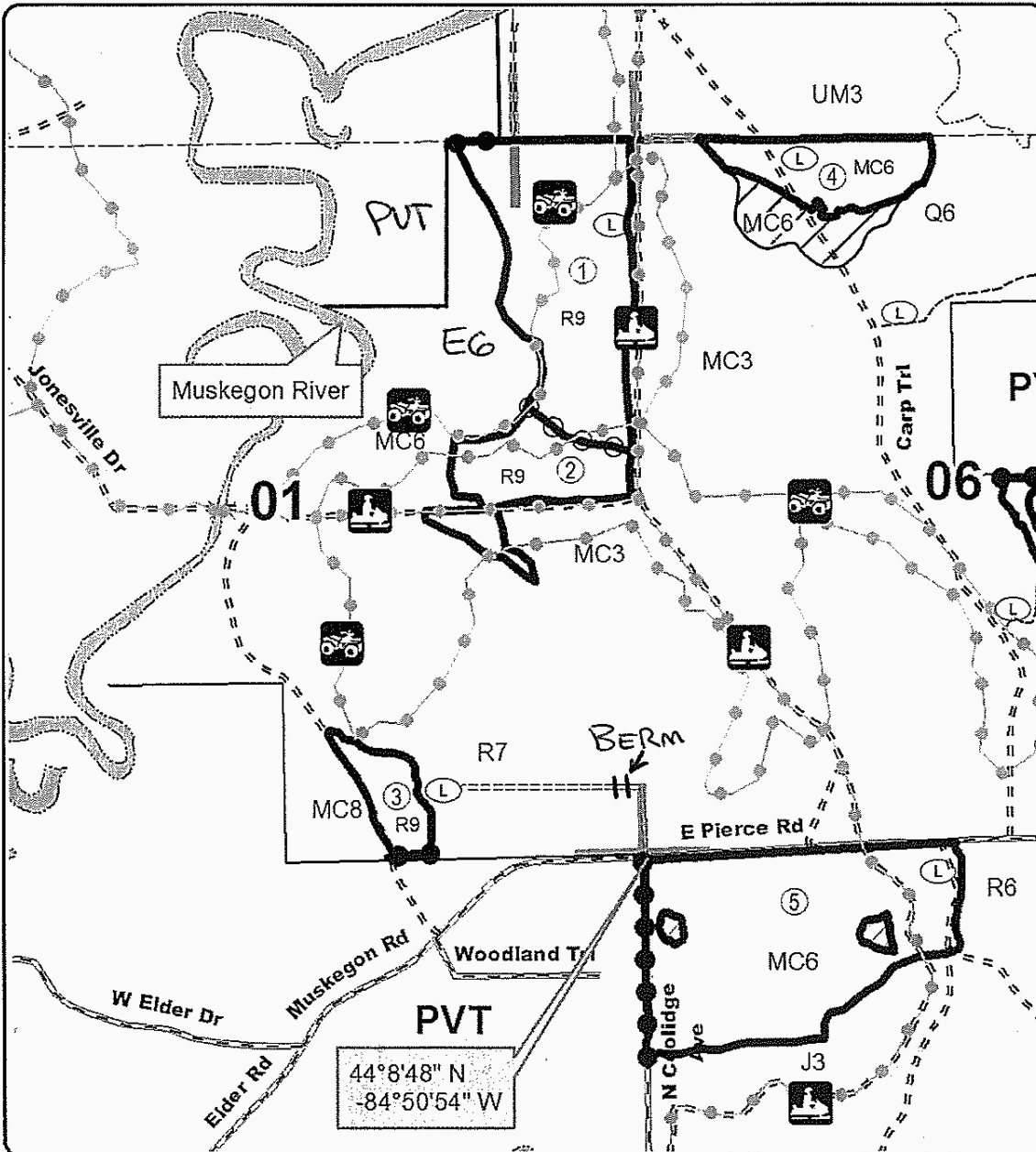
0 = Non Stocked	5 = Pole Timber Medium
1 = Seedling Sapling Poor	6 = Pole Timber Well
2 = Seedling Sapling Medium	7 = Saw Timber Poor
3 = Seedling Sapling Well	8 = Saw Timber Medium
4 = Pole Timber Poor	9 = Saw Timber Well

PU	Acres	PU	Acres
1	45.9	6	31.3
2	18.3	7	21.9
3	7.5	8	18.8
4	15.3	9	6.7
5	63.1		

TOWN LINE CREEK MIX

Compartment 4

228.8 Acres



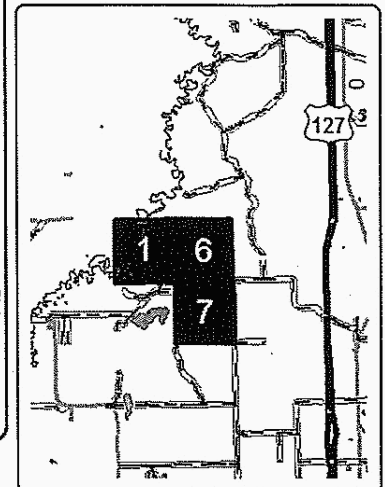
44°8'48" N
-84°50'54" W

Legend

Sale Boundary
 - Against State (Red)
 - Payment Unit (Yellow)
 - Private Line (Blue)

- Section Corners
 - Retention Area
 - Proposed Skid Trail
 - Proposed Landing (L)
 - Paved Roads
 - Gravel Roads
 - Poor Dirt Roads
 - Streams
 - Lakes and Rivers
 - Recreational Trail
 - PU Number

Locator Map
1:200,000





TIMBER SALE MAP

This information provided by authority of Part 525, 1994 PA 451, as amended.

Sale Number	Year
73-001	17

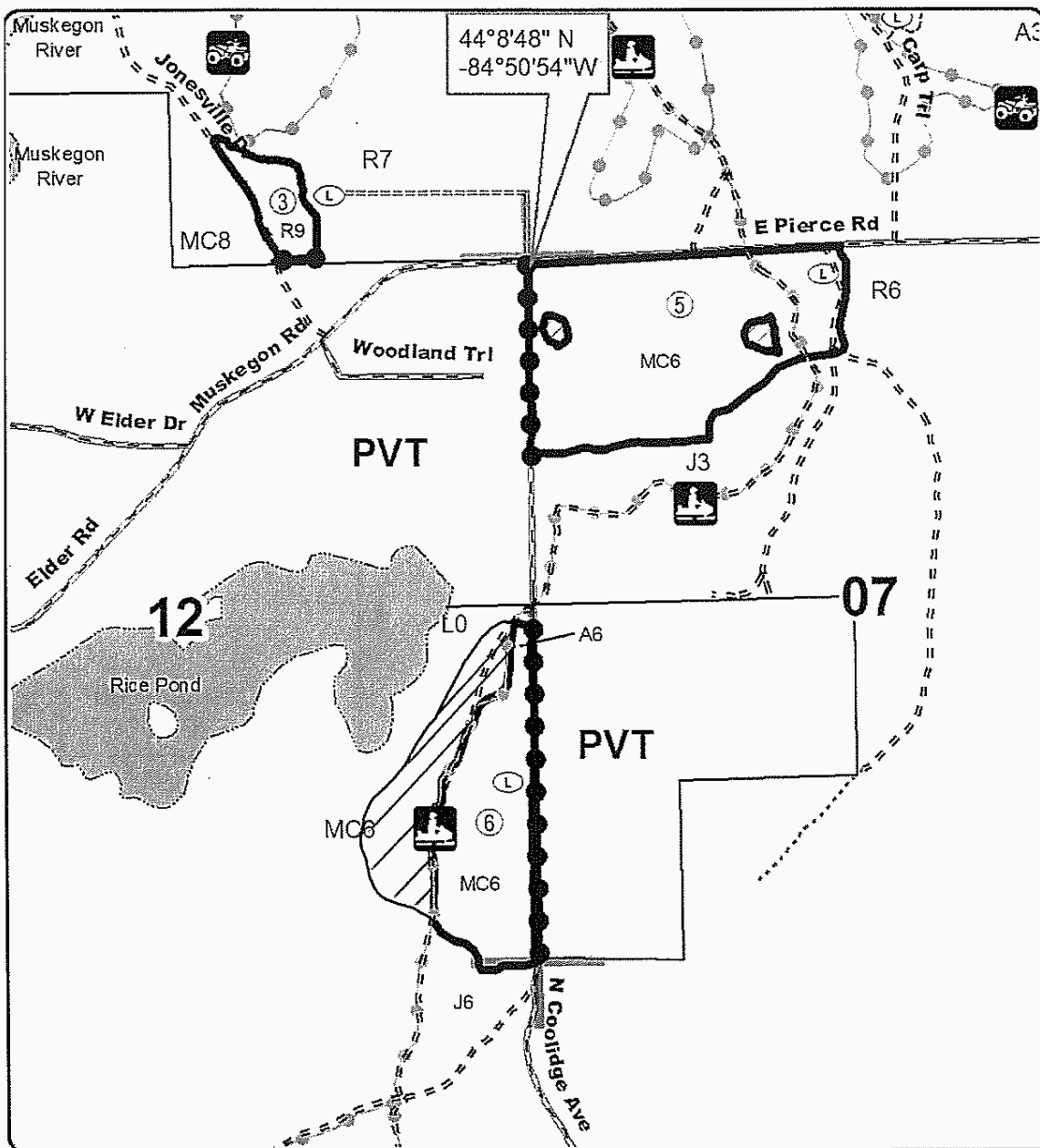
Forest Management Unit Gladwin Management Unit	County Clare	Mapped By Fanelli	Date 09/15/2017	Page 2	of 4
Township 20N	Range 04W 05W	Section(s) and Subdivision(s) 5,6,7,8 Various 1,12, 13 Various	Scale 1:15,840		

Cover Type				Density	
A = Aspen	H = Hemlock	N = Marsh	U = Upland Brush	0 = Non Stocked	5 = Pole Timber Medium
B = Paper Birch	J = Jack Pine	O = Oak	UM = Upland Mixed	1 = Seedling Sapling Poor	6 = Pole Timber Well
C = Cedar	L = Lowland Brush	P = Lowland Poplar	V = Bog or Marsh	2 = Seedling Sapling Medium	7 = Saw Timber Poor
D = Tread Bog	LM = Lowland Mixed	Q = Mixed Swamp Conifer	W = White Pine	3 = Seedling Sapling Well	8 = Saw Timber Medium
E = Swamp Hdwoods	M = Mpl, Bch, Bch	R = Red Pine	X = Non Stocked	4 = Pole Timber Poor	9 = Saw Timber Well
F = Spruce Fir	MC = Mixed Conifer	S = Black Spruce	Z = Water		
G = Grass	MD = Mixed Deciduous	T = Tamarack			

PU	Acres	PU	Acres
1	45.9	6	31.3
2	18.3	7	21.9
3	7.5	8	18.8
4	15.3	9	6.7
5	63.1		

TOWN LINE CREEK MIX

Compartment 4
228.8 Acres

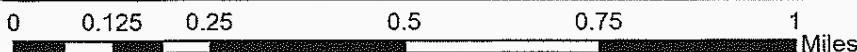
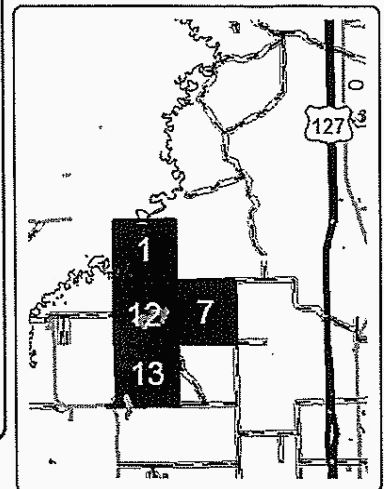


Legend

Sale Boundary

- Against State (Red)
- Payment Unit (Yellow)
- Private Line (Blue)
- Section Corners
- Retention Area
- Proposed Skid Trail
- Proposed Landing
- Paved Roads
- Gravel Roads
- Poor Dirt Roads
- Closed Roads
- Streams
- Lakes and Rivers
- Recreational Trail
- PU Number

Locator Map
1:200,000





TIMBER SALE MAP

This information provided by authority of Part 525, 1994 PA 451, as amended.

Forest Management Unit Gladwin Management Unit		County Clare	Mapped By Fanelli	Date 09/15/2017	Page 3	of 4
Township 20N	Range 04W 05W	Section(s) and Subdivision(s) 5,6,7,8 Various 1,12, 13 Various		Scale 1:15,840		

Cover Type

A = Aspen	H = Hemlock	N = Marsh	U = Upland Brush
B = Paper Birch	J = Jack Pine	O = Oak	UM = Upland Mixed
C = Cedar	L = Lowland Brush	P = Lowland Poplar	V = Bog or Marsh
D = Tread Bog	LM = Lowland Mixed	Q = Mixed Swamp Conifer	W = White Pine
E = Swamp Hdwoods	M = Mpl, Bch, Brch	R = Red Pine	X = Non Stocked
F = Spruce Fir	MC = Mixed Conifer	S = Black Spruce	Z = Water
G = Grass	MD = Mixed Deciduous	T = Tamarack	

Density

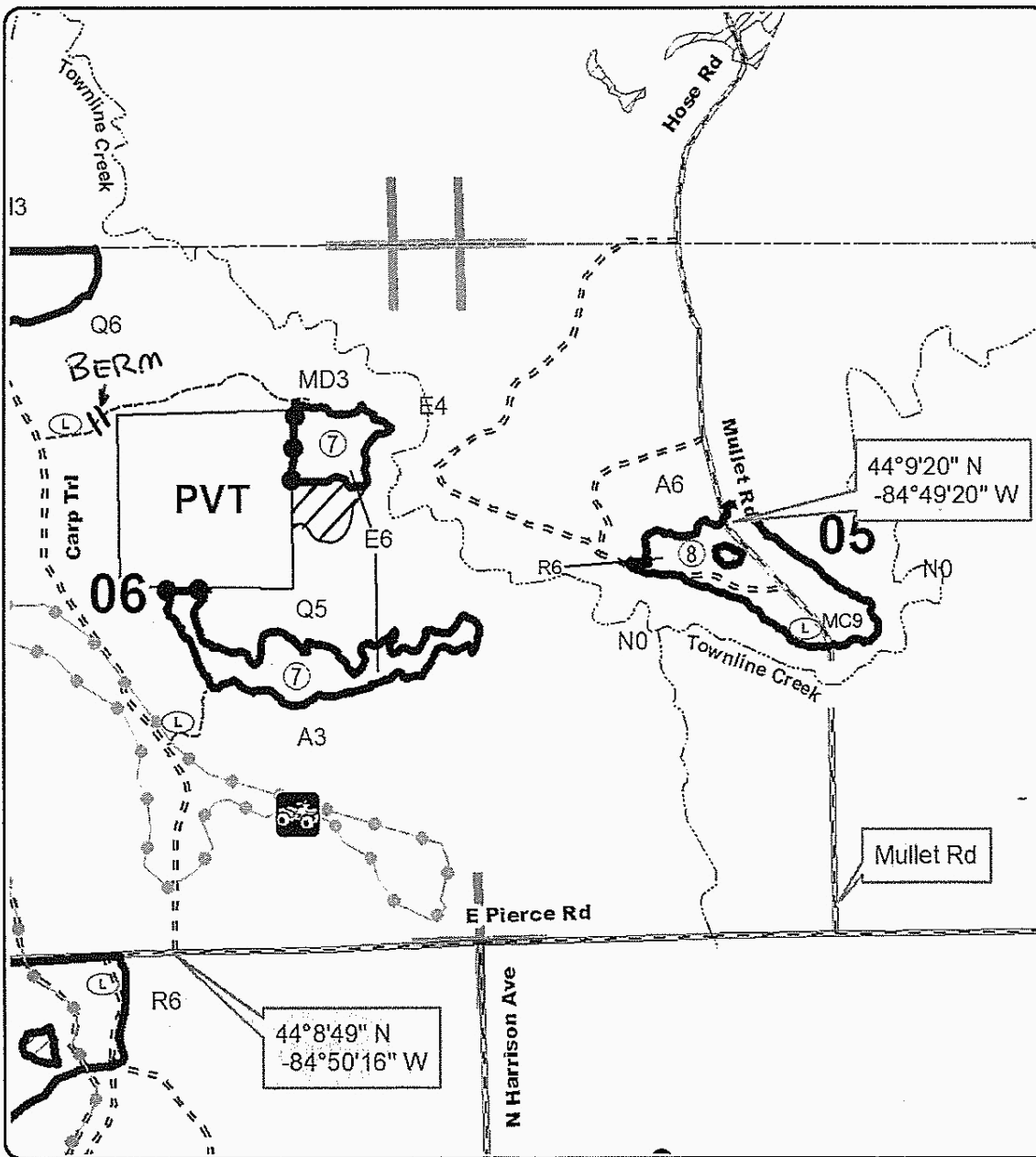
0 = Non Stocked	5 = Pole Timber Medium
1 = Seedling Sapling Poor	6 = Pole Timber Well
2 = Seedling Sapling Medium	7 = Saw Timber Poor
3 = Seedling Sapling Well	8 = Saw Timber Medium
4 = Pole Timber Poor	9 = Saw Timber Well

PU	Acres	PU	Acres
1	45.9	6	31.3
2	18.3	7	21.9
3	7.5	8	18.7
4	15.3	9	6.7
5	63.1		

TOWN LINE CREEK MIX

Compartment 4

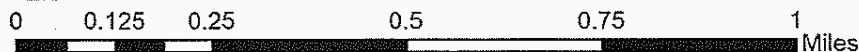
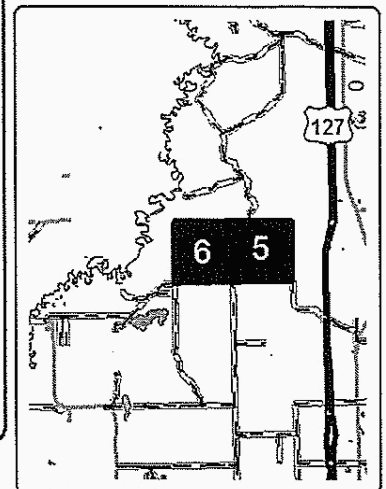
228.8 Acres



Legend

- Sale Boundary: Against State (Red)
- Payment Unit (Yellow)
- Private Line (Blue)
- Section Corners
- Retention Area
- Proposed Skid Trail
- Proposed Landing
- Gravel Roads
- Poor Dirt Roads
- Streams
- Recreational Trail
- PU Number

Locator Map
1:200,000





Sale Number	Year
73-001	17

TIMBER SALE MAP

This information provided by authority of Part 525, 1994 PA 451, as amended.

Forest Management Unit Gladwin Management Unit	County Clare	Mapped By Fanelli	Date 09/15/2017	Page 4	of 4
Township 20N	Range 04W 05W	Section(s) and Subdivision(s) 5,6,7,8 Various 1,12, 13 Various	Scale 1:15,840		

Cover Type

A = Aspen	H = Hemlock	N = Marsh	U = Upland Brush
B = Paper Birch	J = Jack Pine	O = Oak	UM = Upland Mixed
C = Cedar	L = Lowland Brush	P = Lowland Poplar	V = Bog or Marsh
D = Tread Bog	LM = Lowland Mixed	Q = Mixed Swamp Conifer	W = White Pine
E = Swamp Hdwoods	M = Mpl. Bch. Brch	R = Red Pine	X = Non Stocked
F = Spruce Fir	MC = Mixed Conifer	S = Black Spruce	Z = Water
G = Grass	MD = Mixed Deciduous	T = Tamarack	

Density

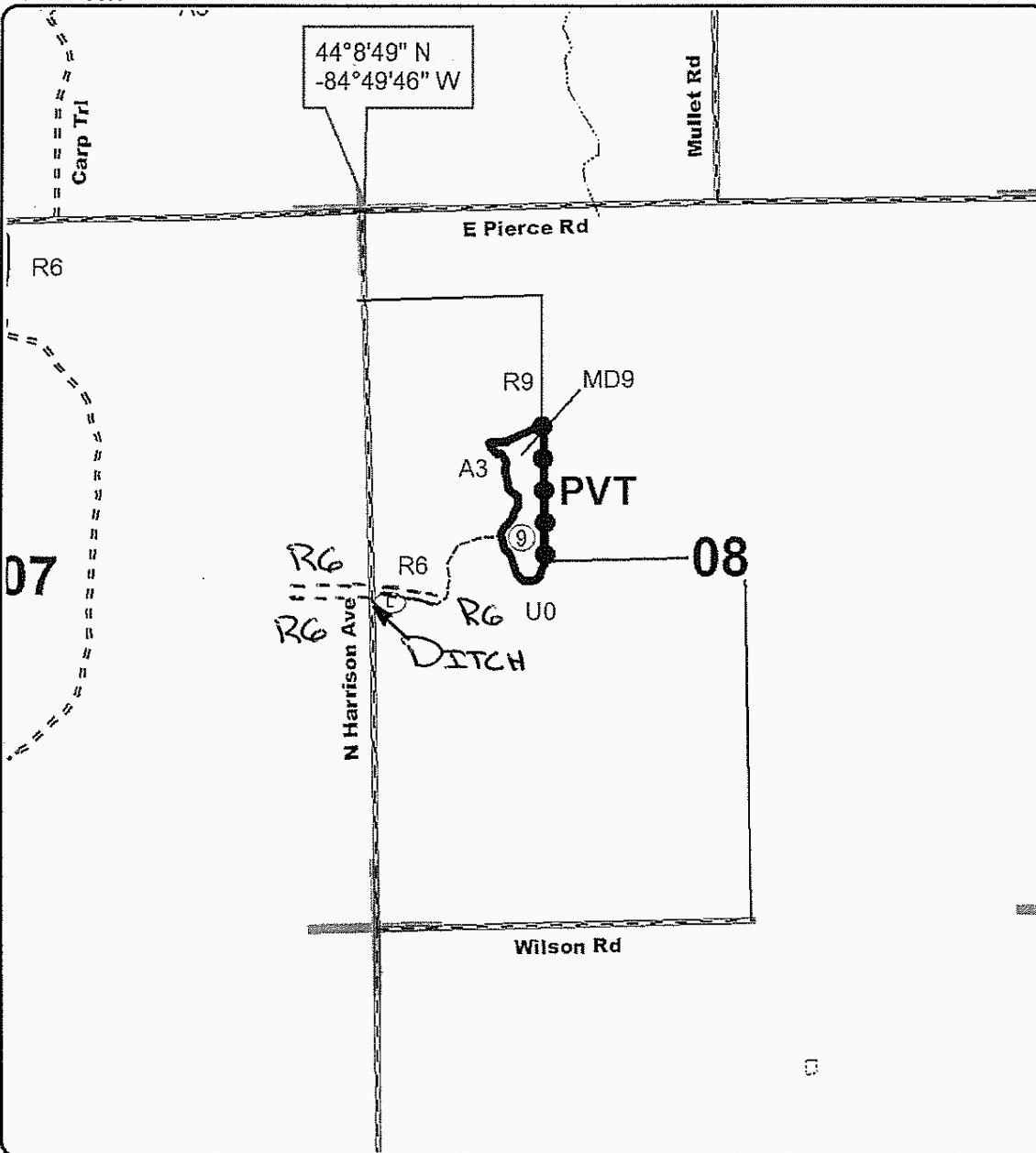
0 = Non Stocked	5 = Pole Timber Medium
1 = Seedling Sapling Poor	6 = Pole Timber Well
2 = Seedling Sapling Medium	7 = Saw Timber Poor
3 = Seedling Sapling Well	8 = Saw Timber Medium
4 = Pole Timber Poor	9 = Saw Timber Well

PU	Acres	PU	Acres
1	45.9	6	31.3
2	18.3	7	21.9
3	7.5	8	18.8
4	15.3	9	6.7
5	63.1		

TOWN LINE CREEK MIX

Compartment 4

228.8 Acres

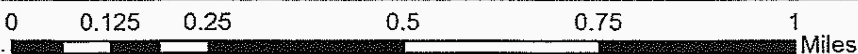
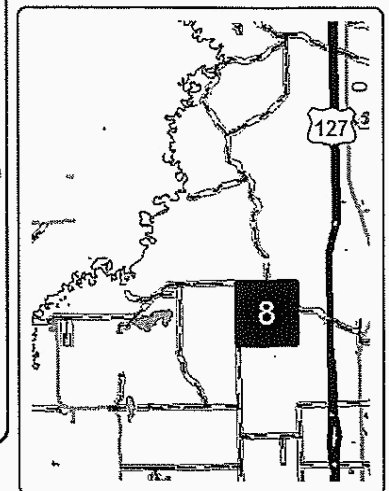


Legend

Sale Boundary

- Against State (Red)
- ○ Payment Unit (Yellow)
- ● Private Line (Blue)
- ▬ Section Corners
- - - Proposed Skid Trail
- Ⓛ Proposed Landing
- ▬ Gravel Roads
- = = Poor Dirt Roads
- - - Closed Roads
- ⋯ Streams
- PU Number

Locator Map
1:200,000



TIMBER SALE INFORMATION

County Line Mix (73-016-17)

Clare County (Advertised Price \$180,059.55)

SALE NOTE: Access to Unit 7 maybe be across private land. Contact DNR for landowner information.

Access may be through private or other public land.

A timber sale contract for this lump sum, sealed bid timber sale will be awarded to the responsible bidder offering the highest sealed bid price. Bids must be at or above the following advertised price for each species:

<u>PRODUCTS & SPECIES</u>	<u>ESTIMATED UNITS*</u>	<u>ADVERTISED PRICE</u>
Sawtimber		
Jack Pine	47.90 MBF	\$ 31.00 / MBF
Mixed Aspen	110.40 MBF	\$ 66.00 / MBF
Mixed Oak	34.00 MBF	\$ 148.00 / MBF
Red Maple	12.40 MBF	\$ 43.00 / MBF
Red Pine	1,003.80 MBF	\$ 115.00 / MBF
White Pine	12.10 MBF	\$ 82.00 / MBF
Pulpwood		
Jack Pine	467.00 Cords	\$ 16.05 / Cord
Mixed Aspen	771.00 Cords	\$ 25.30 / Cord
Mixed Oak	161.00 Cords	\$ 10.45 / Cord
Paper Birch	8.00 Cords	\$ 16.00 / Cord
Red Maple	63.00 Cords	\$ 21.55 / Cord
Red Pine	570.00 Cords	\$ 32.65 / Cord
White Pine	24.00 Cords	\$ 21.40 / Cord

* The total volume is statistically estimated within plus (+) or minus (-) 8.23 percent. The estimated units are final and not subject to adjustment. Prospective bidders are urged to examine this timber and to make their own estimates of quantity and quality.

BOND AND PAYMENT SCHEDULE:

1. A bond in the amount of \$9,003.00 to insure faithful performance of the conditions of the contract will be deposited by the successful bidder within 21 days of the sale award.
2. Cutting in any sale or unit without the required advance payment would be considered a trespass.
3. Total payment must be paid in advance or according to the following schedule:
 - (a) Ten percent (10%) of the sale value must be paid within 21 days of the sale award.
 - (b) The 10% down payment will be credited towards the first unit cut.
4. If no cutting takes place, the 10% down payment will not be refunded.
5. Operations on the contract issued will terminate on 03/31/2020.

Description of Timber by Payment Unit (PU)

PU	MARKET GROUP	PRODUCT	QUANTITY	UNIT	ACRES	ADVERTISE PRICE
1	Jack Pine	Sawtimber	14.5	MBF	16.3	\$4,305.05
	Mixed Oak		12.6	MBF		
	<i>BI/R/Hybrid Oak</i>		12.1	<i>MBF</i>		
	<i>White Oak</i>		0.5	<i>MBF</i>		
	Red Maple		0.5	MBF		
	<i>Red Maple</i>		0.5	<i>MBF</i>		
	White Pine	10.0	MBF			
	Jack Pine	Pulpwood	35.0	Cords		
	Mixed Oak		7.0	Cords		
	<i>BI/R/Hybrid Oak</i>		5.0	<i>Cords</i>		
	<i>White Oak</i>		2.0	<i>Cords</i>		
	Red Maple		5.0	Cords		
	White Pine		19.0	Cords		
	White Pine		19.0	Cords		
2	Jack Pine	Sawtimber	11.5	MBF	28.8	\$8,778.30
	Mixed Aspen		13.9	MBF		
	<i>B. T. Aspen</i>		1.1	<i>MBF</i>		
	<i>Quaking Aspen</i>		12.8	<i>MBF</i>		
	Mixed Oak		6.5	MBF		
	<i>BI/R/Hybrid Oak</i>		6.5	<i>MBF</i>		
	Red Maple		4.7	MBF		
	<i>Paper Birch</i>		0.5	<i>MBF</i>		
	<i>Red Maple</i>		4.2	<i>MBF</i>		
	Red Pine		3.2	MBF		
	White Pine	2.1	MBF			
	Jack Pine	Pulpwood	14.0	Cords		
	Mixed Aspen		185.0	Cords		
	<i>B. T. Aspen</i>		9.0	<i>Cords</i>		
	<i>Quaking Aspen</i>		176.0	<i>Cords</i>		
	Mixed Oak		32.0	Cords		
	<i>BI/R/Hybrid Oak</i>		29.0	<i>Cords</i>		
	<i>White Oak</i>		3.0	<i>Cords</i>		
	Red Maple		20.0	Cords		
	Red Pine		2.0	Cords		
White Pine	3.0		Cords			
3	Mixed Aspen	Sawtimber	42.3	MBF	26.4	\$7,783.70
	<i>B. T. Aspen</i>		0.4	<i>MBF</i>		
	<i>Quaking Aspen</i>		41.9	<i>MBF</i>		
	Mixed Oak		2.0	MBF		
	<i>BI/R/Hybrid Oak</i>		2.0	<i>MBF</i>		
	Red Maple		1.9	MBF		
	<i>Red Maple</i>	1.9	<i>MBF</i>			
	Jack Pine	Pulpwood	21.0	Cords		
	Mixed Aspen		145.0	Cords		
	<i>B. T. Aspen</i>		7.0	<i>Cords</i>		
	<i>Quaking Aspen</i>		138.0	<i>Cords</i>		
	Mixed Oak		17.0	Cords		
<i>BI/R/Hybrid Oak</i>	17.0		<i>Cords</i>			
Red Maple	20.0	Cords				
4	Jack Pine	Sawtimber	10.2	MBF	51.0	\$9,853.80
	Mixed Aspen		11.9	MBF		
	<i>B. T. Aspen</i>		11.5	<i>MBF</i>		
	<i>Quaking Aspen</i>		0.4	<i>MBF</i>		
	Mixed Oak	11.3	MBF			
	<i>BI/R/Hybrid Oak</i>	11.3	<i>MBF</i>			
	Jack Pine	Pulpwood	354.0	Cords		
	Mixed Aspen		47.0	Cords		

Description of Timber by Payment Unit (PU), con't

PU	MARKET GROUP	PRODUCT	QUANTITY	UNIT	ACRES	ADVERTISE PRICE
4 con't	<i>B. T. Aspen</i>	<i>Pulpwood</i>	24.0	<i>Cords</i>		
	<i>Quaking Aspen</i>		23.0	<i>Cords</i>		
	Mixed Oak		20.0	Cords		
	<i>BI/R/Hybrid Oak</i>		20.0	<i>Cords</i>		
5	Red Pine	Sawtimber	577.7	MBF	42.5	\$72,949.45
	Jack Pine	Pulpwood	2.0	Cords		
	Mixed Aspen		3.0	Cords		
	<i>Quaking Aspen</i>		3.0	<i>Cords</i>		
	Mixed Oak		10.0	Cords		
	<i>BI/R/Hybrid Oak</i>		10.0	<i>Cords</i>		
	Red Pine		193.0	Cords		
6	Jack Pine	Sawtimber	11.7	MBF	39.5	\$61,826.80
	Red Pine		422.9	MBF		
	Jack Pine	Pulpwood	40.0	Cords		
	Red Pine		372.0	Cords		
	White Pine		2.0	Cords		
7	Mixed Aspen	Sawtimber	42.3	MBF	9.0	\$5,273.50
	<i>B. T. Aspen</i>		42.3	<i>MBF</i>		
	Mixed Oak		1.6	MBF		
	<i>BI/R/Hybrid Oak</i>		1.6	<i>MBF</i>		
	Red Maple		5.3	MBF		
	<i>Paper Birch</i>		1.4	<i>MBF</i>		
	<i>Red Maple</i>		3.9	<i>MBF</i>		
	Jack Pine	Pulpwood	1.0	Cords		
	Mixed Aspen		54.0	Cords		
	<i>B. T. Aspen</i>		54.0	<i>Cords</i>		
	Mixed Oak		2.0	Cords		
	<i>BI/R/Hybrid Oak</i>		2.0	<i>Cords</i>		
	Paper Birch		8.0	Cords		
	Red Maple		18.0	Cords		
	Red Pine		3.0	Cords		
TOTAL:			1,220.6	MBF		
TOTAL:			1,654.0	Cords		

Sale Specific Conditions & Requirements

Sale Name: County Line Mix

Sale Number: 73-016-17 Seq#: 1

1 - Sale Area

1.2 - Boundaries

1.2.1 - Painted boundaries (1/14)

The sale boundary and Payment Unit boundaries are marked and identified by blue, red and yellow paint. Exterior sale boundary lines against private property are marked with blue paint. Exterior sale boundary lines against state are marked with red paint. Interior Payment Unit boundaries are marked with yellow paint. Yellow painted trees designating an interior Payment Unit boundary are only to be cut when all surrounding Payment Units have been paid.

2 - Timber Specifications

2.1 - Included Timber

2.1.1 - Clearcut unit(s) with unmerchantable trees (6/14)

Within Payment Unit(s) 1 - 4 and 7, cut all trees that are two (2) inches or more at DBH, except do not cut any green painted trees. In addition, within Payment Unit 3, do not cut any red pine or spruce. Also, within Payment Unit 4, do not cut any red pine.

2.1.4 - Designated timber unit(s) (6/17)

Within Payment Unit(s) 5 and 6, all red pine, jack pine and aspen trees are designated for cutting, regardless of merchantability.

2.1.15 - Hazard trees near roads (7/13)

Cut and remove all standing dead trees within 100 feet of the cleared portion of M-61 and Kirby Ave. These trees may be utilized.

2.2 - Utilization

2.2.2 - Chipping required (5/14)

Payment Unit 4 must be chip harvested to facilitate subsequent planting operations. The Purchaser has the option to produce sawlogs or pulpwood bolts, but the remaining portion of the trees must be chipped and hauled. Do not chip 1/6 to 1/3 of the slash from harvested trees (tree tops and limbs less than four inches in diameter).

2.2.3 - Stump heights (4/07)

Stump heights within the Sale Area shall not exceed 8 inches for trees greater than 10 inches DBH and 4 inches for trees smaller than 10 inches DBH.

2.2.11 - Chipping restriction (9/14)

If chipping occurs on this sale, then 1 pile of tops must be left per 2 acres. The piles must be evenly distributed throughout sale area. This specification contributes towards the requirements for biomass retention.

3 - Payments

3.4 - Damaged Timber

3.4.1 - Damaged timber (6/14)

General Condition and Requirement 3.4 Damaged Timber, defines liquidated damages for undesignated live merchantable trees which are cut or injured. In addition, extreme care should be taken to avoid damage to tree seedlings and saplings.

Within the sale area, if more than 25% of the tree seedlings or saplings (1/4" to 4.5" DBH) within a specified portion of the sale area are damaged, liquidated damages will be assessed at \$300.00 per acre for all acreage within that specified portion of the sale area that was damaged.

No damage is acceptable to merchantable trees. Within the sale area, if more than 5% of trees (> 4.5" DBH) within a specified area of the sale are damaged, liquidated damages will be assessed for all trees damaged. Rates will be in accordance with General Condition and Requirement 3.4 Damaged Timber.

4 - Transportation

4.1 - Construction

4.1.3 - Slash and earthen piles (8/04)

Piles or windrows of earth along roads and landings that have been widened or constructed shall be leveled. Slash from road maintenance or construction, including stumps, shall be dispersed throughout the sale.

4.1.7 - Road closure (10/11)

All new roads built into the sale must be blocked to vehicle traffic upon completion of the sale. Overgrown roads that are reopened shall be considered new roads. In general, this will require constructing a four (4') foot high berm of stumps and logs covered with earth. Stumps and brush must be placed along the remainder of the trail. All stumps from road building and landing construction must be reserved to block any newly constructed roads upon completion of the sale. These stumps must be scattered along the road system to prohibit vehicular movement. Contact the sale administrator for specific details of design and placement.

4.4 - Access

4.4.1 - Private property access (3/11)

Permission for access across private land is the responsibility of the Purchaser. The private landowner has been contacted by the DNR and is willing to allow access through his property to access Payment Unit 7. Contact the Sale Administrator for the private landowner's name and number. An alternate route exist across state land, however the two track is seasonally wet and would require road work if used.

5 - Operations

5.1 - Notification

5.1.1 - Pre-sale conference (10/16)

A pre-sale conference on site between the Purchaser and sale administrator is required prior to beginning any operations to determine landing and road locations and to confirm locations of well sites and pipelines. The Sale Administrator must be contacted at least 3 days in advance to schedule the conference.

5.1.3 - Well heads and natural gas pipelines (11/15)

The Purchaser is responsible for contacting the gas or pipeline company prior to operating equipment in the vicinity of well heads or natural gas pipelines. Contact Jim Wade or Kevin Andrews with Consumers Energy/Michigan Gas Storage Company at 231-590-2917 or 231-743-2341.

5.2 - Conduct of Operations

5.2.1 - Slash

5.2.1.11 - Slash for reforestation (5/07)

To facilitate reforestation, Payment Unit(s) 4 shall be left with slash evenly distributed. Bunched tops within the cutting area shall be broken up and scattered. Stumps shall be cut low to the ground. Processing sites shall not be left with a compacted layer of slash; tops from these sites shall be hauled back into the cut area and scattered.

5.2.2 - Hazard Trees/Snags

5.2.2.1 - Den trees (10/16)

Obvious hollow and/or den trees shall be protected and left standing unless they are a safety hazard.

5.2.3 - Operating Restrictions

5.2.3.6 - Bark beetle restriction (12/08)

In the event drought creates a high risk of pine bark beetle infestation, pine is not to be cut during the period March 1 through July 1, unless all portions of trees greater than two inches in diameter are removed from the sale area, reduced to chips, or treated to the satisfaction of the Unit Manager or his/her representative, within fifteen days of being severed from the stump. Pine log decks, pulpwood piles and treetops that are piled for chipping in the fall or winter within a 1/4 mile of susceptible sites must be removed before March 15. Residual slash must not be placed in piles or rows and must be spread over the site for quick drying. The Department of Natural Resources will exercise this specification if the risk

of damage warrants.

5.2.4 - Dead and Down Creation

5.2.4.2 - Dead and down creation, hare and grouse (1/14)

To improve habitat for snowshoe hare, grouse, and other species, the Purchaser is to leave one 8 inch diameter log size piece on the ground for every two acres. They should be scattered throughout the sale. Note these pieces should have a minimum length of 8 feet.

5.2.4.3 - Dead and down creation, dead trees (6/07)

Except as provided for in General Condition and Requirement 5.2.2, no dead trees, standing or down, are to be cut, skidded, or processed.

5.2.22 - Operating Caution

5.2.22.1 - Operating caution (6/11)

It is recommended, but not required, that within Payment Unit(s) 3, cutting, skidding, and hauling occur during dry summer or frozen winter conditions. The reason for the recommendation is because of seasonably wet soil conditions.

5.2.31 - Landing locations (9/13)

Recommended landing areas are marked on the timber sale map with the letter "L".

5.4 - Soil Protection

5.4.1 - Rutting restriction, general (7/16)

Operations are to cease immediately if equipment and weather conditions result in rutting of roads and/or skid trails which is 12 inches or greater in depth and 50 feet in length. The Unit Manager or his/her representative may restrict hauling and/or skidding if ruts exceed the specified depth. With the Unit Manager or his/her representative's approval, the Purchaser may return to the area when the risk of rutting has decreased.



TIMBER SALE MAP

This information provided by authority of Part 525, 1994 PA 451, as amended.

Sale Number	Year
73-016	17

Forest Management Unit Gladwin Management Unit	County Clare	Mapped By C. Wasserman	Date 09/21/17	Page 1	of 4
Township 19N	Range 06W	Section(s) and Subdivision(s) Section 5,7,8,17,19	Scale 1:15,840		

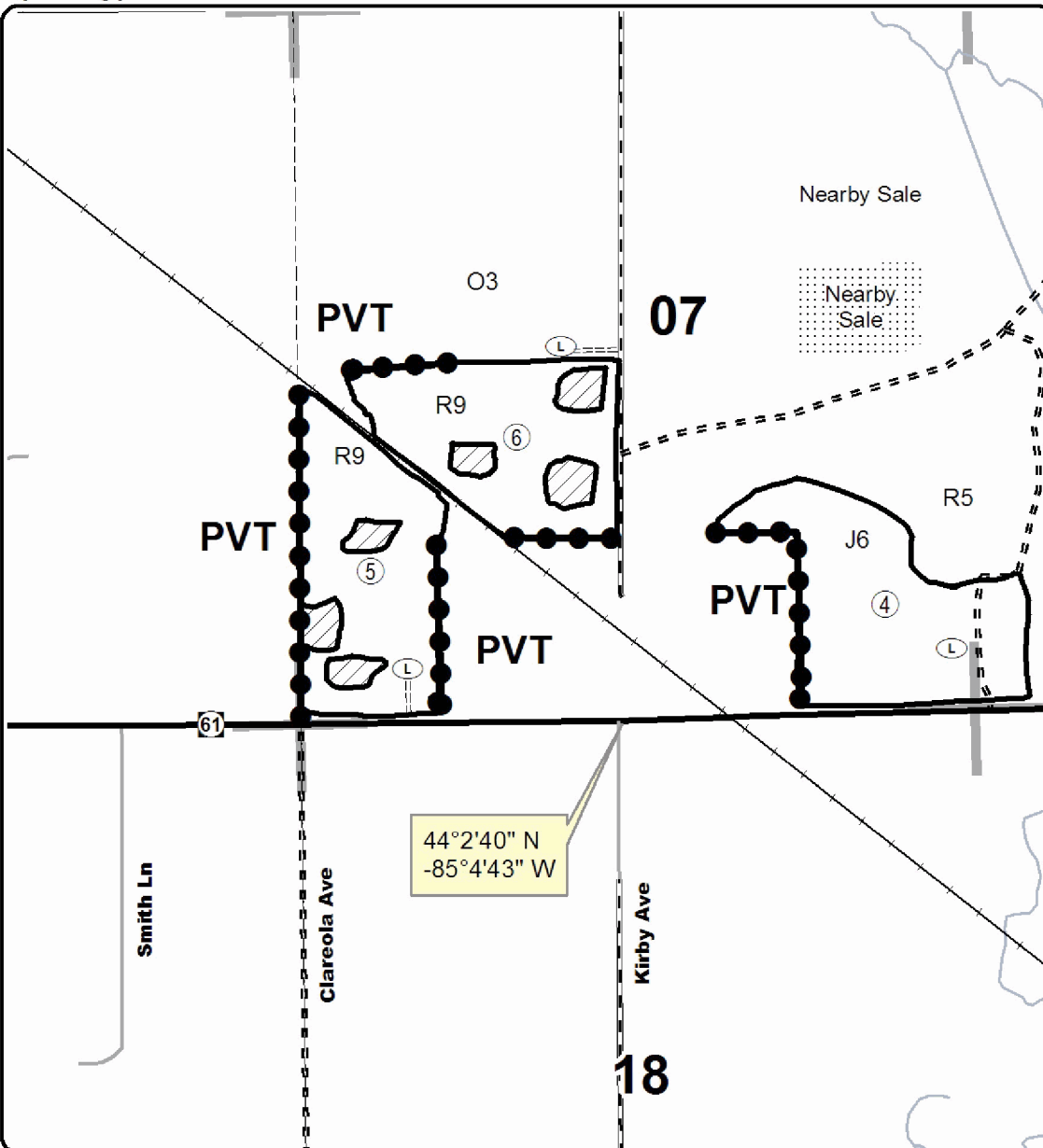
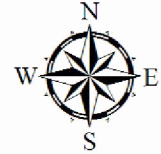
Cover Type				Density			
A = Aspen	H = Hemlock	N = Marsh	U = Upland Brush	0 = Non Stocked	5 = Pole Timber Medium		
B = Paper Birch	J = Jack Pine	O = Oak	UM = Upland Mixed	1 = Seedling Sapling Poor	6 = Pole Timber Well		
C = Cedar	L = Lowland Brush	P = Lowland Poplar	V = Bog or Marsh	2 = Seedling Sapling Medium	7 = Saw Timber Poor		
D = Treed Bog	LM = Lowland Mixed	Q = Mixed Swamp Conifer	W = White Pine	3 = Seedling Sapling Well	8 = Saw Timber Medium		
E = Swamp Hdwoods	M = Mpl, Bch, Brch	R = Red Pine	X = Non Stocked	4 = Pole Timber Poor	9 = Saw Timber Well		
F = Spruce Fir	MC = Mixed Conifer	S = Black Spruce	Z = Water				
G = Grass	MD = Mixed Deciduous	T = Tamarack					

PU	Acres	PU	Acres
1	16.3	5	42.5
2	28.8	6	39.5
3	26.4	7	9
4	51		

County Line Mix

Compartment 015

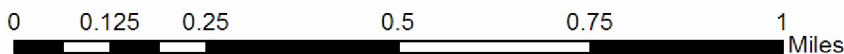
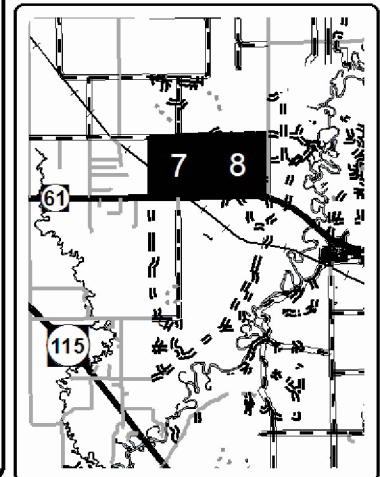
213.5 Acres



Legend

- Against State (Red)
- Payment Unit (Yellow)
- Private Line (Blue)
- Section Corners
- ▨ Retention Area
- ⊙ Proposed Landing
- PU Number
- Highway
- Paved Roads
- Gravel Roads
- Poor Dirt Roads
- Closed Roads
- Active Railroad

Locator Map
1:200,000





TIMBER SALE MAP

This information provided by authority of Part 525, 1994 PA 451, as amended.

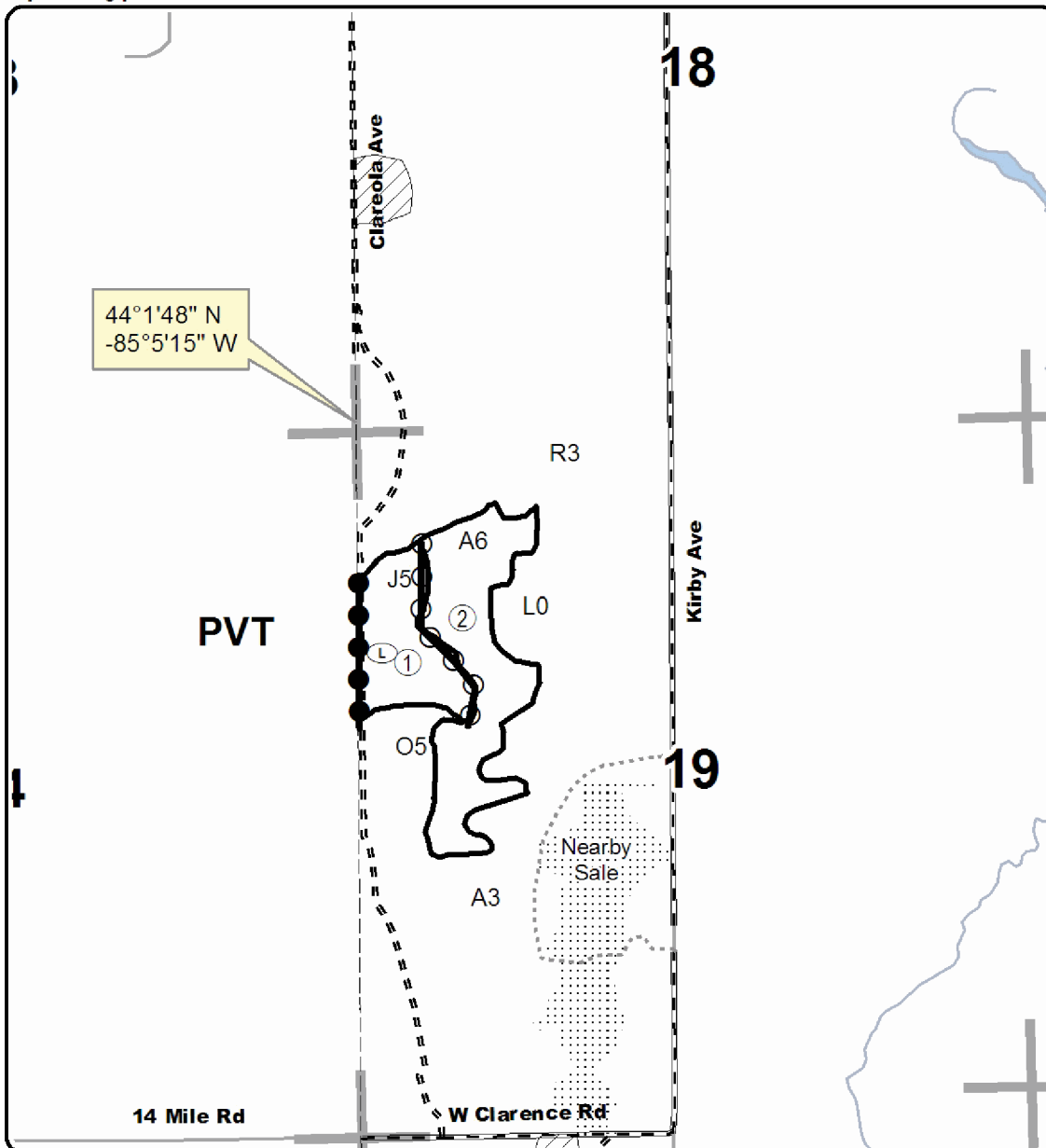
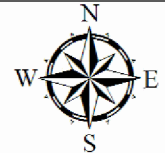
Sale Number	73-016	Year	17
-------------	--------	------	----

Forest Management Unit Gladwin Management Unit	County Clare	Mapped By C. Wasserman	Date 09/21/17	Page 2	of 4
Township 19N	Range 06W	Section(s) and Subdivision(s) Section 5,7,8,17,19	Scale 1:15,840		

Cover Type				Density	
A = Aspen	H = Hemlock	N = Marsh	U = Upland Brush	0 = Non Stocked	5 = Pole Timber Medium
B = Paper Birch	J = Jack Pine	O = Oak	UM = Upland Mixed	1 = Seedling Sapling Poor	6 = Pole Timber Well
C = Cedar	L = Lowland Brush	P = Lowland Poplar	V = Bog or Marsh	2 = Seedling Sapling Medium	7 = Saw Timber Poor
D = Treed Bog	LM = Lowland Mixed	Q = Mixed Swamp Conifer	W = White Pine	3 = Seedling Sapling Well	8 = Saw Timber Medium
E = Swamp Hdwoods	M = Mpl, Bch, Brch	R = Red Pine	X = Non Stocked	4 = Pole Timber Poor	9 = Saw Timber Well
F = Spruce Fir	MC = Mixed Conifer	S = Black Spruce	Z = Water		
G = Grass	MD = Mixed Deciduous	T = Tamarack			

PU	Acres	PU	Acres
1	16.3	5	42.5
2	28.8	6	39.5
3	26.4	7	9
4	51		

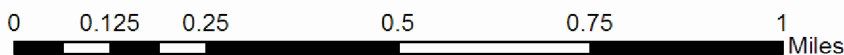
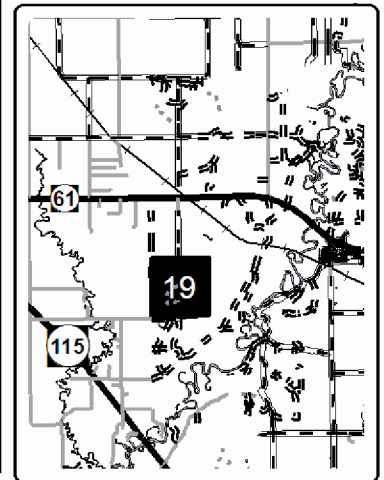
County Line Mix Compartment 015 213.5 Acres



Legend

- Against State (Red)
- Payment Unit (Yellow)
- Private Line (Blue)
- Section Corners
- ▨ Retention Area
- Ⓛ Proposed Landing
- PU Number
- Highway
- Paved Roads
- Gravel Roads
- - - Poor Dirt Roads
- ⋯ Closed Roads

Locator Map
1:200,000





TIMBER SALE MAP

This information provided by authority of Part 525, 1994 PA 451, as amended.

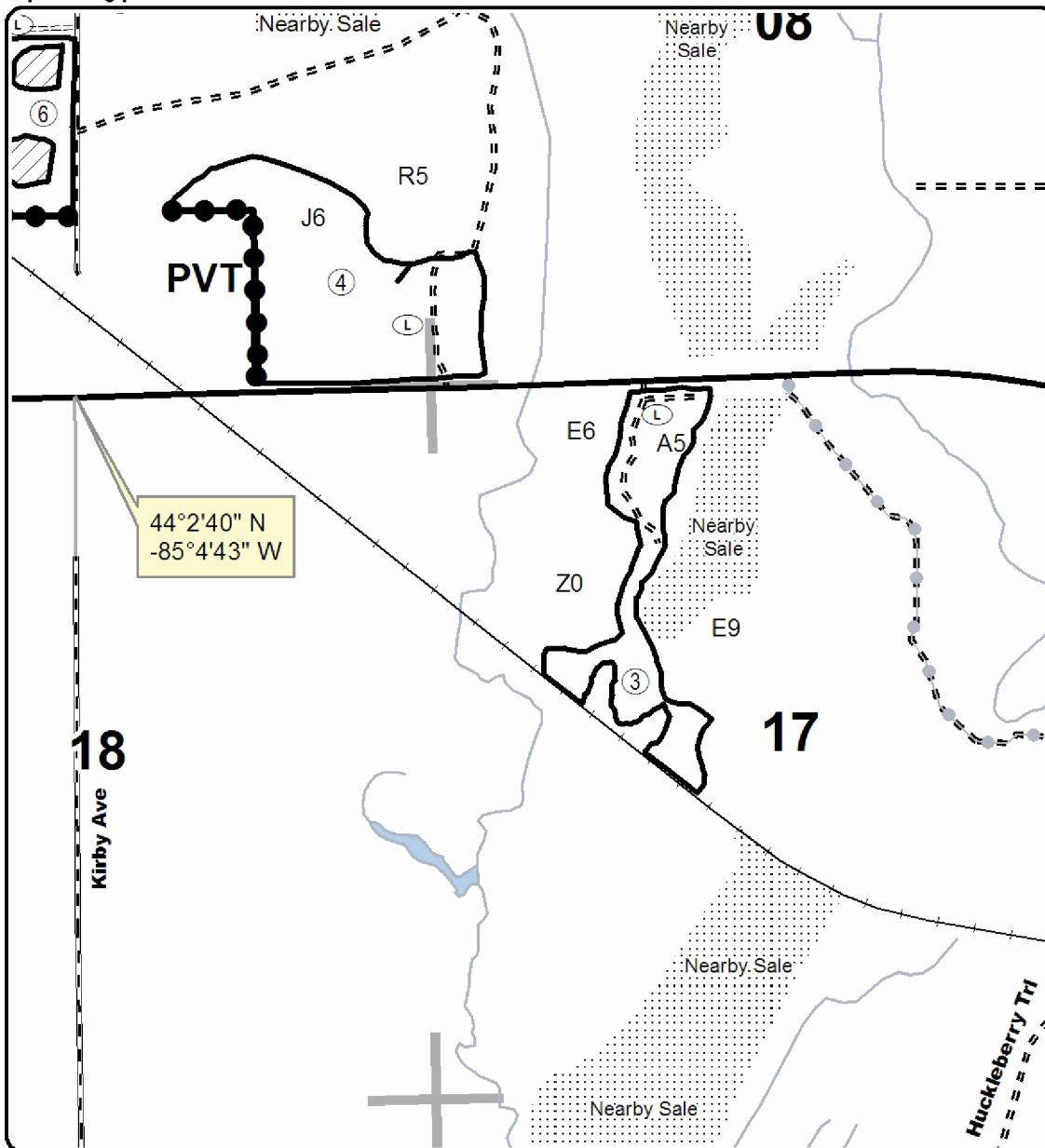
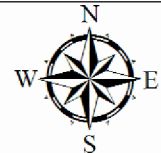
Sale Number 73-016		Year 17	
Date 09/21/17	Page 3	of 4	
Township 19N		Range 06W	Section(s) and Subdivision(s) Section 5,7,8,17,19
Forest Management Unit Gladwin Management Unit		County Clare	Mapped By C. Wasserman
		Cruised By C. Wasserman	Scale 1:15,840

Cover Type			
A = Aspen	H = Hemlock	N = Marsh	U = Upland Brush
B = Paper Birch	J = Jack Pine	O = Oak	UM = Upland Mixed
C = Cedar	L = Lowland Brush	P = Lowland Poplar	V = Bog or Marsh
D = Tread Bog	LM = Lowland Mixed	Q = Mixed Swamp Conifer	W = White Pine
E = Swamp Hdwoods	M = Mpl, Bch, Brch	R = Red Pine	X = Non Stocked
F = Spruce Fir	MC = Mixed Conifer	S = Black Spruce	Z = Water
G = Grass	MD = Mixed Deciduous	T = Tamarack	

Density	
0 = Non Stocked	5 = Pole Timber Medium
1 = Seedling Sapling Poor	6 = Pole Timber Well
2 = Seedling Sapling Medium	7 = Saw Timber Poor
3 = Seedling Sapling Well	8 = Saw Timber Medium
4 = Pole Timber Poor	9 = Saw Timber Well

PU	Acres	PU	Acres
1	16.3	5	42.5
2	28.8	6	39.5
3	26.4	7	9
4	51		

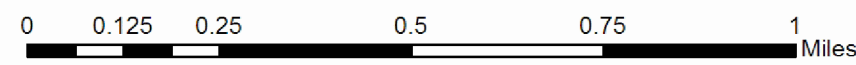
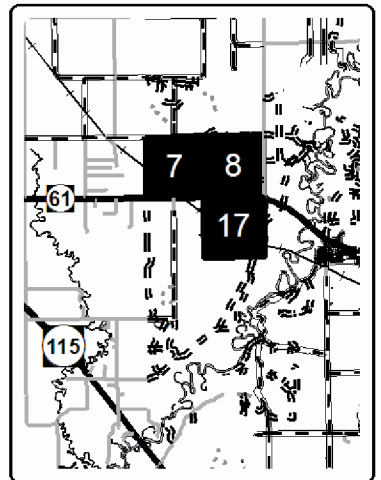
County Line Mix Compartment 015 213.5 Acres



Legend

- Against State (Red)
- Payment Unit (Yellow)
- Private Line (Blue)
- ⋯ Nearby Timber Sale
- Section Corners
- ▨ Retention Area
- Ⓛ Proposed Landing
- PU Number
- Highway
- Paved Roads
- Gravel Roads
- == Poor Dirt Roads
- ⋯ Closed Roads
- Active Railroad
- Recreation Trail

Locator Map
1:200,000





TIMBER SALE MAP

This information provided by authority of Part 525, 1994 PA 451, as amended.

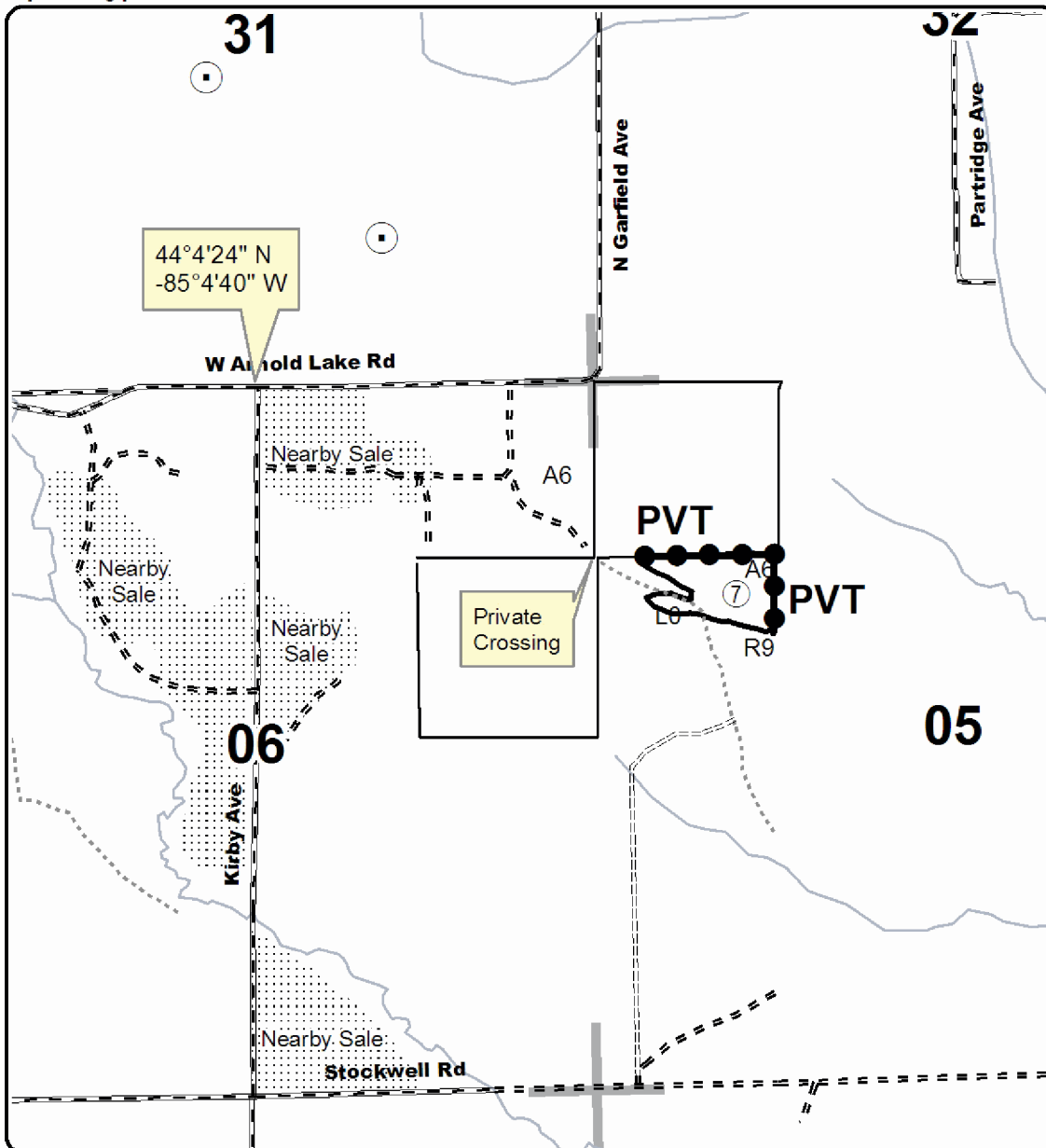
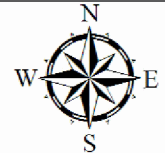
Sale Number	Year
73-016	17

Forest Management Unit Gladwin Management Unit	County Clare	Mapped By C. Wasserman	Date 09/21/17	Page 4	of 4
Township 19N	Range 06W	Section(s) and Subdivision(s) Section 5,7,8,17,19	Scale 1:15,840		

Cover Type				Density	
A = Aspen	H = Hemlock	N = Marsh	U = Upland Brush	0 = Non Stocked	5 = Pole Timber Medium
B = Paper Birch	J = Jack Pine	O = Oak	UM = Upland Mixed	1 = Seedling Sapling Poor	6 = Pole Timber Well
C = Cedar	L = Lowland Brush	P = Lowland Poplar	V = Bog or Marsh	2 = Seedling Sapling Medium	7 = Saw Timber Poor
D = Tread Bog	LM = Lowland Mixed	Q = Mixed Swamp Conifer	W = White Pine	3 = Seedling Sapling Well	8 = Saw Timber Medium
E = Swamp Hdwoods	M = Mpl, Bch, Brch	R = Red Pine	X = Non Stocked	4 = Pole Timber Poor	9 = Saw Timber Well
F = Spruce Fir	MC = Mixed Conifer	S = Black Spruce	Z = Water		
G = Grass	MD = Mixed Deciduous	T = Tamarack			

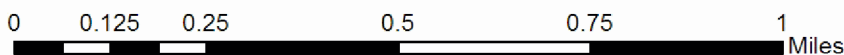
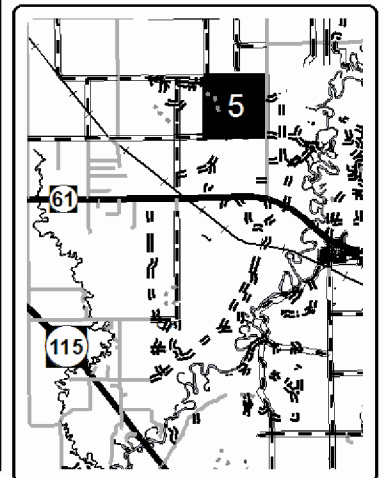
PU	Acres	PU	Acres
1	16.3	5	42.5
2	28.8	6	39.5
3	26.4	7	9
4	51		

County Line Mix Compartment 015 213.5 Acres



Legend	
	Against State (Red)
	Payment Unit (Yellow)
	Private Line (Blue)
	Section Corners
	Proposed Landing
	Oil & Gas Well Sites
	Highway
	Paved Roads
	Gravel Roads
	Poor Dirt Roads
	Closed Roads

Locator Map
1:200,000



County Line Mix (73-016-17)
; Clare COUNTY

In response to the notice of sale to be held 10:00 a.m. (local time) on March 14, 2018, I am hereby submitting my sealed bid (firm offer) for the following forest products to be cut. Bids for individual species must be at or above the advertised price. All non-responsive bid forms may be rejected.

<u>PRODUCTS & SPECIES</u>	<u>ESTIMATED VOLUME*</u>	<u>ADVERTISED PRICE</u>	<u>BID PRICE/UNIT</u>
Sawtimber			
Jack Pine	47.90 MBF	\$ 31.00/MBF	\$ _____
Mixed Aspen	110.40 MBF	\$ 66.00/MBF	\$ _____
Mixed Oak	34.00 MBF	\$ 148.00/MBF	\$ _____
Red Maple	12.40 MBF	\$ 43.00/MBF	\$ _____
Red Pine	1,003.80 MBF	\$ 115.00/MBF	\$ _____
White Pine	12.10 MBF	\$ 82.00/MBF	\$ _____
Pulpwood			
Jack Pine	467.00 Cords	\$ 16.05/Cord	\$ _____
Mixed Aspen	771.00 Cords	\$ 25.30/Cord	\$ _____
Mixed Oak	161.00 Cords	\$ 10.45/Cord	\$ _____
Paper Birch	8.00 Cords	\$ 16.00/Cord	\$ _____
Red Maple	63.00 Cords	\$ 21.55/Cord	\$ _____
Red Pine	570.00 Cords	\$ 32.65/Cord	\$ _____
White Pine	24.00 Cords	\$ 21.40/Cord	\$ _____

*The volumes are statistically estimated within plus (+) or minus (-) 8.23 percent. These estimated volumes are final and not subject to adjustment. Prospective bidders are urged to examine this timber and to make their own estimates of quantity and quality.

I understand that any or all bids may be rejected. All bids must be signed and all bid items must be bid or the bid form may be rejected. I also understand that consideration and awarding a contract will be based upon my past performance and ability to complete the contract based upon equipment and staffing subject to my control.

FEDERAL ID: _____ or SOCIAL SECURITY NUMBER: _____

Company or individual bidding: _____

Company representative's name: _____

Address: _____

City: _____ State: _____ Zip: _____

IF AVAILABLE, PLEASE PLACE THE PERSONALIZED LABEL FROM YOUR PROSPECTUS IN THE ABOVE BOX.

Individual or company representative's signature: _____ Date: _____

Phone number : _____ Email (optional): _____

THE WINNING BIDDER MUST COMPLETE THE VERIFICATION OF WORKER'S DISABILITY COMPENSATION ACT COMPLIANCE (ON REVERSE SIDE IF DOUBLE SIDED) WITHIN 21 DAYS OF SALE AWARD DATE



FOR DEPARTMENT USE ONLY
Sale Number (XX - XXX - XX - XX)
Forest Management Unit:

TIMBER SALE VERIFICATION OF WORKER'S DISABILITY COMPENSATION ACT COMPLIANCE

*As required by Act 317, P.A. 1969 (Worker's Compensation) and
Part 5 of Act 451 of 1994, as amended.*

VERIFICATION OF WORKER'S DISABILITY COMPENSATION ACT COMPLIANCE

- This verification must be completed and submitted within 21 days of contract award and prior to the issuance of the timber sale contract.
- In addition, if boxes 2B or 2C are checked, then Notice of Exclusion or Certificate of Insurance must be submitted within twenty-one (21) days of the contract award and prior to the issuance of the timber sale contract.
- All information must be typed or printed except for written signatures.

Please Check Appropriate Categories:

1. My business is organized as (you **must** check one of the boxes below):
 - A. Sole Proprietorship (individual)
 - B. Partnership
 - C. Corporation

2. You **must** check one of the boxes below:
 - A. I certify my business is a sole proprietorship and it has no employees but the sole proprietor. I am not subject to the Worker's Compensation Laws.
 - B. I certify my business has satisfied its obligation to the Worker's Compensation Act through the use of an approved Notice of Exclusion (BWC-337, Rev. 5/96). I will provide a copy of the Notice of Exclusion within 21 days of the contract award. (For questions or a copy of the BWC-337, please call the Worker's Compensation Bureau at 517-322-1195).
 - C. I certify my business has a Worker's Compensation Policy. I will provide an original Certificate of Insurance within twenty-one (21) days of the contract award.

3. If you have checked item 2(A) or 2(B), you **must** indicate the number of **both** full-time and part-time employees, other than yourself, including family members and active partners (if none, you must enter "0").

_____ Full-time Employees

_____ Part-time Employees

Name of Business		Federal ID (or) Social Security No.	
Address		Telephone ()	
City	State	ZIP	

I hereby certify that the above information is true and correct. I agree to notify the Michigan DNR of any changes that occur in factors affecting my coverage during any of my present and future operations.

Signature of Owner or Authorized Representative

Title

Date

Please complete the "SEALED BID" information on the next page

Town Line Creek Mix (73-001-17)
; Clare COUNTY

In response to the notice of sale to be held 10:00 a.m. (local time) on March 14, 2018, I am hereby submitting my sealed bid (firm offer) for the following forest products to be cut. Bids for individual species must be at or above the advertised price. All non-responsive bid forms may be rejected.

<u>PRODUCTS & SPECIES</u>	<u>ESTIMATED VOLUME*</u>	<u>ADVERTISED PRICE</u>	<u>BID PRICE/UNIT</u>
Sawtimber			
Black Cherry	0.90 MBF	\$ 167.00/MBF	\$ _____
Mixed Aspen	13.50 MBF	\$ 66.00/MBF	\$ _____
Mixed Oak	22.30 MBF	\$ 148.00/MBF	\$ _____
Red Maple	19.10 MBF	\$ 43.00/MBF	\$ _____
Red Pine	193.80 MBF	\$ 115.00/MBF	\$ _____
White Pine	10.30 MBF	\$ 82.00/MBF	\$ _____
Pulpwood			
Balsam Fir	54.00 Cords	\$ 12.95/Cord	\$ _____
Jack Pine	486.00 Cords	\$ 16.05/Cord	\$ _____
Mixed Aspen	267.00 Cords	\$ 25.30/Cord	\$ _____
Mixed Hardwood	277.00 Cords	\$ 21.55/Cord	\$ _____
Mixed Oak	517.00 Cords	\$ 10.45/Cord	\$ _____
N. White Cedar	9.00 Cords	\$ 19.40/Cord	\$ _____
Red Pine	791.00 Cords	\$ 32.65/Cord	\$ _____
White Pine	381.00 Cords	\$ 21.40/Cord	\$ _____

*These estimated volumes are final and not subject to adjustment. Prospective bidders are urged to examine this timber and to make their own estimates of quantity and quality.

I understand that any or all bids may be rejected. All bids must be signed and all bid items must be bid or the bid form may be rejected. I also understand that consideration and awarding a contract will be based upon my past performance and ability to complete the contract based upon equipment and staffing subject to my control.

FEDERAL ID: _____ or SOCIAL SECURITY NUMBER: _____

Company or individual bidding: _____

Company representative's name: _____

Address: _____

City: _____ State: _____ Zip: _____

IF AVAILABLE, PLEASE PLACE THE PERSONALIZED LABEL FROM YOUR PROSPECTUS IN THE ABOVE BOX.

Individual or company representative's signature: _____ Date: _____

Phone number : _____ Email (optional): _____

THE WINNING BIDDER MUST COMPLETE THE VERIFICATION OF WORKER'S DISABILITY COMPENSATION ACT COMPLIANCE (ON REVERSE SIDE IF DOUBLE SIDED) WITHIN 21 DAYS OF SALE AWARD DATE



FOR DEPARTMENT USE ONLY
Sale Number (XX - XXX - XX - XX)
Forest Management Unit:

TIMBER SALE VERIFICATION OF WORKER'S DISABILITY COMPENSATION ACT COMPLIANCE

*As required by Act 317, P.A. 1969 (Worker's Compensation) and
Part 5 of Act 451 of 1994, as amended.*

VERIFICATION OF WORKER'S DISABILITY COMPENSATION ACT COMPLIANCE

- This verification must be completed and submitted within 21 days of contract award and prior to the issuance of the timber sale contract.
- In addition, if boxes 2B or 2C are checked, then Notice of Exclusion or Certificate of Insurance must be submitted within twenty-one (21) days of the contract award and prior to the issuance of the timber sale contract.
- All information must be typed or printed except for written signatures.

Please Check Appropriate Categories:

1. My business is organized as (you **must** check one of the boxes below):
 - A. Sole Proprietorship (individual)
 - B. Partnership
 - C. Corporation
2. You **must** check one of the boxes below:
 - A. I certify my business is a sole proprietorship and it has no employees but the sole proprietor. I am not subject to the Worker's Compensation Laws.
 - B. I certify my business has satisfied its obligation to the Worker's Compensation Act through the use of an approved Notice of Exclusion (BWC-337, Rev. 5/96). I will provide a copy of the Notice of Exclusion within 21 days of the contract award. (For questions or a copy of the BWC-337, please call the Worker's Compensation Bureau at 517-322-1195).
 - C. I certify my business has a Worker's Compensation Policy. I will provide an original Certificate of Insurance within twenty-one (21) days of the contract award.
3. If you have checked item 2(A) or 2(B), you **must** indicate the number of **both** full-time and part-time employees, other than yourself, including family members and active partners (if none, you must enter "0").

_____ Full-time Employees

_____ Part-time Employees

Name of Business		Federal ID (or) Social Security No.	
Address		Telephone ()	
City	State	ZIP	

I hereby certify that the above information is true and correct. I agree to notify the Michigan DNR of any changes that occur in factors affecting my coverage during any of my present and future operations.

Signature of Owner or Authorized Representative

Title

Date

Please complete the "SEALED BID" information on the next page