



**DEPARTMENT OF NATURAL RESOURCES  
STATE OF MICHIGAN**

**TIMBER SALE PROSPECTUS #6172**

SCHEDULED SALE DATE AND TIME: 2:00 p.m. (local time) on March 21, 2018.

LOCATION: SHINGLETON MGMT UNIT, PO BOX 67 M-28 WEST, SHINGLETON, MI 49884.

PROSPECTUS NOTE: The bidder is advised to inspect the sale area and review the location, estimated volumes, operating costs and contract terms of proposed sales. Please be aware that some landowners may request 60 days or more notice for access across their land.

Notice is hereby given that bids will be received by the Unit Manager, SHINGLETON MANAGEMENT UNIT, for certain timber on the following described lands:

Alice in Hardwood-Land (41-003-17)

Alger County, Advertised Price \$2,309.00, 20.0 Acres, Hardwood, Spruce/Fir/Tamarack.

SALE NOTE: This sale has been reduced approximately 25% from the original Advertised Price, as it went "no bid" on Prospectus 6138 from January 31, 2018.

The County must be contacted prior to crossing or harvesting in the county road right-of-way. This applies to Payment Unit 2 and County Road H-58.

Permission for access across private land is the responsibility of the Purchaser. See Sale Spec 4.4.1 for details.

It is the responsibility of the Purchaser to obtain permission from the utility company (UPPCO) to utilize the power line right-of-way for operations.

Harvesting is not permitted during the period of April 15 to July 15 because of bark slippage.

Some roads or skid trails may require extra protection such as that afforded by Crane Mats/Timber Mats. See Sale Spec 5.2.17 for additional information.

Trail 8 is shown on the Timber Sale Map. See Sale Spec 5.2.41 and 6.2.3 for information.

Access may be through private land.

SBW Sea Serpent Spruce (41-020-17)

Alger County, Advertised Price \$31,486.15, 136.2 Acres, Hardwood, Spruce/Fir/Tamarack.

SALE NOTE: This sale has been reduced approximately 25% from the original Advertised Price, as it went "no bid" on Prospectus 6055 from December 6, 2017.

Cutting, skidding, and hauling are limited to the period of December 1 to April 1 to protect Endangered Species in the area.

A recreation site such as a trail, pathway, or campground is within the sale area or the vicinity. Certain restrictions/specifications may be applicable including time restrictions.

Sean Cone-ery (41-006-16)

Schoolcraft County, Advertised Price \$32,487.65, 61.0 Acres, Jack Pine, Red Pine.

SALE NOTE: This sale has been reduced approximately 25% from the original Advertised Price, as it went "no bid" on Prospectus 6054 from November 8, 2017.

MDOT must be notified prior to harvesting in the MDOT right-of-way.

In Payment Units 3-6, it is recommended that harvesting occur in dry summer or frozen winter conditions due to wet areas that occur along the power line, which is used as access.

Box Car Spruce (41-020-16)

Schoolcraft County, Advertised Price \$1,986.50, 21.1 Acres, Spruce/Fir/Tamarack.

SALE NOTE: This sale has been reduced approximately 25% from the original Advertised Price, as it went "no bid" on Prospectus 5949 from August 9, 2017.

It is recommended, but not required, that harvesting occur during dry summer or frozen winter conditions due to soft soils.

An MDOT Permit may be required to access the sale. Please see Sale Specification 4.1.11 for additional information.

## BID INSTRUCTIONS (VER. 11/28/2017):

### 1. Scheduled Bid Location, Date, and Time (2/11)

Bids must be received by the Unit Manager, SHINGLETON OFFICE, PO BOX 67 M-28 WEST, SHINGLETON, MI 49884, no later than 2:00 p.m. (local time) on March 21, 2018. For further information concerning this sale, contact Robert Burnham at 906-452-6227 extension 240.

### 2. Bidder's Qualifications (5/16)

Purchaser shall obtain workers compensation insurance to cover claims under Michigan's Worker's Disability Compensation Act of 1969 or similar employee benefit act of any other state applicable to an employee. If all or part of a timber sale was prepared by a private contractor, the contractor and that contractor's company are not permitted to bid on the timber sale contract. Bids will not be accepted from individuals or companies appearing on the DNR/FRD No-Bid List. This list contains the names of purchasers who previously failed to execute a contract within 21-days or who have a history of poor performance.

### 3. Preparation of Sealed Bids (5/16)

Bid Forms may be completed online thru Michigan DNR Timber Sale Online Bidding (OLB) at [www.michigan.gov/timberbidding](http://www.michigan.gov/timberbidding) or by completing the hardcopy Bid Form found in the Timber Sale Prospectus. Hardcopy Bid Forms shall be manually signed in ink. Registration in OLB is considered your 'signature' for all bids submitted thru that system. Bid prices must be entered for each species and product in the Bid Price column for all material subject to bidding and all fill-in blanks must be completed. If erasures or other changes appear on the hardcopy Bid Form, each erasure or change must be initialed by the person signing the bid.

### 4. Submission of Sealed Bids (5/16)

Bid forms may be obtained from the Unit Manager or thru OLB. Bids may be submitted hardcopy or thru OLB. All hardcopy bids must be submitted on the bid form and in an envelope clearly identified as described in this section. NOTE: Only one bid form per bid envelope. Sealed bids must be submitted to the Unit office designated in the prospectus and must be submitted at or prior to the time established in the prospectus. The envelope should show on the outside (a) the sale name or number and (b) the date and time of bid opening, as shown in the prospectus. Bids received after the time specified in the sale prospectus are late bids and will be rejected.

It is possible for a bidder to submit multiple bids on a single sale. For example, a bid may be submitted hardcopy and a bid may be submitted thru OLB. Or, two bidders from the same company could both submit bids on the same sale. If this were to happen, the State would accept all bids received and award the contract accordingly. All bidding and contractual requirements would apply to all bids received.

### 5. Public Opening of Sealed Bids (7/16)

If conditions permit, the sealed bids will be publicly opened and posted at the time and place set in the prospectus.

If a bidder, present at a bid opening, has submitted bids on more than one sale, that bidder may withdraw their unopened bid envelopes or announce the withdrawal of their online bid after being declared the successful bidder on one sale.

### 6. Award of Contract (1/11)

Award of the contract will be made to the Bidder whose bid, conforming to the prospectus, is most advantageous to the State of Michigan on the basis of total value at rates bid for the estimated quantities. The State reserves the right to reject any bid or waive any minor irregularity in bids received. A written award mailed (or otherwise furnished) to the successful Bidder shall be deemed to result in a binding contract without further action by either party.

### 7. Down Payment (1/11)

The Bidder to whom award is made must make a down payment within 21 days of the sale award. The amount of the down payment will be calculated as shown in the Bond and Payment Schedule of this prospectus. Only cash may be used to meet this requirement.

### 8. Performance Security (1/11)

As guarantee of faithful performance, a cash bond, certificate of deposit, surety bond or irrevocable letter of credit (LOC) is required within 21 days of the sale award. The amount of the performance security is shown in the Bond and

Payment Schedule of this prospectus. If an LOC or surety is used, the coverage must extend for at least 6 months beyond the contract expiration.

#### 9. Timber Sale Contract (11/17)

Additional conditions and requirements common to all timber sales are listed on the timber sale contract (R4031) and are available on line at [www.michigan.gov/timber](http://www.michigan.gov/timber). Contact the Unit Manager for additional information or a sample contract. Within 21 days of the date of the award letter, the bidder must sign the contract and provide the required down payment, performance security, and verification of worker's disability compensation. The down payment and performance security shall be in accordance with the provisions of the timber sale contract, in the sums stated in this prospectus. If these actions are not taken, then the Bidder, the Bidder's corporation, and the corporation's principals may not be permitted to bid on State timber sales for a period of 1 year. In addition, the Bidder certifies that if awarded this contract, the Bidder will complete the timber sale contract in accordance with its terms and any modifications thereof including requirements to purchase, cut, and remove the included timber by the expiration date.

Payment Unit values in the State Forest Timber Sale Contract are calculated based on the advertised value of the Payment Unit as a percentage of the total advertised value of the contract. The advertised value of each Payment Unit is given in the Description of Timber by Payment Unit table on the Timber Sale Information page. For example, if the value of Payment Unit 1 is advertised as \$1,500 and the total Timber Sale value is advertised as \$10,000, the contract price for Payment Unit 1 will be 15% of the total bid price ( $\$1,500/\$10,000 * 100$ ).

#### 10. Disclaimer of Estimates and Bidder's Warranty of Inspection (7/16)

Before submitting this bid, the Bidder is advised and cautioned to inspect the sale area, review the requirements of the sale contract, and take other steps as may be reasonably necessary to ascertain the location, estimated volumes, construction estimates, and operating costs of the proposed sale. Failure to do so will not relieve the Bidder from responsibility for completing the contract.

The Bidder warrants that this bid is submitted solely on the basis of the Bidder's examination and inspection of the quality and quantity of the timber offered for sale and the Bidder's opinion of the value thereof and the costs of recovery. No reliance should be placed on the State of Michigan's estimates of timber quality, quantity or costs of recovery. Bidder further acknowledges that the State of Michigan: (i) expressly disclaims any warranty of fitness of timber for any purpose; (ii) offers this timber as is without any warranty of quality (merchantability) or quantity and (iii) expressly disclaims any warranty as to the quantity or quality of timber sold.

#### 11. Certification and Chain-of-Custody (10/14)

Unless otherwise indicated in the contract under section 7 – Other Conditions of the Sale Specific Conditions & Requirements, the area encompassed by this timber sale is certified to the standards of the Forest Stewardship Council (FSC) - Certificate #SCS-FM/COC-00090N and the Sustainable Forestry Initiative (SFI) - Certificate # NSF-SFIS-5Y031-SF5. Forest products from this sale may be delivered to the mill as "FSC 100% and / or SFI certified" as long as the contractor hauling the forest products is chain-of-custody (COC) certified or covered under a COC certificate from the destination mill. The purchaser is responsible for maintaining COC after leaving the sale area.

#### 12. Good Neighbor Authority (GNA) Requirements (7/16)

If the name of this timber sales contains the acronym GNA, it is authorized by the Good Neighbor Authority (GNA) and covered by various agreements between the U.S. Forest Service and the State. The timber sale occurs on federal land and the following conditions apply:

GNA contracts on US Forest Service land will not be awarded to purchasers on the Federal list of excluded parties. The System for Award Management (SAM) will be checked for active excluded parties prior to award of contract. In addition, the Bidder to whom award is made must complete an Assurance Regarding Felony Conviction or Tax Delinquent Status for Corporate Applicants (AD-3031).

#### 13. Good Neighbor Authority (GNA) Requirements, con't (9/16)

Bidder certifies, by signing this bid form, that to the best of Bidder's knowledge that the following representations are accurate and complete.

a. That the Bidder and its principals are not presently debarred, suspended, proposed for debarment, declared ineligible, or voluntary excluded from timber sales (covered transactions) by any Federal department or agency.

b. That the Bidder and its principals have not within a 3-year period preceding this bid been convicted of or had a civil judgment rendered against them for commission of fraud or a criminal offense in connection with obtaining, attempting to obtain, or performing a public (Federal, State, or local) transaction or contract under a public transaction; violation of Federal or State antitrust statutes or commission of embezzlement, theft, forgery, bribery, falsification or destruction of records, making false statements, or receiving stolen property.

c. That the Bidder and its principals are not presently indicted for or otherwise criminally or civilly charged by a governmental entity (Federal, State, or local) with commission of any of the offenses enumerated in paragraph b of this certification.

d. That the Bidder and its principals have not within a 3-year period preceding this bid had one or more public transactions (Federal, State, or local) terminated for breach or default of a timber or forest product contract.

Bidders that cannot certify this requirement, in whole or in part, shall submit an explanation with their bid.

KEITH CREAGH

Director



# TIMBER SALE INFORMATION

Alice in Hardwood-Land (41-003-17)

Alger County (Advertised Price \$2,309.00)

SALE NOTE: This sale has been reduced approximately 25% from the original Advertised Price, as it went "no bid" on Prospectus 6138 from January 31, 2018.

The County must be contacted prior to crossing or harvesting in the county road right-of-way. This applies to Payment Unit 2 and County Road H-58.

Permission for access across private land is the responsibility of the Purchaser. See Sale Spec 4.4.1 for details.

It is the responsibility of the Purchaser to obtain permission from the utility company (UPPCO) to utilize the power line right-of-way for operations.

Harvesting is not permitted during the period of April 15 to July 15 because of bark slippage.

Some roads or skid trails may require extra protection such as that afforded by Crane Mats/Timber Mats. See Sale Spec 5.2.17 for additional information.

Trail 8 is shown on the Timber Sale Map. See Sale Spec 5.2.41 and 6.2.3 for information.

Access may be through private land.

A timber sale contract for this lump sum, sealed bid timber sale will be awarded to the responsible bidder offering the highest sealed bid price. Bids must be at or above the following advertised price for each species:

<u>PRODUCTS &amp; SPECIES</u>	<u>ESTIMATED UNITS*</u>	<u>ADVERTISED PRICE</u>
Sawtimber		
Paper Birch	0.30 MBF	\$ 45.00 / MBF
Red Maple	0.70 MBF	\$ 66.00 / MBF
Sugar Maple	2.60 MBF	\$ 193.00 / MBF
Pulpwood		
Balsam Fir	5.00 Cords	\$ 11.50 / Cord
Mixed Hardwood	143.00 Cords	\$ 10.10 / Cord
Quaking Aspen	6.00 Cords	\$ 17.10 / Cord
White Spruce	9.00 Cords	\$ 15.90 / Cord

\* The total volume is statistically estimated within plus (+) or minus (-) 22.18 percent. The estimated units are final and not subject to adjustment. Prospective bidders are urged to examine this timber and to make their own estimates of quantity and quality.

## BOND AND PAYMENT SCHEDULE:

1. A bond in the amount of \$115.00 to insure faithful performance of the conditions of the contract will be deposited by the successful bidder within 21 days of the sale award.
2. Cutting in any sale or unit without the required advance payment would be considered a trespass.
3. Total payment must be paid in advance or according to the following schedule:
  - (a) Ten percent (10%) of the sale value must be paid within 21 days of the sale award.
  - (b) The 10% down payment will be credited towards the first unit cut.
4. If no cutting takes place, the 10% down payment will not be refunded.
5. Operations on the contract issued will terminate on 06/30/2021.

**Description of Timber by Payment Unit (PU)**

PU	MARKET GROUP	PRODUCT	QUANTITY	UNIT	ACRES	ADVERTISE PRICE
1	Paper Birch	Sawtimber	0.3	MBF	16.3	\$2,049.30
	Red Maple		0.7	MBF		
	Sugar Maple		2.6	MBF		
	Balsam Fir		4.0	Cords		
	Mixed Hardwood		120.0	Cords		
	Quaking Aspen		6.0	Cords		
	White Spruce		8.0	Cords		
2	Balsam Fir	Pulpwood	1.0	Cords	3.7	\$259.70
	Mixed Hardwood		23.0	Cords		
	White Spruce		1.0	Cords		
TOTAL:			3.6	MBF		
TOTAL:			163.0	Cords		



## Sale Specific Conditions & Requirements

**Sale Name: Alice in Hardwood-Land**

**Sale Number: 41-003-17 Seq#: 2**

### 1 - Sale Area

#### 1.2 - Boundaries

##### 1.2.1 - Painted boundaries (1/14)

The sale boundary and Payment Unit boundaries are marked and identified by red paint. Exterior sale boundary lines against state are marked with red paint. The painted boundary line trees are not Included Timber and are to be protected unless marked with orange paint.

### 2 - Timber Specifications

#### 2.1 - Included Timber

##### 2.1.3 - Cut tree marked unit(s) (12/08)

Within Payment Unit(s) 1 & 2, all trees are designated for cutting when marked with orange paint above and below stump height, regardless of merchantability. In addition, within Payment Unit 1, cut all merchantable balsam fir.

### 3 - Payments

#### 3.3 - Pre-measured Sales

##### 3.3.4 - Dividing payment units (7/14)

Payment Unit(s) 1 may be divided at the request of the Purchaser and upon approval of the Unit Manager. Dividing Payment Units is a contract modification which requires a Timber Sale Contract Supplement. There will be only one division per Payment Unit.

### 4 - Transportation

#### 4.1 - Construction

##### 4.1.1 - Stream crossings, general (3/11)

All stream crossing structures will be temporary and therefore, shall be provided by the Purchaser, and must be removed upon completion of the sale. All permits for stream crossings will be provided by the DNR.

##### 4.1.3 - Slash and earthen piles (8/04)

Piles or windrows of earth along roads and landings that have been widened or constructed shall be leveled. Slash from road maintenance or construction, including stumps, shall be dispersed throughout the sale.

##### 4.1.4 - Timber removed for construction (12/09)

Trees cut or damaged in the process of pre-approved road, landing or skid trail construction will be decked in an area separate from other Designated Timber and not removed until measured by the sale administrator. Payment will be made at the specified Purchase Unit Price.

##### 4.1.5 - Culverts (5/14)

Roads may require the installation of culverts for cross drainage or at natural drainage-ways. If culverts are needed in these locations, their placement will be specified by the sale administrator and they shall be installed prior to hauling. The culverts shall be new, corrugated metal or plastic gauge. Culverts will be a minimum of 12 inches in diameter and 24 feet in length. If culverts are removed, fill shall be removed from wetland soils as specified. Soils shall be maintained and left in a non-erodible condition, with water bars, seed, fertilizer, mulch, and slash installed as directed by the sale administrator and as specified in the BMP manual. Stream crossing permits, if needed, will be obtained by the DNR.

##### 4.1.6 - Road construction (1/09)

Construction of new roads or improvements of existing roads shall be done in such a way as to minimize the environmental and visual impacts. Merchantable trees shall be cut and utilized unless otherwise directed. Non-merchantable trees shall be severed and laid flat on the ground. Slash shall be scattered, and not left in windrows and kept a minimum of 10 feet back from the road edge. Stumps shall be set upright, not left on edge, and be moved at least 10 feet away from the road edge. Disturbed soil shall be feathered into the woods and not left in berms or windrows.

#### 4.1.7 - Road closure (10/11)

All new roads built into the sale must be blocked to vehicle traffic upon completion of the sale. Overgrown roads that are reopened shall be considered new roads. In general, this will require constructing a four (4') foot high berm of stumps and logs covered with earth. Stumps and brush must be placed along the remainder of the trail. These roads must be rendered impassable to cars and trucks. Contact the sale administrator for specific details of design and placement.

#### 4.2 - Maintenance

##### 4.2.4 - Grading (10/16)

For completion of the sale, state forest roads must be graded. In general, this will require a road grader or bull dozer to shape up the roads after forest products have been hauled off site. This includes cleaning of drainage areas, grading, crowning and filling with gravel, if necessary. The grading equipment to be used must be approved by the Unit Manager or his/her representative.

#### 4.3 - Public Right-of-Way

##### 4.3.2 - County R-O-W (12/06)

The county must be contacted prior to crossing or harvesting in the county road R-O-W. This applies to Payment Unit 2 and County Road H-58.

#### 4.4 - Access

##### 4.4.1 - Private property access (3/11)

Permission for access across private land is the responsibility of the Purchaser. If crossing Hancock Timber Resource Group property, a permit from them is required. When the sale is purchased, they should be contacted regarding crossing their property. Allow 30-60 days for permit processing. A copy of the permit should be provided to the Unit Manager by the pre-sale conference.

### 5 - Operations

#### 5.1 - Notification

##### 5.1.1 - Pre-sale conference (10/16)

A pre-sale conference on site between the Purchaser and sale administrator is required prior to beginning any operations to determine landing and road locations. The Unit Manager or his/her representative must be contacted at least 5 days in advance to schedule the conference.

##### 5.1.4 - Post-sale conference (10/16)

A post-sale conference on site between the Purchaser and sale administrator is required 5 days prior to the completion of active logging operations to determine clean-up and repair of landings, road edges, and the fulfillment of other contract specifications.

##### 5.1.6 - Utility R.O.W. (1/15)

It is the responsibility of the Purchaser to obtain permission from the utility company to utilize the power line R.O.W. for operations. Contact UPPCO at (800) 562-7680.

#### 5.2 - Conduct of Operations

##### 5.2.2 - Hazard Trees/Snags

###### 5.2.2.1 - Den trees (10/16)

Obvious hollow and/or den trees shall be protected and left standing unless they are a safety hazard.

##### 5.2.3 - Operating Restrictions

###### 5.2.3.3 - Bark slippage restriction (3/09)

Within Payment Unit(s) 1 & 2, unless changed by written agreement, cutting and skidding are not permitted during the period of April 15 to July 15. This restriction is because of bark slippage.

##### 5.2.17 - Crane Mats/Timber Mats (9/17)

Some roads or skid trails may require extra protection such as that afforded by Crane Mats/Timber Mats. Approximately 50

feet of Crane Mats /Timber Mats or something similar must be used on skid trails at locations shown on the Timber Sale Map. If available, Crane Mats/Timber Mats may be borrowed from the DNR and are located at the Marquette ICC, the Newberry Field Office and the Grayling Field Office. Contact the sale administrator for specific details. A Timber Sale Contract Supplement will be used to document the Purchaser's use of the DNR's Crane Mats/Timber Mats. It is the responsibility of the Purchaser to contact the sale administrator to schedule pick up and drop off. In addition, all mats must be cleaned prior to drop off. A charge of \$125.00 will be assessed for all damaged or non-returned mats. Damage is defined as misuse resulting in three or more broken cants.

#### 5.2.38 - No decking against live trees (2/04)

Cut products may not be decked against unmarked or designated leave trees.

#### 5.2.41 - Snowmobile trail protection (9/11)

Trail 8 is a snowmobile trail and is shown on the Timber Sale Map. Do not cut or damage posts with orange trail markers or traffic control signs. If the trail is used for hauling, it must be graded to the satisfaction of the Unit Manager or his/her representative prior to December 1st. If the trail road is to be used for hauling during the snowmobile season, then a snow covered base must be left on the trail. The snowmobile trail may only be crossed at right angles. No decking of forest products will be permitted along the snowmobile trail.

### 5.4 - Soil Protection

#### 5.4.1 - Rutting restriction, general (7/16)

Operations are to cease immediately if equipment and weather conditions result in rutting of roads and/or skid trails which is 12 inches or greater in depth and 50 feet in length. The Unit Manager or his/her representative may restrict hauling and/or skidding if ruts exceed the specified depth. With the Unit Manager or his/her representative's approval, the Purchaser may return to the area when the risk of rutting has decreased.

### 5.8 - Protection of Endangered Species

#### 5.8.3 - Red shoulder hawk or goshawk (2/16)

In the event that an active red shoulder hawk or goshawk nest is found, the contract may be amended to protect the nest site until the nest is determined to be inactive. The value of the trees in this excluded area will be refunded or credited to the Purchaser. The nest will be buffered with a five-chain radius (eight acre) protection area, centered on the nest tree, in which there will be no cutting or new roads constructed. Avoid human disturbance, including loading and skidding, in the protection area.

An additional zone of five chains (ten chains centered on the active nest tree) will be established in which there is no management activity from April 1 to July 30. Limit biomass harvesting and chipping operations within this ten-chain zone, retain the maximum one-third of residues per the Woody Biomass Harvesting Guidelines (Michigan DNR 2010). Nests determined to be inactive will be protected with a one-chain no-harvest buffer.

## 6 - Safety and Fire Prevention

### 6.2 - Signing

#### 6.2.3 - Recreational trail posting (2/10)

The Purchaser is responsible for posting and maintaining caution signs on Trail 8 prior to beginning operations. The trail must be posted at appropriate distances from the sale area to warn of logging activity and truck traffic at both ends of the trail. Signs must be removed when harvest operations are suspended or completed. The DNR will provide these signs.

## 7 - Other Conditions

### 7.3 - Contract Modifications

#### 7.3.1 - Emerald Ash Borer

##### 7.3.1.2 - Emerald ash borer, ash or firewood on sale (2/05)

There is ash and/or "firewood" in this sale and it is located within an emerald ash borer quarantined area. The Director of the Michigan Department of Agriculture (MDA) by the authority of Act No. 72 of the Public Acts of 1945, as amended, and Quarantine Regulation No. 620, has promulgated this quarantine to prevent the further spread of this pest and sets forth: definitions, regulated articles, regulated areas, conditions of movement, violations and penalties, and special

exemptions. The Purchaser must comply with this quarantine. Contact the MDA for further information.



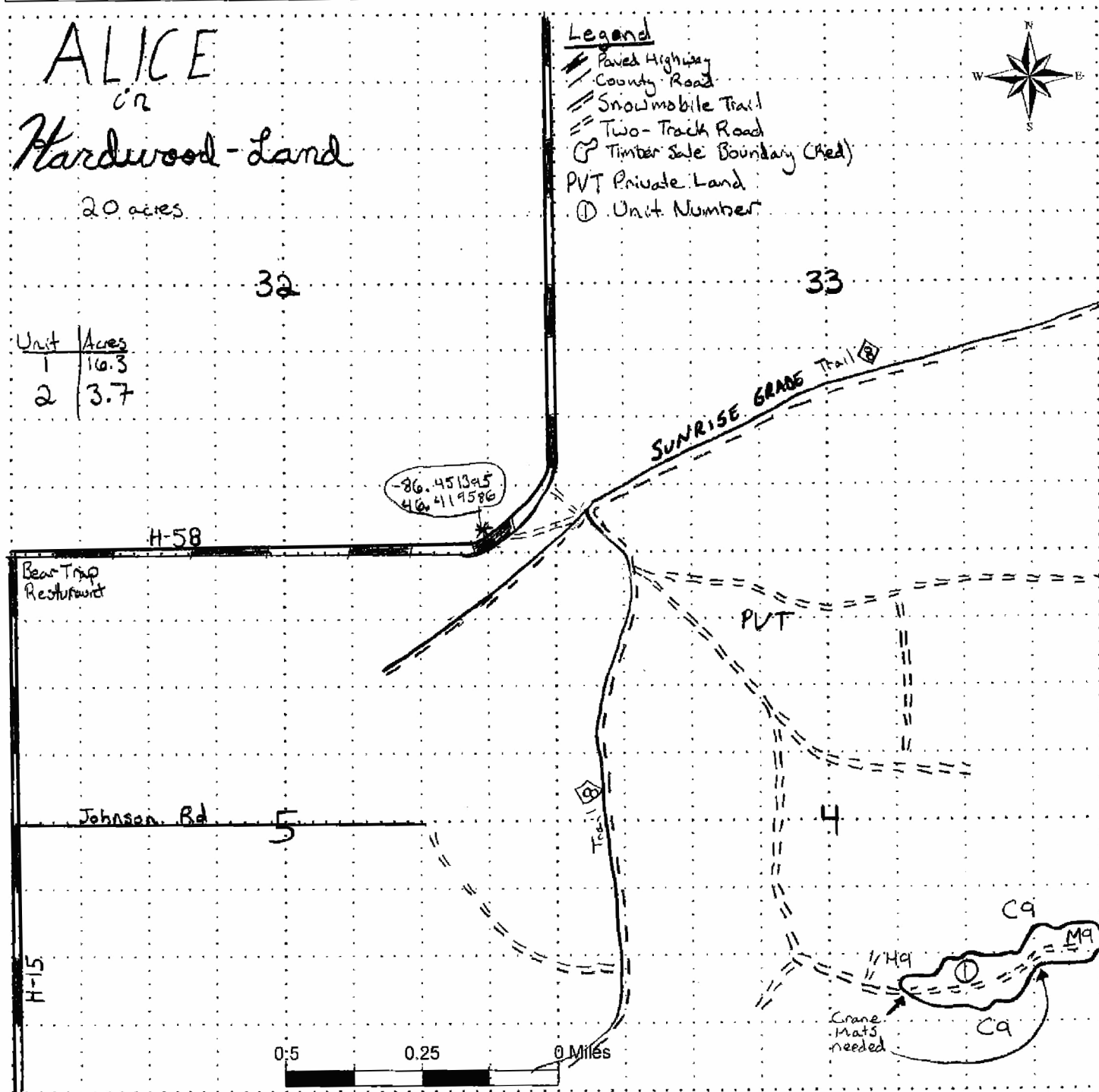
### TIMBER SALE MAP

This information provided by authority of Part 5, 1994 PA 451, as amended.

Sale Number	Year
41-003	17
Date	Page of
11/28/16	1 of 2

Forest Management Unit	County	Mapped By	Date	Page	of
Shingleton	Alger	Kentner	11/28/16	1	2
Township	Range	Section(s) and Subdivision(s)			
46N	17W	4: SE 1/4			

Cover Type				Density	
A = Aspen	J = Jack Pine	O = Oak	U = Upland Brush	0 = Non Stocked	5 = Pole Timber Medium
B = Paper Birch	K = Rock	P = Lowland Poplar	UM = Upland Mix Forest	1 = Seedling Sapling Poor	6 = Pole Timber Well
C = Cedar	L = Lowland Brush	Q = Mixed Swamp Conifer	V = Bog or Marsh	2 = Seedling Sapling Medium	7 = Saw Timber Poor
D = Tread Bog	LM = Lowland Mix Forest	R = Red Pine	W = White Pine	3 = Seedling Sapling Well	8 = Saw Timber Medium
E = Swamp Hardwoods	M = Maple, Beech, Birch	S = Black Spruce	X = Non Stocked	4 = Pole Timber Poor	9 = Saw Timber Well
F = Spruce/Fir	MC = Mixed Conifer	T = Tamarack	Y = Sand		
G = Grass	MD = Mixed Deciduous		Z = Water		
H = Hemlock	N = Marsh				





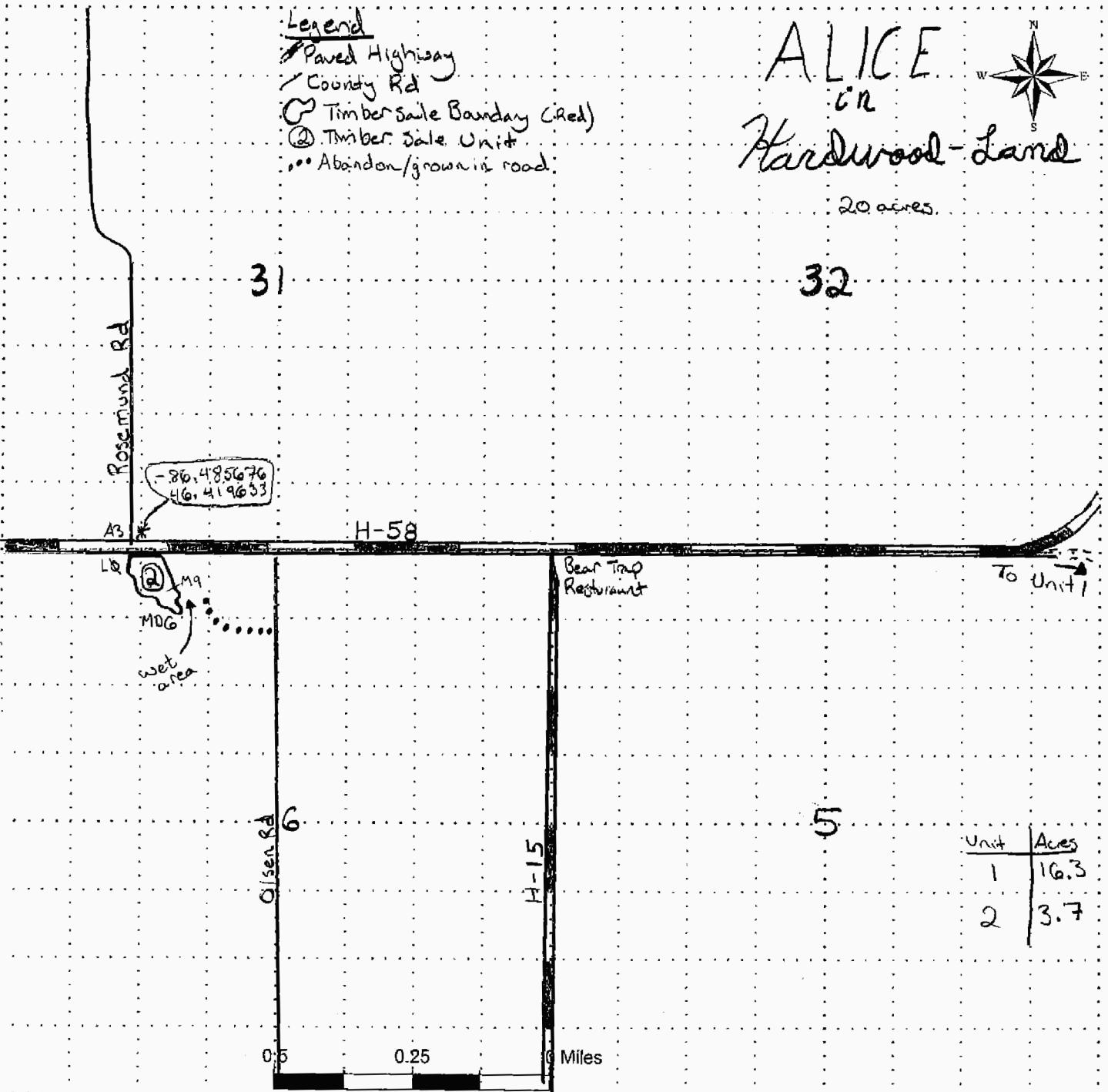
# TIMBER SALE MAP

This information provided by authority of Part 5, 1994 PA 451, as amended.

Sale Number	Year
41-003	17

Forest Management Unit <b>Shingleton</b>	County <b>Alger</b>	Mapped By <b>Kentner</b>	Date <b>11/28/2016</b>	Page <b>2</b>	of <b>2</b>
Township <b>46N</b>	Range <b>17W</b>	Section(s) and Subdivision(s) <b>6: NWNW, NENW</b>			

Cover Type				Density	
A = Aspen	J = Jack Pine	O = Oak	U = Upland Brush	0 = Non Stocked	5 = Pole Timber Medium
B = Paper Birch	K = Rock	P = Lowland Poplar	UM = Upland Mix Forest	1 = Seedling Sapling Poor	6 = Pole Timber Well
C = Cedar	L = Lowland Brush	Q = Mixed Swamp Conifer	V = Bog or Marsh	2 = Seedling Sapling Medium	7 = Saw Timber Poor
D = Treed Bog	LM = Lowland Mix Forest	R = Red Pine	W = White Pine	3 = Seedling Sapling Well	8 = Saw Timber Medium
E = Swamp Hardwoods	M = Maple, Beech, Birch	S = Black Spruce	X = Non Stocked	4 = Pole Timber Poor	9 = Saw Timber Well
F = Spruce/Fir	MC = Mixed Conifer	T = Tamarack	Y = Sand		
G = Grass	MD = Mixed Deciduous		Z = Water		
H = Hemlock	N = Marsh				



## TIMBER SALE INFORMATION

### SBW Sea Serpent Spruce (41-020-17)

Alger County (Advertised Price \$31,486.15)

SALE NOTE: This sale has been reduced approximately 25% from the original Advertised Price, as it went "no bid" on Prospectus 6055 from December 6, 2017.

Cutting, skidding, and hauling are limited to the period of December 1 to April 1 to protect Endangered Species in the area.

A recreation site such as a trail, pathway, or campground is within the sale area or the vicinity. Certain restrictions/specifications may be applicable including time restrictions.

A timber sale contract for this lump sum, sealed bid timber sale will be awarded to the responsible bidder offering the highest sealed bid price. Bids must be at or above the following advertised price for each species:

<u>PRODUCTS &amp; SPECIES</u>	<u>ESTIMATED UNITS*</u>	<u>ADVERTISED PRICE</u>
Pulpwood		
Balsam Fir	324.00 Cords	\$ 12.95 / Cord
Black Spruce	970.00 Cords	\$ 17.90 / Cord
Jack Pine	13.00 Cords	\$ 26.50 / Cord
Paper Birch	56.00 Cords	\$ 13.45 / Cord
Quaking Aspen	197.00 Cords	\$ 19.25 / Cord
Red Maple	297.00 Cords	\$ 11.35 / Cord
Red Pine	6.00 Cords	\$ 37.90 / Cord
Tamarack	2.00 Cords	\$ 8.75 / Cord
White Pine	101.00 Cords	\$ 13.85 / Cord
Yellow Birch	2.00 Cords	\$ 11.35 / Cord

\* The total volume is statistically estimated within plus (+) or minus (-) 9.09 percent. The estimated units are final and not subject to adjustment. Prospective bidders are urged to examine this timber and to make their own estimates of quantity and quality.

#### **BOND AND PAYMENT SCHEDULE:**

1. A bond in the amount of \$1,574.00 to insure faithful performance of the conditions of the contract will be deposited by the successful bidder within 21 days of the sale award.
2. Cutting in any sale or unit without the required advance payment would be considered a trespass.
3. Total payment must be paid in advance or according to the following schedule:
  - (a) Ten percent (10%) of the sale value must be paid within 21 days of the sale award.
  - (b) The 10% down payment will be credited towards the first unit cut.
4. If no cutting takes place, the 10% down payment will not be refunded.
5. Operations on the contract issued will terminate on 06/30/2021.

**Description of Timber by Payment Unit (PU)**

PU	MARKET GROUP	PRODUCT	QUANTITY	UNIT	ACRES	ADVERTISE PRICE
1	Balsam Fir	Pulpwood	4.0	Cords	4.4	\$516.55
	Black Spruce		7.0	Cords		
	Quaking Aspen		9.0	Cords		
	White Pine		12.0	Cords		
2	Balsam Fir	Pulpwood	83.0	Cords	62.4	\$19,458.70
	Black Spruce		800.0	Cords		
	Jack Pine		8.0	Cords		
	Paper Birch		20.0	Cords		
	Quaking Aspen		87.0	Cords		
	Red Maple		108.0	Cords		
	Tamarack		2.0	Cords		
	White Pine		48.0	Cords		
	3		Balsam Fir	Pulpwood		
Black Spruce		31.0	Cords			
Paper Birch		11.0	Cords			
Quaking Aspen		36.0	Cords			
Red Maple		115.0	Cords			
Yellow Birch		2.0	Cords			
4	Balsam Fir	Pulpwood	39.0	Cords	13.3	\$1,663.75
	Black Spruce		27.0	Cords		
	Paper Birch		13.0	Cords		
	Red Maple		38.0	Cords		
	White Pine		5.0	Cords		
5	Black Spruce	Pulpwood	3.0	Cords	6.0	\$634.20
	Paper Birch		9.0	Cords		
	Quaking Aspen		5.0	Cords		
	Red Maple		32.0	Cords		
6	Balsam Fir	Pulpwood	99.0	Cords	15.9	\$3,887.65
	Black Spruce		87.0	Cords		
	Paper Birch		3.0	Cords		
	Quaking Aspen		26.0	Cords		
	Red Maple		2.0	Cords		
	White Pine		35.0	Cords		
7	Balsam Fir	Pulpwood	13.0	Cords	7.4	\$1,487.80
	Black Spruce		15.0	Cords		
	Jack Pine		5.0	Cords		
	Quaking Aspen		34.0	Cords		
	Red Maple		2.0	Cords		
	Red Pine		6.0	Cords		
	White Pine		1.0	Cords		
TOTAL:			1,968.0	Cords		



## Sale Specific Conditions & Requirements

Sale Name: SBW Sea Serpent Spruce

Sale Number: 41-020-17 Seq#: 2

### 1 - Sale Area

#### 1.2 - Boundaries

##### 1.2.1 - Painted boundaries (1/14)

The sale boundary and Payment Unit boundaries are marked and identified by red and yellow paint. Exterior sale boundary lines against state are marked with red paint. Interior Payment Unit boundaries are marked with yellow paint. The painted boundary line trees are not Included Timber and are to be protected. Yellow painted trees designating an interior Payment Unit boundary are only to be cut when all surrounding Payment Units have been paid.

### 2 - Timber Specifications

#### 2.1 - Included Timber

##### 2.1.1 - Clearcut unit(s) with unmerchantable trees (6/14)

Within Payment Unit(s) 1, 3 and 7, cut all aspen, red maple and ash trees that are 2" or more at DBH. In addition, cut all other species that are 4" or more at DBH except hemlock and oak. Also, within Payment Units 3 and 7, do not cut cedar or trees marked with green paint.

##### 2.1.2 - Clearcut unit(s) w/o unmerchantable trees (8/11)

Within Payment Unit(s) 2, 4, 5 and 6, cut all trees which meet minimum piece specifications in 2.2 Utilization except hemlock, oak, cedar and any trees painted in green paint. In addition, do not cut white pine in Payment Unit 5. Special protection trees identified in accordance with condition 3.4.2, within clearcutting unit boundaries, are not Included Timber and are to be protected.

### 3 - Payments

#### 3.3 - Pre-measured Sales

##### 3.3.4 - Dividing payment units (7/14)

Payment Unit(s) 2, 3, and 6 may be divided at the request of the Purchaser and upon approval of the Unit Manager. Dividing Payment Units is a contract modification which requires a Timber Sale Contract Supplement.

#### 3.4 - Damaged Timber

##### 3.4.2 - Special Protection Trees (4/14)

The Purchaser shall not cut live or dead special protection trees within cutting units or clearings. Special protection trees are hemlock and oak. If the Purchaser's operations have cut or damaged special protection trees through carelessness, the Purchaser shall pay \$100 as fixed, agreed and liquidated damages for each special protection tree cut or damaged. Such payment does not constitute ownership of the undesignated timber.

### 4 - Transportation

#### 4.1 - Construction

##### 4.1.3 - Slash and earthen piles (8/04)

Piles or windrows of earth along roads and landings that have been widened or constructed shall be leveled. Slash from road maintenance or construction, including stumps, shall be dispersed throughout the sale.

##### 4.1.4 - Timber removed for construction (12/09)

Trees cut or damaged in the process of pre-approved road, landing or skid trail construction will be decked in an area separate from other Designated Timber and not removed until measured by the sale administrator. Payment will be made at the specified Purchase Unit Price.

##### 4.1.6 - Road construction (1/09)

Construction of new roads or improvements of existing roads shall be done in such a way as to minimize the environmental and visual impacts. Merchantable trees shall be cut and utilized unless otherwise directed. Non-merchantable trees shall be severed and laid flat on the ground. Slash shall be scattered, and not left in windrows and kept a minimum of 10 feet back

from the road edge. Stumps shall be set upright, not left on edge, and be moved at least 10 feet away from the road edge. Disturbed soil shall be feathered into the woods and not left in berms or windrows.

#### 4.1.7 - Road closure (10/11)

All new roads built into the sale must be blocked to vehicle traffic upon completion of the sale. Overgrown roads that are reopened shall be considered new roads. In general, this will require constructing double earthen berms at strategic locations. Stumps and brush must be placed along the remainder of the trail. These roads must be rendered impassable to cars and trucks. Contact the sale administrator for specific details of design and placement.

## 5 - Operations

### 5.1 - Notification

#### 5.1.1 - Pre-sale conference (10/16)

A pre-sale conference on site between the Purchaser and sale administrator is required prior to beginning any operations to determine landing and road locations. The Unit Manager or his/her representative must be contacted at least 5 days in advance to schedule the conference.

#### 5.1.4 - Post-sale conference (10/16)

A post-sale conference on site between the Purchaser and sale administrator is required 5 days prior to the completion of active logging operations to determine clean-up and repair of landings, road edges, and the fulfillment of other contract specifications.

#### 5.1.6 - Utility R.O.W. (1/15)

It is the responsibility of the Purchaser to obtain permission from the utility company to utilize the power line R.O.W. for operations. Contact Uppco @ (906) 387-3070.

### 5.2 - Conduct of Operations

#### 5.2.1 - Slash

##### 5.2.1.11 - Slash for reforestation (5/07)

To facilitate reforestation, the sale area shall be left with slash evenly distributed. Bunched tops within the cutting area shall be broken up and scattered. Stumps shall be cut low to the ground. Processing sites shall not be left with a compacted layer of slash; tops from these sites shall be hauled back into the cut area and scattered.

#### 5.2.2 - Hazard Trees/Snags

##### 5.2.2.1 - Den trees (10/16)

Obvious hollow and/or den trees shall be protected and left standing unless they are a safety hazard.

#### 5.2.3 - Operating Restrictions

##### 5.2.3.1 - Operating restrictions (9/11)

Within Payment Unit(s) 1-7, unless changed by written agreement, cutting, skidding, and hauling are limited to the period of December 1 to April 1. This restriction is to protect threatened and endangered species.

#### 5.2.32 - Decking/landing restoration (9/13)

All decking and landing areas must have the surface area restored to a condition equal to or better than before. This is to ensure the proper regeneration of the stand. Wood debris, chips and "cookies" from trimmings must be removed or scattered away from landing and loading areas and may not be windrowed on the edge.

#### 5.2.38 - No decking against live trees (2/04)

Cut products may not be decked against unmarked or designated leave trees.

#### 5.2.41 - Snowmobile trail protection (9/11)

Snowmobile Trail 8 is shown on the Timber Sale Map. Do not cut or damage posts with orange trail markers or traffic control signs. The snowmobile trail may only be crossed at right angles. No decking of forest products will be permitted within 100' of the snowmobile trail.

### 5.4 - Soil Protection

#### 5.4.1 - Rutting restriction, general (7/16)

Operations are to cease immediately if equipment and weather conditions result in rutting of roads which is 12 inches or greater in depth and 50 feet in length. The Unit Manager or his/her representative may restrict hauling and/or skidding if ruts exceed the specified depth. With the Unit Manager or his/her representative's approval, the Purchaser may return to the area when the risk of rutting has decreased.

## 5.8 - Protection of Endangered Species

### 5.8.3 - Red shoulder hawk or goshawk (2/16)

In the event that an active red shoulder hawk or goshawk nest is found, the contract may be amended to protect the nest site until the nest is determined to be inactive. The value of the trees in this excluded area will be refunded or credited to the Purchaser. The nest will be buffered with a five-chain radius (eight acre) protection area, centered on the nest tree, in which there will be no cutting or new roads constructed. Avoid human disturbance, including loading and skidding, in the protection area.

An additional zone of five chains (ten chains centered on the active nest tree) will be established in which there is no management activity from March 1 to August 15. Limit biomass harvesting and chipping operations within this ten-chain zone, retain the maximum one-third of residues per the Woody Biomass Harvesting Guidelines (Michigan DNR 2010). Nests determined to be inactive will be protected with a one-chain no-harvest buffer.

## 7 - Other Conditions

### 7.3 - Contract Modifications

#### 7.3.1 - Emerald Ash Borer

##### 7.3.1.2 - Emerald ash borer, ash or firewood on sale (2/05)

There is ash and/or "firewood" in this sale and it is located within an emerald ash borer quarantined area. The Director of the Michigan Department of Agriculture (MDA) by the authority of Act No. 72 of the Public Acts of 1945, as amended, and Quarantine Regulation No. 620, has promulgated this quarantine to prevent the further spread of this pest and sets forth: definitions, regulated articles, regulated areas, conditions of movement, violations and penalties, and special exemptions. The Purchaser must comply with this quarantine. Contact the MDA for further information.

### 7.5 - Loss

#### 7.5.1 - Deteriorating timber (7/09)

The sale area has received damage from Spruce budworm. The Purchaser should harvest the wood as soon as possible. The Department of Natural Resources is held free of responsibility of any further damage or deterioration due to delay in harvesting.



### TIMBER SALE MAP

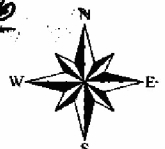
This information provided by authority of Part 5, 1994 PA 451, as amended.

Forest Management Unit Shingleton	Country Alger	Mapped By Holodnick	Date 4/26/2017	Page 1	of 1
Township 46N	Range 17W	Section(s) and Subdivision(s) 29 NENE, N0WE, SENE, SWNE, NENW, SENW, NESE,			

Cover Type				Density	
A = Aspen	J = Jack Pine	O = Oak	U = Upland Brush	0 = Non Stocked	5 = Pole Timber Medium
B = Paper Birch	K = Rock	P = Lowland Poplar	UM = Upland Mix Forest	1 = Seedling Sapling Poor	6 = Pole Timber Well
C = Cedar	L = Lowland Brush	Q = Mixed Swamp Conifer	V = Bog or Marsh	2 = Seedling Sapling Medium	7 = Saw Timber Poor
D = Tread Bog	LM = Lowland Mix Forest	R = Red Pine	W = White Pine	3 = Seedling Sapling Well	8 = Saw Timber Medium
E = Swamp Hardwoods	M = Maple, Beech, Birch	S = Black Spruce	X = Non Stocked	4 = Pole Timber Poor	9 = Saw Timber Well
F = Spruce/Fir	MC = Mixed Conifer	T = Tamarack	Y = Sand		
G = Grass	MD = Mixed Deciduous		Z = Water		
H = Hemlock	N = Marsh				

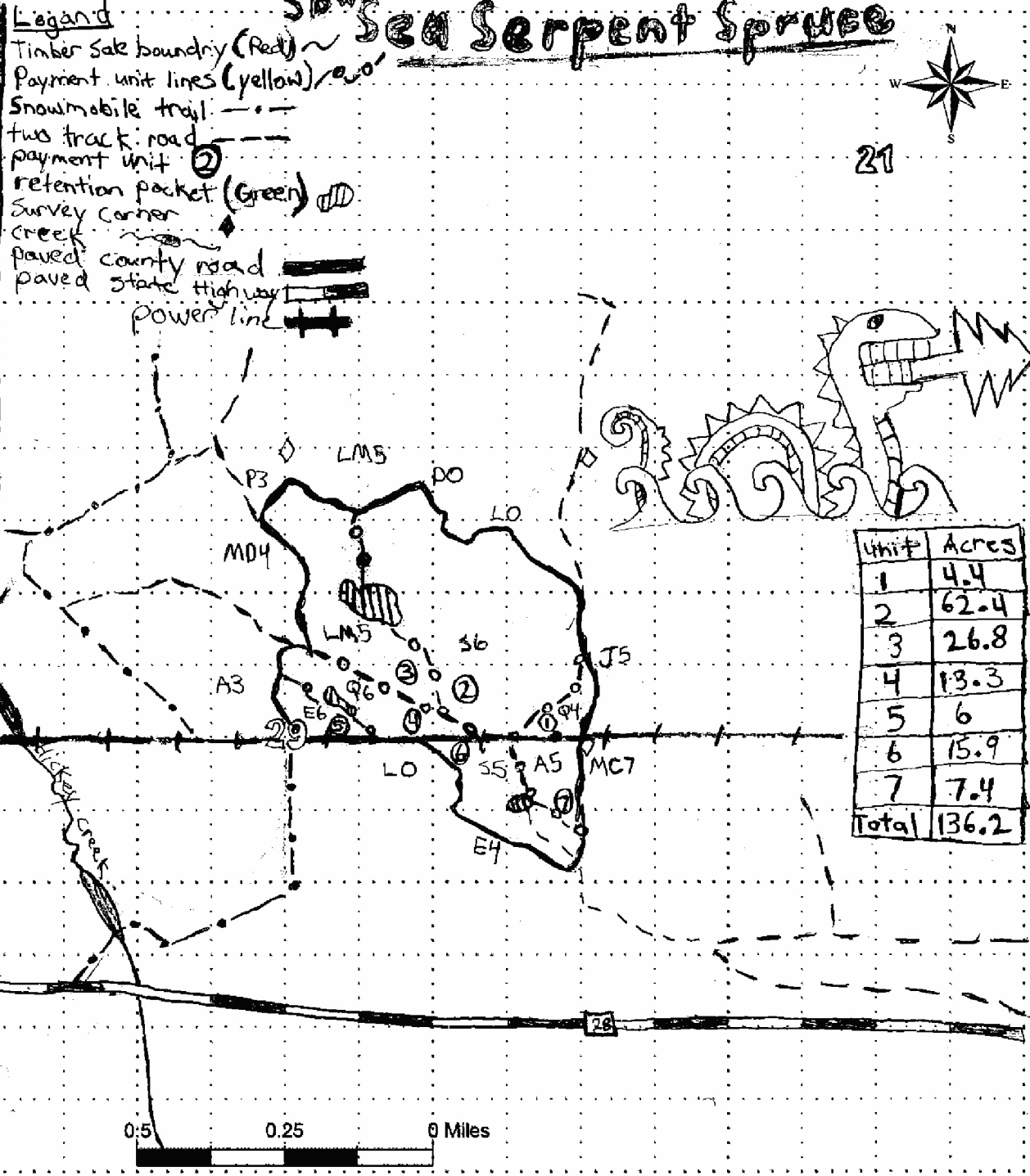
**Legend**  
 Timber Sale boundary (Red) ~~~~~  
 Payment unit lines (yellow) - - -  
 Snowmobile trail - · - · -  
 two track road - - - -  
 payment unit retention packet (Green) [hatched box]  
 Survey corner [diamond]  
 creek [wavy line]  
 paved county road [thick solid line]  
 paved state highway [thick solid line with cross-ticks]  
 power line [line with cross-ticks]

**SBW SEA SERPENT SPRUCE**



H15

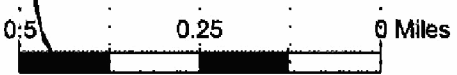
21



Unit	Acres
1	4.4
2	62.4
3	26.8
4	13.3
5	6
6	15.9
7	7.4
<b>Total</b>	<b>136.2</b>

Shingleton  
 Park St  
 Hemlock St  
 Cherry St  
 Maple St  
 Birch Rd  
 Pine St

28-469930  
 46-347972



# TIMBER SALE INFORMATION

Sean Conery (41-006-16)

Schoolcraft County (Advertised Price \$32,487.65)

SALE NOTE: This sale has been reduced approximately 25% from the original Advertised Price, as it went "no bid" on Prospectus 6054 from November 8, 2017.

MDOT must be notified prior to harvesting in the MDOT right-of-way.

In Payment Units 3-6, it is recommended that harvesting occur in dry summer or frozen winter conditions due to wet areas that occur along the power line, which is used as access.

A timber sale contract for this lump sum, sealed bid timber sale will be awarded to the responsible bidder offering the highest sealed bid price. Bids must be at or above the following advertised price for each species:

<u>PRODUCTS &amp; SPECIES</u>	<u>ESTIMATED UNITS*</u>	<u>ADVERTISED PRICE</u>
Pulpwood		
Black Spruce	4.00 Cords	\$ 18.30 / Cord
Jack Pine	204.00 Cords	\$ 27.10 / Cord
Paper Birch	4.00 Cords	\$ 13.75 / Cord
Quaking Aspen	97.00 Cords	\$ 19.70 / Cord
Red Pine	619.00 Cords	\$ 38.75 / Cord
White Pine	66.00 Cords	\$ 14.15 / Cord

\* The total volume is statistically estimated within plus (+) or minus (-) 14.53 percent. The estimated units are final and not subject to adjustment. Prospective bidders are urged to examine this timber and to make their own estimates of quantity and quality.

## **BOND AND PAYMENT SCHEDULE:**

1. A bond in the amount of \$1,624.00 to insure faithful performance of the conditions of the contract will be deposited by the successful bidder within 21 days of the sale award.
2. Cutting in any sale or unit without the required advance payment would be considered a trespass.
3. Total payment must be paid in advance or according to the following schedule:
  - (a) Ten percent (10%) of the sale value must be paid within 21 days of the sale award.
  - (b) The 10% down payment will be credited towards the first unit cut.
4. If no cutting takes place, the 10% down payment will not be refunded.
5. Operations on the contract issued will terminate on 06/30/2021.

**Description of Timber by Payment Unit (PU)**

PU	MARKET GROUP	PRODUCT	QUANTITY	UNIT	ACRES	ADVERTISE PRICE
1	Jack Pine	Pulpwood	6.0	Cords	6.9	\$6,191.70
	Quaking Aspen		4.0	Cords		
	Red Pine		151.0	Cords		
	White Pine		7.0	Cords		
2	Black Spruce	Pulpwood	2.0	Cords	7.0	\$4,734.15
	Jack Pine		5.0	Cords		
	Red Pine		117.0	Cords		
	White Pine		2.0	Cords		
3	Jack Pine	Pulpwood	55.0	Cords	6.1	\$3,176.45
	Quaking Aspen		1.0	Cords		
	Red Pine		43.0	Cords		
4	Quaking Aspen	Pulpwood	30.0	Cords	5.6	\$3,046.40
	Red Pine		63.0	Cords		
	White Pine		1.0	Cords		
5	Black Spruce	Pulpwood	2.0	Cords	22.1	\$9,627.25
	Jack Pine		67.0	Cords		
	Quaking Aspen		50.0	Cords		
	Red Pine		165.0	Cords		
	White Pine		28.0	Cords		
6	Jack Pine	Pulpwood	71.0	Cords	13.3	\$5,711.70
	Paper Birch		4.0	Cords		
	Quaking Aspen		12.0	Cords		
	Red Pine		80.0	Cords		
	White Pine		28.0	Cords		
TOTAL:			994.0	Cords		

## Sale Specific Conditions & Requirements

**Sale Name: Sean Cone-ery**

**Sale Number: 41-006-16 Seq#: 2**

### 1 - Sale Area

#### 1.2 - Boundaries

##### 1.2.1 - Painted boundaries (1/14)

The sale boundary and Payment Unit boundaries are marked and identified by red paint. Exterior sale boundary lines against state are marked with red paint. The painted boundary line trees are not Included Timber and are to be protected.

### 2 - Timber Specifications

#### 2.1 - Included Timber

##### 2.1.2 - Clearcut unit(s) w/o unmerchantable trees (8/11)

Within Payment Unit(s) 1-6, cut all trees which meet minimum piece specifications in 2.2 Utilization except oak and hemlock. In addition, within Payment Units 1, 2, 4, do not cut trees marked in green paint.

#### 2.2 - Utilization

##### 2.2.3 - Stump heights (4/07)

Stump heights within the Sale Area shall not exceed 6 inches for all trees. This is in order to facilitate scarification operations. A written waiver of this requirement may be obtained if wet summer weather makes winter logging necessary.

### 3 - Payments

#### 3.3 - Pre-measured Sales

##### 3.3.4 - Dividing payment units (7/14)

Payment Unit(s) 1, 5 & 6 may be divided at the request of the Purchaser and upon approval of the Unit Manager. Dividing Payment Units is a contract modification which requires a Timber Sale Contract Supplement. There will be only one division per Payment Unit.

#### 3.4 - Damaged Timber

##### 3.4.2 - Special Protection Trees (4/14)

The Purchaser shall not cut live or dead special protection trees within cutting units or clearings. Special protection trees are oak and hemlock. If the Purchaser's operations have cut or damaged special protection trees through carelessness, the Purchaser shall pay \$100 as fixed, agreed and liquidated damages for each special protection tree cut or damaged. Such payment does not constitute ownership of the undesignated timber.

### 4 - Transportation

#### 4.1 - Construction

##### 4.1.2 - Stream crossings, specific (3/11)

The ditch crossing, along the power-line, will require the installation of a culvert or portable bridge which may be borrowed from the DNR. This installation will be performed in accordance with the specifications on the appropriate permits which shall be provided by the DNR, allow 60-90 days for permitting.

##### 4.1.3 - Slash and earthen piles (8/04)

Piles or windrows of earth along roads and landings that have been widened or constructed shall be leveled. Slash from road maintenance or construction, including stumps, shall be dispersed throughout the sale.

##### 4.1.5 - Culverts (5/14)

Roads may require the installation of culverts for cross drainage or at natural drainage-ways. If culverts are needed in these locations, their placement will be specified by the sale administrator and they shall be installed prior to hauling. The culverts shall be new, corrugated metal or plastic gauge. Culverts will be a minimum of 12 inches in diameter and 24 feet in length. If culverts are removed, fill shall be removed from wetland soils as specified. Soils shall be maintained and left in a non-erodible condition, with water bars, seed, fertilizer, mulch, and slash installed as directed by the sale administrator and as specified in

the BMP manual. Stream crossing permits, if needed, will be obtained by the DNR.

#### 4.1.6 - Road construction (1/09)

Construction of new roads or improvements of existing roads shall be done in such a way as to minimize the environmental and visual impacts. Merchantable trees shall be cut and utilized unless otherwise directed. Non-merchantable trees shall be severed and laid flat on the ground. Slash shall be scattered, and not left in windrows and kept a minimum of 10 feet back from the road edge. Stumps shall be set upright, not left on edge, and be moved at least 10 feet away from the road edge. Disturbed soil shall be feathered into the woods and not left in berms or windrows.

#### 4.1.7 - Road closure (10/11)

All new roads built into the sale must be blocked to vehicle traffic upon completion of the sale. Overgrown roads that are reopened shall be considered new roads. In general, this will require constructing double earthen berms at strategic locations. Stumps and brush must be placed along the remainder of the trail. These roads must be rendered impassable to cars and trucks. Contact the sale administrator for specific details of design and placement.

### 4.3 - Public Right-of-Way

#### 4.3.1 - MDOT R-O-W (11/14)

The Michigan Department of Transportation (MDOT) must be contacted prior to harvesting timber within the MDOT right-of-way.

## 5 - Operations

### 5.1 - Notification

#### 5.1.1 - Pre-sale conference (10/11)

A pre-sale conference between the Purchaser and sale administrator is required prior to beginning any operations to determine landing and road locations. The Unit Manager or his/her representative must be contacted at least 5 days in advance to schedule the conference.

#### 5.1.4 - Post-sale conference (6/11)

A post-sale conference on site between the Purchaser and sale administrator is required 5 days prior to the completion of active logging operations to determine clean-up and repair of landings, road edges, and the fulfillment of other contract specifications.

#### 5.1.6 - Utility R.O.W. (1/15)

It is the responsibility of the Purchaser to obtain permission from the utility company to utilize the power line R.O.W. for operations. Contact ATC at (262) 506-6700.

### 5.2 - Conduct of Operations

#### 5.2.1 - Slash

##### 5.2.1.11 - Slash for reforestation (5/07)

To facilitate reforestation, the sale area shall be left with slash evenly distributed. Bunched tops within the cutting area shall be broken up and scattered. Stumps shall be cut low to the ground. Processing sites shall not be left with a compacted layer of slash; tops from these sites shall be hauled back into the cut area and scattered.

#### 5.2.2 - Hazard Trees/Snags

##### 5.2.2.1 - Den trees (2/04)

Obvious hollow and/or den trees shall be protected and left standing unless they are a safety hazard.

#### 5.2.3 - Operating Restrictions

##### 5.2.3.6 - Bark beetle restriction (12/08)

In the event drought creates a high risk of pine bark beetle infestation, pine is not to be cut during the period March 1 through July 1, unless all portions of trees greater than two inches in diameter are removed from the sale area, reduced to chips, or treated to the satisfaction of the Unit Manager or his/her representative, within fifteen days of being severed from the stump. Pine log decks, pulpwood piles and treetops that are piled for chipping in the fall or winter within a 1/4 mile of susceptible sites must be removed before March 15. Residual slash must not be placed in piles or rows and must be spread over the site for quick drying. The Department of Natural Resources will exercise this specification if the risk



of damage warrants.

#### 5.2.17 - Crane Mats/Timber Mats (9/17)

Some roads or skid trails may require extra protection such as that afforded by Crane Mats/Timber Mats. If available, Crane Mats/Timber Mats may be borrowed from the DNR and are located at the Marquette ICC, the Newberry Field Office and the Grayling Field Office. Contact the sale administrator for specific details. A Timber Sale Contract Supplement will be used to document the Purchaser's use of the DNR's Crane Mats/Timber Mats. It is the responsibility of the Purchaser to contact the sale administrator to schedule pick up and drop off. In addition, all mats must be cleaned prior to drop off. A charge of \$125.00 will be assessed for all damaged or non-returned mats. Damage is defined as misuse resulting in three or more broken cants.

#### 5.2.22 - Operating Caution

##### 5.2.22.1 - Operating caution (6/11)

It is recommended, but not required, that within Payment Unit(s) 3-6, cutting, skidding, and hauling occur during dry summer or frozen winter conditions. The reason for the recommendation is because of the wet conditions that occur along the power line, which is used as access.

#### 5.2.38 - No decking against live trees (2/04)

Cut products may not be decked against unmarked or designated leave trees.

### 5.4 - Soil Protection

#### 5.4.1 - Rutting restriction, general (1/09)

Operations are to cease immediately if equipment and weather conditions result in rutting of roads and skid trails which is 12 inches or greater in depth and 50 feet in length. The Unit Manager or his/her representative may restrict hauling and/or skidding if ruts exceed the specified depth. With the Unit Manager or his/her representative's approval, the Purchaser may return to the area when the risk of rutting has decreased.

### 5.8 - Protection of Endangered Species

#### 5.8.3 - Red shoulder hawk or goshawk (2/16)

In the event that an active red shoulder hawk or goshawk nest is found, the contract may be amended to protect the nest site until the nest is determined to be inactive. The value of the trees in this excluded area will be refunded or credited to the Purchaser. The nest will be buffered with a five-chain radius (eight acre) protection area, centered on the nest tree, in which there will be no cutting or new roads constructed. Avoid human disturbance, including loading and skidding, in the protection area.

An additional zone of five chains (ten chains centered on the active nest tree) will be established in which there is no management activity from April 1 to July 30. Limit biomass harvesting and chipping operations within this ten-chain zone, retain the maximum one-third of residues per the Woody Biomass Harvesting Guidelines (Michigan DNR 2010). Nests determined to be inactive will be protected with a one-chain no-harvest buffer.

## 7 - Other Conditions

### 7.3 - Contract Modifications

#### 7.3.1 - Emerald Ash Borer

##### 7.3.1.1 - Emerald ash borer, no ash or firewood on sale (2/05)

There is no ash or "firewood" in this sale, but it is located within an emerald ash borer quarantined area. The Director of the Michigan Department of Agriculture (MDA) by the authority of Act No. 72 of the Public Acts of 1945, as amended, and Quarantine Regulation No. 620, has promulgated this quarantine to prevent the further spread of this pest and sets forth: definitions, regulated articles, regulated areas, conditions of movement, violations and penalties, and special exemptions. The Purchaser must comply with this quarantine. Contact the MDA for further information.



# TIMBER SALE MAP

This information provided by authority of Part 5, 1994 PA 451, as amended.

Sale Number	Year
41-006	16

Forest Management Unit Shingleton	County Schoolcraft	Mapped By Kentner	Date 1/12/16	Page 1	of 1
Township 46N	Range 14W/13W	Section(s) and Subdivision(s) 25: E 1/2 SW 1/4, NWSE, SWSE, SESE, E 1/2 NW 1/4 30: W 1/2 NW 1/4, NWSW 36: NENE, NWNE, NENW			

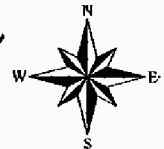
Cover Type				Density			
A = Aspen	J = Jack Pine	O = Oak	U = Upland Brush	0 = Non Stocked	5 = Pole Timber Medium		
B = Paper Birch	K = Rock	P = Lowland Poplar	UM = Upland Mix Forest	1 = Seedling Sapling Poor	6 = Pole Timber Well		
C = Cedar	L = Lowland Brush	Q = Mixed Swamp Conifer	V = Bog or Marsh	2 = Seedling Sapling Medium	7 = Saw Timber Poor		
D = Tread Bog	LM = Lowland Mix Forest	R = Red Pine	W = White Pine	3 = Seedling Sapling Well	8 = Saw Timber Medium		
E = Swamp Hardwoods	M = Maple, Beech, Birch	S = Black Spruce	X = Non Stocked	4 = Pole Timber Poor	9 = Saw Timber Well		
F = Spruce/Fir	MC = Mixed Conifer	T = Tamarack	Y = Sand				
G = Grass	MD = Mixed Deciduous		Z = Water				
H = Hemlock	N = Marsh						



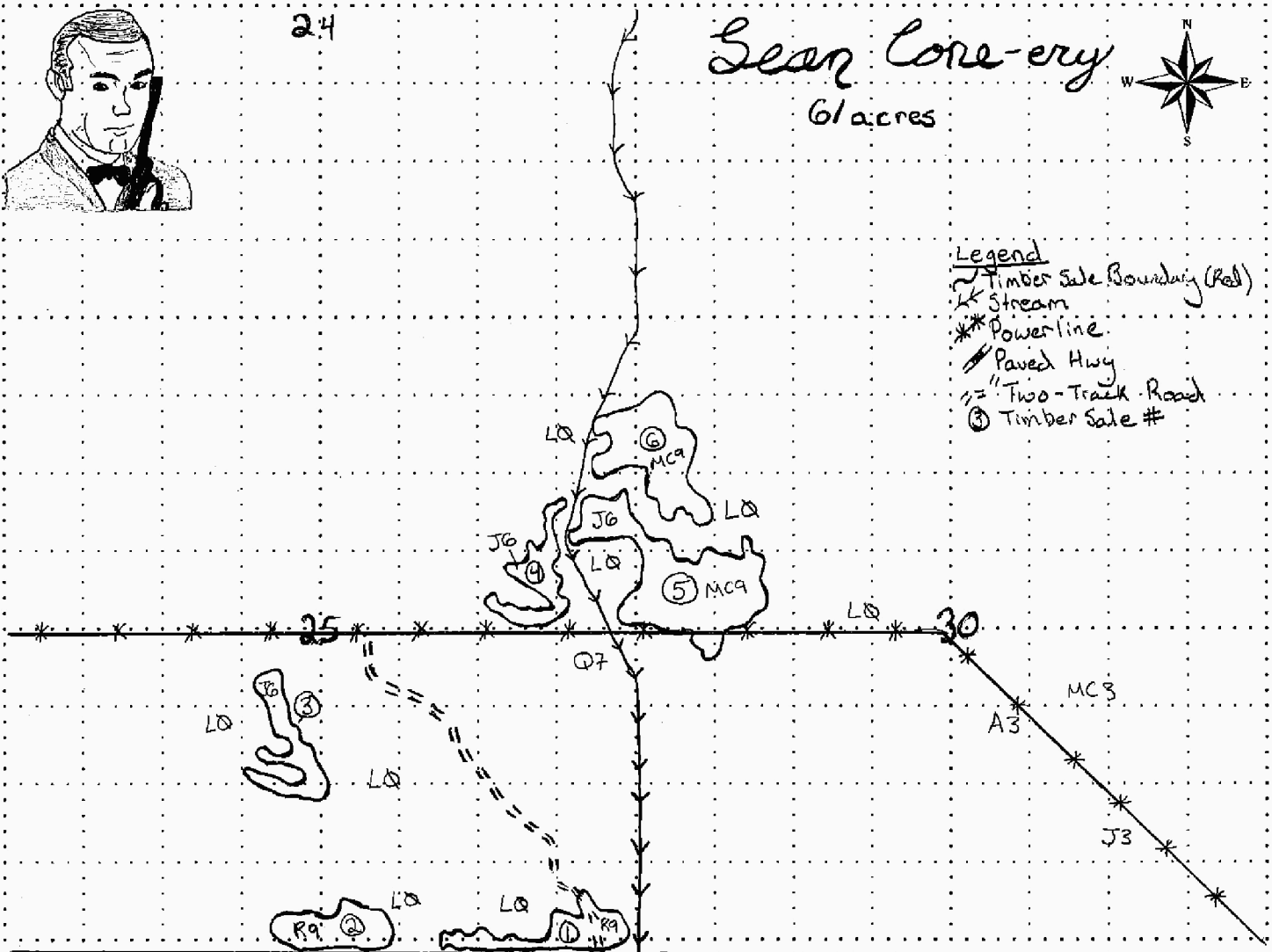
24

## Sean Core-ery

612 acres

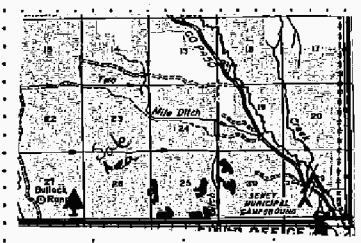
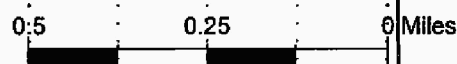


- Legend
- Timber Sale Boundary (Red)
  - Stream
  - Powerline
  - Paved Hwy
  - Two-Track Road
  - Timber Sale #



Unit	Acres
1	6.9
2	7
3	6.1
4	6.6
5	22.1
6	13.3

85.991630  
46.345117



**TIMBER SALE INFORMATION**

Box Car Spruce (41-020-16)

Schoolcraft County (Advertised Price \$1,986.50)

SALE NOTE: This sale has been reduced approximately 25% from the original Advertised Price, as it went "no bid" on Prospectus 5949 from August 9, 2017.

It is recommended, but not required, that harvesting occur during dry summer or frozen winter conditions due to soft soils.

An MDOT Permit may be required to access the sale. Please see Sale Specification 4.1.11 for additional information.

A timber sale contract for this lump sum, sealed bid timber sale will be awarded to the responsible bidder offering the highest sealed bid price. Bids must be at or above the following advertised price for each species:

<u>PRODUCTS &amp; SPECIES</u>	<u>ESTIMATED UNITS*</u>	<u>ADVERTISED PRICE</u>
Pulpwood		
Black Spruce	110.00 Cords	\$ 17.90 / Cord
Tamarack	2.00 Cords	\$ 8.75 / Cord

\* The total volume is statistically estimated within plus (+) or minus (-) 24.72 percent. The estimated units are final and not subject to adjustment. Prospective bidders are urged to examine this timber and to make their own estimates of quantity and quality.

**BOND AND PAYMENT SCHEDULE:**

1. A bond in the amount of \$99.00 to insure faithful performance of the conditions of the contract will be deposited by the successful bidder within 21 days of the sale award.
2. Cutting in any sale or unit without the required advance payment would be considered a trespass.
3. Total payment must be paid in advance or according to the following schedule:
  - (a) Ten percent (10%) of the sale value must be paid within 21 days of the sale award.
  - (b) The 10% down payment will be credited towards the first unit cut.
4. If no cutting takes place, the 10% down payment will not be refunded.
5. Operations on the contract issued will terminate on 06/30/2021.

**Description of Timber by Payment Unit (PU)**

PU	MARKET GROUP	PRODUCT	QUANTITY	UNIT	ACRES	ADVERTISE PRICE
1	Black Spruce	Pulpwood	38.0	Cords	6.0	\$697.70
	Tamarack		2.0	Cords		
2	Black Spruce	Pulpwood	72.0	Cords	15.1	\$1,288.80
TOTAL:			112.0	Cords		

## Sale Specific Conditions & Requirements

**Sale Name: Box Car Spruce**

**Sale Number: 41-020-16 Seq#: 2**

### 1 - Sale Area

#### 1.2 - Boundaries

##### 1.2.1 - Painted boundaries (1/14)

The sale boundary and Payment Unit boundaries are marked and identified by blue and red paint. Exterior sale boundary lines against private property are marked with blue paint. Exterior sale boundary lines against state are marked with red paint. The painted boundary line trees are not Included Timber and are to be protected.

### 2 - Timber Specifications

#### 2.1 - Included Timber

##### 2.1.2 - Clearcut unit(s) w/o unmerchantable trees (8/11)

Within Payment Unit(s) 1 and 2, cut all trees which meet minimum piece specifications in 2.2 Utilization except white pine, hemlock, oak and cedar.

### 3 - Payments

#### 3.4 - Damaged Timber

##### 3.4.2 - Special Protection Trees (4/14)

The Purchaser shall not cut live or dead special protection trees within cutting units or clearings. Special protection trees are hemlock and oak. If the Purchaser's operations have cut or damaged special protection trees through carelessness, the Purchaser shall pay \$100 as fixed, agreed and liquidated damages for each special protection tree cut or damaged. Such payment does not constitute ownership of the undesignated timber.

### 4 - Transportation

#### 4.1 - Construction

##### 4.1.3 - Slash and earthen piles (8/04)

Piles or windrows of earth along roads and landings that have been widened or constructed shall be leveled. Slash from road maintenance or construction, including stumps, shall be dispersed throughout the sale.

##### 4.1.4 - Timber removed for construction (12/09)

Trees cut or damaged in the process of pre-approved road, landing or skid trail construction will be decked in an area separate from other Designated Timber and not removed until measured by the sale administrator. Payment will be made at the specified Purchase Unit Price.

##### 4.1.5 - Culverts (5/14)

Roads may require the installation of culverts for cross drainage or at natural drainage-ways. If culverts are needed in these locations, their placement will be specified by the sale administrator and they shall be installed prior to hauling. The culverts shall be new, corrugated metal or plastic gauge. Culverts will be a minimum of 12 inches in diameter and 24 feet in length. If culverts are removed, fill shall be removed from wetland soils as specified. Soils shall be maintained and left in a non-erodible condition, with water bars, seed, fertilizer, mulch, and slash installed as directed by the sale administrator and as specified in the BMP manual. Stream crossing permits, if needed, will be obtained by the DNR.

##### 4.1.6 - Road construction (1/09)

Construction of new roads or improvements of existing roads shall be done in such a way as to minimize the environmental and visual impacts. Merchantable trees shall be cut and utilized unless otherwise directed. Non-merchantable trees shall be severed and laid flat on the ground. Slash shall be scattered, and not left in windrows and kept a minimum of 10 feet back from the road edge. Stumps shall be set upright, not left on edge, and be moved at least 10 feet away from the road edge. Disturbed soil shall be feathered into the woods and not left in berms or windrows.

##### 4.1.7 - Road closure (10/11)

All new roads built into the sale must be blocked to vehicle traffic upon completion of the sale. Overgrown roads that are

reopened shall be considered new roads. In general, this will require constructing a four (4') foot high berm of stumps and logs covered with earth. These roads must be rendered impassable to cars and trucks. All stumps from road building and landing construction must be reserved to block any newly constructed roads upon completion of the sale. These stumps must be scattered along the road system to prohibit vehicular movement. Contact the sale administrator for specific details of design and placement.

#### 4.1.11 - Permits (2/12)

The Purchaser will secure any necessary highway and stream crossing permits that may be required.

### 4.4 - Access

#### 4.4.2 - Alternate route on private property (2/04)

It is the Purchaser's responsibility to obtain access across private land for any routes other than the route shown on the sale map.

## 5 - Operations

### 5.1 - Notification

#### 5.1.1 - Pre-sale conference (10/11)

A pre-sale conference on site between the Purchaser and sale administrator is required prior to beginning any operations to determine landing and road locations. The Unit Manager or his/her representative must be contacted at least 5 days in advance to schedule the conference.

#### 5.1.4 - Post-sale conference (6/11)

A post-sale conference on site between the Purchaser and sale administrator is required 5 days prior to the completion of active logging operations to determine clean-up and repair of landings, road edges, and the fulfillment of other contract specifications.

### 5.2 - Conduct of Operations

#### 5.2.2 - Hazard Trees/Snags

##### 5.2.2.1 - Den trees (2/04)

Obvious hollow and/or den trees shall be protected and left standing unless they are a safety hazard.

#### 5.2.17 - Crane Mats/Timber Mats (10/14)

Some roads or skid trails may require extra protection such as that afforded by Crane Mats/Timber Mats. If available, Crane Mats/Timber Mats may be borrowed from the DNR and are located at the Marquette ICC and the Grayling Field Office. Contact the sale administrator for specific details. A Timber Sale Contract Supplement will be used to document the Purchaser's use of the DNR's Crane Mats/Timber Mats. It is the responsibility of the Purchaser to contact the sale administrator to schedule pick up and drop off. In addition, all mats must be cleaned prior to drop off. A charge of \$125.00 will be assessed for all damaged or non-returned mats. Damage is defined as misuse resulting in three or more broken cants.

#### 5.2.22 - Operating Caution

##### 5.2.22.1 - Operating caution (6/11)

It is recommended, but not required, that within Payment Unit(s) 1 and 2, cutting, skidding, and hauling occur during dry summer or frozen winter conditions. The reason for the recommendation is to reduce rutting due to soft soils.

#### 5.2.32 - Decking/landing restoration (9/13)

All decking and landing areas must have the surface area restored to a condition equal to or better than before. This is to ensure the proper regeneration of the stand. Wood debris, chips and "cookies" from trimmings must be removed or scattered away from landing and loading areas and may not be windrowed on the edge.

#### 5.2.38 - No decking against live trees (2/04)

Cut products may not be decked against unmarked or designated leave trees.

### 5.4 - Soil Protection

#### 5.4.1 - Rutting restriction, general (7/16)

Operations are to cease immediately if equipment and weather conditions result in rutting of roads and/or skid trails which is

12 inches or greater in depth and 50 feet in length. The Unit Manager or his/her representative may restrict hauling and/or skidding if ruts exceed the specified depth. With the Unit Manager or his/her representative's approval, the Purchaser may return to the area when the risk of rutting has decreased.

## 5.8 - Protection of Endangered Species

### 5.8.3 - Red shoulder hawk or goshawk (2/16)

In the event that an active red shoulder hawk or goshawk nest is found, the contract may be amended to protect the nest site until the nest is determined to be inactive. The value of the trees in this excluded area will be refunded or credited to the Purchaser. The nest will be buffered with a five-chain radius (eight acre) protection area, centered on the nest tree, in which there will be no cutting or new roads constructed. Avoid human disturbance, including loading and skidding, in the protection area.

An additional zone of five chains (ten chains centered on the active nest tree) will be established in which there is no management activity from March 1 to August 15. Limit biomass harvesting and chipping operations within this ten-chain zone, retain the maximum one-third of residues per the Woody Biomass Harvesting Guidelines (Michigan DNR 2010). Nests determined to be inactive will be protected with a one-chain no-harvest buffer.

## 7 - Other Conditions

### 7.3 - Contract Modifications

#### 7.3.1 - Emerald Ash Borer

##### 7.3.1.1 - Emerald ash borer, no ash or firewood on sale (2/05)

There is no ash or "firewood" in this sale, but it is located within an emerald ash borer quarantined area. The Director of the Michigan Department of Agriculture (MDA) by the authority of Act No. 72 of the Public Acts of 1945, as amended, and Quarantine Regulation No. 620, has promulgated this quarantine to prevent the further spread of this pest and sets forth: definitions, regulated articles, regulated areas, conditions of movement, violations and penalties, and special exemptions. The Purchaser must comply with this quarantine. Contact the MDA for further information.



Sale Number	Year
41-20	16

### TIMBER SALE MAP

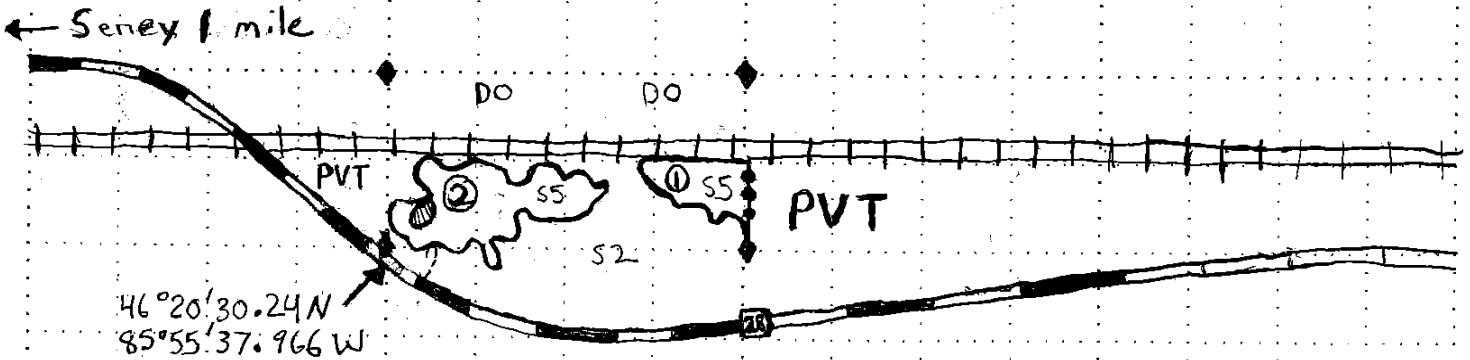
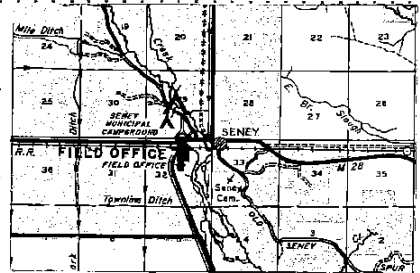
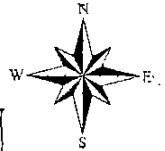
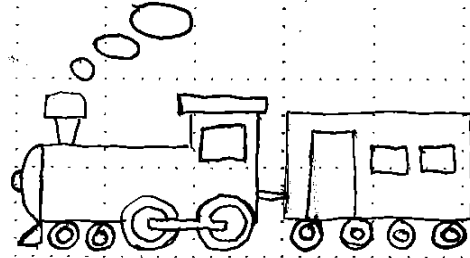
This information provided by authority of Part 5, 1994 PA 451, as amended.

Forest Management Unit <b>Shingleton</b>	County <b>Schoecraft</b>	Mapped By <b>Pete Holadnick</b>	Date <b>8/31/16</b>	Page <b>1</b>	of <b>1</b>
Township <b>46 N</b>	Range <b>13W</b>	Section(s) and Subdivision(s) <b>34 NENW, SWNW, NENE</b>			

Cover Type				Density	
A = Aspen	J = Jack Pine	O = Oak	U = Upland Brush	0 = Non Stocked	5 = Pole Timber Medium
B = Paper Birch	K = Rock	P = Lowland Poplar	UM = Upland Mix Forest	1 = Seedling Sapling Poor	6 = Pole Timber Well
C = Cedar	L = Lowland Brush	Q = Mixed Swamp Conifer	V = Bog or Marsh	2 = Seedling Sapling Medium	7 = Saw Timber Poor
D = Tread Bog	LM = Lowland Mix Forest	R = Red Pine	W = White Pine	3 = Seedling Sapling Well	8 = Saw Timber Medium
E = Swamp Hardwoods	M = Maple, Beech, Birch	S = Black Spruce	X = Non Stocked	4 = Pole Timber Poor	9 = Saw Timber Well
F = Spruce/Fir	MC = Mixed Conifer	T = Tamarack	Y = Sand		
G = Grass	MD = Mixed Deciduous		Z = Water		
H = Hemlock	N = Marsh				

**Box Car Spruce**  
21.1 acres

Unit	Acres
1	6 ac
2	15.1 ac
total	21.1 ac



**Legend**

- Timber Sale Boundary (red)
- Private Boundary (blue)
- Paved highway M28
- Railroad company land
- retention (red)
- proposed road

0.5      0.25      0 Miles





Box Car Spruce (41-020-16)  
; Schoolcraft COUNTY

In response to the notice of sale to be held 2:00 p.m. (local time) on March 21, 2018, I am hereby submitting my sealed bid (firm offer) for the following forest products to be cut. Bids for individual species must be at or above the advertised price. All non-responsive bid forms may be rejected.

<u>PRODUCTS &amp; SPECIES</u>	<u>ESTIMATED VOLUME*</u>	<u>ADVERTISED PRICE</u>	<u>BID PRICE/UNIT</u>
Pulpwood			
Black Spruce	110.00 Cords	\$ 17.90/Cord	\$ _____
Tamarack	2.00 Cords	\$ 8.75/Cord	\$ _____

\*The volumes are statistically estimated within plus (+) or minus (-) 24.72 percent. These estimated volumes are final and not subject to adjustment. Prospective bidders are urged to examine this timber and to make their own estimates of quantity and quality.

I understand that any or all bids may be rejected. All bids must be signed and all bid items must be bid or the bid form may be rejected. I also understand that consideration and awarding a contract will be based upon my past performance and ability to complete the contract based upon equipment and staffing subject to my control.

FEDERAL ID: \_\_\_\_\_ or SOCIAL SECURITY NUMBER: \_\_\_\_\_

Company or individual bidding: \_\_\_\_\_

Company representative's name: \_\_\_\_\_

Address: \_\_\_\_\_

City: \_\_\_\_\_ State: \_\_\_\_\_ Zip: \_\_\_\_\_

IF AVAILABLE, PLEASE PLACE THE PERSONALIZED LABEL FROM YOUR PROSPECTUS IN THE ABOVE BOX.

Individual or company representative's signature: \_\_\_\_\_ Date: \_\_\_\_\_

Phone number : \_\_\_\_\_ Email (optional): \_\_\_\_\_

**THE WINNING BIDDER MUST COMPLETE THE VERIFICATION OF WORKER'S DISABILITY COMPENSATION ACT COMPLIANCE (ON REVERSE SIDE IF DOUBLE SIDED) WITHIN 21 DAYS OF SALE AWARD DATE**



<b>FOR DEPARTMENT USE ONLY</b>
Sale Number (XX - XXX - XX - XX)
Forest Management Unit:

## TIMBER SALE VERIFICATION OF WORKER'S DISABILITY COMPENSATION ACT COMPLIANCE

*As required by Act 317, P.A. 1969 (Worker's Compensation) and  
Part 5 of Act 451 of 1994, as amended.*

### VERIFICATION OF WORKER'S DISABILITY COMPENSATION ACT COMPLIANCE

- This verification must be completed and submitted within 21 days of contract award and prior to the issuance of the timber sale contract.
- In addition, if boxes 2B or 2C are checked, then Notice of Exclusion or Certificate of Insurance must be submitted within twenty-one (21) days of the contract award and prior to the issuance of the timber sale contract.
- All information must be typed or printed except for written signatures.

Please Check Appropriate Categories:

1. My business is organized as (you **must** check one of the boxes below):
  - A.  Sole Proprietorship (individual)
  - B.  Partnership
  - C.  Corporation
2. You **must** check one of the boxes below:
  - A.  I certify my business is a sole proprietorship and it has no employees but the sole proprietor. I am not subject to the Worker's Compensation Laws.
  - B.  I certify my business has satisfied its obligation to the Worker's Compensation Act through the use of an approved Notice of Exclusion (BWC-337, Rev. 5/96). I will provide a copy of the Notice of Exclusion within 21 days of the contract award. (For questions or a copy of the BWC-337, please call the Worker's Compensation Bureau at 517-322-1195).
  - C.  I certify my business has a Worker's Compensation Policy. I will provide an original Certificate of Insurance within twenty-one (21) days of the contract award.
3. If you have checked item 2(A) or 2(B), you **must** indicate the number of **both** full-time and part-time employees, other than yourself, including family members and active partners (if none, you must enter "0").

\_\_\_\_\_ Full-time Employees

\_\_\_\_\_ Part-time Employees

Name of Business		Federal ID (or) Social Security No.	
Address		Telephone (       )	
City	State	ZIP	

*I hereby certify that the above information is true and correct. I agree to notify the Michigan DNR of any changes that occur in factors affecting my coverage during any of my present and future operations.*

\_\_\_\_\_  
Signature of Owner or Authorized Representative

\_\_\_\_\_  
Title

\_\_\_\_\_  
Date

**Please complete the "SEALED BID" information on the next page**

SBW Sea Serpent Spruce (41-020-17)  
; Alger COUNTY

In response to the notice of sale to be held 2:00 p.m. (local time) on March 21, 2018, I am hereby submitting my sealed bid (firm offer) for the following forest products to be cut. Bids for individual species must be at or above the advertised price. All non-responsive bid forms may be rejected.

<u>PRODUCTS &amp; SPECIES</u>	<u>ESTIMATED VOLUME*</u>	<u>ADVERTISED PRICE</u>	<u>BID PRICE/UNIT</u>
Pulpwood			
Balsam Fir	324.00 Cords	\$ 12.95/Cord	\$ _____
Black Spruce	970.00 Cords	\$ 17.90/Cord	\$ _____
Jack Pine	13.00 Cords	\$ 26.50/Cord	\$ _____
Paper Birch	56.00 Cords	\$ 13.45/Cord	\$ _____
Quaking Aspen	197.00 Cords	\$ 19.25/Cord	\$ _____
Red Maple	297.00 Cords	\$ 11.35/Cord	\$ _____
Red Pine	6.00 Cords	\$ 37.90/Cord	\$ _____
Tamarack	2.00 Cords	\$ 8.75/Cord	\$ _____
White Pine	101.00 Cords	\$ 13.85/Cord	\$ _____
Yellow Birch	2.00 Cords	\$ 11.35/Cord	\$ _____

\*The volumes are statistically estimated within plus (+) or minus (-) 9.09 percent. These estimated volumes are final and not subject to adjustment. Prospective bidders are urged to examine this timber and to make their own estimates of quantity and quality.

I understand that any or all bids may be rejected. All bids must be signed and all bid items must be bid or the bid form may be rejected. I also understand that consideration and awarding a contract will be based upon my past performance and ability to complete the contract based upon equipment and staffing subject to my control.

FEDERAL ID: \_\_\_\_ - \_\_\_\_ - \_\_\_\_ or SOCIAL SECURITY NUMBER: \_\_\_\_ - \_\_\_\_ - \_\_\_\_

Company or individual bidding: \_\_\_\_\_

Company representative's name: \_\_\_\_\_

Address: \_\_\_\_\_

City: \_\_\_\_\_ State: \_\_\_\_\_ Zip: \_\_\_\_\_

IF AVAILABLE, PLEASE PLACE THE PERSONALIZED LABEL FROM YOUR PROSPECTUS IN THE ABOVE BOX.

Individual or company representative's signature: \_\_\_\_\_ Date: \_\_\_\_\_

Phone number : \_\_\_\_\_ Email (optional): \_\_\_\_\_

**THE WINNING BIDDER MUST COMPLETE THE VERIFICATION OF WORKER'S DISABILITY COMPENSATION ACT COMPLIANCE (ON REVERSE SIDE IF DOUBLE SIDED) WITHIN 21 DAYS OF SALE AWARD DATE**



<b>FOR DEPARTMENT USE ONLY</b>
Sale Number (XX - XXX - XX - XX)
Forest Management Unit:

## TIMBER SALE VERIFICATION OF WORKER'S DISABILITY COMPENSATION ACT COMPLIANCE

*As required by Act 317, P.A. 1969 (Worker's Compensation) and  
Part 5 of Act 451 of 1994, as amended.*

### VERIFICATION OF WORKER'S DISABILITY COMPENSATION ACT COMPLIANCE

- This verification must be completed and submitted within 21 days of contract award and prior to the issuance of the timber sale contract.
- In addition, if boxes 2B or 2C are checked, then Notice of Exclusion or Certificate of Insurance must be submitted within twenty-one (21) days of the contract award and prior to the issuance of the timber sale contract.
- All information must be typed or printed except for written signatures.

Please Check Appropriate Categories:

1. My business is organized as (you **must** check one of the boxes below):
  - A.  Sole Proprietorship (individual)
  - B.  Partnership
  - C.  Corporation
2. You **must** check one of the boxes below:
  - A.  I certify my business is a sole proprietorship and it has no employees but the sole proprietor. I am not subject to the Worker's Compensation Laws.
  - B.  I certify my business has satisfied its obligation to the Worker's Compensation Act through the use of an approved Notice of Exclusion (BWC-337, Rev. 5/96). I will provide a copy of the Notice of Exclusion within 21 days of the contract award. (For questions or a copy of the BWC-337, please call the Worker's Compensation Bureau at 517-322-1195).
  - C.  I certify my business has a Worker's Compensation Policy. I will provide an original Certificate of Insurance within twenty-one (21) days of the contract award.
3. If you have checked item 2(A) or 2(B), you **must** indicate the number of **both** full-time and part-time employees, other than yourself, including family members and active partners (if none, you must enter "0").

\_\_\_\_\_ Full-time Employees

\_\_\_\_\_ Part-time Employees

Name of Business		Federal ID (or) Social Security No.	
Address		Telephone (       )	
City	State	ZIP	

*I hereby certify that the above information is true and correct. I agree to notify the Michigan DNR of any changes that occur in factors affecting my coverage during any of my present and future operations.*

\_\_\_\_\_  
Signature of Owner or Authorized Representative

\_\_\_\_\_  
Title

\_\_\_\_\_  
Date

**Please complete the "SEALED BID" information on the next page**

Alice in Hardwood-Land (41-003-17)  
; Alger COUNTY

In response to the notice of sale to be held 2:00 p.m. (local time) on March 21, 2018, I am hereby submitting my sealed bid (firm offer) for the following forest products to be cut. Bids for individual species must be at or above the advertised price. All non-responsive bid forms may be rejected.

<u>PRODUCTS &amp; SPECIES</u>	<u>ESTIMATED VOLUME*</u>	<u>ADVERTISED PRICE</u>	<u>BID PRICE/UNIT</u>
<b>Sawtimber</b>			
Paper Birch	0.30 MBF	\$ 45.00/MBF	\$ _____
Red Maple	0.70 MBF	\$ 66.00/MBF	\$ _____
Sugar Maple	2.60 MBF	\$ 193.00/MBF	\$ _____
<b>Pulpwood</b>			
Balsam Fir	5.00 Cords	\$ 11.50/Cord	\$ _____
Mixed Hardwood	143.00 Cords	\$ 10.10/Cord	\$ _____
Quaking Aspen	6.00 Cords	\$ 17.10/Cord	\$ _____
White Spruce	9.00 Cords	\$ 15.90/Cord	\$ _____

\*The volumes are statistically estimated within plus (+) or minus (-) 22.18 percent. These estimated volumes are final and not subject to adjustment. Prospective bidders are urged to examine this timber and to make their own estimates of quantity and quality.

I understand that any or all bids may be rejected. All bids must be signed and all bid items must be bid or the bid form may be rejected. I also understand that consideration and awarding a contract will be based upon my past performance and ability to complete the contract based upon equipment and staffing subject to my control.

FEDERAL ID: \_\_\_\_\_ or SOCIAL SECURITY NUMBER: \_\_\_\_\_

Company or individual bidding: \_\_\_\_\_

Company representative's name: \_\_\_\_\_

Address: \_\_\_\_\_

City: \_\_\_\_\_ State: \_\_\_\_\_ Zip: \_\_\_\_\_

IF AVAILABLE, PLEASE PLACE THE PERSONALIZED LABEL FROM YOUR PROSPECTUS IN THE ABOVE BOX.

Individual or company representative's signature: \_\_\_\_\_ Date: \_\_\_\_\_

Phone number : \_\_\_\_\_ Email (optional): \_\_\_\_\_

**THE WINNING BIDDER MUST COMPLETE THE VERIFICATION OF WORKER'S DISABILITY COMPENSATION ACT COMPLIANCE (ON REVERSE SIDE IF DOUBLE SIDED) WITHIN 21 DAYS OF SALE AWARD DATE**



FOR DEPARTMENT USE ONLY	
Sale Number (XX - XXX - XX - XX)	
Forest Management Unit:	

# TIMBER SALE VERIFICATION OF WORKER'S DISABILITY COMPENSATION ACT COMPLIANCE

As required by Act 317, P.A. 1969 (Worker's Compensation) and  
Part 5 of Act 451 of 1994, as amended.

## VERIFICATION OF WORKER'S DISABILITY COMPENSATION ACT COMPLIANCE

- This verification must be completed and submitted within 21 days of contract award and prior to the issuance of the timber sale contract.
- In addition, if boxes 2B or 2C are checked, then Notice of Exclusion or Certificate of Insurance must be submitted within twenty-one (21) days of the contract award and prior to the issuance of the timber sale contract.
- All information must be typed or printed except for written signatures.

Please Check Appropriate Categories:

1. My business is organized as (you **must** check one of the boxes below):
  - A.  Sole Proprietorship (individual)
  - B.  Partnership
  - C.  Corporation
2. You **must** check one of the boxes below:
  - A.  I certify my business is a sole proprietorship and it has no employees but the sole proprietor. I am not subject to the Worker's Compensation Laws.
  - B.  I certify my business has satisfied its obligation to the Worker's Compensation Act through the use of an approved Notice of Exclusion (BWC-337, Rev. 5/96). I will provide a copy of the Notice of Exclusion within 21 days of the contract award. (For questions or a copy of the BWC-337, please call the Worker's Compensation Bureau at 517-322-1195).
  - C.  I certify my business has a Worker's Compensation Policy. I will provide an original Certificate of Insurance within twenty-one (21) days of the contract award.
3. If you have checked item 2(A) or 2(B), you **must** indicate the number of **both** full-time and part-time employees, other than yourself, including family members and active partners (if none, you must enter "0").

\_\_\_\_\_ Full-time Employees

\_\_\_\_\_ Part-time Employees

Name of Business		Federal ID (or) Social Security No.	
Address		Telephone (       )	
City	State	ZIP	

*I hereby certify that the above information is true and correct. I agree to notify the Michigan DNR of any changes that occur in factors affecting my coverage during any of my present and future operations.*

\_\_\_\_\_  
Signature of Owner or Authorized Representative

\_\_\_\_\_  
Title

\_\_\_\_\_  
Date

Please complete the "SEALED BID" information on the next page

Sean Cone-ery (41-006-16)  
; Schoolcraft COUNTY

In response to the notice of sale to be held 2:00 p.m. (local time) on March 21, 2018, I am hereby submitting my sealed bid (firm offer) for the following forest products to be cut. Bids for individual species must be at or above the advertised price. All non-responsive bid forms may be rejected.

<u>PRODUCTS &amp; SPECIES</u>	<u>ESTIMATED VOLUME*</u>	<u>ADVERTISED PRICE</u>	<u>BID PRICE/UNIT</u>
Pulpwood			
Black Spruce	4.00 Cords	\$ 18.30/Cord	\$ _____
Jack Pine	204.00 Cords	\$ 27.10/Cord	\$ _____
Paper Birch	4.00 Cords	\$ 13.75/Cord	\$ _____
Quaking Aspen	97.00 Cords	\$ 19.70/Cord	\$ _____
Red Pine	619.00 Cords	\$ 38.75/Cord	\$ _____
White Pine	66.00 Cords	\$ 14.15/Cord	\$ _____

\*The volumes are statistically estimated within plus (+) or minus (-) 14.53 percent. These estimated volumes are final and not subject to adjustment. Prospective bidders are urged to examine this timber and to make their own estimates of quantity and quality.

I understand that any or all bids may be rejected. All bids must be signed and all bid items must be bid or the bid form may be rejected. I also understand that consideration and awarding a contract will be based upon my past performance and ability to complete the contract based upon equipment and staffing subject to my control.

FEDERAL ID: \_\_\_ - \_\_\_ - \_\_\_ or SOCIAL SECURITY NUMBER: \_\_\_ - \_\_\_ - \_\_\_

Company or individual bidding: \_\_\_\_\_

Company representative's name: \_\_\_\_\_

Address: \_\_\_\_\_

City: \_\_\_\_\_ State: \_\_\_\_\_ Zip: \_\_\_\_\_

IF AVAILABLE, PLEASE PLACE THE PERSONALIZED LABEL FROM YOUR PROSPECTUS IN THE ABOVE BOX.

Individual or company representative's signature: \_\_\_\_\_ Date: \_\_\_\_\_

Phone number : \_\_\_\_\_ Email (optional): \_\_\_\_\_

**THE WINNING BIDDER MUST COMPLETE THE VERIFICATION OF WORKER'S DISABILITY COMPENSATION ACT COMPLIANCE (ON REVERSE SIDE IF DOUBLE SIDED) WITHIN 21 DAYS OF SALE AWARD DATE**



<b>FOR DEPARTMENT USE ONLY</b>
Sale Number (XX - XXX - XX - XX)
Forest Management Unit:

## TIMBER SALE VERIFICATION OF WORKER'S DISABILITY COMPENSATION ACT COMPLIANCE

*As required by Act 317, P.A. 1969 (Worker's Compensation) and  
Part 5 of Act 451 of 1994, as amended.*

### VERIFICATION OF WORKER'S DISABILITY COMPENSATION ACT COMPLIANCE

- This verification must be completed and submitted within 21 days of contract award and prior to the issuance of the timber sale contract.
- In addition, if boxes 2B or 2C are checked, then Notice of Exclusion or Certificate of Insurance must be submitted within twenty-one (21) days of the contract award and prior to the issuance of the timber sale contract.
- All information must be typed or printed except for written signatures.

Please Check Appropriate Categories:

1. My business is organized as (you **must** check one of the boxes below):
  - A.  Sole Proprietorship (individual)
  - B.  Partnership
  - C.  Corporation
  
2. You **must** check one of the boxes below:
  - A.  I certify my business is a sole proprietorship and it has no employees but the sole proprietor. I am not subject to the Worker's Compensation Laws.
  - B.  I certify my business has satisfied its obligation to the Worker's Compensation Act through the use of an approved Notice of Exclusion (BWC-337, Rev. 5/96). I will provide a copy of the Notice of Exclusion within 21 days of the contract award. (For questions or a copy of the BWC-337, please call the Worker's Compensation Bureau at 517-322-1195).
  - C.  I certify my business has a Worker's Compensation Policy. I will provide an original Certificate of Insurance within twenty-one (21) days of the contract award.
  
3. If you have checked item 2(A) or 2(B), you **must** indicate the number of **both** full-time and part-time employees, other than yourself, including family members and active partners (if none, you must enter "0").

\_\_\_\_\_ Full-time Employees

\_\_\_\_\_ Part-time Employees

Name of Business		Federal ID (or) Social Security No.	
Address		Telephone (       )	
City	State	ZIP	

*I hereby certify that the above information is true and correct. I agree to notify the Michigan DNR of any changes that occur in factors affecting my coverage during any of my present and future operations.*

\_\_\_\_\_  
Signature of Owner or Authorized Representative

\_\_\_\_\_  
Title

\_\_\_\_\_  
Date

**Please complete the "SEALED BID" information on the next page**