



**DEPARTMENT OF NATURAL RESOURCES
STATE OF MICHIGAN**

TIMBER SALE PROSPECTUS #6146

SCHEDULED SALE DATE AND TIME: 4:00 p.m. (local time) on May 24, 2018.

LOCATION: TRAVERSE CITY MGMT UNIT, 2122 M 37 SOUTH, TRAVERSE CITY, MI 49685.

PROSPECTUS NOTE: The bidder is advised to inspect the sale area and review the location, estimated volumes, operating costs and contract terms of proposed sales. Please be aware that some landowners may request 60 days or more notice for access across their land.

Notice is hereby given that bids will be received by the Unit Manager, TRAVERSE CITY MANAGEMENT UNIT, for certain timber on the following described lands:

Hodge Weave (61-070-17)

Grand Traverse County, Advertised Price \$23,903.00, 74.0 Acres, Hardwood, Jack Pine.

SALE NOTE: Payment Unit 1 is a jack pine final harvest with retention. The jack pine is relatively good in this stand. This unit must be chipped and tree length harvested to prepare site for planting (see specs 2.2.2 & 2.2.4).

Payment Unit 2 is a final harvest with oak and jack pine as the main components. The oak logs are of decent quality. Chipping and tree length harvesting is not required on this unit, but will be permitted.

Oak wilt restrictions will apply to this sale area (see spec 5.2.3.4).

A recreation site such as a trail, pathway, or campground is within the sale area or the vicinity. Certain restrictions/specifications may be applicable including time restrictions.

Lolo Jack (61-071-17)

Grand Traverse County, Advertised Price \$27,984.20, 127.4 Acres, Hardwood, Jack Pine.

SALE NOTE: Payment Units 1 and 2; jack pine chip harvest with tree length skidding required. The stand will be planted after harvest. The motorcycle trail through the stand has a buffer marked out on both sides with pink/purple paint.

Payment Unit 3; jack pine/aspens with orange marked oak/red maple.

A recreation site such as a trail, pathway, or campground is within the sale area or the vicinity. Certain restrictions/specifications may be applicable including time restrictions.

Bunker Hardwood (61-076-17)

Grand Traverse County, Advertised Price \$69,529.05, 47.1 Acres, Hardwood, Red Oak.

SALE NOTE: Marked red oak / northern hardwoods and one final harvest unit of hardwoods / aspen mix. Good quality red oak and northern hardwoods.

Hot Spot Red (61-083-17)

Grand Traverse County, Advertised Price \$63,001.55, 71.3 Acres, Red Pine, White Pine.

SALE NOTE: Sale is a marked red pine thinning.

MayKal Red (61-084-17)

Grand Traverse County, Advertised Price \$17,332.65, 24.1 Acres, Red Pine, White Pine.

SALE NOTE: Sale is a red pine plantation thinning.

BID INSTRUCTIONS (VER. 11/28/2017):

1. Scheduled Bid Location, Date, and Time (2/11)

Bids must be received by the Unit Manager, TRAVERSE CITY OFFICE, 2122 M 37 SOUTH, TRAVERSE CITY, MI 49685, no later than 4:00 p.m. (local time) on May 24, 2018. For further information concerning this sale, contact David Lemmien at 231-922-5280 extension 6840.

2. Bidder's Qualifications (5/16)

Purchaser shall obtain workers compensation insurance to cover claims under Michigan's Worker's Disability Compensation Act of 1969 or similar employee benefit act of any other state applicable to an employee. If all or part of a timber sale was prepared by a private contractor, the contractor and that contractor's company are not permitted to bid on the timber sale contract. Bids will not be accepted from individuals or companies appearing on the DNR/FRD No-Bid List. This list contains the names of purchasers who previously failed to execute a contract within 21-days or who have a history of poor performance.

3. Preparation of Sealed Bids (5/16)

Bid Forms may be completed online thru Michigan DNR Timber Sale Online Bidding (OLB) at www.michigan.gov/timberbidding or by completing the hardcopy Bid Form found in the Timber Sale Prospectus. Hardcopy Bid Forms shall be manually signed in ink. Registration in OLB is considered your 'signature' for all bids submitted thru that system. Bid prices must be entered for each species and product in the Bid Price column for all material subject to bidding and all fill-in blanks must be completed. If erasures or other changes appear on the hardcopy Bid Form, each erasure or change must be initialed by the person signing the bid.

4. Submission of Sealed Bids (5/16)

Bid forms may be obtained from the Unit Manager or thru OLB. Bids may be submitted hardcopy or thru OLB. All hardcopy bids must be submitted on the bid form and in an envelope clearly identified as described in this section. NOTE: Only one bid form per bid envelope. Sealed bids must be submitted to the Unit office designated in the prospectus and must be submitted at or prior to the time established in the prospectus. The envelope should show on the outside (a) the sale name or number and (b) the date and time of bid opening, as shown in the prospectus. Bids received after the time specified in the sale prospectus are late bids and will be rejected.

It is possible for a bidder to submit multiple bids on a single sale. For example, a bid may be submitted hardcopy and a bid may be submitted thru OLB. Or, two bidders from the same company could both submit bids on the same sale. If this were to happen, the State would accept all bids received and award the contract accordingly. All bidding and contractual requirements would apply to all bids received.

5. Public Opening of Sealed Bids (7/16)

If conditions permit, the sealed bids will be publicly opened and posted at the time and place set in the prospectus.

If a bidder, present at a bid opening, has submitted bids on more than one sale, that bidder may withdraw their unopened bid envelopes or announce the withdrawal of their online bid after being declared the successful bidder on one sale.

6. Award of Contract (1/11)

Award of the contract will be made to the Bidder whose bid, conforming to the prospectus, is most advantageous to the State of Michigan on the basis of total value at rates bid for the estimated quantities. The State reserves the right to reject any bid or waive any minor irregularity in bids received. A written award mailed (or otherwise furnished) to the successful Bidder shall be deemed to result in a binding contract without further action by either party.

7. Down Payment (1/11)

The Bidder to whom award is made must make a down payment within 21 days of the sale award. The amount of the down payment will be calculated as shown in the Bond and Payment Schedule of this prospectus. Only cash may be used to meet this requirement.

8. Performance Security (1/11)

As guarantee of faithful performance, a cash bond, certificate of deposit, surety bond or irrevocable letter of credit (LOC) is required within 21 days of the sale award. The amount of the performance security is shown in the Bond and

Payment Schedule of this prospectus. If an LOC or surety is used, the coverage must extend for at least 6 months beyond the contract expiration.

9. Timber Sale Contract (11/17)

Additional conditions and requirements common to all timber sales are listed on the timber sale contract (R4031) and are available on line at www.michigan.gov/timber. Contact the Unit Manager for additional information or a sample contract. Within 21 days of the date of the award letter, the bidder must sign the contract and provide the required down payment, performance security, and verification of worker's disability compensation. The down payment and performance security shall be in accordance with the provisions of the timber sale contract, in the sums stated in this prospectus. If these actions are not taken, then the Bidder, the Bidder's corporation, and the corporation's principals may not be permitted to bid on State timber sales for a period of 1 year. In addition, the Bidder certifies that if awarded this contract, the Bidder will complete the timber sale contract in accordance with its terms and any modifications thereof including requirements to purchase, cut, and remove the included timber by the expiration date.

Payment Unit values in the State Forest Timber Sale Contract are calculated based on the advertised value of the Payment Unit as a percentage of the total advertised value of the contract. The advertised value of each Payment Unit is given in the Description of Timber by Payment Unit table on the Timber Sale Information page. For example, if the value of Payment Unit 1 is advertised as \$1,500 and the total Timber Sale value is advertised as \$10,000, the contract price for Payment Unit 1 will be 15% of the total bid price ($\$1,500/\$10,000 * 100$).

10. Disclaimer of Estimates and Bidder's Warranty of Inspection (7/16)

Before submitting this bid, the Bidder is advised and cautioned to inspect the sale area, review the requirements of the sale contract, and take other steps as may be reasonably necessary to ascertain the location, estimated volumes, construction estimates, and operating costs of the proposed sale. Failure to do so will not relieve the Bidder from responsibility for completing the contract.

The Bidder warrants that this bid is submitted solely on the basis of the Bidder's examination and inspection of the quality and quantity of the timber offered for sale and the Bidder's opinion of the value thereof and the costs of recovery. No reliance should be placed on the State of Michigan's estimates of timber quality, quantity or costs of recovery. Bidder further acknowledges that the State of Michigan: (i) expressly disclaims any warranty of fitness of timber for any purpose; (ii) offers this timber as is without any warranty of quality (merchantability) or quantity and (iii) expressly disclaims any warranty as to the quantity or quality of timber sold.

11. Certification and Chain-of-Custody (10/14)

Unless otherwise indicated in the contract under section 7 – Other Conditions of the Sale Specific Conditions & Requirements, the area encompassed by this timber sale is certified to the standards of the Forest Stewardship Council (FSC) - Certificate #SCS-FM/COC-00090N and the Sustainable Forestry Initiative (SFI) - Certificate # NSF-SFIS-5Y031-SF5. Forest products from this sale may be delivered to the mill as "FSC 100% and / or SFI certified" as long as the contractor hauling the forest products is chain-of-custody (COC) certified or covered under a COC certificate from the destination mill. The purchaser is responsible for maintaining COC after leaving the sale area.

12. Good Neighbor Authority (GNA) Requirements (7/16)

If the name of this timber sales contains the acronym GNA, it is authorized by the Good Neighbor Authority (GNA) and covered by various agreements between the U.S. Forest Service and the State. The timber sale occurs on federal land and the following conditions apply:

GNA contracts on US Forest Service land will not be awarded to purchasers on the Federal list of excluded parties. The System for Award Management (SAM) will be checked for active excluded parties prior to award of contract. In addition, the Bidder to whom award is made must complete an Assurance Regarding Felony Conviction or Tax Delinquent Status for Corporate Applicants (AD-3031).

13. Good Neighbor Authority (GNA) Requirements, con't (9/16)

Bidder certifies, by signing this bid form, that to the best of Bidder's knowledge that the following representations are accurate and complete.

a. That the Bidder and its principals are not presently debarred, suspended, proposed for debarment, declared ineligible, or voluntary excluded from timber sales (covered transactions) by any Federal department or agency.

b. That the Bidder and its principals have not within a 3-year period preceding this bid been convicted of or had a civil judgment rendered against them for commission of fraud or a criminal offense in connection with obtaining, attempting to obtain, or performing a public (Federal, State, or local) transaction or contract under a public transaction; violation of Federal or State antitrust statutes or commission of embezzlement, theft, forgery, bribery, falsification or destruction of records, making false statements, or receiving stolen property.

c. That the Bidder and its principals are not presently indicted for or otherwise criminally or civilly charged by a governmental entity (Federal, State, or local) with commission of any of the offenses enumerated in paragraph b of this certification.

d. That the Bidder and its principals have not within a 3-year period preceding this bid had one or more public transactions (Federal, State, or local) terminated for breach or default of a timber or forest product contract.

Bidders that cannot certify this requirement, in whole or in part, shall submit an explanation with their bid.

KEITH CREAGH

Director

TIMBER SALE INFORMATION

Hodge Weave (61-070-17)

Grand Traverse County (Advertised Price \$23,903.00)

SALE NOTE: Payment Unit 1 is a jack pine final harvest with retention. The jack pine is relatively good in this stand. This unit must be chipped and tree length harvested to prepare site for planting (see specs 2.2.2 & 2.2.4).

Payment Unit 2 is a final harvest with oak and jack pine as the main components. The oak logs are of decent quality. Chipping and tree length harvesting is not required on this unit, but will be permitted.

Oak wilt restrictions will apply to this sale area (see spec 5.2.3.4).

A recreation site such as a trail, pathway, or campground is within the sale area or the vicinity. Certain restrictions/specifications may be applicable including time restrictions.

A timber sale contract for this lump sum, sealed bid timber sale will be awarded to the responsible bidder offering the highest sealed bid price. Bids must be at or above the following advertised price for each species:

| <u>PRODUCTS & SPECIES</u> | <u>ESTIMATED UNITS*</u> | | <u>ADVERTISED PRICE</u> |
|-------------------------------|-------------------------|-------|-------------------------|
| Sawtimber | | | |
| Jack Pine | 27.90 | MBF | \$ 31.00 / MBF |
| Red Pine | 8.00 | MBF | \$ 117.00 / MBF |
| White Oak | 70.50 | MBF | \$ 57.00 / MBF |
| Pulpwood | | | |
| Black Cherry | 9.00 | Cords | \$ 20.05 / Cord |
| Jack Pine | 763.00 | Cords | \$ 15.55 / Cord |
| Red Maple | 7.00 | Cords | \$ 20.05 / Cord |
| Red Pine | 12.00 | Cords | \$ 41.10 / Cord |
| White Oak | 303.00 | Cords | \$ 17.40 / Cord |
| White Pine | 9.00 | Cords | \$ 14.75 / Cord |

* The total volume is statistically estimated within plus (+) or minus (-) 13.68 percent. The estimated units are final and not subject to adjustment. Prospective bidders are urged to examine this timber and to make their own estimates of quantity and quality.

BOND AND PAYMENT SCHEDULE:

1. A bond in the amount of \$1,195.00 to insure faithful performance of the conditions of the contract will be deposited by the successful bidder within 21 days of the sale award.
2. Cutting in any sale or unit without the required advance payment would be considered a trespass.
3. Total payment must be paid in advance or according to the following schedule:
 - (a) Ten percent (10%) of the sale value must be paid within 21 days of the sale award.
 - (b) The 10% down payment will be credited towards the first unit cut.
 - (c) Payment for each of the following units must be made before cutting begins in that unit:

| PAYMENT UNIT NUMBER | PERCENT OF TOTAL SALE VALUE |
|---------------------|-----------------------------|
| 01 | 43.8% |
| 02 | 56.2% |
4. If no cutting takes place, the 10% down payment will not be refunded.
5. Operations on the contract issued will terminate on 06/30/2020.

Description of Timber by Payment Unit (PU)

| PU | MARKET GROUP | PRODUCT | QUANTITY | UNIT | ACRES | ADVERTISE PRICE | | | |
|----|------------------|-----------------|------------------|--------------|-------|-----------------|------------|--|--|
| 1 | Jack Pine | Sawtimber | 26.0 | MBF | 42.7 | \$10,463.30 | | | |
| | Red Pine | | 2.7 | MBF | | | | | |
| | White Oak | | 1.2 | MBF | | | | | |
| | Jack Pine | Pulpwood | 576.0 | Cords | | | | | |
| | Red Pine | | 6.0 | Cords | | | | | |
| | White Oak | | 4.0 | Cords | | | | | |
| | | | | | | | | | |
| 2 | Jack Pine | Sawtimber | 1.9 | MBF | 31.3 | \$13,439.70 | | | |
| | Red Pine | | 5.3 | MBF | | | | | |
| | White Oak | | 69.3 | MBF | | | | | |
| | Black Cherry | Pulpwood | 9.0 | Cords | | | | | |
| | Jack Pine | | 187.0 | Cords | | | | | |
| | Red Maple | | 7.0 | Cords | | | | | |
| | <i>Red Maple</i> | | <i>Sawtimber</i> | 1.4 | | | <i>MBF</i> | | |
| | <i>Red Maple</i> | <i>Pulpwood</i> | 4.0 | <i>Cords</i> | | | | | |
| | Red Pine | | 6.0 | Cords | | | | | |
| | White Oak | | 299.0 | Cords | | | | | |
| | White Pine | | 9.0 | Cords | | | | | |
| | TOTAL: | | | 106.4 | | | MBF | | |
| | TOTAL: | | | 1,103.0 | | | Cords | | |

Sale Specific Conditions & Requirements

Sale Name: Hodge Weave

Sale Number: 61-070-17 Seq#: 1

1 - Sale Area

1.2 - Boundaries

1.2.1 - Painted boundaries (1/14)

The sale boundary and Payment Unit boundaries are marked and identified by red yellow paint. Exterior sale boundary lines against state are marked with red paint. Interior Payment Unit boundaries are marked with red/yellow paint. The painted boundary line trees are not Included Timber and are to be protected.

2 - Timber Specifications

2.1 - Included Timber

2.1.1 - Clearcut unit(s) with unmerchantable trees (6/14)

Within Payment Unit(s) 1, cut all trees that are one (1) inch or more at DBH. Special protection trees identified in accordance with condition 3.4.2, within clearcutting unit boundaries, are not Included Timber and are to be protected.

2.1.2 - Clearcut unit(s) w/o unmerchantable trees (8/11)

Within Payment Unit(s) 2, cut all trees which meet minimum piece specifications in 2.2 Utilization. Special protection trees identified in accordance with condition 3.4.2, within clearcutting unit boundaries, are not Included Timber and are to be protected.

2.2 - Utilization

2.2.2 - Chipping required (5/14)

Payment Unit 1 must be chip harvested to facilitate subsequent planting operations. The Purchaser has the option to produce sawlogs or pulpwood bolts, but the remaining portion of the trees must be chipped and hauled. The requirement to retain approximately 1/6 to 1/3 of tree tops and limbs less than four inches in diameter does not apply (G. C. & R. 2.2). This is because slash would hinder planting operations.

2.2.3 - Stump heights (4/07)

Stump heights within Payment Unit(s) 1 shall not exceed 6 inches for all trees. This is in order to facilitate planting operations.

2.2.4 - Skidding length (2/14)

Tree length skidding is required in Payment Unit 1.

3 - Payments

3.4 - Damaged Timber

3.4.1 - Damaged timber (6/14)

General Condition and Requirement 3.4 Damaged Timber, defines liquidated damages for undesignated live merchantable trees which are cut or injured. In addition, extreme care should be taken to avoid damage to the oak seedlings and saplings within Payment Unit 2.

3.4.2 - Special Protection Trees (4/14)

The Purchaser shall not cut live or dead special protection trees within cutting units or clearings. Special protection trees are marked with green paint. If the Purchaser's operations have cut or damaged special protection trees through carelessness, the Purchaser shall pay \$25 as fixed, agreed and liquidated damages for each special protection tree cut or damaged. Such payment does not constitute ownership of the undesignated timber. Note that heavy green marked retention will be found along the motorcycle trail with lighter scattered retention in the rest of the sale area.

4 - Transportation

4.1 - Construction

4.1.6 - Road construction (1/09)

Construction of new roads or improvements of existing roads shall be done in such a way as to minimize the environmental

and visual impacts. Merchantable trees shall be cut and utilized unless otherwise directed. Non-merchantable trees shall be severed and laid flat on the ground. Slash shall be scattered, and not left in windrows and kept a minimum of 10 feet back from the road edge. Stumps shall be set upright, not left on edge, and be moved at least 10 feet away from the road edge. Disturbed soil shall be feathered into the woods and not left in berms or windrows.

4.2 - Maintenance

4.2.5 - Two wheel drive condition (2/04)

All existing trail roads on and adjacent to the sale area must be passable by two-wheel drive traffic for the duration of the sale.

5 - Operations

5.1 - Notification

5.1.1 - Pre-sale conference (10/16)

A pre-sale conference on site between the Purchaser and sale administrator is required prior to beginning any operations to determine landing and road locations. The Unit Manager or his/her representative must be contacted at least 3 days in advance to schedule the conference.

5.1.4 - Post-sale conference (10/16)

A post-sale conference on site between the Purchaser and sale administrator is required 3 days prior to the completion of active logging operations to determine clean-up and repair of landings, road edges, and the fulfillment of other contract specifications.

5.2 - Conduct of Operations

5.2.1 - Slash

5.2.1.8 - Slash height (12/08)

No slash or tree tops may exceed 30 inches in height. This applies to payment Unit 2 if it is not chipped.

5.2.3 - Operating Restrictions

5.2.3.4 - Oak wilt restriction (9/17)

Within Payment Unit(s) 1 and 2, cutting, skidding, hauling and brushing of access roads are not permitted during the period of April 15 to July 15. This is necessary to reduce the spread of oak wilt. For more information, contact the Unit Manager or his/her representative.

5.2.38 - No decking against live trees (2/04)

Cut products may not be decked against unmarked or designated leave trees.

5.2.39 - ORV trail/route protection (12/12)

The ORV trail is shown on the Timber Sale Map. Do not cut trees or damage posts with orange ORV markers. Any stumps within 5 feet of the trail must be cut flush with the ground. Maintain a 20 foot wide slash, debris, and rut free zone daily using the ORV trail or route as the centerline. Do not run equipment down the ORV trail or route. Skidding across the trail or route may only occur in locations approved by the sale administrator.

5.4 - Soil Protection

5.4.1 - Rutting restriction, general (7/16)

Operations are to cease immediately if equipment and weather conditions result in rutting of roads and/or skid trails which is 12 inches or greater in depth and 50 feet in length. The Unit Manager or his/her representative may restrict hauling and/or skidding if ruts exceed the specified depth. With the Unit Manager or his/her representative's approval, the Purchaser may return to the area when the risk of rutting has decreased.

6 - Safety and Fire Prevention

6.2 - Signing

6.2.1 - Road posting (9/09)

The Purchaser is responsible for posting and maintaining caution signs on adjacent county roads prior to beginning operations.

The road must be posted at appropriate distances from the sale area to warn of logging activity and truck traffic. Signs must be removed when harvest operations are suspended or completed. The Purchaser will provide these signs.

6.2.3 - Recreational trail posting (2/10)

The Purchaser is responsible for posting and maintaining caution signs on the motorcycle trail prior to beginning operations. The trail must be posted at appropriate distances from the sale area to warn of logging activity and truck traffic at both ends of the trail. Signs must be removed when harvest operations are suspended or completed. The Purchaser will provide these signs.



TIMBER SALE MAP

This information provided by authority of Part 525, 1994 PA 451, as amended.

| | | | | | |
|---|--------------------------|--|--------------------|-----------|---------|
| Forest Management Unit Traverse City | County Grand Traverse | Mapped By Ruppen | Date 09/30/2017 | Page 1 | of 1 |
| Township 26N | Range 9W | Section(s) and Subdivision(s) SE1/4 | Scale 1:15,840 | | |

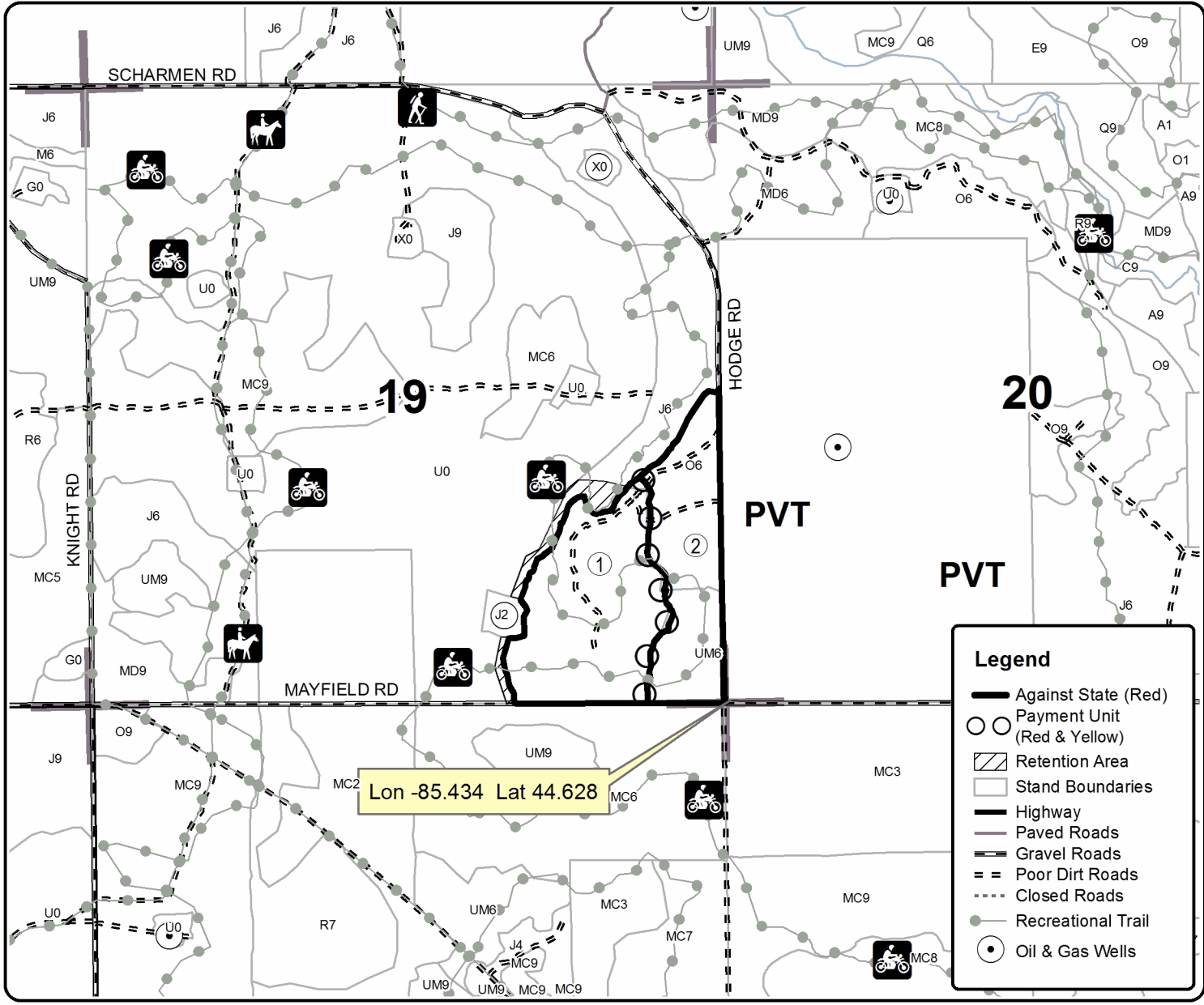
| Cover Type | | | | Density | |
|-------------------|----------------------|-------------------------|-------------------|-----------------------------|------------------------|
| A = Aspen | H = Hemlock | N = Marsh | U = Upland Brush | 0 = Non Stocked | 5 = Pole Timber Medium |
| B = Paper Birch | J = Jack Pine | O = Oak | UM = Upland Mixed | 1 = Seedling Sapling Poor | 6 = Pole Timber Well |
| C = Cedar | L = Lowland Brush | P = Lowland Poplar | V = Bog or Marsh | 2 = Seedling Sapling Medium | 7 = Saw Timber Poor |
| D = Tread Bog | LM = Lowland Mixed | Q = Mixed Swamp Conifer | W = White Pine | 3 = Seedling Sapling Well | 8 = Saw Timber Medium |
| E = Swamp Hdwoods | M = Mpl, Bch, Brch | R = Red Pine | X = Non Stocked | 4 = Pole Timber Poor | 9 = Saw Timber Well |
| F = Spruce Fir | MC = Mixed Conifer | S = Black Spruce | Z = Water | | |
| G = Grass | MD = Mixed Deciduous | T = Tamarack | | | |

| PU | Acres |
|----|-------|
| 1 | 42.7 |
| 2 | 31.3 |

Hodge Weave

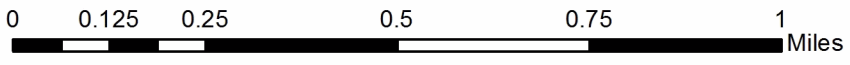
Compartment 53

74 Acres



Legend

- Against State (Red)
- Payment Unit (Red & Yellow)
- Retention Area
- Stand Boundaries
- Highway
- Paved Roads
- Gravel Roads
- Poor Dirt Roads
- Closed Roads
- Recreational Trail
- Oil & Gas Wells



TIMBER SALE INFORMATION

Lolo Jack (61-071-17)

Grand Traverse County (Advertised Price \$27,984.20)

SALE NOTE: Payment Units 1 and 2; jack pine chip harvest with tree length skidding required. The stand will be planted after harvest. The motorcycle trail through the stand has a buffer marked out on both sides with pink/purple paint.

Payment Unit 3; jack pine/aspen with orange marked oak/red maple.

A recreation site such as a trail, pathway, or campground is within the sale area or the vicinity. Certain restrictions/specifications may be applicable including time restrictions.

A timber sale contract for this lump sum, sealed bid timber sale will be awarded to the responsible bidder offering the highest sealed bid price. Bids must be at or above the following advertised price for each species:

| <u>PRODUCTS & SPECIES</u> | <u>ESTIMATED UNITS*</u> | <u>ADVERTISED PRICE</u> |
|-------------------------------|-------------------------|-------------------------|
| Sawtimber | | |
| B. T. Aspen | 3.90 MBF | \$ 109.00 / MBF |
| Jack Pine | 24.10 MBF | \$ 31.00 / MBF |
| Red Oak | 5.00 MBF | \$ 205.00 / MBF |
| White Oak | 35.30 MBF | \$ 57.00 / MBF |
| Pulpwood | | |
| Jack Pine | 1,240.00 Cords | \$ 15.55 / Cord |
| Mixed Aspen | 20.00 Cords | \$ 20.65 / Cord |
| Mixed Hardwood | 17.00 Cords | \$ 20.05 / Cord |
| Mixed Oak | 188.00 Cords | \$ 17.40 / Cord |
| Red Pine | 6.00 Cords | \$ 41.10 / Cord |
| White Pine | 15.00 Cords | \$ 14.75 / Cord |

* The total volume is statistically estimated within plus (+) or minus (-) 12.68 percent. The estimated units are final and not subject to adjustment. Prospective bidders are urged to examine this timber and to make their own estimates of quantity and quality.

BOND AND PAYMENT SCHEDULE:

1. A bond in the amount of \$1,399.00 to insure faithful performance of the conditions of the contract will be deposited by the successful bidder within 21 days of the sale award.
2. Cutting in any sale or unit without the required advance payment would be considered a trespass.
3. Total payment must be paid in advance or according to the following schedule:
 - (a) Ten percent (10%) of the sale value must be paid within 21 days of the sale award.
 - (b) The 10% down payment will be credited towards the first unit cut.
 - (c) Payment for each of the following units must be made before cutting begins in that unit:

| <u>PAYMENT UNIT NUMBER</u> | <u>PERCENT OF TOTAL SALE VALUE</u> |
|----------------------------|------------------------------------|
| 01 | 41.8% |
| 02 | 46.8% |
| 03 | 11.4% |

4. If no cutting takes place, the 10% down payment will not be refunded.
5. Operations on the contract issued will terminate on 06/30/2020.

Description of Timber by Payment Unit (PU)

| PU | MARKET GROUP | PRODUCT | QUANTITY | UNIT | ACRES | ADVERTISE PRICE |
|----------------------|----------------------|-------------|-----------|--------------|-------|-----------------|
| 1 | Jack Pine | Sawtimber | 11.0 | MBF | 52.6 | \$11,699.80 |
| | Red Oak | | 1.4 | MBF | | |
| | White Oak | | 15.8 | MBF | | |
| | Jack Pine | Pulpwood | 537.0 | Cords | | |
| | Mixed Aspen | | 3.0 | Cords | | |
| | <i>Quaking Aspen</i> | | 3.0 | <i>Cords</i> | | |
| | Mixed Hardwood | | 7.0 | Cords | | |
| | <i>Black Cherry</i> | | 7.0 | <i>Cords</i> | | |
| | Mixed Oak | | 80.0 | Cords | | |
| | <i>Red Oak</i> | | 6.0 | <i>Cords</i> | | |
| | <i>White Oak</i> | | 74.0 | <i>Cords</i> | | |
| | Red Pine | | 3.0 | Cords | | |
| | White Pine | | 7.0 | Cords | | |
| | 2 | Jack Pine | Sawtimber | 12.3 | | |
| Red Oak | | 1.6 | | MBF | | |
| White Oak | | 17.7 | | MBF | | |
| Jack Pine | | Pulpwood | 603.0 | Cords | | |
| Mixed Aspen | | | 4.0 | Cords | | |
| <i>Quaking Aspen</i> | | | 4.0 | <i>Cords</i> | | |
| Mixed Hardwood | | | 7.0 | Cords | | |
| <i>Black Cherry</i> | | | 7.0 | <i>Cords</i> | | |
| Mixed Oak | | | 89.0 | Cords | | |
| <i>Red Oak</i> | | | 6.0 | <i>Cords</i> | | |
| <i>White Oak</i> | | | 83.0 | <i>Cords</i> | | |
| Red Pine | | | 3.0 | Cords | | |
| White Pine | | | 8.0 | Cords | | |
| 3 | | B. T. Aspen | Sawtimber | 3.9 | MBF | 15.7 |
| | Jack Pine | 0.8 | | MBF | | |
| | Red Oak | 2.0 | | MBF | | |
| | White Oak | 1.8 | MBF | | | |
| | Jack Pine | Pulpwood | 100.0 | Cords | | |
| | Mixed Aspen | | 13.0 | Cords | | |
| | <i>B. T. Aspen</i> | | 13.0 | <i>Cords</i> | | |
| | Mixed Hardwood | | 3.0 | Cords | | |
| | <i>Red Maple</i> | | 3.0 | <i>Cords</i> | | |
| | Mixed Oak | | 19.0 | Cords | | |
| | <i>Red Oak</i> | | 10.0 | <i>Cords</i> | | |
| | <i>White Oak</i> | | 9.0 | <i>Cords</i> | | |
| TOTAL: | | | 68.3 | MBF | | |
| TOTAL: | | | 1,486.0 | Cords | | |

Sale Specific Conditions & Requirements

Sale Name: Lolo Jack

Sale Number: 61-071-17 Seq#: 1

1 - Sale Area

1.2 - Boundaries

1.2.1 - Painted boundaries (1/14)

The sale boundary and Payment Unit boundaries are marked and identified by blue, red and yellow paint. Exterior sale boundary lines against private property are marked with blue paint. Exterior sale boundary lines against state are marked with red paint. Interior Payment Unit boundaries are marked with yellow paint, with the exception of the boundary between Payment Units 1 and 2, which is identified by the motorcycle trail. The no cut buffer along the motorcycle trail is marked with pink/purple paint. The painted boundary line trees are not Included Timber and are to be protected.

2 - Timber Specifications

2.1 - Included Timber

2.1.1 - Clearcut unit(s) with unmerchantable trees (6/14)

Within Payment Unit(s) 1 and 2, cut all trees that are one (1) inch or more at DBH. Special protection trees identified in accordance with condition 3.4.2, within clearcutting unit boundaries, are not Included Timber and are to be protected.

2.1.2 - Clearcut unit(s) w/o unmerchantable trees (8/11)

Within Payment Unit(s) 3, cut all jack pine and aspen trees which meet minimum piece specifications in 2.2 Utilization. In addition, cut all trees marked with orange paint above and below stump height.

2.1.11 - Description of timber note (2/04)

Note that mixed hardwood pulp includes cherry with 3 cords of red maple.

2.2 - Utilization

2.2.2 - Chipping required (5/14)

Payment Units 1 and 2 must be chip harvested to facilitate subsequent planting operations. Payment Unit 3 may be chip harvested, but it is not required. The Purchaser has the option to produce sawlogs or pulpwood bolts, but the remaining portion of the trees must be chipped and hauled. The requirement to retain approximately 1/6 to 1/3 of tree tops and limbs less than four inches in diameter does not apply in Payment Units 1 and 2 (G. C. & R. 2.2). This is because slash would hinder planting operations.

2.2.3 - Stump heights (4/07)

Stump heights within Payment Unit(s) 1 and 2 shall not exceed 6 inches for all trees. This is in order to facilitate planting operations.

2.2.4 - Skidding length (2/14)

Tree length skidding is required in Payment Units 1 and 2. Tree length skidding is not required in Payment Unit 3, but will be allowed if it can be accomplished without damage to residual trees.

3 - Payments

3.4 - Damaged Timber

3.4.1 - Damaged timber (6/14)

General Condition and Requirement 3.4 Damaged Timber, defines liquidated damages for undesignated live merchantable trees which are cut or injured. In addition, extreme care should be taken to avoid damage to oak seedlings and saplings in Payment Unit 3.

3.4.2 - Special Protection Trees (4/14)

The Purchaser shall not cut live or dead special protection trees within cutting units or clearings. Special protection trees are marked with green paint. If the Purchaser's operations have cut or damaged special protection trees through carelessness, the Purchaser shall pay \$25 as fixed, agreed and liquidated damages for each special protection tree cut or damaged. Such payment does not constitute ownership of the undesignated timber.

4 - Transportation

4.1 - Construction

4.1.6 - Road construction (1/09)

Construction of new roads or improvements of existing roads shall be done in such a way as to minimize the environmental and visual impacts. Merchantable trees shall be cut and utilized unless otherwise directed. Non-merchantable trees shall be severed and laid flat on the ground. Slash shall be scattered, and not left in windrows and kept a minimum of 10 feet back from the road edge. Stumps shall be set upright, not left on edge, and be moved at least 10 feet away from the road edge. Disturbed soil shall be feathered into the woods and not left in berms or windrows.

4.2 - Maintenance

4.2.4 - Grading (10/16)

For completion of the sale, state forest roads must be graded. In general, this will require a road grader or bull dozer to shape up the roads after forest products have been hauled off site. This includes cleaning of drainage areas, grading, crowning and filling with gravel, if necessary. The grading equipment to be used must be approved by the Unit Manager or his/her representative. The forest road off of Mayfield Road that will be used to access the sale area is also used for private property access. It must be restored to a condition equal to or better than before the sale, and must be kept in two wheel drive condition during the harvest. This may require the replacement of gravel surfacing.

4.2.5 - Two wheel drive condition (2/04)

All existing trail roads on and adjacent to the sale area must be passable by two-wheel drive traffic for the duration of the sale.

5 - Operations

5.1 - Notification

5.1.1 - Pre-sale conference (10/16)

A pre-sale conference on site between the Purchaser and sale administrator is required prior to beginning any operations to determine landing and road locations. The Unit Manager or his/her representative must be contacted at least 3 days in advance to schedule the conference.

5.1.4 - Post-sale conference (10/16)

A post-sale conference on site between the Purchaser and sale administrator is required 3 days prior to the completion of active logging operations to determine clean-up and repair of landings, road edges, and the fulfillment of other contract specifications.

5.2 - Conduct of Operations

5.2.1 - Slash

5.2.1.2 - Slash Removal

5.2.1.2.1 - Slash removal, right-of-way (9/16)

All slash must be removed at least 10 feet from the cleared right-of-way of the gas line shown on Timber Sale Map.

5.2.1.8 - Slash height (12/08)

No slash or tree tops may exceed 30 inches in height. This applies to Payment Unit 3 if it is not chip harvested.

5.2.3 - Operating Restrictions

5.2.3.4 - Oak wilt restriction (9/17)

Within Payment Unit(s) 1-3, cutting, skidding, hauling and brushing of access roads are not permitted during the period of April 15 to July 15. This is necessary to reduce the spread of oak wilt. For more information, contact the Unit Manager or his/her representative.

5.2.38 - No decking against live trees (2/04)

Cut products may not be decked against unmarked or designated leave trees.

5.2.39 - ORV trail/route protection (12/12)

The motorcycle trail is shown on the Timber Sale Map. Do not cut trees or damage posts with orange ORV markers. A no cut buffer is marked with purple/pink paint approximately 20 feet on each side of the trail. Trees within the buffer area are not Included Timber. Maintain a 20 foot wide slash, debris, and rut free zone daily using the ORV trail or route as the centerline. Do not run equipment down the ORV trail or route. Skidding across the trail or route may only occur in locations approved by the sale administrator.

5.4 - Soil Protection

5.4.1 - Rutting restriction, general (7/16)

Operations are to cease immediately if equipment and weather conditions result in rutting of roads and/or skid trails which is 12 inches or greater in depth and 50 feet in length. The Unit Manager or his/her representative may restrict hauling and/or skidding if ruts exceed the specified depth. With the Unit Manager or his/her representative's approval, the Purchaser may return to the area when the risk of rutting has decreased.

6 - Safety and Fire Prevention

6.2 - Signing

6.2.1 - Road posting (9/09)

The Purchaser is responsible for posting and maintaining caution signs on Mayfield Road prior to beginning operations. The road must be posted at appropriate distances from the sale area to warn of logging activity and truck traffic. Signs must be removed when harvest operations are suspended or completed. The Purchaser will provide these signs.

6.2.3 - Recreational trail posting (2/10)

The Purchaser is responsible for posting and maintaining caution signs on the motorcycle trail prior to beginning operations. The trail must be posted at appropriate distances from the sale area to warn of logging activity and truck traffic at both ends of the trail. Signs must be removed when harvest operations are suspended or completed. The Purchaser will provide these signs.



TIMBER SALE MAP

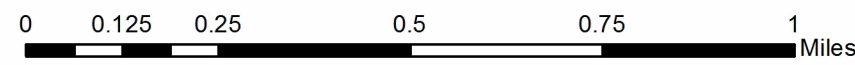
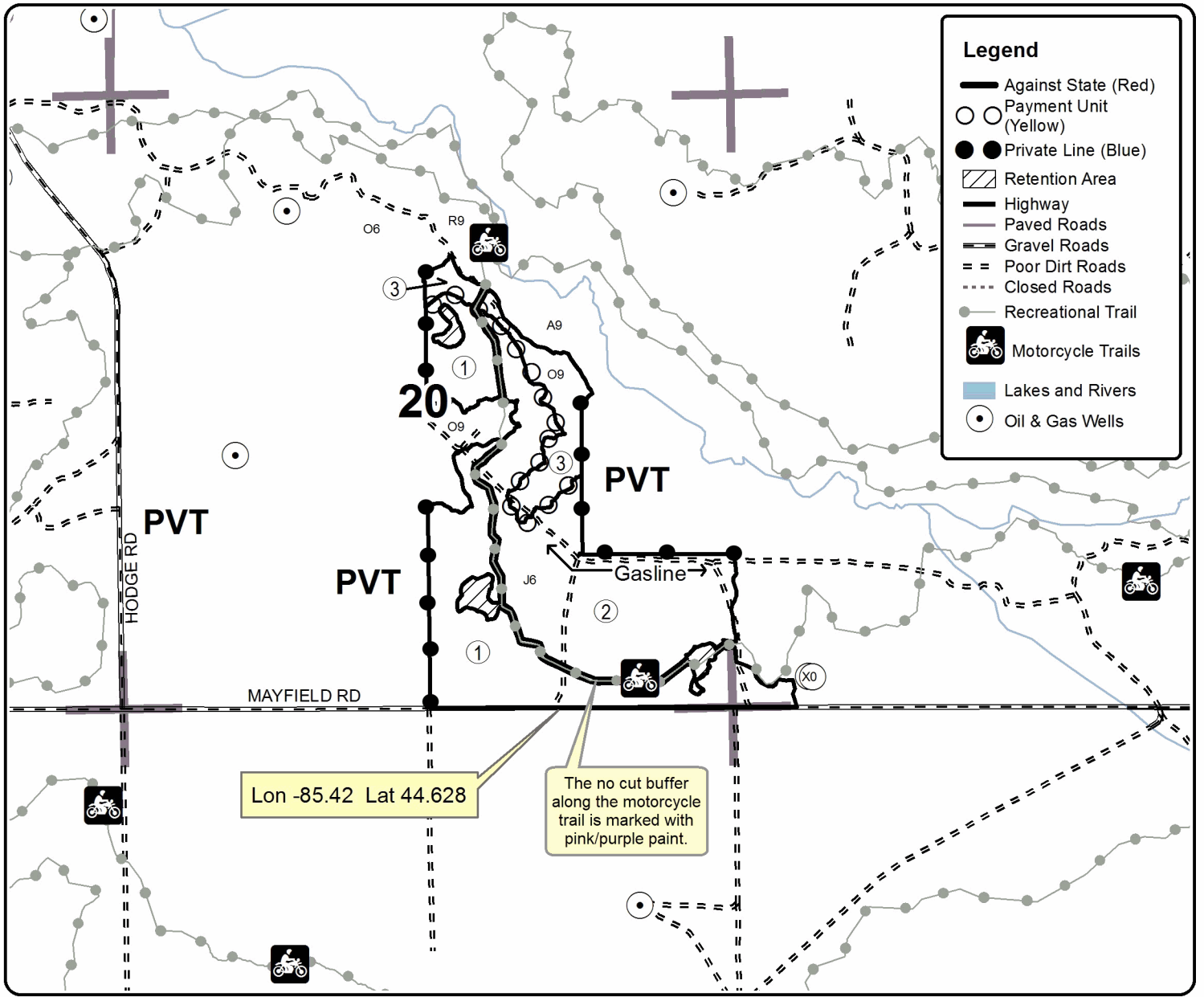
This information provided by authority of Part 525, 1994 PA 451, as amended.

| | | | | | | |
|---|-------------|---|---------------------|--------------------|-----------|---------|
| Forest Management Unit Traverse City | | County Grand Traverse | Mapped By Ruppen | Date 09/30/2017 | Page 1 | of 1 |
| Township 26N | Range 9W | Section(s) and Subdivision(s) Sec 20 S1/2NE, NWSE, S1/2 SE Sec 21 SWSW | | Scale 1:15,840 | | |

| Cover Type | | | | Density | |
|-------------------|----------------------|-------------------------|-------------------|-----------------------------|------------------------|
| A = Aspen | H = Hemlock | N = Marsh | U = Upland Brush | 0 = Non Stocked | 5 = Pole Timber Medium |
| B = Paper Birch | J = Jack Pine | O = Oak | UM = Upland Mixed | 1 = Seedling Sapling Poor | 6 = Pole Timber Well |
| C = Cedar | L = Lowland Brush | P = Lowland Poplar | V = Bog or Marsh | 2 = Seedling Sapling Medium | 7 = Saw Timber Poor |
| D = Tread Bog | LM = Lowland Mixed | Q = Mixed Swamp Conifer | W = White Pine | 3 = Seedling Sapling Well | 8 = Saw Timber Medium |
| E = Swamp Hdwoods | M = Mpl, Bch, Brch | R = Red Pine | X = Non Stocked | 4 = Pole Timber Poor | 9 = Saw Timber Well |
| F = Spruce Fir | MC = Mixed Conifer | S = Black Spruce | Z = Water | | |
| G = Grass | MD = Mixed Deciduous | T = Tamarack | | | |

| PU | Acres |
|----|-------|
| 1 | 52.6 |
| 2 | 59.1 |
| 3 | 15.7 |

Lolo Jack Compartment 53 127.4 Acres



TIMBER SALE INFORMATION

Bunker Hardwood (61-076-17)

Grand Traverse County (Advertised Price \$69,529.05)

SALE NOTE: Marked red oak / northern hardwoods and one final harvest unit of hardwoods / aspen mix. Good quality red oak and northern hardwoods.

A timber sale contract for this lump sum, sealed bid timber sale will be awarded to the responsible bidder offering the highest sealed bid price. Bids must be at or above the following advertised price for each species:

| <u>PRODUCTS & SPECIES</u> | <u>ESTIMATED UNITS*</u> | <u>ADVERTISED PRICE</u> |
|-------------------------------|-------------------------|-------------------------|
| Sawtimber | | |
| B. T. Aspen | 44.70 MBF | \$ 109.00 / MBF |
| Basswood | 17.00 MBF | \$ 120.00 / MBF |
| Beech | 6.30 MBF | \$ 108.00 / MBF |
| Red Maple | 3.80 MBF | \$ 115.00 / MBF |
| Red Oak | 149.70 MBF | \$ 205.00 / MBF |
| Sugar Maple | 49.30 MBF | \$ 263.00 / MBF |
| Pulpwood | | |
| B. T. Aspen | 137.00 Cords | \$ 20.65 / Cord |
| Basswood | 54.00 Cords | \$ 29.80 / Cord |
| Misc. Species 1 | 53.00 Cords | \$ 9.75 / Cord |
| Mixed Hardwood | 327.00 Cords | \$ 20.05 / Cord |
| Red Oak | 364.00 Cords | \$ 17.40 / Cord |

* The total volume is statistically estimated within plus (+) or minus (-) 21.03 percent. The estimated units are final and not subject to adjustment. Prospective bidders are urged to examine this timber and to make their own estimates of quantity and quality.

BOND AND PAYMENT SCHEDULE:

1. A bond in the amount of \$3,476.00 to insure faithful performance of the conditions of the contract will be deposited by the successful bidder within 21 days of the sale award.
2. Cutting in any sale or unit without the required advance payment would be considered a trespass.
3. Total payment must be paid in advance or according to the following schedule:
 - (a) Ten percent (10%) of the sale value must be paid within 21 days of the sale award.
 - (b) The 10% down payment will be credited towards the first unit cut.
 - (c) Payment for each of the following units must be made before cutting begins in that unit:

| PAYMENT UNIT NUMBER | PERCENT OF TOTAL SALE VALUE |
|---------------------|-----------------------------|
| 01 | 37.4% |
| 02 | 31.5% |
| 03 | 31.1% |
4. If no cutting takes place, the 10% down payment will not be refunded.
5. Operations on the contract issued will terminate on 06/30/2020.

Description of Timber by Payment Unit (PU)

| PU | MARKET GROUP | PRODUCT | QUANTITY | UNIT | ACRES | ADVERTISE PRICE |
|---------|------------------------|-----------|----------|--------------|-------|-----------------|
| 1 | Basswood | Sawtimber | 3.7 | MBF | 19.4 | \$25,981.20 |
| | Beech | | 2.8 | MBF | | |
| | Red Oak | | 65.1 | MBF | | |
| | Sugar Maple | 25.1 | MBF | | | |
| | Basswood | Pulpwood | 9.0 | Cords | | |
| | Mixed Hardwood | | 128.0 | Cords | | |
| | <i>Beech</i> | | 4.0 | <i>Cords</i> | | |
| | <i>Ironwood</i> | | 3.0 | <i>Cords</i> | | |
| | <i>Sugar Maple</i> | | 121.0 | <i>Cords</i> | | |
| | Red Oak | | 141.0 | Cords | | |
| Red Oak | 141.0 | | Cords | | | |
| 2 | Basswood | Sawtimber | 13.3 | MBF | 17.6 | \$21,912.30 |
| | Red Oak | | 55.8 | MBF | | |
| | Sugar Maple | | 14.0 | MBF | | |
| | Basswood | Pulpwood | 45.0 | Cords | | |
| | Misc. Species 1 | | 53.0 | Cords | | |
| | <i>Misc. Species 1</i> | | 37.0 | <i>Cords</i> | | |
| | <i>Misc. Species 2</i> | | 16.0 | <i>Cords</i> | | |
| | Mixed Hardwood | | 71.0 | Cords | | |
| | <i>Black Cherry</i> | | 14.0 | <i>Cords</i> | | |
| | <i>Sugar Maple</i> | | 57.0 | <i>Cords</i> | | |
| | Red Oak | | 110.0 | Cords | | |
| 3 | B. T. Aspen | Sawtimber | 44.7 | MBF | 10.1 | \$21,635.55 |
| | Beech | | 3.5 | MBF | | |
| | Red Maple | | 3.8 | MBF | | |
| | Red Oak | 28.8 | MBF | | | |
| | Sugar Maple | 10.2 | MBF | | | |
| | B. T. Aspen | Pulpwood | 137.0 | Cords | | |
| | Mixed Hardwood | | 128.0 | Cords | | |
| | <i>Beech</i> | | 48.0 | <i>Cords</i> | | |
| | <i>Red Maple</i> | | 35.0 | <i>Cords</i> | | |
| | <i>Sugar Maple</i> | | 45.0 | <i>Cords</i> | | |
| | Red Oak | | 113.0 | Cords | | |
| Red Oak | 113.0 | | Cords | | | |
| TOTAL: | | | 270.8 | MBF | | |
| TOTAL: | | | 935.0 | Cords | | |

Sale Specific Conditions & Requirements

Sale Name: Bunker Hardwood

Sale Number: 61-076-17 Seq#: 1

1 - Sale Area

1.2 - Boundaries

1.2.1 - Painted boundaries (1/14)

The sale boundary and Payment Unit boundaries are marked and identified by blue, red and yellow paint. Exterior sale boundary lines against private property are marked with blue paint. Exterior sale boundary lines against state are marked with red paint. Interior Payment Unit boundaries are marked with yellow paint and also follow forest roads. The painted boundary line trees are not Included Timber and are to be protected unless marked with orange paint.

2 - Timber Specifications

2.1 - Included Timber

2.1.1 - Clearcut unit(s) with unmerchantable trees (6/14)

Within Payment Unit(s) 3, cut all trees that are two (2) inches or more at DBH. Special protection trees identified in accordance with condition 3.4.2, within clearcutting unit boundaries, are not Included Timber and are to be protected.

2.1.3 - Cut tree marked unit(s) (12/08)

Within Payment Unit(s) 1 and 2, all trees are designated for cutting when marked with orange paint above and below stump height, regardless of merchantability. In addition, cut all aspen and beech. Also, cut all standing dead ash and oak which meet minimum piece specifications in 2.2 Utilization.

2.1.11 - Description of timber note (2/04)

Note that mixed hardwood pulp includes sugar maple, red maple, beech, cherry, and ironwood. Misc. Species 1 is standing dead oak and ash, which may be cut throughout the sale area.

2.2 - Utilization

2.2.6 - Roundwood operation required (5/07)

The skidding of whole trees or tree segments with limbs attached is prohibited within Payment Units 1 and 2. All products must be produced as roundwood and forwarded to existing roads or landing areas in final product length. Payment Unit 3 may be tree length harvested, but it is not required.

3 - Payments

3.4 - Damaged Timber

3.4.2 - Special Protection Trees (4/14)

The Purchaser shall not cut live or dead special protection trees within cutting units or clearings. Special protection trees are marked with green paint. If the Purchaser's operations have cut or damaged special protection trees through carelessness, the Purchaser shall pay \$25 as fixed, agreed and liquidated damages for each special protection tree cut or damaged. Such payment does not constitute ownership of the undesignated timber.

4 - Transportation

4.1 - Construction

4.1.12 - No new roads (1/12)

No new roads will be permitted in any Payment Unit. All operations are limited to existing roads. Skid trails only will be allowed.

4.2 - Maintenance

4.2.5 - Two wheel drive condition (2/04)

All existing trail roads on and adjacent to the sale area must be passable by two-wheel drive traffic for the duration of the sale.

5 - Operations

5.1 - Notification

5.1.1 - Pre-sale conference (10/16)

A pre-sale conference on site between the Purchaser and sale administrator is required prior to beginning any operations to determine landing locations. The Unit Manager or his/her representative must be contacted at least 3 days in advance to schedule the conference.

5.1.4 - Post-sale conference (10/16)

A post-sale conference on site between the Purchaser and sale administrator is required 3 days prior to the completion of active logging operations to determine clean-up and repair of landings, road edges, and the fulfillment of other contract specifications.

5.2 - Conduct of Operations

5.2.1 - Slash

5.2.1.8 - Slash height (12/08)

No slash or tree tops may exceed 30 inches in height.

5.2.2 - Hazard Trees/Snags

5.2.2.1 - Den trees (10/16)

Obvious hollow and/or den trees shall be protected and left standing unless they are a safety hazard.

5.2.3 - Operating Restrictions

5.2.3.4 - Oak wilt restriction (9/17)

Within Payment Unit(s) 1, 2, and 3, cutting skidding and hauling are not permitted during the period of April 15 to July 15. This is necessary to reduce the spread of oak wilt. For more information, contact the Unit Manager or his/her representative.

5.2.38 - No decking against live trees (2/04)

Cut products may not be decked against unmarked or designated leave trees.

5.4 - Soil Protection

5.4.1 - Rutting restriction, general (7/16)

Operations are to cease immediately if equipment and weather conditions result in rutting of roads and/or skid trails which is 12 inches or greater in depth and 50 feet in length. The Unit Manager or his/her representative may restrict hauling and/or skidding if ruts exceed the specified depth. With the Unit Manager or his/her representative's approval, the Purchaser may return to the area when the risk of rutting has decreased.

5.4.4 - Slope protection (5/15)

Skid trails and roads on slopes shall be water barred with slash, stumps, and/or clean straw bales native to the area as soon as use is complete to prevent erosion.

6 - Safety and Fire Prevention

6.2 - Signing

6.2.1 - Road posting (9/09)

The Purchaser is responsible for posting and maintaining caution signs on Bunker Hill prior to beginning operations. The road must be posted at appropriate distances from the sale area to warn of logging activity and truck traffic. Signs must be removed when harvest operations are suspended or completed. The Purchaser will provide these signs.



TIMBER SALE MAP

This information provided by authority of Part 525, 1994 PA 451, as amended.

| | | | | | | |
|---|-------------|---|---------------------|--------------------|-----------|---------|
| Forest Management Unit Traverse City | | County Grand Traverse | Mapped By Ruppen | Date 09/27/2017 | Page 1 | of 1 |
| Township 27N | Range 9W | Section(s) and Subdivision(s) Sec 16 W1/2SW Sec 17 SE1/4 | | Scale 1:15,840 | | |

Cover Type

| | | | |
|-------------------|----------------------|-------------------------|-------------------|
| A = Aspen | H = Hemlock | N = Marsh | U = Upland Brush |
| B = Paper Birch | J = Jack Pine | O = Oak | UM = Upland Mixed |
| C = Cedar | L = Lowland Brush | P = Lowland Poplar | V = Bog or Marsh |
| D = Treed Bog | LM = Lowland Mixed | Q = Mixed Swamp Conifer | W = White Pine |
| E = Swamp Hdwoods | M = Mpl, Bch, Bich | R = Red Pine | X = Non Stocked |
| F = Spruce Fir | MC = Mixed Conifer | S = Black Spruce | Z = Water |
| G = Grass | MD = Mixed Deciduous | T = Tamarack | |

Density

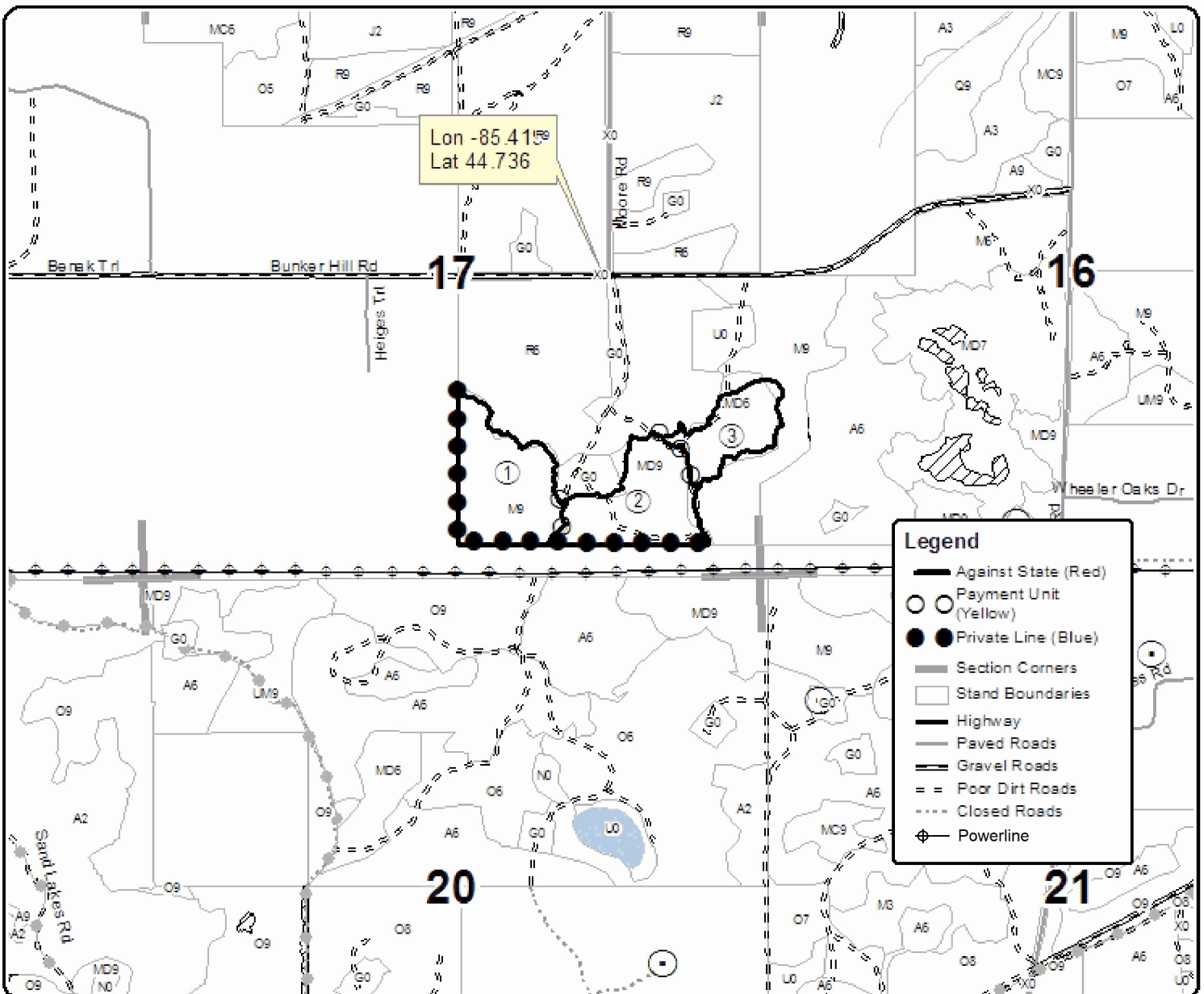
| | |
|----------------------------|------------------------|
| 0 = Non Stocked | 5 = Pole Timber Medium |
| 1 = Seeding Sapling Poor | 6 = Pole Timber Well |
| 2 = Seeding Sapling Medium | 7 = Saw Timber Poor |
| 3 = Seeding Sapling Well | 8 = Saw Timber Medium |
| 4 = Pole Timber Poor | 9 = Saw Timber Well |

| PU | Acres |
|----|-------|
| 1 | 19.4 |
| 2 | 17.6 |
| 3 | 10.1 |

Bunker Hardwoods

Compartment 041

47.1 Acres



TIMBER SALE INFORMATION

Hot Spot Red (61-083-17)

Grand Traverse County (Advertised Price \$63,001.55)

SALE NOTE: Sale is a marked red pine thinning.

A timber sale contract for this lump sum, sealed bid timber sale will be awarded to the responsible bidder offering the highest sealed bid price. Bids must be at or above the following advertised price for each species:

| <u>PRODUCTS & SPECIES</u> | <u>ESTIMATED UNITS*</u> | <u>ADVERTISED PRICE</u> |
|-------------------------------|-------------------------|-------------------------|
| Sawtimber | | |
| Red Pine | 165.60 MBF | \$ 117.00 / MBF |
| White Pine | 1.30 MBF | \$ 61.00 / MBF |
| Pulpwood | | |
| Jack Pine | 8.00 Cords | \$ 15.55 / Cord |
| Red Pine | 1,054.00 Cords | \$ 41.10 / Cord |
| White Pine | 7.00 Cords | \$ 14.75 / Cord |

* The total volume is statistically estimated within plus (+) or minus (-) 12.32 percent. The estimated units are final and not subject to adjustment. Prospective bidders are urged to examine this timber and to make their own estimates of quantity and quality.

BOND AND PAYMENT SCHEDULE:

- A bond in the amount of \$3,150.00 to insure faithful performance of the conditions of the contract will be deposited by the successful bidder within 21 days of the sale award.
- Cutting in any sale or unit without the required advance payment would be considered a trespass.
- Total payment must be paid in advance or according to the following schedule:
 - Ten percent (10%) of the sale value must be paid within 21 days of the sale award.
 - The 10% down payment will be credited towards the first unit cut.
 - Payment for each of the following units must be made before cutting begins in that unit:

| PAYMENT UNIT NUMBER | PERCENT OF TOTAL SALE VALUE |
|---------------------|-----------------------------|
| 01 | 23.0% |
| 02 | 43.2% |
| 03 | 33.8% |
- If no cutting takes place, the 10% down payment will not be refunded.
- Operations on the contract issued will terminate on 06/30/2020.

Description of Timber by Payment Unit (PU)

| PU | MARKET GROUP | PRODUCT | QUANTITY | UNIT | ACRES | ADVERTISE PRICE |
|--------|--------------|-----------|----------|-------|-------|-----------------|
| 1 | Red Pine | Sawtimber | 41.4 | MBF | 19.3 | \$14,461.20 |
| | Red Pine | Pulpwood | 234.0 | Cords | | |
| 2 | Red Pine | Sawtimber | 59.3 | MBF | 27.1 | \$27,241.50 |
| | Red Pine | Pulpwood | 494.0 | Cords | | |
| 3 | Red Pine | Sawtimber | 64.9 | MBF | 24.9 | \$21,298.85 |
| | White Pine | | 1.3 | MBF | | |
| | Jack Pine | Pulpwood | 8.0 | Cords | | |
| | Red Pine | | 326.0 | Cords | | |
| | White Pine | | 7.0 | Cords | | |
| TOTAL: | | | 166.9 | MBF | | |
| TOTAL: | | | 1,069.0 | Cords | | |

Sale Specific Conditions & Requirements

Sale Name: Hot Spot Red

Sale Number: 61-083-17 Seq#: 1

1 - Sale Area

1.2 - Boundaries

1.2.1 - Painted boundaries (1/14)

The sale boundary is marked and identified by red paint. Exterior sale boundary lines against state are marked with red paint. The painted boundary line trees are not Included Timber and are to be protected.

2 - Timber Specifications

2.1 - Included Timber

2.1.3 - Cut tree marked unit(s) (12/08)

Within Payment Unit(s) 1-3, all trees are designated for cutting when marked with orange paint above and below stump height, regardless of merchantability.

2.2 - Utilization

2.2.3 - Stump heights (4/07)

Stump heights within the Sale Area shall not exceed 6 inches for all trees. This is in order to facilitate planting operations.

2.2.6 - Roundwood operation required (5/07)

The skidding of whole trees or tree segments with limbs attached is prohibited. All products must be produced as roundwood and forwarded to existing roads or landing areas in final product length.

4 - Transportation

4.1 - Construction

4.1.12 - No new roads (1/12)

No new roads will be permitted in any Payment Unit. All operations are limited to existing roads. Skid trails only will be allowed.

4.2 - Maintenance

4.2.5 - Two wheel drive condition (2/04)

All existing trail roads on and adjacent to the sale area must be passable by two-wheel drive traffic for the duration of the sale.

5 - Operations

5.1 - Notification

5.1.1 - Pre-sale conference (10/16)

A pre-sale conference on site between the Purchaser and sale administrator is required prior to beginning any operations to determine landing locations. The Unit Manager or his/her representative must be contacted at least 3 days in advance to schedule the conference.

5.1.4 - Post-sale conference (10/16)

A post-sale conference on site between the Purchaser and sale administrator is required 3 days prior to the completion of active logging operations to determine clean-up and repair of landings, road edges, and the fulfillment of other contract specifications.

5.2 - Conduct of Operations

5.2.1 - Slash

5.2.1.8 - Slash height (12/08)

No slash or tree tops may exceed 24 inches in height.

5.2.3 - Operating Restrictions

5.2.3.3 - Bark slippage restriction (3/09)

Within Payment Unit(s) 1-3, unless changed by written agreement, cutting and skidding are not permitted during the period of April 15 to July 15. This restriction is because of bark slippage.

5.2.38 - No decking against live trees (2/04)

Cut products may not be decked against unmarked or designated leave trees.

5.4 - Soil Protection

5.4.1 - Rutting restriction, general (7/16)

Operations are to cease immediately if equipment and weather conditions result in rutting of roads and/or skid trails which is 12 inches or greater in depth and 50 feet in length. The Unit Manager or his/her representative may restrict hauling and/or skidding if ruts exceed the specified depth. With the Unit Manager or his/her representative's approval, the Purchaser may return to the area when the risk of rutting has decreased.

6 - Safety and Fire Prevention

6.2 - Signing

6.2.1 - Road posting (9/09)

The Purchaser is responsible for posting and maintaining caution signs on Mayfield Road prior to beginning operations. The road must be posted at appropriate distances from the sale area to warn of logging activity and truck traffic. Signs must be removed when harvest operations are suspended or completed. The Purchaser will provide these signs.



TIMBER SALE MAP

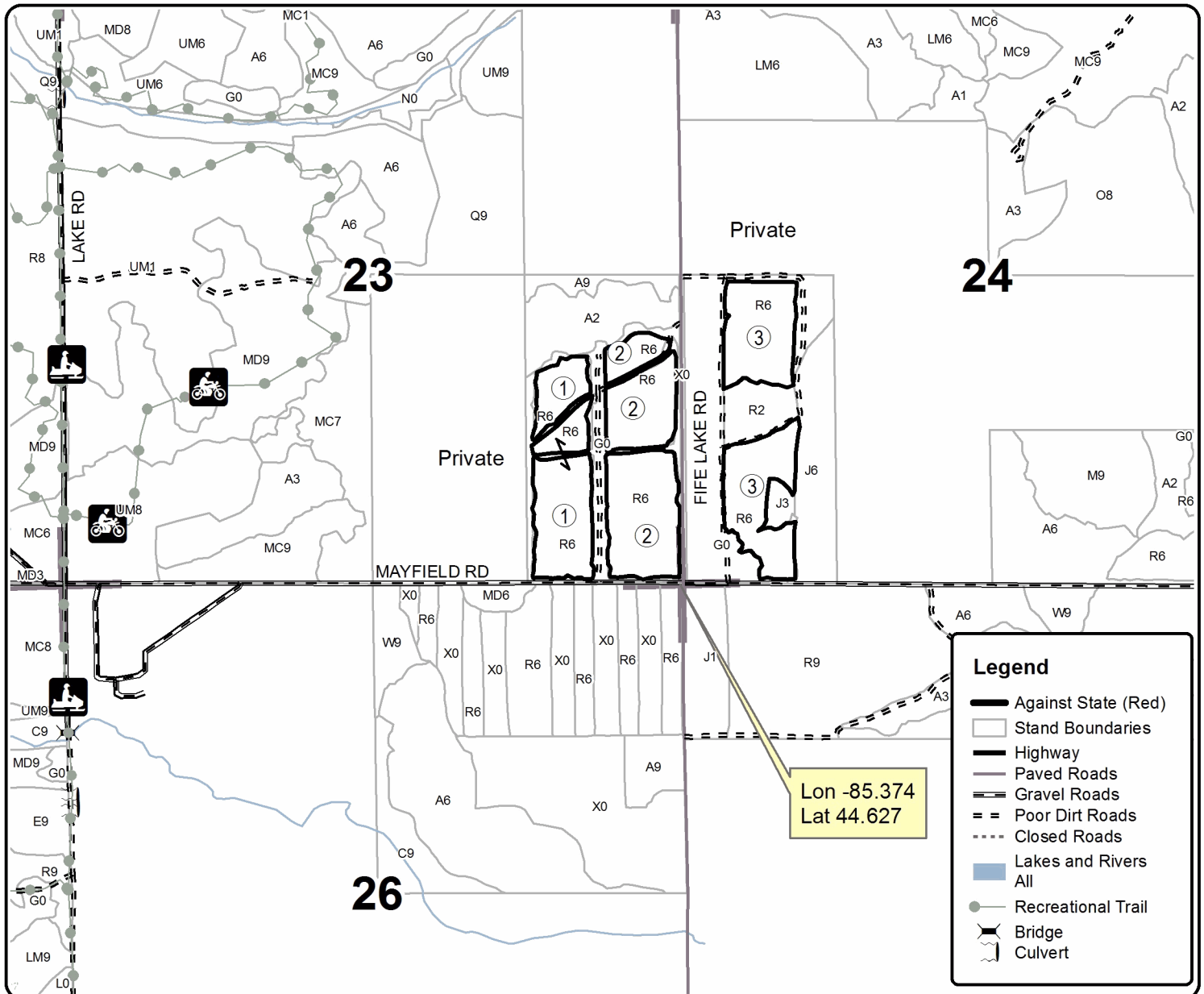
This information provided by authority of Part 525, 1994 PA 451, as amended.

| | | | | | | |
|---|-------------|--|---------------------|--------------------|-----------|---------|
| Forest Management Unit Traverse City | | County Grand Traverse | Mapped By Ruppen | Date 09/27/2017 | Page 1 | of 1 |
| Township 26N | Range 9W | Section(s) and Subdivision(s) Sec 23 E1/2SE Sec 24 W1/2SW | | Scale 1:15,840 | | |

| Cover Type | | | | Density | |
|-------------------|----------------------|-------------------------|-------------------|-----------------------------|------------------------|
| A = Aspen | H = Hemlock | N = Marsh | U = Upland Brush | 0 = Non Stocked | 5 = Pole Timber Medium |
| B = Paper Birch | J = Jack Pine | O = Oak | UM = Upland Mixed | 1 = Seedling Sapling Poor | 6 = Pole Timber Well |
| C = Cedar | L = Lowland Brush | P = Lowland Poplar | V = Bog or Marsh | 2 = Seedling Sapling Medium | 7 = Saw Timber Poor |
| DM = Tread Bog | LM = Lowland Mixed | Q = Mixed Swamp Conifer | W = White Pine | 3 = Seedling Sapling Well | 8 = Saw Timber Medium |
| E = Swamp Hdwoods | M = Mpl, Bch, Brch | R = Red Pine | X = Non Stocked | 4 = Pole Timber Poor | 9 = Saw Timber Well |
| F = Spruce Fir | MC = Mixed Conifer | S = Black Spruce | Z = Water | | |
| G = Grass | MD = Mixed Deciduous | T = Tamarack | | | |

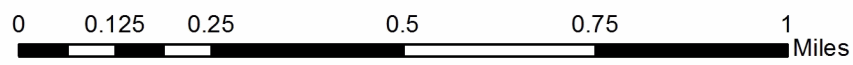
| PU | Acres |
|----|-------|
| 1 | 19.3 |
| 2 | 27.1 |
| 3 | 24.9 |

Hot Spot Red Compartment 053 71.3 Acres



Legend

- Against State (Red)
- Stand Boundaries
- Highway
- Paved Roads
- Gravel Roads
- Poor Dirt Roads
- Closed Roads
- Lakes and Rivers
- All
- Recreational Trail
- Bridge
- Culvert



TIMBER SALE INFORMATION

MayKal Red (61-084-17)

Grand Traverse County (Advertised Price \$17,332.65)

SALE NOTE: Sale is a red pine plantation thinning.

A timber sale contract for this lump sum, sealed bid timber sale will be awarded to the responsible bidder offering the highest sealed bid price. Bids must be at or above the following advertised price for each species:

| <u>PRODUCTS & SPECIES</u> | <u>ESTIMATED UNITS*</u> | <u>ADVERTISED PRICE</u> |
|-------------------------------|-------------------------|-------------------------|
| Sawtimber | | |
| Red Pine | 35.20 MBF | \$ 117.00 / MBF |
| White Pine | 2.30 MBF | \$ 61.00 / MBF |
| Pulpwood | | |
| Red Pine | 312.00 Cords | \$ 41.10 / Cord |
| White Pine | 17.00 Cords | \$ 14.75 / Cord |

* The total volume is statistically estimated within plus (+) or minus (-) 23.22 percent. The estimated units are final and not subject to adjustment. Prospective bidders are urged to examine this timber and to make their own estimates of quantity and quality.

BOND AND PAYMENT SCHEDULE:

- A bond in the amount of \$867.00 to insure faithful performance of the conditions of the contract will be deposited by the successful bidder within 21 days of the sale award.
- Cutting in any sale or unit without the required advance payment would be considered a trespass.
- Total payment must be paid in advance or according to the following schedule:
 - Ten percent (10%) of the sale value must be paid within 21 days of the sale award.
 - The 10% down payment will be credited towards the first unit cut.
 - Payment for each of the following units must be made before cutting begins in that unit:

| PAYMENT UNIT NUMBER | PERCENT OF TOTAL SALE VALUE |
|---------------------|-----------------------------|
| 01 | 47.4% |
| 02 | 52.6% |
- If no cutting takes place, the 10% down payment will not be refunded.
- Operations on the contract issued will terminate on 06/30/2020.

Description of Timber by Payment Unit (PU)

| PU | MARKET GROUP | PRODUCT | QUANTITY | UNIT | ACRES | ADVERTISE PRICE |
|--------|--------------|-----------|----------|-------|-------|-----------------|
| 1 | Red Pine | Sawtimber | 16.7 | MBF | 11.4 | \$8,221.80 |
| | White Pine | | 1.1 | MBF | | |
| | Red Pine | Pulpwood | 148.0 | Cords | | |
| | White Pine | | 8.0 | Cords | | |
| 2 | Red Pine | Sawtimber | 18.5 | MBF | 12.7 | \$9,110.85 |
| | White Pine | | 1.2 | MBF | | |
| | Red Pine | Pulpwood | 164.0 | Cords | | |
| | White Pine | | 9.0 | Cords | | |
| TOTAL: | | | 37.5 | MBF | | |
| TOTAL: | | | 329.0 | Cords | | |

Sale Specific Conditions & Requirements

Sale Name: MayKal Red

Sale Number: 61-084-17 Seq#: 1

1 - Sale Area

1.2 - Boundaries

1.2.1 - Painted boundaries (1/14)

The sale boundary is marked and identified by red paint. Exterior sale boundary lines against state are marked with red paint. Note that the northern boundary of the sale is also painted red, as the boundary is slightly back from the private property boundary. The painted boundary line trees are not Included Timber and are to be protected unless marked with orange paint.

2 - Timber Specifications

2.1 - Included Timber

2.1.3 - Cut tree marked unit(s) (12/08)

Within Payment Unit(s) 1 and 2, all trees are designated for cutting when marked with orange paint above and below stump height, regardless of merchantability. In addition, all white pine trees are designated for cutting.

2.2 - Utilization

2.2.3 - Stump heights (4/07)

Stump heights within the Sale Area shall not exceed 6 inches for all trees. This is in order to facilitate planting operations.

2.2.6 - Roundwood operation required (5/07)

The skidding of whole trees or tree segments with limbs attached is prohibited. All products must be produced as roundwood and forwarded to existing roads or landing areas in final product length.

4 - Transportation

4.1 - Construction

4.1.12 - No new roads (1/12)

No new roads will be permitted in any Payment Unit. All operations are limited to existing roads. Skid trails only will be allowed.

4.2 - Maintenance

4.2.5 - Two wheel drive condition (2/04)

All existing trail roads on and adjacent to the sale area must be passable by two-wheel drive traffic for the duration of the sale.

5 - Operations

5.1 - Notification

5.1.1 - Pre-sale conference (10/16)

A pre-sale conference on site between the Purchaser and sale administrator is required prior to beginning any operations to determine landing locations. The Unit Manager or his/her representative must be contacted at least 3 days in advance to schedule the conference.

5.1.4 - Post-sale conference (10/16)

A post-sale conference on site between the Purchaser and sale administrator is required 3 days prior to the completion of active logging operations to determine clean-up and repair of landings, road edges, and the fulfillment of other contract specifications.

5.2 - Conduct of Operations

5.2.1 - Slash

5.2.1.8 - Slash height (12/08)

No slash or tree tops may exceed 24 inches in height.

5.2.3 - Operating Restrictions

5.2.3.3 - Bark slippage restriction (3/09)

Within Payment Unit(s) 1 and 2, unless changed by written agreement, cutting and skidding are not permitted during the period of April 15 to July 15. This restriction is because of bark slippage.

5.2.3.6 - Bark beetle restriction (12/08)

In the event drought creates a high risk of pine bark beetle infestation, pine is not to be cut during the period March 1 through July 1, unless all portions of trees greater than two inches in diameter are removed from the sale area, reduced to chips, or treated to the satisfaction of the Unit Manager or his/her representative, within fifteen days of being severed from the stump. Pine log decks, pulpwood piles and treetops that are piled for chipping in the fall or winter within a 1/4 mile of susceptible sites must be removed before March 15. Residual slash must not be placed in piles or rows and must be spread over the site for quick drying. The Department of Natural Resources will exercise this specification if the risk of damage warrants.

5.2.38 - No decking against live trees (2/04)

Cut products may not be decked against unmarked or designated leave trees.

5.4 - Soil Protection

5.4.1 - Rutting restriction, general (7/16)

Operations are to cease immediately if equipment and weather conditions result in rutting of roads and/or skid trails which is 12 inches or greater in depth and 50 feet in length. The Unit Manager or his/her representative may restrict hauling and/or skidding if ruts exceed the specified depth. With the Unit Manager or his/her representative's approval, the Purchaser may return to the area when the risk of rutting has decreased.

6 - Safety and Fire Prevention

6.2 - Signing

6.2.1 - Road posting (9/09)

The Purchaser is responsible for posting and maintaining caution signs on Mayfield/Grand-Kal Roads prior to beginning operations. The road must be posted at appropriate distances from the sale area to warn of logging activity and truck traffic. Signs must be removed when harvest operations are suspended or completed. The Purchaser will provide these signs.



TIMBER SALE MAP

This information provided by authority of Par 525, 1994 PA 451, as amended.

| | |
|-------------|------|
| Sale Number | Year |
| 61-084 | 17 |

| | | | | | |
|---|--------------------------|---------------------|--------------------|-----------|---------|
| Forest Management Unit Traverse City | County Grand Traverse | Mapped By Ruppen | Date 09/26/2017 | Page 1 | of 1 |
| Cruised By Cross | | | | | |

| | | | |
|-----------------|-------------|--|-------------------|
| Township 26N | Range 9W | Section(s) and Subdivision(s) Sec 24 S1/2SE | Scale 1:15,840 |
|-----------------|-------------|--|-------------------|

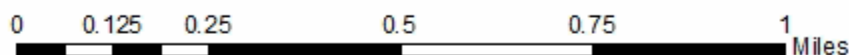
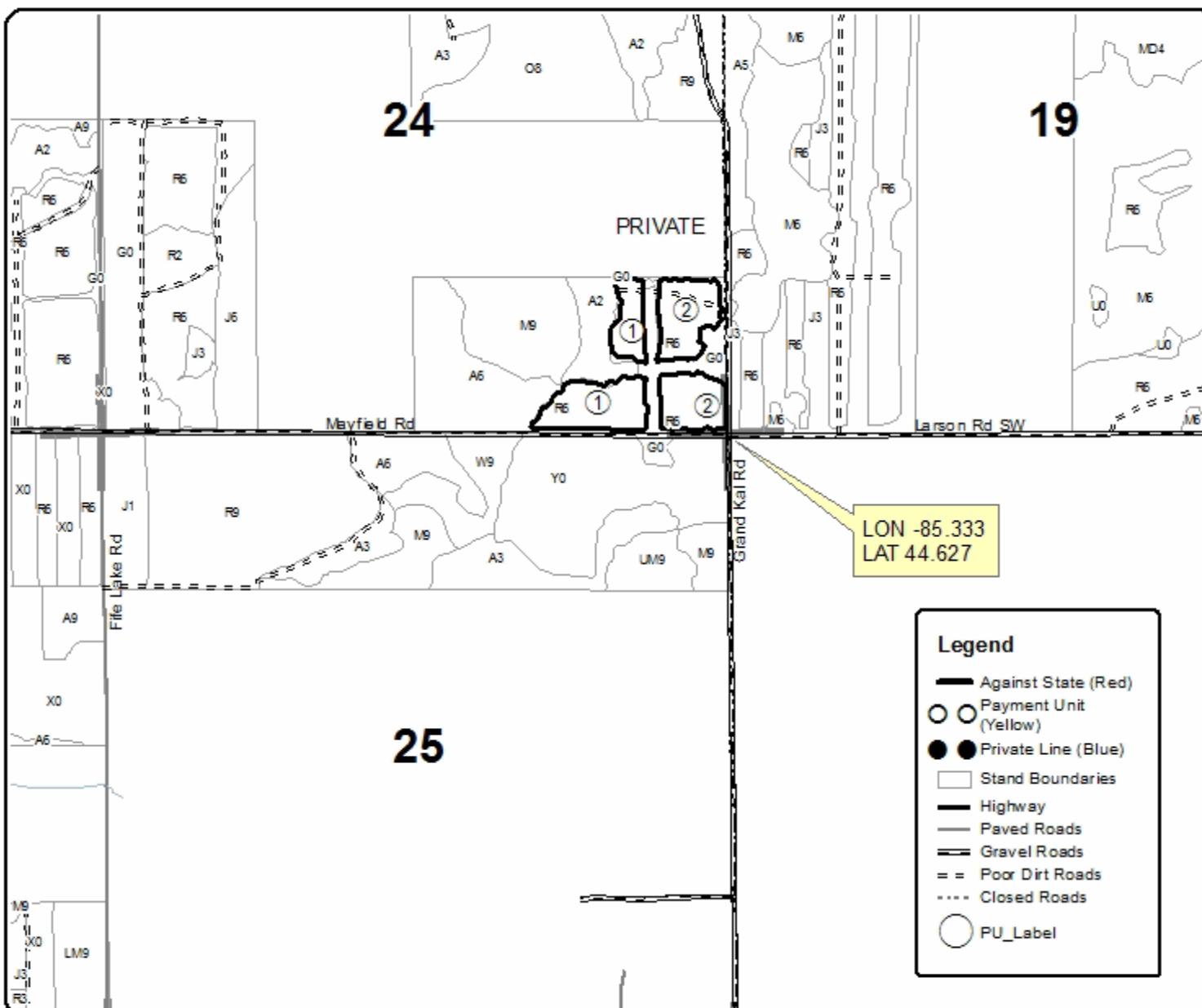
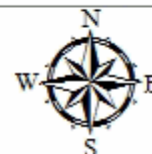
| Cover Type | | | | Density | |
|-------------------|----------------------|-------------------------|-------------------|----------------------------|------------------------|
| A = Aspen | H = Hemlock | N = Marsh | U = Upland Brush | 0 = Non Stocked | 5 = Pole Timber Medium |
| B = Paper Birch | J = Jack Pine | O = Oak | UM = Upland Mixed | 1 = Seeding Sapling Poor | 6 = Pole Timber Well |
| C = Cedar | L = Lowland Brush | P = Lowland Poplar | V = Bog or Marsh | 2 = Seeding Sapling Medium | 7 = Saw Timber Poor |
| D = Treed Bog | LM = Lowland Mixed | Q = Mixed Swamp Conifer | W = White Pine | 3 = Seeding Sapling Well | 8 = Saw Timber Medium |
| E = Swamp Hdwoods | M = Mpl, Bch, Bich | R = Red Pine | X = Non Stocked | 4 = Pole Timber Poor | 9 = Saw Timber Well |
| F = Spruce Fir | MC = Mixed Conifer | S = Black Spruce | Z = Water | | |
| G = Grass | MD = Mixed Deciduous | T = Tamarack | | | |

| PU | Acres |
|----|-------|
| 1 | 11.4 |
| 2 | 12.7 |

MayKal Red

Compartment 053

24.1 Acres



Hot Spot Red (61-083-17)
; Grand Traverse COUNTY

In response to the notice of sale to be held 4:00 p.m. (local time) on May 24, 2018, I am hereby submitting my sealed bid (firm offer) for the following forest products to be cut. Bids for individual species must be at or above the advertised price. All non-responsive bid forms may be rejected.

| <u>PRODUCTS & SPECIES</u> | <u>ESTIMATED VOLUME*</u> | <u>ADVERTISED PRICE</u> | <u>BID PRICE/UNIT</u> |
|-------------------------------|--------------------------|-------------------------|-----------------------|
| Sawtimber | | | |
| Red Pine | 165.60 MBF | \$ 117.00/MBF | \$ _____ |
| White Pine | 1.30 MBF | \$ 61.00/MBF | \$ _____ |
| Pulpwood | | | |
| Jack Pine | 8.00 Cords | \$ 15.55/Cord | \$ _____ |
| Red Pine | 1,054.00 Cords | \$ 41.10/Cord | \$ _____ |
| White Pine | 7.00 Cords | \$ 14.75/Cord | \$ _____ |

*The volumes are statistically estimated within plus (+) or minus (-) 12.32 percent. These estimated volumes are final and not subject to adjustment. Prospective bidders are urged to examine this timber and to make their own estimates of quantity and quality.

I understand that any or all bids may be rejected. All bids must be signed and all bid items must be bid or the bid form may be rejected. I also understand that consideration and awarding a contract will be based upon my past performance and ability to complete the contract based upon equipment and staffing subject to my control.

FEDERAL ID: ____ - ____ - ____ or SOCIAL SECURITY NUMBER: ____ - ____ - ____

Company or individual bidding: _____

Company representative's name: _____

Address: _____

City: _____ State: _____ Zip: _____

IF AVAILABLE, PLEASE PLACE THE PERSONALIZED LABEL FROM YOUR PROSPECTUS IN THE ABOVE BOX.

Individual or company representative's signature: _____ Date: _____

Phone number : _____ Email (optional): _____

THE WINNING BIDDER MUST COMPLETE THE VERIFICATION OF WORKER'S DISABILITY COMPENSATION ACT COMPLIANCE (ON REVERSE SIDE IF DOUBLE SIDED) WITHIN 21 DAYS OF SALE AWARD DATE



| FOR DEPARTMENT USE ONLY | |
|----------------------------------|--|
| Sale Number (XX – XXX – XX – XX) | |
| Forest Management Unit: | |

TIMBER SALE VERIFICATION OF WORKER'S DISABILITY COMPENSATION ACT COMPLIANCE

As required by Act 317, P.A. 1969 (Worker's Compensation) and
Part 5 of Act 451 of 1994, as amended.

VERIFICATION OF WORKER'S DISABILITY COMPENSATION ACT COMPLIANCE

- This verification must be completed and submitted within 21 days of contract award and prior to the issuance of the timber sale contract.
- In addition, if boxes 2B or 2C are checked, then Notice of Exclusion or Certificate of Insurance must be submitted within twenty-one (21) days of the contract award and prior to the issuance of the timber sale contract.
- All information must be typed or printed except for written signatures.

Please Check Appropriate Categories:

- My business is organized as (you **must** check one of the boxes below):
 - Sole Proprietorship (individual)
 - Partnership
 - Corporation
- You **must** check one of the boxes below:
 - I certify my business is a sole proprietorship and it has no employees but the sole proprietor. I am not subject to the Worker's Compensation Laws.
 - I certify my business has satisfied its obligation to the Worker's Compensation Act through the use of an approved Notice of Exclusion (BWC-337, Rev. 5/96). I will provide a copy of the Notice of Exclusion within 21 days of the contract award. (For questions or a copy of the BWC-337, please call the Worker's Compensation Bureau at 517-322-1195).
 - I certify my business has a Worker's Compensation Policy. I will provide an original Certificate of Insurance within twenty-one (21) days of the contract award.
- If you have checked item 2(A) or 2(B), you **must** indicate the number of **both** full-time and part-time employees, other than yourself, including family members and active partners (if none, you must enter "0").

_____ Full-time Employees

_____ Part-time Employees

| | | | |
|------------------|-------|-------------------------------------|--|
| Name of Business | | Federal ID (or) Social Security No. | |
| Address | | Telephone () | |
| City | State | ZIP | |

I hereby certify that the above information is true and correct. I agree to notify the Michigan DNR of any changes that occur in factors affecting my coverage during any of my present and future operations.

Signature of Owner or Authorized Representative

Title

Date

Please complete the "SEALED BID" information on the next page

MayKal Red (61-084-17)
; Grand Traverse COUNTY

In response to the notice of sale to be held 4:00 p.m. (local time) on May 24, 2018, I am hereby submitting my sealed bid (firm offer) for the following forest products to be cut. Bids for individual species must be at or above the advertised price. All non-responsive bid forms may be rejected.

| <u>PRODUCTS & SPECIES</u> | <u>ESTIMATED VOLUME*</u> | <u>ADVERTISED PRICE</u> | <u>BID PRICE/UNIT</u> |
|-------------------------------|--------------------------|-------------------------|-----------------------|
| Sawtimber | | | |
| Red Pine | 35.20 MBF | \$ 117.00/MBF | \$ _____ |
| White Pine | 2.30 MBF | \$ 61.00/MBF | \$ _____ |
| Pulpwood | | | |
| Red Pine | 312.00 Cords | \$ 41.10/Cord | \$ _____ |
| White Pine | 17.00 Cords | \$ 14.75/Cord | \$ _____ |

*The volumes are statistically estimated within plus (+) or minus (-) 23.22 percent. These estimated volumes are final and not subject to adjustment. Prospective bidders are urged to examine this timber and to make their own estimates of quantity and quality.

I understand that any or all bids may be rejected. All bids must be signed and all bid items must be bid or the bid form may be rejected. I also understand that consideration and awarding a contract will be based upon my past performance and ability to complete the contract based upon equipment and staffing subject to my control.

FEDERAL ID: _____ or SOCIAL SECURITY NUMBER: _____

Company or individual bidding: _____

Company representative's name: _____

Address: _____

City: _____ State: _____ Zip: _____

IF AVAILABLE, PLEASE PLACE THE PERSONALIZED LABEL FROM YOUR PROSPECTUS IN THE ABOVE BOX.

Individual or company representative's signature: _____ Date: _____

Phone number : _____ Email (optional): _____

THE WINNING BIDDER MUST COMPLETE THE VERIFICATION OF WORKER'S DISABILITY COMPENSATION ACT COMPLIANCE (ON REVERSE SIDE IF DOUBLE SIDED) WITHIN 21 DAYS OF SALE AWARD DATE



| |
|----------------------------------|
| FOR DEPARTMENT USE ONLY |
| Sale Number (XX - XXX - XX - XX) |
| Forest Management Unit: |

TIMBER SALE VERIFICATION OF WORKER'S DISABILITY COMPENSATION ACT COMPLIANCE

*As required by Act 317, P.A. 1969 (Worker's Compensation) and
Part 5 of Act 451 of 1994, as amended.*

VERIFICATION OF WORKER'S DISABILITY COMPENSATION ACT COMPLIANCE

- This verification must be completed and submitted within 21 days of contract award and prior to the issuance of the timber sale contract.
- In addition, if boxes 2B or 2C are checked, then Notice of Exclusion or Certificate of Insurance must be submitted within twenty-one (21) days of the contract award and prior to the issuance of the timber sale contract.
- All information must be typed or printed except for written signatures.

Please Check Appropriate Categories:

1. My business is organized as (you **must** check one of the boxes below):
 - A. Sole Proprietorship (individual)
 - B. Partnership
 - C. Corporation

2. You **must** check one of the boxes below:
 - A. I certify my business is a sole proprietorship and it has no employees but the sole proprietor. I am not subject to the Worker's Compensation Laws.
 - B. I certify my business has satisfied its obligation to the Worker's Compensation Act through the use of an approved Notice of Exclusion (BWC-337, Rev. 5/96). I will provide a copy of the Notice of Exclusion within 21 days of the contract award. (For questions or a copy of the BWC-337, please call the Worker's Compensation Bureau at 517-322-1195).
 - C. I certify my business has a Worker's Compensation Policy. I will provide an original Certificate of Insurance within twenty-one (21) days of the contract award.

3. If you have checked item 2(A) or 2(B), you **must** indicate the number of **both** full-time and part-time employees, other than yourself, including family members and active partners (if none, you must enter "0").

_____ Full-time Employees

_____ Part-time Employees

| | | | |
|------------------|-------|-------------------------------------|--|
| Name of Business | | Federal ID (or) Social Security No. | |
| Address | | Telephone () | |
| City | State | ZIP | |

I hereby certify that the above information is true and correct. I agree to notify the Michigan DNR of any changes that occur in factors affecting my coverage during any of my present and future operations.

Signature of Owner or Authorized Representative

Title

Date

Please complete the "SEALED BID" information on the next page

Bunker Hardwood (61-076-17)
; Grand Traverse COUNTY

In response to the notice of sale to be held 4:00 p.m. (local time) on May 24, 2018, I am hereby submitting my sealed bid (firm offer) for the following forest products to be cut. Bids for individual species must be at or above the advertised price. All non-responsive bid forms may be rejected.

| <u>PRODUCTS & SPECIES</u> | <u>ESTIMATED VOLUME*</u> | <u>ADVERTISED PRICE</u> | <u>BID PRICE/UNIT</u> |
|-------------------------------|--------------------------|-------------------------|-----------------------|
| Sawtimber | | | |
| B. T. Aspen | 44.70 MBF | \$ 109.00/MBF | \$ _____ |
| Basswood | 17.00 MBF | \$ 120.00/MBF | \$ _____ |
| Beech | 6.30 MBF | \$ 108.00/MBF | \$ _____ |
| Red Maple | 3.80 MBF | \$ 115.00/MBF | \$ _____ |
| Red Oak | 149.70 MBF | \$ 205.00/MBF | \$ _____ |
| Sugar Maple | 49.30 MBF | \$ 263.00/MBF | \$ _____ |
| Pulpwood | | | |
| B. T. Aspen | 137.00 Cords | \$ 20.65/Cord | \$ _____ |
| Basswood | 54.00 Cords | \$ 29.80/Cord | \$ _____ |
| Misc. Species 1 | 53.00 Cords | \$ 9.75/Cord | \$ _____ |
| Mixed Hardwood | 327.00 Cords | \$ 20.05/Cord | \$ _____ |
| Red Oak | 364.00 Cords | \$ 17.40/Cord | \$ _____ |

*The volumes are statistically estimated within plus (+) or minus (-) 21.03 percent. These estimated volumes are final and not subject to adjustment. Prospective bidders are urged to examine this timber and to make their own estimates of quantity and quality.

I understand that any or all bids may be rejected. All bids must be signed and all bid items must be bid or the bid form may be rejected. I also understand that consideration and awarding a contract will be based upon my past performance and ability to complete the contract based upon equipment and staffing subject to my control.

FEDERAL ID: _____ or SOCIAL SECURITY NUMBER: _____

Company or individual bidding: _____

Company representative's name: _____

Address: _____

City: _____ State: _____ Zip: _____

IF AVAILABLE, PLEASE PLACE THE PERSONALIZED LABEL FROM YOUR PROSPECTUS IN THE ABOVE BOX.

Individual or company representative's signature: _____ Date: _____

Phone number : _____ Email (optional): _____

THE WINNING BIDDER MUST COMPLETE THE VERIFICATION OF WORKER'S DISABILITY COMPENSATION ACT COMPLIANCE (ON REVERSE SIDE IF DOUBLE SIDED) WITHIN 21 DAYS OF SALE AWARD DATE



TIMBER SALE VERIFICATION OF WORKER'S DISABILITY COMPENSATION ACT COMPLIANCE

As required by Act 317, P.A. 1969 (Worker's Compensation) and
Part 5 of Act 451 of 1994, as amended.

| FOR DEPARTMENT USE ONLY |
|----------------------------------|
| Sale Number (XX - XXX - XX - XX) |
| Forest Management Unit: |

VERIFICATION OF WORKER'S DISABILITY COMPENSATION ACT COMPLIANCE

- This verification must be completed and submitted within 21 days of contract award and prior to the issuance of the timber sale contract.
- In addition, if boxes 2B or 2C are checked, then Notice of Exclusion or Certificate of Insurance must be submitted within twenty-one (21) days of the contract award and prior to the issuance of the timber sale contract.
- All information must be typed or printed except for written signatures.

Please Check Appropriate Categories:

1. My business is organized as (you **must** check one of the boxes below):
 - A. Sole Proprietorship (individual)
 - B. Partnership
 - C. Corporation
2. You **must** check one of the boxes below:
 - A. I certify my business is a sole proprietorship and it has no employees but the sole proprietor. I am not subject to the Worker's Compensation Laws.
 - B. I certify my business has satisfied its obligation to the Worker's Compensation Act through the use of an approved Notice of Exclusion (BWC-337, Rev. 5/96). I will provide a copy of the Notice of Exclusion within 21 days of the contract award. (For questions or a copy of the BWC-337, please call the Worker's Compensation Bureau at 517-322-1195).
 - C. I certify my business has a Worker's Compensation Policy. I will provide an original Certificate of Insurance within twenty-one (21) days of the contract award.
3. If you have checked item 2(A) or 2(B), you **must** indicate the number of **both** full-time and part-time employees, other than yourself, including family members and active partners (if none, you must enter "0").

_____ Full-time Employees

_____ Part-time Employees

| | | |
|------------------|-------|-------------------------------------|
| Name of Business | | Federal ID (or) Social Security No. |
| Address | | Telephone () |
| City | State | ZIP |

I hereby certify that the above information is true and correct. I agree to notify the Michigan DNR of any changes that occur in factors affecting my coverage during any of my present and future operations.

Signature of Owner or Authorized Representative

Title

Date

Please complete the "SEALED BID" information on the next page

Hodge Weave (61-070-17)
; Grand Traverse COUNTY

In response to the notice of sale to be held 4:00 p.m. (local time) on May 24, 2018, I am hereby submitting my sealed bid (firm offer) for the following forest products to be cut. Bids for individual species must be at or above the advertised price. All non-responsive bid forms may be rejected.

| <u>PRODUCTS & SPECIES</u> | <u>ESTIMATED VOLUME*</u> | <u>ADVERTISED PRICE</u> | <u>BID PRICE/UNIT</u> |
|-------------------------------|--------------------------|-------------------------|-----------------------|
| Sawtimber | | | |
| Jack Pine | 27.90 MBF | \$ 31.00/MBF | \$ _____ |
| Red Pine | 8.00 MBF | \$ 117.00/MBF | \$ _____ |
| White Oak | 70.50 MBF | \$ 57.00/MBF | \$ _____ |
| Pulpwood | | | |
| Black Cherry | 9.00 Cords | \$ 20.05/Cord | \$ _____ |
| Jack Pine | 763.00 Cords | \$ 15.55/Cord | \$ _____ |
| Red Maple | 7.00 Cords | \$ 20.05/Cord | \$ _____ |
| Red Pine | 12.00 Cords | \$ 41.10/Cord | \$ _____ |
| White Oak | 303.00 Cords | \$ 17.40/Cord | \$ _____ |
| White Pine | 9.00 Cords | \$ 14.75/Cord | \$ _____ |

*The volumes are statistically estimated within plus (+) or minus (-) 13.68 percent. These estimated volumes are final and not subject to adjustment. Prospective bidders are urged to examine this timber and to make their own estimates of quantity and quality.

I understand that any or all bids may be rejected. All bids must be signed and all bid items must be bid or the bid form may be rejected. I also understand that consideration and awarding a contract will be based upon my past performance and ability to complete the contract based upon equipment and staffing subject to my control.

FEDERAL ID: ____ - ____ - ____ or SOCIAL SECURITY NUMBER: ____ - ____ - ____

Company or individual bidding: _____

Company representative's name: _____

Address: _____

City: _____ State: _____ Zip: _____

IF AVAILABLE, PLEASE PLACE THE PERSONALIZED LABEL FROM YOUR PROSPECTUS IN THE ABOVE BOX.

Individual or company representative's signature: _____ Date: _____

Phone number : _____ Email (optional): _____

THE WINNING BIDDER MUST COMPLETE THE VERIFICATION OF WORKER'S DISABILITY COMPENSATION ACT COMPLIANCE (ON REVERSE SIDE IF DOUBLE SIDED) WITHIN 21 DAYS OF SALE AWARD DATE



| |
|----------------------------------|
| FOR DEPARTMENT USE ONLY |
| Sale Number (XX - XXX - XX - XX) |
| Forest Management Unit: |

TIMBER SALE VERIFICATION OF WORKER'S DISABILITY COMPENSATION ACT COMPLIANCE

*As required by Act 317, P.A. 1969 (Worker's Compensation) and
Part 5 of Act 451 of 1994, as amended.*

VERIFICATION OF WORKER'S DISABILITY COMPENSATION ACT COMPLIANCE

- This verification must be completed and submitted within 21 days of contract award and prior to the issuance of the timber sale contract.
- In addition, if boxes 2B or 2C are checked, then Notice of Exclusion or Certificate of Insurance must be submitted within twenty-one (21) days of the contract award and prior to the issuance of the timber sale contract.
- All information must be typed or printed except for written signatures.

Please Check Appropriate Categories:

1. My business is organized as (you **must** check one of the boxes below):
 - A. Sole Proprietorship (individual)
 - B. Partnership
 - C. Corporation
2. You **must** check one of the boxes below:
 - A. I certify my business is a sole proprietorship and it has no employees but the sole proprietor. I am not subject to the Worker's Compensation Laws.
 - B. I certify my business has satisfied its obligation to the Worker's Compensation Act through the use of an approved Notice of Exclusion (BWC-337, Rev. 5/96). I will provide a copy of the Notice of Exclusion within 21 days of the contract award. (For questions or a copy of the BWC-337, please call the Worker's Compensation Bureau at 517-322-1195).
 - C. I certify my business has a Worker's Compensation Policy. I will provide an original Certificate of Insurance within twenty-one (21) days of the contract award.
3. If you have checked item 2(A) or 2(B), you **must** indicate the number of **both** full-time and part-time employees, other than yourself, including family members and active partners (if none, you must enter "0").

_____ Full-time Employees

_____ Part-time Employees

| | | | |
|------------------|-------|-------------------------------------|--|
| Name of Business | | Federal ID (or) Social Security No. | |
| Address | | Telephone () | |
| City | State | ZIP | |

I hereby certify that the above information is true and correct. I agree to notify the Michigan DNR of any changes that occur in factors affecting my coverage during any of my present and future operations.

Signature of Owner or Authorized Representative

Title

Date

Please complete the "SEALED BID" information on the next page

Lolo Jack (61-071-17)
; Grand Traverse COUNTY

In response to the notice of sale to be held 4:00 p.m. (local time) on May 24, 2018, I am hereby submitting my sealed bid (firm offer) for the following forest products to be cut. Bids for individual species must be at or above the advertised price. All non-responsive bid forms may be rejected.

| <u>PRODUCTS & SPECIES</u> | <u>ESTIMATED VOLUME*</u> | <u>ADVERTISED PRICE</u> | <u>BID PRICE/UNIT</u> |
|-------------------------------|--------------------------|-------------------------|-----------------------|
| Sawtimber | | | |
| B. T. Aspen | 3.90 MBF | \$ 109.00/MBF | \$ _____ |
| Jack Pine | 24.10 MBF | \$ 31.00/MBF | \$ _____ |
| Red Oak | 5.00 MBF | \$ 205.00/MBF | \$ _____ |
| White Oak | 35.30 MBF | \$ 57.00/MBF | \$ _____ |
| Pulpwood | | | |
| Jack Pine | 1,240.00 Cords | \$ 15.55/Cord | \$ _____ |
| Mixed Aspen | 20.00 Cords | \$ 20.65/Cord | \$ _____ |
| Mixed Hardwood | 17.00 Cords | \$ 20.05/Cord | \$ _____ |
| Mixed Oak | 188.00 Cords | \$ 17.40/Cord | \$ _____ |
| Red Pine | 6.00 Cords | \$ 41.10/Cord | \$ _____ |
| White Pine | 15.00 Cords | \$ 14.75/Cord | \$ _____ |

*The volumes are statistically estimated within plus (+) or minus (-) 12.68 percent. These estimated volumes are final and not subject to adjustment. Prospective bidders are urged to examine this timber and to make their own estimates of quantity and quality.

I understand that any or all bids may be rejected. All bids must be signed and all bid items must be bid or the bid form may be rejected. I also understand that consideration and awarding a contract will be based upon my past performance and ability to complete the contract based upon equipment and staffing subject to my control.

FEDERAL ID: _____ or SOCIAL SECURITY NUMBER: _____

Company or individual bidding: _____

Company representative's name: _____

Address: _____

City: _____ State: _____ Zip: _____

IF AVAILABLE, PLEASE PLACE THE PERSONALIZED LABEL FROM YOUR PROSPECTUS IN THE ABOVE BOX.

Individual or company representative's signature: _____ Date: _____

Phone number : _____ Email (optional): _____

THE WINNING BIDDER MUST COMPLETE THE VERIFICATION OF WORKER'S DISABILITY COMPENSATION ACT COMPLIANCE (ON REVERSE SIDE IF DOUBLE SIDED) WITHIN 21 DAYS OF SALE AWARD DATE



| |
|----------------------------------|
| FOR DEPARTMENT USE ONLY |
| Sale Number (XX - XXX - XX - XX) |
| Forest Management Unit: |

TIMBER SALE VERIFICATION OF WORKER'S DISABILITY COMPENSATION ACT COMPLIANCE

*As required by Act 317, P.A. 1969 (Worker's Compensation) and
Part 5 of Act 451 of 1994, as amended.*

VERIFICATION OF WORKER'S DISABILITY COMPENSATION ACT COMPLIANCE

- This verification must be completed and submitted within 21 days of contract award and prior to the issuance of the timber sale contract.
- In addition, if boxes 2B or 2C are checked, then Notice of Exclusion or Certificate of Insurance must be submitted within twenty-one (21) days of the contract award and prior to the issuance of the timber sale contract.
- All information must be typed or printed except for written signatures.

Please Check Appropriate Categories:

1. My business is organized as (you **must** check one of the boxes below):
 - A. Sole Proprietorship (individual)
 - B. Partnership
 - C. Corporation

2. You **must** check one of the boxes below:
 - A. I certify my business is a sole proprietorship and it has no employees but the sole proprietor. I am not subject to the Worker's Compensation Laws.
 - B. I certify my business has satisfied its obligation to the Worker's Compensation Act through the use of an approved Notice of Exclusion (BWC-337, Rev. 5/96). I will provide a copy of the Notice of Exclusion within 21 days of the contract award. (For questions or a copy of the BWC-337, please call the Worker's Compensation Bureau at 517-322-1195).
 - C. I certify my business has a Worker's Compensation Policy. I will provide an original Certificate of Insurance within twenty-one (21) days of the contract award.

3. If you have checked item 2(A) or 2(B), you **must** indicate the number of **both** full-time and part-time employees, other than yourself, including family members and active partners (if none, you must enter "0").

_____ Full-time Employees

_____ Part-time Employees

| | | | |
|------------------|-------|-------------------------------------|--|
| Name of Business | | Federal ID (or) Social Security No. | |
| Address | | Telephone () | |
| City | State | ZIP | |

I hereby certify that the above information is true and correct. I agree to notify the Michigan DNR of any changes that occur in factors affecting my coverage during any of my present and future operations.

Signature of Owner or Authorized Representative

Title

Date

Please complete the "SEALED BID" information on the next page