



**DEPARTMENT OF NATURAL RESOURCES
STATE OF MICHIGAN**

TIMBER SALE PROSPECTUS #6179

SCHEDULED SALE DATE AND TIME: 8:30 a.m. (local time) on May 30, 2018.

LOCATION: CRYSTAL FALLS MGT UNIT, 1420 US-2 WEST, CRYSTAL FALLS, MI 49920.

PROSPECTUS NOTE: The bidder is advised to inspect the sale area and review the location, estimated volumes, operating costs and contract terms of proposed sales. Please be aware that some landowners may request 60 days or more notice for access across their land.

Notice is hereby given that bids will be received by the Unit Manager, CRYSTAL FALLS MANAGEMENT UNIT, for certain timber on the following described lands:

Cell Phone Buck (12-051-18)

Iron County, Advertised Price \$64,852.35, 125.7 Acres, Hardwood, Spruce/Fir/Tamarack.

SALE NOTE: Payment Unit 5 must be harvested and skid in frozen ground conditions only. See spec 5.2.3.1.

Harvesting and skidding operations are not permitted in Payment Units 1, 2, and 4 during April 15 - July 15, due to bark slip. See spec 5.2.3.3.

If the snowmobile trail is used for hauling then a snow covered base must remain on the trail. In addition, no decking will be permitted along the snowmobile trail during the snowmobile season. See spec 5.2.41.

Signs warning of logging activity must be provided by the Purchaser if the snowmobile trail is used during the snowmobile season. See spec 6.2.2.

A recreation site such as a trail, pathway, or campground is within the sale area or the vicinity. Certain restrictions/specifications may be applicable including time restrictions. Access may be through private land.

Camp 6 Mix (12-052-18)

Iron County, Advertised Price \$71,361.55, 136.2 Acres, Aspen, Spruce/Fir/Tamarack.

SALE NOTE: A recreation site such as a trail, pathway, or campground is within the sale area or the vicinity. Certain restrictions/specifications may be applicable including time restrictions.

Hemlock SBW (12-069-17)

Iron County, Advertised Price \$23,937.55, 102.4 Acres, Aspen, Spruce/Fir/Tamarack.

SALE NOTE: A recreation site such as a trail, pathway, or campground is within the sale area or the vicinity. Certain restrictions/specifications may be applicable including time restrictions. Access may be through private or other public land.

GNA Cat Shot (12-070-17)

Iron County, Advertised Price \$141,965.35, 322.0 Acres, Red Pine, Spruce/Fir/Tamarack.

SALE NOTE: This is a Good Neighbor Authority (GNA) timber sale on national forest land. This timber sale was set-up and is being advertised by the Michigan DNR for the US Forest Service. The contract will be awarded and administered by the Michigan DNR. Note the additional Sale Specific Conditions & Requirements containing the acronym 'GNA'.

Access may be through other public land.

BID INSTRUCTIONS (VER. 11/28/2017):

1. Scheduled Bid Location, Date, and Time (2/11)

Bids must be received by the Unit Manager, CRYSTAL FALLS OFFICE, 1420 US-2 WEST, CRYSTAL FALLS, MI 49920, no later than 8:30 a.m. (local time) on May 30, 2018. For further information concerning this sale, contact Dan McNamee at 906-875-6622.

2. Bidder's Qualifications (5/16)

Purchaser shall obtain workers compensation insurance to cover claims under Michigan's Worker's Disability Compensation Act of 1969 or similar employee benefit act of any other state applicable to an employee. If all or part of a timber sale was prepared by a private contractor, the contractor and that contractor's company are not permitted to bid on the timber sale contract. Bids will not be accepted from individuals or companies appearing on the DNR/FRD No-Bid List. This list contains the names of purchasers who previously failed to execute a contract within 21-days or who have a history of poor performance.

3. Preparation of Sealed Bids (5/16)

Bid Forms may be completed online thru Michigan DNR Timber Sale Online Bidding (OLB) at www.michigan.gov/timberbidding or by completing the hardcopy Bid Form found in the Timber Sale Prospectus. Hardcopy Bid Forms shall be manually signed in ink. Registration in OLB is considered your 'signature' for all bids submitted thru that system. Bid prices must be entered for each species and product in the Bid Price column for all material subject to bidding and all fill-in blanks must be completed. If erasures or other changes appear on the hardcopy Bid Form, each erasure or change must be initialed by the person signing the bid.

4. Submission of Sealed Bids (5/16)

Bid forms may be obtained from the Unit Manager or thru OLB. Bids may be submitted hardcopy or thru OLB. All hardcopy bids must be submitted on the bid form and in an envelope clearly identified as described in this section. NOTE: Only one bid form per bid envelope. Sealed bids must be submitted to the Unit office designated in the prospectus and must be submitted at or prior to the time established in the prospectus. The envelope should show on the outside (a) the sale name or number and (b) the date and time of bid opening, as shown in the prospectus. Bids received after the time specified in the sale prospectus are late bids and will be rejected.

It is possible for a bidder to submit multiple bids on a single sale. For example, a bid may be submitted hardcopy and a bid may be submitted thru OLB. Or, two bidders from the same company could both submit bids on the same sale. If this were to happen, the State would accept all bids received and award the contract accordingly. All bidding and contractual requirements would apply to all bids received.

5. Public Opening of Sealed Bids (7/16)

If conditions permit, the sealed bids will be publicly opened and posted at the time and place set in the prospectus.

If a bidder, present at a bid opening, has submitted bids on more than one sale, that bidder may withdraw their unopened bid envelopes or announce the withdrawal of their online bid after being declared the successful bidder on one sale.

6. Award of Contract (1/11)

Award of the contract will be made to the Bidder whose bid, conforming to the prospectus, is most advantageous to the State of Michigan on the basis of total value at rates bid for the estimated quantities. The State reserves the right to reject any bid or waive any minor irregularity in bids received. A written award mailed (or otherwise furnished) to the successful Bidder shall be deemed to result in a binding contract without further action by either party.

7. Down Payment (1/11)

The Bidder to whom award is made must make a down payment within 21 days of the sale award. The amount of the down payment will be calculated as shown in the Bond and Payment Schedule of this prospectus. Only cash may be used to meet this requirement.

8. Performance Security (1/11)

As guarantee of faithful performance, a cash bond, certificate of deposit, surety bond or irrevocable letter of credit (LOC) is required within 21 days of the sale award. The amount of the performance security is shown in the Bond and

Payment Schedule of this prospectus. If an LOC or surety is used, the coverage must extend for at least 6 months beyond the contract expiration.

9. Timber Sale Contract (11/17)

Additional conditions and requirements common to all timber sales are listed on the timber sale contract (R4031) and are available on line at www.michigan.gov/timber. Contact the Unit Manager for additional information or a sample contract. Within 21 days of the date of the award letter, the bidder must sign the contract and provide the required down payment, performance security, and verification of worker's disability compensation. The down payment and performance security shall be in accordance with the provisions of the timber sale contract, in the sums stated in this prospectus. If these actions are not taken, then the Bidder, the Bidder's corporation, and the corporation's principals may not be permitted to bid on State timber sales for a period of 1 year. In addition, the Bidder certifies that if awarded this contract, the Bidder will complete the timber sale contract in accordance with its terms and any modifications thereof including requirements to purchase, cut, and remove the included timber by the expiration date.

Payment Unit values in the State Forest Timber Sale Contract are calculated based on the advertised value of the Payment Unit as a percentage of the total advertised value of the contract. The advertised value of each Payment Unit is given in the Description of Timber by Payment Unit table on the Timber Sale Information page. For example, if the value of Payment Unit 1 is advertised as \$1,500 and the total Timber Sale value is advertised as \$10,000, the contract price for Payment Unit 1 will be 15% of the total bid price ($\$1,500/\$10,000 * 100$).

10. Disclaimer of Estimates and Bidder's Warranty of Inspection (7/16)

Before submitting this bid, the Bidder is advised and cautioned to inspect the sale area, review the requirements of the sale contract, and take other steps as may be reasonably necessary to ascertain the location, estimated volumes, construction estimates, and operating costs of the proposed sale. Failure to do so will not relieve the Bidder from responsibility for completing the contract.

The Bidder warrants that this bid is submitted solely on the basis of the Bidder's examination and inspection of the quality and quantity of the timber offered for sale and the Bidder's opinion of the value thereof and the costs of recovery. No reliance should be placed on the State of Michigan's estimates of timber quality, quantity or costs of recovery. Bidder further acknowledges that the State of Michigan: (i) expressly disclaims any warranty of fitness of timber for any purpose; (ii) offers this timber as is without any warranty of quality (merchantability) or quantity and (iii) expressly disclaims any warranty as to the quantity or quality of timber sold.

11. Certification and Chain-of-Custody (10/14)

Unless otherwise indicated in the contract under section 7 – Other Conditions of the Sale Specific Conditions & Requirements, the area encompassed by this timber sale is certified to the standards of the Forest Stewardship Council (FSC) - Certificate #SCS-FM/COC-00090N and the Sustainable Forestry Initiative (SFI) - Certificate # NSF-SFIS-5Y031-SF5. Forest products from this sale may be delivered to the mill as "FSC 100% and / or SFI certified" as long as the contractor hauling the forest products is chain-of-custody (COC) certified or covered under a COC certificate from the destination mill. The purchaser is responsible for maintaining COC after leaving the sale area.

12. Good Neighbor Authority (GNA) Requirements (7/16)

If the name of this timber sales contains the acronym GNA, it is authorized by the Good Neighbor Authority (GNA) and covered by various agreements between the U.S. Forest Service and the State. The timber sale occurs on federal land and the following conditions apply:

GNA contracts on US Forest Service land will not be awarded to purchasers on the Federal list of excluded parties. The System for Award Management (SAM) will be checked for active excluded parties prior to award of contract. In addition, the Bidder to whom award is made must complete an Assurance Regarding Felony Conviction or Tax Delinquent Status for Corporate Applicants (AD-3031).

13. Good Neighbor Authority (GNA) Requirements, con't (9/16)

Bidder certifies, by signing this bid form, that to the best of Bidder's knowledge that the following representations are accurate and complete.

a. That the Bidder and its principals are not presently debarred, suspended, proposed for debarment, declared ineligible, or voluntary excluded from timber sales (covered transactions) by any Federal department or agency.

b. That the Bidder and its principals have not within a 3-year period preceding this bid been convicted of or had a civil judgment rendered against them for commission of fraud or a criminal offense in connection with obtaining, attempting to obtain, or performing a public (Federal, State, or local) transaction or contract under a public transaction; violation of Federal or State antitrust statutes or commission of embezzlement, theft, forgery, bribery, falsification or destruction of records, making false statements, or receiving stolen property.

c. That the Bidder and its principals are not presently indicted for or otherwise criminally or civilly charged by a governmental entity (Federal, State, or local) with commission of any of the offenses enumerated in paragraph b of this certification.

d. That the Bidder and its principals have not within a 3-year period preceding this bid had one or more public transactions (Federal, State, or local) terminated for breach or default of a timber or forest product contract.

Bidders that cannot certify this requirement, in whole or in part, shall submit an explanation with their bid.

KEITH CREAGH

Director

TIMBER SALE INFORMATION

Cell Phone Buck (12-051-18)

Iron County (Advertised Price \$64,852.35)

SALE NOTE: Payment Unit 5 must be harvested and skid in frozen ground conditions only. See spec 5.2.3.1.

Harvesting and skidding operations are not permitted in Payment Units 1, 2, and 4 during April 15 - July 15, due to bark slip. See spec 5.2.3.3.

If the snowmobile trail is used for hauling then a snow covered base must remain on the trail. In addition, no decking will be permitted along the snowmobile trail during the snowmobile season. See spec 5.2.41.

Signs warning of logging activity must be provided by the Purchaser if the snowmobile trail is used during the snowmobile season. See spec 6.2.2.

A recreation site such as a trail, pathway, or campground is within the sale area or the vicinity. Certain restrictions/specifications may be applicable including time restrictions. Access may be through private land.

A timber sale contract for this lump sum, sealed bid timber sale will be awarded to the responsible bidder offering the highest sealed bid price. Bids must be at or above the following advertised price for each species:

<u>PRODUCTS & SPECIES</u>	<u>ESTIMATED UNITS*</u>	<u>ADVERTISED PRICE</u>
Sawtimber		
Basswood	28.50 MBF	\$ 236.00 / MBF
Red Maple	22.00 MBF	\$ 187.00 / MBF
Sugar Maple	11.70 MBF	\$ 452.00 / MBF
White Ash	9.60 MBF	\$ 95.00 / MBF
Yellow Birch	4.10 MBF	\$ 158.00 / MBF
Pulpwood		
Balsam Fir	49.00 Cords	\$ 20.50 / Cord
Basswood	77.00 Cords	\$ 11.70 / Cord
Mixed Aspen	416.00 Cords	\$ 36.85 / Cord
Mixed Hardwood	856.00 Cords	\$ 24.40 / Cord
Mixed Spruce	236.00 Cords	\$ 24.65 / Cord
Tamarack	251.00 Cords	\$ 12.85 / Cord

* The total volume is statistically estimated within plus (+) or minus (-) 8.11 percent. The estimated units are final and not subject to adjustment. Prospective bidders are urged to examine this timber and to make their own estimates of quantity and quality.

BOND AND PAYMENT SCHEDULE:

1. A bond in the amount of \$4,000.00 to insure faithful performance of the conditions of the contract will be deposited by the successful bidder within 21 days of the sale award.
2. Cutting in any sale or unit without the required advance payment would be considered a trespass.
3. Total payment must be paid in advance or according to the following schedule:
 - (a) Ten percent (10%) of the sale value must be paid within 21 days of the sale award.
 - (b) The 10% down payment will be credited towards the first unit cut.
 - (c) Payment for each of the following units must be made before cutting begins in that unit:

<u>PAYMENT UNIT NUMBER</u>	<u>PERCENT OF TOTAL SALE VALUE</u>
01	21.3%
02	13.8%
03	9.2%
04	16.9%
05	13.3%
06	25.5%

4. If no cutting takes place, the 10% down payment will not be refunded.
5. Operations on the contract issued will terminate on 06/30/2021.

Description of Timber by Payment Unit (PU)

PU	MARKET GROUP	PRODUCT	QUANTITY	UNIT	ACRES	ADVERTISE PRICE					
1	Basswood Red Maple Sugar Maple White Ash Yellow Birch Basswood Mixed Aspen <i>Balsam Poplar</i> <i>Quaking Aspen</i> Mixed Hardwood <i>Red Maple</i> <i>Sugar Maple</i> <i>White Ash</i> <i>Yellow Birch</i>	Sawtimber	17.3	MBF	32.8	\$13,821.65					
			4.8	MBF							
			6.6	MBF							
			5.8	MBF							
			2.5	MBF							
		Pulpwood	45.0	Cords							
			23.0	Cords							
			4.0	<i>Cords</i>							
			19.0	<i>Cords</i>							
			145.0	Cords							
			28.0	<i>Cords</i>							
			68.0	<i>Cords</i>							
			18.0	<i>Cords</i>							
			31.0	<i>Cords</i>							
			2	Basswood Red Maple Sugar Maple White Ash Yellow Birch Basswood Mixed Aspen <i>Balsam Poplar</i> <i>Quaking Aspen</i> Mixed Hardwood <i>Red Maple</i> <i>Sugar Maple</i> <i>White Ash</i> <i>Yellow Birch</i>	Sawtimber	11.2	MBF	21.1	\$8,929.10		
3.1	MBF										
4.3	MBF										
3.8	MBF										
1.6	MBF										
Pulpwood	29.0	Cords									
	14.0	Cords									
	2.0	<i>Cords</i>									
	12.0	<i>Cords</i>									
	94.0	Cords									
	18.0	<i>Cords</i>									
	44.0	<i>Cords</i>									
	12.0	<i>Cords</i>									
	20.0	<i>Cords</i>									
	3	Balsam Fir Mixed Aspen <i>Balsam Poplar</i> <i>Quaking Aspen</i> Mixed Hardwood <i>Paper Birch</i> <i>Red Maple</i> <i>Yellow Birch</i> Mixed Spruce <i>White Spruce</i>			Pulpwood	14.0	Cords	8.8	\$5,959.60		
93.0			Cords								
3.0			<i>Cords</i>								
90.0			<i>Cords</i>								
89.0			Cords								
5.0			<i>Cords</i>								
83.0			<i>Cords</i>								
1.0			<i>Cords</i>								
3.0			Cords								
3.0			<i>Cords</i>								
4			Red Maple Sugar Maple Balsam Fir Mixed Aspen <i>Quaking Aspen</i> Mixed Hardwood <i>Red Maple</i> <i>Sugar Maple</i> <i>Yellow Birch</i>	Sawtimber		14.1	MBF			27.2	\$10,952.85
						0.8	MBF				
	Pulpwood	31.0		Cords							
		45.0		Cords							
		45.0		<i>Cords</i>							
		232.0		Cords							
		199.0		<i>Cords</i>							
		21.0		<i>Cords</i>							
		12.0		<i>Cords</i>							
		5		Mixed Spruce <i>Black Spruce</i> Tamarack	Pulpwood	218.0	Cords	14.7	\$8,599.05		
218.0	<i>Cords</i>										
251.0	Cords										
6	Balsam Fir Basswood Mixed Aspen <i>Balsam Poplar</i> <i>Quaking Aspen</i> Mixed Hardwood	Pulpwood	4.0	Cords	21.1	\$16,590.10					
			3.0	Cords							
			241.0	Cords							
			9.0	<i>Cords</i>							
			232.0	<i>Cords</i>							
			296.0	Cords							

Description of Timber by Payment Unit (PU), con't

PU	MARKET GROUP	PRODUCT	QUANTITY	UNIT	ACRES	ADVERTISE PRICE
6 con't	<i>Paper Birch</i>	<i>Pulpwood</i>	5.0	<i>Cords</i>		
	<i>Red Maple</i>		247.0	<i>Cords</i>		
	<i>Sugar Maple</i>		44.0	<i>Cords</i>		
	Mixed Spruce		15.0	Cords		
	<i>White Spruce</i>		15.0	<i>Cords</i>		
TOTAL:			75.9	MBF		
TOTAL:			1,885.0	Cords		

Sale Specific Conditions & Requirements

Sale Name: Cell Phone Buck

Sale Number: 12-051-18 Seq#: 1

1 - Sale Area

1.2 - Boundaries

1.2.1 - Painted boundaries (1/14)

The sale boundary and Payment Unit boundaries are marked and identified by blue and red paint. Timber sale boundary lines against private property are marked with blue paint. Sale boundary lines against state land are marked with double red paint dots. Interior Payment Unit boundaries are marked with double red paint slashes.

2 - Timber Specifications

2.1 - Included Timber

2.1.1 - Clearcut unit(s) with unmerchantable trees (6/14)

Within Payment Unit(s) 3 and 5, cut all aspen and maple trees that are two (2) inches or more at DBH. In addition, cut all birch, basswood, balm, spruce, balsam, tamarack and jack pine which meet minimum piece specifications in 2.2 - Utilization.

Within Payment Unit 6, cut all aspen, maple, birch, basswood, balm, spruce, balsam, tamarack and jack pine which meet minimum piece specifications in 2.2 - Utilization.

2.1.3 - Cut tree marked unit(s) (12/08)

Within Payment Unit(s) 1, 2 and 4, all trees are designated for cutting when marked with orange paint above and below stump height, regardless of merchantability.

2.2 - Utilization

2.2.11 - Chipping restriction (9/14)

If chipping occurs on this sale, then no woody debris present on the ground at the start of the sale may be chipped. In addition, brush or chips may not be stored or stockpiled on-site for more than 60 days past the sale expiration date. Residual chip depth at the landing may not exceed 4 inches.

2.3 - Log Rule

2.3.1 - Log rule (12/08)

All board foot volumes of sawlog size products in this contract have been determined by the Scribner Decimal C Log Rule.

3 - Payments

3.4 - Damaged Timber

3.4.1 - Damaged timber (6/14)

General Condition and Requirement 3.4 Damaged Timber, defines liquidated damages for undesignated live merchantable trees which are cut or injured. In addition, extreme care should be taken to avoid damage to cherry seedlings and saplings.

4 - Transportation

4.1 - Construction

4.1.3 - Slash and earthen piles (8/04)

Piles or windrows of earth along roads and landings that have been widened or constructed shall be leveled. Slash from road maintenance or construction, including stumps, shall be removed at least ten feet from the edge of the road and not left in piles.

4.1.6 - Road construction (1/09)

Improvements of existing roads shall be done in such a way as to minimize the environmental and visual impacts. Merchantable trees shall be cut and utilized unless otherwise directed. Non-merchantable trees shall be severed and laid flat on the ground. Slash shall be scattered, and not left in windrows. Stumps shall be set upright, not left on edge, and be moved at least 10 feet away from the road edge. Disturbed soil shall be feathered into the woods and not left in berms or windrows.

4.1.7 - Road closure (10/11)

All new roads built into the sale must be blocked to vehicle traffic within 60 days of the sale expiration. Overgrown roads that are reopened shall be considered new roads. In general, this will require constructing a four foot high berm of stumps and logs covered with dirt. Contact the sale administrator for specific design and placement.

5 - Operations

5.2 - Conduct of Operations

5.2.1 - Slash

5.2.1.8 - Slash height (12/08)

No slash or tree tops may exceed 36 inches in height.

5.2.3 - Operating Restrictions

5.2.3.1 - Operating restrictions (9/11)

Within Payment Unit(s) 5, unless changed by written agreement, cutting and skidding are only permitted during frozen conditions. This restriction is because both the Payment Unit and access are very wet.

5.2.3.3 - Bark slippage restriction (3/09)

Within Payment Unit(s) 1, 2 and 4, unless changed by written agreement, cutting and skidding are not permitted during the period of April 15 to July 15. This restriction is because of bark slippage.

5.2.38 - No decking against live trees (2/04)

Cut products may not be decked against unmarked or designated leave trees.

5.2.41 - Snowmobile trail protection (9/11)

The trail road to access Payment units 4 and 6 is a snowmobile trail and is shown on the Timber Sale Map. Do not cut or damage posts with orange trail markers or traffic control signs. The road must be maintained and restored to a condition equal to or better than before the sale; this maintenance/restoration must be done prior to December 1. If hauling during the snowmobile season, then a snow covered base must be left on the trail. Maintain a 20 foot wide slash, debris, and rut free zone daily using the snowmobile trail as the centerline. No decking of forest products will be permitted along the snowmobile trail during the snowmobile season.

5.4 - Soil Protection

5.4.1 - Rutting restriction, general (7/16)

Operations are to cease immediately if equipment and weather conditions result in rutting of roads and/or skid trails which is 12 inches or greater in depth and 50 feet in length. The Unit Manager or his/her representative may restrict hauling and/or skidding if ruts exceed the specified depth. With the Unit Manager or his/her representative's approval, the Purchaser may return to the area when the risk of rutting has decreased.

5.8 - Protection of Endangered Species

5.8.5 - Protection of raptor nests (3/13)

All trees with raptor nests will be protected if found during harvesting operations. Notification will be made to the Unit Manager or his/her representative who will notify the Wildlife Biologist so an on-site evaluation and recommendation can be made, if necessary.

6 - Safety and Fire Prevention

6.2 - Signing

6.2.2 - Snowmobile trail posting (8/09)

The Purchaser is responsible for posting and maintaining caution signs on the snowmobile trail prior to beginning operations during the snowmobile season (approximately December 1 to March 31). The trail must be posted at appropriate distances from the sale area to warn of logging activity and truck traffic. Signs must be removed when harvest operations are suspended or completed. The Purchaser will provide these signs.



TIMBER SALE MAP

This information provided by authority of Part 525, 1994 PA 451, as amended.

Forest Management Unit Crystal Falls	County Iron	Mapped By Scott Sebero	Date 11/30/17	Page 1	of 1
Township 44N 43N	Range 32W	Section(s) and Subdivision(s) 34 S1/2NE,N1/2SE,SESW 3 N1/2NE,E1/2NW,N1/2SE,SESE,SWNE	Scale 1:15,840		

Cover Type

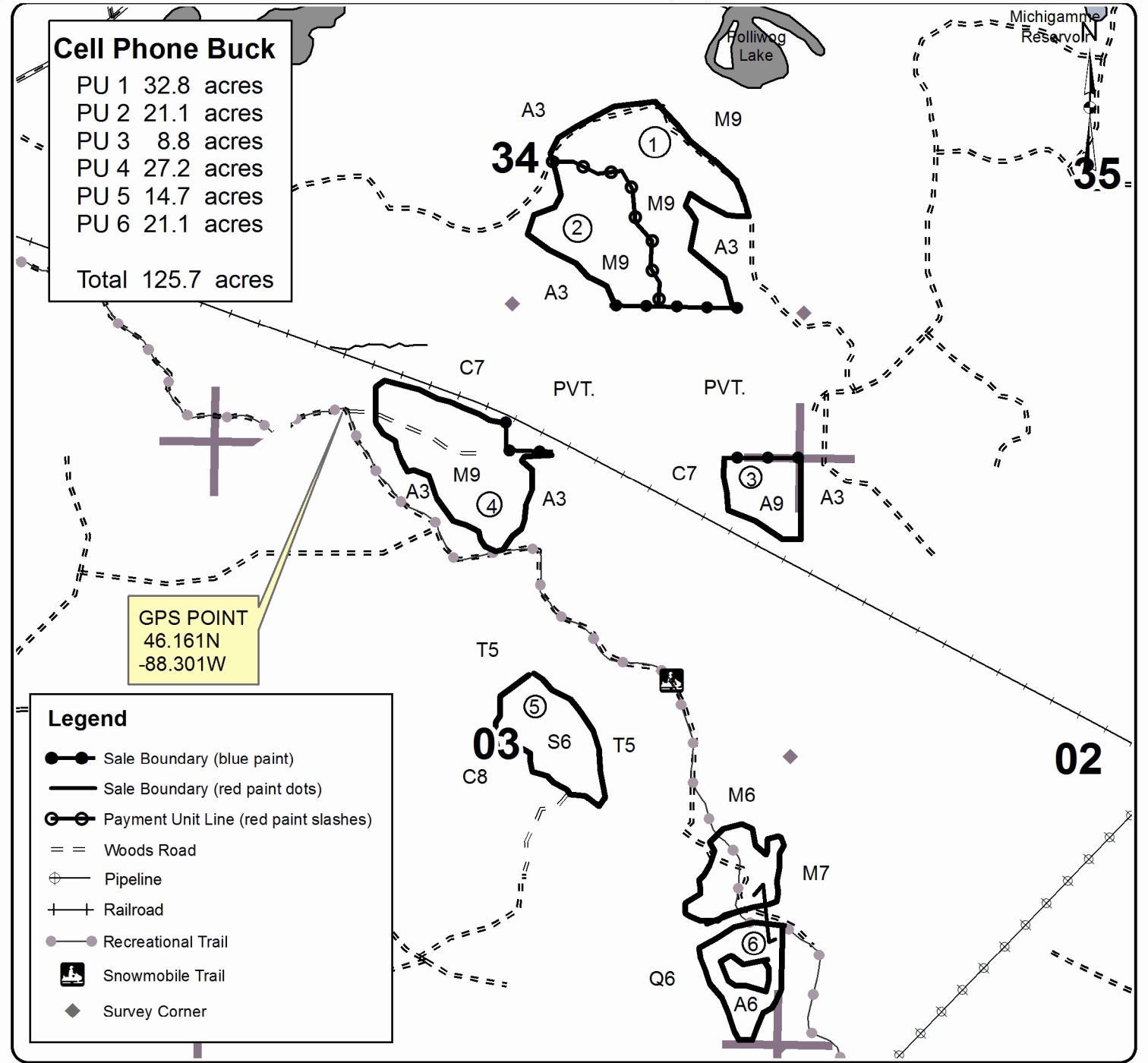
A = Aspen	H = Hemlock	N = Marsh	U = Upland Brush
B = Paper Birch	J = Jack Pine	O = Oak	UM = Upland Mixed
C = Cedar	L = Lowland Brush	P = Lowland Poplar	V = Bog or Marsh
D = Tread Bog	LM = Lowland Mixed	Q = Mixed Swamp Conifer	W = White Pine
E = Swamp Hdwoods	M = Mpl, Bch, Brch	R = Red Pine	X = Non Stocked
F = Spruce Fir	MC = Mixed Conifer	S = Black Spruce	Z = Water
G = Grass	MD = Mixed Deciduous	T = Tamarack	

Density

0 = Non Stocked	5 = Pole Timber Medium
1 = Seedling Sapling Poor	6 = Pole Timber Well
2 = Seedling Sapling Medium	7 = Saw Timber Poor
3 = Seedling Sapling Well	8 = Saw Timber Medium
4 = Pole Timber Poor	9 = Saw Timber Well

Cell Phone Buck

- PU 1 32.8 acres
- PU 2 21.1 acres
- PU 3 8.8 acres
- PU 4 27.2 acres
- PU 5 14.7 acres
- PU 6 21.1 acres
- Total 125.7 acres**



Legend

- Sale Boundary (blue paint)
- Sale Boundary (red paint dots)
- Payment Unit Line (red paint slashes)
- Woods Road
- Pipeline
- Railroad
- Recreational Trail
- Snowmobile Trail
- Survey Corner

TIMBER SALE INFORMATION

Camp 6 Mix (12-052-18)

Iron County (Advertised Price \$71,361.55)

SALE NOTE: A recreation site such as a trail, pathway, or campground is within the sale area or the vicinity. Certain restrictions/specifications may be applicable including time restrictions.

A timber sale contract for this lump sum, sealed bid timber sale will be awarded to the responsible bidder offering the highest sealed bid price. Bids must be at or above the following advertised price for each species:

<u>PRODUCTS & SPECIES</u>	<u>ESTIMATED UNITS*</u>	<u>ADVERTISED PRICE</u>
Sawtimber		
Red Pine	15.90 MBF	\$ 135.00 / MBF
Pulpwood		
Balsam Fir	25.00 Cords	\$ 20.50 / Cord
Jack Pine	11.00 Cords	\$ 42.25 / Cord
Mixed Hardwood	91.00 Cords	\$ 24.40 / Cord
Mixed Spruce	258.00 Cords	\$ 24.65 / Cord
Quaking Aspen	1,513.00 Cords	\$ 36.85 / Cord
Red Pine	31.00 Cords	\$ 56.70 / Cord
Tamarack	167.00 Cords	\$ 12.85 / Cord

* The total volume is statistically estimated within plus (+) or minus (-) 8.33 percent. The estimated units are final and not subject to adjustment. Prospective bidders are urged to examine this timber and to make their own estimates of quantity and quality.

BOND AND PAYMENT SCHEDULE:

1. A bond in the amount of \$4,000.00 to insure faithful performance of the conditions of the contract will be deposited by the successful bidder within 21 days of the sale award.
2. Cutting in any sale or unit without the required advance payment would be considered a trespass.
3. Total payment must be paid in advance or according to the following schedule:
 - (a) Ten percent (10%) of the sale value must be paid within 21 days of the sale award.
 - (b) The 10% down payment will be credited towards the first unit cut.
 - (c) Payment for each of the following units must be made before cutting begins in that unit:

<u>PAYMENT UNIT NUMBER</u>	<u>PERCENT OF TOTAL SALE VALUE</u>
01	6.2%
02	9.1%
03	19.1%
04	23.7%
05	20.3%
06	21.6%
4. If no cutting takes place, the 10% down payment will not be refunded.
5. Operations on the contract issued will terminate on 06/30/2021.

Description of Timber by Payment Unit (PU)

PU	MARKET GROUP	PRODUCT	QUANTITY	UNIT	ACRES	ADVERTISE PRICE
1	Red Pine	Sawtimber	15.9	MBF	5.5	\$4,411.50
	Balsam Fir	Pulpwood	3.0	Cords		
	Mixed Spruce		16.0	Cords		
	<i>White Spruce</i>		16.0	<i>Cords</i>		
	Red Pine		31.0	Cords		
	Tamarack		4.0	Cords		
	2	Balsam Fir	Pulpwood	16.0		
Mixed Hardwood			47.0	Cords		
<i>Paper Birch</i>			19.0	<i>Cords</i>		
<i>Red Maple</i>			28.0	<i>Cords</i>		
Mixed Spruce			93.0	Cords		
<i>Black Spruce</i>			84.0	<i>Cords</i>		
<i>White Spruce</i>			9.0	<i>Cords</i>		
Quaking Aspen			51.0	Cords		
Tamarack			68.0	Cords		
3		Jack Pine	Pulpwood	1.0	Cords	29.8
	Mixed Hardwood		1.0	Cords		
	<i>Red Maple</i>		1.0	<i>Cords</i>		
	Mixed Spruce		115.0	Cords		
	<i>Black Spruce</i>		115.0	<i>Cords</i>		
	Quaking Aspen		258.0	Cords		
	Tamarack		95.0	Cords		
4	Jack Pine	Pulpwood	1.0	Cords	37.8	\$16,884.70
	Mixed Hardwood		3.0	Cords		
	<i>Red Maple</i>		3.0	<i>Cords</i>		
	Mixed Spruce		30.0	Cords		
	<i>Black Spruce</i>		30.0	<i>Cords</i>		
	Quaking Aspen		435.0	Cords		
5	Balsam Fir	Pulpwood	3.0	Cords	24.1	\$14,488.45
	Jack Pine		4.0	Cords		
	Mixed Hardwood		19.0	Cords		
	<i>Red Maple</i>		19.0	<i>Cords</i>		
	Mixed Spruce		2.0	Cords		
	<i>White Spruce</i>		2.0	<i>Cords</i>		
	Quaking Aspen		373.0	Cords		
6	Balsam Fir	Pulpwood	3.0	Cords	25.6	\$15,427.05
	Jack Pine		5.0	Cords		
	Mixed Hardwood		21.0	Cords		
	<i>Red Maple</i>		21.0	<i>Cords</i>		
	Mixed Spruce		2.0	Cords		
	<i>White Spruce</i>		2.0	<i>Cords</i>		
	Quaking Aspen		396.0	Cords		
TOTAL:			15.9	MBF		
TOTAL:			2,096.0	Cords		

Sale Specific Conditions & Requirements

Sale Name: Camp 6 Mix

Sale Number: 12-052-18 Seq#: 1

1 - Sale Area

1.2 - Boundaries

1.2.1 - Painted boundaries (1/14)

Timber sale boundary lines against private property are marked with blue paint. Sale boundary lines against state land are marked with double red paint dots. Interior Payment Unit boundaries are marked with double red paint slashes.

2 - Timber Specifications

2.1 - Included Timber

2.1.1 - Clearcut unit(s) with unmerchantable trees (6/14)

Within Payment Unit(s) 2, 3, 4, 5 and 6, cut all trees that are two (2) inches or more at DBH, except do not cut red pine, white pine, oak, hemlock or cedar.

Within Payment Unit 1, cut all trees that are two (2) inches or more at DBH, except do not cut hemlock, cedar or oak. In addition, do not cut any red pine and white pine marked with green paint.

2.2 - Utilization

2.2.10 - No chipping tops and limbs (8/16)

Within Payment Unit(s) 1-6, chipping of the bole, 2-inches in diameter or greater, is allowed. Chipping of limbs or portions of the tree less than 2-inches in diameter is not permitted. Limbs and the remaining top must be left on site and scattered.

2.3 - Log Rule

2.3.1 - Log rule (12/08)

All board foot volumes of sawlog size products in this contract have been determined by the Scribner Decimal C Log Rule to a 10" top.

4 - Transportation

4.1 - Construction

4.1.3 - Slash and earthen piles (8/04)

Piles or windrows of earth along roads and landings that have been widened or constructed shall be leveled. Slash from road maintenance or construction, including stumps, shall be removed at least ten feet from the edge of the road and not left in piles.

4.1.6 - Road construction (1/09)

Improvements of existing roads shall be done in such a way as to minimize the environmental and visual impacts. Merchantable trees shall be cut and utilized unless otherwise directed. Non-merchantable trees shall be severed and laid flat on the ground. Slash shall be scattered, and not left in windrows. Stumps shall be set upright, not left on edge, and be moved at least 10 feet away from the road edge. Disturbed soil shall be feathered into the woods and not left in berms or windrows.

4.1.7 - Road closure (10/11)

All new roads built into the sale must be blocked to vehicle traffic within 60 days of the sale expiration. Overgrown roads that are reopened shall be considered new roads. In general, this will require constructing a four foot high berm of stumps and logs covered with dirt. Contact the sale administrator for specific design and placement.

5 - Operations

5.2 - Conduct of Operations

5.2.1 - Slash

5.2.1.8 - Slash height (12/08)

No slash or tree tops may exceed 36 inches in height.

5.2.3 - Operating Restrictions

5.2.3.1 - Operating restrictions (9/11)

Within Payment Unit(s) 3, 4, 5 & 6, unless changed by written agreement, cutting is limited to frozen conditions. This restriction is because tops are to be used to provide feed for deer.

5.2.38 - No decking against live trees (2/04)

Cut products may not be decked against unmarked or designated leave trees.

5.2.41 - Snowmobile trail protection (9/11)

The trail road is a snowmobile trail and is shown on the Timber Sale Map. Do not cut or damage posts with orange trail markers or traffic control signs. The road must be maintained and restored to a condition equal to or better than before the sale. The road maintenance/restoration must be done prior to December 1. If the trail road is to be used for hauling during the snowmobile season, then a snow covered base must be left on the trail. Maintain a 20 foot wide slash, debris, and rut free zone daily using the snowmobile trail as the centerline. No decking of forest products will be permitted along the snowmobile trail during the snowmobile season.

5.4 - Soil Protection

5.4.1 - Rutting restriction, general (7/16)

Operations are to cease immediately if equipment and weather conditions result in rutting of roads and/or skid trails which is 12 inches or greater in depth and 50 feet in length. The Unit Manager or his/her representative may restrict hauling and/or skidding if ruts exceed the specified depth. With the Unit Manager or his/her representative's approval, the Purchaser may return to the area when the risk of rutting has decreased.

5.8 - Protection of Endangered Species

5.8.5 - Protection of raptor nests (3/13)

All trees with raptor nests will be protected if found during harvesting operations. Notification will be made to the Unit Manager or his/her representative who will notify the Wildlife Biologist so an on-site evaluation and recommendation can be made, if necessary.

6 - Safety and Fire Prevention

6.2 - Signing

6.2.2 - Snowmobile trail posting (8/09)

The Purchaser is responsible for posting and maintaining caution signs on the snowmobile trail prior to beginning operations during the snowmobile season (approximately December 1 to March 31). The trail must be posted at appropriate distances from the sale area to warn of logging activity and truck traffic. Signs must be removed when harvest operations are suspended or completed. The Purchaser will provide these signs.

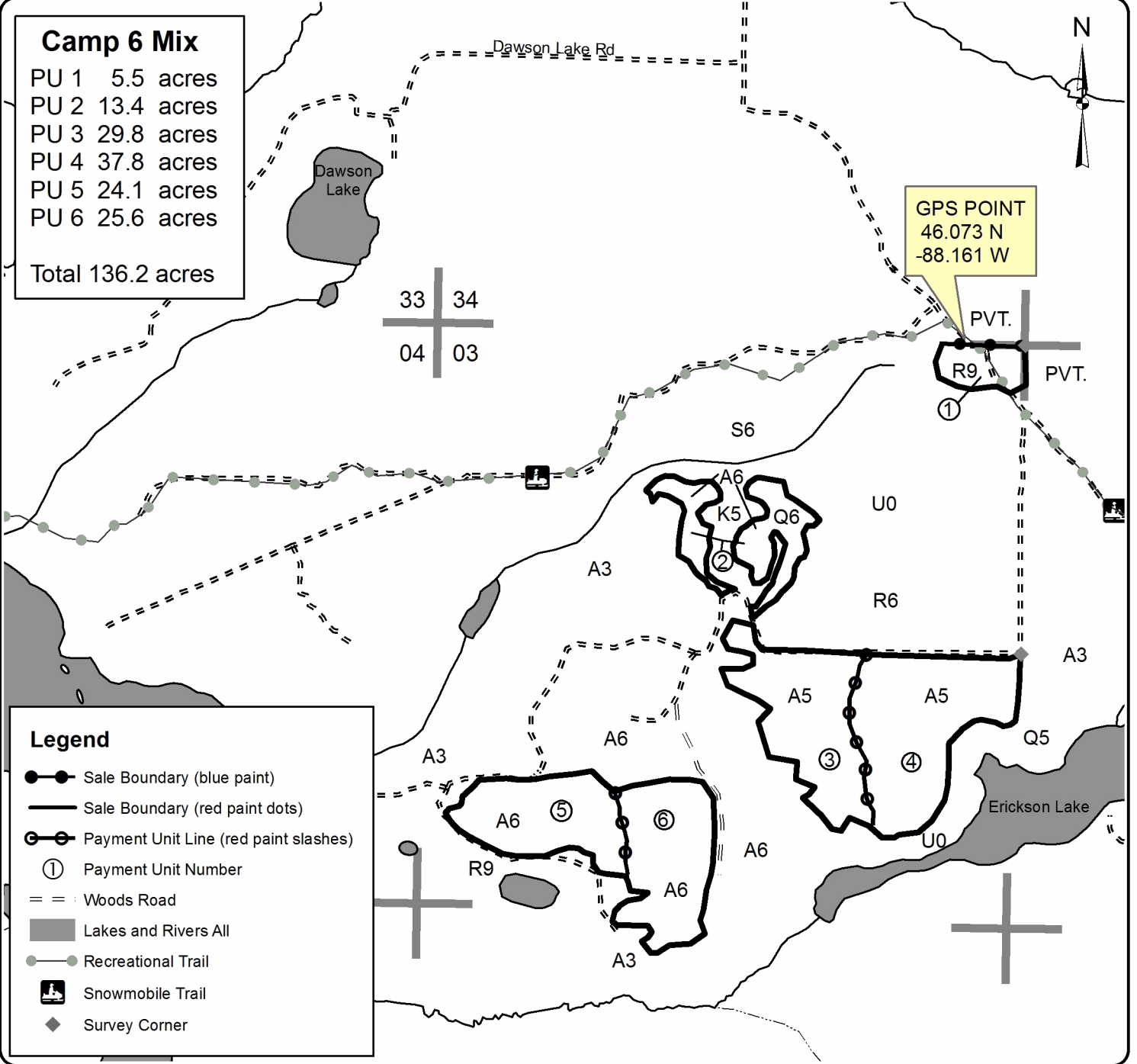


TIMBER SALE MAP

This information provided by authority of Part 525, 1994 PA 451, as amended.

Forest Management Unit Crystal Falls	County Iron	Mapped By Scott Sebero	Date 01/16/2018	Page 1	of 1
Township 42N	Range 31W	Section(s) and Subdivision(s) 2 NWSW 10 NENW 3 SE1/4,S1/2SW,NENE,SWNE,SENW	Scale 1:15,840		

Cover Type				Density			
A = Aspen	H = Hemlock	N = Marsh	U = Upland Brush	0 = Non Stocked	5 = Pole Timber Medium		
B = Paper Birch	J = Jack Pine	O = Oak	UM = Upland Mixed	1 = Seedling Sapling Poor	6 = Pole Timber Well		
C = Cedar	L = Lowland Brush	P = Lowland Poplar	V = Bog or Marsh	2 = Seedling Sapling Medium	7 = Saw Timber Poor		
D = Tread Bog	LM = Lowland Mixed	Q = Mixed Swamp Conifer	W = White Pine	3 = Seedling Sapling Well	8 = Saw Timber Medium		
E = Swamp Hdwoods	M = Mpl, Bch, Brch	R = Red Pine	X = Non Stocked	4 = Pole Timber Poor	9 = Saw Timber Well		
F = Spruce Fir	MC = Mixed Conifer	S = Black Spruce	Z = Water				
G = Grass	MD = Mixed Deciduous	T = Tamarack					



TIMBER SALE INFORMATION

Hemlock SBW (12-069-17)

Iron County (Advertised Price \$23,937.55)

SALE NOTE: A recreation site such as a trail, pathway, or campground is within the sale area or the vicinity. Certain restrictions/specifications may be applicable including time restrictions. Access may be through private or other public land.

A timber sale contract for this lump sum, sealed bid timber sale will be awarded to the responsible bidder offering the highest sealed bid price. Bids must be at or above the following advertised price for each species:

<u>PRODUCTS & SPECIES</u>	<u>ESTIMATED UNITS*</u>	<u>ADVERTISED PRICE</u>
Pulpwood		
Balsam Fir	297.00 Cords	\$ 13.65 / Cord
Quaking Aspen	610.00 Cords	\$ 24.55 / Cord
Red Maple	180.00 Cords	\$ 16.30 / Cord
White Spruce	120.00 Cords	\$ 16.45 / Cord

* The total volume is statistically estimated within plus (+) or minus (-) 12.20 percent. The estimated units are final and not subject to adjustment. Prospective bidders are urged to examine this timber and to make their own estimates of quantity and quality.

BOND AND PAYMENT SCHEDULE:

- A bond in the amount of \$1,300.00 to insure faithful performance of the conditions of the contract will be deposited by the successful bidder within 21 days of the sale award.
- Cutting in any sale or unit without the required advance payment would be considered a trespass.
- Total payment must be paid in advance or according to the following schedule:
 - Ten percent (10%) of the sale value must be paid within 21 days of the sale award.
 - The 10% down payment will be credited towards the first unit cut.
 - Payment for each of the following units must be made before cutting begins in that unit:

<u>PAYMENT UNIT NUMBER</u>	<u>PERCENT OF TOTAL SALE VALUE</u>
01	28.2%
02	8.0%
03	24.9%
04	38.9%
- If no cutting takes place, the 10% down payment will not be refunded.
- Operations on the contract issued will terminate on 06/30/2021.

Description of Timber by Payment Unit (PU)

<u>PU</u>	<u>MARKET GROUP</u>	<u>PRODUCT</u>	<u>QUANTITY</u>	<u>UNIT</u>	<u>ACRES</u>	<u>ADVERTISE PRICE</u>
1	Balsam Fir Quaking Aspen Red Maple White Spruce	Pulpwood	93.0 175.0 53.0 20.0	Cords Cords Cords Cords	24.9	\$6,758.60
2	Balsam Fir Quaking Aspen White Spruce	Pulpwood	55.0 13.0 51.0	Cords Cords Cords	12.6	\$1,908.85
3	Balsam Fir Quaking Aspen Red Maple White Spruce	Pulpwood	45.0 157.0 73.0 19.0	Cords Cords Cords Cords	18.8	\$5,971.05
4	Balsam Fir Quaking Aspen Red Maple White Spruce	Pulpwood	104.0 265.0 54.0 30.0	Cords Cords Cords Cords	46.1	\$9,299.05
TOTAL:			1,207.0	Cords		

Sale Specific Conditions & Requirements

Sale Name: Hemlock SBW

Sale Number: 12-069-17 Seq#: 1

1 - Sale Area

1.2 - Boundaries

1.2.1 - Painted boundaries (1/14)

Timber sale boundary lines against private property are marked with blue paint. Sale boundary lines against state land are marked with double red paint dots.

2 - Timber Specifications

2.1 - Included Timber

2.1.2 - Clearcut unit(s) w/o unmerchantable trees (8/11)

Within Payment Unit(s) 1 - 4, cut all aspen, spruce, balsam fir, tamarack, and red maple trees which meet minimum piece specifications in 2.2 Utilization (100" piece to a top diameter inside bark of 4 inches).

2.2 - Utilization

2.2.3 - Stump heights (4/07)

Stump heights within the Sale Area shall not exceed 12 inches for trees greater than 10 inches DBH and 4 inches for trees smaller than 10 inches DBH.

2.2.11 - Chipping restriction (9/14)

If chipping occurs on this sale, then no woody debris present on the ground at the start of the sale may be chipped. Chip piles must be removed within 60 days of the sale expiration. In addition, after chip pile removal, residual chip depth at the landing may not exceed 4 inches.

3 - Payments

3.4 - Damaged Timber

3.4.1 - Damaged timber (6/14)

General Condition and Requirement 3.4 Damaged Timber, defines liquidated damages for undesignated live merchantable trees which are cut or injured. Within the sale area, there are scattered areas of advanced aspen and maple regeneration. Extreme care should be taken to avoid damage to these tree seedlings and saplings.

4 - Transportation

4.1 - Construction

4.1.5 - Culverts (5/14)

Culvert may be required at natural drainage-ways. If culverts are needed in these locations, their placement will be specified by the sale administrator and shall be installed prior to hauling. Potential culvert locations are shown on, but not limited to, the Timber Sale Map. The culverts shall be new, corrugated metal or plastic gauge. Culverts will be a minimum of 12 inches in diameter and 24 feet in length. It shall be the responsibility of the Purchaser to provide and install the culverts should they be required.

4.1.6 - Road construction (1/09)

Improvements of existing roads shall be done in such a way as to minimize the environmental and visual impacts. Merchantable trees shall be cut and utilized unless otherwise directed. Non-merchantable trees shall be severed and laid flat on the ground. Slash shall be scattered, and not left in windrows. Stumps shall be set upright, not left on edge, and be moved at least 5 feet away from the road edge. Disturbed soil shall be feathered into the woods and not left in berms or windrows.

4.1.7 - Road closure (10/11)

All new roads built into the sale must be blocked to vehicle traffic within 60 days of the sale expiration. Overgrown roads that are reopened shall be considered new roads. In general, this will require scattering stumps and brush in the road course. These roads must be made impassable to ORVs. Contact the sale administrator for specific design and placement.

4.1.12 - No new roads (1/12)

No new roads will be permitted into Payment Unit 2 or 3. Skid trails only will be allowed.

4.2 - Maintenance

4.2.5 - Two wheel drive condition (2/04)

All existing trail roads on and adjacent to the sale area must be passable by two-wheel drive traffic for the duration of the sale.

4.4 - Access

4.4.1 - Private property access (3/11)

Permission for access across private land is the responsibility of the Purchaser. The access to the sale crosses Molpus and Ottawa Forest Products lands. It is also the responsibility of the Purchaser to obtain any road use agreement(s) that may be required.

5 - Operations

5.2 - Conduct of Operations

5.2.1 - Slash

5.2.1.8 - Slash height (12/08)

No slash or tree tops may exceed 24 inches in height.

5.2.1.11 - Slash for reforestation (5/07)

To facilitate reforestation, the sale area shall be left with slash evenly distributed. Bunched tops within the cutting area shall be broken up and scattered. Stumps shall be cut low to the ground. Processing sites shall not be left with a compacted layer of slash; tops from these sites shall be hauled back into the cut area and scattered.

5.2.2 - Hazard Trees/Snags

5.2.2.1 - Den trees (10/16)

Obvious hollow and/or den trees shall be protected and left standing unless they are a safety hazard.

5.2.3 - Operating Restrictions

5.2.3.1 - Operating restrictions (9/11)

Within Payment Unit(s) 1 - 4, unless changed by written agreement, cutting, skidding, and hauling are not permitted from March 1 to December 1. This restriction is to avoid spring break up woods/road conditions, wet ground within the sale area, and sections of wet access road. If prolonged wet weather conditions occur throughout the operating season, the sale administrator may suspend operations until favorable weather and ground conditions are present.

5.2.38 - No decking against live trees (2/04)

Cut products may not be decked against unmarked or designated leave trees.

5.2.41 - Snowmobile trail protection (9/11)

The woods road to access the sale area is a snowmobile trail as shown on the Timber Sale Map. Do not cut or damage posts with orange trail markers or traffic control signs. Any road maintenance/restoration must be done prior to December 1. A snow covered base must be left on the trail. Maintain a 20 foot wide slash, debris, and rut free zone daily using the snowmobile trail as the centerline. No decking of forest products will be permitted along the snowmobile trail from December 1 to March 1. All stumps within 20 feet of the snowmobile trail must be cut at ground level.

5.4 - Soil Protection

5.4.1 - Rutting restriction, general (7/16)

Operations are to cease immediately if equipment and weather conditions result in rutting of roads and/or skid trails which is 12 inches or greater in depth and 50 feet in length. The Unit Manager or his/her representative may restrict hauling and/or skidding if ruts exceed the specified depth. With the Unit Manager or his/her representative's approval, the Purchaser may return to the area when the risk of rutting has decreased.

5.4.6 - Wet area protection (5/10)

No harvesting operations, including skidding and felling, are to take place within any vernal area. During harvesting, there should be no disturbance to the vernal area depression. Known vernal areas are shown on the Timber Sale Map. All equipment, trees and tops should be kept out of these areas. Within 100 feet of vernal areas, equipment should only be used when the soil is in a dry or frozen condition. Care must be taken by the Purchaser to identify and avoid operating in these areas of the timber sale.

5.8 - Protection of Endangered Species

5.8.5 - Protection of raptor nests (3/13)

All trees with raptor nests will be protected if found during harvesting operations. Notification will be made to the Unit Manager or his/her representative who will notify the Wildlife Biologist so an on-site evaluation and recommendation can be made, if necessary.

6 - Safety and Fire Prevention

6.2 - Signing

6.2.2 - Snowmobile trail posting (8/09)

The Purchaser is responsible for posting and maintaining caution signs on the snowmobile trail prior to beginning operations during the snowmobile season (approximately December 1 to March 31). The trail must be posted at either end of the access road to the sale area to warn of logging activity and truck traffic. Signs must be removed when harvest operations are suspended or completed. The Purchaser will provide these signs. Contact the sale administrator for specific placement.

7 - Other Conditions

7.5 - Loss

7.5.1 - Deteriorating timber (7/09)

The sale area has received damage from spruce budworm. The Purchaser should harvest the wood as soon as possible. The Department of Natural Resources is held free of responsibility of any further damage or deterioration due to delay in harvesting.

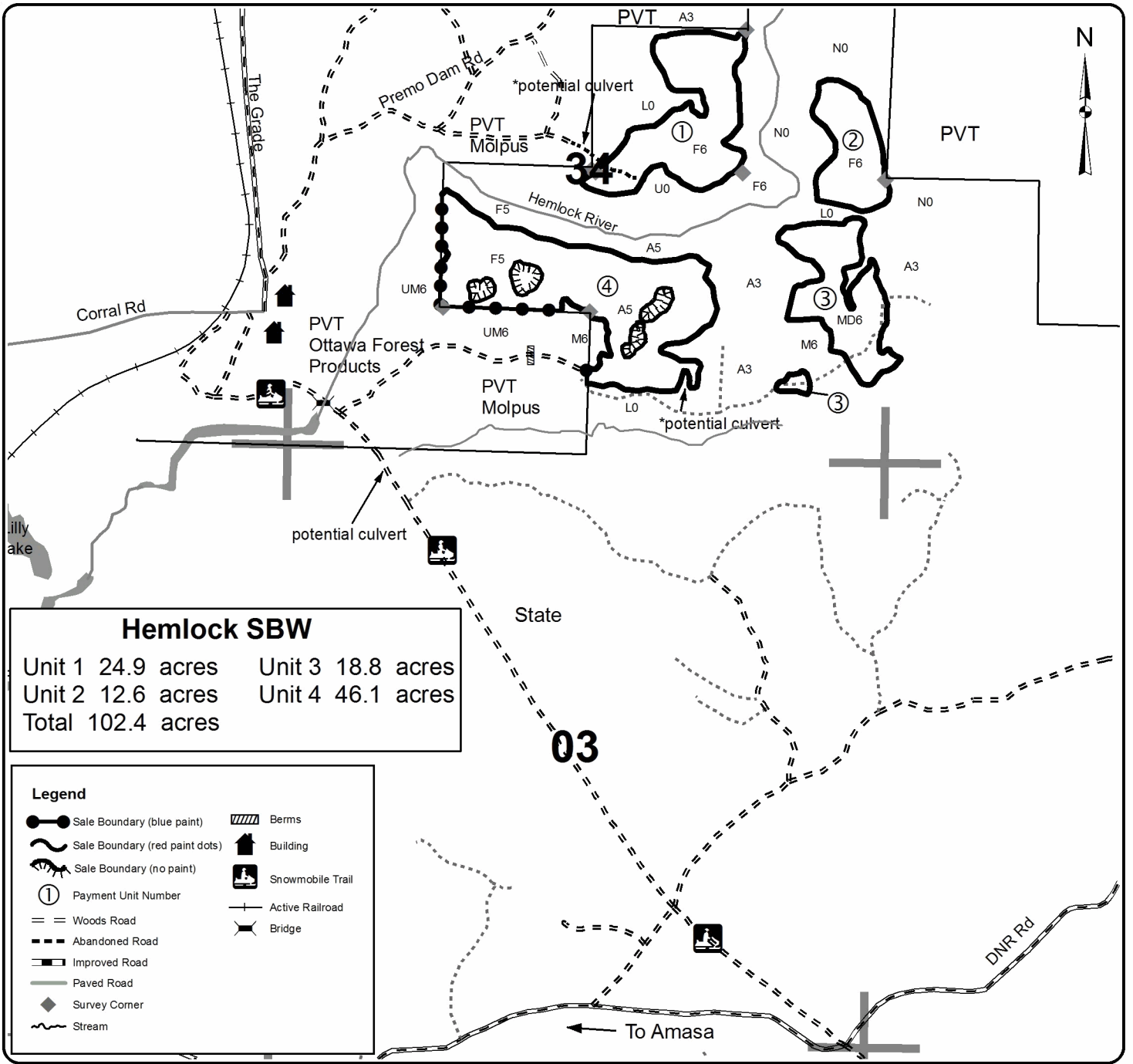


TIMBER SALE MAP

This information provided by authority of Part 525, 1994 PA 451, as amended.

Forest Management Unit Crystal Falls	County Iron	Mapped By Rice	Date 9/26/17	Page 1	of 1
Township 45N	Range 33W	Section(s) and Subdivision(s) sec 34 S1/2NE, SE1/4, NESW sec 35 W1/2SW	Scale 4 inches = 1 mile		

Cover Type				Density	
A = Aspen	H = Hemlock	N = Marsh	U = Upland Brush	0 = Non Stocked	5 = Pole Timber Medium
B = Paper Birch	J = Jack Pine	O = Oak	UM = Upland Mixed	1 = Seedling Sapling Poor	6 = Pole Timber Well
C = Cedar	L = Lowland Brush	P = Lowland Poplar	V = Bog or Marsh	2 = Seedling Sapling Medium	7 = Saw Timber Poor
D = Treed Bog	LM = Lowland Mixed	Q = Mixed Swamp Conifer	W = White Pine	3 = Seedling Sapling Well	8 = Saw Timber Medium
E = Swamp Hdwoods	M = Mpl, Bch, Brch	R = Red Pine	X = Non Stocked	4 = Pole Timber Poor	9 = Saw Timber Well
F = Spruce Fir	MC = Mixed Conifer	S = Black Spruce	Z = Water		
G = Grass	MD = Mixed Deciduous	T = Tamarack			



TIMBER SALE INFORMATION

GNA Cat Shot (12-070-17)

Iron County (Advertised Price \$141,965.35)

SALE NOTE: This is a Good Neighbor Authority (GNA) timber sale on national forest land. This timber sale was set-up and is being advertised by the Michigan DNR for the US Forest Service. The contract will be awarded and administered by the Michigan DNR. Note the additional Sale Specific Conditions & Requirements containing the acronym 'GNA'.

Access may be through other public land.

A timber sale contract for this lump sum, sealed bid timber sale will be awarded to the responsible bidder offering the highest sealed bid price. Bids must be at or above the following advertised price for each species:

<u>PRODUCTS & SPECIES</u>	<u>ESTIMATED UNITS*</u>	<u>ADVERTISED PRICE</u>
Sawtimber		
Red Pine	142.50 MBF	\$ 135.00 / MBF
Pulpwood		
Balsam Fir	114.00 Cords	\$ 20.50 / Cord
Jack Pine	81.00 Cords	\$ 42.25 / Cord
Mixed Hardwood	9.00 Cords	\$ 24.40 / Cord
Mixed Spruce	45.00 Cords	\$ 24.65 / Cord
Paper Birch	6.00 Cords	\$ 24.90 / Cord
Quaking Aspen	31.00 Cords	\$ 36.85 / Cord
Red Pine	2,014.00 Cords	\$ 56.70 / Cord
Tamarack	12.00 Cords	\$ 12.85 / Cord

* The estimated units are final and not subject to adjustment. Prospective bidders are urged to examine this timber and to make their own estimates of quantity and quality.

BOND AND PAYMENT SCHEDULE:

1. A bond in the amount of \$13,000.00 to insure faithful performance of the conditions of the contract will be deposited by the successful bidder within 21 days of the sale award.
2. Cutting in any sale or unit without the required advance payment would be considered a trespass.
3. Total payment must be paid in advance or according to the following schedule:
 - (a) Ten percent (10%) of the sale value must be paid within 21 days of the sale award.
 - (b) The 10% down payment will be credited towards the first unit cut.
 - (c) Payment for each of the following units must be made before cutting begins in that unit:

<u>PAYMENT UNIT NUMBER</u>	<u>PERCENT OF TOTAL SALE VALUE</u>
01	2.4%
02	1.1%
03	5.7%
04	3.1%
05	1.3%
06	6.7%
07	9.6%
08	10.5%
09	2.1%
10	4.4%
11	1.9%
12	3.2%
13	3.1%
14	10.9%
15	5.7%
16	5.8%
17	1.2%
18	4.7%
19	7.5%
20	9.1%

4. If no cutting takes place, the 10% down payment will not be refunded.
5. Operations on the contract issued will terminate on 06/30/2021.

Description of Timber by Payment Unit (PU)

PU	MARKET GROUP	PRODUCT	QUANTITY	UNIT	ACRES	ADVERTISE PRICE
1	Jack Pine Red Pine	Pulpwood	16.0	Cords	11.4	\$3,340.90
			47.0	Cords		
2	Balsam Fir Jack Pine Mixed Spruce <i>Black Spruce</i> Red Pine	Pulpwood	2.0	Cords	4.5	\$1,495.40
			7.0	Cords		
			1.0	Cords		
			1.0	<i>Cords</i>		
			20.0	Cords		
3	Balsam Fir Jack Pine Red Pine	Pulpwood	1.0	Cords	28.4	\$8,076.45
			35.0	Cords		
			116.0	Cords		
4	Balsam Fir Jack Pine Red Pine	Pulpwood	5.0	Cords	24.2	\$4,421.75
			15.0	Cords		
			65.0	Cords		
5	Balsam Fir Jack Pine Red Pine	Pulpwood	2.0	Cords	5.4	\$1,784.25
			1.0	Cords		
			30.0	Cords		
6	Red Pine	Pulpwood	168.0	Cords	27.7	\$9,525.60
7	Balsam Fir Jack Pine Paper Birch Red Pine	Pulpwood	14.0	Cords	24.0	\$13,590.15
			1.0	Cords		
			2.0	Cords		
			233.0	Cords		
8	Balsam Fir Jack Pine Mixed Spruce <i>Black Spruce</i> Red Pine	Pulpwood	28.0	Cords	23.1	\$14,931.00
			6.0	Cords		
			4.0	Cords		
			4.0	<i>Cords</i>		
			247.0	Cords		
9	Balsam Fir Red Pine	Pulpwood	7.0	Cords	3.8	\$2,978.50
			50.0	Cords		
10	Balsam Fir Mixed Spruce <i>White Spruce</i> Paper Birch Quaking Aspen Red Pine Tamarack	Pulpwood	2.0	Cords	25.7	\$6,276.15
			9.0	Cords		
			9.0	<i>Cords</i>		
			2.0	Cords		
			3.0	Cords		
			103.0	Cords		
			1.0	Cords		
11	Red Pine Red Pine	Sawtimber	11.4	MBF	4.5	\$2,729.70
		Pulpwood	21.0	Cords		
12	Red Pine	Pulpwood	80.0	Cords	11.1	\$4,536.00
13	Balsam Fir Red Pine	Pulpwood	4.0	Cords	8.9	\$4,391.20
			76.0	Cords		
14	Red Pine Balsam Fir Mixed Spruce <i>Black Spruce</i> <i>White Spruce</i> Red Pine Tamarack	Sawtimber	57.3	MBF	25.5	\$15,744.75
		Pulpwood	5.0	Cords		
			16.0	Cords		
			6.0	<i>Cords</i>		
			10.0	<i>Cords</i>		
			130.0	Cords		
			11.0	Cords		
15	Red Pine Balsam Fir Mixed Spruce <i>Black Spruce</i> <i>White Spruce</i> Red Pine	Sawtimber	29.3	MBF	8.0	\$8,090.95
		Pulpwood	8.0	Cords		
			7.0	Cords		
			2.0	<i>Cords</i>		
			5.0	<i>Cords</i>		
			67.0	Cords		
16	Balsam Fir Mixed Spruce	Pulpwood	4.0	Cords	11.2	\$8,276.40
			5.0	Cords		

Description of Timber by Payment Unit (PU), con't

PU	MARKET GROUP	PRODUCT	QUANTITY	UNIT	ACRES	ADVERTISE PRICE
16 con't	<i>Black Spruce</i>	<i>Pulpwood</i>	2.0	<i>Cords</i>		
	<i>White Spruce</i>		3.0	<i>Cords</i>		
	Quaking Aspen		19.0	Cords		
	Red Pine		130.0	Cords		
17	Balsam Fir	Pulpwood	5.0	Cords	11.9	\$1,633.45
	Mixed Hardwood		9.0	Cords		
	<i>Red Maple</i>		2.0	<i>Cords</i>		
	<i>Sugar Maple</i>		6.0	<i>Cords</i>		
	<i>Yellow Birch</i>		1.0	<i>Cords</i>		
	Paper Birch		2.0	Cords		
	Quaking Aspen		5.0	Cords		
	Red Pine		19.0	Cords		
	18		Balsam Fir	Pulpwood		
Mixed Spruce		2.0	Cords			
<i>White Spruce</i>		2.0	<i>Cords</i>			
Quaking Aspen		4.0	Cords			
Red Pine		109.0	Cords			
19	Balsam Fir	Pulpwood	8.0	Cords	21.2	\$10,621.45
	Mixed Spruce		1.0	Cords		
	<i>White Spruce</i>		1.0	<i>Cords</i>		
	Red Pine		184.0	Cords		
20	Red Pine	Sawtimber	44.5	MBF	20.5	\$12,918.80
	Balsam Fir	Pulpwood	8.0	Cords		
	Red Pine		119.0	Cords		
TOTAL:			142.5	MBF		
TOTAL:			2,312.0	Cords		

Sale Specific Conditions & Requirements

Sale Name: GNA Cat Shot

Sale Number: 12-070-17 Seq#: 2

1 - Sale Area

1.2 - Boundaries

1.2.1 - Painted boundaries (1/14)

The sale boundary and Payment Unit boundaries are marked and identified by orange paint. The sale boundary is marked and identified by triple orange paint marks. The Interior Payment Unit boundary between Payment Units 10 & 20 are marked with double orange paint marks. The painted boundary line trees are not Included Timber and are to be protected, unless marked with blue paint.

2 - Timber Specifications

2.1 - Included Timber

2.1.3 - Cut tree marked unit(s) (12/08)

Within Payment Unit(s) 1 - 20, all trees are designated for cutting when marked with blue paint above and below stump height, regardless of merchantability.

2.2 - Utilization

2.2.10 - No chipping tops and limbs (8/16)

Within Payment Unit(s) 1 - 20, chipping of limbs or tops is not permitted. Limbs and the remaining top must be left on site and scattered.

2.2.12 - GNA, cut and remove Included Timber (1/16)

Unless provided otherwise herein, the DNR agrees to sell and permit Purchaser to cut and remove included timber and Purchaser agrees to purchase, cut, and remove included timber.

4 - Transportation

4.1 - Construction

4.1.5 - Culverts (5/14)

Roads may require the installation of culverts for cross drainage or at natural drainage-ways. If culverts are needed in these locations, their placement will be specified by the sale administrator and they shall be installed prior to hauling. The culverts shall be new, corrugated metal or plastic gauge. Culverts will be a minimum of 12 inches in diameter and 24 feet in length. If culverts are removed, fill shall be removed from wetland soils as specified. Soils shall be maintained and left in a non-erodible condition, with water bars, seed, fertilizer, mulch, and slash installed as directed by the sale administrator and as specified in the BMP manual. Stream crossing permits, if needed, will be obtained by the DNR.

4.1.7 - Road closure (10/11)

Overgrown or closed roads that are reopened must be closed upon timber sale completion. In general, this will require constructing a minimal four (4') foot high berm of stumps, logs and earth. These roads must be rendered impassable to vehicles. Contact the sale administrator for specific placement and construction.

4.1.12 - No new roads (1/12)

No new roads will be permitted. All operations are limited to existing roads.

5 - Operations

5.1 - Notification

5.1.1 - Pre-sale conference (10/16)

A pre-sale conference on site between the Purchaser and sale administrator is required prior to beginning any operations to determine landing and road locations. The Unit Manager or his/her representative must be contacted at least 10 days in advance to schedule the conference.

5.1.4 - Post-sale conference (10/16)

A post-sale conference on site between the Purchaser and sale administrator is required 5 days prior to the completion of active logging operations to determine clean-up and repair of landings, road edges, and the fulfillment of other contract specifications.

5.2 - Conduct of Operations

5.2.1 - Slash

5.2.1.8 - Slash height (12/08)

No slash or tree tops may exceed 36 inches in height.

5.2.1.11 - Slash for reforestation (5/07)

To facilitate reforestation, the sale area shall be left with slash evenly distributed. Bunched tops within the cutting area shall be broken up and scattered. Stumps shall be cut low to the ground. Processing sites shall not be left with a compacted layer of slash; tops from these sites shall be hauled back into the cut area and scattered.

5.2.2 - Hazard Trees/Snags

5.2.2.1 - Den trees (10/16)

Obvious hollow and/or den trees shall be protected and left standing unless they are a safety hazard.

5.2.3 - Operating Restrictions

5.2.3.2 - Operating restrictions (9/11)

Within Payment Unit(s) 1 - 10, 12 - 18 & 20, unless changed by written agreement, cutting, skidding, and hauling are not permitted from March 1 to July 15.

Within Payment Unit(s) 11 & 19, unless changed by written agreement, cutting, skidding and hauling are not permitted from October 1 to December 14 and March 1 to July 15. Note that operational delays can be expected up to one week following rainfall during the summer period.

This restriction is to avoid spring break up conditions, bark slip season and soil protection.

5.2.3.6 - Bark beetle restriction (12/08)

In the event drought creates a high risk of pine bark beetle infestation, pine is not to be cut during the period March 1 through July 1, unless all portions of trees greater than two inches in diameter are removed from the sale area, reduced to chips, or treated to the satisfaction of the Unit Manager or his/her representative, within fifteen days of being severed from the stump. Pine log decks, pulpwood piles and treetops that are piled for chipping in the fall or winter within a 1/4 mile of susceptible sites must be removed before March 15. Residual slash must not be placed in piles or rows and must be spread over the site for quick drying. The Department of Natural Resources will exercise this specification if the risk of damage warrants.

5.2.32 - Decking/landing restoration (9/13)

All decking and landing areas must have the surface area restored to a condition equal to or better than before. This is to ensure the proper regeneration of the stand. Wood debris, chips and "cookies" from trimmings must be removed or scattered away from landing and loading areas and may not be windrowed on the edge.

5.2.38 - No decking against live trees (2/04)

Cut products may not be decked against unmarked or designated leave trees.

5.4 - Soil Protection

5.4.1 - Rutting restriction, general (7/16)

Operations are to cease immediately if equipment and weather conditions result in rutting of roads and/or skid trails which are 12 inches or greater in depth and 50 feet in length. The Unit Manager or his/her representative may restrict hauling and/or skidding if ruts exceed the specified depth. With the Unit Manager or his/her representative's approval, the Purchaser may return to the area when the risk of rutting has decreased.

5.4.6 - Wet area protection (5/10)

No harvesting operations, including skidding and felling, are to take place within the vernal pond areas or drainages. When harvesting occurs, there should be no disturbance to the vernal pond depression. All equipment, trees and tops should be kept

out of this area. Within 100 feet of the pond, equipment should only be used when the soil is in a dry or frozen condition. Care must be taken by the Purchaser to identify and avoid operating in these areas of the timber sale.

5.6 - Debris and Waste Material

5.6.2 - GNA, equipment cleaning (1/16)

(a) Areas, known by the DNR prior to timber sale advertisement, that are infested with invasive species of concern are shown on the Timber Sale Map. A current list of invasive species of concern and a map showing the extent of known infestations is available from the DNR. For purposes of this provision, "Off-Road Equipment" includes all logging and construction machinery, except for log trucks, chip vans, service vehicles, water trucks, pickup trucks, cars, and similar vehicles.

(b) Purchaser shall adhere to the following requirements with regard to cleaning "Off-Road Equipment":

(i) Prior to moving Off-Road Equipment onto the Sale Area, Purchaser shall identify the location of the equipment's most recent operation. Purchaser shall not move any Off-Road Equipment that last operated in an area infested with one or more invasive species of concern onto Sale Area without having cleaned such equipment of seeds, soil, vegetative matter, and other debris that could contain or hold seeds, and having notified the DNR, as provided in (iii). If the location of prior operation cannot be identified, then Purchaser shall assume that the location is infested with invasive species of concern.

(ii) Prior to moving Off-Road Equipment from a cutting unit that is shown on the Timber Sale Map to be infested with invasive species of concern to, or through any other area that is shown as being free of invasive species of concern, or infested with a different invasive species, Purchaser shall clean such equipment of seeds, soil, vegetative matter, and other debris that could contain or hold seeds, and shall notify the DNR, as provided in (iii).

(iii) Prior to moving any Off-Road Equipment subject to the cleaning requirements set forth above, Purchaser shall advise DNR of its cleaning measures and make the equipment available for inspection. DNR shall have 2 days, excluding weekends and State holidays, to inspect equipment after it has been made available. After satisfactory inspection or after such 2 day period, Purchaser may move the equipment as planned. Equipment shall be considered clean when a visual inspection does not disclose seeds, soil, vegetative matter, and other debris that could contain or hold seeds. Purchaser shall not be required to disassemble equipment unless so directed by the DNR after inspection.

(iv) If Purchaser desires to clean Off-Road Equipment on National Forest land, such as at the end of a project or prior to moving to, or through an area that is free of invasive species of concern, Purchaser shall obtain prior approval from the Unit Manager or his/her representative as to the location for such cleaning and measures, if any, for controlling impacts.

(v) Unit Manager or his/her representative may order delay, interruption, or modification of this Contract pursuant to Condition & Requirement 7.3 or 7.3.4.

(c) Nothing contained in this Condition & Requirement shall be interpreted as creating any warranty on the part of the DNR that all locations of invasive species of concern have been described herein, elsewhere in this Contract, or designated on the ground. Following sale advertisement, additional locations may be described or designated, and other species may be added to the list of invasive species of concern. In such event, the Unit Manager or his/her representative may order delay, interruption, or modification of this Contract pursuant to Condition & Requirement 7.3 or 7.3.4.

(d) The parties shall promptly communicate with one another with respect to description or designation of additional locations; discovery of locations of new species or new infestation; and, addition of species to the list of invasive species of concern.

5.8 - Protection of Endangered Species

5.8.5 - Protection of raptor nests (3/13)

All trees with raptor nests will be protected if found during harvesting operations. Notification will be made to the Unit Manager or his/her representative who will notify the Wildlife Biologist so an on-site evaluation and recommendation can be made, if necessary.

6 - Safety and Fire Prevention

6.2 - Signing

6.2.1 - Road posting (9/09)

The Purchaser is responsible for posting and maintaining caution signs on Federal Forest Roads 16, 3340, 4100 and 157, prior to beginning operations. The road must be posted at appropriate distances from the sale area to warn of logging activity and truck traffic. Signs must be removed when harvest operations are suspended or completed. The Purchaser will provide these signs.

7 - Other Conditions

SKIP

7.1.1 - GNA, title (7/16)

General Condition & Requirement 7.1 is inapplicable. The following applies to this contract.

All right, title, and interest in and to any Included Timber shall remain in USDA Forest Service with the State of Michigan acting on behalf of the USDA Forest Service under this GNA contract, until it has been Measured, removed from Sale Area or other authorized cutting area, and paid for, at which time title shall vest in Purchaser. Title to any Included Timber that has been Measured and paid for, but not removed from Sale Area or other authorized cutting area by Purchaser on or prior to Termination Date, shall remain in USDA Forest Service.

7.3 - Contract Modifications

7.3.4 - GNA, contract suspension and modification (5/16)

(a) The Unit Manager may, by written order, delay or interrupt authorized operations under this contract or, notwithstanding Condition & Requirement 7.3, modify this contract, in whole or in part:

(i) To prevent environmental degradation or resource damage, including, but not limited to, harm to habitat, plants, animals, cultural resources, or cave resources;

(ii) To ensure consistency with land and resource management plans or other documents prepared pursuant to the National Environmental Policy Act of 1969, 42 USC 4321-4347;

(iii) To conduct environmental analysis, including, but not limited to, engaging in consultation pursuant to the Endangered Species Act of 1973, 16 USC 1531, et seq.; or

(iv) Upon agreement of the Forest Service, due to administrative appeal or litigation, regardless of whether the Unit Manager's order is required by a court order or this contract is named in such a proceeding.

(b) In the event of an order delaying or interrupting Purchaser's Operations under this Condition & Requirement, Purchaser's remedy shall be:

(i) a no cost contract extension,

(ii) reimbursement for Out-of-Pocket Expenses,

however, the foregoing remedies shall be available only to the extent that the Unit Manager's order was the sole and exclusive cause of the delay or interruption of Purchaser's operations.

(c) Remedies awarded to the Purchaser shall not be duplicative, and the Unit Manager shall have the right to structure remedies provided herein to avoid duplicative compensation.

(d) Purchaser agrees that this Condition & Requirement, and the remedies provided herein shall apply regardless of any finding by any court that the DNR failed to comply with any statute, regulation and/or policy in connection with awarding, advertising, or authorizing this sale, or a similar sale.

7.5 - Loss

7.5.2 - GNA, liability for loss (7/16)

If Included Timber is destroyed or damaged by an unexpected event that changes the nature of Included Timber, such as wind, flood, insects, disease, or similar cause, the Purchaser shall bear the timber value loss resulting from such destruction or damage.

Deterioration or loss of timber value due to delay or interruption under 7.3.4 - GNA, contract suspension and modification, shall be borne by the party holding title. In this event, Included Timber to which USDA Forest Service holds title, Purchaser of the State GNA contract will not be obligated to remove and pay for such timber. This Subsection shall not be construed to relieve either party of liability for negligence.

7.10 - Certified Timber

7.10.1 - Non-certified timber (2/16)

The area encompassed by this timber sale is not certified to the standards of the Forest Stewardship Council (FSC) or the Sustainable Forestry Initiative (SFI). Forest products from this sale may not be delivered to the mill as "FSC and / or SFI certified". The lands within this sale belong to the National Forest system and are being managed by the State as part of a Good Neighbor Authority (GNA) agreement.



TIMBER SALE MAP

This information provided by authority of Part 525, 1994 PA 451, as amended.

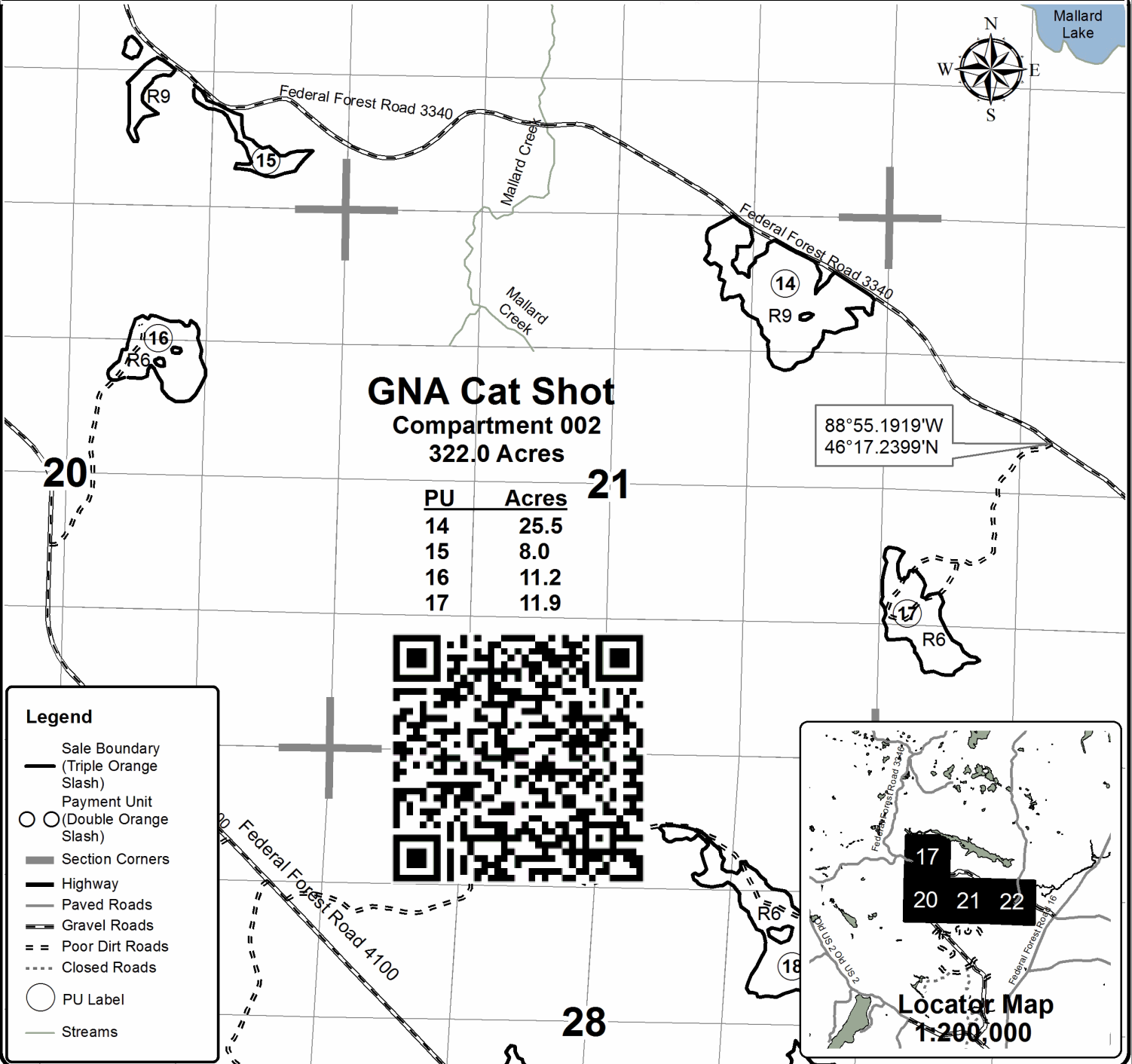
Forest Management Unit Crystal Falls	County Iron	Mapped By Brodeur	Date 09/25/2017	Page 1	of 4
Township 45N	Range 37W	Section(s) and Subdivision(s) Sec 17 S1/2 SE, NWSE; Sec 20 W1/2NE; Sec 21 N1/2NE, SENE; Sec 22 W1/2SW	Cruised By Brodeur		
			Scale 1:15,840		

Cover Type

A = Aspen	H = Hemlock	N = Marsh	U = Upland Brush
B = Paper Birch	J = Jack Pine	O = Oak	UM = Upland Mixed
C = Cedar	L = Lowland Brush	P = Lowland Poplar	V = Bog or Marsh
D = Tread Bog	LM = Lowland Mixed	Q = Mixed Swamp Conifer	W = White Pine
E = Swamp Hdwoods	M = Mpl, Bch, Brch	R = Red Pine	X = Non Stocked
F = Spruce Fir	MC = Mixed Conifer	S = Black Spruce	Z = Water
G = Grass	MD = Mixed Deciduous	T = Tamarack	

Density

0 = Non Stocked	5 = Pole Timber Medium
1 = Seedling Sapling Poor	6 = Pole Timber Well
2 = Seedling Sapling Medium	7 = Saw Timber Poor
3 = Seedling Sapling Well	8 = Saw Timber Medium
4 = Pole Timber Poor	9 = Saw Timber Well



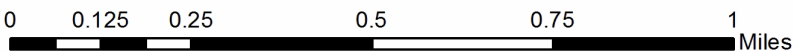
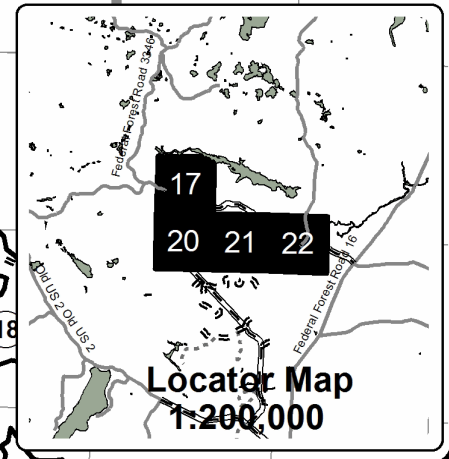
GNA Cat Shot
Compartment 002
322.0 Acres

PU	Acres
14	25.5
15	8.0
16	11.2
17	11.9



Legend

- Sale Boundary (Triple Orange Slash)
- ○ Payment Unit (Double Orange Slash)
- Section Corners
- Highway
- Paved Roads
- Gravel Roads
- == Poor Dirt Roads
- Closed Roads
- PU Label
- Streams





TIMBER SALE MAP

This information provided by authority of Part 525, 1994 PA 451, as amended.

Forest Management Unit Crystal Falls		County Iron	Mapped By Brodeur	Date 09/25/2017	Page 2	of 4
Township 45N	Range 37W	Section(s) and Subdivision(s) Sec 28 N1/2NE, SENE, SE1/4, NESW, SWSW; Sec 29 W1/2NE, NENE, NWSE; Sec 32 E1/2NE, SWNE, NESE; Sec 33 W1/2NW, SENW, E1/2NE; Sec 34 W1/2NW		Scale 1:15,840		

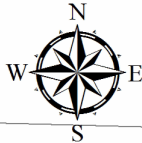
Cover Type

Density

A = Aspen	H = Hemlock	N = Marsh	U = Upland Brush	0 = Non Stocked	5 = Pole Timber Medium
B = Paper Birch	J = Jack Pine	O = Oak	UM = Upland Mixed	1 = Seedling Sapling Poor	6 = Pole Timber Well
C = Cedar	L = Lowland Brush	P = Lowland Poplar	V = Bog or Marsh	2 = Seedling Sapling Medium	7 = Saw Timber Poor
D = Treed Bog	LM = Lowland Mixed	Q = Mixed Swamp Conifer	W = White Pine	3 = Seedling Sapling Well	8 = Saw Timber Medium
E = Swamp Hdwoods	M = Mpl, Bch, Brch	R = Red Pine	X = Non Stocked	4 = Pole Timber Poor	9 = Saw Timber Well
F = Spruce Fir	MC = Mixed Conifer	S = Black Spruce	Z = Water		
G = Grass	MD = Mixed Deciduous	T = Tamarack			

Legend

- Sale Boundary (Triple Orange Slash)
- Payment Unit (Double Orange Slash)
- Section Corners
- Highway
- Paved Roads
- Gravel Roads
- == Poor Dirt Roads
- Closed Roads
- PU Label
- ⊕ Berms

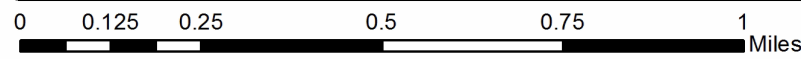
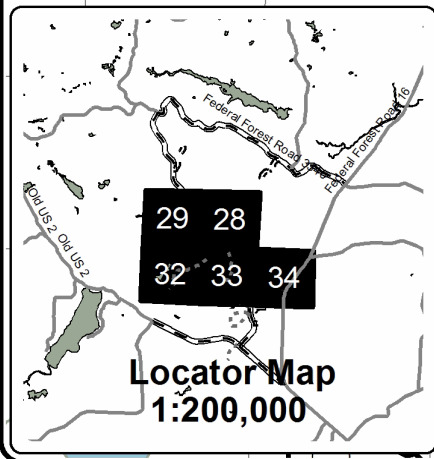
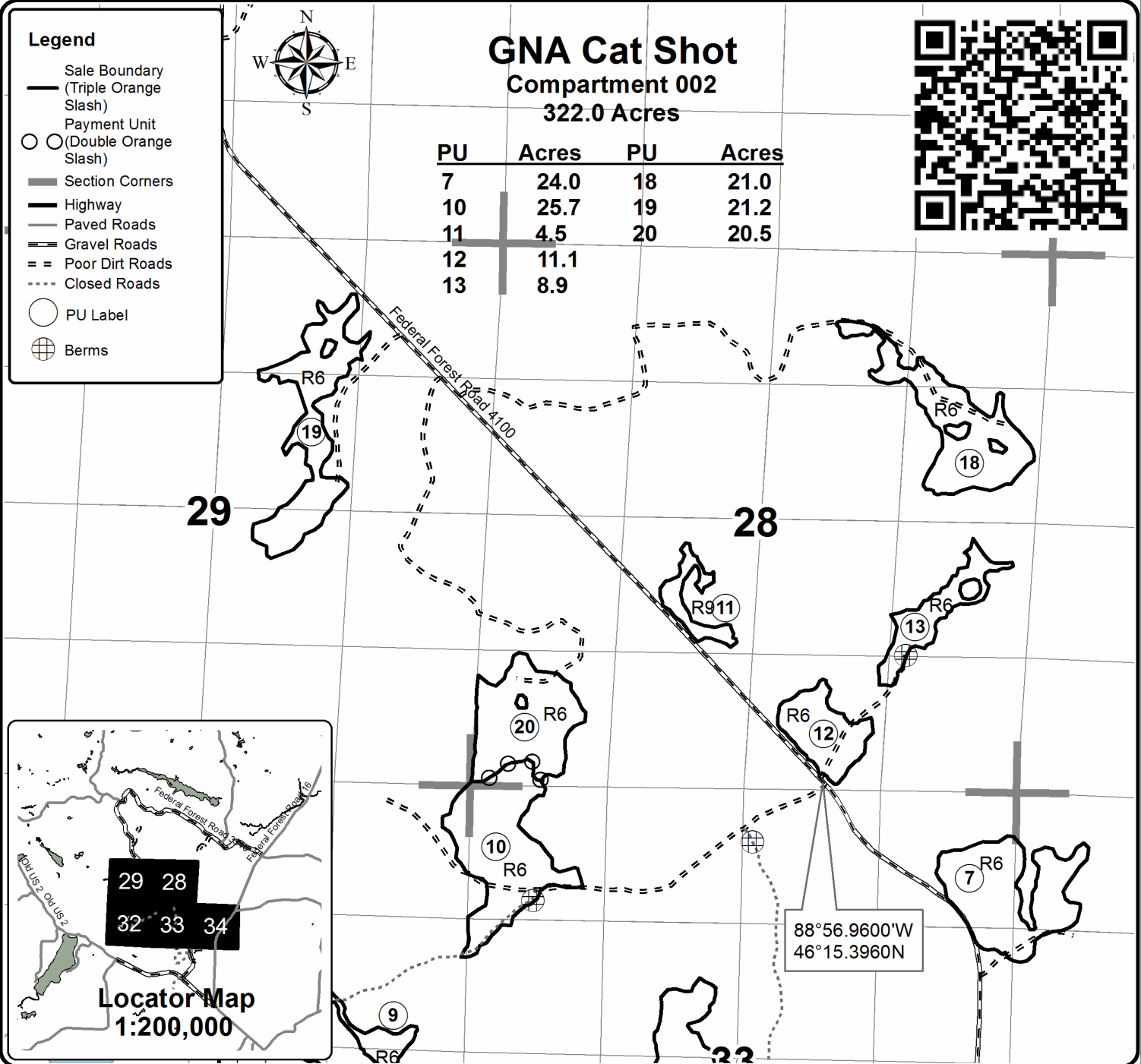


GNA Cat Shot

Compartment 002

322.0 Acres

PU	Acres	PU	Acres
7	24.0	18	21.0
10	25.7	19	21.2
11	4.5	20	20.5
12	11.1		
13	8.9		





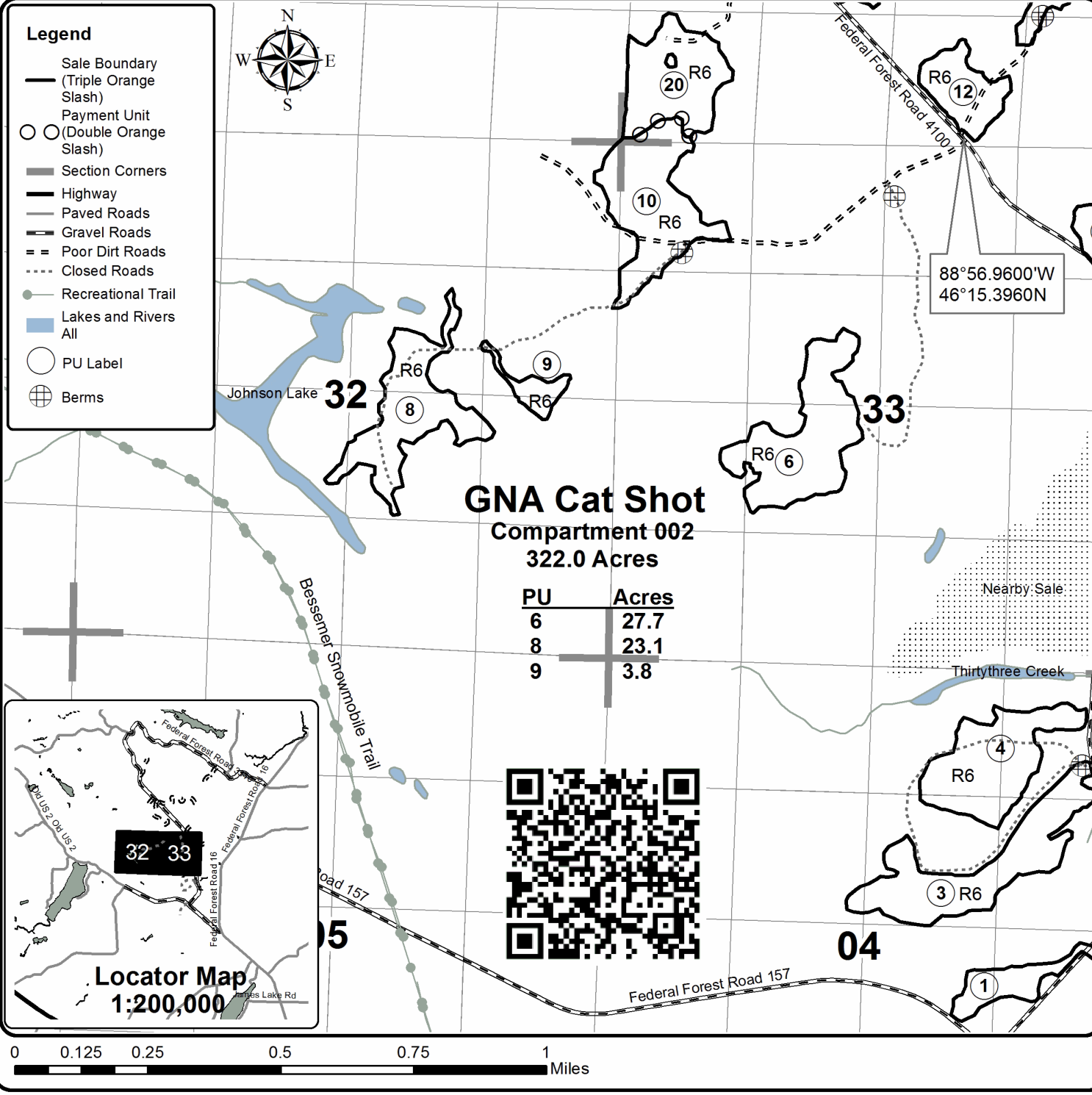
TIMBER SALE MAP

This information provided by authority of Part 525, 1994 PA 451, as amended.

Sale Number	Year
12 - 070	17

Forest Management Unit Crystal Falls	County Iron	Mapped By Brodeur	Date 09/25/2017	Page 3	of 4
Township 45N	Range 37W	Section(s) and Subdivision(s) Sec 32 S1/2NE, N1/2SE, NESW; Sec 33 SENW, N1/2SW	Scale 1:15,840		

Cover Type				Density	
A = Aspen	H = Hemlock	N = Marsh	U = Upland Brush	0 = Non Stocked	5 = Pole Timber Medium
B = Paper Birch	J = Jack Pine	O = Oak	UM = Upland Mixed	1 = Seedling Sapling Poor	6 = Pole Timber Well
C = Cedar	L = Lowland Brush	P = Lowland Poplar	V = Bog or Marsh	2 = Seedling Sapling Medium	7 = Saw Timber Poor
D = Treed Bog	LM = Lowland Mixed	Q = Mixed Swamp Conifer	W = White Pine	3 = Seedling Sapling Well	8 = Saw Timber Medium
E = Swamp Hdwoods	M = Mpl, Bch, Brch	R = Red Pine	X = Non Stocked	4 = Pole Timber Poor	9 = Saw Timber Well
F = Spruce Fir	MC = Mixed Conifer	S = Black Spruce	Z = Water		
G = Grass	MD = Mixed Deciduous	T = Tamarack			

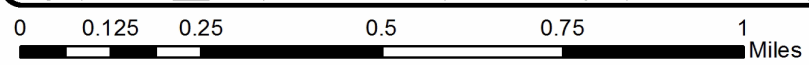
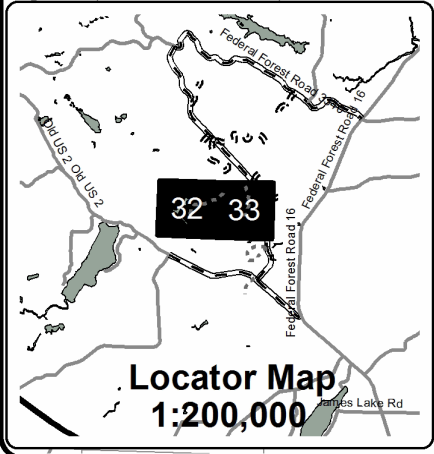


Legend

- Sale Boundary (Triple Orange Slash)
- Payment Unit (Double Orange Slash)
- Section Corners
- Highway
- Paved Roads
- Gravel Roads
- - - Poor Dirt Roads
- ⋯ Closed Roads
- Recreational Trail
- Lakes and Rivers All
- PU Label
- ⊕ Berms

GNA Cat Shot
Compartment 002
322.0 Acres

PU	Acres
6	27.7
8	23.1
9	3.8





TIMBER SALE MAP

This information provided by authority of Part 525, 1994 PA 451, as amended.

Sale Number	Year
12 - 070	17

Forest Management Unit Crystal Falls	County Iron	Mapped By Brodeur	Date 09/25/2017	Page 4	of 4
Township 44N	Range 37W	Section(s) and Subdivision(s) Sec 3 W1/2NW; Sec 4 NE1/4, SENW, N1/2SE, SESW; Sec 9 NENW, NWNE	Scale 1:15,840		

Cover Type

Density

A = Aspen	H = Hemlock	N = Marsh	U = Upland Brush	0 = Non Stocked	5 = Pole Timber Medium
B = Paper Birch	J = Jack Pine	O = Oak	UM = Upland Mixed	1 = Seedling Sapling Poor	6 = Pole Timber Well
C = Cedar	L = Lowland Brush	P = Lowland Poplar	V = Bog or Marsh	2 = Seedling Sapling Medium	7 = Saw Timber Poor
D = Treed Bog	LM = Lowland Mixed	Q = Mixed Swamp Conifer	W = White Pine	3 = Seedling Sapling Well	8 = Saw Timber Medium
E = Swamp Hdwoods	M = Mpl, Bch, Brch	R = Red Pine	X = Non Stocked	4 = Pole Timber Poor	9 = Saw Timber Well
F = Spruce Fir	MC = Mixed Conifer	S = Black Spruce	Z = Water		
G = Grass	MD = Mixed Deciduous	T = Tamarack			

Legend

- Sale Boundary (Triple Orange Slash)
- Payment Unit (Double Orange Slash)
- Section Corners
- Highway
- Paved Roads
- Gravel Roads
- - - Poor Dirt Roads
- ⋯ Closed Roads
- Recreational Trail
- Streams
- Lakes and Rivers All
- PU Label
- ⊕ Berms

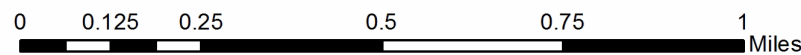
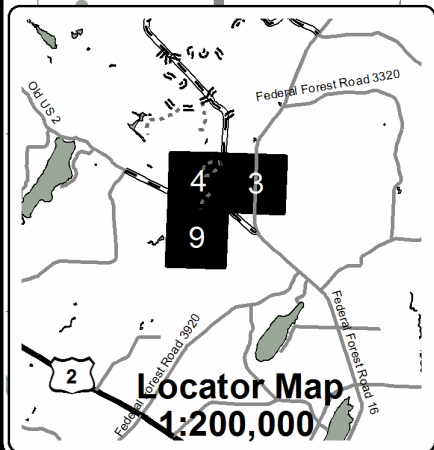


GNA Cat Shot

Compartment 002

322.0 Acres

PU	Acres
1	11.4
2	4.5
3	28.4
4	24.2
5	5.4



Hemlock SBW (12-069-17)
; Iron COUNTY

In response to the notice of sale to be held 8:30 a.m. (local time) on May 30, 2018, I am hereby submitting my sealed bid (firm offer) for the following forest products to be cut. Bids for individual species must be at or above the advertised price. All non-responsive bid forms may be rejected.

<u>PRODUCTS & SPECIES</u>	<u>ESTIMATED VOLUME*</u>	<u>ADVERTISED PRICE</u>	<u>BID PRICE/UNIT</u>
Pulpwood			
Balsam Fir	297.00 Cords	\$ 13.65/Cord	\$ _____
Quaking Aspen	610.00 Cords	\$ 24.55/Cord	\$ _____
Red Maple	180.00 Cords	\$ 16.30/Cord	\$ _____
White Spruce	120.00 Cords	\$ 16.45/Cord	\$ _____

*The volumes are statistically estimated within plus (+) or minus (-) 12.20 percent. These estimated volumes are final and not subject to adjustment. Prospective bidders are urged to examine this timber and to make their own estimates of quantity and quality.

I understand that any or all bids may be rejected. All bids must be signed and all bid items must be bid or the bid form may be rejected. I also understand that consideration and awarding a contract will be based upon my past performance and ability to complete the contract based upon equipment and staffing subject to my control.

FEDERAL ID: ___ - ___ - ___ or SOCIAL SECURITY NUMBER: ___ - ___ - ___

Company or individual bidding: _____

Company representative's name: _____

Address: _____

City: _____ State: _____ Zip: _____

IF AVAILABLE, PLEASE PLACE THE PERSONALIZED LABEL FROM YOUR PROSPECTUS IN THE ABOVE BOX.

Individual or company representative's signature: _____ Date: _____

Phone number : _____ Email (optional): _____

THE WINNING BIDDER MUST COMPLETE THE VERIFICATION OF WORKER'S DISABILITY COMPENSATION ACT COMPLIANCE (ON REVERSE SIDE IF DOUBLE SIDED) WITHIN 21 DAYS OF SALE AWARD DATE



FOR DEPARTMENT USE ONLY
Sale Number (XX - XXX - XX - XX)
Forest Management Unit:

TIMBER SALE VERIFICATION OF WORKER'S DISABILITY COMPENSATION ACT COMPLIANCE

*As required by Act 317, P.A. 1969 (Worker's Compensation) and
Part 5 of Act 451 of 1994, as amended.*

VERIFICATION OF WORKER'S DISABILITY COMPENSATION ACT COMPLIANCE

- This verification must be completed and submitted within 21 days of contract award and prior to the issuance of the timber sale contract.
- In addition, if boxes 2B or 2C are checked, then Notice of Exclusion or Certificate of Insurance must be submitted within twenty-one (21) days of the contract award and prior to the issuance of the timber sale contract.
- All information must be typed or printed except for written signatures.

Please Check Appropriate Categories:

1. My business is organized as (you **must** check one of the boxes below):
 - A. Sole Proprietorship (individual)
 - B. Partnership
 - C. Corporation
2. You **must** check one of the boxes below:
 - A. I certify my business is a sole proprietorship and it has no employees but the sole proprietor. I am not subject to the Worker's Compensation Laws.
 - B. I certify my business has satisfied its obligation to the Worker's Compensation Act through the use of an approved Notice of Exclusion (BWC-337, Rev. 5/96). I will provide a copy of the Notice of Exclusion within 21 days of the contract award. (For questions or a copy of the BWC-337, please call the Worker's Compensation Bureau at 517-322-1195).
 - C. I certify my business has a Worker's Compensation Policy. I will provide an original Certificate of Insurance within twenty-one (21) days of the contract award.
3. If you have checked item 2(A) or 2(B), you **must** indicate the number of **both** full-time and part-time employees, other than yourself, including family members and active partners (if none, you must enter "0").

_____ Full-time Employees

_____ Part-time Employees

Name of Business		Federal ID (or) Social Security No.	
Address		Telephone ()	
City	State	ZIP	

I hereby certify that the above information is true and correct. I agree to notify the Michigan DNR of any changes that occur in factors affecting my coverage during any of my present and future operations.

Signature of Owner or Authorized Representative

Title

Date

Please complete the "SEALED BID" information on the next page

GNA Cat Shot (12-070-17)
; Iron COUNTY

In response to the notice of sale to be held 8:30 a.m. (local time) on May 30, 2018, I am hereby submitting my sealed bid (firm offer) for the following forest products to be cut. Bids for individual species must be at or above the advertised price. All non-responsive bid forms may be rejected.

<u>PRODUCTS & SPECIES</u>	<u>ESTIMATED VOLUME*</u>	<u>ADVERTISED PRICE</u>	<u>BID PRICE/UNIT</u>
Sawtimber			
Red Pine	142.50 MBF	\$ 135.00/MBF	\$ _____
Pulpwood			
Balsam Fir	114.00 Cords	\$ 20.50/Cord	\$ _____
Jack Pine	81.00 Cords	\$ 42.25/Cord	\$ _____
Mixed Hardwood	9.00 Cords	\$ 24.40/Cord	\$ _____
Mixed Spruce	45.00 Cords	\$ 24.65/Cord	\$ _____
Paper Birch	6.00 Cords	\$ 24.90/Cord	\$ _____
Quaking Aspen	31.00 Cords	\$ 36.85/Cord	\$ _____
Red Pine	2,014.00 Cords	\$ 56.70/Cord	\$ _____
Tamarack	12.00 Cords	\$ 12.85/Cord	\$ _____

*These estimated volumes are final and not subject to adjustment. Prospective bidders are urged to examine this timber and to make their own estimates of quantity and quality.

I understand that any or all bids may be rejected. All bids must be signed and all bid items must be bid or the bid form may be rejected. I also understand that consideration and awarding a contract will be based upon my past performance and ability to complete the contract based upon equipment and staffing subject to my control.

FEDERAL ID: ____ - ____ - ____ or SOCIAL SECURITY NUMBER: ____ - ____ - ____

Company or individual bidding: _____

Company representative's name: _____

Address: _____

City: _____ State: _____ Zip: _____

IF AVAILABLE, PLEASE PLACE THE PERSONALIZED LABEL FROM YOUR PROSPECTUS IN THE ABOVE BOX.

Individual or company representative's signature: _____ Date: _____

Phone number : _____ Email (optional): _____

THE WINNING BIDDER MUST COMPLETE THE VERIFICATION OF WORKER'S DISABILITY COMPENSATION ACT COMPLIANCE (ON REVERSE SIDE IF DOUBLE SIDED) WITHIN 21 DAYS OF SALE AWARD DATE



FOR DEPARTMENT USE ONLY
Sale Number (XX - XXX - XX - XX)
Forest Management Unit:

TIMBER SALE VERIFICATION OF WORKER'S DISABILITY COMPENSATION ACT COMPLIANCE

*As required by Act 317, P.A. 1969 (Worker's Compensation) and
Part 5 of Act 451 of 1994, as amended.*

VERIFICATION OF WORKER'S DISABILITY COMPENSATION ACT COMPLIANCE

- This verification must be completed and submitted within 21 days of contract award and prior to the issuance of the timber sale contract.
- In addition, if boxes 2B or 2C are checked, then Notice of Exclusion or Certificate of Insurance must be submitted within twenty-one (21) days of the contract award and prior to the issuance of the timber sale contract.
- All information must be typed or printed except for written signatures.

Please Check Appropriate Categories:

1. My business is organized as (you **must** check one of the boxes below):
 - A. Sole Proprietorship (individual)
 - B. Partnership
 - C. Corporation
2. You **must** check one of the boxes below:
 - A. I certify my business is a sole proprietorship and it has no employees but the sole proprietor. I am not subject to the Worker's Compensation Laws.
 - B. I certify my business has satisfied its obligation to the Worker's Compensation Act through the use of an approved Notice of Exclusion (BWC-337, Rev. 5/96). I will provide a copy of the Notice of Exclusion within 21 days of the contract award. (For questions or a copy of the BWC-337, please call the Worker's Compensation Bureau at 517-322-1195).
 - C. I certify my business has a Worker's Compensation Policy. I will provide an original Certificate of Insurance within twenty-one (21) days of the contract award.
3. If you have checked item 2(A) or 2(B), you **must** indicate the number of **both** full-time and part-time employees, other than yourself, including family members and active partners (if none, you must enter "0").

_____ Full-time Employees

_____ Part-time Employees

Name of Business		Federal ID (or) Social Security No.	
Address		Telephone ()	
City	State	ZIP	

I hereby certify that the above information is true and correct. I agree to notify the Michigan DNR of any changes that occur in factors affecting my coverage during any of my present and future operations.

Signature of Owner or Authorized Representative

Title

Date

Please complete the "SEALED BID" information on the next page

Cell Phone Buck (12-051-18)

; Iron COUNTY

In response to the notice of sale to be held 8:30 a.m. (local time) on May 30, 2018, I am hereby submitting my sealed bid (firm offer) for the following forest products to be cut. Bids for individual species must be at or above the advertised price. All non-responsive bid forms may be rejected.

<u>PRODUCTS & SPECIES</u>	<u>ESTIMATED VOLUME*</u>	<u>ADVERTISED PRICE</u>	<u>BID PRICE/UNIT</u>
Sawtimber			
Basswood	28.50 MBF	\$ 236.00/MBF	\$ _____
Red Maple	22.00 MBF	\$ 187.00/MBF	\$ _____
Sugar Maple	11.70 MBF	\$ 452.00/MBF	\$ _____
White Ash	9.60 MBF	\$ 95.00/MBF	\$ _____
Yellow Birch	4.10 MBF	\$ 158.00/MBF	\$ _____
Pulpwood			
Balsam Fir	49.00 Cords	\$ 20.50/Cord	\$ _____
Basswood	77.00 Cords	\$ 11.70/Cord	\$ _____
Mixed Aspen	416.00 Cords	\$ 36.85/Cord	\$ _____
Mixed Hardwood	856.00 Cords	\$ 24.40/Cord	\$ _____
Mixed Spruce	236.00 Cords	\$ 24.65/Cord	\$ _____
Tamarack	251.00 Cords	\$ 12.85/Cord	\$ _____

*The volumes are statistically estimated within plus (+) or minus (-) 8.11 percent. These estimated volumes are final and not subject to adjustment. Prospective bidders are urged to examine this timber and to make their own estimates of quantity and quality.

I understand that any or all bids may be rejected. All bids must be signed and all bid items must be bid or the bid form may be rejected. I also understand that consideration and awarding a contract will be based upon my past performance and ability to complete the contract based upon equipment and staffing subject to my control.

FEDERAL ID: _____ or SOCIAL SECURITY NUMBER: _____

Company or individual bidding: _____

Company representative's name: _____

Address: _____

City: _____ State: _____ Zip: _____

IF AVAILABLE, PLEASE PLACE THE PERSONALIZED LABEL FROM YOUR PROSPECTUS IN THE ABOVE BOX.

Individual or company representative's signature: _____ Date: _____

Phone number : _____ Email (optional): _____

THE WINNING BIDDER MUST COMPLETE THE VERIFICATION OF WORKER'S DISABILITY COMPENSATION ACT COMPLIANCE (ON REVERSE SIDE IF DOUBLE SIDED) WITHIN 21 DAYS OF SALE AWARD DATE



FOR DEPARTMENT USE ONLY
Sale Number (XX - XXX - XX - XX)
Forest Management Unit:

TIMBER SALE VERIFICATION OF WORKER'S DISABILITY COMPENSATION ACT COMPLIANCE

*As required by Act 317, P.A. 1969 (Worker's Compensation) and
Part 5 of Act 451 of 1994, as amended.*

VERIFICATION OF WORKER'S DISABILITY COMPENSATION ACT COMPLIANCE

- This verification must be completed and submitted within 21 days of contract award and prior to the issuance of the timber sale contract.
- In addition, if boxes 2B or 2C are checked, then Notice of Exclusion or Certificate of Insurance must be submitted within twenty-one (21) days of the contract award and prior to the issuance of the timber sale contract.
- All information must be typed or printed except for written signatures.

Please Check Appropriate Categories:

1. My business is organized as (you **must** check one of the boxes below):
 - A. Sole Proprietorship (individual)
 - B. Partnership
 - C. Corporation
2. You **must** check one of the boxes below:
 - A. I certify my business is a sole proprietorship and it has no employees but the sole proprietor. I am not subject to the Worker's Compensation Laws.
 - B. I certify my business has satisfied its obligation to the Worker's Compensation Act through the use of an approved Notice of Exclusion (BWC-337, Rev. 5/96). I will provide a copy of the Notice of Exclusion within 21 days of the contract award. (For questions or a copy of the BWC-337, please call the Worker's Compensation Bureau at 517-322-1195).
 - C. I certify my business has a Worker's Compensation Policy. I will provide an original Certificate of Insurance within twenty-one (21) days of the contract award.
3. If you have checked item 2(A) or 2(B), you **must** indicate the number of **both** full-time and part-time employees, other than yourself, including family members and active partners (if none, you must enter "0").

_____ Full-time Employees

_____ Part-time Employees

Name of Business		Federal ID (or) Social Security No.	
Address		Telephone ()	
City	State	ZIP	

I hereby certify that the above information is true and correct. I agree to notify the Michigan DNR of any changes that occur in factors affecting my coverage during any of my present and future operations.

Signature of Owner or Authorized Representative

Title

Date

Please complete the "SEALED BID" information on the next page

Camp 6 Mix (12-052-18)
; Iron COUNTY

In response to the notice of sale to be held 8:30 a.m. (local time) on May 30, 2018, I am hereby submitting my sealed bid (firm offer) for the following forest products to be cut. Bids for individual species must be at or above the advertised price. All non-responsive bid forms may be rejected.

<u>PRODUCTS & SPECIES</u>	<u>ESTIMATED VOLUME*</u>	<u>ADVERTISED PRICE</u>	<u>BID PRICE/UNIT</u>
Sawtimber			
Red Pine	15.90 MBF	\$ 135.00/MBF	\$ _____
Pulpwood			
Balsam Fir	25.00 Cords	\$ 20.50/Cord	\$ _____
Jack Pine	11.00 Cords	\$ 42.25/Cord	\$ _____
Mixed Hardwood	91.00 Cords	\$ 24.40/Cord	\$ _____
Mixed Spruce	258.00 Cords	\$ 24.65/Cord	\$ _____
Quaking Aspen	1,513.00 Cords	\$ 36.85/Cord	\$ _____
Red Pine	31.00 Cords	\$ 56.70/Cord	\$ _____
Tamarack	167.00 Cords	\$ 12.85/Cord	\$ _____

*The volumes are statistically estimated within plus (+) or minus (-) 8.33 percent. These estimated volumes are final and not subject to adjustment. Prospective bidders are urged to examine this timber and to make their own estimates of quantity and quality.

I understand that any or all bids may be rejected. All bids must be signed and all bid items must be bid or the bid form may be rejected. I also understand that consideration and awarding a contract will be based upon my past performance and ability to complete the contract based upon equipment and staffing subject to my control.

FEDERAL ID: _____ or SOCIAL SECURITY NUMBER: _____

Company or individual bidding: _____

Company representative's name: _____

Address: _____

City: _____ State: _____ Zip: _____

IF AVAILABLE, PLEASE PLACE THE PERSONALIZED LABEL FROM YOUR PROSPECTUS IN THE ABOVE BOX.

Individual or company representative's signature: _____ Date: _____

Phone number : _____ Email (optional): _____

THE WINNING BIDDER MUST COMPLETE THE VERIFICATION OF WORKER'S DISABILITY COMPENSATION ACT COMPLIANCE (ON REVERSE SIDE IF DOUBLE SIDED) WITHIN 21 DAYS OF SALE AWARD DATE



FOR DEPARTMENT USE ONLY	
Sale Number (XX - XXX - XX - XX)	
Forest Management Unit:	

TIMBER SALE VERIFICATION OF WORKER'S DISABILITY COMPENSATION ACT COMPLIANCE

As required by Act 317, P.A. 1969 (Worker's Compensation) and
Part 5 of Act 451 of 1994, as amended.

VERIFICATION OF WORKER'S DISABILITY COMPENSATION ACT COMPLIANCE

- This verification must be completed and submitted within 21 days of contract award and prior to the issuance of the timber sale contract.
- In addition, if boxes 2B or 2C are checked, then Notice of Exclusion or Certificate of Insurance must be submitted within twenty-one (21) days of the contract award and prior to the issuance of the timber sale contract.
- All information must be typed or printed except for written signatures.

Please Check Appropriate Categories:

- My business is organized as (you **must** check one of the boxes below):
 - Sole Proprietorship (individual)
 - Partnership
 - Corporation
- You **must** check one of the boxes below:
 - I certify my business is a sole proprietorship and it has no employees but the sole proprietor. I am not subject to the Worker's Compensation Laws.
 - I certify my business has satisfied its obligation to the Worker's Compensation Act through the use of an approved Notice of Exclusion (BWC-337, Rev. 5/96). I will provide a copy of the Notice of Exclusion within 21 days of the contract award. (For questions or a copy of the BWC-337, please call the Worker's Compensation Bureau at 517-322-1195).
 - I certify my business has a Worker's Compensation Policy. I will provide an original Certificate of Insurance within twenty-one (21) days of the contract award.
- If you have checked item 2(A) or 2(B), you **must** indicate the number of **both** full-time and part-time employees, other than yourself, including family members and active partners (if none, you must enter "0").

_____ Full-time Employees

_____ Part-time Employees

Name of Business		Federal ID (or) Social Security No.	
Address		Telephone ()	
City	State	ZIP	

I hereby certify that the above information is true and correct. I agree to notify the Michigan DNR of any changes that occur in factors affecting my coverage during any of my present and future operations.

Signature of Owner or Authorized Representative

Title

Date

Please complete the "SEALED BID" information on the next page