



**DEPARTMENT OF NATURAL RESOURCES
STATE OF MICHIGAN**

TIMBER SALE PROSPECTUS #6248

SCHEDULED SALE DATE AND TIME: 3:00 p.m. (local time) on September 25, 2018.

LOCATION: ESCANABA OFFICE, 6833 HWY 2, 41 & M-35, GLADSTONE, MI 49837.

PROSPECTUS NOTE: The bidder is advised to inspect the sale area and review the location, estimated volumes, operating costs and contract terms of proposed sales. Please be aware that some landowners may request 60 days or more notice for access across their land.

Notice is hereby given that bids will be received by the Unit Manager, ESCANABA MANAGEMENT UNIT, for certain timber on the following described lands:

374 North Drumlin (33-001-18) / T37N, R25W, SEC. 19, SW,W1/2SE.

T37N, R25W, SEC. 30, NW,NWNE,NWSW.

T37N, R26W, SEC. 25, SENE,N1/2SE.

Menominee County, Advertised Price \$152,733.80, 297.9 Acres, Hardwood, Spruce/Fir/Tamarack.

SALE NOTE: This area is restricted to wheeled vehicle access. The access gate into the sale area will remain closed during the management operations.

South Engineer (33-002-18) / T43N, R22W, SEC. 17, S1/2SW,SE.

T43N, R22W, SEC. 20, NWNW.

Delta County, Advertised Price \$76,591.40, 95.4 Acres, Hardwood, Aspen.

SALE NOTE: This sale involves low and wet ground. A portion of the sale has an operating caution to operate during dry summer or frozen ground conditions (see spec 5.2.22.1). However, due to the potential of rutting (see spec 5.4.1), operations may be limited to frozen ground conditions.

Longrie Creek (33-025-18) / T35N, R28W, SEC. 15, S1/2NW,NE,N1/2SW,N1/2SE,SWSE.

T35N, R28W, SEC. 22, N1/2NW,SWNW,NWNE.

Menominee County, Advertised Price \$97,463.10, 197.3 Acres, Hardwood, Spruce/Fir/Tamarack.

SALE NOTE: The eastern larch beetle has caused some tamarack mortality within the sale area, especially within Payment Units 1, 6, and 14. The Purchaser should harvest these stands as soon as possible, to prevent further loss. The best access into Payment Units 10 - 15 is from the south through private property. If permission can't be obtained, the Purchaser can obtain a DEQ permit and place a portable bridge over Longrie Creek to provide access from the north. Some roadwork will be required on the access road into the northern Payment Units.

Access may be through private land.

Broberg Uplands (33-026-18) / T35N, R28W, SEC. 5, SESW.

T35N, R28W, SEC. 8, N1/2NW,SENE,W1/2NE.

T35N, R28W, SEC. 9, S1/2NW,NENW,NWSW.

Menominee County, Advertised Price \$86,317.60, 137.7 Acres, Hardwood, Aspen.

SALE NOTE: All Payment Units can be harvested at any time. The Purchaser will be required to haul and spread some gravel prior to any hauling taking place.

Spring Tick (33-027-18) / T34N, R29W, SEC. 1 , SWSW.

T34N, R29W, SEC. 11, NENE.

T34N, R29W, SEC. 12, N1/2NW,NWNE.

T34N, R29W, SEC. 2 , N1/2NE,S1/2SE.

Menominee County, Advertised Price \$44,682.55, 82.8 Acres, Hardwood, White Pine.

SALE NOTE: The eastern larch beetle has caused some tamarack mortality within Payment Units 1 and 2, the Purchaser should harvest these Payments Units as soon as possible to prevent further loss of volume (see spec 7.5.1).

Payment Unit 4 has numerous Oak Wilt epi-centers within it. If funding becomes available to treat the oak wilt, this contract may be modified (see spec 5.2.3.4).

BID INSTRUCTIONS (VER. 07/02/2018):

1. Scheduled Bid Location, Date, and Time (2/11)

Bids must be received by the Unit Manager, ESCANABA OFFICE, 6833 HWY 2, 41 & M-35, GLADSTONE, MI 49837, no later than 3:00 p.m. (local time) on September 25, 2018. For further information concerning this sale, contact Eric Thompson at 906-786-2354.

2. Bidder's Qualifications (5/16)

Purchaser shall obtain workers compensation insurance to cover claims under Michigan's Worker's Disability Compensation Act of 1969 or similar employee benefit act of any other state applicable to an employee. If all or part of a timber sale was prepared by a private contractor, the contractor and that contractor's company are not permitted to bid on the timber sale contract. Bids will not be accepted from individuals or companies appearing on the DNR/FRD No-Bid List. This list contains the names of purchasers who previously failed to execute a contract within 21-days or who have a history of poor performance.

3. Preparation of Sealed Bids (5/16)

Bid Forms may be completed online thru Michigan DNR Timber Sale Online Bidding (OLB) at www.michigan.gov/timberbidding or by completing the hardcopy Bid Form found in the Timber Sale Prospectus. Hardcopy Bid Forms shall be manually signed in ink. Registration in OLB is considered your 'signature' for all bids submitted thru that system. Bid prices must be entered for each species and product in the Bid Price column for all material subject to bidding and all fill-in blanks must be completed. If erasures or other changes appear on the hardcopy Bid Form, each erasure or change must be initialed by the person signing the bid.

4. Submission of Sealed Bids (5/16)

Bid forms may be obtained from the Unit Manager or thru OLB. Bids may be submitted hardcopy or thru OLB. All hardcopy bids must be submitted on the bid form and in an envelope clearly identified as described in this section. NOTE: Only one bid form per bid envelope. Sealed bids must be submitted to the Unit office designated in the prospectus and must be submitted at or prior to the time established in the prospectus. The envelope should show on the outside (a) the sale name or number and (b) the date and time of bid opening, as shown in the prospectus. Bids received after the time specified in the sale prospectus are late bids and will be rejected.

It is possible for a bidder to submit multiple bids on a single sale. For example, a bid may be submitted hardcopy and a bid may be submitted thru OLB. Or, two bidders from the same company could both submit bids on the same sale. If this were to happen, the State would accept all bids received and award the contract accordingly. All bidding and contractual requirements would apply to all bids received.

5. Public Opening of Sealed Bids (7/16)

If conditions permit, the sealed bids will be publicly opened and posted at the time and place set in the prospectus.

If a bidder, present at a bid opening, has submitted bids on more than one sale, that bidder may withdraw their unopened bid envelopes or announce the withdrawal of their online bid after being declared the successful bidder on one sale.

6. Award of Contract (1/11)

Award of the contract will be made to the Bidder whose bid, conforming to the prospectus, is most advantageous to the State of Michigan on the basis of total value at rates bid for the estimated quantities. The State reserves the right to reject any bid or waive any minor irregularity in bids received. A written award mailed (or otherwise furnished) to the successful Bidder shall be deemed to result in a binding contract without further action by either party.

7. Down Payment (1/11)

The Bidder to whom award is made must make a down payment within 21 days of the sale award. The amount of the down payment will be calculated as shown in the Bond and Payment Schedule of this prospectus. Only cash may be used to meet this requirement.

8. Performance Security (1/11)

As guarantee of faithful performance, a cash bond, certificate of deposit, surety bond or irrevocable letter of credit (LOC) is required within 21 days of the sale award. The amount of the performance security is shown in the Bond and

Payment Schedule of this prospectus. If an LOC or surety is used, the coverage must extend for at least 6 months beyond the contract expiration.

9. Timber Sale Contract (7/18)

Additional conditions and requirements common to all timber sales are listed on the timber sale contract (R4031) and are available on line at www.michigan.gov/timber. Contact the Unit Manager for additional information or a sample contract. Within 21 days of the date of the award letter, the bidder must sign the contract and provide the required down payment, performance security, and verification of worker's disability compensation. The down payment and performance security shall be in accordance with the provisions of the timber sale contract, in the sums stated in this prospectus. If these actions are not taken, then the Bidder, the Bidder's corporation, and the corporation's principals may not be permitted to bid on State timber sales for a period of 3 months after the first offense, 6 months after the second offense, and 1 year after the third offense. An offense will only be counted against the Bidder for 5 years. In addition, the Bidder certifies that if awarded this contract, the Bidder will complete the timber sale contract in accordance with its terms and any modifications thereof including requirements to purchase, cut, and remove the included timber by the expiration date.

Payment Unit values in the State Forest Timber Sale Contract are calculated based on the advertised value of the Payment Unit as a percentage of the total advertised value of the contract. The advertised value of each Payment Unit is given in the Description of Timber by Payment Unit table on the Timber Sale Information page. For example, if the value of Payment Unit 1 is advertised as \$1,500 and the total Timber Sale value is advertised as \$10,000, the contract price for Payment Unit 1 will be 15% of the total bid price ($\$1,500/\$10,000 * 100$).

10. Disclaimer of Estimates and Bidder's Warranty of Inspection (7/16)

Before submitting this bid, the Bidder is advised and cautioned to inspect the sale area, review the requirements of the sale contract, and take other steps as may be reasonably necessary to ascertain the location, estimated volumes, construction estimates, and operating costs of the proposed sale. Failure to do so will not relieve the Bidder from responsibility for completing the contract.

The Bidder warrants that this bid is submitted solely on the basis of the Bidder's examination and inspection of the quality and quantity of the timber offered for sale and the Bidder's opinion of the value thereof and the costs of recovery. No reliance should be placed on the State of Michigan's estimates of timber quality, quantity or costs of recovery. Bidder further acknowledges that the State of Michigan: (i) expressly disclaims any warranty of fitness of timber for any purpose; (ii) offers this timber as is without any warranty of quality (merchantability) or quantity and (iii) expressly disclaims any warranty as to the quantity or quality of timber sold.

11. Certification and Chain-of-Custody (10/14)

Unless otherwise indicated in the contract under section 7 – Other Conditions of the Sale Specific Conditions & Requirements, the area encompassed by this timber sale is certified to the standards of the Forest Stewardship Council (FSC) - Certificate #SCS-FM/COC-00090N and the Sustainable Forestry Initiative (SFI) - Certificate #NSF-SFIS-5Y031-SF5. Forest products from this sale may be delivered to the mill as "FSC 100% and / or SFI certified" as long as the contractor hauling the forest products is chain-of-custody (COC) certified or covered under a COC certificate from the destination mill. The purchaser is responsible for maintaining COC after leaving the sale area.

12. Good Neighbor Authority (GNA) Requirements (7/16)

If the name of this timber sales contains the acronym GNA, it is authorized by the Good Neighbor Authority (GNA) and covered by various agreements between the U.S. Forest Service and the State. The timber sale occurs on federal land and the following conditions apply:

GNA contracts on US Forest Service land will not be awarded to purchasers on the Federal list of excluded parties. The System for Award Management (SAM) will be checked for active excluded parties prior to award of contract. In addition, the Bidder to whom award is made must complete an Assurance Regarding Felony Conviction or Tax Delinquent Status for Corporate Applicants (AD-3031).

13. Good Neighbor Authority (GNA) Requirements, con't (9/16)

Bidder certifies, by signing this bid form, that to the best of Bidder's knowledge that the following representations are accurate and complete.

- a. That the Bidder and its principals are not presently debarred, suspended, proposed for debarment, declared ineligible, or voluntary excluded from timber sales (covered transactions) by any Federal department or agency.
- b. That the Bidder and its principals have not within a 3-year period preceding this bid been convicted of or had a civil judgment rendered against them for commission of fraud or a criminal offense in connection with obtaining, attempting to obtain, or performing a public (Federal, State, or local) transaction or contract under a public transaction; violation of Federal or State antitrust statutes or commission of embezzlement, theft, forgery, bribery, falsification or destruction of records, making false statements, or receiving stolen property.
- c. That the Bidder and its principals are not presently indicted for or otherwise criminally or civilly charged by a governmental entity (Federal, State, or local) with commission of any of the offenses enumerated in paragraph b of this certification.
- d. That the Bidder and its principals have not within a 3-year period preceding this bid had one or more public transactions (Federal, State, or local) terminated for breach or default of a timber or forest product contract.

Bidders that cannot certify this requirement, in whole or in part, shall submit an explanation with their bid.

KEITH CREAGH
Director

TIMBER SALE INFORMATION

374 North Drumlin (33-001-18)
 T37N, R25W, SEC. 19; T37N, R25W, SEC. 30; T37N, R26W, SEC. 25.
 Menominee County (Advertised Price \$152,733.80)

SALE NOTE: This area is restricted to wheeled vehicle access. The access gate into the sale area will remain closed during the management operations.

A timber sale contract for this lump sum, sealed bid timber sale will be awarded to the responsible bidder offering the highest sealed bid price. Bids must be at or above the following advertised price for each species:

<u>PRODUCTS & SPECIES</u>	<u>ESTIMATED UNITS*</u>	<u>ADVERTISED PRICE</u>
Sawtimber		
Basswood	177.60 MBF	\$ 113.00 / MBF
Beech	3.80 MBF	\$ 79.00 / MBF
Black Cherry	1.60 MBF	\$ 153.00 / MBF
Paper Birch	3.30 MBF	\$ 83.00 / MBF
Red Maple	7.60 MBF	\$ 206.00 / MBF
Sugar Maple	48.10 MBF	\$ 292.00 / MBF
White Ash	32.10 MBF	\$ 63.00 / MBF
Yellow Birch	1.50 MBF	\$ 117.00 / MBF
Pulpwood		
Balsam Fir	348.00 Cords	\$ 25.90 / Cord
Mixed Aspen	311.00 Cords	\$ 29.45 / Cord
Mixed Hardwood	3,004.00 Cords	\$ 29.25 / Cord
Mixed Spruce	107.00 Cords	\$ 21.35 / Cord
Red Pine	91.00 Cords	\$ 57.35 / Cord
Tamarack	15.00 Cords	\$ 19.05 / Cord
White Pine	7.00 Cords	\$ 29.90 / Cord

* The total volume is statistically estimated within plus (+) or minus (-) 8.19 percent. The estimated units are final and not subject to adjustment. Prospective bidders are urged to examine this timber and to make their own estimates of quantity and quality.

BOND AND PAYMENT SCHEDULE:

1. A bond in the amount of \$7,637.00 to insure faithful performance of the conditions of the contract will be deposited by the successful bidder within 21 days of the sale award.
2. Cutting in any sale or unit without the required advance payment would be considered a trespass.
3. Total payment must be paid in advance or according to the following schedule:
 - (a) Ten percent (10%) of the sale value must be paid within 21 days of the sale award.
 - (b) The 10% down payment will be credited towards the first unit cut.
 - (c) Payment for each of the following units must be made before cutting begins in that unit:

PAYMENT UNIT NUMBER	PERCENT OF TOTAL SALE VALUE
01	6.4%
02	10.1%
03	11.2%
04	15.5%
05	9.3%
06	18.0%
07	4.3%
08	9.6%
09	7.5%
10	8.1%

4. If no cutting takes place, the 10% down payment will not be refunded.
5. Operations on the contract issued will terminate on 12/31/2021.

Description of Timber by Payment Unit (PU)

PU	MARKET GROUP	PRODUCT	QUANTITY	UNIT	ACRES	ADVERTISE PRICE
1	Balsam Fir	Pulpwood	122.0	Cords	26.0	\$9,788.10
	Mixed Aspen		58.0	Cords		
	<i>Balsam Poplar</i>		31.0	<i>Cords</i>		
	<i>Quaking Aspen</i>		27.0	<i>Cords</i>		
	Mixed Hardwood		108.0	Cords		
	<i>American Elm</i>		8.0	<i>Cords</i>		
	<i>Basswood</i>		6.0	<i>Cords</i>		
	<i>Black Ash</i>		34.0	<i>Cords</i>		
	<i>Black Cherry</i>		21.0	<i>Cords</i>		
	<i>Paper Birch</i>		9.0	<i>Cords</i>		
	<i>Red Maple</i>		23.0	<i>Cords</i>		
	<i>Sugar Maple</i>		7.0	<i>Cords</i>		
	Mixed Spruce		70.0	Cords		
	<i>White Spruce</i>		70.0	<i>Cords</i>		
	Tamarack		14.0	Cords		
2	Paper Birch	Sawtimber	1.0	MBF	30.1	\$15,374.20
	Balsam Fir	Pulpwood	75.0	Cords		
	Mixed Aspen		16.0	Cords		
	<i>Balsam Poplar</i>		16.0	<i>Cords</i>		
	Mixed Hardwood		243.0	Cords		
	<i>Basswood</i>		77.0	<i>Cords</i>		
	<i>Black Ash</i>		31.0	<i>Cords</i>		
	<i>Paper Birch</i>		48.0	<i>Cords</i>		
	<i>Red Maple</i>		27.0	<i>Cords</i>		
	<i>Sugar Maple</i>		60.0	<i>Cords</i>		
	Mixed Spruce		16.0	Cords		
	<i>Black Spruce</i>		6.0	<i>Cords</i>		
	<i>White Spruce</i>		10.0	<i>Cords</i>		
	Red Pine		91.0	Cords		
	White Pine		7.0	Cords		
3	Basswood		Sawtimber	28.8	MBF	30.8
	Beech	0.8		MBF		
	Red Maple	0.3		MBF		
	Sugar Maple	8.5		MBF		
	White Ash	4.8		MBF		
	Balsam Fir	Pulpwood	12.0	Cords		
	Mixed Hardwood		363.0	Cords		
	<i>Basswood</i>		161.0	<i>Cords</i>		
	<i>Beech</i>		13.0	<i>Cords</i>		
	<i>Ironwood</i>		2.0	<i>Cords</i>		
	<i>Paper Birch</i>		1.0	<i>Cords</i>		
	<i>Red Maple</i>		16.0	<i>Cords</i>		
	<i>Sugar Maple</i>		158.0	<i>Cords</i>		
	<i>White Ash</i>		11.0	<i>Cords</i>		
	<i>Yellow Birch</i>		1.0	<i>Cords</i>		
4	Basswood	Sawtimber	40.0	MBF	42.8	\$23,733.05
	Beech		1.1	MBF		
	Red Maple		0.4	MBF		
	Sugar Maple		11.7	MBF		
	White Ash		6.6	MBF		
	Balsam Fir	Pulpwood	17.0	Cords		
	Mixed Hardwood		505.0	Cords		
	<i>Basswood</i>		224.0	<i>Cords</i>		
	<i>Beech</i>		18.0	<i>Cords</i>		
	<i>Ironwood</i>		3.0	<i>Cords</i>		
	<i>Paper Birch</i>		1.0	<i>Cords</i>		

Description of Timber by Payment Unit (PU), con't

PU	MARKET GROUP	PRODUCT	QUANTITY	UNIT	ACRES	ADVERTISE PRICE
4 con't	<i>Red Maple</i> <i>Sugar Maple</i> <i>White Ash</i> <i>Yellow Birch</i>	<i>Pulpwood</i>	23.0 219.0 15.0 2.0	<i>Cords</i> <i>Cords</i> <i>Cords</i> <i>Cords</i>		
5	Basswood Beech Red Maple Sugar Maple White Ash Balsam Fir Mixed Hardwood <i>Basswood</i> <i>Beech</i> <i>Ironwood</i> <i>Paper Birch</i> <i>Red Maple</i> <i>Sugar Maple</i> <i>White Ash</i> <i>Yellow Birch</i>	Sawtimber Pulpwood	23.9 0.7 0.2 7.0 4.0 10.0 302.0 134.0 10.0 2.0 1.0 14.0 131.0 9.0 1.0	MBF MBF MBF MBF MBF Cords Cords <i>Cords</i> <i>Cords</i> <i>Cords</i> <i>Cords</i> <i>Cords</i> <i>Cords</i> <i>Cords</i> <i>Cords</i>	25.6	\$14,185.70
6	Basswood Beech Red Maple Sugar Maple White Ash Balsam Fir Mixed Hardwood <i>Basswood</i> <i>Beech</i> <i>Ironwood</i> <i>Paper Birch</i> <i>Red Maple</i> <i>Sugar Maple</i> <i>White Ash</i> <i>Yellow Birch</i>	Sawtimber Pulpwood	46.6 1.2 0.5 13.7 7.7 20.0 586.0 260.0 20.0 4.0 2.0 26.0 254.0 18.0 2.0	MBF MBF MBF MBF MBF Cords Cords <i>Cords</i> <i>Cords</i> <i>Cords</i> <i>Cords</i> <i>Cords</i> <i>Cords</i> <i>Cords</i> <i>Cords</i>	49.8	\$27,607.60
7	Basswood Paper Birch Red Maple Yellow Birch Balsam Fir Mixed Aspen <i>Balsam Poplar</i> Mixed Hardwood <i>American Elm</i> <i>Basswood</i> <i>Black Ash</i> <i>Paper Birch</i> <i>Red Maple</i> <i>Sugar Maple</i> <i>White Ash</i> <i>Yellow Birch</i> Mixed Spruce <i>White Spruce</i> Tamarack	Sawtimber Pulpwood	0.7 0.7 3.1 1.5 31.0 23.0 23.0 136.0 4.0 9.0 37.0 18.0 41.0 8.0 13.0 6.0 10.0 10.0 1.0	MBF MBF MBF MBF Cords Cords <i>Cords</i> Cords <i>Cords</i> <i>Cords</i> <i>Cords</i> <i>Cords</i> <i>Cords</i> <i>Cords</i> <i>Cords</i> <i>Cords</i> Cords <i>Cords</i> Cords	14.1	\$6,642.10
8	Black Cherry Paper Birch Red Maple	Sawtimber	1.6 1.6 3.1	MBF MBF MBF	24.1	\$14,587.40

Description of Timber by Payment Unit (PU), con't

PU	MARKET GROUP	PRODUCT	QUANTITY	UNIT	ACRES	ADVERTISE PRICE
8 con't	Sugar Maple	Sawtimber	1.6	MBF		
	White Ash		1.6	MBF		
	Balsam Fir	Pulpwood	43.0	Cords		
	Mixed Aspen		212.0	Cords		
	<i>Balsam Poplar</i>		212.0	<i>Cords</i>		
	Mixed Hardwood		185.0	Cords		
	<i>Basswood</i>		47.0	<i>Cords</i>		
	<i>Black Ash</i>		8.0	<i>Cords</i>		
	<i>Black Cherry</i>		5.0	<i>Cords</i>		
	<i>Green Ash</i>		2.0	<i>Cords</i>		
	<i>Paper Birch</i>		24.0	<i>Cords</i>		
	<i>Red Maple</i>		47.0	<i>Cords</i>		
	<i>Sugar Maple</i>		45.0	<i>Cords</i>		
	<i>White Ash</i>		7.0	<i>Cords</i>		
	Mixed Spruce		11.0	Cords		
	<i>Black Spruce</i>		5.0	<i>Cords</i>		
<i>White Spruce</i>		6.0	<i>Cords</i>			
9	Basswood	Sawtimber	18.0	MBF	26.2	\$11,384.75
	Sugar Maple		2.7	MBF		
	White Ash		3.6	MBF		
	Balsam Fir	Pulpwood	9.0	Cords		
	Mixed Aspen		1.0	Cords		
	<i>Quaking Aspen</i>		1.0	<i>Cords</i>		
	Mixed Hardwood		276.0	Cords		
	<i>Basswood</i>		124.0	<i>Cords</i>		
	<i>Beech</i>		1.0	<i>Cords</i>		
	<i>Ironwood</i>		9.0	<i>Cords</i>		
	<i>Red Maple</i>		4.0	<i>Cords</i>		
	<i>Sugar Maple</i>		110.0	<i>Cords</i>		
	<i>White Ash</i>		28.0	<i>Cords</i>		
	10	Basswood	Sawtimber	19.6		
Sugar Maple			2.9	MBF		
White Ash			3.8	MBF		
Balsam Fir		Pulpwood	9.0	Cords		
Mixed Aspen			1.0	Cords		
<i>Quaking Aspen</i>			1.0	<i>Cords</i>		
Mixed Hardwood			300.0	Cords		
<i>Basswood</i>			135.0	<i>Cords</i>		
<i>Beech</i>			2.0	<i>Cords</i>		
<i>Ironwood</i>			9.0	<i>Cords</i>		
<i>Red Maple</i>			4.0	<i>Cords</i>		
<i>Sugar Maple</i>			119.0	<i>Cords</i>		
<i>White Ash</i>			31.0	<i>Cords</i>		
TOTAL:			275.6	MBF		
TOTAL:			3,883.0	Cords		

Sale Specific Conditions & Requirements

Sale Name: 374 North Drumlin

Sale Number: 33-001-18 Seq#: 1

1 - Sale Area

1.2 - Boundaries

1.2.1 - Painted boundaries (1/14)

The sale boundary and Payment Unit boundaries are marked and identified by blue, red and yellow paint. Exterior sale boundary lines against private property are marked with blue paint. Exterior sale boundary lines against state are marked with red paint. Interior retention areas are marked with red painted x marks. Interior Payment Unit boundaries are marked with yellow paint. The painted boundary line trees are not Included Timber and are to be protected unless marked with orange paint. Yellow painted trees designating an interior Payment Unit boundary are only to be cut when all surrounding Payment Units have been paid.

2 - Timber Specifications

2.1 - Included Timber

2.1.1 - Clearcut unit(s) with unmerchantable trees (6/14)

Within Payment Unit(s) 1, 2, 7 and 8, cut all trees that are three (3) inches or more at DBH, with the following exceptions:

Within Payment Unit 1, do not cut any hemlock and cedar.

Within Payment Unit 2, do not cut any hemlock, cedar, and trees marked with green paint.

Within Payment Unit 7, do not cut any cedar.

Within Payment Unit 8, do not cut any yellow birch and cedar.

2.1.3 - Cut tree marked unit(s) (12/08)

Within Payment Unit(s) 3, 4, 5, 6, 9 and 10, all trees are designated for cutting when marked with orange paint above and below stump height, regardless of merchantability.

2.1.9 - Harvest exception (12/08)

Do not cut any cedar trees other than those that are necessary to remove in order to operate within the sale area. Every effort must be made to preserve the existing cedar and to leave an intact stand upon sale completion. All cut cedar shall be piled separately by products and scaled in the woods unless other scaling arrangements are agreed to by the Unit Manager or his/her representative. Stumpage price for cedar shall be \$60.00 per cord.

3 - Payments

3.3 - Pre-measured Sales

3.3.4 - Dividing payment units (7/14)

Payment Unit(s) with a contract purchase value of \$18,000 dollars or greater may be divided at the request of the Purchaser and upon approval of the Unit Manager. Dividing Payment Units is a contract modification which requires a Timber Sale Contract Supplement.

4 - Transportation

4.1 - Construction

4.1.5 - Culverts (5/14)

Roads may require the installation of culverts for cross drainage or at natural drainage-ways. If culverts are needed in these locations, their placement will be specified by the sale administrator and they shall be installed prior to hauling. The culverts shall be new, corrugated metal or plastic gauge. Culverts will be a minimum of 12 inches in diameter and 24 feet in length. If culverts are removed, fill shall be removed from wetland soils as specified. Soils shall be maintained and left in a non-erodible condition, with water bars, seed, fertilizer, mulch, and slash installed as directed by the sale administrator and as specified in

the BMP manual. Stream crossing permits, if needed, will be obtained by the DNR.

4.1.6 - Road construction (1/09)

Construction of new roads or improvements of existing roads shall be done in such a way as to minimize the environmental and visual impacts. Merchantable trees shall be cut and utilized unless otherwise directed. Non-merchantable trees shall be severed and laid flat on the ground. Slash shall be scattered, and not left in windrows and kept a minimum of 10 feet back from the road edge. Stumps shall be set upright, not left on edge, and be moved at least 10 feet away from the road edge. Disturbed soil shall be feathered into the woods and not left in berms or windrows.

4.2 - Maintenance

4.2.2 - Fill material (4/07)

To maintain roads, fill material may be needed in areas where "holes" exist or may be expected to develop. This fill material should be placed before trucking begins. Contact the sale administrator regarding the availability of onsite sand or gravel from adjacent State-owned lands.

4.4 - Access

4.4.2 - Alternate route on private property (2/04)

It is the Purchaser's responsibility to obtain access across private land for any routes other than the route shown on the sale map.

4.4.3 - Access gate (12/08)

The access gate must be locked at all times. This is to prevent someone other than the Purchaser from going through the gate and being locked in.

5 - Operations

5.2 - Conduct of Operations

5.2.2 - Hazard Trees/Snags

5.2.2.1 - Den trees (10/16)

Obvious hollow and/or den trees shall be protected and left standing unless they are a safety hazard.

5.2.3 - Operating Restrictions

5.2.3.1 - Operating restrictions (9/11)

Within Payment Unit(s) 1 and 7, unless changed by written agreement, cutting, skidding, and hauling are limited to the period of December 1 to March 31, or frozen ground conditions. This restriction is because these units are in low and wet ground.

5.2.3.3 - Bark slippage restriction (3/09)

Within Payment Unit(s) 3, 4, 5, 6, 9 and 10, unless changed by written agreement, cutting and skidding are not permitted during the period of April 15 to July 15. This restriction is because of bark slippage.

5.2.22 - Operating Caution

5.2.22.1 - Operating caution (6/11)

It is recommended, but not required, that within Payment Unit(s) 2 (east portion) and 8 (southeast portion), cutting, skidding, and hauling occur during dry summer or frozen winter conditions. The reason for the recommendation is because these units or portions of these units are low and wet ground.

5.2.38 - No decking against live trees (2/04)

Cut products may not be decked against unmarked or designated leave trees.

5.4 - Soil Protection

5.4.1 - Rutting restriction, general (7/16)

Operations are to cease immediately if equipment and weather conditions result in rutting of roads and/or skid trails which is 12 inches or greater in depth and 50 feet in length. The Unit Manager or his/her representative may restrict hauling and/or skidding if ruts exceed the specified depth. With the Unit Manager or his/her representative's approval, the Purchaser may

return to the area when the risk of rutting has decreased.

5.4.4 - Slope protection (5/15)

Skid trails and roads on slopes shall be water barred with slash, stumps, and/or clean straw bales native to the area as soon as use is complete to prevent erosion.

5.7 - Protection of Historical Sites

5.7.1 - Historical sites (7/12)

The Purchaser shall not cut live or dead trees or operate equipment within historical sites. Historical sites are marked with a green boundary line. The Purchaser shall protect historical sites from damage by the Purchaser's operations. If Purchaser's operations have cut or damaged historical sites through carelessness, the Purchaser shall pay \$250 dollars as fixed, agreed and liquidated damages for each acre or part thereof cut or damaged.

6 - Safety and Fire Prevention

6.2 - Signing

6.2.1 - Road posting (9/09)

The Purchaser is responsible for posting and maintaining caution signs on County Road 374 prior to beginning operations. The road must be posted at appropriate distances from the sale area to warn of logging activity and truck traffic. Signs must be removed when harvest operations are suspended or completed. The Purchaser will provide these signs.



TIMBER SALE MAP

This information provided by authority of Part 525, 1994 PA 451, as amended.

Forest Management Unit Escanaba	County Menominee	Mapped By Racine	Date 7/12/2018	Page 1	of 1
Township 37N	Range 25,26 W	Section(s) and Subdivision(s) 37 25 19)SW1/4, W1/2SE 30) NW1/4, NWNE, NWSW 37 26 25) SENE, E1/2SE, NWSE	Scale 1:15,840		

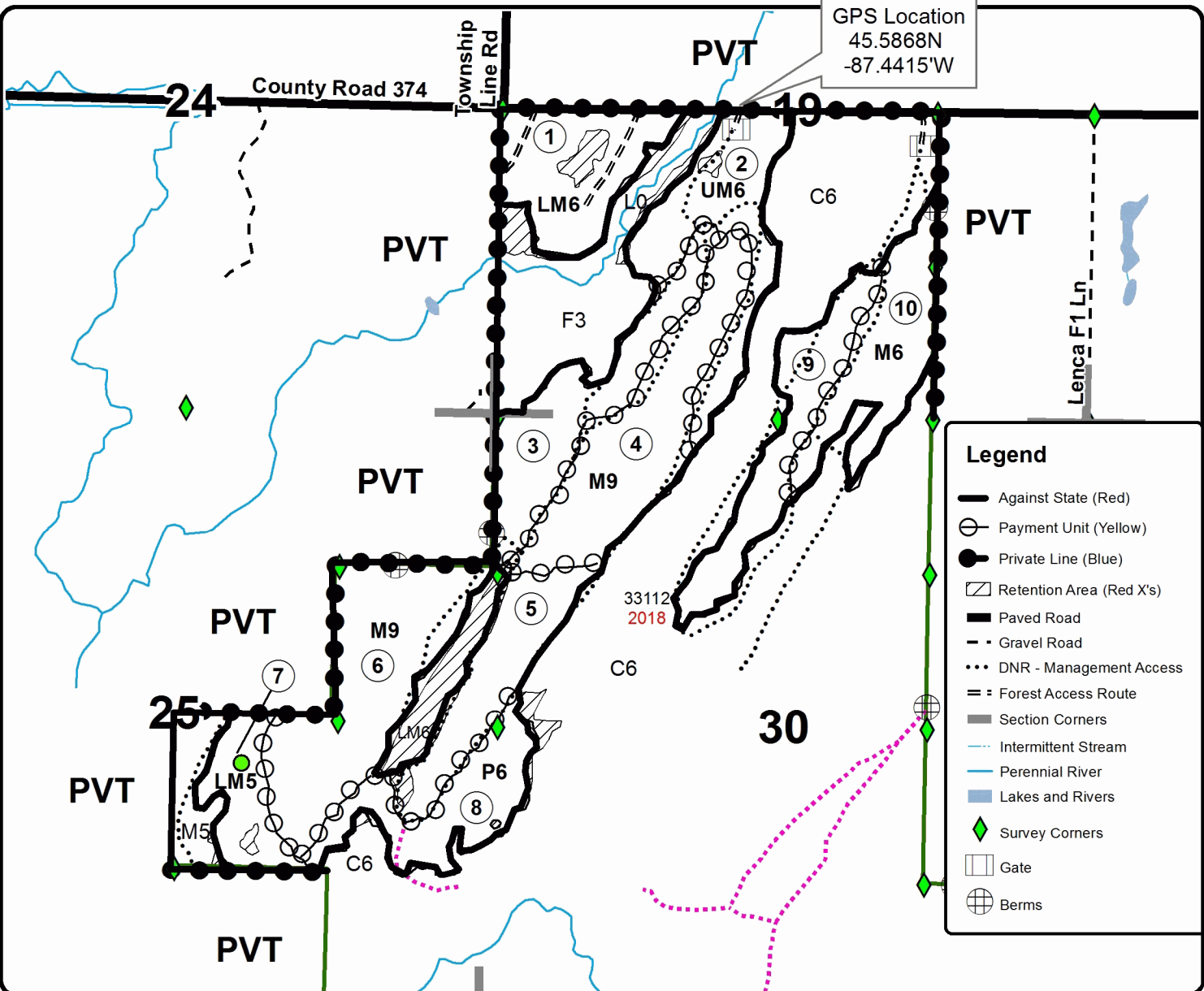
Cover Type				Density	
A = Aspen	H = Hemlock	N = Marsh	U = Upland Brush	0 = Non Stocked	5 = Pole Timber Medium
B = Paper Birch	J = Jack Pine	O = Oak	UM = Upland Mixed	1 = Seedling Sapling Poor	6 = Pole Timber Well
C = Cedar	L = Lowland Brush	P = Lowland Poplar	V = Bog or Marsh	2 = Seedling Sapling Medium	7 = Saw Timber Poor
D = Treed Bog	LM = Lowland Mixed	Q = Mixed Swamp Conifer	W = White Pine	3 = Seedling Sapling Well	8 = Saw Timber Medium
E = Swamp Hdwoods	M = Mpl, Bch, Brch	R = Red Pine	X = Non Stocked	4 = Pole Timber Poor	9 = Saw Timber Well
F = Spruce Fir	MC = Mixed Conifer	S = Black Spruce	Z = Water		
G = Grass	MD = Mixed Deciduous	T = Tamarack			

PU	Acres	PU	Acres
1	26	6	49.8
2	30.1	7	14.1
3	30.8	8	24.1
4	42.8	9	26.2
5	25.6	10	28.4

374 North Drumlin Compartment 112 297.9 Acres



GPS Location
45.5868N
-87.4415'W



Legend

- Against State (Red)
- Payment Unit (Yellow)
- Private Line (Blue)
- ▭ Retention Area (Red X's)
- Paved Road
- - Gravel Road
- ... DNR - Management Access
- ≡ Forest Access Route
- Section Corners
- ~ Intermittent Stream
- Perennial River
- Lakes and Rivers
- ◆ Survey Corners
- Gate
- ⊕ Berms

TIMBER SALE INFORMATION

South Engineer (33-002-18)

T43N, R22W, SEC. 17; T43N, R22W, SEC. 20.

Delta County (Advertised Price \$76,591.40)

SALE NOTE: This sale involves low and wet ground. A portion of the sale has an operating caution to operate during dry summer or frozen ground conditions (see spec 5.2.22.1). However, due to the potential of rutting (see spec 5.4.1), operations may be limited to frozen ground conditions.

A timber sale contract for this lump sum, sealed bid timber sale will be awarded to the responsible bidder offering the highest sealed bid price. Bids must be at or above the following advertised price for each species:

<u>PRODUCTS & SPECIES</u>	<u>ESTIMATED UNITS*</u>		<u>ADVERTISED PRICE</u>
Sawtimber			
Basswood	14.70	MBF	\$ 113.00 / MBF
Green Ash	4.90	MBF	\$ 88.00 / MBF
Red Maple	38.50	MBF	\$ 206.00 / MBF
Sugar Maple	34.90	MBF	\$ 292.00 / MBF
White Ash	7.00	MBF	\$ 63.00 / MBF
Pulpwood			
Balsam Fir	63.00	Cords	\$ 25.90 / Cord
Mixed Aspen	620.00	Cords	\$ 29.45 / Cord
Mixed Hardwood	1,217.00	Cords	\$ 29.25 / Cord
White Spruce	21.00	Cords	\$ 21.35 / Cord

* The total volume is statistically estimated within plus (+) or minus (-) 15.74 percent. The estimated units are final and not subject to adjustment. Prospective bidders are urged to examine this timber and to make their own estimates of quantity and quality.

BOND AND PAYMENT SCHEDULE:

1. A bond in the amount of \$3,830.00 to insure faithful performance of the conditions of the contract will be deposited by the successful bidder within 21 days of the sale award.
2. Cutting in any sale or unit without the required advance payment would be considered a trespass.
3. Total payment must be paid in advance or according to the following schedule:
 - (a) Ten percent (10%) of the sale value must be paid within 21 days of the sale award.
 - (b) The 10% down payment will be credited towards the first unit cut.
 - (c) Payment for each of the following units must be made before cutting begins in that unit:

PAYMENT UNIT NUMBER	PERCENT OF TOTAL SALE VALUE
01	5.1%
02	3.9%
03	5.5%
04	25.5%
05	11.4%
06	22.3%
07	26.3%

4. If no cutting takes place, the 10% down payment will not be refunded.
5. Operations on the contract issued will terminate on 09/30/2021.

Description of Timber by Payment Unit (PU)

PU	MARKET GROUP	PRODUCT	QUANTITY	UNIT	ACRES	ADVERTISE PRICE			
1	Red Maple	Sawtimber	5.4	MBF	5.0	\$3,907.40			
	Balsam Fir	Pulpwood	2.0	Cords					
	Mixed Aspen		8.0	Cords					
	<i>Quaking Aspen</i>		8.0	<i>Cords</i>					
	Mixed Hardwood		85.0	Cords					
	<i>Black Ash</i>		23.0	<i>Cords</i>					
	<i>Red Maple</i>		55.0	<i>Cords</i>					
	<i>Sugar Maple</i>		7.0	<i>Cords</i>					
	White Spruce		1.0	Cords					
	2	Red Maple	Sawtimber	3.1			MBF	6.4	\$2,949.45
Sugar Maple			1.4	MBF					
Mixed Aspen		Pulpwood	4.0	Cords					
<i>B. T. Aspen</i>			4.0	<i>Cords</i>					
Mixed Hardwood			61.0	Cords					
<i>Basswood</i>			3.0	<i>Cords</i>					
<i>Black Ash</i>			2.0	<i>Cords</i>					
<i>Red Maple</i>			26.0	<i>Cords</i>					
<i>Sugar Maple</i>			26.0	<i>Cords</i>					
<i>Yellow Birch</i>			4.0	<i>Cords</i>					
3		Basswood	Sawtimber	1.1	MBF	6.0	\$4,186.10		
		Sugar Maple		7.9	MBF				
	Mixed Hardwood	Pulpwood	60.0	Cords					
	<i>Basswood</i>		3.0	<i>Cords</i>					
	<i>Sugar Maple</i>		53.0	<i>Cords</i>					
	<i>Yellow Birch</i>		4.0	<i>Cords</i>					
4	Green Ash	Sawtimber	4.9	MBF	15.6	\$19,498.05			
	Red Maple		19.7	MBF					
	Balsam Fir	Pulpwood	49.0	Cords					
	Mixed Aspen		19.0	Cords					
	<i>Balsam Poplar</i>		3.0	<i>Cords</i>					
	<i>Quaking Aspen</i>		16.0	<i>Cords</i>					
	Mixed Hardwood		436.0	Cords					
	<i>Black Ash</i>		90.0	<i>Cords</i>					
	<i>Green Ash</i>		24.0	<i>Cords</i>					
	<i>Paper Birch</i>		3.0	<i>Cords</i>					
	<i>Red Maple</i>		262.0	<i>Cords</i>					
	<i>Sugar Maple</i>		3.0	<i>Cords</i>					
	<i>Yellow Birch</i>		54.0	<i>Cords</i>					
	White Spruce		20.0	Cords					
5	Red Maple	Sawtimber	6.2	MBF	12.0	\$8,759.40			
	Sugar Maple		3.1	MBF					
	Balsam Fir	Pulpwood	10.0	Cords					
	Mixed Hardwood		216.0	Cords					
	<i>Red Maple</i>		128.0	<i>Cords</i>					
	<i>Sugar Maple</i>		88.0	<i>Cords</i>					
6	Basswood	Sawtimber	8.7	MBF	29.8	\$17,087.20			
	Red Maple		4.1	MBF					
	Sugar Maple		22.5	MBF					
	White Ash		7.0	MBF					
	Mixed Hardwood	Pulpwood	282.0	Cords					
	<i>Basswood</i>		21.0	<i>Cords</i>					
	<i>Black Cherry</i>		2.0	<i>Cords</i>					
	<i>Red Maple</i>		25.0	<i>Cords</i>					
	<i>Sugar Maple</i>		198.0	<i>Cords</i>					
	<i>White Ash</i>		29.0	<i>Cords</i>					
	<i>Yellow Birch</i>		7.0	<i>Cords</i>					

Description of Timber by Payment Unit (PU), con't

PU	MARKET GROUP	PRODUCT	QUANTITY	UNIT	ACRES	ADVERTISE PRICE
7	Basswood	Sawtimber	4.9	MBF	20.6	\$20,203.80
	Balsam Fir	Pulpwood	2.0	Cords		
	Mixed Aspen		589.0	Cords		
	<i>Balsam Poplar</i>		<i>57.0</i>	<i>Cords</i>		
	<i>Quaking Aspen</i>		<i>532.0</i>	<i>Cords</i>		
	Mixed Hardwood		77.0	Cords		
	<i>Basswood</i>		<i>9.0</i>	<i>Cords</i>		
	<i>Black Cherry</i>		<i>8.0</i>	<i>Cords</i>		
	<i>Sugar Maple</i>		<i>49.0</i>	<i>Cords</i>		
	<i>White Ash</i>		<i>11.0</i>	<i>Cords</i>		
	TOTAL:			100.0		
TOTAL:			1,921.0	Cords		

Sale Specific Conditions & Requirements

Sale Name: South Engineer

Sale Number: 33-002-18 Seq#: 1

1 - Sale Area

1.2 - Boundaries

1.2.1 - Painted boundaries (1/14)

The sale boundary and Payment Unit boundaries are marked and identified red and yellow paint. Exterior sale boundary lines against state are marked with red paint. Interior Payment Unit boundaries are marked with yellow paint. The painted boundary line trees are not Included Timber and are to be protected unless marked with orange paint. Yellow painted trees designating an interior Payment Unit boundary are only to be cut when all surrounding Payment Units have been paid.

2 - Timber Specifications

2.1 - Included Timber

2.1.1 - Clearcut unit(s) with unmerchantable trees (6/14)

Within Payment Unit(s) 1, 4 and 7, cut all trees that are three (3) inches or more at DBH, with the following exceptions:

Within Payment Unit 1, do not cut any hemlock and yellow birch.

Within Payment Unit 4, do not cut any cedar.

2.1.3 - Cut tree marked unit(s) (12/08)

Within Payment Unit(s) 2, 3 and 6, all trees are designated for cutting when marked with orange paint above and below stump height, regardless of merchantability.

2.1.7 - Leave tree marked unit(s) (6/14)

Within Payment Unit(s) 5, all trees which meet minimum piece specifications in 2.2 Utilization, are designated for cutting, except do not cut cedar, hemlock, yellow birch and trees marked with green paint above and below stump height.

3 - Payments

3.3 - Pre-measured Sales

3.3.4 - Dividing payment units (7/14)

Payment Unit(s) with a value of \$18,000 dollars or greater may be divided at the request of the Purchaser and upon approval of the Unit Manager. Dividing Payment Units is a contract modification which requires a Timber Sale Contract Supplement.

4 - Transportation

4.1 - Construction

4.1.6 - Road construction (1/09)

Construction of new roads or improvements of existing roads shall be done in such a way as to minimize the environmental and visual impacts. Merchantable trees shall be cut and utilized unless otherwise directed. Non-merchantable trees shall be severed and laid flat on the ground. Slash shall be scattered, and not left in windrows and kept a minimum of 10 feet back from the road edge. Stumps shall be set upright, not left on edge, and be moved at least 10 feet away from the road edge. Disturbed soil shall be feathered into the woods and not left in berms or windrows.

4.2 - Maintenance

4.2.2 - Fill material (4/07)

To maintain roads, fill material may be needed in areas where "holes" exist or may be expected to develop. This fill material should be placed before trucking begins. Contact the sale administrator regarding the availability of onsite sand or gravel from adjacent State-owned lands.

4.2.4 - Grading (10/16)

For completion of the sale, state forest roads must be graded. In general, this will require a road grader or bull dozer to shape up the roads after forest products have been hauled off site. This includes cleaning of drainage areas, grading, crowning and

filling with gravel, if necessary. The grading equipment to be used must be approved by the Unit Manager or his/her representative.

5 - Operations

5.2 - Conduct of Operations

5.2.2 - Hazard Trees/Snags

5.2.2.1 - Den trees (10/16)

Obvious hollow and/or den trees shall be protected and left standing unless they are a safety hazard.

5.2.3 - Operating Restrictions

5.2.3.3 - Bark slippage restriction (3/09)

Within Payment Unit(s) 2, 3 and 6, unless changed by written agreement, cutting and skidding are not permitted during the period of April 15 to July 15. This restriction is because of bark slippage.

5.2.22 - Operating Caution

5.2.22.1 - Operating caution (6/11)

It is recommended, but not required, that within Payment Unit(s) 1, 4, 5 and southeast portion of 7, cutting, skidding, and hauling occur during dry summer or frozen winter conditions. The reason for the recommendation is because these units have low and wet ground.

5.4 - Soil Protection

5.4.1 - Rutting restriction, general (7/16)

Operations are to cease immediately if equipment and weather conditions result in rutting of roads and/or skid trails which is 12 inches or greater in depth and 50 feet in length. The Unit Manager or his/her representative may restrict hauling and/or skidding if ruts exceed the specified depth. With the Unit Manager or his/her representative's approval, the Purchaser may return to the area when the risk of rutting has decreased.

5.8 - Protection of Endangered Species

5.8.3 - Red shoulder hawk or goshawk (2/16)

In the event that an active red shoulder hawk or goshawk nest is found, the contract may be amended to protect the nest site until the nest is determined to be inactive. The value of the trees in this excluded area will be refunded or credited to the Purchaser. The nest will be buffered with a five-chain radius (eight acre) protection area, centered on the nest tree, in which there will be no cutting or new roads constructed. Avoid human disturbance, including loading and skidding, in the protection area.

An additional zone of five chains (ten chains centered on the active nest tree) will be established in which there is no management activity from April 1 to July 30. Limit biomass harvesting and chipping operations within this ten-chain zone, retain the maximum one-third of residues per the Woody Biomass Harvesting Guidelines (Michigan DNR 2010). Nests determined to be inactive will be protected with a one-chain no-harvest buffer.

6 - Safety and Fire Prevention

6.2 - Signing

6.2.1 - Road posting (9/09)

The Purchaser is responsible for posting and maintaining caution signs on the Engineer Road and the ingress and egress of County Road 432 prior to beginning operations. The road must be posted at appropriate distances from the sale area to warn of logging activity and truck traffic. Signs must be removed when harvest operations are suspended or completed. The Purchaser will provide these signs.

7 - Other Conditions

7.3 - Contract Modifications

7.3.1 - Emerald Ash Borer

7.3.1.2 - Emerald ash borer, ash or firewood on sale (2/05)

There is ash and/or "firewood" in this sale and it is located within an emerald ash borer quarantined area. The Director of the Michigan Department of Agriculture (MDA) by the authority of Act No. 72 of the Public Acts of 1945, as amended, and Quarantine Regulation No. 620, has promulgated this quarantine to prevent the further spread of this pest and sets forth: definitions, regulated articles, regulated areas, conditions of movement, violations and penalties, and special exemptions. The Purchaser must comply with this quarantine. Contact the MDA for further information.



TIMBER SALE MAP

This information provided by authority of Part 525, 1994 PA 451, as amended.

Forest Management Unit ESCANABA	County DELTA	Mapped By RACINE	Date 6/26/2018	Page 1	of 1
Cruised By Escanaba Unit					

Township 43N	Range 22W	Section(s) and Subdivision(s) 17) NESE,NWSE,SESE,SWSE,SESW,SWSW 20) NENE,NWNE,NWNW	Scale 1:15,840
-----------------	--------------	---	-------------------

Cover Type

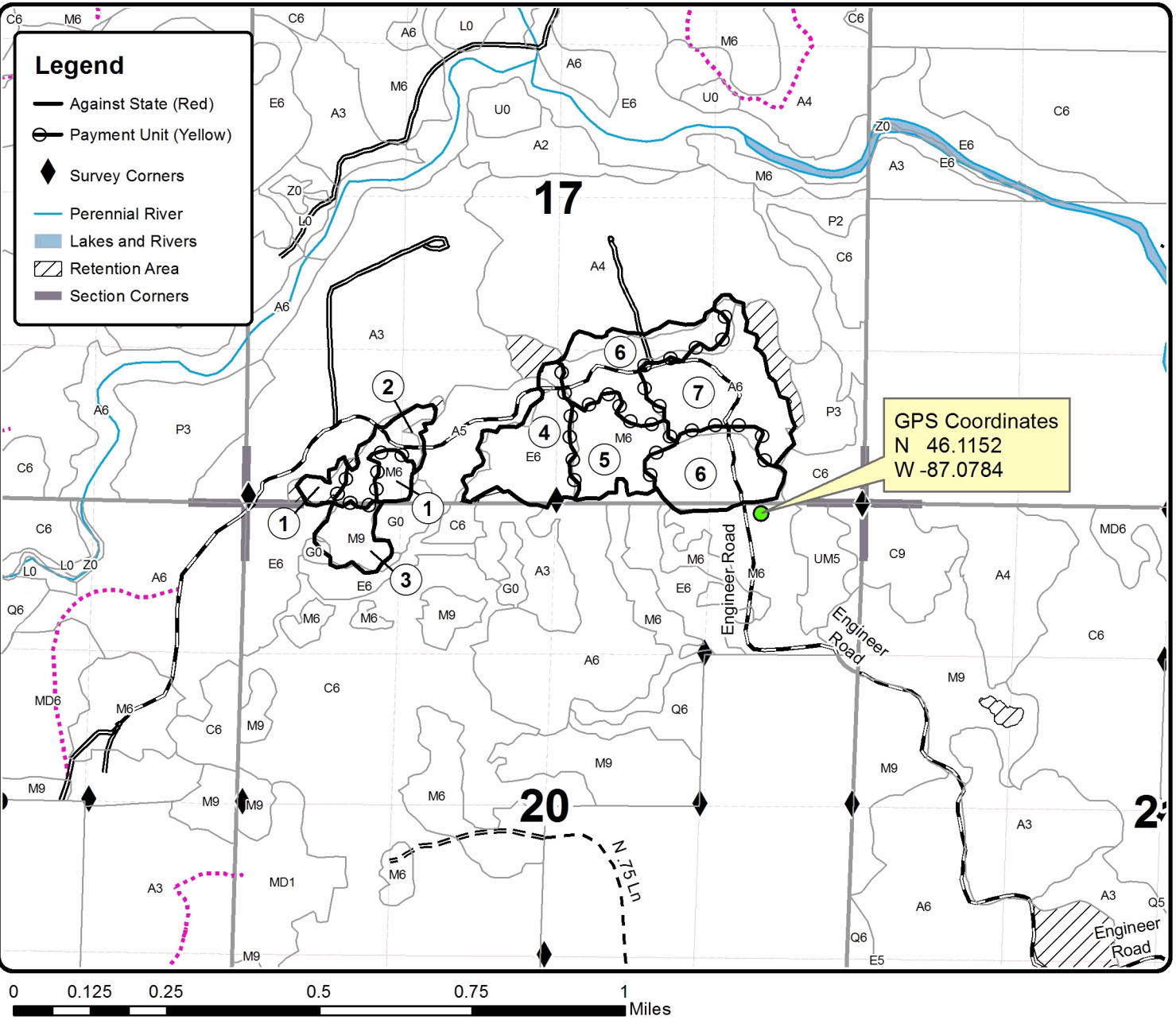
A = Aspen	H = Hemlock	N = Marsh	U = Upland Brush
B = Paper Birch	J = Jack Pine	O = Oak	UM = Upland Mixed
C = Cedar	L = Lowland Brush	P = Lowland Poplar	V = Bog or Marsh
D = Treed Bog	LM = Lowland Mixed	Q = Mixed Swamp Conifer	W = White Pine
E = Swamp Hdwoods	M = Mpl, Bch, Brch	R = Red Pine	X = Non Stocked
F = Spruce Fir	MC = Mixed Conifer	S = Black Spruce	Z = Water
G = Grass	MD = Mixed Deciduous	T = Tamarack	

Density

0 = Non Stocked	5 = Pole Timber Medium
1 = Seedling Sapling Poor	6 = Pole Timber Well
2 = Seedling Sapling Medium	7 = Saw Timber Poor
3 = Seedling Sapling Well	8 = Saw Timber Medium
4 = Pole Timber Poor	9 = Saw Timber Well

PU	Acres	PU	Acres
1	5	5	12
2	6.4	6	29.8
3	6	7	20.6
4	15.6		

South Engineer Compartment 91 and 98 95.4 Acres



TIMBER SALE INFORMATION

Longrie Creek (33-025-18)

T35N, R28W, SEC. 15; T35N, R28W, SEC. 22.

Menominee County (Advertised Price \$97,463.10)

SALE NOTE: The eastern larch beetle has caused some tamarack mortality within the sale area, especially within Payment Units 1, 6, and 14. The Purchaser should harvest these stands as soon as possible, to prevent further loss. The best access into Payment Units 10 - 15 is from the south through private property. If permission can't be obtained, the Purchaser can obtain a DEQ permit and place a portable bridge over Longrie Creek to provide access from the north. Some roadwork will be required on the access road into the northern Payment Units.

Access may be through private land.

A timber sale contract for this lump sum, sealed bid timber sale will be awarded to the responsible bidder offering the highest sealed bid price. Bids must be at or above the following advertised price for each species:

<u>PRODUCTS & SPECIES</u>	<u>ESTIMATED UNITS*</u>		<u>ADVERTISED PRICE</u>
Sawtimber			
Basswood	17.10	MBF	\$ 98.00 / MBF
Black Ash	0.90	MBF	\$ 66.00 / MBF
Green Ash	1.60	MBF	\$ 77.00 / MBF
Red Maple	25.20	MBF	\$ 179.00 / MBF
Red Oak	5.10	MBF	\$ 175.00 / MBF
Sugar Maple	14.60	MBF	\$ 253.00 / MBF
White Ash	0.50	MBF	\$ 85.00 / MBF
White Pine	25.50	MBF	\$ 52.00 / MBF
Pulpwood			
Balsam Fir	313.00	Cords	\$ 22.45 / Cord
Mixed Aspen	407.00	Cords	\$ 25.55 / Cord
Mixed Hardwood	1,510.00	Cords	\$ 25.35 / Cord
Mixed Spruce	216.00	Cords	\$ 18.50 / Cord
N. White Cedar	634.00	Cords	\$ 19.45 / Cord
Tamarack	639.00	Cords	\$ 16.50 / Cord
White Pine	99.00	Cords	\$ 25.90 / Cord

* The total volume is statistically estimated within plus (+) or minus (-) 8.88 percent. The estimated units are final and not subject to adjustment. Prospective bidders are urged to examine this timber and to make their own estimates of quantity and quality.

BOND AND PAYMENT SCHEDULE:

1. A bond in the amount of \$4,873.00 to insure faithful performance of the conditions of the contract will be deposited by the successful bidder within 21 days of the sale award.
2. Cutting in any sale or unit without the required advance payment would be considered a trespass.
3. Total payment must be paid in advance or according to the following schedule:
 - (a) Ten percent (10%) of the sale value must be paid within 21 days of the sale award.
 - (b) The 10% down payment will be credited towards the first unit cut.

(c) Payment for each of the following units must be made before cutting begins in that unit:

PAYMENT UNIT NUMBER	PERCENT OF TOTAL SALE VALUE
01	8.8%
02	2.7%
03	8.6%
04	2.2%
05	4.5%
06	11.2%
07	4.2%
08	9.1%
09	3.8%
10	5.6%
11	9.0%
12	6.1%
13	5.0%
14	16.8%
15	2.4%

4. If no cutting takes place, the 10% down payment will not be refunded.

5. Operations on the contract issued will terminate on 06/30/2021.

Description of Timber by Payment Unit (PU)

PU	MARKET GROUP	PRODUCT	QUANTITY	UNIT	ACRES	ADVERTISE PRICE
1	Balsam Fir	Pulpwood	25.0	Cords	26.1	\$8,615.70
	Mixed Aspen		48.0	Cords		
	<i>Balsam Poplar</i>		48.0	<i>Cords</i>		
	Mixed Hardwood		87.0	Cords		
	<i>Black Ash</i>		70.0	<i>Cords</i>		
	<i>Paper Birch</i>		10.0	<i>Cords</i>		
	<i>Red Maple</i>		7.0	<i>Cords</i>		
	Mixed Spruce		7.0	Cords		
	<i>Black Spruce</i>		7.0	<i>Cords</i>		
	N. White Cedar		108.0	Cords		
	Tamarack		145.0	Cords		
2	Balsam Fir	Pulpwood	15.0	Cords	9.4	\$2,635.60
	Mixed Aspen		11.0	Cords		
	<i>Balsam Poplar</i>		4.0	<i>Cords</i>		
	<i>Quaking Aspen</i>		7.0	<i>Cords</i>		
	Mixed Hardwood		56.0	Cords		
	<i>Black Ash</i>		43.0	<i>Cords</i>		
	<i>Green Ash</i>		8.0	<i>Cords</i>		
	<i>Paper Birch</i>		5.0	<i>Cords</i>		
	Mixed Spruce		5.0	Cords		
	<i>Black Spruce</i>		5.0	<i>Cords</i>		
	N. White Cedar		26.0	Cords		
3	White Pine	Sawtimber	5.1	MBF	14.2	\$8,333.60
	Balsam Fir	Pulpwood	44.0	Cords		
	Mixed Aspen		176.0	Cords		
	<i>Balsam Poplar</i>		42.0	<i>Cords</i>		
	<i>Quaking Aspen</i>		134.0	<i>Cords</i>		
	Mixed Hardwood		50.0	Cords		
	<i>Black Ash</i>		27.0	<i>Cords</i>		
	<i>Black Cherry</i>		1.0	<i>Cords</i>		
	<i>Green Ash</i>		3.0	<i>Cords</i>		
	<i>Paper Birch</i>		10.0	<i>Cords</i>		
	<i>Red Maple</i>		9.0	<i>Cords</i>		
	Mixed Spruce		7.0	Cords		
	<i>Black Spruce</i>		7.0	<i>Cords</i>		
	N. White Cedar		50.0	Cords		
	Tamarack		2.0	Cords		
White Pine	7.0	Cords				
4	Red Maple	Sawtimber	2.3	MBF	3.1	\$2,157.45
	Red Oak	Pulpwood	0.5	MBF		
	Balsam Fir		1.0	Cords		
	Mixed Hardwood		60.0	Cords		
	<i>Black Ash</i>		4.0	<i>Cords</i>		
	<i>Red Maple</i>		38.0	<i>Cords</i>		
	<i>Red Oak</i>		9.0	<i>Cords</i>		
	<i>Sugar Maple</i>		9.0	<i>Cords</i>		
	Mixed Spruce		2.0	Cords		
	<i>White Spruce</i>		2.0	<i>Cords</i>		
	N. White Cedar		4.0	Cords		
5	White Pine	Sawtimber	3.4	MBF	7.3	\$4,338.80
	Balsam Fir	Pulpwood	11.0	Cords		
	Mixed Aspen		60.0	Cords		
	<i>Balsam Poplar</i>		26.0	<i>Cords</i>		
	<i>Quaking Aspen</i>		34.0	<i>Cords</i>		
	Mixed Hardwood		73.0	Cords		
	<i>Black Ash</i>		36.0	<i>Cords</i>		

Description of Timber by Payment Unit (PU), con't

PU	MARKET GROUP	PRODUCT	QUANTITY	UNIT	ACRES	ADVERTISE PRICE	
5 con't	<i>Green Ash</i>	<i>Pulpwood</i>	10.0	<i>Cords</i>			
	<i>Paper Birch</i>		3.0	<i>Cords</i>			
	<i>Red Maple</i>		24.0	<i>Cords</i>			
	N. White Cedar		22.0	Cords			
	White Pine		4.0	Cords			
6	Red Maple	Sawtimber	3.6	MBF	23.9	\$10,896.95	
	White Pine		2.5	MBF			
	Balsam Fir	Pulpwood	13.0	Cords			
	Mixed Aspen		3.0	Cords			
	<i>Balsam Poplar</i>		3.0	<i>Cords</i>			
	Mixed Hardwood		81.0	Cords			
	<i>Black Ash</i>		44.0	<i>Cords</i>			
	<i>Red Maple</i>		37.0	<i>Cords</i>			
	Mixed Spruce		37.0	Cords			
	<i>Black Spruce</i>		33.0	<i>Cords</i>			
	<i>White Spruce</i>		4.0	<i>Cords</i>			
	N. White Cedar		150.0	Cords			
	Tamarack		228.0	Cords			
	White Pine		13.0	Cords			
	7		Red Oak	Sawtimber			1.4
White Pine				1.5	MBF		
Balsam Fir		Pulpwood	19.0	Cords			
Mixed Aspen			89.0	Cords			
<i>Quaking Aspen</i>			89.0	<i>Cords</i>			
Mixed Hardwood			36.0	Cords			
<i>Black Cherry</i>			9.0	<i>Cords</i>			
<i>Red Maple</i>			22.0	<i>Cords</i>			
<i>Red Oak</i>			5.0	<i>Cords</i>			
Mixed Spruce			4.0	Cords			
<i>Black Spruce</i>			4.0	<i>Cords</i>			
White Pine			5.0	Cords			
8	Basswood		Sawtimber	0.9	MBF	13.2	\$8,829.40
	Red Maple		3.0	MBF			
	Red Oak		1.5	MBF			
	Sugar Maple		0.5	MBF			
	White Pine		2.7	MBF			
	Balsam Fir	Pulpwood	8.0	Cords			
	Mixed Aspen		10.0	Cords			
	<i>Balsam Poplar</i>		10.0	<i>Cords</i>			
	Mixed Hardwood		190.0	Cords			
	<i>American Elm</i>		3.0	<i>Cords</i>			
	<i>Basswood</i>		9.0	<i>Cords</i>			
	<i>Black Ash</i>		100.0	<i>Cords</i>			
	<i>Paper Birch</i>		7.0	<i>Cords</i>			
	<i>Red Maple</i>		56.0	<i>Cords</i>			
	<i>Red Oak</i>		6.0	<i>Cords</i>			
	<i>Sugar Maple</i>		9.0	<i>Cords</i>			
	Mixed Spruce		29.0	Cords			
	<i>Black Spruce</i>		29.0	<i>Cords</i>			
	N. White Cedar		58.0	Cords			
	Tamarack		24.0	Cords			
White Pine	14.0	Cords					
9	Basswood	Sawtimber	0.4	MBF	11.8	\$3,667.45	
	Black Ash		0.9	MBF			
	Red Maple		1.4	MBF			
	Balsam Fir	Pulpwood	11.0	Cords			

Description of Timber by Payment Unit (PU), con't

PU	MARKET GROUP	PRODUCT	QUANTITY	UNIT	ACRES	ADVERTISE PRICE			
9 con't	Mixed Aspen	Pulpwood	1.0	Cords					
	<i>Balsam Poplar</i>		1.0	<i>Cords</i>					
	Mixed Hardwood		93.0	Cords					
	<i>Basswood</i>		10.0	<i>Cords</i>					
	<i>Black Ash</i>		36.0	<i>Cords</i>					
	<i>Green Ash</i>		15.0	<i>Cords</i>					
	<i>Red Maple</i>		30.0	<i>Cords</i>					
	<i>Yellow Birch</i>		2.0	<i>Cords</i>					
	Mixed Spruce		33.0	Cords					
	<i>Black Spruce</i>		31.0	<i>Cords</i>					
	<i>White Spruce</i>		2.0	<i>Cords</i>					
	White Pine		3.0	Cords					
	10		Basswood	Sawtimber			3.3	MBF	10.2
Green Ash		0.5	MBF						
Red Maple		1.3	MBF						
Sugar Maple		1.8	MBF						
Balsam Fir		Pulpwood	36.0		Cords				
Mixed Hardwood			123.0	Cords					
<i>American Elm</i>			2.0	<i>Cords</i>					
<i>Basswood</i>			35.0	<i>Cords</i>					
<i>Beech</i>			6.0	<i>Cords</i>					
<i>Black Ash</i>			41.0	<i>Cords</i>					
<i>Green Ash</i>			14.0	<i>Cords</i>					
<i>Ironwood</i>			1.0	<i>Cords</i>					
<i>Red Maple</i>			6.0	<i>Cords</i>					
<i>Sugar Maple</i>			17.0	<i>Cords</i>					
<i>Yellow Birch</i>			1.0	<i>Cords</i>					
Mixed Spruce			3.0	Cords					
<i>White Spruce</i>			3.0	<i>Cords</i>					
N. White Cedar			20.0	Cords					
11			Basswood	Sawtimber	1.6	MBF	8.5	\$8,794.60	
		Red Maple	7.5		MBF				
	Sugar Maple	8.7	MBF						
	White Ash	0.5	MBF						
	White Pine	5.0	MBF						
	Balsam Fir	Pulpwood	19.0	Cords					
	Mixed Hardwood		152.0	Cords					
	<i>Basswood</i>		17.0	<i>Cords</i>					
	<i>Red Maple</i>		88.0	<i>Cords</i>					
	<i>Sugar Maple</i>		41.0	<i>Cords</i>					
	<i>White Ash</i>		5.0	<i>Cords</i>					
	<i>Yellow Birch</i>		1.0	<i>Cords</i>					
	N. White Cedar		17.0	Cords					
	White Pine		7.0	Cords					
	12		Basswood	Sawtimber	3.3	MBF			15.9
Red Maple		3.5	MBF						
Red Oak		1.3	MBF						
White Pine		2.3	MBF						
Balsam Fir		Pulpwood	66.0	Cords					
Mixed Aspen			5.0	Cords					
<i>Balsam Poplar</i>			5.0	<i>Cords</i>					
Mixed Hardwood			80.0	Cords					
<i>Basswood</i>			14.0	<i>Cords</i>					
<i>Black Ash</i>			11.0	<i>Cords</i>					
<i>Ironwood</i>			5.0	<i>Cords</i>					
<i>Red Maple</i>			48.0	<i>Cords</i>					

Description of Timber by Payment Unit (PU), con't

PU	MARKET GROUP	PRODUCT	QUANTITY	UNIT	ACRES	ADVERTISE PRICE
12 con't	<i>Red Oak</i>	<i>Pulpwood</i>	2.0	<i>Cords</i>		
	Mixed Spruce		20.0	Cords		
	<i>White Spruce</i>		20.0	<i>Cords</i>		
	N. White Cedar		24.0	Cords		
	White Pine		8.0	Cords		
13	Basswood	Sawtimber	5.1	MBF	15.5	\$4,859.20
	Red Maple		0.5	MBF		
	Sugar Maple		3.2	MBF		
	Balsam Fir	Pulpwood	2.0	Cords		
	Mixed Hardwood		134.0	Cords		
	<i>Basswood</i>		35.0	<i>Cords</i>		
	<i>Beech</i>		10.0	<i>Cords</i>		
	<i>Ironwood</i>		3.0	<i>Cords</i>		
	<i>Red Maple</i>		5.0	<i>Cords</i>		
	<i>Red Oak</i>		4.0	<i>Cords</i>		
	<i>Sugar Maple</i>		72.0	<i>Cords</i>		
	<i>White Ash</i>		5.0	<i>Cords</i>		
	Mixed Spruce		1.0	Cords		
	<i>White Spruce</i>		1.0	<i>Cords</i>		
	14	Green Ash	Sawtimber	1.1		
Red Maple			2.1	MBF		
White Pine			2.3	MBF		
Balsam Fir		Pulpwood	41.0	Cords		
Mixed Hardwood			238.0	Cords		
<i>Basswood</i>			16.0	<i>Cords</i>		
<i>Black Ash</i>			114.0	<i>Cords</i>		
<i>Green Ash</i>			43.0	<i>Cords</i>		
<i>Paper Birch</i>			14.0	<i>Cords</i>		
<i>Red Maple</i>			48.0	<i>Cords</i>		
<i>Yellow Birch</i>			3.0	<i>Cords</i>		
Mixed Spruce			57.0	Cords		
<i>Black Spruce</i>			57.0	<i>Cords</i>		
N. White Cedar			155.0	Cords		
Tamarack			240.0	Cords		
White Pine		36.0	Cords			
15	Basswood	Sawtimber	2.5	MBF	4.5	\$2,299.95
	Red Oak		0.4	MBF		
	Sugar Maple		0.4	MBF		
	White Pine		0.7	MBF		
	Balsam Fir	Pulpwood	2.0	Cords		
	Mixed Aspen		4.0	Cords		
	<i>Balsam Poplar</i>		4.0	<i>Cords</i>		
	Mixed Hardwood		57.0	Cords		
	<i>Basswood</i>		14.0	<i>Cords</i>		
	<i>Beech</i>		3.0	<i>Cords</i>		
	<i>Red Maple</i>		17.0	<i>Cords</i>		
	<i>Red Oak</i>		1.0	<i>Cords</i>		
	<i>Sugar Maple</i>		19.0	<i>Cords</i>		
	<i>White Ash</i>		3.0	<i>Cords</i>		
	Mixed Spruce		11.0	Cords		
<i>White Spruce</i>		11.0	<i>Cords</i>			
White Pine		2.0	Cords			
TOTAL:			90.5	MBF		
TOTAL:			3,818.0	Cords		

Sale Specific Conditions & Requirements

Sale Name: Longrie Creek

Sale Number: 33-025-18 Seq#: 1

1 - Sale Area

1.2 - Boundaries

1.2.1 - Painted boundaries (1/14)

The sale boundary and Payment Unit boundaries are marked and identified by blue, red and yellow paint. Exterior sale boundary lines against private property are marked with blue paint. Exterior sale boundary lines against state are marked with red paint. Retention patches are bounded by red paint; no harvesting activities may occur with these patches. Interior Payment Unit boundaries are marked with yellow paint. The painted boundary line trees are not Included Timber and are to be protected. Yellow painted trees designating an interior Payment Unit boundary are only to be cut when all surrounding Payment Units have been paid for.

2 - Timber Specifications

2.1 - Included Timber

2.1.1 - Clearcut unit(s) with unmerchantable trees (6/14)

Within Payment Unit(s) 1 - 12, 14, and 15, cut all trees that are three (3) inches or more at DBH, with the following exceptions:

- Within Payment Units 1, 2, 6, 11, and 12, do not cut trees marked with green paint. In addition, within Payment Unit 12, do not cut hemlock and white oak.

- Within Payment Unit 9, do not cut cedar.

2.1.3 - Cut tree marked unit(s) (12/08)

Within Payment Unit(s) 13, all trees are designated for cutting when marked with orange paint above and below stump height, regardless of merchantability. In addition, cut all aspen, spruce, balsam fir, and ironwood three (3) inches or greater at DBH.

2.2 - Utilization

2.2.4 - Skidding length (2/14)

Within Payment Unit 13, skidding of unlimbed tops or lengths over 17 feet is not permissible.

3 - Payments

3.3 - Pre-measured Sales

3.3.4 - Dividing payment units (7/14)

Payment Unit(s) \$18,000 in value or greater may be divided at the request of the Purchaser and upon approval of the Unit Manager. Dividing Payment Units is a contract modification which requires a Timber Sale Contract Supplement. There will be only one division per Payment Unit.

4 - Transportation

4.1 - Construction

4.1.1 - Stream crossings, general (3/11)

All stream crossing structures will be temporary and therefore, shall be provided by the Purchaser, and must be removed upon completion of the sale. All permits for stream crossings will be provided by the Purchaser. If the Purchaser cannot acquire access into Payment Units 10 - 15 from the south through private property, then a portable bridge will have to be placed over Longrie Creek. The Purchaser will have to supply the bridge and will be responsible for the permit, installation, and removal of the bridge. A portable bridge may be available from the DNR.

4.1.8 - Road work (1) (8/07)

The following road work is required: The Purchaser must haul and spread 160 yards of gravel onto the Longrie Lake Road. There are a number of low areas on the road starting near Payment Unit 6, and heading south down to Payment Unit 4. The

gravel is available from a state pit located on the Swanson Road, which is about 5 miles away. Note that all roadwork must be completed prior to any hauling taking place in Payment Units 1 - 9.

4.2 - Maintenance

4.2.1 - Hauling restriction (12/08)

Hauling may be restricted on forest roads by the Unit Manager or his/her representative. The restriction may occur during spring breakup or during other wet weather conditions.

4.2.4 - Grading (10/16)

For completion of the sale, state forest roads must be graded. In general, this will require a road grader or bull dozer to shape up the roads after forest products have been hauled off site. This includes cleaning of drainage areas, grading, crowning and filling with gravel, if necessary. The grading equipment to be used must be approved by the Unit Manager or his/her representative.

4.4 - Access

4.4.1 - Private property access (3/11)

Permission for access across private land is the responsibility of the Purchaser. Should the Purchaser desire to cross private land, a copy of the written permission from the private land-owner will be required by the DNR. The best access into Payment Units 10 - 15 is through private property to the south.

5 - Operations

5.2 - Conduct of Operations

5.2.3 - Operating Restrictions

5.2.3.1 - Operating restrictions (9/11)

Within Payment Unit(s) 1, 2, 5, 6, 8, 9, and 14, cutting and skidding are limited to the period of December 1 to March 31, unless there is an extended dry or frozen period and the sale administrator allows harvesting during that time period. This restriction is because of low wet ground throughout each of these Payment Units.

5.2.3.3 - Bark slippage restriction (3/09)

Within Payment Unit(s) 13, cutting and skidding are not permitted during the period of April 15 to July 15. This restriction is because of bark slippage.

5.2.22 - Operating Caution

5.2.22.1 - Operating caution (6/11)

It is recommended, but not required, that within Payment Unit(s) 3, 4, 10, 12, and 15, cutting and skidding occur during dry summer or frozen winter conditions. The reason for the recommendation is because of some low wet ground within each of these Payment Units.

5.3 - Stream Protection

5.3.1 - Operating near stream (7/04)

No tracked or wheeled vehicles shall be operated within 100 feet of Longrie Creek; except at an approved crossing.

5.4 - Soil Protection

5.4.1 - Rutting restriction, general (7/16)

Operations are to cease immediately if equipment and weather conditions result in rutting of roads and/or skid trails which is 12 inches or greater in depth and 50 feet in length. The Unit Manager or his/her representative may restrict hauling and/or skidding if ruts exceed the specified depth. With the Unit Manager or his/her representative's approval, the Purchaser may return to the area when the risk of rutting has decreased.

7 - Other Conditions

7.2 - Extensions

7.2.5 - Weather related extension (1/13)

If weather conditions during the operating period of this contract prevent harvesting, this sale may qualify for a weather

related extension. If approved, the normal extension fee would be waived. To qualify, there must be a documented attempt each year to harvest in the difficult portion of the sale.

7.5 - Loss

7.5.1 - Deteriorating timber (7/09)

The sale area has received damage from the eastern larch beetle and the spruce budworm. The eastern larch beetle has caused some pockets of tamarack mortality within Payment Units 1, 6, and 14. The Purchaser should harvest the wood as soon as possible. The Department of Natural Resources is held free of responsibility of any further damage or deterioration due to delay in harvesting.



TIMBER SALE MAP

This information provided by authority of Part 525, 1994 PA 451, as amended.

Forest Management Unit Escanaba Management Unit		County Menominee County	Mapped By Beaudo	Date 6/20/2018	Page 1	of 1
Township 35N	Range 28W	Section(s) and Subdivision(s) Sec 15 - NENE, NESE, NESW, NWNE, NWSE, NWSW, SENE, SENW, SESE, SWNE, SWNW, SWSE; Sec 22 - NENW, NVNE, NWNW, SWNW		Scale 1:15,840		

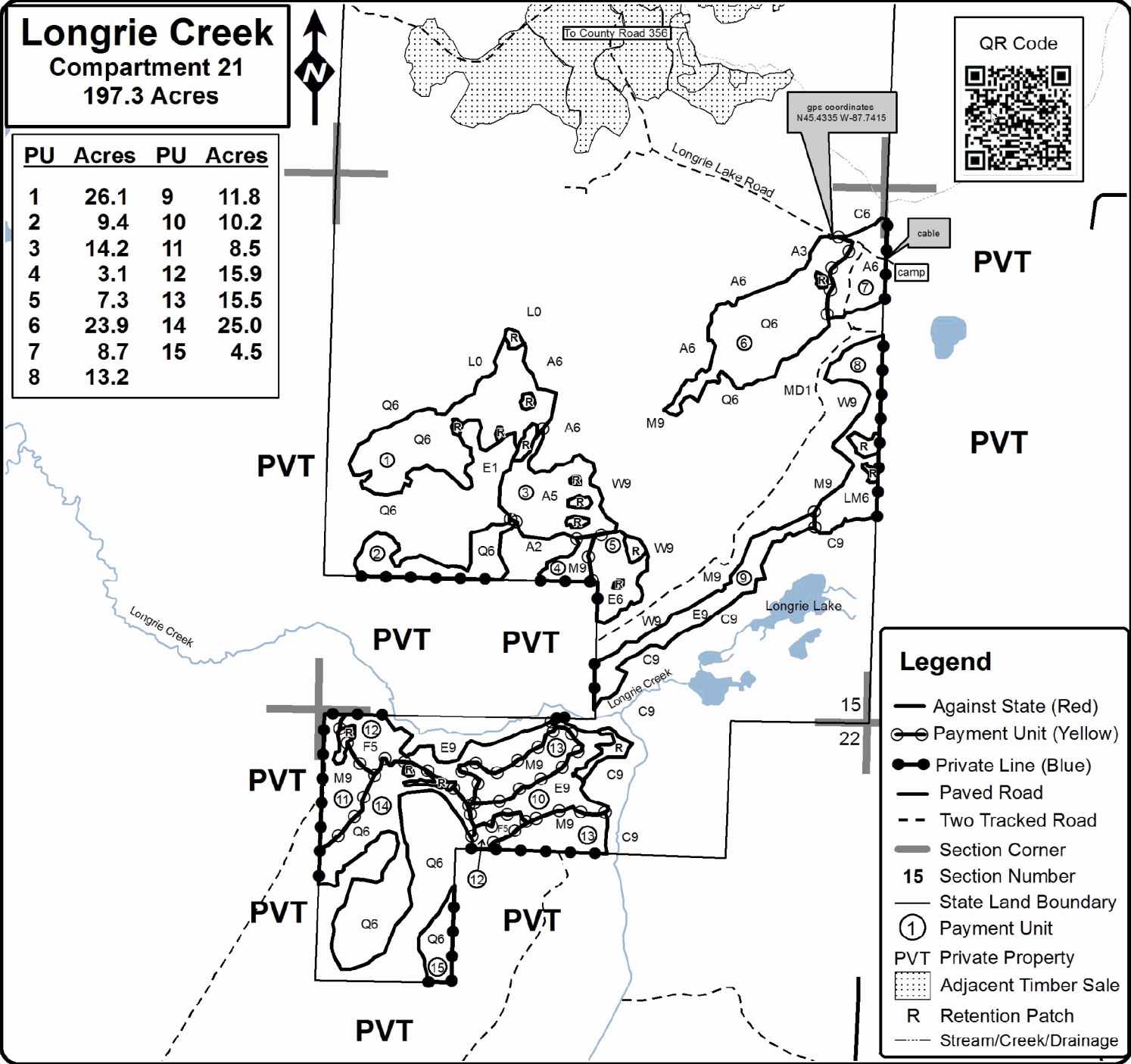
Cover Type				Density	
A = Aspen	H = Hemlock	N = Marsh	U = Upland Brush	0 = Non Stocked	5 = Pole Timber Medium
B = Paper Birch	J = Jack Pine	O = Oak	UM = Upland Mixed	1 = Seedling Sapling Poor	6 = Pole Timber Well
C = Cedar	L = Lowland Brush	P = Lowland Poplar	V = Bog or Marsh	2 = Seedling Sapling Medium	7 = Saw Timber Poor
D = Treed Bog	LM = Lowland Mixed	Q = Mixed Swamp Conifer	W = White Pine	3 = Seedling Sapling Well	8 = Saw Timber Medium
E = Swamp Hdwoods	M = Mpl, Bch, Brch	R = Red Pine	X = Non Stocked	4 = Pole Timber Poor	9 = Saw Timber Well
F = Spruce Fir	MC = Mixed Conifer	S = Black Spruce	Z = Water		
G = Grass	MD = Mixed Deciduous	T = Tamarack			

Longrie Creek Compartment 21 197.3 Acres

PU	Acres	PU	Acres
1	26.1	9	11.8
2	9.4	10	10.2
3	14.2	11	8.5
4	3.1	12	15.9
5	7.3	13	15.5
6	23.9	14	25.0
7	8.7	15	4.5
8	13.2		

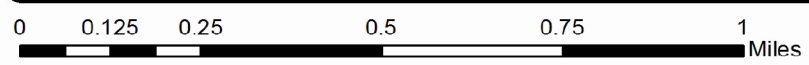


gps coordinates
N45.4335 W-87.7415



Legend

- Against State (Red)
- Payment Unit (Yellow)
- Private Line (Blue)
- Paved Road
- Two Tracked Road
- Section Corner
- 15** Section Number
- State Land Boundary
- Payment Unit
- PVT Private Property
- Adjacent Timber Sale
- Retention Patch
- Stream/Creek/Drainage



TIMBER SALE INFORMATION

Broberg Uplands (33-026-18)
T35N, R28W, SEC. 5; T35N, R28W, SEC. 8; T35N, R28W, SEC. 9.
Menominee County (Advertised Price \$86,317.60)

SALE NOTE: All Payment Units can be harvested at any time. The Purchaser will be required to haul and spread some gravel prior to any hauling taking place.

A timber sale contract for this lump sum, sealed bid timber sale will be awarded to the responsible bidder offering the highest sealed bid price. Bids must be at or above the following advertised price for each species:

<u>PRODUCTS & SPECIES</u>	<u>ESTIMATED UNITS*</u>		<u>ADVERTISED PRICE</u>
Sawtimber			
Northern Pin Oak	75.80	MBF	\$ 135.00 / MBF
Paper Birch	2.50	MBF	\$ 83.00 / MBF
Red Maple	13.80	MBF	\$ 150.00 / MBF
Red Oak	50.70	MBF	\$ 150.00 / MBF
White Oak	10.00	MBF	\$ 113.00 / MBF
White Pine	17.40	MBF	\$ 60.00 / MBF
Pulpwood			
Balsam Fir	23.00	Cords	\$ 25.90 / Cord
Mixed Aspen	449.00	Cords	\$ 29.45 / Cord
Mixed Hardwood	793.00	Cords	\$ 29.25 / Cord
Mixed Oak	900.00	Cords	\$ 27.85 / Cord
N. White Cedar	17.00	Cords	\$ 22.45 / Cord
White Pine	36.00	Cords	\$ 29.90 / Cord
White Spruce	23.00	Cords	\$ 21.35 / Cord

* The total volume is statistically estimated within plus (+) or minus (-) 9.96 percent. The estimated units are final and not subject to adjustment. Prospective bidders are urged to examine this timber and to make their own estimates of quantity and quality.

BOND AND PAYMENT SCHEDULE:

1. A bond in the amount of \$4,316.00 to insure faithful performance of the conditions of the contract will be deposited by the successful bidder within 21 days of the sale award.
2. Cutting in any sale or unit without the required advance payment would be considered a trespass.
3. Total payment must be paid in advance or according to the following schedule:
 - (a) Ten percent (10%) of the sale value must be paid within 21 days of the sale award.
 - (b) The 10% down payment will be credited towards the first unit cut.
 - (c) Payment for each of the following units must be made before cutting begins in that unit:

PAYMENT UNIT NUMBER	PERCENT OF TOTAL SALE VALUE
01	15.3%
02	17.0%
03	14.2%
04	20.0%
05	14.9%
06	18.6%

4. If no cutting takes place, the 10% down payment will not be refunded.
5. Operations on the contract issued will terminate on 09/30/2021.

Description of Timber by Payment Unit (PU)

PU	MARKET GROUP	PRODUCT	QUANTITY	UNIT	ACRES	ADVERTISE PRICE		
1	Northern Pin Oak	Sawtimber	22.2	MBF	23.2	\$13,188.65		
			1.9	MBF				
			9.6	MBF				
			1.6	MBF				
			Pulpwood	Mixed Aspen			57.0	Cords
				<i>B. T. Aspen</i>			6.0	<i>Cords</i>
				<i>Quaking Aspen</i>			51.0	<i>Cords</i>
				Mixed Hardwood			34.0	Cords
				<i>Black Cherry</i>			4.0	<i>Cords</i>
				<i>Red Maple</i>			30.0	<i>Cords</i>
				Mixed Oak			200.0	Cords
				<i>Northern Pin Oak</i>			157.0	<i>Cords</i>
				<i>Red Oak</i>			17.0	<i>Cords</i>
				<i>White Oak</i>			26.0	<i>Cords</i>
White Spruce	2.0	Cords						
2	Northern Pin Oak	Sawtimber	12.0	MBF	20.5	\$14,631.20		
			38.1	MBF				
			2.3	MBF				
			Pulpwood	Mixed Aspen			5.0	Cords
				<i>Quaking Aspen</i>			5.0	<i>Cords</i>
				Mixed Hardwood			47.0	Cords
				<i>Red Maple</i>			47.0	<i>Cords</i>
				Mixed Oak			198.0	Cords
				<i>Northern Pin Oak</i>			52.0	<i>Cords</i>
				<i>Red Oak</i>			127.0	<i>Cords</i>
				<i>White Oak</i>			19.0	<i>Cords</i>
3	Northern Pin Oak	Sawtimber		26.2	MBF	27.2	\$12,232.10	
				0.5	MBF			
			2.9	MBF				
			Pulpwood	Mixed Aspen	20.0			Cords
				<i>Quaking Aspen</i>	20.0			<i>Cords</i>
				Mixed Hardwood	12.0			Cords
				<i>Black Cherry</i>	2.0			<i>Cords</i>
				<i>Red Maple</i>	10.0			<i>Cords</i>
				Mixed Oak	264.0			Cords
				<i>Northern Pin Oak</i>	220.0			<i>Cords</i>
				<i>White Oak</i>	44.0			<i>Cords</i>
4	Northern Pin Oak	Sawtimber		9.9	MBF	19.4	\$17,313.25	
				0.9	MBF			
			7.6	MBF				
			3.0	MBF				
			2.7	MBF				
			Pulpwood	Mixed Aspen	82.0			Cords
				<i>B. T. Aspen</i>	47.0			<i>Cords</i>
				<i>Quaking Aspen</i>	35.0			<i>Cords</i>
				Mixed Hardwood	303.0			Cords
				<i>Paper Birch</i>	23.0			<i>Cords</i>
				<i>Red Maple</i>	280.0			<i>Cords</i>
				Mixed Oak	98.0			Cords
				<i>Northern Pin Oak</i>	66.0			<i>Cords</i>
				<i>Red Oak</i>	8.0			<i>Cords</i>
<i>White Oak</i>	24.0	<i>Cords</i>						
5	Northern Pin Oak	Sawtimber	3.5	MBF	20.2	\$12,867.35		
			1.6	MBF				
			3.8	MBF				
			0.5	MBF				

Description of Timber by Payment Unit (PU), con't

PU	MARKET GROUP	PRODUCT	QUANTITY	UNIT	ACRES	ADVERTISE PRICE
5 con't	Balsam Fir	Pulpwood	2.0	Cords		
	Mixed Aspen		27.0	Cords		
	<i>B. T. Aspen</i>		7.0	<i>Cords</i>		
	<i>Quaking Aspen</i>		20.0	<i>Cords</i>		
	Mixed Hardwood		306.0	Cords		
	<i>Black Cherry</i>		2.0	<i>Cords</i>		
	<i>Paper Birch</i>		8.0	<i>Cords</i>		
	<i>Red Maple</i>		296.0	<i>Cords</i>		
	Mixed Oak		66.0	Cords		
	<i>Northern Pin Oak</i>		57.0	<i>Cords</i>		
	<i>White Oak</i>		9.0	<i>Cords</i>		
	6		Northern Pin Oak	Sawtimber		
White Pine		17.4	MBF			
Balsam Fir		Pulpwood	21.0	Cords		
Mixed Aspen			258.0	Cords		
<i>B. T. Aspen</i>			44.0	<i>Cords</i>		
<i>Quaking Aspen</i>			214.0	<i>Cords</i>		
Mixed Hardwood			91.0	Cords		
<i>Black Cherry</i>			10.0	<i>Cords</i>		
<i>Paper Birch</i>			20.0	<i>Cords</i>		
<i>Red Maple</i>			61.0	<i>Cords</i>		
Mixed Oak			74.0	Cords		
<i>Northern Pin Oak</i>			74.0	<i>Cords</i>		
N. White Cedar			17.0	Cords		
White Pine			36.0	Cords		
White Spruce			21.0	Cords		
TOTAL:			170.2	MBF		
TOTAL:			2,241.0	Cords		

Sale Specific Conditions & Requirements

Sale Name: Broberg Uplands

Sale Number: 33-026-18 Seq#: 1

1 - Sale Area

1.2 - Boundaries

1.2.1 - Painted boundaries (1/14)

The sale boundary and Payment Unit boundaries are marked and identified by blue, red and yellow paint. Exterior sale boundary lines against private property are marked with blue paint. Exterior sale boundary lines against state are marked with red paint. Retention patches are marked with red paint; these areas are to be protected and no harvesting activities may occur within them. Interior Payment Unit boundaries are marked with yellow paint. The painted boundary line trees are not Included Timber and are to be protected. Yellow painted trees designating an interior Payment Unit boundary are only to be cut when all surrounding Payment Units have been paid for.

2 - Timber Specifications

2.1 - Included Timber

2.1.1 - Clearcut unit(s) with unmerchantable trees (6/14)

Within Payment Unit(s) 1 - 6, cut all trees that are three (3) inches or more at DBH, with the following exceptions:

- Within Payment Units 1, 2, and 3, do not cut pine.
- Within Payment Units 4 and 5, do not cut pine and spruce.
- Within Payment Unit 6, do not cut pine marked with green paint.

2.1.16 - Timber along county or forest roads (6/14)

Cut and remove all standing trees 4" DBH or greater within 20 feet of the center line of Broberg Lane, between Payment Units 3 and 6. This wood will be piled separately by species and product, and will be scaled by the sale administrator. The Purchaser shall pay contract rates for the species and products. The exact locations of where the wood will be cut will be identified during the pre-sale meeting.

3 - Payments

3.3 - Pre-measured Sales

3.3.4 - Dividing payment units (7/14)

Payment Unit(s) \$18,000 in value or greater may be divided at the request of the Purchaser and upon approval of the Unit Manager. Dividing Payment Units is a contract modification which requires a Timber Sale Contract Supplement. There will be only one division per Payment Unit.

4 - Transportation

4.1 - Construction

4.1.8 - Road work (1) (8/07)

The following road work is required: the Purchaser must haul and spread 60 yards of pit run gravel on the access road into the sale area. The exact locations will be identified during the pre-sale meeting. All roadwork must be completed prior to any hauling taking place. The gravel is available from a State pit located on Swanson Road, which is about 4 miles away.

4.2 - Maintenance

4.2.1 - Hauling restriction (12/08)

Hauling may be restricted on forest roads by the Unit Manager or his/her representative. The restriction may occur during spring breakup or during other wet weather conditions.

4.2.4 - Grading (10/16)

For completion of the sale, state forest roads must be graded. In general, this will require a road grader or bull dozer to shape

up the roads after forest products have been hauled off site. This includes cleaning of drainage areas, grading, crowning and filling with gravel, if necessary. The grading equipment to be used must be approved by the Unit Manager or his/her representative.

5 - Operations

5.4 - Soil Protection

5.4.1 - Rutting restriction, general (7/16)

Operations are to cease immediately if equipment and weather conditions result in rutting of roads and/or skid trails which is 12 inches or greater in depth and 50 feet in length. The Unit Manager or his/her representative may restrict hauling and/or skidding if ruts exceed the specified depth. With the Unit Manager or his/her representative's approval, the Purchaser may return to the area when the risk of rutting has decreased.

5.5 - Protection of Improvements

5.5.3 - Protection of improvements detail (10/13)

Within the sale and surrounding area, there are a number of green well casings sticking out of the ground between 2-3 feet. The Purchaser must identify and protect them. If one of the well casings is broken, the sale administrator must be notified immediately.

7 - Other Conditions

7.3 - Contract Modifications

7.3.2 - Modification for oak wilt (2/05)

Within the sale area, there may be patches of oak wilt. If oak wilt is identified within the sale area, this contract may be modified. The following modifications could occur: time of cutting, species to cut, volume to harvest, or various others dealing with the treatment of oak wilt. If a species is not specified in this contract, it shall be paid for at the average price received for that species and product.



TIMBER SALE MAP

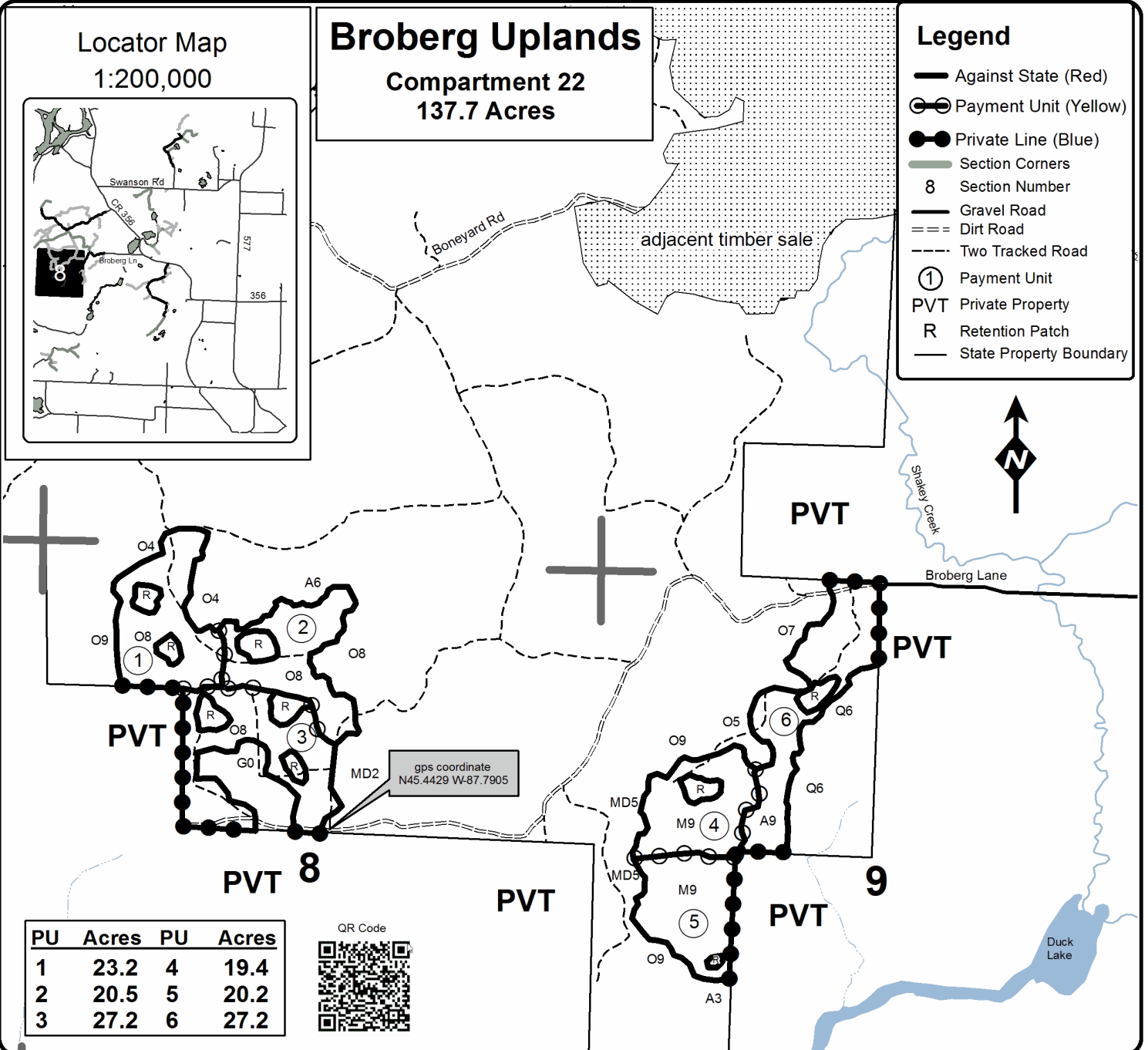
This information provided by authority of Part 525, 1994 PA 451, as amended.

Sale Number	Year
33-026	18

Forest Management Unit Escanaba Management Unit	County Menominee County	Mapped By Beaudo	Date 5/25/2018	Page 1	of 1
		Cruised By Salter			

Township 35N	Range 28W	Section(s) and Subdivision(s) Sec 5: SWSW, SESW; Sec 8: NWNW, NENW, SENW, NWNE, SWNE; Sec 9: NWSW, SWNW, SENW, NENW	Scale 1:15,840
-----------------	--------------	---	-------------------

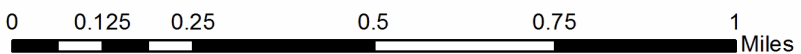
Cover Type				Density			
A = Aspen	H = Hemlock	N = Marsh	U = Upland Brush	0 = Non Stocked	5 = Pole Timber Medium		
B = Paper Birch	J = Jack Pine	O = Oak	UM = Upland Mixed	1 = Seedling Sapling Poor	6 = Pole Timber Well		
C = Cedar	L = Lowland Brush	P = Lowland Poplar	V = Bog or Marsh	2 = Seedling Sapling Medium	7 = Saw Timber Poor		
D = Treed Bog	LM = Lowland Mixed	Q = Mixed Swamp Conifer	W = White Pine	3 = Seedling Sapling Well	8 = Saw Timber Medium		
E = Swamp Hdwoods	M = Mpl, Bch, Brch	R = Red Pine	X = Non Stocked	4 = Pole Timber Poor	9 = Saw Timber Well		
F = Spruce Fir	MC = Mixed Conifer	S = Black Spruce	Z = Water				
G = Grass	MD = Mixed Deciduous	T = Tamarack					



Legend

- Against State (Red)
- ⊙ Payment Unit (Yellow)
- Private Line (Blue)
- Section Corners
- 8 Section Number
- Gravel Road
- - - Dirt Road
- - - Two Tracked Road
- ⊙ Payment Unit
- PVT Private Property
- R Retention Patch
- State Property Boundary

PU	Acres	PU	Acres
1	23.2	4	19.4
2	20.5	5	20.2
3	27.2	6	27.2



TIMBER SALE INFORMATION

Spring Tick (33-027-18)

T34N, R29W, SEC. 1; T34N, R29W, SEC. 11; T34N, R29W, SEC. 12; T34N, R29W, SEC. 2.
Menominee County (Advertised Price \$44,682.55)

SALE NOTE: The eastern larch beetle has caused some tamarack mortality within Payment Units 1 and 2, the Purchaser should harvest these Payments Units as soon as possible to prevent further loss of volume (see spec 7.5.1).

Payment Unit 4 has numerous Oak Wilt epi-centers within it. If funding becomes available to treat the oak wilt, this contract may be modified (see spec 5.2.3.4).

A timber sale contract for this lump sum, sealed bid timber sale will be awarded to the responsible bidder offering the highest sealed bid price. Bids must be at or above the following advertised price for each species:

<u>PRODUCTS & SPECIES</u>	<u>ESTIMATED UNITS*</u>		<u>ADVERTISED PRICE</u>
Sawtimber			
Northern Pin Oak	26.80	MBF	\$ 154.00 / MBF
Red Maple	0.40	MBF	\$ 206.00 / MBF
Red Oak	35.80	MBF	\$ 202.00 / MBF
Sugar Maple	0.50	MBF	\$ 292.00 / MBF
White Oak	4.90	MBF	\$ 83.00 / MBF
White Pine	69.50	MBF	\$ 60.00 / MBF
Pulpwood			
Balsam Fir	30.00	Cords	\$ 25.90 / Cord
Mixed Aspen	83.00	Cords	\$ 29.45 / Cord
Mixed Hardwood	125.00	Cords	\$ 29.25 / Cord
Mixed Oak	323.00	Cords	\$ 27.85 / Cord
Mixed Spruce	30.00	Cords	\$ 21.35 / Cord
N. White Cedar	72.00	Cords	\$ 22.45 / Cord
Red Pine	46.00	Cords	\$ 57.35 / Cord
Tamarack	162.00	Cords	\$ 19.05 / Cord
White Pine	156.00	Cords	\$ 29.90 / Cord

* The total volume is statistically estimated within plus (+) or minus (-) 12.85 percent. The estimated units are final and not subject to adjustment. Prospective bidders are urged to examine this timber and to make their own estimates of quantity and quality.

BOND AND PAYMENT SCHEDULE:

1. A bond in the amount of \$2,234.00 to insure faithful performance of the conditions of the contract will be deposited by the successful bidder within 21 days of the sale award.
2. Cutting in any sale or unit without the required advance payment would be considered a trespass.
3. Total payment must be paid in advance or according to the following schedule:
 - (a) Ten percent (10%) of the sale value must be paid within 21 days of the sale award.
 - (b) The 10% down payment will be credited towards the first unit cut.
 - (c) Payment for each of the following units must be made before cutting begins in that unit:

PAYMENT UNIT NUMBER	PERCENT OF TOTAL SALE VALUE
01	11.3%
02	15.1%
03	42.8%
04	30.8%

4. If no cutting takes place, the 10% down payment will not be refunded.
5. Operations on the contract issued will terminate on 06/30/2020.

Description of Timber by Payment Unit (PU)

PU	MARKET GROUP	PRODUCT	QUANTITY	UNIT	ACRES	ADVERTISE PRICE
1	Sugar Maple	Sawtimber	0.5	MBF	16.5	\$5,039.30
	Balsam Fir	Pulpwood	28.0	Cords		
	Mixed Aspen		19.0	Cords		
	<i>Balsam Poplar</i>		15.0	<i>Cords</i>		
	<i>Quaking Aspen</i>		4.0	<i>Cords</i>		
	Mixed Hardwood		47.0	Cords		
	<i>Basswood</i>		5.0	<i>Cords</i>		
	<i>Black Ash</i>		15.0	<i>Cords</i>		
	<i>Green Ash</i>		3.0	<i>Cords</i>		
	<i>Ironwood</i>		2.0	<i>Cords</i>		
	<i>Paper Birch</i>		6.0	<i>Cords</i>		
	<i>Red Maple</i>		14.0	<i>Cords</i>		
	<i>Sugar Maple</i>		2.0	<i>Cords</i>		
	Mixed Oak		9.0	Cords		
	<i>Northern Pin Oak</i>		9.0	<i>Cords</i>		
	Mixed Spruce		24.0	Cords		
	<i>White Spruce</i>		24.0	<i>Cords</i>		
	N. White Cedar		22.0	Cords		
	Tamarack		45.0	Cords		
	White Pine		4.0	Cords		
2	Red Maple	Sawtimber	0.4	MBF	13.7	\$6,762.55
	Red Oak		0.4	MBF		
	White Pine		7.5	MBF		
	Balsam Fir	Pulpwood	2.0	Cords		
	Mixed Aspen		5.0	Cords		
	<i>Balsam Poplar</i>		5.0	<i>Cords</i>		
	Mixed Hardwood		72.0	Cords		
	<i>American Elm</i>		1.0	<i>Cords</i>		
	<i>Black Ash</i>		25.0	<i>Cords</i>		
	<i>Paper Birch</i>		6.0	<i>Cords</i>		
	<i>Red Maple</i>		40.0	<i>Cords</i>		
	Mixed Oak		2.0	Cords		
	<i>Red Oak</i>		2.0	<i>Cords</i>		
	Mixed Spruce		2.0	Cords		
	<i>Black Spruce</i>		2.0	<i>Cords</i>		
	N. White Cedar		43.0	Cords		
	Tamarack		113.0	Cords		
White Pine		21.0	Cords			
3	Northern Pin Oak	Sawtimber	4.3	MBF	26.4	\$19,107.55
	Red Oak		33.2	MBF		
	White Oak		4.1	MBF		
	White Pine		53.2	MBF		
	Mixed Aspen	Pulpwood	1.0	Cords		
	<i>B. T. Aspen</i>		1.0	<i>Cords</i>		
	Mixed Hardwood		1.0	Cords		
	<i>Red Maple</i>		1.0	<i>Cords</i>		
	Mixed Oak		136.0	Cords		
	<i>Northern Pin Oak</i>		31.0	<i>Cords</i>		
	<i>Red Oak</i>		88.0	<i>Cords</i>		
	<i>White Oak</i>		17.0	<i>Cords</i>		
	Mixed Spruce		3.0	Cords		
	<i>White Spruce</i>		3.0	<i>Cords</i>		
	N. White Cedar		3.0	Cords		
	Red Pine		18.0	Cords		
	Tamarack		3.0	Cords		
White Pine		105.0	Cords			

Description of Timber by Payment Unit (PU), con't

PU	MARKET GROUP	PRODUCT	QUANTITY	UNIT	ACRES	ADVERTISE PRICE
4	Northern Pin Oak	Sawtimber	22.5	MBF	26.2	\$13,773.15
	Red Oak		2.2	MBF		
	White Oak		0.8	MBF		
	White Pine		8.8	MBF		
	Mixed Aspen	Pulpwood	58.0	Cords		
	<i>B. T. Aspen</i>		33.0	<i>Cords</i>		
	<i>Quaking Aspen</i>		25.0	<i>Cords</i>		
	Mixed Hardwood		5.0	Cords		
	<i>Beech</i>		2.0	<i>Cords</i>		
	<i>Red Maple</i>		3.0	<i>Cords</i>		
	Mixed Oak		176.0	Cords		
	<i>Northern Pin Oak</i>		166.0	<i>Cords</i>		
	<i>Red Oak</i>		3.0	<i>Cords</i>		
	<i>White Oak</i>		7.0	<i>Cords</i>		
	Mixed Spruce	1.0	Cords			
	<i>White Spruce</i>	1.0	<i>Cords</i>			
	N. White Cedar	4.0	Cords			
	Red Pine	28.0	Cords			
	Tamarack	1.0	Cords			
	White Pine	26.0	Cords			
TOTAL:			137.9	MBF		
TOTAL:			1,027.0	Cords		

Sale Specific Conditions & Requirements

Sale Name: Spring Tick

Sale Number: 33-027-18 Seq#: 1

1 - Sale Area

1.2 - Boundaries

1.2.1 - Painted boundaries (1/14)

The sale boundary and Payment Unit boundaries are marked and identified by blue, red and yellow paint. Exterior sale boundary lines against private property are marked with blue paint. Exterior sale boundary lines against state are marked with red paint. Retention patches are bounded by red paint; no harvesting activities may occur in these areas. Interior Payment Unit boundaries are marked with yellow paint. The painted boundary line trees are not Included Timber and are to be protected. Yellow painted trees designating an interior Payment Unit boundary are only to be cut when all surrounding Payment Units have been paid for.

2 - Timber Specifications

2.1 - Included Timber

2.1.1 - Clearcut unit(s) with unmerchantable trees (6/14)

Within Payment Unit(s) 1 - 4, cut all trees that are three (3) inches or more at DBH, with the following exceptions:

- Within Payment Unit 1, do not cut hemlock.

- Within Payment Units 3 and 4, do not cut hemlock and pine marked with green paint.

3 - Payments

3.3 - Pre-measured Sales

3.3.4 - Dividing payment units (7/14)

Payment Unit(s) \$18,000 in value or greater may be divided at the request of the Purchaser and upon approval of the Unit Manager. Dividing Payment Units is a contract modification which requires a Timber Sale Contract Supplement. There will be only one division per Payment Unit.

4 - Transportation

4.2 - Maintenance

4.2.1 - Hauling restriction (12/08)

Hauling may be restricted on forest roads by the Unit Manager or his/her representative. The restriction may occur during spring breakup or during other wet weather conditions.

4.2.4 - Grading (10/16)

For completion of the sale, state forest roads must be graded. In general, this will require a road grader or bull dozer to shape up the roads after forest products have been hauled off site. This includes cleaning of drainage areas, grading, crowning and filling with gravel, if necessary. The grading equipment to be used must be approved by the Unit Manager or his/her representative.

5 - Operations

5.2 - Conduct of Operations

5.2.3 - Operating Restrictions

5.2.3.1 - Operating restrictions (9/11)

Within Payment Unit(s) 2, unless changed by written agreement, cutting and skidding are limited to the period of December 1 to March 31, unless there is an extended dry or frozen period and the sale administrator allows harvesting during that time period. This restriction is because of low wet ground within the Payment Units.

5.2.3.4 - Oak wilt restriction, no exceptions (1/18)

Within Payment Unit 4, cutting and skidding are not permitted during the period of April 15 to July 15. No exceptions will be granted. This is necessary to reduce the spread of oak wilt. All oak harvested within this Payment Unit must be hauled prior to April 15.

Note that oak wilt has been identified within Payment Unit 4. If funding becomes available to treat the oak wilt, the following modifications could occur: time of cutting, species to cut, volume to harvest, or various others dealing with the treatment of oak wilt.

5.2.22 - Operating Caution

5.2.22.1 - Operating caution (6/11)

It is recommended, but not required, that within Payment Unit(s) 1, cutting and skidding occur during dry summer or frozen winter conditions. The reason for the recommendation is because the western half of the Payment is low and wet. The eastern half can be harvested during a dry summer, but the western half is much lower and will require frozen conditions to harvest it.

5.4 - Soil Protection

5.4.1 - Rutting restriction, general (7/16)

Operations are to cease immediately if equipment and weather conditions result in rutting of roads and/or skid trails which is 12 inches or greater in depth and 50 feet in length. The Unit Manager or his/her representative may restrict hauling and/or skidding if ruts exceed the specified depth. With the Unit Manager or his/her representative's approval, the Purchaser may return to the area when the risk of rutting has decreased.

7 - Other Conditions

7.2 - Extensions

7.2.6 - Forest health extension (6/13)

This sale contains trees infected with (eastern larch beetle and oak wilt disease). It is considered at high risk for mortality and/or loss of timber value. The sale must be harvested promptly. One (1), twelve (12) month extension can be applied to one (1) other State Forest Timber Sale Contract owned by the purchaser or owned by one (1) designated sub-contractor of the Purchaser that works this contract. To qualify, the contract expiration date of the contract to be extended must be within twelve (12) months from the issue date of this contract. If this is the first extension on the other State Forest Timber Sale Contract, then the 5% extension fee will be waived. If this is an additional extension, the 10% fee will be reduced to 5%. The forest health extension must be used before this contract is closed-out. This specification does not alleviate the purchaser from any contractual obligations of the extended State Forest Timber Sale Contract. Per General Condition & Requirement 7.2, extensions are at the sole discretion of the DNR.

7.3 - Contract Modifications

7.3.2 - Modification for oak wilt (2/05)

Within the sale area, there may be patches of oak wilt. If oak wilt is identified within the sale area, this contract may be modified. The following modifications could occur: time of cutting, species to cut, volume to harvest, or various others dealing with the treatment of oak wilt. If a species is not specified in this contract, it shall be paid for at the average price received for that species and product.

7.5 - Loss

7.5.1 - Deteriorating timber (7/09)

The sale area has received damage from the eastern larch beetle, which has caused some tamarack mortality within Payment Units 1 and 2. Also, there are numerous oak wilt epi-centers within Payment Unit 4. The Purchaser should harvest the wood as soon as possible. The Department of Natural Resources is held free of responsibility of any further damage or deterioration due to delay in harvesting.



TIMBER SALE MAP

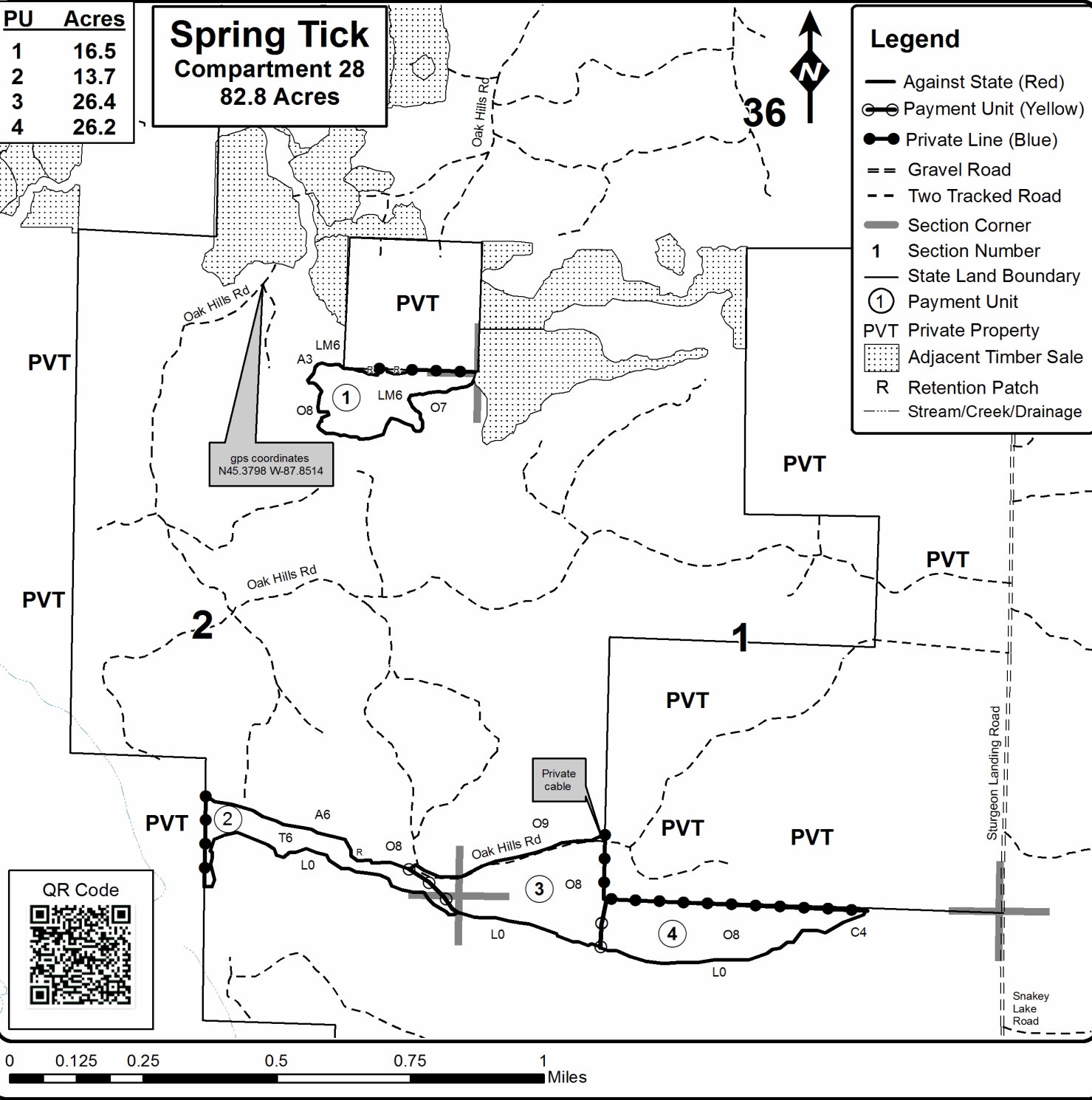
This information provided by authority of Part 525, 1994 PA 451, as amended.

Forest Management Unit Escanaba Management Unit	County Menominee County	Mapped By Beaudo	Date 6/18/2018	Page 1	of 1
Township 34N 35N	Range 29W	Section(s) and Subdivision(s) 34N: Sec 1 - SWSW; Sec 2 - NENE, NWNE, SESE, SWSE; Sec 11 - NENE; Sec 12 NENW, NWNE, NVNW. 35N: Sec 35 - SWSE.	Scale 1:15,840		
Cruised By Salter					

Cover Type				Density			
A = Aspen	H = Hemlock	N = Marsh	U = Upland Brush	0 = Non Stocked	5 = Pole Timber Medium		
B = Paper Birch	J = Jack Pine	O = Oak	UM = Upland Mixed	1 = Seedling Sapling Poor	6 = Pole Timber Well		
C = Cedar	L = Lowland Brush	P = Lowland Poplar	V = Bog or Marsh	2 = Seedling Sapling Medium	7 = Saw Timber Poor		
D = Treed Bog	LM = Lowland Mixed	Q = Mixed Swamp Conifer	W = White Pine	3 = Seedling Sapling Well	8 = Saw Timber Medium		
E = Swamp Hdwoods	M = Mpl, Bch, Brch	R = Red Pine	X = Non Stocked	4 = Pole Timber Poor	9 = Saw Timber Well		
F = Spruce Fir	MC = Mixed Conifer	S = Black Spruce	Z = Water				
G = Grass	MD = Mixed Deciduous	T = Tamarack					

PU	Acres
1	16.5
2	13.7
3	26.4
4	26.2

**Spring Tick
Compartment 28
82.8 Acres**



Longrie Creek (33-025-18)
T35N, R28W, SEC. 15; T35N, R28W, SEC. 22; Menominee COUNTY

In response to the notice of sale to be held 3:00 p.m. (local time) on September 25, 2018, I am hereby submitting my sealed bid (firm offer) for the following forest products to be cut. Bids for individual species must be at or above the advertised price. All non-responsive bid forms may be rejected.

<u>PRODUCTS & SPECIES</u>	<u>ESTIMATED VOLUME*</u>	<u>ADVERTISED PRICE</u>	<u>BID PRICE/UNIT</u>
Sawtimber			
Basswood	17.10 MBF	\$ 98.00/MBF	\$ _____
Black Ash	0.90 MBF	\$ 66.00/MBF	\$ _____
Green Ash	1.60 MBF	\$ 77.00/MBF	\$ _____
Red Maple	25.20 MBF	\$ 179.00/MBF	\$ _____
Red Oak	5.10 MBF	\$ 175.00/MBF	\$ _____
Sugar Maple	14.60 MBF	\$ 253.00/MBF	\$ _____
White Ash	0.50 MBF	\$ 85.00/MBF	\$ _____
White Pine	25.50 MBF	\$ 52.00/MBF	\$ _____
Pulpwood			
Balsam Fir	313.00 Cords	\$ 22.45/Cord	\$ _____
Mixed Aspen	407.00 Cords	\$ 25.55/Cord	\$ _____
Mixed Hardwood	1,510.00 Cords	\$ 25.35/Cord	\$ _____
Mixed Spruce	216.00 Cords	\$ 18.50/Cord	\$ _____
N. White Cedar	634.00 Cords	\$ 19.45/Cord	\$ _____
Tamarack	639.00 Cords	\$ 16.50/Cord	\$ _____
White Pine	99.00 Cords	\$ 25.90/Cord	\$ _____

*The volumes are statistically estimated within plus (+) or minus (-) 8.88 percent. These estimated volumes are final and not subject to adjustment. Prospective bidders are urged to examine this timber and to make their own estimates of quantity and quality.

I understand that any or all bids may be rejected. All bids must be signed and all bid items must be bid or the bid form may be rejected. I also understand that consideration and awarding a contract will be based upon my past performance and ability to complete the contract based upon equipment and staffing subject to my control.

FEDERAL ID: _____ or SOCIAL SECURITY NUMBER: _____

Company or individual bidding: _____

Company representative's name: _____

Address: _____

City: _____ State: _____ Zip: _____

IF AVAILABLE, PLEASE PLACE THE PERSONALIZED LABEL FROM YOUR PROSPECTUS IN THE ABOVE BOX.

Individual or company representative's signature: _____ Date: _____

Phone number : _____ Email (optional): _____

THE WINNING BIDDER MUST COMPLETE THE VERIFICATION OF WORKER'S DISABILITY COMPENSATION ACT COMPLIANCE (ON REVERSE SIDE IF DOUBLE SIDED) WITHIN 21 DAYS OF SALE AWARD DATE



FOR DEPARTMENT USE ONLY	
Sale Number (XX - XXX - XX - XX)	
Forest Management Unit:	

TIMBER SALE VERIFICATION OF WORKER'S DISABILITY COMPENSATION ACT COMPLIANCE

As required by Act 317, P.A. 1969 (Worker's Compensation) and
Part 5 of Act 451 of 1994, as amended.

VERIFICATION OF WORKER'S DISABILITY COMPENSATION ACT COMPLIANCE

- This verification must be completed and submitted within 21 days of contract award and prior to the issuance of the timber sale contract.
- In addition, if boxes 2B or 2C are checked, then Notice of Exclusion or Certificate of Insurance must be submitted within twenty-one (21) days of the contract award and prior to the issuance of the timber sale contract.
- All information must be typed or printed except for written signatures.

Please Check Appropriate Categories:

1. My business is organized as (you **must** check one of the boxes below):
 - A. Sole Proprietorship (individual)
 - B. Partnership
 - C. Corporation
2. You **must** check one of the boxes below:
 - A. I certify my business is a sole proprietorship and it has no employees but the sole proprietor. I am not subject to the Worker's Compensation Laws.
 - B. I certify my business has satisfied its obligation to the Worker's Compensation Act through the use of an approved Notice of Exclusion (BWC-337, Rev. 5/96). I will provide a copy of the Notice of Exclusion within 21 days of the contract award. (For questions or a copy of the BWC-337, please call the Worker's Compensation Bureau at 517-322-1195).
 - C. I certify my business has a Worker's Compensation Policy. I will provide an original Certificate of Insurance within twenty-one (21) days of the contract award.
3. If you have checked item 2(A) or 2(B), you **must** indicate the number of **both** full-time and part-time employees, other than yourself, including family members and active partners (if none, you must enter "0").

_____ Full-time Employees

_____ Part-time Employees

Name of Business		Federal ID (or) Social Security No.	
Address		Telephone ()	
City	State	ZIP	

I hereby certify that the above information is true and correct. I agree to notify the Michigan DNR of any changes that occur in factors affecting my coverage during any of my present and future operations.

Signature of Owner or Authorized Representative

Title

Date

Please complete the "SEALED BID" information on the next page

Broberg Uplands (33-026-18)

T35N, R28W, SEC. 5; T35N, R28W, SEC. 8; T35N, R28W, SEC. 9; Menominee

In response to the notice of sale to be held 3:00 p.m. (local time) on September 25, 2018, I am hereby submitting my sealed bid (firm offer) for the following forest products to be cut. Bids for individual species must be at or above the advertised price. All non-responsive bid forms may be rejected.

<u>PRODUCTS & SPECIES</u>	<u>ESTIMATED VOLUME*</u>	<u>ADVERTISED PRICE</u>	<u>BID PRICE/UNIT</u>
Sawtimber			
Northern Pin Oak	75.80 MBF	\$ 135.00/MBF	\$ _____
Paper Birch	2.50 MBF	\$ 83.00/MBF	\$ _____
Red Maple	13.80 MBF	\$ 150.00/MBF	\$ _____
Red Oak	50.70 MBF	\$ 150.00/MBF	\$ _____
White Oak	10.00 MBF	\$ 113.00/MBF	\$ _____
White Pine	17.40 MBF	\$ 60.00/MBF	\$ _____
Pulpwood			
Balsam Fir	23.00 Cords	\$ 25.90/Cord	\$ _____
Mixed Aspen	449.00 Cords	\$ 29.45/Cord	\$ _____
Mixed Hardwood	793.00 Cords	\$ 29.25/Cord	\$ _____
Mixed Oak	900.00 Cords	\$ 27.85/Cord	\$ _____
N. White Cedar	17.00 Cords	\$ 22.45/Cord	\$ _____
White Pine	36.00 Cords	\$ 29.90/Cord	\$ _____
White Spruce	23.00 Cords	\$ 21.35/Cord	\$ _____

*The volumes are statistically estimated within plus (+) or minus (-) 9.96 percent. These estimated volumes are final and not subject to adjustment. Prospective bidders are urged to examine this timber and to make their own estimates of quantity and quality.

I understand that any or all bids may be rejected. All bids must be signed and all bid items must be bid or the bid form may be rejected. I also understand that consideration and awarding a contract will be based upon my past performance and ability to complete the contract based upon equipment and staffing subject to my control.

FEDERAL ID: _____ or SOCIAL SECURITY NUMBER: _____

Company or individual bidding: _____

Company representative's name: _____

Address: _____

City: _____ State: _____ Zip: _____

IF AVAILABLE, PLEASE PLACE THE PERSONALIZED LABEL FROM YOUR PROSPECTUS IN THE ABOVE BOX.

Individual or company representative's signature: _____ Date: _____

Phone number : _____ Email (optional): _____

THE WINNING BIDDER MUST COMPLETE THE VERIFICATION OF WORKER'S DISABILITY COMPENSATION ACT COMPLIANCE (ON REVERSE SIDE IF DOUBLE SIDED) WITHIN 21 DAYS OF SALE AWARD DATE



FOR DEPARTMENT USE ONLY	
Sale Number (XX - XXX - XX - XX)	
Forest Management Unit:	

TIMBER SALE VERIFICATION OF WORKER'S DISABILITY COMPENSATION ACT COMPLIANCE

As required by Act 317, P.A. 1969 (Worker's Compensation) and
Part 5 of Act 451 of 1994, as amended.

VERIFICATION OF WORKER'S DISABILITY COMPENSATION ACT COMPLIANCE

- This verification must be completed and submitted within 21 days of contract award and prior to the issuance of the timber sale contract.
- In addition, if boxes 2B or 2C are checked, then Notice of Exclusion or Certificate of Insurance must be submitted within twenty-one (21) days of the contract award and prior to the issuance of the timber sale contract.
- All information must be typed or printed except for written signatures.

Please Check Appropriate Categories:

1. My business is organized as (you **must** check one of the boxes below):
 - A. Sole Proprietorship (individual)
 - B. Partnership
 - C. Corporation
2. You **must** check one of the boxes below:
 - A. I certify my business is a sole proprietorship and it has no employees but the sole proprietor. I am not subject to the Worker's Compensation Laws.
 - B. I certify my business has satisfied its obligation to the Worker's Compensation Act through the use of an approved Notice of Exclusion (BWC-337, Rev. 5/96). I will provide a copy of the Notice of Exclusion within 21 days of the contract award. (For questions or a copy of the BWC-337, please call the Worker's Compensation Bureau at 517-322-1195).
 - C. I certify my business has a Worker's Compensation Policy. I will provide an original Certificate of Insurance within twenty-one (21) days of the contract award.
3. If you have checked item 2(A) or 2(B), you **must** indicate the number of **both** full-time and part-time employees, other than yourself, including family members and active partners (if none, you must enter "0").

_____ Full-time Employees

_____ Part-time Employees

Name of Business		Federal ID (or) Social Security No.	
Address		Telephone ()	
City	State	ZIP	

I hereby certify that the above information is true and correct. I agree to notify the Michigan DNR of any changes that occur in factors affecting my coverage during any of my present and future operations.

Signature of Owner or Authorized Representative

Title

Date

Please complete the "SEALED BID" information on the next page

Spring Tick (33-027-18)

T34N, R29W, SEC. 1; T34N, R29W, SEC. 11; T34N, R29W, SEC. 12; T34N, R29W,

In response to the notice of sale to be held 3:00 p.m. (local time) on September 25, 2018, I am hereby submitting my sealed bid (firm offer) for the following forest products to be cut. Bids for individual species must be at or above the advertised price. All non-responsive bid forms may be rejected.

<u>PRODUCTS & SPECIES</u>	<u>ESTIMATED VOLUME*</u>	<u>ADVERTISED PRICE</u>	<u>BID PRICE/UNIT</u>
Sawtimber			
Northern Pin Oak	26.80 MBF	\$ 154.00/MBF	\$ _____
Red Maple	0.40 MBF	\$ 206.00/MBF	\$ _____
Red Oak	35.80 MBF	\$ 202.00/MBF	\$ _____
Sugar Maple	0.50 MBF	\$ 292.00/MBF	\$ _____
White Oak	4.90 MBF	\$ 83.00/MBF	\$ _____
White Pine	69.50 MBF	\$ 60.00/MBF	\$ _____
Pulpwood			
Balsam Fir	30.00 Cords	\$ 25.90/Cord	\$ _____
Mixed Aspen	83.00 Cords	\$ 29.45/Cord	\$ _____
Mixed Hardwood	125.00 Cords	\$ 29.25/Cord	\$ _____
Mixed Oak	323.00 Cords	\$ 27.85/Cord	\$ _____
Mixed Spruce	30.00 Cords	\$ 21.35/Cord	\$ _____
N. White Cedar	72.00 Cords	\$ 22.45/Cord	\$ _____
Red Pine	46.00 Cords	\$ 57.35/Cord	\$ _____
Tamarack	162.00 Cords	\$ 19.05/Cord	\$ _____
White Pine	156.00 Cords	\$ 29.90/Cord	\$ _____

*The volumes are statistically estimated within plus (+) or minus (-) 12.85 percent. These estimated volumes are final and not subject to adjustment. Prospective bidders are urged to examine this timber and to make their own estimates of quantity and quality.

I understand that any or all bids may be rejected. All bids must be signed and all bid items must be bid or the bid form may be rejected. I also understand that consideration and awarding a contract will be based upon my past performance and ability to complete the contract based upon equipment and staffing subject to my control.

FEDERAL ID: _____ or SOCIAL SECURITY NUMBER: _____

Company or individual bidding: _____

Company representative's name: _____

Address: _____

City: _____ State: _____ Zip: _____

IF AVAILABLE, PLEASE PLACE THE PERSONALIZED LABEL FROM YOUR PROSPECTUS IN THE ABOVE BOX.

Individual or company representative's signature: _____ Date: _____

Phone number : _____ Email (optional): _____

THE WINNING BIDDER MUST COMPLETE THE VERIFICATION OF WORKER'S DISABILITY COMPENSATION ACT COMPLIANCE (ON REVERSE SIDE IF DOUBLE SIDED) WITHIN 21 DAYS OF SALE AWARD DATE



FOR DEPARTMENT USE ONLY
Sale Number (XX - XXX - XX - XX)
Forest Management Unit:

TIMBER SALE VERIFICATION OF WORKER'S DISABILITY COMPENSATION ACT COMPLIANCE

*As required by Act 317, P.A. 1969 (Worker's Compensation) and
Part 5 of Act 451 of 1994, as amended.*

VERIFICATION OF WORKER'S DISABILITY COMPENSATION ACT COMPLIANCE

- This verification must be completed and submitted within 21 days of contract award and prior to the issuance of the timber sale contract.
- In addition, if boxes 2B or 2C are checked, then Notice of Exclusion or Certificate of Insurance must be submitted within twenty-one (21) days of the contract award and prior to the issuance of the timber sale contract.
- All information must be typed or printed except for written signatures.

Please Check Appropriate Categories:

1. My business is organized as (you **must** check one of the boxes below):
 - A. Sole Proprietorship (individual)
 - B. Partnership
 - C. Corporation
2. You **must** check one of the boxes below:
 - A. I certify my business is a sole proprietorship and it has no employees but the sole proprietor. I am not subject to the Worker's Compensation Laws.
 - B. I certify my business has satisfied its obligation to the Worker's Compensation Act through the use of an approved Notice of Exclusion (BWC-337, Rev. 5/96). I will provide a copy of the Notice of Exclusion within 21 days of the contract award. (For questions or a copy of the BWC-337, please call the Worker's Compensation Bureau at 517-322-1195).
 - C. I certify my business has a Worker's Compensation Policy. I will provide an original Certificate of Insurance within twenty-one (21) days of the contract award.
3. If you have checked item 2(A) or 2(B), you **must** indicate the number of **both** full-time and part-time employees, other than yourself, including family members and active partners (if none, you must enter "0").

_____ Full-time Employees

_____ Part-time Employees

Name of Business		Federal ID (or) Social Security No.	
Address		Telephone ()	
City	State	ZIP	

I hereby certify that the above information is true and correct. I agree to notify the Michigan DNR of any changes that occur in factors affecting my coverage during any of my present and future operations.

Signature of Owner or Authorized Representative

Title

Date

Please complete the "SEALED BID" information on the next page

374 North Drumlin (33-001-18)

T37N, R25W, SEC. 19; T37N, R25W, SEC. 30; T37N, R26W, SEC. 25; Menominee

In response to the notice of sale to be held 3:00 p.m. (local time) on September 25, 2018, I am hereby submitting my sealed bid (firm offer) for the following forest products to be cut. Bids for individual species must be at or above the advertised price. All non-responsive bid forms may be rejected.

<u>PRODUCTS & SPECIES</u>	<u>ESTIMATED VOLUME*</u>	<u>ADVERTISED PRICE</u>	<u>BID PRICE/UNIT</u>
Sawtimber			
Basswood	177.60 MBF	\$ 113.00/MBF	\$ _____
Beech	3.80 MBF	\$ 79.00/MBF	\$ _____
Black Cherry	1.60 MBF	\$ 153.00/MBF	\$ _____
Paper Birch	3.30 MBF	\$ 83.00/MBF	\$ _____
Red Maple	7.60 MBF	\$ 206.00/MBF	\$ _____
Sugar Maple	48.10 MBF	\$ 292.00/MBF	\$ _____
White Ash	32.10 MBF	\$ 63.00/MBF	\$ _____
Yellow Birch	1.50 MBF	\$ 117.00/MBF	\$ _____
Pulpwood			
Balsam Fir	348.00 Cords	\$ 25.90/Cord	\$ _____
Mixed Aspen	311.00 Cords	\$ 29.45/Cord	\$ _____
Mixed Hardwood	3,004.00 Cords	\$ 29.25/Cord	\$ _____
Mixed Spruce	107.00 Cords	\$ 21.35/Cord	\$ _____
Red Pine	91.00 Cords	\$ 57.35/Cord	\$ _____
Tamarack	15.00 Cords	\$ 19.05/Cord	\$ _____
White Pine	7.00 Cords	\$ 29.90/Cord	\$ _____

*The volumes are statistically estimated within plus (+) or minus (-) 8.19 percent. These estimated volumes are final and not subject to adjustment. Prospective bidders are urged to examine this timber and to make their own estimates of quantity and quality.

I understand that any or all bids may be rejected. All bids must be signed and all bid items must be bid or the bid form may be rejected. I also understand that consideration and awarding a contract will be based upon my past performance and ability to complete the contract based upon equipment and staffing subject to my control.

FEDERAL ID: _____ or SOCIAL SECURITY NUMBER: _____

Company or individual bidding: _____

Company representative's name: _____

Address: _____

City: _____ State: _____ Zip: _____

IF AVAILABLE, PLEASE PLACE THE PERSONALIZED LABEL FROM YOUR PROSPECTUS IN THE ABOVE BOX.

Individual or company representative's signature: _____ Date: _____

Phone number : _____ Email (optional): _____

THE WINNING BIDDER MUST COMPLETE THE VERIFICATION OF WORKER'S DISABILITY COMPENSATION ACT COMPLIANCE (ON REVERSE SIDE IF DOUBLE SIDED) WITHIN 21 DAYS OF SALE AWARD DATE



FOR DEPARTMENT USE ONLY
Sale Number (XX - XXX - XX - XX)
Forest Management Unit:

TIMBER SALE VERIFICATION OF WORKER'S DISABILITY COMPENSATION ACT COMPLIANCE

*As required by Act 317, P.A. 1969 (Worker's Compensation) and
Part 5 of Act 451 of 1994, as amended.*

VERIFICATION OF WORKER'S DISABILITY COMPENSATION ACT COMPLIANCE

- This verification must be completed and submitted within 21 days of contract award and prior to the issuance of the timber sale contract.
- In addition, if boxes 2B or 2C are checked, then Notice of Exclusion or Certificate of Insurance must be submitted within twenty-one (21) days of the contract award and prior to the issuance of the timber sale contract.
- All information must be typed or printed except for written signatures.

Please Check Appropriate Categories:

1. My business is organized as (you **must** check one of the boxes below):
 - A. Sole Proprietorship (individual)
 - B. Partnership
 - C. Corporation
2. You **must** check one of the boxes below:
 - A. I certify my business is a sole proprietorship and it has no employees but the sole proprietor. I am not subject to the Worker's Compensation Laws.
 - B. I certify my business has satisfied its obligation to the Worker's Compensation Act through the use of an approved Notice of Exclusion (BWC-337, Rev. 5/96). I will provide a copy of the Notice of Exclusion within 21 days of the contract award. (For questions or a copy of the BWC-337, please call the Worker's Compensation Bureau at 517-322-1195).
 - C. I certify my business has a Worker's Compensation Policy. I will provide an original Certificate of Insurance within twenty-one (21) days of the contract award.
3. If you have checked item 2(A) or 2(B), you **must** indicate the number of **both** full-time and part-time employees, other than yourself, including family members and active partners (if none, you must enter "0").

_____ Full-time Employees

_____ Part-time Employees

Name of Business		Federal ID (or) Social Security No.	
Address		Telephone ()	
City	State	ZIP	

I hereby certify that the above information is true and correct. I agree to notify the Michigan DNR of any changes that occur in factors affecting my coverage during any of my present and future operations.

Signature of Owner or Authorized Representative

Title

Date

Please complete the "SEALED BID" information on the next page

South Engineer (33-002-18)
T43N, R22W, SEC. 17; T43N, R22W, SEC. 20; Delta COUNTY

In response to the notice of sale to be held 3:00 p.m. (local time) on September 25, 2018, I am hereby submitting my sealed bid (firm offer) for the following forest products to be cut. Bids for individual species must be at or above the advertised price. All non-responsive bid forms may be rejected.

<u>PRODUCTS & SPECIES</u>	<u>ESTIMATED VOLUME*</u>	<u>ADVERTISED PRICE</u>	<u>BID PRICE/UNIT</u>
Sawtimber			
Basswood	14.70 MBF	\$ 113.00/MBF	\$ _____
Green Ash	4.90 MBF	\$ 88.00/MBF	\$ _____
Red Maple	38.50 MBF	\$ 206.00/MBF	\$ _____
Sugar Maple	34.90 MBF	\$ 292.00/MBF	\$ _____
White Ash	7.00 MBF	\$ 63.00/MBF	\$ _____
Pulpwood			
Balsam Fir	63.00 Cords	\$ 25.90/Cord	\$ _____
Mixed Aspen	620.00 Cords	\$ 29.45/Cord	\$ _____
Mixed Hardwood	1,217.00 Cords	\$ 29.25/Cord	\$ _____
White Spruce	21.00 Cords	\$ 21.35/Cord	\$ _____

*The volumes are statistically estimated within plus (+) or minus (-) 15.74 percent. These estimated volumes are final and not subject to adjustment. Prospective bidders are urged to examine this timber and to make their own estimates of quantity and quality.

I understand that any or all bids may be rejected. All bids must be signed and all bid items must be bid or the bid form may be rejected. I also understand that consideration and awarding a contract will be based upon my past performance and ability to complete the contract based upon equipment and staffing subject to my control.

FEDERAL ID: ____ - ____ - ____ or SOCIAL SECURITY NUMBER: ____ - ____ - ____

Company or individual bidding: _____

Company representative's name: _____

Address: _____

City: _____ State: _____ Zip: _____

IF AVAILABLE, PLEASE PLACE THE PERSONALIZED LABEL FROM YOUR PROSPECTUS IN THE ABOVE BOX.

Individual or company representative's signature: _____ Date: _____

Phone number : _____ Email (optional): _____

THE WINNING BIDDER MUST COMPLETE THE VERIFICATION OF WORKER'S DISABILITY COMPENSATION ACT COMPLIANCE (ON REVERSE SIDE IF DOUBLE SIDED) WITHIN 21 DAYS OF SALE AWARD DATE



FOR DEPARTMENT USE ONLY
Sale Number (XX - XXX - XX - XX)
Forest Management Unit:

TIMBER SALE VERIFICATION OF WORKER'S DISABILITY COMPENSATION ACT COMPLIANCE

*As required by Act 317, P.A. 1969 (Worker's Compensation) and
Part 5 of Act 451 of 1994, as amended.*

VERIFICATION OF WORKER'S DISABILITY COMPENSATION ACT COMPLIANCE

- This verification must be completed and submitted within 21 days of contract award and prior to the issuance of the timber sale contract.
- In addition, if boxes 2B or 2C are checked, then Notice of Exclusion or Certificate of Insurance must be submitted within twenty-one (21) days of the contract award and prior to the issuance of the timber sale contract.
- All information must be typed or printed except for written signatures.

Please Check Appropriate Categories:

1. My business is organized as (you **must** check one of the boxes below):
 - A. Sole Proprietorship (individual)
 - B. Partnership
 - C. Corporation

2. You **must** check one of the boxes below:
 - A. I certify my business is a sole proprietorship and it has no employees but the sole proprietor. I am not subject to the Worker's Compensation Laws.
 - B. I certify my business has satisfied its obligation to the Worker's Compensation Act through the use of an approved Notice of Exclusion (BWC-337, Rev. 5/96). I will provide a copy of the Notice of Exclusion within 21 days of the contract award. (For questions or a copy of the BWC-337, please call the Worker's Compensation Bureau at 517-322-1195).
 - C. I certify my business has a Worker's Compensation Policy. I will provide an original Certificate of Insurance within twenty-one (21) days of the contract award.

3. If you have checked item 2(A) or 2(B), you **must** indicate the number of **both** full-time and part-time employees, other than yourself, including family members and active partners (if none, you must enter "0").

_____ Full-time Employees

_____ Part-time Employees

Name of Business		Federal ID (or) Social Security No.	
Address		Telephone ()	
City	State	ZIP	

I hereby certify that the above information is true and correct. I agree to notify the Michigan DNR of any changes that occur in factors affecting my coverage during any of my present and future operations.

Signature of Owner or Authorized Representative

Title

Date

Please complete the "SEALED BID" information on the next page