



**DEPARTMENT OF NATURAL RESOURCES  
STATE OF MICHIGAN**

**TIMBER SALE PROSPECTUS #6442**

SCHEDULED SALE DATE AND TIME: 3:00 p.m. (local time) on May 21, 2019.

LOCATION: INDIAN RIVER FIELD OFFICE, 6984 WILSON, INDIAN RIVER, MI 49749.

PROSPECTUS NOTE: The bidder is advised to inspect the sale area and review the location, estimated volumes, operating costs and contract terms of proposed sales. Please be aware that some landowners may request 60 days or more notice for access across their land.

Notice is hereby given that bids will be received by the Unit Manager, GAYLORD MANAGEMENT UNIT, for certain timber on the following described lands:

Two Mann Road Aspen (52-101-19) / T36N, R01W, SEC. 24, S1/2SW.

T36N, R01W, SEC. 26, W1/2NW.

T36N, R01W, SEC. 27, S1/2NE.

Cheboygan County, Advertised Price \$32,800.70, 69.6 Acres, Aspen, Hardwood.

SALE NOTE: Payment Unit 3 will require a bridge or culvert for access. This will require a permit from the DEQ, and the Purchaser will need to provide advanced notice of the intent to harvest so that the DNR may obtain the necessary permit(s).

A recreation site such as a trail, pathway, or campground is within the sale area or the vicinity. Certain restrictions/specifications may be applicable including time restrictions.

Hunny Bunny Mix (52-115-18) / T34N, R02W, SEC. 25, SW,SE.

Cheboygan County, Advertised Price \$52,646.95, 62.7 Acres, Hardwood, Spruce/Fir/Tamarack.

SALE NOTE: Gated access to Payment Units 2-5 may eventually be removed. Disconnected utility lines existed in Payment Unit 2 in summer of 2018.

Snack Jack Mix (52-117-18) / T35N, R02W, SEC. 23, E1/2SE.

T35N, R02W, SEC. 24, W1/2SW.

T35N, R02W, SEC. 26, S1/2NW,SWNE,NESW,NWSE.

Cheboygan County, Advertised Price \$61,927.95, 76.8 Acres, Aspen, Red Pine.

SALE NOTE: Payment Unit 5 will require a long skid. Alternate access routes will be considered.

Tiny Piney (52-126-18) / T35N, R02W, SEC. 34, S1/2NE,SESE.

Cheboygan County, Advertised Price \$9,248.25, 13.0 Acres, Red Pine, Jack Pine.

SALE NOTE: Sale is small but has good access. Operational hazard - utility lines (buried and above ground) along south edge of Payment Unit 2.

A recreation site such as a trail, pathway, or campground is within the sale area or the vicinity. Certain restrictions/specifications may be applicable including time restrictions.

## BID INSTRUCTIONS (VER. 07/02/2018):

### 1. Scheduled Bid Location, Date, and Time (2/11)

Bids must be received by the Unit Manager, INDIAN RIVER OFFICE, 6984 Wilson, Indian River, MI 49749, no later than 3:00 p.m. (local time) on May 21, 2019. For further information concerning this sale, contact Lucas Merrick at 989-732-3541 extension 5440.

### 2. Bidder's Qualifications (5/16)

Purchaser shall obtain workers compensation insurance to cover claims under Michigan's Worker's Disability Compensation Act of 1969 or similar employee benefit act of any other state applicable to an employee. If all or part of a timber sale was prepared by a private contractor, the contractor and that contractor's company are not permitted to bid on the timber sale contract. Bids will not be accepted from individuals or companies appearing on the DNR/FRD No-Bid List. This list contains the names of purchasers who previously failed to execute a contract within 21-days or who have a history of poor performance.

### 3. Preparation of Sealed Bids (5/16)

Bid Forms may be completed online thru Michigan DNR Timber Sale Online Bidding (OLB) at [www.michigan.gov/timberbidding](http://www.michigan.gov/timberbidding) or by completing the hardcopy Bid Form found in the Timber Sale Prospectus. Hardcopy Bid Forms shall be manually signed in ink. Registration in OLB is considered your 'signature' for all bids submitted thru that system. Bid prices must be entered for each species and product in the Bid Price column for all material subject to bidding and all fill-in blanks must be completed. If erasures or other changes appear on the hardcopy Bid Form, each erasure or change must be initialed by the person signing the bid.

### 4. Submission of Sealed Bids (5/16)

Bid forms may be obtained from the Unit Manager or thru OLB. Bids may be submitted hardcopy or thru OLB. All hardcopy bids must be submitted on the bid form and in an envelope clearly identified as described in this section. NOTE: Only one bid form per bid envelope. Sealed bids must be submitted to the Unit office designated in the prospectus and must be submitted at or prior to the time established in the prospectus. The envelope should show on the outside (a) the sale name or number and (b) the date and time of bid opening, as shown in the prospectus. Bids received after the time specified in the sale prospectus are late bids and will be rejected.

It is possible for a bidder to submit multiple bids on a single sale. For example, a bid may be submitted hardcopy and a bid may be submitted thru OLB. Or, two bidders from the same company could both submit bids on the same sale. If this were to happen, the State would accept all bids received and award the contract accordingly. All bidding and contractual requirements would apply to all bids received.

### 5. Public Opening of Sealed Bids (7/16)

If conditions permit, the sealed bids will be publicly opened and posted at the time and place set in the prospectus.

If a bidder, present at a bid opening, has submitted bids on more than one sale, that bidder may withdraw their unopened bid envelopes or announce the withdrawal of their online bid after being declared the successful bidder on one sale.

### 6. Award of Contract (1/11)

Award of the contract will be made to the Bidder whose bid, conforming to the prospectus, is most advantageous to the State of Michigan on the basis of total value at rates bid for the estimated quantities. The State reserves the right to reject any bid or waive any minor irregularity in bids received. A written award mailed (or otherwise furnished) to the successful Bidder shall be deemed to result in a binding contract without further action by either party.

### 7. Down Payment (1/11)

The Bidder to whom award is made must make a down payment within 21 days of the sale award. The amount of the down payment will be calculated as shown in the Bond and Payment Schedule of this prospectus. Only cash may be used to meet this requirement.

### 8. Performance Security (1/11)

As guarantee of faithful performance, a cash bond, certificate of deposit, surety bond or irrevocable letter of credit (LOC) is required within 21 days of the sale award. The amount of the performance security is shown in the Bond and

Payment Schedule of this prospectus. If an LOC or surety is used, the coverage must extend for at least 6 months beyond the contract expiration.

#### 9. Timber Sale Contract (7/18)

Additional conditions and requirements common to all timber sales are listed on the timber sale contract (R4031) and are available on line at [www.michigan.gov/timber](http://www.michigan.gov/timber). Contact the Unit Manager for additional information or a sample contract. Within 21 days of the date of the award letter, the bidder must sign the contract and provide the required down payment, performance security, and verification of worker's disability compensation. The down payment and performance security shall be in accordance with the provisions of the timber sale contract, in the sums stated in this prospectus. If these actions are not taken, then the Bidder, the Bidder's corporation, and the corporation's principals may not be permitted to bid on State timber sales for a period of 3 months after the first offense, 6 months after the second offense, and 1 year after the third offense. An offense will only be counted against the Bidder for 5 years. In addition, the Bidder certifies that if awarded this contract, the Bidder will complete the timber sale contract in accordance with its terms and any modifications thereof including requirements to purchase, cut, and remove the included timber by the expiration date.

Payment Unit values in the State Forest Timber Sale Contract are calculated based on the advertised value of the Payment Unit as a percentage of the total advertised value of the contract. The advertised value of each Payment Unit is given in the Description of Timber by Payment Unit table on the Timber Sale Information page. For example, if the value of Payment Unit 1 is advertised as \$1,500 and the total Timber Sale value is advertised as \$10,000, the contract price for Payment Unit 1 will be 15% of the total bid price ( $\$1,500/\$10,000 * 100$ ).

#### 10. Disclaimer of Estimates and Bidder's Warranty of Inspection (7/16)

Before submitting this bid, the Bidder is advised and cautioned to inspect the sale area, review the requirements of the sale contract, and take other steps as may be reasonably necessary to ascertain the location, estimated volumes, construction estimates, and operating costs of the proposed sale. Failure to do so will not relieve the Bidder from responsibility for completing the contract.

The Bidder warrants that this bid is submitted solely on the basis of the Bidder's examination and inspection of the quality and quantity of the timber offered for sale and the Bidder's opinion of the value thereof and the costs of recovery. No reliance should be placed on the State of Michigan's estimates of timber quality, quantity or costs of recovery. Bidder further acknowledges that the State of Michigan: (i) expressly disclaims any warranty of fitness of timber for any purpose; (ii) offers this timber as is without any warranty of quality (merchantability) or quantity and (iii) expressly disclaims any warranty as to the quantity or quality of timber sold.

#### 11. Certification and Chain-of-Custody (10/14)

Unless otherwise indicated in the contract under section 7 – Other Conditions of the Sale Specific Conditions & Requirements, the area encompassed by this timber sale is certified to the standards of the Forest Stewardship Council (FSC) - Certificate #SCS-FM/COC-00090N and the Sustainable Forestry Initiative (SFI) - Certificate #NSF-SFIS-5Y031-SF5. Forest products from this sale may be delivered to the mill as "FSC 100% and / or SFI certified" as long as the contractor hauling the forest products is chain-of-custody (COC) certified or covered under a COC certificate from the destination mill. The purchaser is responsible for maintaining COC after leaving the sale area.

#### 12. Good Neighbor Authority (GNA) Requirements (7/16)

If the name of this timber sales contains the acronym GNA, it is authorized by the Good Neighbor Authority (GNA) and covered by various agreements between the U.S. Forest Service and the State. The timber sale occurs on federal land and the following conditions apply:

GNA contracts on US Forest Service land will not be awarded to purchasers on the Federal list of excluded parties. The System for Award Management (SAM) will be checked for active excluded parties prior to award of contract. In addition, the Bidder to whom award is made must complete an Assurance Regarding Felony Conviction or Tax Delinquent Status for Corporate Applicants (AD-3031).

#### 13. Good Neighbor Authority (GNA) Requirements, con't (9/16)

Bidder certifies, by signing this bid form, that to the best of Bidder's knowledge that the following representations are accurate and complete.

- a. That the Bidder and its principals are not presently debarred, suspended, proposed for debarment, declared ineligible, or voluntary excluded from timber sales (covered transactions) by any Federal department or agency.
- b. That the Bidder and its principals have not within a 3-year period preceding this bid been convicted of or had a civil judgment rendered against them for commission of fraud or a criminal offense in connection with obtaining, attempting to obtain, or performing a public (Federal, State, or local) transaction or contract under a public transaction; violation of Federal or State antitrust statutes or commission of embezzlement, theft, forgery, bribery, falsification or destruction of records, making false statements, or receiving stolen property.
- c. That the Bidder and its principals are not presently indicted for or otherwise criminally or civilly charged by a governmental entity (Federal, State, or local) with commission of any of the offenses enumerated in paragraph b of this certification.
- d. That the Bidder and its principals have not within a 3-year period preceding this bid had one or more public transactions (Federal, State, or local) terminated for breach or default of a timber or forest product contract.

Bidders that cannot certify this requirement, in whole or in part, shall submit an explanation with their bid.

DAN EICHINGER  
Director

## TIMBER SALE INFORMATION

Two Mann Road Aspen (52-101-19)  
T36N, R01W, SEC. 24; T36N, R01W, SEC. 26; T36N, R01W, SEC. 27.  
Cheboygan County (Advertised Price \$32,800.70)

SALE NOTE: Payment Unit 3 will require a bridge or culvert for access. This will require a permit from the DEQ, and the Purchaser will need to provide advanced notice of the intent to harvest so that the DNR may obtain the necessary permit(s).

A recreation site such as a trail, pathway, or campground is within the sale area or the vicinity. Certain restrictions/specifications may be applicable including time restrictions.

A timber sale contract for this lump sum, sealed bid timber sale will be awarded to the responsible bidder offering the highest sealed bid price. Bids must be at or above the following advertised price for each species:

<u>PRODUCTS &amp; SPECIES</u>	<u>ESTIMATED UNITS*</u>		<u>ADVERTISED PRICE</u>
Sawtimber			
Mixed Aspen	57.20	MBF	\$ 52.00 / MBF
Red Maple	17.30	MBF	\$ 96.00 / MBF
Pulpwood			
Balsam Fir	340.00	Cords	\$ 28.60 / Cord
Mixed Aspen	441.00	Cords	\$ 18.15 / Cord
Mixed Hardwood	376.00	Cords	\$ 24.00 / Cord
N. White Cedar	4.00	Cords	\$ 16.05 / Cord
Paper Birch	33.00	Cords	\$ 17.10 / Cord
White Pine	2.00	Cords	\$ 24.30 / Cord
White Spruce	25.00	Cords	\$ 29.45 / Cord

\* The total volume is statistically estimated within plus (+) or minus (-) 10.46 percent. The estimated units are final and not subject to adjustment. Prospective bidders are urged to examine this timber and to make their own estimates of quantity and quality.

**BOND AND PAYMENT SCHEDULE:**

1. A bond in the amount of \$3,280.00 to insure faithful performance of the conditions of the contract will be deposited by the successful bidder within 21 days of the sale award.
2. Cutting in any sale or unit without the required advance payment would be considered a trespass.
3. Total payment must be paid in advance or according to the following schedule:
  - (a) Ten percent (10%) of the sale value must be paid within 21 days of the sale award.
  - (b) The 10% down payment will be credited towards the first unit cut.
  - (c) Payment for each of the following units must be made before cutting begins in that unit:

PAYMENT UNIT NUMBER	PERCENT OF TOTAL SALE VALUE
01	21.4%
02	11.2%
03	29.7%
04	37.7%

4. If no cutting takes place, the 10% down payment will not be refunded.
5. Operations on the contract issued will terminate on 06/30/2022.

**Description of Timber by Payment Unit (PU)**

PU	MARKET GROUP	PRODUCT	QUANTITY	UNIT	ACRES	ADVERTISE PRICE
1	Mixed Aspen	Sawtimber	8.1	MBF	17.0	\$7,007.65
	<i>B. T. Aspen</i>		0.3	<i>MBF</i>		
	<i>Quaking Aspen</i>		7.8	<i>MBF</i>		
	Red Maple		3.6	MBF		
	Balsam Fir	Pulpwood	58.0	Cords		
	<i>Balsam Fir</i>		58.0	<i>Cords</i>		
	Mixed Aspen		131.0	Cords		
	<i>Balsam Poplar</i>	<i>Sawtimber</i>	1.0	<i>MBF</i>		
	<i>B. T. Aspen</i>	<i>Pulpwood</i>	32.0	<i>Cords</i>		
	<i>Balsam Poplar</i>		13.0	<i>Cords</i>		
	<i>Quaking Aspen</i>		84.0	<i>Cords</i>		
	Mixed Hardwood		89.0	Cords		
	<i>Red Maple</i>		89.0	<i>Cords</i>		
	Paper Birch		4.0	Cords		
	<i>Paper Birch</i>		4.0	<i>Cords</i>		
2	Mixed Aspen	Sawtimber	6.3	MBF	8.8	\$3,675.90
	<i>Quaking Aspen</i>		6.3	<i>MBF</i>		
	Red Maple		0.4	MBF		
	Balsam Fir	Pulpwood	72.0	Cords		
	<i>Balsam Fir</i>	<i>Sawtimber</i>	1.0	<i>MBF</i>		
	<i>Balsam Fir</i>	<i>Pulpwood</i>	70.0	<i>Cords</i>		
	Mixed Aspen		42.0	Cords		
	<i>Balsam Poplar</i>		4.0	<i>Cords</i>		
	<i>Quaking Aspen</i>		38.0	<i>Cords</i>		
	Mixed Hardwood		16.0	Cords		
	<i>Red Maple</i>		16.0	<i>Cords</i>		
	N. White Cedar		1.0	Cords		
	White Spruce		3.0	Cords		
	<i>White Spruce</i>		3.0	<i>Cords</i>		
3	Mixed Aspen	Sawtimber	20.6	MBF	17.7	\$9,733.25
	<i>B. T. Aspen</i>		16.3	<i>MBF</i>		
	<i>Quaking Aspen</i>		4.3	<i>MBF</i>		
	Red Maple		9.2	MBF		
	Balsam Fir	Pulpwood	63.0	Cords		
	<i>Balsam Fir</i>		63.0	<i>Cords</i>		
	Mixed Aspen		49.0	Cords		
	<i>B. T. Aspen</i>		37.0	<i>Cords</i>		
	<i>Quaking Aspen</i>		12.0	<i>Cords</i>		
	Mixed Hardwood		195.0	Cords		
	<i>Red Maple</i>		195.0	<i>Cords</i>		
	Paper Birch		21.0	Cords		
	<i>Paper Birch</i>		21.0	<i>Cords</i>		
	White Pine		2.0	Cords		
4	Mixed Aspen	Sawtimber	22.2	MBF	26.1	\$12,383.90
	<i>Quaking Aspen</i>		22.2	<i>MBF</i>		
	Red Maple		4.1	MBF		
	Balsam Fir	Pulpwood	147.0	Cords		
	<i>Balsam Fir</i>	<i>Sawtimber</i>	0.5	<i>MBF</i>		
	<i>Balsam Fir</i>	<i>Pulpwood</i>	146.0	<i>Cords</i>		
	Mixed Aspen		219.0	Cords		
	<i>Balsam Poplar</i>		3.0	<i>Cords</i>		
	<i>Quaking Aspen</i>		216.0	<i>Cords</i>		
	Mixed Hardwood		76.0	Cords		
	<i>Black Cherry</i>		1.0	<i>Cords</i>		
	<i>Red Maple</i>		75.0	<i>Cords</i>		
	N. White Cedar		3.0	Cords		

**Description of Timber by Payment Unit (PU), con't**

PU	MARKET GROUP	PRODUCT	QUANTITY	UNIT	ACRES	ADVERTISE PRICE
4 con't	Paper Birch	Pulpwood	8.0	Cords		
	<i>Paper Birch</i>	<i>Sawtimber</i>	<i>0.5</i>	<i>MBF</i>		
	<i>Paper Birch</i>	<i>Pulpwood</i>	<i>7.0</i>	<i>Cords</i>		
	White Spruce		22.0	Cords		
	<i>White Spruce</i>	<i>Sawtimber</i>	<i>0.5</i>	<i>MBF</i>		
	<i>White Spruce</i>	<i>Pulpwood</i>	<i>21.0</i>	<i>Cords</i>		
TOTAL:			74.5	MBF		
TOTAL:			1,221.0	Cords		

# Sale Specific Conditions & Requirements

**Sale Name: Two Mann Road Aspen**

**Sale Number: 52-101-19 Seq#: 1**

## 1 - Sale Area

### 1.2 - Boundaries

#### 1.2.1 - Painted boundaries (1/14)

The sale boundary and Payment Unit boundaries are marked and identified by blue, red, teal, and yellow paint. Exterior sale boundary lines against private property are marked with blue paint. Exterior sale boundary lines against state are marked with red paint. Interior Payment Unit boundaries are marked with yellow paint. Interior retention island boundaries are marked with teal paint. The painted boundary line trees are not Included Timber and are to be protected. Yellow painted trees designating an interior Payment Unit boundary are only to be cut when all surrounding Payment Units have been paid.

## 2 - Timber Specifications

### 2.1 - Included Timber

#### 2.1.1 - Clearcut unit(s) with unmerchantable trees (6/14)

Within Payment Unit(s) 1-4, cut all trees that are two (2) inches or more at DBH, except do not cut white pine greater than 18" at DBH and any red pine. In addition, within Payment Unit 1, do not cut any white pine or spruce. Also, within Payment Unit 2, do not cut any spruce greater than 18" at DBH. Special protection trees identified in accordance with condition 3.4.2, within clearcutting unit boundaries, are not Included Timber and are to be protected.

## 3 - Payments

### 3.4 - Damaged Timber

#### 3.4.2 - Special Protection Trees (4/14)

The Purchaser shall not cut live or dead special protection trees within cutting units or clearings. Special protection trees are spruce greater than 18" at DBH (within Payment Unit 2) and all white pine greater than 18" at DBH. If the Purchaser's operations have cut or damaged special protection trees through carelessness, the Purchaser shall pay triple stumpage as fixed, agreed and liquidated damages for each special protection tree cut or damaged. Such payment does not constitute ownership of the undesignated timber.

## 4 - Transportation

### 4.1 - Construction

#### 4.1.2 - Stream crossings, specific (3/11)

The Creek/River crossing will require the installation of a culvert or portable bridge which may be borrowed from the DNR. This installation will be performed in accordance with the specifications on the appropriate permits which shall be provided by the DNR. The DNR will need adequate notice from the Purchaser to acquire the necessary permits after the sale has been purchased to allow time for processing.

#### 4.1.3 - Slash and earthen piles (8/04)

Piles or windrows of earth along roads and landings that have been widened or constructed shall be leveled. Slash from road maintenance or construction, including stumps, shall be dispersed throughout the sale if not chipped or otherwise utilized or removed from the sale area.

#### 4.1.5 - Culverts (5/14)

Access may require the installation of culverts for cross drainage or at natural drainage-ways. If culverts are needed in these locations, their placement will be specified by the sale administrator and they shall be installed prior to hauling. The culverts will meet the standards within DEQ permits. Culverts shall be removed along with any fill used as determined by DEQ and/or DNR. Soils shall be maintained and left in a non-erodible condition, with water bars, seed, fertilizer, mulch, and slash installed as directed by the sale administrator and as specified in the BMP manual. Stream crossing permits, if needed, will be obtained by the DNR.

#### 4.1.12 - No new roads (1/12)

No new roads will be permitted in any Payment Unit. All operations are limited to existing roads. Skid trails only will be



allowed.

#### 4.2 - Maintenance

##### 4.2.5 - Two wheel drive condition (2/04)

All existing trail roads on and adjacent to the sale area must be passable by two-wheel drive traffic for the duration of the sale.

### 5 - Operations

#### 5.1 - Notification

##### 5.1.1 - Pre-sale conference (10/16)

A pre-sale conference on site between the Purchaser and sale administrator is required prior to beginning any operations to determine landing locations and access. The Unit Manager or his/her representative must be contacted at least 5 days in advance to schedule the conference.

#### 5.2 - Conduct of Operations

##### 5.2.2 - Hazard Trees/Snags

###### 5.2.2.1 - Den trees (10/16)

Obvious hollow and/or den trees shall be protected and left standing unless they are a safety hazard.

##### 5.2.17 - Timber Mats and Interlocking Composite Mats (3/18)

Some roads or skid trails may require extra protection such as that afforded by timber mats, interlocking composite mats, or another approved system. If available, mats may be borrowed from the DNR. A Timber Sale Contract Supplement will be used to document the Purchaser's use of the DNR's mats. Contact the sale administrator regarding availability and pick-up. Timber mats are available from various field offices. Composite mats are only available from the Grayling field office. The Purchaser is responsible for picking up and hauling the mats to and from the site. The composite mats will require DNR staff onsite for installation and removal. Contact the sale administrator to schedule at least 30 days before desired install/removal date. All mats must be cleaned prior to drop off. This may include, but is not limited to, power washing and brushing to remove mud and debris. A charge of \$400.00 per timber mat and \$2,000.00 per composite mat will be assessed for all damaged or non-returned mats. Damage for the crane/timber mats is defined as three or more broken cants. Damage for the composite mats is defined as cracked or broken mats.

##### 5.2.22 - Operating Caution

###### 5.2.22.1 - Operating caution (6/11)

It is recommended, but not required, that within Payment Unit(s) 1-4, cutting, skidding, and hauling occur during dry summer or frozen winter conditions. The reason for the recommendation is because the sale is on low ground, also to preserve the condition of the snowmobile (NEST) trail.

##### 5.2.32 - Decking/landing restoration (9/13)

All decking and landing areas must have the surface area restored to a condition equal to or better than before. This is to ensure the proper regeneration of the stand. Wood debris, chips and "cookies" from trimmings (in excess of 1/3 slash) must be removed or scattered away from landing and loading areas and may not be windrowed on the edge.

##### 5.2.41 - Snowmobile trail protection (9/11)

The North Eastern State Trail (NEST) is a snowmobile trail and is shown on the Timber Sale Map. Do not cut or damage posts with orange trail markers or traffic control signs. If the trail is used, it must be maintained and restored to a condition equal to or better than before the sale. If the trail is used for hauling, it must be graded to the satisfaction of the Unit Manager or his/her representative prior to December 1st. If the trail road is to be used for hauling during the snowmobile season, then a snow covered base must be left on the trail. No decking of forest products will be permitted along the snowmobile trail.

#### 5.4 - Soil Protection

##### 5.4.1 - Rutting restriction, general (7/16)

Operations are to cease immediately if equipment and weather conditions result in rutting of roads and/or skid trails which is 12 inches or greater in depth and 50 feet in length. The Unit Manager or his/her representative may restrict hauling and/or skidding if ruts exceed the specified depth. With the Unit Manager or his/her representative's approval, the Purchaser may

return to the area when the risk of rutting has decreased.

## 5.8 - Protection of Endangered Species

### 5.8.5 - Protection of raptor nests (3/13)

All trees with raptor nests will be protected if found during harvesting operations. Notification will be made to the Unit Manager or his/her representative who will notify the Wildlife Biologist so an on-site evaluation and recommendation can be made, if necessary.

## 6 - Safety and Fire Prevention

### 6.2 - Signing

#### 6.2.1 - Road posting (9/09)

The Purchaser is responsible for posting and maintaining caution signs on Mann Road (if the snowmobile trail is the designated haul route) prior to beginning operations. The road must be posted at appropriate distances from the sale area to warn of logging activity and truck traffic. Signs must be removed when harvest operations are suspended or completed. The Purchaser will provide these signs.

#### 6.2.2 - Snowmobile trail posting (8/09)

The Purchaser is responsible for posting and maintaining caution signs on the North Eastern State Trail (NEST) prior to beginning operations during the snowmobile season (approximately December 1 to March 31). The trail must be posted at appropriate distances from the sale area to warn of logging activity and truck traffic. Signs must be removed when harvest operations are suspended or completed. The Purchaser will provide these signs.

## 7 - Other Conditions

### 7.2 - Extensions

#### 7.2.5 - Weather related extension (1/13)

If weather conditions during the operating period of this contract prevent harvesting, this sale may qualify for a weather related extension. If approved, the normal extension fee would be waived. To qualify, there must be a documented attempt each year to harvest in the difficult portion of the sale.



# TIMBER SALE MAP

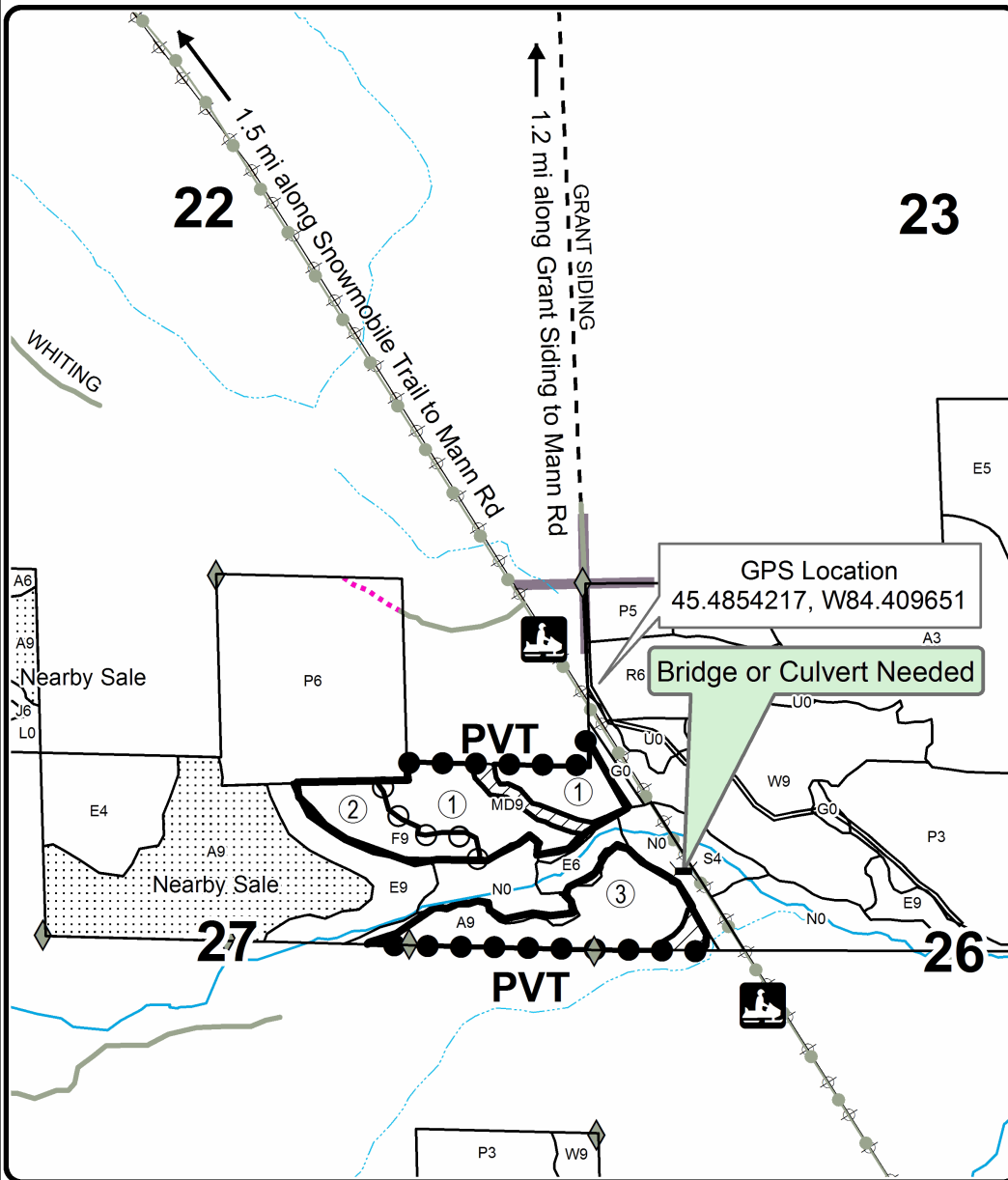
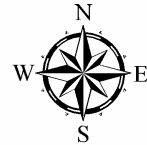
This information provided by authority of Part 525, 1994 PA 451, as amended.

Forest Management Unit Gaylord Management Unit		County Cheboygan	Mapped By TSP	Date 03/07/2019	Page 1	of 2
Township 36N	Range 01W	Section(s) and Subdivision(s) Sec 24: S1/2SW; 26: W1/2NW; 27: S1/2NE		Scale 1:15,840		

Cover Type				Density			
A = Aspen	H = Hemlock	N = Marsh	U = Upland Brush	0 = Non Stocked	5 = Pole Timber Medium		
B = Paper Birch	J = Jack Pine	O = Oak	UM = Upland Mixed	1 = Seedling Sapling Poor	6 = Pole Timber Well		
C = Cedar	L = Lowland Brush	P = Lowland Poplar	V = Bog or Marsh	2 = Seedling Sapling Medium	7 = Saw Timber Poor		
D = Treed Bog	LM = Lowland Mixed	Q = Mixed Swamp Conifer	W = White Pine	3 = Seedling Sapling Well	8 = Saw Timber Medium		
E = Swamp Hdwoods	M = Mpl, Bch, Brch	R = Red Pine	X = Non Stocked	4 = Pole Timber Poor	9 = Saw Timber Well		
F = Spruce Fir	MC = Mixed Conifer	S = Black Spruce	Z = Water				
G = Grass	MD = Mixed Deciduous	T = Tamarack					

PU	Acres	PU	Acres
1	17	4	26.1
2	8.8		
3	17.7		

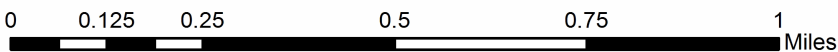
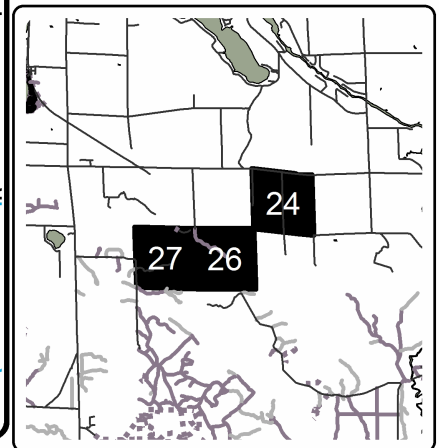
## Two Mann Road Aspen Compartment 189 69.6 Acres



### Legend

- Against State (Red)
- Payment Unit (Yellow)
- Private Line (Blue)
- Retention Area
- Stand Boundaries
- Nearby Timber Sales
- Snowmobile Trails
- Section Corners
- Field Grade Corners
- Secondary Forest Road
- Gravel Road
- Private
- Temporary Management Access
- Intermittent Stream
- Perennial River
- Powerline

### Locator Map 1:200,000





# TIMBER SALE MAP

This information provided by authority of Part 525, 1994 PA 451, as amended.

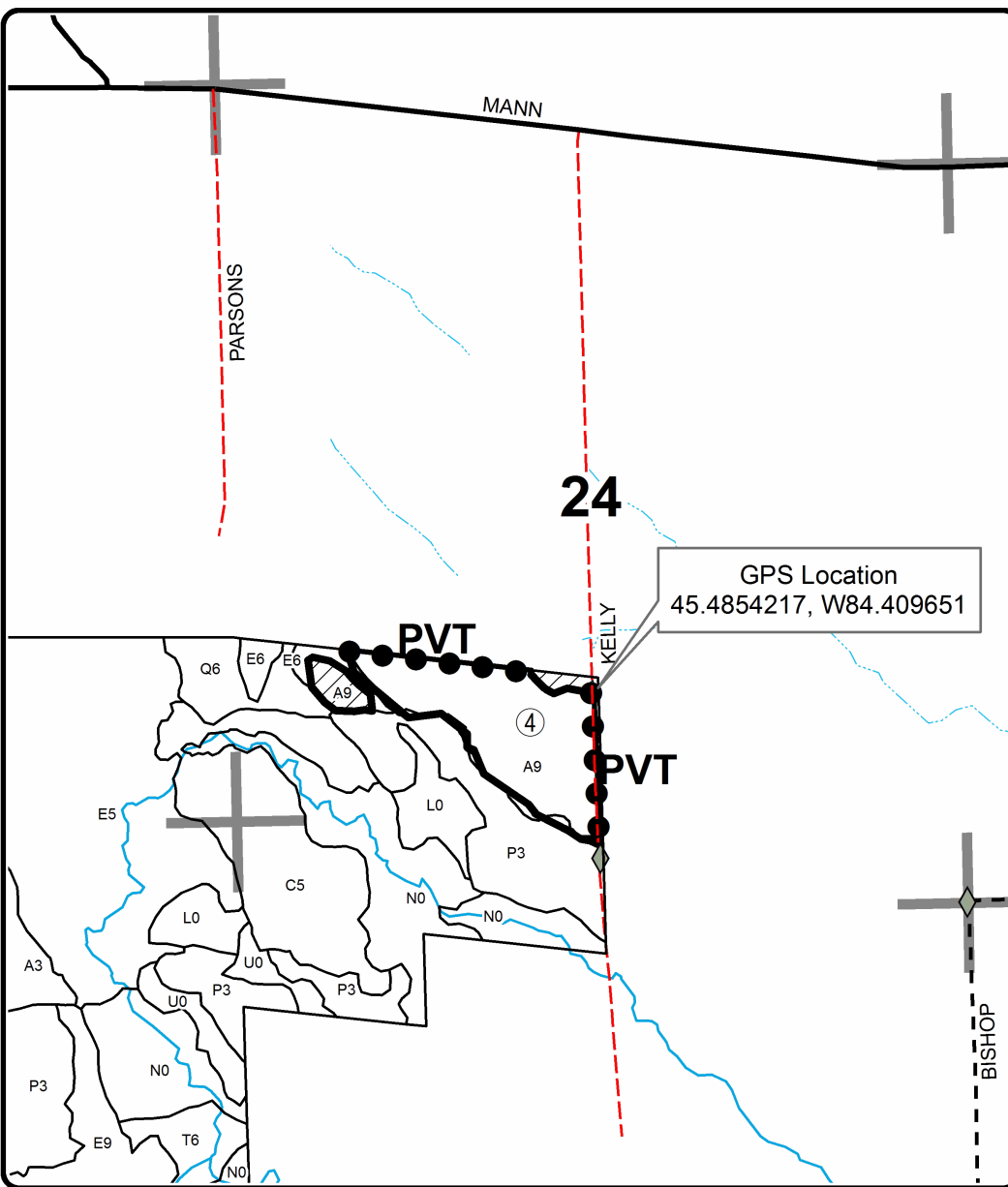
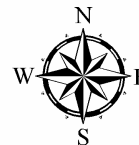
Forest Management Unit Gaylord Management Unit	County Cheboygan	Mapped By TSP	Date 03/07/2019	Page 2	of 2
Township 36N	Range 01W	Section(s) and Subdivision(s) Sec 24: S1/2SW; 26: W1/2NW; 27: S1/2NE	Scale 1:15,840		

Cover Type				Density	
A = Aspen	H = Hemlock	N = Marsh	U = Upland Brush	0 = Non Stocked	5 = Pole Timber Medium
B = Paper Birch	J = Jack Pine	O = Oak	UM = Upland Mixed	1 = Seedling Sapling Poor	6 = Pole Timber Well
C = Cedar	L = Lowland Brush	P = Lowland Poplar	V = Bog or Marsh	2 = Seedling Sapling Medium	7 = Saw Timber Poor
D = Treed Bog	LM = Lowland Mixed	Q = Mixed Swamp Conifer	W = White Pine	3 = Seedling Sapling Well	8 = Saw Timber Medium
E = Swamp Hdwoods	M = Mpl, Bch, Brch	R = Red Pine	X = Non Stocked	4 = Pole Timber Poor	9 = Saw Timber Well
F = Spruce Fir	MC = Mixed Conifer	S = Black Spruce	Z = Water		
G = Grass	MD = Mixed Deciduous	T = Tamarack			

PU	Acres	PU	Acres
1	17	4	26.1
2	8.8		
3	17.7		

## Two Mann Road Aspen

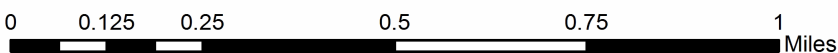
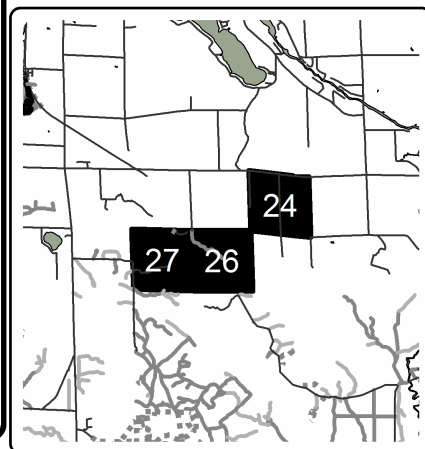
Compartment 189  
69.6 Acres



### Legend

- Against State (Red)
- Private Line (Blue)
- ▨ Retention Area
- Stand Boundaries
- Section Corners
- ◆ Field Grade Corners
- Paved Road
- - Gravel Road
- - County Road - Seasonal
- ⋯ Intermittent Stream
- Perennial River

Locator Map 1:200,000



**TIMBER SALE INFORMATION**

Hunny Bunny Mix (52-115-18)

T34N, R02W, SEC. 25.

Cheboygan County (Advertised Price \$52,646.95)

SALE NOTE: Gated access to Payment Units 2-5 may eventually be removed. Disconnected utility lines existed in Payment Unit 2 in summer of 2018.

A timber sale contract for this lump sum, sealed bid timber sale will be awarded to the responsible bidder offering the highest sealed bid price. Bids must be at or above the following advertised price for each species:

<u>PRODUCTS &amp; SPECIES</u>	<u>ESTIMATED UNITS*</u>	<u>ADVERTISED PRICE</u>
Sawtimber		
Mixed Aspen	61.50 MBF	\$ 60.00 / MBF
Red Maple	23.60 MBF	\$ 111.00 / MBF
Red Pine	3.40 MBF	\$ 117.00 / MBF
Sugar Maple	47.20 MBF	\$ 328.00 / MBF
Pulpwood		
Balsam Fir	311.00 Cords	\$ 33.00 / Cord
Basswood	37.00 Cords	\$ 7.40 / Cord
Misc. Species 1	2.00 Cords	\$ 3.75 / Cord
Mixed Aspen	166.00 Cords	\$ 20.95 / Cord
Mixed Hardwood	510.00 Cords	\$ 27.70 / Cord
Paper Birch	64.00 Cords	\$ 19.75 / Cord
Red Pine	9.00 Cords	\$ 50.55 / Cord
Scotch Pine	25.00 Cords	\$ 23.60 / Cord

\* The total volume is statistically estimated within plus (+) or minus (-) 19.14 percent. The estimated units are final and not subject to adjustment. Prospective bidders are urged to examine this timber and to make their own estimates of quantity and quality.

**BOND AND PAYMENT SCHEDULE:**

1. A bond in the amount of \$2,632.00 to insure faithful performance of the conditions of the contract will be deposited by the successful bidder within 21 days of the sale award.
2. Cutting in any sale or unit without the required advance payment would be considered a trespass.
3. Total payment must be paid in advance or according to the following schedule:
  - (a) Ten percent (10%) of the sale value must be paid within 21 days of the sale award.
  - (b) The 10% down payment will be credited towards the first unit cut.
  - (c) Payment for each of the following units must be made before cutting begins in that unit:
 

<u>PAYMENT UNIT NUMBER</u>	<u>PERCENT OF TOTAL SALE VALUE</u>
01	43.6%
02	22.6%
03	1.3%
04	1.7%
05	30.8%
4. If no cutting takes place, the 10% down payment will not be refunded.
5. Operations on the contract issued will terminate on 06/30/2022.

**Description of Timber by Payment Unit (PU)**

PU	MARKET GROUP	PRODUCT	QUANTITY	UNIT	ACRES	ADVERTISE PRICE
1	Mixed Aspen	Sawtimber	6.0	MBF	18.0	\$22,958.10
	<i>Quaking Aspen</i>		6.0	<i>MBF</i>		
	Red Maple		21.3	MBF		
	Sugar Maple		15.5	MBF		
	Balsam Fir	Pulpwood	192.0	Cords		
	<i>Balsam Fir</i>	<i>Sawtimber</i>	25.1	<i>MBF</i>		
	<i>Balsam Fir</i>	<i>Pulpwood</i>	142.0	<i>Cords</i>		
	Mixed Aspen		53.0	Cords		
	<i>B. T. Aspen</i>		19.0	<i>Cords</i>		
	<i>Quaking Aspen</i>		34.0	<i>Cords</i>		
	Mixed Hardwood		256.0	Cords		
	<i>Beech</i>	<i>Sawtimber</i>	4.4	<i>MBF</i>		
	<i>Beech</i>	<i>Pulpwood</i>	17.0	<i>Cords</i>		
	<i>Red Maple</i>		132.0	<i>Cords</i>		
	<i>Sugar Maple</i>		98.0	<i>Cords</i>		
	Paper Birch		31.0	Cords		
	<i>Paper Birch</i>	<i>Sawtimber</i>	5.4	<i>MBF</i>		
	<i>Paper Birch</i>	<i>Pulpwood</i>	20.0	<i>Cords</i>		
	2	Mixed Aspen	Sawtimber	53.2		
<i>B. T. Aspen</i>			47.3	<i>MBF</i>		
<i>Quaking Aspen</i>			5.9	<i>MBF</i>		
Red Maple			2.3	MBF		
Balsam Fir		Pulpwood	119.0	Cords		
<i>Balsam Fir</i>		<i>Sawtimber</i>	8.6	<i>MBF</i>		
<i>Balsam Fir</i>		<i>Pulpwood</i>	102.0	<i>Cords</i>		
Mixed Aspen			108.0	Cords		
<i>B. T. Aspen</i>			84.0	<i>Cords</i>		
<i>Quaking Aspen</i>			24.0	<i>Cords</i>		
Mixed Hardwood			58.0	Cords		
<i>Beech</i>		<i>Sawtimber</i>	2.3	<i>MBF</i>		
<i>Beech</i>		<i>Pulpwood</i>	30.0	<i>Cords</i>		
<i>Red Maple</i>			23.0	<i>Cords</i>		
Paper Birch			33.0	Cords		
<i>Paper Birch</i>		<i>Sawtimber</i>	2.9	<i>MBF</i>		
<i>Paper Birch</i>		<i>Pulpwood</i>	27.0	<i>Cords</i>		
3	Mixed Hardwood	Pulpwood	3.0	Cords	1.9	\$673.10
	<i>Sugar Maple</i>		3.0	<i>Cords</i>		
	Scotch Pine		25.0	Cords		
4	Red Pine	Sawtimber	3.4	MBF	0.7	\$880.45
	Mixed Hardwood	Pulpwood	1.0	Cords		
	<i>Red Maple</i>		1.0	<i>Cords</i>		
	Red Pine		9.0	Cords		
5	Mixed Aspen	Sawtimber	2.3	MBF	27.2	\$16,240.05
	<i>B. T. Aspen</i>		2.3	<i>MBF</i>		
	Sugar Maple		31.7	MBF		
	Basswood	Pulpwood	37.0	Cords		
	<i>Basswood</i>	<i>Sawtimber</i>	4.9	<i>MBF</i>		
	<i>Basswood</i>	<i>Pulpwood</i>	27.0	<i>Cords</i>		
	Misc. Species 1		2.0	Cords		
	<i>White Ash</i>		2.0	<i>Cords</i>		
	Mixed Aspen		5.0	Cords		
	<i>B. T. Aspen</i>		5.0	<i>Cords</i>		
	Mixed Hardwood		192.0	Cords		
	<i>Beech</i>	<i>Sawtimber</i>	3.8	<i>MBF</i>		
	<i>Beech</i>	<i>Pulpwood</i>	13.0	<i>Cords</i>		
	<i>Sugar Maple</i>		171.0	<i>Cords</i>		

TOTAL:	135.7	MBF
--------	-------	-----

TOTAL:	1,124.0	Cords
--------	---------	-------

# Sale Specific Conditions & Requirements

**Sale Name: Hunny Bunny Mix**

**Sale Number: 52-115-18 Seq#: 2**

## 1 - Sale Area

### 1.2 - Boundaries

#### 1.2.1 - Painted boundaries (1/14)

The sale boundary and Payment Unit boundaries are marked and identified by blue, red and yellow paint. Exterior sale boundary lines against private property are marked with blue paint. Exterior sale boundary lines against state are marked with red paint. Interior Payment Unit boundaries are marked with yellow paint. The painted boundary line trees are not Included Timber and are to be protected.

## 2 - Timber Specifications

### 2.1 - Included Timber

#### 2.1.1 - Clearcut unit(s) with unmerchantable trees (6/14)

Within Payment Unit(s) 1 and 2, cut all trees that are two (2) inches or more at DBH, except do not cut oak and pine. In addition, within Payment Unit 2, do not cut spruce and hemlock. Special protection trees identified in accordance with condition 3.4.2, within clearcutting unit boundaries, are not Included Timber and are to be protected.

#### 2.1.3 - Cut tree marked unit(s) (12/08)

Within Payment Unit(s) 5, all trees are designated for cutting when marked with orange paint above and below stump height, regardless of merchantability.

#### 2.1.4 - Designated timber unit(s) (6/17)

Within Payment Unit(s) 3, all scotch pine are designated for cutting, regardless of merchantability.

#### 2.1.8 - Designated plantation row unit(s) (12/08)

Within Payment Unit(s) 4, all red pine trees which meet minimum piece specifications in 2.2 Utilization, within designated plantation rows are designated for cutting. Designated plantation rows are every third row.

## 3 - Payments

### 3.4 - Damaged Timber

#### 3.4.1 - Damaged timber (6/14)

General Condition and Requirement 3.4 Damaged Timber, defines liquidated damages for undesignated live merchantable trees which are cut or injured.

No damage is acceptable to merchantable trees within Payment Units 4 and 5. Within the Payment Units 4 and 5, if more than 5% of trees (> 4.5" DBH) within a specified area of the sale are damaged, liquidated damages will be assessed for all trees damaged. Rates will be in accordance with General Condition and Requirement 3.4 Damaged Timber.

### 3.6 - Payment Unit Cutting Schedule

#### 3.6.1 - Order of cutting (1/09)

Payment Units shall be cut in numerical order unless the sale is paid in full.

## 4 - Transportation

### 4.1 - Construction

#### 4.1.3 - Slash and earthen piles (8/04)

Piles or windrows of earth along roads and landings that have been widened or constructed shall be leveled. Slash from road maintenance or construction, including stumps, shall be dispersed or utilized, not left in piles.

#### 4.1.4 - Timber removed for construction (12/09)

Trees cut or damaged in the process of pre-approved road, landing or skid trail construction will be decked in an area separate from other Designated Timber and not removed until measured by the sale administrator. Payment will be made at the



specified Purchase Unit Price.

#### 4.1.12 - No new roads (1/12)

No new roads will be permitted. All operations are limited to existing roads. Skid trails only will be allowed.

### 4.2 - Maintenance

#### 4.2.5 - Two wheel drive condition (2/04)

All existing trail roads on and adjacent to the sale area must be passable by two-wheel drive traffic for the duration of the sale.

## 5 - Operations

### 5.1 - Notification

#### 5.1.1 - Pre-sale conference (10/16)

A pre-sale conference on site between the Purchaser and sale administrator is required prior to beginning a Payment Unit to determine access and landing locations. The Unit Manager or his/her representative must be contacted at least 10 days in advance to schedule the conference.

### 5.2 - Conduct of Operations

#### 5.2.1 - Slash

##### 5.2.1.13 - Dispose of slash as directed (12/05)

Slash is to be disposed of as directed by the DNR sale administrator.

#### 5.2.2 - Hazard Trees/Snags

##### 5.2.2.1 - Den trees (10/16)

Obvious hollow and/or den trees shall be protected and left standing unless they are a safety hazard.

#### 5.2.3 - Operating Restrictions

##### 5.2.3.3 - Bark slippage restriction (3/09)

Within Payment Unit(s) 4 and 5, unless changed by written agreement, cutting and skidding are not permitted during the period of April 15 to July 15. This restriction is because of bark slippage.

#### 5.2.29 - Shrub protection (9/07)

Do not cut or damage hawthorn, witch-hazel, dogwood or junberry. These woody-shrub plants are highly beneficial to various wildlife species.

#### 5.2.32 - Decking/landing restoration (9/13)

All decking and landing areas must have the surface area restored to a condition equal to or better than before. This is to ensure the proper regeneration of the stand. Wood debris, chips and "cookies" from trimmings must be removed or scattered away from landing and loading areas and may not be windrowed on the edge.

#### 5.2.38 - No decking against live trees (2/04)

Cut products may not be decked against unmarked or designated leave trees.

### 5.4 - Soil Protection

#### 5.4.1 - Rutting restriction, general (7/16)

Operations are to cease immediately if equipment and weather conditions result in rutting of roads and/or skid trails which is 12 inches or greater in depth and 50 feet in length. The Unit Manager or his/her representative may restrict hauling and/or skidding if ruts exceed the specified depth. With the Unit Manager or his/her representative's approval, the Purchaser may return to the area when the risk of rutting has decreased.

### 5.8 - Protection of Endangered Species

#### 5.8.5 - Protection of raptor nests (3/13)

All trees with raptor nests will be protected if found during harvesting operations. Notification will be made to the Unit Manager or his/her representative who will notify the Wildlife Biologist so an on-site evaluation and recommendation can be

made, if necessary.

## **6 - Safety and Fire Prevention**

### 6.2 - Signing

#### 6.2.1 - Road posting (9/09)

The Purchaser is responsible for posting and maintaining caution signs on Munger Road prior to beginning operations. The road must be posted at appropriate distances from the access road and/or sale area to warn of logging activity and truck traffic. Signs must be removed when harvest operations are suspended or completed. The Purchaser will provide these signs.



# TIMBER SALE MAP

This information provided by authority of Part 525, 1994 PA 451, as amended.

Sale Number	Year
52 - 115	18

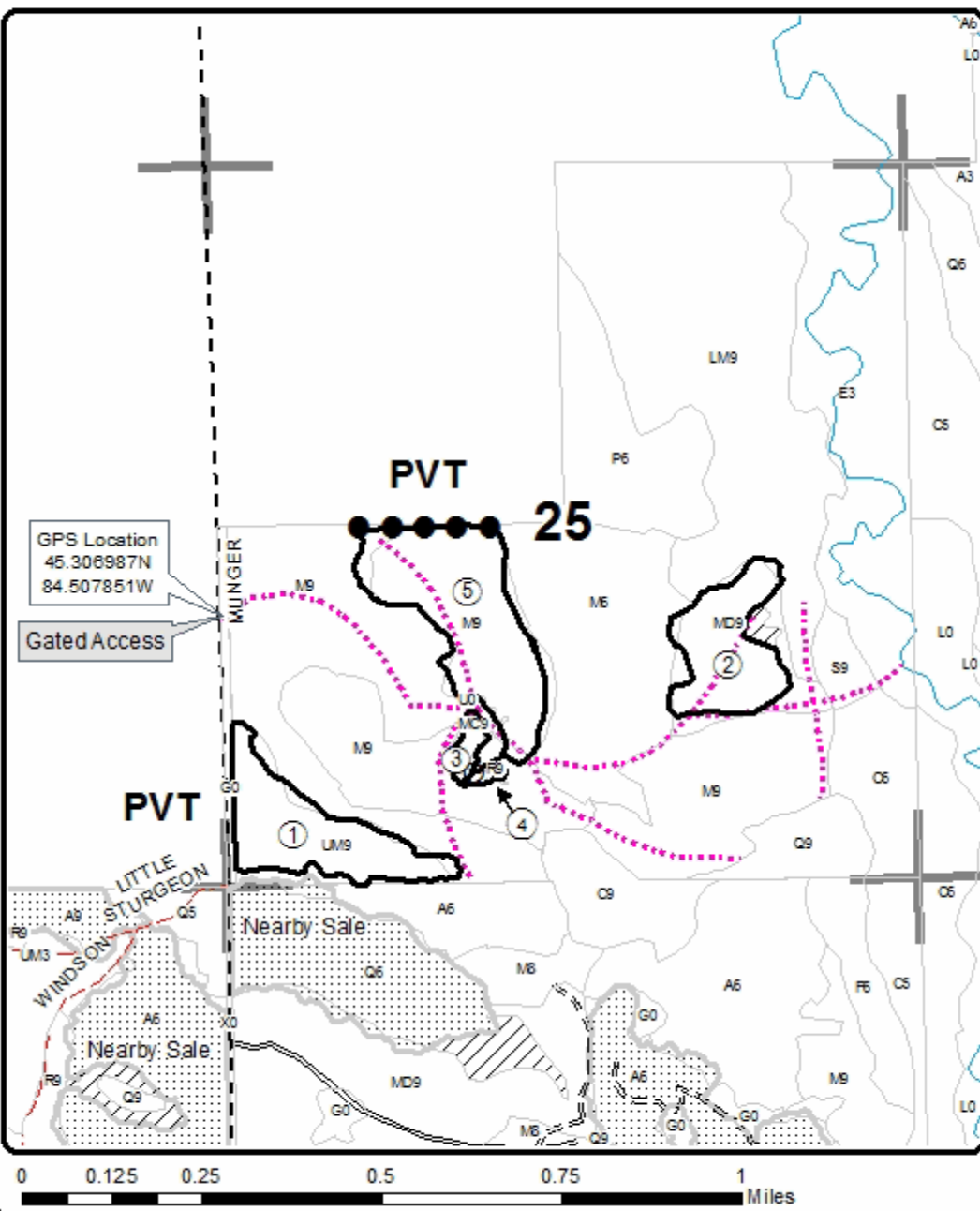
Forest Management Unit Gaylord Management Unit	County Cheboygan	Mapped By TSP	Date 08/15/2018	Page 1	of 2
Township 34N	Range 02W	Section(s) and Subdivision(s) Section 25: S1/2	Scale 1:15,840		

Cover Type				Density			
A = Aspen	H = Hemlock	N = Marsh	U = Upland Brush	0 = Non Stocked	5 = Pole Timber Medium		
D = Paper Birch	J = Jack Pine	O = Oak	UM = Upland Mixed	1 = Seedling Sapling Poor	6 = Pole Timber Well		
C = Cedar	L = Lowland Brush	P = Lowland Poplar	V = Bog or Marsh	2 = Seedling Sapling Medium	7 = Saw Timber Poor		
D = Tread Bog	LM = Lowland Mixed	Q = Mixed Swamp Conifer	W = White Pine	3 = Seedling Sapling Well	8 = Saw Timber Medium		
E = Swamp Hdwoods	M = Mpl. Dec. Decid	R = Red Pine	X = Non Stocked	4 = Pole Timber Poor	9 = Saw Timber Well		
F = Spruce Fir	MC = Mixed Conifer	S = Black Spruce	Z = Water				
G = Grass	MD = Mixed Deciduous	T = Tamarack					

PU	Acres	PU	Acres
1	18	4	0.7
2	14.9	5	27.2
3	1.9		

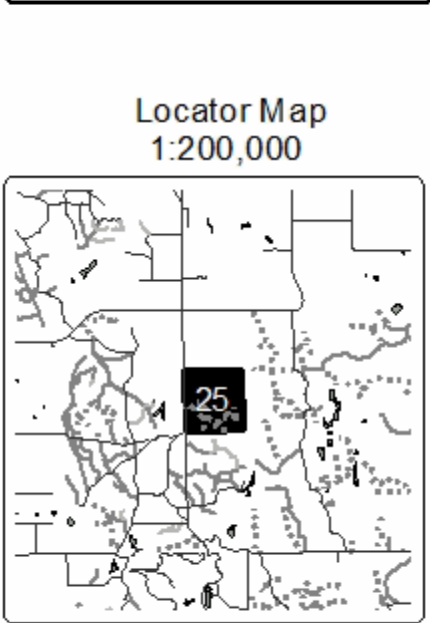
## Hunny Bunny Mix

Compartment 173  
62.7 Acres



### Legend

- Against State (Red)
- Payment Unit (Yellow)
- Private Line (Blue)
- Stand Boundaries
- ▨ Retention Area
- ⋯ Nearby Timber Sales
- == Secondary Forest Road
- == Forest Access Route
- - Gravel Road
- - County Road - Seasonal
- ⋯ Temporary Management Access
- Perennial River
- Section Corners





# TIMBER SALE MAP

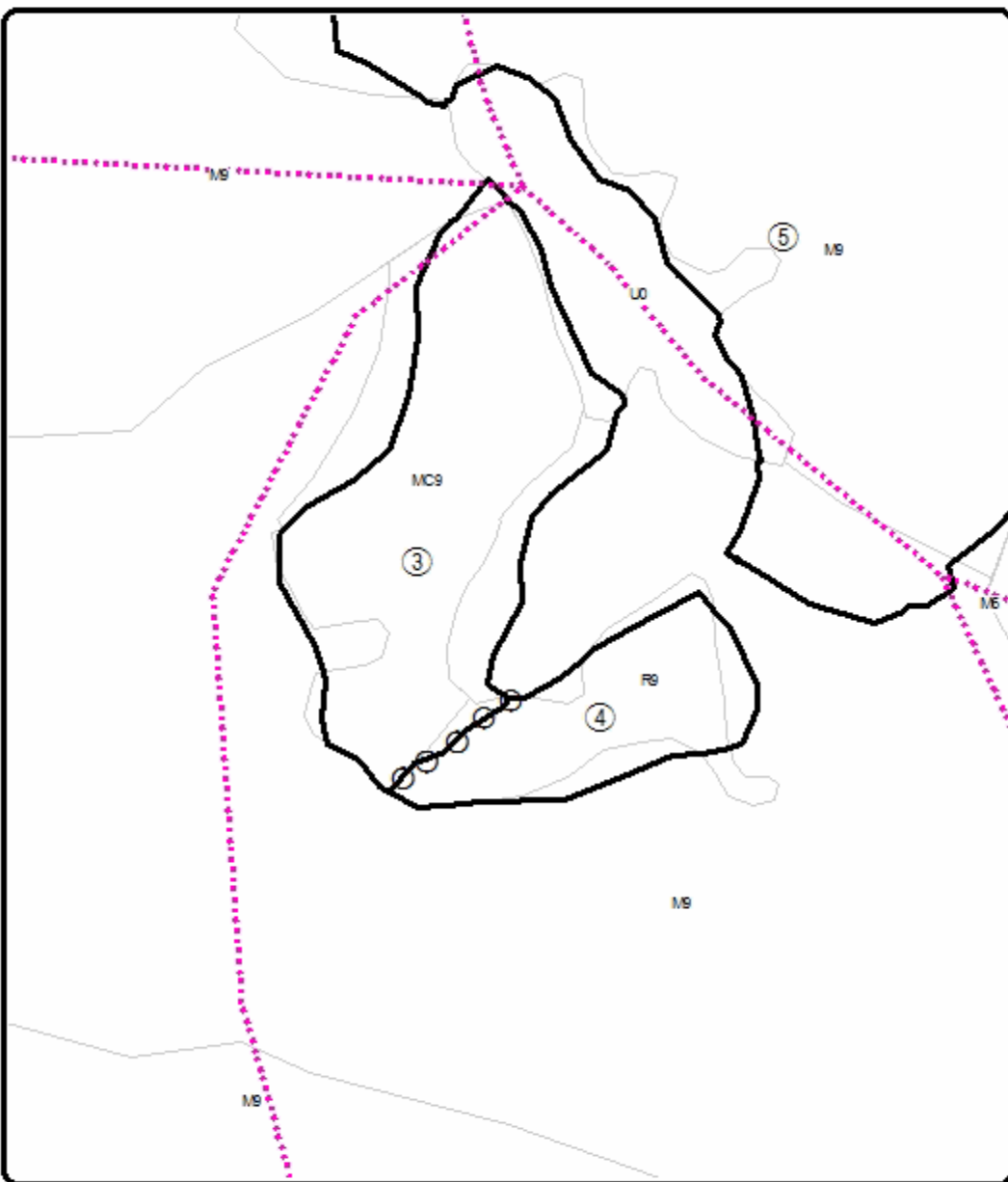
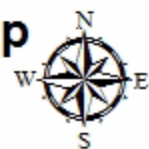
This information provided by authority of Part 525, 1994 PA 451, as amended.

Sale Number	Year
52 - 115	18

Forest Management Unit Gaylord Management Unit	County Cheboygan	Mapped By TSP	Date 08/14/2018	Page 2	of 2
Township 34N	Range 02W	Section(s) and Subdivision(s) Section 25: S1/2	Scale 1:1,980		

Cover Type				Density	
A = Aspen	H = Hemlock	N = Marsh	U = Upland Brush	0 = Non Stocked	5 = Pole Timber Medium
D = Paper Birch	J = Jack Pine	O = Oak	UM = Upland Mixed	1 = Seedling Sapling Poor	6 = Pole Timber Well
C = Cedar	L = Lowland Brush	P = Lowland Poplar	V = Bog or Marsh	2 = Seedling Sapling Medium	7 = Saw Timber Poor
D = Tread Bog	LM = Lowland Mixed	Q = Mixed Swamp Conifer	W = White Pine	3 = Seedling Sapling Well	8 = Saw Timber Medium
E = Swamp Hardwoods	M = Mpl. Dch. Drch	R = Red Pine	X = Non Stocked	4 = Pole Timber Poor	9 = Saw Timber Well
F = Spruce Fir	MC = Mixed Conifer	S = Black Spruce	Z = Water		
G = Grass	MD = Mixed Deciduous	T = Tamarack			

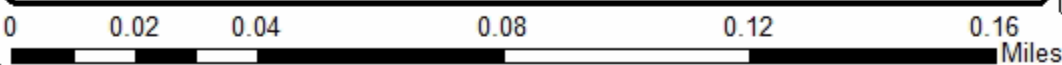
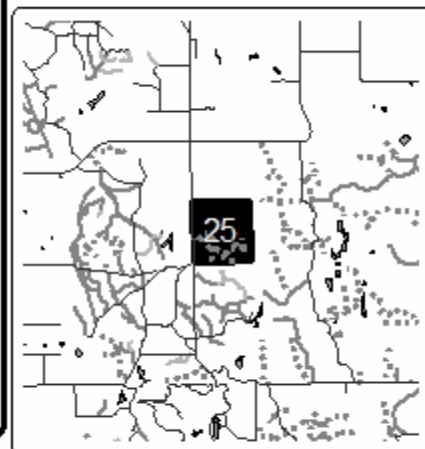
PU	Acres	PU	Acres	Payment Units 3 & 4 - Detail Map	
1	18	4	0.7	Compartment 173 62.7 Acres	
2	14.9	5	27.2		
3	1.9				



**Legend**

- ..... Temporary Management Access
- Against State (Red)
- Payment Unit (Yellow)
- Stand Boundaries

Locator Map  
1:200,000



**TIMBER SALE INFORMATION**

Snack Jack Mix (52-117-18)

T35N, R02W, SEC. 23; T35N, R02W, SEC. 24; T35N, R02W, SEC. 26.  
Cheboygan County (Advertised Price \$61,927.95)

SALE NOTE: Payment Unit 5 will require a long skid. Alternate access routes will be considered.

A timber sale contract for this lump sum, sealed bid timber sale will be awarded to the responsible bidder offering the highest sealed bid price. Bids must be at or above the following advertised price for each species:

<u>PRODUCTS &amp; SPECIES</u>	<u>ESTIMATED UNITS*</u>	<u>ADVERTISED PRICE</u>
<b>Sawtimber</b>		
Mixed Aspen	81.70 MBF	\$ 60.00 / MBF
Red Oak	25.30 MBF	\$ 241.00 / MBF
Red Pine	134.40 MBF	\$ 117.00 / MBF
White Pine	26.90 MBF	\$ 56.00 / MBF
<b>Pulpwood</b>		
Balsam Fir	48.00 Cords	\$ 33.00 / Cord
Jack Pine	10.00 Cords	\$ 21.15 / Cord
Mixed Aspen	550.00 Cords	\$ 20.95 / Cord
Mixed Hardwood	60.00 Cords	\$ 27.70 / Cord
Red Oak	74.00 Cords	\$ 22.35 / Cord
Red Pine	246.00 Cords	\$ 50.55 / Cord
White Pine	165.00 Cords	\$ 28.05 / Cord

\* The total volume is statistically estimated within plus (+) or minus (-) 17.87 percent. The estimated units are final and not subject to adjustment. Prospective bidders are urged to examine this timber and to make their own estimates of quantity and quality.

**BOND AND PAYMENT SCHEDULE:**

1. A bond in the amount of \$3,096.00 to insure faithful performance of the conditions of the contract will be deposited by the successful bidder within 21 days of the sale award.
2. Cutting in any sale or unit without the required advance payment would be considered a trespass.
3. Total payment must be paid in advance or according to the following schedule:
  - (a) Ten percent (10%) of the sale value must be paid within 21 days of the sale award.
  - (b) The 10% down payment will be credited towards the first unit cut.
  - (c) Payment for each of the following units must be made before cutting begins in that unit:
 

<u>PAYMENT UNIT NUMBER</u>	<u>PERCENT OF TOTAL SALE VALUE</u>
01	16.3%
02	13.3%
03	5.7%
04	31.2%
05	33.5%
4. If no cutting takes place, the 10% down payment will not be refunded.
5. Operations on the contract issued will terminate on 06/30/2022.

**Description of Timber by Payment Unit (PU)**

PU	MARKET GROUP	PRODUCT	QUANTITY	UNIT	ACRES	ADVERTISE PRICE
1	Mixed Aspen	Sawtimber	31.8	MBF	28.3	\$10,069.10
	<i>B. T. Aspen</i>		27.5	<i>MBF</i>		
	<i>Quaking Aspen</i>		4.3	<i>MBF</i>		
	White Pine		5.6	MBF		
	Balsam Fir	Pulpwood	30.0	Cords		
	<i>Balsam Fir</i>	<i>Sawtimber</i>	2.4	<i>MBF</i>		
	<i>Balsam Fir</i>	<i>Pulpwood</i>	25.0	<i>Cords</i>		
	Jack Pine		8.0	Cords		
	<i>Jack Pine</i>	<i>Sawtimber</i>	0.3	<i>MBF</i>		
	<i>Jack Pine</i>	<i>Pulpwood</i>	7.0	<i>Cords</i>		
	Mixed Aspen		243.0	Cords		
	<i>B. T. Aspen</i>		131.0	<i>Cords</i>		
	<i>Quaking Aspen</i>		112.0	<i>Cords</i>		
	Mixed Hardwood		4.0	Cords		
	<i>Red Maple</i>		4.0	<i>Cords</i>		
	White Pine		53.0	Cords		
	2	Mixed Aspen	Sawtimber	19.5		
<i>B. T. Aspen</i>			19.5	<i>MBF</i>		
White Pine			19.4	MBF		
Balsam Fir		Pulpwood	4.0	Cords		
<i>Balsam Fir</i>			4.0	<i>Cords</i>		
Mixed Aspen			134.0	Cords		
<i>B. T. Aspen</i>			134.0	<i>Cords</i>		
Mixed Hardwood			15.0	Cords		
<i>Red Maple</i>			15.0	<i>Cords</i>		
White Pine			93.0	Cords		
3	Mixed Aspen	Sawtimber	11.0	MBF	9.8	\$3,519.85
	<i>B. T. Aspen</i>		9.5	<i>MBF</i>		
	<i>Quaking Aspen</i>		1.5	<i>MBF</i>		
	White Pine		1.9	MBF		
	Balsam Fir	Pulpwood	11.0	Cords		
	<i>Balsam Fir</i>	<i>Sawtimber</i>	0.8	<i>MBF</i>		
	<i>Balsam Fir</i>	<i>Pulpwood</i>	9.0	<i>Cords</i>		
	Jack Pine		2.0	Cords		
	<i>Jack Pine</i>	<i>Sawtimber</i>	0.1	<i>MBF</i>		
	<i>Jack Pine</i>	<i>Pulpwood</i>	2.0	<i>Cords</i>		
	Mixed Aspen		84.0	Cords		
	<i>B. T. Aspen</i>		45.0	<i>Cords</i>		
	<i>Quaking Aspen</i>		39.0	<i>Cords</i>		
	Mixed Hardwood		2.0	Cords		
	<i>Red Maple</i>		2.0	<i>Cords</i>		
White Pine		19.0	Cords			
4	Mixed Aspen	Sawtimber	11.8	MBF	14.3	\$19,301.50
	<i>B. T. Aspen</i>		8.1	<i>MBF</i>		
	<i>Quaking Aspen</i>		3.7	<i>MBF</i>		
	Red Oak		15.9	MBF		
	Red Pine		66.8	MBF		
	Balsam Fir	Pulpwood	4.0	Cords		
	<i>Balsam Fir</i>		3.0	<i>Cords</i>		
	<i>White Spruce</i>		1.0	<i>Cords</i>		
	Mixed Aspen		19.0	Cords		
	<i>B. T. Aspen</i>		11.0	<i>Cords</i>		
	<i>Quaking Aspen</i>		8.0	<i>Cords</i>		
	Mixed Hardwood		27.0	Cords		
	<i>Red Maple</i>	<i>Sawtimber</i>	0.8	<i>MBF</i>		
	<i>Beech</i>	<i>Pulpwood</i>	2.0	<i>Cords</i>		

**Description of Timber by Payment Unit (PU), con't**

PU	MARKET GROUP	PRODUCT	QUANTITY	UNIT	ACRES	ADVERTISE PRICE
4 con't	<i>Paper Birch</i>	<i>Pulpwood</i>	2.0	<i>Cords</i>		
	<i>Red Maple</i>		21.0	<i>Cords</i>		
	Red Oak		41.0	Cords		
	Red Pine		94.0	Cords		
5	Mixed Aspen	Sawtimber	7.6	MBF	16.6	\$20,850.65
	<i>B. T. Aspen</i>		7.6	<i>MBF</i>		
	Red Oak		9.4	MBF		
	Red Pine	67.6	MBF			
	Mixed Aspen	Pulpwood	70.0	Cords		
	<i>B. T. Aspen</i>		70.0	<i>Cords</i>		
	Mixed Hardwood		12.0	Cords		
	<i>Red Maple</i>		12.0	<i>Cords</i>		
	Red Oak		33.0	Cords		
	Red Pine		152.0	Cords		
TOTAL:			268.3	MBF		
TOTAL:			1,154.0	Cords		

## Sale Specific Conditions & Requirements

**Sale Name: Snack Jack Mix**

**Sale Number: 52-117-18 Seq#: 2**

### 1 - Sale Area

#### 1.2 - Boundaries

##### 1.2.1 - Painted boundaries (1/14)

The sale boundary and Payment Unit boundaries are marked and identified by blue, red, purple, and yellow paint. Exterior sale boundary lines against private property are marked with blue paint. Exterior sale boundary lines against state are marked with red paint. Interior retention island boundaries are marked with purple paint. Interior Payment Unit boundaries are marked with yellow paint. The painted boundary line trees are not Included Timber and are to be protected.

### 2 - Timber Specifications

#### 2.1 - Included Timber

##### 2.1.1 - Clearcut unit(s) with unmerchantable trees (6/14)

Within Payment Unit(s) 1, 2, and 3, cut all trees that are two (2) inches or more at DBH, with the following exceptions:

- Within Payment Units 1 and 3, do not cut white pine greater than 18" at DBH, trees marked with teal paint, or any oak, red pine, or spruce.

- Within Payment Unit 2, do not cut any oak, red pine, spruce, or trees marked with teal paint.

##### 2.1.2 - Clearcut unit(s) w/o unmerchantable trees (8/11)

Within Payment Unit(s) 4 and 5, cut all trees which meet minimum piece specifications in 2.2 Utilization, except do not cut red pine greater than 24" at DBH, red oak greater than 18" at DBH, or any white pine, hemlock, cedar, or trees marked with teal paint.

### 3 - Payments

#### 3.4 - Damaged Timber

##### 3.4.1 - Damaged timber (6/14)

General Condition and Requirement 3.4 Damaged Timber, defines liquidated damages for undesignated live merchantable trees which are cut or injured. In addition, extreme care should be taken to avoid damage to tree seedlings and saplings in Payment Units 4 and 5.

Within Payment Units 4 and 5, if more than 50% of the tree seedlings or saplings (1/4" to 4.5" DBH) within a specified portion of the sale area are damaged, liquidated damages will be assessed at \$350.00 per acre for all acreage within that specified portion of the sale area that was damaged.

No damage is acceptable to merchantable trees. Within the sale area, if more than 5% of trees (> 4.5" DBH) within a specified area of the sale are damaged, liquidated damages will be assessed for all trees damaged. Rates will be in accordance with General Condition and Requirement 3.4 Damaged Timber.

### 4 - Transportation

#### 4.1 - Construction

##### 4.1.12 - No new roads (1/12)

No new roads will be permitted. All operations are limited to existing roads. Skid trails only will be allowed.

#### 4.2 - Maintenance

##### 4.2.5 - Two wheel drive condition (2/04)

All existing trail roads on and adjacent to the sale area must be passable by two-wheel drive traffic for the duration of the sale.



## 5 - Operations

### 5.1 - Notification

#### 5.1.1 - Pre-sale conference (10/16)

A pre-sale conference on site between the Purchaser and sale administrator is required prior to beginning any operations to determine landing and road locations. The Unit Manager or his/her representative must be contacted at least 10 days in advance to schedule the conference.

### 5.2 - Conduct of Operations

#### 5.2.1 - Slash

##### 5.2.1.13 - Dispose of slash as directed (12/05)

Slash is to be disposed of as directed by the sale administrator.

#### 5.2.2 - Hazard Trees/Snags

##### 5.2.2.1 - Den trees (10/16)

Obvious hollow and/or den trees shall be protected and left standing unless they are a safety hazard.

#### 5.2.3 - Operating Restrictions

##### 5.2.3.5 - Oak wilt restriction (1/18)

Within Payment Unit(s) 1 - 5, unless changed by written agreement, cutting, skidding, hauling within the sale and brushing of access roads to the sale are not permitted during the period of April 15 to July 15. Operations may be allowed if specific steps are taken to prevent damaging uncut oak during the high risk period. Those steps may include completing all road brushing before April 15th and clearing a tree-length buffer along uncut oak cover before April 15th. This is necessary to reduce the spread of oak wilt. For more information, contact the Unit Manager or his/her representative.

##### 5.2.3.6 - Bark beetle restriction (12/08)

In the event drought creates a high risk of pine bark beetle infestation, pine is not to be cut during the period March 1 through July 1, unless all portions of trees greater than two inches in diameter are removed from the sale area, reduced to chips, or treated to the satisfaction of the Unit Manager or his/her representative, within fifteen days of being severed from the stump. Pine log decks, pulpwood piles and treetops that are piled for chipping in the fall or winter within a 1/4 mile of susceptible sites must be removed before March 15. Residual slash must not be placed in piles or rows and must be spread over the site for quick drying. The Department of Natural Resources will exercise this specification if the risk of damage warrants.

#### 5.2.29 - Shrub protection (9/07)

Do not cut or damage hawthorn, witch-hazel, dogwood or juneberry. These woody-shrub plants are highly beneficial to various wildlife species.

#### 5.2.32 - Decking/landing restoration (9/13)

All decking and landing areas must have the surface area restored to a condition equal to or better than before. This is to ensure the proper regeneration of the stand. Wood debris, chips and "cookies" from trimmings must be removed or scattered away from landing and loading areas and may not be windrowed on the edge.

### 5.4 - Soil Protection

#### 5.4.1 - Rutting restriction, general (7/16)

Operations are to cease immediately if equipment and weather conditions result in rutting of roads and/or skid trails which is 12 inches or greater in depth and 50 feet in length. The Unit Manager or his/her representative may restrict hauling and/or skidding if ruts exceed the specified depth. With the Unit Manager or his/her representative's approval, the Purchaser may return to the area when the risk of rutting has decreased.

### 5.8 - Protection of Endangered Species

#### 5.8.5 - Protection of raptor nests (3/13)

All trees with raptor nests will be protected if found during harvesting operations. Notification will be made to the Unit Manager or his/her representative who will notify the Wildlife Biologist so an on-site evaluation and recommendation can be

made, if necessary.

## **6 - Safety and Fire Prevention**

### 6.2 - Signing

#### 6.2.1 - Road posting (9/09)

The Purchaser is responsible for posting and maintaining caution signs on Ostrander Road prior to beginning operations. The road must be posted at appropriate distances from the sale area to warn of logging activity and truck traffic. Signs must be removed when harvest operations are suspended or completed. The Purchaser will provide these signs.



# TIMBER SALE MAP

This information provided by authority of Part 525, 1994 PA 451, as amended.

Sale Number	Year
52 - 117	18

Forest Management Unit Gaylord Management Unit	County Cheboygan	Mapped By TSP	Date 08/28/2018	Page 1	of 1
Township 35N	Range 02W	Section(s) and Subdivision(s) 23: E1/2SE; 24: W1/2SW; 26: S1/2NW, SWNE, NESW, NWSE	Scale 1:15,840		

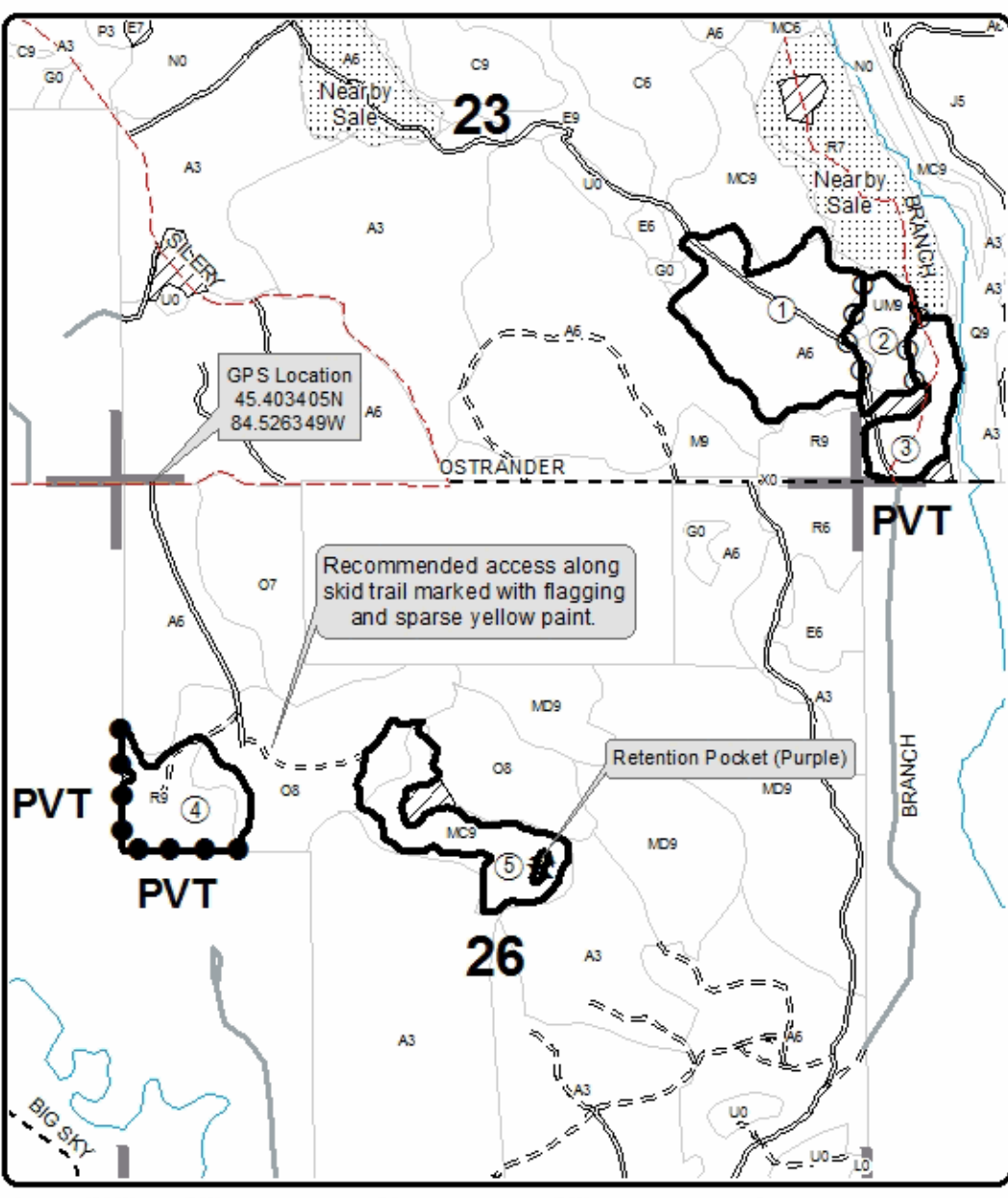
Cover Type				Density			
A = Aspen	H = Hemlock	N = Marsh	U = Upland Brush	0 = Non Stocked	5 = Pole Timber Medium		
B = Paper Birch	J = Jack Pine	O = Oak	UM = Upland Mixed	1 = Seedling Sapling Poor	6 = Pole Timber Well		
C = Cedar	L = Lowland Brush	P = Lowland Poplar	V = Bog or Marsh	2 = Seedling Sapling Medium	7 = Saw Timber Poor		
D = Treed Bog	LM = Lowland Mixed	Q = Mixed Swamp Conifer	W = White Pine	3 = Seedling Sapling Well	8 = Saw Timber Medium		
E = Swamp Hdwoods	M = Mpl. Bch, Brch	R = Red Pine	X = Non Stocked	4 = Pole Timber Poor	9 = Saw Timber Well		
F = Spruce Fir	MC = Mixed Conifer	S = Black Spruce	Z = Water				
G = Grass	MD = Mixed Deciduous	T = Tamarack					

PU	Acres	PU	Acres
1	28.3	4	14.3
2	7.8	5	16.6
3	9.8		

## Snack Jack Mix

### Compartment 175

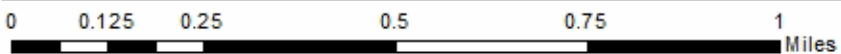
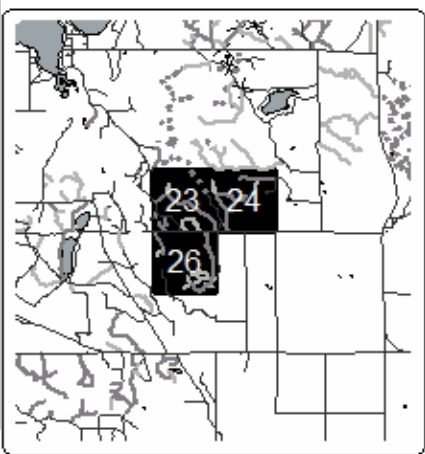
76.8 Acres



### Legend

- Against State (Red)
- ○ Payment Unit (Yellow)
- ● Private Line (Blue)
- ▲▲ Retention Pocket (Purple)
- ▨ Retention Area
- ▤▤ Nearby Timber Sales
- Stand Boundaries
- Secondary Forest Road
- == Forest Access Route
- - Gravel Road
- - - County Road - Seasonal
- Private
- ⋯ Temporary Management Access
- Intermittent Stream
- Perennial River
- Section Corners

Locator Map  
1:200,000





**TIMBER SALE INFORMATION**

Tiny Piney (52-126-18)

T35N, R02W, SEC. 34.

Cheboygan County (Advertised Price \$9,248.25)

SALE NOTE: Sale is small but has good access. Operational hazard - utility lines (buried and above ground) along south edge of Payment Unit 2.

A recreation site such as a trail, pathway, or campground is within the sale area or the vicinity. Certain restrictions/specifications may be applicable including time restrictions.

A timber sale contract for this lump sum, sealed bid timber sale will be awarded to the responsible bidder offering the highest sealed bid price. Bids must be at or above the following advertised price for each species:

<u>PRODUCTS &amp; SPECIES</u>	<u>ESTIMATED UNITS*</u>	<u>ADVERTISED PRICE</u>
Sawtimber		
Red Pine	21.00 MBF	\$ 117.00 / MBF
Pulpwood		
Jack Pine	8.00 Cords	\$ 21.15 / Cord
Red Pine	131.00 Cords	\$ 50.55 / Cord

\* The total volume is statistically estimated within plus (+) or minus (-) 47.53 percent. The estimated units are final and not subject to adjustment. Prospective bidders are urged to examine this timber and to make their own estimates of quantity and quality.

**BOND AND PAYMENT SCHEDULE:**

- A bond in the amount of \$925.00 to insure faithful performance of the conditions of the contract will be deposited by the successful bidder within 21 days of the sale award.
- Cutting in any sale or unit without the required advance payment would be considered a trespass.
- Total payment must be paid in advance or according to the following schedule:
  - Ten percent (10%) of the sale value must be paid within 21 days of the sale award.
  - The 10% down payment will be credited towards the first unit cut.
  - Payment for each of the following units must be made before cutting begins in that unit:
 

PAYMENT UNIT NUMBER	PERCENT OF TOTAL SALE VALUE
01	23.1%
02	76.9%
- If no cutting takes place, the 10% down payment will not be refunded.
- Operations on the contract issued will terminate on 06/30/2022.

**Description of Timber by Payment Unit (PU)**

PU	MARKET GROUP	PRODUCT	QUANTITY	UNIT	ACRES	ADVERTISE PRICE
1	Red Pine	Sawtimber	2.1	MBF	5.0	\$2,133.60
	Jack Pine	Pulpwood	8.0	Cords		
	<i>Jack Pine</i>	<i>Sawtimber</i>	0.7	<i>MBF</i>		
	<i>Jack Pine</i>	<i>Pulpwood</i>	7.0	<i>Cords</i>		
	Red Pine		34.0	Cords		
2	Red Pine	Sawtimber	18.9	MBF	8.0	\$7,114.65
	Red Pine	Pulpwood	97.0	Cords		
TOTAL:			21.0	MBF		
TOTAL:			139.0	Cords		

## Sale Specific Conditions & Requirements

**Sale Name: Tiny Piney**

**Sale Number: 52-126-18 Seq#: 2**

### 1 - Sale Area

#### 1.2 - Boundaries

##### 1.2.1 - Painted boundaries (1/14)

The sale boundary is marked and identified by red paint. Exterior sale boundary lines against state are marked with red paint. The painted boundary line trees are not Included Timber and are to be protected unless marked with orange paint.

### 2 - Timber Specifications

#### 2.1 - Included Timber

##### 2.1.3 - Cut tree marked unit(s) (12/08)

Within Payment Unit(s) 1 and 2, all trees are designated for cutting when marked with orange paint above and below stump height, regardless of merchantability. In addition, all scotch pine are designated for cutting. Note that Payment Unit 1 is marked linearly, to mimic a third-row thinning.

#### 2.2 - Utilization

##### 2.2.3 - Stump heights (4/07)

Stump heights within the Sale Area shall not exceed 6 inches for all trees. This is in order to facilitate potential planting operations.

### 3 - Payments

#### 3.4 - Damaged Timber

##### 3.4.1 - Damaged timber (6/14)

General Condition and Requirement 3.4 Damaged Timber, defines liquidated damages for undesignated live merchantable trees which are cut or injured.

No damage is acceptable to merchantable trees. Within the sale area, if more than 5% of trees (> 4.5" DBH) within a specified area of the sale are damaged, liquidated damages will be assessed for all trees damaged. Rates will be in accordance with General Condition and Requirement 3.4 Damaged Timber.

### 4 - Transportation

#### 4.1 - Construction

##### 4.1.3 - Slash and earthen piles (8/04)

Piles or windrows of earth along roads and landings that have been widened or constructed shall be leveled. Slash from road maintenance or construction, including stumps, shall be chipped, utilized, or otherwise dispersed and not left in piles, unless it is to block interior (management only) access.

##### 4.1.12 - No new roads (1/12)

No new roads will be permitted. All operations are limited to existing roads.

### 5 - Operations

#### 5.1 - Notification

##### 5.1.1 - Pre-sale conference (10/16)

A pre-sale conference on site between the Purchaser and sale administrator is required prior to beginning any operations to determine landing locations. The Unit Manager or his/her representative must be contacted at least 10 days in advance to schedule the conference.

##### 5.1.6 - Utility R.O.W. (1/15)

It is the responsibility of the Purchaser to obtain permission from the utility company to utilize the power line R.O.W. for

operations.

## 5.2 - Conduct of Operations

### 5.2.1 - Slash

#### 5.2.1.11 - Slash for reforestation (5/07)

To facilitate reforestation, the sale area shall be left with slash evenly distributed. Bunched tops within the cutting area shall be broken up and scattered. Stumps shall be cut low to the ground. Processing sites shall not be left with a compacted layer of slash; tops from these sites shall be hauled back into the cut area and scattered.

### 5.2.2 - Hazard Trees/Snags

#### 5.2.2.1 - Den trees (10/16)

Obvious hollow and/or den trees shall be protected and left standing unless they are a safety hazard.

### 5.2.3 - Operating Restrictions

#### 5.2.3.6 - Bark beetle restriction (12/08)

In the event drought creates a high risk of pine bark beetle infestation, pine is not to be cut during the period March 1 through July 1, unless all portions of trees greater than two inches in diameter are removed from the sale area, reduced to chips, or treated to the satisfaction of the Unit Manager or his/her representative, within fifteen days of being severed from the stump. Pine log decks, pulpwood piles and treetops that are piled for chipping in the fall or winter within a 1/4 mile of susceptible sites must be removed before March 15. Residual slash must not be placed in piles or rows and must be spread over the site for quick drying. The Department of Natural Resources will exercise this specification if the risk of damage warrants.

#### 5.2.38 - No decking against live trees (2/04)

Cut products may not be decked against unmarked or designated leave trees.

#### 5.2.39 - ORV trail/route protection (4/18)

The Tomahawk to Red Bridge MCCCT is an ORV trail or route and is shown on the Timber Sale Map. Maintain a 20 foot wide slash, debris, and rut free zone daily using the ORV trail or route as the centerline. Do not run equipment down the ORV trail or route, except in areas agreed upon with the sale administrator. Skidding across the trail or route may only occur in locations approved by the sale administrator.

## 5.4 - Soil Protection

### 5.4.1 - Rutting restriction, general (7/16)

Operations are to cease immediately if equipment and weather conditions result in rutting of roads and/or skid trails which is 12 inches or greater in depth and 50 feet in length. The Unit Manager or his/her representative may restrict hauling and/or skidding if ruts exceed the specified depth. With the Unit Manager or his/her representative's approval, the Purchaser may return to the area when the risk of rutting has decreased.

## 6 - Safety and Fire Prevention

### 6.2 - Signing

#### 6.2.1 - Road posting (9/09)

The Purchaser is responsible for posting and maintaining caution signs on Old Onaway and/or M-68 prior to beginning operations. The road must be posted at appropriate distances from the sale area to warn of logging activity and truck traffic. Signs must be removed when harvest operations are suspended or completed. The Purchaser will provide these signs.

#### 6.2.3 - Recreational trail posting (2/10)

The Purchaser is responsible for posting and maintaining caution signs on the MCCCT ORV Route prior to beginning operations. The trail must be posted at appropriate distances from the sale area to warn of logging activity and truck traffic at both ends of the trail. Signs must be removed when harvest operations are suspended or completed. The Purchaser will provide these signs.



# TIMBER SALE MAP

This information provided by authority of Part 525, 1994 PA 451, as amended.

Sale Number	Year
52 - 126	18

Forest Management Unit Gaylord Management Unit	County Cheboygan	Mapped By TSP	Date 08/22/2018	Page 1	of 1
Township 35N	Range 02W	Section(s) and Subdivision(s) Sec 34: S1/2NE, SESE	Scale 1:7,920		

Cover Type				Density			
A = Aspen	H = Hemlock	N = Marsh	U = Upland Brush	0 = Non Stocked	5 = Pole Timber Medium		
B = Paper Birch	J = Jack Pine	O = Oak	UM = Upland Mixed	1 = Seedling Sapling Poor	6 = Pole Timber Well		
C = Cedar	L = Lowland Brush	P = Lowland Poplar	V = Bog or Marsh	2 = Seedling Sapling Medium	7 = Saw Timber Poor		
D = Treed Bog	LM = Lowland Mixed	Q = Mixed Swamp Conifer	W = White Pine	3 = Seedling Sapling Well	8 = Saw Timber Medium		
E = Swamp Hdwoods	M = Mpl, Bch, Brch	R = Red Pine	X = Non Stocked	4 = Pole Timber Poor	9 = Saw Timber Well		
F = Spruce Fir	MC = Mixed Conifer	S = Black Spruce	Z = Water				
G = Grass	MD = Mixed Deciduous	T = Tamarack					

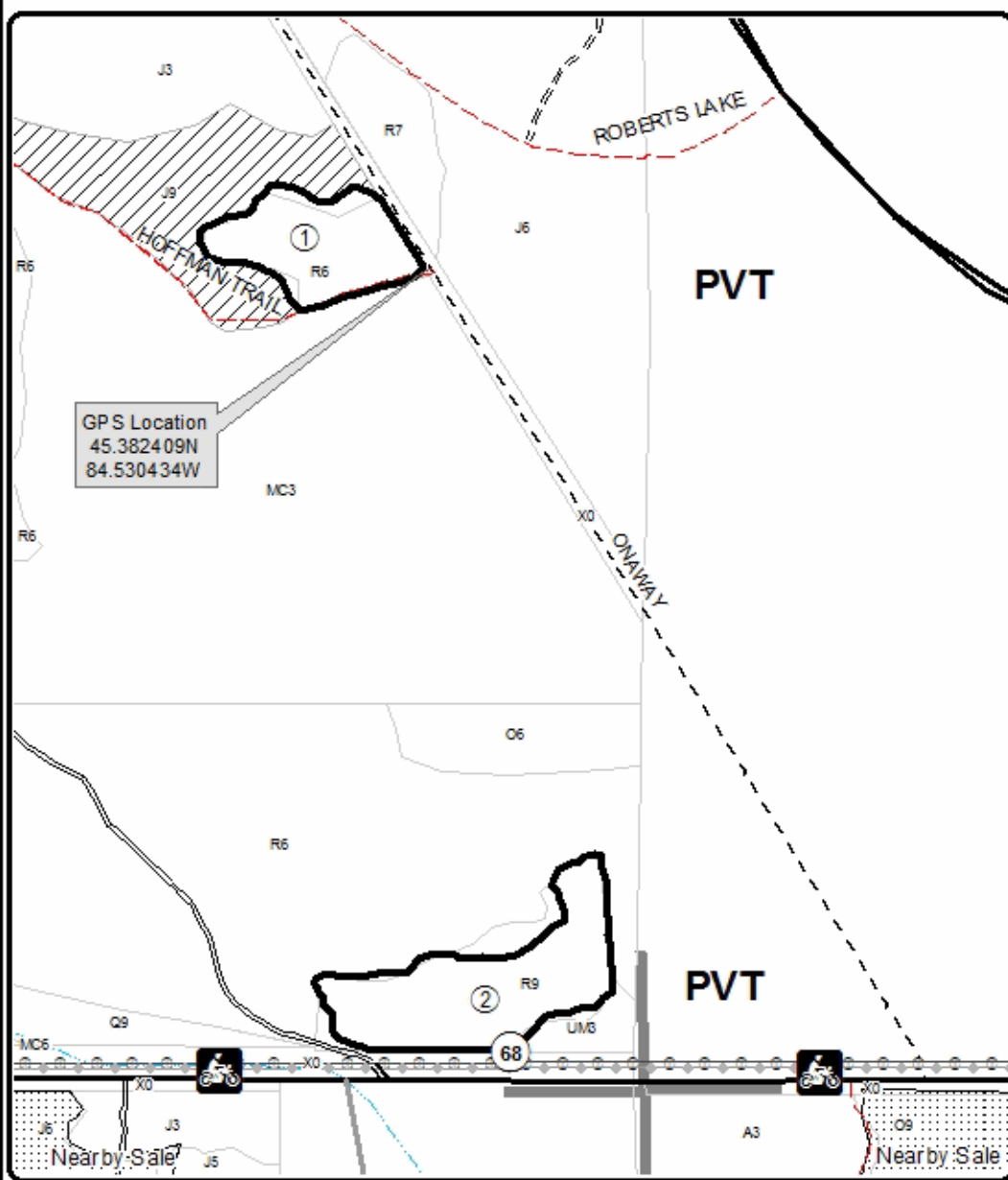
### PU Acres

1	5
2	8

## Tiny Piney

### Compartment 175

13 Acres

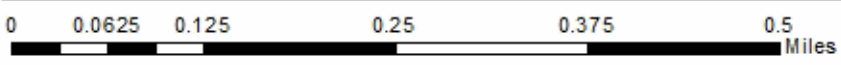
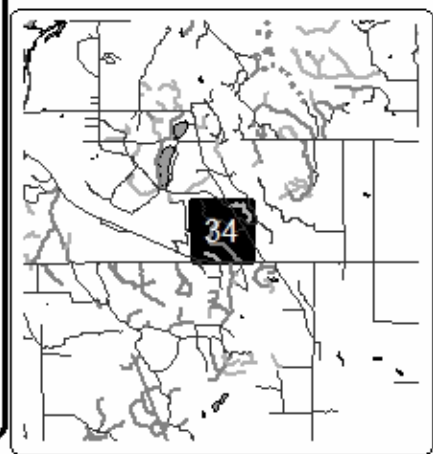


### Legend

- Against State (Red)
- Retention Area
- Nearby Timber Sales
- Stand Boundaries
- Recreational Trail
- Powerline
- Secondary Forest Road
- Forest Access Route
- Paved Road
- Gravel Road
- County Road - Seasonal
- Private Road
- Intermittent Stream
- Section Corners

### Locator Map

1:200,000









Two Mann Road Aspen (52-101-19)  
T36N, R01W, SEC. 24; T36N, R01W, SEC. 26; T36N, R01W, SEC. 27; Cheboygan

In response to the notice of sale to be held 3:00 p.m. (local time) on May 21, 2019, I am hereby submitting my sealed bid (firm offer) for the following forest products to be cut. Bids for individual species must be at or above the advertised price. All non-responsive bid forms may be rejected.

<u>PRODUCTS &amp; SPECIES</u>	<u>ESTIMATED VOLUME*</u>	<u>ADVERTISED PRICE</u>	<u>BID PRICE/UNIT</u>
<b>Sawtimber</b>			
Mixed Aspen	57.20 MBF	\$ 52.00/MBF	\$ _____
Red Maple	17.30 MBF	\$ 96.00/MBF	\$ _____
<b>Pulpwood</b>			
Balsam Fir	340.00 Cords	\$ 28.60/Cord	\$ _____
Mixed Aspen	441.00 Cords	\$ 18.15/Cord	\$ _____
Mixed Hardwood	376.00 Cords	\$ 24.00/Cord	\$ _____
N. White Cedar	4.00 Cords	\$ 16.05/Cord	\$ _____
Paper Birch	33.00 Cords	\$ 17.10/Cord	\$ _____
White Pine	2.00 Cords	\$ 24.30/Cord	\$ _____
White Spruce	25.00 Cords	\$ 29.45/Cord	\$ _____

\*The volumes are statistically estimated within plus (+) or minus (-) 10.46 percent. These estimated volumes are final and not subject to adjustment. Prospective bidders are urged to examine this timber and to make their own estimates of quantity and quality.

I understand that any or all bids may be rejected. All bids must be signed and all bid items must be bid or the bid form may be rejected. I also understand that consideration and awarding a contract will be based upon my past performance and ability to complete the contract based upon equipment and staffing subject to my control.

FEDERAL ID: \_\_\_\_ - \_\_\_\_ - \_\_\_\_ or SOCIAL SECURITY NUMBER: \_\_\_\_ - \_\_\_\_ - \_\_\_\_

Company or individual bidding: \_\_\_\_\_

Company representative's name: \_\_\_\_\_

Address: \_\_\_\_\_

City: \_\_\_\_\_ State: \_\_\_\_\_ Zip: \_\_\_\_\_

IF AVAILABLE, PLEASE PLACE THE PERSONALIZED LABEL FROM YOUR PROSPECTUS IN THE ABOVE BOX.

Individual or company representative's signature: \_\_\_\_\_ Date: \_\_\_\_\_

Phone number : \_\_\_\_\_ Email (optional): \_\_\_\_\_

**THE WINNING BIDDER MUST COMPLETE THE VERIFICATION OF WORKER'S DISABILITY COMPENSATION ACT COMPLIANCE (ON REVERSE SIDE IF DOUBLE SIDED) WITHIN 21 DAYS OF SALE AWARD DATE**



<b>FOR DEPARTMENT USE ONLY</b>
Sale Number (XX - XXX - XX - XX)
Forest Management Unit:

## TIMBER SALE VERIFICATION OF WORKER'S DISABILITY COMPENSATION ACT COMPLIANCE

*As required by Act 317, P.A. 1969 (Worker's Compensation) and  
Part 5 of Act 451 of 1994, as amended.*

### VERIFICATION OF WORKER'S DISABILITY COMPENSATION ACT COMPLIANCE

- This verification must be completed and submitted within 21 days of contract award and prior to the issuance of the timber sale contract.
- In addition, if boxes 2B or 2C are checked, then Notice of Exclusion or Certificate of Insurance must be submitted within twenty-one (21) days of the contract award and prior to the issuance of the timber sale contract.
- All information must be typed or printed except for written signatures.

Please Check Appropriate Categories:

1. My business is organized as (you **must** check one of the boxes below):
  - A.  Sole Proprietorship (individual)
  - B.  Partnership
  - C.  Corporation
  
2. You **must** check one of the boxes below:
  - A.  I certify my business is a sole proprietorship and it has no employees but the sole proprietor. I am not subject to the Worker's Compensation Laws.
  - B.  I certify my business has satisfied its obligation to the Worker's Compensation Act through the use of an approved Notice of Exclusion (BWC-337, Rev. 5/96). I will provide a copy of the Notice of Exclusion within 21 days of the contract award. (For questions or a copy of the BWC-337, please call the Worker's Compensation Bureau at 517-322-1195).
  - C.  I certify my business has a Worker's Compensation Policy. I will provide an original Certificate of Insurance within twenty-one (21) days of the contract award.
  
3. If you have checked item 2(A) or 2(B), you **must** indicate the number of **both** full-time and part-time employees, other than yourself, including family members and active partners (if none, you must enter "0").

\_\_\_\_\_ Full-time Employees

\_\_\_\_\_ Part-time Employees

Name of Business		Federal ID (or) Social Security No.	
Address		Telephone (       )	
City	State	ZIP	

*I hereby certify that the above information is true and correct. I agree to notify the Michigan DNR of any changes that occur in factors affecting my coverage during any of my present and future operations.*

\_\_\_\_\_  
Signature of Owner or Authorized Representative

\_\_\_\_\_  
Title

\_\_\_\_\_  
Date

**Please complete the "SEALED BID" information on the next page**

Snack Jack Mix (52-117-18)

T35N, R02W, SEC. 23; T35N, R02W, SEC. 24; T35N, R02W, SEC. 26; Cheboygan

In response to the notice of sale to be held 3:00 p.m. (local time) on May 21, 2019, I am hereby submitting my sealed bid (firm offer) for the following forest products to be cut. Bids for individual species must be at or above the advertised price. All non-responsive bid forms may be rejected.

<u>PRODUCTS &amp; SPECIES</u>	<u>ESTIMATED VOLUME*</u>	<u>ADVERTISED PRICE</u>	<u>BID PRICE/UNIT</u>
<b>Sawtimber</b>			
Mixed Aspen	81.70 MBF	\$ 60.00/MBF	\$ _____
Red Oak	25.30 MBF	\$ 241.00/MBF	\$ _____
Red Pine	134.40 MBF	\$ 117.00/MBF	\$ _____
White Pine	26.90 MBF	\$ 56.00/MBF	\$ _____
<b>Pulpwood</b>			
Balsam Fir	48.00 Cords	\$ 33.00/Cord	\$ _____
Jack Pine	10.00 Cords	\$ 21.15/Cord	\$ _____
Mixed Aspen	550.00 Cords	\$ 20.95/Cord	\$ _____
Mixed Hardwood	60.00 Cords	\$ 27.70/Cord	\$ _____
Red Oak	74.00 Cords	\$ 22.35/Cord	\$ _____
Red Pine	246.00 Cords	\$ 50.55/Cord	\$ _____
White Pine	165.00 Cords	\$ 28.05/Cord	\$ _____

\*The volumes are statistically estimated within plus (+) or minus (-) 17.87 percent. These estimated volumes are final and not subject to adjustment. Prospective bidders are urged to examine this timber and to make their own estimates of quantity and quality.

I understand that any or all bids may be rejected. All bids must be signed and all bid items must be bid or the bid form may be rejected. I also understand that consideration and awarding a contract will be based upon my past performance and ability to complete the contract based upon equipment and staffing subject to my control.

FEDERAL ID: \_\_\_\_\_ or SOCIAL SECURITY NUMBER: \_\_\_\_\_

Company or individual bidding: \_\_\_\_\_

Company representative's name: \_\_\_\_\_

Address: \_\_\_\_\_

City: \_\_\_\_\_ State: \_\_\_\_\_ Zip: \_\_\_\_\_

IF AVAILABLE, PLEASE PLACE THE PERSONALIZED LABEL FROM YOUR PROSPECTUS IN THE ABOVE BOX.

Individual or company representative's signature: \_\_\_\_\_ Date: \_\_\_\_\_

Phone number : \_\_\_\_\_ Email (optional): \_\_\_\_\_

**THE WINNING BIDDER MUST COMPLETE THE VERIFICATION OF WORKER'S DISABILITY COMPENSATION ACT COMPLIANCE (ON REVERSE SIDE IF DOUBLE SIDED) WITHIN 21 DAYS OF SALE AWARD DATE**



FOR DEPARTMENT USE ONLY	
Sale Number (XX - XXX - XX - XX)	
Forest Management Unit:	

# TIMBER SALE VERIFICATION OF WORKER'S DISABILITY COMPENSATION ACT COMPLIANCE

As required by Act 317, P.A. 1969 (Worker's Compensation) and  
Part 5 of Act 451 of 1994, as amended.

## VERIFICATION OF WORKER'S DISABILITY COMPENSATION ACT COMPLIANCE

- This verification must be completed and submitted within 21 days of contract award and prior to the issuance of the timber sale contract.
- In addition, if boxes 2B or 2C are checked, then Notice of Exclusion or Certificate of Insurance must be submitted within twenty-one (21) days of the contract award and prior to the issuance of the timber sale contract.
- All information must be typed or printed except for written signatures.

Please Check Appropriate Categories:

1. My business is organized as (you **must** check one of the boxes below):
  - A.  Sole Proprietorship (individual)
  - B.  Partnership
  - C.  Corporation
2. You **must** check one of the boxes below:
  - A.  I certify my business is a sole proprietorship and it has no employees but the sole proprietor. I am not subject to the Worker's Compensation Laws.
  - B.  I certify my business has satisfied its obligation to the Worker's Compensation Act through the use of an approved Notice of Exclusion (BWC-337, Rev. 5/96). I will provide a copy of the Notice of Exclusion within 21 days of the contract award. (For questions or a copy of the BWC-337, please call the Worker's Compensation Bureau at 517-322-1195).
  - C.  I certify my business has a Worker's Compensation Policy. I will provide an original Certificate of Insurance within twenty-one (21) days of the contract award.
3. If you have checked item 2(A) or 2(B), you **must** indicate the number of **both** full-time and part-time employees, other than yourself, including family members and active partners (if none, you must enter "0").

\_\_\_\_\_ Full-time Employees

\_\_\_\_\_ Part-time Employees

Name of Business		Federal ID (or) Social Security No.	
Address		Telephone (       )	
City	State	ZIP	

*I hereby certify that the above information is true and correct. I agree to notify the Michigan DNR of any changes that occur in factors affecting my coverage during any of my present and future operations.*

\_\_\_\_\_  
Signature of Owner or Authorized Representative

\_\_\_\_\_  
Title

\_\_\_\_\_  
Date

Please complete the "SEALED BID" information on the next page

Tiny Piney (52-126-18)  
T35N, R02W, SEC. 34; Cheboygan COUNTY

In response to the notice of sale to be held 3:00 p.m. (local time) on May 21, 2019, I am hereby submitting my sealed bid (firm offer) for the following forest products to be cut. Bids for individual species must be at or above the advertised price. All non-responsive bid forms may be rejected.

<u>PRODUCTS &amp; SPECIES</u>	<u>ESTIMATED VOLUME*</u>	<u>ADVERTISED PRICE</u>	<u>BID PRICE/UNIT</u>
Sawtimber			
Red Pine	21.00 MBF	\$ 117.00/MBF	\$ _____
Pulpwood			
Jack Pine	8.00 Cords	\$ 21.15/Cord	\$ _____
Red Pine	131.00 Cords	\$ 50.55/Cord	\$ _____

\*The volumes are statistically estimated within plus (+) or minus (-) 47.53 percent. These estimated volumes are final and not subject to adjustment. Prospective bidders are urged to examine this timber and to make their own estimates of quantity and quality.

I understand that any or all bids may be rejected. All bids must be signed and all bid items must be bid or the bid form may be rejected. I also understand that consideration and awarding a contract will be based upon my past performance and ability to complete the contract based upon equipment and staffing subject to my control.

FEDERAL ID: \_\_\_\_\_ or SOCIAL SECURITY NUMBER: \_\_\_\_\_

Company or individual bidding: \_\_\_\_\_

Company representative's name: \_\_\_\_\_

Address: \_\_\_\_\_

City: \_\_\_\_\_ State: \_\_\_\_\_ Zip: \_\_\_\_\_

IF AVAILABLE, PLEASE PLACE THE PERSONALIZED LABEL FROM YOUR PROSPECTUS IN THE ABOVE BOX.

Individual or company representative's signature: \_\_\_\_\_ Date: \_\_\_\_\_

Phone number : \_\_\_\_\_ Email (optional): \_\_\_\_\_

**THE WINNING BIDDER MUST COMPLETE THE VERIFICATION OF WORKER'S DISABILITY COMPENSATION ACT COMPLIANCE (ON REVERSE SIDE IF DOUBLE SIDED) WITHIN 21 DAYS OF SALE AWARD DATE**



<b>FOR DEPARTMENT USE ONLY</b>
Sale Number (XX - XXX - XX - XX)
Forest Management Unit:

## TIMBER SALE VERIFICATION OF WORKER'S DISABILITY COMPENSATION ACT COMPLIANCE

*As required by Act 317, P.A. 1969 (Worker's Compensation) and  
Part 5 of Act 451 of 1994, as amended.*

### VERIFICATION OF WORKER'S DISABILITY COMPENSATION ACT COMPLIANCE

- This verification must be completed and submitted within 21 days of contract award and prior to the issuance of the timber sale contract.
- In addition, if boxes 2B or 2C are checked, then Notice of Exclusion or Certificate of Insurance must be submitted within twenty-one (21) days of the contract award and prior to the issuance of the timber sale contract.
- All information must be typed or printed except for written signatures.

Please Check Appropriate Categories:

1. My business is organized as (you **must** check one of the boxes below):
  - A.  Sole Proprietorship (individual)
  - B.  Partnership
  - C.  Corporation
2. You **must** check one of the boxes below:
  - A.  I certify my business is a sole proprietorship and it has no employees but the sole proprietor. I am not subject to the Worker's Compensation Laws.
  - B.  I certify my business has satisfied its obligation to the Worker's Compensation Act through the use of an approved Notice of Exclusion (BWC-337, Rev. 5/96). I will provide a copy of the Notice of Exclusion within 21 days of the contract award. (For questions or a copy of the BWC-337, please call the Worker's Compensation Bureau at 517-322-1195).
  - C.  I certify my business has a Worker's Compensation Policy. I will provide an original Certificate of Insurance within twenty-one (21) days of the contract award.
3. If you have checked item 2(A) or 2(B), you **must** indicate the number of **both** full-time and part-time employees, other than yourself, including family members and active partners (if none, you must enter "0").

\_\_\_\_\_ Full-time Employees

\_\_\_\_\_ Part-time Employees

Name of Business		Federal ID (or) Social Security No.	
Address		Telephone (       )	
City	State	ZIP	

*I hereby certify that the above information is true and correct. I agree to notify the Michigan DNR of any changes that occur in factors affecting my coverage during any of my present and future operations.*

\_\_\_\_\_  
Signature of Owner or Authorized Representative

\_\_\_\_\_  
Title

\_\_\_\_\_  
Date

**Please complete the "SEALED BID" information on the next page**



Hunny Bunny Mix (52-115-18)  
T34N, R02W, SEC. 25; Cheboygan COUNTY

In response to the notice of sale to be held 3:00 p.m. (local time) on May 21, 2019, I am hereby submitting my sealed bid (firm offer) for the following forest products to be cut. Bids for individual species must be at or above the advertised price. All non-responsive bid forms may be rejected.

<u>PRODUCTS &amp; SPECIES</u>	<u>ESTIMATED VOLUME*</u>	<u>ADVERTISED PRICE</u>	<u>BID PRICE/UNIT</u>
<b>Sawtimber</b>			
Mixed Aspen	61.50 MBF	\$ 60.00/MBF	\$ _____
Red Maple	23.60 MBF	\$ 111.00/MBF	\$ _____
Red Pine	3.40 MBF	\$ 117.00/MBF	\$ _____
Sugar Maple	47.20 MBF	\$ 328.00/MBF	\$ _____
<b>Pulpwood</b>			
Balsam Fir	311.00 Cords	\$ 33.00/Cord	\$ _____
Basswood	37.00 Cords	\$ 7.40/Cord	\$ _____
Misc. Species 1	2.00 Cords	\$ 3.75/Cord	\$ _____
Mixed Aspen	166.00 Cords	\$ 20.95/Cord	\$ _____
Mixed Hardwood	510.00 Cords	\$ 27.70/Cord	\$ _____
Paper Birch	64.00 Cords	\$ 19.75/Cord	\$ _____
Red Pine	9.00 Cords	\$ 50.55/Cord	\$ _____
Scotch Pine	25.00 Cords	\$ 23.60/Cord	\$ _____

\*The volumes are statistically estimated within plus (+) or minus (-) 19.14 percent. These estimated volumes are final and not subject to adjustment. Prospective bidders are urged to examine this timber and to make their own estimates of quantity and quality.

I understand that any or all bids may be rejected. All bids must be signed and all bid items must be bid or the bid form may be rejected. I also understand that consideration and awarding a contract will be based upon my past performance and ability to complete the contract based upon equipment and staffing subject to my control.

FEDERAL ID: \_\_\_\_ - \_\_\_\_ - \_\_\_\_ or SOCIAL SECURITY NUMBER: \_\_\_\_ - \_\_\_\_ - \_\_\_\_

Company or individual bidding: \_\_\_\_\_

Company representative's name: \_\_\_\_\_

Address: \_\_\_\_\_

City: \_\_\_\_\_ State: \_\_\_\_\_ Zip: \_\_\_\_\_

IF AVAILABLE, PLEASE PLACE THE PERSONALIZED LABEL FROM YOUR PROSPECTUS IN THE ABOVE BOX.

Individual or company representative's signature: \_\_\_\_\_ Date: \_\_\_\_\_

Phone number : \_\_\_\_\_ Email (optional): \_\_\_\_\_

**THE WINNING BIDDER MUST COMPLETE THE VERIFICATION OF WORKER'S DISABILITY COMPENSATION ACT COMPLIANCE (ON REVERSE SIDE IF DOUBLE SIDED) WITHIN 21 DAYS OF SALE AWARD DATE**



<b>FOR DEPARTMENT USE ONLY</b>
Sale Number (XX - XXX - XX - XX)
Forest Management Unit:

## TIMBER SALE VERIFICATION OF WORKER'S DISABILITY COMPENSATION ACT COMPLIANCE

*As required by Act 317, P.A. 1969 (Worker's Compensation) and  
Part 5 of Act 451 of 1994, as amended.*

### VERIFICATION OF WORKER'S DISABILITY COMPENSATION ACT COMPLIANCE

- This verification must be completed and submitted within 21 days of contract award and prior to the issuance of the timber sale contract.
- In addition, if boxes 2B or 2C are checked, then Notice of Exclusion or Certificate of Insurance must be submitted within twenty-one (21) days of the contract award and prior to the issuance of the timber sale contract.
- All information must be typed or printed except for written signatures.

Please Check Appropriate Categories:

1. My business is organized as (you **must** check one of the boxes below):
  - A.  Sole Proprietorship (individual)
  - B.  Partnership
  - C.  Corporation
  
2. You **must** check one of the boxes below:
  - A.  I certify my business is a sole proprietorship and it has no employees but the sole proprietor. I am not subject to the Worker's Compensation Laws.
  - B.  I certify my business has satisfied its obligation to the Worker's Compensation Act through the use of an approved Notice of Exclusion (BWC-337, Rev. 5/96). I will provide a copy of the Notice of Exclusion within 21 days of the contract award. (For questions or a copy of the BWC-337, please call the Worker's Compensation Bureau at 517-322-1195).
  - C.  I certify my business has a Worker's Compensation Policy. I will provide an original Certificate of Insurance within twenty-one (21) days of the contract award.
  
3. If you have checked item 2(A) or 2(B), you **must** indicate the number of **both** full-time and part-time employees, other than yourself, including family members and active partners (if none, you must enter "0").

\_\_\_\_\_ Full-time Employees

\_\_\_\_\_ Part-time Employees

Name of Business		Federal ID (or) Social Security No.	
Address		Telephone (       )	
City	State	ZIP	

*I hereby certify that the above information is true and correct. I agree to notify the Michigan DNR of any changes that occur in factors affecting my coverage during any of my present and future operations.*

\_\_\_\_\_  
Signature of Owner or Authorized Representative

\_\_\_\_\_  
Title

\_\_\_\_\_  
Date

**Please complete the "SEALED BID" information on the next page**