



**DEPARTMENT OF NATURAL RESOURCES  
STATE OF MICHIGAN**

**TIMBER SALE PROSPECTUS #6447**

SCHEDULED SALE DATE AND TIME: 2:00 p.m. (local time) on June 12, 2019.

LOCATION: SHINGLETON MGMT UNIT, PO BOX 67, M 28 WEST, SHINGLETON, MI 49884.

PROSPECTUS NOTE: The bidder is advised to inspect the sale area and review the location, estimated volumes, operating costs and contract terms of proposed sales. Please be aware that some landowners may request 60 days or more notice for access across their land.

Notice is hereby given that bids will be received by the Unit Manager, SHINGLETON MANAGEMENT UNIT, for certain timber on the following described lands:

Tadpole Tidbits Mix (41-021-18) / T47N, R17W, SEC. 17, NW.

T47N, R17W, SEC. 18, E1/2NE.

T47N, R17W, SEC. 7, SESE.

T47N, R17W, SEC. 8, SWSW.

Alger County, Advertised Price \$30,352.50, 81.6 Acres, Hardwood, Spruce/Fir/Tamarack.

SALE NOTE: Within Payment Unit(s) 1-3, harvesting is not permitted during the period of April 15 to July 15 due to bark slippage. See Sale Spec 5.2.3.3.

It is recommended, but not required, that harvesting occur during dry summer or frozen winter conditions due to potential soft soils. See Sale Spec 5.2.22.1.

A small portion of Payment Unit(s) 2, 3 and 4 include a Riparian Management Zone (RMZ) with strict rutting restrictions. See Sale Spec 5.4.7 for restrictions.

Orange Bear Hardwoods (41-022-18) / T48N, R17W, SEC. 24, E1/2SW.

T48N, R17W, SEC. 25, W1/2SE.

T48N, R17W, SEC. 26, SWNE, W1/2SE.

Alger County, Advertised Price \$26,967.60, 95.7 Acres, Hardwood, Spruce/Fir/Tamarack.

SALE NOTE: Permission for access across private land is the responsibility of the Purchaser. If crossing Hancock Forest Management Property, a permit is required. See Sale Spec 4.4.1 for requirements.

Within Payment Unit(s) 1, 2, 4 and 5, harvesting is not permitted during the period of April 15 to July 15 because of bark slippage.

No harvesting operations, including skidding and felling, are to take place within the vernal pond areas or drainages. See Sale Spec 5.4.6 for additional information.

Access may be through private land.

Surfside Mix (41-023-18) / T47N, R17W, SEC. 16, NWNW.

T47N, R17W, SEC. 17, N1/2NE, SENE, NESE.

T47N, R17W, SEC. 8, SESE.

Alger County, Advertised Price \$24,127.50, 69.7 Acres, N White Cedar, Hardwood.

SALE NOTE: Permission for access across private land is the responsibility of the Purchaser. If crossing Hancock Forest Management Property, a permit is required. See Sale Spec 4.4.1 for requirements.

Within Payment Unit(s) 1 and 2, harvesting is not permitted during the period of April 15 to July 15 because of bark slippage. See Sale Spec 5.2.3.3.

Within Payment Unit(s) 3 and 4, it is recommended, but not required, that harvesting occur during dry summer or frozen winter conditions due to low ground areas. See Sale Spec 5.2.22.1.

Access may be through private land.

## BID INSTRUCTIONS (VER. 07/02/2018):

### 1. Scheduled Bid Location, Date, and Time (2/11)

Bids must be received by the Unit Manager, SHINGLETON OFFICE, PO Box 67 M 28 West, Shingleton, MI 49884, no later than 2:00 p.m. (local time) on June 12, 2019. For further information concerning this sale, contact Robert Burnham at 906-452-6227 extension 240.

### 2. Bidder's Qualifications (5/16)

Purchaser shall obtain workers compensation insurance to cover claims under Michigan's Worker's Disability Compensation Act of 1969 or similar employee benefit act of any other state applicable to an employee. If all or part of a timber sale was prepared by a private contractor, the contractor and that contractor's company are not permitted to bid on the timber sale contract. Bids will not be accepted from individuals or companies appearing on the DNR/FRD No-Bid List. This list contains the names of purchasers who previously failed to execute a contract within 21-days or who have a history of poor performance.

### 3. Preparation of Sealed Bids (5/16)

Bid Forms may be completed online thru Michigan DNR Timber Sale Online Bidding (OLB) at [www.michigan.gov/timberbidding](http://www.michigan.gov/timberbidding) or by completing the hardcopy Bid Form found in the Timber Sale Prospectus. Hardcopy Bid Forms shall be manually signed in ink. Registration in OLB is considered your 'signature' for all bids submitted thru that system. Bid prices must be entered for each species and product in the Bid Price column for all material subject to bidding and all fill-in blanks must be completed. If erasures or other changes appear on the hardcopy Bid Form, each erasure or change must be initialed by the person signing the bid.

### 4. Submission of Sealed Bids (5/16)

Bid forms may be obtained from the Unit Manager or thru OLB. Bids may be submitted hardcopy or thru OLB. All hardcopy bids must be submitted on the bid form and in an envelope clearly identified as described in this section. NOTE: Only one bid form per bid envelope. Sealed bids must be submitted to the Unit office designated in the prospectus and must be submitted at or prior to the time established in the prospectus. The envelope should show on the outside (a) the sale name or number and (b) the date and time of bid opening, as shown in the prospectus. Bids received after the time specified in the sale prospectus are late bids and will be rejected.

It is possible for a bidder to submit multiple bids on a single sale. For example, a bid may be submitted hardcopy and a bid may be submitted thru OLB. Or, two bidders from the same company could both submit bids on the same sale. If this were to happen, the State would accept all bids received and award the contract accordingly. All bidding and contractual requirements would apply to all bids received.

### 5. Public Opening of Sealed Bids (7/16)

If conditions permit, the sealed bids will be publicly opened and posted at the time and place set in the prospectus.

If a bidder, present at a bid opening, has submitted bids on more than one sale, that bidder may withdraw their unopened bid envelopes or announce the withdrawal of their online bid after being declared the successful bidder on one sale.

### 6. Award of Contract (1/11)

Award of the contract will be made to the Bidder whose bid, conforming to the prospectus, is most advantageous to the State of Michigan on the basis of total value at rates bid for the estimated quantities. The State reserves the right to reject any bid or waive any minor irregularity in bids received. A written award mailed (or otherwise furnished) to the successful Bidder shall be deemed to result in a binding contract without further action by either party.

### 7. Down Payment (1/11)

The Bidder to whom award is made must make a down payment within 21 days of the sale award. The amount of the down payment will be calculated as shown in the Bond and Payment Schedule of this prospectus. Only cash may be used to meet this requirement.

### 8. Performance Security (1/11)

As guarantee of faithful performance, a cash bond, certificate of deposit, surety bond or irrevocable letter of credit (LOC) is required within 21 days of the sale award. The amount of the performance security is shown in the Bond and

Payment Schedule of this prospectus. If an LOC or surety is used, the coverage must extend for at least 6 months beyond the contract expiration.

#### 9. Timber Sale Contract (7/18)

Additional conditions and requirements common to all timber sales are listed on the timber sale contract (R4031) and are available on line at [www.michigan.gov/timber](http://www.michigan.gov/timber). Contact the Unit Manager for additional information or a sample contract. Within 21 days of the date of the award letter, the bidder must sign the contract and provide the required down payment, performance security, and verification of worker's disability compensation. The down payment and performance security shall be in accordance with the provisions of the timber sale contract, in the sums stated in this prospectus. If these actions are not taken, then the Bidder, the Bidder's corporation, and the corporation's principals may not be permitted to bid on State timber sales for a period of 3 months after the first offense, 6 months after the second offense, and 1 year after the third offense. An offense will only be counted against the Bidder for 5 years. In addition, the Bidder certifies that if awarded this contract, the Bidder will complete the timber sale contract in accordance with its terms and any modifications thereof including requirements to purchase, cut, and remove the included timber by the expiration date.

Payment Unit values in the State Forest Timber Sale Contract are calculated based on the advertised value of the Payment Unit as a percentage of the total advertised value of the contract. The advertised value of each Payment Unit is given in the Description of Timber by Payment Unit table on the Timber Sale Information page. For example, if the value of Payment Unit 1 is advertised as \$1,500 and the total Timber Sale value is advertised as \$10,000, the contract price for Payment Unit 1 will be 15% of the total bid price ( $\$1,500/\$10,000 * 100$ ).

#### 10. Disclaimer of Estimates and Bidder's Warranty of Inspection (7/16)

Before submitting this bid, the Bidder is advised and cautioned to inspect the sale area, review the requirements of the sale contract, and take other steps as may be reasonably necessary to ascertain the location, estimated volumes, construction estimates, and operating costs of the proposed sale. Failure to do so will not relieve the Bidder from responsibility for completing the contract.

The Bidder warrants that this bid is submitted solely on the basis of the Bidder's examination and inspection of the quality and quantity of the timber offered for sale and the Bidder's opinion of the value thereof and the costs of recovery. No reliance should be placed on the State of Michigan's estimates of timber quality, quantity or costs of recovery. Bidder further acknowledges that the State of Michigan: (i) expressly disclaims any warranty of fitness of timber for any purpose; (ii) offers this timber as is without any warranty of quality (merchantability) or quantity and (iii) expressly disclaims any warranty as to the quantity or quality of timber sold.

#### 11. Certification and Chain-of-Custody (10/14)

Unless otherwise indicated in the contract under section 7 – Other Conditions of the Sale Specific Conditions & Requirements, the area encompassed by this timber sale is certified to the standards of the Forest Stewardship Council (FSC) - Certificate #SCS-FM/COC-00090N and the Sustainable Forestry Initiative (SFI) - Certificate #NSF-SFIS-5Y031-SF5. Forest products from this sale may be delivered to the mill as "FSC 100% and / or SFI certified" as long as the contractor hauling the forest products is chain-of-custody (COC) certified or covered under a COC certificate from the destination mill. The purchaser is responsible for maintaining COC after leaving the sale area.

#### 12. Good Neighbor Authority (GNA) Requirements (7/16)

If the name of this timber sales contains the acronym GNA, it is authorized by the Good Neighbor Authority (GNA) and covered by various agreements between the U.S. Forest Service and the State. The timber sale occurs on federal land and the following conditions apply:

GNA contracts on US Forest Service land will not be awarded to purchasers on the Federal list of excluded parties. The System for Award Management (SAM) will be checked for active excluded parties prior to award of contract. In addition, the Bidder to whom award is made must complete an Assurance Regarding Felony Conviction or Tax Delinquent Status for Corporate Applicants (AD-3031).

#### 13. Good Neighbor Authority (GNA) Requirements, con't (9/16)

Bidder certifies, by signing this bid form, that to the best of Bidder's knowledge that the following representations are accurate and complete.

- a. That the Bidder and its principals are not presently debarred, suspended, proposed for debarment, declared ineligible, or voluntary excluded from timber sales (covered transactions) by any Federal department or agency.
- b. That the Bidder and its principals have not within a 3-year period preceding this bid been convicted of or had a civil judgment rendered against them for commission of fraud or a criminal offense in connection with obtaining, attempting to obtain, or performing a public (Federal, State, or local) transaction or contract under a public transaction; violation of Federal or State antitrust statutes or commission of embezzlement, theft, forgery, bribery, falsification or destruction of records, making false statements, or receiving stolen property.
- c. That the Bidder and its principals are not presently indicted for or otherwise criminally or civilly charged by a governmental entity (Federal, State, or local) with commission of any of the offenses enumerated in paragraph b of this certification.
- d. That the Bidder and its principals have not within a 3-year period preceding this bid had one or more public transactions (Federal, State, or local) terminated for breach or default of a timber or forest product contract.

Bidders that cannot certify this requirement, in whole or in part, shall submit an explanation with their bid.

DAN EICHINGER  
Director



# TIMBER SALE INFORMATION

## Tadpole Tidbits Mix (41-021-18)

T47N, R17W, SEC. 17; T47N, R17W, SEC. 18; T47N, R17W, SEC. 7; T47N, R17W, SEC. 8.

Alger County (Advertised Price \$30,352.50)

SALE NOTE: Within Payment Unit(s) 1-3, harvesting is not permitted during the period of April 15 to July 15 due to bark slippage. See Sale Spec 5.2.3.3.

It is recommended, but not required, that harvesting occur during dry summer or frozen winter conditions due to potential soft soils. See Sale Spec 5.2.22.1.

A small portion of Payment Unit(s) 2, 3 and 4 include a Riparian Management Zone (RMZ) with strict rutting restrictions. See Sale Spec 5.4.7 for restrictions.

A timber sale contract for this lump sum, sealed bid timber sale will be awarded to the responsible bidder offering the highest sealed bid price. Bids must be at or above the following advertised price for each species:

<u>PRODUCTS &amp; SPECIES</u>	<u>ESTIMATED UNITS*</u>	<u>ADVERTISED PRICE</u>
<b>Sawtimber</b>		
Basswood	0.80 MBF	\$ 142.00 / MBF
Black Cherry	0.10 MBF	\$ 129.00 / MBF
Red Maple	2.20 MBF	\$ 109.00 / MBF
Sugar Maple	37.10 MBF	\$ 404.00 / MBF
<b>Pulpwood</b>		
Balsam Fir	58.00 Cords	\$ 19.95 / Cord
Basswood	47.00 Cords	\$ 11.55 / Cord
Hemlock	4.00 Cords	\$ 10.15 / Cord
Mixed Hardwood	605.00 Cords	\$ 20.35 / Cord
N. White Cedar	3.00 Cords	\$ 7.50 / Cord
Quaking Aspen	7.00 Cords	\$ 27.00 / Cord
White Spruce	20.00 Cords	\$ 36.70 / Cord

\* The total volume is statistically estimated within plus (+) or minus (-) 21.97 percent. The estimated units are final and not subject to adjustment. Prospective bidders are urged to examine this timber and to make their own estimates of quantity and quality.

### **BOND AND PAYMENT SCHEDULE:**

1. A bond in the amount of \$1,518.00 to insure faithful performance of the conditions of the contract will be deposited by the successful bidder within 21 days of the sale award.
2. Cutting in any sale or unit without the required advance payment would be considered a trespass.
3. Total payment must be paid in advance or according to the following schedule:
  - (a) Ten percent (10%) of the sale value must be paid within 21 days of the sale award.
  - (b) The 10% down payment will be credited towards the first unit cut.
  - (c) Payment for each of the following units must be made before cutting begins in that unit:

PAYMENT UNIT NUMBER	PERCENT OF TOTAL SALE VALUE
01	25.9%
02	29.2%
03	26.8%
04	18.1%

4. If no cutting takes place, the 10% down payment will not be refunded.
5. Operations on the contract issued will terminate on 06/30/2022.

**Description of Timber by Payment Unit (PU)**

PU	MARKET GROUP	PRODUCT	QUANTITY	UNIT	ACRES	ADVERTISE PRICE	
1	Basswood	Sawtimber	0.8	MBF	25.1	\$7,866.80	
	Red Maple		1.7	MBF			
	Sugar Maple		8.3	MBF			
	Basswood		Pulpwood	1.0			Cords
	Basswood			2.0			Cords
	Hemlock			4.0			Cords
	Mixed Hardwood			203.0			Cords
	<i>Beech</i>			8.0			<i>Cords</i>
	<i>Red Maple</i>			41.0			<i>Cords</i>
	<i>Sugar Maple</i>			154.0			<i>Cords</i>
2	Black Cherry	Sawtimber	0.1	MBF	28.7	\$8,864.40	
	Red Maple		0.2	MBF			
	Sugar Maple		14.9	MBF			
	Basswood		Pulpwood	1.0			Cords
	Basswood			9.0			Cords
	Mixed Hardwood			132.0			Cords
	<i>Beech</i>			1.0			<i>Cords</i>
	<i>Black Cherry</i>			2.0			<i>Cords</i>
	<i>Red Maple</i>			1.0			<i>Cords</i>
	<i>Sugar Maple</i>			128.0			<i>Cords</i>
3	Red Maple	Sawtimber	0.3	MBF	16.1	\$8,124.40	
	Sugar Maple		13.9	MBF			
	Basswood	Pulpwood	10.0	Cords			
	Mixed Hardwood		116.0	Cords			
	<i>Beech</i>		5.0	<i>Cords</i>			
	<i>Black Cherry</i>		12.0	<i>Cords</i>			
	<i>Red Maple</i>		1.0	<i>Cords</i>			
	<i>Sugar Maple</i>		98.0	<i>Cords</i>			
4	Basswood	Pulpwood	56.0	Cords	11.7	\$5,496.90	
	Basswood		26.0	Cords			
	Mixed Hardwood		154.0	Cords			
	<i>Black Ash</i>		7.0	<i>Cords</i>			
	<i>Black Cherry</i>		14.0	<i>Cords</i>			
	<i>Ironwood</i>		2.0	<i>Cords</i>			
	<i>Red Maple</i>		60.0	<i>Cords</i>			
	<i>Sugar Maple</i>		60.0	<i>Cords</i>			
	<i>Yellow Birch</i>		11.0	<i>Cords</i>			
	N. White Cedar		3.0	Cords			
	Quaking Aspen		7.0	Cords			
	White Spruce		20.0	Cords			
	TOTAL:			40.2			MBF
TOTAL:			744.0	Cords			



## Sale Specific Conditions & Requirements

**Sale Name: Tadpole Tidbits Mix**

**Sale Number: 41-021-18 Seq#: 2**

### 1 - Sale Area

#### 1.2 - Boundaries

##### 1.2.1 - Painted boundaries (1/14)

The sale boundary and Payment Unit boundaries are marked and identified by red and yellow paint. Exterior sale boundary lines against state are marked with red paint. Interior Payment Unit boundaries are marked with yellow paint. The painted boundary line trees are not Included Timber and are to be protected.

### 2 - Timber Specifications

#### 2.1 - Included Timber

##### 2.1.2 - Clearcut unit(s) w/o unmerchantable trees (8/11)

Within Payment Unit(s) 4, cut all trees which meet minimum piece specifications in 2.2 Utilization, except do not cut oak and hemlock. Special protection trees identified in accordance with condition 3.4.2, within clearcutting unit boundaries, are not Included Timber and are to be protected. Special protection areas identified in accordance with condition 3.4.3, within clearcutting unit boundaries, are not Included Timber and are to be protected.

##### 2.1.3 - Cut tree marked unit(s) (12/08)

Within Payment Unit(s) 1-3, all trees are designated for cutting when marked with orange paint above and below stump height, regardless of merchantability.

### 3 - Payments

#### 3.3 - Pre-measured Sales

##### 3.3.4 - Dividing payment units (7/14)

Payment Unit(s) with a value over \$15,000 may be divided at the request of the Purchaser and upon approval of the Unit Manager. Dividing Payment Units is a contract modification which requires a Timber Sale Contract Supplement.

#### 3.4 - Damaged Timber

##### 3.4.2 - Special Protection Trees (4/14)

The Purchaser shall not cut live or dead special protection trees within cutting units or clearings. Special protection trees are oak and hemlock. If the Purchaser's operations have cut or damaged special protection trees through carelessness, the Purchaser shall pay \$100.00 as fixed, agreed and liquidated damages for each special protection tree cut or damaged. Such payment does not constitute ownership of the undesignated timber.

##### 3.4.3 - Special Protection Areas (8/11)

The Purchaser shall protect special protection areas from damage by the Purchaser's operations. Special protection areas are excluded with the red boundary line and identified on the Timber Sale Map. If the Purchaser's operations have cut or damaged special protection areas through carelessness, the Purchaser shall pay \$1,000 as fixed, agreed and liquidated damages for each acre or part thereof cut or damaged. Such payment does not constitute ownership of the undesignated timber.

### 4 - Transportation

#### 4.1 - Construction

##### 4.1.3 - Slash and earthen piles (8/04)

Piles or windrows of earth along roads and landings that have been widened or constructed shall be leveled. Slash from road maintenance or construction, including stumps, shall be dispersed throughout the sale.

##### 4.1.4 - Timber removed for construction (12/09)

Trees cut or damaged in the process of pre-approved road, landing or skid trail construction will be decked in an area separate from other Designated Timber and not removed until measured by the sale administrator. Payment will be made at the specified Purchase Unit Price.

#### 4.1.6 - Road construction (1/09)

Construction of new roads or improvements of existing roads shall be done in such a way as to minimize the environmental and visual impacts. Merchantable trees shall be cut and utilized unless otherwise directed. Non-merchantable trees shall be severed and laid flat on the ground. Slash shall be scattered, and not left in windrows and kept a minimum of 10 feet back from the road edge. Stumps shall be set upright, not left on edge, and be moved at least 10 feet away from the road edge. Disturbed soil shall be feathered into the woods and not left in berms or windrows.

#### 4.1.7 - Road closure (10/11)

All new roads built into the sale must be blocked to vehicle traffic upon completion of the sale. Overgrown roads that are reopened shall be considered new roads. In general, this will require constructing a four (4') foot high berm of stumps and logs covered with earth. These roads must be rendered impassable to cars and trucks. Contact the sale administrator for specific details of design and placement.

### 4.2 - Maintenance

#### 4.2.2 - Fill material (4/07)

To maintain roads, fill material may be needed in areas where "holes" exist or may be expected to develop. This fill material should be placed before trucking begins. Contact the sale administrator regarding the availability of onsite sand, gravel, or pitrun from adjacent State-owned lands.

#### 4.2.4 - Grading (10/16)

For completion of the sale, state forest roads must be graded. In general, this will require a road grader or bull dozer to shape up the roads after forest products have been hauled off site. This includes cleaning of drainage areas, grading, crowning and filling with gravel, if necessary. The grading equipment to be used must be approved by the Unit Manager or his/her representative.

## 5 - Operations

### 5.1 - Notification

#### 5.1.1 - Pre-sale conference (10/16)

A pre-sale conference between the Purchaser and sale administrator is required prior to beginning any operations. The Unit Manager or his/her representative must be contacted at least 5 days in advance to schedule the conference.

### 5.2 - Conduct of Operations

#### 5.2.2 - Hazard Trees/Snags

##### 5.2.2.1 - Den trees (10/16)

Obvious hollow and/or den trees shall be protected and left standing unless they are a safety hazard.

#### 5.2.3 - Operating Restrictions

##### 5.2.3.3 - Bark slippage restriction (3/09)

Within Payment Unit(s) 1-3, unless changed by written agreement, cutting and skidding are not permitted during the period of April 15 to July 15. This restriction is because of bark slippage.

#### 5.2.22 - Operating Caution

##### 5.2.22.1 - Operating caution (6/11)

It is recommended, but not required, that within Payment Unit(s) 1-4, cutting, skidding and hauling occur during dry summer or frozen winter conditions. The reason for the recommendation is due potential soft soils. Also a small portion of Payment Units 2, 3, and 4 are within an RMZ with strict rutting restrictions (see spec 5.4.7).

#### 5.2.32 - Decking/landing restoration (9/13)

All decking and landing areas must have the surface area restored to a condition equal to or better than before. This is to ensure the proper regeneration of the stand. Wood debris and slash must be removed or scattered away from landing and loading areas and may not be windrowed on the edge.

#### 5.2.37 - No decking areas (12/08)

No decking is allowed along the grade near the special protection area indicated on the Timber Sale Map.

5.2.38 - No decking against live trees (2/04)

Cut products may not be decked against unmarked or designated leave trees.

5.4 - Soil Protection

5.4.1 - Rutting restriction, general (7/16)

Operations are to cease immediately if equipment and weather conditions result in rutting of roads and/or skid trails which is 12 inches or greater in depth and 50 feet in length. The Unit Manager or his/her representative may restrict hauling and/or skidding if ruts exceed the specified depth. With the Unit Manager or his/her representative's approval, the Purchaser may return to the area when the risk of rutting has decreased.

5.4.7 - Rutting restriction, Riparian Management Zone (RMZ) (1/09)

Payment Unit(s) 2, 3 and 4 include a Riparian Management Zone (RMZ) and is shown on the Timber Sale Map. Operations are to cease immediately if equipment and weather conditions result in rutting of roads and skid trails which is 6 inches or greater in depth and 25 feet in length within 100' of the north sale boundary line. The Unit Manager or his/her representative may restrict hauling and/or skidding if ruts exceed the specified depth. With the Unit Manager or his/her representative's approval, the Purchaser may return to the area when the risk of rutting has decreased.

5.8 - Protection of Endangered Species

5.8.3 - Red shoulder hawk or goshawk (2/16)

In the event that an active red shoulder hawk or goshawk nest is found, the contract may be amended to protect the nest site until the nest is determined to be inactive. The value of the trees in this excluded area will be refunded or credited to the Purchaser. The nest will be buffered with a five-chain radius (eight acre) protection area, centered on the nest tree, in which there will be no cutting or new roads constructed. Avoid human disturbance, including loading and skidding, in the protection area.

An additional zone of five chains (ten chains centered on the active nest tree) will be established in which there is no management activity from April 1 to July 30. Limit biomass harvesting and chipping operations within this ten-chain zone, retain the maximum one-third of residues per the Woody Biomass Harvesting Guidelines (Michigan DNR 2010). Nests determined to be inactive will be protected with a one-chain no-harvest buffer.



Sale Number	Year
41 - 021	18

# TIMBER SALE MAP

This information provided by authority of Part 525, 1994 PA 451, as amended.

Forest Management Unit Shingleton	County Alger	Mapped By Steve Tuovila	Date 10/01/2018	Page 1	of 1
Township 47N	Range 17W	Section(s) and Subdivision(s) 7-SESE 8-SWSW 17-NW 18-E1/2NE	Scale 1:15,840		

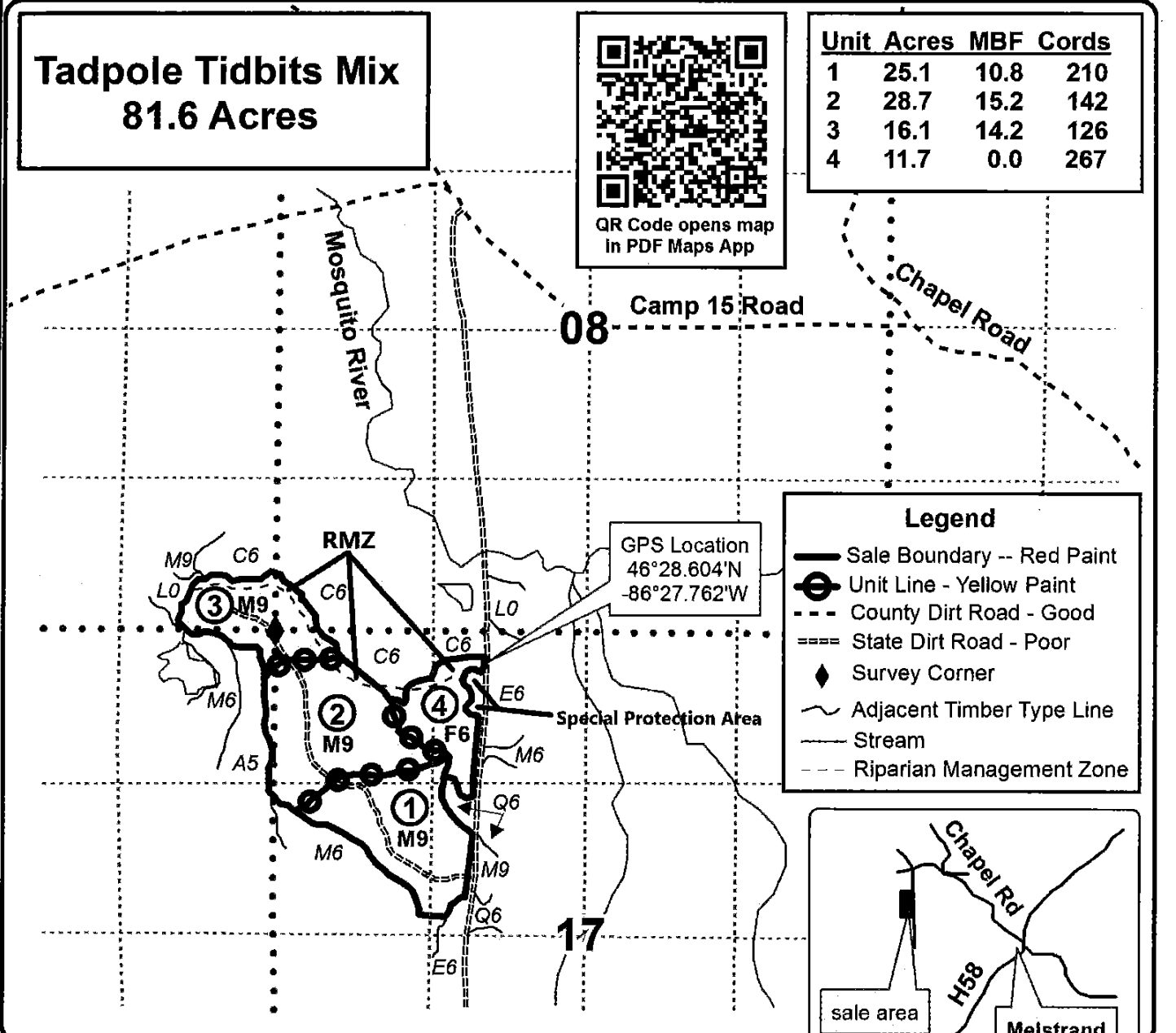
Cover Type				Density			
A = Aspen	H = Hemlock	N = Marsh	U = Upland Brush	0 = Non Stocked	5 = Pole Timber Medium		
B = Paper Birch	J = Jack Pine	O = Oak	UM = Upland Mixed	1 = Seedling Sapling Poor	6 = Pole Timber Well		
C = Cedar	L = Lowland Brush	P = Lowland Poplar	V = Bog or Marsh	2 = Seedling Sapling Medium	7 = Saw Timber Poor		
D = Treed Bog	LM = Lowland Mixed	Q = Mixed Swamp Conifer	W = White Pine	3 = Seedling Sapling Well	8 = Saw Timber Medium		
E = Swamp Hdwoods	M = Mpl, Bch, Brch	R = Red Pine	X = Non Stocked	4 = Pole Timber Poor	9 = Saw Timber Well		
F = Spruce Fir	MC = Mixed Conifer	S = Black Spruce	Z = Water				
G = Grass	MD = Mixed Deciduous	T = Tamarack					

## Tadpole Tidbits Mix 81.6 Acres



QR Code opens map  
in PDF Maps App

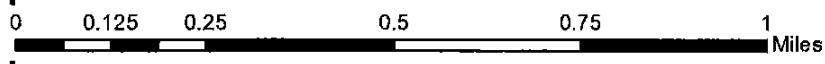
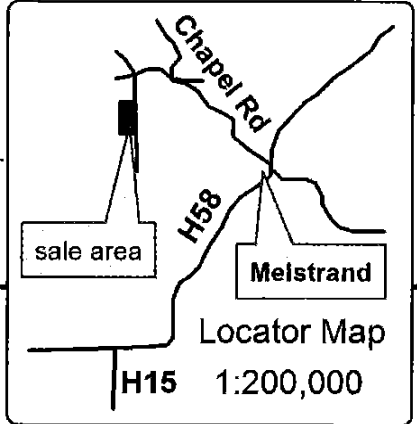
Unit	Acres	MBF	Cords
1	25.1	10.8	210
2	28.7	15.2	142
3	16.1	14.2	126
4	11.7	0.0	267



GPS Location  
46°28.604'N  
-86°27.762'W

### Legend

- Sale Boundary -- Red Paint
- Unit Line - Yellow Paint
- - - County Dirt Road - Good
- ==== State Dirt Road - Poor
- ◆ Survey Corner
- ~ Adjacent Timber Type Line
- Stream
- - - Riparian Management Zone



**TIMBER SALE INFORMATION**

Orange Bear Hardwoods (41-022-18)

T48N, R17W, SEC. 24; T48N, R17W, SEC. 25; T48N, R17W, SEC. 26.  
Alger County (Advertised Price \$26,967.60)

SALE NOTE: Permission for access across private land is the responsibility of the Purchaser. If crossing Hancock Forest Management Property, a permit is required. See Sale Spec 4.4.1 for requirements.

Within Payment Unit(s) 1, 2, 4 and 5, harvesting is not permitted during the period of April 15 to July 15 because of bark slippage.

No harvesting operations, including skidding and felling, are to take place within the vernal pond areas or drainages. See Sale Spec 5.4.6 for additional information.

Access may be through private land.

A timber sale contract for this lump sum, sealed bid timber sale will be awarded to the responsible bidder offering the highest sealed bid price. Bids must be at or above the following advertised price for each species:

<u>PRODUCTS &amp; SPECIES</u>	<u>ESTIMATED UNITS*</u>	<u>ADVERTISED PRICE</u>
Sawtimber		
Red Maple	12.70 MBF	\$ 117.00 / MBF
Sugar Maple	6.60 MBF	\$ 433.00 / MBF
Pulpwood		
Balsam Fir	23.00 Cords	\$ 21.40 / Cord
Mixed Hardwood	976.00 Cords	\$ 21.80 / Cord
White Pine	8.00 Cords	\$ 23.35 / Cord
White Spruce	17.00 Cords	\$ 39.30 / Cord

\* The total volume is statistically estimated within plus (+) or minus (-) 23.18 percent. The estimated units are final and not subject to adjustment. Prospective bidders are urged to examine this timber and to make their own estimates of quantity and quality.

**BOND AND PAYMENT SCHEDULE:**

1. A bond in the amount of \$1,348.00 to insure faithful performance of the conditions of the contract will be deposited by the successful bidder within 21 days of the sale award.
2. Cutting in any sale or unit without the required advance payment would be considered a trespass.
3. Total payment must be paid in advance or according to the following schedule:
  - (a) Ten percent (10%) of the sale value must be paid within 21 days of the sale award.
  - (b) The 10% down payment will be credited towards the first unit cut.
  - (c) Payment for each of the following units must be made before cutting begins in that unit:

<u>PAYMENT UNIT NUMBER</u>	<u>PERCENT OF TOTAL SALE VALUE</u>
01	20.2%
02	21.3%
03	36.2%
04	14.0%
05	8.3%

4. If no cutting takes place, the 10% down payment will not be refunded.
5. Operations on the contract issued will terminate on 06/30/2022.

**Description of Timber by Payment Unit (PU)**

PU	MARKET GROUP	PRODUCT	QUANTITY	UNIT	ACRES	ADVERTISE PRICE			
1	Red Maple	Sawtimber	3.1	MBF	30.7	\$5,456.50			
	Sugar Maple		1.8	MBF					
	Balsam Fir	Pulpwood	5.0	Cords					
	Mixed Hardwood		193.0	Cords					
	<i>Beech</i>		13.0	<i>Cords</i>					
	<i>Red Maple</i>		126.0	<i>Cords</i>					
	<i>Sugar Maple</i>		54.0	<i>Cords</i>					
2	Red Maple	Sawtimber	4.4	MBF	27.8	\$5,737.20			
	Sugar Maple		3.2	MBF					
	Mixed Hardwood	Pulpwood	176.0	Cords					
	<i>Beech</i>		4.0	<i>Cords</i>					
	<i>Red Maple</i>		130.0	<i>Cords</i>					
	<i>Sugar Maple</i>		42.0	<i>Cords</i>					
	3	Balsam Fir	Pulpwood	18.0			Cords	11.7	\$9,742.10
Mixed Hardwood			390.0	Cords					
<i>Black Cherry</i>			36.0	<i>Cords</i>					
<i>Paper Birch</i>			230.0	<i>Cords</i>					
<i>Red Maple</i>			98.0	<i>Cords</i>					
<i>Yellow Birch</i>			26.0	<i>Cords</i>					
White Pine			8.0	Cords					
White Spruce			17.0	Cords					
4		Red Maple	Sawtimber	4.8	MBF	11.8	\$3,783.50		
	Sugar Maple		1.5	MBF					
	Mixed Hardwood	Pulpwood	118.0	Cords					
	<i>Beech</i>		6.0	<i>Cords</i>					
	<i>Red Maple</i>		86.0	<i>Cords</i>					
	<i>Sugar Maple</i>		26.0	<i>Cords</i>					
	5	Red Maple	Sawtimber	0.4	MBF			13.7	\$2,248.30
Sugar Maple			0.1	MBF					
Mixed Hardwood		Pulpwood	99.0	Cords					
<i>Beech</i>			4.0	<i>Cords</i>					
<i>Black Cherry</i>			2.0	<i>Cords</i>					
<i>Red Maple</i>			92.0	<i>Cords</i>					
<i>Sugar Maple</i>			1.0	<i>Cords</i>					
TOTAL:			19.3	MBF					
TOTAL:			1,024.0	Cords					

# Sale Specific Conditions & Requirements

**Sale Name: Orange Bear Hardwoods**

**Sale Number: 41-022-18 Seq#: 2**

## 1 - Sale Area

### 1.2 - Boundaries

#### 1.2.1 - Painted boundaries (1/14)

The sale boundary and Payment Unit boundaries are marked and identified by blue, red and yellow paint. Exterior sale boundary lines against private property are marked with blue paint. Exterior sale boundary lines against state are marked with red paint. Interior Payment Unit boundaries are marked with yellow paint. The painted boundary line trees are not Included Timber and are to be protected, unless marked with orange paint.

## 2 - Timber Specifications

### 2.1 - Included Timber

#### 2.1.2 - Clearcut unit(s) w/o unmerchantable trees (8/11)

Within Payment Unit(s) 3, cut all trees which meet minimum piece specifications in 2.2 Utilization, except do not cut trees marked with green paint. Special protection trees identified in accordance with condition 3.4.2, within clearcutting unit boundaries, are not Included Timber and are to be protected.

#### 2.1.3 - Cut tree marked unit(s) (12/08)

Within Payment Unit(s) 1, 2, 4 & 5, all trees are designated for cutting when marked with orange paint above and below stump height, regardless of merchantability.

## 3 - Payments

### 3.3 - Pre-measured Sales

#### 3.3.4 - Dividing payment units (7/14)

Payment Unit(s) with a value over \$15,000 may be divided at the request of the Purchaser and upon approval of the Unit Manager. Dividing Payment Units is a contract modification which requires a Timber Sale Contract Supplement.

### 3.4 - Damaged Timber

#### 3.4.2 - Special Protection Trees (4/14)

The Purchaser shall not cut live or dead special protection trees within cutting units or clearings. Special protection trees are oak and hemlock. If the Purchaser's operations have cut or damaged special protection trees through carelessness, the Purchaser shall pay \$100 as fixed, agreed and liquidated damages for each special protection tree cut or damaged. Such payment does not constitute ownership of the undesignated timber.

## 4 - Transportation

### 4.1 - Construction

#### 4.1.3 - Slash and earthen piles (8/04)

Piles or windrows of earth along roads and landings that have been widened or constructed shall be leveled. Slash from road maintenance or construction, including stumps, shall be dispersed throughout the sale.

#### 4.1.6 - Road construction (1/09)

Construction of new roads or improvements of existing roads shall be done in such a way as to minimize the environmental and visual impacts. Merchantable trees shall be cut and utilized unless otherwise directed. Non-merchantable trees shall be severed and laid flat on the ground. Slash shall be scattered, and not left in windrows and kept a minimum of 10 feet back from the road edge. Stumps shall be set upright, not left on edge, and be moved at least 10 feet away from the road edge. Disturbed soil shall be feathered into the woods and not left in berms or windrows.

#### 4.1.7 - Road closure (10/11)

All new roads built into the sale must be blocked to vehicle traffic upon completion of the sale. Overgrown roads that are reopened shall be considered new roads. In general, this will require constructing a four (4') foot high berm of stumps and logs covered with earth. Stumps and brush must be placed along the remainder of the trail. These roads must be rendered

impassable to cars and trucks. Contact the sale administrator for specific details of design and placement.

#### 4.2 - Maintenance

##### 4.2.2 - Fill material (4/07)

To maintain roads, fill material may be needed in areas where "holes" exist or may be expected to develop. This fill material should be placed before trucking begins.

##### 4.2.4 - Grading (10/16)

For completion of the sale, state forest roads must be graded. In general, this will require a road grader or bull dozer to shape up the roads after forest products have been hauled off site. This includes cleaning of drainage areas, grading, crowning and filling with gravel, if necessary. The grading equipment to be used must be approved by the Unit Manager or his/her representative.

#### 4.4 - Access

##### 4.4.1 - Private property access (3/11)

Permission for access across private land is the responsibility of the Purchaser. If crossing Hancock Forest Management Property, a permit is required. When the sale is purchased they should be contacted about crossing their property. Allow 30-60 days for permit processing. A copy of the permit should be provided to the Unit Manager by the pre-sale conference.

### 5 - Operations

#### 5.1 - Notification

##### 5.1.1 - Pre-sale conference (10/16)

A pre-sale conference on site between the Purchaser and sale administrator is required prior to beginning any operations to determine landing and road locations. The Unit Manager or his/her representative must be contacted at least 5 days in advance to schedule the conference.

#### 5.2 - Conduct of Operations

##### 5.2.2 - Hazard Trees/Snags

###### 5.2.2.1 - Den trees (10/16)

Obvious hollow and/or den trees shall be protected and left standing unless they are a safety hazard.

##### 5.2.3 - Operating Restrictions

###### 5.2.3.3 - Bark slippage restriction (3/09)

Within Payment Unit(s) 1, 2, 4 & 5, unless changed by written agreement, cutting and skidding are not permitted during the period of April 15 to July 15. This restriction is because of bark slippage.

##### 5.2.32 - Decking/landing restoration (9/13)

All decking and landing areas must have the surface area restored to a condition equal to or better than before. This is to ensure the proper regeneration of the stand. Wood debris, chips and "cookies" from trimmings must be removed or scattered away from landing and loading areas and may not be windrowed on the edge.

##### 5.2.38 - No decking against live trees (2/04)

Cut products may not be decked against unmarked or designated leave trees.

#### 5.4 - Soil Protection

##### 5.4.1 - Rutting restriction, general (7/16)

Operations are to cease immediately if equipment and weather conditions result in rutting of roads and/or skid trails which is 12 inches or greater in depth and 50 feet in length. The Unit Manager or his/her representative may restrict hauling and/or skidding if ruts exceed the specified depth. With the Unit Manager or his/her representative's approval, the Purchaser may return to the area when the risk of rutting has decreased.

##### 5.4.3 - Erosion control (12/08)

Skid trails or haul roads may require erosion control structures or berms per direction of the Unit Manager or his/her representative.



#### 5.4.6 - Wet area protection (5/10)

No harvesting operations, including skidding and felling, are to take place within the vernal pond areas or drainages. When harvesting occurs, there should be no disturbance to the vernal pond depression. All equipment, trees and tops should be kept out of this area. Within 100 feet of the pond, equipment should only be used when the soil is in a dry or frozen condition. Care must be taken by the Purchaser to identify and avoid operating in these areas of the timber sale. These areas are within Payment Units 2 & 4 and have been excluded from the sale area with red paint.

### 5.8 - Protection of Endangered Species

#### 5.8.3 - Red shoulder hawk or goshawk (2/16)

In the event that an active red shoulder hawk or goshawk nest is found, the contract may be amended to protect the nest site until the nest is determined to be inactive. The value of the trees in this excluded area will be refunded or credited to the Purchaser. The nest will be buffered with a five-chain radius (eight acre) protection area, centered on the nest tree, in which there will be no cutting or new roads constructed. Avoid human disturbance, including loading and skidding, in the protection area.

An additional zone of five chains (ten chains centered on the active nest tree) will be established in which there is no management activity from April 1 to July 30 (UP). Limit biomass harvesting and chipping operations within this ten-chain zone, retain the maximum one-third of residues per the Woody Biomass Harvesting Guidelines (Michigan DNR 2010). Nests determined to be inactive will be protected with a one-chain no-harvest buffer.



# TIMBER SALE MAP

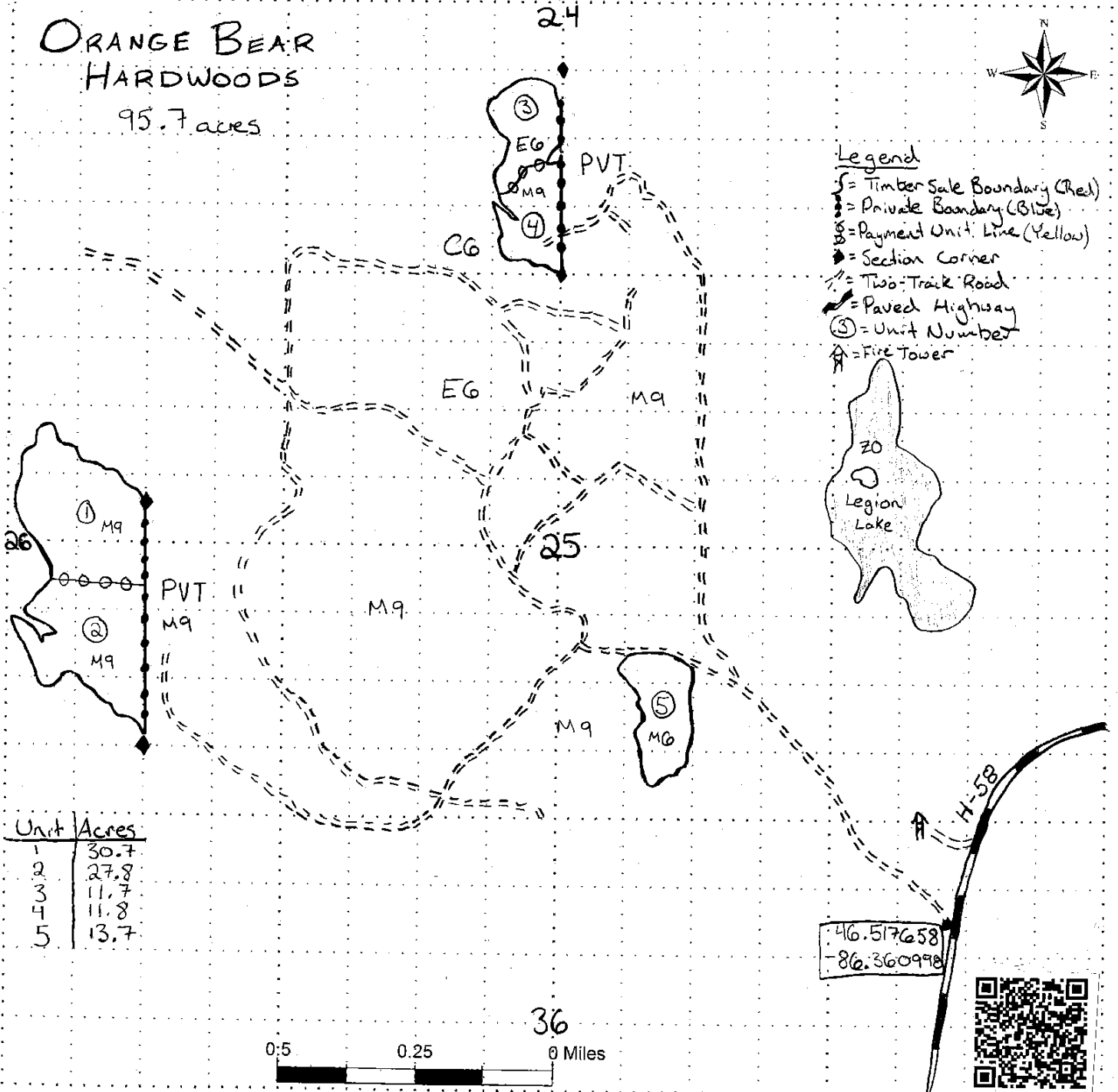
This information provided by authority of Part 5, 1994 PA 451, as amended.

Sale Number	Year
41-022	18
Date	Page of
9/26/18	1 of 1

Forest Management Unit	County	Mapped By	Date
Shingleton	Alger	S. Kentner	9/26/18
Township	Range	Cruised By	
48N	17W	Kentner, Tuovila	
Section(s) and Subdivision(s)			
24: E 1/2 SE 1/4, 25: W 1/2 SE 1/4, 26: W 1/2 SE 1/4, W 1/2 NE 1/4			

Cover Type				Density	
A = Aspen	J = Jack Pine	O = Oak	U = Upland Brush	0 = Non Stocked	5 = Pole Timber Medium
B = Paper Birch	K = Rock	P = Lowland Poplar	UM = Upland Mix Forest	1 = Seedling Sapling Poor	6 = Pole Timber Well
C = Cedar	L = Lowland Brush	Q = Mixed Swamp Conifer	V = Bog or Marsh	2 = Seedling Sapling Medium	7 = Saw Timber Poor
D = Treed Bog	LM = Lowland Mix Forest	R = Red Pine	W = White Pine	3 = Seedling Sapling Well	8 = Saw Timber Medium
E = Swamp Hardwoods	M = Maple, Beech, Birch	S = Black Spruce	X = Non Stocked	4 = Pole Timber Poor	9 = Saw Timber Well
F = Spruce/Fir	MC = Mixed Conifer	T = Tamarack	Y = Sand		
G = Grass	MD = Mixed Deciduous	Z = Water			
H = Hemlock	N = Marsh				

**ORANGE BEAR  
HARDWOODS**  
95.7 acres



**TIMBER SALE INFORMATION**

Surfside Mix (41-023-18)

T47N, R17W, SEC. 16; T47N, R17W, SEC. 17; T47N, R17W, SEC. 8.  
Alger County (Advertised Price \$24,127.50)

SALE NOTE: Permission for access across private land is the responsibility of the Purchaser. If crossing Hancock Forest Management Property, a permit is required. See Sale Spec 4.4.1 for requirements.

Within Payment Unit(s) 1 and 2, harvesting is not permitted during the period of April 15 to July 15 because of bark slippage. See Sale Spec 5.2.3.3.

Within Payment Unit(s) 3 and 4, it is recommended, but not required, that harvesting occur during dry summer or frozen winter conditions due to low ground areas. See Sale Spec 5.2.22.1.

Access may be through private land.

A timber sale contract for this lump sum, sealed bid timber sale will be awarded to the responsible bidder offering the highest sealed bid price. Bids must be at or above the following advertised price for each species:

<u>PRODUCTS &amp; SPECIES</u>	<u>ESTIMATED UNITS*</u>	<u>ADVERTISED PRICE</u>
Sawtimber		
Black Cherry	0.40 MBF	\$ 119.00 / MBF
Red Maple	3.20 MBF	\$ 101.00 / MBF
Sugar Maple	13.90 MBF	\$ 375.00 / MBF
Pulpwood		
Balsam Fir	52.00 Cords	\$ 18.55 / Cord
Mixed Hardwood	429.00 Cords	\$ 18.90 / Cord
N. White Cedar	540.00 Cords	\$ 6.95 / Cord
Paper Birch	248.00 Cords	\$ 11.80 / Cord
White Spruce	82.00 Cords	\$ 34.05 / Cord

\* The total volume is statistically estimated within plus (+) or minus (-) 22.25 percent. The estimated units are final and not subject to adjustment. Prospective bidders are urged to examine this timber and to make their own estimates of quantity and quality.

**BOND AND PAYMENT SCHEDULE:**

1. A bond in the amount of \$1,206.00 to insure faithful performance of the conditions of the contract will be deposited by the successful bidder within 21 days of the sale award.
2. Cutting in any sale or unit without the required advance payment would be considered a trespass.
3. Total payment must be paid in advance or according to the following schedule:
  - (a) Ten percent (10%) of the sale value must be paid within 21 days of the sale award.
  - (b) The 10% down payment will be credited towards the first unit cut.
  - (c) Payment for each of the following units must be made before cutting begins in that unit:

PAYMENT UNIT NUMBER	PERCENT OF TOTAL SALE VALUE
01	18.1%
02	20.3%
03	24.4%
04	37.2%

4. If no cutting takes place, the 10% down payment will not be refunded.
5. Operations on the contract issued will terminate on 06/30/2022.

**Description of Timber by Payment Unit (PU)**

PU	MARKET GROUP	PRODUCT	QUANTITY	UNIT	ACRES	ADVERTISE PRICE	
1	Black Cherry	Sawtimber	0.1	MBF	18.4	\$4,372.35	
	Red Maple		1.5	MBF			
	Sugar Maple		5.6	MBF			
	Balsam Fir		Pulpwood	1.0			Cords
	Mixed Hardwood			107.0			Cords
	<i>Beech</i>			24.0			<i>Cords</i>
	<i>Black Cherry</i>			1.0			<i>Cords</i>
	<i>Ironwood</i>			1.0			<i>Cords</i>
	<i>Red Maple</i>			9.0			<i>Cords</i>
	<i>Sugar Maple</i>			72.0			<i>Cords</i>
	White Spruce			2.0			Cords
2	Black Cherry	Sawtimber		0.3	MBF	17.2	\$4,895.55
	Red Maple		1.7	MBF			
	Sugar Maple		8.3	MBF			
	Balsam Fir		Pulpwood	2.0	Cords		
	Mixed Hardwood			76.0	Cords		
	<i>Beech</i>			4.0	<i>Cords</i>		
	<i>Black Cherry</i>			3.0	<i>Cords</i>		
	<i>Ironwood</i>			3.0	<i>Cords</i>		
	<i>Red Maple</i>			7.0	<i>Cords</i>		
	<i>Sugar Maple</i>			59.0	<i>Cords</i>		
	White Spruce			3.0	Cords		
3	Balsam Fir	Pulpwood		24.0	Cords	12.0	\$5,893.65
	Mixed Hardwood		155.0	Cords			
	<i>Red Maple</i>		129.0	<i>Cords</i>			
	<i>Yellow Birch</i>		26.0	<i>Cords</i>			
	N. White Cedar		154.0	Cords			
	Paper Birch		16.0	Cords			
	White Spruce		37.0	Cords			
4	Balsam Fir	Pulpwood	25.0	Cords	22.1	\$8,965.95	
	Mixed Hardwood		91.0	Cords			
	<i>Black Ash</i>		6.0	<i>Cords</i>			
	<i>Red Maple</i>		85.0	<i>Cords</i>			
	N. White Cedar		386.0	Cords			
	Paper Birch		232.0	Cords			
	White Spruce		40.0	Cords			
TOTAL:			17.5	MBF			
TOTAL:			1,351.0	Cords			

## Sale Specific Conditions & Requirements

**Sale Name: Surfside Mix**

**Sale Number: 41-023-18 Seq#: 2**

### 1 - Sale Area

#### 1.2 - Boundaries

##### 1.2.1 - Painted boundaries (1/14)

The Sale Boundary and Payment Unit boundaries are marked and identified by red, blue, yellow, and green paint. Exterior sale boundary lines against state are marked with red paint. Exterior sale boundary lines against private property are marked with blue paint. Interior Payment Unit boundaries are marked with yellow paint. Retention areas are marked with green paint. The painted boundary line trees are not Included Timber and are to be protected.

### 2 - Timber Specifications

#### 2.1 - Included Timber

##### 2.1.2 - Clearcut unit(s) w/o unmerchantable trees (8/11)

Within Payment Unit(s) 3 and 4, cut all trees which meet minimum piece specifications in 2.2 Utilization, except do not cut hemlock and oak. Special protection trees identified in accordance with condition 3.4.2, within clearcutting unit boundaries, are not Included Timber and are to be protected.

##### 2.1.3 - Cut tree marked unit(s) (12/08)

Within Payment Unit(s) 1 and 2, all trees are designated for cutting when marked with orange paint above and below stump height, regardless of merchantability.

### 3 - Payments

#### 3.4 - Damaged Timber

##### 3.4.2 - Special Protection Trees (4/14)

The Purchaser shall not cut live or dead special protection trees within cutting units or clearings. Special protection trees are hemlock and oak. If the Purchaser's operations have cut or damaged special protection trees through carelessness, the Purchaser shall pay \$100 as fixed, agreed and liquidated damages for each special protection tree cut or damaged. Such payment does not constitute ownership of the undesignated timber.

### 4 - Transportation

#### 4.1 - Construction

##### 4.1.3 - Slash and earthen piles (8/04)

Piles or windrows of earth along roads and landings that have been widened or constructed shall be leveled. Slash from road maintenance or construction, including stumps, shall be dispersed throughout the sale.

##### 4.1.4 - Timber removed for construction (12/09)

Trees cut or damaged in the process of pre-approved road, landing or skid trail construction will be decked in an area separate from other Designated Timber and not removed until measured by the sale administrator. Payment will be made at the specified Purchase Unit Price.

##### 4.1.6 - Road construction (1/09)

Construction of new roads or improvements of existing roads shall be done in such a way as to minimize the environmental and visual impacts. Merchantable trees shall be cut and utilized unless otherwise directed. Non-merchantable trees shall be severed and laid flat on the ground. Slash shall be scattered, and not left in windrows and kept a minimum of 10 feet back from the road edge. Stumps shall be set upright, not left on edge, and be moved at least 10 feet away from the road edge. Disturbed soil shall be feathered into the woods and not left in berms or windrows.

##### 4.1.7 - Road closure (10/11)

All new roads built into the sale must be blocked to vehicle traffic upon completion of the sale. Overgrown roads that are reopened shall be considered new roads. In general, this will require constructing a four (4') foot high berm of stumps and logs covered with earth. Contact the sale administrator for specific details of design and placement.

## 4.2 - Maintenance

### 4.2.2 - Fill material (4/07)

To maintain roads, fill material may be needed in areas where "holes" exist or may be expected to develop. This fill material should be placed before trucking begins. Contact the sale administrator regarding the availability of onsite sand, gravel, or pit run from adjacent State-owned lands.

### 4.2.4 - Grading (10/16)

For completion of the sale, state forest roads must be graded. In general, this will require a road grader or bull dozer to shape up the roads after forest products have been hauled off site. This includes cleaning of drainage areas, grading, crowning and filling with gravel, if necessary. The grading equipment to be used must be approved by the Unit Manager or his/her representative.

## 4.4 - Access

### 4.4.1 - Private property access (3/11)

Permission for access across private land is the responsibility of the Purchaser. If crossing Hancock property, a permit from them is required. When the sale is purchased, Hancock should be contacted regarding crossing their property. Allow 30-60 days for permit processing. A copy of the permit should be provided to the Unit Manager by the Pre-sale conference.

## 5 - Operations

### 5.1 - Notification

#### 5.1.1 - Pre-sale conference (10/16)

A pre-sale conference between the Purchaser and sale administrator is required prior to beginning any operations. The Unit Manager or his/her representative must be contacted at least 5 days in advance to schedule the conference.

### 5.2 - Conduct of Operations

#### 5.2.2 - Hazard Trees/Snags

##### 5.2.2.1 - Den trees (10/16)

Obvious hollow and/or den trees shall be protected and left standing unless they are a safety hazard.

#### 5.2.3 - Operating Restrictions

##### 5.2.3.3 - Bark slippage restriction (3/09)

Within Payment Unit(s) 1 and 2, unless changed by written agreement, cutting and skidding are not permitted during the period of April 15 to July 15. This restriction is because of bark slippage.

#### 5.2.22 - Operating Caution

##### 5.2.22.1 - Operating caution (6/11)

It is recommended, but not required, that within Payment Unit(s) 3 and 4, cutting, skidding and hauling occur during dry summer or frozen winter conditions. The reason for the recommendation low ground within the Payment Units.

#### 5.2.32 - Decking/landing restoration (9/13)

All decking and landing areas must have the surface area restored to a condition equal to or better than before. This is to ensure the proper regeneration of the stand. Wood debris and slash must be removed or scattered away from landing and loading areas and may not be windrowed on the edge.

#### 5.2.38 - No decking against live trees (2/04)

Cut products may not be decked against unmarked or designated leave trees.

### 5.4 - Soil Protection

#### 5.4.1 - Rutting restriction, general (7/16)

Operations are to cease immediately if equipment and weather conditions result in rutting of roads and/or skid trails which is 12 inches or greater in depth and 50 feet in length. The Unit Manager or his/her representative may restrict hauling and/or skidding if ruts exceed the specified depth. With the Unit Manager or his/her representative's approval, the Purchaser may return to the area when the risk of rutting has decreased.

## 5.8 - Protection of Endangered Species

### 5.8.3 - Red shoulder hawk or goshawk (2/16)

In the event that an active red shoulder hawk or goshawk nest is found, the contract may be amended to protect the nest site until the nest is determined to be inactive. The value of the trees in this excluded area will be refunded or credited to the Purchaser. The nest will be buffered with a five-chain radius (eight acre) protection area, centered on the nest tree, in which there will be no cutting or new roads constructed. Avoid human disturbance, including loading and skidding, in the protection area.

An additional zone of five chains (ten chains centered on the active nest tree) will be established in which there is no management activity from April 1 to July 30. Limit biomass harvesting and chipping operations within this ten-chain zone, retain the maximum one-third of residues per the Woody Biomass Harvesting Guidelines (Michigan DNR 2010). Nests determined to be inactive will be protected with a one-chain no-harvest buffer.



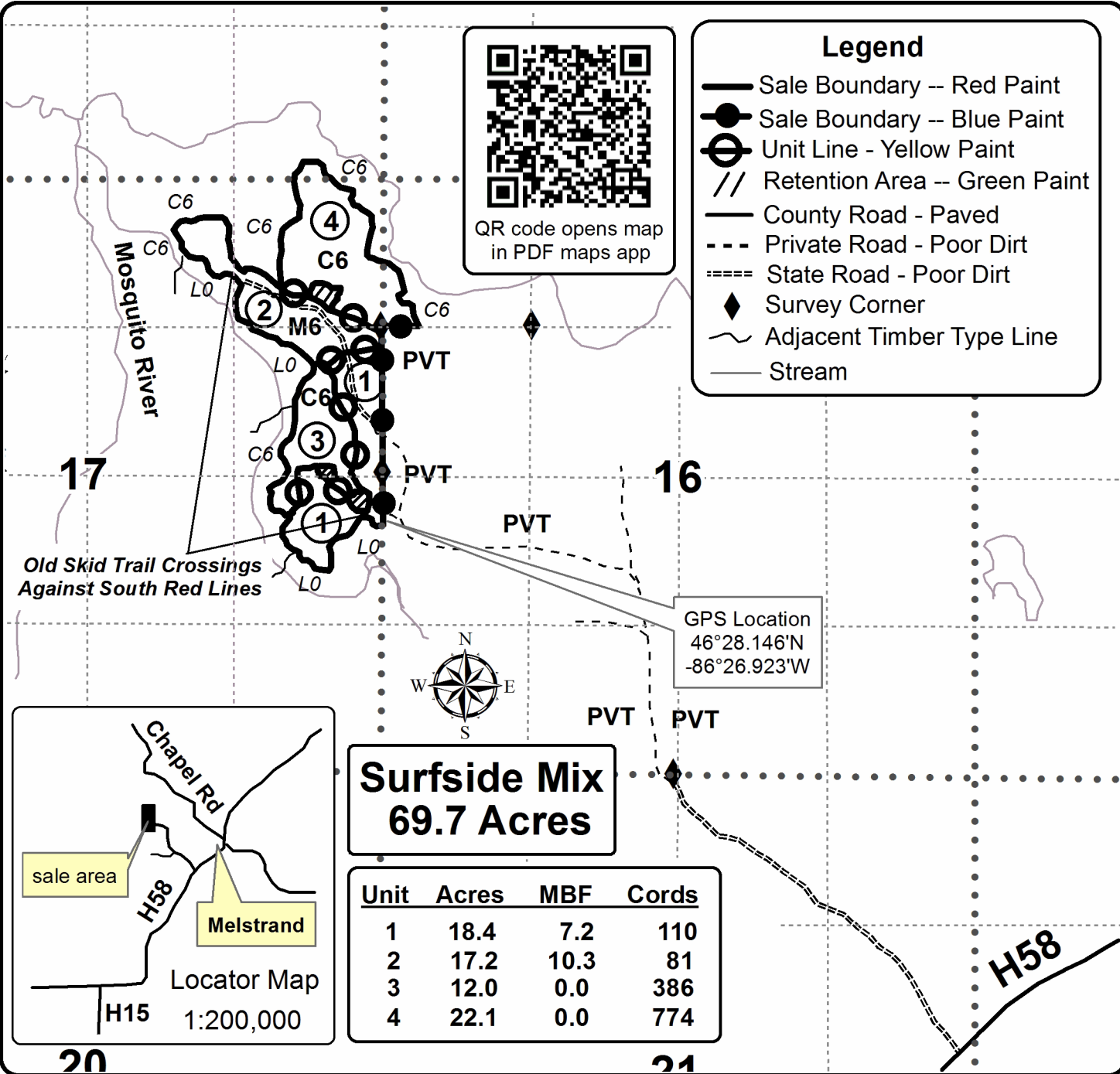
Sale Number	Year
41 - 023	18

# TIMBER SALE MAP

This information provided by authority of Part 525, 1994 PA 451, as amended.

Forest Management Unit Shingleton	County Alger	Mapped By Steve Tuovila	Date 10/11/18	Page 1	of 1
Township 47N	Range 17W	Section(s) and Subdivision(s) 8-SESE 16-NWNW 17-N1/2NE,SENE,NESE	Scale 1:15,840		

Cover Type				Density			
A = Aspen	H = Hemlock	N = Marsh	U = Upland Brush	0 = Non Stocked	5 = Pole Timber Medium		
B = Paper Birch	J = Jack Pine	O = Oak	UM = Upland Mixed	1 = Seedling Sapling Poor	6 = Pole Timber Well		
C = Cedar	L = Lowland Brush	P = Lowland Poplar	V = Bog or Marsh	2 = Seedling Sapling Medium	7 = Saw Timber Poor		
D = Treed Bog	LM = Lowland Mixed	Q = Mixed Swamp Conifer	W = White Pine	3 = Seedling Sapling Well	8 = Saw Timber Medium		
E = Swamp Hdwoods	M = Mpl, Bch, Brch	R = Red Pine	X = Non Stocked	4 = Pole Timber Poor	9 = Saw Timber Well		
F = Spruce Fir	MC = Mixed Conifer	S = Black Spruce	Z = Water				
G = Grass	MD = Mixed Deciduous	T = Tamarack					



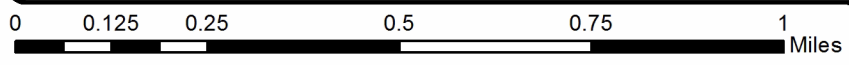
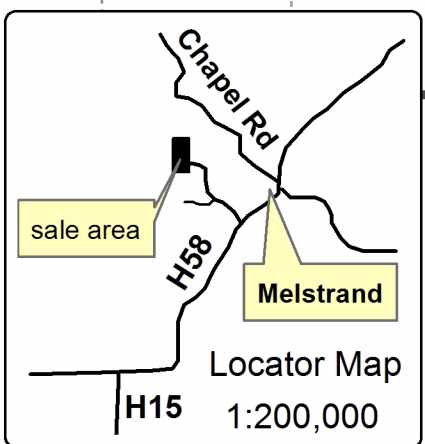
### Legend

- Sale Boundary -- Red Paint
- Sale Boundary -- Blue Paint
- Unit Line - Yellow Paint
- // Retention Area -- Green Paint
- County Road - Paved
- - - Private Road - Poor Dirt
- ==== State Road - Poor Dirt
- ◆ Survey Corner
- ~ Adjacent Timber Type Line
- Stream

GPS Location  
46°28.146'N  
-86°26.923'W

**Surfside Mix**  
**69.7 Acres**

Unit	Acres	MBF	Cords
1	18.4	7.2	110
2	17.2	10.3	81
3	12.0	0.0	386
4	22.1	0.0	774





Surfside Mix (41-023-18)

T47N, R17W, SEC. 16; T47N, R17W, SEC. 17; T47N, R17W, SEC. 8; Alger

In response to the notice of sale to be held 2:00 p.m. (local time) on June 12, 2019, I am hereby submitting my sealed bid (firm offer) for the following forest products to be cut. Bids for individual species must be at or above the advertised price. All non-responsive bid forms may be rejected.

<u>PRODUCTS &amp; SPECIES</u>	<u>ESTIMATED VOLUME*</u>	<u>ADVERTISED PRICE</u>	<u>BID PRICE/UNIT</u>
<b>Sawtimber</b>			
Black Cherry	0.40 MBF	\$ 119.00/MBF	\$ _____
Red Maple	3.20 MBF	\$ 101.00/MBF	\$ _____
Sugar Maple	13.90 MBF	\$ 375.00/MBF	\$ _____
<b>Pulpwood</b>			
Balsam Fir	52.00 Cords	\$ 18.55/Cord	\$ _____
Mixed Hardwood	429.00 Cords	\$ 18.90/Cord	\$ _____
N. White Cedar	540.00 Cords	\$ 6.95/Cord	\$ _____
Paper Birch	248.00 Cords	\$ 11.80/Cord	\$ _____
White Spruce	82.00 Cords	\$ 34.05/Cord	\$ _____

\*The volumes are statistically estimated within plus (+) or minus (-) 22.25 percent. These estimated volumes are final and not subject to adjustment. Prospective bidders are urged to examine this timber and to make their own estimates of quantity and quality.

I understand that any or all bids may be rejected. All bids must be signed and all bid items must be bid or the bid form may be rejected. I also understand that consideration and awarding a contract will be based upon my past performance and ability to complete the contract based upon equipment and staffing subject to my control.

FEDERAL ID: \_\_\_\_ - \_\_\_\_ - \_\_\_\_ or SOCIAL SECURITY NUMBER: \_\_\_\_ - \_\_\_\_ - \_\_\_\_

Company or individual bidding: \_\_\_\_\_

Company representative's name: \_\_\_\_\_

Address: \_\_\_\_\_

City: \_\_\_\_\_ State: \_\_\_\_\_ Zip: \_\_\_\_\_

IF AVAILABLE, PLEASE PLACE THE PERSONALIZED LABEL FROM YOUR PROSPECTUS IN THE ABOVE BOX.

Individual or company representative's signature: \_\_\_\_\_ Date: \_\_\_\_\_

Phone number : \_\_\_\_\_ Email (optional): \_\_\_\_\_

**THE WINNING BIDDER MUST COMPLETE THE VERIFICATION OF WORKER'S DISABILITY COMPENSATION ACT COMPLIANCE (ON REVERSE SIDE IF DOUBLE SIDED) WITHIN 21 DAYS OF SALE AWARD DATE**



<b>FOR DEPARTMENT USE ONLY</b>
Sale Number (XX - XXX - XX - XX)
Forest Management Unit:

## TIMBER SALE VERIFICATION OF WORKER'S DISABILITY COMPENSATION ACT COMPLIANCE

*As required by Act 317, P.A. 1969 (Worker's Compensation) and  
Part 5 of Act 451 of 1994, as amended.*

### VERIFICATION OF WORKER'S DISABILITY COMPENSATION ACT COMPLIANCE

- This verification must be completed and submitted within 21 days of contract award and prior to the issuance of the timber sale contract.
- In addition, if boxes 2B or 2C are checked, then Notice of Exclusion or Certificate of Insurance must be submitted within twenty-one (21) days of the contract award and prior to the issuance of the timber sale contract.
- All information must be typed or printed except for written signatures.

Please Check Appropriate Categories:

1. My business is organized as (you **must** check one of the boxes below):
  - A.  Sole Proprietorship (individual)
  - B.  Partnership
  - C.  Corporation
2. You **must** check one of the boxes below:
  - A.  I certify my business is a sole proprietorship and it has no employees but the sole proprietor. I am not subject to the Worker's Compensation Laws.
  - B.  I certify my business has satisfied its obligation to the Worker's Compensation Act through the use of an approved Notice of Exclusion (BWC-337, Rev. 5/96). I will provide a copy of the Notice of Exclusion within 21 days of the contract award. (For questions or a copy of the BWC-337, please call the Worker's Compensation Bureau at 517-322-1195).
  - C.  I certify my business has a Worker's Compensation Policy. I will provide an original Certificate of Insurance within twenty-one (21) days of the contract award.
3. If you have checked item 2(A) or 2(B), you **must** indicate the number of **both** full-time and part-time employees, other than yourself, including family members and active partners (if none, you must enter "0").

\_\_\_\_\_ Full-time Employees

\_\_\_\_\_ Part-time Employees

Name of Business		Federal ID (or) Social Security No.	
Address		Telephone (       )	
City	State	ZIP	

*I hereby certify that the above information is true and correct. I agree to notify the Michigan DNR of any changes that occur in factors affecting my coverage during any of my present and future operations.*

\_\_\_\_\_  
Signature of Owner or Authorized Representative

\_\_\_\_\_  
Title

\_\_\_\_\_  
Date

**Please complete the "SEALED BID" information on the next page**

Orange Bear Hardwoods (41-022-18)  
T48N, R17W, SEC. 24; T48N, R17W, SEC. 25; T48N, R17W, SEC. 26; Alger

In response to the notice of sale to be held 2:00 p.m. (local time) on June 12, 2019, I am hereby submitting my sealed bid (firm offer) for the following forest products to be cut. Bids for individual species must be at or above the advertised price. All non-responsive bid forms may be rejected.

<u>PRODUCTS &amp; SPECIES</u>	<u>ESTIMATED VOLUME*</u>	<u>ADVERTISED PRICE</u>	<u>BID PRICE/UNIT</u>
<b>Sawtimber</b>			
Red Maple	12.70 MBF	\$ 117.00/MBF	\$ _____
Sugar Maple	6.60 MBF	\$ 433.00/MBF	\$ _____
<b>Pulpwood</b>			
Balsam Fir	23.00 Cords	\$ 21.40/Cord	\$ _____
Mixed Hardwood	976.00 Cords	\$ 21.80/Cord	\$ _____
White Pine	8.00 Cords	\$ 23.35/Cord	\$ _____
White Spruce	17.00 Cords	\$ 39.30/Cord	\$ _____

\*The volumes are statistically estimated within plus (+) or minus (-) 23.18 percent. These estimated volumes are final and not subject to adjustment. Prospective bidders are urged to examine this timber and to make their own estimates of quantity and quality.

I understand that any or all bids may be rejected. All bids must be signed and all bid items must be bid or the bid form may be rejected. I also understand that consideration and awarding a contract will be based upon my past performance and ability to complete the contract based upon equipment and staffing subject to my control.

FEDERAL ID: \_\_\_\_\_ or SOCIAL SECURITY NUMBER: \_\_\_\_\_

Company or individual bidding: \_\_\_\_\_

Company representative's name: \_\_\_\_\_

Address: \_\_\_\_\_

City: \_\_\_\_\_ State: \_\_\_\_\_ Zip: \_\_\_\_\_

IF AVAILABLE, PLEASE PLACE THE PERSONALIZED LABEL FROM YOUR PROSPECTUS IN THE ABOVE BOX.

Individual or company representative's signature: \_\_\_\_\_ Date: \_\_\_\_\_

Phone number : \_\_\_\_\_ Email (optional): \_\_\_\_\_

**THE WINNING BIDDER MUST COMPLETE THE VERIFICATION OF WORKER'S DISABILITY COMPENSATION ACT COMPLIANCE (ON REVERSE SIDE IF DOUBLE SIDED) WITHIN 21 DAYS OF SALE AWARD DATE**



<b>FOR DEPARTMENT USE ONLY</b>
Sale Number (XX - XXX - XX - XX)
Forest Management Unit:

## TIMBER SALE VERIFICATION OF WORKER'S DISABILITY COMPENSATION ACT COMPLIANCE

*As required by Act 317, P.A. 1969 (Worker's Compensation) and  
Part 5 of Act 451 of 1994, as amended.*

### VERIFICATION OF WORKER'S DISABILITY COMPENSATION ACT COMPLIANCE

- This verification must be completed and submitted within 21 days of contract award and prior to the issuance of the timber sale contract.
- In addition, if boxes 2B or 2C are checked, then Notice of Exclusion or Certificate of Insurance must be submitted within twenty-one (21) days of the contract award and prior to the issuance of the timber sale contract.
- All information must be typed or printed except for written signatures.

Please Check Appropriate Categories:

1. My business is organized as (you **must** check one of the boxes below):
  - A.  Sole Proprietorship (individual)
  - B.  Partnership
  - C.  Corporation
  
2. You **must** check one of the boxes below:
  - A.  I certify my business is a sole proprietorship and it has no employees but the sole proprietor. I am not subject to the Worker's Compensation Laws.
  - B.  I certify my business has satisfied its obligation to the Worker's Compensation Act through the use of an approved Notice of Exclusion (BWC-337, Rev. 5/96). I will provide a copy of the Notice of Exclusion within 21 days of the contract award. (For questions or a copy of the BWC-337, please call the Worker's Compensation Bureau at 517-322-1195).
  - C.  I certify my business has a Worker's Compensation Policy. I will provide an original Certificate of Insurance within twenty-one (21) days of the contract award.
  
3. If you have checked item 2(A) or 2(B), you **must** indicate the number of **both** full-time and part-time employees, other than yourself, including family members and active partners (if none, you must enter "0").

\_\_\_\_\_ Full-time Employees

\_\_\_\_\_ Part-time Employees

Name of Business		Federal ID (or) Social Security No.	
Address		Telephone (       )	
City	State	ZIP	

*I hereby certify that the above information is true and correct. I agree to notify the Michigan DNR of any changes that occur in factors affecting my coverage during any of my present and future operations.*

\_\_\_\_\_  
Signature of Owner or Authorized Representative

\_\_\_\_\_  
Title

\_\_\_\_\_  
Date

**Please complete the "SEALED BID" information on the next page**

Tadpole Tidbits Mix (41-021-18)

T47N, R17W, SEC. 17; T47N, R17W, SEC. 18; T47N, R17W, SEC. 7; T47N, R17W,

In response to the notice of sale to be held 2:00 p.m. (local time) on June 12, 2019, I am hereby submitting my sealed bid (firm offer) for the following forest products to be cut. Bids for individual species must be at or above the advertised price. All non-responsive bid forms may be rejected.

<u>PRODUCTS &amp; SPECIES</u>	<u>ESTIMATED VOLUME*</u>	<u>ADVERTISED PRICE</u>	<u>BID PRICE/UNIT</u>
<b>Sawtimber</b>			
Basswood	0.80 MBF	\$ 142.00/MBF	\$ _____
Black Cherry	0.10 MBF	\$ 129.00/MBF	\$ _____
Red Maple	2.20 MBF	\$ 109.00/MBF	\$ _____
Sugar Maple	37.10 MBF	\$ 404.00/MBF	\$ _____
<b>Pulpwood</b>			
Balsam Fir	58.00 Cords	\$ 19.95/Cord	\$ _____
Basswood	47.00 Cords	\$ 11.55/Cord	\$ _____
Hemlock	4.00 Cords	\$ 10.15/Cord	\$ _____
Mixed Hardwood	605.00 Cords	\$ 20.35/Cord	\$ _____
N. White Cedar	3.00 Cords	\$ 7.50/Cord	\$ _____
Quaking Aspen	7.00 Cords	\$ 27.00/Cord	\$ _____
White Spruce	20.00 Cords	\$ 36.70/Cord	\$ _____

\*The volumes are statistically estimated within plus (+) or minus (-) 21.97 percent. These estimated volumes are final and not subject to adjustment. Prospective bidders are urged to examine this timber and to make their own estimates of quantity and quality.

I understand that any or all bids may be rejected. All bids must be signed and all bid items must be bid or the bid form may be rejected. I also understand that consideration and awarding a contract will be based upon my past performance and ability to complete the contract based upon equipment and staffing subject to my control.

FEDERAL ID: \_\_\_\_\_ or SOCIAL SECURITY NUMBER: \_\_\_\_\_

Company or individual bidding: \_\_\_\_\_

Company representative's name: \_\_\_\_\_

Address: \_\_\_\_\_

City: \_\_\_\_\_ State: \_\_\_\_\_ Zip: \_\_\_\_\_

IF AVAILABLE, PLEASE PLACE THE PERSONALIZED LABEL FROM YOUR PROSPECTUS IN THE ABOVE BOX.

Individual or company representative's signature: \_\_\_\_\_ Date: \_\_\_\_\_

Phone number : \_\_\_\_\_ Email (optional): \_\_\_\_\_

**THE WINNING BIDDER MUST COMPLETE THE VERIFICATION OF WORKER'S DISABILITY COMPENSATION ACT COMPLIANCE (ON REVERSE SIDE IF DOUBLE SIDED) WITHIN 21 DAYS OF SALE AWARD DATE**



<b>FOR DEPARTMENT USE ONLY</b>
Sale Number (XX - XXX - XX - XX)
Forest Management Unit:

## TIMBER SALE VERIFICATION OF WORKER'S DISABILITY COMPENSATION ACT COMPLIANCE

*As required by Act 317, P.A. 1969 (Worker's Compensation) and  
Part 5 of Act 451 of 1994, as amended.*

### VERIFICATION OF WORKER'S DISABILITY COMPENSATION ACT COMPLIANCE

- This verification must be completed and submitted within 21 days of contract award and prior to the issuance of the timber sale contract.
- In addition, if boxes 2B or 2C are checked, then Notice of Exclusion or Certificate of Insurance must be submitted within twenty-one (21) days of the contract award and prior to the issuance of the timber sale contract.
- All information must be typed or printed except for written signatures.

Please Check Appropriate Categories:

1. My business is organized as (you **must** check one of the boxes below):
  - A.  Sole Proprietorship (individual)
  - B.  Partnership
  - C.  Corporation
2. You **must** check one of the boxes below:
  - A.  I certify my business is a sole proprietorship and it has no employees but the sole proprietor. I am not subject to the Worker's Compensation Laws.
  - B.  I certify my business has satisfied its obligation to the Worker's Compensation Act through the use of an approved Notice of Exclusion (BWC-337, Rev. 5/96). I will provide a copy of the Notice of Exclusion within 21 days of the contract award. (For questions or a copy of the BWC-337, please call the Worker's Compensation Bureau at 517-322-1195).
  - C.  I certify my business has a Worker's Compensation Policy. I will provide an original Certificate of Insurance within twenty-one (21) days of the contract award.
3. If you have checked item 2(A) or 2(B), you **must** indicate the number of **both** full-time and part-time employees, other than yourself, including family members and active partners (if none, you must enter "0").

\_\_\_\_\_ Full-time Employees

\_\_\_\_\_ Part-time Employees

Name of Business		Federal ID (or) Social Security No.	
Address		Telephone (       )	
City	State	ZIP	

*I hereby certify that the above information is true and correct. I agree to notify the Michigan DNR of any changes that occur in factors affecting my coverage during any of my present and future operations.*

\_\_\_\_\_  
Signature of Owner or Authorized Representative

\_\_\_\_\_  
Title

\_\_\_\_\_  
Date

**Please complete the "SEALED BID" information on the next page**