



**DEPARTMENT OF NATURAL RESOURCES
STATE OF MICHIGAN**

TIMBER SALE PROSPECTUS #6590

SCHEDULED SALE DATE AND TIME: 9:00 a.m. (local time) on March 17, 2020.

LOCATION: GRAYLING MGMT UNIT, 1955 HARTWICK PINES ROAD, GRAYLING, MI 49738.

PROSPECTUS NOTE: The bidder is advised to inspect the sale area and review the location, estimated volumes, operating costs and contract terms of proposed sales. Please be aware that some landowners may request 60 days or more notice for access across their land.

Notice is hereby given that bids will be received by the Unit Manager, GRAYLING MANAGEMENT UNIT, for certain timber on the following described lands:

T-Rex KW (72-043-19) / T25N, R03W, SEC. 1 , NW,W1/2NE,NESW,S1/2SW,NWSE.

T25N, R03W, SEC. 2 , NW,NE,SW,SE.

Crawford County, Advertised Price \$161,959.10, 704.8 Acres, Jack Pine, Red Pine.

SALE NOTE: The Purchaser must contact the gas company prior to operating in the vicinity of their pipeline (see spec 5.1.3).

Chipping and low stumps are required (see specs 2.2.2 and 2.2.3). 231 acres of the sale is 29 year old KW jack pine. 186 acres of the sale is 37 year old KW jack pine.

A recreation site such as a trail, pathway, or campground is within the sale area or the vicinity. Certain restrictions/specifications may be applicable including time restrictions.

About Time Red Pine (72-044-19) / T27N, R03W, SEC. 19, E1/2NE.

T27N, R03W, SEC. 20, SWNW,SW.

T27N, R03W, SEC. 29, NWNW.

Crawford County, Advertised Price \$123,639.15, 82.8 Acres, Red Pine, Hardwood.

SALE NOTE: Access may be through the DNR service drive off of M-93, going behind the office buildings. There is also a 2-track off of M-93 on the west side of Payment Unit 6.

A recreation site such as a trail, pathway, or campground is within the sale area or the vicinity. Certain restrictions/specifications may be applicable including time restrictions.

N 241 HWs (72-621-19) / T28N, R03W, SEC. 23, NENW,N1/2NE,SENE,E1/2SW,SE.

T28N, R03W, SEC. 26, NWNE.

Crawford County, Advertised Price \$107,309.55, 116.3 Acres, Hardwood, Aspen.

SALE NOTE: This sale is on lands used for Military training. Seasonal operating restrictions pertaining to Military training and coppice regeneration protection will apply. Beech Bark Disease is present in the sale area and is beginning to cause mortality.

Timberdoodle Delight (72-637-19) / T28N, R02W, SEC. 23, S1/2NE,SWSW,SE.

Crawford County, Advertised Price \$139,477.30, 105.9 Acres, Hardwood, Aspen.

SALE NOTE: Military sale contains timing restrictions

Dyer Conners JP (72-645-19) / T27N, R01W, SEC. 31, NE,N1/2SE.

Crawford County, Advertised Price \$42,065.25, 92.4 Acres, Jack Pine, Red Pine.

SALE NOTE: The sale is on lands used for Military training. Seasonal restrictions relating to Military use and oak wilt are applied. The site will be trenched and planted following the harvest, so stump height and slash management specs are in place.

BID INSTRUCTIONS (VER. 07/02/2018):

1. Scheduled Bid Location, Date, and Time (2/11)

Bids must be received by the Unit Manager, GRAYLING OFFICE, 1955 HARTWICK PINES ROAD, GRAYLING, MI 49738, no later than 9:00 a.m. (local time) on March 17, 2020. For further information concerning this sale, contact Thomas Barnes at 989-348-6371 extension 7440.

2. Bidder's Qualifications (5/16)

Purchaser shall obtain workers compensation insurance to cover claims under Michigan's Worker's Disability Compensation Act of 1969 or similar employee benefit act of any other state applicable to an employee. If all or part of a timber sale was prepared by a private contractor, the contractor and that contractor's company are not permitted to bid on the timber sale contract. Bids will not be accepted from individuals or companies appearing on the DNR/FRD No-Bid List. This list contains the names of purchasers who previously failed to execute a contract within 21-days or who have a history of poor performance.

3. Preparation of Sealed Bids (5/16)

Bid Forms may be completed online thru Michigan DNR Timber Sale Online Bidding (OLB) at www.michigan.gov/timberbidding or by completing the hardcopy Bid Form found in the Timber Sale Prospectus. Hardcopy Bid Forms shall be manually signed in ink. Registration in OLB is considered your 'signature' for all bids submitted thru that system. Bid prices must be entered for each species and product in the Bid Price column for all material subject to bidding and all fill-in blanks must be completed. If erasures or other changes appear on the hardcopy Bid Form, each erasure or change must be initialed by the person signing the bid.

4. Submission of Sealed Bids (5/16)

Bid forms may be obtained from the Unit Manager or thru OLB. Bids may be submitted hardcopy or thru OLB. All hardcopy bids must be submitted on the bid form and in an envelope clearly identified as described in this section. NOTE: Only one bid form per bid envelope. Sealed bids must be submitted to the Unit office designated in the prospectus and must be submitted at or prior to the time established in the prospectus. The envelope should show on the outside (a) the sale name or number and (b) the date and time of bid opening, as shown in the prospectus. Bids received after the time specified in the sale prospectus are late bids and will be rejected.

It is possible for a bidder to submit multiple bids on a single sale. For example, a bid may be submitted hardcopy and a bid may be submitted thru OLB. Or, two bidders from the same company could both submit bids on the same sale. If this were to happen, the State would accept all bids received and award the contract accordingly. All bidding and contractual requirements would apply to all bids received.

5. Public Opening of Sealed Bids (7/16)

If conditions permit, the sealed bids will be publicly opened and posted at the time and place set in the prospectus.

If a bidder, present at a bid opening, has submitted bids on more than one sale, that bidder may withdraw their unopened bid envelopes or announce the withdrawal of their online bid after being declared the successful bidder on one sale.

6. Award of Contract (1/11)

Award of the contract will be made to the Bidder whose bid, conforming to the prospectus, is most advantageous to the State of Michigan on the basis of total value at rates bid for the estimated quantities. The State reserves the right to reject any bid or waive any minor irregularity in bids received. A written award mailed (or otherwise furnished) to the successful Bidder shall be deemed to result in a binding contract without further action by either party.

7. Down Payment (1/11)

The Bidder to whom award is made must make a down payment within 21 days of the sale award. The amount of the down payment will be calculated as shown in the Bond and Payment Schedule of this prospectus. Only cash may be used to meet this requirement.

8. Performance Security (1/11)

As guarantee of faithful performance, a cash bond, certificate of deposit, surety bond or irrevocable letter of credit (LOC) is required within 21 days of the sale award. The amount of the performance security is shown in the Bond and

Payment Schedule of this prospectus. If an LOC or surety is used, the coverage must extend for at least 6 months beyond the contract expiration.

9. Timber Sale Contract (7/18)

Additional conditions and requirements common to all timber sales are listed on the timber sale contract (R4031) and are available on line at www.michigan.gov/timber. Contact the Unit Manager for additional information or a sample contract. Within 21 days of the date of the award letter, the bidder must sign the contract and provide the required down payment, performance security, and verification of worker's disability compensation. The down payment and performance security shall be in accordance with the provisions of the timber sale contract, in the sums stated in this prospectus. If these actions are not taken, then the Bidder, the Bidder's corporation, and the corporation's principals may not be permitted to bid on State timber sales for a period of 3 months after the first offense, 6 months after the second offense, and 1 year after the third offense. An offense will only be counted against the Bidder for 5 years. In addition, the Bidder certifies that if awarded this contract, the Bidder will complete the timber sale contract in accordance with its terms and any modifications thereof including requirements to purchase, cut, and remove the included timber by the expiration date.

Payment Unit values in the State Forest Timber Sale Contract are calculated based on the advertised value of the Payment Unit as a percentage of the total advertised value of the contract. The advertised value of each Payment Unit is given in the Description of Timber by Payment Unit table on the Timber Sale Information page. For example, if the value of Payment Unit 1 is advertised as \$1,500 and the total Timber Sale value is advertised as \$10,000, the contract price for Payment Unit 1 will be 15% of the total bid price ($\$1,500/\$10,000 * 100$).

10. Disclaimer of Estimates and Bidder's Warranty of Inspection (7/16)

Before submitting this bid, the Bidder is advised and cautioned to inspect the sale area, review the requirements of the sale contract, and take other steps as may be reasonably necessary to ascertain the location, estimated volumes, construction estimates, and operating costs of the proposed sale. Failure to do so will not relieve the Bidder from responsibility for completing the contract.

The Bidder warrants that this bid is submitted solely on the basis of the Bidder's examination and inspection of the quality and quantity of the timber offered for sale and the Bidder's opinion of the value thereof and the costs of recovery. No reliance should be placed on the State of Michigan's estimates of timber quality, quantity or costs of recovery. Bidder further acknowledges that the State of Michigan: (i) expressly disclaims any warranty of fitness of timber for any purpose; (ii) offers this timber as is without any warranty of quality (merchantability) or quantity and (iii) expressly disclaims any warranty as to the quantity or quality of timber sold.

11. Certification and Chain-of-Custody (10/14)

Unless otherwise indicated in the contract under section 7 – Other Conditions of the Sale Specific Conditions & Requirements, the area encompassed by this timber sale is certified to the standards of the Forest Stewardship Council (FSC) - Certificate #SCS-FM/COC-00090N and the Sustainable Forestry Initiative (SFI) - Certificate #NSF-SFIS-5Y031-SF5. Forest products from this sale may be delivered to the mill as "FSC 100% and / or SFI certified" as long as the contractor hauling the forest products is chain-of-custody (COC) certified or covered under a COC certificate from the destination mill. The purchaser is responsible for maintaining COC after leaving the sale area.

12. Good Neighbor Authority (GNA) Requirements (7/16)

If the name of this timber sales contains the acronym GNA, it is authorized by the Good Neighbor Authority (GNA) and covered by various agreements between the U.S. Forest Service and the State. The timber sale occurs on federal land and the following conditions apply:

GNA contracts on US Forest Service land will not be awarded to purchasers on the Federal list of excluded parties. The System for Award Management (SAM) will be checked for active excluded parties prior to award of contract. In addition, the Bidder to whom award is made must complete an Assurance Regarding Felony Conviction or Tax Delinquent Status for Corporate Applicants (AD-3031).

13. Good Neighbor Authority (GNA) Requirements, con't (9/16)

Bidder certifies, by signing this bid form, that to the best of Bidder's knowledge that the following representations are accurate and complete.

- a. That the Bidder and its principals are not presently debarred, suspended, proposed for debarment, declared ineligible, or voluntary excluded from timber sales (covered transactions) by any Federal department or agency.
- b. That the Bidder and its principals have not within a 3-year period preceding this bid been convicted of or had a civil judgment rendered against them for commission of fraud or a criminal offense in connection with obtaining , attempting to obtain, or performing a public (Federal, State, or local) transaction or contract under a public transaction; violation of Federal or State antitrust statutes or commission of embezzlement, theft, forgery, bribery, falsification or destruction of records, making false statements, or receiving stolen property.
- c. That the Bidder and its principals are not presently indicted for or otherwise criminally or civilly charged by a governmental entity (Federal, State, or local) with commission of any of the offenses enumerated in paragraph b of this certification.
- d. That the Bidder and its principals have not within a 3-year period preceding this bid had one or more public transactions (Federal, State, or local) terminated for breach or default of a timber or forest product contract.

Bidders that cannot certify this requirement, in whole or in part, shall submit an explanation with their bid.

DAN EICHINGER
Director

TIMBER SALE INFORMATION

T-Rex KW (72-043-19)

T25N, R03W, SEC. 1; T25N, R03W, SEC. 2.

Crawford County (Advertised Price \$161,959.10)

SALE NOTE: The Purchaser must contact the gas company prior to operating in the vicinity of their pipeline (see spec 5.1.3).

Chipping and low stumps are required (see specs 2.2.2 and 2.2.3). 231 acres of the sale is 29 year old KW jack pine. 186 acres of the sale is 37 year old KW jack pine.

A recreation site such as a trail, pathway, or campground is within the sale area or the vicinity. Certain restrictions/specifications may be applicable including time restrictions.

A timber sale contract for this lump sum, sealed bid timber sale will be awarded to the responsible bidder offering the highest sealed bid price. Bids must be at or above the following advertised price for each species:

<u>PRODUCTS & SPECIES</u>	<u>ESTIMATED UNITS*</u>	<u>ADVERTISED PRICE</u>
Sawtimber		
Northern Pin Oak	15.10 MBF	\$ 131.00 / MBF
Red Pine	424.20 MBF	\$ 80.00 / MBF
White Pine	34.10 MBF	\$ 34.00 / MBF
Pulpwood		
Balsam Fir	1.00 Cords	\$ 13.25 / Cord
Jack Pine	5,560.00 Cords	\$ 17.40 / Cord
Mixed Oak	164.00 Cords	\$ 17.15 / Cord
Quaking Aspen	4.00 Cords	\$ 16.40 / Cord
Red Maple	67.00 Cords	\$ 22.10 / Cord
Red Pine	487.00 Cords	\$ 38.10 / Cord
White Pine	255.00 Cords	\$ 20.45 / Cord

* The estimated units are final and not subject to adjustment. Prospective bidders are urged to examine this timber and to make their own estimates of quantity and quality.

BOND AND PAYMENT SCHEDULE:

1. A bond in the amount of \$8,098.00 to insure faithful performance of the conditions of the contract will be deposited by the successful bidder within 21 days of the sale award.
2. Cutting in any sale or unit without the required advance payment would be considered a trespass.
3. Total payment must be paid in advance or according to the following schedule :
 - (a) Ten percent (10%) of the sale value must be paid within 21 days of the sale award.
 - (b) The 10% down payment will be credited towards the first unit cut.
 - (c) Payment for each of the following units must be made before cutting begins in that unit:

PAYMENT UNIT NUMBER	PERCENT OF TOTAL SALE VALUE
01	5.9%
02	7.6%
03	13.2%
04	12.1%
05	20.5%
06	12.1%
07	11.1%
08	5.6%
09	5.6%
10	6.3%

4. If no cutting takes place, the 10% down payment will not be refunded.
5. Operations on the contract issued will terminate on 03/31/2023.

Description of Timber by Payment Unit (PU)

PU	MARKET GROUP	PRODUCT	QUANTITY	UNIT	ACRES	ADVERTISE PRICE
1	Jack Pine	Pulpwood	500.0	Cords	93.2	\$9,484.35
	<i>Jack Pine</i>		500.0	<i>Cords</i>		
	Mixed Oak		6.0	Cords		
	Red Maple		4.0	Cords		
	White Pine		29.0	Cords		
2	Red Pine	Sawtimber	30.0	MBF	65.6	\$12,237.00
	White Pine		2.1	MBF		
	Jack Pine	Pulpwood	474.0	Cords		
	Mixed Oak		5.0	Cords		
	Red Maple		4.0	Cords		
	Red Pine		24.0	Cords		
	White Pine		21.0	Cords		
3	Red Pine	Sawtimber	70.3	MBF	82.4	\$21,390.10
	White Pine		4.9	MBF		
	Jack Pine	Pulpwood	728.0	Cords		
	Mixed Oak		7.0	Cords		
	Red Maple		4.0	Cords		
	Red Pine		57.0	Cords		
	White Pine		27.0	Cords		
4	Red Pine	Sawtimber	64.0	MBF	76.1	\$19,557.60
	White Pine		4.5	MBF		
	Jack Pine	Pulpwood	667.0	Cords		
	Mixed Oak		7.0	Cords		
	Red Maple		3.0	Cords		
	Red Pine		52.0	Cords		
	White Pine		25.0	Cords		
5	Northern Pin Oak	Sawtimber	15.1	MBF	93.0	\$33,418.85
	Red Pine		114.7	MBF		
	White Pine		12.6	MBF		
	Balsam Fir	Pulpwood	1.0	Cords		
	Jack Pine		548.0	Cords		
	Mixed Oak		57.0	Cords		
	Red Maple		7.0	Cords		
	Red Pine		230.0	Cords		
	White Pine		117.0	Cords		
6	Red Pine	Sawtimber	74.8	MBF	56.5	\$19,536.50
	White Pine		5.2	MBF		
	Jack Pine	Pulpwood	605.0	Cords		
	Mixed Oak		5.0	Cords		
	Red Maple		4.0	Cords		
	Red Pine		60.0	Cords		
	White Pine		19.0	Cords		
7	Red Pine	Sawtimber	68.8	MBF	52.0	\$17,932.10
	White Pine		4.8	MBF		
	Jack Pine	Pulpwood	557.0	Cords		
	Mixed Oak		5.0	Cords		
	Red Maple		2.0	Cords		
	Red Pine		55.0	Cords		
	White Pine		17.0	Cords		
8	Red Pine	Sawtimber	0.5	MBF	59.3	\$9,043.15
	Jack Pine	Pulpwood	472.0	Cords		
	Mixed Oak		23.0	Cords		
	Quaking Aspen		1.0	Cords		
	Red Maple		12.0	Cords		
	Red Pine		3.0	Cords		

Description of Timber by Payment Unit (PU), con't

PU	MARKET GROUP	PRODUCT	QUANTITY	UNIT	ACRES	ADVERTISE PRICE
9	Red Pine	Sawtimber	0.5	MBF	59.7	\$9,117.45
	Jack Pine	Pulpwood	475.0	Cords		
	Mixed Oak		23.0	Cords		
	Quaking Aspen		1.0	Cords		
	Red Maple		13.0	Cords		
	Red Pine		3.0	Cords		
10	Red Pine	Sawtimber	0.6	MBF	67.0	\$10,224.60
	Jack Pine	Pulpwood	533.0	Cords		
	Mixed Oak		26.0	Cords		
	Quaking Aspen		2.0	Cords		
	Red Maple		14.0	Cords		
	Red Pine		3.0	Cords		
TOTAL:			473.4	MBF		
TOTAL:			6,537.0	Cords		

Sale Specific Conditions & Requirements

Sale Name: T-Rex KW

Sale Number: 72-043-19 Seq#: 1

1 - Sale Area

1.2 - Boundaries

1.2.1 - Painted boundaries (1/14)

The sale boundary and Payment Unit boundaries are marked and identified by blue, red and yellow paint, along with unpainted designated boundaries. Exterior sale boundary lines against private property are marked with blue paint, with the exception of the boundaries adjacent to Beasley Rd, 4 Mile Rd, 5 Mile Rd, and Staley Lake Rd, which are unpainted and identified by the roads. Exterior sale boundary lines against state are marked with red paint, with the exception of the boundaries adjacent to 5 Mile Rd and Staley Lake Rd, which are unpainted and identified by the roads. In addition, the west boundaries of Payment Units 8 & 9, and north boundary of Payment Unit 8 are unpainted and identified by the type change. The openings labeled G0 or U0 on the Timber Sale Map within Payment Unit 1 and adjacent to Payment Unit 8 are unpainted and identified by the type change. Interior Payment Unit boundaries are marked with yellow paint, with the exception of the boundaries along the pipeline, which are unpainted and identified by the pipeline. In addition, the boundary between Payment Units 5 & 8 is unpainted and identified by Staley Lake Rd. The painted boundary line trees are not Included Timber and are to be protected. Yellow painted trees designating an interior Payment Unit boundary are only to be cut when all surrounding Payment Units have been paid.

2 - Timber Specifications

2.1 - Included Timber

2.1.1 - Clearcut unit(s) with unmerchantable trees (6/14)

Within Payment Unit(s) 1-10, cut all trees that are two (2) inches or more at DBH, except do not cut trees marked with green paint or any trees greater than 24 inches in diameter at stump height. Note that green painted trees are located around section corners and along the horse trail.

2.2 - Utilization

2.2.2 - Chipping required (2/18)

All Payment Units must be chip harvested to meet Kirtland's warbler habitat requirements. The Purchaser has the option to produce sawlogs or pulpwood bolts, but the remaining portion of the trees must be chipped and hauled. If market conditions limit the practicality of chipping, tops and slash must be arranged in a way that will not inhibit future planting operations, as directed by the sale administrator. The producer may skid all remaining topwood out of these payment units and scatter in locations approved by the sale administrator. If the deadline is not met, damages will be collected determined by the cost to complete this work. A chipping exemption can be obtained if proposed operations are determined to be suitable for planting by reforestation staff. This exemption must be granted in writing. The requirement to retain approximately 1/6 to 1/3 of tree tops and limbs less than four inches in diameter does not apply (G. C. & R. 2.2). This is because KW management does not require it.

2.2.3 - Stump heights (4/07)

Stump heights within the Sale Area shall not exceed 6 inches for all trees. This is in order to facilitate planting operations.

3 - Payments

3.3 - Pre-measured Sales

3.3.4 - Dividing payment units (7/14)

Payment Unit(s) may be divided at the request of the Purchaser and upon approval of the Unit Manager. Dividing Payment Units is a contract modification which requires a Timber Sale Contract Supplement.

3.4 - Damaged Timber

3.4.2 - Special Protection Trees (4/14)

The Purchaser shall not cut live or dead special protection trees within cutting units or clearings. Special protection trees are legacy red pine or white pine trees with a stump diameter greater than 24 inches. If the Purchaser's operations have cut or

damaged special protection trees through carelessness, the Purchaser shall pay \$500 as fixed, agreed and liquidated damages for each special protection tree cut or damaged. Such payment does not constitute ownership of the undesignated timber.

4 - Transportation

4.1 - Construction

4.1.6 - Road construction (1/09)

Construction of new roads or improvements of existing roads shall be done in such a way as to minimize the environmental and visual impacts. Merchantable trees shall be cut and utilized unless otherwise directed. Non-merchantable trees shall be severed and laid flat on the ground. Slash shall be chipped, utilized or dispersed into the sale. Stumps shall be set upright, not left on edge, and be moved at least 10 feet away from the road edge. Disturbed soil shall be feathered into the woods and not left in berms or windrows.

4.1.7 - Road closure (10/11)

All new roads built into the sale must be blocked to vehicle traffic upon completion of the sale. In general, this will require constructing a four (4') foot high berm of stumps and logs covered with earth. Stumps and brush must be placed along the remainder of the trail. These roads must be rendered impassable to cars and trucks. Temporary berms may be required if no sale activity occurs for 30 or more consecutive days. Contact the sale administrator for specific details of design and placement.

4.1.11 - Permits (2/12)

The Purchaser will secure any necessary highway permits that may be required.

5 - Operations

5.1 - Notification

5.1.1 - Pre-sale conference (10/16)

A pre-sale conference between the Purchaser and sale administrator is required prior to beginning any operations to determine landing and road locations. The Unit Manager or his/her representative must be contacted at least 5 days in advance to schedule the conference.

5.1.3 - Well heads and natural gas pipelines (11/15)

The Purchaser is responsible for contacting the pipeline company prior to operating equipment in the vicinity of well heads or natural gas pipelines. Contact DTE Energy at 1 (800) 363-9541.

5.2 - Conduct of Operations

5.2.2 - Hazard Trees/Snags

5.2.2.1 - Den trees (10/16)

Obvious hollow and/or den trees shall be protected and left standing unless they are a safety hazard.

5.2.32 - Decking/landing restoration (9/13)

All decking and landing areas must have the surface area restored to a condition equal to or better than before. This is to ensure the proper regeneration of the stand. Wood debris, chips and "cookies" from trimmings must be removed or scattered away from landing and loading areas and may not be windrowed on the edge.

5.2.37 - No decking areas (12/08)

No decking is allowed within 50 feet of pipeline without permission of the pipeline company.

5.2.40 - Pathway protection (10/10)

The Shore to Shore Trail is a horse trail and is shown on the Timber Sale Map. Do not cut trees or damage posts with blue pathway markers or green paint. Maintain a rut and slash free zone within 10 feet of the trail. Do not deck wood along the trail. Do not run equipment down the pathway. Do not operate equipment along the trail during scheduled trail rides. The administrator will provide a minimum of two weeks notice of when scheduled trail rides are to occur.

5.4 - Soil Protection

5.4.1 - Rutting restriction, general (7/16)

Operations are to cease immediately if equipment and weather conditions result in rutting of roads and/or skid trails which is

12 inches or greater in depth and 50 feet in length. The Unit Manager or his/her representative may restrict hauling and/or skidding if ruts exceed the specified depth. With the Unit Manager or his/her representative's approval, the Purchaser may return to the area when the risk of rutting has decreased.

5.8 - Protection of Endangered Species

5.8.1 - Kirtland's warbler (1) (10/12)

This sale is adjacent to a young jack pine stand which may be used by the endangered Kirtland's Warbler. The Department reserves the right to temporarily restrict all harvesting operations in a buffer zone of up to 500 feet if it is determined that Warbler territory has been established in the adjacent stand. The restricted period, if put into effect, would apply from May 1 to August 15.

6 - Safety and Fire Prevention

6.2 - Signing

6.2.1 - Road posting (9/09)

The Purchaser is responsible for posting and maintaining caution signs on 4 Mile Road prior to beginning operations. The road must be posted at appropriate distances from the sale area to warn of logging activity and truck traffic. Signs must be removed when harvest operations are suspended or completed. The Purchaser will provide these signs.

6.2.3 - Recreational trail posting (2/10)

The Purchaser is responsible for posting and maintaining caution signs on the Shore to Shore Horse Trail prior to beginning operations. The trail must be posted between the campground and Payment Unit 8 and the intersection of Beasley Road and 4 Mile Road to warn of logging activity and truck traffic at both ends of the trail. Signs must be removed when harvest operations are suspended or completed. The Purchaser will provide these signs.

7 - Other Conditions

7.2 - Extensions

7.2.2 - No extensions (3/09)

There will be no extensions granted on this contract. This sale is already scheduled for planting.

8 - Performance and Settlement

8.3 - Uncompleted or Terminated Contracts

8.3.1 - Completion of contract, chipping (1/16)

In addition to cutting, all chipping must be completed by the contract expiration date. If chipping has not been completed, an extension fee or damages may be charged per General Condition & Requirement 7.2 and 8.3.



TIMBER SALE MAP

This information provided by authority of Part 525, 1994 PA 451, as amended.

Sale Number	Year
72 - 043	19

Forest Management Unit	County	Mapped By	Date	Page	of
Grayling	Crawford	McClarren, Nellis	09/18/2019	1	1
Township	Range	Section(s) and Subdivision(s)	Scale		
25N	03W	Sec.1, NW, W1/2NE, E1/2SW, NWSE, Sec. 2, All	1:15,840		

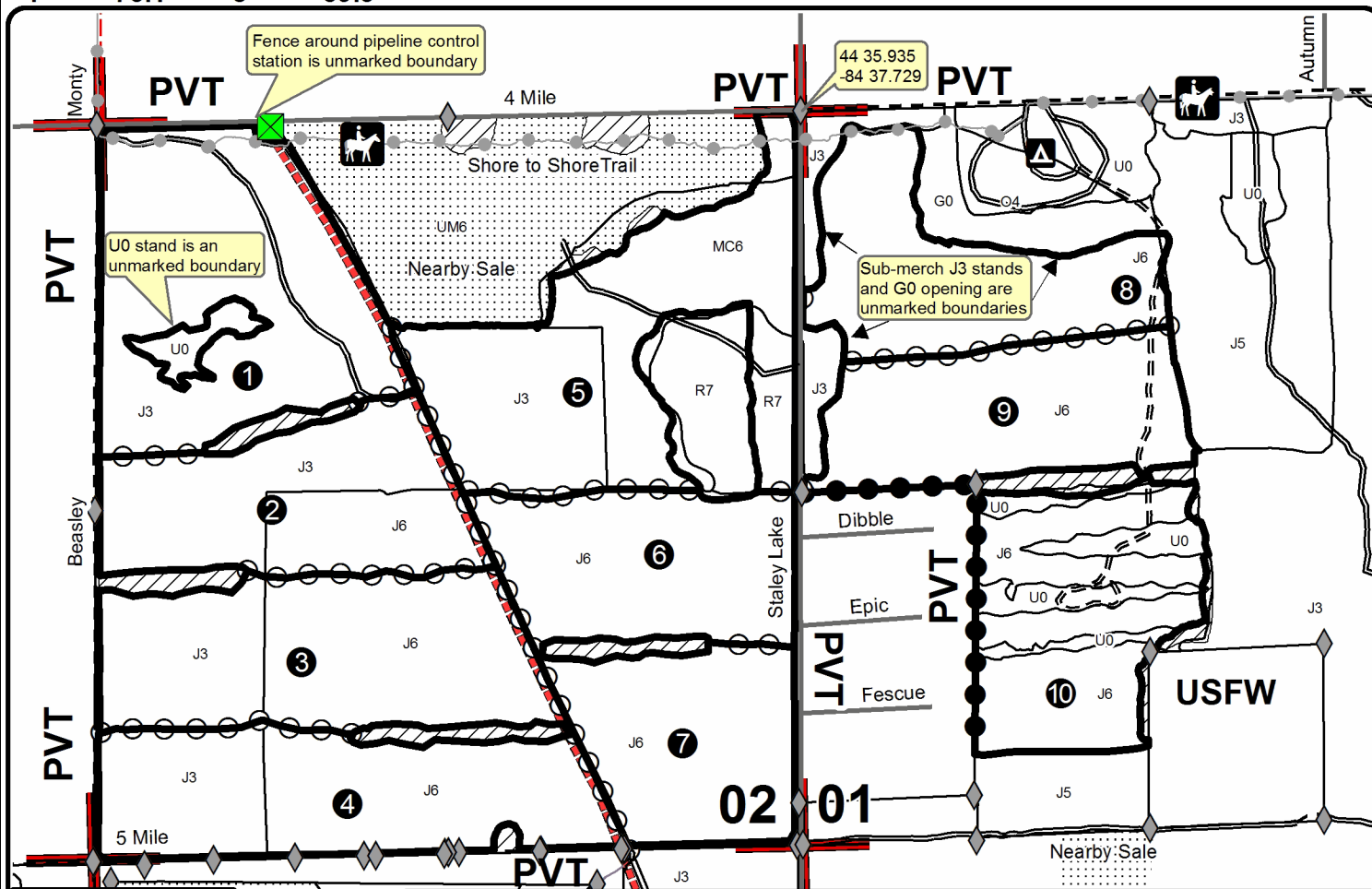
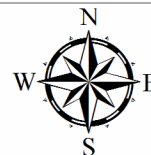
Cover Type				Density			
A = Aspen	H = Hemlock	N = Marsh	U = Upland Brush	0 = Non Stocked	5 = Pole Timber Medium		
B = Paper Birch	J = Jack Pine	O = Oak	UM = Upland Mixed	1 = Seedling Sapling Poor	6 = Pole Timber Well		
C = Cedar	L = Lowland Brush	P = Lowland Poplar	V = Bog or Marsh	2 = Seedling Sapling Medium	7 = Saw Timber Poor		
D = Treed Bog	LM = Lowland Mixed	Q = Mixed Swamp Conifer	W = White Pine	3 = Seedling Sapling Well	8 = Saw Timber Medium		
E = Swamp Hdwoods	M = Mpl, Bch, Brch	R = Red Pine	X = Non Stocked	4 = Pole Timber Poor	9 = Saw Timber Well		
F = Spruce Fir	MC = Mixed Conifer	S = Black Spruce	Z = Water				
G = Grass	MD = Mixed Deciduous	T = Tamarack					

PU	Acres	PU	Acres	PU	Acres
1	93.2	5	93	9	59.7
2	65.6	6	56.5	10	67
3	82.4	7	52		
4	76.1	8	59.3		

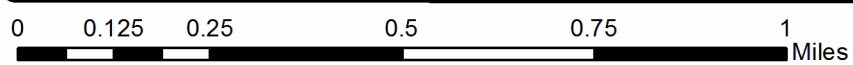
T-Rex KW

Compartment 232

704.8 Acres



Against State (Red or Designated Road)	Recreation Trails	Pipeline
Payment Unit (Yellow or Designated Road)	Secondary Forest Road	Pipeline Control Station
Private Line (Blue)	Forest Access Route	Field Grade Corners
Retention Area	Paved Road	PU Label
Stand Boundaries	Gravel Road	State Forest Campgrounds
	County Road - Seasonal	Section Corners
	Private	
	Active Railroad	



TIMBER SALE INFORMATION

About Time Red Pine (72-044-19)

T27N, R03W, SEC. 19; T27N, R03W, SEC. 20; T27N, R03W, SEC. 29.
Crawford County (Advertised Price \$123,639.15)

SALE NOTE: Access may be through the DNR service drive off of M-93, going behind the office buildings. There is also a 2-track off of M-93 on the west side of Payment Unit 6.

A recreation site such as a trail, pathway, or campground is within the sale area or the vicinity. Certain restrictions/specifications may be applicable including time restrictions.

A timber sale contract for this lump sum, sealed bid timber sale will be awarded to the responsible bidder offering the highest sealed bid price. Bids must be at or above the following advertised price for each species:

<u>PRODUCTS & SPECIES</u>	<u>ESTIMATED UNITS*</u>		<u>ADVERTISED PRICE</u>
Sawtimber			
BI/R/Hybrid Oak	46.90	MBF	\$ 197.00 / MBF
Red Maple	13.80	MBF	\$ 67.00 / MBF
Red Pine	572.40	MBF	\$ 121.00 / MBF
White Oak	8.00	MBF	\$ 70.00 / MBF
Pulpwood			
B. T. Aspen	106.00	Cords	\$ 24.60 / Cord
Jack Pine	18.00	Cords	\$ 26.15 / Cord
Mixed Oak	208.00	Cords	\$ 25.75 / Cord
Red Maple	313.00	Cords	\$ 33.10 / Cord
Red Pine	435.00	Cords	\$ 57.15 / Cord

* The total volume is statistically estimated within plus (+) or minus (-) 17.18 percent. The estimated units are final and not subject to adjustment. Prospective bidders are urged to examine this timber and to make their own estimates of quantity and quality.

BOND AND PAYMENT SCHEDULE:

1. A bond in the amount of _____ to insure faithful performance of the conditions of the contract will be deposited by the successful bidder within 21 days of the sale award.
2. Cutting in any sale or unit without the required advance payment would be considered a trespass.
3. Total payment must be paid in advance or according to the following schedule :
 - (a) Ten percent (10%) of the sale value must be paid within 21 days of the sale award.
 - (b) The 10% down payment will be credited towards the first unit cut.
 - (c) Payment for each of the following units must be made before cutting begins in that unit:

PAYMENT UNIT NUMBER	PERCENT OF TOTAL SALE VALUE
01	3.3%
02	39.9%
03	34.7%
04	16.9%
05	1.8%
06	3.4%

4. If no cutting takes place, the 10% down payment will not be refunded.
5. Operations on the contract issued will terminate on 03/31/2022.

Description of Timber by Payment Unit (PU)

PU	MARKET GROUP	PRODUCT	QUANTITY	UNIT	ACRES	ADVERTISE PRICE	
1	Red Maple	Pulpwood	1.0	Cords	15.7	\$4,090.75	
	Red Pine		71.0	Cords			
2	Bl/R/Hybrid Oak	Sawtimber	12.2	MBF	26.0	\$49,304.20	
	<i>Red Oak</i>		12.2	<i>MBF</i>			
	Red Maple		0.5	MBF			
	Red Pine		275.0	MBF			
	White Oak		1.9	MBF			
	B. T. Aspen		Pulpwood	6.0			Cords
	Jack Pine			10.0			Cords
	Mixed Oak			72.0			Cords
	Red Maple			62.0			Cords
	Red Pine			160.0			Cords
	3	Bl/R/Hybrid Oak	Sawtimber	10.6			MBF
<i>Red Oak</i>		10.6		<i>MBF</i>			
Red Maple		0.5		MBF			
Red Pine		239.1		MBF			
White Oak		1.7		MBF			
B. T. Aspen		Pulpwood		5.0	Cords		
Jack Pine				8.0	Cords		
Mixed Oak				63.0	Cords		
Red Maple				54.0	Cords		
Red Pine				140.0	Cords		
4		Bl/R/Hybrid Oak	Sawtimber	24.1	MBF	7.6	\$20,896.95
	<i>Red Oak</i>	24.1		<i>MBF</i>			
	Red Maple	11.0		MBF			
	Red Pine	40.8		MBF			
	White Oak	4.4		MBF			
	B. T. Aspen	Pulpwood		33.0	Cords		
	Mixed Oak			69.0	Cords		
	Red Maple			153.0	Cords		
	Red Pine		44.0	Cords			
5	Red Pine	Sawtimber	11.8	MBF	6.9	\$2,170.75	
	Red Pine	Pulpwood	13.0	Cords			
6	Red Maple	Sawtimber	1.8	MBF	4.0	\$4,261.85	
	Red Pine		5.7	MBF			
	B. T. Aspen	Pulpwood	62.0	Cords			
	Mixed Oak		4.0	Cords			
	Red Maple		43.0	Cords			
	Red Pine		7.0	Cords			
TOTAL:			641.1	MBF			
TOTAL:			1,080.0	Cords			

Sale Specific Conditions & Requirements

Sale Name: About Time Red Pine

Sale Number: 72-044-19 Seq#: 1

1 - Sale Area

1.2 - Boundaries

1.2.1 - Painted boundaries (9/19)

The sale boundary and Payment Unit boundaries are marked and identified by red and yellow paint, along with a road. Exterior sale boundary lines against state are marked with red paint. The exterior sale boundary line against private is unpainted and identified by the 2-track along the west side of Payment Unit 6. Interior Payment Unit boundaries are marked with yellow paint. Retention patches are marked with red paint; no harvesting activities may occur within these areas. The painted boundary line trees are not Included Timber and are to be protected unless marked with orange paint. Yellow painted trees designating an interior Payment Unit boundary are only to be cut when all surrounding Payment Units have been paid.

2 - Timber Specifications

2.1 - Included Timber

2.1.1 - Clearcut unit(s) with unmerchantable trees (6/14)

Within Payment Unit(s) 2, 3, 4, and 6, cut all trees that are two (2) inches or more at DBH, except within Payment Units 2 and 3, do not cut oak trees greater than 26 inches at DBH.

2.1.3 - Cut tree marked unit(s) (12/08)

Within Payment Unit(s) 1 and 5, all trees are designated for cutting when marked with orange paint above and below stump height, regardless of merchantability.

2.1.11 - Description of timber note (2/04)

Note that black/red hybrid oak includes red oak, pin oak and hybrid oak.

2.2 - Utilization

2.2.2 - Chipping required (2/18)

Payment Units 2-4 must be chip harvested to facilitate subsequent red pine planting operations. The Purchaser has the option to produce sawlogs or pulpwood bolts, but the remaining portion of the trees must be chipped and hauled. If market conditions limit the practicality of chipping, tops and slash must be arranged in a way that will not inhibit future planting operations, as directed by the sale administrator. The producer may skid all remaining topwood out of these units and scatter in locations approved by the sale administrator. If the deadline is not met, damages will be collected determined by the cost to complete this work. A chipping exemption can be obtained if proposed operations are determined to be suitable for planting by reforestation staff. This exemption must be granted in writing. The requirement to retain approximately 1/6 to 1/3 of tree tops and limbs less than four inches in diameter is still applicable (G. C. & R. 2.2).

2.2.3 - Stump heights (4/07)

Stump heights within Payment Unit(s) 2-4 shall not exceed 6 inches for all trees. This is in order to facilitate planting operations.

3 - Payments

3.3 - Pre-measured Sales

3.3.4 - Dividing payment units (7/14)

Payment Unit(s) 2 or 3 may be divided at the request of the Purchaser and upon approval of the Unit Manager. Dividing Payment Units is a contract modification which requires a Timber Sale Contract Supplement. There will be only one division per Payment Unit.

4 - Transportation

4.1 - Construction

4.1.6 - Road construction (1/09)

Construction of new roads or improvements of existing roads shall be done in such a way as to minimize the environmental

and visual impacts. Merchantable trees shall be cut and utilized unless otherwise directed. Non-merchantable trees shall be severed and laid flat on the ground. Slash shall be chipped, utilized or otherwise removed from the sale. Stumps shall be set upright, not left on edge, and be moved at least 10 feet away from the road edge. Disturbed soil shall be feathered into the woods and not left in berms or windrows.

4.1.7 - Road closure (10/11)

All new roads built into the sale must be blocked to vehicle traffic upon completion of the sale. Overgrown roads that are reopened shall be considered new roads. In general, this will require constructing a four (4') foot high berm of stumps and logs covered with earth. All stumps from road building and landing construction must be reserved to block any newly constructed roads upon completion of the sale. These stumps must be scattered along the road system to prohibit vehicular movement. Contact the sale administrator for specific details of design and placement.

4.2 - Maintenance

4.2.5 - Two wheel drive condition (2/04)

All existing trail roads on and adjacent to the sale area must be passable by two-wheel drive traffic for the duration of the sale.

5 - Operations

5.1 - Notification

5.1.1 - Pre-sale conference (10/16)

A pre-sale conference on site between the Purchaser and sale administrator is required prior to beginning any operations to determine landing and road locations and discuss operations along the MDOT fence. The Unit Manager or his/her representative must be contacted at least 10 days in advance to schedule the conference.

5.1.3 - Well heads and natural gas pipelines (11/15)

The Purchaser is responsible for contacting the gas or pipeline company prior to operating equipment in the vicinity of well heads or natural gas pipelines.

5.2 - Conduct of Operations

5.2.1 - Slash

5.2.1.11 - Slash for reforestation (5/07)

To facilitate reforestation, Payment Unit(s) 2-4 shall be left with slash evenly distributed. Bunched tops within the cutting area shall be broken up and scattered. Stumps shall be cut low to the ground. Processing sites shall not be left with a compacted layer of slash; tops from these sites shall be hauled back into the cut area and scattered.

5.2.2 - Hazard Trees/Snags

5.2.2.1 - Den trees (10/16)

Obvious hollow and/or den trees shall be protected and left standing unless they are a safety hazard.

5.2.3 - Operating Restrictions

5.2.3.3 - Bark slippage restriction (3/09)

Within Payment Unit(s) 1 and 5, unless changed by written agreement, cutting and skidding are not permitted during the period of April 15 to July 15. This restriction is because of bark slippage.

5.2.3.5 - Oak wilt restriction (1/18)

Within Payment Unit(s) 2-4, unless changed by written agreement, cutting, skidding, hauling within the sale and brushing of access roads to the sale are not permitted during the period of April 15 to July 15. Operations may be allowed if specific steps are taken to prevent damaging uncut oak during the high risk period. Those steps may include completing all road brushing before April 15th and clearing a tree-length buffer along uncut oak cover before April 15th. This is necessary to reduce the spread of oak wilt. For more information, contact the Unit Manager or his/her representative.

5.2.3.6 - Bark beetle restriction (12/08)

In the event drought creates a high risk of pine bark beetle infestation, pine is not to be cut during the period March 1 through July 1, unless all portions of trees greater than two inches in diameter are removed from the sale area, reduced to chips, or treated to the satisfaction of the Unit Manager or his/her representative, within fifteen days of being severed

from the stump. Pine log decks, pulpwood piles and treetops that are piled for chipping in the fall or winter within a 1/4 mile of susceptible sites must be removed before March 15. Residual slash must not be placed in piles or rows and must be spread over the site for quick drying. The Department of Natural Resources will exercise this specification if the risk of damage warrants.

5.2.17 - Timber Mats and Interlocking Composite Mats (3/18)

The bicycle pathway crossing will likely require extra protection, such as that afforded by interlocking composite mats or another approved system. If available, mats may be borrowed from the DNR. A Timber Sale Contract Supplement will be used to document the Purchaser's use of the DNR's mats. Contact the sale administrator regarding availability and pick-up. Composite mats are only available from the Grayling field office. The Purchaser is responsible for picking up and hauling the mats to and from the site. The composite mats will require DNR staff onsite for installation and removal. Contact the sale administrator to schedule at least 30 days before desired install/removal date. All mats must be cleaned prior to drop off. This may include, but is not limited to, power washing and brushing to remove mud and debris. A charge of \$2,000.00 per composite mat will be assessed for all damaged or non-returned mats. Damage for the composite mats is defined as cracked or broken mats.

5.2.32 - Decking/landing restoration (9/13)

All decking and landing areas must have the surface area restored to a condition equal to or better than before. This is to ensure the proper regeneration of the stand. Wood debris, chips and "cookies" from trimmings must be removed or scattered away from landing and loading areas and may not be windrowed on the edge.

5.2.38 - No decking against live trees (2/04)

Cut products may not be decked against unmarked or designated leave trees.

5.2.40 - Pathway protection (10/10)

The horse trail and bicycle path are shown on the Timber Sale Map. Do not cut trees or damage posts with blue pathway markers. Maintain a 20-foot wide slash, debris, and rut free zone daily, using the pathway as the centerline. Do not run equipment down the pathway. Skidding across the horse trail may only occur in locations approved by the sale administrator. Do not operate equipment along the trail during scheduled trail rides. The administrator will provide a minimum of two weeks notice of when scheduled trail rides are to occur. The bicycle path, which runs parallel to M-93, is shown on the Timber Sale Map and may need extra protection if crossed (i.e. mats, chips, etc. at points where the haul route crosses it).

5.4 - Soil Protection

5.4.1 - Rutting restriction, general (7/16)

Operations are to cease immediately if equipment and weather conditions result in rutting of roads and/or skid trails which is 12 inches or greater in depth and 50 feet in length. The Unit Manager or his/her representative may restrict hauling and/or skidding if ruts exceed the specified depth. With the Unit Manager or his/her representative's approval, the Purchaser may return to the area when the risk of rutting has decreased.

5.8 - Protection of Endangered Species

5.8.5 - Protection of raptor nests (3/13)

All trees with raptor nests will be protected if found during harvesting operations. Notification will be made to the Unit Manager or his/her representative who will notify the Wildlife Biologist so an on-site evaluation and recommendation can be made, if necessary.

6 - Safety and Fire Prevention

6.2 - Signing

6.2.3 - Recreational trail posting (2/10)

The Purchaser is responsible for posting and maintaining caution signs on the paved bicycle pathway that runs along M-93 and the horse trail prior to beginning operations. The trail must be posted along with the pathway at appropriate distances from the sale area to warn of logging activity and truck traffic at both ends of the trail. Signs must be removed when harvest operations are suspended or completed. The Purchaser will provide these signs.



TIMBER SALE MAP

This information provided by authority of Part 525, 1994 PA 451, as amended.

Forest Management Unit Grayling	County Crawford	Mapped By Fate	Date 09/27/2019	Page 1	of 1
Township 27N	Range 03W	Section(s) and Subdivision(s) 19: E2NE 20: SWNW, SW 29: NWNW	Scale 1:15,840		

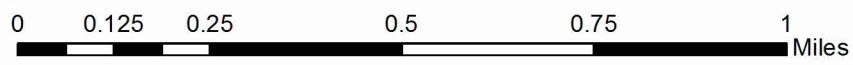
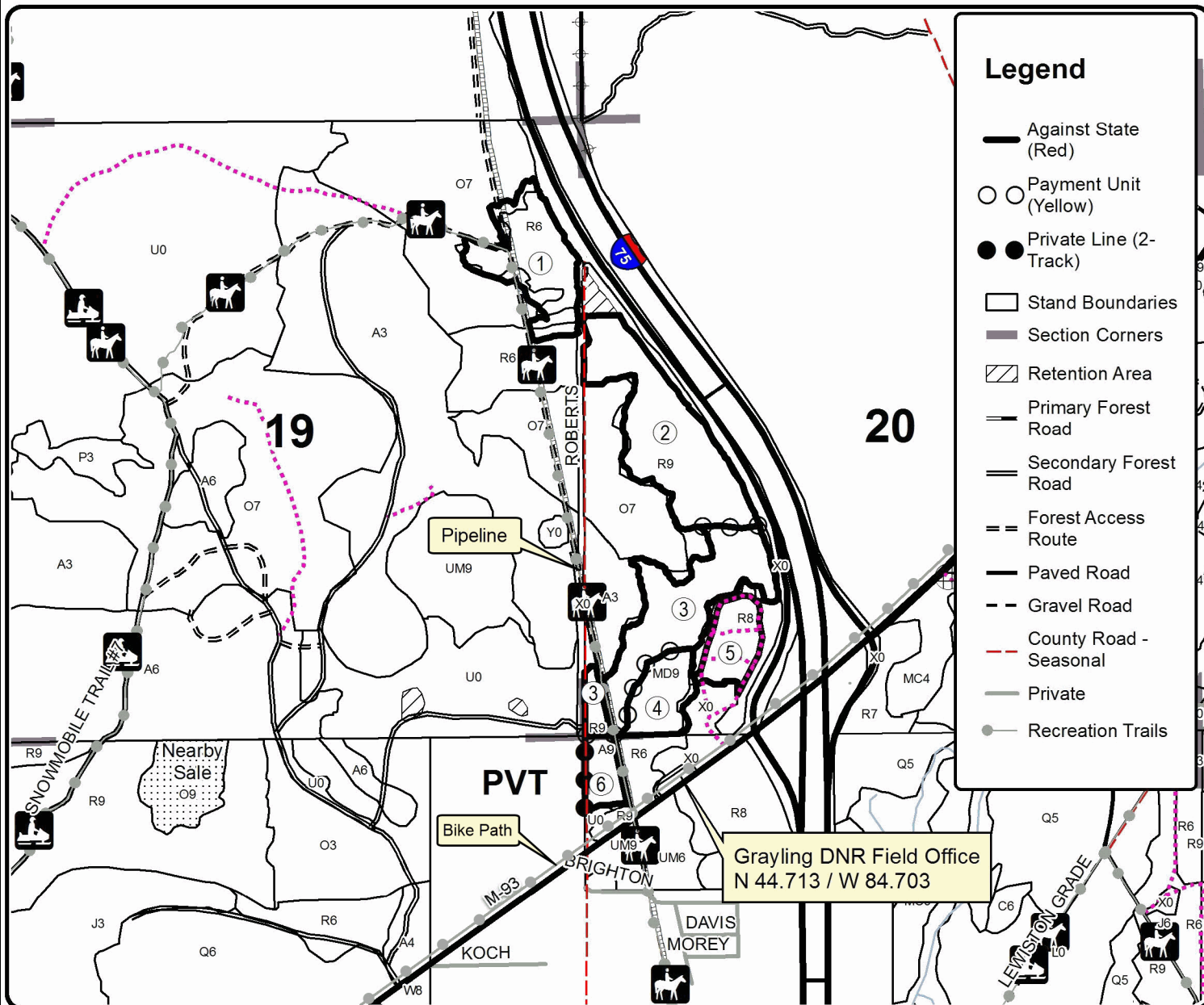
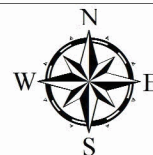
Cover Type				Density	
A = Aspen	H = Hemlock	N = Marsh	U = Upland Brush	0 = Non Stocked	5 = Pole Timber Medium
B = Paper Birch	J = Jack Pine	O = Oak	UM = Upland Mixed	1 = Seedling Sapling Poor	6 = Pole Timber Well
C = Cedar	L = Lowland Brush	P = Lowland Poplar	V = Bog or Marsh	2 = Seedling Sapling Medium	7 = Saw Timber Poor
D = Treed Bog	LM = Lowland Mixed	Q = Mixed Swamp Conifer	W = White Pine	3 = Seedling Sapling Well	8 = Saw Timber Medium
E = Swamp Hdwoods	M = Mpl, Bch, Brch	R = Red Pine	X = Non Stocked	4 = Pole Timber Poor	9 = Saw Timber Well
F = Spruce Fir	MC = Mixed Conifer	S = Black Spruce	Z = Water		
G = Grass	MD = Mixed Deciduous	T = Tamarack			

PU	Acres	PU	Acres
1	15.7	4	7.6
2	26.0	5	6.9
3	22.6	6	4.0

About Time Red Pine

Compartments 217 & 218

82.8 Acres



TIMBER SALE INFORMATION

N 241 HWs (72-621-19)

T28N, R03W, SEC. 23; T28N, R03W, SEC. 26.
Crawford County (Advertised Price \$107,309.55)

SALE NOTE: This sale is on lands used for Military training. Seasonal operating restrictions pertaining to Military training and coppice regeneration protection will apply. Beech Bark Disease is present in the sale area and is beginning to cause mortality.

A timber sale contract for this lump sum, sealed bid timber sale will be awarded to the responsible bidder offering the highest sealed bid price. Bids must be at or above the following advertised price for each species:

<u>PRODUCTS & SPECIES</u>	<u>ESTIMATED UNITS*</u>	<u>ADVERTISED PRICE</u>
Sawtimber		
Basswood	95.50 MBF	\$ 51.00 / MBF
Beech	103.60 MBF	\$ 51.00 / MBF
Mixed Aspen	91.30 MBF	\$ 52.00 / MBF
Red Maple	6.40 MBF	\$ 49.00 / MBF
Sugar Maple	219.50 MBF	\$ 180.00 / MBF
Pulpwood		
Basswood	247.00 Cords	\$ 10.30 / Cord
Mixed Aspen	345.00 Cords	\$ 18.05 / Cord
Mixed Hardwood	1,803.00 Cords	\$ 24.30 / Cord

* The total volume is statistically estimated within plus (+) or minus (-) 9.54 percent. The estimated units are final and not subject to adjustment. Prospective bidders are urged to examine this timber and to make their own estimates of quantity and quality.

BOND AND PAYMENT SCHEDULE:

1. A bond in the amount of \$5,365.00 to insure faithful performance of the conditions of the contract will be deposited by the successful bidder within 21 days of the sale award.
2. Cutting in any sale or unit without the required advance payment would be considered a trespass.
3. Total payment must be paid in advance or according to the following schedule :
 - (a) Ten percent (10%) of the sale value must be paid within 21 days of the sale award.
 - (b) The 10% down payment will be credited towards the first unit cut.
 - (c) Payment for each of the following units must be made before cutting begins in that unit:

PAYMENT UNIT NUMBER	PERCENT OF TOTAL SALE VALUE
01	4.5%
02	16.0%
03	14.5%
04	11.3%
05	13.3%
06	17.5%
07	22.9%
4. If no cutting takes place, the 10% down payment will not be refunded.
5. Operations on the contract issued will terminate on 03/31/2024.

Description of Timber by Payment Unit (PU)

PU	MARKET GROUP	PRODUCT	QUANTITY	UNIT	ACRES	ADVERTISE PRICE
1	Beech	Sawtimber	3.9	MBF	10.8	\$4,838.45
	Mixed Aspen		1.0	MBF		
	Red Maple		1.9	MBF		
	Sugar Maple		1.9	MBF		
	Mixed Aspen	Pulpwood	51.0	Cords		
	Mixed Hardwood		133.0	Cords		
2	Basswood	Sawtimber	25.7	MBF	16.8	\$17,135.80
	Beech		9.6	MBF		
	Mixed Aspen		45.1	MBF		
	Red Maple		1.1	MBF		
	Sugar Maple	24.6	MBF			
	Basswood	Pulpwood	54.0	Cords		
	Mixed Aspen		104.0	Cords		
	Mixed Hardwood		250.0	Cords		
3	Basswood	Sawtimber	40.7	MBF	16.4	\$15,577.70
	Beech		2.7	MBF		
	Mixed Aspen		24.7	MBF		
	Sugar Maple		28.3	MBF		
	Basswood	Pulpwood	102.0	Cords		
	Mixed Aspen		104.0	Cords		
	Mixed Hardwood		167.0	Cords		
4	Basswood	Sawtimber	5.5	MBF	14.8	\$12,072.40
	Beech		11.1	MBF		
	Mixed Aspen		8.0	MBF		
	Sugar Maple		29.2	MBF		
	Basswood	Pulpwood	16.0	Cords		
	Mixed Aspen		32.0	Cords		
	Mixed Hardwood		198.0	Cords		
5	Basswood	Sawtimber	7.1	MBF	15.3	\$14,252.20
	Beech		18.2	MBF		
	Sugar Maple		25.8	MBF		
	Basswood	Pulpwood	27.0	Cords		
	Mixed Aspen		20.0	Cords		
	Mixed Hardwood		316.0	Cords		
6	Basswood	Sawtimber	8.5	MBF	19.9	\$18,831.50
	Beech		35.6	MBF		
	Mixed Aspen		12.5	MBF		
	Sugar Maple		42.4	MBF		
	Basswood	Pulpwood	22.0	Cords		
	Mixed Aspen		34.0	Cords		
	Mixed Hardwood		307.0	Cords		
7	Basswood	Sawtimber	8.0	MBF	22.3	\$24,601.50
	Beech		22.5	MBF		
	Red Maple		3.4	MBF		
	Sugar Maple		67.3	MBF		
	Basswood	Pulpwood	26.0	Cords		
	Mixed Hardwood		432.0	Cords		
TOTAL:			516.3	MBF		
TOTAL:			2,395.0	Cords		

Sale Specific Conditions & Requirements

Sale Name: N 241 HWs

Sale Number: 72-621-19 **Seq#:** 2

1 - Sale Area

1.2 - Boundaries

1.2.1 - Painted boundaries (1/14)

The sale boundary and Payment Unit boundaries are marked and identified by blue, red and yellow paint, in addition to designated unpainted Payment Unit boundaries. Exterior sale boundary lines against private property are marked with blue paint. Exterior sale boundary lines against state are marked with red paint. Interior Payment Unit boundaries are marked with yellow paint, with the exception of the boundaries between Payment Units 1 & 2 and 5 & 7, which are unpainted and designated by the interior roads. The painted boundary line trees are not Included Timber and are to be protected, with the exception of the red painted boundary trees along the cleared edge of the roads shown on the Timber Sale Map, which are designated for cutting. If the roadside red painted tree is within a multiple-stem clump, cut all trees within the clump. Yellow painted trees designating an interior Payment Unit boundary are only to be cut when all surrounding Payment Units have been paid.

2 - Timber Specifications

2.1 - Included Timber

2.1.1 - Clearcut unit(s) with unmerchantable trees (6/14)

Within Payment Unit(s) 1-7, cut all trees that are one (1) inch or more at DBH, except do not cut white pine, red pine, and green-marked trees. Survey corner witness trees are ringed with green paint in Payment Units 1 & 5, and one large beech wildlife tree was green marked in Payment Unit 5.

2.1.11 - Description of timber note (2/04)

Note that Beech Bark Disease is present within the sale area. Declining beech cruised during sale prep will likely be dead by time of harvest, so cut all beech, dead or alive.

2.2 - Utilization

2.2.2 - Chipping required (2/18)

Payment Units 4-7 must be chip harvested to facilitate future planting operations and to meet National Guard requirements. The Purchaser has the option to produce sawlogs or pulpwood bolts, but the remaining portion of the trees must be chipped and hauled. The requirement to retain approximately 1/6 to 1/3 of tree tops and limbs less than four inches in diameter does not apply (G. C. & R. 2.2) because the lands are used for Military training.

2.2.3 - Stump heights (4/07)

Stump heights within the Sale Area shall not exceed 6 inches for all trees. This is in order to facilitate military and planting requirements.

2.2.9 - No chipping permitted (12/08)

Within Payment Unit(s) 1-3, all wood must be removed by tree segment or roundwood. No chipping of tops is permitted within those units.

3 - Payments

3.3 - Pre-measured Sales

3.3.4 - Dividing payment units (7/14)

Payment Unit(s) 6 and 7 may be divided at the request of the Purchaser and upon approval of the Unit Manager. Dividing Payment Units is a contract modification which requires a Timber Sale Contract Supplement.

4 - Transportation

4.1 - Construction

4.1.3 - Slash and earthen piles (8/04)

Piles or windrows of earth along roads and landings that have been widened or constructed shall be leveled. Slash from road

maintenance or construction, including stumps, shall be chipped, utilized or dispersed into the sale area.

4.1.6 - Road construction (1/09)

Construction of new roads or improvements of existing roads shall be done in such a way as to minimize the environmental and visual impacts. Merchantable trees shall be cut and utilized unless otherwise directed. Non-merchantable trees shall be severed and laid flat on the ground. Slash shall be chipped, utilized or dispersed away from the road edge. Stumps shall be set upright, not left on edge, and be moved at least 10 feet away from the road edge. Disturbed soil shall be feathered into the woods and not left in berms or windrows.

4.1.7 - Road closure (10/11)

All new roads built into the sale must be blocked to vehicle traffic upon completion of the sale. Overgrown roads that are reopened shall be considered new roads. In general, this will require constructing a four (4') foot high berm of stumps and logs covered with earth. Stumps and brush must be scattered across approximately 100 feet of the trail behind each berm. Contact the sale administrator for specific details of design and placement.

4.1.11 - Permits (2/12)

The Purchaser will secure any necessary highway and stream crossing permits that may be required.

5 - Operations

5.1 - Notification

5.1.4 - Post-sale conference (10/16)

A post-sale conference on site between the Purchaser and sale administrator is required prior to the completion of active logging operations to determine clean-up and repair of landings, road edges, and the fulfillment of other contract specifications.

5.1.5 - National Guard notification (2/15)

This sale is upon lands utilized for training by the Michigan National Guard - Camp Grayling. A minimum of five (5) business days prior to opening this sale, the producer must request that the sale administrator contact the military for information regarding training plans that may impact sale operations.

5.2 - Conduct of Operations

5.2.3 - Operating Restrictions

5.2.3.7 - National Guard training restriction (1/09)

Operations on this contract may not be allowed during National Guard training operations. Typically, the restricted period is from May 1 to October 31. The contractor must check with the Unit Manager who will coordinate the cutting schedule with the Military. All harvest equipment and timber products may need to be removed from the sale area during military training operations.

5.2.3.11 - Coppice regeneration protection (4/10)

To promote aspen and maple regeneration, unless changed by written agreement with the Unit Manager, harvesting is limited to November 1 through March 31. Timber harvesting in any Payment Unit must be completed before significant sprouting occurs in that Payment Unit so as to minimize damage to the new regeneration. Any post harvest operations, such as chipping, must be completed before sprouting of regeneration occurs. If it is anticipated that chipping will be delayed, then tops shall be carried to one central location.

5.2.29 - Shrub protection (9/07)

Do not cut or damage juneberry within the harvest area. These woody-shrub plants are highly beneficial to various wildlife species. In addition, if the opening between Payment Units 5 and 7 (see Timber Sale Map) is used for a landing area, protect the juneberry, apple, cherry, and scattered open-grown trees within the opening. If used, the road through that opening will need to be brushed.

5.2.38 - No decking against live trees (2/04)

Cut products may not be decked against unmarked or designated leave trees.

5.4 - Soil Protection

5.4.1 - Rutting restriction, general (7/16)

Operations are to cease immediately if equipment and weather conditions result in rutting of roads and/or skid trails which is

12 inches or greater in depth and 50 feet in length. The Unit Manager or his/her representative may restrict hauling and/or skidding if ruts exceed the specified depth. With the Unit Manager or his/her representative's approval, the Purchaser may return to the area when the risk of rutting has decreased.

5.4.2 - Skid trails (2/04)

Skid trails up and down slopes should be avoided. If however this is unavoidable, these trails will be left in a non-erodible condition using water bars, logs, and slash. Placing of slash on these skid trails while logging is ongoing may alleviate need for any further action. At the direction of the sale administrator, seed, fertilizer, and mulch may also be required.

6 - Safety and Fire Prevention

6.2 - Signing

6.2.1 - Road posting (9/09)

The Purchaser is responsible for posting and maintaining caution signs on Marker Road prior to beginning operations. The road must be posted at appropriate distances from the sale area when trees are being felled alongside it to warn of logging activity and truck traffic. Signs must be removed when harvest operations are suspended or completed. The Purchaser will provide these signs.

7 - Other Conditions

7.5 - Loss

7.5.1 - Deteriorating timber (7/09)

The sale area has received damage from Beech Bark Disease. The Purchaser should harvest the wood as soon as possible. The Department of Natural Resources is held free of responsibility of any further damage or deterioration due to delay in harvesting.

7.10 - Certified Timber

7.10.1 - Non-certified timber (2/16)

The area encompassed by this timber sale is not certified to the standards of the Forest Stewardship Council (FSC) or the Sustainable Forestry Initiative (SFI). Forest products from this sale may not be delivered to the mill as "FSC and / or SFI certified". The lands within this sale are managed for military training.



TIMBER SALE MAP

This information provided by authority of Part 525, 1994 PA 451, as amended.

Forest Management Unit Grayling	County Crawford	Mapped By Charlebois	Date 08/19/2019	Page 1	of 1
Township 28N	Range 3W	Section(s) and Subdivision(s) Sec 14: SESW Sec 23: NENW, N1/2NE, SENE, SE, E1/2SW & Sec 26: NWNE	Scale 1:15,840		

Cover Type				Density	
A = Aspen	H = Hemlock	N = Marsh	U = Upland Brush	0 = Non Stocked	5 = Pole Timber Medium
B = Paper Birch	J = Jack Pine	O = Oak	UM = Upland Mixed	1 = Seedling Sapling Poor	6 = Pole Timber Well
C = Cedar	L = Lowland Brush	P = Lowland Poplar	V = Bog or Marsh	2 = Seedling Sapling Medium	7 = Saw Timber Poor
D = Treed Bog	LM = Lowland Mixed	Q = Mixed Swamp Conifer	W = White Pine	3 = Seedling Sapling Well	8 = Saw Timber Medium
E = Swamp Hdwoods	M = Mpl, Bch, Brch	R = Red Pine	X = Non Stocked	4 = Pole Timber Poor	9 = Saw Timber Well
F = Spruce Fir	MC = Mixed Conifer	S = Black Spruce	Z = Water		
G = Grass	MD = Mixed Deciduous	T = Tamarack			

N 241 HWs
Compartment 241
116.3 Acres

PU	Acres
1	10.8
2	16.8
3	16.4
4	14.8
5	15.3
6	19.9
7	22.3



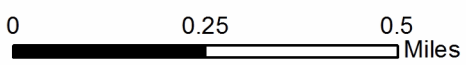
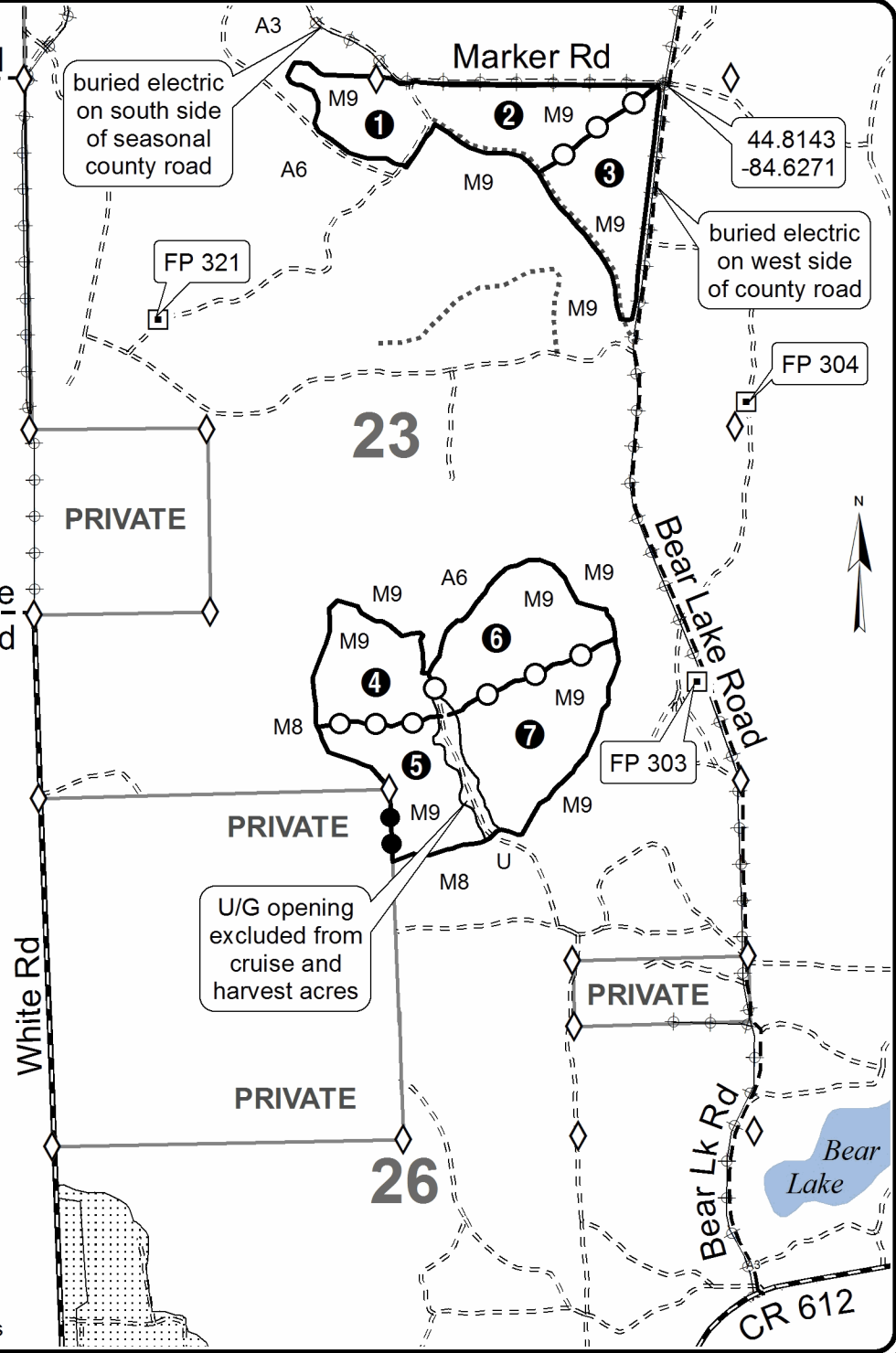
Legend

Sale Boundary

- Against State (red)
- Against Private (blue)
- Payment Unit (yellow)
- or designated (unpainted) following mapped interior roads

Other Features

- Nearby Sale
- Covertime Boundary
- Paved Road
- Gravel Road
- Poor Dirt Road
- Closed Road
- Powerline
- State Land Boundary
- Survey Corner
- 26 Section Number
- Military Firing Point



TIMBER SALE INFORMATION

Timberdoodle Delight (72-637-19)
 T28N, R02W, SEC. 23.
 Crawford County (Advertised Price \$139,477.30)

SALE NOTE: Military sale contains timing restrictions

A timber sale contract for this lump sum, sealed bid timber sale will be awarded to the responsible bidder offering the highest sealed bid price. Bids must be at or above the following advertised price for each species:

<u>PRODUCTS & SPECIES</u>	<u>ESTIMATED UNITS*</u>	<u>ADVERTISED PRICE</u>
Sawtimber		
BI/R/Hybrid Oak	326.00 MBF	\$ 197.00 / MBF
Red Maple	18.90 MBF	\$ 67.00 / MBF
Red Pine	1.50 MBF	\$ 121.00 / MBF
Pulpwood		
BI/R/Hybrid Oak	1,138.00 Cords	\$ 25.75 / Cord
Mixed Aspen	561.00 Cords	\$ 24.60 / Cord
Paper Birch	15.00 Cords	\$ 11.95 / Cord
Red Maple	903.00 Cords	\$ 33.10 / Cord
Red Pine	3.00 Cords	\$ 57.15 / Cord
Sugar Maple	14.00 Cords	\$ 33.10 / Cord

* The total volume is statistically estimated within plus (+) or minus (-) 8.04 percent. The estimated units are final and not subject to adjustment. Prospective bidders are urged to examine this timber and to make their own estimates of quantity and quality.

BOND AND PAYMENT SCHEDULE:

1. A bond in the amount of \$6,974.00 to insure faithful performance of the conditions of the contract will be deposited by the successful bidder within 21 days of the sale award.
2. Cutting in any sale or unit without the required advance payment would be considered a trespass.
3. Total payment must be paid in advance or according to the following schedule :
 - (a) Ten percent (10%) of the sale value must be paid within 21 days of the sale award.
 - (b) The 10% down payment will be credited towards the first unit cut.
 - (c) Payment for each of the following units must be made before cutting begins in that unit:

<u>PAYMENT UNIT NUMBER</u>	<u>PERCENT OF TOTAL SALE VALUE</u>
01	29.3%
02	35.0%
03	26.2%
04	9.5%
4. If no cutting takes place, the 10% down payment will not be refunded.
5. Operations on the contract issued will terminate on 03/31/2022.

Description of Timber by Payment Unit (PU)

PU	MARKET GROUP	PRODUCT	QUANTITY	UNIT	ACRES	ADVERTISE PRICE
1	BI/R/Hybrid Oak	Sawtimber	93.1	MBF	27.6	\$40,851.50
	<i>BI/R/Hybrid Oak</i>		93.1	<i>MBF</i>		
	Red Pine		1.5	MBF		
	BI/R/Hybrid Oak	Pulpwood	469.0	Cords		
	Mixed Aspen		64.0	Cords		
	Red Maple		257.0	Cords		
	Red Pine		3.0	Cords		
2	BI/R/Hybrid Oak	Sawtimber	129.9	MBF	33.7	\$48,767.75
	<i>BI/R/Hybrid Oak</i>		128.9	<i>MBF</i>		
	<i>Red Oak</i>		1.0	<i>MBF</i>		
	Red Maple		7.4	MBF		
	BI/R/Hybrid Oak	Pulpwood	370.0	Cords		
	Mixed Aspen		124.0	Cords		
	Paper Birch		9.0	Cords		
	Red Maple		294.0	Cords		
	Sugar Maple		8.0	Cords		
3	BI/R/Hybrid Oak	Sawtimber	97.4	MBF	25.3	\$36,585.05
	<i>BI/R/Hybrid Oak</i>		96.7	<i>MBF</i>		
	<i>Red Oak</i>		0.7	<i>MBF</i>		
	Red Maple		5.6	MBF		
	BI/R/Hybrid Oak	Pulpwood	277.0	Cords		
	Mixed Aspen		95.0	Cords		
	Paper Birch		6.0	Cords		
	Red Maple		220.0	Cords		
	Sugar Maple		6.0	Cords		
4	BI/R/Hybrid Oak	Sawtimber	5.6	MBF	19.3	\$13,297.60
	<i>BI/R/Hybrid Oak</i>		5.6	<i>MBF</i>		
	Red Maple		5.9	MBF		
	BI/R/Hybrid Oak	Pulpwood	22.0	Cords		
	Mixed Aspen		279.0	Cords		
	Red Maple		132.0	Cords		
TOTAL:			346.4	MBF		
TOTAL:			2,635.0	Cords		

Sale Specific Conditions & Requirements

Sale Name: Timberdoodle Delight

Sale Number: 72-637-19 Seq#: 1

1 - Sale Area

1.2 - Boundaries

1.2.1 - Painted boundaries (9/19)

The sale boundary and Payment Unit boundaries are marked and identified by blue, red and yellow paint, along with roads. Exterior sale boundary lines against private property are marked with blue paint. Exterior sale boundary lines against state are marked with red paint, with the exception of the boundaries against Lonesome Lake Road and County Road 612, which are unpainted and identified by the roads. Interior Payment Unit boundaries are marked with yellow paint, with the exception of the boundary between Payment Units 1 & 2, which is unpainted and identified by the two-track road. Retention patches are marked with red paint; no harvesting activities may occur within these areas. The painted boundary line trees are not Included Timber and are to be protected unless marked with orange paint. Yellow painted trees designating an interior Payment Unit boundary are only to be cut when all surrounding Payment Units have been paid.

2 - Timber Specifications

2.1 - Included Timber

2.1.1 - Clearcut unit(s) with unmerchantable trees (6/14)

Within Payment Unit(s) 1-4, cut all trees that are two (2) inches or more at DBH. In addition, within Payment Unit 1, do not cut green marked trees located near private corner. Also, within Payment Units 2, 3, and 4, do not cut red pine.

2.1.15 - Hazard trees near roads (7/13)

Cut and remove all standing dead trees within 100 feet of the cleared portion of County Rd 612. These trees may be utilized or must be scattered back into the sale area.

2.2 - Utilization

2.2.2 - Chipping required (2/18)

This area must be chip harvested to meet National Guard requirements. The Purchaser has the option to produce sawlogs or pulpwood bolts, but the remaining portion of the trees must be chipped and hauled. The chipping requirement could be waived with military approval if market conditions limit the practicality of chipping. Tops and slash would need to be arranged in a way that would not inhibit military operations, as directed by the sale administrator. The Purchaser may skid all remaining topwood out of the units and scatter in locations approved by the sale administrator. If the deadline is not met, damages will be collected determined by the cost to complete this work. A chipping exemption can be obtained if proposed operations are determined to be suitable by military staff. This exemption must be granted in writing. The requirement to retain approximately 1/6 to 1/3 of tree tops and limbs less than four inches in diameter does not apply (G. C. & R. 2.2). This is because the timber sale is on non-certified military lands.

2.2.3 - Stump heights (4/07)

Stump heights within the Sale Area shall not exceed 6 inches for all trees. This is in order to facilitate military requirements. A written waiver of this requirement may be obtained if wet summer weather makes winter logging necessary.

3 - Payments

3.3 - Pre-measured Sales

3.3.4 - Dividing payment units (7/14)

Payment Unit(s) may be divided at the request of the Purchaser and upon approval of the Unit Manager. Dividing Payment Units is a contract modification which requires a Timber Sale Contract Supplement.

4 - Transportation

4.1 - Construction

4.1.3 - Slash and earthen piles (8/04)

Piles or windrows of earth along roads and landings that have been widened or constructed shall be leveled. Slash from road

maintenance or construction, including stumps, shall be chipped, utilized or otherwise removed from the sale.

4.1.6 - Road construction (1/09)

Construction of new roads or improvements of existing roads shall be done in such a way as to minimize the environmental and visual impacts. Merchantable trees shall be cut and utilized unless otherwise directed. Non-merchantable trees shall be severed and laid flat on the ground. Slash shall be chipped, utilized or otherwise removed from the sale. Stumps shall be set upright, not left on edge, and be moved at least 10 feet away from the road edge. Disturbed soil shall be feathered into the woods and not left in berms or windrows.

4.1.7 - Road closure (10/11)

All new roads built into the sale must be blocked to vehicle traffic upon completion of the sale. Overgrown roads that are reopened shall be considered new roads. In general, this will require constructing a four (4') foot high berm of stumps and logs covered with earth. Stumps and brush must be placed along the remainder of the trail. These roads must be rendered impassable to cars and trucks. Temporary berms may be required if no sale activity occurs for 30 or more consecutive days. Contact the sale administrator for specific details of design and placement.

4.1.11 - Permits (2/12)

The Purchaser will secure any necessary highway permits that may be required.

5 - Operations

5.1 - Notification

5.1.5 - National Guard notification (2/15)

This sale is upon lands utilized for training by the Michigan National Guard - Camp Grayling. A minimum of five (5) business days prior to opening this sale, the producer must request that the sale administrator contact the military for information regarding training plans that may impact sale operations.

5.2 - Conduct of Operations

5.2.1 - Slash

5.2.1.13 - Dispose of slash as directed (12/05)

Slash is to be disposed of as directed by the Sale Administrator.

5.2.2 - Hazard Trees/Snags

5.2.2.1 - Den trees (10/16)

Obvious hollow and/or den trees shall be protected and left standing unless they are a safety hazard.

5.2.3 - Operating Restrictions

5.2.3.7 - National Guard training restriction (1/09)

Operations on this contract may not be allowed during National Guard training operations. Typically, the restricted period is from May 1 to October 31. The contractor must check with the Unit Manager who will coordinate the cutting schedule with the Military. All harvest equipment and timber products must be removed from the sale area during the period of May 1 to October 31.

5.2.4 - Dead and Down Creation

5.2.4.4 - Dead and down creation, grouse (6/18)

To encourage grouse and other wildlife, in Payment Unit(s) 4, leave one, 12" or larger diameter (or largest diameter trees within stand) whole tree on the ground for every 2 acres; preferably a hardwood species such as oak or maple or if no hardwoods are present, a pine species (white or red) if no hardwoods are present. These trees will be evenly scattered throughout the unit, preferably at least two chains from any roads, two-tracks, or trails open to vehicles.

5.2.29 - Shrub protection (9/07)

Do not cut or damage hawthorn, dogwood and juneberry. These woody-shrub plants are highly beneficial to various wildlife species.

5.2.32 - Decking/landing restoration (9/13)

All decking and landing areas must have the surface area restored to a condition equal to or better than before. This is to

ensure the proper regeneration of the stand. Wood debris, chips and "cookies" from trimmings must be removed or scattered away from landing and loading areas and may not be windrowed on the edge.

5.4 - Soil Protection

5.4.1 - Rutting restriction, general (7/16)

Operations are to cease immediately if equipment and weather conditions result in rutting of roads and/or skid trails which is 12 inches or greater in depth and 50 feet in length. The Unit Manager or his/her representative may restrict hauling and/or skidding if ruts exceed the specified depth. With the Unit Manager or his/her representative's approval, the Purchaser may return to the area when the risk of rutting has decreased.

6 - Safety and Fire Prevention

6.2 - Signing

6.2.1 - Road posting (9/09)

The Purchaser is responsible for posting and maintaining caution signs on Lonesome Lake Road prior to beginning operations. The road must be posted at appropriate distances from the sale area to warn of logging activity and truck traffic. Signs must be removed when harvest operations are suspended or completed. The Purchaser will provide these signs.

7 - Other Conditions

7.10 - Certified Timber

7.10.1 - Non-certified timber (2/16)

The area encompassed by this timber sale is not certified to the standards of the Forest Stewardship Council (FSC) or the Sustainable Forestry Initiative (SFI). Forest products from this sale may not be delivered to the mill as "FSC and / or SFI certified". The lands within this sale are managed for military training.



TIMBER SALE MAP

This information provided by authority of Part 525, 1994 PA 451, as amended.

Sale Number	Year
72-637	19

Forest Management Unit	County	Mapped By	Date	Page	of
Grayling	Crawford	Derek Nellis	09/23/2019	1	1
Township	Range	Section(s) and Subdivision(s)	Scale		
28N	02W	Section 23: S1/2NE, SWSW, SE	1:15,840		

Cover Type				Density	
A = Aspen	H = Hemlock	N = Marsh	U = Upland Brush	0 = Non Stocked	5 = Pole Timber Medium
B = Paper Birch	J = Jack Pine	O = Oak	UM = Upland Mixed	1 = Seedling Sapling Poor	6 = Pole Timber Well
C = Cedar	L = Lowland Brush	P = Lowland Poplar	V = Bog or Marsh	2 = Seedling Sapling Medium	7 = Saw Timber Poor
D = Treed Bog	LM = Lowland Mixed	Q = Mixed Swamp Conifer	W = White Pine	3 = Seedling Sapling Well	8 = Saw Timber Medium
E = Swamp Hdwoods	M = Mpl, Bch, Brch	R = Red Pine	X = Non Stocked	4 = Pole Timber Poor	9 = Saw Timber Well
F = Spruce Fir	MC = Mixed Conifer	S = Black Spruce	Z = Water		
G = Grass	MD = Mixed Deciduous	T = Tamarack			

Timberdoodle Delight Compartment 266

105.9 Acres

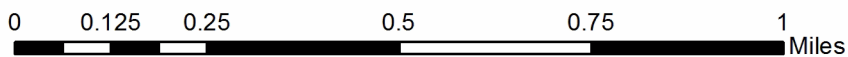
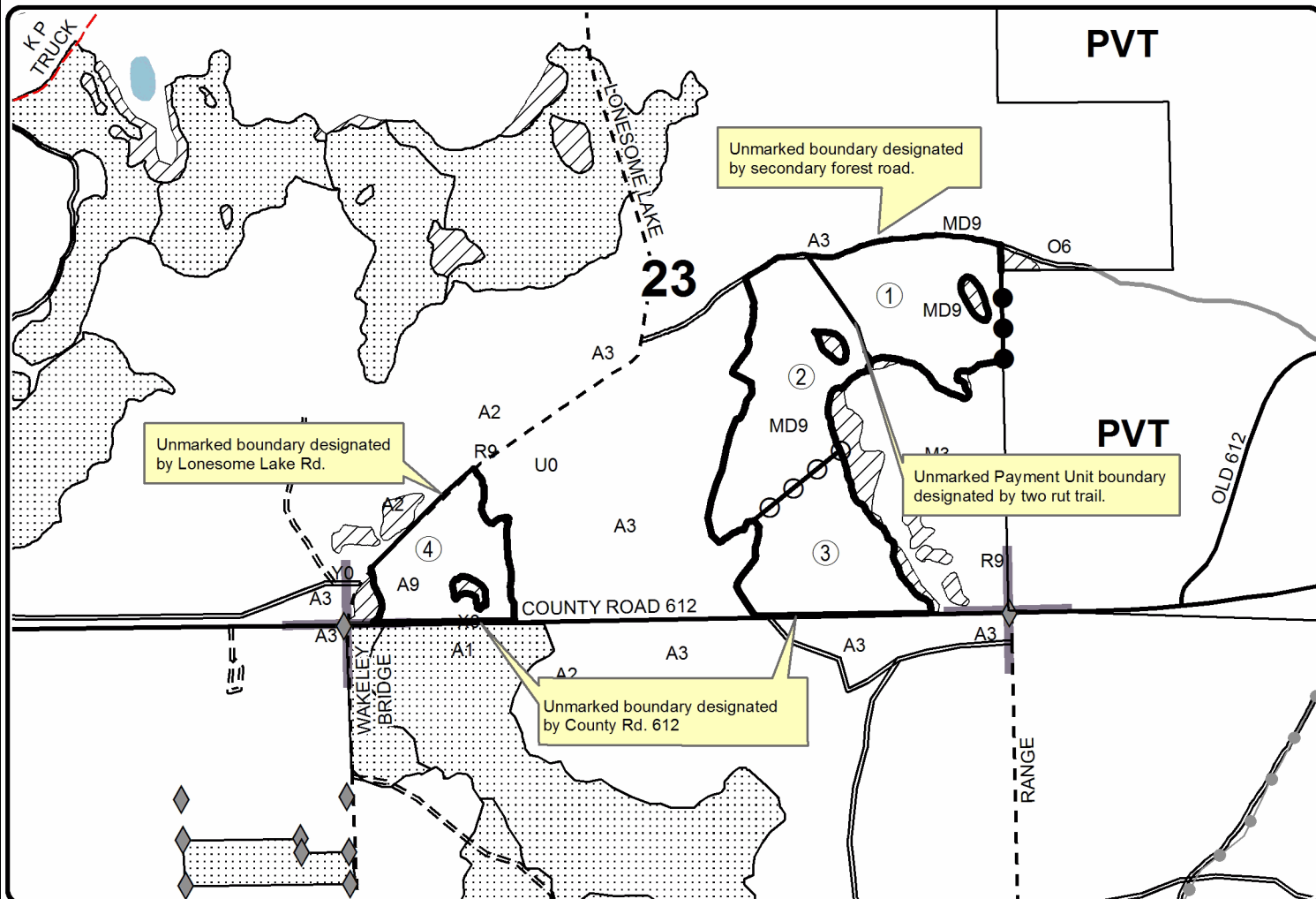
PU Acres

1	27.6
2	33.7
3	25.3
4	19.3



Legend

- Secondary Forest Road
- Forest Access Route
- Paved Road
- Gravel Road
- County Road - Seasonal
- Private
- Section Corners
- Field Grade Corners
- Nearby Timber Sale
- Retention Area
- Payment Unit
- Against State (Red)
- Private Line (Blue)
- Payment Unit (Yellow)
- Payment Unit Label



TIMBER SALE INFORMATION

Dyer Conners JP (72-645-19)
 T27N, R01W, SEC. 31.
 Crawford County (Advertised Price \$42,065.25)

SALE NOTE: The sale is on lands used for Military training. Seasonal restrictions relating to Military use and oak wilt are applied. The site will be trenched and planted following the harvest, so stump height and slash management specs are in place.

A timber sale contract for this lump sum, sealed bid timber sale will be awarded to the responsible bidder offering the highest sealed bid price. Bids must be at or above the following advertised price for each species:

<u>PRODUCTS & SPECIES</u>	<u>ESTIMATED UNITS*</u>	<u>ADVERTISED PRICE</u>
Sawtimber		
Northern Pin Oak	20.70 MBF	\$ 104.00 / MBF
Red Pine	100.00 MBF	\$ 105.00 / MBF
Pulpwood		
Balsam Fir	2.00 Cords	\$ 17.20 / Cord
Jack Pine	876.00 Cords	\$ 22.65 / Cord
Mixed Oak	150.00 Cords	\$ 22.30 / Cord
Red Pine	111.00 Cords	\$ 49.55 / Cord
White Pine	26.00 Cords	\$ 26.60 / Cord

* The total volume is statistically estimated within plus (+) or minus (-) 10.95 percent. The estimated units are final and not subject to adjustment. Prospective bidders are urged to examine this timber and to make their own estimates of quantity and quality.

BOND AND PAYMENT SCHEDULE:

1. A bond in the amount of _____ to insure faithful performance of the conditions of the contract will be deposited by the successful bidder within 21 days of the sale award.
2. Cutting in any sale or unit without the required advance payment would be considered a trespass.
3. Total payment must be paid in advance or according to the following schedule :
 - (a) Ten percent (10%) of the sale value must be paid within 21 days of the sale award.
 - (b) The 10% down payment will be credited towards the first unit cut.
 - (c) Payment for each of the following units must be made before cutting begins in that unit:

PAYMENT UNIT NUMBER	PERCENT OF TOTAL SALE VALUE
01	72.0%
02	28.0%
4. If no cutting takes place, the 10% down payment will not be refunded.
5. Operations on the contract issued will terminate on 03/31/2022.

Description of Timber by Payment Unit (PU)

PU	MARKET GROUP	PRODUCT	QUANTITY	UNIT	ACRES	ADVERTISE PRICE
1	Northern Pin Oak	Sawtimber	14.2	MBF	55.2	\$30,297.50
	Red Pine		92.2	MBF		
	Balsam Fir	Pulpwood	2.0	Cords		
	Jack Pine		495.0	Cords		
	Mixed Oak		98.0	Cords		
	Red Pine		105.0	Cords		
	White Pine		19.0	Cords		
	2	Northern Pin Oak	Sawtimber	6.5		
Red Pine			7.8	MBF		
Jack Pine		Pulpwood	381.0	Cords		
Mixed Oak			52.0	Cords		
Red Pine			6.0	Cords		
White Pine			7.0	Cords		
TOTAL:			120.7	MBF		
TOTAL:			1,165.0	Cords		

Sale Specific Conditions & Requirements

Sale Name: Dyer Connors JP

Sale Number: 72-645-19 Seq#: 1

1 - Sale Area

1.2 - Boundaries

1.2.1 - Painted boundaries (1/14)

The sale boundary and Payment Unit boundaries are marked and identified by red paint, along with a road. Exterior sale boundary lines against state are marked with red paint. The interior Payment Unit boundary is unpainted and identified by the poor dirt road as shown on the Timber Sale Map. The red painted boundary line trees are not Included Timber and are to be protected, with the exception of the red painted trees along the north-south road and bordering the J3 and R3 cover types (see Timber Sale Map), which are designated for cutting. If the designated red painted tree is in a multiple-stem clump, cut all trees within the clump.

2 - Timber Specifications

2.1 - Included Timber

2.1.1 - Clearcut unit(s) with unmerchantable trees (6/14)

Within Payment Unit(s) 1 and 2, cut all trees that are one (1) inch or more at DBH, except do not cut trees marked with green paint. Special protection trees identified in accordance with condition 3.4.2, within clearcutting unit boundaries, are not Included Timber and are to be protected.

2.1.11 - Description of timber note (2/04)

Note that traces of aspen will be cut within the sale area, but no aspen landed in cruise plots.

2.1.16 - Timber along county or forest roads (6/14)

Cut and remove all dead standing trees within 100 feet of the mapped roads adjacent to the sale area.

2.2 - Utilization

2.2.2 - Chipping required (2/18)

This area must be chip harvested to facilitate subsequent planting operations and to meet National Guard requirements. However, the chipping requirement could be waived with military approval, if chip markets are depressed. If a chipping exemption is granted, tops and slash must be arranged in a way that will not inhibit future planting operations, as directed by the sale administrator. The requirement to retain approximately 1/6 to 1/3 of tree tops and limbs less than four inches in diameter does not apply (G. C. & R. 2.2) because the sale is on Military lands.

2.2.3 - Stump heights (4/07)

Stump heights within the Sale Area shall not exceed 6 inches for all trees. This is in order to facilitate planting operations and to meet military requirements.

3 - Payments

3.3 - Pre-measured Sales

3.3.4 - Dividing payment units (7/14)

Payment Unit(s) may be divided at the request of the Purchaser and upon approval of the Unit Manager. Dividing Payment Units is a contract modification which requires a Timber Sale Contract Supplement.

3.4 - Damaged Timber

3.4.2 - Special Protection Trees (4/14)

The Purchaser shall not cut live or dead special protection trees within cutting units or clearings. Special protection trees are the pioneer red pine marked with green paint. If the Purchaser's operations have cut or damaged special protection trees through carelessness, the Purchaser shall pay \$500 as fixed, agreed and liquidated damages for each special protection tree cut or damaged. Such payment does not constitute ownership of the undesignated timber.

4 - Transportation

4.1 - Construction

4.1.3 - Slash and earthen piles (8/04)

Piles or windrows of earth along roads and landings that have been widened or constructed shall be leveled. Slash from road maintenance or construction, including stumps, shall be chipped, utilized or dispersed into the sale.

4.1.6 - Road construction (1/09)

Construction of new roads or improvements of existing roads shall be done in such a way as to minimize the environmental and visual impacts. Merchantable trees shall be cut and utilized unless otherwise directed. Non-merchantable trees shall be severed and laid flat on the ground. Slash shall be scattered or chipped, not left in windrows, and be kept a minimum of 10 feet back from the road edge. Stumps shall be set upright, not left on edge, and be moved at least 10 feet away from the road edge. Disturbed soil shall be feathered into the woods and not left in berms or windrows.

4.1.7 - Road closure (10/11)

All new roads built into the sale must be blocked to vehicle traffic upon completion of the sale. Overgrown roads that are reopened shall be considered new roads. In general, closure will require constructing a four (4') foot high berm of stumps and logs covered with earth. Stumps and brush must be scattered across the first 100 feet of road behind the berm. Contact the sale administrator for specific details of design and placement.

4.1.11 - Permits (2/12)

The Purchaser will secure any necessary road permits that may be required.

5 - Operations

5.1 - Notification

5.1.1 - Pre-sale conference (10/16)

A pre-sale conference between the Purchaser and sale administrator is required prior to beginning any operations to determine landing and road locations. The Unit Manager or his/her representative must be contacted at least 5 days in advance to schedule the conference.

5.1.4 - Post-sale conference (10/16)

A post-sale conference on site between the Purchaser and sale administrator is required prior to the completion of active logging operations to determine clean-up and repair of landings, road edges, and the fulfillment of other contract specifications.

5.1.5 - National Guard notification (2/15)

This sale is upon lands utilized for training by the Michigan National Guard - Camp Grayling. A minimum of five (5) business days prior to opening this sale, the producer must request that the sale administrator contact the military for information regarding training plans that may impact sale operations.

5.2 - Conduct of Operations

5.2.3 - Operating Restrictions

5.2.3.5 - Oak wilt restriction (1/18)

Within Payment Unit(s) 1 and 2, unless changed by written agreement, cutting, skidding, hauling within the sale and brushing of access roads to the sale are not permitted during the period of April 15 to July 15. Operations may be allowed if specific steps are taken to prevent damaging uncut oak during the high risk period. Those steps may include completing all road brushing before April 15th and clearing a tree-length buffer along uncut oak cover before April 15th. This is necessary to reduce the spread of oak wilt. For more information, contact the Unit Manager or his/her representative.

5.2.3.7 - National Guard training restriction (1/09)

Operations on this contract may not be allowed during National Guard training operations. Typically, the restricted period is from May 1 to October 31. The contractor must check with the Unit Manager who will coordinate the cutting schedule with the Military.

5.2.38 - No decking against live trees (2/04)

Cut products may not be decked against unmarked or designated leave trees.

5.4 - Soil Protection

5.4.1 - Rutting restriction, general (7/16)

Operations are to cease immediately if equipment and weather conditions result in rutting of roads and/or skid trails which is 12 inches or greater in depth and 50 feet in length. The Unit Manager or his/her representative may restrict hauling and/or skidding if ruts exceed the specified depth. With the Unit Manager or his/her representative's approval, the Purchaser may return to the area when the risk of rutting has decreased.

6 - Safety and Fire Prevention

6.2 - Signing

6.2.1 - Road posting (9/09)

The Purchaser is responsible for posting and maintaining caution signs on the north-south road adjacent to the east boundary prior to beginning operations. The road must be posted at appropriate distances from the sale area, when trees are being felled within 300 feet of the mapped roads, to warn of logging activity and truck traffic. Signs must be removed when harvest operations are suspended or completed. The Purchaser will provide these signs.

7 - Other Conditions

7.5 - Loss

7.5.1 - Deteriorating timber (7/09)

The sale area has received damage from age-related decline and mortality in the jack pine and northern pin oak. The Purchaser should harvest the wood as soon as possible. The Department of Natural Resources is held free of responsibility of any further damage or deterioration due to delay in harvesting.

7.10 - Certified Timber

7.10.1 - Non-certified timber (2/16)

The area encompassed by this timber sale is not certified to the standards of the Forest Stewardship Council (FSC) or the Sustainable Forestry Initiative (SFI). Forest products from this sale may not be delivered to the mill as "FSC and / or SFI certified". The lands within this sale are managed for military training.



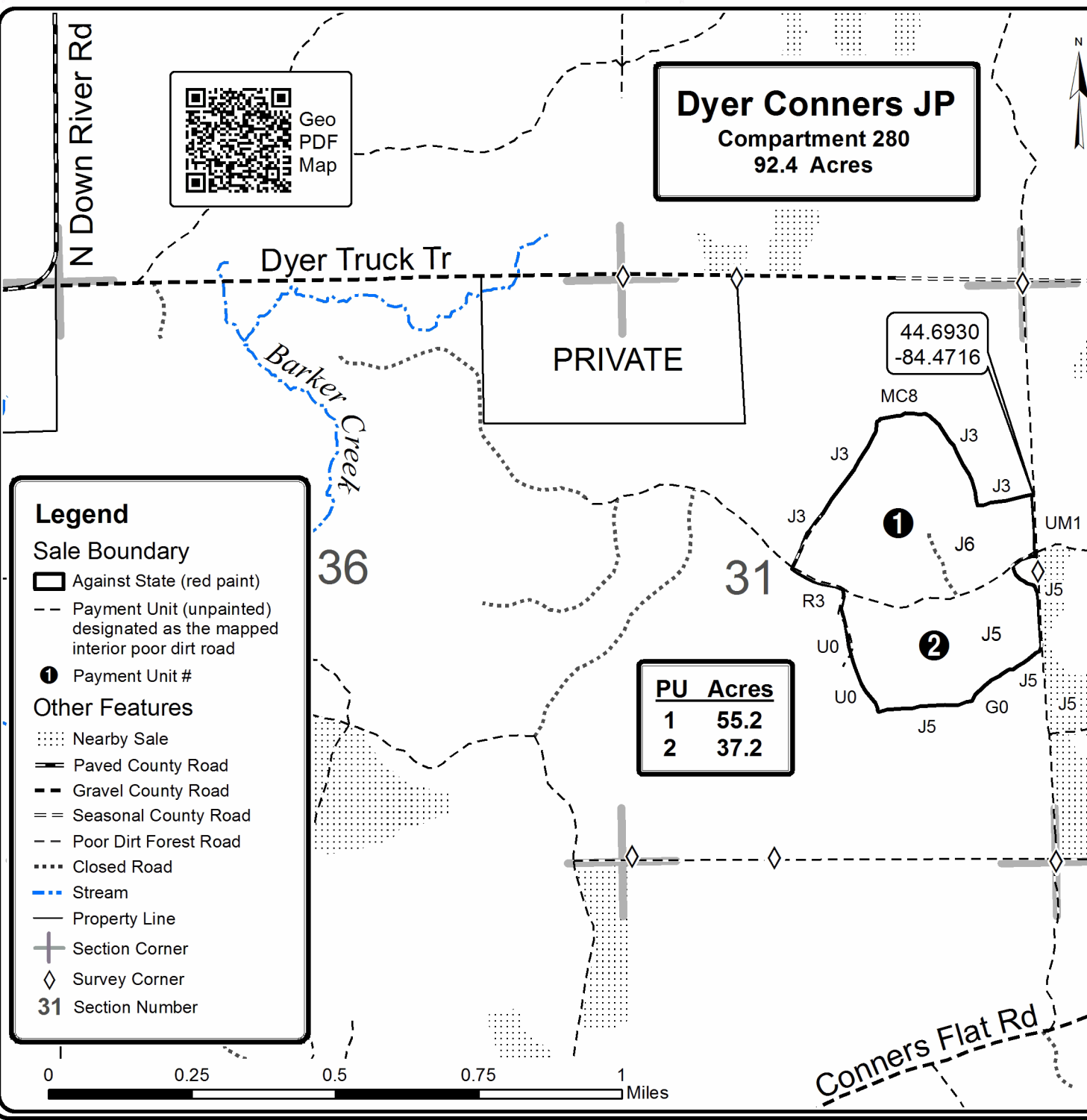
TIMBER SALE MAP

This information provided by authority of Part 525, 1994 PA 451, as amended.

Sale Number	Year
72 - 645	19

Forest Management Unit	County	Mapped By	Date	Page	of
Grayling	Crawford	Charlebois	09/12/2019	1	1
Township	Range	Section(s) and Subdivision(s)	Scale		
27N	1W	Sec 31: NE, N1/2SE	1:15,840		

Cover Type				Density	
A = Aspen	H = Hemlock	N = Marsh	U = Upland Brush	0 = Non Stocked	5 = Pole Timber Medium
B = Paper Birch	J = Jack Pine	O = Oak	UM = Upland Mixed	1 = Seedling Sapling Poor	6 = Pole Timber Well
C = Cedar	L = Lowland Brush	P = Lowland Poplar	V = Bog or Marsh	2 = Seedling Sapling Medium	7 = Saw Timber Poor
D = Treed Bog	LM = Lowland Mixed	Q = Mixed Swamp Conifer	W = White Pine	3 = Seedling Sapling Well	8 = Saw Timber Medium
E = Swamp Hdwoods	M = Mpl, Bch, Brch	R = Red Pine	X = Non Stocked	4 = Pole Timber Poor	9 = Saw Timber Well
F = Spruce Fir	MC = Mixed Conifer	S = Black Spruce	Z = Water		
G = Grass	MD = Mixed Deciduous	T = Tamarack			



Timberdoodle Delight (72-637-19)
T28N, R02W, SEC. 23; Crawford COUNTY

In response to the notice of sale to be held 9:00 a.m. (local time) on March 17, 2020, I am hereby submitting my sealed bid (firm offer) for the following forest products to be cut. Bids for individual species must be at or above the advertised price. All non-responsive bid forms may be rejected.

<u>PRODUCTS & SPECIES</u>	<u>ESTIMATED VOLUME*</u>	<u>ADVERTISED PRICE</u>	<u>BID PRICE/UNIT</u>
Sawtimber			
Bl/R/Hybrid Oak	326.00 MBF	\$ 197.00/MBF	\$ _____
Red Maple	18.90 MBF	\$ 67.00/MBF	\$ _____
Red Pine	1.50 MBF	\$ 121.00/MBF	\$ _____
Pulpwood			
Bl/R/Hybrid Oak	1,138.00 Cords	\$ 25.75/Cord	\$ _____
Mixed Aspen	561.00 Cords	\$ 24.60/Cord	\$ _____
Paper Birch	15.00 Cords	\$ 11.95/Cord	\$ _____
Red Maple	903.00 Cords	\$ 33.10/Cord	\$ _____
Red Pine	3.00 Cords	\$ 57.15/Cord	\$ _____
Sugar Maple	14.00 Cords	\$ 33.10/Cord	\$ _____

*The volumes are statistically estimated within plus (+) or minus (-) 8.04 percent. These estimated volumes are final and not subject to adjustment. Prospective bidders are urged to examine this timber and to make their own estimates of quantity and quality.

I understand that any or all bids may be rejected. All bids must be signed and all bid items must be bid or the bid form may be rejected. I also understand that consideration and awarding a contract will be based upon my past performance and ability to complete the contract based upon equipment and staffing subject to my control.

FEDERAL ID: ____ - ____ - ____ or SOCIAL SECURITY NUMBER: ____ - ____ - ____

Company or individual bidding: _____

Company representative's name: _____

Address: _____

City: _____ State: _____ Zip: _____

IF AVAILABLE, PLEASE PLACE THE PERSONALIZED LABEL FROM YOUR PROSPECTUS IN THE ABOVE BOX.

Individual or company representative's signature: _____ Date: _____

Phone number : _____ Email (optional): _____

THE WINNING BIDDER MUST COMPLETE THE VERIFICATION OF WORKER'S DISABILITY COMPENSATION ACT COMPLIANCE (ON REVERSE SIDE IF DOUBLE SIDED) WITHIN 21 DAYS OF SALE AWARD DATE



FOR DEPARTMENT USE ONLY
Sale Number (XX - XXX - XX - XX)
Forest Management Unit:

TIMBER SALE VERIFICATION OF WORKER'S DISABILITY COMPENSATION ACT COMPLIANCE

*As required by Act 317, P.A. 1969 (Worker's Compensation) and
Part 5 of Act 451 of 1994, as amended.*

VERIFICATION OF WORKER'S DISABILITY COMPENSATION ACT COMPLIANCE

- This verification must be completed and submitted within 21 days of contract award and prior to the issuance of the timber sale contract.
- In addition, if boxes 2B or 2C are checked, then Notice of Exclusion or Certificate of Insurance must be submitted within twenty-one (21) days of the contract award and prior to the issuance of the timber sale contract.
- All information must be typed or printed except for written signatures.

Please Check Appropriate Categories:

1. My business is organized as (you **must** check one of the boxes below):
 - A. Sole Proprietorship (individual)
 - B. Partnership
 - C. Corporation
2. You **must** check one of the boxes below:
 - A. I certify my business is a sole proprietorship and it has no employees but the sole proprietor. I am not subject to the Worker's Compensation Laws.
 - B. I certify my business has satisfied its obligation to the Worker's Compensation Act through the use of an approved Notice of Exclusion (BWC-337, Rev. 5/96). I will provide a copy of the Notice of Exclusion within 21 days of the contract award. (For questions or a copy of the BWC-337, please call the Worker's Compensation Bureau at 517-322-1195).
 - C. I certify my business has a Worker's Compensation Policy. I will provide an original Certificate of Insurance within twenty-one (21) days of the contract award.
3. If you have checked item 2(A) or 2(B), you **must** indicate the number of **both** full-time and part-time employees, other than yourself, including family members and active partners (if none, you must enter "0").

_____ Full-time Employees

_____ Part-time Employees

Name of Business		Federal ID (or) Social Security No.	
Address		Telephone ()	
City	State	ZIP	

I hereby certify that the above information is true and correct. I agree to notify the Michigan DNR of any changes that occur in factors affecting my coverage during any of my present and future operations.

Signature of Owner or Authorized Representative

Title

Date

Please complete the "SEALED BID" information on the next page

T-Rex KW (72-043-19)
T25N, R03W, SEC. 1; T25N, R03W, SEC. 2; Crawford COUNTY

In response to the notice of sale to be held 9:00 a.m. (local time) on March 17, 2020, I am hereby submitting my sealed bid (firm offer) for the following forest products to be cut. Bids for individual species must be at or above the advertised price. All non-responsive bid forms may be rejected.

<u>PRODUCTS & SPECIES</u>	<u>ESTIMATED VOLUME*</u>	<u>ADVERTISED PRICE</u>	<u>BID PRICE/UNIT</u>
Sawtimber			
Northern Pin Oak	15.10 MBF	\$ 131.00/MBF	\$ _____
Red Pine	424.20 MBF	\$ 80.00/MBF	\$ _____
White Pine	34.10 MBF	\$ 34.00/MBF	\$ _____
Pulpwood			
Balsam Fir	1.00 Cords	\$ 13.25/Cord	\$ _____
Jack Pine	5,560.00 Cords	\$ 17.40/Cord	\$ _____
Mixed Oak	164.00 Cords	\$ 17.15/Cord	\$ _____
Quaking Aspen	4.00 Cords	\$ 16.40/Cord	\$ _____
Red Maple	67.00 Cords	\$ 22.10/Cord	\$ _____
Red Pine	487.00 Cords	\$ 38.10/Cord	\$ _____
White Pine	255.00 Cords	\$ 20.45/Cord	\$ _____

*These estimated volumes are final and not subject to adjustment. Prospective bidders are urged to examine this timber and to make their own estimates of quantity and quality.

I understand that any or all bids may be rejected. All bids must be signed and all bid items must be bid or the bid form may be rejected. I also understand that consideration and awarding a contract will be based upon my past performance and ability to complete the contract based upon equipment and staffing subject to my control.

FEDERAL ID: _____ or SOCIAL SECURITY NUMBER: _____

Company or individual bidding: _____

Company representative's name: _____

Address: _____

City: _____ State: _____ Zip: _____

IF AVAILABLE, PLEASE PLACE THE PERSONALIZED LABEL FROM YOUR PROSPECTUS IN THE ABOVE BOX.

Individual or company representative's signature: _____ Date: _____

Phone number : _____ Email (optional): _____

THE WINNING BIDDER MUST COMPLETE THE VERIFICATION OF WORKER'S DISABILITY COMPENSATION ACT COMPLIANCE (ON REVERSE SIDE IF DOUBLE SIDED) WITHIN 21 DAYS OF SALE AWARD DATE

Dyer Conners JP (72-645-19)
T27N, R01W, SEC. 31; Crawford COUNTY

In response to the notice of sale to be held 9:00 a.m. (local time) on March 17, 2020, I am hereby submitting my sealed bid (firm offer) for the following forest products to be cut. Bids for individual species must be at or above the advertised price. All non-responsive bid forms may be rejected.

<u>PRODUCTS & SPECIES</u>	<u>ESTIMATED VOLUME*</u>	<u>ADVERTISED PRICE</u>	<u>BID PRICE/UNIT</u>
Sawtimber			
Northern Pin Oak	20.70 MBF	\$ 104.00/MBF	\$ _____
Red Pine	100.00 MBF	\$ 105.00/MBF	\$ _____
Pulpwood			
Balsam Fir	2.00 Cords	\$ 17.20/Cord	\$ _____
Jack Pine	876.00 Cords	\$ 22.65/Cord	\$ _____
Mixed Oak	150.00 Cords	\$ 22.30/Cord	\$ _____
Red Pine	111.00 Cords	\$ 49.55/Cord	\$ _____
White Pine	26.00 Cords	\$ 26.60/Cord	\$ _____

*The volumes are statistically estimated within plus (+) or minus (-) 10.95 percent. These estimated volumes are final and not subject to adjustment. Prospective bidders are urged to examine this timber and to make their own estimates of quantity and quality.

I understand that any or all bids may be rejected. All bids must be signed and all bid items must be bid or the bid form may be rejected. I also understand that consideration and awarding a contract will be based upon my past performance and ability to complete the contract based upon equipment and staffing subject to my control.

FEDERAL ID: _____ or SOCIAL SECURITY NUMBER: _____

Company or individual bidding: _____

Company representative's name: _____

Address: _____

City: _____ State: _____ Zip: _____

IF AVAILABLE, PLEASE PLACE THE PERSONALIZED LABEL FROM YOUR PROSPECTUS IN THE ABOVE BOX.

Individual or company representative's signature: _____ Date: _____

Phone number : _____ Email (optional): _____

THE WINNING BIDDER MUST COMPLETE THE VERIFICATION OF WORKER'S DISABILITY COMPENSATION ACT COMPLIANCE (ON REVERSE SIDE IF DOUBLE SIDED) WITHIN 21 DAYS OF SALE AWARD DATE



FOR DEPARTMENT USE ONLY	
Sale Number (XX - XXX - XX - XX)	
Forest Management Unit:	

TIMBER SALE VERIFICATION OF WORKER'S DISABILITY COMPENSATION ACT COMPLIANCE

As required by Act 317, P.A. 1969 (Worker's Compensation) and
Part 5 of Act 451 of 1994, as amended.

VERIFICATION OF WORKER'S DISABILITY COMPENSATION ACT COMPLIANCE

- This verification must be completed and submitted within 21 days of contract award and prior to the issuance of the timber sale contract.
- In addition, if boxes 2B or 2C are checked, then Notice of Exclusion or Certificate of Insurance must be submitted within twenty-one (21) days of the contract award and prior to the issuance of the timber sale contract.
- All information must be typed or printed except for written signatures.

Please Check Appropriate Categories:

1. My business is organized as (you **must** check one of the boxes below):
 - A. Sole Proprietorship (individual)
 - B. Partnership
 - C. Corporation
2. You **must** check one of the boxes below:
 - A. I certify my business is a sole proprietorship and it has no employees but the sole proprietor. I am not subject to the Worker's Compensation Laws.
 - B. I certify my business has satisfied its obligation to the Worker's Compensation Act through the use of an approved Notice of Exclusion (BWC-337, Rev. 5/96). I will provide a copy of the Notice of Exclusion within 21 days of the contract award. (For questions or a copy of the BWC-337, please call the Worker's Compensation Bureau at 517-322-1195).
 - C. I certify my business has a Worker's Compensation Policy. I will provide an original Certificate of Insurance within twenty-one (21) days of the contract award.
3. If you have checked item 2(A) or 2(B), you **must** indicate the number of **both** full-time and part-time employees, other than yourself, including family members and active partners (if none, you must enter "0").

_____ Full-time Employees

_____ Part-time Employees

Name of Business		Federal ID (or) Social Security No.	
Address		Telephone ()	
City	State	ZIP	

I hereby certify that the above information is true and correct. I agree to notify the Michigan DNR of any changes that occur in factors affecting my coverage during any of my present and future operations.

Signature of Owner or Authorized Representative

Title

Date

Please complete the "SEALED BID" information on the next page

About Time Red Pine (72-044-19)

T27N, R03W, SEC. 19; T27N, R03W, SEC. 20; T27N, R03W, SEC. 29; Crawford

In response to the notice of sale to be held 9:00 a.m. (local time) on March 17, 2020, I am hereby submitting my sealed bid (firm offer) for the following forest products to be cut. Bids for individual species must be at or above the advertised price. All non-responsive bid forms may be rejected.

<u>PRODUCTS & SPECIES</u>	<u>ESTIMATED VOLUME*</u>	<u>ADVERTISED PRICE</u>	<u>BID PRICE/UNIT</u>
Sawtimber			
Bl/R/Hybrid Oak	46.90 MBF	\$ 197.00/MBF	\$ _____
Red Maple	13.80 MBF	\$ 67.00/MBF	\$ _____
Red Pine	572.40 MBF	\$ 121.00/MBF	\$ _____
White Oak	8.00 MBF	\$ 70.00/MBF	\$ _____
Pulpwood			
B. T. Aspen	106.00 Cords	\$ 24.60/Cord	\$ _____
Jack Pine	18.00 Cords	\$ 26.15/Cord	\$ _____
Mixed Oak	208.00 Cords	\$ 25.75/Cord	\$ _____
Red Maple	313.00 Cords	\$ 33.10/Cord	\$ _____
Red Pine	435.00 Cords	\$ 57.15/Cord	\$ _____

*The volumes are statistically estimated within plus (+) or minus (-) 17.18 percent. These estimated volumes are final and not subject to adjustment. Prospective bidders are urged to examine this timber and to make their own estimates of quantity and quality.

I understand that any or all bids may be rejected. All bids must be signed and all bid items must be bid or the bid form may be rejected. I also understand that consideration and awarding a contract will be based upon my past performance and ability to complete the contract based upon equipment and staffing subject to my control.

FEDERAL ID: ____ - ____ - ____ or SOCIAL SECURITY NUMBER: ____ - ____ - ____

Company or individual bidding: _____

Company representative's name: _____

Address: _____

City: _____ State: _____ Zip: _____

IF AVAILABLE, PLEASE PLACE THE PERSONALIZED LABEL FROM YOUR PROSPECTUS IN THE ABOVE BOX.

Individual or company representative's signature: _____ Date: _____

Phone number : _____ Email (optional): _____

THE WINNING BIDDER MUST COMPLETE THE VERIFICATION OF WORKER'S DISABILITY COMPENSATION ACT COMPLIANCE (ON REVERSE SIDE IF DOUBLE SIDED) WITHIN 21 DAYS OF SALE AWARD DATE



TIMBER SALE VERIFICATION OF WORKER'S DISABILITY COMPENSATION ACT COMPLIANCE

As required by Act 317, P.A. 1969 (Worker's Compensation) and
Part 5 of Act 451 of 1994, as amended.

FOR DEPARTMENT USE ONLY	
Sale Number (XX - XXX - XX - XX)	
Forest Management Unit:	

VERIFICATION OF WORKER'S DISABILITY COMPENSATION ACT COMPLIANCE

- This verification must be completed and submitted within 21 days of contract award and prior to the issuance of the timber sale contract.
- In addition, if boxes 2B or 2C are checked, then Notice of Exclusion or Certificate of Insurance must be submitted within twenty-one (21) days of the contract award and prior to the issuance of the timber sale contract.
- All information must be typed or printed except for written signatures.

Please Check Appropriate Categories:

1. My business is organized as (you **must** check one of the boxes below):
 - A. Sole Proprietorship (individual)
 - B. Partnership
 - C. Corporation
2. You **must** check one of the boxes below:
 - A. I certify my business is a sole proprietorship and it has no employees but the sole proprietor. I am not subject to the Worker's Compensation Laws.
 - B. I certify my business has satisfied its obligation to the Worker's Compensation Act through the use of an approved Notice of Exclusion (BWC-337, Rev. 5/96). I will provide a copy of the Notice of Exclusion within 21 days of the contract award. (For questions or a copy of the BWC-337, please call the Worker's Compensation Bureau at 517-322-1195).
 - C. I certify my business has a Worker's Compensation Policy. I will provide an original Certificate of Insurance within twenty-one (21) days of the contract award.
3. If you have checked item 2(A) or 2(B), you **must** indicate the number of **both** full-time and part-time employees, other than yourself, including family members and active partners (if none, you must enter "0").

_____ Full-time Employees

_____ Part-time Employees

Name of Business		Federal ID (or) Social Security No.	
Address		Telephone ()	
City	State	ZIP	

I hereby certify that the above information is true and correct. I agree to notify the Michigan DNR of any changes that occur in factors affecting my coverage during any of my present and future operations.

Signature of Owner or Authorized Representative

Title

Date

Please complete the "SEALED BID" information on the next page

N 241 HWs (72-621-19)
T28N, R03W, SEC. 23; T28N, R03W, SEC. 26; Crawford COUNTY

In response to the notice of sale to be held 9:00 a.m. (local time) on March 17, 2020, I am hereby submitting my sealed bid (firm offer) for the following forest products to be cut. Bids for individual species must be at or above the advertised price. All non-responsive bid forms may be rejected.

<u>PRODUCTS & SPECIES</u>	<u>ESTIMATED VOLUME*</u>	<u>ADVERTISED PRICE</u>	<u>BID PRICE/UNIT</u>
Sawtimber			
Basswood	95.50 MBF	\$ 51.00/MBF	\$ _____
Beech	103.60 MBF	\$ 51.00/MBF	\$ _____
Mixed Aspen	91.30 MBF	\$ 52.00/MBF	\$ _____
Red Maple	6.40 MBF	\$ 49.00/MBF	\$ _____
Sugar Maple	219.50 MBF	\$ 180.00/MBF	\$ _____
Pulpwood			
Basswood	247.00 Cords	\$ 10.30/Cord	\$ _____
Mixed Aspen	345.00 Cords	\$ 18.05/Cord	\$ _____
Mixed Hardwood	1,803.00 Cords	\$ 24.30/Cord	\$ _____

*The volumes are statistically estimated within plus (+) or minus (-) 9.54 percent. These estimated volumes are final and not subject to adjustment. Prospective bidders are urged to examine this timber and to make their own estimates of quantity and quality.

I understand that any or all bids may be rejected. All bids must be signed and all bid items must be bid or the bid form may be rejected. I also understand that consideration and awarding a contract will be based upon my past performance and ability to complete the contract based upon equipment and staffing subject to my control.

FEDERAL ID: ____ - ____ - ____ or SOCIAL SECURITY NUMBER: ____ - ____ - ____

Company or individual bidding: _____

Company representative's name: _____

Address: _____

City: _____ State: _____ Zip: _____

IF AVAILABLE, PLEASE PLACE THE PERSONALIZED LABEL FROM YOUR PROSPECTUS IN THE ABOVE BOX.

Individual or company representative's signature: _____ Date: _____

Phone number : _____ Email (optional): _____

THE WINNING BIDDER MUST COMPLETE THE VERIFICATION OF WORKER'S DISABILITY COMPENSATION ACT COMPLIANCE (ON REVERSE SIDE IF DOUBLE SIDED) WITHIN 21 DAYS OF SALE AWARD DATE



FOR DEPARTMENT USE ONLY
Sale Number (XX - XXX - XX - XX)
Forest Management Unit:

TIMBER SALE VERIFICATION OF WORKER'S DISABILITY COMPENSATION ACT COMPLIANCE

*As required by Act 317, P.A. 1969 (Worker's Compensation) and
Part 5 of Act 451 of 1994, as amended.*

VERIFICATION OF WORKER'S DISABILITY COMPENSATION ACT COMPLIANCE

- This verification must be completed and submitted within 21 days of contract award and prior to the issuance of the timber sale contract.
- In addition, if boxes 2B or 2C are checked, then Notice of Exclusion or Certificate of Insurance must be submitted within twenty-one (21) days of the contract award and prior to the issuance of the timber sale contract.
- All information must be typed or printed except for written signatures.

Please Check Appropriate Categories:

1. My business is organized as (you **must** check one of the boxes below):
 - A. Sole Proprietorship (individual)
 - B. Partnership
 - C. Corporation

2. You **must** check one of the boxes below:
 - A. I certify my business is a sole proprietorship and it has no employees but the sole proprietor. I am not subject to the Worker's Compensation Laws.
 - B. I certify my business has satisfied its obligation to the Worker's Compensation Act through the use of an approved Notice of Exclusion (BWC-337, Rev. 5/96). I will provide a copy of the Notice of Exclusion within 21 days of the contract award. (For questions or a copy of the BWC-337, please call the Worker's Compensation Bureau at 517-322-1195).
 - C. I certify my business has a Worker's Compensation Policy. I will provide an original Certificate of Insurance within twenty-one (21) days of the contract award.

3. If you have checked item 2(A) or 2(B), you **must** indicate the number of **both** full-time and part-time employees, other than yourself, including family members and active partners (if none, you must enter "0").

_____ Full-time Employees

_____ Part-time Employees

Name of Business		Federal ID (or) Social Security No.	
Address		Telephone ()	
City	State	ZIP	

I hereby certify that the above information is true and correct. I agree to notify the Michigan DNR of any changes that occur in factors affecting my coverage during any of my present and future operations.

Signature of Owner or Authorized Representative

Title

Date

Please complete the "SEALED BID" information on the next page