



**DEPARTMENT OF NATURAL RESOURCES
STATE OF MICHIGAN**

TIMBER SALE PROSPECTUS #6739

SCHEDULED SALE DATE AND TIME: 1:00 p.m. (local time) on September 21, 2020.

LOCATION: GWINN MGMT UNIT, 410 WEST M 35, GWINN, MI 49841.

PROSPECTUS NOTE: The bidder is advised to inspect the sale area and review the location, estimated volumes, operating costs and contract terms of proposed sales. Please be aware that some landowners may request 60 days or more notice for access across their land.

Notice is hereby given that bids will be received by the Unit Manager, GWINN MANAGEMENT UNIT, for certain timber on the following described lands:

Bog Dogs (32-006-20) / T44N, R26W, SEC. 27, SWSW.

T44N, R26W, SEC. 28, SW,SE.

T44N, R26W, SEC. 29, S1/2NW,N1/2SW,NESE,S1/2SE.

T44N, R26W, SEC. 30, S1/2NE,E1/2SW,N1/2SE,SWSE.

T44N, R26W, SEC. 32, NENE.

T44N, R26W, SEC. 33, NWNW.

Marquette County, Advertised Price \$87,664.45, 179.0 Acres, Spruce/Fir/Tamarack, Hardwood.

SALE NOTE: Operation during dry or frozen condition is recommended for Payment Units 3, 5, 6, 9, 12, 13 and 14, due to poorly drained ground within and/or access to these Payment Units.

Approval is required from the County for crossing and/or harvesting within the county road R-O-W while operating Payment Units 7, 8, and 14 (see spec 4.3.2 for details).

Harlow Hardwood (32-004-19) / T49N, R26W, SEC. 13, W1/2SW.

T49N, R26W, SEC. 24, NW,SWNE,N1/2SW,SWSW,NWSE.

T49N, R26W, SEC. 25, NWNW,S1/2NW.

Marquette County, Advertised Price \$87,505.55, 211.9 Acres, Hardwood, Sugar Maple.

SALE NOTE: Sale operations are restricted to the period of December 1 to March 15, unless changed by written agreement. Sale operation is restricted to a short wood operation only, less than seventeen (17) skid lengths. Echo Lake Road and/or Nash Creek Road will require ~fifty (50) yards of approved fill material to repair problem areas.

A recreation site such as a trail, pathway, or campground is within the sale area or the vicinity. Certain restrictions/specifications may be applicable including time restrictions. Access may be through private land.

BID INSTRUCTIONS (VER. 07/02/2018):

1. Scheduled Bid Location, Date, and Time (2/11)

Bids must be received by the Unit Manager, GWINN OFFICE, 410 WEST M 35, GWINN, MI 49841, no later than 1:00 p.m. (local time) on September 21, 2020. For further information concerning this sale, contact Kristen Matson at 906-346-9201 extension 103.

2. Bidder's Qualifications (5/16)

Purchaser shall obtain workers compensation insurance to cover claims under Michigan's Worker's Disability Compensation Act of 1969 or similar employee benefit act of any other state applicable to an employee. If all or part of a timber sale was prepared by a private contractor, the contractor and that contractor's company are not permitted to bid on the timber sale contract. Bids will not be accepted from individuals or companies appearing on the DNR/FRD No-Bid List. This list contains the names of purchasers who previously failed to execute a contract within 21-days or who have a history of poor performance.

3. Preparation of Sealed Bids (5/16)

Bid Forms may be completed online thru Michigan DNR Timber Sale Online Bidding (OLB) at www.michigan.gov/timberbidding or by completing the hardcopy Bid Form found in the Timber Sale Prospectus. Hardcopy Bid Forms shall be manually signed in ink. Registration in OLB is considered your 'signature' for all bids submitted thru that system. Bid prices must be entered for each species and product in the Bid Price column for all material subject to bidding and all fill-in blanks must be completed. If erasures or other changes appear on the hardcopy Bid Form, each erasure or change must be initialed by the person signing the bid.

4. Submission of Sealed Bids (5/16)

Bid forms may be obtained from the Unit Manager or thru OLB. Bids may be submitted hardcopy or thru OLB. All hardcopy bids must be submitted on the bid form and in an envelope clearly identified as described in this section. NOTE: Only one bid form per bid envelope. Sealed bids must be submitted to the Unit office designated in the prospectus and must be submitted at or prior to the time established in the prospectus. The envelope should show on the outside (a) the sale name or number and (b) the date and time of bid opening, as shown in the prospectus. Bids received after the time specified in the sale prospectus are late bids and will be rejected.

It is possible for a bidder to submit multiple bids on a single sale. For example, a bid may be submitted hardcopy and a bid may be submitted thru OLB. Or, two bidders from the same company could both submit bids on the same sale. If this were to happen, the State would accept all bids received and award the contract accordingly. All bidding and contractual requirements would apply to all bids received.

5. Public Opening of Sealed Bids (7/16)

If conditions permit, the sealed bids will be publicly opened and posted at the time and place set in the prospectus.

If a bidder, present at a bid opening, has submitted bids on more than one sale, that bidder may withdraw their unopened bid envelopes or announce the withdrawal of their online bid after being declared the successful bidder on one sale.

6. Award of Contract (1/11)

Award of the contract will be made to the Bidder whose bid, conforming to the prospectus, is most advantageous to the State of Michigan on the basis of total value at rates bid for the estimated quantities. The State reserves the right to reject any bid or waive any minor irregularity in bids received. A written award mailed (or otherwise furnished) to the successful Bidder shall be deemed to result in a binding contract without further action by either party.

7. Down Payment (1/11)

The Bidder to whom award is made must make a down payment within 21 days of the sale award. The amount of the down payment will be calculated as shown in the Bond and Payment Schedule of this prospectus. Only cash may be used to meet this requirement.

8. Performance Security (1/11)

As guarantee of faithful performance, a cash bond, certificate of deposit, surety bond or irrevocable letter of credit (LOC) is required within 21 days of the sale award. The amount of the performance security is shown in the Bond and

Payment Schedule of this prospectus. If an LOC or surety is used, the coverage must extend for at least 6 months beyond the contract expiration.

9. Timber Sale Contract (7/18)

Additional conditions and requirements common to all timber sales are listed on the timber sale contract (R4031) and are available on line at www.michigan.gov/timber. Contact the Unit Manager for additional information or a sample contract. Within 21 days of the date of the award letter, the bidder must sign the contract and provide the required down payment, performance security, and verification of worker's disability compensation. The down payment and performance security shall be in accordance with the provisions of the timber sale contract, in the sums stated in this prospectus. If these actions are not taken, then the Bidder, the Bidder's corporation, and the corporation's principals may not be permitted to bid on State timber sales for a period of 3 months after the first offense, 6 months after the second offense, and 1 year after the third offense. An offense will only be counted against the Bidder for 5 years. In addition, the Bidder certifies that if awarded this contract, the Bidder will complete the timber sale contract in accordance with its terms and any modifications thereof including requirements to purchase, cut, and remove the included timber by the expiration date.

Payment Unit values in the State Forest Timber Sale Contract are calculated based on the advertised value of the Payment Unit as a percentage of the total advertised value of the contract. The advertised value of each Payment Unit is given in the Description of Timber by Payment Unit table on the Timber Sale Information page. For example, if the value of Payment Unit 1 is advertised as \$1,500 and the total Timber Sale value is advertised as \$10,000, the contract price for Payment Unit 1 will be 15% of the total bid price ($\$1,500/\$10,000 * 100$).

10. Disclaimer of Estimates and Bidder's Warranty of Inspection (7/16)

Before submitting this bid, the Bidder is advised and cautioned to inspect the sale area, review the requirements of the sale contract, and take other steps as may be reasonably necessary to ascertain the location, estimated volumes, construction estimates, and operating costs of the proposed sale. Failure to do so will not relieve the Bidder from responsibility for completing the contract.

The Bidder warrants that this bid is submitted solely on the basis of the Bidder's examination and inspection of the quality and quantity of the timber offered for sale and the Bidder's opinion of the value thereof and the costs of recovery. No reliance should be placed on the State of Michigan's estimates of timber quality, quantity or costs of recovery. Bidder further acknowledges that the State of Michigan: (i) expressly disclaims any warranty of fitness of timber for any purpose; (ii) offers this timber as is without any warranty of quality (merchantability) or quantity and (iii) expressly disclaims any warranty as to the quantity or quality of timber sold.

11. Certification and Chain-of-Custody (10/14)

Unless otherwise indicated in the contract under section 7 – Other Conditions of the Sale Specific Conditions & Requirements, the area encompassed by this timber sale is certified to the standards of the Forest Stewardship Council (FSC) - Certificate #SCS-FM/COC-00090N and the Sustainable Forestry Initiative (SFI) - Certificate #NSF-SFIS-5Y031-SF5. Forest products from this sale may be delivered to the mill as "FSC 100% and / or SFI certified" as long as the contractor hauling the forest products is chain-of-custody (COC) certified or covered under a COC certificate from the destination mill. The purchaser is responsible for maintaining COC after leaving the sale area.

12. Good Neighbor Authority (GNA) Requirements (7/16)

If the name of this timber sales contains the acronym GNA, it is authorized by the Good Neighbor Authority (GNA) and covered by various agreements between the U.S. Forest Service and the State. The timber sale occurs on federal land and the following conditions apply:

GNA contracts on US Forest Service land will not be awarded to purchasers on the Federal list of excluded parties. The System for Award Management (SAM) will be checked for active excluded parties prior to award of contract. In addition, the Bidder to whom award is made must complete an Assurance Regarding Felony Conviction or Tax Delinquent Status for Corporate Applicants (AD-3031).

13. Good Neighbor Authority (GNA) Requirements, con't (9/16)

Bidder certifies, by signing this bid form, that to the best of Bidder's knowledge that the following representations are accurate and complete.

- a. That the Bidder and its principals are not presently debarred, suspended, proposed for debarment, declared ineligible, or voluntary excluded from timber sales (covered transactions) by any Federal department or agency.
- b. That the Bidder and its principals have not within a 3-year period preceding this bid been convicted of or had a civil judgment rendered against them for commission of fraud or a criminal offense in connection with obtaining , attempting to obtain, or performing a public (Federal, State, or local) transaction or contract under a public transaction; violation of Federal or State antitrust statutes or commission of embezzlement, theft, forgery, bribery, falsification or destruction of records, making false statements, or receiving stolen property.
- c. That the Bidder and its principals are not presently indicted for or otherwise criminally or civilly charged by a governmental entity (Federal, State, or local) with commission of any of the offenses enumerated in paragraph b of this certification.
- d. That the Bidder and its principals have not within a 3-year period preceding this bid had one or more public transactions (Federal, State, or local) terminated for breach or default of a timber or forest product contract.

Bidders that cannot certify this requirement, in whole or in part, shall submit an explanation with their bid.

DAN EICHINGER
Director

TIMBER SALE INFORMATION

Bog Dogs (32-006-20)

T44N, R26W, SEC. 27; T44N, R26W, SEC. 28; T44N, R26W, SEC. 29; T44N, R26W, SEC. 30; T44N, R26W, SEC. 32; T44N, R26W, SEC. 33.

SALE NOTE: Operation during dry or frozen condition is recommended for Payment Units 3, 5, 6, 9, 12, 13 and 14, due to poorly drained ground within and/or access to these Payment Units.

Approval is required from the County for crossing and/or harvesting within the county road R-O-W while operating Payment Units 7, 8, and 14 (see spec 4.3.2 for details).

A timber sale contract for this lump sum, sealed bid timber sale will be awarded to the responsible bidder offering the highest sealed bid price. Bids must be at or above the following advertised price for each species:

<u>PRODUCTS & SPECIES</u>	<u>ESTIMATED UNITS*</u>		<u>ADVERTISED PRICE</u>
Sawtimber			
Basswood	2.30	MBF	\$ 109.00 / MBF
Paper Birch	17.70	MBF	\$ 81.00 / MBF
Red Maple	13.90	MBF	\$ 75.00 / MBF
Sugar Maple	32.60	MBF	\$ 227.00 / MBF
Yellow Birch	1.30	MBF	\$ 57.00 / MBF
Pulpwood			
Balsam Fir	631.00	Cords	\$ 18.40 / Cord
Mixed Aspen	723.00	Cords	\$ 25.70 / Cord
Mixed Hardwood	698.00	Cords	\$ 16.90 / Cord
Mixed Spruce	857.00	Cords	\$ 23.75 / Cord
Tamarack	813.00	Cords	\$ 18.60 / Cord

* The estimated units are final and not subject to adjustment. Prospective bidders are urged to examine this timber and to make their own estimates of quantity and quality.

BOND AND PAYMENT SCHEDULE:

1. A bond in the amount of \$4,383.00 to insure faithful performance of the conditions of the contract will be deposited by the successful bidder within 21 days of the sale award.
2. Cutting in any sale or unit without the required advance payment would be considered a trespass.
3. Total payment must be paid in advance or according to the following schedule :
 - (a) Ten percent (10%) of the sale value must be paid within 21 days of the sale award.
 - (b) The 10% down payment will be credited towards the first unit cut.
 - (c) Payment for each of the following units must be made before cutting begins in that unit:

PAYMENT UNIT NUMBER	PERCENT OF TOTAL SALE VALUE
01	18.4%
02	1.9%
03	1.7%
04	3.9%
05	2.1%
06	3.7%
07	12.1%
08	6.7%
09	10.7%
10	5.8%
11	5.2%
12	3.5%
13	12.4%
14	11.9%

4. If no cutting takes place, the 10% down payment will not be refunded.
5. Operations on the contract issued will terminate on 08/31/2023.

Description of Timber by Payment Unit (PU)

PU	MARKET GROUP	PRODUCT	QUANTITY	UNIT	ACRES	ADVERTISE PRICE
1	Paper Birch	Sawtimber	2.2	MBF	28.1	\$16,157.90
	Red Maple		10.8	MBF		
	Yellow Birch		1.1	MBF		
	Balsam Fir	Pulpwood	350.0	Cords		
	Mixed Aspen		155.0	Cords		
	Mixed Hardwood		190.0	Cords		
	Mixed Spruce		62.0	Cords		
2	Red Maple	Sawtimber	1.3	MBF	4.3	\$1,707.30
	Sugar Maple		2.5	MBF		
	Yellow Birch		0.2	MBF		
	Mixed Hardwood	Pulpwood	61.0	Cords		
3	Mixed Aspen	Pulpwood	3.0	Cords	2.7	\$1,468.05
	<i>Balsam Poplar</i>		3.0	Cords		
	Mixed Spruce		57.0	Cords		
	Tamarack		2.0	Cords		
4	Paper Birch	Sawtimber	10.6	MBF	8.5	\$3,450.30
	Balsam Fir	Pulpwood	4.0	Cords		
	Mixed Hardwood		149.0	Cords		
5	Balsam Fir	Pulpwood	25.0	Cords	4.2	\$1,839.15
	Mixed Aspen		43.0	Cords		
	Mixed Hardwood		12.0	Cords		
	Mixed Spruce		3.0	Cords		
6	Balsam Fir	Pulpwood	2.0	Cords	4.2	\$3,269.90
	Mixed Aspen		7.0	Cords		
	Mixed Hardwood		2.0	Cords		
	Mixed Spruce		124.0	Cords		
	Tamarack		4.0	Cords		
7	Paper Birch	Sawtimber	2.9	MBF	17.2	\$10,575.75
	Sugar Maple		0.9	MBF		
	Balsam Fir	Pulpwood	117.0	Cords		
	Mixed Aspen		275.0	Cords		
	Mixed Hardwood		50.0	Cords		
	Mixed Spruce		3.0	Cords		
8	Paper Birch	Sawtimber	1.6	MBF	9.6	\$5,885.05
	Sugar Maple		0.5	MBF		
	Balsam Fir	Pulpwood	65.0	Cords		
	Mixed Aspen		153.0	Cords		
	Mixed Hardwood		29.0	Cords		
	Mixed Spruce		1.0	Cords		
9	Balsam Fir	Pulpwood	15.0	Cords	15.7	\$9,337.25
	Mixed Aspen		62.0	Cords		
	Mixed Hardwood		19.0	Cords		
	Mixed Spruce		297.0	Cords		
	Tamarack		5.0	Cords		
10	Basswood	Sawtimber	2.3	MBF	16.9	\$5,070.80
	Red Maple		1.1	MBF		
	Sugar Maple		13.5	MBF		
	Mixed Hardwood	Pulpwood	99.0	Cords		
11	Paper Birch	Sawtimber	0.4	MBF	12.4	\$4,583.10
	Red Maple		0.7	MBF		
	Sugar Maple		15.2	MBF		
	Mixed Hardwood	Pulpwood	62.0	Cords		
12	Mixed Hardwood	Pulpwood	6.0	Cords	17.5	\$3,035.00
	<i>Red Maple</i>		6.0	Cords		
	Mixed Spruce		64.0	Cords		

Description of Timber by Payment Unit (PU), con't

PU	MARKET GROUP	PRODUCT	QUANTITY	UNIT	ACRES	ADVERTISE PRICE
12 con't	Tamarack	Pulpwood	76.0	Cords		
13	Balsam Fir	Pulpwood	23.0	Cords	19.7	\$10,850.15
	Mixed Aspen		7.0	Cords		
	Mixed Hardwood		19.0	Cords		
	Mixed Spruce		201.0	Cords		
	Tamarack		277.0	Cords		
14	Balsam Fir	Pulpwood	30.0	Cords	18.0	\$10,434.75
	Mixed Aspen		18.0	Cords		
	Mixed Spruce		45.0	Cords		
	Tamarack		449.0	Cords		
TOTAL:			67.8	MBF		
TOTAL:			3,722.0	Cords		

Sale Specific Conditions & Requirements

Sale Name: Bog Dogs

Sale Number: 32-006-20 Seq#: 1

1 - Sale Area

1.2 - Boundaries

1.2.1 - Painted boundaries (9/19)

The sale boundary and Payment Unit boundaries are marked and identified by red and yellow paint. Exterior sale boundary lines against state are marked with red paint. Interior Payment Unit boundaries are marked with yellow paint. Retention patches are marked with red paint; no harvesting activities may occur within these areas. The painted boundary line trees are not Included Timber and are to be protected unless marked with orange paint. Yellow painted trees designating an interior Payment Unit boundary are only to be cut when all surrounding Payment Units have been paid.

2 - Timber Specifications

2.1 - Included Timber

2.1.1 - Clearcut unit(s) with unmerchantable trees (6/14)

Within Payment Unit(s) 3, 5, 6, 9 and 12, cut all trees that are two (2) inches or more at DBH, except do not cut any cedar.

In addition, within:

- Payment Unit 3, do not cut any hemlock, paper birch, or white spruce.
- Payment Unit 5, do not cut any hemlock, red pine, white pine, or white spruce.
- Payment Units 6 and 9, do not cut any hemlock.
- Payment Unit 12, do not cut any black ash or white pine.

2.1.2 - Clearcut unit(s) w/o unmerchantable trees (8/11)

Within Payment Unit(s) 13 and 14, cut all trees which meet minimum piece specifications in 2.2 Utilization, except do not cut any cedar. In addition within Payment Unit 14, do not cut any black ash or paper birch. Also, within Payment Unit 13, do not cut any hemlock.

2.1.3 - Cut tree marked unit(s) (12/08)

Within Payment Unit(s) 2, 4, 10 and 11, all trees are designated for cutting when marked with orange paint above and below stump height, regardless of merchantability. In addition within these Payment Units, cut all spruce and fir, which meet minimum piece specifications in 2.2 Utilization. Also within Payment Unit 4, cut all paper birch, which meet minimum piece specifications within 2.2 Utilization, unless marked with green paint.

2.1.7 - Leave tree marked unit(s) (6/14)

Within Payment Unit(s) 1, 7 and 8, cut all trees that are two (2) inches or more at DBH, except do not cut any red pine, white pine, or green marked trees. In addition within Payment Unit 1, do not cut any cedar or hemlock. Also within Payment Units 7 and 8, do not cut any black cherry or white spruce.

2.2 - Utilization

2.2.6 - Roundwood operation required (5/07)

The skidding of whole trees or tree segments with limbs attached is prohibited within Payment Units 2, 4, 10 and 11. All products must be produced as roundwood and forwarded to existing roads or landing areas in final product length.

3 - Payments

3.4 - Damaged Timber

3.4.1 - Damaged timber (7/16)

General Condition and Requirement 3.4 Damaged Timber, defines liquidated damages for undesignated live merchantable trees which are cut or injured. In addition, extreme care should be taken to avoid damage to tree seedlings and saplings. Within Payment Units 2, 4, 10 and 11, if more than 20% of the tree seedlings or saplings (1/4" to 4.5" DBH) within a specified portion of the sale area are damaged, liquidated damages will be assessed at \$250.00 per acre for all acreage within that specified portion of the sale area that was damaged. No damage is acceptable to undesignated live merchantable trees. Within the sale area, if more than 5% of trees (> 4.5" DBH) within a specified area of the sale are damaged, liquidated

damages will be assessed for all trees damaged. Rates will be in accordance with General Condition and Requirement 3.4 Damaged Timber.

4 - Transportation

4.1 - Construction

4.1.3 - Slash and earthen piles (8/04)

Piles or windrows of earth along roads and landings that have been widened or constructed shall be leveled. Slash from road maintenance or construction, including stumps, shall be dispersed throughout the sale.

4.1.4 - Timber removed for construction (12/09)

Trees cut or damaged in the process of pre-approved road, landing or skid trail construction will be decked in an area separate from other Designated Timber and not removed until measured by the sale administrator. Payment will be made at the specified Purchase Unit Price.

4.1.6 - Road construction (1/09)

Construction of new roads or improvements of existing roads shall be done in such a way as to minimize the environmental and visual impacts. Merchantable trees shall be cut and utilized unless otherwise directed. Non-merchantable trees shall be severed and laid flat on the ground. Slash shall be scattered, not left in windrows and kept a minimum of 10 feet back from the road edge. Stumps shall be set upright, not left on edge, and be moved at least 10 feet away from the road edge. Disturbed soil shall be feathered into the woods and not left in berms or windrows.

4.1.7 - Road closure (10/11)

All new roads built into the sale must be blocked to vehicle traffic upon completion of the sale. All new roads built into the sale must be blocked to vehicle traffic within 30 days of completion of hauling. Overgrown roads that are reopened shall be considered new roads. In general, this will require constructing a four (4') foot high berm of stumps and logs covered with earth. Contact the sale administrator for details of design and placement.

4.2 - Maintenance

4.2.3 - Road maintenance (8/13)

The following road maintenance may be needed: Within 30 days of completion of hauling, or if no hauling occurs for 30 days, the road must be maintained and graded. This includes cleaning of drainage areas, grading, crowning and filling with gravel, if necessary. Damages will be assessed if grading/repair does not occur.

4.2.4 - Grading (10/16)

For completion of the sale, state forest roads must be graded. In general, this will require a road grader or bull dozer to shape up the roads after forest products have been hauled off site. This includes cleaning of drainage areas, grading, crowning and filling with gravel, if necessary. The grading equipment to be used must be approved by the Unit Manager or his/her representative.

4.3 - Public Right-of-Way

4.3.2 - County R-O-W (12/06)

The county must be contacted prior to crossing or harvesting within the county road R-O-W. This specification applies to Payment Units 7, 8 and 14 along County Road(s) 438 and Kates Grade.

5 - Operations

5.1 - Notification

5.1.1 - Pre-sale conference (10/16)

A pre-sale conference between the Purchaser and sale administrator is required prior to beginning any operation. The Unit Manager or their representative must be contacted at least 3 business days in advance to schedule this conference.

5.2 - Conduct of Operations

5.2.1 - Slash

5.2.1.11 - Slash for reforestation (5/07)

To facilitate reforestation, the sale area shall be left with slash evenly distributed. Bunched tops within the cutting area

shall be broken up and scattered. Stumps shall be cut low to the ground. Processing sites shall not be left with a compacted layer of slash; tops from these sites shall be hauled back into the cut area and scattered.

5.2.2 - Hazard Trees/Snags

5.2.2.1 - Den trees (10/16)

Obvious hollow and/or den trees shall be protected and left standing unless they are a safety hazard.

5.2.3 - Operating Restrictions

5.2.3.3 - Bark slippage restriction (3/09)

Within Payment Unit(s) 2, 4, 10 and 11, unless changed by written agreement, cutting and skidding are not permitted during the period of April 15 to July 15. This restriction is because of the likelihood of bark slippage.

5.2.17 - Timber Mats and Interlocking Composite Mats (3/18)

Some roads or skid trails may require extra protection such as that afforded by timber mats. Timber mats may help with access and/or hauling within Payment Units 1, 2, 5, 6, 11, 12 and 13, due to areas of poorly drained soils. If available, mats may be borrowed from the DNR. A Timber Sale Contract Supplement will be used to document the Purchaser's use of the DNR's mats. Contact the sale administrator regarding availability and pick-up. Timber mats are available from various field offices. The Purchaser is responsible for picking up and hauling the mats to and from the site. Contact the sale administrator to schedule at least 30 days before desired install/removal date. All mats must be cleaned prior to drop off. This may include, but is not limited to, power washing and brushing to remove mud and debris. A charge of \$400.00 per timber mat will be assessed for all damaged or non-returned mats. Damage for the crane/timber mats is defined as three or more broken cants.

5.2.22 - Operating Caution

5.2.22.1 - Operating caution (6/11)

It is recommended, but not required, that within Payment Unit(s) 3, 5, 6, 9, 12, 13 and 14, cutting, skidding and hauling occur during dry summer or frozen winter conditions. The reason for the recommendation is because of poorly drained soils within and/or access to these Payment Units.

5.2.32 - Decking/landing restoration (9/13)

All decking and landing areas must have the surface area restored to a condition equal to or better than before. This is to ensure the proper regeneration of the stand. Wood debris, chips and "cookies" from trimmings must be removed or scattered away from landing and loading areas and may not be windrowed on the edge.

5.2.37 - No decking areas (12/08)

No decking is allowed within fifty (50) feet of County Road 438 and Kate's Grade without permission of both the Marquette County Road Commission and the Unit Manager or their representative.

5.2.38 - No decking against live trees (2/04)

Cut products may not be decked against unmarked or designated leave trees.

5.4 - Soil Protection

5.4.1 - Rutting restriction, general (7/16)

Operations are to cease immediately if equipment and weather conditions result in rutting of roads which is twelve (12) inches or greater in depth and fifty (50) feet in length.

In addition within Payment Units 1-11, operations are to cease immediately if equipment and weather conditions result in rutting on skid trails which is twelve (12) inches or greater in depth and fifty (50) feet in length. Within Payment Units 12-14, operations are to cease immediately if equipment and weather conditions result in rutting on skid trails which is twenty four (24) inches or greater in depth and one hundred (100) feet in length.

The Unit Manager or his/her representative may restrict hauling and/or skidding if ruts exceed the specified depth. With the Unit Manager or his/her representative's approval, the Purchaser may return to the area when the risk of rutting has decreased.

5.4.2 - Skid trails (2/04)

Skid trails up and down slopes should be avoided. If however this is unavoidable, these trails will be left in a non-erodible condition using water bars, logs, and slash. Placing of slash on these skid trails while logging is ongoing may alleviate need for

any further action. At the direction of the sale administrator, seed, fertilizer, and mulch may also be required.

5.8 - Protection of Endangered Species

5.8.5 - Protection of raptor nests (3/13)

All trees with raptor nests will be protected if found during harvesting operations. Notification will be made to the Unit Manager or his/her representative who will notify the Wildlife Biologist so an on-site evaluation and recommendation can be made, if necessary.

6 - Safety and Fire Prevention

6.2 - Signing

6.2.1 - Road posting (9/09)

The Purchaser is responsible for posting and maintaining caution signs on County Road 438 and Kates/Ross Grade prior to beginning operations. The road must be posted at appropriate distances from the sale area to warn of logging activity and truck traffic. Signs must be removed when harvest operations are suspended or completed. The Purchaser shall provide these signs.



TIMBER SALE MAP

This information provided by authority of Part 525, 1994 PA 451, as amended.

Forest Management Unit Gwinn		County Marquette	Mapped By Brolin	Date 03/30/2020	Page 1	of 1
Township 44N	Range 26W	Section(s) and Subdivision(s) Sections 27, 28, 29, 30, 32, and 33		Scale 1:31,680		

Cover Type				Density	
A = Aspen	H = Hemlock	N = Marsh	U = Upland Brush	0 = Non Stocked	5 = Pole Timber Medium
B = Paper Birch	J = Jack Pine	O = Oak	UM = Upland Mixed	1 = Seedling Sapling Poor	6 = Pole Timber Well
C = Cedar	L = Lowland Brush	P = Lowland Poplar	V = Bog or Marsh	2 = Seedling Sapling Medium	7 = Saw Timber Poor
D = Tread Bog	LM = Lowland Mixed	Q = Mixed Swamp Conifer	W = White Pine	3 = Seedling Sapling Well	8 = Saw Timber Medium
E = Swamp Hdwoods	M = Mpl, Bch, Brch	R = Red Pine	X = Non Stocked	4 = Pole Timber Poor	9 = Saw Timber Well
F = Spruce Fir	MC = Mixed Conifer	S = Black Spruce	Z = Water		
G = Grass	MD = Mixed Deciduous	T = Tamarack			

PU Acres	PU Acres	PU Acres
1 28.1	6 4.2	11 12.4
2 4.3	7 17.2	12 17.5
3 2.7	8 9.6	13 19.7
4 8.5	9 15.7	14 18
5 4.2	10 16.9	

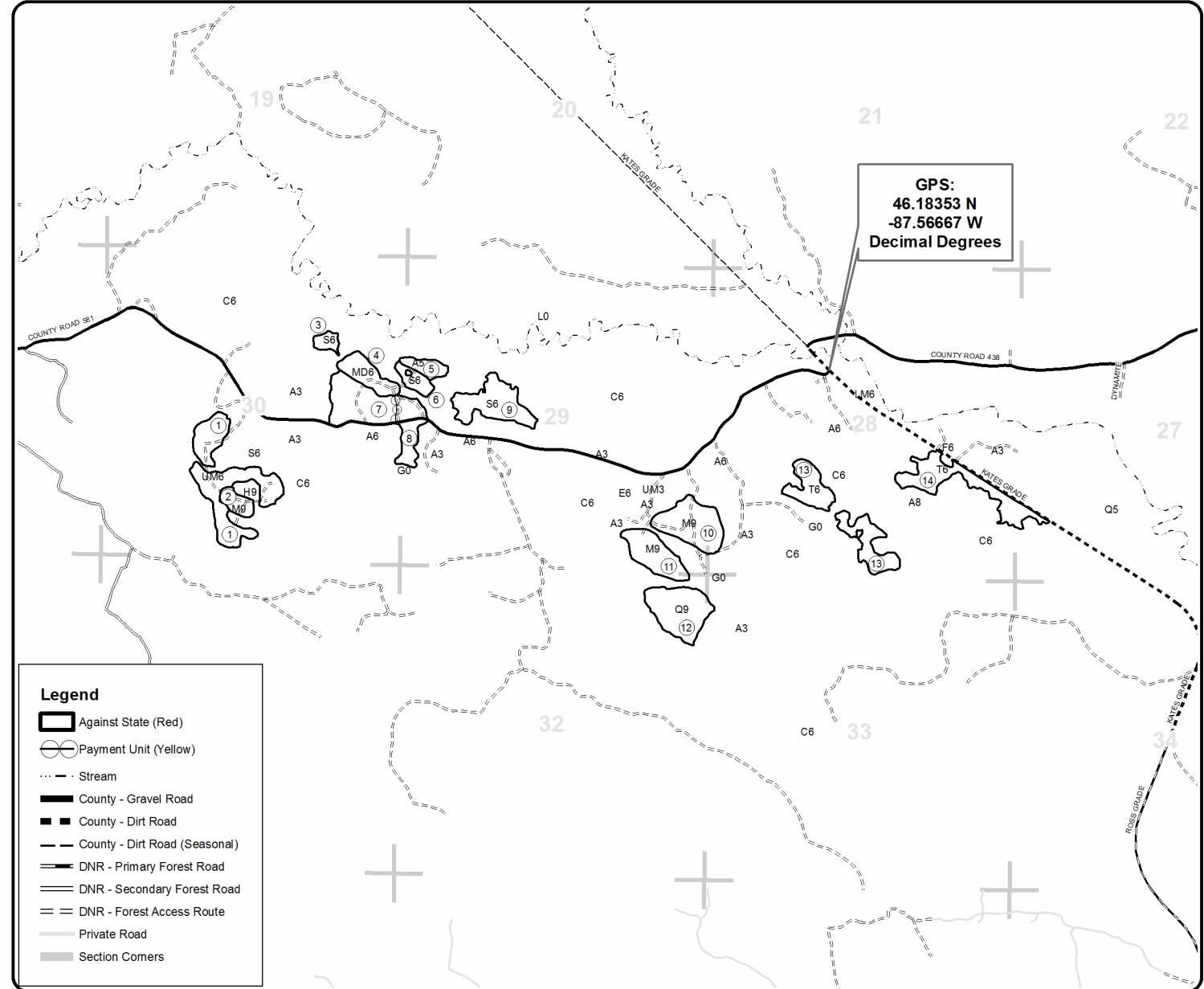
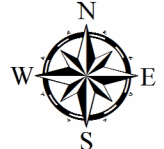
Bog Dogs

Compartments 58 and 59

179.0 Acres

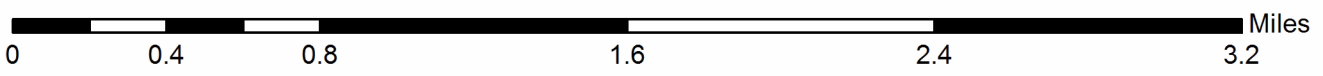


QR code for PDF Map app



Legend

- Against State (Red)
- Payment Unit (Yellow)
- Stream
- County - Gravel Road
- County - Dirt Road
- County - Dirt Road (Seasonal)
- DNR - Primary Forest Road
- DNR - Secondary Forest Road
- DNR - Forest Access Route
- Private Road
- Section Corners



TIMBER SALE INFORMATION

Harlow Hardwood (32-004-19)

T49N, R26W, SEC. 13; T49N, R26W, SEC. 24; T49N, R26W, SEC. 25.
Marquette County (Advertised Price \$87,505.55)

SALE NOTE: Sale operations are restricted to the period of December 1 to March 15, unless changed by written agreement. Sale operation is restricted to a short wood operation only, less than seventeen (17) skid lengths. Echo Lake Road and/or Nash Creek Road will require ~fifty (50) yards of approved fill material to repair problem areas.

A recreation site such as a trail, pathway, or campground is within the sale area or the vicinity. Certain restrictions/specifications may be applicable including time restrictions. Access may be through private land.

A timber sale contract for this lump sum, sealed bid timber sale will be awarded to the responsible bidder offering the highest sealed bid price. Bids must be at or above the following advertised price for each species:

<u>PRODUCTS & SPECIES</u>	<u>ESTIMATED UNITS*</u>	<u>ADVERTISED PRICE</u>
Sawtimber		
Basswood	0.70 MBF	\$ 109.00 / MBF
Red Maple	102.00 MBF	\$ 75.00 / MBF
Sugar Maple	171.40 MBF	\$ 227.00 / MBF
Yellow Birch	1.90 MBF	\$ 57.00 / MBF
Pulpwood		
Balsam Fir	41.00 Cords	\$ 18.40 / Cord
Mixed Aspen	317.00 Cords	\$ 25.70 / Cord
Mixed Hardwood	1,844.00 Cords	\$ 16.90 / Cord
Paper Birch	57.00 Cords	\$ 12.25 / Cord

* The total volume is statistically estimated within plus (+) or minus (-) 13.05 percent. The estimated units are final and not subject to adjustment. Prospective bidders are urged to examine this timber and to make their own estimates of quantity and quality.

BOND AND PAYMENT SCHEDULE:

1. A bond in the amount of \$4,375.00 to insure faithful performance of the conditions of the contract will be deposited by the successful bidder within 21 days of the sale award.
2. Cutting in any sale or unit without the required advance payment would be considered a trespass.
3. Total payment must be paid in advance or according to the following schedule :
 - (a) Ten percent (10%) of the sale value must be paid within 21 days of the sale award.
 - (b) The 10% down payment will be credited towards the first unit cut.
 - (c) Payment for each of the following units must be made before cutting begins in that unit:

PAYMENT UNIT NUMBER	PERCENT OF TOTAL SALE VALUE
01	18.4%
02	2.9%
03	9.9%
04	12.5%
05	31.2%
06	14.9%
07	4.4%
08	5.8%

4. If no cutting takes place, the 10% down payment will not be refunded.
5. Operations on the contract issued will terminate on 08/31/2023.

Description of Timber by Payment Unit (PU)

PU	MARKET GROUP	PRODUCT	QUANTITY	UNIT	ACRES	ADVERTISE PRICE
1	Basswood	Sawtimber	0.3	MBF	37.8	\$16,059.40
	Red Maple		5.2	MBF		
	Sugar Maple		45.7	MBF		
	Yellow Birch		1.9	MBF		
	Mixed Hardwood		305.0	Cords		
2	Red Maple	Sawtimber	0.1	MBF	8.1	\$2,496.50
	Sugar Maple		6.2	MBF		
	Mixed Hardwood	Pulpwood	64.0	Cords		
3	Red Maple	Sawtimber	6.7	MBF	25.0	\$8,656.00
	Sugar Maple		23.1	MBF		
	Balsam Fir	Pulpwood	2.0	Cords		
	Mixed Hardwood		170.0	Cords		
4	Basswood	Sawtimber	0.1	MBF	34.4	\$10,909.30
	Red Maple		4.6	MBF		
	Sugar Maple		21.2	MBF		
	Mixed Aspen	Pulpwood	34.0	Cords		
	Mixed Hardwood		288.0	Cords		
5	Basswood	Sawtimber	0.3	MBF	50.5	\$27,378.90
	Red Maple		52.0	MBF		
	Sugar Maple		54.5	MBF		
	Balsam Fir	Pulpwood	7.0	Cords		
	Mixed Aspen		9.0	Cords		
	Mixed Hardwood		634.0	Cords		
6	Red Maple	Sawtimber	33.4	MBF	30.3	\$13,054.80
	Sugar Maple		20.7	MBF		
	Mixed Aspen	Pulpwood	10.0	Cords		
	Mixed Hardwood		331.0	Cords		
7	Balsam Fir	Pulpwood	7.0	Cords	15.8	\$3,873.25
	Mixed Aspen		94.0	Cords		
	Mixed Hardwood		46.0	Cords		
	Paper Birch		45.0	Cords		
8	Balsam Fir	Pulpwood	25.0	Cords	10.0	\$5,077.40
	Mixed Aspen		170.0	Cords		
	Mixed Hardwood		6.0	Cords		
	Paper Birch		12.0	Cords		
TOTAL:			276.0	MBF		
TOTAL:			2,259.0	Cords		

Sale Specific Conditions & Requirements

Sale Name: Harlow Hardwood

Sale Number: 32-004-19 Seq#: 1

1 - Sale Area

1.2 - Boundaries

1.2.1 - Painted boundaries (1/14)

The sale boundary and Payment Unit boundaries are marked and identified by blue, red and yellow paint. Exterior sale boundary lines against private property are marked with blue paint. Exterior sale boundary lines against state are marked with red paint. Interior Payment Unit boundaries are marked with yellow paint. The painted boundary line trees are not Included Timber and are to be protected unless marked with orange paint.

2 - Timber Specifications

2.1 - Included Timber

2.1.1 - Clearcut unit(s) with unmerchantable trees (6/14)

Within Payment Unit(s) 7 and 8, cut all species trees that are two (2) inches or more at DBH, except do not cut any cedar, hemlock, oak, red pine, or white pine.

2.1.3 - Cut tree marked unit(s) (12/08)

Within Payment Unit(s) 1-6, all trees are designated for cutting when marked with orange paint above and below stump height, regardless of merchantability.

2.2 - Utilization

2.2.4 - Skidding length (2/14)

The skidding of un-limbed tops or lengths of over 17 feet shall not be permitted within any Payment Unit.

3 - Payments

3.4 - Damaged Timber

3.4.1 - Damaged timber (6/14)

General Condition and Requirement 3.4 Damaged Timber, defines liquidated damages for undesignted live merchantable trees which are cut or injured. In addition, extreme care should be taken to avoid damage to tree seedlings and saplings. Within the sale area, if more than 20% of the tree seedlings or saplings (1/4" to 4.5" DBH) within a specified portion of the sale area are damaged, liquidated damages will be assessed at \$250 per acre for all acreage within that specified portion of the sale area that was damaged.

No damage is acceptable to merchantable trees. Within the sale area, if more than 5% of trees (> 4.5" DBH) within a specified area of the sale are damaged, liquidated damages will be assessed for all trees damaged. Rates will be in accordance with General Condition and Requirement 3.4 Damaged Timber.

4 - Transportation

4.1 - Construction

4.1.2 - Stream crossings, specific (3/11)

A river crossing will require the installation of a culvert or portable bridge, which may be borrowed from the DNR. This installation shall be performed in accordance with the specifications on the appropriate permit(s) which shall be provided by the DNR.

4.1.3 - Slash and earthen piles (8/04)

Piles or windrows of earth along roads and landings that have been widened or constructed shall be leveled. Slash from road maintenance or construction, including stumps, shall be dispersed throughout the sale.

4.1.4 - Timber removed for construction (12/09)

Trees cut or damaged in the process of pre-approved road, landing or skid trail construction will be decked in an area separate from other Designated Timber and not removed until measured by the sale administrator. Payment will be made at the

specified Purchase Unit Price.

4.1.6 - Road construction (1/09)

Construction of new roads or improvements of existing roads shall be done in such a way as to minimize the environmental and visual impacts. Merchantable trees shall be cut and utilized unless otherwise directed. Non-merchantable trees shall be severed and laid flat on the ground. Slash shall be scattered, not left in windrows and kept a minimum of 10 feet back from the road edge. Stumps shall be set upright, not left on edge, and be moved at least 10 feet away from the road edge. Disturbed soil shall be feathered into the woods and not left in berms or windrows.

4.1.7 - Road closure (10/11)

All new roads built into the sale must be blocked to vehicle traffic within 30 days of the completion of hauling. Overgrown roads that are reopened shall be considered new roads. Some existing roads may also need to be closed, see the Timber Sale Map for locations. In general, this will require constructing a four (4') foot high berm of stumps and logs covered with earth. All stumps from road building and landing construction must be reserved to block any newly constructed roads upon completion of the sale. These stumps must be scattered along the road system to prohibit vehicular movement. Contact the sale administrator for details of design and placement.

4.1.8 - Road work (1) (8/07)

The following road work is required: ~fifty (50) yards of pit run is needed to fill holes on Echo Lake Road and/or Nash Creek Road and prepare said roads for hauling.

4.1.11 - Permits (2/12)

The DNR will secure any necessary stream crossing permits that may be required.

4.2 - Maintenance

4.2.1 - Hauling restriction (12/08)

Hauling may be restricted on forest roads by the Unit Manager or their representative. The restriction may occur during spring breakup or wet weather conditions. Hauling is also restricted to weekdays to avoid conflict with Little Presque Isle users.

4.2.3 - Road maintenance (8/13)

The following road maintenance may be needed: Within 30 days of completion of hauling or if no hauling occurs for 30 days, the road must be maintained and graded. This includes cleaning of drainage areas, grading, crowning and filling with gravel, if necessary. Damages will be assessed if grading/repair does not occur.

4.2.4 - Grading (10/16)

For completion of the sale, state forest roads must be graded. In general, this will require a road grader or bulldozer to shape up the roads after forest products have been hauled off site. This includes cleaning of drainage areas, grading, crowning and filling with gravel, if necessary. The grading equipment to be used must be approved by the Unit Manager or his/her representative.

4.4 - Access

4.4.1 - Private property access (3/11)

Permission for access across private land is the responsibility of the Purchaser. Should the Purchaser desire to cross private land, a copy of the written permission from the private land-owner will be required to be provided to the Unit Manager.

5 - Operations

5.1 - Notification

5.1.1 - Pre-sale conference (10/16)

A pre-sale conference between the Purchaser and sale administrator is required prior to beginning any operation. The Unit Manager or their representative must be contacted at least 3 business days in advance to schedule this conference.

5.1.4 - Post-sale conference (10/16)

A post-sale conference on site between the Purchaser and sale administrator is required 3 days prior to the completion of active logging operations to determine clean-up and repair of landings, road edges, and the fulfillment of other contract specifications.

5.2 - Conduct of Operations

5.2.1 - Slash

5.2.1.11 - Slash for reforestation (5/07)

To facilitate reforestation, the sale area shall be left with slash evenly distributed. Bunched tops within the cutting area shall be broken up and scattered. Stumps shall be cut low to the ground. Processing sites shall not be left with a compacted layer of slash; tops from these sites shall be hauled back into the cut area and scattered.

5.2.2 - Hazard Trees/Snags

5.2.2.1 - Den trees (10/16)

Obvious hollow and/or den trees shall be protected and left standing unless they are a safety hazard.

5.2.3 - Operating Restrictions

5.2.3.1 - Operating restrictions (9/11)

Within Payment Unit(s) 1-8, unless changed by written agreement, cutting, skidding and hauling are limited to the period of December 1 to March 15. This restriction is due to heavy recreational use and winter deer yard restrictions.

5.2.3.3 - Bark slippage restriction (3/09)

Within Payment Unit(s) 1-6, unless changed by written agreement, cutting and skidding are not permitted during the period of April 15 to July 15. This restriction is because of bark slippage.

5.2.29 - Shrub protection (9/07)

Do not cut or damage hawthorn, witch-hazel, apple or juneberry. These woody-shrub plants are highly beneficial to various wildlife species.

5.2.31 - Landing locations (9/13)

Recommended landing areas are marked on the Timber Sale Map with the letter "L". Landings must be confined to these designated sites unless otherwise authorized by the Unit Manager or their representative.

5.2.32 - Decking/landing restoration (9/13)

All decking and landing areas must have the surface area restored to a condition equal to or better than before. This is to ensure the proper regeneration of the stand. Wood debris, chips and "cookies" from trimmings must be removed or scattered away from landing and loading areas and may not be windrowed on the edge.

5.2.38 - No decking against live trees (2/04)

Cut products may not be decked against unmarked or designated leave trees.

5.2.40 - Pathway protection (10/10)

The Harlow Lake pathway is a bike and hiking trail and is shown on the Timber Sale Map. Do not cut trees or damage posts with blue pathway markers. Maintain a twenty (20) foot wide slash, debris and rut free zone daily, using the pathway as the center-line. Do not operate equipment down the pathway.

5.4 - Soil Protection

5.4.1 - Rutting restriction, general (7/16)

Operations are to cease immediately if equipment and weather conditions result in rutting of roads and/or skid trails which is twelve (12) inches or greater in depth and fifty (50) feet in length. The Unit Manager or his/her representative may restrict hauling and/or skidding if ruts exceed the specified depth. With the Unit Manager or his/her representative's approval, the Purchaser may return to the area when the risk of rutting has decreased.

5.4.2 - Skid trails (2/04)

Skid trails up and down slopes should be avoided. If however this is unavoidable, these trails will be left in a non-erodible condition using water bars, logs, and slash. Placing of slash on these skid trails while logging is ongoing may alleviate need for any further action. At the direction of the sale administrator, seed, fertilizer, and mulch may also be required.

5.4.3 - Erosion control (12/08)

Skid trails or haul roads may require erosion control structures or berms per direction of the Unit Manager or his/her representative.

5.4.4 - Slope protection (5/15)

Skid trails and roads on slopes shall be water barred with slash, stumps, and/or clean straw bales native to the area as soon as use is complete to prevent erosion.

5.6 - Debris and Waste Material

5.6.3 - Equipment cleaning (12/17)

For purposes of this provision, "Off-Road Equipment" includes all logging and construction machinery, except for log trucks, chip vans, service vehicles, water trucks, pickup trucks, cars, and similar vehicles. Off-Road Equipment brought on site must be clean and free from plant material and soil prior to arrival on any Payment Unit. Off-Road Equipment shall be cleaned of plant material and dirt prior to being moved to a new stand within the sale. Plant material includes leaves, stems, roots and seeds. Equipment shall be considered clean when a visual inspection does not disclose seeds, soil, vegetative matter, and other debris that could contain or hold seeds. This is to prevent the spread of invasive plant species.

5.8 - Protection of Endangered Species

5.8.5 - Protection of raptor nests (3/13)

All trees with raptor nests will be protected if found during harvesting operations. Notification will be made to the Unit Manager or his/her representative who will notify the Wildlife Biologist so an on-site evaluation and recommendation can be made, if necessary.

6 - Safety and Fire Prevention

6.2 - Signing

6.2.1 - Road posting (9/09)

The Purchaser is responsible for posting and maintaining caution signs on Echo Lake road and Harlow Lake road prior to beginning operations. The road must be posted at appropriate distances from the sale area to warn of logging activity and truck traffic. Signs must be removed when harvest operations are suspended or completed. The Purchaser shall provide these signs.

6.2.3 - Recreational trail posting (2/10)

The Purchaser is responsible for posting and maintaining caution signs on Harlow Lake Pathway prior to beginning operations. The trail must be posted at appropriate distances from the sale area to warn of logging activity and truck traffic at both ends of the trail. Signs must be removed when harvest operations are suspended or completed. The Purchaser shall provide these signs.



TIMBER SALE MAP

This information provided by authority of Part 525, 1994 PA 451, as amended.

Sale Number	Year
32-004	19

Forest Management Unit Gwinn FMU	County Marquette	Mapped By Hill	Date 5/8/19	Page 1	of 2
Township 49N	Range 26W	Section(s) and Subdivision(s) Sections 13, 24, 25	Scale 1:15,840		

Cover Type				Density			
A = Aspen	H = Herlock	N = Marsh	U = Upland Brush	0 = Non Stocked	5 = Pole Timber Medium		
D = Paper Birch	J = Jack Pine	O = Oak	UM = Upland Mixed	1 = Seedling Sapling Poor	6 = Pole Timber Well		
C = Cedar	L = Lowland Brush	P = Lowland Poplar	V = Bog or Marsh	2 = Seedling Sapling Medium	7 = Saw Timber Poor		
D = Treed Bog	LM = Lowland Mixed	Q = Mixed Swamo Conifer	W = White Pine	3 = Seedling Sapling Well	8 = Saw Timber Medium		
E = Swamp Hdwoods	M = Mpl. Och. Birch	R = Red Pine	X = Non Stocked	4 = Pole Timber Poor	9 = Saw Timber Well		
F = Spruce Fir	MC = Mixed Conifer	S = Black Spruce	Z = Water				
G = Grass	MD = Mixed Deciduous	T = Tamarack					

PU	Acres	PU	Acres
1	37.8	5	50.5
2	08.1	6	30.3
3	25.0	7	15.8
4	34.4	8	10.0

Harlow Hardwood

Compartment 204
211.9 Acres



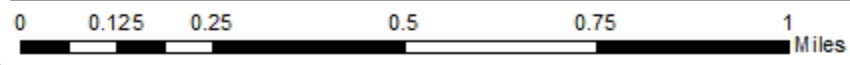
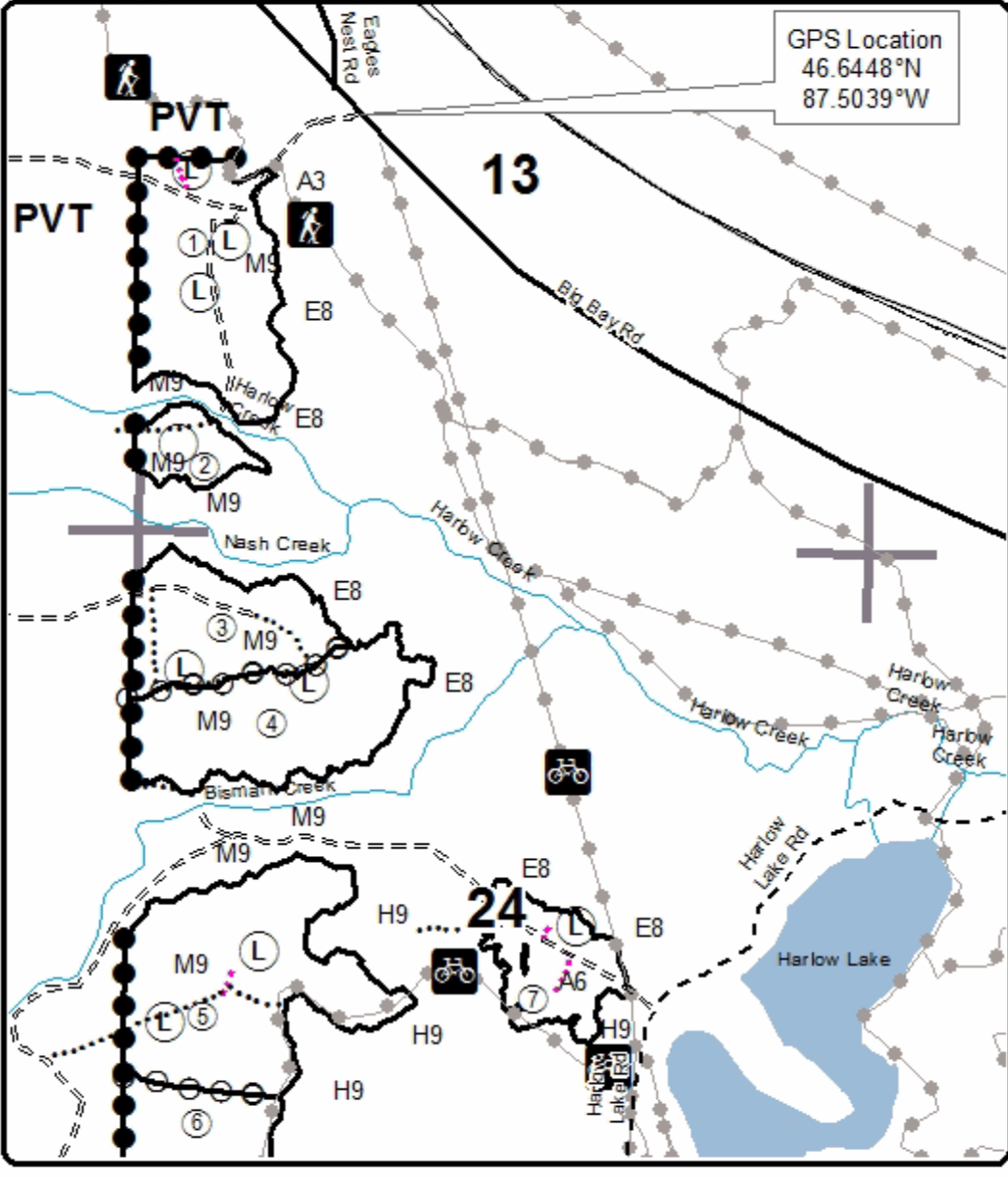
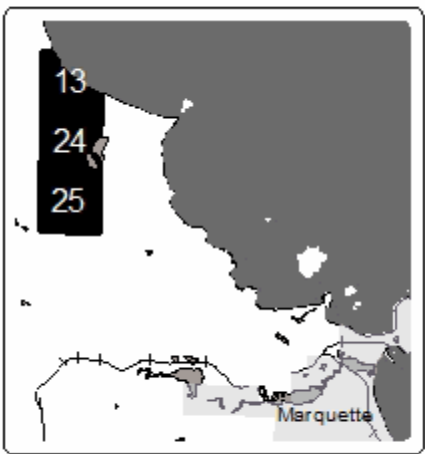
Legend

- == Poor Dirt Road
- - County Road
- ... Closed Road
- ... Approved Landing Spur
- Paved County Road
- Payment Unit (Yellow)
- Private Line (Blue)
- ▭ Against State (Red)
- Section Corners
- Perennial River
- Lakes and Rivers
- Recreational Trail
- Approved Landing

QR Code for PDF Maps



Locator Map
1:200,000





TIMBER SALE MAP

This information provided by authority of Part 525, 1994 PA 451, as amended.

Sale Number	Year
32-004	19

Forest Management Unit Gwinn FMU		County Marquette	Mapped By Hill	Date 5/8/19	Page 2	of 2
Township 49N	Range 26W	Section(s) and Subdivision(s) Sections 13, 24, 25		Scale 1:15,840		

Cover Type				Density	
A = Aspen	H = Hemlock	N = Marsh	U = Upland Brush	0 = Non Stocked	5 = Pole Timber Medium
D = Paper Birch	J = Jack Pine	O = Oak	UM = Upland Mixed	1 = Seedling Sapling Poor	6 = Pole Timber Well
C = Cedar	L = Lowland Brush	P = Lowland Poplar	V = Bog or Marsh	2 = Seedling Sapling Medium	7 = Saw Timber Poor
D = Treed Bog	LM = Lowland Mixed	Q = Mixed Swam Conifer	W = White Pine	3 = Seedling Sapling Well	8 = Saw Timber Medium
E = Swamp Hardwoods	M = Mpl. Dec. Dec.	R = Red Pine	X = Non Stocked	4 = Pole Timber Poor	9 = Saw Timber Well
F = Spruce Fir	MC = Mixed Conifer	S = Black Spruce	Z = Water		
G = Grass	MD = Mixed Deciduous	T = Tamarack			

PU	Acres	PU	Acres
1	37.8	5	50.5
2	08.1	6	30.3
3	25.0	7	15.8
4	34.4	8	10.0

Harlow Hardwood

Compartment 204
211.9 Acres



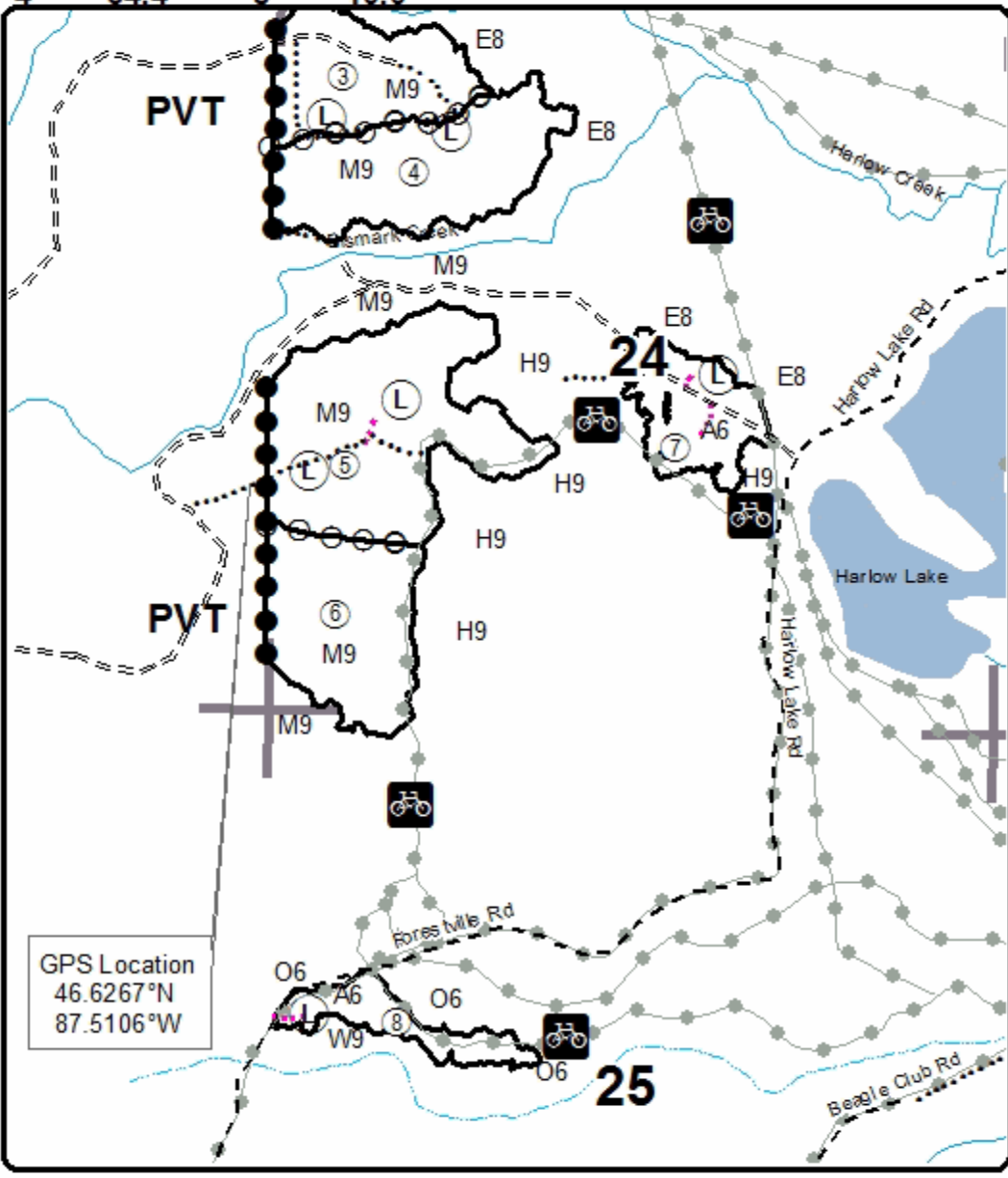
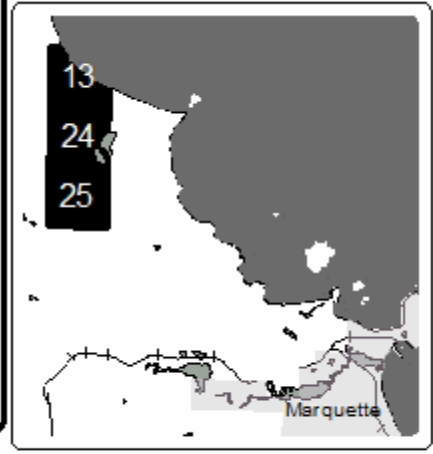
Legend

- == Poor Dirt Road
- - County Road
- ... Closed Road
- ... Approved Landing Spur
- Payment Unit (Yellow)
- Private Line (Blue)
- ▭ Against State (Red)
- ▬ Section Corners
- Intermittent Stream
- Perennial River
- Lakes and Rivers
- Recreational Trail
- Approved Landing

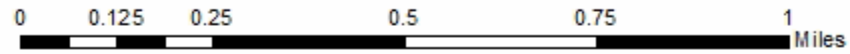
QR Code for PDF Maps



Locator Map
1:200,000



GPS Location
46.6267°N
87.5106°W



Harlow Hardwood (32-004-19)
T49N, R26W, SEC. 13; T49N, R26W, SEC. 24; T49N, R26W, SEC. 25; Marquette

In response to the notice of sale to be held 1:00 p.m. (local time) on September 21, 2020, I am hereby submitting my sealed bid (firm offer) for the following forest products to be cut. Bids for individual species must be at or above the advertised price. All non-responsive bid forms may be rejected.

<u>PRODUCTS & SPECIES</u>	<u>ESTIMATED VOLUME*</u>	<u>ADVERTISED PRICE</u>	<u>BID PRICE/UNIT</u>
Sawtimber			
Basswood	0.70 MBF	\$ 109.00/MBF	\$ _____
Red Maple	102.00 MBF	\$ 75.00/MBF	\$ _____
Sugar Maple	171.40 MBF	\$ 227.00/MBF	\$ _____
Yellow Birch	1.90 MBF	\$ 57.00/MBF	\$ _____
Pulpwood			
Balsam Fir	41.00 Cords	\$ 18.40/Cord	\$ _____
Mixed Aspen	317.00 Cords	\$ 25.70/Cord	\$ _____
Mixed Hardwood	1,844.00 Cords	\$ 16.90/Cord	\$ _____
Paper Birch	57.00 Cords	\$ 12.25/Cord	\$ _____

*The volumes are statistically estimated within plus (+) or minus (-) 13.05 percent. These estimated volumes are final and not subject to adjustment. Prospective bidders are urged to examine this timber and to make their own estimates of quantity and quality.

I understand that any or all bids may be rejected. All bids must be signed and all bid items must be bid or the bid form may be rejected. I also understand that consideration and awarding a contract will be based upon my past performance and ability to complete the contract based upon equipment and staffing subject to my control.

FEDERAL ID: ____ - ____ - ____ or SOCIAL SECURITY NUMBER: ____ - ____ - ____

Company or individual bidding: _____

Company representative's name: _____

Address: _____

City: _____ State: _____ Zip: _____

IF AVAILABLE, PLEASE PLACE THE PERSONALIZED LABEL FROM YOUR PROSPECTUS IN THE ABOVE BOX.

Individual or company representative's signature: _____ Date: _____

Phone number : _____ Email (optional): _____

THE WINNING BIDDER MUST COMPLETE THE VERIFICATION OF WORKER'S DISABILITY COMPENSATION ACT COMPLIANCE (ON REVERSE SIDE IF DOUBLE SIDED) WITHIN 21 DAYS OF SALE AWARD DATE



TIMBER SALE VERIFICATION OF WORKER'S DISABILITY COMPENSATION ACT COMPLIANCE

As required by Act 317, P.A. 1969 (Worker's Compensation) and
Part 5 of Act 451 of 1994, as amended.

FOR DEPARTMENT USE ONLY	
Sale Number (XX - XXX - XX - XX)	
Forest Management Unit:	

VERIFICATION OF WORKER'S DISABILITY COMPENSATION ACT COMPLIANCE

- This verification must be completed and submitted within 21 days of contract award and prior to the issuance of the timber sale contract.
- In addition, if boxes 2B or 2C are checked, then Notice of Exclusion or Certificate of Insurance must be submitted within twenty-one (21) days of the contract award and prior to the issuance of the timber sale contract.
- All information must be typed or printed except for written signatures.

Please Check Appropriate Categories:

1. My business is organized as (you **must** check one of the boxes below):
 - A. Sole Proprietorship (individual)
 - B. Partnership
 - C. Corporation
2. You **must** check one of the boxes below:
 - A. I certify my business is a sole proprietorship and it has no employees but the sole proprietor. I am not subject to the Worker's Compensation Laws.
 - B. I certify my business has satisfied its obligation to the Worker's Compensation Act through the use of an approved Notice of Exclusion (BWC-337, Rev. 5/96). I will provide a copy of the Notice of Exclusion within 21 days of the contract award. (For questions or a copy of the BWC-337, please call the Worker's Compensation Bureau at 517-322-1195).
 - C. I certify my business has a Worker's Compensation Policy. I will provide an original Certificate of Insurance within twenty-one (21) days of the contract award.
3. If you have checked item 2(A) or 2(B), you **must** indicate the number of **both** full-time and part-time employees, other than yourself, including family members and active partners (if none, you must enter "0").

_____ Full-time Employees

_____ Part-time Employees

Name of Business		Federal ID (or) Social Security No.	
Address		Telephone ()	
City	State	ZIP	

I hereby certify that the above information is true and correct. I agree to notify the Michigan DNR of any changes that occur in factors affecting my coverage during any of my present and future operations.

Signature of Owner or Authorized Representative

Title

Date

Please complete the "SEALED BID" information on the next page

Bog Dogs (32-006-20)

T44N, R26W, SEC. 27; T44N, R26W, SEC. 28; T44N, R26W, SEC. 29; T44N,

In response to the notice of sale to be held 1:00 p.m. (local time) on September 21, 2020, I am hereby submitting my sealed bid (firm offer) for the following forest products to be cut. Bids for individual species must be at or above the advertised price. All non-responsive bid forms may be rejected.

<u>PRODUCTS & SPECIES</u>	<u>ESTIMATED VOLUME*</u>	<u>ADVERTISED PRICE</u>	<u>BID PRICE/UNIT</u>
Sawtimber			
Basswood	2.30 MBF	\$ 109.00/MBF	\$ _____
Paper Birch	17.70 MBF	\$ 81.00/MBF	\$ _____
Red Maple	13.90 MBF	\$ 75.00/MBF	\$ _____
Sugar Maple	32.60 MBF	\$ 227.00/MBF	\$ _____
Yellow Birch	1.30 MBF	\$ 57.00/MBF	\$ _____
Pulpwood			
Balsam Fir	631.00 Cords	\$ 18.40/Cord	\$ _____
Mixed Aspen	723.00 Cords	\$ 25.70/Cord	\$ _____
Mixed Hardwood	698.00 Cords	\$ 16.90/Cord	\$ _____
Mixed Spruce	857.00 Cords	\$ 23.75/Cord	\$ _____
Tamarack	813.00 Cords	\$ 18.60/Cord	\$ _____

*These estimated volumes are final and not subject to adjustment. Prospective bidders are urged to examine this timber and to make their own estimates of quantity and quality.

I understand that any or all bids may be rejected. All bids must be signed and all bid items must be bid or the bid form may be rejected. I also understand that consideration and awarding a contract will be based upon my past performance and ability to complete the contract based upon equipment and staffing subject to my control.

FEDERAL ID: _____ or SOCIAL SECURITY NUMBER: _____

Company or individual bidding: _____

Company representative's name: _____

Address: _____

City: _____ State: _____ Zip: _____

IF AVAILABLE, PLEASE PLACE THE PERSONALIZED LABEL FROM YOUR PROSPECTUS IN THE ABOVE BOX.

Individual or company representative's signature: _____ Date: _____

Phone number : _____ Email (optional): _____

THE WINNING BIDDER MUST COMPLETE THE VERIFICATION OF WORKER'S DISABILITY COMPENSATION ACT COMPLIANCE (ON REVERSE SIDE IF DOUBLE SIDED) WITHIN 21 DAYS OF SALE AWARD DATE



FOR DEPARTMENT USE ONLY
Sale Number (XX - XXX - XX - XX)
Forest Management Unit:

TIMBER SALE VERIFICATION OF WORKER'S DISABILITY COMPENSATION ACT COMPLIANCE

*As required by Act 317, P.A. 1969 (Worker's Compensation) and
Part 5 of Act 451 of 1994, as amended.*

VERIFICATION OF WORKER'S DISABILITY COMPENSATION ACT COMPLIANCE

- This verification must be completed and submitted within 21 days of contract award and prior to the issuance of the timber sale contract.
- In addition, if boxes 2B or 2C are checked, then Notice of Exclusion or Certificate of Insurance must be submitted within twenty-one (21) days of the contract award and prior to the issuance of the timber sale contract.
- All information must be typed or printed except for written signatures.

Please Check Appropriate Categories:

1. My business is organized as (you **must** check one of the boxes below):
 - A. Sole Proprietorship (individual)
 - B. Partnership
 - C. Corporation
2. You **must** check one of the boxes below:
 - A. I certify my business is a sole proprietorship and it has no employees but the sole proprietor. I am not subject to the Worker's Compensation Laws.
 - B. I certify my business has satisfied its obligation to the Worker's Compensation Act through the use of an approved Notice of Exclusion (BWC-337, Rev. 5/96). I will provide a copy of the Notice of Exclusion within 21 days of the contract award. (For questions or a copy of the BWC-337, please call the Worker's Compensation Bureau at 517-322-1195).
 - C. I certify my business has a Worker's Compensation Policy. I will provide an original Certificate of Insurance within twenty-one (21) days of the contract award.
3. If you have checked item 2(A) or 2(B), you **must** indicate the number of **both** full-time and part-time employees, other than yourself, including family members and active partners (if none, you must enter "0").

_____ Full-time Employees

_____ Part-time Employees

Name of Business		Federal ID (or) Social Security No.	
Address		Telephone ()	
City	State	ZIP	

I hereby certify that the above information is true and correct. I agree to notify the Michigan DNR of any changes that occur in factors affecting my coverage during any of my present and future operations.

Signature of Owner or Authorized Representative

Title

Date

Please complete the "SEALED BID" information on the next page