



**DEPARTMENT OF NATURAL RESOURCES
STATE OF MICHIGAN**

TIMBER SALE PROSPECTUS #6608

SCHEDULED SALE DATE AND TIME: 2:00 p.m. (local time) on February 19, 2020.

LOCATION: SHINGLETON MGMT UNIT, PO BOX 67, M 28 WEST, SHINGLETON, MI 49884.

PROSPECTUS NOTE: The bidder is advised to inspect the sale area and review the location, estimated volumes, operating costs and contract terms of proposed sales. Please be aware that some landowners may request 60 days or more notice for access across their land.

Notice is hereby given that bids will be received by the Unit Manager, SHINGLETON MANAGEMENT UNIT, for certain timber on the following described lands:

Red Pine vs. White Pine (41-018-19) / T46N, R13W, SEC. 6 , NWNW.

T46N, R14W, SEC. 1 , NENE.

T47N, R13W, SEC. 30, W1/2NW,SWSW.

T47N, R13W, SEC. 31, SWSW.

T47N, R14W, SEC. 25, SENW,NE,E1/2SW,SE.

T47N, R14W, SEC. 36, S1/2NW,NE,SW,SE.

Schoolcraft County, Advertised Price \$157,674.90, 434.4 Acres, Red Pine, White Pine.

SALE NOTE: Extensive road work is required on this sale. The advertised price has been reduced by the estimated cost of this road work to off-set the additional expense. See Sale Spec 4.1.8 for additional information.

The Sunken Lake Road is a snowmobile trail and is shown on the Timber Sale Map. See Sale Spec 5.2.41 for restrictions.

A recreation site such as a trail, pathway, or campground is within the sale area or the vicinity. Certain restrictions/specifications may be applicable including time restrictions.

Beaverview Mix (41-020-19) / T45N, R13W, SEC. 26, SWNW.

T45N, R13W, SEC. 27, SENW,NE.

Schoolcraft County, Advertised Price \$48,194.35, 66.2 Acres, Red Pine, Spruce/Fir/Tamarack.

Treasure Pineland (41-022-19) / T47N, R14W, SEC. 27, NW,NWSW,S1/2SW,S1/2SE.

T47N, R14W, SEC. 34, N1/2NW,W1/2NE,E1/2SW,NWSE.

T47N, R14W, SEC. 34, S1/2SE.

T47N, R14W, SEC. 35, NWSW,S1/2SW.

Schoolcraft County, Advertised Price \$131,313.45, 294.3 Acres, Red Pine, White Pine.

SALE NOTE: Extensive road work is required on this sale. The advertised price has been reduced by the estimate cost of this road work to off-set the additional expense. See Sale Spec 4.1.8 for additional information.

The Sunken Lake Road is a snowmobile trail and is shown on the Timber Sale Map. See Sale Spec 5.2.41 for additional information.

A recreation site such as a trail, pathway, or campground is within the sale area or the vicinity. Certain restrictions/specifications may be applicable including time restrictions.

BID INSTRUCTIONS (VER. 07/02/2018):

1. Scheduled Bid Location, Date, and Time (2/11)

Bids must be received by the Unit Manager, SHINGLETON OFFICE, PO Box 67 M 28 West, Shingleton, MI 49884, no later than 2:00 p.m. (local time) on February 19, 2020. For further information concerning this sale, contact Robert Burnham at 906-452-6227 extension 240.

2. Bidder's Qualifications (5/16)

Purchaser shall obtain workers compensation insurance to cover claims under Michigan's Worker's Disability Compensation Act of 1969 or similar employee benefit act of any other state applicable to an employee. If all or part of a timber sale was prepared by a private contractor, the contractor and that contractor's company are not permitted to bid on the timber sale contract. Bids will not be accepted from individuals or companies appearing on the DNR/FRD No-Bid List. This list contains the names of purchasers who previously failed to execute a contract within 21-days or who have a history of poor performance.

3. Preparation of Sealed Bids (5/16)

Bid Forms may be completed online thru Michigan DNR Timber Sale Online Bidding (OLB) at www.michigan.gov/timberbidding or by completing the hardcopy Bid Form found in the Timber Sale Prospectus. Hardcopy Bid Forms shall be manually signed in ink. Registration in OLB is considered your 'signature' for all bids submitted thru that system. Bid prices must be entered for each species and product in the Bid Price column for all material subject to bidding and all fill-in blanks must be completed. If erasures or other changes appear on the hardcopy Bid Form, each erasure or change must be initialed by the person signing the bid.

4. Submission of Sealed Bids (5/16)

Bid forms may be obtained from the Unit Manager or thru OLB. Bids may be submitted hardcopy or thru OLB. All hardcopy bids must be submitted on the bid form and in an envelope clearly identified as described in this section. NOTE: Only one bid form per bid envelope. Sealed bids must be submitted to the Unit office designated in the prospectus and must be submitted at or prior to the time established in the prospectus. The envelope should show on the outside (a) the sale name or number and (b) the date and time of bid opening, as shown in the prospectus. Bids received after the time specified in the sale prospectus are late bids and will be rejected.

It is possible for a bidder to submit multiple bids on a single sale. For example, a bid may be submitted hardcopy and a bid may be submitted thru OLB. Or, two bidders from the same company could both submit bids on the same sale. If this were to happen, the State would accept all bids received and award the contract accordingly. All bidding and contractual requirements would apply to all bids received.

5. Public Opening of Sealed Bids (7/16)

If conditions permit, the sealed bids will be publicly opened and posted at the time and place set in the prospectus.

If a bidder, present at a bid opening, has submitted bids on more than one sale, that bidder may withdraw their unopened bid envelopes or announce the withdrawal of their online bid after being declared the successful bidder on one sale.

6. Award of Contract (1/11)

Award of the contract will be made to the Bidder whose bid, conforming to the prospectus, is most advantageous to the State of Michigan on the basis of total value at rates bid for the estimated quantities. The State reserves the right to reject any bid or waive any minor irregularity in bids received. A written award mailed (or otherwise furnished) to the successful Bidder shall be deemed to result in a binding contract without further action by either party.

7. Down Payment (1/11)

The Bidder to whom award is made must make a down payment within 21 days of the sale award. The amount of the down payment will be calculated as shown in the Bond and Payment Schedule of this prospectus. Only cash may be used to meet this requirement.

8. Performance Security (1/11)

As guarantee of faithful performance, a cash bond, certificate of deposit, surety bond or irrevocable letter of credit (LOC) is required within 21 days of the sale award. The amount of the performance security is shown in the Bond and

Payment Schedule of this prospectus. If an LOC or surety is used, the coverage must extend for at least 6 months beyond the contract expiration.

9. Timber Sale Contract (7/18)

Additional conditions and requirements common to all timber sales are listed on the timber sale contract (R4031) and are available on line at www.michigan.gov/timber. Contact the Unit Manager for additional information or a sample contract. Within 21 days of the date of the award letter, the bidder must sign the contract and provide the required down payment, performance security, and verification of worker's disability compensation. The down payment and performance security shall be in accordance with the provisions of the timber sale contract, in the sums stated in this prospectus. If these actions are not taken, then the Bidder, the Bidder's corporation, and the corporation's principals may not be permitted to bid on State timber sales for a period of 3 months after the first offense, 6 months after the second offense, and 1 year after the third offense. An offense will only be counted against the Bidder for 5 years. In addition, the Bidder certifies that if awarded this contract, the Bidder will complete the timber sale contract in accordance with its terms and any modifications thereof including requirements to purchase, cut, and remove the included timber by the expiration date.

Payment Unit values in the State Forest Timber Sale Contract are calculated based on the advertised value of the Payment Unit as a percentage of the total advertised value of the contract. The advertised value of each Payment Unit is given in the Description of Timber by Payment Unit table on the Timber Sale Information page. For example, if the value of Payment Unit 1 is advertised as \$1,500 and the total Timber Sale value is advertised as \$10,000, the contract price for Payment Unit 1 will be 15% of the total bid price ($\$1,500/\$10,000 * 100$).

10. Disclaimer of Estimates and Bidder's Warranty of Inspection (7/16)

Before submitting this bid, the Bidder is advised and cautioned to inspect the sale area, review the requirements of the sale contract, and take other steps as may be reasonably necessary to ascertain the location, estimated volumes, construction estimates, and operating costs of the proposed sale. Failure to do so will not relieve the Bidder from responsibility for completing the contract.

The Bidder warrants that this bid is submitted solely on the basis of the Bidder's examination and inspection of the quality and quantity of the timber offered for sale and the Bidder's opinion of the value thereof and the costs of recovery. No reliance should be placed on the State of Michigan's estimates of timber quality, quantity or costs of recovery. Bidder further acknowledges that the State of Michigan: (i) expressly disclaims any warranty of fitness of timber for any purpose; (ii) offers this timber as is without any warranty of quality (merchantability) or quantity and (iii) expressly disclaims any warranty as to the quantity or quality of timber sold.

11. Certification and Chain-of-Custody (10/14)

Unless otherwise indicated in the contract under section 7 – Other Conditions of the Sale Specific Conditions & Requirements, the area encompassed by this timber sale is certified to the standards of the Forest Stewardship Council (FSC) - Certificate #SCS-FM/COC-00090N and the Sustainable Forestry Initiative (SFI) - Certificate #NSF-SFIS-5Y031-SF5. Forest products from this sale may be delivered to the mill as "FSC 100% and / or SFI certified" as long as the contractor hauling the forest products is chain-of-custody (COC) certified or covered under a COC certificate from the destination mill. The purchaser is responsible for maintaining COC after leaving the sale area.

12. Good Neighbor Authority (GNA) Requirements (7/16)

If the name of this timber sales contains the acronym GNA, it is authorized by the Good Neighbor Authority (GNA) and covered by various agreements between the U.S. Forest Service and the State. The timber sale occurs on federal land and the following conditions apply:

GNA contracts on US Forest Service land will not be awarded to purchasers on the Federal list of excluded parties. The System for Award Management (SAM) will be checked for active excluded parties prior to award of contract. In addition, the Bidder to whom award is made must complete an Assurance Regarding Felony Conviction or Tax Delinquent Status for Corporate Applicants (AD-3031).

13. Good Neighbor Authority (GNA) Requirements, con't (9/16)

Bidder certifies, by signing this bid form, that to the best of Bidder's knowledge that the following representations are accurate and complete.

- a. That the Bidder and its principals are not presently debarred, suspended, proposed for debarment, declared ineligible, or voluntary excluded from timber sales (covered transactions) by any Federal department or agency.
- b. That the Bidder and its principals have not within a 3-year period preceding this bid been convicted of or had a civil judgment rendered against them for commission of fraud or a criminal offense in connection with obtaining , attempting to obtain, or performing a public (Federal, State, or local) transaction or contract under a public transaction; violation of Federal or State antitrust statutes or commission of embezzlement, theft, forgery, bribery, falsification or destruction of records, making false statements, or receiving stolen property.
- c. That the Bidder and its principals are not presently indicted for or otherwise criminally or civilly charged by a governmental entity (Federal, State, or local) with commission of any of the offenses enumerated in paragraph b of this certification.
- d. That the Bidder and its principals have not within a 3-year period preceding this bid had one or more public transactions (Federal, State, or local) terminated for breach or default of a timber or forest product contract.

Bidders that cannot certify this requirement, in whole or in part, shall submit an explanation with their bid.

DAN EICHINGER
Director

TIMBER SALE INFORMATION

Red Pine vs. White Pine (41-018-19)

T46N, R13W, SEC. 6; T46N, R14W, SEC. 1; T47N, R13W, SEC. 30; T47N, R13W, SEC. 31; T47N, R14W, SEC. 25; T47N, R14W, SEC. 36.

SALE NOTE: Extensive road work is required on this sale. The advertised price has been reduced by the estimated cost of this road work to off-set the additional expense. See Sale Spec 4.1.8 for additional information.

The Sunken Lake Road is a snowmobile trail and is shown on the Timber Sale Map. See Sale Spec 5.2.41 for restrictions.

A recreation site such as a trail, pathway, or campground is within the sale area or the vicinity. Certain restrictions/specifications may be applicable including time restrictions.

A timber sale contract for this lump sum, sealed bid timber sale will be awarded to the responsible bidder offering the highest sealed bid price. Bids must be at or above the following advertised price for each species:

<u>PRODUCTS & SPECIES</u>	<u>ESTIMATED UNITS*</u>	<u>ADVERTISED PRICE</u>
Pulpwood		
Jack Pine	352.00 Cords	\$ 30.20 / Cord
Paper Birch	33.00 Cords	\$ 13.10 / Cord
Quaking Aspen	32.00 Cords	\$ 29.05 / Cord
Red Maple	9.00 Cords	\$ 19.30 / Cord
Red Pine	2,329.00 Cords	\$ 55.10 / Cord
White Pine	1,035.00 Cords	\$ 16.60 / Cord

* The estimated units are final and not subject to adjustment. Prospective bidders are urged to examine this timber and to make their own estimates of quantity and quality.

BOND AND PAYMENT SCHEDULE:

1. A bond in the amount of \$7,884.00 to insure faithful performance of the conditions of the contract will be deposited by the successful bidder within 21 days of the sale award.
2. Cutting in any sale or unit without the required advance payment would be considered a trespass.
3. Total payment must be paid in advance or according to the following schedule :
 - (a) Ten percent (10%) of the sale value must be paid within 21 days of the sale award.
 - (b) The 10% down payment will be credited towards the first unit cut.

(c) Payment for each of the following units must be made before cutting begins in that unit:

PAYMENT UNIT NUMBER	PERCENT OF TOTAL SALE VALUE
01	1.1%
02	11.4%
03	5.0%
04	3.2%
05	3.7%
06	2.0%
07	0.5%
08	0.9%
09	1.6%
10	1.6%
11	2.3%
12	4.4%
13	9.1%
14	9.9%
15	4.5%
16	4.5%
17	10.0%
18	4.1%
19	8.3%
20	6.3%
21	5.6%

4. If no cutting takes place, the 10% down payment will not be refunded.
5. Operations on the contract issued will terminate on 06/30/2023.

Description of Timber by Payment Unit (PU)

PU	MARKET GROUP	PRODUCT	QUANTITY	UNIT	ACRES	ADVERTISE PRICE
1	Jack Pine Red Pine White Pine	Pulpwood	1.0	Cords	8.6	\$1,788.10
			31.0	Cords		
			3.0	Cords		
2	Jack Pine Red Pine White Pine	Pulpwood	28.0	Cords	36.7	\$18,197.10
			289.0	Cords		
			86.0	Cords		
3	Jack Pine Red Pine White Pine	Pulpwood	9.0	Cords	17.2	\$7,881.60
			136.0	Cords		
			7.0	Cords		
4	Jack Pine Red Pine White Pine	Pulpwood	82.0	Cords	14.1	\$5,041.00
			36.0	Cords		
			35.0	Cords		
5	Jack Pine Paper Birch Red Pine White Pine	Pulpwood	6.0	Cords	17.2	\$5,761.30
			6.0	Cords		
			89.0	Cords		
			36.0	Cords		
6	Jack Pine Red Pine White Pine	Pulpwood	12.0	Cords	8.8	\$3,077.10
			33.0	Cords		
			54.0	Cords		
7	Jack Pine Red Pine White Pine	Pulpwood	7.0	Cords	6.6	\$856.70
			9.0	Cords		
			9.0	Cords		
8	Red Pine White Pine	Pulpwood	21.0	Cords	8.2	\$1,372.90
			13.0	Cords		
9	Jack Pine Red Pine White Pine	Pulpwood	7.0	Cords	13.6	\$2,488.50
			35.0	Cords		
			21.0	Cords		
10	Jack Pine Red Maple Red Pine White Pine	Pulpwood	15.0	Cords	10.6	\$2,448.10
			4.0	Cords		
			33.0	Cords		
			6.0	Cords		
11	Paper Birch Red Pine White Pine	Pulpwood	10.0	Cords	4.8	\$3,605.40
			26.0	Cords		
			123.0	Cords		
12	Quaking Aspen Red Pine White Pine	Pulpwood	2.0	Cords	21.5	\$6,908.50
			118.0	Cords		
			21.0	Cords		
13	Jack Pine Red Pine White Pine	Pulpwood	23.0	Cords	34.7	\$14,353.70
			225.0	Cords		
			76.0	Cords		
14	Jack Pine Quaking Aspen Red Pine White Pine	Pulpwood	6.0	Cords	40.1	\$15,652.10
			12.0	Cords		
			191.0	Cords		
			277.0	Cords		
15	Jack Pine Paper Birch Red Pine White Pine	Pulpwood	37.0	Cords	15.8	\$7,045.00
			4.0	Cords		
			100.0	Cords		
			22.0	Cords		
16	Jack Pine Paper Birch Quaking Aspen Red Pine	Pulpwood	54.0	Cords	17.4	\$7,108.70
			13.0	Cords		
			12.0	Cords		
			90.0	Cords		
17	Jack Pine Quaking Aspen Red Pine	Pulpwood	38.0	Cords	51.4	\$15,726.30
			6.0	Cords		
			256.0	Cords		

Description of Timber by Payment Unit (PU), con't

PU	MARKET GROUP	PRODUCT	QUANTITY	UNIT	ACRES	ADVERTISE PRICE
17 con't	White Pine	Pulpwood	18.0	Cords		
18	Jack Pine	Pulpwood	25.0	Cords	13.1	\$6,446.50
	Red Maple		3.0	Cords		
	Red Pine		92.0	Cords		
	White Pine		34.0	Cords		
19	Red Pine	Pulpwood	216.0	Cords	35.1	\$13,096.80
	White Pine		72.0	Cords		
20	Jack Pine	Pulpwood	2.0	Cords	29.1	\$9,988.60
	Red Pine		160.0	Cords		
	White Pine		67.0	Cords		
21	Red Maple	Pulpwood	2.0	Cords	29.8	\$8,830.90
	Red Pine		143.0	Cords		
	White Pine		55.0	Cords		
TOTAL:			3,790.0	Cords		

Sale Specific Conditions & Requirements

Sale Name: Red Pine vs. White Pine

Sale Number: 41-018-19 Seq#: 1

1 - Sale Area

1.2 - Boundaries

1.2.1 - Painted boundaries (9/19)

The sale boundary and Payment Unit boundaries are marked and identified by red and yellow paint. Exterior sale boundary lines against state are marked with red paint. Interior Payment Unit boundaries are marked with yellow paint. The painted boundary line trees are not Included Timber and are to be protected unless marked with orange paint.

2 - Timber Specifications

2.1 - Included Timber

2.1.1 - Clearcut unit(s) with unmerchantable trees (6/14)

Within Payment Unit(s) 1 and 3, cut all trees that are two (2) inches or more at DBH, except do not cut oak and hemlock.

2.1.3 - Cut tree marked unit(s) (12/08)

Within Payment Unit(s) 2 and 4-21, all trees are designated for cutting when marked with orange paint above and below stump height, regardless of merchantability. In addition, within Payment Units 4, 5, 12, 13, 15, 16, and 18-21, cut all jack pine. Also, within Payment Unit 14, cut all jack pine, white pine, and aspen.

2.1.7 - Leave tree marked unit(s) (6/14)

Within Payment Unit(s) 11, all trees which meet minimum piece specifications in 2.2 Utilization are designated for cutting, except do not cut oak, hemlock, or any trees marked with green paint above and below stump height.

2.2 - Utilization

2.2.3 - Stump heights (4/07)

Stump heights within Payment Unit 3 shall not exceed 12 inches for trees greater than 10 inches DBH and 4 inches for trees smaller than 10 inches DBH. This is in order to facilitate planting operations.

3 - Payments

3.3 - Pre-measured Sales

3.3.4 - Dividing payment units (7/14)

Payment Unit(s) with a value over \$15,000 may be divided at the request of the Purchaser and upon approval of the Unit Manager. Dividing Payment Units is a contract modification which requires a Timber Sale Contract Supplement.

3.4 - Damaged Timber

3.4.2 - Special Protection Trees (4/14)

The Purchaser shall not cut live or dead special protection trees within cutting units or clearings. Special protection trees are oak and hemlock. If the Purchaser's operations have cut or damaged special protection trees through carelessness, the Purchaser shall pay \$100 as fixed, agreed and liquidated damages for each special protection tree cut or damaged. Such payment does not constitute ownership of the undesignated timber.

4 - Transportation

4.1 - Construction

4.1.3 - Slash and earthen piles (8/04)

Piles or windrows of earth along roads and landings that have been widened or constructed shall be leveled. Slash from road maintenance or construction, including stumps, shall be dispersed throughout the sale.

4.1.6 - Road construction (1/09)

Construction of new roads or improvements of existing roads shall be done in such a way as to minimize the environmental and visual impacts. Merchantable trees shall be cut and utilized unless otherwise directed. Non-merchantable trees shall be

severed and laid flat on the ground. Slash shall be scattered, and not left in windrows and kept a minimum of 10 feet back from the road edge. Stumps shall be set upright, not left on edge, and be moved at least 10 feet away from the road edge. Disturbed soil shall be feathered into the woods and not left in berms or windrows.

4.1.7 - Road closure (10/11)

All new roads built into the sale must be blocked to vehicle traffic upon completion of the sale. Overgrown roads that are reopened shall be considered new roads. In general, this will require constructing double earthen berms at strategic locations. These roads must be rendered impassable to cars and trucks. Contact the sale administrator for specific details of design and placement.

4.1.8 - Road work (1) (8/07)

The following road work is required: 300 cubic yards of breaker run gravel containing stone no larger than 3" must be purchased, hauled and spread between the sale area and the intersection of the Sunken Lake Road and Reservoir Dam Road. All work will be at the Purchaser's expense and work must be complete before hauling can occur, unless otherwise approved by the Unit Manager.

4.1.10 - Oversight (12/08)

The Unit Manager, or his/her representative, must be present when the road improvement project is initiated.

4.2 - Maintenance

4.2.4 - Grading (10/16)

For completion of the sale, state forest roads must be graded. In general, this will require a road grader or bull dozer to shape up the roads after forest products have been hauled off site. The grading equipment to be used must be approved by the Unit Manager or his/her representative.

5 - Operations

5.1 - Notification

5.1.1 - Pre-sale conference (10/16)

A pre-sale conference between the Purchaser and sale administrator is required prior to beginning any operations. The Unit Manager or his/her representative must be contacted at least 5 days in advance to schedule the conference.

5.2 - Conduct of Operations

5.2.1 - Slash

5.2.1.11 - Slash for reforestation (5/07)

To facilitate reforestation, Payment Unit 3 shall be left with slash evenly distributed. Bunched tops within the cutting area shall be broken up and scattered. Stumps shall be cut low to the ground. Processing sites shall not be left with a compacted layer of slash; tops from these sites shall be hauled back into the cut area and scattered.

5.2.2 - Hazard Trees/Snags

5.2.2.1 - Den trees (10/16)

Obvious hollow and/or den trees shall be protected and left standing unless they are a safety hazard.

5.2.3 - Operating Restrictions

5.2.3.6 - Bark beetle restriction (12/08)

In the event drought creates a high risk of pine bark beetle infestation, pine is not to be cut during the period March 1 through July 1, unless all portions of trees greater than two inches in diameter are removed from the sale area, reduced to chips, or treated to the satisfaction of the Unit Manager or his/her representative, within fifteen days of being severed from the stump. Pine log decks, pulpwood piles and treetops that are piled for chipping in the fall or winter within a 1/4 mile of susceptible sites must be removed before March 15. Residual slash must not be placed in piles or rows and must be spread over the site for quick drying. The Department of Natural Resources will exercise this specification if the risk of damage warrants.

5.2.32 - Decking/landing restoration (9/13)

All decking and landing areas must have the surface area restored to a condition equal to or better than before. This is to ensure the proper regeneration of the stand. Wood debris, chips and "cookies" from trimmings must be evenly distributed

throughout the sale area. This condition applies to Payment Unit 3.

5.2.38 - No decking against live trees (2/04)

Cut products may not be decked against unmarked or designated leave trees.

5.2.41 - Snowmobile trail protection (9/11)

The Sunken Lake Road is a snowmobile trail and is shown on the Timber Sale Map. Do not cut or damage posts with orange trail markers or traffic control signs. If the trail is used for hauling, it must be graded to the satisfaction of the Unit Manager or his/her representative prior to December 1st. If the trail road is to be used for hauling during the snowmobile season, then a snow covered base must be left on the trail. Maintain a 20 foot wide slash, debris, and rut free zone daily using the snowmobile trail as the centerline.

5.4 - Soil Protection

5.4.1 - Rutting restriction, general (7/16)

Operations are to cease immediately if equipment and weather conditions result in rutting of roads and/or skid trails which is 12 inches or greater in depth and 50 feet in length. The Unit Manager or his/her representative may restrict hauling and/or skidding if ruts exceed the specified depth. With the Unit Manager or his/her representative's approval, the Purchaser may return to the area when the risk of rutting has decreased.

5.8 - Protection of Endangered Species

5.8.3 - Red shoulder hawk or goshawk (2/16)

In the event that an active red shoulder hawk or goshawk nest is found, the contract may be amended to protect the nest site until the nest is determined to be inactive. The value of the trees in this excluded area will be refunded or credited to the Purchaser. The nest will be buffered with a five-chain radius (eight acre) protection area, centered on the nest tree, in which there will be no cutting or new roads constructed. Avoid human disturbance, including loading and skidding, in the protection area.

An additional zone of five chains (ten chains centered on the active nest tree) will be established in which there is no management activity from April 1 to July 30. Limit biomass harvesting and chipping operations within this ten-chain zone, retain the maximum one-third of residues per the Woody Biomass Harvesting Guidelines (Michigan DNR 2010). Nests determined to be inactive will be protected with a one-chain no-harvest buffer.

6 - Safety and Fire Prevention

6.2 - Signing

6.2.2 - Snowmobile trail posting (8/09)

The Purchaser is responsible for posting and maintaining caution signs on the snowmobile trail prior to beginning operations during the snowmobile season (approximately December 1 to March 31). The trail must be posted at appropriate distances from the sale area to warn of logging activity and truck traffic. Signs must be removed when harvest operations are suspended or completed. The DNR will provide these signs.

7 - Other Conditions

7.3 - Contract Modifications

7.3.3 - Modification for reforestation (8/05)

When contractual work of Purchaser has been accepted for any Payment Unit identified on Sale Area Map, Payment Unit will be eliminated from the Sale Area on written notice so that reforestation operations can begin.



TIMBER SALE MAP

This information provided by authority of Part 525, 1994 PA 451, as amended.

Forest Management Unit Shingleton	County Schoolcraft	Mapped By Steve Tuovila	Date 9/23/2019	Page 1	of 2
Township see below	Range see below	Section(s) and Subdivision(s) see below	Scale 1:15,840		

Cover Type

A = Aspen	H = Hemlock	N = Marsh	U = Upland Brush
B = Paper Birch	J = Jack Pine	O = Oak	UM = Upland Mixed
C = Cedar	L = Lowland Brush	P = Lowland Poplar	V = Bog or Marsh
D = Treed Bog	LM = Lowland Mixed	Q = Mixed Swamp Conifer	W = White Pine
E = Swamp Hdwoods	M = Mpl. Bch, Brch	R = Red Pine	X = Non Stocked
F = Spruce Fir	MC = Mixed Conifer	S = Black Spruce	Z = Water
G = Grass	MD = Mixed Deciduous	T = Tamarack	

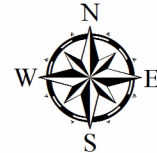
Density

0 = Non Stocked	5 = Pole Timber Medium
1 = Seedling Sapling Poor	6 = Pole Timber Well
2 = Seedling Sapling Medium	7 = Saw Timber Poor
3 = Seedling Sapling Well	8 = Saw Timber Medium
4 = Pole Timber Poor	9 = Saw Timber Well

46N 13W 6 NWNW
46N 14W 1 NENE
47N 13W 30 W1/2NW,SWSW
47N 13W 31 SWSW
47N 14W 25 SENW,NE,E1/2SW,SE
47N 14W 36 S1/2NW,NE,SW,SE

Red Pine vs. White Pine

map 1 of 2
434.4 Acres



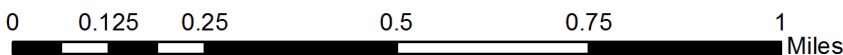
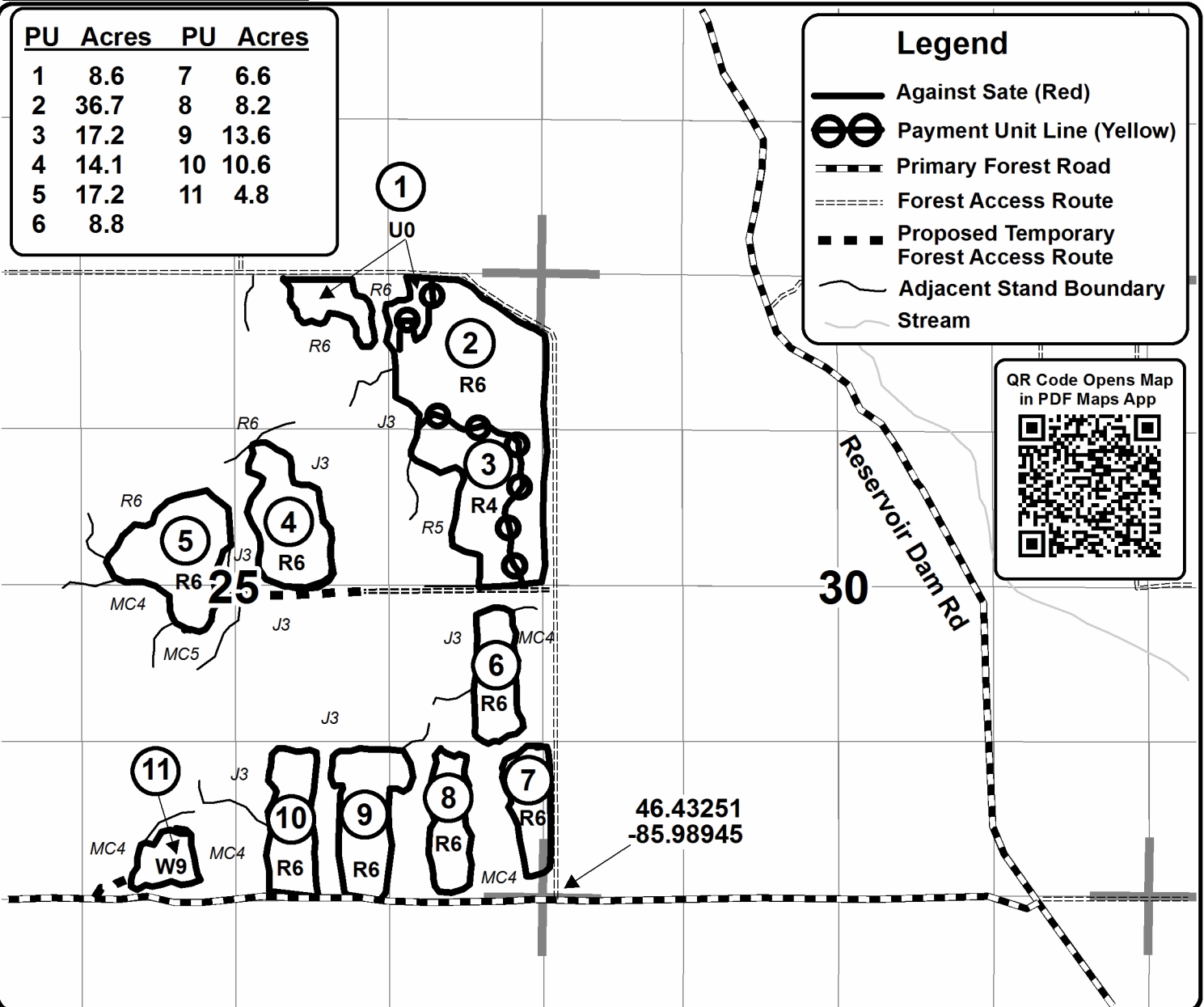
PU Acres PU Acres

1	8.6	7	6.6
2	36.7	8	8.2
3	17.2	9	13.6
4	14.1	10	10.6
5	17.2	11	4.8
6	8.8		

Legend

- Against Sate (Red)
- Payment Unit Line (Yellow)
- Primary Forest Road
- Forest Access Route
- Proposed Temporary Forest Access Route
- Adjacent Stand Boundary
- Stream

QR Code Opens Map in PDF Maps App





TIMBER SALE MAP

This information provided by authority of Part 525, 1994 PA 451, as amended.

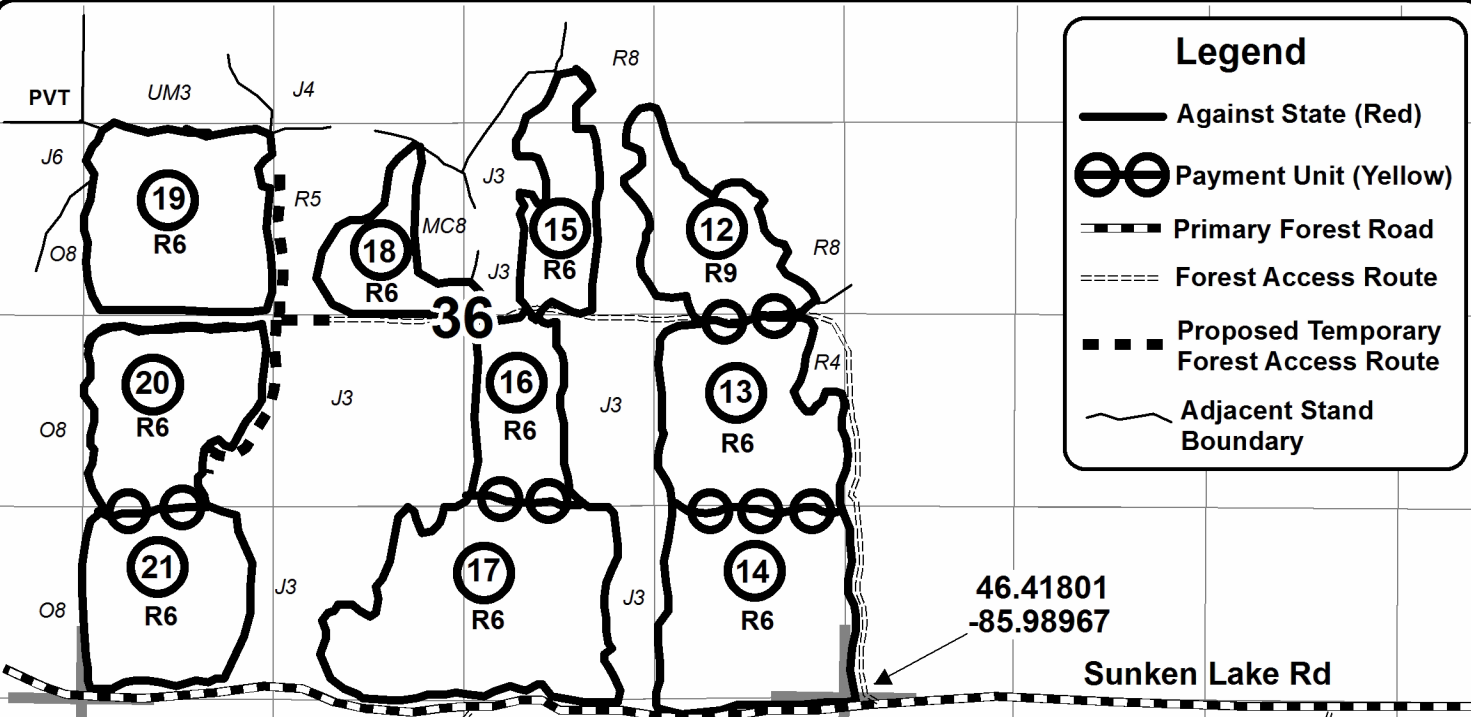
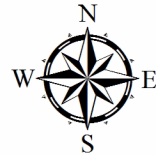
Forest Management Unit Shingleton		County Schoolcraft	Mapped By Steve Tuovila	Date 9/23/2019	Page 2	of 2
Township see below	Range see below	Section(s) and Subdivision(s) see below		Scale 1:15,840		

Cover Type				Density	
A = Aspen	H = Hemlock	N = Marsh	U = Upland Brush	0 = Non Stocked	5 = Pole Timber Medium
B = Paper Birch	J = Jack Pine	O = Oak	UM = Upland Mixed	1 = Seedling Sapling Poor	6 = Pole Timber Well
C = Cedar	L = Lowland Brush	P = Lowland Poplar	V = Bog or Marsh	2 = Seedling Sapling Medium	7 = Saw Timber Poor
D = Treed Bog	LM = Lowland Mixed	Q = Mixed Swamp Conifer	W = White Pine	3 = Seedling Sapling Well	8 = Saw Timber Medium
E = Swamp Hdwoods	M = Mpl. Bch, Brch	R = Red Pine	X = Non Stocked	4 = Pole Timber Poor	9 = Saw Timber Well
F = Spruce Fir	MC = Mixed Conifer	S = Black Spruce	Z = Water		
G = Grass	MD = Mixed Deciduous	T = Tamarack			

46N 13W	6 NWNW
46N 14W	1 NENE
47N 13W	30 W1/2NW,SWSW
47N 13W	31 SWSW
47N 14W	25 SENW,NE,E1/2SW,SE
47N 14W	36 S1/2NW,NE,SW,SE

Red Pine vs. White Pine

map 2 of 2
434.4 Acres



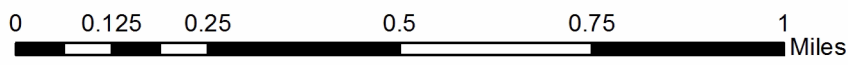
Legend

- Against State (Red)
- ⊗ Payment Unit (Yellow)
- ▬ Primary Forest Road
- ⋯ Forest Access Route
- ▬ Proposed Temporary Forest Access Route
- ~ Adjacent Stand Boundary

PU	Acres	PU	Acres
12	21.5	17	51.4
13	34.7	18	13.1
14	40.1	19	35.1
15	15.8	20	29.1
16	17.4	21	29.8

QR Code Opens Map in PDF Maps App

01 06



TIMBER SALE INFORMATION

Beaverview Mix (41-020-19)

T45N, R13W, SEC. 26; T45N, R13W, SEC. 27.
Schoolcraft County (Advertised Price \$48,194.35)

A timber sale contract for this lump sum, sealed bid timber sale will be awarded to the responsible bidder offering the highest sealed bid price. Bids must be at or above the following advertised price for each species:

<u>PRODUCTS & SPECIES</u>	<u>ESTIMATED UNITS*</u>		<u>ADVERTISED PRICE</u>
Sawtimber			
Paper Birch	0.30	MBF	\$ 78.00 / MBF
Red Maple	0.70	MBF	\$ 161.00 / MBF
Sugar Maple	0.60	MBF	\$ 364.00 / MBF
Yellow Birch	0.10	MBF	\$ 144.00 / MBF
Pulpwood			
B. T. Aspen	92.00	Cords	\$ 30.45 / Cord
Balsam Fir	33.00	Cords	\$ 16.55 / Cord
Jack Pine	57.00	Cords	\$ 31.65 / Cord
Mixed Hardwood	113.00	Cords	\$ 20.20 / Cord
Mixed Spruce	145.00	Cords	\$ 28.70 / Cord
Paper Birch	5.00	Cords	\$ 13.75 / Cord
Red Pine	586.00	Cords	\$ 57.70 / Cord
Tamarack	2.00	Cords	\$ 8.60 / Cord
White Pine	134.00	Cords	\$ 17.40 / Cord

* The total volume is statistically estimated within plus (+) or minus (-) 12.09 percent. The estimated units are final and not subject to adjustment. Prospective bidders are urged to examine this timber and to make their own estimates of quantity and quality.

BOND AND PAYMENT SCHEDULE:

1. A bond in the amount of \$2,410.00 to insure faithful performance of the conditions of the contract will be deposited by the successful bidder within 21 days of the sale award.
2. Cutting in any sale or unit without the required advance payment would be considered a trespass.
3. Total payment must be paid in advance or according to the following schedule :
 - (a) Ten percent (10%) of the sale value must be paid within 21 days of the sale award.
 - (b) The 10% down payment will be credited towards the first unit cut.
 - (c) Payment for each of the following units must be made before cutting begins in that unit:

PAYMENT UNIT NUMBER	PERCENT OF TOTAL SALE VALUE
01	6.0%
02	26.1%
03	9.5%
04	22.4%
05	24.5%
06	11.5%
4. If no cutting takes place, the 10% down payment will not be refunded.
5. Operations on the contract issued will terminate on 06/30/2023.

Description of Timber by Payment Unit (PU)

PU	MARKET GROUP	PRODUCT	QUANTITY	UNIT	ACRES	ADVERTISE PRICE	
1	Paper Birch	Sawtimber	0.3	MBF	11.8	\$2,877.30	
	Red Maple		0.7	MBF			
	Sugar Maple		0.6	MBF			
	Yellow Birch		0.1	MBF			
	B. T. Aspen		Pulpwood	11.0			Cords
	Balsam Fir			8.0			Cords
	Mixed Hardwood			99.0			Cords
	Paper Birch			3.0			Cords
2	B. T. Aspen	Pulpwood	11.0	Cords	10.2	\$12,613.75	
	Balsam Fir		2.0	Cords			
	Jack Pine		2.0	Cords			
	Mixed Hardwood		7.0	Cords			
	Mixed Spruce		15.0	Cords			
	Paper Birch		2.0	Cords			
	Red Pine		192.0	Cords			
	White Pine		29.0	Cords			
3	B. T. Aspen	Pulpwood	2.0	Cords	4.4	\$4,559.40	
	Mixed Spruce		14.0	Cords			
	Red Pine		71.0	Cords			
4	B. T. Aspen	Pulpwood	4.0	Cords	8.5	\$10,811.05	
	Jack Pine		9.0	Cords			
	Mixed Hardwood		1.0	Cords			
	Mixed Spruce		18.0	Cords			
	Red Pine		168.0	Cords			
	White Pine		10.0	Cords			
5	B. T. Aspen	Pulpwood	55.0	Cords	22.7	\$11,808.10	
	Balsam Fir		23.0	Cords			
	Jack Pine		46.0	Cords			
	Mixed Hardwood		6.0	Cords			
	Mixed Spruce		86.0	Cords			
	Red Pine		76.0	Cords			
	Tamarack		2.0	Cords			
	White Pine		75.0	Cords			
6	B. T. Aspen	Pulpwood	9.0	Cords	8.6	\$5,524.75	
	Mixed Spruce		12.0	Cords			
	Red Pine		79.0	Cords			
	White Pine		20.0	Cords			
TOTAL:			1.7	MBF			
TOTAL:			1,167.0	Cords			

Sale Specific Conditions & Requirements

Sale Name: Beaverview Mix

Sale Number: 41-020-19 Seq#: 1

1 - Sale Area

1.2 - Boundaries

1.2.1 - Painted boundaries (9/19)

The sale boundary and Payment Unit boundaries are marked and identified by blue, red and yellow paint. Exterior sale boundary lines against private property are marked with blue paint. Exterior sale boundary lines against state are marked with red paint. Interior Payment Unit boundaries are marked with yellow paint. The painted boundary line trees are not Included Timber and are to be protected unless marked with orange paint. Yellow painted trees designating an interior Payment Unit boundary are only to be cut when all surrounding Payment Units have been paid.

2 - Timber Specifications

2.1 - Included Timber

2.1.2 - Clearcut unit(s) w/o unmerchantable trees (8/11)

Within Payment Unit(s) 5, cut all trees which meet minimum piece specifications in 2.2 Utilization, except do not cut cedar, hemlock, oak and all trees marked in green paint. Special protection trees identified in accordance with condition 3.4.2, within clearcutting unit boundaries, are not Included Timber and are to be protected.

2.1.3 - Cut tree marked unit(s) (12/08)

Within Payment Unit(s) 1, all trees are designated for cutting when marked with orange paint above and below stump height, regardless of merchantability.

2.1.7 - Leave tree marked unit(s) (6/14)

Within Payment Unit(s) 2, 3, 4 and 6, all trees which meet minimum piece specifications in 2.2 Utilization are designated for cutting, except do not cut cedar, hemlock, oak, and trees marked with green paint above and below stump height. Special protection trees identified in accordance with condition 3.4.2, within clearcutting unit boundaries, are not Included Timber and are to be protected.

2.2 - Utilization

2.2.3 - Stump heights (4/07)

Stump heights within Payment Unit(s) 2, 3, 4 & 6 shall not exceed 12 inches for trees greater than 10 inches DBH and 4 inches for trees smaller than 10 inches DBH. This is in order to facilitate regeneration activities.

3 - Payments

3.3 - Pre-measured Sales

3.3.4 - Dividing payment units (7/14)

Payment Unit(s) over 15,000 may be divided at the request of the Purchaser and upon approval of the Unit Manager. Dividing Payment Units is a contract modification which requires a Timber Sale Contract Supplement.

3.4 - Damaged Timber

3.4.2 - Special Protection Trees (4/14)

The Purchaser shall not cut live or dead special protection trees within cutting units or clearings. Special protection trees are hemlock and oak. If the Purchaser's operations have cut or damaged special protection trees through carelessness, the Purchaser shall pay \$100 as fixed, agreed and liquidated damages for each special protection tree cut or damaged. Such payment does not constitute ownership of the undesignated timber.

4 - Transportation

4.1 - Construction

4.1.3 - Slash and earthen piles (8/04)

Piles or windrows of earth along roads and landings that have been widened or constructed shall be leveled. Slash from road

maintenance or construction, including stumps, shall be dispersed throughout the sale.

4.1.4 - Timber removed for construction (12/09)

Trees cut or damaged in the process of pre-approved road, landing or skid trail construction will be decked in an area separate from other Designated Timber and not removed until measured by the sale administrator. Payment will be made at the specified Purchase Unit Price.

4.1.6 - Road construction (1/09)

Construction of new roads or improvements of existing roads shall be done in such a way as to minimize the environmental and visual impacts. Merchantable trees shall be cut and utilized unless otherwise directed. Non-merchantable trees shall be severed and laid flat on the ground. Slash shall be scattered, and not left in windrows and kept a minimum of 10 feet back from the road edge. Stumps shall be set upright, not left on edge, and be moved at least 10 feet away from the road edge. Disturbed soil shall be feathered into the woods and not left in berms or windrows.

4.1.7 - Road closure (10/11)

All new roads built into the sale must be blocked to vehicle traffic upon completion of the sale. Overgrown roads that are reopened shall be considered new roads. In general, this will require constructing double earthen berms at strategic locations. Contact the sale administrator for specific details of design and placement.

4.2 - Maintenance

4.2.2 - Fill material (4/07)

To maintain roads, fill material may be needed in areas where "holes" exist or may be expected to develop. This fill material should be placed before trucking begins.

4.2.4 - Grading (10/16)

For completion of the sale, state forest roads must be graded. In general, this will require a road grader or bull dozer to shape up the roads after forest products have been hauled off site. The grading equipment to be used must be approved by the Unit Manager or his/her representative.

5 - Operations

5.1 - Notification

5.1.1 - Pre-sale conference (10/16)

A pre-sale conference on site between the Purchaser and sale administrator is required prior to beginning any operations to determine landing and road locations. The Unit Manager or his/her representative must be contacted at least 10 days in advance to schedule the conference.

5.2 - Conduct of Operations

5.2.1 - Slash

5.2.1.11 - Slash for reforestation (5/07)

To facilitate reforestation, the sale area shall be left with slash evenly distributed. Bunched tops within the cutting area shall be broken up and scattered. Stumps shall be cut low to the ground. Processing sites shall not be left with a compacted layer of slash; tops from these sites shall be hauled back into the cut area and scattered.

5.2.2 - Hazard Trees/Snags

5.2.2.1 - Den trees (10/16)

Obvious hollow and/or den trees shall be protected and left standing unless they are a safety hazard.

5.2.3 - Operating Restrictions

5.2.3.6 - Bark beetle restriction (12/08)

In the event drought creates a high risk of pine bark beetle infestation, pine is not to be cut during the period March 1 through July 1, unless all portions of trees greater than two inches in diameter are removed from the sale area, reduced to chips, or treated to the satisfaction of the Unit Manager or his/her representative, within fifteen days of being severed from the stump. Pine log decks, pulpwood piles and treetops that are piled for chipping in the fall or winter within a 1/4 mile of susceptible sites must be removed before March 15. Residual slash must not be placed in piles or rows and must be spread over the site for quick drying. The Department of Natural Resources will exercise this specification if the risk

of damage warrants.

5.2.32 - Decking/landing restoration (9/13)

All decking and landing areas must have the surface area restored to a condition equal to or better than before. This is to ensure the proper regeneration of the stand. Wood debris, chips and "cookies" from trimmings must be removed or scattered away from landing and loading areas and may not be windrowed on the edge.

5.2.38 - No decking against live trees (2/04)

Cut products may not be decked against unmarked or designated leave trees.

5.4 - Soil Protection

5.4.1 - Rutting restriction, general (7/16)

Operations are to cease immediately if equipment and weather conditions result in rutting of roads and/or skid trails which is 12 inches or greater in depth and 50 feet in length. The Unit Manager or his/her representative may restrict hauling and/or skidding if ruts exceed the specified depth. With the Unit Manager or his/her representative's approval, the Purchaser may return to the area when the risk of rutting has decreased.

5.8 - Protection of Endangered Species

5.8.3 - Red shoulder hawk or goshawk (2/16)

In the event that an active red shoulder hawk or goshawk nest is found, the contract may be amended to protect the nest site until the nest is determined to be inactive. The value of the trees in this excluded area will be refunded or credited to the Purchaser. The nest will be buffered with a five-chain radius (eight acre) protection area, centered on the nest tree, in which there will be no cutting or new roads constructed. Avoid human disturbance, including loading and skidding, in the protection area.

An additional zone of five chains (ten chains centered on the active nest tree) will be established in which there is no management activity from April 1 to July 30. Limit biomass harvesting and chipping operations within this ten-chain zone, retain the maximum one-third of residues per the Woody Biomass Harvesting Guidelines (Michigan DNR 2010). Nests determined to be inactive will be protected with a one-chain no-harvest buffer.

7 - Other Conditions

7.3 - Contract Modifications

7.3.3 - Modification for reforestation (8/05)

When contractual work of Purchaser has been accepted for any Payment Unit identified on Sale Area Map, Payment Unit will be eliminated from the Sale Area on written notice so that reforestation operations can begin.



TIMBER SALE MAP

This information provided by authority of Part 5, 1994 PA 451, as amended.

Sale Number	Year
41-020-19-01	19

Forest Management Unit Shingleton	County Schoolcraft	Mapped By S. Clark	Date 9-23-19	Page 1	of 1
Compartment Number 6	Township 45N	Range 13W	Section(s) and Subdivision(s) Sec 26 SWNW, Sec 27 SENW, NE	Scale: [... 4] = 1 mile	

Cover Type			
A = Aspen	J = Jack Pine	O = Oak	U = Upland Brush
B = Paper Birch	K = Rock	P = Lowland Poplar	UM = Upland Mix Forest
C = Cedar	L = Lowland Brush	Q = Mixed Swamp Conifer	V = Bog or Marsh
D = Treed Bog	LM = Lowland Mix	R = Red Pine	W = White Pine
E = Swamp Hardwoods	Forest	S = Black Spruce	X = Non Stocked
F = Spruce/Fir	M = Maple, Beech, Birch	T = Tamarack	Y = Sand
G = Grass	MC = Mixed Conifer		Z = Water
H = Hemlock	MD = Mixed Deciduous		
	N = Marsh		

Density	
0 = Non Stocked	5 = Pole Timber Medium
1 = Seedling Sapling Poor	6 = Pole Timber Well
2 = Seedling Sapling Medium	7 = Saw Timber Poor
3 = Seedling Sapling Well	8 = Saw Timber Medium
4 = Pole Timber Poor	9 = Saw Timber Well

Beaverview Mix
Compt. 6 66.2 acres

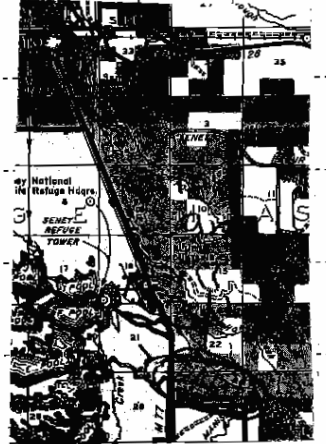
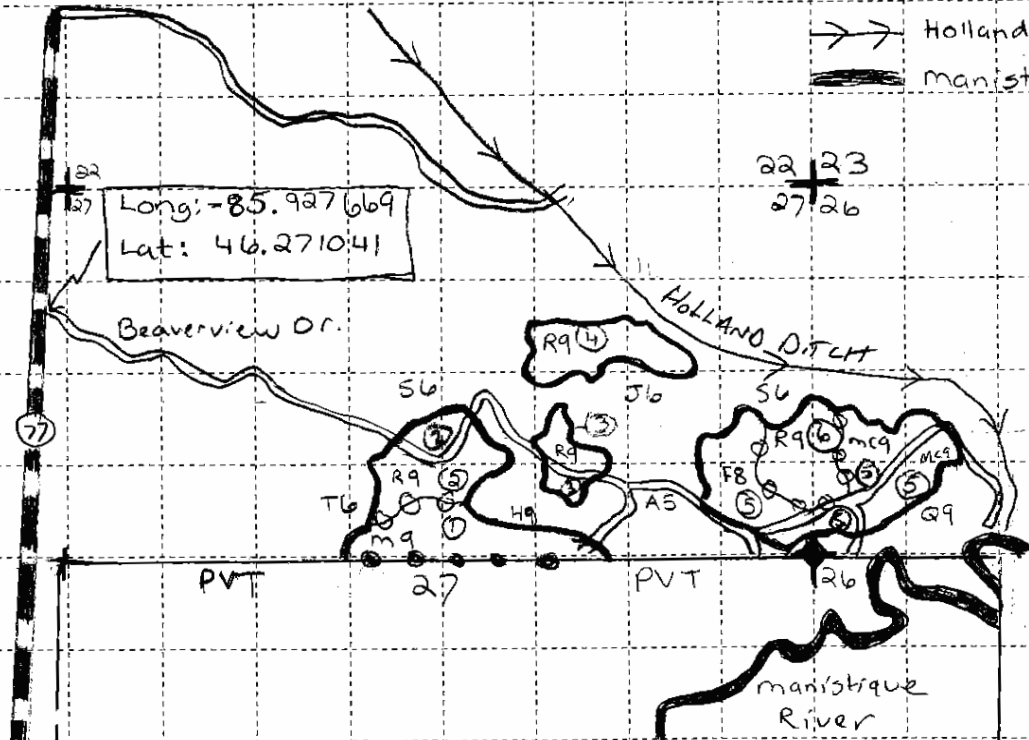


Payment Unit acres

- ① - 11.8 acres
- ② - 10.2 acres
- ③ - 4.4 acres
- ④ - 8.5 acres
- ⑤ - 22.7 acres
- ⑥ - 8.6 acres

Legend

- Sale boundary - red - against state
- Sale boundary - blue - against private
- Sale boundary - yellow - payment unit
- Survey corner
- Section corner
- m-77
- poor dirt road
- Holland Creek
- Manistique River



TIMBER SALE INFORMATION

Treasure Pineland (41-022-19)

T47N, R14W, SEC. 27; T47N, R14W, SEC. 34; T47N, R14W, SEC. 35.
Schoolcraft County (Advertised Price \$131,313.45)

SALE NOTE: Extensive road work is required on this sale. The advertised price has been reduced by the estimate cost of this road work to off-set the additional expense. See Sale Spec 4.1.8 for additional information.

The Sunken Lake Road is a snowmobile trail and is shown on the Timber Sale Map. See Sale Spec 5.2.41 for additional information.

A recreation site such as a trail, pathway, or campground is within the sale area or the vicinity. Certain restrictions/specifications may be applicable including time restrictions.

A timber sale contract for this lump sum, sealed bid timber sale will be awarded to the responsible bidder offering the highest sealed bid price. Bids must be at or above the following advertised price for each species:

<u>PRODUCTS & SPECIES</u>	<u>ESTIMATED UNITS*</u>	<u>ADVERTISED PRICE</u>
Pulpwood		
Jack Pine	61.00 Cords	\$ 29.95 / Cord
Mixed Hardwood	33.00 Cords	\$ 19.15 / Cord
Paper Birch	68.00 Cords	\$ 13.00 / Cord
Quaking Aspen	74.00 Cords	\$ 28.80 / Cord
Red Pine	2,058.00 Cords	\$ 54.60 / Cord
White Pine	819.00 Cords	\$ 16.45 / Cord

* The total volume is statistically estimated within plus (+) or minus (-) 12.08 percent. The estimated units are final and not subject to adjustment. Prospective bidders are urged to examine this timber and to make their own estimates of quantity and quality.

BOND AND PAYMENT SCHEDULE:

1. A bond in the amount of \$6,566.00 to insure faithful performance of the conditions of the contract will be deposited by the successful bidder within 21 days of the sale award.
2. Cutting in any sale or unit without the required advance payment would be considered a trespass.
3. Total payment must be paid in advance or according to the following schedule :
 - (a) Ten percent (10%) of the sale value must be paid within 21 days of the sale award.
 - (b) The 10% down payment will be credited towards the first unit cut.
 - (c) Payment for each of the following units must be made before cutting begins in that unit:

PAYMENT UNIT NUMBER	PERCENT OF TOTAL SALE VALUE
01	28.9%
02	3.5%
03	4.7%
04	5.4%
05	5.4%
06	3.5%
07	27.5%
08	12.0%
09	9.1%

4. If no cutting takes place, the 10% down payment will not be refunded.
5. Operations on the contract issued will terminate on 06/30/2023.

Description of Timber by Payment Unit (PU)

PU	MARKET GROUP	PRODUCT	QUANTITY	UNIT	ACRES	ADVERTISE PRICE
1	Jack Pine Red Pine White Pine	Pulpwood	5.0 602.0 307.0	Cords Cords Cords	38.1	\$38,069.10
2	Jack Pine Mixed Hardwood Quaking Aspen Red Pine White Pine	Pulpwood	13.0 2.0 3.0 72.0 11.0	Cords Cords Cords Cords Cords	28.6	\$4,626.20
3	Mixed Hardwood <i>Sugar Maple</i> Quaking Aspen Red Pine White Pine	Pulpwood	2.0 2.0 12.0 100.0 20.0	Cords <i>Cords</i> Cords Cords Cords	29.0	\$6,172.90
4	Mixed Hardwood <i>Sugar Maple</i> Paper Birch Quaking Aspen Red Pine White Pine	Pulpwood	7.0 7.0 28.0 22.0 106.0 8.0	Cords <i>Cords</i> Cords Cords Cords Cords	33.8	\$7,050.85
5	Jack Pine Mixed Hardwood Quaking Aspen Red Pine White Pine	Pulpwood	13.0 9.0 28.0 97.0 22.0	Cords Cords Cords Cords Cords	42.2	\$7,026.20
6	Jack Pine Red Pine White Pine	Pulpwood	1.0 83.0 2.0	Cords Cords Cords	18.2	\$4,594.65
7	Jack Pine Mixed Hardwood Paper Birch Quaking Aspen Red Pine White Pine	Pulpwood	6.0 13.0 40.0 6.0 553.0 289.0	Cords Cords Cords Cords Cords Cords	66.4	\$36,069.30
8	Jack Pine Quaking Aspen Red Pine White Pine	Pulpwood	23.0 3.0 250.0 78.0	Cords Cords Cords Cords	24.2	\$15,708.35
9	Red Pine White Pine	Pulpwood	195.0 82.0	Cords Cords	13.8	\$11,995.90
TOTAL:			3,113.0	Cords		

Sale Specific Conditions & Requirements

Sale Name: Treasure Pineland

Sale Number: 41-022-19 Seq#: 1

1 - Sale Area

1.2 - Boundaries

1.2.1 - Painted boundaries (9/19)

The sale boundary and Payment Unit boundaries are marked and identified by blue, red and yellow paint. Exterior sale boundary lines against private are marked with blue paint. Exterior sale boundary lines against state are marked with red paint. Interior Payment Unit boundaries are marked with yellow paint. The painted boundary line trees are not Included Timber and are to be protected unless marked with orange paint.

2 - Timber Specifications

2.1 - Included Timber

2.1.1 - Clearcut unit(s) with unmerchantable trees (6/14)

Within Payment Unit(s) 1, 8, & 9, cut all trees that are two (2) inches or more at DBH.

2.1.3 - Cut tree marked unit(s) (12/08)

Within Payment Unit(s) 2-6, all trees are designated for cutting when marked with orange paint above and below stump height, regardless of merchantability. In addition, all jack pine, aspen, paper birch and maple are designated for harvest.

2.1.7 - Leave tree marked unit(s) (6/14)

Within Payment Unit(s) 7, all trees which meet minimum piece specifications in 2.2 Utilization are designated for cutting, except do not cut oak or any trees marked with green paint above and below stump height.

2.2 - Utilization

2.2.3 - Stump heights (4/07)

Stump heights within the sale area shall not exceed 12 inches for trees greater than 10 inches DBH and 4 inches for trees smaller than 10 inches DBH. This is in order to facilitate planting operations.

3 - Payments

3.3 - Pre-measured Sales

3.3.4 - Dividing payment units (7/14)

Payment Unit(s) that are \$15,000 or greater in value may be divided at the request of the Purchaser and upon approval of the Unit Manager. Dividing Payment Units is a contract modification which requires a Timber Sale Contract Supplement. There will be only one division per Payment Unit.

3.4 - Damaged Timber

3.4.1 - Damaged timber (7/16)

General Condition and Requirement 3.4 Damaged Timber, defines liquidated damages for undesignated live merchantable trees which are cut or injured. In addition, extreme care should be taken to avoid damage to tree seedlings and saplings in Payment Unit 7.

Within Payment Unit 7, if more than 25% of the tree seedlings or saplings (1/4" to 4.5" DBH) within a specified portion of the sale area are damaged, liquidated damages will be assessed at \$300 per acre for all acreage within that specified portion of the sale area that was damaged.

4 - Transportation

4.1 - Construction

4.1.3 - Slash and earthen piles (8/04)

Piles or windrows of earth along roads and landings that have been widened or constructed shall be leveled. Slash from road maintenance or construction, including stumps, shall be dispersed throughout the sale.

4.1.4 - Timber removed for construction (12/09)

Trees cut or damaged in the process of pre-approved road, landing or skid trail construction will be decked in an area separate from other Designated Timber and not removed until measured by the sale administrator. Payment will be made at the specified Purchase Unit Price.

4.1.6 - Road construction (1/09)

Construction of new roads or improvements of existing roads shall be done in such a way as to minimize the environmental and visual impacts. Merchantable trees shall be cut and utilized unless otherwise directed. Non-merchantable trees shall be severed and laid flat on the ground. Slash shall be scattered, and not left in windrows and kept a minimum of 10 feet back from the road edge. Stumps shall be set upright, not left on edge, and be moved at least 10 feet away from the road edge. Disturbed soil shall be feathered into the woods and not left in berms or windrows.

4.1.7 - Road closure (10/11)

All new roads built into the sale must be blocked to vehicle traffic upon completion of the sale. Overgrown roads that are reopened shall be considered new roads. In general, this will require constructing a four (4') foot high berm of stumps and logs covered with earth. Stumps and brush must be placed along the remainder of the trail. These roads must be rendered impassable to cars and trucks. Contact the sale administrator for specific details of design and placement.

4.1.8 - Road work (1) (8/07)

The following road work is required: 300 cubic yards of breaker run gravel containing rock no larger than 3" must be purchased, hauled and spread on the Sunken Lake Road between the sale area and the Reservoir Dam Road. The exact location and placement of this gravel will be determined by the Sale Administrator prior to any operations. All work is at the Purchaser's expense and all work needs to be done prior to hauling, unless otherwise approved by the Unit Manager.

4.1.10 - Oversight (12/08)

The Unit Manager, or his/her representative, must be present when the road improvement project is initiated.

4.2 - Maintenance

4.2.4 - Grading (10/16)

For completion of the sale, state forest roads must be graded. In general, this will require a road grader or bull dozer to shape up the roads after forest products have been hauled off site. This includes cleaning of drainage areas, grading, crowning and filling with gravel, if necessary. The grading equipment to be used must be approved by the Unit Manager or his/her representative.

5 - Operations

5.1 - Notification

5.1.1 - Pre-sale conference (10/16)

A pre-sale conference between the Purchaser and sale administrator is required prior to beginning any operations. The Unit Manager or his/her representative must be contacted at least 5 days in advance to schedule the conference.

5.2 - Conduct of Operations

5.2.1 - Slash

5.2.1.11 - Slash for reforestation (5/07)

To facilitate reforestation, Payment Unit(s) 1, 8 & 9 shall be left with slash evenly distributed. Bunched tops within the cutting area shall be broken up and scattered. Stumps shall be cut low to the ground. Processing sites shall not be left with a compacted layer of slash; tops from these sites shall be hauled back into the cut area and scattered.

5.2.2 - Hazard Trees/Snags

5.2.2.1 - Den trees (10/16)

Obvious hollow and/or den trees shall be protected and left standing unless they are a safety hazard.

5.2.3 - Operating Restrictions

5.2.3.6 - Bark beetle restriction (12/08)

In the event drought creates a high risk of pine bark beetle infestation, pine is not to be cut during the period March 1

through July 1, unless all portions of trees greater than two inches in diameter are removed from the sale area, reduced to chips, or treated to the satisfaction of the Unit Manager or his/her representative, within fifteen days of being severed from the stump. Pine log decks, pulpwood piles and treetops that are piled for chipping in the fall or winter within a 1/4 mile of susceptible sites must be removed before March 15. Residual slash must not be placed in piles or rows and must be spread over the site for quick drying. The Department of Natural Resources will exercise this specification if the risk of damage warrants.

5.2.32 - Decking/landing restoration (9/13)

All decking and landing areas must have the surface area restored to a condition equal to or better than before. This is to ensure the proper regeneration of the stand. Wood debris, chips and "cookies" from trimmings must be removed or scattered away from landing and loading areas and may not be windrowed on the edge.

5.2.38 - No decking against live trees (2/04)

Cut products may not be decked against unmarked or designated leave trees.

5.2.41 - Snowmobile trail protection (9/11)

The Sunken Lake Road is a snowmobile trail and is shown on the Timber Sale Map. Do not cut or damage posts with orange trail markers or traffic control signs. If the trail is used for hauling, it must be graded to the satisfaction of the Unit Manager or his/her representative prior to December 1st. If the trail road is to be used for hauling during the snowmobile season, then a snow covered base must be left on the trail. Maintain a 20 foot wide slash, debris, and rut free zone daily using the snowmobile trail as the centerline. All stumps within 20 feet of the snowmobile trail must be cut at ground level.

5.4 - Soil Protection

5.4.1 - Rutting restriction, general (7/16)

Operations are to cease immediately if equipment and weather conditions result in rutting of roads and/or skid trails which is 12 inches or greater in depth and 50 feet in length. The Unit Manager or his/her representative may restrict hauling and/or skidding if ruts exceed the specified depth. With the Unit Manager or his/her representative's approval, the Purchaser may return to the area when the risk of rutting has decreased.

5.8 - Protection of Endangered Species

5.8.3 - Red shoulder hawk or goshawk (2/16)

In the event that an active red shoulder hawk or goshawk nest is found, the contract may be amended to protect the nest site until the nest is determined to be inactive. The value of the trees in this excluded area will be refunded or credited to the Purchaser. The nest will be buffered with a five-chain radius (eight acre) protection area, centered on the nest tree, in which there will be no cutting or new roads constructed. Avoid human disturbance, including loading and skidding, in the protection area.

An additional zone of five chains (ten chains centered on the active nest tree) will be established in which there is no management activity from April 1 to July 30. Limit biomass harvesting and chipping operations within this ten-chain zone, retain the maximum one-third of residues per the Woody Biomass Harvesting Guidelines (Michigan DNR 2010). Nests determined to be inactive will be protected with a one-chain no-harvest buffer.

6 - Safety and Fire Prevention

6.2 - Signing

6.2.2 - Snowmobile trail posting (8/09)

The Purchaser is responsible for posting and maintaining caution signs on the Sunken Lake Road prior to beginning operations during the snowmobile season (approximately December 1 to March 31). The trail must be posted at appropriate distances from the sale area 200 feet from the sale area to warn of logging activity and truck traffic. Signs must be removed when harvest operations are suspended or completed. The DNR will provide these signs.

7 - Other Conditions

7.3 - Contract Modifications

7.3.3 - Modification for reforestation (8/05)

When contractual work of Purchaser has been accepted for any Payment Unit identified on Sale Area Map, Payment Unit

will be eliminated from the Sale Area on written notice so that reforestation operations can begin.



TIMBER SALE MAP

This information provided by authority of Part 5, 1994 PA 451, as amended.

Sale Number 41-022	Year 19
-----------------------	------------

Forest Management Unit Shingleton	County Schoolcraft	Mapped By S. Kentner	Date 9/25/19	Page 1	of 1
Township 47N	Range 14W	Section(s) and Subdivision(s) 27: E1/2, SE1/4 34: E1/2 35: SW1/4			
Cruised By Clark					

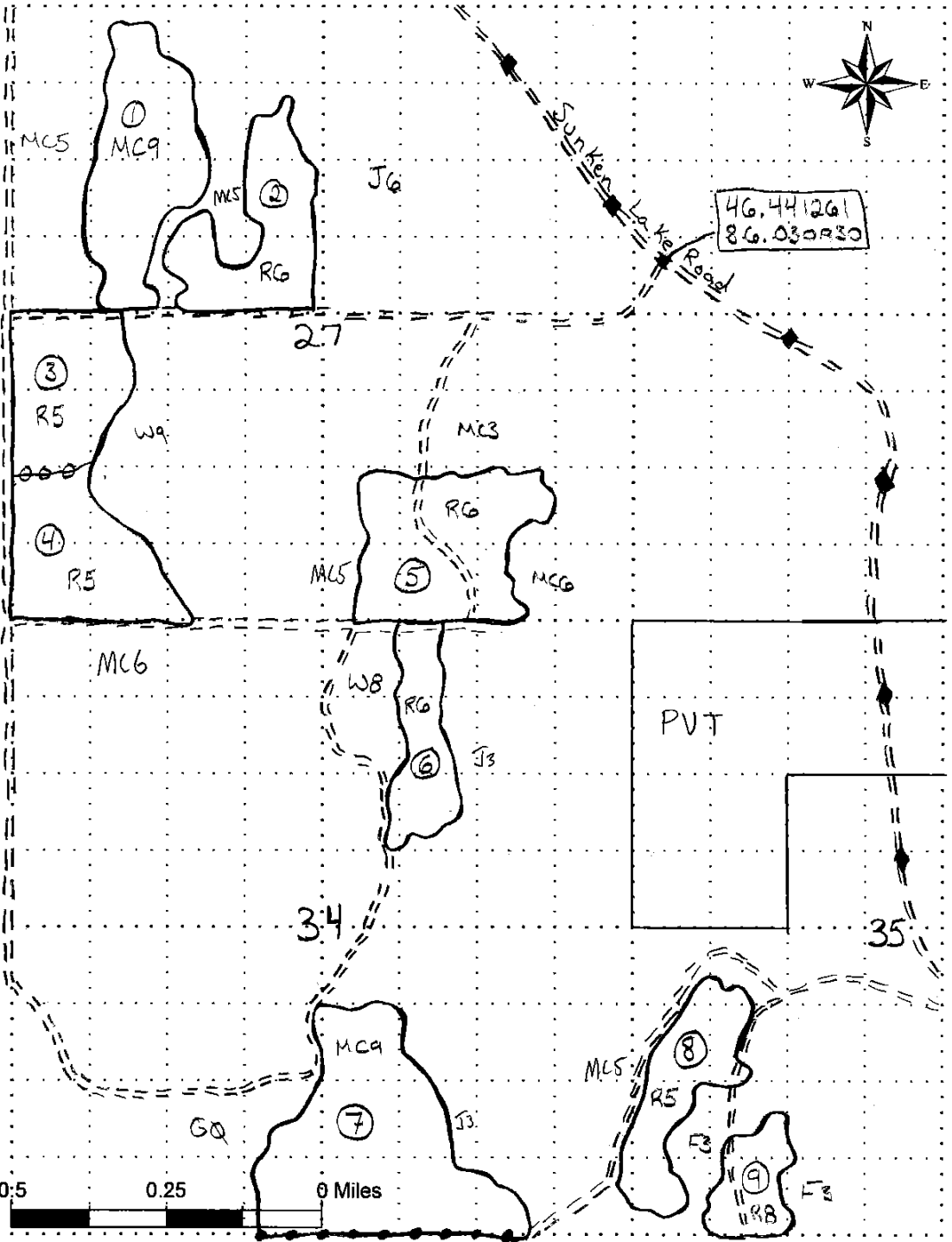
Cover Type				Density			
A = Aspen	J = Jack Pine	O = Oak	U = Upland Brush	0 = Non Stocked	5 = Pole Timber Medium		
B = Paper Birch	K = Rock	P = Lowland Poplar	UM = Upland Mix Forest	1 = Seedling Sapling Poor	6 = Pole Timber Well		
C = Cedar	L = Lowland Brush	Q = Mixed Swamp Conifer	V = Bog or Marsh	2 = Seedling Sapling Medium	7 = Saw Timber Poor		
D = Treed Bog	LM = Lowland Mix Forest	R = Red Pine	W = White Pine	3 = Seedling Sapling Well	8 = Saw Timber Medium		
E = Swamp Hardwoods	M = Maple, Beech, Birch	S = Black Spruce	X = Non Stocked	4 = Pole Timber Poor	9 = Saw Timber Well		
F = Spruce/Fir	MC = Mixed Conifer	T = Tamarack	Y = Sand				
G = Grass	MD = Mixed Deciduous	Z = Water					
H = Hemlock	N = Marsh						

TREASURE
PINELAND
294.3 acres

Unit	Acres
1	38.1
2	22.6
3	22.7
4	33.8
5	42.2
6	18.2
7	66.4
8	24.2
9	13.8

Legend

- S = Timber Sale Boundary (Red)
- ⊞ = Payment Unit Line (Yellow)
- PVT = Private Land
- ⑤ = Unit Number
- // = Two-Track Road
- ◆ = Snowmobile Trail
- ⊞ = Private Boundary (Blue)



Red Pine vs. White Pine (41-018-19)

T46N, R13W, SEC. 6; T46N, R14W, SEC. 1; T47N, R13W, SEC. 30; T47N, R13W,

In response to the notice of sale to be held 2:00 p.m. (local time) on February 19, 2020, I am hereby submitting my sealed bid (firm offer) for the following forest products to be cut. Bids for individual species must be at or above the advertised price. All non-responsive bid forms may be rejected.

<u>PRODUCTS & SPECIES</u>	<u>ESTIMATED VOLUME*</u>	<u>ADVERTISED PRICE</u>	<u>BID PRICE/UNIT</u>
Pulpwood			
Jack Pine	352.00 Cords	\$ 30.20/Cord	\$ _____
Paper Birch	33.00 Cords	\$ 13.10/Cord	\$ _____
Quaking Aspen	32.00 Cords	\$ 29.05/Cord	\$ _____
Red Maple	9.00 Cords	\$ 19.30/Cord	\$ _____
Red Pine	2,329.00 Cords	\$ 55.10/Cord	\$ _____
White Pine	1,035.00 Cords	\$ 16.60/Cord	\$ _____

*These estimated volumes are final and not subject to adjustment. Prospective bidders are urged to examine this timber and to make their own estimates of quantity and quality.

I understand that any or all bids may be rejected. All bids must be signed and all bid items must be bid or the bid form may be rejected. I also understand that consideration and awarding a contract will be based upon my past performance and ability to complete the contract based upon equipment and staffing subject to my control.

FEDERAL ID: ____ - ____ - ____ or SOCIAL SECURITY NUMBER: ____ - ____ - ____

Company or individual bidding: _____

Company representative's name: _____

Address: _____

City: _____ State: _____ Zip: _____

IF AVAILABLE, PLEASE PLACE THE PERSONALIZED LABEL FROM YOUR PROSPECTUS IN THE ABOVE BOX.

Individual or company representative's signature: _____ Date: _____

Phone number : _____ Email (optional): _____

THE WINNING BIDDER MUST COMPLETE THE VERIFICATION OF WORKER'S DISABILITY COMPENSATION ACT COMPLIANCE (ON REVERSE SIDE IF DOUBLE SIDED) WITHIN 21 DAYS OF SALE AWARD DATE



FOR DEPARTMENT USE ONLY	
Sale Number (XX - XXX - XX - XX)	
Forest Management Unit:	

TIMBER SALE VERIFICATION OF WORKER'S DISABILITY COMPENSATION ACT COMPLIANCE

As required by Act 317, P.A. 1969 (Worker's Compensation) and
Part 5 of Act 451 of 1994, as amended.

VERIFICATION OF WORKER'S DISABILITY COMPENSATION ACT COMPLIANCE

- This verification must be completed and submitted within 21 days of contract award and prior to the issuance of the timber sale contract.
- In addition, if boxes 2B or 2C are checked, then Notice of Exclusion or Certificate of Insurance must be submitted within twenty-one (21) days of the contract award and prior to the issuance of the timber sale contract.
- All information must be typed or printed except for written signatures.

Please Check Appropriate Categories:

1. My business is organized as (you **must** check one of the boxes below):
 - A. Sole Proprietorship (individual)
 - B. Partnership
 - C. Corporation
2. You **must** check one of the boxes below:
 - A. I certify my business is a sole proprietorship and it has no employees but the sole proprietor. I am not subject to the Worker's Compensation Laws.
 - B. I certify my business has satisfied its obligation to the Worker's Compensation Act through the use of an approved Notice of Exclusion (BWC-337, Rev. 5/96). I will provide a copy of the Notice of Exclusion within 21 days of the contract award. (For questions or a copy of the BWC-337, please call the Worker's Compensation Bureau at 517-322-1195).
 - C. I certify my business has a Worker's Compensation Policy. I will provide an original Certificate of Insurance within twenty-one (21) days of the contract award.
3. If you have checked item 2(A) or 2(B), you **must** indicate the number of **both** full-time and part-time employees, other than yourself, including family members and active partners (if none, you must enter "0").

_____ Full-time Employees

_____ Part-time Employees

Name of Business		Federal ID (or) Social Security No.	
Address		Telephone ()	
City	State	ZIP	

I hereby certify that the above information is true and correct. I agree to notify the Michigan DNR of any changes that occur in factors affecting my coverage during any of my present and future operations.

Signature of Owner or Authorized Representative

Title

Date

Please complete the "SEALED BID" information on the next page

Beaverview Mix (41-020-19)
T45N, R13W, SEC. 26; T45N, R13W, SEC. 27; Schoolcraft COUNTY

In response to the notice of sale to be held 2:00 p.m. (local time) on February 19, 2020, I am hereby submitting my sealed bid (firm offer) for the following forest products to be cut. Bids for individual species must be at or above the advertised price. All non-responsive bid forms may be rejected.

<u>PRODUCTS & SPECIES</u>	<u>ESTIMATED VOLUME*</u>	<u>ADVERTISED PRICE</u>	<u>BID PRICE/UNIT</u>
Sawtimber			
Paper Birch	0.30 MBF	\$ 78.00/MBF	\$ _____
Red Maple	0.70 MBF	\$ 161.00/MBF	\$ _____
Sugar Maple	0.60 MBF	\$ 364.00/MBF	\$ _____
Yellow Birch	0.10 MBF	\$ 144.00/MBF	\$ _____
Pulpwood			
B. T. Aspen	92.00 Cords	\$ 30.45/Cord	\$ _____
Balsam Fir	33.00 Cords	\$ 16.55/Cord	\$ _____
Jack Pine	57.00 Cords	\$ 31.65/Cord	\$ _____
Mixed Hardwood	113.00 Cords	\$ 20.20/Cord	\$ _____
Mixed Spruce	145.00 Cords	\$ 28.70/Cord	\$ _____
Paper Birch	5.00 Cords	\$ 13.75/Cord	\$ _____
Red Pine	586.00 Cords	\$ 57.70/Cord	\$ _____
Tamarack	2.00 Cords	\$ 8.60/Cord	\$ _____
White Pine	134.00 Cords	\$ 17.40/Cord	\$ _____

*The volumes are statistically estimated within plus (+) or minus (-) 12.09 percent. These estimated volumes are final and not subject to adjustment. Prospective bidders are urged to examine this timber and to make their own estimates of quantity and quality.

I understand that any or all bids may be rejected. All bids must be signed and all bid items must be bid or the bid form may be rejected. I also understand that consideration and awarding a contract will be based upon my past performance and ability to complete the contract based upon equipment and staffing subject to my control.

FEDERAL ID: _____ or SOCIAL SECURITY NUMBER: _____

Company or individual bidding: _____

Company representative's name: _____

Address: _____

City: _____ State: _____ Zip: _____

IF AVAILABLE, PLEASE PLACE THE PERSONALIZED LABEL FROM YOUR PROSPECTUS IN THE ABOVE BOX.

Individual or company representative's signature: _____ Date: _____

Phone number : _____ Email (optional): _____

THE WINNING BIDDER MUST COMPLETE THE VERIFICATION OF WORKER'S DISABILITY COMPENSATION ACT COMPLIANCE (ON REVERSE SIDE IF DOUBLE SIDED) WITHIN 21 DAYS OF SALE AWARD DATE



FOR DEPARTMENT USE ONLY	
Sale Number (XX - XXX - XX - XX)	
Forest Management Unit:	

TIMBER SALE VERIFICATION OF WORKER'S DISABILITY COMPENSATION ACT COMPLIANCE

As required by Act 317, P.A. 1969 (Worker's Compensation) and
Part 5 of Act 451 of 1994, as amended.

VERIFICATION OF WORKER'S DISABILITY COMPENSATION ACT COMPLIANCE

- This verification must be completed and submitted within 21 days of contract award and prior to the issuance of the timber sale contract.
- In addition, if boxes 2B or 2C are checked, then Notice of Exclusion or Certificate of Insurance must be submitted within twenty-one (21) days of the contract award and prior to the issuance of the timber sale contract.
- All information must be typed or printed except for written signatures.

Please Check Appropriate Categories:

1. My business is organized as (you **must** check one of the boxes below):
 - A. Sole Proprietorship (individual)
 - B. Partnership
 - C. Corporation
2. You **must** check one of the boxes below:
 - A. I certify my business is a sole proprietorship and it has no employees but the sole proprietor. I am not subject to the Worker's Compensation Laws.
 - B. I certify my business has satisfied its obligation to the Worker's Compensation Act through the use of an approved Notice of Exclusion (BWC-337, Rev. 5/96). I will provide a copy of the Notice of Exclusion within 21 days of the contract award. (For questions or a copy of the BWC-337, please call the Worker's Compensation Bureau at 517-322-1195).
 - C. I certify my business has a Worker's Compensation Policy. I will provide an original Certificate of Insurance within twenty-one (21) days of the contract award.
3. If you have checked item 2(A) or 2(B), you **must** indicate the number of **both** full-time and part-time employees, other than yourself, including family members and active partners (if none, you must enter "0").

_____ Full-time Employees

_____ Part-time Employees

Name of Business		Federal ID (or) Social Security No.	
Address		Telephone ()	
City	State	ZIP	

I hereby certify that the above information is true and correct. I agree to notify the Michigan DNR of any changes that occur in factors affecting my coverage during any of my present and future operations.

Signature of Owner or Authorized Representative

Title

Date

Please complete the "SEALED BID" information on the next page

Treasure Pineland (41-022-19)

T47N, R14W, SEC. 27; T47N, R14W, SEC. 34; T47N, R14W, SEC. 35; Schoolcraft

In response to the notice of sale to be held 2:00 p.m. (local time) on February 19, 2020, I am hereby submitting my sealed bid (firm offer) for the following forest products to be cut. Bids for individual species must be at or above the advertised price. All non-responsive bid forms may be rejected.

<u>PRODUCTS & SPECIES</u>	<u>ESTIMATED VOLUME*</u>	<u>ADVERTISED PRICE</u>	<u>BID PRICE/UNIT</u>
Pulpwood			
Jack Pine	61.00 Cords	\$ 29.95/Cord	\$ _____
Mixed Hardwood	33.00 Cords	\$ 19.15/Cord	\$ _____
Paper Birch	68.00 Cords	\$ 13.00/Cord	\$ _____
Quaking Aspen	74.00 Cords	\$ 28.80/Cord	\$ _____
Red Pine	2,058.00 Cords	\$ 54.60/Cord	\$ _____
White Pine	819.00 Cords	\$ 16.45/Cord	\$ _____

*The volumes are statistically estimated within plus (+) or minus (-) 12.08 percent. These estimated volumes are final and not subject to adjustment. Prospective bidders are urged to examine this timber and to make their own estimates of quantity and quality.

I understand that any or all bids may be rejected. All bids must be signed and all bid items must be bid or the bid form may be rejected. I also understand that consideration and awarding a contract will be based upon my past performance and ability to complete the contract based upon equipment and staffing subject to my control.

FEDERAL ID: ___ - ___ - ___ or SOCIAL SECURITY NUMBER: ___ - ___ - ___

Company or individual bidding: _____

Company representative's name: _____

Address: _____

City: _____ State: _____ Zip: _____

IF AVAILABLE, PLEASE PLACE THE PERSONALIZED LABEL FROM YOUR PROSPECTUS IN THE ABOVE BOX.

Individual or company representative's signature: _____ Date: _____

Phone number : _____ Email (optional): _____

THE WINNING BIDDER MUST COMPLETE THE VERIFICATION OF WORKER'S DISABILITY COMPENSATION ACT COMPLIANCE (ON REVERSE SIDE IF DOUBLE SIDED) WITHIN 21 DAYS OF SALE AWARD DATE



FOR DEPARTMENT USE ONLY
Sale Number (XX - XXX - XX - XX)
Forest Management Unit:

TIMBER SALE VERIFICATION OF WORKER'S DISABILITY COMPENSATION ACT COMPLIANCE

*As required by Act 317, P.A. 1969 (Worker's Compensation) and
Part 5 of Act 451 of 1994, as amended.*

VERIFICATION OF WORKER'S DISABILITY COMPENSATION ACT COMPLIANCE

- This verification must be completed and submitted within 21 days of contract award and prior to the issuance of the timber sale contract.
- In addition, if boxes 2B or 2C are checked, then Notice of Exclusion or Certificate of Insurance must be submitted within twenty-one (21) days of the contract award and prior to the issuance of the timber sale contract.
- All information must be typed or printed except for written signatures.

Please Check Appropriate Categories:

1. My business is organized as (you **must** check one of the boxes below):
 - A. Sole Proprietorship (individual)
 - B. Partnership
 - C. Corporation

2. You **must** check one of the boxes below:
 - A. I certify my business is a sole proprietorship and it has no employees but the sole proprietor. I am not subject to the Worker's Compensation Laws.
 - B. I certify my business has satisfied its obligation to the Worker's Compensation Act through the use of an approved Notice of Exclusion (BWC-337, Rev. 5/96). I will provide a copy of the Notice of Exclusion within 21 days of the contract award. (For questions or a copy of the BWC-337, please call the Worker's Compensation Bureau at 517-322-1195).
 - C. I certify my business has a Worker's Compensation Policy. I will provide an original Certificate of Insurance within twenty-one (21) days of the contract award.

3. If you have checked item 2(A) or 2(B), you **must** indicate the number of **both** full-time and part-time employees, other than yourself, including family members and active partners (if none, you must enter "0").

_____ Full-time Employees

_____ Part-time Employees

Name of Business		Federal ID (or) Social Security No.	
Address		Telephone ()	
City	State	ZIP	

I hereby certify that the above information is true and correct. I agree to notify the Michigan DNR of any changes that occur in factors affecting my coverage during any of my present and future operations.

Signature of Owner or Authorized Representative

Title

Date

Please complete the "SEALED BID" information on the next page