



**DEPARTMENT OF NATURAL RESOURCES
STATE OF MICHIGAN**

TIMBER SALE PROSPECTUS #6707

SCHEDULED SALE DATE AND TIME: 2:00 p.m. (local time) on June 3, 2020.

LOCATION: SHINGLETON MGMT UNIT, PO BOX 67, M 28 WEST, SHINGLETON, MI 49884.

PROSPECTUS NOTE: It is recommended that for the duration of the "Stay Home, Stay Safe" executive order that bidders submit their bids through the Online Bidding System (<https://www2.dnr.state.mi.us/VMSONlineBidding/>). If you need to register, contact Jake Reid (ReidJ6@michigan.gov, 517-284-5908) or Donovan Asselin (AsselinD@michigan.gov, 517-930-1326). Paper bids will still be accepted during this time, either dropped in the bid box at the bid location or by mailing. If mailing, please allow for additional time.

The bidder is advised to inspect the sale area and review the location, estimated volumes, operating costs and contract terms of proposed sales. Please be aware that some landowners may request 60 days or more notice for access across their land.

Fletchers Hill Mix 2 (41-009-19) / T44N, R16W, SEC. 32, E1/2NE, E1/2SE.

T44N, R16W, SEC. 33, NWNW, S1/2NW, N1/2SW, NWSE, S1/2SE.

Schoolcraft County, Advertised Price \$35,969.75, 161.0 Acres, Red Pine, Red Oak.

SALE NOTE: Road work is required on this sale (see spec 4.1.8 for details).

Permission for access across private land is the responsibility of the Purchaser (see spec 4.4.1 for details).

C-170 Hardwood sale (41-014-19) / T47N, R17W, SEC. 13, SENW, S1/2NE, NESW, S1/2SW, SE.

Alger County, Advertised Price \$192,241.05, 273.7 Acres, Hardwood, Sugar Maple.

SALE NOTE: Permission for access across private land is the responsibility of the Purchaser (see spec 4.4.1 for details).

Harvesting is not permitted during the period of April 15 to July 15 because of bark slippage (see spec 5.2.3.3 for details).

The Sunrise Grade (Trail 8) is a snowmobile trail and is shown on the Timber Sale Map restrictions apply (see spec 5.2.41 & 6.2.2 for details).

A recreation site such as a trail, pathway, or campground is within the sale area or the vicinity. Certain restrictions/specifications may be applicable including time restrictions. Access may be through private land.

Lotsapine (41-017-19) / T49N, R15W, SEC. 16, NESW,S1/2SW,SWSE.

T49N, R15W, SEC. 20, SE.

T49N, R15W, SEC. 21, NW,W1/2NE,NWSW,SESW,S1/2SE.

T49N, R15W, SEC. 28, NW,NE,NWSW,NESE.

T49N, R15W, SEC. 29, SENE,SESW,SE.

T49N, R15W, SEC. 32, NENW,N1/2NE.

Alger County, Advertised Price \$549,403.90, 576.2 Acres, Red Pine, White Pine.

SALE NOTE: The county must be contacted prior to crossing or harvesting in the County Road R-O-W. This applies to H-58 and the Hurricane Truck Trail (see spec 4.3.2 for details).

Permission for access across federal land is the responsibility of the Purchaser (see spec 4.4.5 for details).

H-58 and the Hurricane Truck Trail are snowmobile trails and they are shown on the Timber Sale Map (see specs 5.2.41 & 6.2.1 for details).

A recreation site such as a trail, pathway, or campground is within the sale area or the vicinity. Certain restrictions/specifications may be applicable including time restrictions. Access may be through other public land.

BID INSTRUCTIONS (VER. 07/02/2018):

1. Scheduled Bid Location, Date, and Time (2/11)

Bids must be received by the Unit Manager, SHINGLETON OFFICE, PO Box 67 M 28 West, Shingleton, MI 49884, no later than 2:00 p.m. (local time) on June 3, 2020. For further information concerning this sale, contact Robert Burnham at 906-452-6227 extension 240.

2. Bidder's Qualifications (5/16)

Purchaser shall obtain workers compensation insurance to cover claims under Michigan's Worker's Disability Compensation Act of 1969 or similar employee benefit act of any other state applicable to an employee. If all or part of a timber sale was prepared by a private contractor, the contractor and that contractor's company are not permitted to bid on the timber sale contract. Bids will not be accepted from individuals or companies appearing on the DNR/FRD No-Bid List. This list contains the names of purchasers who previously failed to execute a contract within 21-days or who have a history of poor performance.

3. Preparation of Sealed Bids (5/16)

Bid Forms may be completed online thru Michigan DNR Timber Sale Online Bidding (OLB) at www.michigan.gov/timberbidding or by completing the hardcopy Bid Form found in the Timber Sale Prospectus. Hardcopy Bid Forms shall be manually signed in ink. Registration in OLB is considered your 'signature' for all bids submitted thru that system. Bid prices must be entered for each species and product in the Bid Price column for all material subject to bidding and all fill-in blanks must be completed. If erasures or other changes appear on the hardcopy Bid Form, each erasure or change must be initialed by the person signing the bid.

4. Submission of Sealed Bids (5/16)

Bid forms may be obtained from the Unit Manager or thru OLB. Bids may be submitted hardcopy or thru OLB. All hardcopy bids must be submitted on the bid form and in an envelope clearly identified as described in this section. NOTE: Only one bid form per bid envelope. Sealed bids must be submitted to the Unit office designated in the prospectus and must be submitted at or prior to the time established in the prospectus. The envelope should show on the outside (a) the sale name or number and (b) the date and time of bid opening, as shown in the prospectus. Bids received after the time specified in the sale prospectus are late bids and will be rejected.

It is possible for a bidder to submit multiple bids on a single sale. For example, a bid may be submitted hardcopy and a bid may be submitted thru OLB. Or, two bidders from the same company could both submit bids on the same sale. If this were to happen, the State would accept all bids received and award the contract accordingly. All bidding and contractual requirements would apply to all bids received.

5. Public Opening of Sealed Bids (7/16)

If conditions permit, the sealed bids will be publicly opened and posted at the time and place set in the prospectus.

If a bidder, present at a bid opening, has submitted bids on more than one sale, that bidder may withdraw their unopened bid envelopes or announce the withdrawal of their online bid after being declared the successful bidder on one sale.

6. Award of Contract (1/11)

Award of the contract will be made to the Bidder whose bid, conforming to the prospectus, is most advantageous to the State of Michigan on the basis of total value at rates bid for the estimated quantities. The State reserves the right to reject any bid or waive any minor irregularity in bids received. A written award mailed (or otherwise furnished) to the successful Bidder shall be deemed to result in a binding contract without further action by either party.

7. Down Payment (1/11)

The Bidder to whom award is made must make a down payment within 21 days of the sale award. The amount of the down payment will be calculated as shown in the Bond and Payment Schedule of this prospectus. Only cash may be used to meet this requirement.

8. Performance Security (1/11)

As guarantee of faithful performance, a cash bond, certificate of deposit, surety bond or irrevocable letter of credit (LOC) is required within 21 days of the sale award. The amount of the performance security is shown in the Bond and

Payment Schedule of this prospectus. If an LOC or surety is used, the coverage must extend for at least 6 months beyond the contract expiration.

9. Timber Sale Contract (7/18)

Additional conditions and requirements common to all timber sales are listed on the timber sale contract (R4031) and are available on line at www.michigan.gov/timber. Contact the Unit Manager for additional information or a sample contract. Within 21 days of the date of the award letter, the bidder must sign the contract and provide the required down payment, performance security, and verification of worker's disability compensation. The down payment and performance security shall be in accordance with the provisions of the timber sale contract, in the sums stated in this prospectus. If these actions are not taken, then the Bidder, the Bidder's corporation, and the corporation's principals may not be permitted to bid on State timber sales for a period of 3 months after the first offense, 6 months after the second offense, and 1 year after the third offense. An offense will only be counted against the Bidder for 5 years. In addition, the Bidder certifies that if awarded this contract, the Bidder will complete the timber sale contract in accordance with its terms and any modifications thereof including requirements to purchase, cut, and remove the included timber by the expiration date.

Payment Unit values in the State Forest Timber Sale Contract are calculated based on the advertised value of the Payment Unit as a percentage of the total advertised value of the contract. The advertised value of each Payment Unit is given in the Description of Timber by Payment Unit table on the Timber Sale Information page. For example, if the value of Payment Unit 1 is advertised as \$1,500 and the total Timber Sale value is advertised as \$10,000, the contract price for Payment Unit 1 will be 15% of the total bid price ($\$1,500/\$10,000 * 100$).

10. Disclaimer of Estimates and Bidder's Warranty of Inspection (7/16)

Before submitting this bid, the Bidder is advised and cautioned to inspect the sale area, review the requirements of the sale contract, and take other steps as may be reasonably necessary to ascertain the location, estimated volumes, construction estimates, and operating costs of the proposed sale. Failure to do so will not relieve the Bidder from responsibility for completing the contract.

The Bidder warrants that this bid is submitted solely on the basis of the Bidder's examination and inspection of the quality and quantity of the timber offered for sale and the Bidder's opinion of the value thereof and the costs of recovery. No reliance should be placed on the State of Michigan's estimates of timber quality, quantity or costs of recovery. Bidder further acknowledges that the State of Michigan: (i) expressly disclaims any warranty of fitness of timber for any purpose; (ii) offers this timber as is without any warranty of quality (merchantability) or quantity and (iii) expressly disclaims any warranty as to the quantity or quality of timber sold.

11. Certification and Chain-of-Custody (10/14)

Unless otherwise indicated in the contract under section 7 – Other Conditions of the Sale Specific Conditions & Requirements, the area encompassed by this timber sale is certified to the standards of the Forest Stewardship Council (FSC) - Certificate #SCS-FM/COC-00090N and the Sustainable Forestry Initiative (SFI) - Certificate #NSF-SFIS-5Y031-SF5. Forest products from this sale may be delivered to the mill as "FSC 100% and / or SFI certified" as long as the contractor hauling the forest products is chain-of-custody (COC) certified or covered under a COC certificate from the destination mill. The purchaser is responsible for maintaining COC after leaving the sale area.

12. Good Neighbor Authority (GNA) Requirements (7/16)

If the name of this timber sales contains the acronym GNA, it is authorized by the Good Neighbor Authority (GNA) and covered by various agreements between the U.S. Forest Service and the State. The timber sale occurs on federal land and the following conditions apply:

GNA contracts on US Forest Service land will not be awarded to purchasers on the Federal list of excluded parties. The System for Award Management (SAM) will be checked for active excluded parties prior to award of contract. In addition, the Bidder to whom award is made must complete an Assurance Regarding Felony Conviction or Tax Delinquent Status for Corporate Applicants (AD-3031).

13. Good Neighbor Authority (GNA) Requirements, con't (9/16)

Bidder certifies, by signing this bid form, that to the best of Bidder's knowledge that the following representations are accurate and complete.

- a. That the Bidder and its principals are not presently debarred, suspended, proposed for debarment, declared ineligible, or voluntary excluded from timber sales (covered transactions) by any Federal department or agency.
- b. That the Bidder and its principals have not within a 3-year period preceding this bid been convicted of or had a civil judgment rendered against them for commission of fraud or a criminal offense in connection with obtaining , attempting to obtain, or performing a public (Federal, State, or local) transaction or contract under a public transaction; violation of Federal or State antitrust statutes or commission of embezzlement, theft, forgery, bribery, falsification or destruction of records, making false statements, or receiving stolen property.
- c. That the Bidder and its principals are not presently indicted for or otherwise criminally or civilly charged by a governmental entity (Federal, State, or local) with commission of any of the offenses enumerated in paragraph b of this certification.
- d. That the Bidder and its principals have not within a 3-year period preceding this bid had one or more public transactions (Federal, State, or local) terminated for breach or default of a timber or forest product contract.

Bidders that cannot certify this requirement, in whole or in part, shall submit an explanation with their bid.

DAN EICHINGER
Director

TIMBER SALE INFORMATION

Fletchers Hill Mix 2 (41-009-19)
 T44N, R16W, SEC. 32; T44N, R16W, SEC. 33.
 Schoolcraft County (Advertised Price \$35,969.75)

SALE NOTE: Road work is required on this sale (see spec 4.1.8 for details).

Permission for access across private land is the responsibility of the Purchaser (see spec 4.4.1 for details).

A timber sale contract for this lump sum, sealed bid timber sale will be awarded to the responsible bidder offering the highest sealed bid price. Bids must be at or above the following advertised price for each species:

<u>PRODUCTS & SPECIES</u>	<u>ESTIMATED UNITS*</u>		<u>ADVERTISED PRICE</u>
Sawtimber			
Red Oak	23.60	MBF	\$ 98.00 / MBF
Pulpwood			
Balsam Fir	11.00	Cords	\$ 7.55 / Cord
Jack Pine	50.00	Cords	\$ 14.65 / Cord
Mixed Aspen	194.00	Cords	\$ 14.65 / Cord
Mixed Hardwood	52.00	Cords	\$ 10.95 / Cord
Mixed Spruce	65.00	Cords	\$ 13.55 / Cord
N. White Cedar	20.00	Cords	\$ 4.10 / Cord
Red Oak	248.00	Cords	\$ 15.55 / Cord
Red Pine	700.00	Cords	\$ 33.95 / Cord
Tamarack	19.00	Cords	\$ 5.65 / Cord
White Pine	71.00	Cords	\$ 10.40 / Cord

* The total volume is statistically estimated within plus (+) or minus (-) 17.98 percent. The estimated units are final and not subject to adjustment. Prospective bidders are urged to examine this timber and to make their own estimates of quantity and quality.

BOND AND PAYMENT SCHEDULE:

1. A bond in the amount of \$1,798.00 to insure faithful performance of the conditions of the contract will be deposited by the successful bidder within 21 days of the sale award.
2. Cutting in any sale or unit without the required advance payment would be considered a trespass.
3. Total payment must be paid in advance or according to the following schedule :
 - (a) Ten percent (10%) of the sale value must be paid within 21 days of the sale award.
 - (b) The 10% down payment will be credited towards the first unit cut.
 - (c) Payment for each of the following units must be made before cutting begins in that unit:

PAYMENT UNIT NUMBER	PERCENT OF TOTAL SALE VALUE
01	13.2%
02	2.4%
03	17.1%
04	5.5%
05	11.9%
06	1.3%
07	5.5%
08	5.2%
09	3.2%
10	3.6%
11	5.5%
12	1.6%
13	24.0%

4. If no cutting takes place, the 10% down payment will not be refunded.
5. Operations on the contract issued will terminate on 06/30/2023.

Description of Timber by Payment Unit (PU)

PU	MARKET GROUP	PRODUCT	QUANTITY	UNIT	ACRES	ADVERTISE PRICE
1	Jack Pine	Pulpwood	25.0	Cords	25.9	\$4,747.20
	Mixed Aspen		14.0	Cords		
	Red Pine		123.0	Cords		
2	Red Oak	Sawtimber	2.9	MBF	1.1	\$856.95
	Red Oak	Pulpwood	15.0	Cords		
	Red Pine		10.0	Cords		
3	Red Oak	Sawtimber	12.8	MBF	49.9	\$6,164.65
	Red Oak	Pulpwood	207.0	Cords		
	Red Pine		44.0	Cords		
	White Pine		19.0	Cords		
4	Red Oak	Sawtimber	7.9	MBF	6.3	\$1,993.30
	Red Oak	Pulpwood	26.0	Cords		
	Red Pine		24.0	Cords		
5	Mixed Aspen	Pulpwood	29.0	Cords	9.3	\$4,269.95
	<i>Quaking Aspen</i>		29.0	<i>Cords</i>		
	Mixed Hardwood		7.0	Cords		
	Red Pine		111.0	Cords		
6	Balsam Fir	Pulpwood	11.0	Cords	1.2	\$459.65
	Mixed Aspen		2.0	Cords		
	Mixed Hardwood		4.0	Cords		
	Mixed Spruce		8.0	Cords		
	N. White Cedar		20.0	Cords		
	Red Pine		2.0	Cords		
	Tamarack		8.0	Cords		
7	Jack Pine	Pulpwood	6.0	Cords	10.5	\$1,975.85
	Mixed Aspen		13.0	Cords		
	Red Pine		50.0	Cords		
8	Mixed Aspen	Pulpwood	23.0	Cords	5.9	\$1,864.70
	<i>Quaking Aspen</i>		23.0	<i>Cords</i>		
	Red Pine		45.0	Cords		
9	Mixed Aspen	Pulpwood	14.0	Cords	4.5	\$1,155.70
	<i>Quaking Aspen</i>		14.0	<i>Cords</i>		
	Red Pine		28.0	Cords		
10	Jack Pine	Pulpwood	16.0	Cords	5.2	\$1,277.50
	Mixed Spruce		57.0	Cords		
	Red Pine		4.0	Cords		
	Tamarack		11.0	Cords		
	White Pine		7.0	Cords		
11	Mixed Aspen	Pulpwood	6.0	Cords	4.5	\$1,971.00
	<i>Quaking Aspen</i>		6.0	<i>Cords</i>		
	Mixed Hardwood		6.0	Cords		
	Red Pine		52.0	Cords		
	White Pine		5.0	Cords		
12	Red Pine	Pulpwood	17.0	Cords	2.2	\$577.15
13	Jack Pine	Pulpwood	3.0	Cords	34.5	\$8,656.15
	Mixed Aspen		93.0	Cords		
	Mixed Hardwood		35.0	Cords		
	Red Pine		190.0	Cords		
	White Pine		40.0	Cords		
TOTAL:			23.6	MBF		
TOTAL:			1,430.0	Cords		

Sale Specific Conditions & Requirements

Sale Name: Fletchers Hill Mix 2

Sale Number: 41-009-19 Seq#: 1

1 - Sale Area

1.2 - Boundaries

1.2.1 - Painted boundaries (1/14)

The sale boundary and Payment Unit boundaries are marked and identified by blue, red and yellow paint. Exterior sale boundary lines against private property are marked with blue paint. Exterior sale boundary lines against state are marked with red paint. Interior Payment Unit boundaries are marked with yellow paint. The painted boundary line trees are not Included Timber and are to be protected, unless marked with orange paint. Yellow painted trees designating an interior Payment Unit boundary are only to be cut when all surrounding Payment Units have been paid.

2 - Timber Specifications

2.1 - Included Timber

2.1.1 - Clearcut unit(s) with unmerchantable trees (6/14)

Within Payment Unit(s) 2, cut all trees that are two (2) inches or more at DBH, except do not cut any aspen or hemlock.

Special protection trees identified in accordance with condition 3.4.2, within clearcutting unit boundaries, are not Included Timber and are to be protected.

2.1.2 - Clearcut unit(s) w/o unmerchantable trees (8/11)

Within Payment Unit(s) 6 and 10, cut all trees which meet minimum piece specifications in 2.2 Utilization, except do not cut any hemlock or oak.

Special protection trees identified in accordance with condition 3.4.2, within clearcutting unit boundaries, are not Included Timber and are to be protected.

2.1.3 - Cut tree marked unit(s) (12/08)

Within Payment Unit(s) 1, 5, 7-9 and 11-13, all red pine and oak are designated for cutting when marked with orange paint above and below stump height, regardless of merchantability. In addition, all other species are designated for cutting, except do not cut trees marked with green paint.

2.1.4 - Designated timber unit(s) (6/17)

Within Payment Unit(s) 3 and 4, within the orange marked gap harvest areas, all trees two (2) inches or more at DBH are designated for cutting, regardless of merchantability. There are 52 gap areas within Payment Units 3 and 4.

Also, within Payment Unit 4, cut all red pine which meet minimum piece specifications in 2.2 Utilization.

2.2 - Utilization

2.2.3 - Stump heights (4/07)

Stump heights within Payment Unit(s) 1, 5, 7, 8, 9, 11, 12, and 13 shall not exceed 12 inches for trees greater than 10 inches DBH and 4 inches for trees smaller than 10 inches DBH. This is in order to facilitate planting operations.

3 - Payments

3.3 - Pre-measured Sales

3.3.4 - Dividing payment units (7/14)

Payment Unit(s) with a value over \$15,000 may be divided at the request of the Purchaser and upon approval of the Unit Manager. Dividing Payment Units is a contract modification which requires a Timber Sale Contract Supplement.

3.4 - Damaged Timber

3.4.1 - Damaged timber (6/14)

General Condition and Requirement 3.4 Damaged Timber, defines liquidated damages for undesignated live merchantable

trees which are cut or injured. In addition, extreme care should be taken to avoid damage to tree seedlings and saplings.

Within Payment Units 2-4, if more than 25% of the oak tree seedlings or saplings (1/4" to 4.5" DBH) within a specified portion of the sale area are damaged, liquidated damages will be assessed at \$500 per acre for all acreage within that specified portion of the sale area that was damaged.

3.4.2 - Special Protection Trees (4/14)

The Purchaser shall not cut live or dead special protection trees within cutting units or clearings. Special protection trees are hemlock. If the Purchaser's operations have cut or damaged special protection trees through carelessness, the Purchaser shall pay \$100 as fixed, agreed and liquidated damages for each special protection tree cut or damaged. Such payment does not constitute ownership of the undesignated timber.

4 - Transportation

4.1 - Construction

4.1.3 - Slash and earthen piles (8/04)

Piles or windrows of earth along roads and landings that have been widened or constructed shall be leveled. Slash from road maintenance or construction, including stumps, shall be dispersed throughout the sale.

4.1.6 - Road construction (1/09)

Construction of new roads or improvements of existing roads shall be done in such a way as to minimize the environmental and visual impacts. Merchantable trees shall be cut and utilized unless otherwise directed. Non-merchantable trees shall be severed and laid flat on the ground. Slash shall be scattered, and not left in windrows and kept a minimum of 10 feet back from the road edge. Stumps shall be set upright, not left on edge, and be moved at least 10 feet away from the road edge. Disturbed soil shall be feathered into the woods and not left in berms or windrows.

4.1.7 - Road closure (10/11)

All new roads built into the sale must be blocked to vehicle traffic upon completion of the sale. Overgrown roads that are reopened shall be considered new roads. These roads must be rendered impassable to cars and trucks. In general, this will require constructing a four (4') foot high berm of stumps and logs covered with earth. All stumps from road building and landing construction must be reserved to block any newly constructed roads upon completion of the sale. These stumps must be scattered along the road system to prohibit vehicular movement. Contact the sale administrator for details of design and placement.

4.1.8 - Road work (1) (8/07)

The following road work is required of the Purchaser: 500 yards of breaker run gravel containing rock no larger than 3 inches must be purchased, hauled; spread between M-94 and the sale area along Fletchers Hill Road. Exact locations will be determined by the sale administrator. All work shall be at the Purchaser's expense and must be completed prior to hauling, unless otherwise approved by the Unit Manager.

4.1.10 - Oversight (12/08)

The Unit Manager, or his/her representative, must be present when the road improvement project is initiated.

4.2 - Maintenance

4.2.4 - Grading (10/16)

For completion of the sale, state forest roads must be graded. In general, this will require a road grader or bull dozer to shape up the roads after forest products have been hauled off site. This includes cleaning of drainage areas, grading, crowning and filling with gravel, if necessary. The grading equipment to be used must be approved by the Unit Manager or his/her representative.

4.4 - Access

4.4.1 - Private property access (3/11)

Permission for access across private land is the responsibility of the Purchaser. Should the Purchaser desire to cross private land, a copy of the written permission from the private landowner shall be supplied to the Unit Manager or his/her representative at least 30 days prior to the commencement of sale activities.

5 - Operations

5.2 - Conduct of Operations

5.2.2 - Hazard Trees/Snags

5.2.2.1 - Den trees (10/16)

Obvious hollow and/or den trees shall be protected and left standing unless they are a safety hazard.

5.2.3 - Operating Restrictions

5.2.3.6 - Bark beetle restriction (12/08)

In the event drought creates a high risk of pine bark beetle infestation, pine is not to be cut during the period March 1 through July 1, unless all portions of trees greater than two inches in diameter are removed from the sale area, reduced to chips, or treated to the satisfaction of the Unit Manager or his/her representative, within fifteen days of being severed from the stump. Pine log decks, pulpwood piles and treetops that are piled for chipping in the fall or winter within a 1/4 mile of susceptible sites must be removed before March 15. Residual slash must not be placed in piles or rows and must be spread over the site for quick drying. The Department of Natural Resources will exercise this specification if the risk of damage warrants.

5.2.32 - Decking/landing restoration (9/13)

All decking and landing areas must have the surface area restored to a condition equal to or better than before. This is to ensure the proper regeneration of the stand. Wood debris, chips and "cookies" from trimmings must be removed or scattered away from landing and loading areas and may not be windrowed on the edge.

5.2.38 - No decking against live trees (2/04)

Cut products may not be decked against unmarked or designated leave trees.

5.4 - Soil Protection

5.4.1 - Rutting restriction, general (7/16)

Operations are to cease immediately if equipment and weather conditions result in rutting of roads and/or skid trails which is 12 inches or greater in depth and 50 feet in length. The Unit Manager or his/her representative may restrict hauling and/or skidding if ruts exceed the specified depth. With the Unit Manager or his/her representative's approval, the Purchaser may return to the area when the risk of rutting has decreased.

5.8 - Protection of Endangered Species

5.8.3 - Red shoulder hawk or goshawk (2/16)

In the event that an active red shoulder hawk or goshawk nest is found, the contract may be amended to protect the nest site until the nest is determined to be inactive. The value of the trees in this excluded area will be refunded or credited to the Purchaser. The nest will be buffered with a five-chain radius (eight acre) protection area, centered on the nest tree, in which there will be no cutting or new roads constructed. Avoid human disturbance, including loading and skidding, in the protection area.

An additional zone of five chains (ten chains centered on the active nest tree) will be established in which there is no management activity from April 1 to July 30. Limit biomass harvesting and chipping operations within this ten-chain zone, retain the maximum one-third of residues per the Woody Biomass Harvesting Guidelines (Michigan DNR 2010). Nests determined to be inactive will be protected with a one-chain no-harvest buffer.



TIMBER SALE MAP

This information provided by authority of Part 5, 1994 PA 451, as amended.

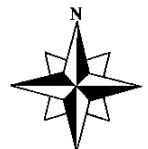
Sale Number	009	Year	19
Date	7-11-19	Page	1 of 1
Scale: ... 4" = 1 mile			

Forest Management Unit	SHINGLETON	County	SCHOOLCRAFT	Mapped By	PETRELIUS
Compartment Number	34	Township	44N	Range	16W
		Section(s) and Subdivision(s) 32: E 1/2 NE, E 1/2 SE 33: N 1/2 NW, S 1/2 NW, N 1/2 SW, NW 1/4 SE, S 1/2 SE			

Cover Type			
A = Aspen	J = Jack Pine	O = Oak	U = Upland Brush
B = Paper Birch	K = Rock	P = Lowland Poplar	UM = Upland Mix Forest
C = Cedar	L = Lowland Brush	Q = Mixed Swamp Conifer	V = Bog or Marsh
D = Treed Bog	LM = Lowland Mix Forest	R = Red Pine	W = White Pine
E = Swamp Hardwoods	M = Maple, Beech, Birch	S = Black Spruce	X = Non Stocked
F = Spruce/Fir	MC = Mixed Conifer	T = Tamarack	Y = Sand
G = Grass	MD = Mixed Deciduous	Z = Water	
H = Hemlock	N = Marsh		

Density	
0 = Non Stocked	5 = Pole Timber Medium
1 = Seedling Sapling Poor	6 = Pole Timber Well
2 = Seedling Sapling Medium	7 = Saw Timber Poor
3 = Seedling Sapling Well	8 = Saw Timber Medium
4 = Pole Timber Poor	9 = Saw Timber Well

Fletchers Hill Mix 2 161 acres

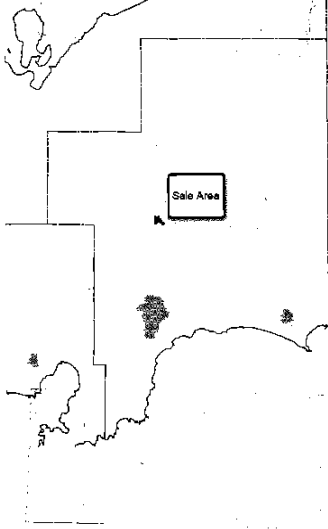
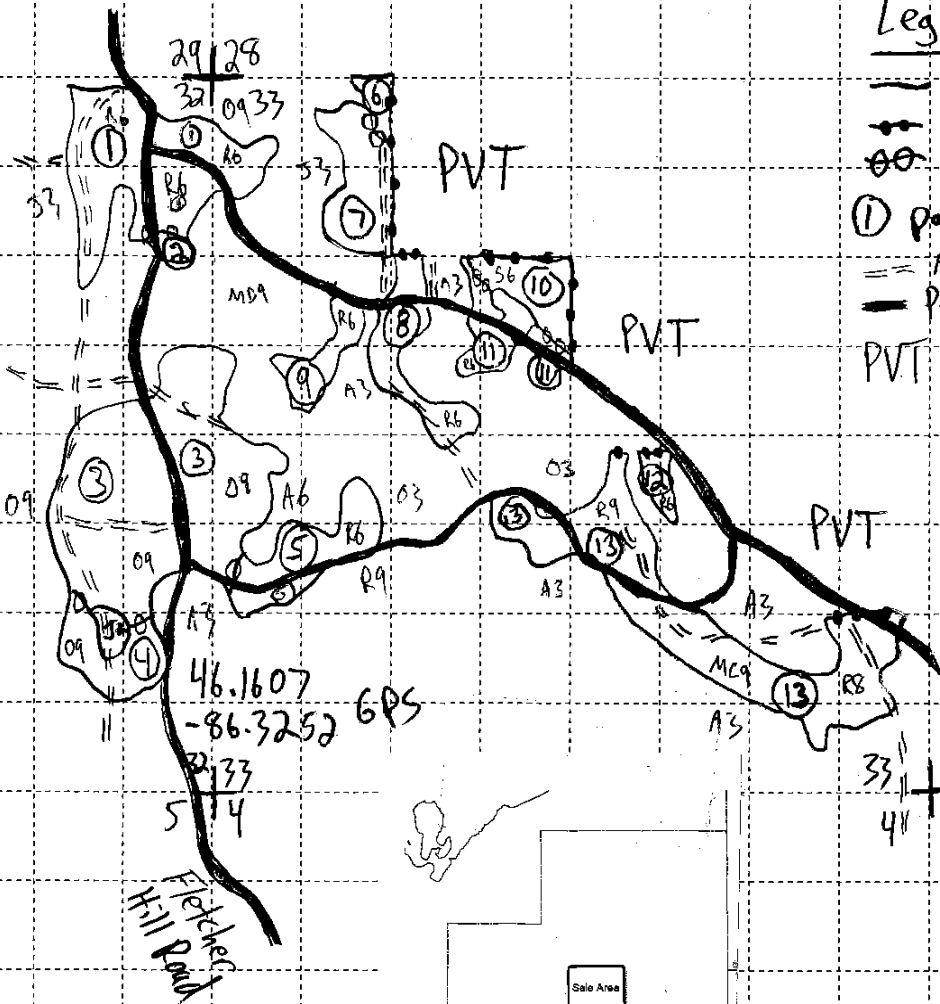


Legend

- Red paint
- Blue paint
- Yellow paint
- ① Payment Unit
- == Forest Access Road
- Primary/secondary Road
- PVT = Private

Payment Units

1 - 25.9	7 - 10.5
2 - 1.1	8 - 5.9
3 - 49.9	9 - 4.5
4 - 6.3	10 - 5.2
5 - 9.3	11 - 4.5
6 - 1.2	12 - 2.2
	13 - 34.5



TIMBER SALE INFORMATION

C-170 Hardwood sale (41-014-19)

T47N, R17W, SEC. 13.

Alger County (Advertised Price \$192,241.05)

SALE NOTE: Permission for access across private land is the responsibility of the Purchaser (see spec 4.4.1 for details).

Harvesting is not permitted during the period of April 15 to July 15 because of bark slippage (see spec 5.2.3.3 for details).

The Sunrise Grade (Trail 8) is a snowmobile trail and is shown on the Timber Sale Map restrictions apply (see spec 5.2.41 & 6.2.2 for details).

A recreation site such as a trail, pathway, or campground is within the sale area or the vicinity. Certain restrictions/specifications may be applicable including time restrictions. Access may be through private land.

A timber sale contract for this lump sum, sealed bid timber sale will be awarded to the responsible bidder offering the highest sealed bid price. Bids must be at or above the following advertised price for each species:

<u>PRODUCTS & SPECIES</u>	<u>ESTIMATED UNITS*</u>	<u>ADVERTISED PRICE</u>
Sawtimber		
Basswood	5.10 MBF	\$ 108.00 / MBF
Black Cherry	5.10 MBF	\$ 148.00 / MBF
Red Maple	6.40 MBF	\$ 117.00 / MBF
Sugar Maple	574.80 MBF	\$ 272.00 / MBF
Yellow Birch	0.30 MBF	\$ 104.00 / MBF
Pulpwood		
Balsam Fir	14.00 Cords	\$ 10.20 / Cord
Basswood	7.00 Cords	\$ 7.25 / Cord
Mixed Hardwood	2,222.00 Cords	\$ 14.75 / Cord
White Spruce	46.00 Cords	\$ 18.30 / Cord

* The estimated units are final and not subject to adjustment. Prospective bidders are urged to examine this timber and to make their own estimates of quantity and quality.

BOND AND PAYMENT SCHEDULE:

1. A bond in the amount of \$9,612.00 to insure faithful performance of the conditions of the contract will be deposited by the successful bidder within 21 days of the sale award.
2. Cutting in any sale or unit without the required advance payment would be considered a trespass.
3. Total payment must be paid in advance or according to the following schedule :
 - (a) Ten percent (10%) of the sale value must be paid within 21 days of the sale award.
 - (b) The 10% down payment will be credited towards the first unit cut.
 - (c) Payment for each of the following units must be made before cutting begins in that unit:

PAYMENT UNIT NUMBER	PERCENT OF TOTAL SALE VALUE
01	8.8%
02	9.1%
03	7.7%
04	7.6%
05	10.8%
06	13.6%
07	14.4%
08	12.9%
09	15.1%

4. If no cutting takes place, the 10% down payment will not be refunded.
5. Operations on the contract issued will terminate on 06/30/2023.

Description of Timber by Payment Unit (PU)

PU	MARKET GROUP	PRODUCT	QUANTITY	UNIT	ACRES	ADVERTISE PRICE
1	Basswood Black Cherry Red Maple	Sawtimber	1.2	MBF	29.4	\$16,872.05
			1.9	MBF		
			1.7	MBF		
	Sugar Maple Basswood Mixed Hardwood White Spruce	Pulpwood	41.1	MBF		
			1.0	Cords		
			328.0	Cords		
			13.0	Cords		
2	Black Cherry Red Maple Sugar Maple Yellow Birch	Sawtimber	1.4	MBF	27.5	\$17,416.10
			1.8	MBF		
			47.1	MBF		
			0.1	MBF		
	Balsam Fir Mixed Hardwood White Spruce	Pulpwood	9.0	Cords		
			236.0	Cords		
			33.0	Cords		
3	Basswood Black Cherry Sugar Maple	Sawtimber	0.3	MBF	18.9	\$14,746.10
			0.7	MBF		
			46.8	MBF		
	Basswood Mixed Hardwood	Pulpwood	1.0	Cords		
			127.0	Cords		
4	Sugar Maple	Sawtimber	44.2	MBF	25.3	\$14,566.15
	Balsam Fir	Pulpwood	5.0	Cords		
	Mixed Hardwood		169.0	Cords		
5	Black Cherry Sugar Maple	Sawtimber	0.1	MBF	25.4	\$20,774.85
			66.4	MBF		
	Mixed Hardwood	Pulpwood	183.0	Cords		
6	Basswood Red Maple Sugar Maple	Sawtimber	0.1	MBF	31.1	\$26,188.50
			0.3	MBF		
			82.8	MBF		
	Basswood Mixed Hardwood	Pulpwood	1.0	Cords		
			245.0	Cords		
7	Basswood Black Cherry Red Maple Sugar Maple	Sawtimber	1.6	MBF	44.2	\$27,631.45
			0.8	MBF		
			1.3	MBF		
			78.7	MBF		
	Basswood Mixed Hardwood	Pulpwood	2.0	Cords		
			391.0	Cords		
8	Basswood Black Cherry Sugar Maple	Sawtimber	0.7	MBF	32.0	\$24,744.30
			0.1	MBF		
			75.7	MBF		
	Basswood Mixed Hardwood	Pulpwood	1.0	Cords		
			275.0	Cords		
9	Basswood Black Cherry Red Maple Sugar Maple Yellow Birch	Sawtimber	1.2	MBF	39.9	\$29,301.55
			0.1	MBF		
			1.3	MBF		
			92.0	MBF		
			0.2	MBF		
	Basswood Mixed Hardwood	Pulpwood	1.0	Cords		
			268.0	Cords		
			TOTAL:			
TOTAL:		2,289.0	Cords			

Sale Specific Conditions & Requirements

Sale Name: C-170 Hardwood sale

Sale Number: 41-014-19 Seq#: 1

1 - Sale Area

1.2 - Boundaries

1.2.1 - Painted boundaries (9/19)

The sale boundary and Payment Unit boundaries are marked and identified by blue, red and yellow paint. Exterior sale boundary lines against private property are marked with blue paint. Exterior sale boundary lines against state are marked with red paint. Interior Payment Unit boundaries are marked with yellow paint. The painted boundary line trees are not Included Timber and are to be protected unless marked with orange paint.

2 - Timber Specifications

2.1 - Included Timber

2.1.3 - Cut tree marked unit(s) (12/08)

Within Payment Unit(s) 1-9, all trees are designated for cutting when marked with orange paint above and below stump height, regardless of merchantability.

Special protection trees identified in accordance with condition 3.4.2, within all Payment Units, are not Included Timber and are to be protected.

3 - Payments

3.3 - Pre-measured Sales

3.3.4 - Dividing payment units (7/14)

Payment Unit(s) 1-9 may be divided at the request of the Purchaser and upon approval of the Unit Manager. Dividing Payment Units is a contract modification which requires a Timber Sale Contract Supplement.

3.4 - Damaged Timber

3.4.2 - Special Protection Trees (4/14)

The Purchaser shall not cut live or dead special protection trees within cutting units or clearings. Special protection trees are hemlock. If the Purchaser's operations have cut or damaged special protection trees through carelessness, the Purchaser shall pay \$100 as fixed, agreed and liquidated damages for each special protection tree cut or damaged. Such payment does not constitute ownership of the undesignated timber.

4 - Transportation

4.1 - Construction

4.1.3 - Slash and earthen piles (8/04)

Piles or windrows of earth along roads and landings that have been widened or constructed shall be leveled. Slash from road maintenance or construction, including stumps, shall be dispersed throughout the sale.

4.1.6 - Road construction (1/09)

Construction of new roads or improvements of existing roads shall be done in such a way as to minimize the environmental and visual impacts. Merchantable trees shall be cut and utilized unless otherwise directed. Non-merchantable trees shall be severed and laid flat on the ground. Slash shall be scattered, and not left in windrows and kept a minimum of 10 feet back from the road edge. Stumps shall be set upright, not left on edge, and be moved at least 10 feet away from the road edge. Disturbed soil shall be feathered into the woods and not left in berms or windrows.

4.1.7 - Road closure (10/11)

All new roads built into the sale must be blocked to vehicle traffic upon completion of the sale. Overgrown roads that are reopened shall be considered new roads. These roads must be rendered impassable to cars and trucks. In general, this will require constructing a four (4') foot high berm of stumps and logs covered with earth. Contact the sale administrator for details of design and placement.

4.2 - Maintenance

4.2.2 - Fill material (4/07)

To maintain roads, fill material may be needed in areas where "holes" exist or may be expected to develop. This fill material should be placed before trucking begins. Contact the sale administrator regarding the availability of onsite sand or gravel from adjacent State-owned lands.

4.2.4 - Grading (10/16)

For completion of the sale, state forest roads must be graded. In general, this will require a road grader or bull dozer to shape up the roads after forest products have been hauled off site. This includes cleaning of drainage areas, grading, crowning and filling with gravel, if necessary. The grading equipment to be used must be approved by the Unit Manager or his/her representative.

4.4 - Access

4.4.1 - Private property access (3/11)

Permission for access across private land is the responsibility of the Purchaser. If crossing Hancock Forest Management Property, a permit is required. When the sale is purchased they should be contacted about crossing their property. Allow 30-60 days for permit processing. A copy of the permit should be provided to the Unit Manager by the pre-sale conference.

5 - Operations

5.1 - Notification

5.1.1 - Pre-sale conference (10/16)

A pre-sale conference between the Purchaser and sale administrator is required prior to beginning any operations to determine landing and road locations. The Unit Manager or his/her representative must be contacted at least 5 days in advance to schedule the conference.

5.2 - Conduct of Operations

5.2.2 - Hazard Trees/Snags

5.2.2.1 - Den trees (10/16)

Obvious hollow and/or den trees shall be protected and left standing unless they are a safety hazard.

5.2.3 - Operating Restrictions

5.2.3.3 - Bark slippage restriction (3/09)

Within Payment Unit(s) 1-9, unless changed by written agreement, cutting and skidding are not permitted during the period of April 15 to July 15. This restriction is because of bark slippage.

5.2.32 - Decking/landing restoration (9/13)

All decking and landing areas must have the surface area restored to a condition equal to or better than before. This is to ensure the proper regeneration of the stand. Wood debris, chips and "cookies" from trimmings must be removed or scattered away from landing and loading areas and may not be windrowed on the edge.

5.2.38 - No decking against live trees (2/04)

Cut products may not be decked against unmarked or designated leave trees.

5.2.41 - Snowmobile trail protection (9/11)

The Sunrise Grade (Trail 8) is a snowmobile trail and is shown on the Timber Sale Map. Do not cut or damage posts with orange trail markers or traffic control signs. The snowmobile trail may only be crossed at the location indicated on the Timber Sale Map, the trail cannot be used. Maintain a 20 foot wide slash, debris, and rut free zone daily using the snowmobile trail as the centerline.

5.4 - Soil Protection

5.4.1 - Rutting restriction, general (7/16)

Operations are to cease immediately if equipment and weather conditions result in rutting of roads and/or skid trails which is 12 inches or greater in depth and 50 feet in length. The Unit Manager or his/her representative may restrict hauling and/or

skidding if ruts exceed the specified depth. With the Unit Manager or his/her representative's approval, the Purchaser may return to the area when the risk of rutting has decreased.

5.8 - Protection of Endangered Species

5.8.3 - Red shoulder hawk or goshawk (2/16)

In the event that an active red shoulder hawk or goshawk nest is found, the contract may be amended to protect the nest site until the nest is determined to be inactive. The value of the trees in this excluded area will be refunded or credited to the Purchaser. The nest will be buffered with a five-chain radius (eight acre) protection area, centered on the nest tree, in which there will be no cutting or new roads constructed. Avoid human disturbance, including loading and skidding, in the protection area.

An additional zone of five chains (ten chains centered on the active nest tree) will be established in which there is no management activity from April 1 to July 30. Limit biomass harvesting and chipping operations within this ten-chain zone, retain the maximum one-third of residues per the Woody Biomass Harvesting Guidelines (Michigan DNR 2010). Nests determined to be inactive will be protected with a one-chain no-harvest buffer.

6 - Safety and Fire Prevention

6.2 - Signing

6.2.2 - Snowmobile trail posting (8/09)

The Purchaser is responsible for posting and maintaining caution signs on Trail 8 prior to beginning operations during the snowmobile season (approximately December 1 to March 31). The trail must be posted at appropriate distances from the access road to warn of logging activity and truck traffic. Signs must be removed when harvest operations are suspended or completed. The DNR will provide these signs.



TIMBER SALE MAP

This information provided by authority of Part 5, 1994 PA 451, as amended.

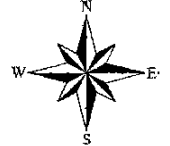
Sale Number	Year
41-14-19-01	2019

Forest Management Shingleton	County Alger	Mapped By Molin	Date 9/25/19	Page 1	of 1
Compartment Number 170	Township 47N	Range 17W	Section(s) and Subdivision(s) 13-SENW, S1/2NE, NESW, S1/2SW, SE		

Cover Type				Density	
A = Aspen	J = Jack Pine	O = Oak	U = Upland Brush	0 = Non Stocked	5 = Pole Timber Medium
B = Paper Birch	K = Rock	P = Lowland Poplar	UM = Upland Mix Forest	1 = Seedling Sapling Poor	6 = Pole Timber Well
C = Cedar	L = Lowland Brush	Q = Mixed Swamp Conifer	V = Bog or Marsh	2 = Seedling Sapling Medium	7 = Saw Timber Poor
D = Treed Bog	LM = Lowland Mix Forest	R = Red Pine	W = White Pine	3 = Seedling Sapling Well	8 = Saw Timber Medium
E = Swamp Hardwoods	M = Maple, Beech, Birch	S = Black Spruce	X = Non Stocked	4 = Pole Timber Poor	9 = Saw Timber Well
F = Spruce/Fir	MC = Mixed Conifer	T = Tamarack	Y = Sand		
G = Grass	MD = Mixed Deciduous		Z = Water		
H = Hemlock	N = Marsh				

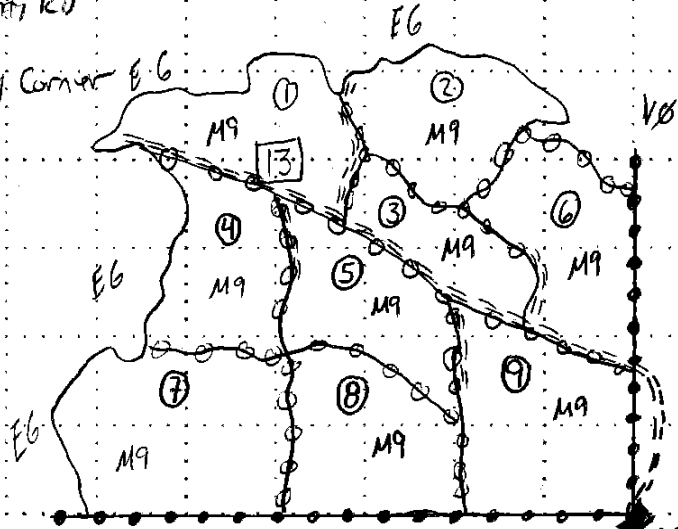
C-170 Hardwood Sale

273.7 acres

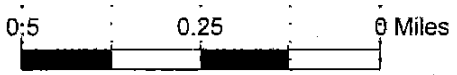


Payment Unit	Acres
1	29.4
2	27.5
3	18.9
4	25.3
5	25.4
6	31.1
7	44.2
8	32.0
9	39.9

- Legend
- Blue Private boundary
 - Red Sale boundary
 - Yellow Unit boundary
 - 2-Track
 - County Rd
 - Survey Corner E 6



GPS Location
46.4624° N
86.3649° W



Sunrise grade Trail B
CO RD 450

TIMBER SALE INFORMATION

Lotsapine (41-017-19)

T49N, R15W, SEC. 16; T49N, R15W, SEC. 20; T49N, R15W, SEC. 21; T49N, R15W, SEC. 28; T49N, R15W, SEC. 29; T49N, R15W, SEC. 32.

SALE NOTE: The county must be contacted prior to crossing or harvesting in the County Road R-O-W. This applies to H-58 and the Hurricane Truck Trail (see spec 4.3.2 for details).

Permission for access across federal land is the responsibility of the Purchaser (see spec 4.4.5 for details).

H-58 and the Hurricane Truck Trail are snowmobile trails and they are shown on the Timber Sale Map (see specs 5.2.41 & 6.2.1 for details).

A recreation site such as a trail, pathway, or campground is within the sale area or the vicinity. Certain restrictions/specifications may be applicable including time restrictions. Access may be through other public land.

A timber sale contract for this lump sum, sealed bid timber sale will be awarded to the responsible bidder offering the highest sealed bid price. Bids must be at or above the following advertised price for each species:

<u>PRODUCTS & SPECIES</u>	<u>ESTIMATED UNITS*</u>		<u>ADVERTISED PRICE</u>
Pulpwood			
Balsam Fir	7.00	Cords	\$ 12.05 / Cord
Black Spruce	45.00	Cords	\$ 21.60 / Cord
Hemlock	9.00	Cords	\$ 10.55 / Cord
Jack Pine	1,183.00	Cords	\$ 23.30 / Cord
Paper Birch	409.00	Cords	\$ 11.45 / Cord
Quaking Aspen	23.00	Cords	\$ 23.35 / Cord
Red Maple	80.00	Cords	\$ 17.40 / Cord
Red Oak	9.00	Cords	\$ 24.75 / Cord
Red Pine	8,433.00	Cords	\$ 54.05 / Cord
White Pine	3,497.00	Cords	\$ 16.60 / Cord

* The estimated units are final and not subject to adjustment. Prospective bidders are urged to examine this timber and to make their own estimates of quantity and quality.

BOND AND PAYMENT SCHEDULE:

1. A bond in the amount of \$27,470.00 to insure faithful performance of the conditions of the contract will be deposited by the successful bidder within 21 days of the sale award.
2. Cutting in any sale or unit without the required advance payment would be considered a trespass.
3. Total payment must be paid in advance or according to the following schedule :
 - (a) Ten percent (10%) of the sale value must be paid within 21 days of the sale award.
 - (b) The 10% down payment will be credited towards the first unit cut.

(c) Payment for each of the following units must be made before cutting begins in that unit:

PAYMENT UNIT NUMBER	PERCENT OF TOTAL SALE VALUE
01	2.0%
02	6.9%
03	3.5%
04	8.0%
05	1.0%
06	11.6%
07	2.9%
08	9.3%
09	6.8%
10	6.3%
11	7.1%
12	5.1%
13	2.5%
14	2.3%
15	1.5%
16	1.4%
17	2.2%
18	3.5%
19	9.6%
20	6.5%

4. If no cutting takes place, the 10% down payment will not be refunded.

5. Operations on the contract issued will terminate on 06/30/2023.

Description of Timber by Payment Unit (PU)

PU	MARKET GROUP	PRODUCT	QUANTITY	UNIT	ACRES	ADVERTISE PRICE
1	Jack Pine	Pulpwood	24.0	Cords	10.8	\$11,056.85
	Red Pine		189.0	Cords		
	White Pine		17.0	Cords		
2	Red Pine	Pulpwood	694.0	Cords	16.9	\$37,726.50
	White Pine		13.0	Cords		
3	Jack Pine	Pulpwood	176.0	Cords	16.9	\$19,369.00
	Paper Birch		7.0	Cords		
	Red Pine		281.0	Cords		
4	Jack Pine	Pulpwood	27.0	Cords	22.6	\$44,018.35
	Red Pine		757.0	Cords		
	White Pine		149.0	Cords		
5	Red Maple	Pulpwood	2.0	Cords	9.4	\$5,530.10
	Red Pine		90.0	Cords		
	White Pine		38.0	Cords		
6	Black Spruce	Pulpwood	21.0	Cords	45.2	\$63,872.00
	Jack Pine		194.0	Cords		
	Paper Birch		11.0	Cords		
	Red Pine		1,037.0	Cords		
	White Pine		164.0	Cords		
7	Jack Pine	Pulpwood	13.0	Cords	18.1	\$16,049.45
	Paper Birch		3.0	Cords		
	Red Pine		252.0	Cords		
	White Pine		126.0	Cords		
8	Jack Pine	Pulpwood	106.0	Cords	38.6	\$51,104.55
	Paper Birch		8.0	Cords		
	Red Maple		8.0	Cords		
	Red Pine		855.0	Cords		
	White Pine		132.0	Cords		
9	Hemlock	Pulpwood	6.0	Cords	41.1	\$37,352.80
	Paper Birch		6.0	Cords		
	Red Maple		4.0	Cords		
	Red Oak		3.0	Cords		
	Red Pine		631.0	Cords		
	White Pine		179.0	Cords		
10	Black Spruce	Pulpwood	13.0	Cords	46.7	\$34,358.25
	Hemlock		3.0	Cords		
	Jack Pine		16.0	Cords		
	Paper Birch		5.0	Cords		
	Red Pine		547.0	Cords		
	White Pine		244.0	Cords		
11	Red Maple	Pulpwood	4.0	Cords	53.8	\$38,905.25
	Red Oak		6.0	Cords		
	Red Pine		631.0	Cords		
	White Pine		276.0	Cords		
12	Red Pine	Pulpwood	477.0	Cords	32.6	\$28,056.05
	White Pine		137.0	Cords		
13	Jack Pine	Pulpwood	228.0	Cords	17.0	\$13,729.55
	Paper Birch		8.0	Cords		
	Red Pine		131.0	Cords		
	White Pine		75.0	Cords		
14	Balsam Fir	Pulpwood	7.0	Cords	28.2	\$12,473.20
	Black Spruce		3.0	Cords		
	Jack Pine		25.0	Cords		
	Paper Birch		178.0	Cords		
	Red Maple		34.0	Cords		

Description of Timber by Payment Unit (PU), con't

PU	MARKET GROUP	PRODUCT	QUANTITY	UNIT	ACRES	ADVERTISE PRICE
14 con't	Red Pine	Pulpwood	109.0	Cords		
	White Pine		194.0	Cords		
15	Black Spruce	Pulpwood	8.0	Cords	25.8	\$8,119.50
	Jack Pine		25.0	Cords		
	Paper Birch		41.0	Cords		
	Red Maple		1.0	Cords		
	Red Pine		91.0	Cords		
	White Pine		118.0	Cords		
16	Red Pine	Pulpwood	132.0	Cords	21.5	\$7,699.00
	White Pine		34.0	Cords		
17	Jack Pine	Pulpwood	28.0	Cords	16.6	\$12,176.35
	Paper Birch		36.0	Cords		
	Quaking Aspen		23.0	Cords		
	Red Maple		13.0	Cords		
	Red Pine		150.0	Cords		
	White Pine		135.0	Cords		
18	Jack Pine	Pulpwood	321.0	Cords	26.1	\$19,405.30
	Paper Birch		25.0	Cords		
	Red Maple		8.0	Cords		
	Red Pine		175.0	Cords		
	White Pine		123.0	Cords		
19	Paper Birch	Pulpwood	7.0	Cords	52.4	\$52,641.65
	Red Maple		6.0	Cords		
	Red Pine		758.0	Cords		
	White Pine		692.0	Cords		
20	Paper Birch	Pulpwood	74.0	Cords	35.9	\$35,760.20
	Red Pine		446.0	Cords		
	White Pine		651.0	Cords		
TOTAL:			13,695.0	Cords		

Sale Specific Conditions & Requirements

Sale Name: Lotsapine

Sale Number: 41-017-19 Seq#: 1

1 - Sale Area

1.2 - Boundaries

1.2.1 - Painted boundaries (1/14)

The sale boundary and Payment Unit boundaries are marked and identified by blue, red and yellow paint. Exterior sale boundary lines against Pictured Rocks National Park are marked with blue paint. Exterior sale boundary lines against state are marked with red paint. Interior Payment Unit boundaries are marked with yellow paint. The painted boundary line trees are not Included Timber and are to be protected unless marked with orange paint. Yellow painted trees designating an interior Payment Unit boundary are only to be cut when all surrounding Payment Units have been paid.

2 - Timber Specifications

2.1 - Included Timber

2.1.1 - Clearcut unit(s) with unmerchantable trees (6/14)

Within Payment Unit(s) 1-4, 6, and 8-12, cut all trees that are two (2) inches or more at DBH, except within Payment Units 1-4, 6, and 8, do not cut any hemlock or oak.

In addition, within Payment Units 1-4, 6, and 8-12, cut all standing dead trees and leave them on the ground. This is in order to facilitate aerial herbicide application as part of reforestation efforts.

2.1.2 - Clearcut unit(s) w/o unmerchantable trees (8/11)

Within Payment Unit(s) 13 and 18, cut all trees which meet minimum piece specifications in 2.2 Utilization, except do not cut any hemlock, oak or green marked trees.

2.1.3 - Cut tree marked unit(s) (12/08)

Within Payment Unit(s) 15 and 16, red pine and white pine are designated for cutting when marked with orange paint above and below stump height, regardless of merchantability. In addition, all other species are designated for cutting, regardless of merchantability, except do not cut hemlock and oak.

2.1.5 - Overstory removal unit(s) (8/11)

Within Payment Unit(s) 5, all trees with a stump diameter equal to or greater than 10 inches, which meet minimum piece specifications in 2.2 Utilization, are designated for cutting, except do not cut any hemlock and oak.

2.1.7 - Leave tree marked unit(s) (6/14)

Within Payment Unit(s) 7, 14, 17, 19, and 20, all trees which meet minimum piece specifications in 2.2 Utilization are designated for cutting, except do not cut any hemlock, oak or green marked trees.

2.2 - Utilization

2.2.3 - Stump heights (4/07)

Stump heights within Payment Unit(s) 1-4, 6, 8-13, 18 shall not exceed 12 inches for trees greater than 10 inches DBH and 4 inches for trees smaller than 10 inches DBH. This is in order to facilitate planting operations.

3 - Payments

3.3 - Pre-measured Sales

3.3.4 - Dividing payment units (7/14)

Payment Unit(s) may be divided at the request of the Purchaser and upon approval of the Unit Manager. Dividing Payment Units is a contract modification which requires a Timber Sale Contract Supplement. There will be only one division per Payment Unit.

3.4 - Damaged Timber

3.4.1 - Damaged timber (7/16)

General Condition and Requirement 3.4 Damaged Timber, defines liquidated damages for undesignated live merchantable

trees which are cut or injured. In addition, extreme care should be taken to avoid damage to tree seedlings and saplings.

Within Payment Unit(s) 5, 7, 14-17, 19 and 20, if more than 25% of the tree seedlings or saplings (1/4" to 4.5" DBH) within a specified portion of the sale area are damaged, liquidated damages will be assessed at \$300 per acre for all acreage within that specified portion of the sale area that was damaged.

4 - Transportation

4.1 - Construction

4.1.3 - Slash and earthen piles (8/04)

Piles or windrows of earth along roads and landings that have been widened or constructed shall be leveled. Slash from road maintenance or construction, including stumps, shall be dispersed throughout the sale.

4.1.6 - Road construction (1/09)

Construction of new roads or improvements of existing roads shall be done in such a way as to minimize the environmental and visual impacts. Merchantable trees shall be cut and utilized unless otherwise directed. Non-merchantable trees shall be severed and laid flat on the ground. Slash shall be scattered, and not left in windrows and kept a minimum of 10 feet back from the road edge. Stumps shall be set upright, not left on edge, and be moved at least 10 feet away from the road edge. Disturbed soil shall be feathered into the woods and not left in berms or windrows.

4.1.7 - Road closure (10/11)

Some new roads built into the sale must be blocked to vehicle traffic upon completion of the sale. Overgrown roads that are reopened shall be considered new roads. These roads must be rendered impassable to cars and trucks. In general, this will require constructing a four (4') foot high berm of stumps and logs covered with earth. Contact the sale administrator for details of design and placement.

4.2 - Maintenance

4.2.4 - Grading (10/16)

For completion of the sale, state forest roads must be graded. In general, this will require a road grader or bull dozer to shape up the roads after forest products have been hauled off site. This includes cleaning of drainage areas, grading, crowning and filling with gravel, if necessary. The grading equipment to be used must be approved by the Unit Manager or his/her representative.

4.3 - Public Right-of-Way

4.3.2 - County R-O-W (12/06)

The county must be contacted prior to crossing or harvesting within the county road R-O-W. This applies to H-58 and the Hurricane Truck Trail.

4.4 - Access

4.4.5 - Federal property access (3/11)

Permission for access across federal land is the responsibility of the Purchaser. Access through Pictured Rocks National Park is required for access to existing roads into Payment Units 1-7. If such access is unavailable or cannot be obtained, a new road will need to be created.

5 - Operations

5.1 - Notification

5.1.1 - Pre-sale conference (10/16)

A pre-sale conference on site between the Purchaser and sale administrator is required prior to beginning any operations to determine landing and road locations. The Unit Manager or his/her representative must be contacted at least 10 days in advance to schedule the conference.

5.2 - Conduct of Operations

5.2.1 - Slash

5.2.1.11 - Slash for reforestation (5/07)

To facilitate reforestation, the sale shall be left with slash evenly distributed. Bunched tops within the cutting area shall be broken up and scattered. Stumps shall be cut low to the ground. Processing sites shall not be left with a compacted layer of slash; tops from these sites shall be hauled back into the cut area and scattered.

5.2.3 - Operating Restrictions

5.2.3.6 - Bark beetle restriction (12/08)

In the event drought creates a high risk of pine bark beetle infestation, pine is not to be cut during the period March 1 through July 1, unless all portions of trees greater than two inches in diameter are removed from the sale area, reduced to chips, or treated to the satisfaction of the Unit Manager or his/her representative, within fifteen days of being severed from the stump. Pine log decks, pulpwood piles and treetops that are piled for chipping in the fall or winter within a 1/4 mile of susceptible sites must be removed before March 15. Residual slash must not be placed in piles or rows and must be spread over the site for quick drying. The Department of Natural Resources will exercise this specification if the risk of damage warrants.

5.2.32 - Decking/landing restoration (9/13)

All decking and landing areas must have the surface area restored to a condition equal to or better than before. This is to ensure the proper regeneration of the stand. Wood debris, chips and "cookies" from trimmings must be removed or scattered away from landing and loading areas and may not be windrowed on the edge.

5.2.38 - No decking against live trees (2/04)

Cut products may not be decked against unmarked or designated leave trees.

5.2.41 - Snowmobile trail protection (9/11)

H-58 and the Hurricane Truck Trail are snowmobile trails and are shown on the Timber Sale Map. Do not cut or damage posts with orange trail markers or traffic control signs. The snowmobile trail may not be used for any sale operations between December 1 and March 31.

5.4 - Soil Protection

5.4.1 - Rutting restriction, general (7/16)

Operations are to cease immediately if equipment and weather conditions result in rutting of roads and/or skid trails which is 12 inches or greater in depth and 50 feet in length. The Unit Manager or his/her representative may restrict hauling and/or skidding if ruts exceed the specified depth. With the Unit Manager or his/her representative's approval, the Purchaser may return to the area when the risk of rutting has decreased.

5.8 - Protection of Endangered Species

5.8.3 - Red shoulder hawk or goshawk (2/16)

In the event that an active red shoulder hawk or goshawk nest is found, the contract may be amended to protect the nest site until the nest is determined to be inactive. The value of the trees in this excluded area will be refunded or credited to the Purchaser. The nest will be buffered with a five-chain radius (eight acre) protection area, centered on the nest tree, in which there will be no cutting or new roads constructed. Avoid human disturbance, including loading and skidding, in the protection area.

An additional zone of five chains (ten chains centered on the active nest tree) will be established in which there is no management activity from April 1 to July 30. Limit biomass harvesting and chipping operations within this ten-chain zone, retain the maximum one-third of residues per the Woody Biomass Harvesting Guidelines (Michigan DNR 2010). Nests determined to be inactive will be protected with a one-chain no-harvest buffer.

6 - Safety and Fire Prevention

6.2 - Signing

6.2.1 - Road posting (9/09)

The Purchaser is responsible for posting and maintaining caution signs on H-58 prior to beginning operations. The road must be posted at appropriate distances from the sale area to warn of logging activity and truck traffic. Signs must be removed when harvest operations are suspended or completed. The Purchaser shall provide these signs.

7 - Other Conditions

7.3 - Contract Modifications

7.3.3 - Modification for reforestation (8/05)

When contractual work of Purchaser has been accepted for any Payment Unit identified on Sale Area Map, Payment Unit will be eliminated from the Sale Area on written notice so that reforestation operations can begin.



TIMBER SALE MAP

This information provided by authority of Part 5, 1994 PA 451, as amended.

Sale Number	Year
017	19

Forest Management Unit Shingleton	County Alger	Mapped By Petrelius	Date 9-15-19	Page of 1 2
Compartiment Number 133	Township 49N	Range 15W	Section(s) and Subdivision(s) 16: NE 1/4, S 1/2 SW, S 1/4 SE 20: SE 21: NW, W 1/2 NE, NW 1/4, SE 1/4 SW, S 1/2 SE	Scale: ... 4" = 1 mile

Cover Type				Density	
A = Aspen	J = Jack Pine	O = Oak	U = Upland Brush	0 = Non Stocked	5 = Pole Timber Medium
B = Paper Birch	K = Rock	P = Lowland Poplar	UM = Upland Mix Forest	1 = Seedling Sapling Poor	6 = Pole Timber Well
C = Cedar	L = Lowland Brush	Q = Mixed Swamp Conifer	V = Bog or Marsh	2 = Seedling Sapling Medium	7 = Saw Timber Poor
D = Treed Bog	LM = Lowland Mix Forest	R = Red Pine	W = White Pine	3 = Seedling Sapling Well	8 = Saw Timber Medium
E = Swamp Hardwoods	M = Maple, Beech, Birch	S = Black Spruce	X = Non Stocked	4 = Pole Timber Poor	9 = Saw Timber Well
F = Spruce/Fir	MC = Mixed Conifer	T = Tamarack	Y = Sand		
G = Grass	MD = Mixed Deciduous		Z = Water		
H = Hemlock	N = Marsh				

LOTSAPINE

576.2 acres

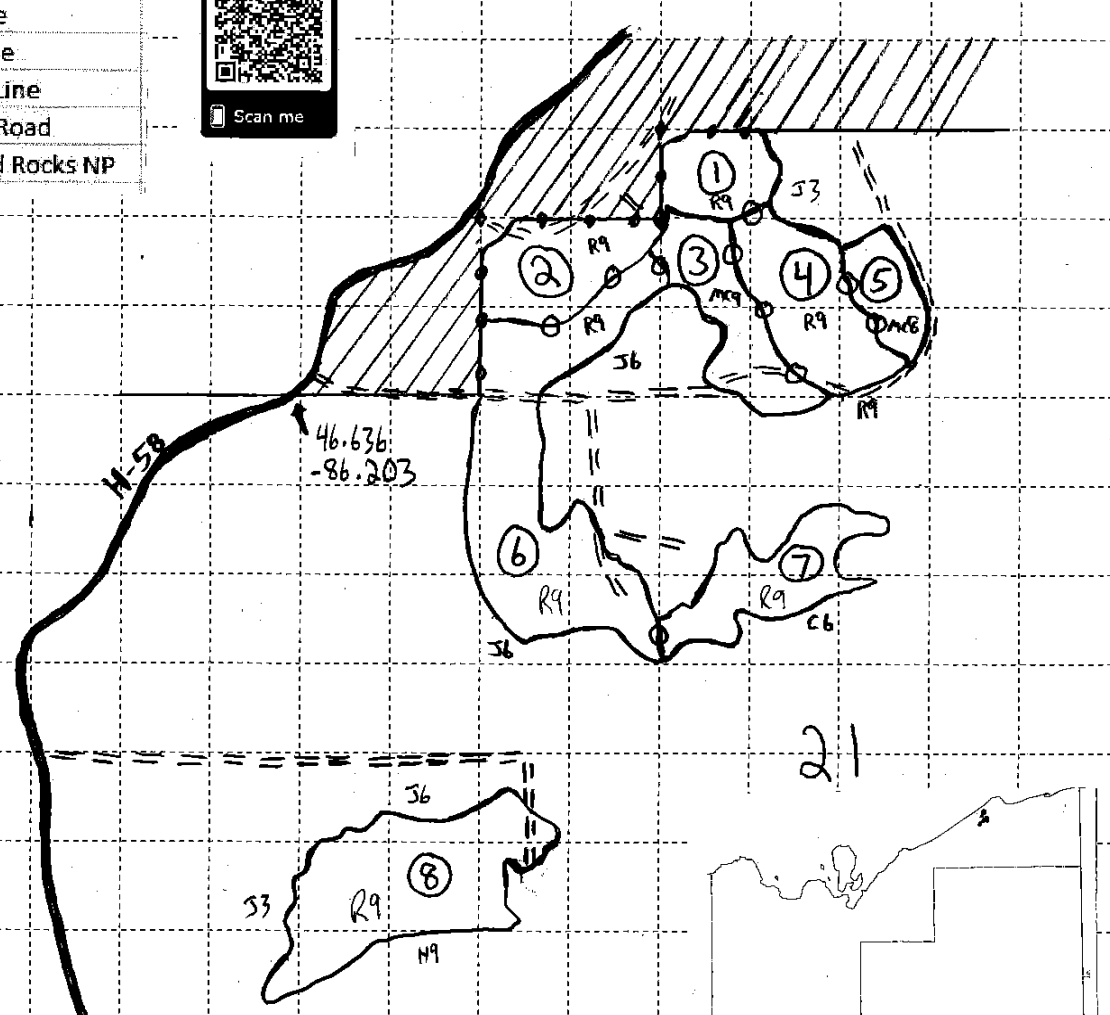


Legend

① ②	Payment Unit #
◆	Survey Corner
—	Red Line
—•—	Blue Line
—○—	Yellow Line
==	Woods Road
////	Pictured Rocks NP



Unit	Acres
1	10.8
2	16.9
3	16.9
4	22.6
5	9.4
6	45.2
7	18.1
8	38.6
9	41.1
10	46.7
11	53.8
12	32.6
13	17
14	28.2
15	25.8
16	21.5
17	16.6
18	26.1
19	52.4
20	35.9





TIMBER SALE MAP

This information provided by authority of Part 5, 1994 PA 451, as amended.

Sale Number	Year
017	19

Forest Management Unit Shingleton	County Alger	Mapped By Petrelis	Date 9-15-19	Page of 2 2
Compartment Number 133	Township 49N	Range 15W	Section(s) and Subdivision(s) 28: NW, NE, NWSW, NENE 29: SESE, SESW, SE 32: NESE, NENE	Scale: ... 4" = 1 mile
Cruised By Petrelis				

Cover Type

A = Aspen	J = Jack Pine	O = Oak	U = Upland Brush
B = Paper Birch	K = Rock	P = Lowland Poplar	UM = Upland Mix Forest
C = Cedar	L = Lowland Brush	Q = Mixed Swamp Conifer	V = Bog or Marsh
D = Treed Bog	LM = Lowland Mix Forest	R = Red Pine	W = White Pine
E = Swamp Hardwoods	M = Maple, Beech, Birch	S = Black Spruce	X = Non Stocked
F = Spruce/Fir	MC = Mixed Conifer	T = Tamarack	Y = Sand
G = Grass	MD = Mixed Deciduous		Z = Water
H = Hemlock	N = Marsh		

Density

0 = Non Stocked	5 = Pole Timber Medium
1 = Seedling Sapling Poor	6 = Pole Timber Well
2 = Seedling Sapling Medium	7 = Saw Timber Poor
3 = Seedling Sapling Well	8 = Saw Timber Medium
4 = Pole Timber Poor	9 = Saw Timber Well

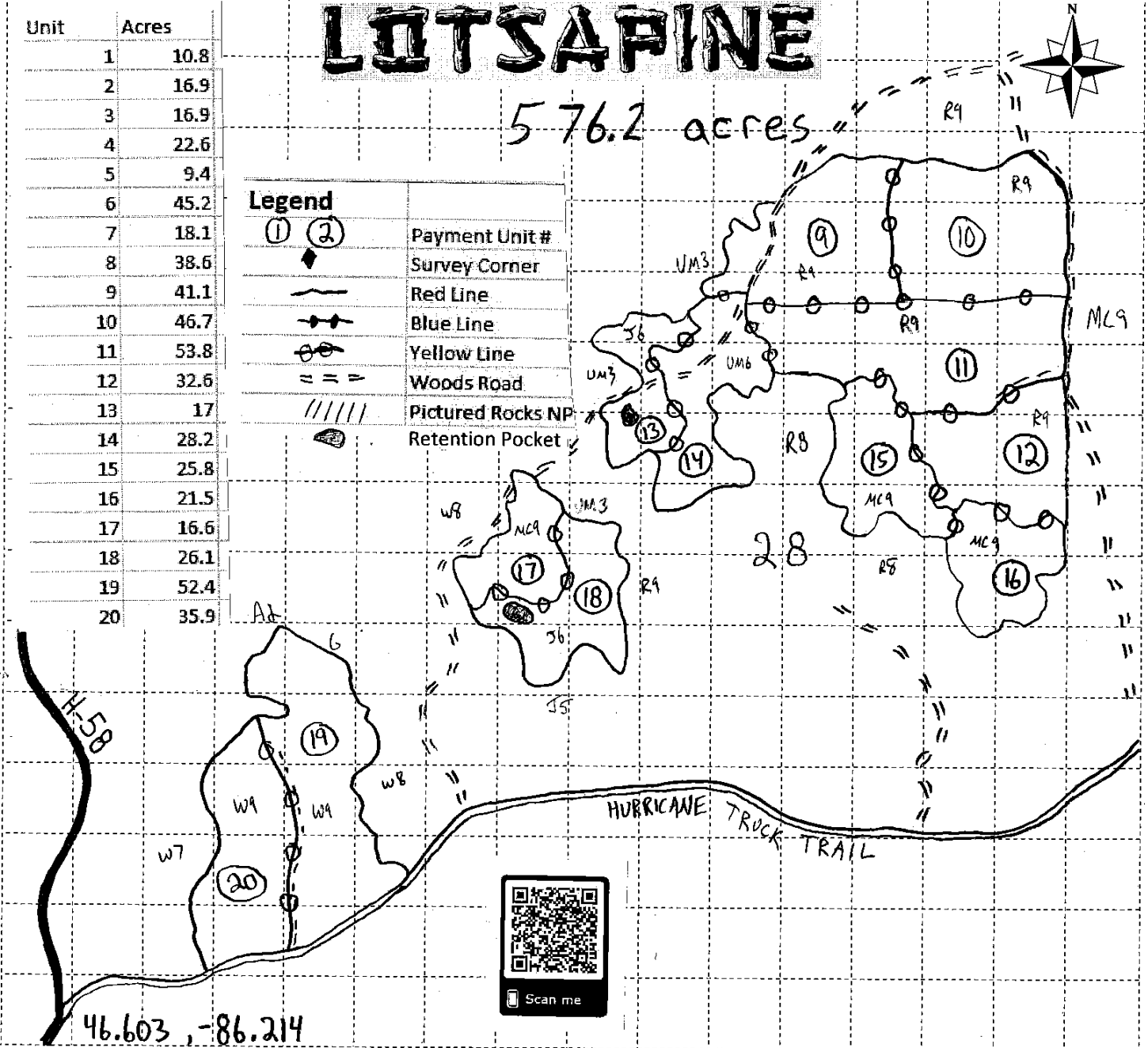
Unit	Acres
1	10.8
2	16.9
3	16.9
4	22.6
5	9.4
6	45.2
7	18.1
8	38.6
9	41.1
10	46.7
11	53.8
12	32.6
13	17
14	28.2
15	25.8
16	21.5
17	16.6
18	26.1
19	52.4
20	35.9

LOTSAPINE

576.2 acres

Legend

①	②	Payment Unit #
◆		Survey Corner
—		Red Line
—●—		Blue Line
—○—		Yellow Line
==		Woods Road
		Pictured Rocks NP
◐		Retention Pocket



46.603, -86.214

Fletchers Hill Mix 2 (41-009-19)
T44N, R16W, SEC. 32; T44N, R16W, SEC. 33; Schoolcraft COUNTY

In response to the notice of sale to be held 2:00 p.m. (local time) on June 3, 2020, I am hereby submitting my sealed bid (firm offer) for the following forest products to be cut. Bids for individual species must be at or above the advertised price. All non-responsive bid forms may be rejected.

<u>PRODUCTS & SPECIES</u>	<u>ESTIMATED VOLUME*</u>	<u>ADVERTISED PRICE</u>	<u>BID PRICE/UNIT</u>
Sawtimber			
Red Oak	23.60 MBF	\$ 98.00/MBF	\$ _____
Pulpwood			
Balsam Fir	11.00 Cords	\$ 7.55/Cord	\$ _____
Jack Pine	50.00 Cords	\$ 14.65/Cord	\$ _____
Mixed Aspen	194.00 Cords	\$ 14.65/Cord	\$ _____
Mixed Hardwood	52.00 Cords	\$ 10.95/Cord	\$ _____
Mixed Spruce	65.00 Cords	\$ 13.55/Cord	\$ _____
N. White Cedar	20.00 Cords	\$ 4.10/Cord	\$ _____
Red Oak	248.00 Cords	\$ 15.55/Cord	\$ _____
Red Pine	700.00 Cords	\$ 33.95/Cord	\$ _____
Tamarack	19.00 Cords	\$ 5.65/Cord	\$ _____
White Pine	71.00 Cords	\$ 10.40/Cord	\$ _____

*The volumes are statistically estimated within plus (+) or minus (-) 17.98 percent. These estimated volumes are final and not subject to adjustment. Prospective bidders are urged to examine this timber and to make their own estimates of quantity and quality.

I understand that any or all bids may be rejected. All bids must be signed and all bid items must be bid or the bid form may be rejected. I also understand that consideration and awarding a contract will be based upon my past performance and ability to complete the contract based upon equipment and staffing subject to my control.

FEDERAL ID: _____ - _____ or SOCIAL SECURITY NUMBER: _____ - _____ - _____

Company or individual bidding: _____

Company representative's name: _____

Address: _____

City: _____ State: _____ Zip: _____

IF AVAILABLE, PLEASE PLACE THE PERSONALIZED LABEL FROM YOUR PROSPECTUS IN THE ABOVE BOX.

Individual or company representative's signature: _____ Date: _____

Phone number : _____ Email (optional): _____

THE WINNING BIDDER MUST COMPLETE THE VERIFICATION OF WORKER'S DISABILITY COMPENSATION ACT COMPLIANCE (ON REVERSE SIDE IF DOUBLE SIDED) WITHIN 21 DAYS OF SALE AWARD DATE



FOR DEPARTMENT USE ONLY	
Sale Number (XX - XXX - XX - XX)	
Forest Management Unit:	

TIMBER SALE VERIFICATION OF WORKER'S DISABILITY COMPENSATION ACT COMPLIANCE

As required by Act 317, P.A. 1969 (Worker's Compensation) and
Part 5 of Act 451 of 1994, as amended.

VERIFICATION OF WORKER'S DISABILITY COMPENSATION ACT COMPLIANCE

- This verification must be completed and submitted within 21 days of contract award and prior to the issuance of the timber sale contract.
- In addition, if boxes 2B or 2C are checked, then Notice of Exclusion or Certificate of Insurance must be submitted within twenty-one (21) days of the contract award and prior to the issuance of the timber sale contract.
- All information must be typed or printed except for written signatures.

Please Check Appropriate Categories:

1. My business is organized as (you **must** check one of the boxes below):
 - A. Sole Proprietorship (individual)
 - B. Partnership
 - C. Corporation
2. You **must** check one of the boxes below:
 - A. I certify my business is a sole proprietorship and it has no employees but the sole proprietor. I am not subject to the Worker's Compensation Laws.
 - B. I certify my business has satisfied its obligation to the Worker's Compensation Act through the use of an approved Notice of Exclusion (BWC-337, Rev. 5/96). I will provide a copy of the Notice of Exclusion within 21 days of the contract award. (For questions or a copy of the BWC-337, please call the Worker's Compensation Bureau at 517-322-1195).
 - C. I certify my business has a Worker's Compensation Policy. I will provide an original Certificate of Insurance within twenty-one (21) days of the contract award.
3. If you have checked item 2(A) or 2(B), you **must** indicate the number of **both** full-time and part-time employees, other than yourself, including family members and active partners (if none, you must enter "0").

_____ Full-time Employees

_____ Part-time Employees

Name of Business		Federal ID (or) Social Security No.	
Address		Telephone ()	
City	State	ZIP	

I hereby certify that the above information is true and correct. I agree to notify the Michigan DNR of any changes that occur in factors affecting my coverage during any of my present and future operations.

Signature of Owner or Authorized Representative

Title

Date

Please complete the "SEALED BID" information on the next page

C-170 Hardwood sale (41-014-19)
T47N, R17W, SEC. 13; Alger COUNTY

In response to the notice of sale to be held 2:00 p.m. (local time) on June 3, 2020, I am hereby submitting my sealed bid (firm offer) for the following forest products to be cut. Bids for individual species must be at or above the advertised price. All non-responsive bid forms may be rejected.

<u>PRODUCTS & SPECIES</u>	<u>ESTIMATED VOLUME*</u>	<u>ADVERTISED PRICE</u>	<u>BID PRICE/UNIT</u>
Sawtimber			
Basswood	5.10 MBF	\$ 108.00/MBF	\$ _____
Black Cherry	5.10 MBF	\$ 148.00/MBF	\$ _____
Red Maple	6.40 MBF	\$ 117.00/MBF	\$ _____
Sugar Maple	574.80 MBF	\$ 272.00/MBF	\$ _____
Yellow Birch	0.30 MBF	\$ 104.00/MBF	\$ _____
Pulpwood			
Balsam Fir	14.00 Cords	\$ 10.20/Cord	\$ _____
Basswood	7.00 Cords	\$ 7.25/Cord	\$ _____
Mixed Hardwood	2,222.00 Cords	\$ 14.75/Cord	\$ _____
White Spruce	46.00 Cords	\$ 18.30/Cord	\$ _____

*These estimated volumes are final and not subject to adjustment. Prospective bidders are urged to examine this timber and to make their own estimates of quantity and quality.

I understand that any or all bids may be rejected. All bids must be signed and all bid items must be bid or the bid form may be rejected. I also understand that consideration and awarding a contract will be based upon my past performance and ability to complete the contract based upon equipment and staffing subject to my control.

FEDERAL ID: ____ - ____ - ____ or SOCIAL SECURITY NUMBER: ____ - ____ - ____

Company or individual bidding: _____

Company representative's name: _____

Address: _____

City: _____ State: _____ Zip: _____

IF AVAILABLE, PLEASE PLACE THE PERSONALIZED LABEL FROM YOUR PROSPECTUS IN THE ABOVE BOX.

Individual or company representative's signature: _____ Date: _____

Phone number : _____ Email (optional): _____

THE WINNING BIDDER MUST COMPLETE THE VERIFICATION OF WORKER'S DISABILITY COMPENSATION ACT COMPLIANCE (ON REVERSE SIDE IF DOUBLE SIDED) WITHIN 21 DAYS OF SALE AWARD DATE



FOR DEPARTMENT USE ONLY	
Sale Number (XX - XXX - XX - XX)	
Forest Management Unit:	

TIMBER SALE VERIFICATION OF WORKER'S DISABILITY COMPENSATION ACT COMPLIANCE

As required by Act 317, P.A. 1969 (Worker's Compensation) and
Part 5 of Act 451 of 1994, as amended.

VERIFICATION OF WORKER'S DISABILITY COMPENSATION ACT COMPLIANCE

- This verification must be completed and submitted within 21 days of contract award and prior to the issuance of the timber sale contract.
- In addition, if boxes 2B or 2C are checked, then Notice of Exclusion or Certificate of Insurance must be submitted within twenty-one (21) days of the contract award and prior to the issuance of the timber sale contract.
- All information must be typed or printed except for written signatures.

Please Check Appropriate Categories:

1. My business is organized as (you **must** check one of the boxes below):
 - A. Sole Proprietorship (individual)
 - B. Partnership
 - C. Corporation
2. You **must** check one of the boxes below:
 - A. I certify my business is a sole proprietorship and it has no employees but the sole proprietor. I am not subject to the Worker's Compensation Laws.
 - B. I certify my business has satisfied its obligation to the Worker's Compensation Act through the use of an approved Notice of Exclusion (BWC-337, Rev. 5/96). I will provide a copy of the Notice of Exclusion within 21 days of the contract award. (For questions or a copy of the BWC-337, please call the Worker's Compensation Bureau at 517-322-1195).
 - C. I certify my business has a Worker's Compensation Policy. I will provide an original Certificate of Insurance within twenty-one (21) days of the contract award.
3. If you have checked item 2(A) or 2(B), you **must** indicate the number of **both** full-time and part-time employees, other than yourself, including family members and active partners (if none, you must enter "0").

_____ Full-time Employees

_____ Part-time Employees

Name of Business		Federal ID (or) Social Security No.	
Address		Telephone ()	
City	State	ZIP	

I hereby certify that the above information is true and correct. I agree to notify the Michigan DNR of any changes that occur in factors affecting my coverage during any of my present and future operations.

Signature of Owner or Authorized Representative

Title

Date

Please complete the "SEALED BID" information on the next page

Lotsapine (41-017-19)

T49N, R15W, SEC. 16; T49N, R15W, SEC. 20; T49N, R15W, SEC. 21; T49N,

In response to the notice of sale to be held 2:00 p.m. (local time) on June 3, 2020, I am hereby submitting my sealed bid (firm offer) for the following forest products to be cut. Bids for individual species must be at or above the advertised price. All non-responsive bid forms may be rejected.

<u>PRODUCTS & SPECIES</u>	<u>ESTIMATED VOLUME*</u>	<u>ADVERTISED PRICE</u>	<u>BID PRICE/UNIT</u>
<u>Pulpwood</u>			
Balsam Fir	7.00 Cords	\$ 12.05/Cord	\$ _____
Black Spruce	45.00 Cords	\$ 21.60/Cord	\$ _____
Hemlock	9.00 Cords	\$ 10.55/Cord	\$ _____
Jack Pine	1,183.00 Cords	\$ 23.30/Cord	\$ _____
Paper Birch	409.00 Cords	\$ 11.45/Cord	\$ _____
Quaking Aspen	23.00 Cords	\$ 23.35/Cord	\$ _____
Red Maple	80.00 Cords	\$ 17.40/Cord	\$ _____
Red Oak	9.00 Cords	\$ 24.75/Cord	\$ _____
Red Pine	8,433.00 Cords	\$ 54.05/Cord	\$ _____
White Pine	3,497.00 Cords	\$ 16.60/Cord	\$ _____

*These estimated volumes are final and not subject to adjustment. Prospective bidders are urged to examine this timber and to make their own estimates of quantity and quality.

I understand that any or all bids may be rejected. All bids must be signed and all bid items must be bid or the bid form may be rejected. I also understand that consideration and awarding a contract will be based upon my past performance and ability to complete the contract based upon equipment and staffing subject to my control.

FEDERAL ID: ____ - ____ - ____ or SOCIAL SECURITY NUMBER: ____ - ____ - ____

Company or individual bidding: _____

Company representative's name: _____

Address: _____

City: _____ State: _____ Zip: _____

IF AVAILABLE, PLEASE PLACE THE PERSONALIZED LABEL FROM YOUR PROSPECTUS IN THE ABOVE BOX.

Individual or company representative's signature: _____ Date: _____

Phone number : _____ Email (optional): _____

THE WINNING BIDDER MUST COMPLETE THE VERIFICATION OF WORKER'S DISABILITY COMPENSATION ACT COMPLIANCE (ON REVERSE SIDE IF DOUBLE SIDED) WITHIN 21 DAYS OF SALE AWARD DATE



FOR DEPARTMENT USE ONLY	
Sale Number (XX - XXX - XX - XX)	
Forest Management Unit:	

TIMBER SALE VERIFICATION OF WORKER'S DISABILITY COMPENSATION ACT COMPLIANCE

As required by Act 317, P.A. 1969 (Worker's Compensation) and
Part 5 of Act 451 of 1994, as amended.

VERIFICATION OF WORKER'S DISABILITY COMPENSATION ACT COMPLIANCE

- This verification must be completed and submitted within 21 days of contract award and prior to the issuance of the timber sale contract.
- In addition, if boxes 2B or 2C are checked, then Notice of Exclusion or Certificate of Insurance must be submitted within twenty-one (21) days of the contract award and prior to the issuance of the timber sale contract.
- All information must be typed or printed except for written signatures.

Please Check Appropriate Categories:

1. My business is organized as (you **must** check one of the boxes below):
 - A. Sole Proprietorship (individual)
 - B. Partnership
 - C. Corporation
2. You **must** check one of the boxes below:
 - A. I certify my business is a sole proprietorship and it has no employees but the sole proprietor. I am not subject to the Worker's Compensation Laws.
 - B. I certify my business has satisfied its obligation to the Worker's Compensation Act through the use of an approved Notice of Exclusion (BWC-337, Rev. 5/96). I will provide a copy of the Notice of Exclusion within 21 days of the contract award. (For questions or a copy of the BWC-337, please call the Worker's Compensation Bureau at 517-322-1195).
 - C. I certify my business has a Worker's Compensation Policy. I will provide an original Certificate of Insurance within twenty-one (21) days of the contract award.
3. If you have checked item 2(A) or 2(B), you **must** indicate the number of **both** full-time and part-time employees, other than yourself, including family members and active partners (if none, you must enter "0").

_____ Full-time Employees

_____ Part-time Employees

Name of Business		Federal ID (or) Social Security No.	
Address		Telephone ()	
City	State	ZIP	

I hereby certify that the above information is true and correct. I agree to notify the Michigan DNR of any changes that occur in factors affecting my coverage during any of my present and future operations.

Signature of Owner or Authorized Representative

Title

Date

Please complete the "SEALED BID" information on the next page