



**DEPARTMENT OF NATURAL RESOURCES  
STATE OF MICHIGAN**

**TIMBER SALE PROSPECTUS #6575**

SCHEDULED SALE DATE AND TIME: 8:30 a.m. (local time) on February 26, 2020.

LOCATION: CRYSTAL FALLS MGMT UNIT, 1420 US 2 WEST, CRYSTAL FALLS, MI 49920.

PROSPECTUS NOTE: The bidder is advised to inspect the sale area and review the location, estimated volumes, operating costs and contract terms of proposed sales. Please be aware that some landowners may request 60 days or more notice for access across their land.

Notice is hereby given that bids will be received by the Unit Manager, CRYSTAL FALLS MANAGEMENT UNIT, for certain timber on the following described lands:

Camp Breen (12-018-19) / T40N, R29W, SEC. 11, NENW.

T40N, R29W, SEC. 2 , NWNW,SESW,SWSE.

T40N, R29W, SEC. 3 , NENE,S1/2NE,NESE.

Dickinson County, Advertised Price \$49,389.50, 90.4 Acres, Hardwood, Aspen.

SALE NOTE: Access is through private land (see spec 4.4.1). Operations in Payment Unit 3 are limited to frozen conditions (see spec 5.2.3.1).

Access may be through private land.

Gremlins (12-020-19) / T39N, R28W, SEC. 3 , NW.

T39N, R28W, SEC. 4 , NENE.

T40N, R28W, SEC. 26, SWSW.

T40N, R28W, SEC. 27, SESE.

T40N, R28W, SEC. 33, SENE,E1/2SE.

T40N, R28W, SEC. 34, NENW,S1/2NW,W1/2NE,N1/2SW,SWSW.

T40N, R28W, SEC. 35, NWNW,W1/2SW,SESE.

Dickinson County, Advertised Price \$55,504.40, 172.9 Acres, Hardwood, Aspen.

SALE NOTE: Extensive road work is required on this sale. The advertised price has been reduced by the estimated cost of this road work to off-set the additional expense (see spec 4.1.8)

This sale has Class A access. No new roads will permitted (see spec 4.1.12)

Frozen conditions are required in Payment Units 2 and 9 (see spec 5.2.3.1)

Several units have received Spruce Budworm or Eastern Larch Beetle damage (see spec 7.5.1)

A recreation site such as a trail, pathway, or campground is within the sale area or the vicinity. Certain restrictions/specifications may be applicable including time restrictions.

## BID INSTRUCTIONS (VER. 07/02/2018):

### 1. Scheduled Bid Location, Date, and Time (2/11)

Bids must be received by the Unit Manager, CRYSTAL FALLS OFFICE, 1420 US 2 West, Crystal Falls, MI 49920, no later than 8:30 a.m. (local time) on February 26, 2020. For further information concerning this sale, contact Dan McNamee at 906-875-6622.

### 2. Bidder's Qualifications (5/16)

Purchaser shall obtain workers compensation insurance to cover claims under Michigan's Worker's Disability Compensation Act of 1969 or similar employee benefit act of any other state applicable to an employee. If all or part of a timber sale was prepared by a private contractor, the contractor and that contractor's company are not permitted to bid on the timber sale contract. Bids will not be accepted from individuals or companies appearing on the DNR/FRD No-Bid List. This list contains the names of purchasers who previously failed to execute a contract within 21-days or who have a history of poor performance.

### 3. Preparation of Sealed Bids (5/16)

Bid Forms may be completed online thru Michigan DNR Timber Sale Online Bidding (OLB) at [www.michigan.gov/timberbidding](http://www.michigan.gov/timberbidding) or by completing the hardcopy Bid Form found in the Timber Sale Prospectus. Hardcopy Bid Forms shall be manually signed in ink. Registration in OLB is considered your 'signature' for all bids submitted thru that system. Bid prices must be entered for each species and product in the Bid Price column for all material subject to bidding and all fill-in blanks must be completed. If erasures or other changes appear on the hardcopy Bid Form, each erasure or change must be initialed by the person signing the bid.

### 4. Submission of Sealed Bids (5/16)

Bid forms may be obtained from the Unit Manager or thru OLB. Bids may be submitted hardcopy or thru OLB. All hardcopy bids must be submitted on the bid form and in an envelope clearly identified as described in this section. NOTE: Only one bid form per bid envelope. Sealed bids must be submitted to the Unit office designated in the prospectus and must be submitted at or prior to the time established in the prospectus. The envelope should show on the outside (a) the sale name or number and (b) the date and time of bid opening, as shown in the prospectus. Bids received after the time specified in the sale prospectus are late bids and will be rejected.

It is possible for a bidder to submit multiple bids on a single sale. For example, a bid may be submitted hardcopy and a bid may be submitted thru OLB. Or, two bidders from the same company could both submit bids on the same sale. If this were to happen, the State would accept all bids received and award the contract accordingly. All bidding and contractual requirements would apply to all bids received.

### 5. Public Opening of Sealed Bids (7/16)

If conditions permit, the sealed bids will be publicly opened and posted at the time and place set in the prospectus.

If a bidder, present at a bid opening, has submitted bids on more than one sale, that bidder may withdraw their unopened bid envelopes or announce the withdrawal of their online bid after being declared the successful bidder on one sale.

### 6. Award of Contract (1/11)

Award of the contract will be made to the Bidder whose bid, conforming to the prospectus, is most advantageous to the State of Michigan on the basis of total value at rates bid for the estimated quantities. The State reserves the right to reject any bid or waive any minor irregularity in bids received. A written award mailed (or otherwise furnished) to the successful Bidder shall be deemed to result in a binding contract without further action by either party.

### 7. Down Payment (1/11)

The Bidder to whom award is made must make a down payment within 21 days of the sale award. The amount of the down payment will be calculated as shown in the Bond and Payment Schedule of this prospectus. Only cash may be used to meet this requirement.

### 8. Performance Security (1/11)

As guarantee of faithful performance, a cash bond, certificate of deposit, surety bond or irrevocable letter of credit (LOC) is required within 21 days of the sale award. The amount of the performance security is shown in the Bond and

Payment Schedule of this prospectus. If an LOC or surety is used, the coverage must extend for at least 6 months beyond the contract expiration.

#### 9. Timber Sale Contract (7/18)

Additional conditions and requirements common to all timber sales are listed on the timber sale contract (R4031) and are available on line at [www.michigan.gov/timber](http://www.michigan.gov/timber). Contact the Unit Manager for additional information or a sample contract. Within 21 days of the date of the award letter, the bidder must sign the contract and provide the required down payment, performance security, and verification of worker's disability compensation. The down payment and performance security shall be in accordance with the provisions of the timber sale contract, in the sums stated in this prospectus. If these actions are not taken, then the Bidder, the Bidder's corporation, and the corporation's principals may not be permitted to bid on State timber sales for a period of 3 months after the first offense, 6 months after the second offense, and 1 year after the third offense. An offense will only be counted against the Bidder for 5 years. In addition, the Bidder certifies that if awarded this contract, the Bidder will complete the timber sale contract in accordance with its terms and any modifications thereof including requirements to purchase, cut, and remove the included timber by the expiration date.

Payment Unit values in the State Forest Timber Sale Contract are calculated based on the advertised value of the Payment Unit as a percentage of the total advertised value of the contract. The advertised value of each Payment Unit is given in the Description of Timber by Payment Unit table on the Timber Sale Information page. For example, if the value of Payment Unit 1 is advertised as \$1,500 and the total Timber Sale value is advertised as \$10,000, the contract price for Payment Unit 1 will be 15% of the total bid price ( $\$1,500/\$10,000 * 100$ ).

#### 10. Disclaimer of Estimates and Bidder's Warranty of Inspection (7/16)

Before submitting this bid, the Bidder is advised and cautioned to inspect the sale area, review the requirements of the sale contract, and take other steps as may be reasonably necessary to ascertain the location, estimated volumes, construction estimates, and operating costs of the proposed sale. Failure to do so will not relieve the Bidder from responsibility for completing the contract.

The Bidder warrants that this bid is submitted solely on the basis of the Bidder's examination and inspection of the quality and quantity of the timber offered for sale and the Bidder's opinion of the value thereof and the costs of recovery. No reliance should be placed on the State of Michigan's estimates of timber quality, quantity or costs of recovery. Bidder further acknowledges that the State of Michigan: (i) expressly disclaims any warranty of fitness of timber for any purpose; (ii) offers this timber as is without any warranty of quality (merchantability) or quantity and (iii) expressly disclaims any warranty as to the quantity or quality of timber sold.

#### 11. Certification and Chain-of-Custody (10/14)

Unless otherwise indicated in the contract under section 7 – Other Conditions of the Sale Specific Conditions & Requirements, the area encompassed by this timber sale is certified to the standards of the Forest Stewardship Council (FSC) - Certificate #SCS-FM/COC-00090N and the Sustainable Forestry Initiative (SFI) - Certificate #NSF-SFIS-5Y031-SF5. Forest products from this sale may be delivered to the mill as "FSC 100% and / or SFI certified" as long as the contractor hauling the forest products is chain-of-custody (COC) certified or covered under a COC certificate from the destination mill. The purchaser is responsible for maintaining COC after leaving the sale area.

#### 12. Good Neighbor Authority (GNA) Requirements (7/16)

If the name of this timber sales contains the acronym GNA, it is authorized by the Good Neighbor Authority (GNA) and covered by various agreements between the U.S. Forest Service and the State. The timber sale occurs on federal land and the following conditions apply:

GNA contracts on US Forest Service land will not be awarded to purchasers on the Federal list of excluded parties. The System for Award Management (SAM) will be checked for active excluded parties prior to award of contract. In addition, the Bidder to whom award is made must complete an Assurance Regarding Felony Conviction or Tax Delinquent Status for Corporate Applicants (AD-3031).

#### 13. Good Neighbor Authority (GNA) Requirements, con't (9/16)

Bidder certifies, by signing this bid form, that to the best of Bidder's knowledge that the following representations are accurate and complete.

- a. That the Bidder and its principals are not presently debarred, suspended, proposed for debarment, declared ineligible, or voluntary excluded from timber sales (covered transactions) by any Federal department or agency.
- b. That the Bidder and its principals have not within a 3-year period preceding this bid been convicted of or had a civil judgment rendered against them for commission of fraud or a criminal offense in connection with obtaining , attempting to obtain, or performing a public (Federal, State, or local) transaction or contract under a public transaction; violation of Federal or State antitrust statutes or commission of embezzlement, theft, forgery, bribery, falsification or destruction of records, making false statements, or receiving stolen property.
- c. That the Bidder and its principals are not presently indicted for or otherwise criminally or civilly charged by a governmental entity (Federal, State, or local) with commission of any of the offenses enumerated in paragraph b of this certification.
- d. That the Bidder and its principals have not within a 3-year period preceding this bid had one or more public transactions (Federal, State, or local) terminated for breach or default of a timber or forest product contract.

Bidders that cannot certify this requirement, in whole or in part, shall submit an explanation with their bid.

DAN EICHINGER  
Director

## TIMBER SALE INFORMATION

### Camp Breen (12-018-19)

T40N, R29W, SEC. 11; T40N, R29W, SEC. 2; T40N, R29W, SEC. 3.  
Dickinson County (Advertised Price \$49,389.50)

SALE NOTE: Access is through private land (see spec 4.4.1). Operations in Payment Unit 3 are limited to frozen conditions (see spec 5.2.3.1).

Access may be through private land.

A timber sale contract for this lump sum, sealed bid timber sale will be awarded to the responsible bidder offering the highest sealed bid price. Bids must be at or above the following advertised price for each species:

<u>PRODUCTS &amp; SPECIES</u>	<u>ESTIMATED UNITS*</u>	<u>ADVERTISED PRICE</u>
Sawtimber		
Basswood	2.90 MBF	\$ 139.00 / MBF
Paper Birch	21.80 MBF	\$ 73.00 / MBF
Red Maple	39.00 MBF	\$ 99.00 / MBF
Sugar Maple	30.00 MBF	\$ 275.00 / MBF
White Ash	7.70 MBF	\$ 78.00 / MBF
Pulpwood		
Balsam Fir	20.00 Cords	\$ 14.60 / Cord
Mixed Aspen	306.00 Cords	\$ 42.25 / Cord
Mixed Hardwood	891.00 Cords	\$ 20.15 / Cord
Paper Birch	157.00 Cords	\$ 21.45 / Cord
White Spruce	6.00 Cords	\$ 23.60 / Cord

\* The total volume is statistically estimated within plus (+) or minus (-) 10.22 percent. The estimated units are final and not subject to adjustment. Prospective bidders are urged to examine this timber and to make their own estimates of quantity and quality.

### **BOND AND PAYMENT SCHEDULE:**

1. A bond in the amount of \$4,939.00 to insure faithful performance of the conditions of the contract will be deposited by the successful bidder within 21 days of the sale award.
2. Cutting in any sale or unit without the required advance payment would be considered a trespass.
3. Total payment must be paid in advance or according to the following schedule :
  - (a) Ten percent (10%) of the sale value must be paid within 21 days of the sale award.
  - (b) The 10% down payment will be credited towards the first unit cut.
  - (c) Payment for each of the following units must be made before cutting begins in that unit:
 

PAYMENT UNIT NUMBER	PERCENT OF TOTAL SALE VALUE
01	42.4%
02	21.2%
03	11.9%
04	21.1%
05	3.4%
4. If no cutting takes place, the 10% down payment will not be refunded.
5. Operations on the contract issued will terminate on 06/30/2023.

**Description of Timber by Payment Unit (PU)**

PU	MARKET GROUP	PRODUCT	QUANTITY	UNIT	ACRES	ADVERTISE PRICE	
1	Basswood	Sawtimber	1.1	MBF	34.4	\$20,922.90	
	Paper Birch		17.3	MBF			
	Red Maple		11.5	MBF			
	Sugar Maple		24.5	MBF			
	White Ash		4.8	MBF			
	Mixed Aspen	Pulpwood	20.0	Cords			
	Mixed Hardwood		439.0	Cords			
	Paper Birch		73.0	Cords			
2	Basswood	Sawtimber	1.8	MBF	20.9	\$10,468.90	
	Paper Birch		0.6	MBF			
	Red Maple		3.8	MBF			
	Sugar Maple		5.5	MBF			
	White Ash		2.9	MBF			
	Balsam Fir	Pulpwood	6.0	Cords			
	Mixed Aspen		78.0	Cords			
	Mixed Hardwood		204.0	Cords			
	Paper Birch		22.0	Cords			
	White Spruce		4.0	Cords			
3	Paper Birch	Sawtimber	0.5	MBF	12.6	\$5,879.65	
	Red Maple		4.3	MBF			
	Balsam Fir	Pulpwood	2.0	Cords			
	Mixed Aspen		96.0	Cords			
	Mixed Hardwood		51.0	Cords			
	Paper Birch		12.0	Cords			
	White Spruce		2.0	Cords			
4	Paper Birch	Sawtimber	2.5	MBF	16.9	\$10,438.10	
	Red Maple		16.6	MBF			
	Balsam Fir	Pulpwood	12.0	Cords			
	Mixed Aspen		102.0	Cords			
	Mixed Hardwood		158.0	Cords			
	Paper Birch		44.0	Cords			
5	Paper Birch	Sawtimber	0.9	MBF	5.6	\$1,679.95	
	Red Maple		2.8	MBF			
	Mixed Aspen	Pulpwood	10.0	Cords			
	Mixed Hardwood		39.0	Cords			
	Paper Birch		6.0	Cords			
TOTAL:			101.4	MBF			
TOTAL:			1,380.0	Cords			

# Sale Specific Conditions & Requirements

**Sale Name: Camp Breen**

**Sale Number: 12-018-19 Seq#: 1**

## 1 - Sale Area

### 1.2 - Boundaries

#### 1.2.1 - Painted boundaries (1/14)

The sale boundary and Payment Unit boundaries are marked and identified by blue, red and yellow paint. Exterior sale boundary lines against private property are marked with blue paint. Exterior sale boundary lines against state are marked with red paint. Interior Payment Unit boundaries are marked with yellow paint. The painted boundary line trees are not Included Timber and are to be protected. Yellow painted trees designating an interior Payment Unit boundary are only to be cut when all surrounding Payment Units have been paid.

## 2 - Timber Specifications

### 2.1 - Included Timber

#### 2.1.1 - Clearcut unit(s) with unmerchantable trees (6/14)

Within Payment Unit(s) 2-5, cut all trees that are two (2) inches or more at DBH, except do not cut hemlock and cedar. In addition, the following exceptions apply:

- Within Payment Units 2 & 3, do not cut oak, elm, or sub-merchantable spruce/fir.
- Within Payment Unit 4, do not cut pine.
- Within Payment Unit 5, do not cut sub-merchantable spruce/fir.

#### 2.1.2 - Clearcut unit(s) w/o unmerchantable trees (8/11)

Within Payment Unit(s) 1, cut all trees which meet minimum piece specifications in 2.2 Utilization, except do not cut oak, pine, cherry, hemlock, or sub-merchantable spruce/fir.

## 4 - Transportation

### 4.1 - Construction

#### 4.1.7 - Road closure (10/11)

All new roads built into the sale must be blocked to vehicle traffic upon completion of the sale. Overgrown roads that are reopened shall be considered new roads. In general, this will require constructing an earthen berms at strategic locations. Contact the sale administrator for specific details of design and placement.

### 4.3 - Public Right-of-Way

#### 4.3.2 - County R-O-W (12/06)

The county must be contacted prior to decking along the county road R-O-W. This applies to Payment Units 2 and 3 and the Norway Truck Trail.

### 4.4 - Access

#### 4.4.1 - Private property access (3/11)

Permission for access across private land is the responsibility of the Purchaser. Should the Purchaser desire to cross private land, a copy of the written permission from the private land-owner may be required by the DNR.

## 5 - Operations

### 5.2 - Conduct of Operations

#### 5.2.1 - Slash

##### 5.2.1.13 - Dispose of slash as directed (12/05)

Slash is to be disposed of as directed by sale administrator.

#### 5.2.3 - Operating Restrictions

##### 5.2.3.1 - Operating restrictions (9/11)

Within Payment Unit(s) 3, unless changed by written agreement, cutting, skidding, and hauling are limited to frozen ground only. This restriction is because of wet soil conditions.

#### 5.4 - Soil Protection

##### 5.4.1 - Rutting restriction, general (7/16)

Operations are to cease immediately if equipment and weather conditions result in rutting of roads and/or skid trails which is 12 inches or greater in depth and 50 feet in length. The Unit Manager or his/her representative may restrict hauling and/or skidding if ruts exceed the specified depth. With the Unit Manager or his/her representative's approval, the Purchaser may return to the area when the risk of rutting has decreased.

##### 5.4.6 - Wet area protection (5/10)

No harvesting operations, including skidding and felling, are to take place within the vernal pond areas or drainages. When harvesting occurs, there should be no disturbance to the vernal pond depression. All equipment, trees and tops should be kept out of this area. Within 100 feet of the pond, equipment should only be used when the soil is in a dry or frozen condition. Care must be taken by the Purchaser to identify and avoid operating in these areas of the timber sale.

### 6 - Safety and Fire Prevention

#### 6.2 - Signing

##### 6.2.1 - Road posting (9/09)

The Purchaser is responsible for posting and maintaining caution signs on Norway Truck Trail prior to beginning operations. The road must be posted at appropriate distances from the sale area to warn of logging activity and truck traffic. Signs must be removed when harvest operations are suspended or completed. The Purchaser will provide these signs.





Sale Number	Year
12-018-19	19

### TIMBER SALE MAP

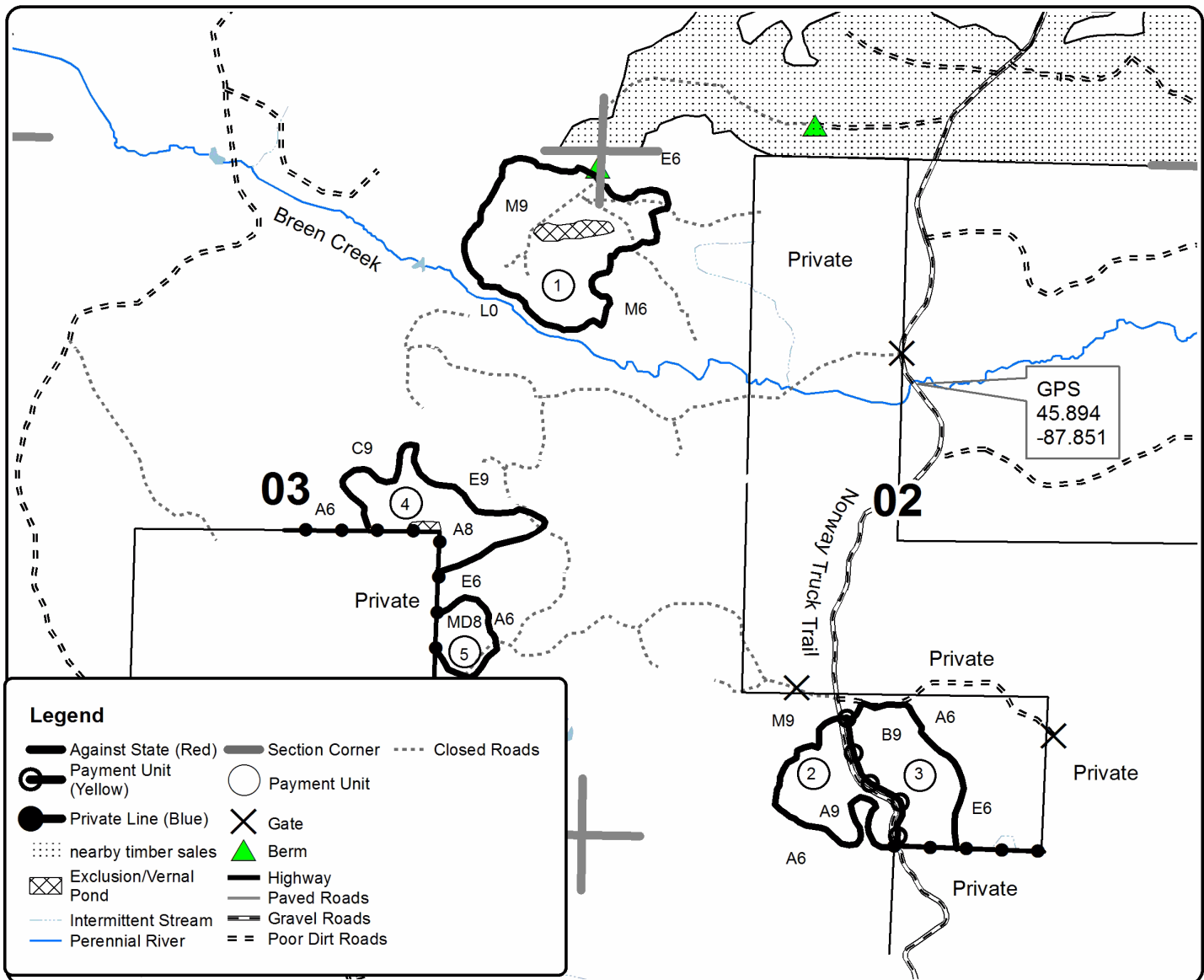
This information provided by authority of Part 525, 1994 PA 451, as amended.

Forest Management Unit	County	Mapped By	Date	Page	of
Crystal Falls Management Unit	Dickinson Co.	Dickie Goupell	9-3-2019	1	1
Township	Range	Section(s) and Subdivision(s)	Scale		
40N	29W	Sec 2 NWNW, SESW, SWSE Sec 3 NENE, S 1/2 NE, NESE Sec 11 NENW	1:15,840		

Cover Type				Density	
A = Aspen	H = Hemlock	N = Marsh	U = Upland Brush	0 = Non Stocked	5 = Pole Timber Medium
B = Paper Birch	J = Jack Pine	O = Oak	UM = Upland Mixed	1 = Seedling Sapling Poor	6 = Pole Timber Well
C = Cedar	L = Lowland Brush	P = Lowland Poplar	V = Bog or Marsh	2 = Seedling Sapling Medium	7 = Saw Timber Poor
D = Treed Bog	LM = Lowland Mixed	Q = Mixed Swamp Conifer	W = White Pine	3 = Seedling Sapling Well	8 = Saw Timber Medium
E = Swamp Hdwoods	M = Mpl, Bch, Brch	R = Red Pine	X = Non Stocked	4 = Pole Timber Poor	9 = Saw Timber Well
F = Spruce Fir	MC = Mixed Conifer	S = Black Spruce	Z = Water		
G = Grass	MD = Mixed Deciduous	T = Tamarack			

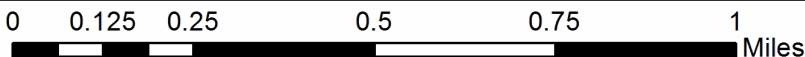
PU	Acres	PU	Acres
1	34.4	4	16.9
2	20.9	5	5.6
3	12.6		

## Camp Breen Compartment 93 Acres 90.4



**Legend**

- Against State (Red)
- Payment Unit (Yellow)
- Private Line (Blue)
- nearby timber sales
- Exclusion/Vernal Pond
- Intermittent Stream
- Perennial River
- Section Corner
- Payment Unit
- Gate
- Berm
- Highway
- Paved Roads
- Gravel Roads
- Poor Dirt Roads
- Closed Roads





## TIMBER SALE INFORMATION

### Gremlins (12-020-19)

T39N, R28W, SEC. 3; T39N, R28W, SEC. 4; T40N, R28W, SEC. 26; T40N, R28W, SEC. 27; T40N, R28W, SEC. 33; T40N, R28W, SEC. 34; T40N, R28W, SEC. 35.

SALE NOTE: Extensive road work is required on this sale. The advertised price has been reduced by the estimated cost of this road work to off-set the additional expense (see spec 4.1.8)

This sale has Class A access. No new roads will permitted (see spec 4.1.12)

Frozen conditions are required in Payment Units 2 and 9 (see spec 5.2.3.1)

Several units have received Spruce Budworm or Eastern Larch Beetle damage (see spec 7.5.1)

A recreation site such as a trail, pathway, or campground is within the sale area or the vicinity. Certain restrictions/specifications may be applicable including time restrictions.

A timber sale contract for this lump sum, sealed bid timber sale will be awarded to the responsible bidder offering the highest sealed bid price. Bids must be at or above the following advertised price for each species:

<u>PRODUCTS &amp; SPECIES</u>	<u>ESTIMATED UNITS*</u>		<u>ADVERTISED PRICE</u>
<b>Sawtimber</b>			
Basswood	31.30	MBF	\$ 127.00 / MBF
Paper Birch	12.10	MBF	\$ 67.00 / MBF
Red Maple	18.60	MBF	\$ 91.00 / MBF
Red Pine	5.30	MBF	\$ 138.00 / MBF
Sugar Maple	41.20	MBF	\$ 253.00 / MBF
White Ash	8.30	MBF	\$ 71.00 / MBF
White Pine	71.70	MBF	\$ 61.00 / MBF
<b>Pulpwood</b>			
Balsam Fir	40.00	Cords	\$ 13.40 / Cord
Mixed Aspen	299.00	Cords	\$ 38.75 / Cord
Mixed Hardwood	710.00	Cords	\$ 18.50 / Cord
Mixed Spruce	73.00	Cords	\$ 21.65 / Cord
Paper Birch	120.00	Cords	\$ 19.65 / Cord
Red Pine	5.00	Cords	\$ 61.00 / Cord
Tamarack	93.00	Cords	\$ 3.00 / Cord
White Pine	109.00	Cords	\$ 28.70 / Cord

\* The total volume is statistically estimated within plus (+) or minus (-) 9.63 percent. The estimated units are final and not subject to adjustment. Prospective bidders are urged to examine this timber and to make their own estimates of quantity and quality.

### **BOND AND PAYMENT SCHEDULE:**

1. A bond in the amount of \$5,550.00 to insure faithful performance of the conditions of the contract will be deposited by the successful bidder within 21 days of the sale award.
2. Cutting in any sale or unit without the required advance payment would be considered a trespass.
3. Total payment must be paid in advance or according to the following schedule :
  - (a) Ten percent (10%) of the sale value must be paid within 21 days of the sale award.
  - (b) The 10% down payment will be credited towards the first unit cut.
  - (c) Payment for each of the following units must be made before cutting begins in that unit:

PAYMENT UNIT NUMBER	PERCENT OF TOTAL SALE VALUE
01	15.3%
02	8.1%
03	10.9%
04	10.5%
05	14.0%
06	3.5%
07	32.0%
08	1.1%
09	4.6%

4. If no cutting takes place, the 10% down payment will not be refunded.
5. Operations on the contract issued will terminate on 06/30/2023.

**Description of Timber by Payment Unit (PU)**

PU	MARKET GROUP	PRODUCT	QUANTITY	UNIT	ACRES	ADVERTISE PRICE				
1		Sawtimber	3.8	MBF	18.5	\$8,466.35				
		Balsam Fir	13.0	Cords						
		Mixed Aspen	165.0	Cords						
		Mixed Hardwood	28.0	Cords						
		Mixed Spruce	13.0	Cords						
		Paper Birch	7.0	Cords						
		2		Sawtimber			0.5	MBF	27.0	\$4,479.35
Red Maple	2.3			MBF						
Balsam Fir	14.0			Cords						
Mixed Aspen	45.0			Cords						
Mixed Hardwood	56.0			Cords						
Mixed Spruce	31.0			Cords						
Paper Birch	17.0			Cords						
Tamarack	88.0			Cords						
3				Sawtimber	2.2	MBF	21.6	\$6,024.50		
		Paper Birch	2.3	MBF						
		Sugar Maple	13.5	MBF						
		Mixed Aspen	3.0	Cords						
		Mixed Hardwood	106.0	Cords						
		Paper Birch	5.0	Cords						
		4		Sawtimber	8.1	MBF			18.5	\$5,800.25
Paper Birch	1.7			MBF						
Sugar Maple	10.4			MBF						
White Ash	1.5			MBF						
Mixed Aspen	3.0			Cords						
Mixed Hardwood	89.0			Cords						
Paper Birch	8.0			Cords						
5				Sawtimber	21.0	MBF	28.2	\$7,751.00		
		Sugar Maple	8.9	MBF						
		White Ash	6.8	MBF						
		Mixed Hardwood	127.0	Cords						
6		Pulpwood	15.0	Cords	9.5	\$1,946.60				
		<i>B. T. Aspen</i>	9.0	<i>Cords</i>						
		<i>Quaking Aspen</i>	6.0	<i>Cords</i>						
		Mixed Hardwood	43.0	Cords						
		Paper Birch	29.0	Cords						
7		Sawtimber	7.6	MBF	40.4	\$17,892.35				
		Red Maple	16.3	MBF						
		Red Pine	5.3	MBF						
		Sugar Maple	4.6	MBF						
		White Pine	71.7	MBF						
		Balsam Fir	13.0	Cords						
		Mixed Aspen	19.0	Cords						
		Mixed Hardwood	245.0	Cords						
		Mixed Spruce	4.0	Cords						
		Paper Birch	34.0	Cords						
		Red Pine	5.0	Cords						
		White Pine	109.0	Cords						
		8		Pulpwood			4.0	Cords	3.2	\$596.60
				<i>Quaking Aspen</i>			4.0	<i>Cords</i>		
Mixed Hardwood	9.0			Cords						
Paper Birch	14.0			Cords						
9		Pulpwood	45.0	Cords	6.0	\$2,547.40				
		<i>Balsam Poplar</i>	31.0	<i>Cords</i>						
		<i>Quaking Aspen</i>	14.0	<i>Cords</i>						

**Description of Timber by Payment Unit (PU), con't**

PU	MARKET GROUP	PRODUCT	QUANTITY	UNIT	ACRES	ADVERTISE PRICE
9 con't	Mixed Hardwood	Pulpwood	7.0	Cords		
	Mixed Spruce		25.0	Cords		
	Paper Birch		6.0	Cords		
	Tamarack		5.0	Cords		
TOTAL:			188.5	MBF		
TOTAL:			1,449.0	Cords		

## Sale Specific Conditions & Requirements

**Sale Name: Gremlins**

**Sale Number: 12-020-19 Seq#: 1**

### 1 - Sale Area

#### 1.2 - Boundaries

##### 1.2.1 - Painted boundaries (1/14)

The sale boundary and Payment Unit boundaries are marked and identified by blue, red and yellow paint. Exterior sale boundary lines against private property are marked with blue paint. Exterior sale boundary lines against state are marked with red paint. Interior Payment Unit boundaries are marked with yellow paint. The painted boundary line trees are not Included Timber and are to be protected. Yellow painted trees designating an interior Payment Unit boundary are only to be cut when marked with orange paint.

### 2 - Timber Specifications

#### 2.1 - Included Timber

##### 2.1.1 - Clearcut unit(s) with unmerchantable trees (6/14)

Within Payment Unit(s) 1, 7, 8, and 9, cut all trees that are two (2) inches or more at DBH. In addition, the following exceptions apply:

- Within Payment Unit 1, do not cut cedar, hemlock, white pine, or any green marked trees.
- Within Payment Unit 7, do not cut cedar, hemlock, oak, or any green marked trees.
- Within Payment Unit 8, do not cut white pine or any green marked trees.
- Within Payment Unit 9, do not cut cedar or hemlock.

##### 2.1.2 - Clearcut unit(s) w/o unmerchantable trees (8/11)

Within Payment Unit(s) 2 and 6, cut all trees which meet minimum piece specifications in 2.2 Utilization, except do not cut any cedar or pine. In addition, within Payment Unit 6, do not cut oak, cherry, or hemlock.

##### 2.1.3 - Cut tree marked unit(s) (12/08)

Within Payment Unit(s) 3, 4, and 5, all trees are designated for cutting when marked with orange paint above and below stump height, regardless of merchantability.

### 3 - Payments

#### 3.4 - Damaged Timber

##### 3.4.1 - Damaged timber (7/16)

General Condition and Requirement 3.4 Damaged Timber, defines liquidated damages for undesignated live merchantable trees which are cut or injured. In addition, extreme care should be taken to avoid damage to tree seedlings and saplings.

Within Payment Unit 7, if more than 10% of the tree seedlings or saplings (1/4" to 4.5" DBH) damaged, liquidated damages will be assessed at \$100.00 per acre for all acreage within that specified portion of the sale area that was damaged.

### 4 - Transportation

#### 4.1 - Construction

##### 4.1.8 - Road work (1) (8/07)

The following road work is required: The Purchaser will install 3 culverts and haul 50 yards of pit run gravel to fill in the low areas of Black Creek Trail for accessing Payment Units 6 and 7. The culvert locations are shown on the Timber Sale Map. All work must be done prior to beginning any operations. The Purchaser will supply the culverts. Equalization culverts will be new corrugated metal or plastic a minimum and a minimum of 18 inches in diameter by 24 feet long. Replace restrictor rocks on the ORV trail going into Payment Units 3, 4, and 5.

##### 4.1.12 - No new roads (1/12)

No new roads will be permitted in any Payment Unit. All operations are limited to existing roads. Skid trails only will be allowed.

## 4.2 - Maintenance

### 4.2.2 - Fill material (4/07)

To maintain roads, fill material may be needed in areas where "holes" exist or may be expected to develop. This fill material should be placed before trucking begins. Contact the sale administrator regarding the availability of onsite gravel from adjacent State-owned lands.

### 4.2.4 - Grading (10/16)

For completion of the sale, state forest roads must be graded. In general, this will require a road grader or bull dozer to shape up the roads after forest products have been hauled off site. This includes cleaning of drainage areas, grading, crowning and filling with gravel, if necessary. The grading equipment to be used must be approved by the Unit Manager or his/her representative.

## 4.3 - Public Right-of-Way

### 4.3.2 - County R-O-W (12/06)

The county must be contacted prior to decking along the county road R-O-W. This applies to Payment Unit 9 and Foster City Road and Bourgeois Farm Road.

## 4.4 - Access

### 4.4.2 - Alternate route on private property (2/04)

It is the Purchaser's responsibility to obtain access across private land for any routes other than the route shown on the sale map.

## 5 - Operations

## 5.2 - Conduct of Operations

### 5.2.1 - Slash

#### 5.2.1.13 - Dispose of slash as directed (12/05)

Slash is to be disposed of as directed by sale administrator.

### 5.2.3 - Operating Restrictions

#### 5.2.3.1 - Operating restrictions (9/11)

Within Payment Unit(s) 2 and 9, unless changed by written agreement, cutting, skidding, and hauling are limited to frozen conditions only. This restriction is because of wet soils.

#### 5.2.3.3 - Bark slippage restriction (3/09)

Within Payment Unit(s) 3, 4, and 5, unless changed by written agreement, cutting and skidding are not permitted during the period of April 1 to July 15. This restriction is because of bark slippage.

#### 5.2.32 - Decking/landing restoration (9/13)

All decking and landing areas must have the surface area restored to a condition equal to or better than before. This is to ensure the proper regeneration of the stand. Wood debris, chips and "cookies" from trimmings must be removed or scattered away from landing and loading areas and may not be windrowed on the edge.

#### 5.2.39 - ORV trail/route protection (4/18)

The recreation trail is an ORV trail or route and is shown on the Timber Sale Map. Do not damage posts with yellow ORV markers. Trees with yellow ORV markers shall be cut off above the markers and at least 5 feet above ground. All stumps within 5 feet of the trail must be cut flush with the ground. Maintain a 20 foot wide slash, debris, and rut free zone daily using the ORV trail or route as the centerline.

## 5.4 - Soil Protection

### 5.4.1 - Rutting restriction, general (7/16)

Operations are to cease immediately if equipment and weather conditions result in rutting of roads and/or skid trails which is 12 inches or greater in depth and 50 feet in length. The Unit Manager or his/her representative may restrict hauling and/or skidding if ruts exceed the specified depth. With the Unit Manager or his/her representative's approval, the Purchaser may



return to the area when the risk of rutting has decreased.

#### 5.4.6 - Wet area protection (5/10)

No harvesting operations, including skidding and felling, are to take place within the vernal pond areas or drainages. When harvesting occurs, there should be no disturbance to the vernal pond depression. All equipment, trees and tops should be kept out of this area. Within 100 feet of the pond, equipment should only be used when the soil is in a dry or frozen condition. Care must be taken by the Purchaser to identify and avoid operating in these areas of the timber sale.

### 6 - Safety and Fire Prevention

#### 6.2 - Signing

##### 6.2.3 - Recreational trail posting (2/10)

The Purchaser is responsible for posting and maintaining caution signs on the recreational trail prior to beginning operations. The trail must be posted at appropriate distances from the sale area to warn of logging activity and truck traffic at both ends of the trail. Signs must be removed when harvest operations are suspended or completed. The Purchaser will provide these signs. Additional signage maybe be necessary on either side of Payment Units 3 and 5.

### 7 - Other Conditions

#### 7.5 - Loss

##### 7.5.1 - Deteriorating timber (7/09)

The sale area has received damage from Spruce Budworm and Eastern Larch Beetle. The Purchaser should harvest the wood as soon as possible. The Department of Natural Resources is held free of responsibility of any further damage or deterioration due to delay in harvesting.



# TIMBER SALE MAP

This information provided by authority of Part 525, 1994 PA 451, as amended.

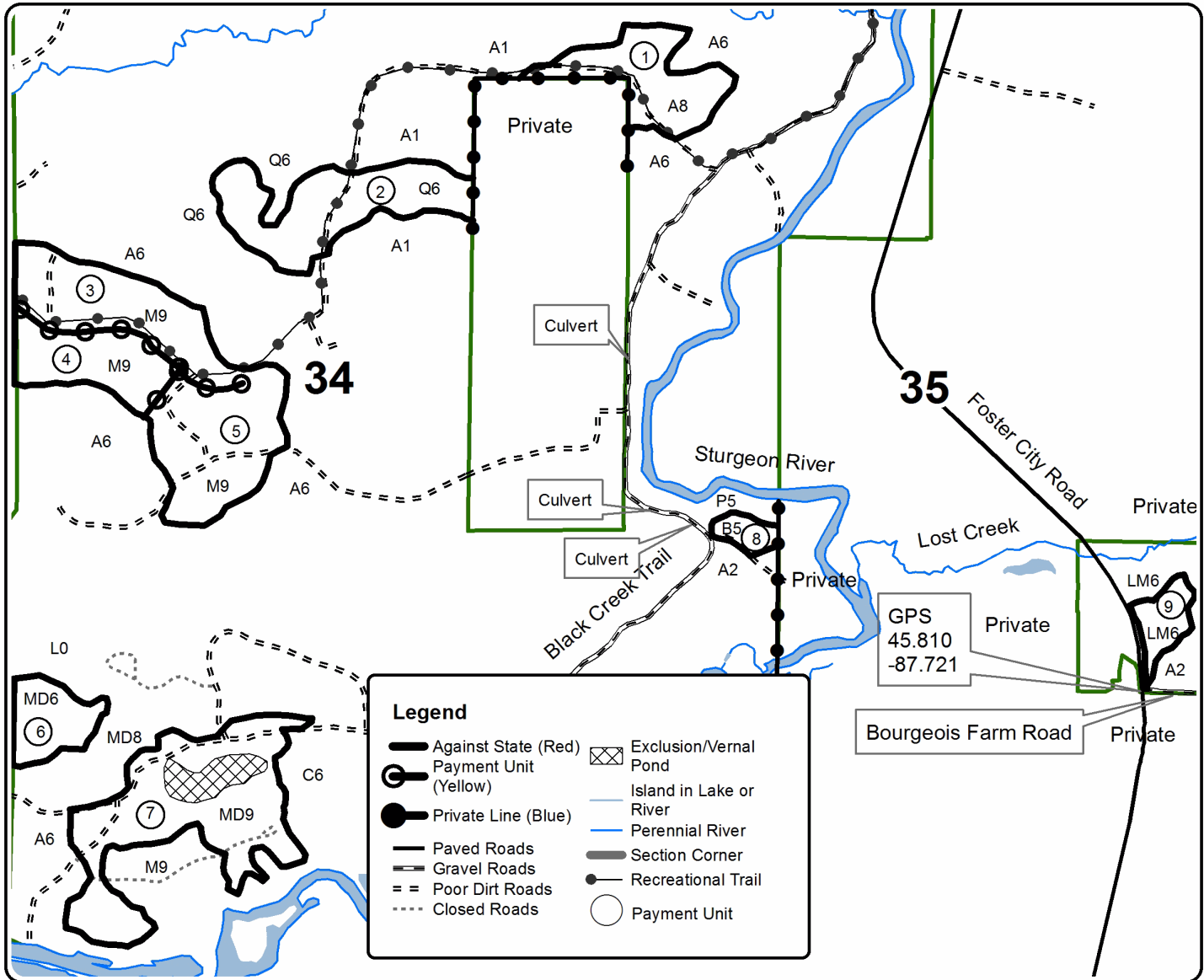
Sale Number	Year
12-020-19	19

Forest Management Unit	County	Mapped By	Date	Page	of
Crystal Falls Management Unit	Dickinson Co.	Dickie Goupell	9-3-2019	1	1
Township	Range	Section(s) and Subdivision(s)	Scale		
39N & 40N	28W	Sec 3 NW, Sec 4 NENE Sec 26 SWSW, Sec 27 SESE Sec 33 SENE, E1/2SE, Sec 34 NENW, S1/2NW, W1/2NE, N1/2SW, SWSW, Sec 35 NWNW, W1/2SW, SESE	1:15,840		

Cover Type				Density	
A = Aspen	H = Hemlock	N = Marsh	U = Upland Brush	0 = Non Stocked	5 = Pole Timber Medium
B = Paper Birch	J = Jack Pine	O = Oak	UM = Upland Mixed	1 = Seedling Sapling Poor	6 = Pole Timber Well
C = Cedar	L = Lowland Brush	P = Lowland Poplar	V = Bog or Marsh	2 = Seedling Sapling Medium	7 = Saw Timber Poor
D = Tread Bog	LM = Lowland Mixed	Q = Mixed Swamp Conifer	W = White Pine	3 = Seedling Sapling Well	8 = Saw Timber Medium
E = Swamp Hdwoods	M = Mpl, Bch, Brch	R = Red Pine	X = Non Stocked	4 = Pole Timber Poor	9 = Saw Timber Well
F = Spruce Fir	MC = Mixed Conifer	S = Black Spruce	Z = Water		
G = Grass	MD = Mixed Deciduous	T = Tamarack			

PU	Acres	PU	Acres
1	18.5	6	9.5
2	27.0	7	40.4
3	21.6	8	3.2
4	18.5	9	6.0
5	28.2		

## Gremlins Compartment 112 Acres 172.9



Camp Breen (12-018-19)

T40N, R29W, SEC. 11; T40N, R29W, SEC. 2; T40N, R29W, SEC. 3; Dickinson

In response to the notice of sale to be held 8:30 a.m. (local time) on February 26, 2020, I am hereby submitting my sealed bid (firm offer) for the following forest products to be cut. Bids for individual species must be at or above the advertised price. All non-responsive bid forms may be rejected.

<u>PRODUCTS &amp; SPECIES</u>	<u>ESTIMATED VOLUME*</u>	<u>ADVERTISED PRICE</u>	<u>BID PRICE/UNIT</u>
<b>Sawtimber</b>			
Basswood	2.90 MBF	\$ 139.00/MBF	\$ _____
Paper Birch	21.80 MBF	\$ 73.00/MBF	\$ _____
Red Maple	39.00 MBF	\$ 99.00/MBF	\$ _____
Sugar Maple	30.00 MBF	\$ 275.00/MBF	\$ _____
White Ash	7.70 MBF	\$ 78.00/MBF	\$ _____
<b>Pulpwood</b>			
Balsam Fir	20.00 Cords	\$ 14.60/Cord	\$ _____
Mixed Aspen	306.00 Cords	\$ 42.25/Cord	\$ _____
Mixed Hardwood	891.00 Cords	\$ 20.15/Cord	\$ _____
Paper Birch	157.00 Cords	\$ 21.45/Cord	\$ _____
White Spruce	6.00 Cords	\$ 23.60/Cord	\$ _____

\*The volumes are statistically estimated within plus (+) or minus (-) 10.22 percent. These estimated volumes are final and not subject to adjustment. Prospective bidders are urged to examine this timber and to make their own estimates of quantity and quality.

I understand that any or all bids may be rejected. All bids must be signed and all bid items must be bid or the bid form may be rejected. I also understand that consideration and awarding a contract will be based upon my past performance and ability to complete the contract based upon equipment and staffing subject to my control.

FEDERAL ID: \_\_\_\_\_ or SOCIAL SECURITY NUMBER: \_\_\_\_\_

Company or individual bidding: \_\_\_\_\_

Company representative's name: \_\_\_\_\_

Address: \_\_\_\_\_

City: \_\_\_\_\_ State: \_\_\_\_\_ Zip: \_\_\_\_\_

IF AVAILABLE, PLEASE PLACE THE PERSONALIZED LABEL FROM YOUR PROSPECTUS IN THE ABOVE BOX.

Individual or company representative's signature: \_\_\_\_\_ Date: \_\_\_\_\_

Phone number : \_\_\_\_\_ Email (optional): \_\_\_\_\_

**THE WINNING BIDDER MUST COMPLETE THE VERIFICATION OF WORKER'S DISABILITY COMPENSATION ACT COMPLIANCE (ON REVERSE SIDE IF DOUBLE SIDED) WITHIN 21 DAYS OF SALE AWARD DATE**



<b>FOR DEPARTMENT USE ONLY</b>
Sale Number (XX - XXX - XX - XX)
Forest Management Unit:

## TIMBER SALE VERIFICATION OF WORKER'S DISABILITY COMPENSATION ACT COMPLIANCE

*As required by Act 317, P.A. 1969 (Worker's Compensation) and  
Part 5 of Act 451 of 1994, as amended.*

### VERIFICATION OF WORKER'S DISABILITY COMPENSATION ACT COMPLIANCE

- This verification must be completed and submitted within 21 days of contract award and prior to the issuance of the timber sale contract.
- In addition, if boxes 2B or 2C are checked, then Notice of Exclusion or Certificate of Insurance must be submitted within twenty-one (21) days of the contract award and prior to the issuance of the timber sale contract.
- All information must be typed or printed except for written signatures.

Please Check Appropriate Categories:

1. My business is organized as (you **must** check one of the boxes below):
  - A.  Sole Proprietorship (individual)
  - B.  Partnership
  - C.  Corporation
2. You **must** check one of the boxes below:
  - A.  I certify my business is a sole proprietorship and it has no employees but the sole proprietor. I am not subject to the Worker's Compensation Laws.
  - B.  I certify my business has satisfied its obligation to the Worker's Compensation Act through the use of an approved Notice of Exclusion (BWC-337, Rev. 5/96). I will provide a copy of the Notice of Exclusion within 21 days of the contract award. (For questions or a copy of the BWC-337, please call the Worker's Compensation Bureau at 517-322-1195).
  - C.  I certify my business has a Worker's Compensation Policy. I will provide an original Certificate of Insurance within twenty-one (21) days of the contract award.
3. If you have checked item 2(A) or 2(B), you **must** indicate the number of **both** full-time and part-time employees, other than yourself, including family members and active partners (if none, you must enter "0").

\_\_\_\_\_ Full-time Employees

\_\_\_\_\_ Part-time Employees

Name of Business		Federal ID (or) Social Security No.	
Address		Telephone (       )	
City	State	ZIP	

*I hereby certify that the above information is true and correct. I agree to notify the Michigan DNR of any changes that occur in factors affecting my coverage during any of my present and future operations.*

\_\_\_\_\_  
Signature of Owner or Authorized Representative

\_\_\_\_\_  
Title

\_\_\_\_\_  
Date

**Please complete the "SEALED BID" information on the next page**

Gremlins (12-020-19)

T39N, R28W, SEC. 3; T39N, R28W, SEC. 4; T40N, R28W, SEC. 26; T40N, R28W,

In response to the notice of sale to be held 8:30 a.m. (local time) on February 26, 2020, I am hereby submitting my sealed bid (firm offer) for the following forest products to be cut. Bids for individual species must be at or above the advertised price. All non-responsive bid forms may be rejected.

<u>PRODUCTS &amp; SPECIES</u>	<u>ESTIMATED VOLUME*</u>	<u>ADVERTISED PRICE</u>	<u>BID PRICE/UNIT</u>
<b>Sawtimber</b>			
Basswood	31.30 MBF	\$ 127.00/MBF	\$ _____
Paper Birch	12.10 MBF	\$ 67.00/MBF	\$ _____
Red Maple	18.60 MBF	\$ 91.00/MBF	\$ _____
Red Pine	5.30 MBF	\$ 138.00/MBF	\$ _____
Sugar Maple	41.20 MBF	\$ 253.00/MBF	\$ _____
White Ash	8.30 MBF	\$ 71.00/MBF	\$ _____
White Pine	71.70 MBF	\$ 61.00/MBF	\$ _____
<b>Pulpwood</b>			
Balsam Fir	40.00 Cords	\$ 13.40/Cord	\$ _____
Mixed Aspen	299.00 Cords	\$ 38.75/Cord	\$ _____
Mixed Hardwood	710.00 Cords	\$ 18.50/Cord	\$ _____
Mixed Spruce	73.00 Cords	\$ 21.65/Cord	\$ _____
Paper Birch	120.00 Cords	\$ 19.65/Cord	\$ _____
Red Pine	5.00 Cords	\$ 61.00/Cord	\$ _____
Tamarack	93.00 Cords	\$ 3.00/Cord	\$ _____
White Pine	109.00 Cords	\$ 28.70/Cord	\$ _____

\*The volumes are statistically estimated within plus (+) or minus (-) 9.63 percent. These estimated volumes are final and not subject to adjustment. Prospective bidders are urged to examine this timber and to make their own estimates of quantity and quality.

I understand that any or all bids may be rejected. All bids must be signed and all bid items must be bid or the bid form may be rejected. I also understand that consideration and awarding a contract will be based upon my past performance and ability to complete the contract based upon equipment and staffing subject to my control.

FEDERAL ID: \_\_\_\_ - \_\_\_\_ - \_\_\_\_ or SOCIAL SECURITY NUMBER: \_\_\_\_ - \_\_\_\_ - \_\_\_\_

Company or individual bidding: \_\_\_\_\_

Company representative's name: \_\_\_\_\_

Address: \_\_\_\_\_

City: \_\_\_\_\_ State: \_\_\_\_\_ Zip: \_\_\_\_\_

IF AVAILABLE, PLEASE PLACE THE PERSONALIZED LABEL FROM YOUR PROSPECTUS IN THE ABOVE BOX.

Individual or company representative's signature: \_\_\_\_\_ Date: \_\_\_\_\_

Phone number : \_\_\_\_\_ Email (optional): \_\_\_\_\_

**THE WINNING BIDDER MUST COMPLETE THE VERIFICATION OF WORKER'S DISABILITY COMPENSATION ACT COMPLIANCE (ON REVERSE SIDE IF DOUBLE SIDED) WITHIN 21 DAYS OF SALE AWARD DATE**



<b>FOR DEPARTMENT USE ONLY</b>
Sale Number (XX - XXX - XX - XX)
Forest Management Unit:

## TIMBER SALE VERIFICATION OF WORKER'S DISABILITY COMPENSATION ACT COMPLIANCE

*As required by Act 317, P.A. 1969 (Worker's Compensation) and  
Part 5 of Act 451 of 1994, as amended.*

### VERIFICATION OF WORKER'S DISABILITY COMPENSATION ACT COMPLIANCE

- This verification must be completed and submitted within 21 days of contract award and prior to the issuance of the timber sale contract.
- In addition, if boxes 2B or 2C are checked, then Notice of Exclusion or Certificate of Insurance must be submitted within twenty-one (21) days of the contract award and prior to the issuance of the timber sale contract.
- All information must be typed or printed except for written signatures.

Please Check Appropriate Categories:

1. My business is organized as (you **must** check one of the boxes below):
  - A.  Sole Proprietorship (individual)
  - B.  Partnership
  - C.  Corporation
  
2. You **must** check one of the boxes below:
  - A.  I certify my business is a sole proprietorship and it has no employees but the sole proprietor. I am not subject to the Worker's Compensation Laws.
  - B.  I certify my business has satisfied its obligation to the Worker's Compensation Act through the use of an approved Notice of Exclusion (BWC-337, Rev. 5/96). I will provide a copy of the Notice of Exclusion within 21 days of the contract award. (For questions or a copy of the BWC-337, please call the Worker's Compensation Bureau at 517-322-1195).
  - C.  I certify my business has a Worker's Compensation Policy. I will provide an original Certificate of Insurance within twenty-one (21) days of the contract award.
  
3. If you have checked item 2(A) or 2(B), you **must** indicate the number of **both** full-time and part-time employees, other than yourself, including family members and active partners (if none, you must enter "0").

\_\_\_\_\_ Full-time Employees

\_\_\_\_\_ Part-time Employees

Name of Business		Federal ID (or) Social Security No.	
Address		Telephone (       )	
City	State	ZIP	

*I hereby certify that the above information is true and correct. I agree to notify the Michigan DNR of any changes that occur in factors affecting my coverage during any of my present and future operations.*

\_\_\_\_\_  
Signature of Owner or Authorized Representative

\_\_\_\_\_  
Title

\_\_\_\_\_  
Date

**Please complete the "SEALED BID" information on the next page**