



**DEPARTMENT OF NATURAL RESOURCES  
STATE OF MICHIGAN**

**TIMBER SALE PROSPECTUS #6686**

SCHEDULED SALE DATE AND TIME: 3:00 p.m. (local time) on June 11, 2020.

LOCATION: NEWBERRY MGMT UNIT, 5666 S STATE HWY M 123, NEWBERRY, MI 49868.

PROSPECTUS NOTE: It is recommended that for the duration of the "Stay Home, Stay Safe" executive order that bidders submit their bids through the Online Bidding System (<https://www2.dnr.state.mi.us/VMSONlineBidding/>). If you need to register, contact Jake Reid (ReidJ6@michigan.gov, 517-284-5908) or Donovan Asselin (AsselinD@michigan.gov, 517-930-1326). Paper bids will still be accepted during this time, either dropped in the bid box at the bid location or by mailing. If mailing, please allow for additional time.

The bidder is advised to inspect the sale area and review the location, estimated volumes, operating costs and contract terms of proposed sales. Please be aware that some landowners may request 60 days or more notice for access across their land.

Skyline Stihl (42-005-19) / T47N, R09W, SEC. 25, SWNW.

T47N, R09W, SEC. 26, NE,N1/2SW,N1/2SE.

T47N, R09W, SEC. 27, SENW,SW,NWSE.

T47N, R09W, SEC. 34, NENE,SWNE.

T47N, R09W, SEC. 35, N1/2NW,N1/2NE.

Luce County, Advertised Price \$126,317.65, 154.8 Acres, Jack Pine, Spruce/Fir/Tamarack.

SALE NOTE: The county must be contacted prior to crossing or harvesting within the county road R-O-W. This applies to Payment Units 1, 3, and 10 along County Road 510.

Permission for access across private land is the responsibility of the Purchaser. See Sale Spec 4.4.1 for additional information.

Access may be through private or other public land.

C58 Pine (42-017-19) / T49N, R06W, SEC. 18, NWNW.

T49N, R06W, SEC. 7, W1/2SW.

T49N, R07W, SEC. 12, SESW,SE.

T49N, R07W, SEC. 13, NW,NE,E1/2SW,W1/2SE.

T49N, R07W, SEC. 14, E1/2NE.

T49N, R07W, SEC. 24, NENW,NWNE.

Chippewa County, Advertised Price \$122,094.70, 166.4 Acres, Jack Pine, Red Pine.

SALE NOTE: The Michigan Department of Transportation (MDOT) must be contacted prior to harvesting timber within the MDOT right-of-way (see spec 4.3.1 for details).

The county must be contacted prior to crossing or harvesting in the County Road right-of-way. This applies to Farm Truck Trail and Widewaters (see spec 4.3.2 for details).

Within Payment Unit(s) 2, 3, 5, 6, 7, and 8, harvesting is limited to the period of April 15 to December 15 due to stump height restrictions (see spec 5.2.3.1 for details).

The snowmobile trail is shown on the Timber Sale Map (see spec 5.2.41 for details).

A recreation site such as a trail, pathway, or campground is within the sale area or the vicinity. Certain restrictions/specifications may be applicable including time restrictions.

Two Puddle Pine (42-020-19) / T47N, R11W, SEC. 22, SESW,S1/2SE.

T47N, R11W, SEC. 27, N1/2NW,NE,NWSW,S1/2SW,SWSE.

T47N, R11W, SEC. 34, N1/2NW,NWNE.

Luce County, Advertised Price \$57,384.70, 139.1 Acres, White Pine, Red Pine.

SALE NOTE: Road maintenance is required on this sale. See sale spec 4.2.3 for specifications.

Within Payment Unit(s) #'s 1-4, harvesting will not be permitted during the winter months because of the low stumps needed for scarification.

The Silver Creek Trail is an ORV trail or route and is shown on the Timber Sale Map. See Sale Spec 5.2.39 for restrictions.

A snowmobile trail is shown on the Timber Sale Map. See Sale Spec 5.2.41 for additional information.

A recreation site such as a trail, pathway, or campground is within the sale area or the vicinity. Certain restrictions/specifications may be applicable including time restrictions.

## BID INSTRUCTIONS (VER. 07/02/2018):

### 1. Scheduled Bid Location, Date, and Time (2/11)

Bids must be received by the Unit Manager, NEWBERRY OFFICE, 5666 S STATE HWY M 123, NEWBERRY, MI 49868, no later than 3:00 p.m. (local time) on June 11, 2020. For further information concerning this sale, contact Jason Tokar at 906-293-3293 extension 4740.

### 2. Bidder's Qualifications (5/16)

Purchaser shall obtain workers compensation insurance to cover claims under Michigan's Worker's Disability Compensation Act of 1969 or similar employee benefit act of any other state applicable to an employee. If all or part of a timber sale was prepared by a private contractor, the contractor and that contractor's company are not permitted to bid on the timber sale contract. Bids will not be accepted from individuals or companies appearing on the DNR/FRD No-Bid List. This list contains the names of purchasers who previously failed to execute a contract within 21-days or who have a history of poor performance.

### 3. Preparation of Sealed Bids (5/16)

Bid Forms may be completed online thru Michigan DNR Timber Sale Online Bidding (OLB) at [www.michigan.gov/timberbidding](http://www.michigan.gov/timberbidding) or by completing the hardcopy Bid Form found in the Timber Sale Prospectus. Hardcopy Bid Forms shall be manually signed in ink. Registration in OLB is considered your 'signature' for all bids submitted thru that system. Bid prices must be entered for each species and product in the Bid Price column for all material subject to bidding and all fill-in blanks must be completed. If erasures or other changes appear on the hardcopy Bid Form, each erasure or change must be initialed by the person signing the bid.

### 4. Submission of Sealed Bids (5/16)

Bid forms may be obtained from the Unit Manager or thru OLB. Bids may be submitted hardcopy or thru OLB. All hardcopy bids must be submitted on the bid form and in an envelope clearly identified as described in this section. NOTE: Only one bid form per bid envelope. Sealed bids must be submitted to the Unit office designated in the prospectus and must be submitted at or prior to the time established in the prospectus. The envelope should show on the outside (a) the sale name or number and (b) the date and time of bid opening, as shown in the prospectus. Bids received after the time specified in the sale prospectus are late bids and will be rejected.

It is possible for a bidder to submit multiple bids on a single sale. For example, a bid may be submitted hardcopy and a bid may be submitted thru OLB. Or, two bidders from the same company could both submit bids on the same sale. If this were to happen, the State would accept all bids received and award the contract accordingly. All bidding and contractual requirements would apply to all bids received.

### 5. Public Opening of Sealed Bids (7/16)

If conditions permit, the sealed bids will be publicly opened and posted at the time and place set in the prospectus.

If a bidder, present at a bid opening, has submitted bids on more than one sale, that bidder may withdraw their unopened bid envelopes or announce the withdrawal of their online bid after being declared the successful bidder on one sale.

### 6. Award of Contract (1/11)

Award of the contract will be made to the Bidder whose bid, conforming to the prospectus, is most advantageous to the State of Michigan on the basis of total value at rates bid for the estimated quantities. The State reserves the right to reject any bid or waive any minor irregularity in bids received. A written award mailed (or otherwise furnished) to the successful Bidder shall be deemed to result in a binding contract without further action by either party.

### 7. Down Payment (1/11)

The Bidder to whom award is made must make a down payment within 21 days of the sale award. The amount of the down payment will be calculated as shown in the Bond and Payment Schedule of this prospectus. Only cash may be used to meet this requirement.

### 8. Performance Security (1/11)

As guarantee of faithful performance, a cash bond, certificate of deposit, surety bond or irrevocable letter of credit (LOC) is required within 21 days of the sale award. The amount of the performance security is shown in the Bond and

Payment Schedule of this prospectus. If an LOC or surety is used, the coverage must extend for at least 6 months beyond the contract expiration.

#### 9. Timber Sale Contract (7/18)

Additional conditions and requirements common to all timber sales are listed on the timber sale contract (R4031) and are available on line at [www.michigan.gov/timber](http://www.michigan.gov/timber). Contact the Unit Manager for additional information or a sample contract. Within 21 days of the date of the award letter, the bidder must sign the contract and provide the required down payment, performance security, and verification of worker's disability compensation. The down payment and performance security shall be in accordance with the provisions of the timber sale contract, in the sums stated in this prospectus. If these actions are not taken, then the Bidder, the Bidder's corporation, and the corporation's principals may not be permitted to bid on State timber sales for a period of 3 months after the first offense, 6 months after the second offense, and 1 year after the third offense. An offense will only be counted against the Bidder for 5 years. In addition, the Bidder certifies that if awarded this contract, the Bidder will complete the timber sale contract in accordance with its terms and any modifications thereof including requirements to purchase, cut, and remove the included timber by the expiration date.

Payment Unit values in the State Forest Timber Sale Contract are calculated based on the advertised value of the Payment Unit as a percentage of the total advertised value of the contract. The advertised value of each Payment Unit is given in the Description of Timber by Payment Unit table on the Timber Sale Information page. For example, if the value of Payment Unit 1 is advertised as \$1,500 and the total Timber Sale value is advertised as \$10,000, the contract price for Payment Unit 1 will be 15% of the total bid price ( $\$1,500/\$10,000 * 100$ ).

#### 10. Disclaimer of Estimates and Bidder's Warranty of Inspection (7/16)

Before submitting this bid, the Bidder is advised and cautioned to inspect the sale area, review the requirements of the sale contract, and take other steps as may be reasonably necessary to ascertain the location, estimated volumes, construction estimates, and operating costs of the proposed sale. Failure to do so will not relieve the Bidder from responsibility for completing the contract.

The Bidder warrants that this bid is submitted solely on the basis of the Bidder's examination and inspection of the quality and quantity of the timber offered for sale and the Bidder's opinion of the value thereof and the costs of recovery. No reliance should be placed on the State of Michigan's estimates of timber quality, quantity or costs of recovery. Bidder further acknowledges that the State of Michigan: (i) expressly disclaims any warranty of fitness of timber for any purpose; (ii) offers this timber as is without any warranty of quality (merchantability) or quantity and (iii) expressly disclaims any warranty as to the quantity or quality of timber sold.

#### 11. Certification and Chain-of-Custody (10/14)

Unless otherwise indicated in the contract under section 7 – Other Conditions of the Sale Specific Conditions & Requirements, the area encompassed by this timber sale is certified to the standards of the Forest Stewardship Council (FSC) - Certificate #SCS-FM/COC-00090N and the Sustainable Forestry Initiative (SFI) - Certificate #NSF-SFIS-5Y031-SF5. Forest products from this sale may be delivered to the mill as "FSC 100% and / or SFI certified" as long as the contractor hauling the forest products is chain-of-custody (COC) certified or covered under a COC certificate from the destination mill. The purchaser is responsible for maintaining COC after leaving the sale area.

#### 12. Good Neighbor Authority (GNA) Requirements (7/16)

If the name of this timber sales contains the acronym GNA, it is authorized by the Good Neighbor Authority (GNA) and covered by various agreements between the U.S. Forest Service and the State. The timber sale occurs on federal land and the following conditions apply:

GNA contracts on US Forest Service land will not be awarded to purchasers on the Federal list of excluded parties. The System for Award Management (SAM) will be checked for active excluded parties prior to award of contract. In addition, the Bidder to whom award is made must complete an Assurance Regarding Felony Conviction or Tax Delinquent Status for Corporate Applicants (AD-3031).

#### 13. Good Neighbor Authority (GNA) Requirements, con't (9/16)

Bidder certifies, by signing this bid form, that to the best of Bidder's knowledge that the following representations are accurate and complete.

- a. That the Bidder and its principals are not presently debarred, suspended, proposed for debarment, declared ineligible, or voluntary excluded from timber sales (covered transactions) by any Federal department or agency.
- b. That the Bidder and its principals have not within a 3-year period preceding this bid been convicted of or had a civil judgment rendered against them for commission of fraud or a criminal offense in connection with obtaining , attempting to obtain, or performing a public (Federal, State, or local) transaction or contract under a public transaction; violation of Federal or State antitrust statutes or commission of embezzlement, theft, forgery, bribery, falsification or destruction of records, making false statements, or receiving stolen property.
- c. That the Bidder and its principals are not presently indicted for or otherwise criminally or civilly charged by a governmental entity (Federal, State, or local) with commission of any of the offenses enumerated in paragraph b of this certification.
- d. That the Bidder and its principals have not within a 3-year period preceding this bid had one or more public transactions (Federal, State, or local) terminated for breach or default of a timber or forest product contract.

Bidders that cannot certify this requirement, in whole or in part, shall submit an explanation with their bid.

DAN EICHINGER  
Director



# TIMBER SALE INFORMATION

Skyline Stihl (42-005-19)

T47N, R09W, SEC. 25; T47N, R09W, SEC. 26; T47N, R09W, SEC. 27; T47N, R09W, SEC. 34; T47N, R09W, SEC. 35.  
Luce County (Advertised Price \$126,317.65)

SALE NOTE: The county must be contacted prior to crossing or harvesting within the county road R-O-W. This applies to Payment Units 1, 3, and 10 along County Road 510.

Permission for access across private land is the responsibility of the Purchaser. See Sale Spec 4.4.1 for additional information.

Access may be through private or other public land.

A timber sale contract for this lump sum, sealed bid timber sale will be awarded to the responsible bidder offering the highest sealed bid price. Bids must be at or above the following advertised price for each species:

<u>PRODUCTS &amp; SPECIES</u>	<u>ESTIMATED UNITS*</u>	<u>ADVERTISED PRICE</u>
Pulpwood		
Balsam Fir	11.00 Cords	\$ 9.70 / Cord
Jack Pine	2,235.00 Cords	\$ 29.60 / Cord
Mixed Aspen	69.00 Cords	\$ 18.75 / Cord
Mixed Hardwood	63.00 Cords	\$ 12.25 / Cord
Mixed Spruce	885.00 Cords	\$ 12.75 / Cord
N. White Cedar	7.00 Cords	\$ 6.00 / Cord
Red Pine	703.00 Cords	\$ 52.95 / Cord
Tamarack	67.00 Cords	\$ 8.30 / Cord
White Pine	575.00 Cords	\$ 15.45 / Cord

\* The total volume is statistically estimated within plus (+) or minus (-) 7.87 percent. The estimated units are final and not subject to adjustment. Prospective bidders are urged to examine this timber and to make their own estimates of quantity and quality.

**BOND AND PAYMENT SCHEDULE:**

1. A bond in the amount of \$6,316.00 to insure faithful performance of the conditions of the contract will be deposited by the successful bidder within 21 days of the sale award.
2. Cutting in any sale or unit without the required advance payment would be considered a trespass.
3. Total payment must be paid in advance or according to the following schedule :
  - (a) Ten percent (10%) of the sale value must be paid within 21 days of the sale award.
  - (b) The 10% down payment will be credited towards the first unit cut.
  - (c) Payment for each of the following units must be made before cutting begins in that unit:

PAYMENT UNIT NUMBER	PERCENT OF TOTAL SALE VALUE
01	17.2%
02	1.6%
03	6.8%
04	3.9%
05	11.0%
06	19.8%
07	4.9%
08	12.1%
09	14.1%
10	8.6%

4. If no cutting takes place, the 10% down payment will not be refunded.
5. Operations on the contract issued will terminate on 12/31/2024.

**Description of Timber by Payment Unit (PU)**

PU	MARKET GROUP	PRODUCT	QUANTITY	UNIT	ACRES	ADVERTISE PRICE
1	Jack Pine	Pulpwood	155.0	Cords	18.8	\$21,686.70
	Mixed Aspen		63.0	Cords		
	Mixed Hardwood		23.0	Cords		
	Mixed Spruce		30.0	Cords		
	N. White Cedar		7.0	Cords		
	Red Pine		226.0	Cords		
	White Pine		210.0	Cords		
	2		Jack Pine	Pulpwood		
Mixed Spruce		7.0	Cords			
3	Balsam Fir	Pulpwood	2.0	Cords	11.3	\$8,547.05
	Jack Pine		130.0	Cords		
	Mixed Hardwood		4.0	Cords		
	Mixed Spruce		70.0	Cords		
	Red Pine		64.0	Cords		
	Tamarack		3.0	Cords		
	White Pine		21.0	Cords		
	4		Jack Pine	Pulpwood		
Mixed Spruce		9.0	Cords			
Red Pine		5.0	Cords			
5	Jack Pine	Pulpwood	164.0	Cords	8.0	\$13,833.25
	Mixed Spruce		6.0	Cords		
	Red Pine		162.0	Cords		
	White Pine		21.0	Cords		
6	Jack Pine	Pulpwood	662.0	Cords	33.8	\$25,205.10
	Mixed Hardwood		3.0	Cords		
	Mixed Spruce		194.0	Cords		
	Red Pine		53.0	Cords		
	Tamarack		13.0	Cords		
	White Pine		12.0	Cords		
7	Jack Pine	Pulpwood	126.0	Cords	15.3	\$6,193.25
	Mixed Aspen		4.0	Cords		
	Mixed Hardwood		2.0	Cords		
	Mixed Spruce		101.0	Cords		
	Red Pine		13.0	Cords		
	Tamarack		30.0	Cords		
	White Pine		9.0	Cords		
	8		Balsam Fir	Pulpwood		
Jack Pine		369.0	Cords			
Mixed Aspen		2.0	Cords			
Mixed Hardwood		2.0	Cords			
Mixed Spruce		227.0	Cords			
Red Pine		18.0	Cords			
Tamarack		9.0	Cords			
White Pine		20.0	Cords			
9		Balsam Fir	Pulpwood		6.0	Cords
	Jack Pine	136.0		Cords		
	Mixed Hardwood	29.0		Cords		
	Mixed Spruce	125.0		Cords		
	Red Pine	146.0		Cords		
	Tamarack	4.0		Cords		
	White Pine	261.0		Cords		
10	Jack Pine	Pulpwood	275.0	Cords	18.0	\$10,857.05
	Mixed Spruce		116.0	Cords		
	Red Pine		16.0	Cords		
	Tamarack		8.0	Cords		



**Description of Timber by Payment Unit (PU), con't**

PU	MARKET GROUP	PRODUCT	QUANTITY	UNIT	ACRES	ADVERTISE PRICE
10 con't	White Pine	Pulpwood	21.0	Cords		
TOTAL:			4,615.0	Cords		

## Sale Specific Conditions & Requirements

**Sale Name: Skyline Stihl**

**Sale Number: 42-005-19 Seq#: 1**

### 1 - Sale Area

#### 1.2 - Boundaries

##### 1.2.1 - Painted boundaries (1/14)

The sale boundary and Payment Unit boundaries are marked and identified by blue, red and yellow paint. Exterior sale boundary lines against private property are marked with blue paint. Exterior sale boundary lines against state are marked with red paint. Interior Payment Unit boundaries are marked with yellow paint. The painted boundary line trees are not Included Timber and are to be protected. Yellow painted trees designating an interior Payment Unit boundary are only to be cut when all surrounding Payment Units have been paid.

### 2 - Timber Specifications

#### 2.1 - Included Timber

##### 2.1.2 - Clearcut unit(s) w/o unmerchantable trees (8/11)

Within Payment Unit(s) 2, 4-8 and 10, cut all trees which meet minimum piece specifications in 2.2 Utilization, except do not cut any oak or hemlock. In addition, attempt to occasionally retain some merchantable trees along ridgetops. Also, within Payment Unit 10, retain either one red pine or white pine per acre of varying size.

##### 2.1.7 - Leave tree marked unit(s) (6/14)

Within Payment Unit(s) 1, 3, and 9, cut all trees that are (2) inches or more at DBH, except do not cut oak, hemlock, or any trees marked with green paint above and below stump height.

#### 2.2 - Utilization

##### 2.2.3 - Stump heights (4/07)

Stump heights within Payment Unit(s) 4, 5, 6, 8, and 10 shall not exceed 12 inches for trees greater than 10 inches DBH and 4 inches for trees smaller than 10 inches DBH. This is in order to facilitate cultivation operations. A written waiver of this requirement may be obtained if wet summer weather makes winter logging necessary.

### 3 - Payments

#### 3.3 - Pre-measured Sales

##### 3.3.4 - Dividing payment units (7/14)

Payment Unit(s) 6 and 8 may be divided at the request of the Purchaser and upon approval of the Unit Manager. Dividing Payment Units is a contract modification which requires a Timber Sale Contract Supplement. There will be only one division per Payment Unit.

### 4 - Transportation

#### 4.1 - Construction

##### 4.1.3 - Slash and earthen piles (8/04)

Piles or windrows of earth along roads and landings that have been widened or constructed shall be leveled. Slash from road maintenance or construction, including stumps, shall be dispersed throughout the sale.

##### 4.1.4 - Timber removed for construction (12/09)

Trees cut or damaged in the process of pre-approved road, landing or skid trail construction will be decked in an area separate from other Designated Timber and not removed until measured by the sale administrator. Payment will be made at the specified Purchase Unit Price.

##### 4.1.6 - Road construction (1/09)

Construction of new roads or improvements of existing roads shall be done in such a way as to minimize the environmental and visual impacts. Merchantable trees shall be cut and utilized unless otherwise directed. Non-merchantable trees shall be severed and laid flat on the ground. Slash shall be scattered, and not left in windrows and kept a minimum of 10 feet back from the road edge. Stumps shall be set upright, not left on edge, and be moved at least 10 feet away from the road edge.

Disturbed soil shall be feathered into the woods and not left in berms or windrows.

#### 4.1.7 - Road closure (10/11)

All new roads built into the sale must be blocked to vehicle traffic within 30 days of completion of hauling. Overgrown roads that are reopened shall be considered new roads. In general, this will require constructing a four (4') foot high berm of stumps and logs covered with earth. Contact the sale administrator for details of design and placement.

### 4.2 - Maintenance

#### 4.2.2 - Fill material (4/07)

To maintain roads, fill material may be needed in areas where "holes" exist or may be expected to develop. This fill material should be placed before trucking begins. Contact the sale administrator regarding the availability of onsite sand or gravel from adjacent State-owned lands.

#### 4.2.4 - Grading (10/16)

For completion of the sale, state forest roads must be graded. In general, this will require a road grader or bull dozer to shape up the roads after forest products have been hauled off site. This includes cleaning of drainage areas, grading, crowning and filling with gravel, if necessary. The grading equipment to be used must be approved by the Unit Manager or his/her representative.

#### 4.2.5 - Two wheel drive condition (2/04)

All existing trail roads on and adjacent to the sale area must be passable by two-wheel drive traffic for the duration of the sale.

### 4.3 - Public Right-of-Way

#### 4.3.2 - County R-O-W (12/06)

The county must be contacted prior to crossing or harvesting within the county road R-O-W. This applies to Payment Units 1, 3, and 10 along County Road 510.

### 4.4 - Access

#### 4.4.1 - Private property access (3/11)

Permission for access across private land is the responsibility of the Purchaser. Should the Purchaser desire to cross private land, a copy of the written permission from the private land-owner may be required by the DNR. A copy of the written permission from the private landowner must be given to the Unit Manager within 30 days of the bid opening and prior to the beginning of operations.

#### 4.4.2 - Alternate route on private property (2/04)

It is the Purchaser's responsibility to obtain access across private land for any routes other than the route shown on the sale map.

## 5 - Operations

### 5.1 - Notification

#### 5.1.1 - Pre-sale conference (10/16)

A pre-sale conference on site between the Purchaser and sale administrator is required prior to beginning any sale operations in order to determine landing and road locations. The Unit Manager or his/her representative must be contacted at least 5 business days in advance to schedule this conference.

#### 5.1.4 - Post-sale conference (10/16)

A post-sale conference on site between the Purchaser and sale administrator is required 5 days prior to the completion of active logging operations to determine clean-up and repair of landings, road edges, and the fulfillment of other contract specifications.

### 5.2 - Conduct of Operations

#### 5.2.1 - Slash

##### 5.2.1.8 - Slash height (12/08)

No slash or tree tops may exceed 24 inches in height.

## 5.2.2 - Hazard Trees/Snags

### 5.2.2.1 - Den trees (10/16)

Obvious hollow and/or den trees shall be protected and left standing unless they are a safety hazard.

## 5.2.3 - Operating Restrictions

### 5.2.3.6 - Bark beetle restriction (12/08)

In the event drought creates a high risk of pine bark beetle infestation, pine is not to be cut during the period March 1 through July 1, unless all portions of trees greater than two inches in diameter are removed from the sale area, reduced to chips, or treated to the satisfaction of the Unit Manager or his/her representative, within fifteen days of being severed from the stump. Pine log decks, pulpwood piles and treetops that are piled for chipping in the fall or winter within a 1/4 mile of susceptible sites must be removed before March 15. Residual slash must not be placed in piles or rows and must be spread over the site for quick drying. The Department of Natural Resources will exercise this specification if the risk of damage warrants.

### 5.2.32 - Decking/landing restoration (9/13)

All decking and landing areas must have the surface area restored to a condition equal to or better than before. This is to ensure the proper regeneration of the stand. Wood debris, chips and "cookies" from trimmings must be removed or scattered away from landing and loading areas and may not be windrowed on the edge.

### 5.2.38 - No decking against live trees (2/04)

Cut products may not be decked against unmarked or designated leave trees.

## 5.4 - Soil Protection

### 5.4.1 - Rutting restriction, general (7/16)

Operations are to cease immediately if equipment and weather conditions result in rutting of roads and/or skid trails which is 12 inches or greater in depth and 50 feet in length. The Unit Manager or his/her representative may restrict hauling and/or skidding if ruts exceed the specified depth. With the Unit Manager or his/her representative's approval, the Purchaser may return to the area when the risk of rutting has decreased.

## 5.8 - Protection of Endangered Species

### 5.8.5 - Protection of raptor nests (3/13)

All trees with raptor nests will be protected if found during harvesting operations. Notification will be made to the Unit Manager or his/her representative who will notify the Wildlife Biologist so an on-site evaluation and recommendation can be made, if necessary.

## 6 - Safety and Fire Prevention

### 6.2 - Signing

#### 6.2.1 - Road posting (9/09)

The Purchaser is responsible for posting and maintaining caution signs on County Road 510 prior to beginning operations. The road must be posted at appropriate distances from the sale area to warn of logging activity and truck traffic. Signs must be removed when harvest operations are suspended or completed. The Purchaser shall provide these signs.



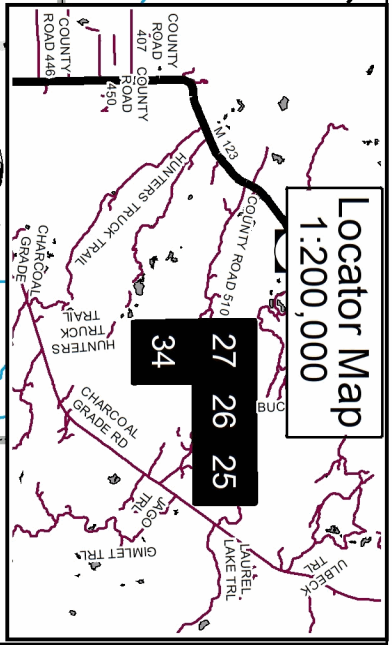
# TIMBER SALE MAP

This information provided by authority of Part 525, 1994 PA 451, as amended.

Forest Management Unit	Newberry	County	Luce	Maped By	Lester Livemore	Date	04/08/2019	Page	1	of	1	Sale Number	42 - 005	Year	19
Township	47N	Range	09W	Section(s) and Subdivision(s)	Section 25: SWNW; Section 26: N1/2SW, N1/2SE, NE; Section 27: SEWW, SW, NWSE; Section 28: N1/2SW, N1/2SE, NE; Section 29: SEWW, SW, NWSE; Section 30: NENE, SWNE; Section 31: N1/2NW, N1/2NE	Crused By	Grossman Forestry/Newberry Staff	Scale				Density	1:15,840		

Cover Type	
A = Aspen	H = Hemlock
B = Paper Birch	J = Jack Pine
C = Cedar	L = Lowland Brush
D = Tread Bog	LM = Lowland Mixed
E = Swamp Hardwoods	M = Mpl, Bch, Birch
F = Spruce Fir	MC = Mixed Conifer
G = Grass	MD = Mixed Deciduous
	N = Marsh
	O = Oak
	P = Lowland Poplar
	Q = Mixed Swamp Conifer
	R = Red Pine
	S = Black Spruce
	T = Tamarack
	U = Upland Brush
	UM = Upland Mixed
	V = Bog or Marsh
	W = White Pine
	X = Non Stocked
	Z = Water

Density	
0 = Non Stocked	5 = Pole Timber Medium
1 = Seeding Sapling Poor	6 = Pole Timber Well
2 = Seeding Sapling Medium	7 = Saw Timber Well
3 = Seeding Sapling Medium	8 = Saw Timber Medium
4 = Pole Timber Poor	9 = Saw Timber Well

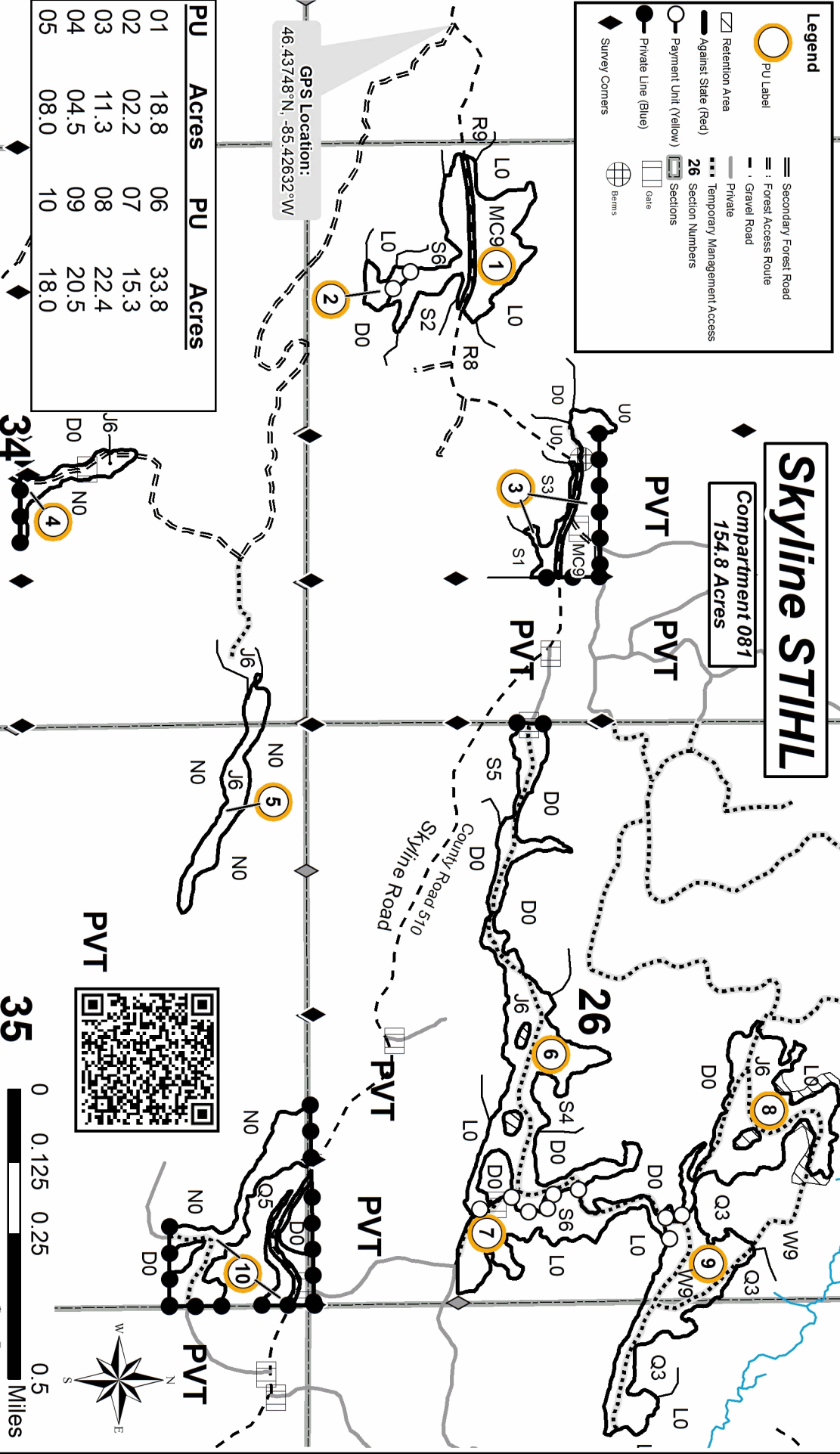


## Skyline STIHL

Compartment 081  
154.8 Acres

**Legend**

- PU Label
- ▭ Retention Area
- ▭ Against State (Red)
- ▭ Payment Unit (Yellow)
- Private Line (Blue)
- ◆ Survey Corners
- ▭ Secondary Forest Road
- ▭ Forest Access Route
- ▭ Gravel Road
- ▭ Private
- ▭ Temporary Management Access
- ▭ Section Numbers
- ▭ Sections
- ▭ Gate
- ▭ Barns



GPS Location:  
46.43748°N, -85.42632°W

PU	Acres	PU	Acres
01	18.8	06	33.8
02	02.2	07	15.3
03	11.3	08	22.4
04	04.5	09	20.5
05	08.0	10	18.0





## TIMBER SALE INFORMATION

### C58 Pine (42-017-19)

T49N, R06W, SEC. 18; T49N, R06W, SEC. 7; T49N, R07W, SEC. 12; T49N, R07W, SEC. 13; T49N, R07W, SEC. 14; T49N, R07W, SEC. 24.

SALE NOTE: The Michigan Department of Transportation (MDOT) must be contacted prior to harvesting timber within the MDOT right-of-way (see spec 4.3.1 for details).

The county must be contacted prior to crossing or harvesting in the County Road right-of-way. This applies to Farm Truck Trail and Widewaters (see spec 4.3.2 for details).

Within Payment Unit(s) 2, 3, 5, 6, 7, and 8, harvesting is limited to the period of April 15 to December 15 due to stump height restrictions (see spec 5.2.3.1 for details).

The snowmobile trail is shown on the Timber Sale Map (see spec 5.2.41 for details).

A recreation site such as a trail, pathway, or campground is within the sale area or the vicinity. Certain restrictions/specifications may be applicable including time restrictions.

A timber sale contract for this lump sum, sealed bid timber sale will be awarded to the responsible bidder offering the highest sealed bid price. Bids must be at or above the following advertised price for each species:

<u>PRODUCTS &amp; SPECIES</u>	<u>ESTIMATED UNITS*</u>	<u>ADVERTISED PRICE</u>
Sawtimber		
Paper Birch	0.90 MBF	\$ 46.00 / MBF
Pulpwood		
Balsam Fir	23.00 Cords	\$ 8.90 / Cord
Jack Pine	1,748.00 Cords	\$ 27.15 / Cord
Mixed Aspen	317.00 Cords	\$ 17.20 / Cord
Mixed Hardwood	314.00 Cords	\$ 11.25 / Cord
Mixed Spruce	196.00 Cords	\$ 11.70 / Cord
Red Oak	4.00 Cords	\$ 20.95 / Cord
Red Pine	1,190.00 Cords	\$ 48.55 / Cord
White Pine	370.00 Cords	\$ 14.20 / Cord

\* The total volume is statistically estimated within plus (+) or minus (-) 7.80 percent. The estimated units are final and not subject to adjustment. Prospective bidders are urged to examine this timber and to make their own estimates of quantity and quality.

### **BOND AND PAYMENT SCHEDULE:**

1. A bond in the amount of \$6,105.00 to insure faithful performance of the conditions of the contract will be deposited by the successful bidder within 21 days of the sale award.
2. Cutting in any sale or unit without the required advance payment would be considered a trespass.
3. Total payment must be paid in advance or according to the following schedule :
  - (a) Ten percent (10%) of the sale value must be paid within 21 days of the sale award.
  - (b) The 10% down payment will be credited towards the first unit cut.
  - (c) Payment for each of the following units must be made before cutting begins in that unit:

PAYMENT UNIT NUMBER	PERCENT OF TOTAL SALE VALUE
01	2.8%
02	11.8%
03	7.1%
04	4.8%
05	14.9%
06	22.0%
07	11.2%
08	14.9%
09	10.5%

4. If no cutting takes place, the 10% down payment will not be refunded.
5. Operations on the contract issued will terminate on 12/31/2024.

**Description of Timber by Payment Unit (PU)**

PU	MARKET GROUP	PRODUCT	QUANTITY	UNIT	ACRES	ADVERTISE PRICE
1	Paper Birch	Sawtimber	0.9	MBF	21.3	\$3,405.65
	Balsam Fir	Pulpwood	21.0	Cords		
	Jack Pine		2.0	Cords		
	Mixed Aspen		24.0	Cords		
	Mixed Hardwood		185.0	Cords		
	Mixed Spruce		4.0	Cords		
	White Pine		41.0	Cords		
	2	Balsam Fir	Pulpwood	2.0		
Jack Pine		176.0	Cords			
Mixed Aspen		49.0	Cords			
Mixed Hardwood		24.0	Cords			
Red Pine		136.0	Cords			
White Pine		130.0	Cords			
3	Jack Pine	Pulpwood	255.0	Cords	19.6	\$8,705.05
Mixed Aspen		52.0	Cords			
Mixed Hardwood		30.0	Cords			
Mixed Spruce		47.0	Cords			
4	Jack Pine	Pulpwood	19.0	Cords	6.0	\$5,874.70
	Mixed Aspen		79.0	Cords		
	Mixed Hardwood		6.0	Cords		
	Red Pine		81.0	Cords		
5	Jack Pine	Pulpwood	100.0	Cords	15.7	\$18,152.60
	Mixed Aspen		37.0	Cords		
	Mixed Hardwood		15.0	Cords		
	Mixed Spruce		27.0	Cords		
	Red Oak		2.0	Cords		
	Red Pine		287.0	Cords		
	White Pine		24.0	Cords		
6	Jack Pine	Pulpwood	149.0	Cords	23.2	\$26,861.85
	Mixed Aspen		54.0	Cords		
	Mixed Hardwood		23.0	Cords		
	Mixed Spruce		39.0	Cords		
	Red Oak		2.0	Cords		
	Red Pine		425.0	Cords		
	White Pine		35.0	Cords		
7	Jack Pine	Pulpwood	315.0	Cords	18.2	\$13,687.50
	Mixed Aspen		8.0	Cords		
	Mixed Hardwood		12.0	Cords		
	Mixed Spruce		34.0	Cords		
	Red Pine		75.0	Cords		
	White Pine		58.0	Cords		
8	Jack Pine	Pulpwood	419.0	Cords	24.2	\$18,179.65
	Mixed Aspen		10.0	Cords		
	Mixed Hardwood		17.0	Cords		
	Mixed Spruce		45.0	Cords		
	Red Pine		99.0	Cords		
	White Pine		78.0	Cords		
9	Jack Pine	Pulpwood	313.0	Cords	20.8	\$12,869.90
	Mixed Aspen		4.0	Cords		
	Mixed Hardwood		2.0	Cords		
	Red Pine		87.0	Cords		
	White Pine		4.0	Cords		
TOTAL:			0.9	MBF		
TOTAL:			4,162.0	Cords		



## Sale Specific Conditions & Requirements

Sale Name: C58 Pine

Sale Number: 42-017-19 Seq#: 1

### 1 - Sale Area

#### 1.2 - Boundaries

##### 1.2.1 - Painted boundaries (1/14)

The sale boundary and Payment Unit boundaries are marked and identified by red and green paint. Exterior sale boundary lines against state are marked with red paint. Interior Payment Unit boundaries are marked with green paint. Green painted trees designating an interior Payment Unit boundary are only to be cut when all surrounding Payment Units have been paid.

### 2 - Timber Specifications

#### 2.1 - Included Timber

##### 2.1.1 - Clearcut unit(s) with unmerchantable trees (6/14)

Within Payment Unit(s) 2, 3 and 5-8, cut all trees that are two (2) inches or more at DBH, except within Payment Unit 3, do not cut any white pine sixteen (16) inches or more at DBH, or any red pine.

##### 2.1.2 - Clearcut unit(s) w/o unmerchantable trees (8/11)

Within Payment Unit(s) 1 and 4, cut all trees which meet minimum piece specifications in 2.2 Utilization, except within Payment Unit 1, do not cut any white pine sixteen (16) inches or more at DBH, or any red pine or hemlock.

In addition, within Payment Unit 4, leave 10-12 evenly spaced red pine or white pine along the edge of the bog. These trees should be ten (10) inches or more at DBH.

##### 2.1.3 - Cut tree marked unit(s) (12/08)

Within Payment Unit(s) 9, red pine are designated for cutting when marked with orange paint above and below stump height, regardless of merchantability. In addition, cut all other species, regardless of merchantability.

##### 2.1.11 - Description of timber note (2/04)

Note that red pine was cruised as pulp, there may be sawlogs within the sale.

#### 2.2 - Utilization

##### 2.2.3 - Stump heights (4/07)

Stump heights within Payment Units 2, 3, 5, 6, 7 and 8 shall not exceed 12 inches for trees greater than 10 inches DBH and 4 inches for trees smaller than 10 inches DBH. This is in order to facilitate cultivation operations. A written waiver of this requirement may be obtained if wet summer weather makes winter logging necessary.

##### 2.2.4 - Skidding length (2/14)

Skidding of unlimbed tops or lengths over 17 feet is not permissible, unless approved by the Unit Manager or his/her representative.

### 3 - Payments

#### 3.3 - Pre-measured Sales

##### 3.3.4 - Dividing payment units (7/14)

Payment Unit(s) 5, 6, 7 and 8 may be divided at the request of the Purchaser and upon approval of the Unit Manager. Dividing Payment Units is a contract modification which requires a Timber Sale Contract Supplement. There will be only one division per Payment Unit.

### 4 - Transportation

#### 4.1 - Construction

##### 4.1.6 - Road construction (1/09)

Construction of new roads or improvements of existing roads shall be done in such a way as to minimize the environmental and visual impacts. Merchantable trees shall be cut and utilized unless otherwise directed. Non-merchantable trees shall be

severed and laid flat on the ground. Slash shall be scattered, and not left in windrows and kept a minimum of 10 feet back from the road edge. Stumps shall be set upright, not left on edge, and be moved at least 10 feet away from the road edge. Disturbed soil shall be feathered into the woods and not left in berms or windrows.

#### 4.1.7 - Road closure (10/11)

All new roads built into the sale must be blocked to vehicle traffic within 30 days of completion of hauling. Overgrown roads that are reopened shall be considered new roads. These roads must be rendered impassable to cars and trucks. In general, this will require constructing earthen berms at strategic locations. Contact the sale administrator for details of design and placement.

### 4.2 - Maintenance

#### 4.2.5 - Two wheel drive condition (2/04)

All existing trail roads on and adjacent to the sale area must be passable by two-wheel drive traffic for the duration of the sale.

### 4.3 - Public Right-of-Way

#### 4.3.1 - MDOT R-O-W (11/14)

The Michigan Department of Transportation (MDOT) must be contacted prior to harvesting timber within the MDOT right-of-way. This applies to Payment Unit 1.

#### 4.3.2 - County R-O-W (12/06)

The county must be contacted prior to crossing or harvesting in the county road R-O-W. This applies to Payment Units 1, 2, 3, 5, 6 and 9 along county roads Farm Truck Trail and Widewaters Road.

## 5 - Operations

### 5.2 - Conduct of Operations

#### 5.2.1 - Slash

##### 5.2.1.8 - Slash height (12/08)

No slash or tree tops may exceed 24 inches in height.

##### 5.2.1.11 - Slash for reforestation (5/07)

To facilitate reforestation, Payment Unit(s) 2, 3, 5, 6, 7 and 8 shall be left with slash evenly distributed. Bunched tops within the cutting area shall be broken up and scattered. Stumps shall be cut low to the ground. Processing sites shall not be left with a compacted layer of slash; tops from these sites shall be hauled back into the cut area and scattered.

#### 5.2.2 - Hazard Trees/Snags

##### 5.2.2.1 - Den trees (10/16)

Obvious hollow and/or den trees shall be protected and left standing unless they are a safety hazard.

#### 5.2.3 - Operating Restrictions

##### 5.2.3.1 - Operating restrictions (9/11)

Within Payment Unit(s) 2, 3, 5, 6, 7 and 8, unless changed by written agreement, cutting, skidding, and hauling are limited to the period of April 15 to December 15. Winter cutting will only be allowed by written agreement with the sale administrator. This restriction is because of the stump height requirement.

##### 5.2.3.3 - Bark slippage restriction (3/09)

Within Payment Unit(s) 9, unless changed by written agreement, cutting and skidding are not permitted during the period of April 15 to July 15. This restriction is because of bark slippage.

##### 5.2.3.6 - Bark beetle restriction (12/08)

In the event drought creates a high risk of pine bark beetle infestation, pine is not to be cut during the period March 1 through July 1, unless all portions of trees greater than two inches in diameter are removed from the sale area, reduced to chips, or treated to the satisfaction of the Unit Manager or his/her representative, within fifteen days of being severed from the stump. Pine log decks, pulpwood piles and treetops that are piled for chipping in the fall or winter within a 1/4 mile of susceptible sites must be removed before March 15. Residual slash must not be placed in piles or rows and must

be spread over the site for quick drying. The Department of Natural Resources will exercise this specification if the risk of damage warrants.

#### 5.2.32 - Decking/landing restoration (9/13)

All decking and landing areas must have the surface area restored to a condition equal to or better than before. This is to ensure the proper regeneration of the stand. Wood debris, chips and "cookies" from trimmings must be removed or scattered away from landing and loading areas and may not be windrowed on the edge.

#### 5.2.38 - No decking against live trees (2/04)

Cut products may not be decked against unmarked or designated leave trees.

#### 5.2.41 - Snowmobile trail protection (9/11)

The snowmobile trail is shown on the Timber Sale Map. Do not cut or damage posts with orange trail markers or traffic control signs. If the trail is used, it must be maintained and restored to a condition equal to or better than before the sale. The road maintenance/restoration must be done prior to December 15. If the trail is used for hauling, it must be graded to the satisfaction of the Unit Manager or his/her representative prior to December 15. If the trail road is to be used for hauling during the snowmobile season, then a snow covered base must be left on the trail. Maintain a 20 foot wide slash, debris, and rut free zone daily using the snowmobile trail as the centerline. No decking of forest products will be permitted along the snowmobile trail.

### 5.4 - Soil Protection

#### 5.4.1 - Rutting restriction, general (7/16)

Operations are to cease immediately if equipment and weather conditions result in rutting of roads and/or skid trails which is 12 inches or greater in depth and 50 feet in length. The Unit Manager or his/her representative may restrict hauling and/or skidding if ruts exceed the specified depth. With the Unit Manager or his/her representative's approval, the Purchaser may return to the area when the risk of rutting has decreased.

#### 5.4.2 - Skid trails (2/04)

Skid trails up and down slopes should be avoided. If however this is unavoidable, these trails will be left in a non-erodible condition using water bars, logs, and slash. Placing of slash on these skid trails while logging is ongoing may alleviate need for any further action. At the direction of the sale administrator, seed, fertilizer, and mulch may also be required.

#### 5.4.5 - Soil caution (11/04)

Care must be taken to minimize soil damage due to the sandy and wet soils in the area.

### 5.8 - Protection of Endangered Species

#### 5.8.5 - Protection of raptor nests (3/13)

All trees with raptor nests will be protected if found during harvesting operations. Notification will be made to the Unit Manager or his/her representative who will notify the Wildlife Biologist so an on-site evaluation and recommendation can be made, if necessary.

## 6 - Safety and Fire Prevention

### 6.2 - Signing

#### 6.2.1 - Road posting (9/09)

The Purchaser is responsible for posting and maintaining caution signs on M-123, Widewaters Road, and Farm Truck Trail prior to beginning operations. The road must be posted at appropriate distances from the sale area to warn of logging activity and truck traffic. Signs must be removed when harvest operations are suspended or completed.

#### 6.2.2 - Snowmobile trail posting (8/09)

The Purchaser is responsible for posting and maintaining caution signs on the snowmobile trail, within Payment Unit 1, prior to beginning operations during the snowmobile season (approximately December 1 to March 31). The trail must be posted at appropriate distances from the sale area to warn of logging activity and truck traffic. Signs must be removed when harvest operations are suspended or completed.

## 7 - Other Conditions

### 7.3 - Contract Modifications

7.3.3 - Modification for reforestation (8/05)

When contractual work of Purchaser has been accepted for any Payment Unit identified on Sale Area Map, Payment Unit will be eliminated from the Sale Area on written notice so that reforestation operations can begin.

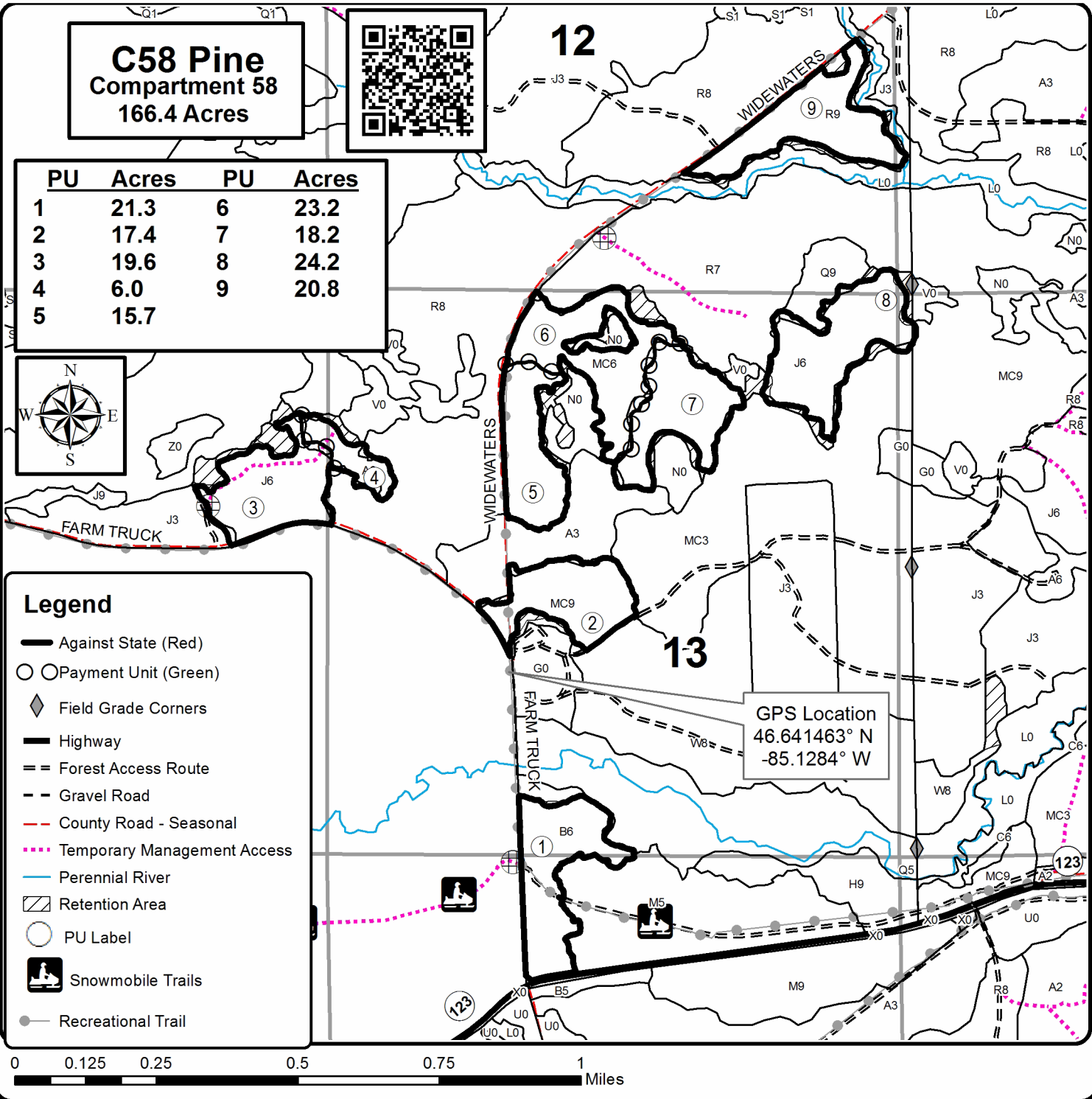


# TIMBER SALE MAP

This information provided by authority of Part 525, 1994 PA 451, as amended.

Forest Management Unit Newberry Management Unit		County Chippewa	Mapped By Kriehn	Date 09/26/2019	Page 1	of 1
Township 49N	Range 07W	Section(s) and Subdivision(s) Section 14 - E1/2 NE Section 24 - NENW,NWNE		Scale 1:15,840		
Cruised By Newberry Staff						

Cover Type				Density			
A = Aspen	H = Hemlock	N = Marsh	U = Upland Brush	0 = Non Stocked	5 = Pole Timber Medium		
B = Paper Birch	J = Jack Pine	O = Oak	UM = Upland Mixed	1 = Seedling Sapling Poor	6 = Pole Timber Well		
C = Cedar	L = Lowland Brush	P = Lowland Poplar	V = Bog or Marsh	2 = Seedling Sapling Medium	7 = Saw Timber Poor		
D = Treed Bog	LM = Lowland Mixed	Q = Mixed Swamp Conifer	W = White Pine	3 = Seedling Sapling Well	8 = Saw Timber Medium		
E = Swamp Hdwoods	M = Mpl, Bch, Brch	R = Red Pine	X = Non Stocked	4 = Pole Timber Poor	9 = Saw Timber Well		
F = Spruce Fir	MC = Mixed Conifer	S = Black Spruce	Z = Water				
G = Grass	MD = Mixed Deciduous	T = Tamarack					





## TIMBER SALE INFORMATION

Two Puddle Pine (42-020-19)  
 T47N, R11W, SEC. 22; T47N, R11W, SEC. 27; T47N, R11W, SEC. 34.  
 Luce County (Advertised Price \$57,384.70)

SALE NOTE: Road maintenance is required on this sale. See sale spec 4.2.3 for specifications.

Within Payment Unit(s) #'s 1-4, harvesting will not be permitted during the winter months because of the low stumps needed for scarification.

The Silver Creek Trail is an ORV trail or route and is shown on the Timber Sale Map. See Sale Spec 5.2.39 for restrictions.

A snowmobile trail is shown on the Timber Sale Map. See Sale Spec 5.2.41 for additional information.

A recreation site such as a trail, pathway, or campground is within the sale area or the vicinity. Certain restrictions/specifications may be applicable including time restrictions.

A timber sale contract for this lump sum, sealed bid timber sale will be awarded to the responsible bidder offering the highest sealed bid price. Bids must be at or above the following advertised price for each species:

<u>PRODUCTS &amp; SPECIES</u>	<u>ESTIMATED UNITS*</u>	<u>ADVERTISED PRICE</u>
Pulpwood		
Black Cherry	11.00 Cords	\$ 11.25 / Cord
Jack Pine	164.00 Cords	\$ 27.15 / Cord
Quaking Aspen	178.00 Cords	\$ 17.20 / Cord
Red Pine	429.00 Cords	\$ 48.55 / Cord
White Pine	2,025.00 Cords	\$ 14.20 / Cord
White Spruce	14.00 Cords	\$ 11.70 / Cord

\* The total volume is statistically estimated within plus (+) or minus (-) 9.53 percent. The estimated units are final and not subject to adjustment. Prospective bidders are urged to examine this timber and to make their own estimates of quantity and quality.

**BOND AND PAYMENT SCHEDULE:**

1. A bond in the amount of \$2,869.00 to insure faithful performance of the conditions of the contract will be deposited by the successful bidder within 21 days of the sale award.
2. Cutting in any sale or unit without the required advance payment would be considered a trespass.
3. Total payment must be paid in advance or according to the following schedule :
  - (a) Ten percent (10%) of the sale value must be paid within 21 days of the sale award.
  - (b) The 10% down payment will be credited towards the first unit cut.
  - (c) Payment for each of the following units must be made before cutting begins in that unit:

PAYMENT UNIT NUMBER	PERCENT OF TOTAL SALE VALUE
01	8.9%
02	28.0%
03	24.0%
04	28.7%
05	1.4%
06	2.6%
07	4.5%
08	1.9%

4. If no cutting takes place, the 10% down payment will not be refunded.
5. Operations on the contract issued will terminate on 12/31/2024.

**Description of Timber by Payment Unit (PU)**

PU	MARKET GROUP	PRODUCT	QUANTITY	UNIT	ACRES	ADVERTISE PRICE
1	Jack Pine	Pulpwood	134.0	Cords	9.7	\$5,086.10
	Quaking Aspen		21.0	Cords		
	White Pine		65.0	Cords		
	White Spruce		14.0	Cords		
2	Black Cherry	Pulpwood	2.0	Cords	25.2	\$16,046.60
	Jack Pine		9.0	Cords		
	Quaking Aspen		26.0	Cords		
	Red Pine		145.0	Cords		
	White Pine		584.0	Cords		
3	Black Cherry	Pulpwood	2.0	Cords	21.6	\$13,786.85
	Jack Pine		8.0	Cords		
	Quaking Aspen		22.0	Cords		
	Red Pine		125.0	Cords		
	White Pine		500.0	Cords		
4	Black Cherry	Pulpwood	2.0	Cords	26.0	\$16,544.95
	Jack Pine		9.0	Cords		
	Quaking Aspen		26.0	Cords		
	Red Pine		150.0	Cords		
	White Pine		602.0	Cords		
5	Quaking Aspen	Pulpwood	2.0	Cords	4.4	\$787.00
	White Pine		53.0	Cords		
6	Black Cherry	Pulpwood	5.0	Cords	12.5	\$1,466.65
	Quaking Aspen		11.0	Cords		
	White Pine		86.0	Cords		
7	Jack Pine	Pulpwood	4.0	Cords	30.8	\$2,566.95
	Quaking Aspen		49.0	Cords		
	Red Pine		9.0	Cords		
	White Pine		83.0	Cords		
8	Quaking Aspen	Pulpwood	21.0	Cords	8.9	\$1,099.60
	White Pine		52.0	Cords		
TOTAL:			2,821.0	Cords		



# Sale Specific Conditions & Requirements

**Sale Name: Two Puddle Pine**

**Sale Number: 42-020-19 Seq#: 2**

## 1 - Sale Area

### 1.2 - Boundaries

#### 1.2.1 - Painted boundaries (9/19)

The sale boundary and Payment Unit boundaries are marked and identified by red and yellow paint. Exterior sale boundary lines against state are marked with red paint. Interior Payment Unit boundaries are marked with yellow paint. The painted boundary line trees are not Included Timber and are to be protected unless marked with orange paint. Yellow painted trees designating an interior Payment Unit boundary are only to be cut when all surrounding Payment Units have been paid.

## 2 - Timber Specifications

### 2.1 - Included Timber

#### 2.1.2 - Clearcut unit(s) w/o unmerchantable trees (8/11)

Within Payment Unit(s) 1, cut all trees which meet minimum piece specifications in 2.2 Utilization.

#### 2.1.3 - Cut tree marked unit(s) (12/08)

Within Payment Unit(s) 5 - 8, all trees are designated for cutting when marked with orange paint above and below stump height, regardless of merchantability. In addition, all aspen is designated for cutting.

#### 2.1.7 - Leave tree marked unit(s) (6/14)

Within Payment Unit(s) 2, 3 and 4, cut all trees that are two (2) inches or more at DBH, except do not cut white pine 20 inches or greater at DBH, or any trees marked with green paint above and below stump height.

#### 2.1.11 - Description of timber note (2/04)

Note that all species were cruised as pulpwood, some sawtimber may be present within the sale.

### 2.2 - Utilization

#### 2.2.3 - Stump heights (4/07)

Stump heights within the Payment Unit(s) 1-4 shall not exceed 12 inches for trees greater than 10 inches DBH and 4 inches for trees smaller than 10 inches DBH. This is in order to facilitate cultivation operations. A written waiver of this requirement may be obtained if wet summer weather makes winter logging necessary.

## 3 - Payments

### 3.4 - Damaged Timber

#### 3.4.1 - Damaged timber (7/16)

General Condition and Requirement 3.4 Damaged Timber, defines liquidated damages for undesignated live merchantable trees which are cut or injured. In addition, extreme care should be taken to avoid damage to tree seedlings and saplings.

## 4 - Transportation

### 4.1 - Construction

#### 4.1.3 - Slash and earthen piles (8/04)

Piles or windrows of earth along roads and landings that have been widened or constructed shall be leveled. Slash from road maintenance or construction, including stumps, shall be dispersed throughout the sale.

#### 4.1.4 - Timber removed for construction (12/09)

Trees cut or damaged in the process of pre-approved road, landing or skid trail construction will be decked in an area separate from other Designated Timber and not removed until measured by the sale administrator. Payment will be made at the specified Purchase Unit Price.

#### 4.1.6 - Road construction (1/09)

Construction of new roads or improvements of existing roads shall be done in such a way as to minimize the environmental and visual impacts. Merchantable trees shall be cut and utilized unless otherwise directed. Non-merchantable trees shall be

severed and laid flat on the ground. Slash shall be scattered, and not left in windrows and kept a minimum of 10 feet back from the road edge. Stumps shall be set upright, not left on edge, and be moved at least 10 feet away from the road edge. Disturbed soil shall be feathered into the woods and not left in berms or windrows.

#### 4.1.7 - Road closure (10/11)

All new roads built into the sale must be blocked to vehicle traffic within 30 days of completion of hauling. Overgrown roads that are reopened shall be considered new roads. In general, this will require constructing a four (4') foot high berm of stumps and logs covered with earth. These roads must be rendered impassable to cars and trucks. Contact the sale administrator for specific details of design and placement.

#### 4.1.12 - No new roads (1/12)

No new roads will be permitted in Payment Unit 1. All operations are limited to existing roads. Skid trails only will be allowed.

### 4.2 - Maintenance

#### 4.2.3 - Road maintenance (8/13)

The following road maintenance is required: Within 60 days of completion of hauling, or if no hauling occurs for 60 days, the road must be maintained and graded. This includes cleaning of drainage areas, grading, crowning and filling with gravel, if necessary. Damages will be assessed if grading/repair does not occur.

#### 4.2.5 - Two wheel drive condition (2/04)

All existing trail roads on and adjacent to the sale area must be passable by two-wheel drive traffic for the duration of the sale.

## 5 - Operations

### 5.1 - Notification

#### 5.1.1 - Pre-sale conference (10/16)

A pre-sale conference between the Purchaser and sale administrator is required prior to beginning any operations a Payment Unit to determine landing and road locations. The Unit Manager or his/her representative must be contacted at least 5 days in advance to schedule the conference.

#### 5.1.4 - Post-sale conference (10/16)

A post-sale conference on site between the Purchaser and sale administrator is required 5 days prior to the completion of active logging operations to determine clean-up and repair of landings, road edges, and the fulfillment of other contract specifications.

### 5.2 - Conduct of Operations

#### 5.2.1 - Slash

##### 5.2.1.1 - Slash within sale area (9/16)

No trees are to be felled outside the sale area and all slash is to be kept at least 10 feet back from the red paint line. If sale boundary lines are along a public road or highway, then slash must be removed 50' from these lines per General Condition & Requirement 5.2.1.

##### 5.2.1.8 - Slash height (12/08)

No slash or tree tops may exceed 24 inches in height.

##### 5.2.1.11 - Slash for reforestation (5/07)

To facilitate reforestation, Payment Unit(s) 1-4 shall be left with slash evenly distributed. Bunched tops within the cutting area shall be broken up and scattered. Stumps shall be cut low to the ground. Processing sites shall not be left with a compacted layer of slash; tops from these sites shall be hauled back into the cut area and scattered.

#### 5.2.2 - Hazard Trees/Snags

##### 5.2.2.1 - Den trees (10/16)

Obvious hollow and/or den trees shall be protected and left standing unless they are a safety hazard.

#### 5.2.3 - Operating Restrictions

#### 5.2.3.1 - Operating restrictions (9/11)

Within Payment Unit(s) #'s 1-4, unless changed by written agreement, cutting, skidding, and hauling are not permitted during the winter months. This restriction is because of the low stumps needed for scarification.

#### 5.2.3.6 - Bark beetle restriction (12/08)

In the event drought creates a high risk of pine bark beetle infestation, pine is not to be cut during the period March 1 through July 1, unless all portions of trees greater than two inches in diameter are removed from the sale area, reduced to chips, or treated to the satisfaction of the Unit Manager or his/her representative, within fifteen days of being severed from the stump. Pine log decks, pulpwood piles and treetops that are piled for chipping in the fall or winter within a 1/4 mile of susceptible sites must be removed before March 15. Residual slash must not be placed in piles or rows and must be spread over the site for quick drying. The Department of Natural Resources will exercise this specification if the risk of damage warrants.

#### 5.2.30 - Landing/road top soil protection (2/15)

Top soil on landings and roads must be removed, stockpiled and saved. Upon completion of the timber sale, soil must be evenly distributed back over the area for revegetation. In addition, the area must be seeded and mulched per instructions of the sale administrator if deemed necessary.

#### 5.2.32 - Decking/landing restoration (9/13)

All decking and landing areas must have the surface area restored to a condition equal to or better than before. This is to ensure the proper regeneration of the stand. Wood debris, chips and "cookies" from trimmings must be removed or scattered away from landing and loading areas and may not be windrowed on the edge.

#### 5.2.38 - No decking against live trees (2/04)

Cut products may not be decked against unmarked or designated leave trees.

#### 5.2.39 - ORV trail/route protection (4/18)

The Silver Creek Trail is an ORV trail or route and is shown on the Timber Sale Map. Do not damage posts with yellow ORV markers. Trees with yellow ORV markers shall be cut off above the markers and at least 5 feet above ground. All stumps within 5 feet of the trail must be cut flush with the ground. All stumps within 5 feet of the trail must be cut off at least 5 feet above ground level. Maintain a 20 foot wide slash, debris, and rut free zone daily using the ORV trail or route as the centerline. Do not run equipment down the ORV trail or route. Skidding across the trail may only occur at right angles.

#### 5.2.41 - Snowmobile trail protection (9/11)

The snowmobile trail is shown on the Timber Sale Map. Do not cut or damage posts with orange trail markers or traffic control signs. If the trail is used, it must be maintained and restored to a condition equal to or better than before the sale. The road maintenance/restoration must be done prior to December 15. If the trail is used for hauling, it must be graded to the satisfaction of the Unit Manager or his/her representative prior to December 1st. If the trail road is to be used for hauling during the snowmobile season, then a snow covered base must be left on the trail. No decking of forest products will be permitted along the snowmobile trail. All stumps within 20 feet of the snowmobile trail must be cut at ground level.

### 5.4 - Soil Protection

#### 5.4.1 - Rutting restriction, general (7/16)

Operations are to cease immediately if equipment and weather conditions result in rutting of roads and/or skid trails which is 12 inches or greater in depth and 50 feet in length. The Unit Manager or his/her representative may restrict hauling and/or skidding if ruts exceed the specified depth. With the Unit Manager or his/her representative's approval, the Purchaser may return to the area when the risk of rutting has decreased.

#### 5.4.2 - Skid trails (2/04)

Skid trails up and down slopes should be avoided. If however this is unavoidable, these trails will be left in a non-erodible condition using water bars, logs, and slash. Placing of slash on these skid trails while logging is ongoing may alleviate need for any further action. At the direction of the sale administrator, seed, fertilizer, and mulch may also be required.

#### 5.4.4 - Slope protection (9/19)

Skid trails and roads on slopes shall be water barred with slash and stumps as soon as use is complete to prevent erosion.

### 5.8 - Protection of Endangered Species

#### 5.8.5 - Protection of raptor nests (3/13)

All trees with raptor nests will be protected if found during harvesting operations. Notification will be made to the Unit Manager or his/her representative who will notify the Wildlife Biologist so an on-site evaluation and recommendation can be made, if necessary.

## **6 - Safety and Fire Prevention**

### **6.2 - Signing**

#### **6.2.1 - Road posting (9/09)**

The Purchaser is responsible for posting and maintaining caution signs on County Road 455 prior to beginning operations. The road must be posted at appropriate distances from the sale area to warn of logging activity and truck traffic. Signs must be removed when harvest operations are suspended or completed. The Purchaser will provide these signs.

#### **6.2.2 - Snowmobile trail posting (8/09)**

The Purchaser is responsible for posting and maintaining caution signs on the snowmobile trail prior to beginning operations during the snowmobile season (approximately December 1 to March 31). The trail must be posted at appropriate distances from the sale area to warn of logging activity and truck traffic. Signs must be removed when harvest operations are suspended or completed. The Purchaser will provide these signs.

## **7 - Other Conditions**

### **7.3 - Contract Modifications**

#### **7.3.3 - Modification for reforestation (8/05)**

When contractual work of Purchaser has been accepted for any Payment Unit identified on Sale Area Map, Payment Unit will be eliminated from the Sale Area on written notice so that reforestation operations can begin.



# TIMBER SALE MAP

This information provided by authority of Part 525, 1994 PA 451, as amended.

Forest Management Unit Newberry	County Luce	Mapped By Lester Livermore	Date 09/20/2019	Page 1	of 1
Township 47N	Range 11W	Section(s) and Subdivision(s) Section 22 - SESW,S½SE Section 27 - N½NW,NE,NWSW,S½SW,SWSE Section 34 - N½NW, NWNE	Scale 1:15,840		

### Cover Type

A = Aspen	H = Hemlock	N = Marsh	U = Upland Brush
B = Paper Birch	J = Jack Pine	O = Oak	UM = Upland Mixed
C = Cedar	L = Lowland Brush	P = Lowland Poplar	V = Bog or Marsh
D = Treed Bog	LM = Lowland Mixed	Q = Mixed Swamp Conifer	W = White Pine
E = Swamp Hdwoods	M = Mpl, Bch, Brch	R = Red Pine	X = Non Stocked
F = Spruce Fir	MC = Mixed Conifer	S = Black Spruce	Z = Water
G = Grass	MD = Mixed Deciduous	T = Tamarack	

### Density

0 = Non Stocked	5 = Pole Timber Medium
1 = Seedling Sapling Poor	6 = Pole Timber Well
2 = Seedling Sapling Medium	7 = Saw Timber Poor
3 = Seedling Sapling Well	8 = Saw Timber Medium
4 = Pole Timber Poor	9 = Saw Timber Well

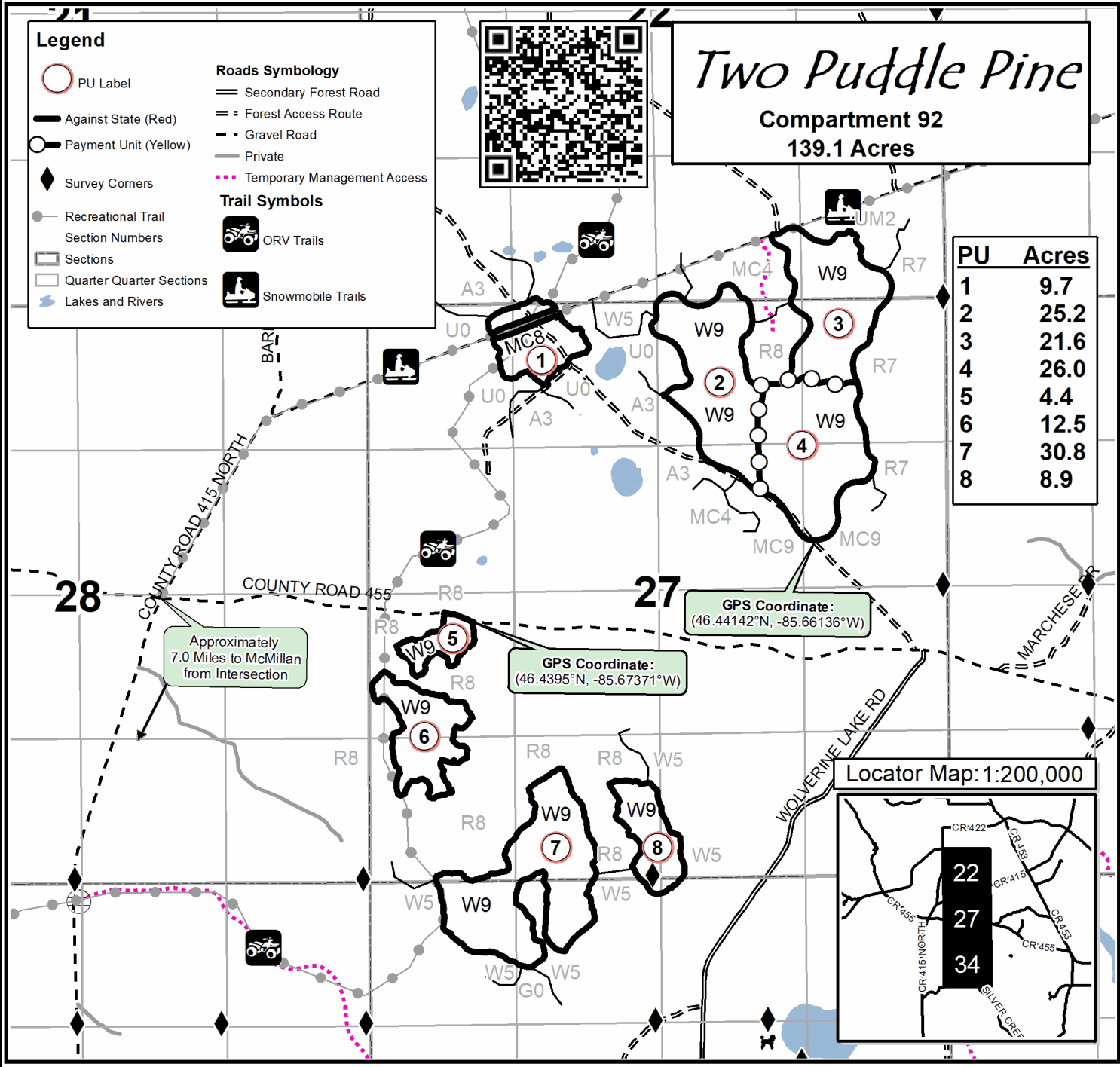
### Legend

- PU Label
  - Against State (Red)
  - Payment Unit (Yellow)
  - Survey Corners
  - Recreational Trail
  - Section Numbers
  - Sections
  - Quarter Quarter Sections
  - Lakes and Rivers
- Roads Symbology**
- Secondary Forest Road
  - Forest Access Route
  - Gravel Road
  - Private
  - Temporary Management Access
- Trail Symbols**
- ORV Trails
  - Snowmobile Trails



*Two Puddle Pine*  
**Compartment 92**  
**139.1 Acres**

PU	Acres
1	9.7
2	25.2
3	21.6
4	26.0
5	4.4
6	12.5
7	30.8
8	8.9

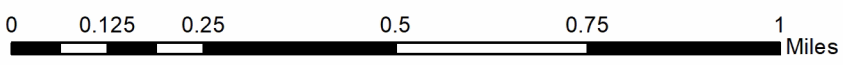
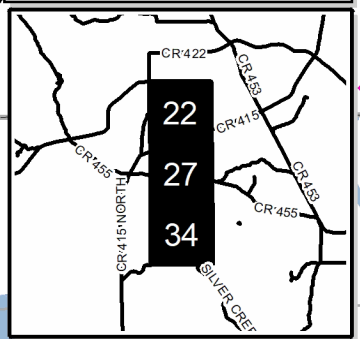


Approximately  
7.0 Miles to McMillan  
from Intersection

GPS Coordinate:  
(46.4395°N, -85.67371°W)

GPS Coordinate:  
(46.44142°N, -85.66136°W)

Locator Map: 1:200,000





Skyline Stihl (42-005-19)

T47N, R09W, SEC. 25; T47N, R09W, SEC. 26; T47N, R09W, SEC. 27; T47N,

In response to the notice of sale to be held 3:00 p.m. (local time) on June 11, 2020, I am hereby submitting my sealed bid (firm offer) for the following forest products to be cut. Bids for individual species must be at or above the advertised price. All non-responsive bid forms may be rejected.

<u>PRODUCTS &amp; SPECIES</u>	<u>ESTIMATED VOLUME*</u>	<u>ADVERTISED PRICE</u>	<u>BID PRICE/UNIT</u>
Pulpwood			
Balsam Fir	11.00 Cords	\$ 9.70/Cord	\$ _____
Jack Pine	2,235.00 Cords	\$ 29.60/Cord	\$ _____
Mixed Aspen	69.00 Cords	\$ 18.75/Cord	\$ _____
Mixed Hardwood	63.00 Cords	\$ 12.25/Cord	\$ _____
Mixed Spruce	885.00 Cords	\$ 12.75/Cord	\$ _____
N. White Cedar	7.00 Cords	\$ 6.00/Cord	\$ _____
Red Pine	703.00 Cords	\$ 52.95/Cord	\$ _____
Tamarack	67.00 Cords	\$ 8.30/Cord	\$ _____
White Pine	575.00 Cords	\$ 15.45/Cord	\$ _____

\*The volumes are statistically estimated within plus (+) or minus (-) 7.87 percent. These estimated volumes are final and not subject to adjustment. Prospective bidders are urged to examine this timber and to make their own estimates of quantity and quality.

I understand that any or all bids may be rejected. All bids must be signed and all bid items must be bid or the bid form may be rejected. I also understand that consideration and awarding a contract will be based upon my past performance and ability to complete the contract based upon equipment and staffing subject to my control.

FEDERAL ID: \_\_\_\_ - \_\_\_\_ - \_\_\_\_ or SOCIAL SECURITY NUMBER: \_\_\_\_ - \_\_\_\_ - \_\_\_\_

Company or individual bidding: \_\_\_\_\_

Company representative's name: \_\_\_\_\_

Address: \_\_\_\_\_

City: \_\_\_\_\_ State: \_\_\_\_\_ Zip: \_\_\_\_\_

IF AVAILABLE, PLEASE PLACE THE PERSONALIZED LABEL FROM YOUR PROSPECTUS IN THE ABOVE BOX.

Individual or company representative's signature: \_\_\_\_\_ Date: \_\_\_\_\_

Phone number : \_\_\_\_\_ Email (optional): \_\_\_\_\_

**THE WINNING BIDDER MUST COMPLETE THE VERIFICATION OF WORKER'S DISABILITY COMPENSATION ACT COMPLIANCE (ON REVERSE SIDE IF DOUBLE SIDED) WITHIN 21 DAYS OF SALE AWARD DATE**



FOR DEPARTMENT USE ONLY	
Sale Number (XX - XXX - XX - XX)	
Forest Management Unit:	

# TIMBER SALE VERIFICATION OF WORKER'S DISABILITY COMPENSATION ACT COMPLIANCE

As required by Act 317, P.A. 1969 (Worker's Compensation) and  
Part 5 of Act 451 of 1994, as amended.

## VERIFICATION OF WORKER'S DISABILITY COMPENSATION ACT COMPLIANCE

- This verification must be completed and submitted within 21 days of contract award and prior to the issuance of the timber sale contract.
- In addition, if boxes 2B or 2C are checked, then Notice of Exclusion or Certificate of Insurance must be submitted within twenty-one (21) days of the contract award and prior to the issuance of the timber sale contract.
- All information must be typed or printed except for written signatures.

Please Check Appropriate Categories:

1. My business is organized as (you **must** check one of the boxes below):
  - A.  Sole Proprietorship (individual)
  - B.  Partnership
  - C.  Corporation
2. You **must** check one of the boxes below:
  - A.  I certify my business is a sole proprietorship and it has no employees but the sole proprietor. I am not subject to the Worker's Compensation Laws.
  - B.  I certify my business has satisfied its obligation to the Worker's Compensation Act through the use of an approved Notice of Exclusion (BWC-337, Rev. 5/96). I will provide a copy of the Notice of Exclusion within 21 days of the contract award. (For questions or a copy of the BWC-337, please call the Worker's Compensation Bureau at 517-322-1195).
  - C.  I certify my business has a Worker's Compensation Policy. I will provide an original Certificate of Insurance within twenty-one (21) days of the contract award.
3. If you have checked item 2(A) or 2(B), you **must** indicate the number of **both** full-time and part-time employees, other than yourself, including family members and active partners (if none, you must enter "0").

\_\_\_\_\_ Full-time Employees

\_\_\_\_\_ Part-time Employees

Name of Business		Federal ID (or) Social Security No.	
Address		Telephone (       )	
City	State	ZIP	

*I hereby certify that the above information is true and correct. I agree to notify the Michigan DNR of any changes that occur in factors affecting my coverage during any of my present and future operations.*

\_\_\_\_\_  
Signature of Owner or Authorized Representative

\_\_\_\_\_  
Title

\_\_\_\_\_  
Date

Please complete the "SEALED BID" information on the next page



C58 Pine (42-017-19)

T49N, R06W, SEC. 18; T49N, R06W, SEC. 7; T49N, R07W, SEC. 12; T49N, R07W,

In response to the notice of sale to be held 3:00 p.m. (local time) on June 11, 2020, I am hereby submitting my sealed bid (firm offer) for the following forest products to be cut. Bids for individual species must be at or above the advertised price. All non-responsive bid forms may be rejected.

<u>PRODUCTS &amp; SPECIES</u>	<u>ESTIMATED VOLUME*</u>	<u>ADVERTISED PRICE</u>	<u>BID PRICE/UNIT</u>
<b>Sawtimber</b>			
Paper Birch	0.90 MBF	\$ 46.00/MBF	\$ _____
<b>Pulpwood</b>			
Balsam Fir	23.00 Cords	\$ 8.90/Cord	\$ _____
Jack Pine	1,748.00 Cords	\$ 27.15/Cord	\$ _____
Mixed Aspen	317.00 Cords	\$ 17.20/Cord	\$ _____
Mixed Hardwood	314.00 Cords	\$ 11.25/Cord	\$ _____
Mixed Spruce	196.00 Cords	\$ 11.70/Cord	\$ _____
Red Oak	4.00 Cords	\$ 20.95/Cord	\$ _____
Red Pine	1,190.00 Cords	\$ 48.55/Cord	\$ _____
White Pine	370.00 Cords	\$ 14.20/Cord	\$ _____

\*The volumes are statistically estimated within plus (+) or minus (-) 7.80 percent. These estimated volumes are final and not subject to adjustment. Prospective bidders are urged to examine this timber and to make their own estimates of quantity and quality.

I understand that any or all bids may be rejected. All bids must be signed and all bid items must be bid or the bid form may be rejected. I also understand that consideration and awarding a contract will be based upon my past performance and ability to complete the contract based upon equipment and staffing subject to my control.

FEDERAL ID: \_\_\_\_ - \_\_\_\_ - \_\_\_\_ or SOCIAL SECURITY NUMBER: \_\_\_\_ - \_\_\_\_ - \_\_\_\_

Company or individual bidding: \_\_\_\_\_

Company representative's name: \_\_\_\_\_

Address: \_\_\_\_\_

City: \_\_\_\_\_ State: \_\_\_\_\_ Zip: \_\_\_\_\_

IF AVAILABLE, PLEASE PLACE THE PERSONALIZED LABEL FROM YOUR PROSPECTUS IN THE ABOVE BOX.

Individual or company representative's signature: \_\_\_\_\_ Date: \_\_\_\_\_

Phone number : \_\_\_\_\_ Email (optional): \_\_\_\_\_

**THE WINNING BIDDER MUST COMPLETE THE VERIFICATION OF WORKER'S DISABILITY COMPENSATION ACT COMPLIANCE (ON REVERSE SIDE IF DOUBLE SIDED) WITHIN 21 DAYS OF SALE AWARD DATE**



FOR DEPARTMENT USE ONLY	
Sale Number (XX - XXX - XX - XX)	
Forest Management Unit:	

## TIMBER SALE VERIFICATION OF WORKER'S DISABILITY COMPENSATION ACT COMPLIANCE

As required by Act 317, P.A. 1969 (Worker's Compensation) and  
Part 5 of Act 451 of 1994, as amended.

### VERIFICATION OF WORKER'S DISABILITY COMPENSATION ACT COMPLIANCE

- This verification must be completed and submitted within 21 days of contract award and prior to the issuance of the timber sale contract.
- In addition, if boxes 2B or 2C are checked, then Notice of Exclusion or Certificate of Insurance must be submitted within twenty-one (21) days of the contract award and prior to the issuance of the timber sale contract.
- All information must be typed or printed except for written signatures.

Please Check Appropriate Categories:

1. My business is organized as (you **must** check one of the boxes below):
  - A.  Sole Proprietorship (individual)
  - B.  Partnership
  - C.  Corporation
2. You **must** check one of the boxes below:
  - A.  I certify my business is a sole proprietorship and it has no employees but the sole proprietor. I am not subject to the Worker's Compensation Laws.
  - B.  I certify my business has satisfied its obligation to the Worker's Compensation Act through the use of an approved Notice of Exclusion (BWC-337, Rev. 5/96). I will provide a copy of the Notice of Exclusion within 21 days of the contract award. (For questions or a copy of the BWC-337, please call the Worker's Compensation Bureau at 517-322-1195).
  - C.  I certify my business has a Worker's Compensation Policy. I will provide an original Certificate of Insurance within twenty-one (21) days of the contract award.
3. If you have checked item 2(A) or 2(B), you **must** indicate the number of **both** full-time and part-time employees, other than yourself, including family members and active partners (if none, you must enter "0").

\_\_\_\_\_ Full-time Employees

\_\_\_\_\_ Part-time Employees

Name of Business		Federal ID (or) Social Security No.	
Address		Telephone (       )	
City	State	ZIP	

*I hereby certify that the above information is true and correct. I agree to notify the Michigan DNR of any changes that occur in factors affecting my coverage during any of my present and future operations.*

\_\_\_\_\_  
Signature of Owner or Authorized Representative

\_\_\_\_\_  
Title

\_\_\_\_\_  
Date

Please complete the "SEALED BID" information on the next page

Two Puddle Pine (42-020-19)  
T47N, R11W, SEC. 22; T47N, R11W, SEC. 27; T47N, R11W, SEC. 34; Luce

In response to the notice of sale to be held 3:00 p.m. (local time) on June 11, 2020, I am hereby submitting my sealed bid (firm offer) for the following forest products to be cut. Bids for individual species must be at or above the advertised price. All non-responsive bid forms may be rejected.

<u>PRODUCTS &amp; SPECIES</u>	<u>ESTIMATED VOLUME*</u>	<u>ADVERTISED PRICE</u>	<u>BID PRICE/UNIT</u>
Pulpwood			
Black Cherry	11.00 Cords	\$ 11.25/Cord	\$ _____
Jack Pine	164.00 Cords	\$ 27.15/Cord	\$ _____
Quaking Aspen	178.00 Cords	\$ 17.20/Cord	\$ _____
Red Pine	429.00 Cords	\$ 48.55/Cord	\$ _____
White Pine	2,025.00 Cords	\$ 14.20/Cord	\$ _____
White Spruce	14.00 Cords	\$ 11.70/Cord	\$ _____

\*The volumes are statistically estimated within plus (+) or minus (-) 9.53 percent. These estimated volumes are final and not subject to adjustment. Prospective bidders are urged to examine this timber and to make their own estimates of quantity and quality.

I understand that any or all bids may be rejected. All bids must be signed and all bid items must be bid or the bid form may be rejected. I also understand that consideration and awarding a contract will be based upon my past performance and ability to complete the contract based upon equipment and staffing subject to my control.

FEDERAL ID: \_\_\_\_ - \_\_\_\_ - \_\_\_\_ or SOCIAL SECURITY NUMBER: \_\_\_\_ - \_\_\_\_ - \_\_\_\_

Company or individual bidding: \_\_\_\_\_

Company representative's name: \_\_\_\_\_

Address: \_\_\_\_\_

City: \_\_\_\_\_ State: \_\_\_\_\_ Zip: \_\_\_\_\_

IF AVAILABLE, PLEASE PLACE THE PERSONALIZED LABEL FROM YOUR PROSPECTUS IN THE ABOVE BOX.

Individual or company representative's signature: \_\_\_\_\_ Date: \_\_\_\_\_

Phone number : \_\_\_\_\_ Email (optional): \_\_\_\_\_

**THE WINNING BIDDER MUST COMPLETE THE VERIFICATION OF WORKER'S DISABILITY COMPENSATION ACT COMPLIANCE (ON REVERSE SIDE IF DOUBLE SIDED) WITHIN 21 DAYS OF SALE AWARD DATE**



<b>FOR DEPARTMENT USE ONLY</b>
Sale Number (XX - XXX - XX - XX)
Forest Management Unit:

## TIMBER SALE VERIFICATION OF WORKER'S DISABILITY COMPENSATION ACT COMPLIANCE

*As required by Act 317, P.A. 1969 (Worker's Compensation) and  
Part 5 of Act 451 of 1994, as amended.*

### VERIFICATION OF WORKER'S DISABILITY COMPENSATION ACT COMPLIANCE

- This verification must be completed and submitted within 21 days of contract award and prior to the issuance of the timber sale contract.
- In addition, if boxes 2B or 2C are checked, then Notice of Exclusion or Certificate of Insurance must be submitted within twenty-one (21) days of the contract award and prior to the issuance of the timber sale contract.
- All information must be typed or printed except for written signatures.

Please Check Appropriate Categories:

1. My business is organized as (you **must** check one of the boxes below):
  - A.  Sole Proprietorship (individual)
  - B.  Partnership
  - C.  Corporation
  
2. You **must** check one of the boxes below:
  - A.  I certify my business is a sole proprietorship and it has no employees but the sole proprietor. I am not subject to the Worker's Compensation Laws.
  - B.  I certify my business has satisfied its obligation to the Worker's Compensation Act through the use of an approved Notice of Exclusion (BWC-337, Rev. 5/96). I will provide a copy of the Notice of Exclusion within 21 days of the contract award. (For questions or a copy of the BWC-337, please call the Worker's Compensation Bureau at 517-322-1195).
  - C.  I certify my business has a Worker's Compensation Policy. I will provide an original Certificate of Insurance within twenty-one (21) days of the contract award.
  
3. If you have checked item 2(A) or 2(B), you **must** indicate the number of **both** full-time and part-time employees, other than yourself, including family members and active partners (if none, you must enter "0").

\_\_\_\_\_ Full-time Employees

\_\_\_\_\_ Part-time Employees

Name of Business		Federal ID (or) Social Security No.	
Address		Telephone (       )	
City	State	ZIP	

*I hereby certify that the above information is true and correct. I agree to notify the Michigan DNR of any changes that occur in factors affecting my coverage during any of my present and future operations.*

\_\_\_\_\_  
Signature of Owner or Authorized Representative

\_\_\_\_\_  
Title

\_\_\_\_\_  
Date

**Please complete the "SEALED BID" information on the next page**