



**DEPARTMENT OF NATURAL RESOURCES
STATE OF MICHIGAN**

TIMBER SALE PROSPECTUS #6871

SCHEDULED SALE DATE AND TIME: 10:00 a.m. (local time) on September 21, 2021.

LOCATION: ATLANTA MGMT UNIT, 13501 M 33, ATLANTA, MI 49709.

PROSPECTUS NOTE: The bidder is advised to inspect the sale area and review the location, estimated volumes, operating costs and contract terms of proposed sales. Please be aware that some landowners may request 60 days or more notice for access across their land.

Notice is hereby given that bids will be received by the Unit Manager, ATLANTA MANAGEMENT UNIT, for certain timber on the following described lands:

Badger Beatdown Mix (54-002-20) / T32N, R03E, SEC. 1 , NW,NWNE.

T32N, R03E, SEC. 2 , NW,NE,NESW,NWSE.

T32N, R03E, SEC. 3 , NENE.

Montmorency County, Advertised Price \$155,379.20, 224.9 Acres, Aspen, Hardwood.

Fertilized Red Pine (54-017-20) / T32N, R03E, SEC. 34, SENE,N1/2SE.

Montmorency County, Advertised Price \$7,375.45, 16.1 Acres, Red Pine, Hardwood.

SALE NOTE: This is a smaller sale removing all overstory trees. Off of two county roads, a dry site.

CR 628 and Voyer Aspen (54-020-20) / T31N, R03E, SEC. 3 , SENW.

T32N, R03E, SEC. 22, SESW,SE.

T32N, R03E, SEC. 27, NENW,E1/2SW,W1/2SE.

T32N, R03E, SEC. 34, NENW,NWNE,NWSW,S1/2SW.

Montmorency County, Advertised Price \$195,381.10, 181.3 Acres, Aspen, Hardwood.

CR 628 and Boden Aspen (54-021-20) / T32N, R03E, SEC. 24, S1/2NW,NESW,NWSE.

Montmorency County, Advertised Price \$111,441.80, 72.7 Acres, Aspen, Red Oak.

BID INSTRUCTIONS (VER. 07/02/2018):

1. Scheduled Bid Location, Date, and Time (2/11)

Bids must be received by the Unit Manager, ATLANTA OFFICE, 13501 M 33, ATLANTA, MI 49709, no later than 10:00 a.m. (local time) on September 21, 2021. For further information concerning this sale, contact Cody Stevens at 989-785-4251 extension 5240.

2. Bidder's Qualifications (5/16)

Purchaser shall obtain workers compensation insurance to cover claims under Michigan's Worker's Disability Compensation Act of 1969 or similar employee benefit act of any other state applicable to an employee. If all or part of a timber sale was prepared by a private contractor, the contractor and that contractor's company are not permitted to bid on the timber sale contract. Bids will not be accepted from individuals or companies appearing on the DNR/FRD No-Bid List. This list contains the names of purchasers who previously failed to execute a contract within 21-days or who have a history of poor performance.

3. Preparation of Sealed Bids (5/16)

Bid Forms may be completed online thru Michigan DNR Timber Sale Online Bidding (OLB) at www.michigan.gov/timberbidding or by completing the hardcopy Bid Form found in the Timber Sale Prospectus. Hardcopy Bid Forms shall be manually signed in ink. Registration in OLB is considered your 'signature' for all bids submitted thru that system. Bid prices must be entered for each species and product in the Bid Price column for all material subject to bidding and all fill-in blanks must be completed. If erasures or other changes appear on the hardcopy Bid Form, each erasure or change must be initialed by the person signing the bid.

4. Submission of Sealed Bids (5/16)

Bid forms may be obtained from the Unit Manager or thru OLB. Bids may be submitted hardcopy or thru OLB. All hardcopy bids must be submitted on the bid form and in an envelope clearly identified as described in this section. NOTE: Only one bid form per bid envelope. Sealed bids must be submitted to the Unit office designated in the prospectus and must be submitted at or prior to the time established in the prospectus. The envelope should show on the outside (a) the sale name or number and (b) the date and time of bid opening, as shown in the prospectus. Bids received after the time specified in the sale prospectus are late bids and will be rejected.

It is possible for a bidder to submit multiple bids on a single sale. For example, a bid may be submitted hardcopy and a bid may be submitted thru OLB. Or, two bidders from the same company could both submit bids on the same sale. If this were to happen, the State would accept all bids received and award the contract accordingly. All bidding and contractual requirements would apply to all bids received.

5. Public Opening of Sealed Bids (7/16)

If conditions permit, the sealed bids will be publicly opened and posted at the time and place set in the prospectus.

If a bidder, present at a bid opening, has submitted bids on more than one sale, that bidder may withdraw their unopened bid envelopes or announce the withdrawal of their online bid after being declared the successful bidder on one sale.

6. Award of Contract (1/11)

Award of the contract will be made to the Bidder whose bid, conforming to the prospectus, is most advantageous to the State of Michigan on the basis of total value at rates bid for the estimated quantities. The State reserves the right to reject any bid or waive any minor irregularity in bids received. A written award mailed (or otherwise furnished) to the successful Bidder shall be deemed to result in a binding contract without further action by either party.

7. Down Payment (1/11)

The Bidder to whom award is made must make a down payment within 21 days of the sale award. The amount of the down payment will be calculated as shown in the Bond and Payment Schedule of this prospectus. Only cash may be used to meet this requirement.

8. Performance Security (1/11)

As guarantee of faithful performance, a cash bond, certificate of deposit, surety bond or irrevocable letter of credit (LOC) is required within 21 days of the sale award. The amount of the performance security is shown in the Bond and

Payment Schedule of this prospectus. If an LOC or surety is used, the coverage must extend for at least 6 months beyond the contract expiration.

9. Timber Sale Contract (7/18)

Additional conditions and requirements common to all timber sales are listed on the timber sale contract (R4031) and are available on line at www.michigan.gov/timber. Contact the Unit Manager for additional information or a sample contract. Within 21 days of the date of the award letter, the bidder must sign the contract and provide the required down payment, performance security, and verification of worker's disability compensation. The down payment and performance security shall be in accordance with the provisions of the timber sale contract, in the sums stated in this prospectus. If these actions are not taken, then the Bidder, the Bidder's corporation, and the corporation's principals may not be permitted to bid on State timber sales for a period of 3 months after the first offense, 6 months after the second offense, and 1 year after the third offense. An offense will only be counted against the Bidder for 5 years. In addition, the Bidder certifies that if awarded this contract, the Bidder will complete the timber sale contract in accordance with its terms and any modifications thereof including requirements to purchase, cut, and remove the included timber by the expiration date.

Payment Unit values in the State Forest Timber Sale Contract are calculated based on the advertised value of the Payment Unit as a percentage of the total advertised value of the contract. The advertised value of each Payment Unit is given in the Description of Timber by Payment Unit table on the Timber Sale Information page. For example, if the value of Payment Unit 1 is advertised as \$1,500 and the total Timber Sale value is advertised as \$10,000, the contract price for Payment Unit 1 will be 15% of the total bid price ($\$1,500/\$10,000 * 100$).

10. Disclaimer of Estimates and Bidder's Warranty of Inspection (7/16)

Before submitting this bid, the Bidder is advised and cautioned to inspect the sale area, review the requirements of the sale contract, and take other steps as may be reasonably necessary to ascertain the location, estimated volumes, construction estimates, and operating costs of the proposed sale. Failure to do so will not relieve the Bidder from responsibility for completing the contract.

The Bidder warrants that this bid is submitted solely on the basis of the Bidder's examination and inspection of the quality and quantity of the timber offered for sale and the Bidder's opinion of the value thereof and the costs of recovery. No reliance should be placed on the State of Michigan's estimates of timber quality, quantity or costs of recovery. Bidder further acknowledges that the State of Michigan: (i) expressly disclaims any warranty of fitness of timber for any purpose; (ii) offers this timber as is without any warranty of quality (merchantability) or quantity and (iii) expressly disclaims any warranty as to the quantity or quality of timber sold.

11. Certification and Chain-of-Custody (10/14)

Unless otherwise indicated in the contract under section 7 – Other Conditions of the Sale Specific Conditions & Requirements, the area encompassed by this timber sale is certified to the standards of the Forest Stewardship Council (FSC) - Certificate #SCS-FM/COC-00090N and the Sustainable Forestry Initiative (SFI) - Certificate #NSF-SFIS-5Y031-SF5. Forest products from this sale may be delivered to the mill as "FSC 100% and / or SFI certified" as long as the contractor hauling the forest products is chain-of-custody (COC) certified or covered under a COC certificate from the destination mill. The purchaser is responsible for maintaining COC after leaving the sale area.

12. Good Neighbor Authority (GNA) Requirements (7/16)

If the name of this timber sales contains the acronym GNA, it is authorized by the Good Neighbor Authority (GNA) and covered by various agreements between the U.S. Forest Service and the State. The timber sale occurs on federal land and the following conditions apply:

GNA contracts on US Forest Service land will not be awarded to purchasers on the Federal list of excluded parties. The System for Award Management (SAM) will be checked for active excluded parties prior to award of contract. In addition, the Bidder to whom award is made must complete an Assurance Regarding Felony Conviction or Tax Delinquent Status for Corporate Applicants (AD-3031).

13. Good Neighbor Authority (GNA) Requirements, con't (9/16)

Bidder certifies, by signing this bid form, that to the best of Bidder's knowledge that the following representations are accurate and complete.

- a. That the Bidder and its principals are not presently debarred, suspended, proposed for debarment, declared ineligible, or voluntary excluded from timber sales (covered transactions) by any Federal department or agency.
- b. That the Bidder and its principals have not within a 3-year period preceding this bid been convicted of or had a civil judgment rendered against them for commission of fraud or a criminal offense in connection with obtaining , attempting to obtain, or performing a public (Federal, State, or local) transaction or contract under a public transaction; violation of Federal or State antitrust statutes or commission of embezzlement, theft, forgery, bribery, falsification or destruction of records, making false statements, or receiving stolen property.
- c. That the Bidder and its principals are not presently indicted for or otherwise criminally or civilly charged by a governmental entity (Federal, State, or local) with commission of any of the offenses enumerated in paragraph b of this certification.
- d. That the Bidder and its principals have not within a 3-year period preceding this bid had one or more public transactions (Federal, State, or local) terminated for breach or default of a timber or forest product contract.

Bidders that cannot certify this requirement, in whole or in part, shall submit an explanation with their bid.

DAN EICHINGER
Director

TIMBER SALE INFORMATION

Badger Beatdown Mix (54-002-20)

T32N, R03E, SEC. 1; T32N, R03E, SEC. 2; T32N, R03E, SEC. 3.
Montmorency County (Advertised Price \$155,379.20)

A timber sale contract for this lump sum, sealed bid timber sale will be awarded to the responsible bidder offering the highest sealed bid price. All units of volume listed below were estimated using the T-Sale computer program and our traditional volume equations. Bids must be at or above the following advertised price for each product and species:

<u>PRODUCTS & SPECIES</u>	<u>ESTIMATED UNITS*</u>	<u>ADVERTISED PRICE</u>
Sawtimber		
Basswood	2.7 MBF	\$ 53.00 / MBF
Mixed Aspen	125.0 MBF	\$ 137.00 / MBF
Red Maple	10.5 MBF	\$ 81.00 / MBF
Red Pine	3.9 MBF	\$ 86.00 / MBF
Sugar Maple	5.1 MBF	\$ 354.00 / MBF
White Spruce	3.6 MBF	\$ 38.00 / MBF
Pulpwood		
Balsam Fir	336 Cords	\$ 20.25 / Cord
Mixed Aspen	2,630 Cords	\$ 34.45 / Cord
Mixed Hardwood	1,195 Cords	\$ 30.40 / Cord
Red Oak	11 Cords	\$ 53.30 / Cord
Red Pine	3 Cords	\$ 31.30 / Cord
White Pine	21 Cords	\$ 13.30 / Cord
White Spruce	36 Cords	\$ 8.00 / Cord

* The total volume is statistically estimated within plus (+) or minus (-) 11.90 percent. There are an estimated 4,711 cords on this timber sale, plus or minus 561 cords at the 95% confidence level. The estimated units are final and not subject to adjustment. Prospective bidders are urged to examine this timber and to make their own estimates of quantity and quality.

BOND AND PAYMENT SCHEDULE:

1. A bond in the amount of \$7,769.00 to insure faithful performance of the conditions of the contract will be deposited by the successful bidder within 21 days of the sale award.
2. Cutting in any sale or unit without the required advance payment would be considered a trespass.
3. Total payment must be paid in advance or according to the following schedule :
 - (a) Ten percent (10%) of the sale value must be paid within 21 days of the sale award.
 - (b) The 10% down payment will be credited towards the first unit cut.
 - (c) Payment for each of the following units must be made before cutting begins in that unit:

PAYMENT UNIT NUMBER	PERCENT OF TOTAL SALE VALUE
01	11.9%
02	11.8%
03	12.4%
04	15.8%
05	16.0%
06	15.1%
07	14.0%
08	0.3%
09	2.4%
10	0.3%

4. If no cutting takes place, the 10% down payment will not be refunded.
5. Operations on the contract issued will terminate on 12/31/2024.

SALE STATISTICS

SALE VOLUMES

VOLUME		STATISTICAL RANGE IN CORDS		
TOTAL CUBIC FEET	TOTAL CORDS	PERCENT ERROR	MINIMUM	MAXIMUM
372,145	4,711	11.90%	4,150	5,271

VDU VOLUMES

A VDU is a Volume Determination Unit. Volumes and their associated statistics are calculated at the VDU level and summarized to the sale level. There is often a one to one relationship between a VDU and a Payment Unit, but not always, depending on the cruise design. Refer to the VDU TO PAYMENT UNIT table.

VDU	VOLUME		PERCENT ERROR	RANGE IN CORDS	
	TOTAL CUBIC FEET	TOTAL CORDS		MINIMUM	MAXIMUM
3	260,676	3,300	13.40%	2,858	3,742
6	1,541	20	43.49%	11	28
7	664	8	78.35%	2	15
9	8,974	114	36.08%	73	155
25	99,311	1,257	14.08%	1,080	1,434
67	980	12	50.60%	6	19
TOTAL:	372,145	4,711		4,029	5,392

VDU TO PAYMENT UNIT

When a VDU is associated with more than one Payment Unit (PU), the VDU volumes are assigned to the PU based on acres of the VDU within the PU.

VDU	VDU ACRES	PU	PU ACRES
3	134.2	3	22.7
		4	28.8
		5	29.5
		6	27.5
		7	25.7
6	2.5	10	2.5
7	2.1	10	2.1
9	28.4	9	28.4
25	52.9	1	26.6
		2	26.3
67	4.8	8	4.8
TOTAL:	224.9		224.9

DESCRIPTION OF TIMBER BY PAYMENT UNIT (PU)

PU	MARKET GROUP	PRODUCT	QUANTITY	UNIT	ACRES	ADVERTISE PRICE	
1	Mixed Aspen	Sawtimber	10.8	MBF	26.6	\$18,537.30	
	<i>B. T. Aspen</i>		7.5	<i>MBF</i>			
	<i>Quaking Aspen</i>		3.3	<i>MBF</i>			
	Red Maple		2.9	MBF			
	Red Pine		2.0	MBF			
	Sugar Maple		0.4	MBF			
	Balsam Fir		Pulpwood	79			Cords
	Mixed Aspen			261			Cords
	<i>B. T. Aspen</i>			55			<i>Cords</i>
	<i>Quaking Aspen</i>			206			<i>Cords</i>
	Mixed Hardwood			187			Cords
	<i>Paper Birch</i>			13			<i>Cords</i>
	<i>Red Maple</i>			117			<i>Cords</i>
	<i>Sugar Maple</i>			57			<i>Cords</i>
	Red Oak			2			Cords
	Red Pine			2			Cords
	White Spruce		8	Cords			
2	Mixed Aspen	Sawtimber	10.7	MBF	26.3	\$18,274.10	
	<i>B. T. Aspen</i>		7.4	<i>MBF</i>			
	<i>Quaking Aspen</i>		3.3	<i>MBF</i>			
	Red Maple		3.0	MBF			
	Red Pine		1.9	MBF			
	Sugar Maple		0.3	MBF			
	Balsam Fir		Pulpwood	80			Cords
	Mixed Aspen			258			Cords
	<i>B. T. Aspen</i>			54			<i>Cords</i>
	<i>Quaking Aspen</i>			204			<i>Cords</i>
	Mixed Hardwood			184			Cords
	<i>Paper Birch</i>			13			<i>Cords</i>
	<i>Red Maple</i>			115			<i>Cords</i>
	<i>Sugar Maple</i>			56			<i>Cords</i>
	Red Oak			2			Cords
	Red Pine			1			Cords
	White Spruce		7	Cords			
3	Basswood	Sawtimber	0.3	MBF	22.7	\$19,271.80	
	Mixed Aspen		17.3	MBF			
	<i>B. T. Aspen</i>		12.0	<i>MBF</i>			
	<i>Quaking Aspen</i>		5.3	<i>MBF</i>			
	Red Maple		0.8	MBF			
	Sugar Maple		0.7	MBF			
	White Spruce		0.6	MBF			
	Balsam Fir		Pulpwood	30			Cords
	Mixed Aspen			352			Cords
	<i>B. T. Aspen</i>			120			<i>Cords</i>
	<i>Balsam Poplar</i>			4			<i>Cords</i>
	<i>Quaking Aspen</i>			228			<i>Cords</i>
	Mixed Hardwood			123			Cords
	<i>Basswood</i>			3			<i>Cords</i>
	<i>Beech</i>			8			<i>Cords</i>
	<i>Ironwood</i>			1			<i>Cords</i>
	<i>Paper Birch</i>			5			<i>Cords</i>
	<i>Red Maple</i>			73			<i>Cords</i>
	<i>Sugar Maple</i>			33			<i>Cords</i>
	Red Oak			1			Cords
	White Spruce			3			Cords
4	Basswood	Sawtimber	0.4	MBF	28.8	\$24,549.30	

DESCRIPTION OF TIMBER BY PAYMENT UNIT (PU), CON'T

PU	MARKET GROUP	PRODUCT	QUANTITY	UNIT	ACRES	ADVERTISE PRICE	
4 con't	Mixed Aspen	Sawtimber	22.0	MBF			
	<i>B. T. Aspen</i>		15.3	<i>MBF</i>			
	<i>Quaking Aspen</i>		6.7	<i>MBF</i>			
	Red Maple		1.0	MBF			
	Sugar Maple		0.9	MBF			
	White Spruce		0.8	MBF			
	Balsam Fir		Pulpwood	38			Cords
	Mixed Aspen			448			Cords
	<i>B. T. Aspen</i>			153			<i>Cords</i>
	<i>Balsam Poplar</i>			5			<i>Cords</i>
	<i>Quaking Aspen</i>			290			<i>Cords</i>
	Mixed Hardwood			156			Cords
	<i>Basswood</i>			4			<i>Cords</i>
	<i>Beech</i>			11			<i>Cords</i>
	<i>Ironwood</i>			2			<i>Cords</i>
	<i>Paper Birch</i>			6			<i>Cords</i>
	<i>Red Maple</i>			92			<i>Cords</i>
	<i>Sugar Maple</i>			41			<i>Cords</i>
	Red Oak			2			Cords
	White Spruce			4			Cords
5	Basswood	Sawtimber		0.4	MBF	29.5	\$24,959.80
	Mixed Aspen			22.4	MBF		
	<i>B. T. Aspen</i>			15.7	<i>MBF</i>		
	<i>Quaking Aspen</i>			6.7	<i>MBF</i>		
	Red Maple			1.0	MBF		
	Sugar Maple			0.8	MBF		
	White Spruce		0.8	MBF			
	Balsam Fir		Pulpwood	39	Cords		
	Mixed Aspen			457	Cords		
	<i>B. T. Aspen</i>			157	<i>Cords</i>		
	<i>Balsam Poplar</i>			4	<i>Cords</i>		
	<i>Quaking Aspen</i>			296	<i>Cords</i>		
	Mixed Hardwood			158	Cords		
	<i>Basswood</i>			4	<i>Cords</i>		
	<i>Beech</i>			11	<i>Cords</i>		
	<i>Ironwood</i>			1	<i>Cords</i>		
	<i>Paper Birch</i>			6	<i>Cords</i>		
	<i>Red Maple</i>			94	<i>Cords</i>		
	<i>Sugar Maple</i>			42	<i>Cords</i>		
	Red Oak			2	Cords		
White Spruce	4	Cords					
6	Basswood	Sawtimber		0.4	MBF	27.5	\$23,399.80
	Mixed Aspen			21.0	MBF		
	<i>B. T. Aspen</i>			14.6	<i>MBF</i>		
	<i>Quaking Aspen</i>			6.4	<i>MBF</i>		
	Red Maple			0.9	MBF		
	Sugar Maple			0.8	MBF		
	White Spruce		0.7	MBF			
	Balsam Fir		Pulpwood	36	Cords		
	Mixed Aspen			428	Cords		
	<i>B. T. Aspen</i>			146	<i>Cords</i>		
	<i>Balsam Poplar</i>			5	<i>Cords</i>		
	<i>Quaking Aspen</i>			277	<i>Cords</i>		
	Mixed Hardwood			150	Cords		
	<i>Basswood</i>			4	<i>Cords</i>		
	<i>Beech</i>			10	<i>Cords</i>		

DESCRIPTION OF TIMBER BY PAYMENT UNIT (PU), CON'T

PU	MARKET GROUP	PRODUCT	QUANTITY	UNIT	ACRES	ADVERTISE PRICE			
6 con't	<i>Ironwood</i>	<i>Pulpwood</i>	2	<i>Cords</i>					
	<i>Paper Birch</i>		6	<i>Cords</i>					
	<i>Red Maple</i>		88	<i>Cords</i>					
	<i>Sugar Maple</i>		40	<i>Cords</i>					
	Red Oak		1	<i>Cords</i>					
	White Spruce		4	<i>Cords</i>					
7	Basswood	Sawtimber	0.4	MBF	25.7	\$21,826.05			
	Mixed Aspen		19.6	MBF					
	<i>B. T. Aspen</i>		13.6	<i>MBF</i>					
	<i>Quaking Aspen</i>		6.0	<i>MBF</i>					
	Red Maple		0.9	MBF					
	Sugar Maple		0.8	MBF					
	White Spruce		0.7	MBF					
	Balsam Fir		Pulpwood	34			<i>Cords</i>		
	Mixed Aspen			399			<i>Cords</i>		
	<i>B. T. Aspen</i>			136			<i>Cords</i>		
	<i>Balsam Poplar</i>			4			<i>Cords</i>		
	<i>Quaking Aspen</i>	259		<i>Cords</i>					
	Mixed Hardwood	139		<i>Cords</i>					
	<i>Basswood</i>	4		<i>Cords</i>					
	<i>Beech</i>	9		<i>Cords</i>					
	<i>Ironwood</i>	2		<i>Cords</i>					
	<i>Paper Birch</i>	5		<i>Cords</i>					
	<i>Red Maple</i>	82		<i>Cords</i>					
	<i>Sugar Maple</i>	37		<i>Cords</i>					
	Red Oak	1	<i>Cords</i>						
	White Spruce	3	<i>Cords</i>						
	8	Mixed Aspen	Pulpwood	7			<i>Cords</i>	4.8	\$423.55
		<i>Quaking Aspen</i>		7			<i>Cords</i>		
Mixed Hardwood		6		<i>Cords</i>					
<i>Sugar Maple</i>		6		<i>Cords</i>					
9	Basswood	Sawtimber	0.8	MBF	28.4	\$3,677.95			
	Mixed Aspen		1.2	MBF					
	<i>B. T. Aspen</i>		1.2	<i>MBF</i>					
	Sugar Maple	Pulpwood	0.4	MBF					
	Mixed Aspen		15	<i>Cords</i>					
	<i>B. T. Aspen</i>		15	<i>Cords</i>					
	Mixed Hardwood		92	<i>Cords</i>					
	<i>Basswood</i>		9	<i>Cords</i>					
	<i>Beech</i>		60	<i>Cords</i>					
	<i>Paper Birch</i>		2	<i>Cords</i>					
	<i>Red Maple</i>		2	<i>Cords</i>					
	<i>Sugar Maple</i>		19	<i>Cords</i>					
	White Spruce		2	<i>Cords</i>					
10	Mixed Aspen	Pulpwood	5	<i>Cords</i>	4.6	\$459.55			
	<i>B. T. Aspen</i>		3	<i>Cords</i>					
	<i>Quaking Aspen</i>		2	<i>Cords</i>					
	White Pine		21	<i>Cords</i>					
	White Spruce		1	<i>Cords</i>					
TOTAL:			150.8	MBF					
TOTAL:			4,232	<i>Cords</i>					

Sale Specific Conditions & Requirements

Sale Name: Badger Beatdown Mix

Sale Number: 54-002-20 Seq#: 2

1 - Sale Area

1.2 - Boundaries

1.2.1 - Painted boundaries (9/19)

The sale boundary and Payment Unit boundaries are marked and identified by blue, red, and yellow paint, along with grass openings (GO's as shown on the Timber Sale Map). Exterior sale boundary lines against private are marked with blue paint. Exterior sale boundary lines against state are marked with red paint, except for the Payment Unit 3 boundaries adjacent to the GO stands, which are unpainted and identified by the opening edge. Interior retention boundaries are marked with red paint; no harvesting activities may occur within these areas. Interior Payment Unit boundaries are marked with yellow paint. The painted boundary line trees are not Included Timber and are to be protected. Yellow painted trees designating an interior Payment Unit boundary are only to be cut when all surrounding Payment Units have been paid.

2 - Timber Specifications

2.1 - Included Timber

2.1.1 - Clearcut unit(s) with unmerchantable trees (6/14)

Within Payment Unit(s) 1 - 7, cut all trees that are two (2) inches or more at DBH, except do not cut any green painted trees that are 26 inches at DBH or larger. Also, do not cut any white pine in Payment Units 1 - 2 and do not cut any white pine and red pine in Payment Units 5 - 7.

Note: See spec 5.2.4.7 - 'Dead and down creation' for instructions on orange marked trees.

2.1.3 - Cut tree marked unit(s) (12/08)

Within Payment Unit(s) 8 - 10, all trees are designated for cutting when marked with orange paint above and below stump height, regardless of merchantability. In addition, in Payment Units 8 - 9, cut all beech except for those marked with green paint.

2.2 - Utilization

2.2.5 - Limbed tree skidding (1/09)

The skidding of whole trees or tree segments with limbs attached is prohibited within Payment Units 8 - 10, unless approved by the Unit Manager or his/her representative. If damage exceeds specification 3.4.1, all products must be processed at the stump using a shortwood operation and forward to the landing.

3 - Payments

3.3 - Pre-measured Sales

3.3.4 - Dividing payment units (7/14)

Payment Unit(s) valued greater than \$25,000 may be divided at the request of the Purchaser and upon approval of the Unit Manager. Dividing Payment Units is a contract modification which requires a Timber Sale Contract Amendment. There will be only one division per Payment Unit.

3.4 - Damaged Timber

3.4.1 - Damaged timber (7/16)

General Condition and Requirement 3.4 Damaged Timber, defines liquidated damages for undesignated live merchantable trees which are cut or injured. No damage is acceptable to undesignated live merchantable trees. Within the sale area, if more than 5% of trees (> 4.5" DBH) within a specified area of the sale are damaged, liquidated damages will be assessed for all trees damaged. Rates will be in accordance with General Condition and Requirement 3.4 Damaged Timber.

3.4.2 - Special Protection Trees (4/14)

The Purchaser shall not cut live or dead special protection trees within cutting units or clearings. Special protection trees are marked with green paint and all undesignated pine. If the Purchaser's operations have cut or damaged special protection trees through carelessness, the Purchaser shall pay \$150 as fixed, agreed and liquidated damages for each special protection tree cut or damaged. Such payment does not constitute ownership of the undesignated timber.

4 - Transportation

4.1 - Construction

4.1.3 - Slash and earthen piles (8/04)

Piles or windrows of earth along roads and landings that have been widened or constructed shall be leveled. Slash from road maintenance or construction, including stumps, shall be chipped, utilized, or otherwise removed from the sale.

4.1.6 - Road construction (1/09)

Construction or improvements of existing roads shall be done in such a way as to minimize the environmental and visual impacts. Merchantable trees shall be cut and utilized unless otherwise directed. Non-merchantable trees shall be severed and laid flat on the ground. Slash shall be scattered, and not left in windrows and kept a minimum of 10 feet back from the road edge. Stumps shall be set upright, not left on edge, and be moved at least 10 feet away from the road edge. Disturbed soil shall be feathered into the woods and not left in berms or windrows.

4.1.7 - Road closure (10/11)

All new roads built into the sale must be blocked to vehicle traffic upon completion of the sale. Overgrown roads that are reopened shall be considered new roads. In general, this will require constructing a four (4') foot high berm of stumps and logs covered with earth. Stumps and brush must be placed along the remainder of the trail. These roads must be rendered impassable to cars and trucks. Contact the sale administrator for specific details of design and placement.

4.2 - Maintenance

4.2.5 - Two wheel drive condition (2/04)

All existing trail roads on and adjacent to the sale area must be passable by two-wheel drive traffic for the duration of the sale.

5 - Operations

5.1 - Notification

5.1.1 - Pre-sale conference (10/16)

A pre-sale conference between the Purchaser and sale administrator is required prior to beginning any operations to determine landing and road locations. The Unit Manager or his/her representative must be contacted at least 5 days in advance to schedule the conference.

5.1.4 - Post-sale conference (10/16)

A post-sale conference on site between the Purchaser and sale administrator is required 5 days prior to the completion of active logging operations to determine clean-up and repair of landings, road edges, and the fulfillment of other contract specifications.

5.2 - Conduct of Operations

5.2.2 - Hazard Trees/Snags

5.2.2.1 - Den trees (10/16)

Obvious hollow and/or den trees shall be protected and left standing unless they are a safety hazard.

5.2.3 - Operating Restrictions

5.2.3.3 - Bark slippage restriction (3/09)

Within Payment Unit(s) 8 - 10, unless changed by written agreement, cutting and skidding are not permitted during the period of April 15 to July 15. This restriction is because of bark slippage.

5.2.3.11 - Coppice regeneration protection (4/10)

Timber harvesting in Payment Units 1 - 7 must be completed within 30 days of severing/cutting stem(s) to minimize damage to deciduous regeneration. Any post harvest operations, such as chipping, must be completed before sprouting of regeneration occurs. If it is anticipated that chipping will be delayed, then tops shall be carried to one central location or left unchipped. The Unit Manager or his/her representative may cease such operations if sprouting occurs before the operation is complete.

5.2.4 - Dead and Down Creation

5.2.4.7 - Dead and down creation: hare, grouse, deer and other species (5/15)

To improve horizontal cover habitat for snowshoe hare, grouse, deer, and other species, the Purchaser is to push over and leave on-site all orange painted trees within Payment Units 1 - 7. These trees should be tipped over with the root ball still attached so the base of the tree is suspended off the ground. The crown of the fallen tree should be at or near ground level after it is pushed over. If it is impractical to push the trees over, they may be cut or partially cut and pushed over. Whenever possible, the tree stem should remain suspended off the ground.

5.2.31 - Landing locations (9/13)

Recommended landing locations are shown on the Timber Sale Map. Landings must be confined to these designated sites unless otherwise authorized by the Unit Manager or his/her representative.

5.2.32 - Decking/landing restoration (9/13)

All decking and landing areas must have the surface area restored to a condition equal to or better than before. This is to ensure the proper regeneration of the stand. Wood debris, chips, and "cookies" from trimmings must be removed or scattered away from landing and loading areas and may not be windrowed on the edge.

5.2.38 - No decking against live trees (2/04)

Cut products may not be decked against unmarked or designated leave trees.

5.4 - Soil Protection

5.4.1 - Rutting restriction, general (7/16)

Operations are to cease immediately if equipment and weather conditions result in rutting of roads and/or skid trails which is 12 inches or greater in depth and 50 feet in length. The Unit Manager or his/her representative may restrict hauling and/or skidding if ruts exceed the specified depth. With the Unit Manager or his/her representative's approval, the Purchaser may return to the area when the risk of rutting has decreased.

5.4.2 - Skid trails (2/04)

Skid trails up and down slopes should be avoided. If however this is unavoidable, these trails will be left in a non-erodible condition using water bars, logs, and slash. Placing of slash on these skid trails while logging is ongoing may alleviate need for any further action. At the direction of the sale administrator, seed, fertilizer, and mulch may also be required.

5.8 - Protection of Endangered Species

5.8.5 - Protection of raptor nests (3/13)

All trees with raptor nests will be protected if found during harvesting operations. Notification will be made to the Unit Manager or his/her representative who will notify the Wildlife Biologist so an on-site evaluation and recommendation can be made, if necessary.



TIMBER SALE MAP

This information provided by authority of Part 525, 1994 PA 451, as amended.

Sale Number	Year
54 - 002	20

Forest Management Unit Atlanta Management Unit	County Montmorency	Mapped By Coy	Date 8/3/2020	Page 2	of 2
Cruised By Coy					

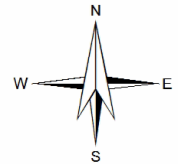
Township 32N	Range 03E	Section(s) and Subdivision(s) 1- NW,NWNE 2- NW,NE,NESW,NWSE 3- NENE	Scale 1:15,840
-----------------	--------------	--	-------------------

Cover Type				Density			
A = Aspen	H = Hemlock	N = Marsh	U = Upland Brush	0 = Non Stocked	5 = Pole Timber Medium		
B = Paper Birch	J = Jack Pine	O = Oak	UM = Upland Mixed	1 = Seedling Sapling Poor	6 = Pole Timber Well		
C = Cedar	L = Lowland Brush	P = Lowland Poplar	V = Bog or Marsh	2 = Seedling Sapling Medium	7 = Saw Timber Poor		
D = Treed Bog	LM = Lowland Mixed	Q = Mixed Swamp Conifer	W = White Pine	3 = Seedling Sapling Well	8 = Saw Timber Medium		
E = Swamp Hdwoods	M = Mpl, Bch, Brch	R = Red Pine	X = Non Stocked	4 = Pole Timber Poor	9 = Saw Timber Well		
F = Spruce Fir	MC = Mixed Conifer	S = Black Spruce	Z = Water				
G = Grass	MD = Mixed Deciduous	T = Tamarack					

PU	Acres	PU	Acres
1	26.6	6	27.5
2	26.3	7	25.7
3	22.7	8	4.8
4	28.8	9	28.4
5	29.5	10	4.6

Badger Beatdown Mix

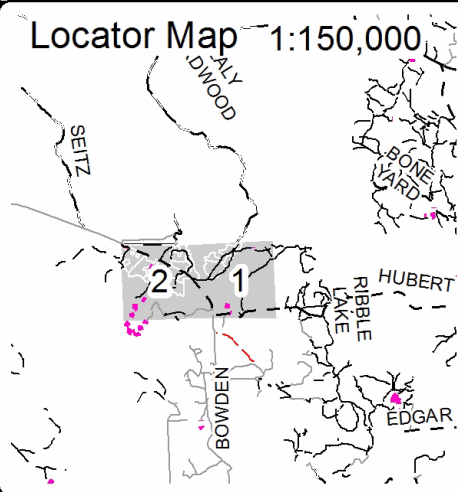
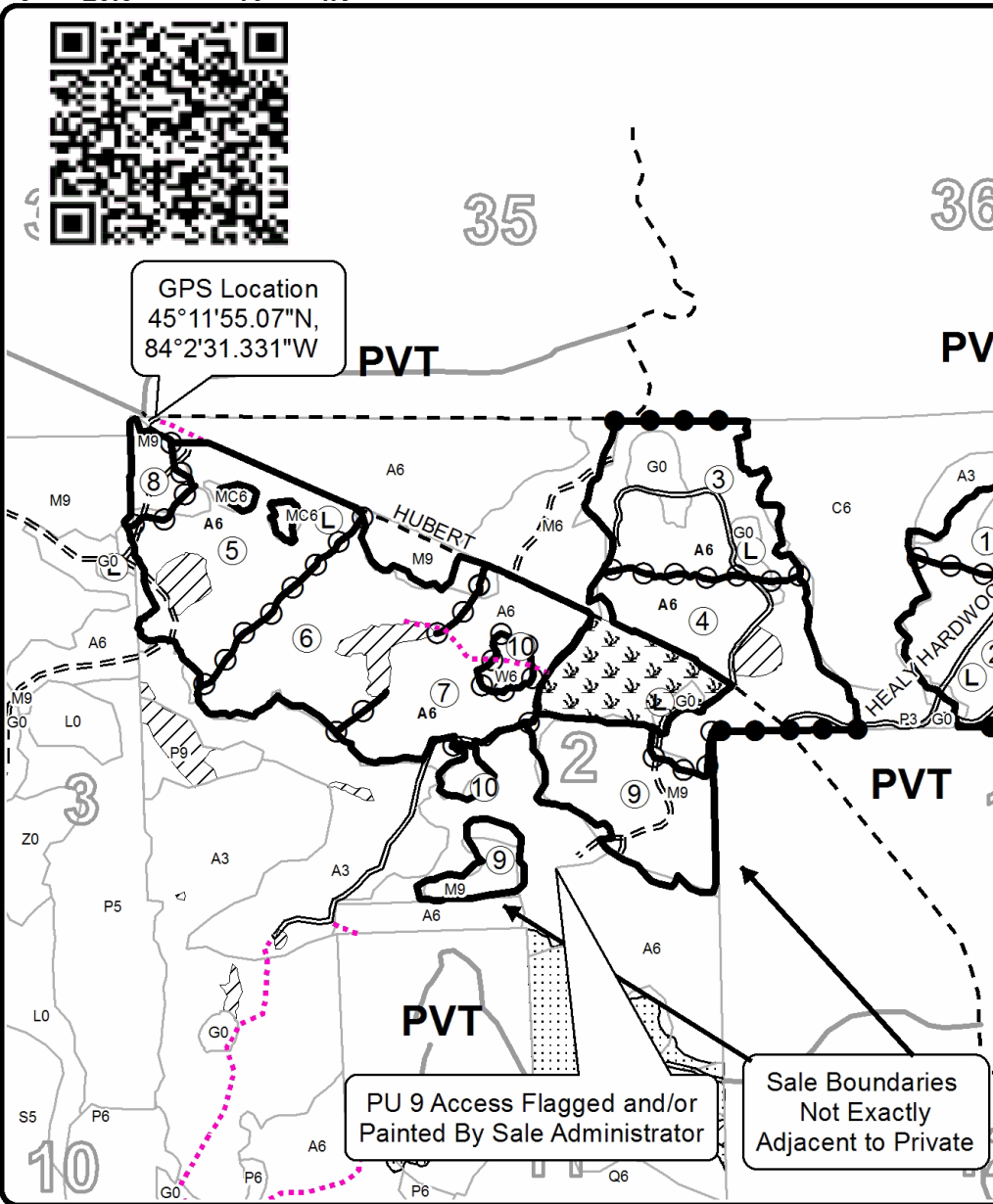
Compartment 67
224.9 Acres



GPS Location
45°11'55.07"N,
84°2'31.331"W

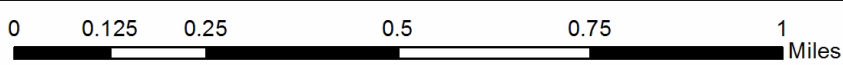
Legend

- Against State (Red)
- Private Line (Blue)
- Payment Unit (Yellow)
- ▨ Retention Area (Red)
- ▤ Nearby Timber Sales
- ☒ Outside Sale (Not Included)
- Stand Boundaries
- Payment Unit
- Ⓛ Landing
- == Secondary Forest Road
- == Forest Access Route
- - Gravel
- Private
- ⋯ Temporary Management Access



PU 9 Access Flaged and/or Painted By Sale Administrator

Sale Boundaries Not Exactly Adjacent to Private



TIMBER SALE INFORMATION

Fertilized Red Pine (54-017-20)

T32N, R03E, SEC. 34.

Montmorency County (Advertised Price \$7,375.45)

SALE NOTE: This is a smaller sale removing all overstory trees. Off of two county roads, a dry site.

A timber sale contract for this lump sum, sealed bid timber sale will be awarded to the responsible bidder offering the highest sealed bid price. All units of volume listed below were estimated using the T-Sale computer program and our traditional volume equations. Bids must be at or above the following advertised price for each product and species:

<u>PRODUCTS & SPECIES</u>	<u>ESTIMATED UNITS*</u>	<u>ADVERTISED PRICE</u>
Sawtimber		
Red Pine	65.0 MBF	\$ 73.00 / MBF
Pulpwood		
Northern Pin Oak	22 Cords	\$ 45.10 / Cord
Red Pine	58 Cords	\$ 26.50 / Cord
White Pine	9 Cords	\$ 11.25 / Cord

* The total volume is statistically estimated within plus (+) or minus (-) 24.20 percent. There are an estimated 220 cords on this timber sale, plus or minus 53 cords at the 95% confidence level. The estimated units are final and not subject to adjustment. Prospective bidders are urged to examine this timber and to make their own estimates of quantity and quality.

BOND AND PAYMENT SCHEDULE:

1. A bond in the amount of \$369.00 to insure faithful performance of the conditions of the contract will be deposited by the successful bidder within 21 days of the sale award.
2. Cutting in any sale or unit without the required advance payment would be considered a trespass.
3. Total payment must be paid in advance or according to the following schedule :
 - (a) Ten percent (10%) of the sale value must be paid within 21 days of the sale award.
 - (b) The remainder is due before cutting begins.
 - (c) Payment for each of the following units must be made before cutting begins in that unit:

PAYMENT UNIT NUMBER	PERCENT OF TOTAL SALE VALUE
01	100.0%
4. If no cutting takes place, the 10% down payment will not be refunded.
5. Operations on the contract issued will terminate on 12/31/2023.

SALE STATISTICS

SALE VOLUMES

VOLUME		STATISTICAL RANGE IN CORDS		
TOTAL CUBIC FEET	TOTAL CORDS	PERCENT ERROR	MINIMUM	MAXIMUM
17,374	220	24.20%	167	273

VDU VOLUMES

A VDU is a Volume Determination Unit. Volumes and their associated statistics are calculated at the VDU level and summarized to the sale level. There is often a one to one relationship between a VDU and a Payment Unit, but not always, depending on the cruise design. Refer to the VDU TO PAYMENT UNIT table.

VDU	VOLUME			RANGE IN CORDS	
	TOTAL CUBIC FEET	TOTAL CORDS	PERCENT ERROR	MINIMUM	MAXIMUM
36	17,372	220	24.20%	167	273
TOTAL:	17,372	220		167	273

VDU TO PAYMENT UNIT

When a VDU is associated with more than one Payment Unit (PU), the VDU volumes are assigned to the PU based on acres of the VDU within the PU.

VDU	VDU ACRES	PU	PU ACRES
36	16.1	1	16.1
TOTAL:	16.1		16.1

DESCRIPTION OF TIMBER BY PAYMENT UNIT (PU)

PU	MARKET GROUP	PRODUCT	QUANTITY	UNIT	ACRES	ADVERTISE PRICE
1	Red Pine	Sawtimber	65.0	MBF	16.1	\$7,375.45
	Northern Pin Oak	Pulpwood	22	Cords		
	<i>Northern Pin Oak</i>	<i>Sawtimber</i>	4.9	<i>MBF</i>		
	<i>Northern Pin Oak</i>	<i>Pulpwood</i>	12	<i>Cords</i>		
	Red Pine		58	Cords		
	White Pine		9	Cords		
	<i>White Pine</i>	<i>Sawtimber</i>	1.7	<i>MBF</i>		
	<i>White Pine</i>	<i>Pulpwood</i>	6	<i>Cords</i>		
	TOTAL:			65.0		
TOTAL:			89	Cords		

Sale Specific Conditions & Requirements

Sale Name: Fertilized Red Pine

Sale Number: 54-017-20 Seq#: 2

1 - Sale Area

1.2 - Boundaries

1.2.1 - Painted boundaries (9/19)

The sale boundaries are marked and identified by red paint. Voyer Lake Road and Windy Ridge Lane serve as unpainted sale boundaries for the north and west portion of the Sale Area. These locations are shown on the Timber Sale Map. Exterior sale boundary lines against state are marked with red paint. The painted boundary line trees are not Included Timber and are to be protected.

2 - Timber Specifications

2.1 - Included Timber

2.1.5 - Overstory removal unit(s) (8/11)

Within Payment Unit(s) 1, all trees with a DBH equal to or greater than four (4) inches which meet minimum piece specifications in 2.2 Utilization, are designated for cutting. Special protection trees marked with green paint and identified in accordance with condition 3.4.2, are not Included Timber and are to be protected.

2.2 - Utilization

2.2.3 - Stump heights (4/07)

Stump heights within the Sale Area shall not exceed 6 inches for all trees. This is to facilitate potential planting operations, if needed.

2.2.5 - Limbed tree skidding (1/09)

The skidding of whole trees or tree segments with limbs attached is prohibited unless approved by the Unit Manager or his/her representative.

3 - Payments

3.4 - Damaged Timber

3.4.1 - Damaged timber (7/16)

General Condition and Requirement 3.4 Damaged Timber, defines liquidated damages for undesignated live merchantable trees which are cut or injured. In addition, extreme care should be taken to avoid damage to tree seedlings and saplings. If more than 50% of the tree seedlings or saplings (1/4" to 4.0' DBH) within a specified portion of the Sale Area are damaged, liquidated damages will be assessed at \$150.00 per acre for all acreage within that specified portion of the Sale Area that was damaged.

3.4.2 - Special Protection Trees (4/14)

The Purchaser shall not cut live or dead special protection trees within cutting units or clearings. Special protection trees are marked with green paint. If the Purchaser's operations have cut or damaged special protection trees through carelessness, the Purchaser shall pay \$250.00 as fixed, agreed and liquidated damages for each special protection tree cut or damaged. Such payment does not constitute ownership of the undesignated timber.

4 - Transportation

4.1 - Construction

4.1.3 - Slash and earthen piles (8/04)

Piles or windrows of earth along roads and landings that have been widened or constructed shall be leveled. Slash from road maintenance or construction, including stumps, shall be dispersed throughout the sale.

4.1.12 - No new roads (1/12)

No new roads will be permitted, only skid trails will be allowed.

4.2 - Maintenance

4.2.5 - Two wheel drive condition (2/04)

All existing trail roads on and adjacent to the sale area must be passable by two-wheel drive traffic for the duration of the sale.

5 - Operations

5.1 - Notification

5.1.1 - Pre-sale conference (10/16)

A pre-sale conference on site between the Purchaser and sale administrator is required prior to beginning any operations to determine landing and road locations. The Unit Manager or his/her representative must be contacted at least 5 days in advance to schedule the conference.

5.1.4 - Post-sale conference (10/16)

A post-sale conference on site between the Purchaser and sale administrator is required 5 days prior to the completion of active logging operations to determine clean-up and repair of landings, road edges, and the fulfillment of other contract specifications.

5.2 - Conduct of Operations

5.2.2 - Hazard Trees/Snags

5.2.2.1 - Den trees (10/16)

Obvious hollow and/or den trees shall be protected and left standing unless they are a safety hazard.

5.2.3 - Operating Restrictions

5.2.3.5 - Oak wilt restriction (1/18)

Within Payment Unit(s) 1, unless changed by written agreement, cutting, skidding, hauling within the sale and brushing of access roads to the sale are not permitted during the period of April 15 to July 15. Operations may be allowed if specific steps are taken to prevent damaging uncut oak during the high risk period. Those steps may include completing all road brushing before April 15th and clearing a tree-length buffer along uncut oak cover before April 15th. This is necessary to reduce the spread of oak wilt. For more information, contact the Unit Manager or his/her representative.

5.2.3.6 - Bark beetle restriction (12/08)

In the event drought creates a high risk of pine bark beetle infestation, pine is not to be cut during the period March 1 through July 1, unless all portions of trees greater than two inches in diameter are removed from the sale area, reduced to chips, or treated to the satisfaction of the Unit Manager or his/her representative, within fifteen days of being severed from the stump. Pine log decks, pulpwood piles and treetops that are piled for chipping in the fall or winter within a 1/4 mile of susceptible sites must be removed before March 15. Residual slash must not be placed in piles or rows and must be spread over the site for quick drying. The Department of Natural Resources will exercise this specification if the risk of damage warrants.

5.2.3.11 - Coppice regeneration protection (4/10)

Timber harvesting in Payment Unit 1 must be completed before significant tree sprouting occurs in that Payment Unit to minimize damage to the new regeneration. Any post harvest operations must be completed before sprouting of regeneration occurs. The Unit Manager or his/her representative may cease such operations if sprouting occurs before the operation is complete.

5.2.32 - Decking/landing restoration (9/13)

All decking and landing areas must have the surface area restored to a condition equal to or better than before. This is to ensure the proper regeneration of the stand. Wood debris, chips, and "cookies" from trimmings must be removed or scattered away from landing and loading areas and may not be windrowed on the edge.

5.2.38 - No decking against live trees (2/04)

Cut products may not be decked against unmarked or designated leave trees.

5.4 - Soil Protection

5.4.1 - Rutting restriction, general (7/16)

Operations are to cease immediately if equipment and weather conditions result in rutting of roads and/or skid trails which is

12 inches or greater in depth and 50 feet in length. The Unit Manager or his/her representative may restrict hauling and/or skidding if ruts exceed the specified depth. With the Unit Manager or his/her representative's approval, the Purchaser may return to the area when the risk of rutting has decreased.

5.8 - Protection of Endangered Species

5.8.5 - Protection of raptor nests (3/13)

All trees with raptor nests will be protected if found during harvesting operations. Notification will be made to the Unit Manager or his/her representative who will notify the Wildlife Biologist so an on-site evaluation and recommendation can be made, if necessary.



TIMBER SALE MAP

This information provided by authority of Part 525, 1994 PA 451, as amended.

Sale Number	Year
54-017	2020

Forest Management Unit Atlanta	County Montmorency	Mapped By Doug Tyran	Date 07/15/2020	Page 1	of 1
Township 32N	Range 03E	Section(s) and Subdivision(s) Sec. 34- SENE, N1/2SE	Cruised By Doug Tyran		

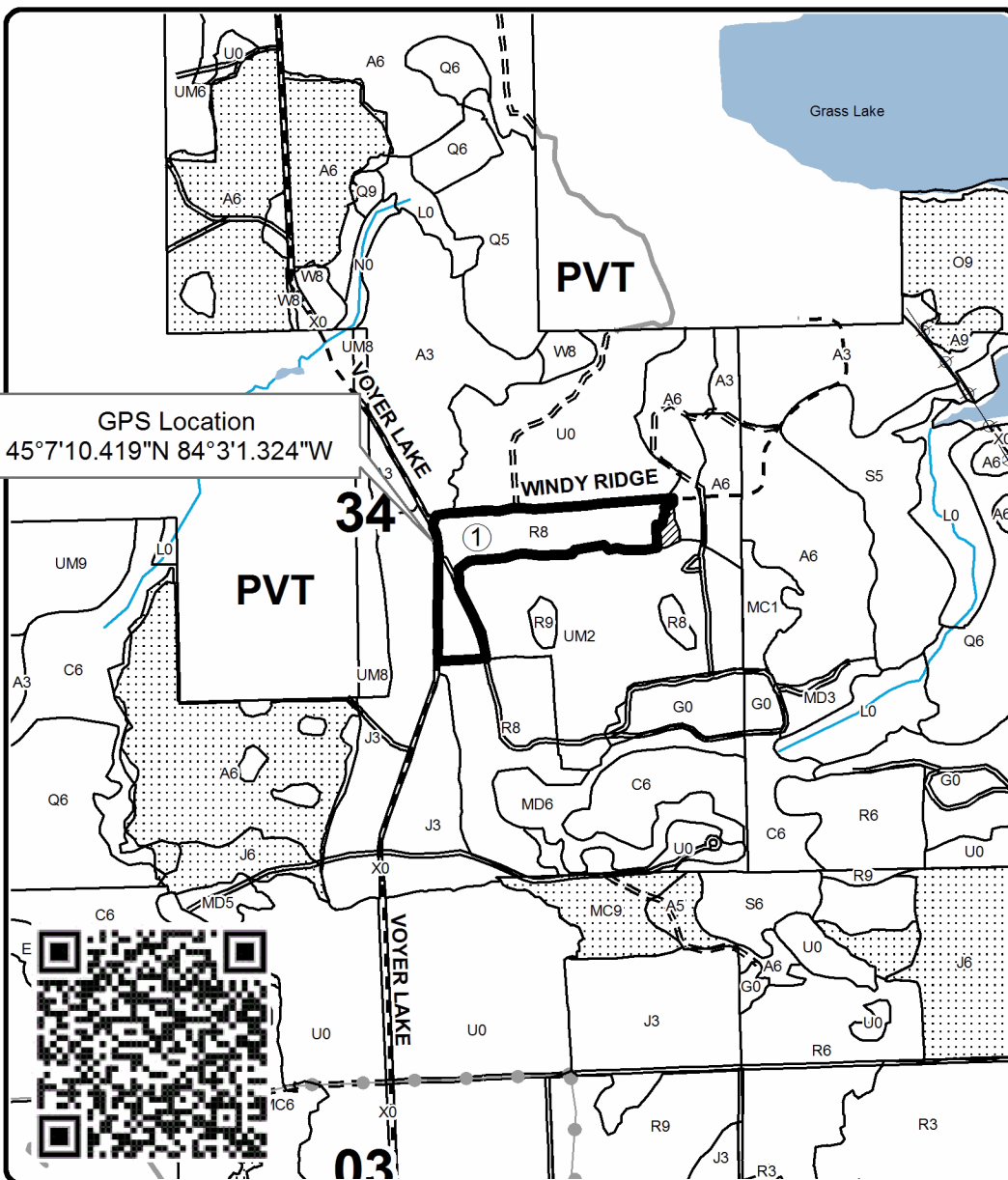
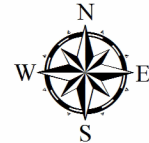
Scale	1:15,840
-------	----------

Cover Type				Density	
A = Aspen	H = Hemlock	N = Marsh	U = Upland Brush	0 = Non Stocked	5 = Pole Timber Medium
B = Paper Birch	J = Jack Pine	O = Oak	UM = Upland Mixed	1 = Seedling Sapling Poor	6 = Pole Timber Well
C = Cedar	L = Lowland Brush	P = Lowland Poplar	V = Bog or Marsh	2 = Seedling Sapling Medium	7 = Saw Timber Poor
D = Treed Bog	LM = Lowland Mixed	Q = Mixed Swamp Conifer	W = White Pine	3 = Seedling Sapling Well	8 = Saw Timber Medium
E = Swamp Hdwoods	M = Mpl, Bch, Brch	R = Red Pine	X = Non Stocked	4 = Pole Timber Poor	9 = Saw Timber Well
F = Spruce Fir	MC = Mixed Conifer	S = Black Spruce	Z = Water		
G = Grass	MD = Mixed Deciduous	T = Tamarack			

PU Acres

1 16.1

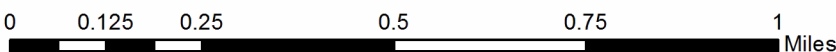
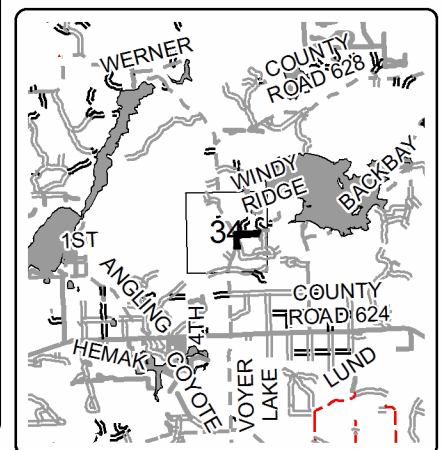
Fertilized Red Pine Compartment 74 16.1 Acres



Legend

- Sale Boundary (Red)
- Stand Boundaries
- Retention Area
- Nearby Timber Sales
- Lakes and Rivers
- Secondary Forest Road
- Forest Access Route
- Gravel Road
- Private Road
- Powerline
- Perennial River

Locator Map 1:150,000



TIMBER SALE INFORMATION

CR 628 and Voyer Aspen (54-020-20)

T31N, R03E, SEC. 3; T32N, R03E, SEC. 22; T32N, R03E, SEC. 27; T32N, R03E, SEC. 34.
Montmorency County (Advertised Price \$195,381.10)

A timber sale contract for this lump sum, sealed bid timber sale will be awarded to the responsible bidder offering the highest sealed bid price. All units of volume listed below were estimated using the T-Sale computer program and our traditional volume equations. Bids must be at or above the following advertised price for each product and species:

<u>PRODUCTS & SPECIES</u>	<u>ESTIMATED UNITS*</u>	<u>ADVERTISED PRICE</u>
Sawtimber		
Mixed Aspen	56.1 MBF	\$ 159.00 / MBF
Red Maple	14.6 MBF	\$ 93.00 / MBF
Red Oak	113.9 MBF	\$ 239.00 / MBF
Red Pine	8.9 MBF	\$ 99.00 / MBF
Sugar Maple	3.5 MBF	\$ 408.00 / MBF
White Pine	56.1 MBF	\$ 52.00 / MBF
Pulpwood		
Balsam Fir	448 Cords	\$ 23.40 / Cord
Jack Pine	80 Cords	\$ 17.45 / Cord
Mixed Aspen	1,960 Cords	\$ 39.75 / Cord
Mixed Hardwood	860 Cords	\$ 35.05 / Cord
Mixed Oak	454 Cords	\$ 61.50 / Cord
Mixed Spruce	46 Cords	\$ 9.25 / Cord
N. White Cedar	46 Cords	\$ 7.40 / Cord
Red Pine	14 Cords	\$ 36.10 / Cord
White Pine	230 Cords	\$ 15.35 / Cord

* The total volume is statistically estimated within plus (+) or minus (-) 7.82 percent. There are an estimated 4,681 cords on this timber sale, plus or minus 366 cords at the 95% confidence level. The estimated units are final and not subject to adjustment. Prospective bidders are urged to examine this timber and to make their own estimates of quantity and quality.

BOND AND PAYMENT SCHEDULE:

- A bond in the amount of \$9,769.00 to insure faithful performance of the conditions of the contract will be deposited by the successful bidder within 21 days of the sale award.
- Cutting in any sale or unit without the required advance payment would be considered a trespass.
- Total payment must be paid in advance or according to the following schedule :
 - Ten percent (10%) of the sale value must be paid within 21 days of the sale award.
 - The 10% down payment will be credited towards the first unit cut.
 - Payment for each of the following units must be made before cutting begins in that unit:

<u>PAYMENT UNIT NUMBER</u>	<u>PERCENT OF TOTAL SALE VALUE</u>
01	16.5%
02	14.9%
03	10.3%
04	10.9%
05	9.2%
06	8.3%
07	9.1%
08	11.8%
09	7.3%
10	1.7%

- If no cutting takes place, the 10% down payment will not be refunded.
- Operations on the contract issued will terminate on 12/31/2023.

SALE STATISTICS

SALE VOLUMES

<u>VOLUME</u>		<u>STATISTICAL RANGE IN CORDS</u>		
<u>TOTAL CUBIC FEET</u>	<u>TOTAL CORDS</u>	<u>PERCENT ERROR</u>	<u>MINIMUM</u>	<u>MAXIMUM</u>
369,795	4,681	7.82%	4,315	5,047

VDU VOLUMES

A VDU is a Volume Determination Unit. Volumes and their associated statistics are calculated at the VDU level and summarized to the sale level. There is often a one to one relationship between a VDU and a Payment Unit, but not always, depending on the cruise design. Refer to the VDU TO PAYMENT UNIT table.

VDU	VOLUME		PERCENT ERROR	RANGE IN CORDS	
	TOTAL CUBIC FEET	TOTAL CORDS		MINIMUM	MAXIMUM
8	21,528	273	35.02%	177	368
11	54,952	696	19.82%	558	833
22	84,483	1,069	12.05%	941	1,198
27	99,943	1,265	15.81%	1,065	1,465
42	80,912	1,024	19.04%	829	1,219
51	15,887	201	36.36%	128	274
75	12,040	152	41.10%	90	215
TOTAL:	369,744	4,680		3,787	5,573

VDU TO PAYMENT UNIT

When a VDU is associated with more than one Payment Unit (PU), the VDU volumes are assigned to the PU based on acres of the VDU within the PU.

VDU	VDU ACRES	PU	PU ACRES
8	12.7	1	12.7
11	24.5	2	24.5
22	40.6	3	19.8
		4	20.8
27	45.9	5	15.9
		6	14.4
		7	15.6
42	37.5	8	23.2
		9	14.3
51	10.9	1	10.9
75	9.2	10	9.2
TOTAL:	181.3		181.3

DESCRIPTION OF TIMBER BY PAYMENT UNIT (PU)

PU	MARKET GROUP	PRODUCT	QUANTITY	UNIT	ACRES	ADVERTISE PRICE	
1	Mixed Aspen	Sawtimber	2.2	MBF	23.6	\$32,268.00	
	<i>B. T. Aspen</i>		2.2	<i>MBF</i>			
	Red Oak		58.3	MBF			
	White Pine	Pulpwood	1.8	MBF			
	Mixed Aspen		82	Cords			
	<i>B. T. Aspen</i>		82	<i>Cords</i>			
	Mixed Hardwood		31	Cords			
	<i>Red Maple</i>		31	<i>Cords</i>			
	Mixed Oak		215	Cords			
	<i>White Oak</i>	Sawtimber	1.5	<i>MBF</i>			
	<i>Red Oak</i>		Pulpwood	192			<i>Cords</i>
	<i>White Oak</i>			20			<i>Cords</i>
White Pine	21			Cords			
2	Mixed Aspen	Sawtimber	7.5	MBF	24.5	\$29,031.60	
	<i>B. T. Aspen</i>		6.8	<i>MBF</i>			
	<i>Quaking Aspen</i>		0.7	<i>MBF</i>			
	Red Maple	Pulpwood	1.8	MBF			
	Red Oak		11.6	MBF			
	White Pine		15.5	MBF			
	Balsam Fir		25	Cords			
	Mixed Aspen		368	Cords			
	<i>B. T. Aspen</i>		181	<i>Cords</i>			
	<i>Quaking Aspen</i>		187	<i>Cords</i>			
	Mixed Hardwood		106	Cords			
	<i>Paper Birch</i>		17	<i>Cords</i>			
	<i>Red Maple</i>		89	<i>Cords</i>			
	Mixed Oak		72	Cords			
	<i>Red Oak</i>		72	<i>Cords</i>			
	Mixed Spruce		5	Cords			
	<i>White Spruce</i>		5	<i>Cords</i>			
White Pine	45	Cords					
3	Mixed Aspen	Sawtimber	9.9	MBF	19.8	\$20,188.80	
	<i>B. T. Aspen</i>		5.4	<i>MBF</i>			
	<i>Quaking Aspen</i>		4.5	<i>MBF</i>			
	Red Maple	Pulpwood	4.1	MBF			
	Red Oak		4.6	MBF			
	Sugar Maple		1.7	MBF			
	Balsam Fir		84	Cords			
	Mixed Aspen		202	Cords			
	<i>B. T. Aspen</i>		63	<i>Cords</i>			
	<i>Quaking Aspen</i>		139	<i>Cords</i>			
	Mixed Hardwood		162	Cords			
	<i>Paper Birch</i>		8	<i>Cords</i>			
	<i>Red Maple</i>		127	<i>Cords</i>			
	<i>Sugar Maple</i>		27	<i>Cords</i>			
	Mixed Oak		11	Cords			
	<i>Red Oak</i>		11	<i>Cords</i>			
	Mixed Spruce		2	Cords			
<i>White Spruce</i>	2	<i>Cords</i>					
Red Pine	2	Cords					
4	Mixed Aspen	Sawtimber	10.4	MBF	20.8	\$21,203.60	
	<i>B. T. Aspen</i>		5.7	<i>MBF</i>			
	<i>Quaking Aspen</i>		4.7	<i>MBF</i>			
	Red Maple		4.4	MBF			
	Red Oak		4.9	MBF			
	Sugar Maple		1.8	MBF			

DESCRIPTION OF TIMBER BY PAYMENT UNIT (PU), CON'T

PU	MARKET GROUP	PRODUCT	QUANTITY	UNIT	ACRES	ADVERTISE PRICE
4 con't	Balsam Fir	Pulpwood	89	Cords		
	Mixed Aspen		212	Cords		
	<i>B. T. Aspen</i>		66	<i>Cords</i>		
	<i>Quaking Aspen</i>		146	<i>Cords</i>		
	Mixed Hardwood		170	Cords		
	<i>Paper Birch</i>		8	<i>Cords</i>		
	<i>Red Maple</i>		134	<i>Cords</i>		
	<i>Sugar Maple</i>		28	<i>Cords</i>		
	Mixed Oak		11	Cords		
	<i>Red Oak</i>		11	<i>Cords</i>		
	Mixed Spruce		2	Cords		
	<i>White Spruce</i>		2	<i>Cords</i>		
	Red Pine		2	Cords		
5	Mixed Aspen	Sawtimber	3.9	MBF	15.9	\$17,896.50
	<i>B. T. Aspen</i>		0.9	<i>MBF</i>		
	<i>Quaking Aspen</i>		3.0	<i>MBF</i>		
	Red Maple		0.9	MBF		
	Red Oak		9.6	MBF		
	White Pine		2.1	MBF		
	Balsam Fir	Pulpwood	64	Cords		
	Mixed Aspen		233	Cords		
	<i>B. T. Aspen</i>		12	<i>Cords</i>		
	<i>Balsam Poplar</i>		12	<i>Cords</i>		
	<i>Quaking Aspen</i>		209	<i>Cords</i>		
	Mixed Hardwood		75	Cords		
	<i>Basswood</i>		1	<i>Cords</i>		
	<i>Paper Birch</i>		6	<i>Cords</i>		
	<i>Red Maple</i>		64	<i>Cords</i>		
	<i>Sugar Maple</i>		3	<i>Cords</i>		
	<i>White Ash</i>		1	<i>Cords</i>		
	Mixed Oak		21	Cords		
	<i>Red Oak</i>		21	<i>Cords</i>		
	Mixed Spruce		2	Cords		
	<i>White Spruce</i>		2	<i>Cords</i>		
	N. White Cedar		4	Cords		
	<i>N. White Cedar</i>		0.4	<i>MBF</i>		
<i>N. White Cedar</i>	3	<i>Cords</i>				
White Pine	4	Cords				
6	Mixed Aspen	Sawtimber	3.5	MBF	14.4	\$16,309.35
	<i>B. T. Aspen</i>		0.8	<i>MBF</i>		
	<i>Quaking Aspen</i>		2.7	<i>MBF</i>		
	Red Maple		0.8	MBF		
	Red Oak		8.7	MBF		
	White Pine	1.9	MBF			
	Balsam Fir	Pulpwood	58	Cords		
	Mixed Aspen		212	Cords		
	<i>B. T. Aspen</i>		11	<i>Cords</i>		
	<i>Balsam Poplar</i>		12	<i>Cords</i>		
	<i>Quaking Aspen</i>		189	<i>Cords</i>		
	Mixed Hardwood		70	Cords		
	<i>Basswood</i>		2	<i>Cords</i>		
	<i>Black Cherry</i>		1	<i>Cords</i>		
	<i>Paper Birch</i>		5	<i>Cords</i>		
	<i>Red Maple</i>		58	<i>Cords</i>		
	<i>Sugar Maple</i>		3	<i>Cords</i>		
<i>White Ash</i>	1		<i>Cords</i>			

DESCRIPTION OF TIMBER BY PAYMENT UNIT (PU), CON'T

PU	MARKET GROUP	PRODUCT	QUANTITY	UNIT	ACRES	ADVERTISE PRICE	
6 con't	Mixed Oak	Pulpwood	19	Cords			
	<i>Red Oak</i>		19	<i>Cords</i>			
	Mixed Spruce		2	Cords			
	<i>White Spruce</i>		2	<i>Cords</i>			
	N. White Cedar		4	Cords			
	<i>N. White Cedar</i>		0.3	<i>MBF</i>			
	<i>N. White Cedar</i>		3	<i>Cords</i>			
White Pine	3	Cords					
7	Mixed Aspen	Sawtimber	3.9	MBF	15.6	\$17,706.05	
	<i>B. T. Aspen</i>		0.9	<i>MBF</i>			
	<i>Quaking Aspen</i>		3.0	<i>MBF</i>			
	Red Maple		0.9	MBF			
	Red Oak		9.4	MBF			
	White Pine		2.1	MBF			
	Balsam Fir		Pulpwood	63			Cords
	Mixed Aspen			230			Cords
	<i>B. T. Aspen</i>			12			<i>Cords</i>
	<i>Balsam Poplar</i>			13			<i>Cords</i>
	<i>Quaking Aspen</i>			205			<i>Cords</i>
	Mixed Hardwood			75			Cords
	<i>Basswood</i>			2			<i>Cords</i>
	<i>Black Cherry</i>			1			<i>Cords</i>
	<i>Paper Birch</i>			5			<i>Cords</i>
	<i>Red Maple</i>			63			<i>Cords</i>
	<i>Sugar Maple</i>			3			<i>Cords</i>
	<i>White Ash</i>			1			<i>Cords</i>
	Mixed Oak			21			Cords
	<i>Red Oak</i>			21			<i>Cords</i>
	Mixed Spruce			2			Cords
	<i>White Spruce</i>			2			<i>Cords</i>
	N. White Cedar			4			Cords
	<i>N. White Cedar</i>			0.4			<i>MBF</i>
	<i>N. White Cedar</i>			3			<i>Cords</i>
	White Pine			4			Cords
	8			Mixed Aspen			Sawtimber
<i>B. T. Aspen</i>		7.1		<i>MBF</i>			
<i>Quaking Aspen</i>		2.0		<i>MBF</i>			
Red Maple		1.1		MBF			
Red Oak		4.2		MBF			
Red Pine		4.5		MBF			
White Pine		19.0		MBF			
Balsam Fir		Pulpwood	37	Cords			
Mixed Aspen			245	Cords			
<i>B. T. Aspen</i>			145	<i>Cords</i>			
<i>Cottonwood</i>			2	<i>Cords</i>			
<i>Quaking Aspen</i>			98	<i>Cords</i>			
Mixed Hardwood			105	Cords			
<i>Paper Birch</i>			2	<i>Cords</i>			
<i>Red Maple</i>			103	<i>Cords</i>			
Mixed Oak			49	Cords			
<i>Red Oak</i>			49	<i>Cords</i>			
Mixed Spruce			6	Cords			
<i>Black Spruce</i>			6	<i>Cords</i>			
N. White Cedar			22	Cords			
<i>N. White Cedar</i>			22	<i>Cords</i>			
Red Pine	6		Cords				

DESCRIPTION OF TIMBER BY PAYMENT UNIT (PU), CON'T

PU	MARKET GROUP	PRODUCT	QUANTITY	UNIT	ACRES	ADVERTISE PRICE		
8 con't	White Pine	Pulpwood	89	Cords				
9	Mixed Aspen	Sawtimber	5.7	MBF	14.3	\$14,291.70		
	<i>B. T. Aspen</i>		4.4	<i>MBF</i>				
	<i>Quaking Aspen</i>		1.3	<i>MBF</i>				
	Red Maple		0.6	MBF				
	Red Oak		2.6	MBF				
	Red Pine		2.8	MBF				
	White Pine		11.7	MBF				
	Balsam Fir		Pulpwood	22			Cords	
	Mixed Aspen			151			Cords	
	<i>B. T. Aspen</i>			90			<i>Cords</i>	
	<i>Cottonwood</i>			1			<i>Cords</i>	
	<i>Quaking Aspen</i>			60			<i>Cords</i>	
	Mixed Hardwood			66			Cords	
	<i>Paper Birch</i>			2			<i>Cords</i>	
	<i>Red Maple</i>			64			<i>Cords</i>	
	Mixed Oak			31			Cords	
	<i>Red Oak</i>			31			<i>Cords</i>	
	Mixed Spruce			4			Cords	
	<i>Black Spruce</i>			4			<i>Cords</i>	
	N. White Cedar			13			Cords	
	<i>N. White Cedar</i>			13			<i>Cords</i>	
	Red Pine			3			Cords	
	White Pine			55			Cords	
10	Red Pine	Sawtimber		1.6	MBF	9.2	\$3,407.05	
	White Pine			2.0	MBF			
	Balsam Fir			Pulpwood	6			Cords
	Jack Pine				80			Cords
	Mixed Aspen				25			Cords
	<i>Quaking Aspen</i>				25			<i>Cords</i>
	Mixed Oak				4			Cords
	<i>Red Oak</i>		4		<i>Cords</i>			
	Mixed Spruce		21		Cords			
	<i>Black Spruce</i>		21		<i>Cords</i>			
	Red Pine		1		Cords			
	White Pine		9		Cords			
TOTAL:			253.1		MBF			
TOTAL:			4,139		Cords			

Sale Specific Conditions & Requirements

Sale Name: CR 628 and Voyer Aspen

Sale Number: 54-020-20 Seq#: 2

1 - Sale Area

1.2 - Boundaries

1.2.1 - Painted boundaries (9/19)

The sale boundary and Payment Unit boundaries are marked and identified by blue, red, and green paint. Exterior sale boundary lines against private are marked with blue paint. Exterior sale boundary lines against state are marked with red paint. Interior retention boundaries are marked with red paint; no harvesting activities may occur within these areas. Interior Payment Unit boundaries are marked with green paint, except for Payment Units 5 - 7 which use Voyer Lake Road and a state forest road as shown on the Timber Sale Map. The painted boundary line trees are not Included Timber and are to be protected. Green painted trees designating an interior Payment Unit boundary are only to be cut when all surrounding Payment Units have been paid.

2 - Timber Specifications

2.1 - Included Timber

2.1.1 - Clearcut unit(s) with unmerchantable trees (6/14)

Within Payment Unit(s) 1 - 10, cut all trees that are two (2) inches or more at DBH, except do not cut any yellow painted trees in any Payment Unit and leave all white pine in Payment Units 3 and 4.

Note: See spec 5.2.4.7 - 'Dead and down creation' for instructions on orange marked trees.

2.2 - Utilization

2.2.2 - Chipping required (2/18)

Payment Unit 10 must be chip harvested to facilitate subsequent planting operations. The Purchaser has the option to produce sawlogs or pulpwood bolts, but the remaining portion of the trees must be chipped and hauled. Products may be produced as roundwood and forwarded to decking areas in final product length, but the tops must be left intact and skidded to the landing for chipping in to minimize the amount of residual slash. If market conditions limit the practicality of chipping, the Purchaser may skid all remaining topwood out of these Payment Units and scatter in locations approved by the sale administrator. Otherwise, tops and slash, trees greater than 4 inches at DBH must be cut to a 2-inch top or smaller. Sub-merchantable trees, and hardwood limbs 4 inches or greater where they attach to the stem, are to be cut/reduced to 4-foot lengths. Slash must not be more than 3 feet high. Operations will be terminated or halted if slash is not being reduced to an acceptable level and damages will be collected determined by the cost to complete the work. The requirement to retain approximately 1/6 to 1/3 of tree tops and limbs less than four inches in diameter is still applicable (G. C. & R. 2.2).

2.2.3 - Stump heights (4/07)

Stump heights within Payment Unit 10 shall not exceed 6 inches for all trees. This is to facilitate planting operations.

3 - Payments

3.3 - Pre-measured Sales

3.3.4 - Dividing payment units (7/14)

Payment Unit(s) valued greater than \$20,000 may be divided at the request of the Purchaser and upon approval of the Unit Manager. Dividing Payment Units is a contract modification which requires a Timber Sale Contract Amendment. There will be only one division per Payment Unit.

3.4 - Damaged Timber

3.4.2 - Special Protection Trees (4/14)

The Purchaser shall not cut live or dead special protection trees within cutting units or clearings. Special protection trees are marked with yellow paint. If the Purchaser's operations have cut or damaged special protection trees through carelessness, the Purchaser shall pay \$150 as fixed, agreed and liquidated damages for each special protection tree cut or damaged. Such payment does not constitute ownership of the undesignated timber.

4 - Transportation

4.1 - Construction

4.1.3 - Slash and earthen piles (8/04)

Piles or windrows of earth along roads and landings that have been widened or constructed shall be leveled. Slash from road maintenance or construction, including stumps, shall be chipped, utilized, or otherwise removed from the sale.

4.1.6 - Road construction (1/09)

Construction or improvements of existing roads shall be done in such a way as to minimize the environmental and visual impacts. Merchantable trees shall be cut and utilized unless otherwise directed. Non-merchantable trees shall be severed and laid flat on the ground. Slash shall be scattered, and not left in windrows and kept a minimum of 10 feet back from the road edge. Stumps shall be set upright, not left on edge, and be moved at least 10 feet away from the road edge. Disturbed soil shall be feathered into the woods and not left in berms or windrows.

4.1.7 - Road closure (10/11)

All new roads built into the sale must be blocked to vehicle traffic upon completion of the sale. Overgrown roads that are reopened shall be considered new roads. In general, this will require constructing a four (4') foot high berm of stumps and logs covered with earth. Stumps and brush must be placed along the remainder of the trail. These roads must be rendered impassable to cars and trucks. Contact the sale administrator for specific details of design and placement.

4.2 - Maintenance

4.2.5 - Two wheel drive condition (2/04)

All existing trail roads on and adjacent to the sale area must be passable by two-wheel drive traffic for the duration of the sale.

5 - Operations

5.1 - Notification

5.1.1 - Pre-sale conference (10/16)

A pre-sale conference between the Purchaser and sale administrator is required prior to beginning any operations to determine landing and road locations. The Unit Manager or his/her representative must be contacted at least 5 days in advance to schedule the conference.

5.1.4 - Post-sale conference (10/16)

A post-sale conference on site between the Purchaser and sale administrator is required 5 days prior to the completion of active logging operations to determine clean-up and repair of landings, road edges, and the fulfillment of other contract specifications.

5.2 - Conduct of Operations

5.2.2 - Hazard Trees/Snags

5.2.2.1 - Den trees (10/16)

Obvious hollow and/or den trees shall be protected and left standing unless they are a safety hazard.

5.2.3 - Operating Restrictions

5.2.3.1 - Operating restrictions (9/11)

Within Payment Unit(s) 10, unless changed by written agreement, cutting and skidding is limited to the period of March 15 to December 1 with snow off and unfrozen ground. This restriction is to increase natural pine and other conifer regeneration.

5.2.3.5 - Oak wilt restriction (1/18)

Within Payment Unit(s) 1 - 9 unless changed by written agreement, cutting, skidding, hauling within the sale and brushing of access roads to the sale are not permitted during the period of April 15 to July 15. Operations may be allowed if specific steps are taken to prevent damaging uncut oak during the high risk period. Those steps may include completing all road brushing before April 15th and clearing a tree-length buffer along uncut oak cover before April 15th. This is necessary to reduce the spread of oak wilt. For more information, contact the Unit Manager or his/her representative.

5.2.3.11 - Coppice regeneration protection (4/10)

Timber harvesting in Payment Units 1 - 9 must be completed within 30 days of severing/cutting stem(s) to minimize damage to deciduous regeneration. Any post harvest operations, such as chipping, must be completed before sprouting of regeneration occurs. If it is anticipated that chipping will be delayed, then tops shall be carried to one central location or left unchipped. The Unit Manager or his/her representative may cease such operations if sprouting occurs before the operation is complete.

5.2.4 - Dead and Down Creation

5.2.4.7 - Dead and down creation: hare, grouse, deer and other species (5/15)

To improve horizontal cover habitat for snowshoe hare, grouse, deer, and other species, the Purchaser is to push over and leave on-site all orange painted trees within Payment Units 2 - 9. These trees should be tipped over with the root ball still attached so the base of the tree is suspended off the ground. The crown of the fallen tree should be at or near ground level after it is pushed over. If it is impractical to push the trees over, they may be cut or partially cut and pushed over. Whenever possible, the tree stem should remain suspended off the ground.

5.2.31 - Landing locations (9/13)

Landing locations are shown on the Timber Sale Map. Landings must be confined to these designated sites unless otherwise authorized by the Unit Manager or his/her representative.

5.2.32 - Decking/landing restoration (9/13)

All decking and landing areas must have the surface area restored to a condition equal to or better than before. This is to ensure the proper regeneration of the stand. Wood debris, chips, and "cookies" from trimmings must be removed or scattered away from landing and loading areas and may not be windrowed on the edge.

5.2.38 - No decking against live trees (2/04)

Cut products may not be decked against unmarked or designated leave trees.

5.4 - Soil Protection

5.4.1 - Rutting restriction, general (7/16)

Operations are to cease immediately if equipment and weather conditions result in rutting of roads and/or skid trails which is 12 inches or greater in depth and 50 feet in length. The Unit Manager or his/her representative may restrict hauling and/or skidding if ruts exceed the specified depth. With the Unit Manager or his/her representative's approval, the Purchaser may return to the area when the risk of rutting has decreased.

5.8 - Protection of Endangered Species

5.8.5 - Protection of raptor nests (3/13)

All trees with raptor nests will be protected if found during harvesting operations. Notification will be made to the Unit Manager or his/her representative who will notify the Wildlife Biologist so an on-site evaluation and recommendation can be made, if necessary.



TIMBER SALE MAP

This information provided by authority of Part 525, 1994 PA 451, as amended.

Sale Number	Year
54 - 020	20

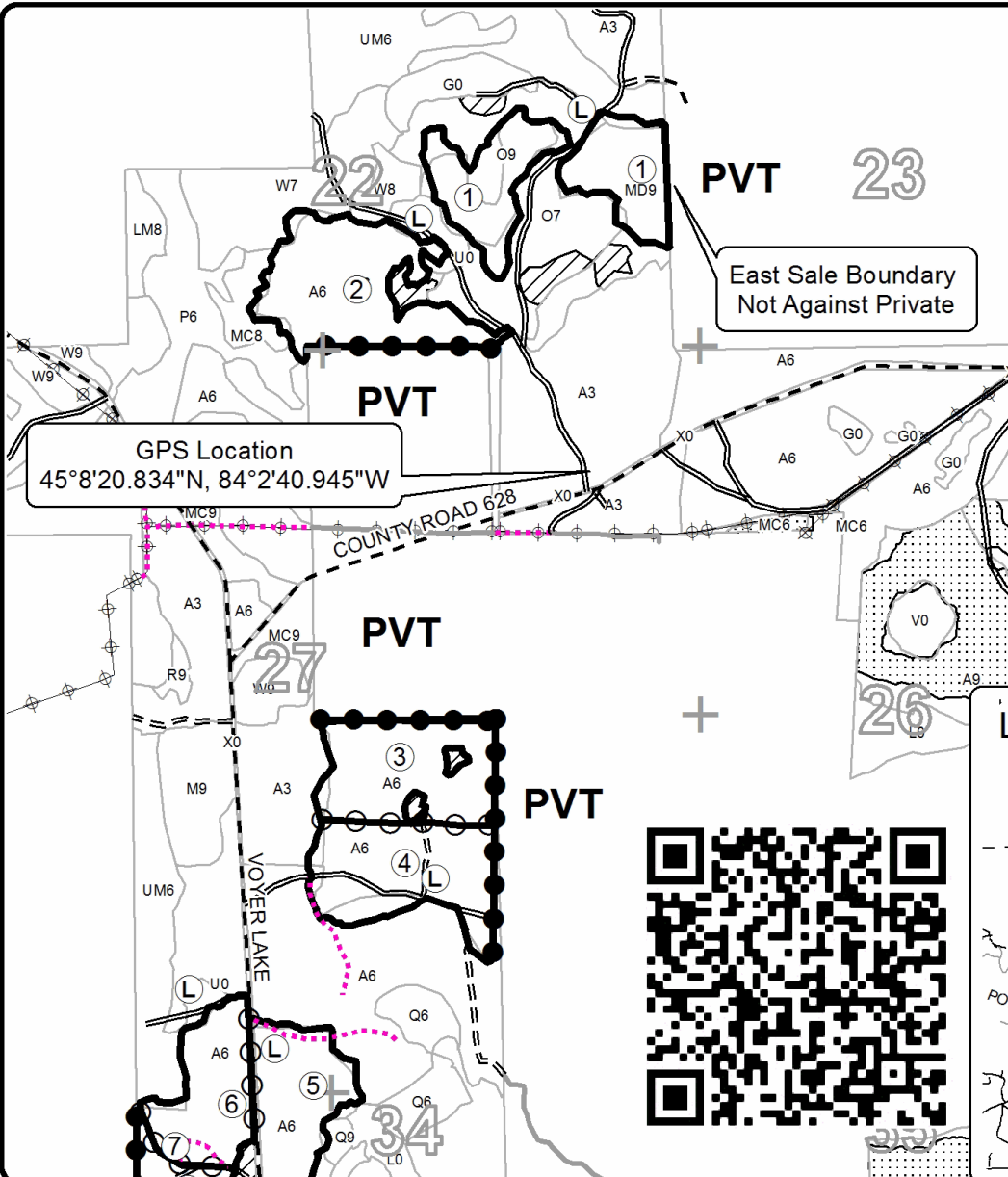
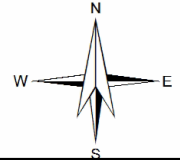
Forest Management Unit Atlanta Management Unit	County Montmorency	Mapped By Coy	Date 4/10/2020	Page 1	of 2
Township 31N & 32N	Range 03E	Section(s) and Subdivision(s) 3- SENW 22- SESW, SE4 27-NENW, E2SW, W2SE 34- NENW, NWN, NWSW, & S2SW	Scale 1:15,840		

Cover Type				Density			
A = Aspen	H = Hemlock	N = Marsh	U = Upland Brush	0 = Non Stocked	5 = Pole Timber Medium		
B = Paper Birch	J = Jack Pine	O = Oak	UM = Upland Mixed	1 = Seedling Sapling Poor	6 = Pole Timber Well		
C = Cedar	L = Lowland Brush	P = Lowland Poplar	V = Bog or Marsh	2 = Seedling Sapling Medium	7 = Saw Timber Poor		
D = Tread Bog	LM = Lowland Mixed	Q = Mixed Swamp Conifer	W = White Pine	3 = Seedling Sapling Well	8 = Saw Timber Medium		
E = Swamp Hdwoods	M = Mpl, Bch, Brch	R = Red Pine	X = Non Stocked	4 = Pole Timber Poor	9 = Saw Timber Well		
F = Spruce Fir	MC = Mixed Conifer	S = Black Spruce	Z = Water				
G = Grass	MD = Mixed Deciduous	T = Tamarack					

PU	Acres	PU	Acres
1	23.6	6	14.4
2	24.5	7	15.6
3	19.8	8	23.2
4	20.8	9	14.3
5	15.9	10	9.2

CR 628 and Voyer Aspen

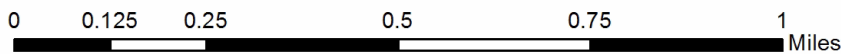
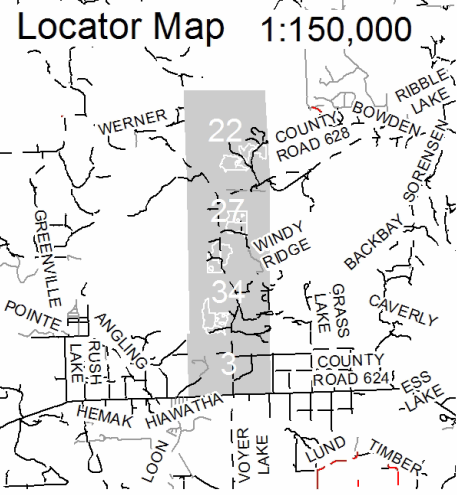
Compartment 74
181.3 Acres



GPS Location
45°8'20.834"N, 84°2'40.945"W

Legend

- Against State (Red)
- Private Line (Blue)
- Payment Unit (Green)
- Retention Area (Red)
- Nearby Timber Sales
- Stand Boundaries
- Landing
- Payment Unit
- Secondary Forest Road
- Forest Access Route
- Gravel Road
- Private
- Temporary Management Access
- Powerline
- Section Corners





TIMBER SALE MAP

This information provided by authority of Part 525, 1994 PA 451, as amended.

Sale Number	Year
54 - 020	20

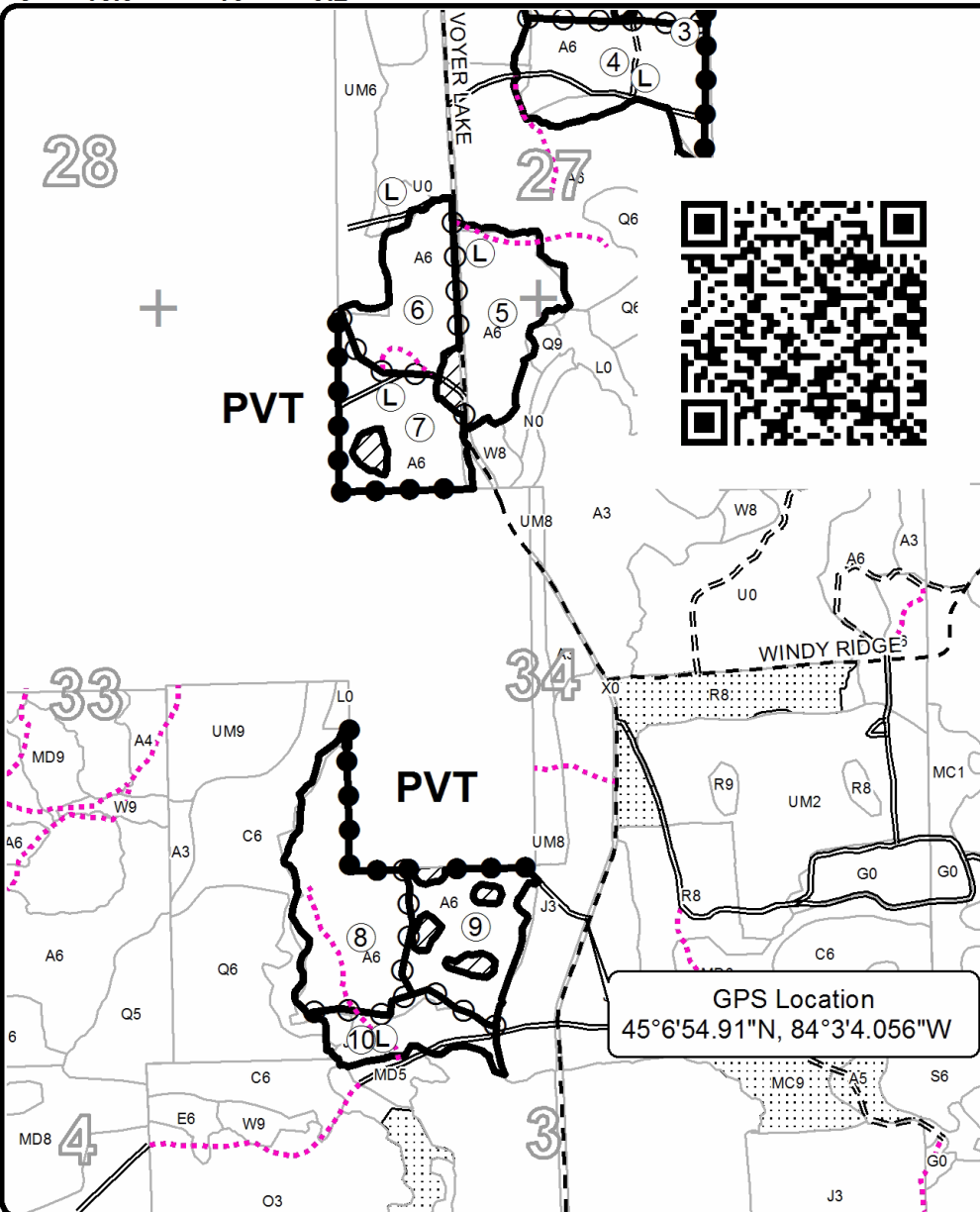
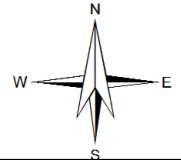
Forest Management Unit Atlanta Management Unit	County Montmorency	Mapped By Coy	Date 4/10/2020	Page 2	of 2
Township 31N & 32N	Range 03E	Section(s) and Subdivision(s) 3- SENW 22- SESW, SE4 27-NENW, E2SW, W2SE 34- NENW, NWNE, NWSW, & S2SW	Scale 1:15,840		

Cover Type				Density	
A = Aspen	H = Hemlock	N = Marsh	U = Upland Brush	0 = Non Stocked	5 = Pole Timber Medium
B = Paper Birch	J = Jack Pine	O = Oak	UM = Upland Mixed	1 = Seedling Sapling Poor	6 = Pole Timber Well
C = Cedar	L = Lowland Brush	P = Lowland Poplar	V = Bog or Marsh	2 = Seedling Sapling Medium	7 = Saw Timber Poor
D = Treed Bog	LM = Lowland Mixed	Q = Mixed Swamp Conifer	W = White Pine	3 = Seedling Sapling Well	8 = Saw Timber Medium
E = Swamp Hdwoods	M = Mpl, Bch, Brch	R = Red Pine	X = Non Stocked	4 = Pole Timber Poor	9 = Saw Timber Well
F = Spruce Fir	MC = Mixed Conifer	S = Black Spruce	Z = Water		
G = Grass	MD = Mixed Deciduous	T = Tamarack			

PU	Acres	PU	Acres
1	23.6	6	14.4
2	24.5	7	15.6
3	19.8	8	23.2
4	20.8	9	14.3
5	15.9	10	9.2

CR 628 and Voyer Aspen

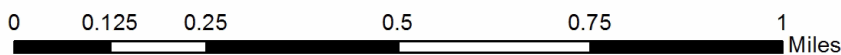
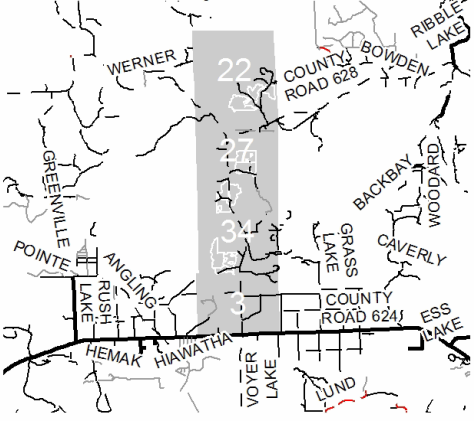
Compartment 74
181.3 Acres



Legend

- Against State (Red)
- Private Line (Blue)
- Payment Unit (Green)
- Retention Area (Red)
- Nearby Timber Sales
- Stand Boundaries
- Landing
- Payment Unit
- Secondary Forest Road
- Forest Access Route
- Gravel Road
- Private
- Temporary Management Access
- Section Corners

Locator Map 1:150,000



TIMBER SALE INFORMATION

CR 628 and Boden Aspen (54-021-20)
T32N, R03E, SEC. 24.
Montmorency County (Advertised Price \$ 111,441.80)

A timber sale contract for this lump sum, sealed bid timber sale will be awarded to the responsible bidder offering the highest sealed bid price. All units of volume listed below were estimated using the T-Sale computer program and our traditional volume equations. Bids must be at or above the following advertised price for each product and species:

<u>PRODUCTS & SPECIES</u>	<u>ESTIMATED UNITS*</u>	<u>ADVERTISED PRICE</u>
Sawtimber		
B. T. Aspen	41.7 MBF	\$ 137.00 / MBF
Red Oak	219.6 MBF	\$ 207.00 / MBF
Pulpwood		
Balsam Fir	10 Cords	\$ 20.25 / Cord
Mixed Aspen	830 Cords	\$ 34.45 / Cord
Red Maple	164 Cords	\$ 30.40 / Cord
Red Oak	497 Cords	\$ 53.30 / Cord

* The total volume is statistically estimated within plus (+) or minus (-) 13.67 percent. There are an estimated 2,054 cords on this timber sale, plus or minus 281 cords at the 95% confidence level. The estimated units are final and not subject to adjustment. Prospective bidders are urged to examine this timber and to make their own estimates of quantity and quality.

BOND AND PAYMENT SCHEDULE:

1. A bond in the amount of \$5,572.00 to insure faithful performance of the conditions of the contract will be deposited by the successful bidder within 21 days of the sale award.
2. Cutting in any sale or unit without the required advance payment would be considered a trespass.
3. Total payment must be paid in advance or according to the following schedule :
 - (a) Ten percent (10%) of the sale value must be paid within 21 days of the sale award.
 - (b) The 10% down payment will be credited towards the first unit cut.
 - (c) Payment for each of the following units must be made before cutting begins in that unit:

PAYMENT UNIT NUMBER	PERCENT OF TOTAL SALE VALUE
01	31.4%
02	29.3%
03	39.3%
4. If no cutting takes place, the 10% down payment will not be refunded.
5. Operations on the contract issued will terminate on 12/31/2023.

SALE STATISTICS

SALE VOLUMES

VOLUME		STATISTICAL RANGE IN CORDS		
TOTAL CUBIC FEET	TOTAL CORDS	PERCENT ERROR	MINIMUM	MAXIMUM
162,300	2,054	13.67%	1,774	2,335

VDU VOLUMES

A VDU is a Volume Determination Unit. Volumes and their associated statistics are calculated at the VDU level and summarized to the sale level. There is often a one to one relationship between a VDU and a Payment Unit, but not always, depending on the cruise design. Refer to the VDU TO PAYMENT UNIT table.

VDU	VOLUME			RANGE IN CORDS	
	TOTAL CUBIC FEET	TOTAL CORDS	PERCENT ERROR	MINIMUM	MAXIMUM
59	162,298	2,054	13.67%	1,774	2,335
TOTAL:	162,298	2,054		1,774	2,335

VDU TO PAYMENT UNIT

When a VDU is associated with more than one Payment Unit (PU), the VDU volumes are assigned to the PU based on acres of the VDU within the PU.

VDU	VDU ACRES	PU	PU ACRES
59	72.7	1	22.8
		2	21.3
		3	28.6
TOTAL:	72.7		72.7

DESCRIPTION OF TIMBER BY PAYMENT UNIT (PU)

PU	MARKET GROUP	PRODUCT	QUANTITY	UNIT	ACRES	ADVERTISE PRICE
1	B. T. Aspen	Sawtimber	13.1	MBF	22.8	\$34,974.40
	Red Oak		68.9	MBF		
	Balsam Fir	Pulpwood	3	Cords		
	Mixed Aspen		261	Cords		
	<i>B. T. Aspen</i>		219	<i>Cords</i>		
	<i>Quaking Aspen</i>		42	<i>Cords</i>		
	Red Maple		51	Cords		
	Red Oak		156	Cords		
	2	B. T. Aspen	Sawtimber	12.2		
Red Oak			64.3	MBF		
Balsam Fir		Pulpwood	3	Cords		
Mixed Aspen			243	Cords		
<i>B. T. Aspen</i>			204	<i>Cords</i>		
<i>Quaking Aspen</i>			39	<i>Cords</i>		
Red Maple			48	Cords		
Red Oak			146	Cords		
3		B. T. Aspen	Sawtimber	16.4	MBF	28.6
	Red Oak		86.4	MBF		
	Balsam Fir	Pulpwood	4	Cords		
	Mixed Aspen		326	Cords		
	<i>B. T. Aspen</i>		274	<i>Cords</i>		
	<i>Quaking Aspen</i>		52	<i>Cords</i>		
	Red Maple		65	Cords		
	Red Oak		195	Cords		
	TOTAL:			261.3	MBF	
TOTAL:			1,501	Cords		

Sale Specific Conditions & Requirements

Sale Name: CR 628 and Boden Aspen

Sale Number: 54-021-20 Seq#: 2

1 - Sale Area

1.2 - Boundaries

1.2.1 - Painted boundaries (9/19)

The sale boundary and Payment Unit boundaries are marked and identified by blue, red, and yellow paint. Exterior sale boundary lines against private are marked with blue paint. Exterior sale boundary lines against state are marked with red paint. Interior retention boundaries are marked with red paint; no harvesting activities may occur within these areas. Interior Payment Unit boundaries are marked with yellow paint. The painted boundary line trees are not Included Timber and are to be protected. Yellow painted trees designating an interior Payment Unit boundary are only to be cut when all surrounding Payment Units have been paid.

2 - Timber Specifications

2.1 - Included Timber

2.1.1 - Clearcut unit(s) with unmerchantable trees (6/14)

Within Payment Unit(s) 1 - 3, cut all trees that are two (2) inches or more at DBH, except do not cut any green painted trees. Also, leave all cedar, white pine, and red pine.

Note: See spec 5.2.4.7 - 'Dead and down creation' for instructions on orange marked trees.

3 - Payments

3.3 - Pre-measured Sales

3.3.4 - Dividing payment units (7/14)

Payment Unit(s) valued greater than \$25,000 may be divided at the request of the Purchaser and upon approval of the Unit Manager. Dividing Payment Units is a contract modification which requires a Timber Sale Contract Amendment. There will be only one division per Payment Unit.

4 - Transportation

4.1 - Construction

4.1.3 - Slash and earthen piles (8/04)

Piles or windrows of earth along roads and landings that have been widened or constructed shall be leveled. Slash from road maintenance or construction, including stumps, shall be chipped, utilized, or otherwise removed from the sale.

4.1.6 - Road construction (1/09)

Construction or improvements of existing roads shall be done in such a way as to minimize the environmental and visual impacts. Merchantable trees shall be cut and utilized unless otherwise directed. Non-merchantable trees shall be severed and laid flat on the ground. Slash shall be scattered, and not left in windrows and kept a minimum of 10 feet back from the road edge. Stumps shall be set upright, not left on edge, and be moved at least 10 feet away from the road edge. Disturbed soil shall be feathered into the woods and not left in berms or windrows.

4.1.7 - Road closure (10/11)

All new roads built into the sale must be blocked to vehicle traffic upon completion of the sale. Overgrown roads that are reopened shall be considered new roads. In general, this will require constructing a four (4') foot high berm of stumps and logs covered with earth. Stumps and brush must be placed along the remainder of the trail. These roads must be rendered impassable to cars and trucks. Contact the sale administrator for specific details of design and placement.

4.2 - Maintenance

4.2.5 - Two wheel drive condition (2/04)

All existing trail roads on and adjacent to the sale area must be passable by two-wheel drive traffic for the duration of the sale.

5 - Operations

5.1 - Notification

5.1.1 - Pre-sale conference (10/16)

A pre-sale conference between the Purchaser and sale administrator is required prior to beginning any operations to determine landing and road locations. The Unit Manager or his/her representative must be contacted at least 5 days in advance to schedule the conference.

5.1.4 - Post-sale conference (10/16)

A post-sale conference on site between the Purchaser and sale administrator is required 5 days prior to the completion of active logging operations to determine clean-up and repair of landings, road edges, and the fulfillment of other contract specifications.

5.1.6 - Utility R.O.W. (4/19)

It is the responsibility of the Purchaser to obtain permission from the utility company to utilize the power line R.O.W. for operations. Contact info: Presque Isle Electric & Gas Cooperative 19831 M-68 Hwy. Onaway, MI 49765

Phone: (800) 423-6634

5.2 - Conduct of Operations

5.2.2 - Hazard Trees/Snags

5.2.2.1 - Den trees (10/16)

Obvious hollow and/or den trees shall be protected and left standing unless they are a safety hazard.

5.2.3 - Operating Restrictions

5.2.3.5 - Oak wilt restriction (1/18)

Within Payment Unit(s) 1 - 3 unless changed by written agreement, cutting, skidding, hauling within the sale and brushing of access roads to the sale are not permitted during the period of April 15 to July 15. Operations may be allowed if specific steps are taken to prevent damaging uncut oak during the high risk period. Those steps may include completing all road brushing before April 15th and clearing a tree-length buffer along uncut oak cover before April 15th. This is necessary to reduce the spread of oak wilt. For more information, contact the Unit Manager or his/her representative.

5.2.3.11 - Coppice regeneration protection (4/10)

Timber harvesting in Payment Units must be completed within 30 days of severing/cutting stem(s) to minimize damage to deciduous regeneration. Any post harvest operations, such as chipping, must be completed before sprouting of regeneration occurs. If it is anticipated that chipping will be delayed, then tops shall be carried to one central location or left unchipped. The Unit Manager or his/her representative may cease such operations if sprouting occurs before the operation is complete.

5.2.4 - Dead and Down Creation

5.2.4.7 - Dead and down creation: hare, grouse, deer and other species (5/15)

To improve horizontal cover habitat for snowshoe hare, grouse, deer, and other species, the Purchaser is to push over and leave on-site all orange painted trees within Payment Units 1 - 3. These trees should be tipped over with the root ball still attached so the base of the tree is suspended off the ground. The crown of the fallen tree should be at or near ground level after it is pushed over. If it is impractical to push the trees over, they may be cut or partially cut and pushed over. Whenever possible, the tree stem should remain suspended off the ground.

5.2.31 - Landing locations (9/13)

Landing locations are shown on the Timber Sale Map. Landings must be confined to these designated sites unless otherwise authorized by the Unit Manager or his/her representative.

5.2.32 - Decking/landing restoration (9/13)

All decking and landing areas must have the surface area restored to a condition equal to or better than before. This is to ensure the proper regeneration of the stand. Wood debris, chips, and "cookies" from trimmings must be removed or scattered away from landing and loading areas and may not be windrowed on the edge.

5.2.38 - No decking against live trees (2/04)

Cut products may not be decked against unmarked or designated leave trees.

5.4 - Soil Protection

5.4.1 - Rutting restriction, general (7/16)

Operations are to cease immediately if equipment and weather conditions result in rutting of roads and/or skid trails which is 12 inches or greater in depth and 50 feet in length. The Unit Manager or his/her representative may restrict hauling and/or skidding if ruts exceed the specified depth. With the Unit Manager or his/her representative's approval, the Purchaser may return to the area when the risk of rutting has decreased.

5.8 - Protection of Endangered Species

5.8.5 - Protection of raptor nests (3/13)

All trees with raptor nests will be protected if found during harvesting operations. Notification will be made to the Unit Manager or his/her representative who will notify the Wildlife Biologist so an on-site evaluation and recommendation can be made, if necessary.



TIMBER SALE MAP

This information provided by authority of Part 525, 1994 PA 451, as amended.

Forest Management Unit Atlanta Management Unit	County Montmorency	Mapped By Coy	Date 7/10/2020	Page 1	of 1
Township 32N	Range 03E	Section(s) and Subdivision(s) 24- S2NW, NESW, & NWSE	Scale 1:15,840		

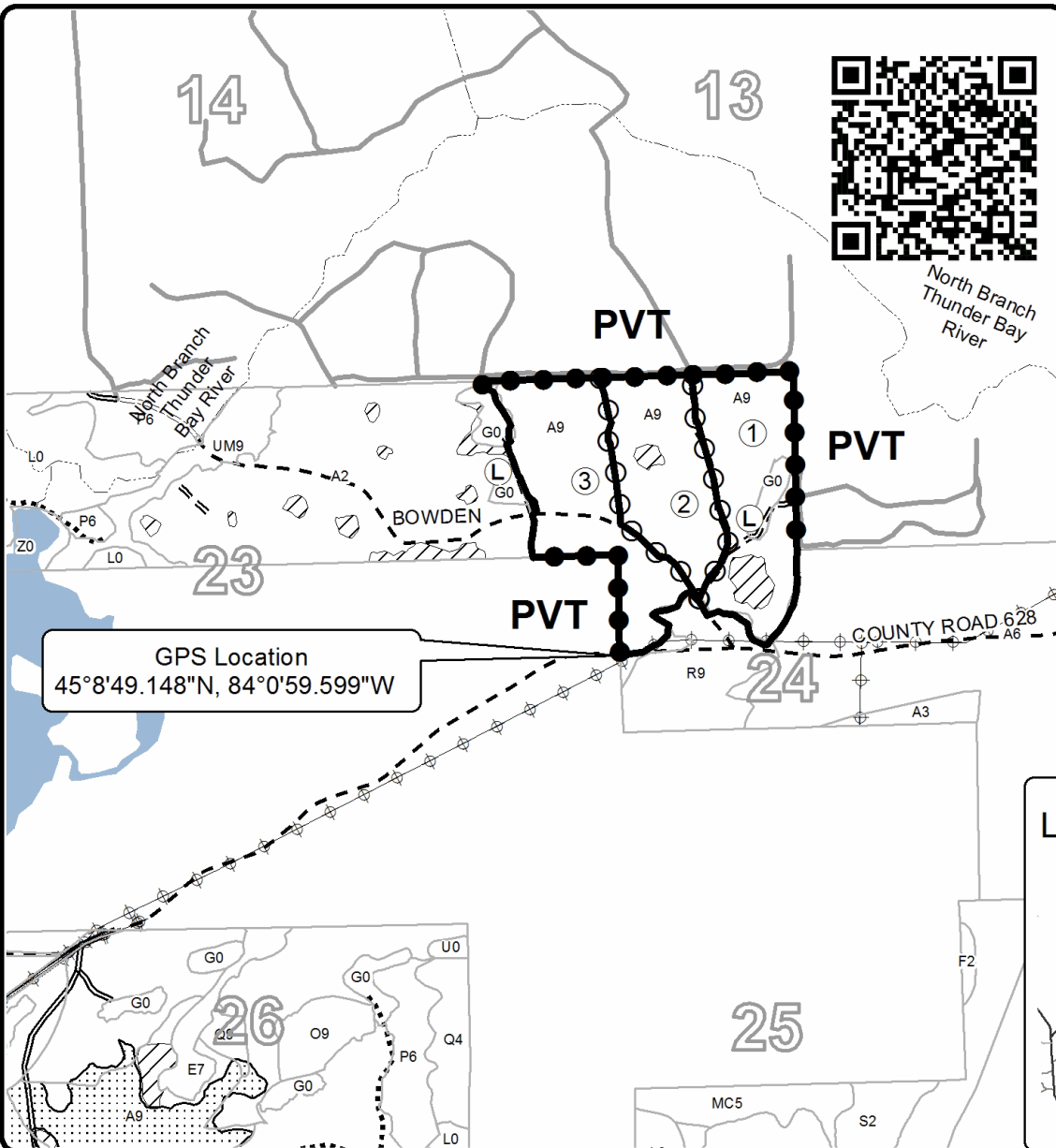
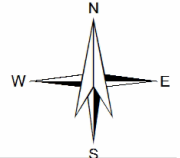
Cover Type				Density	
A = Aspen	H = Hemlock	N = Marsh	U = Upland Brush	0 = Non Stocked	5 = Pole Timber Medium
B = Paper Birch	J = Jack Pine	O = Oak	UM = Upland Mixed	1 = Seedling Sapling Poor	6 = Pole Timber Well
C = Cedar	L = Lowland Brush	P = Lowland Poplar	V = Bog or Marsh	2 = Seedling Sapling Medium	7 = Saw Timber Poor
D = Treed Bog	LM = Lowland Mixed	Q = Mixed Swamp Conifer	W = White Pine	3 = Seedling Sapling Well	8 = Saw Timber Medium
E = Swamp Hdwoods	M = Mpl, Bch, Brch	R = Red Pine	X = Non Stocked	4 = Pole Timber Poor	9 = Saw Timber Well
F = Spruce Fir	MC = Mixed Conifer	S = Black Spruce	Z = Water		
G = Grass	MD = Mixed Deciduous	T = Tamarack			

PU Acres

1	22.8
2	21.3
3	28.6

CR 628 and Boden Aspen

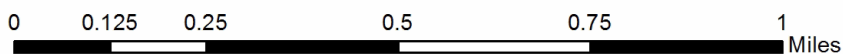
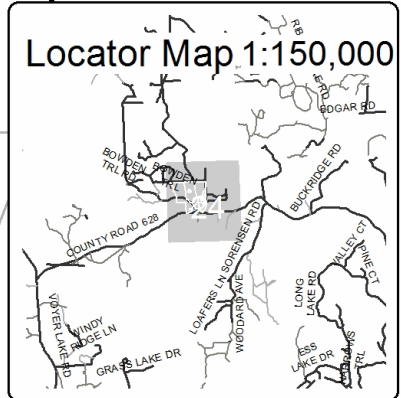
Compartment 67
72.7 Acres



GPS Location
45°8'49.148"N, 84°0'59.599"W

Legend

- Against State (Red)
- Private Line (Blue)
- Payment Unit (Yellow)
- Retention Area (Red)
- Nearby Timber Sales
- Stand Boundaries
- Lakes
- Payment Unit
- Landing
- Secondary Forest Road
- Forest Access Route
- Gravel Road
- County Road - Seasonal
- Private Road
- Temporary Access
- Powerline
- Perennial River



CR 628 and Boden Aspen (54-021-20)
T32N, R03E, SEC. 24; Montmorency COUNTY

In response to the notice of sale to be held 10:00 a.m. (local time) on September 21, 2021, I am hereby submitting my sealed bid (firm offer) for the following forest products to be cut. Bids for individual species must be at or above the advertised price. All non-responsive bid forms may be rejected.

<u>PRODUCTS & SPECIES</u>	<u>ESTIMATED VOLUME*</u>	<u>ADVERTISED PRICE</u>	<u>BID PRICE/UNIT</u>
Sawtimber			
B. T. Aspen	41.7 MBF	\$ 137.00/MBF	\$ _____
Red Oak	219.6 MBF	\$ 207.00/MBF	\$ _____
Pulpwood			
Balsam Fir	10 Cords	\$ 20.25/Cord	\$ _____
Mixed Aspen	830 Cords	\$ 34.45/Cord	\$ _____
Red Maple	164 Cords	\$ 30.40/Cord	\$ _____
Red Oak	497 Cords	\$ 53.30/Cord	\$ _____

*The volumes are statistically estimated within plus (+) or minus (-) 13.67 percent at 95% confidence level. These estimated volumes are final and not subject to adjustment. Prospective bidders are urged to examine this timber and to make their own estimates of quantity and quality.

I understand that any or all bids may be rejected. All bids must be signed and all bid items must be bid or the bid form may be rejected. I also understand that consideration and awarding a contract will be based upon my past performance and ability to complete the contract based upon equipment and staffing subject to my control.

FEDERAL ID: _____ - _____ or SOCIAL SECURITY NUMBER: _____ - _____ - _____

Company or individual bidding: _____

Company representative's name: _____

Address: _____

City: _____ State: _____ Zip: _____

IF AVAILABLE, PLEASE PLACE THE PERSONALIZED LABEL FROM YOUR PROSPECTUS IN THE ABOVE BOX.

Individual or company representative's signature: _____ Date: _____

Phone number : _____ Email (optional): _____

THE WINNING BIDDER MUST COMPLETE THE VERIFICATION OF WORKER'S DISABILITY COMPENSATION ACT COMPLIANCE (ON REVERSE SIDE IF DOUBLE SIDED) WITHIN 21 DAYS OF SALE AWARD DATE



FOR DEPARTMENT USE ONLY
Sale Number (XX - XXX - XX - XX)
Forest Management Unit:

TIMBER SALE VERIFICATION OF WORKER'S DISABILITY COMPENSATION ACT COMPLIANCE

*As required by Act 317, P.A. 1969 (Worker's Compensation) and
Part 5 of Act 451 of 1994, as amended.*

VERIFICATION OF WORKER'S DISABILITY COMPENSATION ACT COMPLIANCE

- This verification must be completed and submitted within 21 days of contract award and prior to the issuance of the timber sale contract.
- In addition, if boxes 2B or 2C are checked, then Notice of Exclusion or Certificate of Insurance must be submitted within twenty-one (21) days of the contract award and prior to the issuance of the timber sale contract.
- All information must be typed or printed except for written signatures.

Please Check Appropriate Categories:

1. My business is organized as (you **must** check one of the boxes below):
 - A. Sole Proprietorship (individual)
 - B. Partnership
 - C. Corporation
2. You **must** check one of the boxes below:
 - A. I certify my business is a sole proprietorship and it has no employees but the sole proprietor. I am not subject to the Worker's Compensation Laws.
 - B. I certify my business has satisfied its obligation to the Worker's Compensation Act through the use of an approved Notice of Exclusion (BWC-337, Rev. 5/96). I will provide a copy of the Notice of Exclusion within 21 days of the contract award. (For questions or a copy of the BWC-337, please call the Worker's Compensation Bureau at 517-322-1195).
 - C. I certify my business has a Worker's Compensation Policy. I will provide an original Certificate of Insurance within twenty-one (21) days of the contract award.
3. If you have checked item 2(A) or 2(B), you **must** indicate the number of **both** full-time and part-time employees, other than yourself, including family members and active partners (if none, you must enter "0").

_____ Full-time Employees

_____ Part-time Employees

Name of Business		Federal ID (or) Social Security No.	
Address		Telephone ()	
City	State	ZIP	

I hereby certify that the above information is true and correct. I agree to notify the Michigan DNR of any changes that occur in factors affecting my coverage during any of my present and future operations.

Signature of Owner or Authorized Representative

Title

Date

Please complete the "SEALED BID" information on the next page

CR 628 and Voyer Aspen (54-020-20)
T31N, R03E, SEC. 3; T32N, R03E, SEC. 22; T32N, R03E, SEC. 27; T32N, R03E,

In response to the notice of sale to be held 10:00 a.m. (local time) on September 21, 2021, I am hereby submitting my sealed bid (firm offer) for the following forest products to be cut. Bids for individual species must be at or above the advertised price. All non-responsive bid forms may be rejected.

<u>PRODUCTS & SPECIES</u>	<u>ESTIMATED VOLUME*</u>	<u>ADVERTISED PRICE</u>	<u>BID PRICE/UNIT</u>
Sawtimber			
Mixed Aspen	56.1 MBF	\$ 159.00/MBF	\$ _____
Red Maple	14.6 MBF	\$ 93.00/MBF	\$ _____
Red Oak	113.9 MBF	\$ 239.00/MBF	\$ _____
Red Pine	8.9 MBF	\$ 99.00/MBF	\$ _____
Sugar Maple	3.5 MBF	\$ 408.00/MBF	\$ _____
White Pine	56.1 MBF	\$ 52.00/MBF	\$ _____
Pulpwood			
Balsam Fir	448 Cords	\$ 23.40/Cord	\$ _____
Jack Pine	80 Cords	\$ 17.45/Cord	\$ _____
Mixed Aspen	1,960 Cords	\$ 39.75/Cord	\$ _____
Mixed Hardwood	860 Cords	\$ 35.05/Cord	\$ _____
Mixed Oak	454 Cords	\$ 61.50/Cord	\$ _____
Mixed Spruce	46 Cords	\$ 9.25/Cord	\$ _____
N. White Cedar	46 Cords	\$ 7.40/Cord	\$ _____
Red Pine	14 Cords	\$ 36.10/Cord	\$ _____
White Pine	230 Cords	\$ 15.35/Cord	\$ _____

*The volumes are statistically estimated within plus (+) or minus (-) 7.82 percent at 95% confidence level. These estimated volumes are final and not subject to adjustment. Prospective bidders are urged to examine this timber and to make their own estimates of quantity and quality.

I understand that any or all bids may be rejected. All bids must be signed and all bid items must be bid or the bid form may be rejected. I also understand that consideration and awarding a contract will be based upon my past performance and ability to complete the contract based upon equipment and staffing subject to my control.

FEDERAL ID: ____ - ____ - ____ or SOCIAL SECURITY NUMBER: ____ - ____ - ____

Company or individual bidding: _____

Company representative's name: _____

Address: _____

City: _____ State: _____ Zip: _____

IF AVAILABLE, PLEASE PLACE THE PERSONALIZED LABEL FROM YOUR PROSPECTUS IN THE ABOVE BOX.

Individual or company representative's signature: _____ Date: _____

Phone number : _____ Email (optional): _____

THE WINNING BIDDER MUST COMPLETE THE VERIFICATION OF WORKER'S DISABILITY COMPENSATION ACT COMPLIANCE (ON REVERSE SIDE IF DOUBLE SIDED) WITHIN 21 DAYS OF SALE AWARD DATE

Fertilized Red Pine (54-017-20)
T32N, R03E, SEC. 34; Montmorency COUNTY

In response to the notice of sale to be held 10:00 a.m. (local time) on September 21, 2021, I am hereby submitting my sealed bid (firm offer) for the following forest products to be cut. Bids for individual species must be at or above the advertised price. All non-responsive bid forms may be rejected.

<u>PRODUCTS & SPECIES</u>	<u>ESTIMATED VOLUME*</u>	<u>ADVERTISED PRICE</u>	<u>BID PRICE/UNIT</u>
Sawtimber			
Red Pine	65.0 MBF	\$ 73.00/MBF	\$ _____
Pulpwood			
Northern Pin Oak	22 Cords	\$ 45.10/Cord	\$ _____
Red Pine	58 Cords	\$ 26.50/Cord	\$ _____
White Pine	9 Cords	\$ 11.25/Cord	\$ _____

*The volumes are statistically estimated within plus (+) or minus (-) 24.20 percent at 95% confidence level. These estimated volumes are final and not subject to adjustment. Prospective bidders are urged to examine this timber and to make their own estimates of quantity and quality.

I understand that any or all bids may be rejected. All bids must be signed and all bid items must be bid or the bid form may be rejected. I also understand that consideration and awarding a contract will be based upon my past performance and ability to complete the contract based upon equipment and staffing subject to my control.

FEDERAL ID: _____ - _____ or SOCIAL SECURITY NUMBER: _____ - _____ - _____

Company or individual bidding: _____

Company representative's name: _____

Address: _____

City: _____ State: _____ Zip: _____

IF AVAILABLE, PLEASE PLACE THE PERSONALIZED LABEL FROM YOUR PROSPECTUS IN THE ABOVE BOX.

Individual or company representative's signature: _____ Date: _____

Phone number : _____ Email (optional): _____

THE WINNING BIDDER MUST COMPLETE THE VERIFICATION OF WORKER'S DISABILITY COMPENSATION ACT COMPLIANCE (ON REVERSE SIDE IF DOUBLE SIDED) WITHIN 21 DAYS OF SALE AWARD DATE



FOR DEPARTMENT USE ONLY	
Sale Number (XX - XXX - XX - XX)	
Forest Management Unit:	

TIMBER SALE VERIFICATION OF WORKER'S DISABILITY COMPENSATION ACT COMPLIANCE

As required by Act 317, P.A. 1969 (Worker's Compensation) and
Part 5 of Act 451 of 1994, as amended.

VERIFICATION OF WORKER'S DISABILITY COMPENSATION ACT COMPLIANCE

- This verification must be completed and submitted within 21 days of contract award and prior to the issuance of the timber sale contract.
- In addition, if boxes 2B or 2C are checked, then Notice of Exclusion or Certificate of Insurance must be submitted within twenty-one (21) days of the contract award and prior to the issuance of the timber sale contract.
- All information must be typed or printed except for written signatures.

Please Check Appropriate Categories:

1. My business is organized as (you **must** check one of the boxes below):
 - A. Sole Proprietorship (individual)
 - B. Partnership
 - C. Corporation
2. You **must** check one of the boxes below:
 - A. I certify my business is a sole proprietorship and it has no employees but the sole proprietor. I am not subject to the Worker's Compensation Laws.
 - B. I certify my business has satisfied its obligation to the Worker's Compensation Act through the use of an approved Notice of Exclusion (BWC-337, Rev. 5/96). I will provide a copy of the Notice of Exclusion within 21 days of the contract award. (For questions or a copy of the BWC-337, please call the Worker's Compensation Bureau at 517-322-1195).
 - C. I certify my business has a Worker's Compensation Policy. I will provide an original Certificate of Insurance within twenty-one (21) days of the contract award.
3. If you have checked item 2(A) or 2(B), you **must** indicate the number of **both** full-time and part-time employees, other than yourself, including family members and active partners (if none, you must enter "0").

_____ Full-time Employees

_____ Part-time Employees

Name of Business		Federal ID (or) Social Security No.	
Address		Telephone ()	
City	State	ZIP	

I hereby certify that the above information is true and correct. I agree to notify the Michigan DNR of any changes that occur in factors affecting my coverage during any of my present and future operations.

Signature of Owner or Authorized Representative

Title

Date

Please complete the "SEALED BID" information on the next page

Badger Beatdown Mix (54-002-20)

T32N, R03E, SEC. 1; T32N, R03E, SEC. 2; T32N, R03E, SEC. 3; Montmorency

In response to the notice of sale to be held 10:00 a.m. (local time) on September 21, 2021, I am hereby submitting my sealed bid (firm offer) for the following forest products to be cut. Bids for individual species must be at or above the advertised price. All non-responsive bid forms may be rejected.

<u>PRODUCTS & SPECIES</u>	<u>ESTIMATED VOLUME*</u>	<u>ADVERTISED PRICE</u>	<u>BID PRICE/UNIT</u>
Sawtimber			
Basswood	2.7 MBF	\$ 53.00/MBF	\$ _____
Mixed Aspen	125.0 MBF	\$ 137.00/MBF	\$ _____
Red Maple	10.5 MBF	\$ 81.00/MBF	\$ _____
Red Pine	3.9 MBF	\$ 86.00/MBF	\$ _____
Sugar Maple	5.1 MBF	\$ 354.00/MBF	\$ _____
White Spruce	3.6 MBF	\$ 38.00/MBF	\$ _____
Pulpwood			
Balsam Fir	336 Cords	\$ 20.25/Cord	\$ _____
Mixed Aspen	2,630 Cords	\$ 34.45/Cord	\$ _____
Mixed Hardwood	1,195 Cords	\$ 30.40/Cord	\$ _____
Red Oak	11 Cords	\$ 53.30/Cord	\$ _____
Red Pine	3 Cords	\$ 31.30/Cord	\$ _____
White Pine	21 Cords	\$ 13.30/Cord	\$ _____
White Spruce	36 Cords	\$ 8.00/Cord	\$ _____

*The volumes are statistically estimated within plus (+) or minus (-) 11.90 percent at 95% confidence level. These estimated volumes are final and not subject to adjustment. Prospective bidders are urged to examine this timber and to make their own estimates of quantity and quality.

I understand that any or all bids may be rejected. All bids must be signed and all bid items must be bid or the bid form may be rejected. I also understand that consideration and awarding a contract will be based upon my past performance and ability to complete the contract based upon equipment and staffing subject to my control.

FEDERAL ID: _____ or SOCIAL SECURITY NUMBER: _____

Company or individual bidding: _____

Company representative's name: _____

Address: _____

City: _____ State: _____ Zip: _____

IF AVAILABLE, PLEASE PLACE THE PERSONALIZED LABEL FROM YOUR PROSPECTUS IN THE ABOVE BOX.

Individual or company representative's signature: _____ Date: _____

Phone number : _____ Email (optional): _____

THE WINNING BIDDER MUST COMPLETE THE VERIFICATION OF WORKER'S DISABILITY COMPENSATION ACT COMPLIANCE (ON REVERSE SIDE IF DOUBLE SIDED) WITHIN 21 DAYS OF SALE AWARD DATE



FOR DEPARTMENT USE ONLY	
Sale Number (XX - XXX - XX - XX)	
Forest Management Unit:	

TIMBER SALE VERIFICATION OF WORKER'S DISABILITY COMPENSATION ACT COMPLIANCE

As required by Act 317, P.A. 1969 (Worker's Compensation) and
Part 5 of Act 451 of 1994, as amended.

VERIFICATION OF WORKER'S DISABILITY COMPENSATION ACT COMPLIANCE

- This verification must be completed and submitted within 21 days of contract award and prior to the issuance of the timber sale contract.
- In addition, if boxes 2B or 2C are checked, then Notice of Exclusion or Certificate of Insurance must be submitted within twenty-one (21) days of the contract award and prior to the issuance of the timber sale contract.
- All information must be typed or printed except for written signatures.

Please Check Appropriate Categories:

1. My business is organized as (you **must** check one of the boxes below):
 - A. Sole Proprietorship (individual)
 - B. Partnership
 - C. Corporation
2. You **must** check one of the boxes below:
 - A. I certify my business is a sole proprietorship and it has no employees but the sole proprietor. I am not subject to the Worker's Compensation Laws.
 - B. I certify my business has satisfied its obligation to the Worker's Compensation Act through the use of an approved Notice of Exclusion (BWC-337, Rev. 5/96). I will provide a copy of the Notice of Exclusion within 21 days of the contract award. (For questions or a copy of the BWC-337, please call the Worker's Compensation Bureau at 517-322-1195).
 - C. I certify my business has a Worker's Compensation Policy. I will provide an original Certificate of Insurance within twenty-one (21) days of the contract award.
3. If you have checked item 2(A) or 2(B), you **must** indicate the number of **both** full-time and part-time employees, other than yourself, including family members and active partners (if none, you must enter "0").

_____ Full-time Employees

_____ Part-time Employees

Name of Business		Federal ID (or) Social Security No.	
Address		Telephone ()	
City	State	ZIP	

I hereby certify that the above information is true and correct. I agree to notify the Michigan DNR of any changes that occur in factors affecting my coverage during any of my present and future operations.

Signature of Owner or Authorized Representative

Title

Date

Please complete the "SEALED BID" information on the next page