



**DEPARTMENT OF NATURAL RESOURCES
STATE OF MICHIGAN**

TIMBER SALE PROSPECTUS #6768

SCHEDULED SALE DATE AND TIME: 3:00 p.m. (local time) on November 24, 2020.

LOCATION: ESCANABA MGMT UNIT, 6833 HWY'S 2, 41 & M-35, GLADSTONE, MI 49837.

PROSPECTUS NOTE: The bidder is advised to inspect the sale area and review the location, estimated volumes, operating costs and contract terms of proposed sales. Please be aware that some landowners may request 60 days or more notice for access across their land.

Notice is hereby given that bids will be received by the Unit Manager, ESCANABA MANAGEMENT UNIT, for certain timber on the following described lands:

Limpert South (33-004-20) / T36N, R24W, SEC. 5 , NENW.

T37N, R24W, SEC. 31, E1/2NW,NE.

T37N, R24W, SEC. 32, W1/2NW,NWSW,SESW.

T37N, R24W, SEC. 33, NENW,S1/2NW,N1/2NE,N1/2SW,SWSE.

Delta County, Advertised Price \$66,963.20, 149.4 Acres, Hardwood, Spruce/Fir/Tamarack.

SALE NOTE: A recreation site such as a trail, pathway, or campground is within the sale area or the vicinity. Certain restrictions/specifications may be applicable including time restrictions. Access may be through private land.

7 and 551 (33-009-20) / T37N, R25W, SEC. 34, SE.

T37N, R25W, SEC. 35, NWSW.

T37N, R25W, SEC. 36, SWNE.

Menominee County, Advertised Price \$18,518.95, 42.2 Acres, Hardwood, White Pine.

SALE NOTE: A recreation site such as a trail, pathway, or campground is within the sale area or the vicinity. Certain restrictions/specifications may be applicable including time restrictions.

GOCJO MIX (33-036-20) / T36N, R25W, SEC. 25, NWNW.

T36N, R25W, SEC. 26, E1/2NE,N1/2SE,SWSE.

T36N, R25W, SEC. 34, E1/2NE,E1/2SE.

T36N, R25W, SEC. 35, S1/2NW,NWSW,S1/2SW,SE.

Menominee County, Advertised Price \$83,801.90, 140.0 Acres, Hardwood, Red Pine.

SALE NOTE: The majority of the sale can be harvested during the summer months, but there are some Payment Units that contain some lower wet areas, that will have to be dry or frozen to harvest.

BID INSTRUCTIONS (VER. 07/02/2018):

1. Scheduled Bid Location, Date, and Time (2/11)

Bids must be received by the Unit Manager, ESCANABA OFFICE, 6833 Hwy's 2, 41 & M-35, Gladstone, MI 49837, no later than 3:00 p.m. (local time) on November 24, 2020. For further information concerning this sale, contact Eric Thompson at 906-789-8231.

2. Bidder's Qualifications (5/16)

Purchaser shall obtain workers compensation insurance to cover claims under Michigan's Worker's Disability Compensation Act of 1969 or similar employee benefit act of any other state applicable to an employee. If all or part of a timber sale was prepared by a private contractor, the contractor and that contractor's company are not permitted to bid on the timber sale contract. Bids will not be accepted from individuals or companies appearing on the DNR/FRD No-Bid List. This list contains the names of purchasers who previously failed to execute a contract within 21-days or who have a history of poor performance.

3. Preparation of Sealed Bids (5/16)

Bid Forms may be completed online thru Michigan DNR Timber Sale Online Bidding (OLB) at www.michigan.gov/timberbidding or by completing the hardcopy Bid Form found in the Timber Sale Prospectus. Hardcopy Bid Forms shall be manually signed in ink. Registration in OLB is considered your 'signature' for all bids submitted thru that system. Bid prices must be entered for each species and product in the Bid Price column for all material subject to bidding and all fill-in blanks must be completed. If erasures or other changes appear on the hardcopy Bid Form, each erasure or change must be initialed by the person signing the bid.

4. Submission of Sealed Bids (5/16)

Bid forms may be obtained from the Unit Manager or thru OLB. Bids may be submitted hardcopy or thru OLB. All hardcopy bids must be submitted on the bid form and in an envelope clearly identified as described in this section. NOTE: Only one bid form per bid envelope. Sealed bids must be submitted to the Unit office designated in the prospectus and must be submitted at or prior to the time established in the prospectus. The envelope should show on the outside (a) the sale name or number and (b) the date and time of bid opening, as shown in the prospectus. Bids received after the time specified in the sale prospectus are late bids and will be rejected.

It is possible for a bidder to submit multiple bids on a single sale. For example, a bid may be submitted hardcopy and a bid may be submitted thru OLB. Or, two bidders from the same company could both submit bids on the same sale. If this were to happen, the State would accept all bids received and award the contract accordingly. All bidding and contractual requirements would apply to all bids received.

5. Public Opening of Sealed Bids (7/16)

If conditions permit, the sealed bids will be publicly opened and posted at the time and place set in the prospectus.

If a bidder, present at a bid opening, has submitted bids on more than one sale, that bidder may withdraw their unopened bid envelopes or announce the withdrawal of their online bid after being declared the successful bidder on one sale.

6. Award of Contract (1/11)

Award of the contract will be made to the Bidder whose bid, conforming to the prospectus, is most advantageous to the State of Michigan on the basis of total value at rates bid for the estimated quantities. The State reserves the right to reject any bid or waive any minor irregularity in bids received. A written award mailed (or otherwise furnished) to the successful Bidder shall be deemed to result in a binding contract without further action by either party.

7. Down Payment (1/11)

The Bidder to whom award is made must make a down payment within 21 days of the sale award. The amount of the down payment will be calculated as shown in the Bond and Payment Schedule of this prospectus. Only cash may be used to meet this requirement.

8. Performance Security (1/11)

As guarantee of faithful performance, a cash bond, certificate of deposit, surety bond or irrevocable letter of credit (LOC) is required within 21 days of the sale award. The amount of the performance security is shown in the Bond and

Payment Schedule of this prospectus. If an LOC or surety is used, the coverage must extend for at least 6 months beyond the contract expiration.

9. Timber Sale Contract (7/18)

Additional conditions and requirements common to all timber sales are listed on the timber sale contract (R4031) and are available on line at www.michigan.gov/timber. Contact the Unit Manager for additional information or a sample contract. Within 21 days of the date of the award letter, the bidder must sign the contract and provide the required down payment, performance security, and verification of worker's disability compensation. The down payment and performance security shall be in accordance with the provisions of the timber sale contract, in the sums stated in this prospectus. If these actions are not taken, then the Bidder, the Bidder's corporation, and the corporation's principals may not be permitted to bid on State timber sales for a period of 3 months after the first offense, 6 months after the second offense, and 1 year after the third offense. An offense will only be counted against the Bidder for 5 years. In addition, the Bidder certifies that if awarded this contract, the Bidder will complete the timber sale contract in accordance with its terms and any modifications thereof including requirements to purchase, cut, and remove the included timber by the expiration date.

Payment Unit values in the State Forest Timber Sale Contract are calculated based on the advertised value of the Payment Unit as a percentage of the total advertised value of the contract. The advertised value of each Payment Unit is given in the Description of Timber by Payment Unit table on the Timber Sale Information page. For example, if the value of Payment Unit 1 is advertised as \$1,500 and the total Timber Sale value is advertised as \$10,000, the contract price for Payment Unit 1 will be 15% of the total bid price ($\$1,500/\$10,000 * 100$).

10. Disclaimer of Estimates and Bidder's Warranty of Inspection (7/16)

Before submitting this bid, the Bidder is advised and cautioned to inspect the sale area, review the requirements of the sale contract, and take other steps as may be reasonably necessary to ascertain the location, estimated volumes, construction estimates, and operating costs of the proposed sale. Failure to do so will not relieve the Bidder from responsibility for completing the contract.

The Bidder warrants that this bid is submitted solely on the basis of the Bidder's examination and inspection of the quality and quantity of the timber offered for sale and the Bidder's opinion of the value thereof and the costs of recovery. No reliance should be placed on the State of Michigan's estimates of timber quality, quantity or costs of recovery. Bidder further acknowledges that the State of Michigan: (i) expressly disclaims any warranty of fitness of timber for any purpose; (ii) offers this timber as is without any warranty of quality (merchantability) or quantity and (iii) expressly disclaims any warranty as to the quantity or quality of timber sold.

11. Certification and Chain-of-Custody (10/14)

Unless otherwise indicated in the contract under section 7 – Other Conditions of the Sale Specific Conditions & Requirements, the area encompassed by this timber sale is certified to the standards of the Forest Stewardship Council (FSC) - Certificate #SCS-FM/COC-00090N and the Sustainable Forestry Initiative (SFI) - Certificate #NSF-SFIS-5Y031-SF5. Forest products from this sale may be delivered to the mill as "FSC 100% and / or SFI certified" as long as the contractor hauling the forest products is chain-of-custody (COC) certified or covered under a COC certificate from the destination mill. The purchaser is responsible for maintaining COC after leaving the sale area.

12. Good Neighbor Authority (GNA) Requirements (7/16)

If the name of this timber sales contains the acronym GNA, it is authorized by the Good Neighbor Authority (GNA) and covered by various agreements between the U.S. Forest Service and the State. The timber sale occurs on federal land and the following conditions apply:

GNA contracts on US Forest Service land will not be awarded to purchasers on the Federal list of excluded parties. The System for Award Management (SAM) will be checked for active excluded parties prior to award of contract. In addition, the Bidder to whom award is made must complete an Assurance Regarding Felony Conviction or Tax Delinquent Status for Corporate Applicants (AD-3031).

13. Good Neighbor Authority (GNA) Requirements, con't (9/16)

Bidder certifies, by signing this bid form, that to the best of Bidder's knowledge that the following representations are accurate and complete.

- a. That the Bidder and its principals are not presently debarred, suspended, proposed for debarment, declared ineligible, or voluntary excluded from timber sales (covered transactions) by any Federal department or agency.
- b. That the Bidder and its principals have not within a 3-year period preceding this bid been convicted of or had a civil judgment rendered against them for commission of fraud or a criminal offense in connection with obtaining , attempting to obtain, or performing a public (Federal, State, or local) transaction or contract under a public transaction; violation of Federal or State antitrust statutes or commission of embezzlement, theft, forgery, bribery, falsification or destruction of records, making false statements, or receiving stolen property.
- c. That the Bidder and its principals are not presently indicted for or otherwise criminally or civilly charged by a governmental entity (Federal, State, or local) with commission of any of the offenses enumerated in paragraph b of this certification.
- d. That the Bidder and its principals have not within a 3-year period preceding this bid had one or more public transactions (Federal, State, or local) terminated for breach or default of a timber or forest product contract.

Bidders that cannot certify this requirement, in whole or in part, shall submit an explanation with their bid.

DAN EICHINGER
Director

TIMBER SALE INFORMATION

Limpert South (33-004-20)

T36N, R24W, SEC. 5; T37N, R24W, SEC. 31; T37N, R24W, SEC. 32; T37N, R24W, SEC. 33.
Delta County (Advertised Price \$66,963.20)

SALE NOTE: A recreation site such as a trail, pathway, or campground is within the sale area or the vicinity. Certain restrictions/specifications may be applicable including time restrictions. Access may be through private land.

A timber sale contract for this lump sum, sealed bid timber sale will be awarded to the responsible bidder offering the highest sealed bid price. All units of volume listed below were estimated using the T-Sale computer program and our traditional volume equations. Bids must be at or above the following advertised price for each product and species:

<u>PRODUCTS & SPECIES</u>	<u>ESTIMATED UNITS*</u>	<u>ADVERTISED PRICE</u>
Sawtimber		
Basswood	0.8 MBF	\$ 78.00 / MBF
Black Ash	1.0 MBF	\$ 2.00 / MBF
Green Ash	33.9 MBF	\$ 36.00 / MBF
Paper Birch	1.3 MBF	\$ 60.00 / MBF
Red Maple	43.4 MBF	\$ 95.00 / MBF
Sugar Maple	2.5 MBF	\$ 163.00 / MBF
Yellow Birch	3.2 MBF	\$ 59.00 / MBF
Pulpwood		
Balsam Fir	280 Cords	\$ 12.55 / Cord
Mixed Aspen	520 Cords	\$ 18.70 / Cord
Mixed Hardwood	1,568 Cords	\$ 18.05 / Cord
Mixed Spruce	403 Cords	\$ 14.40 / Cord
N. White Cedar	107 Cords	\$ 10.95 / Cord
Red Pine	20 Cords	\$ 42.60 / Cord
Tamarack	45 Cords	\$ 8.25 / Cord
White Pine	588 Cords	\$ 18.95 / Cord

* The total volume is statistically estimated within plus (+) or minus (-) 7.84 percent. There are an estimated 3,991 cords on this timber sale, plus or minus 313 cords at the 95% confidence level. The estimated units are final and not subject to adjustment. Prospective bidders are urged to examine this timber and to make their own estimates of quantity and quality.

BOND AND PAYMENT SCHEDULE:

1. A bond in the amount of \$3,348.00 to insure faithful performance of the conditions of the contract will be deposited by the successful bidder within 21 days of the sale award.
2. Cutting in any sale or unit without the required advance payment would be considered a trespass.
3. Total payment must be paid in advance or according to the following schedule :
 - (a) Ten percent (10%) of the sale value must be paid within 21 days of the sale award.
 - (b) The 10% down payment will be credited towards the first unit cut.
 - (c) Payment for each of the following units must be made before cutting begins in that unit:

PAYMENT UNIT NUMBER	PERCENT OF TOTAL SALE VALUE
01	16.0%
02	7.3%
03	6.6%
04	2.7%
05	16.4%
06	5.9%
07	7.9%
08	13.3%
09	12.1%
10	3.8%
11	5.8%
12	2.2%

4. If no cutting takes place, the 10% down payment will not be refunded.
5. Operations on the contract issued will terminate on 09/30/2024.

SALE STATISTICS

SALE VOLUMES

VOLUME			STATISTICAL RANGE IN CORDS	
TOTAL CUBIC FEET	TOTAL CORDS	PERCENT ERROR	MINIMUM	MAXIMUM
315,253	3,991	7.84%	3,678	4,303

VDU VOLUMES

A VDU is a Volume Determination Unit. Volumes and their associated statistics are calculated at the VDU level and summarized to the sale level. There is often a one to one relationship between a VDU and a Payment Unit, but not always, depending on the cruise design. Refer to the VDU TO PAYMENT UNIT table.

VDU	VOLUME			RANGE IN CORDS	
	TOTAL CUBIC FEET	TOTAL CORDS	PERCENT ERROR	MINIMUM	MAXIMUM
14	44,524	564	28.87%	401	726
15	23,945	303	28.87%	216	391
19	8,074	102	16.94%	85	120
20	17,064	216	22.40%	168	264
32	45,330	574	14.18%	492	655
41	18,913	239	22.90%	185	294
68	31,150	394	41.53%	231	558
72	11,716	148	35.12%	96	200
75	28,835	365	18.82%	296	434
77	41,491	525	13.59%	454	597
78	38,418	486	18.90%	394	578
84	5,846	74	28.59%	53	95
TOTAL:	315,305	3,991		3,070	4,912

VDU TO PAYMENT UNIT

When a VDU is associated with more than one Payment Unit (PU), the VDU volumes are assigned to the PU based on acres of the VDU within the PU.

VDU	VDU ACRES	PU	PU ACRES
14	19.6	1	19.6
15	9.7	2	9.7
19	3.8	4	3.8
20	7.7	3	7.7
32	18.4	5	18.4
41	11.1	6	11.1
68	12.0	11	12.0
72	6.9	10	6.9
75	10.7	7	10.7
77	22.9	8	22.9
78	19.3	9	19.3
84	7.3	12	7.3
TOTAL:	149.4		149.4

DESCRIPTION OF TIMBER BY PAYMENT UNIT (PU)

PU	MARKET GROUP	PRODUCT	QUANTITY	UNIT	ACRES	ADVERTISE PRICE
1	Red Maple	Sawtimber	0.9	MBF	19.6	\$10,703.05
	Balsam Fir	Pulpwood	7	Cords		
	Mixed Hardwood		11	Cords		
	<i>Paper Birch</i>		6	<i>Cords</i>		
	<i>Red Maple</i>		5	<i>Cords</i>		
	Mixed Spruce		41	Cords		
	<i>Black Spruce</i>		41	<i>Cords</i>		
	Red Pine		12	Cords		
	Tamarack		7	Cords		
	White Pine		484	Cords		
2	Balsam Fir	Pulpwood	2	Cords	9.7	\$4,895.60
	Mixed Hardwood		12	Cords		
	<i>Red Maple</i>		12	<i>Cords</i>		
	Mixed Spruce		156	Cords		
	<i>Black Spruce</i>		156	<i>Cords</i>		
	Red Pine		8	Cords		
	Tamarack		30	Cords		
	White Pine		96	Cords		
3	Paper Birch	Sawtimber	0.6	MBF	7.7	\$4,439.85
	Red Maple		11.4	MBF		
	Balsam Fir	Pulpwood	4	Cords		
	Mixed Aspen		8	Cords		
	<i>Quaking Aspen</i>		8	<i>Cords</i>		
	Mixed Hardwood		141	Cords		
	<i>Black Cherry</i>		2	<i>Cords</i>		
	<i>Green Ash</i>		10	<i>Cords</i>		
	<i>Paper Birch</i>		13	<i>Cords</i>		
	<i>Red Maple</i>		116	<i>Cords</i>		
	Mixed Spruce		40	Cords		
<i>Black Spruce</i>		40	<i>Cords</i>			
4	Green Ash	Sawtimber	1.1	MBF	3.8	\$1,826.75
	Red Maple		0.4	MBF		
	Balsam Fir	Pulpwood	5	Cords		
	Mixed Aspen		1	Cords		
	<i>Quaking Aspen</i>		1	<i>Cords</i>		
	Mixed Hardwood		90	Cords		
	<i>Black Ash</i>		11	<i>Cords</i>		
	<i>Green Ash</i>		65	<i>Cords</i>		
	<i>Paper Birch</i>		1	<i>Cords</i>		
	<i>Red Maple</i>		13	<i>Cords</i>		
	Mixed Spruce		3	Cords		
	<i>Black Spruce</i>		3	<i>Cords</i>		
	5	Black Ash	Sawtimber	1.0		
Green Ash			13.9	MBF		
Red Maple			16.7	MBF		
Yellow Birch			3.2	MBF		
Mixed Hardwood		Pulpwood	446	Cords		
<i>Black Ash</i>			101	<i>Cords</i>		
<i>Green Ash</i>			151	<i>Cords</i>		
<i>Red Maple</i>			171	<i>Cords</i>		
<i>Yellow Birch</i>			23	<i>Cords</i>		
Mixed Spruce			5	Cords		
<i>Black Spruce</i>			5	<i>Cords</i>		
N. White Cedar			45	Cords		
White Pine			8	Cords		
6	Paper Birch	Sawtimber	0.7	MBF	11.1	\$3,918.75

DESCRIPTION OF TIMBER BY PAYMENT UNIT (PU), CON'T

PU	MARKET GROUP	PRODUCT	QUANTITY	UNIT	ACRES	ADVERTISE PRICE
6 con't	Red Maple	Sawtimber	4.6	MBF		
	Balsam Fir	Pulpwood	17	Cords		
	Mixed Aspen		6	Cords		
	<i>Quaking Aspen</i>		6	<i>Cords</i>		
	Mixed Hardwood		91	Cords		
	<i>Green Ash</i>		12	<i>Cords</i>		
	<i>Paper Birch</i>		39	<i>Cords</i>		
	<i>Red Maple</i>		40	<i>Cords</i>		
	Mixed Spruce		71	Cords		
	<i>White Spruce</i>		71	<i>Cords</i>		
	N. White Cedar		35	Cords		
	Tamarack		8	Cords		
7	Green Ash	Sawtimber	14.1	MBF	10.7	\$5,269.05
	Red Maple		6.9	MBF		
	Balsam Fir	Pulpwood	5	Cords		
	Mixed Hardwood		224	Cords		
	<i>Black Ash</i>		46	<i>Cords</i>		
	<i>Green Ash</i>		133	<i>Cords</i>		
	<i>Red Maple</i>		45	<i>Cords</i>		
8	Basswood	Sawtimber	0.8	MBF	22.9	\$8,882.45
	Green Ash		1.3	MBF		
	Sugar Maple		2.5	MBF		
	Balsam Fir	Pulpwood	113	Cords		
	Mixed Aspen		151	Cords		
	<i>Balsam Poplar</i>		20	<i>Cords</i>		
	<i>Quaking Aspen</i>		131	<i>Cords</i>		
	Mixed Hardwood		188	Cords		
	<i>Basswood</i>		8	<i>Cords</i>		
	<i>Black Ash</i>		12	<i>Cords</i>		
	<i>Black Cherry</i>		4	<i>Cords</i>		
	<i>Green Ash</i>		116	<i>Cords</i>		
	<i>Ironwood</i>		2	<i>Cords</i>		
	<i>Paper Birch</i>		4	<i>Cords</i>		
	<i>Red Maple</i>		9	<i>Cords</i>		
	<i>Sugar Maple</i>		31	<i>Cords</i>		
	<i>Yellow Birch</i>		2	<i>Cords</i>		
	Mixed Spruce		34	Cords		
<i>White Spruce</i>		34	<i>Cords</i>			
N. White Cedar		22	Cords			
9	Green Ash	Sawtimber	1.5	MBF	19.3	\$8,085.25
	Balsam Fir	Pulpwood	109	Cords		
	Mixed Aspen		190	Cords		
	<i>Balsam Poplar</i>		58	<i>Cords</i>		
	<i>Quaking Aspen</i>		132	<i>Cords</i>		
	Mixed Hardwood		127	Cords		
	<i>Black Ash</i>		3	<i>Cords</i>		
	<i>Green Ash</i>		92	<i>Cords</i>		
	<i>Paper Birch</i>		7	<i>Cords</i>		
	<i>Red Maple</i>		25	<i>Cords</i>		
	Mixed Spruce		53	Cords		
	<i>White Spruce</i>		53	<i>Cords</i>		
	N. White Cedar		5	Cords		
10	Green Ash	Sawtimber	2.0	MBF	6.9	\$2,533.85
	Balsam Fir	Pulpwood	2	Cords		
	Mixed Hardwood		135	Cords		
	<i>Black Ash</i>		76	<i>Cords</i>		

DESCRIPTION OF TIMBER BY PAYMENT UNIT (PU), CON'T

PU	MARKET GROUP	PRODUCT	QUANTITY	UNIT	ACRES	ADVERTISE PRICE
10 con't	<i>Green Ash</i> <i>Paper Birch</i>	<i>Pulpwood</i>	50 9	<i>Cords</i> <i>Cords</i>		
11	Balsam Fir Mixed Aspen <i>Balsam Poplar</i> <i>Quaking Aspen</i> Mixed Hardwood <i>Box Elder</i> <i>Paper Birch</i> <i>Red Maple</i>	Pulpwood	13 161 9 152 39 2 27 10	Cords Cords <i>Cords</i> <i>Cords</i> Cords <i>Cords</i> <i>Cords</i> <i>Cords</i>	12.0	\$3,877.80
12	Red Maple Balsam Fir Mixed Aspen <i>Balsam Poplar</i> Mixed Hardwood <i>Green Ash</i> <i>Ironwood</i> <i>Red Maple</i> <i>Yellow Birch</i>	Sawtimber Pulpwood	2.5 3 3 3 64 4 2 57 1	MBF Cords Cords <i>Cords</i> Cords <i>Cords</i> <i>Cords</i> <i>Cords</i> <i>Cords</i>	7.3	\$1,486.45
TOTAL:			86.1	MBF		
TOTAL:			3,531	Cords		

Sale Specific Conditions & Requirements

Sale Name: Limpert South

Sale Number: 33-004-20 Seq#: 1

1 - Sale Area

1.2 - Boundaries

1.2.1 - Painted boundaries (9/19)

The sale boundary and Payment Unit boundaries are marked and identified by blue, red and yellow paint. Exterior sale boundary lines against private property are marked with blue paint. Exterior sale boundary lines against state are marked with red paint. Interior Payment Unit boundaries are marked with yellow paint. Retention patches and stream buffers are marked with red paint; no harvesting activities may occur within these areas. The painted boundary line trees are not Included Timber and are to be protected unless marked with orange paint. Yellow painted trees designating an interior Payment Unit boundary are only to be cut when all surrounding Payment Units have been paid.

2 - Timber Specifications

2.1 - Included Timber

2.1.1 - Clearcut unit(s) with unmerchantable trees (6/14)

Within Payment Unit(s) 2, 3, 4, 5, 6, 7, 8, 9, 10 and 11, cut all trees that are three (3) inches or more at DBH, with the following exceptions:

- Within Payment Unit 2, leave all hemlock and cedar.
- Within Payment Unit 3, leave all hemlock, pine and cedar.
- Within Payment Unit 5 and 8, leave all hemlock and green marked trees.
- Within Payment Units 6 and 9, leave all green marked trees.
- Within Payment Units 7, 10 and 11, leave all cedar.

2.1.3 - Cut tree marked unit(s) (12/08)

Within Payment Unit(s) 12, all trees are designated for cutting when marked with orange paint above and below stump height, regardless of merchantability.

2.1.5 - Overstory removal unit(s) (8/11)

Within Payment Unit(s) 1, all white pine with a diameter greater than 7 inches at 12 inches above ground level, which meet minimum piece specifications in 2.2 Utilization, are designated for cutting, except do not cut green marked trees. In addition, all other trees greater than 3 inches at DBH are designated for cutting, except do not cut cedar and hemlock

2.1.9 - Harvest exception (12/08)

Do not cut any cedar or hemlock in the units that require them to be left (see specification 2.1.1) other than those that are necessary to remove in order to operate within the sale area. Every effort must be made to preserve the existing cedar and hemlock and to leave an intact stand upon sale completion. All cut cedar and hemlock shall be piled separately by products and scaled in the woods unless other scaling arrangements are agreed to by the Unit Manager or his/her representative. Stumpage price for cedar and hemlock shall be \$50.00 per cord for posts and pulpwood, and \$100.00 per cord for bolts and sawlogs.

3 - Payments

3.3 - Pre-measured Sales

3.3.4 - Dividing payment units (7/14)

Payment Unit(s) with a purchase value of \$18,000 or more may be divided at the request of the Purchaser and upon approval of the Unit Manager. Dividing Payment Units is a contract modification which requires a Timber Sale Contract Amendment. There will be only one division per Payment Unit.

4 - Transportation

4.1 - Construction

4.1.1 - Stream crossings, general (3/11)

All stream crossing structures will be temporary and therefore, shall be provided by the Purchaser, and must be removed upon

completion of the sale. All permits for stream crossings will be provided by the DNR.

4.1.5 - Culverts (5/14)

Roads may require the installation of culverts for cross drainage or at natural drainage-ways. If culverts are needed in these locations, their placement will be specified by the sale administrator and they shall be installed prior to hauling. The culverts shall be new corrugated metal. Culverts will be a minimum of 18 inches in diameter and 24 feet in length. If culverts are removed, fill shall be removed from wetland soils as specified. Soils shall be maintained and left in a non-erodible condition, with water bars, seed, fertilizer, mulch, and slash installed as directed by the sale administrator and as specified in the BMP manual. Stream crossing permits, if needed, will be obtained by the DNR.

4.1.6 - Road construction (1/09)

Construction of new roads or improvements of existing roads shall be done in such a way as to minimize the environmental and visual impacts. Merchantable trees shall be cut and utilized unless otherwise directed. Non-merchantable trees shall be severed and laid flat on the ground. Slash shall be scattered, and not left in windrows and kept a minimum of 10 feet back from the road edge. Stumps shall be set upright, not left on edge, and be moved at least 10 feet away from the road edge. Disturbed soil shall be feathered into the woods and not left in berms or windrows.

4.1.7 - Road closure (10/11)

All new roads built into the sale must be blocked to vehicle traffic upon completion of the sale. Overgrown roads that are reopened shall be considered new roads. In general, this will require constructing a four (4') foot high berm of stumps and logs covered with earth. Stumps and brush must be placed along the remainder of the trail. These roads must be rendered impassable to cars and trucks. Temporary berms may be required if no sale activity occurs for 30 or more consecutive days. Contact the sale administrator for specific details of design and placement.

4.2 - Maintenance

4.2.4 - Grading (10/16)

For completion of the sale, state forest roads must be graded. In general, this will require a road grader or bull dozer to shape up the roads after forest products have been hauled off site. This includes cleaning of drainage areas, grading, crowning and filling with gravel, if necessary. The grading equipment to be used must be approved by the Unit Manager or his/her representative.

4.4 - Access

4.4.1 - Private property access (3/11)

Permission for access across private land is the responsibility of the Purchaser. Should the Purchaser desire to cross private land, a copy of the written permission from the private land-owner may be required by the DNR.

5 - Operations

5.2 - Conduct of Operations

5.2.2 - Hazard Trees/Snags

5.2.2.1 - Den trees (10/16)

Obvious hollow and/or den trees shall be protected and left standing unless they are a safety hazard.

5.2.3 - Operating Restrictions

5.2.3.1 - Operating restrictions (9/11)

Within Payment Unit(s) 2, 3, 4, 5, 7, 10 and 11 cutting, skidding, and hauling are limited to the period of December 1 to March 31, or during frozen ground conditions, unless otherwise approved by the unit manager. This restriction is due to low wet ground within the units.

5.2.3.3 - Bark slippage restriction (3/09)

Within Payment Unit(s) 12, cutting and skidding are not permitted during the period of April 15 to July 15. This restriction is because of bark slippage.

5.2.38 - No decking against live trees (2/04)

Cut products may not be decked against unmarked or designated leave trees.

5.4 - Soil Protection

5.4.1 - Rutting restriction, general (7/16)

Operations are to cease immediately if equipment and weather conditions result in rutting of roads and/or skid trails which is 12 inches or greater in depth and 50 feet in length. The Unit Manager or his/her representative may restrict hauling and/or skidding if ruts exceed the specified depth. With the Unit Manager or his/her representative's approval, the Purchaser may return to the area when the risk of rutting has decreased.

6 - Safety and Fire Prevention

6.2 - Signing

6.2.3 - Recreational trail posting (2/10)

The Purchaser is responsible for posting and maintaining caution signs on the Deer Pond Road prior to beginning operations. The trail must be posted at appropriate distances from the sale area to warn of logging activity and truck traffic at both ends of the trail. Signs must be removed when harvest operations are suspended or completed. The Purchaser will provide these signs.



Sale Number	Year
33 - 004	20

TIMBER SALE MAP

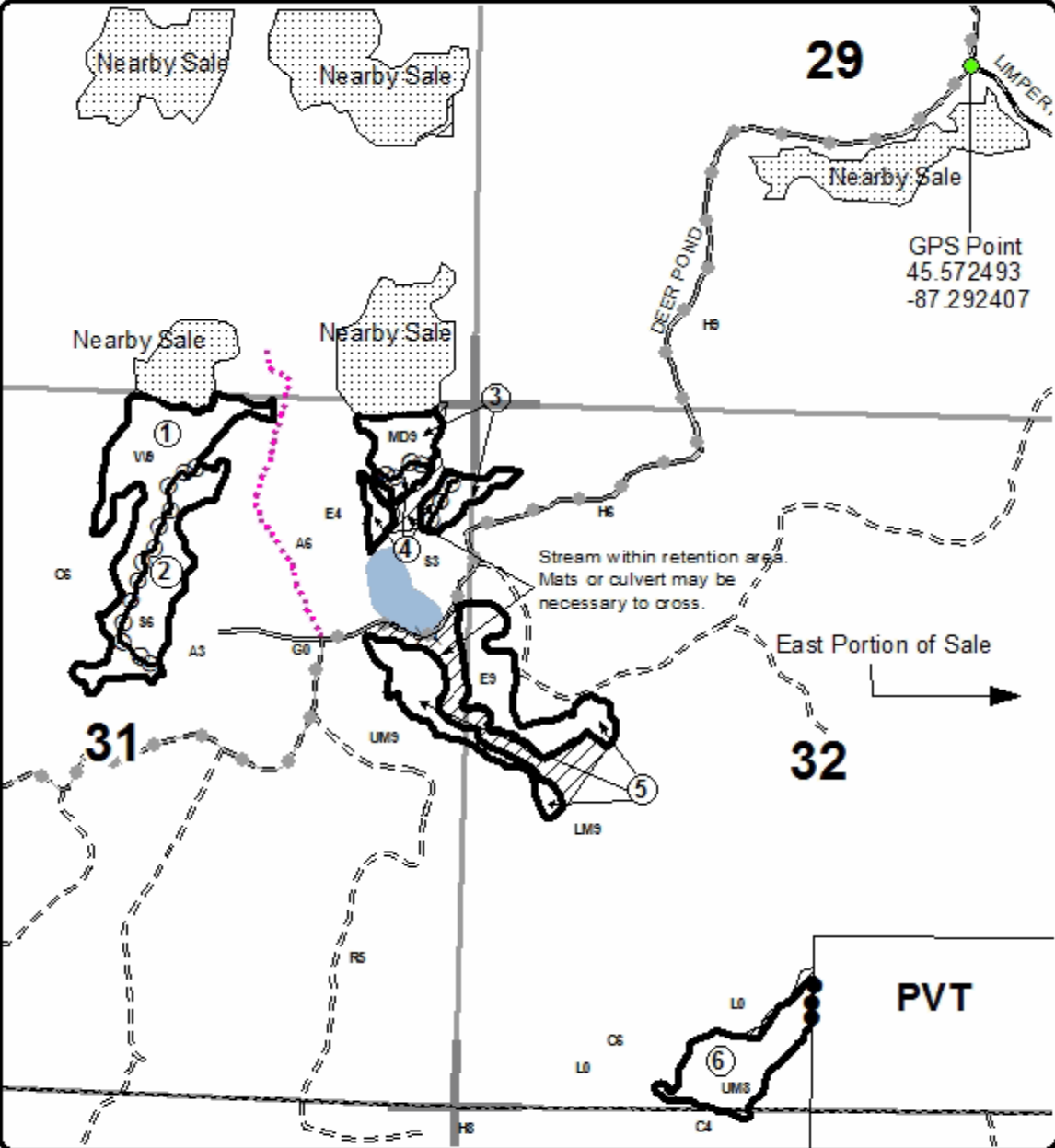
This information provided by authority of Part 525, 1994 PA 451, as amended.

Forest Management Unit Escanaba	County Delta	Mapped By Ulrich	Date 07/22/2020	Page 1	of 2
Township 37N	Range 24W	Section(s) and Subdivision(s) Sec31 E1/2NW,NE Sec32 W1/2NW,NWSW,SESW Sec33 NENW,S1/2NW,N1/2NE, N1/2SW,SWSE	Scale 1:15,840		

Cover Type				Density	
A = Aspen	H = Hemlock	N = Marsh	U = Upland Brush	0 = Non Stocked	5 = Pole Timber Medium
B = Paper Birch	J = Jack Pine	O = Oak	UM = Upland Mixed	1 = Seeding Sapling Poor	6 = Pole Timber Well
C = Cedar	L = Lowland Brush	P = Lowland Poplar	V = Bog or Marsh	2 = Seeding Sapling Medium	7 = Saw Timber Poor
D = Treed Bog	LM = Lowland Mixed	Q = Mixed Swamp Conifer	W = White Pine	3 = Seeding Sapling Well	8 = Saw Timber Medium
E = Swamp Hardwoods	M = Mpl. Ech. Birch	R = Red Pine	X = Non Stocked	4 = Pole Timber Poor	9 = Saw Timber Well
F = Spruce Fir	MC = Mixed Conifer	S = Black Spruce	Z = Water		
G = Creas	MD = Mixed Deciduous	T = Tamarack			

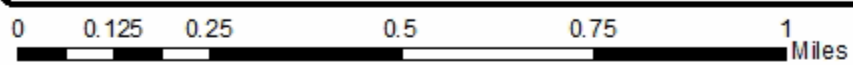
PU	Acres	PU	Acres
1	19.6	4	3.8
2	9.7	5	18.4
3	7.7	6	11.1

Limpert South (west stands)
Compartment 074
149.4 Acres



Legend

- Recreational Trails
- Highway
- Primary Forest Road
- Secondary Forest Road
- Forest Access Route
- Paved Road
- Gravel Road
- County Road - Seasonal
- Private
- DNR - Management Access
- Temporary Management Access
- Retention Area
- Against State (Red)
- Payment Unit (Yellow)
- Private Line (Blue)
- Section Corners





TIMBER SALE MAP

This information provided by authority of Part 525, 1994 PA 451, as amended.

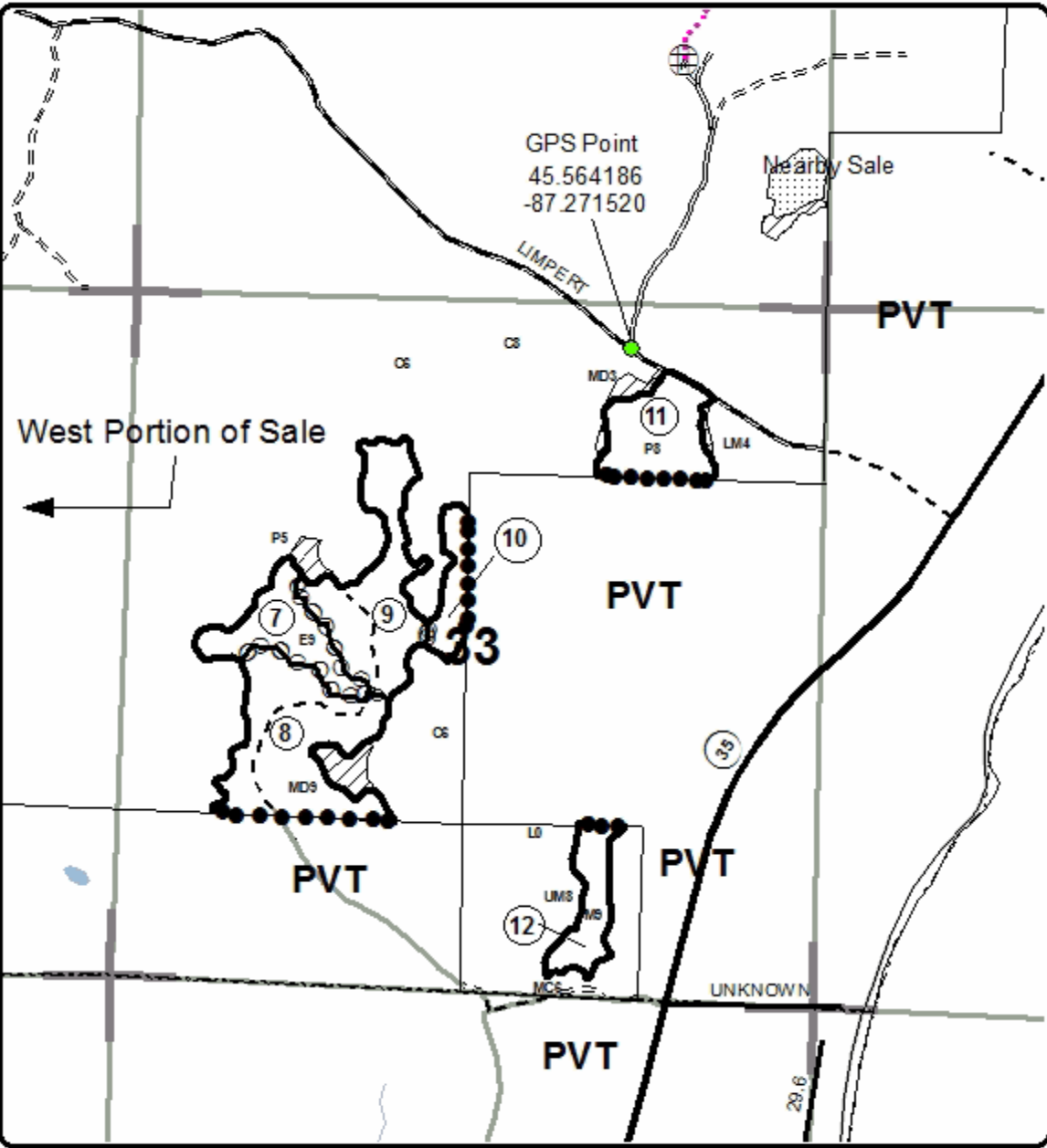
Sale Number	Year
33 - 004	20

Forest Management Unit Escanaba	County Delta	Mapped By Urich	Date 07/22/2020	Page 2	of 2
Township 37N	Range 24W	Section(s) and Subdivision(s) Sec31 E1/2NW,NE Sec32 W1/2NW,NWSW,SESW Sec33 NENW,S1/2NW,N1/2NE, N1/2SW,SWSE	Scale 1:15,840		

Cover Type				Density			
A = Aspen	H = Hemlock	N = Marsh	U = Upland Brush	0 = Non Stocked	5 = Pole Timber Medium		
B = Paper Birch	J = Jack Pine	O = Oak	UM = Upland Mixed	1 = Seeding Sapling Poor	6 = Pole Timber Well		
C = Cedar	L = Lowland Brush	P = Lowland Poplar	V = Bog or Marsh	2 = Seeding Sapling Medium	7 = Saw Timber Poor		
D = Treed Bog	LM = Lowland Mixed	Q = Mixed Swamp Conifer	W = White Pine	3 = Seeding Sapling Well	8 = Saw Timber Medium		
E = Swamp Hardwoods	M = Mpl. Ech. Birch	R = Red Pine	X = Non Stocked	4 = Pole Timber Poor	9 = Saw Timber Well		
F = Spruce Fir	MC = Mixed Conifer	S = Black Spruce	Z = Water				
G = Cress	MD = Mixed Deciduous	T = Tamarack					

PU	Acres	PU	Acres
7	10.7	10	6.9
8	22.9	11	12
9	19.3	12	7.3

Limpert South (east stands)
Compartment 074
149.4 Acres



Legend

- Highway
- Primary Forest Road
- Secondary Forest Road
- Forest Access Route
- Paved Road
- Gravel Road
- County Road - Seasonal
- Private
- DNR - Management Access
- Temporary Management Access
- Retention Area
- Against State (Red)
- Payment Unit (Yellow)
- Private Line (Blue)
- Section Corners



TIMBER SALE INFORMATION

7 and 551 (33-009-20)

T37N, R25W, SEC. 34; T37N, R25W, SEC. 35; T37N, R25W, SEC. 36.
Menominee County (Advertised Price \$18,518.95)

SALE NOTE: A recreation site such as a trail, pathway, or campground is within the sale area or the vicinity. Certain restrictions/specifications may be applicable including time restrictions.

A timber sale contract for this lump sum, sealed bid timber sale will be awarded to the responsible bidder offering the highest sealed bid price. All units of volume listed below were estimated using the T-Sale computer program and our traditional volume equations. Bids must be at or above the following advertised price for each product and species:

<u>PRODUCTS & SPECIES</u>	<u>ESTIMATED UNITS*</u>	<u>ADVERTISED PRICE</u>
Sawtimber		
Basswood	3.0 MBF	\$ 78.00 / MBF
Beech	0.5 MBF	\$ 45.00 / MBF
Red Maple	11.8 MBF	\$ 95.00 / MBF
Sugar Maple	17.5 MBF	\$ 163.00 / MBF
Yellow Birch	1.0 MBF	\$ 59.00 / MBF
Pulpwood		
Balsam Fir	20 Cords	\$ 12.55 / Cord
Mixed Hardwood	353 Cords	\$ 18.05 / Cord
Mixed Spruce	5 Cords	\$ 14.40 / Cord
Quaking Aspen	91 Cords	\$ 18.70 / Cord
Red Pine	80 Cords	\$ 42.60 / Cord
White Pine	128 Cords	\$ 18.95 / Cord

* The total volume is statistically estimated within plus (+) or minus (-) 18.54 percent. There are an estimated 744 cords on this timber sale, plus or minus 138 cords at the 95% confidence level. The estimated units are final and not subject to adjustment. Prospective bidders are urged to examine this timber and to make their own estimates of quantity and quality.

BOND AND PAYMENT SCHEDULE:

1. A bond in the amount of \$926.00 to insure faithful performance of the conditions of the contract will be deposited by the successful bidder within 21 days of the sale award.
2. Cutting in any sale or unit without the required advance payment would be considered a trespass.
3. Total payment must be paid in advance or according to the following schedule :
 - (a) Ten percent (10%) of the sale value must be paid within 21 days of the sale award.
 - (b) The 10% down payment will be credited towards the first unit cut.
 - (c) Payment for each of the following units must be made before cutting begins in that unit:

PAYMENT UNIT NUMBER	PERCENT OF TOTAL SALE VALUE
01	13.5%
02	8.2%
03	3.3%
04	28.4%
05	6.5%
06	40.1%
4. If no cutting takes place, the 10% down payment will not be refunded.
5. Operations on the contract issued will terminate on 12/31/2023.

SALE STATISTICS

SALE VOLUMES

VOLUME			STATISTICAL RANGE IN CORDS	
TOTAL CUBIC FEET	TOTAL CORDS	PERCENT ERROR	MINIMUM	MAXIMUM
58,754	744	18.54%	606	882

VDU VOLUMES

A VDU is a Volume Determination Unit. Volumes and their associated statistics are calculated at the VDU level and summarized to the sale level. There is often a one to one relationship between a VDU and a Payment Unit, but not always, depending on the cruise design. Refer to the VDU TO PAYMENT UNIT table.

VDU	VOLUME		PERCENT ERROR	RANGE IN CORDS	
	TOTAL CUBIC FEET	TOTAL CORDS		MINIMUM	MAXIMUM
6	4,914	62	28.03%	45	80
17	21,591	273	34.69%	178	368
21	6,731	85	57.24%	36	134
24	6,209	79	75.07%	20	138
34	19,323	245	16.11%	205	284
TOTAL:	58,768	744		484	1,003

VDU TO PAYMENT UNIT

When a VDU is associated with more than one Payment Unit (PU), the VDU volumes are assigned to the PU based on acres of the VDU within the PU.

VDU	VDU ACRES	PU	PU ACRES
6	4.7	5	4.7
17	11.5	3	1.2
		4	10.3
21	7.5	1	7.5
24	5.7	2	5.7
34	12.8	6	12.8
TOTAL:	42.2		42.2

DESCRIPTION OF TIMBER BY PAYMENT UNIT (PU)

PU	MARKET GROUP	PRODUCT	QUANTITY	UNIT	ACRES	ADVERTISE PRICE
1	Basswood	Sawtimber	1.0	MBF	7.5	\$2,493.55
	Beech		0.5	MBF		
	Sugar Maple		6.9	MBF		
	Yellow Birch		1.0	MBF		
	Mixed Hardwood	Pulpwood	67	Cords		
	<i>Basswood</i>		2	<i>Cords</i>		
	<i>Beech</i>		6	<i>Cords</i>		
	<i>Sugar Maple</i>		57	<i>Cords</i>		
	<i>Yellow Birch</i>		2	<i>Cords</i>		
2	Red Maple	Sawtimber	1.1	MBF	5.7	\$1,518.95
	Balsam Fir	Pulpwood	2	Cords		
	Mixed Hardwood		21	Cords		
	<i>Black Cherry</i>		2	<i>Cords</i>		
	<i>Red Maple</i>		19	<i>Cords</i>		
	Quaking Aspen		52	Cords		
	White Pine		2	Cords		
3	Red Maple	Sawtimber	0.5	MBF	1.2	\$612.80
	Balsam Fir	Pulpwood	1	Cords		
	Mixed Hardwood		11	Cords		
	<i>Ironwood</i>		1	<i>Cords</i>		
	<i>Paper Birch</i>		1	<i>Cords</i>		
	<i>Red Maple</i>		9	<i>Cords</i>		
	Quaking Aspen		4	Cords		
	Red Pine		3	Cords		
	White Pine		8	Cords		
4	Red Maple	Sawtimber	4.4	MBF	10.3	\$5,251.35
	Balsam Fir	Pulpwood	6	Cords		
	Mixed Hardwood		99	Cords		
	<i>Ironwood</i>		6	<i>Cords</i>		
	<i>Paper Birch</i>		11	<i>Cords</i>		
	<i>Red Maple</i>		82	<i>Cords</i>		
	Mixed Spruce		4	Cords		
	<i>Black Spruce</i>		4	<i>Cords</i>		
	Quaking Aspen		35	Cords		
	Red Pine		21	Cords		
	White Pine		72	Cords		
5	Red Maple	Sawtimber	1.4	MBF	4.7	\$1,197.40
	Balsam Fir	Pulpwood	5	Cords		
	Mixed Hardwood		19	Cords		
	<i>Red Maple</i>		19	<i>Cords</i>		
	Mixed Spruce		1	Cords		
	<i>White Spruce</i>		1	<i>Cords</i>		
	White Pine		34	Cords		
6	Basswood	Sawtimber	2.0	MBF	12.8	\$7,444.90
	Red Maple		4.4	MBF		
	Sugar Maple		10.6	MBF		
	Balsam Fir	Pulpwood	6	Cords		
	Mixed Hardwood		136	Cords		
	<i>Basswood</i>		7	<i>Cords</i>		
	<i>Beech</i>		9	<i>Cords</i>		
	<i>Ironwood</i>		6	<i>Cords</i>		
	<i>Red Maple</i>		59	<i>Cords</i>		
	<i>Sugar Maple</i>		55	<i>Cords</i>		
	Red Pine		56	Cords		
	White Pine		12	Cords		

TOTAL:	33.8	MBF
--------	------	-----

TOTAL:	677	Cords
--------	-----	-------

Sale Specific Conditions & Requirements

Sale Name: 7 and 551

Sale Number: 33-009-20 Seq#: 1

1 - Sale Area

1.2 - Boundaries

1.2.1 - Painted boundaries (9/19)

The sale boundary and Payment Unit boundaries are marked and identified by blue, red and yellow paint. Exterior sale boundary lines against private property are marked with blue paint. Exterior sale boundary lines against state are marked with red paint, with the exception of the Payment Unit 3 boundary, which is unpainted and identified by the grass opening and County Road 551. Interior Payment Unit boundaries are marked with yellow paint. Retention patches are marked with red painted x marks; no harvesting activities may occur within these areas. The painted boundary line trees are not Included Timber and are to be protected unless marked with orange paint. Yellow painted trees designating an interior Payment Unit boundary are only to be cut when all surrounding Payment Units have been paid.

2 - Timber Specifications

2.1 - Included Timber

2.1.1 - Clearcut unit(s) with unmerchantable trees (6/14)

Within Payment Unit(s) 2 and 3, cut all trees that are two (2) inches or more at DBH.

2.1.3 - Cut tree marked unit(s) (12/08)

Within Payment Unit(s) 1 and 5, all trees are designated for cutting when marked with orange paint above and below stump height, regardless of merchantability. In addition, within Payment Unit 5, all other trees are designated for cutting, except do not cut any unmarked pine.

2.1.4 - Designated timber unit(s) (6/17)

Within Payment Unit(s) 4, all trees are designated for cutting which meet minimum piece specifications in 2.2 - Utilization, except do not cut any hemlock. In addition, do not cut any pine trees with a DBH of 18 inches or greater.

For the purpose of timber sale administration, all cut pine trees will have a stump diameter of 20 inches or less, measured at a point of 12 inches above ground level.

2.1.7 - Leave tree marked unit(s) (6/14)

Within Payment Unit(s) 6, all trees which meet minimum piece specifications in 2.2 Utilization are designated for cutting, except do not cut cedar, hemlock, and trees marked with green paint above and below stump height.

3 - Payments

3.3 - Pre-measured Sales

3.3.4 - Dividing payment units (7/14)

Payment Unit(s) with a contract bid value of \$18,000 dollars or greater may be divided at the request of the Purchaser and upon approval of the Unit Manager. Dividing Payment Units is a contract modification which requires a Timber Sale Contract Amendment.

4 - Transportation

4.1 - Construction

4.1.6 - Road construction (1/09)

Construction of new roads or improvements of existing roads shall be done in such a way as to minimize the environmental and visual impacts. Merchantable trees shall be cut and utilized unless otherwise directed. Non-merchantable trees shall be severed and laid flat on the ground. Slash shall be scattered, and not left in windrows and kept a minimum of 10 feet back from the road edge. Stumps shall be set upright, not left on edge, and be moved at least 10 feet away from the road edge. Disturbed soil shall be feathered into the woods and not left in berms or windrows.

4.1.7 - Road closure (10/11)

All new roads built into the sale must be blocked to vehicle traffic upon completion of the sale. Overgrown roads that are reopened shall be considered new roads. In general, this will require constructing a four (4') foot high berm of stumps and logs covered with earth. These roads must be rendered impassable to cars and trucks. Contact the sale administrator for specific details of design and placement.

4.2 - Maintenance

4.2.2 - Fill material (4/07)

To maintain roads, fill material may be needed in areas where "holes" exist or may be expected to develop. This fill material should be placed before trucking begins. Contact the sale administrator regarding the availability of onsite sand or gravel from adjacent State-owned lands.

4.2.4 - Grading (10/16)

For completion of the sale, state forest roads must be graded. In general, this will require a road grader or bull dozer to shape up the roads after forest products have been hauled off site. This includes cleaning of drainage areas, grading, crowning and filling with gravel, if necessary. The grading equipment to be used must be approved by the Unit Manager or his/her representative.

5 - Operations

5.2 - Conduct of Operations

5.2.2 - Hazard Trees/Snags

5.2.2.1 - Den trees (10/16)

Obvious hollow and/or den trees shall be protected and left standing unless they are a safety hazard.

5.2.3 - Operating Restrictions

5.2.3.3 - Bark slippage restriction (3/09)

Within Payment Unit(s) 1 and 5, unless changed by written agreement, cutting and skidding are not permitted during the period of April 15 to July 15. This restriction is because of bark slippage.

5.2.39 - ORV trail/route protection (4/18)

The Forest Island trail is an ORV trail or route and is shown on the Timber Sale Map. Do not cut trees or damage posts with yellow ORV markers. Maintain a 20 foot wide slash, debris, and rut free zone daily using the ORV trail or route as the centerline.

5.4 - Soil Protection

5.4.1 - Rutting restriction, general (7/16)

Operations are to cease immediately if equipment and weather conditions result in rutting of roads and/or skid trails which is 12 inches or greater in depth and 50 feet in length. The Unit Manager or his/her representative may restrict hauling and/or skidding if ruts exceed the specified depth. With the Unit Manager or his/her representative's approval, the Purchaser may return to the area when the risk of rutting has decreased.

6 - Safety and Fire Prevention

6.2 - Signing

6.2.1 - Road posting (9/09)

The Purchaser is responsible for posting and maintaining caution signs on County Road 551 and 7 Mile Marsh Road prior to beginning operations. The road must be posted at appropriate distances from the sale area to warn of logging activity and truck traffic. Signs must be removed when harvest operations are suspended or completed. The Purchaser will provide these signs.

6.2.3 - Recreational trail posting (2/10)

The Purchaser is responsible for posting and maintaining caution signs on the Forest Island Orv Route prior to beginning operations. The trail must be posted at appropriate distances from the sale area to warn of logging activity and truck traffic at both ends of the trail. Signs must be removed when harvest operations are suspended or completed. The Purchaser will provide these signs.



TIMBER SALE MAP

This information provided by authority of Part 525, 1994 PA 451 as amended.

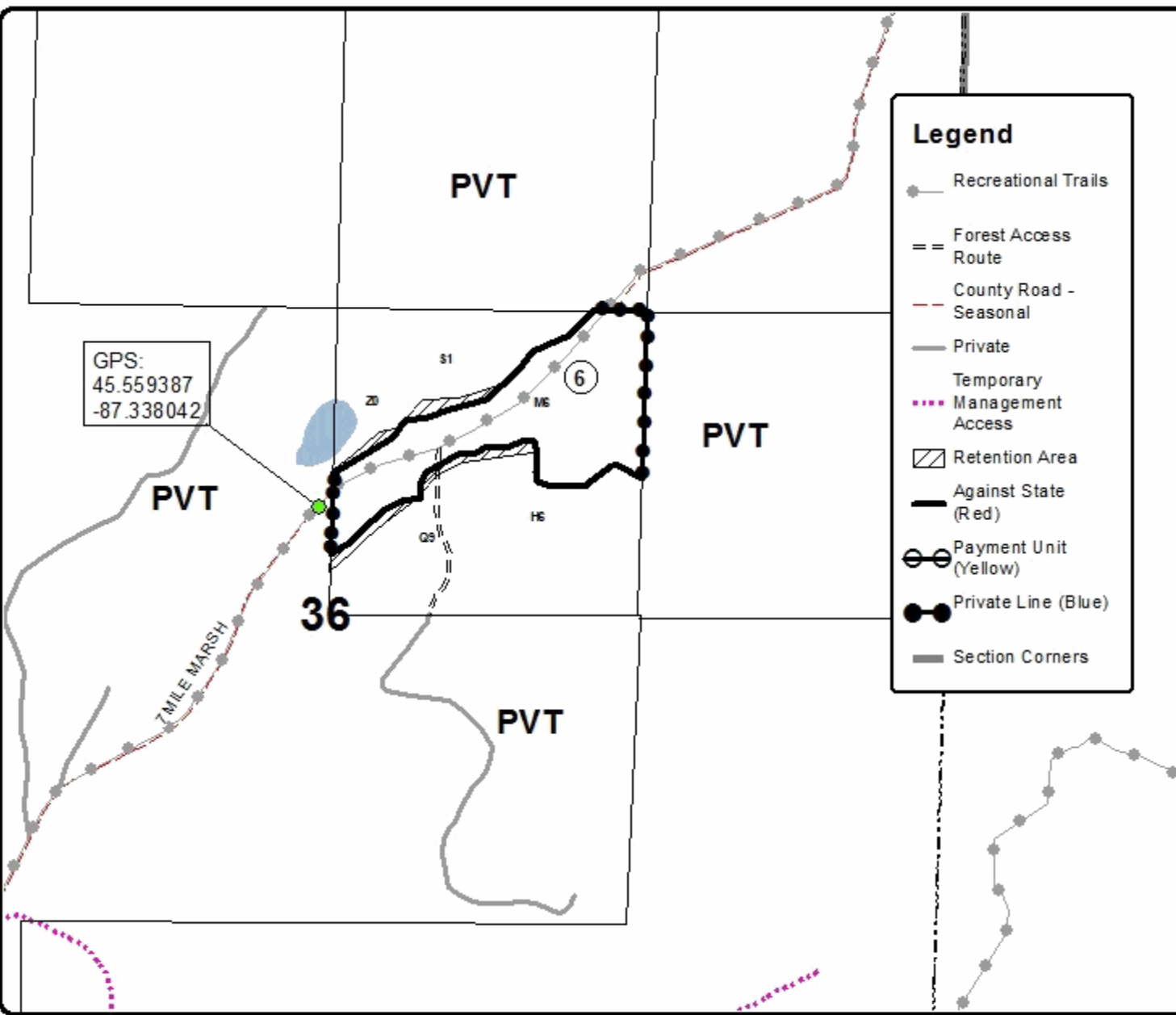
Sale Number	Year
33 - 009	20

Forest Management Unit Escanaba	County Menominee	Mapped By Urlich	Date 10/26/20	Page 2	of 2
Township 37N	Range 25W	Section(s) and Subdivision(s) sec. 34SE, sec. 35NWSW, sec. 36SWNE	Scale 1:7,920		

Cover Type				Density	
A = Aspen	H = Hemlock	N = Marsh	U = Upland Brush	0 = Non Stocked	5 = Pole Timber Medium
B = Paper Birch	J = Jack Pine	O = Oak	UM = Upland Mixed	1 = Seedling Sapling Poor	6 = Pole Timber Well
C = Cedar	L = Lowland Brush	P = Lowland Poplar	V = Bog or Marsh	2 = Seedling Sapling Medium	7 = Saw Timber Poor
D = Treed Bog	LM = Lowland Mixed	Q = Mixed Swamp Conifer	W = White Pine	3 = Seedling Sapling Well	8 = Saw Timber Medium
E = Swamp Hardwoods	M = Mpl. Ech. Birch	R = Red Pine	X = Non Stocked	4 = Pole Timber Poor	9 = Saw Timber Well
F = Spruce Fir	MC = Mixed Conifer	S = Black Spruce	Z = Water		
G = Creas	MD = Mixed Deciduous	T = Tamarack			

PU	Acres	PU	Acres
1	7.5	4	10.3
2	5.7	5	4.7
3	1.2	6	12.8

7 and 551
Compartment 35
42.2 Acres





TIMBER SALE MAP

This information provided by authority of Part 525, 1994 PA 451 as amended.

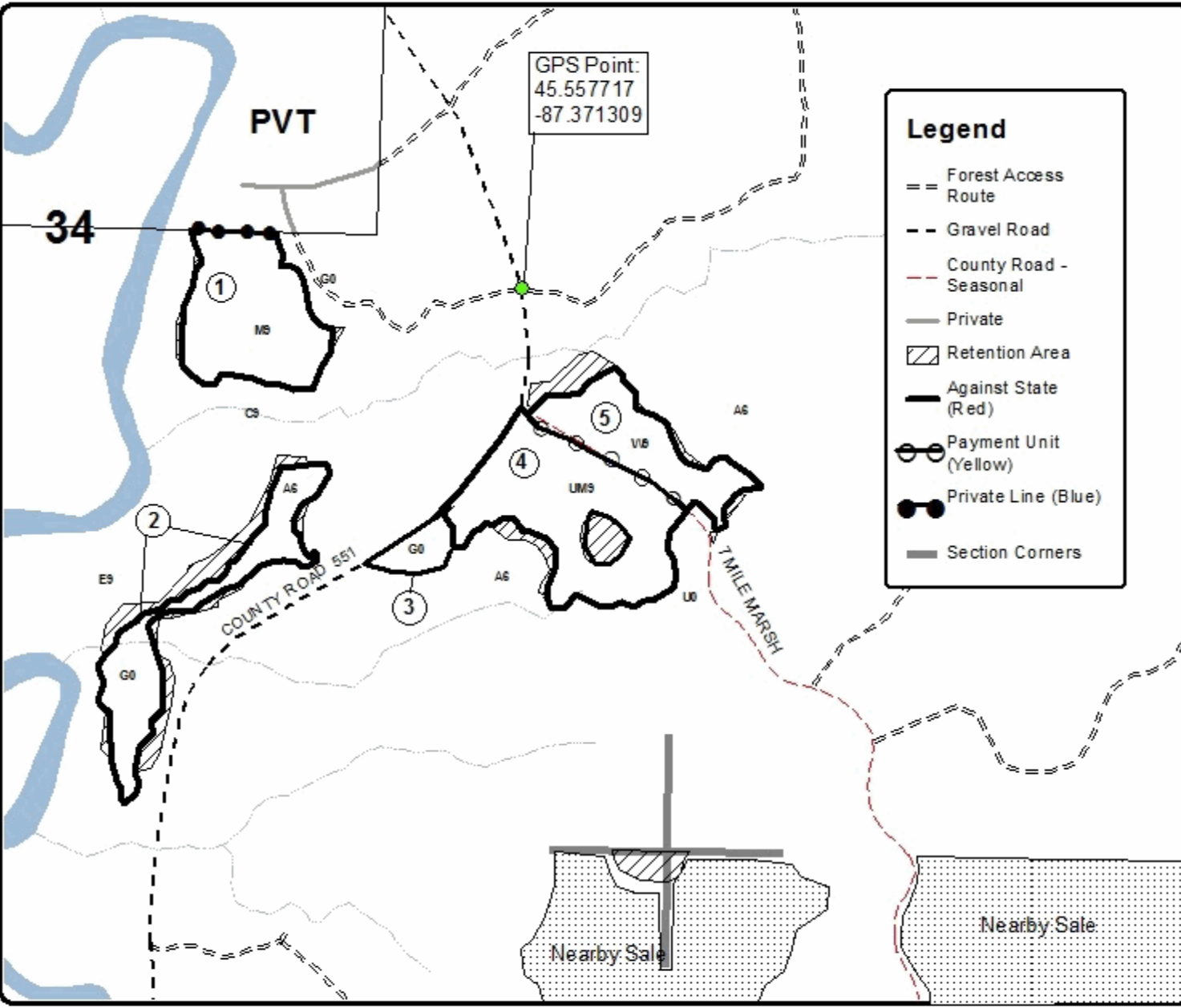
Sale Number	Year
33 - 009	20

Forest Management Unit Escanaba	County Menominee	Mapped By Urlich	Date 10/26/20	Page 1	of 2
Township 37N	Range 25W	Section(s) and Subdivision(s) sec. 34SE, sec. 35NWSW, sec. 36SWNE	Scale 1:7,920		

Cover Type				Density	
A = Aspen	H = Hemlock	N = Marsh	U = Upland Brush	0 = Non Stocked	5 = Pole Timber Medium
B = Paper Birch	J = Jack Pine	O = Oak	UM = Upland Mixed	1 = Seeding Sapling Poor	6 = Pole Timber Well
C = Cedar	L = Lowland Brush	P = Lowland Poplar	V = Bog or Marsh	2 = Seeding Sapling Medium	7 = Saw Timber Poor
D = Tread Bog	LM = Lowland Mixed	Q = Mixed Swamp Conifer	W = White Pine	3 = Seeding Sapling Well	8 = Saw Timber Medium
E = Swamp Hardwoods	M = Mpl. Ech. Birch	R = Red Pine	X = Non Stocked	4 = Pole Timber Poor	9 = Saw Timber Well
F = Spruce Fir	MC = Mixed Conifer	S = Black Spruce	Z = Water		
G = Cress	MD = Mixed Deciduous	T = Tamarack			

PU	Acres	PU	Acres
1	7.5	4	10.3
2	5.7	5	4.7
3	1.2	6	12.8

7 and 551
Compartment 35
42.2 Acres





TIMBER SALE MAP

This information provided by authority of Part 525, 1994 PA 451 as amended.

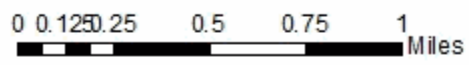
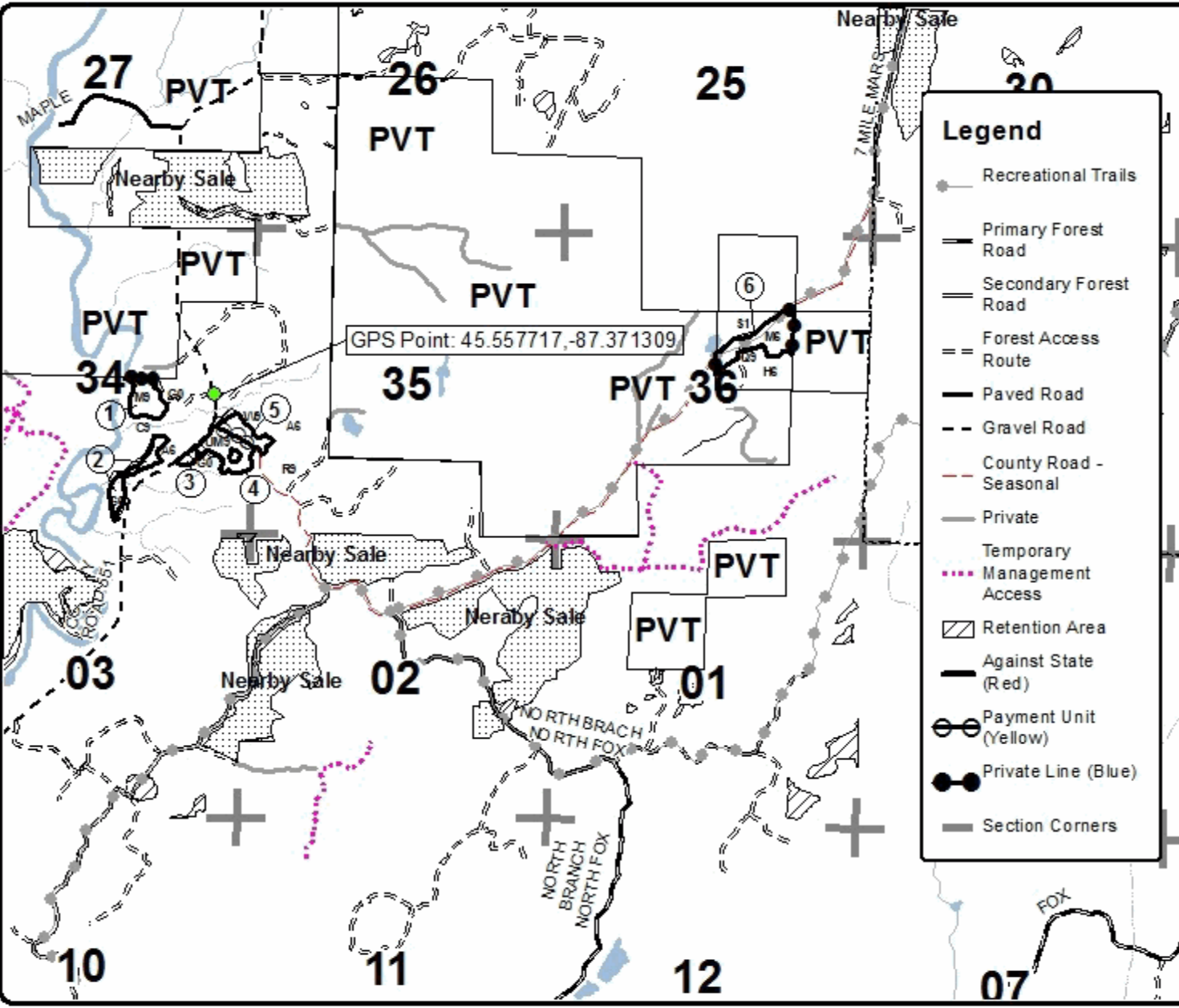
Sale Number	33 - 009	Year	20
Date	9/28/2020	Page	of

Forest Management Unit	County	Mapped By	Urlich	Date	9/28/2020	Page	of
Escanaba	Menominee	Cruised By	Urlich, Racine				
Township	Range	Section(s) and Subdivision(s)	Scale				
37N	25W	sec. 34SE, sec. 35NWSW, sec. 36SWNE	1:31,680				

Cover Type				Density			
A = Aspen	H = Hemlock	N = Marsh	U = Upland Brush	0 = Non Stocked	5 = Pole Timber Medium		
B = Paper Birch	J = Jack Pine	O = Oak	UM = Upland Mixed	1 = Seeding Sapling Poor	6 = Pole Timber Well		
C = Cedar	L = Lowland Brush	P = Lowland Poplar	V = Bog or Marsh	2 = Seeding Sapling Medium	7 = Saw Timber Poor		
D = Tread Bog	LM = Lowland Mixed	Q = Mixed Swamp Conifer	W = White Pine	3 = Seeding Sapling Well	8 = Saw Timber Medium		
E = Swamp Hardwoods	M = Mpl. Ech. Bich	R = Red Pine	X = Non Stocked	4 = Pole Timber Poor	9 = Saw Timber Well		
F = Spruce Fir	MC = Mixed Conifer	S = Black Spruce	Z = Water				
G = Cress	MD = Mixed Deciduous	T = Tamarack					

PU	Acres	PU	Acres
1	7.5	4	10.3
2	5.7	5	4.7
3	1.2	6	12.8

7 and 551
Compartment 35
42.2 Acres



TIMBER SALE INFORMATION

GOCJO MIX (33-036-20)

T36N, R25W, SEC. 25; T36N, R25W, SEC. 26; T36N, R25W, SEC. 34; T36N, R25W, SEC. 35.
Menominee County (Advertised Price \$83,801.90)

SALE NOTE: The majority of the sale can be harvested during the summer months, but there are some Payment Units that contain some lower wet areas, that will have to be dry or frozen to harvest.

A timber sale contract for this lump sum, sealed bid timber sale will be awarded to the responsible bidder offering the highest sealed bid price. All units of volume listed below were estimated using the T-Sale computer program and our traditional volume equations. Bids must be at or above the following advertised price for each product and species:

<u>PRODUCTS & SPECIES</u>	<u>ESTIMATED UNITS*</u>	<u>ADVERTISED PRICE</u>
Sawtimber		
Green Ash	3.4 MBF	\$ 43.00 / MBF
Paper Birch	3.0 MBF	\$ 70.00 / MBF
Red Maple	55.1 MBF	\$ 112.00 / MBF
Sugar Maple	22.3 MBF	\$ 192.00 / MBF
White Ash	9.2 MBF	\$ 69.00 / MBF
Pulpwood		
Balsam Fir	85 Cords	\$ 14.85 / Cord
Mixed Aspen	87 Cords	\$ 22.10 / Cord
Mixed Hardwood	1,516 Cords	\$ 21.35 / Cord
Mixed Spruce	92 Cords	\$ 17.00 / Cord
N. White Cedar	16 Cords	\$ 12.95 / Cord
Red Pine	564 Cords	\$ 50.35 / Cord
White Pine	297 Cords	\$ 22.35 / Cord

* The total volume is statistically estimated within plus (+) or minus (-) 8.52 percent. There are an estimated 2,840 cords on this timber sale, plus or minus 242 cords at the 95% confidence level. The estimated units are final and not subject to adjustment. Prospective bidders are urged to examine this timber and to make their own estimates of quantity and quality.

BOND AND PAYMENT SCHEDULE:

- A bond in the amount of \$4,190.00 to insure faithful performance of the conditions of the contract will be deposited by the successful bidder within 21 days of the sale award.
- Cutting in any sale or unit without the required advance payment would be considered a trespass.
- Total payment must be paid in advance or according to the following schedule :
 - Ten percent (10%) of the sale value must be paid within 21 days of the sale award.
 - The 10% down payment will be credited towards the first unit cut.
 - Payment for each of the following units must be made before cutting begins in that unit:

PAYMENT UNIT NUMBER	PERCENT OF TOTAL SALE VALUE
01	18.3%
02	20.1%
03	4.5%
04	6.5%
05	17.1%
06	18.8%
07	14.7%
- If no cutting takes place, the 10% down payment will not be refunded.
- Operations on the contract issued will terminate on 06/30/2024.

SALE STATISTICS

SALE VOLUMES

VOLUME		STATISTICAL RANGE IN CORDS		
TOTAL CUBIC FEET	TOTAL CORDS	PERCENT ERROR	MINIMUM	MAXIMUM
224,381	2,840	8.52%	2,598	3,082

VDU VOLUMES

A VDU is a Volume Determination Unit. Volumes and their associated statistics are calculated at the VDU level and summarized to the sale level. There is often a one to one relationship between a VDU and a Payment Unit, but not always, depending on the cruise design. Refer to the VDU TO PAYMENT UNIT table.

VDU	VOLUME		PERCENT ERROR	RANGE IN CORDS	
	TOTAL CUBIC FEET	TOTAL CORDS		MINIMUM	MAXIMUM
37	49,873	631	18.74%	513	750
40	58,160	736	15.19%	624	848
49	13,177	167	44.77%	92	241
50	11,937	151	25.94%	112	190
56	28,195	357	27.22%	260	454
63	31,900	404	16.32%	338	470
560	31,142	394	26.37%	290	498
TOTAL:	224,384	2,840		2,229	3,451

VDU TO PAYMENT UNIT

When a VDU is associated with more than one Payment Unit (PU), the VDU volumes are assigned to the PU based on acres of the VDU within the PU.

VDU	VDU ACRES	PU	PU ACRES
37	23.2	1	23.2
40	22.6	2	22.6
49	13.7	4	13.7
50	9.4	3	9.4
56	18.3	5	18.3
63	33.6	7	33.6
560	19.2	6	19.2
TOTAL:	140.0		140.0

DESCRIPTION OF TIMBER BY PAYMENT UNIT (PU)

PU	MARKET GROUP	PRODUCT	QUANTITY	UNIT	ACRES	ADVERTISE PRICE
1	Paper Birch	Sawtimber	2.2	MBF	23.2	\$15,343.35
	Red Maple		25.0	MBF		
	Sugar Maple		1.9	MBF		
	Balsam Fir	Pulpwood	25	Cords		
	Mixed Aspen		30	Cords		
	<i>Quaking Aspen</i>		30	<i>Cords</i>		
	Mixed Hardwood		497	Cords		
	<i>Black Ash</i>		16	<i>Cords</i>		
	<i>Green Ash</i>		21	<i>Cords</i>		
	<i>Paper Birch</i>		37	<i>Cords</i>		
	<i>Red Maple</i>		403	<i>Cords</i>		
	<i>Sugar Maple</i>		18	<i>Cords</i>		
	<i>Yellow Birch</i>		2	<i>Cords</i>		
	Mixed Spruce		21	Cords		
	<i>White Spruce</i>		21	<i>Cords</i>		
White Pine		1	Cords			
2	Green Ash	Sawtimber	3.4	MBF	22.6	\$16,832.55
	Paper Birch		0.8	MBF		
	Red Maple		21.1	MBF		
	Balsam Fir	Pulpwood	31	Cords		
	Mixed Aspen		7	Cords		
	<i>Quaking Aspen</i>		7	<i>Cords</i>		
	Mixed Hardwood		606	Cords		
	<i>Black Ash</i>		30	<i>Cords</i>		
	<i>Green Ash</i>		104	<i>Cords</i>		
	<i>Paper Birch</i>		3	<i>Cords</i>		
	<i>Red Maple</i>		461	<i>Cords</i>		
	<i>Yellow Birch</i>		8	<i>Cords</i>		
	Mixed Spruce		42	Cords		
	<i>White Spruce</i>		42	<i>Cords</i>		
	3	Balsam Fir	Pulpwood	12		
Mixed Aspen			6	Cords		
<i>B. T. Aspen</i>			2	<i>Cords</i>		
<i>Quaking Aspen</i>			4	<i>Cords</i>		
Mixed Hardwood			61	Cords		
<i>Balsam Poplar</i>			5	<i>Cords</i>		
<i>Paper Birch</i>			19	<i>Cords</i>		
<i>Red Maple</i>			37	<i>Cords</i>		
Mixed Spruce			3	Cords		
<i>Black Spruce</i>			2	<i>Cords</i>		
<i>White Spruce</i>			1	<i>Cords</i>		
Red Pine			23	Cords		
White Pine			44	Cords		
4		Balsam Fir	Pulpwood	3	Cords	13.7
	Mixed Aspen		6	Cords		
	<i>Quaking Aspen</i>		6	<i>Cords</i>		
	Mixed Hardwood		31	Cords		
	<i>Paper Birch</i>		11	<i>Cords</i>		
	<i>Red Maple</i>		20	<i>Cords</i>		
	Mixed Spruce		6	Cords		
	<i>White Spruce</i>		6	<i>Cords</i>		
	Red Pine		64	Cords		
	White Pine		56	Cords		
5	Balsam Fir	Pulpwood	1	Cords	18.3	\$14,314.70
	Mixed Hardwood		3	Cords		
	<i>Red Maple</i>		3	<i>Cords</i>		

DESCRIPTION OF TIMBER BY PAYMENT UNIT (PU), CON'T

PU	MARKET GROUP	PRODUCT	QUANTITY	UNIT	ACRES	ADVERTISE PRICE				
5 con't	Mixed Spruce	Pulpwood	6	Cords						
	<i>Black Spruce</i>		3	<i>Cords</i>						
	<i>White Spruce</i>		3	<i>Cords</i>						
	Red Pine		227	Cords						
	White Pine		121	Cords						
6	Red Maple	Sawtimber	0.8	MBF	19.2	\$15,737.75				
	Balsam Fir	Pulpwood	11	Cords						
	Mixed Aspen		35	Cords						
	<i>B. T. Aspen</i>		35	<i>Cords</i>						
	Mixed Hardwood		13	Cords						
	<i>Red Maple</i>		13	<i>Cords</i>						
	Mixed Spruce		10	Cords						
	<i>Black Spruce</i>		7	<i>Cords</i>						
	<i>White Spruce</i>		3	<i>Cords</i>						
	Red Pine		250	Cords						
	White Pine		75	Cords						
7	Red Maple	Sawtimber	8.2	MBF	33.6	\$12,352.95				
	Sugar Maple	Pulpwood	20.4	MBF						
	White Ash		9.2	MBF						
	Balsam Fir		2	Cords						
	Mixed Aspen		3	Cords						
	<i>Quaking Aspen</i>		3	<i>Cords</i>						
	Mixed Hardwood		305	Cords						
	<i>Basswood</i>		3	<i>Cords</i>						
	<i>Black Ash</i>		3	<i>Cords</i>						
	<i>Ironwood</i>		13	<i>Cords</i>						
	<i>Paper Birch</i>		3	<i>Cords</i>						
	<i>Red Maple</i>		37	<i>Cords</i>						
	<i>Sugar Maple</i>		132	<i>Cords</i>						
	<i>White Ash</i>		113	<i>Cords</i>						
	<i>Yellow Birch</i>		1	<i>Cords</i>						
	Mixed Spruce		4	Cords						
	<i>White Spruce</i>		4	<i>Cords</i>						
	N. White Cedar		16	Cords						
	TOTAL:			93.0			MBF			
	TOTAL:			2,657			Cords			

Sale Specific Conditions & Requirements

Sale Name: GOCJO MIX

Sale Number: 33-036-20 Seq#: 1

1 - Sale Area

1.2 - Boundaries

1.2.1 - Painted boundaries (9/19)

The sale boundary and Payment Unit boundaries are marked and identified by blue, red and yellow paint. Exterior sale boundary lines against private property are marked with blue paint. Exterior sale boundary lines against state are marked with red paint. Interior Payment Unit boundaries are marked with yellow paint. The painted boundary line trees are not Included Timber and are to be protected unless marked with orange paint. Yellow painted trees designating an interior Payment Unit boundary are only to be cut when all surrounding Payment Units have been paid for.

2 - Timber Specifications

2.1 - Included Timber

2.1.1 - Clearcut unit(s) with unmerchantable trees (6/14)

Within Payment Unit(s) 1, cut all trees that are four (4) inches or more at DBH; except do not cut cedar, hemlock and trees marked with green paint.

Within Payment Units(s) 2 and 4, cut all trees that are three (3) inches or more at DBH; except do not cut hemlock. In addition, within Payment Unit 2, do not cut cedar or any trees marked with green paint. Also, within Payment Unit 4, do not cut trees marked with orange paint.

2.1.3 - Cut tree marked unit(s) (12/08)

Within Payment Unit(s) 7, all trees are designated for cutting when marked with orange paint above and below stump height, regardless of merchantability.

Within Payment Unit(s) 3, all red pine are designated for cutting when marked with orange paint above and below stump height, regardless of merchantability. In addition, cut all white pine greater than twelve (12) inches at DBH, except for those marked with green paint. Also, cut all ash, balsam fir, spruce, maple, aspen, balm, and birch greater than four (4) inches at DBH.

2.1.5 - Overstory removal unit(s) (8/11)

Within Payment Unit(s) 5 and 6, all red and white pine with DBH equal to or greater than ten (10) inches which meet minimum piece specifications in 2.2 Utilization, are designated for cutting; except for those trees marked with green paint. In addition, cut all spruce, aspen, balsam fir and maple greater than four (4) inches at DBH.

2.1.16 - Timber along county or forest roads (6/14)

Cut and remove all trees marked with orange paint along the access road between the GO C Jo Road and Payment Unit 7. This wood is included, as part of Payment Unit 7.

2.2 - Utilization

2.2.4 - Skidding length (2/14)

Skidding of unlimbed tops or lengths over 17 feet is not permissible, within Payment Units 1, 4, 5, 6 and 7.

3 - Payments

3.3 - Pre-measured Sales

3.3.4 - Dividing payment units (7/14)

Payment Unit(s) \$18,000 in value or greater may be divided at the request of the Purchaser and upon approval of the Unit Manager. Dividing Payment Units is a contract modification which requires a Timber Sale Contract Amendment. There will be only one division per Payment Unit.

4 - Transportation

4.2 - Maintenance

4.2.1 - Hauling restriction (12/08)

Hauling may be restricted on forest roads by the Unit Manager or his/her representative. The restriction may occur during spring breakup or during other wet weather conditions.

4.2.4 - Grading (10/16)

For completion of the sale, state forest roads must be graded. In general, this will require a road grader or bull dozer to shape up the roads after forest products have been hauled off site. This includes cleaning of drainage areas, grading, crowning and filling with gravel, if necessary. The grading equipment to be used must be approved by the Unit Manager or his/her representative.

5 - Operations

5.2 - Conduct of Operations

5.2.3 - Operating Restrictions

5.2.3.3 - Bark slippage restriction (3/09)

Within Payment Unit(s) 3 and 7, unless changed by written agreement, cutting and skidding are not permitted during the period of April 15 to July 15. This restriction is because of bark slippage.

5.2.22 - Operating Caution

5.2.22.1 - Operating caution (6/11)

It is recommended, but not required, that within Payment Unit(s) 2, 5 and 6, cutting and skidding occur during dry summer or frozen winter conditions. The reason for the recommendation is because of some low wet ground within each of the Payment Units.

5.4 - Soil Protection

5.4.1 - Rutting restriction, general (7/16)

Operations are to cease immediately if equipment and weather conditions result in rutting of roads and/or skid trails which is 12 inches or greater in depth and 50 feet in length. The Unit Manager or his/her representative may restrict hauling and/or skidding if ruts exceed the specified depth. With the Unit Manager or his/her representative's approval, the Purchaser may return to the area when the risk of rutting has decreased.

6 - Safety and Fire Prevention

6.2 - Signing

6.2.1 - Road posting (9/09)

The Purchaser is responsible for posting and maintaining caution signs on Camp K, South Fox and GO C JO roads prior to beginning operations. The road must be posted at appropriate distances from the sale area to warn of logging activity and truck traffic. Signs must be removed when harvest operations are suspended or completed. The Purchaser will provide these signs.

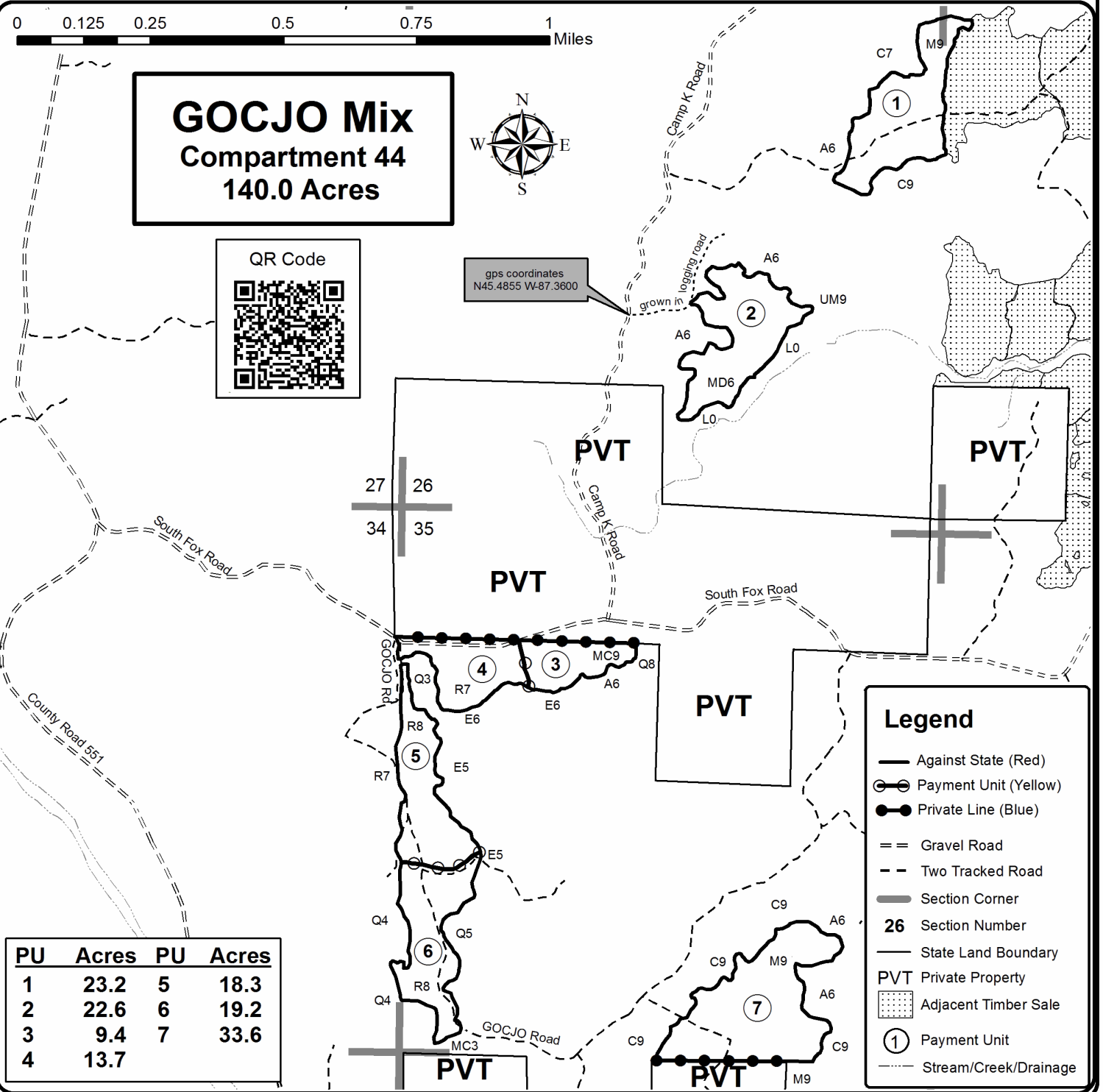


TIMBER SALE MAP

This information provided by authority of Part 525, 1994 PA 451, as amended.

Forest Management Unit Escanaba Management Unit	County Menominee County	Mapped By Beaudo	Date 9/29/2020	Page 1	of 1
Township 36N	Range 25W	Section(s) and Subdivision(s) Sec 25 - NWNW; Sec 26 - E1/2NE, N1/2SE, SWSE; Sec 34 - E1/2NE, E1/2SE; Sec 35 - S1/2NW, NWSW, S1/2SW, SE.	Scale 1:15,840		

Cover Type				Density	
A = Aspen	H = Hemlock	N = Marsh	U = Upland Brush	0 = Non Stocked	5 = Pole Timber Medium
B = Paper Birch	J = Jack Pine	O = Oak	UM = Upland Mixed	1 = Seedling Sapling Poor	6 = Pole Timber Well
C = Cedar	L = Lowland Brush	P = Lowland Poplar	V = Bog or Marsh	2 = Seedling Sapling Medium	7 = Saw Timber Poor
D = Treed Bog	LM = Lowland Mixed	Q = Mixed Swamp Conifer	W = White Pine	3 = Seedling Sapling Well	8 = Saw Timber Medium
E = Swamp Hdwoods	M = Mpl, Bch, Brch	R = Red Pine	X = Non Stocked	4 = Pole Timber Poor	9 = Saw Timber Well
F = Spruce Fir	MC = Mixed Conifer	S = Black Spruce	Z = Water		
G = Grass	MD = Mixed Deciduous	T = Tamarack			



PU	Acres	PU	Acres
1	23.2	5	18.3
2	22.6	6	19.2
3	9.4	7	33.6
4	13.7		

Limpert South (33-004-20)

T36N, R24W, SEC. 5; T37N, R24W, SEC. 31; T37N, R24W, SEC. 32; T37N, R24W,

In response to the notice of sale to be held 3:00 p.m. (local time) on November 24, 2020, I am hereby submitting my sealed bid (firm offer) for the following forest products to be cut. Bids for individual species must be at or above the advertised price. All non-responsive bid forms may be rejected.

<u>PRODUCTS & SPECIES</u>	<u>ESTIMATED VOLUME*</u>	<u>ADVERTISED PRICE</u>	<u>BID PRICE/UNIT</u>
Sawtimber			
Basswood	0.8 MBF	\$ 78.00/MBF	\$ _____
Black Ash	1.0 MBF	\$ 2.00/MBF	\$ _____
Green Ash	33.9 MBF	\$ 36.00/MBF	\$ _____
Paper Birch	1.3 MBF	\$ 60.00/MBF	\$ _____
Red Maple	43.4 MBF	\$ 95.00/MBF	\$ _____
Sugar Maple	2.5 MBF	\$ 163.00/MBF	\$ _____
Yellow Birch	3.2 MBF	\$ 59.00/MBF	\$ _____
Pulpwood			
Balsam Fir	280 Cords	\$ 12.55/Cord	\$ _____
Mixed Aspen	520 Cords	\$ 18.70/Cord	\$ _____
Mixed Hardwood	1,568 Cords	\$ 18.05/Cord	\$ _____
Mixed Spruce	403 Cords	\$ 14.40/Cord	\$ _____
N. White Cedar	107 Cords	\$ 10.95/Cord	\$ _____
Red Pine	20 Cords	\$ 42.60/Cord	\$ _____
Tamarack	45 Cords	\$ 8.25/Cord	\$ _____
White Pine	588 Cords	\$ 18.95/Cord	\$ _____

*The volumes are statistically estimated within plus (+) or minus (-) 7.84 percent at 95% confidence level. These estimated volumes are final and not subject to adjustment. Prospective bidders are urged to examine this timber and to make their own estimates of quantity and quality.

I understand that any or all bids may be rejected. All bids must be signed and all bid items must be bid or the bid form may be rejected. I also understand that consideration and awarding a contract will be based upon my past performance and ability to complete the contract based upon equipment and staffing subject to my control.

FEDERAL ID: ____ - ____ - ____ or SOCIAL SECURITY NUMBER: ____ - ____ - ____

Company or individual bidding: _____

Company representative's name: _____

Address: _____

City: _____ State: _____ Zip: _____

IF AVAILABLE, PLEASE PLACE THE PERSONALIZED LABEL FROM YOUR PROSPECTUS IN THE ABOVE BOX.

Individual or company representative's signature: _____ Date: _____

Phone number : _____ Email (optional): _____

THE WINNING BIDDER MUST COMPLETE THE VERIFICATION OF WORKER'S DISABILITY COMPENSATION ACT COMPLIANCE (ON REVERSE SIDE IF DOUBLE SIDED) WITHIN 21 DAYS OF SALE AWARD DATE



FOR DEPARTMENT USE ONLY	
Sale Number (XX - XXX - XX - XX)	
Forest Management Unit:	

TIMBER SALE VERIFICATION OF WORKER'S DISABILITY COMPENSATION ACT COMPLIANCE

As required by Act 317, P.A. 1969 (Worker's Compensation) and
Part 5 of Act 451 of 1994, as amended.

VERIFICATION OF WORKER'S DISABILITY COMPENSATION ACT COMPLIANCE

- This verification must be completed and submitted within 21 days of contract award and prior to the issuance of the timber sale contract.
- In addition, if boxes 2B or 2C are checked, then Notice of Exclusion or Certificate of Insurance must be submitted within twenty-one (21) days of the contract award and prior to the issuance of the timber sale contract.
- All information must be typed or printed except for written signatures.

Please Check Appropriate Categories:

1. My business is organized as (you **must** check one of the boxes below):
 - A. Sole Proprietorship (individual)
 - B. Partnership
 - C. Corporation
2. You **must** check one of the boxes below:
 - A. I certify my business is a sole proprietorship and it has no employees but the sole proprietor. I am not subject to the Worker's Compensation Laws.
 - B. I certify my business has satisfied its obligation to the Worker's Compensation Act through the use of an approved Notice of Exclusion (BWC-337, Rev. 5/96). I will provide a copy of the Notice of Exclusion within 21 days of the contract award. (For questions or a copy of the BWC-337, please call the Worker's Compensation Bureau at 517-322-1195).
 - C. I certify my business has a Worker's Compensation Policy. I will provide an original Certificate of Insurance within twenty-one (21) days of the contract award.
3. If you have checked item 2(A) or 2(B), you **must** indicate the number of **both** full-time and part-time employees, other than yourself, including family members and active partners (if none, you must enter "0").

_____ Full-time Employees

_____ Part-time Employees

Name of Business		Federal ID (or) Social Security No.	
Address		Telephone ()	
City	State	ZIP	

I hereby certify that the above information is true and correct. I agree to notify the Michigan DNR of any changes that occur in factors affecting my coverage during any of my present and future operations.

Signature of Owner or Authorized Representative

Title

Date

Please complete the "SEALED BID" information on the next page

7 and 551 (33-009-20)

T37N, R25W, SEC. 34; T37N, R25W, SEC. 35; T37N, R25W, SEC. 36; Menominee

In response to the notice of sale to be held 3:00 p.m. (local time) on November 24, 2020, I am hereby submitting my sealed bid (firm offer) for the following forest products to be cut. Bids for individual species must be at or above the advertised price. All non-responsive bid forms may be rejected.

<u>PRODUCTS & SPECIES</u>	<u>ESTIMATED VOLUME*</u>	<u>ADVERTISED PRICE</u>	<u>BID PRICE/UNIT</u>
Sawtimber			
Basswood	3.0 MBF	\$ 78.00/MBF	\$ _____
Beech	0.5 MBF	\$ 45.00/MBF	\$ _____
Red Maple	11.8 MBF	\$ 95.00/MBF	\$ _____
Sugar Maple	17.5 MBF	\$ 163.00/MBF	\$ _____
Yellow Birch	1.0 MBF	\$ 59.00/MBF	\$ _____
Pulpwood			
Balsam Fir	20 Cords	\$ 12.55/Cord	\$ _____
Mixed Hardwood	353 Cords	\$ 18.05/Cord	\$ _____
Mixed Spruce	5 Cords	\$ 14.40/Cord	\$ _____
Quaking Aspen	91 Cords	\$ 18.70/Cord	\$ _____
Red Pine	80 Cords	\$ 42.60/Cord	\$ _____
White Pine	128 Cords	\$ 18.95/Cord	\$ _____

*The volumes are statistically estimated within plus (+) or minus (-) 18.54 percent at 95% confidence level. These estimated volumes are final and not subject to adjustment. Prospective bidders are urged to examine this timber and to make their own estimates of quantity and quality.

I understand that any or all bids may be rejected. All bids must be signed and all bid items must be bid or the bid form may be rejected. I also understand that consideration and awarding a contract will be based upon my past performance and ability to complete the contract based upon equipment and staffing subject to my control.

FEDERAL ID: _____ or SOCIAL SECURITY NUMBER: _____

Company or individual bidding: _____

Company representative's name: _____

Address: _____

City: _____ State: _____ Zip: _____

IF AVAILABLE, PLEASE PLACE THE PERSONALIZED LABEL FROM YOUR PROSPECTUS IN THE ABOVE BOX.

Individual or company representative's signature: _____ Date: _____

Phone number : _____ Email (optional): _____

THE WINNING BIDDER MUST COMPLETE THE VERIFICATION OF WORKER'S DISABILITY COMPENSATION ACT COMPLIANCE (ON REVERSE SIDE IF DOUBLE SIDED) WITHIN 21 DAYS OF SALE AWARD DATE



FOR DEPARTMENT USE ONLY
Sale Number (XX - XXX - XX - XX)
Forest Management Unit:

TIMBER SALE VERIFICATION OF WORKER'S DISABILITY COMPENSATION ACT COMPLIANCE

*As required by Act 317, P.A. 1969 (Worker's Compensation) and
Part 5 of Act 451 of 1994, as amended.*

VERIFICATION OF WORKER'S DISABILITY COMPENSATION ACT COMPLIANCE

- This verification must be completed and submitted within 21 days of contract award and prior to the issuance of the timber sale contract.
- In addition, if boxes 2B or 2C are checked, then Notice of Exclusion or Certificate of Insurance must be submitted within twenty-one (21) days of the contract award and prior to the issuance of the timber sale contract.
- All information must be typed or printed except for written signatures.

Please Check Appropriate Categories:

1. My business is organized as (you **must** check one of the boxes below):
 - A. Sole Proprietorship (individual)
 - B. Partnership
 - C. Corporation

2. You **must** check one of the boxes below:
 - A. I certify my business is a sole proprietorship and it has no employees but the sole proprietor. I am not subject to the Worker's Compensation Laws.
 - B. I certify my business has satisfied its obligation to the Worker's Compensation Act through the use of an approved Notice of Exclusion (BWC-337, Rev. 5/96). I will provide a copy of the Notice of Exclusion within 21 days of the contract award. (For questions or a copy of the BWC-337, please call the Worker's Compensation Bureau at 517-322-1195).
 - C. I certify my business has a Worker's Compensation Policy. I will provide an original Certificate of Insurance within twenty-one (21) days of the contract award.

3. If you have checked item 2(A) or 2(B), you **must** indicate the number of **both** full-time and part-time employees, other than yourself, including family members and active partners (if none, you must enter "0").

_____ Full-time Employees

_____ Part-time Employees

Name of Business		Federal ID (or) Social Security No.	
Address		Telephone ()	
City	State	ZIP	

I hereby certify that the above information is true and correct. I agree to notify the Michigan DNR of any changes that occur in factors affecting my coverage during any of my present and future operations.

Signature of Owner or Authorized Representative

Title

Date

Please complete the "SEALED BID" information on the next page

GOCJO MIX (33-036-20)

T36N, R25W, SEC. 25; T36N, R25W, SEC. 26; T36N, R25W, SEC. 34; T36N,

In response to the notice of sale to be held 3:00 p.m. (local time) on November 24, 2020, I am hereby submitting my sealed bid (firm offer) for the following forest products to be cut. Bids for individual species must be at or above the advertised price. All non-responsive bid forms may be rejected.

<u>PRODUCTS & SPECIES</u>	<u>ESTIMATED VOLUME*</u>	<u>ADVERTISED PRICE</u>	<u>BID PRICE/UNIT</u>
Sawtimber			
Green Ash	3.4 MBF	\$ 43.00/MBF	\$ _____
Paper Birch	3.0 MBF	\$ 70.00/MBF	\$ _____
Red Maple	55.1 MBF	\$ 112.00/MBF	\$ _____
Sugar Maple	22.3 MBF	\$ 192.00/MBF	\$ _____
White Ash	9.2 MBF	\$ 69.00/MBF	\$ _____
Pulpwood			
Balsam Fir	85 Cords	\$ 14.85/Cord	\$ _____
Mixed Aspen	87 Cords	\$ 22.10/Cord	\$ _____
Mixed Hardwood	1,516 Cords	\$ 21.35/Cord	\$ _____
Mixed Spruce	92 Cords	\$ 17.00/Cord	\$ _____
N. White Cedar	16 Cords	\$ 12.95/Cord	\$ _____
Red Pine	564 Cords	\$ 50.35/Cord	\$ _____
White Pine	297 Cords	\$ 22.35/Cord	\$ _____

*The volumes are statistically estimated within plus (+) or minus (-) 8.52 percent at 95% confidence level. These estimated volumes are final and not subject to adjustment. Prospective bidders are urged to examine this timber and to make their own estimates of quantity and quality.

I understand that any or all bids may be rejected. All bids must be signed and all bid items must be bid or the bid form may be rejected. I also understand that consideration and awarding a contract will be based upon my past performance and ability to complete the contract based upon equipment and staffing subject to my control.

FEDERAL ID: ____ - ____ - ____ or SOCIAL SECURITY NUMBER: ____ - ____ - ____

Company or individual bidding: _____

Company representative's name: _____

Address: _____

City: _____ State: _____ Zip: _____

IF AVAILABLE, PLEASE PLACE THE PERSONALIZED LABEL FROM YOUR PROSPECTUS IN THE ABOVE BOX.

Individual or company representative's signature: _____ Date: _____

Phone number : _____ Email (optional): _____

THE WINNING BIDDER MUST COMPLETE THE VERIFICATION OF WORKER'S DISABILITY COMPENSATION ACT COMPLIANCE (ON REVERSE SIDE IF DOUBLE SIDED) WITHIN 21 DAYS OF SALE AWARD DATE

