



**DEPARTMENT OF NATURAL RESOURCES
STATE OF MICHIGAN**

TIMBER SALE PROSPECTUS #6844

SCHEDULED SALE DATE AND TIME: 10:00 a.m. (local time) on February 24, 2021.

LOCATION: GLADWIN MGMT UNIT, 801 NORTH SILVERLEAF, GLADWIN, MI 48624.

PROSPECTUS NOTE: The bidder is advised to inspect the sale area and review the location, estimated volumes, operating costs and contract terms of proposed sales. Please be aware that some landowners may request 60 days or more notice for access across their land.

Notice is hereby given that bids will be received by the Unit Manager, GLADWIN MANAGEMENT UNIT, for certain timber on the following described lands:

Rise Up Temple (73-006-20) / T19N, R06W, SEC. 22, N1/2NE,SWNE,NWSE.

T19N, R06W, SEC. 23, NWNW.

T19N, R06W, SEC. 28, NWSW,S1/2SW.

T19N, R06W, SEC. 33, NW,N1/2SW.

Clare County, Advertised Price \$40,902.50, 113.4 Acres, Hardwood, White Pine.

SALE NOTE: This sale contains clearcut, seed tree, and marked thinning units. Payment Units 1-4 contain oil & gas well pads/lines. Some lines are above ground, see spec 5.1.3 for more information.

Jungle Hardwoods (73-012-20) / T20N, R04W, SEC. 14, S1/2SE.

T20N, R04W, SEC. 22, NE.

T20N, R04W, SEC. 34, SENE,W1/2SW,SE.

T20N, R04W, SEC. 4, NE.

Clare County, Advertised Price \$138,114.35, 156.8 Acres, Red Pine, Hardwood.

BID INSTRUCTIONS (VER. 07/02/2018):

1. Scheduled Bid Location, Date, and Time (2/11)

Bids must be received by the Unit Manager, GLADWIN OFFICE, 801 NORTH SILVERLEAF, GLADWIN, MI 48624, no later than 10:00 a.m. (local time) on February 24, 2021. For further information concerning this sale, contact Blair Tweedale at 989-426-9205 extension 7640.

2. Bidder's Qualifications (5/16)

Purchaser shall obtain workers compensation insurance to cover claims under Michigan's Worker's Disability Compensation Act of 1969 or similar employee benefit act of any other state applicable to an employee. If all or part of a timber sale was prepared by a private contractor, the contractor and that contractor's company are not permitted to bid on the timber sale contract. Bids will not be accepted from individuals or companies appearing on the DNR/FRD No-Bid List. This list contains the names of purchasers who previously failed to execute a contract within 21-days or who have a history of poor performance.

3. Preparation of Sealed Bids (5/16)

Bid Forms may be completed online thru Michigan DNR Timber Sale Online Bidding (OLB) at www.michigan.gov/timberbidding or by completing the hardcopy Bid Form found in the Timber Sale Prospectus. Hardcopy Bid Forms shall be manually signed in ink. Registration in OLB is considered your 'signature' for all bids submitted thru that system. Bid prices must be entered for each species and product in the Bid Price column for all material subject to bidding and all fill-in blanks must be completed. If erasures or other changes appear on the hardcopy Bid Form, each erasure or change must be initialed by the person signing the bid.

4. Submission of Sealed Bids (5/16)

Bid forms may be obtained from the Unit Manager or thru OLB. Bids may be submitted hardcopy or thru OLB. All hardcopy bids must be submitted on the bid form and in an envelope clearly identified as described in this section. NOTE: Only one bid form per bid envelope. Sealed bids must be submitted to the Unit office designated in the prospectus and must be submitted at or prior to the time established in the prospectus. The envelope should show on the outside (a) the sale name or number and (b) the date and time of bid opening, as shown in the prospectus. Bids received after the time specified in the sale prospectus are late bids and will be rejected.

It is possible for a bidder to submit multiple bids on a single sale. For example, a bid may be submitted hardcopy and a bid may be submitted thru OLB. Or, two bidders from the same company could both submit bids on the same sale. If this were to happen, the State would accept all bids received and award the contract accordingly. All bidding and contractual requirements would apply to all bids received.

5. Public Opening of Sealed Bids (7/16)

If conditions permit, the sealed bids will be publicly opened and posted at the time and place set in the prospectus.

If a bidder, present at a bid opening, has submitted bids on more than one sale, that bidder may withdraw their unopened bid envelopes or announce the withdrawal of their online bid after being declared the successful bidder on one sale.

6. Award of Contract (1/11)

Award of the contract will be made to the Bidder whose bid, conforming to the prospectus, is most advantageous to the State of Michigan on the basis of total value at rates bid for the estimated quantities. The State reserves the right to reject any bid or waive any minor irregularity in bids received. A written award mailed (or otherwise furnished) to the successful Bidder shall be deemed to result in a binding contract without further action by either party.

7. Down Payment (1/11)

The Bidder to whom award is made must make a down payment within 21 days of the sale award. The amount of the down payment will be calculated as shown in the Bond and Payment Schedule of this prospectus. Only cash may be used to meet this requirement.

8. Performance Security (1/11)

As guarantee of faithful performance, a cash bond, certificate of deposit, surety bond or irrevocable letter of credit (LOC) is required within 21 days of the sale award. The amount of the performance security is shown in the Bond and

Payment Schedule of this prospectus. If an LOC or surety is used, the coverage must extend for at least 6 months beyond the contract expiration.

9. Timber Sale Contract (7/18)

Additional conditions and requirements common to all timber sales are listed on the timber sale contract (R4031) and are available on line at www.michigan.gov/timber. Contact the Unit Manager for additional information or a sample contract. Within 21 days of the date of the award letter, the bidder must sign the contract and provide the required down payment, performance security, and verification of worker's disability compensation. The down payment and performance security shall be in accordance with the provisions of the timber sale contract, in the sums stated in this prospectus. If these actions are not taken, then the Bidder, the Bidder's corporation, and the corporation's principals may not be permitted to bid on State timber sales for a period of 3 months after the first offense, 6 months after the second offense, and 1 year after the third offense. An offense will only be counted against the Bidder for 5 years. In addition, the Bidder certifies that if awarded this contract, the Bidder will complete the timber sale contract in accordance with its terms and any modifications thereof including requirements to purchase, cut, and remove the included timber by the expiration date.

Payment Unit values in the State Forest Timber Sale Contract are calculated based on the advertised value of the Payment Unit as a percentage of the total advertised value of the contract. The advertised value of each Payment Unit is given in the Description of Timber by Payment Unit table on the Timber Sale Information page. For example, if the value of Payment Unit 1 is advertised as \$1,500 and the total Timber Sale value is advertised as \$10,000, the contract price for Payment Unit 1 will be 15% of the total bid price ($\$1,500/\$10,000 * 100$).

10. Disclaimer of Estimates and Bidder's Warranty of Inspection (7/16)

Before submitting this bid, the Bidder is advised and cautioned to inspect the sale area, review the requirements of the sale contract, and take other steps as may be reasonably necessary to ascertain the location, estimated volumes, construction estimates, and operating costs of the proposed sale. Failure to do so will not relieve the Bidder from responsibility for completing the contract.

The Bidder warrants that this bid is submitted solely on the basis of the Bidder's examination and inspection of the quality and quantity of the timber offered for sale and the Bidder's opinion of the value thereof and the costs of recovery. No reliance should be placed on the State of Michigan's estimates of timber quality, quantity or costs of recovery. Bidder further acknowledges that the State of Michigan: (i) expressly disclaims any warranty of fitness of timber for any purpose; (ii) offers this timber as is without any warranty of quality (merchantability) or quantity and (iii) expressly disclaims any warranty as to the quantity or quality of timber sold.

11. Certification and Chain-of-Custody (10/14)

Unless otherwise indicated in the contract under section 7 – Other Conditions of the Sale Specific Conditions & Requirements, the area encompassed by this timber sale is certified to the standards of the Forest Stewardship Council (FSC) - Certificate #SCS-FM/COC-00090N and the Sustainable Forestry Initiative (SFI) - Certificate #NSF-SFIS-5Y031-SF5. Forest products from this sale may be delivered to the mill as "FSC 100% and / or SFI certified" as long as the contractor hauling the forest products is chain-of-custody (COC) certified or covered under a COC certificate from the destination mill. The purchaser is responsible for maintaining COC after leaving the sale area.

12. Good Neighbor Authority (GNA) Requirements (7/16)

If the name of this timber sales contains the acronym GNA, it is authorized by the Good Neighbor Authority (GNA) and covered by various agreements between the U.S. Forest Service and the State. The timber sale occurs on federal land and the following conditions apply:

GNA contracts on US Forest Service land will not be awarded to purchasers on the Federal list of excluded parties. The System for Award Management (SAM) will be checked for active excluded parties prior to award of contract. In addition, the Bidder to whom award is made must complete an Assurance Regarding Felony Conviction or Tax Delinquent Status for Corporate Applicants (AD-3031).

13. Good Neighbor Authority (GNA) Requirements, con't (9/16)

Bidder certifies, by signing this bid form, that to the best of Bidder's knowledge that the following representations are accurate and complete.

- a. That the Bidder and its principals are not presently debarred, suspended, proposed for debarment, declared ineligible, or voluntary excluded from timber sales (covered transactions) by any Federal department or agency.
- b. That the Bidder and its principals have not within a 3-year period preceding this bid been convicted of or had a civil judgment rendered against them for commission of fraud or a criminal offense in connection with obtaining , attempting to obtain, or performing a public (Federal, State, or local) transaction or contract under a public transaction; violation of Federal or State antitrust statutes or commission of embezzlement, theft, forgery, bribery, falsification or destruction of records, making false statements, or receiving stolen property.
- c. That the Bidder and its principals are not presently indicted for or otherwise criminally or civilly charged by a governmental entity (Federal, State, or local) with commission of any of the offenses enumerated in paragraph b of this certification.
- d. That the Bidder and its principals have not within a 3-year period preceding this bid had one or more public transactions (Federal, State, or local) terminated for breach or default of a timber or forest product contract.

Bidders that cannot certify this requirement, in whole or in part, shall submit an explanation with their bid.

DAN EICHINGER
Director

TIMBER SALE INFORMATION

Rise Up Temple (73-006-20)

T19N, R06W, SEC. 22; T19N, R06W, SEC. 23; T19N, R06W, SEC. 28; T19N, R06W, SEC. 33.
Clare County (Advertised Price \$40,902.50)

SALE NOTE: This sale contains clearcut, seed tree, and marked thinning units. Payment Units 1-4 contain oil & gas well pads/lines. Some lines are above ground, see spec 5.1.3 for more information.

A timber sale contract for this lump sum, sealed bid timber sale will be awarded to the responsible bidder offering the highest sealed bid price. All units of volume listed below were estimated using the T-Sale computer program and our traditional volume equations. Bids must be at or above the following advertised price for each product and species:

| <u>PRODUCTS & SPECIES</u> | <u>ESTIMATED UNITS*</u> | <u>ADVERTISED PRICE</u> |
|-------------------------------|-------------------------|-------------------------|
| Sawtimber | | |
| B. T. Aspen | 10.9 MBF | \$ 56.00 / MBF |
| Northern Pin Oak | 50.6 MBF | \$ 90.00 / MBF |
| Red Maple | 8.4 MBF | \$ 34.00 / MBF |
| Red Pine | 45.5 MBF | \$ 103.00 / MBF |
| White Pine | 62.9 MBF | \$ 39.00 / MBF |
| Pulpwood | | |
| Jack Pine | 102 Cords | \$ 13.30 / Cord |
| Mixed Aspen | 277 Cords | \$ 15.60 / Cord |
| Mixed Hardwood | 152 Cords | \$ 11.20 / Cord |
| Mixed Oak | 406 Cords | \$ 12.05 / Cord |
| Paper Birch | 7 Cords | \$ 9.50 / Cord |
| Red Pine | 297 Cords | \$ 37.10 / Cord |
| White Pine | 304 Cords | \$ 16.30 / Cord |

* The total volume is statistically estimated within plus (+) or minus (-) 11.29 percent. There are an estimated 1,901 cords on this timber sale, plus or minus 215 cords at the 95% confidence level. The estimated units are final and not subject to adjustment. Prospective bidders are urged to examine this timber and to make their own estimates of quantity and quality.

BOND AND PAYMENT SCHEDULE:

1. A bond in the amount of \$2,045.00 to insure faithful performance of the conditions of the contract will be deposited by the successful bidder within 21 days of the sale award.
2. Cutting in any sale or unit without the required advance payment would be considered a trespass.
3. Total payment must be paid in advance or according to the following schedule :
 - (a) Ten percent (10%) of the sale value must be paid within 21 days of the sale award.
 - (b) The 10% down payment will be credited towards the first unit cut.
 - (c) Payment for each of the following units must be made before cutting begins in that unit:

| PAYMENT UNIT NUMBER | PERCENT OF TOTAL SALE VALUE |
|---------------------|-----------------------------|
| 01 | 10.5% |
| 02 | 27.7% |
| 03 | 8.5% |
| 04 | 4.3% |
| 05 | 13.3% |
| 06 | 10.8% |
| 07 | 3.0% |
| 08 | 21.9% |
4. If no cutting takes place, the 10% down payment will not be refunded.
5. Operations on the contract issued will terminate on 03/31/2024.

SALE STATISTICS

SALE VOLUMES

| VOLUME | | STATISTICAL RANGE IN CORDS | | |
|------------------|-------------|----------------------------|---------|---------|
| TOTAL CUBIC FEET | TOTAL CORDS | PERCENT ERROR | MINIMUM | MAXIMUM |
| 150,184 | 1,901 | 11.29% | 1,686 | 2,116 |

VDU VOLUMES

A VDU is a Volume Determination Unit. Volumes and their associated statistics are calculated at the VDU level and summarized to the sale level. There is often a one to one relationship between a VDU and a Payment Unit, but not always, depending on the cruise design. Refer to the VDU TO PAYMENT UNIT table.

| VDU | VOLUME | | PERCENT ERROR | RANGE IN CORDS | |
|---------------|------------------|--------------|---------------|----------------|--------------|
| | TOTAL CUBIC FEET | TOTAL CORDS | | MINIMUM | MAXIMUM |
| 43 | 7,300 | 92 | 23.76% | 70 | 114 |
| 75 | 15,168 | 192 | 36.86% | 121 | 263 |
| 86 | 7,600 | 96 | 39.42% | 58 | 134 |
| 91 | 18,652 | 236 | 27.12% | 172 | 300 |
| 92 | 11,645 | 147 | 33.07% | 99 | 196 |
| 98 | 12,616 | 160 | 43.73% | 90 | 230 |
| 112 | 5,254 | 67 | 65.35% | 23 | 110 |
| 140 | 18,296 | 232 | 39.93% | 139 | 324 |
| 211 | 53,665 | 679 | 15.77% | 572 | 786 |
| TOTAL: | 150,195 | 1,901 | | 1,345 | 2,458 |

VDU TO PAYMENT UNIT

When a VDU is associated with more than one Payment Unit (PU), the VDU volumes are assigned to the PU based on acres of the VDU within the PU.

| VDU | VDU ACRES | PU | PU ACRES |
|---------------|--------------|----|--------------|
| 43 | 9.7 | 4 | 9.7 |
| 75 | 7.3 | 3 | 7.3 |
| 86 | 7.9 | 6 | 7.9 |
| 91 | 13.9 | 1 | 13.9 |
| 92 | 6.7 | 6 | 6.7 |
| 98 | 6.4 | 5 | 6.4 |
| 112 | 5.2 | 7 | 5.2 |
| 140 | 16.6 | 8 | 16.6 |
| 211 | 39.7 | 2 | 39.7 |
| TOTAL: | 113.4 | | 113.4 |

DESCRIPTION OF TIMBER BY PAYMENT UNIT (PU)

| PU | MARKET GROUP | PRODUCT | QUANTITY | UNIT | ACRES | ADVERTISE PRICE |
|-------------------------|-------------------------|------------------|-----------|--------------|-------|-----------------|
| 1 | B. T. Aspen | Sawtimber | 4.6 | MBF | 13.9 | \$4,286.45 |
| | Northern Pin Oak | | 1.6 | MBF | | |
| | Red Pine | | 5.4 | MBF | | |
| | White Pine | | 5.5 | MBF | | |
| | Jack Pine | Pulpwood | 5 | Cords | | |
| | <i>Jack Pine</i> | | 5 | <i>Cords</i> | | |
| | Mixed Aspen | | 86 | Cords | | |
| | <i>B. T. Aspen</i> | | 86 | <i>Cords</i> | | |
| | Mixed Hardwood | | 7 | Cords | | |
| | <i>Black Cherry</i> | | 3 | <i>Cords</i> | | |
| | <i>Red Maple</i> | | 4 | <i>Cords</i> | | |
| | Mixed Oak | | 61 | Cords | | |
| | <i>Northern Pin Oak</i> | | 61 | <i>Cords</i> | | |
| | Red Pine | | 10 | Cords | | |
| | White Pine | | 32 | Cords | | |
| | <i>European Larch</i> | | 1 | <i>Cords</i> | | |
| | <i>White Pine</i> | | 31 | <i>Cords</i> | | |
| 2 | B. T. Aspen | Sawtimber | 2.5 | MBF | 39.7 | \$11,302.25 |
| | Northern Pin Oak | | 18.0 | MBF | | |
| | Red Maple | | 4.4 | MBF | | |
| | Red Pine | | 2.7 | MBF | | |
| | White Pine | | 30.8 | MBF | | |
| | Mixed Aspen | Pulpwood | 162 | Cords | | |
| | <i>B. T. Aspen</i> | | 162 | <i>Cords</i> | | |
| | Mixed Hardwood | | 72 | Cords | | |
| | <i>Black Cherry</i> | | 4 | <i>Cords</i> | | |
| | <i>Red Maple</i> | | 68 | <i>Cords</i> | | |
| | Mixed Oak | | 199 | Cords | | |
| | <i>Northern Pin Oak</i> | | 199 | <i>Cords</i> | | |
| | Paper Birch | | 3 | Cords | | |
| | Red Pine | | 4 | Cords | | |
| | White Pine | | 123 | Cords | | |
| | <i>White Pine</i> | | 123 | <i>Cords</i> | | |
| | 3 | B. T. Aspen | Sawtimber | 3.8 | | |
| Northern Pin Oak | | | 4.7 | MBF | | |
| Red Maple | | | 1.7 | MBF | | |
| Red Pine | | | 2.1 | MBF | | |
| White Pine | | | 15.9 | MBF | | |
| Jack Pine | | Pulpwood | 17 | Cords | | |
| <i>Jack Pine</i> | | <i>Sawtimber</i> | 0.9 | <i>MBF</i> | | |
| <i>Jack Pine</i> | | <i>Pulpwood</i> | 15 | <i>Cords</i> | | |
| Mixed Aspen | | | 3 | Cords | | |
| <i>B. T. Aspen</i> | | | 3 | <i>Cords</i> | | |
| Mixed Hardwood | | | 26 | Cords | | |
| <i>Red Maple</i> | | | 26 | <i>Cords</i> | | |
| Mixed Oak | | | 28 | Cords | | |
| <i>Northern Pin Oak</i> | | | 28 | <i>Cords</i> | | |
| Red Pine | | | 3 | Cords | | |
| White Pine | | | 58 | Cords | | |
| <i>White Pine</i> | | | 58 | <i>Cords</i> | | |
| 4 | Northern Pin Oak | Sawtimber | 5.5 | MBF | 9.7 | \$1,766.60 |
| | Red Maple | | 1.0 | MBF | | |
| | Red Pine | | 1.5 | MBF | | |
| | White Pine | | 1.0 | MBF | | |
| | Jack Pine | Pulpwood | 2 | Cords | | |
| | <i>Jack Pine</i> | | 2 | <i>Cords</i> | | |

DESCRIPTION OF TIMBER BY PAYMENT UNIT (PU), CON'T

| PU | MARKET GROUP | PRODUCT | QUANTITY | UNIT | ACRES | ADVERTISE PRICE | |
|-------------------------|-------------------------|------------------|--------------|--------------|------------|-----------------|--------------|
| 4 con't | Mixed Aspen | Pulpwood | 11 | Cords | | | |
| | <i>B. T. Aspen</i> | | 11 | <i>Cords</i> | | | |
| | Mixed Hardwood | | 23 | Cords | | | |
| | <i>Red Maple</i> | | 23 | <i>Cords</i> | | | |
| | Mixed Oak | | 22 | Cords | | | |
| | <i>Northern Pin Oak</i> | | 22 | <i>Cords</i> | | | |
| | Red Pine | | 3 | Cords | | | |
| | White Pine | | 13 | Cords | | | |
| | <i>White Pine</i> | | 13 | <i>Cords</i> | | | |
| 5 | Northern Pin Oak | Sawtimber | 3.4 | MBF | 6.4 | \$5,429.00 | |
| | Red Pine | | 19.2 | MBF | | | |
| | White Pine | | 2.5 | MBF | | | |
| | Jack Pine | Pulpwood | 6 | Cords | | | |
| | <i>Jack Pine</i> | | 6 | <i>Cords</i> | | | |
| | Mixed Aspen | Sawtimber | 13 | Cords | | | |
| | <i>Quaking Aspen</i> | | 0.4 | <i>MBF</i> | | | |
| | <i>Quaking Aspen</i> | | Pulpwood | 12 | | | <i>Cords</i> |
| | Mixed Hardwood | | | 4 | | | Cords |
| | <i>Red Maple</i> | | 4 | <i>Cords</i> | | | |
| | Mixed Oak | | 14 | Cords | | | |
| | <i>Northern Pin Oak</i> | | 14 | <i>Cords</i> | | | |
| | Paper Birch | | 4 | Cords | | | |
| | Red Pine | | 66 | Cords | | | |
| | White Pine | | 4 | Cords | | | |
| | <i>White Pine</i> | 4 | <i>Cords</i> | | | | |
| 6 | Northern Pin Oak | Sawtimber | 12.8 | MBF | 14.6 | \$4,428.95 | |
| | Red Pine | | 0.9 | MBF | | | |
| | White Pine | | 6.8 | MBF | | | |
| | Jack Pine | Pulpwood | 70 | Cords | | | |
| | <i>Jack Pine</i> | | 70 | <i>Cords</i> | | | |
| | Mixed Oak | Sawtimber | 57 | Cords | | | |
| | <i>White Oak</i> | | 0.5 | <i>MBF</i> | | | |
| | <i>Northern Pin Oak</i> | | Pulpwood | 54 | | | <i>Cords</i> |
| | <i>White Oak</i> | | | 2 | | | <i>Cords</i> |
| | Red Pine | | 3 | Cords | | | |
| | White Pine | | 73 | Cords | | | |
| | <i>White Pine</i> | | 73 | <i>Cords</i> | | | |
| | 7 | Northern Pin Oak | Sawtimber | 4.6 | | | MBF |
| Red Maple | | 1.3 | | MBF | | | |
| Red Pine | | 0.9 | | MBF | | | |
| White Pine | | Pulpwood | 0.4 | MBF | | | |
| Jack Pine | | | 2 | Cords | | | |
| <i>Jack Pine</i> | | | 2 | <i>Cords</i> | | | |
| Mixed Aspen | | | 2 | Cords | | | |
| <i>Quaking Aspen</i> | | | 2 | <i>Cords</i> | | | |
| Mixed Hardwood | | | 20 | Cords | | | |
| <i>Red Maple</i> | | | 20 | <i>Cords</i> | | | |
| Mixed Oak | | | 25 | Cords | | | |
| <i>White Oak</i> | | | Sawtimber | 2.6 | <i>MBF</i> | | |
| <i>Northern Pin Oak</i> | | | | Pulpwood | 13 | <i>Cords</i> | |
| <i>White Oak</i> | | 7 | <i>Cords</i> | | | | |
| Red Pine | | 2 | Cords | | | | |
| White Pine | | 1 | Cords | | | | |
| <i>White Pine</i> | 1 | <i>Cords</i> | | | | | |
| 8 | Red Pine | Sawtimber | 12.8 | MBF | 16.6 | \$8,961.00 | |
| | Red Pine | Pulpwood | 206 | Cords | | | |

| | | |
|--------|-------|-----|
| TOTAL: | 178.3 | MBF |
|--------|-------|-----|

| | | |
|--------|-------|-------|
| TOTAL: | 1,545 | Cords |
|--------|-------|-------|

Sale Specific Conditions & Requirements

Sale Name: Rise Up Temple

Sale Number: 73-006-20 Seq#: 1

1 - Sale Area

1.2 - Boundaries

1.2.1 - Painted boundaries (9/19)

The sale boundary and Payment Unit boundaries are marked and identified by blue and red paint. Exterior sale boundary lines against private property are marked with blue paint. Exterior sale boundary lines against state are marked with red paint. Retention patches are marked with red paint; no harvesting activities may occur within these areas. The painted boundary line trees are not Included Timber and are to be protected unless marked with orange paint.

2 - Timber Specifications

2.1 - Included Timber

2.1.1 - Clearcut unit(s) with unmerchantable trees (6/14)

Within Payment Unit(s) 1-7, cut all trees that are two (2) inches or more at DBH, except do not cut trees marked with green paint above and below stump height.

2.1.3 - Cut tree marked unit(s) (12/08)

Within Payment Unit(s) 8, all trees are designated for cutting when marked with orange paint above and below stump height, regardless of merchantability.

2.2 - Utilization

2.2.2 - Chipping required (2/18)

Payment Unit 6 must be chip harvested to facilitate subsequent planting operations. If market conditions limit the practicality of chipping, tops and slash must be arranged in a way that will not inhibit future planting operations, as directed by the sale administrator. The requirement to retain approximately 1/6 to 1/3 of tree tops and limbs less than four inches in diameter is still applicable (G. C. & R. 2.2).

2.2.9 - No chipping permitted (12/08)

Within Payment Unit(s) 5, all wood must be removed by whole tree, tree segment, or roundwood. No chipping is permitted. tops may not be chipped.

3 - Payments

3.3 - Pre-measured Sales

3.3.4 - Dividing payment units (7/14)

Payment Unit(s) may be divided at the request of the Purchaser and upon approval of the Unit Manager. Dividing Payment Units is a contract modification which requires a Timber Sale Contract Amendment. There will be only one division per Payment Unit.

3.4 - Damaged Timber

3.4.1 - Damaged timber (7/16)

General Condition and Requirement 3.4 Damaged Timber, defines liquidated damages for undesignated live merchantable trees which are cut or injured. No damage is acceptable to undesignated live merchantable trees. Within the sale area, if more than 5% of trees (> 4.5" DBH) within a specified area of the sale are damaged, liquidated damages will be assessed for all trees damaged. Rates will be in accordance with General Condition and Requirement 3.4 Damaged Timber.

4 - Transportation

4.1 - Construction

4.1.6 - Road construction (1/09)

Construction of new roads or improvements of existing roads shall be done in such a way as to minimize the environmental and visual impacts. Merchantable trees shall be cut and utilized unless otherwise directed. Non-merchantable trees shall be

severed and laid flat on the ground. Slash shall be scattered, and not left in windrows and kept a minimum of 10 feet back from the road edge. Stumps shall be set upright, not left on edge, and be moved at least 10 feet away from the road edge. Disturbed soil shall be feathered into the woods and not left in berms or windrows.

4.1.7 - Road closure (10/11)

All new roads built into the sale must be blocked to vehicle traffic upon completion of the sale. Overgrown roads that are reopened shall be considered new roads. In general, this will require constructing a four (4') foot high berm of stumps and logs covered with earth. Stumps and brush must be placed along the remainder of the trail. These roads must be rendered impassable to cars and trucks. Contact the sale administrator for specific details of design and placement.

5 - Operations

5.1 - Notification

5.1.1 - Pre-sale conference (10/16)

A pre-sale conference between the Purchaser and sale administrator is required prior to beginning any operations to determine landing and road locations. The Unit Manager or his/her representative must be contacted at least 5 days in advance to schedule the conference.

5.1.3 - Well heads and natural gas pipelines (11/15)

The Purchaser is responsible for contacting the gas or pipeline company 10 days prior to operating equipment in the vicinity of well heads or natural gas pipelines. Contact Doug Struble with Lease Management Inc. at (989) 506-2333.

5.2 - Conduct of Operations

5.2.1 - Slash

5.2.1.8 - Slash height (12/08)

No slash or tree tops may exceed 36 inches in height.

5.2.2 - Hazard Trees/Snags

5.2.2.1 - Den trees (10/16)

Obvious hollow and/or den trees shall be protected and left standing unless they are a safety hazard.

5.2.3 - Operating Restrictions

5.2.3.3 - Bark slippage restriction (3/09)

Within Payment Unit(s) 8, unless changed by written agreement, cutting and skidding are not permitted during the period of April 15 to July 15. This restriction is because of bark slippage.

5.2.3.5 - Oak wilt restriction (1/18)

Within Payment Units 2 & 7, unless changed by written agreement, cutting, skidding, hauling within the sale and brushing of access roads to the sale are not permitted during the period of April 15 to July 15. Operations may be allowed if specific steps are taken to prevent damaging uncut oak during the high risk period. Those steps may include completing all road brushing before April 15th and clearing a tree-length buffer along uncut oak cover before April 15th. This is necessary to reduce the spread of oak wilt. For more information, contact the Unit Manager or his/her representative.

5.2.3.6 - Bark beetle restriction (12/08)

In the event drought creates a high risk of pine bark beetle infestation, pine is not to be cut during the period March 1 through July 1, unless all portions of trees greater than two inches in diameter are removed from the sale area, reduced to chips, or treated to the satisfaction of the Unit Manager or his/her representative, within fifteen days of being severed from the stump. Pine log decks, pulpwood piles and treetops that are piled for chipping in the fall or winter within a 1/4 mile of susceptible sites must be removed before March 15. Residual slash must not be placed in piles or rows and must be spread over the site for quick drying. The Department of Natural Resources will exercise this specification if the risk of damage warrants.

5.2.4 - Dead and Down Creation

5.2.4.4 - Dead and down creation, grouse (6/18)

To encourage grouse and other wildlife, in Payment Unit(s) 1 & 2, leave one, 12" diameter or larger log-length (8 foot minimum) piece on the ground for every 2 acres. These trees will be evenly scattered throughout the unit, preferably at

least two chains from any roads, two-tracks, or trails open to vehicles.

5.2.17 - Timber Mats and Interlocking Composite Mats (3/18)

Some roads or skid trails may require extra protection such as that afforded by timber mats, interlocking composite mats, or another approved system. Approximately 120 feet of road or trail will need extra protection at locations shown on the Timber Sale Map for Payment Unit 5. If available, mats may be borrowed from the DNR. A Timber Sale Contract Supplement will be used to document the Purchaser's use of the DNR's mats. Contact the sale administrator regarding availability and pick-up. Timber mats are available from various field offices. Composite mats are only available from the Grayling field office. The Purchaser is responsible for picking up and hauling the mats to and from the site. The composite mats will require DNR staff onsite for installation and removal. Contact the sale administrator to schedule at least 30 days before desired install/removal date. All mats must be cleaned prior to drop off. This may include, but is not limited to, power washing and brushing to remove mud and debris. A charge of \$400.00 per timber mat and \$2,000.00 per composite mat will be assessed for all damaged or non-returned mats. Damage for the crane/timber mats is defined as three or more broken cants. Damage for the composite mats is defined as cracked or broken mats.

5.2.32 - Decking/landing restoration (9/13)

All decking and landing areas must have the surface area restored to a condition equal to or better than before. This is to ensure the proper regeneration of the stand. Wood debris, chips and "cookies" from trimmings must be removed or scattered away from landing and loading areas and may not be windrowed on the edge.

5.4 - Soil Protection

5.4.1 - Rutting restriction, general (7/16)

Operations are to cease immediately if equipment and weather conditions result in rutting of roads and/or skid trails which is 12 inches or greater in depth and 50 feet in length. The Unit Manager or his/her representative may restrict hauling and/or skidding if ruts exceed the specified depth. With the Unit Manager or his/her representative's approval, the Purchaser may return to the area when the risk of rutting has decreased.

6 - Safety and Fire Prevention

6.2 - Signing

6.2.1 - Road posting (9/09)

The Purchaser is responsible for posting and maintaining caution signs on M-61 & Twin Lakes Ave prior to beginning operations. The road must be posted at appropriate distances from the sale area to warn of logging activity and truck traffic. Signs must be removed when harvest operations are suspended or completed.



TIMBER SALE MAP

This information provided by authority of Part 525, 1994 PA 451, as amended.

| | | | | | | |
|-------------------------|--------------|-----------------------------------|----------|------------|------|----|
| Forest Management Unit | County | Mapped By | Behrmann | Date | Page | of |
| Gladwin Management Unit | Clare County | Cruised By | Behrmann | 09/08/2020 | 2 | 2 |
| Township | Range | Section(s) and Subdivision(s) | Scale | | | |
| 19N | 06W | Sec. 22 NENE, W1/2NE Sec. 23 NWNW | 1:7,920 | | | |

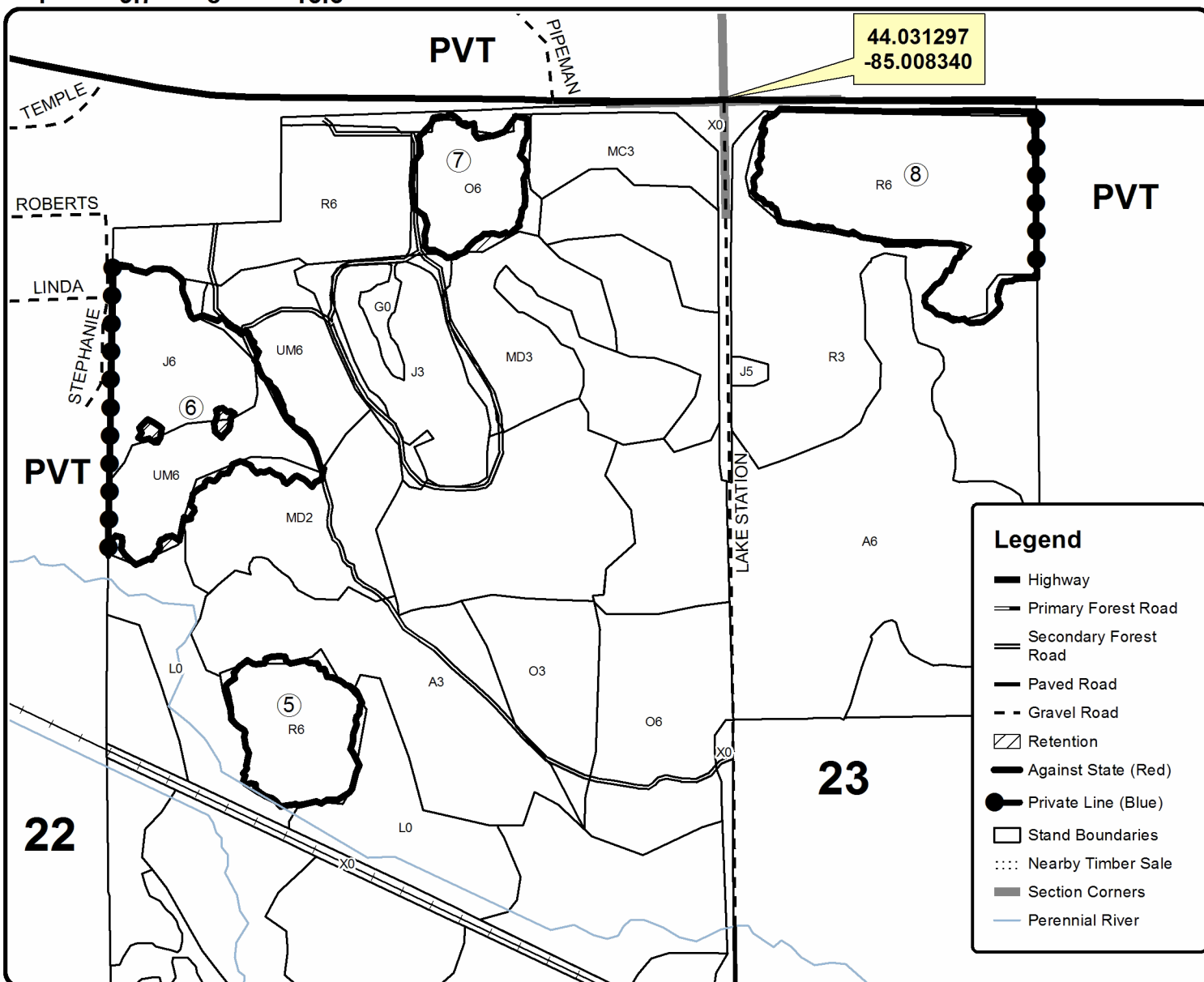
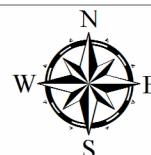
| Cover Type | | | | Density | |
|-------------------|----------------------|-------------------------|-------------------|-----------------------------|------------------------|
| A = Aspen | H = Hemlock | N = Marsh | U = Upland Brush | 0 = Non Stocked | 5 = Pole Timber Medium |
| B = Paper Birch | J = Jack Pine | O = Oak | UM = Upland Mixed | 1 = Seedling Sapling Poor | 6 = Pole Timber Well |
| C = Cedar | L = Lowland Brush | P = Lowland Poplar | V = Bog or Marsh | 2 = Seedling Sapling Medium | 7 = Saw Timber Poor |
| D = Tread Bog | LM = Lowland Mixed | Q = Mixed Swamp Conifer | W = White Pine | 3 = Seedling Sapling Well | 8 = Saw Timber Medium |
| E = Swamp Hdwoods | M = Mpl, Bch, Brch | R = Red Pine | X = Non Stocked | 4 = Pole Timber Poor | 9 = Saw Timber Well |
| F = Spruce Fir | MC = Mixed Conifer | S = Black Spruce | Z = Water | | |
| G = Grass | MD = Mixed Deciduous | T = Tamarack | | | |

| PU | Acres | PU | Acres |
|----|-------|----|-------|
| 1 | 13.9 | 5 | 6.4 |
| 2 | 39.7 | 6 | 14.6 |
| 3 | 7.3 | 7 | 5.2 |
| 4 | 9.7 | 8 | 16.6 |

Rise Up Temple

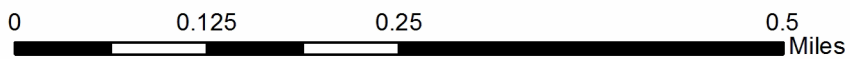
Compartment 16

113.4 Acres



Legend

- Highway
- Primary Forest Road
- Secondary Forest Road
- Paved Road
- Gravel Road
- Retention
- Against State (Red)
- Private Line (Blue)
- Stand Boundaries
- Nearby Timber Sale
- Section Corners
- Perennial River





TIMBER SALE MAP

This information provided by authority of Part 525, 1994 PA 451, as amended.

| | |
|-------------|------|
| Sale Number | Year |
| 73 - 006 | 20 |

| | | | | | |
|-------------------------|--------------|----------------------------------|------------|------|----|
| Forest Management Unit | County | Mapped By | Date | Page | of |
| Gladwin Management Unit | Clare County | Behrmann | 09/08/2020 | 1 | 2 |
| Township | Range | Section(s) and Subdivision(s) | Scale | | |
| 19N | 06W | Sec. 28 SWSW, Sec. 33 NW, N1/2SW | 1:15,840 | | |

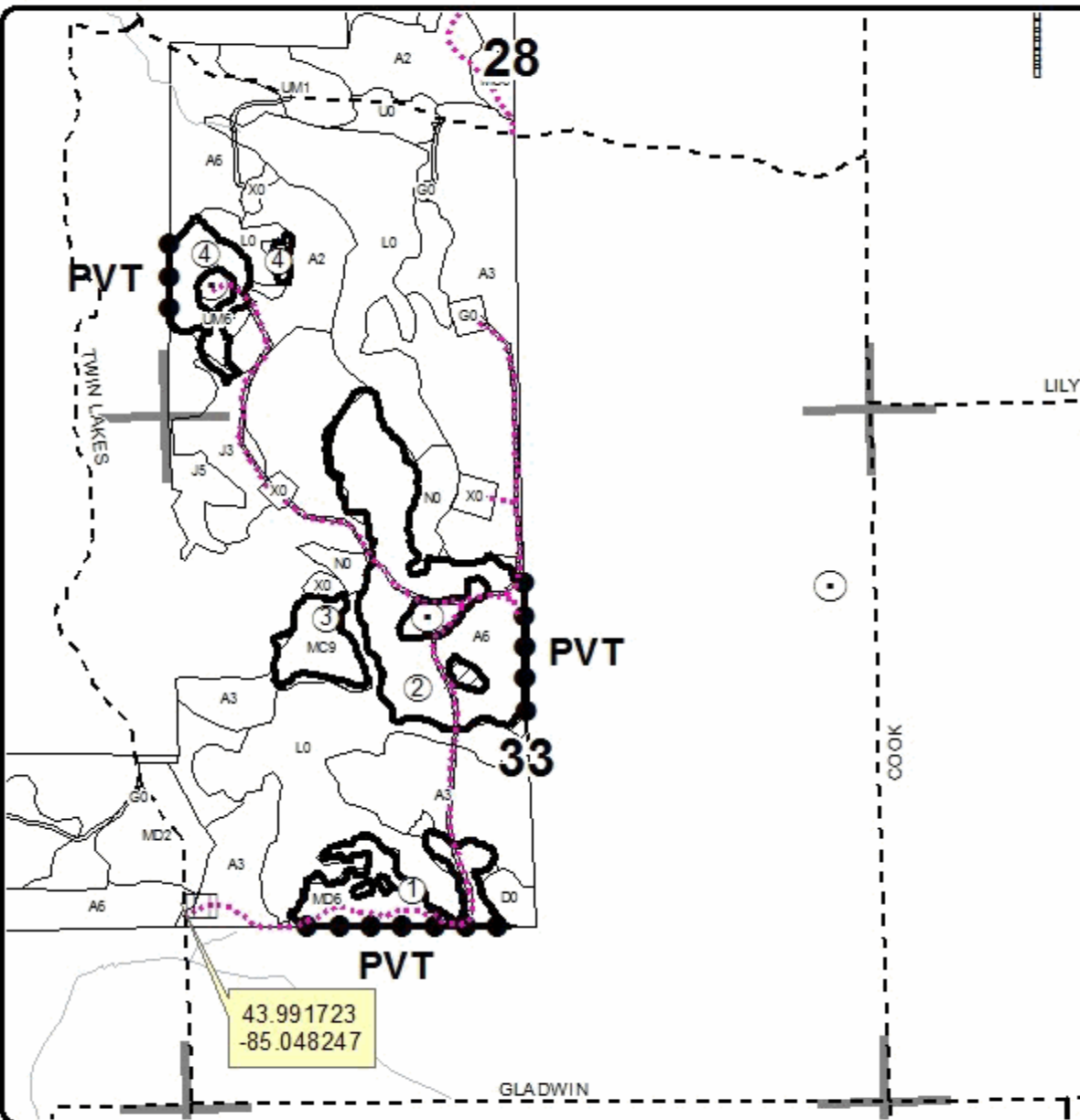
| Cover Type | | | | Density | |
|---------------------|----------------------|-------------------------|-------------------|----------------------------|------------------------|
| A = Aspen | H = Hemlock | N = Marsh | U = Upland Brush | 0 = Non Stocked | 5 = Pole Timber Medium |
| B = Paper Birch | J = Jack Pine | O = Oak | UM = Upland Mixed | 1 = Seeding Sapling Poor | 6 = Pole Timber Well |
| C = Cedar | L = Lowland Brush | P = Lowland Poplar | V = Bog or Marsh | 2 = Seeding Sapling Medium | 7 = Saw Timber Poor |
| D = Tread Bog | LM = Lowland Mixed | Q = Mixed Swamp Conifer | W = White Pine | 3 = Seeding Sapling Well | 8 = Saw Timber Medium |
| E = Swamp Hardwoods | M = Mpl. Ech. Bich | R = Red Pine | X = Non Stocked | 4 = Pole Timber Poor | 9 = Saw Timber Well |
| F = Spruce Fir | MC = Mixed Conifer | S = Black Spruce | Z = Water | | |
| G = Cress | MD = Mixed Deciduous | T = Tamarack | | | |

| PU | Acres | PU | Acres |
|----|-------|----|-------|
| 1 | 13.9 | 5 | 6.4 |
| 2 | 39.7 | 6 | 14.6 |
| 3 | 7.3 | 7 | 5.2 |
| 4 | 9.7 | 8 | 16.6 |

Rise Up Temple

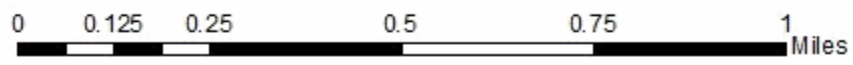
Compartment 16

113.4 Acres



Legend

- Highway
- Secondary Forest Road
- Forest Access Route
- Paved Road
- Gravel Road
- Temporary Management Access
- Retention Area
- Against State (Red)
- Pipeline
- Private Line (Blue)
- Section Corners
- Lakes and Rivers



TIMBER SALE INFORMATION

Jungle Hardwoods (73-012-20)

T20N, R04W, SEC. 14; T20N, R04W, SEC. 22; T20N, R04W, SEC. 34; T20N, R04W, SEC. 4.
Clare County (Advertised Price \$138,114.35)

A timber sale contract for this lump sum, sealed bid timber sale will be awarded to the responsible bidder offering the highest sealed bid price. All units of volume listed below were estimated using the T-Sale computer program and our traditional volume equations. Bids must be at or above the following advertised price for each product and species:

| <u>PRODUCTS & SPECIES</u> | <u>ESTIMATED UNITS*</u> | <u>ADVERTISED PRICE</u> |
|-------------------------------|-------------------------|-------------------------|
| Sawtimber | | |
| Mixed Aspen | 78.9 MBF | \$ 56.00 / MBF |
| Northern Pin Oak | 129.5 MBF | \$ 90.00 / MBF |
| Red Maple | 75.1 MBF | \$ 34.00 / MBF |
| Red Oak | 47.7 MBF | \$ 109.00 / MBF |
| Red Pine | 346.0 MBF | \$ 103.00 / MBF |
| White Oak | 42.8 MBF | \$ 91.00 / MBF |
| White Pine | 66.6 MBF | \$ 39.00 / MBF |
| Pulpwood | | |
| Balsam Fir | 20 Cords | \$ 15.40 / Cord |
| Black Spruce | 7 Cords | \$ 18.30 / Cord |
| Jack Pine | 181 Cords | \$ 13.30 / Cord |
| Mixed Aspen | 619 Cords | \$ 15.60 / Cord |
| Mixed Hardwood | 675 Cords | \$ 11.20 / Cord |
| Mixed Oak | 537 Cords | \$ 12.05 / Cord |
| Paper Birch | 36 Cords | \$ 9.50 / Cord |
| Red Pine | 1,119 Cords | \$ 37.10 / Cord |
| Tamarack | 2 Cords | \$ 10.75 / Cord |
| White Pine | 230 Cords | \$ 16.30 / Cord |

* The total volume is statistically estimated within plus (+) or minus (-) 9.17 percent. There are an estimated 4,996 cords on this timber sale, plus or minus 458 cords at the 95% confidence level. The estimated units are final and not subject to adjustment. Prospective bidders are urged to examine this timber and to make their own estimates of quantity and quality.

BOND AND PAYMENT SCHEDULE:

1. A bond in the amount of \$6,906.00 to insure faithful performance of the conditions of the contract will be deposited by the successful bidder within 21 days of the sale award.
2. Cutting in any sale or unit without the required advance payment would be considered a trespass.
3. Total payment must be paid in advance or according to the following schedule :
 - (a) Ten percent (10%) of the sale value must be paid within 21 days of the sale award.
 - (b) The 10% down payment will be credited towards the first unit cut.
 - (c) Payment for each of the following units must be made before cutting begins in that unit:

| PAYMENT UNIT NUMBER | PERCENT OF TOTAL SALE VALUE |
|---------------------|-----------------------------|
| 01 | 19.8% |
| 02 | 9.4% |
| 03 | 6.2% |
| 04 | 4.2% |
| 05 | 11.1% |
| 06 | 10.9% |
| 07 | 24.8% |
| 08 | 4.8% |
| 09 | 4.5% |
| 10 | 4.3% |

4. If no cutting takes place, the 10% down payment will not be refunded.
5. Operations on the contract issued will terminate on 03/31/2023.

SALE STATISTICS

SALE VOLUMES

| VOLUME | | | STATISTICAL RANGE IN CORDS | |
|------------------|-------------|---------------|----------------------------|---------|
| TOTAL CUBIC FEET | TOTAL CORDS | PERCENT ERROR | MINIMUM | MAXIMUM |
| 394,663 | 4,996 | 9.17% | 4,538 | 5,454 |

VDU VOLUMES

A VDU is a Volume Determination Unit. Volumes and their associated statistics are calculated at the VDU level and summarized to the sale level. There is often a one to one relationship between a VDU and a Payment Unit, but not always, depending on the cruise design. Refer to the VDU TO PAYMENT UNIT table.

| VDU | VOLUME | | | RANGE IN CORDS | |
|---------------|------------------|--------------|---------------|----------------|--------------|
| | TOTAL CUBIC FEET | TOTAL CORDS | PERCENT ERROR | MINIMUM | MAXIMUM |
| 8 | 17,056 | 216 | 11.39% | 191 | 240 |
| 9 | 12,024 | 152 | 44.38% | 85 | 220 |
| 35 | 23,819 | 302 | 32.08% | 205 | 398 |
| 59 | 47,171 | 597 | 21.62% | 468 | 726 |
| 62 | 85,202 | 1,079 | 18.60% | 878 | 1,279 |
| 70 | 14,907 | 189 | 41.24% | 111 | 267 |
| 100 | 2,267 | 29 | 39.12% | 17 | 40 |
| 101 | 59,432 | 752 | 15.97% | 632 | 872 |
| 113 | 15,816 | 200 | 37.04% | 126 | 274 |
| 124 | 15,982 | 202 | 22.59% | 157 | 248 |
| 126 | 70,373 | 891 | 17.50% | 735 | 1,047 |
| 140 | 26,560 | 336 | 17.95% | 276 | 397 |
| 146 | 4,061 | 51 | 11.53% | 45 | 57 |
| TOTAL: | 394,668 | 4,996 | | 3,926 | 6,066 |

VDU TO PAYMENT UNIT

When a VDU is associated with more than one Payment Unit (PU), the VDU volumes are assigned to the PU based on acres of the VDU within the PU.

| VDU | VDU ACRES | PU | PU ACRES |
|---------------|--------------|----|--------------|
| 8 | 9.0 | 10 | 9.0 |
| 9 | 3.9 | 10 | 3.9 |
| 35 | 10.0 | 8 | 10.0 |
| 59 | 21.8 | 6 | 21.2 |
| | | 7 | 0.6 |
| 62 | 30.4 | 6 | 0.2 |
| | | 7 | 30.2 |
| 70 | 4.2 | 9 | 4.2 |
| 100 | 4.1 | 1 | 4.1 |
| 101 | 14.5 | 1 | 8.6 |
| | | 2 | 5.9 |
| 113 | 2.6 | 1 | 2.6 |
| 124 | 5.4 | 4 | 5.4 |
| 126 | 26.9 | 5 | 26.9 |
| 140 | 22.3 | 3 | 22.3 |
| 146 | 1.7 | 4 | 1.7 |
| TOTAL: | 156.8 | | 156.8 |

DESCRIPTION OF TIMBER BY PAYMENT UNIT (PU)

| PU | MARKET GROUP | PRODUCT | QUANTITY | UNIT | ACRES | ADVERTISE PRICE |
|----|-------------------------|------------------|----------|--------------|-------|-----------------|
| 1 | Northern Pin Oak | Sawtimber | 0.8 | MBF | 15.3 | \$27,382.55 |
| | Red Pine | | 128.1 | MBF | | |
| | White Oak | | 7.6 | MBF | | |
| | White Pine | | 0.9 | MBF | | |
| | Jack Pine | Pulpwood | 29 | Cords | | |
| | <i>Jack Pine</i> | | 29 | <i>Cords</i> | | |
| | Mixed Hardwood | | 5 | Cords | | |
| | <i>Red Maple</i> | | 5 | <i>Cords</i> | | |
| | Mixed Oak | | 25 | Cords | | |
| | <i>Northern Pin Oak</i> | | 2 | <i>Cords</i> | | |
| | <i>White Oak</i> | | 23 | <i>Cords</i> | | |
| | Red Pine | | 340 | Cords | | |
| | White Pine | | 2 | Cords | | |
| 2 | Northern Pin Oak | Sawtimber | 0.6 | MBF | 5.9 | \$12,925.60 |
| | Red Pine | | 64.2 | MBF | | |
| | White Oak | | 3.6 | MBF | | |
| | White Pine | | 0.6 | MBF | | |
| | Mixed Hardwood | Pulpwood | 4 | Cords | | |
| | <i>Red Maple</i> | | 4 | <i>Cords</i> | | |
| | Mixed Oak | | 8 | Cords | | |
| | <i>Northern Pin Oak</i> | | 1 | <i>Cords</i> | | |
| | <i>White Oak</i> | | 7 | <i>Cords</i> | | |
| | Red Pine | | 155 | Cords | | |
| | White Pine | | 1 | Cords | | |
| 3 | Northern Pin Oak | Sawtimber | 48.7 | MBF | 22.3 | \$8,512.90 |
| | White Oak | | 12.7 | MBF | | |
| | White Pine | | 4.7 | MBF | | |
| | Mixed Aspen | Pulpwood | 24 | Cords | | |
| | <i>Quaking Aspen</i> | | 24 | <i>Cords</i> | | |
| | Mixed Hardwood | | 8 | Cords | | |
| | <i>Black Cherry</i> | <i>Sawtimber</i> | 2.3 | <i>MBF</i> | | |
| | <i>Black Cherry</i> | <i>Pulpwood</i> | 3 | <i>Cords</i> | | |
| | Mixed Oak | | 116 | Cords | | |
| | <i>Northern Pin Oak</i> | | 77 | <i>Cords</i> | | |
| | <i>White Oak</i> | | 39 | <i>Cords</i> | | |
| | White Pine | | 57 | Cords | | |
| 4 | Mixed Aspen | Sawtimber | 18.2 | MBF | 7.1 | \$5,785.35 |
| | <i>B. T. Aspen</i> | | 14.0 | <i>MBF</i> | | |
| | <i>Quaking Aspen</i> | | 4.2 | <i>MBF</i> | | |
| | Northern Pin Oak | | 12.2 | MBF | | |
| | Red Maple | | 5.4 | MBF | | |
| | Red Oak | | 12.8 | MBF | | |
| | Mixed Aspen | Pulpwood | 70 | Cords | | |
| | <i>B. T. Aspen</i> | | 61 | <i>Cords</i> | | |
| | <i>Quaking Aspen</i> | | 9 | <i>Cords</i> | | |
| | Mixed Hardwood | | 60 | Cords | | |
| | <i>Red Maple</i> | | 60 | <i>Cords</i> | | |
| | Mixed Oak | | 27 | Cords | | |
| | <i>Northern Pin Oak</i> | | 17 | <i>Cords</i> | | |
| | <i>Red Oak</i> | | 10 | <i>Cords</i> | | |
| 5 | Mixed Aspen | Sawtimber | 36.4 | MBF | 26.9 | \$15,379.95 |
| | <i>B. T. Aspen</i> | | 23.8 | <i>MBF</i> | | |
| | <i>Quaking Aspen</i> | | 12.6 | <i>MBF</i> | | |
| | Northern Pin Oak | | 29.2 | MBF | | |
| | Red Maple | | 40.8 | MBF | | |
| | Red Oak | | 2.6 | MBF | | |

DESCRIPTION OF TIMBER BY PAYMENT UNIT (PU), CON'T

| PU | MARKET GROUP | PRODUCT | QUANTITY | UNIT | ACRES | ADVERTISE PRICE |
|-------------------------|-------------------------|------------------|------------|--------------|-------|-----------------|
| 5 con't | White Oak | Sawtimber | 3.4 | MBF | | |
| | White Pine | | 1.5 | MBF | | |
| | Balsam Fir | Pulpwood | 5 | Cords | | |
| | <i>Balsam Fir</i> | | 5 | <i>Cords</i> | | |
| | Black Spruce | | 4 | Cords | | |
| | Mixed Aspen | | 254 | Cords | | |
| | <i>B. T. Aspen</i> | | 87 | <i>Cords</i> | | |
| | <i>Quaking Aspen</i> | | 167 | <i>Cords</i> | | |
| | Mixed Hardwood | | 291 | Cords | | |
| | <i>Black Cherry</i> | <i>Sawtimber</i> | 2.9 | <i>MBF</i> | | |
| | <i>Black Cherry</i> | <i>Pulpwood</i> | 31 | <i>Cords</i> | | |
| | <i>Red Maple</i> | | 254 | <i>Cords</i> | | |
| | Mixed Oak | | 97 | Cords | | |
| | <i>Northern Pin Oak</i> | | 88 | <i>Cords</i> | | |
| | <i>Red Oak</i> | | 2 | <i>Cords</i> | | |
| | <i>White Oak</i> | | 7 | <i>Cords</i> | | |
| | Paper Birch | | 9 | Cords | | |
| | <i>Paper Birch</i> | | 9 | <i>Cords</i> | | |
| | White Pine | | 3 | Cords | | |
| | 6 | Mixed Aspen | Sawtimber | 0.1 | | |
| <i>B. T. Aspen</i> | | | <i>0.1</i> | <i>MBF</i> | | |
| Northern Pin Oak | | | 20.7 | MBF | | |
| Red Maple | | | 22.6 | MBF | | |
| Red Pine | | | 41.8 | MBF | | |
| White Oak | | | 8.8 | MBF | | |
| White Pine | | | 6.1 | MBF | | |
| Balsam Fir | | Pulpwood | 3 | Cords | | |
| <i>Balsam Fir</i> | | | 3 | <i>Cords</i> | | |
| Mixed Aspen | | | 9 | Cords | | |
| <i>B. T. Aspen</i> | | | 9 | <i>Cords</i> | | |
| Mixed Hardwood | | | 159 | Cords | | |
| <i>Red Maple</i> | | | 159 | <i>Cords</i> | | |
| Mixed Oak | | | 96 | Cords | | |
| <i>Northern Pin Oak</i> | | | 70 | <i>Cords</i> | | |
| <i>White Oak</i> | | | 26 | <i>Cords</i> | | |
| Paper Birch | | | 7 | Cords | | |
| <i>Paper Birch</i> | | <i>Sawtimber</i> | 0.7 | <i>MBF</i> | | |
| <i>Paper Birch</i> | | <i>Pulpwood</i> | 6 | <i>Cords</i> | | |
| Red Pine | | | 95 | Cords | | |
| White Pine | | 18 | Cords | | | |
| 7 | Mixed Aspen | Sawtimber | 9.6 | MBF | 30.8 | \$34,445.15 |
| | <i>B. T. Aspen</i> | | 9.6 | <i>MBF</i> | | |
| | Northern Pin Oak | | 5.9 | MBF | | |
| | Red Maple | | 2.9 | MBF | | |
| | Red Pine | | 97.2 | MBF | | |
| | White Oak | | 6.7 | MBF | | |
| | White Pine | | 6.3 | MBF | | |
| | Balsam Fir | Pulpwood | 12 | Cords | | |
| | <i>Balsam Fir</i> | <i>Sawtimber</i> | 0.8 | <i>MBF</i> | | |
| | <i>Balsam Fir</i> | <i>Pulpwood</i> | 10 | <i>Cords</i> | | |
| | Mixed Aspen | | 152 | Cords | | |
| | <i>B. T. Aspen</i> | | 110 | <i>Cords</i> | | |
| | <i>Quaking Aspen</i> | | 42 | <i>Cords</i> | | |
| | Mixed Hardwood | | 71 | Cords | | |
| | <i>Black Cherry</i> | | 8 | <i>Cords</i> | | |
| | <i>Red Maple</i> | | 63 | <i>Cords</i> | | |

DESCRIPTION OF TIMBER BY PAYMENT UNIT (PU), CON'T

| PU | MARKET GROUP | PRODUCT | QUANTITY | UNIT | ACRES | ADVERTISE PRICE | |
|-------------------------|-------------------------|-----------|--------------|--------------|------------|-----------------|------|
| 7 con't | Mixed Oak | Pulpwood | 89 | Cords | | | |
| | <i>Northern Pin Oak</i> | | 78 | <i>Cords</i> | | | |
| | <i>White Oak</i> | | 11 | <i>Cords</i> | | | |
| | Paper Birch | | 20 | Cords | | | |
| | <i>Paper Birch</i> | | 0.8 | <i>MBF</i> | | | |
| | <i>Paper Birch</i> | | 18 | <i>Cords</i> | | | |
| | Red Pine | | 474 | Cords | | | |
| | White Pine | | 13 | Cords | | | |
| 8 | Mixed Aspen | Sawtimber | 0.4 | MBF | 10.0 | \$6,568.85 | |
| | <i>B. T. Aspen</i> | | 0.4 | <i>MBF</i> | | | |
| | Northern Pin Oak | | 0.7 | MBF | | | |
| | Red Pine | | 11.8 | MBF | | | |
| | White Pine | 14.8 | MBF | | | | |
| | Mixed Aspen | Pulpwood | 92 | Cords | | | |
| | <i>B. T. Aspen</i> | | 85 | <i>Cords</i> | | | |
| | <i>Quaking Aspen</i> | | 7 | <i>Cords</i> | | | |
| | Mixed Hardwood | | 26 | Cords | | | |
| | <i>Red Maple</i> | | 26 | <i>Cords</i> | | | |
| | Mixed Oak | | 43 | Cords | | | |
| | <i>Northern Pin Oak</i> | | 43 | <i>Cords</i> | | | |
| | Red Pine | | 51 | Cords | | | |
| | White Pine | | 34 | Cords | | | |
| | 9 | | Mixed Aspen | Sawtimber | | | 14.2 |
| <i>B. T. Aspen</i> | | | 14.2 | | <i>MBF</i> | | |
| Northern Pin Oak | | 10.3 | MBF | | | | |
| Red Maple | | 3.4 | MBF | | | | |
| Red Oak | | 32.3 | MBF | | | | |
| Mixed Aspen | | Pulpwood | 18 | Cords | | | |
| <i>B. T. Aspen</i> | | | 18 | <i>Cords</i> | | | |
| Mixed Hardwood | | | 18 | Cords | | | |
| <i>Red Maple</i> | | | 18 | <i>Cords</i> | | | |
| Mixed Oak | | | 32 | Cords | | | |
| <i>Northern Pin Oak</i> | | | 8 | <i>Cords</i> | | | |
| <i>Red Oak</i> | 24 | | <i>Cords</i> | | | | |
| 10 | Northern Pin Oak | Sawtimber | 0.4 | MBF | 12.9 | \$5,897.80 | |
| | Red Pine | | 2.9 | MBF | | | |
| | White Pine | | 31.7 | MBF | | | |
| | Black Spruce | Pulpwood | 3 | Cords | | | |
| | Jack Pine | | 152 | Cords | | | |
| | <i>Jack Pine</i> | | 5.5 | <i>MBF</i> | | | |
| | <i>Jack Pine</i> | | 141 | <i>Cords</i> | | | |
| | Mixed Hardwood | | 33 | Cords | | | |
| | <i>Black Cherry</i> | | 13 | <i>Cords</i> | | | |
| | <i>Red Maple</i> | | 20 | <i>Cords</i> | | | |
| | Mixed Oak | | 4 | Cords | | | |
| | <i>Northern Pin Oak</i> | | 4 | <i>Cords</i> | | | |
| | Red Pine | | 4 | Cords | | | |
| | Tamarack | | 2 | Cords | | | |
| | White Pine | | 102 | Cords | | | |
| TOTAL: | | | 786.6 | MBF | | | |
| TOTAL: | | | 3,426 | Cords | | | |

Sale Specific Conditions & Requirements

Sale Name: Jungle Hardwoods

Sale Number: 73-012-20 Seq#: 1

1 - Sale Area

1.2 - Boundaries

1.2.1 - Painted boundaries (9/19)

The sale boundary and Payment Unit boundaries are marked and identified by blue, red and yellow paint. Exterior sale boundary lines against private property are marked with blue paint. Exterior sale boundary lines against state are marked with red paint. Interior Payment Unit boundaries are marked with yellow paint. Retention patches are marked with red paint; no harvesting activities may occur within these areas. The painted boundary line trees are not Included Timber and are to be protected. Yellow painted trees designating an interior Payment Unit boundary are only to be cut when all surrounding Payment Units have been paid.

2 - Timber Specifications

2.1 - Included Timber

2.1.1 - Clearcut unit(s) with unmerchantable trees (6/14)

Within Payment Unit(s) 1-2, 6-8, and 10, cut all trees that are two (2) inches or more at DBH.

2.1.7 - Leave tree marked unit(s) (6/14)

Within Payment Unit(s) 3-5, and 9, cut all trees that are two (2) inches or more at DBH except trees marked with green paint above and below stump height.

2.2 - Utilization

2.2.2 - Chipping required (2/18)

Payment Units 1-3, 6-8, and 10 must be chip harvested to facilitate future silvicultural activities. Products may be produced as roundwood and forwarded to decking areas in final product length, but the tops must be left intact and skidded to the landing for chipping in order to minimize the amount of residual slash. If market conditions limit the practicality of chipping, a chipping exemption may be obtained if proposed operations are determined to be suitable for future silvicultural activities by the sale administrator. There is no guarantee that an exception will be granted, and if one is, it must be granted in writing. If the deadline is not met, damages will be collected determined by the cost to complete this work. The requirement to retain approximately 1/6 to 1/3 of tree tops and limbs less than four inches in diameter is still applicable (G. C. & R. 2.2).

2.2.3 - Stump heights (4/07)

Stump heights within Payment Units 1-2, 6-8, and 10 shall not exceed 6 inches for all trees.

3 - Payments

3.3 - Pre-measured Sales

3.3.4 - Dividing payment units (7/14)

Payment Unit(s) may be divided at the request of the Purchaser and upon approval of the Unit Manager. Dividing Payment Units is a contract modification which requires a Timber Sale Contract Amendment.

4 - Transportation

4.1 - Construction

4.1.6 - Road construction (1/09)

Construction of new roads or improvements of existing roads shall be done in such a way as to minimize the environmental and visual impacts. Merchantable trees shall be cut and utilized unless otherwise directed. Non-merchantable trees shall be severed and laid flat on the ground. Slash shall be scattered, and not left in windrows and kept a minimum of 10 feet back from the road edge. Stumps shall be set upright, not left on edge, and be moved at least 10 feet away from the road edge. Disturbed soil shall be feathered into the woods and not left in berms or windrows.

4.1.7 - Road closure (10/11)

All new roads built into the sale must be blocked to vehicle traffic upon completion of the sale. Overgrown roads that are

reopened shall be considered new roads. In general, this will require constructing a four (4') foot high berm of stumps and logs covered with earth. These roads must be rendered impassable to cars and trucks. Contact the sale administrator for specific details of design and placement.

4.2 - Maintenance

4.2.3 - Road maintenance (8/13)

The following road maintenance is required: Within 60 days of completion of hauling, the road must be maintained and graded. This includes cleaning of drainage areas, grading, crowning and filling with gravel, if necessary. Damages will be assessed if grading/repair does not occur.

4.2.5 - Two wheel drive condition (2/04)

All existing trail roads on and adjacent to the sale area must be passable by two-wheel drive traffic for the duration of the sale.

5 - Operations

5.1 - Notification

5.1.1 - Pre-sale conference (10/16)

A pre-sale conference between the Purchaser and sale administrator is required prior to beginning any operations to determine landing and road locations. The Unit Manager or his/her representative must be contacted at least 5 days in advance to schedule the conference.

5.2 - Conduct of Operations

5.2.1 - Slash

5.2.1.8 - Slash height (12/08)

No slash or tree tops may exceed 36 inches in height.

5.2.3 - Operating Restrictions

5.2.3.4 - Oak wilt restriction, no exceptions (1/18)

Within Payment Units 3 and 9, cutting, skidding, hauling within the sale and brushing of access roads to the sale are not permitted during the period of April 15 to July 15. No exceptions will be granted. This is necessary to reduce the spread of oak wilt.

5.2.3.6 - Bark beetle restriction (12/08)

In the event drought creates a high risk of pine bark beetle infestation, pine is not to be cut during the period March 1 through July 1, unless all portions of trees greater than two inches in diameter are removed from the sale area, reduced to chips, or treated to the satisfaction of the Unit Manager or his/her representative, within fifteen days of being severed from the stump. Pine log decks, pulpwood piles and treetops that are piled for chipping in the fall or winter within a 1/4 mile of susceptible sites must be removed before March 15. Residual slash must not be placed in piles or rows and must be spread over the site for quick drying. The Department of Natural Resources will exercise this specification if the risk of damage warrants.

5.2.3.11 - Coppice regeneration protection (4/10)

Timber harvesting, skidding, and chipping in Payment Units 4, 5, and 9 must be completed before significant aspen sprouting occurs in that Payment Unit so as to minimize damage to the new regeneration. The Unit Manager or his/her representative may cease such operations if sprouting occurs before the operation is complete.

5.2.4 - Dead and Down Creation

5.2.4.4 - Dead and down creation, grouse (6/18)

To encourage grouse and other wildlife, in Payment Unit(s) 4 and 5, leave one, 12" diameter or larger log-length (8 foot minimum) piece on the ground for every 2 acres. These logs will be evenly scattered throughout the unit, preferably at least two chains from any roads, two-tracks, or trails open to vehicles. This can be an unmerchantable piece or a full tree.

5.2.22 - Operating Caution

5.2.22.1 - Operating caution (6/11)

It is recommended, but not required, that within Payment Unit(s) 4, 5, and 9, cutting, skidding, and hauling occur during dry summer or frozen winter conditions. The reason for the recommendation is because of heavy soil conditions in these Payment Units.

5.2.32 - Decking/landing restoration (9/13)

All decking and landing areas must have the surface area restored to a condition equal to or better than before. This is to ensure the proper regeneration of the stand. Wood debris, chips and "cookies" from trimmings must be removed or scattered away from landing and loading areas and may not be windrowed on the edge.

5.4 - Soil Protection

5.4.1 - Rutting restriction, general (7/16)

Operations are to cease immediately if equipment and weather conditions result in rutting of roads and/or skid trails which is 12 inches or greater in depth and 50 feet in length. The Unit Manager or his/her representative may restrict hauling and/or skidding if ruts exceed the specified depth. With the Unit Manager or his/her representative's approval, the Purchaser may return to the area when the risk of rutting has decreased.

6 - Safety and Fire Prevention

6.2 - Signing

6.2.1 - Road posting (9/09)

The Purchaser is responsible for posting and maintaining caution signs on Arnold Lake Rd., Haskell Lake Rd., and Old-127 prior to beginning operations. The road must be posted at appropriate distances from the sale area to warn of logging activity and truck traffic. Signs must be removed when harvest operations are suspended or completed. The Purchaser will provide these signs.



TIMBER SALE MAP

This information provided by authority of Part 525, 1994 PA 451, as amended.

| | | | | | |
|-----------------------------------|-----------------|--|-------------------|-----------|---------|
| Forest Management Unit Gladwin | County Clare | Mapped By Martell and Lewicki | Date 9/17/20 | Page 1 | of 3 |
| Township 20N | Range 04W | Section(s) and Subdivision(s) Sec. 4 - NE; Sec. 14 - S1/2SE; Sec. 22 - NE; Sec. 34 - SENE,W1/2SW,SE | Scale 1:15,840 | | |

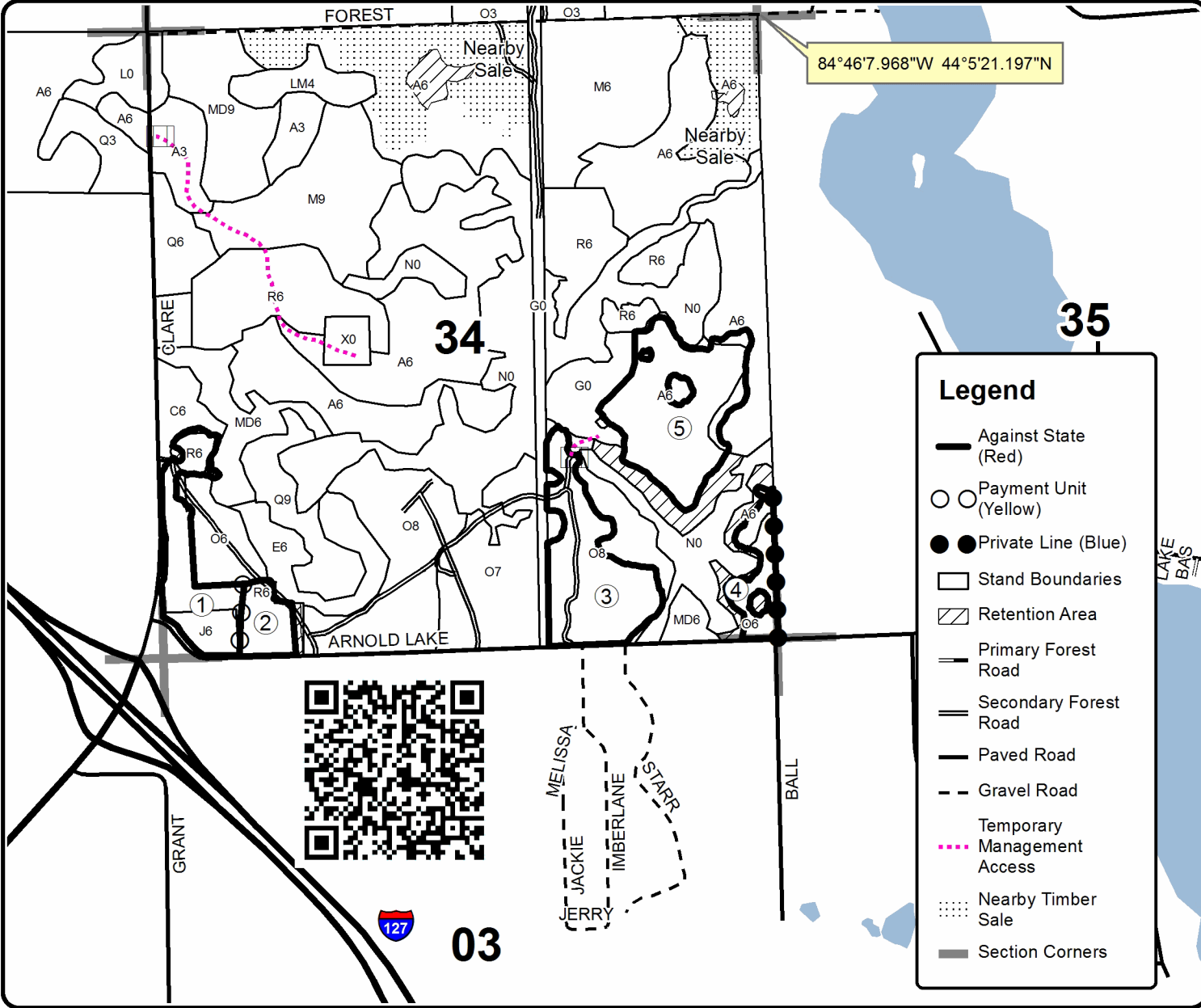
| Cover Type | | | | Density | |
|-------------------|----------------------|-------------------------|-------------------|-----------------------------|------------------------|
| A = Aspen | H = Hemlock | N = Marsh | U = Upland Brush | 0 = Non Stocked | 5 = Pole Timber Medium |
| B = Paper Birch | J = Jack Pine | O = Oak | UM = Upland Mixed | 1 = Seedling Sapling Poor | 6 = Pole Timber Well |
| C = Cedar | L = Lowland Brush | P = Lowland Poplar | V = Bog or Marsh | 2 = Seedling Sapling Medium | 7 = Saw Timber Poor |
| D = Treed Bog | LM = Lowland Mixed | Q = Mixed Swamp Conifer | W = White Pine | 3 = Seedling Sapling Well | 8 = Saw Timber Medium |
| E = Swamp Hdwoods | M = Mpl, Bch, Brch | R = Red Pine | X = Non Stocked | 4 = Pole Timber Poor | 9 = Saw Timber Well |
| F = Spruce Fir | MC = Mixed Conifer | S = Black Spruce | Z = Water | | |
| G = Grass | MD = Mixed Deciduous | T = Tamarack | | | |

| PU | Acres | PU | Acres |
|----|-------|----|-------|
| 1 | 15.3 | 6 | 21.4 |
| 2 | 5.9 | 7 | 30.8 |
| 3 | 22.3 | 8 | 10.0 |
| 4 | 7.1 | 9 | 4.2 |
| 5 | 26.9 | 10 | 12.9 |

Jungle Hardwoods

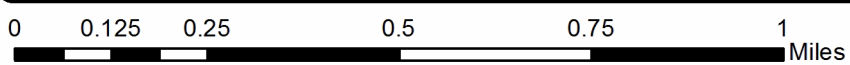
Compartment 3

156.8 Acres



Legend

- Against State (Red)
- ○ Payment Unit (Yellow)
- ● Private Line (Blue)
- Stand Boundaries
- ▨ Retention Area
- Primary Forest Road
- Secondary Forest Road
- Paved Road
- - - Gravel Road
- Temporary Management Access
- ⋯ Nearby Timber Sale
- Section Corners





TIMBER SALE MAP

This information provided by authority of Part 525, 1994 PA 451, as amended.

| | |
|-------------|------|
| Sale Number | Year |
| 73 - 012 | 20 |

| | | | | | |
|------------------------|--------|---|----------|------|----|
| Forest Management Unit | County | Mapped By | Date | Page | of |
| Gladwin | Clare | Martell and Lewicki | 9/17/20 | 2 | 3 |
| Township | Range | Section(s) and Subdivision(s) | Scale | | |
| 20N | 04W | Sec. 4 - NE; Sec. 14 - S1/2SE; Sec. 22 - NE; Sec. 34 - SENE,W1/2SW,SE | 1:15,840 | | |

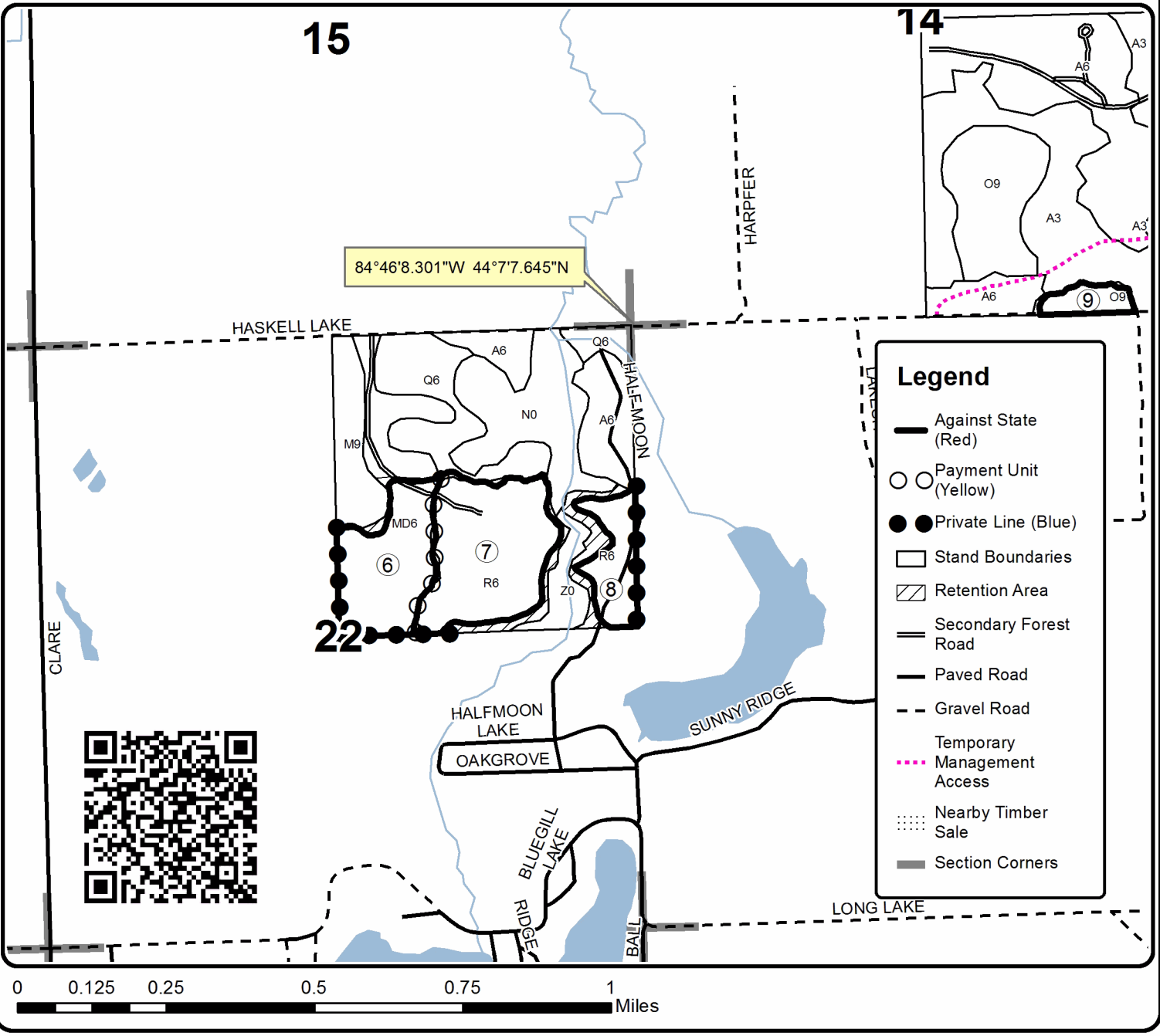
| Cover Type | | | | Density | |
|-------------------|----------------------|-------------------------|-------------------|-----------------------------|------------------------|
| A = Aspen | H = Hemlock | N = Marsh | U = Upland Brush | 0 = Non Stocked | 5 = Pole Timber Medium |
| B = Paper Birch | J = Jack Pine | O = Oak | UM = Upland Mixed | 1 = Seedling Sapling Poor | 6 = Pole Timber Well |
| C = Cedar | L = Lowland Brush | P = Lowland Poplar | V = Bog or Marsh | 2 = Seedling Sapling Medium | 7 = Saw Timber Poor |
| D = Treed Bog | LM = Lowland Mixed | Q = Mixed Swamp Conifer | W = White Pine | 3 = Seedling Sapling Well | 8 = Saw Timber Medium |
| E = Swamp Hdwoods | M = Mpl, Bch, Brch | R = Red Pine | X = Non Stocked | 4 = Pole Timber Poor | 9 = Saw Timber Well |
| F = Spruce Fir | MC = Mixed Conifer | S = Black Spruce | Z = Water | | |
| G = Grass | MD = Mixed Deciduous | T = Tamarack | | | |

| PU | Acres | PU | Acres |
|----|-------|----|-------|
| 1 | 15.3 | 6 | 21.4 |
| 2 | 5.9 | 7 | 30.8 |
| 3 | 22.3 | 8 | 10.0 |
| 4 | 7.1 | 9 | 4.2 |
| 5 | 26.9 | 10 | 12.9 |

Jungle Hardwoods

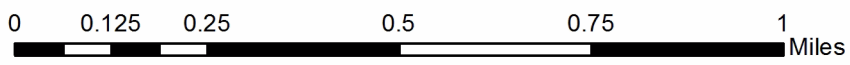
Compartment 3

156.8 Acres



Legend

- Against State (Red)
- Payment Unit (Yellow)
- Private Line (Blue)
- Stand Boundaries
- ▨ Retention Area
- == Secondary Forest Road
- Paved Road
- - Gravel Road
- Temporary Management Access (dotted pink line)
- ⋯ Nearby Timber Sale
- Section Corners





TIMBER SALE MAP

This information provided by authority of Part 525, 1994 PA 451, as amended.

| | | | | | | |
|-----------------------------------|--------------|--|----------------------------------|------------------|-----------|---------|
| Forest Management Unit Gladwin | | County Clare | Mapped By Martell and Lewicki | Date 9/17/20 | Page 3 | of 3 |
| Township 20N | Range 04W | Section(s) and Subdivision(s) Sec. 4 - NE; Sec. 14 - S1/2SE; Sec. 22 - NE; Sec. 34 - SENE,W1/2SW,SE | | Scale 1:7,920 | | |

Cover Type

| | | | |
|-------------------|----------------------|-------------------------|-------------------|
| A = Aspen | H = Hemlock | N = Marsh | U = Upland Brush |
| B = Paper Birch | J = Jack Pine | O = Oak | UM = Upland Mixed |
| C = Cedar | L = Lowland Brush | P = Lowland Poplar | V = Bog or Marsh |
| D = Treed Bog | LM = Lowland Mixed | Q = Mixed Swamp Conifer | W = White Pine |
| E = Swamp Hdwoods | M = Mpl. Bch, Brch | R = Red Pine | X = Non Stocked |
| F = Spruce Fir | MC = Mixed Conifer | S = Black Spruce | Z = Water |
| G = Grass | MD = Mixed Deciduous | T = Tamarack | |

Density

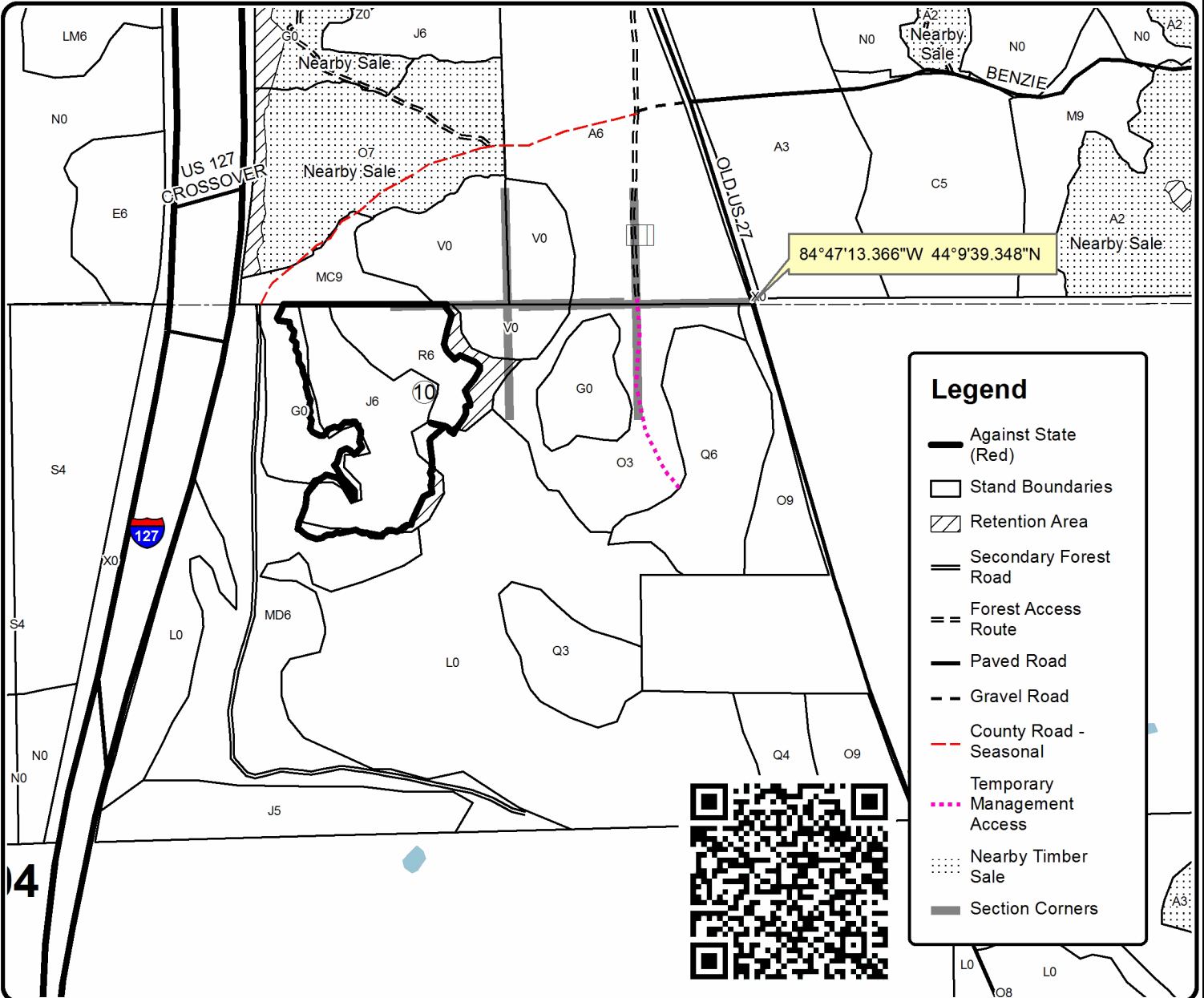
| | |
|-----------------------------|------------------------|
| 0 = Non Stocked | 5 = Pole Timber Medium |
| 1 = Seedling Sapling Poor | 6 = Pole Timber Well |
| 2 = Seedling Sapling Medium | 7 = Saw Timber Poor |
| 3 = Seedling Sapling Well | 8 = Saw Timber Medium |
| 4 = Pole Timber Poor | 9 = Saw Timber Well |

| PU | Acres | PU | Acres |
|----|-------|----|-------|
| 1 | 15.3 | 6 | 21.4 |
| 2 | 5.9 | 7 | 30.8 |
| 3 | 22.3 | 8 | 10.0 |
| 4 | 7.1 | 9 | 4.2 |
| 5 | 26.9 | 10 | 12.9 |

Jungle Hardwoods

Compartment 3

156.8 Acres



Legend

- Against State (Red)
- Stand Boundaries
- Retention Area
- Secondary Forest Road
- Forest Access Route
- Paved Road
- Gravel Road
- County Road - Seasonal
- Temporary Management Access
- Nearby Timber Sale
- Section Corners



Rise Up Temple (73-006-20)
T19N, R06W, SEC. 22; T19N, R06W, SEC. 23; T19N, R06W, SEC. 28; T19N,

In response to the notice of sale to be held 10:00 a.m. (local time) on February 24, 2021, I am hereby submitting my sealed bid (firm offer) for the following forest products to be cut. Bids for individual species must be at or above the advertised price. All non-responsive bid forms may be rejected.

| <u>PRODUCTS & SPECIES</u> | <u>ESTIMATED VOLUME*</u> | <u>ADVERTISED PRICE</u> | <u>BID PRICE/UNIT</u> |
|-------------------------------|--------------------------|-------------------------|-----------------------|
| Sawtimber | | | |
| B. T. Aspen | 10.9 MBF | \$ 56.00/MBF | \$ _____ |
| Northern Pin Oak | 50.6 MBF | \$ 90.00/MBF | \$ _____ |
| Red Maple | 8.4 MBF | \$ 34.00/MBF | \$ _____ |
| Red Pine | 45.5 MBF | \$ 103.00/MBF | \$ _____ |
| White Pine | 62.9 MBF | \$ 39.00/MBF | \$ _____ |
| Pulpwood | | | |
| Jack Pine | 102 Cords | \$ 13.30/Cord | \$ _____ |
| Mixed Aspen | 277 Cords | \$ 15.60/Cord | \$ _____ |
| Mixed Hardwood | 152 Cords | \$ 11.20/Cord | \$ _____ |
| Mixed Oak | 406 Cords | \$ 12.05/Cord | \$ _____ |
| Paper Birch | 7 Cords | \$ 9.50/Cord | \$ _____ |
| Red Pine | 297 Cords | \$ 37.10/Cord | \$ _____ |
| White Pine | 304 Cords | \$ 16.30/Cord | \$ _____ |

*The volumes are statistically estimated within plus (+) or minus (-) 11.29 percent at 95% confidence level. These estimated volumes are final and not subject to adjustment. Prospective bidders are urged to examine this timber and to make their own estimates of quantity and quality.

I understand that any or all bids may be rejected. All bids must be signed and all bid items must be bid or the bid form may be rejected. I also understand that consideration and awarding a contract will be based upon my past performance and ability to complete the contract based upon equipment and staffing subject to my control.

FEDERAL ID: ____ - ____ - ____ or SOCIAL SECURITY NUMBER: ____ - ____ - ____

Company or individual bidding: _____

Company representative's name: _____

Address: _____

City: _____ State: _____ Zip: _____

IF AVAILABLE, PLEASE PLACE THE PERSONALIZED LABEL FROM YOUR PROSPECTUS IN THE ABOVE BOX.

Individual or company representative's signature: _____ Date: _____

Phone number : _____ Email (optional): _____

THE WINNING BIDDER MUST COMPLETE THE VERIFICATION OF WORKER'S DISABILITY COMPENSATION ACT COMPLIANCE (ON REVERSE SIDE IF DOUBLE SIDED) WITHIN 21 DAYS OF SALE AWARD DATE



TIMBER SALE VERIFICATION OF WORKER'S DISABILITY COMPENSATION ACT COMPLIANCE

As required by Act 317, P.A. 1969 (Worker's Compensation) and
Part 5 of Act 451 of 1994, as amended.

| FOR DEPARTMENT USE ONLY | |
|----------------------------------|--|
| Sale Number (XX - XXX - XX - XX) | |
| Forest Management Unit: | |

VERIFICATION OF WORKER'S DISABILITY COMPENSATION ACT COMPLIANCE

- This verification must be completed and submitted within 21 days of contract award and prior to the issuance of the timber sale contract.
- In addition, if boxes 2B or 2C are checked, then Notice of Exclusion or Certificate of Insurance must be submitted within twenty-one (21) days of the contract award and prior to the issuance of the timber sale contract.
- All information must be typed or printed except for written signatures.

Please Check Appropriate Categories:

1. My business is organized as (you **must** check one of the boxes below):
 - A. Sole Proprietorship (individual)
 - B. Partnership
 - C. Corporation
2. You **must** check one of the boxes below:
 - A. I certify my business is a sole proprietorship and it has no employees but the sole proprietor. I am not subject to the Worker's Compensation Laws.
 - B. I certify my business has satisfied its obligation to the Worker's Compensation Act through the use of an approved Notice of Exclusion (BWC-337, Rev. 5/96). I will provide a copy of the Notice of Exclusion within 21 days of the contract award. (For questions or a copy of the BWC-337, please call the Worker's Compensation Bureau at 517-322-1195).
 - C. I certify my business has a Worker's Compensation Policy. I will provide an original Certificate of Insurance within twenty-one (21) days of the contract award.
3. If you have checked item 2(A) or 2(B), you **must** indicate the number of **both** full-time and part-time employees, other than yourself, including family members and active partners (if none, you must enter "0").

_____ Full-time Employees

_____ Part-time Employees

| | | | |
|------------------|-------|-------------------------------------|--|
| Name of Business | | Federal ID (or) Social Security No. | |
| Address | | Telephone () | |
| City | State | ZIP | |

I hereby certify that the above information is true and correct. I agree to notify the Michigan DNR of any changes that occur in factors affecting my coverage during any of my present and future operations.

Signature of Owner or Authorized Representative

Title

Date

Please complete the "SEALED BID" information on the next page

Jungle Hardwoods (73-012-20)

T20N, R04W, SEC. 14; T20N, R04W, SEC. 22; T20N, R04W, SEC. 34; T20N,

In response to the notice of sale to be held 10:00 a.m. (local time) on February 24, 2021, I am hereby submitting my sealed bid (firm offer) for the following forest products to be cut. Bids for individual species must be at or above the advertised price. All non-responsive bid forms may be rejected.

| <u>PRODUCTS & SPECIES</u> | <u>ESTIMATED VOLUME*</u> | <u>ADVERTISED PRICE</u> | <u>BID PRICE/UNIT</u> |
|-------------------------------|--------------------------|-------------------------|-----------------------|
| Sawtimber | | | |
| Mixed Aspen | 78.9 MBF | \$ 56.00/MBF | \$ _____ |
| Northern Pin Oak | 129.5 MBF | \$ 90.00/MBF | \$ _____ |
| Red Maple | 75.1 MBF | \$ 34.00/MBF | \$ _____ |
| Red Oak | 47.7 MBF | \$ 109.00/MBF | \$ _____ |
| Red Pine | 346.0 MBF | \$ 103.00/MBF | \$ _____ |
| White Oak | 42.8 MBF | \$ 91.00/MBF | \$ _____ |
| White Pine | 66.6 MBF | \$ 39.00/MBF | \$ _____ |
| Pulpwood | | | |
| Balsam Fir | 20 Cords | \$ 15.40/Cord | \$ _____ |
| Black Spruce | 7 Cords | \$ 18.30/Cord | \$ _____ |
| Jack Pine | 181 Cords | \$ 13.30/Cord | \$ _____ |
| Mixed Aspen | 619 Cords | \$ 15.60/Cord | \$ _____ |
| Mixed Hardwood | 675 Cords | \$ 11.20/Cord | \$ _____ |
| Mixed Oak | 537 Cords | \$ 12.05/Cord | \$ _____ |
| Paper Birch | 36 Cords | \$ 9.50/Cord | \$ _____ |
| Red Pine | 1,119 Cords | \$ 37.10/Cord | \$ _____ |
| Tamarack | 2 Cords | \$ 10.75/Cord | \$ _____ |
| White Pine | 230 Cords | \$ 16.30/Cord | \$ _____ |

*The volumes are statistically estimated within plus (+) or minus (-) 9.17 percent at 95% confidence level. These estimated volumes are final and not subject to adjustment. Prospective bidders are urged to examine this timber and to make their own estimates of quantity and quality.

I understand that any or all bids may be rejected. All bids must be signed and all bid items must be bid or the bid form may be rejected. I also understand that consideration and awarding a contract will be based upon my past performance and ability to complete the contract based upon equipment and staffing subject to my control.

FEDERAL ID: _____ - _____ or SOCIAL SECURITY NUMBER: _____ - _____ - _____

Company or individual bidding: _____

Company representative's name: _____

Address: _____

City: _____ State: _____ Zip: _____

IF AVAILABLE, PLEASE PLACE THE PERSONALIZED LABEL FROM YOUR PROSPECTUS IN THE ABOVE BOX.

Individual or company representative's signature: _____ Date: _____

Phone number : _____ Email (optional): _____

THE WINNING BIDDER MUST COMPLETE THE VERIFICATION OF WORKER'S DISABILITY COMPENSATION ACT COMPLIANCE (ON REVERSE SIDE IF DOUBLE SIDED) WITHIN 21 DAYS OF SALE AWARD DATE



| FOR DEPARTMENT USE ONLY | |
|----------------------------------|--|
| Sale Number (XX - XXX - XX - XX) | |
| Forest Management Unit: | |

TIMBER SALE VERIFICATION OF WORKER'S DISABILITY COMPENSATION ACT COMPLIANCE

As required by Act 317, P.A. 1969 (Worker's Compensation) and
Part 5 of Act 451 of 1994, as amended.

VERIFICATION OF WORKER'S DISABILITY COMPENSATION ACT COMPLIANCE

- This verification must be completed and submitted within 21 days of contract award and prior to the issuance of the timber sale contract.
- In addition, if boxes 2B or 2C are checked, then Notice of Exclusion or Certificate of Insurance must be submitted within twenty-one (21) days of the contract award and prior to the issuance of the timber sale contract.
- All information must be typed or printed except for written signatures.

Please Check Appropriate Categories:

1. My business is organized as (you **must** check one of the boxes below):
 - A. Sole Proprietorship (individual)
 - B. Partnership
 - C. Corporation
2. You **must** check one of the boxes below:
 - A. I certify my business is a sole proprietorship and it has no employees but the sole proprietor. I am not subject to the Worker's Compensation Laws.
 - B. I certify my business has satisfied its obligation to the Worker's Compensation Act through the use of an approved Notice of Exclusion (BWC-337, Rev. 5/96). I will provide a copy of the Notice of Exclusion within 21 days of the contract award. (For questions or a copy of the BWC-337, please call the Worker's Compensation Bureau at 517-322-1195).
 - C. I certify my business has a Worker's Compensation Policy. I will provide an original Certificate of Insurance within twenty-one (21) days of the contract award.
3. If you have checked item 2(A) or 2(B), you **must** indicate the number of **both** full-time and part-time employees, other than yourself, including family members and active partners (if none, you must enter "0").

_____ Full-time Employees

_____ Part-time Employees

| | | | |
|------------------|-------|-------------------------------------|--|
| Name of Business | | Federal ID (or) Social Security No. | |
| Address | | Telephone () | |
| City | State | ZIP | |

I hereby certify that the above information is true and correct. I agree to notify the Michigan DNR of any changes that occur in factors affecting my coverage during any of my present and future operations.

Signature of Owner or Authorized Representative

Title

Date

Please complete the "SEALED BID" information on the next page