



**DEPARTMENT OF NATURAL RESOURCES
STATE OF MICHIGAN**

TIMBER SALE PROSPECTUS #6892

SCHEDULED SALE DATE AND TIME: 10:00 a.m. (local time) on August 11, 2021.

LOCATION: GLADWIN MGMT UNIT, 801 NORTH SILVERLEAF, GLADWIN, MI 48624.

PROSPECTUS NOTE: The bidder is advised to inspect the sale area and review the location, estimated volumes, operating costs and contract terms of proposed sales. Please be aware that some landowners may request 60 days or more notice for access across their land.

Notice is hereby given that bids will be received by the Unit Manager, GLADWIN MANAGEMENT UNIT, for certain timber on the following described lands:

Guernsey-School Mix (73-010-20) / T17N, R02E, SEC. 2 , SWSW.

T17N, R02E, SEC. 3 , SENW,SW,NWSE,S1/2SE.

T17N, R02E, SEC. 4 , N1/2SE,SWSE.

T17N, R02E, SEC. 4 , NENW,S1/2NW,SWNE,E1/2SW.

Gladwin County, Advertised Price \$29,554.80, 117.8 Acres, Hardwood, Aspen.

Sturgeon's Hope (73-013-20) / T15N, R01E, SEC. 10, N1/2NW,SWNW,NE,SESW,SWSE.

T15N, R01E, SEC. 15, W1/2NE.

T15N, R01E, SEC. 3 , W1/2SW.

T15N, R01E, SEC. 4 , S1/2NE,N1/2SE,SESE.

T15N, R01E, SEC. 9 , E1/2NE.

Midland County, Advertised Price \$53,931.60, 122.8 Acres, Hardwood, Aspen.

SALE NOTE: The access to the Payment Units uses Hope Road which is a seasonal county road. The road needs work to make it usable for logging trucks to access some of the Payment Units. The sale is restricted to dry/frozen conditions mainly because of access issues.

BID INSTRUCTIONS (VER. 07/02/2018):

1. Scheduled Bid Location, Date, and Time (2/11)

Bids must be received by the Unit Manager, GLADWIN OFFICE, 801 NORTH SILVERLEAF, GLADWIN, MI 48624, no later than 10:00 a.m. (local time) on August 11, 2021. For further information concerning this sale, contact Patrick Mohney at 989-426-9205 extension 7640.

2. Bidder's Qualifications (5/16)

Purchaser shall obtain workers compensation insurance to cover claims under Michigan's Worker's Disability Compensation Act of 1969 or similar employee benefit act of any other state applicable to an employee. If all or part of a timber sale was prepared by a private contractor, the contractor and that contractor's company are not permitted to bid on the timber sale contract. Bids will not be accepted from individuals or companies appearing on the DNR/FRD No-Bid List. This list contains the names of purchasers who previously failed to execute a contract within 21-days or who have a history of poor performance.

3. Preparation of Sealed Bids (5/16)

Bid Forms may be completed online thru Michigan DNR Timber Sale Online Bidding (OLB) at www.michigan.gov/timberbidding or by completing the hardcopy Bid Form found in the Timber Sale Prospectus. Hardcopy Bid Forms shall be manually signed in ink. Registration in OLB is considered your 'signature' for all bids submitted thru that system. Bid prices must be entered for each species and product in the Bid Price column for all material subject to bidding and all fill-in blanks must be completed. If erasures or other changes appear on the hardcopy Bid Form, each erasure or change must be initialed by the person signing the bid.

4. Submission of Sealed Bids (5/16)

Bid forms may be obtained from the Unit Manager or thru OLB. Bids may be submitted hardcopy or thru OLB. All hardcopy bids must be submitted on the bid form and in an envelope clearly identified as described in this section. NOTE: Only one bid form per bid envelope. Sealed bids must be submitted to the Unit office designated in the prospectus and must be submitted at or prior to the time established in the prospectus. The envelope should show on the outside (a) the sale name or number and (b) the date and time of bid opening, as shown in the prospectus. Bids received after the time specified in the sale prospectus are late bids and will be rejected.

It is possible for a bidder to submit multiple bids on a single sale. For example, a bid may be submitted hardcopy and a bid may be submitted thru OLB. Or, two bidders from the same company could both submit bids on the same sale. If this were to happen, the State would accept all bids received and award the contract accordingly. All bidding and contractual requirements would apply to all bids received.

5. Public Opening of Sealed Bids (7/16)

If conditions permit, the sealed bids will be publicly opened and posted at the time and place set in the prospectus.

If a bidder, present at a bid opening, has submitted bids on more than one sale, that bidder may withdraw their unopened bid envelopes or announce the withdrawal of their online bid after being declared the successful bidder on one sale.

6. Award of Contract (1/11)

Award of the contract will be made to the Bidder whose bid, conforming to the prospectus, is most advantageous to the State of Michigan on the basis of total value at rates bid for the estimated quantities. The State reserves the right to reject any bid or waive any minor irregularity in bids received. A written award mailed (or otherwise furnished) to the successful Bidder shall be deemed to result in a binding contract without further action by either party.

7. Down Payment (1/11)

The Bidder to whom award is made must make a down payment within 21 days of the sale award. The amount of the down payment will be calculated as shown in the Bond and Payment Schedule of this prospectus. Only cash may be used to meet this requirement.

8. Performance Security (1/11)

As guarantee of faithful performance, a cash bond, certificate of deposit, surety bond or irrevocable letter of credit (LOC) is required within 21 days of the sale award. The amount of the performance security is shown in the Bond and

Payment Schedule of this prospectus. If an LOC or surety is used, the coverage must extend for at least 6 months beyond the contract expiration.

9. Timber Sale Contract (7/18)

Additional conditions and requirements common to all timber sales are listed on the timber sale contract (R4031) and are available on line at www.michigan.gov/timber. Contact the Unit Manager for additional information or a sample contract. Within 21 days of the date of the award letter, the bidder must sign the contract and provide the required down payment, performance security, and verification of worker's disability compensation. The down payment and performance security shall be in accordance with the provisions of the timber sale contract, in the sums stated in this prospectus. If these actions are not taken, then the Bidder, the Bidder's corporation, and the corporation's principals may not be permitted to bid on State timber sales for a period of 3 months after the first offense, 6 months after the second offense, and 1 year after the third offense. An offense will only be counted against the Bidder for 5 years. In addition, the Bidder certifies that if awarded this contract, the Bidder will complete the timber sale contract in accordance with its terms and any modifications thereof including requirements to purchase, cut, and remove the included timber by the expiration date.

Payment Unit values in the State Forest Timber Sale Contract are calculated based on the advertised value of the Payment Unit as a percentage of the total advertised value of the contract. The advertised value of each Payment Unit is given in the Description of Timber by Payment Unit table on the Timber Sale Information page. For example, if the value of Payment Unit 1 is advertised as \$1,500 and the total Timber Sale value is advertised as \$10,000, the contract price for Payment Unit 1 will be 15% of the total bid price ($\$1,500/\$10,000 * 100$).

10. Disclaimer of Estimates and Bidder's Warranty of Inspection (7/16)

Before submitting this bid, the Bidder is advised and cautioned to inspect the sale area, review the requirements of the sale contract, and take other steps as may be reasonably necessary to ascertain the location, estimated volumes, construction estimates, and operating costs of the proposed sale. Failure to do so will not relieve the Bidder from responsibility for completing the contract.

The Bidder warrants that this bid is submitted solely on the basis of the Bidder's examination and inspection of the quality and quantity of the timber offered for sale and the Bidder's opinion of the value thereof and the costs of recovery. No reliance should be placed on the State of Michigan's estimates of timber quality, quantity or costs of recovery. Bidder further acknowledges that the State of Michigan: (i) expressly disclaims any warranty of fitness of timber for any purpose; (ii) offers this timber as is without any warranty of quality (merchantability) or quantity and (iii) expressly disclaims any warranty as to the quantity or quality of timber sold.

11. Certification and Chain-of-Custody (10/14)

Unless otherwise indicated in the contract under section 7 – Other Conditions of the Sale Specific Conditions & Requirements, the area encompassed by this timber sale is certified to the standards of the Forest Stewardship Council (FSC) - Certificate #SCS-FM/COC-00090N and the Sustainable Forestry Initiative (SFI) - Certificate #NSF-SFIS-5Y031-SF5. Forest products from this sale may be delivered to the mill as "FSC 100% and / or SFI certified" as long as the contractor hauling the forest products is chain-of-custody (COC) certified or covered under a COC certificate from the destination mill. The purchaser is responsible for maintaining COC after leaving the sale area.

12. Good Neighbor Authority (GNA) Requirements (7/16)

If the name of this timber sales contains the acronym GNA, it is authorized by the Good Neighbor Authority (GNA) and covered by various agreements between the U.S. Forest Service and the State. The timber sale occurs on federal land and the following conditions apply:

GNA contracts on US Forest Service land will not be awarded to purchasers on the Federal list of excluded parties. The System for Award Management (SAM) will be checked for active excluded parties prior to award of contract. In addition, the Bidder to whom award is made must complete an Assurance Regarding Felony Conviction or Tax Delinquent Status for Corporate Applicants (AD-3031).

13. Good Neighbor Authority (GNA) Requirements, con't (9/16)

Bidder certifies, by signing this bid form, that to the best of Bidder's knowledge that the following representations are accurate and complete.

- a. That the Bidder and its principals are not presently debarred, suspended, proposed for debarment, declared ineligible, or voluntary excluded from timber sales (covered transactions) by any Federal department or agency.
- b. That the Bidder and its principals have not within a 3-year period preceding this bid been convicted of or had a civil judgment rendered against them for commission of fraud or a criminal offense in connection with obtaining , attempting to obtain, or performing a public (Federal, State, or local) transaction or contract under a public transaction; violation of Federal or State antitrust statutes or commission of embezzlement, theft, forgery, bribery, falsification or destruction of records, making false statements, or receiving stolen property.
- c. That the Bidder and its principals are not presently indicted for or otherwise criminally or civilly charged by a governmental entity (Federal, State, or local) with commission of any of the offenses enumerated in paragraph b of this certification.
- d. That the Bidder and its principals have not within a 3-year period preceding this bid had one or more public transactions (Federal, State, or local) terminated for breach or default of a timber or forest product contract.

Bidders that cannot certify this requirement, in whole or in part, shall submit an explanation with their bid.

DAN EICHINGER
Director

TIMBER SALE INFORMATION

Guernsey-School Mix (73-010-20)
 T17N, R02E, SEC. 2; T17N, R02E, SEC. 3; T17N, R02E, SEC. 4.
 Gladwin County (Advertised Price \$29,554.80)

A timber sale contract for this lump sum, sealed bid timber sale will be awarded to the responsible bidder offering the highest sealed bid price. All units of volume listed below were estimated using the T-Sale computer program and our traditional volume equations. Bids must be at or above the following advertised price for each product and species:

<u>PRODUCTS & SPECIES</u>	<u>ESTIMATED UNITS*</u>	<u>ADVERTISED PRICE</u>
Sawtimber		
Mixed Aspen	50.4 MBF	\$ 63.00 / MBF
Mixed Oak	53.3 MBF	\$ 80.00 / MBF
Red Maple	13.3 MBF	\$ 36.00 / MBF
Red Oak	51.3 MBF	\$ 116.00 / MBF
Pulpwood		
Mixed Aspen	401 Cords	\$ 18.45 / Cord
Mixed Hardwood	240 Cords	\$ 15.05 / Cord
Mixed Oak	275 Cords	\$ 16.85 / Cord
Red Pine	1 Cords	\$ 41.80 / Cord

* The total volume is statistically estimated within plus (+) or minus (-) 12.72 percent. There are an estimated 1,255 cords on this timber sale, plus or minus 160 cords at the 95% confidence level. The estimated units are final and not subject to adjustment. Prospective bidders are urged to examine this timber and to make their own estimates of quantity and quality.

BOND AND PAYMENT SCHEDULE:

1. A bond in the amount of \$1,478.00 to insure faithful performance of the conditions of the contract will be deposited by the successful bidder within 21 days of the sale award.
2. Cutting in any sale or unit without the required advance payment would be considered a trespass.
3. Total payment must be paid in advance or according to the following schedule :
 - (a) Ten percent (10%) of the sale value must be paid within 21 days of the sale award.
 - (b) The 10% down payment will be credited towards the first unit cut.
 - (c) Payment for each of the following units must be made before cutting begins in that unit:

PAYMENT UNIT NUMBER	PERCENT OF TOTAL SALE VALUE
01	23.1%
02	5.0%
03	6.7%
04	17.8%
05	13.8%
06	33.6%
4. If no cutting takes place, the 10% down payment will not be refunded.
5. Operations on the contract issued will terminate on 09/30/2024.

SALE STATISTICS

SALE VOLUMES

VOLUME		STATISTICAL RANGE IN CORDS		
TOTAL CUBIC FEET	TOTAL CORDS	PERCENT ERROR	MINIMUM	MAXIMUM
99,162	1,255	12.72%	1,096	1,415

VDU VOLUMES

A VDU is a Volume Determination Unit. Volumes and their associated statistics are calculated at the VDU level and summarized to the sale level. There is often a one to one relationship between a VDU and a Payment Unit, but not always, depending on the cruise design. Refer to the VDU TO PAYMENT UNIT table.

VDU	VOLUME		PERCENT ERROR	RANGE IN CORDS	
	TOTAL CUBIC FEET	TOTAL CORDS		MINIMUM	MAXIMUM
30	5,625	71	56.44%	31	111
31	22,389	283	30.00%	198	368
106	16,124	204	27.08%	149	259
133	20,659	262	34.47%	171	352
215	26,639	337	19.85%	270	404
254	7,710	98	34.94%	63	132
TOTAL:	99,145	1,255		883	1,627

VDU TO PAYMENT UNIT

When a VDU is associated with more than one Payment Unit (PU), the VDU volumes are assigned to the PU based on acres of the VDU within the PU.

VDU	VDU ACRES	PU	PU ACRES
30	8.9	2	8.9
31	32.1	4	32.1
106	18.5	5	18.5
133	34.0	6	34.0
215	15.5	1	15.5
254	8.8	3	8.8
TOTAL:	117.8		117.8

DESCRIPTION OF TIMBER BY PAYMENT UNIT (PU)

PU	MARKET GROUP	PRODUCT	QUANTITY	UNIT	ACRES	ADVERTISE PRICE		
1	Mixed Aspen	Sawtimber	29.5	MBF	15.5	\$6,829.60		
	<i>Quaking Aspen</i>		29.5	<i>MBF</i>				
	Mixed Oak		6.7	MBF				
	<i>BI/R/Hybrid Oak</i>		6.7	<i>MBF</i>				
	Red Maple	Pulpwood	9.1	MBF				
	Mixed Aspen		107	Cords				
	<i>Quaking Aspen</i>		107	<i>Cords</i>				
	Mixed Hardwood		116	Cords				
	<i>Paper Birch</i>		Sawtimber	1.1			<i>MBF</i>	
	<i>American Elm</i>			Pulpwood			3	<i>Cords</i>
	<i>Paper Birch</i>						3	<i>Cords</i>
	<i>Red Maple</i>						108	<i>Cords</i>
	Mixed Oak		23	Cords				
	<i>BI/R/Hybrid Oak</i>		23	<i>Cords</i>				
2	Mixed Aspen	Sawtimber	0.8	MBF	8.9	\$1,474.45		
	<i>B. T. Aspen</i>		0.4	<i>MBF</i>				
	<i>Quaking Aspen</i>		0.4	<i>MBF</i>				
	Mixed Oak		5.3	MBF				
	<i>BI/R/Hybrid Oak</i>	5.3	<i>MBF</i>					
	Mixed Aspen	Pulpwood	20	Cords				
	<i>B. T. Aspen</i>		12	<i>Cords</i>				
	<i>Quaking Aspen</i>		8	<i>Cords</i>				
	Mixed Hardwood		19	Cords				
	<i>Paper Birch</i>		2	<i>Cords</i>				
	<i>Red Maple</i>		17	<i>Cords</i>				
	Mixed Oak		18	Cords				
	<i>BI/R/Hybrid Oak</i>		18	<i>Cords</i>				
	Red Pine		1	Cords				
3	Mixed Aspen		Sawtimber	9.2	MBF	8.8	\$1,983.50	
	<i>B. T. Aspen</i>	9.2		<i>MBF</i>				
	Mixed Oak	1.6		MBF				
	<i>BI/R/Hybrid Oak</i>	1.6		<i>MBF</i>				
	Red Maple	Pulpwood	2.9	MBF				
	Mixed Aspen		31	Cords				
	<i>B. T. Aspen</i>		21	<i>Cords</i>				
	<i>Quaking Aspen</i>		10	<i>Cords</i>				
	Mixed Hardwood		32	Cords				
	<i>Paper Birch</i>		2	<i>Cords</i>				
	<i>Red Maple</i>		30	<i>Cords</i>				
	Mixed Oak		7	Cords				
<i>BI/R/Hybrid Oak</i>	7	<i>Cords</i>						
4	Mixed Aspen	Sawtimber	7.5	MBF	32.1	\$5,264.55		
	<i>B. T. Aspen</i>		7.5	<i>MBF</i>				
	Mixed Oak		4.2	MBF				
	<i>Northern Pin Oak</i>		4.2	<i>MBF</i>				
	Red Maple	Pulpwood	1.3	MBF				
	Mixed Aspen		119	Cords				
	<i>B. T. Aspen</i>		117	<i>Cords</i>				
	<i>Quaking Aspen</i>		2	<i>Cords</i>				
	Mixed Hardwood		62	Cords				
	<i>Paper Birch</i>		3	<i>Cords</i>				
	<i>Red Maple</i>		59	<i>Cords</i>				
	Mixed Oak		76	Cords				
	<i>Northern Pin Oak</i>		76	<i>Cords</i>				
5	Mixed Aspen	Sawtimber	3.4	MBF	18.5	\$4,084.35		
	<i>B. T. Aspen</i>		3.4	<i>MBF</i>				

DESCRIPTION OF TIMBER BY PAYMENT UNIT (PU), CON'T

PU	MARKET GROUP	PRODUCT	QUANTITY	UNIT	ACRES	ADVERTISE PRICE
5 con't	Mixed Oak	Sawtimber	7.6	MBF		
	<i>Northern Pin Oak</i>		7.6	<i>MBF</i>		
	Mixed Aspen	Pulpwood	124	Cords		
	<i>B. T. Aspen</i>		124	<i>Cords</i>		
	Mixed Hardwood		11	Cords		
	<i>Paper Birch</i>		5	<i>Cords</i>		
	<i>Red Maple</i>		6	<i>Cords</i>		
	Mixed Oak		48	Cords		
	<i>Northern Pin Oak</i>		48	<i>Cords</i>		
6	Mixed Oak	Sawtimber	27.9	MBF	34.0	\$9,918.35
	<i>Northern Pin Oak</i>		27.9	<i>MBF</i>		
	Red Oak	51.3	MBF			
	Mixed Oak	Pulpwood	103	Cords		
	<i>Northern Pin Oak</i>		37	<i>Cords</i>		
	<i>Red Oak</i>		66	<i>Cords</i>		
TOTAL:			168.3	MBF		
TOTAL:			917	Cords		

Sale Specific Conditions & Requirements

Sale Name: Guernsey-School Mix

Sale Number: 73-010-20 Seq#: 1

1 - Sale Area

1.2 - Boundaries

1.2.1 - Painted boundaries (9/19)

The sale boundary and Payment Unit boundaries are marked and identified by blue and red. Exterior sale boundary lines against private property are marked with blue paint. Exterior sale boundary lines against state are marked with red paint.

2 - Timber Specifications

2.1 - Included Timber

2.1.1 - Clearcut unit(s) with unmerchantable trees (6/14)

Within Payment Unit(s) 1 - 5, cut all trees that are two (2) inches or more at DBH, except within Payment Units 1 and 3 - 5, do not cut conifers or trees marked with green paint above and below stump height. Within Payment Unit 2, do not cut red pine or white oak.

2.1.5 - Overstory removal unit(s) (8/11)

Within Payment Unit(s) 6, all oak with a DBH equal to or greater than 12 inches which meet minimum piece specifications in 2.2 Utilization, are designated for cutting.

3 - Payments

3.4 - Damaged Timber

3.4.1 - Damaged timber (7/16)

General Condition and Requirement 3.4 Damaged Timber, defines liquidated damages for undesignated live merchantable trees which are cut or injured. No damage is acceptable to undesignated live merchantable trees. Within Payment Unit 6, if more than 15% of trees (> 4.5" DBH) within a specified area of the sale are damaged, liquidated damages will be assessed for all trees damaged. Rates will be in accordance with General Condition and Requirement 3.4 Damaged Timber.

4 - Transportation

4.1 - Construction

4.1.7 - Road closure (10/11)

All new roads built into the sale must be blocked to vehicle traffic upon completion of the sale. Overgrown roads that are reopened shall be considered new roads. In general, this will require constructing a four (4') foot high berm of stumps and logs covered with earth. Stumps and brush must be placed along the remainder of the trail. These roads must be rendered impassable to cars and trucks. All stumps from road building and landing construction must be reserved to block any newly constructed roads upon completion of the sale. These stumps must be scattered along the road system to prohibit vehicular movement. Contact the sale administrator for specific details of design and placement.

4.2 - Maintenance

4.2.1 - Hauling restriction (12/08)

Hauling may be restricted on forest roads by the Unit Manager or his/her representative. The restriction may occur during wet weather conditions.

4.2.2 - Fill material (4/07)

To maintain roads, fill material may be needed in areas where "holes" exist or may be expected to develop. This fill material should be placed before trucking begins. Contact the sale administrator regarding the availability of onsite sand or gravel from adjacent State-owned lands.

5 - Operations

5.2 - Conduct of Operations

5.2.1 - Slash

5.2.1.8 - Slash height (12/08)

No slash or tree tops may exceed 36 inches in height.

5.2.3 - Operating Restrictions

5.2.3.1 - Operating restrictions (9/11)

Within Payment Unit(s) 1 - 4, unless changed by written agreement, cutting, skidding, and hauling are not permitted during the period of April 1 to June 15. This restriction is because of seasonally wet weather conditions.

5.2.3.4 - Oak wilt restriction, no exceptions (1/18)

Within Payment Unit(s) 6, cutting, skidding, hauling within the sale and brushing of access roads to the sale are not permitted during the period of April 15 to July 15. No exceptions will be granted. This is necessary to reduce the spread of oak wilt.

5.2.4 - Dead and Down Creation

5.2.4.4 - Dead and down creation, grouse (6/18)

To encourage grouse and other wildlife, in Payment Unit(s) 1 - 5, leave one 12" or larger diameter whole tree on the ground for every 3 acres. Trees should be scattered throughout the Sale Area and at least two chains from any roads, two-tracks, or trails open to vehicles, or positioned per the sale administrators instructions. The butt end of the tree must be placed on the severed stump. Stumps must be at least 3 feet tall.

5.2.31 - Landing locations (9/13)

Recommended landing areas are marked on the Timber Sale Map with the letter "L". These locations are recommendations only. All landing locations and designs must be authorized by the Unit Manager or his/her representative.

5.4 - Soil Protection

5.4.1 - Rutting restriction, general (7/16)

Operations are to cease immediately if equipment and weather conditions result in rutting of roads and/or skid trails which is 12 inches or greater in depth and 50 feet in length. The Unit Manager or his/her representative may restrict hauling and/or skidding if ruts exceed the specified depth. With the Unit Manager or his/her representative's approval, the Purchaser may return to the area when the risk of rutting has decreased.



TIMBER SALE MAP

This information provided by authority of Part 525, 1994 PA 451, as amended.

Forest Management Unit Gladwin	County Gladwin	Mapped By Scott Shooltz	Date 09/30/2020	Page 1	of 2
Township 17N	Range 02E	Section(s) and Subdivision(s) Sections: 2, 3, & 4 Subdivisions: Various	Scale 1:15,840		

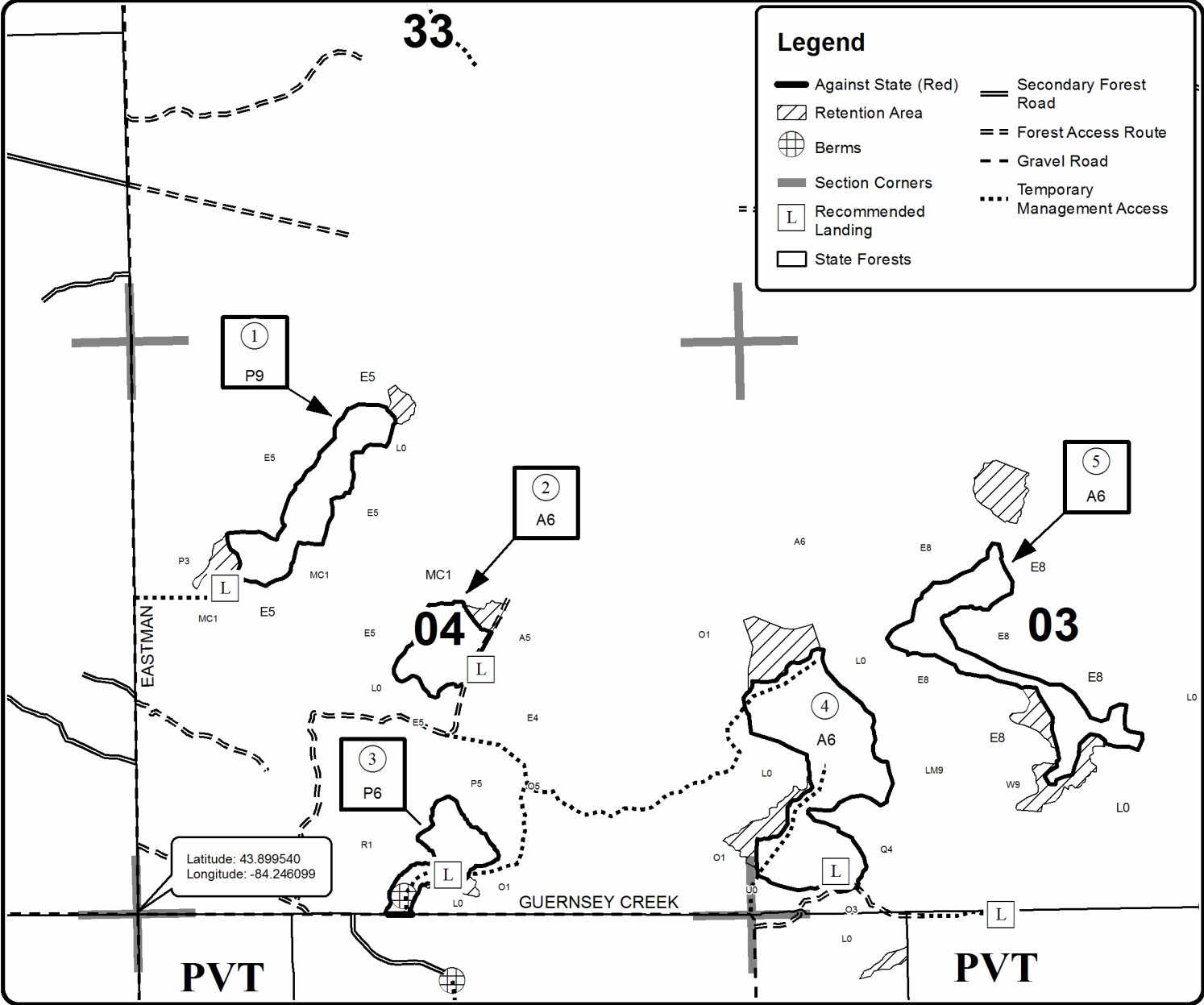
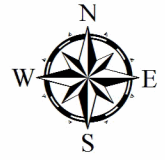
Cover Type				Density	
A = Aspen	H = Hemlock	N = Marsh	U = Upland Brush	0 = Non Stocked	5 = Pole Timber Medium
B = Paper Birch	J = Jack Pine	O = Oak	UM = Upland Mixed	1 = Seedling Sapling Poor	6 = Pole Timber Well
C = Cedar	L = Lowland Brush	P = Lowland Poplar	V = Bog or Marsh	2 = Seedling Sapling Medium	7 = Saw Timber Poor
D = Treed Bog	LM = Lowland Mixed	Q = Mixed Swamp Conifer	W = White Pine	3 = Seedling Sapling Well	8 = Saw Timber Medium
E = Swamp Hdwoods	M = Mpl, Bch, Brch	R = Red Pine	X = Non Stocked	4 = Pole Timber Poor	9 = Saw Timber Well
F = Spruce Fir	MC = Mixed Conifer	S = Black Spruce	Z = Water		
G = Grass	MD = Mixed Deciduous	T = Tamarack			

PU	Acres	PU	Acres
1	15.5	4	32.1
2	8.9	5	18.5
3	8.8	6	34

Guernsey-School Mix

Compartment 75

117.8 Acres



Latitude: 43.899540
Longitude: -84.246099



TIMBER SALE MAP

This information provided by authority of Part 525, 1994 PA 451, as amended.

Sale Number	Year
73 - 010	20

Forest Management Unit Gladwin	County Gladwin	Mapped By Scott Shooltz	Date 09/30/2020	Page 2	of 2
Township 17N	Range 02E	Section(s) and Subdivision(s) Sections: 2, 3, & 4 Subdivisions: Various	Scale 1:15,840		

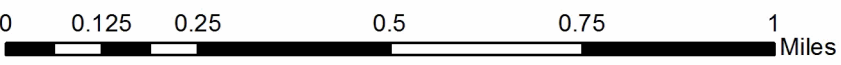
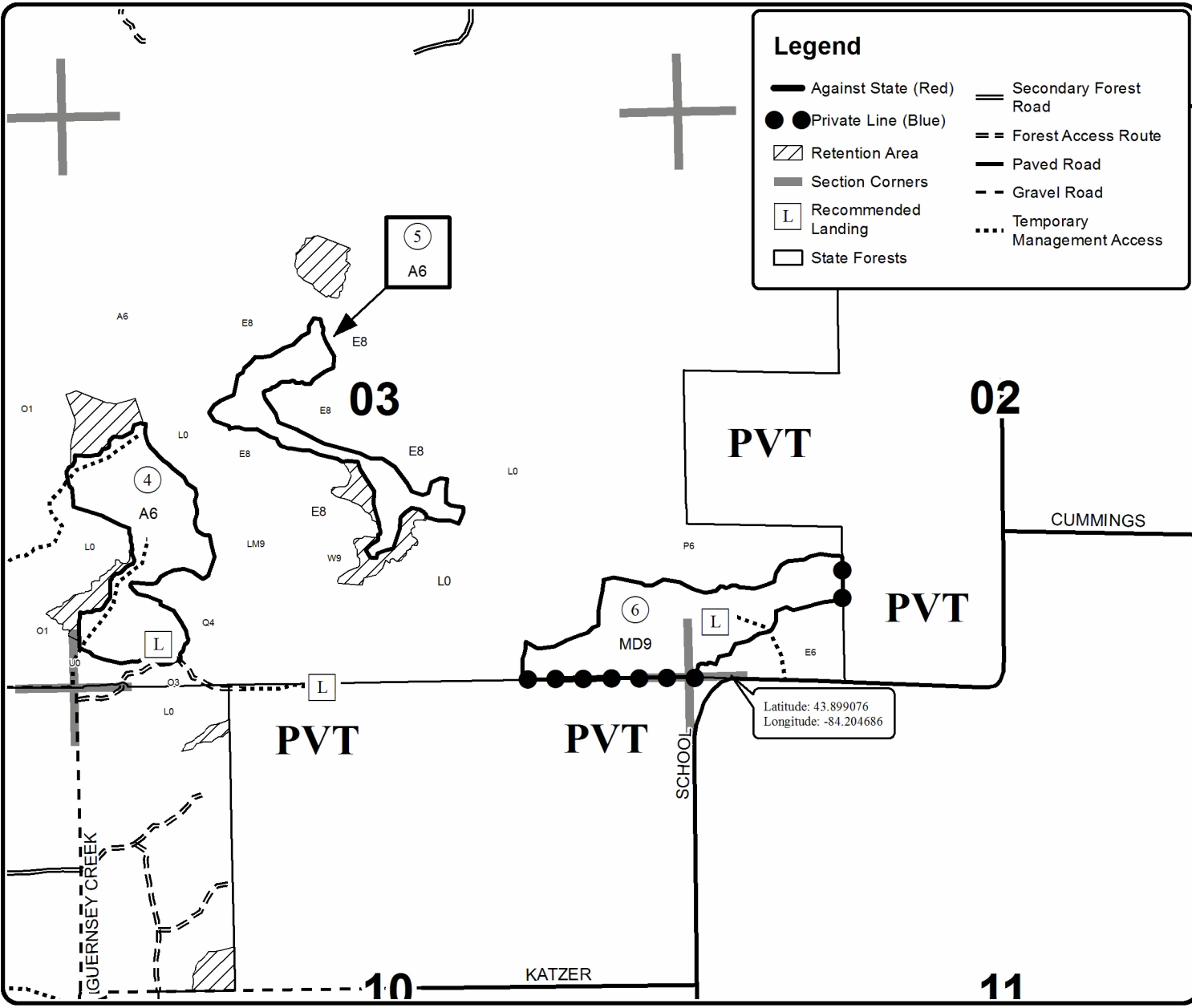
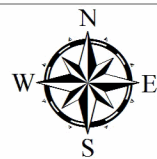
Cover Type				Density	
A = Aspen	H = Hemlock	N = Marsh	U = Upland Brush	0 = Non Stocked	5 = Pole Timber Medium
B = Paper Birch	J = Jack Pine	O = Oak	UM = Upland Mixed	1 = Seedling Sapling Poor	6 = Pole Timber Well
C = Cedar	L = Lowland Brush	P = Lowland Poplar	V = Bog or Marsh	2 = Seedling Sapling Medium	7 = Saw Timber Poor
D = Treed Bog	LM = Lowland Mixed	Q = Mixed Swamp Conifer	W = White Pine	3 = Seedling Sapling Well	8 = Saw Timber Medium
E = Swamp Hdwoods	M = Mpl, Bch, Brch	R = Red Pine	X = Non Stocked	4 = Pole Timber Poor	9 = Saw Timber Well
F = Spruce Fir	MC = Mixed Conifer	S = Black Spruce	Z = Water		
G = Grass	MD = Mixed Deciduous	T = Tamarack			

PU	Acres	PU	Acres
1	15.5	4	32.1
2	8.9	5	18.5
3	8.8	6	34

Guernsey-School Mix

Compartment 75

117.8 Acres



TIMBER SALE INFORMATION

Sturgeon's Hope (73-013-20)

T15N, R01E, SEC. 10; T15N, R01E, SEC. 15; T15N, R01E, SEC. 3; T15N, R01E, SEC. 4; T15N, R01E, SEC. 9.
Midland County (Advertised Price \$53,931.60)

SALE NOTE: The access to the Payment Units uses Hope Road which is a seasonal county road. The road needs work to make it usable for logging trucks to access some of the Payment Units. The sale is restricted to dry/frozen conditions mainly because of access issues.

A timber sale contract for this lump sum, sealed bid timber sale will be awarded to the responsible bidder offering the highest sealed bid price. All units of volume listed below were estimated using the T-Sale computer program and our traditional volume equations. Bids must be at or above the following advertised price for each product and species:

<u>PRODUCTS & SPECIES</u>	<u>ESTIMATED UNITS*</u>	<u>ADVERTISED PRICE</u>
Sawtimber		
Bl/R/Hybrid Oak	89.8 MBF	\$ 80.00 / MBF
Red Maple	56.4 MBF	\$ 36.00 / MBF
Red Oak	26.5 MBF	\$ 116.00 / MBF
Red Pine	12.6 MBF	\$ 94.00 / MBF
White Oak	11.2 MBF	\$ 86.00 / MBF
Pulpwood		
Mixed Aspen	1,052 Cords	\$ 18.45 / Cord
Mixed Hardwood	392 Cords	\$ 15.05 / Cord
Mixed Oak	783 Cords	\$ 16.85 / Cord
Paper Birch	12 Cords	\$ 14.00 / Cord
Red Pine	17 Cords	\$ 41.80 / Cord
White Pine	7 Cords	\$ 16.35 / Cord

* The total volume is statistically estimated within plus (+) or minus (-) 9.55 percent. There are an estimated 2,652 cords on this timber sale, plus or minus 253 cords at the 95% confidence level. The estimated units are final and not subject to adjustment. Prospective bidders are urged to examine this timber and to make their own estimates of quantity and quality.

BOND AND PAYMENT SCHEDULE:

1. A bond in the amount of \$2,697.00 to insure faithful performance of the conditions of the contract will be deposited by the successful bidder within 21 days of the sale award.
 2. Cutting in any sale or unit without the required advance payment would be considered a trespass.
 3. Total payment must be paid in advance or according to the following schedule :
 - (a) Ten percent (10%) of the sale value must be paid within 21 days of the sale award.
 - (b) The 10% down payment will be credited towards the first unit cut.
 - (c) Payment for each of the following units must be made before cutting begins in that unit:
- | PAYMENT UNIT NUMBER | PERCENT OF TOTAL SALE VALUE |
|---------------------|-----------------------------|
| 01 | 19.7% |
| 02 | 14.6% |
| 03 | 5.9% |
| 04 | 4.2% |
| 05 | 10.0% |
| 06 | 14.6% |
| 07 | 14.3% |
| 08 | 8.8% |
| 09 | 7.9% |
4. If no cutting takes place, the 10% down payment will not be refunded.
 5. Operations on the contract issued will terminate on 03/31/2024.

SALE STATISTICS

SALE VOLUMES

VOLUME		STATISTICAL RANGE IN CORDS		
TOTAL CUBIC FEET	TOTAL CORDS	PERCENT ERROR	MINIMUM	MAXIMUM
209,523	2,652	9.55%	2,399	2,905

VDU VOLUMES

A VDU is a Volume Determination Unit. Volumes and their associated statistics are calculated at the VDU level and summarized to the sale level. There is often a one to one relationship between a VDU and a Payment Unit, but not always, depending on the cruise design. Refer to the VDU TO PAYMENT UNIT table.

VDU	VOLUME		PERCENT ERROR	RANGE IN CORDS	
	TOTAL CUBIC FEET	TOTAL CORDS		MINIMUM	MAXIMUM
15	23,621	299	21.26%	235	363
29	16,100	204	16.10%	171	237
51	12,687	161	56.90%	69	252
65	30,036	380	36.60%	241	519
79	42,091	533	22.94%	411	655
103	29,301	371	14.82%	316	426
113	27,705	351	14.82%	299	403
214	9,512	120	27.45%	87	153
218	18,447	234	36.78%	148	319
TOTAL:	209,500	2,652		1,977	3,327

VDU TO PAYMENT UNIT

When a VDU is associated with more than one Payment Unit (PU), the VDU volumes are assigned to the PU based on acres of the VDU within the PU.

VDU	VDU ACRES	PU	PU ACRES
15	14.8	5	14.8
29	6.6	9	6.6
51	12.2	3	12.2
65	20.1	2	20.1
79	25.3	1	25.3
103	12.0	7	12.0
113	17.6	6	17.6
214	5.0	4	5.0
218	9.2	8	9.2
TOTAL:	122.8		122.8

DESCRIPTION OF TIMBER BY PAYMENT UNIT (PU)

PU	MARKET GROUP	PRODUCT	QUANTITY	UNIT	ACRES	ADVERTISE PRICE			
1	BI/R/Hybrid Oak	Sawtimber	14.8	MBF	25.3	\$10,569.50			
	Red Maple		2.6	MBF					
	Red Pine		4.8	MBF					
	Mixed Aspen	Pulpwood	299	Cords					
	<i>B. T. Aspen</i>	<i>Sawtimber</i>	9.9	<i>MBF</i>					
	<i>B. T. Aspen</i>	<i>Pulpwood</i>	279	<i>Cords</i>					
	Mixed Hardwood		38	Cords					
	<i>Red Maple</i>		38	<i>Cords</i>					
	Mixed Oak		141	Cords					
	<i>BI/R/Hybrid Oak</i>		140	<i>Cords</i>					
	<i>White Oak</i>		1	<i>Cords</i>					
	Paper Birch		3	Cords					
	<i>Paper Birch</i>	<i>Sawtimber</i>	0.6	<i>MBF</i>					
	<i>Paper Birch</i>	<i>Pulpwood</i>	2	<i>Cords</i>					
Red Pine		8	Cords						
2	BI/R/Hybrid Oak	Sawtimber	5.2	MBF	20.1	\$7,882.85			
	Red Maple		5.2	MBF					
	Red Pine		7.8	MBF					
	White Oak		3.7	MBF					
	Mixed Aspen	Pulpwood	243	Cords					
	<i>B. T. Aspen</i>	<i>Sawtimber</i>	7.1	<i>MBF</i>					
	<i>B. T. Aspen</i>	<i>Pulpwood</i>	203	<i>Cords</i>					
	<i>Quaking Aspen</i>		26	<i>Cords</i>					
	Mixed Hardwood		24	Cords					
	<i>Red Maple</i>		24	<i>Cords</i>					
	Mixed Oak		53	Cords					
	<i>BI/R/Hybrid Oak</i>		48	<i>Cords</i>					
	<i>White Oak</i>		5	<i>Cords</i>					
	Red Pine		9	Cords					
	White Pine		7	Cords					
	<i>White Pine</i>	<i>Sawtimber</i>	1.0	<i>MBF</i>					
<i>White Pine</i>	<i>Pulpwood</i>	5	<i>Cords</i>						
3	BI/R/Hybrid Oak	Sawtimber	9.9	MBF	12.2	\$3,183.25			
	Red Maple		1.9	MBF					
	Mixed Aspen	Pulpwood	36	Cords					
	<i>B. T. Aspen</i>	<i>Sawtimber</i>	1.0	<i>MBF</i>					
	<i>B. T. Aspen</i>	<i>Pulpwood</i>	2	<i>Cords</i>					
	<i>Quaking Aspen</i>		32	<i>Cords</i>					
	Mixed Hardwood		24	Cords					
	<i>Black Cherry</i>		3	<i>Cords</i>					
	<i>Red Maple</i>		21	<i>Cords</i>					
	Mixed Oak		77	Cords					
	<i>BI/R/Hybrid Oak</i>		77	<i>Cords</i>					
	4	BI/R/Hybrid Oak	Sawtimber	2.9			MBF	5.0	\$2,287.40
		Mixed Aspen	Pulpwood	72			Cords		
<i>B. T. Aspen</i>		<i>Sawtimber</i>	3.8	<i>MBF</i>					
<i>B. T. Aspen</i>		<i>Pulpwood</i>	64	<i>Cords</i>					
Mixed Hardwood			8	Cords					
<i>Red Maple</i>			8	<i>Cords</i>					
Mixed Oak			36	Cords					
<i>BI/R/Hybrid Oak</i>			36	<i>Cords</i>					
5	BI/R/Hybrid Oak	Sawtimber	5.3	MBF	14.8	\$5,410.70			
	Red Maple		3.0	MBF					
	Mixed Aspen	Pulpwood	112	Cords					
	<i>B. T. Aspen</i>		109	<i>Cords</i>					
	<i>Quaking Aspen</i>		3	<i>Cords</i>					

DESCRIPTION OF TIMBER BY PAYMENT UNIT (PU), CON'T

PU	MARKET GROUP	PRODUCT	QUANTITY	UNIT	ACRES	ADVERTISE PRICE			
5 con't	Mixed Hardwood	Pulpwood	29	Cords					
	<i>Red Maple</i>		29	<i>Cords</i>					
	Mixed Oak		141	Cords					
	<i>Bl/R/Hybrid Oak</i>		140	<i>Cords</i>					
	<i>White Oak</i>		1	<i>Cords</i>					
6	Bl/R/Hybrid Oak	Sawtimber	11.1	MBF	17.6	\$7,875.30			
	Red Oak		17.3	MBF					
	White Oak		0.6	MBF					
	Mixed Aspen	Pulpwood	70	Cords					
	<i>Quaking Aspen</i>	<i>Sawtimber</i>	3.1	<i>MBF</i>					
	<i>Quaking Aspen</i>	<i>Pulpwood</i>	64	<i>Cords</i>					
	Mixed Hardwood		62	Cords					
	<i>Black Cherry</i>	<i>Sawtimber</i>	1.0	<i>MBF</i>					
	<i>Black Cherry</i>	<i>Pulpwood</i>	7	<i>Cords</i>					
	<i>Red Maple</i>		53	<i>Cords</i>					
	Mixed Oak		158	Cords					
	<i>Bl/R/Hybrid Oak</i>		56	<i>Cords</i>					
	<i>Red Oak</i>		99	<i>Cords</i>					
	<i>White Oak</i>		3	<i>Cords</i>					
	Paper Birch		3	Cords					
	<i>Paper Birch</i>		3	<i>Cords</i>					
	7	Bl/R/Hybrid Oak	Sawtimber	14.0			MBF	12.0	\$7,732.15
		Red Maple		26.3			MBF		
Red Oak			7.6	MBF					
White Oak			4.1	MBF					
Mixed Aspen		Pulpwood	80	Cords					
<i>B. T. Aspen</i>		<i>Sawtimber</i>	14.8	<i>MBF</i>					
<i>Quaking Aspen</i>			2.1	<i>MBF</i>					
<i>B. T. Aspen</i>		<i>Pulpwood</i>	34	<i>Cords</i>					
<i>Quaking Aspen</i>			12	<i>Cords</i>					
Mixed Hardwood			118	Cords					
<i>Red Maple</i>			118	<i>Cords</i>					
Mixed Oak			65	Cords					
<i>Bl/R/Hybrid Oak</i>			39	<i>Cords</i>					
<i>Red Oak</i>			15	<i>Cords</i>					
<i>White Oak</i>			11	<i>Cords</i>					
Paper Birch			6	Cords					
<i>Paper Birch</i>			6	<i>Cords</i>					
8		Bl/R/Hybrid Oak	Sawtimber	12.4	MBF	9.2	\$4,747.80		
	Red Maple		3.8	MBF					
	White Oak		2.8	MBF					
	Mixed Aspen	Pulpwood	90	Cords					
	<i>B. T. Aspen</i>	<i>Sawtimber</i>	3.4	<i>MBF</i>					
	<i>B. T. Aspen</i>	<i>Pulpwood</i>	42	<i>Cords</i>					
	<i>Quaking Aspen</i>		41	<i>Cords</i>					
	Mixed Hardwood		38	Cords					
	<i>Red Maple</i>		38	<i>Cords</i>					
	Mixed Oak		68	Cords					
	<i>Bl/R/Hybrid Oak</i>		59	<i>Cords</i>					
	<i>White Oak</i>		9	<i>Cords</i>					
	9	Bl/R/Hybrid Oak	Sawtimber	14.2	MBF			6.6	\$4,242.65
Red Maple			13.6	MBF					
Red Oak			1.6	MBF					
Mixed Aspen		Pulpwood	50	Cords					
<i>B. T. Aspen</i>		<i>Sawtimber</i>	13.4	<i>MBF</i>					
<i>B. T. Aspen</i>		<i>Pulpwood</i>	23	<i>Cords</i>					

DESCRIPTION OF TIMBER BY PAYMENT UNIT (PU), CON'T

PU	MARKET GROUP	PRODUCT	QUANTITY	UNIT	ACRES	ADVERTISE PRICE
9 con't	Mixed Hardwood	Pulpwood	51	Cords		
	<i>Red Maple</i>		51	<i>Cords</i>		
	Mixed Oak		44	Cords		
	<i>Bl/R/Hybrid Oak</i>		38	<i>Cords</i>		
	<i>Red Oak</i>		6	<i>Cords</i>		
TOTAL:			196.5	MBF		
TOTAL:			2,263	Cords		

Sale Specific Conditions & Requirements

Sale Name: Sturgeon's Hope

Sale Number: 73-013-20 Seq#: 1

1 - Sale Area

1.2 - Boundaries

1.2.1 - Painted boundaries (9/19)

The sale boundary and Payment Unit boundaries are marked and identified by blue, red, and yellow paint. Exterior sale boundary lines against private property are marked with blue paint. Exterior sale boundary lines against state are marked with red paint. Interior Payment Unit boundaries are marked with yellow paint. Retention patches are marked with red paint; no harvesting activities may occur within these areas. Yellow painted trees designating an interior Payment Unit boundary are only to be cut when all surrounding Payment Units have been paid.

2 - Timber Specifications

2.1 - Included Timber

2.1.1 - Clearcut unit(s) with unmerchantable trees (6/14)

Within Payment Unit(s) 1 - 9, cut all trees that are two (2) inches or more at DBH, except do not cut trees marked with green paint above and below stump height. In addition, within Payment Units 3 and 9 leave all pine; within Payment Units 6 and 7 leave all white pine; and Payment Unit 2 leave all white pine with a DBH greater than 22".

3 - Payments

3.4 - Damaged Timber

3.4.1 - Damaged timber (7/16)

General Condition and Requirement 3.4 Damaged Timber, defines liquidated damages for undesignated live merchantable trees which are cut or injured. In addition, extreme care should be taken to avoid damage to tree seedlings and saplings.

Within the Payment Units 3, 6, 7 and 9, if more than 25% of the tree seedlings or saplings (1/4" to 4.5" DBH) within a specified portion of the Sale Area are damaged, liquidated damages will be assessed at \$300 per acre for all acreage within that specified portion of the Sale Area that was damaged.

No damage is acceptable to undesignated live merchantable trees. Within the Sale Area, if more than 5% of trees (> 4.5" DBH) within a specified area of the sale are damaged, liquidated damages will be assessed for all trees damaged. Rates will be in accordance with General Condition and Requirement 3.4 Damaged Timber.

4 - Transportation

4.1 - Construction

4.1.7 - Road closure (10/11)

All new roads built into the sale must be blocked to vehicle traffic upon completion of the sale. Overgrown roads that are reopened shall be considered new roads. All stumps from road building and landing construction must be reserved to block any newly constructed roads upon completion of the sale. These stumps must be scattered along the road system to prohibit vehicular movement. Contact the sale administrator for specific details of design and placement.

4.2 - Maintenance

4.2.2 - Fill material (4/07)

To maintain roads, fill material may be needed in areas where "holes" exist or may be expected to develop. This fill material should be placed before trucking begins. Contact the sale administrator regarding the availability of onsite sand or gravel from adjacent State-owned lands.

4.2.5 - Two wheel drive condition (2/04)

All existing trail roads on and adjacent to the sale area must be passable by two-wheel drive traffic for the duration of the sale.

5 - Operations

5.2 - Conduct of Operations

5.2.2 - Hazard Trees/Snags

5.2.2.1 - Den trees (10/16)

Obvious hollow and/or den trees shall be protected and left standing unless they are a safety hazard.

5.2.4 - Dead and Down Creation

5.2.4.4 - Dead and down creation, grouse (6/18)

To encourage grouse and other wildlife, in Payment Unit(s) 1 - 9 leave one 12" or larger diameter whole tree on the ground for every 3 acres. Trees should be scattered throughout the Sale Area and at least two chains from any roads, two-tracks, or trails open to vehicles, or positioned per the sale administrators instructions. Stumps must be at least 3 feet tall.

5.2.22 - Operating Caution

5.2.22.1 - Operating caution (6/11)

It is recommended, but not required, that within Payment Unit(s) 1 - 9, cutting, skidding, and hauling occur during dry summer or frozen winter conditions. The reason for the recommendation is because soils and access route is seasonable unpassable and prone to rutting.

5.4 - Soil Protection

5.4.1 - Rutting restriction, general (7/16)

Operations are to cease immediately if equipment and weather conditions result in rutting of roads and/or skid trails which is 12 inches or greater in depth and 50 feet in length. The Unit Manager or his/her representative may restrict hauling and/or skidding if ruts exceed the specified depth. With the Unit Manager or his/her representative's approval, the Purchaser may return to the area when the risk of rutting has decreased.



TIMBER SALE MAP

This information provided by authority of Part 525, 1994 PA 451, as amended.

Sale Number	Year
73 - 013	20

Forest Management Unit Gladwin Management Unit	County Midland	Mapped By Steven Nyhoff	Date 9/16/2020	Page 1	of 2
Cruised By Steven Nyhoff					

Township 15N	Range 01E	Section(s) and Subdivision(s) Various	Scale 1:15,840
-----------------	--------------	--	-------------------

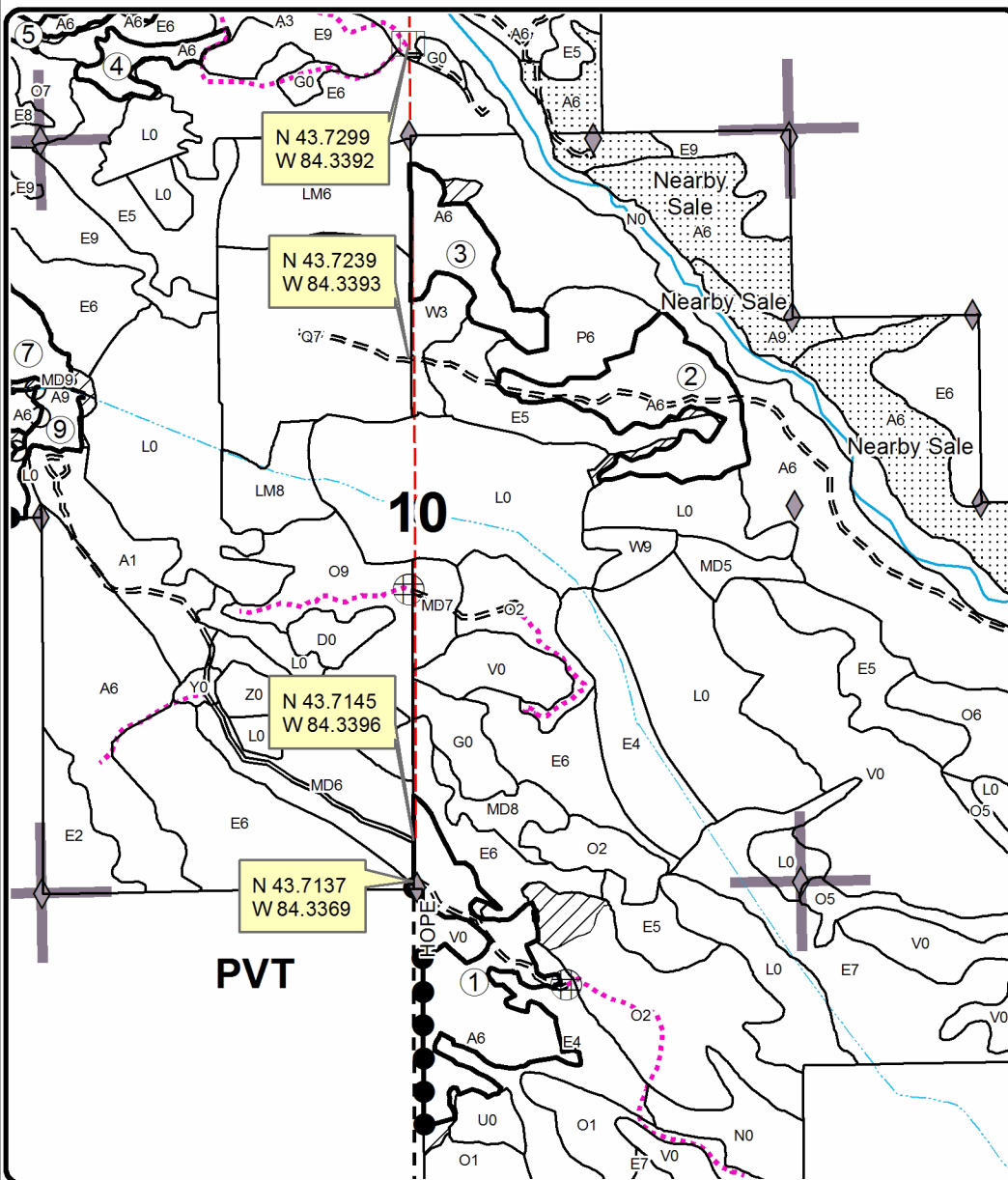
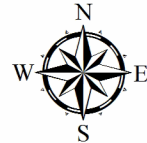
Cover Type				Density			
A = Aspen	H = Hemlock	N = Marsh	U = Upland Brush	0 = Non Stocked	5 = Pole Timber Medium		
B = Paper Birch	J = Jack Pine	O = Oak	UM = Upland Mixed	1 = Seedling Sapling Poor	6 = Pole Timber Well		
C = Cedar	L = Lowland Brush	P = Lowland Poplar	V = Bog or Marsh	2 = Seedling Sapling Medium	7 = Saw Timber Poor		
D = Treed Bog	LM = Lowland Mixed	Q = Mixed Swamp Conifer	W = White Pine	3 = Seedling Sapling Well	8 = Saw Timber Medium		
E = Swamp Hdwoods	M = Mpl, Bch, Brch	R = Red Pine	X = Non Stocked	4 = Pole Timber Poor	9 = Saw Timber Well		
F = Spruce Fir	MC = Mixed Conifer	S = Black Spruce	Z = Water				
G = Grass	MD = Mixed Deciduous	T = Tamarack					

PU	Acres	PU	Acres	PU	Acres
1	25.3	4	5.0	7	12.0
2	20.1	5	14.8	8	9.2
3	12.2	6	17.6	9	6.6

Sturgeon's Hope

Compartment 101

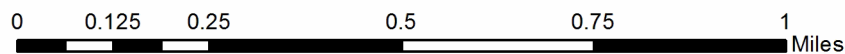
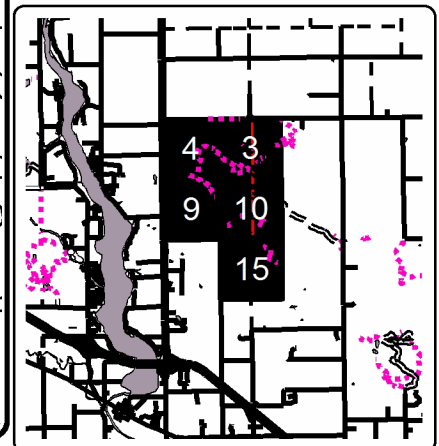
122.8 Acres



Legend

- Stand Boundaries
- Field Grade Corners
- Secondary Forest Road
- Forest Access Route
- Gravel Road
- County Road - Seasonal
- Temporary Management Access
- Intermittent Stream
- Perennial River
- Retention Area
- Against State (Red)
- Payment Unit (Yellow)
- Private Line (Blue)
- Nearby Timber Sales
- Section Corners

Locator Map
1:200,000





TIMBER SALE MAP

This information provided by authority of Part 525, 1994 PA 451, as amended.

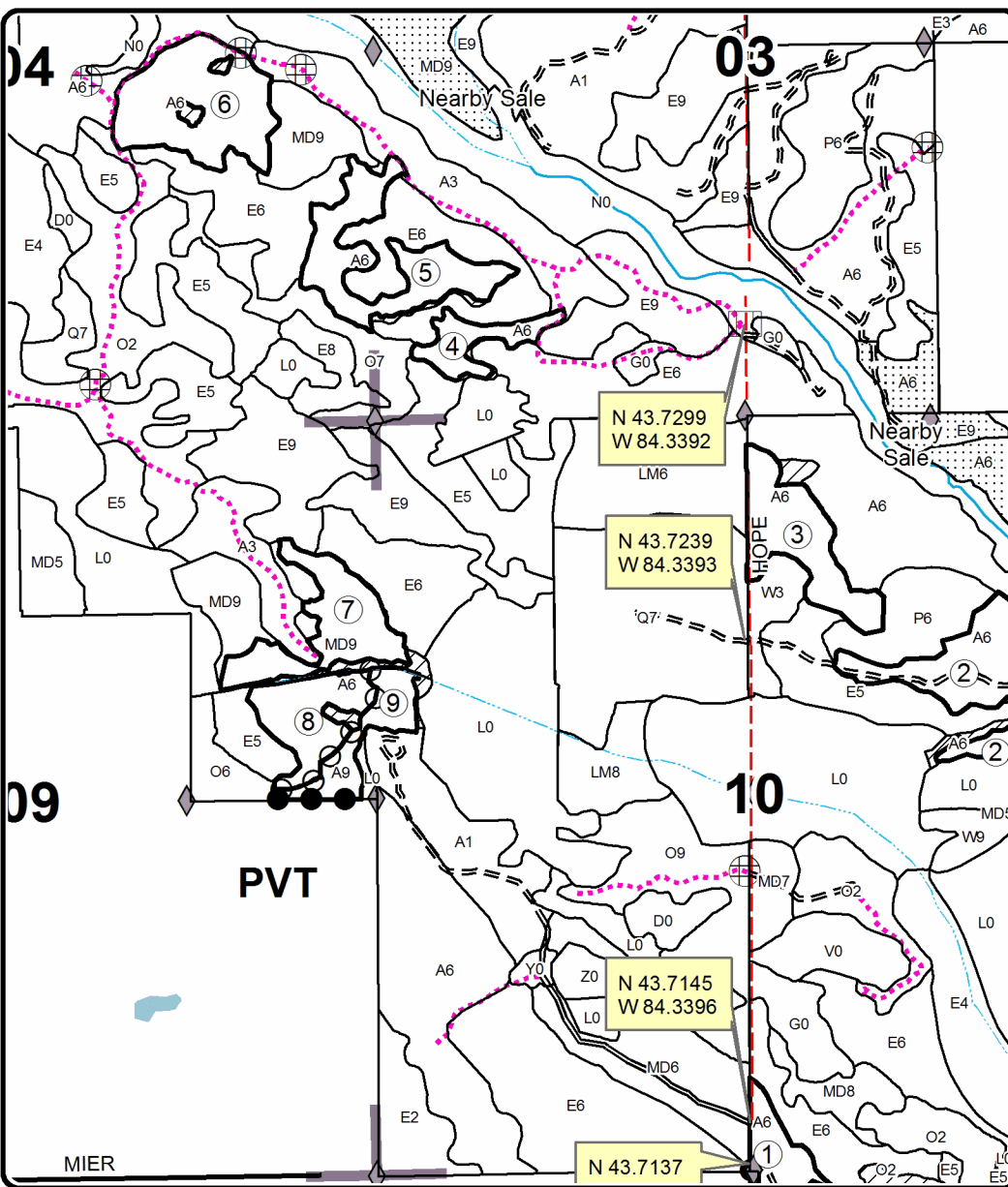
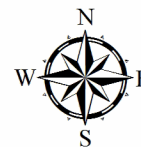
Sale Number	Year
73 - 013	20

Forest Management Unit Gladwin Management Unit	County Midland	Mapped By Steven Nyhoff	Date 9/16/2020	Page 2	of 2
Township 15N	Range 01E	Section(s) and Subdivision(s) Various	Scale 1:15,840		

Cover Type				Density	
A = Aspen	H = Hemlock	N = Marsh	U = Upland Brush	0 = Non Stocked	5 = Pole Timber Medium
B = Paper Birch	J = Jack Pine	O = Oak	UM = Upland Mixed	1 = Seedling Sapling Poor	6 = Pole Timber Well
C = Cedar	L = Lowland Brush	P = Lowland Poplar	V = Bog or Marsh	2 = Seedling Sapling Medium	7 = Saw Timber Poor
D = Tread Bog	LM = Lowland Mixed	Q = Mixed Swamp Conifer	W = White Pine	3 = Seedling Sapling Well	8 = Saw Timber Medium
E = Swamp Hdwoods	M = Mpl, Bch, Brch	R = Red Pine	X = Non Stocked	4 = Pole Timber Poor	9 = Saw Timber Well
F = Spruce Fir	MC = Mixed Conifer	S = Black Spruce	Z = Water		
G = Grass	MD = Mixed Deciduous	T = Tamarack			

PU	Acres	PU	Acres	PU	Acres
1	25.3	4	5.0	7	12.0
2	20.1	5	14.8	8	9.2
3	12.2	6	17.6	9	6.6

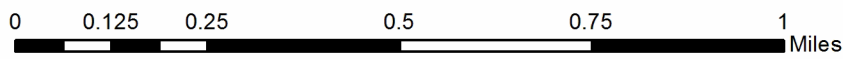
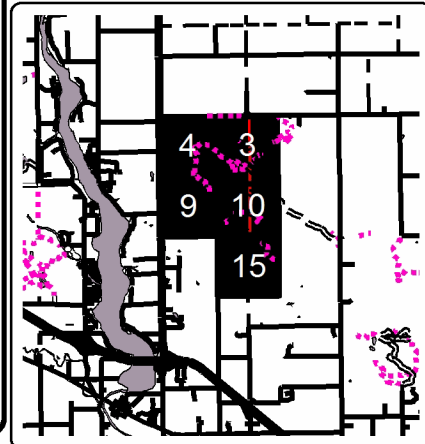
Sturgeon's Hope Compartment 101 122.8 Acres



Legend

- Stand Boundaries
- Field Grade Corners
- Secondary Forest Road
- Forest Access Route
- Paved Road
- Gravel Road
- County Road - Seasonal
- Temporary Management Access
- Intermittent Stream
- Perennial River
- Lakes and Rivers
- Retention Area
- Against State (Red)
- Payment Unit (Yellow)
- Private Line (Blue)
- Nearby Timber Sales
- Section Corners

Locator Map
1:200,000



Guernsey-School Mix (73-010-20)

T17N, R02E, SEC. 2; T17N, R02E, SEC. 3; T17N, R02E, SEC. 4; Gladwin COUNTY

In response to the notice of sale to be held 10:00 a.m. (local time) on August 11, 2021, I am hereby submitting my sealed bid (firm offer) for the following forest products to be cut. Bids for individual species must be at or above the advertised price. All non-responsive bid forms may be rejected.

<u>PRODUCTS & SPECIES</u>	<u>ESTIMATED VOLUME*</u>	<u>ADVERTISED PRICE</u>	<u>BID PRICE/UNIT</u>
Sawtimber			
Mixed Aspen	50.4 MBF	\$ 63.00/MBF	\$ _____
Mixed Oak	53.3 MBF	\$ 80.00/MBF	\$ _____
Red Maple	13.3 MBF	\$ 36.00/MBF	\$ _____
Red Oak	51.3 MBF	\$ 116.00/MBF	\$ _____
Pulpwood			
Mixed Aspen	401 Cords	\$ 18.45/Cord	\$ _____
Mixed Hardwood	240 Cords	\$ 15.05/Cord	\$ _____
Mixed Oak	275 Cords	\$ 16.85/Cord	\$ _____
Red Pine	1 Cords	\$ 41.80/Cord	\$ _____

*The volumes are statistically estimated within plus (+) or minus (-) 12.72 percent at 95% confidence level. These estimated volumes are final and not subject to adjustment. Prospective bidders are urged to examine this timber and to make their own estimates of quantity and quality.

I understand that any or all bids may be rejected. All bids must be signed and all bid items must be bid or the bid form may be rejected. I also understand that consideration and awarding a contract will be based upon my past performance and ability to complete the contract based upon equipment and staffing subject to my control.

FEDERAL ID: ____ - ____ - ____ or SOCIAL SECURITY NUMBER: ____ - ____ - ____

Company or individual bidding: _____

Company representative's name: _____

Address: _____

City: _____ State: _____ Zip: _____

IF AVAILABLE, PLEASE PLACE THE PERSONALIZED LABEL FROM YOUR PROSPECTUS IN THE ABOVE BOX.

Individual or company representative's signature: _____ Date: _____

Phone number : _____ Email (optional): _____

THE WINNING BIDDER MUST COMPLETE THE VERIFICATION OF WORKER'S DISABILITY COMPENSATION ACT COMPLIANCE (ON REVERSE SIDE IF DOUBLE SIDED) WITHIN 21 DAYS OF SALE AWARD DATE



FOR DEPARTMENT USE ONLY
Sale Number (XX - XXX - XX - XX)
Forest Management Unit:

TIMBER SALE VERIFICATION OF WORKER'S DISABILITY COMPENSATION ACT COMPLIANCE

*As required by Act 317, P.A. 1969 (Worker's Compensation) and
Part 5 of Act 451 of 1994, as amended.*

VERIFICATION OF WORKER'S DISABILITY COMPENSATION ACT COMPLIANCE

- This verification must be completed and submitted within 21 days of contract award and prior to the issuance of the timber sale contract.
- In addition, if boxes 2B or 2C are checked, then Notice of Exclusion or Certificate of Insurance must be submitted within twenty-one (21) days of the contract award and prior to the issuance of the timber sale contract.
- All information must be typed or printed except for written signatures.

Please Check Appropriate Categories:

1. My business is organized as (you **must** check one of the boxes below):
 - A. Sole Proprietorship (individual)
 - B. Partnership
 - C. Corporation
2. You **must** check one of the boxes below:
 - A. I certify my business is a sole proprietorship and it has no employees but the sole proprietor. I am not subject to the Worker's Compensation Laws.
 - B. I certify my business has satisfied its obligation to the Worker's Compensation Act through the use of an approved Notice of Exclusion (BWC-337, Rev. 5/96). I will provide a copy of the Notice of Exclusion within 21 days of the contract award. (For questions or a copy of the BWC-337, please call the Worker's Compensation Bureau at 517-322-1195).
 - C. I certify my business has a Worker's Compensation Policy. I will provide an original Certificate of Insurance within twenty-one (21) days of the contract award.
3. If you have checked item 2(A) or 2(B), you **must** indicate the number of **both** full-time and part-time employees, other than yourself, including family members and active partners (if none, you must enter "0").

_____ Full-time Employees

_____ Part-time Employees

Name of Business		Federal ID (or) Social Security No.	
Address		Telephone ()	
City	State	ZIP	

I hereby certify that the above information is true and correct. I agree to notify the Michigan DNR of any changes that occur in factors affecting my coverage during any of my present and future operations.

Signature of Owner or Authorized Representative

Title

Date

Please complete the "SEALED BID" information on the next page

Sturgeon's Hope (73-013-20)

T15N, R01E, SEC. 10; T15N, R01E, SEC. 15; T15N, R01E, SEC. 3; T15N, R01E,

In response to the notice of sale to be held 10:00 a.m. (local time) on August 11, 2021, I am hereby submitting my sealed bid (firm offer) for the following forest products to be cut. Bids for individual species must be at or above the advertised price. All non-responsive bid forms may be rejected.

<u>PRODUCTS & SPECIES</u>	<u>ESTIMATED VOLUME*</u>	<u>ADVERTISED PRICE</u>	<u>BID PRICE/UNIT</u>
Sawtimber			
Bl/R/Hybrid Oak	89.8 MBF	\$ 80.00/MBF	\$ _____
Red Maple	56.4 MBF	\$ 36.00/MBF	\$ _____
Red Oak	26.5 MBF	\$ 116.00/MBF	\$ _____
Red Pine	12.6 MBF	\$ 94.00/MBF	\$ _____
White Oak	11.2 MBF	\$ 86.00/MBF	\$ _____
Pulpwood			
Mixed Aspen	1,052 Cords	\$ 18.45/Cord	\$ _____
Mixed Hardwood	392 Cords	\$ 15.05/Cord	\$ _____
Mixed Oak	783 Cords	\$ 16.85/Cord	\$ _____
Paper Birch	12 Cords	\$ 14.00/Cord	\$ _____
Red Pine	17 Cords	\$ 41.80/Cord	\$ _____
White Pine	7 Cords	\$ 16.35/Cord	\$ _____

*The volumes are statistically estimated within plus (+) or minus (-) 9.55 percent at 95% confidence level. These estimated volumes are final and not subject to adjustment. Prospective bidders are urged to examine this timber and to make their own estimates of quantity and quality.

I understand that any or all bids may be rejected. All bids must be signed and all bid items must be bid or the bid form may be rejected. I also understand that consideration and awarding a contract will be based upon my past performance and ability to complete the contract based upon equipment and staffing subject to my control.

FEDERAL ID: _____ or SOCIAL SECURITY NUMBER: _____

Company or individual bidding: _____

Company representative's name: _____

Address: _____

City: _____ State: _____ Zip: _____

IF AVAILABLE, PLEASE PLACE THE PERSONALIZED LABEL FROM YOUR PROSPECTUS IN THE ABOVE BOX.

Individual or company representative's signature: _____ Date: _____

Phone number : _____ Email (optional): _____

THE WINNING BIDDER MUST COMPLETE THE VERIFICATION OF WORKER'S DISABILITY COMPENSATION ACT COMPLIANCE (ON REVERSE SIDE IF DOUBLE SIDED) WITHIN 21 DAYS OF SALE AWARD DATE



FOR DEPARTMENT USE ONLY
Sale Number (XX - XXX - XX - XX)
Forest Management Unit:

TIMBER SALE VERIFICATION OF WORKER'S DISABILITY COMPENSATION ACT COMPLIANCE

*As required by Act 317, P.A. 1969 (Worker's Compensation) and
Part 5 of Act 451 of 1994, as amended.*

VERIFICATION OF WORKER'S DISABILITY COMPENSATION ACT COMPLIANCE

- This verification must be completed and submitted within 21 days of contract award and prior to the issuance of the timber sale contract.
- In addition, if boxes 2B or 2C are checked, then Notice of Exclusion or Certificate of Insurance must be submitted within twenty-one (21) days of the contract award and prior to the issuance of the timber sale contract.
- All information must be typed or printed except for written signatures.

Please Check Appropriate Categories:

1. My business is organized as (you **must** check one of the boxes below):
 - A. Sole Proprietorship (individual)
 - B. Partnership
 - C. Corporation
2. You **must** check one of the boxes below:
 - A. I certify my business is a sole proprietorship and it has no employees but the sole proprietor. I am not subject to the Worker's Compensation Laws.
 - B. I certify my business has satisfied its obligation to the Worker's Compensation Act through the use of an approved Notice of Exclusion (BWC-337, Rev. 5/96). I will provide a copy of the Notice of Exclusion within 21 days of the contract award. (For questions or a copy of the BWC-337, please call the Worker's Compensation Bureau at 517-322-1195).
 - C. I certify my business has a Worker's Compensation Policy. I will provide an original Certificate of Insurance within twenty-one (21) days of the contract award.
3. If you have checked item 2(A) or 2(B), you **must** indicate the number of **both** full-time and part-time employees, other than yourself, including family members and active partners (if none, you must enter "0").

_____ Full-time Employees

_____ Part-time Employees

Name of Business		Federal ID (or) Social Security No.	
Address		Telephone ()	
City	State	ZIP	

I hereby certify that the above information is true and correct. I agree to notify the Michigan DNR of any changes that occur in factors affecting my coverage during any of my present and future operations.

Signature of Owner or Authorized Representative

Title

Date

Please complete the "SEALED BID" information on the next page