



**DEPARTMENT OF NATURAL RESOURCES
STATE OF MICHIGAN**

TIMBER SALE PROSPECTUS #6850

SCHEDULED SALE DATE AND TIME: 3:00 p.m. (local time) on April 27, 2021.

LOCATION: INDIAN RIVER FIELD OFFICE, 6984 WILSON, INDIAN RIVER, MI 49749.

PROSPECTUS NOTE: The bidder is advised to inspect the sale area and review the location, estimated volumes, operating costs and contract terms of proposed sales. Please be aware that some landowners may request 60 days or more notice for access across their land.

Notice is hereby given that bids will be received by the Unit Manager, GAYLORD MANAGEMENT UNIT, for certain timber on the following described lands:

Tree Stooges Red Pine (52-106-20) / T34N, R03W, SEC. 20, SESW.
T34N, R03W, SEC. 21, W1/2NW.

Cheboygan County, Advertised Price \$35,764.20, 38.6 Acres, Red Pine, Hardwood.

SALE NOTE: There is a seasonal restriction on Payment Unit 1 (see spec 5.2.3.3). Payment Units 2 and 3 contain mixed hardwood and softwood which must also be removed (see spec 2.2.2).

A recreation site such as a trail, pathway, or campground is within the sale area or the vicinity. Certain restrictions/specifications may be applicable including time restrictions.

N. Conway Mix (52-113-20) / T36N, R05W, SEC. 1, SW.
T36N, R05W, SEC. 12, NW.
T36N, R05W, SEC. 14, S1/2SW.
T36N, R05W, SEC. 2, SESE.
T36N, R05W, SEC. 23, NENW.

Emmet County, Advertised Price \$73,414.25, 84.0 Acres, Hardwood, Aspen.

SALE NOTE: Seasonal snowmobile trail restrictions applied to this sale.

Burt Red Pine (52-123-20) / T36N, R03W, SEC. 7, SESE.

Cheboygan County, Advertised Price \$5,335.45, 13.9 Acres, Red Pine.

SALE NOTE: Intermediate red pine crown thinning. Seasonal bark slippage restriction applied. No harvest activity from April 15 to July 15.

Liquefaction Aspen (52-114-17) / T39N, R04W, SEC. 23, NESE.

T39N, R04W, SEC. 24, SW,SWSE.

T39N, R04W, SEC. 25, W1/2NE.

T39N, R04W, SEC. 34, SENW,SENE,N1/2SW,N1/2SE.

T39N, R04W, SEC. 36, NENW,S1/2NW,S1/2NE.

Emmet County, Advertised Price \$66,345.50, 183.2 Acres, Aspen, Hardwood.

SALE NOTE: The intent of this sale is to diversify age classes of early successional species within this compartment. Some areas may be heavy to pole timber.

The Snowmobile Trail may not be used for any timber sale related activity from 12/01-3/31, though the Village of Mackinaw has granted permission for use of a two-track through their property with conditions.

A recreation site such as a trail, pathway, or campground is within the sale area or the vicinity. Certain restrictions/specifications may be applicable including time restrictions. Access may be through private or other public land.

BID INSTRUCTIONS (VER. 07/02/2018):

1. Scheduled Bid Location, Date, and Time (2/11)

Bids must be received by the Unit Manager, INDIAN RIVER OFFICE, 6984 Wilson, Indian River, MI 49749, no later than 3:00 p.m. (local time) on April 27, 2021. For further information concerning this sale, contact Lucas Merrick at 989-732-3541 extension 5440.

2. Bidder's Qualifications (5/16)

Purchaser shall obtain workers compensation insurance to cover claims under Michigan's Worker's Disability Compensation Act of 1969 or similar employee benefit act of any other state applicable to an employee. If all or part of a timber sale was prepared by a private contractor, the contractor and that contractor's company are not permitted to bid on the timber sale contract. Bids will not be accepted from individuals or companies appearing on the DNR/FRD No-Bid List. This list contains the names of purchasers who previously failed to execute a contract within 21-days or who have a history of poor performance.

3. Preparation of Sealed Bids (5/16)

Bid Forms may be completed online thru Michigan DNR Timber Sale Online Bidding (OLB) at www.michigan.gov/timberbidding or by completing the hardcopy Bid Form found in the Timber Sale Prospectus. Hardcopy Bid Forms shall be manually signed in ink. Registration in OLB is considered your 'signature' for all bids submitted thru that system. Bid prices must be entered for each species and product in the Bid Price column for all material subject to bidding and all fill-in blanks must be completed. If erasures or other changes appear on the hardcopy Bid Form, each erasure or change must be initialed by the person signing the bid.

4. Submission of Sealed Bids (5/16)

Bid forms may be obtained from the Unit Manager or thru OLB. Bids may be submitted hardcopy or thru OLB. All hardcopy bids must be submitted on the bid form and in an envelope clearly identified as described in this section. NOTE: Only one bid form per bid envelope. Sealed bids must be submitted to the Unit office designated in the prospectus and must be submitted at or prior to the time established in the prospectus. The envelope should show on the outside (a) the sale name or number and (b) the date and time of bid opening, as shown in the prospectus. Bids received after the time specified in the sale prospectus are late bids and will be rejected.

It is possible for a bidder to submit multiple bids on a single sale. For example, a bid may be submitted hardcopy and a bid may be submitted thru OLB. Or, two bidders from the same company could both submit bids on the same sale. If this were to happen, the State would accept all bids received and award the contract accordingly. All bidding and contractual requirements would apply to all bids received.

5. Public Opening of Sealed Bids (7/16)

If conditions permit, the sealed bids will be publicly opened and posted at the time and place set in the prospectus.

If a bidder, present at a bid opening, has submitted bids on more than one sale, that bidder may withdraw their unopened bid envelopes or announce the withdrawal of their online bid after being declared the successful bidder on one sale.

6. Award of Contract (1/11)

Award of the contract will be made to the Bidder whose bid, conforming to the prospectus, is most advantageous to the State of Michigan on the basis of total value at rates bid for the estimated quantities. The State reserves the right to reject any bid or waive any minor irregularity in bids received. A written award mailed (or otherwise furnished) to the successful Bidder shall be deemed to result in a binding contract without further action by either party.

7. Down Payment (1/11)

The Bidder to whom award is made must make a down payment within 21 days of the sale award. The amount of the down payment will be calculated as shown in the Bond and Payment Schedule of this prospectus. Only cash may be used to meet this requirement.

8. Performance Security (1/11)

As guarantee of faithful performance, a cash bond, certificate of deposit, surety bond or irrevocable letter of credit (LOC) is required within 21 days of the sale award. The amount of the performance security is shown in the Bond and

Payment Schedule of this prospectus. If an LOC or surety is used, the coverage must extend for at least 6 months beyond the contract expiration.

9. Timber Sale Contract (7/18)

Additional conditions and requirements common to all timber sales are listed on the timber sale contract (R4031) and are available on line at www.michigan.gov/timber. Contact the Unit Manager for additional information or a sample contract. Within 21 days of the date of the award letter, the bidder must sign the contract and provide the required down payment, performance security, and verification of worker's disability compensation. The down payment and performance security shall be in accordance with the provisions of the timber sale contract, in the sums stated in this prospectus. If these actions are not taken, then the Bidder, the Bidder's corporation, and the corporation's principals may not be permitted to bid on State timber sales for a period of 3 months after the first offense, 6 months after the second offense, and 1 year after the third offense. An offense will only be counted against the Bidder for 5 years. In addition, the Bidder certifies that if awarded this contract, the Bidder will complete the timber sale contract in accordance with its terms and any modifications thereof including requirements to purchase, cut, and remove the included timber by the expiration date.

Payment Unit values in the State Forest Timber Sale Contract are calculated based on the advertised value of the Payment Unit as a percentage of the total advertised value of the contract. The advertised value of each Payment Unit is given in the Description of Timber by Payment Unit table on the Timber Sale Information page. For example, if the value of Payment Unit 1 is advertised as \$1,500 and the total Timber Sale value is advertised as \$10,000, the contract price for Payment Unit 1 will be 15% of the total bid price ($\$1,500/\$10,000 * 100$).

10. Disclaimer of Estimates and Bidder's Warranty of Inspection (7/16)

Before submitting this bid, the Bidder is advised and cautioned to inspect the sale area, review the requirements of the sale contract, and take other steps as may be reasonably necessary to ascertain the location, estimated volumes, construction estimates, and operating costs of the proposed sale. Failure to do so will not relieve the Bidder from responsibility for completing the contract.

The Bidder warrants that this bid is submitted solely on the basis of the Bidder's examination and inspection of the quality and quantity of the timber offered for sale and the Bidder's opinion of the value thereof and the costs of recovery. No reliance should be placed on the State of Michigan's estimates of timber quality, quantity or costs of recovery. Bidder further acknowledges that the State of Michigan: (i) expressly disclaims any warranty of fitness of timber for any purpose; (ii) offers this timber as is without any warranty of quality (merchantability) or quantity and (iii) expressly disclaims any warranty as to the quantity or quality of timber sold.

11. Certification and Chain-of-Custody (10/14)

Unless otherwise indicated in the contract under section 7 – Other Conditions of the Sale Specific Conditions & Requirements, the area encompassed by this timber sale is certified to the standards of the Forest Stewardship Council (FSC) - Certificate #SCS-FM/COC-00090N and the Sustainable Forestry Initiative (SFI) - Certificate #NSF-SFIS-5Y031-SF5. Forest products from this sale may be delivered to the mill as "FSC 100% and / or SFI certified" as long as the contractor hauling the forest products is chain-of-custody (COC) certified or covered under a COC certificate from the destination mill. The purchaser is responsible for maintaining COC after leaving the sale area.

12. Good Neighbor Authority (GNA) Requirements (7/16)

If the name of this timber sales contains the acronym GNA, it is authorized by the Good Neighbor Authority (GNA) and covered by various agreements between the U.S. Forest Service and the State. The timber sale occurs on federal land and the following conditions apply:

GNA contracts on US Forest Service land will not be awarded to purchasers on the Federal list of excluded parties. The System for Award Management (SAM) will be checked for active excluded parties prior to award of contract. In addition, the Bidder to whom award is made must complete an Assurance Regarding Felony Conviction or Tax Delinquent Status for Corporate Applicants (AD-3031).

13. Good Neighbor Authority (GNA) Requirements, con't (9/16)

Bidder certifies, by signing this bid form, that to the best of Bidder's knowledge that the following representations are accurate and complete.

- a. That the Bidder and its principals are not presently debarred, suspended, proposed for debarment, declared ineligible, or voluntary excluded from timber sales (covered transactions) by any Federal department or agency.
- b. That the Bidder and its principals have not within a 3-year period preceding this bid been convicted of or had a civil judgment rendered against them for commission of fraud or a criminal offense in connection with obtaining , attempting to obtain, or performing a public (Federal, State, or local) transaction or contract under a public transaction; violation of Federal or State antitrust statutes or commission of embezzlement, theft, forgery, bribery, falsification or destruction of records, making false statements, or receiving stolen property.
- c. That the Bidder and its principals are not presently indicted for or otherwise criminally or civilly charged by a governmental entity (Federal, State, or local) with commission of any of the offenses enumerated in paragraph b of this certification.
- d. That the Bidder and its principals have not within a 3-year period preceding this bid had one or more public transactions (Federal, State, or local) terminated for breach or default of a timber or forest product contract.

Bidders that cannot certify this requirement, in whole or in part, shall submit an explanation with their bid.

DAN EICHINGER
Director

TIMBER SALE INFORMATION

Tree Stooges Red Pine (52-106-20)
 T34N, R03W, SEC. 20; T34N, R03W, SEC. 21.
 Cheboygan County (Advertised Price \$35,764.20)

SALE NOTE: There is a seasonal restriction on Payment Unit 1 (see spec 5.2.3.3). Payment Units 2 and 3 contain mixed hardwood and softwood which must also be removed (see spec 2.2.2).

A recreation site such as a trail, pathway, or campground is within the sale area or the vicinity. Certain restrictions/specifications may be applicable including time restrictions.

A timber sale contract for this lump sum, sealed bid timber sale will be awarded to the responsible bidder offering the highest sealed bid price. All units of volume listed below were estimated using the T-Sale computer program and our traditional volume equations. Bids must be at or above the following advertised price for each product and species:

<u>PRODUCTS & SPECIES</u>	<u>ESTIMATED UNITS*</u>	<u>ADVERTISED PRICE</u>
Sawtimber		
Red Pine	158.8 MBF	\$ 82.00 / MBF
Pulpwood		
B. T. Aspen	12 Cords	\$ 13.95 / Cord
Mixed Hardwood	33 Cords	\$ 14.55 / Cord
Red Pine	647 Cords	\$ 34.15 / Cord

* The total volume is statistically estimated within plus (+) or minus (-) 19.61 percent. There are an estimated 1,014 cords on this timber sale, plus or minus 199 cords at the 95% confidence level. The estimated units are final and not subject to adjustment. Prospective bidders are urged to examine this timber and to make their own estimates of quantity and quality.

BOND AND PAYMENT SCHEDULE:

1. A bond in the amount of \$1,788.00 to insure faithful performance of the conditions of the contract will be deposited by the successful bidder within 21 days of the sale award.
2. Cutting in any sale or unit without the required advance payment would be considered a trespass.
3. Total payment must be paid in advance or according to the following schedule :
 - (a) Ten percent (10%) of the sale value must be paid within 21 days of the sale award.
 - (b) The 10% down payment will be credited towards the first unit cut.
 - (c) Payment for each of the following units must be made before cutting begins in that unit:

PAYMENT UNIT NUMBER	PERCENT OF TOTAL SALE VALUE
01	16.2%
02	34.5%
03	49.3%

4. If no cutting takes place, the 10% down payment will not be refunded.
5. Operations on the contract issued will terminate on 06/30/2024.

SALE STATISTICS

SALE VOLUMES

VOLUME		STATISTICAL RANGE IN CORDS		
TOTAL CUBIC FEET	TOTAL CORDS	PERCENT ERROR	MINIMUM	MAXIMUM
80,097	1,014	19.61%	815	1,213

VDU VOLUMES

A VDU is a Volume Determination Unit. Volumes and their associated statistics are calculated at the VDU level and summarized to the sale level. There is often a one to one relationship between a VDU and a Payment Unit, but not always, depending on the cruise design. Refer to the VDU TO PAYMENT UNIT table.

VDU	VOLUME		PERCENT ERROR	RANGE IN CORDS	
	TOTAL CUBIC FEET	TOTAL CORDS		MINIMUM	MAXIMUM
9	13,059	165	20.58%	131	199
12	28,946	366	19.05%	297	436
29	38,086	482	33.47%	321	643
TOTAL:	80,090	1,014		749	1,279

VDU TO PAYMENT UNIT

When a VDU is associated with more than one Payment Unit (PU), the VDU volumes are assigned to the PU based on acres of the VDU within the PU.

VDU	VDU ACRES	PU	PU ACRES
9	10.8	1	10.8
12	11.9	2	11.9
29	15.9	3	15.9
TOTAL:	38.6		38.6

DESCRIPTION OF TIMBER BY PAYMENT UNIT (PU)

PU	MARKET GROUP	PRODUCT	QUANTITY	UNIT	ACRES	ADVERTISE PRICE
1	Red Pine	Sawtimber	9.3	MBF	10.8	\$5,782.65
	Red Pine	Pulpwood	147	Cords		
2	Red Pine	Sawtimber	51.8	MBF	11.9	\$12,339.85
	B. T. Aspen	Pulpwood	12	Cords		
	Mixed Hardwood		33	Cords		
	<i>Red Maple</i>		22	Cords		
	<i>Sugar Maple</i>		11	Cords		
3	Red Pine	Sawtimber	97.7	MBF	15.9	\$17,641.70
	Red Pine	Pulpwood	282	Cords		
TOTAL:			158.8	MBF		
TOTAL:			692	Cords		

Sale Specific Conditions & Requirements

Sale Name: Tree Stooges Red Pine

Sale Number: 52-106-20 Seq#: 1

1 - Sale Area

1.2 - Boundaries

1.2.1 - Painted boundaries (9/19)

The sale boundary is marked and identified by red and blue paint. Exterior sale boundary lines against private property are marked with blue paint. The eastern private sale boundary line is identified by Keck Road. Exterior sale boundary lines against state are marked with red paint. The painted boundary line trees are not Included Timber and are to be protected unless marked with orange paint.

2 - Timber Specifications

2.1 - Included Timber

2.1.1 - Clearcut unit(s) with unmerchantable trees (6/14)

Within Payment Unit(s) 2 and 3, cut all trees that are two (2) inches or more at DBH, except do not cut any oak, if present.

2.1.3 - Cut tree marked unit(s) (12/08)

Within Payment Unit(s) 1, all trees are designated for cutting when marked with orange paint above and below stump height, regardless of merchantability.

2.1.11 - Description of timber note (2/04)

Note that Payment Unit 2 contains trace elm, white pine, black cherry, beech, and ironwood not picked up on the cruise.

Payment Unit 3 contains trace bigtooth, red maple, beech, ironwood, and quaking aspen not picked up on the cruise.

2.2 - Utilization

2.2.2 - Chipping required (2/18)

Payment Units 2 and 3 must be chip harvested to facilitate subsequent planting operations. The Purchaser has the option to produce sawlogs or pulpwood bolts, but the remaining portion of the trees must be chipped. If market conditions limit the practicality of chipping, tops and slash must be arranged in a way that will not inhibit future planting operations, as directed by the sale administrator. A chipping exemption can be obtained if proposed operations are determined to be suitable for planting by reforestation staff. This exemption must be granted in writing. The requirement to retain approximately 1/6 to 1/3 of tree tops and limbs less than four inches in diameter does not apply (G. C. & R. 2.2). This is to minimize obstacles in facilitating future planting operations.

2.2.3 - Stump heights (4/07)

Stump heights within Payment Unit(s) 2 and 3 shall not exceed 6 inches for all trees. This is to facilitate planting operations.

3 - Payments

3.4 - Damaged Timber

3.4.1 - Damaged timber (7/16)

General Condition and Requirement 3.4 Damaged Timber, defines liquidated damages for undesignated live merchantable trees which are cut or injured. No damage is acceptable to undesignated live merchantable trees within Payment Unit 1. If more than 5% of trees (> 4.5" DBH) within a specified area of Payment Unit 1 are damaged, liquidated damages will be assessed for all trees damaged. Rates will be in accordance with General Condition and Requirement 3.4 Damaged Timber.

4 - Transportation

4.2 - Maintenance

4.2.5 - Two wheel drive condition (2/04)

All existing trail roads on and adjacent to the sale area must be passable by two-wheel drive traffic for the duration of the sale.

5 - Operations

5.1 - Notification

5.1.1 - Pre-sale conference (10/16)

A pre-sale conference on site between the Purchaser and sale administrator is required prior to beginning any operations to determine landing and road locations. The Unit Manager or his/her representative must be contacted at least 5 days in advance to schedule the conference.

5.2 - Conduct of Operations

5.2.1 - Slash

5.2.1.11 - Slash for reforestation (5/07)

To facilitate reforestation, Payment Unit(s) 2 and 3 shall be left with slash evenly distributed. Bunched tops within the cutting area shall be broken up and scattered. Stumps shall be cut low to the ground. Processing sites shall not be left with a compacted layer of slash; tops from these sites shall be hauled back into the cut area and scattered.

5.2.3 - Operating Restrictions

5.2.3.3 - Bark slippage restriction (3/09)

Within Payment Unit(s) 1, unless changed by written agreement, cutting and skidding are not permitted during the period of April 15 to July 15. This restriction is because of bark slippage.

5.2.38 - No decking against live trees (2/04)

Cut products may not be decked against unmarked or designated leave trees.

5.2.39 - ORV trail/route protection (4/18)

ORV trails are shown on the Timber Sale Map within Payment Unit 2 and along the south edge of Payment Unit 1. Within Payment Unit 2, all stumps within 5 feet of the trail must be cut flush with the ground and a 20-foot-wide slash, debris, and rut free zone must be maintained daily using the ORV route as the centerline. In addition, do not run equipment down the ORV trail within Payment Unit 2.

5.2.41 - Snowmobile trail protection (9/11)

There is a snowmobile trail shown on the Timber Sale Map on the south edge of Payment Unit 1. Do not cut or damage posts with orange trail markers or traffic control signs. If the trail is used, it must be maintained and restored to a condition equal to or better than before the sale. If the trail is used for hauling, it must be graded to the satisfaction of the Unit Manager or his/her representative prior to December 1. If the trail road is to be used for hauling during the snowmobile season, then a snow-covered base must be left on the trail.

5.4 - Soil Protection

5.4.1 - Rutting restriction, general (7/16)

Operations are to cease immediately if equipment and weather conditions result in rutting of roads and/or skid trails which is 12 inches or greater in depth and 50 feet in length. The Unit Manager or his/her representative may restrict hauling and/or skidding if ruts exceed the specified depth. With the Unit Manager or his/her representative's approval, the Purchaser may return to the area when the risk of rutting has decreased.

6 - Safety and Fire Prevention

6.2 - Signing

6.2.1 - Road posting (9/09)

The Purchaser is responsible for posting and maintaining caution signs on access and haul routes prior to beginning operations. The road must be posted at appropriate distances from the Sale Area to warn of logging activity and truck traffic. Signs must be removed when harvest operations are suspended or completed. The Purchaser will provide these signs.

6.2.3 - Recreational trail posting (2/10)

The Purchaser is responsible for posting and maintaining caution signs on the recreational trails affected by any active unit or haul route prior to beginning operations. The trail must be posted at appropriate distances from the Sale Area to warn of logging activity and truck traffic at both ends of the trail. Signs must be removed when harvest operations are suspended or completed. The Purchaser will provide these signs.



TIMBER SALE MAP

This information provided by authority of Part 525, 1994 PA 451, as amended.

Sale Number	Year
52 - 106	20

Forest Management Unit Gaylord	County Cheboygan	Mapped By TSP	Date 07/08/2020	Page 1	of 1
Cruised By TSP					

Township 34N	Range 03W	Section(s) and Subdivision(s) Sec 20: SESW; 21: W1/2NW	Scale 1:15,840
-----------------	--------------	---	-------------------

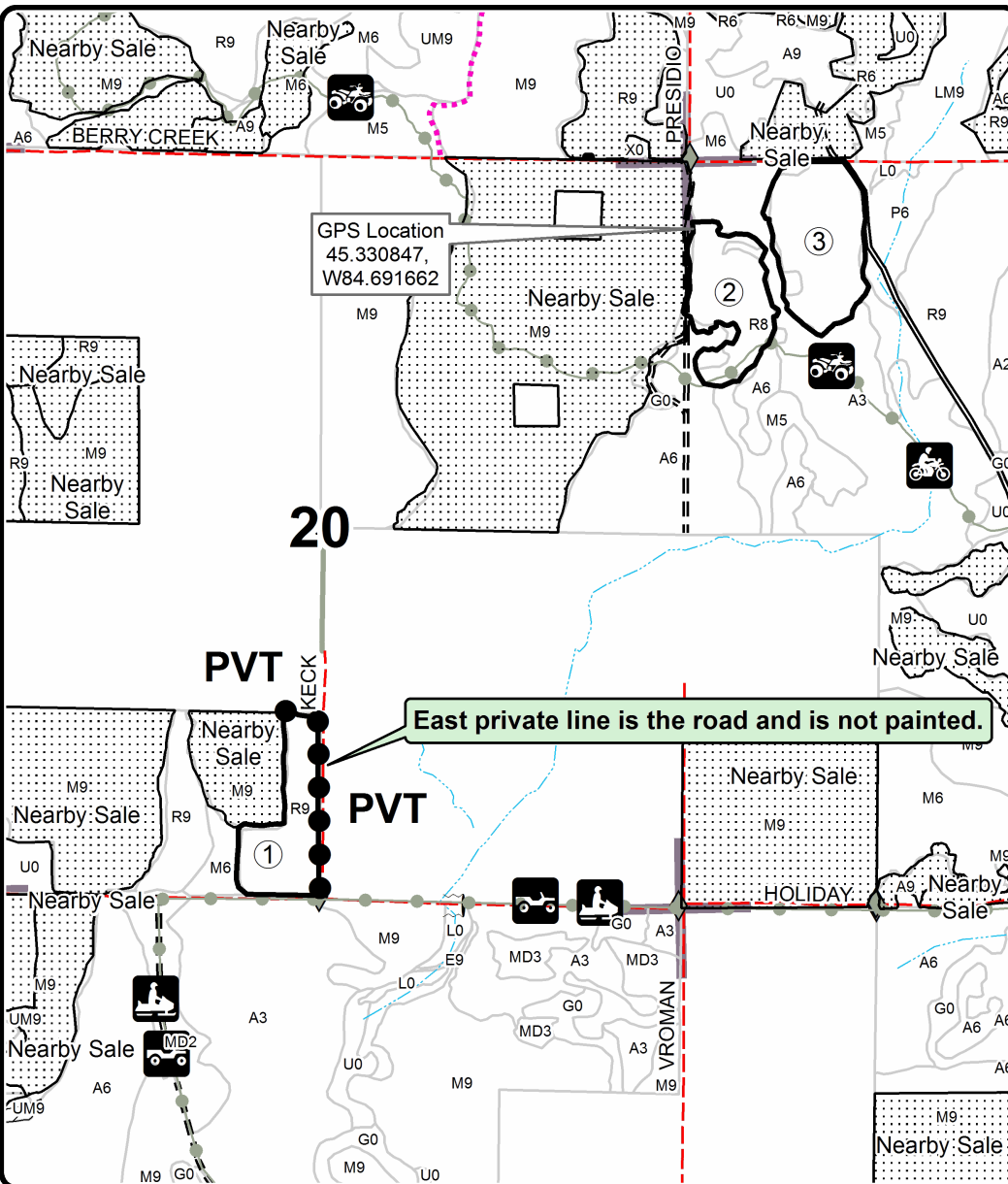
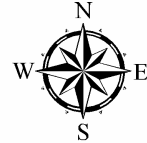
Cover Type				Density			
A = Aspen	H = Hemlock	N = Marsh	U = Upland Brush	0 = Non Stocked	5 = Pole Timber Medium		
B = Paper Birch	J = Jack Pine	O = Oak	UM = Upland Mixed	1 = Seedling Sapling Poor	6 = Pole Timber Well		
C = Cedar	L = Lowland Brush	P = Lowland Poplar	V = Bog or Marsh	2 = Seedling Sapling Medium	7 = Saw Timber Poor		
D = Treed Bog	LM = Lowland Mixed	Q = Mixed Swamp Conifer	W = White Pine	3 = Seedling Sapling Well	8 = Saw Timber Medium		
E = Swamp Hdwoods	M = Mpl, Bch, Brch	R = Red Pine	X = Non Stocked	4 = Pole Timber Poor	9 = Saw Timber Well		
F = Spruce Fir	MC = Mixed Conifer	S = Black Spruce	Z = Water				
G = Grass	MD = Mixed Deciduous	T = Tamarack					

PU	Acres
1	10.8
2	11.9
3	15.9

Tree Stooges Red Pine

Compartment 149

38.6 Acres

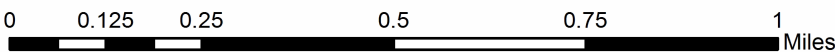
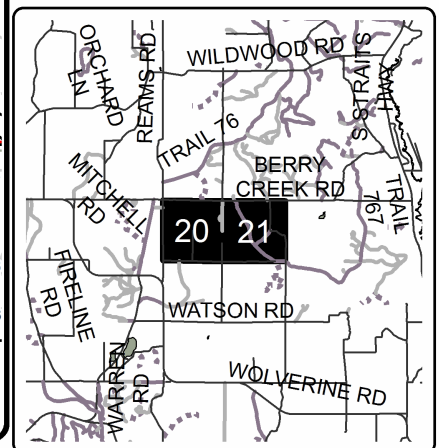


Legend

- Against State (Red)
- Private Line (Blue)
- Retention Area
- Nearby Timber Sales
- Stand Boundaries
- Recreational Trail
- Secondary Forest Road
- Forest Access Route
- County Road - Seasonal
- Private
- Temporary Management Access
- Intermittent Stream
- Section Corners
- Survey Corners

Locator Map

1:200,000



TIMBER SALE INFORMATION

N. Conway Mix (52-113-20)

T36N, R05W, SEC. 1; T36N, R05W, SEC. 12; T36N, R05W, SEC. 14; T36N, R05W, SEC. 2; T36N, R05W, SEC. 23.
Emmet County (Advertised Price \$73,414.25)

SALE NOTE: Seasonal snowmobile trail restrictions applied to this sale.

A timber sale contract for this lump sum, sealed bid timber sale will be awarded to the responsible bidder offering the highest sealed bid price. All units of volume listed below were estimated using the T-Sale computer program and our traditional volume equations. Bids must be at or above the following advertised price for each product and species:

<u>PRODUCTS & SPECIES</u>	<u>ESTIMATED UNITS*</u>	<u>ADVERTISED PRICE</u>
Sawtimber		
B. T. Aspen	29.0 MBF	\$ 39.00 / MBF
Basswood	8.7 MBF	\$ 42.00 / MBF
Red Maple	114.8 MBF	\$ 58.00 / MBF
Sugar Maple	148.6 MBF	\$ 249.00 / MBF
Pulpwood		
B. T. Aspen	700 Cords	\$ 13.95 / Cord
Mixed Hardwood	1,271 Cords	\$ 14.55 / Cord

* The total volume is statistically estimated within plus (+) or minus (-) 9.76 percent. There are an estimated 2,574 cords on this timber sale, plus or minus 251 cords at the 95% confidence level. The estimated units are final and not subject to adjustment. Prospective bidders are urged to examine this timber and to make their own estimates of quantity and quality.

BOND AND PAYMENT SCHEDULE:

1. A bond in the amount of \$3,671.00 to insure faithful performance of the conditions of the contract will be deposited by the successful bidder within 21 days of the sale award.
2. Cutting in any sale or unit without the required advance payment would be considered a trespass.
3. Total payment must be paid in advance or according to the following schedule :
 - (a) Ten percent (10%) of the sale value must be paid within 21 days of the sale award.
 - (b) The 10% down payment will be credited towards the first unit cut.
 - (c) Payment for each of the following units must be made before cutting begins in that unit:

<u>PAYMENT UNIT NUMBER</u>	<u>PERCENT OF TOTAL SALE VALUE</u>
01	11.5%
02	25.9%
03	43.7%
04	18.9%

4. If no cutting takes place, the 10% down payment will not be refunded.
5. Operations on the contract issued will terminate on 06/30/2024.

SALE STATISTICS

SALE VOLUMES

<u>VOLUME</u>		<u>STATISTICAL RANGE IN CORDS</u>		
<u>TOTAL CUBIC FEET</u>	<u>TOTAL CORDS</u>	<u>PERCENT ERROR</u>	<u>MINIMUM</u>	<u>MAXIMUM</u>
203,367	2,574	9.76%	2,323	2,826

VDU VOLUMES

A VDU is a Volume Determination Unit. Volumes and their associated statistics are calculated at the VDU level and summarized to the sale level. There is often a one to one relationship between a VDU and a Payment Unit, but not always, depending on the cruise design. Refer to the VDU TO PAYMENT UNIT table.

VDU	VOLUME		PERCENT ERROR	RANGE IN CORDS	
	TOTAL CUBIC FEET	TOTAL CORDS		MINIMUM	MAXIMUM
7	92,525	1,171	10.60%	1,047	1,295
16	23,740	301	35.48%	194	407
33	34,033	431	29.99%	302	560
34	53,049	672	21.11%	530	813
TOTAL:	203,346	2,574		2,072	3,076

VDU TO PAYMENT UNIT

When a VDU is associated with more than one Payment Unit (PU), the VDU volumes are assigned to the PU based on acres of the VDU within the PU.

VDU	VDU ACRES	PU	PU ACRES
7	40.8	2	17.5
		3	23.3
16	7.7	1	7.7
33	15.4	3	15.4
34	20.1	4	20.1
TOTAL:	84.0		84.0

DESCRIPTION OF TIMBER BY PAYMENT UNIT (PU)

PU	MARKET GROUP	PRODUCT	QUANTITY	UNIT	ACRES	ADVERTISE PRICE
1	B. T. Aspen	Sawtimber	7.8	MBF	7.7	\$8,425.30
	Red Maple		13.6	MBF		
	Sugar Maple		16.5	MBF		
	B. T. Aspen		59	Cords		
	Mixed Hardwood	Pulpwood	165	Cords		
	<i>Basswood</i>		9	<i>Cords</i>		
	<i>Beech</i>		15	<i>Cords</i>		
	<i>Red Maple</i>		59	<i>Cords</i>		
	<i>Sugar Maple</i>		82	<i>Cords</i>		
2	B. T. Aspen	Sawtimber	7.8	MBF	17.5	\$19,023.80
	Basswood		3.7	MBF		
	Red Maple		25.4	MBF		
	Sugar Maple		49.6	MBF		
	B. T. Aspen	Pulpwood	53	Cords		
	Mixed Hardwood		275	Cords		
	<i>Basswood</i>		6	<i>Cords</i>		
	<i>Beech</i>		20	<i>Cords</i>		
	<i>Red Maple</i>		56	<i>Cords</i>		
	<i>Sugar Maple</i>		193	<i>Cords</i>		
3	B. T. Aspen	Sawtimber	13.4	MBF	38.7	\$32,083.95
	Basswood		5.0	MBF		
	Red Maple		39.0	MBF		
	Sugar Maple		68.2	MBF		
	B. T. Aspen	Pulpwood	409	Cords		
	Mixed Hardwood		440	Cords		
	<i>Basswood</i>		9	<i>Cords</i>		
	<i>Beech</i>		29	<i>Cords</i>		
	<i>Red Maple</i>		121	<i>Cords</i>		
	<i>Sugar Maple</i>		281	<i>Cords</i>		
4	Red Maple	Sawtimber	36.8	MBF	20.1	\$13,881.20
	Sugar Maple		14.3	MBF		
	B. T. Aspen	Pulpwood	179	Cords		
	Mixed Hardwood		391	Cords		
	<i>Beech</i>		7	<i>Cords</i>		
	<i>Black Cherry</i>		20	<i>Cords</i>		
	<i>Red Maple</i>		248	<i>Cords</i>		
	<i>Sugar Maple</i>		116	<i>Cords</i>		
TOTAL:			301.1	MBF		
TOTAL:			1,971	Cords		

Sale Specific Conditions & Requirements

Sale Name: N. Conway Mix

Sale Number: 52-113-20 Seq#: 2

1 - Sale Area

1.2 - Boundaries

1.2.1 - Painted boundaries (9/19)

The sale boundary and Payment Unit boundaries are marked and identified by blue, red, and yellow paint. Exterior sale boundary lines adjacent to private property are marked with blue paint. Exterior sale boundary lines adjacent to state-owned property are marked with red paint. Interior Payment Unit boundaries are marked with yellow paint. A timber retention area is shown on the Timber Sale Map in Payment Unit 3 and is marked with red paint; no harvesting activities may occur within this area. The painted exterior boundary line trees are not Included Timber and are to remain unharvested. Yellow painted trees designating an interior Payment Unit boundary are only to be cut when all surrounding Payment Units have been paid.

2 - Timber Specifications

2.1 - Included Timber

2.1.1 - Clearcut unit(s) with unmerchantable trees (6/14)

Within Payment Unit(s) 1 - 4, cut all trees that are two (2) inches or more at DBH, except do not cut oak, hemlock, or white pine. In addition, within Payment Units 2 and 3, do not cut black cherry, juneberry, or green banded white ash and beech. Also, within Payment Unit 4, do not cut juneberry, or any green banded black cherry, white ash, and beech.

3 - Payments

3.3 - Pre-measured Sales

3.3.4 - Dividing payment units (7/14)

Payment Unit(s) 1 - 4 may be divided at the request of the Purchaser and upon approval of the Unit Manager. Dividing Payment Units is a contract modification which requires a Timber Sale Contract Amendment. There will be only one division per Payment Unit. The Contract Supplement must be signed and received before harvest operations can begin.

4 - Transportation

4.1 - Construction

4.1.3 - Slash and earthen piles (8/04)

Piles or windrows of earth along roads and landings that have been widened or constructed shall be leveled. Slash from road maintenance or construction, including stumps, shall be dispersed throughout the Sale Area or chipped and utilized, or otherwise removed from the sale.

4.1.6 - Road construction (1/09)

Construction of new roads or improvements of existing roads shall be done in such a way as to minimize the environmental and visual impacts. Merchantable trees shall be cut and utilized unless otherwise directed. Non-merchantable trees shall be severed and laid flat on the ground. Slash shall be scattered, and not left in windrows and kept a minimum of 10 feet back from the road edge. Stumps shall be set upright, not left on edge, and be moved at least 10 feet away from the road edge. Disturbed soil shall be feathered into the woods and not left in berms or windrows.

4.1.7 - Road closure (10/11)

All new roads built into the sale must be blocked to vehicle traffic upon completion of the sale. Overgrown roads that are reopened shall be considered new roads. In general, this will require constructing a four (4') foot high berm of stumps and logs covered with earth.

4.2 - Maintenance

4.2.5 - Two wheel drive condition (2/04)

All existing trail roads on and adjacent to the sale area must be passable by two-wheel drive traffic for the duration of the sale.

5 - Operations

5.1 - Notification

5.1.1 - Pre-sale conference (10/16)

A pre-sale conference between the Purchaser and sale administrator is required prior to beginning any operations to discuss contract specifications and to determine landing and road locations.

5.2 - Conduct of Operations

5.2.1 - Slash

5.2.1.1 - Slash within sale area (9/16)

No trees are to be felled outside the sale area and all slash is to be kept at least 10 feet back from the red paint line. If sale boundary lines are along a public road or highway, then slash must be removed 50' from these lines per General Condition & Requirement 5.2.1.

5.2.1.8 - Slash height (12/08)

No slash or tree tops may exceed 36 inches in height.

5.2.2 - Hazard Trees/Snags

5.2.2.1 - Den trees (10/16)

Obvious hollow and/or den trees shall be protected and left standing unless they are a safety hazard.

5.2.4 - Dead and Down Creation

5.2.4.1 - Dead and down creation, marked trees (10/13)

To encourage grouse and other wildlife, in Payment Unit(s) 1 - 4, all trees marked with a band of pink paint must be left until all merchantable timber has been cut and taken to the landing. At which time, they are to be cut, felled, and left on the ground. These trees will serve as ruffed grouse drumming logs and have been taken off the timber tally.

5.2.29 - Shrub protection (1/20)

Do not cut or damage hawthorn, witch-hazel, dogwood, or junberry. These woody-shrub plants are highly beneficial to various wildlife species.

5.2.32 - Decking/landing restoration (9/13)

All decking and landing areas must have the surface area restored to a condition equal to or better than before. This is to ensure the proper regeneration of the stand. Wood debris, chips and "cookies" from trimmings must be removed or scattered away from landing and loading areas and may not be windrowed on the edge. Stumps will be removed from the landing area and dispersed back into the Sale Area away from the landing. Piles of topsoil will need to be spread out evenly.

5.2.41 - Snowmobile trail protection (9/11)

The designated snowmobile trail is shown on the Timber Sale Map. Do not cut or damage posts with orange trail markers or traffic control signs. If the trail is used, it must be maintained daily and restored to a condition equal to or better than before the sale. The final road maintenance/restoration must be done prior to December 1, making it in a condition suitable for trail grooming. The snowmobile trail may not be used for any timber sale operations from December 1 to April 1. Access into Payment Units 2 and 3 is possible during this period from Tower Road if the snowmobile trail is not crossed. Maintain a 20-foot-wide slash, debris, and rut free zone daily using the snowmobile trail as the centerline. No decking of forest products will be permitted along the snowmobile trail. All stumps within 10 feet of the snowmobile trail must be cut at ground level.

5.4 - Soil Protection

5.4.1 - Rutting restriction, general (7/16)

Operations are to cease immediately if equipment and weather conditions result in rutting of roads which is 12 inches or greater in depth and 50 feet in length. The Unit Manager or his/her representative may restrict hauling and/or skidding if ruts exceed the specified depth. With the Unit Manager or his/her representative's approval, the Purchaser may return to the area when the risk of rutting has decreased.

5.8 - Protection of Endangered Species

5.8.5 - Protection of raptor nests (3/13)

All trees with raptor nests will be protected if found during harvesting operations. Notification will be made to the Unit Manager or his/her representative who will notify the Wildlife Biologist so an on-site evaluation and recommendation can be made, if necessary.

6 - Safety and Fire Prevention

6.2 - Signing

6.2.1 - Road posting (9/09)

The Purchaser is responsible for posting and maintaining caution signs on Tower, N. Conway, and E. Stutsmanville Rds. prior to beginning operations. The road must be posted at appropriate distances from the Sale Area to warn of logging activity and truck traffic. Signs must be removed when harvest operations are suspended or completed. The Purchaser will provide these signs.



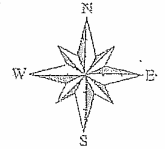
TIMBER SALE MAP

This information provided by authority of Part 525, 1994 PA 451, as amended.

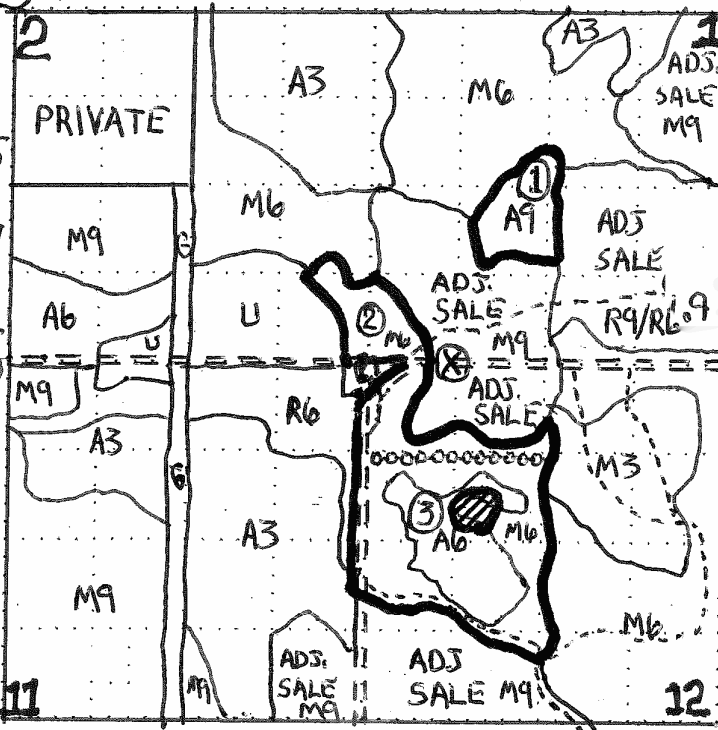
Sale Number	Year
52-113-20	2020
Date	Page of
08/20/20	1 2

Forest Management Unit GAYLORD-NORTH	County EMMET	Mapped By STACKS	Date
Township T36N	Range R05W	Cruised By STACKS	Page of 1 2
Section(s) and Subdivision(s) 1 SW 1/4; 2 SESE; 12 SW 1/4			
Cover Type		Density	
A = Aspen B = Paper Birch C = Cedar D = Tread Bog E = Swamp Hardwoods F = Spruce/Fir G = Grass H = Hemlock	J = Jack Pine K = Rock L = Lowland Brush LM = Lowland Mix Forest M = Maple, Beech, Birch MC = Mixed Conifer N = Marsh	O = Oak P = Lowland Poplar Q = Mixed Swamp Conifer R = Red Pine S = Black Spruce T = Tamarack U = Upland Brush UM = Upland Mix Forest V = Bog or Marsh W = White Pine X = Non Stocked Y = Sand Z = Water	0 = Non Stocked 1 = Seedling Sapling Poor 2 = Seedling Sapling Medium 3 = Seedling Sapling Well 4 = Pole Timber Poor 5 = Pole Timber Medium 6 = Pole Timber Well 7 = Saw Timber Poor 8 = Saw Timber Medium 9 = Saw Timber Well

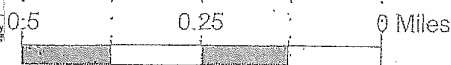
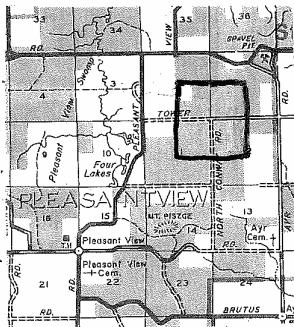
COMPARTMENT 116
N. CONWAY MIX
84 ACRES
EMMET COUNTY



P.U.	ACRES
1	7.7
2	17.5
3	38.7
4	20.1
	84.0



SALE BOUNDARY:
 PUBLIC (RED) -
 PRIVATE (BLUE) -
 PAYMENT UNIT: (YELLOW) -
 P.U. NUMBER - ①
 COUNTY ROAD (SEASONAL) -
 FOREST TRAIL ROAD -
 SNOWMOBILE/TRAIL -
 RETENTION AREA -
 (X) - 84.871375°
 45.536287°





TIMBER SALE MAP

This information provided by authority of Part 525, 1994 PA 451, as amended.

Sale Number	Year
52-113-20	2020

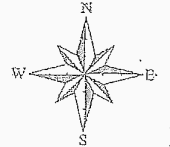
Forest Management Unit GAYLORD - NORTH	County EMMET	Mapped By STACKS	Date 08/20/20	Page 2	of 2
Township T36N	Range R05W	Section(s) and Subdivision(s) 14 5 1/2 SW; 23 NENW			
Cover Type			Density		
A = Aspen B = Paper Birch C = Cedar D = Treed Bog E = Swamp Hardwoods F = Spruce/Fir G = Grass H = Hemlock	J = Jack Pine K = Rock L = Lowland Brush LM = Lowland Mix Forest M = Maple, Beech, Birch MC = Mixed Conifer MD = Mixed Deciduous N = Marsh	O = Oak P = Lowland Poplar Q = Mixed Swamp Conifer R = Red Pine S = Black Spruce T = Tamarack	U = Upland Brush UM = Upland Mix Forest V = Bog or Marsh W = White Pine X = Non Stocked Y = Sand Z = Water	0 = Non Stocked 1 = Seedling Sapling Poor 2 = Seedling Sapling Medium 3 = Seedling Sapling Well 4 = Pole Timber Poor	5 = Pole Timber Medium 6 = Pole Timber Well 7 = Saw Timber Poor 8 = Saw Timber Medium 9 = Saw Timber Well

COMPARTMENT 116

N. CONWAY MIX

84 ACRES

EMMET COUNTY



P.U.	ACRES	SCHEIRSCHMIDT	RD.	SALE BOUNDARY
------	-------	---------------	-----	---------------

4 - 20.1

PRIVATE

PUBLIC (RED) -

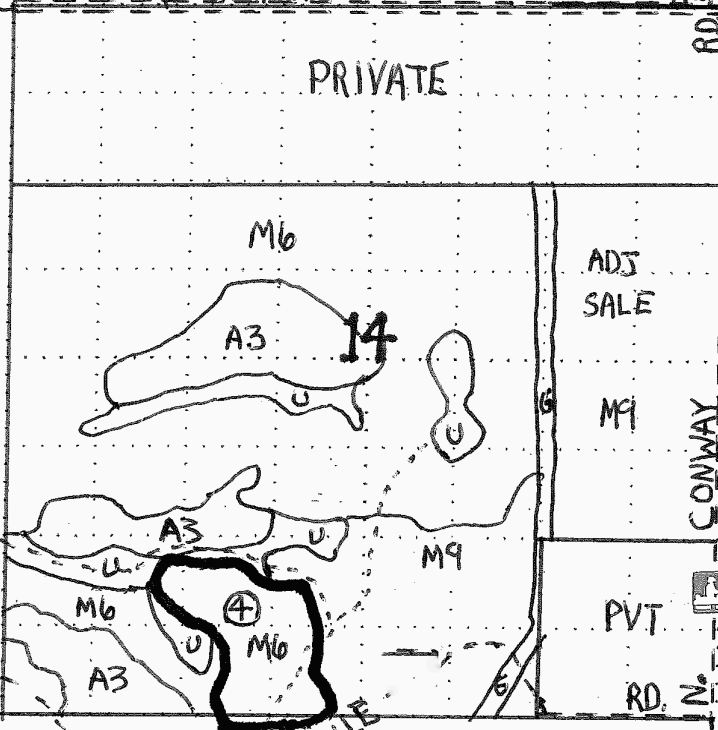
P.U. NUMBER -

COUNTY ROAD -

SEASONAL C.R. -

FOREST TRAIL ROAD -

SNOWMOBILE TRAIL -



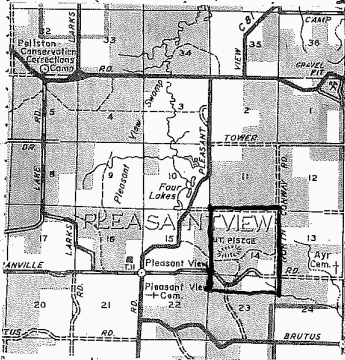
ADJ SALE

M9

PVT

RD. N

- 84.885947
45.507157



0.5 0.25 0 Miles

TIMBER SALE INFORMATION

Burt Red Pine (52-123-20)
 T36N, R03W, SEC. 7.
 Cheboygan County (Advertised Price \$5,335.45)

SALE NOTE: Intermediate red pine crown thinning. Seasonal bark slippage restriction applied. No harvest activity from April 15 to July 15.

A timber sale contract for this lump sum, sealed bid timber sale will be awarded to the responsible bidder offering the highest sealed bid price. All units of volume listed below were estimated using the T-Sale computer program and our traditional volume equations. Bids must be at or above the following advertised price for each product and species:

<u>PRODUCTS & SPECIES</u>	<u>ESTIMATED UNITS*</u>	<u>ADVERTISED PRICE</u>
Sawtimber		
Red Pine	30.5 MBF	\$ 82.00 / MBF
Pulpwood		
Red Pine	83 Cords	\$ 34.15 / Cord

* The total volume is statistically estimated within plus (+) or minus (-) 31.04 percent. There are an estimated 144 cords on this timber sale, plus or minus 45 cords at the 95% confidence level. The estimated units are final and not subject to adjustment. Prospective bidders are urged to examine this timber and to make their own estimates of quantity and quality.

BOND AND PAYMENT SCHEDULE:

1. A bond in the amount of \$267.00 to insure faithful performance of the conditions of the contract will be deposited by the successful bidder within 21 days of the sale award.
2. Cutting in any sale or unit without the required advance payment would be considered a trespass.
3. Total payment must be paid in advance or according to the following schedule :
 - (a) Ten percent (10%) of the sale value must be paid within 21 days of the sale award.
 - (b) The remainder is due before cutting begins.
 - (c) Payment for each of the following units must be made before cutting begins in that unit:

PAYMENT UNIT NUMBER	PERCENT OF TOTAL SALE VALUE
01	100.0%
4. If no cutting takes place, the 10% down payment will not be refunded.
5. Operations on the contract issued will terminate on 06/30/2024.

SALE STATISTICS

SALE VOLUMES

VOLUME		STATISTICAL RANGE IN CORDS		
TOTAL CUBIC FEET	TOTAL CORDS	PERCENT ERROR	MINIMUM	MAXIMUM
11,351	144	31.04%	99	188

VDU VOLUMES

A VDU is a Volume Determination Unit. Volumes and their associated statistics are calculated at the VDU level and summarized to the sale level. There is often a one to one relationship between a VDU and a Payment Unit, but not always, depending on the cruise design. Refer to the VDU TO PAYMENT UNIT table.

VDU	VOLUME			RANGE IN CORDS	
	TOTAL CUBIC FEET	TOTAL CORDS	PERCENT ERROR	MINIMUM	MAXIMUM
6	11,344	144	31.04%	99	188
TOTAL:	11,344	144		99	188

VDU TO PAYMENT UNIT

When a VDU is associated with more than one Payment Unit (PU), the VDU volumes are assigned to the PU based on acres of the VDU within the PU.

VDU	VDU ACRES	PU	PU ACRES
6	13.9	1	13.9
TOTAL:	13.9		13.9

DESCRIPTION OF TIMBER BY PAYMENT UNIT (PU)

PU	MARKET GROUP	PRODUCT	QUANTITY	UNIT	ACRES	ADVERTISE PRICE
1	Red Pine	Sawtimber	30.5	MBF	13.9	\$5,335.45
	Red Pine	Pulpwood	83	Cords		
TOTAL:			30.5	MBF		
TOTAL:			83	Cords		

Sale Specific Conditions & Requirements

Sale Name: Burt Red Pine

Sale Number: 52-123-20 Seq#: 2

1 - Sale Area

1.2 - Boundaries

1.2.1 - Painted boundaries (9/19)

The sale boundary and Payment Unit boundaries are marked and identified by blue and red paint. Exterior sale boundary lines adjacent to private property are marked with blue paint. Exterior sale boundary lines adjacent to state-owned property are marked with red paint.

2 - Timber Specifications

2.1 - Included Timber

2.1.3 - Cut tree marked unit(s) (12/08)

Within Payment Unit(s) 1, all red pine trees are designated for cutting when marked with orange paint above and below stump height, regardless of merchantability. Any trees, other than oak or hemlock, that blocks movement of harvest equipment within the sale boundary, may be felled and left intact on the ground.

2.2 - Utilization

2.2.3 - Stump heights (4/07)

Stump heights within the Sale Area shall not exceed 6 inches for all trees.

3 - Payments

3.3 - Pre-measured Sales

3.3.4 - Dividing payment units (7/14)

Payment Unit(s) may be divided at the request of the Purchaser and upon approval of the Unit Manager. Dividing Payment Units is a contract modification which requires a Timber Sale Contract Amendment. There will be only one division per Payment Unit. The signed contract amendment must be received before harvest operations can begin.

3.4 - Damaged Timber

3.4.1 - Damaged timber (7/16)

General Condition and Requirement 3.4 Damaged Timber, defines liquidated damages for undesignated live merchantable trees which are cut or injured.

4 - Transportation

4.1 - Construction

4.1.3 - Slash and earthen piles (8/04)

Piles or windrows of earth along roads and landings that have been widened or constructed shall be leveled. Slash from road maintenance or construction, including stumps, shall be dispersed throughout the sale.

4.1.4 - Timber removed for construction (12/09)

Trees cut or damaged in the process of pre-approved road, landing or skid trail construction will be decked in an area separate from other Designated Timber and not removed until measured by the sale administrator. Payment will be made at the specified Purchase Unit Price.

4.1.6 - Road construction (1/09)

Construction of new roads or improvements of existing roads shall be done in such a way as to minimize the environmental and visual impacts. Merchantable trees shall be cut and utilized unless otherwise directed. Non-merchantable trees shall be severed and laid flat on the ground. Slash shall be scattered, and not left in windrows and kept a minimum of 10 feet back from the road edge. Stumps shall be set upright, not left on edge, and be moved at least 10 feet away from the road edge. Disturbed soil shall be feathered into the woods and not left in berms or windrows.

4.1.7 - Road closure (10/11)

All new roads built into the sale must be blocked to vehicle traffic upon completion of the sale. Overgrown roads that are reopened shall be considered new roads. In general, this will require constructing a four (4') foot high berm of stumps and logs covered with earth. These roads must be rendered impassable to cars and trucks.

4.2 - Maintenance

4.2.3 - Road maintenance (8/13)

The following road maintenance is required: Hardwood and Indian Roads must remain in a condition suitable for two-wheel drive traffic during the time harvest operations are on-going. Grading of these roads may be necessary after operations are complete.

4.3 - Public Right-of-Way

4.3.2 - County R-O-W (12/06)

The county must be contacted prior to crossing or harvesting in the county road R-O-W. This applies to Hardwood Road and Indian Road R.O.W.'s.

5 - Operations

5.1 - Notification

5.1.1 - Pre-sale conference (10/16)

A pre-sale conference between the Purchaser and sale administrator is required prior to beginning any operations to determine landing and road locations.

5.1.6 - Utility R.O.W. (4/19)

It is the responsibility of the Purchaser to obtain permission from the utility company to utilize the power line R.O.W. for operations.

5.2 - Conduct of Operations

5.2.1 - Slash

5.2.1.2 - Slash Removal

5.2.1.2.6 - Slash removal, general (7/05)

All slash must be removed from at least 10 feet back from the red boundary lines. Slash must not accumulate at the landing area and be spread uniformly throughout the Sale Area.

5.2.2 - Hazard Trees/Snags

5.2.2.1 - Den trees (10/16)

Obvious hollow and/or den trees shall be protected and left standing unless they are a safety hazard.

5.2.3 - Operating Restrictions

5.2.3.3 - Bark slippage restriction (3/09)

Within Payment Unit(s) 1, unless changed by written agreement, cutting and skidding are not permitted during the period of April 15 to July 15. This restriction is because of bark slippage.

5.2.3.6 - Bark beetle restriction (12/08)

In the event drought creates a high risk of pine bark beetle infestation, pine is not to be cut during the period March 1 through July 1, unless all portions of trees greater than two inches in diameter are removed from the sale area, reduced to chips, or treated to the satisfaction of the Unit Manager or his/her representative, within fifteen days of being severed from the stump. Pine log decks, pulpwood piles and treetops that are piled for chipping in the fall or winter within a 1/4 mile of susceptible sites must be removed before March 15. Residual slash must not be placed in piles or rows and must be spread over the site for quick drying. The Department of Natural Resources will exercise this specification if the risk of damage warrants.

5.4 - Soil Protection

5.4.1 - Rutting restriction, general (7/16)

Operations are to cease immediately if equipment and weather conditions result in rutting of roads which is 12 inches or greater in depth and 50 feet in length. The Unit Manager or his/her representative may restrict hauling and/or skidding if ruts exceed the specified depth. With the Unit Manager or his/her representative's approval, the Purchaser may return to the area when the risk of rutting has decreased.

5.8 - Protection of Endangered Species

5.8.5 - Protection of raptor nests (3/13)

All trees with raptor nests will be protected if found during harvesting operations. Notification will be made to the Unit Manager or his/her representative who will notify the Wildlife Biologist so an on-site evaluation and recommendation can be made, if necessary.

6 - Safety and Fire Prevention

6.2 - Signing

6.2.1 - Road posting (9/09)

The Purchaser is responsible for posting and maintaining caution signs on Hardwood and Indian Roads prior to beginning operations. The road must be posted at appropriate distances from the Sale Area to warn of logging activity and truck traffic. Signs must be removed when harvest operations are suspended or completed. The Purchaser will provide these signs.



TIMBER SALE MAP

This information provided by authority of Part 525, 1994 PA 451, as amended.

Sale Number	Year
52-123-20	2020
Date	Page of
09/14/2020	1 of 1

Forest Management Unit GAYLORD - NORTH	County CHEBOYGAN	Mapped By STACKS
Township T36N	Range R03W	Cruised By STACKS
Section(s) and Subdivision(s) 7 SESE		

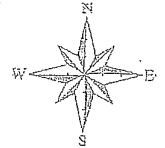
Cover Type				Density	
A = Aspen	J = Jack Pine	O = Oak	U = Upland Brush	0 = Non Stocked	5 = Pole Timber Medium
B = Paper Birch	K = Rock	P = Lowland Poplar	UM = Upland Mix Forest	1 = Seedling Sapling Poor	6 = Pole Timber Well
C = Cedar	L = Lowland Brush	Q = Mixed Swamp Conifer	V = Bog or Marsh	2 = Seedling Sapling Medium	7 = Saw Timber Poor
D = Tread Bog	LM = Lowland Mix Forest	R = Red Pine	W = White Pine	3 = Seedling Sapling Well	8 = Saw Timber Medium
E = Swamp Hardwoods	M = Maple, Beech, Birch	S = Black Spruce	X = Non Stocked	4 = Pole Timber Poor	9 = Saw Timber Well
F = Spruce/Fir	MC = Mixed Conifer	T = Tamarack	Y = Sand		
G = Grass	MD = Mixed Deciduous		Z = Water		
H = Hemlock	N = Marsh				

COMPARTMENT 140

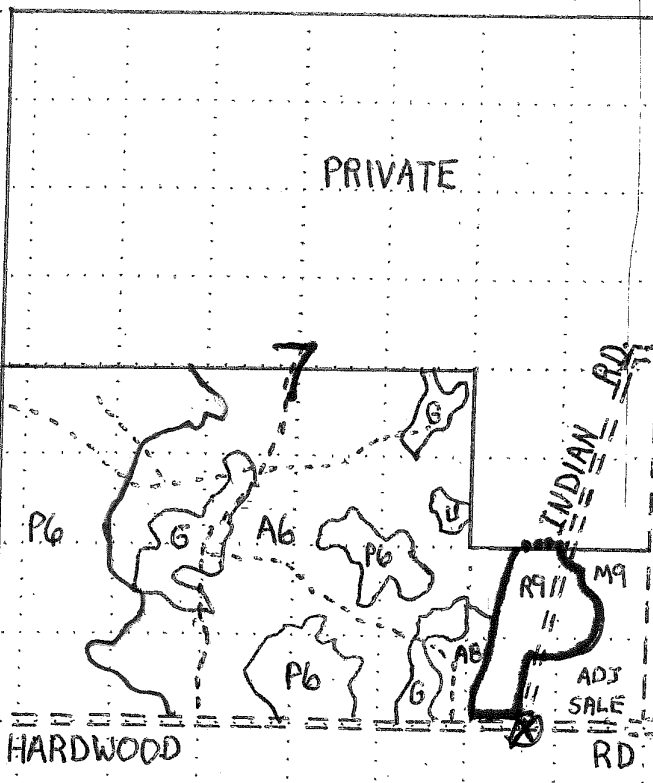
BURT RED PINE

13.9 ACRES

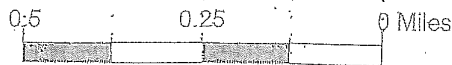
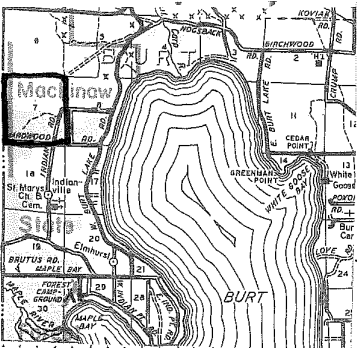
CHEBOYGAN COUNTY



<u>P.U.</u>	<u>ACRES</u>
1	13.9



- SALE BOUNDARY:**
- PUBLIC (RED) - ———
 - PRIVATE (BLUE) - - - - -
- PAYMENT UNIT:**
- (YELLOW) - 00000
- P.U. NUMBER - ①**
- COUNTY ROAD - - - - -**
- SEASONAL C. R. - - - - -**
- FOREST TRAIL ROAD - - - - -**
- SNOWMOBILE TRAIL -**
- RETENTION AREA -**



⊗ - 84.715236°
45.521548°

TIMBER SALE INFORMATION

Liquefaction Aspen (52-114-17)

T39N, R04W, SEC. 23; T39N, R04W, SEC. 24; T39N, R04W, SEC. 25; T39N, R04W, SEC. 34; T39N, R04W, SEC. 36.
Emmet County (Advertised Price \$66,345.50)

SALE NOTE: The intent of this sale is to diversify age classes of early successional species within this compartment. Some areas may be heavy to pole timber.

The Snowmobile Trail may not be used for any timber sale related activity from 12/01-3/31, though the Village of Mackinaw has granted permission for use of a two-track through their property with conditions.

A recreation site such as a trail, pathway, or campground is within the sale area or the vicinity. Certain restrictions/specifications may be applicable including time restrictions. Access may be through private or other public land.

A timber sale contract for this lump sum, sealed bid timber sale will be awarded to the responsible bidder offering the highest sealed bid price. All units of volume listed below were estimated using the T-Sale computer program and our traditional volume equations. Bids must be at or above the following advertised price for each product and species:

<u>PRODUCTS & SPECIES</u>	<u>ESTIMATED UNITS*</u>	<u>ADVERTISED PRICE</u>
Sawtimber		
Mixed Aspen	334.2 MBF	\$ 39.00 / MBF
Red Maple	14.7 MBF	\$ 58.00 / MBF
Pulpwood		
Balsam Fir	289 Cords	\$ 13.55 / Cord
Mixed Aspen	2,957 Cords	\$ 13.95 / Cord
Mixed Hardwood	374 Cords	\$ 14.55 / Cord
Paper Birch	99 Cords	\$ 7.45 / Cord
White Ash	135 Cords	\$ 8.25 / Cord

* The total volume is statistically estimated within plus (+) or minus (-) 9.13 percent. There are an estimated 4,595 cords on this timber sale, plus or minus 420 cords at the 95% confidence level. The estimated units are final and not subject to adjustment. Prospective bidders are urged to examine this timber and to make their own estimates of quantity and quality.

BOND AND PAYMENT SCHEDULE:

1. A bond in the amount of \$3,317.00 to insure faithful performance of the conditions of the contract will be deposited by the successful bidder within 21 days of the sale award.
2. Cutting in any sale or unit without the required advance payment would be considered a trespass.
3. Total payment must be paid in advance or according to the following schedule :
 - (a) Ten percent (10%) of the sale value must be paid within 21 days of the sale award.
 - (b) The 10% down payment will be credited towards the first unit cut.
 - (c) Payment for each of the following units must be made before cutting begins in that unit:

PAYMENT UNIT NUMBER	PERCENT OF TOTAL SALE VALUE
01	35.9%
02	45.3%
03	18.8%
4. If no cutting takes place, the 10% down payment will not be refunded.
5. Operations on the contract issued will terminate on 06/30/2024.

SALE STATISTICS

SALE VOLUMES

VOLUME		STATISTICAL RANGE IN CORDS		
TOTAL CUBIC FEET	TOTAL CORDS	PERCENT ERROR	MINIMUM	MAXIMUM
362,987	4,595	9.13%	4,175	5,014

VDU VOLUMES

A VDU is a Volume Determination Unit. Volumes and their associated statistics are calculated at the VDU level and summarized to the sale level. There is often a one to one relationship between a VDU and a Payment Unit, but not always, depending on the cruise design. Refer to the VDU TO PAYMENT UNIT table.

VDU	VOLUME		PERCENT ERROR	RANGE IN CORDS	
	TOTAL CUBIC FEET	TOTAL CORDS		MINIMUM	MAXIMUM
14	21,409	271	21.90%	212	330
29	91,514	1,158	14.87%	986	1,331
42	64,306	814	16.64%	679	949
60	38,236	484	17.83%	398	570
141	45,638	578	23.63%	441	714
291	66,826	846	21.37%	665	1,027
601	35,013	443	18.36%	362	525
TOTAL:	362,942	4,594		3,742	5,446

VDU TO PAYMENT UNIT

When a VDU is associated with more than one Payment Unit (PU), the VDU volumes are assigned to the PU based on acres of the VDU within the PU.

VDU	VDU ACRES	PU	PU ACRES
14	13.1	1	13.1
29	30.3	2	30.3
42	23.3	1	23.3
60	31.6	3	31.6
141	29.6	1	29.6
291	27.2	2	27.2
601	28.1	3	28.1
TOTAL:	183.2		183.2

DESCRIPTION OF TIMBER BY PAYMENT UNIT (PU)

PU	MARKET GROUP	PRODUCT	QUANTITY	UNIT	ACRES	ADVERTISE PRICE
1	Mixed Aspen	Sawtimber	121.9	MBF	66.0	\$23,801.75
	<i>B. T. Aspen</i>		78.4	<i>MBF</i>		
	<i>Quaking Aspen</i>		43.5	<i>MBF</i>		
	Red Maple		1.5	MBF		
	Balsam Fir	Pulpwood	113	Cords		
	<i>Balsam Fir</i>	<i>Sawtimber</i>	2.3	<i>MBF</i>		
	<i>Balsam Fir</i>	<i>Pulpwood</i>	108	<i>Cords</i>		
	Mixed Aspen		1,074	Cords		
	<i>Balsam Poplar</i>	<i>Sawtimber</i>	0.8	<i>MBF</i>		
	<i>B. T. Aspen</i>	<i>Pulpwood</i>	463	<i>Cords</i>		
	<i>Balsam Poplar</i>		39	<i>Cords</i>		
	<i>Quaking Aspen</i>		570	<i>Cords</i>		
	Mixed Hardwood		117	Cords		
	<i>Sugar Maple</i>	<i>Sawtimber</i>	0.9	<i>MBF</i>		
	<i>Basswood</i>	<i>Pulpwood</i>	4	<i>Cords</i>		
	<i>Red Maple</i>		87	<i>Cords</i>		
	<i>Sugar Maple</i>		24	<i>Cords</i>		
	Paper Birch		28	Cords		
	<i>Paper Birch</i>	<i>Sawtimber</i>	0.4	<i>MBF</i>		
	<i>Paper Birch</i>	<i>Pulpwood</i>	27	<i>Cords</i>		
	White Ash		65	Cords		
	<i>White Ash</i>	<i>Sawtimber</i>	5.2	<i>MBF</i>		
	<i>Black Ash</i>	<i>Pulpwood</i>	10	<i>Cords</i>		
<i>White Ash</i>		45	<i>Cords</i>			
2	Mixed Aspen	Sawtimber	184.7	MBF	57.5	\$30,083.50
	<i>B. T. Aspen</i>		171.2	<i>MBF</i>		
	<i>Quaking Aspen</i>		13.5	<i>MBF</i>		
	Red Maple		12.7	MBF		
	Balsam Fir	Pulpwood	19	Cords		
	<i>Balsam Fir</i>	<i>Sawtimber</i>	1.6	<i>MBF</i>		
	<i>Balsam Fir</i>	<i>Pulpwood</i>	16	<i>Cords</i>		
	Mixed Aspen		1,290	Cords		
	<i>B. T. Aspen</i>		1,138	<i>Cords</i>		
	<i>Quaking Aspen</i>		152	<i>Cords</i>		
	Mixed Hardwood		233	Cords		
	<i>Basswood</i>	<i>Sawtimber</i>	0.4	<i>MBF</i>		
	<i>Beech</i>		0.7	<i>MBF</i>		
	<i>Sugar Maple</i>		4.1	<i>MBF</i>		
	<i>Basswood</i>	<i>Pulpwood</i>	5	<i>Cords</i>		
	<i>Beech</i>		12	<i>Cords</i>		
	<i>Red Maple</i>		168	<i>Cords</i>		
	<i>Sugar Maple</i>		38	<i>Cords</i>		
	Paper Birch		55	Cords		
	<i>Paper Birch</i>	<i>Sawtimber</i>	5.2	<i>MBF</i>		
	<i>Paper Birch</i>	<i>Pulpwood</i>	45	<i>Cords</i>		
	White Ash		11	Cords		
	<i>White Ash</i>		11	<i>Cords</i>		
3	Mixed Aspen	Sawtimber	27.6	MBF	59.7	\$12,467.50
	<i>Quaking Aspen</i>		27.6	<i>MBF</i>		
	Red Maple		0.5	MBF		
	Balsam Fir	Pulpwood	158	Cords		
	<i>Balsam Fir</i>	<i>Sawtimber</i>	4.8	<i>MBF</i>		
	<i>Balsam Fir</i>	<i>Pulpwood</i>	148	<i>Cords</i>		
	Mixed Aspen		593	Cords		
	<i>Balsam Poplar</i>	<i>Sawtimber</i>	4.4	<i>MBF</i>		
	<i>B. T. Aspen</i>	<i>Pulpwood</i>	10	<i>Cords</i>		

DESCRIPTION OF TIMBER BY PAYMENT UNIT (PU), CON'T

PU	MARKET GROUP	PRODUCT	QUANTITY	UNIT	ACRES	ADVERTISE PRICE
3 con't	<i>Balsam Poplar</i>	<i>Pulpwood</i>	97	<i>Cords</i>		
	<i>Quaking Aspen</i>		477	<i>Cords</i>		
	Mixed Hardwood		23	<i>Cords</i>		
	<i>Red Maple</i>		23	<i>Cords</i>		
	Paper Birch		16	<i>Cords</i>		
	<i>Paper Birch</i>	<i>Sawtimber</i>	0.9	<i>MBF</i>		
	<i>Paper Birch</i>	<i>Pulpwood</i>	14	<i>Cords</i>		
	White Ash		60	<i>Cords</i>		
	<i>White Ash</i>	<i>Sawtimber</i>	2.4	<i>MBF</i>		
	<i>Black Ash</i>	<i>Pulpwood</i>	16	<i>Cords</i>		
	<i>White Ash</i>		39	<i>Cords</i>		
TOTAL:			348.9	MBF		
TOTAL:			3,855	Cords		

Sale Specific Conditions & Requirements

Sale Name: Liquefaction Aspen

Sale Number: 52-114-17 Seq#: 2

1 - Sale Area

1.2 - Boundaries

1.2.1 - Painted boundaries (1/14)

The sale boundaries are marked and identified by blue and red paint. Exterior sale boundary lines against private property are marked with blue paint. Exterior sale boundary lines against state are marked with red paint. The painted boundary line trees are not Included Timber and are to be protected. Note that there are a few yellow painted trees within Payment Unit 1 (southern-most portion) that do not indicate boundary or any special designation; these yellow marked trees are designated for cutting.

2 - Timber Specifications

2.1 - Included Timber

2.1.1 - Clearcut unit(s) with unmerchantable trees (6/14)

Within Payment Unit(s) 1 - 3, cut all trees that are two (2) inches or more at DBH, except do not cut hemlock and oak, if present. In addition, the following exceptions apply:

- Within Payment Unit 1, do not cut pine. In addition, in Stand 42 (see Timber Sale Map) do not cut pine & spruce.
- Within Payment Unit 2, do not cut pine or spruce.
- Within Payment Unit 3, do not cut conifers (including tamarack) or teal marked trees.

3 - Payments

3.3 - Pre-measured Sales

3.3.4 - Dividing payment units (7/14)

Payment Unit(s) may be divided at the request of the Purchaser and upon approval of the Unit Manager. Dividing Payment Units is a contract modification which requires a Timber Sale Contract Amendment.

3.4 - Damaged Timber

3.4.3 - Special Protection Areas (8/11)

The Purchaser shall protect special protection areas from damage by the Purchaser's operations. Special protection areas are the retention areas adjacent to the east portion of Payment Unit 1, which contain a potential HAL site. The Purchaser shall not cut live or dead trees within special protection areas. If the Purchaser's operations have cut or damaged special protection areas through carelessness, the Purchaser shall pay 3x stumpage as fixed, agreed, and liquidated damages for each acre or part thereof cut or damaged. Such payment does not constitute ownership of the undesignated timber.

4 - Transportation

4.1 - Construction

4.1.4 - Timber removed for construction (12/09)

Trees cut or damaged in the process of pre-approved road, landing or skid trail construction will be decked in an area separate from other Designated Timber and not removed until measured by the sale administrator. Payment will be made at the specified Purchase Unit Price.

4.1.5 - Culverts (5/14)

Roads may require the installation of culverts for cross drainage or at natural drainage-ways. If culverts are needed in these locations, their placement will be specified by the sale administrator and they shall be installed prior to hauling. The culverts shall be new, corrugated metal or plastic gauge.

4.2 - Maintenance

4.2.3 - Road maintenance (8/13)

The following road maintenance may be required: If the Mackinaw Village two-track into Payment Unit 1 is used during

operations, it will need to be continuously maintained during active operations. This includes cleaning of drainage areas, grading, crowning, and filling with gravel, if necessary. Damages will be assessed if grading/repair does not occur.

4.2.5 - Two wheel drive condition (2/04)

All existing trail roads on and adjacent to the sale area must be passable by two-wheel drive traffic for the duration of the sale.

4.4 - Access

4.4.1 - Private property access (3/11)

Permission for access across private land (Mackinaw Village) has been obtained by the DNR.

5 - Operations

5.1 - Notification

5.1.1 - Pre-sale conference (10/16)

A pre-sale conference on site between the Purchaser and sale administrator is required prior to beginning any operations to determine landing and road locations. The Unit Manager or his/her representative must be contacted at least 10 days in advance to schedule the conference.

5.2 - Conduct of Operations

5.2.1 - Slash

5.2.1.11 - Slash for reforestation (5/07)

To facilitate reforestation, the Sale Area shall be left with slash evenly distributed. Bunched tops within the cutting area shall be broken up and scattered. Stumps shall be cut low to the ground. Processing sites shall not be left with a compacted layer of slash; tops from these sites shall be hauled back into the cut area and scattered.

5.2.29 - Shrub protection (9/07)

Do not cut or damage hawthorn, witch-hazel, or serviceberry. These woody-shrub plants are highly beneficial to various wildlife species.

5.2.32 - Decking/landing restoration (9/13)

All decking and landing areas must have the surface area restored to a condition equal to or better than before. This is to ensure the proper regeneration of the stand. Wood debris, chips and "cookies" from trimmings must be removed or scattered away from landing and loading areas and may not be windrowed on the edge.

5.2.41 - Snowmobile trail protection (9/11)

Trail 7 is a snowmobile trail and is shown on the Timber Sale Map. Do not cut or damage posts with orange trail markers or traffic control signs. If the trail is used, it must be maintained and restored to a condition equal to or better than before the sale. The road maintenance/restoration must be done prior to December 1. In addition, any access from the snowmobile trail must be blocked off and impassable by motorized vehicles (including snowmobiles) prior to December 1. The snowmobile trail may not be used for any timber sale operations from December 1 to March 31. No decking of forest products will be permitted along the snowmobile trail.

5.4 - Soil Protection

5.4.1 - Rutting restriction, general (7/16)

Operations are to cease immediately if equipment and weather conditions result in rutting of roads and/or skid trails which is 12 inches or greater in depth and 50 feet in length. The Unit Manager or his/her representative may restrict hauling and/or skidding if ruts exceed the specified depth. With the Unit Manager or his/her representative's approval, the Purchaser may return to the area when the risk of rutting has decreased.

5.4.5 - Soil caution (11/04)

Care must be taken to minimize soil damage due to the seasonally wet soils.

5.8 - Protection of Endangered Species

5.8.5 - Protection of raptor nests (3/13)

All trees with raptor nests will be protected if found during harvesting operations. Notification will be made to the Unit

Manager or his/her representative who will notify the Wildlife Biologist so an on-site evaluation and recommendation can be made, if necessary.

6 - Safety and Fire Prevention

6.2 - Signing

6.2.1 - Road posting (9/09)

The Purchaser is responsible for posting and maintaining caution signs on haul routes prior to beginning operations. The road must be posted at appropriate distances from the Sale Area to warn of logging activity and truck traffic. Signs must be removed when harvest operations are suspended or completed. The Purchaser will provide these signs.

6.2.2 - Snowmobile trail posting (8/09)

The Purchaser is responsible for posting and maintaining caution signs on Snowmobile Trail 7 if used for access and/or hauling prior to beginning operations during the snowmobile season (approximately December 1 to March 31). The trail must be posted at appropriate distances from the Sale Area to warn of logging activity and truck traffic. Signs must be removed when harvest operations are suspended or completed. The Purchaser will provide these signs.

7 - Other Conditions

7.5 - Loss

7.5.1 - Deteriorating timber (7/09)

The sale area has received damage from emerald ash borer. The Purchaser should harvest the wood as soon as possible. The Department of Natural Resources is held free of responsibility of any further damage or deterioration due to delay in harvesting.



TIMBER SALE MAP

This information provided by authority of Part 525, 1994 PA 451, as amended.

Forest Management Unit Gaylord	County Emmet	Mapped By TSP	Date 12/21/2020	Page 2	of 3
Township 39N	Range 04W	Section(s) and Subdivision(s) Sec 23: NESE; 24: SW, SWSE; 25: W1/2NE; 34: SENW, SENE, N1/2SW, N1/2SE; 36: NENW, S1/2NW, S1/2NE	Scale 1:15,840		

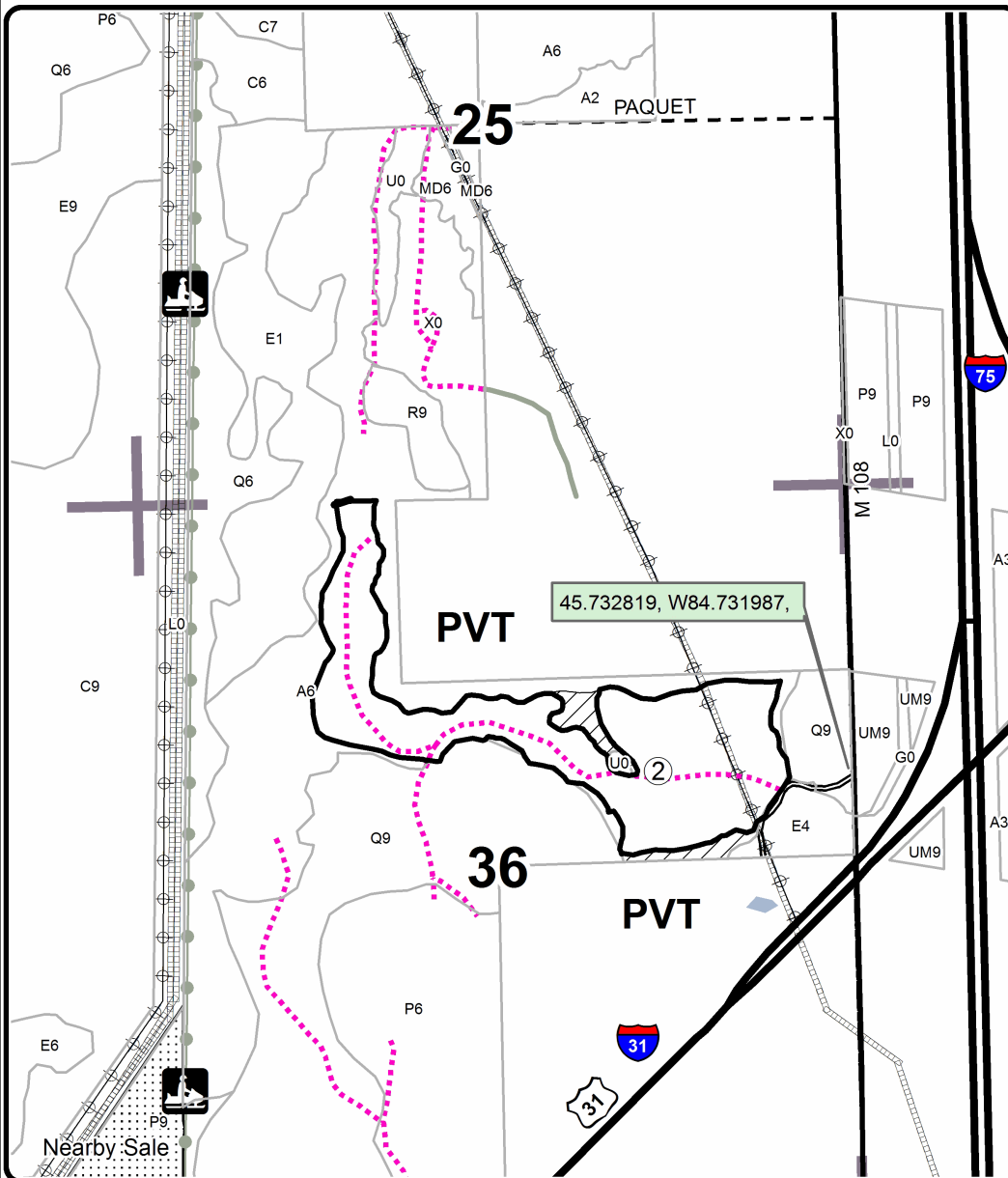
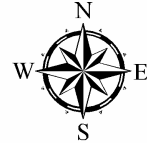
Cover Type				Density	
A = Aspen	H = Hemlock	N = Marsh	U = Upland Brush	0 = Non Stocked	5 = Pole Timber Medium
B = Paper Birch	J = Jack Pine	O = Oak	UM = Upland Mixed	1 = Seedling Sapling Poor	6 = Pole Timber Well
C = Cedar	L = Lowland Brush	P = Lowland Poplar	V = Bog or Marsh	2 = Seedling Sapling Medium	7 = Saw Timber Poor
D = Treed Bog	LM = Lowland Mixed	Q = Mixed Swamp Conifer	W = White Pine	3 = Seedling Sapling Well	8 = Saw Timber Medium
E = Swamp Hdwoods	M = Mpl, Bch, Brch	R = Red Pine	X = Non Stocked	4 = Pole Timber Poor	9 = Saw Timber Well
F = Spruce Fir	MC = Mixed Conifer	S = Black Spruce	Z = Water		
G = Grass	MD = Mixed Deciduous	T = Tamarack			

PU	Acres
1	66
2	57.5
3	59.7

Liquefaction Aspen

Compartment 135

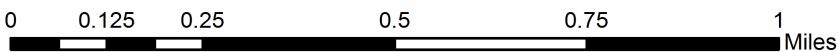
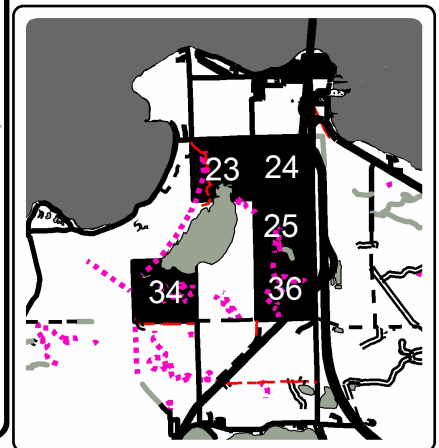
183.2 Acres



Legend

- Against State (Red)
- Stand Boundaries
- Recreational Trail
- Highway
- Secondary Forest Road
- Paved Road
- Gravel Road
- Private
- Temporary Management Access
- Pipeline
- Powerline
- Lakes and Rivers
- Retention Area
- Nearby Timber Sales
- Section Corners

Locator Map
1:200,000





TIMBER SALE MAP

This information provided by authority of Part 525, 1994 PA 451, as amended.

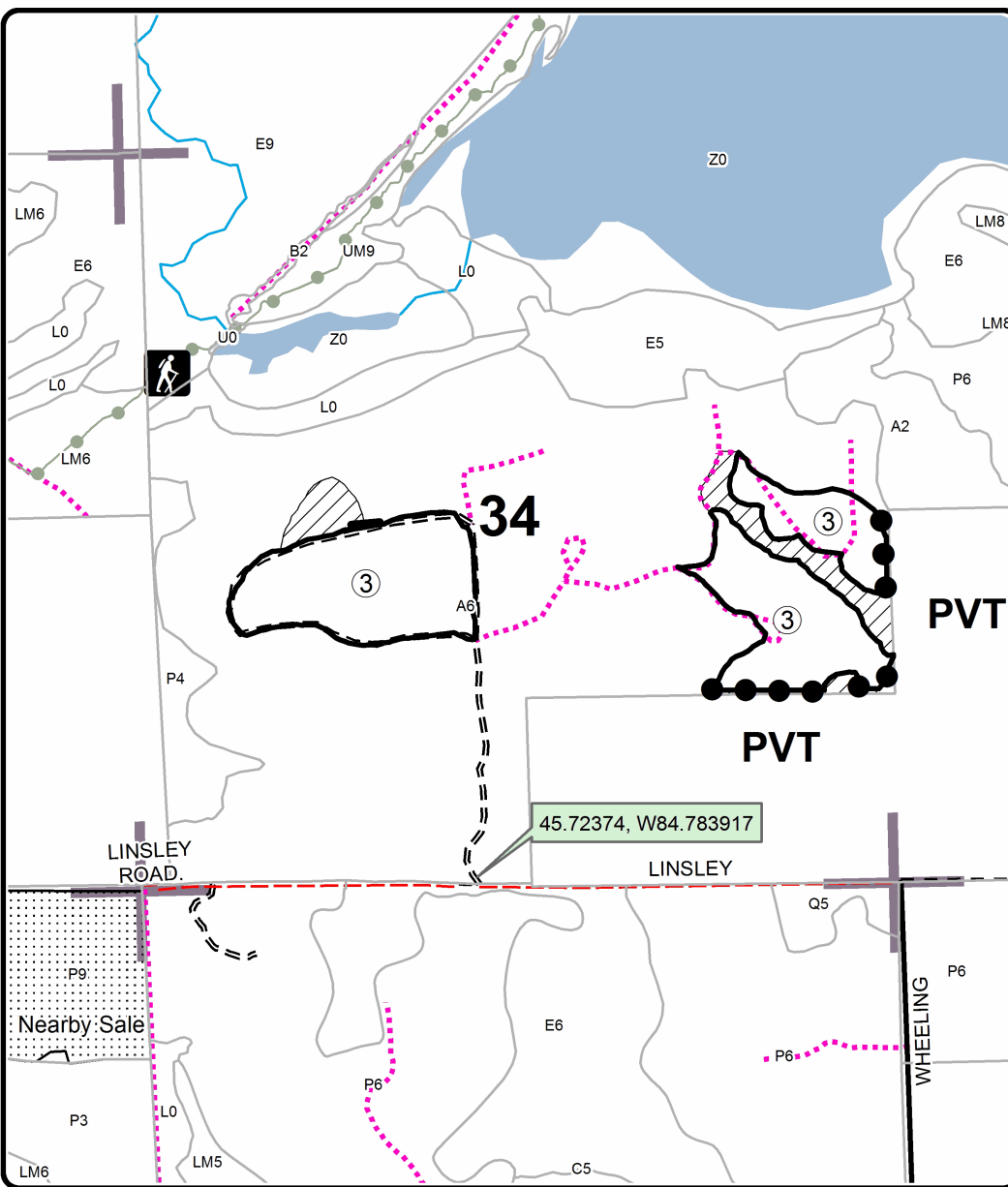
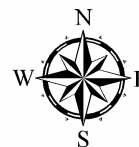
Forest Management Unit Gaylord	County Emmet	Mapped By TSP	Date 12/21/2020	Page 3	of 3
Township 39N	Range 04W	Section(s) and Subdivision(s) 34: SENW, SENE, N1/2SW, N1/2SE; 36: NENW, S1/2NW, S1/2NE	Scale 1:15,840		

Cover Type				Density	
A = Aspen	H = Hemlock	N = Marsh	U = Upland Brush	0 = Non Stocked	5 = Pole Timber Medium
B = Paper Birch	J = Jack Pine	O = Oak	UM = Upland Mixed	1 = Seedling Sapling Poor	6 = Pole Timber Well
C = Cedar	L = Lowland Brush	P = Lowland Poplar	V = Bog or Marsh	2 = Seedling Sapling Medium	7 = Saw Timber Poor
D = Treed Bog	LM = Lowland Mixed	Q = Mixed Swamp Conifer	W = White Pine	3 = Seedling Sapling Well	8 = Saw Timber Medium
E = Swamp Hdwoods	M = Mpl, Bch, Brch	R = Red Pine	X = Non Stocked	4 = Pole Timber Poor	9 = Saw Timber Well
F = Spruce Fir	MC = Mixed Conifer	S = Black Spruce	Z = Water		
G = Grass	MD = Mixed Deciduous	T = Tamarack			

PU	Acres
1	66
2	57.5
3	59.7

Liquefaction Aspen

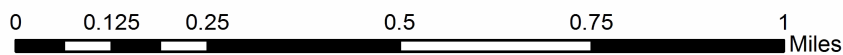
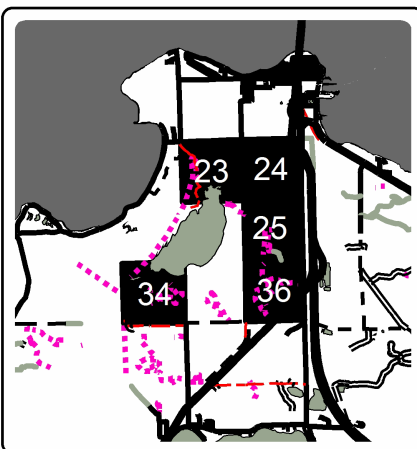
Compartment 135
183.2 Acres



Legend

- Against State (Red)
- Private Line (Blue)
- Stand Boundaries
- Recreational Trail
- == Forest Access Route
- Paved Road
- - Gravel Road
- - - County Road - Seasonal
- ⋯ Temporary Management Access
- Perennial River
- Lakes and Rivers
- ▨ Retention Area
- ▤ Nearby Timber Sales
- Section Corners

Locator Map
1:200,000





TIMBER SALE MAP

This information provided by authority of Part 525, 1994 PA 451, as amended.

Sale Number	Year
52 - 114	17

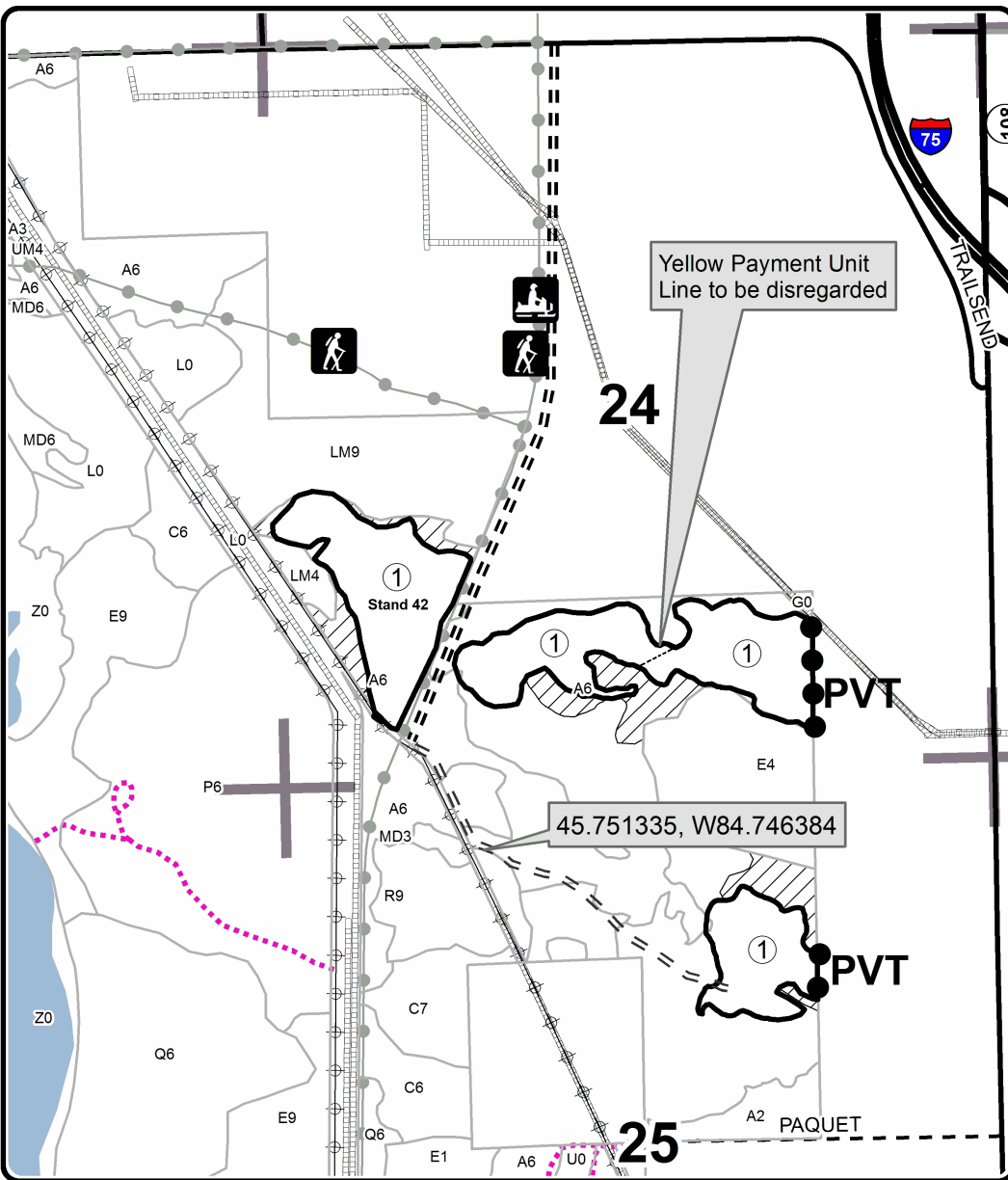
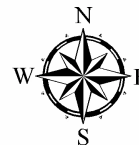
Forest Management Unit Gaylord	County Emmet	Mapped By TSP	Date 12/21/2020	Page 1	of 3
Township 39N	Range 04W	Section(s) and Subdivision(s) Sec 23: NESE; 24: SW, SWSE; 25: W1/2NE; 34: SENW, SENE, N1/2SW, N1/2SE; 36: NENW, S1/2NW, S1/2NE	Scale 1:15,840		

Cover Type				Density	
A = Aspen	H = Hemlock	N = Marsh	U = Upland Brush	0 = Non Stocked	5 = Pole Timber Medium
B = Paper Birch	J = Jack Pine	O = Oak	UM = Upland Mixed	1 = Seedling Sapling Poor	6 = Pole Timber Well
C = Cedar	L = Lowland Brush	P = Lowland Poplar	V = Bog or Marsh	2 = Seedling Sapling Medium	7 = Saw Timber Poor
D = Treed Bog	LM = Lowland Mixed	Q = Mixed Swamp Conifer	W = White Pine	3 = Seedling Sapling Well	8 = Saw Timber Medium
E = Swamp Hdwoods	M = Mpl, Bch, Brch	R = Red Pine	X = Non Stocked	4 = Pole Timber Poor	9 = Saw Timber Well
F = Spruce Fir	MC = Mixed Conifer	S = Black Spruce	Z = Water		
G = Grass	MD = Mixed Deciduous	T = Tamarack			

PU	Acres
1	66
2	57.5
3	59.7

Liquefaction Aspen

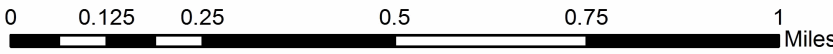
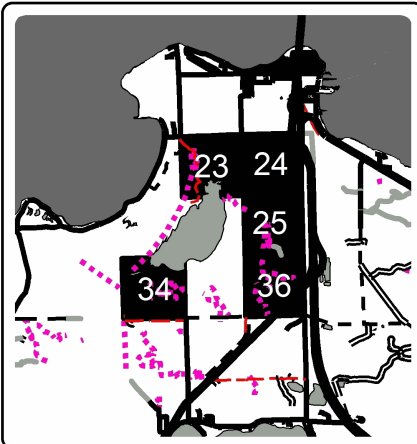
Compartment 135
183.2 Acres



Legend

- Against State (Red)
- Private Line (Blue)
- Stand Boundaries
- Recreational Trail
- Highway
- Paved Road
- Gravel Road
- Private
- Temporary Management Access
- Pipeline
- ⊕ Powerline
- Lakes and Rivers
- Retention Area
- Section Corners

Locator Map
1:200,000



Tree Stooges Red Pine (52-106-20)
T34N, R03W, SEC. 20; T34N, R03W, SEC. 21; Cheboygan COUNTY

In response to the notice of sale to be held 3:00 p.m. (local time) on April 27, 2021, I am hereby submitting my sealed bid (firm offer) for the following forest products to be cut. Bids for individual species must be at or above the advertised price. All non-responsive bid forms may be rejected.

<u>PRODUCTS & SPECIES</u>	<u>ESTIMATED VOLUME*</u>	<u>ADVERTISED PRICE</u>	<u>BID PRICE/UNIT</u>
Sawtimber			
Red Pine	158.8 MBF	\$ 82.00/MBF	\$ _____
Pulpwood			
B. T. Aspen	12 Cords	\$ 13.95/Cord	\$ _____
Mixed Hardwood	33 Cords	\$ 14.55/Cord	\$ _____
Red Pine	647 Cords	\$ 34.15/Cord	\$ _____

*The volumes are statistically estimated within plus (+) or minus (-) 19.61 percent at 95% confidence level. These estimated volumes are final and not subject to adjustment. Prospective bidders are urged to examine this timber and to make their own estimates of quantity and quality.

I understand that any or all bids may be rejected. All bids must be signed and all bid items must be bid or the bid form may be rejected. I also understand that consideration and awarding a contract will be based upon my past performance and ability to complete the contract based upon equipment and staffing subject to my control.

FEDERAL ID: _____ - _____ or SOCIAL SECURITY NUMBER: _____ - _____ - _____

Company or individual bidding: _____

Company representative's name: _____

Address: _____

City: _____ State: _____ Zip: _____

IF AVAILABLE, PLEASE PLACE THE PERSONALIZED LABEL FROM YOUR PROSPECTUS IN THE ABOVE BOX.

Individual or company representative's signature: _____ Date: _____

Phone number : _____ Email (optional): _____

THE WINNING BIDDER MUST COMPLETE THE VERIFICATION OF WORKER'S DISABILITY COMPENSATION ACT COMPLIANCE (ON REVERSE SIDE IF DOUBLE SIDED) WITHIN 21 DAYS OF SALE AWARD DATE



FOR DEPARTMENT USE ONLY	
Sale Number (XX - XXX - XX - XX)	
Forest Management Unit:	

TIMBER SALE VERIFICATION OF WORKER'S DISABILITY COMPENSATION ACT COMPLIANCE

As required by Act 317, P.A. 1969 (Worker's Compensation) and
Part 5 of Act 451 of 1994, as amended.

VERIFICATION OF WORKER'S DISABILITY COMPENSATION ACT COMPLIANCE

- This verification must be completed and submitted within 21 days of contract award and prior to the issuance of the timber sale contract.
- In addition, if boxes 2B or 2C are checked, then Notice of Exclusion or Certificate of Insurance must be submitted within twenty-one (21) days of the contract award and prior to the issuance of the timber sale contract.
- All information must be typed or printed except for written signatures.

Please Check Appropriate Categories:

1. My business is organized as (you **must** check one of the boxes below):
 - A. Sole Proprietorship (individual)
 - B. Partnership
 - C. Corporation
2. You **must** check one of the boxes below:
 - A. I certify my business is a sole proprietorship and it has no employees but the sole proprietor. I am not subject to the Worker's Compensation Laws.
 - B. I certify my business has satisfied its obligation to the Worker's Compensation Act through the use of an approved Notice of Exclusion (BWC-337, Rev. 5/96). I will provide a copy of the Notice of Exclusion within 21 days of the contract award. (For questions or a copy of the BWC-337, please call the Worker's Compensation Bureau at 517-322-1195).
 - C. I certify my business has a Worker's Compensation Policy. I will provide an original Certificate of Insurance within twenty-one (21) days of the contract award.
3. If you have checked item 2(A) or 2(B), you **must** indicate the number of **both** full-time and part-time employees, other than yourself, including family members and active partners (if none, you must enter "0").

_____ Full-time Employees

_____ Part-time Employees

Name of Business		Federal ID (or) Social Security No.	
Address		Telephone ()	
City	State	ZIP	

I hereby certify that the above information is true and correct. I agree to notify the Michigan DNR of any changes that occur in factors affecting my coverage during any of my present and future operations.

Signature of Owner or Authorized Representative

Title

Date

Please complete the "SEALED BID" information on the next page

Burt Red Pine (52-123-20)
T36N, R03W, SEC. 7; Cheboygan COUNTY

In response to the notice of sale to be held 3:00 p.m. (local time) on April 27, 2021, I am hereby submitting my sealed bid (firm offer) for the following forest products to be cut. Bids for individual species must be at or above the advertised price. All non-responsive bid forms may be rejected.

<u>PRODUCTS & SPECIES</u>	<u>ESTIMATED VOLUME*</u>	<u>ADVERTISED PRICE</u>	<u>BID PRICE/UNIT</u>
Sawtimber Red Pine	30.5 MBF	\$ 82.00/MBF	\$ _____
Pulpwood Red Pine	83 Cords	\$ 34.15/Cord	\$ _____

*The volumes are statistically estimated within plus (+) or minus (-) 31.04 percent at 95% confidence level. These estimated volumes are final and not subject to adjustment. Prospective bidders are urged to examine this timber and to make their own estimates of quantity and quality.

I understand that any or all bids may be rejected. All bids must be signed and all bid items must be bid or the bid form may be rejected. I also understand that consideration and awarding a contract will be based upon my past performance and ability to complete the contract based upon equipment and staffing subject to my control.

FEDERAL ID: ____ - ____ - ____ or SOCIAL SECURITY NUMBER: ____ - ____ - ____

Company or individual bidding: _____

Company representative's name: _____

Address: _____

City: _____ State: _____ Zip: _____

IF AVAILABLE, PLEASE PLACE THE PERSONALIZED LABEL FROM YOUR PROSPECTUS IN THE ABOVE BOX.

Individual or company representative's signature: _____ Date: _____
Phone number : _____ Email (optional): _____

THE WINNING BIDDER MUST COMPLETE THE VERIFICATION OF WORKER'S DISABILITY COMPENSATION ACT COMPLIANCE (ON REVERSE SIDE IF DOUBLE SIDED) WITHIN 21 DAYS OF SALE AWARD DATE



FOR DEPARTMENT USE ONLY
Sale Number (XX – XXX – XX – XX)
Forest Management Unit:

TIMBER SALE VERIFICATION OF WORKER'S DISABILITY COMPENSATION ACT COMPLIANCE

*As required by Act 317, P.A. 1969 (Worker's Compensation) and
Part 5 of Act 451 of 1994, as amended.*

VERIFICATION OF WORKER'S DISABILITY COMPENSATION ACT COMPLIANCE

- This verification must be completed and submitted within 21 days of contract award and prior to the issuance of the timber sale contract.
- In addition, if boxes 2B or 2C are checked, then Notice of Exclusion or Certificate of Insurance must be submitted within twenty-one (21) days of the contract award and prior to the issuance of the timber sale contract.
- All information must be typed or printed except for written signatures.

Please Check Appropriate Categories:

1. My business is organized as (you **must** check one of the boxes below):
 - A. Sole Proprietorship (individual)
 - B. Partnership
 - C. Corporation

2. You **must** check one of the boxes below:
 - A. I certify my business is a sole proprietorship and it has no employees but the sole proprietor. I am not subject to the Worker's Compensation Laws.
 - B. I certify my business has satisfied its obligation to the Worker's Compensation Act through the use of an approved Notice of Exclusion (BWC-337, Rev. 5/96). I will provide a copy of the Notice of Exclusion within 21 days of the contract award. (For questions or a copy of the BWC-337, please call the Worker's Compensation Bureau at 517-322-1195).
 - C. I certify my business has a Worker's Compensation Policy. I will provide an original Certificate of Insurance within twenty-one (21) days of the contract award.

3. If you have checked item 2(A) or 2(B), you **must** indicate the number of **both** full-time and part-time employees, other than yourself, including family members and active partners (if none, you must enter "0").

_____ Full-time Employees

_____ Part-time Employees

Name of Business		Federal ID (or) Social Security No.	
Address		Telephone ()	
City	State	ZIP	

I hereby certify that the above information is true and correct. I agree to notify the Michigan DNR of any changes that occur in factors affecting my coverage during any of my present and future operations.

Signature of Owner or Authorized Representative

Title

Date

Please complete the "SEALED BID" information on the next page

N. Conway Mix (52-113-20)

T36N, R05W, SEC. 1; T36N, R05W, SEC. 12; T36N, R05W, SEC. 14; T36N, R05W,

In response to the notice of sale to be held 3:00 p.m. (local time) on April 27, 2021, I am hereby submitting my sealed bid (firm offer) for the following forest products to be cut. Bids for individual species must be at or above the advertised price. All non-responsive bid forms may be rejected.

<u>PRODUCTS & SPECIES</u>	<u>ESTIMATED VOLUME*</u>	<u>ADVERTISED PRICE</u>	<u>BID PRICE/UNIT</u>
Sawtimber			
B. T. Aspen	29.0 MBF	\$ 39.00/MBF	\$ _____
Basswood	8.7 MBF	\$ 42.00/MBF	\$ _____
Red Maple	114.8 MBF	\$ 58.00/MBF	\$ _____
Sugar Maple	148.6 MBF	\$ 249.00/MBF	\$ _____
Pulpwood			
B. T. Aspen	700 Cords	\$ 13.95/Cord	\$ _____
Mixed Hardwood	1,271 Cords	\$ 14.55/Cord	\$ _____

*The volumes are statistically estimated within plus (+) or minus (-) 9.76 percent at 95% confidence level. These estimated volumes are final and not subject to adjustment. Prospective bidders are urged to examine this timber and to make their own estimates of quantity and quality.

I understand that any or all bids may be rejected. All bids must be signed and all bid items must be bid or the bid form may be rejected. I also understand that consideration and awarding a contract will be based upon my past performance and ability to complete the contract based upon equipment and staffing subject to my control.

FEDERAL ID: _____ - _____ or SOCIAL SECURITY NUMBER: _____ - _____ - _____

Company or individual bidding: _____

Company representative's name: _____

Address: _____

City: _____ State: _____ Zip: _____

IF AVAILABLE, PLEASE PLACE THE PERSONALIZED LABEL FROM YOUR PROSPECTUS IN THE ABOVE BOX.

Individual or company representative's signature: _____ Date: _____

Phone number : _____ Email (optional): _____

THE WINNING BIDDER MUST COMPLETE THE VERIFICATION OF WORKER'S DISABILITY COMPENSATION ACT COMPLIANCE (ON REVERSE SIDE IF DOUBLE SIDED) WITHIN 21 DAYS OF SALE AWARD DATE



FOR DEPARTMENT USE ONLY	
Sale Number (XX - XXX - XX - XX)	
Forest Management Unit:	

TIMBER SALE VERIFICATION OF WORKER'S DISABILITY COMPENSATION ACT COMPLIANCE

As required by Act 317, P.A. 1969 (Worker's Compensation) and
Part 5 of Act 451 of 1994, as amended.

VERIFICATION OF WORKER'S DISABILITY COMPENSATION ACT COMPLIANCE

- This verification must be completed and submitted within 21 days of contract award and prior to the issuance of the timber sale contract.
- In addition, if boxes 2B or 2C are checked, then Notice of Exclusion or Certificate of Insurance must be submitted within twenty-one (21) days of the contract award and prior to the issuance of the timber sale contract.
- All information must be typed or printed except for written signatures.

Please Check Appropriate Categories:

1. My business is organized as (you **must** check one of the boxes below):
 - A. Sole Proprietorship (individual)
 - B. Partnership
 - C. Corporation
2. You **must** check one of the boxes below:
 - A. I certify my business is a sole proprietorship and it has no employees but the sole proprietor. I am not subject to the Worker's Compensation Laws.
 - B. I certify my business has satisfied its obligation to the Worker's Compensation Act through the use of an approved Notice of Exclusion (BWC-337, Rev. 5/96). I will provide a copy of the Notice of Exclusion within 21 days of the contract award. (For questions or a copy of the BWC-337, please call the Worker's Compensation Bureau at 517-322-1195).
 - C. I certify my business has a Worker's Compensation Policy. I will provide an original Certificate of Insurance within twenty-one (21) days of the contract award.
3. If you have checked item 2(A) or 2(B), you **must** indicate the number of **both** full-time and part-time employees, other than yourself, including family members and active partners (if none, you must enter "0").

_____ Full-time Employees

_____ Part-time Employees

Name of Business		Federal ID (or) Social Security No.	
Address		Telephone ()	
City	State	ZIP	

I hereby certify that the above information is true and correct. I agree to notify the Michigan DNR of any changes that occur in factors affecting my coverage during any of my present and future operations.

Signature of Owner or Authorized Representative

Title

Date

Please complete the "SEALED BID" information on the next page

Liquefaction Aspen (52-114-17)

T39N, R04W, SEC. 23; T39N, R04W, SEC. 24; T39N, R04W, SEC. 25; T39N,

In response to the notice of sale to be held 3:00 p.m. (local time) on April 27, 2021, I am hereby submitting my sealed bid (firm offer) for the following forest products to be cut. Bids for individual species must be at or above the advertised price. All non-responsive bid forms may be rejected.

<u>PRODUCTS & SPECIES</u>	<u>ESTIMATED VOLUME*</u>	<u>ADVERTISED PRICE</u>	<u>BID PRICE/UNIT</u>
Sawtimber			
Mixed Aspen	334.2 MBF	\$ 39.00/MBF	\$ _____
Red Maple	14.7 MBF	\$ 58.00/MBF	\$ _____
Pulpwood			
Balsam Fir	289 Cords	\$ 13.55/Cord	\$ _____
Mixed Aspen	2,957 Cords	\$ 13.95/Cord	\$ _____
Mixed Hardwood	374 Cords	\$ 14.55/Cord	\$ _____
Paper Birch	99 Cords	\$ 7.45/Cord	\$ _____
White Ash	135 Cords	\$ 8.25/Cord	\$ _____

*The volumes are statistically estimated within plus (+) or minus (-) 9.13 percent at 95% confidence level. These estimated volumes are final and not subject to adjustment. Prospective bidders are urged to examine this timber and to make their own estimates of quantity and quality.

I understand that any or all bids may be rejected. All bids must be signed and all bid items must be bid or the bid form may be rejected. I also understand that consideration and awarding a contract will be based upon my past performance and ability to complete the contract based upon equipment and staffing subject to my control.

FEDERAL ID: _____ or SOCIAL SECURITY NUMBER: _____

Company or individual bidding: _____

Company representative's name: _____

Address: _____

City: _____ State: _____ Zip: _____

IF AVAILABLE, PLEASE PLACE THE PERSONALIZED LABEL FROM YOUR PROSPECTUS IN THE ABOVE BOX.

Individual or company representative's signature: _____ Date: _____

Phone number : _____ Email (optional): _____

THE WINNING BIDDER MUST COMPLETE THE VERIFICATION OF WORKER'S DISABILITY COMPENSATION ACT COMPLIANCE (ON REVERSE SIDE IF DOUBLE SIDED) WITHIN 21 DAYS OF SALE AWARD DATE



FOR DEPARTMENT USE ONLY	
Sale Number (XX - XXX - XX - XX)	
Forest Management Unit:	

TIMBER SALE VERIFICATION OF WORKER'S DISABILITY COMPENSATION ACT COMPLIANCE

As required by Act 317, P.A. 1969 (Worker's Compensation) and
Part 5 of Act 451 of 1994, as amended.

VERIFICATION OF WORKER'S DISABILITY COMPENSATION ACT COMPLIANCE

- This verification must be completed and submitted within 21 days of contract award and prior to the issuance of the timber sale contract.
- In addition, if boxes 2B or 2C are checked, then Notice of Exclusion or Certificate of Insurance must be submitted within twenty-one (21) days of the contract award and prior to the issuance of the timber sale contract.
- All information must be typed or printed except for written signatures.

Please Check Appropriate Categories:

1. My business is organized as (you **must** check one of the boxes below):
 - A. Sole Proprietorship (individual)
 - B. Partnership
 - C. Corporation
2. You **must** check one of the boxes below:
 - A. I certify my business is a sole proprietorship and it has no employees but the sole proprietor. I am not subject to the Worker's Compensation Laws.
 - B. I certify my business has satisfied its obligation to the Worker's Compensation Act through the use of an approved Notice of Exclusion (BWC-337, Rev. 5/96). I will provide a copy of the Notice of Exclusion within 21 days of the contract award. (For questions or a copy of the BWC-337, please call the Worker's Compensation Bureau at 517-322-1195).
 - C. I certify my business has a Worker's Compensation Policy. I will provide an original Certificate of Insurance within twenty-one (21) days of the contract award.
3. If you have checked item 2(A) or 2(B), you **must** indicate the number of **both** full-time and part-time employees, other than yourself, including family members and active partners (if none, you must enter "0").

_____ Full-time Employees

_____ Part-time Employees

Name of Business		Federal ID (or) Social Security No.	
Address		Telephone ()	
City	State	ZIP	

I hereby certify that the above information is true and correct. I agree to notify the Michigan DNR of any changes that occur in factors affecting my coverage during any of my present and future operations.

Signature of Owner or Authorized Representative

Title

Date

Please complete the "SEALED BID" information on the next page