



**DEPARTMENT OF NATURAL RESOURCES  
STATE OF MICHIGAN**

**TIMBER SALE PROSPECTUS #6714**

SCHEDULED SALE DATE AND TIME: 9:00 a.m. (local time) on October 19, 2020.

LOCATION: KALKASKA FIELD OFFICE, 2089 NORTH BIRCH STREET, KALKASKA, MI 49646.

PROSPECTUS NOTE: It is recommended that for the duration of the "Stay Home, Stay Safe" executive order that bidders submit their bids through the Online Bidding System (<https://www.dnr.state.mi.us/VMSONlineBidding/>). If you need to register, contact Jake Reid (ReidJ6@michigan.gov, 517-284-5908) or Donovan Asselin (AsselinD@michigan.gov, 517-930-1326). Paper bids will still be accepted during this time, either dropped in the bid box at the bid location or by mailing. If mailing, please allow for additional time.

The bidder is advised to inspect the sale area and review the location, estimated volumes, operating costs and contract terms of proposed sales. Please be aware that some landowners may request 60 days or more notice for access across their land.

Gnarly Beech Hardwoods (61-101-20) / T27N, R06W, SEC. 13, NESW,S1/2SW,SE.

T27N, R06W, SEC. 24, N1/2NW,N1/2NE.

Kalkaska County, Advertised Price \$63,566.70, 103.9 Acres, Hardwood, Sugar Maple.

SALE NOTE: Sale must be chipped, there will be no exemptions granted.

One Leg Aspen (61-107-20) / T25N, R05W, SEC. 20, E1/2NW,W1/2NE.

Kalkaska County, Advertised Price \$36,746.15, 73.0 Acres, Aspen, Hardwood.

SALE NOTE: A recreation site such as a trail, pathway, or campground is within the sale area or the vicinity. Certain restrictions/specifications may be applicable including time restrictions.

Outhouse Pine (61-111-20) / T26N, R08W, SEC. 2 , N1/2NW.

T26N, R08W, SEC. 3 , NENW,NE.

T27N, R08W, SEC. 34, SESE.

T27N, R08W, SEC. 35, S1/2NW,SW.

Kalkaska County, Advertised Price \$90,943.70, 184.1 Acres, Red Pine, White Pine.

104 Hardwood Alteration (61-151-19) / T28N, R05W, SEC. 16, NW,NWNE,S1/2NE,NESW,SE.

T28N, R05W, SEC. 17, NE,E1/2SE.

T28N, R05W, SEC. 8 , SESE.

T28N, R05W, SEC. 9 , SWSW.

Kalkaska County, Advertised Price \$223,054.40, 390.2 Acres, Hardwood, Sugar Maple.

SALE NOTE: Recommend a rotary head feller buncher to cut the bulk of this timber sale as beech and ironwood are being cut down to 1" DBH.

A recreation site such as a trail, pathway, or campground is within the sale area or the vicinity. Certain restrictions/specifications may be applicable including time restrictions.

## BID INSTRUCTIONS (VER. 07/02/2018):

### 1. Scheduled Bid Location, Date, and Time (2/11)

Bids must be received by the Unit Manager, KALKASKA OFFICE, 2089 North Birch Street, Kalkaska, MI 49646, no later than 9:00 a.m. (local time) on October 19, 2020. For further information concerning this sale, contact David Lemmien at 231-922-6040.

### 2. Bidder's Qualifications (5/16)

Purchaser shall obtain workers compensation insurance to cover claims under Michigan's Worker's Disability Compensation Act of 1969 or similar employee benefit act of any other state applicable to an employee. If all or part of a timber sale was prepared by a private contractor, the contractor and that contractor's company are not permitted to bid on the timber sale contract. Bids will not be accepted from individuals or companies appearing on the DNR/FRD No-Bid List. This list contains the names of purchasers who previously failed to execute a contract within 21-days or who have a history of poor performance.

### 3. Preparation of Sealed Bids (5/16)

Bid Forms may be completed online thru Michigan DNR Timber Sale Online Bidding (OLB) at [www.michigan.gov/timberbidding](http://www.michigan.gov/timberbidding) or by completing the hardcopy Bid Form found in the Timber Sale Prospectus. Hardcopy Bid Forms shall be manually signed in ink. Registration in OLB is considered your 'signature' for all bids submitted thru that system. Bid prices must be entered for each species and product in the Bid Price column for all material subject to bidding and all fill-in blanks must be completed. If erasures or other changes appear on the hardcopy Bid Form, each erasure or change must be initialed by the person signing the bid.

### 4. Submission of Sealed Bids (5/16)

Bid forms may be obtained from the Unit Manager or thru OLB. Bids may be submitted hardcopy or thru OLB. All hardcopy bids must be submitted on the bid form and in an envelope clearly identified as described in this section. NOTE: Only one bid form per bid envelope. Sealed bids must be submitted to the Unit office designated in the prospectus and must be submitted at or prior to the time established in the prospectus. The envelope should show on the outside (a) the sale name or number and (b) the date and time of bid opening, as shown in the prospectus. Bids received after the time specified in the sale prospectus are late bids and will be rejected.

It is possible for a bidder to submit multiple bids on a single sale. For example, a bid may be submitted hardcopy and a bid may be submitted thru OLB. Or, two bidders from the same company could both submit bids on the same sale. If this were to happen, the State would accept all bids received and award the contract accordingly. All bidding and contractual requirements would apply to all bids received.

### 5. Public Opening of Sealed Bids (7/16)

If conditions permit, the sealed bids will be publicly opened and posted at the time and place set in the prospectus.

If a bidder, present at a bid opening, has submitted bids on more than one sale, that bidder may withdraw their unopened bid envelopes or announce the withdrawal of their online bid after being declared the successful bidder on one sale.

### 6. Award of Contract (1/11)

Award of the contract will be made to the Bidder whose bid, conforming to the prospectus, is most advantageous to the State of Michigan on the basis of total value at rates bid for the estimated quantities. The State reserves the right to reject any bid or waive any minor irregularity in bids received. A written award mailed (or otherwise furnished) to the successful Bidder shall be deemed to result in a binding contract without further action by either party.

### 7. Down Payment (1/11)

The Bidder to whom award is made must make a down payment within 21 days of the sale award. The amount of the down payment will be calculated as shown in the Bond and Payment Schedule of this prospectus. Only cash may be used to meet this requirement.

### 8. Performance Security (1/11)

As guarantee of faithful performance, a cash bond, certificate of deposit, surety bond or irrevocable letter of credit (LOC) is required within 21 days of the sale award. The amount of the performance security is shown in the Bond and

Payment Schedule of this prospectus. If an LOC or surety is used, the coverage must extend for at least 6 months beyond the contract expiration.

#### 9. Timber Sale Contract (7/18)

Additional conditions and requirements common to all timber sales are listed on the timber sale contract (R4031) and are available on line at [www.michigan.gov/timber](http://www.michigan.gov/timber). Contact the Unit Manager for additional information or a sample contract. Within 21 days of the date of the award letter, the bidder must sign the contract and provide the required down payment, performance security, and verification of worker's disability compensation. The down payment and performance security shall be in accordance with the provisions of the timber sale contract, in the sums stated in this prospectus. If these actions are not taken, then the Bidder, the Bidder's corporation, and the corporation's principals may not be permitted to bid on State timber sales for a period of 3 months after the first offense, 6 months after the second offense, and 1 year after the third offense. An offense will only be counted against the Bidder for 5 years. In addition, the Bidder certifies that if awarded this contract, the Bidder will complete the timber sale contract in accordance with its terms and any modifications thereof including requirements to purchase, cut, and remove the included timber by the expiration date.

Payment Unit values in the State Forest Timber Sale Contract are calculated based on the advertised value of the Payment Unit as a percentage of the total advertised value of the contract. The advertised value of each Payment Unit is given in the Description of Timber by Payment Unit table on the Timber Sale Information page. For example, if the value of Payment Unit 1 is advertised as \$1,500 and the total Timber Sale value is advertised as \$10,000, the contract price for Payment Unit 1 will be 15% of the total bid price ( $\$1,500/\$10,000 * 100$ ).

#### 10. Disclaimer of Estimates and Bidder's Warranty of Inspection (7/16)

Before submitting this bid, the Bidder is advised and cautioned to inspect the sale area, review the requirements of the sale contract, and take other steps as may be reasonably necessary to ascertain the location, estimated volumes, construction estimates, and operating costs of the proposed sale. Failure to do so will not relieve the Bidder from responsibility for completing the contract.

The Bidder warrants that this bid is submitted solely on the basis of the Bidder's examination and inspection of the quality and quantity of the timber offered for sale and the Bidder's opinion of the value thereof and the costs of recovery. No reliance should be placed on the State of Michigan's estimates of timber quality, quantity or costs of recovery. Bidder further acknowledges that the State of Michigan: (i) expressly disclaims any warranty of fitness of timber for any purpose; (ii) offers this timber as is without any warranty of quality (merchantability) or quantity and (iii) expressly disclaims any warranty as to the quantity or quality of timber sold.

#### 11. Certification and Chain-of-Custody (10/14)

Unless otherwise indicated in the contract under section 7 – Other Conditions of the Sale Specific Conditions & Requirements, the area encompassed by this timber sale is certified to the standards of the Forest Stewardship Council (FSC) - Certificate #SCS-FM/COC-00090N and the Sustainable Forestry Initiative (SFI) - Certificate #NSF-SFIS-5Y031-SF5. Forest products from this sale may be delivered to the mill as "FSC 100% and / or SFI certified" as long as the contractor hauling the forest products is chain-of-custody (COC) certified or covered under a COC certificate from the destination mill. The purchaser is responsible for maintaining COC after leaving the sale area.

#### 12. Good Neighbor Authority (GNA) Requirements (7/16)

If the name of this timber sales contains the acronym GNA, it is authorized by the Good Neighbor Authority (GNA) and covered by various agreements between the U.S. Forest Service and the State. The timber sale occurs on federal land and the following conditions apply:

GNA contracts on US Forest Service land will not be awarded to purchasers on the Federal list of excluded parties. The System for Award Management (SAM) will be checked for active excluded parties prior to award of contract. In addition, the Bidder to whom award is made must complete an Assurance Regarding Felony Conviction or Tax Delinquent Status for Corporate Applicants (AD-3031).

#### 13. Good Neighbor Authority (GNA) Requirements, con't (9/16)

Bidder certifies, by signing this bid form, that to the best of Bidder's knowledge that the following representations are accurate and complete.

- a. That the Bidder and its principals are not presently debarred, suspended, proposed for debarment, declared ineligible, or voluntary excluded from timber sales (covered transactions) by any Federal department or agency.
- b. That the Bidder and its principals have not within a 3-year period preceding this bid been convicted of or had a civil judgment rendered against them for commission of fraud or a criminal offense in connection with obtaining , attempting to obtain, or performing a public (Federal, State, or local) transaction or contract under a public transaction; violation of Federal or State antitrust statutes or commission of embezzlement, theft, forgery, bribery, falsification or destruction of records, making false statements, or receiving stolen property.
- c. That the Bidder and its principals are not presently indicted for or otherwise criminally or civilly charged by a governmental entity (Federal, State, or local) with commission of any of the offenses enumerated in paragraph b of this certification.
- d. That the Bidder and its principals have not within a 3-year period preceding this bid had one or more public transactions (Federal, State, or local) terminated for breach or default of a timber or forest product contract.

Bidders that cannot certify this requirement, in whole or in part, shall submit an explanation with their bid.

DAN EICHINGER  
Director

**TIMBER SALE INFORMATION**

Gnarly Beech Hardwoods (61-101-20)  
 T27N, R06W, SEC. 13; T27N, R06W, SEC. 24.  
 Kalkaska County (Advertised Price \$63,566.70)

SALE NOTE: Sale must be chipped, there will be no exemptions granted.

A timber sale contract for this lump sum, sealed bid timber sale will be awarded to the responsible bidder offering the highest sealed bid price. All units of volume listed below were estimated using the T-Sale computer program and our traditional volume equations. Bids must be at or above the following advertised price for each product and species:

<u>PRODUCTS &amp; SPECIES</u>	<u>ESTIMATED UNITS*</u>	<u>ADVERTISED PRICE</u>
<b>Sawtimber</b>		
Basswood	91.2 MBF	\$ 64.00 / MBF
Beech	17.1 MBF	\$ 54.00 / MBF
Red Maple	53.7 MBF	\$ 88.00 / MBF
Red Oak	20.7 MBF	\$ 122.00 / MBF
Sugar Maple	214.4 MBF	\$ 148.00 / MBF
White Pine	3.5 MBF	\$ 44.00 / MBF
<b>Pulpwood</b>		
Basswood	211 Cords	\$ 9.25 / Cord
Beech	194 Cords	\$ 10.65 / Cord
Mixed Hardwood	953 Cords	\$ 10.65 / Cord
Paper Birch	24 Cords	\$ 8.55 / Cord
Red Maple	216 Cords	\$ 10.65 / Cord
Red Oak	89 Cords	\$ 7.10 / Cord
White Pine	43 Cords	\$ 8.50 / Cord

\* The total volume is statistically estimated within plus (+) or minus (-) 12.25 percent. There are an estimated 2,532 cords on this timber sale, plus or minus 310 cords at the 95% confidence level. The estimated units are final and not subject to adjustment. Prospective bidders are urged to examine this timber and to make their own estimates of quantity and quality.

**BOND AND PAYMENT SCHEDULE:**

- A bond in the amount of \$3,178.00 to insure faithful performance of the conditions of the contract will be deposited by the successful bidder within 21 days of the sale award.
- Cutting in any sale or unit without the required advance payment would be considered a trespass.
- Total payment must be paid in advance or according to the following schedule :
  - Ten percent (10%) of the sale value must be paid within 21 days of the sale award.
  - The 10% down payment will be credited towards the first unit cut.
  - Payment for each of the following units must be made before cutting begins in that unit:
 

PAYMENT UNIT NUMBER	PERCENT OF TOTAL SALE VALUE
01	45.5%
02	54.5%
- If no cutting takes place, the 10% down payment will not be refunded.
- Operations on the contract issued will terminate on 12/31/2022.

**SALE STATISTICS**

**SALE VOLUMES**

VOLUME		STATISTICAL RANGE IN CORDS		
TOTAL CUBIC FEET	TOTAL CORDS	PERCENT ERROR	MINIMUM	MAXIMUM
200,019	2,532	12.25%	2,222	2,842

## VDU VOLUMES

A VDU is a Volume Determination Unit. Volumes and their associated statistics are calculated at the VDU level and summarized to the sale level. There is often a one to one relationship between a VDU and a Payment Unit, but not always, depending on the cruise design. Refer to the VDU TO PAYMENT UNIT table.

VDU	VOLUME		PERCENT ERROR	RANGE IN CORDS	
	TOTAL CUBIC FEET	TOTAL CORDS		MINIMUM	MAXIMUM
26	200,020	2,532	12.25%	2,222	2,842
<b>TOTAL:</b>	<b>200,020</b>	<b>2,532</b>		<b>2,222</b>	<b>2,842</b>

## VDU TO PAYMENT UNIT

When a VDU is associated with more than one Payment Unit (PU), the VDU volumes are assigned to the PU based on acres of the VDU within the PU.

VDU	VDU ACRES	PU	PU ACRES
26	103.9	1	47.3
		2	56.6
<b>TOTAL:</b>	<b>103.9</b>		<b>103.9</b>

## DESCRIPTION OF TIMBER BY PAYMENT UNIT (PU)

PU	MARKET GROUP	PRODUCT	QUANTITY	UNIT	ACRES	ADVERTISE PRICE
1	Basswood	Sawtimber	41.5	MBF	47.3	\$28,932.55
	Beech		7.8	MBF		
	Red Maple		24.4	MBF		
	Red Oak		9.4	MBF		
	Sugar Maple		97.6	MBF		
	White Pine		1.6	MBF		
	Basswood		Pulpwood	96		
	Beech	88		Cords		
	Mixed Hardwood	434		Cords		
	<i>Black Cherry</i>	1		Cords		
	<i>Ironwood</i>	1		Cords		
	<i>Sugar Maple</i>	432		Cords		
	Paper Birch	11		Cords		
	Red Maple	98		Cords		
	Red Oak	41		Cords		
	White Pine	20	Cords			
2	Basswood	Sawtimber	49.7	MBF	56.6	\$34,634.15
	Beech		9.3	MBF		
	Red Maple		29.3	MBF		
	Red Oak		11.3	MBF		
	Sugar Maple		116.8	MBF		
	White Pine		1.9	MBF		
	Basswood		Pulpwood	115		
	Beech	106		Cords		
	Mixed Hardwood	519		Cords		
	<i>Black Cherry</i>	1		Cords		
	<i>Ironwood</i>	1		Cords		
	<i>Sugar Maple</i>	517		Cords		
	Paper Birch	13		Cords		
	Red Maple	118		Cords		
	Red Oak	48		Cords		
	White Pine	23	Cords			
TOTAL:			400.6	MBF		
TOTAL:			1,730	Cords		

# Sale Specific Conditions & Requirements

**Sale Name: Gnarly Beech Hardwoods**

**Sale Number: 61-101-20 Seq#: 1**

## 1 - Sale Area

### 1.2 - Boundaries

#### 1.2.1 - Painted boundaries (9/19)

The sale boundary and Payment Unit boundaries are marked and identified by red and yellow paint. Exterior sale boundary lines against state are marked with red paint. Interior Payment Unit boundaries are marked with yellow paint. The painted boundary line trees are not Included Timber and are to be left standing. Yellow painted trees designating an interior Payment Unit boundary are only to be cut when all surrounding Payment Units have been paid.

## 2 - Timber Specifications

### 2.1 - Included Timber

#### 2.1.1 - Clearcut unit(s) with unmerchantable trees (6/14)

Within Payment Unit(s) 1 and 2, cut all trees that are one (1) inch or more at DBH, regardless of merchantability.

### 2.2 - Utilization

#### 2.2.2 - Chipping required (2/18)

This sale must be chip harvested to facilitate subsequent planting operations. The Purchaser has the option to produce sawlogs or pulpwood bolts, but the remaining portion of the trees must be chipped and hauled. The requirement to retain approximately 1/6 to 1/3 of tree tops and limbs less than four inches in diameter is still applicable (G. C. & R. 2.2).

#### 2.2.3 - Stump heights (4/07)

Stump heights within the sale area shall not exceed either twelve (12) inches for trees ten (10) inches and more at DBH or four (4) inches for trees less than ten (10) inches at DBH. This is in order to facilitate planting operations.

## 3 - Payments

### 3.3 - Pre-measured Sales

#### 3.3.4 - Dividing payment units (7/14)

Payment Unit(s) 1 and 2, may be divided at the request of the Purchaser and upon approval of the Unit Manager. Dividing Payment Units is a contract modification which requires a Timber Sale Contract Supplement. There shall be only one division per Payment Unit.

## 4 - Transportation

### 4.1 - Construction

#### 4.1.3 - Slash and earthen piles (8/04)

Piles or windrows of earth along roads and landings that have been widened or constructed shall be leveled. Slash from road maintenance or construction, including stumps, shall be dispersed throughout the sale and/or chipped, utilized or otherwise removed from the sale.

#### 4.1.7 - Road closure (10/11)

All new roads built into the sale must be blocked to vehicle traffic within 30 days of completion of hauling. Overgrown roads that are reopened shall be considered new roads. In general, this will require constructing double earthen berms at strategic locations. Temporary berms may be required if no sale activity occurs for 30 or more consecutive days. Contact the sale administrator for details of design and placement.

#### 4.1.11 - Permits (2/12)

The Purchaser will secure any necessary highway and county road permits that may be required.

### 4.2 - Maintenance

#### 4.2.5 - Two wheel drive condition (2/04)

All existing trail roads on and adjacent to the sale area must be passable by two-wheel drive traffic for the duration of the sale.

## **5 - Operations**

### 5.1 - Notification

#### 5.1.1 - Pre-sale conference (10/16)

A pre-sale conference on site between the Purchaser and sale administrator is required prior to beginning any operation to determine landing and road locations. The Unit Manager or their representative must be contacted at least 5 days in advance to schedule this conference.

### 5.2 - Conduct of Operations

#### 5.2.3 - Operating Restrictions

##### 5.2.3.5 - Oak wilt restriction (1/18)

Within Payment Unit(s) 1 and 2, unless changed by written agreement, cutting, skidding, hauling within the sale and brushing of access roads to the sale are not permitted during the period of April 15 to July 15. Operations may be allowed if specific steps are taken to prevent damaging uncut oak during the high risk period. Those steps may include completing all road brushing before April 15th and clearing a tree-length buffer along uncut oak cover before April 15th. This is necessary to reduce the spread of oak wilt. For more information, contact the Unit Manager or his/her representative.

#### 5.2.32 - Decking/landing restoration (9/13)

All decking and landing areas must have the surface area restored to a condition equal to or better than before. This is to ensure the proper regeneration of the stand. Wood debris, chips and "cookies" from trimmings must be removed or scattered away from landing and loading areas and may not be windrowed on the edge.

#### 5.2.39 - ORV trail/route protection (4/18)

The trail is an ORV trail or route within the sale area, which is shown on the Timber Sale Map. Do not cut trees or damage posts with yellow ORV markers. All stumps within five (5) feet of the trail must be cut flush with the ground. Maintain a twenty (20) foot wide slash, debris and rut free zone daily using the ORV trail or route as the center-line. Do not run equipment down the ORV trail or route. Skidding across the trail or route may only occur in locations approved by the sale administrator.

### 5.4 - Soil Protection

#### 5.4.1 - Rutting restriction, general (7/16)

Operations are to cease immediately if equipment and weather conditions result in rutting of roads and/or skid trails which is twelve (12) inches or greater in depth and fifty (50) feet in length. The Unit Manager or his/her representative may restrict hauling and/or skidding if ruts exceed the specified depth. With the Unit Manager or his/her representative's approval, the Purchaser may return to the area when the risk of rutting has decreased.

## **6 - Safety and Fire Prevention**

### 6.2 - Signing

#### 6.2.1 - Road posting (9/09)

The Purchaser is responsible for posting and maintaining caution signs on county and state roads prior to beginning operations. The road must be posted at appropriate distances from the sale area to warn of logging activity and truck traffic. Signs must be removed when harvest operations are suspended or completed. The Purchaser shall provide these signs.

#### 6.2.3 - Recreational trail posting (2/10)

The Purchaser is responsible for posting and maintaining caution signs on all trails affected by timber sale operations prior to beginning operations. The trail must be posted at appropriate distances from the sale area to warn of logging activity and truck traffic at both ends of the trail. Signs must be removed when harvest operations are suspended or completed. The Purchaser shall provide these signs.





# TIMBER SALE MAP

This information provided by authority of Part 525, 1994 PA 451, as amended.

Forest Management Unit Traverse City Management Unit		County Kalaska County	Mapped By Tom Peterson	Date 12/05/2019	Page 1	of 1
Township 27N	Range 06W	Section(s) and Subdivision(s) Sec 13: SE1/4, S1/2SW & NESW Sec 24: N1/2NE & N1/2NW		Scale 1:15,840		

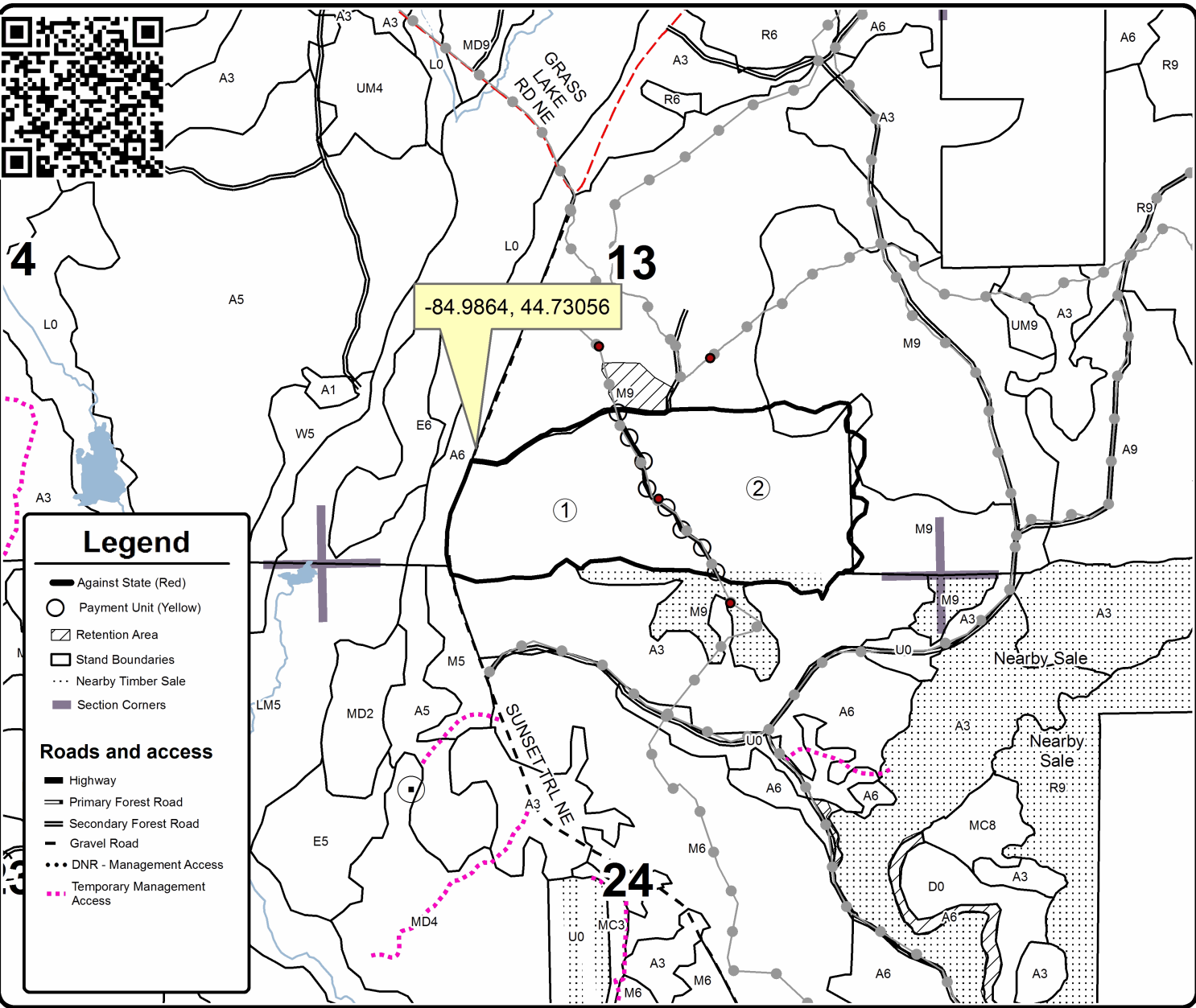
Cover Type				Density	
A = Aspen	H = Hemlock	N = Marsh	U = Upland Brush	0 = Non Stocked	5 = Pole Timber Medium
B = Paper Birch	J = Jack Pine	O = Oak	UM = Upland Mixed	1 = Seedling Sapling Poor	6 = Pole Timber Well
C = Cedar	L = Lowland Brush	P = Lowland Poplar	V = Bog or Marsh	2 = Seedling Sapling Medium	7 = Saw Timber Poor
D = Treed Bog	LM = Lowland Mixed	Q = Mixed Swamp Conifer	W = White Pine	3 = Seedling Sapling Well	8 = Saw Timber Medium
E = Swamp Hdwoods	M = Mpl, Bch, Brch	R = Red Pine	X = Non Stocked	4 = Pole Timber Poor	9 = Saw Timber Well
F = Spruce Fir	MC = Mixed Conifer	S = Black Spruce	Z = Water		
G = Grass	MD = Mixed Deciduous	T = Tamarack			

PU	Acres
1	47.3
2	56.6

## Gnarly Beech Hardwoods

### Compartment 61114

### 103.9 Acres





## TIMBER SALE INFORMATION

### One Leg Aspen (61-107-20)

T25N, R05W, SEC. 20.

Kalkaska County (Advertised Price \$36,746.15)

SALE NOTE: A recreation site such as a trail, pathway, or campground is within the sale area or the vicinity. Certain restrictions/specifications may be applicable including time restrictions.

A timber sale contract for this lump sum, sealed bid timber sale will be awarded to the responsible bidder offering the highest sealed bid price. All units of volume listed below were estimated using the T-Sale computer program and our traditional volume equations. Bids must be at or above the following advertised price for each product and species:

<u>PRODUCTS &amp; SPECIES</u>	<u>ESTIMATED UNITS*</u>	<u>ADVERTISED PRICE</u>
Sawtimber		
Beech	4.6 MBF	\$ 54.00 / MBF
Black Cherry	2.3 MBF	\$ 239.00 / MBF
Mixed Aspen	147.5 MBF	\$ 88.00 / MBF
Mixed Oak	11.4 MBF	\$ 90.00 / MBF
Paper Birch	2.7 MBF	\$ 24.00 / MBF
Red Maple	18.2 MBF	\$ 88.00 / MBF
Red Pine	26.8 MBF	\$ 79.00 / MBF
Sugar Maple	17.9 MBF	\$ 148.00 / MBF
Pulpwood		
Balsam Fir	5 Cords	\$ 7.90 / Cord
Mixed Aspen	965 Cords	\$ 11.30 / Cord
Mixed Hardwood	344 Cords	\$ 10.65 / Cord
Mixed Oak	53 Cords	\$ 7.10 / Cord
Red Pine	19 Cords	\$ 27.65 / Cord

\* The total volume is statistically estimated within plus (+) or minus (-) 13.95 percent. There are an estimated 1,850 cords on this timber sale, plus or minus 258 cords at the 95% confidence level. The estimated units are final and not subject to adjustment. Prospective bidders are urged to examine this timber and to make their own estimates of quantity and quality.

### **BOND AND PAYMENT SCHEDULE:**

1. A bond in the amount of \$1,837.00 to insure faithful performance of the conditions of the contract will be deposited by the successful bidder within 21 days of the sale award.
2. Cutting in any sale or unit without the required advance payment would be considered a trespass.
3. Total payment must be paid in advance or according to the following schedule :
  - (a) Ten percent (10%) of the sale value must be paid within 21 days of the sale award.
  - (b) The 10% down payment will be credited towards the first unit cut.
  - (c) Payment for each of the following units must be made before cutting begins in that unit:
 

PAYMENT UNIT NUMBER	PERCENT OF TOTAL SALE VALUE
01	68.6%
02	31.4%
4. If no cutting takes place, the 10% down payment will not be refunded.
5. Operations on the contract issued will terminate on 12/31/2022.

### **SALE STATISTICS**

#### **SALE VOLUMES**

VOLUME		STATISTICAL RANGE IN CORDS		
TOTAL CUBIC FEET	TOTAL CORDS	PERCENT ERROR	MINIMUM	MAXIMUM
146,145	1,850	13.95%	1,592	2,108

**VDU VOLUMES**

A VDU is a Volume Determination Unit. Volumes and their associated statistics are calculated at the VDU level and summarized to the sale level. There is often a one to one relationship between a VDU and a Payment Unit, but not always, depending on the cruise design. Refer to the VDU TO PAYMENT UNIT table.

VDU	VOLUME		PERCENT ERROR	RANGE IN CORDS	
	TOTAL CUBIC FEET	TOTAL CORDS		MINIMUM	MAXIMUM
21	146,142	1,850	13.95%	1,592	2,108
<b>TOTAL:</b>	<b>146,142</b>	<b>1,850</b>		<b>1,592</b>	<b>2,108</b>

**VDU TO PAYMENT UNIT**

When a VDU is associated with more than one Payment Unit (PU), the VDU volumes are assigned to the PU based on acres of the VDU within the PU.

VDU	VDU ACRES	PU	PU ACRES
21	73.0	1	50.1
		2	22.9
<b>TOTAL:</b>	<b>73.0</b>		<b>73.0</b>

**DESCRIPTION OF TIMBER BY PAYMENT UNIT (PU)**

PU	MARKET GROUP	PRODUCT	QUANTITY	UNIT	ACRES	ADVERTISE PRICE	
1	Beech	Sawtimber	3.2	MBF	50.1	\$25,223.95	
	Black Cherry		1.6	MBF			
	Mixed Aspen		101.3	MBF			
	<i>B. T. Aspen</i>		30.1	MBF			
	<i>Quaking Aspen</i>		71.2	MBF			
	Mixed Oak		7.8	MBF			
	<i>BI/R/Hybrid Oak</i>		2.3	MBF			
	<i>Red Oak</i>		5.5	MBF			
	Paper Birch		1.9	MBF			
	Red Maple		12.5	MBF			
	Red Pine		18.4	MBF			
	Sugar Maple		12.3	MBF			
	Balsam Fir		Pulpwood	3			Cords
	Mixed Aspen			662			Cords
	<i>B. T. Aspen</i>			47			Cords
	<i>Quaking Aspen</i>			615			Cords
	Mixed Hardwood			236			Cords
	<i>Basswood</i>			40			Cords
	<i>Beech</i>			9			Cords
	<i>Black Cherry</i>			34			Cords
	<i>Ironwood</i>	8		Cords			
	<i>Paper Birch</i>	16		Cords			
	<i>Red Maple</i>	53		Cords			
	<i>Sugar Maple</i>	73		Cords			
	<i>White Ash</i>	3		Cords			
	Mixed Oak	36		Cords			
	<i>BI/R/Hybrid Oak</i>	8		Cords			
	<i>Red Oak</i>	28		Cords			
	Red Pine	13		Cords			
	2	Beech		Sawtimber			1.4
Black Cherry		0.7	MBF				
Mixed Aspen		46.2	MBF				
<i>B. T. Aspen</i>		13.7	MBF				
<i>Quaking Aspen</i>		32.5	MBF				
Mixed Oak		3.6	MBF				
<i>BI/R/Hybrid Oak</i>		1.1	MBF				
<i>Red Oak</i>		2.5	MBF				
Paper Birch		0.8	MBF				
Red Maple		5.7	MBF				
Red Pine		8.4	MBF				
Sugar Maple		5.6	MBF				
Balsam Fir		Pulpwood	2	Cords			
Mixed Aspen			303	Cords			
<i>B. T. Aspen</i>			22	Cords			
<i>Quaking Aspen</i>			281	Cords			
Mixed Hardwood			108	Cords			
<i>Basswood</i>			18	Cords			
<i>Beech</i>			4	Cords			
<i>Black Cherry</i>			16	Cords			
<i>Ironwood</i>			3	Cords			
<i>Paper Birch</i>			8	Cords			
<i>Red Maple</i>			24	Cords			
<i>Sugar Maple</i>			33	Cords			
<i>White Ash</i>			2	Cords			
Mixed Oak			17	Cords			
<i>BI/R/Hybrid Oak</i>	4	Cords					

**DESCRIPTION OF TIMBER BY PAYMENT UNIT (PU), CON'T**

PU	MARKET GROUP	PRODUCT	QUANTITY	UNIT	ACRES	ADVERTISE PRICE
2 con't	<i>Red Oak</i>	<i>Pulpwood</i>	13	<i>Cords</i>		
	Red Pine		6	Cords		
TOTAL:			231.4	MBF		
TOTAL:			1,386	Cords		

# Sale Specific Conditions & Requirements

**Sale Name: One Leg Aspen**

**Sale Number: 61-107-20 Seq#: 1**

## 1 - Sale Area

### 1.2 - Boundaries

#### 1.2.1 - Painted boundaries (9/19)

The sale boundary and Payment Unit boundaries are marked and identified by red and yellow paint. Exterior sale boundary lines against state are marked with red paint. Interior Payment Unit boundaries are marked with yellow paint. Yellow painted trees designating an interior Payment Unit boundary are only to be cut when all surrounding Payment Units have been paid.

## 2 - Timber Specifications

### 2.1 - Included Timber

#### 2.1.1 - Clearcut unit(s) with unmerchantable trees (6/14)

Within Payment Unit(s) 1 and 2, cut all trees that are two (2) inches or more at DBH, except do not any white oak or green marked trees.

## 3 - Payments

### 3.3 - Pre-measured Sales

#### 3.3.4 - Dividing payment units (7/14)

Payment Unit(s) 1, may be divided at the request of the Purchaser and upon approval of the Unit Manager. Dividing Payment Units is a contract modification which requires a Timber Sale Contract Supplement. There shall be only one division per Payment Unit.

## 4 - Transportation

### 4.1 - Construction

#### 4.1.6 - Road construction (1/09)

Construction of new roads or improvements of existing roads shall be done in such a way as to minimize the environmental and visual impacts. Merchantable trees shall be cut and utilized unless otherwise directed. Non-merchantable trees shall be severed and laid flat on the ground. Slash shall be scattered, not left in windrows and kept a minimum of ten (10) feet back from the road edge. Stumps shall be set upright, not left on edge, and be moved at least ten (10) feet away from the road edge. Disturbed soil shall be feathered into the woods and not left in berms or windrows.

#### 4.1.7 - Road closure (10/11)

All new roads built into the sale must be blocked to vehicle traffic within 30 days of completion of hauling. Overgrown roads that are reopened shall be considered new roads. These roads must be rendered impassable to cars and trucks. In general, this will require constructing a four (4) foot high berm of stumps and logs covered with earth. Contact the sale administrator for details of design and placement.

## 5 - Operations

### 5.1 - Notification

#### 5.1.1 - Pre-sale conference (10/16)

A pre-sale conference on site between the Purchaser and sale administrator is required prior to beginning any operation to determine landing, road location, and threatened species guidance. The Unit Manager or their representative must be contacted at least 5 days in advance to schedule this conference.

### 5.2 - Conduct of Operations

#### 5.2.1 - Slash

##### 5.2.1.8 - Slash height (12/08)

No slash or tree tops may exceed twenty four (24) inches in height.

#### 5.2.1.10 - No slash in openings (5/10)

No brush or logging debris is to be left in the maintained wildlife opening, which is indicated by U0 on the Timber Sale Map east of the sale area. Any damage to the opening shall be repaired according to specifications of the Unit Manager or his/her representative.

#### 5.2.3 - Operating Restrictions

##### 5.2.3.1 - Operating restrictions (9/11)

Within Payment Unit(s) 1 and 2, unless changed by written agreement, there is a couple acre pocket on the east side of the Payment Units where cutting and skidding is limited to frozen ground condition. This restriction is because of a threatened species. Contact the sale administrator for additional details.

##### 5.2.29 - Shrub protection (1/20)

Do not cut or damage hawthorn, witch-hazel, dogwood or juneberry. These woody-shrub plants are highly beneficial to various wildlife species.

##### 5.2.32 - Decking/landing restoration (9/13)

All decking and landing areas must have the surface area restored to a condition equal to or better than before. This is to ensure the proper regeneration of the stand. Wood debris, chips and "cookies" from trimmings must be removed or scattered away from landing and loading areas and may not be windrowed on the edge.

##### 5.2.37 - No decking areas (12/08)

No decking is allowed within the U0 cover types located on the east side of the timber sale. These are managed wildlife openings.

##### 5.2.41 - Snowmobile trail protection (9/11)

The Cranberry trail is a snowmobile trail and is shown on the Timber Sale Map. Do not cut or damage posts with orange trail markers or traffic control signs. If the trail is used, it must be maintained and restored to a condition equal to or better than before the sale. If the trail is used for hauling, it must be graded to the satisfaction of the Unit Manager or their representative prior to December 1. If the trail road is used for hauling during the snowmobile season, then a snow covered base must be left on the trail. Maintain a twenty (20) foot wide slash, debris and rut free zone daily using the snowmobile trail as the center-line. No decking of forest products will be permitted along the snowmobile trail. All stumps within twenty (20) feet of the snowmobile trail must be cut at ground level.

##### 5.2.43 - Opening protection (12/08)

No activities are permitted in openings marked on the Timber Sale Map with the letter "G". Any damage to the openings shall be repaired according to specifications of the Unit Manager or his/her representative.

#### 5.4 - Soil Protection

##### 5.4.1 - Rutting restriction, general (7/16)

Operations are to cease immediately if equipment and weather conditions result in rutting of roads and/or skid trails which is twelve (12) inches or greater in depth and fifty (50) feet in length. The Unit Manager or his/her representative may restrict hauling and/or skidding if ruts exceed the specified depth. With the Unit Manager or his/her representative's approval, the Purchaser may return to the area when the risk of rutting has decreased.

### 6 - Safety and Fire Prevention

#### 6.2 - Signing

##### 6.2.1 - Road posting (9/09)

The Purchaser is responsible for posting and maintaining caution signs on roads used for hauling prior to beginning operations. The road must be posted at appropriate distances from the sale area to warn of logging activity and truck traffic. Signs must be removed when harvest operations are suspended or completed. The Purchaser shall provide these signs.

##### 6.2.2 - Snowmobile trail posting (8/09)

The Purchaser is responsible for posting and maintaining caution signs on Cranberry snowmobile trail prior to beginning operations during the snowmobile season (approximately December 1 to March 31). The trail must be posted at appropriate distances from the sale area to warn of logging activity and truck traffic. Signs must be removed when harvest operations are suspended or completed. The Purchaser shall provide these signs.







Sale Number	Year
61-107	20

# TIMBER SALE MAP

This information provided by authority of Part 525, 1994 PA 451, as amended.

Forest Management Unit Traverse City	County Kalkaska	Mapped By Crigier	Date 03/26/2020	Page 1	of 1
Township 25N	Range 05W	Section(s) and Subdivision(s) Section 20	Scale 1:15,840		

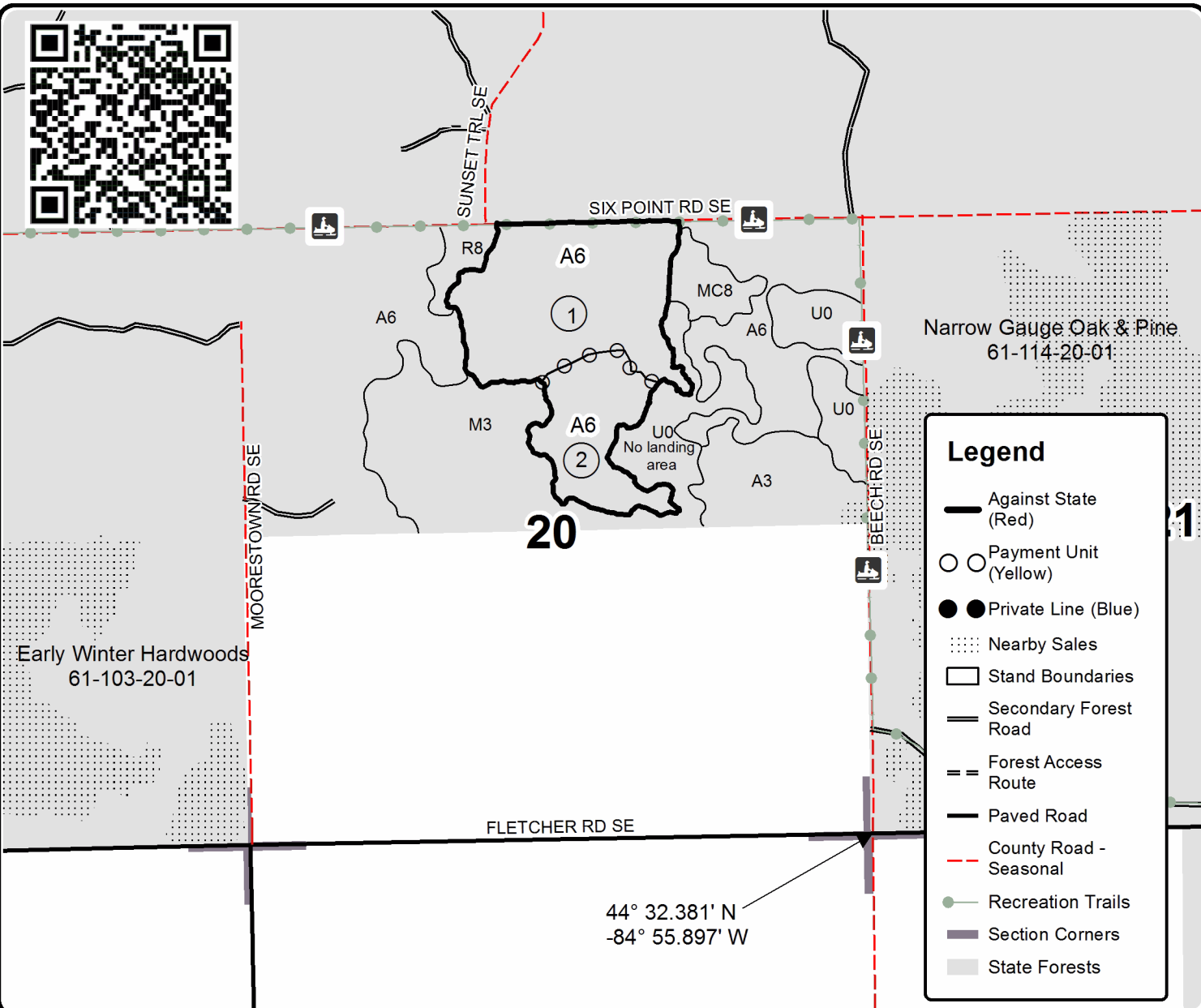
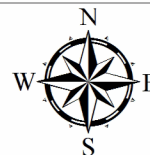
Cover Type				Density	
A = Aspen	H = Hemlock	N = Marsh	U = Upland Brush	0 = Non Stocked	5 = Pole Timber Medium
B = Paper Birch	J = Jack Pine	O = Oak	UM = Upland Mixed	1 = Seedling Sapling Poor	6 = Pole Timber Well
C = Cedar	L = Lowland Brush	P = Lowland Poplar	V = Bog or Marsh	2 = Seedling Sapling Medium	7 = Saw Timber Poor
D = Treed Bog	LM = Lowland Mixed	Q = Mixed Swamp Conifer	W = White Pine	3 = Seedling Sapling Well	8 = Saw Timber Medium
E = Swamp Hdwoods	M = Mpl, Bch, Brch	R = Red Pine	X = Non Stocked	4 = Pole Timber Poor	9 = Saw Timber Well
F = Spruce Fir	MC = Mixed Conifer	S = Black Spruce	Z = Water		
G = Grass	MD = Mixed Deciduous	T = Tamarack			

PU	Acres	PU	Acres
1	50.1		
2	22.9		

## One Leg Aspen

### Compartment 143

### 73 Acres



44° 32.381' N  
-84° 55.897' W

## TIMBER SALE INFORMATION

### Outhouse Pine (61-111-20)

T26N, R08W, SEC. 2; T26N, R08W, SEC. 3; T27N, R08W, SEC. 34; T27N, R08W, SEC. 35.  
Kalkaska County (Advertised Price \$90,943.70)

A timber sale contract for this lump sum, sealed bid timber sale will be awarded to the responsible bidder offering the highest sealed bid price. All units of volume listed below were estimated using the T-Sale computer program and our traditional volume equations. Bids must be at or above the following advertised price for each product and species:

<u>PRODUCTS &amp; SPECIES</u>	<u>ESTIMATED UNITS*</u>	<u>ADVERTISED PRICE</u>
<b>Sawtimber</b>		
Red Maple	12.3 MBF	\$ 88.00 / MBF
Red Oak	3.4 MBF	\$ 122.00 / MBF
Red Pine	769.9 MBF	\$ 79.00 / MBF
White Oak	2.1 MBF	\$ 47.00 / MBF
White Pine	151.0 MBF	\$ 44.00 / MBF
<b>Pulpwood</b>		
B. T. Aspen	200 Cords	\$ 11.30 / Cord
Balsam Fir	18 Cords	\$ 7.90 / Cord
Black Cherry	17 Cords	\$ 10.65 / Cord
Jack Pine	95 Cords	\$ 9.10 / Cord
Red Maple	147 Cords	\$ 10.65 / Cord
Red Oak	40 Cords	\$ 7.10 / Cord
Red Pine	464 Cords	\$ 27.65 / Cord
White Oak	38 Cords	\$ 7.10 / Cord
White Pine	410 Cords	\$ 8.50 / Cord

\* The total volume is statistically estimated within plus (+) or minus (-) 15.67 percent. There are an estimated 3,308 cords on this timber sale, plus or minus 518 cords at the 95% confidence level. The estimated units are final and not subject to adjustment. Prospective bidders are urged to examine this timber and to make their own estimates of quantity and quality.

### **BOND AND PAYMENT SCHEDULE:**

1. A bond in the amount of \$4,547.00 to insure faithful performance of the conditions of the contract will be deposited by the successful bidder within 21 days of the sale award.
2. Cutting in any sale or unit without the required advance payment would be considered a trespass.
3. Total payment must be paid in advance or according to the following schedule :
  - (a) Ten percent (10%) of the sale value must be paid within 21 days of the sale award.
  - (b) The 10% down payment will be credited towards the first unit cut.
  - (c) Payment for each of the following units must be made before cutting begins in that unit:

PAYMENT UNIT NUMBER	PERCENT OF TOTAL SALE VALUE
01	0.8%
02	4.3%
03	88.2%
04	6.7%

4. If no cutting takes place, the 10% down payment will not be refunded.
5. Operations on the contract issued will terminate on 03/31/2023.

### **SALE STATISTICS**

#### **SALE VOLUMES**

VOLUME		STATISTICAL RANGE IN CORDS		
TOTAL CUBIC FEET	TOTAL CORDS	PERCENT ERROR	MINIMUM	MAXIMUM
261,324	3,308	15.67%	2,790	3,826

**VDU VOLUMES**

A VDU is a Volume Determination Unit. Volumes and their associated statistics are calculated at the VDU level and summarized to the sale level. There is often a one to one relationship between a VDU and a Payment Unit, but not always, depending on the cruise design. Refer to the VDU TO PAYMENT UNIT table.

VDU	VOLUME		PERCENT ERROR	RANGE IN CORDS	
	TOTAL CUBIC FEET	TOTAL CORDS		MINIMUM	MAXIMUM
31	20,287	257	29.28%	182	332
57	5,609	71	41.01%	42	100
93	197,927	2,505	16.34%	2,096	2,915
119	34,049	431	49.68%	217	645
193	3,452	44	61.43%	17	71
<b>TOTAL:</b>	<b>261,324</b>	<b>3,308</b>		<b>2,553</b>	<b>4,063</b>

**VDU TO PAYMENT UNIT**

When a VDU is associated with more than one Payment Unit (PU), the VDU volumes are assigned to the PU based on acres of the VDU within the PU.

VDU	VDU ACRES	PU	PU ACRES
31	20.5	2	20.5
57	15.7	1	15.7
93	118.7	3	118.7
119	23.4	4	23.4
193	5.8	2	5.8
<b>TOTAL:</b>	<b>184.1</b>		<b>184.1</b>

**DESCRIPTION OF TIMBER BY PAYMENT UNIT (PU)**

PU	MARKET GROUP	PRODUCT	QUANTITY	UNIT	ACRES	ADVERTISE PRICE				
1	B. T. Aspen	Pulpwood	7	Cords	15.7	\$683.65				
	Black Cherry		10	Cords						
	Jack Pine		40	Cords						
	Red Maple		7	Cords						
	White Pine		7	Cords						
2	Red Pine	Sawtimber	9.4	MBF	26.3	\$3,934.05				
	White Pine		11.1	MBF						
	B. T. Aspen	Pulpwood	4	Cords						
	Black Cherry		7	Cords						
	Jack Pine		32	Cords						
	Red Maple		34	Cords						
	Red Pine		20	Cords						
	White Pine		162	Cords						
	3		Red Oak	Sawtimber			3.4	MBF	118.7	\$80,197.75
Red Pine			754.5	MBF						
White Oak			2.1	MBF						
White Pine			134.7	MBF						
B. T. Aspen		Pulpwood	16	Cords						
Red Maple			5	Cords						
Red Oak			40	Cords						
Red Pine			424	Cords						
White Oak			38	Cords						
White Pine			193	Cords						
4			Red Maple	Sawtimber	12.3	MBF	23.4	\$6,128.25		
			Red Pine		6.0	MBF				
	White Pine		5.2	MBF						
	B. T. Aspen	Pulpwood	173	Cords						
	Balsam Fir		18	Cords						
	Jack Pine		23	Cords						
	Red Maple		101	Cords						
	Red Pine		20	Cords						
	White Pine		48	Cords						
TOTAL:			938.7	MBF						
TOTAL:			1,429	Cords						

## Sale Specific Conditions & Requirements

**Sale Name: Outhouse Pine**

**Sale Number: 61-111-20 Seq#: 1**

### 1 - Sale Area

#### 1.2 - Boundaries

##### 1.2.1 - Painted boundaries (9/19)

The sale boundary and Payment Unit boundaries are marked and identified by blue, red and yellow paint. Exterior sale boundary lines against private property are marked with blue paint. Exterior sale boundary lines against state are marked with red paint. Interior Payment Unit boundaries are marked with yellow paint. Yellow painted trees designating an interior Payment Unit boundary are only to be cut when all surrounding Payment Units have been paid.

### 2 - Timber Specifications

#### 2.1 - Included Timber

##### 2.1.1 - Clearcut unit(s) with unmerchantable trees (6/14)

Within Payment Unit(s) 1, 2, 3 and 4, cut all trees that are two (2) inches or more at DBH, except within Payments Units 1 and 4, do not cut any oak.

#### 2.2 - Utilization

##### 2.2.2 - Chipping required (2/18)

Payment Unit 3, must be chip harvested to facilitate subsequent planting operations. The Purchaser has the option to produce sawlogs or pulpwood bolts, but the remaining portion of the trees must be chipped and hauled. If market conditions limit the practicality of chipping, the producer may skid all remaining topwood out of this Payment Unit and scatter in locations as approved by the sale administrator. If the deadline is not met damages collected shall be determined by the cost to complete this work. The requirement to retain approximately 1/6 to 1/3 of tree tops and limbs less than four inches in diameter is still applicable (G. C. & R. 2.2).

##### 2.2.3 - Stump heights (4/07)

Stump heights within Payment Unit 3, shall not exceed six (6) inches for all trees. This is in order to facilitate planting operations.

### 4 - Transportation

#### 4.1 - Construction

##### 4.1.3 - Slash and earthen piles (8/04)

Piles or windrows of earth along roads and landings that have been widened or constructed shall be leveled. Slash from road maintenance or construction, including stumps, shall be dispersed throughout the sale.

##### 4.1.6 - Road construction (1/09)

Construction of new roads or improvements of existing roads shall be done in such a way as to minimize the environmental and visual impacts. Merchantable trees shall be cut and utilized unless otherwise directed. Non-merchantable trees shall be severed and laid flat on the ground. Slash shall be scattered, not left in windrows and kept a minimum of ten (10) feet back from the road edge. Stumps shall be set upright, not left on edge, and be moved at least ten (10) feet away from the road edge. Disturbed soil shall be feathered into the woods and not left in berms or windrows.

#### 4.2 - Maintenance

##### 4.2.5 - Two wheel drive condition (2/04)

All existing trail roads on and adjacent to the sale area must be passable by two-wheel drive traffic for the duration of the sale.

### 5 - Operations

#### 5.1 - Notification

##### 5.1.1 - Pre-sale conference (10/16)

A pre-sale conference on site between the Purchaser and sale administrator is required prior to beginning any operation to determine landing and road locations. The Unit Manager or their representative must be contacted at least 5 days in advance to schedule this conference.

#### 5.1.3 - Well heads and natural gas pipelines (11/15)

The Purchaser is responsible for contacting the gas or pipeline company prior to operating equipment in the vicinity of well heads or natural gas pipelines.

#### 5.1.4 - Post-sale conference (10/16)

A post-sale conference on site between the Purchaser and sale administrator is required 5 days prior to the completion of active logging operations to determine clean-up and repair of landings, road edges, and the fulfillment of other contract specifications.

### 5.2 - Conduct of Operations

#### 5.2.3 - Operating Restrictions

##### 5.2.3.4 - Oak wilt restriction, no exceptions (1/18)

Within Payment Unit(s) 1 and 4, cutting, skidding, hauling within the sale and brushing of access roads to the sale are not permitted during the period of April 15 to July 15. No exceptions will be granted. This is necessary to reduce the spread of oak wilt.

#### 5.2.22 - Operating Caution

##### 5.2.22.1 - Operating caution (6/11)

It is recommended, but not required, that within Payment Unit(s) 4, cutting, skidding and hauling occur during dry summer or frozen winter conditions. The reason for the recommendation is because of wet areas within the Payment Unit.

#### 5.2.32 - Decking/landing restoration (9/13)

All decking and landing areas must have the surface area restored to a condition equal to or better than before. This is to ensure the proper regeneration of the stand. Wood debris, chips and "cookies" from trimmings must be removed or scattered away from landing and loading areas and may not be windrowed on the edge.

### 5.4 - Soil Protection

#### 5.4.1 - Rutting restriction, general (7/16)

Operations are to cease immediately if equipment and weather conditions result in rutting of roads and/or skid trails which is twelve (12) inches or greater in depth and fifty (50) feet in length. The Unit Manager or his/her representative may restrict hauling and/or skidding if ruts exceed the specified depth. With the Unit Manager or his/her representative's approval, the Purchaser may return to the area when the risk of rutting has decreased.



# TIMBER SALE MAP

This information provided by authority of Part 525, 1994 PA 451, as amended.

Forest Management Unit Traverse City	County Kalkaska	Mapped By Roell	Date 07/28/2020	Page 1	of 1
Township 26N & 27N	Range 08W	Section(s) and Subdivision(s) Sale is within portions of Sections 2, 3, 34, & 35	Scale 1:15,840		

Cover Type				Density	
A = Aspen	H = Hemlock	N = Marsh	U = Upland Brush	0 = Non Stocked	5 = Pole Timber Medium
B = Paper Birch	J = Jack Pine	O = Oak	UM = Upland Mixed	1 = Seeding Sapling Poor	6 = Pole Timber Well
C = Cedar	L = Lowland Brush	P = Lowland Poplar	V = Bog or Marsh	2 = Seeding Sapling Medium	7 = Saw Timber Poor
D = Tread Bog	LM = Lowland Mixed	Q = Mixed Swamp Conifer	W = White Pine	3 = Seeding Sapling Well	8 = Saw Timber Medium
E = Swamp Hardwoods	M = Mpl. Ech. Birch	R = Red Pine	X = Non Stocked	4 = Pole Timber Poor	9 = Saw Timber Well
F = Spruce Fir	MC = Mixed Conifer	S = Black Spruce	Z = Water		
G = Creas	MD = Mixed Deciduous	T = Tamarack			

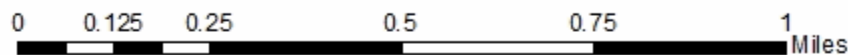
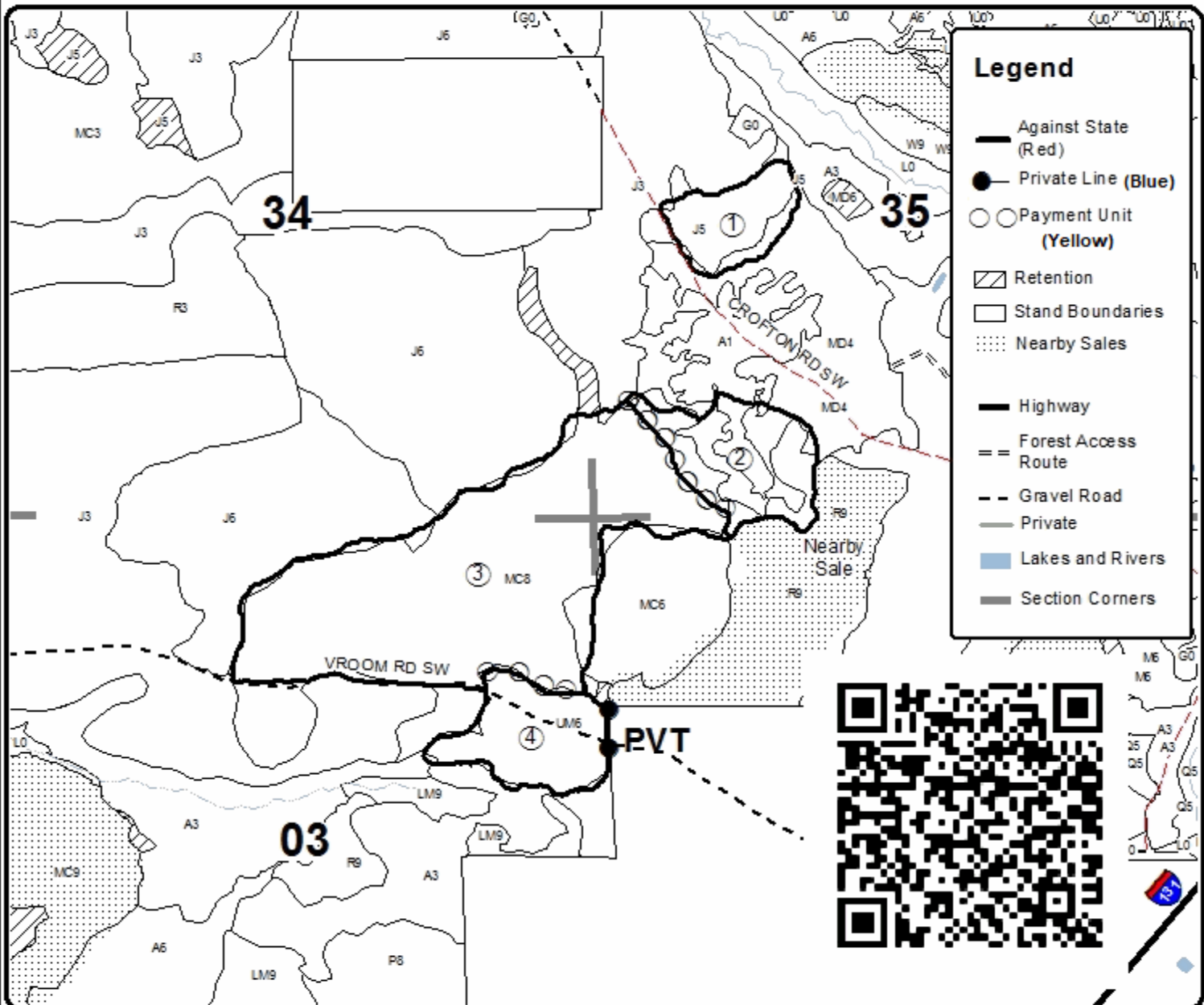
### PU Acres

1	15.7	4	23.4
2	26.3		
3	118.7		

## Outhouse Pine

### Compartment 157

### 184.1 Acres





## TIMBER SALE INFORMATION

### 104 Hardwood Alteration (61-151-19)

T28N, R05W, SEC. 16; T28N, R05W, SEC. 17; T28N, R05W, SEC. 8; T28N, R05W, SEC. 9.  
Kalkaska County (Advertised Price \$223,054.40)

SALE NOTE: Recommend a rotary head feller buncher to cut the bulk of this timber sale as beech and ironwood are being cut down to 1" DBH.

A recreation site such as a trail, pathway, or campground is within the sale area or the vicinity. Certain restrictions/specifications may be applicable including time restrictions.

A timber sale contract for this lump sum, sealed bid timber sale will be awarded to the responsible bidder offering the highest sealed bid price. All units of volume listed below were estimated using the T-Sale computer program and our traditional volume equations. Bids must be at or above the following advertised price for each product and species:

<u>PRODUCTS &amp; SPECIES</u>	<u>ESTIMATED UNITS*</u>		<u>ADVERTISED PRICE</u>
<b>Sawtimber</b>			
Basswood	192.9	MBF	\$ 64.00 / MBF
Beech	142.7	MBF	\$ 54.00 / MBF
Black Cherry	6.4	MBF	\$ 239.00 / MBF
Mixed Aspen	33.9	MBF	\$ 88.00 / MBF
Paper Birch	2.4	MBF	\$ 24.00 / MBF
Red Maple	160.6	MBF	\$ 88.00 / MBF
Red Pine	128.2	MBF	\$ 79.00 / MBF
Sugar Maple	600.0	MBF	\$ 148.00 / MBF
White Pine	8.9	MBF	\$ 44.00 / MBF
<b>Pulpwood</b>			
Basswood	406	Cords	\$ 9.25 / Cord
Mixed Aspen	669	Cords	\$ 11.30 / Cord
Mixed Hardwood	6,177	Cords	\$ 10.65 / Cord
Red Pine	281	Cords	\$ 27.65 / Cord
White Pine	13	Cords	\$ 8.50 / Cord

\* The total volume is statistically estimated within plus (+) or minus (-) 7.85 percent. There are an estimated 10,102 cords on this timber sale, plus or minus 793 cords at the 95% confidence level. The estimated units are final and not subject to adjustment. Prospective bidders are urged to examine this timber and to make their own estimates of quantity and quality.

### **BOND AND PAYMENT SCHEDULE:**

1. A bond in the amount of \$11,153.00 to insure faithful performance of the conditions of the contract will be deposited by the successful bidder within 21 days of the sale award.
2. Cutting in any sale or unit without the required advance payment would be considered a trespass.
3. Total payment must be paid in advance or according to the following schedule :
  - (a) Ten percent (10%) of the sale value must be paid within 21 days of the sale award.
  - (b) The 10% down payment will be credited towards the first unit cut.
  - (c) Payment for each of the following units must be made before cutting begins in that unit:
 

PAYMENT UNIT NUMBER	PERCENT OF TOTAL SALE VALUE
01	9.7%
02	20.3%
03	7.8%
04	13.5%
05	11.8%
06	8.0%
07	13.7%
08	15.2%
4. If no cutting takes place, the 10% down payment will not be refunded.
5. Operations on the contract issued will terminate on 12/31/2023.

### **SALE STATISTICS**

**SALE VOLUMES**

VOLUME			STATISTICAL RANGE IN CORDS	
TOTAL CUBIC FEET	TOTAL CORDS	PERCENT ERROR	MINIMUM	MAXIMUM
798,073	10,102	7.85%	9,309	10,895

**VDU VOLUMES**

A VDU is a Volume Determination Unit. Volumes and their associated statistics are calculated at the VDU level and summarized to the sale level. There is often a one to one relationship between a VDU and a Payment Unit, but not always, depending on the cruise design. Refer to the VDU TO PAYMENT UNIT table.

VDU	VOLUME			RANGE IN CORDS	
	TOTAL CUBIC FEET	TOTAL CORDS	PERCENT ERROR	MINIMUM	MAXIMUM
2	123,983	1,569	17.17%	1,300	1,839
3	17,973	228	23.54%	174	281
4	84,577	1,071	18.99%	867	1,274
5	13,288	168	30.27%	117	219
10	99,738	1,263	19.79%	1,013	1,512
11	11,100	141	39.14%	86	195
104	61,304	776	20.72%	615	937
110	117,710	1,490	21.39%	1,171	1,809
204	153,197	1,939	13.27%	1,682	2,197
210	115,237	1,459	24.19%	1,106	1,812
<b>TOTAL:</b>	<b>798,105</b>	<b>10,103</b>		<b>8,131</b>	<b>12,074</b>

**VDU TO PAYMENT UNIT**

When a VDU is associated with more than one Payment Unit (PU), the VDU volumes are assigned to the PU based on acres of the VDU within the PU.

VDU	VDU ACRES	PU	PU ACRES
2	66.0	8	66.0
3	12.2	6	12.2
4	63.4	1	63.4
5	9.4	6	9.4
10	32.8	4	32.7
		5	0.1
11	7.9	6	7.9
104	45.4	3	45.4
110	46.1	5	45.9
		7	0.2
204	52.4	2	52.4
210	54.6	5	0.1
		7	54.5
<b>TOTAL:</b>	<b>390.2</b>		<b>390.2</b>

**DESCRIPTION OF TIMBER BY PAYMENT UNIT (PU)**

PU	MARKET GROUP	PRODUCT	QUANTITY	UNIT	ACRES	ADVERTISE PRICE	
1	Basswood	Sawtimber	19.6	MBF	63.4	\$21,573.65	
	Beech		5.5	MBF			
	Black Cherry		3.2	MBF			
	Red Maple		11.5	MBF			
	Sugar Maple		60.5	MBF			
	Basswood		Pulpwood	42			Cords
	Mixed Aspen			114			Cords
	<i>B. T. Aspen</i>			82			Cords
	<i>Quaking Aspen</i>			32			Cords
	Mixed Hardwood			715			Cords
	<i>Beech</i>			242			Cords
	<i>Black Cherry</i>			15			Cords
	<i>Ironwood</i>			53			Cords
	<i>Red Maple</i>			46			Cords
	<i>Sugar Maple</i>			359			Cords
2	Basswood	Sawtimber	28.6	MBF	52.4	\$45,321.80	
	Beech		71.5	MBF			
	Mixed Aspen		29.2	MBF			
	<i>Quaking Aspen</i>		29.2	MBF			
	Red Maple		57.6	MBF			
	Sugar Maple		119.9	MBF			
	White Pine		5.8	MBF			
	Basswood		Pulpwood	26			Cords
	Mixed Aspen			72			Cords
	<i>Quaking Aspen</i>			72			Cords
	Mixed Hardwood			1,210			Cords
	<i>Beech</i>			212			Cords
	<i>Ironwood</i>			36			Cords
	<i>Red Maple</i>			121			Cords
	<i>Sugar Maple</i>			841			Cords
White Pine	6	Cords					
3	Basswood	Sawtimber		59.2	MBF	45.4	\$17,309.30
	Beech		21.6	MBF			
	Black Cherry		1.6	MBF			
	Mixed Aspen		1.1	MBF			
	<i>Quaking Aspen</i>		1.1	MBF			
	Red Maple		25.7	MBF			
	Sugar Maple		29.8	MBF			
	Basswood		Pulpwood	98	Cords		
	Mixed Aspen			56	Cords		
	<i>B. T. Aspen</i>			49	Cords		
	<i>Quaking Aspen</i>			7	Cords		
	Mixed Hardwood			344	Cords		
	<i>Beech</i>			95	Cords		
	<i>Black Cherry</i>			7	Cords		
	<i>Red Maple</i>			41	Cords		
<i>Sugar Maple</i>	201	Cords					
4	Basswood	Sawtimber		27.5	MBF	32.7	\$30,028.10
	Beech		3.7	MBF			
	Black Cherry		1.6	MBF			
	Mixed Aspen		3.6	MBF			
	<i>B. T. Aspen</i>		3.6	MBF			
	Red Maple		29.1	MBF			
	Sugar Maple		101.6	MBF			
	Basswood		Pulpwood	87	Cords		
	Mixed Aspen			163	Cords		

**DESCRIPTION OF TIMBER BY PAYMENT UNIT (PU), CON'T**

PU	MARKET GROUP	PRODUCT	QUANTITY	UNIT	ACRES	ADVERTISE PRICE	
4 con't	<i>B. T. Aspen</i>	<i>Pulpwood</i>	16	<i>Cords</i>			
	<i>Quaking Aspen</i>		147	<i>Cords</i>			
	Mixed Hardwood		669	<i>Cords</i>			
	<i>Beech</i>		183	<i>Cords</i>			
	<i>Black Cherry</i>		24	<i>Cords</i>			
	<i>Ironwood</i>		53	<i>Cords</i>			
	<i>Red Maple</i>		64	<i>Cords</i>			
	<i>Sugar Maple</i>		345	<i>Cords</i>			
5	Basswood	Sawtimber	26.4	MBF	46.1	\$26,426.85	
	Beech		2.5	MBF			
	Paper Birch		2.4	MBF			
	Red Maple		10.4	MBF			
	Sugar Maple		68.3	MBF			
	Basswood		Pulpwood	51			<i>Cords</i>
	Mixed Aspen			103			<i>Cords</i>
	<i>Quaking Aspen</i>			103			<i>Cords</i>
	Mixed Hardwood			1,116			<i>Cords</i>
	<i>Beech</i>			380			<i>Cords</i>
	<i>Ironwood</i>			44			<i>Cords</i>
	<i>Paper Birch</i>			5			<i>Cords</i>
	<i>Red Maple</i>			71			<i>Cords</i>
	<i>Sugar Maple</i>			616			<i>Cords</i>
	6			Red Pine			Sawtimber
Red Pine		Pulpwood	281	<i>Cords</i>			
7	Basswood	Sawtimber	0.1	MBF	54.7	\$30,528.15	
	Beech		37.9	MBF			
	Sugar Maple		107.5	MBF			
	Mixed Aspen		Pulpwood	161			<i>Cords</i>
	<i>B. T. Aspen</i>			161			<i>Cords</i>
	Mixed Hardwood			1,009			<i>Cords</i>
	<i>Beech</i>			355			<i>Cords</i>
	<i>Sugar Maple</i>			654			<i>Cords</i>
8	Basswood	Sawtimber	31.5	MBF	66.0	\$33,969.10	
	Red Maple		26.3	MBF			
	Sugar Maple		112.4	MBF			
	White Pine		3.1	MBF			
	Basswood		Pulpwood	102			<i>Cords</i>
	Mixed Hardwood			1,114			<i>Cords</i>
	<i>Beech</i>			364			<i>Cords</i>
	<i>Red Maple</i>			50			<i>Cords</i>
	<i>Sugar Maple</i>			700			<i>Cords</i>
	White Pine			7			<i>Cords</i>
TOTAL:			1,276.0	MBF			
TOTAL:			7,546	Cords			

## Sale Specific Conditions & Requirements

**Sale Name: 104 Hardwood Alteration**

**Sale Number: 61-151-19 Seq#: 1**

### 1 - Sale Area

#### 1.2 - Boundaries

##### 1.2.1 - Painted boundaries (9/19)

The sale boundary and Payment Unit boundaries are marked and identified by blue, red and yellow paint. Exterior sale boundary lines against private property are marked with blue paint. Exterior sale boundary lines against state are marked with red paint. Interior Payment Unit boundaries are marked with yellow paint. The painted boundary line trees are not Included Timber and are to be protected unless marked with orange paint. Yellow painted trees designating an interior Payment Unit boundary are only to be cut when all surrounding Payment Units have been paid for and they are designated for removal in both adjacent Payment Units.

### 2 - Timber Specifications

#### 2.1 - Included Timber

##### 2.1.1 - Clearcut unit(s) with unmerchantable trees (6/14)

Within Payment Unit(s) 2 & 8, cut all trees that are one (1) inch or more at DBH, except do not cut any green marked trees.

Note: understory brush needs to be cut down to a one (1) inch DBH. A rotary head feller buncher is strongly encouraged for a clean site post harvest.

##### 2.1.3 - Cut tree marked unit(s) (12/08)

Within Payment Unit(s) 1, 3 & 6, all trees are designated for cutting when marked with orange paint above and below stump height, regardless of merchantability. In addition, cut all aspen, beech and ironwood, one (1) inch or more at DBH, except do not cut any aspen or beech, which are marked with an orange X.

##### 2.1.7 - Leave tree marked unit(s) (6/14)

Within Payment Unit(s) 4, 5 & 7, cut all trees that are one (1) inch or more at DBH, except do not cut any red pine, white pine, or green marked trees.

#### 2.2 - Utilization

##### 2.2.2 - Chipping required (2/18)

Payment Units 2 & 8, must be chip harvested to facilitate subsequent planting operations. The Purchaser has the option to produce sawlogs or pulpwood bolts, but the remaining portion of the trees must be chipped and hauled off site. A chipping exemption may be obtained if proposed operation is determined to be suitable for planting by reforestation staff. This exemption must be granted in writing. The requirement to retain approximately 1/6 to 1/3 of tree tops and limbs less than four inches in diameter does not apply (G. C. & R. 2.2). This is because these areas will need to be trenched and planted.

##### 2.2.3 - Stump heights (4/07)

Stump heights within all Payment Units shall not exceed either twelve (12) inches for trees ten (10) inches and more at DBH or four (4) inches for trees less than ten (10) inches at DBH. This is in order to facilitate potential future planting operations.

##### 2.2.4 - Skidding length (2/14)

Skidding of un-limbed tops is not permissible within Payment Units 1 & 3, unless approved by the Unit Manager or their representative. Skidding of lengths over seventeen (17) feet is permissible as long as the sale administrator approves the method and equipment used. If at any point damage exceeds specification 3.4.1, all of the remaining wood must be skid in lengths less than seventeen (17) feet.

### 3 - Payments

#### 3.3 - Pre-measured Sales

##### 3.3.4 - Dividing payment units (7/14)

Payment Unit(s) over \$15,000 in value may be divided at the request of the Purchaser and upon approval of the Unit Manager. Dividing Payment Units is a contract modification which requires a Timber Sale Contract Supplement.

## 4 - Transportation

### 4.1 - Construction

#### 4.1.6 - Road construction (1/09)

Construction of new roads or improvements of existing roads shall be done in such a way as to minimize the environmental and visual impacts. Merchantable trees shall be cut and utilized unless otherwise directed. Non-merchantable trees shall be severed and laid flat on the ground. Slash shall be scattered, not left in windrows and kept a minimum of ten (10) feet back from the road edge. Stumps shall be set upright, not left on edge, and be moved at least ten (10) feet away from the road edge. Disturbed soil shall be feathered into the woods and not left in berms or windrows.

#### 4.1.7 - Road closure (10/11)

All new roads built into the sale must be blocked to vehicle traffic within 30 days of completion of hauling. Overgrown roads that are reopened shall be considered new roads. In general, this will require constructing a four (4') foot high berm of stumps and logs covered with earth. Stumps and brush must be placed along the remainder of the trail where they are readily available. All stumps from road building and landing construction must be reserved to block any newly constructed roads upon completion of the sale. These stumps must be scattered along the road system to prohibit vehicular movement. Contact the sale administrator for details of design and placement.

## 5 - Operations

### 5.2 - Conduct of Operations

#### 5.2.3 - Operating Restrictions

##### 5.2.3.3 - Bark slippage restriction (3/09)

Within Payment Unit(s) 1, 3, 4, 5, 6 & 7, unless changed by written agreement, cutting and skidding are not permitted during the period of April 15 to July 15. This restriction is because of bark slippage.

#### 5.2.16 - Equipment recommended (11/18)

Note: Payment Units 1-8, require beech and ironwood brush to be cut down to a one (1) inch DBH. To efficiently and effectively harvest, a rotary head feller-buncher is the recommended equipment to best accomplish this cutting.

#### 5.2.38 - No decking against live trees (2/04)

Cut products may not be decked against unmarked or designated leave trees.

#### 5.2.39 - ORV trail/route protection (4/18)

There is an ORV trail and route shown on the Timber Sale Map. Do not cut trees or damage posts with yellow ORV markers. All stumps within five (5) feet of the trail must be cut flush with the ground. Maintain a twenty (20) foot wide slash, debris and rut free zone daily using the ORV trail or route as the center-line. Do not run equipment down the ORV trail or route. Skidding across the trail or route may only occur in locations approved by the sale administrator.

#### 5.2.41 - Snowmobile trail protection (9/11)

There is a snowmobile trail shown on the Timber Sale Map. Do not cut or damage posts with orange trail markers or traffic control signs. If this trail is used, it must be maintained and restored to a condition equal to or better than before the sale. If the trail road is to be used for hauling during the snowmobile season, then a snow covered base must be left on the trail. The snowmobile trail may only be crossed at right angles. Maintain a twenty (20) foot wide slash, debris and rut free zone daily using the snowmobile trail as the center-line. No decking of forest products will be permitted along the snowmobile trail. All stumps within twenty (20) feet of the snowmobile trail shall be cut at ground level.

### 5.4 - Soil Protection

#### 5.4.4 - Slope protection (9/19)

Skid trails and roads on slopes shall be water barred with slash and stumps as soon as use is complete to prevent erosion.

### 5.8 - Protection of Endangered Species

#### 5.8.5 - Protection of raptor nests (3/13)

All trees with raptor nests will be protected if found during harvesting operations. Notification will be made to the Unit Manager or his/her representative who will notify the Wildlife Biologist so an on-site evaluation and recommendation can be made, if necessary.

## **6 - Safety and Fire Prevention**

### **6.2 - Signing**

#### **6.2.1 - Road posting (9/09)**

The Purchaser is responsible for posting and maintaining caution signs on impacted roads prior to beginning operations. The road must be posted at appropriate distances from the sale area to warn of logging activity and truck traffic. Signs must be removed when harvest operations are suspended or completed. The Purchaser shall provide these signs.

#### **6.2.2 - Snowmobile trail posting (8/09)**

The Purchaser is responsible for posting and maintaining caution signs on the snowmobile trail prior to beginning operations during the snowmobile season (approximately December 1 to March 31). The trail must be posted at appropriate distances from the sale area to warn of logging activity and truck traffic. Signs must be removed when harvest operations are suspended or completed. The Purchaser shall provide these signs.

#### **6.2.3 - Recreational trail posting (2/10)**

The Purchaser is responsible for posting and maintaining caution signs on ORV trails and routes prior to beginning operations. The trail must be posted at appropriate distances from the sale area to warn of logging activity and truck traffic at both ends of the trail. Signs must be removed when harvest operations are suspended or completed. The Purchaser shall provide these signs.

## **7 - Other Conditions**

### **7.5 - Loss**

#### **7.5.1 - Deteriorating timber (7/09)**

The sale area has received damage from Beech Bark Disease. The Purchaser should harvest the wood as soon as possible. The Department of Natural Resources is held free of responsibility of any further damage or deterioration due to delay in harvesting.



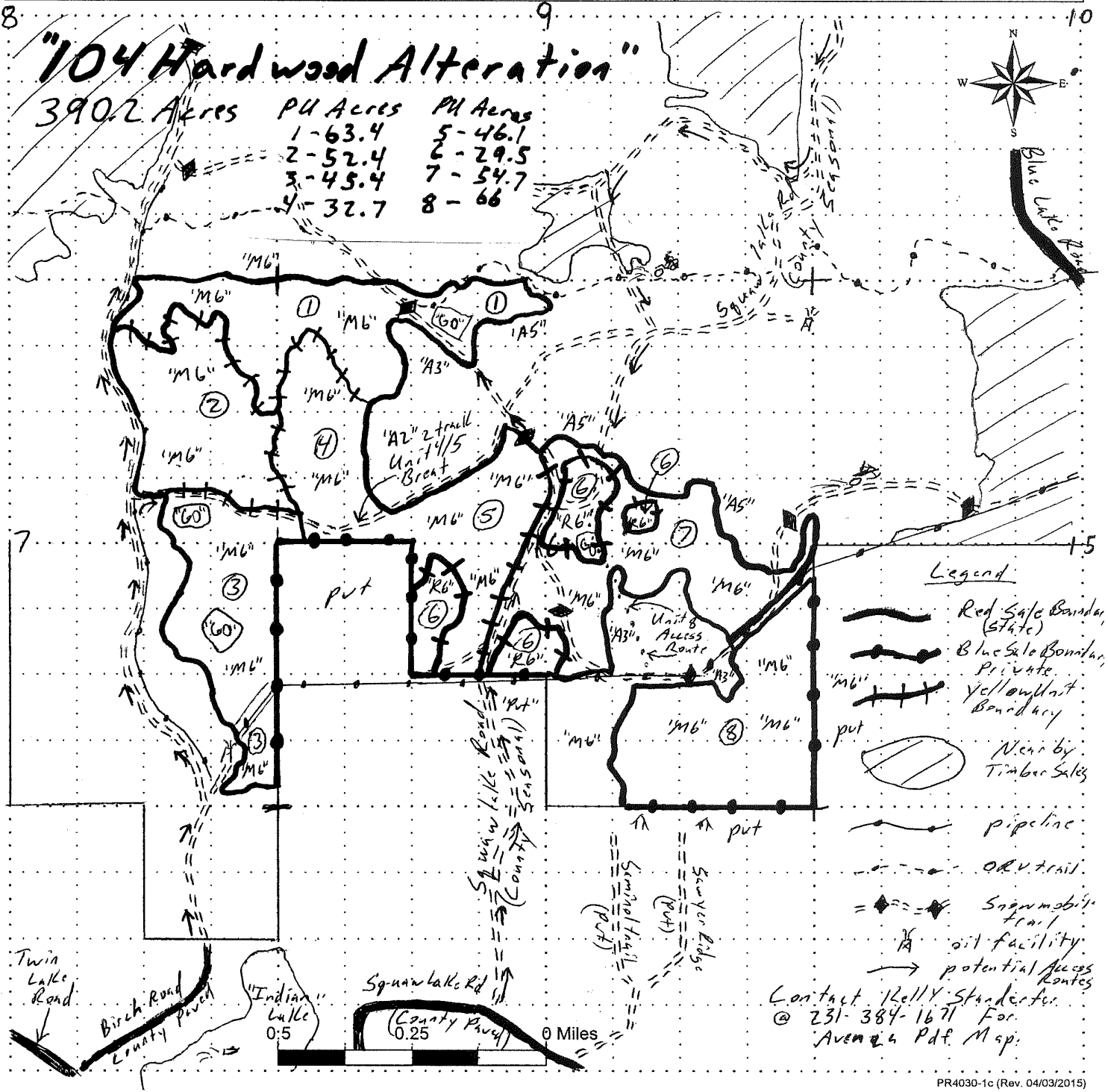
# TIMBER SALE MAP

This information provided by authority of Part 5, 1994 PA 451, as amended.

Sale Number	Year
61-151	19

Forest Management Unit <i>Traverse City</i>	County <i>Kalkaska</i>	Mapped By <i>Standerfer</i>	Date <i>9/13/19</i>	Page <i>1</i>	of <i>1</i>
Compartment Number <i>104</i>	Township <i>28N</i>	Range <i>05W</i>	Section(s) and Subdivision(s) <i>17 NE 1/4, E 1/2 SE 16 SE 1/4, NESW, S 1/2 NE, NW 1/4</i>		

Cover Type				Density	
A = Aspen	J = Jack Pine	O = Oak	U = Upland Brush	0 = Non Stocked	5 = Pole Timber Medium
B = Paper Birch	K = Rock	P = Lowland Poplar	UM = Upland Mix Forest	1 = Seedling Sapling Poor	6 = Pole Timber Well
C = Cedar	L = Lowland Brush	Q = Mixed Swamp Conifer	V = Bog or Marsh	2 = Seedling Sapling Medium	7 = Saw Timber Poor
D = Treed Bog	LM = Lowland Mix Forest	R = Red Pine	W = White Pine	3 = Seedling Sapling Well	8 = Saw Timber Medium
E = Swamp Hardwoods	M = Maple, Beech, Birch	S = Black Spruce	X = Non Stocked	4 = Pole Timber Poor	9 = Saw Timber Well
F = Spruce/Fir	MC = Mixed Conifer	T = Tamarack	Y = Sand		
G = Grass	MD = Mixed Deciduous		Z = Water		
H = Hemlock	N = Marsh				



PR4030-1c (Rev. 04/03/2015)



104 Hardwood Alteration (61-151-19)

T28N, R05W, SEC. 16; T28N, R05W, SEC. 17; T28N, R05W, SEC. 8; T28N, R05W,

In response to the notice of sale to be held 9:00 a.m. (local time) on October 19, 2020, I am hereby submitting my sealed bid (firm offer) for the following forest products to be cut. Bids for individual species must be at or above the advertised price. All non-responsive bid forms may be rejected.

<u>PRODUCTS &amp; SPECIES</u>	<u>ESTIMATED VOLUME*</u>	<u>ADVERTISED PRICE</u>	<u>BID PRICE/UNIT</u>
<b>Sawtimber</b>			
Basswood	192.9 MBF	\$ 64.00/MBF	\$ _____
Beech	142.7 MBF	\$ 54.00/MBF	\$ _____
Black Cherry	6.4 MBF	\$ 239.00/MBF	\$ _____
Mixed Aspen	33.9 MBF	\$ 88.00/MBF	\$ _____
Paper Birch	2.4 MBF	\$ 24.00/MBF	\$ _____
Red Maple	160.6 MBF	\$ 88.00/MBF	\$ _____
Red Pine	128.2 MBF	\$ 79.00/MBF	\$ _____
Sugar Maple	600.0 MBF	\$ 148.00/MBF	\$ _____
White Pine	8.9 MBF	\$ 44.00/MBF	\$ _____
<b>Pulpwood</b>			
Basswood	406 Cords	\$ 9.25/Cord	\$ _____
Mixed Aspen	669 Cords	\$ 11.30/Cord	\$ _____
Mixed Hardwood	6,177 Cords	\$ 10.65/Cord	\$ _____
Red Pine	281 Cords	\$ 27.65/Cord	\$ _____
White Pine	13 Cords	\$ 8.50/Cord	\$ _____

\*The volumes are statistically estimated within plus (+) or minus (-) 7.85 percent at 95% confidence level. These estimated volumes are final and not subject to adjustment. Prospective bidders are urged to examine this timber and to make their own estimates of quantity and quality.

I understand that any or all bids may be rejected. All bids must be signed and all bid items must be bid or the bid form may be rejected. I also understand that consideration and awarding a contract will be based upon my past performance and ability to complete the contract based upon equipment and staffing subject to my control.

FEDERAL ID: \_\_\_\_\_ - \_\_\_\_\_ or SOCIAL SECURITY NUMBER: \_\_\_\_\_ - \_\_\_\_\_ - \_\_\_\_\_

Company or individual bidding: \_\_\_\_\_

Company representative's name: \_\_\_\_\_

Address: \_\_\_\_\_

City: \_\_\_\_\_ State: \_\_\_\_\_ Zip: \_\_\_\_\_

IF AVAILABLE, PLEASE PLACE THE PERSONALIZED LABEL FROM YOUR PROSPECTUS IN THE ABOVE BOX.

Individual or company representative's signature: \_\_\_\_\_ Date: \_\_\_\_\_

Phone number : \_\_\_\_\_ Email (optional): \_\_\_\_\_

**THE WINNING BIDDER MUST COMPLETE THE VERIFICATION OF WORKER'S DISABILITY COMPENSATION ACT COMPLIANCE (ON REVERSE SIDE IF DOUBLE SIDED) WITHIN 21 DAYS OF SALE AWARD DATE**



FOR DEPARTMENT USE ONLY	
Sale Number (XX - XXX - XX - XX)	
Forest Management Unit:	

# TIMBER SALE VERIFICATION OF WORKER'S DISABILITY COMPENSATION ACT COMPLIANCE

As required by Act 317, P.A. 1969 (Worker's Compensation) and  
Part 5 of Act 451 of 1994, as amended.

## VERIFICATION OF WORKER'S DISABILITY COMPENSATION ACT COMPLIANCE

- This verification must be completed and submitted within 21 days of contract award and prior to the issuance of the timber sale contract.
- In addition, if boxes 2B or 2C are checked, then Notice of Exclusion or Certificate of Insurance must be submitted within twenty-one (21) days of the contract award and prior to the issuance of the timber sale contract.
- All information must be typed or printed except for written signatures.

Please Check Appropriate Categories:

1. My business is organized as (you **must** check one of the boxes below):
  - A.  Sole Proprietorship (individual)
  - B.  Partnership
  - C.  Corporation
2. You **must** check one of the boxes below:
  - A.  I certify my business is a sole proprietorship and it has no employees but the sole proprietor. I am not subject to the Worker's Compensation Laws.
  - B.  I certify my business has satisfied its obligation to the Worker's Compensation Act through the use of an approved Notice of Exclusion (BWC-337, Rev. 5/96). I will provide a copy of the Notice of Exclusion within 21 days of the contract award. (For questions or a copy of the BWC-337, please call the Worker's Compensation Bureau at 517-322-1195).
  - C.  I certify my business has a Worker's Compensation Policy. I will provide an original Certificate of Insurance within twenty-one (21) days of the contract award.
3. If you have checked item 2(A) or 2(B), you **must** indicate the number of **both** full-time and part-time employees, other than yourself, including family members and active partners (if none, you must enter "0").

\_\_\_\_\_ Full-time Employees

\_\_\_\_\_ Part-time Employees

Name of Business		Federal ID (or) Social Security No.	
Address		Telephone (       )	
City	State	ZIP	

*I hereby certify that the above information is true and correct. I agree to notify the Michigan DNR of any changes that occur in factors affecting my coverage during any of my present and future operations.*

\_\_\_\_\_  
Signature of Owner or Authorized Representative

\_\_\_\_\_  
Title

\_\_\_\_\_  
Date

Please complete the "SEALED BID" information on the next page

Gnarly Beech Hardwoods (61-101-20)  
T27N, R06W, SEC. 13; T27N, R06W, SEC. 24; Kalkaska COUNTY

In response to the notice of sale to be held 9:00 a.m. (local time) on October 19, 2020, I am hereby submitting my sealed bid (firm offer) for the following forest products to be cut. Bids for individual species must be at or above the advertised price. All non-responsive bid forms may be rejected.

<u>PRODUCTS &amp; SPECIES</u>	<u>ESTIMATED VOLUME*</u>	<u>ADVERTISED PRICE</u>	<u>BID PRICE/UNIT</u>
<b>Sawtimber</b>			
Basswood	91.2 MBF	\$ 64.00/MBF	\$ _____
Beech	17.1 MBF	\$ 54.00/MBF	\$ _____
Red Maple	53.7 MBF	\$ 88.00/MBF	\$ _____
Red Oak	20.7 MBF	\$ 122.00/MBF	\$ _____
Sugar Maple	214.4 MBF	\$ 148.00/MBF	\$ _____
White Pine	3.5 MBF	\$ 44.00/MBF	\$ _____
<b>Pulpwood</b>			
Basswood	211 Cords	\$ 9.25/Cord	\$ _____
Beech	194 Cords	\$ 10.65/Cord	\$ _____
Mixed Hardwood	953 Cords	\$ 10.65/Cord	\$ _____
Paper Birch	24 Cords	\$ 8.55/Cord	\$ _____
Red Maple	216 Cords	\$ 10.65/Cord	\$ _____
Red Oak	89 Cords	\$ 7.10/Cord	\$ _____
White Pine	43 Cords	\$ 8.50/Cord	\$ _____

\*The volumes are statistically estimated within plus (+) or minus (-) 12.25 percent at 95% confidence level. These estimated volumes are final and not subject to adjustment. Prospective bidders are urged to examine this timber and to make their own estimates of quantity and quality.

I understand that any or all bids may be rejected. All bids must be signed and all bid items must be bid or the bid form may be rejected. I also understand that consideration and awarding a contract will be based upon my past performance and ability to complete the contract based upon equipment and staffing subject to my control.

FEDERAL ID: \_\_\_\_\_ or SOCIAL SECURITY NUMBER: \_\_\_\_\_

Company or individual bidding: \_\_\_\_\_

Company representative's name: \_\_\_\_\_

Address: \_\_\_\_\_

City: \_\_\_\_\_ State: \_\_\_\_\_ Zip: \_\_\_\_\_

IF AVAILABLE, PLEASE PLACE THE PERSONALIZED LABEL FROM YOUR PROSPECTUS IN THE ABOVE BOX.

Individual or company representative's signature: \_\_\_\_\_ Date: \_\_\_\_\_

Phone number : \_\_\_\_\_ Email (optional): \_\_\_\_\_

**THE WINNING BIDDER MUST COMPLETE THE VERIFICATION OF WORKER'S DISABILITY COMPENSATION ACT COMPLIANCE (ON REVERSE SIDE IF DOUBLE SIDED) WITHIN 21 DAYS OF SALE AWARD DATE**



<b>FOR DEPARTMENT USE ONLY</b>	
Sale Number (XX - XXX - XX - XX)	
Forest Management Unit:	

## TIMBER SALE VERIFICATION OF WORKER'S DISABILITY COMPENSATION ACT COMPLIANCE

As required by Act 317, P.A. 1969 (Worker's Compensation) and  
Part 5 of Act 451 of 1994, as amended.

### VERIFICATION OF WORKER'S DISABILITY COMPENSATION ACT COMPLIANCE

- This verification must be completed and submitted within 21 days of contract award and prior to the issuance of the timber sale contract.
- In addition, if boxes 2B or 2C are checked, then Notice of Exclusion or Certificate of Insurance must be submitted within twenty-one (21) days of the contract award and prior to the issuance of the timber sale contract.
- All information must be typed or printed except for written signatures.

Please Check Appropriate Categories:

1. My business is organized as (you **must** check one of the boxes below):
  - A.  Sole Proprietorship (individual)
  - B.  Partnership
  - C.  Corporation
2. You **must** check one of the boxes below:
  - A.  I certify my business is a sole proprietorship and it has no employees but the sole proprietor. I am not subject to the Worker's Compensation Laws.
  - B.  I certify my business has satisfied its obligation to the Worker's Compensation Act through the use of an approved Notice of Exclusion (BWC-337, Rev. 5/96). I will provide a copy of the Notice of Exclusion within 21 days of the contract award. (For questions or a copy of the BWC-337, please call the Worker's Compensation Bureau at 517-322-1195).
  - C.  I certify my business has a Worker's Compensation Policy. I will provide an original Certificate of Insurance within twenty-one (21) days of the contract award.
3. If you have checked item 2(A) or 2(B), you **must** indicate the number of **both** full-time and part-time employees, other than yourself, including family members and active partners (if none, you must enter "0").

\_\_\_\_\_ Full-time Employees

\_\_\_\_\_ Part-time Employees

Name of Business		Federal ID (or) Social Security No.	
Address		Telephone (       )	
City	State	ZIP	

*I hereby certify that the above information is true and correct. I agree to notify the Michigan DNR of any changes that occur in factors affecting my coverage during any of my present and future operations.*

\_\_\_\_\_  
Signature of Owner or Authorized Representative

\_\_\_\_\_  
Title

\_\_\_\_\_  
Date

Please complete the "SEALED BID" information on the next page

One Leg Aspen (61-107-20)  
T25N, R05W, SEC. 20; Kalkaska COUNTY

In response to the notice of sale to be held 9:00 a.m. (local time) on October 19, 2020, I am hereby submitting my sealed bid (firm offer) for the following forest products to be cut. Bids for individual species must be at or above the advertised price. All non-responsive bid forms may be rejected.

<u>PRODUCTS &amp; SPECIES</u>	<u>ESTIMATED VOLUME*</u>	<u>ADVERTISED PRICE</u>	<u>BID PRICE/UNIT</u>
<b>Sawtimber</b>			
Beech	4.6 MBF	\$ 54.00/MBF	\$ _____
Black Cherry	2.3 MBF	\$ 239.00/MBF	\$ _____
Mixed Aspen	147.5 MBF	\$ 88.00/MBF	\$ _____
Mixed Oak	11.4 MBF	\$ 90.00/MBF	\$ _____
Paper Birch	2.7 MBF	\$ 24.00/MBF	\$ _____
Red Maple	18.2 MBF	\$ 88.00/MBF	\$ _____
Red Pine	26.8 MBF	\$ 79.00/MBF	\$ _____
Sugar Maple	17.9 MBF	\$ 148.00/MBF	\$ _____
<b>Pulpwood</b>			
Balsam Fir	5 Cords	\$ 7.90/Cord	\$ _____
Mixed Aspen	965 Cords	\$ 11.30/Cord	\$ _____
Mixed Hardwood	344 Cords	\$ 10.65/Cord	\$ _____
Mixed Oak	53 Cords	\$ 7.10/Cord	\$ _____
Red Pine	19 Cords	\$ 27.65/Cord	\$ _____

\*The volumes are statistically estimated within plus (+) or minus (-) 13.95 percent at 95% confidence level. These estimated volumes are final and not subject to adjustment. Prospective bidders are urged to examine this timber and to make their own estimates of quantity and quality.

I understand that any or all bids may be rejected. All bids must be signed and all bid items must be bid or the bid form may be rejected. I also understand that consideration and awarding a contract will be based upon my past performance and ability to complete the contract based upon equipment and staffing subject to my control.

FEDERAL ID: \_\_\_\_\_ or SOCIAL SECURITY NUMBER: \_\_\_\_\_

Company or individual bidding: \_\_\_\_\_

Company representative's name: \_\_\_\_\_

Address: \_\_\_\_\_

City: \_\_\_\_\_ State: \_\_\_\_\_ Zip: \_\_\_\_\_

IF AVAILABLE, PLEASE PLACE THE PERSONALIZED LABEL FROM YOUR PROSPECTUS IN THE ABOVE BOX.

Individual or company representative's signature: \_\_\_\_\_ Date: \_\_\_\_\_

Phone number : \_\_\_\_\_ Email (optional): \_\_\_\_\_

**THE WINNING BIDDER MUST COMPLETE THE VERIFICATION OF WORKER'S DISABILITY COMPENSATION ACT COMPLIANCE (ON REVERSE SIDE IF DOUBLE SIDED) WITHIN 21 DAYS OF SALE AWARD DATE**



FOR DEPARTMENT USE ONLY	
Sale Number (XX - XXX - XX - XX)	
Forest Management Unit:	

## TIMBER SALE VERIFICATION OF WORKER'S DISABILITY COMPENSATION ACT COMPLIANCE

As required by Act 317, P.A. 1969 (Worker's Compensation) and  
Part 5 of Act 451 of 1994, as amended.

### VERIFICATION OF WORKER'S DISABILITY COMPENSATION ACT COMPLIANCE

- This verification must be completed and submitted within 21 days of contract award and prior to the issuance of the timber sale contract.
- In addition, if boxes 2B or 2C are checked, then Notice of Exclusion or Certificate of Insurance must be submitted within twenty-one (21) days of the contract award and prior to the issuance of the timber sale contract.
- All information must be typed or printed except for written signatures.

Please Check Appropriate Categories:

1. My business is organized as (you **must** check one of the boxes below):
  - A.  Sole Proprietorship (individual)
  - B.  Partnership
  - C.  Corporation
2. You **must** check one of the boxes below:
  - A.  I certify my business is a sole proprietorship and it has no employees but the sole proprietor. I am not subject to the Worker's Compensation Laws.
  - B.  I certify my business has satisfied its obligation to the Worker's Compensation Act through the use of an approved Notice of Exclusion (BWC-337, Rev. 5/96). I will provide a copy of the Notice of Exclusion within 21 days of the contract award. (For questions or a copy of the BWC-337, please call the Worker's Compensation Bureau at 517-322-1195).
  - C.  I certify my business has a Worker's Compensation Policy. I will provide an original Certificate of Insurance within twenty-one (21) days of the contract award.
3. If you have checked item 2(A) or 2(B), you **must** indicate the number of **both** full-time and part-time employees, other than yourself, including family members and active partners (if none, you must enter "0").

\_\_\_\_\_ Full-time Employees

\_\_\_\_\_ Part-time Employees

Name of Business		Federal ID (or) Social Security No.	
Address		Telephone (       )	
City	State	ZIP	

*I hereby certify that the above information is true and correct. I agree to notify the Michigan DNR of any changes that occur in factors affecting my coverage during any of my present and future operations.*

\_\_\_\_\_  
Signature of Owner or Authorized Representative

\_\_\_\_\_  
Title

\_\_\_\_\_  
Date

Please complete the "SEALED BID" information on the next page

Outhouse Pine (61-111-20)

T26N, R08W, SEC. 2; T26N, R08W, SEC. 3; T27N, R08W, SEC. 34; T27N, R08W,

In response to the notice of sale to be held 9:00 a.m. (local time) on October 19, 2020, I am hereby submitting my sealed bid (firm offer) for the following forest products to be cut. Bids for individual species must be at or above the advertised price. All non-responsive bid forms may be rejected.

<u>PRODUCTS &amp; SPECIES</u>	<u>ESTIMATED VOLUME*</u>	<u>ADVERTISED PRICE</u>	<u>BID PRICE/UNIT</u>
<b>Sawtimber</b>			
Red Maple	12.3 MBF	\$ 88.00/MBF	\$ _____
Red Oak	3.4 MBF	\$ 122.00/MBF	\$ _____
Red Pine	769.9 MBF	\$ 79.00/MBF	\$ _____
White Oak	2.1 MBF	\$ 47.00/MBF	\$ _____
White Pine	151.0 MBF	\$ 44.00/MBF	\$ _____
<b>Pulpwood</b>			
B. T. Aspen	200 Cords	\$ 11.30/Cord	\$ _____
Balsam Fir	18 Cords	\$ 7.90/Cord	\$ _____
Black Cherry	17 Cords	\$ 10.65/Cord	\$ _____
Jack Pine	95 Cords	\$ 9.10/Cord	\$ _____
Red Maple	147 Cords	\$ 10.65/Cord	\$ _____
Red Oak	40 Cords	\$ 7.10/Cord	\$ _____
Red Pine	464 Cords	\$ 27.65/Cord	\$ _____
White Oak	38 Cords	\$ 7.10/Cord	\$ _____
White Pine	410 Cords	\$ 8.50/Cord	\$ _____

\*The volumes are statistically estimated within plus (+) or minus (-) 15.67 percent at 95% confidence level. These estimated volumes are final and not subject to adjustment. Prospective bidders are urged to examine this timber and to make their own estimates of quantity and quality.

I understand that any or all bids may be rejected. All bids must be signed and all bid items must be bid or the bid form may be rejected. I also understand that consideration and awarding a contract will be based upon my past performance and ability to complete the contract based upon equipment and staffing subject to my control.

FEDERAL ID: \_\_\_\_\_ - \_\_\_\_\_ or SOCIAL SECURITY NUMBER: \_\_\_\_\_ - \_\_\_\_\_ - \_\_\_\_\_

Company or individual bidding: \_\_\_\_\_

Company representative's name: \_\_\_\_\_

Address: \_\_\_\_\_

City: \_\_\_\_\_ State: \_\_\_\_\_ Zip: \_\_\_\_\_

IF AVAILABLE, PLEASE PLACE THE PERSONALIZED LABEL FROM YOUR PROSPECTUS IN THE ABOVE BOX.

Individual or company representative's signature: \_\_\_\_\_ Date: \_\_\_\_\_

Phone number : \_\_\_\_\_ Email (optional): \_\_\_\_\_

**THE WINNING BIDDER MUST COMPLETE THE VERIFICATION OF WORKER'S DISABILITY COMPENSATION ACT COMPLIANCE (ON REVERSE SIDE IF DOUBLE SIDED) WITHIN 21 DAYS OF SALE AWARD DATE**



# TIMBER SALE VERIFICATION OF WORKER'S DISABILITY COMPENSATION ACT COMPLIANCE

As required by Act 317, P.A. 1969 (Worker's Compensation) and  
Part 5 of Act 451 of 1994, as amended.

FOR DEPARTMENT USE ONLY	
Sale Number (XX - XXX - XX - XX)	
Forest Management Unit:	

## VERIFICATION OF WORKER'S DISABILITY COMPENSATION ACT COMPLIANCE

- This verification must be completed and submitted within 21 days of contract award and prior to the issuance of the timber sale contract.
- In addition, if boxes 2B or 2C are checked, then Notice of Exclusion or Certificate of Insurance must be submitted within twenty-one (21) days of the contract award and prior to the issuance of the timber sale contract.
- All information must be typed or printed except for written signatures.

Please Check Appropriate Categories:

1. My business is organized as (you **must** check one of the boxes below):
  - A.  Sole Proprietorship (individual)
  - B.  Partnership
  - C.  Corporation
2. You **must** check one of the boxes below:
  - A.  I certify my business is a sole proprietorship and it has no employees but the sole proprietor. I am not subject to the Worker's Compensation Laws.
  - B.  I certify my business has satisfied its obligation to the Worker's Compensation Act through the use of an approved Notice of Exclusion (BWC-337, Rev. 5/96). I will provide a copy of the Notice of Exclusion within 21 days of the contract award. (For questions or a copy of the BWC-337, please call the Worker's Compensation Bureau at 517-322-1195).
  - C.  I certify my business has a Worker's Compensation Policy. I will provide an original Certificate of Insurance within twenty-one (21) days of the contract award.
3. If you have checked item 2(A) or 2(B), you **must** indicate the number of **both** full-time and part-time employees, other than yourself, including family members and active partners (if none, you must enter "0").

\_\_\_\_\_ Full-time Employees

\_\_\_\_\_ Part-time Employees

Name of Business		Federal ID (or) Social Security No.	
Address		Telephone (       )	
City	State	ZIP	

*I hereby certify that the above information is true and correct. I agree to notify the Michigan DNR of any changes that occur in factors affecting my coverage during any of my present and future operations.*

\_\_\_\_\_  
Signature of Owner or Authorized Representative

\_\_\_\_\_  
Title

\_\_\_\_\_  
Date

Please complete the "SEALED BID" information on the next page