



**DEPARTMENT OF NATURAL RESOURCES
STATE OF MICHIGAN**

TIMBER SALE PROSPECTUS #6753

SCHEDULED SALE DATE AND TIME: 4:00 p.m. (local time) on February 22, 2021.

LOCATION: KALKASKA FIELD OFFICE, 2089 NORTH BIRCH STREET, KALKASKA, MI 49646.

PROSPECTUS NOTE: It is recommended that for the duration of the "Stay Home, Stay Safe" executive order that bidders submit their bids through the Online Bidding System (<https://www.dnr.state.mi.us/VMSONlineBidding/>). If you need to register, contact Jake Reid (ReidJ6@michigan.gov, 517-284-5908) or Donovan Asselin (AsselinD@michigan.gov, 517-930-1326). Paper bids will still be accepted during this time, either dropped in the bid box at the bid location or by mailing. If mailing, please allow for additional time.

The bidder is advised to inspect the sale area and review the location, estimated volumes, operating costs and contract terms of proposed sales. Please be aware that some landowners may request 60 days or more notice for access across their land.

122 Grade A Aspen (61-128-20) / T26N, R05W, SEC. 8 , S1/2NE,SE.

Kalkaska County, Advertised Price \$65,104.80, 82.2 Acres, Aspen, Hardwood.

SALE NOTE: Good quality aspen. Cutting will be allowed during oak wilt if roads are brushed out and the east edge of the sale is cut out prior to the April 15th oak wilt deadline.

122 Pothole Sale (61-129-20) / T26N, R05W, SEC. 16, W1/2NW.

T26N, R05W, SEC. 17, SENW,NE,SW,SE.

T26N, R05W, SEC. 20, N1/2NW.

T26N, R05W, SEC. 8 , SESE.

T26N, R05W, SEC. 9 , SWSW.

Kalkaska County, Advertised Price \$74,100.30, 298.2 Acres, White Pine, Red Pine.

SALE NOTE: A recreation site such as a trail, pathway, or campground is within the sale area or the vicinity. Certain restrictions/specifications may be applicable including time restrictions.

Spirit Animals Aspen (61-130-20) / T25N, R08W, SEC. 25, NESW,S1/2SW,NWSE,S1/2SE.

T25N, R08W, SEC. 36, NENW,NWNE.

Kalkaska County, Advertised Price \$56,091.40, 91.8 Acres, Aspen, Hardwood.

SALE NOTE: Please note Sale Conditions related to roads, sale operations and access, specifically 4.1.6, 4.1.12 and 5.2.31. There will be no exceptions to these specifications. Please contact Katie Armstrong at 231-342-9737 to borrow a gate key to access the sale area.

Radical Hope Mix (61-136-20) / T28N, R05W, SEC. 28, W1/2SW.

T28N, R05W, SEC. 29, NENW,S1/2NW,S1/2NE,N1/2SW.

T28N, R05W, SEC. 29, SESW,NESE,S1/2SE.

T28N, R05W, SEC. 32, NE.

Kalkaska County, Advertised Price \$47,980.55, 181.3 Acres, Hardwood, White Pine.

SALE NOTE: Please note that several units will require chipping to facilitate future planting operations. Alternatives may be considered if producers can demonstrate that site will be sufficiently prepared for planting.

A recreation site such as a trail, pathway, or campground is within the sale area or the vicinity. Certain restrictions/specifications may be applicable including time restrictions.

Yuge Pine (61-127-19) / T27N, R08W, SEC. 27, NW,N1/2NE,SENE.

Kalkaska County, Advertised Price \$75,538.80, 87.2 Acres, Red Pine, Hardwood.

SALE NOTE: A recreation site such as a trail, pathway, or campground is within the sale area or the vicinity. Certain restrictions/specifications may be applicable including time restrictions.

BID INSTRUCTIONS (VER. 07/02/2018):

1. Scheduled Bid Location, Date, and Time (2/11)

Bids must be received by the Unit Manager, KALKASKA OFFICE, 2089 North Birch Street, Kalkaska, MI 49646, no later than 4:00 p.m. (local time) on February 22, 2021. For further information concerning this sale, contact David Lemmien at 231-922-6040.

2. Bidder's Qualifications (5/16)

Purchaser shall obtain workers compensation insurance to cover claims under Michigan's Worker's Disability Compensation Act of 1969 or similar employee benefit act of any other state applicable to an employee. If all or part of a timber sale was prepared by a private contractor, the contractor and that contractor's company are not permitted to bid on the timber sale contract. Bids will not be accepted from individuals or companies appearing on the DNR/FRD No-Bid List. This list contains the names of purchasers who previously failed to execute a contract within 21-days or who have a history of poor performance.

3. Preparation of Sealed Bids (5/16)

Bid Forms may be completed online thru Michigan DNR Timber Sale Online Bidding (OLB) at www.michigan.gov/timberbidding or by completing the hardcopy Bid Form found in the Timber Sale Prospectus. Hardcopy Bid Forms shall be manually signed in ink. Registration in OLB is considered your 'signature' for all bids submitted thru that system. Bid prices must be entered for each species and product in the Bid Price column for all material subject to bidding and all fill-in blanks must be completed. If erasures or other changes appear on the hardcopy Bid Form, each erasure or change must be initialed by the person signing the bid.

4. Submission of Sealed Bids (5/16)

Bid forms may be obtained from the Unit Manager or thru OLB. Bids may be submitted hardcopy or thru OLB. All hardcopy bids must be submitted on the bid form and in an envelope clearly identified as described in this section. NOTE: Only one bid form per bid envelope. Sealed bids must be submitted to the Unit office designated in the prospectus and must be submitted at or prior to the time established in the prospectus. The envelope should show on the outside (a) the sale name or number and (b) the date and time of bid opening, as shown in the prospectus. Bids received after the time specified in the sale prospectus are late bids and will be rejected.

It is possible for a bidder to submit multiple bids on a single sale. For example, a bid may be submitted hardcopy and a bid may be submitted thru OLB. Or, two bidders from the same company could both submit bids on the same sale. If this were to happen, the State would accept all bids received and award the contract accordingly. All bidding and contractual requirements would apply to all bids received.

5. Public Opening of Sealed Bids (7/16)

If conditions permit, the sealed bids will be publicly opened and posted at the time and place set in the prospectus.

If a bidder, present at a bid opening, has submitted bids on more than one sale, that bidder may withdraw their unopened bid envelopes or announce the withdrawal of their online bid after being declared the successful bidder on one sale.

6. Award of Contract (1/11)

Award of the contract will be made to the Bidder whose bid, conforming to the prospectus, is most advantageous to the State of Michigan on the basis of total value at rates bid for the estimated quantities. The State reserves the right to reject any bid or waive any minor irregularity in bids received. A written award mailed (or otherwise furnished) to the successful Bidder shall be deemed to result in a binding contract without further action by either party.

7. Down Payment (1/11)

The Bidder to whom award is made must make a down payment within 21 days of the sale award. The amount of the down payment will be calculated as shown in the Bond and Payment Schedule of this prospectus. Only cash may be used to meet this requirement.

8. Performance Security (1/11)

As guarantee of faithful performance, a cash bond, certificate of deposit, surety bond or irrevocable letter of credit (LOC) is required within 21 days of the sale award. The amount of the performance security is shown in the Bond and

Payment Schedule of this prospectus. If an LOC or surety is used, the coverage must extend for at least 6 months beyond the contract expiration.

9. Timber Sale Contract (7/18)

Additional conditions and requirements common to all timber sales are listed on the timber sale contract (R4031) and are available on line at www.michigan.gov/timber. Contact the Unit Manager for additional information or a sample contract. Within 21 days of the date of the award letter, the bidder must sign the contract and provide the required down payment, performance security, and verification of worker's disability compensation. The down payment and performance security shall be in accordance with the provisions of the timber sale contract, in the sums stated in this prospectus. If these actions are not taken, then the Bidder, the Bidder's corporation, and the corporation's principals may not be permitted to bid on State timber sales for a period of 3 months after the first offense, 6 months after the second offense, and 1 year after the third offense. An offense will only be counted against the Bidder for 5 years. In addition, the Bidder certifies that if awarded this contract, the Bidder will complete the timber sale contract in accordance with its terms and any modifications thereof including requirements to purchase, cut, and remove the included timber by the expiration date.

Payment Unit values in the State Forest Timber Sale Contract are calculated based on the advertised value of the Payment Unit as a percentage of the total advertised value of the contract. The advertised value of each Payment Unit is given in the Description of Timber by Payment Unit table on the Timber Sale Information page. For example, if the value of Payment Unit 1 is advertised as \$1,500 and the total Timber Sale value is advertised as \$10,000, the contract price for Payment Unit 1 will be 15% of the total bid price ($\$1,500/\$10,000 * 100$).

10. Disclaimer of Estimates and Bidder's Warranty of Inspection (7/16)

Before submitting this bid, the Bidder is advised and cautioned to inspect the sale area, review the requirements of the sale contract, and take other steps as may be reasonably necessary to ascertain the location, estimated volumes, construction estimates, and operating costs of the proposed sale. Failure to do so will not relieve the Bidder from responsibility for completing the contract.

The Bidder warrants that this bid is submitted solely on the basis of the Bidder's examination and inspection of the quality and quantity of the timber offered for sale and the Bidder's opinion of the value thereof and the costs of recovery. No reliance should be placed on the State of Michigan's estimates of timber quality, quantity or costs of recovery. Bidder further acknowledges that the State of Michigan: (i) expressly disclaims any warranty of fitness of timber for any purpose; (ii) offers this timber as is without any warranty of quality (merchantability) or quantity and (iii) expressly disclaims any warranty as to the quantity or quality of timber sold.

11. Certification and Chain-of-Custody (10/14)

Unless otherwise indicated in the contract under section 7 – Other Conditions of the Sale Specific Conditions & Requirements, the area encompassed by this timber sale is certified to the standards of the Forest Stewardship Council (FSC) - Certificate #SCS-FM/COC-00090N and the Sustainable Forestry Initiative (SFI) - Certificate #NSF-SFIS-5Y031-SF5. Forest products from this sale may be delivered to the mill as "FSC 100% and / or SFI certified" as long as the contractor hauling the forest products is chain-of-custody (COC) certified or covered under a COC certificate from the destination mill. The purchaser is responsible for maintaining COC after leaving the sale area.

12. Good Neighbor Authority (GNA) Requirements (7/16)

If the name of this timber sales contains the acronym GNA, it is authorized by the Good Neighbor Authority (GNA) and covered by various agreements between the U.S. Forest Service and the State. The timber sale occurs on federal land and the following conditions apply:

GNA contracts on US Forest Service land will not be awarded to purchasers on the Federal list of excluded parties. The System for Award Management (SAM) will be checked for active excluded parties prior to award of contract. In addition, the Bidder to whom award is made must complete an Assurance Regarding Felony Conviction or Tax Delinquent Status for Corporate Applicants (AD-3031).

13. Good Neighbor Authority (GNA) Requirements, con't (9/16)

Bidder certifies, by signing this bid form, that to the best of Bidder's knowledge that the following representations are accurate and complete.

- a. That the Bidder and its principals are not presently debarred, suspended, proposed for debarment, declared ineligible, or voluntary excluded from timber sales (covered transactions) by any Federal department or agency.
- b. That the Bidder and its principals have not within a 3-year period preceding this bid been convicted of or had a civil judgment rendered against them for commission of fraud or a criminal offense in connection with obtaining , attempting to obtain, or performing a public (Federal, State, or local) transaction or contract under a public transaction; violation of Federal or State antitrust statutes or commission of embezzlement, theft, forgery, bribery, falsification or destruction of records, making false statements, or receiving stolen property.
- c. That the Bidder and its principals are not presently indicted for or otherwise criminally or civilly charged by a governmental entity (Federal, State, or local) with commission of any of the offenses enumerated in paragraph b of this certification.
- d. That the Bidder and its principals have not within a 3-year period preceding this bid had one or more public transactions (Federal, State, or local) terminated for breach or default of a timber or forest product contract.

Bidders that cannot certify this requirement, in whole or in part, shall submit an explanation with their bid.

DAN EICHINGER
Director

TIMBER SALE INFORMATION

122 Grade A Aspen (61-128-20)
T26N, R05W, SEC. 8.
Kalkaska County (Advertised Price \$65,104.80)

SALE NOTE: Good quality aspen. Cutting will be allowed during oak wilt if roads are brushed out and the east edge of the sale is cut out prior to the April 15th oak wilt deadline.

A timber sale contract for this lump sum, sealed bid timber sale will be awarded to the responsible bidder offering the highest sealed bid price. All units of volume listed below were estimated using the T-Sale computer program and our traditional volume equations. Bids must be at or above the following advertised price for each product and species:

<u>PRODUCTS & SPECIES</u>	<u>ESTIMATED UNITS*</u>	<u>ADVERTISED PRICE</u>
Sawtimber		
B. T. Aspen	231.4 MBF	\$ 91.00 / MBF
Red Maple	10.4 MBF	\$ 133.00 / MBF
Red Oak	35.1 MBF	\$ 140.00 / MBF
Pulpwood		
B. T. Aspen	2,143 Cords	\$ 14.15 / Cord
Mixed Hardwood	370 Cords	\$ 13.55 / Cord
Red Oak	245 Cords	\$ 9.85 / Cord

* The total volume is statistically estimated within plus (+) or minus (-) 11.43 percent. There are an estimated 3,347 cords on this timber sale, plus or minus 383 cords at the 95% confidence level. The estimated units are final and not subject to adjustment. Prospective bidders are urged to examine this timber and to make their own estimates of quantity and quality.

BOND AND PAYMENT SCHEDULE:

1. A bond in the amount of \$3,255.00 to insure faithful performance of the conditions of the contract will be deposited by the successful bidder within 21 days of the sale award.
2. Cutting in any sale or unit without the required advance payment would be considered a trespass.
3. Total payment must be paid in advance or according to the following schedule :
 - (a) Ten percent (10%) of the sale value must be paid within 21 days of the sale award.
 - (b) The 10% down payment will be credited towards the first unit cut.
 - (c) Payment for each of the following units must be made before cutting begins in that unit:

PAYMENT UNIT NUMBER	PERCENT OF TOTAL SALE VALUE
01	34.3%
02	30.2%
03	35.5%
4. If no cutting takes place, the 10% down payment will not be refunded.
5. Operations on the contract issued will terminate on 03/31/2024.

SALE STATISTICS

SALE VOLUMES

VOLUME			STATISTICAL RANGE IN CORDS	
TOTAL CUBIC FEET	TOTAL CORDS	PERCENT ERROR	MINIMUM	MAXIMUM
264,430	3,347	11.43%	2,965	3,730

VDU VOLUMES

A VDU is a Volume Determination Unit. Volumes and their associated statistics are calculated at the VDU level and summarized to the sale level. There is often a one to one relationship between a VDU and a Payment Unit, but not always, depending on the cruise design. Refer to the VDU TO PAYMENT UNIT table.

	VOLUME			RANGE IN CORDS	
VDU	TOTAL CUBIC FEET	TOTAL CORDS	PERCENT ERROR	MINIMUM	MAXIMUM
11	264,437	3,347	11.43%	2,965	3,730
TOTAL:	264,437	3,347		2,965	3,730

VDU TO PAYMENT UNIT

When a VDU is associated with more than one Payment Unit (PU), the VDU volumes are assigned to the PU based on acres of the VDU within the PU.

VDU	VDU ACRES	PU	PU ACRES
11	82.2	1	28.2
		2	24.8
		3	29.2
TOTAL:	82.2		82.2

DESCRIPTION OF TIMBER BY PAYMENT UNIT (PU)

PU	MARKET GROUP	PRODUCT	QUANTITY	UNIT	ACRES	ADVERTISE PRICE
1	B. T. Aspen	Sawtimber	79.4	MBF	28.2	\$22,332.70
	Red Maple		3.6	MBF		
	Red Oak		12.0	MBF		
	B. T. Aspen	Pulpwood	735	Cords		
	Mixed Hardwood		127	Cords		
	<i>Beech</i>		14	<i>Cords</i>		
	<i>Paper Birch</i>		9	<i>Cords</i>		
	<i>Red Maple</i>		104	<i>Cords</i>		
	Red Oak		84	Cords		
2	B. T. Aspen	Sawtimber	69.8	MBF	24.8	\$19,649.65
	Red Maple		3.1	MBF		
	Red Oak		10.6	MBF		
	B. T. Aspen	Pulpwood	647	Cords		
	Mixed Hardwood		112	Cords		
	<i>Beech</i>		12	<i>Cords</i>		
	<i>Paper Birch</i>		8	<i>Cords</i>		
	<i>Red Maple</i>		92	<i>Cords</i>		
	Red Oak		74	Cords		
3	B. T. Aspen	Sawtimber	82.2	MBF	29.2	\$23,122.45
	Red Maple		3.7	MBF		
	Red Oak		12.5	MBF		
	B. T. Aspen	Pulpwood	761	Cords		
	Mixed Hardwood		131	Cords		
	<i>Beech</i>		15	<i>Cords</i>		
	<i>Paper Birch</i>		8	<i>Cords</i>		
	<i>Red Maple</i>		108	<i>Cords</i>		
	Red Oak		87	Cords		
TOTAL:			276.9	MBF		
TOTAL:			2,758	Cords		

Sale Specific Conditions & Requirements

Sale Name: 122 Grade A Aspen

Sale Number: 61-128-20 Seq#: 1

1 - Sale Area

1.2 - Boundaries

1.2.1 - Painted boundaries (9/19)

The sale boundary and Payment Unit boundaries are marked and identified by red and yellow paint. Exterior sale boundary lines against state are marked with red paint. Note that the north end of Payment Unit 1 is along private, however the line was set back due to some larger white pine trees. Interior Payment Unit boundaries are marked with yellow paint. The painted boundary line trees are not Included Timber and are to be protected. Yellow painted trees designating an interior Payment Unit boundary are only to be cut when all surrounding Payment Units have been paid for.

2 - Timber Specifications

2.1 - Included Timber

2.1.1 - Clearcut unit(s) with unmerchantable trees (6/14)

Within Payment Unit(s) 1, 2 & 3, cut all trees that are two (2) inches or more at DBH, except do not cut any white oak, white pine, or trees marked with green paint.

3 - Payments

3.3 - Pre-measured Sales

3.3.4 - Dividing payment units (7/14)

Payment Unit(s) over \$15,000 in value may be divided at the request of the Purchaser and upon approval of the Unit Manager. Dividing Payment Units is a contract modification which requires a Timber Sale Contract Amendment. There will be only one division per Payment Unit.

4 - Transportation

4.1 - Construction

4.1.6 - Road construction (1/09)

Construction of new roads or improvements of existing roads shall be done in such a way as to minimize the environmental and visual impacts. Merchantable trees shall be cut and utilized unless otherwise directed. Non-merchantable trees shall be severed and laid flat on the ground. Slash shall be scattered, and not left in windrows and kept a minimum of 10 feet back from the road edge. Stumps shall be set upright, not left on edge, and be moved at least 10 feet away from the road edge. Disturbed soil shall be feathered into the woods and not left in berms or windrows.

4.1.7 - Road closure (10/11)

All new roads built into the sale must be blocked to vehicle traffic within 30 days of completion of hauling. In general, this will require constructing a four (4') foot high berm of stumps and logs covered with earth. Stumps and brush must be placed along the remainder of the trail where they are readily available. These roads must be rendered impassable to cars and trucks.

5 - Operations

5.1 - Notification

5.1.6 - Utility R.O.W. (4/19)

It is the responsibility of the Purchaser to obtain permission from the utility company to utilize the AT&T Fiber Optic R.O.W. for operations. Contact Dick with AT&T at 616-206-8306 for specific details on the fiber optic line protection details.

5.2 - Conduct of Operations

5.2.1 - Slash

5.2.1.1 - Slash within sale area (9/16)

No trees are to be felled outside the sale area and all slash is to be kept at least 10 feet back from the red paint line. This

spec applies to the north end of Payment Unit 1, which is adjacent to private property. If sale boundary lines are along a public road or highway, then slash must be removed 50' from these lines per General Condition & Requirement 5.2.1.

5.2.2 - Hazard Trees/Snags

5.2.2.1 - Den trees (10/16)

Obvious hollow and/or den trees shall be protected and left standing unless they are a safety hazard.

5.2.3 - Operating Restrictions

5.2.3.5 - Oak wilt restriction (1/18)

Within Payment Units 1 & 3, unless changed by written agreement, cutting, skidding, hauling within the sale and brushing of access roads to the sale are not permitted during the period of April 15 to July 15. Operations may be allowed if specific steps are taken to prevent damaging uncut oak during the high risk period. Those steps may include completing all road brushing before April 15th and clearing a tree-length buffer along uncut oak cover before April 15th. This is necessary to reduce the spread of oak wilt. For more information, contact the Unit Manager or his/her representative.

Note that if road brushing and cutting of 66' along the eastern edge of Payment Units 1 & 3 is done prior to April 15th, cutting, skidding and trucking will be allowed during oak wilt season.

5.2.4 - Dead and Down Creation

5.2.4.2 - Dead and down creation, hare and grouse (1/14)

To improve habitat for snowshoe hare, grouse, and other species, the Purchaser is to leave two brush piles (approximately 20' x 20' x 4' in size) on the ground for every acre. They should be scattered throughout the sale or positioned per the sale administrators instructions. If possible, larger cull pieces should be incorporated into the base of the brush piles to allow air space.

5.2.32 - Decking/landing restoration (9/13)

All decking and landing areas must have the surface area restored to a condition equal to or better than before. This is to ensure the proper regeneration of the stand. Wood debris, chips and "cookies" from trimmings must be removed or scattered away from landing and loading areas and may not be windrowed on the edge.

5.2.38 - No decking against live trees (2/04)

Cut products may not be decked against unmarked or designated leave trees.

5.4 - Soil Protection

5.4.1 - Rutting restriction, general (7/16)

Operations are to cease immediately if equipment and weather conditions result in rutting of roads and/or skid trails which is 12 inches or greater in depth and 50 feet in length. The Unit Manager or his/her representative may restrict hauling and/or skidding if ruts exceed the specified depth. With the Unit Manager or his/her representative's approval, the Purchaser may return to the area when the risk of rutting has decreased.

5.8 - Protection of Endangered Species

5.8.5 - Protection of raptor nests (3/13)

All trees with raptor nests will be protected if found during harvesting operations. Notification will be made to the Unit Manager or his/her representative who will notify the Wildlife Biologist so an on-site evaluation and recommendation can be made, if necessary.

6 - Safety and Fire Prevention

6.2 - Signing

6.2.1 - Road posting (9/09)

The Purchaser is responsible for posting and maintaining caution signs on Riverview Road prior to beginning operations. The road must be posted at appropriate distances from the sale area to warn of logging activity and truck traffic. Signs must be removed when harvest operations are suspended or completed. The Purchaser will provide these signs.



TIMBER SALE MAP

This information provided by authority of Part 525, 1994 PA 451, as amended.

Forest Management Unit Traverse City	County Kalkaska	Mapped By Standerfer	Date 9/4/2020	Page 1	of 1
Township 26N	Range 05W	Section(s) and Subdivision(s) 8 - (SE1/4 & S1/2NE)	Scale 1:15,840		

Cover Type				Density	
A = Aspen	H = Hemlock	N = Marsh	U = Upland Brush	0 = Non Stocked	5 = Pole Timber Medium
B = Paper Birch	J = Jack Pine	O = Oak	UM = Upland Mixed	1 = Seedling Sapling Poor	6 = Pole Timber Well
C = Cedar	L = Lowland Brush	P = Lowland Poplar	V = Bog or Marsh	2 = Seedling Sapling Medium	7 = Saw Timber Poor
D = Treed Bog	LM = Lowland Mixed	Q = Mixed Swamp Conifer	W = White Pine	3 = Seedling Sapling Well	8 = Saw Timber Medium
E = Swamp Hdwoods	M = Mpl, Bch, Brch	R = Red Pine	X = Non Stocked	4 = Pole Timber Poor	9 = Saw Timber Well
F = Spruce Fir	MC = Mixed Conifer	S = Black Spruce	Z = Water		
G = Grass	MD = Mixed Deciduous	T = Tamarack			

PU	Acres
1	28.2
2	29.2
3	24.8

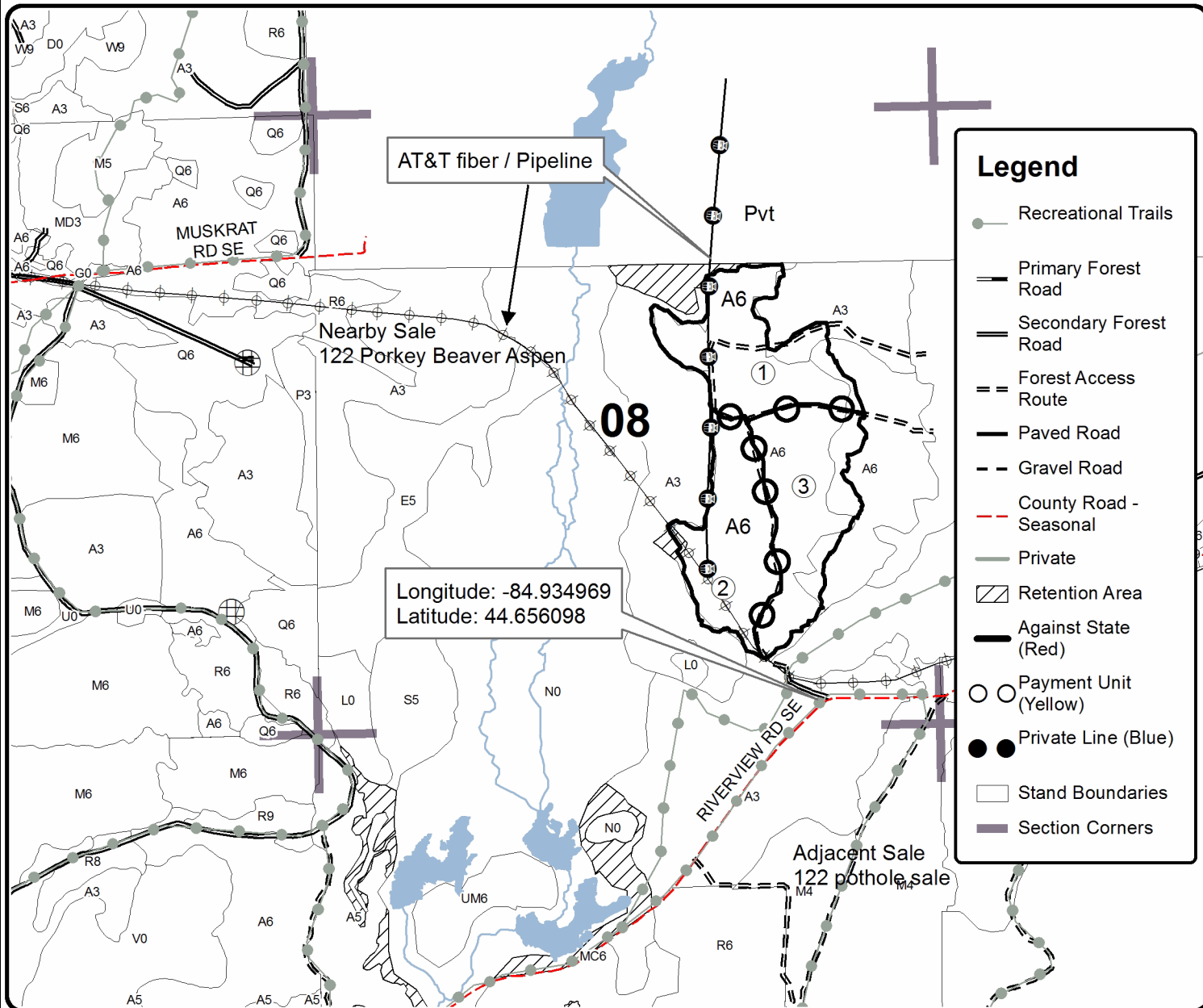
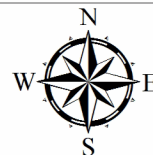


QR Code For
Avenza PDF Map

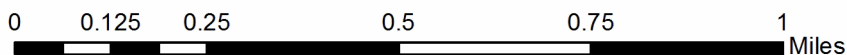
122 Grade A Aspen

Compartment 122

82.2 Acres



Longitude: -84.934969
Latitude: 44.656098



TIMBER SALE INFORMATION

122 Pothole Sale (61-129-20)

T26N, R05W, SEC. 16; T26N, R05W, SEC. 17; T26N, R05W, SEC. 20; T26N, R05W, SEC. 8; T26N, R05W, SEC. 9.
Kalkaska County (Advertised Price \$74,100.30)

SALE NOTE: A recreation site such as a trail, pathway, or campground is within the sale area or the vicinity. Certain restrictions/specifications may be applicable including time restrictions.

A timber sale contract for this lump sum, sealed bid timber sale will be awarded to the responsible bidder offering the highest sealed bid price. All units of volume listed below were estimated using the T-Sale computer program and our traditional volume equations. Bids must be at or above the following advertised price for each product and species:

<u>PRODUCTS & SPECIES</u>	<u>ESTIMATED UNITS*</u>	<u>ADVERTISED PRICE</u>
Sawtimber		
Mixed Aspen	15.6 MBF	\$ 77.00 / MBF
Red Maple	4.3 MBF	\$ 112.00 / MBF
Red Oak	68.8 MBF	\$ 119.00 / MBF
Red Pine	252.5 MBF	\$ 78.00 / MBF
White Pine	280.7 MBF	\$ 41.00 / MBF
Pulpwood		
Jack Pine	19 Cords	\$ 8.00 / Cord
Mixed Aspen	422 Cords	\$ 12.00 / Cord
Mixed Hardwood	456 Cords	\$ 11.45 / Cord
Red Oak	160 Cords	\$ 8.35 / Cord
Red Pine	252 Cords	\$ 26.90 / Cord
White Pine	1,372 Cords	\$ 10.55 / Cord

* The total volume is statistically estimated within plus (+) or minus (-) 15.62 percent. There are an estimated 3,996 cords on this timber sale, plus or minus 624 cords at the 95% confidence level. The estimated units are final and not subject to adjustment. Prospective bidders are urged to examine this timber and to make their own estimates of quantity and quality.

BOND AND PAYMENT SCHEDULE:

1. A bond in the amount of \$3,705.00 to insure faithful performance of the conditions of the contract will be deposited by the successful bidder within 21 days of the sale award.
2. Cutting in any sale or unit without the required advance payment would be considered a trespass.
3. Total payment must be paid in advance or according to the following schedule :
 - (a) Ten percent (10%) of the sale value must be paid within 21 days of the sale award.
 - (b) The 10% down payment will be credited towards the first unit cut.
 - (c) Payment for each of the following units must be made before cutting begins in that unit:

PAYMENT UNIT NUMBER	PERCENT OF TOTAL SALE VALUE
01	43.0%
02	25.8%
03	4.4%
04	7.8%
05	10.4%
06	8.6%
4. If no cutting takes place, the 10% down payment will not be refunded.
5. Operations on the contract issued will terminate on 03/31/2024.

SALE STATISTICS

SALE VOLUMES

VOLUME			STATISTICAL RANGE IN CORDS	
TOTAL CUBIC FEET	TOTAL CORDS	PERCENT ERROR	MINIMUM	MAXIMUM
315,711	3,996	15.62%	3,372	4,621

VDU VOLUMES

A VDU is a Volume Determination Unit. Volumes and their associated statistics are calculated at the VDU level and summarized to the sale level. There is often a one to one relationship between a VDU and a Payment Unit, but not always, depending on the cruise design. Refer to the VDU TO PAYMENT UNIT table.

VDU	VOLUME		PERCENT ERROR	RANGE IN CORDS	
	TOTAL CUBIC FEET	TOTAL CORDS		MINIMUM	MAXIMUM
6	6,486	82	49.47%	41	123
14	103,245	1,307	24.15%	991	1,623
23	13,019	165	28.18%	118	211
30	192,942	2,442	14.33%	2,092	2,792
TOTAL:	315,692	3,996		3,243	4,749

VDU TO PAYMENT UNIT

When a VDU is associated with more than one Payment Unit (PU), the VDU volumes are assigned to the PU based on acres of the VDU within the PU.

VDU	VDU ACRES	PU	PU ACRES
6	16.6	4	16.5
		6	0.1
14	181.3	4	46.5
		5	73.8
		6	61.0
23	13.2	3	13.2
30	87.1	1	54.4
		2	32.7
TOTAL:	298.2		298.2

DESCRIPTION OF TIMBER BY PAYMENT UNIT (PU)

PU	MARKET GROUP	PRODUCT	QUANTITY	UNIT	ACRES	ADVERTISE PRICE	
1	Mixed Aspen	Sawtimber	9.7	MBF	54.4	\$31,796.45	
	<i>B. T. Aspen</i>		7.2	MBF			
	<i>Quaking Aspen</i>		2.5	MBF			
	Red Oak		43.0	MBF			
	Red Pine		123.9	MBF			
	White Pine		122.0	MBF			
	Jack Pine		Pulpwood	10			Cords
	Mixed Aspen			227			Cords
	<i>B. T. Aspen</i>			135			Cords
	<i>Quaking Aspen</i>			92			Cords
	Mixed Hardwood			64			Cords
	<i>Black Cherry</i>			8			Cords
	<i>Red Maple</i>			56			Cords
	Red Oak			84			Cords
	Red Pine			104			Cords
	White Pine			401			Cords
	2		Mixed Aspen	Sawtimber			5.9
<i>B. T. Aspen</i>		4.4	MBF				
<i>Quaking Aspen</i>		1.5	MBF				
Red Oak		25.8	MBF				
Red Pine		74.4	MBF				
White Pine		73.2	MBF				
Jack Pine		Pulpwood	6		Cords		
Mixed Aspen			137		Cords		
<i>B. T. Aspen</i>			81		Cords		
<i>Quaking Aspen</i>			56		Cords		
Mixed Hardwood			39		Cords		
<i>Black Cherry</i>			5		Cords		
<i>Red Maple</i>			34		Cords		
Red Oak			51		Cords		
Red Pine			63		Cords		
White Pine	241		Cords				
3	Red Maple	Sawtimber	4.3	MBF	13.2	\$3,280.20	
	Red Pine		10.8	MBF			
	White Pine		16.8	MBF			
	Mixed Aspen		Pulpwood	3			Cords
	<i>B. T. Aspen</i>			3			Cords
	Mixed Hardwood			5			Cords
	<i>Red Maple</i>		5	Cords			
	Red Oak		6	Cords			
	Red Pine		21	Cords			
	White Pine		53	Cords			
4	Red Pine	Sawtimber	11.1	MBF	63.0	\$5,763.45	
	White Pine		17.6	MBF			
	Jack Pine	Pulpwood	1	Cords			
	Mixed Aspen		16	Cords			
	<i>B. T. Aspen</i>		16	Cords			
	Mixed Hardwood		126	Cords			
	<i>Black Cherry</i>		46	Cords			
	<i>Red Maple</i>		80	Cords			
	Red Oak		8	Cords			
	Red Pine		16	Cords			
	White Pine		193	Cords			
5	Red Pine	Sawtimber	17.7	MBF	73.8	\$7,730.75	
	White Pine		28.0	MBF			
	Jack Pine	Pulpwood	1	Cords			

DESCRIPTION OF TIMBER BY PAYMENT UNIT (PU), CON'T

PU	MARKET GROUP	PRODUCT	QUANTITY	UNIT	ACRES	ADVERTISE PRICE
5 con't	Mixed Aspen	Pulpwood	21	Cords		
	<i>B. T. Aspen</i>		21	<i>Cords</i>		
	Mixed Hardwood		122	Cords		
	<i>Black Cherry</i>		34	<i>Cords</i>		
	<i>Red Maple</i>		88	<i>Cords</i>		
	Red Oak		6	Cords		
	Red Pine		26	Cords		
	White Pine		265	Cords		
6	Red Pine	Sawtimber	14.6	MBF	61.1	\$6,398.90
	White Pine		23.1	MBF		
	Jack Pine	Pulpwood	1	Cords		
	Mixed Aspen		18	Cords		
	<i>B. T. Aspen</i>		18	<i>Cords</i>		
	Mixed Hardwood		100	Cords		
	<i>Black Cherry</i>		28	<i>Cords</i>		
	<i>Red Maple</i>		72	<i>Cords</i>		
	Red Oak		5	Cords		
	Red Pine		22	Cords		
	White Pine		219	Cords		
	TOTAL:			621.9		
TOTAL:			2,681	Cords		

Sale Specific Conditions & Requirements

Sale Name: 122 Pothole Sale

Sale Number: 61-129-20 Seq#: 1

1 - Sale Area

1.2 - Boundaries

1.2.1 - Painted boundaries (9/19)

The sale boundary and Payment Unit boundaries are marked and identified by red and yellow paint, along with roads and trails. Exterior sale boundary lines against state are marked with red paint. Interior Payment Unit boundaries are marked with yellow paint or red double dots, with the exception of the boundaries between Payment Units 4, 5, and 6, which are unpainted and identified by the roads/trails (see Timber Sale Map). Retention patches are marked with red paint; no harvesting activities may occur within these areas. The painted boundary line trees are not Included Timber and are to be protected. Yellow painted trees designating an interior Payment Unit boundary are only to be cut when all surrounding Payment Units have been paid for and they are designated for removal in both adjacent units.

2 - Timber Specifications

2.1 - Included Timber

2.1.2 - Clearcut unit(s) w/o unmerchantable trees (8/11)

Within Payment Unit(s) 1, 2, 4, 5 & 6, cut all trees which meet minimum piece specifications in 2.2 Utilization, except do not cut any white oak or any trees marked with green paint.

2.1.3 - Cut tree marked unit(s) (12/08)

Within Payment Unit(s) 3, all trees are designated for cutting when marked with orange paint above and below stump height, regardless of merchantability. In addition, cut all aspen and red maple trees greater than 3 inches at DBH.

3 - Payments

3.3 - Pre-measured Sales

3.3.4 - Dividing payment units (7/14)

Payment Unit(s) over \$15,000 in value may be divided at the request of the Purchaser and upon approval of the Unit Manager. Dividing Payment Units is a contract modification which requires a Timber Sale Contract Amendment. There will be only one division per Payment Unit.

4 - Transportation

4.1 - Construction

4.1.6 - Road construction (1/09)

Construction of new roads or improvements of existing roads shall be done in such a way as to minimize the environmental and visual impacts. Merchantable trees shall be cut and utilized unless otherwise directed. Non-merchantable trees shall be severed and laid flat on the ground. Slash shall be scattered, and not left in windrows and kept a minimum of 10 feet back from the road edge. Stumps shall be set upright, not left on edge, and be moved at least 10 feet away from the road edge. Disturbed soil shall be feathered into the woods and not left in berms or windrows.

4.1.7 - Road closure (10/11)

All new roads built into the sale must be blocked to vehicle traffic within 30 days of completion of hauling. Overgrown roads that are reopened shall be considered new roads. In general, this will require constructing a four (4') foot high berm of stumps and logs covered with earth. Stumps and brush must be placed along the remainder of the trail where they are readily available. These roads must be rendered impassable to cars and trucks.

5 - Operations

5.2 - Conduct of Operations

5.2.2 - Hazard Trees/Snags

5.2.2.1 - Den trees (10/16)

Obvious hollow and/or den trees shall be protected and left standing unless they are a safety hazard. Note that standing dead oak is designated for cutting, however obviously hollow den trees should be left uncut and undamaged.

5.2.3 - Operating Restrictions

5.2.3.1 - Operating restrictions (9/11)

Within Payment Unit(s) 1-6, cutting, skidding, and hauling are limited the period of October 1 to March 31, during dry or frozen ground conditions. These dates may be altered if a given year's weather pattern makes snakes active early or later in the year. This restriction is because this area has been designated as Eastern Massasauga Rattlesnake Habitat and this will also protect against oak wilt.

5.2.4 - Dead and Down Creation

5.2.4.2 - Dead and down creation, hare and grouse (1/14)

To improve habitat for snowshoe hare, grouse, and other species, the Purchaser is to leave two brush piles (approximately 20' x 20' x 4') on the ground for every acre. They should be scattered throughout the sale or positioned per the sale administrators instructions. If possible, larger cull pieces should be incorporated into the base of these brush piles to create some air space in the piles.

5.2.32 - Decking/landing restoration (9/13)

All decking and landing areas must have the surface area restored to a condition equal to or better than before. This is to ensure the proper regeneration of the stand. Wood debris, chips and "cookies" from trimmings must be removed or scattered away from landing and loading areas and may not be windrowed on the edge.

5.2.38 - No decking against live trees (2/04)

Cut products may not be decked against unmarked or designated leave trees.

5.2.39 - ORV trail/route protection (4/18)

There are ORV trails and routes shown on the Timber Sale Map. Do not cut trees or damage posts with yellow ORV markers. All stumps within 5 feet of the trail must be cut flush with the ground. Maintain a 20 foot wide slash, debris, and rut free zone daily using the ORV trail or route as the centerline. Do not run equipment down the ORV trail or route. Skidding across the trail or route may only occur in locations approved by the sale administrator.

5.4 - Soil Protection

5.4.1 - Rutting restriction, general (7/16)

Operations are to cease immediately if equipment and weather conditions result in rutting of roads and/or skid trails which is 12 inches or greater in depth and 50 feet in length. The Unit Manager or his/her representative may restrict hauling and/or skidding if ruts exceed the specified depth. With the Unit Manager or his/her representative's approval, the Purchaser may return to the area when the risk of rutting has decreased.

6 - Safety and Fire Prevention

6.2 - Signing

6.2.1 - Road posting (9/09)

The Purchaser is responsible for posting and maintaining caution signs on impacted roads prior to beginning operations. The road must be posted at appropriate distances from the sale area to warn of logging activity and truck traffic. Signs must be removed when harvest operations are suspended or completed. The Purchaser will provide these signs.

6.2.3 - Recreational trail posting (2/10)

The Purchaser is responsible for posting and maintaining caution signs on ORV trails prior to beginning operations. The trail must be posted at appropriate distances from the sale area to warn of logging activity and truck traffic at both ends of the trail. Signs must be removed when harvest operations are suspended or completed. The Purchaser will provide these signs.



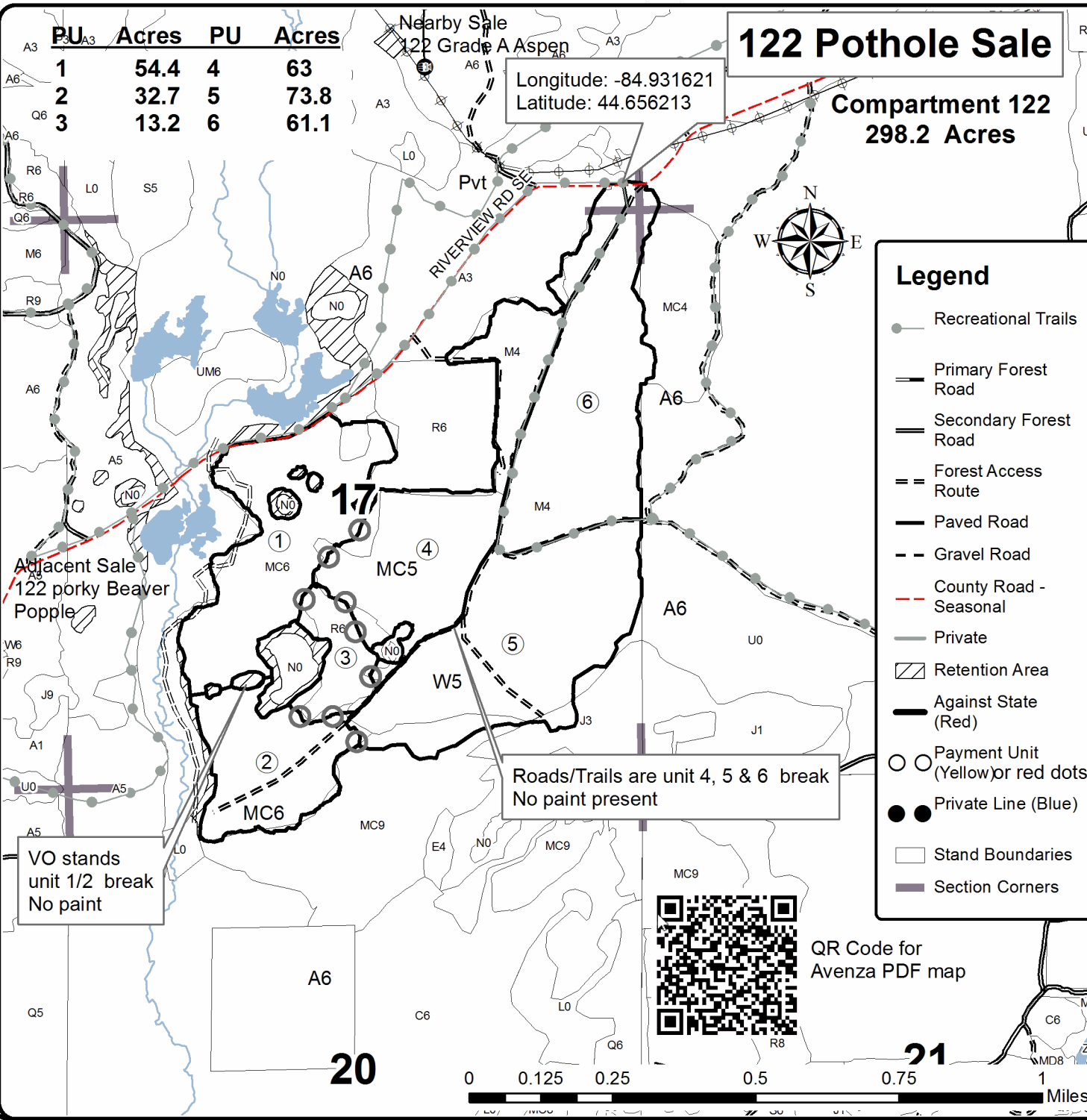
TIMBER SALE MAP

This information provided by authority of Part 525, 1994 PA 451, as amended.

Sale Number	Year
61 - 129	20

Forest Management Unit	County	Mapped By	Date	Page	of
Traverse City	Kalkaska	Standerfer	9/4/2020	1	1
Township	Range	Section(s) and Subdivision(s)	Scale		
26N	05W	7, 8 17 & 18 (See proposal)	1:15,840		

Cover Type				Density	
A = Aspen	H = Hemlock	N = Marsh	U = Upland Brush	0 = Non Stocked	5 = Pole Timber Medium
B = Paper Birch	J = Jack Pine	O = Oak	UM = Upland Mixed	1 = Seedling Sapling Poor	6 = Pole Timber Well
C = Cedar	L = Lowland Brush	P = Lowland Poplar	V = Bog or Marsh	2 = Seedling Sapling Medium	7 = Saw Timber Poor
D = Treed Bog	LM = Lowland Mixed	Q = Mixed Swamp Conifer	W = White Pine	3 = Seedling Sapling Well	8 = Saw Timber Medium
E = Swamp Hdwoods	M = Mpl, Bch, Brch	R = Red Pine	X = Non Stocked	4 = Pole Timber Poor	9 = Saw Timber Well
F = Spruce Fir	MC = Mixed Conifer	S = Black Spruce	Z = Water		
G = Grass	MD = Mixed Deciduous	T = Tamarack			



TIMBER SALE INFORMATION

Spirit Animals Aspen (61-130-20)
T25N, R08W, SEC. 25; T25N, R08W, SEC. 36.
Kalkaska County (Advertised Price \$56,091.40)

SALE NOTE: Please note Sale Conditions related to roads, sale operations and access, specifically 4.1.6, 4.1.12 and 5.2.31. There will be no exceptions to these specifications. Please contact Katie Armstrong at 231-342-9737 to borrow a gate key to access the sale area.

A timber sale contract for this lump sum, sealed bid timber sale will be awarded to the responsible bidder offering the highest sealed bid price. All units of volume listed below were estimated using the T-Sale computer program and our traditional volume equations. Bids must be at or above the following advertised price for each product and species:

<u>PRODUCTS & SPECIES</u>	<u>ESTIMATED UNITS*</u>	<u>ADVERTISED PRICE</u>
Sawtimber		
Red Maple	68.2 MBF	\$ 112.00 / MBF
Red Oak	78.2 MBF	\$ 119.00 / MBF
Red Pine	34.1 MBF	\$ 78.00 / MBF
Sugar Maple	7.7 MBF	\$ 157.00 / MBF
White Pine	54.3 MBF	\$ 41.00 / MBF
Pulpwood		
Balsam Fir	13 Cords	\$ 7.10 / Cord
Mixed Aspen	1,652 Cords	\$ 12.00 / Cord
Mixed Hardwood	732 Cords	\$ 11.45 / Cord
Red Oak	267 Cords	\$ 8.35 / Cord
Red Pine	37 Cords	\$ 26.90 / Cord
White Pine	145 Cords	\$ 10.55 / Cord

* The total volume is statistically estimated within plus (+) or minus (-) 9.67 percent. There are an estimated 3,332 cords on this timber sale, plus or minus 322 cords at the 95% confidence level. The estimated units are final and not subject to adjustment. Prospective bidders are urged to examine this timber and to make their own estimates of quantity and quality.

BOND AND PAYMENT SCHEDULE:

1. A bond in the amount of \$5,609.00 to insure faithful performance of the conditions of the contract will be deposited by the successful bidder within 21 days of the sale award.
2. Cutting in any sale or unit without the required advance payment would be considered a trespass.
3. Total payment must be paid in advance or according to the following schedule :
 - (a) Ten percent (10%) of the sale value must be paid within 21 days of the sale award.
 - (b) The 10% down payment will be credited towards the first unit cut.
 - (c) Payment for each of the following units must be made before cutting begins in that unit:

PAYMENT UNIT NUMBER	PERCENT OF TOTAL SALE VALUE
01	28.8%
02	22.3%
03	5.2%
04	26.3%
05	17.4%
4. If no cutting takes place, the 10% down payment will not be refunded.
5. Operations on the contract issued will terminate on 04/14/2023.

SALE STATISTICS

SALE VOLUMES

VOLUME		STATISTICAL RANGE IN CORDS		
TOTAL CUBIC FEET	TOTAL CORDS	PERCENT ERROR	MINIMUM	MAXIMUM
263,224	3,332	9.67%	3,010	3,654

VDU VOLUMES

A VDU is a Volume Determination Unit. Volumes and their associated statistics are calculated at the VDU level and summarized to the sale level. There is often a one to one relationship between a VDU and a Payment Unit, but not always, depending on the cruise design. Refer to the VDU TO PAYMENT UNIT table.

VDU	VOLUME		PERCENT ERROR	RANGE IN CORDS	
	TOTAL CUBIC FEET	TOTAL CORDS		MINIMUM	MAXIMUM
201	67,640	856	17.91%	703	1,010
202	50,094	634	19.53%	510	758
203	18,589	235	74.94%	59	412
204	73,644	932	14.56%	796	1,068
205	51,026	646	28.14%	464	828
206	2,196	28	135.87%	10	66
TOTAL:	263,189	3,332		2,523	4,140

VDU TO PAYMENT UNIT

When a VDU is associated with more than one Payment Unit (PU), the VDU volumes are assigned to the PU based on acres of the VDU within the PU.

VDU	VDU ACRES	PU	PU ACRES
201	20.8	1	20.8
202	16.4	2	16.4
203	10.5	3	10.5
204	24.7	4	24.7
205	18.0	5	18.0
206	1.4	1	1.4
TOTAL:	91.8		91.8

DESCRIPTION OF TIMBER BY PAYMENT UNIT (PU)

PU	MARKET GROUP	PRODUCT	QUANTITY	UNIT	ACRES	ADVERTISE PRICE
1	Red Maple	Sawtimber	13.9	MBF	22.2	\$16,109.40
	Red Oak		29.0	MBF		
	Red Pine		18.9	MBF		
	Sugar Maple		3.2	MBF		
	White Pine		19.0	MBF		
	Mixed Aspen	Pulpwood	315	Cords		
	<i>B. T. Aspen</i>		315	<i>Cords</i>		
	Mixed Hardwood		200	Cords		
	<i>Beech</i>		57	<i>Cords</i>		
	<i>Red Maple</i>		129	<i>Cords</i>		
	<i>Sugar Maple</i>		14	<i>Cords</i>		
	Red Oak		130	Cords		
	Red Pine		27	Cords		
White Pine		44	Cords			
2	Red Maple	Sawtimber	27.9	MBF	16.4	\$12,530.85
	Red Oak		23.0	MBF		
	Sugar Maple		4.5	MBF		
	White Pine		3.0	MBF		
	Mixed Aspen	Pulpwood	227	Cords		
	<i>B. T. Aspen</i>		227	<i>Cords</i>		
	Mixed Hardwood		207	Cords		
	<i>Beech</i>		55	<i>Cords</i>		
	<i>Ironwood</i>		2	<i>Cords</i>		
	<i>Red Maple</i>		138	<i>Cords</i>		
	<i>Sugar Maple</i>		12	<i>Cords</i>		
	Red Oak		64	Cords		
	White Pine		20	Cords		
3	White Pine	Sawtimber	13.6	MBF	10.5	\$2,920.00
	Balsam Fir	Pulpwood	13	Cords		
	Mixed Aspen		146	Cords		
	<i>B. T. Aspen</i>		146	<i>Cords</i>		
	Mixed Hardwood		13	Cords		
	<i>Red Maple</i>		13	<i>Cords</i>		
	White Pine		35	Cords		
4	Red Maple	Sawtimber	13.7	MBF	24.7	\$14,761.05
	Red Oak		18.8	MBF		
	Red Pine		9.4	MBF		
	White Pine		18.7	MBF		
	Mixed Aspen	Pulpwood	552	Cords		
	<i>B. T. Aspen</i>	<i>Sawtimber</i>	2.2	<i>MBF</i>		
	<i>B. T. Aspen</i>	<i>Pulpwood</i>	548	<i>Cords</i>		
	Mixed Hardwood		166	Cords		
	<i>Red Maple</i>		166	<i>Cords</i>		
	Red Oak		52	Cords		
	Red Pine		6	Cords		
White Pine		35	Cords			
5	Red Maple	Sawtimber	12.7	MBF	18.0	\$9,770.10
	Red Oak		7.4	MBF		
	Red Pine		5.8	MBF		
	Mixed Aspen	Pulpwood	412	Cords		
	<i>B. T. Aspen</i>		412	<i>Cords</i>		
	Mixed Hardwood		146	Cords		
	<i>Red Maple</i>		146	<i>Cords</i>		
	Red Oak		21	Cords		
	Red Pine		4	Cords		
	White Pine		11	Cords		

TOTAL:	242.5	MBF
--------	-------	-----

TOTAL:	2,846	Cords
--------	-------	-------

Sale Specific Conditions & Requirements

Sale Name: Spirit Animals Aspen

Sale Number: 61-130-20 Seq#: 1

1 - Sale Area

1.2 - Boundaries

1.2.1 - Painted boundaries (9/19)

The sale boundary and Payment Unit boundaries are marked and identified by blue, red and yellow paint. Exterior sale boundary lines against private property are marked with blue paint. Exterior sale boundary lines against state are marked with red paint. Interior Payment Unit boundaries are marked with yellow paint. The painted boundary line trees are not Included Timber and are to be protected. Yellow painted trees designating an interior Payment Unit boundary are only to be cut when all surrounding Payment Units have been paid.

2 - Timber Specifications

2.1 - Included Timber

2.1.1 - Clearcut unit(s) with unmerchantable trees (6/14)

Within Payment Unit(s) 1-5, cut all trees that are two (2) inches or more at DBH, except do not cut white pine less than 6 inches at DBH and white oak less than 6 inches at DBH.

In addition, there is a small pocket of white pine in the southwest corner of Payment Unit 1. Within this area, which is lined by yellow paint, cut all aspen, all red maple and trees marked marked with orange paint.

3 - Payments

3.3 - Pre-measured Sales

3.3.4 - Dividing payment units (7/14)

Payment Unit(s) greater than \$20,000 may be divided at the request of the Purchaser and upon approval of the Unit Manager. Dividing Payment Units is a contract modification which requires a Timber Sale Contract Amendment. There will be only one division per Payment Unit.

3.4 - Damaged Timber

3.4.1 - Damaged timber (7/16)

General Condition and Requirement 3.4 Damaged Timber, defines liquidated damages for undesignated live merchantable trees which are cut or injured. In addition, extreme care should be taken to avoid damage to desirable tree seedlings and saplings, especially white pine and oak.

Within the sale area, if more than 25% of the tree seedlings or saplings (1/4" to 4.5" DBH) within a specified portion of the sale area are damaged, liquidated damages will be assessed at \$300 per acre for all acreage within that specified portion of the sale area that was damaged.

Note that this specification does not apply to beech or ironwood.

4 - Transportation

4.1 - Construction

4.1.6 - Road construction (1/09)

Roads shown on the Timber Sale Map as Temporary Management Access may be improved only from Puffer Road to the Y intersection of Payment Units 2, 3, and 4. Improvements of these roads shall be done in such a way as to minimize the environmental and visual impacts. Merchantable trees shall be cut and utilized unless otherwise directed. Non-merchantable trees shall be severed and laid flat on the ground. Slash shall be scattered, and not left in windrows and kept a minimum of 10 feet back from the road edge. Stumps shall be set upright, not left on edge, and be moved at least 10 feet away from the road edge, or saved to help block roads as described in 4.1.7. Disturbed soil shall be feathered into the woods and not left in berms or windrows. Roads west of the sale boundary may be not be used or improved under any circumstances.

4.1.7 - Road closure (10/11)

Some stumps and large brush shall be retained to help block illegal ORV access along the road to the sale area. Contact the sale administrator for specific details of design and placement.

4.1.12 - No new roads (1/12)

No new roads will be permitted in any Payment Unit. All operations are limited to existing roads. Skid trails only will be allowed.

4.4 - Access

4.4.3 - Access gate (12/08)

The access gate must be locked at the completion of each day unless otherwise approved by the Unit Manager or Sale Administrator.

5 - Operations

5.1 - Notification

5.1.1 - Pre-sale conference (10/16)

A pre-sale conference on site between the Purchaser and sale administrator is required prior to beginning any operations to determine landing locations and review sale specifications. The Sale Administrator must be contacted at least 5 days in advance to schedule the conference.

5.2 - Conduct of Operations

5.2.1 - Slash

5.2.1.8 - Slash height (12/08)

No slash or tree tops may exceed 36 inches in height.

5.2.2 - Hazard Trees/Snags

5.2.2.1 - Den trees (10/16)

Obvious hollow and/or den trees shall be protected and left standing unless they are a safety hazard.

5.2.3 - Operating Restrictions

5.2.3.5 - Oak wilt restriction (1/18)

Within Payment Units 1, 2, 3, 4, and 5, unless changed by written agreement, cutting, skidding, hauling within the sale and brushing of access roads to the sale are not permitted during the period of April 15 to July 15. Operations may be allowed if specific steps are taken to prevent damaging uncut oak during the high risk period. Those steps may include completing all road brushing before April 15th and clearing a tree-length buffer along uncut oak cover before April 15th. Producer must also use equipment capable of shearing any red oak saplings if sale is cut during the restricted period. This is necessary to reduce the spread of oak wilt. For more information, contact the Unit Manager or his/her representative.

5.2.3.11 - Coppice regeneration protection (4/10)

Timber harvesting in any Payment Unit must be completed before significant aspen sprouting occurs in that Payment Unit so as to minimize damage to the new regeneration. Any post harvest operations, such as chipping, must be completed before sprouting of regeneration occurs. If it is anticipated that chipping will be delayed, then tops shall be carried to one central location or left unchipped. The Unit Manager or his/her representative may cease such operations if sprouting occurs before the operation is complete.

5.2.31 - Landing locations (9/13)

Landings and all timber sale operations (other than hauling) must be within the timber sale boundary unless otherwise approved by the Unit Manager or his representative.

5.2.32 - Decking/landing restoration (9/13)

All decking and landing areas must have the surface area restored to a condition equal to or better than before. This is to ensure the proper regeneration of the stand. Wood debris, chips and "cookies" from trimmings must be removed or scattered away from landing and loading areas and may not be windrowed on the edge.

5.2.38 - No decking against live trees (2/04)

Cut products may not be decked against unmarked or designated leave trees.

5.4 - Soil Protection

5.4.1 - Rutting restriction, general (7/16)

Operations are to cease immediately if equipment and weather conditions result in rutting of roads and/or skid trails which is 12 inches or greater in depth and 50 feet in length. The Unit Manager or his/her representative may restrict hauling and/or skidding if ruts exceed the specified depth. With the Unit Manager or his/her representative's approval, the Purchaser may return to the area when the risk of rutting has decreased.

5.4.4 - Slope protection (9/19)

Skid trails and roads on slopes shall be water barred with slash and stumps as soon as use is complete to prevent erosion.

5.8 - Protection of Endangered Species

5.8.5 - Protection of raptor nests (3/13)

All trees with raptor nests will be protected if found during harvesting operations. Notification will be made to the Unit Manager or his/her representative who will notify the Wildlife Biologist so an on-site evaluation and recommendation can be made, if necessary.



Sale Number	Year
61-130	20

TIMBER SALE MAP

This information provided by authority of Part 525, 1994 PA 451, as amended.

Forest Management Unit Traverse City	County Kalkaska	Mapped By Armstrong	Date 8/24/2020	Page 1	of 1
Township 25N	Range 8W	Section(s) and Subdivision(s) Sec. 25: NESW, S1/2SW, NWSE, S1/2SE; Sec. 36: NENW, NWNE	Scale 1:7,920		

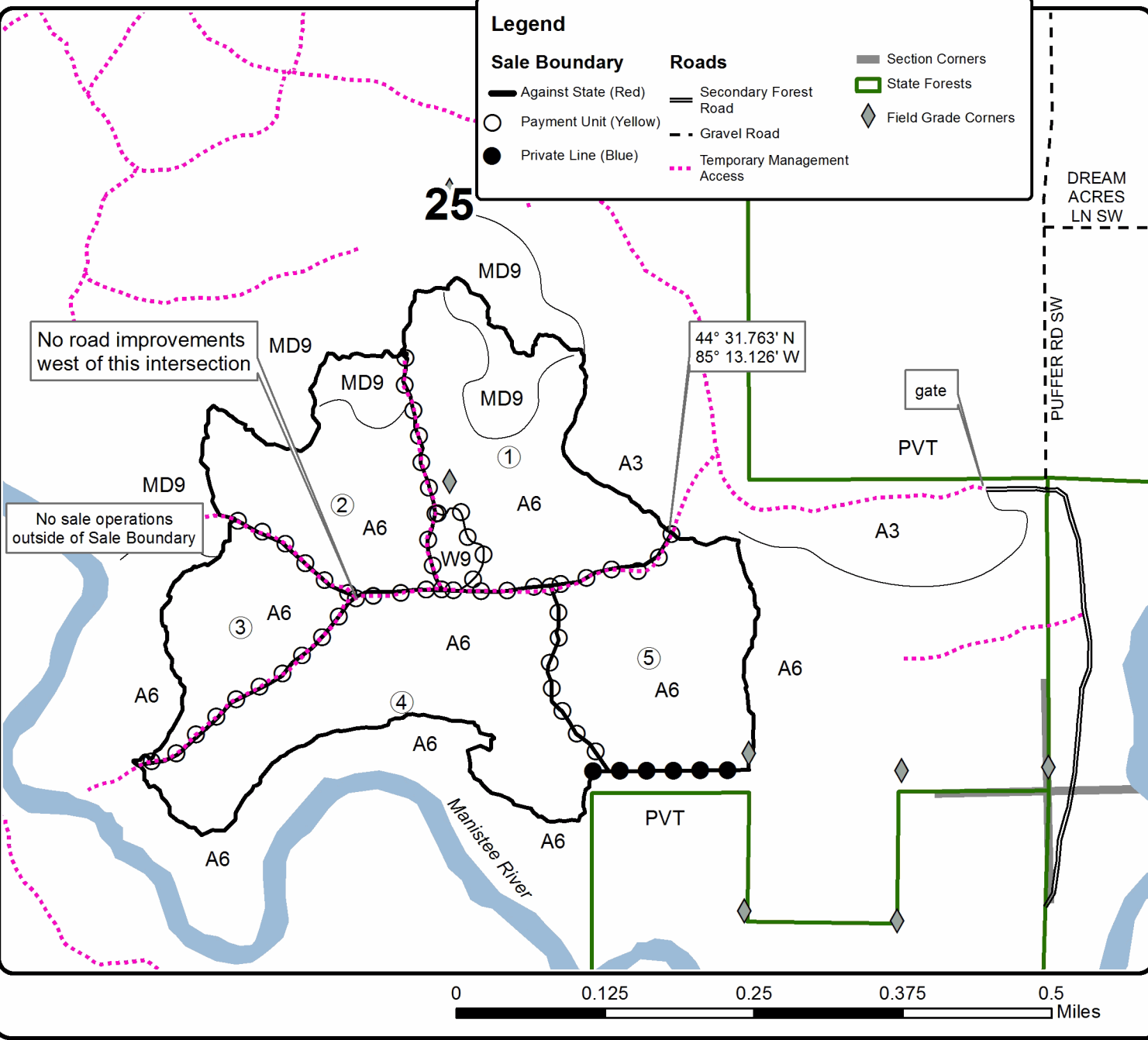
Cover Type				Density	
A = Aspen	H = Hemlock	N = Marsh	U = Upland Brush	0 = Non Stocked	5 = Pole Timber Medium
B = Paper Birch	J = Jack Pine	O = Oak	UM = Upland Mixed	1 = Seedling Sapling Poor	6 = Pole Timber Well
C = Cedar	L = Lowland Brush	P = Lowland Poplar	V = Bog or Marsh	2 = Seedling Sapling Medium	7 = Saw Timber Poor
D = Treed Bog	LM = Lowland Mixed	Q = Mixed Swamp Conifer	W = White Pine	3 = Seedling Sapling Well	8 = Saw Timber Medium
E = Swamp Hdwoods	M = Mpl, Bch, Brch	R = Red Pine	X = Non Stocked	4 = Pole Timber Poor	9 = Saw Timber Well
F = Spruce Fir	MC = Mixed Conifer	S = Black Spruce	Z = Water		
G = Grass	MD = Mixed Deciduous	T = Tamarack			

PU	Acres	PU	Acres
1	22.2	4	24.7
2	16.4	5	18.0
3	10.5		

Spirit Animals Mix

Compartment 246

91.8 acres



TIMBER SALE INFORMATION

Radical Hope Mix (61-136-20)

T28N, R05W, SEC. 28; T28N, R05W, SEC. 29; T28N, R05W, SEC. 32.
Kalkaska County (Advertised Price \$47,980.55)

SALE NOTE: Please note that several units will require chipping to facilitate future planting operations. Alternatives may be considered if producers can demonstrate that site will be sufficiently prepared for planting .

A recreation site such as a trail, pathway, or campground is within the sale area or the vicinity. Certain restrictions/specifications may be applicable including time restrictions.

A timber sale contract for this lump sum, sealed bid timber sale will be awarded to the responsible bidder offering the highest sealed bid price. All units of volume listed below were estimated using the T-Sale computer program and our traditional volume equations. Bids must be at or above the following advertised price for each product and species:

<u>PRODUCTS & SPECIES</u>	<u>ESTIMATED UNITS*</u>		<u>ADVERTISED PRICE</u>
Sawtimber			
Basswood	35.2	MBF	\$ 67.00 / MBF
Black Cherry	57.6	MBF	\$ 150.00 / MBF
Mixed Aspen	1.2	MBF	\$ 77.00 / MBF
Red Maple	3.6	MBF	\$ 112.00 / MBF
Red Pine	62.6	MBF	\$ 78.00 / MBF
Sugar Maple	4.9	MBF	\$ 157.00 / MBF
White Pine	92.4	MBF	\$ 41.00 / MBF
Pulpwood			
Mixed Aspen	251	Cords	\$ 12.00 / Cord
Mixed Hardwood	903	Cords	\$ 11.45 / Cord
Red Pine	313	Cords	\$ 26.90 / Cord
White Pine	500	Cords	\$ 10.55 / Cord

* The total volume is statistically estimated within plus (+) or minus (-) 10.73 percent. There are an estimated 2,480 cords on this timber sale, plus or minus 266 cords at the 95% confidence level. The estimated units are final and not subject to adjustment. Prospective bidders are urged to examine this timber and to make their own estimates of quantity and quality.

BOND AND PAYMENT SCHEDULE:

1. A bond in the amount of \$4,798.00 to insure faithful performance of the conditions of the contract will be deposited by the successful bidder within 21 days of the sale award.
2. Cutting in any sale or unit without the required advance payment would be considered a trespass.
3. Total payment must be paid in advance or according to the following schedule :
 - (a) Ten percent (10%) of the sale value must be paid within 21 days of the sale award.
 - (b) The 10% down payment will be credited towards the first unit cut.
 - (c) Payment for each of the following units must be made before cutting begins in that unit:

PAYMENT UNIT NUMBER	PERCENT OF TOTAL SALE VALUE
01	15.0%
02	11.9%
03	5.3%
04	3.6%
05	11.2%
06	28.5%
07	5.0%
08	6.3%
09	13.2%

4. If no cutting takes place, the 10% down payment will not be refunded.
5. Operations on the contract issued will terminate on 04/14/2024.

SALE STATISTICS

SALE VOLUMES

VOLUME			STATISTICAL RANGE IN CORDS	
TOTAL CUBIC FEET	TOTAL CORDS	PERCENT ERROR	MINIMUM	MAXIMUM
195,922	2,480	10.73%	2,214	2,746

VDU VOLUMES

A VDU is a Volume Determination Unit. Volumes and their associated statistics are calculated at the VDU level and summarized to the sale level. There is often a one to one relationship between a VDU and a Payment Unit, but not always, depending on the cruise design. Refer to the VDU TO PAYMENT UNIT table.

VDU	VOLUME			RANGE IN CORDS	
	TOTAL CUBIC FEET	TOTAL CORDS	PERCENT ERROR	MINIMUM	MAXIMUM
18	34,523	437	23.17%	336	538
23	25,004	317	25.27%	237	396
28	48,538	614	16.45%	513	715
35	16,614	210	27.85%	152	269
41	7,489	95	37.84%	59	131
116	22,436	284	28.62%	203	365
161	34,365	435	24.99%	326	544
216	6,976	88	50.38%	44	133
TOTAL:	195,944	2,480		1,869	3,092

VDU TO PAYMENT UNIT

When a VDU is associated with more than one Payment Unit (PU), the VDU volumes are assigned to the PU based on acres of the VDU within the PU.

VDU	VDU ACRES	PU	PU ACRES
18	31.5	1	17.6
		2	13.9
23	34.2	9	34.2
28	32.0	6	32.0
35	7.2	6	7.2
41	10.8	3	10.8
116	13.0	5	13.0
161	43.9	7	19.2
		8	24.7
216	8.7	4	8.7
TOTAL:	181.3		181.3

DESCRIPTION OF TIMBER BY PAYMENT UNIT (PU)

PU	MARKET GROUP	PRODUCT	QUANTITY	UNIT	ACRES	ADVERTISE PRICE
1	Black Cherry	Sawtimber	4.4	MBF	17.6	\$7,212.30
	Red Pine		29.3	MBF		
	Mixed Hardwood	Pulpwood	32	Cords		
	<i>Basswood</i>		2	<i>Cords</i>		
	<i>Black Cherry</i>		30	<i>Cords</i>		
	Red Pine		145	Cords		
2	Black Cherry	Sawtimber	3.5	MBF	13.9	\$5,687.45
	Red Pine		23.2	MBF		
	Mixed Hardwood	Pulpwood	25	Cords		
	<i>Basswood</i>		2	<i>Cords</i>		
	<i>Black Cherry</i>		23	<i>Cords</i>		
	Red Pine		114	Cords		
3	Black Cherry	Sawtimber	0.8	MBF	10.8	\$2,550.45
	Red Pine		8.7	MBF		
	Sugar Maple		0.4	MBF		
	Mixed Hardwood	Pulpwood	23	Cords		
	<i>Black Cherry</i>		19	<i>Cords</i>		
	<i>Sugar Maple</i>		4	<i>Cords</i>		
Red Pine		53	Cords			
4	Basswood	Sawtimber	4.1	MBF	8.7	\$1,720.45
	Black Cherry		1.3	MBF		
	Sugar Maple		2.8	MBF		
	Mixed Hardwood	Pulpwood	69	Cords		
	<i>Basswood</i>		11	<i>Cords</i>		
	<i>Black Cherry</i>		20	<i>Cords</i>		
	<i>Ironwood</i>		8	<i>Cords</i>		
	<i>Sugar Maple</i>		30	<i>Cords</i>		
	White Pine		2	Cords		
5	Basswood	Sawtimber	9.8	MBF	13.0	\$5,359.70
	Black Cherry		11.3	MBF		
	Red Maple		2.9	MBF		
	Mixed Hardwood	Pulpwood	215	Cords		
	<i>Basswood</i>		23	<i>Cords</i>		
	<i>Black Cherry</i>		90	<i>Cords</i>		
	<i>Ironwood</i>		2	<i>Cords</i>		
	<i>Red Maple</i>		87	<i>Cords</i>		
	<i>Sugar Maple</i>		13	<i>Cords</i>		
	White Pine		21	Cords		
6	Black Cherry	Sawtimber	22.8	MBF	39.2	\$13,716.50
	Mixed Aspen		0.8	MBF		
	<i>Quaking Aspen</i>		0.8	<i>MBF</i>		
	Red Maple		0.7	MBF		
	Red Pine		1.4	MBF		
	White Pine		77.7	MBF		
	Mixed Aspen	Pulpwood	70	Cords		
	<i>Quaking Aspen</i>		70	<i>Cords</i>		
	Mixed Hardwood		237	Cords		
	<i>Black Cherry</i>		201	<i>Cords</i>		
	<i>Red Maple</i>		36	<i>Cords</i>		
	Red Pine		1	Cords		
	White Pine		311	Cords		
7	Basswood	Sawtimber	0.6	MBF	19.2	\$2,379.15
	Mixed Aspen		0.2	MBF		
	<i>B. T. Aspen</i>		0.2	<i>MBF</i>		
	Sugar Maple		0.6	MBF		

DESCRIPTION OF TIMBER BY PAYMENT UNIT (PU), CON'T

PU	MARKET GROUP	PRODUCT	QUANTITY	UNIT	ACRES	ADVERTISE PRICE
7 con't	White Pine	Sawtimber	4.9	MBF		
	Mixed Aspen	Pulpwood	79	Cords		
	<i>B. T. Aspen</i>		4	<i>Cords</i>		
	<i>Quaking Aspen</i>		75	<i>Cords</i>		
	Mixed Hardwood		40	Cords		
	<i>Basswood</i>		1	<i>Cords</i>		
	<i>Black Cherry</i>		21	<i>Cords</i>		
	<i>Red Maple</i>		9	<i>Cords</i>		
	<i>Sugar Maple</i>		9	<i>Cords</i>		
	White Pine		59	Cords		
8	Basswood	Sawtimber	0.7	MBF	24.7	\$3,032.90
	Mixed Aspen	Pulpwood	0.2	MBF		
	<i>B. T. Aspen</i>		0.2	<i>MBF</i>		
	Sugar Maple		0.7	MBF		
	White Pine		6.4	MBF		
	Mixed Aspen		102	Cords		
	<i>B. T. Aspen</i>		6	<i>Cords</i>		
	<i>Quaking Aspen</i>		96	<i>Cords</i>		
	Mixed Hardwood		50	Cords		
	<i>Basswood</i>		1	<i>Cords</i>		
	<i>Black Cherry</i>		26	<i>Cords</i>		
	<i>Red Maple</i>		11	<i>Cords</i>		
	<i>Sugar Maple</i>		12	<i>Cords</i>		
	White Pine		76	Cords		
	9		Basswood	Sawtimber		
Black Cherry		Pulpwood	13.5	MBF		
Sugar Maple			0.4	MBF		
White Pine			3.4	MBF		
Mixed Hardwood			212	Cords		
<i>Basswood</i>			58	<i>Cords</i>		
<i>Black Cherry</i>			125	<i>Cords</i>		
<i>Ironwood</i>			5	<i>Cords</i>		
<i>Red Maple</i>			10	<i>Cords</i>		
<i>Sugar Maple</i>			14	<i>Cords</i>		
White Pine			31	Cords		
TOTAL:			257.5	MBF		
TOTAL:			1,967	Cords		

Sale Specific Conditions & Requirements

Sale Name: Radical Hope Mix

Sale Number: 61-136-20 Seq#: 1

1 - Sale Area

1.2 - Boundaries

1.2.1 - Painted boundaries (9/19)

The sale boundary and Payment Unit boundaries are marked and identified by red and yellow paint. Exterior sale boundary lines against state are marked with red paint. Interior Payment Unit boundaries are marked with yellow paint. The painted boundary and payment unit line trees are not Included Timber and are to be protected unless marked with orange paint.

2 - Timber Specifications

2.1 - Included Timber

2.1.1 - Clearcut unit(s) with unmerchantable trees (6/14)

Within Payment Unit(s) 6-9, cut all trees that are two (2) inches or more at DBH.

2.1.3 - Cut tree marked unit(s) (12/08)

Within Payment Unit(s) 1-4, all trees are designated for cutting when marked with orange paint above and below stump height, regardless of merchantability. In addition, within Payment Unit 4, cut all aspen, beech, and ironwood, except do not cut any that might be marked with an orange X.

Note that Payment Units 1, 2, and 3 are essentially a third row thinning, but the rows are uneven so cut trees have been marked to help the producer follow the designated cut rows.

2.1.7 - Leave tree marked unit(s) (6/14)

Within Payment Unit(s) 5, cut all trees that are two (2) inches or more at DBH, except do not cut sugar maple less than four (4) inches at DBH or any trees marked with green paint above and below stump height.

2.1.11 - Description of timber note (2/04)

Note that dead and unmerchantable trees have been marked in Payment Units 1, 2, and 3. These trees were marked to help the producer follow the cut rows and do not contribute to the estimated timber volume.

2.2 - Utilization

2.2.2 - Chipping required (2/18)

Payment Units 6, 7, 8, and 9 must be chip harvested to facilitate future planting operations. The Purchaser has the option to produce sawlogs or pulpwood bolts, but the remaining portion of the trees must be chipped and hauled. The Sale Administrator may grant a chipping exemption if he/she determines that proposed operations would leave the site suitable for planting. Chipping alternatives may include skidding tops to the edge of the Payment Units, running over and processing tops into small enough pieces that they will not interfere with future trenching, and/or chipping tops and distributing chips throughout the Payment Units. The chipping exemption must be granted in writing. The requirement to retain approximately 1/6 to 1/3 of tree tops and limbs less than four inches in diameter is still applicable (G. C. & R. 2.2).

2.2.3 - Stump heights (4/07)

Stump heights within Payment Units 6, 7, 8, and 9 shall not exceed 6 inches for all trees. This is in order to facilitate planting operations.

2.2.4 - Skidding length (2/14)

Within Payment Units 1, 2, 3, and 4, skidding of unlimbed tops or lengths over 17 feet is not permissible unless approved by the Sale Administrator.

3 - Payments

3.3 - Pre-measured Sales

3.3.4 - Dividing payment units (7/14)

Payment Unit(s) greater than \$20,000 may be divided at the request of the Purchaser and upon approval of the Unit Manager.

Dividing Payment Units is a contract modification which requires a Timber Sale Contract Amendment. There will be only one division per Payment Unit.

3.4 - Damaged Timber

3.4.1 - Damaged timber (7/16)

General Condition and Requirement 3.4 Damaged Timber, defines liquidated damages for undesignated live merchantable trees which are cut or injured. In addition, extreme care should be taken to avoid damage to sugar maple seedlings and saplings in Payment Units 1, 2, 3, 4, and 5.

Within these Payment Units, if more than 25% of the tree seedlings or saplings (1/4" to 4.5" DBH) within a specified portion of the sale area are damaged, liquidated damages will be assessed at \$300 per acre for all acreage within that specified portion of the sale area that was damaged.

4 - Transportation

4.1 - Construction

4.1.6 - Road construction (1/09)

Construction of new roads or improvements of existing roads shall be done in such a way as to minimize the environmental and visual impacts. Merchantable trees shall be cut and utilized unless otherwise directed. Non-merchantable trees shall be severed and laid flat on the ground. Slash shall be scattered, and not left in windrows and kept a minimum of 10 feet back from the road edge. Stumps shall be set upright, not left on edge, and be moved at least 10 feet away from the road edge. Disturbed soil shall be feathered into the woods and not left in berms or windrows.

4.1.7 - Road closure (10/11)

All new roads built into the sale must be blocked to vehicle traffic within 30 days of completion of hauling. Overgrown roads that are reopened shall be considered new roads. In general, this will require constructing a four (4') foot high berm of stumps and logs covered with earth. These roads must be rendered impassable to cars, trucks and ORVs. All stumps from road building and landing construction must be reserved to block any newly constructed roads upon completion of the sale. These stumps must be scattered along the road system to prohibit vehicular movement. Temporary berms may be required if no sale activity occurs for 30 or more consecutive days. Contact the sale administrator for specific details of design and placement.

5 - Operations

5.1 - Notification

5.1.1 - Pre-sale conference (10/16)

A pre-sale conference on site between the Purchaser and sale administrator is required prior to beginning any operations to review sale specifications and determine landing locations. The Sale Administrator must be contacted at least 5 days in advance to schedule the conference.

5.1.3 - Well heads and natural gas pipelines (11/15)

The Purchaser is responsible for contacting the gas or pipeline company prior to operating equipment in the vicinity of well heads or natural gas pipelines. Contact Lambda Energy Resources at 888-328-7430.

5.2 - Conduct of Operations

5.2.1 - Slash

5.2.1.8 - Slash height (12/08)

No slash or tree tops may exceed 36 inches in height.

5.2.3 - Operating Restrictions

5.2.3.3 - Bark slippage restriction (3/09)

Within Payment Unit(s) 1, 2, 3, 4, and 5, unless changed by written agreement, cutting and skidding are not permitted during the period of April 15 to July 15. This restriction is because of bark slippage.

5.2.3.6 - Bark beetle restriction (12/08)

In the event drought creates a high risk of pine bark beetle infestation, pine is not to be cut during the period March 1

through July 1, unless all portions of trees greater than two inches in diameter are removed from the sale area, reduced to chips, or treated to the satisfaction of the Unit Manager or his/her representative, within fifteen days of being severed from the stump. Pine log decks, pulpwood piles and treetops that are piled for chipping in the fall or winter within a 1/4 mile of susceptible sites must be removed before March 15. Residual slash must not be placed in piles or rows and must be spread over the site for quick drying. The Department of Natural Resources will exercise this specification if the risk of damage warrants.

5.2.20 - Equipment width (2/04)

Equipment used to remove designated trees must be capable of moving through cut rows without damaging residual trees.

5.2.32 - Decking/landing restoration (9/13)

All decking and landing areas must have the surface area restored to a condition equal to or better than before. This is to ensure the proper regeneration of the stand. Wood debris, chips and "cookies" from trimmings must be removed or scattered away from landing and loading areas and may not be windrowed on the edge.

5.2.38 - No decking against live trees (2/04)

Cut products may not be decked against unmarked or designated leave trees.

5.2.39 - ORV trail/route protection (4/18)

An ORV trail runs through Payment Unit 9 as shown on the Timber Sale Map. Trees with ORV trail signs shall be cut off above the markers and at least 5 feet above ground. All stumps within 5 feet of the trail must be cut flush with the ground. Maintain a 20 foot wide slash, debris, and rut free zone daily using the ORV trail or route as the centerline. Do not run equipment down the ORV trail or route. Skidding across the trail may only occur in one location, to be approved by the sale administrator.

5.4 - Soil Protection

5.4.1 - Rutting restriction, general (7/16)

Operations are to cease immediately if equipment and weather conditions result in rutting of roads and/or skid trails which is 12 inches or greater in depth and 50 feet in length. The Unit Manager or his/her representative may restrict hauling and/or skidding if ruts exceed the specified depth. With the Unit Manager or his/her representative's approval, the Purchaser may return to the area when the risk of rutting has decreased.

5.8 - Protection of Endangered Species

5.8.5 - Protection of raptor nests (3/13)

All trees with raptor nests will be protected if found during harvesting operations. Notification will be made to the Unit Manager or his/her representative who will notify the Wildlife Biologist so an on-site evaluation and recommendation can be made, if necessary.

6 - Safety and Fire Prevention

6.2 - Signing

6.2.1 - Road posting (9/09)

The Purchaser is responsible for posting and maintaining caution signs on haul roads prior to beginning operations. The road must be posted at appropriate distances from the sale area to warn of logging activity and truck traffic. Signs must be removed when harvest operations are suspended or completed. The Purchaser will provide these signs.

6.2.3 - Recreational trail posting (2/10)

The Purchaser is responsible for posting and maintaining caution signs on the ORV trail in Payment Unit 9 prior to beginning operations. The trail must be posted at appropriate distances from the sale area to warn of logging activity and truck traffic at both ends of the trail. Signs must be removed when harvest operations are suspended or completed. The Purchaser will provide these signs.



TIMBER SALE MAP

This information provided by authority of Part 525, 1994 PA 451, as amended.

Forest Management Unit Traverse City	County Kalkaska	Mapped By Armstrong	Date 9/23/20	Page 1	of 1
Township 28N	Range 5W	Section(s) and Subdivision(s) Sec. 28: W1/2SW; Sec. 29: NENW, S1/2NW,S1/2NE,N1/2SW,SESW,NESE,S1/2SE; Sec. 32: NE1/4	Scale 1:15,840		

Cover Type

A = Aspen	H = Hemlock	N = Marsh	U = Upland Brush
B = Paper Birch	J = Jack Pine	O = Oak	UM = Upland Mixed
C = Cedar	L = Lowland Brush	P = Lowland Poplar	V = Bog or Marsh
D = Treed Bog	LM = Lowland Mixed	Q = Mixed Swamp Conifer	W = White Pine
E = Swamp Hdwoods	M = Mpl, Bch, Brch	R = Red Pine	X = Non Stocked
F = Spruce Fir	MC = Mixed Conifer	S = Black Spruce	Z = Water
G = Grass	MD = Mixed Deciduous	T = Tamarack	

Density

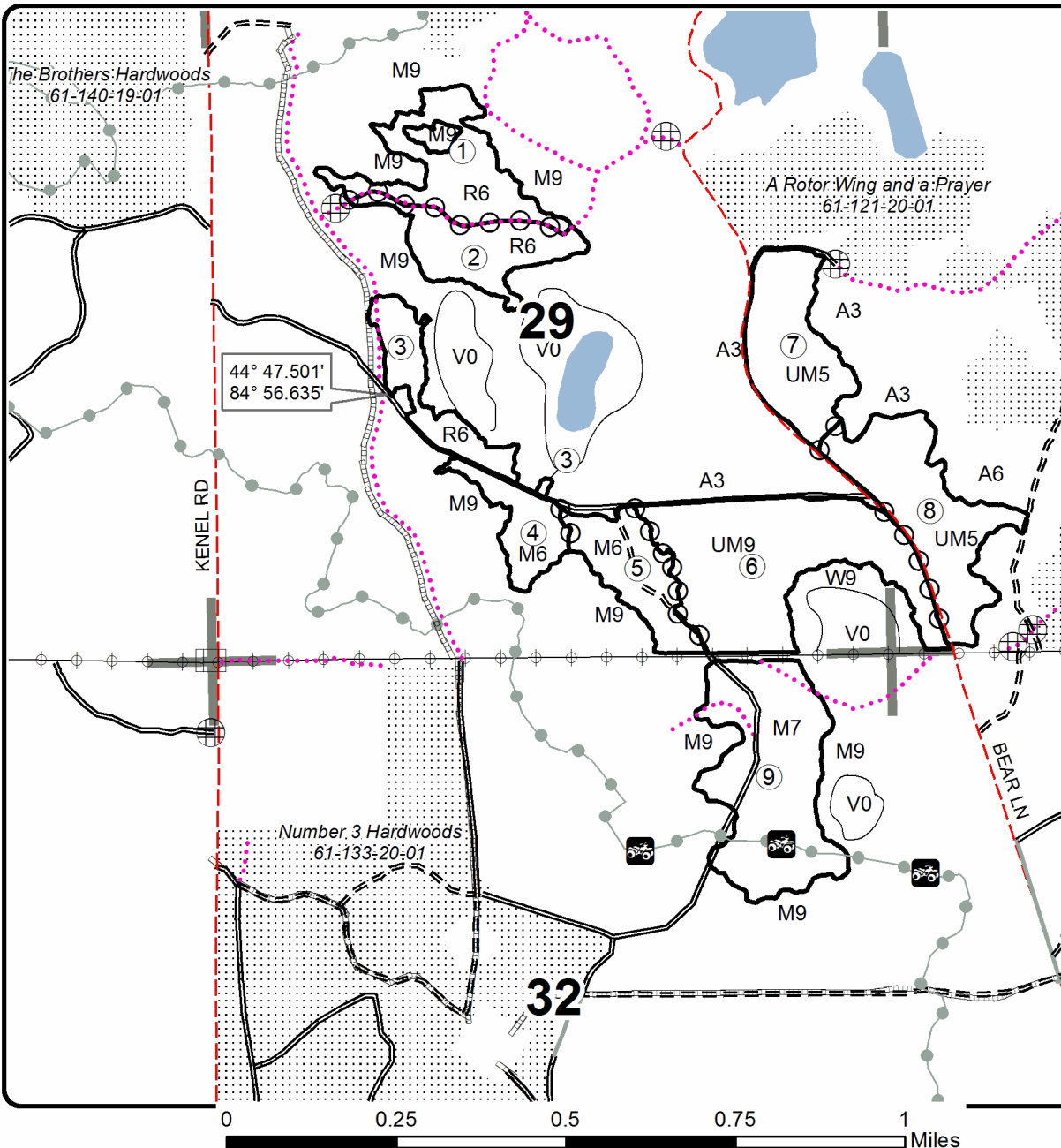
0 = Non Stocked	5 = Pole Timber Medium
1 = Seedling Sapling Poor	6 = Pole Timber Well
2 = Seedling Sapling Medium	7 = Saw Timber Poor
3 = Seedling Sapling Well	8 = Saw Timber Medium
4 = Pole Timber Poor	9 = Saw Timber Well

Unit	Acres	Unit	Acres	Unit	Acres
1	17.6	4	8.7	7	19.2
2	13.9	5	13.0	8	24.7
3	10.8	6	39.2	9	34.2

Radical Hope Mix

Compartments 108 & 208

181.3 acres



Legend

Sale Boundary

- Against State (Red)
- Payment Unit (Yellow)
- Private Line (Blue)

Roads

- == Secondary Forest Road
- == Forest Access Route
- - - County Road - Seasonal
- Private
- Gate
- ⊕ Berms
- ⋯ Temporary Management Access
- Recreational Trails
- Pipeline
- ⊕ Powerline
- Stand Boundaries
- ⋯ Nearby Timber Sale
- Section Corners

TIMBER SALE INFORMATION

Yuge Pine (61-127-19)

T27N, R08W, SEC. 27.

Kalkaska County (Advertised Price \$75,538.80)

SALE NOTE: A recreation site such as a trail, pathway, or campground is within the sale area or the vicinity. Certain restrictions/specifications may be applicable including time restrictions.

A timber sale contract for this lump sum, sealed bid timber sale will be awarded to the responsible bidder offering the highest sealed bid price. All units of volume listed below were estimated using the T-Sale computer program and our traditional volume equations. Bids must be at or above the following advertised price for each product and species:

<u>PRODUCTS & SPECIES</u>	<u>ESTIMATED UNITS*</u>	<u>ADVERTISED PRICE</u>
Sawtimber		
Jack Pine	1.0 MBF	\$ 17.00 / MBF
Red Maple	6.4 MBF	\$ 112.00 / MBF
Red Oak	4.1 MBF	\$ 119.00 / MBF
Red Pine	649.8 MBF	\$ 78.00 / MBF
White Oak	26.2 MBF	\$ 67.00 / MBF
White Pine	43.2 MBF	\$ 41.00 / MBF
Pulpwood		
Jack Pine	206 Cords	\$ 8.00 / Cord
Mixed Aspen	104 Cords	\$ 12.00 / Cord
Mixed Hardwood	173 Cords	\$ 11.45 / Cord
Mixed Oak	160 Cords	\$ 8.35 / Cord
Red Pine	440 Cords	\$ 26.90 / Cord
White Pine	195 Cords	\$ 10.55 / Cord

* The total volume is statistically estimated within plus (+) or minus (-) 18.63 percent. There are an estimated 2,740 cords on this timber sale, plus or minus 510 cords at the 95% confidence level. The estimated units are final and not subject to adjustment. Prospective bidders are urged to examine this timber and to make their own estimates of quantity and quality.

BOND AND PAYMENT SCHEDULE:

1. A bond in the amount of \$3,777.00 to insure faithful performance of the conditions of the contract will be deposited by the successful bidder within 21 days of the sale award.
2. Cutting in any sale or unit without the required advance payment would be considered a trespass.
3. Total payment must be paid in advance or according to the following schedule :
 - (a) Ten percent (10%) of the sale value must be paid within 21 days of the sale award.
 - (b) The 10% down payment will be credited towards the first unit cut.
 - (c) Payment for each of the following units must be made before cutting begins in that unit:

PAYMENT UNIT NUMBER	PERCENT OF TOTAL SALE VALUE
01	9.3%
02	89.3%
03	1.4%
4. If no cutting takes place, the 10% down payment will not be refunded.
5. Operations on the contract issued will terminate on 03/31/2024.

SALE STATISTICS

SALE VOLUMES

VOLUME		STATISTICAL RANGE IN CORDS		
TOTAL CUBIC FEET	TOTAL CORDS	PERCENT ERROR	MINIMUM	MAXIMUM
216,460	2,740	18.63%	2,230	3,250

VDU VOLUMES

A VDU is a Volume Determination Unit. Volumes and their associated statistics are calculated at the VDU level and summarized to the sale level. There is often a one to one relationship between a VDU and a Payment Unit, but not always, depending on the cruise design. Refer to the VDU TO PAYMENT UNIT table.

VDU	VOLUME		PERCENT ERROR	RANGE IN CORDS	
	TOTAL CUBIC FEET	TOTAL CORDS		MINIMUM	MAXIMUM
68	32,098	406	22.78%	314	499
87	176,952	2,240	18.34%	1,829	2,651
92	7,410	94	48.02%	49	139
TOTAL:	216,460	2,740		2,192	3,288

VDU TO PAYMENT UNIT

When a VDU is associated with more than one Payment Unit (PU), the VDU volumes are assigned to the PU based on acres of the VDU within the PU.

VDU	VDU ACRES	PU	PU ACRES
68	21.1	1	21.1
87	53.3	2	53.3
92	12.8	3	12.8
TOTAL:	87.2		87.2

DESCRIPTION OF TIMBER BY PAYMENT UNIT (PU)

PU	MARKET GROUP	PRODUCT	QUANTITY	UNIT	ACRES	ADVERTISE PRICE			
1	Red Maple	Sawtimber	1.0	MBF	21.1	\$6,993.45			
	Red Pine		34.6	MBF					
	Jack Pine	Pulpwood	123	Cords					
	Mixed Aspen		81	Cords					
	<i>B. T. Aspen</i>		81	<i>Cords</i>					
	Mixed Hardwood		60	Cords					
	<i>Black Cherry</i>		18	<i>Cords</i>					
	<i>Red Maple</i>		42	<i>Cords</i>					
	Red Pine		49	Cords					
	White Pine		21	Cords					
2	Jack Pine	Sawtimber	1.0	MBF	53.3	\$67,467.00			
	Red Maple		5.4	MBF					
	Red Oak		4.1	MBF					
	Red Pine		614.2	MBF					
	White Oak		26.2	MBF					
	White Pine		43.2	MBF					
	Jack Pine	Pulpwood	53	Cords					
	Mixed Aspen		8	Cords					
	<i>B. T. Aspen</i>		3	<i>Cords</i>					
	<i>Quaking Aspen</i>		5	<i>Cords</i>					
	Mixed Hardwood		82	Cords					
	<i>Black Cherry</i>		4	<i>Cords</i>					
	<i>Red Maple</i>		78	<i>Cords</i>					
	Mixed Oak		156	Cords					
	<i>Red Oak</i>		19	<i>Cords</i>					
	<i>White Oak</i>		137	<i>Cords</i>					
	Red Pine		387	Cords					
	White Pine		166	Cords					
	3	Red Pine	Sawtimber	1.0			MBF	12.8	\$1,078.35
		Jack Pine	Pulpwood	30			Cords		
Mixed Aspen			15	Cords					
<i>B. T. Aspen</i>			15	<i>Cords</i>					
Mixed Hardwood			31	Cords					
<i>Black Cherry</i>			5	<i>Cords</i>					
<i>Red Maple</i>			26	<i>Cords</i>					
Mixed Oak			4	Cords					
<i>Red Oak</i>			4	<i>Cords</i>					
Red Pine			4	Cords					
White Pine		8	Cords						
TOTAL:			730.7	MBF					
TOTAL:			1,278	Cords					

Sale Specific Conditions & Requirements

Sale Name: Yuge Pine

Sale Number: 61-127-19 Seq#: 1

1 - Sale Area

1.2 - Boundaries

1.2.1 - Painted boundaries (1/14)

The sale boundary and Payment Unit boundaries are marked and identified by blue and red paint. Exterior sale boundary lines against private property are marked with blue paint. Exterior sale boundary lines against state are marked with red paint. The painted boundary line trees are not Included Timber and are to be protected.

2 - Timber Specifications

2.1 - Included Timber

2.1.1 - Clearcut unit(s) with unmerchantable trees (6/14)

Within Payment Unit(s) 1, 2 & 3, cut all trees that are two (2) inches or more at DBH, except do not cut any white oak within Payment Unit 3.

2.2 - Utilization

2.2.2 - Chipping required (2/18)

Payment Unit 1 & 2 must be chip harvested to facilitate subsequent planting operations. The Purchaser has the option to produce sawlogs or pulpwood bolts, but the remaining portion of the trees must be chipped and hauled. The requirement to retain approximately 1/6 to 1/3 of tree tops and limbs less than four inches in diameter is still applicable (G. C. & R. 2.2).

2.2.3 - Stump heights (4/07)

Stump heights within the Sale Area Payment Unit(s) 1 & 2 shall not exceed 6 inches for all trees. This is in order to facilitate planting operations.

4 - Transportation

4.2 - Maintenance

4.2.5 - Two wheel drive condition (2/04)

All existing trail roads on and adjacent to the sale area must be passable by two-wheel drive traffic for the duration of the sale.

5 - Operations

5.1 - Notification

5.1.1 - Pre-sale conference (10/16)

A pre-sale conference on site between the Purchaser and sale administrator is required prior to beginning any operations to determine landing and road locations. The snowmobile trail will not be used as a haul road there are multiple options to avoid user conflict. The Unit Manager or his/her representative must be contacted at least 5 days in advance to schedule the conference.

5.1.4 - Post-sale conference (10/16)

A post-sale conference on site between the Purchaser and sale administrator is required 5 days prior to the completion of active logging operations to determine clean-up and repair of landings, road edges, and the fulfillment of other contract specifications.

5.2 - Conduct of Operations

5.2.1 - Slash

5.2.1.8 - Slash height (12/08)

No slash or tree tops may exceed 24 inches in height.

5.2.2 - Hazard Trees/Snags

5.2.2.1 - Den trees (10/16)

Obvious hollow and/or den trees shall be protected and left standing unless they are a safety hazard.

5.2.3 - Operating Restrictions

5.2.3.4 - Oak wilt restriction, no exceptions (1/18)

Within Payment Unit(s) 1, 2 & 3 cutting, skidding, hauling within the sale and brushing of access roads to the sale are not permitted during the period of April 15 to July 15. No exceptions will be granted. This is necessary to reduce the spread of oak wilt.

5.2.32 - Decking/landing restoration (9/13)

All decking and landing areas must have the surface area restored to a condition equal to or better than before. This is to ensure the proper regeneration of the stand. Wood debris, chips and "cookies" from trimmings must be removed or scattered away from landing and loading areas and may not be windrowed on the edge.

5.2.40 - Pathway protection (10/10)

There is a biking/hiking trail on the boundary of Payment Unit 2 and is shown on the Timber Sale Map. Do not cut trees or damage posts with pathway markers. Maintain a 20-foot wide slash, debris, and rut free zone daily, using the pathway as the centerline. Do not run equipment down the pathway. Skidding across the trail may only occur in locations approved by the sale administrator.

5.2.41 - Snowmobile trail protection (9/11)

The snowmobile trail is shown on the Timber Sale Map. Do not cut or damage posts with orange trail markers or traffic control signs. The snowmobile trail may not be used for any timber sale operations. Maintain a 20 foot wide slash, debris, and rut free zone daily using the snowmobile trail as the centerline. No decking of forest products will be permitted along the snowmobile trail. All stumps within 20 feet of the snowmobile trail must be cut at ground level.

5.4 - Soil Protection

5.4.1 - Rutting restriction, general (7/16)

Operations are to cease immediately if equipment and weather conditions result in rutting of roads and/or skid trails which is 12 inches or greater in depth and 50 feet in length. The Unit Manager or his/her representative may restrict hauling and/or skidding if ruts exceed the specified depth. With the Unit Manager or his/her representative's approval, the Purchaser may return to the area when the risk of rutting has decreased.

6 - Safety and Fire Prevention

6.2 - Signing

6.2.1 - Road posting (9/09)

The Purchaser is responsible for posting and maintaining caution signs on the access road prior to beginning operations. The road must be posted at appropriate distances from the sale area to warn of logging activity and truck traffic. Signs must be removed when harvest operations are suspended or completed. The Purchaser will provide these signs.

6.2.3 - Recreational trail posting (2/10)

The Purchaser is responsible for posting and maintaining caution signs on the hiking/biking and snowmobile trails prior to beginning operations. The trail must be posted 200 feet from the sale area to warn of logging activity and truck traffic at both ends of the trail. Signs must be removed when harvest operations are suspended or completed. The Purchaser will provide these signs.



TIMBER SALE MAP

This information provided by authority of Part 525, 1994 PA 451 as amended.

Sale Number	Year
61-127	19

Forest Management Unit Traverse City	County Kalkaska	Mapped By Roell	Date 08/29/2019	Page 1	of 1
Township 27N	Range 08W	Section(s) and Subdivision(s) Sections 27	Scale 1:15,840		

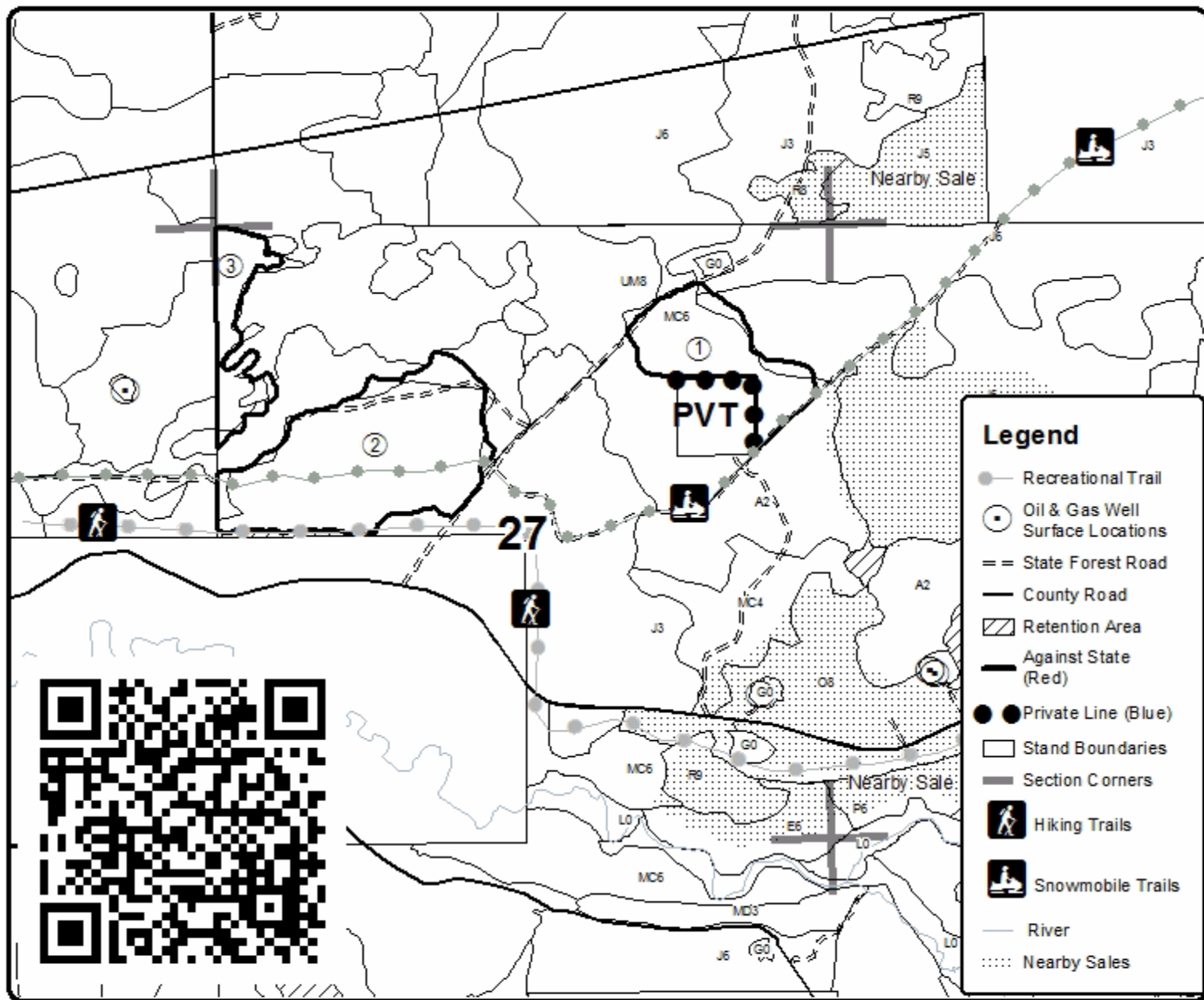
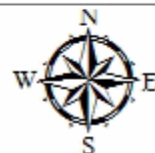
Cover Type				Density	
A = Aspen	H = Hemlock	N = Marsh	U = Upland Brush	0 = Non Stocked	5 = Pole Timber Medium
B = Paper Birch	J = Jack Pine	O = Oak	UM = Upland Mixed	1 = Seedling Sapling Poor	6 = Pole Timber Well
C = Cedar	L = Lowland Brush	P = Lowland Poplar	V = Bog or Marsh	2 = Seedling Sapling Medium	7 = Saw Timber Poor
D = Tread Bog	LM = Lowland Mixed	Q = Mixed Swamp Conifer	W = White Pine	3 = Seedling Sapling Well	8 = Saw Timber Medium
E = Swamp Hardwoods	M = Mpl. Ech. Birch	R = Red Pine	X = Non Stocked	4 = Pole Timber Poor	9 = Saw Timber Well
F = Spruce Fir	MC = Mixed Conifer	S = Black Spruce	Z = Water		
G = Creas	MD = Mixed Deciduous	T = Tamarack			

PU	Acres
1	21.1
2	53.3
3	12.8

YUGE PINE

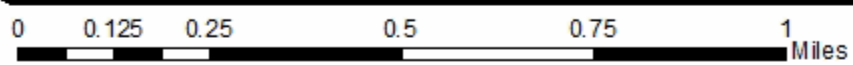
Compartment 161

87.2 Acres



Legend

- Recreational Trail
- Oil & Gas Well Surface Locations
- State Forest Road
- County Road
- Retention Area
- Against State (Red)
- Private Line (Blue)
- Stand Boundaries
- Section Corners
- Hiking Trails
- Snowmobile Trails
- River
- Nearby Sales



Yuge Pine (61-127-19)
T27N, R08W, SEC. 27; Kalkaska COUNTY

In response to the notice of sale to be held 4:00 p.m. (local time) on February 22, 2021, I am hereby submitting my sealed bid (firm offer) for the following forest products to be cut. Bids for individual species must be at or above the advertised price. All non-responsive bid forms may be rejected.

<u>PRODUCTS & SPECIES</u>	<u>ESTIMATED VOLUME*</u>	<u>ADVERTISED PRICE</u>	<u>BID PRICE/UNIT</u>
Sawtimber			
Jack Pine	1.0 MBF	\$ 17.00/MBF	\$ _____
Red Maple	6.4 MBF	\$ 112.00/MBF	\$ _____
Red Oak	4.1 MBF	\$ 119.00/MBF	\$ _____
Red Pine	649.8 MBF	\$ 78.00/MBF	\$ _____
White Oak	26.2 MBF	\$ 67.00/MBF	\$ _____
White Pine	43.2 MBF	\$ 41.00/MBF	\$ _____
Pulpwood			
Jack Pine	206 Cords	\$ 8.00/Cord	\$ _____
Mixed Aspen	104 Cords	\$ 12.00/Cord	\$ _____
Mixed Hardwood	173 Cords	\$ 11.45/Cord	\$ _____
Mixed Oak	160 Cords	\$ 8.35/Cord	\$ _____
Red Pine	440 Cords	\$ 26.90/Cord	\$ _____
White Pine	195 Cords	\$ 10.55/Cord	\$ _____

*The volumes are statistically estimated within plus (+) or minus (-) 18.63 percent at 95% confidence level. These estimated volumes are final and not subject to adjustment. Prospective bidders are urged to examine this timber and to make their own estimates of quantity and quality.

I understand that any or all bids may be rejected. All bids must be signed and all bid items must be bid or the bid form may be rejected. I also understand that consideration and awarding a contract will be based upon my past performance and ability to complete the contract based upon equipment and staffing subject to my control.

FEDERAL ID: ____ - ____ - ____ or SOCIAL SECURITY NUMBER: ____ - ____ - ____

Company or individual bidding: _____

Company representative's name: _____

Address: _____

City: _____ State: _____ Zip: _____

IF AVAILABLE, PLEASE PLACE THE PERSONALIZED LABEL FROM YOUR PROSPECTUS IN THE ABOVE BOX.

Individual or company representative's signature: _____ Date: _____

Phone number : _____ Email (optional): _____

THE WINNING BIDDER MUST COMPLETE THE VERIFICATION OF WORKER'S DISABILITY COMPENSATION ACT COMPLIANCE (ON REVERSE SIDE IF DOUBLE SIDED) WITHIN 21 DAYS OF SALE AWARD DATE



FOR DEPARTMENT USE ONLY
Sale Number (XX - XXX - XX - XX)
Forest Management Unit:

TIMBER SALE VERIFICATION OF WORKER'S DISABILITY COMPENSATION ACT COMPLIANCE

*As required by Act 317, P.A. 1969 (Worker's Compensation) and
Part 5 of Act 451 of 1994, as amended.*

VERIFICATION OF WORKER'S DISABILITY COMPENSATION ACT COMPLIANCE

- This verification must be completed and submitted within 21 days of contract award and prior to the issuance of the timber sale contract.
- In addition, if boxes 2B or 2C are checked, then Notice of Exclusion or Certificate of Insurance must be submitted within twenty-one (21) days of the contract award and prior to the issuance of the timber sale contract.
- All information must be typed or printed except for written signatures.

Please Check Appropriate Categories:

1. My business is organized as (you **must** check one of the boxes below):
 - A. Sole Proprietorship (individual)
 - B. Partnership
 - C. Corporation
2. You **must** check one of the boxes below:
 - A. I certify my business is a sole proprietorship and it has no employees but the sole proprietor. I am not subject to the Worker's Compensation Laws.
 - B. I certify my business has satisfied its obligation to the Worker's Compensation Act through the use of an approved Notice of Exclusion (BWC-337, Rev. 5/96). I will provide a copy of the Notice of Exclusion within 21 days of the contract award. (For questions or a copy of the BWC-337, please call the Worker's Compensation Bureau at 517-322-1195).
 - C. I certify my business has a Worker's Compensation Policy. I will provide an original Certificate of Insurance within twenty-one (21) days of the contract award.
3. If you have checked item 2(A) or 2(B), you **must** indicate the number of **both** full-time and part-time employees, other than yourself, including family members and active partners (if none, you must enter "0").

_____ Full-time Employees

_____ Part-time Employees

Name of Business		Federal ID (or) Social Security No.	
Address		Telephone ()	
City	State	ZIP	

I hereby certify that the above information is true and correct. I agree to notify the Michigan DNR of any changes that occur in factors affecting my coverage during any of my present and future operations.

Signature of Owner or Authorized Representative

Title

Date

Please complete the "SEALED BID" information on the next page

Spirit Animals Aspen (61-130-20)
T25N, R08W, SEC. 25; T25N, R08W, SEC. 36; Kalkaska COUNTY

In response to the notice of sale to be held 4:00 p.m. (local time) on February 22, 2021, I am hereby submitting my sealed bid (firm offer) for the following forest products to be cut. Bids for individual species must be at or above the advertised price. All non-responsive bid forms may be rejected.

<u>PRODUCTS & SPECIES</u>	<u>ESTIMATED VOLUME*</u>	<u>ADVERTISED PRICE</u>	<u>BID PRICE/UNIT</u>
Sawtimber			
Red Maple	68.2 MBF	\$ 112.00/MBF	\$ _____
Red Oak	78.2 MBF	\$ 119.00/MBF	\$ _____
Red Pine	34.1 MBF	\$ 78.00/MBF	\$ _____
Sugar Maple	7.7 MBF	\$ 157.00/MBF	\$ _____
White Pine	54.3 MBF	\$ 41.00/MBF	\$ _____
Pulpwood			
Balsam Fir	13 Cords	\$ 7.10/Cord	\$ _____
Mixed Aspen	1,652 Cords	\$ 12.00/Cord	\$ _____
Mixed Hardwood	732 Cords	\$ 11.45/Cord	\$ _____
Red Oak	267 Cords	\$ 8.35/Cord	\$ _____
Red Pine	37 Cords	\$ 26.90/Cord	\$ _____
White Pine	145 Cords	\$ 10.55/Cord	\$ _____

*The volumes are statistically estimated within plus (+) or minus (-) 9.67 percent at 95% confidence level. These estimated volumes are final and not subject to adjustment. Prospective bidders are urged to examine this timber and to make their own estimates of quantity and quality.

I understand that any or all bids may be rejected. All bids must be signed and all bid items must be bid or the bid form may be rejected. I also understand that consideration and awarding a contract will be based upon my past performance and ability to complete the contract based upon equipment and staffing subject to my control.

FEDERAL ID: _____ or SOCIAL SECURITY NUMBER: _____

Company or individual bidding: _____

Company representative's name: _____

Address: _____

City: _____ State: _____ Zip: _____

IF AVAILABLE, PLEASE PLACE THE PERSONALIZED LABEL FROM YOUR PROSPECTUS IN THE ABOVE BOX.

Individual or company representative's signature: _____ Date: _____

Phone number : _____ Email (optional): _____

THE WINNING BIDDER MUST COMPLETE THE VERIFICATION OF WORKER'S DISABILITY COMPENSATION ACT COMPLIANCE (ON REVERSE SIDE IF DOUBLE SIDED) WITHIN 21 DAYS OF SALE AWARD DATE



FOR DEPARTMENT USE ONLY	
Sale Number (XX - XXX - XX - XX)	
Forest Management Unit:	

TIMBER SALE VERIFICATION OF WORKER'S DISABILITY COMPENSATION ACT COMPLIANCE

As required by Act 317, P.A. 1969 (Worker's Compensation) and
Part 5 of Act 451 of 1994, as amended.

VERIFICATION OF WORKER'S DISABILITY COMPENSATION ACT COMPLIANCE

- This verification must be completed and submitted within 21 days of contract award and prior to the issuance of the timber sale contract.
- In addition, if boxes 2B or 2C are checked, then Notice of Exclusion or Certificate of Insurance must be submitted within twenty-one (21) days of the contract award and prior to the issuance of the timber sale contract.
- All information must be typed or printed except for written signatures.

Please Check Appropriate Categories:

1. My business is organized as (you **must** check one of the boxes below):
 - A. Sole Proprietorship (individual)
 - B. Partnership
 - C. Corporation
2. You **must** check one of the boxes below:
 - A. I certify my business is a sole proprietorship and it has no employees but the sole proprietor. I am not subject to the Worker's Compensation Laws.
 - B. I certify my business has satisfied its obligation to the Worker's Compensation Act through the use of an approved Notice of Exclusion (BWC-337, Rev. 5/96). I will provide a copy of the Notice of Exclusion within 21 days of the contract award. (For questions or a copy of the BWC-337, please call the Worker's Compensation Bureau at 517-322-1195).
 - C. I certify my business has a Worker's Compensation Policy. I will provide an original Certificate of Insurance within twenty-one (21) days of the contract award.
3. If you have checked item 2(A) or 2(B), you **must** indicate the number of **both** full-time and part-time employees, other than yourself, including family members and active partners (if none, you must enter "0").

_____ Full-time Employees

_____ Part-time Employees

Name of Business		Federal ID (or) Social Security No.	
Address		Telephone ()	
City	State	ZIP	

I hereby certify that the above information is true and correct. I agree to notify the Michigan DNR of any changes that occur in factors affecting my coverage during any of my present and future operations.

Signature of Owner or Authorized Representative

Title

Date

Please complete the "SEALED BID" information on the next page

122 Grade A Aspen (61-128-20)
T26N, R05W, SEC. 8; Kalkaska COUNTY

In response to the notice of sale to be held 4:00 p.m. (local time) on February 22, 2021, I am hereby submitting my sealed bid (firm offer) for the following forest products to be cut. Bids for individual species must be at or above the advertised price. All non-responsive bid forms may be rejected.

<u>PRODUCTS & SPECIES</u>	<u>ESTIMATED VOLUME*</u>	<u>ADVERTISED PRICE</u>	<u>BID PRICE/UNIT</u>
Sawtimber			
B. T. Aspen	231.4 MBF	\$ 91.00/MBF	\$ _____
Red Maple	10.4 MBF	\$ 133.00/MBF	\$ _____
Red Oak	35.1 MBF	\$ 140.00/MBF	\$ _____
Pulpwood			
B. T. Aspen	2,143 Cords	\$ 14.15/Cord	\$ _____
Mixed Hardwood	370 Cords	\$ 13.55/Cord	\$ _____
Red Oak	245 Cords	\$ 9.85/Cord	\$ _____

*The volumes are statistically estimated within plus (+) or minus (-) 11.43 percent at 95% confidence level. These estimated volumes are final and not subject to adjustment. Prospective bidders are urged to examine this timber and to make their own estimates of quantity and quality.

I understand that any or all bids may be rejected. All bids must be signed and all bid items must be bid or the bid form may be rejected. I also understand that consideration and awarding a contract will be based upon my past performance and ability to complete the contract based upon equipment and staffing subject to my control.

FEDERAL ID: _____ - _____ or SOCIAL SECURITY NUMBER: _____ - _____ - _____

Company or individual bidding: _____

Company representative's name: _____

Address: _____

City: _____ State: _____ Zip: _____

IF AVAILABLE, PLEASE PLACE THE PERSONALIZED LABEL FROM YOUR PROSPECTUS IN THE ABOVE BOX.

Individual or company representative's signature: _____ Date: _____

Phone number : _____ Email (optional): _____

THE WINNING BIDDER MUST COMPLETE THE VERIFICATION OF WORKER'S DISABILITY COMPENSATION ACT COMPLIANCE (ON REVERSE SIDE IF DOUBLE SIDED) WITHIN 21 DAYS OF SALE AWARD DATE



FOR DEPARTMENT USE ONLY	
Sale Number (XX - XXX - XX - XX)	
Forest Management Unit:	

TIMBER SALE VERIFICATION OF WORKER'S DISABILITY COMPENSATION ACT COMPLIANCE

As required by Act 317, P.A. 1969 (Worker's Compensation) and
Part 5 of Act 451 of 1994, as amended.

VERIFICATION OF WORKER'S DISABILITY COMPENSATION ACT COMPLIANCE

- This verification must be completed and submitted within 21 days of contract award and prior to the issuance of the timber sale contract.
- In addition, if boxes 2B or 2C are checked, then Notice of Exclusion or Certificate of Insurance must be submitted within twenty-one (21) days of the contract award and prior to the issuance of the timber sale contract.
- All information must be typed or printed except for written signatures.

Please Check Appropriate Categories:

1. My business is organized as (you **must** check one of the boxes below):
 - A. Sole Proprietorship (individual)
 - B. Partnership
 - C. Corporation
2. You **must** check one of the boxes below:
 - A. I certify my business is a sole proprietorship and it has no employees but the sole proprietor. I am not subject to the Worker's Compensation Laws.
 - B. I certify my business has satisfied its obligation to the Worker's Compensation Act through the use of an approved Notice of Exclusion (BWC-337, Rev. 5/96). I will provide a copy of the Notice of Exclusion within 21 days of the contract award. (For questions or a copy of the BWC-337, please call the Worker's Compensation Bureau at 517-322-1195).
 - C. I certify my business has a Worker's Compensation Policy. I will provide an original Certificate of Insurance within twenty-one (21) days of the contract award.
3. If you have checked item 2(A) or 2(B), you **must** indicate the number of **both** full-time and part-time employees, other than yourself, including family members and active partners (if none, you must enter "0").

_____ Full-time Employees

_____ Part-time Employees

Name of Business		Federal ID (or) Social Security No.	
Address		Telephone ()	
City	State	ZIP	

I hereby certify that the above information is true and correct. I agree to notify the Michigan DNR of any changes that occur in factors affecting my coverage during any of my present and future operations.

Signature of Owner or Authorized Representative

Title

Date

Please complete the "SEALED BID" information on the next page

122 Pothole Sale (61-129-20)
T26N, R05W, SEC. 16; T26N, R05W, SEC. 17; T26N, R05W, SEC. 20; T26N,

In response to the notice of sale to be held 4:00 p.m. (local time) on February 22, 2021, I am hereby submitting my sealed bid (firm offer) for the following forest products to be cut. Bids for individual species must be at or above the advertised price. All non-responsive bid forms may be rejected.

<u>PRODUCTS & SPECIES</u>	<u>ESTIMATED VOLUME*</u>	<u>ADVERTISED PRICE</u>	<u>BID PRICE/UNIT</u>
Sawtimber			
Mixed Aspen	15.6 MBF	\$ 77.00/MBF	\$ _____
Red Maple	4.3 MBF	\$ 112.00/MBF	\$ _____
Red Oak	68.8 MBF	\$ 119.00/MBF	\$ _____
Red Pine	252.5 MBF	\$ 78.00/MBF	\$ _____
White Pine	280.7 MBF	\$ 41.00/MBF	\$ _____
Pulpwood			
Jack Pine	19 Cords	\$ 8.00/Cord	\$ _____
Mixed Aspen	422 Cords	\$ 12.00/Cord	\$ _____
Mixed Hardwood	456 Cords	\$ 11.45/Cord	\$ _____
Red Oak	160 Cords	\$ 8.35/Cord	\$ _____
Red Pine	252 Cords	\$ 26.90/Cord	\$ _____
White Pine	1,372 Cords	\$ 10.55/Cord	\$ _____

*The volumes are statistically estimated within plus (+) or minus (-) 15.62 percent at 95% confidence level. These estimated volumes are final and not subject to adjustment. Prospective bidders are urged to examine this timber and to make their own estimates of quantity and quality.

I understand that any or all bids may be rejected. All bids must be signed and all bid items must be bid or the bid form may be rejected. I also understand that consideration and awarding a contract will be based upon my past performance and ability to complete the contract based upon equipment and staffing subject to my control.

FEDERAL ID: _____ - _____ or SOCIAL SECURITY NUMBER: _____ - _____ - _____

Company or individual bidding: _____

Company representative's name: _____

Address: _____

City: _____ State: _____ Zip: _____

IF AVAILABLE, PLEASE PLACE THE PERSONALIZED LABEL FROM YOUR PROSPECTUS IN THE ABOVE BOX.

Individual or company representative's signature: _____ Date: _____

Phone number : _____ Email (optional): _____

THE WINNING BIDDER MUST COMPLETE THE VERIFICATION OF WORKER'S DISABILITY COMPENSATION ACT COMPLIANCE (ON REVERSE SIDE IF DOUBLE SIDED) WITHIN 21 DAYS OF SALE AWARD DATE



FOR DEPARTMENT USE ONLY
Sale Number (XX - XXX - XX - XX)
Forest Management Unit:

TIMBER SALE VERIFICATION OF WORKER'S DISABILITY COMPENSATION ACT COMPLIANCE

*As required by Act 317, P.A. 1969 (Worker's Compensation) and
Part 5 of Act 451 of 1994, as amended.*

VERIFICATION OF WORKER'S DISABILITY COMPENSATION ACT COMPLIANCE

- This verification must be completed and submitted within 21 days of contract award and prior to the issuance of the timber sale contract.
- In addition, if boxes 2B or 2C are checked, then Notice of Exclusion or Certificate of Insurance must be submitted within twenty-one (21) days of the contract award and prior to the issuance of the timber sale contract.
- All information must be typed or printed except for written signatures.

Please Check Appropriate Categories:

1. My business is organized as (you **must** check one of the boxes below):
 - A. Sole Proprietorship (individual)
 - B. Partnership
 - C. Corporation
2. You **must** check one of the boxes below:
 - A. I certify my business is a sole proprietorship and it has no employees but the sole proprietor. I am not subject to the Worker's Compensation Laws.
 - B. I certify my business has satisfied its obligation to the Worker's Compensation Act through the use of an approved Notice of Exclusion (BWC-337, Rev. 5/96). I will provide a copy of the Notice of Exclusion within 21 days of the contract award. (For questions or a copy of the BWC-337, please call the Worker's Compensation Bureau at 517-322-1195).
 - C. I certify my business has a Worker's Compensation Policy. I will provide an original Certificate of Insurance within twenty-one (21) days of the contract award.
3. If you have checked item 2(A) or 2(B), you **must** indicate the number of **both** full-time and part-time employees, other than yourself, including family members and active partners (if none, you must enter "0").

_____ Full-time Employees

_____ Part-time Employees

Name of Business		Federal ID (or) Social Security No.	
Address		Telephone ()	
City	State	ZIP	

I hereby certify that the above information is true and correct. I agree to notify the Michigan DNR of any changes that occur in factors affecting my coverage during any of my present and future operations.

Signature of Owner or Authorized Representative

Title

Date

Please complete the "SEALED BID" information on the next page

Radical Hope Mix (61-136-20)
T28N, R05W, SEC. 28; T28N, R05W, SEC. 29; T28N, R05W, SEC. 32; Kalkaska

In response to the notice of sale to be held 4:00 p.m. (local time) on February 22, 2021, I am hereby submitting my sealed bid (firm offer) for the following forest products to be cut. Bids for individual species must be at or above the advertised price. All non-responsive bid forms may be rejected.

<u>PRODUCTS & SPECIES</u>	<u>ESTIMATED VOLUME*</u>	<u>ADVERTISED PRICE</u>	<u>BID PRICE/UNIT</u>
Sawtimber			
Basswood	35.2 MBF	\$ 67.00/MBF	\$ _____
Black Cherry	57.6 MBF	\$ 150.00/MBF	\$ _____
Mixed Aspen	1.2 MBF	\$ 77.00/MBF	\$ _____
Red Maple	3.6 MBF	\$ 112.00/MBF	\$ _____
Red Pine	62.6 MBF	\$ 78.00/MBF	\$ _____
Sugar Maple	4.9 MBF	\$ 157.00/MBF	\$ _____
White Pine	92.4 MBF	\$ 41.00/MBF	\$ _____
Pulpwood			
Mixed Aspen	251 Cords	\$ 12.00/Cord	\$ _____
Mixed Hardwood	903 Cords	\$ 11.45/Cord	\$ _____
Red Pine	313 Cords	\$ 26.90/Cord	\$ _____
White Pine	500 Cords	\$ 10.55/Cord	\$ _____

*The volumes are statistically estimated within plus (+) or minus (-) 10.73 percent at 95% confidence level. These estimated volumes are final and not subject to adjustment. Prospective bidders are urged to examine this timber and to make their own estimates of quantity and quality.

I understand that any or all bids may be rejected. All bids must be signed and all bid items must be bid or the bid form may be rejected. I also understand that consideration and awarding a contract will be based upon my past performance and ability to complete the contract based upon equipment and staffing subject to my control.

FEDERAL ID: _____ or SOCIAL SECURITY NUMBER: _____

Company or individual bidding: _____

Company representative's name: _____

Address: _____

City: _____ State: _____ Zip: _____

IF AVAILABLE, PLEASE PLACE THE PERSONALIZED LABEL FROM YOUR PROSPECTUS IN THE ABOVE BOX.

Individual or company representative's signature: _____ Date: _____

Phone number : _____ Email (optional): _____

THE WINNING BIDDER MUST COMPLETE THE VERIFICATION OF WORKER'S DISABILITY COMPENSATION ACT COMPLIANCE (ON REVERSE SIDE IF DOUBLE SIDED) WITHIN 21 DAYS OF SALE AWARD DATE



FOR DEPARTMENT USE ONLY	
Sale Number (XX - XXX - XX - XX)	
Forest Management Unit:	

TIMBER SALE VERIFICATION OF WORKER'S DISABILITY COMPENSATION ACT COMPLIANCE

As required by Act 317, P.A. 1969 (Worker's Compensation) and
Part 5 of Act 451 of 1994, as amended.

VERIFICATION OF WORKER'S DISABILITY COMPENSATION ACT COMPLIANCE

- This verification must be completed and submitted within 21 days of contract award and prior to the issuance of the timber sale contract.
- In addition, if boxes 2B or 2C are checked, then Notice of Exclusion or Certificate of Insurance must be submitted within twenty-one (21) days of the contract award and prior to the issuance of the timber sale contract.
- All information must be typed or printed except for written signatures.

Please Check Appropriate Categories:

1. My business is organized as (you **must** check one of the boxes below):
 - A. Sole Proprietorship (individual)
 - B. Partnership
 - C. Corporation
2. You **must** check one of the boxes below:
 - A. I certify my business is a sole proprietorship and it has no employees but the sole proprietor. I am not subject to the Worker's Compensation Laws.
 - B. I certify my business has satisfied its obligation to the Worker's Compensation Act through the use of an approved Notice of Exclusion (BWC-337, Rev. 5/96). I will provide a copy of the Notice of Exclusion within 21 days of the contract award. (For questions or a copy of the BWC-337, please call the Worker's Compensation Bureau at 517-322-1195).
 - C. I certify my business has a Worker's Compensation Policy. I will provide an original Certificate of Insurance within twenty-one (21) days of the contract award.
3. If you have checked item 2(A) or 2(B), you **must** indicate the number of **both** full-time and part-time employees, other than yourself, including family members and active partners (if none, you must enter "0").

_____ Full-time Employees

_____ Part-time Employees

Name of Business		Federal ID (or) Social Security No.	
Address		Telephone ()	
City	State	ZIP	

I hereby certify that the above information is true and correct. I agree to notify the Michigan DNR of any changes that occur in factors affecting my coverage during any of my present and future operations.

Signature of Owner or Authorized Representative

Title

Date

Please complete the "SEALED BID" information on the next page