



**DEPARTMENT OF NATURAL RESOURCES
STATE OF MICHIGAN**

TIMBER SALE PROSPECTUS #6803

SCHEDULED SALE DATE AND TIME: 3:00 p.m. (local time) on March 18, 2021.

LOCATION: NEWBERRY MGMT UNIT, 5666 S STATE HWY M 123, NEWBERRY, MI 49868.

PROSPECTUS NOTE: The bidder is advised to inspect the sale area and review the location, estimated volumes, operating costs and contract terms of proposed sales. Please be aware that some landowners may request 60 days or more notice for access across their land.

Notice is hereby given that bids will be received by the Unit Manager, NEWBERRY MANAGEMENT UNIT, for certain timber on the following described lands:

Soggy Soles (42-005-20) / T46N, R10W, SEC. 5 , SESW,SWSE.

T46N, R10W, SEC. 8 , N1/2NW,SENE,NE.

T46N, R10W, SEC. 9 , E1/2SW.

Luce County, Advertised Price \$20,125.00, 64.6 Acres, Spruce/Fir/Tamarack, Aspen.

SALE NOTE: It is recommended, but not required, that harvesting occur during dry summer or frozen winter conditions because of the low ground nature and wet soil types found in some of the units.

The Silver Creek ORV Trail is an ORV trail and is shown on the Timber Sale Map. See Sale Spec. 5.2.39 for additional information.

A recreation site such as a trail, pathway, or campground is within the sale area or the vicinity. Certain restrictions/specifications may be applicable including time restrictions.

Camp 6 Hardwoods (42-016-20) / T46N, R10W, SEC. 8 , SENE,N1/2SE.

T46N, R10W, SEC. 9 , NWNW,S1/2NW,NWSW.

Luce County, Advertised Price \$9,224.90, 92.2 Acres, Hardwood, Spruce/Fir/Tamarack.

SALE NOTE: Harvesting is not permitted during the period of April 15 to July 15 due to bark slippage.

The Silver Creek Trail is an ORV trail and is shown on the Timber Sale Map. See Sale Spec. 5.2.39 for additional information.

A recreation site such as a trail, pathway, or campground is within the sale area or the vicinity. Certain restrictions/specifications may be applicable including time restrictions.

Jagged Spruce (42-029-20) / T46N, R10W, SEC. 7 , NESE,S1/2SE.

T46N, R10W, SEC. 8 , W1/2SW.

Luce County, Advertised Price \$23,860.65, 82.9 Acres, Spruce/Fir/Tamarack, Hardwood.

SALE NOTE: No new roads will be permitted in any Payment Unit. All operations are limited to existing roads. Skid trails only will be allowed.

It is recommended, but not required, that harvesting occur during snow free conditions because of the need to cut low stumps.

Silver Creek Trail is an ORV trail or route and is shown on the Timber Sale Map. See Sale Spec. 5.2.39 for additional information.

A recreation site such as a trail, pathway, or campground is within the sale area or the vicinity. Certain restrictions/specifications may be applicable including time restrictions.

BID INSTRUCTIONS (VER. 07/02/2018):

1. Scheduled Bid Location, Date, and Time (2/11)

Bids must be received by the Unit Manager, NEWBERRY OFFICE, 5666 S STATE HWY M 123, NEWBERRY, MI 49868, no later than 3:00 p.m. (local time) on March 18, 2021. For further information concerning this sale, contact Keith Magnusson at 906-293-3293 extension 4740.

2. Bidder's Qualifications (5/16)

Purchaser shall obtain workers compensation insurance to cover claims under Michigan's Worker's Disability Compensation Act of 1969 or similar employee benefit act of any other state applicable to an employee. If all or part of a timber sale was prepared by a private contractor, the contractor and that contractor's company are not permitted to bid on the timber sale contract. Bids will not be accepted from individuals or companies appearing on the DNR/FRD No-Bid List. This list contains the names of purchasers who previously failed to execute a contract within 21-days or who have a history of poor performance.

3. Preparation of Sealed Bids (5/16)

Bid Forms may be completed online thru Michigan DNR Timber Sale Online Bidding (OLB) at www.michigan.gov/timberbidding or by completing the hardcopy Bid Form found in the Timber Sale Prospectus. Hardcopy Bid Forms shall be manually signed in ink. Registration in OLB is considered your 'signature' for all bids submitted thru that system. Bid prices must be entered for each species and product in the Bid Price column for all material subject to bidding and all fill-in blanks must be completed. If erasures or other changes appear on the hardcopy Bid Form, each erasure or change must be initialed by the person signing the bid.

4. Submission of Sealed Bids (5/16)

Bid forms may be obtained from the Unit Manager or thru OLB. Bids may be submitted hardcopy or thru OLB. All hardcopy bids must be submitted on the bid form and in an envelope clearly identified as described in this section. NOTE: Only one bid form per bid envelope. Sealed bids must be submitted to the Unit office designated in the prospectus and must be submitted at or prior to the time established in the prospectus. The envelope should show on the outside (a) the sale name or number and (b) the date and time of bid opening, as shown in the prospectus. Bids received after the time specified in the sale prospectus are late bids and will be rejected.

It is possible for a bidder to submit multiple bids on a single sale. For example, a bid may be submitted hardcopy and a bid may be submitted thru OLB. Or, two bidders from the same company could both submit bids on the same sale. If this were to happen, the State would accept all bids received and award the contract accordingly. All bidding and contractual requirements would apply to all bids received.

5. Public Opening of Sealed Bids (7/16)

If conditions permit, the sealed bids will be publicly opened and posted at the time and place set in the prospectus.

If a bidder, present at a bid opening, has submitted bids on more than one sale, that bidder may withdraw their unopened bid envelopes or announce the withdrawal of their online bid after being declared the successful bidder on one sale.

6. Award of Contract (1/11)

Award of the contract will be made to the Bidder whose bid, conforming to the prospectus, is most advantageous to the State of Michigan on the basis of total value at rates bid for the estimated quantities. The State reserves the right to reject any bid or waive any minor irregularity in bids received. A written award mailed (or otherwise furnished) to the successful Bidder shall be deemed to result in a binding contract without further action by either party.

7. Down Payment (1/11)

The Bidder to whom award is made must make a down payment within 21 days of the sale award. The amount of the down payment will be calculated as shown in the Bond and Payment Schedule of this prospectus. Only cash may be used to meet this requirement.

8. Performance Security (1/11)

As guarantee of faithful performance, a cash bond, certificate of deposit, surety bond or irrevocable letter of credit (LOC) is required within 21 days of the sale award. The amount of the performance security is shown in the Bond and

Payment Schedule of this prospectus. If an LOC or surety is used, the coverage must extend for at least 6 months beyond the contract expiration.

9. Timber Sale Contract (7/18)

Additional conditions and requirements common to all timber sales are listed on the timber sale contract (R4031) and are available on line at www.michigan.gov/timber. Contact the Unit Manager for additional information or a sample contract. Within 21 days of the date of the award letter, the bidder must sign the contract and provide the required down payment, performance security, and verification of worker's disability compensation. The down payment and performance security shall be in accordance with the provisions of the timber sale contract, in the sums stated in this prospectus. If these actions are not taken, then the Bidder, the Bidder's corporation, and the corporation's principals may not be permitted to bid on State timber sales for a period of 3 months after the first offense, 6 months after the second offense, and 1 year after the third offense. An offense will only be counted against the Bidder for 5 years. In addition, the Bidder certifies that if awarded this contract, the Bidder will complete the timber sale contract in accordance with its terms and any modifications thereof including requirements to purchase, cut, and remove the included timber by the expiration date.

Payment Unit values in the State Forest Timber Sale Contract are calculated based on the advertised value of the Payment Unit as a percentage of the total advertised value of the contract. The advertised value of each Payment Unit is given in the Description of Timber by Payment Unit table on the Timber Sale Information page. For example, if the value of Payment Unit 1 is advertised as \$1,500 and the total Timber Sale value is advertised as \$10,000, the contract price for Payment Unit 1 will be 15% of the total bid price ($\$1,500/\$10,000 * 100$).

10. Disclaimer of Estimates and Bidder's Warranty of Inspection (7/16)

Before submitting this bid, the Bidder is advised and cautioned to inspect the sale area, review the requirements of the sale contract, and take other steps as may be reasonably necessary to ascertain the location, estimated volumes, construction estimates, and operating costs of the proposed sale. Failure to do so will not relieve the Bidder from responsibility for completing the contract.

The Bidder warrants that this bid is submitted solely on the basis of the Bidder's examination and inspection of the quality and quantity of the timber offered for sale and the Bidder's opinion of the value thereof and the costs of recovery. No reliance should be placed on the State of Michigan's estimates of timber quality, quantity or costs of recovery. Bidder further acknowledges that the State of Michigan: (i) expressly disclaims any warranty of fitness of timber for any purpose; (ii) offers this timber as is without any warranty of quality (merchantability) or quantity and (iii) expressly disclaims any warranty as to the quantity or quality of timber sold.

11. Certification and Chain-of-Custody (10/14)

Unless otherwise indicated in the contract under section 7 – Other Conditions of the Sale Specific Conditions & Requirements, the area encompassed by this timber sale is certified to the standards of the Forest Stewardship Council (FSC) - Certificate #SCS-FM/COC-00090N and the Sustainable Forestry Initiative (SFI) - Certificate #NSF-SFIS-5Y031-SF5. Forest products from this sale may be delivered to the mill as "FSC 100% and / or SFI certified" as long as the contractor hauling the forest products is chain-of-custody (COC) certified or covered under a COC certificate from the destination mill. The purchaser is responsible for maintaining COC after leaving the sale area.

12. Good Neighbor Authority (GNA) Requirements (7/16)

If the name of this timber sales contains the acronym GNA, it is authorized by the Good Neighbor Authority (GNA) and covered by various agreements between the U.S. Forest Service and the State. The timber sale occurs on federal land and the following conditions apply:

GNA contracts on US Forest Service land will not be awarded to purchasers on the Federal list of excluded parties. The System for Award Management (SAM) will be checked for active excluded parties prior to award of contract. In addition, the Bidder to whom award is made must complete an Assurance Regarding Felony Conviction or Tax Delinquent Status for Corporate Applicants (AD-3031).

13. Good Neighbor Authority (GNA) Requirements, con't (9/16)

Bidder certifies, by signing this bid form, that to the best of Bidder's knowledge that the following representations are accurate and complete.

- a. That the Bidder and its principals are not presently debarred, suspended, proposed for debarment, declared ineligible, or voluntary excluded from timber sales (covered transactions) by any Federal department or agency.
- b. That the Bidder and its principals have not within a 3-year period preceding this bid been convicted of or had a civil judgment rendered against them for commission of fraud or a criminal offense in connection with obtaining , attempting to obtain, or performing a public (Federal, State, or local) transaction or contract under a public transaction; violation of Federal or State antitrust statutes or commission of embezzlement, theft, forgery, bribery, falsification or destruction of records, making false statements, or receiving stolen property.
- c. That the Bidder and its principals are not presently indicted for or otherwise criminally or civilly charged by a governmental entity (Federal, State, or local) with commission of any of the offenses enumerated in paragraph b of this certification.
- d. That the Bidder and its principals have not within a 3-year period preceding this bid had one or more public transactions (Federal, State, or local) terminated for breach or default of a timber or forest product contract.

Bidders that cannot certify this requirement, in whole or in part, shall submit an explanation with their bid.

DAN EICHINGER
Director

TIMBER SALE INFORMATION

Soggy Soles (42-005-20)

T46N, R10W, SEC. 5; T46N, R10W, SEC. 8; T46N, R10W, SEC. 9.

Luce County (Advertised Price \$20,125.00)

SALE NOTE: It is recommended, but not required, that harvesting occur during dry summer or frozen winter conditions because of the low ground nature and wet soil types found in some of the units.

The Silver Creek ORV Trail is an ORV trail and is shown on the Timber Sale Map. See Sale Spec. 5.2.39 for additional information.

A recreation site such as a trail, pathway, or campground is within the sale area or the vicinity. Certain restrictions/specifications may be applicable including time restrictions.

A timber sale contract for this lump sum, sealed bid timber sale will be awarded to the responsible bidder offering the highest sealed bid price. All units of volume listed below were estimated using the T-Sale computer program and our traditional volume equations. Bids must be at or above the following advertised price for each product and species:

<u>PRODUCTS & SPECIES</u>	<u>ESTIMATED UNITS*</u>	<u>ADVERTISED PRICE</u>
Sawtimber		
Red Maple	9.3 MBF	\$ 71.00 / MBF
Pulpwood		
Balsam Fir	145 Cords	\$ 9.00 / Cord
Mixed Hardwood	243 Cords	\$ 11.65 / Cord
Mixed Spruce	720 Cords	\$ 11.75 / Cord
N. White Cedar	12 Cords	\$ 4.15 / Cord
Quaking Aspen	474 Cords	\$ 13.80 / Cord
Tamarack	55 Cords	\$ 5.05 / Cord

* The total volume is statistically estimated within plus (+) or minus (-) 13.99 percent. There are an estimated 1,665 cords on this timber sale, plus or minus 233 cords at the 95% confidence level. The estimated units are final and not subject to adjustment. Prospective bidders are urged to examine this timber and to make their own estimates of quantity and quality.

BOND AND PAYMENT SCHEDULE:

1. A bond in the amount of \$1,006.00 to insure faithful performance of the conditions of the contract will be deposited by the successful bidder within 21 days of the sale award.
2. Cutting in any sale or unit without the required advance payment would be considered a trespass.
3. Total payment must be paid in advance or according to the following schedule :
 - (a) Ten percent (10%) of the sale value must be paid within 21 days of the sale award.
 - (b) The 10% down payment will be credited towards the first unit cut.
 - (c) Payment for each of the following units must be made before cutting begins in that unit:

PAYMENT UNIT NUMBER	PERCENT OF TOTAL SALE VALUE
01	13.4%
02	39.7%
03	8.2%
04	7.9%
05	6.5%
06	11.0%
07	13.3%

4. If no cutting takes place, the 10% down payment will not be refunded.
5. Operations on the contract issued will terminate on 06/30/2025.

SALE STATISTICS

SALE VOLUMES

VOLUME		STATISTICAL RANGE IN CORDS		
TOTAL CUBIC FEET	TOTAL CORDS	PERCENT ERROR	MINIMUM	MAXIMUM
131,533	1,665	13.99%	1,432	1,898

VDU VOLUMES

A VDU is a Volume Determination Unit. Volumes and their associated statistics are calculated at the VDU level and summarized to the sale level. There is often a one to one relationship between a VDU and a Payment Unit, but not always, depending on the cruise design. Refer to the VDU TO PAYMENT UNIT table.

VDU	VOLUME		PERCENT ERROR	RANGE IN CORDS	
	TOTAL CUBIC FEET	TOTAL CORDS		MINIMUM	MAXIMUM
16	18,138	230	32.44%	155	304
26	48,380	612	21.40%	481	743
27	11,929	151	22.63%	117	185
32	8,595	109	31.00%	75	143
33	11,028	140	36.69%	88	191
43	14,741	187	36.06%	119	254
45	18,731	237	19.57%	191	284
TOTAL:	131,543	1,665		1,227	2,103

VDU TO PAYMENT UNIT

When a VDU is associated with more than one Payment Unit (PU), the VDU volumes are assigned to the PU based on acres of the VDU within the PU.

VDU	VDU ACRES	PU	PU ACRES
16	9.1	7	9.1
26	14.4	2	14.4
27	6.0	3	6.0
32	5.7	5	5.7
33	7.6	4	7.6
43	8.8	6	8.8
45	13.0	1	13.0
TOTAL:	64.6		64.6

DESCRIPTION OF TIMBER BY PAYMENT UNIT (PU)

PU	MARKET GROUP	PRODUCT	QUANTITY	UNIT	ACRES	ADVERTISE PRICE
1	Balsam Fir	Pulpwood	9	Cords	13.0	\$2,694.05
	Mixed Hardwood		18	Cords		
	<i>Paper Birch</i>		8	<i>Cords</i>		
	<i>Red Maple</i>		10	<i>Cords</i>		
	Mixed Spruce		195	Cords		
	<i>Black Spruce</i>		195	<i>Cords</i>		
	Quaking Aspen		3	Cords		
	Tamarack		14	Cords		
2	Red Maple	Sawtimber	4.5	MBF	14.4	\$8,002.25
	Balsam Fir	Pulpwood	79	Cords		
	Mixed Hardwood		58	Cords		
	<i>Black Cherry</i>		7	<i>Cords</i>		
	<i>Paper Birch</i>		6	<i>Cords</i>		
	<i>Red Maple</i>		45	<i>Cords</i>		
	Mixed Spruce		59	Cords		
	<i>Black Spruce</i>		12	<i>Cords</i>		
	<i>White Spruce</i>		47	<i>Cords</i>		
	Quaking Aspen		406	Cords		
3	Balsam Fir		Pulpwood	4	Cords	6.0
	Mixed Hardwood	7		Cords		
	<i>Red Maple</i>	7		<i>Cords</i>		
	Mixed Spruce	123		Cords		
	<i>Black Spruce</i>	123		<i>Cords</i>		
	N. White Cedar	12		Cords		
Tamarack	6	Cords				
4	Red Maple	Sawtimber	1.6	MBF	7.6	\$1,596.95
	Mixed Hardwood	Pulpwood	17	Cords		
	<i>Red Maple</i>		17	<i>Cords</i>		
	Mixed Spruce		93	Cords		
	<i>Black Spruce</i>		93	<i>Cords</i>		
	Quaking Aspen		7	Cords		
Tamarack	19		Cords			
5	Balsam Fir	Pulpwood	2	Cords	5.7	\$1,311.15
	Mixed Hardwood		10	Cords		
	<i>Black Cherry</i>		3	<i>Cords</i>		
	<i>Paper Birch</i>		1	<i>Cords</i>		
	<i>Red Maple</i>		6	<i>Cords</i>		
	Mixed Spruce		79	Cords		
	<i>Black Spruce</i>		79	<i>Cords</i>		
	Quaking Aspen		18	Cords		
6	Red Maple	Sawtimber	0.9	MBF	8.8	\$2,208.20
	Mixed Hardwood	Pulpwood	29	Cords		
	<i>Black Cherry</i>		1	<i>Cords</i>		
	<i>Paper Birch</i>		5	<i>Cords</i>		
	<i>Red Maple</i>		23	<i>Cords</i>		
	Mixed Spruce		133	Cords		
	<i>Black Spruce</i>		133	<i>Cords</i>		
	Quaking Aspen		14	Cords		
	Tamarack		10	Cords		
7	Red Maple		Sawtimber	2.3	MBF	9.1
	Balsam Fir	Pulpwood	51	Cords		
	Mixed Hardwood		104	Cords		
	<i>Paper Birch</i>		6	<i>Cords</i>		
	<i>Red Maple</i>		90	<i>Cords</i>		
	<i>Yellow Birch</i>		8	<i>Cords</i>		

DESCRIPTION OF TIMBER BY PAYMENT UNIT (PU), CON'T

PU	MARKET GROUP	PRODUCT	QUANTITY	UNIT	ACRES	ADVERTISE PRICE
7 con't	Mixed Spruce	Pulpwood	38	Cords		
	<i>Black Spruce</i>		38	<i>Cords</i>		
	Quaking Aspen		26	Cords		
	Tamarack		6	Cords		
TOTAL:			9.3	MBF		
TOTAL:			1,649	Cords		

Sale Specific Conditions & Requirements

Sale Name: Soggy Soles

Sale Number: 42-005-20 Seq#: 1

1 - Sale Area

1.2 - Boundaries

1.2.1 - Painted boundaries (9/19)

The sale boundary and Payment Unit boundaries are marked and identified by blue, red and green paint. Exterior sale boundary lines against private property are marked with blue paint. Exterior sale boundary lines against state are marked with red paint. Interior Payment Unit boundaries are marked with green paint. The painted boundary line trees are not Included Timber.

2 - Timber Specifications

2.1 - Included Timber

2.1.2 - Clearcut unit(s) w/o unmerchantable trees (8/11)

Within Payment Unit(s) 1 - 7, cut all trees which meet minimum piece specifications in 2.2 Utilization. DO NOT CUT any white pine or hemlock in any unit. DO NOT CUT any yellow birch in Payment Unit 4.

2.1.7 - Leave tree marked unit(s) (6/14)

Within Payment Unit(s) 2, leave all trees marked with green paint above and below stump height.

4 - Transportation

4.1 - Construction

4.1.4 - Timber removed for construction (12/09)

Trees cut or damaged in the process of pre-approved road, landing or skid trail construction will be decked in an area separate from other Designated Timber and not removed until measured by the sale administrator. Payment will be made at the specified Purchase Unit Price.

4.1.6 - Road construction (1/09)

Construction of new roads or improvements of existing roads shall be done in such a way as to minimize the environmental and visual impacts. Merchantable trees shall be cut and utilized unless otherwise directed. Non-merchantable trees shall be severed and laid flat on the ground. Slash shall be scattered, and not left in windrows and kept a minimum of 10 feet back from the road edge. Stumps shall be set upright, not left on edge, and be moved at least 10 feet away from the road edge. Disturbed soil shall be feathered into the woods and not left in berms or windrows.

4.1.7 - Road closure (10/11)

All new roads built into the sale must be blocked to vehicle traffic upon completion of the sale. Overgrown roads that are reopened shall be considered new roads. All stumps from road building and landing construction must be reserved to block any newly constructed roads upon completion of the sale. These stumps must be scattered along the road system to prohibit vehicular movement. Contact the sale administrator for specific details of design and placement.

4.2 - Maintenance

4.2.4 - Grading (10/16)

For completion of the sale, state forest roads must be graded. In general, this will require a road grader or bull dozer to shape up the roads after forest products have been hauled off site. This includes cleaning of drainage areas, grading, crowning and filling with gravel, if necessary. The grading equipment to be used must be approved by the Unit Manager or his/her representative.

5 - Operations

5.1 - Notification

5.1.1 - Pre-sale conference (10/16)

A pre-sale conference between the Purchaser and sale administrator is required prior to beginning any operations to determine landing and road locations, in particular access to Unit 1.

5.2 - Conduct of Operations

5.2.2 - Hazard Trees/Snags

5.2.2.1 - Den trees (10/16)

Obvious hollow and/or den trees shall be protected and left standing unless they are a safety hazard.

5.2.4 - Dead and Down Creation

5.2.4.4 - Dead and down creation, grouse (6/18)

To encourage grouse and other wildlife, in Payment Unit(s) 2, leave and/or create drumming logs by hinge cutting or tipping over 5 trees of any species (one per 3 acres) scattered across the stand that are 9-15 inches in diameter and within site of the red boundary line where there might be mature in the adjacent stand.

5.2.4.6 - Dead and down creation, other (9/09)

To enhance hare habitat, brush piles must be constructed in Units 1, 6 & 7. In Unit 6, create at least 2 linear brush piles along to the eastern boundary of the Unit. In Unit 7, create at least 4 linear brush piles along the western and southern boundary of the Unit. In Unit 1 create 3 linear brush piles and running in to the southern boundary of the Unit as well as 10 scattered hinge cut trees throughout the stand. The brush piles should be linear, a minimum of 50 feet long and at least 6 feet tall.

Use whole trees versus only tops to make them function longer. Spruce/fir are preferred species to be used to construct the piles. Piles should be perpendicular to edges of Unit, reaching into adjacent stand 10 feet or more. Contact the sale administrator for further details.

5.2.22 - Operating Caution

5.2.22.1 - Operating caution (6/11)

It is recommended, but not required, that within Payment Unit(s) 1 - 7, cutting and skidding occur during dry summer or frozen winter conditions. The reason for the recommendation is because of the low ground nature and wet soil types found in some of the units.

5.2.39 - ORV trail/route protection (4/18)

The Silver Creek ORV Trail is an ORV trail and is shown on the Timber Sale Map. This trail uses a portion of the Camp 6 Road and occurs near the sale area. Please use caution when traveling on the Camp 6 Road.

5.4 - Soil Protection

5.4.1 - Rutting restriction, general (7/16)

Operations are to cease immediately if equipment and weather conditions result in rutting of roads and/or skid trails which is 12 inches or greater in depth and 50 feet in length. The Unit Manager or his/her representative may restrict hauling and/or skidding if ruts exceed the specified depth. With the Unit Manager or his/her representative's approval, the Purchaser may return to the area when the risk of rutting has decreased.

5.4.5 - Soil caution (11/04)

Care must be taken to minimize soil damage due to the wet nature of portions of the sale area. In particular, Unit 6 can be seasonally wet along the eastern edge.

5.8 - Protection of Endangered Species

5.8.5 - Protection of raptor nests (3/13)

All trees with raptor nests will be protected if found during harvesting operations. Notification will be made to the Unit Manager or his/her representative who will notify the Wildlife Biologist so an on-site evaluation and recommendation can be made, if necessary.

6 - Safety and Fire Prevention

6.2 - Signing

6.2.2 - Snowmobile trail posting (8/09)

The Purchaser is responsible for posting and maintaining caution signs on the snowmobile trail prior to beginning operations during the snowmobile season (approximately December 1 to March 31). The trail must be posted at appropriate distances

from the sale area to warn of logging activity and truck traffic. Signs must be removed when harvest operations are suspended or completed. The DNR will provide these signs.

6.2.3 - Recreational trail posting (2/10)

The Purchaser is responsible for posting and maintaining caution signs on Silver Creek ORV Trail prior to beginning operations. The trail must be posted at appropriate distances from the sale area to warn of logging activity and truck traffic at both ends of the trail. Signs must be removed when harvest operations are suspended or completed. The DNR will provide these signs.



TIMBER SALE MAP

This information provided by authority of Part 525, 1994 PA 451, as amended.

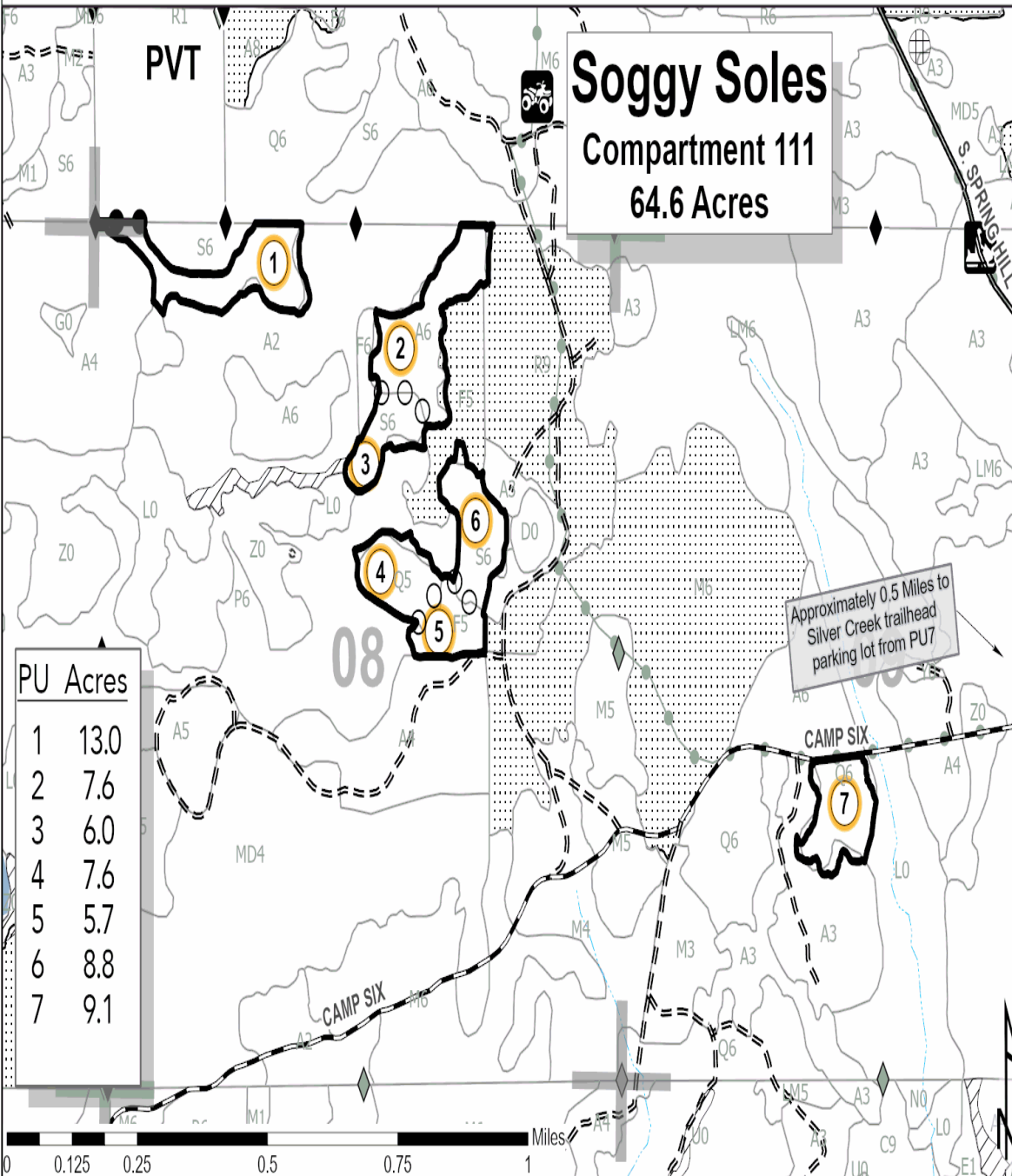
Forest Management Unit Newberry	County Luce	Mapped By Livermore	Date 8/13/2020	Page 1	of 1
Cruised By Kriehn, Magnusson					

Township 46N	Range 10W	Section(s) and Subdivision(s) Section 05: SESW, SWSE Section 08: N½NW, SENW, NE Section 09: E½SW	Scale 1:15,840
-----------------	--------------	-----------------------------------------------------------------------------------------------------	-------------------

Cover Type				Density			
A = Aspen	H = Hemlock	N = Marsh	U = Upland Brush	0 = Non Stocked	5 = Pole Timber Medium		
B = Paper Birch	J = Jack Pine	O = Oak	UM = Upland Mixed	1 = Seedling Sapling Poor	6 = Pole Timber Well		
C = Cedar	L = Lowland Brush	P = Lowland Poplar	V = Bog or Marsh	2 = Seedling Sapling Medium	7 = Saw Timber Poor		
D = Treed Bog	LM = Lowland Mixed	Q = Mixed Swamp Conifer	W = White Pine	3 = Seedling Sapling Well	8 = Saw Timber Medium		
E = Swamp Hdwoods	M = Mpl, Bch, Brch	R = Red Pine	X = Non Stocked	4 = Pole Timber Poor	9 = Saw Timber Well		
F = Spruce Fir	MC = Mixed Conifer	S = Black Spruce	Z = Water				
G = Grass	MD = Mixed Deciduous	T = Tamarack					



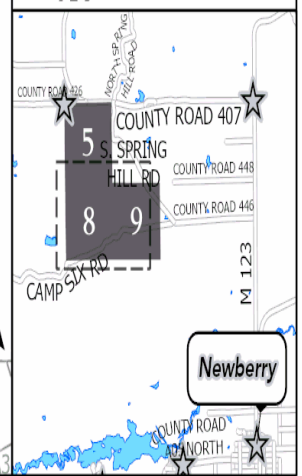
- Against State (Red)
- Payment Unit (Green)
- Private Line (Blue)
- Payment Unit Label
- PVT Private Ownership
- ORV Trails
- Snowmobile Trails
- Recreational Trail
- 01 Section Numbers
- Section Corners
- Survey Corners
- Field Grade Corners
- Berns
- Primary Forest Road
- Secondary Forest Road
- Forest Access Route
- Paved Road
- Gravel Road
- County Road - Seasonal
- Private
- Temporary Management Access
- Intermittent Stream
- Lakes and Rivers
- Retention Area
- Stand Covertype
- Nearby Timber Sale



PU	Acres
1	13.0
2	7.6
3	6.0
4	7.6
5	5.7
6	8.8
7	9.1

Approximately 0.5 Miles to Silver Creek trailhead parking lot from PU7

Locator Map: 1:200,000
 [] - Main Map Extent



TIMBER SALE INFORMATION

Camp 6 Hardwoods (42-016-20)
 T46N, R10W, SEC. 8; T46N, R10W, SEC. 9.
 Luce County (Advertised Price \$9,224.90)

SALE NOTE: Harvesting is not permitted during the period of April 15 to July 15 due to bark slippage.

The Silver Creek Trail is an ORV trail and is shown on the Timber Sale Map. See Sale Spec. 5.2.39 for additional information.

A recreation site such as a trail, pathway, or campground is within the sale area or the vicinity. Certain restrictions/specifications may be applicable including time restrictions.

A timber sale contract for this lump sum, sealed bid timber sale will be awarded to the responsible bidder offering the highest sealed bid price. All units of volume listed below were estimated using the T-Sale computer program and our traditional volume equations. Bids must be at or above the following advertised price for each product and species:

<u>PRODUCTS & SPECIES</u>	<u>ESTIMATED UNITS*</u>	<u>ADVERTISED PRICE</u>
Sawtimber		
Beech	15.9 MBF	\$ 48.00 / MBF
Paper Birch	0.7 MBF	\$ 25.00 / MBF
Red Maple	1.5 MBF	\$ 71.00 / MBF
Pulpwood		
Balsam Fir	124 Cords	\$ 9.00 / Cord
Mixed Hardwood	616 Cords	\$ 11.65 / Cord
White Pine	3 Cords	\$ 15.10 / Cord

* The total volume is statistically estimated within plus (+) or minus (-) 19.20 percent. There are an estimated 779 cords on this timber sale, plus or minus 150 cords at the 95% confidence level. The estimated units are final and not subject to adjustment. Prospective bidders are urged to examine this timber and to make their own estimates of quantity and quality.

BOND AND PAYMENT SCHEDULE:

1. A bond in the amount of \$461.00 to insure faithful performance of the conditions of the contract will be deposited by the successful bidder within 21 days of the sale award.
2. Cutting in any sale or unit without the required advance payment would be considered a trespass.
3. Total payment must be paid in advance or according to the following schedule :
 - (a) Ten percent (10%) of the sale value must be paid within 21 days of the sale award.
 - (b) The 10% down payment will be credited towards the first unit cut.
 - (c) Payment for each of the following units must be made before cutting begins in that unit:

PAYMENT UNIT NUMBER	PERCENT OF TOTAL SALE VALUE
01	25.7%
02	28.0%
03	24.2%
04	22.1%
4. If no cutting takes place, the 10% down payment will not be refunded.
5. Operations on the contract issued will terminate on 12/31/2024.

SALE STATISTICS

SALE VOLUMES

VOLUME		STATISTICAL RANGE IN CORDS		
TOTAL CUBIC FEET	TOTAL CORDS	PERCENT ERROR	MINIMUM	MAXIMUM
61,538	779	19.20%	629	929

VDU VOLUMES

A VDU is a Volume Determination Unit. Volumes and their associated statistics are calculated at the VDU level and summarized to the sale level. There is often a one to one relationship between a VDU and a Payment Unit, but not always, depending on the cruise design. Refer to the VDU TO PAYMENT UNIT table.

VDU	VOLUME		PERCENT ERROR	RANGE IN CORDS	
	TOTAL CUBIC FEET	TOTAL CORDS		MINIMUM	MAXIMUM
22	246,164	3,116	19.20%	2,518	3,714
TOTAL:	246,164	3,116		2,518	3,714

VDU TO PAYMENT UNIT

When a VDU is associated with more than one Payment Unit (PU), the VDU volumes are assigned to the PU based on acres of the VDU within the PU.

VDU	VDU ACRES	PU	PU ACRES
22	92.2	1	23.6
		2	26.3
		3	22.1
		4	20.2
TOTAL:	92.2		92.2

DESCRIPTION OF TIMBER BY PAYMENT UNIT (PU)

PU	MARKET GROUP	PRODUCT	QUANTITY	UNIT	ACRES	ADVERTISE PRICE			
1	Beech	Sawtimber	4.1	MBF	23.6	\$2,374.00			
	Paper Birch		0.2	MBF					
	Red Maple		0.4	MBF					
	Balsam Fir	Pulpwood	32	Cords					
	Mixed Hardwood		158	Cords					
	<i>American Elm</i>		1	<i>Cords</i>					
	<i>Beech</i>		62	<i>Cords</i>					
	<i>Black Cherry</i>		3	<i>Cords</i>					
	<i>Paper Birch</i>		1	<i>Cords</i>					
	<i>Red Maple</i>		88	<i>Cords</i>					
	<i>Sugar Maple</i>		3	<i>Cords</i>					
	White Pine		1	Cords					
	2	Beech	Sawtimber	4.5			MBF	26.3	\$2,577.35
Paper Birch			0.1	MBF					
Red Maple			0.4	MBF					
Balsam Fir		Pulpwood	35	Cords					
Mixed Hardwood			173	Cords					
<i>Beech</i>			68	<i>Cords</i>					
<i>Black Cherry</i>			3	<i>Cords</i>					
<i>Paper Birch</i>			1	<i>Cords</i>					
<i>Red Maple</i>			98	<i>Cords</i>					
<i>Sugar Maple</i>			3	<i>Cords</i>					
3		Beech	Sawtimber	3.8	MBF	22.1	\$2,236.75		
		Paper Birch		0.2	MBF				
		Red Maple		0.4	MBF				
	Balsam Fir	Pulpwood	30	Cords					
	Mixed Hardwood		149	Cords					
	<i>American Elm</i>		1	<i>Cords</i>					
	<i>Beech</i>		58	<i>Cords</i>					
	<i>Black Cherry</i>		3	<i>Cords</i>					
	<i>Paper Birch</i>		1	<i>Cords</i>					
	<i>Red Maple</i>		83	<i>Cords</i>					
	<i>Sugar Maple</i>		3	<i>Cords</i>					
	White Pine		1	Cords					
	4	Beech	Sawtimber	3.5	MBF			20.2	\$2,036.80
Paper Birch			0.2	MBF					
Red Maple			0.3	MBF					
Balsam Fir		Pulpwood	27	Cords					
Mixed Hardwood			136	Cords					
<i>American Elm</i>			1	<i>Cords</i>					
<i>Beech</i>			53	<i>Cords</i>					
<i>Black Cherry</i>			2	<i>Cords</i>					
<i>Paper Birch</i>			1	<i>Cords</i>					
<i>Red Maple</i>			76	<i>Cords</i>					
<i>Sugar Maple</i>			3	<i>Cords</i>					
White Pine			1	Cords					
TOTAL:			18.1	MBF					
TOTAL:			743	Cords					

Sale Specific Conditions & Requirements

Sale Name: Camp 6 Hardwoods

Sale Number: 42-016-20 Seq#: 1

1 - Sale Area

1.2 - Boundaries

1.2.1 - Painted boundaries (9/19)

The sale boundary and Payment Unit boundaries are marked and identified by red and yellow paint. Exterior sale boundary lines against state are marked with red paint. Interior Payment Unit boundaries are marked with yellow paint. The painted boundary line trees are not Included Timber and are to be protected unless marked with orange paint. Yellow painted trees designating an interior Payment Unit boundary are only to be cut when all surrounding Payment Units have been paid.

2 - Timber Specifications

2.1 - Included Timber

2.1.3 - Cut tree marked unit(s) (12/08)

Within Payment Unit(s) 1-4, all trees are designated for cutting when marked with orange paint above and below stump height, regardless of merchantability. In addition, cut all merchantable beech and balsam fir, except do not cut trees marked with green paint.

2.2 - Utilization

2.2.3 - Stump heights (4/07)

Stump heights within the Sale Area shall not exceed 12 inches for trees greater than 10 inches DBH and 4 inches for trees smaller than 10 inches DBH.

4 - Transportation

4.1 - Construction

4.1.4 - Timber removed for construction (12/09)

Trees cut or damaged in the process of pre-approved road, landing or skid trail construction will be decked in an area separate from other Designated Timber and not removed until measured by the sale administrator. Payment will be made at the specified Purchase Unit Price.

4.1.6 - Road construction (1/09)

Construction of new roads or improvements of existing roads shall be done in such a way as to minimize the environmental and visual impacts. Merchantable trees shall be cut and utilized unless otherwise directed. Non-merchantable trees shall be severed and laid flat on the ground. Slash shall be scattered, and not left in windrows and kept a minimum of 10 feet back from the road edge. Stumps shall be set upright, not left on edge, and be moved at least 10 feet away from the road edge. Disturbed soil shall be feathered into the woods and not left in berms or windrows.

4.1.7 - Road closure (10/11)

All new roads built into the sale must be blocked to vehicle traffic upon completion of the sale. Overgrown roads that are reopened shall be considered new roads. These roads must be rendered impassable to cars and trucks. All stumps from road building and landing construction must be reserved to block any newly constructed roads upon completion of the sale. These stumps must be scattered along the road system to prohibit vehicular movement. Contact the sale administrator for specific details of design and placement.

4.2 - Maintenance

4.2.4 - Grading (10/16)

For completion of the sale, state forest roads must be graded. In general, this will require a road grader or bull dozer to shape up the roads after forest products have been hauled off site. This includes cleaning of drainage areas, grading, crowning and filling with gravel, if necessary. The grading equipment to be used must be approved by the Unit Manager or his/her representative.

5 - Operations

5.2 - Conduct of Operations

5.2.1 - Slash

5.2.1.2 - Slash Removal

5.2.1.2.1 - Slash removal, right-of-way (9/16)

All slash must be removed at least 10 feet from the cleared right-of-way of existing forest roads.

5.2.1.8 - Slash height (12/08)

No slash or tree tops may exceed 24 inches in height.

5.2.2 - Hazard Trees/Snags

5.2.2.1 - Den trees (10/16)

Obvious hollow and/or den trees shall be protected and left standing unless they are a safety hazard.

5.2.3 - Operating Restrictions

5.2.3.3 - Bark slippage restriction (3/09)

Within Payment Unit(s) 1-4, unless changed by written agreement, cutting and skidding are not permitted during the period of April 15 to July 15. This restriction is because of bark slippage.

5.2.32 - Decking/landing restoration (9/13)

All decking and landing areas must have the surface area restored to a condition equal to or better than before. This is to ensure the proper regeneration of the stand. Wood debris, chips and "cookies" from trimmings must be removed or scattered away from landing and loading areas and may not be windrowed on the edge.

5.2.39 - ORV trail/route protection (4/18)

The Silver Creek Trail is an ORV trail and is shown on the Timber Sale Map. Do not cut trees or damage posts with orange ORV markers. All stumps within 5 feet of the trail must be cut flush with the ground. Maintain a 20 foot wide slash, debris, and rut free zone daily using the ORV trail or route as the centerline. Do not run equipment down the ORV trail.

5.8 - Protection of Endangered Species

5.8.5 - Protection of raptor nests (3/13)

All trees with raptor nests will be protected if found during harvesting operations. Notification will be made to the Unit Manager or his/her representative who will notify the Wildlife Biologist so an on-site evaluation and recommendation can be made, if necessary.

6 - Safety and Fire Prevention

6.2 - Signing

6.2.3 - Recreational trail posting (2/10)

The Purchaser is responsible for posting and maintaining caution signs on the Silver Creek ORV Trail prior to beginning operations. The trail must be posted at appropriate distances from the sale area to warn of logging activity and truck traffic at both ends of the trail. Signs must be removed when harvest operations are suspended or completed. The DNR will provide these signs.



TIMBER SALE MAP

This information provided by authority of Part 525, 1994 PA 451, as amended.

Forest Management Unit Newberry Management Unit	County Luce	Mapped By Payment	Date 09/16/2020	Page 1	of 1
Township 46N	Range 10W	Section(s) and Subdivision(s) 8: SENE, N1/2SE. 9: NWNW, S1/2NW, NWSW	Scale 1:15,840		

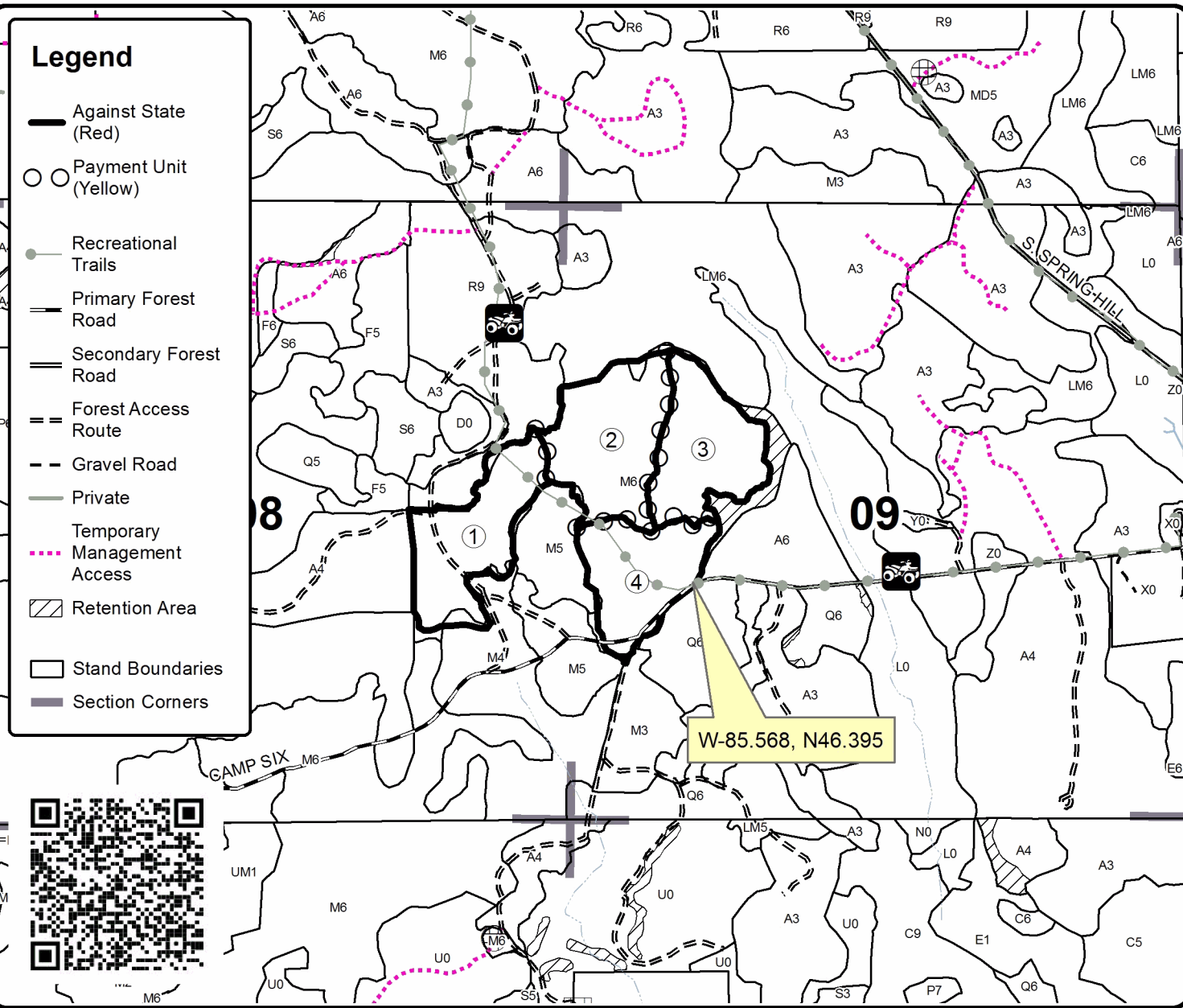
Cover Type				Density	
A = Aspen	H = Hemlock	N = Marsh	U = Upland Brush	0 = Non Stocked	5 = Pole Timber Medium
B = Paper Birch	J = Jack Pine	O = Oak	UM = Upland Mixed	1 = Seedling Sapling Poor	6 = Pole Timber Well
C = Cedar	L = Lowland Brush	P = Lowland Poplar	V = Bog or Marsh	2 = Seedling Sapling Medium	7 = Saw Timber Poor
D = Treed Bog	LM = Lowland Mixed	Q = Mixed Swamp Conifer	W = White Pine	3 = Seedling Sapling Well	8 = Saw Timber Medium
E = Swamp Hdwoods	M = Mpl, Bch, Brch	R = Red Pine	X = Non Stocked	4 = Pole Timber Poor	9 = Saw Timber Well
F = Spruce Fir	MC = Mixed Conifer	S = Black Spruce	Z = Water		
G = Grass	MD = Mixed Deciduous	T = Tamarack			

PU	Acres	PU	Acres
1	23.6	4	20.2
2	26.3		
3	22.1		

Camp 6 Hardwoods

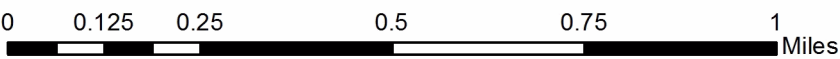
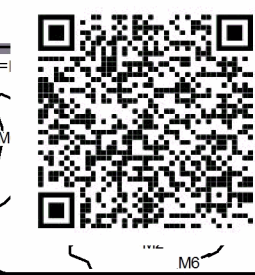
Compartment 111

92.2 Acres



Legend

- Against State (Red)
- Payment Unit (Yellow)
- Recreational Trails
- == Primary Forest Road
- == Secondary Forest Road
- == Forest Access Route
- - Gravel Road
- Private
- Temporary Management Access
- ▨ Retention Area
- Stand Boundaries
- Section Corners



TIMBER SALE INFORMATION

Jagged Spruce (42-029-20)
T46N, R10W, SEC. 7; T46N, R10W, SEC. 8.
Luce County (Advertised Price \$23,860.65)

SALE NOTE: No new roads will be permitted in any Payment Unit. All operations are limited to existing roads. Skid trails only will be allowed.

It is recommended, but not required, that harvesting occur during snow free conditions because of the need to cut low stumps.

Silver Creek Trail is an ORV trail or route and is shown on the Timber Sale Map. See Sale Spec. 5.2.39 for additional information.

A recreation site such as a trail, pathway, or campground is within the sale area or the vicinity. Certain restrictions/specifications may be applicable including time restrictions.

A timber sale contract for this lump sum, sealed bid timber sale will be awarded to the responsible bidder offering the highest sealed bid price. All units of volume listed below were estimated using the T-Sale computer program and our traditional volume equations. Bids must be at or above the following advertised price for each product and species:

<u>PRODUCTS & SPECIES</u>	<u>ESTIMATED UNITS*</u>	<u>ADVERTISED PRICE</u>
Sawtimber		
Red Maple	8.1 MBF	\$ 71.00 / MBF
Pulpwood		
Balsam Fir	34 Cords	\$ 9.00 / Cord
Mixed Hardwood	370 Cords	\$ 11.65 / Cord
Paper Birch	33 Cords	\$ 10.05 / Cord
Quaking Aspen	185 Cords	\$ 13.80 / Cord
White Pine	124 Cords	\$ 15.10 / Cord
White Spruce	1,184 Cords	\$ 11.75 / Cord

* The total volume is statistically estimated within plus (+) or minus (-) 11.86 percent. There are an estimated 1,946 cords on this timber sale, plus or minus 231 cords at the 95% confidence level. The estimated units are final and not subject to adjustment. Prospective bidders are urged to examine this timber and to make their own estimates of quantity and quality.

BOND AND PAYMENT SCHEDULE:

1. A bond in the amount of \$1,193.00 to insure faithful performance of the conditions of the contract will be deposited by the successful bidder within 21 days of the sale award.
2. Cutting in any sale or unit without the required advance payment would be considered a trespass.
3. Total payment must be paid in advance or according to the following schedule :
 - (a) Ten percent (10%) of the sale value must be paid within 21 days of the sale award.
 - (b) The 10% down payment will be credited towards the first unit cut.
 - (c) Payment for each of the following units must be made before cutting begins in that unit:

PAYMENT UNIT NUMBER	PERCENT OF TOTAL SALE VALUE
01	31.2%
02	30.7%
03	22.5%
04	15.6%

4. If no cutting takes place, the 10% down payment will not be refunded.
5. Operations on the contract issued will terminate on 12/31/2024.

SALE STATISTICS

SALE VOLUMES

VOLUME		STATISTICAL RANGE IN CORDS		
TOTAL CUBIC FEET	TOTAL CORDS	PERCENT ERROR	MINIMUM	MAXIMUM
153,770	1,946	11.86%	1,716	2,177

VDU VOLUMES

A VDU is a Volume Determination Unit. Volumes and their associated statistics are calculated at the VDU level and summarized to the sale level. There is often a one to one relationship between a VDU and a Payment Unit, but not always, depending on the cruise design. Refer to the VDU TO PAYMENT UNIT table.

VDU	VOLUME		PERCENT ERROR	RANGE IN CORDS	
	TOTAL CUBIC FEET	TOTAL CORDS		MINIMUM	MAXIMUM
54	615,126	7,786	11.86%	6,863	8,710
TOTAL:	615,126	7,786		6,863	8,710

VDU TO PAYMENT UNIT

When a VDU is associated with more than one Payment Unit (PU), the VDU volumes are assigned to the PU based on acres of the VDU within the PU.

VDU	VDU ACRES	PU	PU ACRES
54	82.9	1	25.9
		2	25.4
		3	18.7
		4	12.9
TOTAL:	82.9		82.9

DESCRIPTION OF TIMBER BY PAYMENT UNIT (PU)

PU	MARKET GROUP	PRODUCT	QUANTITY	UNIT	ACRES	ADVERTISE PRICE
1	Red Maple	Sawtimber	2.5	MBF	25.9	\$7,449.80
	Balsam Fir	Pulpwood	11	Cords		
	Mixed Hardwood		115	Cords		
	<i>Beech</i>		1	<i>Cords</i>		
	<i>Black Cherry</i>		15	<i>Cords</i>		
	<i>Red Maple</i>		99	<i>Cords</i>		
	Paper Birch		11	Cords		
	Quaking Aspen		57	Cords		
	White Pine		39	Cords		
	White Spruce		370	Cords		
	2	Red Maple	Sawtimber	2.5		
Balsam Fir		Pulpwood	10	Cords		
Mixed Hardwood			114	Cords		
<i>Beech</i>			2	<i>Cords</i>		
<i>Black Cherry</i>			14	<i>Cords</i>		
<i>Red Maple</i>			98	<i>Cords</i>		
Paper Birch			10	Cords		
Quaking Aspen			57	Cords		
White Pine			38	Cords		
White Spruce			363	Cords		
3		Red Maple	Sawtimber	1.8	MBF	18.7
	Balsam Fir	Pulpwood	8	Cords		
	Mixed Hardwood		83	Cords		
	<i>Beech</i>		1	<i>Cords</i>		
	<i>Black Cherry</i>		10	<i>Cords</i>		
	<i>Red Maple</i>		72	<i>Cords</i>		
	Paper Birch		7	Cords		
	Quaking Aspen		42	Cords		
	White Pine		28	Cords		
	White Spruce		267	Cords		
	4	Red Maple	Sawtimber	1.3	MBF	
Balsam Fir		Pulpwood	5	Cords		
Mixed Hardwood			58	Cords		
<i>Beech</i>			1	<i>Cords</i>		
<i>Black Cherry</i>			7	<i>Cords</i>		
<i>Red Maple</i>			50	<i>Cords</i>		
Paper Birch			5	Cords		
Quaking Aspen			29	Cords		
White Pine			19	Cords		
White Spruce			184	Cords		
TOTAL:			8.1	MBF		
TOTAL:			1,930	Cords		

Sale Specific Conditions & Requirements

Sale Name: Jagged Spruce

Sale Number: 42-029-20 Seq#: 1

1 - Sale Area

1.2 - Boundaries

1.2.1 - Painted boundaries (9/19)

The sale boundary and Payment Unit boundaries are marked and identified by red and yellow paint. Exterior sale boundary lines against state are marked with red paint. Interior Payment Unit boundaries are marked with yellow paint. The painted boundary line trees are not Included Timber and are to be protected. Yellow painted trees designating an interior Payment Unit boundary are only to be cut when all surrounding Payment Units have been paid.

2 - Timber Specifications

2.1 - Included Timber

2.1.1 - Clearcut unit(s) with unmerchantable trees (6/14)

Within Payment Unit(s) 1-4, cut all trees that are two (2) inches or more at DBH.

2.2 - Utilization

2.2.3 - Stump heights (4/07)

Stump heights within the Sale Area shall not exceed 6 inches for all trees. This is in order to facilitate planting operations. A written waiver of this requirement may be obtained if wet summer weather makes winter logging necessary.

3 - Payments

3.3 - Pre-measured Sales

3.3.4 - Dividing payment units (7/14)

Payment Unit(s) 1 & 2 may be divided at the request of the Purchaser and upon approval of the Unit Manager. Dividing Payment Units is a contract modification which requires a Timber Sale Contract Amendment. There will be only one division per Payment Unit.

4 - Transportation

4.1 - Construction

4.1.3 - Slash and earthen piles (8/04)

Piles or windrows of earth along roads and landings that have been widened or constructed shall be leveled. Slash from road maintenance or construction, including stumps, shall be dispersed throughout the sale.

4.1.6 - Road construction (1/09)

Construction of new roads or improvements of existing roads shall be done in such a way as to minimize the environmental and visual impacts. Merchantable trees shall be cut and utilized unless otherwise directed. Non-merchantable trees shall be severed and laid flat on the ground. Slash shall be scattered, and not left in windrows and kept a minimum of 10 feet back from the road edge. Stumps shall be set upright, not left on edge, and be moved at least 10 feet away from the road edge. Disturbed soil shall be feathered into the woods and not left in berms or windrows.

4.1.7 - Road closure (10/11)

All new roads built into the sale must be blocked to vehicle traffic upon completion of the sale. Overgrown roads that are reopened shall be considered new roads. All stumps from road building and landing construction must be reserved to block any newly constructed roads upon completion of the sale. These stumps must be scattered along the road system to prohibit vehicular movement. Contact the sale administrator for specific details of design and placement.

4.1.12 - No new roads (1/12)

No new roads will be permitted in Payment Units 3 and 4. All operations are limited to existing roads in these units. Skid trails only will be allowed. Road improvements will also be allowed.

4.2 - Maintenance

4.2.1 - Hauling restriction (12/08)

Hauling may be restricted on forest roads by the Unit Manager or his/her representative. The restriction may occur during spring breakup or during wet weather conditions.

4.2.3 - Road maintenance (8/13)

The following road maintenance may be needed: Cleaning of drainage areas, grading, crowning and filling with gravel, if necessary.

4.2.4 - Grading (10/16)

For completion of the sale, state forest roads must be graded. In general, this will require a road grader or bull dozer to shape up the roads after forest products have been hauled off site. This includes cleaning of drainage areas, grading, crowning and filling with gravel, if necessary. The grading equipment to be used must be approved by the Unit Manager or his/her representative.

5 - Operations

5.2 - Conduct of Operations

5.2.1 - Slash

5.2.1.8 - Slash height (12/08)

No slash or tree tops may exceed 24 inches in height.

5.2.1.12 - Slash for prescribed burning (1/05)

To facilitate prescribed burning, slash shall be moved at least 10 feet inside the edge of the sale boundary. Slash cannot be piled or placed near residual trees.

5.2.2 - Hazard Trees/Snags

5.2.2.1 - Den trees (10/16)

Obvious hollow and/or den trees shall be protected and left standing unless they are a safety hazard.

5.2.22 - Operating Caution

5.2.22.1 - Operating caution (6/11)

It is recommended, but not required, that within Payment Unit(s) 1-4, cutting occur during snow free conditions. The reason for the recommendation is because of the need to cut low stumps.

5.2.32 - Decking/landing restoration (9/13)

All decking and landing areas must have the surface area restored to a condition equal to or better than before. This is to ensure the proper regeneration of the stand. Wood debris, chips and "cookies" from trimmings must be removed or scattered away from landing and loading areas and may not be windrowed on the edge.

5.2.38 - No decking against live trees (2/04)

Cut products may not be decked against unmarked or designated leave trees.

5.2.39 - ORV trail/route protection (4/18)

Silver Creek Trail is an ORV trail or route and is shown on the Timber Sale Map. Do not cut trees or damage posts with yellow ORV markers. Maintain a 20 foot wide slash, debris, and rut free zone daily using the ORV trail or route as the centerline.

5.4 - Soil Protection

5.4.1 - Rutting restriction, general (7/16)

Operations are to cease immediately if equipment and weather conditions result in rutting of roads and/or skid trails which is 12 inches or greater in depth and 50 feet in length. The Unit Manager or his/her representative may restrict hauling and/or skidding if ruts exceed the specified depth. With the Unit Manager or his/her representative's approval, the Purchaser may return to the area when the risk of rutting has decreased.

5.8 - Protection of Endangered Species

5.8.5 - Protection of raptor nests (3/13)

All trees with raptor nests will be protected if found during harvesting operations. Notification will be made to the Unit Manager or his/her representative who will notify the Wildlife Biologist so an on-site evaluation and recommendation can be made, if necessary.

6 - Safety and Fire Prevention

6.2 - Signing

6.2.1 - Road posting (9/09)

The Purchaser is responsible for posting and maintaining caution signs on Camp Six Road prior to beginning operations. The road must be posted at appropriate distances from the sale area to warn of logging activity and truck traffic. Signs must be removed when harvest operations are suspended or completed. The Purchaser will provide these signs.



TIMBER SALE MAP

This information provided by authority of Part 525, 1994 PA 451, as amended.

Forest Management Unit
Newberry

County
Luce

Mapped By
Livermore

Cruised By
Newberry Staff

Township
46N

Range
10W

Section(s) and Subdivision(s)
Section 7: NESE, S1/2SE Section 8: W1/2SW

Scale

1:15,840

Date
7/13/2020

Page
1

of
1

Year
2020

Cover Type

- A = Aspen
- B = Paper Birch
- C = Cedar
- D = Tread Bog
- E = Swamp Hardwoods
- F = Spruce Fir
- G = Grass
- H = Hemlock
- J = Jack Pine
- L = Lowland Brush
- LM = Lowland Mixed
- M = Mpl, Bot, Birch
- MC = Mixed Conifer
- MD = Mixed Deciduous
- N = Marsh
- O = Oak
- P = Lowland Poplar
- Q = Mixed Swamp Conifer
- R = Red Pine
- S = Black Spruce
- T = Tamarack
- U = Upland Brush
- UM = Upland Mixed
- V = Bog or Marsh
- W = White Pine
- X = Non Stocked
- Z = Water

Density

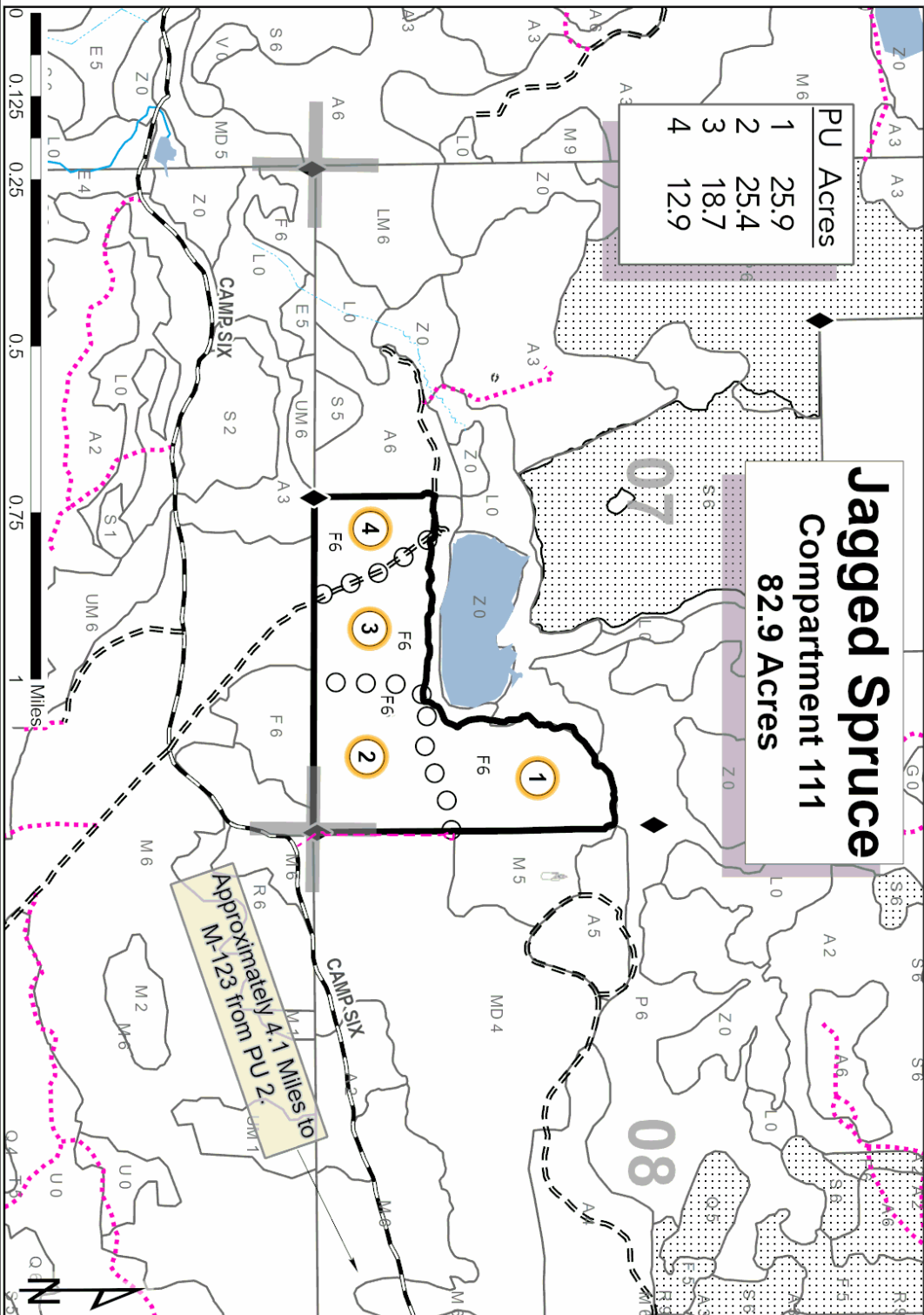
- 0 = Non Stocked
- 1 = Seeding Sapling Poor
- 2 = Seeding Sapling Medium
- 3 = Seeding Sapling Well
- 4 = Pole Timber Poor
- 5 = Pole Timber Medium
- 6 = Pole Timber Well
- 7 = Saw Timber Poor
- 8 = Saw Timber Medium
- 9 = Saw Timber Well

PU	Acres
1	25.9
2	25.4
3	18.7
4	12.9

Jagged Spruce

Compartment 111

82.9 Acres

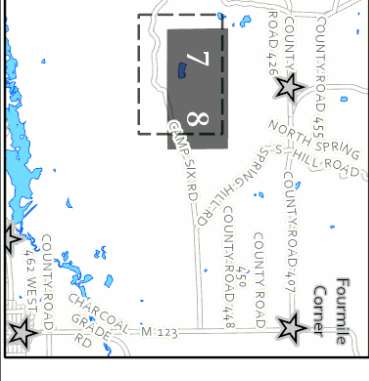


Approximately 4.1 Miles to
M-128 from PU 2.



- Against State (Red)
- Payment Unit (Yellow)
- 01 Section Numbers
- Section Corners
- Survey Corners
- Berms
- Primary Forest Road
- Secondary Forest Road
- Forest Access Route
- Paved Road
- Gravel Road
- County Road - Seasonal
- County Road - Private
- Intermittent Stream
- Perennial River
- Lakes and Rivers
- DNR - Management Access
- Temporary Management Access
- Nearby Timber Sale

Locator Map: 1:200,000
Main Map Extent



Soggy Soles (42-005-20)

T46N, R10W, SEC. 5; T46N, R10W, SEC. 8; T46N, R10W, SEC. 9; Luce COUNTY

In response to the notice of sale to be held 3:00 p.m. (local time) on March 18, 2021, I am hereby submitting my sealed bid (firm offer) for the following forest products to be cut. Bids for individual species must be at or above the advertised price. All non-responsive bid forms may be rejected.

<u>PRODUCTS & SPECIES</u>	<u>ESTIMATED VOLUME*</u>	<u>ADVERTISED PRICE</u>	<u>BID PRICE/UNIT</u>
Sawtimber			
Red Maple	9.3 MBF	\$ 71.00/MBF	\$ _____
Pulpwood			
Balsam Fir	145 Cords	\$ 9.00/Cord	\$ _____
Mixed Hardwood	243 Cords	\$ 11.65/Cord	\$ _____
Mixed Spruce	720 Cords	\$ 11.75/Cord	\$ _____
N. White Cedar	12 Cords	\$ 4.15/Cord	\$ _____
Quaking Aspen	474 Cords	\$ 13.80/Cord	\$ _____
Tamarack	55 Cords	\$ 5.05/Cord	\$ _____

*The volumes are statistically estimated within plus (+) or minus (-) 13.99 percent at 95% confidence level. These estimated volumes are final and not subject to adjustment. Prospective bidders are urged to examine this timber and to make their own estimates of quantity and quality.

I understand that any or all bids may be rejected. All bids must be signed and all bid items must be bid or the bid form may be rejected. I also understand that consideration and awarding a contract will be based upon my past performance and ability to complete the contract based upon equipment and staffing subject to my control.

FEDERAL ID: _____ or SOCIAL SECURITY NUMBER: _____
 Company or individual bidding: _____
 Company representative's name: _____
 Address: _____
 City: _____ State: _____ Zip: _____

IF AVAILABLE, PLEASE PLACE THE PERSONALIZED LABEL FROM YOUR PROSPECTUS IN THE ABOVE BOX.

Individual or company representative's signature: _____ Date: _____
Phone number : _____ Email (optional): _____

THE WINNING BIDDER MUST COMPLETE THE VERIFICATION OF WORKER'S DISABILITY COMPENSATION ACT COMPLIANCE (ON REVERSE SIDE IF DOUBLE SIDED) WITHIN 21 DAYS OF SALE AWARD DATE



TIMBER SALE VERIFICATION OF WORKER'S DISABILITY COMPENSATION ACT COMPLIANCE

As required by Act 317, P.A. 1969 (Worker's Compensation) and
Part 5 of Act 451 of 1994, as amended.

FOR DEPARTMENT USE ONLY	
Sale Number (XX - XXX - XX - XX)	
Forest Management Unit:	

VERIFICATION OF WORKER'S DISABILITY COMPENSATION ACT COMPLIANCE

- This verification must be completed and submitted within 21 days of contract award and prior to the issuance of the timber sale contract.
- In addition, if boxes 2B or 2C are checked, then Notice of Exclusion or Certificate of Insurance must be submitted within twenty-one (21) days of the contract award and prior to the issuance of the timber sale contract.
- All information must be typed or printed except for written signatures.

Please Check Appropriate Categories:

1. My business is organized as (you **must** check one of the boxes below):
 - A. Sole Proprietorship (individual)
 - B. Partnership
 - C. Corporation
2. You **must** check one of the boxes below:
 - A. I certify my business is a sole proprietorship and it has no employees but the sole proprietor. I am not subject to the Worker's Compensation Laws.
 - B. I certify my business has satisfied its obligation to the Worker's Compensation Act through the use of an approved Notice of Exclusion (BWC-337, Rev. 5/96). I will provide a copy of the Notice of Exclusion within 21 days of the contract award. (For questions or a copy of the BWC-337, please call the Worker's Compensation Bureau at 517-322-1195).
 - C. I certify my business has a Worker's Compensation Policy. I will provide an original Certificate of Insurance within twenty-one (21) days of the contract award.
3. If you have checked item 2(A) or 2(B), you **must** indicate the number of **both** full-time and part-time employees, other than yourself, including family members and active partners (if none, you must enter "0").

_____ Full-time Employees

_____ Part-time Employees

Name of Business		Federal ID (or) Social Security No.	
Address		Telephone ()	
City	State	ZIP	

I hereby certify that the above information is true and correct. I agree to notify the Michigan DNR of any changes that occur in factors affecting my coverage during any of my present and future operations.

Signature of Owner or Authorized Representative

Title

Date

Please complete the "SEALED BID" information on the next page

Camp 6 Hardwoods (42-016-20)
T46N, R10W, SEC. 8; T46N, R10W, SEC. 9; Luce COUNTY

In response to the notice of sale to be held 3:00 p.m. (local time) on March 18, 2021, I am hereby submitting my sealed bid (firm offer) for the following forest products to be cut. Bids for individual species must be at or above the advertised price. All non-responsive bid forms may be rejected.

<u>PRODUCTS & SPECIES</u>	<u>ESTIMATED VOLUME*</u>	<u>ADVERTISED PRICE</u>	<u>BID PRICE/UNIT</u>
Sawtimber			
Beech	15.9 MBF	\$ 48.00/MBF	\$ _____
Paper Birch	0.7 MBF	\$ 25.00/MBF	\$ _____
Red Maple	1.5 MBF	\$ 71.00/MBF	\$ _____
Pulpwood			
Balsam Fir	124 Cords	\$ 9.00/Cord	\$ _____
Mixed Hardwood	616 Cords	\$ 11.65/Cord	\$ _____
White Pine	3 Cords	\$ 15.10/Cord	\$ _____

*The volumes are statistically estimated within plus (+) or minus (-) 19.20 percent at 95% confidence level. These estimated volumes are final and not subject to adjustment. Prospective bidders are urged to examine this timber and to make their own estimates of quantity and quality.

I understand that any or all bids may be rejected. All bids must be signed and all bid items must be bid or the bid form may be rejected. I also understand that consideration and awarding a contract will be based upon my past performance and ability to complete the contract based upon equipment and staffing subject to my control.

FEDERAL ID: _____ - _____ or SOCIAL SECURITY NUMBER: _____ - _____ - _____

Company or individual bidding: _____

Company representative's name: _____

Address: _____

City: _____ State: _____ Zip: _____

IF AVAILABLE, PLEASE PLACE THE PERSONALIZED LABEL FROM YOUR PROSPECTUS IN THE ABOVE BOX.

Individual or company representative's signature: _____ Date: _____

Phone number : _____ Email (optional): _____

THE WINNING BIDDER MUST COMPLETE THE VERIFICATION OF WORKER'S DISABILITY COMPENSATION ACT COMPLIANCE (ON REVERSE SIDE IF DOUBLE SIDED) WITHIN 21 DAYS OF SALE AWARD DATE



FOR DEPARTMENT USE ONLY
Sale Number (XX - XXX - XX - XX)
Forest Management Unit:

TIMBER SALE VERIFICATION OF WORKER'S DISABILITY COMPENSATION ACT COMPLIANCE

*As required by Act 317, P.A. 1969 (Worker's Compensation) and
Part 5 of Act 451 of 1994, as amended.*

VERIFICATION OF WORKER'S DISABILITY COMPENSATION ACT COMPLIANCE

- This verification must be completed and submitted within 21 days of contract award and prior to the issuance of the timber sale contract.
- In addition, if boxes 2B or 2C are checked, then Notice of Exclusion or Certificate of Insurance must be submitted within twenty-one (21) days of the contract award and prior to the issuance of the timber sale contract.
- All information must be typed or printed except for written signatures.

Please Check Appropriate Categories:

- My business is organized as (you **must** check one of the boxes below):
 - Sole Proprietorship (individual)
 - Partnership
 - Corporation
- You **must** check one of the boxes below:
 - I certify my business is a sole proprietorship and it has no employees but the sole proprietor. I am not subject to the Worker's Compensation Laws.
 - I certify my business has satisfied its obligation to the Worker's Compensation Act through the use of an approved Notice of Exclusion (BWC-337, Rev. 5/96). I will provide a copy of the Notice of Exclusion within 21 days of the contract award. (For questions or a copy of the BWC-337, please call the Worker's Compensation Bureau at 517-322-1195).
 - I certify my business has a Worker's Compensation Policy. I will provide an original Certificate of Insurance within twenty-one (21) days of the contract award.
- If you have checked item 2(A) or 2(B), you **must** indicate the number of **both** full-time and part-time employees, other than yourself, including family members and active partners (if none, you must enter "0").

_____ Full-time Employees

_____ Part-time Employees

Name of Business		Federal ID (or) Social Security No.	
Address		Telephone ()	
City	State	ZIP	

I hereby certify that the above information is true and correct. I agree to notify the Michigan DNR of any changes that occur in factors affecting my coverage during any of my present and future operations.

Signature of Owner or Authorized Representative

Title

Date

Please complete the "SEALED BID" information on the next page

Jagged Spruce (42-029-20)
T46N, R10W, SEC. 7; T46N, R10W, SEC. 8; Luce COUNTY

In response to the notice of sale to be held 3:00 p.m. (local time) on March 18, 2021, I am hereby submitting my sealed bid (firm offer) for the following forest products to be cut. Bids for individual species must be at or above the advertised price. All non-responsive bid forms may be rejected.

<u>PRODUCTS & SPECIES</u>	<u>ESTIMATED VOLUME*</u>	<u>ADVERTISED PRICE</u>	<u>BID PRICE/UNIT</u>
Sawtimber			
Red Maple	8.1 MBF	\$ 71.00/MBF	\$ _____
Pulpwood			
Balsam Fir	34 Cords	\$ 9.00/Cord	\$ _____
Mixed Hardwood	370 Cords	\$ 11.65/Cord	\$ _____
Paper Birch	33 Cords	\$ 10.05/Cord	\$ _____
Quaking Aspen	185 Cords	\$ 13.80/Cord	\$ _____
White Pine	124 Cords	\$ 15.10/Cord	\$ _____
White Spruce	1,184 Cords	\$ 11.75/Cord	\$ _____

*The volumes are statistically estimated within plus (+) or minus (-) 11.86 percent at 95% confidence level. These estimated volumes are final and not subject to adjustment. Prospective bidders are urged to examine this timber and to make their own estimates of quantity and quality.

I understand that any or all bids may be rejected. All bids must be signed and all bid items must be bid or the bid form may be rejected. I also understand that consideration and awarding a contract will be based upon my past performance and ability to complete the contract based upon equipment and staffing subject to my control.

FEDERAL ID: _____ or SOCIAL SECURITY NUMBER: _____

Company or individual bidding: _____

Company representative's name: _____

Address: _____

City: _____ State: _____ Zip: _____

IF AVAILABLE, PLEASE PLACE THE PERSONALIZED LABEL FROM YOUR PROSPECTUS IN THE ABOVE BOX.

Individual or company representative's signature: _____ Date: _____

Phone number : _____ Email (optional): _____

THE WINNING BIDDER MUST COMPLETE THE VERIFICATION OF WORKER'S DISABILITY COMPENSATION ACT COMPLIANCE (ON REVERSE SIDE IF DOUBLE SIDED) WITHIN 21 DAYS OF SALE AWARD DATE



TIMBER SALE VERIFICATION OF WORKER'S DISABILITY COMPENSATION ACT COMPLIANCE

As required by Act 317, P.A. 1969 (Worker's Compensation) and
Part 5 of Act 451 of 1994, as amended.

FOR DEPARTMENT USE ONLY	
Sale Number (XX - XXX - XX - XX)	
Forest Management Unit:	

VERIFICATION OF WORKER'S DISABILITY COMPENSATION ACT COMPLIANCE

- This verification must be completed and submitted within 21 days of contract award and prior to the issuance of the timber sale contract.
- In addition, if boxes 2B or 2C are checked, then Notice of Exclusion or Certificate of Insurance must be submitted within twenty-one (21) days of the contract award and prior to the issuance of the timber sale contract.
- All information must be typed or printed except for written signatures.

Please Check Appropriate Categories:

1. My business is organized as (you **must** check one of the boxes below):
 - A. Sole Proprietorship (individual)
 - B. Partnership
 - C. Corporation
2. You **must** check one of the boxes below:
 - A. I certify my business is a sole proprietorship and it has no employees but the sole proprietor. I am not subject to the Worker's Compensation Laws.
 - B. I certify my business has satisfied its obligation to the Worker's Compensation Act through the use of an approved Notice of Exclusion (BWC-337, Rev. 5/96). I will provide a copy of the Notice of Exclusion within 21 days of the contract award. (For questions or a copy of the BWC-337, please call the Worker's Compensation Bureau at 517-322-1195).
 - C. I certify my business has a Worker's Compensation Policy. I will provide an original Certificate of Insurance within twenty-one (21) days of the contract award.
3. If you have checked item 2(A) or 2(B), you **must** indicate the number of **both** full-time and part-time employees, other than yourself, including family members and active partners (if none, you must enter "0").

_____ Full-time Employees

_____ Part-time Employees

Name of Business		Federal ID (or) Social Security No.	
Address		Telephone ()	
City	State	ZIP	

I hereby certify that the above information is true and correct. I agree to notify the Michigan DNR of any changes that occur in factors affecting my coverage during any of my present and future operations.

Signature of Owner or Authorized Representative

Title

Date

Please complete the "SEALED BID" information on the next page