



**DEPARTMENT OF NATURAL RESOURCES
STATE OF MICHIGAN**

TIMBER SALE PROSPECTUS #6810

SCHEDULED SALE DATE AND TIME: 3:00 p.m. (local time) on June 24, 2021.

LOCATION: NEWBERRY MGMT UNIT, 5666 S STATE HWY M 123, NEWBERRY, MI 49868.

PROSPECTUS NOTE: The bidder is advised to inspect the sale area and review the location, estimated volumes, operating costs and contract terms of proposed sales. Please be aware that some landowners may request 60 days or more notice for access across their land.

Notice is hereby given that bids will be received by the Unit Manager, NEWBERRY MANAGEMENT UNIT, for certain timber on the following described lands:

Blind Sucker Mix (42-006-20) / T49N, R11W, SEC. 18, NWSW,S1/2SW.

T49N, R12W, SEC. 13, NENW,S1/2NW,S1/2NE,N1/2SW.

T49N, R12W, SEC. 13, SWSW,N1/2SE,SESE.

T49N, R12W, SEC. 14, E1/2SE.

Luce County, Advertised Price \$98,465.35, 184.7 Acres, Red Pine, Hardwood.

SALE NOTE: The Pine Ridge Trail is an ORV trail and is shown on the Timber Sale Map. See Sale Spec 5.2.39 for additional information.

Trail 8 is a snowmobile trail and is shown on the Timber Sale Map. See Sale Spec. 5.2.41 for restrictions.

A recreation site such as a trail, pathway, or campground is within the sale area or the vicinity. Certain restrictions/specifications may be applicable including time restrictions.

Holland Lake Pine (42-014-20) / T49N, R11W, SEC. 22, E1/2SE.

T49N, R11W, SEC. 23, S1/2NW,N1/2SW,SWSW.

T49N, R11W, SEC. 24, N1/2SW.

T49N, R11W, SEC. 26, E1/2NW.

T49N, R11W, SEC. 28, NESW,NWSE.

Luce County, Advertised Price \$43,037.60, 147.2 Acres, Red Pine, White Pine.

SALE NOTE: The Pine Ridge Trail is an ORV trail and is shown on the Timber Sale Map. See Sale Spec 5.2.39 for additional information.

The Headquarters Lake Equestrian Trail is a horse trail and is shown on the Timber Sale Map. See Sale Spec 5.2.40 for restrictions.

A recreation site such as a trail, pathway, or campground is within the sale area or the vicinity. Certain restrictions/specifications may be applicable including time restrictions.

BID INSTRUCTIONS (VER. 07/02/2018):

1. Scheduled Bid Location, Date, and Time (2/11)

Bids must be received by the Unit Manager, NEWBERRY OFFICE, 5666 S STATE HWY M 123, NEWBERRY, MI 49868, no later than 3:00 p.m. (local time) on June 24, 2021. For further information concerning this sale, contact Keith Magnusson at 906-293-3293 extension 4740.

2. Bidder's Qualifications (5/16)

Purchaser shall obtain workers compensation insurance to cover claims under Michigan's Worker's Disability Compensation Act of 1969 or similar employee benefit act of any other state applicable to an employee. If all or part of a timber sale was prepared by a private contractor, the contractor and that contractor's company are not permitted to bid on the timber sale contract. Bids will not be accepted from individuals or companies appearing on the DNR/FRD No-Bid List. This list contains the names of purchasers who previously failed to execute a contract within 21-days or who have a history of poor performance.

3. Preparation of Sealed Bids (5/16)

Bid Forms may be completed online thru Michigan DNR Timber Sale Online Bidding (OLB) at www.michigan.gov/timberbidding or by completing the hardcopy Bid Form found in the Timber Sale Prospectus. Hardcopy Bid Forms shall be manually signed in ink. Registration in OLB is considered your 'signature' for all bids submitted thru that system. Bid prices must be entered for each species and product in the Bid Price column for all material subject to bidding and all fill-in blanks must be completed. If erasures or other changes appear on the hardcopy Bid Form, each erasure or change must be initialed by the person signing the bid.

4. Submission of Sealed Bids (5/16)

Bid forms may be obtained from the Unit Manager or thru OLB. Bids may be submitted hardcopy or thru OLB. All hardcopy bids must be submitted on the bid form and in an envelope clearly identified as described in this section. NOTE: Only one bid form per bid envelope. Sealed bids must be submitted to the Unit office designated in the prospectus and must be submitted at or prior to the time established in the prospectus. The envelope should show on the outside (a) the sale name or number and (b) the date and time of bid opening, as shown in the prospectus. Bids received after the time specified in the sale prospectus are late bids and will be rejected.

It is possible for a bidder to submit multiple bids on a single sale. For example, a bid may be submitted hardcopy and a bid may be submitted thru OLB. Or, two bidders from the same company could both submit bids on the same sale. If this were to happen, the State would accept all bids received and award the contract accordingly. All bidding and contractual requirements would apply to all bids received.

5. Public Opening of Sealed Bids (7/16)

If conditions permit, the sealed bids will be publicly opened and posted at the time and place set in the prospectus.

If a bidder, present at a bid opening, has submitted bids on more than one sale, that bidder may withdraw their unopened bid envelopes or announce the withdrawal of their online bid after being declared the successful bidder on one sale.

6. Award of Contract (1/11)

Award of the contract will be made to the Bidder whose bid, conforming to the prospectus, is most advantageous to the State of Michigan on the basis of total value at rates bid for the estimated quantities. The State reserves the right to reject any bid or waive any minor irregularity in bids received. A written award mailed (or otherwise furnished) to the successful Bidder shall be deemed to result in a binding contract without further action by either party.

7. Down Payment (1/11)

The Bidder to whom award is made must make a down payment within 21 days of the sale award. The amount of the down payment will be calculated as shown in the Bond and Payment Schedule of this prospectus. Only cash may be used to meet this requirement.

8. Performance Security (1/11)

As guarantee of faithful performance, a cash bond, certificate of deposit, surety bond or irrevocable letter of credit (LOC) is required within 21 days of the sale award. The amount of the performance security is shown in the Bond and

Payment Schedule of this prospectus. If an LOC or surety is used, the coverage must extend for at least 6 months beyond the contract expiration.

9. Timber Sale Contract (7/18)

Additional conditions and requirements common to all timber sales are listed on the timber sale contract (R4031) and are available on line at www.michigan.gov/timber. Contact the Unit Manager for additional information or a sample contract. Within 21 days of the date of the award letter, the bidder must sign the contract and provide the required down payment, performance security, and verification of worker's disability compensation. The down payment and performance security shall be in accordance with the provisions of the timber sale contract, in the sums stated in this prospectus. If these actions are not taken, then the Bidder, the Bidder's corporation, and the corporation's principals may not be permitted to bid on State timber sales for a period of 3 months after the first offense, 6 months after the second offense, and 1 year after the third offense. An offense will only be counted against the Bidder for 5 years. In addition, the Bidder certifies that if awarded this contract, the Bidder will complete the timber sale contract in accordance with its terms and any modifications thereof including requirements to purchase, cut, and remove the included timber by the expiration date.

Payment Unit values in the State Forest Timber Sale Contract are calculated based on the advertised value of the Payment Unit as a percentage of the total advertised value of the contract. The advertised value of each Payment Unit is given in the Description of Timber by Payment Unit table on the Timber Sale Information page. For example, if the value of Payment Unit 1 is advertised as \$1,500 and the total Timber Sale value is advertised as \$10,000, the contract price for Payment Unit 1 will be 15% of the total bid price ($\$1,500/\$10,000 * 100$).

10. Disclaimer of Estimates and Bidder's Warranty of Inspection (7/16)

Before submitting this bid, the Bidder is advised and cautioned to inspect the sale area, review the requirements of the sale contract, and take other steps as may be reasonably necessary to ascertain the location, estimated volumes, construction estimates, and operating costs of the proposed sale. Failure to do so will not relieve the Bidder from responsibility for completing the contract.

The Bidder warrants that this bid is submitted solely on the basis of the Bidder's examination and inspection of the quality and quantity of the timber offered for sale and the Bidder's opinion of the value thereof and the costs of recovery. No reliance should be placed on the State of Michigan's estimates of timber quality, quantity or costs of recovery. Bidder further acknowledges that the State of Michigan: (i) expressly disclaims any warranty of fitness of timber for any purpose; (ii) offers this timber as is without any warranty of quality (merchantability) or quantity and (iii) expressly disclaims any warranty as to the quantity or quality of timber sold.

11. Certification and Chain-of-Custody (10/14)

Unless otherwise indicated in the contract under section 7 – Other Conditions of the Sale Specific Conditions & Requirements, the area encompassed by this timber sale is certified to the standards of the Forest Stewardship Council (FSC) - Certificate #SCS-FM/COC-00090N and the Sustainable Forestry Initiative (SFI) - Certificate #NSF-SFIS-5Y031-SF5. Forest products from this sale may be delivered to the mill as "FSC 100% and / or SFI certified" as long as the contractor hauling the forest products is chain-of-custody (COC) certified or covered under a COC certificate from the destination mill. The purchaser is responsible for maintaining COC after leaving the sale area.

12. Good Neighbor Authority (GNA) Requirements (7/16)

If the name of this timber sales contains the acronym GNA, it is authorized by the Good Neighbor Authority (GNA) and covered by various agreements between the U.S. Forest Service and the State. The timber sale occurs on federal land and the following conditions apply:

GNA contracts on US Forest Service land will not be awarded to purchasers on the Federal list of excluded parties. The System for Award Management (SAM) will be checked for active excluded parties prior to award of contract. In addition, the Bidder to whom award is made must complete an Assurance Regarding Felony Conviction or Tax Delinquent Status for Corporate Applicants (AD-3031).

13. Good Neighbor Authority (GNA) Requirements, con't (9/16)

Bidder certifies, by signing this bid form, that to the best of Bidder's knowledge that the following representations are accurate and complete.

- a. That the Bidder and its principals are not presently debarred, suspended, proposed for debarment, declared ineligible, or voluntary excluded from timber sales (covered transactions) by any Federal department or agency.
- b. That the Bidder and its principals have not within a 3-year period preceding this bid been convicted of or had a civil judgment rendered against them for commission of fraud or a criminal offense in connection with obtaining , attempting to obtain, or performing a public (Federal, State, or local) transaction or contract under a public transaction; violation of Federal or State antitrust statutes or commission of embezzlement, theft, forgery, bribery, falsification or destruction of records, making false statements, or receiving stolen property.
- c. That the Bidder and its principals are not presently indicted for or otherwise criminally or civilly charged by a governmental entity (Federal, State, or local) with commission of any of the offenses enumerated in paragraph b of this certification.
- d. That the Bidder and its principals have not within a 3-year period preceding this bid had one or more public transactions (Federal, State, or local) terminated for breach or default of a timber or forest product contract.

Bidders that cannot certify this requirement, in whole or in part, shall submit an explanation with their bid.

DAN EICHINGER
Director

TIMBER SALE INFORMATION

Blind Sucker Mix (42-006-20)

T49N, R11W, SEC. 18; T49N, R12W, SEC. 13; T49N, R12W, SEC. 14.
Luce County (Advertised Price \$98,465.35)

SALE NOTE: The Pine Ridge Trail is an ORV trail and is shown on the Timber Sale Map. See Sale Spec 5.2.39 for additional information.

Trail 8 is a snowmobile trail and is shown on the Timber Sale Map. See Sale Spec. 5.2.41 for restrictions.

A recreation site such as a trail, pathway, or campground is within the sale area or the vicinity. Certain restrictions/specifications may be applicable including time restrictions.

A timber sale contract for this lump sum, sealed bid timber sale will be awarded to the responsible bidder offering the highest sealed bid price. All units of volume listed below were estimated using the T-Sale computer program and our traditional volume equations. Bids must be at or above the following advertised price for each product and species:

<u>PRODUCTS & SPECIES</u>	<u>ESTIMATED UNITS*</u>	<u>ADVERTISED PRICE</u>
Sawtimber		
Paper Birch	11.5 MBF	\$ 27.00 / MBF
Red Maple	62.1 MBF	\$ 71.00 / MBF
Sugar Maple	2.2 MBF	\$ 218.00 / MBF
Yellow Birch	10.4 MBF	\$ 28.00 / MBF
Pulpwood		
Balsam Fir	162 Cords	\$ 9.40 / Cord
Mixed Hardwood	1,242 Cords	\$ 11.95 / Cord
Mixed Spruce	71 Cords	\$ 17.30 / Cord
N. White Cedar	7 Cords	\$ 4.80 / Cord
Red Oak	5 Cords	\$ 17.45 / Cord
Red Pine	1,372 Cords	\$ 46.40 / Cord
White Pine	746 Cords	\$ 15.55 / Cord

* The total volume is statistically estimated within plus (+) or minus (-) 10.37 percent. There are an estimated 3,810 cords on this timber sale, plus or minus 395 cords at the 95% confidence level. The estimated units are final and not subject to adjustment. Prospective bidders are urged to examine this timber and to make their own estimates of quantity and quality.

BOND AND PAYMENT SCHEDULE:

1. A bond in the amount of \$4,923.00 to insure faithful performance of the conditions of the contract will be deposited by the successful bidder within 21 days of the sale award.
2. Cutting in any sale or unit without the required advance payment would be considered a trespass.
3. Total payment must be paid in advance or according to the following schedule :
 - (a) Ten percent (10%) of the sale value must be paid within 21 days of the sale award.
 - (b) The 10% down payment will be credited towards the first unit cut.
 - (c) Payment for each of the following units must be made before cutting begins in that unit:

PAYMENT UNIT NUMBER	PERCENT OF TOTAL SALE VALUE
01	2.3%
02	6.5%
03	9.0%
04	2.2%
05	2.4%
06	23.8%
07	12.6%
08	5.6%
09	4.5%
10	8.4%
11	22.7%

4. If no cutting takes place, the 10% down payment will not be refunded.
5. Operations on the contract issued will terminate on 12/31/2024.

SALE STATISTICS

SALE VOLUMES

VOLUME			STATISTICAL RANGE IN CORDS	
TOTAL CUBIC FEET	TOTAL CORDS	PERCENT ERROR	MINIMUM	MAXIMUM
300,963	3,810	10.37%	3,415	4,205

VDU VOLUMES

A VDU is a Volume Determination Unit. Volumes and their associated statistics are calculated at the VDU level and summarized to the sale level. There is often a one to one relationship between a VDU and a Payment Unit, but not always, depending on the cruise design. Refer to the VDU TO PAYMENT UNIT table.

VDU	VOLUME			RANGE IN CORDS	
	TOTAL CUBIC FEET	TOTAL CORDS	PERCENT ERROR	MINIMUM	MAXIMUM
39	37,486	475	21.60%	372	577
40	11,645	147	36.02%	94	200
42	6,462	82	90.53%	8	156
44	49,091	621	19.90%	498	745
46	40,345	511	18.11%	418	603
48	22,468	284	44.01%	159	410
65	22,468	284	27.97%	205	364
66	23,700	300	16.89%	249	351
69	31,458	398	16.72%	332	465
71	49,991	633	23.10%	487	779
79	5,862	74	38.68%	45	103
TOTAL:	300,974	3,810		2,867	4,752

VDU TO PAYMENT UNIT

When a VDU is associated with more than one Payment Unit (PU), the VDU volumes are assigned to the PU based on acres of the VDU within the PU.

VDU	VDU ACRES	PU	PU ACRES
39	26.5	2	26.5
40	7.5	1	7.5
42	16.7	4	16.7
44	18.1	6	18.1
46	27.8	11	27.8
48	9.0	10	9.0
65	11.8	9	11.8
66	7.7	7	7.7
69	19.1	8	19.1
71	31.6	3	31.6
79	8.9	5	8.9
TOTAL:	184.7		184.7

DESCRIPTION OF TIMBER BY PAYMENT UNIT (PU)

PU	MARKET GROUP	PRODUCT	QUANTITY	UNIT	ACRES	ADVERTISE PRICE
1	Red Maple	Sawtimber	8.9	MBF	7.5	\$2,222.60
	Sugar Maple		2.2	MBF		
	Yellow Birch		0.6	MBF		
	Balsam Fir	Pulpwood	2	Cords		
	Mixed Hardwood		90	Cords		
	<i>Beech</i>	<i>Sawtimber</i>	0.6	<i>MBF</i>		
	<i>Beech</i>	<i>Pulpwood</i>	5	<i>Cords</i>		
	<i>Red Maple</i>		63	<i>Cords</i>		
	<i>Sugar Maple</i>		18	<i>Cords</i>		
	<i>Yellow Birch</i>		3	<i>Cords</i>		
2	Paper Birch	Sawtimber	4.6	MBF	26.5	\$6,398.90
	Red Maple		17.5	MBF		
	Balsam Fir	Pulpwood	72	Cords		
	Mixed Hardwood		320	Cords		
	<i>American Elm</i>	<i>Sawtimber</i>	2.8	<i>MBF</i>		
	<i>Beech</i>		4.2	<i>MBF</i>		
	<i>American Elm</i>	<i>Pulpwood</i>	13	<i>Cords</i>		
	<i>Beech</i>		24	<i>Cords</i>		
	<i>Paper Birch</i>		97	<i>Cords</i>		
	<i>Red Maple</i>		159	<i>Cords</i>		
	<i>Sugar Maple</i>		6	<i>Cords</i>		
	<i>Yellow Birch</i>		7	<i>Cords</i>		
	Mixed Spruce		9	Cords		
	<i>Black Spruce</i>		9	<i>Cords</i>		
	N. White Cedar		7	Cords		
	White Pine		22	Cords		
3	Paper Birch	Sawtimber	4.8	MBF	31.6	\$8,879.70
	Red Maple		15.1	MBF		
	Yellow Birch		3.4	MBF		
	Balsam Fir	Pulpwood	16	Cords		
	Mixed Hardwood		414	Cords		
	<i>Beech</i>	<i>Sawtimber</i>	1.3	<i>MBF</i>		
	<i>Beech</i>	<i>Pulpwood</i>	36	<i>Cords</i>		
	<i>Paper Birch</i>		56	<i>Cords</i>		
	<i>Red Maple</i>		258	<i>Cords</i>		
	<i>Sugar Maple</i>		6	<i>Cords</i>		
	<i>Yellow Birch</i>		55	<i>Cords</i>		
	Mixed Spruce		25	Cords		
	<i>Black Spruce</i>		25	<i>Cords</i>		
	White Pine		132	Cords		
4	Red Pine	Pulpwood	30	Cords	16.7	\$2,185.05
	White Pine		51	Cords		
5	Mixed Spruce	Pulpwood	3	Cords	8.9	\$2,343.80
	<i>Black Spruce</i>		3	<i>Cords</i>		
	Red Pine		38	Cords		
	White Pine		34	Cords		
6	Mixed Hardwood	Pulpwood	5	Cords	18.1	\$23,397.65
	<i>Red Maple</i>		5	<i>Cords</i>		
	Red Pine		446	Cords		
	White Pine		170	Cords		
7	Red Pine	Pulpwood	252	Cords	7.7	\$12,439.20
	White Pine		48	Cords		
8	Paper Birch	Sawtimber	2.1	MBF	19.1	\$5,473.80
	Red Maple		15.0	MBF		
	Yellow Birch		1.3	MBF		

DESCRIPTION OF TIMBER BY PAYMENT UNIT (PU), CON'T

PU	MARKET GROUP	PRODUCT	QUANTITY	UNIT	ACRES	ADVERTISE PRICE	
8 con't	Balsam Fir	Pulpwood	57	Cords			
	Mixed Hardwood		268	Cords			
	<i>Beech</i>		3.9	<i>MBF</i>			
	<i>Beech</i>		64	<i>Cords</i>			
	<i>Paper Birch</i>		5	<i>Cords</i>			
	<i>Red Maple</i>		161	<i>Cords</i>			
	<i>Yellow Birch</i>		30	<i>Cords</i>			
	Mixed Spruce		10	Cords			
	<i>White Spruce</i>		10	<i>Cords</i>			
	White Pine		26	Cords			
9	Red Maple	Sawtimber	5.6	MBF	11.8	\$4,442.20	
	Yellow Birch		5.1	MBF			
	Balsam Fir	Pulpwood	15	Cords			
	Mixed Hardwood		132	Cords			
	<i>Red Maple</i>		105	<i>Cords</i>			
	<i>Yellow Birch</i>		27	<i>Cords</i>			
	Mixed Spruce		23	Cords			
	<i>Black Spruce</i>		10	<i>Cords</i>			
	<i>White Spruce</i>		13	<i>Cords</i>			
	Red Pine		11	Cords			
	White Pine		82	Cords			
10	Red Oak		Pulpwood	5	Cords	9.0	\$8,297.50
	Red Pine			125	Cords		
	White Pine	155		Cords			
11	Mixed Hardwood	Pulpwood	13	Cords	27.8	\$22,384.95	
	<i>Paper Birch</i>		9	<i>Cords</i>			
	<i>Red Maple</i>		4	<i>Cords</i>			
	Mixed Spruce		1	Cords			
	<i>Black Spruce</i>		1	<i>Cords</i>			
	Red Pine		470	Cords			
	White Pine		26	Cords			
TOTAL:			86.2	MBF			
TOTAL:			3,605	Cords			

Sale Specific Conditions & Requirements

Sale Name: Blind Sucker Mix

Sale Number: 42-006-20 Seq#: 1

1 - Sale Area

1.2 - Boundaries

1.2.1 - Painted boundaries (9/19)

The sale boundary and Payment Unit boundaries are marked and identified by red paint. Exterior sale boundary lines against state are marked with red paint. Interior Payment Unit boundaries are marked with red paint. The interior boundary trees can be cut when all surrounding units have been paid for.

2 - Timber Specifications

2.1 - Included Timber

2.1.1 - Clearcut unit(s) with unmerchantable trees (6/14)

Within Payment Unit(s) 5 - 7, 10, and 11, cut all trees that are two (2) inches or more at DBH.

2.1.2 - Clearcut unit(s) w/o unmerchantable trees (8/11)

Within Payment Unit(s) 2, 3, 8, and 9, cut all trees which meet minimum piece specifications in 2.2 Utilization except hemlock, oak, and white pine greater than 20 inches diameter. Some hemlock may be harvested where needed for operability. See spec 2.1.9.

2.1.3 - Cut tree marked unit(s) (12/08)

Within Payment Unit(s) 4, all trees are designated for cutting when marked with orange paint above and below stump height, regardless of merchantability.

2.1.5 - Overstory removal unit(s) (8/11)

Within Payment Unit(s) 1, all trees which meet minimum piece specifications in 2.2 Utilization, are designated for cutting except hemlock, white pine, and oak.

2.1.9 - Harvest exception (12/08)

Do not cut any hemlock trees in Payment Units 2, 3, 8 & 9 other than those that are necessary to remove in order to operate within the sale area. Every effort must be made to preserve the existing hemlock and to leave an intact stand upon sale completion. All cut hemlock shall be piled separately by products and scaled in the woods unless other scaling arrangements are agreed to by the Unit Manager or his/her representative. Stumpage price for hemlock shall be \$50.00 per cord for pulpwood and \$100.00 per cord for and sawlogs.

2.1.11 - Description of timber note (2/04)

Note that there are red and white pine trees of sawlog size in sale. All red and white pine were cruised as pulp.

2.2 - Utilization

2.2.3 - Stump heights (4/07)

Stump heights within Payment Unit(s) 4 - 7, 10, and 11 shall not exceed 6 inches for all trees. This is to facilitate planting operations. A written waiver of this requirement may be obtained if wet summer weather makes winter logging necessary.

3 - Payments

3.3 - Pre-measured Sales

3.3.4 - Dividing payment units (7/14)

Payment Unit(s) 3, 6, 7 & 11 may be divided at the request of the Purchaser and upon approval of the Unit Manager.

Dividing Payment Units is a contract modification which requires a Timber Sale Contract Amendment. There will be only one division per Payment Unit.

4 - Transportation

4.1 - Construction

4.1.12 - No new roads (1/12)

No new roads will be permitted in any Payment Unit. All operations are limited to existing roads. Skid trails and back in spurs only will be allowed.

4.2 - Maintenance

4.2.5 - Two wheel drive condition (2/04)

All existing trail roads on and adjacent to the sale area must be passable by two-wheel drive traffic for the duration of the sale.

5 - Operations

5.2 - Conduct of Operations

5.2.1 - Slash

5.2.1.2 - Slash Removal

5.2.1.2.1 - Slash removal, right-of-way (9/16)

All slash must be removed at least 10 feet from the cleared right-of-way of existing forest roads.

5.2.1.8 - Slash height (12/08)

No slash or tree tops may exceed 24 inches in height.

5.2.2 - Hazard Trees/Snags

5.2.2.1 - Den trees (10/16)

Obvious hollow and/or den trees shall be protected and left standing unless they are a safety hazard.

5.2.3 - Operating Restrictions

5.2.3.3 - Bark slippage restriction (3/09)

Within Payment Unit(s) 4, unless changed by written agreement, cutting and skidding are not permitted during the period of April 15 to July 15. This restriction is because of bark slippage.

5.2.3.6 - Bark beetle restriction (12/08)

In the event drought creates a high risk of pine bark beetle infestation, pine is not to be cut during the period March 1 through July 1, unless all portions of trees greater than two inches in diameter are removed from the sale area, reduced to chips, or treated to the satisfaction of the Unit Manager or his/her representative, within fifteen days of being severed from the stump. Pine log decks, pulpwood piles and treetops that are piled for chipping in the fall or winter within a 1/4 mile of susceptible sites must be removed before March 15. Residual slash must not be placed in piles or rows and must be spread over the site for quick drying. The Department of Natural Resources will exercise this specification if the risk of damage warrants.

5.2.32 - Decking/landing restoration (9/13)

All decking and landing areas must have the surface area restored to a condition equal to or better than before. This is to ensure the proper regeneration of the stand. Wood debris, chips, and "cookies" from trimmings must be removed or scattered away from landing and loading areas and may not be windrowed on the edge.

5.2.38 - No decking against live trees (2/04)

Cut products may not be decked against unmarked or designated leave trees.

5.2.39 - ORV trail/route protection (4/18)

The Pine Ridge Trail is an ORV trail and is shown on the Timber Sale Map. Do not cut trees or damage posts with orange ORV markers. All stumps within 5 feet of the trail must be cut flush with the ground. Maintain a 20-foot-wide slash, debris, and rut free zone daily using the ORV trail or route as the centerline. Do not run equipment down the ORV trail or route.

5.2.41 - Snowmobile trail protection (9/11)

Trail 8 is a snowmobile trail and is shown on the Timber Sale Map. Do not cut or damage posts with orange trail markers or traffic control signs. If the trail is used, it must be maintained and restored to a condition equal to or better than before the sale. If the trail road is to be used for hauling during the snowmobile season, then a snow-covered base must be left on the trail. Maintain a 20-foot-wide slash, debris, and rut free zone daily using the snowmobile trail as the centerline.

5.4 - Soil Protection

5.4.1 - Rutting restriction, general (7/16)

Operations are to cease immediately if equipment and weather conditions result in rutting of roads and/or skid trails which is 12 inches or greater in depth and 50 feet in length. The Unit Manager or his/her representative may restrict hauling and/or skidding if ruts exceed the specified depth. With the Unit Manager or his/her representative's approval, the Purchaser may return to the area when the risk of rutting has decreased.

5.8 - Protection of Endangered Species

5.8.5 - Protection of raptor nests (3/13)

All trees with raptor nests will be protected if found during harvesting operations. Notification will be made to the Unit Manager or his/her representative who will notify the Wildlife Biologist so an on-site evaluation and recommendation can be made, if necessary.

6 - Safety and Fire Prevention

6.2 - Signing

6.2.1 - Road posting (9/09)

The Purchaser is responsible for posting and maintaining caution signs on County Road 410 West, 433, and 378 prior to beginning operations. The road must be posted 200 feet from the Sale Area to warn of logging activity and truck traffic. Signs must be removed when harvest operations are suspended or completed. The Purchaser will provide these signs.

6.2.2 - Snowmobile trail posting (8/09)

The Purchaser is responsible for posting and maintaining caution signs on Trail 8 and the County Roads that serve as snowmobile trails in the winter. prior to beginning operations during the snowmobile season (approximately December 1 to March 31). The trail must be posted to warn of logging activity and truck traffic. Signs must be removed when harvest operations are suspended or completed. The Purchaser will provide these signs.

6.2.3 - Recreational trail posting (2/10)

The Purchaser is responsible for posting and maintaining caution signs on Pine Ridge Trail prior to beginning operations. The trail must be posted 200 feet from the Sale Area to warn of logging activity and truck traffic at both ends of the trail. Signs must be removed when harvest operations are suspended or completed. The DNR will provide these signs.



TIMBER SALE MAP

This information provided by authority of Part 525, 1994 PA 451, as amended.

Forest Management Unit	County	Year
Newberry	Luce	2020
Range	Section(s) and Subdivision(s)	Date
11W / 12W	Section 13: SWSW, N1/2SE, SESE Section 14: E1/2SE Section 18: NWSW, S1/2SW Section 13: NENW, S1/2NW, S1/2NE, N1/2SW	7/18/2020
Township	Scale	Page of
49N	1:15,840	1 1

Cover Type		Density	
A = Aspen	H = Hemlock	0 = Non Stocked	5 = Pole Timber Medium
B = Paper Birch	J = Jack Pine	1 = Seedling Sapling Poor	6 = Pole Timber Well
C = Cedar	L = Lowland Brush	2 = Seedling Sapling Medium	7 = Saw Timber Poor
D = Tread Bog	LM = Lowland Mixed	3 = Seedling Sapling Well	8 = Saw Timber Medium
E = Swamp Hdwoods	M = Mpl, Bch, Brch	4 = Pole Timber Poor	9 = Saw Timber Well
F = Spruce Fir	MC = Mixed Conifer		
G = Grass	MD = Mixed Deciduous		
	N = Marsh		
	O = Oak		
	P = Lowland Poplar		
	Q = Mixed Swamp Conifer		
	R = Red Pine		
	S = Black Spruce		
	T = Tamarack		
	U = Upland Brush		
	UM = Upland Mixed		
	V = Bog or Marsh		
	W = White Pine		
	X = Non Stocked		
	Z = Water		

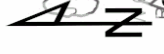
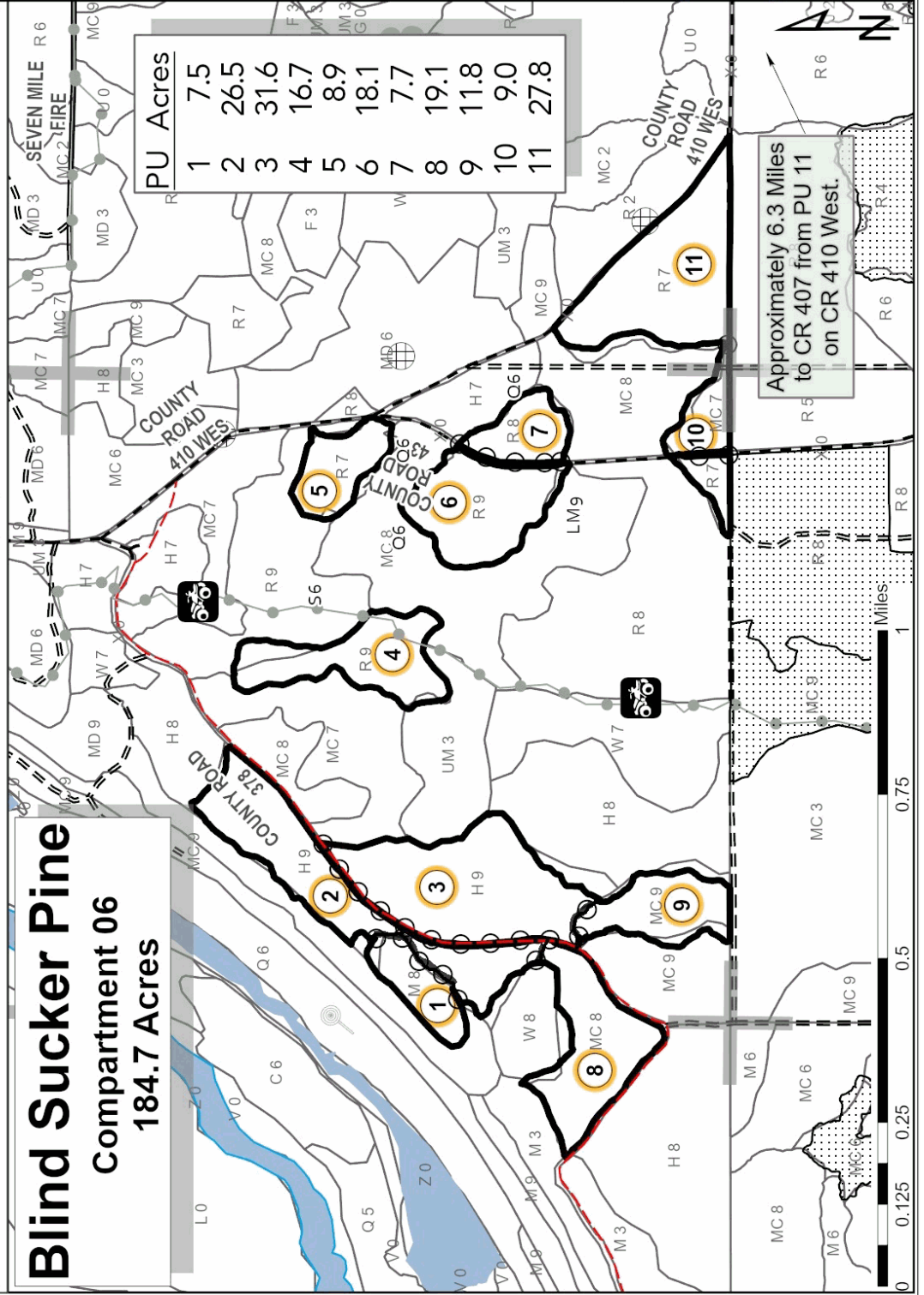
Blind Sucker Pine Compartment 06 184.7 Acres

PU	Acres
1	7.5
2	26.5
3	31.6
4	16.7
5	8.9
6	18.1
7	7.7
8	19.1
9	11.8
10	9.0
11	27.8

Approximately 6.3 Miles
to CR 407 from PU 11
on CR 410 West.

- Against State (Red)
- Payment Unit (Red)
- Payment Unit Label
- ORV Trails
- Recreational Trail
- Section Numbers
- Section Corners
- Berms
- Primary Forest Road
- Secondary Forest Road
- Forest Access Route
- Paved Road
- Gravel Road
- County Road - Seasonal
- Private
- Perennial River
- Lakes and Rivers
- DNR - Management Access
- Temporary Management Access
- Retention Area
- Nearby Timber Sale

Locator Map: 1:200,000
--- Main Map Extent



TIMBER SALE INFORMATION

Holland Lake Pine (42-014-20)

T49N, R11W, SEC. 22; T49N, R11W, SEC. 23; T49N, R11W, SEC. 24; T49N, R11W, SEC. 26; T49N, R11W, SEC. 28.
Luce County (Advertised Price \$43,037.60)

SALE NOTE: The Pine Ridge Trail is an ORV trail and is shown on the Timber Sale Map. See Sale Spec 5.2.39 for additional information.

The Headquarters Lake Equestrian Trail is a horse trail and is shown on the Timber Sale Map. See Sale Spec 5.2.40 for restrictions.

A recreation site such as a trail, pathway, or campground is within the sale area or the vicinity. Certain restrictions/specifications may be applicable including time restrictions.

A timber sale contract for this lump sum, sealed bid timber sale will be awarded to the responsible bidder offering the highest sealed bid price. All units of volume listed below were estimated using the T-Sale computer program and our traditional volume equations. Bids must be at or above the following advertised price for each product and species:

<u>PRODUCTS & SPECIES</u>	<u>ESTIMATED UNITS*</u>	<u>ADVERTISED PRICE</u>
Pulpwood		
Beech	9 Cords	\$ 11.95 / Cord
Jack Pine	27 Cords	\$ 22.75 / Cord
Quaking Aspen	2 Cords	\$ 17.40 / Cord
Red Pine	710 Cords	\$ 46.40 / Cord
White Pine	596 Cords	\$ 15.55 / Cord
White Spruce	4 Cords	\$ 17.30 / Cord

* The total volume is statistically estimated within plus (+) or minus (-) 14.58 percent. There are an estimated 1,350 cords on this timber sale, plus or minus 197 cords at the 95% confidence level. The estimated units are final and not subject to adjustment. Prospective bidders are urged to examine this timber and to make their own estimates of quantity and quality.

BOND AND PAYMENT SCHEDULE:

1. A bond in the amount of \$2,152.00 to insure faithful performance of the conditions of the contract will be deposited by the successful bidder within 21 days of the sale award.
2. Cutting in any sale or unit without the required advance payment would be considered a trespass.
3. Total payment must be paid in advance or according to the following schedule :
 - (a) Ten percent (10%) of the sale value must be paid within 21 days of the sale award.
 - (b) The 10% down payment will be credited towards the first unit cut.

(c) Payment for each of the following units must be made before cutting begins in that unit:

PAYMENT UNIT NUMBER	PERCENT OF TOTAL SALE VALUE
01	24.1%
02	6.5%
03	15.3%
04	11.4%
05	31.6%
06	11.1%

4. If no cutting takes place, the 10% down payment will not be refunded.
5. Operations on the contract issued will terminate on 12/31/2023.

SALE STATISTICS

SALE VOLUMES

VOLUME		STATISTICAL RANGE IN CORDS		
TOTAL CUBIC FEET	TOTAL CORDS	PERCENT ERROR	MINIMUM	MAXIMUM
106,656	1,350	14.58%	1,153	1,547

VDU VOLUMES

A VDU is a Volume Determination Unit. Volumes and their associated statistics are calculated at the VDU level and summarized to the sale level. There is often a one to one relationship between a VDU and a Payment Unit, but not always, depending on the cruise design. Refer to the VDU TO PAYMENT UNIT table.

VDU	VOLUME		PERCENT ERROR	RANGE IN CORDS	
	TOTAL CUBIC FEET	TOTAL CORDS		MINIMUM	MAXIMUM
30	13,817	175	39.68%	105	244
49	25,090	318	27.20%	231	404
53	55,529	703	26.27%	518	888
58	70,626	894	18.69%	727	1,061
76	25,707	325	25.89%	241	410
TOTAL:	190,769	2,415		1,823	3,007

VDU TO PAYMENT UNIT

When a VDU is associated with more than one Payment Unit (PU), the VDU volumes are assigned to the PU based on acres of the VDU within the PU.

VDU	VDU ACRES	PU	PU ACRES
30	8.8	6	8.8
49	54.6	5	54.6
53	32.8	2	0.7
		3	24.3
		4	7.8
		4	7.8
58	33.6	2	15.7
		3	0.9
		4	17.0
76	17.4	1	17.4
TOTAL:	147.2		147.2

DESCRIPTION OF TIMBER BY PAYMENT UNIT (PU)

PU	MARKET GROUP	PRODUCT	QUANTITY	UNIT	ACRES	ADVERTISE PRICE
1	Jack Pine	Pulpwood	8	Cords	17.4	\$10,366.55
	Quaking Aspen		2	Cords		
	Red Pine		170	Cords		
	White Pine		141	Cords		
	White Spruce		4	Cords		
2	Beech	Pulpwood	4	Cords	16.4	\$2,818.15
	Jack Pine		1	Cords		
	Red Pine		19	Cords		
	White Pine		120	Cords		
3	Red Pine	Pulpwood	122	Cords	25.2	\$6,578.25
	White Pine		59	Cords		
4	Beech	Pulpwood	5	Cords	24.8	\$4,920.10
	Jack Pine		1	Cords		
	Red Pine		56	Cords		
	White Pine		144	Cords		
5	Red Pine	Pulpwood	280	Cords	54.6	\$13,582.90
	White Pine		38	Cords		
6	Jack Pine	Pulpwood	17	Cords	8.8	\$4,771.65
	Red Pine		63	Cords		
	White Pine		94	Cords		
TOTAL:			1,348	Cords		

Sale Specific Conditions & Requirements

Sale Name: Holland Lake Pine

Sale Number: 42-014-20 Seq#: 1

1 - Sale Area

1.2 - Boundaries

1.2.1 - Painted boundaries (9/19)

The sale boundary and Payment Unit boundaries are marked and identified by red and green paint. Exterior sale boundary lines against state are marked with red paint and County Roads 410 and 414. Interior Payment Unit boundaries are marked with green paint. The painted boundary line trees are not Included Timber and are to be protected unless marked with orange paint.

2 - Timber Specifications

2.1 - Included Timber

2.1.1 - Clearcut unit(s) with unmerchantable trees (6/14)

Within Payment Unit(s) 1 & 5, cut all trees that are two (2) inches or more at DBH.

2.1.3 - Cut tree marked unit(s) (12/08)

Within Payment Unit(s) 2 - 4, all trees are designated for cutting when marked with orange paint above and below stump height, regardless of merchantability. In addition, cut all jack pine and beech that is present. Do not cut any oak or paper birch.

2.1.7 - Leave tree marked unit(s) (6/14)

Within Payment Unit(s) 6, cut all trees that are two (2) inches or more at DBH except trees marked with green paint above and below stump height.

2.1.11 - Description of timber note (2/04)

Note that there is sawlog sized red and white pine within the sale. All red and white pine were cruised as pulp.

2.2 - Utilization

2.2.3 - Stump heights (4/07)

Stump heights within Payment Unit(s) 1, 5 and 6 shall not exceed 6 inches for all trees. This is to facilitate follow up cultivation operations.

4 - Transportation

4.1 - Construction

4.1.3 - Slash and earthen piles (8/04)

Piles or windrows of earth along roads and landings that have been widened or constructed shall be leveled. Slash from road maintenance or construction, including stumps, shall be dispersed throughout the sale.

4.1.7 - Road closure (10/11)

All new back in spurs built into the sale must be blocked to vehicle traffic upon completion of the sale. All stumps from road building and landing construction must be reserved to block any newly constructed spurs upon completion of the sale. These stumps must be scattered along the road system to prohibit vehicular movement. Contact the sale administrator for specific details of design and placement.

4.1.12 - No new roads (1/12)

No new roads will be permitted in any Payment Unit. Back in spurs off existing roads will be allowed.

4.2 - Maintenance

4.2.4 - Grading (10/16)

For completion of the sale, state forest roads must be graded. In general, this will require a road grader or bulldozer to shape up the roads after forest products have been hauled off site. This includes grading, crowning, and filling with gravel, as necessary. The grading equipment to be used must be approved by the Unit Manager or his/her representative.

5 - Operations

5.2 - Conduct of Operations

5.2.1 - Slash

5.2.1.2 - Slash Removal

5.2.1.2.1 - Slash removal, right-of-way (9/16)

All slash must be removed at least 10 feet from the cleared right-of-way of existing forest roads.

5.2.1.8 - Slash height (12/08)

No slash or tree tops may exceed 24 inches in height.

5.2.2 - Hazard Trees/Snags

5.2.2.1 - Den trees (10/16)

Obvious hollow and/or den trees shall be protected and left standing unless they are a safety hazard.

5.2.3 - Operating Restrictions

5.2.3.6 - Bark beetle restriction (12/08)

In the event drought creates a high risk of pine bark beetle infestation, pine is not to be cut during the period March 1 through July 1, unless all portions of trees greater than two inches in diameter are removed from the sale area, reduced to chips, or treated to the satisfaction of the Unit Manager or his/her representative, within fifteen days of being severed from the stump. Pine log decks, pulpwood piles and treetops that are piled for chipping in the fall or winter within a 1/4 mile of susceptible sites must be removed before March 15. Residual slash must not be placed in piles or rows and must be spread over the site for quick drying. The Department of Natural Resources will exercise this specification if the risk of damage warrants.

5.2.32 - Decking/landing restoration (9/13)

All decking and landing areas must have the surface area restored to a condition equal to or better than before. This is to ensure the proper regeneration of the stand. Wood debris, chips, and "cookies" from trimmings must be removed or scattered away from landing and loading areas and may not be windrowed on the edge.

5.2.38 - No decking against live trees (2/04)

Cut products may not be decked against unmarked or designated leave trees.

5.2.39 - ORV trail/route protection (4/18)

The Pine Ridge Trail is an ORV trail and is shown on the Timber Sale Map. All stumps within 5 feet of the trail must be cut off at least 5 feet above ground level. Maintain a 20-foot-wide slash, debris, and rut free zone daily using the ORV trail or route as the centerline. Do not run equipment down the ORV trail or route.

5.2.40 - Pathway protection (10/10)

The Headquarters Lake Equestrian Trail is a horse trail and is shown on the Timber Sale Map. Maintain a 20-foot-wide slash, debris, and rut free zone daily, using the pathway as the centerline. Please use caution and be courteous to riders that are passing through.

5.8 - Protection of Endangered Species

5.8.5 - Protection of raptor nests (3/13)

All trees with raptor nests will be protected if found during harvesting operations. Notification will be made to the Unit Manager or his/her representative who will notify the Wildlife Biologist so an on-site evaluation and recommendation can be made, if necessary.

6 - Safety and Fire Prevention

6.2 - Signing

6.2.1 - Road posting (9/09)

The Purchaser is responsible for posting and maintaining caution signs on County Roads 410 and 416 prior to beginning operations. The road must be posted at appropriate distances from the Sale Area to warn of logging activity and truck traffic.

Signs must be removed when harvest operations are suspended or completed. The Purchaser will provide these signs.

6.2.3 - Recreational trail posting (2/10)

The Purchaser is responsible for posting and maintaining caution signs on the ORV and Equestrian trails prior to beginning operations. The trail must be posted at appropriate distances from the Sale Area to warn of logging activity and truck traffic at both ends of the trail. Signs must be removed when harvest operations are suspended or completed. The DNR will provide these signs.



TIMBER SALE MAP

This information provided by authority of Part 525, 1994 PA 451, as amended.

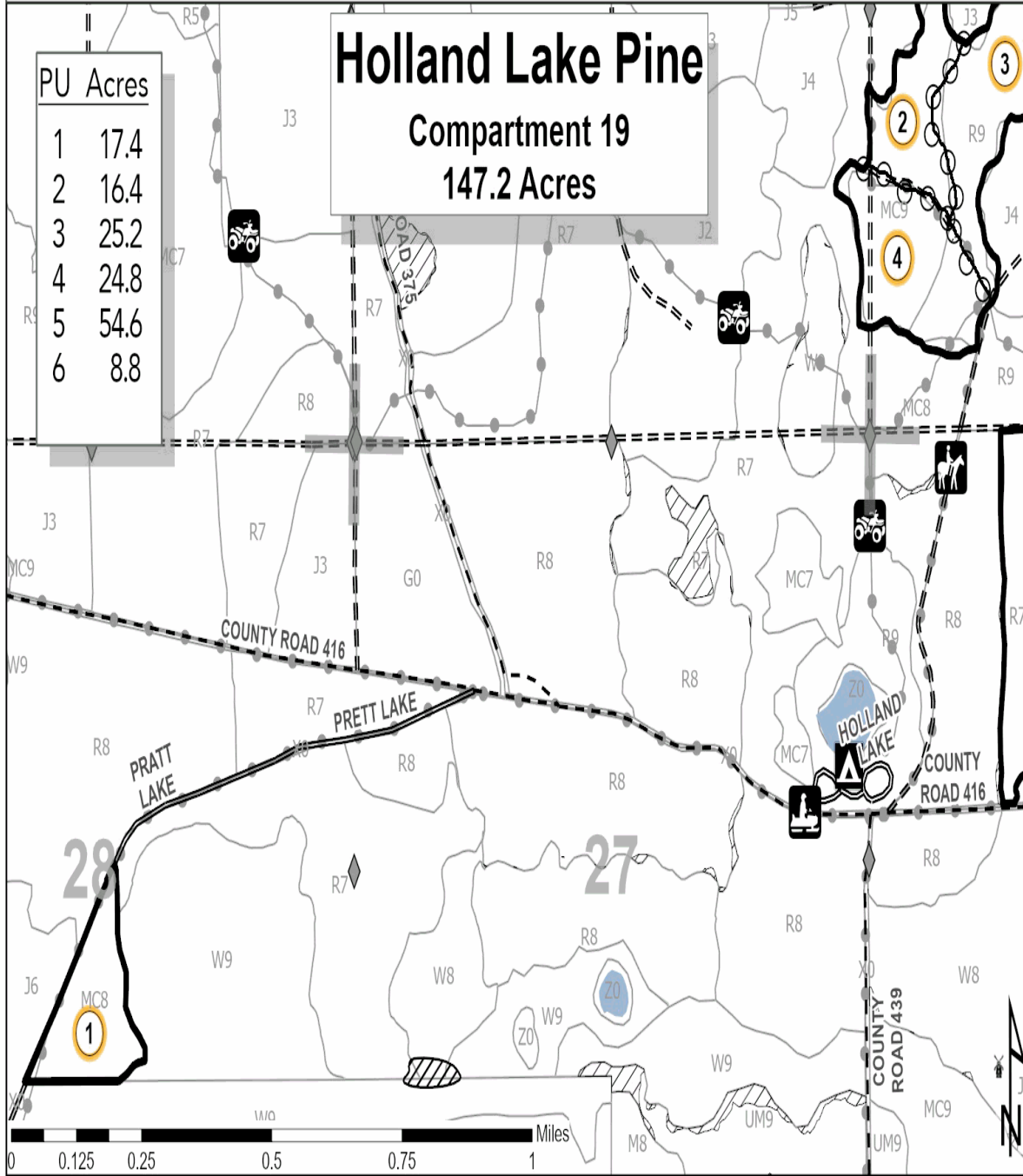
Forest Management Unit Newberry	County Luce	Mapped By Livermore	Date 8/13/2020	Page 1	of 2
		Cruised By Newberry Staff			

Township 49N	Range 11W	Section(s) and Subdivision(s) Section 26: E½NW Section 28: NESW, NWSE Section 22: E½SE Section 23: S½NW, N½SW, SWSW Section 24: N½NW	Scale 1:15,840
-----------------	--------------	--	-------------------

Cover Type				Density			
A = Aspen	H = Hemlock	N = Marsh	U = Upland Brush	0 = Non Stocked	5 = Pole Timber Medium		
B = Paper Birch	J = Jack Pine	O = Oak	UM = Upland Mixed	1 = Seedling Sapling Poor	6 = Pole Timber Well		
C = Cedar	L = Lowland Brush	P = Lowland Poplar	V = Bog or Marsh	2 = Seedling Sapling Medium	7 = Saw Timber Poor		
D = Treed Bog	LM = Lowland Mixed	Q = Mixed Swamp Conifer	W = White Pine	3 = Seedling Sapling Well	8 = Saw Timber Medium		
E = Swamp Hdwoods	M = Mpl, Bch, Brch	R = Red Pine	X = Non Stocked	4 = Pole Timber Poor	9 = Saw Timber Well		
F = Spruce Fir	MC = Mixed Conifer	S = Black Spruce	Z = Water				
G = Grass	MD = Mixed Deciduous	T = Tamarack					

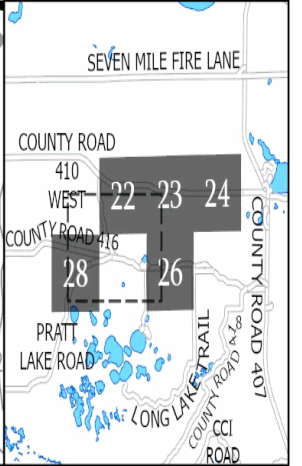


- Against State (Red)
- Payment Unit (Green)
- Payment Unit Label
- 🐎 Horse Trails
- 🚙 ORV Trails
- 🏠 Snowmobile Trails
- 🚶 Recreational Trail
- 01 Section Numbers
- ▣ Section Corners
- 🏕 State Forest Campground
- ◆ Field Grade Corners
- ⊕ Berms
- Primary Forest Road
- Secondary Forest Road
- Forest Access Route
- Paved Road
- Gravel Road
- County Road - Seasonal
- Private
- ⋯ Temporary Management Access
- 🌊 Lakes and Rivers
- Retention Area
- ▨ Retention Area
- Stand Covertype



PU	Acres
1	17.4
2	16.4
3	25.2
4	24.8
5	54.6
6	8.8

Locator Map: 1:200,000
 □ - Main Map Extent





Sale Number	Year
42-014-20	2020

TIMBER SALE MAP

This information provided by authority of Part 525, 1994 PA 451, as amended.

Forest Management Unit Newberry	County Luce	Mapped By Livermore	Date 8/13/2020	Page 2	of 2
Cruised By Newberry Staff					

Township 49N	Range 11W	Section(s) and Subdivision(s) Section 26: E½NW Section 28: NESW, NWSE Section 22: E½SE Section 23: S½NW, N½SW, SWSW Section 24: N½NW	Scale 1:15,840
-----------------	--------------	--	-------------------

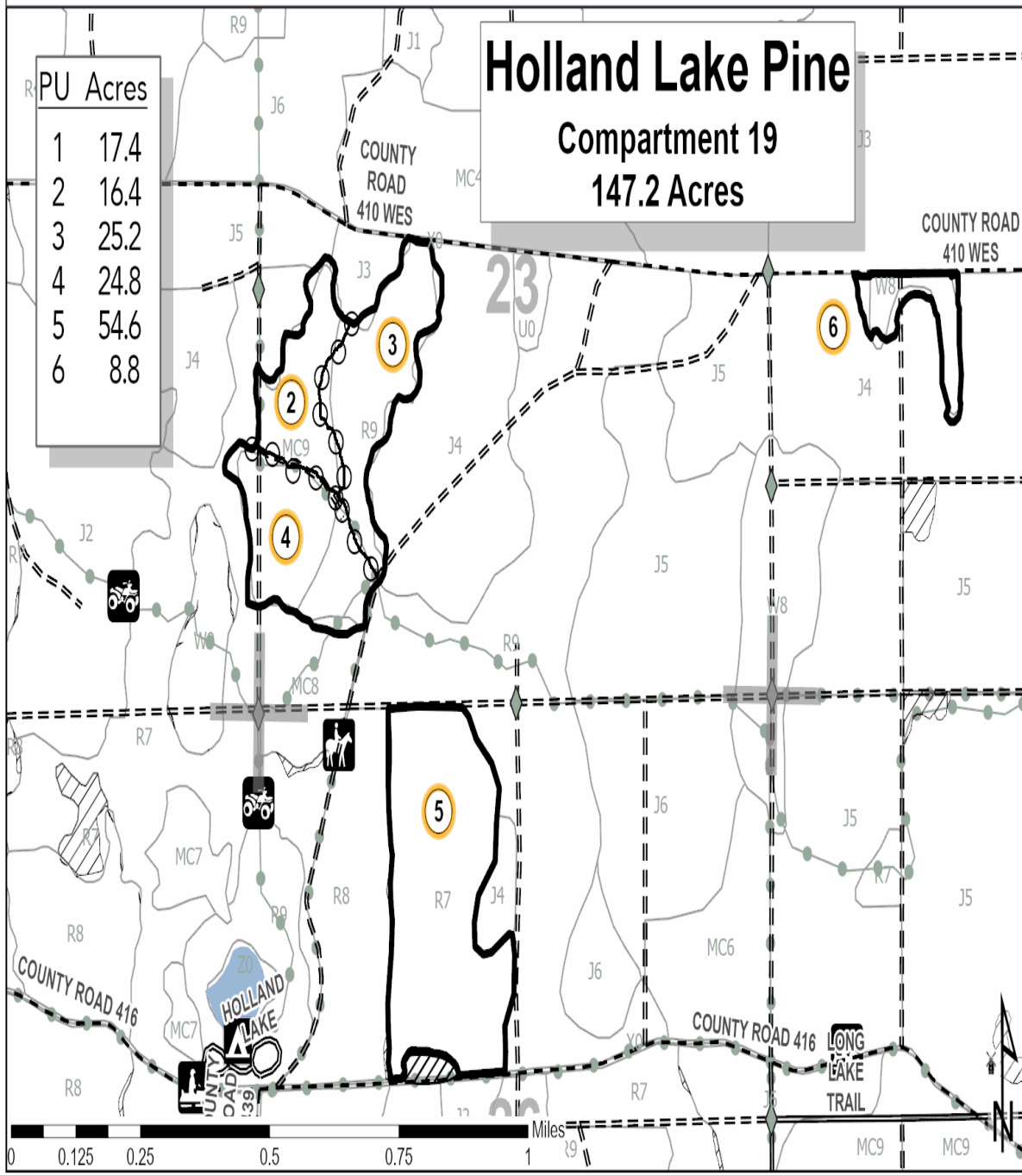
Cover Type			Density		
A = Aspen	H = Hemlock	N = Marsh	U = Upland Brush	0 = Non Stocked	5 = Pole Timber Medium
B = Paper Birch	J = Jack Pine	O = Oak	UM = Upland Mixed	1 = Seedling Sapling Poor	6 = Pole Timber Well
C = Cedar	L = Lowland Brush	P = Lowland Poplar	V = Bog or Marsh	2 = Seedling Sapling Medium	7 = Saw Timber Poor
D = Treed Bog	LM = Lowland Mixed	Q = Mixed Swamp Conifer	W = White Pine	3 = Seedling Sapling Well	8 = Saw Timber Medium
E = Swamp Hdwoods	M = Mpl, Bch, Brch	R = Red Pine	X = Non Stocked	4 = Pole Timber Poor	9 = Saw Timber Well
F = Spruce Fir	MC = Mixed Conifer	S = Black Spruce	Z = Water		
G = Grass	MD = Mixed Deciduous	T = Tamarack			



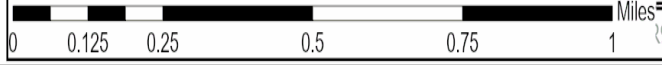
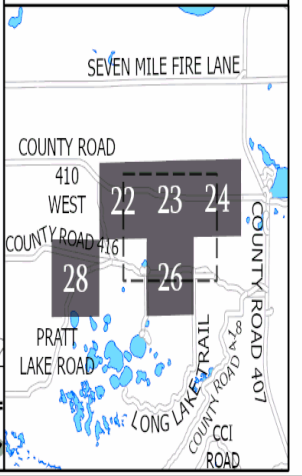
- Against State (Red)
- Payment Unit (Green)
- Payment Unit Label
- 🐎 Horse Trails
- 🚙 ORV Trails
- 🏠 Snowmobile Trails
- 🌿 Recreational Trail
- 01 Section Numbers
- Section Corners
- 🏕 State Forest Campground
- ◆ Field Grade Corners
- Primary Forest Road
- Secondary Forest Road
- == Forest Access Route
- Paved Road
- - Gravel Road
- - - County Road - Seasonal
- Private
- ⋯ Temporary Management Access
- 🌊 Lakes and Rivers
- Retention Area
- ▨ Retention Area
- Stand Coverture

Holland Lake Pine Compartment 19 147.2 Acres

PU	Acres
1	17.4
2	16.4
3	25.2
4	24.8
5	54.6
6	8.8



Locator Map: 1:200,000
 [] - Main Map Extent



Blind Sucker Mix (42-006-20)
T49N, R11W, SEC. 18; T49N, R12W, SEC. 13; T49N, R12W, SEC. 14; Luce

In response to the notice of sale to be held 3:00 p.m. (local time) on June 24, 2021, I am hereby submitting my sealed bid (firm offer) for the following forest products to be cut. Bids for individual species must be at or above the advertised price. All non-responsive bid forms may be rejected.

<u>PRODUCTS & SPECIES</u>	<u>ESTIMATED VOLUME*</u>	<u>ADVERTISED PRICE</u>	<u>BID PRICE/UNIT</u>
Sawtimber			
Paper Birch	11.5 MBF	\$ 27.00/MBF	\$ _____
Red Maple	62.1 MBF	\$ 71.00/MBF	\$ _____
Sugar Maple	2.2 MBF	\$ 218.00/MBF	\$ _____
Yellow Birch	10.4 MBF	\$ 28.00/MBF	\$ _____
Pulpwood			
Balsam Fir	162 Cords	\$ 9.40/Cord	\$ _____
Mixed Hardwood	1,242 Cords	\$ 11.95/Cord	\$ _____
Mixed Spruce	71 Cords	\$ 17.30/Cord	\$ _____
N. White Cedar	7 Cords	\$ 4.80/Cord	\$ _____
Red Oak	5 Cords	\$ 17.45/Cord	\$ _____
Red Pine	1,372 Cords	\$ 46.40/Cord	\$ _____
White Pine	746 Cords	\$ 15.55/Cord	\$ _____

*The volumes are statistically estimated within plus (+) or minus (-) 10.37 percent at 95% confidence level. These estimated volumes are final and not subject to adjustment. Prospective bidders are urged to examine this timber and to make their own estimates of quantity and quality.

I understand that any or all bids may be rejected. All bids must be signed and all bid items must be bid or the bid form may be rejected. I also understand that consideration and awarding a contract will be based upon my past performance and ability to complete the contract based upon equipment and staffing subject to my control.

FEDERAL ID: _____ or SOCIAL SECURITY NUMBER: _____

Company or individual bidding: _____

Company representative's name: _____

Address: _____

City: _____ State: _____ Zip: _____

IF AVAILABLE, PLEASE PLACE THE PERSONALIZED LABEL FROM YOUR PROSPECTUS IN THE ABOVE BOX.

Individual or company representative's signature: _____ Date: _____

Phone number : _____ Email (optional): _____

THE WINNING BIDDER MUST COMPLETE THE VERIFICATION OF WORKER'S DISABILITY COMPENSATION ACT COMPLIANCE (ON REVERSE SIDE IF DOUBLE SIDED) WITHIN 21 DAYS OF SALE AWARD DATE



FOR DEPARTMENT USE ONLY
Sale Number (XX - XXX - XX - XX)
Forest Management Unit:

TIMBER SALE VERIFICATION OF WORKER'S DISABILITY COMPENSATION ACT COMPLIANCE

*As required by Act 317, P.A. 1969 (Worker's Compensation) and
Part 5 of Act 451 of 1994, as amended.*

VERIFICATION OF WORKER'S DISABILITY COMPENSATION ACT COMPLIANCE

- This verification must be completed and submitted within 21 days of contract award and prior to the issuance of the timber sale contract.
- In addition, if boxes 2B or 2C are checked, then Notice of Exclusion or Certificate of Insurance must be submitted within twenty-one (21) days of the contract award and prior to the issuance of the timber sale contract.
- All information must be typed or printed except for written signatures.

Please Check Appropriate Categories:

1. My business is organized as (you **must** check one of the boxes below):
 - A. Sole Proprietorship (individual)
 - B. Partnership
 - C. Corporation
2. You **must** check one of the boxes below:
 - A. I certify my business is a sole proprietorship and it has no employees but the sole proprietor. I am not subject to the Worker's Compensation Laws.
 - B. I certify my business has satisfied its obligation to the Worker's Compensation Act through the use of an approved Notice of Exclusion (BWC-337, Rev. 5/96). I will provide a copy of the Notice of Exclusion within 21 days of the contract award. (For questions or a copy of the BWC-337, please call the Worker's Compensation Bureau at 517-322-1195).
 - C. I certify my business has a Worker's Compensation Policy. I will provide an original Certificate of Insurance within twenty-one (21) days of the contract award.
3. If you have checked item 2(A) or 2(B), you **must** indicate the number of **both** full-time and part-time employees, other than yourself, including family members and active partners (if none, you must enter "0").

_____ Full-time Employees

_____ Part-time Employees

Name of Business		Federal ID (or) Social Security No.	
Address		Telephone ()	
City	State	ZIP	

I hereby certify that the above information is true and correct. I agree to notify the Michigan DNR of any changes that occur in factors affecting my coverage during any of my present and future operations.

Signature of Owner or Authorized Representative

Title

Date

Please complete the "SEALED BID" information on the next page

Holland Lake Pine (42-014-20)

T49N, R11W, SEC. 22; T49N, R11W, SEC. 23; T49N, R11W, SEC. 24; T49N,

In response to the notice of sale to be held 3:00 p.m. (local time) on June 24, 2021, I am hereby submitting my sealed bid (firm offer) for the following forest products to be cut. Bids for individual species must be at or above the advertised price. All non-responsive bid forms may be rejected.

<u>PRODUCTS & SPECIES</u>	<u>ESTIMATED VOLUME*</u>	<u>ADVERTISED PRICE</u>	<u>BID PRICE/UNIT</u>
Pulpwood			
Beech	9 Cords	\$ 11.95/Cord	\$ _____
Jack Pine	27 Cords	\$ 22.75/Cord	\$ _____
Quaking Aspen	2 Cords	\$ 17.40/Cord	\$ _____
Red Pine	710 Cords	\$ 46.40/Cord	\$ _____
White Pine	596 Cords	\$ 15.55/Cord	\$ _____
White Spruce	4 Cords	\$ 17.30/Cord	\$ _____

*The volumes are statistically estimated within plus (+) or minus (-) 14.58 percent at 95% confidence level. These estimated volumes are final and not subject to adjustment. Prospective bidders are urged to examine this timber and to make their own estimates of quantity and quality.

I understand that any or all bids may be rejected. All bids must be signed and all bid items must be bid or the bid form may be rejected. I also understand that consideration and awarding a contract will be based upon my past performance and ability to complete the contract based upon equipment and staffing subject to my control.

FEDERAL ID: ____ - ____ - ____ or SOCIAL SECURITY NUMBER: ____ - ____ - ____

Company or individual bidding: _____

Company representative's name: _____

Address: _____

City: _____ State: _____ Zip: _____

IF AVAILABLE, PLEASE PLACE THE PERSONALIZED LABEL FROM YOUR PROSPECTUS IN THE ABOVE BOX.

Individual or company representative's signature: _____ Date: _____

Phone number : _____ Email (optional): _____

THE WINNING BIDDER MUST COMPLETE THE VERIFICATION OF WORKER'S DISABILITY COMPENSATION ACT COMPLIANCE (ON REVERSE SIDE IF DOUBLE SIDED) WITHIN 21 DAYS OF SALE AWARD DATE



FOR DEPARTMENT USE ONLY	
Sale Number (XX - XXX - XX - XX)	
Forest Management Unit:	

TIMBER SALE VERIFICATION OF WORKER'S DISABILITY COMPENSATION ACT COMPLIANCE

As required by Act 317, P.A. 1969 (Worker's Compensation) and
Part 5 of Act 451 of 1994, as amended.

VERIFICATION OF WORKER'S DISABILITY COMPENSATION ACT COMPLIANCE

- This verification must be completed and submitted within 21 days of contract award and prior to the issuance of the timber sale contract.
- In addition, if boxes 2B or 2C are checked, then Notice of Exclusion or Certificate of Insurance must be submitted within twenty-one (21) days of the contract award and prior to the issuance of the timber sale contract.
- All information must be typed or printed except for written signatures.

Please Check Appropriate Categories:

1. My business is organized as (you **must** check one of the boxes below):
 - A. Sole Proprietorship (individual)
 - B. Partnership
 - C. Corporation
2. You **must** check one of the boxes below:
 - A. I certify my business is a sole proprietorship and it has no employees but the sole proprietor. I am not subject to the Worker's Compensation Laws.
 - B. I certify my business has satisfied its obligation to the Worker's Compensation Act through the use of an approved Notice of Exclusion (BWC-337, Rev. 5/96). I will provide a copy of the Notice of Exclusion within 21 days of the contract award. (For questions or a copy of the BWC-337, please call the Worker's Compensation Bureau at 517-322-1195).
 - C. I certify my business has a Worker's Compensation Policy. I will provide an original Certificate of Insurance within twenty-one (21) days of the contract award.
3. If you have checked item 2(A) or 2(B), you **must** indicate the number of **both** full-time and part-time employees, other than yourself, including family members and active partners (if none, you must enter "0").

_____ Full-time Employees

_____ Part-time Employees

Name of Business		Federal ID (or) Social Security No.	
Address		Telephone ()	
City	State	ZIP	

I hereby certify that the above information is true and correct. I agree to notify the Michigan DNR of any changes that occur in factors affecting my coverage during any of my present and future operations.

Signature of Owner or Authorized Representative

Title

Date

Please complete the "SEALED BID" information on the next page