



**DEPARTMENT OF NATURAL RESOURCES
STATE OF MICHIGAN**

TIMBER SALE PROSPECTUS #6836

SCHEDULED SALE DATE AND TIME: 9:00 a.m. (local time) on March 16, 2021.

LOCATION: ROSCOMMON MGMT UNIT, PO BOX 218, ROSCOMMON, MI 48653.

PROSPECTUS NOTE: The bidder is advised to inspect the sale area and review the location, estimated volumes, operating costs and contract terms of proposed sales. Please be aware that some landowners may request 60 days or more notice for access across their land.

Notice is hereby given that bids will be received by the Unit Manager, ROSCOMMON MANAGEMENT UNIT, for certain timber on the following described lands:

Massasauga Mix (71-014-20) / T21N, R04W, SEC. 18, SENW,SWNE,NESW,N1/2SE.

T21N, R04W, SEC. 7 , N1/2SE,SWSE.

T21N, R04W, SEC. 7 , W1/2NW,S1/2NE,NWSW,SESW.

T21N, R04W, SEC. 8 , SWNW.

Roscommon County, Advertised Price \$62,605.15, 114.3 Acres, Hardwood, Red Pine.

SALE NOTE: A recreation site such as a trail, pathway, or campground is within the sale area or the vicinity. Certain restrictions/specifications may be applicable including time restrictions.

Pinball Alley (71-019-20) / T22N, R01W, SEC. 1 , SWSW.

T22N, R01W, SEC. 11, N1/2NE,SENE,NESE.

T22N, R01W, SEC. 12, NWNW,S1/2NW,N1/2SW.

T23N, R01W, SEC. 35, NENE.

T23N, R01W, SEC. 36, W1/2NW,NWSW,S1/2SW.

Roscommon County, Advertised Price \$78,317.25, 126.5 Acres, Aspen, Hardwood.

SALE NOTE: A recreation site such as a trail, pathway, or campground is within the sale area or the vicinity. Certain restrictions/specifications may be applicable including time restrictions.

BID INSTRUCTIONS (VER. 07/02/2018):

1. Scheduled Bid Location, Date, and Time (2/11)

Bids must be received by the Unit Manager, ROSCOMMON OFFICE, PO BOX 218, ROSCOMMON, MI 48653, no later than 9:00 a.m. (local time) on March 16, 2021. For further information concerning this sale, contact Patrick Mohney at 989-275-4622 extension 2740.

2. Bidder's Qualifications (5/16)

Purchaser shall obtain workers compensation insurance to cover claims under Michigan's Worker's Disability Compensation Act of 1969 or similar employee benefit act of any other state applicable to an employee. If all or part of a timber sale was prepared by a private contractor, the contractor and that contractor's company are not permitted to bid on the timber sale contract. Bids will not be accepted from individuals or companies appearing on the DNR/FRD No-Bid List. This list contains the names of purchasers who previously failed to execute a contract within 21-days or who have a history of poor performance.

3. Preparation of Sealed Bids (5/16)

Bid Forms may be completed online thru Michigan DNR Timber Sale Online Bidding (OLB) at www.michigan.gov/timberbidding or by completing the hardcopy Bid Form found in the Timber Sale Prospectus. Hardcopy Bid Forms shall be manually signed in ink. Registration in OLB is considered your 'signature' for all bids submitted thru that system. Bid prices must be entered for each species and product in the Bid Price column for all material subject to bidding and all fill-in blanks must be completed. If erasures or other changes appear on the hardcopy Bid Form, each erasure or change must be initialed by the person signing the bid.

4. Submission of Sealed Bids (5/16)

Bid forms may be obtained from the Unit Manager or thru OLB. Bids may be submitted hardcopy or thru OLB. All hardcopy bids must be submitted on the bid form and in an envelope clearly identified as described in this section. NOTE: Only one bid form per bid envelope. Sealed bids must be submitted to the Unit office designated in the prospectus and must be submitted at or prior to the time established in the prospectus. The envelope should show on the outside (a) the sale name or number and (b) the date and time of bid opening, as shown in the prospectus. Bids received after the time specified in the sale prospectus are late bids and will be rejected.

It is possible for a bidder to submit multiple bids on a single sale. For example, a bid may be submitted hardcopy and a bid may be submitted thru OLB. Or, two bidders from the same company could both submit bids on the same sale. If this were to happen, the State would accept all bids received and award the contract accordingly. All bidding and contractual requirements would apply to all bids received.

5. Public Opening of Sealed Bids (7/16)

If conditions permit, the sealed bids will be publicly opened and posted at the time and place set in the prospectus.

If a bidder, present at a bid opening, has submitted bids on more than one sale, that bidder may withdraw their unopened bid envelopes or announce the withdrawal of their online bid after being declared the successful bidder on one sale.

6. Award of Contract (1/11)

Award of the contract will be made to the Bidder whose bid, conforming to the prospectus, is most advantageous to the State of Michigan on the basis of total value at rates bid for the estimated quantities. The State reserves the right to reject any bid or waive any minor irregularity in bids received. A written award mailed (or otherwise furnished) to the successful Bidder shall be deemed to result in a binding contract without further action by either party.

7. Down Payment (1/11)

The Bidder to whom award is made must make a down payment within 21 days of the sale award. The amount of the down payment will be calculated as shown in the Bond and Payment Schedule of this prospectus. Only cash may be used to meet this requirement.

8. Performance Security (1/11)

As guarantee of faithful performance, a cash bond, certificate of deposit, surety bond or irrevocable letter of credit (LOC) is required within 21 days of the sale award. The amount of the performance security is shown in the Bond and

Payment Schedule of this prospectus. If an LOC or surety is used, the coverage must extend for at least 6 months beyond the contract expiration.

9. Timber Sale Contract (7/18)

Additional conditions and requirements common to all timber sales are listed on the timber sale contract (R4031) and are available on line at www.michigan.gov/timber. Contact the Unit Manager for additional information or a sample contract. Within 21 days of the date of the award letter, the bidder must sign the contract and provide the required down payment, performance security, and verification of worker's disability compensation. The down payment and performance security shall be in accordance with the provisions of the timber sale contract, in the sums stated in this prospectus. If these actions are not taken, then the Bidder, the Bidder's corporation, and the corporation's principals may not be permitted to bid on State timber sales for a period of 3 months after the first offense, 6 months after the second offense, and 1 year after the third offense. An offense will only be counted against the Bidder for 5 years. In addition, the Bidder certifies that if awarded this contract, the Bidder will complete the timber sale contract in accordance with its terms and any modifications thereof including requirements to purchase, cut, and remove the included timber by the expiration date.

Payment Unit values in the State Forest Timber Sale Contract are calculated based on the advertised value of the Payment Unit as a percentage of the total advertised value of the contract. The advertised value of each Payment Unit is given in the Description of Timber by Payment Unit table on the Timber Sale Information page. For example, if the value of Payment Unit 1 is advertised as \$1,500 and the total Timber Sale value is advertised as \$10,000, the contract price for Payment Unit 1 will be 15% of the total bid price ($\$1,500/\$10,000 * 100$).

10. Disclaimer of Estimates and Bidder's Warranty of Inspection (7/16)

Before submitting this bid, the Bidder is advised and cautioned to inspect the sale area, review the requirements of the sale contract, and take other steps as may be reasonably necessary to ascertain the location, estimated volumes, construction estimates, and operating costs of the proposed sale. Failure to do so will not relieve the Bidder from responsibility for completing the contract.

The Bidder warrants that this bid is submitted solely on the basis of the Bidder's examination and inspection of the quality and quantity of the timber offered for sale and the Bidder's opinion of the value thereof and the costs of recovery. No reliance should be placed on the State of Michigan's estimates of timber quality, quantity or costs of recovery. Bidder further acknowledges that the State of Michigan: (i) expressly disclaims any warranty of fitness of timber for any purpose; (ii) offers this timber as is without any warranty of quality (merchantability) or quantity and (iii) expressly disclaims any warranty as to the quantity or quality of timber sold.

11. Certification and Chain-of-Custody (10/14)

Unless otherwise indicated in the contract under section 7 – Other Conditions of the Sale Specific Conditions & Requirements, the area encompassed by this timber sale is certified to the standards of the Forest Stewardship Council (FSC) - Certificate #SCS-FM/COC-00090N and the Sustainable Forestry Initiative (SFI) - Certificate #NSF-SFIS-5Y031-SF5. Forest products from this sale may be delivered to the mill as "FSC 100% and / or SFI certified" as long as the contractor hauling the forest products is chain-of-custody (COC) certified or covered under a COC certificate from the destination mill. The purchaser is responsible for maintaining COC after leaving the sale area.

12. Good Neighbor Authority (GNA) Requirements (7/16)

If the name of this timber sales contains the acronym GNA, it is authorized by the Good Neighbor Authority (GNA) and covered by various agreements between the U.S. Forest Service and the State. The timber sale occurs on federal land and the following conditions apply:

GNA contracts on US Forest Service land will not be awarded to purchasers on the Federal list of excluded parties. The System for Award Management (SAM) will be checked for active excluded parties prior to award of contract. In addition, the Bidder to whom award is made must complete an Assurance Regarding Felony Conviction or Tax Delinquent Status for Corporate Applicants (AD-3031).

13. Good Neighbor Authority (GNA) Requirements, con't (9/16)

Bidder certifies, by signing this bid form, that to the best of Bidder's knowledge that the following representations are accurate and complete.

- a. That the Bidder and its principals are not presently debarred, suspended, proposed for debarment, declared ineligible, or voluntary excluded from timber sales (covered transactions) by any Federal department or agency.
- b. That the Bidder and its principals have not within a 3-year period preceding this bid been convicted of or had a civil judgment rendered against them for commission of fraud or a criminal offense in connection with obtaining , attempting to obtain, or performing a public (Federal, State, or local) transaction or contract under a public transaction; violation of Federal or State antitrust statutes or commission of embezzlement, theft, forgery, bribery, falsification or destruction of records, making false statements, or receiving stolen property.
- c. That the Bidder and its principals are not presently indicted for or otherwise criminally or civilly charged by a governmental entity (Federal, State, or local) with commission of any of the offenses enumerated in paragraph b of this certification.
- d. That the Bidder and its principals have not within a 3-year period preceding this bid had one or more public transactions (Federal, State, or local) terminated for breach or default of a timber or forest product contract.

Bidders that cannot certify this requirement, in whole or in part, shall submit an explanation with their bid.

DAN EICHINGER
Director

TIMBER SALE INFORMATION

Massasauga Mix (71-014-20)
 T21N, R04W, SEC. 18; T21N, R04W, SEC. 7; T21N, R04W, SEC. 8.
 Roscommon County (Advertised Price \$62,605.15)

SALE NOTE: A recreation site such as a trail, pathway, or campground is within the sale area or the vicinity. Certain restrictions/specifications may be applicable including time restrictions.

A timber sale contract for this lump sum, sealed bid timber sale will be awarded to the responsible bidder offering the highest sealed bid price. All units of volume listed below were estimated using the T-Sale computer program and our traditional volume equations. Bids must be at or above the following advertised price for each product and species:

<u>PRODUCTS & SPECIES</u>	<u>ESTIMATED UNITS*</u>	<u>ADVERTISED PRICE</u>
Sawtimber		
Jack Pine	9.8 MBF	\$ 26.00 / MBF
Mixed Oak	196.0 MBF	\$ 75.00 / MBF
Red Pine	175.2 MBF	\$ 94.00 / MBF
White Pine	45.6 MBF	\$ 42.00 / MBF
Pulpwood		
B. T. Aspen	129 Cords	\$ 16.90 / Cord
Balsam Fir	26 Cords	\$ 18.20 / Cord
Jack Pine	96 Cords	\$ 12.90 / Cord
Mixed Oak	517 Cords	\$ 13.85 / Cord
Red Maple	24 Cords	\$ 12.60 / Cord
Red Pine	315 Cords	\$ 36.20 / Cord
White Pine	339 Cords	\$ 19.20 / Cord

* The total volume is statistically estimated within plus (+) or minus (-) 9.75 percent. There are an estimated 2,298 cords on this timber sale, plus or minus 224 cords at the 95% confidence level. The estimated units are final and not subject to adjustment. Prospective bidders are urged to examine this timber and to make their own estimates of quantity and quality.

BOND AND PAYMENT SCHEDULE:

1. A bond in the amount of \$3,130.00 to insure faithful performance of the conditions of the contract will be deposited by the successful bidder within 21 days of the sale award.
 2. Cutting in any sale or unit without the required advance payment would be considered a trespass.
 3. Total payment must be paid in advance or according to the following schedule :
 - (a) Ten percent (10%) of the sale value must be paid within 21 days of the sale award.
 - (b) The 10% down payment will be credited towards the first unit cut.
 - (c) Payment for each of the following units must be made before cutting begins in that unit:
- | PAYMENT UNIT NUMBER | PERCENT OF TOTAL SALE VALUE |
|---------------------|-----------------------------|
| 01 | 17.0% |
| 02 | 26.7% |
| 03 | 20.1% |
| 04 | 16.8% |
| 05 | 8.4% |
| 06 | 11.0% |
4. If no cutting takes place, the 10% down payment will not be refunded.
 5. Operations on the contract issued will terminate on 03/31/2023.

SALE STATISTICS

SALE VOLUMES

VOLUME			STATISTICAL RANGE IN CORDS	
TOTAL CUBIC FEET	TOTAL CORDS	PERCENT ERROR	MINIMUM	MAXIMUM
181,539	2,298	9.75%	2,074	2,522

VDU VOLUMES

A VDU is a Volume Determination Unit. Volumes and their associated statistics are calculated at the VDU level and summarized to the sale level. There is often a one to one relationship between a VDU and a Payment Unit, but not always, depending on the cruise design. Refer to the VDU TO PAYMENT UNIT table.

VDU	VOLUME		PERCENT ERROR	RANGE IN CORDS	
	TOTAL CUBIC FEET	TOTAL CORDS		MINIMUM	MAXIMUM
121	19,940	252	22.05%	197	308
131	33,085	419	15.61%	353	484
133	19,213	243	23.18%	187	300
140	30,605	387	23.57%	296	479
159	157,510	1,994	12.40%	1,747	2,241
TOTAL:	260,352	3,296		2,780	3,812

VDU TO PAYMENT UNIT

When a VDU is associated with more than one Payment Unit (PU), the VDU volumes are assigned to the PU based on acres of the VDU within the PU.

VDU	VDU ACRES	PU	PU ACRES
121	24.8	6	24.8
131	18.4	4	18.4
133	15.6	5	15.6
140	16.5	3	16.5
159	39.0	1	15.1
		2	23.9
TOTAL:	114.3		114.3

DESCRIPTION OF TIMBER BY PAYMENT UNIT (PU)

PU	MARKET GROUP	PRODUCT	QUANTITY	UNIT	ACRES	ADVERTISE PRICE		
1	Jack Pine	Sawtimber	0.6	MBF	15.1	\$10,618.50		
	Mixed Oak		23.9	MBF				
	<i>Bl/R/Hybrid Oak</i>		23.1	<i>MBF</i>				
	<i>White Oak</i>		0.8	<i>MBF</i>				
	Red Pine		31.6	MBF				
	White Pine		10.7	MBF				
	B. T. Aspen		Pulpwood	24			Cords	
	<i>B. T. Aspen</i>			<i>Sawtimber</i>			1.7	<i>MBF</i>
	<i>B. T. Aspen</i>			<i>Pulpwood</i>			21	<i>Cords</i>
	Jack Pine			12			Cords	
	Mixed Oak		68	Cords				
	<i>Bl/R/Hybrid Oak</i>		65	<i>Cords</i>				
	<i>White Oak</i>		3	<i>Cords</i>				
	Red Maple		4	Cords				
	<i>Red Maple</i>		4	<i>Cords</i>				
	Red Pine		62	Cords				
	White Pine		83	Cords				
2	Jack Pine	Sawtimber	1.0	MBF	23.9	\$16,777.25		
	Mixed Oak		37.8	MBF				
	<i>Bl/R/Hybrid Oak</i>		36.6	<i>MBF</i>				
	<i>White Oak</i>		1.2	<i>MBF</i>				
	Red Pine		50.1	MBF				
	White Pine		16.9	MBF				
	B. T. Aspen		Pulpwood	37			Cords	
	<i>B. T. Aspen</i>			<i>Sawtimber</i>			2.6	<i>MBF</i>
	<i>B. T. Aspen</i>			<i>Pulpwood</i>			32	<i>Cords</i>
	Jack Pine			18			Cords	
	Mixed Oak		107	Cords				
	<i>Bl/R/Hybrid Oak</i>		103	<i>Cords</i>				
	<i>White Oak</i>		4	<i>Cords</i>				
	Red Maple		6	Cords				
	<i>Red Maple</i>		6	<i>Cords</i>				
	Red Pine		98	Cords				
	White Pine		132	Cords				
3	Jack Pine	Sawtimber	3.8	MBF	16.5	\$12,562.65		
	Mixed Oak		12.8	MBF				
	<i>Bl/R/Hybrid Oak</i>		12.8	<i>MBF</i>				
	Red Pine		60.6	MBF				
	White Pine		3.0	MBF				
	B. T. Aspen		Pulpwood	21			Cords	
	<i>B. T. Aspen</i>			<i>Cords</i>			21	<i>Cords</i>
	Jack Pine			25			Cords	
	Mixed Oak			57			Cords	
	<i>Bl/R/Hybrid Oak</i>			57			<i>Cords</i>	
	Red Pine		109	Cords				
White Pine		14	Cords					
4	Jack Pine	Sawtimber	4.4	MBF	18.4	\$10,494.95		
	Mixed Oak		23.8	MBF				
	<i>Bl/R/Hybrid Oak</i>		23.4	<i>MBF</i>				
	<i>White Oak</i>		0.4	<i>MBF</i>				
	Red Pine		30.7	MBF				
	White Pine		6.9	MBF				
	B. T. Aspen		Pulpwood	31			Cords	
	<i>B. T. Aspen</i>			<i>Sawtimber</i>			0.4	<i>MBF</i>
	<i>B. T. Aspen</i>			<i>Pulpwood</i>			30	<i>Cords</i>
	Balsam Fir			11			Cords	

DESCRIPTION OF TIMBER BY PAYMENT UNIT (PU), CON'T

PU	MARKET GROUP	PRODUCT	QUANTITY	UNIT	ACRES	ADVERTISE PRICE	
4 con't	Jack Pine	Pulpwood	37	Cords			
	Mixed Oak		95	Cords			
	<i>B/I/R/Hybrid Oak</i>		88	<i>Cords</i>			
	<i>White Oak</i>		7	<i>Cords</i>			
	Red Pine		42	Cords			
	White Pine		72	Cords			
5	Mixed Oak	Sawtimber	26.3	MBF	15.6	\$5,256.40	
	<i>B/I/R/Hybrid Oak</i>		26.3	<i>MBF</i>			
	Red Pine		2.2	MBF			
	White Pine	8.1	MBF				
	B. T. Aspen	Pulpwood	15	Cords			
	<i>B. T. Aspen</i>		<i>Sawtimber</i>	0.4			<i>MBF</i>
	<i>B. T. Aspen</i>		<i>Pulpwood</i>	14			<i>Cords</i>
	Balsam Fir		15	Cords			
	Jack Pine		4	Cords			
	Mixed Oak		80	Cords			
	<i>B/I/R/Hybrid Oak</i>		80	<i>Cords</i>			
	Red Maple		14	Cords			
	<i>Red Maple</i>	<i>Sawtimber</i>	2.4	<i>MBF</i>			
	<i>Red Maple</i>	<i>Pulpwood</i>	9	<i>Cords</i>			
	Red Pine		4	Cords			
	White Pine		38	Cords			
	6	Mixed Oak	Sawtimber	71.4			MBF
<i>B/I/R/Hybrid Oak</i>		71.4		<i>MBF</i>			
Mixed Oak		Pulpwood	110	Cords			
<i>B/I/R/Hybrid Oak</i>			103	<i>Cords</i>			
<i>White Oak</i>			7	<i>Cords</i>			
TOTAL:			426.6	MBF			
TOTAL:			1,445	Cords			

Sale Specific Conditions & Requirements

Sale Name: Massasauga Mix

Sale Number: 71-014-20 Seq#: 1

1 - Sale Area

1.2 - Boundaries

1.2.1 - Painted boundaries (9/19)

The sale boundary and Payment Unit boundaries are marked and identified by red and yellow paint. Exterior sale boundary lines against state are marked with red paint. Interior Payment Unit boundaries are marked with yellow paint. Retention patches are marked with red paint; no harvesting activities may occur within these areas. The painted boundary line trees are not Included Timber and are to be protected. Yellow painted trees designating an interior Payment Unit boundary are only to be cut when all surrounding Payment Units have been paid.

2 - Timber Specifications

2.1 - Included Timber

2.1.1 - Clearcut unit(s) with unmerchantable trees (6/14)

Within Payment Unit(s) 1, 2, 4, and 5, cut all trees that are two (2) inches or more at DBH, except do not cut trees marked with green paint.

2.1.2 - Clearcut unit(s) w/o unmerchantable trees (8/11)

Within Payment Unit(s) 3 and 6, cut all trees which meet minimum piece specifications in 2.2 Utilization, except do not cut trees marked in green paint.

2.2 - Utilization

2.2.3 - Stump heights (4/07)

Stump heights within the Sale Area shall not exceed 12 inches for trees greater than 10 inches DBH and 4 inches for trees smaller than 10 inches DBH.

3 - Payments

3.3 - Pre-measured Sales

3.3.4 - Dividing payment units (7/14)

Payment Unit(s) may be divided at the request of the Purchaser and upon approval of the Unit Manager. Dividing Payment Units is a contract modification which requires a Timber Sale Contract Amendment.

3.4 - Damaged Timber

3.4.1 - Damaged timber (7/16)

General Condition and Requirement 3.4 Damaged Timber, defines liquidated damages for undesignated live merchantable trees which are cut or injured. In addition, extreme care should be taken to avoid damage to tree seedlings and saplings.

Within Payment Units 3 and 6, if more than 20% of the tree seedlings or saplings (1/4" to 4.5" DBH) within a specified portion of the sale area are damaged, liquidated damages will be assessed at \$300 per acre for all acreage within that specified portion of the sale area that was damaged.

No damage is acceptable to undesignated live merchantable trees. Within the sale area, if more than 5% of trees (> 4.5" DBH) within a specified area of the sale are damaged, liquidated damages will be assessed for all trees damaged. Rates will be in accordance with General Condition and Requirement 3.4 Damaged Timber.

4 - Transportation

4.1 - Construction

4.1.3 - Slash and earthen piles (8/04)

Piles or windrows of earth along roads and landings that have been widened or constructed shall be leveled. Slash from road

maintenance or construction, including stumps, shall be dispersed throughout the sale.

4.1.7 - Road closure (10/11)

All new roads built into the sale must be blocked to vehicle traffic upon completion of the sale. In general, this will require constructing a four (4') foot high berm of stumps and logs covered with earth. Stumps and brush must be placed along the remainder of the trail. These roads must be rendered impassable to cars and trucks. Contact the sale administrator for specific details of design and placement.

4.2 - Maintenance

4.2.1 - Hauling restriction (12/08)

Hauling may be restricted on forest roads by the Unit Manager or his/her representative. The restriction may occur during wet weather conditions.

4.2.3 - Road maintenance (8/13)

The following road maintenance is required: Within 60 days of completion of hauling, or if no hauling occurs for 60 days, the road must be maintained and graded. This includes cleaning of drainage areas, grading, crowning and filling with gravel, if necessary. Damages will be assessed if grading/repair does not occur.

4.2.5 - Two wheel drive condition (2/04)

All existing trail roads on and adjacent to the sale area must be passable by two-wheel drive traffic for the duration of the sale.

5 - Operations

5.1 - Notification

5.1.1 - Pre-sale conference (10/16)

A pre-sale conference between the Purchaser and sale administrator is required prior to beginning any operations to determine landing and road locations.

5.1.4 - Post-sale conference (10/16)

A post-sale conference on site between the Purchaser and sale administrator is required prior to the completion of active logging operations to determine clean-up and repair of landings, road edges, and the fulfillment of other contract specifications.

5.2 - Conduct of Operations

5.2.1 - Slash

5.2.1.2 - Slash Removal

5.2.1.2.1 - Slash removal, right-of-way (9/16)

All slash must be removed at least 10 feet from the cleared right-of-way of forest roads.

5.2.1.8 - Slash height (12/08)

No slash or tree tops may exceed 24 inches in height.

5.2.1.11 - Slash for reforestation (5/07)

To facilitate reforestation, Payment Unit(s) 3 and 4 shall be left with slash evenly distributed. Bunched tops within the cutting area shall be broken up and scattered. Stumps shall be cut low to the ground. Processing sites shall not be left with a compacted layer of slash; tops from these sites shall be hauled back into the cut area and scattered.

5.2.2 - Hazard Trees/Snags

5.2.2.1 - Den trees (10/16)

Obvious hollow and/or den trees shall be protected and left standing unless they are a safety hazard.

5.2.3 - Operating Restrictions

5.2.3.1 - Operating restrictions (9/11)

Within Payment Unit(s) 1 and 2, cutting and skidding are not permitted during the period of May 1 to October 1. This restriction is to protect habitat for the threatened Eastern Massasauga rattlesnake.

5.2.4 - Dead and Down Creation

5.2.4.4 - Dead and down creation, grouse (6/18)

To encourage grouse and other wildlife, in Payment Unit(s) 4 and 5, leave one, 12" diameter or larger log-length (8 foot minimum) piece on the ground for every 2 acres. These will be evenly scattered throughout the unit. This can be an unmerchantable piece or a full tree. In addition, the Purchaser must leave 5 large top piles within Payment Units 4 and 5. These piles must consist of multiple tops piled together. Placement of these piles shall be along the Payment Unit's northern swamp boundaries.

5.2.32 - Decking/landing restoration (9/13)

All decking and landing areas must have the surface area restored to a condition equal to or better than before. This is to ensure the proper regeneration of the stand. Wood debris, chips and "cookies" from trimmings must be removed or scattered away from landing and loading areas and may not be windrowed on the edge.

5.2.38 - No decking against live trees (2/04)

Cut products may not be decked against unmarked or designated leave trees.

5.2.41 - Snowmobile trail protection (9/11)

The snowmobile trail is shown on the Timber Sale Map. Do not cut or damage posts with orange trail markers or traffic control signs. If the trail is used, it must be maintained and restored to a condition equal to or better than before the sale. The road maintenance/restoration must be done prior to December 1. If the trail is used for hauling, it must be graded to the satisfaction of the Unit Manager or his/her representative prior to December 1st. If the trail road is to be used for hauling during the snowmobile season, then a snow covered base must be left on the trail. Maintain a 20 foot wide slash, debris, and rut free zone daily using the snowmobile trail as the centerline. No decking of forest products will be permitted along the snowmobile trail.

6 - Safety and Fire Prevention

6.2 - Signing

6.2.2 - Snowmobile trail posting (8/09)

The Purchaser is responsible for posting and maintaining caution signs on the snowmobile trail prior to beginning operations during the snowmobile season (approximately December 1 to March 31). The trail must be posted at appropriate distances from the sale area to warn of logging activity and truck traffic. Signs must be removed when harvest operations are suspended or completed.



TIMBER SALE MAP

This information provided by authority of Part 525, 1994 PA 451, as amended.

Forest Management Unit	County	Mapped By	LEWICKI	Date	Page	of
Roscommon Management Unit	Roscommon	Cruised By	LEWICKI	09/01/2020	1	1
Township	Range	Section(s) and Subdivision(s)	Scale			
21N	04W	Portions of S.7 ; S.8 and S.18 See proposal	1:15,840			

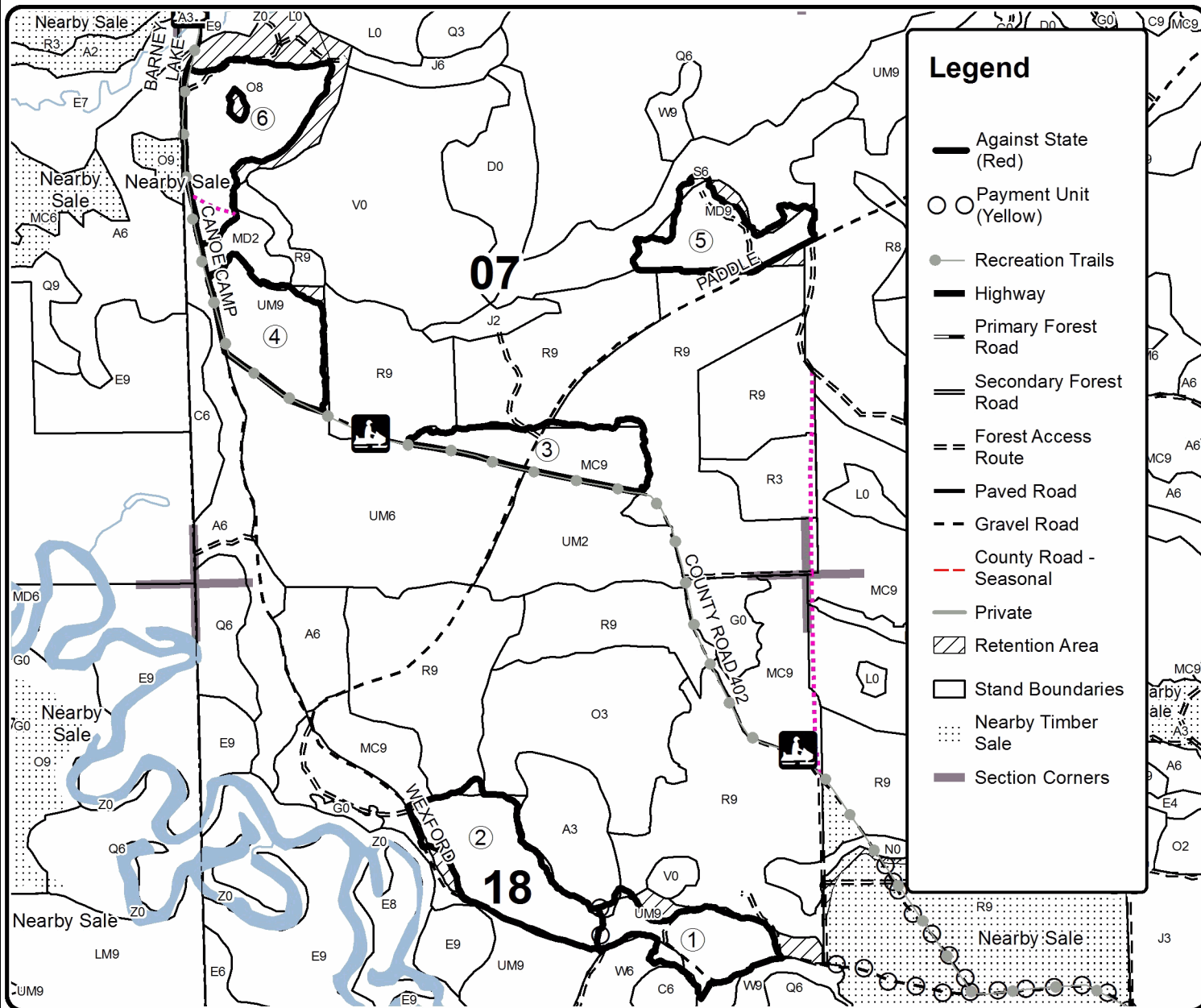
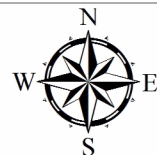
Cover Type				Density	
A = Aspen	H = Hemlock	N = Marsh	U = Upland Brush	0 = Non Stocked	5 = Pole Timber Medium
B = Paper Birch	J = Jack Pine	O = Oak	UM = Upland Mixed	1 = Seedling Sapling Poor	6 = Pole Timber Well
C = Cedar	L = Lowland Brush	P = Lowland Poplar	V = Bog or Marsh	2 = Seedling Sapling Medium	7 = Saw Timber Poor
D = Treed Bog	LM = Lowland Mixed	Q = Mixed Swamp Conifer	W = White Pine	3 = Seedling Sapling Well	8 = Saw Timber Medium
E = Swamp Hdwoods	M = Mpl, Bch, Brch	R = Red Pine	X = Non Stocked	4 = Pole Timber Poor	9 = Saw Timber Well
F = Spruce Fir	MC = Mixed Conifer	S = Black Spruce	Z = Water		
G = Grass	MD = Mixed Deciduous	T = Tamarack			

PU	Acres	PU	Acres
1	15.1	4	18.4
2	23.9	5	15.6
3	16.5	6	24.8

Massasauga Mix

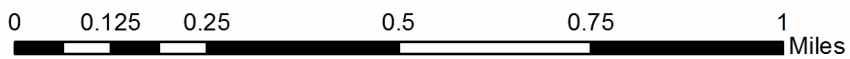
Compartment 13

114.3 Acres



Legend

- Against State (Red)
- Payment Unit (Yellow)
- Recreation Trails
- Highway
- Primary Forest Road
- Secondary Forest Road
- == Forest Access Route
- Paved Road
- - Gravel Road
- - County Road - Seasonal
- Private
- ▨ Retention Area
- Stand Boundaries
- ⋯ Nearby Timber Sale
- Section Corners



TIMBER SALE INFORMATION

Pinball Alley (71-019-20)

T22N, R01W, SEC. 1; T22N, R01W, SEC. 11; T22N, R01W, SEC. 12; T23N, R01W, SEC. 35; T23N, R01W, SEC. 36.
Roscommon County (Advertised Price \$78,317.25)

SALE NOTE: A recreation site such as a trail, pathway, or campground is within the sale area or the vicinity. Certain restrictions/specifications may be applicable including time restrictions.

A timber sale contract for this lump sum, sealed bid timber sale will be awarded to the responsible bidder offering the highest sealed bid price. All units of volume listed below were estimated using the T-Sale computer program and our traditional volume equations. Bids must be at or above the following advertised price for each product and species:

<u>PRODUCTS & SPECIES</u>	<u>ESTIMATED UNITS*</u>		<u>ADVERTISED PRICE</u>
Sawtimber			
BI/R/Hybrid Oak	74.6	MBF	\$ 75.00 / MBF
Jack Pine	16.2	MBF	\$ 26.00 / MBF
Mixed Aspen	193.4	MBF	\$ 64.00 / MBF
Red Maple	15.7	MBF	\$ 57.00 / MBF
Red Pine	77.3	MBF	\$ 94.00 / MBF
White Oak	13.9	MBF	\$ 78.00 / MBF
White Pine	25.2	MBF	\$ 42.00 / MBF
Pulpwood			
Jack Pine	159	Cords	\$ 12.90 / Cord
Mixed Aspen	1,907	Cords	\$ 16.90 / Cord
Mixed Hardwood	408	Cords	\$ 12.60 / Cord
Mixed Oak	347	Cords	\$ 13.85 / Cord
Red Pine	88	Cords	\$ 36.20 / Cord
White Pine	115	Cords	\$ 19.20 / Cord

* The total volume is statistically estimated within plus (+) or minus (-) 9.93 percent. There are an estimated 3,857 cords on this timber sale, plus or minus 383 cords at the 95% confidence level. The estimated units are final and not subject to adjustment. Prospective bidders are urged to examine this timber and to make their own estimates of quantity and quality.

BOND AND PAYMENT SCHEDULE:

1. A bond in the amount of \$7,832.00 to insure faithful performance of the conditions of the contract will be deposited by the successful bidder within 21 days of the sale award.
2. Cutting in any sale or unit without the required advance payment would be considered a trespass.
3. Total payment must be paid in advance or according to the following schedule :
 - (a) Ten percent (10%) of the sale value must be paid within 21 days of the sale award.
 - (b) The 10% down payment will be credited towards the first unit cut.
 - (c) Payment for each of the following units must be made before cutting begins in that unit:

PAYMENT UNIT NUMBER	PERCENT OF TOTAL SALE VALUE
01	4.6%
02	23.1%
03	23.8%
04	22.1%
05	26.4%
4. If no cutting takes place, the 10% down payment will not be refunded.
5. Operations on the contract issued will terminate on 03/31/2023.

SALE STATISTICS

SALE VOLUMES

VOLUME		STATISTICAL RANGE IN CORDS		
TOTAL CUBIC FEET	TOTAL CORDS	PERCENT ERROR	MINIMUM	MAXIMUM
304,709	3,857	9.93%	3,474	4,240

VDU VOLUMES

A VDU is a Volume Determination Unit. Volumes and their associated statistics are calculated at the VDU level and summarized to the sale level. There is often a one to one relationship between a VDU and a Payment Unit, but not always, depending on the cruise design. Refer to the VDU TO PAYMENT UNIT table.

VDU	VOLUME		PERCENT ERROR	RANGE IN CORDS	
	TOTAL CUBIC FEET	TOTAL CORDS		MINIMUM	MAXIMUM
22	68,928	873	18.50%	711	1,034
41	18,383	233	27.27%	169	296
178	295,033	3,735	15.57%	3,153	4,316
183	14,670	186	43.07%	106	266
186	55,221	699	17.35%	578	820
TOTAL:	452,236	5,725		4,717	6,732

VDU TO PAYMENT UNIT

When a VDU is associated with more than one Payment Unit (PU), the VDU volumes are assigned to the PU based on acres of the VDU within the PU.

VDU	VDU ACRES	PU	PU ACRES
22	25.8	2	25.8
41	11.6	1	11.6
178	52.5	3	27.2
		4	25.3
183	7.7	5	7.7
186	28.9	5	28.9
TOTAL:	126.5		126.5

DESCRIPTION OF TIMBER BY PAYMENT UNIT (PU)

PU	MARKET GROUP	PRODUCT	QUANTITY	UNIT	ACRES	ADVERTISE PRICE
1	BI/R/Hybrid Oak	Sawtimber	2.4	MBF	11.6	\$3,586.70
	Jack Pine		15.8	MBF		
	Red Pine		1.8	MBF		
	White Pine		4.0	MBF		
	Jack Pine	Pulpwood	141	Cords		
	Mixed Oak		20	Cords		
	<i>BI/R/Hybrid Oak</i>		20	<i>Cords</i>		
	Red Pine		6	Cords		
	White Pine		18	Cords		
2	Jack Pine	Sawtimber	0.4	MBF	25.8	\$18,102.50
	Mixed Aspen		66.5	MBF		
	<i>B. T. Aspen</i>		66.5	<i>MBF</i>		
	Red Maple		0.4	MBF		
	Red Pine		16.5	MBF		
	White Pine		1.8	MBF		
	Jack Pine	Pulpwood	18	Cords		
	Mixed Aspen		582	Cords		
	<i>B. T. Aspen</i>		582	<i>Cords</i>		
	Mixed Hardwood		29	Cords		
	<i>Black Cherry</i>		5	<i>Cords</i>		
	<i>Red Maple</i>		24	<i>Cords</i>		
	Mixed Oak		26	Cords		
	<i>BI/R/Hybrid Oak</i>		26	<i>Cords</i>		
	Red Pine		30	Cords		
White Pine		16	Cords			
3	BI/R/Hybrid Oak	Sawtimber	3.5	MBF	27.2	\$18,618.05
	Mixed Aspen		51.0	MBF		
	<i>B. T. Aspen</i>		44.7	<i>MBF</i>		
	<i>Quaking Aspen</i>		6.3	<i>MBF</i>		
	Red Maple		2.5	MBF		
	Red Pine		16.4	MBF		
	White Pine		7.1	MBF		
	Mixed Aspen	Pulpwood	611	Cords		
	<i>B. T. Aspen</i>		456	<i>Cords</i>		
	<i>Quaking Aspen</i>		155	<i>Cords</i>		
	Mixed Hardwood		119	Cords		
	<i>Red Maple</i>		119	<i>Cords</i>		
	Mixed Oak		55	Cords		
	<i>BI/R/Hybrid Oak</i>		55	<i>Cords</i>		
Red Pine		7	Cords			
White Pine		14	Cords			
4	BI/R/Hybrid Oak	Sawtimber	3.2	MBF	25.3	\$17,331.75
	Mixed Aspen		47.5	MBF		
	<i>B. T. Aspen</i>		41.6	<i>MBF</i>		
	<i>Quaking Aspen</i>		5.9	<i>MBF</i>		
	Red Maple		2.4	MBF		
	Red Pine		15.2	MBF		
	White Pine		6.7	MBF		
	Mixed Aspen	Pulpwood	570	Cords		
	<i>B. T. Aspen</i>		425	<i>Cords</i>		
	<i>Quaking Aspen</i>		145	<i>Cords</i>		
	Mixed Hardwood		111	Cords		
	<i>Red Maple</i>		111	<i>Cords</i>		
	Mixed Oak		51	Cords		
	<i>BI/R/Hybrid Oak</i>		51	<i>Cords</i>		
Red Pine		6	Cords			

DESCRIPTION OF TIMBER BY PAYMENT UNIT (PU), CON'T

PU	MARKET GROUP	PRODUCT	QUANTITY	UNIT	ACRES	ADVERTISE PRICE
4 con't	White Pine	Pulpwood	13	Cords		
5	BI/R/Hybrid Oak	Sawtimber	65.5	MBF	36.6	\$20,678.25
	Mixed Aspen		28.4	MBF		
	<i>B. T. Aspen</i>		28.4	<i>MBF</i>		
	Red Maple		10.4	MBF		
	Red Pine		27.4	MBF		
	White Oak		13.9	MBF		
	White Pine		5.6	MBF		
	Mixed Aspen	Pulpwood	144	Cords		
	<i>B. T. Aspen</i>		135	<i>Cords</i>		
	<i>Quaking Aspen</i>		9	<i>Cords</i>		
	Mixed Hardwood		149	Cords		
	<i>Red Maple</i>		149	<i>Cords</i>		
	Mixed Oak		195	Cords		
	<i>BI/R/Hybrid Oak</i>		149	<i>Cords</i>		
	<i>White Oak</i>		46	<i>Cords</i>		
	Red Pine		39	Cords		
	White Pine		54	Cords		
TOTAL:			416.3	MBF		
TOTAL:			3,024	Cords		

Sale Specific Conditions & Requirements

Sale Name: Pinball Alley

Sale Number: 71-019-20 Seq#: 1

1 - Sale Area

1.2 - Boundaries

1.2.1 - Painted boundaries (9/19)

The sale boundary and Payment Unit boundaries are marked and identified by red and yellow paint. Exterior sale boundary lines against state are marked with red paint. Interior Payment Unit boundaries are marked with yellow paint. The painted boundary line trees are not Included Timber and are to be protected. Yellow painted trees designating an interior Payment Unit boundary are only to be cut when all surrounding Payment Units have been paid.

2 - Timber Specifications

2.1 - Included Timber

2.1.1 - Clearcut unit(s) with unmerchantable trees (6/14)

Within Payment Unit(s) 1-4, cut all trees that are two (2) inches or more at DBH, except do not cut any trees marked with green paint. In addition, within Payment Unit 1, do not cut red pine or oak greater than 10 inches at DBH.

2.1.2 - Clearcut unit(s) w/o unmerchantable trees (8/11)

Within Payment Unit(s) 5, cut all trees which meet minimum piece specifications in 2.2 Utilization, except do not cut trees marked green paint.

2.2 - Utilization

2.2.3 - Stump heights (4/07)

Stump heights within the Sale Area shall not exceed 12 inches for trees greater than 10 inches DBH and 4 inches for trees smaller than 10 inches DBH.

2.2.10 - No chipping tops and limbs (8/16)

Within Payment Unit(s) 1, chipping of the bole, 2-inches in diameter or greater, is allowed. Chipping of limbs or portions of the tree less than 2-inches in diameter is not permitted. Limbs and the remaining top must be left on site and scattered.

3 - Payments

3.3 - Pre-measured Sales

3.3.4 - Dividing payment units (7/14)

Payment Unit(s) may be divided at the request of the Purchaser and upon approval of the Unit Manager. Dividing Payment Units is a contract modification which requires a Timber Sale Contract Amendment.

3.4 - Damaged Timber

3.4.1 - Damaged timber (7/16)

General Condition and Requirement 3.4 Damaged Timber, defines liquidated damages for undesignated live merchantable trees which are cut or injured. In addition, extreme care should be taken to avoid damage to tree seedlings and saplings.

Within Payment Unit 5, if more than 20% of the tree seedlings or saplings (1/4" to 4.5" DBH) within a specified portion of the sale area are damaged, liquidated damages will be assessed at \$300 per acre for all acreage within that specified portion of the sale area that was damaged.

No damage is acceptable to undesignated live merchantable trees. Within the sale area, if more than 5% of trees (> 4.5" DBH) within a specified area of the sale are damaged, liquidated damages will be assessed for all trees damaged. Rates will be in accordance with General Condition and Requirement 3.4 Damaged Timber

4 - Transportation

4.1 - Construction

4.1.3 - Slash and earthen piles (8/04)

Piles or windrows of earth along roads and landings that have been widened or constructed shall be leveled. Slash from road maintenance or construction, including stumps, shall be dispersed throughout the sale.

4.1.6 - Road construction (1/09)

Construction of new roads or improvements of existing roads shall be done in such a way as to minimize the environmental and visual impacts. Merchantable trees shall be cut and utilized unless otherwise directed. Non-merchantable trees shall be severed and laid flat on the ground. Slash shall be scattered, and not left in windrows and kept a minimum of 10 feet back from the road edge, or be chipped, utilized or otherwise removed from the sale. Stumps shall be set upright, not left on edge, and be moved at least 10 feet away from the road edge. Disturbed soil shall be feathered into the woods and not left in berms or windrows.

4.1.7 - Road closure (10/11)

All new roads built into the sale must be blocked to vehicle traffic upon completion of the sale. In general, this will require constructing a four (4') foot high berm of stumps and logs covered with earth. Stumps and brush must be placed along the remainder of the trail. These roads must be rendered impassable to cars and trucks. Contact the sale administrator for specific details of design and placement.

4.2 - Maintenance

4.2.1 - Hauling restriction (12/08)

Hauling may be restricted on forest roads by the Unit Manager or his/her representative. The restriction may occur during wet weather conditions.

4.2.3 - Road maintenance (8/13)

The following road maintenance is required: Within 60 days of completion of hauling, or if no hauling occurs for 60 days, the road must be maintained and graded. This includes cleaning of drainage areas, grading, crowning and filling with gravel, if necessary. Damages will be assessed if grading/repair does not occur.

4.2.5 - Two wheel drive condition (2/04)

All existing trail roads on and adjacent to the sale area must be passable by two-wheel drive traffic for the duration of the sale.

5 - Operations

5.1 - Notification

5.1.1 - Pre-sale conference (10/16)

A pre-sale conference between the Purchaser and sale administrator is required prior to beginning any operations to determine landing and road locations.

5.1.4 - Post-sale conference (10/16)

A post-sale conference on site between the Purchaser and sale administrator is required prior to the completion of active logging operations to determine clean-up and repair of landings, road edges, and the fulfillment of other contract specifications.

5.2 - Conduct of Operations

5.2.1 - Slash

5.2.1.8 - Slash height (12/08)

No slash or tree tops may exceed 24 inches in height.

5.2.1.13 - Dispose of slash as directed (12/05)

Slash is to be disposed of as directed by the Sale Administrator. In general, this will require placing slash and stumps in the illegal ORV trail within Payment Unit 5.

5.2.2 - Hazard Trees/Snags

5.2.2.1 - Den trees (10/16)

Obvious hollow and/or den trees shall be protected and left standing unless they are a safety hazard.

5.2.3 - Operating Restrictions

5.2.3.11 - Coppice regeneration protection (4/10)

Timber harvesting in any Payment Unit must be completed before significant aspen sprouting occurs in that Payment Unit so as to minimize damage to the new regeneration. Any post harvest operations, such as chipping, must be completed before sprouting of regeneration occurs. If it is anticipated that chipping will be delayed, then tops shall be carried to one central location or left unchipped. The Unit Manager or his/her representative may cease such operations if sprouting occurs before the operation is complete.

5.2.4 - Dead and Down Creation

5.2.4.2 - Dead and down creation, hare and grouse (1/14)

To improve habitat for snowshoe hare, grouse, and other species, the Purchaser is to leave two, 10 inch diameter or larger log size pieces on the ground for every two acres. They should be scattered throughout the sale. If possible, the logs or trees should be felled so they overlap. Note these pieces should have a minimum length of five feet. They can be of any tree species and can be an un-merchantable piece of wood or a full tree.

In addition, the Purchaser is to create one (1) large brush pile for every 2 acres within Payment Units 3, 4, and 5. These piles should be made up of multiple tree tops and be placed near lowland boundaries. Contact the sale administrator for specific placement and design.

5.2.30 - Landing/road top soil protection (2/15)

Top soil on landings and new roads must be removed, stockpiled and saved. Upon completion of the timber sale, soil must be evenly distributed back over the area for revegetation.

5.2.39 - ORV trail/route protection (4/18)

The ORV trail is shown on the Timber Sale Map. Do not cut trees or damage posts with yellow ORV markers. Maintain a 20 foot wide slash, debris, and rut free zone daily using the ORV trail or route as the centerline. Do not run equipment down the ORV trail or route. Skidding across the trail or route may only occur in locations approved by the sale administrator.

5.2.41 - Snowmobile trail protection (9/11)

The snowmobile trail and is shown on the Timber Sale Map. Do not cut or damage posts with orange trail markers or traffic control signs. If the trail is used, it must be maintained and restored to a condition equal to or better than before the sale. The road maintenance/restoration must be done prior to December 1. If the trail is used for hauling, it must be graded to the satisfaction of the Unit Manager or his/her representative prior to December 1st. If the trail road is to be used for hauling during the snowmobile season, then a snow covered base must be left on the trail. Maintain a 20 foot wide slash, debris, and rut free zone daily using the snowmobile trail as the centerline. No decking of forest products will be permitted along the snowmobile trail.

6 - Safety and Fire Prevention

6.2 - Signing

6.2.2 - Snowmobile trail posting (10/20)

The Purchaser is responsible for posting and maintaining caution signs on the snowmobile trail prior to beginning operations during the snowmobile season (approximately December 1 to March 31). The trail must be posted at appropriate distances from the sale area to warn of logging activity and truck traffic. Signs must be removed when harvest operations are suspended or completed.



TIMBER SALE MAP

This information provided by authority of Part 525, 1994 PA 451, as amended.

Forest Management Unit	County	Mapped By	Roscommon	Date	Page	of
Roscommon Management Unit	Roscommon County	Cruised By	Roscommon	09/28/2020	1	2
Township	Range	Section(s) and Subdivision(s)	Scale			
23N	01W	W1/2NW; NWSW; S1/2SW	1:15,840			

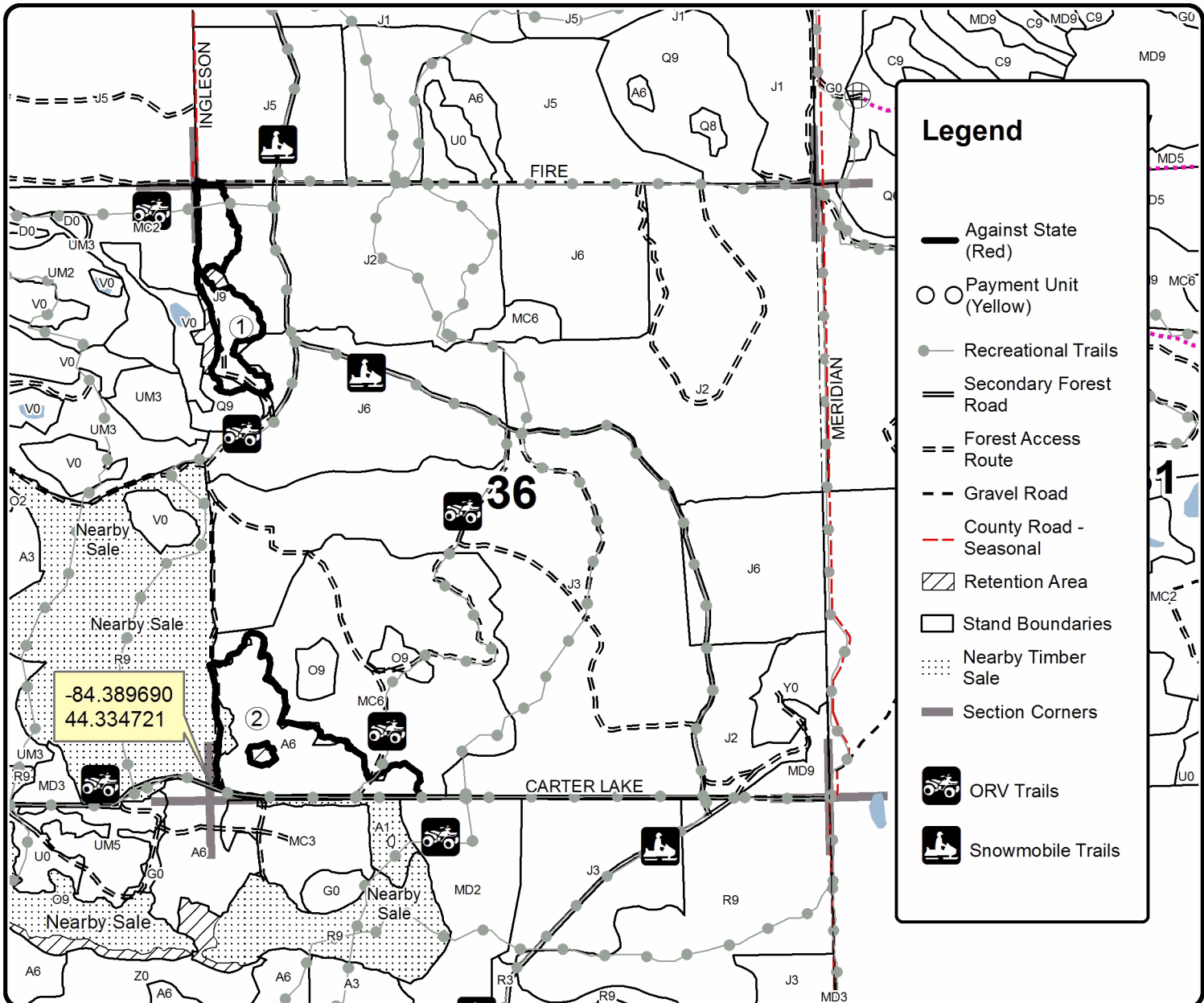
Cover Type				Density	
A = Aspen	H = Hemlock	N = Marsh	U = Upland Brush	0 = Non Stocked	5 = Pole Timber Medium
B = Paper Birch	J = Jack Pine	O = Oak	UM = Upland Mixed	1 = Seedling Sapling Poor	6 = Pole Timber Well
C = Cedar	L = Lowland Brush	P = Lowland Poplar	V = Bog or Marsh	2 = Seedling Sapling Medium	7 = Saw Timber Poor
D = Treed Bog	LM = Lowland Mixed	Q = Mixed Swamp Conifer	W = White Pine	3 = Seedling Sapling Well	8 = Saw Timber Medium
E = Swamp Hdwoods	M = Mpl, Bch, Brch	R = Red Pine	X = Non Stocked	4 = Pole Timber Poor	9 = Saw Timber Well
F = Spruce Fir	MC = Mixed Conifer	S = Black Spruce	Z = Water		
G = Grass	MD = Mixed Deciduous	T = Tamarack			

PU	Acres	PU	Acres
1	11.6	4	25.3
2	25.8	5	36.6
3	27.2		

Pinball Alley

Compartment 056

126.5 Acres





Sale Number	Year
71-019	20

TIMBER SALE MAP

This information provided by authority of Part 525, 1994 PA 451, as amended.

Forest Management Unit	County	Mapped By	Roscommon	Date	Page	of
Roscommon Management Unit	Roscommon County	Cruised By	Roscommon	09/28/2020	1	2
Township	Range	Section(s) and Subdivision(s)	Scale			
22N	01W		1:15,840			

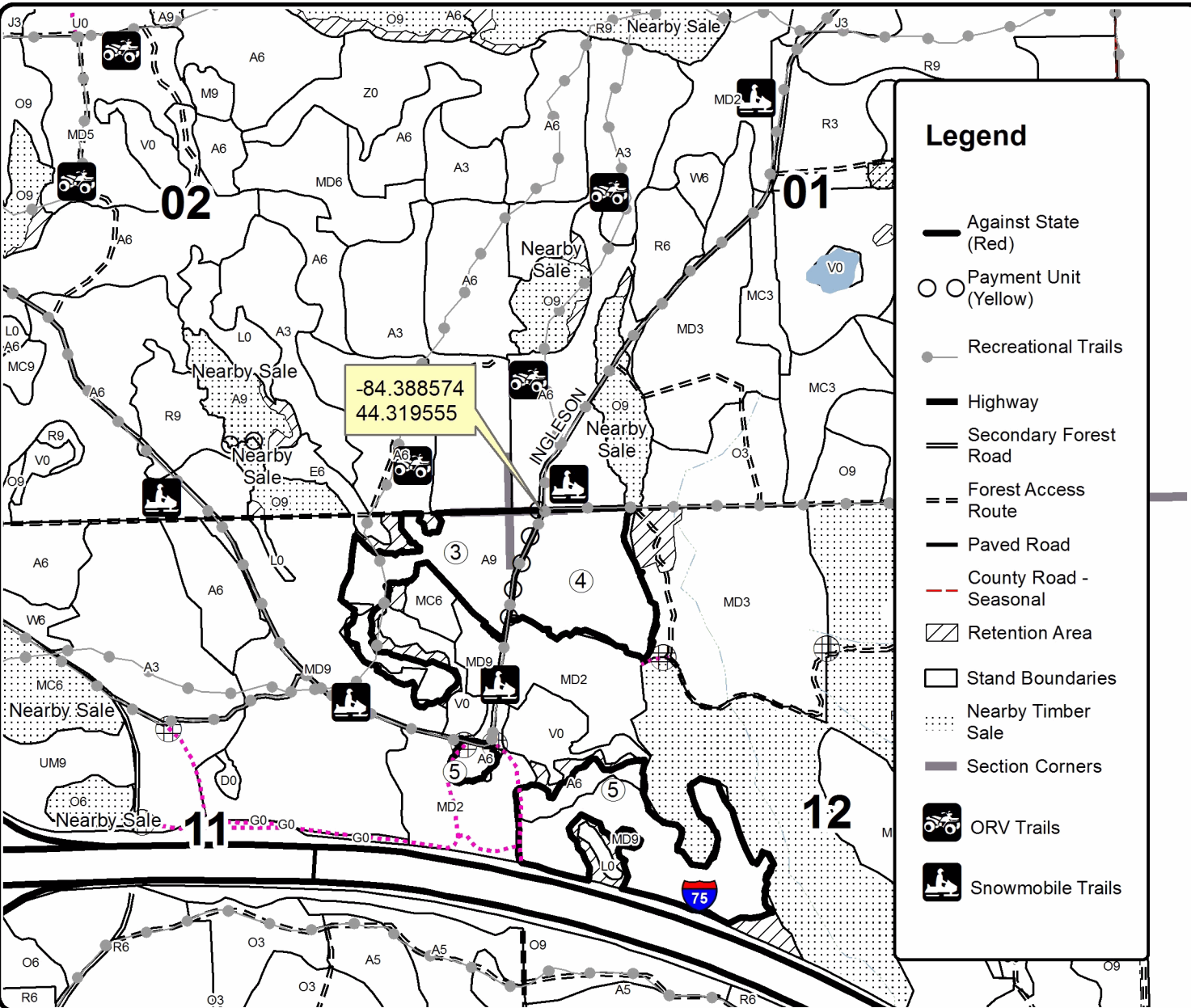
Cover Type				Density	
A = Aspen	H = Hemlock	N = Marsh	U = Upland Brush	0 = Non Stocked	5 = Pole Timber Medium
B = Paper Birch	J = Jack Pine	O = Oak	UM = Upland Mixed	1 = Seedling Sapling Poor	6 = Pole Timber Well
C = Cedar	L = Lowland Brush	P = Lowland Poplar	V = Bog or Marsh	2 = Seedling Sapling Medium	7 = Saw Timber Poor
D = Treed Bog	LM = Lowland Mixed	Q = Mixed Swamp Conifer	W = White Pine	3 = Seedling Sapling Well	8 = Saw Timber Medium
E = Swamp Hdwoods	M = Mpl. Bch. Brch	R = Red Pine	X = Non Stocked	4 = Pole Timber Poor	9 = Saw Timber Well
F = Spruce Fir	MC = Mixed Conifer	S = Black Spruce	Z = Water		
G = Grass	MD = Mixed Deciduous	T = Tamarack			

PU	Acres	PU	Acres
1	11.6	4	25.3
2	25.8	5	36.6
3	27.2		

Pinball Alley

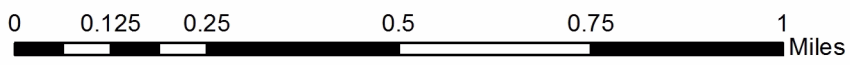
Compartment 056

126.5 Acres



Legend

- Against State (Red)
- ○ Payment Unit (Yellow)
- Recreational Trails
- Highway
- Secondary Forest Road
- Forest Access Route
- Paved Road
- County Road - Seasonal
- ▨ Retention Area
- Stand Boundaries
- ▤ Nearby Timber Sale
- Section Corners
- 🛵 ORV Trails
- 🛷 Snowmobile Trails



Massasauga Mix (71-014-20)

T21N, R04W, SEC. 18; T21N, R04W, SEC. 7; T21N, R04W, SEC. 8; Roscommon

In response to the notice of sale to be held 9:00 a.m. (local time) on March 16, 2021, I am hereby submitting my sealed bid (firm offer) for the following forest products to be cut. Bids for individual species must be at or above the advertised price. All non-responsive bid forms may be rejected.

<u>PRODUCTS & SPECIES</u>	<u>ESTIMATED VOLUME*</u>	<u>ADVERTISED PRICE</u>	<u>BID PRICE/UNIT</u>
Sawtimber			
Jack Pine	9.8 MBF	\$ 26.00/MBF	\$ _____
Mixed Oak	196.0 MBF	\$ 75.00/MBF	\$ _____
Red Pine	175.2 MBF	\$ 94.00/MBF	\$ _____
White Pine	45.6 MBF	\$ 42.00/MBF	\$ _____
Pulpwood			
B. T. Aspen	129 Cords	\$ 16.90/Cord	\$ _____
Balsam Fir	26 Cords	\$ 18.20/Cord	\$ _____
Jack Pine	96 Cords	\$ 12.90/Cord	\$ _____
Mixed Oak	517 Cords	\$ 13.85/Cord	\$ _____
Red Maple	24 Cords	\$ 12.60/Cord	\$ _____
Red Pine	315 Cords	\$ 36.20/Cord	\$ _____
White Pine	339 Cords	\$ 19.20/Cord	\$ _____

*The volumes are statistically estimated within plus (+) or minus (-) 9.75 percent at 95% confidence level. These estimated volumes are final and not subject to adjustment. Prospective bidders are urged to examine this timber and to make their own estimates of quantity and quality.

I understand that any or all bids may be rejected. All bids must be signed and all bid items must be bid or the bid form may be rejected. I also understand that consideration and awarding a contract will be based upon my past performance and ability to complete the contract based upon equipment and staffing subject to my control .

FEDERAL ID: _____ - _____ or SOCIAL SECURITY NUMBER: _____ - _____ - _____

Company or individual bidding: _____

Company representative's name: _____

Address: _____

City: _____ State: _____ Zip: _____

IF AVAILABLE, PLEASE PLACE THE PERSONALIZED LABEL FROM YOUR PROSPECTUS IN THE ABOVE BOX.

Individual or company representative's signature: _____ Date: _____

Phone number : _____ Email (optional): _____

THE WINNING BIDDER MUST COMPLETE THE VERIFICATION OF WORKER'S DISABILITY COMPENSATION ACT COMPLIANCE (ON REVERSE SIDE IF DOUBLE SIDED) WITHIN 21 DAYS OF SALE AWARD DATE



TIMBER SALE VERIFICATION OF WORKER'S DISABILITY COMPENSATION ACT COMPLIANCE

As required by Act 317, P.A. 1969 (Worker's Compensation) and
Part 5 of Act 451 of 1994, as amended.

FOR DEPARTMENT USE ONLY
Sale Number (XX - XXX - XX - XX)
Forest Management Unit:

VERIFICATION OF WORKER'S DISABILITY COMPENSATION ACT COMPLIANCE

- This verification must be completed and submitted within 21 days of contract award and prior to the issuance of the timber sale contract.
- In addition, if boxes 2B or 2C are checked, then Notice of Exclusion or Certificate of Insurance must be submitted within twenty-one (21) days of the contract award and prior to the issuance of the timber sale contract.
- All information must be typed or printed except for written signatures.

Please Check Appropriate Categories:

1. My business is organized as (you **must** check one of the boxes below):
 - A. Sole Proprietorship (individual)
 - B. Partnership
 - C. Corporation

2. You **must** check one of the boxes below:
 - A. I certify my business is a sole proprietorship and it has no employees but the sole proprietor. I am not subject to the Worker's Compensation Laws.
 - B. I certify my business has satisfied its obligation to the Worker's Compensation Act through the use of an approved Notice of Exclusion (BWC-337, Rev. 5/96). I will provide a copy of the Notice of Exclusion within 21 days of the contract award. (For questions or a copy of the BWC-337, please call the Worker's Compensation Bureau at 517-322-1195).
 - C. I certify my business has a Worker's Compensation Policy. I will provide an original Certificate of Insurance within twenty-one (21) days of the contract award.

3. If you have checked item 2(A) or 2(B), you **must** indicate the number of **both** full-time and part-time employees, other than yourself, including family members and active partners (if none, you must enter "0").

_____ Full-time Employees

_____ Part-time Employees

Name of Business		Federal ID (or) Social Security No.	
Address		Telephone ()	
City	State	ZIP	

I hereby certify that the above information is true and correct. I agree to notify the Michigan DNR of any changes that occur in factors affecting my coverage during any of my present and future operations.

Signature of Owner or Authorized Representative

Title

Date

Please complete the "SEALED BID" information on the next page

Pinball Alley (71-019-20)

T22N, R01W, SEC. 1; T22N, R01W, SEC. 11; T22N, R01W, SEC. 12; T23N, R01W,

In response to the notice of sale to be held 9:00 a.m. (local time) on March 16, 2021, I am hereby submitting my sealed bid (firm offer) for the following forest products to be cut. Bids for individual species must be at or above the advertised price. All non-responsive bid forms may be rejected.

<u>PRODUCTS & SPECIES</u>	<u>ESTIMATED VOLUME*</u>	<u>ADVERTISED PRICE</u>	<u>BID PRICE/UNIT</u>
Sawtimber			
Bl/R/Hybrid Oak	74.6 MBF	\$ 75.00/MBF	\$ _____
Jack Pine	16.2 MBF	\$ 26.00/MBF	\$ _____
Mixed Aspen	193.4 MBF	\$ 64.00/MBF	\$ _____
Red Maple	15.7 MBF	\$ 57.00/MBF	\$ _____
Red Pine	77.3 MBF	\$ 94.00/MBF	\$ _____
White Oak	13.9 MBF	\$ 78.00/MBF	\$ _____
White Pine	25.2 MBF	\$ 42.00/MBF	\$ _____
Pulpwood			
Jack Pine	159 Cords	\$ 12.90/Cord	\$ _____
Mixed Aspen	1,907 Cords	\$ 16.90/Cord	\$ _____
Mixed Hardwood	408 Cords	\$ 12.60/Cord	\$ _____
Mixed Oak	347 Cords	\$ 13.85/Cord	\$ _____
Red Pine	88 Cords	\$ 36.20/Cord	\$ _____
White Pine	115 Cords	\$ 19.20/Cord	\$ _____

*The volumes are statistically estimated within plus (+) or minus (-) 9.93 percent at 95% confidence level. These estimated volumes are final and not subject to adjustment. Prospective bidders are urged to examine this timber and to make their own estimates of quantity and quality.

I understand that any or all bids may be rejected. All bids must be signed and all bid items must be bid or the bid form may be rejected. I also understand that consideration and awarding a contract will be based upon my past performance and ability to complete the contract based upon equipment and staffing subject to my control.

FEDERAL ID: _____ or SOCIAL SECURITY NUMBER: _____

Company or individual bidding: _____

Company representative's name: _____

Address: _____

City: _____ State: _____ Zip: _____

IF AVAILABLE, PLEASE PLACE THE PERSONALIZED LABEL FROM YOUR PROSPECTUS IN THE ABOVE BOX.

Individual or company representative's signature: _____ Date: _____

Phone number : _____ Email (optional): _____

THE WINNING BIDDER MUST COMPLETE THE VERIFICATION OF WORKER'S DISABILITY COMPENSATION ACT COMPLIANCE (ON REVERSE SIDE IF DOUBLE SIDED) WITHIN 21 DAYS OF SALE AWARD DATE



FOR DEPARTMENT USE ONLY
Sale Number (XX – XXX – XX – XX)
Forest Management Unit:

TIMBER SALE VERIFICATION OF WORKER'S DISABILITY COMPENSATION ACT COMPLIANCE

*As required by Act 317, P.A. 1969 (Worker's Compensation) and
Part 5 of Act 451 of 1994, as amended.*

VERIFICATION OF WORKER'S DISABILITY COMPENSATION ACT COMPLIANCE

- This verification must be completed and submitted within 21 days of contract award and prior to the issuance of the timber sale contract.
- In addition, if boxes 2B or 2C are checked, then Notice of Exclusion or Certificate of Insurance must be submitted within twenty-one (21) days of the contract award and prior to the issuance of the timber sale contract.
- All information must be typed or printed except for written signatures.

Please Check Appropriate Categories:

1. My business is organized as (you **must** check one of the boxes below):
 - A. Sole Proprietorship (individual)
 - B. Partnership
 - C. Corporation

2. You **must** check one of the boxes below:
 - A. I certify my business is a sole proprietorship and it has no employees but the sole proprietor. I am not subject to the Worker's Compensation Laws.
 - B. I certify my business has satisfied its obligation to the Worker's Compensation Act through the use of an approved Notice of Exclusion (BWC-337, Rev. 5/96). I will provide a copy of the Notice of Exclusion within 21 days of the contract award. (For questions or a copy of the BWC-337, please call the Worker's Compensation Bureau at 517-322-1195).
 - C. I certify my business has a Worker's Compensation Policy. I will provide an original Certificate of Insurance within twenty-one (21) days of the contract award.

3. If you have checked item 2(A) or 2(B), you **must** indicate the number of **both** full-time and part-time employees, other than yourself, including family members and active partners (if none, you must enter "0").

_____ Full-time Employees

_____ Part-time Employees

Name of Business		Federal ID (or) Social Security No.	
Address		Telephone ()	
City	State	ZIP	

I hereby certify that the above information is true and correct. I agree to notify the Michigan DNR of any changes that occur in factors affecting my coverage during any of my present and future operations.

Signature of Owner or Authorized Representative

Title

Date

Please complete the "SEALED BID" information on the next page