



**DEPARTMENT OF NATURAL RESOURCES
STATE OF MICHIGAN**

TIMBER SALE PROSPECTUS #6755

SCHEDULED SALE DATE AND TIME: 4:00 p.m. (local time) on April 22, 2021.

LOCATION: TRAVERSE CITY MGMT UNIT, 2122 M 37 SOUTH, TRAVERSE CITY, MI 49685.

PROSPECTUS NOTE: It is recommended that for the duration of the "Stay Home, Stay Safe" executive order that bidders submit their bids through the Online Bidding System (<https://www.dnr.state.mi.us/VMSONlineBidding/>). If you need to register, contact Jake Reid (ReidJ6@michigan.gov, 517-284-5908) or Donovan Asselin (AsselinD@michigan.gov, 517-930-1326). Paper bids will still be accepted during this time, either dropped in the bid box at the bid location or by mailing. If mailing, please allow for additional time.

The bidder is advised to inspect the sale area and review the location, estimated volumes, operating costs and contract terms of proposed sales. Please be aware that some landowners may request 60 days or more notice for access across their land.

Bellows Lake Mix (61-020-20) / T27N, R12W, SEC. 30, E1/2NW,N1/2NE.

Grand Traverse County, Advertised Price \$22,475.95, 39.3 Acres, Red Pine, Hardwood.

Betsie Camper's Cut (61-042-20) / T25N, R13W, SEC. 2 , E1/2NW,W1/2NE,N1/2SW.

Benzie County, Advertised Price \$10,931.00, 26.0 Acres, Aspen, Hardwood.

SALE NOTE: Oak wilt restriction spec on sale.

Also roundwood operation required spec on sale.

A recreation site such as a trail, pathway, or campground is within the sale area or the vicinity.
Certain restrictions/specifications may be applicable including time restrictions.

Stair Step Aspen (61-043-20) / T25N, R14W, SEC. 22, S1/2NE,NESE.

T25N, R14W, SEC. 23, W1/2SW.

Benzie County, Advertised Price \$33,025.05, 49.4 Acres, Aspen, Hardwood.

SALE NOTE: Oak wilt restriction on sale.

Also, round wood operation requirement on sale.

A recreation site such as a trail, pathway, or campground is within the sale area or the vicinity.
Certain restrictions/specifications may be applicable including time restrictions.

Forks Aspen (61-045-20) / T26N, R09W, SEC. 4 , SWSE.

T26N, R09W, SEC. 9 , NWNE.

Grand Traverse County, Advertised Price \$4,860.25, 12.5 Acres, Aspen, Hardwood.

SALE NOTE: A recreation site such as a trail, pathway, or campground is within the sale area or the vicinity. Certain restrictions/specifications may be applicable including time restrictions.

Karlin Fire Aspen (61-055-20) / T25N, R12W, SEC. 16, SENW,N1/2NE,SWNE.

T25N, R12W, SEC. 9 , SESE.

Grand Traverse County, Advertised Price \$29,982.35, 50.2 Acres, Aspen, Hardwood.

Vasoak (61-048-19) / T27N, R10W, SEC. 24, S1/2SW,SWSE.

T27N, R10W, SEC. 25, NENW,NWNE.

Grand Traverse County, Advertised Price \$26,378.15, 40.2 Acres, Hardwood, Red Oak.

SALE NOTE: Mixed oak and pine stand that will be clear-cut with retention to release advanced understory saplings. Short wood harvest only. No feller bunching- processor harvester only to protect understory.

A recreation site such as a trail, pathway, or campground is within the sale area or the vicinity. Certain restrictions/specifications may be applicable including time restrictions.

BID INSTRUCTIONS (VER. 07/02/2018):

1. Scheduled Bid Location, Date, and Time (2/11)

Bids must be received by the Unit Manager, TRAVERSE CITY OFFICE, 2122 M 37 South, Traverse City, MI 49685, no later than 4:00 p.m. (local time) on April 22, 2021. For further information concerning this sale, contact David Lemmien at 231-922-6040.

2. Bidder's Qualifications (5/16)

Purchaser shall obtain workers compensation insurance to cover claims under Michigan's Worker's Disability Compensation Act of 1969 or similar employee benefit act of any other state applicable to an employee. If all or part of a timber sale was prepared by a private contractor, the contractor and that contractor's company are not permitted to bid on the timber sale contract. Bids will not be accepted from individuals or companies appearing on the DNR/FRD No-Bid List. This list contains the names of purchasers who previously failed to execute a contract within 21-days or who have a history of poor performance.

3. Preparation of Sealed Bids (5/16)

Bid Forms may be completed online thru Michigan DNR Timber Sale Online Bidding (OLB) at www.michigan.gov/timberbidding or by completing the hardcopy Bid Form found in the Timber Sale Prospectus. Hardcopy Bid Forms shall be manually signed in ink. Registration in OLB is considered your 'signature' for all bids submitted thru that system. Bid prices must be entered for each species and product in the Bid Price column for all material subject to bidding and all fill-in blanks must be completed. If erasures or other changes appear on the hardcopy Bid Form, each erasure or change must be initialed by the person signing the bid.

4. Submission of Sealed Bids (5/16)

Bid forms may be obtained from the Unit Manager or thru OLB. Bids may be submitted hardcopy or thru OLB. All hardcopy bids must be submitted on the bid form and in an envelope clearly identified as described in this section. NOTE: Only one bid form per bid envelope. Sealed bids must be submitted to the Unit office designated in the prospectus and must be submitted at or prior to the time established in the prospectus. The envelope should show on the outside (a) the sale name or number and (b) the date and time of bid opening, as shown in the prospectus. Bids received after the time specified in the sale prospectus are late bids and will be rejected.

It is possible for a bidder to submit multiple bids on a single sale. For example, a bid may be submitted hardcopy and a bid may be submitted thru OLB. Or, two bidders from the same company could both submit bids on the same sale. If this were to happen, the State would accept all bids received and award the contract accordingly. All bidding and contractual requirements would apply to all bids received.

5. Public Opening of Sealed Bids (7/16)

If conditions permit, the sealed bids will be publicly opened and posted at the time and place set in the prospectus.

If a bidder, present at a bid opening, has submitted bids on more than one sale, that bidder may withdraw their unopened bid envelopes or announce the withdrawal of their online bid after being declared the successful bidder on one sale.

6. Award of Contract (1/11)

Award of the contract will be made to the Bidder whose bid, conforming to the prospectus, is most advantageous to the State of Michigan on the basis of total value at rates bid for the estimated quantities. The State reserves the right to reject any bid or waive any minor irregularity in bids received. A written award mailed (or otherwise furnished) to the successful Bidder shall be deemed to result in a binding contract without further action by either party.

7. Down Payment (1/11)

The Bidder to whom award is made must make a down payment within 21 days of the sale award. The amount of the down payment will be calculated as shown in the Bond and Payment Schedule of this prospectus. Only cash may be used to meet this requirement.

8. Performance Security (1/11)

As guarantee of faithful performance, a cash bond, certificate of deposit, surety bond or irrevocable letter of credit (LOC) is required within 21 days of the sale award. The amount of the performance security is shown in the Bond and

Payment Schedule of this prospectus. If an LOC or surety is used, the coverage must extend for at least 6 months beyond the contract expiration.

9. Timber Sale Contract (7/18)

Additional conditions and requirements common to all timber sales are listed on the timber sale contract (R4031) and are available on line at www.michigan.gov/timber. Contact the Unit Manager for additional information or a sample contract. Within 21 days of the date of the award letter, the bidder must sign the contract and provide the required down payment, performance security, and verification of worker's disability compensation. The down payment and performance security shall be in accordance with the provisions of the timber sale contract, in the sums stated in this prospectus. If these actions are not taken, then the Bidder, the Bidder's corporation, and the corporation's principals may not be permitted to bid on State timber sales for a period of 3 months after the first offense, 6 months after the second offense, and 1 year after the third offense. An offense will only be counted against the Bidder for 5 years. In addition, the Bidder certifies that if awarded this contract, the Bidder will complete the timber sale contract in accordance with its terms and any modifications thereof including requirements to purchase, cut, and remove the included timber by the expiration date.

Payment Unit values in the State Forest Timber Sale Contract are calculated based on the advertised value of the Payment Unit as a percentage of the total advertised value of the contract. The advertised value of each Payment Unit is given in the Description of Timber by Payment Unit table on the Timber Sale Information page. For example, if the value of Payment Unit 1 is advertised as \$1,500 and the total Timber Sale value is advertised as \$10,000, the contract price for Payment Unit 1 will be 15% of the total bid price ($\$1,500/\$10,000 * 100$).

10. Disclaimer of Estimates and Bidder's Warranty of Inspection (7/16)

Before submitting this bid, the Bidder is advised and cautioned to inspect the sale area, review the requirements of the sale contract, and take other steps as may be reasonably necessary to ascertain the location, estimated volumes, construction estimates, and operating costs of the proposed sale. Failure to do so will not relieve the Bidder from responsibility for completing the contract.

The Bidder warrants that this bid is submitted solely on the basis of the Bidder's examination and inspection of the quality and quantity of the timber offered for sale and the Bidder's opinion of the value thereof and the costs of recovery. No reliance should be placed on the State of Michigan's estimates of timber quality, quantity or costs of recovery. Bidder further acknowledges that the State of Michigan: (i) expressly disclaims any warranty of fitness of timber for any purpose; (ii) offers this timber as is without any warranty of quality (merchantability) or quantity and (iii) expressly disclaims any warranty as to the quantity or quality of timber sold.

11. Certification and Chain-of-Custody (10/14)

Unless otherwise indicated in the contract under section 7 – Other Conditions of the Sale Specific Conditions & Requirements, the area encompassed by this timber sale is certified to the standards of the Forest Stewardship Council (FSC) - Certificate #SCS-FM/COC-00090N and the Sustainable Forestry Initiative (SFI) - Certificate #NSF-SFIS-5Y031-SF5. Forest products from this sale may be delivered to the mill as "FSC 100% and / or SFI certified" as long as the contractor hauling the forest products is chain-of-custody (COC) certified or covered under a COC certificate from the destination mill. The purchaser is responsible for maintaining COC after leaving the sale area.

12. Good Neighbor Authority (GNA) Requirements (7/16)

If the name of this timber sales contains the acronym GNA, it is authorized by the Good Neighbor Authority (GNA) and covered by various agreements between the U.S. Forest Service and the State. The timber sale occurs on federal land and the following conditions apply:

GNA contracts on US Forest Service land will not be awarded to purchasers on the Federal list of excluded parties. The System for Award Management (SAM) will be checked for active excluded parties prior to award of contract. In addition, the Bidder to whom award is made must complete an Assurance Regarding Felony Conviction or Tax Delinquent Status for Corporate Applicants (AD-3031).

13. Good Neighbor Authority (GNA) Requirements, con't (9/16)

Bidder certifies, by signing this bid form, that to the best of Bidder's knowledge that the following representations are accurate and complete.

- a. That the Bidder and its principals are not presently debarred, suspended, proposed for debarment, declared ineligible, or voluntary excluded from timber sales (covered transactions) by any Federal department or agency.
- b. That the Bidder and its principals have not within a 3-year period preceding this bid been convicted of or had a civil judgment rendered against them for commission of fraud or a criminal offense in connection with obtaining , attempting to obtain, or performing a public (Federal, State, or local) transaction or contract under a public transaction; violation of Federal or State antitrust statutes or commission of embezzlement, theft, forgery, bribery, falsification or destruction of records, making false statements, or receiving stolen property.
- c. That the Bidder and its principals are not presently indicted for or otherwise criminally or civilly charged by a governmental entity (Federal, State, or local) with commission of any of the offenses enumerated in paragraph b of this certification.
- d. That the Bidder and its principals have not within a 3-year period preceding this bid had one or more public transactions (Federal, State, or local) terminated for breach or default of a timber or forest product contract.

Bidders that cannot certify this requirement, in whole or in part, shall submit an explanation with their bid.

DAN EICHINGER
Director

TIMBER SALE INFORMATION

Bellows Lake Mix (61-020-20)

T27N, R12W, SEC. 30.

Grand Traverse County (Advertised Price \$22,475.95)

A timber sale contract for this lump sum, sealed bid timber sale will be awarded to the responsible bidder offering the highest sealed bid price. All units of volume listed below were estimated using the T-Sale computer program and our traditional volume equations. Bids must be at or above the following advertised price for each product and species:

<u>PRODUCTS & SPECIES</u>	<u>ESTIMATED UNITS*</u>	<u>ADVERTISED PRICE</u>
Sawtimber		
B. T. Aspen	4.3 MBF	\$ 77.00 / MBF
Basswood	2.7 MBF	\$ 67.00 / MBF
Beech	14.1 MBF	\$ 49.00 / MBF
Black Cherry	0.4 MBF	\$ 134.00 / MBF
Red Maple	2.9 MBF	\$ 113.00 / MBF
Red Oak	23.4 MBF	\$ 118.00 / MBF
Red Pine	131.0 MBF	\$ 78.00 / MBF
Sugar Maple	2.9 MBF	\$ 155.00 / MBF
White Pine	14.3 MBF	\$ 39.00 / MBF
Pulpwood		
B. T. Aspen	13 Cords	\$ 12.85 / Cord
Mixed Hardwood	153 Cords	\$ 11.75 / Cord
Red Oak	71 Cords	\$ 10.45 / Cord
Red Pine	138 Cords	\$ 28.00 / Cord
White Pine	28 Cords	\$ 11.95 / Cord

* The total volume is statistically estimated within plus (+) or minus (-) 16.73 percent. There are an estimated 794 cords on this timber sale, plus or minus 133 cords at the 95% confidence level. The estimated units are final and not subject to adjustment. Prospective bidders are urged to examine this timber and to make their own estimates of quantity and quality.

BOND AND PAYMENT SCHEDULE:

1. A bond in the amount of \$1,124.00 to insure faithful performance of the conditions of the contract will be deposited by the successful bidder within 21 days of the sale award.
2. Cutting in any sale or unit without the required advance payment would be considered a trespass.
3. Total payment must be paid in advance or according to the following schedule :
 - (a) Ten percent (10%) of the sale value must be paid within 21 days of the sale award.
 - (b) The 10% down payment will be credited towards the first unit cut.
 - (c) Payment for each of the following units must be made before cutting begins in that unit:

PAYMENT UNIT NUMBER	PERCENT OF TOTAL SALE VALUE
01	25.4%
02	47.7%
03	26.9%
4. If no cutting takes place, the 10% down payment will not be refunded.
5. Operations on the contract issued will terminate on 06/30/2023.

SALE STATISTICS

SALE VOLUMES

VOLUME		STATISTICAL RANGE IN CORDS		
TOTAL CUBIC FEET	TOTAL CORDS	PERCENT ERROR	MINIMUM	MAXIMUM
62,739	794	16.73%	661	927

VDU VOLUMES

A VDU is a Volume Determination Unit. Volumes and their associated statistics are calculated at the VDU level and summarized to the sale level. There is often a one to one relationship between a VDU and a Payment Unit, but not always, depending on the cruise design. Refer to the VDU TO PAYMENT UNIT table.

VDU	VOLUME		PERCENT ERROR	RANGE IN CORDS	
	TOTAL CUBIC FEET	TOTAL CORDS		MINIMUM	MAXIMUM
5	26,994	342	29.44%	241	442
7	21,054	267	28.36%	191	342
15	14,678	186	23.52%	142	230
TOTAL:	62,726	794		574	1,014

VDU TO PAYMENT UNIT

When a VDU is associated with more than one Payment Unit (PU), the VDU volumes are assigned to the PU based on acres of the VDU within the PU.

VDU	VDU ACRES	PU	PU ACRES
5	7.0	2	7.0
7	18.1	1	18.1
15	14.2	3	14.2
TOTAL:	39.3		39.3

DESCRIPTION OF TIMBER BY PAYMENT UNIT (PU)

PU	MARKET GROUP	PRODUCT	QUANTITY	UNIT	ACRES	ADVERTISE PRICE	
1	Basswood	Sawtimber	2.7	MBF	18.1	\$5,718.80	
	Beech		13.2	MBF			
	Red Oak		19.4	MBF			
	Sugar Maple		2.9	MBF			
	B. T. Aspen		Pulpwood	4			Cords
	Mixed Hardwood			121			Cords
	<i>Basswood</i>			5			<i>Cords</i>
	<i>Beech</i>			74			<i>Cords</i>
	<i>Red Maple</i>			17			<i>Cords</i>
	<i>Sugar Maple</i>			25			<i>Cords</i>
	Red Oak			65			Cords
2	Beech	Sawtimber	0.9	MBF	7.0	\$10,722.10	
	Red Maple		2.9	MBF			
	Red Oak		4.0	MBF			
	Red Pine		85.6	MBF			
	White Pine		14.3	MBF			
	Mixed Hardwood		Pulpwood	22			Cords
	<i>Beech</i>			11			<i>Cords</i>
	<i>Red Maple</i>			11			<i>Cords</i>
	Red Oak			6			Cords
	Red Pine			71			Cords
	White Pine			28			Cords
3	B. T. Aspen	Sawtimber		4.3	MBF	14.2	\$6,035.05
	Black Cherry		0.4	MBF			
	Red Pine		45.4	MBF			
	B. T. Aspen		Pulpwood	9	Cords		
	Mixed Hardwood			10	Cords		
	<i>Black Cherry</i>			2	<i>Cords</i>		
	<i>Red Maple</i>			8	<i>Cords</i>		
	Red Pine			67	Cords		
TOTAL:			196.0	MBF			
TOTAL:			403	Cords			

Sale Specific Conditions & Requirements

Sale Name: Bellows Lake Mix

Sale Number: 61-020-20 Seq#: 1

1 - Sale Area

1.2 - Boundaries

1.2.1 - Painted boundaries (9/19)

The sale boundary and Payment Unit boundaries are marked and identified by blue and red paint. Exterior sale boundary lines against private property are marked with blue paint. Exterior sale boundary lines against state land are marked with red paint. Retention patches are marked with double red paint marks; no harvesting activities may occur within these areas. The painted boundary line trees are not Included Timber and are to be protected unless marked with orange paint.

2 - Timber Specifications

2.1 - Included Timber

2.1.1 - Clearcut unit(s) with unmerchantable trees (6/14)

Within Payment Unit(s) 2, cut all trees that are two (2) inches or more at DBH.

2.1.3 - Cut tree marked unit(s) (12/08)

Within Payment Unit(s) 1 and 3, all trees are designated for cutting when marked with orange paint above and below stump height, regardless of merchantability. In addition, within Payment Unit 1, only cut all beech greater than 2 inches at DBH, unless marked with green paint.

2.2 - Utilization

2.2.2 - Chipping required (2/18)

Payment Unit 2 must be chip harvested to facilitate subsequent planting operations. Products may be produced as roundwood and forwarded to decking areas in final product length, but the tops must be left intact and skidded to the landing for chipping to minimize the amount of residual slash. If market conditions limit the practicality of chipping, tops and slash must be arranged in a way that will not inhibit future planting operations, as directed by the sale administrator. The requirement to retain approximately 1/6 to 1/3 of tree tops and limbs less than four inches in diameter is still applicable (G. C. & R. 2.2).

2.2.3 - Stump heights (4/07)

Stump heights within Payment Unit 2 shall not exceed 6 inches for all trees. This is to facilitate planting operations.

2.2.4 - Skidding length (2/14)

Skidding of unlimbed tops or lengths over 17 feet is not permissible within Payment Units 1 and 3 unless approved by the Unit Manager or his/her representative.

4 - Transportation

4.1 - Construction

4.1.3 - Slash and earthen piles (8/04)

Piles or windrows of earth along roads and landings that have been widened or constructed shall be leveled. Slash from road maintenance or construction, including stumps, shall be dispersed throughout the sale.

4.1.12 - No new roads (1/12)

No new roads will be permitted in any Payment Unit. All operations are limited to existing roads. Only skid trails will be allowed.

5 - Operations

5.2 - Conduct of Operations

5.2.1 - Slash

5.2.1.8 - Slash height (12/08)

No slash or tree tops may exceed 36 inches in height.

5.2.3 - Operating Restrictions

5.2.3.4 - Oak wilt restriction, no exceptions (1/18)

Within Payment Units 1 and 3 cutting, skidding, and hauling within the sale and brushing of access roads to the sale are not permitted during the period of April 15 to July 15. No exceptions will be granted. This is necessary to reduce the spread of oak wilt.

5.2.3.6 - Bark beetle restriction (12/08)

In the event drought creates a high risk of pine bark beetle infestation, pine is not to be cut during the period March 1 through July 1, unless all portions of trees greater than two inches in diameter are removed from the sale area, reduced to chips, or treated to the satisfaction of the Unit Manager or his/her representative, within fifteen days of being severed from the stump. Pine log decks, pulpwood piles and treetops that are piled for chipping in the fall or winter within a 1/4 mile of susceptible sites must be removed before March 15. Residual slash must not be placed in piles or rows and must be spread over the site for quick drying. The Department of Natural Resources will exercise this specification if the risk of damage warrants.

5.2.4 - Dead and Down Creation

5.2.4.1 - Dead and down creation, marked trees (10/13)

All trees marked with an orange "X" must be felled and left on site for wildlife. These trees have been taken off the timber tally.

5.2.38 - No decking against live trees (2/04)

Cut products may not be decked against unmarked or designated leave trees.

5.4 - Soil Protection

5.4.3 - Erosion control (12/08)

Skid trails or haul roads may require erosion control structures or berms per direction of the Unit Manager or his/her representative.

5.4.6 - Wet area protection (5/10)

No harvesting operations, including skidding and felling, are to take place within the forested wetlands adjacent to Payment Units 2 and 3 (indicated by "LM6" and "Q4" stands on the Timber Sale Map). All equipment, trees and tops should be kept out of these areas. Care must be taken by the Purchaser to identify and avoid operating in these areas of the timber sale.



TIMBER SALE MAP

This information provided by authority of Part 525, 1994 PA 451, as amended.

Sale Number	Year
61-020	20

Forest Management Unit	County	Mapped By	Date	Page	of
Traverse City	Grand Traverse	Tim Webb	4/9/2020	1	1
Township	Range	Section(s) and Subdivision(s)	Scale		
27N	12W	Sec. 30: N1/2NE, W1/2NW	1:7,920		

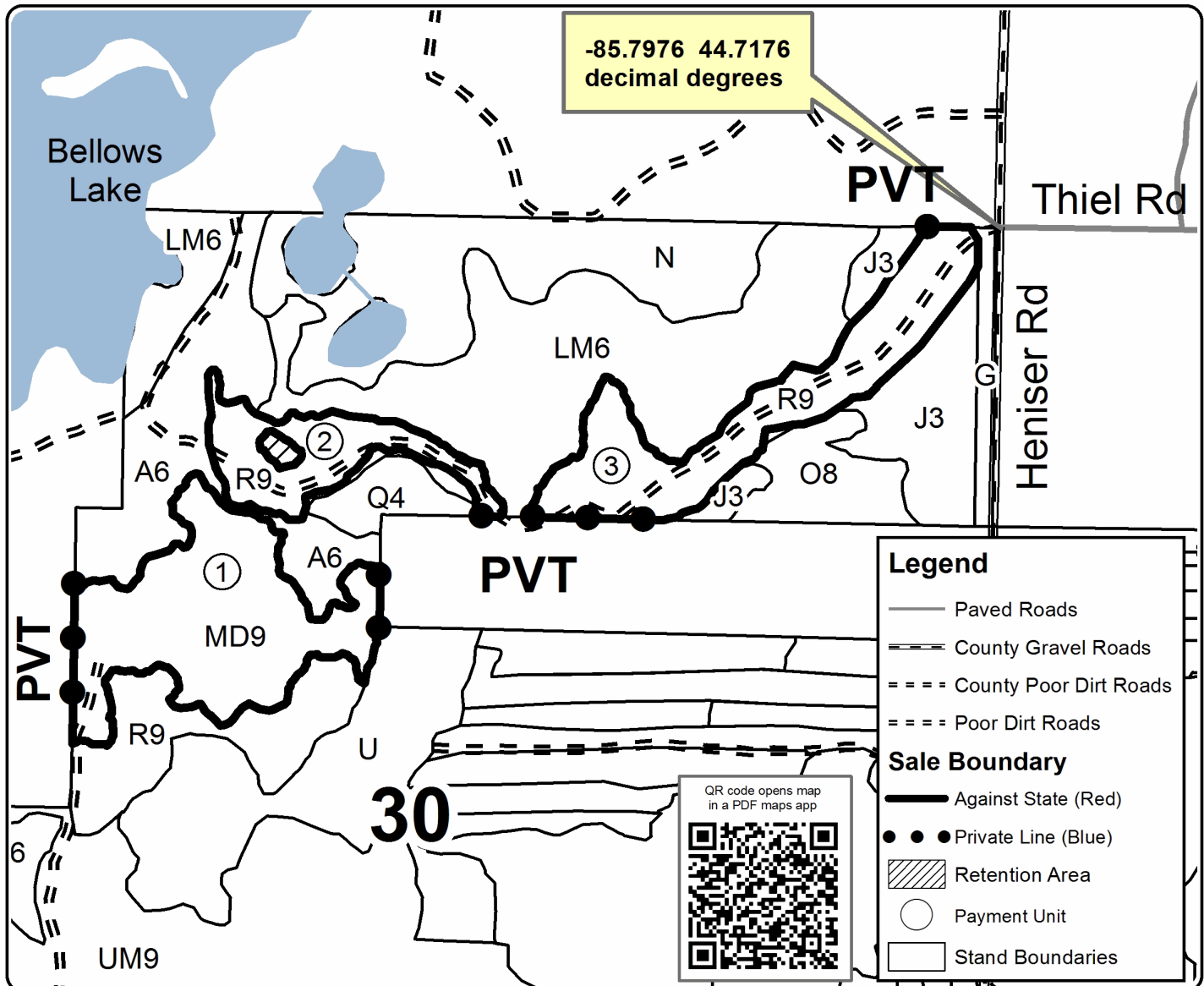
Cover Type				Density	
A = Aspen	H = Hemlock	N = Marsh	U = Upland Brush	0 = Non Stocked	5 = Pole Timber Medium
B = Paper Birch	J = Jack Pine	O = Oak	UM = Upland Mixed	1 = Seedling Sapling Poor	6 = Pole Timber Well
C = Cedar	L = Lowland Brush	P = Lowland Poplar	V = Bog or Marsh	2 = Seedling Sapling Medium	7 = Saw Timber Poor
D = Treed Bog	LM = Lowland Mixed	Q = Mixed Swamp Conifer	W = White Pine	3 = Seedling Sapling Well	8 = Saw Timber Medium
E = Swamp Hdwoods	M = Mpl, Bch, Brch	R = Red Pine	X = Non Stocked	4 = Pole Timber Poor	9 = Saw Timber Well
F = Spruce Fir	MC = Mixed Conifer	S = Black Spruce	Z = Water		
G = Grass	MD = Mixed Deciduous	T = Tamarack			

PU	Acres
1	18.1
2	7.0
3	14.2

Bellows Lake Mix

Compartment 61

39.3 acres



TIMBER SALE INFORMATION

Betsie Camper's Cut (61-042-20)
T25N, R13W, SEC. 2.
Benzie County (Advertised Price \$10,931.00)

SALE NOTE: Oak wilt restriction spec on sale.
Also roundwood operation required spec on sale.

A recreation site such as a trail, pathway, or campground is within the sale area or the vicinity. Certain restrictions/specifications may be applicable including time restrictions.

A timber sale contract for this lump sum, sealed bid timber sale will be awarded to the responsible bidder offering the highest sealed bid price. All units of volume listed below were estimated using the T-Sale computer program and our traditional volume equations. Bids must be at or above the following advertised price for each product and species:

<u>PRODUCTS & SPECIES</u>	<u>ESTIMATED UNITS*</u>	<u>ADVERTISED PRICE</u>
Sawtimber		
B. T. Aspen	57.8 MBF	\$ 77.00 / MBF
Black Cherry	1.0 MBF	\$ 134.00 / MBF
Red Maple	16.9 MBF	\$ 113.00 / MBF
Pulpwood		
B. T. Aspen	219 Cords	\$ 12.85 / Cord
Black Cherry	5 Cords	\$ 11.75 / Cord
Ironwood	4 Cords	\$ 11.75 / Cord
Quaking Aspen	33 Cords	\$ 12.85 / Cord
Red Maple	93 Cords	\$ 11.75 / Cord

* The total volume is statistically estimated within plus (+) or minus (-) 26.39 percent. There are an estimated 505 cords on this timber sale, plus or minus 133 cords at the 95% confidence level. The estimated units are final and not subject to adjustment. Prospective bidders are urged to examine this timber and to make their own estimates of quantity and quality.

BOND AND PAYMENT SCHEDULE:

1. A bond in the amount of \$547.00 to insure faithful performance of the conditions of the contract will be deposited by the successful bidder within 21 days of the sale award.
2. Cutting in any sale or unit without the required advance payment would be considered a trespass.
3. Total payment must be paid in advance or according to the following schedule :
 - (a) Ten percent (10%) of the sale value must be paid within 21 days of the sale award.
 - (b) The 10% down payment will be credited towards the first unit cut.
 - (c) Payment for each of the following units must be made before cutting begins in that unit:

PAYMENT UNIT NUMBER	PERCENT OF TOTAL SALE VALUE
01	46.5%
02	53.5%
4. If no cutting takes place, the 10% down payment will not be refunded.
5. Operations on the contract issued will terminate on 12/31/2023.

SALE STATISTICS

SALE VOLUMES

VOLUME		STATISTICAL RANGE IN CORDS		
TOTAL CUBIC FEET	TOTAL CORDS	PERCENT ERROR	MINIMUM	MAXIMUM
39,922	505	26.39%	372	639

VDU VOLUMES

A VDU is a Volume Determination Unit. Volumes and their associated statistics are calculated at the VDU level and summarized to the sale level. There is often a one to one relationship between a VDU and a Payment Unit, but not always, depending on the cruise design. Refer to the VDU TO PAYMENT UNIT table.

VDU	VOLUME		PERCENT ERROR	RANGE IN CORDS	
	TOTAL CUBIC FEET	TOTAL CORDS		MINIMUM	MAXIMUM
9	17,980	228	35.73%	146	309
10	21,954	278	18.58%	226	330
TOTAL:	39,935	506		373	638

VDU TO PAYMENT UNIT

When a VDU is associated with more than one Payment Unit (PU), the VDU volumes are assigned to the PU based on acres of the VDU within the PU.

VDU	VDU ACRES	PU	PU ACRES
9	17.5	1	17.5
10	8.5	2	8.5
TOTAL:	26.0		26.0

DESCRIPTION OF TIMBER BY PAYMENT UNIT (PU)

PU	MARKET GROUP	PRODUCT	QUANTITY	UNIT	ACRES	ADVERTISE PRICE
1	B. T. Aspen	Sawtimber	19.9	MBF	17.5	\$5,078.65
	Black Cherry		1.0	MBF		
	Red Maple		12.6	MBF		
	B. T. Aspen	Pulpwood	55	Cords		
	Black Cherry		3	Cords		
	Ironwood		4	Cords		
	Quaking Aspen		33	Cords		
	Red Maple		66	Cords		
2	B. T. Aspen	Sawtimber	37.9	MBF	8.5	\$5,852.35
	Red Maple		4.3	MBF		
	B. T. Aspen	Pulpwood	164	Cords		
	Black Cherry		2	Cords		
	Red Maple		27	Cords		
TOTAL:			75.7	MBF		
TOTAL:			354	Cords		

Sale Specific Conditions & Requirements

Sale Name: Betsie Camper's Cut

Sale Number: 61-042-20 Seq#: 1

1 - Sale Area

1.2 - Boundaries

1.2.1 - Painted boundaries (9/19)

The sale boundary and Payment Unit boundaries are marked and identified by red paint. Exterior sale boundary lines against state are marked with red paint. The painted boundary line trees are not Included Timber and are to be protected.

2 - Timber Specifications

2.1 - Included Timber

2.1.7 - Leave tree marked unit(s) (6/14)

Within Payment Unit(s) 1 and 2, all aspen, red maple, cherry, beech, and ironwood trees are designated for cutting regardless of merchantability. Except, do not cut any trees marked with green paint above and below stump height. Do not cut any other tree species that is not specifically designated for cutting.

2.2 - Utilization

2.2.3 - Stump heights (4/07)

Stump heights within the Sale Area shall not exceed 12 inches for trees greater than 10 inches at DBH and 6 inches for trees smaller than 10 inches at DBH.

2.2.6 - Roundwood operation required (5/07)

The skidding of whole trees or tree segments with limbs attached is prohibited within Payment Unit(s) 1 and 2. All products must be produced as roundwood and forwarded to existing roads or landing areas in final product length.

4 - Transportation

4.1 - Construction

4.1.3 - Slash and earthen piles (8/04)

Piles or windrows of earth along roads and landings that have been widened or constructed shall be leveled. Slash from road maintenance or construction, including stumps, shall be dispersed throughout the sale as determined by the DNR sale administrator.

5 - Operations

5.2 - Conduct of Operations

5.2.1 - Slash

5.2.1.8 - Slash height (12/08)

No slash or tree tops may exceed 24 inches in height.

5.2.1.10 - No slash in openings (5/10)

No brush or logging debris is to be left in the maintained wildlife opening which is indicated by G0 on the Timber Sale Map. Any damage to the opening shall be repaired according to specifications of the Unit Manager or his/her representative.

5.2.3 - Operating Restrictions

5.2.3.4 - Oak wilt restriction, no exceptions (1/18)

Within Payment Unit(s) 1 and 2, cutting, skidding, and hauling within the sale and brushing of access roads to the sale are not permitted during the period of April 15 to July 15. No exceptions will be granted. This is necessary to reduce the spread of oak wilt.

5.2.4 - Dead and Down Creation

5.2.4.3 - Dead and down creation, dead trees (6/07)

Except as provided for in General Condition and Requirement 5.2.2, no dead trees, standing or down, are to be cut, skidded, or processed.

5.2.4.4 - Dead and down creation, grouse (6/18)

To encourage grouse and other wildlife, in Payment Unit(s) 1 and 2, leave one, 12" diameter or larger log-length (8 foot minimum) piece on the ground for every 2 acres. Preferably a maple or cherry log. These trees will be evenly scattered throughout the Payment Unit, preferably at least two chains from any roads, two-tracks, or trails open to vehicles. This can be an unmerchantable piece or a full tree.

5.2.38 - No decking against live trees (2/04)

Cut products may not be decked against unmarked or designated leave trees.

5.2.41 - Snowmobile trail protection (9/11)

The Betsie River Snowmobile trail is shown on the Timber Sale Map. Do not cut or damage posts with orange trail markers or traffic control signs. If the trail is used, it must be maintained and restored to a condition equal to or better than before the sale. The road maintenance/restoration must be done prior to December 1. If the trail is used for hauling, it must be graded to the satisfaction of the Unit Manager or his/her representative prior to December 1. If the trail road is to be used for hauling during the snowmobile season, then a snow-covered base must be left on the trail.

5.4 - Soil Protection

5.4.1 - Rutting restriction, general (7/16)

Operations are to cease immediately if equipment and weather conditions result in rutting of roads and/or skid trails which is 12 inches or greater in depth and 50 feet in length. The Unit Manager or his/her representative may restrict hauling and/or skidding if ruts exceed the specified depth. With the Unit Manager or his/her representative's approval, the Purchaser may return to the area when the risk of rutting has decreased.

5.4.5 - Soil caution (11/04)

Care must be taken to minimize soil damage when using forwarding trail in Payment Unit 2. Depending on soil conditions, Equipment Operator may have to build-up forwarding trail through potential wet area using slash, then remove slash from wet area when forwarding is done.

6 - Safety and Fire Prevention

6.2 - Signing

6.2.2 - Snowmobile trail posting (8/09)

The Purchaser is responsible for posting and maintaining caution signs on Betsie River Snowmobile Trail prior to beginning operations during the snowmobile season (approximately December 1 to March 31). The trail must be posted at appropriate distances from the Sale Area to warn of logging activity and truck traffic. Signs must be removed when harvest operations are suspended or completed. The Purchaser will provide these signs.



TIMBER SALE MAP

This information provided by authority of Part 525, 1994 PA 451 as amended.

Sale Number	Year
61 - 042	20

Forest Management Unit Traverse City	County Benzie	Mapped By Craig Allen	Date 09/16/2020	Page 1	of 1
Township 25N	Range 13W	Section(s) and Subdivision(s) Sec.02 : E1/2NW, W1/2NE, N1/2SW	Scale 1:7,920		

Cover Type				Density	
A = Aspen	H = Hemlock	N = Marsh	U = Upland Brush	0 = Non Stocked	5 = Pole Timber Medium
B = Paper Birch	J = Jack Pine	O = Oak	UM = Upland Mixed	1 = Seeding Sapling Poor	6 = Pole Timber Well
C = Cedar	L = Lowland Brush	P = Lowland Poplar	V = Bog or Marsh	2 = Seeding Sapling Medium	7 = Saw Timber Poor
D = Treed Bog	LM = Lowland Mixed	Q = Mixed Swamp Conifer	W = White Pine	3 = Seeding Sapling Well	8 = Saw Timber Medium
E = Swamp Hardwoods	M = Mpl. Ech. Birch	R = Red Pine	X = Non Stocked	4 = Pole Timber Poor	9 = Saw Timber Well
F = Spruce Fir	MC = Mixed Conifer	S = Black Spruce	Z = Water		
G = Creas	MD = Mixed Deciduous	T = Tamarack			

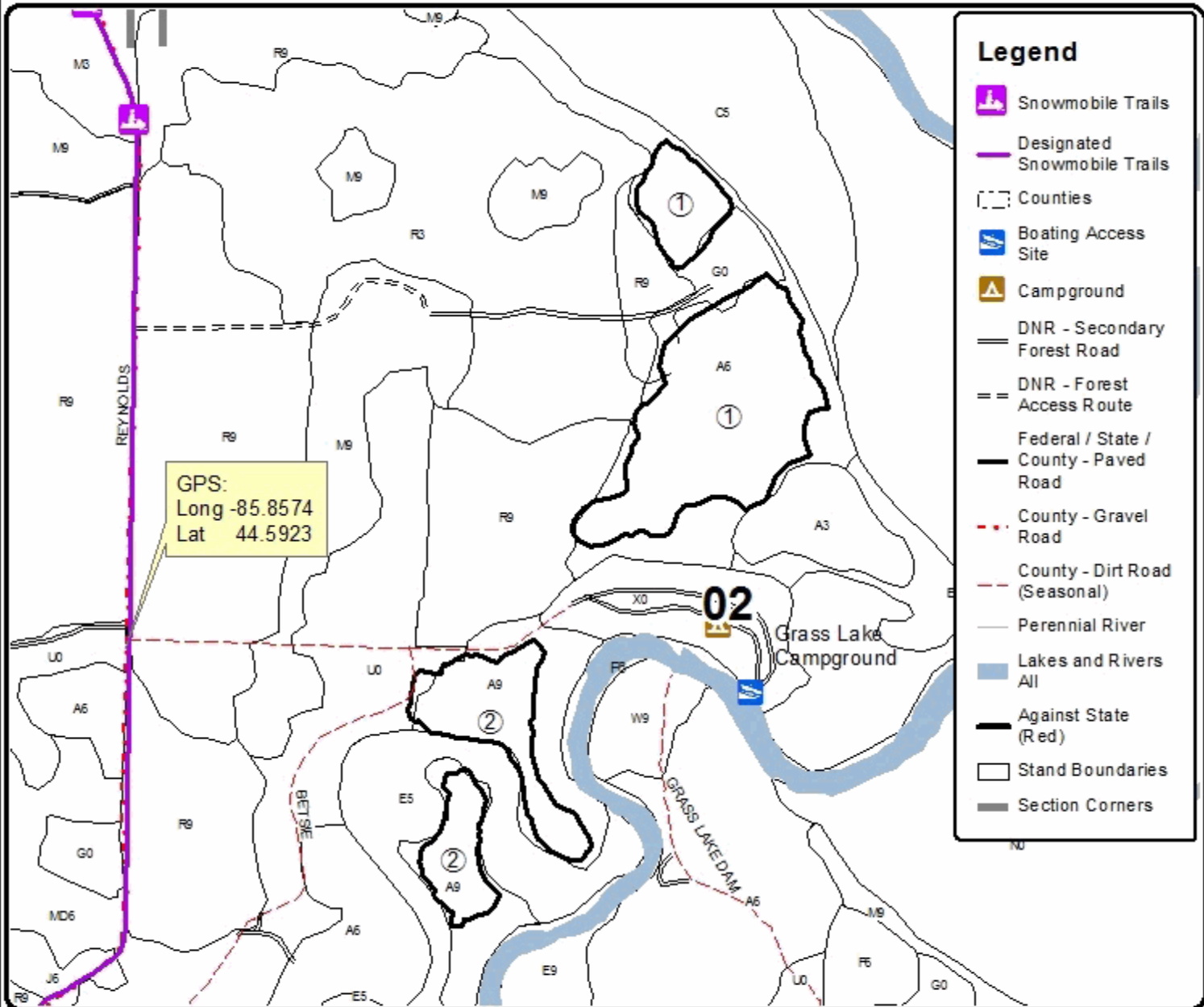
PU Acres

1	17.5
2	8.5

Betsie Camper's Cut

Compartment 20

26 Acres



TIMBER SALE INFORMATION

Stair Step Aspen (61-043-20)
 T25N, R14W, SEC. 22; T25N, R14W, SEC. 23.
 Benzie County (Advertised Price \$33,025.05)

SALE NOTE: Oak wilt restriction on sale.
 Also, round wood operation requirement on sale.

A recreation site such as a trail, pathway, or campground is within the sale area or the vicinity. Certain restrictions/specifications may be applicable including time restrictions.

A timber sale contract for this lump sum, sealed bid timber sale will be awarded to the responsible bidder offering the highest sealed bid price. All units of volume listed below were estimated using the T-Sale computer program and our traditional volume equations. Bids must be at or above the following advertised price for each product and species:

<u>PRODUCTS & SPECIES</u>	<u>ESTIMATED UNITS*</u>	<u>ADVERTISED PRICE</u>
Sawtimber		
B. T. Aspen	115.0 MBF	\$ 77.00 / MBF
Black Cherry	28.7 MBF	\$ 134.00 / MBF
Quaking Aspen	21.8 MBF	\$ 77.00 / MBF
Red Maple	38.7 MBF	\$ 113.00 / MBF
Pulpwood		
B. T. Aspen	528 Cords	\$ 12.85 / Cord
Black Cherry	200 Cords	\$ 11.75 / Cord
Ironwood	7 Cords	\$ 11.75 / Cord
Quaking Aspen	195 Cords	\$ 12.85 / Cord
Red Maple	217 Cords	\$ 11.75 / Cord

* The total volume is statistically estimated within plus (+) or minus (-) 11.96 percent. There are an estimated 1,555 cords on this timber sale, plus or minus 186 cords at the 95% confidence level. The estimated units are final and not subject to adjustment. Prospective bidders are urged to examine this timber and to make their own estimates of quantity and quality.

BOND AND PAYMENT SCHEDULE:

- A bond in the amount of \$1,651.00 to insure faithful performance of the conditions of the contract will be deposited by the successful bidder within 21 days of the sale award.
- Cutting in any sale or unit without the required advance payment would be considered a trespass.
- Total payment must be paid in advance or according to the following schedule :
 - Ten percent (10%) of the sale value must be paid within 21 days of the sale award.
 - The 10% down payment will be credited towards the first unit cut.
 - Payment for each of the following units must be made before cutting begins in that unit:

PAYMENT UNIT NUMBER	PERCENT OF TOTAL SALE VALUE
01	66.2%
02	33.8%
- If no cutting takes place, the 10% down payment will not be refunded.
- Operations on the contract issued will terminate on 12/31/2023.

SALE STATISTICS

SALE VOLUMES

VOLUME		STATISTICAL RANGE IN CORDS		
TOTAL CUBIC FEET	TOTAL CORDS	PERCENT ERROR	MINIMUM	MAXIMUM
122,830	1,555	11.96%	1,369	1,741

VDU VOLUMES

A VDU is a Volume Determination Unit. Volumes and their associated statistics are calculated at the VDU level and summarized to the sale level. There is often a one to one relationship between a VDU and a Payment Unit, but not always, depending on the cruise design. Refer to the VDU TO PAYMENT UNIT table.

VDU	VOLUME		PERCENT ERROR	RANGE IN CORDS	
	TOTAL CUBIC FEET	TOTAL CORDS		MINIMUM	MAXIMUM
5	120,515	1,526	12.15%	1,340	1,711
20	2,307	29	49.30%	15	44
TOTAL:	122,821	1,555		1,355	1,754

VDU TO PAYMENT UNIT

When a VDU is associated with more than one Payment Unit (PU), the VDU volumes are assigned to the PU based on acres of the VDU within the PU.

VDU	VDU ACRES	PU	PU ACRES
5	48.1	1	31.6
		2	16.5
20	1.3	1	1.3
TOTAL:	49.4		49.4

DESCRIPTION OF TIMBER BY PAYMENT UNIT (PU)

PU	MARKET GROUP	PRODUCT	QUANTITY	UNIT	ACRES	ADVERTISE PRICE
1	B. T. Aspen	Sawtimber	75.9	MBF	32.9	\$21,878.65
	Black Cherry		18.9	MBF		
	Quaking Aspen		14.3	MBF		
	Red Maple		25.7	MBF		
	B. T. Aspen	Pulpwood	355	Cords		
	Black Cherry		131	Cords		
	Ironwood		5	Cords		
	Quaking Aspen		128	Cords		
	Red Maple		144	Cords		
2	B. T. Aspen	Sawtimber	39.1	MBF	16.5	\$11,146.40
	Black Cherry		9.8	MBF		
	Quaking Aspen		7.5	MBF		
	Red Maple		13.0	MBF		
	B. T. Aspen	Pulpwood	173	Cords		
	Black Cherry		69	Cords		
	Ironwood		2	Cords		
	Quaking Aspen		67	Cords		
	Red Maple		73	Cords		
TOTAL:			204.2	MBF		
TOTAL:			1,147	Cords		

Sale Specific Conditions & Requirements

Sale Name: Stair Step Aspen

Sale Number: 61-043-20 Seq#: 1

1 - Sale Area

1.2 - Boundaries

1.2.1 - Painted boundaries (9/19)

The sale boundary and Payment Unit boundaries are marked and identified by blue, red, and yellow paint. Exterior sale boundary lines against private property are marked with blue paint. Exterior sale boundary lines against state are marked with red paint. The edge of the Betsie Valley Trail is the northeast boundary of Payment Unit 1. South Weldon road is also a boundary of Payment Unit 1 (see map). Interior Payment Unit boundaries are marked with yellow paint. Retention patches are marked with red paint; no harvesting activities may occur within these areas. The painted boundary line trees are not Included Timber and are to be protected. Yellow painted trees designating an interior Payment Unit boundary are only to be cut when all surrounding Payment Units have been paid.

2 - Timber Specifications

2.1 - Included Timber

2.1.7 - Leave tree marked unit(s) (6/14)

Within Payment Unit(s) 1 and 2, all red maple, aspen, cherry, beech and ironwood trees are designated for cutting regardless of merchantability. Except, do not cut any trees marked with green paint above and below stump height. Do not cut any other tree species that is not specifically designated for cutting.

2.2 - Utilization

2.2.3 - Stump heights (4/07)

Stump heights within the Sale Area shall not exceed 12 inches for trees greater than 10 inches at DBH and 6 inches for trees smaller than 10 inches at DBH.

2.2.6 - Roundwood operation required (5/07)

The skidding of whole trees or tree segments with limbs attached is prohibited within Payment Unit(s) 1 and 2. All products must be produced as roundwood and forwarded to existing roads or landing areas in final product length.

4 - Transportation

4.1 - Construction

4.1.3 - Slash and earthen piles (8/04)

Piles or windrows of earth along roads and landings that have been widened or constructed shall be leveled. Slash from road maintenance or construction, including stumps, shall be dispersed throughout the sale as specified by DNR sale administrator.

5 - Operations

5.2 - Conduct of Operations

5.2.1 - Slash

5.2.1.8 - Slash height (12/08)

No slash or tree tops may exceed 24 inches in height.

5.2.3 - Operating Restrictions

5.2.3.4 - Oak wilt restriction, no exceptions (1/18)

Within Payment Unit(s) 1 and 2, cutting, skidding, and hauling within the sale and brushing of access roads to the sale are not permitted during the period of April 15 to July 15. No exceptions will be granted. This is necessary to reduce the spread of oak wilt.

5.2.4 - Dead and Down Creation

5.2.4.3 - Dead and down creation, dead trees (6/07)

Except as provided for in General Condition and Requirement 5.2.2, no dead trees, standing or down, are to be cut, skidded, or processed.

5.2.4.4 - Dead and down creation, grouse (6/18)

To encourage grouse and other wildlife, in Payment Unit(s) 1 and 2, leave one, 12" diameter or larger log-length (8 foot minimum) piece on the ground for every 2 acres. Preferably a maple or cherry log. These trees will be evenly scattered throughout the Payment Unit, preferably at least two chains from any roads, two-tracks, or trails open to vehicles. This can be an unmerchantable piece or a full tree.

5.2.38 - No decking against live trees (2/04)

Cut products may not be decked against unmarked or designated leave trees.

5.2.40 - Pathway protection (10/10)

The Betsie Valley Pathway (BVT) is a bike, hiking, ski, snowmobile trail and is shown on the Timber Sale Map. Do not cut trees or damage posts with blue pathway markers. Do not run equipment down the pathway. No logging equipment is allowed on the trail at any time.

5.4 - Soil Protection

5.4.1 - Rutting restriction, general (7/16)

Operations are to cease immediately if equipment and weather conditions result in rutting of roads and/or skid trails which is 12 inches or greater in depth and 50 feet in length. The Unit Manager or his/her representative may restrict hauling and/or skidding if ruts exceed the specified depth. With the Unit Manager or his/her representative's approval, the Purchaser may return to the area when the risk of rutting has decreased.

5.4.5 - Soil caution (11/04)

Care must be taken to minimize soil damage when using forwarding trail in Payment Unit 2. Depending on soil conditions, Equipment Operator may have to build-up forwarding trail through potential wet area using slash, then remove slash from wet area when forwarding is done.



TIMBER SALE MAP

This information provided by authority of Part 525, 1994 PA 451 as amended.

Sale Number	Year
61 -043	20

Forest Management Unit Traverse City	County Benzie	Mapped By Craig Allen	Date 9/29/2020	Page 1	of 1
Township 25N	Range 14W	Section(s) and Subdivision(s) Sec. 22: S1/2NE, NESE Sec. 23: W1/2SW	Scale 1:7,920		

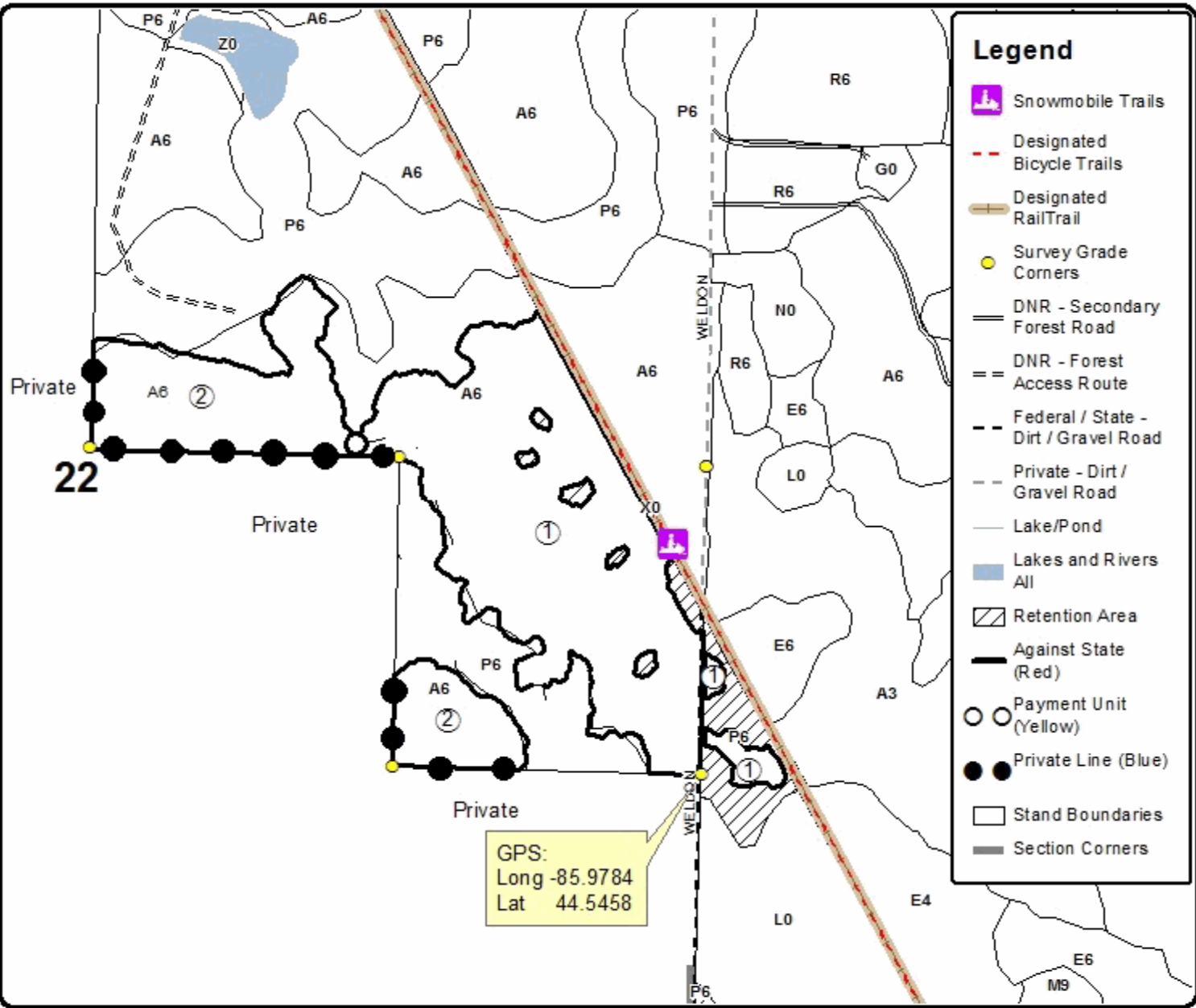
Cover Type				Density	
A = Aspen	H = Hemlock	N = Marsh	U = Upland Brush	0 = Non Stocked	5 = Pole Timber Medium
B = Paper Birch	J = Jack Pine	O = Oak	UM = Upland Mixed	1 = Seeding Sapling Poor	6 = Pole Timber Well
C = Cedar	L = Lowland Brush	P = Lowland Poplar	V = Bog or Marsh	2 = Seeding Sapling Medium	7 = Saw Timber Poor
D = Treed Bog	LM = Lowland Mixed	Q = Mixed Swamp Conifer	W = White Pine	3 = Seeding Sapling Well	8 = Saw Timber Medium
E = Swamp Hardwoods	M = Mpl. Ech. Birch	R = Red Pine	X = Non Stocked	4 = Pole Timber Poor	9 = Saw Timber Well
F = Spruce Fir	MC = Mixed Conifer	S = Black Spruce	Z = Water		
G = Cress	MD = Mixed Deciduous	T = Tamarack			

PU	Acres
1	32.9
2	16.5

Stair Step Aspen

Compartment 30

49.4 Acres



GPS:
Long -85.9784
Lat 44.5458



TIMBER SALE INFORMATION

Forks Aspen (61-045-20)
 T26N, R09W, SEC. 4; T26N, R09W, SEC. 9.
 Grand Traverse County (Advertised Price \$4,860.25)

SALE NOTE: A recreation site such as a trail, pathway, or campground is within the sale area or the vicinity. Certain restrictions/specifications may be applicable including time restrictions.

A timber sale contract for this lump sum, sealed bid timber sale will be awarded to the responsible bidder offering the highest sealed bid price. All units of volume listed below were estimated using the T-Sale computer program and our traditional volume equations. Bids must be at or above the following advertised price for each product and species:

<u>PRODUCTS & SPECIES</u>	<u>ESTIMATED UNITS*</u>	<u>ADVERTISED PRICE</u>
Sawtimber		
B. T. Aspen	7.7 MBF	\$ 77.00 / MBF
Red Pine	1.4 MBF	\$ 78.00 / MBF
Pulpwood		
B. T. Aspen	293 Cords	\$ 12.85 / Cord
Balsam Fir	3 Cords	\$ 6.90 / Cord
Mixed Hardwood	18 Cords	\$ 11.75 / Cord
Northern Pin Oak	7 Cords	\$ 10.45 / Cord
Red Pine	1 Cords	\$ 28.00 / Cord
White Pine	5 Cords	\$ 11.95 / Cord

* The total volume is statistically estimated within plus (+) or minus (-) 23.61 percent. There are an estimated 344 cords on this timber sale, plus or minus 81 cords at the 95% confidence level. The estimated units are final and not subject to adjustment. Prospective bidders are urged to examine this timber and to make their own estimates of quantity and quality.

BOND AND PAYMENT SCHEDULE:

1. A bond in the amount of \$486.00 to insure faithful performance of the conditions of the contract will be deposited by the successful bidder within 21 days of the sale award.
2. Cutting in any sale or unit without the required advance payment would be considered a trespass.
3. Total payment must be paid in advance or according to the following schedule :
 - (a) Ten percent (10%) of the sale value must be paid within 21 days of the sale award.
 - (b) The 10% down payment will be credited towards the first unit cut.
 - (c) Payment for each of the following units must be made before cutting begins in that unit:

PAYMENT UNIT NUMBER	PERCENT OF TOTAL SALE VALUE
01	26.7%
02	73.3%
4. If no cutting takes place, the 10% down payment will not be refunded.
5. Operations on the contract issued will terminate on 06/30/2023.

SALE STATISTICS

SALE VOLUMES

VOLUME		STATISTICAL RANGE IN CORDS		
TOTAL CUBIC FEET	TOTAL CORDS	PERCENT ERROR	MINIMUM	MAXIMUM
27,201	344	23.61%	263	426

VDU VOLUMES

A VDU is a Volume Determination Unit. Volumes and their associated statistics are calculated at the VDU level and summarized to the sale level. There is often a one to one relationship between a VDU and a Payment Unit, but not always, depending on the cruise design. Refer to the VDU TO PAYMENT UNIT table.

VDU	VOLUME		PERCENT ERROR	RANGE IN CORDS	
	TOTAL CUBIC FEET	TOTAL CORDS		MINIMUM	MAXIMUM
106	7,608	96	42.62%	55	137
111	19,608	248	28.29%	178	318
TOTAL:	27,216	345		233	456

VDU TO PAYMENT UNIT

When a VDU is associated with more than one Payment Unit (PU), the VDU volumes are assigned to the PU based on acres of the VDU within the PU.

VDU	VDU ACRES	PU	PU ACRES
106	6.5	1	6.5
111	6.0	2	6.0
TOTAL:	12.5		12.5

DESCRIPTION OF TIMBER BY PAYMENT UNIT (PU)

PU	MARKET GROUP	PRODUCT	QUANTITY	UNIT	ACRES	ADVERTISE PRICE
1	B. T. Aspen	Sawtimber	1.6	MBF	6.5	\$1,297.55
	B. T. Aspen	Pulpwood	78	Cords		
	Mixed Hardwood		6	Cords		
	<i>Black Cherry</i>		4	<i>Cords</i>		
	<i>Red Maple</i>		2	<i>Cords</i>		
	Northern Pin Oak		4	Cords		
	<i>Northern Pin Oak</i>		4	<i>Cords</i>		
	White Pine		5	Cords		
2	B. T. Aspen	Sawtimber	6.1	MBF	6.0	\$3,562.70
	Red Pine		1.4	MBF		
	B. T. Aspen	Pulpwood	215	Cords		
	Balsam Fir		3	Cords		
	Mixed Hardwood		12	Cords		
	<i>Black Cherry</i>		3	<i>Cords</i>		
	<i>Red Maple</i>		9	<i>Cords</i>		
	Northern Pin Oak		3	Cords		
	<i>Northern Pin Oak</i>	<i>Sawtimber</i>	0.9	<i>MBF</i>		
	<i>Northern Pin Oak</i>	<i>Pulpwood</i>	1	<i>Cords</i>		
	Red Pine		1	Cords		
TOTAL:			9.1	MBF		
TOTAL:			327	Cords		

Sale Specific Conditions & Requirements

Sale Name: Forks Aspen

Sale Number: 61-045-20 Seq#: 1

1 - Sale Area

1.2 - Boundaries

1.2.1 - Painted boundaries (9/19)

The sale boundary and Payment Unit boundaries are marked and identified by blue and red paint, along with a powerline. Exterior sale boundary lines against private property are marked with blue paint. Exterior sale boundary lines against state are marked with red paint. The interior Payment Unit boundary is unpainted and identified by the powerline. Retention patches are marked with red paint; no harvesting activities may occur within these areas. The painted boundary line trees are not Included Timber and are to be protected.

2 - Timber Specifications

2.1 - Included Timber

2.1.3 - Cut tree marked unit(s) (12/08)

Within Payment Unit(s) 1, all trees are designated for cutting when marked with orange paint above and below stump height, regardless of merchantability. Also cut all aspen unless marked with green paint.

2.1.7 - Leave tree marked unit(s) (6/14)

Within Payment Unit(s) 2, all trees which meet minimum piece specifications in 2.2 Utilization are designated for cutting, except do not cut cedar or any trees marked with green paint above and below stump height. Special protection trees identified in accordance with condition 3.4.2, within clearcutting unit boundaries, are not Included Timber and are to be protected.

2.2 - Utilization

2.2.6 - Roundwood operation required (5/07)

The skidding of whole trees or tree segments with limbs attached is prohibited within Payment Unit(s) 1 and 2. All products must be produced as roundwood and forwarded to existing roads or landing areas in final product length.

2.2.10 - No chipping tops and limbs (8/16)

Within Payment Unit(s) 1 and 2, chipping of limbs or tops is not permitted. Limbs and the remaining top must be left on site and scattered.

3 - Payments

3.4 - Damaged Timber

3.4.2 - Special Protection Trees (4/14)

The Purchaser shall not cut live or dead special protection trees within cutting units or clearings. Special protection trees are marked with green paint or designated species. If the Purchaser's operations have cut or damaged special protection trees through carelessness, the Purchaser shall pay \$25 as fixed, agreed and liquidated damages for each special protection tree cut or damaged. Such payment does not constitute ownership of the undesignated timber.

4 - Transportation

4.1 - Construction

4.1.6 - Road construction (1/09)

Construction of new roads or improvements of existing roads shall be done in such a way as to minimize the environmental and visual impacts. Merchantable trees shall be cut and utilized unless otherwise directed. Non-merchantable trees shall be severed and laid flat on the ground. Slash shall be scattered, and not left in windrows and kept a minimum of 10 feet back from the road edge. Stumps shall be set upright, not left on edge, and be moved at least 10 feet away from the road edge. Disturbed soil shall be feathered into the woods and not left in berms or windrows. A short segment of road may be needed to access Payment Unit 2 from Brown Bridge Road.

4.1.7 - Road closure (10/11)

All new roads built into the sale must be blocked to vehicle traffic upon completion of the sale. All new roads built into the sale must be blocked to vehicle traffic within 30 days of completion of hauling. These roads must be rendered impassable to cars and trucks. All stumps from road building and landing construction must be reserved to block any newly constructed roads upon completion of the sale. These stumps must be scattered along the road system to prohibit vehicular movement. Contact the sale administrator for specific details of design and placement.

4.2 - Maintenance

4.2.4 - Grading (10/16)

For completion of the sale, state forest roads must be graded. In general, this will require a road grader or bulldozer to shape up the roads after forest products have been hauled off site. The grading equipment to be used must be approved by the Unit Manager or his/her representative.

4.2.5 - Two wheel drive condition (2/04)

All existing trail roads on and adjacent to the sale area must be passable by two-wheel drive traffic for the duration of the sale.

5 - Operations

5.1 - Notification

5.1.1 - Pre-sale conference (10/16)

A pre-sale conference on site between the Purchaser and sale administrator is required prior to beginning any operations to determine landing and road locations. The Unit Manager or his/her representative must be contacted at least 3 days in advance to schedule the conference.

5.1.4 - Post-sale conference (10/16)

A post-sale conference on site between the Purchaser and sale administrator is required 5 days prior to the completion of active logging operations to determine clean-up and repair of landings, road edges, and the fulfillment of other contract specifications.

5.2 - Conduct of Operations

5.2.1 - Slash

5.2.1.8 - Slash height (12/08)

No slash or tree tops may exceed 24 inches in height.

5.2.3 - Operating Restrictions

5.2.3.2 - Operating restrictions (9/11)

Within Payment Unit(s) 1 and 2, unless changed by written agreement, cutting, skidding, and hauling are limited to the period of Nov 1 to March 30. This restriction is because of the adjacent campground and possible wet soil conditions.

5.2.4 - Dead and Down Creation

5.2.4.4 - Dead and down creation, grouse (6/18)

To encourage grouse and other wildlife, in Payment Unit(s) 2, leave one, 12" diameter or larger log-length (8 foot minimum) piece on the ground for every acre. These will be evenly scattered throughout the unit. This can be an unmerchantable piece or a full tree.

5.2.38 - No decking against live trees (2/04)

Cut products may not be decked against unmarked or designated leave trees.

5.4 - Soil Protection

5.4.1 - Rutting restriction, general (7/16)

Operations are to cease immediately if equipment and weather conditions result in rutting of roads and/or skid trails which is 12 inches or greater in depth and 50 feet in length. The Unit Manager or his/her representative may restrict hauling and/or skidding if ruts exceed the specified depth. With the Unit Manager or his/her representative's approval, the Purchaser may

return to the area when the risk of rutting has decreased.

5.4.6 - Wet area protection (5/10)

No harvesting operations, including skidding and felling, are to take place within the red lined area in the south end of Payment Unit 2. When harvesting occurs, there should be no disturbance to the vernal pond depression. All equipment, trees and tops should be kept out of this area. Within 100 feet of the pond, equipment should only be used when the soil is in a dry or frozen condition. Care must be taken by the Purchaser to identify and avoid operating in these areas of the timber sale.

6 - Safety and Fire Prevention

6.2 - Signing

6.2.1 - Road posting (9/09)

The Purchaser is responsible for posting and maintaining caution signs on Brown Bridge Road prior to beginning operations. The road must be posted at appropriate distances from the Sale Area to warn of logging activity and truck traffic. Signs must be removed when harvest operations are suspended or completed. The Purchaser will provide these signs.



Sale Number	Year
61-045	20

TIMBER SALE MAP

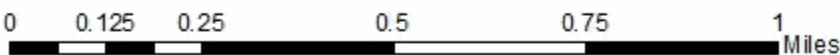
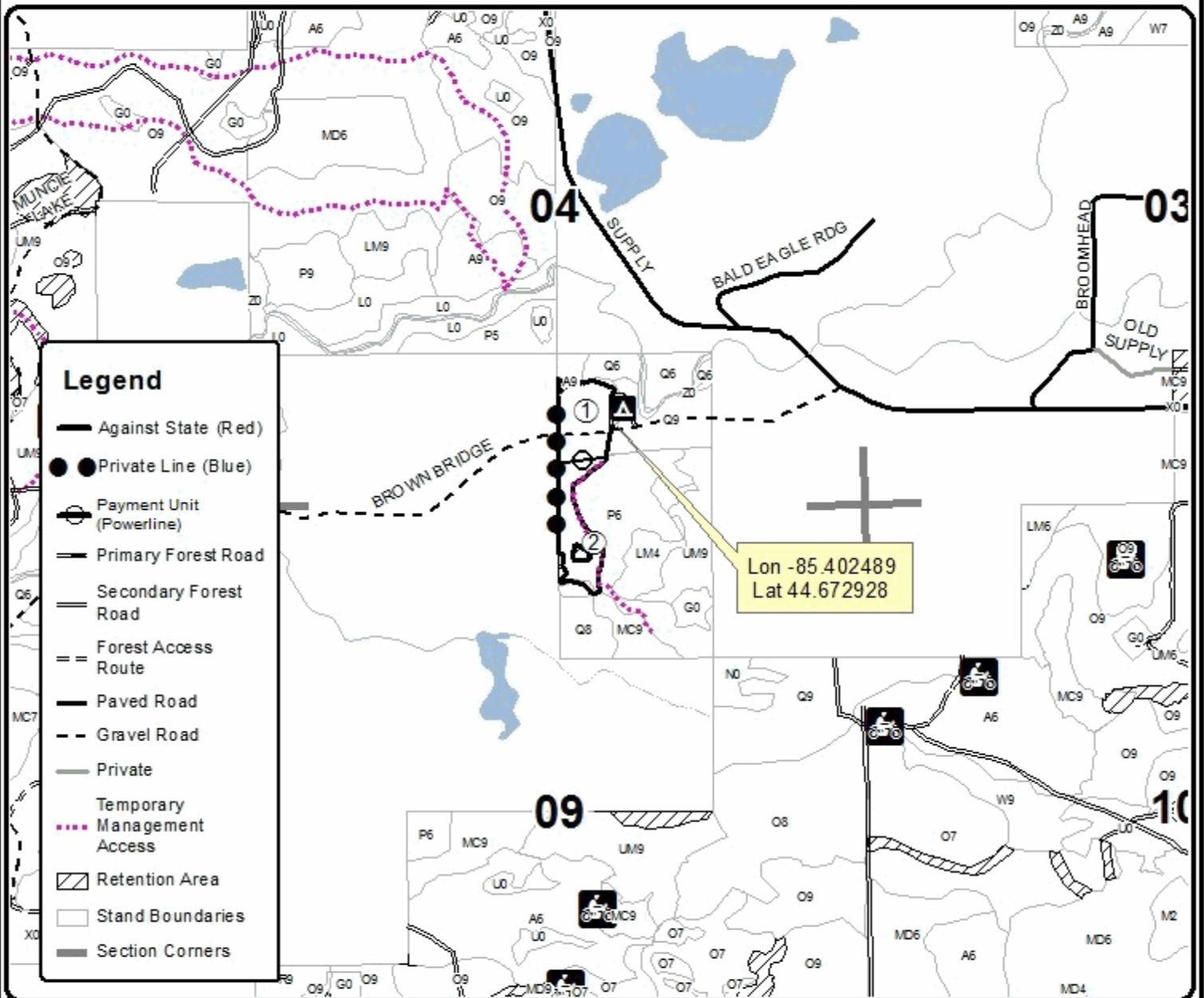
This information provided by authority of Part 525, 1994 PA 451 as amended.

Forest Management Unit Traverse City	County Grand Traverse	Mapped By Ruppen	Date 09/30/2020	Page 1	of 1
Township 26N	Range 9 W	Section(s) and Subdivision(s) Sec 4 SWSW, Sec 9 NWNE	Scale 1:15,840		

Cover Type				Density	
A = Aspen	H = Hemlock	N = Marsh	U = Upland Brush	0 = Non Stocked	5 = Pole Timber Medium
B = Paper Birch	J = Jack Pine	O = Oak	UM = Upland Mixed	1 = Seeding Sapling Poor	6 = Pole Timber Well
C = Cedar	L = Lowland Brush	P = Lowland Poplar	V = Bog or Marsh	2 = Seeding Sapling Medium	7 = Saw Timber Poor
D = Treed Bog	LM = Lowland Mixed	Q = Mixed Swamp Conifer	W = White Pine	3 = Seeding Sapling Well	8 = Saw Timber Medium
E = Swamp Hardwoods	M = Mpl. Ech. Birch	R = Red Pine	X = Non Stocked	4 = Pole Timber Poor	9 = Saw Timber Well
F = Spruce Fir	MC = Mixed Conifer	S = Black Spruce	Z = Water		
G = Cress	MD = Mixed Deciduous	T = Tamarack			

PU	Acres
1	6.5
2	6.0

Forks Aspen Compartment 47 12.5 Acres



TIMBER SALE INFORMATION

Karlin Fire Aspen (61-055-20)
 T25N, R12W, SEC. 16; T25N, R12W, SEC. 9.
 Grand Traverse County (Advertised Price \$29,982.35)

A timber sale contract for this lump sum, sealed bid timber sale will be awarded to the responsible bidder offering the highest sealed bid price. All units of volume listed below were estimated using the T-Sale computer program and our traditional volume equations. Bids must be at or above the following advertised price for each product and species:

<u>PRODUCTS & SPECIES</u>	<u>ESTIMATED UNITS*</u>	<u>ADVERTISED PRICE</u>
Sawtimber		
B. T. Aspen	119.2 MBF	\$ 77.00 / MBF
Beech	11.2 MBF	\$ 49.00 / MBF
Red Maple	45.8 MBF	\$ 113.00 / MBF
Red Oak	6.6 MBF	\$ 118.00 / MBF
Pulpwood		
B. T. Aspen	790 Cords	\$ 12.85 / Cord
Beech	66 Cords	\$ 11.75 / Cord
Red Maple	224 Cords	\$ 11.75 / Cord
Red Oak	71 Cords	\$ 10.45 / Cord

* The total volume is statistically estimated within plus (+) or minus (-) 13.63 percent. There are an estimated 1,517 cords on this timber sale, plus or minus 207 cords at the 95% confidence level. The estimated units are final and not subject to adjustment. Prospective bidders are urged to examine this timber and to make their own estimates of quantity and quality.

BOND AND PAYMENT SCHEDULE:

1. A bond in the amount of \$1,499.00 to insure faithful performance of the conditions of the contract will be deposited by the successful bidder within 21 days of the sale award.
2. Cutting in any sale or unit without the required advance payment would be considered a trespass.
3. Total payment must be paid in advance or according to the following schedule :
 - (a) Ten percent (10%) of the sale value must be paid within 21 days of the sale award.
 - (b) The 10% down payment will be credited towards the first unit cut.
 - (c) Payment for each of the following units must be made before cutting begins in that unit:

PAYMENT UNIT NUMBER	PERCENT OF TOTAL SALE VALUE
01	31.5%
02	28.4%
03	40.1%
4. If no cutting takes place, the 10% down payment will not be refunded.
5. Operations on the contract issued will terminate on 12/31/2023.

SALE STATISTICS

SALE VOLUMES

VOLUME		STATISTICAL RANGE IN CORDS		
TOTAL CUBIC FEET	TOTAL CORDS	PERCENT ERROR	MINIMUM	MAXIMUM
119,819	1,517	13.63%	1,310	1,723

VDU VOLUMES

A VDU is a Volume Determination Unit. Volumes and their associated statistics are calculated at the VDU level and summarized to the sale level. There is often a one to one relationship between a VDU and a Payment Unit, but not always, depending on the cruise design. Refer to the VDU TO PAYMENT UNIT table.

VDU	VOLUME		PERCENT ERROR	RANGE IN CORDS	
	TOTAL CUBIC FEET	TOTAL CORDS		MINIMUM	MAXIMUM
119	28,519	361	17.98%	296	426
126	91,292	1,156	17.17%	957	1,354
TOTAL:	119,811	1,517		1,253	1,780

VDU TO PAYMENT UNIT

When a VDU is associated with more than one Payment Unit (PU), the VDU volumes are assigned to the PU based on acres of the VDU within the PU.

VDU	VDU ACRES	PU	PU ACRES
119	11.2	1	11.2
126	39.0	2	16.2
		3	22.8
TOTAL:	50.2		50.2

DESCRIPTION OF TIMBER BY PAYMENT UNIT (PU)

PU	MARKET GROUP	PRODUCT	QUANTITY	UNIT	ACRES	ADVERTISE PRICE
1	B. T. Aspen	Sawtimber	36.9	MBF	11.2	\$9,445.75
	Beech		6.7	MBF		
	Red Maple		31.2	MBF		
	Red Oak		2.1	MBF		
	B. T. Aspen	Pulpwood	70	Cords		
	Beech		44	Cords		
	Red Maple		88	Cords		
	Red Oak		5	Cords		
2	B. T. Aspen	Sawtimber	34.2	MBF	16.2	\$8,528.05
	Beech		1.9	MBF		
	Red Maple		6.1	MBF		
	Red Oak		1.9	MBF		
	B. T. Aspen	Pulpwood	299	Cords		
	Beech		9	Cords		
	Red Maple		56	Cords		
	Red Oak		27	Cords		
3	B. T. Aspen	Sawtimber	48.1	MBF	22.8	\$12,008.55
	Beech		2.6	MBF		
	Red Maple		8.5	MBF		
	Red Oak		2.6	MBF		
	B. T. Aspen	Pulpwood	421	Cords		
	Beech		13	Cords		
	Red Maple		80	Cords		
	Red Oak		39	Cords		
TOTAL:			182.8	MBF		
TOTAL:			1,151	Cords		

Sale Specific Conditions & Requirements

Sale Name: Karlin Fire Aspen

Sale Number: 61-055-20 Seq#: 1

1 - Sale Area

1.2 - Boundaries

1.2.1 - Painted boundaries (9/19)

The sale boundary and Payment Unit boundaries are marked and identified by blue, red, and yellow paint. Exterior sale boundary lines against private property are marked with blue paint. Exterior sale boundary lines against state are marked with red paint. Interior Payment Unit boundaries are marked with yellow paint. The painted boundary line trees are not Included Timber and are to be protected. Yellow painted trees designating an interior Payment Unit boundary are only to be cut when all surrounding Payment Units have been paid.

2 - Timber Specifications

2.1 - Included Timber

2.1.3 - Cut tree marked unit(s) (12/08)

Within Payment Unit(s) 1 - 3, all red oak trees are designated for cutting when marked with orange paint above and below stump height, regardless of merchantability. Also, all red oak trees with DBH equal to or less than 9 inches are designated for cutting, regardless of merchantability.

2.1.7 - Leave tree marked unit(s) (6/14)

Within Payment Unit(s) 1 - 3, all red maple, aspen, cherry, and beech are designated for cutting regardless of merchantability. Except, do not cut any trees marked with green paint above and below stump height. Do not cut any other tree species that is not specifically designated for cutting.

2.2 - Utilization

2.2.3 - Stump heights (4/07)

Stump heights within the Sale Area shall not exceed 12 inches for trees greater than 10 inches in DBH and 6 inches for trees smaller than 10 inches in DBH.

4 - Transportation

4.1 - Construction

4.1.3 - Slash and earthen piles (8/04)

Piles or windrows of earth along roads and landings that have been widened or constructed shall be leveled. Slash from road maintenance or construction, including stumps, shall be dispersed throughout the sale as recommended by the DNR sale administrator.

5 - Operations

5.2 - Conduct of Operations

5.2.1 - Slash

5.2.1.8 - Slash height (12/08)

No slash or tree tops may exceed 24 inches in height.

5.2.1.13 - Dispose of slash as directed (12/05)

Slash is to be disposed of as directed by the DNR sale administrator. Steep hillsides will need slash and residual logging debris scattered on them to prevent erosion and/or illegal vehicle hill climbing activities.

5.2.3 - Operating Restrictions

5.2.3.4 - Oak wilt restriction, no exceptions (1/18)

Within all Payment Units cutting, skidding, and hauling within the sale and brushing of access roads to the sale are not permitted during the period of April 15 to July 15. No exceptions will be granted. This is necessary to reduce the spread

of oak wilt.

5.2.4 - Dead and Down Creation

5.2.4.3 - Dead and down creation, dead trees (6/07)

Except as provided for in General Condition and Requirement 5.2.2, no dead trees, standing or down, are to be cut, skidded, or processed.

5.2.4.4 - Dead and down creation, grouse (6/18)

To encourage grouse and other wildlife, in Payment Unit(s) 1 - 3 leave one, 12" diameter or larger log-length (8 foot minimum) piece on the ground for every 2 acres, preferably a hardwood species such as oak or maple. These trees will be evenly scattered throughout the Payment Unit, preferably at least two chains from any roads, two-tracks, or trails open to vehicles. This can be an unmerchantable piece or a full tree.

5.2.31 - Landing locations (9/13)

Landing areas are marked on the Timber Sale Map with the letter "L". Landings must be confined to these designated sites unless otherwise authorized by the Unit Manager or his/her representative.

5.4 - Soil Protection

5.4.3 - Erosion control (12/08)

Skid trails or haul roads may require erosion control structures or berms per direction of the Unit Manager or his/her representative.

5.4.5 - Soil caution (11/04)

Care must be taken to minimize soil damage due to the sandy soils.



TIMBER SALE MAP

This information provided by authority of Part 525, 1994 PA 451 as amended.

Forest Management Unit Traverse City	County Grand Traverse	Mapped By Craig Allen	Date 9/29/2020	Page 1	of 1
Township 25N	Range 12W	Section(s) and Subdivision(s) Sec.09: SESE, Sec.16: SENW, N1/2NE, SWNE	Scale 1:7,920		

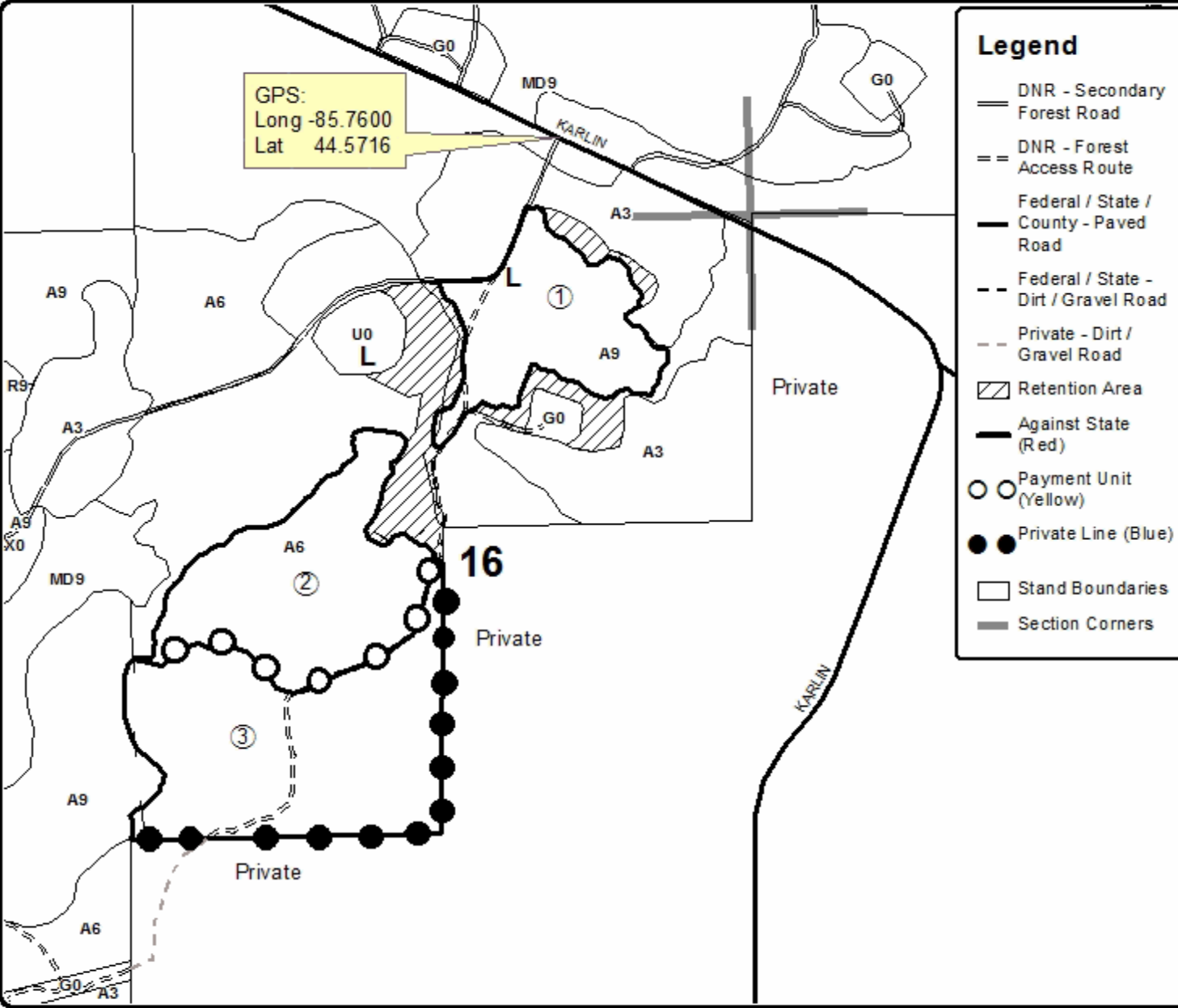
Cover Type				Density	
A = Aspen	H = Hemlock	N = Marsh	U = Upland Brush	0 = Non Stocked	5 = Pole Timber Medium
B = Paper Birch	J = Jack Pine	O = Oak	UM = Upland Mixed	1 = Seeding Sapling Poor	6 = Pole Timber Well
C = Cedar	L = Lowland Brush	P = Lowland Poplar	V = Bog or Marsh	2 = Seeding Sapling Medium	7 = Saw Timber Poor
D = Tread Bog	LM = Lowland Mixed	Q = Mixed Swamp Conifer	W = White Pine	3 = Seeding Sapling Well	8 = Saw Timber Medium
E = Swamp Hardwoods	M = Mpl. Ech. Birch	R = Red Pine	X = Non Stocked	4 = Pole Timber Poor	9 = Saw Timber Well
F = Spruce Fir	MC = Mixed Conifer	S = Black Spruce	Z = Water		
G = Creas	MD = Mixed Deciduous	T = Tamarack			

PU	Acres
1	11.2
2	16.2
3	22.8

Karlin Fire Aspen

Compartment 60

50.2 Acres



Legend

- DNR - Secondary Forest Road
- DNR - Forest Access Route
- Federal / State / County - Paved Road
- Federal / State - Dirt / Gravel Road
- Private - Dirt / Gravel Road
- Retention Area
- Against State (Red)
- Payment Unit (Yellow)
- Private Line (Blue)
- Stand Boundaries
- Section Corners



TIMBER SALE INFORMATION

Vasoak (61-048-19)

T27N, R10W, SEC. 24; T27N, R10W, SEC. 25.

Grand Traverse County (Advertised Price \$26,378.15)

SALE NOTE: Mixed oak and pine stand that will be clear-cut with retention to release advanced understory saplings. Short wood harvest only. No feller bunching- processor harvester only to protect understory.

A recreation site such as a trail, pathway, or campground is within the sale area or the vicinity. Certain restrictions/specifications may be applicable including time restrictions.

A timber sale contract for this lump sum, sealed bid timber sale will be awarded to the responsible bidder offering the highest sealed bid price. All units of volume listed below were estimated using the T-Sale computer program and our traditional volume equations. Bids must be at or above the following advertised price for each product and species:

<u>PRODUCTS & SPECIES</u>	<u>ESTIMATED UNITS*</u>	<u>ADVERTISED PRICE</u>
Sawtimber		
B. T. Aspen	3.6 MBF	\$ 77.00 / MBF
Red Oak	128.9 MBF	\$ 118.00 / MBF
White Oak	48.0 MBF	\$ 71.00 / MBF
White Pine	4.2 MBF	\$ 39.00 / MBF
Pulpwood		
B. T. Aspen	22 Cords	\$ 12.85 / Cord
Mixed Oak	531 Cords	\$ 10.45 / Cord
Red Maple	92 Cords	\$ 11.75 / Cord
White Pine	34 Cords	\$ 11.95 / Cord

* The total volume is statistically estimated within plus (+) or minus (-) 6.81 percent. There are an estimated 1,049 cords on this timber sale, plus or minus 71 cords at the 95% confidence level. The estimated units are final and not subject to adjustment. Prospective bidders are urged to examine this timber and to make their own estimates of quantity and quality.

BOND AND PAYMENT SCHEDULE:

1. A bond in the amount of \$1,319.00 to insure faithful performance of the conditions of the contract will be deposited by the successful bidder within 21 days of the sale award.
2. Cutting in any sale or unit without the required advance payment would be considered a trespass.
3. Total payment must be paid in advance or according to the following schedule :
 - (a) Ten percent (10%) of the sale value must be paid within 21 days of the sale award.
 - (b) The 10% down payment will be credited towards the first unit cut.
 - (c) Payment for each of the following units must be made before cutting begins in that unit:

PAYMENT UNIT NUMBER	PERCENT OF TOTAL SALE VALUE
01	54.3%
02	45.7%

4. If no cutting takes place, the 10% down payment will not be refunded.
5. Operations on the contract issued will terminate on 06/30/2023.

SALE STATISTICS

SALE VOLUMES

VOLUME		STATISTICAL RANGE IN CORDS		
TOTAL CUBIC FEET	TOTAL CORDS	PERCENT ERROR	MINIMUM	MAXIMUM
82,847	1,049	6.81%	977	1,120

VDU VOLUMES

A VDU is a Volume Determination Unit. Volumes and their associated statistics are calculated at the VDU level and summarized to the sale level. There is often a one to one relationship between a VDU and a Payment Unit, but not always, depending on the cruise design. Refer to the VDU TO PAYMENT UNIT table.

VDU	VOLUME		PERCENT ERROR	RANGE IN CORDS	
	TOTAL CUBIC FEET	TOTAL CORDS		MINIMUM	MAXIMUM
113	44,540	564	10.53%	504	623
913	38,299	485	8.96%	441	528
TOTAL:	82,839	1,049		946	1,151

VDU TO PAYMENT UNIT

When a VDU is associated with more than one Payment Unit (PU), the VDU volumes are assigned to the PU based on acres of the VDU within the PU.

VDU	VDU ACRES	PU	PU ACRES
113	21.8	1	21.8
913	18.4	2	18.4
TOTAL:	40.2		40.2

DESCRIPTION OF TIMBER BY PAYMENT UNIT (PU)

PU	MARKET GROUP	PRODUCT	QUANTITY	UNIT	ACRES	ADVERTISE PRICE
1	B. T. Aspen	Sawtimber	3.6	MBF	21.8	\$14,334.70
	Red Oak		75.3	MBF		
	White Oak		15.0	MBF		
	White Pine		1.8	MBF		
	B. T. Aspen	Pulpwood	19	Cords		
	Mixed Oak		276	Cords		
	<i>Red Oak</i>		194	<i>Cords</i>		
	<i>White Oak</i>		82	<i>Cords</i>		
	Red Maple		58	Cords		
	White Pine		19	Cords		
2	Red Oak	Sawtimber	53.6	MBF	18.4	\$12,043.45
	White Oak		33.0	MBF		
	White Pine		2.4	MBF		
	B. T. Aspen	Pulpwood	3	Cords		
	Mixed Oak		255	Cords		
	<i>Red Oak</i>		107	<i>Cords</i>		
	<i>White Oak</i>		148	<i>Cords</i>		
	Red Maple		34	Cords		
	White Pine		15	Cords		
	TOTAL:			184.7		
TOTAL:			679	Cords		

Sale Specific Conditions & Requirements

Sale Name: Vasoak

Sale Number: 61-048-19 Seq#: 1

1 - Sale Area

1.2 - Boundaries

1.2.1 - Painted boundaries (1/14)

The sale boundary and Payment Unit boundaries are marked and identified by red and/or yellow paint. Exterior sale boundary lines against state are marked with red paint. Interior Payment Unit boundaries are marked with red and yellow paint. The painted boundary line trees are not Included Timber and are to be protected. Yellow/red painted trees designating an interior Payment Unit boundary are only to be cut when all surrounding Payment Units have been paid unless green marked for retention.

2 - Timber Specifications

2.1 - Included Timber

2.1.7 - Leave tree marked unit(s) (6/14)

Within Payment Unit(s) 1 and 2, all trees, which meet minimum piece specifications in 2.2 Utilization, are designated for cutting except trees marked with green paint above and below stump height. In addition, do not cut any red or white pine that are 6" or less diameter when measured at 4.5 feet above the ground. Special protection trees identified in accordance with condition 3.4.2, within clearcutting unit boundaries, are not Included Timber and are to be protected.

2.2 - Utilization

2.2.6 - Roundwood operation required (5/07)

The skidding of whole trees or tree segments with limbs attached is prohibited. All products must be produced as roundwood and forwarded to existing roads or landing areas in final product length. Trees must be harvested with in-woods processor (feller bunching harvester will not be allow) in order to retain existing understory vegetation.

3 - Payments

3.4 - Damaged Timber

3.4.1 - Damaged timber (7/16)

General Condition and Requirement 3.4 Damaged Timber, defines liquidated damages for undesignated live merchantable trees which are cut or injured. In addition, extreme care should be taken to avoid damage to tree seedlings and saplings. Advanced understory regeneration is present and efforts must be taken to protect it.

3.4.2 - Special Protection Trees (4/14)

The Purchaser shall not cut live or dead special protection trees within cutting units or clearings. Special protection trees are marked with green paint. If the Purchaser's operations have cut or damaged special protection trees through carelessness, the Purchaser shall pay \$25 as fixed, agreed and liquidated damages for each special protection tree cut or damaged. Such payment does not constitute ownership of the undesignated timber.

4 - Transportation

4.1 - Construction

4.1.12 - No new roads (1/12)

No new roads will be permitted in any Payment Unit. . All operations are limited to existing roads. Skid trails only will be allowed.

4.2 - Maintenance

4.2.5 - Two wheel drive condition (2/04)

All existing trail roads on and adjacent to the sale area must be passable by two-wheel drive traffic for the duration of the sale.

5 - Operations

5.1 - Notification

5.1.1 - Pre-sale conference (10/16)

A pre-sale conference on site between the Purchaser and sale administrator is required prior to beginning any operations to determine landing and road locations. The Unit Manager or his/her representative must be contacted at least 3 days in advance to schedule the conference.

5.1.4 - Post-sale conference (10/16)

A post-sale conference on site between the Purchaser and sale administrator is required 3 days prior to the completion of active logging operations to determine clean-up and repair of landings, road edges, and the fulfillment of other contract specifications.

5.2 - Conduct of Operations

5.2.1 - Slash

5.2.1.8 - Slash height (12/08)

No slash or tree tops may exceed 30 inches in height.

5.2.2 - Hazard Trees/Snags

5.2.2.1 - Den trees (10/16)

Obvious hollow and/or den trees shall be protected and left standing unless they are a safety hazard.

5.2.3 - Operating Restrictions

5.2.3.4 - Oak wilt restriction, no exceptions (1/18)

Within Payment Unit(s) 1 and 2, cutting, skidding, and hauling within the sale and brushing of access roads to the sale are not permitted during the period of April 15 to July 15. No exceptions will be granted. This is necessary to reduce the spread of oak wilt.

5.2.38 - No decking against live trees (2/04)

Cut products may not be decked against unmarked or designated leave trees.

5.2.40 - Pathway protection (10/10)

The Vasa Pathway is a multi-use trail and is shown on the Timber Sale Map. Do not run equipment down the pathway.

5.4 - Soil Protection

5.4.1 - Rutting restriction, general (7/16)

Operations are to cease immediately if equipment and weather conditions result in rutting of roads and/or skid trails which is 12 inches or greater in depth and 50 feet in length. The Unit Manager or his/her representative may restrict hauling and/or skidding if ruts exceed the specified depth. With the Unit Manager or his/her representative's approval, the Purchaser may return to the area when the risk of rutting has decreased.

5.4.4 - Slope protection (9/19)

Skid trails and roads on slopes shall be water barred with slash, stumps, and/or clean straw bales native to the area as soon as use is complete to prevent erosion.

6 - Safety and Fire Prevention

6.2 - Signing

6.2.1 - Road posting (9/09)

The Purchaser is responsible for posting and maintaining caution signs on nearby roads prior to beginning operations. The road must be posted at appropriate distances from the Sale Area to warn of logging activity and truck traffic. Signs must be removed when harvest operations are suspended or completed. The Purchaser will provide these signs.

6.2.3 - Recreational trail posting (2/10)

The Purchaser is responsible for posting and maintaining caution signs on the Vasa Trail; prior to beginning operations. The trail must be posted at appropriate distances from the Sale Area to warn of logging activity and truck traffic at both ends of the trail. Signs must be removed when harvest operations are suspended or completed. The Purchaser will provide these

signs.

Vasoak (61-048-19)

T27N, R10W, SEC. 24; T27N, R10W, SEC. 25; Grand Traverse COUNTY

In response to the notice of sale to be held 4:00 p.m. (local time) on April 22, 2021, I am hereby submitting my sealed bid (firm offer) for the following forest products to be cut. Bids for individual species must be at or above the advertised price. All non-responsive bid forms may be rejected.

<u>PRODUCTS & SPECIES</u>	<u>ESTIMATED VOLUME*</u>	<u>ADVERTISED PRICE</u>	<u>BID PRICE/UNIT</u>
Sawtimber			
B. T. Aspen	3.6 MBF	\$ 77.00/MBF	\$ _____
Red Oak	128.9 MBF	\$ 118.00/MBF	\$ _____
White Oak	48.0 MBF	\$ 71.00/MBF	\$ _____
White Pine	4.2 MBF	\$ 39.00/MBF	\$ _____
Pulpwood			
B. T. Aspen	22 Cords	\$ 12.85/Cord	\$ _____
Mixed Oak	531 Cords	\$ 10.45/Cord	\$ _____
Red Maple	92 Cords	\$ 11.75/Cord	\$ _____
White Pine	34 Cords	\$ 11.95/Cord	\$ _____

*The volumes are statistically estimated within plus (+) or minus (-) 6.81 percent at 95% confidence level. These estimated volumes are final and not subject to adjustment. Prospective bidders are urged to examine this timber and to make their own estimates of quantity and quality.

I understand that any or all bids may be rejected. All bids must be signed and all bid items must be bid or the bid form may be rejected. I also understand that consideration and awarding a contract will be based upon my past performance and ability to complete the contract based upon equipment and staffing subject to my control.

FEDERAL ID: ____ - ____ - ____ or SOCIAL SECURITY NUMBER: ____ - ____ - ____

Company or individual bidding: _____

Company representative's name: _____

Address: _____

City: _____ State: _____ Zip: _____

IF AVAILABLE, PLEASE PLACE THE PERSONALIZED LABEL FROM YOUR PROSPECTUS IN THE ABOVE BOX.

Individual or company representative's signature: _____ Date: _____

Phone number : _____ Email (optional): _____

THE WINNING BIDDER MUST COMPLETE THE VERIFICATION OF WORKER'S DISABILITY COMPENSATION ACT COMPLIANCE (ON REVERSE SIDE IF DOUBLE SIDED) WITHIN 21 DAYS OF SALE AWARD DATE

Bellows Lake Mix (61-020-20)
T27N, R12W, SEC. 30; Grand Traverse COUNTY

In response to the notice of sale to be held 4:00 p.m. (local time) on April 22, 2021, I am hereby submitting my sealed bid (firm offer) for the following forest products to be cut. Bids for individual species must be at or above the advertised price. All non-responsive bid forms may be rejected.

<u>PRODUCTS & SPECIES</u>	<u>ESTIMATED VOLUME*</u>	<u>ADVERTISED PRICE</u>	<u>BID PRICE/UNIT</u>
Sawtimber			
B. T. Aspen	4.3 MBF	\$ 77.00/MBF	\$ _____
Basswood	2.7 MBF	\$ 67.00/MBF	\$ _____
Beech	14.1 MBF	\$ 49.00/MBF	\$ _____
Black Cherry	0.4 MBF	\$ 134.00/MBF	\$ _____
Red Maple	2.9 MBF	\$ 113.00/MBF	\$ _____
Red Oak	23.4 MBF	\$ 118.00/MBF	\$ _____
Red Pine	131.0 MBF	\$ 78.00/MBF	\$ _____
Sugar Maple	2.9 MBF	\$ 155.00/MBF	\$ _____
White Pine	14.3 MBF	\$ 39.00/MBF	\$ _____
Pulpwood			
B. T. Aspen	13 Cords	\$ 12.85/Cord	\$ _____
Mixed Hardwood	153 Cords	\$ 11.75/Cord	\$ _____
Red Oak	71 Cords	\$ 10.45/Cord	\$ _____
Red Pine	138 Cords	\$ 28.00/Cord	\$ _____
White Pine	28 Cords	\$ 11.95/Cord	\$ _____

*The volumes are statistically estimated within plus (+) or minus (-) 16.73 percent at 95% confidence level. These estimated volumes are final and not subject to adjustment. Prospective bidders are urged to examine this timber and to make their own estimates of quantity and quality.

I understand that any or all bids may be rejected. All bids must be signed and all bid items must be bid or the bid form may be rejected. I also understand that consideration and awarding a contract will be based upon my past performance and ability to complete the contract based upon equipment and staffing subject to my control.

FEDERAL ID: _____ - _____ or SOCIAL SECURITY NUMBER: _____ - _____ - _____

Company or individual bidding: _____

Company representative's name: _____

Address: _____

City: _____ State: _____ Zip: _____

IF AVAILABLE, PLEASE PLACE THE PERSONALIZED LABEL FROM YOUR PROSPECTUS IN THE ABOVE BOX.

Individual or company representative's signature: _____ Date: _____

Phone number : _____ Email (optional): _____

THE WINNING BIDDER MUST COMPLETE THE VERIFICATION OF WORKER'S DISABILITY COMPENSATION ACT COMPLIANCE (ON REVERSE SIDE IF DOUBLE SIDED) WITHIN 21 DAYS OF SALE AWARD DATE



FOR DEPARTMENT USE ONLY
Sale Number (XX - XXX - XX - XX)
Forest Management Unit:

TIMBER SALE VERIFICATION OF WORKER'S DISABILITY COMPENSATION ACT COMPLIANCE

*As required by Act 317, P.A. 1969 (Worker's Compensation) and
Part 5 of Act 451 of 1994, as amended.*

VERIFICATION OF WORKER'S DISABILITY COMPENSATION ACT COMPLIANCE

- This verification must be completed and submitted within 21 days of contract award and prior to the issuance of the timber sale contract.
- In addition, if boxes 2B or 2C are checked, then Notice of Exclusion or Certificate of Insurance must be submitted within twenty-one (21) days of the contract award and prior to the issuance of the timber sale contract.
- All information must be typed or printed except for written signatures.

Please Check Appropriate Categories:

1. My business is organized as (you **must** check one of the boxes below):
 - A. Sole Proprietorship (individual)
 - B. Partnership
 - C. Corporation

2. You **must** check one of the boxes below:
 - A. I certify my business is a sole proprietorship and it has no employees but the sole proprietor. I am not subject to the Worker's Compensation Laws.
 - B. I certify my business has satisfied its obligation to the Worker's Compensation Act through the use of an approved Notice of Exclusion (BWC-337, Rev. 5/96). I will provide a copy of the Notice of Exclusion within 21 days of the contract award. (For questions or a copy of the BWC-337, please call the Worker's Compensation Bureau at 517-322-1195).
 - C. I certify my business has a Worker's Compensation Policy. I will provide an original Certificate of Insurance within twenty-one (21) days of the contract award.

3. If you have checked item 2(A) or 2(B), you **must** indicate the number of **both** full-time and part-time employees, other than yourself, including family members and active partners (if none, you must enter "0").

_____ Full-time Employees

_____ Part-time Employees

Name of Business		Federal ID (or) Social Security No.	
Address		Telephone ()	
City	State	ZIP	

I hereby certify that the above information is true and correct. I agree to notify the Michigan DNR of any changes that occur in factors affecting my coverage during any of my present and future operations.

Signature of Owner or Authorized Representative

Title

Date

Please complete the "SEALED BID" information on the next page

Betsie Camper's Cut (61-042-20)
T25N, R13W, SEC. 2; Benzie COUNTY

In response to the notice of sale to be held 4:00 p.m. (local time) on April 22, 2021, I am hereby submitting my sealed bid (firm offer) for the following forest products to be cut. Bids for individual species must be at or above the advertised price. All non-responsive bid forms may be rejected.

<u>PRODUCTS & SPECIES</u>	<u>ESTIMATED VOLUME*</u>	<u>ADVERTISED PRICE</u>	<u>BID PRICE/UNIT</u>
Sawtimber			
B. T. Aspen	57.8 MBF	\$ 77.00/MBF	\$ _____
Black Cherry	1.0 MBF	\$ 134.00/MBF	\$ _____
Red Maple	16.9 MBF	\$ 113.00/MBF	\$ _____
Pulpwood			
B. T. Aspen	219 Cords	\$ 12.85/Cord	\$ _____
Black Cherry	5 Cords	\$ 11.75/Cord	\$ _____
Ironwood	4 Cords	\$ 11.75/Cord	\$ _____
Quaking Aspen	33 Cords	\$ 12.85/Cord	\$ _____
Red Maple	93 Cords	\$ 11.75/Cord	\$ _____

*The volumes are statistically estimated within plus (+) or minus (-) 26.39 percent at 95% confidence level. These estimated volumes are final and not subject to adjustment. Prospective bidders are urged to examine this timber and to make their own estimates of quantity and quality.

I understand that any or all bids may be rejected. All bids must be signed and all bid items must be bid or the bid form may be rejected. I also understand that consideration and awarding a contract will be based upon my past performance and ability to complete the contract based upon equipment and staffing subject to my control.

FEDERAL ID: _____ - _____ or SOCIAL SECURITY NUMBER: _____ - _____ - _____

Company or individual bidding: _____

Company representative's name: _____

Address: _____

City: _____ State: _____ Zip: _____

IF AVAILABLE, PLEASE PLACE THE PERSONALIZED LABEL FROM YOUR PROSPECTUS IN THE ABOVE BOX.

Individual or company representative's signature: _____ Date: _____

Phone number : _____ Email (optional): _____

THE WINNING BIDDER MUST COMPLETE THE VERIFICATION OF WORKER'S DISABILITY COMPENSATION ACT COMPLIANCE (ON REVERSE SIDE IF DOUBLE SIDED) WITHIN 21 DAYS OF SALE AWARD DATE



FOR DEPARTMENT USE ONLY	
Sale Number (XX - XXX - XX - XX)	
Forest Management Unit:	

TIMBER SALE VERIFICATION OF WORKER'S DISABILITY COMPENSATION ACT COMPLIANCE

As required by Act 317, P.A. 1969 (Worker's Compensation) and
Part 5 of Act 451 of 1994, as amended.

VERIFICATION OF WORKER'S DISABILITY COMPENSATION ACT COMPLIANCE

- This verification must be completed and submitted within 21 days of contract award and prior to the issuance of the timber sale contract.
- In addition, if boxes 2B or 2C are checked, then Notice of Exclusion or Certificate of Insurance must be submitted within twenty-one (21) days of the contract award and prior to the issuance of the timber sale contract.
- All information must be typed or printed except for written signatures.

Please Check Appropriate Categories:

1. My business is organized as (you **must** check one of the boxes below):
 - A. Sole Proprietorship (individual)
 - B. Partnership
 - C. Corporation
2. You **must** check one of the boxes below:
 - A. I certify my business is a sole proprietorship and it has no employees but the sole proprietor. I am not subject to the Worker's Compensation Laws.
 - B. I certify my business has satisfied its obligation to the Worker's Compensation Act through the use of an approved Notice of Exclusion (BWC-337, Rev. 5/96). I will provide a copy of the Notice of Exclusion within 21 days of the contract award. (For questions or a copy of the BWC-337, please call the Worker's Compensation Bureau at 517-322-1195).
 - C. I certify my business has a Worker's Compensation Policy. I will provide an original Certificate of Insurance within twenty-one (21) days of the contract award.
3. If you have checked item 2(A) or 2(B), you **must** indicate the number of **both** full-time and part-time employees, other than yourself, including family members and active partners (if none, you must enter "0").

_____ Full-time Employees

_____ Part-time Employees

Name of Business		Federal ID (or) Social Security No.	
Address		Telephone ()	
City	State	ZIP	

I hereby certify that the above information is true and correct. I agree to notify the Michigan DNR of any changes that occur in factors affecting my coverage during any of my present and future operations.

Signature of Owner or Authorized Representative

Title

Date

Please complete the "SEALED BID" information on the next page

Forks Aspen (61-045-20)
T26N, R09W, SEC. 4; T26N, R09W, SEC. 9; Grand Traverse COUNTY

In response to the notice of sale to be held 4:00 p.m. (local time) on April 22, 2021, I am hereby submitting my sealed bid (firm offer) for the following forest products to be cut. Bids for individual species must be at or above the advertised price. All non-responsive bid forms may be rejected.

<u>PRODUCTS & SPECIES</u>	<u>ESTIMATED VOLUME*</u>	<u>ADVERTISED PRICE</u>	<u>BID PRICE/UNIT</u>
Sawtimber			
B. T. Aspen	7.7 MBF	\$ 77.00/MBF	\$ _____
Red Pine	1.4 MBF	\$ 78.00/MBF	\$ _____
Pulpwood			
B. T. Aspen	293 Cords	\$ 12.85/Cord	\$ _____
Balsam Fir	3 Cords	\$ 6.90/Cord	\$ _____
Mixed Hardwood	18 Cords	\$ 11.75/Cord	\$ _____
Northern Pin Oak	7 Cords	\$ 10.45/Cord	\$ _____
Red Pine	1 Cords	\$ 28.00/Cord	\$ _____
White Pine	5 Cords	\$ 11.95/Cord	\$ _____

*The volumes are statistically estimated within plus (+) or minus (-) 23.61 percent at 95% confidence level. These estimated volumes are final and not subject to adjustment. Prospective bidders are urged to examine this timber and to make their own estimates of quantity and quality.

I understand that any or all bids may be rejected. All bids must be signed and all bid items must be bid or the bid form may be rejected. I also understand that consideration and awarding a contract will be based upon my past performance and ability to complete the contract based upon equipment and staffing subject to my control.

FEDERAL ID: ____ - ____ - ____ or SOCIAL SECURITY NUMBER: ____ - ____ - ____

Company or individual bidding: _____

Company representative's name: _____

Address: _____

City: _____ State: _____ Zip: _____

IF AVAILABLE, PLEASE PLACE THE PERSONALIZED LABEL FROM YOUR PROSPECTUS IN THE ABOVE BOX.

Individual or company representative's signature: _____ Date: _____

Phone number : _____ Email (optional): _____

THE WINNING BIDDER MUST COMPLETE THE VERIFICATION OF WORKER'S DISABILITY COMPENSATION ACT COMPLIANCE (ON REVERSE SIDE IF DOUBLE SIDED) WITHIN 21 DAYS OF SALE AWARD DATE



TIMBER SALE VERIFICATION OF WORKER'S DISABILITY COMPENSATION ACT COMPLIANCE

As required by Act 317, P.A. 1969 (Worker's Compensation) and
Part 5 of Act 451 of 1994, as amended.

FOR DEPARTMENT USE ONLY	
Sale Number (XX - XXX - XX - XX)	
Forest Management Unit:	

VERIFICATION OF WORKER'S DISABILITY COMPENSATION ACT COMPLIANCE

- This verification must be completed and submitted within 21 days of contract award and prior to the issuance of the timber sale contract.
- In addition, if boxes 2B or 2C are checked, then Notice of Exclusion or Certificate of Insurance must be submitted within twenty-one (21) days of the contract award and prior to the issuance of the timber sale contract.
- All information must be typed or printed except for written signatures.

Please Check Appropriate Categories:

1. My business is organized as (you **must** check one of the boxes below):
 - A. Sole Proprietorship (individual)
 - B. Partnership
 - C. Corporation
2. You **must** check one of the boxes below:
 - A. I certify my business is a sole proprietorship and it has no employees but the sole proprietor. I am not subject to the Worker's Compensation Laws.
 - B. I certify my business has satisfied its obligation to the Worker's Compensation Act through the use of an approved Notice of Exclusion (BWC-337, Rev. 5/96). I will provide a copy of the Notice of Exclusion within 21 days of the contract award. (For questions or a copy of the BWC-337, please call the Worker's Compensation Bureau at 517-322-1195).
 - C. I certify my business has a Worker's Compensation Policy. I will provide an original Certificate of Insurance within twenty-one (21) days of the contract award.
3. If you have checked item 2(A) or 2(B), you **must** indicate the number of **both** full-time and part-time employees, other than yourself, including family members and active partners (if none, you must enter "0").

_____ Full-time Employees

_____ Part-time Employees

Name of Business		Federal ID (or) Social Security No.	
Address		Telephone ()	
City	State	ZIP	

I hereby certify that the above information is true and correct. I agree to notify the Michigan DNR of any changes that occur in factors affecting my coverage during any of my present and future operations.

Signature of Owner or Authorized Representative

Title

Date

Please complete the "SEALED BID" information on the next page

Stair Step Aspen (61-043-20)
T25N, R14W, SEC. 22; T25N, R14W, SEC. 23; Benzie COUNTY

In response to the notice of sale to be held 4:00 p.m. (local time) on April 22, 2021, I am hereby submitting my sealed bid (firm offer) for the following forest products to be cut. Bids for individual species must be at or above the advertised price. All non-responsive bid forms may be rejected.

<u>PRODUCTS & SPECIES</u>	<u>ESTIMATED VOLUME*</u>	<u>ADVERTISED PRICE</u>	<u>BID PRICE/UNIT</u>
Sawtimber			
B. T. Aspen	115.0 MBF	\$ 77.00/MBF	\$ _____
Black Cherry	28.7 MBF	\$ 134.00/MBF	\$ _____
Quaking Aspen	21.8 MBF	\$ 77.00/MBF	\$ _____
Red Maple	38.7 MBF	\$ 113.00/MBF	\$ _____
Pulpwood			
B. T. Aspen	528 Cords	\$ 12.85/Cord	\$ _____
Black Cherry	200 Cords	\$ 11.75/Cord	\$ _____
Ironwood	7 Cords	\$ 11.75/Cord	\$ _____
Quaking Aspen	195 Cords	\$ 12.85/Cord	\$ _____
Red Maple	217 Cords	\$ 11.75/Cord	\$ _____

*The volumes are statistically estimated within plus (+) or minus (-) 11.96 percent at 95% confidence level. These estimated volumes are final and not subject to adjustment. Prospective bidders are urged to examine this timber and to make their own estimates of quantity and quality.

I understand that any or all bids may be rejected. All bids must be signed and all bid items must be bid or the bid form may be rejected. I also understand that consideration and awarding a contract will be based upon my past performance and ability to complete the contract based upon equipment and staffing subject to my control.

FEDERAL ID: ____ - ____ - ____ or SOCIAL SECURITY NUMBER: ____ - ____ - ____

Company or individual bidding: _____

Company representative's name: _____

Address: _____

City: _____ State: _____ Zip: _____

IF AVAILABLE, PLEASE PLACE THE PERSONALIZED LABEL FROM YOUR PROSPECTUS IN THE ABOVE BOX.

Individual or company representative's signature: _____ Date: _____

Phone number : _____ Email (optional): _____

THE WINNING BIDDER MUST COMPLETE THE VERIFICATION OF WORKER'S DISABILITY COMPENSATION ACT COMPLIANCE (ON REVERSE SIDE IF DOUBLE SIDED) WITHIN 21 DAYS OF SALE AWARD DATE



FOR DEPARTMENT USE ONLY
Sale Number (XX - XXX - XX - XX)
Forest Management Unit:

TIMBER SALE VERIFICATION OF WORKER'S DISABILITY COMPENSATION ACT COMPLIANCE

*As required by Act 317, P.A. 1969 (Worker's Compensation) and
Part 5 of Act 451 of 1994, as amended.*

VERIFICATION OF WORKER'S DISABILITY COMPENSATION ACT COMPLIANCE

- This verification must be completed and submitted within 21 days of contract award and prior to the issuance of the timber sale contract.
- In addition, if boxes 2B or 2C are checked, then Notice of Exclusion or Certificate of Insurance must be submitted within twenty-one (21) days of the contract award and prior to the issuance of the timber sale contract.
- All information must be typed or printed except for written signatures.

Please Check Appropriate Categories:

1. My business is organized as (you **must** check one of the boxes below):
 - A. Sole Proprietorship (individual)
 - B. Partnership
 - C. Corporation
2. You **must** check one of the boxes below:
 - A. I certify my business is a sole proprietorship and it has no employees but the sole proprietor. I am not subject to the Worker's Compensation Laws.
 - B. I certify my business has satisfied its obligation to the Worker's Compensation Act through the use of an approved Notice of Exclusion (BWC-337, Rev. 5/96). I will provide a copy of the Notice of Exclusion within 21 days of the contract award. (For questions or a copy of the BWC-337, please call the Worker's Compensation Bureau at 517-322-1195).
 - C. I certify my business has a Worker's Compensation Policy. I will provide an original Certificate of Insurance within twenty-one (21) days of the contract award.
3. If you have checked item 2(A) or 2(B), you **must** indicate the number of **both** full-time and part-time employees, other than yourself, including family members and active partners (if none, you must enter "0").

_____ Full-time Employees

_____ Part-time Employees

Name of Business		Federal ID (or) Social Security No.	
Address		Telephone ()	
City	State	ZIP	

I hereby certify that the above information is true and correct. I agree to notify the Michigan DNR of any changes that occur in factors affecting my coverage during any of my present and future operations.

Signature of Owner or Authorized Representative

Title

Date

Please complete the "SEALED BID" information on the next page

Karlin Fire Aspen (61-055-20)
T25N, R12W, SEC. 16; T25N, R12W, SEC. 9; Grand Traverse COUNTY

In response to the notice of sale to be held 4:00 p.m. (local time) on April 22, 2021, I am hereby submitting my sealed bid (firm offer) for the following forest products to be cut. Bids for individual species must be at or above the advertised price. All non-responsive bid forms may be rejected.

<u>PRODUCTS & SPECIES</u>	<u>ESTIMATED VOLUME*</u>	<u>ADVERTISED PRICE</u>	<u>BID PRICE/UNIT</u>
Sawtimber			
B. T. Aspen	119.2 MBF	\$ 77.00/MBF	\$ _____
Beech	11.2 MBF	\$ 49.00/MBF	\$ _____
Red Maple	45.8 MBF	\$ 113.00/MBF	\$ _____
Red Oak	6.6 MBF	\$ 118.00/MBF	\$ _____
Pulpwood			
B. T. Aspen	790 Cords	\$ 12.85/Cord	\$ _____
Beech	66 Cords	\$ 11.75/Cord	\$ _____
Red Maple	224 Cords	\$ 11.75/Cord	\$ _____
Red Oak	71 Cords	\$ 10.45/Cord	\$ _____

*The volumes are statistically estimated within plus (+) or minus (-) 13.63 percent at 95% confidence level. These estimated volumes are final and not subject to adjustment. Prospective bidders are urged to examine this timber and to make their own estimates of quantity and quality.

I understand that any or all bids may be rejected. All bids must be signed and all bid items must be bid or the bid form may be rejected. I also understand that consideration and awarding a contract will be based upon my past performance and ability to complete the contract based upon equipment and staffing subject to my control.

FEDERAL ID: ____ - ____ - ____ or SOCIAL SECURITY NUMBER: ____ - ____ - ____

Company or individual bidding: _____

Company representative's name: _____

Address: _____

City: _____ State: _____ Zip: _____

IF AVAILABLE, PLEASE PLACE THE PERSONALIZED LABEL FROM YOUR PROSPECTUS IN THE ABOVE BOX.

Individual or company representative's signature: _____ Date: _____

Phone number : _____ Email (optional): _____

THE WINNING BIDDER MUST COMPLETE THE VERIFICATION OF WORKER'S DISABILITY COMPENSATION ACT COMPLIANCE (ON REVERSE SIDE IF DOUBLE SIDED) WITHIN 21 DAYS OF SALE AWARD DATE



FOR DEPARTMENT USE ONLY	
Sale Number (XX - XXX - XX - XX)	
Forest Management Unit:	

TIMBER SALE VERIFICATION OF WORKER'S DISABILITY COMPENSATION ACT COMPLIANCE

As required by Act 317, P.A. 1969 (Worker's Compensation) and
Part 5 of Act 451 of 1994, as amended.

VERIFICATION OF WORKER'S DISABILITY COMPENSATION ACT COMPLIANCE

- This verification must be completed and submitted within 21 days of contract award and prior to the issuance of the timber sale contract.
- In addition, if boxes 2B or 2C are checked, then Notice of Exclusion or Certificate of Insurance must be submitted within twenty-one (21) days of the contract award and prior to the issuance of the timber sale contract.
- All information must be typed or printed except for written signatures.

Please Check Appropriate Categories:

1. My business is organized as (you **must** check one of the boxes below):
 - A. Sole Proprietorship (individual)
 - B. Partnership
 - C. Corporation
2. You **must** check one of the boxes below:
 - A. I certify my business is a sole proprietorship and it has no employees but the sole proprietor. I am not subject to the Worker's Compensation Laws.
 - B. I certify my business has satisfied its obligation to the Worker's Compensation Act through the use of an approved Notice of Exclusion (BWC-337, Rev. 5/96). I will provide a copy of the Notice of Exclusion within 21 days of the contract award. (For questions or a copy of the BWC-337, please call the Worker's Compensation Bureau at 517-322-1195).
 - C. I certify my business has a Worker's Compensation Policy. I will provide an original Certificate of Insurance within twenty-one (21) days of the contract award.
3. If you have checked item 2(A) or 2(B), you **must** indicate the number of **both** full-time and part-time employees, other than yourself, including family members and active partners (if none, you must enter "0").

_____ Full-time Employees

_____ Part-time Employees

Name of Business		Federal ID (or) Social Security No.	
Address		Telephone ()	
City	State	ZIP	

I hereby certify that the above information is true and correct. I agree to notify the Michigan DNR of any changes that occur in factors affecting my coverage during any of my present and future operations.

Signature of Owner or Authorized Representative

Title

Date

Please complete the "SEALED BID" information on the next page