



**DEPARTMENT OF NATURAL RESOURCES  
STATE OF MICHIGAN**

**TIMBER SALE PROSPECTUS #6772**

SCHEDULED SALE DATE AND TIME: 4:00 p.m. (local time) on June 17, 2021.

LOCATION: TRAVERSE CITY MGMT UNIT, 2122 M 37 SOUTH, TRAVERSE CITY, MI 49685.

PROSPECTUS NOTE: It is recommended that for the duration of the "Stay Home, Stay Safe" executive order that bidders submit their bids through the Online Bidding System (<https://www.dnr.state.mi.us/VMSONlineBidding/>). If you need to register, contact Jake Reid (ReidJ6@michigan.gov, 517-284-5908) or Donovan Asselin (AsselinD@michigan.gov, 517-930-1326). Paper bids will still be accepted during this time, either dropped in the bid box at the bid location or by mailing. If mailing, please allow for additional time.

The bidder is advised to inspect the sale area and review the location, estimated volumes, operating costs and contract terms of proposed sales. Please be aware that some landowners may request 60 days or more notice for access across their land.

Wallin Conifer Mix (61-038-20) / T25N, R13W, SEC. 11, N1/2NW,W1/2NE,NWSE.

T25N, R13W, SEC. 2 , W1/2SW.

Benzie County, Advertised Price \$87,818.55, 79.0 Acres, Red Pine, Spruce/Fir/Tamarack.

SALE NOTE: Deteriorating timber spec for Payment Unit 4 of this sale.

Also, Bark Beetle spec on sale.

A recreation site such as a trail, pathway, or campground is within the sale area or the vicinity. Certain restrictions/specifications may be applicable including time restrictions.

Marsh Madness (61-044-20) / T25N, R13W, SEC. 11, NENW,S1/2NW,S1/2NE,NESW,N1/2SE.

T25N, R13W, SEC. 13, W1/2NW,NWSW.

T25N, R13W, SEC. 14, NE,N1/2SE.

Benzie County, Advertised Price \$39,342.15, 103.8 Acres, Aspen, Hardwood.

SALE NOTE: Oak Wilt restriction exist on sale.

Slide Bye Mix (61-046-20) / T26N, R09W, SEC. 6 , S1/2SE.

Grand Traverse County, Advertised Price \$5,864.30, 18.2 Acres, Hardwood, White Pine.

SALE NOTE: A recreation site such as a trail, pathway, or campground is within the sale area or the vicinity. Certain restrictions/specifications may be applicable including time restrictions.

Muncie Weave (61-047-20) / T26N, R09W, SEC. 5 , SWNE,W1/2SE.

Grand Traverse County, Advertised Price \$14,541.55, 42.5 Acres, Hardwood, Red Oak.

SALE NOTE: Clear cut Payment Unit in oak type that will be planted to red pine after harvest. Smaller marked Payment Unit in pine type with declining jack pine.

A recreation site such as a trail, pathway, or campground is within the sale area or the vicinity. Certain restrictions/specifications may be applicable including time restrictions.

Uglas Weave (61-049-20) / T26N, R09W, SEC. 10, SENW,SWNE,NESW,NWSE.

Grand Traverse County, Advertised Price \$12,592.85, 25.1 Acres, Hardwood, White Pine.

SALE NOTE: A recreation site such as a trail, pathway, or campground is within the sale area or the vicinity. Certain restrictions/specifications may be applicable including time restrictions.

## BID INSTRUCTIONS (VER. 07/02/2018):

### 1. Scheduled Bid Location, Date, and Time (2/11)

Bids must be received by the Unit Manager, TRAVERSE CITY OFFICE, 2122 M 37 South, Traverse City, MI 49685, no later than 4:00 p.m. (local time) on June 17, 2021. For further information concerning this sale, contact David Lemmien at 231-922-6040.

### 2. Bidder's Qualifications (5/16)

Purchaser shall obtain workers compensation insurance to cover claims under Michigan's Worker's Disability Compensation Act of 1969 or similar employee benefit act of any other state applicable to an employee. If all or part of a timber sale was prepared by a private contractor, the contractor and that contractor's company are not permitted to bid on the timber sale contract. Bids will not be accepted from individuals or companies appearing on the DNR/FRD No-Bid List. This list contains the names of purchasers who previously failed to execute a contract within 21-days or who have a history of poor performance.

### 3. Preparation of Sealed Bids (5/16)

Bid Forms may be completed online thru Michigan DNR Timber Sale Online Bidding (OLB) at [www.michigan.gov/timberbidding](http://www.michigan.gov/timberbidding) or by completing the hardcopy Bid Form found in the Timber Sale Prospectus. Hardcopy Bid Forms shall be manually signed in ink. Registration in OLB is considered your 'signature' for all bids submitted thru that system. Bid prices must be entered for each species and product in the Bid Price column for all material subject to bidding and all fill-in blanks must be completed. If erasures or other changes appear on the hardcopy Bid Form, each erasure or change must be initialed by the person signing the bid.

### 4. Submission of Sealed Bids (5/16)

Bid forms may be obtained from the Unit Manager or thru OLB. Bids may be submitted hardcopy or thru OLB. All hardcopy bids must be submitted on the bid form and in an envelope clearly identified as described in this section. NOTE: Only one bid form per bid envelope. Sealed bids must be submitted to the Unit office designated in the prospectus and must be submitted at or prior to the time established in the prospectus. The envelope should show on the outside (a) the sale name or number and (b) the date and time of bid opening, as shown in the prospectus. Bids received after the time specified in the sale prospectus are late bids and will be rejected.

It is possible for a bidder to submit multiple bids on a single sale. For example, a bid may be submitted hardcopy and a bid may be submitted thru OLB. Or, two bidders from the same company could both submit bids on the same sale. If this were to happen, the State would accept all bids received and award the contract accordingly. All bidding and contractual requirements would apply to all bids received.

### 5. Public Opening of Sealed Bids (7/16)

If conditions permit, the sealed bids will be publicly opened and posted at the time and place set in the prospectus.

If a bidder, present at a bid opening, has submitted bids on more than one sale, that bidder may withdraw their unopened bid envelopes or announce the withdrawal of their online bid after being declared the successful bidder on one sale.

### 6. Award of Contract (1/11)

Award of the contract will be made to the Bidder whose bid, conforming to the prospectus, is most advantageous to the State of Michigan on the basis of total value at rates bid for the estimated quantities. The State reserves the right to reject any bid or waive any minor irregularity in bids received. A written award mailed (or otherwise furnished) to the successful Bidder shall be deemed to result in a binding contract without further action by either party.

### 7. Down Payment (1/11)

The Bidder to whom award is made must make a down payment within 21 days of the sale award. The amount of the down payment will be calculated as shown in the Bond and Payment Schedule of this prospectus. Only cash may be used to meet this requirement.

### 8. Performance Security (1/11)

As guarantee of faithful performance, a cash bond, certificate of deposit, surety bond or irrevocable letter of credit (LOC) is required within 21 days of the sale award. The amount of the performance security is shown in the Bond and

Payment Schedule of this prospectus. If an LOC or surety is used, the coverage must extend for at least 6 months beyond the contract expiration.

#### 9. Timber Sale Contract (7/18)

Additional conditions and requirements common to all timber sales are listed on the timber sale contract (R4031) and are available on line at [www.michigan.gov/timber](http://www.michigan.gov/timber). Contact the Unit Manager for additional information or a sample contract. Within 21 days of the date of the award letter, the bidder must sign the contract and provide the required down payment, performance security, and verification of worker's disability compensation. The down payment and performance security shall be in accordance with the provisions of the timber sale contract, in the sums stated in this prospectus. If these actions are not taken, then the Bidder, the Bidder's corporation, and the corporation's principals may not be permitted to bid on State timber sales for a period of 3 months after the first offense, 6 months after the second offense, and 1 year after the third offense. An offense will only be counted against the Bidder for 5 years. In addition, the Bidder certifies that if awarded this contract, the Bidder will complete the timber sale contract in accordance with its terms and any modifications thereof including requirements to purchase, cut, and remove the included timber by the expiration date.

Payment Unit values in the State Forest Timber Sale Contract are calculated based on the advertised value of the Payment Unit as a percentage of the total advertised value of the contract. The advertised value of each Payment Unit is given in the Description of Timber by Payment Unit table on the Timber Sale Information page. For example, if the value of Payment Unit 1 is advertised as \$1,500 and the total Timber Sale value is advertised as \$10,000, the contract price for Payment Unit 1 will be 15% of the total bid price ( $\$1,500/\$10,000 * 100$ ).

#### 10. Disclaimer of Estimates and Bidder's Warranty of Inspection (7/16)

Before submitting this bid, the Bidder is advised and cautioned to inspect the sale area, review the requirements of the sale contract, and take other steps as may be reasonably necessary to ascertain the location, estimated volumes, construction estimates, and operating costs of the proposed sale. Failure to do so will not relieve the Bidder from responsibility for completing the contract.

The Bidder warrants that this bid is submitted solely on the basis of the Bidder's examination and inspection of the quality and quantity of the timber offered for sale and the Bidder's opinion of the value thereof and the costs of recovery. No reliance should be placed on the State of Michigan's estimates of timber quality, quantity or costs of recovery. Bidder further acknowledges that the State of Michigan: (i) expressly disclaims any warranty of fitness of timber for any purpose; (ii) offers this timber as is without any warranty of quality (merchantability) or quantity and (iii) expressly disclaims any warranty as to the quantity or quality of timber sold.

#### 11. Certification and Chain-of-Custody (10/14)

Unless otherwise indicated in the contract under section 7 – Other Conditions of the Sale Specific Conditions & Requirements, the area encompassed by this timber sale is certified to the standards of the Forest Stewardship Council (FSC) - Certificate #SCS-FM/COC-00090N and the Sustainable Forestry Initiative (SFI) - Certificate #NSF-SFIS-5Y031-SF5. Forest products from this sale may be delivered to the mill as "FSC 100% and / or SFI certified" as long as the contractor hauling the forest products is chain-of-custody (COC) certified or covered under a COC certificate from the destination mill. The purchaser is responsible for maintaining COC after leaving the sale area.

#### 12. Good Neighbor Authority (GNA) Requirements (7/16)

If the name of this timber sales contains the acronym GNA, it is authorized by the Good Neighbor Authority (GNA) and covered by various agreements between the U.S. Forest Service and the State. The timber sale occurs on federal land and the following conditions apply:

GNA contracts on US Forest Service land will not be awarded to purchasers on the Federal list of excluded parties. The System for Award Management (SAM) will be checked for active excluded parties prior to award of contract. In addition, the Bidder to whom award is made must complete an Assurance Regarding Felony Conviction or Tax Delinquent Status for Corporate Applicants (AD-3031).

#### 13. Good Neighbor Authority (GNA) Requirements, con't (9/16)

Bidder certifies, by signing this bid form, that to the best of Bidder's knowledge that the following representations are accurate and complete.

- a. That the Bidder and its principals are not presently debarred, suspended, proposed for debarment, declared ineligible, or voluntary excluded from timber sales (covered transactions) by any Federal department or agency.
- b. That the Bidder and its principals have not within a 3-year period preceding this bid been convicted of or had a civil judgment rendered against them for commission of fraud or a criminal offense in connection with obtaining , attempting to obtain, or performing a public (Federal, State, or local) transaction or contract under a public transaction; violation of Federal or State antitrust statutes or commission of embezzlement, theft, forgery, bribery, falsification or destruction of records, making false statements, or receiving stolen property.
- c. That the Bidder and its principals are not presently indicted for or otherwise criminally or civilly charged by a governmental entity (Federal, State, or local) with commission of any of the offenses enumerated in paragraph b of this certification.
- d. That the Bidder and its principals have not within a 3-year period preceding this bid had one or more public transactions (Federal, State, or local) terminated for breach or default of a timber or forest product contract.

Bidders that cannot certify this requirement, in whole or in part, shall submit an explanation with their bid.

DAN EICHINGER  
Director



# TIMBER SALE INFORMATION

Wallin Conifer Mix (61-038-20)  
T25N, R13W, SEC. 11; T25N, R13W, SEC. 2.  
Benzie County (Advertised Price \$87,818.55)

SALE NOTE: Deteriorating timber spec for Payment Unit 4 of this sale.  
Also, Bark Beetle spec on sale.

A recreation site such as a trail, pathway, or campground is within the sale area or the vicinity. Certain restrictions/specifications may be applicable including time restrictions.

A timber sale contract for this lump sum, sealed bid timber sale will be awarded to the responsible bidder offering the highest sealed bid price. All units of volume listed below were estimated using the T-Sale computer program and our traditional volume equations. Bids must be at or above the following advertised price for each product and species:

<u>PRODUCTS &amp; SPECIES</u>	<u>ESTIMATED UNITS*</u>	<u>ADVERTISED PRICE</u>
<b>Sawtimber</b>		
Black Cherry	11.4 MBF	\$ 144.00 / MBF
Mixed Aspen	10.0 MBF	\$ 79.00 / MBF
Red Maple	9.6 MBF	\$ 116.00 / MBF
Red Pine	679.6 MBF	\$ 79.00 / MBF
White Spruce	44.0 MBF	\$ 33.00 / MBF
<b>Pulpwood</b>		
Jack Pine	12 Cords	\$ 7.60 / Cord
Mixed Aspen	56 Cords	\$ 12.65 / Cord
Mixed Hardwood	101 Cords	\$ 11.75 / Cord
Red Pine	651 Cords	\$ 28.10 / Cord
White Pine	4 Cords	\$ 11.90 / Cord
White Spruce	591 Cords	\$ 14.90 / Cord

\* The total volume is statistically estimated within plus (+) or minus (-) 10.69 percent. There are an estimated 2,926 cords on this timber sale, plus or minus 313 cords at the 95% confidence level. The estimated units are final and not subject to adjustment. Prospective bidders are urged to examine this timber and to make their own estimates of quantity and quality.

### **BOND AND PAYMENT SCHEDULE:**

1. A bond in the amount of \$4,391.00 to insure faithful performance of the conditions of the contract will be deposited by the successful bidder within 21 days of the sale award.
2. Cutting in any sale or unit without the required advance payment would be considered a trespass.
3. Total payment must be paid in advance or according to the following schedule :
  - (a) Ten percent (10%) of the sale value must be paid within 21 days of the sale award.
  - (b) The 10% down payment will be credited towards the first unit cut.
  - (c) Payment for each of the following units must be made before cutting begins in that unit:

PAYMENT UNIT NUMBER	PERCENT OF TOTAL SALE VALUE
01	23.6%
02	1.3%
03	49.4%
04	5.4%
05	8.1%
06	12.2%

4. If no cutting takes place, the 10% down payment will not be refunded.
5. Operations on the contract issued will terminate on 12/31/2023.

### **SALE STATISTICS**

#### **SALE VOLUMES**

VOLUME		STATISTICAL RANGE IN CORDS		
TOTAL CUBIC FEET	TOTAL CORDS	PERCENT ERROR	MINIMUM	MAXIMUM
231,136	2,926	10.69%	2,613	3,239

## VDU VOLUMES

A VDU is a Volume Determination Unit. Volumes and their associated statistics are calculated at the VDU level and summarized to the sale level. There is often a one to one relationship between a VDU and a Payment Unit, but not always, depending on the cruise design. Refer to the VDU TO PAYMENT UNIT table.

VDU	VOLUME		PERCENT ERROR	RANGE IN CORDS	
	TOTAL CUBIC FEET	TOTAL CORDS		MINIMUM	MAXIMUM
12	45,591	577	35.26%	374	781
23	4,385	56	69.14%	17	94
25	96,427	1,221	16.06%	1,025	1,417
26	24,016	304	21.00%	240	368
28	29,025	367	18.40%	300	435
35	26,844	340	26.77%	249	431
101	4,819	61	29.21%	43	79
<b>TOTAL:</b>	<b>231,107</b>	<b>2,925</b>		<b>2,247</b>	<b>3,604</b>

## VDU TO PAYMENT UNIT

When a VDU is associated with more than one Payment Unit (PU), the VDU volumes are assigned to the PU based on acres of the VDU within the PU.

VDU	VDU ACRES	PU	PU ACRES
12	15.0	1	15.0
23	4.2	2	4.2
25	27.1	3	27.1
26	11.1	4	11.1
28	13.0	5	13.0
35	6.1	6	6.1
101	2.5	5	2.5
<b>TOTAL:</b>	<b>79.0</b>		<b>79.0</b>



**DESCRIPTION OF TIMBER BY PAYMENT UNIT (PU)**

PU	MARKET GROUP	PRODUCT	QUANTITY	UNIT	ACRES	ADVERTISE PRICE	
1	Black Cherry	Sawtimber	5.1	MBF	15.0	\$20,695.65	
	Red Maple		1.4	MBF			
	Red Pine		197.9	MBF			
	Jack Pine		Pulpwood	12			Cords
	Mixed Hardwood			15			Cords
	<i>Black Cherry</i>			8			Cords
	<i>Red Maple</i>			7			Cords
	Red Pine			137			Cords
	White Pine		4	Cords			
2	Mixed Aspen	Sawtimber	6.6	MBF	4.2	\$1,137.10	
	<i>B. T. Aspen</i>		3.5	MBF			
	<i>Quaking Aspen</i>		3.1	MBF			
	Red Maple		1.0	MBF			
	Mixed Aspen		Pulpwood	33			Cords
	<i>B. T. Aspen</i>			9			Cords
	<i>Quaking Aspen</i>			24			Cords
	Mixed Hardwood			7			Cords
	<i>Black Cherry</i>			1			Cords
	<i>Red Maple</i>			6			Cords
3	Black Cherry	Sawtimber	2.6	MBF	27.1	\$43,466.95	
	Red Maple		1.4	MBF			
	Red Pine		420.0	MBF			
	Mixed Hardwood		Pulpwood	43			Cords
	<i>Black Cherry</i>			17			Cords
	<i>Red Maple</i>			22			Cords
	<i>Sugar Maple</i>			4			Cords
	Red Pine			329			Cords
4	Black Cherry	Sawtimber	1.3	MBF	11.1	\$4,746.85	
	Red Maple		0.7	MBF			
	White Spruce		11.5	MBF			
	Mixed Hardwood		Pulpwood	9			Cords
	<i>Black Cherry</i>			7			Cords
	<i>Red Maple</i>			2			Cords
	White Spruce			268			Cords
5	Black Cherry	Sawtimber	2.4	MBF	15.5	\$7,093.45	
	Mixed Aspen		3.4	MBF			
	<i>Quaking Aspen</i>		3.4	MBF			
	Red Maple		3.3	MBF			
	White Spruce		32.5	MBF			
	Mixed Aspen		Pulpwood	21			Cords
	<i>Quaking Aspen</i>			21			Cords
	Mixed Hardwood			22			Cords
	<i>Black Cherry</i>			11			Cords
	<i>Red Maple</i>			11			Cords
White Spruce	302	Cords					
6	Red Maple	Sawtimber	1.8	MBF	6.1	\$10,678.55	
	Red Pine		61.7	MBF			
	Mixed Aspen		Pulpwood	2			Cords
	<i>Quaking Aspen</i>			2			Cords
	Mixed Hardwood			5			Cords
	<i>Red Maple</i>			5			Cords
	Red Pine			185			Cords
	White Spruce		21	Cords			
TOTAL:			754.6	MBF			

TOTAL:	1,415 Cords
--------	-------------

## Sale Specific Conditions & Requirements

Sale Name: Wallin Conifer Mix

Sale Number: 61-038-20 Seq#: 1

### 1 - Sale Area

#### 1.2 - Boundaries

##### 1.2.1 - Painted boundaries (9/19)

The sale boundary and Payment Unit boundaries are marked and identified by red and yellow paint. Exterior sale boundary lines against state are marked with red paint. Interior Payment Unit boundaries are marked with yellow paint. The painted boundary line trees are not Included Timber and are to be protected. Yellow painted trees designating an interior Payment Unit boundary are only to be cut when all surrounding Payment Units have been paid.

### 2 - Timber Specifications

#### 2.1 - Included Timber

##### 2.1.1 - Clearcut unit(s) with unmerchantable trees (6/14)

Within Payment Unit(s) 1 and 3 - 6, cut all trees that are one (1) inch or more at DBH, regardless of merchantability.

##### 2.1.7 - Leave tree marked unit(s) (6/14)

Within Payment Unit(s) 2, all aspen, red maple, jack pine, beech and cherry are designated for cutting, regardless of merchantability. Except, do not cut any trees that are marked with green paint above and below stump height, or any other tree species that is not specifically designated for cutting.

#### 2.2 - Utilization

##### 2.2.2 - Chipping required (2/18)

Payment Unit 1 and 3 - 6 must be chip harvested to facilitate subsequent planting operations. The Purchaser has the option to produce sawlogs or pulpwood bolts, but the remaining portion of the trees must be chipped and hauled. Products may be produced as roundwood and forwarded to decking areas in final product length, but the tops must be left intact and skidded to the landing for chipping to minimize the amount of residual slash. The requirement to retain approximately 1/6 to 1/3 of tree tops and limbs less than four inches in diameter does not apply (G. C. & R. 2.2). This is to facilitate subsequent planting operations in these Payment Units.

##### 2.2.3 - Stump heights (4/07)

Stump heights within Payment Unit(s) 1 and 3 - 6, shall not exceed 12 inches for trees greater than 10 inches at DBH and 4 inches for trees smaller than 10 inches at DBH. This is to facilitate planting operations.

##### 2.2.8 - Utilization and removal (5/14)

Within Payment Units 1 and 3 - 6, all products meeting standards set forth in General Condition and Requirement 2.2 - Utilization must be removed from the Sale Area. This is because these Payment Units will be trenched and planted after the sale is completed.

### 4 - Transportation

#### 4.1 - Construction

##### 4.1.3 - Slash and earthen piles (8/04)

Piles or windrows of earth along roads and landings that have been widened or constructed shall be leveled. Slash from road maintenance or construction, including stumps, shall be chipped, utilized, or otherwise removed from the sale as agreed with DNR sale administrator.

### 5 - Operations

#### 5.2 - Conduct of Operations

##### 5.2.3 - Operating Restrictions

###### 5.2.3.6 - Bark beetle restriction (12/08)

In the event drought creates a high risk of pine bark beetle infestation, pine is not to be cut during the period March 1

through July 1, unless all portions of trees greater than two inches in diameter are removed from the sale area, reduced to chips, or treated to the satisfaction of the Unit Manager or his/her representative, within fifteen days of being severed from the stump. Pine log decks, pulpwood piles and treetops that are piled for chipping in the fall or winter within a 1/4 mile of susceptible sites must be removed before March 15. Residual slash must not be placed in piles or rows and must be spread over the site for quick drying. The Department of Natural Resources will exercise this specification if the risk of damage warrants.

#### 5.2.4 - Dead and Down Creation

##### 5.2.4.4 - Dead and down creation, grouse (6/18)

To encourage grouse and other wildlife, in Payment Unit(s) 2, leave one 12" or larger diameter log at least 8 feet in length on the ground for every 1 acre (4 total), preferably a hardwood species such as maple. These will be evenly scattered throughout the Payment Unit. This can be an unmerchantable piece or a full tree.

##### 5.2.38 - No decking against live trees (2/04)

Cut products may not be decked against unmarked or designated leave trees.

##### 5.2.41 - Snowmobile trail protection (9/11)

The Betsie River snowmobile trail is shown on the Timber Sale Map. Do not cut or damage posts with orange trail markers or traffic control signs. If the trail is used, it must be maintained and restored to a condition equal to or better than before the sale. If the trail is used for hauling, it must be graded to the satisfaction of the Unit Manager or his/her representative prior to December 1. If the trail road is to be used for hauling during the snowmobile season, then a snow-covered base must be left on the trail. No decking of forest products will be permitted along the snowmobile trail. All stumps within 20 feet of the snowmobile trail must be cut at ground level. In addition, any trees cut within 5 feet of the trail must have the stumps removed and be disposed of according to the direction of the Unit Manager or his/her representative.

## 6 - Safety and Fire Prevention

### 6.2 - Signing

#### 6.2.2 - Snowmobile trail posting (8/09)

The Purchaser is responsible for posting and maintaining caution signs on Betsie River Snowmobile trail prior to beginning operations during the snowmobile season (approximately December 1 to March 31). The trail must be posted at appropriate distances from the Sale Area to warn of logging activity and truck traffic. Signs must be removed when harvest operations are suspended or completed. The Purchaser will provide these signs.

## 7 - Other Conditions

### 7.5 - Loss

#### 7.5.1 - Deteriorating timber (7/09)

The sale area has received damage from spruce die-back (from possible spruce budworm) in Payment Unit 4. The Purchaser should harvest the wood as soon as possible. The Department of Natural Resources is held free of responsibility of any further damage or deterioration due to delay in harvesting.

## 8 - Performance and Settlement

### 8.3 - Uncompleted or Terminated Contracts

#### 8.3.1 - Completion of contract, chipping (1/16)

In addition to cutting, all chipping must be completed by the contract expiration date. If chipping has not been completed, an extension fee or damages may be charged per General Condition & Requirement 7.2 and 8.3.



Sale Number	Year
61 - 038	20

# TIMBER SALE MAP

This information provided by authority of Part 525, 1994 PA 451 as amended.

Forest Management Unit Traverse City	County Benzie	Mapped By Craig Allen	Date 09/16/2020	Page 1	of 1
Township 25N	Range 13W	Section(s) and Subdivision(s) Sec. 02: W1/2SW Sec. 11: N1/2NW, W 1/2NE, NWSE	Scale 1:15,840		

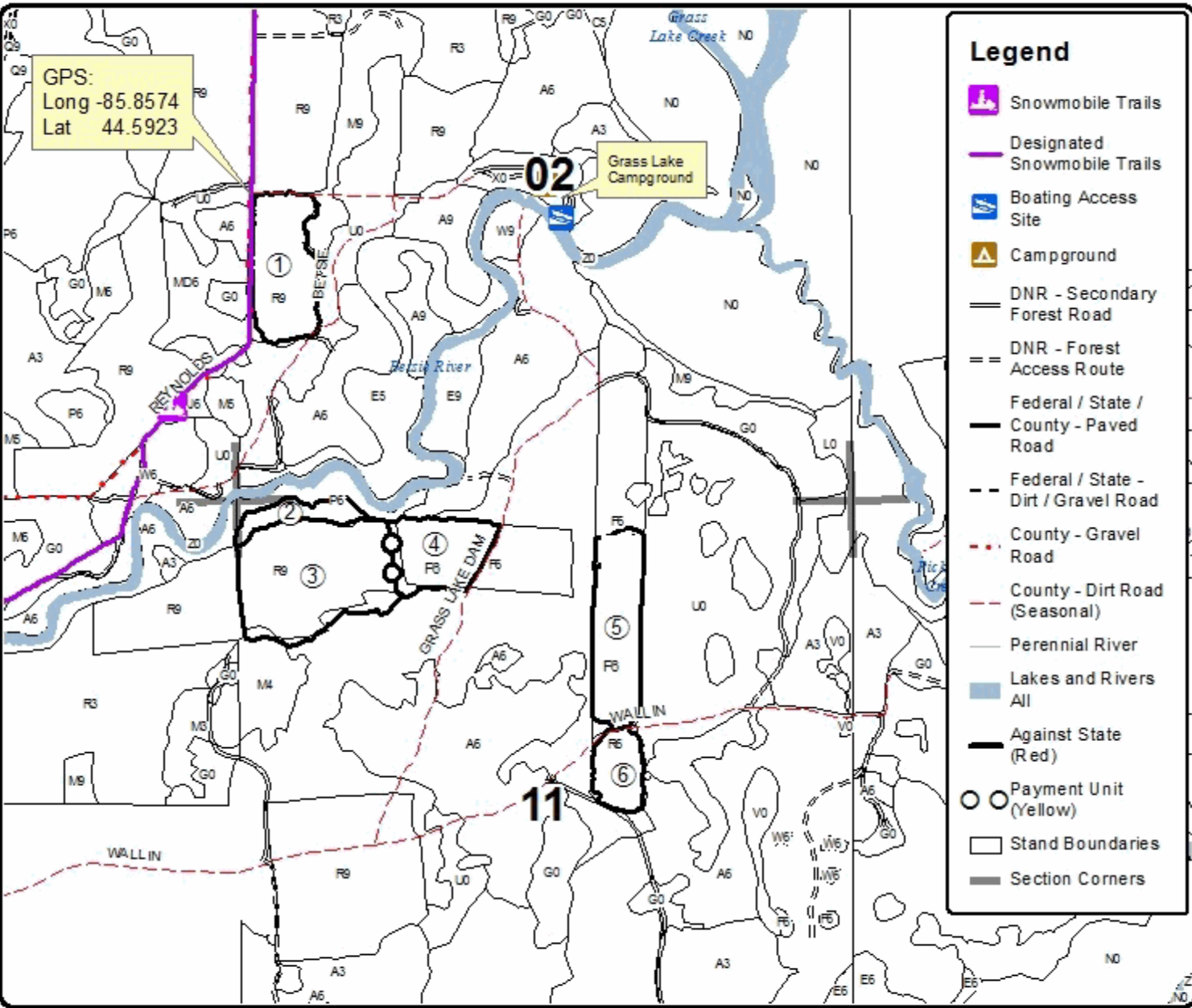
Cover Type				Density	
A = Aspen	H = Hemlock	N = Marsh	U = Upland Brush	0 = Non Stocked	5 = Pole Timber Medium
B = Paper Birch	J = Jack Pine	O = Oak	UM = Upland Mixed	1 = Seeding Sapling Poor	6 = Pole Timber Well
C = Cedar	L = Lowland Brush	P = Lowland Poplar	V = Bog or Marsh	2 = Seeding Sapling Medium	7 = Saw Timber Poor
D = Treed Bog	LM = Lowland Mixed	Q = Mixed Swamp Conifer	W = White Pine	3 = Seeding Sapling Well	8 = Saw Timber Medium
E = Swamp Hardwoods	M = Mpl. Ech. Birch	R = Red Pine	X = Non Stocked	4 = Pole Timber Poor	9 = Saw Timber Well
F = Spruce Fir	MC = Mixed Conifer	S = Black Spruce	Z = Water		
G = Cress	MD = Mixed Deciduous	T = Tamarack			

PU	Acres	PU	Acres
1	15	4	11.1
2	4.2	5	15.5
3	27.1	6	6.1

## Wallin Conifer Mix

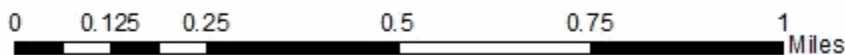
### Compartment 20

79 Acres



### Legend

- Snowmobile Trails
- Designated Snowmobile Trails
- Boating Access Site
- Campground
- DNR - Secondary Forest Road
- DNR - Forest Access Route
- Federal / State / County - Paved Road
- Federal / State - Dirt / Gravel Road
- County - Gravel Road
- County - Dirt Road (Seasonal)
- Perennial River
- Lakes and Rivers All
- Against State (Red)
- Payment Unit (Yellow)
- Stand Boundaries
- Section Corners





## TIMBER SALE INFORMATION

### Marsh Madness (61-044-20)

T25N, R13W, SEC. 11; T25N, R13W, SEC. 13; T25N, R13W, SEC. 14.  
Benzie County (Advertised Price \$39,342.15)

SALE NOTE: Oak Wilt restriction exist on sale.

A timber sale contract for this lump sum, sealed bid timber sale will be awarded to the responsible bidder offering the highest sealed bid price. All units of volume listed below were estimated using the T-Sale computer program and our traditional volume equations. Bids must be at or above the following advertised price for each product and species:

<u>PRODUCTS &amp; SPECIES</u>	<u>ESTIMATED UNITS*</u>	<u>ADVERTISED PRICE</u>
Sawtimber		
Beech	0.7 MBF	\$ 52.00 / MBF
Black Cherry	17.0 MBF	\$ 144.00 / MBF
Mixed Aspen	99.3 MBF	\$ 79.00 / MBF
Red Maple	85.8 MBF	\$ 116.00 / MBF
Sugar Maple	3.1 MBF	\$ 155.00 / MBF
White Pine	2.0 MBF	\$ 39.00 / MBF
Pulpwood		
Jack Pine	2 Cords	\$ 7.60 / Cord
Mixed Aspen	1,085 Cords	\$ 12.65 / Cord
Mixed Hardwood	388 Cords	\$ 11.75 / Cord
White Pine	17 Cords	\$ 11.90 / Cord

\* The total volume is statistically estimated within plus (+) or minus (-) 14.26 percent. There are an estimated 1,907 cords on this timber sale, plus or minus 272 cords at the 95% confidence level. The estimated units are final and not subject to adjustment. Prospective bidders are urged to examine this timber and to make their own estimates of quantity and quality.

### **BOND AND PAYMENT SCHEDULE:**

1. A bond in the amount of \$1,967.00 to insure faithful performance of the conditions of the contract will be deposited by the successful bidder within 21 days of the sale award.
2. Cutting in any sale or unit without the required advance payment would be considered a trespass.
3. Total payment must be paid in advance or according to the following schedule :
  - (a) Ten percent (10%) of the sale value must be paid within 21 days of the sale award.
  - (b) The 10% down payment will be credited towards the first unit cut.
  - (c) Payment for each of the following units must be made before cutting begins in that unit:
 

PAYMENT UNIT NUMBER	PERCENT OF TOTAL SALE VALUE
01	41.0%
02	6.2%
03	12.6%
04	22.9%
05	17.3%
4. If no cutting takes place, the 10% down payment will not be refunded.
5. Operations on the contract issued will terminate on 12/31/2023.

### **SALE STATISTICS**

#### **SALE VOLUMES**

VOLUME			STATISTICAL RANGE IN CORDS	
TOTAL CUBIC FEET	TOTAL CORDS	PERCENT ERROR	MINIMUM	MAXIMUM
150,651	1,907	14.26%	1,635	2,179

**VDU VOLUMES**

A VDU is a Volume Determination Unit. Volumes and their associated statistics are calculated at the VDU level and summarized to the sale level. There is often a one to one relationship between a VDU and a Payment Unit, but not always, depending on the cruise design. Refer to the VDU TO PAYMENT UNIT table.

VDU	VOLUME		PERCENT ERROR	RANGE IN CORDS	
	TOTAL CUBIC FEET	TOTAL CORDS		MINIMUM	MAXIMUM
33	55,829	707	27.89%	510	904
42	19,687	249	48.18%	129	369
60	75,121	951	14.75%	811	1,091
<b>TOTAL:</b>	<b>150,637</b>	<b>1,907</b>		<b>1,449</b>	<b>2,364</b>

**VDU TO PAYMENT UNIT**

When a VDU is associated with more than one Payment Unit (PU), the VDU volumes are assigned to the PU based on acres of the VDU within the PU.

VDU	VDU ACRES	PU	PU ACRES
33	31.1	1	27.0
		2	4.1
42	20.3	3	20.3
60	52.4	4	29.9
		5	22.5
<b>TOTAL:</b>	<b>103.8</b>		<b>103.8</b>



**DESCRIPTION OF TIMBER BY PAYMENT UNIT (PU)**

PU	MARKET GROUP	PRODUCT	QUANTITY	UNIT	ACRES	ADVERTISE PRICE	
1	Beech	Sawtimber	0.6	MBF	27.0	\$16,153.00	
	Black Cherry		7.4	MBF			
	Mixed Aspen		22.3	MBF			
	<i>B. T. Aspen</i>		22.3	<i>MBF</i>			
	Red Maple		67.6	MBF			
	Sugar Maple		2.7	MBF			
	White Pine		1.7	MBF			
	Jack Pine		Pulpwood	2			Cords
	Mixed Aspen			161			Cords
	<i>B. T. Aspen</i>			161			<i>Cords</i>
	Mixed Hardwood	233		Cords			
	<i>Beech</i>	2		<i>Cords</i>			
	<i>Black Cherry</i>	43		<i>Cords</i>			
	<i>Ironwood</i>	2	<i>Cords</i>				
	<i>Red Maple</i>	173	<i>Cords</i>				
	<i>Sugar Maple</i>	13	<i>Cords</i>				
White Pine	15	Cords					
2	Beech	Sawtimber	0.1	MBF	4.1	\$2,439.35	
	Black Cherry		1.1	MBF			
	Mixed Aspen		3.4	MBF			
	<i>B. T. Aspen</i>		3.4	<i>MBF</i>			
	Red Maple		10.3	MBF			
	Sugar Maple		0.4	MBF			
	White Pine		0.3	MBF			
	Mixed Aspen		Pulpwood	24			Cords
	<i>B. T. Aspen</i>			24			<i>Cords</i>
	Mixed Hardwood			35			Cords
	<i>Black Cherry</i>	7		<i>Cords</i>			
	<i>Red Maple</i>	26		<i>Cords</i>			
<i>Sugar Maple</i>	2	<i>Cords</i>					
White Pine	2	Cords					
3	Black Cherry	Sawtimber	6.0	MBF	20.3	\$4,964.30	
	Mixed Aspen		12.3	MBF			
	<i>B. T. Aspen</i>		9.1	<i>MBF</i>			
	<i>Quaking Aspen</i>		3.2	<i>MBF</i>			
	Red Maple		5.4	MBF			
	Mixed Aspen		Pulpwood	143			Cords
	<i>B. T. Aspen</i>			95			<i>Cords</i>
	<i>Quaking Aspen</i>			48			<i>Cords</i>
	Mixed Hardwood			59			Cords
	<i>Black Cherry</i>			23			<i>Cords</i>
<i>Red Maple</i>	36	<i>Cords</i>					
4	Black Cherry	Sawtimber	1.4	MBF	29.9	\$8,993.30	
	Mixed Aspen		35.0	MBF			
	<i>B. T. Aspen</i>		29.6	<i>MBF</i>			
	<i>Quaking Aspen</i>		5.4	<i>MBF</i>			
	Red Maple		1.4	MBF			
	Mixed Aspen		Pulpwood	432			Cords
	<i>B. T. Aspen</i>			281			<i>Cords</i>
	<i>Quaking Aspen</i>			151			<i>Cords</i>
	Mixed Hardwood			34			Cords
	<i>Black Cherry</i>			27			<i>Cords</i>
<i>Red Maple</i>	7	<i>Cords</i>					
5	Black Cherry	Sawtimber	1.1	MBF	22.5	\$6,792.20	
	Mixed Aspen		26.3	MBF			
	<i>B. T. Aspen</i>		22.2	<i>MBF</i>			

**DESCRIPTION OF TIMBER BY PAYMENT UNIT (PU), CON'T**

PU	MARKET GROUP	PRODUCT	QUANTITY	UNIT	ACRES	ADVERTISE PRICE
5 con't	<i>Quaking Aspen</i>	<i>Sawtimber</i>	4.1	<i>MBF</i>		
	Red Maple		1.1	MBF		
	Mixed Aspen	Pulpwood	325	Cords		
	<i>B. T. Aspen</i>		212	<i>Cords</i>		
	<i>Quaking Aspen</i>		113	<i>Cords</i>		
	Mixed Hardwood		27	Cords		
	<i>Black Cherry</i>		21	<i>Cords</i>		
	<i>Red Maple</i>		6	<i>Cords</i>		
TOTAL:			207.9	MBF		
TOTAL:			1,492	Cords		

# Sale Specific Conditions & Requirements

**Sale Name: Marsh Madness**

**Sale Number: 61-044-20 Seq#: 1**

## 1 - Sale Area

### 1.2 - Boundaries

#### 1.2.1 - Painted boundaries (9/19)

The sale boundary and Payment Unit boundaries are marked and identified by red and yellow paint. Exterior sale boundary lines against state are marked with red paint. Interior Payment Unit boundaries are marked with yellow paint. The painted boundary line trees are not Included Timber and are to be protected. Yellow painted trees designating an interior Payment Unit boundary are only to be cut when all surrounding Payment Units have been paid.

## 2 - Timber Specifications

### 2.1 - Included Timber

#### 2.1.3 - Cut tree marked unit(s) (12/08)

Within Payment Unit(s) 2, all trees are designated for cutting when marked with orange paint above and below stump height, regardless of merchantability. Do not cut any other trees in this Payment Unit.

#### 2.1.7 - Leave tree marked unit(s) (6/14)

Within Payment Unit(s) 1 and 3 - 5, all aspen, maple, cherry, beech, ironwood, and jack pine are designated for cutting regardless of merchantability. Except, do not cut any trees marked with green paint above and below stump height or any other tree species not specifically designated for cutting.

### 2.2 - Utilization

#### 2.2.3 - Stump heights (4/07)

Stump heights within the Sale Area shall not exceed 12 inches for trees greater than 10 inches at DBH and 6 inches for trees smaller than 10 inches at DBH.

## 4 - Transportation

### 4.1 - Construction

#### 4.1.3 - Slash and earthen piles (8/04)

Piles or windrows of earth along roads and landings that have been widened or constructed shall be leveled. Slash from road maintenance or construction, including stumps, shall be chipped, utilized, or dispersed within the Sale Area as determined by the DNR sale administrator.

## 5 - Operations

### 5.2 - Conduct of Operations

#### 5.2.1 - Slash

##### 5.2.1.8 - Slash height (12/08)

No slash or tree tops may exceed 24 inches in height.

##### 5.2.1.10 - No slash in openings (5/10)

No brush or logging debris is to be left in the maintained wildlife openings which is indicated by G0 on the Timber Sale Map. Any damage to the opening shall be repaired according to specifications of the Unit Manager or his/her representative.

#### 5.2.3 - Operating Restrictions

##### 5.2.3.4 - Oak wilt restriction, no exceptions (1/18)

Within all Payment Units, cutting, skidding, hauling within the sale and brushing of access roads to the sale are not permitted during the period of April 15 to July 15. No exceptions will be granted. This is necessary to reduce the spread of oak wilt.

#### 5.2.4 - Dead and Down Creation

##### 5.2.4.3 - Dead and down creation, dead trees (6/07)

Except as provided for in General Condition and Requirement 5.2.2, no dead trees, standing or down, are to be cut, skidded, or processed.

##### 5.2.4.4 - Dead and down creation, grouse (6/18)

To encourage grouse and other wildlife, in Payment Unit(s) 1, leave one, 12" diameter or larger log-length (8 foot minimum) piece on the ground for every 2 acres, preferably a hardwood species such as maple or cherry. These logs will be evenly scattered throughout the Payment Unit, preferably at least two chains from any roads, two-tracks, or trails open to vehicles. This can be an unmerchantable piece or a full tree.

##### 5.2.32 - Decking/landing restoration (9/13)

All decking and landing areas must have the surface area restored to a condition equal to or better than before. This is to ensure the proper regeneration of the stand. Wood debris, chips, and wood trimmings must be removed or scattered away from landing and loading areas and may not be windrowed on the edge.

##### 5.2.38 - No decking against live trees (2/04)

Cut products may not be decked against unmarked or designated leave trees.

#### 5.4 - Soil Protection

##### 5.4.1 - Rutting restriction, general (7/16)

Operations are to cease immediately if equipment and weather conditions result in rutting of roads and/or skid trails which is 12 inches or greater in depth and 50 feet in length. The Unit Manager or his/her representative may restrict hauling and/or skidding if ruts exceed the specified depth. With the Unit Manager or his/her representative's approval, the Purchaser may return to the area when the risk of rutting has decreased.



Sale Number	Year
61 - 044	20

# TIMBER SALE MAP

This information provided by authority of Part 525, 1994 PA 451, as amended.

Forest Management Unit Traverse City	County Benzie	Mapped By Craig Allen	Date 09/16/2020	Page 1	of 1
Township 25N	Range 13W	Section(s) and Subdivision(s) Sec. 11: NENW, S1/2NW, S1/2NE, NENW, N1/2SE Sec. 13: W1/2NW, NWSW Sec. 14: N1/2SE	Scale 1:15,840		

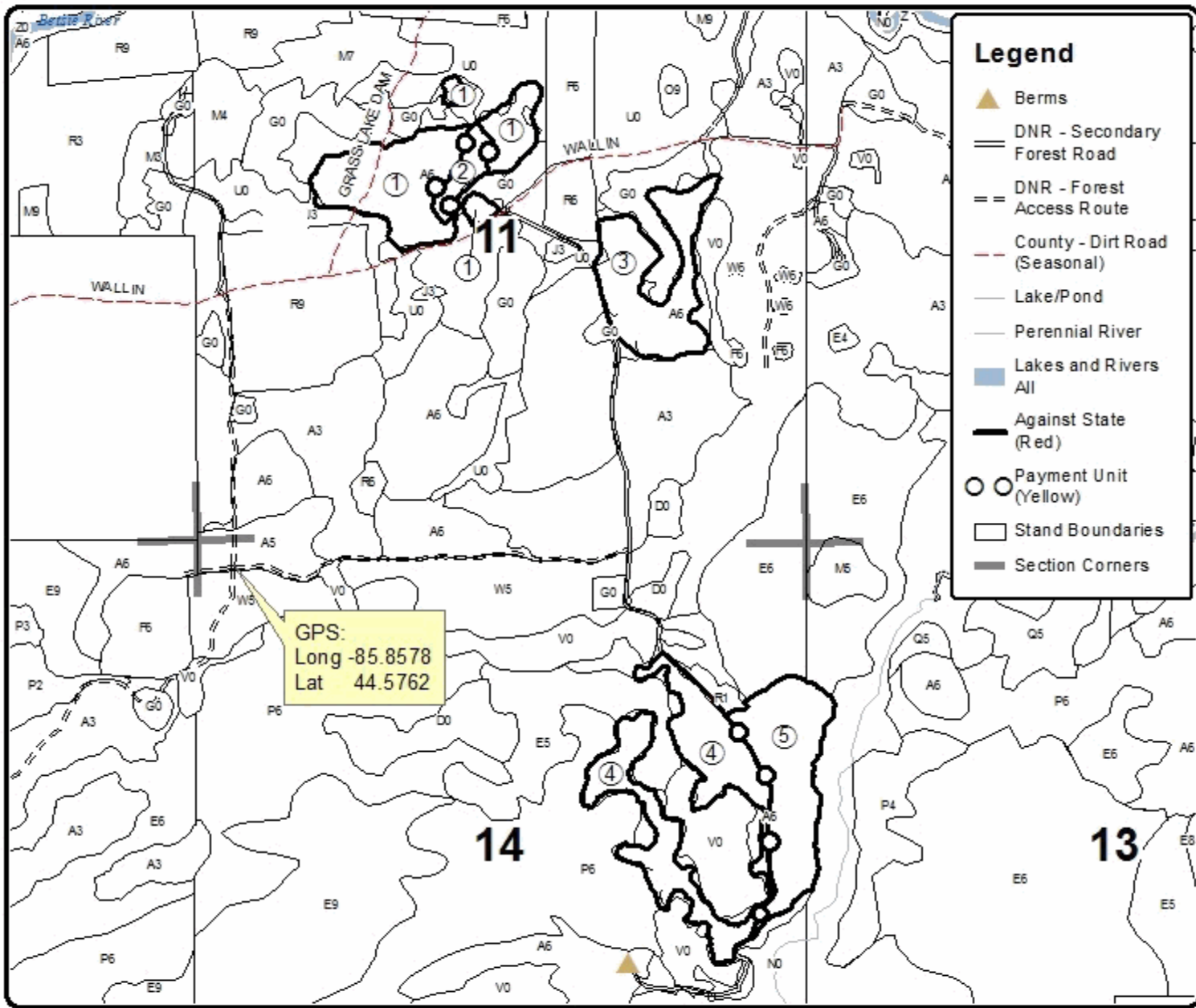
Cover Type				Density	
A = Aspen	H = Hemlock	N = Marsh	U = Upland Brush	0 = Non Stocked	5 = Pole Timber Medium
B = Paper Birch	J = Jack Pine	O = Oak	UM = Upland Mixed	1 = Seeding Sapling Poor	6 = Pole Timber Well
C = Cedar	L = Lowland Brush	P = Lowland Poplar	V = Bog or Marsh	2 = Seeding Sapling Medium	7 = Saw Timber Poor
D = Tread Bog	LM = Lowland Mixed	Q = Mixed Swamp Conifer	W = White Pine	3 = Seeding Sapling Well	8 = Saw Timber Medium
E = Swamp Hardwoods	M = Mpl. Ech. Birch	R = Red Pine	X = Non Stocked	4 = Pole Timber Poor	9 = Saw Timber Well
F = Spruce Fir	MC = Mixed Conifer	S = Black Spruce	Z = Water		
G = Creas	MD = Mixed Deciduous	T = Tamarack			

PU	Acres	PU	Acres
1	27	4	29.9
2	4.1	5	22.5
3	20.3		

## Marsh Madness

### Compartment 20

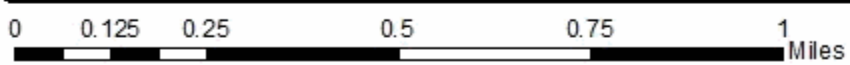
103.8 Acres



### Legend

- Berms
- DNR - Secondary Forest Road
- DNR - Forest Access Route
- County - Dirt Road (Seasonal)
- Lake/Pond
- Perennial River
- Lakes and Rivers All
- Against State (Red)
- Payment Unit (Yellow)
- Stand Boundaries
- Section Corners

GPS:  
Long -85.8578  
Lat 44.5762





## TIMBER SALE INFORMATION

Slide Bye Mix (61-046-20)

T26N, R09W, SEC. 6.

Grand Traverse County (Advertised Price \$5,864.30)

SALE NOTE: A recreation site such as a trail, pathway, or campground is within the sale area or the vicinity. Certain restrictions/specifications may be applicable including time restrictions.

A timber sale contract for this lump sum, sealed bid timber sale will be awarded to the responsible bidder offering the highest sealed bid price. All units of volume listed below were estimated using the T-Sale computer program and our traditional volume equations. Bids must be at or above the following advertised price for each product and species:

<u>PRODUCTS &amp; SPECIES</u>	<u>ESTIMATED UNITS*</u>	<u>ADVERTISED PRICE</u>
Sawtimber		
Mixed Oak	18.2 MBF	\$ 55.00 / MBF
Red Maple	0.5 MBF	\$ 116.00 / MBF
Red Pine	7.7 MBF	\$ 79.00 / MBF
White Oak	6.8 MBF	\$ 70.00 / MBF
White Pine	4.1 MBF	\$ 39.00 / MBF
Pulpwood		
B. T. Aspen	21 Cords	\$ 12.65 / Cord
Jack Pine	45 Cords	\$ 7.60 / Cord
Mixed Hardwood	64 Cords	\$ 11.75 / Cord
Mixed Oak	157 Cords	\$ 10.35 / Cord
Red Pine	4 Cords	\$ 28.10 / Cord
White Pine	39 Cords	\$ 11.90 / Cord

\* The total volume is statistically estimated within plus (+) or minus (-) 19.15 percent. There are an estimated 406 cords on this timber sale, plus or minus 78 cords at the 95% confidence level. The estimated units are final and not subject to adjustment. Prospective bidders are urged to examine this timber and to make their own estimates of quantity and quality.

### **BOND AND PAYMENT SCHEDULE:**

1. A bond in the amount of \$586.00 to insure faithful performance of the conditions of the contract will be deposited by the successful bidder within 21 days of the sale award.
2. Cutting in any sale or unit without the required advance payment would be considered a trespass.
3. Total payment must be paid in advance or according to the following schedule :
  - (a) Ten percent (10%) of the sale value must be paid within 21 days of the sale award.
  - (b) The remainder is due before cutting begins.
  - (c) Payment for each of the following units must be made before cutting begins in that unit:
 

PAYMENT UNIT NUMBER	PERCENT OF TOTAL SALE VALUE
01	100.0%
4. If no cutting takes place, the 10% down payment will not be refunded.
5. Operations on the contract issued will terminate on 09/30/2023.

### **SALE STATISTICS**

#### **SALE VOLUMES**

VOLUME		STATISTICAL RANGE IN CORDS		
TOTAL CUBIC FEET	TOTAL CORDS	PERCENT ERROR	MINIMUM	MAXIMUM
32,045	406	19.15%	328	483

**VDU VOLUMES**

A VDU is a Volume Determination Unit. Volumes and their associated statistics are calculated at the VDU level and summarized to the sale level. There is often a one to one relationship between a VDU and a Payment Unit, but not always, depending on the cruise design. Refer to the VDU TO PAYMENT UNIT table.

VDU	VOLUME		PERCENT ERROR	RANGE IN CORDS	
	TOTAL CUBIC FEET	TOTAL CORDS		MINIMUM	MAXIMUM
22	19,316	245	24.95%	183	306
25	12,727	161	29.85%	113	209
<b>TOTAL:</b>	<b>32,042</b>	<b>406</b>		<b>297</b>	<b>515</b>

**VDU TO PAYMENT UNIT**

When a VDU is associated with more than one Payment Unit (PU), the VDU volumes are assigned to the PU based on acres of the VDU within the PU.

VDU	VDU ACRES	PU	PU ACRES
22	9.7	1	9.7
25	8.5	1	8.5
<b>TOTAL:</b>	<b>18.2</b>		<b>18.2</b>

**DESCRIPTION OF TIMBER BY PAYMENT UNIT (PU)**

PU	MARKET GROUP	PRODUCT	QUANTITY	UNIT	ACRES	ADVERTISE PRICE	
1	Mixed Oak	Sawtimber	18.2	MBF	18.2	\$5,864.30	
	<i>Northern Pin Oak</i>		0.4	<i>MBF</i>			
	<i>Red Oak</i>		17.8	<i>MBF</i>			
	Red Maple		0.5	MBF			
	Red Pine		7.7	MBF			
	White Oak		6.8	MBF			
	White Pine		4.1	MBF			
	B. T. Aspen		Pulpwood	21			Cords
	Jack Pine			45			Cords
	Mixed Hardwood			64			Cords
	<i>Black Cherry</i>	3		<i>Cords</i>			
	<i>Red Maple</i>	61		<i>Cords</i>			
	Mixed Oak	157		Cords			
	<i>Northern Pin Oak</i>	4		<i>Cords</i>			
	<i>Red Oak</i>	59		<i>Cords</i>			
	<i>White Oak</i>	94		<i>Cords</i>			
	Red Pine	4		Cords			
	White Pine	39	Cords				
	<b>TOTAL:</b>			37.3	MBF		
	<b>TOTAL:</b>			330	Cords		



## Sale Specific Conditions & Requirements

**Sale Name: Slide Bye Mix**

**Sale Number: 61-046-20 Seq#: 1**

### 1 - Sale Area

#### 1.2 - Boundaries

##### 1.2.1 - Painted boundaries (9/19)

The sale boundary and Payment Unit boundaries are marked and identified by red paint. Exterior sale boundary lines against state are marked with red paint. The painted boundary line trees are not Included Timber and are to be protected.

### 2 - Timber Specifications

#### 2.1 - Included Timber

##### 2.1.1 - Clearcut unit(s) with unmerchantable trees (6/14)

Within Payment Unit(s) 1, cut all trees that are one(1) inch or more at DBH.

#### 2.2 - Utilization

##### 2.2.2 - Chipping required (2/18)

This area must be chip harvested to facilitate subsequent planting operations. The Purchaser has the option to produce sawlogs or pulpwood bolts, but the remaining portion of the trees must be chipped and hauled. Products may be produced as roundwood and forwarded to decking areas in final product length, but the tops must be left intact and skidded to the landing for chipping to minimize the amount of residual slash. The requirement to retain approximately 1/6 to 1/3 of tree tops and limbs less than four inches in diameter does not apply (G. C. & R. 2.2). This is because this would interfere with the planting operation.

##### 2.2.3 - Stump heights (4/07)

Stump heights within the Sale Area Payment Unit(s) shall not exceed 6 inches for all trees. This is to facilitate planting operations.

### 4 - Transportation

#### 4.1 - Construction

##### 4.1.12 - No new roads (1/12)

No new roads will be permitted in any Payment Unit. All operations are limited to existing roads. Skid trails only will be allowed.

#### 4.2 - Maintenance

##### 4.2.5 - Two wheel drive condition (2/04)

All existing trail roads on and adjacent to the sale area must be passable by two-wheel drive traffic for the duration of the sale.

### 5 - Operations

#### 5.1 - Notification

##### 5.1.1 - Pre-sale conference (10/16)

A pre-sale conference on site between the Purchaser and sale administrator is required prior to beginning any operations to determine landing and road locations. The Unit Manager or his/her representative must be contacted at least 3 days in advance to schedule the conference.

##### 5.1.4 - Post-sale conference (10/16)

A post-sale conference on site between the Purchaser and sale administrator is required 3 days prior to the completion of active logging operations to determine clean-up and repair of landings, road edges, and the fulfillment of other contract specifications.

#### 5.2 - Conduct of Operations

### 5.2.3 - Operating Restrictions

#### 5.2.3.5 - Oak wilt restriction (1/18)

Within Payment Unit(s) unless changed by written agreement, cutting, skidding, hauling within the sale and brushing of access roads to the sale are not permitted during the period of April 15 to July 15. Operations may be allowed if specific steps are taken to prevent damaging uncut oak during the high risk period. Those steps may include completing all road brushing before April 15th and clearing a tree-length buffer along uncut oak cover before April 15th. This is necessary to reduce the spread of oak wilt. For more information, contact the Unit Manager or his/her representative.

#### 5.2.32 - Decking/landing restoration (9/13)

All decking and landing areas must have the surface area restored to a condition equal to or better than before. This is to ensure the proper regeneration of the stand. Wood debris, chips, and "cookies" from trimmings must be removed or scattered away from landing and loading areas.

#### 5.2.40 - Pathway protection (10/10)

The Muncie Lake Pathway is shown on the Timber Sale Map. Do not cut trees or damage posts with blue pathway markers. Do not run equipment down the pathway. Skidding across the trail may only occur in locations approved by the sale administrator.

### 5.4 - Soil Protection

#### 5.4.1 - Rutting restriction, general (7/16)

Operations are to cease immediately if equipment and weather conditions result in rutting of roads and/or skid trails which is 12 inches or greater in depth and 50 feet in length. The Unit Manager or his/her representative may restrict hauling and/or skidding if ruts exceed the specified depth. With the Unit Manager or his/her representative's approval, the Purchaser may return to the area when the risk of rutting has decreased.

#### 5.4.6 - Wet area protection (5/10)

No harvesting operations, including skidding and felling, are to take place within the vernal pond areas or drainages. When harvesting occurs, there should be no disturbance to the vernal pond depression. All equipment, trees and tops should be kept out of this area. Within 100 feet of the pond, equipment should only be used when the soil is in a dry or frozen condition. Care must be taken by the Purchaser to identify and avoid operating in these areas of the timber sale.

## 6 - Safety and Fire Prevention

### 6.2 - Signing

#### 6.2.1 - Road posting (9/09)

The Purchaser is responsible for posting and maintaining caution signs on adjacent roads prior to beginning operations. The road must be posted at appropriate distances from the Sale Area to warn of logging activity and truck traffic. Signs must be removed when harvest operations are suspended or completed. The Purchaser will provide these signs.

#### 6.2.3 - Recreational trail posting (2/10)

The Purchaser is responsible for posting and maintaining caution signs on the Muncie Lake Pathway prior to beginning operations. The trail must be posted at appropriate distances from the Sale Area to warn of logging activity and truck traffic at both ends of the trail. Signs must be removed when harvest operations are suspended or completed. The Purchaser will provide these signs.



Sale Number	Year
61-046	20

# TIMBER SALE MAP

This information provided by authority of Part 525, 1994 PA 451, as amended.

Forest Management Unit Traverse City	County Grand Traverse	Mapped By Ruppen	Date 09/30/2020	Page 1	of 1
Township 26N	Range 9W	Section(s) and Subdivision(s) Sec 6 S1/2SE	Scale 1:15,840		

Cover Type				Density	
A = Aspen	H = Hemlock	N = Marsh	U = Upland Brush	0 = Non Stocked	5 = Pole Timber Medium
B = Paper Birch	J = Jack Pine	O = Oak	UM = Upland Mixed	1 = Seeding Sapling Poor	6 = Pole Timber Well
C = Cedar	L = Lowland Brush	P = Lowland Poplar	V = Bog or Marsh	2 = Seeding Sapling Medium	7 = Saw Timber Poor
D = Treed Bog	LM = Lowland Mixed	Q = Mixed Swamp Conifer	W = White Pine	3 = Seeding Sapling Well	8 = Saw Timber Medium
E = Swamp Hardwoods	M = Mpl. Ech. Birch	R = Red Pine	X = Non Stocked	4 = Pole Timber Poor	9 = Saw Timber Well
F = Spruce Fir	MC = Mixed Conifer	S = Black Spruce	Z = Water		
G = Cress	MD = Mixed Deciduous	T = Tamarack			

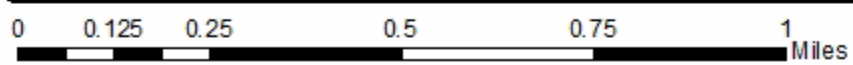
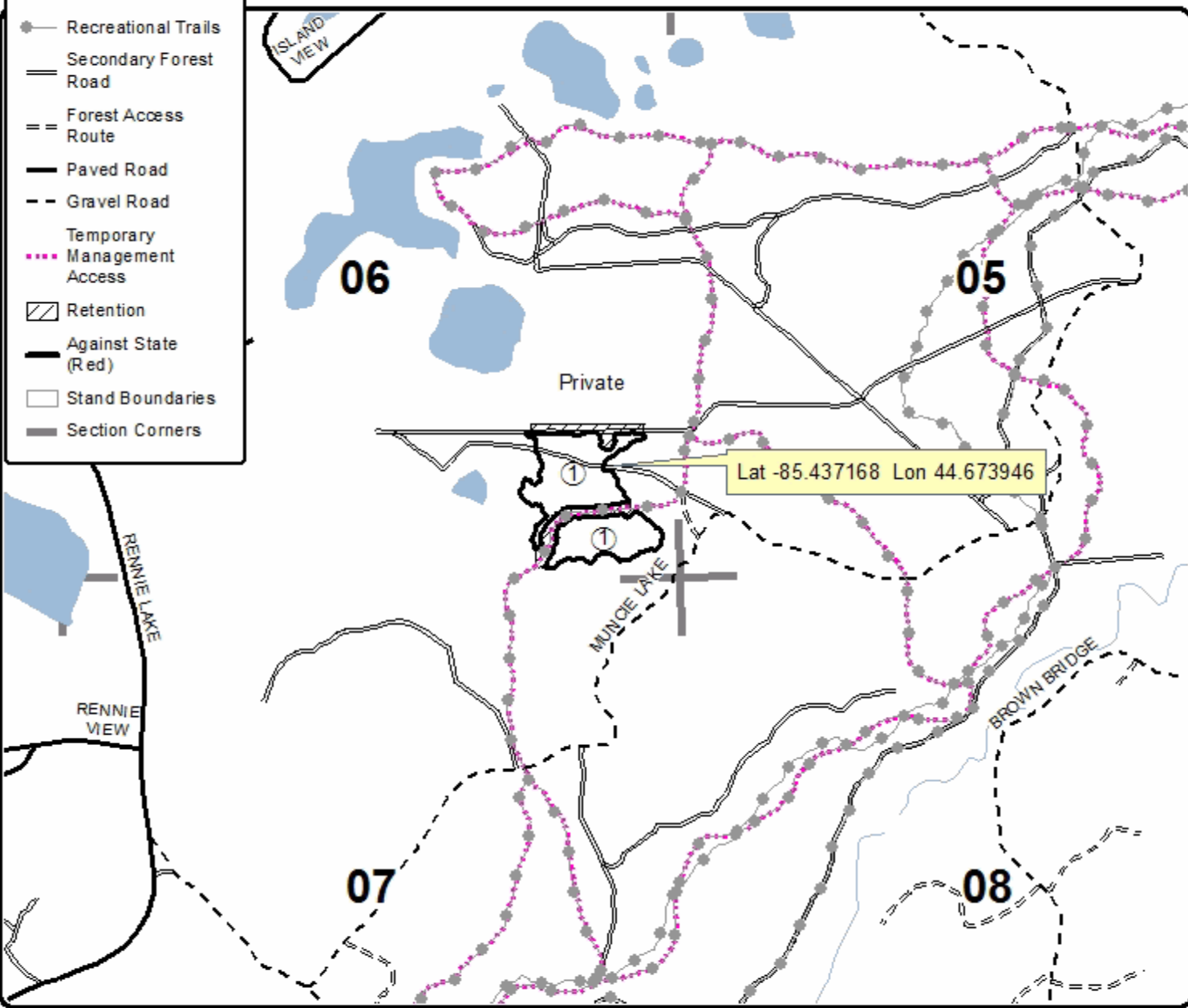
**PU Acres**  
1 18.2

## Slide Bye Mix Compartment 47 18.2 Acres



**Legend**

- Recreational Trails
- Secondary Forest Road
- Forest Access Route
- Paved Road
- Gravel Road
- Temporary Management Access
- Retention
- Against State (Red)
- Stand Boundaries
- Section Corners





## TIMBER SALE INFORMATION

Muncie Weave (61-047-20)

T26N, R09W, SEC. 5.

Grand Traverse County (Advertised Price \$14,541.55)

SALE NOTE: Clear cut Payment Unit in oak type that will be planted to red pine after harvest. Smaller marked Payment Unit in pine type with declining jack pine.

A recreation site such as a trail, pathway, or campground is within the sale area or the vicinity. Certain restrictions/specifications may be applicable including time restrictions.

A timber sale contract for this lump sum, sealed bid timber sale will be awarded to the responsible bidder offering the highest sealed bid price. All units of volume listed below were estimated using the T-Sale computer program and our traditional volume equations. Bids must be at or above the following advertised price for each product and species:

<u>PRODUCTS &amp; SPECIES</u>	<u>ESTIMATED UNITS*</u>	<u>ADVERTISED PRICE</u>
Sawtimber		
B. T. Aspen	4.5 MBF	\$ 79.00 / MBF
Northern Pin Oak	32.4 MBF	\$ 55.00 / MBF
Red Maple	1.3 MBF	\$ 116.00 / MBF
Red Oak	32.3 MBF	\$ 119.00 / MBF
White Oak	30.0 MBF	\$ 70.00 / MBF
White Pine	3.7 MBF	\$ 39.00 / MBF
Pulpwood		
B. T. Aspen	37 Cords	\$ 12.65 / Cord
Jack Pine	55 Cords	\$ 7.60 / Cord
Mixed Oak	401 Cords	\$ 10.35 / Cord
Red Maple	53 Cords	\$ 11.75 / Cord
Red Pine	7 Cords	\$ 28.10 / Cord
White Pine	26 Cords	\$ 11.90 / Cord

\* The total volume is statistically estimated within plus (+) or minus (-) 15.25 percent. There are an estimated 786 cords on this timber sale, plus or minus 120 cords at the 95% confidence level. The estimated units are final and not subject to adjustment. Prospective bidders are urged to examine this timber and to make their own estimates of quantity and quality.

### **BOND AND PAYMENT SCHEDULE:**

1. A bond in the amount of \$1,454.00 to insure faithful performance of the conditions of the contract will be deposited by the successful bidder within 21 days of the sale award.
2. Cutting in any sale or unit without the required advance payment would be considered a trespass.
3. Total payment must be paid in advance or according to the following schedule :
  - (a) Ten percent (10%) of the sale value must be paid within 21 days of the sale award.
  - (b) The 10% down payment will be credited towards the first unit cut.
  - (c) Payment for each of the following units must be made before cutting begins in that unit:

PAYMENT UNIT NUMBER	PERCENT OF TOTAL SALE VALUE
01	3.1%
02	48.0%
03	48.9%

4. If no cutting takes place, the 10% down payment will not be refunded.
5. Operations on the contract issued will terminate on 09/30/2023.

### **SALE STATISTICS**

#### **SALE VOLUMES**

VOLUME		STATISTICAL RANGE IN CORDS		
TOTAL CUBIC FEET	TOTAL CORDS	PERCENT ERROR	MINIMUM	MAXIMUM
62,058	786	15.25%	666	905

**VDU VOLUMES**

A VDU is a Volume Determination Unit. Volumes and their associated statistics are calculated at the VDU level and summarized to the sale level. There is often a one to one relationship between a VDU and a Payment Unit, but not always, depending on the cruise design. Refer to the VDU TO PAYMENT UNIT table.

VDU	VOLUME		PERCENT ERROR	RANGE IN CORDS	
	TOTAL CUBIC FEET	TOTAL CORDS		MINIMUM	MAXIMUM
46	3,547	45	59.48%	18	72
47	58,484	740	15.77%	624	857
<b>TOTAL:</b>	<b>62,031</b>	<b>785</b>		<b>642</b>	<b>929</b>

**VDU TO PAYMENT UNIT**

When a VDU is associated with more than one Payment Unit (PU), the VDU volumes are assigned to the PU based on acres of the VDU within the PU.

VDU	VDU ACRES	PU	PU ACRES
46	6.5	1	6.5
47	36.0	2	17.9
		3	18.1
<b>TOTAL:</b>	<b>42.5</b>		<b>42.5</b>

**DESCRIPTION OF TIMBER BY PAYMENT UNIT (PU)**

PU	MARKET GROUP	PRODUCT	QUANTITY	UNIT	ACRES	ADVERTISE PRICE
1	B. T. Aspen	Sawtimber	0.7	MBF	6.5	\$450.25
	B. T. Aspen	Pulpwood	6	Cords		
	Jack Pine		27	Cords		
	Mixed Oak		11	Cords		
	White Oak		11	Cords		
2	B. T. Aspen	Sawtimber	1.9	MBF	17.9	\$6,982.85
	Northern Pin Oak		16.1	MBF		
	Red Maple		0.6	MBF		
	Red Oak		16.1	MBF		
	White Oak		14.9	MBF		
	White Pine		1.8	MBF		
	B. T. Aspen	Pulpwood	15	Cords		
	Jack Pine		14	Cords		
	Mixed Oak		194	Cords		
	Northern Pin Oak		43	Cords		
	Red Oak		45	Cords		
	White Oak		106	Cords		
	Red Maple		26	Cords		
	Red Pine		3	Cords		
	Red Pine	Sawtimber	0.4	MBF		
	Red Pine	Pulpwood	2	Cords		
	White Pine		13	Cords		
	3	B. T. Aspen	Sawtimber	1.9		
Northern Pin Oak			16.3	MBF		
Red Maple			0.7	MBF		
Red Oak			16.2	MBF		
White Oak			15.1	MBF		
White Pine			1.9	MBF		
B. T. Aspen		Pulpwood	16	Cords		
Jack Pine			14	Cords		
Mixed Oak			196	Cords		
Northern Pin Oak			43	Cords		
Red Oak			46	Cords		
White Oak			107	Cords		
Red Maple			27	Cords		
Red Pine			4	Cords		
Red Pine		Sawtimber	0.4	MBF		
Red Pine		Pulpwood	3	Cords		
White Pine			13	Cords		
TOTAL:			104.2	MBF		
TOTAL:			579	Cords		

# Sale Specific Conditions & Requirements

**Sale Name: Muncie Weave**

**Sale Number: 61-047-20 Seq#: 1**

## 1 - Sale Area

### 1.2 - Boundaries

#### 1.2.1 - Painted boundaries (9/19)

The sale boundary and Payment Unit boundaries are marked and identified by blue, red, and yellow paint. Exterior sale boundary lines against private property are marked with blue paint. Exterior sale boundary lines against state are marked with red paint. Interior Payment Unit boundaries are marked with yellow and red paint. Retention patches are marked with red paint; no harvesting activities may occur within these areas. The painted boundary line trees are not Included Timber and are to be protected unless marked with orange paint.

## 2 - Timber Specifications

### 2.1 - Included Timber

#### 2.1.1 - Clearcut unit(s) with unmerchantable trees (6/14)

Within Payment Unit(s) 2 and 3, cut all trees that are one (1) inch or more at DBH, except do not cut trees marked with green paint at and below DBH. Special protection trees identified in accordance with condition 3.4.2, within clearcutting unit boundaries, are not Included Timber and are to be protected. Special protection areas identified in accordance with condition 3.4.3, within clearcutting unit boundaries, are not Included Timber and are to be protected.

#### 2.1.3 - Cut tree marked unit(s) (12/08)

Within Payment Unit(s) 1, all trees are designated for cutting when marked with orange paint above and below stump height, regardless of merchantability. In addition, cut all aspen and jack pine unless marked with green paint at and below DBH.

### 2.2 - Utilization

#### 2.2.2 - Chipping required (2/18)

Payment Units 1 and 2 must be chip harvested to facilitate subsequent planting operations. The Purchaser has the option to produce sawlogs or pulpwood bolts, but the remaining portion of the trees must be chipped and hauled. Products may be produced as roundwood and forwarded to decking areas in final product length, but the tops must be left intact and skidded to the landing for chipping to minimize the amount of residual slash. The requirement to retain approximately 1/6 to 1/3 of tree tops and limbs less than four inches in diameter does not apply (G. C. & R. 2.2). This is because this would interfere with planting operations.

#### 2.2.3 - Stump heights (4/07)

Stump heights within Payment Unit(s) 2 and 3 shall not exceed 6 inches for all trees. This is to facilitate planting operations.

## 3 - Payments

### 3.4 - Damaged Timber

#### 3.4.2 - Special Protection Trees (4/14)

The Purchaser shall not cut live or dead special protection trees within cutting units or clearings. Special protection trees are marked with green paint. If the Purchaser's operations have cut or damaged special protection trees through carelessness, the Purchaser shall pay \$25 as fixed, agreed and liquidated damages for each special protection tree cut or damaged. Such payment does not constitute ownership of the undesignated timber.

#### 3.4.3 - Special Protection Areas (8/11)

The Purchaser shall protect special protection areas from damage by the Purchaser's operations. Special protection areas are marked with a red boundary line. The Purchaser shall not cut live or dead trees within special protection areas. If the Purchaser's operations have cut or damaged special protection areas through carelessness, the Purchaser shall pay \$100 as fixed, agreed and liquidated damages for each acre or part thereof cut or damaged. Such payment does not constitute ownership of the undesignated timber.

## 4 - Transportation



#### 4.1 - Construction

##### 4.1.12 - No new roads (1/12)

No new roads will be permitted in any Payment Unit. All operations are limited to existing roads. Only skid trails will be allowed.

#### 4.2 - Maintenance

##### 4.2.4 - Grading (10/16)

For completion of the sale, state forest roads must be graded. In general, this will require a road grader or bulldozer to shape up the roads after forest products have been hauled off site. This includes cleaning of drainage areas, grading, crowning, and filling with gravel, if necessary. The grading equipment to be used must be approved by the Unit Manager or his/her representative.

##### 4.2.5 - Two wheel drive condition (2/04)

All existing trail roads on and adjacent to the sale area must be passable by two-wheel drive traffic for the duration of the sale.

### 5 - Operations

#### 5.1 - Notification

##### 5.1.1 - Pre-sale conference (10/16)

A pre-sale conference on site between the Purchaser and sale administrator is required prior to beginning any operations to determine landing and road locations. The Unit Manager or his/her representative must be contacted at least 3 days in advance to schedule the conference.

##### 5.1.4 - Post-sale conference (10/16)

A post-sale conference on site between the Purchaser and sale administrator is required 3 days prior to the completion of active logging operations to determine clean-up and repair of landings, road edges, and the fulfillment of other contract specifications.

#### 5.2 - Conduct of Operations

##### 5.2.1 - Slash

###### 5.2.1.8 - Slash height (12/08)

No slash or tree tops may exceed 24 inches in height. This applies to Payment Unit 1.

##### 5.2.3 - Operating Restrictions

###### 5.2.3.4 - Oak wilt restriction, no exceptions (1/18)

Within Payment Unit(s) 1, cutting, skidding, hauling within the sale and brushing of access roads to the sale are not permitted during the period of April 15 to July 15. No exceptions will be granted. This is necessary to reduce the spread of oak wilt.

###### 5.2.3.5 - Oak wilt restriction (1/18)

Within Payment Unit(s) 2 and 3 unless changed by written agreement, cutting, skidding, hauling within the sale and brushing of access roads to the sale are not permitted during the period of April 15 to July 15. Operations may be allowed if specific steps are taken to prevent damaging uncut oak during the high risk period. Those steps may include completing all road brushing before April 15th and clearing a tree-length buffer along uncut oak cover before April 15th. This is necessary to reduce the spread of oak wilt. For more information, contact the Unit Manager or his/her representative.

##### 5.2.38 - No decking against live trees (2/04)

Cut products may not be decked against unmarked or designated leave trees.

##### 5.2.40 - Pathway protection (10/10)

The Muncie Lake Pathway is shown on the Timber Sale Map. Do not cut trees or damage posts with blue pathway markers. Maintain a 20-foot-wide slash, debris, and rut free zone daily, using the pathway as the centerline. In most of the Sale Area the pathway is within a retention area. Do not run equipment down the pathway. Skidding across the trail may only occur in locations approved by the sale administrator.

#### 5.2.41 - Snowmobile trail protection (9/11)

The snowmobile trail and is shown on the Timber Sale Map. Do not cut or damage posts with orange trail markers or traffic control signs. If the trail is used, it must be maintained and restored to a condition equal to or better than before the sale. The road maintenance/restoration must be done prior to December 1. If the trail is used for hauling, it must be graded to the satisfaction of the Unit Manager or his/her representative prior to December 1. The snowmobile trail may not be used for any timber sale operations from December 1 to March 31. The snowmobile trail may only be crossed at right angles. Maintain a 20-foot-wide slash, debris, and rut free zone daily using the snowmobile trail as the centerline. No decking of forest products will be permitted along the snowmobile trail. All stumps within 20 feet of the snowmobile trail must be cut at ground level.

### 5.4 - Soil Protection

#### 5.4.1 - Rutting restriction, general (7/16)

Operations are to cease immediately if equipment and weather conditions result in rutting of roads and/or skid trails which is 12 inches or greater in depth and 50 feet in length. The Unit Manager or his/her representative may restrict hauling and/or skidding if ruts exceed the specified depth. With the Unit Manager or his/her representative's approval, the Purchaser may return to the area when the risk of rutting has decreased.

## 6 - Safety and Fire Prevention

### 6.2 - Signing

#### 6.2.1 - Road posting (9/09)

The Purchaser is responsible for posting and maintaining caution signs on adjacent roads as appropriate for safety prior to beginning operations. The road must be posted at appropriate distances from the Sale Area to warn of logging activity and truck traffic. Signs must be removed when harvest operations are suspended or completed. The Purchaser will provide these signs.

#### 6.2.3 - Recreational trail posting (2/10)

The Purchaser is responsible for posting and maintaining caution signs on the Muncie Lake Pathway prior to beginning operations. The trail must be posted at appropriate distances from the Sale Area to warn of logging activity and truck traffic at both ends of the trail. Signs must be removed when harvest operations are suspended or completed. The Purchaser will provide these signs.



# TIMBER SALE MAP

This information provided by authority of Part 525, 1994 PA 451 as amended.

Sale Number	Year
61-047	20

Forest Management Unit Traverse City	County Grand Traverse	Mapped By Ruppen	Date 09/30/2020	Page 1	of 1
Township 26N	Range 9W	Section(s) and Subdivision(s) Sec 5 SWNW, W1/2SE	Scale 1:15,840		

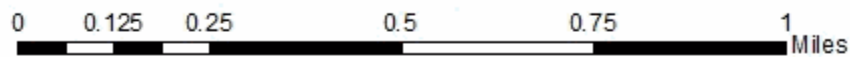
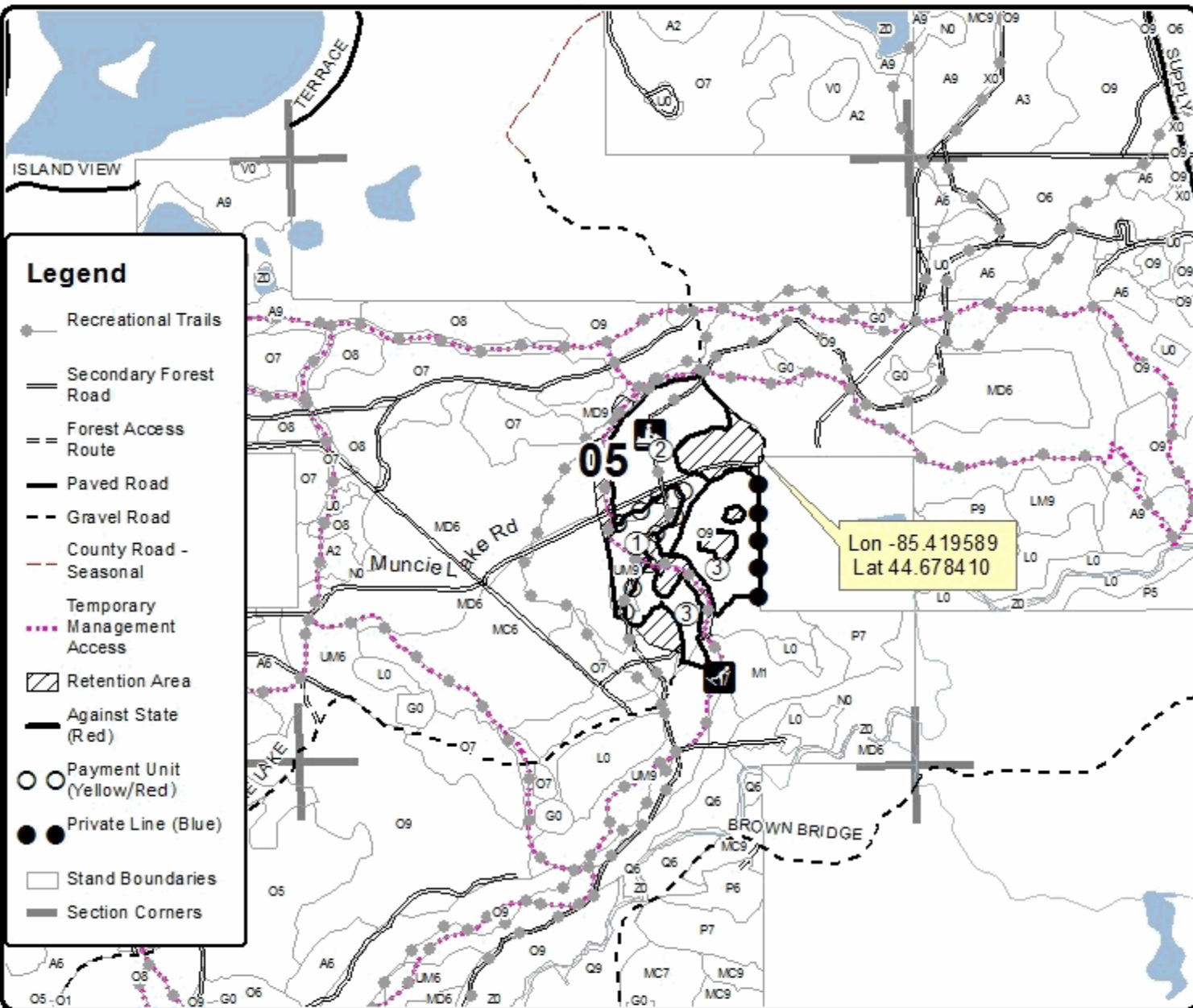
Cover Type				Density	
A = Aspen	H = Hemlock	N = Marsh	U = Upland Brush	0 = Non Stocked	5 = Pole Timber Medium
B = Paper Birch	J = Jack Pine	O = Oak	UM = Upland Mixed	1 = Seeding Sapling Poor	6 = Pole Timber Well
C = Cedar	L = Lowland Brush	P = Lowland Poplar	V = Bog or Marsh	2 = Seeding Sapling Medium	7 = Saw Timber Poor
D = Tread Bog	LM = Lowland Mixed	Q = Mixed Swamp Conifer	W = White Pine	3 = Seeding Sapling Well	8 = Saw Timber Medium
E = Swamp Hardwoods	M = Mpl. Ech. Birch	R = Red Pine	X = Non Stocked	4 = Pole Timber Poor	9 = Saw Timber Well
F = Spruce Fir	MC = Mixed Conifer	S = Black Spruce	Z = Water		
G = Cress	MD = Mixed Deciduous	T = Tamarack			

PU	Acres
1	6.5
2	17.9
3	18.1

## Muncie Weave

### Compartment 47

42.5 Acres





## TIMBER SALE INFORMATION

Uglas Weave (61-049-20)

T26N, R09W, SEC. 10.

Grand Traverse County (Advertised Price \$12,592.85)

SALE NOTE: A recreation site such as a trail, pathway, or campground is within the sale area or the vicinity. Certain restrictions/specifications may be applicable including time restrictions.

A timber sale contract for this lump sum, sealed bid timber sale will be awarded to the responsible bidder offering the highest sealed bid price. All units of volume listed below were estimated using the T-Sale computer program and our traditional volume equations. Bids must be at or above the following advertised price for each product and species:

<u>PRODUCTS &amp; SPECIES</u>	<u>ESTIMATED UNITS*</u>	<u>ADVERTISED PRICE</u>
<b>Sawtimber</b>		
B. T. Aspen	5.3 MBF	\$ 79.00 / MBF
Northern Pin Oak	4.5 MBF	\$ 55.00 / MBF
Red Maple	0.9 MBF	\$ 116.00 / MBF
Red Oak	20.2 MBF	\$ 119.00 / MBF
Red Pine	3.2 MBF	\$ 79.00 / MBF
White Oak	54.7 MBF	\$ 70.00 / MBF
White Pine	9.0 MBF	\$ 39.00 / MBF
<b>Pulpwood</b>		
B. T. Aspen	28 Cords	\$ 12.65 / Cord
Mixed Hardwood	46 Cords	\$ 11.75 / Cord
Mixed Oak	299 Cords	\$ 10.35 / Cord
Red Pine	2 Cords	\$ 28.10 / Cord
White Pine	79 Cords	\$ 11.90 / Cord

\* The total volume is statistically estimated within plus (+) or minus (-) 10.99 percent. There are an estimated 648 cords on this timber sale, plus or minus 71 cords at the 95% confidence level. The estimated units are final and not subject to adjustment. Prospective bidders are urged to examine this timber and to make their own estimates of quantity and quality.

**BOND AND PAYMENT SCHEDULE:**

1. A bond in the amount of \$1,259.00 to insure faithful performance of the conditions of the contract will be deposited by the successful bidder within 21 days of the sale award.
2. Cutting in any sale or unit without the required advance payment would be considered a trespass.
3. Total payment must be paid in advance or according to the following schedule :
  - (a) Ten percent (10%) of the sale value must be paid within 21 days of the sale award.
  - (b) The remainder is due before cutting begins.
  - (c) Payment for each of the following units must be made before cutting begins in that unit:
 

PAYMENT UNIT NUMBER	PERCENT OF TOTAL SALE VALUE
01	100.0%
4. If no cutting takes place, the 10% down payment will not be refunded.
5. Operations on the contract issued will terminate on 09/30/2023.

**SALE STATISTICS**

**SALE VOLUMES**

VOLUME		STATISTICAL RANGE IN CORDS		
TOTAL CUBIC FEET	TOTAL CORDS	PERCENT ERROR	MINIMUM	MAXIMUM
51,198	648	10.99%	577	719

**VDU VOLUMES**

A VDU is a Volume Determination Unit. Volumes and their associated statistics are calculated at the VDU level and summarized to the sale level. There is often a one to one relationship between a VDU and a Payment Unit, but not always, depending on the cruise design. Refer to the VDU TO PAYMENT UNIT table.

VDU	VOLUME		PERCENT ERROR	RANGE IN CORDS	
	TOTAL CUBIC FEET	TOTAL CORDS		MINIMUM	MAXIMUM
157	23,597	299	14.76%	255	343
170	27,603	349	16.02%	293	405
<b>TOTAL:</b>	<b>51,200</b>	<b>648</b>		<b>548</b>	<b>748</b>

**VDU TO PAYMENT UNIT**

When a VDU is associated with more than one Payment Unit (PU), the VDU volumes are assigned to the PU based on acres of the VDU within the PU.

VDU	VDU ACRES	PU	PU ACRES
157	11.2	1	11.2
170	13.9	1	13.9
<b>TOTAL:</b>	<b>25.1</b>		<b>25.1</b>

**DESCRIPTION OF TIMBER BY PAYMENT UNIT (PU)**

PU	MARKET GROUP	PRODUCT	QUANTITY	UNIT	ACRES	ADVERTISE PRICE
1	B. T. Aspen	Sawtimber	5.3	MBF	25.1	\$12,592.85
	Northern Pin Oak		4.5	MBF		
	Red Maple		0.9	MBF		
	Red Oak		20.2	MBF		
	Red Pine		3.2	MBF		
	White Oak		54.7	MBF		
	White Pine		9.0	MBF		
	B. T. Aspen		Pulpwood	28		
	Mixed Hardwood	46		Cords		
	<i>Black Cherry</i>	1		Cords		
	<i>Red Maple</i>	45		Cords		
	Mixed Oak	299		Cords		
	<i>Northern Pin Oak</i>	14		Cords		
	<i>Red Oak</i>	48		Cords		
	<i>White Oak</i>	237		Cords		
	Red Pine	2		Cords		
	White Pine	79	Cords			
TOTAL:			97.8	MBF		
TOTAL:			454	Cords		

## Sale Specific Conditions & Requirements

**Sale Name: Uglas Weave**

**Sale Number: 61-049-20 Seq#: 1**

### 1 - Sale Area

#### 1.2 - Boundaries

##### 1.2.1 - Painted boundaries (9/19)

The sale boundary and Payment Unit boundaries are marked and identified by red paint. The painted boundary line trees are not Included Timber and are to be protected.

### 2 - Timber Specifications

#### 2.1 - Included Timber

##### 2.1.1 - Clearcut unit(s) with unmerchantable trees (6/14)

Within Payment Unit(s) 1, cut all trees that are one (1) inch or more at DBH.

#### 2.2 - Utilization

##### 2.2.2 - Chipping required (2/18)

This area must be chip harvested to facilitate subsequent planting operations. The Purchaser has the option to produce sawlogs or pulpwood bolts, but the remaining portion of the trees must be chipped and hauled. Products may be produced as roundwood and forwarded to decking areas in final product length, but the tops must be left intact and skidded to the landing for chipping to minimize the amount of residual slash. The requirement to retain approximately 1/6 to 1/3 of tree tops and limbs less than four inches in diameter does not apply (G. C. & R. 2.2). This is because this would interfere with planting operations.

##### 2.2.3 - Stump heights (4/07)

Stump heights within the Sale Area shall not exceed 6 inches for all trees. This is to facilitate planting operations.

### 4 - Transportation

#### 4.2 - Maintenance

##### 4.2.4 - Grading (10/16)

For completion of the sale, state forest roads must be graded. In general, this will require a road grader or bulldozer to shape up the roads after forest products have been hauled off site. This includes cleaning of drainage areas, grading, crowning, and filling with gravel, if necessary. The grading equipment to be used must be approved by the Unit Manager or his/her representative.

##### 4.2.5 - Two wheel drive condition (2/04)

All existing trail roads on and adjacent to the sale area must be passable by two-wheel drive traffic for the duration of the sale.

### 5 - Operations

#### 5.1 - Notification

##### 5.1.1 - Pre-sale conference (10/16)

A pre-sale conference on site between the Purchaser and sale administrator is required prior to beginning any operations to determine landing and road locations. The Unit Manager or his/her representative must be contacted at least 3 days in advance to schedule the conference.

##### 5.1.4 - Post-sale conference (10/16)

A post-sale conference on site between the Purchaser and sale administrator is required 3 days prior to the completion of active logging operations to determine clean-up and repair of landings, road edges, and the fulfillment of other contract specifications.

#### 5.2 - Conduct of Operations

## 5.2.1 - Slash

### 5.2.1.10 - No slash in openings (5/10)

No brush or logging debris is to be left in the maintained wildlife opening which is indicated by G0 on the Timber Sale Map. Any damage to the opening shall be repaired according to specifications of the Unit Manager or his/her representative.

## 5.2.3 - Operating Restrictions

### 5.2.3.5 - Oak wilt restriction (1/18)

Within Payment Unit(s) 1, unless changed by written agreement, cutting, skidding, hauling within the sale and brushing of access roads to the sale are not permitted during the period of April 15 to July 15. Operations may be allowed if specific steps are taken to prevent damaging uncut oak during the high risk period. Those steps may include completing all road brushing before April 15th and clearing a tree-length buffer along uncut oak cover before April 15th. This is necessary to reduce the spread of oak wilt. For more information, contact the Unit Manager or his/her representative.

## 5.4 - Soil Protection

### 5.4.1 - Rutting restriction, general (7/16)

Operations are to cease immediately if equipment and weather conditions result in rutting of roads and/or skid trails which is 12 inches or greater in depth and 50 feet in length. The Unit Manager or his/her representative may restrict hauling and/or skidding if ruts exceed the specified depth. With the Unit Manager or his/her representative's approval, the Purchaser may return to the area when the risk of rutting has decreased.

## 6 - Safety and Fire Prevention

### 6.2 - Signing

#### 6.2.3 - Recreational trail posting (2/10)

The Purchaser is responsible for posting and maintaining caution signs on motorcycle trail prior to beginning operations. The trail must be posted at appropriate distances from the Sale Area to warn of logging activity and truck traffic at both ends of the trail. Signs must be removed when harvest operations are suspended or completed. The Purchaser will provide these signs.





# TIMBER SALE MAP

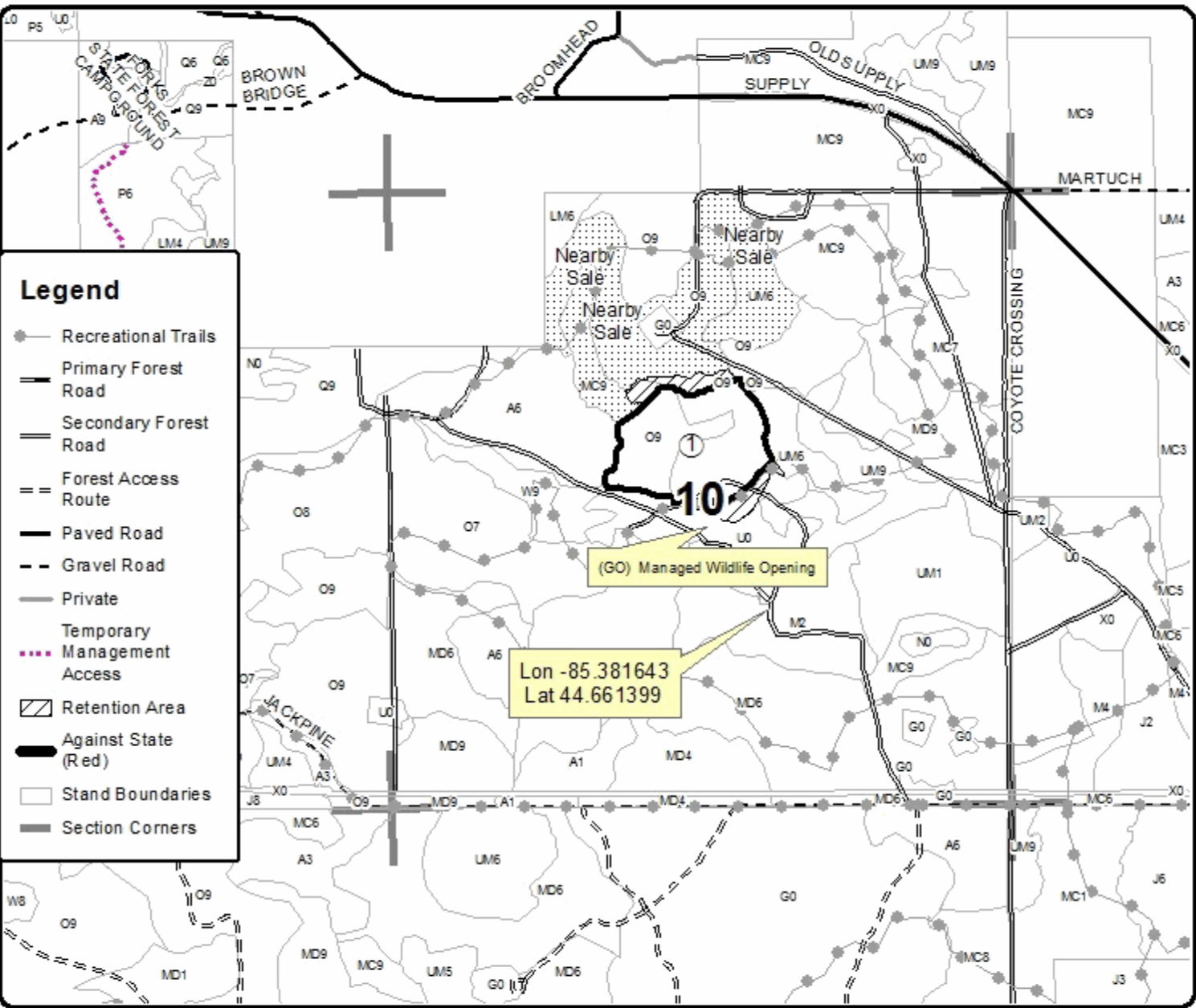
This information provided by authority of Part 525, 1994 PA 451, as amended.

Forest Management Unit Traverse City	County Grand Traverse	Mapped By Ruppen	Date 09/30/2020	Page 1	of 1
Township 26N	Range 9W	Section(s) and Subdivision(s) Sec 10 SENW/SWNE/NESW/NWSE	Scale 1:15,840		

Cover Type				Density	
A = Aspen	H = Hemlock	N = Marsh	U = Upland Brush	0 = Non Stocked	5 = Pole Timber Medium
B = Paper Birch	J = Jack Pine	O = Oak	UM = Upland Mixed	1 = Seeding Sapling Poor	6 = Pole Timber Well
C = Cedar	L = Lowland Brush	P = Lowland Poplar	V = Bog or Marsh	2 = Seeding Sapling Medium	7 = Saw Timber Poor
D = Tread Bog	LM = Lowland Mixed	Q = Mixed Swamp Conifer	W = White Pine	3 = Seeding Sapling Well	8 = Saw Timber Medium
E = Swamp Hardwoods	M = Mpl. Ech. Birch	R = Red Pine	X = Non Stocked	4 = Pole Timber Poor	9 = Saw Timber Well
F = Spruce Fir	MC = Mixed Conifer	S = Black Spruce	Z = Water		
G = Creas	MD = Mixed Deciduous	T = Tamarack			

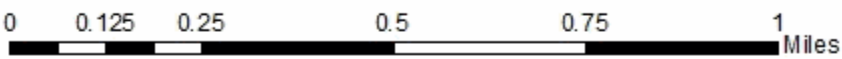
**PU Acres**  
1 25.1

## Uglas Weave Compartment 47 25.1 Acres



**Legend**

- Recreational Trails
- Primary Forest Road
- Secondary Forest Road
- Forest Access Route
- Paved Road
- Gravel Road
- Private
- Temporary Management Access
- Retention Area
- Against State (Red)
- Stand Boundaries
- Section Corners





Wallin Conifer Mix (61-038-20)  
T25N, R13W, SEC. 11; T25N, R13W, SEC. 2; Benzie COUNTY

In response to the notice of sale to be held 4:00 p.m. (local time) on June 17, 2021, I am hereby submitting my sealed bid ( firm offer) for the following forest products to be cut. Bids for individual species must be at or above the advertised price. All non-responsive bid forms may be rejected.

<u>PRODUCTS &amp; SPECIES</u>	<u>ESTIMATED VOLUME*</u>	<u>ADVERTISED PRICE</u>	<u>BID PRICE/UNIT</u>
<b>Sawtimber</b>			
Black Cherry	11.4 MBF	\$ 144.00/MBF	\$ _____
Mixed Aspen	10.0 MBF	\$ 79.00/MBF	\$ _____
Red Maple	9.6 MBF	\$ 116.00/MBF	\$ _____
Red Pine	679.6 MBF	\$ 79.00/MBF	\$ _____
White Spruce	44.0 MBF	\$ 33.00/MBF	\$ _____
<b>Pulpwood</b>			
Jack Pine	12 Cords	\$ 7.60/Cord	\$ _____
Mixed Aspen	56 Cords	\$ 12.65/Cord	\$ _____
Mixed Hardwood	101 Cords	\$ 11.75/Cord	\$ _____
Red Pine	651 Cords	\$ 28.10/Cord	\$ _____
White Pine	4 Cords	\$ 11.90/Cord	\$ _____
White Spruce	591 Cords	\$ 14.90/Cord	\$ _____

\*The volumes are statistically estimated within plus (+) or minus (-) 10.69 percent at 95% confidence level. These estimated volumes are final and not subject to adjustment. Prospective bidders are urged to examine this timber and to make their own estimates of quantity and quality.

I understand that any or all bids may be rejected. All bids must be signed and all bid items must be bid or the bid form may be rejected. I also understand that consideration and awarding a contract will be based upon my past performance and ability to complete the contract based upon equipment and staffing subject to my control .

FEDERAL ID: \_\_\_\_\_ or SOCIAL SECURITY NUMBER: \_\_\_\_\_

Company or individual bidding: \_\_\_\_\_

Company representative's name: \_\_\_\_\_

Address: \_\_\_\_\_

City: \_\_\_\_\_ State: \_\_\_\_\_ Zip: \_\_\_\_\_

IF AVAILABLE, PLEASE PLACE THE PERSONALIZED LABEL FROM YOUR PROSPECTUS IN THE ABOVE BOX.

Individual or company representative's signature: \_\_\_\_\_ Date: \_\_\_\_\_

Phone number : \_\_\_\_\_ Email (optional): \_\_\_\_\_

**THE WINNING BIDDER MUST COMPLETE THE VERIFICATION OF WORKER'S DISABILITY COMPENSATION ACT COMPLIANCE (ON REVERSE SIDE IF DOUBLE SIDED) WITHIN 21 DAYS OF SALE AWARD DATE**



FOR DEPARTMENT USE ONLY	
Sale Number (XX - XXX - XX - XX)	
Forest Management Unit:	

# TIMBER SALE VERIFICATION OF WORKER'S DISABILITY COMPENSATION ACT COMPLIANCE

As required by Act 317, P.A. 1969 (Worker's Compensation) and  
Part 5 of Act 451 of 1994, as amended.

## VERIFICATION OF WORKER'S DISABILITY COMPENSATION ACT COMPLIANCE

- This verification must be completed and submitted within 21 days of contract award and prior to the issuance of the timber sale contract.
- In addition, if boxes 2B or 2C are checked, then Notice of Exclusion or Certificate of Insurance must be submitted within twenty-one (21) days of the contract award and prior to the issuance of the timber sale contract.
- All information must be typed or printed except for written signatures.

Please Check Appropriate Categories:

1. My business is organized as (you **must** check one of the boxes below):
  - A.  Sole Proprietorship (individual)
  - B.  Partnership
  - C.  Corporation
2. You **must** check one of the boxes below:
  - A.  I certify my business is a sole proprietorship and it has no employees but the sole proprietor. I am not subject to the Worker's Compensation Laws.
  - B.  I certify my business has satisfied its obligation to the Worker's Compensation Act through the use of an approved Notice of Exclusion (BWC-337, Rev. 5/96). I will provide a copy of the Notice of Exclusion within 21 days of the contract award. (For questions or a copy of the BWC-337, please call the Worker's Compensation Bureau at 517-322-1195).
  - C.  I certify my business has a Worker's Compensation Policy. I will provide an original Certificate of Insurance within twenty-one (21) days of the contract award.
3. If you have checked item 2(A) or 2(B), you **must** indicate the number of **both** full-time and part-time employees, other than yourself, including family members and active partners (if none, you must enter "0").

\_\_\_\_\_ Full-time Employees

\_\_\_\_\_ Part-time Employees

Name of Business		Federal ID (or) Social Security No.	
Address		Telephone (       )	
City	State	ZIP	

*I hereby certify that the above information is true and correct. I agree to notify the Michigan DNR of any changes that occur in factors affecting my coverage during any of my present and future operations.*

\_\_\_\_\_  
Signature of Owner or Authorized Representative

\_\_\_\_\_  
Title

\_\_\_\_\_  
Date

Please complete the "SEALED BID" information on the next page

Slide Bye Mix (61-046-20)  
T26N, R09W, SEC. 6; Grand Traverse COUNTY

In response to the notice of sale to be held 4:00 p.m. (local time) on June 17, 2021, I am hereby submitting my sealed bid ( firm offer) for the following forest products to be cut. Bids for individual species must be at or above the advertised price. All non-responsive bid forms may be rejected.

<u>PRODUCTS &amp; SPECIES</u>	<u>ESTIMATED VOLUME*</u>	<u>ADVERTISED PRICE</u>	<u>BID PRICE/UNIT</u>
<b>Sawtimber</b>			
Mixed Oak	18.2 MBF	\$ 55.00/MBF	\$ _____
Red Maple	0.5 MBF	\$ 116.00/MBF	\$ _____
Red Pine	7.7 MBF	\$ 79.00/MBF	\$ _____
White Oak	6.8 MBF	\$ 70.00/MBF	\$ _____
White Pine	4.1 MBF	\$ 39.00/MBF	\$ _____
<b>Pulpwood</b>			
B. T. Aspen	21 Cords	\$ 12.65/Cord	\$ _____
Jack Pine	45 Cords	\$ 7.60/Cord	\$ _____
Mixed Hardwood	64 Cords	\$ 11.75/Cord	\$ _____
Mixed Oak	157 Cords	\$ 10.35/Cord	\$ _____
Red Pine	4 Cords	\$ 28.10/Cord	\$ _____
White Pine	39 Cords	\$ 11.90/Cord	\$ _____

\*The volumes are statistically estimated within plus (+) or minus (-) 19.15 percent at 95% confidence level. These estimated volumes are final and not subject to adjustment. Prospective bidders are urged to examine this timber and to make their own estimates of quantity and quality.

I understand that any or all bids may be rejected. All bids must be signed and all bid items must be bid or the bid form may be rejected. I also understand that consideration and awarding a contract will be based upon my past performance and ability to complete the contract based upon equipment and staffing subject to my control .

FEDERAL ID: \_\_\_\_\_ or SOCIAL SECURITY NUMBER: \_\_\_\_\_

Company or individual bidding: \_\_\_\_\_

Company representative's name: \_\_\_\_\_

Address: \_\_\_\_\_

City: \_\_\_\_\_ State: \_\_\_\_\_ Zip: \_\_\_\_\_

IF AVAILABLE, PLEASE PLACE THE PERSONALIZED LABEL FROM YOUR PROSPECTUS IN THE ABOVE BOX.

Individual or company representative's signature: \_\_\_\_\_ Date: \_\_\_\_\_

Phone number : \_\_\_\_\_ Email (optional): \_\_\_\_\_

**THE WINNING BIDDER MUST COMPLETE THE VERIFICATION OF WORKER'S DISABILITY COMPENSATION ACT COMPLIANCE (ON REVERSE SIDE IF DOUBLE SIDED) WITHIN 21 DAYS OF SALE AWARD DATE**



<b>FOR DEPARTMENT USE ONLY</b>
Sale Number (XX – XXX – XX – XX)
Forest Management Unit:

## TIMBER SALE VERIFICATION OF WORKER'S DISABILITY COMPENSATION ACT COMPLIANCE

*As required by Act 317, P.A. 1969 (Worker's Compensation) and  
Part 5 of Act 451 of 1994, as amended.*

### VERIFICATION OF WORKER'S DISABILITY COMPENSATION ACT COMPLIANCE

- This verification must be completed and submitted within 21 days of contract award and prior to the issuance of the timber sale contract.
- In addition, if boxes 2B or 2C are checked, then Notice of Exclusion or Certificate of Insurance must be submitted within twenty-one (21) days of the contract award and prior to the issuance of the timber sale contract.
- All information must be typed or printed except for written signatures.

Please Check Appropriate Categories:

1. My business is organized as (you **must** check one of the boxes below):
  - A.  Sole Proprietorship (individual)
  - B.  Partnership
  - C.  Corporation
  
2. You **must** check one of the boxes below:
  - A.  I certify my business is a sole proprietorship and it has no employees but the sole proprietor. I am not subject to the Worker's Compensation Laws.
  - B.  I certify my business has satisfied its obligation to the Worker's Compensation Act through the use of an approved Notice of Exclusion (BWC-337, Rev. 5/96). I will provide a copy of the Notice of Exclusion within 21 days of the contract award. (For questions or a copy of the BWC-337, please call the Worker's Compensation Bureau at 517-322-1195).
  - C.  I certify my business has a Worker's Compensation Policy. I will provide an original Certificate of Insurance within twenty-one (21) days of the contract award.
  
3. If you have checked item 2(A) or 2(B), you **must** indicate the number of **both** full-time and part-time employees, other than yourself, including family members and active partners (if none, you must enter "0").

\_\_\_\_\_ Full-time Employees

\_\_\_\_\_ Part-time Employees

Name of Business		Federal ID (or) Social Security No.	
Address		Telephone (       )	
City	State	ZIP	

*I hereby certify that the above information is true and correct. I agree to notify the Michigan DNR of any changes that occur in factors affecting my coverage during any of my present and future operations.*

\_\_\_\_\_  
Signature of Owner or Authorized Representative

\_\_\_\_\_  
Title

\_\_\_\_\_  
Date

**Please complete the "SEALED BID" information on the next page**

Muncie Weave (61-047-20)  
T26N, R09W, SEC. 5; Grand Traverse COUNTY

In response to the notice of sale to be held 4:00 p.m. (local time) on June 17, 2021, I am hereby submitting my sealed bid ( firm offer) for the following forest products to be cut. Bids for individual species must be at or above the advertised price. All non-responsive bid forms may be rejected.

<u>PRODUCTS &amp; SPECIES</u>	<u>ESTIMATED VOLUME*</u>	<u>ADVERTISED PRICE</u>	<u>BID PRICE/UNIT</u>
<b>Sawtimber</b>			
B. T. Aspen	4.5 MBF	\$ 79.00/MBF	\$ _____
Northern Pin Oak	32.4 MBF	\$ 55.00/MBF	\$ _____
Red Maple	1.3 MBF	\$ 116.00/MBF	\$ _____
Red Oak	32.3 MBF	\$ 119.00/MBF	\$ _____
White Oak	30.0 MBF	\$ 70.00/MBF	\$ _____
White Pine	3.7 MBF	\$ 39.00/MBF	\$ _____
<b>Pulpwood</b>			
B. T. Aspen	37 Cords	\$ 12.65/Cord	\$ _____
Jack Pine	55 Cords	\$ 7.60/Cord	\$ _____
Mixed Oak	401 Cords	\$ 10.35/Cord	\$ _____
Red Maple	53 Cords	\$ 11.75/Cord	\$ _____
Red Pine	7 Cords	\$ 28.10/Cord	\$ _____
White Pine	26 Cords	\$ 11.90/Cord	\$ _____

\*The volumes are statistically estimated within plus (+) or minus (-) 15.25 percent at 95% confidence level. These estimated volumes are final and not subject to adjustment. Prospective bidders are urged to examine this timber and to make their own estimates of quantity and quality.

I understand that any or all bids may be rejected. All bids must be signed and all bid items must be bid or the bid form may be rejected. I also understand that consideration and awarding a contract will be based upon my past performance and ability to complete the contract based upon equipment and staffing subject to my control.

FEDERAL ID: \_\_\_\_ - \_\_\_\_ - \_\_\_\_ or SOCIAL SECURITY NUMBER: \_\_\_\_ - \_\_\_\_ - \_\_\_\_

Company or individual bidding: \_\_\_\_\_

Company representative's name: \_\_\_\_\_

Address: \_\_\_\_\_

City: \_\_\_\_\_ State: \_\_\_\_\_ Zip: \_\_\_\_\_

IF AVAILABLE, PLEASE PLACE THE PERSONALIZED LABEL FROM YOUR PROSPECTUS IN THE ABOVE BOX.

Individual or company representative's signature: \_\_\_\_\_ Date: \_\_\_\_\_

Phone number : \_\_\_\_\_ Email (optional): \_\_\_\_\_

**THE WINNING BIDDER MUST COMPLETE THE VERIFICATION OF WORKER'S DISABILITY COMPENSATION ACT COMPLIANCE (ON REVERSE SIDE IF DOUBLE SIDED) WITHIN 21 DAYS OF SALE AWARD DATE**



FOR DEPARTMENT USE ONLY	
Sale Number (XX - XXX - XX - XX)	
Forest Management Unit:	

## TIMBER SALE VERIFICATION OF WORKER'S DISABILITY COMPENSATION ACT COMPLIANCE

As required by Act 317, P.A. 1969 (Worker's Compensation) and  
Part 5 of Act 451 of 1994, as amended.

### VERIFICATION OF WORKER'S DISABILITY COMPENSATION ACT COMPLIANCE

- This verification must be completed and submitted within 21 days of contract award and prior to the issuance of the timber sale contract.
- In addition, if boxes 2B or 2C are checked, then Notice of Exclusion or Certificate of Insurance must be submitted within twenty-one (21) days of the contract award and prior to the issuance of the timber sale contract.
- All information must be typed or printed except for written signatures.

Please Check Appropriate Categories:

1. My business is organized as (you **must** check one of the boxes below):
  - A.  Sole Proprietorship (individual)
  - B.  Partnership
  - C.  Corporation
2. You **must** check one of the boxes below:
  - A.  I certify my business is a sole proprietorship and it has no employees but the sole proprietor. I am not subject to the Worker's Compensation Laws.
  - B.  I certify my business has satisfied its obligation to the Worker's Compensation Act through the use of an approved Notice of Exclusion (BWC-337, Rev. 5/96). I will provide a copy of the Notice of Exclusion within 21 days of the contract award. (For questions or a copy of the BWC-337, please call the Worker's Compensation Bureau at 517-322-1195).
  - C.  I certify my business has a Worker's Compensation Policy. I will provide an original Certificate of Insurance within twenty-one (21) days of the contract award.
3. If you have checked item 2(A) or 2(B), you **must** indicate the number of **both** full-time and part-time employees, other than yourself, including family members and active partners (if none, you must enter "0").

\_\_\_\_\_ Full-time Employees

\_\_\_\_\_ Part-time Employees

Name of Business		Federal ID (or) Social Security No.	
Address		Telephone (       )	
City	State	ZIP	

*I hereby certify that the above information is true and correct. I agree to notify the Michigan DNR of any changes that occur in factors affecting my coverage during any of my present and future operations.*

\_\_\_\_\_  
Signature of Owner or Authorized Representative

\_\_\_\_\_  
Title

\_\_\_\_\_  
Date

Please complete the "SEALED BID" information on the next page



Uglas Weave (61-049-20)  
T26N, R09W, SEC. 10; Grand Traverse COUNTY

In response to the notice of sale to be held 4:00 p.m. (local time) on June 17, 2021, I am hereby submitting my sealed bid ( firm offer) for the following forest products to be cut. Bids for individual species must be at or above the advertised price. All non-responsive bid forms may be rejected.

<u>PRODUCTS &amp; SPECIES</u>	<u>ESTIMATED VOLUME*</u>	<u>ADVERTISED PRICE</u>	<u>BID PRICE/UNIT</u>
<b>Sawtimber</b>			
B. T. Aspen	5.3 MBF	\$ 79.00/MBF	\$ _____
Northern Pin Oak	4.5 MBF	\$ 55.00/MBF	\$ _____
Red Maple	0.9 MBF	\$ 116.00/MBF	\$ _____
Red Oak	20.2 MBF	\$ 119.00/MBF	\$ _____
Red Pine	3.2 MBF	\$ 79.00/MBF	\$ _____
White Oak	54.7 MBF	\$ 70.00/MBF	\$ _____
White Pine	9.0 MBF	\$ 39.00/MBF	\$ _____
<b>Pulpwood</b>			
B. T. Aspen	28 Cords	\$ 12.65/Cord	\$ _____
Mixed Hardwood	46 Cords	\$ 11.75/Cord	\$ _____
Mixed Oak	299 Cords	\$ 10.35/Cord	\$ _____
Red Pine	2 Cords	\$ 28.10/Cord	\$ _____
White Pine	79 Cords	\$ 11.90/Cord	\$ _____

\*The volumes are statistically estimated within plus (+) or minus (-) 10.99 percent at 95% confidence level. These estimated volumes are final and not subject to adjustment. Prospective bidders are urged to examine this timber and to make their own estimates of quantity and quality.

I understand that any or all bids may be rejected. All bids must be signed and all bid items must be bid or the bid form may be rejected. I also understand that consideration and awarding a contract will be based upon my past performance and ability to complete the contract based upon equipment and staffing subject to my control.

FEDERAL ID: \_\_\_\_ - \_\_\_\_ - \_\_\_\_ or SOCIAL SECURITY NUMBER: \_\_\_\_ - \_\_\_\_ - \_\_\_\_

Company or individual bidding: \_\_\_\_\_

Company representative's name: \_\_\_\_\_

Address: \_\_\_\_\_

City: \_\_\_\_\_ State: \_\_\_\_\_ Zip: \_\_\_\_\_

IF AVAILABLE, PLEASE PLACE THE PERSONALIZED LABEL FROM YOUR PROSPECTUS IN THE ABOVE BOX.

Individual or company representative's signature: \_\_\_\_\_ Date: \_\_\_\_\_

Phone number : \_\_\_\_\_ Email (optional): \_\_\_\_\_

**THE WINNING BIDDER MUST COMPLETE THE VERIFICATION OF WORKER'S DISABILITY COMPENSATION ACT COMPLIANCE (ON REVERSE SIDE IF DOUBLE SIDED) WITHIN 21 DAYS OF SALE AWARD DATE**



<b>FOR DEPARTMENT USE ONLY</b>
Sale Number (XX - XXX - XX - XX)
Forest Management Unit:

## TIMBER SALE VERIFICATION OF WORKER'S DISABILITY COMPENSATION ACT COMPLIANCE

*As required by Act 317, P.A. 1969 (Worker's Compensation) and  
Part 5 of Act 451 of 1994, as amended.*

### VERIFICATION OF WORKER'S DISABILITY COMPENSATION ACT COMPLIANCE

- This verification must be completed and submitted within 21 days of contract award and prior to the issuance of the timber sale contract.
- In addition, if boxes 2B or 2C are checked, then Notice of Exclusion or Certificate of Insurance must be submitted within twenty-one (21) days of the contract award and prior to the issuance of the timber sale contract.
- All information must be typed or printed except for written signatures.

Please Check Appropriate Categories:

1. My business is organized as (you **must** check one of the boxes below):
  - A.  Sole Proprietorship (individual)
  - B.  Partnership
  - C.  Corporation
2. You **must** check one of the boxes below:
  - A.  I certify my business is a sole proprietorship and it has no employees but the sole proprietor. I am not subject to the Worker's Compensation Laws.
  - B.  I certify my business has satisfied its obligation to the Worker's Compensation Act through the use of an approved Notice of Exclusion (BWC-337, Rev. 5/96). I will provide a copy of the Notice of Exclusion within 21 days of the contract award. (For questions or a copy of the BWC-337, please call the Worker's Compensation Bureau at 517-322-1195).
  - C.  I certify my business has a Worker's Compensation Policy. I will provide an original Certificate of Insurance within twenty-one (21) days of the contract award.
3. If you have checked item 2(A) or 2(B), you **must** indicate the number of **both** full-time and part-time employees, other than yourself, including family members and active partners (if none, you must enter "0").

\_\_\_\_\_ Full-time Employees

\_\_\_\_\_ Part-time Employees

Name of Business		Federal ID (or) Social Security No.	
Address		Telephone (       )	
City	State	ZIP	

*I hereby certify that the above information is true and correct. I agree to notify the Michigan DNR of any changes that occur in factors affecting my coverage during any of my present and future operations.*

\_\_\_\_\_  
Signature of Owner or Authorized Representative

\_\_\_\_\_  
Title

\_\_\_\_\_  
Date

**Please complete the "SEALED BID" information on the next page**

Marsh Madness (61-044-20)  
T25N, R13W, SEC. 11; T25N, R13W, SEC. 13; T25N, R13W, SEC. 14; Benzie

In response to the notice of sale to be held 4:00 p.m. (local time) on June 17, 2021, I am hereby submitting my sealed bid ( firm offer) for the following forest products to be cut. Bids for individual species must be at or above the advertised price. All non-responsive bid forms may be rejected.

<u>PRODUCTS &amp; SPECIES</u>	<u>ESTIMATED VOLUME*</u>	<u>ADVERTISED PRICE</u>	<u>BID PRICE/UNIT</u>
<b>Sawtimber</b>			
Beech	0.7 MBF	\$ 52.00/MBF	\$ _____
Black Cherry	17.0 MBF	\$ 144.00/MBF	\$ _____
Mixed Aspen	99.3 MBF	\$ 79.00/MBF	\$ _____
Red Maple	85.8 MBF	\$ 116.00/MBF	\$ _____
Sugar Maple	3.1 MBF	\$ 155.00/MBF	\$ _____
White Pine	2.0 MBF	\$ 39.00/MBF	\$ _____
<b>Pulpwood</b>			
Jack Pine	2 Cords	\$ 7.60/Cord	\$ _____
Mixed Aspen	1,085 Cords	\$ 12.65/Cord	\$ _____
Mixed Hardwood	388 Cords	\$ 11.75/Cord	\$ _____
White Pine	17 Cords	\$ 11.90/Cord	\$ _____

\*The volumes are statistically estimated within plus (+) or minus (-) 14.26 percent at 95% confidence level. These estimated volumes are final and not subject to adjustment. Prospective bidders are urged to examine this timber and to make their own estimates of quantity and quality.

I understand that any or all bids may be rejected. All bids must be signed and all bid items must be bid or the bid form may be rejected. I also understand that consideration and awarding a contract will be based upon my past performance and ability to complete the contract based upon equipment and staffing subject to my control.

FEDERAL ID: \_\_\_\_\_ or SOCIAL SECURITY NUMBER: \_\_\_\_\_

Company or individual bidding: \_\_\_\_\_

Company representative's name: \_\_\_\_\_

Address: \_\_\_\_\_

City: \_\_\_\_\_ State: \_\_\_\_\_ Zip: \_\_\_\_\_

IF AVAILABLE, PLEASE PLACE THE PERSONALIZED LABEL FROM YOUR PROSPECTUS IN THE ABOVE BOX.

Individual or company representative's signature: \_\_\_\_\_ Date: \_\_\_\_\_

Phone number : \_\_\_\_\_ Email (optional): \_\_\_\_\_

**THE WINNING BIDDER MUST COMPLETE THE VERIFICATION OF WORKER'S DISABILITY COMPENSATION ACT COMPLIANCE (ON REVERSE SIDE IF DOUBLE SIDED) WITHIN 21 DAYS OF SALE AWARD DATE**



<b>FOR DEPARTMENT USE ONLY</b>	
Sale Number (XX - XXX - XX - XX)	
Forest Management Unit:	

# TIMBER SALE VERIFICATION OF WORKER'S DISABILITY COMPENSATION ACT COMPLIANCE

As required by Act 317, P.A. 1969 (Worker's Compensation) and  
Part 5 of Act 451 of 1994, as amended.

## VERIFICATION OF WORKER'S DISABILITY COMPENSATION ACT COMPLIANCE

- This verification must be completed and submitted within 21 days of contract award and prior to the issuance of the timber sale contract.
- In addition, if boxes 2B or 2C are checked, then Notice of Exclusion or Certificate of Insurance must be submitted within twenty-one (21) days of the contract award and prior to the issuance of the timber sale contract.
- All information must be typed or printed except for written signatures.

Please Check Appropriate Categories:

1. My business is organized as (you **must** check one of the boxes below):
  - A.  Sole Proprietorship (individual)
  - B.  Partnership
  - C.  Corporation
2. You **must** check one of the boxes below:
  - A.  I certify my business is a sole proprietorship and it has no employees but the sole proprietor. I am not subject to the Worker's Compensation Laws.
  - B.  I certify my business has satisfied its obligation to the Worker's Compensation Act through the use of an approved Notice of Exclusion (BWC-337, Rev. 5/96). I will provide a copy of the Notice of Exclusion within 21 days of the contract award. (For questions or a copy of the BWC-337, please call the Worker's Compensation Bureau at 517-322-1195).
  - C.  I certify my business has a Worker's Compensation Policy. I will provide an original Certificate of Insurance within twenty-one (21) days of the contract award.
3. If you have checked item 2(A) or 2(B), you **must** indicate the number of **both** full-time and part-time employees, other than yourself, including family members and active partners (if none, you must enter "0").

\_\_\_\_\_ Full-time Employees

\_\_\_\_\_ Part-time Employees

Name of Business		Federal ID (or) Social Security No.	
Address		Telephone (       )	
City	State	ZIP	

*I hereby certify that the above information is true and correct. I agree to notify the Michigan DNR of any changes that occur in factors affecting my coverage during any of my present and future operations.*

\_\_\_\_\_  
Signature of Owner or Authorized Representative

\_\_\_\_\_  
Title

\_\_\_\_\_  
Date

Please complete the "SEALED BID" information on the next page