



**DEPARTMENT OF NATURAL RESOURCES
STATE OF MICHIGAN**

TIMBER SALE PROSPECTUS #6776

SCHEDULED SALE DATE AND TIME: 9:00 a.m. (local time) on December 8, 2020.

LOCATION: ROSCOMMON MGMT UNIT, PO BOX 218, ROSCOMMON, MI 48653.

PROSPECTUS NOTE: The bidder is advised to inspect the sale area and review the location, estimated volumes, operating costs and contract terms of proposed sales. Please be aware that some landowners may request 60 days or more notice for access across their land.

Notice is hereby given that bids will be received by the Unit Manager, ROSCOMMON MANAGEMENT UNIT, for certain timber on the following described lands:

Red Oak Experiment (71-003-20) / T21N, R01W, SEC. 10, NESE,S1/2SE.

T21N, R01W, SEC. 14, NWNW.

T21N, R01W, SEC. 15, NE,N1/2SE.

Roscommon County, Advertised Price \$133,994.45, 185.6 Acres, Hardwood, Red Oak.

SALE NOTE: Primary access for the sale will be via Dunham Lake Road. Forest roads are present to all the Payment Units with no new roads needing to be built. The existing forest roads may need improvements prior to hauling. Trees will be required to be limbed/topped at the stump prior to being moved to the landing. Sale can't be operated in during the Oak Wilt restriction period, no exceptions.

A recreation site such as a trail, pathway, or campground is within the sale area or the vicinity. Certain restrictions/specifications may be applicable including time restrictions.

Expressway Pine (71-004-20) / T22N, R01W, SEC. 11, NW.

T22N, R01W, SEC. 12, NENW,S1/2NW,NE,N1/2SW,N1/2SE.

T22N, R01W, SEC. 12, SWSE.

Roscommon County, Advertised Price \$123,143.40, 181.2 Acres, Red Pine, Hardwood.

SALE NOTE: Due to oak wilt and bark slippage restrictions, harvest operations will not be allowed between April 15th and July 15.

There is heavy ORV usage of all forest roads used to access sale areas. Some hauling may need to be done during frozen conditions on the snowmobile trail when the loose sand has firmed up.

A recreation site such as a trail, pathway, or campground is within the sale area or the vicinity. Certain restrictions/specifications may be applicable including time restrictions.

Turkey Call Aspen (71-011-20) / T24N, R01E, SEC. 5, NWNW.

T24N, R01E, SEC. 6, NW,N1/2NE.

T24N, R01W, SEC. 11, E1/2SE.

T24N, R01W, SEC. 12, SWNE,SW,SE.

T24N, R01W, SEC. 13, NENW,W1/2NE.

Ogemaw County, Advertised Price \$120,424.15, 182.5 Acres, Aspen, Hardwood.

SALE NOTE: A recreation site such as a trail, pathway, or campground is within the sale area or the vicinity. Certain restrictions/specifications may be applicable including time restrictions.

64 Red Pine (71-012-20) / T24N, R01E, SEC. 6 , NENW,N1/2NE.

T24N, R01W, SEC. 13, NWNW,S1/2NW,N1/2SW,SWSW,S1/2SE.

T24N, R01W, SEC. 14, NESE.

Roscommon County, Advertised Price \$119,153.50, 94.6 Acres, Red Pine, Hardwood.

SALE NOTE: A recreation site such as a trail, pathway, or campground is within the sale area or the vicinity. Certain restrictions/specifications may be applicable including time restrictions.

64 Tag Team (71-016-20) / T24N, R01E, SEC. 18, SENW,SW.

T24N, R01E, SEC. 6 , NESW,S1/2SW,SE.

T24N, R01E, SEC. 7 , NW,NWNE.

T24N, R01W, SEC. 12, NW,NE.

Ogemaw County, Advertised Price \$158,523.40, 415.2 Acres, Aspen, Jack Pine.

SALE NOTE: A recreation site such as a trail, pathway, or campground is within the sale area or the vicinity. Certain restrictions/specifications may be applicable including time restrictions.

BID INSTRUCTIONS (VER. 07/02/2018):

1. Scheduled Bid Location, Date, and Time (2/11)

Bids must be received by the Unit Manager, ROSCOMMON OFFICE, PO BOX 218, ROSCOMMON, MI 48653, no later than 9:00 a.m. (local time) on December 8, 2020. For further information concerning this sale, contact Patrick Mohney at 989-275-4622 extension 2740.

2. Bidder's Qualifications (5/16)

Purchaser shall obtain workers compensation insurance to cover claims under Michigan's Worker's Disability Compensation Act of 1969 or similar employee benefit act of any other state applicable to an employee. If all or part of a timber sale was prepared by a private contractor, the contractor and that contractor's company are not permitted to bid on the timber sale contract. Bids will not be accepted from individuals or companies appearing on the DNR/FRD No-Bid List. This list contains the names of purchasers who previously failed to execute a contract within 21-days or who have a history of poor performance.

3. Preparation of Sealed Bids (5/16)

Bid Forms may be completed online thru Michigan DNR Timber Sale Online Bidding (OLB) at www.michigan.gov/timberbidding or by completing the hardcopy Bid Form found in the Timber Sale Prospectus. Hardcopy Bid Forms shall be manually signed in ink. Registration in OLB is considered your 'signature' for all bids submitted thru that system. Bid prices must be entered for each species and product in the Bid Price column for all material subject to bidding and all fill-in blanks must be completed. If erasures or other changes appear on the hardcopy Bid Form, each erasure or change must be initialed by the person signing the bid.

4. Submission of Sealed Bids (5/16)

Bid forms may be obtained from the Unit Manager or thru OLB. Bids may be submitted hardcopy or thru OLB. All hardcopy bids must be submitted on the bid form and in an envelope clearly identified as described in this section. NOTE: Only one bid form per bid envelope. Sealed bids must be submitted to the Unit office designated in the prospectus and must be submitted at or prior to the time established in the prospectus. The envelope should show on the outside (a) the sale name or number and (b) the date and time of bid opening, as shown in the prospectus. Bids received after the time specified in the sale prospectus are late bids and will be rejected.

It is possible for a bidder to submit multiple bids on a single sale. For example, a bid may be submitted hardcopy and a bid may be submitted thru OLB. Or, two bidders from the same company could both submit bids on the same sale. If this were to happen, the State would accept all bids received and award the contract accordingly. All bidding and contractual requirements would apply to all bids received.

5. Public Opening of Sealed Bids (7/16)

If conditions permit, the sealed bids will be publicly opened and posted at the time and place set in the prospectus.

If a bidder, present at a bid opening, has submitted bids on more than one sale, that bidder may withdraw their unopened bid envelopes or announce the withdrawal of their online bid after being declared the successful bidder on one sale.

6. Award of Contract (1/11)

Award of the contract will be made to the Bidder whose bid, conforming to the prospectus, is most advantageous to the State of Michigan on the basis of total value at rates bid for the estimated quantities. The State reserves the right to reject any bid or waive any minor irregularity in bids received. A written award mailed (or otherwise furnished) to the successful Bidder shall be deemed to result in a binding contract without further action by either party.

7. Down Payment (1/11)

The Bidder to whom award is made must make a down payment within 21 days of the sale award. The amount of the down payment will be calculated as shown in the Bond and Payment Schedule of this prospectus. Only cash may be used to meet this requirement.

8. Performance Security (1/11)

As guarantee of faithful performance, a cash bond, certificate of deposit, surety bond or irrevocable letter of credit (LOC) is required within 21 days of the sale award. The amount of the performance security is shown in the Bond and

Payment Schedule of this prospectus. If an LOC or surety is used, the coverage must extend for at least 6 months beyond the contract expiration.

9. Timber Sale Contract (7/18)

Additional conditions and requirements common to all timber sales are listed on the timber sale contract (R4031) and are available on line at www.michigan.gov/timber. Contact the Unit Manager for additional information or a sample contract. Within 21 days of the date of the award letter, the bidder must sign the contract and provide the required down payment, performance security, and verification of worker's disability compensation. The down payment and performance security shall be in accordance with the provisions of the timber sale contract, in the sums stated in this prospectus. If these actions are not taken, then the Bidder, the Bidder's corporation, and the corporation's principals may not be permitted to bid on State timber sales for a period of 3 months after the first offense, 6 months after the second offense, and 1 year after the third offense. An offense will only be counted against the Bidder for 5 years. In addition, the Bidder certifies that if awarded this contract, the Bidder will complete the timber sale contract in accordance with its terms and any modifications thereof including requirements to purchase, cut, and remove the included timber by the expiration date.

Payment Unit values in the State Forest Timber Sale Contract are calculated based on the advertised value of the Payment Unit as a percentage of the total advertised value of the contract. The advertised value of each Payment Unit is given in the Description of Timber by Payment Unit table on the Timber Sale Information page. For example, if the value of Payment Unit 1 is advertised as \$1,500 and the total Timber Sale value is advertised as \$10,000, the contract price for Payment Unit 1 will be 15% of the total bid price ($\$1,500/\$10,000 * 100$).

10. Disclaimer of Estimates and Bidder's Warranty of Inspection (7/16)

Before submitting this bid, the Bidder is advised and cautioned to inspect the sale area, review the requirements of the sale contract, and take other steps as may be reasonably necessary to ascertain the location, estimated volumes, construction estimates, and operating costs of the proposed sale. Failure to do so will not relieve the Bidder from responsibility for completing the contract.

The Bidder warrants that this bid is submitted solely on the basis of the Bidder's examination and inspection of the quality and quantity of the timber offered for sale and the Bidder's opinion of the value thereof and the costs of recovery. No reliance should be placed on the State of Michigan's estimates of timber quality, quantity or costs of recovery. Bidder further acknowledges that the State of Michigan: (i) expressly disclaims any warranty of fitness of timber for any purpose; (ii) offers this timber as is without any warranty of quality (merchantability) or quantity and (iii) expressly disclaims any warranty as to the quantity or quality of timber sold.

11. Certification and Chain-of-Custody (10/14)

Unless otherwise indicated in the contract under section 7 – Other Conditions of the Sale Specific Conditions & Requirements, the area encompassed by this timber sale is certified to the standards of the Forest Stewardship Council (FSC) - Certificate #SCS-FM/COC-00090N and the Sustainable Forestry Initiative (SFI) - Certificate #NSF-SFIS-5Y031-SF5. Forest products from this sale may be delivered to the mill as "FSC 100% and / or SFI certified" as long as the contractor hauling the forest products is chain-of-custody (COC) certified or covered under a COC certificate from the destination mill. The purchaser is responsible for maintaining COC after leaving the sale area.

12. Good Neighbor Authority (GNA) Requirements (7/16)

If the name of this timber sales contains the acronym GNA, it is authorized by the Good Neighbor Authority (GNA) and covered by various agreements between the U.S. Forest Service and the State. The timber sale occurs on federal land and the following conditions apply:

GNA contracts on US Forest Service land will not be awarded to purchasers on the Federal list of excluded parties. The System for Award Management (SAM) will be checked for active excluded parties prior to award of contract. In addition, the Bidder to whom award is made must complete an Assurance Regarding Felony Conviction or Tax Delinquent Status for Corporate Applicants (AD-3031).

13. Good Neighbor Authority (GNA) Requirements, con't (9/16)

Bidder certifies, by signing this bid form, that to the best of Bidder's knowledge that the following representations are accurate and complete.

- a. That the Bidder and its principals are not presently debarred, suspended, proposed for debarment, declared ineligible, or voluntary excluded from timber sales (covered transactions) by any Federal department or agency.
- b. That the Bidder and its principals have not within a 3-year period preceding this bid been convicted of or had a civil judgment rendered against them for commission of fraud or a criminal offense in connection with obtaining , attempting to obtain, or performing a public (Federal, State, or local) transaction or contract under a public transaction; violation of Federal or State antitrust statutes or commission of embezzlement, theft, forgery, bribery, falsification or destruction of records, making false statements, or receiving stolen property.
- c. That the Bidder and its principals are not presently indicted for or otherwise criminally or civilly charged by a governmental entity (Federal, State, or local) with commission of any of the offenses enumerated in paragraph b of this certification.
- d. That the Bidder and its principals have not within a 3-year period preceding this bid had one or more public transactions (Federal, State, or local) terminated for breach or default of a timber or forest product contract.

Bidders that cannot certify this requirement, in whole or in part, shall submit an explanation with their bid.

DAN EICHINGER
Director

TIMBER SALE INFORMATION

Red Oak Experiment (71-003-20)
 T21N, R01W, SEC. 10; T21N, R01W, SEC. 14; T21N, R01W, SEC. 15.
 Roscommon County (Advertised Price \$133,994.45)

SALE NOTE: Primary access for the sale will be via Dunham Lake Road. Forest roads are present to all the Payment Units with no new roads needing to be built. The existing forest roads may need improvements prior to hauling. Trees will be required to be limbed/topped at the stump prior to being moved to the landing. Sale can't be operated in during the Oak Wilt restriction period, no exceptions.

A recreation site such as a trail, pathway, or campground is within the sale area or the vicinity. Certain restrictions/specifications may be applicable including time restrictions.

A timber sale contract for this lump sum, sealed bid timber sale will be awarded to the responsible bidder offering the highest sealed bid price. All units of volume listed below were estimated using the T-Sale computer program and our traditional volume equations. Bids must be at or above the following advertised price for each product and species:

<u>PRODUCTS & SPECIES</u>	<u>ESTIMATED UNITS*</u>	<u>ADVERTISED PRICE</u>
Sawtimber		
B. T. Aspen	51.8 MBF	\$ 57.00 / MBF
Bl/R/Hybrid Oak	22.9 MBF	\$ 83.00 / MBF
Red Maple	13.6 MBF	\$ 57.00 / MBF
Red Oak	903.9 MBF	\$ 120.00 / MBF
White Oak	23.8 MBF	\$ 79.00 / MBF
Pulpwood		
B. T. Aspen	30 Cords	\$ 20.85 / Cord
Mixed Hardwood	149 Cords	\$ 14.50 / Cord
Mixed Oak	1,002 Cords	\$ 14.80 / Cord
Red Pine	9 Cords	\$ 38.05 / Cord
White Pine	3 Cords	\$ 19.90 / Cord

* The total volume is statistically estimated within plus (+) or minus (-) 12.68 percent. There are an estimated 3,226 cords on this timber sale, plus or minus 409 cords at the 95% confidence level. The estimated units are final and not subject to adjustment. Prospective bidders are urged to examine this timber and to make their own estimates of quantity and quality.

BOND AND PAYMENT SCHEDULE:

1. A bond in the amount of \$6,700.00 to insure faithful performance of the conditions of the contract will be deposited by the successful bidder within 21 days of the sale award.
2. Cutting in any sale or unit without the required advance payment would be considered a trespass.
3. Total payment must be paid in advance or according to the following schedule :
 - (a) Ten percent (10%) of the sale value must be paid within 21 days of the sale award.
 - (b) The 10% down payment will be credited towards the first unit cut.
 - (c) Payment for each of the following units must be made before cutting begins in that unit:

PAYMENT UNIT NUMBER	PERCENT OF TOTAL SALE VALUE
01	20.4%
02	21.7%
03	7.1%
04	20.1%
05	4.2%
06	21.0%
07	5.5%

4. If no cutting takes place, the 10% down payment will not be refunded.
5. Operations on the contract issued will terminate on 03/31/2023.

SALE STATISTICS

SALE VOLUMES

VOLUME		STATISTICAL RANGE IN CORDS		
TOTAL CUBIC FEET	TOTAL CORDS	PERCENT ERROR	MINIMUM	MAXIMUM
254,867	3,226	12.68%	2,817	3,635

VDU VOLUMES

A VDU is a Volume Determination Unit. Volumes and their associated statistics are calculated at the VDU level and summarized to the sale level. There is often a one to one relationship between a VDU and a Payment Unit, but not always, depending on the cruise design. Refer to the VDU TO PAYMENT UNIT table.

VDU	VOLUME		PERCENT ERROR	RANGE IN CORDS	
	TOTAL CUBIC FEET	TOTAL CORDS		MINIMUM	MAXIMUM
30	216,650	2,742	14.54%	2,344	3,141
32	13,375	169	31.92%	115	223
33	24,806	314	25.44%	234	394
TOTAL:	254,830	3,226		2,693	3,758

VDU TO PAYMENT UNIT

When a VDU is associated with more than one Payment Unit (PU), the VDU volumes are assigned to the PU based on acres of the VDU within the PU.

VDU	VDU ACRES	PU	PU ACRES
30	161.8	1	37.3
		2	39.3
		4	36.7
		6	38.4
		7	10.1
32	8.7	5	8.7
33	15.1	3	15.1
TOTAL:	185.6		185.6

DESCRIPTION OF TIMBER BY PAYMENT UNIT (PU)

PU	MARKET GROUP	PRODUCT	QUANTITY	UNIT	ACRES	ADVERTISE PRICE
1	BI/R/Hybrid Oak	Sawtimber	5.0	MBF	37.3	\$27,373.50
	Red Maple		1.0	MBF		
	Red Oak		192.8	MBF		
	White Oak		5.1	MBF		
	Mixed Hardwood	Pulpwood	14	Cords		
	<i>Black Cherry</i>	<i>Sawtimber</i>	0.3	<i>MBF</i>		
	<i>Black Cherry</i>	<i>Pulpwood</i>	1	<i>Cords</i>		
	<i>Red Maple</i>		12	<i>Cords</i>		
	Mixed Oak		207	Cords		
	<i>BI/R/Hybrid Oak</i>		7	<i>Cords</i>		
	<i>Red Oak</i>		190	<i>Cords</i>		
	<i>White Oak</i>		10	<i>Cords</i>		
	Red Pine		2	Cords		
	<i>Red Pine</i>	<i>Sawtimber</i>	0.9	<i>MBF</i>		
	White Pine	Pulpwood	1	Cords		
2	BI/R/Hybrid Oak	Sawtimber	5.3	MBF	39.3	\$28,897.35
	Red Maple		1.0	MBF		
	Red Oak		203.1	MBF		
	White Oak		5.4	MBF		
	Mixed Hardwood	Pulpwood	17	Cords		
	<i>Black Cherry</i>	<i>Sawtimber</i>	0.3	<i>MBF</i>		
	<i>Black Cherry</i>	<i>Pulpwood</i>	3	<i>Cords</i>		
	<i>Red Maple</i>		13	<i>Cords</i>		
	Mixed Oak		219	Cords		
	<i>BI/R/Hybrid Oak</i>		8	<i>Cords</i>		
	<i>Red Oak</i>		201	<i>Cords</i>		
	<i>White Oak</i>		10	<i>Cords</i>		
	Red Pine		3	Cords		
	<i>Red Pine</i>	<i>Sawtimber</i>	1.0	<i>MBF</i>		
	<i>Red Pine</i>	<i>Pulpwood</i>	1	<i>Cords</i>		
3	B. T. Aspen	Sawtimber	35.2	MBF	15.1	\$9,526.20
	Red Maple		6.8	MBF		
	Red Oak		39.9	MBF		
	White Oak		0.7	MBF		
	B. T. Aspen	Pulpwood	22	Cords		
	Mixed Hardwood		66	Cords		
	<i>Red Maple</i>		66	<i>Cords</i>		
	Mixed Oak		59	Cords		
	<i>Red Oak</i>		49	<i>Cords</i>		
	<i>White Oak</i>		10	<i>Cords</i>		
4	BI/R/Hybrid Oak	Sawtimber	5.0	MBF	36.7	\$26,949.20
	Red Maple		1.0	MBF		
	Red Oak		189.7	MBF		
	White Oak		5.0	MBF		
	Mixed Hardwood	Pulpwood	14	Cords		
	<i>Black Cherry</i>	<i>Sawtimber</i>	0.3	<i>MBF</i>		
	<i>Black Cherry</i>	<i>Pulpwood</i>	1	<i>Cords</i>		
	<i>Red Maple</i>		12	<i>Cords</i>		
	Mixed Oak		204	Cords		
	<i>BI/R/Hybrid Oak</i>		7	<i>Cords</i>		
	<i>Red Oak</i>		187	<i>Cords</i>		
	<i>White Oak</i>		10	<i>Cords</i>		
	Red Pine		2	Cords		
	<i>Red Pine</i>	<i>Sawtimber</i>	0.9	<i>MBF</i>		
	White Pine	Pulpwood	1	Cords		
5	B. T. Aspen	Sawtimber	16.6	MBF	8.7	\$5,682.10

DESCRIPTION OF TIMBER BY PAYMENT UNIT (PU), CON'T

PU	MARKET GROUP	PRODUCT	QUANTITY	UNIT	ACRES	ADVERTISE PRICE
5 con't	BI/R/Hybrid Oak	Sawtimber	1.0	MBF		
	Red Maple		2.5	MBF		
	Red Oak		27.7	MBF		
	White Oak		1.0	MBF		
	B. T. Aspen	Pulpwood	8	Cords		
	Mixed Hardwood		22	Cords		
	<i>Red Maple</i>		22	<i>Cords</i>		
	Mixed Oak		42	Cords		
	<i>BI/R/Hybrid Oak</i>		1	<i>Cords</i>		
	<i>Red Oak</i>		36	<i>Cords</i>		
<i>White Oak</i>		5	<i>Cords</i>			
6	BI/R/Hybrid Oak	Sawtimber	5.2	MBF	38.4	\$28,185.60
	Red Maple		1.0	MBF		
	Red Oak		198.5	MBF		
	White Oak		5.2	MBF		
	Mixed Hardwood	Pulpwood	14	Cords		
	<i>Black Cherry</i>	<i>Sawtimber</i>	0.3	<i>MBF</i>		
	<i>Black Cherry</i>	<i>Pulpwood</i>	1	<i>Cords</i>		
	<i>Red Maple</i>		12	<i>Cords</i>		
	Mixed Oak		214	Cords		
	<i>BI/R/Hybrid Oak</i>		8	<i>Cords</i>		
	<i>Red Oak</i>		196	<i>Cords</i>		
	<i>White Oak</i>		10	<i>Cords</i>		
	Red Pine		2	Cords		
	<i>Red Pine</i>	<i>Sawtimber</i>	0.9	<i>MBF</i>		
	White Pine	Pulpwood	1	Cords		
7	BI/R/Hybrid Oak	Sawtimber	1.4	MBF	10.1	\$7,395.00
	Red Maple		0.3	MBF		
	Red Oak		52.2	MBF		
	White Oak		1.4	MBF		
	Mixed Hardwood	Pulpwood	3	Cords		
	<i>Black Cherry</i>	<i>Sawtimber</i>	0.1	<i>MBF</i>		
	<i>Red Maple</i>	<i>Pulpwood</i>	3	<i>Cords</i>		
	Mixed Oak		57	Cords		
	<i>BI/R/Hybrid Oak</i>		2	<i>Cords</i>		
	<i>Red Oak</i>		52	<i>Cords</i>		
	<i>White Oak</i>		3	<i>Cords</i>		
TOTAL:			1,016.0	MBF		
TOTAL:			1,194	Cords		

Sale Specific Conditions & Requirements

Sale Name: Red Oak Experiment

Sale Number: 71-003-20 Seq#: 1

1 - Sale Area

1.2 - Boundaries

1.2.1 - Painted boundaries (9/19)

The sale boundary and Payment Unit boundaries are marked and identified by blue, red and yellow paint. Exterior sale boundary lines against private property are marked with blue paint. Exterior sale boundary lines against state are marked with red paint. Interior Payment Unit boundaries are marked with yellow paint. Retention patches are marked with red paint; no harvesting activities may occur within these areas. The painted boundary line trees are not Included Timber and are to be protected unless marked with orange paint. Yellow painted trees designating an interior Payment Unit boundary are only to be cut when all surrounding Payment Units have been paid.

2 - Timber Specifications

2.1 - Included Timber

2.1.3 - Cut tree marked unit(s) (12/08)

Within Payment Unit(s) 3 and 5, all trees are designated for cutting when marked with orange paint above and below stump height, regardless of merchantability. In addition, cut all aspen trees that are two (2) inches or greater at DBH.

2.1.7 - Leave tree marked unit(s) (6/14)

Within Payment Unit(s) 1, 2, 4, 6, and 7, cut all trees that are one (1) inch or more at DBH, except do not cut aspen or any trees marked with green paint above and below stump height.

2.2 - Utilization

2.2.1 - Utilization (2/04)

All listed board foot volumes of sawlog size products in this contract have been determined using a top diameter inside bark of 8 inches.

2.2.3 - Stump heights (4/07)

Stump heights within the Sale Area shall not exceed 6 inches for all trees. This is in order to facilitate scarification operations.

2.2.6 - Roundwood operation required (5/07)

The skidding of whole trees or tree segments with limbs attached is prohibited within Payment Unit(s) 1-7. All products must be produced as roundwood and forwarded to existing roads or landing areas in final product length.

2.2.9 - No chipping permitted (12/08)

Within Payment Unit(s) 1-7, all wood must be removed by tree segment or roundwood. Chipping of limb/top piles will only be allowed within Payment Unit(s) 1, 2, 4, 6 and 7. All other processed products must be removed from the units before these piles can be taken to a designated landing to be chipped.

3 - Payments

3.3 - Pre-measured Sales

3.3.4 - Dividing payment units (7/14)

Payment Unit(s) 1, 2, 4 and 6 may be divided at the request of the Purchaser and upon approval of the Unit Manager. Dividing Payment Units is a contract modification which requires a Timber Sale Contract Amendment. There will be only one division per Payment Unit.

3.4 - Damaged Timber

3.4.1 - Damaged timber (7/16)

General Condition and Requirement 3.4 Damaged Timber, defines liquidated damages for undesignated live merchantable trees which are cut or injured. In addition, extreme care should be taken to avoid damage to tree seedlings and saplings within Payment Unit(s) 3 and 5.

Within Payment Unit(s) 3 and 5, if more than 25% of the tree seedlings or saplings (1/4" to 4.5" DBH) within a specified portion of the Payment Unit(s) are damaged, liquidated damages will be assessed at \$300 per acre for all acreage within that specified portion of the Payment Unit area that was damaged.

No damage is acceptable to undesignated live merchantable trees. Within the sale area, if more than 5% of trees (> 4.5" DBH) within a specified area of the sale are damaged, liquidated damages will be assessed for all trees damaged. Rates will be in accordance with General Condition and Requirement 3.4 Damaged Timber.

4 - Transportation

4.1 - Construction

4.1.3 - Slash and earthen piles (8/04)

Piles or windrows of earth along roads and landings that have been widened or constructed shall be leveled. Slash from road maintenance or construction, including stumps, shall be chipped, utilized or dispersed within the sale area.

4.1.6 - Road construction (1/09)

Improvements of existing roads shall be done in such a way as to minimize the environmental and visual impacts. Merchantable trees shall be cut and utilized unless otherwise directed. Non-merchantable trees shall be severed and laid flat on the ground. Slash shall be scattered, and not left in windrows and kept a minimum of 10 feet back from the road edge. Stumps shall be set upright, not left on edge, and be moved at least 10 feet away from the road edge. Disturbed soil shall be feathered into the woods and not left in berms or windrows.

4.1.12 - No new roads (1/12)

No new roads will be permitted in any Payment Unit. All operations are limited to existing roads. Skid trails only will be allowed.

4.2 - Maintenance

4.2.3 - Road maintenance (8/13)

The following road maintenance is required: Within 60 days of completion of hauling, or if no hauling occurs for 60 days, the forest roads must be maintained and graded to a condition prior to usage. This may include cleaning of drainage areas, grading, crowning and filling of holes with gravel, if necessary. Damages will be assessed if grading/repair does not occur.

4.2.5 - Two wheel drive condition (2/04)

All existing trail roads on and adjacent to the sale area must be passable by two-wheel drive traffic for the duration of the sale.

5 - Operations

5.1 - Notification

5.1.1 - Pre-sale conference (10/16)

A pre-sale conference on site between the Purchaser and sale administrator is required prior to beginning to determine landing, road improvements, and discuss cutting specifications. The Unit Manager or his/her representative must be contacted at least 5 days in advance to schedule the conference.

5.1.4 - Post-sale conference (10/16)

A post-sale conference on site between the Purchaser and sale administrator is required 5 days prior to the completion of active logging operations to determine clean-up and repair of landings, road edges, and the fulfillment of other contract specifications.

5.2 - Conduct of Operations

5.2.1 - Slash

5.2.1.1 - Slash within sale area (9/16)

No trees are to be felled outside the sale area and all slash is to be kept at least 15 feet back from the blue paint line. If sale boundary lines are along a public road or highway, then slash must be removed 50' from these lines per General Condition & Requirement 5.2.1.

5.2.1.8 - Slash height (12/08)

No slash or tree tops may exceed 24 inches in height. Slash and/or tree tops can't be left in windrows either. They must be scattered uniformly over the sale area.

5.2.2 - Hazard Trees/Snags

5.2.2.1 - Den trees (10/16)

Obvious hollow and/or den trees shall be protected and left standing unless they are a safety hazard.

5.2.3 - Operating Restrictions

5.2.3.4 - Oak wilt restriction, no exceptions (1/18)

Within Payment Unit(s) 1-7, cutting, skidding, and brushing of access roads to the sale are not permitted during the period of April 15 to July 15. No exceptions will be granted. This is necessary to reduce the spread of oak wilt.

5.2.31 - Landing locations (9/13)

Landing/decking areas for the sale must be approved by the timber sale administrator before construction. Landings must be confined to these designated sites unless otherwise authorized by the Unit Manager or his/her representative. They are to be kept to a size only big enough to accommodate operations.

5.2.32 - Decking/landing restoration (9/13)

All decking and landing areas must have the surface area restored to a condition equal to or better than before. This is to ensure the proper regeneration of the stand. Wood debris, chips and "cookies" from trimmings must be removed or scattered away from landing and loading areas and may not be windrowed on the edge. The decking/landing area may need to be blocked off after it is done being used, at the direction of the Sale Administrator.

5.2.38 - No decking against live trees (2/04)

Cut products may not be decked against unmarked or designated leave trees.

5.2.39 - ORV trail/route protection (4/18)

An ORV trail/route is shown on the Timber Sale Map. Do not cut trees or damage posts with yellow ORV markers. All stumps within 5 feet of the trail must be cut flush with the ground. Maintain a 20 foot wide slash, debris, and rut free zone daily using the ORV trail or route as the centerline.

5.4 - Soil Protection

5.4.1 - Rutting restriction, general (7/16)

Operations are to cease immediately if equipment and weather conditions result in rutting of roads and/or skid trails which is 12 inches or greater in depth and 50 feet in length. The Unit Manager or his/her representative may restrict hauling and/or skidding if ruts exceed the specified depth. With the Unit Manager or his/her representative's approval, the Purchaser may return to the area when the risk of rutting has decreased.

5.4.2 - Skid trails (2/04)

Skid trails up and down slopes should be avoided. If however this is unavoidable, these trails will be left in a non-erodible condition using water bars, logs, and slash. Placing of slash on these skid trails while logging is ongoing may alleviate need for any further action. At the direction of the sale administrator, seed, fertilizer, and mulch may also be required.

6 - Safety and Fire Prevention

6.2 - Signing

6.2.1 - Road posting (9/09)

The Purchaser is responsible for posting and maintaining caution signs on Dunham Lake Road and any forest roads within the sale area prior to beginning operations. The road must be posted at appropriate distances from the sale area to warn of logging activity and truck traffic. Signs must be removed when harvest operations are suspended or completed. The Purchaser will provide these signs.

6.2.3 - Recreational trail posting (2/10)

The Purchaser is responsible for posting and maintaining caution signs on the ORV trail/route prior to beginning operations. The trail must be posted at appropriate distances from the sale area to warn of logging activity and truck traffic at both ends of the trail. Signs must be removed when harvest operations are suspended or completed.

7 - Other Conditions

7.2 - Extensions

7.2.1 - One year extension (2/04)

Given justification, only one, 1 year extension may be granted if the contract has been paid for in full.

7.3 - Contract Modifications

7.3.2 - Modification for oak wilt (2/05)

Within the sale area, there may be patches of oak wilt. If oak wilt is identified within the sale area, this contract may be modified. The following modifications could occur: time of cutting, species to cut, volume to harvest, or various others dealing with the treatment of oak wilt. If a species is not specified in this contract, it shall be paid for at the average price received for that species and product.



TIMBER SALE MAP

This information provided by authority of Part 525, 1994 PA 451, as amended.

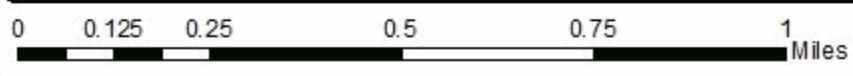
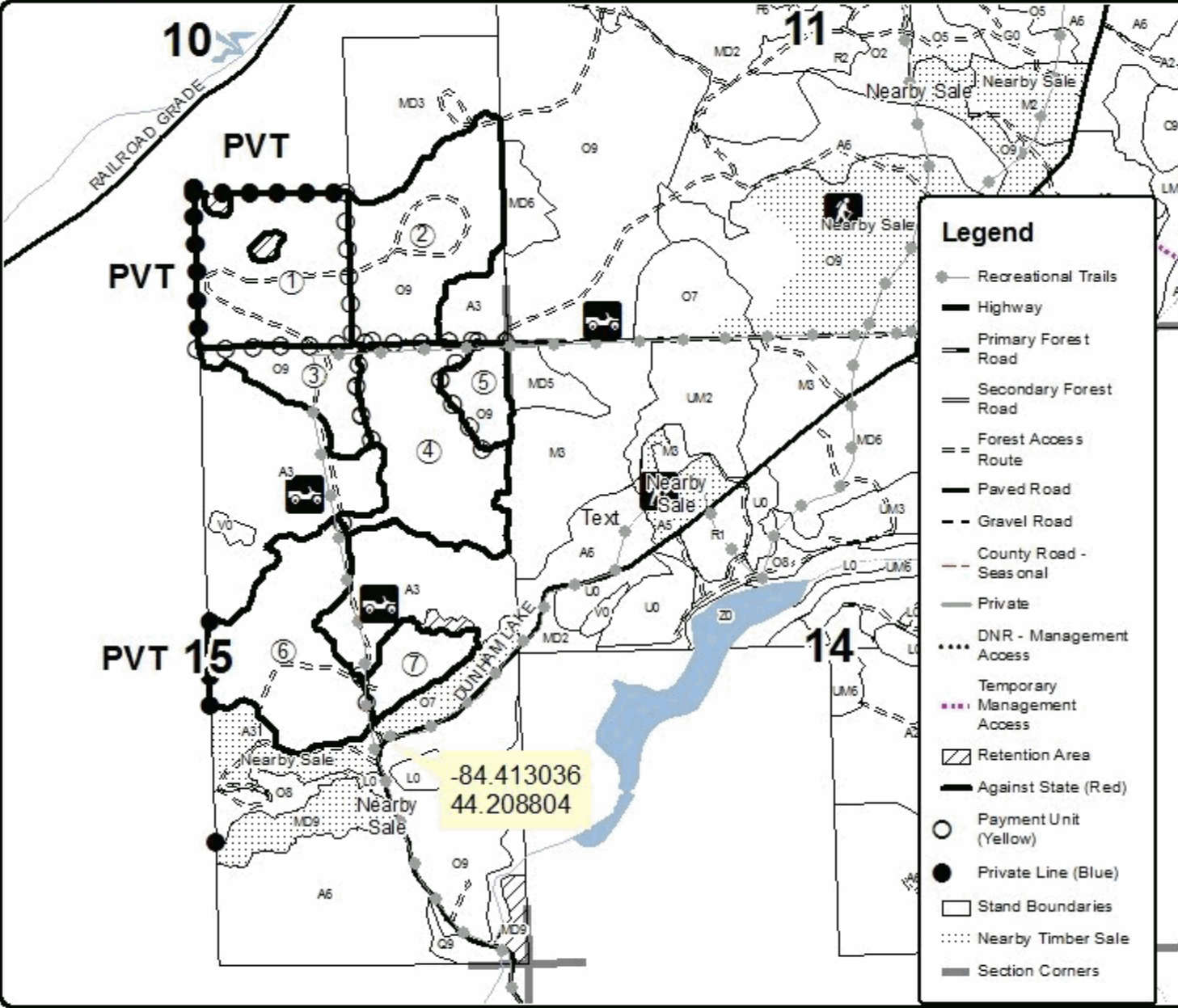
Sale Number	Year
71-003	20

Forest Management Unit Roscommon	County Roscommon	Mapped By Bates	Date 08/27/2020	Page 1	of 1
Township 21N	Range 01W	Section(s) and Subdivision(s) 10 - NESE, S1/2SE; 15 - NE1/4, N1/2SE	Scale 1:15,840		
Cruised By U.M.L.M.					

Cover Type				Density			
A = Aspen	H = Hemlock	N = Marsh	U = Upland Brush	0 = Non Stocked	5 = Pole Timber Medium		
B = Paper Birch	J = Jack Pine	O = Oak	UM = Upland Mixed	1 = Seeding Sapling Poor	6 = Pole Timber Well		
C = Cedar	L = Lowland Brush	P = Lowland Poplar	V = Bog or Marsh	2 = Seeding Sapling Medium	7 = Saw Timber Poor		
D = Treed Bog	LM = Lowland Mixed	Q = Mixed Swamp Conifer	W = White Pine	3 = Seeding Sapling Well	8 = Saw Timber Medium		
E = Swamp Hardwoods	M = Mpl. Ech. Birch	R = Red Pine	X = Non Stocked	4 = Pole Timber Poor	9 = Saw Timber Well		
F = Spruce Fir	MC = Mixed Conifer	S = Black Spruce	Z = Water				
G = Creas	MD = Mixed Deciduous	T = Tamarack					

PU	Acres	PU	Acres
1	37.3	5	8.7
2	39.3	6	38.4
3	15.1	7	10.1
4	36.7		

Red Oak Experiment Compartment 52 185.6 Acres



TIMBER SALE INFORMATION

Expressway Pine (71-004-20)
T22N, R01W, SEC. 11; T22N, R01W, SEC. 12.
Roscommon County (Advertised Price \$123,143.40)

SALE NOTE: Due to oak wilt and bark slippage restrictions, harvest operations will not be allowed between April 15th and July 15.

There is heavy ORV usage of all forest roads used to access sale areas. Some hauling may need to be done during frozen conditions on the snowmobile trail when the loose sand has firmed up.

A recreation site such as a trail, pathway, or campground is within the sale area or the vicinity. Certain restrictions/specifications may be applicable including time restrictions.

A timber sale contract for this lump sum, sealed bid timber sale will be awarded to the responsible bidder offering the highest sealed bid price. All units of volume listed below were estimated using the T-Sale computer program and our traditional volume equations. Bids must be at or above the following advertised price for each product and species:

<u>PRODUCTS & SPECIES</u>	<u>ESTIMATED UNITS*</u>	<u>ADVERTISED PRICE</u>
Sawtimber		
Mixed Oak	25.0 MBF	\$ 83.00 / MBF
Red Pine	1,118.5 MBF	\$ 89.00 / MBF
Pulpwood		
Mixed Oak	58 Cords	\$ 14.80 / Cord
Quaking Aspen	60 Cords	\$ 20.85 / Cord
Red Maple	39 Cords	\$ 14.50 / Cord
Red Pine	488 Cords	\$ 38.05 / Cord
White Pine	14 Cords	\$ 19.90 / Cord

* The total volume is statistically estimated within plus (+) or minus (-) 14.51 percent. There are an estimated 2,947 cords on this timber sale, plus or minus 428 cords at the 95% confidence level. The estimated units are final and not subject to adjustment. Prospective bidders are urged to examine this timber and to make their own estimates of quantity and quality.

BOND AND PAYMENT SCHEDULE:

1. A bond in the amount of \$6,157.00 to insure faithful performance of the conditions of the contract will be deposited by the successful bidder within 21 days of the sale award.
2. Cutting in any sale or unit without the required advance payment would be considered a trespass.
3. Total payment must be paid in advance or according to the following schedule :
 - (a) Ten percent (10%) of the sale value must be paid within 21 days of the sale award.
 - (b) The 10% down payment will be credited towards the first unit cut.
 - (c) Payment for each of the following units must be made before cutting begins in that unit:

PAYMENT UNIT NUMBER	PERCENT OF TOTAL SALE VALUE
01	8.1%
02	0.8%
03	24.5%
04	15.3%
05	29.4%
06	21.9%
4. If no cutting takes place, the 10% down payment will not be refunded.
5. Operations on the contract issued will terminate on 03/31/2023.

SALE STATISTICS

SALE VOLUMES

VOLUME		STATISTICAL RANGE IN CORDS		
TOTAL CUBIC FEET	TOTAL CORDS	PERCENT ERROR	MINIMUM	MAXIMUM
232,832	2,947	14.51%	2,520	3,375

VDU VOLUMES

A VDU is a Volume Determination Unit. Volumes and their associated statistics are calculated at the VDU level and summarized to the sale level. There is often a one to one relationship between a VDU and a Payment Unit, but not always, depending on the cruise design. Refer to the VDU TO PAYMENT UNIT table.

VDU	VOLUME		PERCENT ERROR	RANGE IN CORDS	
	TOTAL CUBIC FEET	TOTAL CORDS		MINIMUM	MAXIMUM
168	22,863	289	26.61%	212	366
170	3,089	39	57.24%	17	61
189	206,877	2,619	16.06%	2,198	3,039
TOTAL:	232,829	2,947		2,427	3,467

VDU TO PAYMENT UNIT

When a VDU is associated with more than one Payment Unit (PU), the VDU volumes are assigned to the PU based on acres of the VDU within the PU.

VDU	VDU ACRES	PU	PU ACRES
168	29.1	1	29.1
170	5.8	2	5.8
189	146.3	3	39.3
		4	24.6
		5	47.3
		6	35.1
TOTAL:	181.2		181.2

DESCRIPTION OF TIMBER BY PAYMENT UNIT (PU)

PU	MARKET GROUP	PRODUCT	QUANTITY	UNIT	ACRES	ADVERTISE PRICE
1	Mixed Oak	Sawtimber	19.4	MBF	29.1	\$9,973.00
	<i>BI/R/Hybrid Oak</i>		11.4	<i>MBF</i>		
	<i>White Oak</i>		8.0	<i>MBF</i>		
	Red Pine		62.1	MBF		
	Mixed Oak	Pulpwood	37	Cords		
	<i>BI/R/Hybrid Oak</i>		17	<i>Cords</i>		
	<i>White Oak</i>		20	<i>Cords</i>		
	Quaking Aspen		4	Cords		
	<i>Quaking Aspen</i>	<i>Sawtimber</i>	1.7	<i>MBF</i>		
	<i>Quaking Aspen</i>	<i>Pulpwood</i>	1	<i>Cords</i>		
	Red Maple		32	Cords		
	<i>Red Maple</i>	<i>Sawtimber</i>	8.0	<i>MBF</i>		
	<i>Red Maple</i>	<i>Pulpwood</i>	16	<i>Cords</i>		
	Red Pine		40	Cords		
	White Pine		11	Cords		
	<i>White Pine</i>	<i>Sawtimber</i>	1.1	<i>MBF</i>		
<i>White Pine</i>	<i>Pulpwood</i>	9	<i>Cords</i>			
2	Mixed Oak	Sawtimber	2.7	MBF	5.8	\$953.35
	<i>BI/R/Hybrid Oak</i>		2.7	<i>MBF</i>		
	Red Pine		1.8	MBF		
	Mixed Oak	Pulpwood	9	Cords		
	<i>BI/R/Hybrid Oak</i>		5	<i>Cords</i>		
	<i>White Oak</i>		4	<i>Cords</i>		
	Quaking Aspen		13	Cords		
	<i>Quaking Aspen</i>	<i>Sawtimber</i>	6.2	<i>MBF</i>		
	<i>Quaking Aspen</i>	<i>Pulpwood</i>	1	<i>Cords</i>		
	Red Maple		2	Cords		
	<i>Red Maple</i>		2	<i>Cords</i>		
	Red Pine		2	Cords		
	White Pine		3	Cords		
	<i>White Pine</i>	<i>Sawtimber</i>	0.7	<i>MBF</i>		
<i>White Pine</i>	<i>Pulpwood</i>	2	<i>Cords</i>			
3	Mixed Oak	Sawtimber	0.8	MBF	39.3	\$30,155.20
	<i>BI/R/Hybrid Oak</i>		0.8	<i>MBF</i>		
	Red Pine		283.3	MBF		
	Mixed Oak	Pulpwood	3	Cords		
	<i>BI/R/Hybrid Oak</i>		3	<i>Cords</i>		
	Quaking Aspen		12	Cords		
	<i>Quaking Aspen</i>	<i>Sawtimber</i>	1.4	<i>MBF</i>		
	<i>Quaking Aspen</i>	<i>Pulpwood</i>	9	<i>Cords</i>		
	Red Maple		1	Cords		
	<i>Red Maple</i>		1	<i>Cords</i>		
	Red Pine		120	Cords		
4	Mixed Oak	Sawtimber	0.5	MBF	24.6	\$18,865.00
	<i>BI/R/Hybrid Oak</i>		0.5	<i>MBF</i>		
	Red Pine		177.3	MBF		
	Mixed Oak	Pulpwood	2	Cords		
	<i>BI/R/Hybrid Oak</i>		2	<i>Cords</i>		
	Quaking Aspen		7	Cords		
	<i>Quaking Aspen</i>	<i>Sawtimber</i>	0.9	<i>MBF</i>		
	<i>Quaking Aspen</i>	<i>Pulpwood</i>	5	<i>Cords</i>		
	Red Maple		1	Cords		
	<i>Red Maple</i>		1	<i>Cords</i>		
Red Pine		75	Cords			
5	Mixed Oak	Sawtimber	0.9	MBF	47.3	\$36,262.15
	<i>BI/R/Hybrid Oak</i>		0.9	<i>MBF</i>		

DESCRIPTION OF TIMBER BY PAYMENT UNIT (PU), CON'T

PU	MARKET GROUP	PRODUCT	QUANTITY	UNIT	ACRES	ADVERTISE PRICE
5 con't	Red Pine	Sawtimber	341.0	MBF		
	Mixed Oak	Pulpwood	4	Cords		
	<i>B/R/Hybrid Oak</i>		4	<i>Cords</i>		
	Quaking Aspen		13	Cords		
	<i>Quaking Aspen</i>	<i>Sawtimber</i>	1.7	<i>MBF</i>		
	<i>Quaking Aspen</i>	<i>Pulpwood</i>	10	<i>Cords</i>		
	Red Maple		2	Cords		
	<i>Red Maple</i>		2	<i>Cords</i>		
	Red Pine		144	Cords		
6	Mixed Oak	Sawtimber	0.7	MBF	35.1	\$26,934.70
	<i>B/R/Hybrid Oak</i>		0.7	<i>MBF</i>		
	Red Pine		253.0	MBF		
	Mixed Oak	Pulpwood	3	Cords		
	<i>B/R/Hybrid Oak</i>		3	<i>Cords</i>		
	Quaking Aspen		11	Cords		
	<i>Quaking Aspen</i>	<i>Sawtimber</i>	1.3	<i>MBF</i>		
	<i>Quaking Aspen</i>	<i>Pulpwood</i>	8	<i>Cords</i>		
	Red Maple		1	Cords		
	<i>Red Maple</i>		1	<i>Cords</i>		
	Red Pine		107	Cords		
TOTAL:			1,143.5	MBF		
TOTAL:			659	Cords		

Sale Specific Conditions & Requirements

Sale Name: Expressway Pine

Sale Number: 71-004-20 Seq#: 1

1 - Sale Area

1.2 - Boundaries

1.2.1 - Painted boundaries (9/19)

The sale boundary and Payment Unit boundaries are marked and identified by red and yellow paint. Exterior sale boundary lines against state are marked with red paint. Interior Payment Unit boundaries are marked with yellow paint. The painted boundary line trees are not Included Timber and are to be protected. Yellow painted trees designating an interior Payment Unit boundary are only to be cut when all surrounding Payment Units have been paid and they are marked with orange paint.

2 - Timber Specifications

2.1 - Included Timber

2.1.3 - Cut tree marked unit(s) (12/08)

Within Payment Unit(s) 1-6, all trees are designated for cutting when marked with orange paint above and below stump height, regardless of merchantability.

2.2 - Utilization

2.2.1 - Utilization (2/04)

All listed board foot volumes of sawlog size products in this contract have been determined using a top diameter inside bark of 8 inches.

2.2.3 - Stump heights (4/07)

Stump heights within the Sale Area shall not exceed 6 inches for all trees.

2.2.6 - Roundwood operation required (5/07)

The skidding of whole trees or tree segments with limbs attached is prohibited within Payment Unit(s) 1-6. All products must be produced as roundwood and forwarded to existing roads or landing areas in final product length.

Exception: Skidding of lengths over 17 feet for utility poles may be allowed within Payment Unit(s) 3-6, as long as the timber sale administrator approves the method and machinery used prior to operations. If at any point damage exceeds specification 3.4.1, all of the remaining wood must be skid in lengths less than 17 feet.

2.2.9 - No chipping permitted (12/08)

Within Payment Unit(s) 1-6, all wood must be removed by tree segment or roundwood. No chipping is permitted.

3 - Payments

3.3 - Pre-measured Sales

3.3.4 - Dividing payment units (7/14)

Payment Unit(s) 3-6 may be divided at the request of the Purchaser and upon approval of the Unit Manager. Dividing Payment Units is a contract modification which requires a Timber Sale Contract Amendment. There will be only one division per Payment Unit.

3.4 - Damaged Timber

3.4.1 - Damaged timber (7/16)

General Condition and Requirement 3.4 Damaged Timber, defines liquidated damages for undesignated live merchantable trees which are cut or injured. In addition, extreme care should be taken to avoid damage to tree seedlings and saplings.

Within Payment Unit(s) 1 and 2, if more than 30% of the tree seedlings or saplings (1/4" to 4.5" DBH) within a specified portion of the sale area are damaged, liquidated damages will be assessed at \$300 per acre for all acreage within that specified portion of the sale area that was damaged.

No damage is acceptable to undesignated live merchantable trees. Within the sale area, if more than 5% of trees (> 4.5" DBH) within a specified area of the sale are damaged, liquidated damages will be assessed for all trees damaged. Rates will be in accordance with General Condition and Requirement 3.4 Damaged Timber.

4 - Transportation

4.1 - Construction

4.1.3 - Slash and earthen piles (8/04)

Piles or windrows of earth along roads and landings that have been widened or constructed shall be leveled. Slash from road maintenance or construction, including stumps, shall be utilized or dispersed throughout the sale.

4.1.6 - Road construction (1/09)

Improvements of existing roads shall be done in such a way as to minimize the environmental and visual impacts. Merchantable trees shall be cut and utilized unless otherwise directed. Non-merchantable trees shall be severed and laid flat on the ground. Slash shall be scattered, and not left in windrows and kept a minimum of 10 feet back from the road edge. Stumps shall be set upright, not left on edge, and be moved at least 10 feet away from the road edge. Disturbed soil shall be feathered into the woods and not left in berms or windrows.

4.1.12 - No new roads (1/12)

No new roads will be permitted in any Payment Unit. All operations are limited to existing roads. Skid trails only will be allowed.

4.2 - Maintenance

4.2.2 - Fill material (4/07)

To maintain roads, fill material may be needed in areas where "holes" exist or may be expected to develop. This fill material should be placed before trucking begins.

4.2.3 - Road maintenance (8/13)

The following road maintenance is required: Within 60 days of completion of hauling, or if no hauling occurs for 60 days, the road must be maintained and graded to the condition prior to being used. This may include cleaning of drainage areas, grading, crowning and filling with gravel, if necessary. Damages will be assessed if grading/repair does not occur.

4.2.5 - Two wheel drive condition (2/04)

All existing trail roads on and adjacent to the sale area must be passable by two-wheel drive traffic for the duration of the sale.

5 - Operations

5.1 - Notification

5.1.1 - Pre-sale conference (10/16)

A pre-sale conference on site between the Purchaser and sale administrator is required prior to beginning any operations to determine landing locations and road improvement needs.

5.1.4 - Post-sale conference (10/16)

A post-sale conference on site between the Purchaser and sale administrator is required 5 days prior to the completion of active logging operations to determine clean-up and repair of landings, road edges, and the fulfillment of other contract specifications.

5.2 - Conduct of Operations

5.2.1 - Slash

5.2.1.8 - Slash height (12/08)

No slash or tree tops may exceed 24 inches in height. Slash must also be spread out uniformly over the site and not left in "windrows"

5.2.3 - Operating Restrictions

5.2.3.3 - Bark slippage restriction (3/09)

Within Payment Unit(s) 3-6, cutting and skidding are not permitted during the period of April 15 to July 15. This restriction is because of bark slippage.

5.2.3.4 - Oak wilt restriction, no exceptions (1/18)

Within Payment Unit(s) 1 & 2, cutting, skidding, and brushing of access roads to the sale are not permitted during the period of April 15 to July 15. No exceptions will be granted. For Payment Unit(s) 3 - 6, brushing of access roads to the sale are not permitted during the period of April 15 to July 15. This is necessary to reduce the spread of oak wilt.

5.2.31 - Landing locations (9/13)

Landing locations must be approved by the Timber Sale Administrator before construction can proceed. Landings must be confined to the site designated by the Sale Administrator and not be larger than needed for harvesting operations.

5.2.32 - Decking/landing restoration (9/13)

All decking and landing areas must have the surface area restored to a condition equal to or better than before. This is to ensure the proper regeneration of the stand. Wood debris and "cookies" from trimmings must be removed or scattered away from landing and loading areas and may not be windrowed on the edge.

5.2.38 - No decking against live trees (2/04)

Cut products may not be decked against unmarked or designated leave trees.

5.2.40 - Pathway protection (10/10)

The Midland to Mackinaw Trail is a hiking trail and is shown on the Timber Sale Map within Payment Unit 1. Do not cut trees or damage posts with blue pathway markers. Maintain a 20-foot wide slash, debris, and rut free zone daily, using the pathway as the centerline. Do not run equipment down the pathway.

5.2.41 - Snowmobile trail protection (9/11)

The snowmobile trail is shown on the Timber Sale Map. Do not cut or damage posts with orange trail markers or traffic control signs. If the trail is used, it must be maintained and restored to a condition equal to or better than before the sale. The road maintenance/restoration must be done prior to December 1. If the trail is used for hauling, it must be graded to the satisfaction of the Unit Manager or his/her representative prior to December 1st. If the trail road is to be used for hauling during the snowmobile season, then a snow covered base must be left on the trail. Maintain a 20 foot wide slash, debris, and rut free zone daily using the snowmobile trail as the centerline. No decking of forest products will be permitted along the snowmobile trail. All stumps within 20 feet of the snowmobile trail must be cut at ground level.

5.4 - Soil Protection

5.4.1 - Rutting restriction, general (7/16)

Operations are to cease immediately if equipment and weather conditions result in rutting of roads and/or skid trails which is 12 inches or greater in depth and 50 feet in length. The Unit Manager or his/her representative may restrict hauling and/or skidding if ruts exceed the specified depth. With the Unit Manager or his/her representative's approval, the Purchaser may return to the area when the risk of rutting has decreased.

5.8 - Protection of Endangered Species

5.8.3 - Red shoulder hawk or goshawk (2/16)

In the event that an active red shoulder hawk or goshawk nest is found, the contract may be amended to protect the nest site until the nest is determined to be inactive. The value of the trees in this excluded area will be refunded or credited to the Purchaser. The nest will be buffered with a five-chain radius (eight acre) protection area, centered on the nest tree, in which there will be no cutting or new roads constructed. Avoid human disturbance, including loading and skidding, in the protection area.

An additional zone of five chains (ten chains centered on the active nest tree) will be established in which there is no management activity from March 15 to July 15. Limit biomass harvesting and chipping operations within this ten-chain zone, retain the maximum one-third of residues per the Woody Biomass Harvesting Guidelines (Michigan DNR 2010). Nests determined to be inactive will be protected with a one-chain no-harvest buffer.

6 - Safety and Fire Prevention

6.2 - Signing

6.2.1 - Road posting (9/09)

The Purchaser is responsible for posting and maintaining caution signs on forest roads prior to beginning operations. The road must be posted at appropriate distances from the sale area to warn of logging activity and truck traffic. Signs must be removed when harvest operations are suspended or completed. The Purchaser will provide these signs.

6.2.2 - Snowmobile trail posting (8/09)

The Purchaser is responsible for posting and maintaining caution signs on the snowmobile trail prior to beginning operations during the snowmobile season (approximately December 1 to March 31). The trail must be posted at appropriate distances from the sale area to warn of logging activity and truck traffic. Signs must be removed when harvest operations are suspended or completed. The Purchaser will provide these signs.

7 - Other Conditions

7.3 - Contract Modifications

7.3.2 - Modification for oak wilt (2/05)

Within the sale area, there may be patches of oak wilt. If oak wilt is identified within the sale area, this contract may be modified. The following modifications could occur: time of cutting, species to cut, volume to harvest, or various others dealing with the treatment of oak wilt. If a species is not specified in this contract, it shall be paid for at the average price received for that species and product.



TIMBER SALE MAP

This information provided by authority of Part 525, 1994 PA 451, as amended.

Forest Management Unit Roscommon	County Roscommon	Mapped By Bates	Date 08/26/2020	Page 1	of 2
Township 22N	Range 01W	Section(s) and Subdivision(s) 11 - NW1/4, 12 - S1/2NW, NE1/4, SESW, N1/2SE, SWSE	Cruised By Superior F.L.M.		

Scale
1:15,840

Cover Type

A = Aspen	H = Hemlock	N = Marsh	U = Upland Brush
B = Paper Birch	J = Jack Pine	O = Oak	UM = Upland Mixed
C = Cedar	L = Lowland Brush	P = Lowland Poplar	V = Bog or Marsh
D = Treed Bog	LM = Lowland Mixed	Q = Mixed Swamp Conifer	W = White Pine
E = Swamp Hdwoods	M = Mpl, Bch, Brch	R = Red Pine	X = Non Stocked
F = Spruce Fir	MC = Mixed Conifer	S = Black Spruce	Z = Water
G = Grass	MD = Mixed Deciduous	T = Tamarack	

Density

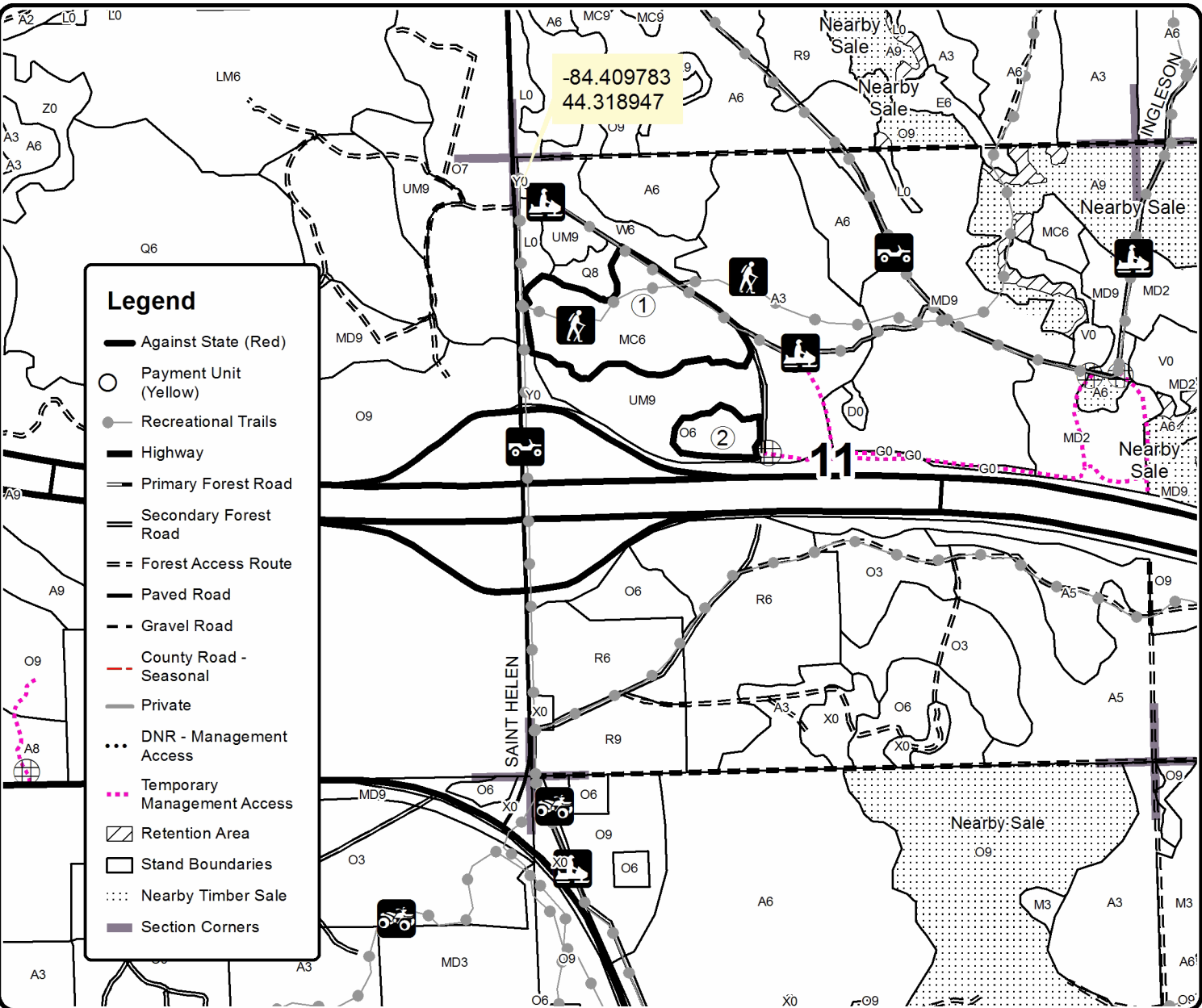
0 = Non Stocked	5 = Pole Timber Medium
1 = Seedling Sapling Poor	6 = Pole Timber Well
2 = Seedling Sapling Medium	7 = Saw Timber Poor
3 = Seedling Sapling Well	8 = Saw Timber Medium
4 = Pole Timber Poor	9 = Saw Timber Well

PU	Acres	PU	Acres
1	29.1	4	24.6
2	5.8	5	47.3
3	39.3	6	35.1

Expressway Pine

Compartment 56

181.2 Acres





Sale Number	Year
71 - 004	20

TIMBER SALE MAP

This information provided by authority of Part 525, 1994 PA 451, as amended.

Forest Management Unit	County	Mapped By	Date	Page	of
Roscommon	Roscommon	Bates	08/26/2020	2	2
Township	Range	Section(s) and Subdivision(s)	Scale		
22N	01W	11 - NW1/4, 12 - S1/2NW, NE1/4, SESW, N1/2SE, SWSE	1:15,840		

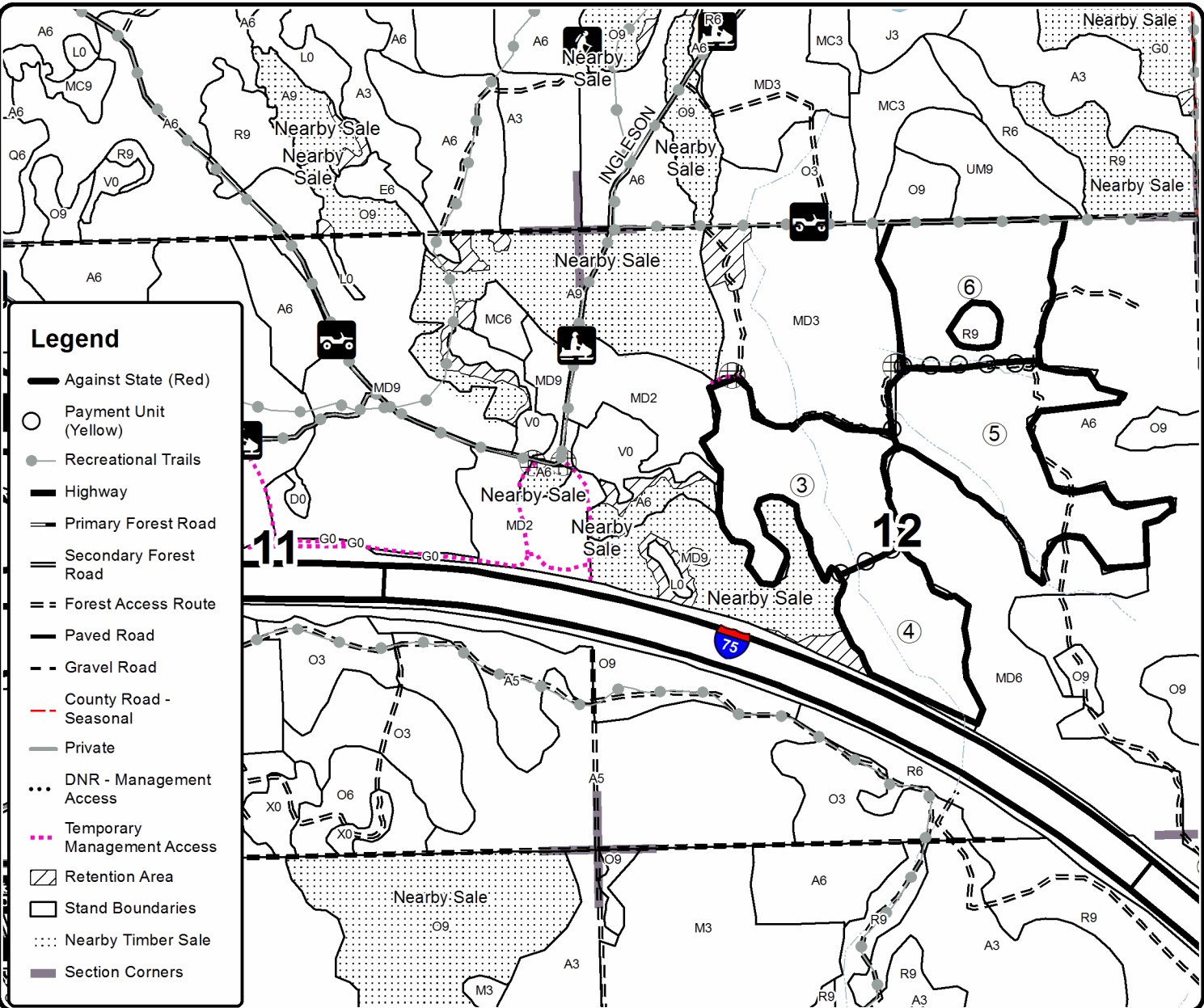
Cover Type				Density	
A = Aspen	H = Hemlock	N = Marsh	U = Upland Brush	0 = Non Stocked	5 = Pole Timber Medium
B = Paper Birch	J = Jack Pine	O = Oak	UM = Upland Mixed	1 = Seedling Sapling Poor	6 = Pole Timber Well
C = Cedar	L = Lowland Brush	P = Lowland Poplar	V = Bog or Marsh	2 = Seedling Sapling Medium	7 = Saw Timber Poor
D = Treed Bog	LM = Lowland Mixed	Q = Mixed Swamp Conifer	W = White Pine	3 = Seedling Sapling Well	8 = Saw Timber Medium
E = Swamp Hdwoods	M = Mpl. Bch. Brch	R = Red Pine	X = Non Stocked	4 = Pole Timber Poor	9 = Saw Timber Well
F = Spruce Fir	MC = Mixed Conifer	S = Black Spruce	Z = Water		
G = Grass	MD = Mixed Deciduous	T = Tamarack			

PU	Acres	PU	Acres
1	29.1	4	24.6
2	5.8	5	47.3
3	39.3	6	35.1

Expressway Pine

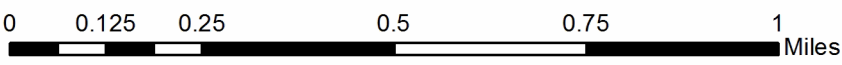
Compartment 56

181.2 Acres



Legend

- Against State (Red)
- Payment Unit (Yellow)
- Recreational Trails
- Highway
- Primary Forest Road
- Secondary Forest Road
- Forest Access Route
- Paved Road
- Gravel Road
- County Road - Seasonal
- Private
- DNR - Management Access
- Temporary Management Access
- Retention Area
- Stand Boundaries
- Nearby Timber Sale
- Section Corners



TIMBER SALE INFORMATION

Turkey Call Aspen (71-011-20)

T24N, R01E, SEC. 5; T24N, R01E, SEC. 6; T24N, R01W, SEC. 11; T24N, R01W, SEC. 12; T24N, R01W, SEC. 13.
Ogemaw County (Advertised Price \$120,424.15)

SALE NOTE: A recreation site such as a trail, pathway, or campground is within the sale area or the vicinity. Certain restrictions/specifications may be applicable including time restrictions.

A timber sale contract for this lump sum, sealed bid timber sale will be awarded to the responsible bidder offering the highest sealed bid price. All units of volume listed below were estimated using the T-Sale computer program and our traditional volume equations. Bids must be at or above the following advertised price for each product and species:

<u>PRODUCTS & SPECIES</u>	<u>ESTIMATED UNITS*</u>	<u>ADVERTISED PRICE</u>
Sawtimber		
BI/R/Hybrid Oak	16.3 MBF	\$ 83.00 / MBF
Quaking Aspen	178.1 MBF	\$ 57.00 / MBF
Red Maple	51.3 MBF	\$ 57.00 / MBF
Red Pine	245.7 MBF	\$ 89.00 / MBF
White Pine	73.6 MBF	\$ 34.00 / MBF
Pulpwood		
Balsam Fir	2 Cords	\$ 20.45 / Cord
Jack Pine	99 Cords	\$ 11.65 / Cord
Mixed Aspen	2,595 Cords	\$ 20.85 / Cord
Mixed Hardwood	495 Cords	\$ 14.50 / Cord
Mixed Oak	106 Cords	\$ 14.80 / Cord
Red Pine	223 Cords	\$ 38.05 / Cord
White Pine	457 Cords	\$ 19.90 / Cord

* The total volume is statistically estimated within plus (+) or minus (-) 6.64 percent. There are an estimated 5,103 cords on this timber sale, plus or minus 339 cords at the 95% confidence level. The estimated units are final and not subject to adjustment. Prospective bidders are urged to examine this timber and to make their own estimates of quantity and quality.

BOND AND PAYMENT SCHEDULE:

1. A bond in the amount of \$6,021.00 to insure faithful performance of the conditions of the contract will be deposited by the successful bidder within 21 days of the sale award.
2. Cutting in any sale or unit without the required advance payment would be considered a trespass.
3. Total payment must be paid in advance or according to the following schedule :
 - (a) Ten percent (10%) of the sale value must be paid within 21 days of the sale award.
 - (b) The 10% down payment will be credited towards the first unit cut.
 - (c) Payment for each of the following units must be made before cutting begins in that unit:

PAYMENT UNIT NUMBER	PERCENT OF TOTAL SALE VALUE
01	11.8%
02	13.9%
03	3.4%
04	10.1%
05	16.9%
06	3.3%
07	11.3%
08	17.9%
09	11.4%
4. If no cutting takes place, the 10% down payment will not be refunded.
5. Operations on the contract issued will terminate on 12/31/2022.

SALE STATISTICS

SALE VOLUMES

VOLUME		STATISTICAL RANGE IN CORDS		
TOTAL CUBIC FEET	TOTAL CORDS	PERCENT ERROR	MINIMUM	MAXIMUM
403,098	5,103	6.64%	4,764	5,441

VDU VOLUMES

A VDU is a Volume Determination Unit. Volumes and their associated statistics are calculated at the VDU level and summarized to the sale level. There is often a one to one relationship between a VDU and a Payment Unit, but not always, depending on the cruise design. Refer to the VDU TO PAYMENT UNIT table.

VDU	VOLUME		PERCENT ERROR	RANGE IN CORDS	
	TOTAL CUBIC FEET	TOTAL CORDS		MINIMUM	MAXIMUM
52	122,584	1,552	12.79%	1,353	1,750
61	46,010	582	14.30%	499	666
96	110,932	1,404	10.88%	1,251	1,557
132	16,985	215	24.17%	163	267
146	87,587	1,109	17.00%	920	1,297
147	18,976	240	32.04%	163	317
TOTAL:	403,074	5,102		4,350	5,854

VDU TO PAYMENT UNIT

When a VDU is associated with more than one Payment Unit (PU), the VDU volumes are assigned to the PU based on acres of the VDU within the PU.

VDU	VDU ACRES	PU	PU ACRES
52	50.5	4	16.8
		5	28.2
		6	5.5
61	15.2	9	15.2
96	41.1	7	15.9
		8	25.2
132	13.1	3	13.1
146	49.7	1	17.2
		2	32.5
147	12.9	1	12.9
TOTAL:	182.5		182.5

DESCRIPTION OF TIMBER BY PAYMENT UNIT (PU)

PU	MARKET GROUP	PRODUCT	QUANTITY	UNIT	ACRES	ADVERTISE PRICE
1	BI/R/Hybrid Oak	Sawtimber	1.2	MBF	30.1	\$14,248.75
	Quaking Aspen		28.9	MBF		
	Red Pine		11.1	MBF		
	White Pine		1.6	MBF		
	Jack Pine	Pulpwood	9	Cords		
	<i>Jack Pine</i>	<i>Sawtimber</i>	0.2	<i>MBF</i>		
	<i>Jack Pine</i>	<i>Pulpwood</i>	9	<i>Cords</i>		
	Mixed Aspen		461	Cords		
	<i>B. T. Aspen</i>	<i>Sawtimber</i>	0.9	<i>MBF</i>		
	<i>B. T. Aspen</i>	<i>Pulpwood</i>	8	<i>Cords</i>		
	<i>Quaking Aspen</i>		451	<i>Cords</i>		
	Mixed Hardwood		10	Cords		
	<i>Black Cherry</i>		6	<i>Cords</i>		
	<i>Red Maple</i>		4	<i>Cords</i>		
	Mixed Oak		13	Cords		
	<i>BI/R/Hybrid Oak</i>		13	<i>Cords</i>		
	Red Pine		27	Cords		
	White Pine		19	Cords		
2	BI/R/Hybrid Oak	Sawtimber	0.9	MBF	32.5	\$16,714.95
	Quaking Aspen		31.8	MBF		
	Red Pine		16.7	MBF		
	White Pine		1.3	MBF		
	Jack Pine	Pulpwood	6	Cords		
	<i>Jack Pine</i>	<i>Sawtimber</i>	0.3	<i>MBF</i>		
	<i>Jack Pine</i>	<i>Pulpwood</i>	5	<i>Cords</i>		
	Mixed Aspen		558	Cords		
	<i>B. T. Aspen</i>	<i>Sawtimber</i>	1.8	<i>MBF</i>		
	<i>B. T. Aspen</i>	<i>Pulpwood</i>	16	<i>Cords</i>		
	<i>Quaking Aspen</i>		538	<i>Cords</i>		
	Mixed Hardwood		13	Cords		
	<i>Black Cherry</i>		11	<i>Cords</i>		
	<i>Red Maple</i>		2	<i>Cords</i>		
	Mixed Oak		8	Cords		
	<i>BI/R/Hybrid Oak</i>		8	<i>Cords</i>		
	Red Pine		27	Cords		
	White Pine		13	Cords		
3	BI/R/Hybrid Oak	Sawtimber	3.3	MBF	13.1	\$4,045.85
	Quaking Aspen		5.3	MBF		
	Red Pine		2.1	MBF		
	Jack Pine	Pulpwood	74	Cords		
	<i>Jack Pine</i>	<i>Sawtimber</i>	4.4	<i>MBF</i>		
	<i>Jack Pine</i>	<i>Pulpwood</i>	65	<i>Cords</i>		
	Mixed Aspen		99	Cords		
	<i>Quaking Aspen</i>		99	<i>Cords</i>		
	Mixed Hardwood		2	Cords		
	<i>Black Cherry</i>		2	<i>Cords</i>		
	Mixed Oak		17	Cords		
	<i>BI/R/Hybrid Oak</i>		17	<i>Cords</i>		
	Red Pine		2	Cords		
4	BI/R/Hybrid Oak	Sawtimber	0.8	MBF	16.8	\$12,142.05
	Quaking Aspen		21.2	MBF		
	Red Maple		2.7	MBF		
	Red Pine		20.1	MBF		
	White Pine		4.5	MBF		
	Jack Pine	Pulpwood	4	Cords		
	<i>Jack Pine</i>	<i>Sawtimber</i>	0.4	<i>MBF</i>		

DESCRIPTION OF TIMBER BY PAYMENT UNIT (PU), CON'T

PU	MARKET GROUP	PRODUCT	QUANTITY	UNIT	ACRES	ADVERTISE PRICE			
4 con't	<i>Jack Pine</i>	<i>Pulpwood</i>	3	<i>Cords</i>					
	Mixed Aspen		273	Cords					
	<i>B. T. Aspen</i>	<i>Sawtimber</i>	1.2	<i>MBF</i>					
	<i>B. T. Aspen</i>	<i>Pulpwood</i>	3	<i>Cords</i>					
	<i>Quaking Aspen</i>		268	<i>Cords</i>					
	Mixed Hardwood		29	Cords					
	<i>Red Maple</i>		29	<i>Cords</i>					
	Mixed Oak		7	Cords					
	<i>BI/R/Hybrid Oak</i>		7	<i>Cords</i>					
	Red Pine		22	Cords					
White Pine		84	Cords						
5	<i>BI/R/Hybrid Oak</i>	<i>Sawtimber</i>	1.3	<i>MBF</i>	28.2	\$20,358.90			
	<i>Quaking Aspen</i>		35.5	<i>MBF</i>					
	<i>Red Maple</i>		4.5	<i>MBF</i>					
	<i>Red Pine</i>		33.7	<i>MBF</i>					
	<i>White Pine</i>		7.5	<i>MBF</i>					
	<i>Jack Pine</i>	<i>Pulpwood</i>	5	<i>Cords</i>					
	<i>Jack Pine</i>	<i>Sawtimber</i>	0.6	<i>MBF</i>					
	<i>Jack Pine</i>	<i>Pulpwood</i>	4	<i>Cords</i>					
	Mixed Aspen		460	Cords					
	<i>B. T. Aspen</i>	<i>Sawtimber</i>	2.1	<i>MBF</i>					
	<i>B. T. Aspen</i>	<i>Pulpwood</i>	5	<i>Cords</i>					
	<i>Quaking Aspen</i>		451	<i>Cords</i>					
	Mixed Hardwood		48	Cords					
	<i>Red Maple</i>		48	<i>Cords</i>					
	Mixed Oak		12	Cords					
	<i>BI/R/Hybrid Oak</i>		12	<i>Cords</i>					
	Red Pine		37	Cords					
	White Pine		140	Cords					
	6	<i>BI/R/Hybrid Oak</i>	<i>Sawtimber</i>	0.3			<i>MBF</i>	5.5	\$3,959.80
		<i>Quaking Aspen</i>		6.9			<i>MBF</i>		
<i>Red Maple</i>			0.9	<i>MBF</i>					
<i>Red Pine</i>			6.6	<i>MBF</i>					
<i>White Pine</i>			1.5	<i>MBF</i>					
<i>Jack Pine</i>		<i>Pulpwood</i>	1	<i>Cords</i>					
<i>Jack Pine</i>		<i>Sawtimber</i>	0.1	<i>MBF</i>					
<i>Jack Pine</i>		<i>Pulpwood</i>	1	<i>Cords</i>					
Mixed Aspen			90	Cords					
<i>B. T. Aspen</i>		<i>Sawtimber</i>	0.4	<i>MBF</i>					
<i>B. T. Aspen</i>		<i>Pulpwood</i>	1	<i>Cords</i>					
<i>Quaking Aspen</i>			88	<i>Cords</i>					
Mixed Hardwood			9	Cords					
<i>Red Maple</i>			9	<i>Cords</i>					
Mixed Oak			2	Cords					
<i>BI/R/Hybrid Oak</i>			2	<i>Cords</i>					
Red Pine			7	Cords					
White Pine			27	Cords					
7	<i>BI/R/Hybrid Oak</i>	<i>Sawtimber</i>	1.0	<i>MBF</i>	15.9	\$13,629.80			
	<i>Quaking Aspen</i>		9.8	<i>MBF</i>					
	<i>Red Maple</i>		9.2	<i>MBF</i>					
	<i>Red Pine</i>		49.1	<i>MBF</i>					
	<i>White Pine</i>		18.4	<i>MBF</i>					
	Mixed Aspen	<i>Pulpwood</i>	180	<i>Cords</i>					
	<i>Quaking Aspen</i>		180	<i>Cords</i>					
	Mixed Hardwood		94	Cords					
	<i>Paper Birch</i>	<i>Sawtimber</i>	1.7	<i>MBF</i>					

DESCRIPTION OF TIMBER BY PAYMENT UNIT (PU), CON'T

PU	MARKET GROUP	PRODUCT	QUANTITY	UNIT	ACRES	ADVERTISE PRICE	
7 con't	<i>Paper Birch</i>	<i>Pulpwood</i>	7	<i>Cords</i>			
	<i>Red Maple</i>		84	<i>Cords</i>			
	Mixed Oak		13	<i>Cords</i>			
	<i>Bl/R/Hybrid Oak</i>		11	<i>Cords</i>			
	<i>White Oak</i>		2	<i>Cords</i>			
	Red Pine		28	<i>Cords</i>			
	White Pine		55	<i>Cords</i>			
8	Bl/R/Hybrid Oak	Sawtimber	1.5	MBF	25.2	\$21,549.90	
	Quaking Aspen		15.6	MBF			
	Red Maple		14.7	MBF			
	Red Pine		77.8	MBF			
	White Pine		29.2	MBF			
	Mixed Aspen	Pulpwood	286	<i>Cords</i>			
	<i>Quaking Aspen</i>		286	<i>Cords</i>			
	Mixed Hardwood	Sawtimber	147	<i>Cords</i>			
	<i>Paper Birch</i>		2.6	<i>MBF</i>			
	<i>Paper Birch</i>		Pulpwood	10			<i>Cords</i>
	<i>Red Maple</i>			132			<i>Cords</i>
	Mixed Oak		19	<i>Cords</i>			
	<i>Bl/R/Hybrid Oak</i>		17	<i>Cords</i>			
	<i>White Oak</i>		2	<i>Cords</i>			
	Red Pine	44	<i>Cords</i>				
	White Pine	87	<i>Cords</i>				
	9	Bl/R/Hybrid Oak	Sawtimber	6.0			MBF
Quaking Aspen		23.1		MBF			
Red Maple		19.3		MBF			
Red Pine		28.5		MBF			
White Pine		9.6		MBF			
Balsam Fir		Pulpwood	2	<i>Cords</i>			
Mixed Aspen			189	<i>Cords</i>			
<i>Quaking Aspen</i>			189	<i>Cords</i>			
Mixed Hardwood			142	<i>Cords</i>			
<i>Black Cherry</i>			3	<i>Cords</i>			
<i>Red Maple</i>			139	<i>Cords</i>			
Mixed Oak			15	<i>Cords</i>			
<i>Bl/R/Hybrid Oak</i>			15	<i>Cords</i>			
Red Pine			29	<i>Cords</i>			
White Pine			32	<i>Cords</i>			
TOTAL:			565.0	MBF			
TOTAL:			3,977	<i>Cords</i>			

Sale Specific Conditions & Requirements

Sale Name: Turkey Call Aspen

Sale Number: 71-011-20 Seq#: 1

1 - Sale Area

1.2 - Boundaries

1.2.1 - Painted boundaries (9/19)

The sale boundary and Payment Unit boundaries are marked and identified by red and yellow paint. Exterior sale boundary lines against state are marked with red paint. Interior Payment Unit boundaries are marked with yellow paint. Retention patches are marked with red paint; no harvesting activities may occur within these areas. The painted boundary line trees are not Included Timber and are to be protected unless marked with orange paint. Yellow painted trees designating an interior Payment Unit boundary are only to be cut when all surrounding Payment Units have been paid.

2 - Timber Specifications

2.1 - Included Timber

2.1.1 - Clearcut unit(s) with unmerchantable trees (6/14)

Within Payment Unit(s) 1-9, cut all trees that are two (2) inches or more at DBH, except within Payment Units 4-9, do not cut red pine and white pine 24 inches or more at DBH.

2.2 - Utilization

2.2.3 - Stump heights (4/07)

Stump heights within the Sale Area shall not exceed 12 inches for trees greater than 10 inches DBH and 4 inches for trees smaller than 10 inches DBH.

3 - Payments

3.3 - Pre-measured Sales

3.3.4 - Dividing payment units (7/14)

Payment Unit(s) may be divided at the request of the Purchaser and upon approval of the Unit Manager. Dividing Payment Units is a contract modification which requires a Timber Sale Contract Amendment.

4 - Transportation

4.1 - Construction

4.1.6 - Road construction (1/09)

Construction of new roads or improvements of existing roads shall be done in such a way as to minimize the environmental and visual impacts. Merchantable trees shall be cut and utilized unless otherwise directed. Non-merchantable trees shall be severed and laid flat on the ground. Slash shall be scattered, and not left in windrows and kept a minimum of 10 feet back from the road edge. Stumps shall be set upright, not left on edge, and be moved at least 10 feet away from the road edge. Disturbed soil shall be feathered into the woods and not left in berms or windrows.

4.1.7 - Road closure (10/11)

All new roads built into the sale must be blocked to vehicle traffic upon completion of the sale. Overgrown roads that are reopened shall be considered new roads. In general, this will require constructing a four (4') foot high berm of stumps and logs covered with earth. All stumps from road building and landing construction must be reserved to block any newly constructed roads. These roads must be rendered impassable to cars and trucks. Contact the sale administrator for specific details of design and placement.

4.2 - Maintenance

4.2.3 - Road maintenance (8/13)

The following road maintenance is required: Within 60 days of completion of hauling, or if no hauling occurs for 60 days, the road must be maintained and graded. This includes cleaning of drainage areas, grading, crowning and filling with gravel, if necessary. Damages will be assessed if grading/repair does not occur.

4.2.5 - Two wheel drive condition (2/04)

All existing trail roads on and adjacent to the sale area must be passable by two-wheel drive traffic for the duration of the sale.

5 - Operations

5.1 - Notification

5.1.1 - Pre-sale conference (10/16)

A pre-sale conference between the Purchaser and sale administrator is required prior to beginning any operations to determine landing and road locations. The Unit Manager or his/her representative must be contacted at least 2 days in advance to schedule the conference.

5.1.4 - Post-sale conference (10/16)

A post-sale conference on site between the Purchaser and sale administrator is required prior to the completion of active logging operations to determine clean-up and repair of landings, road edges, and the fulfillment of other contract specifications. This conference must take place prior to moving all machines from the job site.

5.2 - Conduct of Operations

5.2.1 - Slash

5.2.1.8 - Slash height (12/08)

No slash or tree tops may exceed 24 inches in height. Additionally, if not chipped, slash and tree tops must be evenly scattered throughout the sale area.

5.2.3 - Operating Restrictions

5.2.3.11 - Coppice regeneration protection (4/10)

Timber harvesting in any Payment Unit must be completed before significant aspen sprouting occurs in that Payment Unit so as to minimize damage to the new regeneration. Any post harvest operations, such as chipping, must be completed before sprouting of regeneration occurs. If it is anticipated that chipping will be delayed, then tops shall be carried to one central location or left unchipped. The Unit Manager or his/her representative may cease such operations if sprouting occurs before the operation is complete.

5.2.4 - Dead and Down Creation

5.2.4.2 - Dead and down creation, hare and grouse (1/14)

To improve habitat for snowshoe hare, grouse, and other species, the Purchaser is to leave two trees, nine (9) inches or larger in diameter on the ground for every two acres. They should be scattered throughout the sale or positioned per the sale administrators instructions. If possible, the logs or trees should be felled so they overlap. Note these pieces should have a minimum length of five feet. They can be of any tree species and can be an un-merchantable piece of wood or a full tree.

5.2.32 - Decking/landing restoration (9/13)

All decking and landing areas must have the surface area restored to a condition equal to or better than before. This is to ensure the proper regeneration of the stand. Wood debris, chips and "cookies" from trimmings must be removed or scattered away from landing and loading areas and may not be windrowed on the edge.

5.2.40 - Pathway protection (10/10)

The Midland to Mackinaw hiking path is shown on the Timber Sale Map. Do not cut trees or damage posts with blue pathway markers. Protect the pathway and do not use it for logging operations when possible. Skidding across the trail may only occur in locations approved by the sale administrator.

5.2.41 - Snowmobile trail protection (9/11)

The snowmobile trail is shown on the Timber Sale Map. Do not cut or damage posts with orange trail markers or traffic control signs. If the trail is used, it must be maintained and restored to a condition equal to or better than before the sale. The road maintenance/restoration must be done prior to December 1. If the trail road is to be used for hauling during the snowmobile season, then a snow covered base must be left on the trail. The snowmobile trail may only be crossed at right angles.

6 - Safety and Fire Prevention

6.2 - Signing

6.2.3 - Recreational trail posting (2/10)

The Purchaser is responsible for posting and maintaining caution signs on the snowmobile trail prior to beginning operations. The trail must be posted at appropriate distances from the sale area to warn of logging activity and truck traffic at both ends of the trail. Signs must be removed when harvest operations are suspended or completed. The Purchaser will provide these signs.



TIMBER SALE MAP

This information provided by authority of Part 525, 1994 PA 451, as amended.

Sale Number	Year
71 - 011	20

Forest Management Unit Roscommon	County Roscommon and Ogemaw	Mapped By Martell	Date 07/22/2020	Page 1	of 2
Township 24N	Range 01E	Section(s) and Subdivision(s) Sec. 5 - NWNW; Sec. 6 - NW, N1/2NE	Scale 1:15,840		

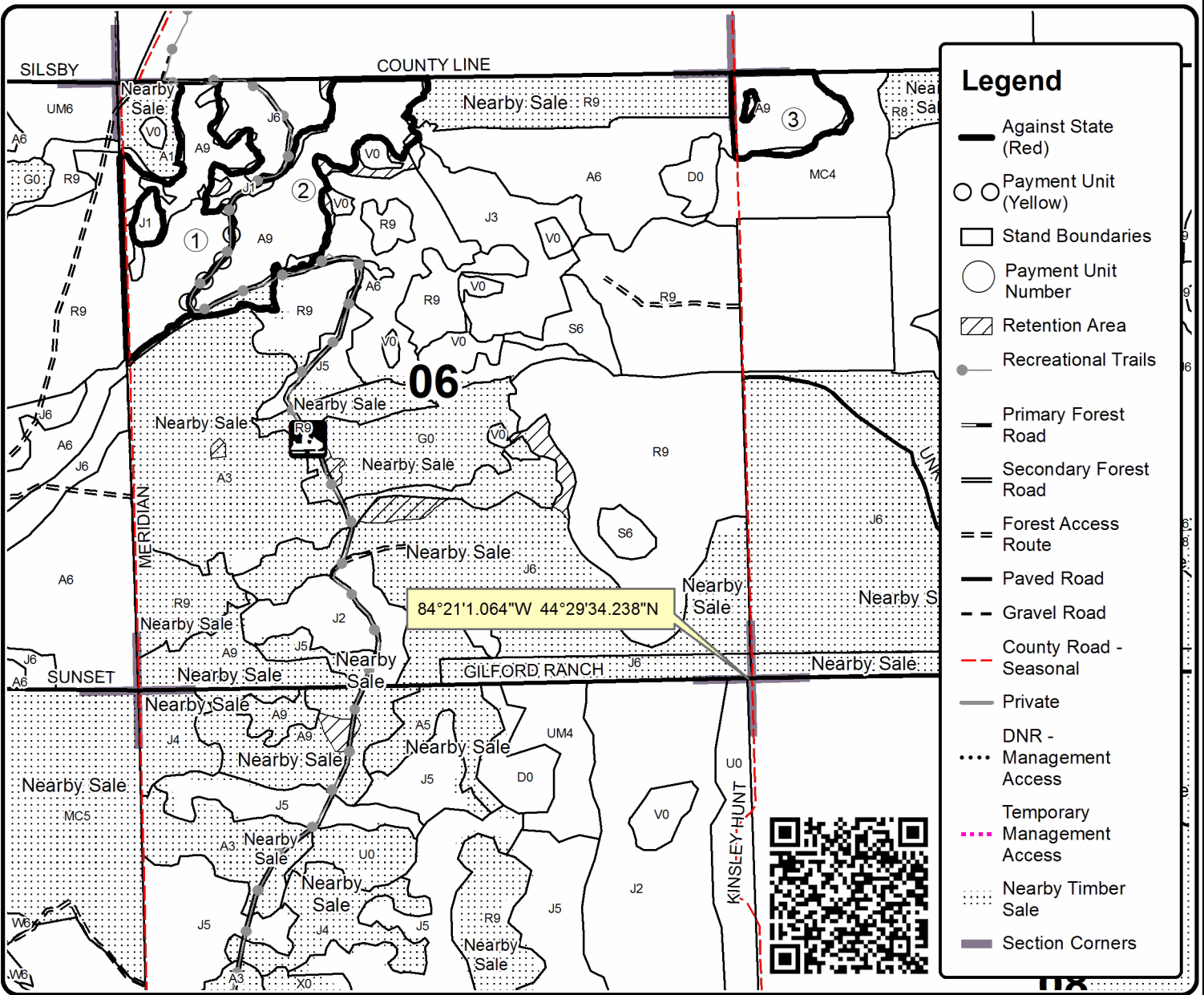
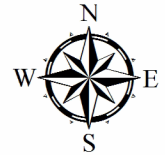
Cover Type				Density	
A = Aspen	H = Hemlock	N = Marsh	U = Upland Brush	0 = Non Stocked	5 = Pole Timber Medium
B = Paper Birch	J = Jack Pine	O = Oak	UM = Upland Mixed	1 = Seedling Sapling Poor	6 = Pole Timber Well
C = Cedar	L = Lowland Brush	P = Lowland Poplar	V = Bog or Marsh	2 = Seedling Sapling Medium	7 = Saw Timber Poor
D = Treed Bog	LM = Lowland Mixed	Q = Mixed Swamp Conifer	W = White Pine	3 = Seedling Sapling Well	8 = Saw Timber Medium
E = Swamp Hdwoods	M = Mpl. Bch, Brch	R = Red Pine	X = Non Stocked	4 = Pole Timber Poor	9 = Saw Timber Well
F = Spruce Fir	MC = Mixed Conifer	S = Black Spruce	Z = Water		
G = Grass	MD = Mixed Deciduous	T = Tamarack			

PU	Acres	PU	Acres
1	30.1	6	5.5
2	32.5	7	15.9
3	13.1	8	25.2
4	16.8	9	15.2
5	28.2		

Turkey Call Aspen

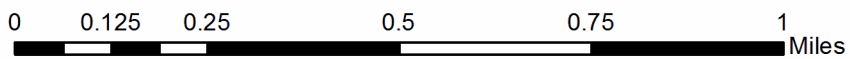
Compartment 64

182.5 Acres



Legend

- Against State (Red)
- Payment Unit (Yellow)
- Stand Boundaries
- Payment Unit Number
- Retention Area
- Recreational Trails
- Primary Forest Road
- Secondary Forest Road
- Forest Access Route
- Paved Road
- Gravel Road
- County Road - Seasonal
- Private
- DNR - Management Access
- Temporary Management Access
- Nearby Timber Sale
- Section Corners





Sale Number	Year
71 - 011	20

TIMBER SALE MAP

This information provided by authority of Part 525, 1994 PA 451, as amended.

Forest Management Unit Roscommon	County Roscommon and Ogemaw	Mapped By Martell	Date 07/22/2020	Page 2	of 2
Township 24N	Range 01W	Section(s) and Subdivision(s) Sec. 11 - E1/2SE; Sec. 12 - SWNE, SW, SE; Sec. 13 - NENW, W1/2NE	Scale 1:15,840		

Cover Type

A = Aspen	H = Hemlock	N = Marsh	U = Upland Brush
B = Paper Birch	J = Jack Pine	O = Oak	UM = Upland Mixed
C = Cedar	L = Lowland Brush	P = Lowland Poplar	V = Bog or Marsh
D = Treed Bog	LM = Lowland Mixed	Q = Mixed Swamp Conifer	W = White Pine
E = Swamp Hdwoods	M = Mpl. Bch, Brch	R = Red Pine	X = Non Stocked
F = Spruce Fir	MC = Mixed Conifer	S = Black Spruce	Z = Water
G = Grass	MD = Mixed Deciduous	T = Tamarack	

Density

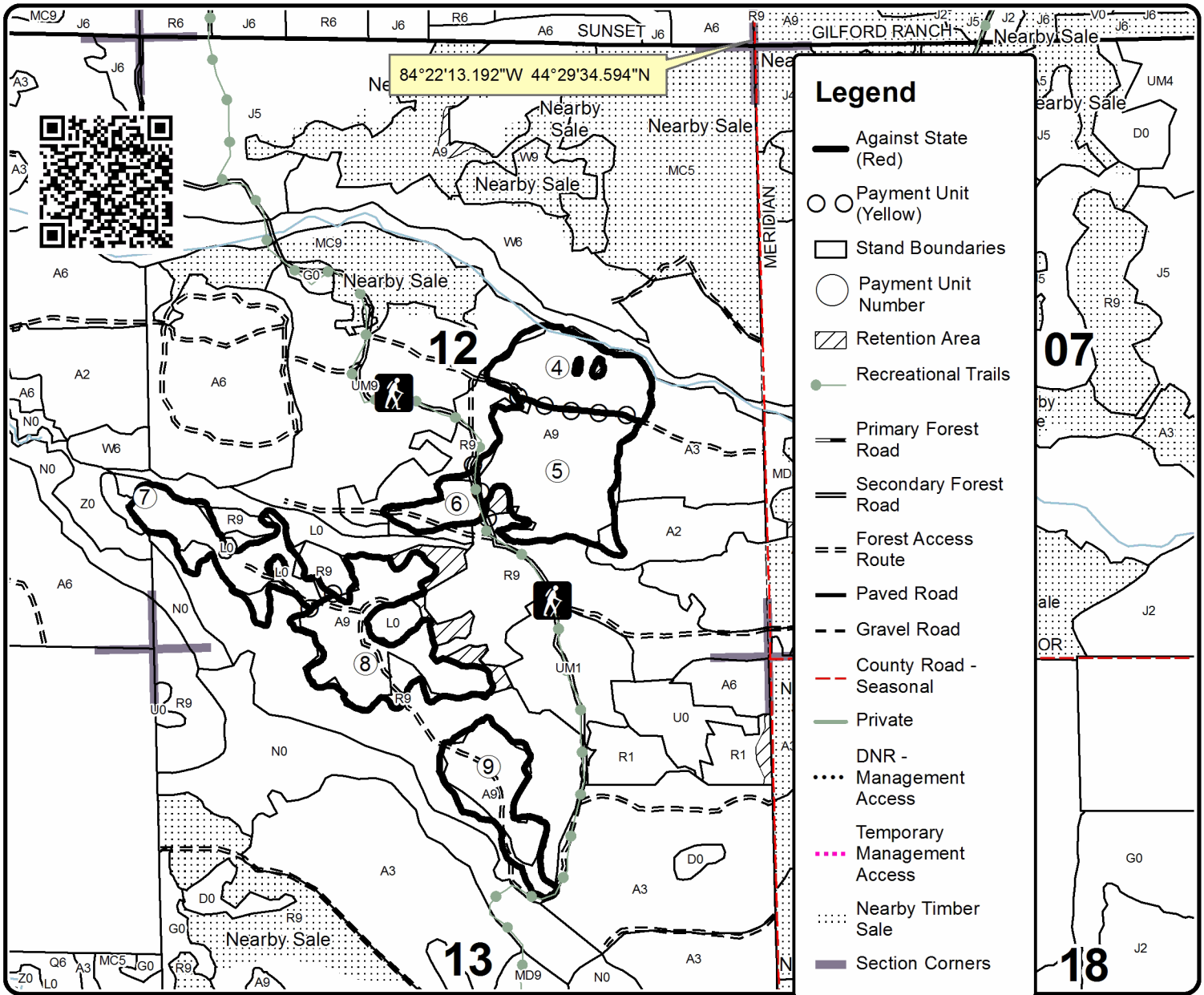
0 = Non Stocked	5 = Pole Timber Medium
1 = Seedling Sapling Poor	6 = Pole Timber Well
2 = Seedling Sapling Medium	7 = Saw Timber Poor
3 = Seedling Sapling Well	8 = Saw Timber Medium
4 = Pole Timber Poor	9 = Saw Timber Well

PU	Acres	PU	Acres
1	30.1	6	5.5
2	32.5	7	15.9
3	13.1	8	25.2
4	16.8	9	15.2
5	28.2		

Turkey Call Aspen

Compartment 64

182.5 Acres



TIMBER SALE INFORMATION

64 Red Pine (71-012-20)

T24N, R01E, SEC. 6; T24N, R01W, SEC. 13; T24N, R01W, SEC. 14.
Roscommon County (Advertised Price \$119,153.50)

SALE NOTE: A recreation site such as a trail, pathway, or campground is within the sale area or the vicinity. Certain restrictions/specifications may be applicable including time restrictions.

A timber sale contract for this lump sum, sealed bid timber sale will be awarded to the responsible bidder offering the highest sealed bid price. All units of volume listed below were estimated using the T-Sale computer program and our traditional volume equations. Bids must be at or above the following advertised price for each product and species:

<u>PRODUCTS & SPECIES</u>	<u>ESTIMATED UNITS*</u>		<u>ADVERTISED PRICE</u>
Sawtimber			
Red Pine	773.0	MBF	\$ 89.00 / MBF
Sugar Maple	4.6	MBF	\$ 117.00 / MBF
Pulpwood			
Balsam Fir	69	Cords	\$ 20.45 / Cord
Bl/R/Hybrid Oak	12	Cords	\$ 14.80 / Cord
Jack Pine	94	Cords	\$ 11.65 / Cord
Mixed Aspen	120	Cords	\$ 20.85 / Cord
Mixed Hardwood	138	Cords	\$ 14.50 / Cord
Red Pine	1,077	Cords	\$ 38.05 / Cord
White Pine	83	Cords	\$ 19.90 / Cord

* The total volume is statistically estimated within plus (+) or minus (-) 10.27 percent. There are an estimated 3,144 cords on this timber sale, plus or minus 323 cords at the 95% confidence level. The estimated units are final and not subject to adjustment. Prospective bidders are urged to examine this timber and to make their own estimates of quantity and quality.

BOND AND PAYMENT SCHEDULE:

1. A bond in the amount of \$5,958.00 to insure faithful performance of the conditions of the contract will be deposited by the successful bidder within 21 days of the sale award.
2. Cutting in any sale or unit without the required advance payment would be considered a trespass.
3. Total payment must be paid in advance or according to the following schedule :
 - (a) Ten percent (10%) of the sale value must be paid within 21 days of the sale award.
 - (b) The 10% down payment will be credited towards the first unit cut.
 - (c) Payment for each of the following units must be made before cutting begins in that unit:

PAYMENT UNIT NUMBER	PERCENT OF TOTAL SALE VALUE
01	14.8%
02	2.8%
03	31.3%
04	33.2%
05	17.9%
4. If no cutting takes place, the 10% down payment will not be refunded.
5. Operations on the contract issued will terminate on 12/31/2022.

SALE STATISTICS

SALE VOLUMES

VOLUME			STATISTICAL RANGE IN CORDS	
TOTAL CUBIC FEET	TOTAL CORDS	PERCENT ERROR	MINIMUM	MAXIMUM
248,366	3,144	10.27%	2,821	3,467

VDU VOLUMES

A VDU is a Volume Determination Unit. Volumes and their associated statistics are calculated at the VDU level and summarized to the sale level. There is often a one to one relationship between a VDU and a Payment Unit, but not always, depending on the cruise design. Refer to the VDU TO PAYMENT UNIT table.

VDU	VOLUME		PERCENT ERROR	RANGE IN CORDS	
	TOTAL CUBIC FEET	TOTAL CORDS		MINIMUM	MAXIMUM
50	83,377	1,055	15.49%	892	1,219
54	80,469	1,019	19.97%	815	1,222
84	19,205	243	45.97%	131	355
85	23,921	303	35.28%	196	410
133	34,807	441	21.98%	344	537
233	6,612	84	66.67%	28	140
TOTAL:	248,392	3,144		2,406	3,882

VDU TO PAYMENT UNIT

When a VDU is associated with more than one Payment Unit (PU), the VDU volumes are assigned to the PU based on acres of the VDU within the PU.

VDU	VDU ACRES	PU	PU ACRES
50	29.0	4	29.0
54	26.0	3	26.0
84	6.7	5	6.7
85	7.2	5	7.2
133	23.8	1	23.8
233	1.9	2	1.9
TOTAL:	94.6		94.6

DESCRIPTION OF TIMBER BY PAYMENT UNIT (PU)

PU	MARKET GROUP	PRODUCT	QUANTITY	UNIT	ACRES	ADVERTISE PRICE
1	Red Pine	Sawtimber	68.8	MBF	23.8	\$17,652.35
	Red Pine	Pulpwood	303	Cords		
2	Red Pine	Sawtimber	13.9	MBF	1.9	\$3,367.90
	Red Pine	Pulpwood	56	Cords		
3	Red Pine	Sawtimber	252.1	MBF	26.0	\$37,267.35
	Sugar Maple		4.6	MBF		
	Balsam Fir	Pulpwood	5	Cords		
	<i>Balsam Fir</i>		5	<i>Cords</i>		
	Jack Pine		28	Cords		
	<i>Jack Pine</i>	<i>Sawtimber</i>	1.8	<i>MBF</i>		
	<i>Jack Pine</i>	<i>Pulpwood</i>	24	<i>Cords</i>		
	Mixed Aspen		72	Cords		
	<i>Balsam Poplar</i>	<i>Sawtimber</i>	2.9	<i>MBF</i>		
	<i>Balsam Poplar</i>	<i>Pulpwood</i>	45	<i>Cords</i>		
	<i>Quaking Aspen</i>		21	<i>Cords</i>		
	Mixed Hardwood		69	Cords		
	<i>Basswood</i>	<i>Sawtimber</i>	4.0	<i>MBF</i>		
	<i>Black Cherry</i>		0.9	<i>MBF</i>		
	<i>Basswood</i>	<i>Pulpwood</i>	5	<i>Cords</i>		
	<i>Black Cherry</i>		27	<i>Cords</i>		
	<i>Red Maple</i>		11	<i>Cords</i>		
	<i>Sugar Maple</i>		16	<i>Cords</i>		
	Red Pine		262	Cords		
	White Pine		70	Cords		
	<i>White Pine</i>	<i>Sawtimber</i>	4.5	<i>MBF</i>		
	<i>White Pine</i>	<i>Pulpwood</i>	61	<i>Cords</i>		
	4	Red Pine	Sawtimber	269.8		
Balsam Fir		Pulpwood	64	Cords		
<i>Balsam Fir</i>		<i>Sawtimber</i>	3.8	<i>MBF</i>		
<i>Balsam Fir</i>		<i>Pulpwood</i>	56	<i>Cords</i>		
Jack Pine			61	Cords		
<i>Jack Pine</i>			61	<i>Cords</i>		
Mixed Aspen			48	Cords		
<i>Balsam Poplar</i>		<i>Sawtimber</i>	2.3	<i>MBF</i>		
<i>Quaking Aspen</i>			1.4	<i>MBF</i>		
<i>Balsam Poplar</i>		<i>Pulpwood</i>	35	<i>Cords</i>		
<i>Quaking Aspen</i>			5	<i>Cords</i>		
Mixed Hardwood			16	Cords		
<i>Black Cherry</i>			2	<i>Cords</i>		
<i>Paper Birch</i>			14	<i>Cords</i>		
Red Pine			315	Cords		
White Pine			13	Cords		
<i>White Pine</i>		<i>Sawtimber</i>	2.1	<i>MBF</i>		
<i>White Pine</i>		<i>Pulpwood</i>	9	<i>Cords</i>		
5	Red Pine	Sawtimber	168.4	MBF	13.9	\$21,357.00
	BI/R/Hybrid Oak	Pulpwood	12	Cords		
	<i>BI/R/Hybrid Oak</i>	<i>Sawtimber</i>	0.8	<i>MBF</i>		
	<i>BI/R/Hybrid Oak</i>	<i>Pulpwood</i>	10	<i>Cords</i>		
	Jack Pine		5	Cords		
	<i>Jack Pine</i>		5	<i>Cords</i>		
	Mixed Hardwood		53	Cords		
	<i>Black Cherry</i>		14	<i>Cords</i>		
	<i>Red Maple</i>		39	<i>Cords</i>		
	Red Pine		141	Cords		
TOTAL:			777.6	MBF		

TOTAL:	1,593 Cords
--------	-------------

Sale Specific Conditions & Requirements

Sale Name: 64 Red Pine

Sale Number: 71-012-20 Seq#: 1

1 - Sale Area

1.2 - Boundaries

1.2.1 - Painted boundaries (9/19)

The sale boundary and Payment Unit boundaries are marked and identified by blue, red and yellow paint. Exterior sale boundary lines against private property are marked with blue paint. Exterior sale boundary lines against state are marked with red paint. Interior Payment Unit boundaries are marked with yellow paint. The painted boundary line trees are not Included Timber and are to be protected unless marked with orange paint. Yellow painted trees designating an interior Payment Unit boundary are only to be cut when all surrounding Payment Units have been paid.

2 - Timber Specifications

2.1 - Included Timber

2.1.1 - Clearcut unit(s) with unmerchantable trees (6/14)

Within Payment Unit(s) 2, 3, and 5, cut all trees that are two (2) inches or more at DBH.

Within Payment Unit(s) 4, cut all trees that are one (1) inch or greater at DBH, except do not cut any sugar maple, red maple, and white oak.

2.1.3 - Cut tree marked unit(s) (12/08)

Within Payment Unit(s) 1, red pine trees are designated for cutting when marked with orange paint above and below stump height, regardless of merchantability. In addition, all other species are designated for cutting.

2.2 - Utilization

2.2.2 - Chipping required (2/18)

Payment Units 3 and 5 must be chip harvested to facilitate subsequent planting operations. Products may be produced as roundwood and forwarded to decking areas in final product length, but the tops must be left intact and skidded to the landing for chipping in order to minimize the amount of residual slash. A chipping exemption can be obtained if proposed operations are determined to be suitable for planting by reforestation staff. This is a possibility and is not guaranteed. This exemption must be granted in writing. The requirement to retain approximately 1/6 to 1/3 of tree tops and limbs less than four inches in diameter is still applicable (G. C. & R. 2.2).

2.2.3 - Stump heights (4/07)

Stump heights within the Sale Area shall not exceed 6 inches for all trees.

2.2.6 - Roundwood operation required (5/07)

The skidding of whole trees or tree segments with limbs attached is prohibited within Payment Unit 1. All products must be produced as roundwood and forwarded to existing roads or landing areas in final product length.

3 - Payments

3.3 - Pre-measured Sales

3.3.4 - Dividing payment units (7/14)

Payment Unit(s) may be divided at the request of the Purchaser and upon approval of the Unit Manager. Dividing Payment Units is a contract modification which requires a Timber Sale Contract Amendment.

3.4 - Damaged Timber

3.4.1 - Damaged timber (7/16)

General Condition and Requirement 3.4 Damaged Timber, defines liquidated damages for undesignated live merchantable trees which are cut or injured. In addition, extreme care should be taken to avoid damage to tree seedlings and saplings.

Within the sale area, if more than 50% of the maple tree seedlings or saplings (1/4" to 4.5" DBH) within a specified portion of

Payment Unit 4 are damaged, liquidated damages will be assessed at \$300 per acre for all acreage within that specified portion of the sale area that was damaged.

No damage is acceptable to undesignated live merchantable trees. Within the sale area, if more than 5 % of trees (> 4.5" DBH) within a specified area of the sale are damaged, liquidated damages will be assessed for all trees damaged. Rates will be in accordance with General Condition and Requirement 3.4 Damaged Timber.

4 - Transportation

4.1 - Construction

4.1.6 - Road construction (1/09)

Construction of new roads or improvements of existing roads shall be done in such a way as to minimize the environmental and visual impacts. Merchantable trees shall be cut and utilized unless otherwise directed. Non-merchantable trees shall be severed and laid flat on the ground. Slash shall be scattered, and not left in windrows and kept a minimum of 10 feet back from the road edge. Stumps shall be set upright, not left on edge, and be moved at least 10 feet away from the road edge. Disturbed soil shall be feathered into the woods and not left in berms or windrows.

4.1.7 - Road closure (10/11)

All new roads built into the sale must be blocked to vehicle traffic upon completion of the sale. Overgrown roads that are reopened shall be considered new roads. In general, this will require constructing a four (4') foot high berm of stumps and logs covered with earth. These roads must be rendered impassable to cars and trucks. Temporary berms may be required if no sale activity occurs for 30 or more consecutive days. Contact the sale administrator for specific details of design and placement.

4.2 - Maintenance

4.2.3 - Road maintenance (8/13)

The following road maintenance is required: Within 60 days of completion of hauling, or if no hauling occurs for 60 days, the road must be maintained and graded. This includes cleaning of drainage areas, grading, crowning and filling with gravel, if necessary. Damages will be assessed if grading/repair does not occur.

4.2.5 - Two wheel drive condition (2/04)

All existing trail roads on and adjacent to the sale area must be passable by two-wheel drive traffic for the duration of the sale.

5 - Operations

5.1 - Notification

5.1.1 - Pre-sale conference (10/16)

A pre-sale conference between the Purchaser and sale administrator is required prior to beginning any operations to determine landing and road locations. The Unit Manager or his/her representative must be contacted in advance to schedule the conference.

5.1.4 - Post-sale conference (10/16)

A post-sale conference on site between the Purchaser and sale administrator is required prior to the completion of active logging operations to determine clean-up and repair of landings, road edges, and the fulfillment of other contract specifications.

5.2 - Conduct of Operations

5.2.1 - Slash

5.2.1.8 - Slash height (12/08)

No slash or tree tops may exceed 24 inches in height.

5.2.3 - Operating Restrictions

5.2.3.3 - Bark slippage restriction (3/09)

Within Payment Unit(s) 1, unless changed by written agreement, cutting and skidding are not permitted during the period of April 15 to July 15. This restriction is because of bark slippage.

5.2.3.6 - Bark beetle restriction (12/08)

In the event drought creates a high risk of pine bark beetle infestation, pine is not to be cut during the period March 1 through July 1, unless all portions of trees greater than two inches in diameter are removed from the sale area, reduced to chips, or treated to the satisfaction of the Unit Manager or his/her representative, within fifteen days of being severed from the stump. Pine log decks, pulpwood piles and treetops that are piled for chipping in the fall or winter within a 1/4 mile of susceptible sites must be removed before March 15. Residual slash must not be placed in piles or rows and must be spread over the site for quick drying. The Department of Natural Resources will exercise this specification if the risk of damage warrants.

5.2.32 - Decking/landing restoration (9/13)

All decking and landing areas must have the surface area restored to a condition equal to or better than before. This is to ensure the proper regeneration of the stand. Wood debris, chips and "cookies" from trimmings must be removed or scattered away from landing and loading areas and may not be windrowed on the edge.

5.2.40 - Pathway protection (10/10)

The Midland to Mackinaw hiking trail is shown on the Timber Sale Map. Do not cut trees or damage posts with blue pathway markers. Use caution while operating near the trail.



TIMBER SALE MAP

This information provided by authority of Part 525, 1994 PA 451, as amended.

Forest Management Unit Roscommon	County Roscommon and Ogemaw	Mapped By Martell	Date 8/3/20	Page 1	of 2
Township 24N	Range 01E	Section(s) and Subdivision(s) Sec. 6 - NENW, N1/2NE	Scale 1:7,920		

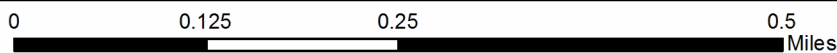
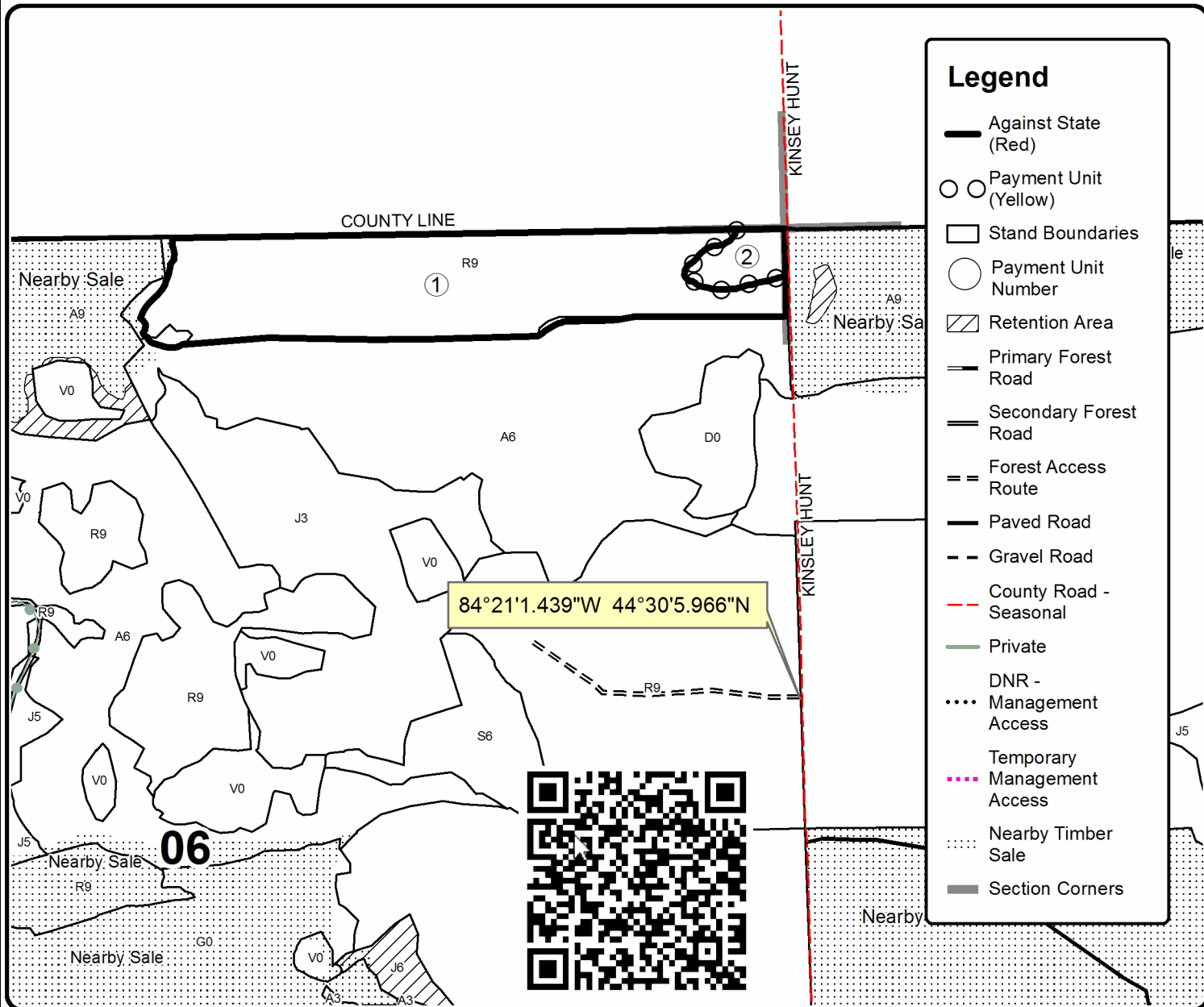
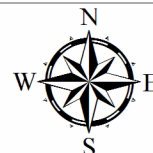
Cover Type				Density	
A = Aspen	H = Hemlock	N = Marsh	U = Upland Brush	0 = Non Stocked	5 = Pole Timber Medium
B = Paper Birch	J = Jack Pine	O = Oak	UM = Upland Mixed	1 = Seedling Sapling Poor	6 = Pole Timber Well
C = Cedar	L = Lowland Brush	P = Lowland Poplar	V = Bog or Marsh	2 = Seedling Sapling Medium	7 = Saw Timber Poor
D = Treed Bog	LM = Lowland Mixed	Q = Mixed Swamp Conifer	W = White Pine	3 = Seedling Sapling Well	8 = Saw Timber Medium
E = Swamp Hdwoods	M = Mpl, Bch, Brch	R = Red Pine	X = Non Stocked	4 = Pole Timber Poor	9 = Saw Timber Well
F = Spruce Fir	MC = Mixed Conifer	S = Black Spruce	Z = Water		
G = Grass	MD = Mixed Deciduous	T = Tamarack			

PU	Acres	PU	Acres
1	23.8	4	29.0
2	1.9	5	13.9
3	26.0		

64 Red Pine

Compartment 64

94.6 Acres





Sale Number	Year
71 - 012	20

TIMBER SALE MAP

This information provided by authority of Part 525, 1994 PA 451, as amended.

Forest Management Unit Roscommon	County Roscommon and Ogemaw	Mapped By Martell	Date 8/3/20	Page 2	of 2
Township 24N	Range 01W	Section(s) and Subdivision(s) Sec. 13 - NWNW, S1/2NW, N1/2SW, SWSW, S1/2SE; Sec. 14 - NESE	Scale 1:15,840		

Cover Type

A = Aspen	H = Hemlock	N = Marsh	U = Upland Brush
B = Paper Birch	J = Jack Pine	O = Oak	UM = Upland Mixed
C = Cedar	L = Lowland Brush	P = Lowland Poplar	V = Bog or Marsh
D = Treed Bog	LM = Lowland Mixed	Q = Mixed Swamp Conifer	W = White Pine
E = Swamp Hdwoods	M = Mpl. Bch, Brch	R = Red Pine	X = Non Stocked
F = Spruce Fir	MC = Mixed Conifer	S = Black Spruce	Z = Water
G = Grass	MD = Mixed Deciduous	T = Tamarack	

Density

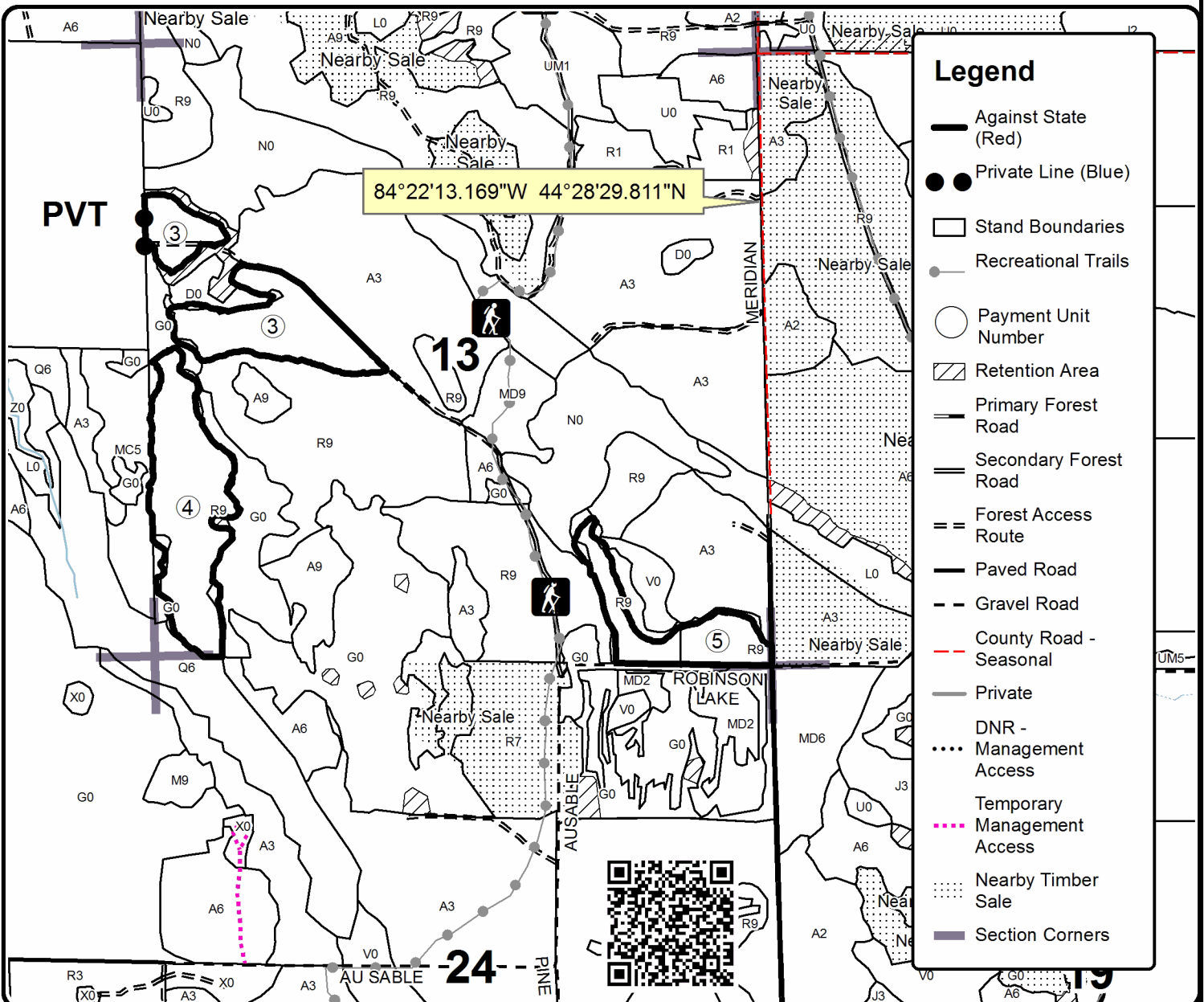
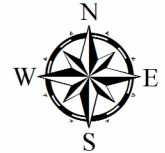
0 = Non Stocked	5 = Pole Timber Medium
1 = Seedling Sapling Poor	6 = Pole Timber Well
2 = Seedling Sapling Medium	7 = Saw Timber Poor
3 = Seedling Sapling Well	8 = Saw Timber Medium
4 = Pole Timber Poor	9 = Saw Timber Well

PU	Acres	PU	Acres
1	23.8	4	29.0
2	1.9	5	13.9
3	26.0		

64 Red Pine

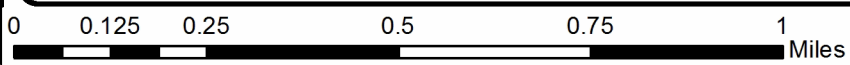
Compartment 64

94.6 Acres



Legend

- Against State (Red)
- Private Line (Blue)
- Stand Boundaries
- Recreational Trails
- Payment Unit Number
- Retention Area
- Primary Forest Road
- Secondary Forest Road
- Forest Access Route
- Paved Road
- Gravel Road
- County Road - Seasonal
- Private
- DNR - Management Access
- Temporary Management Access
- Nearby Timber Sale
- Section Corners



TIMBER SALE INFORMATION

64 Tag Team (71-016-20)

T24N, R01E, SEC. 18; T24N, R01E, SEC. 6; T24N, R01E, SEC. 7; T24N, R01W, SEC. 12.
Ogemaw County (Advertised Price \$158,523.40)

SALE NOTE: A recreation site such as a trail, pathway, or campground is within the sale area or the vicinity. Certain restrictions/specifications may be applicable including time restrictions.

A timber sale contract for this lump sum, sealed bid timber sale will be awarded to the responsible bidder offering the highest sealed bid price. All units of volume listed below were estimated using the T-Sale computer program and our traditional volume equations. Bids must be at or above the following advertised price for each product and species:

<u>PRODUCTS & SPECIES</u>	<u>ESTIMATED UNITS*</u>	<u>ADVERTISED PRICE</u>
Sawtimber		
BI/R/Hybrid Oak	47.3 MBF	\$ 83.00 / MBF
Jack Pine	71.7 MBF	\$ 23.00 / MBF
Quaking Aspen	71.5 MBF	\$ 57.00 / MBF
Red Pine	353.5 MBF	\$ 89.00 / MBF
White Pine	77.5 MBF	\$ 40.00 / MBF
Pulpwood		
Jack Pine	1,298 Cords	\$ 11.65 / Cord
Mixed Hardwood	159 Cords	\$ 14.50 / Cord
Mixed Oak	291 Cords	\$ 14.80 / Cord
Quaking Aspen	2,598 Cords	\$ 20.85 / Cord
Red Pine	556 Cords	\$ 38.05 / Cord
White Pine	867 Cords	\$ 19.90 / Cord

* The estimated units are final and not subject to adjustment. Prospective bidders are urged to examine this timber and to make their own estimates of quantity and quality.

BOND AND PAYMENT SCHEDULE:

1. A bond in the amount of \$7,926.00 to insure faithful performance of the conditions of the contract will be deposited by the successful bidder within 21 days of the sale award.
2. Cutting in any sale or unit without the required advance payment would be considered a trespass.
3. Total payment must be paid in advance or according to the following schedule :
 - (a) Ten percent (10%) of the sale value must be paid within 21 days of the sale award.
 - (b) The 10% down payment will be credited towards the first unit cut.
 - (c) Payment for each of the following units must be made before cutting begins in that unit:

PAYMENT UNIT NUMBER	PERCENT OF TOTAL SALE VALUE
01	5.4%
02	10.4%
03	4.5%
04	18.2%
05	1.9%
06	5.8%
07	4.7%
08	0.8%
09	4.0%
10	3.3%
11	1.2%
12	3.7%
13	11.9%
14	8.8%
15	8.7%
16	6.7%

4. If no cutting takes place, the 10% down payment will not be refunded.
5. Operations on the contract issued will terminate on 12/31/2022.

SALE STATISTICS

SALE VOLUMES

VOLUME			STATISTICAL RANGE IN CORDS	
TOTAL CUBIC FEET	TOTAL CORDS	PERCENT ERROR	MINIMUM	MAXIMUM
554,053	7,013	0.00%	7,013	7,013

VDU VOLUMES

A VDU is a Volume Determination Unit. Volumes and their associated statistics are calculated at the VDU level and summarized to the sale level. There is often a one to one relationship between a VDU and a Payment Unit, but not always, depending on the cruise design. Refer to the VDU TO PAYMENT UNIT table.

VDU	VOLUME			RANGE IN CORDS	
	TOTAL CUBIC FEET	TOTAL CORDS	PERCENT ERROR	MINIMUM	MAXIMUM
38	93,860	1,188	12.62%	1,038	1,338
42	57,804	732	20.78%	580	884
45	19,189	243	28.36%	174	312
89	9,994	127	27.49%	92	161
157	125,697	1,591	10.74%	1,420	1,762
161	1,390	18	63.94%	6	29
163	28,630	362	22.46%	281	444
170	13,833	175	25.50%	130	220
171	31,505	399	26.28%	294	504
173	5,949	75	35.77%	48	102
180	11,463	145	41.84%	84	206
190	154,722	1,959	12.87%	1,706	2,211
TOTAL:	554,035	7,013		5,855	8,171

VDU TO PAYMENT UNIT

When a VDU is associated with more than one Payment Unit (PU), the VDU volumes are assigned to the PU based on acres of the VDU within the PU.

VDU	VDU ACRES	PU	PU ACRES
38	38.7	4	38.7
42	68.7	6	37.8
		7	30.9
45	28.5	12	28.5
89	8.7	5	8.7
157	87.3	2	42.2
		3	18.1
		16	27.0
161	3.6	1	3.6
163	15.7	1	15.7
170	15.0	10	15.0
171	29.1	9	22.2
		10	6.9
173	12.0	8	11.2
		9	0.8
180	21.3	11	21.3
190	86.6	13	34.9
		14	26.0
		15	25.7
TOTAL:	415.2		415.2

DESCRIPTION OF TIMBER BY PAYMENT UNIT (PU)

PU	MARKET GROUP	PRODUCT	QUANTITY	UNIT	ACRES	ADVERTISE PRICE
1	BI/R/Hybrid Oak	Sawtimber	0.4	MBF	19.3	\$8,497.55
	Jack Pine		1.3	MBF		
	Quaking Aspen		5.8	MBF		
	Red Pine		14.0	MBF		
	White Pine		1.5	MBF		
	Jack Pine	Pulpwood	56	Cords		
	Mixed Hardwood		6	Cords		
	<i>Black Cherry</i>		6	Cords		
	Mixed Oak		1	Cords		
	<i>BI/R/Hybrid Oak</i>		1	Cords		
	Quaking Aspen		171	Cords		
	Red Pine		28	Cords		
	White Pine		71	Cords		
2	BI/R/Hybrid Oak	Sawtimber	0.3	MBF	42.2	\$16,493.10
	Jack Pine		23.9	MBF		
	Quaking Aspen		2.9	MBF		
	Red Pine		59.8	MBF		
	White Pine		0.3	MBF		
	Jack Pine	Pulpwood	402	Cords		
	Mixed Oak		16	Cords		
	<i>BI/R/Hybrid Oak</i>		16	Cords		
	Quaking Aspen		61	Cords		
	Red Pine		109	Cords		
	White Pine		4	Cords		
	3	BI/R/Hybrid Oak	Sawtimber	0.1		
Jack Pine			10.2	MBF		
Quaking Aspen			1.2	MBF		
Red Pine			25.7	MBF		
White Pine			0.1	MBF		
Jack Pine		Pulpwood	174	Cords		
Mixed Oak			7	Cords		
<i>BI/R/Hybrid Oak</i>			7	Cords		
Quaking Aspen			26	Cords		
Red Pine			46	Cords		
White Pine			2	Cords		
4	BI/R/Hybrid Oak	Sawtimber	1.9	MBF	38.7	\$28,989.00
	Jack Pine		1.0	MBF		
	Quaking Aspen		8.8	MBF		
	Red Pine		66.6	MBF		
	White Pine		54.7	MBF		
	Jack Pine	Pulpwood	1	Cords		
	Mixed Hardwood		5	Cords		
	<i>Red Maple</i>	Sawtimber	0.4	MBF		
	<i>Red Maple</i>	Pulpwood	4	Cords		
	Mixed Oak		20	Cords		
	<i>BI/R/Hybrid Oak</i>		20	Cords		
	Quaking Aspen		421	Cords		
	Red Pine		86	Cords		
	White Pine		390	Cords		
	5	Quaking Aspen	Sawtimber	2.3		
Red Pine			6.4	MBF		
White Pine			4.0	MBF		
Mixed Hardwood		Pulpwood	5	Cords		
<i>Red Maple</i>			5	Cords		
Mixed Oak			6	Cords		
<i>BI/R/Hybrid Oak</i>			6	Cords		

DESCRIPTION OF TIMBER BY PAYMENT UNIT (PU), CON'T

PU	MARKET GROUP	PRODUCT	QUANTITY	UNIT	ACRES	ADVERTISE PRICE
5 con't	Quaking Aspen Red Pine White Pine	Pulpwood	10 14 66	Cords Cords Cords		
6	Jack Pine Quaking Aspen Red Pine White Pine Jack Pine Mixed Hardwood <i>Black Cherry</i> Mixed Oak <i>BI/R/Hybrid Oak</i> Quaking Aspen Red Pine White Pine	Sawtimber Pulpwood	2.1 4.3 17.2 5.0 52 6 6 2 2 172 32 82	MBF MBF MBF MBF Cords Cords Cords Cords Cords Cords Cords Cords	37.8	\$9,182.20
7	Jack Pine Quaking Aspen Red Pine White Pine Jack Pine Mixed Hardwood <i>Black Cherry</i> Mixed Oak <i>BI/R/Hybrid Oak</i> Quaking Aspen Red Pine White Pine	Sawtimber Pulpwood	1.7 3.6 14.1 4.1 43 5 5 1 1 140 26 67	MBF MBF MBF MBF Cords Cords Cords Cords Cords Cords Cords Cords	30.9	\$7,493.05
8	Jack Pine Quaking Aspen Red Pine Jack Pine Mixed Hardwood <i>Black Cherry</i> Quaking Aspen Red Pine	Sawtimber Pulpwood	1.5 2.0 0.5 31 6 6 25 1	MBF MBF MBF Cords Cords Cords Cords Cords	11.2	\$1,200.45
9	BI/R/Hybrid Oak Jack Pine Quaking Aspen Red Pine White Pine Jack Pine Mixed Hardwood <i>Black Cherry</i> Mixed Oak <i>BI/R/Hybrid Oak</i> Quaking Aspen Red Pine White Pine	Sawtimber Pulpwood	0.3 1.1 9.0 1.4 2.9 27 2 2 11 11 216 2 22	MBF MBF MBF MBF MBF Cords Cords Cords Cords Cords Cords Cords Cords	23.0	\$6,327.65
10	BI/R/Hybrid Oak Jack Pine Quaking Aspen Red Pine White Pine Jack Pine Mixed Oak <i>BI/R/Hybrid Oak</i>	Sawtimber Pulpwood	0.1 3.9 6.2 0.4 0.9 48 11 11	MBF MBF MBF MBF MBF Cords Cords Cords	21.9	\$5,158.15

DESCRIPTION OF TIMBER BY PAYMENT UNIT (PU), CON'T

PU	MARKET GROUP	PRODUCT	QUANTITY	UNIT	ACRES	ADVERTISE PRICE
14 con't	<i>White Oak</i>	<i>Pulpwood</i>	3	<i>Cords</i>		
	Quaking Aspen		333	Cords		
	Red Pine		32	Cords		
	White Pine		29	Cords		
15	BI/R/Hybrid Oak	Sawtimber	10.4	MBF	25.7	\$13,816.95
	Jack Pine		0.5	MBF		
	Quaking Aspen		7.0	MBF		
	Red Pine		27.9	MBF		
	White Pine		0.7	MBF		
	Jack Pine	Pulpwood	20	Cords		
	Mixed Hardwood		32	Cords		
	<i>Red Maple</i>	<i>Sawtimber</i>	1.2	<i>MBF</i>		
	<i>Black Cherry</i>	<i>Pulpwood</i>	6	<i>Cords</i>		
	<i>Red Maple</i>		24	<i>Cords</i>		
	Mixed Oak		46	Cords		
	<i>White Oak</i>	<i>Sawtimber</i>	1.7	<i>MBF</i>		
	<i>BI/R/Hybrid Oak</i>	<i>Pulpwood</i>	40	<i>Cords</i>		
	<i>White Oak</i>		3	<i>Cords</i>		
	Quaking Aspen		329	Cords		
	Red Pine		32	Cords		
	White Pine		29	Cords		
16	BI/R/Hybrid Oak	Sawtimber	0.2	MBF	27.0	\$10,549.15
	Jack Pine		15.2	MBF		
	Quaking Aspen		1.8	MBF		
	Red Pine		38.3	MBF		
	White Pine		0.2	MBF		
	Jack Pine	Pulpwood	259	Cords		
	Mixed Oak		10	Cords		
	<i>BI/R/Hybrid Oak</i>		10	<i>Cords</i>		
	Quaking Aspen		39	Cords		
	Red Pine		69	Cords		
	White Pine		3	Cords		
TOTAL:			621.5	MBF		
TOTAL:			5,767	Cords		

Sale Specific Conditions & Requirements

Sale Name: 64 Tag Team

Sale Number: 71-016-20 Seq#: 1

1 - Sale Area

1.2 - Boundaries

1.2.1 - Painted boundaries (9/19)

The sale boundary and Payment Unit boundaries are marked and identified by red and yellow paint. Exterior sale boundary lines against state are marked with red paint. Interior Payment Unit boundaries are marked with yellow paint. Retention patches are marked with red paint; no harvesting activities may occur within these areas. The painted boundary line trees are not Included Timber and are to be protected unless marked with orange paint. Yellow painted trees designating an interior Payment Unit boundary are only to be cut when all surrounding Payment Units have been paid.

2 - Timber Specifications

2.1 - Included Timber

2.1.1 - Clearcut unit(s) with unmerchantable trees (6/14)

Within Payment Unit(s) 1-4, 6-11, and 13-16, cut all trees that are two (2) inches or more at DBH.

2.1.3 - Cut tree marked unit(s) (12/08)

Within Payment Unit(s) 5 and 12, all trees are designated for cutting when marked with orange paint above and below stump height, regardless of merchantability. In addition, within Payment Unit 5, cut all other trees, except do not cut red pine and white pine. Also, within Payment Unit 12, cut all jack pine and aspen.

2.2 - Utilization

2.2.2 - Chipping required (2/18)

Payment Units 6-8 and 11 must be chip harvested to facilitate subsequent planting operations. Products may be produced as roundwood and forwarded to decking areas in final product length, but the tops must be left intact and skidded to the landing for chipping in order to minimize the amount of residual slash. There is a possibility of obtaining a chipping exemption if market conditions limit the practicality of chipping and if tops and slash are arranged in a way that will not inhibit future planting operations, as directed by the sale administrator. This exemption must be granted in writing. Note that there is no guarantee an exemption will be granted. The requirement to retain approximately 1/6 to 1/3 of tree tops and limbs less than four inches in diameter is still applicable (G. C. & R. 2.2).

2.2.3 - Stump heights (4/07)

Stump heights within the Sale Area shall not exceed 12 inches for trees greater than 16 inches DBH and 6 inches for trees smaller than 16 inches DBH.

2.2.6 - Roundwood operation required (5/07)

The skidding of whole trees or tree segments with limbs attached is prohibited within Payment Units 5 and 12. All products must be produced as roundwood and forwarded to existing roads or landing areas in final product length.

2.2.9 - No chipping permitted (12/08)

Within Payment Unit(s) 5 and 12, no chipping is permitted.

3 - Payments

3.3 - Pre-measured Sales

3.3.4 - Dividing payment units (7/14)

Payment Unit(s) may be divided at the request of the Purchaser and upon approval of the Unit Manager. Dividing Payment Units is a contract modification which requires a Timber Sale Contract Amendment.

3.4 - Damaged Timber

3.4.1 - Damaged timber (7/16)

General Condition and Requirement 3.4 Damaged Timber, defines liquidated damages for undesignated live merchantable trees which are cut or injured.

No damage is acceptable to undesignated live merchantable trees. Within the sale area, if more than 5% of trees (> 4.5" DBH) within a specified area of the sale are damaged, liquidated damages will be assessed for all trees damaged. Rates will be in accordance with General Condition and Requirement 3.4 Damaged Timber.

4 - Transportation

4.1 - Construction

4.1.6 - Road construction (1/09)

Construction of new roads or improvements of existing roads shall be done in such a way as to minimize the environmental and visual impacts. Merchantable trees shall be cut and utilized unless otherwise directed. Non-merchantable trees shall be severed and laid flat on the ground. Slash shall be scattered, and not left in windrows and kept a minimum of 10 feet back from the road edge. Stumps shall be set upright, not left on edge, and be moved at least 10 feet away from the road edge. Disturbed soil shall be feathered into the woods and not left in berms or windrows.

4.1.7 - Road closure (10/11)

All new roads built into the sale must be blocked to vehicle traffic upon completion of the sale. Overgrown roads that are reopened shall be considered new roads. In general, this will require constructing a four (4') foot high berm of stumps and logs covered with earth. These roads must be rendered impassable to cars and trucks. All stumps from road building and landing construction must be reserved to block any newly constructed roads upon completion of the sale. Temporary berms may be required if no sale activity occurs for 30 or more consecutive days. Contact the sale administrator for specific details of design and placement.

4.2 - Maintenance

4.2.3 - Road maintenance (8/13)

The following road maintenance may be needed: within 60 days of completion of hauling, or if no hauling occurs for 60 days, the road must be maintained and graded. This includes cleaning of drainage areas, grading, crowning and filling with gravel, if necessary. Damages will be assessed if grading/repair does not occur.

4.2.5 - Two wheel drive condition (2/04)

All existing trail roads on and adjacent to the sale area must be passable by two-wheel drive traffic for the duration of the sale.

5 - Operations

5.1 - Notification

5.1.1 - Pre-sale conference (10/16)

A pre-sale conference between the Purchaser and sale administrator is required prior to beginning any operations to determine landing and road locations. The Unit Manager or his/her representative must be contacted at least 1 day in advance to schedule the conference.

5.1.4 - Post-sale conference (10/16)

A post-sale conference on site between the Purchaser and sale administrator is required prior to the completion of active logging operations to determine clean-up and repair of landings, road edges, and the fulfillment of other contract specifications.

5.2 - Conduct of Operations

5.2.1 - Slash

5.2.1.8 - Slash height (12/08)

No slash or tree tops may exceed 24 inches in height.

5.2.1.11 - Slash for reforestation (5/07)

To facilitate reforestation, Payment Units 2 and 16 shall be left with slash evenly distributed. Bunched tops within the cutting area shall be broken up and scattered. Stumps shall be cut low to the ground. Processing sites shall not be left with a compacted layer of slash; tops from these sites shall be hauled back into the cut area and scattered. Tops and slash from Payment Unit 3 shall either be moved to Payment Units 2 and 6 and spread evenly, or be chipped and hauled off site. This is due to future fuel break treatments.

5.2.3 - Operating Restrictions

5.2.3.3 - Bark slippage restriction (3/09)

Within Payment Unit(s) 5 and 12, unless changed by written agreement, cutting and skidding are not permitted during the period of April 15 to July 15. This restriction is because of bark slippage.

5.2.3.6 - Bark beetle restriction (12/08)

In the event drought creates a high risk of pine bark beetle infestation, pine is not to be cut during the period March 1 through July 1, unless all portions of trees greater than two inches in diameter are removed from the sale area, reduced to chips, or treated to the satisfaction of the Unit Manager or his/her representative, within fifteen days of being severed from the stump. Pine log decks, pulpwood piles and treetops that are piled for chipping in the fall or winter within a 1/4 mile of susceptible sites must be removed before March 15. Residual slash must not be placed in piles or rows and must be spread over the site for quick drying. The Department of Natural Resources will exercise this specification if the risk of damage warrants.

5.2.3.11 - Coppice regeneration protection (4/10)

Any post harvest operations, such as chipping, must be completed before sprouting of regeneration occurs. If it is anticipated that chipping will be delayed, then tops shall be carried to one central location or left unchipped. The Unit Manager or his/her representative may cease such operations if sprouting occurs before the operation is complete.

5.2.4 - Dead and Down Creation

5.2.4.2 - Dead and down creation, hare and grouse (1/14)

To improve habitat for snowshoe hare, grouse, and other species, the Purchaser is to leave two trees, nine (9) inches or larger in diameter, on the ground for every two acres in Payment Units 1, 4, 9, 10, and 13-15. They should be scattered throughout the Payment Units. The logs or trees should be felled so they overlap. Note these pieces should have a minimum length of five feet. They can be of any tree species and can be an un-merchantable piece of wood or a full tree.

5.2.29 - Shrub protection (1/20)

Do not cut or damage hawthorn, witch-hazel, dogwood or junberry (especially prevalent within Payment Units 13-15). These woody-shrub plants are highly beneficial to various wildlife species.

5.2.32 - Decking/landing restoration (9/13)

All decking and landing areas must have the surface area restored to a condition equal to or better than before. This is to ensure the proper regeneration of the stand. Wood debris, chips and "cookies" from trimmings must be removed or scattered away from landing and loading areas and may not be windrowed on the edge.

5.2.40 - Pathway protection (10/10)

The Midland to Mackinaw hiking trail is shown on the Timber Sale Map. Do not cut trees or damage posts with blue pathway markers. Use caution when operating near and along this trail.

5.2.41 - Snowmobile trail protection (9/11)

The snowmobile trail is shown on the Timber Sale Map. Do not cut or damage posts with orange trail markers or traffic control signs. If the trail is used, it must be maintained and restored to a condition equal to or better than before the sale. The road maintenance/restoration must be done prior to December 1. If the trail road is to be used for hauling during the snowmobile season, then a snow covered base must be left on the trail. The snowmobile trail may only be crossed at right angles.

6 - Safety and Fire Prevention

6.2 - Signing

6.2.3 - Recreational trail posting (2/10)

The Purchaser is responsible for posting and maintaining caution signs on the snowmobile trail and the Midland to Mackinaw hiking trail prior to beginning operations. The trail must be posted at appropriate distances from the sale area to warn of logging activity and truck traffic at both ends of the trail. Signs must be removed when harvest operations are suspended or completed. The Purchaser will provide these signs.



TIMBER SALE MAP

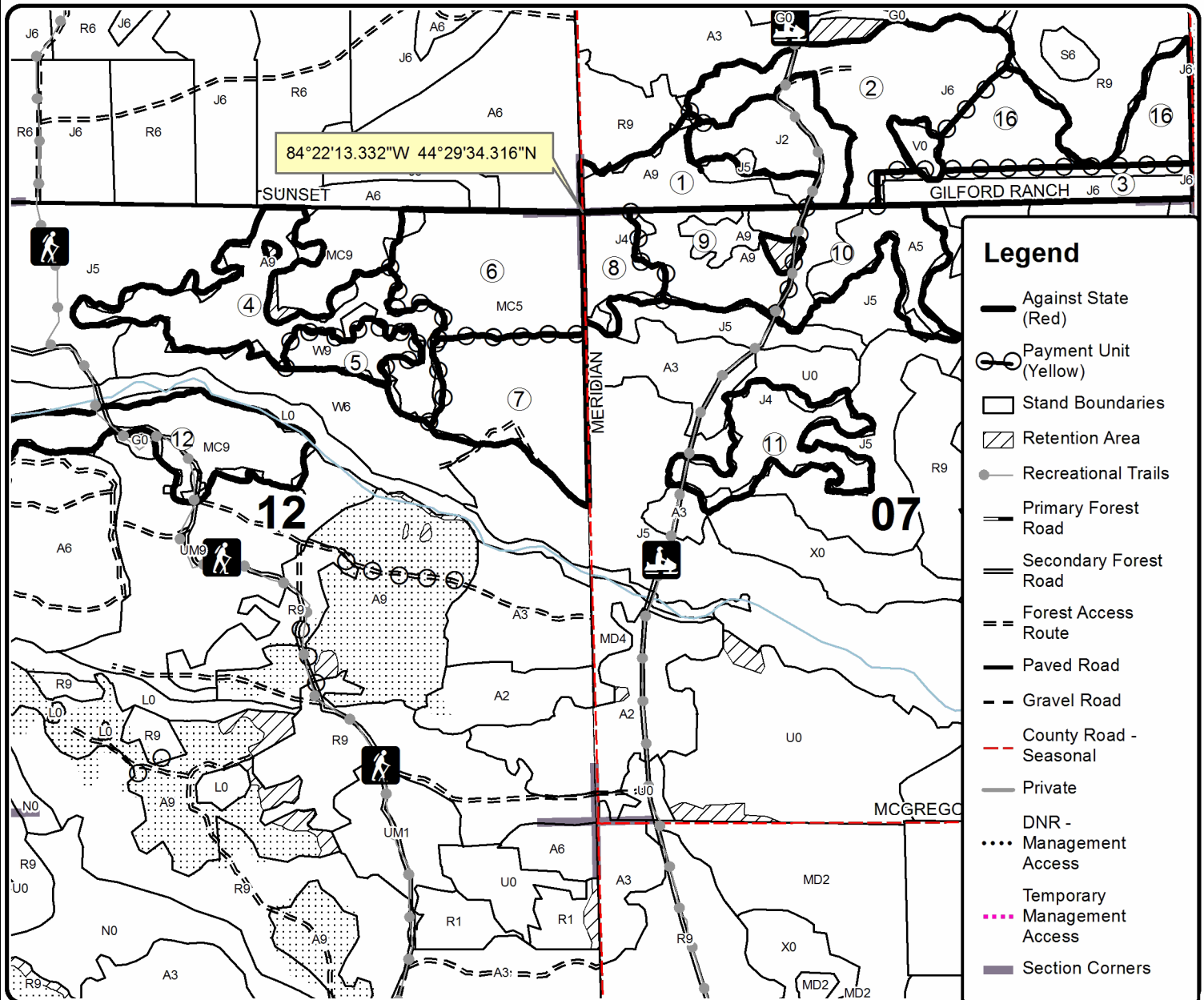
This information provided by authority of Part 525, 1994 PA 451, as amended.

Forest Management Unit Roscommon	County Roscommon, Ogemaw	Mapped By Martell	Date 08/26/2020	Page 1	of 2
Township 24N	Range 01W, 01E	Section(s) and Subdivision(s) Sec. 6 - NESW,S1/2SW,SE; Sec. 7 - NW,NWNE; Sec. 12 - NW,NE	Scale 1:15,840		

Cover Type				Density	
A = Aspen	H = Hemlock	N = Marsh	U = Upland Brush	0 = Non Stocked	5 = Pole Timber Medium
B = Paper Birch	J = Jack Pine	O = Oak	UM = Upland Mixed	1 = Seedling Sapling Poor	6 = Pole Timber Well
C = Cedar	L = Lowland Brush	P = Lowland Poplar	V = Bog or Marsh	2 = Seedling Sapling Medium	7 = Saw Timber Poor
D = Treed Bog	LM = Lowland Mixed	Q = Mixed Swamp Conifer	W = White Pine	3 = Seedling Sapling Well	8 = Saw Timber Medium
E = Swamp Hdwoods	M = Mpl, Bch, Brch	R = Red Pine	X = Non Stocked	4 = Pole Timber Poor	9 = Saw Timber Well
F = Spruce Fir	MC = Mixed Conifer	S = Black Spruce	Z = Water		
G = Grass	MD = Mixed Deciduous	T = Tamarack			

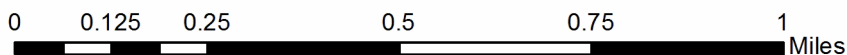
PU	Acres	PU	Acres	PU	Acres
1	19.3	6	37.8	11	21.3
2	42.2	7	30.9	12	28.5
3	18.1	8	11.2	16	27.0
4	38.7	9	23.0		
5	8.7	10	21.9		

64 Tag Team Compartment 64 415.2 Acres



Legend

- Against State (Red)
- Payment Unit (Yellow)
- Stand Boundaries
- Retention Area
- Recreational Trails
- Primary Forest Road
- Secondary Forest Road
- Forest Access Route
- Paved Road
- Gravel Road
- County Road - Seasonal
- Private
- DNR - Management Access
- Temporary Management Access
- Section Corners





Sale Number	Year
71 - 016	20

TIMBER SALE MAP

This information provided by authority of Part 525, 1994 PA 451, as amended.

Forest Management Unit Roscommon	County Ogemaw	Mapped By Martell	Date 08/26/2020	Page 2	of 2
Township 24N	Range 01E	Section(s) and Subdivision(s) Sec. 18 - SENW,SW	Scale 1:15,840		

Cover Type

A = Aspen	H = Hemlock	N = Marsh	U = Upland Brush
B = Paper Birch	J = Jack Pine	O = Oak	UM = Upland Mixed
C = Cedar	L = Lowland Brush	P = Lowland Poplar	V = Bog or Marsh
D = Treed Bog	LM = Lowland Mixed	Q = Mixed Swamp Conifer	W = White Pine
E = Swamp Hdwoods	M = Mpl. Bch, Brch	R = Red Pine	X = Non Stocked
F = Spruce Fir	MC = Mixed Conifer	S = Black Spruce	Z = Water
G = Grass	MD = Mixed Deciduous	T = Tamarack	

Density

0 = Non Stocked	5 = Pole Timber Medium
1 = Seedling Sapling Poor	6 = Pole Timber Well
2 = Seedling Sapling Medium	7 = Saw Timber Poor
3 = Seedling Sapling Well	8 = Saw Timber Medium
4 = Pole Timber Poor	9 = Saw Timber Well

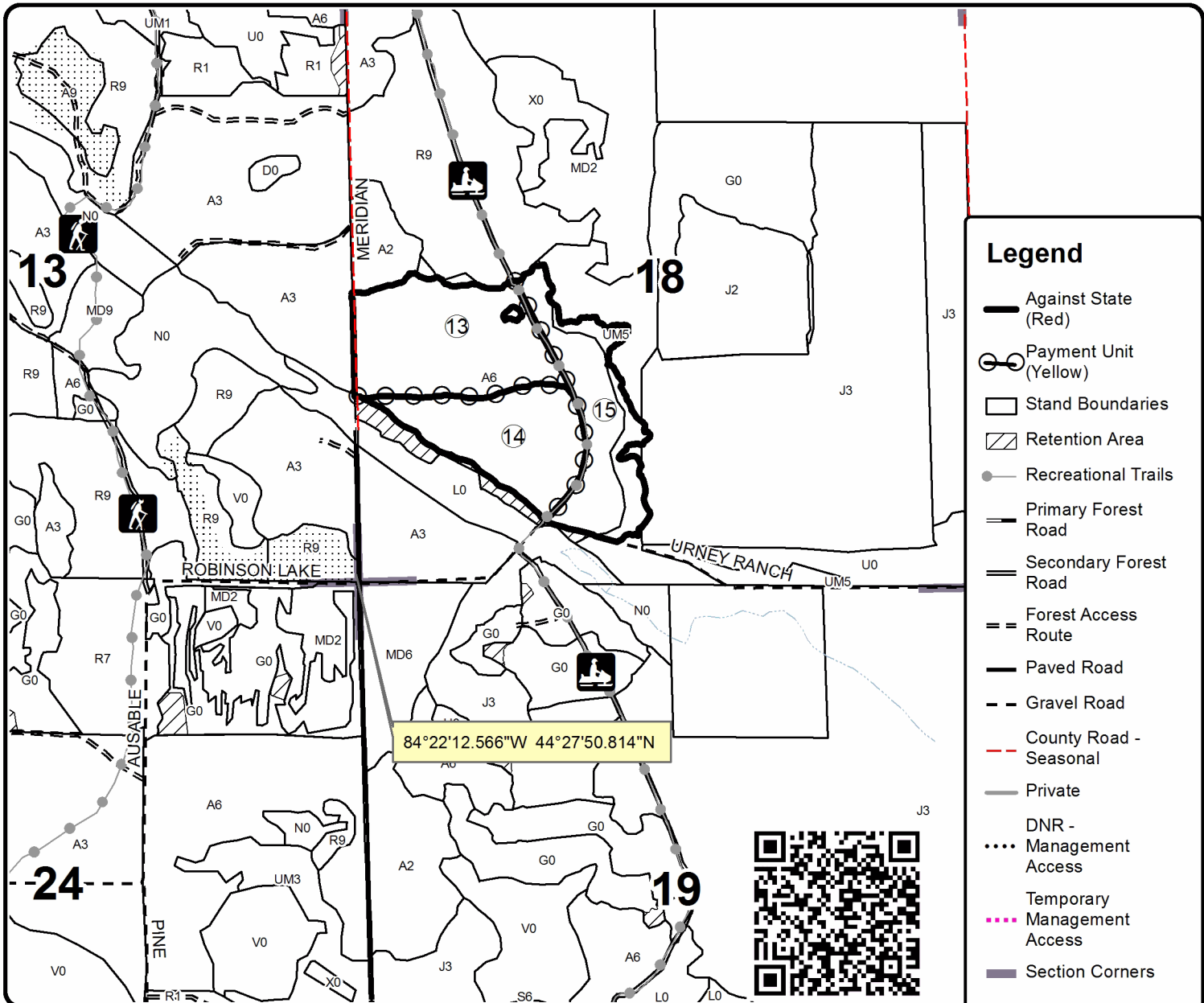
PU Acres

13	34.9
14	26.0
15	25.7

64 Tag Team

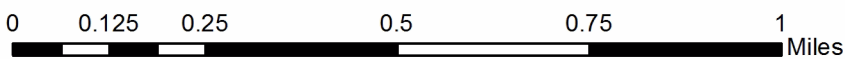
Compartment 64

415.2 Acres



Legend

- Against State (Red)
- Payment Unit (Yellow)
- Stand Boundaries
- Retention Area
- Recreational Trails
- Primary Forest Road
- Secondary Forest Road
- Forest Access Route
- Paved Road
- Gravel Road
- County Road - Seasonal
- Private
- DNR - Management Access
- Temporary Management Access
- Section Corners



Turkey Call Aspen (71-011-20)

T24N, R01E, SEC. 5; T24N, R01E, SEC. 6; T24N, R01W, SEC. 11; T24N, R01W,

In response to the notice of sale to be held 9:00 a.m. (local time) on December 8, 2020, I am hereby submitting my sealed bid (firm offer) for the following forest products to be cut. Bids for individual species must be at or above the advertised price. All non-responsive bid forms may be rejected.

<u>PRODUCTS & SPECIES</u>	<u>ESTIMATED VOLUME*</u>	<u>ADVERTISED PRICE</u>	<u>BID PRICE/UNIT</u>
Sawtimber			
Bl/R/Hybrid Oak	16.3 MBF	\$ 83.00/MBF	\$ _____
Quaking Aspen	178.1 MBF	\$ 57.00/MBF	\$ _____
Red Maple	51.3 MBF	\$ 57.00/MBF	\$ _____
Red Pine	245.7 MBF	\$ 89.00/MBF	\$ _____
White Pine	73.6 MBF	\$ 34.00/MBF	\$ _____
Pulpwood			
Balsam Fir	2 Cords	\$ 20.45/Cord	\$ _____
Jack Pine	99 Cords	\$ 11.65/Cord	\$ _____
Mixed Aspen	2,595 Cords	\$ 20.85/Cord	\$ _____
Mixed Hardwood	495 Cords	\$ 14.50/Cord	\$ _____
Mixed Oak	106 Cords	\$ 14.80/Cord	\$ _____
Red Pine	223 Cords	\$ 38.05/Cord	\$ _____
White Pine	457 Cords	\$ 19.90/Cord	\$ _____

*The volumes are statistically estimated within plus (+) or minus (-) 6.64 percent at 95% confidence level. These estimated volumes are final and not subject to adjustment. Prospective bidders are urged to examine this timber and to make their own estimates of quantity and quality.

I understand that any or all bids may be rejected. All bids must be signed and all bid items must be bid or the bid form may be rejected. I also understand that consideration and awarding a contract will be based upon my past performance and ability to complete the contract based upon equipment and staffing subject to my control.

FEDERAL ID: ____ - ____ - ____ or SOCIAL SECURITY NUMBER: ____ - ____ - ____

Company or individual bidding: _____

Company representative's name: _____

Address: _____

City: _____ State: _____ Zip: _____

IF AVAILABLE, PLEASE PLACE THE PERSONALIZED LABEL FROM YOUR PROSPECTUS IN THE ABOVE BOX.

Individual or company representative's signature: _____ Date: _____

Phone number : _____ Email (optional): _____

THE WINNING BIDDER MUST COMPLETE THE VERIFICATION OF WORKER'S DISABILITY COMPENSATION ACT COMPLIANCE (ON REVERSE SIDE IF DOUBLE SIDED) WITHIN 21 DAYS OF SALE AWARD DATE



FOR DEPARTMENT USE ONLY	
Sale Number (XX - XXX - XX - XX)	
Forest Management Unit:	

TIMBER SALE VERIFICATION OF WORKER'S DISABILITY COMPENSATION ACT COMPLIANCE

As required by Act 317, P.A. 1969 (Worker's Compensation) and
Part 5 of Act 451 of 1994, as amended.

VERIFICATION OF WORKER'S DISABILITY COMPENSATION ACT COMPLIANCE

- This verification must be completed and submitted within 21 days of contract award and prior to the issuance of the timber sale contract.
- In addition, if boxes 2B or 2C are checked, then Notice of Exclusion or Certificate of Insurance must be submitted within twenty-one (21) days of the contract award and prior to the issuance of the timber sale contract.
- All information must be typed or printed except for written signatures.

Please Check Appropriate Categories:

1. My business is organized as (you **must** check one of the boxes below):
 - A. Sole Proprietorship (individual)
 - B. Partnership
 - C. Corporation
2. You **must** check one of the boxes below:
 - A. I certify my business is a sole proprietorship and it has no employees but the sole proprietor. I am not subject to the Worker's Compensation Laws.
 - B. I certify my business has satisfied its obligation to the Worker's Compensation Act through the use of an approved Notice of Exclusion (BWC-337, Rev. 5/96). I will provide a copy of the Notice of Exclusion within 21 days of the contract award. (For questions or a copy of the BWC-337, please call the Worker's Compensation Bureau at 517-322-1195).
 - C. I certify my business has a Worker's Compensation Policy. I will provide an original Certificate of Insurance within twenty-one (21) days of the contract award.
3. If you have checked item 2(A) or 2(B), you **must** indicate the number of **both** full-time and part-time employees, other than yourself, including family members and active partners (if none, you must enter "0").

_____ Full-time Employees

_____ Part-time Employees

Name of Business		Federal ID (or) Social Security No.	
Address		Telephone ()	
City	State	ZIP	

I hereby certify that the above information is true and correct. I agree to notify the Michigan DNR of any changes that occur in factors affecting my coverage during any of my present and future operations.

Signature of Owner or Authorized Representative

Title

Date

Please complete the "SEALED BID" information on the next page

64 Red Pine (71-012-20)

T24N, R01E, SEC. 6; T24N, R01W, SEC. 13; T24N, R01W, SEC. 14; Roscommon

In response to the notice of sale to be held 9:00 a.m. (local time) on December 8, 2020, I am hereby submitting my sealed bid (firm offer) for the following forest products to be cut. Bids for individual species must be at or above the advertised price. All non-responsive bid forms may be rejected.

<u>PRODUCTS & SPECIES</u>	<u>ESTIMATED VOLUME*</u>	<u>ADVERTISED PRICE</u>	<u>BID PRICE/UNIT</u>
Sawtimber			
Red Pine	773.0 MBF	\$ 89.00/MBF	\$ _____
Sugar Maple	4.6 MBF	\$ 117.00/MBF	\$ _____
Pulpwood			
Balsam Fir	69 Cords	\$ 20.45/Cord	\$ _____
Bl/R/Hybrid Oak	12 Cords	\$ 14.80/Cord	\$ _____
Jack Pine	94 Cords	\$ 11.65/Cord	\$ _____
Mixed Aspen	120 Cords	\$ 20.85/Cord	\$ _____
Mixed Hardwood	138 Cords	\$ 14.50/Cord	\$ _____
Red Pine	1,077 Cords	\$ 38.05/Cord	\$ _____
White Pine	83 Cords	\$ 19.90/Cord	\$ _____

*The volumes are statistically estimated within plus (+) or minus (-) 10.27 percent at 95% confidence level. These estimated volumes are final and not subject to adjustment. Prospective bidders are urged to examine this timber and to make their own estimates of quantity and quality.

I understand that any or all bids may be rejected. All bids must be signed and all bid items must be bid or the bid form may be rejected. I also understand that consideration and awarding a contract will be based upon my past performance and ability to complete the contract based upon equipment and staffing subject to my control.

FEDERAL ID: ____ - ____ - ____ or SOCIAL SECURITY NUMBER: ____ - ____ - ____

Company or individual bidding: _____

Company representative's name: _____

Address: _____

City: _____ State: _____ Zip: _____

IF AVAILABLE, PLEASE PLACE THE PERSONALIZED LABEL FROM YOUR PROSPECTUS IN THE ABOVE BOX.

Individual or company representative's signature: _____ Date: _____

Phone number : _____ Email (optional): _____

THE WINNING BIDDER MUST COMPLETE THE VERIFICATION OF WORKER'S DISABILITY COMPENSATION ACT COMPLIANCE (ON REVERSE SIDE IF DOUBLE SIDED) WITHIN 21 DAYS OF SALE AWARD DATE



FOR DEPARTMENT USE ONLY
Sale Number (XX - XXX - XX - XX)
Forest Management Unit:

TIMBER SALE VERIFICATION OF WORKER'S DISABILITY COMPENSATION ACT COMPLIANCE

*As required by Act 317, P.A. 1969 (Worker's Compensation) and
Part 5 of Act 451 of 1994, as amended.*

VERIFICATION OF WORKER'S DISABILITY COMPENSATION ACT COMPLIANCE

- This verification must be completed and submitted within 21 days of contract award and prior to the issuance of the timber sale contract.
- In addition, if boxes 2B or 2C are checked, then Notice of Exclusion or Certificate of Insurance must be submitted within twenty-one (21) days of the contract award and prior to the issuance of the timber sale contract.
- All information must be typed or printed except for written signatures.

Please Check Appropriate Categories:

1. My business is organized as (you **must** check one of the boxes below):
 - A. Sole Proprietorship (individual)
 - B. Partnership
 - C. Corporation

2. You **must** check one of the boxes below:
 - A. I certify my business is a sole proprietorship and it has no employees but the sole proprietor. I am not subject to the Worker's Compensation Laws.
 - B. I certify my business has satisfied its obligation to the Worker's Compensation Act through the use of an approved Notice of Exclusion (BWC-337, Rev. 5/96). I will provide a copy of the Notice of Exclusion within 21 days of the contract award. (For questions or a copy of the BWC-337, please call the Worker's Compensation Bureau at 517-322-1195).
 - C. I certify my business has a Worker's Compensation Policy. I will provide an original Certificate of Insurance within twenty-one (21) days of the contract award.

3. If you have checked item 2(A) or 2(B), you **must** indicate the number of **both** full-time and part-time employees, other than yourself, including family members and active partners (if none, you must enter "0").

_____ Full-time Employees

_____ Part-time Employees

Name of Business		Federal ID (or) Social Security No.	
Address		Telephone ()	
City	State	ZIP	

I hereby certify that the above information is true and correct. I agree to notify the Michigan DNR of any changes that occur in factors affecting my coverage during any of my present and future operations.

Signature of Owner or Authorized Representative

Title

Date

Please complete the "SEALED BID" information on the next page

64 Tag Team (71-016-20)

T24N, R01E, SEC. 18; T24N, R01E, SEC. 6; T24N, R01E, SEC. 7; T24N, R01W,

In response to the notice of sale to be held 9:00 a.m. (local time) on December 8, 2020, I am hereby submitting my sealed bid (firm offer) for the following forest products to be cut. Bids for individual species must be at or above the advertised price. All non-responsive bid forms may be rejected.

<u>PRODUCTS & SPECIES</u>	<u>ESTIMATED VOLUME*</u>	<u>ADVERTISED PRICE</u>	<u>BID PRICE/UNIT</u>
Sawtimber			
Bl/R/Hybrid Oak	47.3 MBF	\$ 83.00/MBF	\$ _____
Jack Pine	71.7 MBF	\$ 23.00/MBF	\$ _____
Quaking Aspen	71.5 MBF	\$ 57.00/MBF	\$ _____
Red Pine	353.5 MBF	\$ 89.00/MBF	\$ _____
White Pine	77.5 MBF	\$ 40.00/MBF	\$ _____
Pulpwood			
Jack Pine	1,298 Cords	\$ 11.65/Cord	\$ _____
Mixed Hardwood	159 Cords	\$ 14.50/Cord	\$ _____
Mixed Oak	291 Cords	\$ 14.80/Cord	\$ _____
Quaking Aspen	2,598 Cords	\$ 20.85/Cord	\$ _____
Red Pine	556 Cords	\$ 38.05/Cord	\$ _____
White Pine	867 Cords	\$ 19.90/Cord	\$ _____

*These estimated volumes are final and not subject to adjustment. Prospective bidders are urged to examine this timber and to make their own estimates of quantity and quality.

I understand that any or all bids may be rejected. All bids must be signed and all bid items must be bid or the bid form may be rejected. I also understand that consideration and awarding a contract will be based upon my past performance and ability to complete the contract based upon equipment and staffing subject to my control.

FEDERAL ID: _____ - _____ or SOCIAL SECURITY NUMBER: _____ - _____ - _____

Company or individual bidding: _____

Company representative's name: _____

Address: _____

City: _____ State: _____ Zip: _____

IF AVAILABLE, PLEASE PLACE THE PERSONALIZED LABEL FROM YOUR PROSPECTUS IN THE ABOVE BOX.

Individual or company representative's signature: _____ Date: _____

Phone number : _____ Email (optional): _____

THE WINNING BIDDER MUST COMPLETE THE VERIFICATION OF WORKER'S DISABILITY COMPENSATION ACT COMPLIANCE (ON REVERSE SIDE IF DOUBLE SIDED) WITHIN 21 DAYS OF SALE AWARD DATE



FOR DEPARTMENT USE ONLY
Sale Number (XX - XXX - XX - XX)
Forest Management Unit:

TIMBER SALE VERIFICATION OF WORKER'S DISABILITY COMPENSATION ACT COMPLIANCE

*As required by Act 317, P.A. 1969 (Worker's Compensation) and
Part 5 of Act 451 of 1994, as amended.*

VERIFICATION OF WORKER'S DISABILITY COMPENSATION ACT COMPLIANCE

- This verification must be completed and submitted within 21 days of contract award and prior to the issuance of the timber sale contract.
- In addition, if boxes 2B or 2C are checked, then Notice of Exclusion or Certificate of Insurance must be submitted within twenty-one (21) days of the contract award and prior to the issuance of the timber sale contract.
- All information must be typed or printed except for written signatures.

Please Check Appropriate Categories:

1. My business is organized as (you **must** check one of the boxes below):
 - A. Sole Proprietorship (individual)
 - B. Partnership
 - C. Corporation
2. You **must** check one of the boxes below:
 - A. I certify my business is a sole proprietorship and it has no employees but the sole proprietor. I am not subject to the Worker's Compensation Laws.
 - B. I certify my business has satisfied its obligation to the Worker's Compensation Act through the use of an approved Notice of Exclusion (BWC-337, Rev. 5/96). I will provide a copy of the Notice of Exclusion within 21 days of the contract award. (For questions or a copy of the BWC-337, please call the Worker's Compensation Bureau at 517-322-1195).
 - C. I certify my business has a Worker's Compensation Policy. I will provide an original Certificate of Insurance within twenty-one (21) days of the contract award.
3. If you have checked item 2(A) or 2(B), you **must** indicate the number of **both** full-time and part-time employees, other than yourself, including family members and active partners (if none, you must enter "0").

_____ Full-time Employees

_____ Part-time Employees

Name of Business		Federal ID (or) Social Security No.	
Address		Telephone ()	
City	State	ZIP	

I hereby certify that the above information is true and correct. I agree to notify the Michigan DNR of any changes that occur in factors affecting my coverage during any of my present and future operations.

Signature of Owner or Authorized Representative

Title

Date

Please complete the "SEALED BID" information on the next page

Red Oak Experiment (71-003-20)
T21N, R01W, SEC. 10; T21N, R01W, SEC. 14; T21N, R01W, SEC. 15;

In response to the notice of sale to be held 9:00 a.m. (local time) on December 8, 2020, I am hereby submitting my sealed bid (firm offer) for the following forest products to be cut. Bids for individual species must be at or above the advertised price. All non-responsive bid forms may be rejected.

<u>PRODUCTS & SPECIES</u>	<u>ESTIMATED VOLUME*</u>	<u>ADVERTISED PRICE</u>	<u>BID PRICE/UNIT</u>
Sawtimber			
B. T. Aspen	51.8 MBF	\$ 57.00/MBF	\$ _____
Bl/R/Hybrid Oak	22.9 MBF	\$ 83.00/MBF	\$ _____
Red Maple	13.6 MBF	\$ 57.00/MBF	\$ _____
Red Oak	903.9 MBF	\$ 120.00/MBF	\$ _____
White Oak	23.8 MBF	\$ 79.00/MBF	\$ _____
Pulpwood			
B. T. Aspen	30 Cords	\$ 20.85/Cord	\$ _____
Mixed Hardwood	149 Cords	\$ 14.50/Cord	\$ _____
Mixed Oak	1,002 Cords	\$ 14.80/Cord	\$ _____
Red Pine	9 Cords	\$ 38.05/Cord	\$ _____
White Pine	3 Cords	\$ 19.90/Cord	\$ _____

*The volumes are statistically estimated within plus (+) or minus (-) 12.68 percent at 95% confidence level. These estimated volumes are final and not subject to adjustment. Prospective bidders are urged to examine this timber and to make their own estimates of quantity and quality.

I understand that any or all bids may be rejected. All bids must be signed and all bid items must be bid or the bid form may be rejected. I also understand that consideration and awarding a contract will be based upon my past performance and ability to complete the contract based upon equipment and staffing subject to my control.

FEDERAL ID: _____ - _____ or SOCIAL SECURITY NUMBER: _____ - _____ - _____

Company or individual bidding: _____

Company representative's name: _____

Address: _____

City: _____ State: _____ Zip: _____

IF AVAILABLE, PLEASE PLACE THE PERSONALIZED LABEL FROM YOUR PROSPECTUS IN THE ABOVE BOX.

Individual or company representative's signature: _____ Date: _____

Phone number : _____ Email (optional): _____

THE WINNING BIDDER MUST COMPLETE THE VERIFICATION OF WORKER'S DISABILITY COMPENSATION ACT COMPLIANCE (ON REVERSE SIDE IF DOUBLE SIDED) WITHIN 21 DAYS OF SALE AWARD DATE



TIMBER SALE VERIFICATION OF WORKER'S DISABILITY COMPENSATION ACT COMPLIANCE

As required by Act 317, P.A. 1969 (Worker's Compensation) and
Part 5 of Act 451 of 1994, as amended.

FOR DEPARTMENT USE ONLY	
Sale Number (XX - XXX - XX - XX)	
Forest Management Unit:	

VERIFICATION OF WORKER'S DISABILITY COMPENSATION ACT COMPLIANCE

- This verification must be completed and submitted within 21 days of contract award and prior to the issuance of the timber sale contract.
- In addition, if boxes 2B or 2C are checked, then Notice of Exclusion or Certificate of Insurance must be submitted within twenty-one (21) days of the contract award and prior to the issuance of the timber sale contract.
- All information must be typed or printed except for written signatures.

Please Check Appropriate Categories:

1. My business is organized as (you **must** check one of the boxes below):
 - A. Sole Proprietorship (individual)
 - B. Partnership
 - C. Corporation
2. You **must** check one of the boxes below:
 - A. I certify my business is a sole proprietorship and it has no employees but the sole proprietor. I am not subject to the Worker's Compensation Laws.
 - B. I certify my business has satisfied its obligation to the Worker's Compensation Act through the use of an approved Notice of Exclusion (BWC-337, Rev. 5/96). I will provide a copy of the Notice of Exclusion within 21 days of the contract award. (For questions or a copy of the BWC-337, please call the Worker's Compensation Bureau at 517-322-1195).
 - C. I certify my business has a Worker's Compensation Policy. I will provide an original Certificate of Insurance within twenty-one (21) days of the contract award.
3. If you have checked item 2(A) or 2(B), you **must** indicate the number of **both** full-time and part-time employees, other than yourself, including family members and active partners (if none, you must enter "0").

_____ Full-time Employees

_____ Part-time Employees

Name of Business		Federal ID (or) Social Security No.	
Address		Telephone ()	
City	State	ZIP	

I hereby certify that the above information is true and correct. I agree to notify the Michigan DNR of any changes that occur in factors affecting my coverage during any of my present and future operations.

Signature of Owner or Authorized Representative

Title

Date

Please complete the "SEALED BID" information on the next page

Expressway Pine (71-004-20)
T22N, R01W, SEC. 11; T22N, R01W, SEC. 12; Roscommon COUNTY

In response to the notice of sale to be held 9:00 a.m. (local time) on December 8, 2020, I am hereby submitting my sealed bid (firm offer) for the following forest products to be cut. Bids for individual species must be at or above the advertised price. All non-responsive bid forms may be rejected.

<u>PRODUCTS & SPECIES</u>	<u>ESTIMATED VOLUME*</u>	<u>ADVERTISED PRICE</u>	<u>BID PRICE/UNIT</u>
Sawtimber			
Mixed Oak	25.0 MBF	\$ 83.00/MBF	\$ _____
Red Pine	1,118.5 MBF	\$ 89.00/MBF	\$ _____
Pulpwood			
Mixed Oak	58 Cords	\$ 14.80/Cord	\$ _____
Quaking Aspen	60 Cords	\$ 20.85/Cord	\$ _____
Red Maple	39 Cords	\$ 14.50/Cord	\$ _____
Red Pine	488 Cords	\$ 38.05/Cord	\$ _____
White Pine	14 Cords	\$ 19.90/Cord	\$ _____

*The volumes are statistically estimated within plus (+) or minus (-) 14.51 percent at 95% confidence level. These estimated volumes are final and not subject to adjustment. Prospective bidders are urged to examine this timber and to make their own estimates of quantity and quality.

I understand that any or all bids may be rejected. All bids must be signed and all bid items must be bid or the bid form may be rejected. I also understand that consideration and awarding a contract will be based upon my past performance and ability to complete the contract based upon equipment and staffing subject to my control.

FEDERAL ID: _____ or SOCIAL SECURITY NUMBER: _____

Company or individual bidding: _____

Company representative's name: _____

Address: _____

City: _____ State: _____ Zip: _____

IF AVAILABLE, PLEASE PLACE THE PERSONALIZED LABEL FROM YOUR PROSPECTUS IN THE ABOVE BOX.

Individual or company representative's signature: _____ Date: _____

Phone number : _____ Email (optional): _____

THE WINNING BIDDER MUST COMPLETE THE VERIFICATION OF WORKER'S DISABILITY COMPENSATION ACT COMPLIANCE (ON REVERSE SIDE IF DOUBLE SIDED) WITHIN 21 DAYS OF SALE AWARD DATE



FOR DEPARTMENT USE ONLY	
Sale Number (XX - XXX - XX - XX)	
Forest Management Unit:	

TIMBER SALE VERIFICATION OF WORKER'S DISABILITY COMPENSATION ACT COMPLIANCE

As required by Act 317, P.A. 1969 (Worker's Compensation) and
Part 5 of Act 451 of 1994, as amended.

VERIFICATION OF WORKER'S DISABILITY COMPENSATION ACT COMPLIANCE

- This verification must be completed and submitted within 21 days of contract award and prior to the issuance of the timber sale contract.
- In addition, if boxes 2B or 2C are checked, then Notice of Exclusion or Certificate of Insurance must be submitted within twenty-one (21) days of the contract award and prior to the issuance of the timber sale contract.
- All information must be typed or printed except for written signatures.

Please Check Appropriate Categories:

1. My business is organized as (you **must** check one of the boxes below):
 - A. Sole Proprietorship (individual)
 - B. Partnership
 - C. Corporation
2. You **must** check one of the boxes below:
 - A. I certify my business is a sole proprietorship and it has no employees but the sole proprietor. I am not subject to the Worker's Compensation Laws.
 - B. I certify my business has satisfied its obligation to the Worker's Compensation Act through the use of an approved Notice of Exclusion (BWC-337, Rev. 5/96). I will provide a copy of the Notice of Exclusion within 21 days of the contract award. (For questions or a copy of the BWC-337, please call the Worker's Compensation Bureau at 517-322-1195).
 - C. I certify my business has a Worker's Compensation Policy. I will provide an original Certificate of Insurance within twenty-one (21) days of the contract award.
3. If you have checked item 2(A) or 2(B), you **must** indicate the number of **both** full-time and part-time employees, other than yourself, including family members and active partners (if none, you must enter "0").

_____ Full-time Employees

_____ Part-time Employees

Name of Business		Federal ID (or) Social Security No.	
Address		Telephone ()	
City	State	ZIP	

I hereby certify that the above information is true and correct. I agree to notify the Michigan DNR of any changes that occur in factors affecting my coverage during any of my present and future operations.

Signature of Owner or Authorized Representative

Title

Date

Please complete the "SEALED BID" information on the next page