



**DEPARTMENT OF NATURAL RESOURCES  
STATE OF MICHIGAN**

**TIMBER SALE PROSPECTUS #6839**

SCHEDULED SALE DATE AND TIME: 10:00 a.m. (local time) on March 9, 2021.

LOCATION: ATLANTA MGMT UNIT, 13501 M 33, ATLANTA, MI 49709.

PROSPECTUS NOTE: The bidder is advised to inspect the sale area and review the location, estimated volumes, operating costs and contract terms of proposed sales. Please be aware that some landowners may request 60 days or more notice for access across their land.

Notice is hereby given that bids will be received by the Unit Manager, ATLANTA MANAGEMENT UNIT, for certain timber on the following described lands:

Aspen Cottage (54-016-20) / T30N, R07E, SEC. 11, SENW,SW.

T30N, R07E, SEC. 14, NW,N1/2SW.

T30N, R07E, SEC. 15, E1/2NE,NESE.

Alpena County, Advertised Price \$62,264.05, 161.4 Acres, Aspen, Hardwood.

SALE NOTE: This sale is off of Dann Road in Alpena County. Some road work may be required as this is a somewhat wet area.

Indian Reserve Mix (54-018-20) / T30N, R07E, SEC. 11, NENE.

T30N, R07E, SEC. 2, SENW,NESW,SESE.

T30N, R07E, SEC. 3, N1/2NE,SENE.

Alpena County, Advertised Price \$66,470.20, 57.9 Acres, Red Oak, Aspen.

SALE NOTE: Permission for access across private land is necessary for harvesting Payment Units 1 & 2. A copy of written permission from the private landowner must be given to the Unit Manager within 30 days of the bid opening and prior to the beginning of operations (see spec 4.4.1). Contact Forest Technician Doug Tyran at (989) 464-9463 for the private land owner's contact information.

A recreation site such as a trail, pathway, or campground is within the sale area or the vicinity. Certain restrictions/specifications may be applicable including time restrictions. Access may be through private land.

Oak Wilt Red Pine (54-019-20) / T30N, R07E, SEC. 14, N1/2NE,SENE.

Alpena County, Advertised Price \$75,561.55, 47.8 Acres, Red Oak, Red Pine.

SALE NOTE: Due to oak wilt, this sale has a short contract duration and will not be granted any extensions. The two oak wilt pockets must be harvested before April 15th, 2021. One, twelve month extension is being offered on another sale if all contract requirements are met on this sale. See specs 5.2.3.1, 7.2.2, and 7.2.6 for more information.

## BID INSTRUCTIONS (VER. 07/02/2018):

### 1. Scheduled Bid Location, Date, and Time (2/11)

Bids must be received by the Unit Manager, ATLANTA OFFICE, 13501 M 33, ATLANTA, MI 49709, no later than 10:00 a.m. (local time) on March 9, 2021. For further information concerning this sale, contact Cody Stevens at 989-785-4251 extension 5240.

### 2. Bidder's Qualifications (5/16)

Purchaser shall obtain workers compensation insurance to cover claims under Michigan's Worker's Disability Compensation Act of 1969 or similar employee benefit act of any other state applicable to an employee. If all or part of a timber sale was prepared by a private contractor, the contractor and that contractor's company are not permitted to bid on the timber sale contract. Bids will not be accepted from individuals or companies appearing on the DNR/FRD No-Bid List. This list contains the names of purchasers who previously failed to execute a contract within 21-days or who have a history of poor performance.

### 3. Preparation of Sealed Bids (5/16)

Bid Forms may be completed online thru Michigan DNR Timber Sale Online Bidding (OLB) at [www.michigan.gov/timberbidding](http://www.michigan.gov/timberbidding) or by completing the hardcopy Bid Form found in the Timber Sale Prospectus. Hardcopy Bid Forms shall be manually signed in ink. Registration in OLB is considered your 'signature' for all bids submitted thru that system. Bid prices must be entered for each species and product in the Bid Price column for all material subject to bidding and all fill-in blanks must be completed. If erasures or other changes appear on the hardcopy Bid Form, each erasure or change must be initialed by the person signing the bid.

### 4. Submission of Sealed Bids (5/16)

Bid forms may be obtained from the Unit Manager or thru OLB. Bids may be submitted hardcopy or thru OLB. All hardcopy bids must be submitted on the bid form and in an envelope clearly identified as described in this section. NOTE: Only one bid form per bid envelope. Sealed bids must be submitted to the Unit office designated in the prospectus and must be submitted at or prior to the time established in the prospectus. The envelope should show on the outside (a) the sale name or number and (b) the date and time of bid opening, as shown in the prospectus. Bids received after the time specified in the sale prospectus are late bids and will be rejected.

It is possible for a bidder to submit multiple bids on a single sale. For example, a bid may be submitted hardcopy and a bid may be submitted thru OLB. Or, two bidders from the same company could both submit bids on the same sale. If this were to happen, the State would accept all bids received and award the contract accordingly. All bidding and contractual requirements would apply to all bids received.

### 5. Public Opening of Sealed Bids (7/16)

If conditions permit, the sealed bids will be publicly opened and posted at the time and place set in the prospectus.

If a bidder, present at a bid opening, has submitted bids on more than one sale, that bidder may withdraw their unopened bid envelopes or announce the withdrawal of their online bid after being declared the successful bidder on one sale.

### 6. Award of Contract (1/11)

Award of the contract will be made to the Bidder whose bid, conforming to the prospectus, is most advantageous to the State of Michigan on the basis of total value at rates bid for the estimated quantities. The State reserves the right to reject any bid or waive any minor irregularity in bids received. A written award mailed (or otherwise furnished) to the successful Bidder shall be deemed to result in a binding contract without further action by either party.

### 7. Down Payment (1/11)

The Bidder to whom award is made must make a down payment within 21 days of the sale award. The amount of the down payment will be calculated as shown in the Bond and Payment Schedule of this prospectus. Only cash may be used to meet this requirement.

### 8. Performance Security (1/11)

As guarantee of faithful performance, a cash bond, certificate of deposit, surety bond or irrevocable letter of credit (LOC) is required within 21 days of the sale award. The amount of the performance security is shown in the Bond and

Payment Schedule of this prospectus. If an LOC or surety is used, the coverage must extend for at least 6 months beyond the contract expiration.

#### 9. Timber Sale Contract (7/18)

Additional conditions and requirements common to all timber sales are listed on the timber sale contract (R4031) and are available on line at [www.michigan.gov/timber](http://www.michigan.gov/timber). Contact the Unit Manager for additional information or a sample contract. Within 21 days of the date of the award letter, the bidder must sign the contract and provide the required down payment, performance security, and verification of worker's disability compensation. The down payment and performance security shall be in accordance with the provisions of the timber sale contract, in the sums stated in this prospectus. If these actions are not taken, then the Bidder, the Bidder's corporation, and the corporation's principals may not be permitted to bid on State timber sales for a period of 3 months after the first offense, 6 months after the second offense, and 1 year after the third offense. An offense will only be counted against the Bidder for 5 years. In addition, the Bidder certifies that if awarded this contract, the Bidder will complete the timber sale contract in accordance with its terms and any modifications thereof including requirements to purchase, cut, and remove the included timber by the expiration date.

Payment Unit values in the State Forest Timber Sale Contract are calculated based on the advertised value of the Payment Unit as a percentage of the total advertised value of the contract. The advertised value of each Payment Unit is given in the Description of Timber by Payment Unit table on the Timber Sale Information page. For example, if the value of Payment Unit 1 is advertised as \$1,500 and the total Timber Sale value is advertised as \$10,000, the contract price for Payment Unit 1 will be 15% of the total bid price ( $\$1,500/\$10,000 * 100$ ).

#### 10. Disclaimer of Estimates and Bidder's Warranty of Inspection (7/16)

Before submitting this bid, the Bidder is advised and cautioned to inspect the sale area, review the requirements of the sale contract, and take other steps as may be reasonably necessary to ascertain the location, estimated volumes, construction estimates, and operating costs of the proposed sale. Failure to do so will not relieve the Bidder from responsibility for completing the contract.

The Bidder warrants that this bid is submitted solely on the basis of the Bidder's examination and inspection of the quality and quantity of the timber offered for sale and the Bidder's opinion of the value thereof and the costs of recovery. No reliance should be placed on the State of Michigan's estimates of timber quality, quantity or costs of recovery. Bidder further acknowledges that the State of Michigan: (i) expressly disclaims any warranty of fitness of timber for any purpose; (ii) offers this timber as is without any warranty of quality (merchantability) or quantity and (iii) expressly disclaims any warranty as to the quantity or quality of timber sold.

#### 11. Certification and Chain-of-Custody (10/14)

Unless otherwise indicated in the contract under section 7 – Other Conditions of the Sale Specific Conditions & Requirements, the area encompassed by this timber sale is certified to the standards of the Forest Stewardship Council (FSC) - Certificate #SCS-FM/COC-00090N and the Sustainable Forestry Initiative (SFI) - Certificate #NSF-SFIS-5Y031-SF5. Forest products from this sale may be delivered to the mill as "FSC 100% and / or SFI certified" as long as the contractor hauling the forest products is chain-of-custody (COC) certified or covered under a COC certificate from the destination mill. The purchaser is responsible for maintaining COC after leaving the sale area.

#### 12. Good Neighbor Authority (GNA) Requirements (7/16)

If the name of this timber sales contains the acronym GNA, it is authorized by the Good Neighbor Authority (GNA) and covered by various agreements between the U.S. Forest Service and the State. The timber sale occurs on federal land and the following conditions apply:

GNA contracts on US Forest Service land will not be awarded to purchasers on the Federal list of excluded parties. The System for Award Management (SAM) will be checked for active excluded parties prior to award of contract. In addition, the Bidder to whom award is made must complete an Assurance Regarding Felony Conviction or Tax Delinquent Status for Corporate Applicants (AD-3031).

#### 13. Good Neighbor Authority (GNA) Requirements, con't (9/16)

Bidder certifies, by signing this bid form, that to the best of Bidder's knowledge that the following representations are accurate and complete.

- a. That the Bidder and its principals are not presently debarred, suspended, proposed for debarment, declared ineligible, or voluntary excluded from timber sales (covered transactions) by any Federal department or agency.
- b. That the Bidder and its principals have not within a 3-year period preceding this bid been convicted of or had a civil judgment rendered against them for commission of fraud or a criminal offense in connection with obtaining , attempting to obtain, or performing a public (Federal, State, or local) transaction or contract under a public transaction; violation of Federal or State antitrust statutes or commission of embezzlement, theft, forgery, bribery, falsification or destruction of records, making false statements, or receiving stolen property.
- c. That the Bidder and its principals are not presently indicted for or otherwise criminally or civilly charged by a governmental entity (Federal, State, or local) with commission of any of the offenses enumerated in paragraph b of this certification.
- d. That the Bidder and its principals have not within a 3-year period preceding this bid had one or more public transactions (Federal, State, or local) terminated for breach or default of a timber or forest product contract.

Bidders that cannot certify this requirement, in whole or in part, shall submit an explanation with their bid.

DAN EICHINGER  
Director

## TIMBER SALE INFORMATION

Aspen Cottage (54-016-20)

T30N, R07E, SEC. 11; T30N, R07E, SEC. 14; T30N, R07E, SEC. 15.  
Alpena County (Advertised Price \$62,264.05)

SALE NOTE: This sale is off of Dann Road in Alpena County. Some road work may be required as this is a somewhat wet area.

A timber sale contract for this lump sum, sealed bid timber sale will be awarded to the responsible bidder offering the highest sealed bid price. All units of volume listed below were estimated using the T-Sale computer program and our traditional volume equations. Bids must be at or above the following advertised price for each product and species:

<u>PRODUCTS &amp; SPECIES</u>	<u>ESTIMATED UNITS*</u>	<u>ADVERTISED PRICE</u>
Sawtimber		
Mixed Aspen	156.3 MBF	\$ 47.00 / MBF
Red Maple	90.1 MBF	\$ 60.00 / MBF
Pulpwood		
Balsam Fir	697 Cords	\$ 14.10 / Cord
Bl/R/Hybrid Oak	16 Cords	\$ 20.65 / Cord
Mixed Aspen	1,835 Cords	\$ 14.55 / Cord
Mixed Hardwood	677 Cords	\$ 16.35 / Cord
Red Pine	13 Cords	\$ 34.90 / Cord
White Pine	34 Cords	\$ 17.45 / Cord
White Spruce	81 Cords	\$ 6.65 / Cord

\* The estimated units are final and not subject to adjustment. Prospective bidders are urged to examine this timber and to make their own estimates of quantity and quality.

### **BOND AND PAYMENT SCHEDULE:**

1. A bond in the amount of \$3,113.00 to insure faithful performance of the conditions of the contract will be deposited by the successful bidder within 21 days of the sale award.
2. Cutting in any sale or unit without the required advance payment would be considered a trespass.
3. Total payment must be paid in advance or according to the following schedule :
  - (a) Ten percent (10%) of the sale value must be paid within 21 days of the sale award.
  - (b) The 10% down payment will be credited towards the first unit cut.
  - (c) Payment for each of the following units must be made before cutting begins in that unit:
 

PAYMENT UNIT NUMBER	PERCENT OF TOTAL SALE VALUE
01	31.0%
02	2.5%
03	31.7%
04	34.8%
4. If no cutting takes place, the 10% down payment will not be refunded.
5. Operations on the contract issued will terminate on 06/30/2025.

### **SALE STATISTICS**

#### **SALE VOLUMES**

VOLUME		STATISTICAL RANGE IN CORDS		
TOTAL CUBIC FEET	TOTAL CORDS	PERCENT ERROR	MINIMUM	MAXIMUM
303,637	3,844	8.37%	3,522	4,165

**VDU VOLUMES**

A VDU is a Volume Determination Unit. Volumes and their associated statistics are calculated at the VDU level and summarized to the sale level. There is often a one to one relationship between a VDU and a Payment Unit, but not always, depending on the cruise design. Refer to the VDU TO PAYMENT UNIT table.

VDU	VOLUME		PERCENT ERROR	RANGE IN CORDS	
	TOTAL CUBIC FEET	TOTAL CORDS		MINIMUM	MAXIMUM
30	13,944	177	44.73%	98	255
61	78,439	993	14.57%	848	1,138
68	410,768	5,200	9.88%	4,686	5,713
102	5,838	74	50.20%	37	111
<b>TOTAL:</b>	<b>508,989</b>	<b>6,443</b>		<b>5,668</b>	<b>7,217</b>

**VDU TO PAYMENT UNIT**

When a VDU is associated with more than one Payment Unit (PU), the VDU volumes are assigned to the PU based on acres of the VDU within the PU.

VDU	VDU ACRES	PU	PU ACRES
30	9.6	1	9.6
61	48.6	1	48.6
68	100.6	3	48.0
		4	52.6
102	2.6	2	2.6
<b>TOTAL:</b>	<b>161.4</b>		<b>161.4</b>

**DESCRIPTION OF TIMBER BY PAYMENT UNIT (PU)**

PU	MARKET GROUP	PRODUCT	QUANTITY	UNIT	ACRES	ADVERTISE PRICE
1	Mixed Aspen	Sawtimber	43.8	MBF	58.2	\$19,324.15
	<i>B. T. Aspen</i>		1.3	<i>MBF</i>		
	<i>Balsam Poplar</i>		1.8	<i>MBF</i>		
	<i>Quaking Aspen</i>		40.7	<i>MBF</i>		
	Red Maple		46.8	MBF		
	Balsam Fir	Pulpwood	179	Cords		
	<i>Balsam Fir</i>	<i>Sawtimber</i>	5.0	<i>MBF</i>		
	<i>Balsam Fir</i>	<i>Pulpwood</i>	169	<i>Cords</i>		
	BI/R/Hybrid Oak		16	Cords		
	Mixed Aspen		484	Cords		
	<i>B. T. Aspen</i>		30	<i>Cords</i>		
	<i>Balsam Poplar</i>		20	<i>Cords</i>		
	<i>Quaking Aspen</i>		434	<i>Cords</i>		
	Mixed Hardwood		257	Cords		
	<i>Paper Birch</i>	<i>Sawtimber</i>	1.4	<i>MBF</i>		
	<i>Paper Birch</i>	<i>Pulpwood</i>	16	<i>Cords</i>		
	<i>Red Elm</i>		2	<i>Cords</i>		
	<i>Red Maple</i>		236	<i>Cords</i>		
	White Spruce		54	Cords		
	<i>White Spruce</i>	<i>Sawtimber</i>	6.1	<i>MBF</i>		
	<i>White Spruce</i>	<i>Pulpwood</i>	42	<i>Cords</i>		
	2	Red Maple	Sawtimber	1.8		
Balsam Fir		Pulpwood	4	Cords		
<i>Balsam Fir</i>			4	<i>Cords</i>		
Mixed Hardwood			20	Cords		
<i>Red Maple</i>			20	<i>Cords</i>		
Red Pine			13	Cords		
<i>Red Pine</i>		<i>Sawtimber</i>	5.0	<i>MBF</i>		
<i>Red Pine</i>		<i>Pulpwood</i>	3	<i>Cords</i>		
White Pine			34	Cords		
<i>White Pine</i>		<i>Sawtimber</i>	5.1	<i>MBF</i>		
<i>White Pine</i>	<i>Pulpwood</i>	24	<i>Cords</i>			
3	Mixed Aspen	Sawtimber	53.7	MBF	48.0	\$19,729.55
	<i>B. T. Aspen</i>		25.0	<i>MBF</i>		
	<i>Quaking Aspen</i>		28.7	<i>MBF</i>		
	Red Maple		19.8	MBF		
	Balsam Fir	Pulpwood	245	Cords		
	<i>Balsam Fir</i>	<i>Sawtimber</i>	0.7	<i>MBF</i>		
	<i>Balsam Fir</i>	<i>Pulpwood</i>	244	<i>Cords</i>		
	Mixed Aspen		644	Cords		
	<i>B. T. Aspen</i>		149	<i>Cords</i>		
	<i>Balsam Poplar</i>		25	<i>Cords</i>		
	<i>Quaking Aspen</i>		470	<i>Cords</i>		
	Mixed Hardwood		190	Cords		
	<i>American Elm</i>		7	<i>Cords</i>		
	<i>Black Ash</i>		1	<i>Cords</i>		
	<i>Paper Birch</i>		1	<i>Cords</i>		
	<i>Red Maple</i>		181	<i>Cords</i>		
	White Spruce		13	Cords		
	<i>White Spruce</i>	<i>Sawtimber</i>	2.3	<i>MBF</i>		
<i>White Spruce</i>	<i>Pulpwood</i>	8	<i>Cords</i>			
4	Mixed Aspen	Sawtimber	58.8	MBF	52.6	\$21,657.85
	<i>B. T. Aspen</i>		27.3	<i>MBF</i>		
	<i>Quaking Aspen</i>		31.5	<i>MBF</i>		
	Red Maple		21.7	MBF		
	Balsam Fir	Pulpwood	268	Cords		

**DESCRIPTION OF TIMBER BY PAYMENT UNIT (PU), CON'T**

PU	MARKET GROUP	PRODUCT	QUANTITY	UNIT	ACRES	ADVERTISE PRICE
4 con't	<i>Balsam Fir</i>	<i>Sawtimber</i>	0.7	<i>MBF</i>		
	<i>Balsam Fir</i>	<i>Pulpwood</i>	267	<i>Cords</i>		
	Mixed Aspen		707	<i>Cords</i>		
	<i>B. T. Aspen</i>		163	<i>Cords</i>		
	<i>Balsam Poplar</i>		28	<i>Cords</i>		
	<i>Quaking Aspen</i>		516	<i>Cords</i>		
	Mixed Hardwood		210	<i>Cords</i>		
	<i>American Elm</i>		8	<i>Cords</i>		
	<i>Black Ash</i>		2	<i>Cords</i>		
	<i>Paper Birch</i>		2	<i>Cords</i>		
	<i>Red Maple</i>		198	<i>Cords</i>		
	White Spruce		14	<i>Cords</i>		
	<i>White Spruce</i>	<i>Sawtimber</i>	2.6	<i>MBF</i>		
	<i>White Spruce</i>	<i>Pulpwood</i>	9	<i>Cords</i>		
	TOTAL:			246.4	MBF	
TOTAL:			3,352	Cords		



## Sale Specific Conditions & Requirements

Sale Name: Aspen Cottage

Sale Number: 54-016-20 Seq#: 2

### 1 - Sale Area

#### 1.2 - Boundaries

##### 1.2.1 - Painted boundaries (9/19)

The sale boundary and Payment Unit boundaries are marked and identified by red, blue, green, and yellow paint. Exterior sale boundary lines against state are marked with red paint. Exterior sale boundary lines against private property are marked with blue paint. Interior Payment Unit boundaries are marked with yellow paint. Interior retention pockets are marked with green paint; no harvesting activities may occur within these areas. The painted boundary line trees are not included timber and are to be protected unless marked with orange paint. Yellow painted trees designating an interior Payment Unit boundary are only to be cut when all surrounding Payment Units have been paid.

### 2 - Timber Specifications

#### 2.1 - Included Timber

##### 2.1.2 - Clearcut unit(s) w/o unmerchantable trees (8/11)

Within Payment Unit(s) 1, 3 & 4, cut all trees which meet minimum piece specifications in 2.2 Utilization, except do not cut cedar, hemlock, or green painted trees.

##### 2.1.3 - Cut tree marked unit(s) (12/08)

Within Payment Unit(s) 2, red oak and pine trees are designated for cutting when marked with yellow paint above and below stump height, regardless of merchantability. In addition, cut all other trees that are four (4) inches or more at DBH, except do not cut green painted trees.

### 3 - Payments

#### 3.3 - Pre-measured Sales

##### 3.3.4 - Dividing payment units (7/14)

Payment Unit(s) 1, 3, & 4 may be divided at the request of the Purchaser and upon approval of the Unit Manager. Dividing Payment Units is a contract modification which requires a Timber Sale Contract Amendment. There will be only one division per Payment Unit.

#### 3.4 - Damaged Timber

##### 3.4.1 - Damaged timber (7/16)

General Condition and Requirement 3.4 Damaged Timber, defines liquidated damages for undesignated live merchantable trees which are cut or injured. In addition, extreme care should be taken to avoid damage to tree seedlings and saplings.

### 4 - Transportation

#### 4.1 - Construction

##### 4.1.3 - Slash and earthen piles (8/04)

Piles or windrows of earth along roads and landings that have been widened or constructed shall be leveled. Slash from road maintenance or construction, including stumps, shall be dispersed throughout the sale.

##### 4.1.5 - Culverts (5/14)

Roads may require the installation of culverts for cross drainage or at natural drainage-ways. If culverts are needed in these locations, their placement will be specified by the sale administrator and they shall be installed prior to hauling. The culverts shall be new, corrugated metal or plastic gauge. Culverts will be a minimum of 12 inches in diameter and 24 feet in length. If culverts are removed, fill shall be removed from wetland soils as specified. Soils shall be maintained and left in a non-erodible condition, with water bars, seed, fertilizer, mulch, and slash installed as directed by the sale administrator and as specified in the BMP manual. Stream crossing permits, if needed, will be obtained by the DNR.

##### 4.1.6 - Road construction (1/09)

Construction of new roads or improvements of existing roads shall be done in such a way as to minimize the environmental

and visual impacts. Merchantable trees shall be cut and utilized unless otherwise directed. Non-merchantable trees shall be severed and laid flat on the ground. Slash shall be scattered, and not left in windrows and kept a minimum of 10 feet back from the road edge. Stumps shall be set upright, not left on edge, and be moved at least 10 feet away from the road edge. Disturbed soil shall be feathered into the woods and not left in berms or windrows.

#### 4.1.7 - Road closure (10/11)

All new roads built into the sale must be blocked to vehicle traffic upon completion of the sale. Overgrown roads that are reopened shall be considered new roads. In general, this will require constructing a four (4') foot high berm of stumps and logs covered with earth. These roads must be rendered impassable to cars and trucks. Contact the sale administrator for specific details of design and placement.

### 4.2 - Maintenance

#### 4.2.5 - Two wheel drive condition (2/04)

All existing trail roads on and adjacent to the sale area must be passable by two-wheel drive traffic for the duration of the sale.

## 5 - Operations

### 5.1 - Notification

#### 5.1.1 - Pre-sale conference (10/16)

A pre-sale conference on site between the Purchaser and sale administrator is required prior to beginning any operations to determine landing and road locations. The Unit Manager or his/her representative must be contacted at least 5 days in advance to schedule the conference.

#### 5.1.4 - Post-sale conference (10/16)

A post-sale conference on site between the Purchaser and sale administrator is required 5 days prior to the completion of active logging operations to determine clean-up and repair of landings, road edges, and the fulfillment of other contract specifications.

### 5.2 - Conduct of Operations

#### 5.2.2 - Hazard Trees/Snags

##### 5.2.2.1 - Den trees (10/16)

Obvious hollow and/or den trees shall be protected and left standing unless they are a safety hazard.

#### 5.2.3 - Operating Restrictions

##### 5.2.3.11 - Coppice regeneration protection (4/10)

Timber harvesting in any Payment Unit must be completed before significant tree sprouting occurs in that Payment Unit so as to minimize damage to the new regeneration. Any post harvest operations must be completed before sprouting of regeneration occurs. The Unit Manager or his/her representative may cease such operations if sprouting occurs before the operation is complete.

#### 5.2.4 - Dead and Down Creation

##### 5.2.4.7 - Dead and down creation: hare, grouse, deer and other species (5/15)

To improve horizontal cover habitat for snowshoe hare, grouse, deer, and other species, the Purchaser is to push over one 10 inch DBH or larger tree for every 2 acres throughout the sale. These trees should be tipped over with the root ball still attached so the base of the tree is suspended off the ground. The crown of the fallen tree should be at or near ground level after it is pushed over. If the trees cannot possibly be pushed over the trees may be cut and left with the base still attached or suspended off the ground.

#### 5.2.22 - Operating Caution

##### 5.2.22.1 - Operating caution (6/11)

It is recommended, but not required, that within Payment Unit(s) 1-4, cutting, skidding, and hauling do not occur during the period of March 15 to June 30. The reason for the recommendation is to protect sensitive soils.

#### 5.2.32 - Decking/landing restoration (9/13)

All decking and landing areas must have the surface area restored to a condition equal to or better than before. This is to ensure the proper regeneration of the stand. Wood debris, chips and "cookies" from trimmings must be removed or scattered away from landing and loading areas and may not be windrowed on the edge.

#### 5.2.38 - No decking against live trees (2/04)

Cut products may not be decked against unmarked or designated leave trees.

### 5.4 - Soil Protection

#### 5.4.1 - Rutting restriction, general (7/16)

Operations are to cease immediately if equipment and weather conditions result in rutting of roads and/or skid trails which is 12 inches or greater in depth and 50 feet in length. The Unit Manager or his/her representative may restrict hauling and/or skidding if ruts exceed the specified depth. With the Unit Manager or his/her representative's approval, the Purchaser may return to the area when the risk of rutting has decreased.

#### 5.4.6 - Wet area protection (5/10)

No harvesting operations, including skidding and felling, are to take place within areas over 50 ft wide with significantly ponded water. All equipment should be kept out of these areas. Within 100 feet of these areas, equipment should only be used when the soil is in a dry or frozen condition. Care must be taken by the Purchaser to identify and avoid operating in these areas of the timber sale.

### 5.8 - Protection of Endangered Species

#### 5.8.5 - Protection of raptor nests (3/13)

All trees with raptor nests will be protected if found during harvesting operations. Notification will be made to the Unit Manager or his/her representative who will notify the Wildlife Biologist so an on-site evaluation and recommendation can be made, if necessary.



# TIMBER SALE MAP

This information provided by authority of Part 525, 1994 PA 451, as amended.

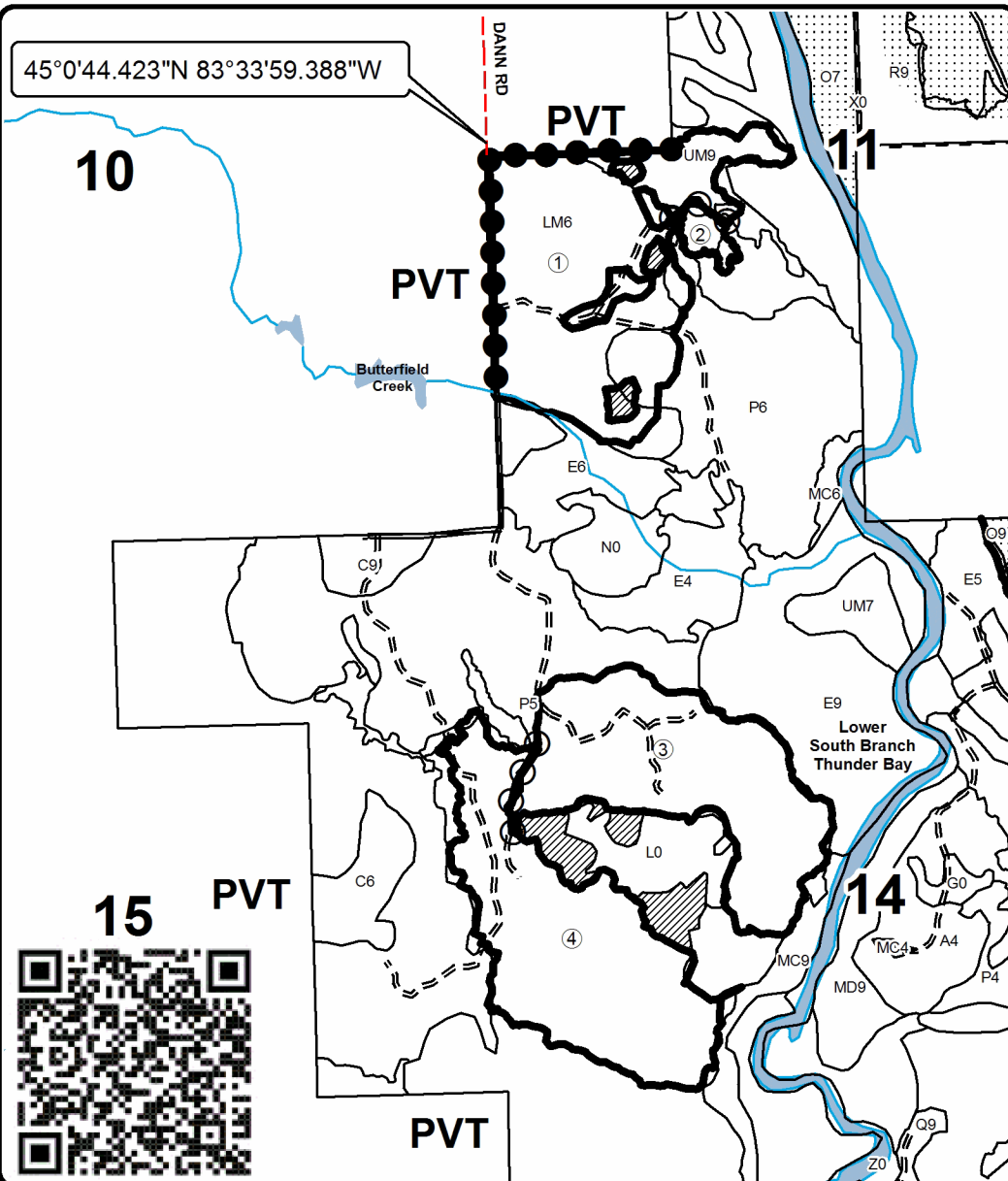
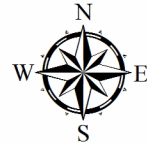
Forest Management Unit Atlanta	County Alpena	Mapped By Doug Tyran	Date 09/28/2020	Page 1	of 1
Township 30N	Range 07E	Cruised By Doug Tyran	Scale 1:15,840		
Section(s) and Subdivision(s) 11: SENW, SW; 14: NW, N1/2SW; 15: E1/2NE, NESE					

Cover Type				Density			
A = Aspen	H = Hemlock	N = Marsh	U = Upland Brush	0 = Non Stocked	5 = Pole Timber Medium		
B = Paper Birch	J = Jack Pine	O = Oak	UM = Upland Mixed	1 = Seedling Sapling Poor	6 = Pole Timber Well		
C = Cedar	L = Lowland Brush	P = Lowland Poplar	V = Bog or Marsh	2 = Seedling Sapling Medium	7 = Saw Timber Poor		
D = Treed Bog	LM = Lowland Mixed	Q = Mixed Swamp Conifer	W = White Pine	3 = Seedling Sapling Well	8 = Saw Timber Medium		
E = Swamp Hdwoods	M = Mpl, Bch, Brch	R = Red Pine	X = Non Stocked	4 = Pole Timber Poor	9 = Saw Timber Well		
F = Spruce Fir	MC = Mixed Conifer	S = Black Spruce	Z = Water				
G = Grass	MD = Mixed Deciduous	T = Tamarack					

PU	Acres	PU	Acres
1	58.2	3	48.0
2	2.6	4	52.6

## Aspen Cottage

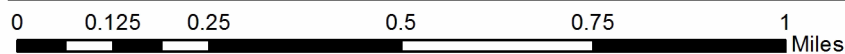
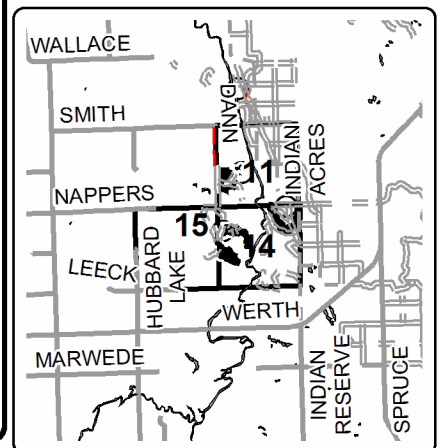
Compartment 88  
161.4 Acres



### Legend

- Against State (Red)
- Payment Unit (Yellow)
- Private Line (Blue)
- Retention Area
- Nearby Timber Sales
- Stand Boundaries
- Lakes and Rivers
- Primary Forest Road
- Secondary Forest Road
- Forest Access Route
- Paved Road
- Gravel Road
- County Road - Seasonal
- Private Road
- Payment Unit Label

Locator Map  
1:150,000



## TIMBER SALE INFORMATION

### Indian Reserve Mix (54-018-20)

T30N, R07E, SEC. 11; T30N, R07E, SEC. 2; T30N, R07E, SEC. 3.  
Alpena County (Advertised Price \$66,470.20)

SALE NOTE: Permission for access across private land is necessary for harvesting Payment Units 1 & 2. A copy of written permission from the private landowner must be given to the Unit Manager within 30 days of the bid opening and prior to the beginning of operations (see spec 4.4.1). Contact Forest Technician Doug Tyran at (989) 464-9463 for the private land owner's contact information.

A recreation site such as a trail, pathway, or campground is within the sale area or the vicinity. Certain restrictions/specifications may be applicable including time restrictions. Access may be through private land.

A timber sale contract for this lump sum, sealed bid timber sale will be awarded to the responsible bidder offering the highest sealed bid price. All units of volume listed below were estimated using the T-Sale computer program and our traditional volume equations. Bids must be at or above the following advertised price for each product and species:

<u>PRODUCTS &amp; SPECIES</u>	<u>ESTIMATED UNITS*</u>		<u>ADVERTISED PRICE</u>
<b>Sawtimber</b>			
Mixed Aspen	149.2	MBF	\$ 47.00 / MBF
Red Maple	34.9	MBF	\$ 60.00 / MBF
Red Oak	156.3	MBF	\$ 159.00 / MBF
Red Pine	102.1	MBF	\$ 90.00 / MBF
White Pine	32.9	MBF	\$ 53.00 / MBF
<b>Pulpwood</b>			
Balsam Fir	58	Cords	\$ 14.10 / Cord
Jack Pine	5	Cords	\$ 15.05 / Cord
Mixed Aspen	180	Cords	\$ 14.55 / Cord
Mixed Hardwood	310	Cords	\$ 16.35 / Cord
Paper Birch	13	Cords	\$ 7.75 / Cord
Red Oak	275	Cords	\$ 20.65 / Cord
Red Pine	172	Cords	\$ 34.90 / Cord
White Pine	64	Cords	\$ 17.45 / Cord
White Spruce	15	Cords	\$ 6.65 / Cord

\* The total volume is statistically estimated within plus (+) or minus (-) 10.16 percent. There are an estimated 2,029 cords on this timber sale, plus or minus 206 cords at the 95% confidence level. The estimated units are final and not subject to adjustment. Prospective bidders are urged to examine this timber and to make their own estimates of quantity and quality.

### **BOND AND PAYMENT SCHEDULE:**

1. A bond in the amount of \$3,324.00 to insure faithful performance of the conditions of the contract will be deposited by the successful bidder within 21 days of the sale award.
2. Cutting in any sale or unit without the required advance payment would be considered a trespass.
3. Total payment must be paid in advance or according to the following schedule :
  - (a) Ten percent (10%) of the sale value must be paid within 21 days of the sale award.
  - (b) The 10% down payment will be credited towards the first unit cut.
  - (c) Payment for each of the following units must be made before cutting begins in that unit:
 

PAYMENT UNIT NUMBER	PERCENT OF TOTAL SALE VALUE
01	8.1%
02	13.6%
03	59.1%
04	1.2%
05	18.0%
4. If no cutting takes place, the 10% down payment will not be refunded.
5. Operations on the contract issued will terminate on 12/31/2023.

### **SALE STATISTICS**

**SALE VOLUMES**

VOLUME			STATISTICAL RANGE IN CORDS	
TOTAL CUBIC FEET	TOTAL CORDS	PERCENT ERROR	MINIMUM	MAXIMUM
160,268	2,029	10.16%	1,823	2,235

**VDU VOLUMES**

A VDU is a Volume Determination Unit. Volumes and their associated statistics are calculated at the VDU level and summarized to the sale level. There is often a one to one relationship between a VDU and a Payment Unit, but not always, depending on the cruise design. Refer to the VDU TO PAYMENT UNIT table.

VDU	VOLUME			RANGE IN CORDS	
	TOTAL CUBIC FEET	TOTAL CORDS	PERCENT ERROR	MINIMUM	MAXIMUM
1	67,735	857	11.72%	757	958
2	1,785	23	7.02%	21	24
25	38,110	482	17.25%	399	566
80	20,414	258	16.71%	215	302
84	32,256	408	31.46%	280	537
<b>TOTAL:</b>	<b>160,299</b>	<b>2,029</b>		<b>1,672</b>	<b>2,386</b>

**VDU TO PAYMENT UNIT**

When a VDU is associated with more than one Payment Unit (PU), the VDU volumes are assigned to the PU based on acres of the VDU within the PU.

VDU	VDU ACRES	PU	PU ACRES
1	22.1	3	22.1
2	2.5	4	2.5
25	15.4	5	15.4
80	7.1	1	7.1
84	10.8	2	10.8
<b>TOTAL:</b>	<b>57.9</b>		<b>57.9</b>

**DESCRIPTION OF TIMBER BY PAYMENT UNIT (PU)**

PU	MARKET GROUP	PRODUCT	QUANTITY	UNIT	ACRES	ADVERTISE PRICE
1	Mixed Aspen	Sawtimber	70.8	MBF	7.1	\$5,376.25
	<i>B. T. Aspen</i>		40.4	<i>MBF</i>		
	<i>Quaking Aspen</i>		30.4	<i>MBF</i>		
	Red Maple		2.6	MBF		
	Red Pine		2.1	MBF		
	White Pine		2.7	MBF		
	Balsam Fir	Pulpwood	27	Cords		
	<i>Balsam Fir</i>	<i>Sawtimber</i>	0.9	<i>MBF</i>		
	<i>Balsam Fir</i>	<i>Pulpwood</i>	25	<i>Cords</i>		
	Mixed Aspen		67	Cords		
	<i>B. T. Aspen</i>		52	<i>Cords</i>		
	<i>Quaking Aspen</i>		15	<i>Cords</i>		
	Mixed Hardwood		4	Cords		
	<i>Paper Birch</i>		2	<i>Cords</i>		
	<i>Red Maple</i>		2	<i>Cords</i>		
	Red Pine		3	Cords		
	White Pine		2	Cords		
2	Mixed Aspen	Sawtimber	54.6	MBF	10.8	\$9,009.10
	<i>B. T. Aspen</i>		41.3	<i>MBF</i>		
	<i>Quaking Aspen</i>		13.3	<i>MBF</i>		
	Red Maple		17.8	MBF		
	Red Pine		12.9	MBF		
	White Pine		20.8	MBF		
	Balsam Fir	Pulpwood	27	Cords		
	<i>Balsam Fir</i>	<i>Sawtimber</i>	1.7	<i>MBF</i>		
	<i>Balsam Fir</i>	<i>Pulpwood</i>	24	<i>Cords</i>		
	Mixed Aspen		67	Cords		
	<i>B. T. Aspen</i>		33	<i>Cords</i>		
	<i>Quaking Aspen</i>		34	<i>Cords</i>		
	Mixed Hardwood		49	Cords		
	<i>Red Maple</i>		49	<i>Cords</i>		
	Red Pine		11	Cords		
	White Pine		27	Cords		
	White Spruce		15	Cords		
<i>White Spruce</i>	<i>Sawtimber</i>	1.4	<i>MBF</i>			
<i>White Spruce</i>	<i>Pulpwood</i>	12	<i>Cords</i>			
3	Mixed Aspen	Sawtimber	14.8	MBF	22.1	\$39,253.45
	<i>B. T. Aspen</i>		14.8	<i>MBF</i>		
	Red Maple		0.8	MBF		
	Red Oak		143.2	MBF		
	Red Pine		60.3	MBF		
	Mixed Aspen	Pulpwood	18	Cords		
	<i>B. T. Aspen</i>		18	<i>Cords</i>		
	Mixed Hardwood		21	Cords		
	<i>Red Maple</i>		21	<i>Cords</i>		
	Red Oak		242	Cords		
	Red Pine		133	Cords		
White Pine		4	Cords			
4	Red Oak	Sawtimber	1.7	MBF	2.5	\$778.85
	Red Pine		0.8	MBF		
	Red Oak	Pulpwood	11	Cords		
	Red Pine		6	Cords		
5	Mixed Aspen	Sawtimber	9.0	MBF	15.4	\$11,951.80
	<i>B. T. Aspen</i>		3.9	<i>MBF</i>		
	<i>Quaking Aspen</i>		5.1	<i>MBF</i>		
	Red Maple		13.7	MBF		

**DESCRIPTION OF TIMBER BY PAYMENT UNIT (PU), CON'T**

PU	MARKET GROUP	PRODUCT	QUANTITY	UNIT	ACRES	ADVERTISE PRICE	
5 con't	Red Oak	Sawtimber	11.4	MBF			
	Red Pine		26.0	MBF			
	White Pine		9.4	MBF			
	Balsam Fir	Pulpwood	4	Cords			
	<i>Balsam Fir</i>		4	<i>Cords</i>			
	Jack Pine		5	Cords			
	<i>Jack Pine</i>	<i>Sawtimber</i>	0.8	<i>MBF</i>			
	<i>Jack Pine</i>	<i>Pulpwood</i>	3	<i>Cords</i>			
	Mixed Aspen		28	Cords			
	<i>B. T. Aspen</i>		13	<i>Cords</i>			
	<i>Quaking Aspen</i>		15	<i>Cords</i>			
	Mixed Hardwood		236	Cords			
	<i>Paper Birch</i>	<i>Sawtimber</i>	0.8	<i>MBF</i>			
	<i>Paper Birch</i>	<i>Pulpwood</i>	9	<i>Cords</i>			
	<i>Red Maple</i>		225	<i>Cords</i>			
	Red Oak		22	Cords			
	Red Pine		19	Cords			
	White Pine		31	Cords			
	TOTAL:			475.4	MBF		
	TOTAL:			1,079	Cords		



# Sale Specific Conditions & Requirements

**Sale Name: Indian Reserve Mix**

**Sale Number: 54-018-20 Seq#: 2**

## 1 - Sale Area

### 1.2 - Boundaries

#### 1.2.1 - Painted boundaries (9/19)

The sale boundary and Payment Unit boundaries are marked and identified by red, blue, green, and yellow paint. Exterior sale boundary lines against state are marked with red paint. Exterior sale boundary lines against private property are marked with blue paint. Interior Payment Unit boundaries are marked with yellow paint. Interior retention patches are marked with green paint; no harvesting activities may occur within these areas. The painted boundary line trees are not included timber and are to be protected. Yellow painted trees designating an interior Payment Unit boundary are only to be cut when all surrounding Payment Units have been paid.

## 2 - Timber Specifications

### 2.1 - Included Timber

#### 2.1.1 - Clearcut unit(s) with unmerchantable trees (6/14)

Within Payment Unit(s) 1, 2, 3, and 5, cut all trees that are two (2) inches or more at DBH, with the following exceptions:

- Within Payment Unit 1, do not cut any pine or cedar. In addition, do not cut sub-merchantable spruce or oak.
- Within Payment Unit 3, do not cut sub-merchantable pine.
- Within Payment Unit 5, do not cut sub-merchantable pine, spruce, or oak.

#### 2.1.3 - Cut tree marked unit(s) (12/08)

Within Payment Unit(s) 4, all trees are designated for cutting when marked with orange paint above and below stump height, regardless of merchantability.

## 3 - Payments

### 3.3 - Pre-measured Sales

#### 3.3.4 - Dividing payment units (7/14)

Payment Unit(s) greater than \$25,000 may be divided at the request of the Purchaser and upon approval of the Unit Manager. Dividing Payment Units is a contract modification which requires a Timber Sale Contract Amendment.

### 3.4 - Damaged Timber

#### 3.4.1 - Damaged timber (7/16)

General Condition and Requirement 3.4 Damaged Timber, defines liquidated damages for undesignated live merchantable trees which are cut or injured. In addition, extreme care should be taken to avoid damage seedlings and saplings. If more than 50% of the tree seedlings or saplings (1/4" to 4" DBH) within a specified portion of the sale area are damaged, liquidated damages will be assessed at \$150.00 per acre for all acreage within that specified portion of the sale area that was damaged.

No damage is acceptable to undesignated live merchantable trees.

## 4 - Transportation

### 4.1 - Construction

#### 4.1.3 - Slash and earthen piles (8/04)

Piles or windrows of earth along roads and landings that have been widened or constructed shall be leveled. Slash from road maintenance or construction, including stumps, shall be dispersed throughout the sale.

#### 4.1.6 - Road construction (1/09)

Improvements of existing roads shall be done in such a way as to minimize the environmental and visual impacts. Merchantable trees shall be cut and utilized unless otherwise directed. Non-merchantable trees shall be severed and laid flat on the ground. Slash shall be scattered, and not left in windrows and kept a minimum of 10 feet back from the road edge. Stumps shall be set upright, not left on edge, and be moved at least 10 feet away from the road edge. Disturbed soil shall be

feathered into the woods and not left in berms or windrows.

#### 4.1.7 - Road closure (10/11)

Overgrown roads that are reopened must be blocked to vehicle traffic upon completion of the sale. In general, this will require constructing a four (4') foot high berm of stumps and logs covered with earth. These roads must be rendered impassable to cars and trucks. Contact the sale administrator for specific details of design and placement.

#### 4.1.12 - No new roads (1/12)

No new roads will be permitted in any Payment Unit. All operations are limited to existing roads. Skid trails only will be allowed.

### 4.2 - Maintenance

#### 4.2.5 - Two wheel drive condition (2/04)

All existing trail roads on and adjacent to the sale area must be passable by two-wheel drive traffic for the duration of the sale.

### 4.4 - Access

#### 4.4.1 - Private property access (3/11)

Permission for access across private land is the responsibility of the Purchaser. A copy of the written permission from the private landowner must be given to the Unit Manager within 30 days of the bid opening and prior to the beginning of operations.

## 5 - Operations

### 5.1 - Notification

#### 5.1.1 - Pre-sale conference (10/16)

A pre-sale conference on site between the Purchaser and sale administrator is required prior to beginning any operations to determine landing and road locations. The Unit Manager or his/her representative must be contacted at least 5 days in advance to schedule the conference.

#### 5.1.4 - Post-sale conference (10/16)

A post-sale conference on site between the Purchaser and sale administrator is required 5 days prior to the completion of active logging operations to determine clean-up and repair of landings, road edges, and the fulfillment of other contract specifications.

### 5.2 - Conduct of Operations

#### 5.2.2 - Hazard Trees/Snags

##### 5.2.2.1 - Den trees (10/16)

Obvious hollow and/or den trees shall be protected and left standing unless they are a safety hazard.

#### 5.2.3 - Operating Restrictions

##### 5.2.3.5 - Oak wilt restriction (1/18)

Within Payment Unit(s) 3, 4, & 5, unless changed by written agreement, cutting, skidding, hauling within the sale and brushing of access roads to the sale are not permitted during the period of April 15 to July 15. Operations may be allowed if specific steps are taken to prevent damaging uncut oak during the high risk period. Those steps may include completing all road brushing before April 15th and clearing a tree-length buffer along uncut oak cover before April 15th. This is necessary to reduce the spread of oak wilt. For more information, contact the Unit Manager or his/her representative.

##### 5.2.3.6 - Bark beetle restriction (12/08)

In the event drought creates a high risk of pine bark beetle infestation, pine is not to be cut during the period March 1 through July 1, unless all portions of trees greater than two inches in diameter are removed from the sale area, reduced to chips, or treated to the satisfaction of the Unit Manager or his/her representative, within fifteen days of being severed from the stump. Pine log decks, pulpwood piles and treetops that are piled for chipping in the fall or winter within a 1/4 mile of susceptible sites must be removed before March 15. Residual slash must not be placed in piles or rows and must be spread over the site for quick drying. The Department of Natural Resources will exercise this specification if the risk of damage warrants.

#### 5.2.3.11 - Coppice regeneration protection (4/10)

Timber harvesting in Payment Unit(s) 1-5 must be completed before significant tree sprouting occurs in that Payment Unit so as to minimize damage to the new regeneration. Any post harvest operations, such as skidding and processing, must be completed before sprouting of regeneration occurs. The Unit Manager or his/her representative may cease such operations if sprouting occurs before the operation is complete.

#### 5.2.4 - Dead and Down Creation

##### 5.2.4.7 - Dead and down creation: hare, grouse, deer and other species (5/15)

To improve horizontal cover habitat for snowshoe hare, grouse, deer, and other species, the Purchaser is to push over orange marked trees in Payment Unit(s) 1 & 2. These trees should be tipped over with the root ball still attached so the base of the tree is suspended off the ground. The crown of the fallen tree should be at or near ground level after it is pushed over.

##### 5.2.32 - Decking/landing restoration (9/13)

All decking and landing areas must have the surface area restored to a condition equal to or better than before. This is to ensure the proper regeneration of the stand. Wood debris, chips and "cookies" from trimmings must be removed or scattered away from landing and loading areas and may not be windrowed on the edge.

##### 5.2.38 - No decking against live trees (2/04)

Cut products may not be decked against unmarked or designated leave trees.

##### 5.2.41 - Snowmobile trail protection (9/11)

Snowmobile Trail 461 is shown on the Timber Sale Map. Do not cut or damage posts with orange trail markers or traffic control signs. If the trail is used, it must be maintained and restored to a condition equal to or better than before the sale. If the trail road is to be used for hauling during the snowmobile season, then a snow covered base must be left on the trail. Maintain a 20 foot wide slash, debris, and rut free zone daily using the snowmobile trail as the centerline. No decking of forest products will be permitted along the snowmobile trail.

#### 5.4 - Soil Protection

##### 5.4.1 - Rutting restriction, general (7/16)

Operations are to cease immediately if equipment and weather conditions result in rutting of roads and/or skid trails which is 12 inches or greater in depth and 50 feet in length. The Unit Manager or his/her representative may restrict hauling and/or skidding if ruts exceed the specified depth. With the Unit Manager or his/her representative's approval, the Purchaser may return to the area when the risk of rutting has decreased.

##### 5.4.7 - Rutting restriction, Riparian Management Zone (RMZ) (1/09)

Within Payment Unit 4, operations are to cease immediately if equipment and weather conditions result in rutting of skid trails which are 6 inches or greater in depth and 25 feet in length. The Unit Manager or his/her representative may restrict hauling and/or skidding if ruts exceed the specified depth. With the Unit Manager or his/her representative's approval, the Purchaser may return to the area when the risk of rutting has decreased.

#### 5.8 - Protection of Endangered Species

##### 5.8.5 - Protection of raptor nests (3/13)

All trees with raptor nests will be protected if found during harvesting operations. Notification will be made to the Unit Manager or his/her representative who will notify the Wildlife Biologist so an on-site evaluation and recommendation can be made, if necessary.

### 6 - Safety and Fire Prevention

#### 6.2 - Signing

##### 6.2.1 - Road posting (10/20)

The Purchaser is responsible for posting and maintaining caution signs on state forest roads prior to beginning operations. The road must be posted approximately 200 feet from the sale area to warn of logging activity and truck traffic. Signs must be removed when harvest operations are suspended or completed. The Purchaser will provide these signs.

##### 6.2.2 - Snowmobile trail posting (10/20)

The Purchaser is responsible for posting and maintaining caution signs on the snowmobile trail prior to beginning operations during the snowmobile season (approximately December 1 to March 31). The trail must be posted approximately 200 feet from the sale area to warn of logging activity and truck traffic. Signs must be removed when harvest operations are suspended or completed. The Purchaser will provide these signs.



Sale Number	Year
54-018-20	2020

# TIMBER SALE MAP

This information provided by authority of Part 525, 1994 PA 451, as amended.

Forest Management Unit Atlanta		County Alpena	Mapped By Doug Tyran		Date 12/20/2020	Page 1 of 1	
		Cruised By Doug Tyran					
Township 30N	Range 07E	Section(s) and Subdivision(s) 2- SENW, NESW, SESE, 3- N1/2NE, SENE, 11- NENE			Scale 1:15,840		

### Cover Type

A = Aspen	H = Hemlock	N = Marsh	U = Upland Brush
B = Paper Birch	J = Jack Pine	O = Oak	UM = Upland Mixed
C = Cedar	L = Lowland Brush	P = Lowland Poplar	V = Bog or Marsh
D = Treed Bog	LM = Lowland Mixed	Q = Mixed Swamp Conifer	W = White Pine
E = Swamp Hdwoods	M = Mpl, Bch, Brch	R = Red Pine	X = Non Stocked
F = Spruce Fir	MC = Mixed Conifer	S = Black Spruce	Z = Water
G = Grass	MD = Mixed Deciduous	T = Tamarack	

### Density

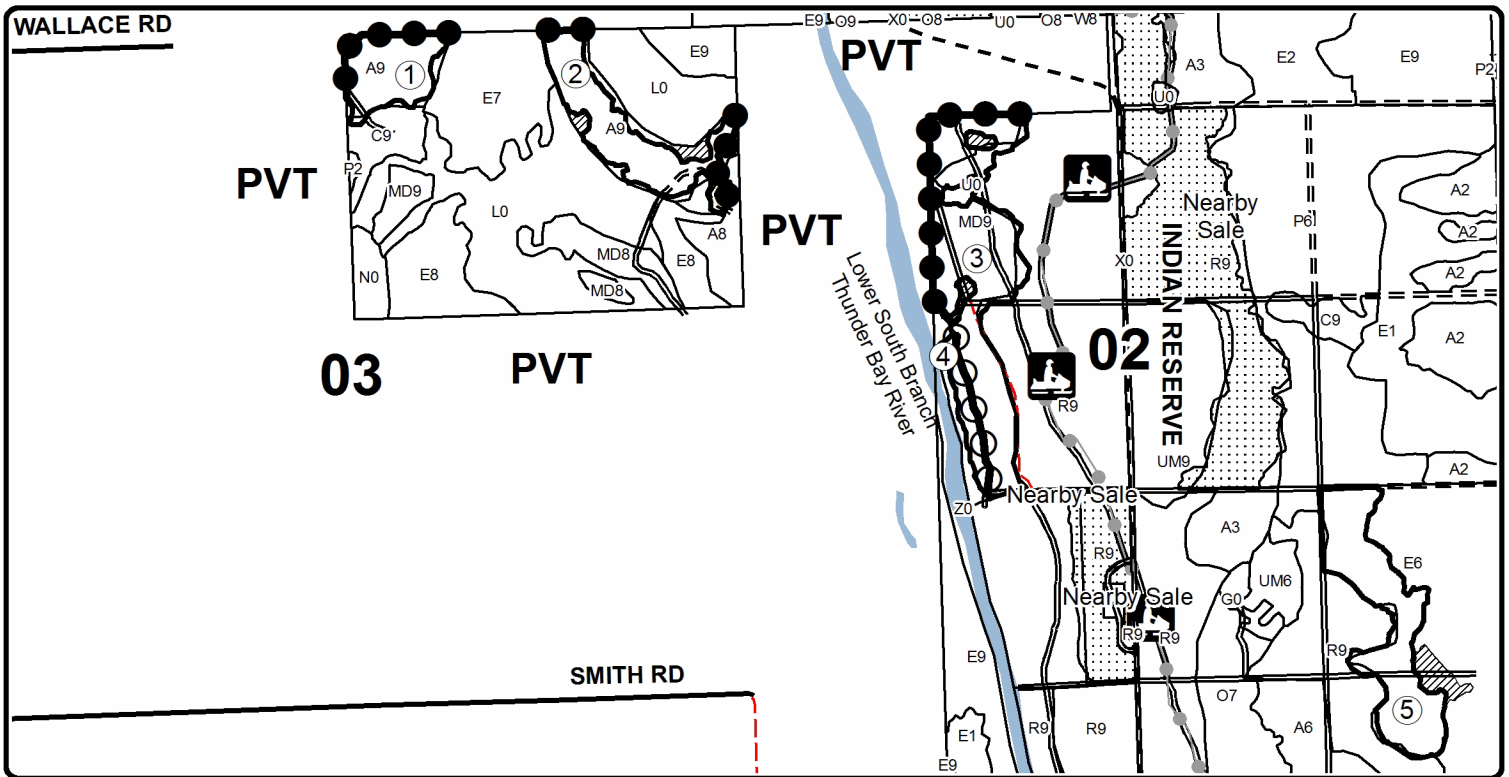
0 = Non Stocked	5 = Pole Timber Medium
1 = Seedling Sapling Poor	6 = Pole Timber Well
2 = Seedling Sapling Medium	7 = Saw Timber Poor
3 = Seedling Sapling Well	8 = Saw Timber Medium
4 = Pole Timber Poor	9 = Saw Timber Well

PU	Acres	PU	Acres
1	7.1	4	2.5
2	10.8	5	15.4
3	22.1		

## Indian Reserve Mix

### Compartment 88

57.9 Acres

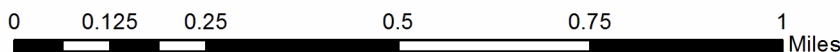
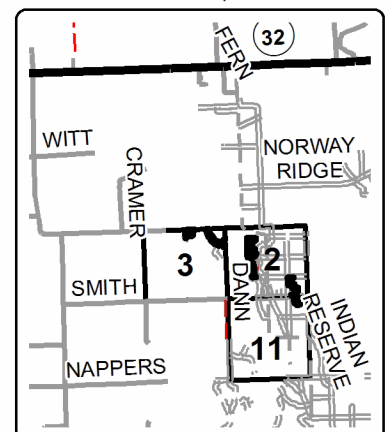


### Legend

- Against State (Red)
- Secondary Forest Road
- Payment Unit (Yellow)
- Forest Access Route
- Private Line (Blue)
- Paved Road
- Stand Boundaries
- Gravel Road
- Retention Area
- Nearby Timber Sales
- Lakes and Rivers
- County Road - Seasonal
- Primary Forest Road
- Private Road
- Snowmobile Trail
- Payment Unit Label

### Locator Map

1:150,000





## TIMBER SALE INFORMATION

### Oak Wilt Red Pine (54-019-20)

T30N, R07E, SEC. 14.

Alpena County (Advertised Price \$75,561.55)

SALE NOTE: Due to oak wilt, this sale has a short contract duration and will not be granted any extensions. The two oak wilt pockets must be harvested before April 15th, 2021. One, twelve month extension is being offered on another sale if all contract requirements are met on this sale. See specs 5.2.3.1, 7.2.2, and 7.2.6 for more information.

A timber sale contract for this lump sum, sealed bid timber sale will be awarded to the responsible bidder offering the highest sealed bid price. All units of volume listed below were estimated using the T-Sale computer program and our traditional volume equations. Bids must be at or above the following advertised price for each product and species:

<u>PRODUCTS &amp; SPECIES</u>	<u>ESTIMATED UNITS*</u>	<u>ADVERTISED PRICE</u>
Sawtimber		
Red Oak	209.4 MBF	\$ 159.00 / MBF
Red Pine	248.3 MBF	\$ 90.00 / MBF
White Pine	36.8 MBF	\$ 53.00 / MBF
Pulpwood		
B. T. Aspen	32 Cords	\$ 14.55 / Cord
Red Maple	9 Cords	\$ 16.35 / Cord
Red Oak	424 Cords	\$ 20.65 / Cord
Red Pine	222 Cords	\$ 34.90 / Cord
White Pine	47 Cords	\$ 17.45 / Cord
White Spruce	5 Cords	\$ 6.65 / Cord

\* The total volume is statistically estimated within plus (+) or minus (-) 13.92 percent. There are an estimated 1,727 cords on this timber sale, plus or minus 240 cords at the 95% confidence level. The estimated units are final and not subject to adjustment. Prospective bidders are urged to examine this timber and to make their own estimates of quantity and quality.

### **BOND AND PAYMENT SCHEDULE:**

1. A bond in the amount of \$3,778.00 to insure faithful performance of the conditions of the contract will be deposited by the successful bidder within 21 days of the sale award.
2. Cutting in any sale or unit without the required advance payment would be considered a trespass.
3. Total payment must be paid in advance or according to the following schedule :
  - (a) Ten percent (10%) of the sale value must be paid within 21 days of the sale award.
  - (b) The 10% down payment will be credited towards the first unit cut.
  - (c) Payment for each of the following units must be made before cutting begins in that unit:
 

PAYMENT UNIT NUMBER	PERCENT OF TOTAL SALE VALUE
01	63.4%
02	36.6%
4. If no cutting takes place, the 10% down payment will not be refunded.
5. Operations on the contract issued will terminate on 06/30/2022.

### **SALE STATISTICS**

#### **SALE VOLUMES**

VOLUME		STATISTICAL RANGE IN CORDS		
TOTAL CUBIC FEET	TOTAL CORDS	PERCENT ERROR	MINIMUM	MAXIMUM
136,411	1,727	13.92%	1,486	1,967

**VDU VOLUMES**

A VDU is a Volume Determination Unit. Volumes and their associated statistics are calculated at the VDU level and summarized to the sale level. There is often a one to one relationship between a VDU and a Payment Unit, but not always, depending on the cruise design. Refer to the VDU TO PAYMENT UNIT table.

VDU	VOLUME		PERCENT ERROR	RANGE IN CORDS	
	TOTAL CUBIC FEET	TOTAL CORDS		MINIMUM	MAXIMUM
42	135,564	1,716	17.26%	1,420	2,012
57	62,615	793	37.86%	493	1,093
58	37,320	472	26.24%	348	596
<b>TOTAL:</b>	<b>235,499</b>	<b>2,981</b>		<b>2,261</b>	<b>3,701</b>

**VDU TO PAYMENT UNIT**

When a VDU is associated with more than one Payment Unit (PU), the VDU volumes are assigned to the PU based on acres of the VDU within the PU.

VDU	VDU ACRES	PU	PU ACRES
42	24.9	1	11.3
		2	13.6
57	10.7	1	5.3
		2	5.4
58	12.2	1	12.2
<b>TOTAL:</b>	<b>47.8</b>		<b>47.8</b>

**DESCRIPTION OF TIMBER BY PAYMENT UNIT (PU)**

PU	MARKET GROUP	PRODUCT	QUANTITY	UNIT	ACRES	ADVERTISE PRICE
1	Red Oak	Sawtimber	156.8	MBF	28.8	\$47,928.25
	Red Pine		123.6	MBF		
	White Pine		16.7	MBF		
	B. T. Aspen	Pulpwood	15	Cords		
	Red Maple		6	Cords		
	Red Oak		298	Cords		
	Red Pine		115	Cords		
	White Pine		27	Cords		
	White Spruce		5	Cords		
	White Spruce	Sawtimber	1.5	MBF		
White Spruce	Pulpwood	2	Cords			
2	Red Oak	Sawtimber	52.6	MBF	19.0	\$27,633.30
	Red Pine		124.7	MBF		
	White Pine		20.1	MBF		
	B. T. Aspen	Pulpwood	17	Cords		
	Red Maple		3	Cords		
	Red Oak		126	Cords		
	Red Pine		107	Cords		
	White Pine		20	Cords		
TOTAL:			494.5	MBF		
TOTAL:			739	Cords		



## Sale Specific Conditions & Requirements

**Sale Name: Oak Wilt Red Pine**

**Sale Number: 54-019-20 Seq#: 2**

### 1 - Sale Area

#### 1.2 - Boundaries

##### 1.2.1 - Painted boundaries (9/19)

The sale boundary and Payment Unit boundaries are marked and identified by red, blue, green, and yellow paint. Exterior sale boundary lines against state are marked with red paint. Exterior sale boundary lines against private property are marked with blue paint. Interior Payment Unit boundaries are marked with yellow paint. Oak wilt pockets within Payment Unit 1 are marked with green paint. Green painted boundary line trees designating an oak wilt pocket are Included Timber. Yellow painted trees designating an interior Payment Unit boundary are only to be cut when all surrounding Payment Units have been paid. The red painted boundary trees designating the opening within Payment Unit 2 are Included Timber. All other painted boundary line trees are not Included Timber and are to be protected.

### 2 - Timber Specifications

#### 2.1 - Included Timber

##### 2.1.1 - Clearcut unit(s) with unmerchantable trees (6/14)

Within Payment Unit(s) 1 & 2, cut all trees that are two (2) inches or more at DBH. In addition, the following requirements apply:

Within the two green painted oak wilt pockets in Payment Unit 1, along with the red painted opening in Payment Unit 2, trees must be harvested, kept separate, processed, and removed from the sale area by April 15th, 2021. See the Timber Sale Map for details.

It is recommended that logs coming from these units are processed before the dates listed above. These requirements are in place to minimize the spread of oak wilt.

#### 2.2 - Utilization

##### 2.2.2 - Chipping required (2/18)

All Payment Units must be chip harvested to facilitate subsequent planting operations. The Purchaser has the option to produce sawlogs or pulpwood bolts, but the remaining portion of the trees must be chipped and hauled. If market conditions limit the practicality of chipping, the chipping requirement may be waived if the following conditions are met:

- Trees greater than 4 inches at DBH must be cut to a 2 inch top or smaller.
- Submerchantable trees, and hardwood limbs 4 inches or greater where they attach to the stem, are to be cut/reduced to 4 foot lengths.
- Slash must be evenly dispersed throughout the sale area, and not be more than 2 feet high.

In all cases, harvesting operations must allow for subsequent planting operations, as determined by the Sale Administrator. The requirement to retain approximately 1/6 to 1/3 of tree tops and limbs less than four inches in diameter is still applicable.

##### 2.2.3 - Stump heights (4/07)

Stump heights within the sale area shall not exceed 6 inches for all trees. This is in order to facilitate planting operations.

### 3 - Payments

#### 3.3 - Pre-measured Sales

##### 3.3.4 - Dividing payment units (7/14)

Payment Unit(s) greater than \$25,000 may be divided at the request of the Purchaser and upon approval of the Unit Manager. Dividing Payment Units is a contract modification which requires a Timber Sale Contract Amendment. There will be only one division per Payment Unit.

#### 3.6 - Payment Unit Cutting Schedule

### 3.6.1 - Order of cutting (1/09)

Payment Units shall be cut in numerical order.

## 4 - Transportation

### 4.1 - Construction

#### 4.1.3 - Slash and earthen piles (8/04)

Piles or windrows of earth along roads and landings that have been widened or constructed shall be leveled. Slash from road maintenance or construction, including stumps, shall be dispersed throughout the sale, or chipped, utilized, or otherwise removed from the sale.

#### 4.1.6 - Road construction (1/09)

Improvements of existing roads shall be done in such a way as to minimize the environmental and visual impacts. Merchantable trees shall be cut and utilized unless otherwise directed. Non-merchantable trees shall be severed and laid flat on the ground. Slash shall be scattered, and not left in windrows and kept a minimum of 10 feet back from the road edge. Stumps shall be set upright, not left on edge, and be moved at least 10 feet away from the road edge. Disturbed soil shall be feathered into the woods and not left in berms or windrows.

#### 4.1.7 - Road closure (10/11)

Overgrown roads that are reopened must be blocked to vehicle traffic upon completion of the sale. In general, this will require constructing a four (4') foot high berm of stumps and logs covered with earth. These roads must be rendered impassable to cars and trucks. Contact the sale administrator for specific details of design and placement.

#### 4.1.12 - No new roads (1/12)

No new roads will be permitted in any Payment Unit. All operations are limited to existing roads. Skid trails only will be allowed.

### 4.2 - Maintenance

#### 4.2.5 - Two wheel drive condition (2/04)

All existing trail roads on and adjacent to the sale area must be passable by two-wheel drive traffic for the duration of the sale.

## 5 - Operations

### 5.1 - Notification

#### 5.1.1 - Pre-sale conference (10/16)

A pre-sale conference on site between the Purchaser and sale administrator is required prior to beginning any operations to determine landing locations. The Unit Manager or his/her representative must be contacted at least 5 days in advance to schedule the conference.

#### 5.1.4 - Post-sale conference (10/16)

A post-sale conference on site between the Purchaser and sale administrator is required 5 days prior to the completion of active logging operations to determine clean-up and repair of landings, road edges, and the fulfillment of other contract specifications.

### 5.2 - Conduct of Operations

#### 5.2.3 - Operating Restrictions

##### 5.2.3.5 - Oak wilt restriction (1/18)

Within Payment Units 1 & 2, unless changed by written agreement, cutting, skidding, hauling within the sale and brushing of access roads to the sale are not permitted during the period of April 15 to July 15. Operations may be allowed if specific steps are taken to prevent damaging uncut oak during the high risk period. Those steps may include completing all road brushing before April 15th and clearing a tree-length buffer along uncut oak cover before April 15th. This is necessary to reduce the spread of oak wilt. For more information, contact the Unit Manager or his/her representative.

##### 5.2.3.6 - Bark beetle restriction (12/08)

In the event drought creates a high risk of pine bark beetle infestation, pine is not to be cut during the period March 1

through July 1, unless all portions of trees greater than two inches in diameter are removed from the sale area, reduced to chips, or treated to the satisfaction of the Unit Manager or his/her representative, within fifteen days of being severed from the stump. Pine log decks, pulpwood piles and treetops that are piled for chipping in the fall or winter within a 1/4 mile of susceptible sites must be removed before March 15. Residual slash must not be placed in piles or rows and must be spread over the site for quick drying. The Department of Natural Resources will exercise this specification if the risk of damage warrants.

#### 5.2.32 - Decking/landing restoration (9/13)

All decking and landing areas must have the surface area restored to a condition equal to or better than before. This is to ensure the proper regeneration of the stand. Wood debris, chips and "cookies" from trimmings must be removed or scattered away from landing and loading areas and may not be windrowed on the edge.

#### 5.2.38 - No decking against live trees (2/04)

Cut products may not be decked against unmarked or designated leave trees.

### 5.4 - Soil Protection

#### 5.4.1 - Rutting restriction, general (7/16)

Operations are to cease immediately if equipment and weather conditions result in rutting of roads and/or skid trails which is 12 inches or greater in depth and 50 feet in length. The Unit Manager or his/her representative may restrict hauling and/or skidding if ruts exceed the specified depth. With the Unit Manager or his/her representative's approval, the Purchaser may return to the area when the risk of rutting has decreased.

### 5.8 - Protection of Endangered Species

#### 5.8.5 - Protection of raptor nests (3/13)

All trees with raptor nests will be protected if found during harvesting operations. Notification will be made to the Unit Manager or his/her representative who will notify the Wildlife Biologist so an on-site evaluation and recommendation can be made, if necessary.

## 6 - Safety and Fire Prevention

### 6.2 - Signing

#### 6.2.1 - Road posting (10/20)

The Purchaser is responsible for posting and maintaining caution signs on forest roads prior to beginning operations. The road must be posted approximately 350 feet from the sale area to warn of logging activity and truck traffic. Signs must be removed when harvest operations are suspended or completed. The Purchaser will provide these signs.

## 7 - Other Conditions

### 7.2 - Extensions

#### 7.2.2 - No extensions (3/09)

There will be no extensions granted on this contract. This is due to the presence of oak wilt.

#### 7.2.6 - Forest health extension (6/13)

This sale contains trees infected with oak wilt. It is considered at high risk for mortality and/or loss of timber value. The sale must be harvested promptly. One (1), twelve (12) month extension can be applied to one (1) other State Forest Timber Sale Contract owned by the purchaser or owned by one (1) designated sub-contractor of the Purchaser that works this contract. To qualify, the contract expiration date of the contract to be extended must be within twelve (12) months from the issue date of this contract. If this is the first extension on the other State Forest Timber Sale Contract, then the 5% extension fee will be waived. If this is an additional extension, the 10% fee will be reduced to 5%. The forest health extension must be used before this contract is closed-out. This specification does not alleviate the purchaser from any contractual obligations of the extended State Forest Timber Sale Contract. Per General Condition & Requirement 7.2, extensions are at the sole discretion of the DNR.



Sale Number	Year
54-019	2020

# TIMBER SALE MAP

This information provided by authority of Part 525, 1994 PA 451, as amended.

Forest Management Unit Atlanta		County Alpena	Mapped By Doug Tyran	Date 12/15/2020	Page 1	of 1
Township 30N		Range 07E	Cruised By Doug Tyran	Scale 1:15,840		
<b>Cover Type</b>						
A = Aspen	H = Hemlock	N = Marsh	U = Upland Brush	0 = Non Stocked		
B = Paper Birch	J = Jack Pine	O = Oak	UM = Upland Mixed	1 = Seedling Sapling Poor	5 = Pole Timber Medium	
C = Cedar	L = Lowland Brush	P = Lowland Poplar	V = Bog or Marsh	2 = Seedling Sapling Medium	6 = Pole Timber Well	
D = Treed Bog	LM = Lowland Mixed	Q = Mixed Swamp Conifer	W = White Pine	3 = Seedling Sapling Well	7 = Saw Timber Poor	
E = Swamp Hdwoods	M = Mpl, Bch, Brch	R = Red Pine	X = Non Stocked	4 = Pole Timber Poor	8 = Saw Timber Medium	
F = Spruce Fir	MC = Mixed Conifer	S = Black Spruce	Z = Water	9 = Saw Timber Well		
G = Grass	MD = Mixed Deciduous	T = Tamarack				

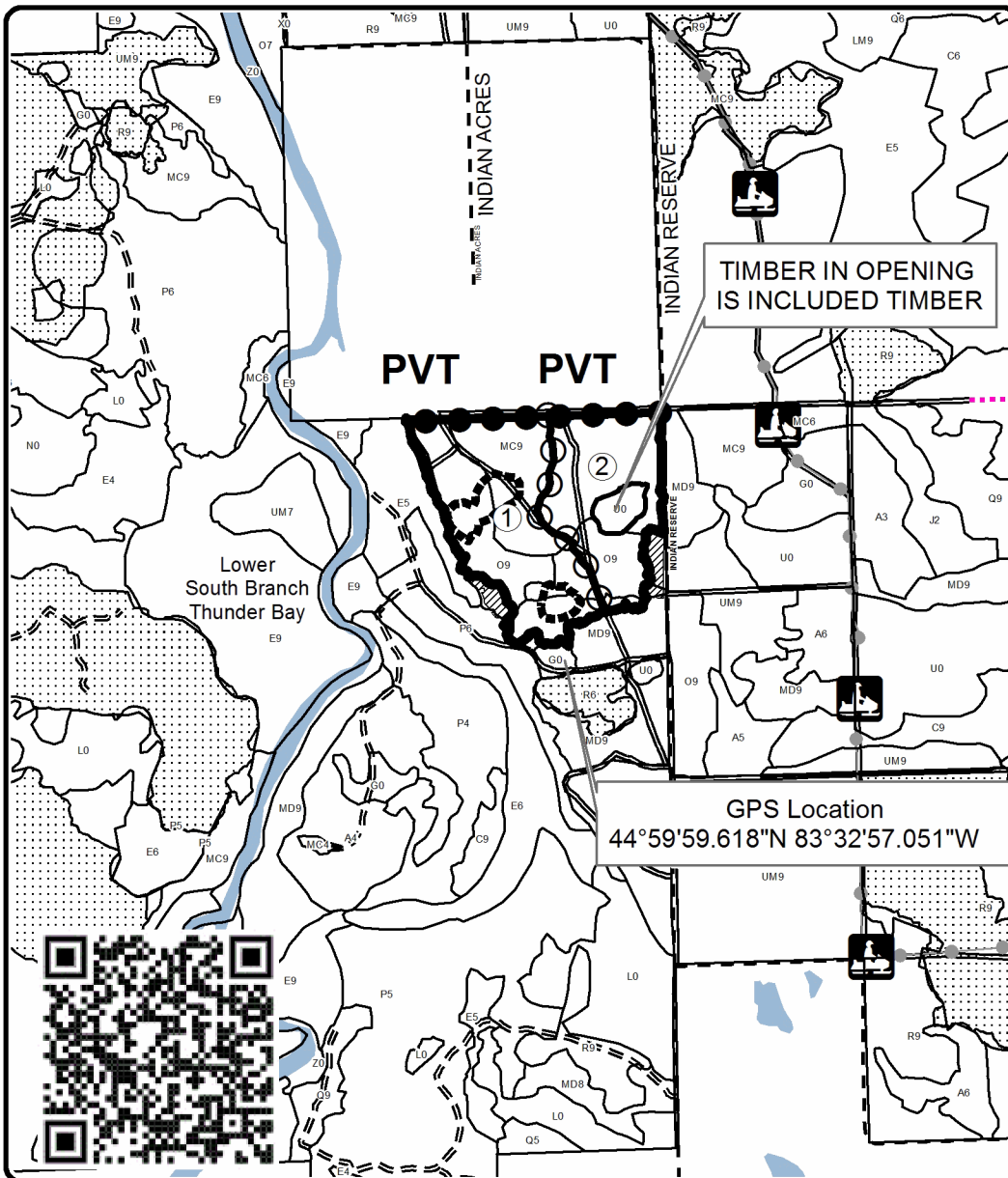
PU	Acres
1	28.8
2	19.0



## Oak Wilt Red Pine

### Compartment 88

47.8 Acres

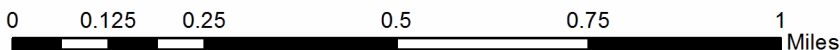
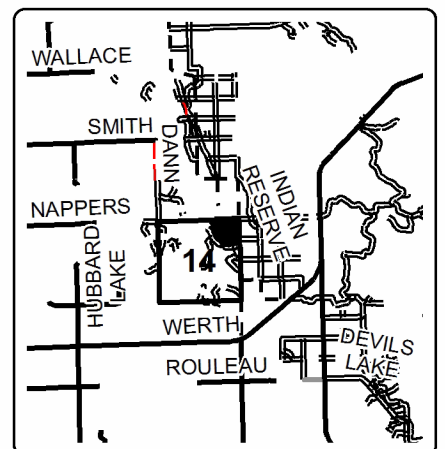


GPS Location  
44°59'59.618"N 83°32'57.051"W

### Legend

- Stand Boundaries
- Against State (Red)
- Payment Unit (Yellow)
- Private Line (Blue)
- Oak Wilt Pockets (Green)
- Retention Area
- Nearby Timber Sales
- Payment Unit Label
- Lakes and Rivers
- Primary Forest Road
- Secondary Forest Road
- Forest Access Route
- Paved Road
- Gravel Road
- County Road - Seasonal
- Private Road
- Recreational Trail

Locator Map  
1:150,000



Indian Reserve Mix (54-018-20)

T30N, R07E, SEC. 11; T30N, R07E, SEC. 2; T30N, R07E, SEC. 3; Alpena COUNTY

In response to the notice of sale to be held 10:00 a.m. (local time) on March 9, 2021, I am hereby submitting my sealed bid ( firm offer) for the following forest products to be cut. Bids for individual species must be at or above the advertised price. All non-responsive bid forms may be rejected.

<u>PRODUCTS &amp; SPECIES</u>	<u>ESTIMATED VOLUME*</u>	<u>ADVERTISED PRICE</u>	<u>BID PRICE/UNIT</u>
<b>Sawtimber</b>			
Mixed Aspen	149.2 MBF	\$ 47.00/MBF	\$ _____
Red Maple	34.9 MBF	\$ 60.00/MBF	\$ _____
Red Oak	156.3 MBF	\$ 159.00/MBF	\$ _____
Red Pine	102.1 MBF	\$ 90.00/MBF	\$ _____
White Pine	32.9 MBF	\$ 53.00/MBF	\$ _____
<b>Pulpwood</b>			
Balsam Fir	58 Cords	\$ 14.10/Cord	\$ _____
Jack Pine	5 Cords	\$ 15.05/Cord	\$ _____
Mixed Aspen	180 Cords	\$ 14.55/Cord	\$ _____
Mixed Hardwood	310 Cords	\$ 16.35/Cord	\$ _____
Paper Birch	13 Cords	\$ 7.75/Cord	\$ _____
Red Oak	275 Cords	\$ 20.65/Cord	\$ _____
Red Pine	172 Cords	\$ 34.90/Cord	\$ _____
White Pine	64 Cords	\$ 17.45/Cord	\$ _____
White Spruce	15 Cords	\$ 6.65/Cord	\$ _____

\*The volumes are statistically estimated within plus (+) or minus (-) 10.16 percent at 95% confidence level. These estimated volumes are final and not subject to adjustment. Prospective bidders are urged to examine this timber and to make their own estimates of quantity and quality.

I understand that any or all bids may be rejected. All bids must be signed and all bid items must be bid or the bid form may be rejected. I also understand that consideration and awarding a contract will be based upon my past performance and ability to complete the contract based upon equipment and staffing subject to my control .

FEDERAL ID: \_\_\_\_\_ - \_\_\_\_\_ or SOCIAL SECURITY NUMBER: \_\_\_\_\_ - \_\_\_\_\_ - \_\_\_\_\_

Company or individual bidding: \_\_\_\_\_

Company representative's name: \_\_\_\_\_

Address: \_\_\_\_\_

City: \_\_\_\_\_ State: \_\_\_\_\_ Zip: \_\_\_\_\_

IF AVAILABLE, PLEASE PLACE THE PERSONALIZED LABEL FROM YOUR PROSPECTUS IN THE ABOVE BOX.

Individual or company representative's signature: \_\_\_\_\_ Date: \_\_\_\_\_

Phone number : \_\_\_\_\_ Email (optional): \_\_\_\_\_

**THE WINNING BIDDER MUST COMPLETE THE VERIFICATION OF WORKER'S DISABILITY COMPENSATION ACT COMPLIANCE (ON REVERSE SIDE IF DOUBLE SIDED) WITHIN 21 DAYS OF SALE AWARD DATE**



<b>FOR DEPARTMENT USE ONLY</b>
Sale Number (XX - XXX - XX - XX)
Forest Management Unit:

## TIMBER SALE VERIFICATION OF WORKER'S DISABILITY COMPENSATION ACT COMPLIANCE

*As required by Act 317, P.A. 1969 (Worker's Compensation) and  
Part 5 of Act 451 of 1994, as amended.*

### VERIFICATION OF WORKER'S DISABILITY COMPENSATION ACT COMPLIANCE

- This verification must be completed and submitted within 21 days of contract award and prior to the issuance of the timber sale contract.
- In addition, if boxes 2B or 2C are checked, then Notice of Exclusion or Certificate of Insurance must be submitted within twenty-one (21) days of the contract award and prior to the issuance of the timber sale contract.
- All information must be typed or printed except for written signatures.

Please Check Appropriate Categories:

1. My business is organized as (you **must** check one of the boxes below):
  - A.  Sole Proprietorship (individual)
  - B.  Partnership
  - C.  Corporation
2. You **must** check one of the boxes below:
  - A.  I certify my business is a sole proprietorship and it has no employees but the sole proprietor. I am not subject to the Worker's Compensation Laws.
  - B.  I certify my business has satisfied its obligation to the Worker's Compensation Act through the use of an approved Notice of Exclusion (BWC-337, Rev. 5/96). I will provide a copy of the Notice of Exclusion within 21 days of the contract award. (For questions or a copy of the BWC-337, please call the Worker's Compensation Bureau at 517-322-1195).
  - C.  I certify my business has a Worker's Compensation Policy. I will provide an original Certificate of Insurance within twenty-one (21) days of the contract award.
3. If you have checked item 2(A) or 2(B), you **must** indicate the number of **both** full-time and part-time employees, other than yourself, including family members and active partners (if none, you must enter "0").

\_\_\_\_\_ Full-time Employees

\_\_\_\_\_ Part-time Employees

Name of Business		Federal ID (or) Social Security No.	
Address		Telephone (       )	
City	State	ZIP	

*I hereby certify that the above information is true and correct. I agree to notify the Michigan DNR of any changes that occur in factors affecting my coverage during any of my present and future operations.*

\_\_\_\_\_  
Signature of Owner or Authorized Representative

\_\_\_\_\_  
Title

\_\_\_\_\_  
Date

**Please complete the "SEALED BID" information on the next page**

Aspen Cottage (54-016-20)

T30N, R07E, SEC. 11; T30N, R07E, SEC. 14; T30N, R07E, SEC. 15; Alpena

In response to the notice of sale to be held 10:00 a.m. (local time) on March 9, 2021, I am hereby submitting my sealed bid ( firm offer) for the following forest products to be cut. Bids for individual species must be at or above the advertised price. All non-responsive bid forms may be rejected.

<u>PRODUCTS &amp; SPECIES</u>	<u>ESTIMATED VOLUME*</u>	<u>ADVERTISED PRICE</u>	<u>BID PRICE/UNIT</u>
<b>Sawtimber</b>			
Mixed Aspen	156.3 MBF	\$ 47.00/MBF	\$ _____
Red Maple	90.1 MBF	\$ 60.00/MBF	\$ _____
<b>Pulpwood</b>			
Balsam Fir	697 Cords	\$ 14.10/Cord	\$ _____
Bl/R/Hybrid Oak	16 Cords	\$ 20.65/Cord	\$ _____
Mixed Aspen	1,835 Cords	\$ 14.55/Cord	\$ _____
Mixed Hardwood	677 Cords	\$ 16.35/Cord	\$ _____
Red Pine	13 Cords	\$ 34.90/Cord	\$ _____
White Pine	34 Cords	\$ 17.45/Cord	\$ _____
White Spruce	81 Cords	\$ 6.65/Cord	\$ _____

\*These estimated volumes are final and not subject to adjustment. Prospective bidders are urged to examine this timber and to make their own estimates of quantity and quality.

I understand that any or all bids may be rejected. All bids must be signed and all bid items must be bid or the bid form may be rejected. I also understand that consideration and awarding a contract will be based upon my past performance and ability to complete the contract based upon equipment and staffing subject to my control.

FEDERAL ID: \_\_\_\_ - \_\_\_\_ - \_\_\_\_ or SOCIAL SECURITY NUMBER: \_\_\_\_ - \_\_\_\_ - \_\_\_\_

Company or individual bidding: \_\_\_\_\_

Company representative's name: \_\_\_\_\_

Address: \_\_\_\_\_

City: \_\_\_\_\_ State: \_\_\_\_\_ Zip: \_\_\_\_\_

IF AVAILABLE, PLEASE PLACE THE PERSONALIZED LABEL FROM YOUR PROSPECTUS IN THE ABOVE BOX.

Individual or company representative's signature: \_\_\_\_\_ Date: \_\_\_\_\_

Phone number : \_\_\_\_\_ Email (optional): \_\_\_\_\_

**THE WINNING BIDDER MUST COMPLETE THE VERIFICATION OF WORKER'S DISABILITY COMPENSATION ACT COMPLIANCE (ON REVERSE SIDE IF DOUBLE SIDED) WITHIN 21 DAYS OF SALE AWARD DATE**



FOR DEPARTMENT USE ONLY	
Sale Number (XX - XXX - XX - XX)	
Forest Management Unit:	

## TIMBER SALE VERIFICATION OF WORKER'S DISABILITY COMPENSATION ACT COMPLIANCE

As required by Act 317, P.A. 1969 (Worker's Compensation) and  
Part 5 of Act 451 of 1994, as amended.

### VERIFICATION OF WORKER'S DISABILITY COMPENSATION ACT COMPLIANCE

- This verification must be completed and submitted within 21 days of contract award and prior to the issuance of the timber sale contract.
- In addition, if boxes 2B or 2C are checked, then Notice of Exclusion or Certificate of Insurance must be submitted within twenty-one (21) days of the contract award and prior to the issuance of the timber sale contract.
- All information must be typed or printed except for written signatures.

Please Check Appropriate Categories:

1. My business is organized as (you **must** check one of the boxes below):
  - A.  Sole Proprietorship (individual)
  - B.  Partnership
  - C.  Corporation
2. You **must** check one of the boxes below:
  - A.  I certify my business is a sole proprietorship and it has no employees but the sole proprietor. I am not subject to the Worker's Compensation Laws.
  - B.  I certify my business has satisfied its obligation to the Worker's Compensation Act through the use of an approved Notice of Exclusion (BWC-337, Rev. 5/96). I will provide a copy of the Notice of Exclusion within 21 days of the contract award. (For questions or a copy of the BWC-337, please call the Worker's Compensation Bureau at 517-322-1195).
  - C.  I certify my business has a Worker's Compensation Policy. I will provide an original Certificate of Insurance within twenty-one (21) days of the contract award.
3. If you have checked item 2(A) or 2(B), you **must** indicate the number of **both** full-time and part-time employees, other than yourself, including family members and active partners (if none, you must enter "0").

\_\_\_\_\_ Full-time Employees

\_\_\_\_\_ Part-time Employees

Name of Business		Federal ID (or) Social Security No.	
Address		Telephone (       )	
City	State	ZIP	

*I hereby certify that the above information is true and correct. I agree to notify the Michigan DNR of any changes that occur in factors affecting my coverage during any of my present and future operations.*

\_\_\_\_\_  
Signature of Owner or Authorized Representative

\_\_\_\_\_  
Title

\_\_\_\_\_  
Date

Please complete the "SEALED BID" information on the next page



Oak Wilt Red Pine (54-019-20)  
T30N, R07E, SEC. 14; Alpena COUNTY

In response to the notice of sale to be held 10:00 a.m. (local time) on March 9, 2021, I am hereby submitting my sealed bid ( firm offer) for the following forest products to be cut. Bids for individual species must be at or above the advertised price. All non-responsive bid forms may be rejected.

<u>PRODUCTS &amp; SPECIES</u>	<u>ESTIMATED VOLUME*</u>	<u>ADVERTISED PRICE</u>	<u>BID PRICE/UNIT</u>
<b>Sawtimber</b>			
Red Oak	209.4 MBF	\$ 159.00/MBF	\$ _____
Red Pine	248.3 MBF	\$ 90.00/MBF	\$ _____
White Pine	36.8 MBF	\$ 53.00/MBF	\$ _____
<b>Pulpwood</b>			
B. T. Aspen	32 Cords	\$ 14.55/Cord	\$ _____
Red Maple	9 Cords	\$ 16.35/Cord	\$ _____
Red Oak	424 Cords	\$ 20.65/Cord	\$ _____
Red Pine	222 Cords	\$ 34.90/Cord	\$ _____
White Pine	47 Cords	\$ 17.45/Cord	\$ _____
White Spruce	5 Cords	\$ 6.65/Cord	\$ _____

\*The volumes are statistically estimated within plus (+) or minus (-) 13.92 percent at 95% confidence level. These estimated volumes are final and not subject to adjustment. Prospective bidders are urged to examine this timber and to make their own estimates of quantity and quality.

I understand that any or all bids may be rejected. All bids must be signed and all bid items must be bid or the bid form may be rejected. I also understand that consideration and awarding a contract will be based upon my past performance and ability to complete the contract based upon equipment and staffing subject to my control.

FEDERAL ID: \_\_\_\_ - \_\_\_\_ - \_\_\_\_ or SOCIAL SECURITY NUMBER: \_\_\_\_ - \_\_\_\_ - \_\_\_\_

Company or individual bidding: \_\_\_\_\_

Company representative's name: \_\_\_\_\_

Address: \_\_\_\_\_

City: \_\_\_\_\_ State: \_\_\_\_\_ Zip: \_\_\_\_\_

IF AVAILABLE, PLEASE PLACE THE PERSONALIZED LABEL FROM YOUR PROSPECTUS IN THE ABOVE BOX.

Individual or company representative's signature: \_\_\_\_\_ Date: \_\_\_\_\_

Phone number : \_\_\_\_\_ Email (optional): \_\_\_\_\_

**THE WINNING BIDDER MUST COMPLETE THE VERIFICATION OF WORKER'S DISABILITY COMPENSATION ACT COMPLIANCE (ON REVERSE SIDE IF DOUBLE SIDED) WITHIN 21 DAYS OF SALE AWARD DATE**



<b>FOR DEPARTMENT USE ONLY</b>
Sale Number (XX - XXX - XX - XX)
Forest Management Unit:

## TIMBER SALE VERIFICATION OF WORKER'S DISABILITY COMPENSATION ACT COMPLIANCE

*As required by Act 317, P.A. 1969 (Worker's Compensation) and  
Part 5 of Act 451 of 1994, as amended.*

### VERIFICATION OF WORKER'S DISABILITY COMPENSATION ACT COMPLIANCE

- This verification must be completed and submitted within 21 days of contract award and prior to the issuance of the timber sale contract.
- In addition, if boxes 2B or 2C are checked, then Notice of Exclusion or Certificate of Insurance must be submitted within twenty-one (21) days of the contract award and prior to the issuance of the timber sale contract.
- All information must be typed or printed except for written signatures.

Please Check Appropriate Categories:

1. My business is organized as (you **must** check one of the boxes below):
  - A.  Sole Proprietorship (individual)
  - B.  Partnership
  - C.  Corporation
2. You **must** check one of the boxes below:
  - A.  I certify my business is a sole proprietorship and it has no employees but the sole proprietor. I am not subject to the Worker's Compensation Laws.
  - B.  I certify my business has satisfied its obligation to the Worker's Compensation Act through the use of an approved Notice of Exclusion (BWC-337, Rev. 5/96). I will provide a copy of the Notice of Exclusion within 21 days of the contract award. (For questions or a copy of the BWC-337, please call the Worker's Compensation Bureau at 517-322-1195).
  - C.  I certify my business has a Worker's Compensation Policy. I will provide an original Certificate of Insurance within twenty-one (21) days of the contract award.
3. If you have checked item 2(A) or 2(B), you **must** indicate the number of **both** full-time and part-time employees, other than yourself, including family members and active partners (if none, you must enter "0").

\_\_\_\_\_ Full-time Employees

\_\_\_\_\_ Part-time Employees

Name of Business		Federal ID (or) Social Security No.	
Address		Telephone (       )	
City	State	ZIP	

*I hereby certify that the above information is true and correct. I agree to notify the Michigan DNR of any changes that occur in factors affecting my coverage during any of my present and future operations.*

\_\_\_\_\_  
Signature of Owner or Authorized Representative

\_\_\_\_\_  
Title

\_\_\_\_\_  
Date

**Please complete the "SEALED BID" information on the next page**