



**DEPARTMENT OF NATURAL RESOURCES  
STATE OF MICHIGAN**

**TIMBER SALE PROSPECTUS #6824**

SCHEDULED SALE DATE AND TIME: 8:30 a.m. (local time) on March 10, 2021.

LOCATION: CRYSTAL FALLS MGMT UNIT, 1420 US 2 WEST, CRYSTAL FALLS, MI 49920.

PROSPECTUS NOTE: The bidder is advised to inspect the sale area and review the location, estimated volumes, operating costs and contract terms of proposed sales. Please be aware that some landowners may request 60 days or more notice for access across their land.

Notice is hereby given that bids will be received by the Unit Manager, CRYSTAL FALLS MANAGEMENT UNIT, for certain timber on the following described lands:

Bug Bungee (12-004-20) / T41N, R27W, SEC. 30, NWSW,S1/2SW,S1/2SE.

T41N, R27W, SEC. 31, N1/2NE.

T41N, R28W, SEC. 25, SENW,E1/2SW,NWSE,SESE.

T41N, R28W, SEC. 36, SENW,NE,NESW,SWSW,SE.

Dickinson County, Advertised Price \$51,817.80, 161.5 Acres, Aspen, Spruce/Fir/Tamarack.

SALE NOTE: The bridge identified on the Timber Sale Map cannot hold logging equipment, trucks, or passenger vehicles.

Covid Spring (12-007-20) / T41N, R29W, SEC. 31, SW.

T41N, R30W, SEC. 36, NE,NESW,S1/2SW,N1/2SE,SWSE.

Dickinson County, Advertised Price \$142,324.40, 201.1 Acres, Aspen, Hardwood.

SALE NOTE: Extensive road work is required on this sale. The advertised price has been reduced by the estimate cost of this road work to off-set the additional expense. Roadwork will be required on Rock Dam Road, including blading, ditching, crowning, adding a minimum of 570 yards of gravel, and replacement of 6 culverts. See the Road Work Map for location information.

Hunter walking trails may be used, however, if they are utilized during snow-free conditions, additional post-harvest maintenance will be required. The Purchaser will be required to return the roads/hunter walking trails to the original condition by leveling, disking, and seeding to original seed composition.

Snail Rail (12-011-20) / T41N, R30W, SEC. 1, NWSW.

T41N, R30W, SEC. 2, E1/2NW,S1/2NE,NESW,N1/2SE,SESE.

Dickinson County, Advertised Price \$27,295.25, 99.2 Acres, Hardwood, Aspen.

SALE NOTE: It's the responsibility of the Purchaser to acquire permission from the railroad company to cross the railroad tracks, if crossing tracks is desired.

Permission for access across private land is the responsibility of the Purchaser. The DNR will secure any necessary DEQ permits. The construction of new roads and reopening of overgrown roads will need to be approved by the timber sale administrator. It is recommended, but not required, that within Payment Units 1-6, cutting, skidding, and hauling occur during dry summer or frozen winter conditions.

Access may be through private land.

Not Mine (12-013-20) / T41N, R27W, SEC. 30, NWNE,SESE.

T41N, R28W, SEC. 24, SENW,NE,N1/2SW,SE.

T41N, R28W, SEC. 25, E1/2NW,N1/2NE,SWNE.

Dickinson County, Advertised Price \$58,856.05, 214.4 Acres, Hardwood, Aspen.

SALE NOTE: The preferred access for Payment Unit 12 is through private property. Please contact the Sale Administrator for more information.

A recreation site such as a trail, pathway, or campground is within the sale area or the vicinity. Certain restrictions/specifications may be applicable including time restrictions.

## BID INSTRUCTIONS (VER. 07/02/2018):

### 1. Scheduled Bid Location, Date, and Time (2/11)

Bids must be received by the Unit Manager, CRYSTAL FALLS OFFICE, 1420 US 2 West, Crystal Falls, MI 49920, no later than 8:30 a.m. (local time) on March 10, 2021. For further information concerning this sale, contact Dan McNamee at 906-875-6622.

### 2. Bidder's Qualifications (5/16)

Purchaser shall obtain workers compensation insurance to cover claims under Michigan's Worker's Disability Compensation Act of 1969 or similar employee benefit act of any other state applicable to an employee. If all or part of a timber sale was prepared by a private contractor, the contractor and that contractor's company are not permitted to bid on the timber sale contract. Bids will not be accepted from individuals or companies appearing on the DNR/FRD No-Bid List. This list contains the names of purchasers who previously failed to execute a contract within 21-days or who have a history of poor performance.

### 3. Preparation of Sealed Bids (5/16)

Bid Forms may be completed online thru Michigan DNR Timber Sale Online Bidding (OLB) at [www.michigan.gov/timberbidding](http://www.michigan.gov/timberbidding) or by completing the hardcopy Bid Form found in the Timber Sale Prospectus. Hardcopy Bid Forms shall be manually signed in ink. Registration in OLB is considered your 'signature' for all bids submitted thru that system. Bid prices must be entered for each species and product in the Bid Price column for all material subject to bidding and all fill-in blanks must be completed. If erasures or other changes appear on the hardcopy Bid Form, each erasure or change must be initialed by the person signing the bid.

### 4. Submission of Sealed Bids (5/16)

Bid forms may be obtained from the Unit Manager or thru OLB. Bids may be submitted hardcopy or thru OLB. All hardcopy bids must be submitted on the bid form and in an envelope clearly identified as described in this section. NOTE: Only one bid form per bid envelope. Sealed bids must be submitted to the Unit office designated in the prospectus and must be submitted at or prior to the time established in the prospectus. The envelope should show on the outside (a) the sale name or number and (b) the date and time of bid opening, as shown in the prospectus. Bids received after the time specified in the sale prospectus are late bids and will be rejected.

It is possible for a bidder to submit multiple bids on a single sale. For example, a bid may be submitted hardcopy and a bid may be submitted thru OLB. Or, two bidders from the same company could both submit bids on the same sale. If this were to happen, the State would accept all bids received and award the contract accordingly. All bidding and contractual requirements would apply to all bids received.

### 5. Public Opening of Sealed Bids (7/16)

If conditions permit, the sealed bids will be publicly opened and posted at the time and place set in the prospectus.

If a bidder, present at a bid opening, has submitted bids on more than one sale, that bidder may withdraw their unopened bid envelopes or announce the withdrawal of their online bid after being declared the successful bidder on one sale.

### 6. Award of Contract (1/11)

Award of the contract will be made to the Bidder whose bid, conforming to the prospectus, is most advantageous to the State of Michigan on the basis of total value at rates bid for the estimated quantities. The State reserves the right to reject any bid or waive any minor irregularity in bids received. A written award mailed (or otherwise furnished) to the successful Bidder shall be deemed to result in a binding contract without further action by either party.

### 7. Down Payment (1/11)

The Bidder to whom award is made must make a down payment within 21 days of the sale award. The amount of the down payment will be calculated as shown in the Bond and Payment Schedule of this prospectus. Only cash may be used to meet this requirement.

### 8. Performance Security (1/11)

As guarantee of faithful performance, a cash bond, certificate of deposit, surety bond or irrevocable letter of credit (LOC) is required within 21 days of the sale award. The amount of the performance security is shown in the Bond and

Payment Schedule of this prospectus. If an LOC or surety is used, the coverage must extend for at least 6 months beyond the contract expiration.

#### 9. Timber Sale Contract (7/18)

Additional conditions and requirements common to all timber sales are listed on the timber sale contract (R4031) and are available on line at [www.michigan.gov/timber](http://www.michigan.gov/timber). Contact the Unit Manager for additional information or a sample contract. Within 21 days of the date of the award letter, the bidder must sign the contract and provide the required down payment, performance security, and verification of worker's disability compensation. The down payment and performance security shall be in accordance with the provisions of the timber sale contract, in the sums stated in this prospectus. If these actions are not taken, then the Bidder, the Bidder's corporation, and the corporation's principals may not be permitted to bid on State timber sales for a period of 3 months after the first offense, 6 months after the second offense, and 1 year after the third offense. An offense will only be counted against the Bidder for 5 years. In addition, the Bidder certifies that if awarded this contract, the Bidder will complete the timber sale contract in accordance with its terms and any modifications thereof including requirements to purchase, cut, and remove the included timber by the expiration date.

Payment Unit values in the State Forest Timber Sale Contract are calculated based on the advertised value of the Payment Unit as a percentage of the total advertised value of the contract. The advertised value of each Payment Unit is given in the Description of Timber by Payment Unit table on the Timber Sale Information page. For example, if the value of Payment Unit 1 is advertised as \$1,500 and the total Timber Sale value is advertised as \$10,000, the contract price for Payment Unit 1 will be 15% of the total bid price ( $\$1,500/\$10,000 * 100$ ).

#### 10. Disclaimer of Estimates and Bidder's Warranty of Inspection (7/16)

Before submitting this bid, the Bidder is advised and cautioned to inspect the sale area, review the requirements of the sale contract, and take other steps as may be reasonably necessary to ascertain the location, estimated volumes, construction estimates, and operating costs of the proposed sale. Failure to do so will not relieve the Bidder from responsibility for completing the contract.

The Bidder warrants that this bid is submitted solely on the basis of the Bidder's examination and inspection of the quality and quantity of the timber offered for sale and the Bidder's opinion of the value thereof and the costs of recovery. No reliance should be placed on the State of Michigan's estimates of timber quality, quantity or costs of recovery. Bidder further acknowledges that the State of Michigan: (i) expressly disclaims any warranty of fitness of timber for any purpose; (ii) offers this timber as is without any warranty of quality (merchantability) or quantity and (iii) expressly disclaims any warranty as to the quantity or quality of timber sold.

#### 11. Certification and Chain-of-Custody (10/14)

Unless otherwise indicated in the contract under section 7 – Other Conditions of the Sale Specific Conditions & Requirements, the area encompassed by this timber sale is certified to the standards of the Forest Stewardship Council (FSC) - Certificate #SCS-FM/COC-00090N and the Sustainable Forestry Initiative (SFI) - Certificate #NSF-SFIS-5Y031-SF5. Forest products from this sale may be delivered to the mill as "FSC 100% and / or SFI certified" as long as the contractor hauling the forest products is chain-of-custody (COC) certified or covered under a COC certificate from the destination mill. The purchaser is responsible for maintaining COC after leaving the sale area.

#### 12. Good Neighbor Authority (GNA) Requirements (7/16)

If the name of this timber sales contains the acronym GNA, it is authorized by the Good Neighbor Authority (GNA) and covered by various agreements between the U.S. Forest Service and the State. The timber sale occurs on federal land and the following conditions apply:

GNA contracts on US Forest Service land will not be awarded to purchasers on the Federal list of excluded parties. The System for Award Management (SAM) will be checked for active excluded parties prior to award of contract. In addition, the Bidder to whom award is made must complete an Assurance Regarding Felony Conviction or Tax Delinquent Status for Corporate Applicants (AD-3031).

#### 13. Good Neighbor Authority (GNA) Requirements, con't (9/16)

Bidder certifies, by signing this bid form, that to the best of Bidder's knowledge that the following representations are accurate and complete.

- a. That the Bidder and its principals are not presently debarred, suspended, proposed for debarment, declared ineligible, or voluntary excluded from timber sales (covered transactions) by any Federal department or agency.
- b. That the Bidder and its principals have not within a 3-year period preceding this bid been convicted of or had a civil judgment rendered against them for commission of fraud or a criminal offense in connection with obtaining , attempting to obtain, or performing a public (Federal, State, or local) transaction or contract under a public transaction; violation of Federal or State antitrust statutes or commission of embezzlement, theft, forgery, bribery, falsification or destruction of records, making false statements, or receiving stolen property.
- c. That the Bidder and its principals are not presently indicted for or otherwise criminally or civilly charged by a governmental entity (Federal, State, or local) with commission of any of the offenses enumerated in paragraph b of this certification.
- d. That the Bidder and its principals have not within a 3-year period preceding this bid had one or more public transactions (Federal, State, or local) terminated for breach or default of a timber or forest product contract.

Bidders that cannot certify this requirement, in whole or in part, shall submit an explanation with their bid.

DAN EICHINGER  
Director



# TIMBER SALE INFORMATION

Bug Bungee (12-004-20)

T41N, R27W, SEC. 30; T41N, R27W, SEC. 31; T41N, R28W, SEC. 25; T41N, R28W, SEC. 36.

Dickinson County (Advertised Price \$51,817.80)

SALE NOTE: The bridge identified on the Timber Sale Map cannot hold logging equipment, trucks, or passenger vehicles.

A timber sale contract for this lump sum, sealed bid timber sale will be awarded to the responsible bidder offering the highest sealed bid price. All units of volume listed below were estimated using the T-Sale computer program and our traditional volume equations. Bids must be at or above the following advertised price for each product and species:

<u>PRODUCTS &amp; SPECIES</u>	<u>ESTIMATED UNITS*</u>	<u>ADVERTISED PRICE</u>
<b>Sawtimber</b>		
Basswood	2.4 MBF	\$ 76.00 / MBF
Paper Birch	3.2 MBF	\$ 57.00 / MBF
Red Maple	1.3 MBF	\$ 97.00 / MBF
Red Pine	29.9 MBF	\$ 115.00 / MBF
Sugar Maple	2.4 MBF	\$ 170.00 / MBF
<b>Pulpwood</b>		
Balsam Fir	101 Cords	\$ 14.40 / Cord
Basswood	22 Cords	\$ 6.30 / Cord
Jack Pine	71 Cords	\$ 19.90 / Cord
Mixed Aspen	1,104 Cords	\$ 28.10 / Cord
Mixed Hardwood	121 Cords	\$ 17.75 / Cord
Mixed Spruce	346 Cords	\$ 11.80 / Cord
Paper Birch	113 Cords	\$ 12.35 / Cord
Red Pine	80 Cords	\$ 37.10 / Cord
Tamarack	222 Cords	\$ 8.80 / Cord
White Pine	56 Cords	\$ 16.15 / Cord

\* The estimated units are final and not subject to adjustment. Prospective bidders are urged to examine this timber and to make their own estimates of quantity and quality.

**BOND AND PAYMENT SCHEDULE:**

1. A bond in the amount of \$3,627.00 to insure faithful performance of the conditions of the contract will be deposited by the successful bidder within 21 days of the sale award.
2. Cutting in any sale or unit without the required advance payment would be considered a trespass.
3. Total payment must be paid in advance or according to the following schedule :
  - (a) Ten percent (10%) of the sale value must be paid within 21 days of the sale award.
  - (b) The 10% down payment will be credited towards the first unit cut.
  - (c) Payment for each of the following units must be made before cutting begins in that unit:

PAYMENT UNIT NUMBER	PERCENT OF TOTAL SALE VALUE
01	8.2%
02	11.3%
03	8.4%
04	5.9%
05	2.4%
06	6.2%
07	5.3%
08	0.9%
09	8.1%
10	7.2%
11	3.2%
12	9.3%
13	6.3%
14	4.8%
15	2.1%
16	3.1%
17	2.4%
18	4.9%

4. If no cutting takes place, the 10% down payment will not be refunded.
5. Operations on the contract issued will terminate on 06/30/2024.

**SALE STATISTICS****SALE VOLUMES**

VOLUME			STATISTICAL RANGE IN CORDS	
TOTAL CUBIC FEET	TOTAL CORDS	PERCENT ERROR	MINIMUM	MAXIMUM
182,800	2,314	0.00%	2,314	2,314

**VDU VOLUMES**

A VDU is a Volume Determination Unit. Volumes and their associated statistics are calculated at the VDU level and summarized to the sale level. There is often a one to one relationship between a VDU and a Payment Unit, but not always, depending on the cruise design. Refer to the VDU TO PAYMENT UNIT table.

VDU	VOLUME		PERCENT ERROR	RANGE IN CORDS	
	TOTAL CUBIC FEET	TOTAL CORDS		MINIMUM	MAXIMUM
26	4,645	59	80.03%	12	106
34	1,936	25	29.79%	17	32
38	1,975	25	45.98%	14	36
47	10,942	139	39.55%	84	193
48	10,531	133	45.97%	72	195
52	4,945	63	49.78%	31	94
57	6,707	85	62.51%	32	138
62	10,618	134	25.25%	100	168
64	28,946	366	20.94%	290	443
65	17,364	220	25.83%	163	277
66	14,512	184	22.47%	142	225
73	14,378	182	28.52%	130	234
78	8,706	110	33.32%	73	147
82	10,396	132	47.41%	69	194
87	12,221	155	50.23%	77	232
91	5,238	66	75.53%	16	116
101	4,148	53	63.45%	19	86
108	9,464	120	59.54%	48	191
110	5,151	65	56.30%	28	102
<b>TOTAL:</b>	<b>182,822</b>	<b>2,314</b>		<b>1,419</b>	<b>3,209</b>



**VDU TO PAYMENT UNIT**

When a VDU is associated with more than one Payment Unit (PU), the VDU volumes are assigned to the PU based on acres of the VDU within the PU.

VDU	VDU ACRES	PU	PU ACRES
26	5.8	18	5.8
34	2.4	6	2.4
38	2.5	8	2.5
47	4.8	10	4.8
48	6.7	9	6.7
52	3.3	11	3.3
57	8.4	6	8.4
62	11.3	4	11.3
64	19.7	1	19.7
65	14.6	2	14.6
66	13.7	3	13.7
73	18.7	12	18.7
78	7.0	7	7.0
82	8.9	5	8.9
87	9.8	13	9.8
91	4.1	17	4.1
101	4.3	15	4.3
108	8.7	14	8.7
110	6.8	16	6.8
<b>TOTAL:</b>	<b>161.5</b>		<b>161.5</b>

**DESCRIPTION OF TIMBER BY PAYMENT UNIT (PU)**

PU	MARKET GROUP	PRODUCT	QUANTITY	UNIT	ACRES	ADVERTISE PRICE
1	Balsam Fir	Pulpwood	3	Cords	19.7	\$4,258.50
	Mixed Aspen		15	Cords		
	<i>Balsam Poplar</i>		6	Cords		
	<i>Quaking Aspen</i>		9	Cords		
	Mixed Spruce		242	Cords		
	<i>Black Spruce</i>		242	Cords		
	Paper Birch		4	Cords		
	Tamarack		101	Cords		
2	Balsam Fir	Pulpwood	14	Cords	14.6	\$5,857.65
	Mixed Aspen		196	Cords		
	<i>B. T. Aspen</i>		88	Cords		
	<i>Quaking Aspen</i>		108	Cords		
	Mixed Spruce		3	Cords		
	<i>White Spruce</i>		3	Cords		
	White Pine		7	Cords		
	<i>White Pine</i>		7	Cords		
3	Sugar Maple	Sawtimber	0.9	MBF	13.7	\$4,339.85
	Balsam Fir	Pulpwood	18	Cords		
	Basswood		4	Cords		
	Mixed Aspen		111	Cords		
	<i>Balsam Poplar</i>		9	Cords		
	<i>Quaking Aspen</i>		102	Cords		
	Mixed Hardwood		36	Cords		
	<i>Ironwood</i>		1	Cords		
	<i>Red Maple</i>		6	Cords		
	<i>Sugar Maple</i>		29	Cords		
	Mixed Spruce		7	Cords		
	<i>Black Spruce</i>		3	Cords		
	<i>White Spruce</i>		4	Cords		
Paper Birch	5	Cords				
4	Paper Birch	Sawtimber	1.6	MBF	11.3	\$3,080.85
	Mixed Aspen	Pulpwood	76	Cords		
	<i>Balsam Poplar</i>		3	Cords		
	<i>Quaking Aspen</i>		73	Cords		
	Mixed Hardwood		28	Cords		
	<i>Black Ash</i>		2	Cords		
	<i>Black Cherry</i>		2	Cords		
	<i>Red Maple</i>		18	Cords		
	<i>Sugar Maple</i>		6	Cords		
	Mixed Spruce		2	Cords		
	<i>Black Spruce</i>		2	Cords		
	Paper Birch		27	Cords		
5	Mixed Aspen	Pulpwood	4	Cords	8.9	\$1,266.55
	<i>Balsam Poplar</i>		4	Cords		
	Mixed Spruce		11	Cords		
	<i>Black Spruce</i>		11	Cords		
	Paper Birch		1	Cords		
	Tamarack		115	Cords		
6	Red Pine	Sawtimber	3.5	MBF	10.8	\$3,186.80
	Balsam Fir	Pulpwood	5	Cords		
	Mixed Aspen		76	Cords		
	<i>Quaking Aspen</i>		76	Cords		
	Mixed Spruce		8	Cords		
	<i>Black Spruce</i>		1	Cords		
	<i>White Spruce</i>		7	Cords		
	Red Pine		13	Cords		

**DESCRIPTION OF TIMBER BY PAYMENT UNIT (PU), CON'T**

PU	MARKET GROUP	PRODUCT	QUANTITY	UNIT	ACRES	ADVERTISE PRICE
7	Balsam Fir	Pulpwood	4	Cords	7.0	\$2,732.35
	Mixed Aspen		85	Cords		
	<i>B. T. Aspen</i>		4	<i>Cords</i>		
	<i>Balsam Poplar</i>		8	<i>Cords</i>		
	<i>Quaking Aspen</i>		73	<i>Cords</i>		
	Mixed Hardwood		3	Cords		
	<i>Red Maple</i>		3	<i>Cords</i>		
	Mixed Spruce		3	Cords		
	<i>White Spruce</i>		3	<i>Cords</i>		
	Paper Birch		16	Cords		
8	Balsam Fir	Pulpwood	3	Cords	2.5	\$461.90
	Jack Pine		1	Cords		
	Mixed Aspen		10	Cords		
	<i>Quaking Aspen</i>		10	<i>Cords</i>		
	Mixed Spruce		7	Cords		
	<i>Black Spruce</i>		7	<i>Cords</i>		
	Tamarack		4	Cords		
9	Red Pine	Sawtimber	7.6	MBF	6.7	\$4,185.20
	Balsam Fir	Pulpwood	2	Cords		
	Mixed Aspen		98	Cords		
	<i>B. T. Aspen</i>		18	<i>Cords</i>		
	<i>Quaking Aspen</i>		80	<i>Cords</i>		
	Mixed Spruce		2	Cords		
	<i>White Spruce</i>		2	<i>Cords</i>		
	Red Pine		11	Cords		
	White Pine		6	Cords		
	<i>White Pine</i>		6	<i>Cords</i>		
10	Balsam Fir		Pulpwood	3	Cords	4.8
	Mixed Aspen	120		Cords		
	<i>B. T. Aspen</i>	36		<i>Cords</i>		
	<i>Quaking Aspen</i>	84		<i>Cords</i>		
	Mixed Hardwood	12		Cords		
	<i>Red Maple</i>	12		<i>Cords</i>		
	Red Pine	3		Cords		
11	Balsam Fir	Pulpwood	9	Cords	3.3	\$1,647.00
	Mixed Aspen		54	Cords		
	<i>Balsam Poplar</i>		8	<i>Cords</i>		
	<i>Quaking Aspen</i>		46	<i>Cords</i>		
12	Red Pine	Sawtimber	5.7	MBF	18.7	\$4,840.45
	Balsam Fir	Pulpwood	4	Cords		
	Jack Pine		27	Cords		
	Mixed Aspen		87	Cords		
	<i>Quaking Aspen</i>		87	<i>Cords</i>		
	Mixed Spruce		2	Cords		
	<i>Black Spruce</i>		1	<i>Cords</i>		
	<i>White Spruce</i>		1	<i>Cords</i>		
	Red Pine		15	Cords		
	White Pine		35	Cords		
	<i>White Pine</i>			<i>Sawtimber</i>		
<i>White Pine</i>			<i>Pulpwood</i>	34	<i>Cords</i>	
13	Balsam Fir	Pulpwood	9	Cords	9.8	\$3,243.65
	Jack Pine		12	Cords		
	Mixed Aspen		79	Cords		
	<i>Balsam Poplar</i>		5	<i>Cords</i>		
	<i>Quaking Aspen</i>		74	<i>Cords</i>		

**DESCRIPTION OF TIMBER BY PAYMENT UNIT (PU), CON'T**

PU	MARKET GROUP	PRODUCT	QUANTITY	UNIT	ACRES	ADVERTISE PRICE
13 con't	Mixed Spruce	Pulpwood	21	Cords		
	<i>White Spruce</i>		21	<i>Cords</i>		
	Paper Birch		33	Cords		
14	Basswood	Sawtimber	2.4	MBF	8.7	\$2,511.80
	Paper Birch		1.6	MBF		
	Red Maple		1.3	MBF		
	Sugar Maple		1.5	MBF		
	Balsam Fir	Pulpwood	4	Cords		
	Basswood		18	Cords		
	Mixed Aspen		31	Cords		
	<i>B. T. Aspen</i>		10	<i>Cords</i>		
	<i>Quaking Aspen</i>		21	<i>Cords</i>		
	Mixed Hardwood		32	Cords		
	<i>American Elm</i>		3	<i>Cords</i>		
	<i>Red Maple</i>		15	<i>Cords</i>		
	<i>Sugar Maple</i>		14	<i>Cords</i>		
	Paper Birch		20	Cords		
15	Balsam Fir	Pulpwood	22	Cords	4.3	\$1,064.90
	Jack Pine		15	Cords		
	Mixed Aspen		16	Cords		
	<i>Quaking Aspen</i>		16	<i>Cords</i>		
16	Red Pine	Sawtimber	1.9	MBF	6.8	\$1,624.90
	Jack Pine	Pulpwood	16	Cords		
	Mixed Aspen		21	Cords		
	<i>B. T. Aspen</i>		4	<i>Cords</i>		
	<i>Quaking Aspen</i>		17	<i>Cords</i>		
	Mixed Hardwood		10	Cords		
	<i>Red Maple</i>		10	<i>Cords</i>		
	Paper Birch		7	Cords		
	Red Pine		5	Cords		
	White Pine		3	Cords		
<i>White Pine</i>	3	<i>Cords</i>				
17	Mixed Aspen	Pulpwood	22	Cords	4.1	\$1,227.80
	<i>Balsam Poplar</i>		2	<i>Cords</i>		
	<i>Quaking Aspen</i>		20	<i>Cords</i>		
	Mixed Spruce		38	Cords		
	<i>Black Spruce</i>		38	<i>Cords</i>		
	Red Pine		3	Cords		
	Tamarack		2	Cords		
	White Pine		2	Cords		
<i>White Pine</i>	2	<i>Cords</i>				
18	Red Pine	Sawtimber	11.2	MBF	5.8	\$2,548.15
	Balsam Fir	Pulpwood	1	Cords		
	Mixed Aspen		3	Cords		
	<i>Quaking Aspen</i>		3	<i>Cords</i>		
	Red Pine		30	Cords		
	White Pine		3	Cords		
<i>White Pine</i>	3	<i>Cords</i>				
TOTAL:			39.2	MBF		
TOTAL:			2,236	Cords		

## Sale Specific Conditions & Requirements

Sale Name: Bug Bungee

Sale Number: 12-004-20 Seq#: 1

### 1 - Sale Area

#### 1.2 - Boundaries

##### 1.2.1 - Painted boundaries (9/19)

The sale boundary and Payment Unit boundaries are marked and identified by blue, red and purple paint. Exterior sale boundary lines against private property are marked with blue paint. Exterior sale boundary lines against state are marked with red paint, with the exception of the Payment Unit 6 and 12 boundaries along Foster City Rd, which are unpainted. In addition, there is no red paint around the G0 stand within Payment Unit 6, or along the powerline ROW in Payment Units 15 and 17. Retention areas within Payment Units 1, 5 and 17 are marked with a red paint; these areas are not to be entered or operated in. Interior Payment Unit boundaries are marked with purple paint. The painted boundary line trees are not Included Timber and are to be protected unless marked with orange paint. Purple painted trees designating an interior Payment Unit boundary are only to be cut when all surrounding Payment Units have been paid.

### 2 - Timber Specifications

#### 2.1 - Included Timber

##### 2.1.1 - Clearcut unit(s) with unmerchantable trees (6/14)

Within Payment Unit(s) 1, 3, 7, 11, and 13, cut all trees that are two (2) inches or more at DBH, except do not cut cedar, red pine, white pine, jack pine, and sub-merchantable spruce/fir. In addition, the following exceptions apply:

- Within Payment Unit 1, do not cut spruce/fir with one pulp stick or less, or any cherry.
- Within Payment Unit 3, do not cut spruce/fir with one pulp stick or less.
- Within Payment Unit 7, do not cut cherry.
- Within Payment Unit 11, do not cut maple.
- Within Payment Unit 13, do not cut spruce/fir with one pulp stick or less, or any paper birch or cherry.

Within Payment Unit(s) 4, 5, 8, 10, 14, 15, and 17, cut all trees that are two (2) inches or more at DBH. In addition, the following exceptions apply:

- Within Payment Units 5 and 17, do not cut cedar.
- Within Payment Units 4, 10, and 14, do not cut red pine, white pine, jack pine and cedar. In addition, do not cut trees marked with green paint in Payment Units 10 and 14.
- Within Payment Units 8 and 15, do not cut red pine and white pine. In addition, do not cut sub-merchantable spruce/fir in Payment Unit 15, or any cedar in Payment Unit 8.

Special protection areas identified in accordance with condition 3.4.3, within clearcutting unit boundaries, are not Included Timber and are to be protected.

##### 2.1.3 - Cut tree marked unit(s) (12/08)

Within Payment Unit(s) 2, 6, 9, 12 and 16, red pine and white pine are designated for cutting when marked with orange paint above and below stump height, regardless of merchantability. In addition, cut all other species that are two (2) inches or more at DBH, with the following exceptions:

- Within Payment Unit 2, do not cut spruce/fir with one pulp stick or less.
- Within Payment Units 6 and 16, do not cut cedar and hemlock.
- Within Payment Unit 9, do not cut sub-merchantable spruce/fir.
- Within Payment Unit 12, do not cut sub-merchantable spruce/fir, or any cherry, cedar and oak.
- Within Payment Unit 16, do not cut green marked trees.

Within Payment Unit(s) 18, all trees are designated for cutting when marked with orange paint above and below stump height, regardless of merchantability. In addition, cut all aspen, balsam, and spruce which meet minimum piece specifications in 2.2 - Utilization.

#### 2.2 - Utilization

##### 2.2.6 - Roundwood operation required (5/07)

The skidding of whole trees or tree segments with limbs attached is prohibited within Payment Unit 15. All products must be produced as roundwood and forwarded to existing roads or landing areas in final product length.

### **3 - Payments**

#### **3.4 - Damaged Timber**

##### **3.4.1 - Damaged timber (7/16)**

General Condition and Requirement 3.4 Damaged Timber, defines liquidated damages for undesignated live merchantable trees which are cut or injured. In addition, extreme care should be taken to avoid damage to tree seedlings and saplings.

Within the sale area, if more than 10% of the tree seedlings or saplings (1/4" to 4.5" DBH) designated for retention are damaged within a specified portion of the sale area, liquidated damages will be assessed at \$100 per acre for all acreage within that specified portion of the sale area that was damaged.

No damage is acceptable to undesignated live merchantable trees. Within the sale area, if more than 5% of trees (> 4.5" DBH) within a specified area of the sale are damaged, liquidated damages will be assessed for all trees damaged. Rates will be in accordance with General Condition and Requirement 3.4 Damaged Timber.

##### **3.4.2 - Special Protection Trees (4/14)**

The Purchaser shall not cut live or dead special protection trees within cutting units or clearings. Special protection trees are marked with green paint. If the Purchaser's operations have cut or damaged special protection trees through carelessness, the Purchaser shall pay \$50 as fixed, agreed and liquidated damages for each special protection tree cut or damaged. Such payment does not constitute ownership of the undesignated timber.

### **4 - Transportation**

#### **4.1 - Construction**

##### **4.1.3 - Slash and earthen piles (8/04)**

Piles or windrows of earth along roads and landings that have been widened or constructed shall be leveled. Slash from road maintenance or construction, including stumps, shall be dispersed throughout the sale, i.e., chipped, utilized or otherwise removed from the sale.

##### **4.1.6 - Road construction (1/09)**

Construction of new roads or improvements of existing roads shall be done in such a way as to minimize the environmental and visual impacts. Merchantable trees shall be cut and utilized unless otherwise directed. Non-merchantable trees shall be severed and laid flat on the ground. Slash shall be scattered, and not left in windrows and kept a minimum of 10 feet back from the road edge, or be chipped, utilized or otherwise removed from the sale. Stumps shall be set upright, not left on edge, and be moved at least 10 feet away from the road edge. Disturbed soil shall be feathered into the woods and not left in berms or windrows.

##### **4.1.7 - Road closure (10/11)**

All new roads built into the sale must be blocked to vehicle traffic upon completion of the sale. All new roads built into the sale must be blocked to vehicle traffic within 30 days of completion of hauling. Overgrown roads that are reopened shall be considered new roads. In general, this will require constructing a four (4') foot high berm of stumps and logs covered with earth. These roads must be rendered impassable to cars and trucks. Temporary berms may be required if no sale activity occurs for 30 or more consecutive days. Contact the sale administrator for specific details of design and placement.

##### **4.1.8 - Road work (1) (8/07)**

The following road work is required: Remove an old culvert and install an 18-inch equalization culvert at the specified location on Snowmobile Trail #115; see Timber Sale Map. The culvert may be metal or plastic. Culvert work must be completed before the end of the contract. Contact the timber sale administrator for further details and/or questions.

#### **4.2 - Maintenance**

##### **4.2.1 - Hauling restriction (12/08)**

Hauling and operation of forest machinery over Hancock Flooding Dam is prohibited. The restriction is due to the dam not being designed to hold the weight.

Hauling is also restricted to Monday through Friday during the snowmobile season (approximately December 1 to March 31).

#### 4.2.5 - Two wheel drive condition (2/04)

All existing trail roads on and adjacent to the sale area must be passable by two-wheel drive traffic for the duration of the sale.

### 4.4 - Access

#### 4.4.1 - Private property access (3/11)

Permission for access across private land is the responsibility of the Purchaser. Should the Purchaser desire to cross private land, a copy of the written permission from the private land-owner may be required by the DNR.

## 5 - Operations

### 5.2 - Conduct of Operations

#### 5.2.1 - Slash

##### 5.2.1.13 - Dispose of slash as directed (12/05)

Slash is to be disposed of as directed by the timber sale administrator.

#### 5.2.3 - Operating Restrictions

##### 5.2.3.1 - Operating restrictions (9/11)

Within Payment Unit(s) 1, 5 and 13, unless changed by written agreement, cutting, skidding and hauling are not permitted during non-frozen ground conditions; the timber sale administrator will determine ground conditions and must be contacted before harvesting takes place. This restriction is because of wet ground.

Within Payment Unit(s) 10 and 15, unless changed by written agreement, cutting and skidding are not permitted during frozen ground conditions; the timber sale administrator will determine ground conditions and must be contacted before harvesting takes place. This restriction is in place to facilitate scarification.

#### 5.2.22 - Operating Caution

##### 5.2.22.1 - Operating caution (6/11)

It is recommended, but not required, that within Payment Unit(s) 8, cutting and skidding occur during dry summer or frozen winter conditions. The reason for the recommendation is because of wet ground.

#### 5.2.41 - Snowmobile trail protection (9/11)

Snowmobile trail #115 is shown on the Timber Sale Map. Do not cut or damage posts with orange trail markers or traffic control signs. If the trail is used, it must be maintained and restored to a condition equal to or better than before the sale. The road maintenance/restoration must be done prior to December 1. If the trail is used for hauling, it must be graded to the satisfaction of the Unit Manager or his/her representative prior to December 1st. If the trail road is to be used for hauling during the snowmobile season, then a snow covered base must be left on the trail. Maintain a 20 foot wide slash, debris, and rut free zone daily using the snowmobile trail as the centerline.

### 5.4 - Soil Protection

#### 5.4.1 - Rutting restriction, general (7/16)

Operations are to cease immediately if equipment and weather conditions result in rutting of roads and/or skid trails which is 12 inches or greater in depth and 50 feet in length. The Unit Manager or his/her representative may restrict hauling and/or skidding if ruts exceed the specified depth. With the Unit Manager or his/her representative's approval, the Purchaser may return to the area when the risk of rutting has decreased.

#### 5.4.3 - Erosion control (12/08)

Skid trails or haul roads may require erosion control structures or berms per direction of the Unit Manager or his/her representative.

### 5.8 - Protection of Endangered Species

#### 5.8.5 - Protection of raptor nests (3/13)

All trees with raptor nests will be protected if found during harvesting operations. Notification will be made to the Unit

Manager or his/her representative who will notify the Wildlife Biologist so an on-site evaluation and recommendation can be made, if necessary.

## **6 - Safety and Fire Prevention**

### 6.2 - Signing

#### 6.2.1 - Road posting (9/09)

The Purchaser is responsible for posting and maintaining caution signs on Foster City Rd prior to beginning operations. The road must be posted at appropriate distances from the sale area to warn of logging activity and truck traffic. Signs must be removed when harvest operations are suspended or completed. The Purchaser will provide these signs.

#### 6.2.2 - Snowmobile trail posting (8/09)

The Purchaser is responsible for posting and maintaining caution signs on Snowmobile Trail #115 prior to beginning operations during the snowmobile season (approximately December 1 to March 31). The trail must be posted at appropriate distances from the sale area to warn of logging activity and truck traffic. Signs must be removed when harvest operations are suspended or completed. The Purchaser will provide these signs.

## **7 - Other Conditions**

### 7.5 - Loss

#### 7.5.1 - Deteriorating timber (7/09)

The sale area has received damage from windthrow or jack pine budworm. The Purchaser should harvest the wood as soon as possible. The Department of Natural Resources is held free of responsibility of any further damage or deterioration due to delay in harvesting.





Sale Number	Year
12-004	20

### TIMBER SALE MAP

This information provided by authority of Par 525, 1994 PA 451, as amended.

Forest Management Unit Crystal Falls	County Dickinson	Mapped By Jacob Siler	Date 03/20/2020	Page 1	of 1
Township 41N	Range 27/28W	Section(s) and Subdivision(s) Section: 30, 31, 25 and 36	Scale 1:15,840		

#### Cover Type

A = Aspen	H = Hemlock	N = Marsh	U = Upland Brush
B = Paper Birch	J = Jack Pine	O = Oak	UM = Upland Mixed
C = Cedar	L = Lowland Brush	P = Lowland Poplar	V = Bog or Marsh
D = Treed Bog	LM = Lowland Mixed	Q = Mixed Swamp Conifer	W = White Pine
E = Swamp Hdwoods	M = Mpl, Bch, Bich	R = Red Pine	X = Non Stocked
F = Spruce Fir	MC = Mixed Conifer	S = Black Spruce	Z = Water
G = Grass	MD = Mixed Deciduous	T = Tamarack	

#### Density

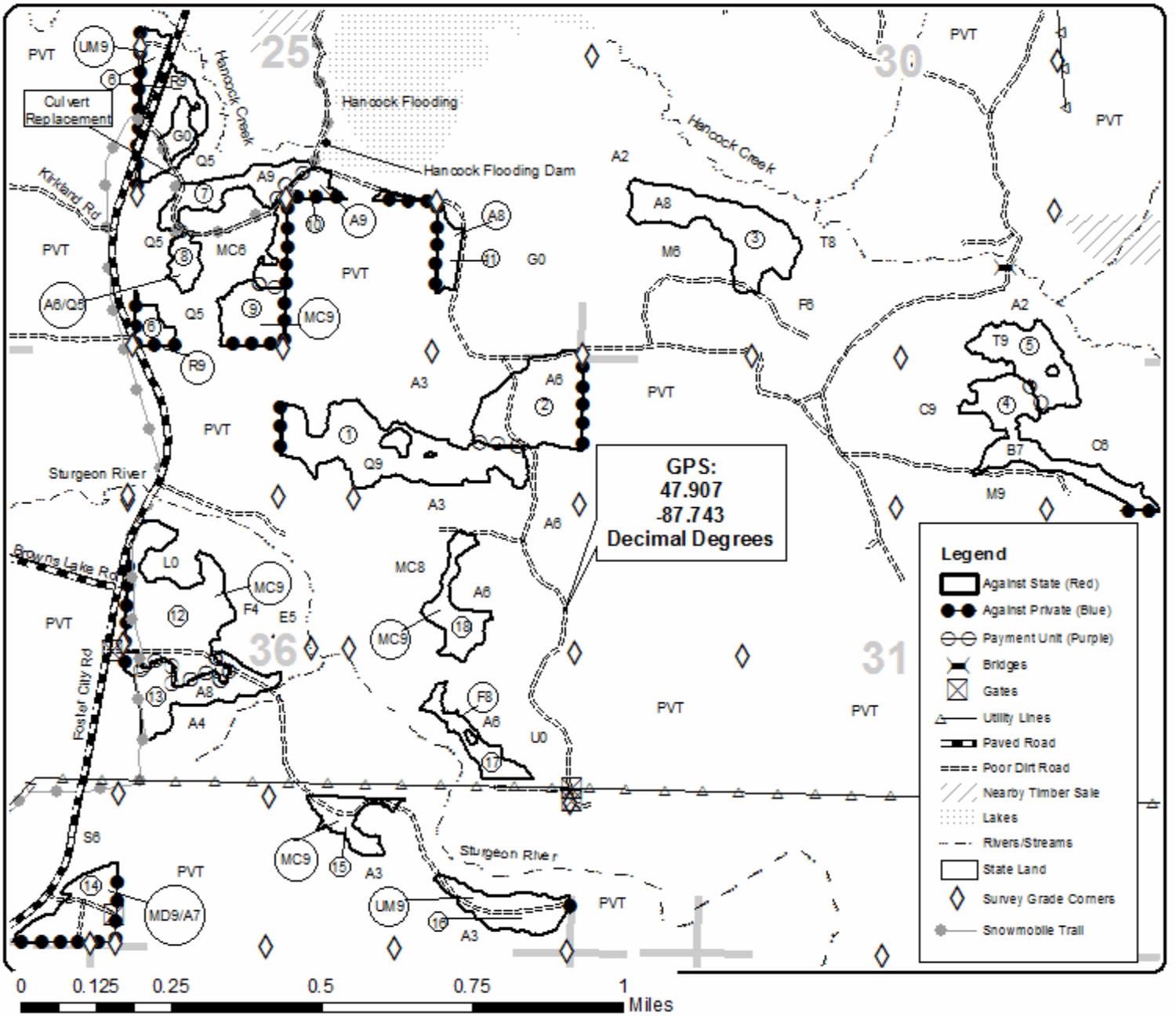
0 = Non Stocked	5 = Pole Timber Medium
1 = Seeding Sapling Poor	6 = Pole Timber Well
2 = Seeding Sapling Medium	7 = Saw Timber Poor
3 = Seeding Sapling Well	8 = Saw Timber Medium
4 = Pole Timber Poor	9 = Saw Timber Well

PU	Acres	PU	Acres	PU	Acres	PU	Acres
1	19.7	6	10.8	11	3.3	16	6.8
2	14.6	7	7.0	12	18.7	17	4.1
3	13.7	8	2.5	13	9.8	18	5.8
4	11.3	9	6.7	14	8.7		
5	8.9	10	4.8	15	4.3		

## Bug Bungee

### Compartment 90

161.5 Acres





## TIMBER SALE INFORMATION

Covid Spring (12-007-20)

T41N, R29W, SEC. 31; T41N, R30W, SEC. 36.  
Dickinson County (Advertised Price \$142,324.40)

SALE NOTE: Extensive road work is required on this sale. The advertised price has been reduced by the estimate cost of this road work to off-set the additional expense. Roadwork will be required on Rock Dam Road, including blading, ditching, crowning, adding a minimum of 570 yards of gravel, and replacement of 6 culverts. See the Road Work Map for location information.

Hunter walking trails may be used, however, if they are utilized during snow-free conditions, additional post-harvest maintenance will be required. The Purchaser will be required to return the roads/hunter walking trails to the original condition by leveling, disking, and seeding to original seed composition.

A timber sale contract for this lump sum, sealed bid timber sale will be awarded to the responsible bidder offering the highest sealed bid price. All units of volume listed below were estimated using the T-Sale computer program and our traditional volume equations. Bids must be at or above the following advertised price for each product and species:

<u>PRODUCTS &amp; SPECIES</u>	<u>ESTIMATED UNITS*</u>	<u>ADVERTISED PRICE</u>
Sawtimber		
Red Maple	2.6 MBF	\$ 91.00 / MBF
Pulpwood		
B. T. Aspen	1,104 Cords	\$ 26.40 / Cord
Balsam Fir	275 Cords	\$ 13.50 / Cord
Balsam Poplar	56 Cords	\$ 26.40 / Cord
Basswood	56 Cords	\$ 5.90 / Cord
Paper Birch	184 Cords	\$ 11.60 / Cord
Quaking Aspen	3,312 Cords	\$ 26.40 / Cord
Red Maple	862 Cords	\$ 16.70 / Cord
Sugar Maple	127 Cords	\$ 16.70 / Cord
White Spruce	78 Cords	\$ 11.10 / Cord
Yellow Birch	28 Cords	\$ 16.70 / Cord

\* The total volume is statistically estimated within plus (+) or minus (-) 5.80 percent. There are an estimated 6,086 cords on this timber sale, plus or minus 353 cords at the 95% confidence level. The estimated units are final and not subject to adjustment. Prospective bidders are urged to examine this timber and to make their own estimates of quantity and quality.

### **BOND AND PAYMENT SCHEDULE:**

1. A bond in the amount of \$11,386.00 to insure faithful performance of the conditions of the contract will be deposited by the successful bidder within 21 days of the sale award.
2. Cutting in any sale or unit without the required advance payment would be considered a trespass.
3. Total payment must be paid in advance or according to the following schedule :
  - (a) Ten percent (10%) of the sale value must be paid within 21 days of the sale award.
  - (b) The 10% down payment will be credited towards the first unit cut.
  - (c) Payment for each of the following units must be made before cutting begins in that unit:
 

PAYMENT UNIT NUMBER	PERCENT OF TOTAL SALE VALUE
01	5.3%
02	17.1%
03	18.3%
04	7.7%
05	14.2%
06	15.9%
07	10.2%
08	11.3%
4. If no cutting takes place, the 10% down payment will not be refunded.
5. Operations on the contract issued will terminate on 06/30/2024.

### **SALE STATISTICS**

**SALE VOLUMES**

VOLUME			STATISTICAL RANGE IN CORDS	
TOTAL CUBIC FEET	TOTAL CORDS	PERCENT ERROR	MINIMUM	MAXIMUM
480,755	6,086	5.80%	5,733	6,438

**VDU VOLUMES**

A VDU is a Volume Determination Unit. Volumes and their associated statistics are calculated at the VDU level and summarized to the sale level. There is often a one to one relationship between a VDU and a Payment Unit, but not always, depending on the cruise design. Refer to the VDU TO PAYMENT UNIT table.

VDU	VOLUME		PERCENT ERROR	RANGE IN CORDS	
	TOTAL CUBIC FEET	TOTAL CORDS		MINIMUM	MAXIMUM
12	167,267	2,117	9.69%	1,912	2,322
13	31,173	395	14.76%	336	453
26	48,309	612	16.15%	513	710
30	42,723	541	19.43%	436	646
35	140,122	1,774	12.29%	1,556	1,992
262	51,168	648	15.77%	546	750
<b>TOTAL:</b>	<b>480,762</b>	<b>6,086</b>		<b>5,298</b>	<b>6,873</b>

**VDU TO PAYMENT UNIT**

When a VDU is associated with more than one Payment Unit (PU), the VDU volumes are assigned to the PU based on acres of the VDU within the PU.

VDU	VDU ACRES	PU	PU ACRES
12	60.7	2	29.3
		3	31.4
13	20.0	1	20.0
		7	19.9
26	20.1	8	0.2
		4	17.3
30	17.3	5	28.1
		6	31.5
35	59.6	7	0.1
		8	23.3
262	23.4		
<b>TOTAL:</b>	<b>201.1</b>		<b>201.1</b>

**DESCRIPTION OF TIMBER BY PAYMENT UNIT (PU)**

PU	MARKET GROUP	PRODUCT	QUANTITY	UNIT	ACRES	ADVERTISE PRICE
1	Balsam Fir Balsam Poplar Basswood Paper Birch Quaking Aspen Red Maple Sugar Maple White Spruce Yellow Birch	Pulpwood	13 45 16 26 96 152 5 16 28	Cords Cords Cords Cords Cords Cords Cords Cords Cords	20.0	\$7,561.00
2	B. T. Aspen Balsam Fir Balsam Poplar Basswood Paper Birch Quaking Aspen Red Maple Sugar Maple White Spruce	Pulpwood	150 39 5 19 12 638 115 35 9	Cords Cords Cords Cords Cords Cords Cords Cords Cords	29.3	\$24,317.90
3	B. T. Aspen Balsam Fir Balsam Poplar Basswood Paper Birch Quaking Aspen Red Maple Sugar Maple White Spruce	Pulpwood	161 41 6 21 13 683 123 38 9	Cords Cords Cords Cords Cords Cords Cords Cords Cords	31.4	\$26,056.80
4	Red Maple B. T. Aspen Balsam Fir Paper Birch Quaking Aspen Red Maple Sugar Maple White Spruce	Sawtimber Pulpwood	2.6 28 33 21 185 223 29 16	MBF Cords Cords Cords Cords Cords Cords Cords	17.3	\$10,934.90
5	B. T. Aspen Balsam Fir Paper Birch Quaking Aspen Red Maple Sugar Maple White Spruce	Pulpwood	302 49 34 382 57 3 9	Cords Cords Cords Cords Cords Cords Cords	28.1	\$20,215.40
6	B. T. Aspen Balsam Fir Paper Birch Quaking Aspen Red Maple Sugar Maple White Spruce	Pulpwood	339 55 39 428 63 4 10	Cords Cords Cords Cords Cords Cords Cords	31.5	\$22,673.60
7	B. T. Aspen Balsam Fir Paper Birch Quaking Aspen Red Maple Sugar Maple	Pulpwood	84 18 27 385 83 7	Cords Cords Cords Cords Cords Cords	20.0	\$14,474.10

**DESCRIPTION OF TIMBER BY PAYMENT UNIT (PU), CON'T**

PU	MARKET GROUP	PRODUCT	QUANTITY	UNIT	ACRES	ADVERTISE PRICE
7 con't	White Spruce	Pulpwood	3	Cords		
8	B. T. Aspen	Pulpwood	40	Cords	23.5	\$16,090.70
	Balsam Fir		27	Cords		
	Paper Birch		12	Cords		
	Quaking Aspen		515	Cords		
	Red Maple		46	Cords		
	Sugar Maple		6	Cords		
	White Spruce		6	Cords		
TOTAL:			2.6	MBF		
TOTAL:			6,082	Cords		

# Sale Specific Conditions & Requirements

**Sale Name: Covid Spring**

**Sale Number: 12-007-20 Seq#: 1**

## 1 - Sale Area

### 1.2 - Boundaries

#### 1.2.1 - Painted boundaries (9/19)

The sale boundary and Payment Unit boundaries are marked and identified by blue, red and yellow paint. Exterior sale boundary lines against private property are marked with blue paint. Exterior sale boundary lines against state are marked with red paint. Interior Payment Unit boundaries are marked with yellow paint. Retention patches are marked with red paint; no harvesting activities may occur within these areas. Yellow painted trees designating an interior Payment Unit boundary are only to be cut when all surrounding Payment Units have been paid.

## 2 - Timber Specifications

### 2.1 - Included Timber

#### 2.1.1 - Clearcut unit(s) with unmerchantable trees (6/14)

Within Payment Unit(s) 1-8, cut all trees that are two (2) inches or more at DBH, except do not cut white pine, red pine, cedar, hemlock and oak. In addition, within Payment Units 5 & 6, do not cut white spruce and balsam fir that are less than 2 sticks.

## 4 - Transportation

### 4.1 - Construction

#### 4.1.2 - Stream crossings, specific (3/11)

There is a stream (Hosking Creek) between Payments Units 2 and 4 as shown on the Timber Sale Map. Crossing this stream will not be encouraged. The Payment Units are accessible without crossing the stream. If the Purchaser chooses to take this route, permission must be obtained from Unit Manager and the Purchaser will be required to obtain permits and a portable bridge.

#### 4.1.6 - Road construction (1/09)

Construction of new roads or improvements of existing roads shall be done in such a way as to minimize the environmental and visual impacts. Merchantable trees shall be cut and utilized unless otherwise directed. Non-merchantable trees shall be severed and laid flat on the ground. Slash shall be scattered, and not left in windrows and kept a minimum of 10 feet back from the road edge. Stumps shall be set upright, not left on edge, and be moved at least 10 feet away from the road edge. Disturbed soil shall be feathered into the woods and not left in berms or windrows.

#### 4.1.7 - Road closure (10/11)

All new roads built into the sale may be blocked to vehicle traffic upon completion of the sale, depending on location. Sale administrator will coordinate with purchaser on which roads will need berms.

### 4.2 - Maintenance

#### 4.2.1 - Hauling restriction (12/08)

Hauling may be restricted on forest roads by the Unit Manager or his representative. The restriction may occur during spring breakup or prolonged wet weather conditions.

#### 4.2.3 - Road maintenance (8/13)

The following road maintenance is required: Install six (6) new 18"x 24' corrugated metal or plastic gauge culverts at locations shown on the included Road Work Map. The Purchaser must put a minimum of 10" of fill over the top of each culvert, with the top four to six inches being gravel.

The Purchaser is also responsible for hauling and spreading 520 yards of gravel at locations as shown on the included Road Work Map. In addition, the Purchaser will be required to ditch, crown, grade, and install several water diversion runoffs on approximately 1900 feet of road as directed by the sale administrator in the areas of sites 2 and 3 on the Road Work Map.

All road work must be completed and approved by the sale administrator prior to any harvesting activities taking place, unless

otherwise approved.

If the hunter walking trails are used without a snow covered base, the trails will require leveling, disking, and reseeded according to the local wildlife division representative.

#### 4.2.4 - Grading (10/16)

For completion of the sale, state forest roads must be graded. In general, this will require a road grader or bull dozer to shape up the roads after forest products have been hauled off site. This includes cleaning of drainage areas, grading, crowning and filling with gravel, if necessary. The grading equipment to be used must be approved by the Unit Manager or his/her representative.

### 4.4 - Access

#### 4.4.3 - Access gate (12/08)

The Hunter Walking Trail gate that accesses Payment Units 1-3 (and possibly Payment Unit 4) must be closed at the completion of each day unless otherwise approved by the Unit Manager or his representative. The sale administrator has the gate key.

## 5 - Operations

### 5.2 - Conduct of Operations

#### 5.2.40 - Pathway protection (10/10)

The gated roads are also hunter walking trails and are shown on the Timber Sale Map. If these trails are used without a snow base, the Purchaser will be required to level, disk, and re-seed according to the specification of the local wildlife representative.

### 5.4 - Soil Protection

#### 5.4.1 - Rutting restriction, general (7/16)

Operations are to cease immediately if equipment and weather conditions result in rutting of roads and/or skid trails which is 12 inches or greater in depth and 50 feet in length. The Unit Manager or his/her representative may restrict hauling and/or skidding if ruts exceed the specified depth. With the Unit Manager or his/her representative's approval, the Purchaser may return to the area when the risk of rutting has decreased.

### 5.8 - Protection of Endangered Species

#### 5.8.5 - Protection of raptor nests (3/13)

All trees with raptor nests will be protected if found during harvesting operations. Notification will be made to the Unit Manager or his/her representative who will notify the Wildlife Biologist so an on-site evaluation and recommendation can be made, if necessary.

## 6 - Safety and Fire Prevention

### 6.2 - Signing

#### 6.2.1 - Road posting (9/09)

The Purchaser is responsible for posting and maintaining caution signs on Rock Dam Road/Old Carney Lake Road prior to beginning operations. The road must be posted at appropriate distances from the harvest area to warn of logging activity and truck traffic. Signs must be removed when harvest operations are suspended or completed. The Purchaser will provide these signs.





# TIMBER SALE MAP

This information provided by authority of Part 525, 1994 PA 451, as amended.

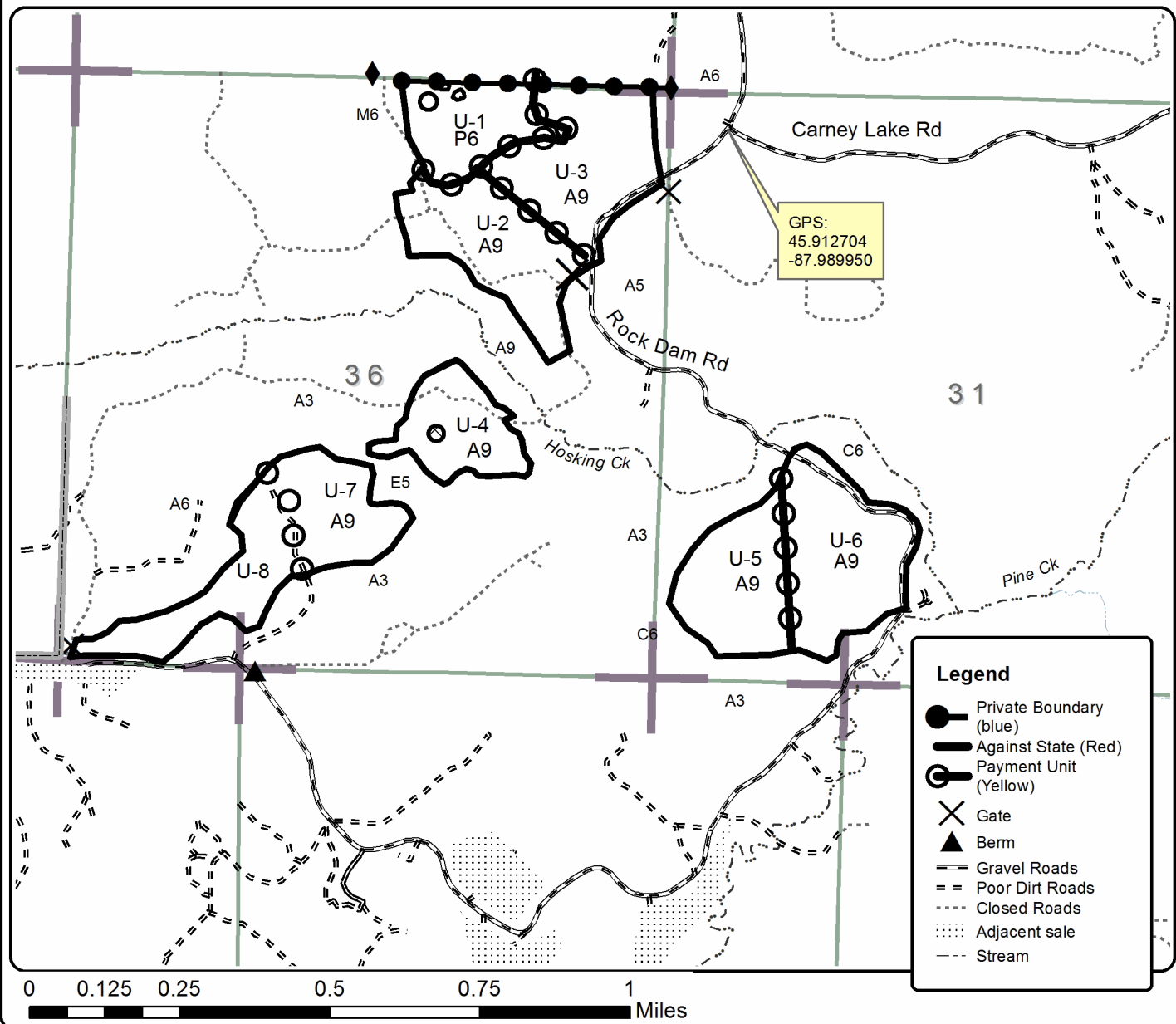
Sale Number	Year
007	2020

Forest Management Unit	County	Mapped By	Date	Page	of
Crystal Falls Management Unit	Dickinson Co.	Debbie Goupell	8/10/2020	1	1
Township	Range	Section(s) and Subdivision(s)	Scale		
41N	29/30W	29W Sec 36: NE,N1/2SE,SWSE, E1/2SW,SWSW. 30W Sec 31: SW	1:15,840		

Cover Type				Density	
A = Aspen	H = Hemlock	N = Marsh	U = Upland Brush	0 = Non Stocked	5 = Pole Timber Medium
B = Paper Birch	J = Jack Pine	O = Oak	UM = Upland Mixed	1 = Seedling Sapling Poor	6 = Pole Timber Well
C = Cedar	L = Lowland Brush	P = Lowland Poplar	V = Bog or Marsh	2 = Seedling Sapling Medium	7 = Saw Timber Poor
D = Treed Bog	LM = Lowland Mixed	Q = Mixed Swamp Conifer	W = White Pine	3 = Seedling Sapling Well	8 = Saw Timber Medium
E = Swamp Hdwoods	M = Mpl, Bch, Brch	R = Red Pine	X = Non Stocked	4 = Pole Timber Poor	9 = Saw Timber Well
F = Spruce Fir	MC = Mixed Conifer	S = Black Spruce	Z = Water		
G = Grass	MD = Mixed Deciduous	T = Tamarack			

Unit	Acres	Unit	Acres
1	20.0	5	28.1
2	29.3	6	31.5
3	31.4	7	20.0
4	17.3	8	23.5

## Covid Spring Compartment 81 201.1 Acres





Sale Number	Year
007	2020

### TIMBER SALE MAP

This information provided by authority of Part 525, 1994 PA 451, as amended.

Forest Management Unit	County	Mapped By	Date	Page	of
Crystal Falls Management Unit	Dickinson Co.	Debbie Goupell	8/10/2020	1	1
Township	Range	Section(s) and Subdivision(s)	Scale		
41N	29/30W	E1/2SW,SWSW. 30W Sec 31: SW	1:7,920		

Cover Type				Density	
A = Aspen	H = Hemlock	N = Marsh	U = Upland Brush	0 = Non Stocked	5 = Pole Timber Medium
B = Paper Birch	J = Jack Pine	O = Oak	UM = Upland Mixed	1 = Seedling Sapling Poor	6 = Pole Timber Well
C = Cedar	L = Lowland Brush	P = Lowland Poplar	V = Bog or Marsh	2 = Seedling Sapling Medium	7 = Saw Timber Poor
D = Treed Bog	LM = Lowland Mixed	Q = Mixed Swamp Conifer	W = White Pine	3 = Seedling Sapling Well	8 = Saw Timber Medium
E = Swamp Hdwoods	M = Mpl, Bch, Brch	R = Red Pine	X = Non Stocked	4 = Pole Timber Poor	9 = Saw Timber Well
F = Spruce Fir	MC = Mixed Conifer	S = Black Spruce	Z = Water		
G = Grass	MD = Mixed Deciduous	T = Tamarack			

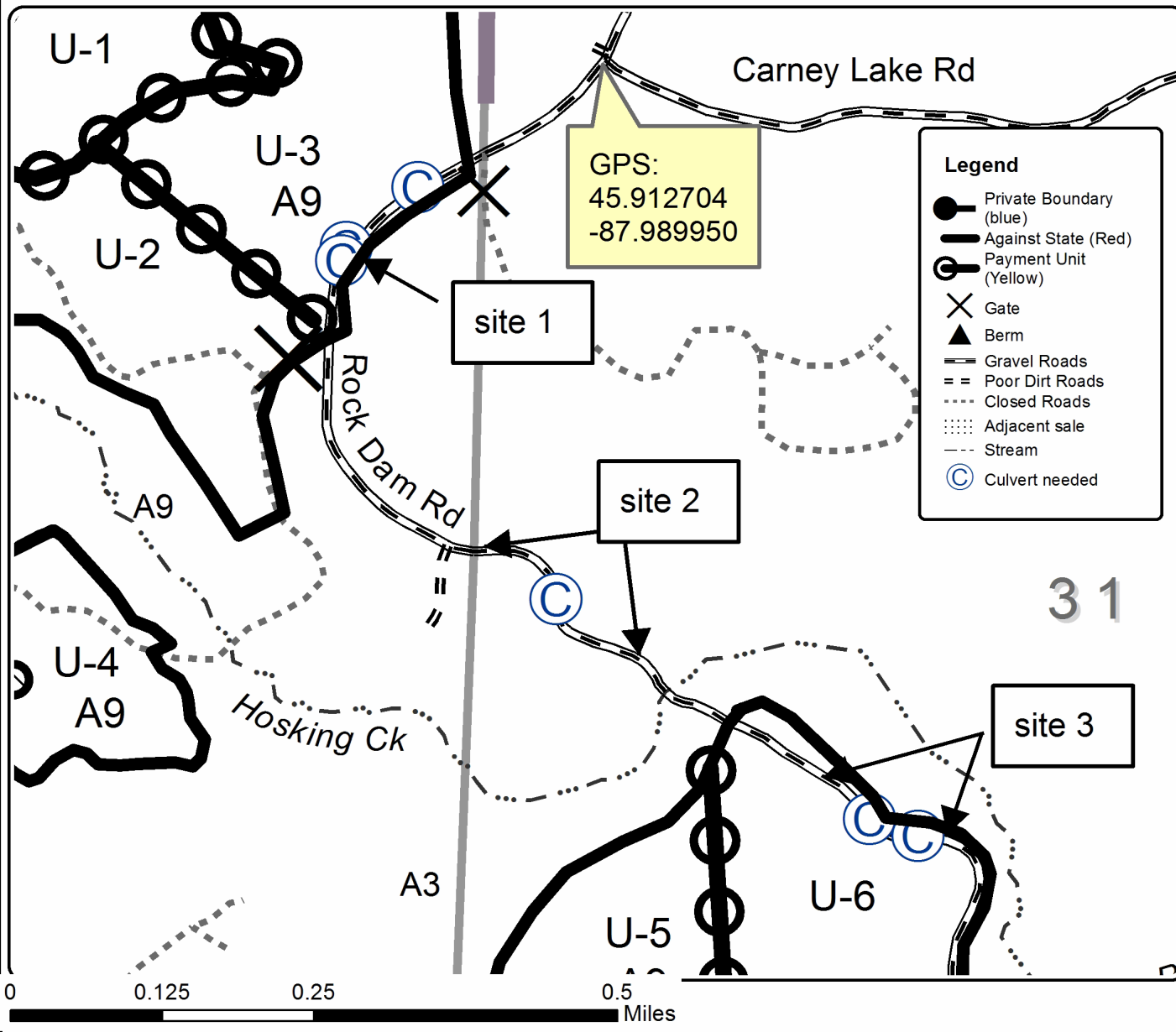
Unit	Acres	Unit	Acres
1	20.0	5	28.1
2	29.3	6	31.5
3	31.4	7	20.0
4	17.3	8	23.5

## Covid Spring

### Roadwork map

### Compartment 81

### 201.1 Acres



## TIMBER SALE INFORMATION

### Snail Rail (12-011-20)

T41N, R30W, SEC. 1; T41N, R30W, SEC. 2.  
Dickinson County (Advertised Price \$27,295.25)

**SALE NOTE:** It's the responsibility of the Purchaser to acquire permission from the railroad company to cross the railroad tracks, if crossing tracks is desired.

Permission for access across private land is the responsibility of the Purchaser. The DNR will secure any necessary DEQ permits. The construction of new roads and reopening of overgrown roads will need to be approved by the timber sale administrator. It is recommended, but not required, that within Payment Units 1-6, cutting, skidding, and hauling occur during dry summer or frozen winter conditions.

Access may be through private land.

A timber sale contract for this lump sum, sealed bid timber sale will be awarded to the responsible bidder offering the highest sealed bid price. All units of volume listed below were estimated using the T-Sale computer program and our traditional volume equations. Bids must be at or above the following advertised price for each product and species:

<u>PRODUCTS &amp; SPECIES</u>	<u>ESTIMATED UNITS*</u>	<u>ADVERTISED PRICE</u>
Sawtimber		
Paper Birch	16.5 MBF	\$ 47.00 / MBF
Pulpwood		
Balsam Fir	51 Cords	\$ 11.75 / Cord
Black Spruce	6 Cords	\$ 9.65 / Cord
Mixed Aspen	487 Cords	\$ 23.00 / Cord
Mixed Hardwood	697 Cords	\$ 14.50 / Cord
Paper Birch	451 Cords	\$ 10.10 / Cord

\* The total volume is statistically estimated within plus (+) or minus (-) 11.69 percent. There are an estimated 1,724 cords on this timber sale, plus or minus 202 cords at the 95% confidence level. The estimated units are final and not subject to adjustment. Prospective bidders are urged to examine this timber and to make their own estimates of quantity and quality.

### **BOND AND PAYMENT SCHEDULE:**

1. A bond in the amount of \$1,911.00 to insure faithful performance of the conditions of the contract will be deposited by the successful bidder within 21 days of the sale award.
2. Cutting in any sale or unit without the required advance payment would be considered a trespass.
3. Total payment must be paid in advance or according to the following schedule :
  - (a) Ten percent (10%) of the sale value must be paid within 21 days of the sale award.
  - (b) The 10% down payment will be credited towards the first unit cut.
  - (c) Payment for each of the following units must be made before cutting begins in that unit:

PAYMENT UNIT NUMBER	PERCENT OF TOTAL SALE VALUE
01	25.1%
02	33.2%
03	4.6%
04	4.8%
05	15.3%
06	17.0%

4. If no cutting takes place, the 10% down payment will not be refunded.
5. Operations on the contract issued will terminate on 06/30/2024.

### **SALE STATISTICS**

#### **SALE VOLUMES**

VOLUME		STATISTICAL RANGE IN CORDS		
TOTAL CUBIC FEET	TOTAL CORDS	PERCENT ERROR	MINIMUM	MAXIMUM
136,220	1,724	11.69%	1,523	1,926

**VDU VOLUMES**

A VDU is a Volume Determination Unit. Volumes and their associated statistics are calculated at the VDU level and summarized to the sale level. There is often a one to one relationship between a VDU and a Payment Unit, but not always, depending on the cruise design. Refer to the VDU TO PAYMENT UNIT table.

VDU	VOLUME		PERCENT ERROR	RANGE IN CORDS	
	TOTAL CUBIC FEET	TOTAL CORDS		MINIMUM	MAXIMUM
57	30,818	390	27.73%	282	498
561	7,505	95	34.56%	62	128
562	6,415	81	44.80%	45	118
701	46,657	591	21.44%	464	717
702	22,420	284	27.13%	207	361
704	22,428	284	23.12%	218	350
<b>TOTAL:</b>	<b>136,243</b>	<b>1,725</b>		<b>1,278</b>	<b>2,171</b>

**VDU TO PAYMENT UNIT**

When a VDU is associated with more than one Payment Unit (PU), the VDU volumes are assigned to the PU based on acres of the VDU within the PU.

VDU	VDU ACRES	PU	PU ACRES
57	12.9	1	12.9
561	7.1	4	7.1
562	6.4	3	6.4
701	34.1	2	34.1
702	17.9	5	17.9
704	20.8	6	20.8
<b>TOTAL:</b>	<b>99.2</b>		<b>99.2</b>

**DESCRIPTION OF TIMBER BY PAYMENT UNIT (PU)**

PU	MARKET GROUP	PRODUCT	QUANTITY	UNIT	ACRES	ADVERTISE PRICE
1	Paper Birch	Sawtimber	0.9	MBF	12.9	\$6,858.25
	Balsam Fir	Pulpwood	5	Cords		
	Black Spruce		6	Cords		
	Mixed Aspen		163	Cords		
	<i>Balsam Poplar</i>		45	Cords		
	<i>Quaking Aspen</i>		118	Cords		
	Mixed Hardwood		177	Cords		
	<i>Red Maple</i>	Sawtimber	0.9	MBF		
	<i>Black Ash</i>	Pulpwood	24	Cords		
	<i>Red Maple</i>		151	Cords		
	Paper Birch		38	Cords		
	2	Paper Birch	Sawtimber	2.8		
Balsam Fir		Pulpwood	18	Cords		
Mixed Aspen			135	Cords		
<i>Quaking Aspen</i>			135	Cords		
Mixed Hardwood			282	Cords		
<i>Black Ash</i>			2	Cords		
<i>Ironwood</i>			2	Cords		
<i>Red Maple</i>			278	Cords		
Paper Birch			151	Cords		
3		Paper Birch	Sawtimber	2.2	MBF	6.4
	Balsam Fir	Pulpwood	2	Cords		
	Mixed Aspen		13	Cords		
	<i>Quaking Aspen</i>		13	Cords		
	Mixed Hardwood		45	Cords		
	<i>Red Maple</i>		24	Cords		
	<i>Sugar Maple</i>		21	Cords		
	Paper Birch		17	Cords		
4	Paper Birch	Sawtimber	1.5	MBF	7.1	\$1,319.40
	Mixed Aspen	Pulpwood	5	Cords		
	<i>Quaking Aspen</i>		5	Cords		
	Mixed Hardwood		58	Cords		
	<i>Basswood</i>		3	Cords		
	<i>Red Maple</i>		26	Cords		
	<i>Sugar Maple</i>		29	Cords		
	Paper Birch		29	Cords		
5	Paper Birch	Sawtimber	3.8	MBF	17.9	\$4,162.95
	Balsam Fir	Pulpwood	19	Cords		
	Mixed Aspen		71	Cords		
	<i>B. T. Aspen</i>		14	Cords		
	<i>Quaking Aspen</i>		57	Cords		
	Mixed Hardwood		59	Cords		
	<i>Ironwood</i>		1	Cords		
	<i>Red Maple</i>		52	Cords		
	<i>Sugar Maple</i>		6	Cords		
	Paper Birch		126	Cords		
6	Paper Birch	Sawtimber	5.3	MBF	20.8	\$4,642.35
	Balsam Fir	Pulpwood	7	Cords		
	Mixed Aspen		100	Cords		
	<i>B. T. Aspen</i>		24	Cords		
	<i>Quaking Aspen</i>		76	Cords		
	Mixed Hardwood		76	Cords		
	<i>Red Maple</i>		62	Cords		
	<i>Sugar Maple</i>		14	Cords		
	Paper Birch		90	Cords		

TOTAL:	16.5	MBF
--------	------	-----

TOTAL:	1,692	Cords
--------	-------	-------

## Sale Specific Conditions & Requirements

**Sale Name: Snail Rail**

**Sale Number: 12-011-20 Seq#: 1**

### 1 - Sale Area

#### 1.2 - Boundaries

##### 1.2.1 - Painted boundaries (9/19)

The sale boundary and Payment Unit boundaries are marked and identified by blue, red, and yellow paint, along with a railroad. Exterior sale boundary lines against private property are marked with blue paint. Exterior sale boundary lines against state are marked with red paint, with the exception of the boundaries along the railroad, which are unpainted. Interior Payment Unit boundaries are marked with yellow paint. Retention patches are marked with red paint; no harvesting activities may occur within these areas. The painted boundary line trees are not Included Timber and are to be protected unless marked with orange paint. Yellow painted trees designating an interior Payment Unit boundary are only to be cut when all surrounding Payment Units have been paid.

### 2 - Timber Specifications

#### 2.1 - Included Timber

##### 2.1.1 - Clearcut unit(s) with unmerchantable trees (6/14)

Within Payment Unit(s) 1 and 2, cut all trees that are two (2) inches or more at DBH, except do not cut cedar, pine, oak, and hemlock. In addition, do not cut sub-merchantable spruce and fir.

##### 2.1.3 - Cut tree marked unit(s) (12/08)

Within Payment Unit(s) 3 and 4, all trees are designated for cutting when marked with purple paint above and below stump height, regardless of merchantability.

Within Payment Unit(s) 5 and 6, all trees are designated for cutting when marked with orange paint above and below stump height, regardless of merchantability. In addition, cut all aspen, balsam poplar, and birch trees that are two (2) inches or more at DBH. Also, cut all spruce and fir which meet minimum piece specifications in 2.2 - Utilization.

### 3 - Payments

#### 3.3 - Pre-measured Sales

##### 3.3.4 - Dividing payment units (7/14)

Payment Unit(s) 2-6 may be divided at the request of the Purchaser and upon approval of the Unit Manager. Dividing Payment Units is a contract modification which requires a Timber Sale Contract Amendment.

### 4 - Transportation

#### 4.1 - Construction

##### 4.1.2 - Stream crossings, specific (3/11)

There is an intermittent stream that runs through the sale, indicated on the Timber Sale Map. Crossing this stream will be permitted with a DEQ permit. The DNR will secure any necessary DEQ permits. The Purchaser should notify the DNR of the requested stream crossing site at least 30 days in advanced of crossing.

##### 4.1.6 - Road construction (1/09)

Construction of new roads or improvements of existing roads shall be done in such a way as to minimize the environmental and visual impacts. Merchantable trees shall be cut and utilized unless otherwise directed. Non-merchantable trees shall be severed and laid flat on the ground. Slash shall be scattered, and not left in windrows and kept a minimum of 10 feet back from the road edge, be chipped, utilized or otherwise removed from the sale. Stumps shall be set upright, not left on edge, and be moved at least 10 feet away from the road edge. Disturbed soil shall be feathered into the woods and not left in berms or windrows.

##### 4.1.7 - Road closure (10/11)

All new roads built into the sale must be blocked to vehicle traffic upon completion of the sale. Overgrown roads that are reopened shall be considered new roads. The construction of new roads and reopening of overgrown roads will need to be

approved by the timber sale administrator. In general, this will require constructing a four (4') foot high berm of stumps and logs covered with earth. These roads must be rendered impassable to cars and trucks. Contact the sale administrator for specific details of design and placement.

#### 4.4 - Access

##### 4.4.1 - Private property access (3/11)

Permission for access across private land is the responsibility of the Purchaser. Should the Purchaser desire to cross private land, a copy of the written permission from the private land-owner may be required by the DNR.

##### 4.4.4 - Restricted access (10/05)

It's the responsibility of the Purchaser to acquire permission from the railroad company to cross the railroad tracks, if crossing tracks is desired.

### 5 - Operations

#### 5.1 - Notification

##### 5.1.1 - Pre-sale conference (10/16)

A pre-sale conference between the Purchaser and sale administrator is required prior to beginning any operations. The Unit Manager or his/her representative must be contacted at least 10 days in advance to schedule the conference, if an on-site meeting is requested.

#### 5.2 - Conduct of Operations

##### 5.2.1 - Slash

###### 5.2.1.13 - Dispose of slash as directed (12/05)

Slash is to be disposed of as directed by the Timber Sale Administrator.

##### 5.2.3 - Operating Restrictions

###### 5.2.3.3 - Bark slippage restriction (3/09)

Within Payment Unit(s) 3, 4, 5 and 6, unless changed by written agreement, cutting and skidding are not permitted during the period of April 15 to July 15. This restriction is because of bark slippage.

##### 5.2.22 - Operating Caution

###### 5.2.22.1 - Operating caution (6/11)

It is recommended, but not required, that within Payment Unit(s) 1-6, cutting, skidding, and hauling occur during dry summer or frozen winter conditions. The reason for the recommendation is because of wet ground.

#### 5.4 - Soil Protection

##### 5.4.1 - Rutting restriction, general (7/16)

Operations are to cease immediately if equipment and weather conditions result in rutting of roads and/or skid trails which is 12 inches or greater in depth and 50 feet in length. The Unit Manager or his/her representative may restrict hauling and/or skidding if ruts exceed the specified depth. With the Unit Manager or his/her representative's approval, the Purchaser may return to the area when the risk of rutting has decreased.





### TIMBER SALE MAP

This information provided by authority of Par 525, 1994 PA 451, as amended.

Forest Management Unit Crystal Falls		County Dickinson	Mapped By Jacob Siler	Date 09/24/2020	Page 1	of 1
Township 41N	Range 30W	Section(s) and Subdivision(s) Section 1 and 2		Scale 1:15,000		

#### Cover Type

A = Aspen	H = Hemlock	N = Marsh	U = Upland Brush
B = Paper Birch	J = Jack Pine	O = Oak	UM = Upland Mixed
C = Cedar	L = Lowland Brush	P = Lowland Poplar	V = Bog or Marsh
D = Treed Bog	LM = Lowland Mixed	Q = Mixed Swamp Conifer	W = White Pine
E = Swamp Hdwoods	M = Mpl, Bch, Bich	R = Red Pine	X = Non Stocked
F = Spruce Fir	MC = Mixed Conifer	S = Black Spruce	Z = Water
G = Grass	MD = Mixed Deciduous	T = Tamarack	

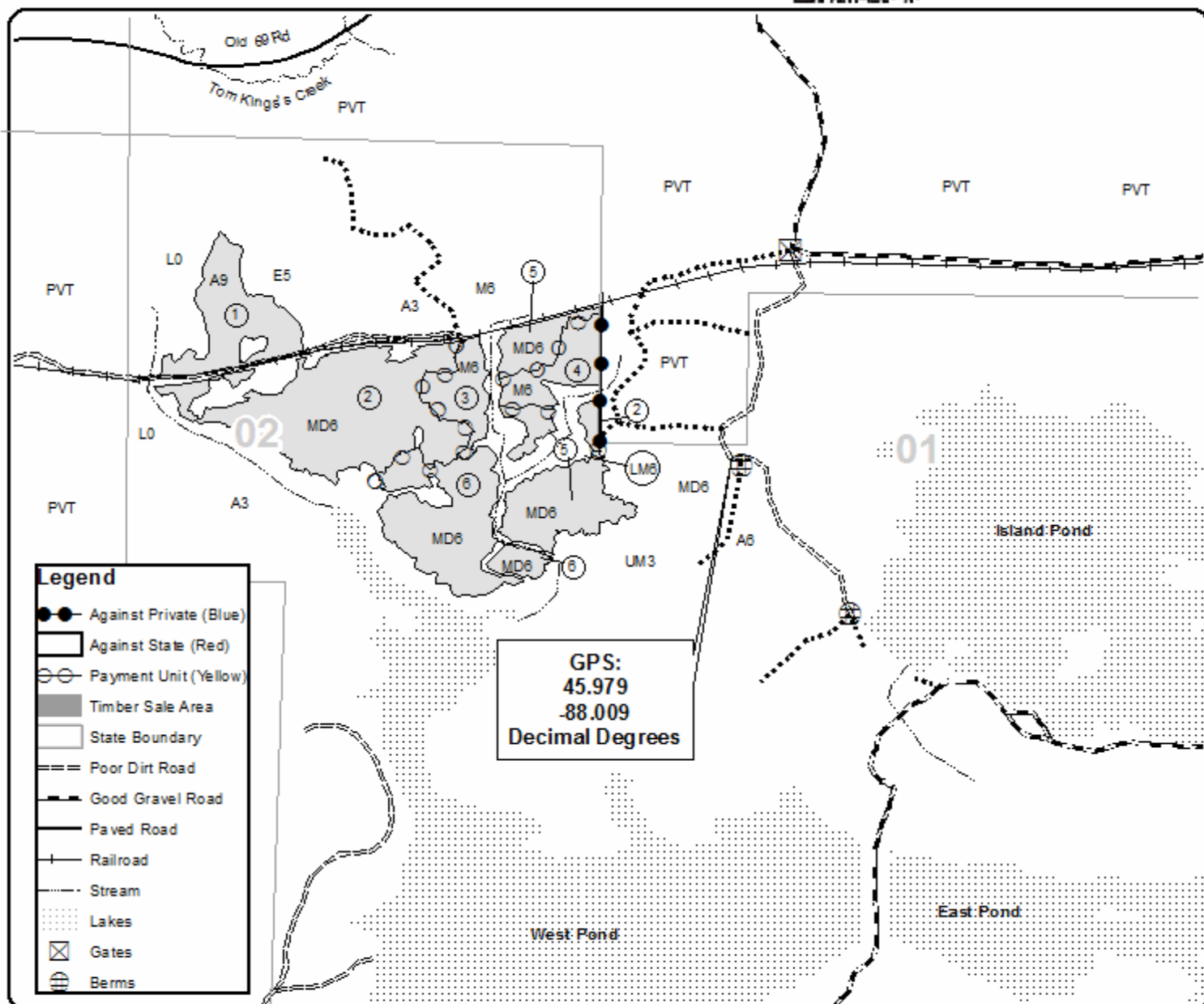
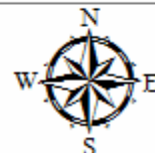
#### Density

0 = Non Stocked	5 = Pole Timber Medium
1 = Seeding Sapling Poor	6 = Pole Timber Well
2 = Seeding Sapling Medium	7 = Saw Timber Poor
3 = Seeding Sapling Well	8 = Saw Timber Medium
4 = Pole Timber Poor	9 = Saw Timber Well

#### PU Acres

1: 12.9	4: 7.1
2: 34.1	5: 17.9
3: 6.4	6: 20.8

**Snail Rail**  
99.2 Acres  
Compartment 73





**TIMBER SALE INFORMATION**

Not Mine (12-013-20)

T41N, R27W, SEC. 30; T41N, R28W, SEC. 24; T41N, R28W, SEC. 25.  
Dickinson County (Advertised Price \$58,856.05)

SALE NOTE: The preferred access for Payment Unit 12 is through private property. Please contact the Sale Administrator for more information.

A recreation site such as a trail, pathway, or campground is within the sale area or the vicinity. Certain restrictions/specifications may be applicable including time restrictions.

A timber sale contract for this lump sum, sealed bid timber sale will be awarded to the responsible bidder offering the highest sealed bid price. All units of volume listed below were estimated using the T-Sale computer program and our traditional volume equations. Bids must be at or above the following advertised price for each product and species:

<u>PRODUCTS &amp; SPECIES</u>	<u>ESTIMATED UNITS*</u>	<u>ADVERTISED PRICE</u>
<b>Sawtimber</b>		
Basswood	50.5 MBF	\$ 76.00 / MBF
Paper Birch	2.3 MBF	\$ 57.00 / MBF
Red Maple	8.6 MBF	\$ 97.00 / MBF
Red Pine	6.4 MBF	\$ 115.00 / MBF
Sugar Maple	14.6 MBF	\$ 170.00 / MBF
White Ash	3.0 MBF	\$ 39.00 / MBF
<b>Pulpwood</b>		
Balsam Fir	39 Cords	\$ 14.40 / Cord
Basswood	302 Cords	\$ 6.30 / Cord
Mixed Aspen	1,123 Cords	\$ 28.10 / Cord
Mixed Hardwood	809 Cords	\$ 17.75 / Cord
Mixed Spruce	51 Cords	\$ 11.80 / Cord
Red Pine	38 Cords	\$ 37.10 / Cord
Tamarack	4 Cords	\$ 8.80 / Cord
White Pine	18 Cords	\$ 16.15 / Cord

\* The total volume is statistically estimated within plus (+) or minus (-) 9.84 percent. There are an estimated 2,551 cords on this timber sale, plus or minus 251 cords at the 95% confidence level. The estimated units are final and not subject to adjustment. Prospective bidders are urged to examine this timber and to make their own estimates of quantity and quality.

**BOND AND PAYMENT SCHEDULE:**

1. A bond in the amount of \$4,708.00 to insure faithful performance of the conditions of the contract will be deposited by the successful bidder within 21 days of the sale award.
2. Cutting in any sale or unit without the required advance payment would be considered a trespass.
3. Total payment must be paid in advance or according to the following schedule :
  - (a) Ten percent (10%) of the sale value must be paid within 21 days of the sale award.
  - (b) The 10% down payment will be credited towards the first unit cut.
  - (c) Payment for each of the following units must be made before cutting begins in that unit:

<u>PAYMENT UNIT NUMBER</u>	<u>PERCENT OF TOTAL SALE VALUE</u>
01	0.8%
02	19.5%
03	6.9%
04	15.9%
05	16.4%
06	10.4%
07	4.6%
08	11.6%
09	1.8%
10	6.5%
11	4.1%
12	1.5%

4. If no cutting takes place, the 10% down payment will not be refunded.
5. Operations on the contract issued will terminate on 06/30/2024.

**SALE STATISTICS****SALE VOLUMES**

VOLUME			STATISTICAL RANGE IN CORDS	
TOTAL CUBIC FEET	TOTAL CORDS	PERCENT ERROR	MINIMUM	MAXIMUM
201,535	2,551	9.84%	2,300	2,802

**VDU VOLUMES**

A VDU is a Volume Determination Unit. Volumes and their associated statistics are calculated at the VDU level and summarized to the sale level. There is often a one to one relationship between a VDU and a Payment Unit, but not always, depending on the cruise design. Refer to the VDU TO PAYMENT UNIT table.

VDU	VOLUME			RANGE IN CORDS	
	TOTAL CUBIC FEET	TOTAL CORDS	PERCENT ERROR	MINIMUM	MAXIMUM
1	2,378	30	65.24%	10	50
2	35,645	451	22.19%	351	551
3	14,489	183	31.45%	126	241
4	33,117	419	26.84%	307	532
5	39,879	505	20.07%	403	606
6	18,684	237	29.02%	168	305
7	7,947	101	47.93%	52	149
8	21,196	268	38.87%	164	373
9	4,922	62	53.00%	29	95
10	9,970	126	21.80%	99	154
11	9,575	121	44.87%	67	176
12	3,745	47	54.11%	22	73
<b>TOTAL:</b>	<b>201,545</b>	<b>2,551</b>		<b>1,798</b>	<b>3,304</b>

**VDU TO PAYMENT UNIT**

When a VDU is associated with more than one Payment Unit (PU), the VDU volumes are assigned to the PU based on acres of the VDU within the PU.

VDU	VDU ACRES	PU	PU ACRES
1	7.5	1	7.5
2	26.8	2	26.8
3	12.0	3	12.0
4	23.3	4	23.3
5	58.5	5	58.5
6	12.5	6	12.5
7	10.5	7	10.5
8	23.9	8	23.9
9	8.1	9	8.1
10	11.2	10	11.2
11	11.5	11	11.5
12	8.6	12	8.6
<b>TOTAL:</b>	<b>214.4</b>		<b>214.4</b>

**DESCRIPTION OF TIMBER BY PAYMENT UNIT (PU)**

PU	MARKET GROUP	PRODUCT	QUANTITY	UNIT	ACRES	ADVERTISE PRICE
1	Basswood	Sawtimber	1.9	MBF	7.5	\$468.50
	Basswood	Pulpwood	12	Cords		
	Mixed Hardwood		14	Cords		
	<i>Sugar Maple</i>		13	<i>Cords</i>		
	<i>Yellow Birch</i>		1	<i>Cords</i>		
2	Balsam Fir	Pulpwood	27	Cords	26.8	\$11,530.30
	Basswood		14	Cords		
	Mixed Aspen		374	Cords		
	<i>Quaking Aspen</i>		374	<i>Cords</i>		
	Mixed Hardwood		22	Cords		
	<i>Balsam Poplar</i>		9	<i>Cords</i>		
	<i>Ironwood</i>		5	<i>Cords</i>		
	<i>Sugar Maple</i>		8	<i>Cords</i>		
	Mixed Spruce		13	Cords		
	<i>White Spruce</i>		13	<i>Cords</i>		
3	Basswood	Sawtimber	2.0	MBF	12.0	\$4,061.75
	Paper Birch		0.8	MBF		
	Red Maple		2.5	MBF		
	Sugar Maple		0.5	MBF		
	Basswood	Pulpwood	16	Cords		
	Mixed Aspen		61	Cords		
	<i>Quaking Aspen</i>		61	<i>Cords</i>		
	Mixed Hardwood		97	Cords		
	<i>Paper Birch</i>		2	<i>Cords</i>		
	<i>Red Maple</i>		60	<i>Cords</i>		
<i>Sugar Maple</i>		35	<i>Cords</i>			
4	Basswood	Sawtimber	2.4	MBF	23.3	\$9,343.70
	Red Maple		2.2	MBF		
	Sugar Maple		4.4	MBF		
	Balsam Fir	Pulpwood	8	Cords		
	Basswood		43	Cords		
	Mixed Aspen		153	Cords		
	<i>Quaking Aspen</i>		153	<i>Cords</i>		
	Mixed Hardwood		198	Cords		
	<i>Ironwood</i>		2	<i>Cords</i>		
	<i>Red Maple</i>		60	<i>Cords</i>		
<i>Sugar Maple</i>		136	<i>Cords</i>			
5	Basswood	Sawtimber	34.8	MBF	58.5	\$9,652.75
	Sugar Maple		8.9	MBF		
	White Ash		3.0	MBF		
	Basswood	Pulpwood	169	Cords		
	Mixed Hardwood		243	Cords		
	<i>Ironwood</i>		8	<i>Cords</i>		
	<i>Red Maple</i>		9	<i>Cords</i>		
	<i>Sugar Maple</i>		221	<i>Cords</i>		
<i>White Ash</i>		5	<i>Cords</i>			
6	Basswood	Sawtimber	1.3	MBF	12.5	\$6,110.40
	Red Maple		1.3	MBF		
	Basswood	Pulpwood	6	Cords		
	Mixed Aspen		182	Cords		
	<i>Quaking Aspen</i>		182	<i>Cords</i>		
	Mixed Hardwood		38	Cords		
	<i>Black Ash</i>	<i>Sawtimber</i>	0.5	<i>MBF</i>		
	<i>Balsam Poplar</i>	<i>Pulpwood</i>	3	<i>Cords</i>		
	<i>Black Ash</i>		2	<i>Cords</i>		
	<i>Paper Birch</i>		11	<i>Cords</i>		

**DESCRIPTION OF TIMBER BY PAYMENT UNIT (PU), CON'T**

PU	MARKET GROUP	PRODUCT	QUANTITY	UNIT	ACRES	ADVERTISE PRICE
6 con't	<i>Red Maple</i> Mixed Spruce <i>Black Spruce</i>	<i>Pulpwood</i>	21 5 5	<i>Cords</i> Cords <i>Cords</i>		
7	Paper Birch Mixed Aspen <i>B. T. Aspen</i> <i>Quaking Aspen</i> Mixed Hardwood <i>Paper Birch</i> <i>Red Maple</i>	Sawtimber Pulpwood	1.0 87 18 69 12 5 7	MBF Cords <i>Cords</i> <i>Cords</i> Cords <i>Cords</i> <i>Cords</i>	10.5	\$2,714.70
8	Red Maple Mixed Aspen <i>B. T. Aspen</i> <i>Quaking Aspen</i> Mixed Hardwood <i>Balsam Poplar</i> <i>Paper Birch</i> <i>Red Maple</i> Mixed Spruce <i>Black Spruce</i> Tamarack	Sawtimber Pulpwood	2.6 191 24 167 64 5 10 49 4 4 4	MBF Cords <i>Cords</i> <i>Cords</i> Cords <i>Cords</i> <i>Cords</i> <i>Cords</i> Cords <i>Cords</i> Cords	23.9	\$6,837.70
9	Basswood Basswood Mixed Hardwood <i>Red Maple</i> <i>Sugar Maple</i>	Sawtimber Pulpwood	4.8 24 29 4 25	MBF Cords Cords <i>Cords</i> <i>Cords</i>	8.1	\$1,030.75
10	Red Pine Balsam Fir Mixed Aspen <i>Quaking Aspen</i> Mixed Hardwood <i>Paper Birch</i> <i>Red Maple</i> Red Pine White Pine	Sawtimber Pulpwood	6.4 4 36 36 18 15 3 38 18	MBF Cords Cords <i>Cords</i> Cords <i>Cords</i> <i>Cords</i> Cords Cords	11.2	\$3,825.20
11	Paper Birch Mixed Aspen <i>Quaking Aspen</i> Mixed Hardwood <i>Balsam Poplar</i> <i>Black Cherry</i> <i>Paper Birch</i> <i>Sugar Maple</i> Mixed Spruce <i>Black Spruce</i> <i>White Spruce</i>	Sawtimber Pulpwood	0.5 39 39 52 23 3 22 4 29 21 8	MBF Cords <i>Cords</i> Cords <i>Cords</i> <i>Cords</i> <i>Cords</i> <i>Cords</i> Cords <i>Cords</i> <i>Cords</i>	11.5	\$2,389.60
12	Basswood Sugar Maple Basswood Mixed Hardwood <i>Sugar Maple</i>	Sawtimber Pulpwood	3.3 0.8 18 22 22	MBF MBF Cords Cords <i>Cords</i>	8.6	\$890.70
TOTAL:			85.4	MBF		
TOTAL:			2,384	Cords		

## Sale Specific Conditions & Requirements

**Sale Name: Not Mine**

**Sale Number: 12-013-20 Seq#: 1**

### 1 - Sale Area

#### 1.2 - Boundaries

##### 1.2.1 - Painted boundaries (9/19)

The sale boundary and Payment Unit boundaries are marked and identified by blue, red and purple paint, along with a road. Exterior sale boundary lines against private property are marked with blue paint. Exterior sale boundary lines against state are marked with red paint. Interior Payment Unit boundaries are marked with purple paint. Note that some of the boundaries for Payment Units 3, 4, 5, 6, and 7 are unpainted and identified by Waucedah Road (see Timber Sale Map). Purple painted trees designating an interior Payment Unit boundary are only to be cut when all surrounding Payment Units have been paid.

### 2 - Timber Specifications

#### 2.1 - Included Timber

##### 2.1.1 - Clearcut unit(s) with unmerchantable trees (6/14)

Within Payment Unit(s) 2, 3, 4, 6, 7, 8, and 11, cut all trees that are two (2) inches or more at DBH, except do not cut cedar, hemlock, and pine. In addition, the following exceptions apply:

- Within Payment Units 4, 7, and 8, do not cut spruce/fir that are less than 2 sticks, or any black ash.
- Within Payment Unit 11, do not cut spruce/fir that are less than 2 sticks.

##### 2.1.3 - Cut tree marked unit(s) (12/08)

Within Payment Unit(s) 1, 5, 9, and 12, all trees are designated for cutting when marked with orange paint above and below stump height, regardless of merchantability.

##### 2.1.4 - Designated timber unit(s) (6/17)

Within Payment Unit(s) 10, pine marked with orange paint above and below stump height are designated for cutting, regardless of merchantability. In addition, cut all other trees that are two (2) inches or more at DBH, except do not cut spruce/fir that are less than 2 sticks.

### 3 - Payments

#### 3.3 - Pre-measured Sales

##### 3.3.4 - Dividing payment units (7/14)

Payment Unit(s) 5 may be divided at the request of the Purchaser and upon approval of the Unit Manager. Dividing Payment Units is a contract modification which requires a Timber Sale Contract Amendment. There will be only one division per Payment Unit.

### 4 - Transportation

#### 4.1 - Construction

##### 4.1.2 - Stream crossings, specific (3/11)

The Hancock Creek shown on the map crossing will require the installation of a culvert or portable bridge which may be borrowed from the DNR. This installation will be performed in accordance with the specifications on the appropriate permits which shall be provided by the DNR.

##### 4.1.5 - Culverts (5/14)

Roads may require the installation of culverts for cross drainage or at natural drainage-ways. If culverts are needed in these locations, their placement will be specified by the sale administrator and they shall be installed prior to hauling. The culverts shall be new, corrugated metal or plastic gauge. Culverts will be a minimum of 18 inches in diameter and 24 feet in length. Stream crossing permits, if needed, will be obtained by the DNR.

##### 4.1.12 - No new roads (1/12)

No new roads will be permitted. All operations are limited to existing roads. Skid trails only will be allowed.

#### 4.3 - Public Right-of-Way

#### 4.3.2 - County R-O-W (12/06)

The county must be contacted prior to crossing or harvesting in the county road R-O-W. This applies to Payment Units 3, 4, 5, 6, and 7 and the Foster City Waucedah Road.

#### 4.4 - Access

##### 4.4.2 - Alternate route on private property (2/04)

It is the Purchaser's responsibility to obtain access across private land for any routes other than the route shown on the Timber Sale Map.

##### 4.4.4 - Restricted access (10/05)

No equipment is allowed to cross the Hancock Flooding dam.

### 5 - Operations

#### 5.2 - Conduct of Operations

##### 5.2.1 - Slash

###### 5.2.1.13 - Dispose of slash as directed (12/05)

Slash is to be disposed of as directed by the Sale Administrator.

##### 5.2.41 - Snowmobile trail protection (9/11)

The Hancock Flooding Trail is a snowmobile trail and is shown on the Timber Sale Map. Do not cut or damage posts with orange trail markers or traffic control signs. If the trail is used, it must be maintained and restored to a condition equal to or better than before the sale. The road maintenance/restoration must be done prior to December 1. If the trail is used for hauling, it must be graded to the satisfaction of the Unit Manager or his/her representative prior to December 1st. If the trail road is to be used for hauling during the snowmobile season, then a snow covered base must be left on the trail. The snowmobile trail may not be used for any timber sale operations from December 1 to March 31. The snowmobile trail may only be crossed at right angles. Maintain a 20 foot wide slash, debris, and rut free zone daily using the snowmobile trail as the centerline. No decking of forest products will be permitted along the snowmobile trail. All stumps within 20 feet of the snowmobile trail must be cut at ground level. In addition, any trees cut within 5 feet of the trail must have the stumps removed and be disposed of according to the direction of the Unit Manager or his/her representative.

#### 5.4 - Soil Protection

##### 5.4.1 - Rutting restriction, general (7/16)

Operations are to cease immediately if equipment and weather conditions result in rutting of roads and/or skid trails which is 12 inches or greater in depth and 50 feet in length. The Unit Manager or his/her representative may restrict hauling and/or skidding if ruts exceed the specified depth. With the Unit Manager or his/her representative's approval, the Purchaser may return to the area when the risk of rutting has decreased.

### 6 - Safety and Fire Prevention

#### 6.2 - Signing

##### 6.2.1 - Road posting (9/09)

The Purchaser is responsible for posting and maintaining caution signs on Foster City Waucedah Road prior to beginning operations. The road must be posted at appropriate distances from the sale area to warn of logging activity and truck traffic. Signs must be removed when harvest operations are suspended or completed. The Purchaser will provide these signs.

##### 6.2.2 - Snowmobile trail posting (8/09)

The Purchaser is responsible for posting and maintaining caution signs on Hancock Flooding Trail prior to beginning operations during the snowmobile season (approximately December 1 to March 31). The trail must be posted at appropriate distances from the sale area to warn of logging activity and truck traffic. Signs must be removed when harvest operations are suspended or completed. The Purchaser will provide these signs.





### TIMBER SALE MAP

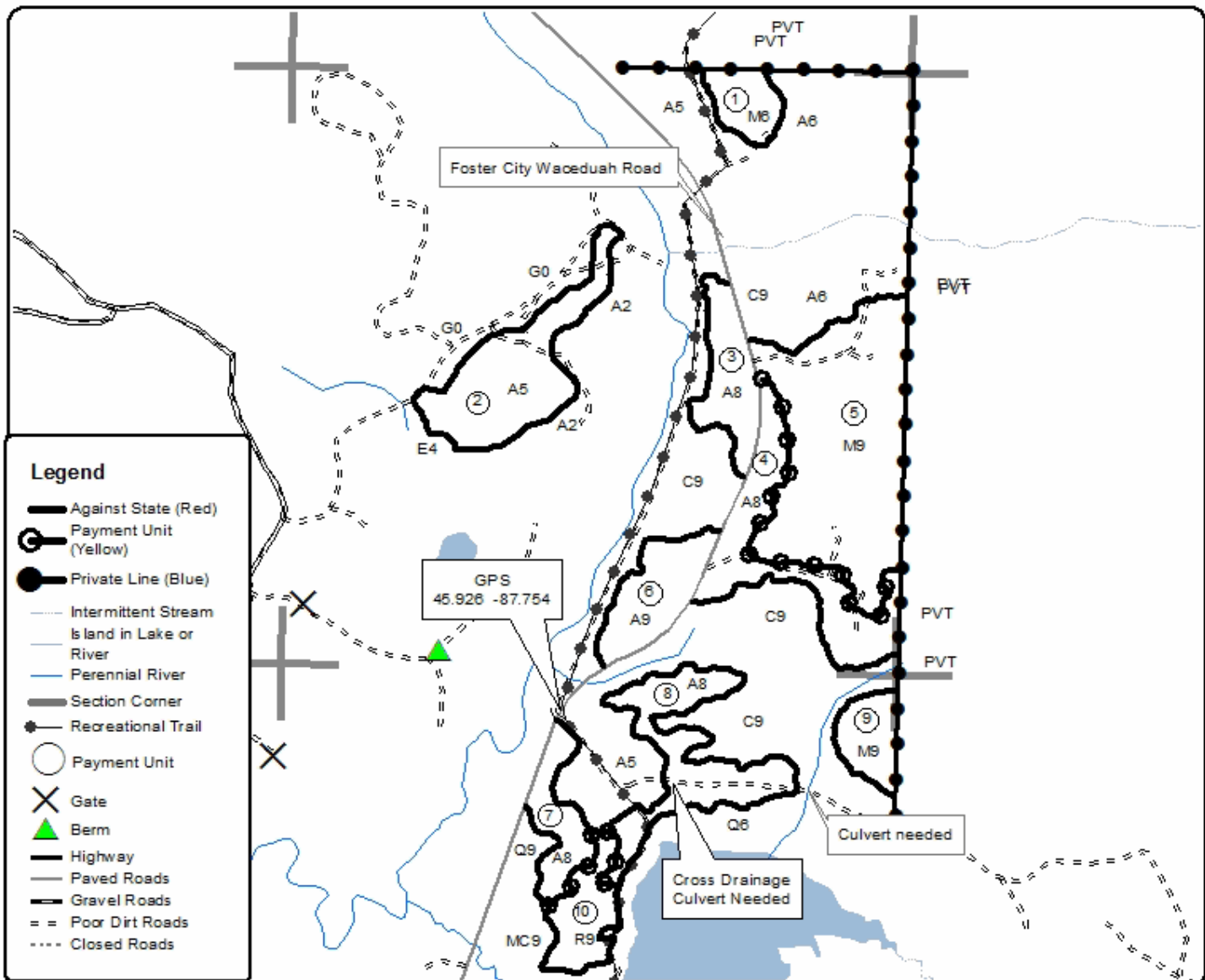
This information provided by authority of Part 525, 1994 PA 451, as amended.

Forest Management Unit Crystal Falls Management Unit	County Dickinson Co.	Mapped By Dickie Goupell	Date 8-8-2020	Page 1	of 2
Township 41N	Range 27W & 28W	Section(s) and Subdivision(s) Sec 30 MWNE, SESE SEC 24 SENW, NE, N 1/2 SW, SE SEC 25 E 1/2 NW, N 1/2 NE, SWNE	Scale 1:15,840		

Cover Type			Density	
A = Aspen	H = Hemlock	N = Marsh	U = Upland Brush	0 = Non Stocked
B = Paper Birch	J = Jack Pine	O = Oak	UM = Upland Mixed	1 = Seedling Sapling Poor
C = Cedar	L = Lowland Brush	P = Lowland Poplar	V = Bog or Marsh	2 = Seedling Sapling Medium
D = Tread Bog	LM = Lowland Mixed	Q = Mixed Swamp Conifer	W = White Pine	3 = Seedling Sapling Well
E = Swamp Hdwoods	M = Mpl, Bch, Birch	R = Red Pine	X = Non Stocked	4 = Pole Timber Poor
F = Spruce Fir	MC = Mixed Conifer	S = Black Spruce	Z = Water	5 = Pole Timber Medium
G = Grass	MD = Mixed Deciduous	T = Tamarack		6 = Pole Timber Well
				7 = Saw Timber Poor
				8 = Saw Timber Medium
				9 = Saw Timber Well

PU	Acres	PU	Acres
1	7.5	7	10.5
2	26.8	8	23.9
3	12.0	9	8.1
4	23.3	10	11.2
5	58.5	11	11.5
6	12.5	12	8.6

**Not Mine**  
**Compartment 90**  
**Acres 214.4**





# TIMBER SALE MAP

This information provided by authority of Part 525, 1994 PA 451, as amended.

Sale Number	Year
12-013-20	2020

Forest Management Unit	County	Mapped By
Crystal Falls Management Unit	Dickinson Co.	Dickie Goupell
		Cruised By
		Dickie Goupell

Date	Page	of
8-8-2020	2	2

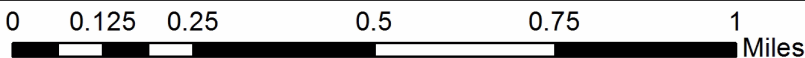
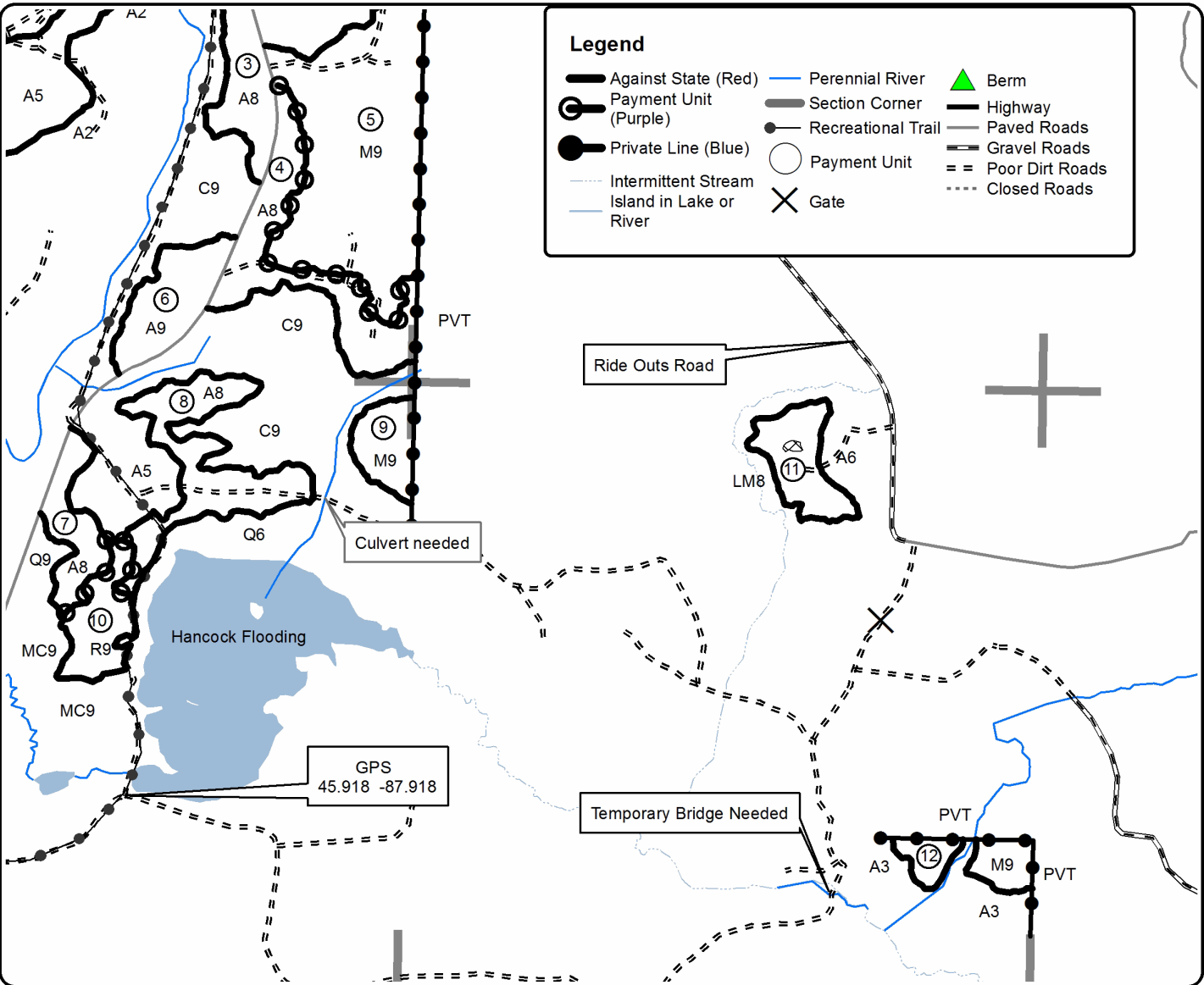
Township	Range	Section(s) and Subdivision(s)	Scale
41N	27W & 28W	Sec 30 NWNE, SESE SEC 24 SENW, NE, N 1/2 SW, SE SEC 25 E 1/2 NW, N 1/2 NE, SWNE	1:15,840

Cover Type			
A = Aspen	H = Hemlock	N = Marsh	U = Upland Brush
B = Paper Birch	J = Jack Pine	O = Oak	UM = Upland Mixed
C = Cedar	L = Lowland Brush	P = Lowland Poplar	V = Bog or Marsh
D = Tread Bog	LM = Lowland Mixed	Q = Mixed Swamp Conifer	W = White Pine
E = Swamp Hdwoods	M = Mpl, Bch, Brch	R = Red Pine	X = Non Stocked
F = Spruce Fir	MC = Mixed Conifer	S = Black Spruce	Z = Water
G = Grass	MD = Mixed Deciduous	T = Tamarack	

Density	
0 = Non Stocked	5 = Pole Timber Medium
1 = Seedling Sapling Poor	6 = Pole Timber Well
2 = Seedling Sapling Medium	7 = Saw Timber Poor
3 = Seedling Sapling Well	8 = Saw Timber Medium
4 = Pole Timber Poor	9 = Saw Timber Well

PU	Acres	PU	Acres
1	7.5	7	10.5
2	26.8	8	23.9
3	12.0	9	8.1
4	23.3	10	11.2
5	58.5	11	11.5
6	12.5	12	8.6

**Not Mine**  
**Compartment 90**  
**Acres 214.4**



Bug Bungee (12-004-20)

T41N, R27W, SEC. 30; T41N, R27W, SEC. 31; T41N, R28W, SEC. 25; T41N,

In response to the notice of sale to be held 8:30 a.m. (local time) on March 10, 2021, I am hereby submitting my sealed bid ( firm offer) for the following forest products to be cut. Bids for individual species must be at or above the advertised price. All non-responsive bid forms may be rejected.

<u>PRODUCTS &amp; SPECIES</u>	<u>ESTIMATED VOLUME*</u>	<u>ADVERTISED PRICE</u>	<u>BID PRICE/UNIT</u>
<b>Sawtimber</b>			
Basswood	2.4 MBF	\$ 76.00/MBF	\$ _____
Paper Birch	3.2 MBF	\$ 57.00/MBF	\$ _____
Red Maple	1.3 MBF	\$ 97.00/MBF	\$ _____
Red Pine	29.9 MBF	\$ 115.00/MBF	\$ _____
Sugar Maple	2.4 MBF	\$ 170.00/MBF	\$ _____
<b>Pulpwood</b>			
Balsam Fir	101 Cords	\$ 14.40/Cord	\$ _____
Basswood	22 Cords	\$ 6.30/Cord	\$ _____
Jack Pine	71 Cords	\$ 19.90/Cord	\$ _____
Mixed Aspen	1,104 Cords	\$ 28.10/Cord	\$ _____
Mixed Hardwood	121 Cords	\$ 17.75/Cord	\$ _____
Mixed Spruce	346 Cords	\$ 11.80/Cord	\$ _____
Paper Birch	113 Cords	\$ 12.35/Cord	\$ _____
Red Pine	80 Cords	\$ 37.10/Cord	\$ _____
Tamarack	222 Cords	\$ 8.80/Cord	\$ _____
White Pine	56 Cords	\$ 16.15/Cord	\$ _____

\*These estimated volumes are final and not subject to adjustment. Prospective bidders are urged to examine this timber and to make their own estimates of quantity and quality.

I understand that any or all bids may be rejected. All bids must be signed and all bid items must be bid or the bid form may be rejected. I also understand that consideration and awarding a contract will be based upon my past performance and ability to complete the contract based upon equipment and staffing subject to my control.

FEDERAL ID: \_\_\_\_ - \_\_\_\_ - \_\_\_\_ or SOCIAL SECURITY NUMBER: \_\_\_\_ - \_\_\_\_ - \_\_\_\_

Company or individual bidding: \_\_\_\_\_

Company representative's name: \_\_\_\_\_

Address: \_\_\_\_\_

City: \_\_\_\_\_ State: \_\_\_\_\_ Zip: \_\_\_\_\_

IF AVAILABLE, PLEASE PLACE THE PERSONALIZED LABEL FROM YOUR PROSPECTUS IN THE ABOVE BOX.

Individual or company representative's signature: \_\_\_\_\_ Date: \_\_\_\_\_

Phone number : \_\_\_\_\_ Email (optional): \_\_\_\_\_

**THE WINNING BIDDER MUST COMPLETE THE VERIFICATION OF WORKER'S DISABILITY COMPENSATION ACT COMPLIANCE (ON REVERSE SIDE IF DOUBLE SIDED) WITHIN 21 DAYS OF SALE AWARD DATE**



<b>FOR DEPARTMENT USE ONLY</b>	
Sale Number (XX - XXX - XX - XX)	
Forest Management Unit:	

# TIMBER SALE VERIFICATION OF WORKER'S DISABILITY COMPENSATION ACT COMPLIANCE

As required by Act 317, P.A. 1969 (Worker's Compensation) and  
Part 5 of Act 451 of 1994, as amended.

## VERIFICATION OF WORKER'S DISABILITY COMPENSATION ACT COMPLIANCE

- This verification must be completed and submitted within 21 days of contract award and prior to the issuance of the timber sale contract.
- In addition, if boxes 2B or 2C are checked, then Notice of Exclusion or Certificate of Insurance must be submitted within twenty-one (21) days of the contract award and prior to the issuance of the timber sale contract.
- All information must be typed or printed except for written signatures.

Please Check Appropriate Categories:

1. My business is organized as (you **must** check one of the boxes below):
  - A.  Sole Proprietorship (individual)
  - B.  Partnership
  - C.  Corporation
2. You **must** check one of the boxes below:
  - A.  I certify my business is a sole proprietorship and it has no employees but the sole proprietor. I am not subject to the Worker's Compensation Laws.
  - B.  I certify my business has satisfied its obligation to the Worker's Compensation Act through the use of an approved Notice of Exclusion (BWC-337, Rev. 5/96). I will provide a copy of the Notice of Exclusion within 21 days of the contract award. (For questions or a copy of the BWC-337, please call the Worker's Compensation Bureau at 517-322-1195).
  - C.  I certify my business has a Worker's Compensation Policy. I will provide an original Certificate of Insurance within twenty-one (21) days of the contract award.
3. If you have checked item 2(A) or 2(B), you **must** indicate the number of **both** full-time and part-time employees, other than yourself, including family members and active partners (if none, you must enter "0").

\_\_\_\_\_ Full-time Employees

\_\_\_\_\_ Part-time Employees

Name of Business		Federal ID (or) Social Security No.	
Address		Telephone (       )	
City	State	ZIP	

*I hereby certify that the above information is true and correct. I agree to notify the Michigan DNR of any changes that occur in factors affecting my coverage during any of my present and future operations.*

\_\_\_\_\_  
Signature of Owner or Authorized Representative

\_\_\_\_\_  
Title

\_\_\_\_\_  
Date

Please complete the "SEALED BID" information on the next page

Covid Spring (12-007-20)  
T41N, R29W, SEC. 31; T41N, R30W, SEC. 36; Dickinson COUNTY

In response to the notice of sale to be held 8:30 a.m. (local time) on March 10, 2021, I am hereby submitting my sealed bid ( firm offer) for the following forest products to be cut. Bids for individual species must be at or above the advertised price. All non-responsive bid forms may be rejected.

<u>PRODUCTS &amp; SPECIES</u>	<u>ESTIMATED VOLUME*</u>	<u>ADVERTISED PRICE</u>	<u>BID PRICE/UNIT</u>
<b>Sawtimber</b>			
Red Maple	2.6 MBF	\$ 91.00/MBF	\$ _____
<b>Pulpwood</b>			
B. T. Aspen	1,104 Cords	\$ 26.40/Cord	\$ _____
Balsam Fir	275 Cords	\$ 13.50/Cord	\$ _____
Balsam Poplar	56 Cords	\$ 26.40/Cord	\$ _____
Basswood	56 Cords	\$ 5.90/Cord	\$ _____
Paper Birch	184 Cords	\$ 11.60/Cord	\$ _____
Quaking Aspen	3,312 Cords	\$ 26.40/Cord	\$ _____
Red Maple	862 Cords	\$ 16.70/Cord	\$ _____
Sugar Maple	127 Cords	\$ 16.70/Cord	\$ _____
White Spruce	78 Cords	\$ 11.10/Cord	\$ _____
Yellow Birch	28 Cords	\$ 16.70/Cord	\$ _____

\*The volumes are statistically estimated within plus (+) or minus (-) 5.80 percent at 95% confidence level. These estimated volumes are final and not subject to adjustment. Prospective bidders are urged to examine this timber and to make their own estimates of quantity and quality.

I understand that any or all bids may be rejected. All bids must be signed and all bid items must be bid or the bid form may be rejected. I also understand that consideration and awarding a contract will be based upon my past performance and ability to complete the contract based upon equipment and staffing subject to my control .

FEDERAL ID: \_\_\_\_\_ or SOCIAL SECURITY NUMBER: \_\_\_\_\_

Company or individual bidding: \_\_\_\_\_

Company representative's name: \_\_\_\_\_

Address: \_\_\_\_\_

City: \_\_\_\_\_ State: \_\_\_\_\_ Zip: \_\_\_\_\_

IF AVAILABLE, PLEASE PLACE THE PERSONALIZED LABEL FROM YOUR PROSPECTUS IN THE ABOVE BOX.

Individual or company representative's signature: \_\_\_\_\_ Date: \_\_\_\_\_

Phone number : \_\_\_\_\_ Email (optional): \_\_\_\_\_

**THE WINNING BIDDER MUST COMPLETE THE VERIFICATION OF WORKER'S DISABILITY COMPENSATION ACT COMPLIANCE (ON REVERSE SIDE IF DOUBLE SIDED) WITHIN 21 DAYS OF SALE AWARD DATE**



<b>FOR DEPARTMENT USE ONLY</b>
Sale Number (XX - XXX - XX - XX)
Forest Management Unit:

## TIMBER SALE VERIFICATION OF WORKER'S DISABILITY COMPENSATION ACT COMPLIANCE

*As required by Act 317, P.A. 1969 (Worker's Compensation) and  
Part 5 of Act 451 of 1994, as amended.*

### VERIFICATION OF WORKER'S DISABILITY COMPENSATION ACT COMPLIANCE

- This verification must be completed and submitted within 21 days of contract award and prior to the issuance of the timber sale contract.
- In addition, if boxes 2B or 2C are checked, then Notice of Exclusion or Certificate of Insurance must be submitted within twenty-one (21) days of the contract award and prior to the issuance of the timber sale contract.
- All information must be typed or printed except for written signatures.

Please Check Appropriate Categories:

1. My business is organized as (you **must** check one of the boxes below):
  - A.  Sole Proprietorship (individual)
  - B.  Partnership
  - C.  Corporation
2. You **must** check one of the boxes below:
  - A.  I certify my business is a sole proprietorship and it has no employees but the sole proprietor. I am not subject to the Worker's Compensation Laws.
  - B.  I certify my business has satisfied its obligation to the Worker's Compensation Act through the use of an approved Notice of Exclusion (BWC-337, Rev. 5/96). I will provide a copy of the Notice of Exclusion within 21 days of the contract award. (For questions or a copy of the BWC-337, please call the Worker's Compensation Bureau at 517-322-1195).
  - C.  I certify my business has a Worker's Compensation Policy. I will provide an original Certificate of Insurance within twenty-one (21) days of the contract award.
3. If you have checked item 2(A) or 2(B), you **must** indicate the number of **both** full-time and part-time employees, other than yourself, including family members and active partners (if none, you must enter "0").

\_\_\_\_\_ Full-time Employees

\_\_\_\_\_ Part-time Employees

Name of Business		Federal ID (or) Social Security No.	
Address		Telephone (       )	
City	State	ZIP	

*I hereby certify that the above information is true and correct. I agree to notify the Michigan DNR of any changes that occur in factors affecting my coverage during any of my present and future operations.*

\_\_\_\_\_  
Signature of Owner or Authorized Representative

\_\_\_\_\_  
Title

\_\_\_\_\_  
Date

**Please complete the "SEALED BID" information on the next page**

Not Mine (12-013-20)

T41N, R27W, SEC. 30; T41N, R28W, SEC. 24; T41N, R28W, SEC. 25; Dickinson

In response to the notice of sale to be held 8:30 a.m. (local time) on March 10, 2021, I am hereby submitting my sealed bid ( firm offer) for the following forest products to be cut. Bids for individual species must be at or above the advertised price. All non-responsive bid forms may be rejected.

<u>PRODUCTS &amp; SPECIES</u>	<u>ESTIMATED VOLUME*</u>	<u>ADVERTISED PRICE</u>	<u>BID PRICE/UNIT</u>
<b>Sawtimber</b>			
Basswood	50.5 MBF	\$ 76.00/MBF	\$ _____
Paper Birch	2.3 MBF	\$ 57.00/MBF	\$ _____
Red Maple	8.6 MBF	\$ 97.00/MBF	\$ _____
Red Pine	6.4 MBF	\$ 115.00/MBF	\$ _____
Sugar Maple	14.6 MBF	\$ 170.00/MBF	\$ _____
White Ash	3.0 MBF	\$ 39.00/MBF	\$ _____
<b>Pulpwood</b>			
Balsam Fir	39 Cords	\$ 14.40/Cord	\$ _____
Basswood	302 Cords	\$ 6.30/Cord	\$ _____
Mixed Aspen	1,123 Cords	\$ 28.10/Cord	\$ _____
Mixed Hardwood	809 Cords	\$ 17.75/Cord	\$ _____
Mixed Spruce	51 Cords	\$ 11.80/Cord	\$ _____
Red Pine	38 Cords	\$ 37.10/Cord	\$ _____
Tamarack	4 Cords	\$ 8.80/Cord	\$ _____
White Pine	18 Cords	\$ 16.15/Cord	\$ _____

\*The volumes are statistically estimated within plus (+) or minus (-) 9.84 percent at 95% confidence level. These estimated volumes are final and not subject to adjustment. Prospective bidders are urged to examine this timber and to make their own estimates of quantity and quality.

I understand that any or all bids may be rejected. All bids must be signed and all bid items must be bid or the bid form may be rejected. I also understand that consideration and awarding a contract will be based upon my past performance and ability to complete the contract based upon equipment and staffing subject to my control.

FEDERAL ID: \_\_\_\_\_ - \_\_\_\_\_ or SOCIAL SECURITY NUMBER: \_\_\_\_\_ - \_\_\_\_\_ - \_\_\_\_\_

Company or individual bidding: \_\_\_\_\_

Company representative's name: \_\_\_\_\_

Address: \_\_\_\_\_

City: \_\_\_\_\_ State: \_\_\_\_\_ Zip: \_\_\_\_\_

IF AVAILABLE, PLEASE PLACE THE PERSONALIZED LABEL FROM YOUR PROSPECTUS IN THE ABOVE BOX.

Individual or company representative's signature: \_\_\_\_\_ Date: \_\_\_\_\_

Phone number : \_\_\_\_\_ Email (optional): \_\_\_\_\_

**THE WINNING BIDDER MUST COMPLETE THE VERIFICATION OF WORKER'S DISABILITY COMPENSATION ACT COMPLIANCE (ON REVERSE SIDE IF DOUBLE SIDED) WITHIN 21 DAYS OF SALE AWARD DATE**



FOR DEPARTMENT USE ONLY	
Sale Number (XX - XXX - XX - XX)	
Forest Management Unit:	

# TIMBER SALE VERIFICATION OF WORKER'S DISABILITY COMPENSATION ACT COMPLIANCE

As required by Act 317, P.A. 1969 (Worker's Compensation) and  
Part 5 of Act 451 of 1994, as amended.

## VERIFICATION OF WORKER'S DISABILITY COMPENSATION ACT COMPLIANCE

- This verification must be completed and submitted within 21 days of contract award and prior to the issuance of the timber sale contract.
- In addition, if boxes 2B or 2C are checked, then Notice of Exclusion or Certificate of Insurance must be submitted within twenty-one (21) days of the contract award and prior to the issuance of the timber sale contract.
- All information must be typed or printed except for written signatures.

Please Check Appropriate Categories:

1. My business is organized as (you **must** check one of the boxes below):
  - A.  Sole Proprietorship (individual)
  - B.  Partnership
  - C.  Corporation
2. You **must** check one of the boxes below:
  - A.  I certify my business is a sole proprietorship and it has no employees but the sole proprietor. I am not subject to the Worker's Compensation Laws.
  - B.  I certify my business has satisfied its obligation to the Worker's Compensation Act through the use of an approved Notice of Exclusion (BWC-337, Rev. 5/96). I will provide a copy of the Notice of Exclusion within 21 days of the contract award. (For questions or a copy of the BWC-337, please call the Worker's Compensation Bureau at 517-322-1195).
  - C.  I certify my business has a Worker's Compensation Policy. I will provide an original Certificate of Insurance within twenty-one (21) days of the contract award.
3. If you have checked item 2(A) or 2(B), you **must** indicate the number of **both** full-time and part-time employees, other than yourself, including family members and active partners (if none, you must enter "0").

\_\_\_\_\_ Full-time Employees

\_\_\_\_\_ Part-time Employees

Name of Business		Federal ID (or) Social Security No.	
Address		Telephone (       )	
City	State	ZIP	

*I hereby certify that the above information is true and correct. I agree to notify the Michigan DNR of any changes that occur in factors affecting my coverage during any of my present and future operations.*

\_\_\_\_\_  
Signature of Owner or Authorized Representative

\_\_\_\_\_  
Title

\_\_\_\_\_  
Date

Please complete the "SEALED BID" information on the next page



Snail Rail (12-011-20)

T41N, R30W, SEC. 1; T41N, R30W, SEC. 2; Dickinson COUNTY

In response to the notice of sale to be held 8:30 a.m. (local time) on March 10, 2021, I am hereby submitting my sealed bid ( firm offer) for the following forest products to be cut. Bids for individual species must be at or above the advertised price. All non-responsive bid forms may be rejected.

<u>PRODUCTS &amp; SPECIES</u>	<u>ESTIMATED VOLUME*</u>	<u>ADVERTISED PRICE</u>	<u>BID PRICE/UNIT</u>
<b>Sawtimber</b>			
Paper Birch	16.5 MBF	\$ 47.00/MBF	\$ _____
<b>Pulpwood</b>			
Balsam Fir	51 Cords	\$ 11.75/Cord	\$ _____
Black Spruce	6 Cords	\$ 9.65/Cord	\$ _____
Mixed Aspen	487 Cords	\$ 23.00/Cord	\$ _____
Mixed Hardwood	697 Cords	\$ 14.50/Cord	\$ _____
Paper Birch	451 Cords	\$ 10.10/Cord	\$ _____

\*The volumes are statistically estimated within plus (+) or minus (-) 11.69 percent at 95% confidence level. These estimated volumes are final and not subject to adjustment. Prospective bidders are urged to examine this timber and to make their own estimates of quantity and quality.

I understand that any or all bids may be rejected. All bids must be signed and all bid items must be bid or the bid form may be rejected. I also understand that consideration and awarding a contract will be based upon my past performance and ability to complete the contract based upon equipment and staffing subject to my control.

FEDERAL ID: \_\_\_\_\_ - \_\_\_\_\_ or SOCIAL SECURITY NUMBER: \_\_\_\_\_ - \_\_\_\_\_ - \_\_\_\_\_

Company or individual bidding: \_\_\_\_\_

Company representative's name: \_\_\_\_\_

Address: \_\_\_\_\_

City: \_\_\_\_\_ State: \_\_\_\_\_ Zip: \_\_\_\_\_

IF AVAILABLE, PLEASE PLACE THE PERSONALIZED LABEL FROM YOUR PROSPECTUS IN THE ABOVE BOX.

Individual or company representative's signature: \_\_\_\_\_ Date: \_\_\_\_\_

Phone number : \_\_\_\_\_ Email (optional): \_\_\_\_\_

**THE WINNING BIDDER MUST COMPLETE THE VERIFICATION OF WORKER'S DISABILITY COMPENSATION ACT COMPLIANCE (ON REVERSE SIDE IF DOUBLE SIDED) WITHIN 21 DAYS OF SALE AWARD DATE**



<b>FOR DEPARTMENT USE ONLY</b>
Sale Number (XX - XXX - XX - XX)
Forest Management Unit:

## TIMBER SALE VERIFICATION OF WORKER'S DISABILITY COMPENSATION ACT COMPLIANCE

*As required by Act 317, P.A. 1969 (Worker's Compensation) and  
Part 5 of Act 451 of 1994, as amended.*

### VERIFICATION OF WORKER'S DISABILITY COMPENSATION ACT COMPLIANCE

- This verification must be completed and submitted within 21 days of contract award and prior to the issuance of the timber sale contract.
- In addition, if boxes 2B or 2C are checked, then Notice of Exclusion or Certificate of Insurance must be submitted within twenty-one (21) days of the contract award and prior to the issuance of the timber sale contract.
- All information must be typed or printed except for written signatures.

Please Check Appropriate Categories:

1. My business is organized as (you **must** check one of the boxes below):
  - A.  Sole Proprietorship (individual)
  - B.  Partnership
  - C.  Corporation
  
2. You **must** check one of the boxes below:
  - A.  I certify my business is a sole proprietorship and it has no employees but the sole proprietor. I am not subject to the Worker's Compensation Laws.
  - B.  I certify my business has satisfied its obligation to the Worker's Compensation Act through the use of an approved Notice of Exclusion (BWC-337, Rev. 5/96). I will provide a copy of the Notice of Exclusion within 21 days of the contract award. (For questions or a copy of the BWC-337, please call the Worker's Compensation Bureau at 517-322-1195).
  - C.  I certify my business has a Worker's Compensation Policy. I will provide an original Certificate of Insurance within twenty-one (21) days of the contract award.
  
3. If you have checked item 2(A) or 2(B), you **must** indicate the number of **both** full-time and part-time employees, other than yourself, including family members and active partners (if none, you must enter "0").

\_\_\_\_\_ Full-time Employees

\_\_\_\_\_ Part-time Employees

Name of Business		Federal ID (or) Social Security No.	
Address		Telephone (       )	
City	State	ZIP	

*I hereby certify that the above information is true and correct. I agree to notify the Michigan DNR of any changes that occur in factors affecting my coverage during any of my present and future operations.*

\_\_\_\_\_  
Signature of Owner or Authorized Representative

\_\_\_\_\_  
Title

\_\_\_\_\_  
Date

**Please complete the "SEALED BID" information on the next page**