



**DEPARTMENT OF NATURAL RESOURCES  
STATE OF MICHIGAN**

**TIMBER SALE PROSPECTUS #6849**

SCHEDULED SALE DATE AND TIME: 3:00 p.m. (local time) on May 25, 2021.

LOCATION: INDIAN RIVER FIELD OFFICE, 6984 WILSON, INDIAN RIVER, MI 49749.

PROSPECTUS NOTE: The bidder is advised to inspect the sale area and review the location, estimated volumes, operating costs and contract terms of proposed sales. Please be aware that some landowners may request 60 days or more notice for access across their land.

Notice is hereby given that bids will be received by the Unit Manager, GAYLORD MANAGEMENT UNIT, for certain timber on the following described lands:

Comp 116 Hardwood (52-103-20) / T36N, R05W, SEC. 1 , SENW,SWNE,NESW,S1/2SW,W1/2SE.

T36N, R05W, SEC. 11, S1/2NE,SE.

T36N, R05W, SEC. 12, N1/2NW,SWNW,W1/2SW.

T36N, R05W, SEC. 2 , SESE.

Emmet County, Advertised Price \$193,426.90, 247.6 Acres, Hardwood, Sugar Maple.

SALE NOTE: Payment Units 1 - 3 cannot be harvested during snowmobile season. Payment Units 4 and 5 can be harvested during snowmobile season with limitations.

A recreation site such as a trail, pathway, or campground is within the sale area or the vicinity. Certain restrictions/specifications may be applicable including time restrictions.

Candy Aspen (52-108-20) / T34N, R03W, SEC. 16, SWSE.

T34N, R03W, SEC. 21, NWNE,SESW,SWSE.

T34N, R03W, SEC. 28, NENW.

Cheboygan County, Advertised Price \$5,711.15, 14.7 Acres, Aspen, Hardwood.

SALE NOTE: Good access. Recreational trails and specs.

A recreation site such as a trail, pathway, or campground is within the sale area or the vicinity. Certain restrictions/specifications may be applicable including time restrictions.

Animistic Hardwood (52-109-20) / T34N, R03W, SEC. 20, SESW.

T34N, R03W, SEC. 29, W1/2NW.

Cheboygan County, Advertised Price \$7,017.20, 23.5 Acres, Hardwood, Sugar Maple.

SALE NOTE: Near Wolverine Road, beech is in decline. Snowmobile trail in the area and along possible haul route.

A recreation site such as a trail, pathway, or campground is within the sale area or the vicinity. Certain restrictions/specifications may be applicable including time restrictions.

Buck Pole Aspen (52-124-20) / T36N, R06W, SEC. 10, W1/2SW.

T36N, R06W, SEC. 11, NE.

Emmet County, Advertised Price \$25,107.30, 77.6 Acres, Aspen, Hardwood.

SALE NOTE: Aspen final harvest with retention. Seasonal harvest restrictions applied to Payment Unit 1 because of presence of designated snowmobile trail. Also, Payment Units 2 and 3 are winter cut only to help prevent excessive soil damage.

## BID INSTRUCTIONS (VER. 07/02/2018):

### 1. Scheduled Bid Location, Date, and Time (2/11)

Bids must be received by the Unit Manager, INDIAN RIVER OFFICE, 6984 Wilson, Indian River, MI 49749, no later than 3:00 p.m. (local time) on May 25, 2021. For further information concerning this sale, contact Lucas Merrick at 989-732-3541 extension 5440.

### 2. Bidder's Qualifications (5/16)

Purchaser shall obtain workers compensation insurance to cover claims under Michigan's Worker's Disability Compensation Act of 1969 or similar employee benefit act of any other state applicable to an employee. If all or part of a timber sale was prepared by a private contractor, the contractor and that contractor's company are not permitted to bid on the timber sale contract. Bids will not be accepted from individuals or companies appearing on the DNR/FRD No-Bid List. This list contains the names of purchasers who previously failed to execute a contract within 21-days or who have a history of poor performance.

### 3. Preparation of Sealed Bids (5/16)

Bid Forms may be completed online thru Michigan DNR Timber Sale Online Bidding (OLB) at [www.michigan.gov/timberbidding](http://www.michigan.gov/timberbidding) or by completing the hardcopy Bid Form found in the Timber Sale Prospectus. Hardcopy Bid Forms shall be manually signed in ink. Registration in OLB is considered your 'signature' for all bids submitted thru that system. Bid prices must be entered for each species and product in the Bid Price column for all material subject to bidding and all fill-in blanks must be completed. If erasures or other changes appear on the hardcopy Bid Form, each erasure or change must be initialed by the person signing the bid.

### 4. Submission of Sealed Bids (5/16)

Bid forms may be obtained from the Unit Manager or thru OLB. Bids may be submitted hardcopy or thru OLB. All hardcopy bids must be submitted on the bid form and in an envelope clearly identified as described in this section. NOTE: Only one bid form per bid envelope. Sealed bids must be submitted to the Unit office designated in the prospectus and must be submitted at or prior to the time established in the prospectus. The envelope should show on the outside (a) the sale name or number and (b) the date and time of bid opening, as shown in the prospectus. Bids received after the time specified in the sale prospectus are late bids and will be rejected.

It is possible for a bidder to submit multiple bids on a single sale. For example, a bid may be submitted hardcopy and a bid may be submitted thru OLB. Or, two bidders from the same company could both submit bids on the same sale. If this were to happen, the State would accept all bids received and award the contract accordingly. All bidding and contractual requirements would apply to all bids received.

### 5. Public Opening of Sealed Bids (7/16)

If conditions permit, the sealed bids will be publicly opened and posted at the time and place set in the prospectus.

If a bidder, present at a bid opening, has submitted bids on more than one sale, that bidder may withdraw their unopened bid envelopes or announce the withdrawal of their online bid after being declared the successful bidder on one sale.

### 6. Award of Contract (1/11)

Award of the contract will be made to the Bidder whose bid, conforming to the prospectus, is most advantageous to the State of Michigan on the basis of total value at rates bid for the estimated quantities. The State reserves the right to reject any bid or waive any minor irregularity in bids received. A written award mailed (or otherwise furnished) to the successful Bidder shall be deemed to result in a binding contract without further action by either party.

### 7. Down Payment (1/11)

The Bidder to whom award is made must make a down payment within 21 days of the sale award. The amount of the down payment will be calculated as shown in the Bond and Payment Schedule of this prospectus. Only cash may be used to meet this requirement.

### 8. Performance Security (1/11)

As guarantee of faithful performance, a cash bond, certificate of deposit, surety bond or irrevocable letter of credit (LOC) is required within 21 days of the sale award. The amount of the performance security is shown in the Bond and

Payment Schedule of this prospectus. If an LOC or surety is used, the coverage must extend for at least 6 months beyond the contract expiration.

#### 9. Timber Sale Contract (7/18)

Additional conditions and requirements common to all timber sales are listed on the timber sale contract (R4031) and are available on line at [www.michigan.gov/timber](http://www.michigan.gov/timber). Contact the Unit Manager for additional information or a sample contract. Within 21 days of the date of the award letter, the bidder must sign the contract and provide the required down payment, performance security, and verification of worker's disability compensation. The down payment and performance security shall be in accordance with the provisions of the timber sale contract, in the sums stated in this prospectus. If these actions are not taken, then the Bidder, the Bidder's corporation, and the corporation's principals may not be permitted to bid on State timber sales for a period of 3 months after the first offense, 6 months after the second offense, and 1 year after the third offense. An offense will only be counted against the Bidder for 5 years. In addition, the Bidder certifies that if awarded this contract, the Bidder will complete the timber sale contract in accordance with its terms and any modifications thereof including requirements to purchase, cut, and remove the included timber by the expiration date.

Payment Unit values in the State Forest Timber Sale Contract are calculated based on the advertised value of the Payment Unit as a percentage of the total advertised value of the contract. The advertised value of each Payment Unit is given in the Description of Timber by Payment Unit table on the Timber Sale Information page. For example, if the value of Payment Unit 1 is advertised as \$1,500 and the total Timber Sale value is advertised as \$10,000, the contract price for Payment Unit 1 will be 15% of the total bid price ( $\$1,500/\$10,000 * 100$ ).

#### 10. Disclaimer of Estimates and Bidder's Warranty of Inspection (7/16)

Before submitting this bid, the Bidder is advised and cautioned to inspect the sale area, review the requirements of the sale contract, and take other steps as may be reasonably necessary to ascertain the location, estimated volumes, construction estimates, and operating costs of the proposed sale. Failure to do so will not relieve the Bidder from responsibility for completing the contract.

The Bidder warrants that this bid is submitted solely on the basis of the Bidder's examination and inspection of the quality and quantity of the timber offered for sale and the Bidder's opinion of the value thereof and the costs of recovery. No reliance should be placed on the State of Michigan's estimates of timber quality, quantity or costs of recovery. Bidder further acknowledges that the State of Michigan: (i) expressly disclaims any warranty of fitness of timber for any purpose; (ii) offers this timber as is without any warranty of quality (merchantability) or quantity and (iii) expressly disclaims any warranty as to the quantity or quality of timber sold.

#### 11. Certification and Chain-of-Custody (10/14)

Unless otherwise indicated in the contract under section 7 – Other Conditions of the Sale Specific Conditions & Requirements, the area encompassed by this timber sale is certified to the standards of the Forest Stewardship Council (FSC) - Certificate #SCS-FM/COC-00090N and the Sustainable Forestry Initiative (SFI) - Certificate # NSF-SFIS-5Y031-SF5. Forest products from this sale may be delivered to the mill as "FSC 100% and / or SFI certified" as long as the contractor hauling the forest products is chain-of-custody (COC) certified or covered under a COC certificate from the destination mill. The purchaser is responsible for maintaining COC after leaving the sale area.

#### 12. Good Neighbor Authority (GNA) Requirements (7/16)

If the name of this timber sales contains the acronym GNA, it is authorized by the Good Neighbor Authority (GNA) and covered by various agreements between the U.S. Forest Service and the State. The timber sale occurs on federal land and the following conditions apply:

GNA contracts on US Forest Service land will not be awarded to purchasers on the Federal list of excluded parties. The System for Award Management (SAM) will be checked for active excluded parties prior to award of contract. In addition, the Bidder to whom award is made must complete an Assurance Regarding Felony Conviction or Tax Delinquent Status for Corporate Applicants (AD-3031).

#### 13. Good Neighbor Authority (GNA) Requirements, con't (9/16)

Bidder certifies, by signing this bid form, that to the best of Bidder's knowledge that the following representations are accurate and complete.

- a. That the Bidder and its principals are not presently debarred, suspended, proposed for debarment, declared ineligible, or voluntary excluded from timber sales (covered transactions) by any Federal department or agency.
- b. That the Bidder and its principals have not within a 3-year period preceding this bid been convicted of or had a civil judgment rendered against them for commission of fraud or a criminal offense in connection with obtaining , attempting to obtain, or performing a public (Federal, State, or local) transaction or contract under a public transaction; violation of Federal or State antitrust statutes or commission of embezzlement, theft, forgery, bribery, falsification or destruction of records, making false statements, or receiving stolen property.
- c. That the Bidder and its principals are not presently indicted for or otherwise criminally or civilly charged by a governmental entity (Federal, State, or local) with commission of any of the offenses enumerated in paragraph b of this certification.
- d. That the Bidder and its principals have not within a 3-year period preceding this bid had one or more public transactions (Federal, State, or local) terminated for breach or default of a timber or forest product contract.

Bidders that cannot certify this requirement, in whole or in part, shall submit an explanation with their bid.

DAN EICHINGER  
Director



# TIMBER SALE INFORMATION

Comp 116 Hardwood (52-103-20)

T36N, R05W, SEC. 1; T36N, R05W, SEC. 11; T36N, R05W, SEC. 12; T36N, R05W, SEC. 2.

Emmet County (Advertised Price \$193,426.90)

SALE NOTE: Payment Units 1 - 3 cannot be harvested during snowmobile season. Payment Units 4 and 5 can be harvested during snowmobile season with limitations.

A recreation site such as a trail, pathway, or campground is within the sale area or the vicinity. Certain restrictions/specifications may be applicable including time restrictions.

A timber sale contract for this lump sum, sealed bid timber sale will be awarded to the responsible bidder offering the highest sealed bid price. All units of volume listed below were estimated using the T-Sale computer program and our traditional volume equations. Bids must be at or above the following advertised price for each product and species:

<u>PRODUCTS &amp; SPECIES</u>	<u>ESTIMATED UNITS*</u>	<u>ADVERTISED PRICE</u>
<b>Sawtimber</b>		
B. T. Aspen	112.8 MBF	\$ 39.00 / MBF
Basswood	151.4 MBF	\$ 42.00 / MBF
Beech	112.5 MBF	\$ 53.00 / MBF
Black Cherry	1.3 MBF	\$ 137.00 / MBF
Red Maple	123.2 MBF	\$ 58.00 / MBF
Sugar Maple	498.5 MBF	\$ 250.00 / MBF
White Ash	221.9 MBF	\$ 34.00 / MBF
<b>Pulpwood</b>		
B. T. Aspen	68 Cords	\$ 13.95 / Cord
Mixed Hardwood	2,501 Cords	\$ 14.50 / Cord

\* The total volume is statistically estimated within plus (+) or minus (-) 8.41 percent. There are an estimated 5,013 cords on this timber sale, plus or minus 422 cords at the 95% confidence level. The estimated units are final and not subject to adjustment. Prospective bidders are urged to examine this timber and to make their own estimates of quantity and quality.

**BOND AND PAYMENT SCHEDULE:**

1. A bond in the amount of \$9,671.00 to insure faithful performance of the conditions of the contract will be deposited by the successful bidder within 21 days of the sale award.
2. Cutting in any sale or unit without the required advance payment would be considered a trespass.
3. Total payment must be paid in advance or according to the following schedule :
  - (a) Ten percent (10%) of the sale value must be paid within 21 days of the sale award.
  - (b) The 10% down payment will be credited towards the first unit cut.
  - (c) Payment for each of the following units must be made before cutting begins in that unit:

PAYMENT UNIT NUMBER	PERCENT OF TOTAL SALE VALUE
01	27.6%
02	19.5%
03	12.5%
04	19.2%
05	21.2%

4. If no cutting takes place, the 10% down payment will not be refunded.
5. Operations on the contract issued will terminate on 06/30/2024.

**SALE STATISTICS**

**SALE VOLUMES**

VOLUME		STATISTICAL RANGE IN CORDS		
TOTAL CUBIC FEET	TOTAL CORDS	PERCENT ERROR	MINIMUM	MAXIMUM
396,026	5,013	8.41%	4,591	5,435

**VDU VOLUMES**

A VDU is a Volume Determination Unit. Volumes and their associated statistics are calculated at the VDU level and summarized to the sale level. There is often a one to one relationship between a VDU and a Payment Unit, but not always, depending on the cruise design. Refer to the VDU TO PAYMENT UNIT table.

VDU	VOLUME		PERCENT ERROR	RANGE IN CORDS	
	TOTAL CUBIC FEET	TOTAL CORDS		MINIMUM	MAXIMUM
3	170,387	2,157	13.44%	1,867	2,447
6	73,683	933	12.59%	815	1,050
30	151,925	1,923	15.97%	1,616	2,230
<b>TOTAL:</b>	<b>395,995</b>	<b>5,013</b>		<b>4,298</b>	<b>5,727</b>

**VDU TO PAYMENT UNIT**

When a VDU is associated with more than one Payment Unit (PU), the VDU volumes are assigned to the PU based on acres of the VDU within the PU.

VDU	VDU ACRES	PU	PU ACRES
3	110.7	1	65.0
		2	45.7
6	38.2	3	38.2
30	98.7	4	46.9
		5	51.8
<b>TOTAL:</b>	<b>247.6</b>		<b>247.6</b>



**DESCRIPTION OF TIMBER BY PAYMENT UNIT (PU)**

PU	MARKET GROUP	PRODUCT	QUANTITY	UNIT	ACRES	ADVERTISE PRICE
1	B. T. Aspen	Sawtimber	18.0	MBF	65.0	\$53,480.15
	Basswood		59.9	MBF		
	Beech		26.1	MBF		
	Red Maple		21.2	MBF		
	Sugar Maple		147.7	MBF		
	White Ash		56.8	MBF		
	B. T. Aspen		Pulpwood	15		
	Mixed Hardwood	592		Cords		
	<i>Basswood</i>	56		<i>Cords</i>		
	<i>Beech</i>	61		<i>Cords</i>		
	<i>Ironwood</i>	5		<i>Cords</i>		
	<i>Red Maple</i>	47		<i>Cords</i>		
	<i>Sugar Maple</i>	368		<i>Cords</i>		
	<i>White Ash</i>	55	<i>Cords</i>			
2	B. T. Aspen	Sawtimber	12.7	MBF	45.7	\$37,622.25
	Basswood		42.2	MBF		
	Beech		18.3	MBF		
	Red Maple		14.9	MBF		
	Sugar Maple		103.9	MBF		
	White Ash		40.0	MBF		
	B. T. Aspen		Pulpwood	11		
	Mixed Hardwood	416		Cords		
	<i>Basswood</i>	40		<i>Cords</i>		
	<i>Beech</i>	43		<i>Cords</i>		
	<i>Ironwood</i>	3		<i>Cords</i>		
	<i>Red Maple</i>	33		<i>Cords</i>		
	<i>Sugar Maple</i>	258		<i>Cords</i>		
	<i>White Ash</i>	39	<i>Cords</i>			
3	B. T. Aspen	Sawtimber	8.9	MBF	38.2	\$24,234.75
	Basswood		29.8	MBF		
	Beech		21.5	MBF		
	Red Maple		19.6	MBF		
	Sugar Maple		39.0	MBF		
	White Ash		109.1	MBF		
	B. T. Aspen		Pulpwood	3		
	Mixed Hardwood	473		Cords		
	<i>Basswood</i>	45		<i>Cords</i>		
	<i>Beech</i>	51		<i>Cords</i>		
	<i>Ironwood</i>	12		<i>Cords</i>		
	<i>Red Maple</i>	29		<i>Cords</i>		
	<i>Sugar Maple</i>	207		<i>Cords</i>		
	<i>White Ash</i>	129	<i>Cords</i>			
4	B. T. Aspen	Sawtimber	34.8	MBF	46.9	\$37,104.55
	Basswood		9.3	MBF		
	Beech		22.1	MBF		
	Black Cherry		0.6	MBF		
	Red Maple		32.1	MBF		
	Sugar Maple		98.8	MBF		
	White Ash		7.6	MBF		
	B. T. Aspen	Pulpwood	19	Cords		
	Mixed Hardwood		484	Cords		
	<i>Basswood</i>		14	<i>Cords</i>		
	<i>Beech</i>		89	<i>Cords</i>		
	<i>Black Cherry</i>		4	<i>Cords</i>		
	<i>Ironwood</i>		3	<i>Cords</i>		
	<i>Red Maple</i>		62	<i>Cords</i>		

**DESCRIPTION OF TIMBER BY PAYMENT UNIT (PU), CON'T**

PU	MARKET GROUP	PRODUCT	QUANTITY	UNIT	ACRES	ADVERTISE PRICE	
4 con't	<i>Sugar Maple</i>	<i>Pulpwood</i>	298	<i>Cords</i>			
	<i>White Ash</i>		11	<i>Cords</i>			
	<i>Yellow Birch</i>		3	<i>Cords</i>			
5	B. T. Aspen	Sawtimber	38.4	MBF	51.8	\$40,985.20	
	Basswood		10.2	MBF			
	Beech		24.5	MBF			
	Black Cherry		0.7	MBF			
	Red Maple		35.4	MBF			
	Sugar Maple		109.1	MBF			
	White Ash		8.4	MBF			
	B. T. Aspen		Pulpwood	20			Cords
	Mixed Hardwood			536			Cords
	<i>Basswood</i>			15			<i>Cords</i>
	<i>Beech</i>	99		<i>Cords</i>			
	<i>Black Cherry</i>	5		<i>Cords</i>			
	<i>Ironwood</i>	3		<i>Cords</i>			
	<i>Red Maple</i>	69		<i>Cords</i>			
	<i>Sugar Maple</i>	329		<i>Cords</i>			
	<i>White Ash</i>	12		<i>Cords</i>			
	<i>Yellow Birch</i>	4		<i>Cords</i>			
	TOTAL:			1,221.6	MBF		
	TOTAL:			2,569	Cords		

# Sale Specific Conditions & Requirements

**Sale Name: Comp 116 Hardwood**

**Sale Number: 52-103-20 Seq#: 2**

## 1 - Sale Area

### 1.2 - Boundaries

#### 1.2.1 - Painted boundaries (9/19)

The sale boundary and Payment Unit boundaries are marked and identified by blue, red, and yellow paint. Exterior sale boundary lines against private property are marked with blue paint. Exterior sale boundary lines against state are marked with red paint. Interior Payment Unit boundaries are marked with yellow paint. The painted boundary line trees are not Included Timber and are to be protected unless marked with orange paint.

## 2 - Timber Specifications

### 2.1 - Included Timber

#### 2.1.3 - Cut tree marked unit(s) (12/08)

Within Payment Unit(s) 1 - 5, all trees are designated for cutting when marked with orange paint above and below stump height, regardless of merchantability. Within green painted regeneration gaps, cut all trees 2" at DBH and greater.

### 2.2 - Utilization

#### 2.2.6 - Roundwood operation required (5/07)

The skidding of whole trees or tree segments with limbs attached is prohibited. All products must be produced as roundwood and forwarded to existing roads or landing areas in final product length.

## 3 - Payments

### 3.3 - Pre-measured Sales

#### 3.3.4 - Dividing payment units (7/14)

Payment Unit(s) 1 - 5 may be divided at the request of the Purchaser and upon approval of the Unit Manager. Dividing Payment Units is a contract modification which requires a Timber Sale Contract Amendment. There will be only one division per Payment Unit.

### 3.4 - Damaged Timber

#### 3.4.1 - Damaged timber (7/16)

General Condition and Requirement 3.4 Damaged Timber, defines liquidated damages for undesignated live merchantable trees which are cut or injured. No damage is acceptable to undesignated live merchantable trees. Within the Sale Area, if more than 5% of trees (> 4.5" DBH) within a specified area of the sale are damaged, liquidated damages will be assessed for all trees damaged. Rates will be in accordance with General Condition and Requirement 3.4 Damaged Timber.

## 4 - Transportation

### 4.1 - Construction

#### 4.1.4 - Timber removed for construction (12/09)

Trees cut or damaged in the process of pre-approved road, landing or skid trail construction will be decked in an area separate from other Designated Timber and not removed until measured by the sale administrator. Payment will be made at the specified Purchase Unit Price.

#### 4.1.7 - Road closure (10/11)

All new roads built into the sale must be blocked to vehicle traffic upon completion of the sale. In general, this will require constructing a four (4') foot high berm of stumps and logs covered with earth. These roads must be rendered impassable to cars and trucks. All stumps from road building and landing construction must be reserved to block any newly constructed roads upon completion of the sale. These stumps must be scattered along the road system to prohibit vehicular movement. Contact the sale administrator for specific details of design and placement.

### 4.2 - Maintenance

#### 4.2.5 - Two wheel drive condition (2/04)

All existing trail roads on and adjacent to the sale area must be passable by two-wheel drive traffic for the duration of the sale.

### 5 - Operations

#### 5.1 - Notification

##### 5.1.1 - Pre-sale conference (10/16)

A pre-sale conference on site between the Purchaser and sale administrator is required prior to beginning any operations to determine landing and road locations. The Unit Manager or his/her representative must be contacted at least 2 days in advance to schedule the conference.

#### 5.2 - Conduct of Operations

##### 5.2.2 - Hazard Trees/Snags

###### 5.2.2.1 - Den trees (10/16)

Obvious hollow and/or den trees shall be protected and left standing unless they are a safety hazard.

##### 5.2.3 - Operating Restrictions

###### 5.2.3.1 - Operating restrictions (9/11)

Within Payment Unit(s) 1 - 3, unless changed by written agreement, cutting, skidding, and hauling are not permitted during the period of December 1 to March 31. This restriction is to protect the snowmobile trail and its users.

###### 5.2.3.3 - Bark slippage restriction (3/09)

Within Payment Unit(s) 1 - 5, unless changed by written agreement, cutting and skidding are not permitted during the period of April 15 to July 15. This restriction is because of bark slippage.

##### 5.2.38 - No decking against live trees (2/04)

Cut products may not be decked against unmarked or designated leave trees.

##### 5.2.41 - Snowmobile trail protection (9/11)

The snowmobile trail is shown on the Timber Sale Map. Do not cut or damage posts with orange trail markers or traffic control signs. If the trail is used for hauling, it must be graded to the satisfaction of the Unit Manager or his/her representative prior to December 1. The snowmobile trail may not be used for any timber sale operations from December 1 to March 31 in Payment Units 1 - 3. Payment Units 4 and 5 may be cut during the snowmobile season but all trucking and harvest activity must utilize Schierschmidt Road west to Pleasantview Road. No logging activity will be permitted on Conway Road during this time. Maintain a 20-foot-wide slash, debris, and rut free zone daily using the snowmobile trail as the centerline. No decking of forest products will be permitted along the snowmobile trail. All stumps within 10 feet of the snowmobile trail must be cut at ground level. In addition, any trees cut within 5 feet of the trail may need the stumps removed and be disposed of according to the direction of the Unit Manager or his/her representative.

#### 5.4 - Soil Protection

##### 5.4.1 - Rutting restriction, general (7/16)

Operations are to cease immediately if equipment and weather conditions result in rutting of roads and/or skid trails which is 12 inches or greater in depth and 50 feet in length. The Unit Manager or his/her representative may restrict hauling and/or skidding if ruts exceed the specified depth. With the Unit Manager or his/her representative's approval, the Purchaser may return to the area when the risk of rutting has decreased.

#### 5.8 - Protection of Endangered Species

##### 5.8.5 - Protection of raptor nests (3/13)

All trees with raptor nests will be protected if found during harvesting operations. Notification will be made to the Unit Manager or his/her representative who will notify the Wildlife Biologist so an on-site evaluation and recommendation can be made, if necessary.



# TIMBER SALE MAP

This information provided by authority of Part 525, 1994 PA 451, as amended.

Forest Management Unit GFMU - Indain Rivr Field Office	County Emmet	Mapped By Harig	Date 05/11/2020	Page 1	of 1
Township 36N	Range 05W	Section(s) and Subdivision(s) 1: SENW,SWNE,NESW,S1/2SW,W1/2SE 2: SESE 11: S1/2NE,SE 12: N1/2NW,SWNW,W1/2SW	Scale 1:20,000		

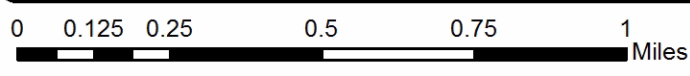
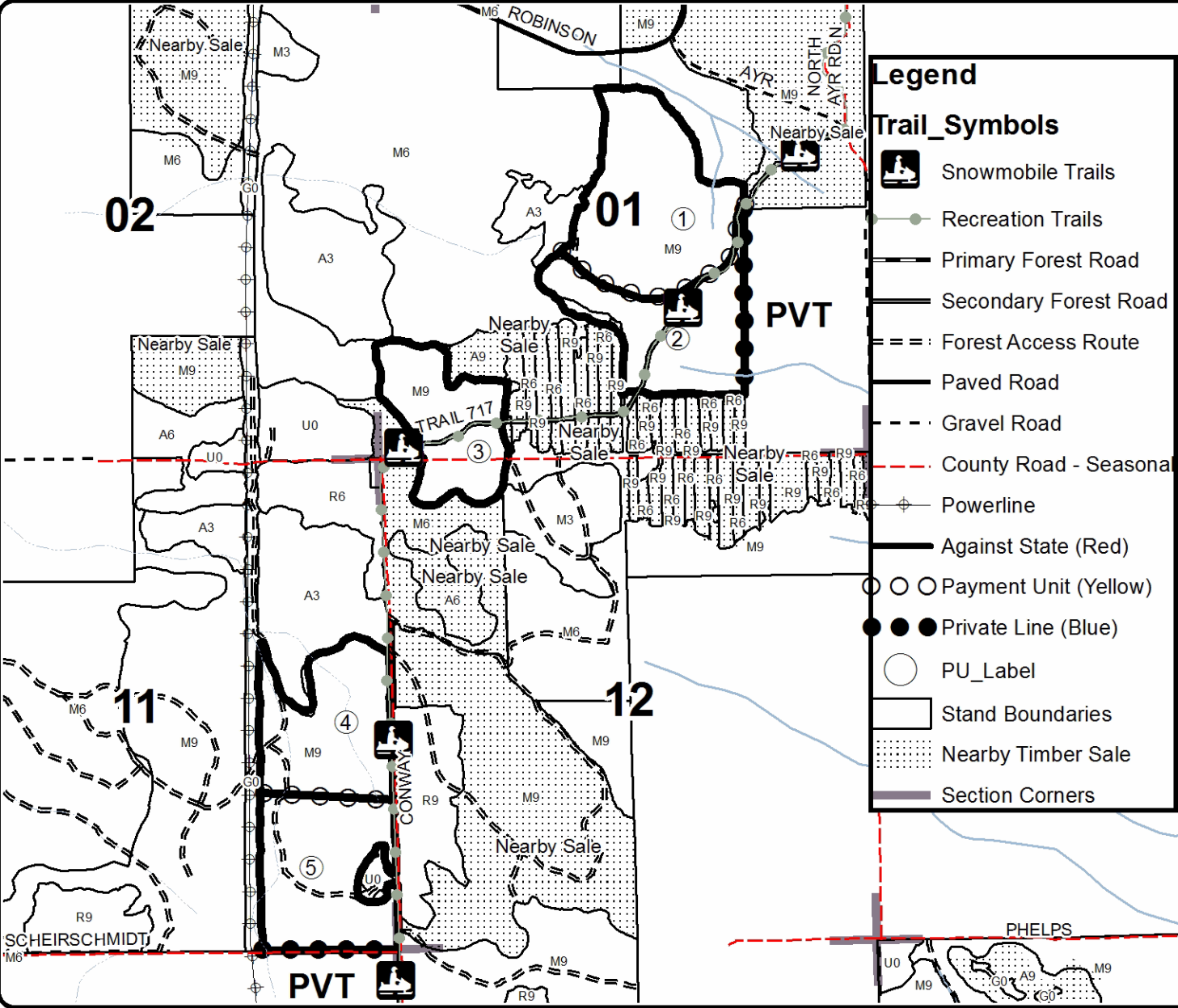
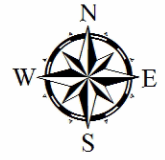
Cover Type				Density	
A = Aspen	H = Hemlock	N = Marsh	U = Upland Brush	0 = Non Stocked	5 = Pole Timber Medium
B = Paper Birch	J = Jack Pine	O = Oak	UM = Upland Mixed	1 = Seedling Sapling Poor	6 = Pole Timber Well
C = Cedar	L = Lowland Brush	P = Lowland Poplar	V = Bog or Marsh	2 = Seedling Sapling Medium	7 = Saw Timber Poor
D = Treed Bog	LM = Lowland Mixed	Q = Mixed Swamp Conifer	W = White Pine	3 = Seedling Sapling Well	8 = Saw Timber Medium
E = Swamp Hdwoods	M = Mpl, Bch, Brch	R = Red Pine	X = Non Stocked	4 = Pole Timber Poor	9 = Saw Timber Well
F = Spruce Fir	MC = Mixed Conifer	S = Black Spruce	Z = Water		
G = Grass	MD = Mixed Deciduous	T = Tamarack			

PU	Acres	PU	Acres
1	65.0	4	46.9
2	45.7	5	51.8
3	38.2		

## Comp 116 Hardwood

### Compartment 116

247.6 Acres





## TIMBER SALE INFORMATION

Candy Aspen (52-108-20)

T34N, R03W, SEC. 16; T34N, R03W, SEC. 21; T34N, R03W, SEC. 28.  
Cheboygan County (Advertised Price \$5,711.15)

SALE NOTE: Good access. Recreational trails and specs.

A recreation site such as a trail, pathway, or campground is within the sale area or the vicinity. Certain restrictions/specifications may be applicable including time restrictions.

A timber sale contract for this lump sum, sealed bid timber sale will be awarded to the responsible bidder offering the highest sealed bid price. All units of volume listed below were estimated using the T-Sale computer program and our traditional volume equations. Bids must be at or above the following advertised price for each product and species:

<u>PRODUCTS &amp; SPECIES</u>	<u>ESTIMATED UNITS*</u>	<u>ADVERTISED PRICE</u>
Sawtimber		
B. T. Aspen	21.3 MBF	\$ 39.00 / MBF
Basswood	10.0 MBF	\$ 42.00 / MBF
Quaking Aspen	21.1 MBF	\$ 39.00 / MBF
Pulpwood		
Basswood	27 Cords	\$ 6.45 / Cord
Mixed Aspen	162 Cords	\$ 13.95 / Cord
Mixed Hardwood	83 Cords	\$ 14.50 / Cord

\* The total volume is statistically estimated within plus (+) or minus (-) 32.35 percent. There are an estimated 372 cords on this timber sale, plus or minus 120 cords at the 95% confidence level. The estimated units are final and not subject to adjustment. Prospective bidders are urged to examine this timber and to make their own estimates of quantity and quality.

### **BOND AND PAYMENT SCHEDULE:**

1. A bond in the amount of \$2,500.00 to insure faithful performance of the conditions of the contract will be deposited by the successful bidder within 21 days of the sale award.
2. Cutting in any sale or unit without the required advance payment would be considered a trespass.
3. Total payment must be paid in advance or according to the following schedule :
  - (a) Ten percent (10%) of the sale value must be paid within 21 days of the sale award.
  - (b) The remainder is due before cutting begins.
  - (c) Payment for each of the following units must be made before cutting begins in that unit:
 

PAYMENT UNIT NUMBER	PERCENT OF TOTAL SALE VALUE
01	100.0%
4. If no cutting takes place, the 10% down payment will not be refunded.
5. Operations on the contract issued will terminate on 06/30/2024.

### **SALE STATISTICS**

#### **SALE VOLUMES**

VOLUME		STATISTICAL RANGE IN CORDS		
TOTAL CUBIC FEET	TOTAL CORDS	PERCENT ERROR	MINIMUM	MAXIMUM
29,390	372	32.35%	252	492

**VDU VOLUMES**

A VDU is a Volume Determination Unit. Volumes and their associated statistics are calculated at the VDU level and summarized to the sale level. There is often a one to one relationship between a VDU and a Payment Unit, but not always, depending on the cruise design. Refer to the VDU TO PAYMENT UNIT table.

VDU	VOLUME		PERCENT ERROR	RANGE IN CORDS	
	TOTAL CUBIC FEET	TOTAL CORDS		MINIMUM	MAXIMUM
37	3,516	45	90.63%	4	85
43	577	7	200.00%	7	22
60	4,211	53	53.87%	25	82
67	9,820	124	45.81%	67	181
77	5,001	63	30.83%	44	83
82	6,265	79	72.56%	22	137
<b>TOTAL:</b>	<b>29,388</b>	<b>372</b>		<b>154</b>	<b>590</b>

**VDU TO PAYMENT UNIT**

When a VDU is associated with more than one Payment Unit (PU), the VDU volumes are assigned to the PU based on acres of the VDU within the PU.

VDU	VDU ACRES	PU	PU ACRES
37	2.1	1	2.1
43	0.5	1	0.5
60	2.8	1	2.8
67	5.0	1	5.0
77	2.9	1	2.9
82	1.4	1	1.4
<b>TOTAL:</b>	<b>14.7</b>		<b>14.7</b>

**DESCRIPTION OF TIMBER BY PAYMENT UNIT (PU)**

PU	MARKET GROUP	PRODUCT	QUANTITY	UNIT	ACRES	ADVERTISE PRICE
1	B. T. Aspen	Sawtimber	21.3	MBF	14.7	\$5,711.15
	Basswood		10.0	MBF		
	Quaking Aspen		21.1	MBF		
	Basswood	Pulpwood	27	Cords		
	Mixed Aspen		162	Cords		
	<i>Balsam Poplar</i>	<i>Sawtimber</i>	<i>0.2</i>	<i>MBF</i>		
	<i>B. T. Aspen</i>	<i>Pulpwood</i>	<i>70</i>	<i>Cords</i>		
	<i>Balsam Poplar</i>		<i>1</i>	<i>Cords</i>		
	<i>Quaking Aspen</i>		<i>91</i>	<i>Cords</i>		
	Mixed Hardwood		83	Cords		
	<i>Paper Birch</i>	<i>Sawtimber</i>	<i>0.1</i>	<i>MBF</i>		
	<i>Red Maple</i>		<i>1.0</i>	<i>MBF</i>		
	<i>Sugar Maple</i>		<i>4.6</i>	<i>MBF</i>		
	<i>Beech</i>	<i>Pulpwood</i>	<i>4</i>	<i>Cords</i>		
	<i>Black Cherry</i>		<i>16</i>	<i>Cords</i>		
	<i>Ironwood</i>		<i>4</i>	<i>Cords</i>		
	<i>Paper Birch</i>		<i>1</i>	<i>Cords</i>		
	<i>Red Maple</i>		<i>9</i>	<i>Cords</i>		
	<i>Sugar Maple</i>		<i>38</i>	<i>Cords</i>		
	TOTAL:			52.4		
TOTAL:			272	Cords		



# Sale Specific Conditions & Requirements

**Sale Name: Candy Aspen**

**Sale Number: 52-108-20 Seq#: 1**

## 1 - Sale Area

### 1.2 - Boundaries

#### 1.2.1 - Painted boundaries (9/19)

The sale boundary and Payment Unit boundaries are marked and identified by red paint. Exterior sale boundary lines against state are marked with red paint. The painted boundary line trees are not Included Timber and are to be protected.

## 2 - Timber Specifications

### 2.1 - Included Timber

#### 2.1.1 - Clearcut unit(s) with unmerchantable trees (6/14)

Within Payment Unit(s) 1, cut all trees that are two (2) inches or more at DBH except do not cut any conifer, oak, or yellow birch.

## 4 - Transportation

### 4.2 - Maintenance

#### 4.2.5 - Two wheel drive condition (2/04)

All existing trail roads on and adjacent to the sale area must be passable by two-wheel drive traffic for the duration of the sale.

## 5 - Operations

### 5.2 - Conduct of Operations

#### 5.2.2 - Hazard Trees/Snags

##### 5.2.2.1 - Den trees (10/16)

Obvious hollow and/or den trees shall be protected and left standing unless they are a safety hazard.

#### 5.2.39 - ORV trail/route protection (4/18)

An ORV route and is shown on the Timber Sale Map. This is also a Snowmobile Trail. Do not cut trees or damage posts with yellow ORV markers.

#### 5.2.41 - Snowmobile trail protection (9/11)

A snowmobile trail is shown on the Timber Sale Map. This is also an ORV Route. Do not cut or damage posts with orange trail markers or traffic control signs. The trail must be maintained and restored to a condition equal to or better than before the sale. If the trail is used for hauling, it must be graded to the satisfaction of the Unit Manager or his/her representative prior to December 1. It is recommended that the Snowmobile Trail not be used for any operations from December 1 to March 31. However, If the trail road is to be used for hauling during the snowmobile season, then a snow-covered base must be left on the trail. No decking of forest products will be permitted immediately along the snowmobile trail. All stumps within 10 feet of the snowmobile trail must be cut at ground level.

### 5.4 - Soil Protection

#### 5.4.1 - Rutting restriction, general (7/16)

Operations are to cease immediately if equipment and weather conditions result in rutting of roads and/or skid trails which is 12 inches or greater in depth and 50 feet in length. The Unit Manager or his/her representative may restrict hauling and/or skidding if ruts exceed the specified depth. With the Unit Manager or his/her representative's approval, the Purchaser may return to the area when the risk of rutting has decreased.

### 5.8 - Protection of Endangered Species

#### 5.8.5 - Protection of raptor nests (3/13)

All trees with raptor nests will be protected if found during harvesting operations. Notification will be made to the Unit

Manager or his/her representative who will notify the Wildlife Biologist so an on-site evaluation and recommendation can be made, if necessary.

## **6 - Safety and Fire Prevention**

### **6.2 - Signing**

#### **6.2.1 - Road posting (9/09)**

The Purchaser is responsible for posting and maintaining caution signs on Berry Creek and Mentor Town Hall Roads, as affected by the sale, prior to beginning operations. The road must be posted at appropriate distances from the Sale Area to warn of logging activity and truck traffic. Signs must be removed when harvest operations are suspended or completed. The Purchaser will provide these signs.

#### **6.2.3 - Recreational trail posting (2/10)**

The Purchaser is responsible for posting and maintaining caution signs on Holiday Road and along the Snowmobile/ORV trail prior to beginning operations. The trail must be posted at appropriate distances from the Sale Area to warn of logging activity and truck traffic at both ends of the trail. Signs must be removed when harvest operations are suspended or completed. The Purchaser will provide these signs.



Sale Number	Year
52 - 108	20

# TIMBER SALE MAP

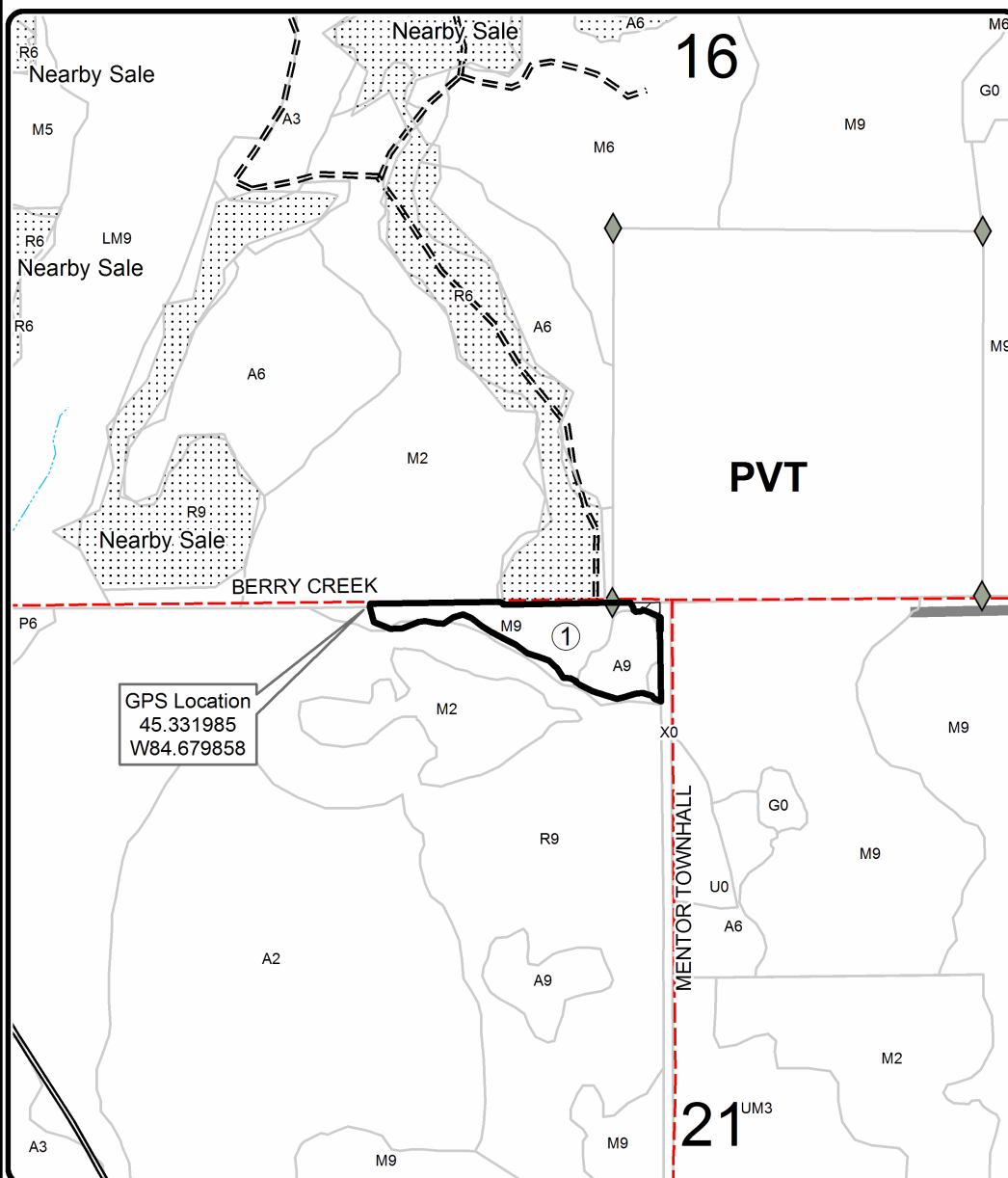
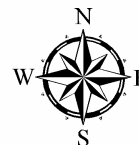
This information provided by authority of Part 525, 1994 PA 451, as amended.

Forest Management Unit Gaylord	County Cheboygan	Mapped By TSP	Date 07/08/2020	Page 1	of 2
Township 34N	Range 03W	Section(s) and Subdivision(s) Sec 16 SWSE; 21: NWNE, SESW, SWSE; 28: NENW	Scale 1:7,920		

Cover Type				Density			
A = Aspen	H = Hemlock	N = Marsh	U = Upland Brush	0 = Non Stocked	5 = Pole Timber Medium		
B = Paper Birch	J = Jack Pine	O = Oak	UM = Upland Mixed	1 = Seedling Sapling Poor	6 = Pole Timber Well		
C = Cedar	L = Lowland Brush	P = Lowland Poplar	V = Bog or Marsh	2 = Seedling Sapling Medium	7 = Saw Timber Poor		
D = Tread Bog	LM = Lowland Mixed	Q = Mixed Swamp Conifer	W = White Pine	3 = Seedling Sapling Well	8 = Saw Timber Medium		
E = Swamp Hdwoods	M = Mpl, Bch, Brch	R = Red Pine	X = Non Stocked	4 = Pole Timber Poor	9 = Saw Timber Well		
F = Spruce Fir	MC = Mixed Conifer	S = Black Spruce	Z = Water				
G = Grass	MD = Mixed Deciduous	T = Tamarack					

**PU**    **Acres**  
**1**    **14.7**

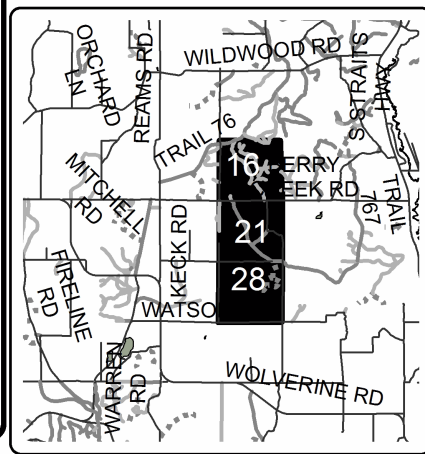
## Candy Aspen Compartment 149 14.7 Acres



### Legend

- Against State (Red)
- Retention Area
- Nearby Timber Sales
- Stand Boundaries
- Secondary Forest Road
- Forest Access Route
- County Road - Seasonal
- Intermittent Stream
- Section Corners
- Survey Corners

Locator Map  
 1:200,000





# TIMBER SALE MAP

This information provided by authority of Part 525, 1994 PA 451, as amended.

Forest Management Unit Gaylord	County Cheboygan	Mapped By TSP	Date 07/08/2020	Page 2	of 2
Cruised By TSP					

Township 34N	Range 03W	Section(s) and Subdivision(s) Sec 16 SWSE; 21: NWNE, SESW, SWSE; 28: NENW	Scale 1:7,920
-----------------	--------------	--	------------------

### Cover Type

A = Aspen	H = Hemlock	N = Marsh	U = Upland Brush
B = Paper Birch	J = Jack Pine	O = Oak	UM = Upland Mixed
C = Cedar	L = Lowland Brush	P = Lowland Poplar	V = Bog or Marsh
D = Treed Bog	LM = Lowland Mixed	Q = Mixed Swamp Conifer	W = White Pine
E = Swamp Hdwoods	M = Mpl, Bch, Brch	R = Red Pine	X = Non Stocked
F = Spruce Fir	MC = Mixed Conifer	S = Black Spruce	Z = Water
G = Grass	MD = Mixed Deciduous	T = Tamarack	

### Density

0 = Non Stocked	5 = Pole Timber Medium
1 = Seedling Sapling Poor	6 = Pole Timber Well
2 = Seedling Sapling Medium	7 = Saw Timber Poor
3 = Seedling Sapling Well	8 = Saw Timber Medium
4 = Pole Timber Poor	9 = Saw Timber Well

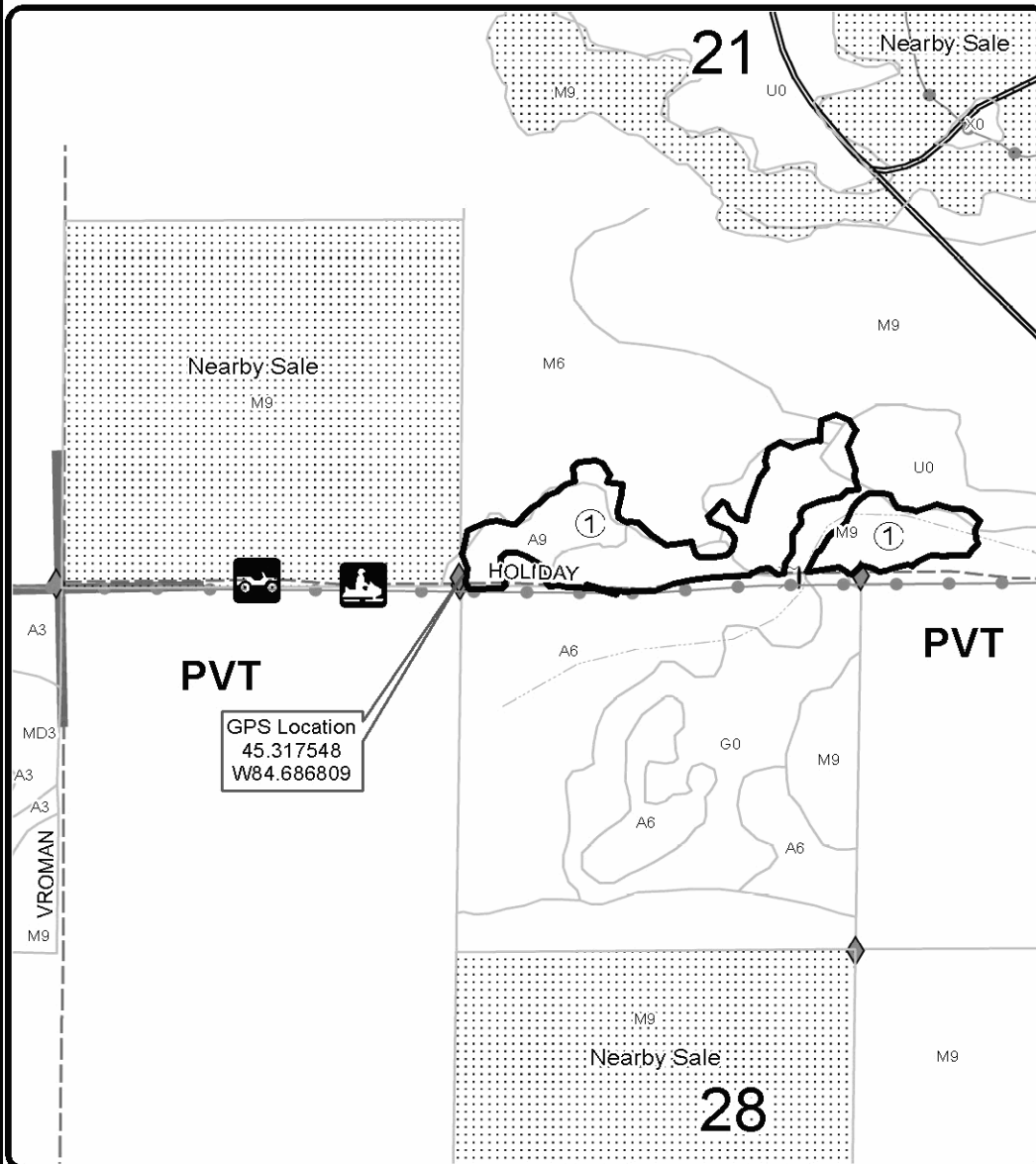
**PU**  
**1**

**Acres**  
**14.7**

## Candy Aspen

### Compartment 149

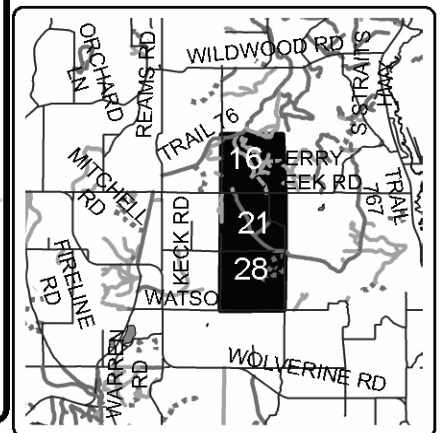
14.7 Acres



### Legend

- Against State (Red)
- Nearby Timber Sales
- Stand Boundaries
- Recreational Trail
- Secondary Forest Road
- County Road - Seasonal
- Intermittent Stream
- Section Corners
- Survey Corners

Locator Map  
1:200,000



## TIMBER SALE INFORMATION

Animistic Hardwood (52-109-20)  
T34N, R03W, SEC. 20; T34N, R03W, SEC. 29.  
Cheboygan County (Advertised Price \$7,017.20)

SALE NOTE: Near Wolverine Road, beech is in decline. Snowmobile trail in the area and along possible haul route.

A recreation site such as a trail, pathway, or campground is within the sale area or the vicinity. Certain restrictions/specifications may be applicable including time restrictions.

A timber sale contract for this lump sum, sealed bid timber sale will be awarded to the responsible bidder offering the highest sealed bid price. All units of volume listed below were estimated using the T-Sale computer program and our traditional volume equations. Bids must be at or above the following advertised price for each product and species:

<u>PRODUCTS &amp; SPECIES</u>	<u>ESTIMATED UNITS*</u>	<u>ADVERTISED PRICE</u>
Sawtimber		
Basswood	10.3 MBF	\$ 46.00 / MBF
Sugar Maple	14.8 MBF	\$ 273.00 / MBF
Pulpwood		
Basswood	48 Cords	\$ 7.05 / Cord
Mixed Hardwood	137 Cords	\$ 15.80 / Cord

\* The total volume is statistically estimated within plus (+) or minus (-) 22.57 percent. There are an estimated 236 cords on this timber sale, plus or minus 53 cords at the 95% confidence level. The estimated units are final and not subject to adjustment. Prospective bidders are urged to examine this timber and to make their own estimates of quantity and quality.

### **BOND AND PAYMENT SCHEDULE:**

1. A bond in the amount of \$351.00 to insure faithful performance of the conditions of the contract will be deposited by the successful bidder within 21 days of the sale award.
2. Cutting in any sale or unit without the required advance payment would be considered a trespass.
3. Total payment must be paid in advance or according to the following schedule :
  - (a) Ten percent (10%) of the sale value must be paid within 21 days of the sale award.
  - (b) The 10% down payment will be credited towards the first unit cut.
  - (c) Payment for each of the following units must be made before cutting begins in that unit:

PAYMENT UNIT NUMBER	PERCENT OF TOTAL SALE VALUE
01	74.9%
02	25.1%

4. If no cutting takes place, the 10% down payment will not be refunded.
5. Operations on the contract issued will terminate on 06/30/2024.

### **SALE STATISTICS**

#### **SALE VOLUMES**

VOLUME		STATISTICAL RANGE IN CORDS		
TOTAL CUBIC FEET	TOTAL CORDS	PERCENT ERROR	MINIMUM	MAXIMUM
18,612	236	22.57%	182	289

#### **VDU VOLUMES**

A VDU is a Volume Determination Unit. Volumes and their associated statistics are calculated at the VDU level and summarized to the sale level. There is often a one to one relationship between a VDU and a Payment Unit, but not always, depending on the cruise design. Refer to the VDU TO PAYMENT UNIT table.

VDU	VOLUME			RANGE IN CORDS	
	TOTAL CUBIC FEET	TOTAL CORDS	PERCENT ERROR	MINIMUM	MAXIMUM
5	11,265	143	26.85%	104	181
801	7,339	93	29.79%	65	121
<b>TOTAL:</b>	<b>18,605</b>	<b>236</b>		<b>170</b>	<b>301</b>

**VDU TO PAYMENT UNIT**

When a VDU is associated with more than one Payment Unit (PU), the VDU volumes are assigned to the PU based on acres of the VDU within the PU.

VDU	VDU ACRES	PU	PU ACRES
5	11.1	1	11.1
801	12.4	2	12.4
<b>TOTAL:</b>	<b>23.5</b>		<b>23.5</b>

**DESCRIPTION OF TIMBER BY PAYMENT UNIT (PU)**

PU	MARKET GROUP	PRODUCT	QUANTITY	UNIT	ACRES	ADVERTISE PRICE
1	Basswood	Sawtimber	8.5	MBF	11.1	\$5,257.50
	Sugar Maple		13.0	MBF		
	Basswood	Pulpwood	30	Cords		
	Mixed Hardwood		70	Cords		
	<i>Red Maple</i>	<i>Sawtimber</i>	1.6	<i>MBF</i>		
	<i>Ironwood</i>	<i>Pulpwood</i>	3	<i>Cords</i>		
	<i>Red Maple</i>		10	<i>Cords</i>		
	<i>Sugar Maple</i>		54	<i>Cords</i>		
2	Basswood	Sawtimber	1.8	MBF	12.4	\$1,759.70
	Sugar Maple		1.8	MBF		
	Basswood	Pulpwood	18	Cords		
	Mixed Hardwood		67	Cords		
	<i>Red Maple</i>	<i>Sawtimber</i>	0.7	<i>MBF</i>		
	<i>Red Maple</i>	<i>Pulpwood</i>	2	<i>Cords</i>		
	<i>Sugar Maple</i>		64	<i>Cords</i>		
	TOTAL:			25.1		
TOTAL:			185	Cords		

## Sale Specific Conditions & Requirements

**Sale Name: Animistic Hardwood**

**Sale Number: 52-109-20 Seq#: 2**

### 1 - Sale Area

#### 1.2 - Boundaries

##### 1.2.1 - Painted boundaries (9/19)

The sale boundary and Payment Unit boundaries are marked and identified by blue and red paint. Exterior sale boundary lines against private property are marked with blue paint. Exterior sale boundary lines against state are marked with red paint. The painted boundary line trees are not Included Timber and are to be protected unless marked with orange paint.

### 2 - Timber Specifications

#### 2.1 - Included Timber

##### 2.1.3 - Cut tree marked unit(s) (12/08)

Within Payment Unit(s) 1 and 2, all trees are designated for cutting when marked with orange paint above and below stump height, regardless of merchantability. Exception made for den trees as stated in sale condition 5.2.2.1.

##### 2.1.11 - Description of timber note (2/04)

Note that "Mixed Hardwood" accounts for small volumes of ironwood and beech.

### 3 - Payments

#### 3.4 - Damaged Timber

##### 3.4.1 - Damaged timber (7/16)

General Condition and Requirement 3.4 Damaged Timber, defines liquidated damages for undesignated live merchantable trees which are cut or injured. In addition, extreme care should be taken to avoid damage to tree seedlings and saplings.

No damage is acceptable to undesignated live merchantable trees. Within the Sale Area, if more than 5% of trees (> 4.5" DBH) within a specified area of the sale are damaged, liquidated damages will be assessed for all trees damaged. Rates will be in accordance with General Condition and Requirement 3.4 Damaged Timber.

### 4 - Transportation

#### 4.1 - Construction

##### 4.1.3 - Slash and earthen piles (8/04)

Piles or windrows of earth along roads and landings that have been widened or constructed shall be leveled. Slash from road maintenance or construction, including stumps, shall be chipped, utilized, or otherwise dispersed throughout the sale.

##### 4.1.4 - Timber removed for construction (12/09)

Trees cut or damaged in the process of pre-approved road, landing or skid trail construction will be decked in an area separate from other Designated Timber and not removed until measured by the sale administrator. Payment will be made at the specified Purchase Unit Price.

##### 4.1.6 - Road construction (1/09)

Construction of new roads or improvements of existing roads shall be done in such a way as to minimize the environmental and visual impacts. Merchantable trees shall be cut and utilized unless otherwise directed. Non-merchantable trees shall be severed and laid flat on the ground. Slash shall be scattered if not otherwise utilized, and not left in windrows and kept a minimum of 10 feet back from the road edge. Stumps shall be set upright, not left on edge, and be moved at least 10 feet away from the road edge. Disturbed soil shall be feathered into the woods and not left in berms or windrows.

##### 4.1.7 - Road closure (10/11)

All new roads built into the sale must be blocked to vehicle traffic upon completion of the sale. Overgrown roads that are reopened shall be considered new roads. In general, this will require constructing a four (4') foot high berm of stumps and logs covered with earth. These roads must be rendered impassable to cars and trucks. Temporary berms may be required if no sale activity occurs for 30 or more consecutive days. Contact the sale administrator for specific details of design and

placement.

#### 4.2 - Maintenance

##### 4.2.5 - Two wheel drive condition (2/04)

All existing trail roads on and adjacent to the sale area must be passable by two-wheel drive traffic for the duration of the sale.

### 5 - Operations

#### 5.2 - Conduct of Operations

##### 5.2.2 - Hazard Trees/Snags

###### 5.2.2.1 - Den trees (10/16)

Obvious hollow and/or den trees shall be protected and left standing unless they are a safety hazard.

##### 5.2.3 - Operating Restrictions

###### 5.2.3.3 - Bark slippage restriction (3/09)

Within Payment Unit(s) 1 and 2, unless changed by written agreement, cutting, and skidding are not permitted during the period of April 15 to July 15. This restriction is because of bark slippage.

#### 5.4 - Soil Protection

##### 5.4.1 - Rutting restriction, general (7/16)

Operations are to cease immediately if equipment and weather conditions result in rutting of roads and/or skid trails which is 12 inches or greater in depth and 50 feet in length. The Unit Manager or his/her representative may restrict hauling and/or skidding if ruts exceed the specified depth. With the Unit Manager or his/her representative's approval, the Purchaser may return to the area when the risk of rutting has decreased.

#### 5.8 - Protection of Endangered Species

##### 5.8.5 - Protection of raptor nests (3/13)

All trees with raptor nests will be protected if found during harvesting operations. Notification will be made to the Unit Manager or his/her representative who will notify the Wildlife Biologist so an on-site evaluation and recommendation can be made, if necessary.

### 6 - Safety and Fire Prevention

#### 6.2 - Signing

##### 6.2.1 - Road posting (9/09)

The Purchaser is responsible for posting and maintaining caution signs on any access and haul routes prior to beginning operations. The road must be posted at appropriate distances from the Sale Area to warn of logging activity and truck traffic. Signs must be removed when harvest operations are suspended or completed. The Purchaser will provide these signs.

##### 6.2.3 - Recreational trail posting (2/10)

The Purchaser is responsible for posting and maintaining caution signs on the ORV/Snowmobile Trail as affected by operations prior to beginning operations. The trail must be posted at appropriate distances from the Sale Area to warn of logging activity and truck traffic at both ends of the trail. Signs must be removed when harvest operations are suspended or completed. The Purchaser will provide these signs.





# TIMBER SALE MAP

This information provided by authority of Part 525, 1994 PA 451, as amended.

Forest Management Unit Gaylord	County Cheboygan	Mapped By TSP	Date 07/08/2020	Page 1	of 1
Cruised By TSP					

Township 34N	Range 03W	Section(s) and Subdivision(s) Sec 20: SESW; 29: W1/2NW	Scale 1:7,920
-----------------	--------------	---	------------------

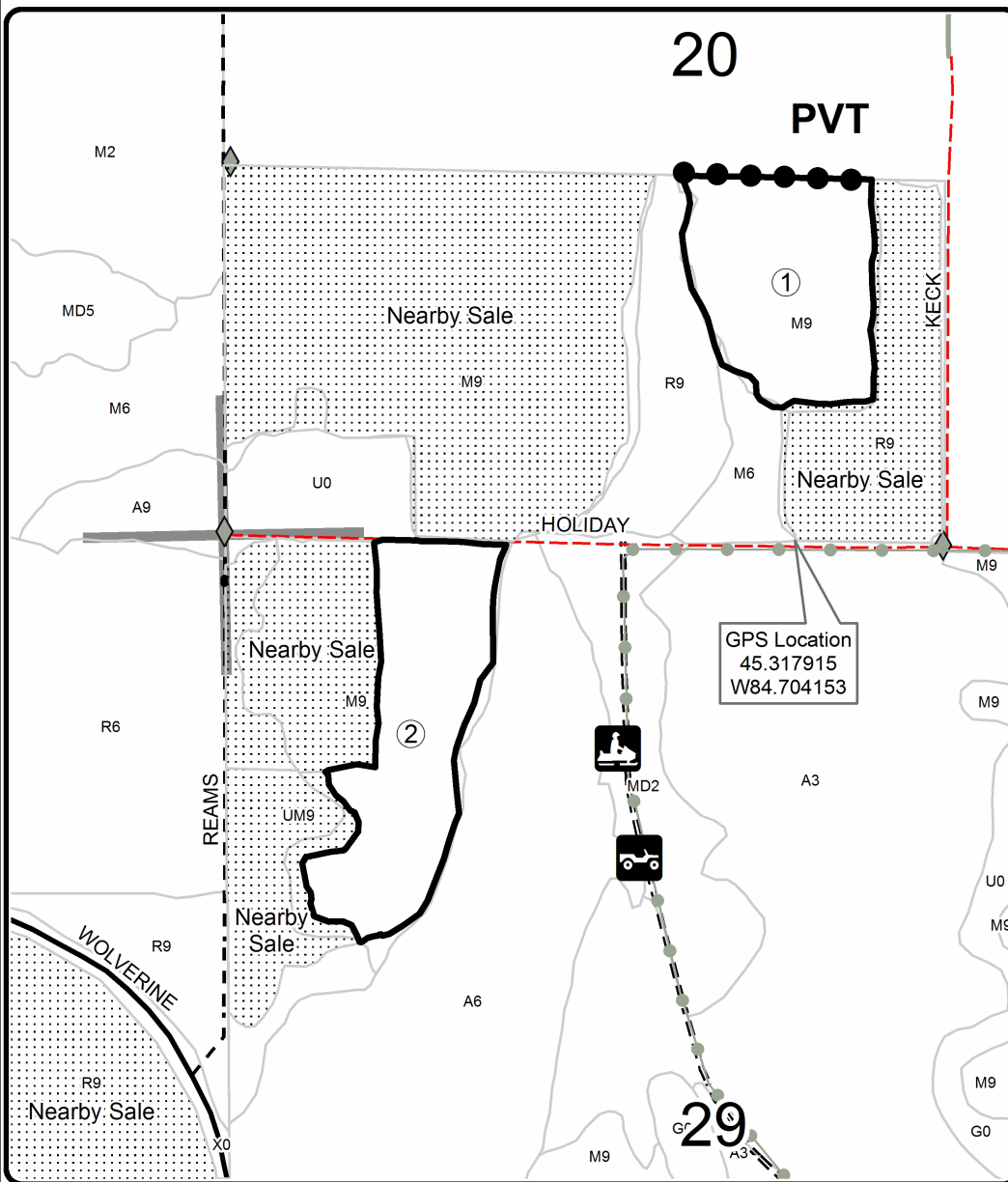
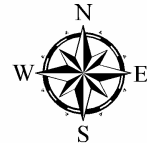
Cover Type				Density			
A = Aspen	H = Hemlock	N = Marsh	U = Upland Brush	0 = Non Stocked	5 = Pole Timber Medium		
B = Paper Birch	J = Jack Pine	O = Oak	UM = Upland Mixed	1 = Seedling Sapling Poor	6 = Pole Timber Well		
C = Cedar	L = Lowland Brush	P = Lowland Poplar	V = Bog or Marsh	2 = Seedling Sapling Medium	7 = Saw Timber Poor		
D = Treed Bog	LM = Lowland Mixed	Q = Mixed Swamp Conifer	W = White Pine	3 = Seedling Sapling Well	8 = Saw Timber Medium		
E = Swamp Hdwoods	M = Mpl, Bch, Brch	R = Red Pine	X = Non Stocked	4 = Pole Timber Poor	9 = Saw Timber Well		
F = Spruce Fir	MC = Mixed Conifer	S = Black Spruce	Z = Water				
G = Grass	MD = Mixed Deciduous	T = Tamarack					

PU	Acres
1	11.1
2	12.4

## Animistic Hardwood

### Compartment 149

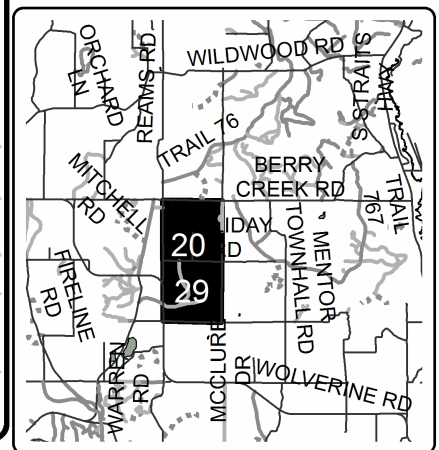
23.5 Acres



### Legend

- Against State (Red)
- Private Line (Blue)
- Nearby Timber Sales
- Stand Boundaries
- Recreational Trail
- Forest Access Route
- Paved Road
- Gravel Road
- County Road - Seasonal
- Private
- Section Corners
- Survey Corners

Locator Map  
1:200,000





## TIMBER SALE INFORMATION

Buck Pole Aspen (52-124-20)  
 T36N, R06W, SEC. 10; T36N, R06W, SEC. 11.  
 Emmet County (Advertised Price \$25,107.30)

SALE NOTE: Aspen final harvest with retention. Seasonal harvest restrictions applied to Payment Unit 1 because of presence of designated snowmobile trail. Also, Payment Units 2 and 3 are winter cut only to help prevent excessive soil damage.

A timber sale contract for this lump sum, sealed bid timber sale will be awarded to the responsible bidder offering the highest sealed bid price. All units of volume listed below were estimated using the T-Sale computer program and our traditional volume equations. Bids must be at or above the following advertised price for each product and species:

<u>PRODUCTS &amp; SPECIES</u>	<u>ESTIMATED UNITS*</u>	<u>ADVERTISED PRICE</u>
Sawtimber		
B. T. Aspen	43.1 MBF	\$ 39.00 / MBF
Red Maple	5.3 MBF	\$ 58.00 / MBF
Sugar Maple	9.9 MBF	\$ 250.00 / MBF
Pulpwood		
Balsam Fir	140 Cords	\$ 13.55 / Cord
Mixed Aspen	1,110 Cords	\$ 13.95 / Cord
Mixed Hardwood	225 Cords	\$ 14.50 / Cord

\* The total volume is statistically estimated within plus (+) or minus (-) 17.60 percent. There are an estimated 1,592 cords on this timber sale, plus or minus 280 cords at the 95% confidence level. The estimated units are final and not subject to adjustment. Prospective bidders are urged to examine this timber and to make their own estimates of quantity and quality.

### **BOND AND PAYMENT SCHEDULE:**

1. A bond in the amount of \$1,255.00 to insure faithful performance of the conditions of the contract will be deposited by the successful bidder within 21 days of the sale award.
2. Cutting in any sale or unit without the required advance payment would be considered a trespass.
3. Total payment must be paid in advance or according to the following schedule :
  - (a) Ten percent (10%) of the sale value must be paid within 21 days of the sale award.
  - (b) The 10% down payment will be credited towards the first unit cut.
  - (c) Payment for each of the following units must be made before cutting begins in that unit:
 

PAYMENT UNIT NUMBER	PERCENT OF TOTAL SALE VALUE
01	41.8%
02	28.6%
03	29.6%
4. If no cutting takes place, the 10% down payment will not be refunded.
5. Operations on the contract issued will terminate on 06/30/2025.

### **SALE STATISTICS**

#### **SALE VOLUMES**

VOLUME		STATISTICAL RANGE IN CORDS		
TOTAL CUBIC FEET	TOTAL CORDS	PERCENT ERROR	MINIMUM	MAXIMUM
125,787	1,592	17.60%	1,312	1,872

**VDU VOLUMES**

A VDU is a Volume Determination Unit. Volumes and their associated statistics are calculated at the VDU level and summarized to the sale level. There is often a one to one relationship between a VDU and a Payment Unit, but not always, depending on the cruise design. Refer to the VDU TO PAYMENT UNIT table.

VDU	VOLUME		PERCENT ERROR	RANGE IN CORDS	
	TOTAL CUBIC FEET	TOTAL CORDS		MINIMUM	MAXIMUM
27	42,984	544	29.69%	383	706
32	40,685	515	31.21%	354	676
132	42,115	533	25.73%	396	670
<b>TOTAL:</b>	<b>125,784</b>	<b>1,592</b>		<b>1,133</b>	<b>2,052</b>

**VDU TO PAYMENT UNIT**

When a VDU is associated with more than one Payment Unit (PU), the VDU volumes are assigned to the PU based on acres of the VDU within the PU.

VDU	VDU ACRES	PU	PU ACRES
27	18.6	1	18.6
32	31.1	2	31.1
132	27.9	3	27.9
<b>TOTAL:</b>	<b>77.6</b>		<b>77.6</b>

**DESCRIPTION OF TIMBER BY PAYMENT UNIT (PU)**

PU	MARKET GROUP	PRODUCT	QUANTITY	UNIT	ACRES	ADVERTISE PRICE
1	B. T. Aspen	Sawtimber	43.1	MBF	18.6	\$10,498.05
	Red Maple		5.3	MBF		
	Sugar Maple		9.9	MBF		
	Mixed Aspen	Pulpwood	285	Cords		
	<i>B. T. Aspen</i>		267	Cords		
	<i>Quaking Aspen</i>		18	Cords		
	Mixed Hardwood		142	Cords		
	<i>Beech</i>		5	Cords		
	<i>Black Cherry</i>		3	Cords		
	<i>Paper Birch</i>		4	Cords		
	<i>Red Maple</i>		40	Cords		
	<i>Sugar Maple</i>		81	Cords		
<i>Yellow Birch</i>	9	Cords				
2	Balsam Fir	Pulpwood	107	Cords	31.1	\$7,184.00
	Mixed Aspen		357	Cords		
	<i>Quaking Aspen</i>		357	Cords		
	Mixed Hardwood		52	Cords		
	<i>Black Cherry</i>		22	Cords		
	<i>Sugar Maple</i>		30	Cords		
3	Balsam Fir	Pulpwood	33	Cords	27.9	\$7,425.25
	Mixed Aspen		468	Cords		
	<i>Quaking Aspen</i>		468	Cords		
	Mixed Hardwood		31	Cords		
	<i>Black Cherry</i>		25	Cords		
	<i>Red Maple</i>		6	Cords		
<b>TOTAL:</b>			58.3	MBF		
<b>TOTAL:</b>			1,475	Cords		

## Sale Specific Conditions & Requirements

**Sale Name: Buck Pole Aspen**

**Sale Number: 52-124-20 Seq#: 2**

### 1 - Sale Area

#### 1.2 - Boundaries

##### 1.2.1 - Painted boundaries (9/19)

The sale boundary is marked and identified by blue and red paint. Exterior sale boundary lines adjacent to private property are marked with blue paint. Exterior sale boundary lines adjacent to state-owned property are marked with red paint. Retention patches are marked with red paint; no harvesting activities may occur within these areas. The painted boundary line trees are not Included Timber and are to be protected.

### 2 - Timber Specifications

#### 2.1 - Included Timber

##### 2.1.1 - Clearcut unit(s) with unmerchantable trees (6/14)

Within Payment Unit(s) 1 - 3, cut all trees that are two (2) inches or more at DBH except do not cut any white pine greater than 24" at DBH, oak or hemlock. Timber retention areas exist in Payment Units 1 - 3, as shown on the Timber Sale Map. No trees are to be cut and no harvest equipment is allowed inside these designated areas.

#### 2.2 - Utilization

##### 2.2.8 - Utilization and removal (5/14)

All products meeting standards set forth in General Condition and Requirement 2.2 - Utilization must be removed from the Sale Area. Retain on site between 1/6 and 1/3 of the slash from harvested trees (tree tops and limbs less than four inches in diameter). This is because of biomass retention guidelines.

### 3 - Payments

#### 3.3 - Pre-measured Sales

##### 3.3.4 - Dividing payment units (7/14)

Payment Unit(s) 1 - 3 may be divided at the request of the Purchaser and upon approval of the Unit Manager. Dividing Payment Units is a contract modification which requires a Timber Sale Contract Amendment. This signed contract amendment must be received before harvest work can begin. There will be only one division per Payment Unit.

### 4 - Transportation

#### 4.1 - Construction

##### 4.1.3 - Slash and earthen piles (8/04)

Piles or windrows of earth along roads and landings that have been widened or constructed shall be leveled. Slash from road maintenance or construction, including stumps, shall be dispersed throughout the sale.

##### 4.1.6 - Road construction (1/09)

Construction of new roads or improvements of existing roads shall be done in such a way as to minimize the environmental and visual impacts. Merchantable trees shall be cut and utilized unless otherwise directed. Non-merchantable trees shall be severed and laid flat on the ground. Slash shall be scattered, and not left in windrows and kept a minimum of 10 feet back from the road edge. Stumps shall be set upright, not left on edge, and be moved at least 10 feet away from the road edge. Disturbed soil shall be feathered into the woods and not left in berms or windrows.

##### 4.1.7 - Road closure (10/11)

All new roads built into the sale must be blocked to vehicle traffic upon completion of the sale. Overgrown roads that are reopened shall be considered new roads. In general, this will require constructing a four (4') foot high berm of stumps and logs covered with earth.

#### 4.2 - Maintenance

##### 4.2.5 - Two wheel drive condition (2/04)

All existing trail roads on and adjacent to the sale area must be passable by two-wheel drive traffic for the duration of the sale.

## 5 - Operations

### 5.1 - Notification

#### 5.1.1 - Pre-sale conference (10/16)

A pre-sale conference between the Purchaser and sale administrator is required prior to beginning any operations to determine landing and road locations.

#### 5.1.6 - Utility R.O.W. (4/19)

It is the responsibility of the Purchaser to obtain permission from the utility company to utilize the power line R.O.W. for operations. This R.O.W. is located along the north boundary line of Payment Unit 2.

### 5.2 - Conduct of Operations

#### 5.2.1 - Slash

##### 5.2.1.1 - Slash within sale area (9/16)

No trees are to be felled outside the sale area and all slash is to be kept at least 10 feet back from the red or blue paint line. If sale boundary lines are along a public road or highway, then slash must be removed 50' from these lines per General Condition & Requirement 5.2.1.

##### 5.2.1.8 - Slash height (12/08)

No slash may exceed 36 inches in height.

#### 5.2.2 - Hazard Trees/Snags

##### 5.2.2.1 - Den trees (10/16)

Obvious hollow and/or den trees shall be protected and left standing unless they are a safety hazard.

#### 5.2.3 - Operating Restrictions

##### 5.2.3.2 - Operating restrictions (9/11)

Within Payment Unit(s) 1, unless changed by written agreement, cutting, skidding, and hauling are not permitted during the period of December 1 to April 1. This restriction is because of the designated snowmobile trail that exists on Beacon Hill Road.

Within Payment Units 2 and 3, unless changed by written agreement, cutting, skidding, and hauling are only permitted during the period of December 1 to April 1. This restriction is to help prevent excessive soil damage during harvest activities.

#### 5.2.4 - Dead and Down Creation

##### 5.2.4.4 - Dead and down creation, grouse (6/18)

To encourage grouse and other wildlife, in Payment Unit(s) 1 - 3, leave any tree marked with a band of pink paint felled and left intact on the ground to serve as a grouse drumming log.

##### 5.2.29 - Shrub protection (1/20)

Do not cut or damage hawthorn, witch-hazel, dogwood, or juneberry. These woody-shrub plants are highly beneficial to various wildlife species.

##### 5.2.32 - Decking/landing restoration (9/13)

All decking and landing areas must have the surface area restored to a condition equal to or better than before. This is to ensure the proper regeneration of the stand. Wood debris, chips, and "cookies" from trimmings must be removed or scattered away from landing and loading areas and may not be windrowed on the edge.

##### 5.2.39 - ORV trail/route protection (4/18)

Middle Village Road is an ORV route and is shown on the Timber Sale Map. Do not cut trees or damage posts with yellow ORV markers. Do not run equipment down the ORV route.

#### 5.2.41 - Snowmobile trail protection (9/11)

The snowmobile trail is shown on the Timber Sale Map, adjacent to Payment Unit 1. Do not cut or damage posts with orange trail markers or traffic control signs. The trail must be maintained and restored to a condition equal to or better than before the sale. It must be graded to the satisfaction of the Unit Manager or his/her representative prior to December 1. The snowmobile trail may not be used for any timber sale operations from December 1 to April 1. No decking of forest products will be permitted along the snowmobile trail. All stumps within 10 feet of the snowmobile trail must be cut at ground level.

### 5.4 - Soil Protection

#### 5.4.1 - Rutting restriction, general (7/16)

Operations are to cease immediately if equipment and weather conditions result in rutting of roads which is 12 inches or greater in depth and 50 feet in length. The Unit Manager or his/her representative may restrict hauling and/or skidding if ruts exceed the specified depth. With the Unit Manager or his/her representative's approval, the Purchaser may return to the area when the risk of rutting has decreased.

### 5.8 - Protection of Endangered Species

#### 5.8.5 - Protection of raptor nests (3/13)

All trees with raptor nests will be protected if found during harvesting operations. Notification will be made to the Unit Manager or his/her representative who will notify the Wildlife Biologist so an on-site evaluation and recommendation can be made, if necessary.

## 6 - Safety and Fire Prevention

### 6.2 - Signing

#### 6.2.1 - Road posting (9/09)

The Purchaser is responsible for posting and maintaining caution signs on Beacon Hill, Middle Village, and State Roads prior to beginning operations. The road must be posted at appropriate distances from the Sale Area to warn of logging activity and truck traffic. Signs must be removed when harvest operations are suspended or completed. The Purchaser will provide these signs.



### TIMBER SALE MAP

This information provided by authority of Part 525, 1994 PA 451, as amended.

Sale Number	Year
52-124-20	2020

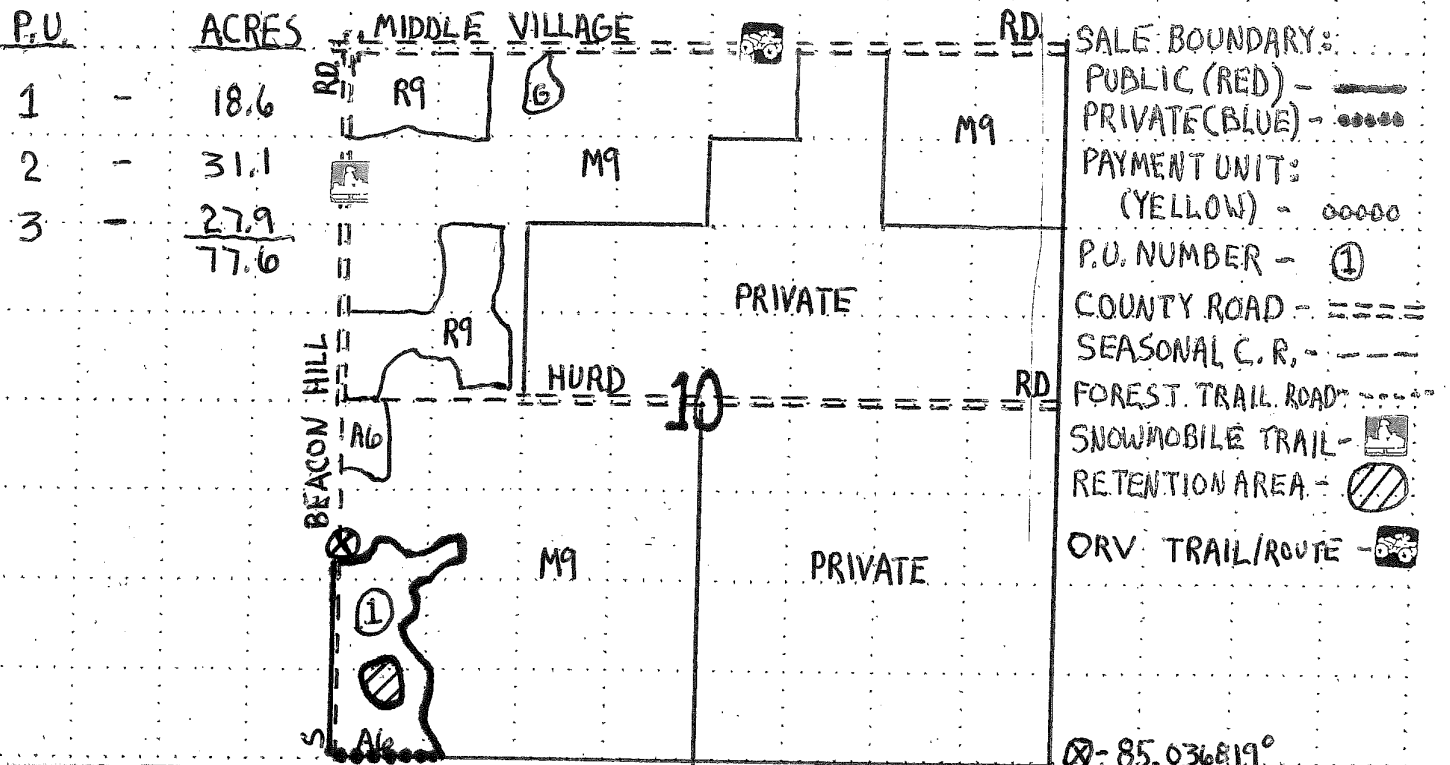
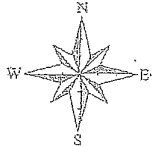
Forest Management Unit <b>GAYLORD-NORTH</b>	County <b>EMMET</b>	Mapped By <b>STACKS</b>	Date <b>09/24/20</b>	Page <b>1</b>	of <b>2</b>
Township <b>T36N</b>	Range <b>R06W</b>	Section(s) and Subdivision(s) <b>10 W 1/2 SW; 11 NE 1/4</b>			

Cover Type				Density	
A = Aspen	J = Jack Pine	O = Oak	U = Upland Brush	0 = Non Stocked	5 = Pole Timber Medium
B = Paper Birch	K = Rock	P = Lowland Poplar	UM = Upland Mix Forest	1 = Seedling Sapling Poor	6 = Pole Timber Well
C = Cedar	L = Lowland Brush	Q = Mixed Swamp Conifer	V = Bog or Marsh	2 = Seedling Sapling Medium	7 = Saw Timber Poor
D = Treed Bog	LM = Lowland Mix Forest	R = Red Pine	W = White Pine	3 = Seedling Sapling Well	8 = Saw Timber Medium
E = Swamp Hardwoods	M = Maple, Beech, Birch	S = Black Spruce	X = Non Stocked	4 = Pole Timber Poor	9 = Saw Timber Well
F = Spruce/Fir	MC = Mixed Conifer	T = Tamarack	Y = Sand		
G = Grass	MD = Mixed Deciduous		Z = Water		
H = Hemlock	N = Marsh				

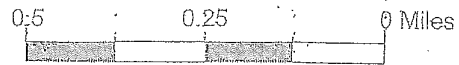
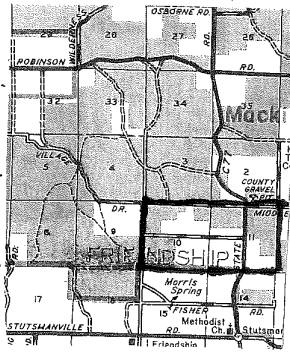
## COMPARTMENT 104 BUCK POLE ASPEN

### 77.6 ACRES

### EMMET COUNTY



⊗ - 85.036819°  
45.526298°







TIMBER SALE MAP

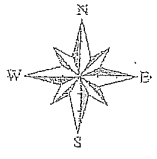
This information provided by authority of Part 525, 1994 PA 451, as amended.

Sale Number	Year
52-124-20	2020
Date	Page of
09/24/20	2   2

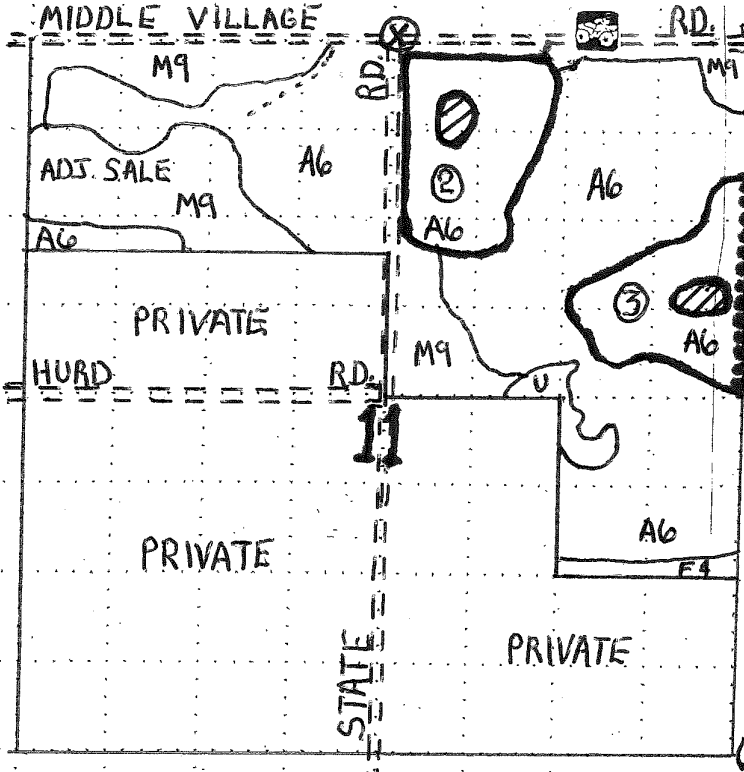
Forest Management Unit <b>GAYLORD-NORTH</b>	County <b>EMMET</b>	Mapped By <b>STACKS</b>
Township <b>T36N</b>	Range <b>R06W</b>	Cruised By <b>STACKS</b>
Section(s) and Subdivision(s) <b>10W 1/2 SW; 11 NE 1/4</b>		

Cover Type				Density	
A = Aspen	J = Jack Pine	O = Oak	U = Upland Brush	0 = Non Stocked	5 = Pole Timber Medium
B = Paper Birch	K = Rock	P = Lowland Poplar	UM = Upland Mix Forest	1 = Seedling Sapling Poor	6 = Pole Timber Well
C = Cedar	L = Lowland Brush	Q = Mixed Swamp Conifer	V = Bog or Marsh	2 = Seedling Sapling Medium	7 = Saw Timber Poor
D = Treed Bog	LM = Lowland Mix Forest	R = Red Pine	W = White Pine	3 = Seedling Sapling Well	8 = Saw Timber Medium
E = Swamp Hardwoods	M = Maple, Beech, Birch	S = Black Spruce	X = Non Stocked	4 = Pole Timber Poor	9 = Saw Timber Well
F = Spruce/Fir	MC = Mixed Conifer	T = Tamarack	Y = Sand		
G = Grass	MD = Mixed Deciduous		Z = Water		
H = Hemlock	N = Marsh				

COMPARTMENT 104  
 BUCK POLE ASPEN  
 77.6 ACRES  
 EMMET COUNTY

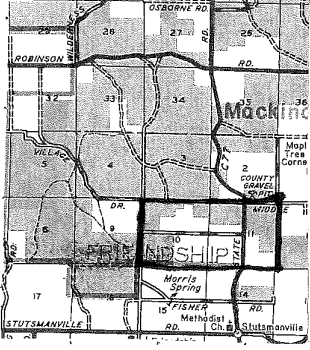


P.U.	ACRES
1	18.6
2	31.1
3	27.9
	<u>77.6</u>



- SALE BOUNDARY:  
 PUBLIC (RED) - ———  
 PRIVATE (BLUE) - ———  
 PAYMENT UNIT:  
 (YELLOW) - ———  
 P.U. NUMBER - ①  
 COUNTY ROAD - ———  
 SEASONAL C.R. - - - -  
 FOREST TRAIL ROAD - - - -  
 SNOWMOBILE TRAIL - [Symbol]  
 RETENTION AREA - [Symbol]  
 ORV TRAIL/ROUTE - [Symbol]

⊗ - 85.006049°  
 45.536677°





Candy Aspen (52-108-20)

T34N, R03W, SEC. 16; T34N, R03W, SEC. 21; T34N, R03W, SEC. 28; Cheboygan

In response to the notice of sale to be held 3:00 p.m. (local time) on May 25, 2021, I am hereby submitting my sealed bid ( firm offer) for the following forest products to be cut. Bids for individual species must be at or above the advertised price. All non-responsive bid forms may be rejected.

<u>PRODUCTS &amp; SPECIES</u>	<u>ESTIMATED VOLUME*</u>	<u>ADVERTISED PRICE</u>	<u>BID PRICE/UNIT</u>
<b>Sawtimber</b>			
B. T. Aspen	21.3 MBF	\$ 39.00/MBF	\$ _____
Basswood	10.0 MBF	\$ 42.00/MBF	\$ _____
Quaking Aspen	21.1 MBF	\$ 39.00/MBF	\$ _____
<b>Pulpwood</b>			
Basswood	27 Cords	\$ 6.45/Cord	\$ _____
Mixed Aspen	162 Cords	\$ 13.95/Cord	\$ _____
Mixed Hardwood	83 Cords	\$ 14.50/Cord	\$ _____

\*The volumes are statistically estimated within plus (+) or minus (-) 32.35 percent at 95% confidence level. These estimated volumes are final and not subject to adjustment. Prospective bidders are urged to examine this timber and to make their own estimates of quantity and quality.

I understand that any or all bids may be rejected. All bids must be signed and all bid items must be bid or the bid form may be rejected. I also understand that consideration and awarding a contract will be based upon my past performance and ability to complete the contract based upon equipment and staffing subject to my control.

FEDERAL ID: \_\_\_\_\_ - \_\_\_\_\_ or SOCIAL SECURITY NUMBER: \_\_\_\_\_ - \_\_\_\_\_ - \_\_\_\_\_

Company or individual bidding: \_\_\_\_\_

Company representative's name: \_\_\_\_\_

Address: \_\_\_\_\_

City: \_\_\_\_\_ State: \_\_\_\_\_ Zip: \_\_\_\_\_

IF AVAILABLE, PLEASE PLACE THE PERSONALIZED LABEL FROM YOUR PROSPECTUS IN THE ABOVE BOX.

Individual or company representative's signature: \_\_\_\_\_ Date: \_\_\_\_\_

Phone number : \_\_\_\_\_ Email (optional): \_\_\_\_\_

**THE WINNING BIDDER MUST COMPLETE THE VERIFICATION OF WORKER'S DISABILITY COMPENSATION ACT COMPLIANCE (ON REVERSE SIDE IF DOUBLE SIDED) WITHIN 21 DAYS OF SALE AWARD DATE**



<b>FOR DEPARTMENT USE ONLY</b>
Sale Number (XX - XXX - XX - XX)
Forest Management Unit:

## TIMBER SALE VERIFICATION OF WORKER'S DISABILITY COMPENSATION ACT COMPLIANCE

*As required by Act 317, P.A. 1969 (Worker's Compensation) and  
Part 5 of Act 451 of 1994, as amended.*

### VERIFICATION OF WORKER'S DISABILITY COMPENSATION ACT COMPLIANCE

- This verification must be completed and submitted within 21 days of contract award and prior to the issuance of the timber sale contract.
- In addition, if boxes 2B or 2C are checked, then Notice of Exclusion or Certificate of Insurance must be submitted within twenty-one (21) days of the contract award and prior to the issuance of the timber sale contract.
- All information must be typed or printed except for written signatures.

Please Check Appropriate Categories:

1. My business is organized as (you **must** check one of the boxes below):
  - A.  Sole Proprietorship (individual)
  - B.  Partnership
  - C.  Corporation
2. You **must** check one of the boxes below:
  - A.  I certify my business is a sole proprietorship and it has no employees but the sole proprietor. I am not subject to the Worker's Compensation Laws.
  - B.  I certify my business has satisfied its obligation to the Worker's Compensation Act through the use of an approved Notice of Exclusion (BWC-337, Rev. 5/96). I will provide a copy of the Notice of Exclusion within 21 days of the contract award. (For questions or a copy of the BWC-337, please call the Worker's Compensation Bureau at 517-322-1195).
  - C.  I certify my business has a Worker's Compensation Policy. I will provide an original Certificate of Insurance within twenty-one (21) days of the contract award.
3. If you have checked item 2(A) or 2(B), you **must** indicate the number of **both** full-time and part-time employees, other than yourself, including family members and active partners (if none, you must enter "0").

\_\_\_\_\_ Full-time Employees                      \_\_\_\_\_ Part-time Employees

Name of Business		Federal ID (or) Social Security No.	
Address		Telephone (       )	
City	State	ZIP	

*I hereby certify that the above information is true and correct. I agree to notify the Michigan DNR of any changes that occur in factors affecting my coverage during any of my present and future operations.*

\_\_\_\_\_  
Signature of Owner or Authorized Representative

\_\_\_\_\_                      \_\_\_\_\_  
Title                                      Date

**Please complete the "SEALED BID" information on the next page**

Animistic Hardwood (52-109-20)  
T34N, R03W, SEC. 20; T34N, R03W, SEC. 29; Cheboygan COUNTY

In response to the notice of sale to be held 3:00 p.m. (local time) on May 25, 2021, I am hereby submitting my sealed bid ( firm offer) for the following forest products to be cut. Bids for individual species must be at or above the advertised price. All non-responsive bid forms may be rejected.

<u>PRODUCTS &amp; SPECIES</u>	<u>ESTIMATED VOLUME*</u>	<u>ADVERTISED PRICE</u>	<u>BID PRICE/UNIT</u>
<b>Sawtimber</b>			
Basswood	10.3 MBF	\$ 46.00/MBF	\$ _____
Sugar Maple	14.8 MBF	\$ 273.00/MBF	\$ _____
<b>Pulpwood</b>			
Basswood	48 Cords	\$ 7.05/Cord	\$ _____
Mixed Hardwood	137 Cords	\$ 15.80/Cord	\$ _____

\*The volumes are statistically estimated within plus (+) or minus (-) 22.57 percent at 95% confidence level. These estimated volumes are final and not subject to adjustment. Prospective bidders are urged to examine this timber and to make their own estimates of quantity and quality.

I understand that any or all bids may be rejected. All bids must be signed and all bid items must be bid or the bid form may be rejected. I also understand that consideration and awarding a contract will be based upon my past performance and ability to complete the contract based upon equipment and staffing subject to my control.

FEDERAL ID: \_\_\_\_\_ - \_\_\_\_\_ or SOCIAL SECURITY NUMBER: \_\_\_\_\_ - \_\_\_\_\_ - \_\_\_\_\_  
 Company or individual bidding: \_\_\_\_\_  
 Company representative's name: \_\_\_\_\_  
 Address: \_\_\_\_\_  
 City: \_\_\_\_\_ State: \_\_\_\_\_ Zip: \_\_\_\_\_

IF AVAILABLE, PLEASE PLACE THE PERSONALIZED LABEL FROM YOUR PROSPECTUS IN THE ABOVE BOX.

Individual or company representative's signature: \_\_\_\_\_ Date: \_\_\_\_\_

Phone number : \_\_\_\_\_ Email (optional): \_\_\_\_\_

**THE WINNING BIDDER MUST COMPLETE THE VERIFICATION OF WORKER'S DISABILITY COMPENSATION ACT COMPLIANCE (ON REVERSE SIDE IF DOUBLE SIDED) WITHIN 21 DAYS OF SALE AWARD DATE**



FOR DEPARTMENT USE ONLY	
Sale Number (XX - XXX - XX - XX)	
Forest Management Unit:	

## TIMBER SALE VERIFICATION OF WORKER'S DISABILITY COMPENSATION ACT COMPLIANCE

As required by Act 317, P.A. 1969 (Worker's Compensation) and  
Part 5 of Act 451 of 1994, as amended.

### VERIFICATION OF WORKER'S DISABILITY COMPENSATION ACT COMPLIANCE

- This verification must be completed and submitted within 21 days of contract award and prior to the issuance of the timber sale contract.
- In addition, if boxes 2B or 2C are checked, then Notice of Exclusion or Certificate of Insurance must be submitted within twenty-one (21) days of the contract award and prior to the issuance of the timber sale contract.
- All information must be typed or printed except for written signatures.

Please Check Appropriate Categories:

1. My business is organized as (you **must** check one of the boxes below):
  - A.  Sole Proprietorship (individual)
  - B.  Partnership
  - C.  Corporation
2. You **must** check one of the boxes below:
  - A.  I certify my business is a sole proprietorship and it has no employees but the sole proprietor. I am not subject to the Worker's Compensation Laws.
  - B.  I certify my business has satisfied its obligation to the Worker's Compensation Act through the use of an approved Notice of Exclusion (BWC-337, Rev. 5/96). I will provide a copy of the Notice of Exclusion within 21 days of the contract award. (For questions or a copy of the BWC-337, please call the Worker's Compensation Bureau at 517-322-1195).
  - C.  I certify my business has a Worker's Compensation Policy. I will provide an original Certificate of Insurance within twenty-one (21) days of the contract award.
3. If you have checked item 2(A) or 2(B), you **must** indicate the number of **both** full-time and part-time employees, other than yourself, including family members and active partners (if none, you must enter "0").

\_\_\_\_\_ Full-time Employees

\_\_\_\_\_ Part-time Employees

Name of Business		Federal ID (or) Social Security No.	
Address		Telephone (       )	
City	State	ZIP	

*I hereby certify that the above information is true and correct. I agree to notify the Michigan DNR of any changes that occur in factors affecting my coverage during any of my present and future operations.*

\_\_\_\_\_  
Signature of Owner or Authorized Representative

\_\_\_\_\_  
Title

\_\_\_\_\_  
Date

Please complete the "SEALED BID" information on the next page

Comp 116 Hardwood (52-103-20)

T36N, R05W, SEC. 1; T36N, R05W, SEC. 11; T36N, R05W, SEC. 12; T36N, R05W,

In response to the notice of sale to be held 3:00 p.m. (local time) on May 25, 2021, I am hereby submitting my sealed bid ( firm offer) for the following forest products to be cut. Bids for individual species must be at or above the advertised price. All non-responsive bid forms may be rejected.

<u>PRODUCTS &amp; SPECIES</u>	<u>ESTIMATED VOLUME*</u>	<u>ADVERTISED PRICE</u>	<u>BID PRICE/UNIT</u>
<b>Sawtimber</b>			
B. T. Aspen	112.8 MBF	\$ 39.00/MBF	\$ _____
Basswood	151.4 MBF	\$ 42.00/MBF	\$ _____
Beech	112.5 MBF	\$ 53.00/MBF	\$ _____
Black Cherry	1.3 MBF	\$ 137.00/MBF	\$ _____
Red Maple	123.2 MBF	\$ 58.00/MBF	\$ _____
Sugar Maple	498.5 MBF	\$ 250.00/MBF	\$ _____
White Ash	221.9 MBF	\$ 34.00/MBF	\$ _____
<b>Pulpwood</b>			
B. T. Aspen	68 Cords	\$ 13.95/Cord	\$ _____
Mixed Hardwood	2,501 Cords	\$ 14.50/Cord	\$ _____

\*The volumes are statistically estimated within plus (+) or minus (-) 8.41 percent at 95% confidence level. These estimated volumes are final and not subject to adjustment. Prospective bidders are urged to examine this timber and to make their own estimates of quantity and quality.

I understand that any or all bids may be rejected. All bids must be signed and all bid items must be bid or the bid form may be rejected. I also understand that consideration and awarding a contract will be based upon my past performance and ability to complete the contract based upon equipment and staffing subject to my control.

FEDERAL ID: \_\_\_\_ - \_\_\_\_ - \_\_\_\_ or SOCIAL SECURITY NUMBER: \_\_\_\_ - \_\_\_\_ - \_\_\_\_

Company or individual bidding: \_\_\_\_\_

Company representative's name: \_\_\_\_\_

Address: \_\_\_\_\_

City: \_\_\_\_\_ State: \_\_\_\_\_ Zip: \_\_\_\_\_

IF AVAILABLE, PLEASE PLACE THE PERSONALIZED LABEL FROM YOUR PROSPECTUS IN THE ABOVE BOX.

Individual or company representative's signature: \_\_\_\_\_ Date: \_\_\_\_\_

Phone number : \_\_\_\_\_ Email (optional): \_\_\_\_\_

**THE WINNING BIDDER MUST COMPLETE THE VERIFICATION OF WORKER'S DISABILITY COMPENSATION ACT COMPLIANCE (ON REVERSE SIDE IF DOUBLE SIDED) WITHIN 21 DAYS OF SALE AWARD DATE**



FOR DEPARTMENT USE ONLY	
Sale Number (XX - XXX - XX - XX)	
Forest Management Unit:	

## TIMBER SALE VERIFICATION OF WORKER'S DISABILITY COMPENSATION ACT COMPLIANCE

As required by Act 317, P.A. 1969 (Worker's Compensation) and  
Part 5 of Act 451 of 1994, as amended.

### VERIFICATION OF WORKER'S DISABILITY COMPENSATION ACT COMPLIANCE

- This verification must be completed and submitted within 21 days of contract award and prior to the issuance of the timber sale contract.
- In addition, if boxes 2B or 2C are checked, then Notice of Exclusion or Certificate of Insurance must be submitted within twenty-one (21) days of the contract award and prior to the issuance of the timber sale contract.
- All information must be typed or printed except for written signatures.

Please Check Appropriate Categories:

1. My business is organized as (you **must** check one of the boxes below):
  - A.  Sole Proprietorship (individual)
  - B.  Partnership
  - C.  Corporation
2. You **must** check one of the boxes below:
  - A.  I certify my business is a sole proprietorship and it has no employees but the sole proprietor. I am not subject to the Worker's Compensation Laws.
  - B.  I certify my business has satisfied its obligation to the Worker's Compensation Act through the use of an approved Notice of Exclusion (BWC-337, Rev. 5/96). I will provide a copy of the Notice of Exclusion within 21 days of the contract award. (For questions or a copy of the BWC-337, please call the Worker's Compensation Bureau at 517-322-1195).
  - C.  I certify my business has a Worker's Compensation Policy. I will provide an original Certificate of Insurance within twenty-one (21) days of the contract award.
3. If you have checked item 2(A) or 2(B), you **must** indicate the number of **both** full-time and part-time employees, other than yourself, including family members and active partners (if none, you must enter "0").

\_\_\_\_\_ Full-time Employees

\_\_\_\_\_ Part-time Employees

Name of Business		Federal ID (or) Social Security No.	
Address		Telephone (       )	
City	State	ZIP	

*I hereby certify that the above information is true and correct. I agree to notify the Michigan DNR of any changes that occur in factors affecting my coverage during any of my present and future operations.*

\_\_\_\_\_  
Signature of Owner or Authorized Representative

\_\_\_\_\_  
Title

\_\_\_\_\_  
Date

Please complete the "SEALED BID" information on the next page



Buck Pole Aspen (52-124-20)  
T36N, R06W, SEC. 10; T36N, R06W, SEC. 11; Emmet COUNTY

In response to the notice of sale to be held 3:00 p.m. (local time) on May 25, 2021, I am hereby submitting my sealed bid ( firm offer) for the following forest products to be cut. Bids for individual species must be at or above the advertised price. All non-responsive bid forms may be rejected.

<u>PRODUCTS &amp; SPECIES</u>	<u>ESTIMATED VOLUME*</u>	<u>ADVERTISED PRICE</u>	<u>BID PRICE/UNIT</u>
<b>Sawtimber</b>			
B. T. Aspen	43.1 MBF	\$ 39.00/MBF	\$ _____
Red Maple	5.3 MBF	\$ 58.00/MBF	\$ _____
Sugar Maple	9.9 MBF	\$ 250.00/MBF	\$ _____
<b>Pulpwood</b>			
Balsam Fir	140 Cords	\$ 13.55/Cord	\$ _____
Mixed Aspen	1,110 Cords	\$ 13.95/Cord	\$ _____
Mixed Hardwood	225 Cords	\$ 14.50/Cord	\$ _____

\*The volumes are statistically estimated within plus (+) or minus (-) 17.60 percent at 95% confidence level. These estimated volumes are final and not subject to adjustment. Prospective bidders are urged to examine this timber and to make their own estimates of quantity and quality.

I understand that any or all bids may be rejected. All bids must be signed and all bid items must be bid or the bid form may be rejected. I also understand that consideration and awarding a contract will be based upon my past performance and ability to complete the contract based upon equipment and staffing subject to my control.

FEDERAL ID: \_\_\_\_\_ - \_\_\_\_\_ or SOCIAL SECURITY NUMBER: \_\_\_\_\_ - \_\_\_\_\_ - \_\_\_\_\_

Company or individual bidding: \_\_\_\_\_

Company representative's name: \_\_\_\_\_

Address: \_\_\_\_\_

City: \_\_\_\_\_ State: \_\_\_\_\_ Zip: \_\_\_\_\_

IF AVAILABLE, PLEASE PLACE THE PERSONALIZED LABEL FROM YOUR PROSPECTUS IN THE ABOVE BOX.

Individual or company representative's signature: \_\_\_\_\_ Date: \_\_\_\_\_

Phone number : \_\_\_\_\_ Email (optional): \_\_\_\_\_

**THE WINNING BIDDER MUST COMPLETE THE VERIFICATION OF WORKER'S DISABILITY COMPENSATION ACT COMPLIANCE (ON REVERSE SIDE IF DOUBLE SIDED) WITHIN 21 DAYS OF SALE AWARD DATE**



<b>FOR DEPARTMENT USE ONLY</b>
Sale Number (XX - XXX - XX - XX)
Forest Management Unit:

## TIMBER SALE VERIFICATION OF WORKER'S DISABILITY COMPENSATION ACT COMPLIANCE

*As required by Act 317, P.A. 1969 (Worker's Compensation) and  
Part 5 of Act 451 of 1994, as amended.*

### VERIFICATION OF WORKER'S DISABILITY COMPENSATION ACT COMPLIANCE

- This verification must be completed and submitted within 21 days of contract award and prior to the issuance of the timber sale contract.
- In addition, if boxes 2B or 2C are checked, then Notice of Exclusion or Certificate of Insurance must be submitted within twenty-one (21) days of the contract award and prior to the issuance of the timber sale contract.
- All information must be typed or printed except for written signatures.

Please Check Appropriate Categories:

1. My business is organized as (you **must** check one of the boxes below):
  - A.  Sole Proprietorship (individual)
  - B.  Partnership
  - C.  Corporation
2. You **must** check one of the boxes below:
  - A.  I certify my business is a sole proprietorship and it has no employees but the sole proprietor. I am not subject to the Worker's Compensation Laws.
  - B.  I certify my business has satisfied its obligation to the Worker's Compensation Act through the use of an approved Notice of Exclusion (BWC-337, Rev. 5/96). I will provide a copy of the Notice of Exclusion within 21 days of the contract award. (For questions or a copy of the BWC-337, please call the Worker's Compensation Bureau at 517-322-1195).
  - C.  I certify my business has a Worker's Compensation Policy. I will provide an original Certificate of Insurance within twenty-one (21) days of the contract award.
3. If you have checked item 2(A) or 2(B), you **must** indicate the number of **both** full-time and part-time employees, other than yourself, including family members and active partners (if none, you must enter "0").

\_\_\_\_\_ Full-time Employees                      \_\_\_\_\_ Part-time Employees

Name of Business		Federal ID (or) Social Security No.	
Address		Telephone (       )	
City	State	ZIP	

*I hereby certify that the above information is true and correct. I agree to notify the Michigan DNR of any changes that occur in factors affecting my coverage during any of my present and future operations.*

\_\_\_\_\_  
Signature of Owner or Authorized Representative

\_\_\_\_\_  
Title

\_\_\_\_\_  
Date

**Please complete the "SEALED BID" information on the next page**