



**DEPARTMENT OF NATURAL RESOURCES
STATE OF MICHIGAN**

TIMBER SALE PROSPECTUS #6811

SCHEDULED SALE DATE AND TIME: 3:00 p.m. (local time) on July 15, 2021.

LOCATION: NEWBERRY MGMT UNIT, 5666 S STATE HWY M 123, NEWBERRY, MI 49868.

PROSPECTUS NOTE: The bidder is advised to inspect the sale area and review the location, estimated volumes, operating costs and contract terms of proposed sales. Please be aware that some landowners may request 60 days or more notice for access across their land.

Notice is hereby given that bids will be received by the Unit Manager, NEWBERRY MANAGEMENT UNIT, for certain timber on the following described lands:

Breezy Does It (42-017-20) / T49N, R12W, SEC. 23, SENW,NESW,SWSW,E1/2SE.

T49N, R12W, SEC. 26, NW,NE,N1/2SW,N1/2SE.

T49N, R12W, SEC. 27, E1/2NE.

Luce County, Advertised Price \$196,755.25, 277.6 Acres, Red Pine, White Pine.

SALE NOTE: Sale Spec. 2.1.7 for marked tree details.

Note that there are sawlog-sized red and white pine within the sale that were cruised as pulp.

There is an existing road that accesses Payment Unit 1 that may need work to be used. All other Payment Units can be accessed from existing roads.

No new roads will be permitted in any Payment Unit, except for access to Payment Unit 1. See Sale Spec 4.1.12 for additional information.

Permission for access across private land is the responsibility of the Purchaser. Hancock Forest Management manages the land adjacent to Payment Units 1 and 2.

Within Payment Unit(s) 1 - 8, harvesting is not permitted during the period of December 12 to April 15 due to low stump height requirement. See 5.2.3.1 for specifications.

Within Payment Unit(s) 1 and 2, harvesting is not permitted during the period of April 15 to July 15 because of bark slippage.

The Pine Ridge Trail is an ORV trail shown on the Timber Sale Map. See Sale Spec 5.2.39 for restrictions.

A recreation site such as a trail, pathway, or campground is within the sale area or the vicinity. Certain restrictions/specifications may be applicable including time restrictions.

Compartment 7 South (42-018-20) / T49N, R12W, SEC. 26, S1/2SW.

T49N, R12W, SEC. 27, NESE, S1/2SE.

T49N, R12W, SEC. 34, E1/2NE.

T49N, R12W, SEC. 35, NW.

Luce County, Advertised Price \$54,397.80, 189.8 Acres, Hardwood, White Pine.

SALE NOTE: Note that there is sawlog-sized red and white pine within the sale. All red and white pine were cruised as pulp.

Permission for access across private land is the responsibility of the Purchaser. Hancock Forest Management manages the land adjacent to Payment Units 1 and 2.

Within Payment Unit(s) 1 - 5, harvesting is not permitted during the period of December 15 to April 15 due to the need to cut low stumps.

In winter, County Road 416 is a snowmobile trail and is shown on the Timber Sale Map. See Sale Spec 5.2.41 for additional information.

BID INSTRUCTIONS (VER. 07/02/2018):

1. Scheduled Bid Location, Date, and Time (2/11)

Bids must be received by the Unit Manager, NEWBERRY OFFICE, 5666 S STATE HWY M 123, NEWBERRY, MI 49868, no later than 3:00 p.m. (local time) on July 15, 2021. For further information concerning this sale, contact Keith Magnusson at 906-293-3293 extension 4740.

2. Bidder's Qualifications (5/16)

Purchaser shall obtain workers compensation insurance to cover claims under Michigan's Worker's Disability Compensation Act of 1969 or similar employee benefit act of any other state applicable to an employee. If all or part of a timber sale was prepared by a private contractor, the contractor and that contractor's company are not permitted to bid on the timber sale contract. Bids will not be accepted from individuals or companies appearing on the DNR/FRD No-Bid List. This list contains the names of purchasers who previously failed to execute a contract within 21-days or who have a history of poor performance.

3. Preparation of Sealed Bids (5/16)

Bid Forms may be completed online thru Michigan DNR Timber Sale Online Bidding (OLB) at www.michigan.gov/timberbidding or by completing the hardcopy Bid Form found in the Timber Sale Prospectus. Hardcopy Bid Forms shall be manually signed in ink. Registration in OLB is considered your 'signature' for all bids submitted thru that system. Bid prices must be entered for each species and product in the Bid Price column for all material subject to bidding and all fill-in blanks must be completed. If erasures or other changes appear on the hardcopy Bid Form, each erasure or change must be initialed by the person signing the bid.

4. Submission of Sealed Bids (5/16)

Bid forms may be obtained from the Unit Manager or thru OLB. Bids may be submitted hardcopy or thru OLB. All hardcopy bids must be submitted on the bid form and in an envelope clearly identified as described in this section. NOTE: Only one bid form per bid envelope. Sealed bids must be submitted to the Unit office designated in the prospectus and must be submitted at or prior to the time established in the prospectus. The envelope should show on the outside (a) the sale name or number and (b) the date and time of bid opening, as shown in the prospectus. Bids received after the time specified in the sale prospectus are late bids and will be rejected.

It is possible for a bidder to submit multiple bids on a single sale. For example, a bid may be submitted hardcopy and a bid may be submitted thru OLB. Or, two bidders from the same company could both submit bids on the same sale. If this were to happen, the State would accept all bids received and award the contract accordingly. All bidding and contractual requirements would apply to all bids received.

5. Public Opening of Sealed Bids (7/16)

If conditions permit, the sealed bids will be publicly opened and posted at the time and place set in the prospectus.

If a bidder, present at a bid opening, has submitted bids on more than one sale, that bidder may withdraw their unopened bid envelopes or announce the withdrawal of their online bid after being declared the successful bidder on one sale.

6. Award of Contract (1/11)

Award of the contract will be made to the Bidder whose bid, conforming to the prospectus, is most advantageous to the State of Michigan on the basis of total value at rates bid for the estimated quantities. The State reserves the right to reject any bid or waive any minor irregularity in bids received. A written award mailed (or otherwise furnished) to the successful Bidder shall be deemed to result in a binding contract without further action by either party.

7. Down Payment (1/11)

The Bidder to whom award is made must make a down payment within 21 days of the sale award. The amount of the down payment will be calculated as shown in the Bond and Payment Schedule of this prospectus. Only cash may be used to meet this requirement.

8. Performance Security (1/11)

As guarantee of faithful performance, a cash bond, certificate of deposit, surety bond or irrevocable letter of credit (LOC) is required within 21 days of the sale award. The amount of the performance security is shown in the Bond and

Payment Schedule of this prospectus. If an LOC or surety is used, the coverage must extend for at least 6 months beyond the contract expiration.

9. Timber Sale Contract (7/18)

Additional conditions and requirements common to all timber sales are listed on the timber sale contract (R4031) and are available on line at www.michigan.gov/timber. Contact the Unit Manager for additional information or a sample contract. Within 21 days of the date of the award letter, the bidder must sign the contract and provide the required down payment, performance security, and verification of worker's disability compensation. The down payment and performance security shall be in accordance with the provisions of the timber sale contract, in the sums stated in this prospectus. If these actions are not taken, then the Bidder, the Bidder's corporation, and the corporation's principals may not be permitted to bid on State timber sales for a period of 3 months after the first offense, 6 months after the second offense, and 1 year after the third offense. An offense will only be counted against the Bidder for 5 years. In addition, the Bidder certifies that if awarded this contract, the Bidder will complete the timber sale contract in accordance with its terms and any modifications thereof including requirements to purchase, cut, and remove the included timber by the expiration date.

Payment Unit values in the State Forest Timber Sale Contract are calculated based on the advertised value of the Payment Unit as a percentage of the total advertised value of the contract. The advertised value of each Payment Unit is given in the Description of Timber by Payment Unit table on the Timber Sale Information page. For example, if the value of Payment Unit 1 is advertised as \$1,500 and the total Timber Sale value is advertised as \$10,000, the contract price for Payment Unit 1 will be 15% of the total bid price ($\$1,500/\$10,000 * 100$).

10. Disclaimer of Estimates and Bidder's Warranty of Inspection (7/16)

Before submitting this bid, the Bidder is advised and cautioned to inspect the sale area, review the requirements of the sale contract, and take other steps as may be reasonably necessary to ascertain the location, estimated volumes, construction estimates, and operating costs of the proposed sale. Failure to do so will not relieve the Bidder from responsibility for completing the contract.

The Bidder warrants that this bid is submitted solely on the basis of the Bidder's examination and inspection of the quality and quantity of the timber offered for sale and the Bidder's opinion of the value thereof and the costs of recovery. No reliance should be placed on the State of Michigan's estimates of timber quality, quantity or costs of recovery. Bidder further acknowledges that the State of Michigan: (i) expressly disclaims any warranty of fitness of timber for any purpose; (ii) offers this timber as is without any warranty of quality (merchantability) or quantity and (iii) expressly disclaims any warranty as to the quantity or quality of timber sold.

11. Certification and Chain-of-Custody (10/14)

Unless otherwise indicated in the contract under section 7 – Other Conditions of the Sale Specific Conditions & Requirements, the area encompassed by this timber sale is certified to the standards of the Forest Stewardship Council (FSC) - Certificate #SCS-FM/COC-00090N and the Sustainable Forestry Initiative (SFI) - Certificate #NSF-SFIS-5Y031-SF5. Forest products from this sale may be delivered to the mill as "FSC 100% and / or SFI certified" as long as the contractor hauling the forest products is chain-of-custody (COC) certified or covered under a COC certificate from the destination mill. The purchaser is responsible for maintaining COC after leaving the sale area.

12. Good Neighbor Authority (GNA) Requirements (7/16)

If the name of this timber sales contains the acronym GNA, it is authorized by the Good Neighbor Authority (GNA) and covered by various agreements between the U.S. Forest Service and the State. The timber sale occurs on federal land and the following conditions apply:

GNA contracts on US Forest Service land will not be awarded to purchasers on the Federal list of excluded parties. The System for Award Management (SAM) will be checked for active excluded parties prior to award of contract. In addition, the Bidder to whom award is made must complete an Assurance Regarding Felony Conviction or Tax Delinquent Status for Corporate Applicants (AD-3031).

13. Good Neighbor Authority (GNA) Requirements, con't (9/16)

Bidder certifies, by signing this bid form, that to the best of Bidder's knowledge that the following representations are accurate and complete.

- a. That the Bidder and its principals are not presently debarred, suspended, proposed for debarment, declared ineligible, or voluntary excluded from timber sales (covered transactions) by any Federal department or agency.
- b. That the Bidder and its principals have not within a 3-year period preceding this bid been convicted of or had a civil judgment rendered against them for commission of fraud or a criminal offense in connection with obtaining , attempting to obtain, or performing a public (Federal, State, or local) transaction or contract under a public transaction; violation of Federal or State antitrust statutes or commission of embezzlement, theft, forgery, bribery, falsification or destruction of records, making false statements, or receiving stolen property.
- c. That the Bidder and its principals are not presently indicted for or otherwise criminally or civilly charged by a governmental entity (Federal, State, or local) with commission of any of the offenses enumerated in paragraph b of this certification.
- d. That the Bidder and its principals have not within a 3-year period preceding this bid had one or more public transactions (Federal, State, or local) terminated for breach or default of a timber or forest product contract.

Bidders that cannot certify this requirement, in whole or in part, shall submit an explanation with their bid.

DAN EICHINGER
Director

TIMBER SALE INFORMATION

Breezy Does It (42-017-20)

T49N, R12W, SEC. 23; T49N, R12W, SEC. 26; T49N, R12W, SEC. 27.

Luce County (Advertised Price \$196,755.25)

SALE NOTE: Sale Spec. 2.1.7 for marked tree details.

Note that there are sawlog-sized red and white pine within the sale that were cruised as pulp.

There is an existing road that accesses Payment Unit 1 that may need work to be used. All other Payment Units can be accessed from existing roads.

No new roads will be permitted in any Payment Unit, except for access to Payment Unit 1. See Sale Spec 4.1.12 for additional information.

Permission for access across private land is the responsibility of the Purchaser. Hancock Forest Management manages the land adjacent to Payment Units 1 and 2.

Within Payment Unit(s) 1 - 8, harvesting is not permitted during the period of December 12 to April 15 due to low stump height requirement. See 5.2.3.1 for specifications.

Within Payment Unit(s) 1 and 2, harvesting is not permitted during the period of April 15 to July 15 because of bark slippage.

The Pine Ridge Trail is an ORV trail shown on the Timber Sale Map. See Sale Spec 5.2.39 for restrictions.

A recreation site such as a trail, pathway, or campground is within the sale area or the vicinity. Certain restrictions/specifications may be applicable including time restrictions.

A timber sale contract for this lump sum, sealed bid timber sale will be awarded to the responsible bidder offering the highest sealed bid price. All units of volume listed below were estimated using the T-Sale computer program and our traditional volume equations. Bids must be at or above the following advertised price for each product and species:

<u>PRODUCTS & SPECIES</u>	<u>ESTIMATED UNITS*</u>	<u>ADVERTISED PRICE</u>
Sawtimber		
Red Maple	25.2 MBF	\$ 70.00 / MBF
Sugar Maple	9.4 MBF	\$ 200.00 / MBF
Pulpwood		
Balsam Fir	29 Cords	\$ 9.55 / Cord
Hemlock	2 Cords	\$ 16.50 / Cord
Jack Pine	161 Cords	\$ 22.75 / Cord
Mixed Hardwood	545 Cords	\$ 11.25 / Cord
Quaking Aspen	3 Cords	\$ 17.35 / Cord
Red Pine	2,993 Cords	\$ 46.30 / Cord
White Pine	2,779 Cords	\$ 15.80 / Cord
White Spruce	27 Cords	\$ 17.45 / Cord

* The total volume is statistically estimated within plus (+) or minus (-) 9.43 percent. There are an estimated 6,608 cords on this timber sale, plus or minus 623 cords at the 95% confidence level. The estimated units are final and not subject to adjustment. Prospective bidders are urged to examine this timber and to make their own estimates of quantity and quality.

BOND AND PAYMENT SCHEDULE:

1. A bond in the amount of \$9,838.00 to insure faithful performance of the conditions of the contract will be deposited by the successful bidder within 21 days of the sale award.
2. Cutting in any sale or unit without the required advance payment would be considered a trespass.
3. Total payment must be paid in advance or according to the following schedule :
 - (a) Ten percent (10%) of the sale value must be paid within 21 days of the sale award.
 - (b) The 10% down payment will be credited towards the first unit cut.

(c) Payment for each of the following units must be made before cutting begins in that unit:

PAYMENT UNIT NUMBER	PERCENT OF TOTAL SALE VALUE
01	3.7%
02	1.3%
03	2.1%
04	8.6%
05	15.6%
06	21.7%
07	32.8%
08	14.2%

4. If no cutting takes place, the 10% down payment will not be refunded.

5. Operations on the contract issued will terminate on 12/31/2024.

SALE STATISTICS

SALE VOLUMES

VOLUME		STATISTICAL RANGE IN CORDS		
TOTAL CUBIC FEET	TOTAL CORDS	PERCENT ERROR	MINIMUM	MAXIMUM
522,019	6,608	9.43%	5,985	7,231

VDU VOLUMES

A VDU is a Volume Determination Unit. Volumes and their associated statistics are calculated at the VDU level and summarized to the sale level. There is often a one to one relationship between a VDU and a Payment Unit, but not always, depending on the cruise design. Refer to the VDU TO PAYMENT UNIT table.

VDU	VOLUME			RANGE IN CORDS	
	TOTAL CUBIC FEET	TOTAL CORDS	PERCENT ERROR	MINIMUM	MAXIMUM
10	35,558	450	13.39%	390	510
12	15,571	197	22.67%	152	242
17	13,667	173	21.49%	136	210
20	70,768	896	15.82%	754	1,038
26	158,395	2,005	19.68%	1,610	2,400
28	140,841	1,783	17.90%	1,464	2,102
29	58,863	745	27.13%	543	947
281	197,563	2,501	18.58%	2,036	2,965
TOTAL:	691,226	8,750		7,085	10,414

VDU TO PAYMENT UNIT

When a VDU is associated with more than one Payment Unit (PU), the VDU volumes are assigned to the PU based on acres of the VDU within the PU.

VDU	VDU ACRES	PU	PU ACRES
10	35.2	1	35.2
12	14.7	3	14.7
17	15.1	2	15.1
20	35.4	8	35.4
26	59.5	7	59.5
28	52.7	5	52.6
		6	0.1
29	19.7	4	19.7
281	45.3	5	0.1
		6	45.2
TOTAL:	277.6		277.6

DESCRIPTION OF TIMBER BY PAYMENT UNIT (PU)

PU	MARKET GROUP	PRODUCT	QUANTITY	UNIT	ACRES	ADVERTISE PRICE
1	Red Maple	Sawtimber	17.7	MBF	35.2	\$7,287.35
	Sugar Maple		7.9	MBF		
	Balsam Fir	Pulpwood	12	Cords		
	Mixed Hardwood		387	Cords		
	<i>Beech</i>	<i>Sawtimber</i>	2.0	<i>MBF</i>		
	<i>Beech</i>	<i>Pulpwood</i>	101	<i>Cords</i>		
	<i>Red Maple</i>		209	<i>Cords</i>		
	<i>Sugar Maple</i>		73	<i>Cords</i>		
2	Red Maple	Sawtimber	7.5	MBF	15.1	\$2,575.85
	Sugar Maple		1.5	MBF		
	Balsam Fir	Pulpwood	2	Cords		
	Hemlock		2	Cords		
	Mixed Hardwood		151	Cords		
	<i>Beech</i>		20	<i>Cords</i>		
	<i>Red Maple</i>		123	<i>Cords</i>		
	<i>Sugar Maple</i>		8	<i>Cords</i>		
3	Red Pine	Pulpwood	32	Cords	14.7	\$4,137.40
	White Pine		146	Cords		
	White Spruce		20	Cords		
4	Jack Pine	Pulpwood	135	Cords	19.7	\$16,871.70
	Mixed Hardwood		7	Cords		
	<i>Red Maple</i>		7	<i>Cords</i>		
	Red Pine		137	Cords		
	White Pine		467	Cords		
5	Balsam Fir	Pulpwood	2	Cords	52.7	\$30,719.45
	Jack Pine		6	Cords		
	Quaking Aspen		3	Cords		
	Red Pine		544	Cords		
	White Pine		337	Cords		
6	Red Pine	Pulpwood	754	Cords	45.3	\$42,731.20
	White Pine		495	Cords		
7	Red Pine	Pulpwood	1,077	Cords	59.5	\$64,527.50
	White Pine		928	Cords		
8	Balsam Fir	Pulpwood	13	Cords	35.4	\$27,904.80
	Jack Pine		20	Cords		
	Red Pine		449	Cords		
	White Pine		406	Cords		
	White Spruce		7	Cords		
TOTAL:			34.6	MBF		
TOTAL:			6,539	Cords		

Sale Specific Conditions & Requirements

Sale Name: Breezy Does It

Sale Number: 42-017-20 Seq#: 1

1 - Sale Area

1.2 - Boundaries

1.2.1 - Painted boundaries (9/19)

The sale boundary and Payment Unit boundaries are marked and identified by blue, red, and yellow paint. Exterior sale boundary lines against private property are marked with blue paint. Exterior sale boundary lines against state are marked with red paint. Interior Payment Unit boundaries are marked with yellow paint. The painted boundary line trees are not Included Timber and are to be protected unless marked with orange paint. Yellow painted trees designating an interior Payment Unit boundary are only to be cut when all surrounding Payment Units have been paid.

2 - Timber Specifications

2.1 - Included Timber

2.1.3 - Cut tree marked unit(s) (12/08)

Within Payment Unit(s) 1, all trees are designated for cutting when marked with orange paint above and below stump height, regardless of merchantability. In addition, within Payment Unit 1, all beech and balsam fir are designated to be cut unless marked with green paint.

2.1.5 - Overstory removal unit(s) (8/11)

Within Payment Unit(s) 3, 5, 6, and 8, all trees which meet minimum piece specifications in 2.2 Utilization, are designated for cutting, except for trees marked with green paint.

2.1.7 - Leave tree marked unit(s) (6/14)

Within Payment Unit(s) 2, 4, and 7, all trees which meet minimum piece specifications in 2.2 Utilization, are designated for cutting, except trees marked with green paint above and below stump height.

Within Payment Unit 4, one 24 inch or larger white pine has been left for every 4 acres, with a 50-foot diameter circle around it. These have been marked in red and are to be left uncut.

2.1.11 - Description of timber note (2/04)

Note that there are sawlog sized red and white pine within the sale. All red and white pine were cruised as pulp.

2.2 - Utilization

2.2.3 - Stump heights (4/07)

Stump heights within Payment Unit(s) 4 - 8 shall not exceed 6 inches for all trees. This is to facilitate planting operations. A written waiver of this requirement may be obtained if wet summer weather makes winter logging necessary.

3 - Payments

3.3 - Pre-measured Sales

3.3.4 - Dividing payment units (7/14)

Payment Unit(s) 1 and 5 - 8 may be divided at the request of the Purchaser and upon approval of the Unit Manager. Dividing Payment Units is a contract modification which requires a Timber Sale Contract Amendment. There will be only one division per Payment Unit.

3.4 - Damaged Timber

3.4.1 - Damaged timber (7/16)

General Condition and Requirement 3.4 Damaged Timber, defines liquidated damages for undesignated live merchantable trees which are cut or injured. In addition, extreme care should be taken to avoid damage to tree seedlings and saplings.

4 - Transportation

4.1 - Construction

4.1.6 - Road construction (1/09)

Construction of new roads or improvements of existing roads will be limited to Payment Units 1 and 2 and shall be done in such a way as to minimize the environmental and visual impacts. Merchantable trees shall be cut and utilized unless otherwise directed. Non-merchantable trees shall be severed and laid flat on the ground. Slash shall be scattered, and not left in windrows and kept a minimum of 10 feet back from the road edge. Stumps shall be set upright, not left on edge, and be moved at least 10 feet away from the road edge. Disturbed soil shall be feathered into the woods and not left in berms or windrows.

There is an existing road that accesses Payment Unit 1 that would need some work to be used. All other Payment Units can be accessed from existing roads.

4.1.7 - Road closure (10/11)

All new roads built into the sale must be blocked to vehicle traffic upon completion of the sale. Overgrown roads that are reopened shall be considered new roads. In general, this will require constructing a four (4') foot high berm of stumps and logs covered with earth. These roads must be rendered impassable to cars and trucks. Contact the sale administrator for specific details of design and placement.

4.1.12 - No new roads (1/12)

No new roads will be permitted in any Payment Unit, except for access to Payment Unit 1. All operations are limited to existing roads. Skid trails only will be allowed.

Skid trails in Payment Units 3 and 5 - 8 will need to be laid out and discussed with the sale administrator prior to harvesting activities. This is to protect existing regeneration.

4.2 - Maintenance

4.2.1 - Hauling restriction (12/08)

Hauling may be restricted on forest roads by the Unit Manager or his/her representative. The restriction may occur during spring breakup or during wet weather conditions.

4.2.5 - Two wheel drive condition (2/04)

All existing trail roads on and adjacent to the sale area must be passable by two-wheel drive traffic for the duration of the sale.

4.4 - Access

4.4.1 - Private property access (3/11)

Permission for access across private land is the responsibility of the Purchaser. Hancock Forest Management manages the land adjacent to Payment Units 1 and 2.

5 - Operations

5.2 - Conduct of Operations

5.2.1 - Slash

5.2.1.2 - Slash Removal

5.2.1.2.1 - Slash removal, right-of-way (9/16)

All slash must be removed at least 10 feet from the cleared right-of-way of existing forest roads.

5.2.1.8 - Slash height (12/08)

No slash or tree tops may exceed 24 inches in height.

5.2.2 - Hazard Trees/Snags

5.2.2.1 - Den trees (10/16)

Obvious hollow and/or den trees shall be protected and left standing unless they are a safety hazard.

5.2.3 - Operating Restrictions

5.2.3.1 - Operating restrictions (9/11)

Within Payment Unit(s) 1 - 8, unless changed by written agreement, cutting, skidding, and hauling are not permitted during the period of 12/15 to 4/15. This restriction is because the need to cut low stumps and several miles of the main access roads leading to the sale are also a snowmobile trail.

5.2.3.3 - Bark slippage restriction (3/09)

Within Payment Unit(s) 1 and 2, unless changed by written agreement, cutting and skidding are not permitted during the period of April 15 to July 15. This restriction is because of bark slippage.

5.2.32 - Decking/landing restoration (9/13)

All decking and landing areas must have the surface area restored to a condition equal to or better than before. This is to ensure the proper regeneration of the stand. Wood debris, chips, and "cookies" from trimmings must be removed or scattered away from landing and loading areas and may not be windrowed on the edge.

5.2.38 - No decking against live trees (2/04)

Cut products may not be decked against unmarked or designated leave trees.

5.2.39 - ORV trail/route protection (4/18)

The Pine Ridge Trail is an ORV trail and is shown on the Timber Sale Map. Do not damage posts with orange ORV markers. All stumps within 5 feet of the trail must be cut flush with the ground. Maintain a 20-foot-wide slash, debris, and rut free zone daily using the ORV trail or route as the centerline. Do not run equipment down the ORV trail or route.

5.4 - Soil Protection

5.4.1 - Rutting restriction, general (7/16)

Operations are to cease immediately if equipment and weather conditions result in rutting of roads and/or skid trails which is 12 inches or greater in depth and 50 feet in length. The Unit Manager or his/her representative may restrict hauling and/or skidding if ruts exceed the specified depth. With the Unit Manager or his/her representative's approval, the Purchaser may return to the area when the risk of rutting has decreased.

5.8 - Protection of Endangered Species

5.8.5 - Protection of raptor nests (3/13)

All trees with raptor nests will be protected if found during harvesting operations. Notification will be made to the Unit Manager or his/her representative who will notify the Wildlife Biologist so an on-site evaluation and recommendation can be made, if necessary.

6 - Safety and Fire Prevention

6.2 - Signing

6.2.1 - Road posting (9/09)

The Purchaser is responsible for posting and maintaining caution signs on County Road 378 and/or 416 prior to beginning operations. The road must be posted at appropriate distances from the Sale Area to warn of logging activity and truck traffic. Signs must be removed when harvest operations are suspended or completed. The Purchaser will provide these signs.

6.2.3 - Recreational trail posting (10/20)

The Purchaser is responsible for posting and maintaining caution signs on the Pine Ridge Trail prior to beginning operations. The trail must be posted approximately 350 feet from the Sale Area to warn of logging activity and truck traffic at both ends of the trail. Signs must be removed when harvest operations are suspended or completed. The DNR will provide these signs.



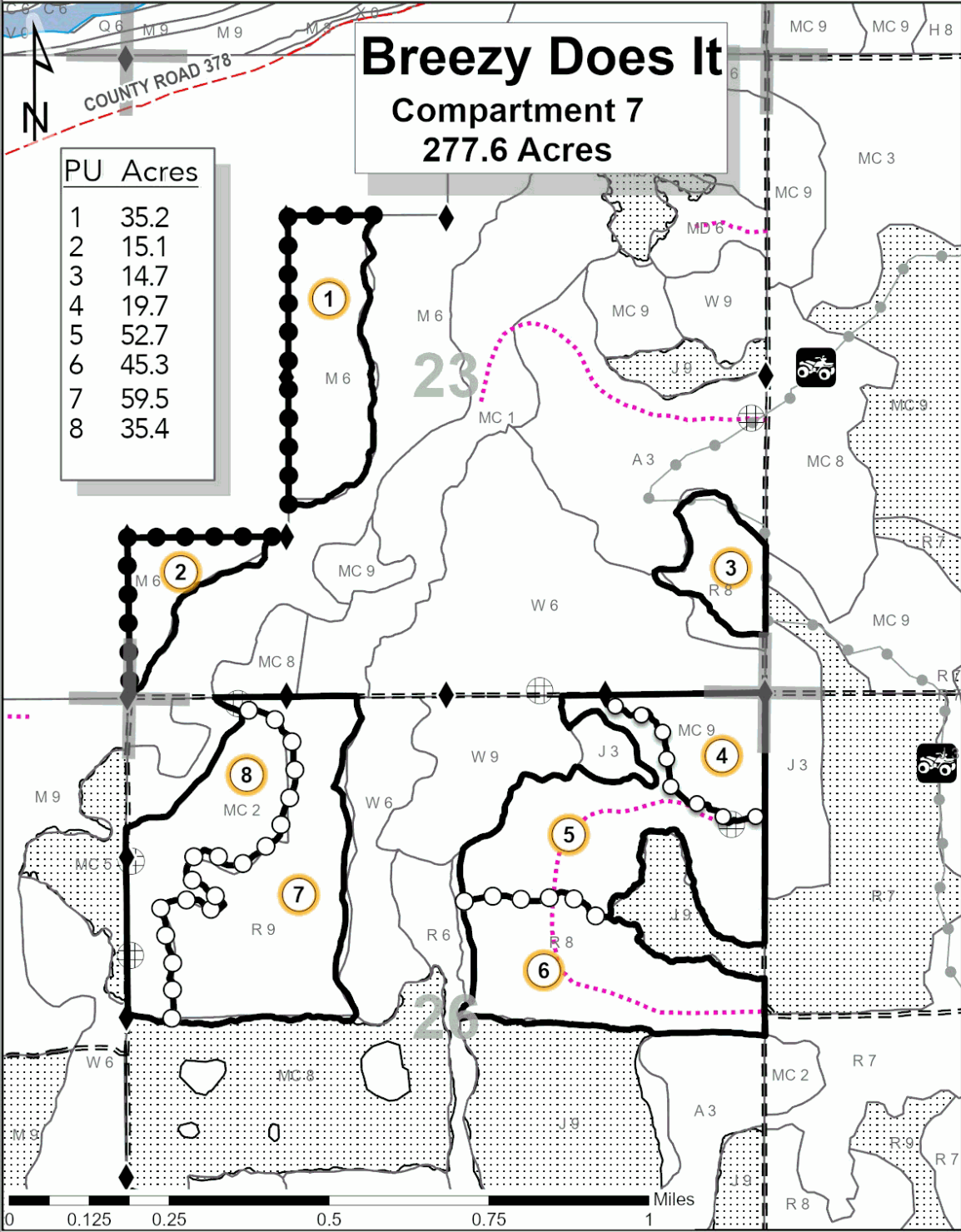
TIMBER SALE MAP

This information provided by authority of Part 525, 1994 PA 451, as amended.

Sale Number	Year
42-017-20	20

Forest Management Unit Newberry	County Luce	Mapped By Livermore	Date 9/29/2020	Page 1	of 1
Township 49N	Range 12W	Section(s) and Subdivision(s) Section 23: SENW, NESW, SWSW, E½SE Section 26: NW¼, N½SW, NE¼, N½SE	Scale 1:15,840		

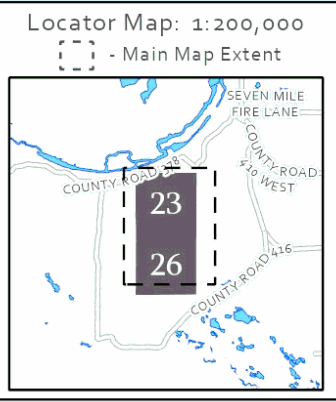
Cover Type				Density			
A = Aspen	H = Hemlock	N = Marsh	U = Upland Brush	0 = Non Stocked	5 = Pole Timber Medium		
B = Paper Birch	J = Jack Pine	O = Oak	UM = Upland Mixed	1 = Seedling Sapling Poor	6 = Pole Timber Well		
C = Cedar	L = Lowland Brush	P = Lowland Poplar	V = Bog or Marsh	2 = Seedling Sapling Medium	7 = Saw Timber Poor		
D = Tread Bog	LM = Lowland Mixed	Q = Mixed Swamp Conifer	W = White Pine	3 = Seedling Sapling Well	8 = Saw Timber Medium		
E = Swamp Hdwoods	M = Mpl, Bch, Brch	R = Red Pine	X = Non Stocked	4 = Pole Timber Poor	9 = Saw Timber Well		
F = Spruce Fir	MC = Mixed Conifer	S = Black Spruce	Z = Water				
G = Grass	MD = Mixed Deciduous	T = Tamarack					



PU	Acres
1	35.2
2	15.1
3	14.7
4	19.7
5	52.7
6	45.3
7	59.5
8	35.4



- Against State (Red)
- Payment Unit (Yellow)
- Private Line (Blue)
- Payment Unit Label
- ORV Trails
- Recreational Trail
- Section Numbers
- Section Corners
- Survey Corners
- Berms
- Primary Forest Road
- Secondary Forest Road
- Forest Access Route
- Paved Road
- Gravel Road
- County Road - Seasonal
- Private
- DNR - Management Access
- Temporary Management Access
- Perennial River
- Lakes and Rivers
- Nearby Timber Sale



TIMBER SALE INFORMATION

Compartment 7 South (42-018-20)

T49N, R12W, SEC. 26; T49N, R12W, SEC. 27; T49N, R12W, SEC. 34; T49N, R12W, SEC. 35.
Luce County (Advertised Price \$54,397.80)

SALE NOTE: Note that there is sawlog-sized red and white pine within the sale. All red and white pine were cruised as pulp.

Permission for access across private land is the responsibility of the Purchaser. Hancock Forest Management manages the land adjacent to Payment Units 1 and 2.

Within Payment Unit(s) 1 - 5, harvesting is not permitted during the period of December 15 to April 15 due to the need to cut low stumps.

In winter, County Road 416 is a snowmobile trail and is shown on the Timber Sale Map. See Sale Spec 5.2.41 for additional information.

A timber sale contract for this lump sum, sealed bid timber sale will be awarded to the responsible bidder offering the highest sealed bid price. All units of volume listed below were estimated using the T-Sale computer program and our traditional volume equations. Bids must be at or above the following advertised price for each product and species:

<u>PRODUCTS & SPECIES</u>	<u>ESTIMATED UNITS*</u>	<u>ADVERTISED PRICE</u>
Sawtimber		
Red Maple	24.1 MBF	\$ 70.00 / MBF
Yellow Birch	0.9 MBF	\$ 33.00 / MBF
Pulpwood		
Balsam Fir	109 Cords	\$ 9.55 / Cord
Jack Pine	23 Cords	\$ 22.75 / Cord
Mixed Hardwood	1,531 Cords	\$ 11.25 / Cord
Mixed Spruce	182 Cords	\$ 17.45 / Cord
Quaking Aspen	23 Cords	\$ 17.35 / Cord
Red Pine	246 Cords	\$ 46.30 / Cord
White Pine	1,198 Cords	\$ 15.80 / Cord

* The total volume is statistically estimated within plus (+) or minus (-) 11.55 percent. There are an estimated 3,363 cords on this timber sale, plus or minus 388 cords at the 95% confidence level. The estimated units are final and not subject to adjustment. Prospective bidders are urged to examine this timber and to make their own estimates of quantity and quality.

BOND AND PAYMENT SCHEDULE:

1. A bond in the amount of \$2,720.00 to insure faithful performance of the conditions of the contract will be deposited by the successful bidder within 21 days of the sale award.
2. Cutting in any sale or unit without the required advance payment would be considered a trespass.
3. Total payment must be paid in advance or according to the following schedule :
 - (a) Ten percent (10%) of the sale value must be paid within 21 days of the sale award.
 - (b) The 10% down payment will be credited towards the first unit cut.
 - (c) Payment for each of the following units must be made before cutting begins in that unit:

PAYMENT UNIT NUMBER	PERCENT OF TOTAL SALE VALUE
01	12.3%
02	15.3%
03	18.4%
04	7.7%
05	46.3%
4. If no cutting takes place, the 10% down payment will not be refunded.
5. Operations on the contract issued will terminate on 12/31/2024.

SALE STATISTICS

SALE VOLUMES

VOLUME		STATISTICAL RANGE IN CORDS		
TOTAL CUBIC FEET	TOTAL CORDS	PERCENT ERROR	MINIMUM	MAXIMUM
265,711	3,363	11.55%	2,975	3,752

VDU VOLUMES

A VDU is a Volume Determination Unit. Volumes and their associated statistics are calculated at the VDU level and summarized to the sale level. There is often a one to one relationship between a VDU and a Payment Unit, but not always, depending on the cruise design. Refer to the VDU TO PAYMENT UNIT table.

VDU	VOLUME		PERCENT ERROR	RANGE IN CORDS	
	TOTAL CUBIC FEET	TOTAL CORDS		MINIMUM	MAXIMUM
38	464,781	5,883	9.00%	5,354	6,413
41	88,441	1,120	18.15%	916	1,323
45	22,333	283	45.76%	153	412
TOTAL:	575,555	7,286		6,423	8,148

VDU TO PAYMENT UNIT

When a VDU is associated with more than one Payment Unit (PU), the VDU volumes are assigned to the PU based on acres of the VDU within the PU.

VDU	VDU ACRES	PU	PU ACRES
38	132.9	1	35.5
		2	44.3
		3	53.1
41	46.8	5	46.8
45	10.1	4	10.1
TOTAL:	189.8		189.8

DESCRIPTION OF TIMBER BY PAYMENT UNIT (PU)

PU	MARKET GROUP	PRODUCT	QUANTITY	UNIT	ACRES	ADVERTISE PRICE
1	Red Maple	Sawtimber	6.4	MBF	35.5	\$6,668.50
	Yellow Birch		0.2	MBF		
	Balsam Fir	Pulpwood	23	Cords		
	Mixed Hardwood		390	Cords		
	<i>Beech</i>		15	<i>Cords</i>		
	<i>Red Maple</i>		353	<i>Cords</i>		
	<i>White Ash</i>		4	<i>Cords</i>		
	<i>Yellow Birch</i>		18	<i>Cords</i>		
	Mixed Spruce		44	Cords		
	<i>Black Spruce</i>		2	<i>Cords</i>		
	<i>White Spruce</i>		42	<i>Cords</i>		
	Quaking Aspen		1	Cords		
	White Pine		52	Cords		
2	Red Maple	Sawtimber	8.0	MBF	44.3	\$8,347.15
	Yellow Birch		0.3	MBF		
	Balsam Fir	Pulpwood	29	Cords		
	Mixed Hardwood		487	Cords		
	<i>Beech</i>		18	<i>Cords</i>		
	<i>Red Maple</i>		441	<i>Cords</i>		
	<i>White Ash</i>		5	<i>Cords</i>		
	<i>Yellow Birch</i>		23	<i>Cords</i>		
	Mixed Spruce		56	Cords		
	<i>Black Spruce</i>		3	<i>Cords</i>		
	<i>White Spruce</i>		53	<i>Cords</i>		
	Quaking Aspen		1	Cords		
	White Pine		65	Cords		
3	Red Maple	Sawtimber	9.7	MBF	53.1	\$9,994.55
	Yellow Birch		0.4	MBF		
	Balsam Fir	Pulpwood	34	Cords		
	Mixed Hardwood		583	Cords		
	<i>Beech</i>		22	<i>Cords</i>		
	<i>Red Maple</i>		529	<i>Cords</i>		
	<i>White Ash</i>		5	<i>Cords</i>		
	<i>Yellow Birch</i>		27	<i>Cords</i>		
	Mixed Spruce		67	Cords		
	<i>Black Spruce</i>		3	<i>Cords</i>		
	<i>White Spruce</i>		64	<i>Cords</i>		
	Quaking Aspen		1	Cords		
	White Pine		78	Cords		
4	Balsam Fir	Pulpwood	6	Cords	10.1	\$4,181.90
	Mixed Hardwood		53	Cords		
	<i>Beech</i>		13	<i>Cords</i>		
	<i>Red Maple</i>		40	<i>Cords</i>		
	Mixed Spruce		3	Cords		
	<i>White Spruce</i>		3	<i>Cords</i>		
	White Pine		220	Cords		
5	Balsam Fir	Pulpwood	17	Cords	46.8	\$25,205.70
	Jack Pine		23	Cords		
	Mixed Hardwood		18	Cords		
	<i>Paper Birch</i>		4	<i>Cords</i>		
	<i>Red Maple</i>		14	<i>Cords</i>		
	Mixed Spruce		12	Cords		
	<i>White Spruce</i>		12	<i>Cords</i>		
	Quaking Aspen		20	Cords		
	Red Pine		246	Cords		
	White Pine		783	Cords		

TOTAL:	25.0	MBF
--------	------	-----

TOTAL:	3,312	Cords
--------	-------	-------

Sale Specific Conditions & Requirements

Sale Name: Compartment 7 South

Sale Number: 42-018-20 Seq#: 1

1 - Sale Area

1.2 - Boundaries

1.2.1 - Painted boundaries (9/19)

The sale boundary and Payment Unit boundaries are marked and identified by red, blue, and yellow paint. Exterior sale boundary lines against private land are marked with blue paint. Exterior sale boundary lines against state are marked with red paint. Interior Payment Unit boundaries are marked with yellow paint. The painted boundary line trees are not Included Timber and are to be protected unless marked with orange paint. Yellow painted trees designating an interior Payment Unit boundary are only to be cut when all surrounding Payment Units have been paid.

2 - Timber Specifications

2.1 - Included Timber

2.1.2 - Clearcut unit(s) w/o unmerchantable trees (8/11)

Within Payment Unit(s) 4, cut all trees which meet minimum piece specifications in 2.2 Utilization except hemlock and yellow birch.

Leave all trees marked in green paint.

2.1.7 - Leave tree marked unit(s) (6/14)

Within Payment Unit(s) 1 - 3 and 5, all trees, which meet minimum piece specifications in 2.2 Utilization, are designated for cutting, except trees marked with green paint above and below stump height. Also, within Payment Units 1 - 3, retain all white pine over 20 inches in diameter.

Leave all Hemlock.

2.1.11 - Description of timber note (2/04)

Note that there is sawlog sized red and white pine within the sale. All red and white pine were cruised as pulp.

2.2 - Utilization

2.2.3 - Stump heights (4/07)

Stump heights within Payment Unit(s) 5 shall not exceed 6 inches for all trees. This is to facilitate scarification operations. A written waiver of this requirement may be obtained if wet summer weather makes winter logging necessary.

3 - Payments

3.3 - Pre-measured Sales

3.3.4 - Dividing payment units (7/14)

Payment Unit(s) 1 - 3, and 5 may be divided at the request of the Purchaser and upon approval of the Unit Manager. Dividing Payment Units is a contract modification which requires a Timber Sale Contract Amendment. There will be only one division per Payment Unit.

4 - Transportation

4.1 - Construction

4.1.6 - Road construction (1/09)

Construction of new roads or improvements of existing roads shall be done in such a way as to minimize the environmental and visual impacts. Merchantable trees shall be cut and utilized unless otherwise directed. Non-merchantable trees shall be severed and laid flat on the ground. Slash shall be scattered, and not left in windrows and kept a minimum of 10 feet back from the road edge. Stumps shall be set upright, not left on edge, and be moved at least 10 feet away from the road edge. Disturbed soil shall be feathered into the woods and not left in berms or windrows. Use the old road that goes through Payment Unit 5 to access Payment Unit 3.

4.1.7 - Road closure (10/11)

All new roads built into the sale must be blocked to vehicle traffic upon completion of the sale. Overgrown roads that are reopened shall be considered new roads. In general, this will require constructing a four (4') foot high berm of stumps and logs covered with earth. These roads must be rendered impassable to cars and trucks. Contact the sale administrator for specific details of design and placement.

4.2 - Maintenance

4.2.1 - Hauling restriction (12/08)

Hauling may be restricted on forest roads by the Unit Manager or his/her representative. The restriction may occur during spring breakup or during wet weather conditions.

4.2.5 - Two wheel drive condition (2/04)

All existing trail roads on and adjacent to the sale area must be passable by two-wheel drive traffic for the duration of the sale.

4.4 - Access

4.4.1 - Private property access (3/11)

Permission for access across private land is the responsibility of the Purchaser. Hancock Forest Management manages the land adjacent to Payment Units 1 and 2.

5 - Operations

5.2 - Conduct of Operations

5.2.1 - Slash

5.2.1.2 - Slash Removal

5.2.1.2.1 - Slash removal, right-of-way (9/16)

All slash must be removed at least 10 feet from the cleared right-of-way of existing forest roads.

5.2.1.8 - Slash height (12/08)

No slash or tree tops may exceed 24 inches in height.

5.2.2 - Hazard Trees/Snags

5.2.2.1 - Den trees (10/16)

Obvious hollow and/or den trees shall be protected and left standing unless they are a safety hazard.

5.2.3 - Operating Restrictions

5.2.3.1 - Operating restrictions (9/11)

Within Payment Unit(s) 1 - 5, unless changed by written agreement, cutting, skidding, and hauling are not permitted during the period of 12/15 to 4/15. This restriction is due to the need to cut low stumps and several miles of the main access roads leading to the sale are a snowmobile trail.

5.2.32 - Decking/landing restoration (9/13)

All decking and landing areas must have the surface area restored to a condition equal to or better than before. This is to ensure the proper regeneration of the stand. Wood debris, chips, and "cookies" from trimmings must be removed or scattered away from landing and loading areas and may not be windrowed on the edge.

5.2.38 - No decking against live trees (2/04)

Cut products may not be decked against unmarked or designated leave trees.

5.2.41 - Snowmobile trail protection (9/11)

In winter, County Road 416 is a snowmobile trail and is shown on the Timber Sale Map. Do not cut or damage posts with orange trail markers or traffic control signs. If the trail is used, it must be maintained and restored to a condition equal to or better than before the sale. If the trail is used for hauling, it must be graded to the satisfaction of the Unit Manager or his/her representative prior to December 1. If the trail road is to be used for hauling during the snowmobile season, then a snow-covered base must be left on the trail. Maintain a 20-foot-wide slash, debris, and rut free zone daily using the

snowmobile trail as the centerline. No decking of forest products will be permitted along the snowmobile trail.

5.4 - Soil Protection

5.4.1 - Rutting restriction, general (7/16)

Operations are to cease immediately if equipment and weather conditions result in rutting of roads and/or skid trails which is 12 inches or greater in depth and 50 feet in length. The Unit Manager or his/her representative may restrict hauling and/or skidding if ruts exceed the specified depth. With the Unit Manager or his/her representative's approval, the Purchaser may return to the area when the risk of rutting has decreased.

5.8 - Protection of Endangered Species

5.8.5 - Protection of raptor nests (3/13)

All trees with raptor nests will be protected if found during harvesting operations. Notification will be made to the Unit Manager or his/her representative who will notify the Wildlife Biologist so an on-site evaluation and recommendation can be made, if necessary.

6 - Safety and Fire Prevention

6.2 - Signing

6.2.1 - Road posting (10/20)

The Purchaser is responsible for posting and maintaining caution signs on County Road 416 prior to beginning operations. The road must be posted at locations designated on the map at appropriate distances from the Sale Area to warn of logging activity and truck traffic. Signs must be removed when harvest operations are suspended or completed. The Purchaser will provide these signs.



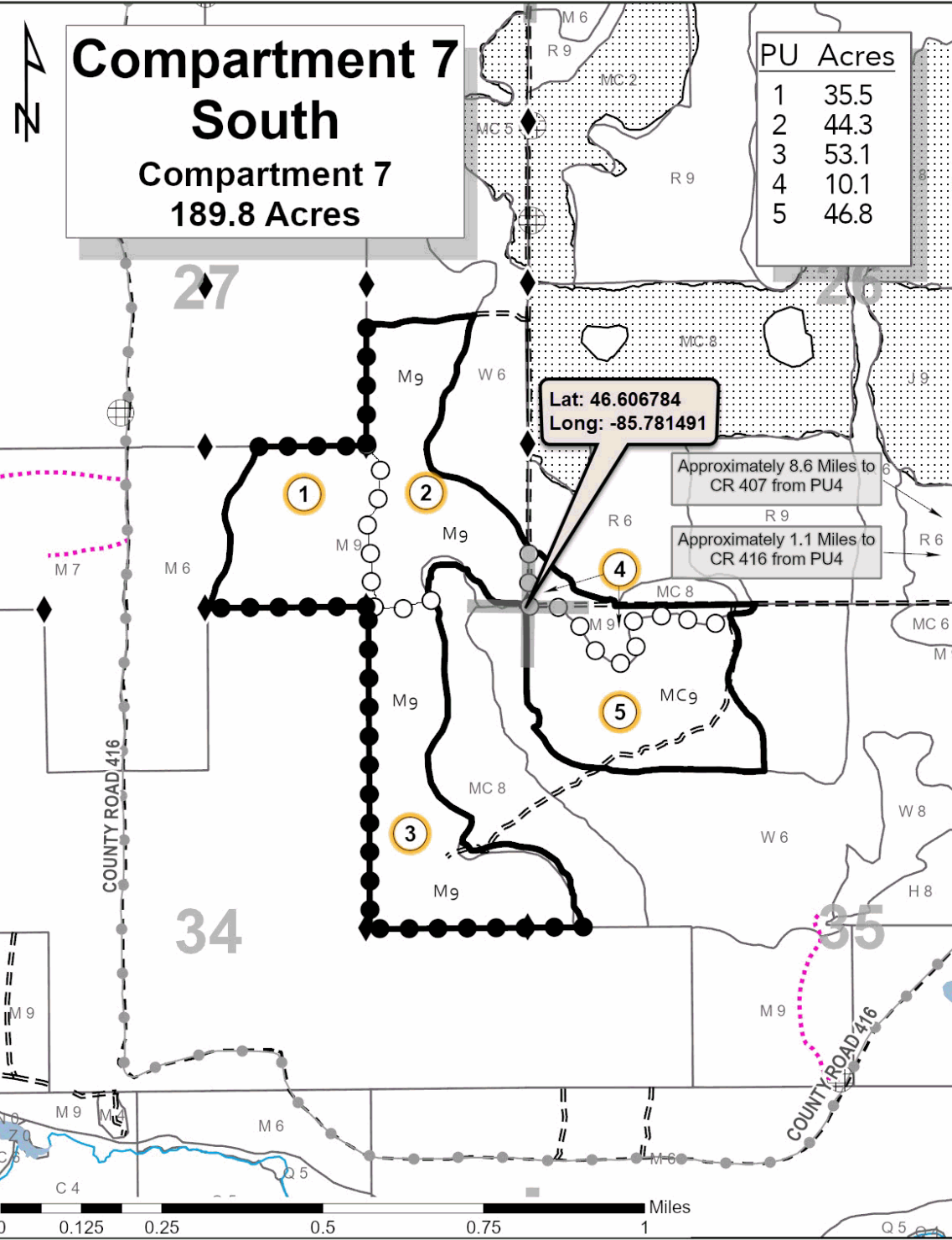
TIMBER SALE MAP

This information provided by authority of Part 525, 1994 PA 451, as amended.

Sale Number	Year
42-018-20	20

Forest Management Unit Newberry	County Luce	Mapped By Livermore	Date 10/3/2020	Page 1	of 1
Township 49N	Range 12W	Section(s) and Subdivision(s) Section 26: S½SW Section 27: NESE, S½SE Section 34: E½NE Section 35: NW	Scale 1:15,840		

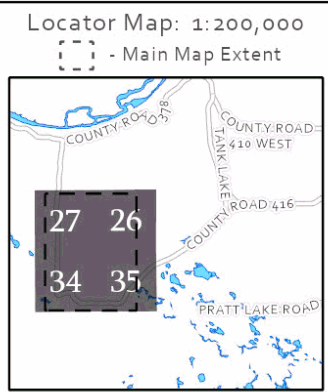
Cover Type				Density		
A = Aspen	H = Hemlock	N = Marsh	U = Upland Brush	0 = Non Stocked	5 = Pole Timber Medium	
B = Paper Birch	J = Jack Pine	O = Oak	UM = Upland Mixed	1 = Seedling Sapling Poor	6 = Pole Timber Well	
C = Cedar	L = Lowland Brush	P = Lowland Poplar	V = Bog or Marsh	2 = Seedling Sapling Medium	7 = Saw Timber Poor	
D = Tread Bog	LM = Lowland Mixed	Q = Mixed Swamp Conifer	W = White Pine	3 = Seedling Sapling Well	8 = Saw Timber Medium	
E = Swamp Hdwoods	M = Mpl, Bch, Brch	R = Red Pine	X = Non Stocked	4 = Pole Timber Poor	9 = Saw Timber Well	
F = Spruce Fir	MC = Mixed Conifer	S = Black Spruce	Z = Water			
G = Grass	MD = Mixed Deciduous	T = Tamarack				



PU	Acres
1	35.5
2	44.3
3	53.1
4	10.1
5	46.8



- Against State (Red)
- Payment Unit (Yellow)
- Private Line (Blue)
- Payment Unit Label
- Recreational Trail
- Section Numbers
- Section Corners
- Survey Corners
- Berms
- Primary Forest Road
- Secondary Forest Road
- Forest Access Route
- Paved Road
- Gravel Road
- County Road - Seasonal
- Private
- DNR - Management Access
- Temporary Management Access
- Perennial River
- Lakes and Rivers
- Nearby Timber Sale



Breezy Does It (42-017-20)

T49N, R12W, SEC. 23; T49N, R12W, SEC. 26; T49N, R12W, SEC. 27; Luce

In response to the notice of sale to be held 3:00 p.m. (local time) on July 15, 2021, I am hereby submitting my sealed bid (firm offer) for the following forest products to be cut. Bids for individual species must be at or above the advertised price. All non-responsive bid forms may be rejected.

<u>PRODUCTS & SPECIES</u>	<u>ESTIMATED VOLUME*</u>	<u>ADVERTISED PRICE</u>	<u>BID PRICE/UNIT</u>
Sawtimber			
Red Maple	25.2 MBF	\$ 70.00/MBF	\$ _____
Sugar Maple	9.4 MBF	\$ 200.00/MBF	\$ _____
Pulpwood			
Balsam Fir	29 Cords	\$ 9.55/Cord	\$ _____
Hemlock	2 Cords	\$ 16.50/Cord	\$ _____
Jack Pine	161 Cords	\$ 22.75/Cord	\$ _____
Mixed Hardwood	545 Cords	\$ 11.25/Cord	\$ _____
Quaking Aspen	3 Cords	\$ 17.35/Cord	\$ _____
Red Pine	2,993 Cords	\$ 46.30/Cord	\$ _____
White Pine	2,779 Cords	\$ 15.80/Cord	\$ _____
White Spruce	27 Cords	\$ 17.45/Cord	\$ _____

*The volumes are statistically estimated within plus (+) or minus (-) 9.43 percent at 95% confidence level. These estimated volumes are final and not subject to adjustment. Prospective bidders are urged to examine this timber and to make their own estimates of quantity and quality.

I understand that any or all bids may be rejected. All bids must be signed and all bid items must be bid or the bid form may be rejected. I also understand that consideration and awarding a contract will be based upon my past performance and ability to complete the contract based upon equipment and staffing subject to my control.

FEDERAL ID: _____ or SOCIAL SECURITY NUMBER: _____

Company or individual bidding: _____

Company representative's name: _____

Address: _____

City: _____ State: _____ Zip: _____

IF AVAILABLE, PLEASE PLACE THE PERSONALIZED LABEL FROM YOUR PROSPECTUS IN THE ABOVE BOX.

Individual or company representative's signature: _____ Date: _____

Phone number : _____ Email (optional): _____

THE WINNING BIDDER MUST COMPLETE THE VERIFICATION OF WORKER'S DISABILITY COMPENSATION ACT COMPLIANCE (ON REVERSE SIDE IF DOUBLE SIDED) WITHIN 21 DAYS OF SALE AWARD DATE



FOR DEPARTMENT USE ONLY	
Sale Number (XX - XXX - XX - XX)	
Forest Management Unit:	

TIMBER SALE VERIFICATION OF WORKER'S DISABILITY COMPENSATION ACT COMPLIANCE

As required by Act 317, P.A. 1969 (Worker's Compensation) and
Part 5 of Act 451 of 1994, as amended.

VERIFICATION OF WORKER'S DISABILITY COMPENSATION ACT COMPLIANCE

- This verification must be completed and submitted within 21 days of contract award and prior to the issuance of the timber sale contract.
- In addition, if boxes 2B or 2C are checked, then Notice of Exclusion or Certificate of Insurance must be submitted within twenty-one (21) days of the contract award and prior to the issuance of the timber sale contract.
- All information must be typed or printed except for written signatures.

Please Check Appropriate Categories:

1. My business is organized as (you **must** check one of the boxes below):
 - A. Sole Proprietorship (individual)
 - B. Partnership
 - C. Corporation
2. You **must** check one of the boxes below:
 - A. I certify my business is a sole proprietorship and it has no employees but the sole proprietor. I am not subject to the Worker's Compensation Laws.
 - B. I certify my business has satisfied its obligation to the Worker's Compensation Act through the use of an approved Notice of Exclusion (BWC-337, Rev. 5/96). I will provide a copy of the Notice of Exclusion within 21 days of the contract award. (For questions or a copy of the BWC-337, please call the Worker's Compensation Bureau at 517-322-1195).
 - C. I certify my business has a Worker's Compensation Policy. I will provide an original Certificate of Insurance within twenty-one (21) days of the contract award.
3. If you have checked item 2(A) or 2(B), you **must** indicate the number of **both** full-time and part-time employees, other than yourself, including family members and active partners (if none, you must enter "0").

_____ Full-time Employees

_____ Part-time Employees

Name of Business		Federal ID (or) Social Security No.	
Address		Telephone ()	
City	State	ZIP	

I hereby certify that the above information is true and correct. I agree to notify the Michigan DNR of any changes that occur in factors affecting my coverage during any of my present and future operations.

Signature of Owner or Authorized Representative

Title

Date

Please complete the "SEALED BID" information on the next page

Compartment 7 South (42-018-20)

T49N, R12W, SEC. 26; T49N, R12W, SEC. 27; T49N, R12W, SEC. 34; T49N,

In response to the notice of sale to be held 3:00 p.m. (local time) on July 15, 2021, I am hereby submitting my sealed bid (firm offer) for the following forest products to be cut. Bids for individual species must be at or above the advertised price. All non-responsive bid forms may be rejected.

<u>PRODUCTS & SPECIES</u>	<u>ESTIMATED VOLUME*</u>	<u>ADVERTISED PRICE</u>	<u>BID PRICE/UNIT</u>
Sawtimber			
Red Maple	24.1 MBF	\$ 70.00/MBF	\$ _____
Yellow Birch	0.9 MBF	\$ 33.00/MBF	\$ _____
Pulpwood			
Balsam Fir	109 Cords	\$ 9.55/Cord	\$ _____
Jack Pine	23 Cords	\$ 22.75/Cord	\$ _____
Mixed Hardwood	1,531 Cords	\$ 11.25/Cord	\$ _____
Mixed Spruce	182 Cords	\$ 17.45/Cord	\$ _____
Quaking Aspen	23 Cords	\$ 17.35/Cord	\$ _____
Red Pine	246 Cords	\$ 46.30/Cord	\$ _____
White Pine	1,198 Cords	\$ 15.80/Cord	\$ _____

*The volumes are statistically estimated within plus (+) or minus (-) 11.55 percent at 95% confidence level. These estimated volumes are final and not subject to adjustment. Prospective bidders are urged to examine this timber and to make their own estimates of quantity and quality.

I understand that any or all bids may be rejected. All bids must be signed and all bid items must be bid or the bid form may be rejected. I also understand that consideration and awarding a contract will be based upon my past performance and ability to complete the contract based upon equipment and staffing subject to my control.

FEDERAL ID: ____ - ____ - ____ or SOCIAL SECURITY NUMBER: ____ - ____ - ____

Company or individual bidding: _____

Company representative's name: _____

Address: _____

City: _____ State: _____ Zip: _____

IF AVAILABLE, PLEASE PLACE THE PERSONALIZED LABEL FROM YOUR PROSPECTUS IN THE ABOVE BOX.

Individual or company representative's signature: _____ Date: _____

Phone number : _____ Email (optional): _____

THE WINNING BIDDER MUST COMPLETE THE VERIFICATION OF WORKER'S DISABILITY COMPENSATION ACT COMPLIANCE (ON REVERSE SIDE IF DOUBLE SIDED) WITHIN 21 DAYS OF SALE AWARD DATE



FOR DEPARTMENT USE ONLY
Sale Number (XX - XXX - XX - XX)
Forest Management Unit:

TIMBER SALE VERIFICATION OF WORKER'S DISABILITY COMPENSATION ACT COMPLIANCE

*As required by Act 317, P.A. 1969 (Worker's Compensation) and
Part 5 of Act 451 of 1994, as amended.*

VERIFICATION OF WORKER'S DISABILITY COMPENSATION ACT COMPLIANCE

- This verification must be completed and submitted within 21 days of contract award and prior to the issuance of the timber sale contract.
- In addition, if boxes 2B or 2C are checked, then Notice of Exclusion or Certificate of Insurance must be submitted within twenty-one (21) days of the contract award and prior to the issuance of the timber sale contract.
- All information must be typed or printed except for written signatures.

Please Check Appropriate Categories:

1. My business is organized as (you **must** check one of the boxes below):
 - A. Sole Proprietorship (individual)
 - B. Partnership
 - C. Corporation
2. You **must** check one of the boxes below:
 - A. I certify my business is a sole proprietorship and it has no employees but the sole proprietor. I am not subject to the Worker's Compensation Laws.
 - B. I certify my business has satisfied its obligation to the Worker's Compensation Act through the use of an approved Notice of Exclusion (BWC-337, Rev. 5/96). I will provide a copy of the Notice of Exclusion within 21 days of the contract award. (For questions or a copy of the BWC-337, please call the Worker's Compensation Bureau at 517-322-1195).
 - C. I certify my business has a Worker's Compensation Policy. I will provide an original Certificate of Insurance within twenty-one (21) days of the contract award.
3. If you have checked item 2(A) or 2(B), you **must** indicate the number of **both** full-time and part-time employees, other than yourself, including family members and active partners (if none, you must enter "0").

_____ Full-time Employees

_____ Part-time Employees

Name of Business		Federal ID (or) Social Security No.	
Address		Telephone ()	
City	State	ZIP	

I hereby certify that the above information is true and correct. I agree to notify the Michigan DNR of any changes that occur in factors affecting my coverage during any of my present and future operations.

Signature of Owner or Authorized Representative

Title

Date

Please complete the "SEALED BID" information on the next page