



**DEPARTMENT OF NATURAL RESOURCES  
STATE OF MICHIGAN**

**TIMBER SALE PROSPECTUS #6882**

SCHEDULED SALE DATE AND TIME: 3:00 p.m. (local time) on August 24, 2021.

LOCATION: INDIAN RIVER FIELD OFFICE, 6984 WILSON, INDIAN RIVER, MI 49749.

PROSPECTUS NOTE: The bidder is advised to inspect the sale area and review the location, estimated volumes, operating costs and contract terms of proposed sales. Please be aware that some landowners may request 60 days or more notice for access across their land.

Notice is hereby given that bids will be received by the Unit Manager, GAYLORD MANAGEMENT UNIT, for certain timber on the following described lands:

Two County Mix (52-101-21) / T37N, R03W, SEC. 6 , NWNE.

T37N, R04W, SEC. 1 , W1/2NW,N1/2SW,NWSE.

Cheboygan County, Advertised Price \$26,042.90, 47.0 Acres, Aspen, Hardwood.

SALE NOTE: There are 5 DEGLE (DEQ) monitoring wells in the field adjacent to the Scotch Pine plantation. The wells are not in the Sale Area but are very close. Great care must be taken to avoid damage to these wells. They are all marked with a red painted 5' tall 4X4.

A recreation site such as a trail, pathway, or campground is within the sale area or the vicinity. Certain restrictions/specifications may be applicable including time restrictions.

Van Mix (52-102-21) / T37N, R04W, SEC. 14, S1/2SW,S1/2SE.

Emmet County, Advertised Price \$18,782.50, 42.8 Acres, Aspen, Spruce/Fir/Tamarack.

SALE NOTE: Parts of this sale may be wet, harvest during frozen winter or dry summer may be necessary.

Another Yappy Dog R.P. (52-118-20) / T36N, R06W, SEC. 14, SWNE.

Emmet County, Advertised Price \$8,341.10, 17.4 Acres, Red Pine.

SALE NOTE: All units of volume listed for this sale were estimated using the Inventory Manager computer program and the new Michigan taper model. Some trees are exhibiting signs of decline due to Armillaria Root Rot. Harvesting as soon as possible is recommended to avoid possible loss of product.

Snake Trail Aspen 2 (52-130-20) / T35N, R01E, SEC. 17, SWSW.

T35N, R01E, SEC. 18, SW,NESE,S1/2SE.

T35N, R01E, SEC. 7 , SWNW,SW.

T35N, R01W, SEC. 12, E1/2SE.

Cheboygan County, Advertised Price \$59,568.55, 132.4 Acres, Aspen, Hardwood.

SALE NOTE: Good aspen volume in Payment Units 4 and 5. Payment Unit 6 is wet, but operable during dry conditions. Has high cedar volume component. Access Payment Unit 6 from southwest corner along old trail/road.

A recreation site such as a trail, pathway, or campground is within the sale area or the vicinity. Certain restrictions/specifications may be applicable including time restrictions.

## BID INSTRUCTIONS (VER. 07/02/2018):

### 1. Scheduled Bid Location, Date, and Time (2/11)

Bids must be received by the Unit Manager, INDIAN RIVER OFFICE, 6984 Wilson, Indian River, MI 49749, no later than 3:00 p.m. (local time) on August 24, 2021. For further information concerning this sale, contact Lucas Merrick at 989-732-3541 extension 5440.

### 2. Bidder's Qualifications (5/16)

Purchaser shall obtain workers compensation insurance to cover claims under Michigan's Worker's Disability Compensation Act of 1969 or similar employee benefit act of any other state applicable to an employee. If all or part of a timber sale was prepared by a private contractor, the contractor and that contractor's company are not permitted to bid on the timber sale contract. Bids will not be accepted from individuals or companies appearing on the DNR/FRD No-Bid List. This list contains the names of purchasers who previously failed to execute a contract within 21-days or who have a history of poor performance.

### 3. Preparation of Sealed Bids (5/16)

Bid Forms may be completed online thru Michigan DNR Timber Sale Online Bidding (OLB) at [www.michigan.gov/timberbidding](http://www.michigan.gov/timberbidding) or by completing the hardcopy Bid Form found in the Timber Sale Prospectus. Hardcopy Bid Forms shall be manually signed in ink. Registration in OLB is considered your 'signature' for all bids submitted thru that system. Bid prices must be entered for each species and product in the Bid Price column for all material subject to bidding and all fill-in blanks must be completed. If erasures or other changes appear on the hardcopy Bid Form, each erasure or change must be initialed by the person signing the bid.

### 4. Submission of Sealed Bids (5/16)

Bid forms may be obtained from the Unit Manager or thru OLB. Bids may be submitted hardcopy or thru OLB. All hardcopy bids must be submitted on the bid form and in an envelope clearly identified as described in this section. NOTE: Only one bid form per bid envelope. Sealed bids must be submitted to the Unit office designated in the prospectus and must be submitted at or prior to the time established in the prospectus. The envelope should show on the outside (a) the sale name or number and (b) the date and time of bid opening, as shown in the prospectus. Bids received after the time specified in the sale prospectus are late bids and will be rejected.

It is possible for a bidder to submit multiple bids on a single sale. For example, a bid may be submitted hardcopy and a bid may be submitted thru OLB. Or, two bidders from the same company could both submit bids on the same sale. If this were to happen, the State would accept all bids received and award the contract accordingly. All bidding and contractual requirements would apply to all bids received.

### 5. Public Opening of Sealed Bids (7/16)

If conditions permit, the sealed bids will be publicly opened and posted at the time and place set in the prospectus.

If a bidder, present at a bid opening, has submitted bids on more than one sale, that bidder may withdraw their unopened bid envelopes or announce the withdrawal of their online bid after being declared the successful bidder on one sale.

### 6. Award of Contract (1/11)

Award of the contract will be made to the Bidder whose bid, conforming to the prospectus, is most advantageous to the State of Michigan on the basis of total value at rates bid for the estimated quantities. The State reserves the right to reject any bid or waive any minor irregularity in bids received. A written award mailed (or otherwise furnished) to the successful Bidder shall be deemed to result in a binding contract without further action by either party.

### 7. Down Payment (1/11)

The Bidder to whom award is made must make a down payment within 21 days of the sale award. The amount of the down payment will be calculated as shown in the Bond and Payment Schedule of this prospectus. Only cash may be used to meet this requirement.

### 8. Performance Security (1/11)

As guarantee of faithful performance, a cash bond, certificate of deposit, surety bond or irrevocable letter of credit (LOC) is required within 21 days of the sale award. The amount of the performance security is shown in the Bond and

Payment Schedule of this prospectus. If an LOC or surety is used, the coverage must extend for at least 6 months beyond the contract expiration.

#### 9. Timber Sale Contract (7/18)

Additional conditions and requirements common to all timber sales are listed on the timber sale contract (R4031) and are available on line at [www.michigan.gov/timber](http://www.michigan.gov/timber). Contact the Unit Manager for additional information or a sample contract. Within 21 days of the date of the award letter, the bidder must sign the contract and provide the required down payment, performance security, and verification of worker's disability compensation. The down payment and performance security shall be in accordance with the provisions of the timber sale contract, in the sums stated in this prospectus. If these actions are not taken, then the Bidder, the Bidder's corporation, and the corporation's principals may not be permitted to bid on State timber sales for a period of 3 months after the first offense, 6 months after the second offense, and 1 year after the third offense. An offense will only be counted against the Bidder for 5 years. In addition, the Bidder certifies that if awarded this contract, the Bidder will complete the timber sale contract in accordance with its terms and any modifications thereof including requirements to purchase, cut, and remove the included timber by the expiration date.

Payment Unit values in the State Forest Timber Sale Contract are calculated based on the advertised value of the Payment Unit as a percentage of the total advertised value of the contract. The advertised value of each Payment Unit is given in the Description of Timber by Payment Unit table on the Timber Sale Information page. For example, if the value of Payment Unit 1 is advertised as \$1,500 and the total Timber Sale value is advertised as \$10,000, the contract price for Payment Unit 1 will be 15% of the total bid price ( $\$1,500/\$10,000 * 100$ ).

#### 10. Disclaimer of Estimates and Bidder's Warranty of Inspection (7/16)

Before submitting this bid, the Bidder is advised and cautioned to inspect the sale area, review the requirements of the sale contract, and take other steps as may be reasonably necessary to ascertain the location, estimated volumes, construction estimates, and operating costs of the proposed sale. Failure to do so will not relieve the Bidder from responsibility for completing the contract.

The Bidder warrants that this bid is submitted solely on the basis of the Bidder's examination and inspection of the quality and quantity of the timber offered for sale and the Bidder's opinion of the value thereof and the costs of recovery. No reliance should be placed on the State of Michigan's estimates of timber quality, quantity or costs of recovery. Bidder further acknowledges that the State of Michigan: (i) expressly disclaims any warranty of fitness of timber for any purpose; (ii) offers this timber as is without any warranty of quality (merchantability) or quantity and (iii) expressly disclaims any warranty as to the quantity or quality of timber sold.

#### 11. Certification and Chain-of-Custody (10/14)

Unless otherwise indicated in the contract under section 7 – Other Conditions of the Sale Specific Conditions & Requirements, the area encompassed by this timber sale is certified to the standards of the Forest Stewardship Council (FSC) - Certificate #SCS-FM/COC-00090N and the Sustainable Forestry Initiative (SFI) - Certificate #NSF-SFIS-5Y031-SF5. Forest products from this sale may be delivered to the mill as "FSC 100% and / or SFI certified" as long as the contractor hauling the forest products is chain-of-custody (COC) certified or covered under a COC certificate from the destination mill. The purchaser is responsible for maintaining COC after leaving the sale area.

#### 12. Good Neighbor Authority (GNA) Requirements (7/16)

If the name of this timber sales contains the acronym GNA, it is authorized by the Good Neighbor Authority (GNA) and covered by various agreements between the U.S. Forest Service and the State. The timber sale occurs on federal land and the following conditions apply:

GNA contracts on US Forest Service land will not be awarded to purchasers on the Federal list of excluded parties. The System for Award Management (SAM) will be checked for active excluded parties prior to award of contract. In addition, the Bidder to whom award is made must complete an Assurance Regarding Felony Conviction or Tax Delinquent Status for Corporate Applicants (AD-3031).

#### 13. Good Neighbor Authority (GNA) Requirements, con't (9/16)

Bidder certifies, by signing this bid form, that to the best of Bidder's knowledge that the following representations are accurate and complete.

- a. That the Bidder and its principals are not presently debarred, suspended, proposed for debarment, declared ineligible, or voluntary excluded from timber sales (covered transactions) by any Federal department or agency.
- b. That the Bidder and its principals have not within a 3-year period preceding this bid been convicted of or had a civil judgment rendered against them for commission of fraud or a criminal offense in connection with obtaining , attempting to obtain, or performing a public (Federal, State, or local) transaction or contract under a public transaction; violation of Federal or State antitrust statutes or commission of embezzlement, theft, forgery, bribery, falsification or destruction of records, making false statements, or receiving stolen property.
- c. That the Bidder and its principals are not presently indicted for or otherwise criminally or civilly charged by a governmental entity (Federal, State, or local) with commission of any of the offenses enumerated in paragraph b of this certification.
- d. That the Bidder and its principals have not within a 3-year period preceding this bid had one or more public transactions (Federal, State, or local) terminated for breach or default of a timber or forest product contract.

Bidders that cannot certify this requirement, in whole or in part, shall submit an explanation with their bid.

DAN EICHINGER  
Director

## TIMBER SALE INFORMATION

### Two County Mix (52-101-21)

T37N, R03W, SEC. 6; T37N, R04W, SEC. 1.  
Cheboygan County (Advertised Price \$26,042.90)

SALE NOTE: There are 5 DEGLE (DEQ) monitoring wells in the field adjacent to the Scotch Pine plantation. The wells are not in the Sale Area but are very close. Great care must be taken to avoid damage to these wells. They are all marked with a red painted 5' tall 4X4.

A recreation site such as a trail, pathway, or campground is within the sale area or the vicinity. Certain restrictions/specifications may be applicable including time restrictions.

A timber sale contract for this lump sum, sealed bid timber sale will be awarded to the responsible bidder offering the highest sealed bid price. All units of volume listed below were estimated using the Inventory Manager computer program and the new Michigan taper model. Bids must be at or above the following advertised price for each product and species:

<u>PRODUCTS &amp; SPECIES</u>	<u>ESTIMATED UNITS*</u>	<u>ADVERTISED PRICE</u>
Sawtimber		
Basswood	5.6 MBF	\$ 45.00 / MBF
Mixed Aspen	79.1 MBF	\$ 40.00 / MBF
N. White Cedar	0.9 MBF	\$ 2.00 / MBF
Paper Birch	4.3 MBF	\$ 27.00 / MBF
Red Maple	9.2 MBF	\$ 66.00 / MBF
Sugar Maple	20.1 MBF	\$ 289.00 / MBF
Pulpwood		
Balsam Fir	103 Cords	\$ 18.30 / Cord
Bl/R/Hybrid Oak	2 Cords	\$ 10.20 / Cord
Mixed Aspen	468 Cords	\$ 15.85 / Cord
Mixed Hardwood	346 Cords	\$ 16.70 / Cord
N. White Cedar	1 Cords	\$ 6.10 / Cord
Scotch Pine	73 Cords	\$ 13.50 / Cord

\* The total volume is statistically estimated within plus (+) or minus (-) 9.88 percent. There are an estimated 1,258 cords on this timber sale, plus or minus 124 cords at the 95% confidence level. The estimated units are final and not subject to adjustment. Prospective bidders are urged to examine this timber and to make their own estimates of quantity and quality.

### **BOND AND PAYMENT SCHEDULE:**

1. A bond in the amount of \$1,302.00 to insure faithful performance of the conditions of the contract will be deposited by the successful bidder within 21 days of the sale award.
2. Cutting in any sale or unit without the required advance payment would be considered a trespass.
3. Total payment must be paid in advance or according to the following schedule :
  - (a) Ten percent (10%) of the sale value must be paid within 21 days of the sale award.
  - (b) The 10% down payment will be credited towards the first unit cut.
  - (c) Payment for each of the following units must be made before cutting begins in that unit:
 

PAYMENT UNIT NUMBER	PERCENT OF TOTAL SALE VALUE
01	34.1%
02	58.2%
03	7.7%
4. If no cutting takes place, the 10% down payment will not be refunded.
5. Operations on the contract issued will terminate on 12/31/2024.

### **SALE STATISTICS**

Volumes were calculated in cubic feet using the Michigan taper model. Cubic foot volume includes all wood inside bark for the product indicated. For display purposes, cubic feet were converted to cords and MBF using a simple conversion factor, e.g. 79 cubic feet per cord and 185 cubic feet per MBF. The cubic foot volumes are precise; the cords and MBF volumes are not. Cubic foot volume cannot be directly converted to cords or boards with precision.

## SALE VOLUMES

The total estimated sale volume may not equal the sum of the species/products due to the nature of statistical calculations associated with double sampling methodology.

VOLUME			STATISTICAL RANGE IN CORDS	
TOTAL CUBIC FEET	TOTAL CORDS	PERCENT ERROR	MINIMUM	MAXIMUM
99,360	1,258	9.88%	1,133	1,382

## VDU VOLUMES

A VDU is a Volume Determination Unit. Volumes and their associated statistics are calculated at the VDU level and summarized to the sale level. There is often a one to one relationship between a VDU and a Payment Unit, but not always, depending on the cruise design. Refer to the VDU TO PAYMENT UNIT table.

	VOLUME			RANGE IN CORDS	
VDU	TOTAL CUBIC FEET	TOTAL CORDS	PERCENT ERROR	MINIMUM	MAXIMUM
7	7,632	97	23.47%	74	119
9	28,555	361	18.20%	296	427
16	5,868	74	16.63%	62	87
21	55,185	699	14.27%	599	798
<b>TOTAL:</b>	<b>97,241</b>	<b>1,231</b>		<b>1,030</b>	<b>1,431</b>

## VDU TO PAYMENT UNIT

When a VDU is associated with more than one Payment Unit (PU), the VDU volumes are assigned to the PU based on acres of the VDU within the PU.

VDU	VDU ACRES	PU	PU ACRES
7	4.7	3	4.7
9	12.3	1	12.3
16	2.2	2	2.2
21	27.8	2	27.8
<b>TOTAL:</b>	<b>47.0</b>		<b>47.0</b>

**DESCRIPTION OF TIMBER BY PAYMENT UNIT (PU)**

PU	MARKET GROUP	PRODUCT	QUANTITY	UNIT	ACRES	ADVERTISE PRICE	
1	Basswood	Sawtimber	3.7	MBF	12.3	\$8,868.95	
	Mixed Aspen		31.1	MBF			
	<i>B. T. Aspen</i>		31.1	<i>MBF</i>			
	Red Maple		5.7	MBF			
	Sugar Maple		9.5	MBF			
	Balsam Fir		Pulpwood	4			Cords
	<i>Balsam Fir</i>			4			<i>Cords</i>
	Mixed Aspen			53			Cords
	<i>B. T. Aspen</i>			53			<i>Cords</i>
	Mixed Hardwood			205			Cords
	<i>Basswood</i>			5			<i>Cords</i>
	<i>Ironwood</i>			14			<i>Cords</i>
	<i>Red Maple</i>			22			<i>Cords</i>
	<i>Sugar Maple</i>			158			<i>Cords</i>
	<i>White Ash</i>			6			<i>Cords</i>
	2		Mixed Aspen	Sawtimber			36.0
<i>B. T. Aspen</i>		32.6	<i>MBF</i>				
<i>Quaking Aspen</i>		3.4	<i>MBF</i>				
Paper Birch		4.3	MBF				
Red Maple		2.2	MBF				
Sugar Maple		9.6	MBF				
Balsam Fir		Pulpwood	74		Cords		
<i>Balsam Fir</i>			74		<i>Cords</i>		
BI/R/Hybrid Oak			2		Cords		
Mixed Aspen			403		Cords		
<i>B. T. Aspen</i>			338		<i>Cords</i>		
<i>Quaking Aspen</i>			65		<i>Cords</i>		
Mixed Hardwood			117		Cords		
<i>Basswood</i>			10		<i>Cords</i>		
<i>Black Cherry</i>			10		<i>Cords</i>		
<i>Paper Birch</i>			4		<i>Cords</i>		
<i>Red Maple</i>		27	<i>Cords</i>				
<i>Sugar Maple</i>		53	<i>Cords</i>				
<i>White Ash</i>		13	<i>Cords</i>				
Scotch Pine		73	Cords				
3	Basswood	Sawtimber	1.9	MBF	4.7	\$1,996.70	
	Mixed Aspen		12.0	MBF			
	<i>B. T. Aspen</i>		12.0	<i>MBF</i>			
	N. White Cedar		0.9	MBF			
	Red Maple		1.3	MBF			
	Sugar Maple		1.0	MBF			
	Balsam Fir		Pulpwood	25			Cords
	<i>Balsam Fir</i>			<i>Sawtimber</i>			4.7
	<i>Balsam Fir</i>		<i>Pulpwood</i>				16
	Mixed Aspen		12	Cords			
	<i>B. T. Aspen</i>		12	<i>Cords</i>			
	Mixed Hardwood		24	Cords			
	<i>Basswood</i>		1	<i>Cords</i>			
	<i>Red Maple</i>		22	<i>Cords</i>			
	<i>Sugar Maple</i>		1	<i>Cords</i>			
	N. White Cedar		1	Cords			
TOTAL:			119.2	MBF			
TOTAL:			993	Cords			

## Sale Specific Conditions & Requirements

**Sale Name: Two County Mix**

**Sale Number: 52-101-21 Seq#: 1**

### 1 - Sale Area

#### 1.2 - Boundaries

##### 1.2.1 - Painted boundaries (9/19)

The sale boundary and Payment Unit boundaries are marked and identified by blue and red paint. Exterior sale boundary lines against private property are marked with blue paint. Exterior sale boundary lines against state are marked with red paint. Retention patches are marked with red paint; no harvesting activities may occur within these areas.

### 2 - Timber Specifications

#### 2.1 - Included Timber

##### 2.1.1 - Clearcut unit(s) with unmerchantable trees (6/14)

Within Payment Unit(s) 1 - 3, cut all trees that are two (2) inches or more at DBH, except hemlock.

### 3 - Payments

#### 3.3 - Pre-measured Sales

##### 3.3.4 - Dividing payment units (7/14)

Payment Unit(s) 2 may be divided at the request of the Purchaser and upon approval of the Unit Manager. Dividing Payment Units is a contract modification which requires a Timber Sale Contract Amendment. There will be only one division per Payment Unit.

### 4 - Transportation

#### 4.1 - Construction

##### 4.1.7 - Road closure (10/11)

All new roads built into the sale must be blocked to vehicle traffic upon completion of the sale. In general, this will require constructing a four (4') foot high berm of stumps and logs covered with earth. Stumps and brush must be placed along the remainder of the trail. All stumps from road building and landing construction must be reserved to block any newly constructed roads upon completion of the sale. These stumps must be scattered along the road system to prohibit vehicular movement. Contact the sale administrator for specific details of design and placement.

#### 4.2 - Maintenance

##### 4.2.5 - Two wheel drive condition (2/04)

All existing trail roads on and adjacent to the sale area must be passable by two-wheel drive traffic for the duration of the sale.

### 5 - Operations

#### 5.1 - Notification

##### 5.1.1 - Pre-sale conference (10/16)

A pre-sale conference on site between the Purchaser and sale administrator is required prior to beginning any operations to determine landing and road locations. The Unit Manager or his/her representative must be contacted at least 3 days in advance to schedule the conference.

#### 5.2 - Conduct of Operations

##### 5.2.1 - Slash

###### 5.2.1.13 - Dispose of slash as directed (12/05)

Slash is to be disposed of as directed by the Sale Administrator.

##### 5.2.2 - Hazard Trees/Snags



#### 5.2.2.1 - Den trees (10/16)

Obvious hollow and/or den trees shall be protected and left standing unless they are a safety hazard.

### 5.2.3 - Operating Restrictions

#### 5.2.3.6 - Bark beetle restriction (12/08)

In the event drought creates a high risk of pine bark beetle infestation, pine is not to be cut during the period March 1 through July 1, unless all portions of trees greater than two inches in diameter are removed from the sale area, reduced to chips, or treated to the satisfaction of the Unit Manager or his/her representative, within fifteen days of being severed from the stump. Pine log decks, pulpwood piles and treetops that are piled for chipping in the fall or winter within a 1/4 mile of susceptible sites must be removed before March 15. Residual slash must not be placed in piles or rows and must be spread over the site for quick drying. The Department of Natural Resources will exercise this specification if the risk of damage warrants.

### 5.4 - Soil Protection

#### 5.4.1 - Rutting restriction, general (7/16)

Operations are to cease immediately if equipment and weather conditions result in rutting of roads and/or skid trails which is 12 inches or greater in depth and 50 feet in length. The Unit Manager or his/her representative may restrict hauling and/or skidding if ruts exceed the specified depth. With the Unit Manager or his/her representative's approval, the Purchaser may return to the area when the risk of rutting has decreased.

### 5.8 - Protection of Endangered Species

#### 5.8.5 - Protection of raptor nests (3/13)

All trees with raptor nests will be protected if found during harvesting operations. Notification will be made to the Unit Manager or his/her representative who will notify the Wildlife Biologist so an on-site evaluation and recommendation can be made, if necessary.



# TIMBER SALE MAP

This information provided by authority of Part 525, 1994 PA 451, as amended.

Forest Management Unit GFMU / Indian River F O	County Emmet/Cheboygan	Mapped By Harig	Date 3/29/2021	Page 1	of 1
Township 37N	Range 03W/04W	Section(s) and Subdivision(s) 03W, 6: NWNE 04W, 1: W1/2NW, N1/2SW, NWSE	Scale 1:15,840		

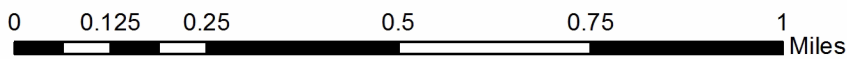
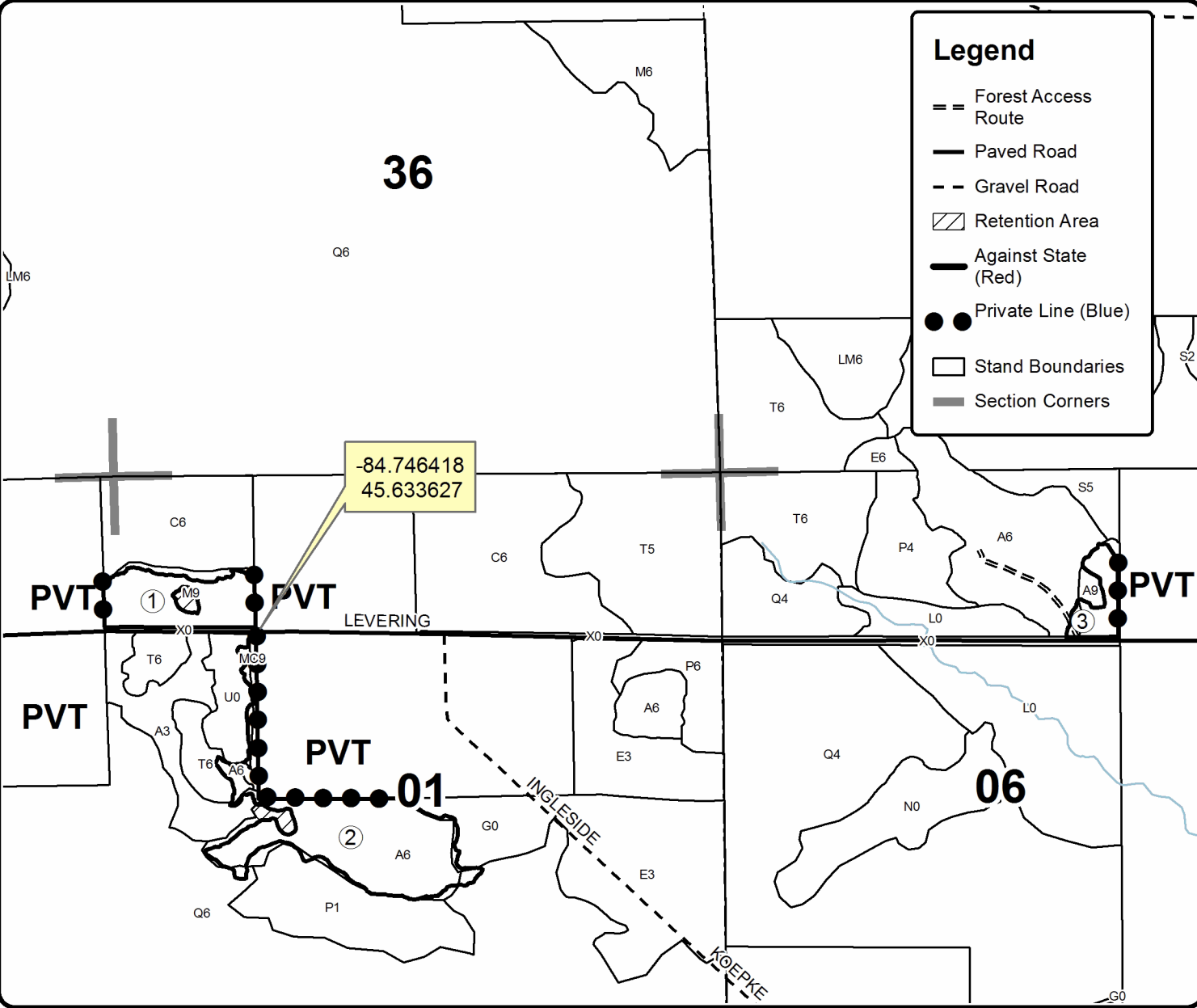
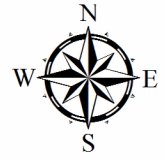
Cover Type				Density	
A = Aspen	H = Hemlock	N = Marsh	U = Upland Brush	0 = Non Stocked	5 = Pole Timber Medium
B = Paper Birch	J = Jack Pine	O = Oak	UM = Upland Mixed	1 = Seedling Sapling Poor	6 = Pole Timber Well
C = Cedar	L = Lowland Brush	P = Lowland Poplar	V = Bog or Marsh	2 = Seedling Sapling Medium	7 = Saw Timber Poor
D = Treed Bog	LM = Lowland Mixed	Q = Mixed Swamp Conifer	W = White Pine	3 = Seedling Sapling Well	8 = Saw Timber Medium
E = Swamp Hdwoods	M = Mpl, Bch, Brch	R = Red Pine	X = Non Stocked	4 = Pole Timber Poor	9 = Saw Timber Well
F = Spruce Fir	MC = Mixed Conifer	S = Black Spruce	Z = Water		
G = Grass	MD = Mixed Deciduous	T = Tamarack			

PU	Acres
1	12.3
2	30.0
3	4.7

## Two County Mix

### Compartment 132

### 47 Acres



## TIMBER SALE INFORMATION

Van Mix (52-102-21)  
T37N, R04W, SEC. 14.  
Emmet County (Advertised Price \$18,782.50)

SALE NOTE: Parts of this sale may be wet, harvest during frozen winter or dry summer may be necessary.

A timber sale contract for this lump sum, sealed bid timber sale will be awarded to the responsible bidder offering the highest sealed bid price. All units of volume listed below were estimated using the Inventory Manager computer program and the new Michigan taper model. Bids must be at or above the following advertised price for each product and species:

<u>PRODUCTS &amp; SPECIES</u>	<u>ESTIMATED UNITS*</u>	<u>ADVERTISED PRICE</u>
Sawtimber		
Quaking Aspen	96.1 MBF	\$ 40.00 / MBF
Red Maple	6.2 MBF	\$ 66.00 / MBF
White Pine	46.0 MBF	\$ 34.00 / MBF
White Spruce	26.1 MBF	\$ 32.00 / MBF
Pulpwood		
Balsam Fir	62 Cords	\$ 18.30 / Cord
Mixed Aspen	382 Cords	\$ 15.85 / Cord
Mixed Hardwood	32 Cords	\$ 16.70 / Cord
N. White Cedar	4 Cords	\$ 6.10 / Cord
White Pine	110 Cords	\$ 17.20 / Cord
White Spruce	200 Cords	\$ 12.45 / Cord

\* The total volume is statistically estimated within plus (+) or minus (-) 7.91 percent. There are an estimated 1,274 cords on this timber sale, plus or minus 101 cords at the 95% confidence level. The estimated units are final and not subject to adjustment. Prospective bidders are urged to examine this timber and to make their own estimates of quantity and quality.

### **BOND AND PAYMENT SCHEDULE:**

1. A bond in the amount of \$939.00 to insure faithful performance of the conditions of the contract will be deposited by the successful bidder within 21 days of the sale award.
2. Cutting in any sale or unit without the required advance payment would be considered a trespass.
3. Total payment must be paid in advance or according to the following schedule :
  - (a) Ten percent (10%) of the sale value must be paid within 21 days of the sale award.
  - (b) The 10% down payment will be credited towards the first unit cut.
  - (c) Payment for each of the following units must be made before cutting begins in that unit:
 

PAYMENT UNIT NUMBER	PERCENT OF TOTAL SALE VALUE
01	80.6%
02	19.4%
4. If no cutting takes place, the 10% down payment will not be refunded.
5. Operations on the contract issued will terminate on 12/31/2025.

### **SALE STATISTICS**

Volumes were calculated in cubic feet using the Michigan taper model. Cubic foot volume includes all wood inside bark for the product indicated. For display purposes, cubic feet were converted to cords and MBF using a simple conversion factor, e.g. 79 cubic feet per cord and 185 cubic feet per MBF. The cubic foot volumes are precise; the cords and MBF volumes are not. Cubic foot volume cannot be directly converted to cords or boards with precision.

### **SALE VOLUMES**

The total estimated sale volume may not equal the sum of the species/products due to the nature of statistical calculations associated with double sampling methodology.

VOLUME		STATISTICAL RANGE IN CORDS		
TOTAL CUBIC FEET	TOTAL CORDS	PERCENT ERROR	MINIMUM	MAXIMUM
100,642	1,274	7.91%	1,173	1,375

**VDU VOLUMES**

A VDU is a Volume Determination Unit. Volumes and their associated statistics are calculated at the VDU level and summarized to the sale level. There is often a one to one relationship between a VDU and a Payment Unit, but not always, depending on the cruise design. Refer to the VDU TO PAYMENT UNIT table.

VDU	VOLUME		PERCENT ERROR	RANGE IN CORDS	
	TOTAL CUBIC FEET	TOTAL CORDS		MINIMUM	MAXIMUM
52	89,945	1,139	7.91%	1,048	1,229
<b>TOTAL:</b>	<b>89,945</b>	<b>1,139</b>		<b>1,048</b>	<b>1,229</b>

**VDU TO PAYMENT UNIT**

When a VDU is associated with more than one Payment Unit (PU), the VDU volumes are assigned to the PU based on acres of the VDU within the PU.

VDU	VDU ACRES	PU	PU ACRES
52	42.8	1	34.5
		2	8.3
<b>TOTAL:</b>	<b>42.8</b>		<b>42.8</b>

**DESCRIPTION OF TIMBER BY PAYMENT UNIT (PU)**

PU	MARKET GROUP	PRODUCT	QUANTITY	UNIT	ACRES	ADVERTISE PRICE	
1	Quaking Aspen	Sawtimber	77.5	MBF	34.5	\$15,131.25	
	Red Maple		5.0	MBF			
	White Pine		37.1	MBF			
	White Spruce		21.0	MBF			
	Balsam Fir		Pulpwood	50			Cords
	Mixed Aspen			308			Cords
	<i>Balsam Poplar</i>			49			Cords
	<i>Quaking Aspen</i>			259			Cords
	Mixed Hardwood			25			Cords
	<i>Black Cherry</i>			2			Cords
	<i>Red Maple</i>			23			Cords
	N. White Cedar			3			Cords
	White Pine			89			Cords
	White Spruce			161			Cords
2	Quaking Aspen	Sawtimber	18.6	MBF	8.3	\$3,651.25	
	Red Maple		1.2	MBF			
	White Pine		8.9	MBF			
	White Spruce		5.1	MBF			
	Balsam Fir		Pulpwood	12			Cords
	Mixed Aspen			74			Cords
	<i>Balsam Poplar</i>			12			Cords
	<i>Quaking Aspen</i>			62			Cords
	Mixed Hardwood			7			Cords
	<i>Black Cherry</i>			1			Cords
	<i>Red Maple</i>			6			Cords
	N. White Cedar			1			Cords
	White Pine			21			Cords
	White Spruce			39			Cords
<b>TOTAL:</b>			174.4	MBF			
<b>TOTAL:</b>			790	Cords			

## Sale Specific Conditions & Requirements

**Sale Name: Van Mix**

**Sale Number: 52-102-21 Seq#: 1**

### 1 - Sale Area

#### 1.2 - Boundaries

##### 1.2.1 - Painted boundaries (9/19)

The sale boundary and Payment Unit boundaries are marked and identified by blue and red paint. Exterior sale boundary lines against private property are marked with blue paint. Exterior sale boundary lines against state are marked with red paint. Retention patches are marked with red paint; no harvesting activities may occur within these areas.

### 2 - Timber Specifications

#### 2.1 - Included Timber

##### 2.1.1 - Clearcut unit(s) with unmerchantable trees (6/14)

Within Payment Unit(s) 1 and 2, cut all trees that are two (2) inches or more at DBH. Do not cut white pine or white spruce 22" at DBH and larger.

### 3 - Payments

#### 3.3 - Pre-measured Sales

##### 3.3.4 - Dividing payment units (7/14)

Payment Unit(s) 1 may be divided at the request of the Purchaser and upon approval of the Unit Manager. Dividing Payment Units is a contract modification which requires a Timber Sale Contract Amendment. There will be only one division per Payment Unit.

### 4 - Transportation

#### 4.1 - Construction

##### 4.1.6 - Road construction (1/09)

Construction of new roads or improvements of existing roads shall be done in such a way as to minimize the environmental and visual impacts. Merchantable trees shall be cut and utilized unless otherwise directed. Non-merchantable trees shall be severed and laid flat on the ground. Slash shall be scattered, and not left in windrows and kept a minimum of 10 feet back from the road edge. Stumps shall be set upright, not left on edge, and be moved at least 10 feet away from the road edge. Disturbed soil shall be feathered into the woods and not left in berms or windrows.

##### 4.1.7 - Road closure (10/11)

All new roads built into the sale must be blocked to vehicle traffic upon completion of the sale. In general, this will require constructing a four (4') foot high berm of stumps and logs covered with earth. Stumps and brush must be placed along the remainder of the trail. Contact the sale administrator for specific details of design and placement.

#### 4.2 - Maintenance

##### 4.2.5 - Two wheel drive condition (2/04)

All existing trail roads on and adjacent to the sale area must be passable by two-wheel drive traffic for the duration of the sale.

### 5 - Operations

#### 5.1 - Notification

##### 5.1.1 - Pre-sale conference (10/16)

A pre-sale conference on site between the Purchaser and sale administrator is required prior to beginning any operations to determine landing and road locations. The Unit Manager or his/her representative must be contacted at least 3 days in advance to schedule the conference.

#### 5.2 - Conduct of Operations

## 5.2.1 - Slash

### 5.2.1.13 - Dispose of slash as directed (12/05)

Slash is to be disposed of as directed by the Sale Administrator.

## 5.2.2 - Hazard Trees/Snags

### 5.2.2.1 - Den trees (10/16)

Obvious hollow and/or den trees shall be protected and left standing unless they are a safety hazard.

## 5.2.22 - Operating Caution

### 5.2.22.1 - Operating caution (6/11)

It is recommended, but not required, that within Payment Unit(s) 1 and 2, cutting, skidding, and hauling occur during dry summer or frozen winter conditions. The reason for the recommendation is because of wet soils in parts of the sale.

## 5.4 - Soil Protection

### 5.4.1 - Rutting restriction, general (7/16)

Operations are to cease immediately if equipment and weather conditions result in rutting of roads and/or skid trails which is 12 inches or greater in depth and 50 feet in length. The Unit Manager or his/her representative may restrict hauling and/or skidding if ruts exceed the specified depth. With the Unit Manager or his/her representative's approval, the Purchaser may return to the area when the risk of rutting has decreased.

## 5.8 - Protection of Endangered Species

### 5.8.5 - Protection of raptor nests (3/13)

All trees with raptor nests will be protected if found during harvesting operations. Notification will be made to the Unit Manager or his/her representative who will notify the Wildlife Biologist so an on-site evaluation and recommendation can be made, if necessary.



# TIMBER SALE MAP

This information provided by authority of Part 525, 1994 PA 451, as amended.

Forest Management Unit	County	Mapped By	Date	Page	of
GFMU - Indian River Field Office	Emmet	Harig	3/25/2021	1	1
Township	Range	Section(s) and Subdivision(s)	Scale		
37N	04W	14: S1/2SW, S1/2SE	1:15,840		

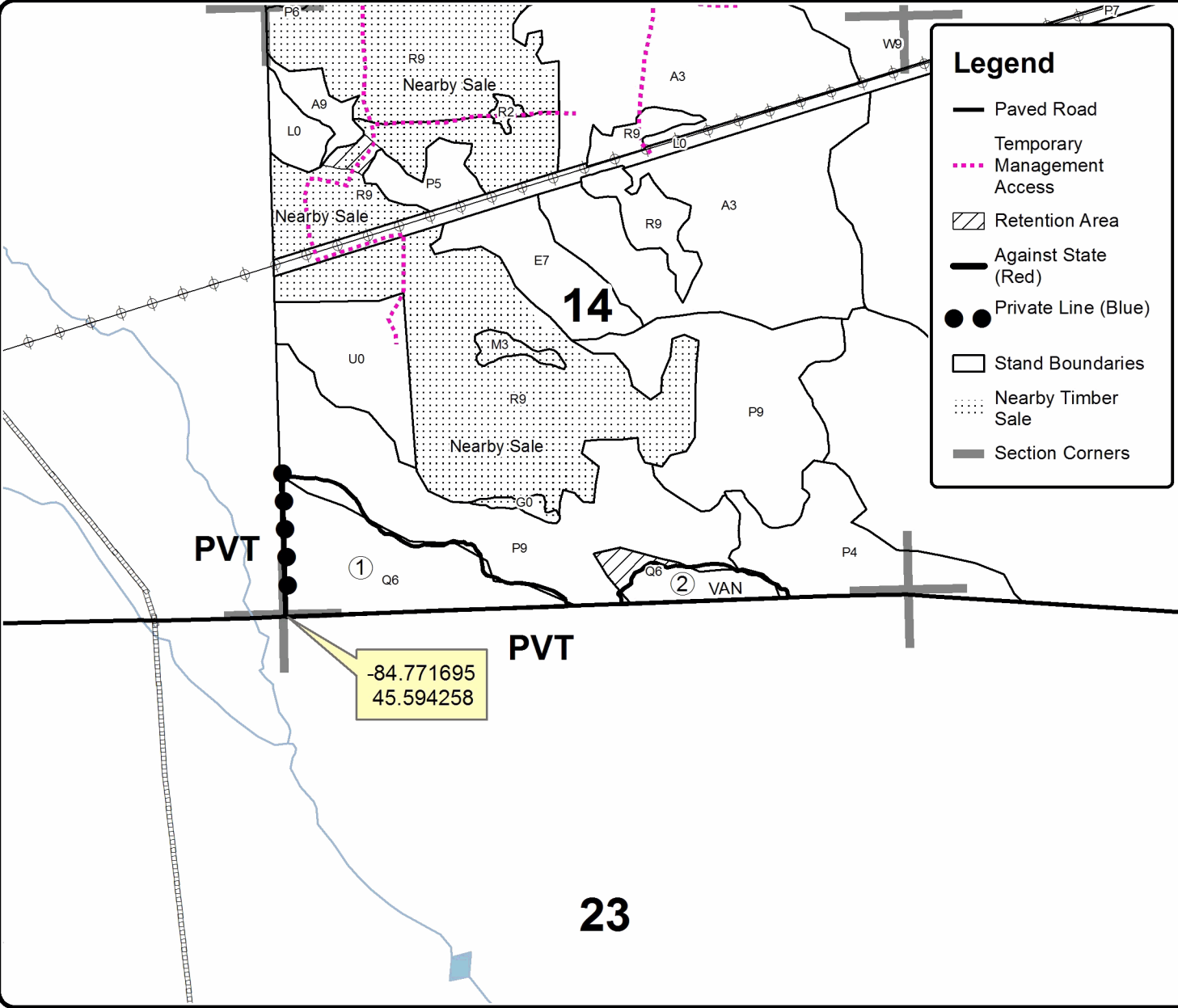
Cover Type				Density	
A = Aspen	H = Hemlock	N = Marsh	U = Upland Brush	0 = Non Stocked	5 = Pole Timber Medium
B = Paper Birch	J = Jack Pine	O = Oak	UM = Upland Mixed	1 = Seedling Sapling Poor	6 = Pole Timber Well
C = Cedar	L = Lowland Brush	P = Lowland Poplar	V = Bog or Marsh	2 = Seedling Sapling Medium	7 = Saw Timber Poor
D = Treed Bog	LM = Lowland Mixed	Q = Mixed Swamp Conifer	W = White Pine	3 = Seedling Sapling Well	8 = Saw Timber Medium
E = Swamp Hdwoods	M = Mpl, Bch, Brch	R = Red Pine	X = Non Stocked	4 = Pole Timber Poor	9 = Saw Timber Well
F = Spruce Fir	MC = Mixed Conifer	S = Black Spruce	Z = Water		
G = Grass	MD = Mixed Deciduous	T = Tamarack			

PU	Acres
1	34.5
2	8.3

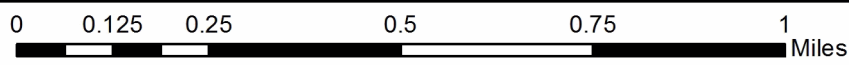
## Van Mix

### Compartment 132

42.8 Acres



-84.771695  
45.594258







## TIMBER SALE INFORMATION

Another Yappy Dog R.P. (52-118-20)  
T36N, R06W, SEC. 14.  
Emmet County (Advertised Price \$8,341.10)

SALE NOTE: All units of volume listed for this sale were estimated using the Inventory Manager computer program and the new Michigan taper model. Some trees are exhibiting signs of decline due to Armillaria Root Rot. Harvesting as soon as possible is recommended to avoid possible loss of product.

A timber sale contract for this lump sum, sealed bid timber sale will be awarded to the responsible bidder offering the highest sealed bid price. All units of volume listed below were estimated using the Inventory Manager computer program and the new Michigan taper model. Bids must be at or above the following advertised price for each product and species:

<u>PRODUCTS &amp; SPECIES</u>	<u>ESTIMATED UNITS*</u>	<u>ADVERTISED PRICE</u>
Posts		
Red Pine	239 Cords	\$ 34.90 / Cord

\* The total volume is statistically estimated within plus (+) or minus (-) 21.48 percent. There are an estimated 239 cords on this timber sale, plus or minus 51 cords at the 95% confidence level. The estimated units are final and not subject to adjustment. Prospective bidders are urged to examine this timber and to make their own estimates of quantity and quality.

### **BOND AND PAYMENT SCHEDULE:**

1. A bond in the amount of \$417.00 to insure faithful performance of the conditions of the contract will be deposited by the successful bidder within 21 days of the sale award.
2. Cutting in any sale or unit without the required advance payment would be considered a trespass.
3. Total payment must be paid in advance or according to the following schedule :
  - (a) Ten percent (10%) of the sale value must be paid within 21 days of the sale award.
  - (b) The remainder is due before cutting begins.
  - (c) Payment for each of the following units must be made before cutting begins in that unit:

PAYMENT UNIT NUMBER	PERCENT OF TOTAL SALE VALUE
01	100.0%
4. If no cutting takes place, the 10% down payment will not be refunded.
5. Operations on the contract issued will terminate on 12/31/2024.

### **SALE STATISTICS**

Volumes were calculated in cubic feet using the Michigan taper model. Cubic foot volume includes all wood inside bark for the product indicated. For display purposes, cubic feet were converted to cords and MBF using a simple conversion factor, e.g. 79 cubic feet per cord and 185 cubic feet per MBF. The cubic foot volumes are precise; the cords and MBF volumes are not. Cubic foot volume cannot be directly converted to cords or boards with precision.

### **SALE VOLUMES**

The total estimated sale volume may not equal the sum of the species/products due to the nature of statistical calculations associated with double sampling methodology.

VOLUME		STATISTICAL RANGE IN CORDS		
TOTAL CUBIC FEET	TOTAL CORDS	PERCENT ERROR	MINIMUM	MAXIMUM
18,884	239	21.48%	188	290

### **VDU VOLUMES**

A VDU is a Volume Determination Unit. Volumes and their associated statistics are calculated at the VDU level and summarized to the sale level. There is often a one to one relationship between a VDU and a Payment Unit, but not always, depending on the cruise design. Refer to the VDU TO PAYMENT UNIT table.

VDU	VOLUME			RANGE IN CORDS	
	TOTAL CUBIC FEET	TOTAL CORDS	PERCENT ERROR	MINIMUM	MAXIMUM
45	18,884	239	21.48%	188	290
<b>TOTAL:</b>	<b>18,884</b>	<b>239</b>		<b>188</b>	<b>290</b>

**VDU TO PAYMENT UNIT**

When a VDU is associated with more than one Payment Unit (PU), the VDU volumes are assigned to the PU based on acres of the VDU within the PU.

VDU	VDU ACRES	PU	PU ACRES
45	17.4	1	17.4
<b>TOTAL:</b>	<b>17.4</b>		<b>17.4</b>

**DESCRIPTION OF TIMBER BY PAYMENT UNIT (PU)**

PU	MARKET GROUP	PRODUCT	QUANTITY	UNIT	ACRES	ADVERTISE PRICE
1	Red Pine	Posts	239	Cords	17.4	\$8,341.10
<b>TOTAL:</b>			<b>239</b>	<b>Cords</b>		

## Sale Specific Conditions & Requirements

**Sale Name: Another Yappy Dog R.P.**

**Sale Number: 52-118-20 Seq#: 2**

### 1 - Sale Area

#### 1.2 - Boundaries

##### 1.2.1 - Painted boundaries (9/19)

The sale boundary is marked and identified by blue and red paint and Fisher Road. Exterior sale boundary lines against private property are marked with blue paint. Exterior sale boundary lines against state are marked with red paint and Fisher Road. The painted boundary line trees are not Included Timber and are to be protected unless marked with orange paint.

### 2 - Timber Specifications

#### 2.1 - Included Timber

##### 2.1.3 - Cut tree marked unit(s) (12/08)

Within Payment Unit(s) 1, all trees are designated for cutting when marked with orange paint above and below stump height, regardless of merchantability.

### 3 - Payments

#### 3.4 - Damaged Timber

##### 3.4.1 - Damaged timber (7/16)

General Condition and Requirement 3.4 Damaged Timber, defines liquidated damages for undesignated live merchantable trees which are cut or injured. No damage is acceptable to undesignated live merchantable trees. Within the Sale Area, if more than 5% of trees (> 4.5" DBH) within a specified area of the sale are damaged, liquidated damages will be assessed for all trees damaged. Rates will be in accordance with General Condition and Requirement 3.4 Damaged Timber.

### 5 - Operations

#### 5.1 - Notification

##### 5.1.1 - Pre-sale conference (10/16)

A pre-sale conference on site between the Purchaser and sale administrator is required prior to beginning any operations to determine landing and road locations. The Unit Manager or his/her representative must be contacted at least 3 days in advance to schedule the conference.

#### 5.2 - Conduct of Operations

##### 5.2.1 - Slash

###### 5.2.1.13 - Dispose of slash as directed (12/05)

Slash is to be disposed of as directed by the Sale Administrator.

##### 5.2.2 - Hazard Trees/Snags

###### 5.2.2.1 - Den trees (10/16)

Obvious hollow and/or den trees shall be protected and left standing unless they are a safety hazard.

##### 5.2.3 - Operating Restrictions

###### 5.2.3.3 - Bark slippage restriction (3/09)

Within Payment Unit(s) 1, unless changed by written agreement, cutting and skidding are not permitted during the period of April 15 to July 15. This restriction is because of bark slippage.

###### 5.2.3.6 - Bark beetle restriction (12/08)

In the event drought creates a high risk of pine bark beetle infestation, pine is not to be cut during the period March 1 through July 1, unless all portions of trees greater than two inches in diameter are removed from the sale area, reduced to chips, or treated to the satisfaction of the Unit Manager or his/her representative, within fifteen days of being severed from the stump. Pine log decks, pulpwood piles and treetops that are piled for chipping in the fall or winter within a 1/4

mile of susceptible sites must be removed before March 15. Residual slash must not be placed in piles or rows and must be spread over the site for quick drying. The Department of Natural Resources will exercise this specification if the risk of damage warrants.

#### 5.2.3.14 - heterobasidion root disease (HRD) (3/21)

This plantation is at risk of infection by the root rot fungus, *Heterobasidion irregulare*. To prevent the spread of this disease, cutting operations within Payment Unit(s) 1 are restricted to the period of January 1st through February 28th. Cutting may only occur outside this period with written permission of the Unit Manager or with the application of a preventative pesticide. Consultation with a forest health specialist will determine if cutting can occur prior to January 1 without pesticide application, dependent upon current and forecasted snow cover. Cellu-Treat and RotStop C are currently the only EPA registered products available in the United States for the control of *Heterobasidion*. Both products are a water-soluble powder that must be applied to the stump, in accordance with the product label. Dye must be added to these products to provide visible evidence of adequate coverage. Application of these pesticides requires licensing by the Michigan Department of Agriculture and Rural Development. All applicators are required to: provide to the Sale Administrator notification of application per requirements in 40 CFR 170.120; and document and provide to the Sale Administrator annually, by December 31 and prior to closure of sale, the volume of product used and acres treated.

#### 5.2.38 - No decking against live trees (2/04)

Cut products may not be decked against unmarked or designated leave trees.

### 5.4 - Soil Protection

#### 5.4.1 - Rutting restriction, general (7/16)

Operations are to cease immediately if equipment and weather conditions result in rutting of roads and/or skid trails which is 12 inches or greater in depth and 50 feet in length. The Unit Manager or his/her representative may restrict hauling and/or skidding if ruts exceed the specified depth. With the Unit Manager or his/her representative's approval, the Purchaser may return to the area when the risk of rutting has decreased.

### 5.8 - Protection of Endangered Species

#### 5.8.5 - Protection of raptor nests (3/13)

All trees with raptor nests will be protected if found during harvesting operations. Notification will be made to the Unit Manager or his/her representative who will notify the Wildlife Biologist so an on-site evaluation and recommendation can be made, if necessary.

## 7 - Other Conditions

### 7.5 - Loss

#### 7.5.1 - Deteriorating timber (7/09)

The sale area has received damage from *Armillaria* Root Rot. The Purchaser should harvest the wood as soon as possible. The Department of Natural Resources is held free of responsibility of any further damage or deterioration due to delay in harvesting.



# TIMBER SALE MAP

This information provided by authority of Part 525, 1994 PA 451, as amended.

Forest Management Unit	County	Mapped By	Date	Page	of
GFMU/ Indian River Field Office	Emmet	Harig	3/17/2021	1	1
		Cruised By			
		Harig			

Township	Range	Section(s) and Subdivision(s)	Scale
36N	06W	14: SWNE	1:15,840

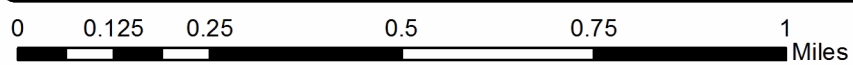
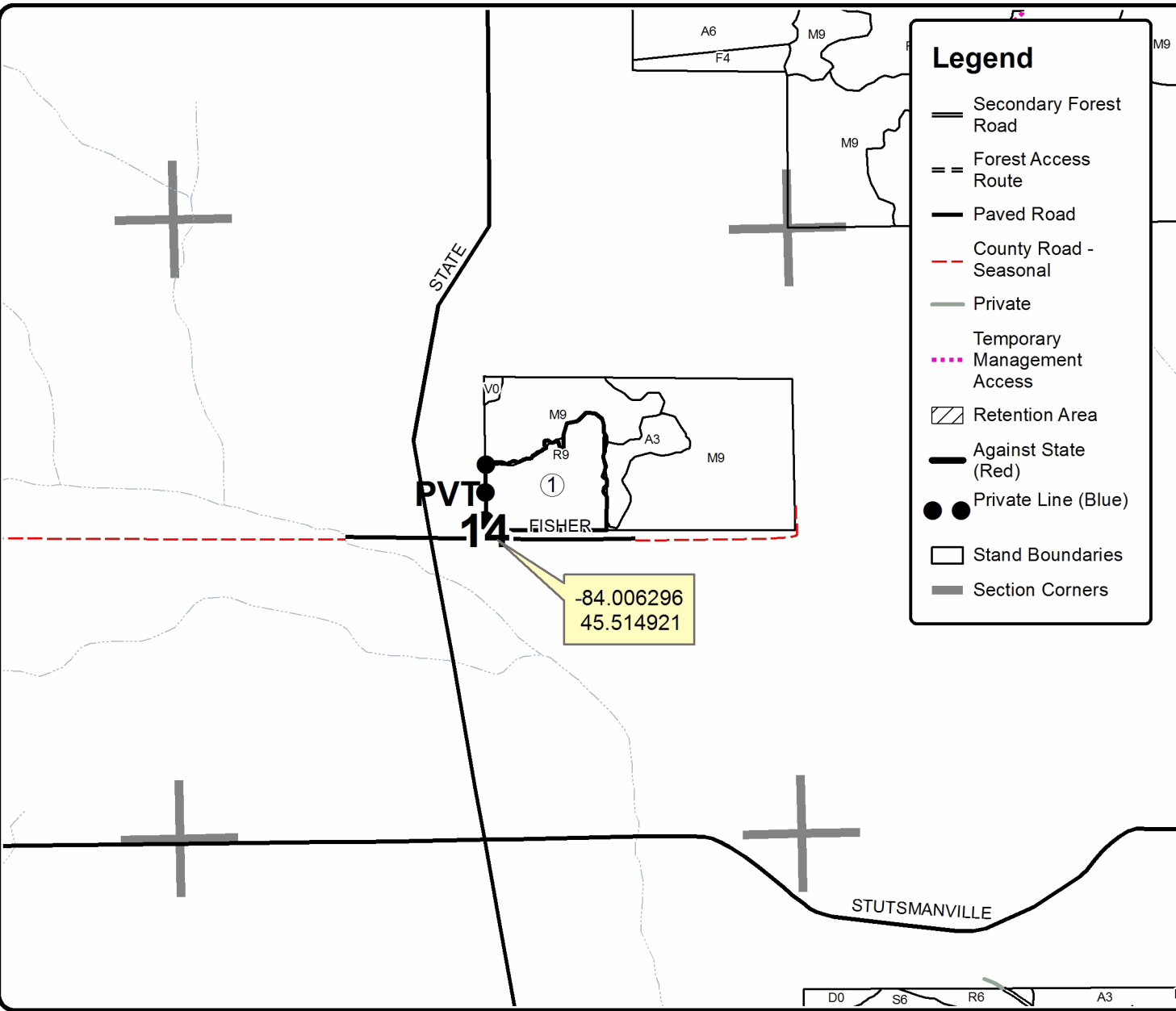
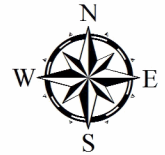
Cover Type				Density	
A = Aspen	H = Hemlock	N = Marsh	U = Upland Brush	0 = Non Stocked	5 = Pole Timber Medium
B = Paper Birch	J = Jack Pine	O = Oak	UM = Upland Mixed	1 = Seedling Sapling Poor	6 = Pole Timber Well
C = Cedar	L = Lowland Brush	P = Lowland Poplar	V = Bog or Marsh	2 = Seedling Sapling Medium	7 = Saw Timber Poor
D = Treed Bog	LM = Lowland Mixed	Q = Mixed Swamp Conifer	W = White Pine	3 = Seedling Sapling Well	8 = Saw Timber Medium
E = Swamp Hdwoods	M = Mpl, Bch, Brch	R = Red Pine	X = Non Stocked	4 = Pole Timber Poor	9 = Saw Timber Well
F = Spruce Fir	MC = Mixed Conifer	S = Black Spruce	Z = Water		
G = Grass	MD = Mixed Deciduous	T = Tamarack			

PU	Acres
1	17.4

## Another Yappy Dog R.P.

### Compartment 104

17.4 Acres





## TIMBER SALE INFORMATION

### Snake Trail Aspen 2 (52-130-20)

T35N, R01E, SEC. 17; T35N, R01E, SEC. 18; T35N, R01E, SEC. 7; T35N, R01W, SEC. 12.  
Cheboygan County (Advertised Price \$59,568.55)

SALE NOTE: Good aspen volume in Payment Units 4 and 5. Payment Unit 6 is wet, but operable during dry conditions. Has high cedar volume component. Access Payment Unit 6 from southwest corner along old trail/road.

A recreation site such as a trail, pathway, or campground is within the sale area or the vicinity. Certain restrictions/specifications may be applicable including time restrictions.

A timber sale contract for this lump sum, sealed bid timber sale will be awarded to the responsible bidder offering the highest sealed bid price. All units of volume listed below were estimated using the T-Sale computer program and our traditional volume equations. Bids must be at or above the following advertised price for each product and species:

<u>PRODUCTS &amp; SPECIES</u>	<u>ESTIMATED UNITS*</u>		<u>ADVERTISED PRICE</u>
<b>Sawtimber</b>			
Mixed Aspen	152.1	MBF	\$ 40.00 / MBF
N. White Cedar	50.7	MBF	\$ 2.00 / MBF
Red Maple	8.0	MBF	\$ 66.00 / MBF
Red Pine	12.8	MBF	\$ 79.00 / MBF
White Spruce	13.3	MBF	\$ 32.00 / MBF
<b>Pulpwood</b>			
Balsam Fir	459	Cords	\$ 18.30 / Cord
Jack Pine	52	Cords	\$ 11.15 / Cord
Mixed Aspen	1,501	Cords	\$ 15.85 / Cord
Mixed Hardwood	870	Cords	\$ 16.70 / Cord
Mixed Spruce	105	Cords	\$ 12.45 / Cord
N. White Cedar	320	Cords	\$ 6.10 / Cord
Red Oak	26	Cords	\$ 10.20 / Cord
Red Pine	15	Cords	\$ 35.05 / Cord
White Pine	4	Cords	\$ 17.20 / Cord

\* The total volume is statistically estimated within plus (+) or minus (-) 12.25 percent. There are an estimated 3,826 cords on this timber sale, plus or minus 469 cords at the 95% confidence level. The estimated units are final and not subject to adjustment. Prospective bidders are urged to examine this timber and to make their own estimates of quantity and quality.

### **BOND AND PAYMENT SCHEDULE:**

1. A bond in the amount of \$5,957.00 to insure faithful performance of the conditions of the contract will be deposited by the successful bidder within 21 days of the sale award.
2. Cutting in any sale or unit without the required advance payment would be considered a trespass.
3. Total payment must be paid in advance or according to the following schedule :
  - (a) Ten percent (10%) of the sale value must be paid within 21 days of the sale award.
  - (b) The 10% down payment will be credited towards the first unit cut.
  - (c) Payment for each of the following units must be made before cutting begins in that unit:
 

PAYMENT UNIT NUMBER	PERCENT OF TOTAL SALE VALUE
01	1.9%
02	2.6%
03	10.6%
04	12.2%
05	23.1%
06	49.6%

4. If no cutting takes place, the 10% down payment will not be refunded.
5. Operations on the contract issued will terminate on 12/31/2025.

### **SALE STATISTICS**

**SALE VOLUMES**

VOLUME			STATISTICAL RANGE IN CORDS	
TOTAL CUBIC FEET	TOTAL CORDS	PERCENT ERROR	MINIMUM	MAXIMUM
302,223	3,826	12.25%	3,357	4,294

**VDU VOLUMES**

A VDU is a Volume Determination Unit. Volumes and their associated statistics are calculated at the VDU level and summarized to the sale level. There is often a one to one relationship between a VDU and a Payment Unit, but not always, depending on the cruise design. Refer to the VDU TO PAYMENT UNIT table.

	VOLUME			RANGE IN CORDS	
VDU	TOTAL CUBIC FEET	TOTAL CORDS	PERCENT ERROR	MINIMUM	MAXIMUM
50	161,626	2,046	19.67%	1,643	2,448
54	29,799	377	37.45%	236	518
58	35,005	443	29.80%	311	575
59	65,199	825	20.02%	660	991
79	7,418	94	59.12%	38	149
83	3,192	40	48.71%	21	60
<b>TOTAL:</b>	<b>302,238</b>	<b>3,826</b>		<b>2,910</b>	<b>4,742</b>

**VDU TO PAYMENT UNIT**

When a VDU is associated with more than one Payment Unit (PU), the VDU volumes are assigned to the PU based on acres of the VDU within the PU.

VDU	VDU ACRES	PU	PU ACRES
50	74.9	6	74.9
54	15.9	3	15.9
58	11.1	4	11.1
59	24.0	5	24.0
79	4.9	1	4.9
83	1.6	2	1.6
<b>TOTAL:</b>	<b>132.4</b>		<b>132.4</b>



**DESCRIPTION OF TIMBER BY PAYMENT UNIT (PU)**

PU	MARKET GROUP	PRODUCT	QUANTITY	UNIT	ACRES	ADVERTISE PRICE
1	Jack Pine	Pulpwood	52	Cords	4.9	\$1,142.95
	Mixed Hardwood		5	Cords		
	<i>Red Maple</i>		5	Cords		
	Mixed Spruce		33	Cords		
	<i>Black Spruce</i>		33	Cords		
	White Pine		4	Cords		
	2		Red Pine	Sawtimber		
Red Pine	Pulpwood	15	Cords			
3	Mixed Aspen	Sawtimber	22.8	MBF	15.9	\$6,339.35
	<i>B. T. Aspen</i>		2.7	MBF		
	<i>Quaking Aspen</i>		20.1	MBF		
	Balsam Fir	Pulpwood	57	Cords		
	Mixed Aspen		245	Cords		
	<i>B. T. Aspen</i>		17	Cords		
	<i>Quaking Aspen</i>		228	Cords		
	Mixed Hardwood		30	Cords		
	<i>Red Maple</i>		30	Cords		
	4		Mixed Aspen	Sawtimber		
<i>B. T. Aspen</i>	19.5	MBF				
<i>Quaking Aspen</i>	1.3	MBF				
Balsam Fir	Pulpwood	6	Cords			
Mixed Aspen		274	Cords			
<i>B. T. Aspen</i>		254	Cords			
<i>Quaking Aspen</i>		20	Cords			
Mixed Hardwood		120	Cords			
<i>Paper Birch</i>		11	Cords			
<i>Red Maple</i>		109	Cords			
5	Mixed Aspen	Sawtimber	50.6	MBF	24.0	\$13,778.55
	<i>B. T. Aspen</i>		50.6	MBF		
	Red Maple	4.3	MBF			
	Balsam Fir	Pulpwood	21	Cords		
	Mixed Aspen		413	Cords		
	<i>B. T. Aspen</i>		413	Cords		
	Mixed Hardwood		256	Cords		
	<i>Basswood</i>		12	Cords		
	<i>Beech</i>		32	Cords		
	<i>Paper Birch</i>		7	Cords		
	<i>Red Maple</i>		187	Cords		
	<i>White Ash</i>		18	Cords		
	Red Oak		26	Cords		
6	Mixed Aspen		Sawtimber	57.9	MBF	74.9
	<i>B. T. Aspen</i>	8.8		MBF		
	<i>Quaking Aspen</i>	49.1		MBF		
	N. White Cedar	50.7	MBF			
	Red Maple	3.7	MBF			
	White Spruce	13.3	MBF			
	Balsam Fir	Pulpwood	375	Cords		
	Mixed Aspen		569	Cords		
	<i>B. T. Aspen</i>		35	Cords		
	<i>Quaking Aspen</i>		534	Cords		
	Mixed Hardwood		459	Cords		
	<i>Basswood</i>		9	Cords		
	<i>Paper Birch</i>		74	Cords		
	<i>Red Maple</i>		376	Cords		
	Mixed Spruce		72	Cords		
	<i>White Spruce</i>		72	Cords		

**DESCRIPTION OF TIMBER BY PAYMENT UNIT (PU), CON'T**

PU	MARKET GROUP	PRODUCT	QUANTITY	UNIT	ACRES	ADVERTISE PRICE
6 con't	N. White Cedar	Pulpwood	320	Cords		
TOTAL:			236.9	MBF		
TOTAL:			3,352	Cords		

## Sale Specific Conditions & Requirements

Sale Name: Snake Trail Aspen 2

Sale Number: 52-130-20 Seq#: 2

### 1 - Sale Area

#### 1.2 - Boundaries

##### 1.2.1 - Painted boundaries (9/19)

The sale boundary and Payment Unit boundaries are marked and identified by red and yellow paint. Exterior sale boundary lines against state are marked with red paint. Interior Payment Unit boundaries are marked with yellow paint. Retention patches are marked with teal paint; no harvesting activities may occur within these areas.

### 2 - Timber Specifications

#### 2.1 - Included Timber

##### 2.1.2 - Clearcut unit(s) w/o unmerchantable trees (8/11)

Within Payment Unit(s) 1 and 3 - 6, cut all trees which meet minimum piece specifications in 2.2 Utilization, except for the following:

- Within Payment Unit 1, do not cut red pine, oak, or teal marked trees.
- Within Payment Unit 3, do not cut cedar, pine, or hemlock.
- Within Payment Unit 4, do not cut red pine, oak, hemlock.
- Within Payment Unit 5, do not cut oak > 24 inches at DBH.
- Within Payment Unit 6, do not cut oak or hemlock.

##### 2.1.3 - Cut tree marked unit(s) (12/08)

Within Payment Unit(s) 2, all trees are designated for cutting when marked with orange paint above and below stump height, regardless of merchantability.

### 3 - Payments

#### 3.3 - Pre-measured Sales

##### 3.3.4 - Dividing payment units (7/14)

Payment Unit(s) 6 may be divided at the request of the Purchaser and upon approval of the Unit Manager. Dividing Payment Units is a contract modification which requires a Timber Sale Contract Amendment.

### 4 - Transportation

#### 4.1 - Construction

##### 4.1.3 - Slash and earthen piles (8/04)

Piles or windrows of earth along roads and landings that have been widened or constructed shall be leveled. Slash from road maintenance or construction, including stumps, shall be dispersed throughout the sale.

##### 4.1.6 - Road construction (1/09)

Construction of new roads or improvements of existing roads shall be done in such a way as to minimize the environmental and visual impacts. Merchantable trees shall be cut and utilized unless otherwise directed. Non-merchantable trees shall be severed and laid flat on the ground. Slash shall be scattered, and not left in windrows and kept a minimum of 10 feet back from the road edge. Stumps shall be set upright, not left on edge, and be moved at least 10 feet away from the road edge. Disturbed soil shall be feathered into the woods and not left in berms or windrows.

##### 4.1.7 - Road closure (10/11)

All new roads built into the sale must be blocked to vehicle traffic upon completion of the sale. Overgrown roads that are reopened shall be considered new roads. In general, this will require constructing a four (4') foot high berm of stumps and logs covered with earth.

#### 4.2 - Maintenance

##### 4.2.4 - Grading (10/16)

For completion of the sale, state forest roads must be graded. In general, this will require a road grader or bulldozer to shape up the roads after forest products have been hauled off site. This includes cleaning of drainage areas, grading, crowning, and filling with gravel, if necessary. The grading equipment to be used must be approved by the Unit Manager or his/her representative.

## 5 - Operations

### 5.1 - Notification

#### 5.1.1 - Pre-sale conference (10/16)

A pre-sale conference between the Purchaser and sale administrator is required prior to beginning any operations to determine landing and road locations. The Unit Manager or his/her representative must be contacted at least 2 days in advance to schedule the conference.

#### 5.1.4 - Post-sale conference (10/16)

A post-sale conference on site between the Purchaser and sale administrator is required 5 days prior to the completion of active logging operations to determine clean-up and repair of landings, road edges, and the fulfillment of other contract specifications.

### 5.2 - Conduct of Operations

#### 5.2.2 - Hazard Trees/Snags

##### 5.2.2.1 - Den trees (10/16)

Obvious hollow and/or den trees shall be protected and left standing unless they are a safety hazard.

#### 5.2.3 - Operating Restrictions

##### 5.2.3.1 - Operating restrictions (9/11)

Within Payment Unit(s) 1, unless changed by written agreement, cutting, skidding, and hauling are limited to the period of June 1 to October 1. This restriction is to promote scarification for natural jack pine regeneration and to minimize rutting potential due to the wetter soil conditions.

#### 5.2.16 - Equipment recommended (11/18)

Tracked equipment is recommended in Payment Units 1, 3, 4, and 6 because of the wetter soil conditions.

#### 5.2.22 - Operating Caution

##### 5.2.22.1 - Operating caution (6/11)

It is recommended, but not required, that within Payment Unit(s) 2 - 5, cutting, skidding, and hauling occur during dry summer or frozen winter conditions. The reason for the recommendation is to minimize the rutting potential due to the wetter soil conditions.

##### 5.2.22.2 - Operating caution (6/11)

It is recommended, but not required, that within Payment Unit(s) 6, cutting, skidding, and hauling occur during the period of July 1 to September 30. The reason for the recommendation is to minimize rutting potential due to the wet soil conditions.

#### 5.2.32 - Decking/landing restoration (9/13)

All decking and landing areas must have the surface area restored to a condition equal to or better than before. This is to ensure the proper regeneration of the stand.

### 5.4 - Soil Protection

#### 5.4.1 - Rutting restriction, general (7/16)

Operations are to cease immediately if equipment and weather conditions result in rutting of roads and/or skid trails which is 12 inches or greater in depth and 50 feet in length. The Unit Manager or his/her representative may restrict hauling and/or skidding if ruts exceed the specified depth. With the Unit Manager or his/her representative's approval, the Purchaser may return to the area when the risk of rutting has decreased.

#### 5.4.6 - Wet area protection (5/10)

No harvesting operations, including skidding and felling, are to take place within vernal pond areas or drainages within the Sale

Area. Care must be taken by the Purchaser to identify and avoid operating in these areas of the timber sale. Contact the sale administrator to discuss harvesting options around any excessive wet areas or drainages.

#### 5.8 - Protection of Endangered Species

##### 5.8.5 - Protection of raptor nests (3/13)

All trees with raptor nests will be protected if found during harvesting operations. Notification will be made to the Unit Manager or his/her representative who will notify the Wildlife Biologist so an on-site evaluation and recommendation can be made, if necessary.

### 6 - Safety and Fire Prevention

#### 6.2 - Signing

##### 6.2.1 - Road posting (9/09)

The Purchaser is responsible for posting and maintaining caution signs on Waveland and Michigan State Roads prior to beginning operations. The road must be posted at appropriate distances from the Sale Area to warn of logging activity and truck traffic. Signs must be removed when harvest operations are suspended or completed.

##### 6.2.3 - Recreational trail posting (2/10)

The Purchaser is responsible for posting and maintaining caution signs on ORV trail prior to beginning operations. The trail must be posted at appropriate distances from the Sale Area to warn of logging activity and truck traffic at both ends of the trail. Signs must be removed when harvest operations are suspended or completed. The Purchaser will provide these signs.

### 7 - Other Conditions

#### 7.5 - Loss

##### 7.5.1 - Deteriorating timber (7/09)

The sale area has received damage from windthrow in the past and is susceptible to possible windthrow in the future. The Purchaser should harvest the wood as soon as possible. The Department of Natural Resources is held free of responsibility of any further damage or deterioration due to delay in harvesting.



# TIMBER SALE MAP

This information provided by authority of Part 525, 1994 PA 451, as amended.

Sale Number	Year
52 - 130	20

Forest Management Unit Gaylord	County Cheboygan	Mapped By TSP	Date 10/06/2020	Page 1	of 1
Township 35N	Range 01E & 01W	Section(s) and Subdivision(s) 01E Sec 7: SW,NW,SW; 17: SWSW; 18: SW,NESE,S1/2SE; 01W Sec 12: E1/2SE	Scale 1:15,840		

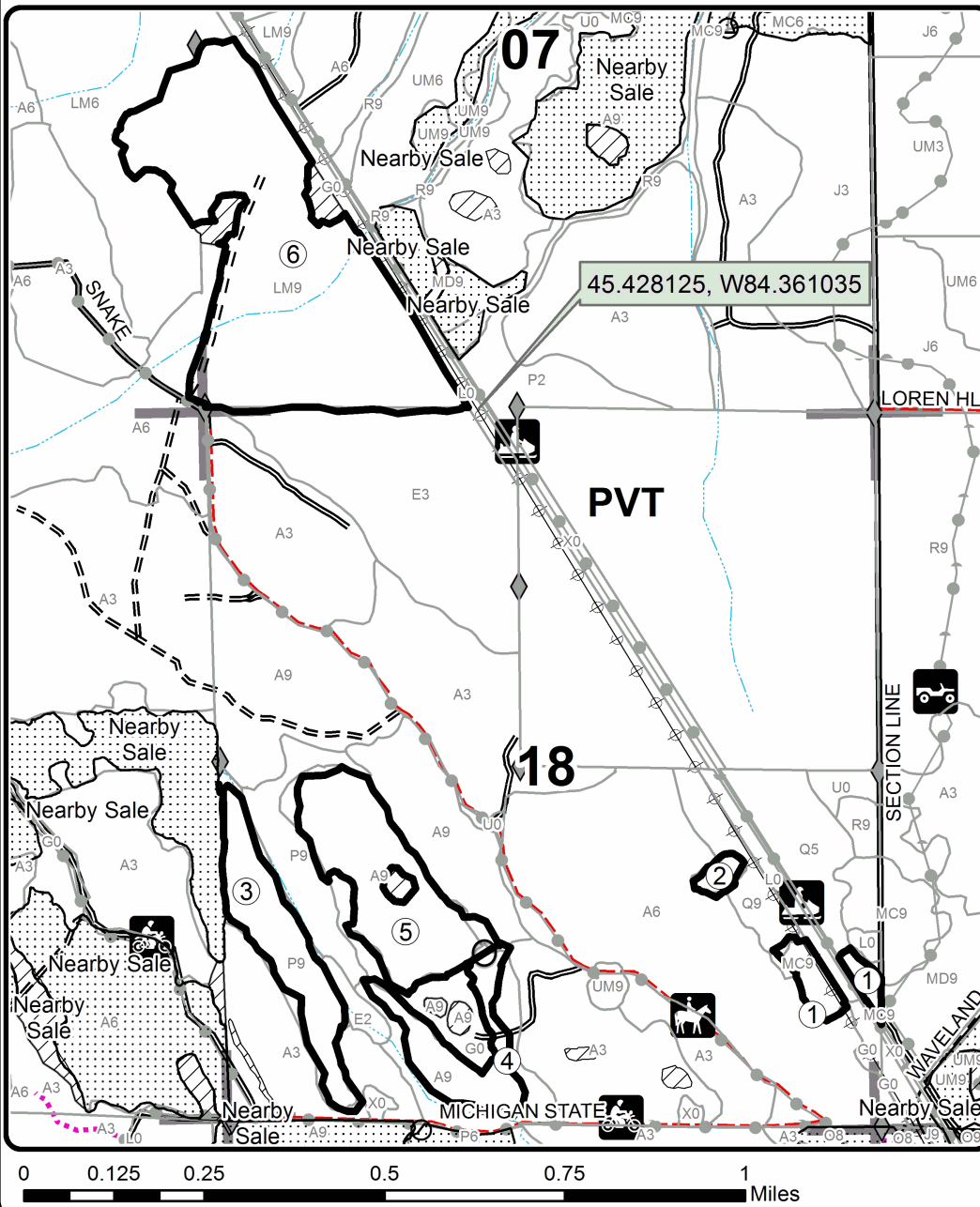
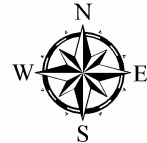
Cover Type				Density			
A = Aspen	H = Hemlock	N = Marsh	U = Upland Brush	0 = Non Stocked	5 = Pole Timber Medium		
B = Paper Birch	J = Jack Pine	O = Oak	UM = Upland Mixed	1 = Seedling Sapling Poor	6 = Pole Timber Well		
C = Cedar	L = Lowland Brush	P = Lowland Poplar	V = Bog or Marsh	2 = Seedling Sapling Medium	7 = Saw Timber Poor		
D = Treed Bog	LM = Lowland Mixed	Q = Mixed Swamp Conifer	W = White Pine	3 = Seedling Sapling Well	8 = Saw Timber Medium		
E = Swamp Hdwoods	M = Mpl, Bch, Brch	R = Red Pine	X = Non Stocked	4 = Pole Timber Poor	9 = Saw Timber Well		
F = Spruce Fir	MC = Mixed Conifer	S = Black Spruce	Z = Water				
G = Grass	MD = Mixed Deciduous	T = Tamarack					

PU	Acres	PU	Acres
1	4.9	4	11.1
2	1.6	5	24
3	15.9	6	74.9

## Snake Trail Aspen 2

### Compartment 205

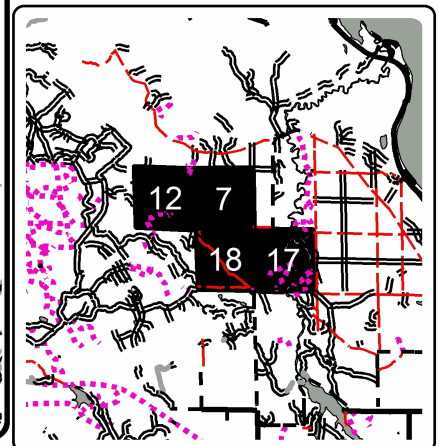
132.4 Acres



### Legend

- Against State (Red)
- Payment Unit (Yellow)
- Retention Area
- Nearby Timber Sales
- Stand Boundaries
- Recreational Trail
- Field Grade Corners
- Secondary Forest Road
- Forest Access Route
- Gravel Road
- County Road - Seasonal
- Temporary Management Access
- Intermittent Stream
- Section Corners

Locator Map  
1:200,000



Snake Trail Aspen 2 (52-130-20)  
T35N, R01E, SEC. 17; T35N, R01E, SEC. 18; T35N, R01E, SEC. 7; T35N, R01W,

In response to the notice of sale to be held 3:00 p.m. (local time) on August 24, 2021, I am hereby submitting my sealed bid (firm offer) for the following forest products to be cut. Bids for individual species must be at or above the advertised price. All non-responsive bid forms may be rejected.

<u>PRODUCTS &amp; SPECIES</u>	<u>ESTIMATED VOLUME*</u>	<u>ADVERTISED PRICE</u>	<u>BID PRICE/UNIT</u>
<b>Sawtimber</b>			
Mixed Aspen	152.1 MBF	\$ 40.00/MBF	\$ _____
N. White Cedar	50.7 MBF	\$ 2.00/MBF	\$ _____
Red Maple	8.0 MBF	\$ 66.00/MBF	\$ _____
Red Pine	12.8 MBF	\$ 79.00/MBF	\$ _____
White Spruce	13.3 MBF	\$ 32.00/MBF	\$ _____
<b>Pulpwood</b>			
Balsam Fir	459 Cords	\$ 18.30/Cord	\$ _____
Jack Pine	52 Cords	\$ 11.15/Cord	\$ _____
Mixed Aspen	1,501 Cords	\$ 15.85/Cord	\$ _____
Mixed Hardwood	870 Cords	\$ 16.70/Cord	\$ _____
Mixed Spruce	105 Cords	\$ 12.45/Cord	\$ _____
N. White Cedar	320 Cords	\$ 6.10/Cord	\$ _____
Red Oak	26 Cords	\$ 10.20/Cord	\$ _____
Red Pine	15 Cords	\$ 35.05/Cord	\$ _____
White Pine	4 Cords	\$ 17.20/Cord	\$ _____

\*The volumes are statistically estimated within plus (+) or minus (-) 12.25 percent at 95% confidence level. These estimated volumes are final and not subject to adjustment. Prospective bidders are urged to examine this timber and to make their own estimates of quantity and quality.

I understand that any or all bids may be rejected. All bids must be signed and all bid items must be bid or the bid form may be rejected. I also understand that consideration and awarding a contract will be based upon my past performance and ability to complete the contract based upon equipment and staffing subject to my control.

FEDERAL ID: \_\_\_\_\_ or SOCIAL SECURITY NUMBER: \_\_\_\_\_

Company or individual bidding: \_\_\_\_\_

Company representative's name: \_\_\_\_\_

Address: \_\_\_\_\_

City: \_\_\_\_\_ State: \_\_\_\_\_ Zip: \_\_\_\_\_

IF AVAILABLE, PLEASE PLACE THE PERSONALIZED LABEL FROM YOUR PROSPECTUS IN THE ABOVE BOX.

Individual or company representative's signature: \_\_\_\_\_ Date: \_\_\_\_\_

Phone number : \_\_\_\_\_ Email (optional): \_\_\_\_\_

**THE WINNING BIDDER MUST COMPLETE THE VERIFICATION OF WORKER'S DISABILITY COMPENSATION ACT COMPLIANCE (ON REVERSE SIDE IF DOUBLE SIDED) WITHIN 21 DAYS OF SALE AWARD DATE**



<b>FOR DEPARTMENT USE ONLY</b>	
Sale Number (XX - XXX - XX - XX)	
Forest Management Unit:	

## TIMBER SALE VERIFICATION OF WORKER'S DISABILITY COMPENSATION ACT COMPLIANCE

As required by Act 317, P.A. 1969 (Worker's Compensation) and  
Part 5 of Act 451 of 1994, as amended.

### VERIFICATION OF WORKER'S DISABILITY COMPENSATION ACT COMPLIANCE

- This verification must be completed and submitted within 21 days of contract award and prior to the issuance of the timber sale contract.
- In addition, if boxes 2B or 2C are checked, then Notice of Exclusion or Certificate of Insurance must be submitted within twenty-one (21) days of the contract award and prior to the issuance of the timber sale contract.
- All information must be typed or printed except for written signatures.

Please Check Appropriate Categories:

1. My business is organized as (you **must** check one of the boxes below):
  - A.  Sole Proprietorship (individual)
  - B.  Partnership
  - C.  Corporation
2. You **must** check one of the boxes below:
  - A.  I certify my business is a sole proprietorship and it has no employees but the sole proprietor. I am not subject to the Worker's Compensation Laws.
  - B.  I certify my business has satisfied its obligation to the Worker's Compensation Act through the use of an approved Notice of Exclusion (BWC-337, Rev. 5/96). I will provide a copy of the Notice of Exclusion within 21 days of the contract award. (For questions or a copy of the BWC-337, please call the Worker's Compensation Bureau at 517-322-1195).
  - C.  I certify my business has a Worker's Compensation Policy. I will provide an original Certificate of Insurance within twenty-one (21) days of the contract award.
3. If you have checked item 2(A) or 2(B), you **must** indicate the number of **both** full-time and part-time employees, other than yourself, including family members and active partners (if none, you must enter "0").

\_\_\_\_\_ Full-time Employees

\_\_\_\_\_ Part-time Employees

Name of Business		Federal ID (or) Social Security No.	
Address		Telephone (       )	
City	State	ZIP	

*I hereby certify that the above information is true and correct. I agree to notify the Michigan DNR of any changes that occur in factors affecting my coverage during any of my present and future operations.*

\_\_\_\_\_  
Signature of Owner or Authorized Representative

\_\_\_\_\_  
Title

\_\_\_\_\_  
Date

Please complete the "SEALED BID" information on the next page



Two County Mix (52-101-21)  
T37N, R03W, SEC. 6; T37N, R04W, SEC. 1; Cheboygan COUNTY

In response to the notice of sale to be held 3:00 p.m. (local time) on August 24, 2021, I am hereby submitting my sealed bid (firm offer) for the following forest products to be cut. Bids for individual species must be at or above the advertised price. All non-responsive bid forms may be rejected.

<u>PRODUCTS &amp; SPECIES</u>	<u>ESTIMATED VOLUME*</u>	<u>ADVERTISED PRICE</u>	<u>BID PRICE/UNIT</u>
<b>Sawtimber</b>			
Basswood	5.6 MBF	\$ 45.00/MBF	\$ _____
Mixed Aspen	79.1 MBF	\$ 40.00/MBF	\$ _____
N. White Cedar	0.9 MBF	\$ 2.00/MBF	\$ _____
Paper Birch	4.3 MBF	\$ 27.00/MBF	\$ _____
Red Maple	9.2 MBF	\$ 66.00/MBF	\$ _____
Sugar Maple	20.1 MBF	\$ 289.00/MBF	\$ _____
<b>Pulpwood</b>			
Balsam Fir	103 Cords	\$ 18.30/Cord	\$ _____
Bl/R/Hybrid Oak	2 Cords	\$ 10.20/Cord	\$ _____
Mixed Aspen	468 Cords	\$ 15.85/Cord	\$ _____
Mixed Hardwood	346 Cords	\$ 16.70/Cord	\$ _____
N. White Cedar	1 Cords	\$ 6.10/Cord	\$ _____
Scotch Pine	73 Cords	\$ 13.50/Cord	\$ _____

\*The volumes are statistically estimated within plus (+) or minus (-) 9.88 percent at 95% confidence level. These estimated volumes are final and not subject to adjustment. Prospective bidders are urged to examine this timber and to make their own estimates of quantity and quality.

I understand that any or all bids may be rejected. All bids must be signed and all bid items must be bid or the bid form may be rejected. I also understand that consideration and awarding a contract will be based upon my past performance and ability to complete the contract based upon equipment and staffing subject to my control.

FEDERAL ID: \_\_\_\_ - \_\_\_\_ - \_\_\_\_ or SOCIAL SECURITY NUMBER: \_\_\_\_ - \_\_\_\_ - \_\_\_\_

Company or individual bidding: \_\_\_\_\_

Company representative's name: \_\_\_\_\_

Address: \_\_\_\_\_

City: \_\_\_\_\_ State: \_\_\_\_\_ Zip: \_\_\_\_\_

IF AVAILABLE, PLEASE PLACE THE PERSONALIZED LABEL FROM YOUR PROSPECTUS IN THE ABOVE BOX.

Individual or company representative's signature: \_\_\_\_\_ Date: \_\_\_\_\_

Phone number : \_\_\_\_\_ Email (optional): \_\_\_\_\_

**THE WINNING BIDDER MUST COMPLETE THE VERIFICATION OF WORKER'S DISABILITY COMPENSATION ACT COMPLIANCE (ON REVERSE SIDE IF DOUBLE SIDED) WITHIN 21 DAYS OF SALE AWARD DATE**



<b>FOR DEPARTMENT USE ONLY</b>	
Sale Number (XX - XXX - XX - XX)	
Forest Management Unit:	

### TIMBER SALE VERIFICATION OF WORKER'S DISABILITY COMPENSATION ACT COMPLIANCE

As required by Act 317, P.A. 1969 (Worker's Compensation) and  
Part 5 of Act 451 of 1994, as amended.

#### VERIFICATION OF WORKER'S DISABILITY COMPENSATION ACT COMPLIANCE

- This verification must be completed and submitted within 21 days of contract award and prior to the issuance of the timber sale contract.
- In addition, if boxes 2B or 2C are checked, then Notice of Exclusion or Certificate of Insurance must be submitted within twenty-one (21) days of the contract award and prior to the issuance of the timber sale contract.
- All information must be typed or printed except for written signatures.

Please Check Appropriate Categories:

1. My business is organized as (you **must** check one of the boxes below):
  - A.  Sole Proprietorship (individual)
  - B.  Partnership
  - C.  Corporation
2. You **must** check one of the boxes below:
  - A.  I certify my business is a sole proprietorship and it has no employees but the sole proprietor. I am not subject to the Worker's Compensation Laws.
  - B.  I certify my business has satisfied its obligation to the Worker's Compensation Act through the use of an approved Notice of Exclusion (BWC-337, Rev. 5/96). I will provide a copy of the Notice of Exclusion within 21 days of the contract award. (For questions or a copy of the BWC-337, please call the Worker's Compensation Bureau at 517-322-1195).
  - C.  I certify my business has a Worker's Compensation Policy. I will provide an original Certificate of Insurance within twenty-one (21) days of the contract award.
3. If you have checked item 2(A) or 2(B), you **must** indicate the number of **both** full-time and part-time employees, other than yourself, including family members and active partners (if none, you must enter "0").

\_\_\_\_\_ Full-time Employees

\_\_\_\_\_ Part-time Employees

Name of Business		Federal ID (or) Social Security No.	
Address		Telephone (       )	
City	State	ZIP	

*I hereby certify that the above information is true and correct. I agree to notify the Michigan DNR of any changes that occur in factors affecting my coverage during any of my present and future operations.*

\_\_\_\_\_  
Signature of Owner or Authorized Representative

\_\_\_\_\_  
Title

\_\_\_\_\_  
Date

Please complete the "SEALED BID" information on the next page

Another Yappy Dog R.P. (52-118-20)  
T36N, R06W, SEC. 14; Emmet COUNTY

In response to the notice of sale to be held 3:00 p.m. (local time) on August 24, 2021, I am hereby submitting my sealed bid (firm offer) for the following forest products to be cut. Bids for individual species must be at or above the advertised price. All non-responsive bid forms may be rejected.

<u>PRODUCTS &amp; SPECIES</u>	<u>ESTIMATED VOLUME*</u>	<u>ADVERTISED PRICE</u>	<u>BID PRICE/UNIT</u>
Posts Red Pine	239 Cords	\$ 34.90/Cord	\$ _____

\*The volumes are statistically estimated within plus (+) or minus (-) 21.48 percent at 95% confidence level. These estimated volumes are final and not subject to adjustment. Prospective bidders are urged to examine this timber and to make their own estimates of quantity and quality.

I understand that any or all bids may be rejected. All bids must be signed and all bid items must be bid or the bid form may be rejected. I also understand that consideration and awarding a contract will be based upon my past performance and ability to complete the contract based upon equipment and staffing subject to my control.

FEDERAL ID: \_\_\_\_ - \_\_\_\_ - \_\_\_\_ or SOCIAL SECURITY NUMBER: \_\_\_\_ - \_\_\_\_ - \_\_\_\_

Company or individual bidding: \_\_\_\_\_

Company representative's name: \_\_\_\_\_

Address: \_\_\_\_\_

City: \_\_\_\_\_ State: \_\_\_\_\_ Zip: \_\_\_\_\_

IF AVAILABLE, PLEASE PLACE THE PERSONALIZED LABEL FROM YOUR PROSPECTUS IN THE ABOVE BOX.

Individual or company representative's signature: \_\_\_\_\_ Date: \_\_\_\_\_

Phone number : \_\_\_\_\_ Email (optional): \_\_\_\_\_

**THE WINNING BIDDER MUST COMPLETE THE VERIFICATION OF WORKER'S DISABILITY COMPENSATION ACT COMPLIANCE (ON REVERSE SIDE IF DOUBLE SIDED) WITHIN 21 DAYS OF SALE AWARD DATE**



<b>FOR DEPARTMENT USE ONLY</b>
Sale Number (XX - XXX - XX - XX)
Forest Management Unit:

## TIMBER SALE VERIFICATION OF WORKER'S DISABILITY COMPENSATION ACT COMPLIANCE

*As required by Act 317, P.A. 1969 (Worker's Compensation) and  
Part 5 of Act 451 of 1994, as amended.*

### VERIFICATION OF WORKER'S DISABILITY COMPENSATION ACT COMPLIANCE

- This verification must be completed and submitted within 21 days of contract award and prior to the issuance of the timber sale contract.
- In addition, if boxes 2B or 2C are checked, then Notice of Exclusion or Certificate of Insurance must be submitted within twenty-one (21) days of the contract award and prior to the issuance of the timber sale contract.
- All information must be typed or printed except for written signatures.

Please Check Appropriate Categories:

1. My business is organized as (you **must** check one of the boxes below):
  - A.  Sole Proprietorship (individual)
  - B.  Partnership
  - C.  Corporation
2. You **must** check one of the boxes below:
  - A.  I certify my business is a sole proprietorship and it has no employees but the sole proprietor. I am not subject to the Worker's Compensation Laws.
  - B.  I certify my business has satisfied its obligation to the Worker's Compensation Act through the use of an approved Notice of Exclusion (BWC-337, Rev. 5/96). I will provide a copy of the Notice of Exclusion within 21 days of the contract award. (For questions or a copy of the BWC-337, please call the Worker's Compensation Bureau at 517-322-1195).
  - C.  I certify my business has a Worker's Compensation Policy. I will provide an original Certificate of Insurance within twenty-one (21) days of the contract award.
3. If you have checked item 2(A) or 2(B), you **must** indicate the number of **both** full-time and part-time employees, other than yourself, including family members and active partners (if none, you must enter "0").

\_\_\_\_\_ Full-time Employees

\_\_\_\_\_ Part-time Employees

Name of Business		Federal ID (or) Social Security No.	
Address		Telephone (       )	
City	State	ZIP	

*I hereby certify that the above information is true and correct. I agree to notify the Michigan DNR of any changes that occur in factors affecting my coverage during any of my present and future operations.*

\_\_\_\_\_  
Signature of Owner or Authorized Representative

\_\_\_\_\_  
Title

\_\_\_\_\_  
Date

**Please complete the "SEALED BID" information on the next page**

Van Mix (52-102-21)  
T37N, R04W, SEC. 14; Emmet COUNTY

In response to the notice of sale to be held 3:00 p.m. (local time) on August 24, 2021, I am hereby submitting my sealed bid (firm offer) for the following forest products to be cut. Bids for individual species must be at or above the advertised price. All non-responsive bid forms may be rejected.

<u>PRODUCTS &amp; SPECIES</u>	<u>ESTIMATED VOLUME*</u>	<u>ADVERTISED PRICE</u>	<u>BID PRICE/UNIT</u>
<b>Sawtimber</b>			
Quaking Aspen	96.1 MBF	\$ 40.00/MBF	\$ _____
Red Maple	6.2 MBF	\$ 66.00/MBF	\$ _____
White Pine	46.0 MBF	\$ 34.00/MBF	\$ _____
White Spruce	26.1 MBF	\$ 32.00/MBF	\$ _____
<b>Pulpwood</b>			
Balsam Fir	62 Cords	\$ 18.30/Cord	\$ _____
Mixed Aspen	382 Cords	\$ 15.85/Cord	\$ _____
Mixed Hardwood	32 Cords	\$ 16.70/Cord	\$ _____
N. White Cedar	4 Cords	\$ 6.10/Cord	\$ _____
White Pine	110 Cords	\$ 17.20/Cord	\$ _____
White Spruce	200 Cords	\$ 12.45/Cord	\$ _____

\*The volumes are statistically estimated within plus (+) or minus (-) 7.91 percent at 95% confidence level. These estimated volumes are final and not subject to adjustment. Prospective bidders are urged to examine this timber and to make their own estimates of quantity and quality.

I understand that any or all bids may be rejected. All bids must be signed and all bid items must be bid or the bid form may be rejected. I also understand that consideration and awarding a contract will be based upon my past performance and ability to complete the contract based upon equipment and staffing subject to my control.

FEDERAL ID: \_\_\_\_\_ or SOCIAL SECURITY NUMBER: \_\_\_\_\_

Company or individual bidding: \_\_\_\_\_

Company representative's name: \_\_\_\_\_

Address: \_\_\_\_\_

City: \_\_\_\_\_ State: \_\_\_\_\_ Zip: \_\_\_\_\_

IF AVAILABLE, PLEASE PLACE THE PERSONALIZED LABEL FROM YOUR PROSPECTUS IN THE ABOVE BOX.

Individual or company representative's signature: \_\_\_\_\_ Date: \_\_\_\_\_

Phone number : \_\_\_\_\_ Email (optional): \_\_\_\_\_

**THE WINNING BIDDER MUST COMPLETE THE VERIFICATION OF WORKER'S DISABILITY COMPENSATION ACT COMPLIANCE (ON REVERSE SIDE IF DOUBLE SIDED) WITHIN 21 DAYS OF SALE AWARD DATE**



<b>FOR DEPARTMENT USE ONLY</b>
Sale Number (XX - XXX - XX - XX)
Forest Management Unit:

## TIMBER SALE VERIFICATION OF WORKER'S DISABILITY COMPENSATION ACT COMPLIANCE

*As required by Act 317, P.A. 1969 (Worker's Compensation) and  
Part 5 of Act 451 of 1994, as amended.*

### VERIFICATION OF WORKER'S DISABILITY COMPENSATION ACT COMPLIANCE

- This verification must be completed and submitted within 21 days of contract award and prior to the issuance of the timber sale contract.
- In addition, if boxes 2B or 2C are checked, then Notice of Exclusion or Certificate of Insurance must be submitted within twenty-one (21) days of the contract award and prior to the issuance of the timber sale contract.
- All information must be typed or printed except for written signatures.

Please Check Appropriate Categories:

1. My business is organized as (you **must** check one of the boxes below):
  - A.  Sole Proprietorship (individual)
  - B.  Partnership
  - C.  Corporation
2. You **must** check one of the boxes below:
  - A.  I certify my business is a sole proprietorship and it has no employees but the sole proprietor. I am not subject to the Worker's Compensation Laws.
  - B.  I certify my business has satisfied its obligation to the Worker's Compensation Act through the use of an approved Notice of Exclusion (BWC-337, Rev. 5/96). I will provide a copy of the Notice of Exclusion within 21 days of the contract award. (For questions or a copy of the BWC-337, please call the Worker's Compensation Bureau at 517-322-1195).
  - C.  I certify my business has a Worker's Compensation Policy. I will provide an original Certificate of Insurance within twenty-one (21) days of the contract award.
3. If you have checked item 2(A) or 2(B), you **must** indicate the number of **both** full-time and part-time employees, other than yourself, including family members and active partners (if none, you must enter "0").

\_\_\_\_\_ Full-time Employees

\_\_\_\_\_ Part-time Employees

Name of Business		Federal ID (or) Social Security No.	
Address		Telephone (       )	
City	State	ZIP	

*I hereby certify that the above information is true and correct. I agree to notify the Michigan DNR of any changes that occur in factors affecting my coverage during any of my present and future operations.*

\_\_\_\_\_  
Signature of Owner or Authorized Representative

\_\_\_\_\_  
Title

\_\_\_\_\_  
Date

**Please complete the "SEALED BID" information on the next page**