



**DEPARTMENT OF NATURAL RESOURCES
STATE OF MICHIGAN**

TIMBER SALE PROSPECTUS #6916

SCHEDULED SALE DATE AND TIME: 9:00 a.m. (local time) on August 24, 2021.

LOCATION: ROSCOMMON MGMT UNIT, PO BOX 218, ROSCOMMON, MI 48653.

PROSPECTUS NOTE: The bidder is advised to inspect the sale area and review the location, estimated volumes, operating costs and contract terms of proposed sales. Please be aware that some landowners may request 60 days or more notice for access across their land.

Notice is hereby given that bids will be received by the Unit Manager, ROSCOMMON MANAGEMENT UNIT, for certain timber on the following described lands:

Russell Lake Aspen (71-005-21) / T23N, R02W, SEC. 11, W1/2SE.

T23N, R02W, SEC. 14, SWSW.

T23N, R02W, SEC. 15, SESE.

T23N, R02W, SEC. 22, SENW,NE.

T23N, R02W, SEC. 23, N1/2NW,SWNW.

Roscommon County, Advertised Price \$134,323.50, 172.4 Acres, Aspen, Hardwood.

SALE NOTE: A recreation site such as a trail, pathway, or campground is within the sale area or the vicinity. Certain restrictions/specifications may be applicable including time restrictions.

Crossway Aspen (71-006-21) / T23N, R02W, SEC. 10, S1/2NW,N1/2NE,SWNE,SW,NWSE.

T23N, R02W, SEC. 9 , SENE,NESE.

Roscommon County, Advertised Price \$85,298.00, 104.7 Acres, Aspen, Hardwood.

SALE NOTE: A recreation site such as a trail, pathway, or campground is within the sale area or the vicinity. Certain restrictions/specifications may be applicable including time restrictions.

Triangle Mix (71-011-21) / T24N, R03W, SEC. 1 , NWNW.

T24N, R03W, SEC. 11, NESE.

T24N, R03W, SEC. 12, SWSW.

T24N, R03W, SEC. 13, NENW.

T24N, R03W, SEC. 2 , SESW.

Roscommon County, Advertised Price \$20,985.40, 36.9 Acres, Hardwood, Aspen.

SALE NOTE: The oak stands are mature and still viable, however external environmental factors are putting stresses on them that may cause their rapid decline.

BID INSTRUCTIONS (VER. 07/02/2018):

1. Scheduled Bid Location, Date, and Time (2/11)

Bids must be received by the Unit Manager, ROSCOMMON OFFICE, PO BOX 218, ROSCOMMON, MI 48653, no later than 9:00 a.m. (local time) on August 24, 2021. For further information concerning this sale, contact Doug Bates at 989-275-4622 extension 2740.

2. Bidder's Qualifications (5/16)

Purchaser shall obtain workers compensation insurance to cover claims under Michigan's Worker's Disability Compensation Act of 1969 or similar employee benefit act of any other state applicable to an employee. If all or part of a timber sale was prepared by a private contractor, the contractor and that contractor's company are not permitted to bid on the timber sale contract. Bids will not be accepted from individuals or companies appearing on the DNR/FRD No-Bid List. This list contains the names of purchasers who previously failed to execute a contract within 21-days or who have a history of poor performance.

3. Preparation of Sealed Bids (5/16)

Bid Forms may be completed online thru Michigan DNR Timber Sale Online Bidding (OLB) at www.michigan.gov/timberbidding or by completing the hardcopy Bid Form found in the Timber Sale Prospectus. Hardcopy Bid Forms shall be manually signed in ink. Registration in OLB is considered your 'signature' for all bids submitted thru that system. Bid prices must be entered for each species and product in the Bid Price column for all material subject to bidding and all fill-in blanks must be completed. If erasures or other changes appear on the hardcopy Bid Form, each erasure or change must be initialed by the person signing the bid.

4. Submission of Sealed Bids (5/16)

Bid forms may be obtained from the Unit Manager or thru OLB. Bids may be submitted hardcopy or thru OLB. All hardcopy bids must be submitted on the bid form and in an envelope clearly identified as described in this section. NOTE: Only one bid form per bid envelope. Sealed bids must be submitted to the Unit office designated in the prospectus and must be submitted at or prior to the time established in the prospectus. The envelope should show on the outside (a) the sale name or number and (b) the date and time of bid opening, as shown in the prospectus. Bids received after the time specified in the sale prospectus are late bids and will be rejected.

It is possible for a bidder to submit multiple bids on a single sale. For example, a bid may be submitted hardcopy and a bid may be submitted thru OLB. Or, two bidders from the same company could both submit bids on the same sale. If this were to happen, the State would accept all bids received and award the contract accordingly. All bidding and contractual requirements would apply to all bids received.

5. Public Opening of Sealed Bids (7/16)

If conditions permit, the sealed bids will be publicly opened and posted at the time and place set in the prospectus.

If a bidder, present at a bid opening, has submitted bids on more than one sale, that bidder may withdraw their unopened bid envelopes or announce the withdrawal of their online bid after being declared the successful bidder on one sale.

6. Award of Contract (1/11)

Award of the contract will be made to the Bidder whose bid, conforming to the prospectus, is most advantageous to the State of Michigan on the basis of total value at rates bid for the estimated quantities. The State reserves the right to reject any bid or waive any minor irregularity in bids received. A written award mailed (or otherwise furnished) to the successful Bidder shall be deemed to result in a binding contract without further action by either party.

7. Down Payment (1/11)

The Bidder to whom award is made must make a down payment within 21 days of the sale award. The amount of the down payment will be calculated as shown in the Bond and Payment Schedule of this prospectus. Only cash may be used to meet this requirement.

8. Performance Security (1/11)

As guarantee of faithful performance, a cash bond, certificate of deposit, surety bond or irrevocable letter of credit (LOC) is required within 21 days of the sale award. The amount of the performance security is shown in the Bond and

Payment Schedule of this prospectus. If an LOC or surety is used, the coverage must extend for at least 6 months beyond the contract expiration.

9. Timber Sale Contract (7/18)

Additional conditions and requirements common to all timber sales are listed on the timber sale contract (R4031) and are available on line at www.michigan.gov/timber. Contact the Unit Manager for additional information or a sample contract. Within 21 days of the date of the award letter, the bidder must sign the contract and provide the required down payment, performance security, and verification of worker's disability compensation. The down payment and performance security shall be in accordance with the provisions of the timber sale contract, in the sums stated in this prospectus. If these actions are not taken, then the Bidder, the Bidder's corporation, and the corporation's principals may not be permitted to bid on State timber sales for a period of 3 months after the first offense, 6 months after the second offense, and 1 year after the third offense. An offense will only be counted against the Bidder for 5 years. In addition, the Bidder certifies that if awarded this contract, the Bidder will complete the timber sale contract in accordance with its terms and any modifications thereof including requirements to purchase, cut, and remove the included timber by the expiration date.

Payment Unit values in the State Forest Timber Sale Contract are calculated based on the advertised value of the Payment Unit as a percentage of the total advertised value of the contract. The advertised value of each Payment Unit is given in the Description of Timber by Payment Unit table on the Timber Sale Information page. For example, if the value of Payment Unit 1 is advertised as \$1,500 and the total Timber Sale value is advertised as \$10,000, the contract price for Payment Unit 1 will be 15% of the total bid price ($\$1,500/\$10,000 * 100$).

10. Disclaimer of Estimates and Bidder's Warranty of Inspection (7/16)

Before submitting this bid, the Bidder is advised and cautioned to inspect the sale area, review the requirements of the sale contract, and take other steps as may be reasonably necessary to ascertain the location, estimated volumes, construction estimates, and operating costs of the proposed sale. Failure to do so will not relieve the Bidder from responsibility for completing the contract.

The Bidder warrants that this bid is submitted solely on the basis of the Bidder's examination and inspection of the quality and quantity of the timber offered for sale and the Bidder's opinion of the value thereof and the costs of recovery. No reliance should be placed on the State of Michigan's estimates of timber quality, quantity or costs of recovery. Bidder further acknowledges that the State of Michigan: (i) expressly disclaims any warranty of fitness of timber for any purpose; (ii) offers this timber as is without any warranty of quality (merchantability) or quantity and (iii) expressly disclaims any warranty as to the quantity or quality of timber sold.

11. Certification and Chain-of-Custody (10/14)

Unless otherwise indicated in the contract under section 7 – Other Conditions of the Sale Specific Conditions & Requirements, the area encompassed by this timber sale is certified to the standards of the Forest Stewardship Council (FSC) - Certificate #SCS-FM/COC-00090N and the Sustainable Forestry Initiative (SFI) - Certificate #NSF-SFIS-5Y031-SF5. Forest products from this sale may be delivered to the mill as "FSC 100% and / or SFI certified" as long as the contractor hauling the forest products is chain-of-custody (COC) certified or covered under a COC certificate from the destination mill. The purchaser is responsible for maintaining COC after leaving the sale area.

12. Good Neighbor Authority (GNA) Requirements (7/16)

If the name of this timber sales contains the acronym GNA, it is authorized by the Good Neighbor Authority (GNA) and covered by various agreements between the U.S. Forest Service and the State. The timber sale occurs on federal land and the following conditions apply:

GNA contracts on US Forest Service land will not be awarded to purchasers on the Federal list of excluded parties. The System for Award Management (SAM) will be checked for active excluded parties prior to award of contract. In addition, the Bidder to whom award is made must complete an Assurance Regarding Felony Conviction or Tax Delinquent Status for Corporate Applicants (AD-3031).

13. Good Neighbor Authority (GNA) Requirements, con't (9/16)

Bidder certifies, by signing this bid form, that to the best of Bidder's knowledge that the following representations are accurate and complete.

- a. That the Bidder and its principals are not presently debarred, suspended, proposed for debarment, declared ineligible, or voluntary excluded from timber sales (covered transactions) by any Federal department or agency.
- b. That the Bidder and its principals have not within a 3-year period preceding this bid been convicted of or had a civil judgment rendered against them for commission of fraud or a criminal offense in connection with obtaining , attempting to obtain, or performing a public (Federal, State, or local) transaction or contract under a public transaction; violation of Federal or State antitrust statutes or commission of embezzlement, theft, forgery, bribery, falsification or destruction of records, making false statements, or receiving stolen property.
- c. That the Bidder and its principals are not presently indicted for or otherwise criminally or civilly charged by a governmental entity (Federal, State, or local) with commission of any of the offenses enumerated in paragraph b of this certification.
- d. That the Bidder and its principals have not within a 3-year period preceding this bid had one or more public transactions (Federal, State, or local) terminated for breach or default of a timber or forest product contract.

Bidders that cannot certify this requirement, in whole or in part, shall submit an explanation with their bid.

DAN EICHINGER
Director

TIMBER SALE INFORMATION

Russell Lake Aspen (71-005-21)

T23N, R02W, SEC. 11; T23N, R02W, SEC. 14; T23N, R02W, SEC. 15; T23N, R02W, SEC. 22; T23N, R02W, SEC. 23.
Roscommon County (Advertised Price \$134,323.50)

SALE NOTE: A recreation site such as a trail, pathway, or campground is within the sale area or the vicinity. Certain restrictions/specifications may be applicable including time restrictions.

A timber sale contract for this lump sum, sealed bid timber sale will be awarded to the responsible bidder offering the highest sealed bid price. All units of volume listed below were estimated using the Inventory Manager computer program and the new Michigan taper model. Bids must be at or above the following advertised price for each product and species:

<u>PRODUCTS & SPECIES</u>	<u>ESTIMATED UNITS*</u>	<u>ADVERTISED PRICE</u>
Sawtimber		
Beech	76.4 MBF	\$ 60.00 / MBF
Bl/R/Hybrid Oak	96.7 MBF	\$ 67.00 / MBF
Mixed Aspen	548.7 MBF	\$ 62.00 / MBF
Paper Birch	23.6 MBF	\$ 27.00 / MBF
Red Maple	83.3 MBF	\$ 57.00 / MBF
White Pine	61.2 MBF	\$ 43.00 / MBF
Pulpwood		
Balsam Fir	30 Cords	\$ 17.55 / Cord
Jack Pine	37 Cords	\$ 13.85 / Cord
Mixed Aspen	3,322 Cords	\$ 17.70 / Cord
Mixed Hardwood	1,037 Cords	\$ 13.40 / Cord
Mixed Oak	227 Cords	\$ 14.00 / Cord
Red Pine	27 Cords	\$ 34.15 / Cord
White Pine	167 Cords	\$ 20.30 / Cord

* The total volume is statistically estimated within plus (+) or minus (-) 4.60 percent. There are an estimated 7,081 cords on this timber sale, plus or minus 326 cords at the 95% confidence level. The estimated units are final and not subject to adjustment. Prospective bidders are urged to examine this timber and to make their own estimates of quantity and quality.

BOND AND PAYMENT SCHEDULE:

1. A bond in the amount of \$6,716.00 to insure faithful performance of the conditions of the contract will be deposited by the successful bidder within 21 days of the sale award.
2. Cutting in any sale or unit without the required advance payment would be considered a trespass.
3. Total payment must be paid in advance or according to the following schedule :
 - (a) Ten percent (10%) of the sale value must be paid within 21 days of the sale award.
 - (b) The 10% down payment will be credited towards the first unit cut.
 - (c) Payment for each of the following units must be made before cutting begins in that unit:

PAYMENT UNIT NUMBER	PERCENT OF TOTAL SALE VALUE
01	2.5%
02	15.8%
03	33.6%
04	26.3%
05	21.8%
4. If no cutting takes place, the 10% down payment will not be refunded.
5. Operations on the contract issued will terminate on 09/30/2023.

SALE STATISTICS

Volumes were calculated in cubic feet using the Michigan taper model. Cubic foot volume includes all wood inside bark for the product indicated. For display purposes, cubic feet were converted to cords and MBF using a simple conversion factor, e.g. 79 cubic feet per cord and 185 cubic feet per MBF. The cubic foot volumes are precise; the cords and MBF volumes are not. Cubic foot volume cannot be directly converted to cords or boards with precision.

SALE VOLUMES

The total estimated sale volume may not equal the sum of the species/products due to the nature of statistical calculations associated with double sampling methodology.

VOLUME			STATISTICAL RANGE IN CORDS	
TOTAL CUBIC FEET	TOTAL CORDS	PERCENT ERROR	MINIMUM	MAXIMUM
559,371	7,081	4.60%	6,754	7,407

VDU VOLUMES

A VDU is a Volume Determination Unit. Volumes and their associated statistics are calculated at the VDU level and summarized to the sale level. There is often a one to one relationship between a VDU and a Payment Unit, but not always, depending on the cruise design. Refer to the VDU TO PAYMENT UNIT table.

	VOLUME			RANGE IN CORDS	
VDU	TOTAL CUBIC FEET	TOTAL CORDS	PERCENT ERROR	MINIMUM	MAXIMUM
100	509,465	6,449	4.72%	6,145	6,753
112	14,237	180	15.63%	152	208
TOTAL:	523,702	6,629		6,297	6,961

VDU TO PAYMENT UNIT

When a VDU is associated with more than one Payment Unit (PU), the VDU volumes are assigned to the PU based on acres of the VDU within the PU.

VDU	VDU ACRES	PU	PU ACRES
100	153.7	2	24.9
		3	52.9
		4	41.5
		5	34.4
112	18.7	1	18.7
TOTAL:	172.4		172.4

DESCRIPTION OF TIMBER BY PAYMENT UNIT (PU)

PU	MARKET GROUP	PRODUCT	QUANTITY	UNIT	ACRES	ADVERTISE PRICE
1	BI/R/Hybrid Oak	Sawtimber	1.1	MBF	18.7	\$3,349.65
	White Pine		10.6	MBF		
	Balsam Fir	Pulpwood	7	Cords		
	<i>Balsam Fir</i>	<i>Sawtimber</i>	0.9	<i>MBF</i>		
	<i>Balsam Fir</i>	<i>Pulpwood</i>	5	<i>Cords</i>		
	Jack Pine		37	Cords		
	<i>Jack Pine</i>	<i>Sawtimber</i>	0.6	<i>MBF</i>		
	<i>Jack Pine</i>	<i>Pulpwood</i>	36	<i>Cords</i>		
	Mixed Aspen		63	Cords		
	<i>B. T. Aspen</i>		12	<i>Cords</i>		
	<i>Quaking Aspen</i>		51	<i>Cords</i>		
	Mixed Hardwood		7	Cords		
	<i>Black Cherry</i>		5	<i>Cords</i>		
	<i>Red Maple</i>		2	<i>Cords</i>		
	Mixed Oak		9	Cords		
	<i>White Oak</i>	<i>Sawtimber</i>	0.8	<i>MBF</i>		
	<i>BI/R/Hybrid Oak</i>	<i>Pulpwood</i>	5	<i>Cords</i>		
	<i>White Oak</i>		2	<i>Cords</i>		
	Red Pine		13	Cords		
	<i>Red Pine</i>	<i>Sawtimber</i>	5.9	<i>MBF</i>		
<i>Red Pine</i>	<i>Pulpwood</i>	1	<i>Cords</i>			
White Pine		20	Cords			
2	Beech	Sawtimber	12.4	MBF	24.9	\$21,238.85
	BI/R/Hybrid Oak		15.5	MBF		
	Mixed Aspen		88.9	MBF		
	<i>B. T. Aspen</i>		57.1	<i>MBF</i>		
	<i>Quaking Aspen</i>		31.8	<i>MBF</i>		
	Paper Birch		3.8	MBF		
	Red Maple		13.5	MBF		
	White Pine		8.2	MBF		
	Balsam Fir	Pulpwood	4	Cords		
	<i>Balsam Fir</i>		4	<i>Cords</i>		
	Mixed Aspen		528	Cords		
	<i>B. T. Aspen</i>		354	<i>Cords</i>		
	<i>Quaking Aspen</i>		174	<i>Cords</i>		
	Mixed Hardwood		166	Cords		
	<i>Beech</i>		27	<i>Cords</i>		
	<i>Paper Birch</i>		2	<i>Cords</i>		
	<i>Red Maple</i>		137	<i>Cords</i>		
	Mixed Oak		35	Cords		
	<i>BI/R/Hybrid Oak</i>		35	<i>Cords</i>		
	Red Pine		3	Cords		
<i>Red Pine</i>	<i>Sawtimber</i>	0.8	<i>MBF</i>			
<i>Red Pine</i>	<i>Pulpwood</i>	1	<i>Cords</i>			
White Pine		24	Cords			
3	Beech	Sawtimber	26.3	MBF	52.9	\$45,065.55
	BI/R/Hybrid Oak		32.9	MBF		
	Mixed Aspen		188.8	MBF		
	<i>B. T. Aspen</i>		121.2	<i>MBF</i>		
	<i>Quaking Aspen</i>		67.6	<i>MBF</i>		
	Paper Birch		8.1	MBF		
	Red Maple		28.7	MBF		
	White Pine		17.4	MBF		
	Balsam Fir	Pulpwood	8	Cords		
	<i>Balsam Fir</i>		8	<i>Cords</i>		
	Mixed Aspen		1,121	Cords		

DESCRIPTION OF TIMBER BY PAYMENT UNIT (PU), CON'T

PU	MARKET GROUP	PRODUCT	QUANTITY	UNIT	ACRES	ADVERTISE PRICE
3 con't	<i>B. T. Aspen</i>	<i>Pulpwood</i>	753	<i>Cords</i>		
	<i>Quaking Aspen</i>		368	<i>Cords</i>		
	Mixed Hardwood		355	<i>Cords</i>		
	<i>Beech</i>		58	<i>Cords</i>		
	<i>Paper Birch</i>		5	<i>Cords</i>		
	<i>Red Maple</i>		292	<i>Cords</i>		
	Mixed Oak		75	<i>Cords</i>		
	<i>BI/R/Hybrid Oak</i>		75	<i>Cords</i>		
	Red Pine		5	<i>Cords</i>		
	<i>Red Pine</i>	<i>Sawtimber</i>	1.8	<i>MBF</i>		
	<i>Red Pine</i>	<i>Pulpwood</i>	1	<i>Cords</i>		
White Pine		50	<i>Cords</i>			
4	Beech	Sawtimber	20.6	MBF	41.5	\$35,378.50
	BI/R/Hybrid Oak		25.8	MBF		
	Mixed Aspen		148.2	MBF		
	<i>B. T. Aspen</i>		95.2	<i>MBF</i>		
	<i>Quaking Aspen</i>		53.0	<i>MBF</i>		
	Paper Birch		6.4	MBF		
	Red Maple		22.5	MBF		
	White Pine		13.7	MBF		
	Balsam Fir	Pulpwood	6	<i>Cords</i>		
	<i>Balsam Fir</i>		6	<i>Cords</i>		
	Mixed Aspen		880	<i>Cords</i>		
	<i>B. T. Aspen</i>		591	<i>Cords</i>		
	<i>Quaking Aspen</i>		289	<i>Cords</i>		
	Mixed Hardwood		278	<i>Cords</i>		
	<i>Beech</i>		45	<i>Cords</i>		
	<i>Paper Birch</i>		4	<i>Cords</i>		
	<i>Red Maple</i>		229	<i>Cords</i>		
	Mixed Oak		59	<i>Cords</i>		
	<i>BI/R/Hybrid Oak</i>		59	<i>Cords</i>		
	Red Pine		4	<i>Cords</i>		
	<i>Red Pine</i>	<i>Sawtimber</i>	1.4	<i>MBF</i>		
	<i>Red Pine</i>	<i>Pulpwood</i>	1	<i>Cords</i>		
	White Pine		40	<i>Cords</i>		
5	Beech	Sawtimber	17.1	MBF	34.4	\$29,325.10
	BI/R/Hybrid Oak		21.4	MBF		
	Mixed Aspen		122.8	MBF		
	<i>B. T. Aspen</i>		78.9	<i>MBF</i>		
	<i>Quaking Aspen</i>		43.9	<i>MBF</i>		
	Paper Birch		5.3	MBF		
	Red Maple		18.6	MBF		
	White Pine		11.3	MBF		
	Balsam Fir	Pulpwood	5	<i>Cords</i>		
	<i>Balsam Fir</i>		5	<i>Cords</i>		
	Mixed Aspen		730	<i>Cords</i>		
	<i>B. T. Aspen</i>		490	<i>Cords</i>		
	<i>Quaking Aspen</i>		240	<i>Cords</i>		
	Mixed Hardwood		231	<i>Cords</i>		
	<i>Beech</i>		38	<i>Cords</i>		
	<i>Paper Birch</i>		3	<i>Cords</i>		
	<i>Red Maple</i>		190	<i>Cords</i>		
	Mixed Oak		49	<i>Cords</i>		
	<i>BI/R/Hybrid Oak</i>		49	<i>Cords</i>		
	Red Pine		3	<i>Cords</i>		
<i>Red Pine</i>	<i>Sawtimber</i>	1.1	<i>MBF</i>			

DESCRIPTION OF TIMBER BY PAYMENT UNIT (PU), CON'T

PU	MARKET GROUP	PRODUCT	QUANTITY	UNIT	ACRES	ADVERTISE PRICE
5 con't	<i>Red Pine</i>	<i>Pulpwood</i>	1	<i>Cords</i>		
	White Pine		33	Cords		
TOTAL:			889.9	MBF		
TOTAL:			4,848	Cords		

Sale Specific Conditions & Requirements

Sale Name: Russell Lake Aspen

Sale Number: 71-005-21 Seq#: 1

1 - Sale Area

1.2 - Boundaries

1.2.1 - Painted boundaries (9/19)

The sale boundary and Payment Unit boundaries are marked and identified by red, blue, and yellow paint. Exterior sale boundary lines against state are marked with red paint. Exterior sale boundary lines against private land are marked with blue paint. Interior Payment Unit boundaries are marked with yellow paint. Retention patches are marked with red paint; no harvesting activities may occur within these areas. The painted boundary line trees are not Included Timber and are to be protected. Yellow painted trees designating an interior Payment Unit boundary are only to be cut when all surrounding Payment Units have been paid.

2 - Timber Specifications

2.1 - Included Timber

2.1.1 - Clearcut unit(s) with unmerchantable trees (6/14)

Within Payment Unit(s) 1 - 5, cut all trees that are two (2) inches or more at DBH, except all white oak and trees marked with green paint.

2.2 - Utilization

2.2.3 - Stump heights (4/07)

Stump heights within the Sale Area shall not exceed 12 inches for trees greater than 10 inches at DBH and 4 inches for trees smaller than 10 inches at DBH.

3 - Payments

3.3 - Pre-measured Sales

3.3.4 - Dividing payment units (7/14)

Payment Unit(s) may be divided at the request of the Purchaser and upon approval of the Unit Manager. Dividing Payment Units is a contract modification which requires a Timber Sale Contract Amendment.

3.4 - Damaged Timber

3.4.1 - Damaged timber (7/16)

General Condition and Requirement 3.4 Damaged Timber, defines liquidated damages for undesignated live merchantable trees which are cut or injured. No damage is acceptable to undesignated live merchantable trees. Within the Sale Area, if more than 5% of trees (> 4.5" DBH) within a specified area of the sale are damaged, liquidated damages will be assessed for all trees damaged. Rates will be in accordance with General Condition and Requirement 3.4 Damaged Timber.

4 - Transportation

4.1 - Construction

4.1.3 - Slash and earthen piles (8/04)

Piles or windrows of earth along roads and landings that have been widened or constructed shall be leveled. Slash from road maintenance or construction, including stumps, shall be dispersed throughout the sale, chipped, utilized, or otherwise removed from the sale.

4.1.6 - Road construction (1/09)

Construction of new roads or improvements of existing roads shall be done in such a way as to minimize the environmental and visual impacts. Merchantable trees shall be cut and utilized unless otherwise directed. Non-merchantable trees shall be severed and laid flat on the ground. Slash shall be scattered, and not left in windrows and kept a minimum of 10 feet back from the road edge. Stumps shall be set upright, not left on edge, and be moved at least 10 feet away from the road edge. Disturbed soil shall be feathered into the woods and not left in berms or windrows.

4.1.7 - Road closure (10/11)

All new roads built into the sale must be blocked to vehicle traffic upon completion of the sale. In general, this will require constructing a four (4') foot high berm of stumps and logs covered with earth. Stumps and brush must be placed along the remainder of the trail. These roads must be rendered impassable to cars and trucks. Contact the sale administrator for specific details of design and placement.

4.2 - Maintenance

4.2.1 - Hauling restriction (12/08)

Hauling may be restricted on forest roads by the Unit Manager or his/her representative. The restriction may occur during wet weather conditions.

4.2.5 - Two wheel drive condition (2/04)

All existing trail roads on and adjacent to the sale area must be passable by two-wheel drive traffic for the duration of the sale.

5 - Operations

5.1 - Notification

5.1.1 - Pre-sale conference (10/16)

A pre-sale conference between the Purchaser and sale administrator is required prior to beginning any operations to determine landing and road locations.

5.1.4 - Post-sale conference (10/16)

A post-sale conference on site between the Purchaser and sale administrator is required prior to the completion of active logging operations to determine clean-up and repair of landings, road edges, and the fulfillment of other contract specifications.

5.2 - Conduct of Operations

5.2.1 - Slash

5.2.1.1 - Slash within sale area (9/16)

No trees are to be felled outside the sale area and all slash is to be kept at least 10 feet back from the red paint line. If sale boundary lines are along a public road or highway, then slash must be removed 50' from these lines per General Condition & Requirement 5.2.1.

5.2.1.8 - Slash height (12/08)

No slash or tree tops may exceed 24 inches in height. If not chipped, the slash piles are not to be left in "windrows" rows which impedes regeneration and must be evenly scattered over the Sale Area.

5.2.2 - Hazard Trees/Snags

5.2.2.1 - Den trees (10/16)

Obvious hollow and/or den trees shall be protected and left standing unless they are a safety hazard.

5.2.3 - Operating Restrictions

5.2.3.11 - Coppice regeneration protection (4/10)

Timber harvesting in any Payment Unit must be completed before significant aspen sprouting occurs in that Payment Unit to minimize damage to the new regeneration. Any post harvest operations, such as chipping, must be completed before sprouting of regeneration occurs. If it is anticipated that chipping will be delayed, then tops shall be carried to one central location or left unchipped. The Unit Manager or his/her representative may cease such operations if sprouting occurs before the operation is complete.

5.2.4 - Dead and Down Creation

5.2.4.2 - Dead and down creation, hare and grouse (1/14)

To improve habitat for snowshoe hare, grouse, and other species, the Purchaser is to leave two 9-inch diameter or larger log size pieces on the ground for every two acres. They should be scattered throughout the sale or positioned per the sale administrators' instructions. If possible, the logs or trees should be felled so they overlap. Note these pieces should have

a minimum length of five feet. They can be of any tree species and can be an un-merchantable piece of wood or a full tree.

5.2.4.3 - Dead and down creation, dead trees (6/07)

Except as provided for in General Condition and Requirement 5.2.2, no dead trees, standing or down, are to be cut, skidded, or processed.

5.2.4.4 - Dead and down creation, grouse (6/18)

To encourage grouse and other wildlife, in Payment Unit(s) 5, leave at least 1 large top/brush pile per every 2 acres. These will be placed within 50 feet of the western boundary along the swamp edge. These piles must contain at least one 5 foot or longer piece of tree and it must be 8" or greater in diameter.

5.2.30 - Landing/road top soil protection (2/15)

Top soil on landings and new roads must be removed, stockpiled and saved. Upon completion of the timber sale, soil must be evenly distributed back over the area for revegetation.

5.2.32 - Decking/landing restoration (9/13)

All decking and landing areas must have the surface area restored to a condition equal to or better than before. This is to ensure the proper regeneration of the stand. Wood debris, chips, and "cookies" from trimmings must be removed or scattered away from landing and loading areas and may not be windrowed on the edge.

5.2.39 - ORV trail/route protection (4/18)

The ORV trail or route and is shown on the Timber Sale Map. Trees with yellow ORV markers shall be cut off above the markers and at least 5 feet above ground. All stumps within 5 feet of the trail must be cut flush with the ground. Maintain a 20-foot-wide slash, debris, and rut free zone daily using the ORV trail or route as the centerline. Do not run equipment down the ORV trail or route. Skidding across the trail or route may only occur in locations approved by the sale administrator.

6 - Safety and Fire Prevention

6.2 - Signing

6.2.3 - Recreational trail posting (10/20)

The Purchaser is responsible for posting and maintaining caution signs on the ORV trail prior to beginning operations. The trail must be posted at appropriate distances from the Sale Area to warn of logging activity and truck traffic at both ends of the trail. Signs must be removed when harvest operations are suspended or completed. The Purchaser will provide these signs.



Sale Number	Year
71-005	21

TIMBER SALE MAP

This information provided by authority of Part 525, 1994 PA 451, as amended.

Forest Management Unit	County	Mapped By	Date	Page	of
Roscommon Management Unit	Roscommon County	Lewicki	5/20/21	2	2
Township	Range	Section(s) and Subdivision(s)	Scale		
23N	02W	S14.SWSW S15.SESE S22.SENW;NE S23.N1/2NW; SWNW	1:15,840		

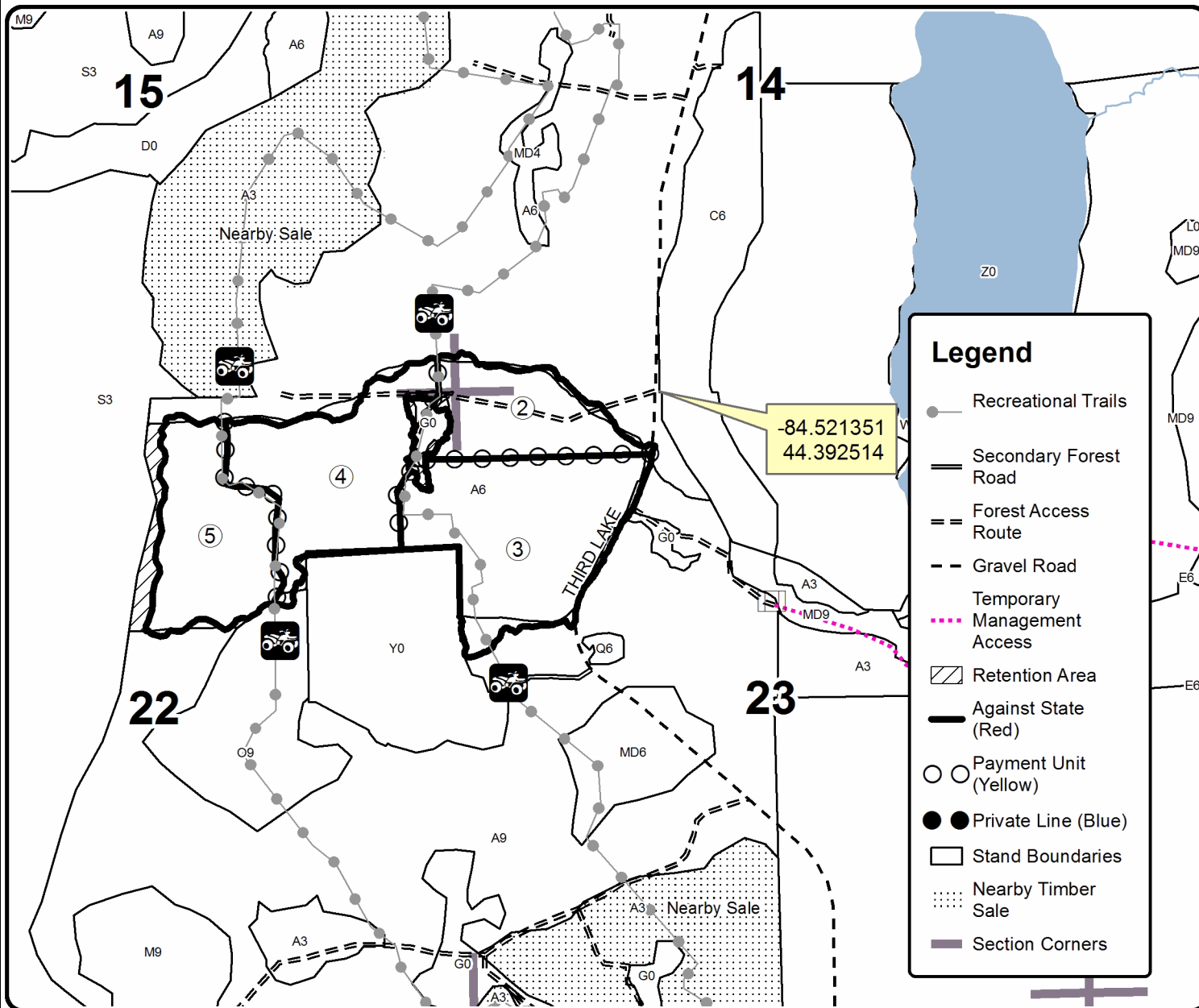
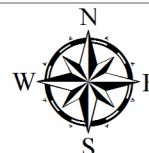
Cover Type				Density	
A = Aspen	H = Hemlock	N = Marsh	U = Upland Brush	0 = Non Stocked	5 = Pole Timber Medium
B = Paper Birch	J = Jack Pine	O = Oak	UM = Upland Mixed	1 = Seedling Sapling Poor	6 = Pole Timber Well
C = Cedar	L = Lowland Brush	P = Lowland Poplar	V = Bog or Marsh	2 = Seedling Sapling Medium	7 = Saw Timber Poor
D = Treed Bog	LM = Lowland Mixed	Q = Mixed Swamp Conifer	W = White Pine	3 = Seedling Sapling Well	8 = Saw Timber Medium
E = Swamp Hdwoods	M = Mpl, Bch, Brch	R = Red Pine	X = Non Stocked	4 = Pole Timber Poor	9 = Saw Timber Well
F = Spruce Fir	MC = Mixed Conifer	S = Black Spruce	Z = Water		
G = Grass	MD = Mixed Deciduous	T = Tamarack			

PU	Acres	PU	Acres
1	18.7	4	41.5
2	24.9	5	34.4
3	52.9		

Russell Lake Aspen

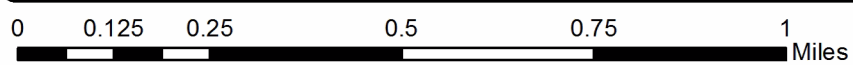
Compartment 38

172.4 Acres



Legend

- Recreational Trails
- Secondary Forest Road
- Forest Access Route
- Gravel Road
- Temporary Management Access
- Retention Area
- Against State (Red)
- Payment Unit (Yellow)
- Private Line (Blue)
- Stand Boundaries
- Nearby Timber Sale
- Section Corners





TIMBER SALE MAP

This information provided by authority of Part 525, 1994 PA 451, as amended.

Sale Number	Year
71-005	21

Forest Management Unit	County	Mapped By	Date	Page	of
Roscommon Management Unit	Roscommon County	Lewicki	5/20/21	2	2
Township	Range	Section(s) and Subdivision(s)	Scale		
23N	02W	S.11 W1/2SE	1:15,840		

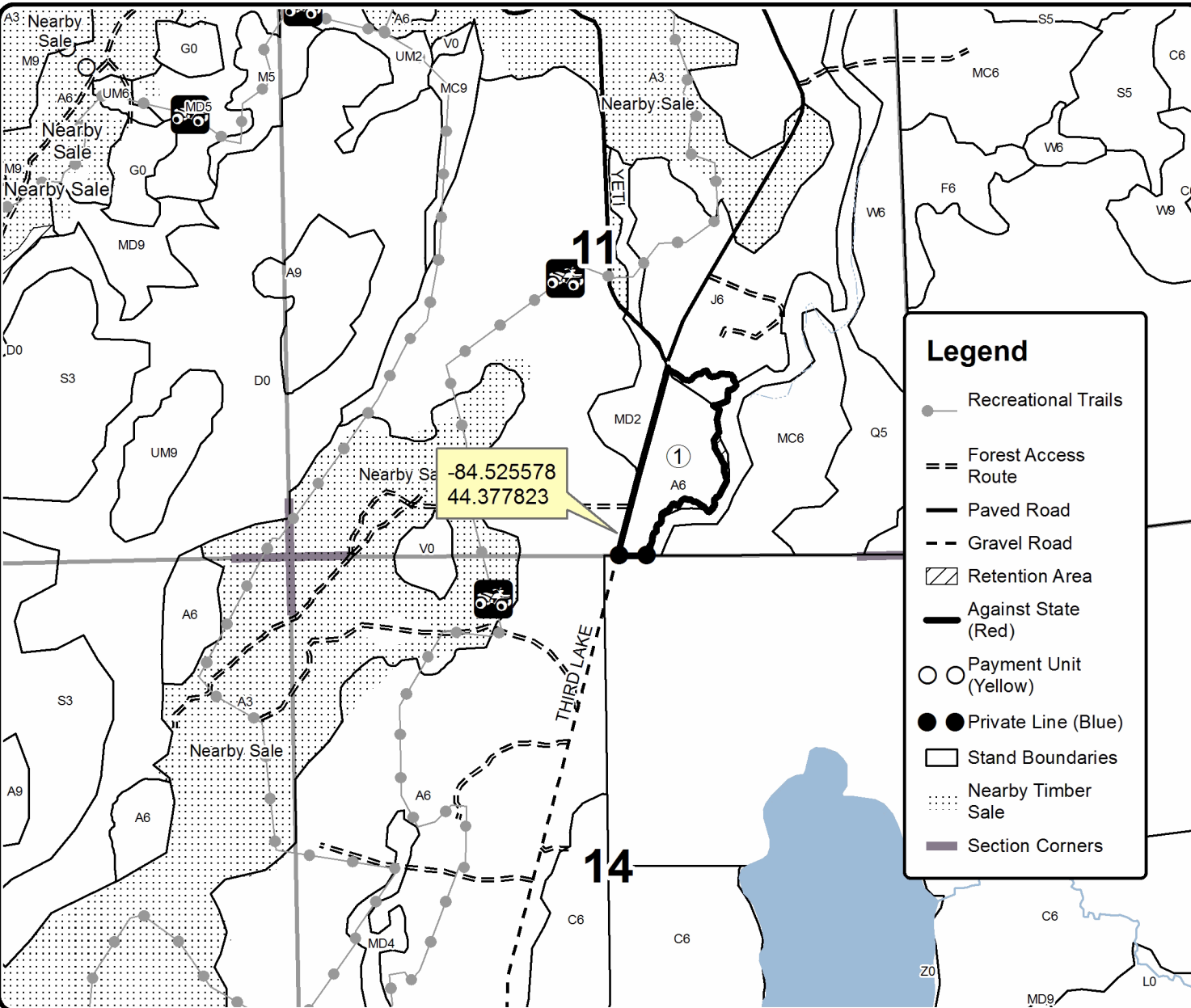
Cover Type				Density	
A = Aspen	H = Hemlock	N = Marsh	U = Upland Brush	0 = Non Stocked	5 = Pole Timber Medium
B = Paper Birch	J = Jack Pine	O = Oak	UM = Upland Mixed	1 = Seedling Sapling Poor	6 = Pole Timber Well
C = Cedar	L = Lowland Brush	P = Lowland Poplar	V = Bog or Marsh	2 = Seedling Sapling Medium	7 = Saw Timber Poor
D = Treed Bog	LM = Lowland Mixed	Q = Mixed Swamp Conifer	W = White Pine	3 = Seedling Sapling Well	8 = Saw Timber Medium
E = Swamp Hdwoods	M = Mpl. Bch. Brch	R = Red Pine	X = Non Stocked	4 = Pole Timber Poor	9 = Saw Timber Well
F = Spruce Fir	MC = Mixed Conifer	S = Black Spruce	Z = Water		
G = Grass	MD = Mixed Deciduous	T = Tamarack			

PU	Acres	PU	Acres
1	18.7	4	41.5
2	24.9	5	34.4
3	52.9		

Russell Lake Aspen

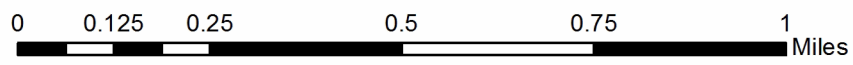
Compartment 38

172.4 Acres



Legend

- Recreational Trails
- Forest Access Route
- Paved Road
- Gravel Road
- Retention Area
- Against State (Red)
- Payment Unit (Yellow)
- Private Line (Blue)
- Stand Boundaries
- Nearby Timber Sale
- Section Corners



TIMBER SALE INFORMATION

Crossway Aspen (71-006-21)
T23N, R02W, SEC. 10; T23N, R02W, SEC. 9.
Roscommon County (Advertised Price \$85,298.00)

SALE NOTE: A recreation site such as a trail, pathway, or campground is within the sale area or the vicinity. Certain restrictions/specifications may be applicable including time restrictions.

A timber sale contract for this lump sum, sealed bid timber sale will be awarded to the responsible bidder offering the highest sealed bid price. All units of volume listed below were estimated using the Inventory Manager computer program and the new Michigan taper model. Bids must be at or above the following advertised price for each product and species:

<u>PRODUCTS & SPECIES</u>	<u>ESTIMATED UNITS*</u>	<u>ADVERTISED PRICE</u>
Sawtimber		
BI/R/Hybrid Oak	22.0 MBF	\$ 67.00 / MBF
Mixed Aspen	222.1 MBF	\$ 62.00 / MBF
Red Maple	44.3 MBF	\$ 57.00 / MBF
Red Pine	12.5 MBF	\$ 91.00 / MBF
White Pine	85.2 MBF	\$ 43.00 / MBF
Pulpwood		
Balsam Fir	49 Cords	\$ 17.55 / Cord
BI/R/Hybrid Oak	83 Cords	\$ 14.00 / Cord
Mixed Aspen	2,777 Cords	\$ 17.70 / Cord
Mixed Hardwood	469 Cords	\$ 13.40 / Cord
Red Pine	33 Cords	\$ 34.15 / Cord
White Pine	204 Cords	\$ 20.30 / Cord

* The total volume is statistically estimated within plus (+) or minus (-) 5.99 percent. There are an estimated 4,639 cords on this timber sale, plus or minus 278 cords at the 95% confidence level. The estimated units are final and not subject to adjustment. Prospective bidders are urged to examine this timber and to make their own estimates of quantity and quality.

BOND AND PAYMENT SCHEDULE:

1. A bond in the amount of \$4,265.00 to insure faithful performance of the conditions of the contract will be deposited by the successful bidder within 21 days of the sale award.
2. Cutting in any sale or unit without the required advance payment would be considered a trespass.
3. Total payment must be paid in advance or according to the following schedule :
 - (a) Ten percent (10%) of the sale value must be paid within 21 days of the sale award.
 - (b) The 10% down payment will be credited towards the first unit cut.
 - (c) Payment for each of the following units must be made before cutting begins in that unit:

PAYMENT UNIT NUMBER	PERCENT OF TOTAL SALE VALUE
01	31.8%
02	23.0%
03	23.3%
04	21.9%
4. If no cutting takes place, the 10% down payment will not be refunded.
5. Operations on the contract issued will terminate on 09/30/2023.

SALE STATISTICS

Volumes were calculated in cubic feet using the Michigan taper model. Cubic foot volume includes all wood inside bark for the product indicated. For display purposes, cubic feet were converted to cords and MBF using a simple conversion factor, e.g. 79 cubic feet per cord and 185 cubic feet per MBF. The cubic foot volumes are precise; the cords and MBF volumes are not. Cubic foot volume cannot be directly converted to cords or boards with precision.

SALE VOLUMES

The total estimated sale volume may not equal the sum of the species/products due to the nature of statistical calculations associated with double sampling methodology.

VOLUME		STATISTICAL RANGE IN CORDS		
TOTAL CUBIC FEET	TOTAL CORDS	PERCENT ERROR	MINIMUM	MAXIMUM
366,481	4,639	5.99%	4,361	4,917

VDU VOLUMES

A VDU is a Volume Determination Unit. Volumes and their associated statistics are calculated at the VDU level and summarized to the sale level. There is often a one to one relationship between a VDU and a Payment Unit, but not always, depending on the cruise design. Refer to the VDU TO PAYMENT UNIT table.

VDU	VOLUME		PERCENT ERROR	RANGE IN CORDS	
	TOTAL CUBIC FEET	TOTAL CORDS		MINIMUM	MAXIMUM
63	346,444	4,385	5.99%	4,123	4,648
TOTAL:	346,444	4,385		4,123	4,648

VDU TO PAYMENT UNIT

When a VDU is associated with more than one Payment Unit (PU), the VDU volumes are assigned to the PU based on acres of the VDU within the PU.

VDU	VDU ACRES	PU	PU ACRES
63	104.7	1	33.3
		2	24.1
		3	24.4
		4	22.9
TOTAL:	104.7		104.7

DESCRIPTION OF TIMBER BY PAYMENT UNIT (PU)

PU	MARKET GROUP	PRODUCT	QUANTITY	UNIT	ACRES	ADVERTISE PRICE	
1	BI/R/Hybrid Oak	Sawtimber	7.0	MBF	33.3	\$27,137.40	
	Mixed Aspen		70.7	MBF			
	<i>B. T. Aspen</i>		46.2	<i>MBF</i>			
	<i>Quaking Aspen</i>		24.5	<i>MBF</i>			
	Red Maple		14.1	MBF			
	Red Pine		4.0	MBF			
	White Pine		27.1	MBF			
	Balsam Fir		Pulpwood	16			Cords
	BI/R/Hybrid Oak			27			Cords
	Mixed Aspen			883			Cords
	<i>B. T. Aspen</i>			370			<i>Cords</i>
	<i>Quaking Aspen</i>			513			<i>Cords</i>
	Mixed Hardwood			151			Cords
	<i>Black Cherry</i>			17			<i>Cords</i>
	<i>Red Maple</i>			131			<i>Cords</i>
	<i>Sugar Maple</i>	3		<i>Cords</i>			
	Red Pine	10	Cords				
	White Pine	64	Cords				
2	BI/R/Hybrid Oak	Sawtimber	5.1	MBF	24.1	\$19,628.45	
	Mixed Aspen		51.1	MBF			
	<i>B. T. Aspen</i>		33.4	<i>MBF</i>			
	<i>Quaking Aspen</i>		17.7	<i>MBF</i>			
	Red Maple		10.2	MBF			
	Red Pine		2.9	MBF			
	White Pine		19.6	MBF			
	Balsam Fir		Pulpwood	11			Cords
	BI/R/Hybrid Oak			19			Cords
	Mixed Aspen			639			Cords
	<i>B. T. Aspen</i>			268			<i>Cords</i>
	<i>Quaking Aspen</i>			371			<i>Cords</i>
	Mixed Hardwood			107			Cords
	<i>Black Cherry</i>			12			<i>Cords</i>
	<i>Red Maple</i>			94			<i>Cords</i>
	<i>Sugar Maple</i>	1		<i>Cords</i>			
	Red Pine	8	Cords				
	White Pine	47	Cords				
3	BI/R/Hybrid Oak	Sawtimber	5.1	MBF	24.4	\$19,872.95	
	Mixed Aspen		51.7	MBF			
	<i>B. T. Aspen</i>		33.8	<i>MBF</i>			
	<i>Quaking Aspen</i>		17.9	<i>MBF</i>			
	Red Maple		10.3	MBF			
	Red Pine		2.9	MBF			
	White Pine		19.9	MBF			
	Balsam Fir		Pulpwood	11			Cords
	BI/R/Hybrid Oak			19			Cords
	Mixed Aspen			647			Cords
	<i>B. T. Aspen</i>			271			<i>Cords</i>
	<i>Quaking Aspen</i>			376			<i>Cords</i>
	Mixed Hardwood			109			Cords
	<i>Black Cherry</i>			13			<i>Cords</i>
	<i>Red Maple</i>			95			<i>Cords</i>
	<i>Sugar Maple</i>	1		<i>Cords</i>			
	Red Pine	8	Cords				
	White Pine	48	Cords				
4	BI/R/Hybrid Oak	Sawtimber	4.8	MBF	22.9	\$18,659.20	
	Mixed Aspen		48.6	MBF			

DESCRIPTION OF TIMBER BY PAYMENT UNIT (PU), CON'T

PU	MARKET GROUP	PRODUCT	QUANTITY	UNIT	ACRES	ADVERTISE PRICE	
4 con't	<i>B. T. Aspen</i>	<i>Sawtimber</i>	31.8	<i>MBF</i>			
	<i>Quaking Aspen</i>		16.8	<i>MBF</i>			
	Red Maple		9.7	MBF			
	Red Pine		2.7	MBF			
	White Pine		18.6	MBF			
	Balsam Fir		Pulpwood	11	Cords		
	Bl/R/Hybrid Oak			18	Cords		
	Mixed Aspen			608	Cords		
	<i>B. T. Aspen</i>			255	<i>Cords</i>		
	<i>Quaking Aspen</i>			353	<i>Cords</i>		
	Mixed Hardwood			102	Cords		
	<i>Black Cherry</i>			12	<i>Cords</i>		
	<i>Red Maple</i>			89	<i>Cords</i>		
	<i>Sugar Maple</i>			1	<i>Cords</i>		
	Red Pine			7	Cords		
	White Pine		45	Cords			
	TOTAL:			386.1	MBF		
TOTAL:			3,615	Cords			

Sale Specific Conditions & Requirements

Sale Name: Crossway Aspen

Sale Number: 71-006-21 Seq#: 1

1 - Sale Area

1.2 - Boundaries

1.2.1 - Painted boundaries (9/19)

The sale boundary and Payment Unit boundaries are marked and identified by blue, red, and yellow paint. Exterior sale boundary lines against private property are marked with blue paint. Exterior sale boundary lines against state are marked with red paint. Interior Payment Unit boundaries are marked with yellow paint. The painted boundary line trees are not Included Timber and are to be protected. Yellow painted trees designating an interior Payment Unit boundary are only to be cut when all surrounding Payment Units have been paid.

2 - Timber Specifications

2.1 - Included Timber

2.1.1 - Clearcut unit(s) with unmerchantable trees (6/14)

Within Payment Unit(s) 1 - 4, cut all trees that are two (2) inches or more at DBH.

2.2 - Utilization

2.2.3 - Stump heights (4/07)

Stump heights within the Sale Area shall not exceed 6 inches for all trees.

3 - Payments

3.3 - Pre-measured Sales

3.3.4 - Dividing payment units (7/14)

Payment Unit(s) may be divided at the request of the Purchaser and upon approval of the Unit Manager. Dividing Payment Units is a contract modification which requires a Timber Sale Contract Amendment.

4 - Transportation

4.1 - Construction

4.1.3 - Slash and earthen piles (8/04)

Piles or windrows of earth along roads and landings that have been widened or constructed shall be leveled. Slash from road maintenance or construction, including stumps, shall be dispersed throughout the sale.

4.1.6 - Road construction (1/09)

Construction of new roads or improvements of existing roads shall be done in such a way as to minimize the environmental and visual impacts. Merchantable trees shall be cut and utilized unless otherwise directed. Non-merchantable trees shall be severed and laid flat on the ground. Slash shall be scattered, and not left in windrows and kept a minimum of 10 feet back from the road edge. Stumps shall be set upright, not left on edge, and be moved at least 10 feet away from the road edge. Disturbed soil shall be feathered into the woods and not left in berms or windrows.

4.1.7 - Road closure (10/11)

All new roads built into the sale must be blocked to vehicle traffic upon completion of the sale. In general, this will require constructing a four (4') foot high berm of stumps and logs covered with earth. Stumps and brush must be placed along the remainder of the trail. These roads must be rendered impassable to cars and trucks. Contact the sale administrator for specific details of design and placement.

4.2 - Maintenance

4.2.3 - Road maintenance (8/13)

The following road maintenance is required: Within 60 days of completion of hauling, or if no hauling occurs for 60 days, the road must be maintained and graded. This includes cleaning of drainage areas, grading, crowning, and filling with gravel, if necessary. Damages will be assessed if grading/repair does not occur.

4.2.5 - Two wheel drive condition (2/04)

All existing trail roads on and adjacent to the sale area must be passable by two-wheel drive traffic for the duration of the sale.

5 - Operations

5.1 - Notification

5.1.1 - Pre-sale conference (10/16)

A pre-sale conference between the Purchaser and sale administrator is required prior to beginning any operations to determine landing and road locations.

5.1.4 - Post-sale conference (10/16)

A post-sale conference on site between the Purchaser and sale administrator is required prior to the completion of active logging operations to determine clean-up and repair of landings, road edges, and the fulfillment of other contract specifications.

5.2 - Conduct of Operations

5.2.1 - Slash

5.2.1.1 - Slash within sale area (9/16)

No trees are to be felled outside the sale area and all slash is to be kept at least 10 feet back from the red and blue paint line. If sale boundary lines are along a public road or highway, then slash must be removed 50' from these lines per General Condition & Requirement 5.2.1.

5.2.1.8 - Slash height (12/08)

No slash or tree tops may exceed 24 inches in height. Slash is to be scattered evenly over the Sale Area if not chipped and must not be left in windrow piles that impede regeneration.

5.2.1.10 - No slash in openings (5/10)

No brush or logging debris is to be left in the maintained wildlife opening which is indicated by G0 on the Timber Sale Map. Any damage to the opening shall be repaired according to specifications of the Unit Manager or his/her representative.

5.2.2 - Hazard Trees/Snags

5.2.2.1 - Den trees (10/16)

Obvious hollow and/or den trees shall be protected and left standing unless they are a safety hazard.

5.2.3 - Operating Restrictions

5.2.3.11 - Coppice regeneration protection (4/10)

Timber harvesting in any Payment Unit must be completed before significant aspen sprouting occurs in that Payment Unit so as to minimize damage to the new regeneration. Any post harvest operations, such as chipping, must be completed before sprouting of regeneration occurs. If it is anticipated that chipping will be delayed, then tops shall be carried to one central location or left unchipped. The Unit Manager or his/her representative may cease such operations if sprouting occurs before the operation is complete.

5.2.4 - Dead and Down Creation

5.2.4.2 - Dead and down creation, hare and grouse (1/14)

To improve habitat for snowshoe hare, grouse, and other species, the Purchaser is to leave two trees, nine (9) inches or larger in diameter on the ground for every two acres. They should be scattered throughout the sale or positioned per the sale administrators' instructions. If possible, the logs or trees should be felled so they overlap. Note these pieces should have a minimum length of five feet. They can be of any tree species and can be an un-merchantable piece of wood or a full tree.

5.2.4.3 - Dead and down creation, dead trees (6/07)

Except as provided for in General Condition and Requirement 5.2.2, no dead trees, standing or down, are to be cut, skidded, or processed.

5.2.4.4 - Dead and down creation, grouse (6/18)

To encourage grouse and other wildlife, in Payment Unit(s) 1 - 4 leave at least 1 large top/brush pile per every 2 acres. These will be placed within 50 feet of the southern boundary along the swamp edge. These piles must contain at least one 5 foot or longer piece of tree and it must be 8" or greater in diameter.

5.2.30 - Landing/road top soil protection (2/15)

Top soil on new landings and new roads must be removed, stockpiled and saved. Upon completion of the timber sale, soil must be evenly distributed back over the area for revegetation.

5.2.32 - Decking/landing restoration (9/13)

All decking and landing areas must have the surface area restored to a condition equal to or better than before. This is to ensure the proper regeneration of the stand. Wood debris, chips, and "cookies" from trimmings must be removed or scattered away from landing and loading areas and may not be windrowed on the edge.

5.2.39 - ORV trail/route protection (4/18)

The ORV trail is shown on the Timber Sale Map. Trees with yellow ORV markers shall be cut off above the markers and at least 5 feet above ground. All stumps within 5 feet of the trail must be cut flush with the ground. Maintain a 20-foot-wide slash, debris, and rut free zone daily using the ORV trail or route as the centerline. Do not run equipment down the ORV trail or route. Skidding across the trail or route may only occur in locations approved by the sale administrator.

5.2.43 - Opening protection (2/21)

No activities are permitted in openings marked on the Timber Sale Map with the letter "G". Any damage to the openings shall be repaired according to specifications of the Unit Manager or his/her representative.

5.4 - Soil Protection

5.4.1 - Rutting restriction, general (7/16)

Operations are to cease immediately if equipment and weather conditions result in rutting of roads and/or skid trails which is 12 inches or greater in depth and 50 feet in length. The Unit Manager or his/her representative may restrict hauling and/or skidding if ruts exceed the specified depth. With the Unit Manager or his/her representative's approval, the Purchaser may return to the area when the risk of rutting has decreased.

6 - Safety and Fire Prevention

6.2 - Signing

6.2.3 - Recreational trail posting (10/20)

The Purchaser is responsible for posting and maintaining caution signs on the ORV trail prior to beginning operations. The trail must be posted at appropriate distances from the Sale Area to warn of logging activity and truck traffic at both ends of the trail. Signs must be removed when harvest operations are suspended or completed. The Purchaser will provide these signs.



TIMBER SALE MAP

This information provided by authority of Part 525, 1994 PA 451, as amended.

Forest Management Unit	County	Mapped By	Date	Page	of
Roscommon Management Unit	Roscommon County	Lewicki	12/22/2020	1	1
Township	Range	Section(s) and Subdivision(s)	Scale		
23N	02W	S.10SW; NE; SWNW S. 9 SENE; NESE	1:15,840		

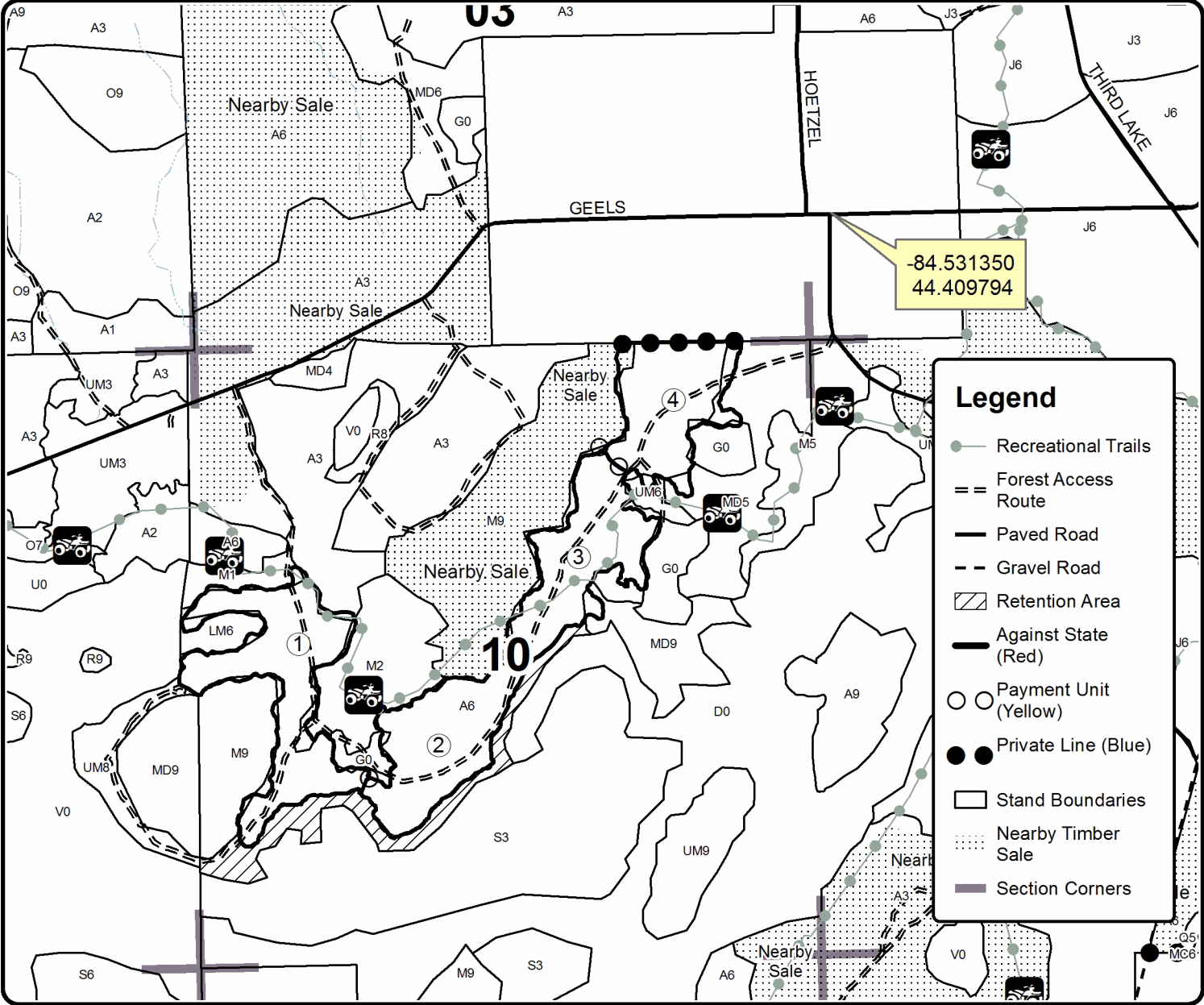
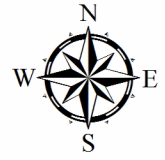
Cover Type				Density	
A = Aspen	H = Hemlock	N = Marsh	U = Upland Brush	0 = Non Stocked	5 = Pole Timber Medium
B = Paper Birch	J = Jack Pine	O = Oak	UM = Upland Mixed	1 = Seedling Sapling Poor	6 = Pole Timber Well
C = Cedar	L = Lowland Brush	P = Lowland Poplar	V = Bog or Marsh	2 = Seedling Sapling Medium	7 = Saw Timber Poor
D = Treed Bog	LM = Lowland Mixed	Q = Mixed Swamp Conifer	W = White Pine	3 = Seedling Sapling Well	8 = Saw Timber Medium
E = Swamp Hdwoods	M = Mpl, Bch, Brch	R = Red Pine	X = Non Stocked	4 = Pole Timber Poor	9 = Saw Timber Well
F = Spruce Fir	MC = Mixed Conifer	S = Black Spruce	Z = Water		
G = Grass	MD = Mixed Deciduous	T = Tamarack			

PU	Acres	PU	Acres
1	33.3	4	22.9
2	24.1		
3	24.4		

CROSSWAY ASPEN

Compartment 038

104.7 Acres



Legend

- Recreational Trails
- Forest Access Route
- Paved Road
- Gravel Road
- Retention Area
- Against State (Red)
- Payment Unit (Yellow)
- Private Line (Blue)
- Stand Boundaries
- Nearby Timber Sale
- Section Corners

TIMBER SALE INFORMATION

Triangle Mix (71-011-21)

T24N, R03W, SEC. 1; T24N, R03W, SEC. 11; T24N, R03W, SEC. 12; T24N, R03W, SEC. 13; T24N, R03W, SEC. 2.
Roscommon County (Advertised Price \$20,985.40)

SALE NOTE: The oak stands are mature and still viable, however external environmental factors are putting stresses on them that may cause their rapid decline.

A timber sale contract for this lump sum, sealed bid timber sale will be awarded to the responsible bidder offering the highest sealed bid price. All units of volume listed below were estimated using the Inventory Manager computer program and the new Michigan taper model. Bids must be at or above the following advertised price for each product and species:

<u>PRODUCTS & SPECIES</u>	<u>ESTIMATED UNITS*</u>	<u>ADVERTISED PRICE</u>
Sawtimber		
B. T. Aspen	50.7 MBF	\$ 62.00 / MBF
Bl/R/Hybrid Oak	71.0 MBF	\$ 67.00 / MBF
Red Maple	26.3 MBF	\$ 57.00 / MBF
White Oak	9.4 MBF	\$ 70.00 / MBF
Pulpwood		
Balsam Fir	104 Cords	\$ 17.55 / Cord
Jack Pine	40 Cords	\$ 13.85 / Cord
Mixed Aspen	224 Cords	\$ 17.70 / Cord
Mixed Hardwood	187 Cords	\$ 13.40 / Cord
Mixed Oak	99 Cords	\$ 14.00 / Cord
Red Pine	6 Cords	\$ 34.15 / Cord
White Pine	24 Cords	\$ 20.30 / Cord

* The total volume is statistically estimated within plus (+) or minus (-) 11.11 percent. There are an estimated 1,041 cords on this timber sale, plus or minus 116 cords at the 95% confidence level. The estimated units are final and not subject to adjustment. Prospective bidders are urged to examine this timber and to make their own estimates of quantity and quality.

BOND AND PAYMENT SCHEDULE:

1. A bond in the amount of \$1,049.00 to insure faithful performance of the conditions of the contract will be deposited by the successful bidder within 21 days of the sale award.
2. Cutting in any sale or unit without the required advance payment would be considered a trespass.
3. Total payment must be paid in advance or according to the following schedule :
 - (a) Ten percent (10%) of the sale value must be paid within 21 days of the sale award.
 - (b) The 10% down payment will be credited towards the first unit cut.
 - (c) Payment for each of the following units must be made before cutting begins in that unit:

PAYMENT UNIT NUMBER	PERCENT OF TOTAL SALE VALUE
01	55.1%
02	25.3%
03	5.7%
04	7.9%
05	6.0%

4. If no cutting takes place, the 10% down payment will not be refunded.
5. Operations on the contract issued will terminate on 09/30/2023.

SALE STATISTICS

Volumes were calculated in cubic feet using the Michigan taper model. Cubic foot volume includes all wood inside bark for the product indicated. For display purposes, cubic feet were converted to cords and MBF using a simple conversion factor, e.g. 79 cubic feet per cord and 185 cubic feet per MBF. The cubic foot volumes are precise; the cords and MBF volumes are not. Cubic foot volume cannot be directly converted to cords or boards with precision.

SALE VOLUMES

The total estimated sale volume may not equal the sum of the species/products due to the nature of statistical calculations associated with double sampling methodology.

VOLUME			STATISTICAL RANGE IN CORDS	
TOTAL CUBIC FEET	TOTAL CORDS	PERCENT ERROR	MINIMUM	MAXIMUM
82,237	1,041	11.11%	925	1,157

VDU VOLUMES

A VDU is a Volume Determination Unit. Volumes and their associated statistics are calculated at the VDU level and summarized to the sale level. There is often a one to one relationship between a VDU and a Payment Unit, but not always, depending on the cruise design. Refer to the VDU TO PAYMENT UNIT table.

	VOLUME			RANGE IN CORDS	
VDU	TOTAL CUBIC FEET	TOTAL CORDS	PERCENT ERROR	MINIMUM	MAXIMUM
132	15,989	202	29.80%	142	263
138	4,083	52	31.05%	36	68
195	5,690	72	29.56%	51	93
203	47,401	600	14.88%	511	689
207	5,713	72	20.09%	58	87
TOTAL:	78,876	998		797	1,200

VDU TO PAYMENT UNIT

When a VDU is associated with more than one Payment Unit (PU), the VDU volumes are assigned to the PU based on acres of the VDU within the PU.

VDU	VDU ACRES	PU	PU ACRES
132	13.9	2	13.9
138	3.4	3	3.4
195	3.5	5	3.5
203	13.1	1	13.1
207	3.0	4	3.0
TOTAL:	36.9		36.9

DESCRIPTION OF TIMBER BY PAYMENT UNIT (PU)

PU	MARKET GROUP	PRODUCT	QUANTITY	UNIT	ACRES	ADVERTISE PRICE
1	B. T. Aspen	Sawtimber	41.5	MBF	13.1	\$11,554.75
	BI/R/Hybrid Oak		3.3	MBF		
	Red Maple		26.3	MBF		
	Balsam Fir	Pulpwood	93	Cords		
	Mixed Aspen		174	Cords		
	<i>B. T. Aspen</i>		174	<i>Cords</i>		
	Mixed Hardwood		184	Cords		
	<i>Paper Birch</i>	<i>Sawtimber</i>	4.5	<i>MBF</i>		
	<i>Paper Birch</i>	<i>Pulpwood</i>	41	<i>Cords</i>		
	<i>Red Maple</i>		134	<i>Cords</i>		
	Mixed Oak		6	Cords		
	<i>BI/R/Hybrid Oak</i>		6	<i>Cords</i>		
2	BI/R/Hybrid Oak	Sawtimber	50.4	MBF	13.9	\$5,305.55
	White Oak		7.9	MBF		
	Balsam Fir	Pulpwood	5	Cords		
	Mixed Aspen		7	Cords		
	<i>B. T. Aspen</i>		7	<i>Cords</i>		
	Mixed Hardwood		3	Cords		
	<i>Red Maple</i>		3	<i>Cords</i>		
	Mixed Oak		58	Cords		
	<i>BI/R/Hybrid Oak</i>		32	<i>Cords</i>		
	<i>White Oak</i>		26	<i>Cords</i>		
	Red Pine		2	Cords		
	White Pine		12	Cords		
	<i>White Pine</i>	<i>Sawtimber</i>	2.3	<i>MBF</i>		
	<i>White Pine</i>	<i>Pulpwood</i>	7	<i>Cords</i>		
3	BI/R/Hybrid Oak	Sawtimber	7.6	MBF	3.4	\$1,192.25
	White Oak		1.5	MBF		
	Jack Pine	Pulpwood	5	Cords		
	<i>Jack Pine</i>		5	<i>Cords</i>		
	Mixed Aspen		6	Cords		
	<i>B. T. Aspen</i>		6	<i>Cords</i>		
	Mixed Oak		19	Cords		
	<i>BI/R/Hybrid Oak</i>		14	<i>Cords</i>		
	<i>White Oak</i>		5	<i>Cords</i>		
	Red Pine		4	Cords		
4	B. T. Aspen	Sawtimber	9.2	MBF	3.0	\$1,667.80
	BI/R/Hybrid Oak		5.8	MBF		
	Jack Pine	Pulpwood	4	Cords		
	<i>Jack Pine</i>	<i>Sawtimber</i>	1.7	<i>MBF</i>		
	<i>Jack Pine</i>	<i>Pulpwood</i>	1	<i>Cords</i>		
	Mixed Aspen		26	Cords		
	<i>Quaking Aspen</i>	<i>Sawtimber</i>	4.2	<i>MBF</i>		
	<i>B. T. Aspen</i>	<i>Pulpwood</i>	12	<i>Cords</i>		
	<i>Quaking Aspen</i>		6	<i>Cords</i>		
	Mixed Oak		8	Cords		
	<i>BI/R/Hybrid Oak</i>		8	<i>Cords</i>		
	White Pine		4	Cords		
	<i>White Pine</i>	<i>Sawtimber</i>	0.8	<i>MBF</i>		
<i>White Pine</i>	<i>Pulpwood</i>	2	<i>Cords</i>			
5	BI/R/Hybrid Oak	Sawtimber	3.9	MBF	3.5	\$1,265.05
	Balsam Fir	Pulpwood	6	Cords		
	Jack Pine		31	Cords		
	<i>Jack Pine</i>	<i>Sawtimber</i>	7.0	<i>MBF</i>		
	<i>Jack Pine</i>	<i>Pulpwood</i>	17	<i>Cords</i>		
	Mixed Aspen		11	Cords		

DESCRIPTION OF TIMBER BY PAYMENT UNIT (PU), CON'T

PU	MARKET GROUP	PRODUCT	QUANTITY	UNIT	ACRES	ADVERTISE PRICE
5 con't	<i>B. T. Aspen</i>	<i>Pulpwood</i>	11	<i>Cords</i>		
	Mixed Oak		8	Cords		
	<i>B/R/Hybrid Oak</i>		8	<i>Cords</i>		
	White Pine		8	Cords		
	<i>White Pine</i>	<i>Sawtimber</i>	1.6	<i>MBF</i>		
	<i>White Pine</i>	<i>Pulpwood</i>	5	<i>Cords</i>		
TOTAL:			157.4	MBF		
TOTAL:			684	Cords		

Sale Specific Conditions & Requirements

Sale Name: Triangle Mix

Sale Number: 71-011-21 Seq#: 1

1 - Sale Area

1.2 - Boundaries

1.2.1 - Painted boundaries (9/19)

The sale boundary and Payment Unit boundaries are marked and identified by blue and red paint. Exterior sale boundary lines against private property are marked with blue paint. Exterior sale boundary lines against state are marked with red paint. Retention patches are marked with red paint; no harvesting activities may occur within these areas. The painted boundary line trees are not Included Timber and are to be protected.

2 - Timber Specifications

2.1 - Included Timber

2.1.1 - Clearcut unit(s) with unmerchantable trees (6/14)

Within Payment Unit(s) 1 and 3 - 5, cut all trees that are two (2) inches or more at DBH, except in Payment Unit 3 do not cut any white oak or white pine that are over 14 inches at DBH and in Payment Unit 5 do not cut any white oak that are over 14 inches at DBH.

2.1.5 - Overstory removal unit(s) (8/11)

Within Payment Unit(s) 2, all trees with a DBH equal to or greater than 5 inches which meet minimum piece specifications in 2.2 Utilization, are designated for cutting, except trees marked with green paint.

2.2 - Utilization

2.2.3 - Stump heights (4/07)

Stump heights within the Sale Area shall not exceed 12 inches for trees greater than 10 inches at DBH and 4 inches for trees smaller than 10 inches at DBH.

2.2.6 - Roundwood operation required (3/21)

The skidding of whole trees or tree segments with limbs attached is prohibited within Payment Unit 2. All products must be produced as roundwood and forwarded to existing roads or landing areas in final product length.

3 - Payments

3.3 - Pre-measured Sales

3.3.4 - Dividing payment units (7/14)

Payment Unit(s) 1 & 2 may be divided at the request of the Purchaser and upon approval of the Unit Manager. Dividing Payment Units is a contract modification which requires a Timber Sale Contract Amendment.

3.4 - Damaged Timber

3.4.1 - Damaged timber (7/16)

General Condition and Requirement 3.4 Damaged Timber, defines liquidated damages for undesignated live merchantable trees which are cut or injured. In addition, extreme care should be taken to avoid damage to tree seedlings and saplings.

Within all Payment Units, should chipping occur in a Payment Unit, this must be done before sprouting of new regeneration. If more than 33% of the newly sprouted tree seedlings within a specified portion of the Sale Area are damaged, liquidated damages will be assessed at \$300 per acre for all acreage within that specified portion of the Sale Area that was damaged.

Within Payment Unit 2, if more than 33% of the tree seedlings or saplings (1/4" to 4.5" DBH) within a specified portion of the Sale Area are damaged, liquidated damages will be assessed at \$300 per acre for all acreage within that specified portion of the Sale Area that was damaged.

4 - Transportation

4.1 - Construction

4.1.6 - Road construction (1/09)

Construction of new roads or improvements of existing roads shall be done in such a way as to minimize the environmental and visual impacts. Merchantable trees shall be cut and utilized unless otherwise directed. Non-merchantable trees shall be severed and laid flat on the ground. Slash shall be scattered, and not left in windrows and kept a minimum of 10 feet back from the road edge. Stumps shall be set upright, not left on edge, and be moved at least 10 feet away from the road edge. Disturbed soil shall be feathered into the woods and not left in berms or windrows.

4.1.7 - Road closure (10/11)

All new roads built into the sale must be blocked to vehicle traffic upon completion of the sale. Overgrown roads that are reopened shall be considered new roads. In general, this will require constructing a four (4') foot high berm of stumps and logs covered with earth. These roads must be rendered impassable to cars and trucks. All stumps from road building and landing construction must be reserved to block any newly constructed roads upon completion of the sale. Contact the sale administrator for specific details of design and placement.

4.2 - Maintenance

4.2.5 - Two wheel drive condition (2/04)

All existing trail roads on and adjacent to the sale area must be passable by two-wheel drive traffic for the duration of the sale.

5 - Operations

5.1 - Notification

5.1.1 - Pre-sale conference (10/16)

A pre-sale conference on site between the Purchaser and sale administrator is required prior to beginning any operations to determine landing and road locations. The Unit Manager or his/her representative must be contacted in advance to schedule the conference.

5.1.4 - Post-sale conference (10/16)

A post-sale conference on site between the Purchaser and sale administrator is required 5 days prior to the completion of active logging operations to determine clean-up and repair of landings, road edges, and the fulfillment of other contract specifications.

5.2 - Conduct of Operations

5.2.1 - Slash

5.2.1.8 - Slash height (12/08)

No slash or tree tops may exceed 24 inches in height. Slash and tops must be spread evenly throughout the Sale Area and not left in windrows.

5.2.3 - Operating Restrictions

5.2.3.5 - Oak wilt restriction (1/18)

Within the Sale Area, unless changed by written agreement, cutting, skidding, hauling within the sale and brushing of access roads to the sale are not permitted during the period of April 15 to July 15. Operations may be allowed if specific steps are taken to prevent damaging uncut oak during the high risk period. Those steps may include completing all road brushing before April 15th and clearing a tree-length buffer along uncut oak cover before April 15th. This is necessary to reduce the spread of oak wilt. For more information, contact the Unit Manager or his/her representative.

5.2.3.11 - Coppice regeneration protection (4/10)

Timber harvesting in any Payment Unit must be completed before significant aspen sprouting occurs in that Payment Unit to minimize damage to the new regeneration. Any post harvest operations, such as chipping, must be completed before sprouting of regeneration occurs. Should damages occur to the new regeneration, the damages will be assessed per Specification 3.4. 1 - Damaged Timber. If it is anticipated that chipping will be delayed, then tops shall be carried to one central location, preferably the landing. A third party entity may be brought in to chip the tops/slash, before new sprouting occurs, should the contract holder fail to present in a timely manner arrangements approved by the Department for protecting the new regeneration. The Unit Manager or his/her representative may also cease such operations if sprouting occurs before the operation is complete and the Payment Unit(s) will be counted as incomplete with liquidated damages assessed accordingly.

5.2.4 - Dead and Down Creation

5.2.4.2 - Dead and down creation, hare and grouse (1/14)

To improve habitat for snowshoe hare, grouse, and other species, the Purchaser is to leave one tree nine (9) inches or larger in diameter on the ground for every two acres in Payment Unit 1. They should be scattered throughout the Sale Area or positioned per the sale administrators' instructions. Note these pieces should have a minimum length of five feet. They can be of any tree species and can be an un-merchantable piece of wood or a full tree. In addition, place at least 4 brush piles along the west edge of Payment Unit 1 along the lowland boundary. Place pieces of a large log or stump at the bottom of the piles to create cavities within the brush pile.

5.2.22 - Operating Caution

5.2.22.2 - Operating caution (6/11)

It is recommended, but not required, that within Payment Unit(s) 1, cutting, skidding, and hauling occur during dry summer or frozen winter conditions. The reason for the recommendation is because of areas of low ground within Payment Unit 1.

5.2.32 - Decking/landing restoration (9/13)

All decking and landing areas must have the surface area restored to a condition equal to or better than before. This is to ensure the proper regeneration of the stand. Wood debris, chips, and "cookies" from trimmings must be removed or scattered away from landing and loading areas and may not be windrowed on the edge.

6 - Safety and Fire Prevention

6.2 - Signing

6.2.1 - Road posting (10/20)

The Purchaser is responsible for posting and maintaining caution signs on all county roads affected by the sale prior to beginning operations. The road must be posted at appropriate distances from the Sale Area to warn of logging activity and truck traffic. Signs must be removed when harvest operations are suspended or completed. The Purchaser will provide these signs.



TIMBER SALE MAP

This information provided by authority of Part 525, 1994 PA 451, as amended.

Forest Management Unit Roscommon	County Roscommon	Mapped By Martell	Date 5/17/21	Page 1	of 2
Township 24N	Range 03W	Section(s) and Subdivision(s) Sec. 1 - NWNW; Sec. 2 - SESW; Sec. 11 - NESE; Sec. 12 - SWSW; Sec. 13 - NENW	Scale 1:15,840		

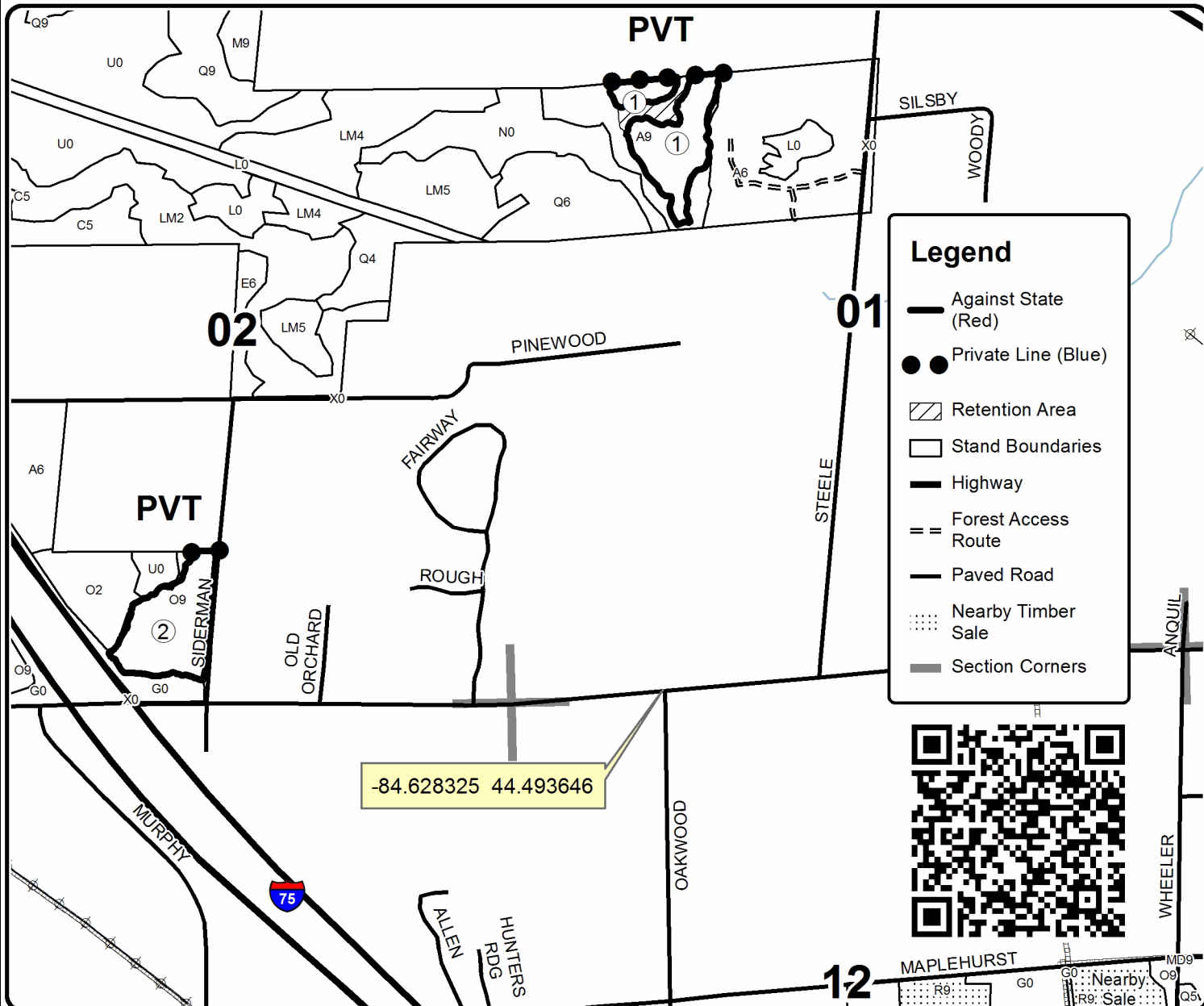
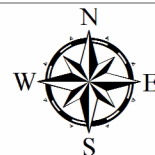
Cover Type				Density	
A = Aspen	H = Hemlock	N = Marsh	U = Upland Brush	0 = Non Stocked	5 = Pole Timber Medium
B = Paper Birch	J = Jack Pine	O = Oak	UM = Upland Mixed	1 = Seedling Sapling Poor	6 = Pole Timber Well
C = Cedar	L = Lowland Brush	P = Lowland Poplar	V = Bog or Marsh	2 = Seedling Sapling Medium	7 = Saw Timber Poor
D = Treed Bog	LM = Lowland Mixed	Q = Mixed Swamp Conifer	W = White Pine	3 = Seedling Sapling Well	8 = Saw Timber Medium
E = Swamp Hdwoods	M = Mpl, Bch, Brch	R = Red Pine	X = Non Stocked	4 = Pole Timber Poor	9 = Saw Timber Well
F = Spruce Fir	MC = Mixed Conifer	S = Black Spruce	Z = Water		
G = Grass	MD = Mixed Deciduous	T = Tamarack			

PU	Acres	PU	Acres
1	13.1	4	3.0
2	13.9	5	3.5
3	3.4		

Triangle Mix

Compartment 32

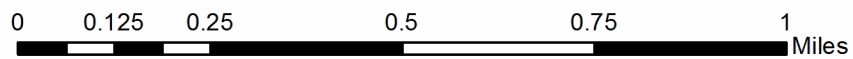
36.9 Acres



Legend

- Against State (Red)
- Private Line (Blue)
- Retention Area
- Stand Boundaries
- Highway
- Forest Access Route
- Paved Road
- Nearby Timber Sale
- Section Corners

-84.628325 44.493646





TIMBER SALE MAP

This information provided by authority of Part 525, 1994 PA 451, as amended.

Sale Number	Year
71 - 011	21

Forest Management Unit	County	Mapped By	Date	Page	of
Roscommon	Roscommon	Martell	5/17/21	2	2
Township	Range	Section(s) and Subdivision(s)	Scale		
24N	03W	Sec. 1 - NWNW; Sec. 2 - SESW; Sec. 11 - NESE; Sec. 12 - SWSW; Sec. 13 - NENW	1:7,920		

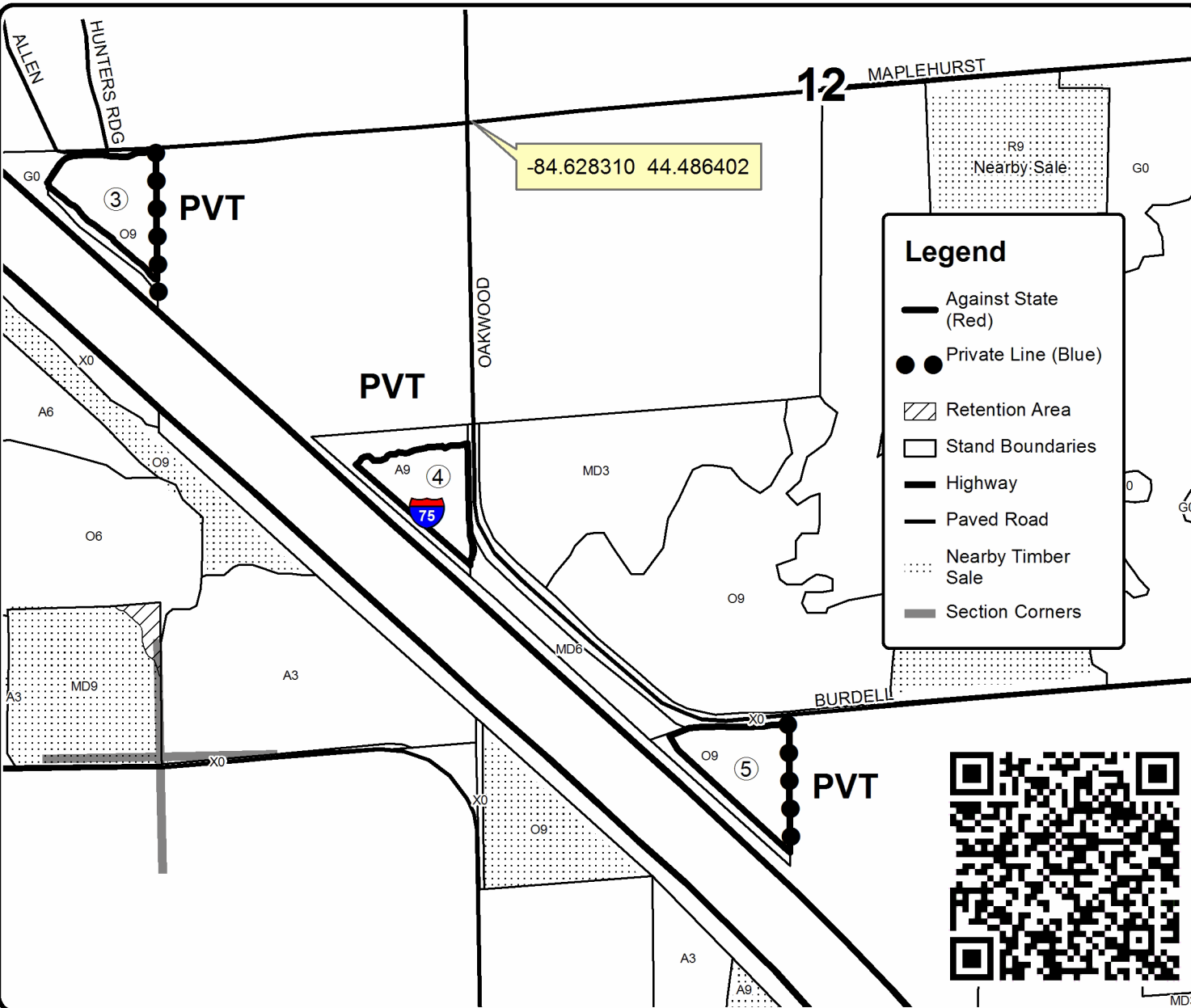
Cover Type				Density	
A = Aspen	H = Hemlock	N = Marsh	U = Upland Brush	0 = Non Stocked	5 = Pole Timber Medium
B = Paper Birch	J = Jack Pine	O = Oak	UM = Upland Mixed	1 = Seedling Sapling Poor	6 = Pole Timber Well
C = Cedar	L = Lowland Brush	P = Lowland Poplar	V = Bog or Marsh	2 = Seedling Sapling Medium	7 = Saw Timber Poor
D = Treed Bog	LM = Lowland Mixed	Q = Mixed Swamp Conifer	W = White Pine	3 = Seedling Sapling Well	8 = Saw Timber Medium
E = Swamp Hdwoods	M = Mpl. Bch, Brch	R = Red Pine	X = Non Stocked	4 = Pole Timber Poor	9 = Saw Timber Well
F = Spruce Fir	MC = Mixed Conifer	S = Black Spruce	Z = Water		
G = Grass	MD = Mixed Deciduous	T = Tamarack			

PU	Acres	PU	Acres
1	13.1	4	3.0
2	13.9	5	3.5
3	3.4		

Triangle Mix

Compartment 32

36.9 Acres



Crossway Aspen (71-006-21)
T23N, R02W, SEC. 10; T23N, R02W, SEC. 9; Roscommon COUNTY

In response to the notice of sale to be held 9:00 a.m. (local time) on August 24, 2021, I am hereby submitting my sealed bid (firm offer) for the following forest products to be cut. Bids for individual species must be at or above the advertised price. All non-responsive bid forms may be rejected.

<u>PRODUCTS & SPECIES</u>	<u>ESTIMATED VOLUME*</u>	<u>ADVERTISED PRICE</u>	<u>BID PRICE/UNIT</u>
Sawtimber			
Bl/R/Hybrid Oak	22.0 MBF	\$ 67.00/MBF	\$ _____
Mixed Aspen	222.1 MBF	\$ 62.00/MBF	\$ _____
Red Maple	44.3 MBF	\$ 57.00/MBF	\$ _____
Red Pine	12.5 MBF	\$ 91.00/MBF	\$ _____
White Pine	85.2 MBF	\$ 43.00/MBF	\$ _____
Pulpwood			
Balsam Fir	49 Cords	\$ 17.55/Cord	\$ _____
Bl/R/Hybrid Oak	83 Cords	\$ 14.00/Cord	\$ _____
Mixed Aspen	2,777 Cords	\$ 17.70/Cord	\$ _____
Mixed Hardwood	469 Cords	\$ 13.40/Cord	\$ _____
Red Pine	33 Cords	\$ 34.15/Cord	\$ _____
White Pine	204 Cords	\$ 20.30/Cord	\$ _____

*The volumes are statistically estimated within plus (+) or minus (-) 5.99 percent at 95% confidence level. These estimated volumes are final and not subject to adjustment. Prospective bidders are urged to examine this timber and to make their own estimates of quantity and quality.

I understand that any or all bids may be rejected. All bids must be signed and all bid items must be bid or the bid form may be rejected. I also understand that consideration and awarding a contract will be based upon my past performance and ability to complete the contract based upon equipment and staffing subject to my control.

FEDERAL ID: _____ - _____ or SOCIAL SECURITY NUMBER: _____ - _____ - _____

Company or individual bidding: _____

Company representative's name: _____

Address: _____

City: _____ State: _____ Zip: _____

IF AVAILABLE, PLEASE PLACE THE PERSONALIZED LABEL FROM YOUR PROSPECTUS IN THE ABOVE BOX.

Individual or company representative's signature: _____ Date: _____

Phone number : _____ Email (optional): _____

THE WINNING BIDDER MUST COMPLETE THE VERIFICATION OF WORKER'S DISABILITY COMPENSATION ACT COMPLIANCE (ON REVERSE SIDE IF DOUBLE SIDED) WITHIN 21 DAYS OF SALE AWARD DATE



FOR DEPARTMENT USE ONLY	
Sale Number (XX - XXX - XX - XX)	
Forest Management Unit:	

TIMBER SALE VERIFICATION OF WORKER'S DISABILITY COMPENSATION ACT COMPLIANCE

As required by Act 317, P.A. 1969 (Worker's Compensation) and
Part 5 of Act 451 of 1994, as amended.

VERIFICATION OF WORKER'S DISABILITY COMPENSATION ACT COMPLIANCE

- This verification must be completed and submitted within 21 days of contract award and prior to the issuance of the timber sale contract.
- In addition, if boxes 2B or 2C are checked, then Notice of Exclusion or Certificate of Insurance must be submitted within twenty-one (21) days of the contract award and prior to the issuance of the timber sale contract.
- All information must be typed or printed except for written signatures.

Please Check Appropriate Categories:

1. My business is organized as (you **must** check one of the boxes below):
 - A. Sole Proprietorship (individual)
 - B. Partnership
 - C. Corporation
2. You **must** check one of the boxes below:
 - A. I certify my business is a sole proprietorship and it has no employees but the sole proprietor. I am not subject to the Worker's Compensation Laws.
 - B. I certify my business has satisfied its obligation to the Worker's Compensation Act through the use of an approved Notice of Exclusion (BWC-337, Rev. 5/96). I will provide a copy of the Notice of Exclusion within 21 days of the contract award. (For questions or a copy of the BWC-337, please call the Worker's Compensation Bureau at 517-322-1195).
 - C. I certify my business has a Worker's Compensation Policy. I will provide an original Certificate of Insurance within twenty-one (21) days of the contract award.
3. If you have checked item 2(A) or 2(B), you **must** indicate the number of **both** full-time and part-time employees, other than yourself, including family members and active partners (if none, you must enter "0").

_____ Full-time Employees

_____ Part-time Employees

Name of Business		Federal ID (or) Social Security No.	
Address		Telephone ()	
City	State	ZIP	

I hereby certify that the above information is true and correct. I agree to notify the Michigan DNR of any changes that occur in factors affecting my coverage during any of my present and future operations.

Signature of Owner or Authorized Representative

Title

Date

Please complete the "SEALED BID" information on the next page

Russell Lake Aspen (71-005-21)

T23N, R02W, SEC. 11; T23N, R02W, SEC. 14; T23N, R02W, SEC. 15; T23N,

In response to the notice of sale to be held 9:00 a.m. (local time) on August 24, 2021, I am hereby submitting my sealed bid (firm offer) for the following forest products to be cut. Bids for individual species must be at or above the advertised price. All non-responsive bid forms may be rejected.

<u>PRODUCTS & SPECIES</u>	<u>ESTIMATED VOLUME*</u>	<u>ADVERTISED PRICE</u>	<u>BID PRICE/UNIT</u>
Sawtimber			
Beech	76.4 MBF	\$ 60.00/MBF	\$ _____
Bl/R/Hybrid Oak	96.7 MBF	\$ 67.00/MBF	\$ _____
Mixed Aspen	548.7 MBF	\$ 62.00/MBF	\$ _____
Paper Birch	23.6 MBF	\$ 27.00/MBF	\$ _____
Red Maple	83.3 MBF	\$ 57.00/MBF	\$ _____
White Pine	61.2 MBF	\$ 43.00/MBF	\$ _____
Pulpwood			
Balsam Fir	30 Cords	\$ 17.55/Cord	\$ _____
Jack Pine	37 Cords	\$ 13.85/Cord	\$ _____
Mixed Aspen	3,322 Cords	\$ 17.70/Cord	\$ _____
Mixed Hardwood	1,037 Cords	\$ 13.40/Cord	\$ _____
Mixed Oak	227 Cords	\$ 14.00/Cord	\$ _____
Red Pine	27 Cords	\$ 34.15/Cord	\$ _____
White Pine	167 Cords	\$ 20.30/Cord	\$ _____

*The volumes are statistically estimated within plus (+) or minus (-) 4.60 percent at 95% confidence level. These estimated volumes are final and not subject to adjustment. Prospective bidders are urged to examine this timber and to make their own estimates of quantity and quality.

I understand that any or all bids may be rejected. All bids must be signed and all bid items must be bid or the bid form may be rejected. I also understand that consideration and awarding a contract will be based upon my past performance and ability to complete the contract based upon equipment and staffing subject to my control.

FEDERAL ID: _____ or SOCIAL SECURITY NUMBER: _____

Company or individual bidding: _____

Company representative's name: _____

Address: _____

City: _____ State: _____ Zip: _____

IF AVAILABLE, PLEASE PLACE THE PERSONALIZED LABEL FROM YOUR PROSPECTUS IN THE ABOVE BOX.

Individual or company representative's signature: _____ Date: _____

Phone number : _____ Email (optional): _____

THE WINNING BIDDER MUST COMPLETE THE VERIFICATION OF WORKER'S DISABILITY COMPENSATION ACT COMPLIANCE (ON REVERSE SIDE IF DOUBLE SIDED) WITHIN 21 DAYS OF SALE AWARD DATE



FOR DEPARTMENT USE ONLY	
Sale Number (XX - XXX - XX - XX)	
Forest Management Unit:	

TIMBER SALE VERIFICATION OF WORKER'S DISABILITY COMPENSATION ACT COMPLIANCE

As required by Act 317, P.A. 1969 (Worker's Compensation) and
Part 5 of Act 451 of 1994, as amended.

VERIFICATION OF WORKER'S DISABILITY COMPENSATION ACT COMPLIANCE

- This verification must be completed and submitted within 21 days of contract award and prior to the issuance of the timber sale contract.
- In addition, if boxes 2B or 2C are checked, then Notice of Exclusion or Certificate of Insurance must be submitted within twenty-one (21) days of the contract award and prior to the issuance of the timber sale contract.
- All information must be typed or printed except for written signatures.

Please Check Appropriate Categories:

1. My business is organized as (you **must** check one of the boxes below):
 - A. Sole Proprietorship (individual)
 - B. Partnership
 - C. Corporation
2. You **must** check one of the boxes below:
 - A. I certify my business is a sole proprietorship and it has no employees but the sole proprietor. I am not subject to the Worker's Compensation Laws.
 - B. I certify my business has satisfied its obligation to the Worker's Compensation Act through the use of an approved Notice of Exclusion (BWC-337, Rev. 5/96). I will provide a copy of the Notice of Exclusion within 21 days of the contract award. (For questions or a copy of the BWC-337, please call the Worker's Compensation Bureau at 517-322-1195).
 - C. I certify my business has a Worker's Compensation Policy. I will provide an original Certificate of Insurance within twenty-one (21) days of the contract award.
3. If you have checked item 2(A) or 2(B), you **must** indicate the number of **both** full-time and part-time employees, other than yourself, including family members and active partners (if none, you must enter "0").

_____ Full-time Employees

_____ Part-time Employees

Name of Business		Federal ID (or) Social Security No.	
Address		Telephone ()	
City	State	ZIP	

I hereby certify that the above information is true and correct. I agree to notify the Michigan DNR of any changes that occur in factors affecting my coverage during any of my present and future operations.

Signature of Owner or Authorized Representative

Title

Date

Please complete the "SEALED BID" information on the next page

Triangle Mix (71-011-21)

T24N, R03W, SEC. 1; T24N, R03W, SEC. 11; T24N, R03W, SEC. 12; T24N, R03W,

In response to the notice of sale to be held 9:00 a.m. (local time) on August 24, 2021, I am hereby submitting my sealed bid (firm offer) for the following forest products to be cut. Bids for individual species must be at or above the advertised price. All non-responsive bid forms may be rejected.

<u>PRODUCTS & SPECIES</u>	<u>ESTIMATED VOLUME*</u>	<u>ADVERTISED PRICE</u>	<u>BID PRICE/UNIT</u>
Sawtimber			
B. T. Aspen	50.7 MBF	\$ 62.00/MBF	\$ _____
Bl/R/Hybrid Oak	71.0 MBF	\$ 67.00/MBF	\$ _____
Red Maple	26.3 MBF	\$ 57.00/MBF	\$ _____
White Oak	9.4 MBF	\$ 70.00/MBF	\$ _____
Pulpwood			
Balsam Fir	104 Cords	\$ 17.55/Cord	\$ _____
Jack Pine	40 Cords	\$ 13.85/Cord	\$ _____
Mixed Aspen	224 Cords	\$ 17.70/Cord	\$ _____
Mixed Hardwood	187 Cords	\$ 13.40/Cord	\$ _____
Mixed Oak	99 Cords	\$ 14.00/Cord	\$ _____
Red Pine	6 Cords	\$ 34.15/Cord	\$ _____
White Pine	24 Cords	\$ 20.30/Cord	\$ _____

*The volumes are statistically estimated within plus (+) or minus (-) 11.11 percent at 95% confidence level. These estimated volumes are final and not subject to adjustment. Prospective bidders are urged to examine this timber and to make their own estimates of quantity and quality.

I understand that any or all bids may be rejected. All bids must be signed and all bid items must be bid or the bid form may be rejected. I also understand that consideration and awarding a contract will be based upon my past performance and ability to complete the contract based upon equipment and staffing subject to my control.

FEDERAL ID: _____ or SOCIAL SECURITY NUMBER: _____

Company or individual bidding: _____

Company representative's name: _____

Address: _____

City: _____ State: _____ Zip: _____

IF AVAILABLE, PLEASE PLACE THE PERSONALIZED LABEL FROM YOUR PROSPECTUS IN THE ABOVE BOX.

Individual or company representative's signature: _____ Date: _____

Phone number : _____ Email (optional): _____

THE WINNING BIDDER MUST COMPLETE THE VERIFICATION OF WORKER'S DISABILITY COMPENSATION ACT COMPLIANCE (ON REVERSE SIDE IF DOUBLE SIDED) WITHIN 21 DAYS OF SALE AWARD DATE



FOR DEPARTMENT USE ONLY	
Sale Number (XX - XXX - XX - XX)	
Forest Management Unit:	

TIMBER SALE VERIFICATION OF WORKER'S DISABILITY COMPENSATION ACT COMPLIANCE

As required by Act 317, P.A. 1969 (Worker's Compensation) and
Part 5 of Act 451 of 1994, as amended.

VERIFICATION OF WORKER'S DISABILITY COMPENSATION ACT COMPLIANCE

- This verification must be completed and submitted within 21 days of contract award and prior to the issuance of the timber sale contract.
- In addition, if boxes 2B or 2C are checked, then Notice of Exclusion or Certificate of Insurance must be submitted within twenty-one (21) days of the contract award and prior to the issuance of the timber sale contract.
- All information must be typed or printed except for written signatures.

Please Check Appropriate Categories:

1. My business is organized as (you **must** check one of the boxes below):
 - A. Sole Proprietorship (individual)
 - B. Partnership
 - C. Corporation
2. You **must** check one of the boxes below:
 - A. I certify my business is a sole proprietorship and it has no employees but the sole proprietor. I am not subject to the Worker's Compensation Laws.
 - B. I certify my business has satisfied its obligation to the Worker's Compensation Act through the use of an approved Notice of Exclusion (BWC-337, Rev. 5/96). I will provide a copy of the Notice of Exclusion within 21 days of the contract award. (For questions or a copy of the BWC-337, please call the Worker's Compensation Bureau at 517-322-1195).
 - C. I certify my business has a Worker's Compensation Policy. I will provide an original Certificate of Insurance within twenty-one (21) days of the contract award.
3. If you have checked item 2(A) or 2(B), you **must** indicate the number of **both** full-time and part-time employees, other than yourself, including family members and active partners (if none, you must enter "0").

_____ Full-time Employees

_____ Part-time Employees

Name of Business		Federal ID (or) Social Security No.	
Address		Telephone ()	
City	State	ZIP	

I hereby certify that the above information is true and correct. I agree to notify the Michigan DNR of any changes that occur in factors affecting my coverage during any of my present and future operations.

Signature of Owner or Authorized Representative

Title

Date

Please complete the "SEALED BID" information on the next page