



**DEPARTMENT OF NATURAL RESOURCES
STATE OF MICHIGAN
TIMBER SALE PROSPECTUS #7060**

SCHEDULED SALE DATE AND TIME: 10:00 a.m. (local time) on June 7, 2022.

LOCATION: ATLANTA MGMT UNIT, 13501 M 33, ATLANTA, MI 49709.

PROSPECTUS NOTE: The bidder is advised to inspect the sale area and review the location, estimated volumes, operating costs and contract terms of proposed sales. Please be aware that some landowners may request 60 days or more notice for access across their land.

Notice is hereby given that bids will be received by the Unit Manager, ATLANTA MANAGEMENT UNIT, for certain timber on the following described lands:

Hunt Creek and Blue Lake Aspen (54-004-21) / T29N, R03E, SEC. 20, NENW,S1/2NW,NWNE,N1/2SW,S1/2SE.
T29N, R03E, SEC. 29, NENW,NE.
T29N, R03E, SEC. 30, NWSW,S1/2SW.
T29N, R03E, SEC. 31, NENW.

Montmorency County, Advertised Price \$191,584.15, 167.0 Acres, Aspen, Hardwood.

SALE NOTE: All units of volume listed for this sale were estimated using the Inventory Manager computer program and the new Michigan taper model.

A recreation site such as a trail, pathway, or campground is within the sale area or the vicinity. Certain restrictions/specifications may be applicable including time restrictions.

Anderbad Barrens Restoration (54-008-21) / T29N, R01E, SEC. 5 , N1/2NE.
T29N, R01E, SEC. 8 , NE.

Montmorency County, Advertised Price \$14,553.65, 57.0 Acres, Jack Pine, Hardwood.

SALE NOTE: All units of volume listed for this sale were estimated using the Inventory Manager computer program and the new Michigan taper model.

A recreation site such as a trail, pathway, or campground is within the sale area or the vicinity. Certain restrictions/specifications may be applicable including time restrictions.

5 EZ Pieces (54-010-21) / T29N, R03E, SEC. 19, SESE.
T29N, R03E, SEC. 20, NWSW,S1/2SW,E1/2SE.
T29N, R03E, SEC. 21, W1/2SW.
T29N, R03E, SEC. 29, SWNW,SWSW.
T29N, R03E, SEC. 30, S1/2NE,SE.
T29N, R03E, SEC. 31, NENE.
T29N, R03E, SEC. 32, NWNW.

Montmorency County, Advertised Price \$163,654.15, 164.4 Acres, Hardwood, Red Oak.

SALE NOTE: All units of volume listed for this sale were estimated using the Inventory Manager computer program and the new Michigan taper model.

A recreation site such as a trail, pathway, or campground is within the sale area or the vicinity. Certain restrictions/specifications may be applicable including time restrictions.

Pine Party (54-012-21) / T32N, R01E, SEC. 27, NWNW,S1/2NW,SWNE,SW.
T32N, R01E, SEC. 28, NESE.

Montmorency County, Advertised Price \$158,997.30, 134.1 Acres, Red Pine, Jack Pine.

SALE NOTE: All units of volume listed for this sale were estimated using the Inventory Manager computer program and the new Michigan taper model.

BID INSTRUCTIONS (VER. 07/02/2018):

1. Scheduled Bid Location, Date, and Time (2/11)

Bids must be received by the Unit Manager, ATLANTA OFFICE, 13501 M 33, ATLANTA, MI 49709, no later than 10:00 a.m. (local time) on June 7, 2022. For further information concerning this sale, contact Cody Stevens at 989-785-4251 extension 5240.

2. Bidder's Qualifications (5/16)

Purchaser shall obtain workers compensation insurance to cover claims under Michigan's Worker's Disability Compensation Act of 1969 or similar employee benefit act of any other state applicable to an employee. If all or part of a timber sale was prepared by a private contractor, the contractor and that contractor's company are not permitted to bid on the timber sale contract. Bids will not be accepted from individuals or companies appearing on the DNR/FRD No-Bid List. This list contains the names of purchasers who previously failed to execute a contract within 21-days or who have a history of poor performance.

3. Preparation of Sealed Bids (5/16)

Bid Forms may be completed online thru Michigan DNR Timber Sale Online Bidding (OLB) at www.michigan.gov/timberbidding or by completing the hardcopy Bid Form found in the Timber Sale Prospectus. Hardcopy Bid Forms shall be manually signed in ink. Registration in OLB is considered your 'signature' for all bids submitted thru that system. Bid prices must be entered for each species and product in the Bid Price column for all material subject to bidding and all fill-in blanks must be completed. If erasures or other changes appear on the hardcopy Bid Form, each erasure or change must be initialed by the person signing the bid.

4. Submission of Sealed Bids (5/16)

Bid forms may be obtained from the Unit Manager or thru OLB. Bids may be submitted hardcopy or thru OLB. All hardcopy bids must be submitted on the bid form and in an envelope clearly identified as described in this section. NOTE: Only one bid form per bid envelope. Sealed bids must be submitted to the Unit office designated in the prospectus and must be submitted at or prior to the time established in the prospectus. The envelope should show on the outside (a) the sale name or number and (b) the date and time of bid opening, as shown in the prospectus. Bids received after the time specified in the sale prospectus are late bids and will be rejected.

It is possible for a bidder to submit multiple bids on a single sale. For example, a bid may be submitted hardcopy and a bid may be submitted thru OLB. Or, two bidders from the same company could both submit bids on the same sale. If this were to happen, the State would accept all bids received and award the contract accordingly. All bidding and contractual requirements would apply to all bids received.

5. Public Opening of Sealed Bids (7/16)

If conditions permit, the sealed bids will be publicly opened and posted at the time and place set in the prospectus.

If a bidder, present at a bid opening, has submitted bids on more than one sale, that bidder may withdraw their unopened bid envelopes or announce the withdrawal of their online bid after being declared the successful bidder on one sale.

6. Award of Contract (1/11)

Award of the contract will be made to the Bidder whose bid, conforming to the prospectus, is most advantageous to the State of Michigan on the basis of total value at rates bid for the estimated quantities. The State reserves the right to reject any bid or waive any minor irregularity in bids received. A written award mailed (or otherwise furnished) to the successful Bidder shall be deemed to result in a binding contract without further action by either party.

7. Down Payment (1/11)

The Bidder to whom award is made must make a down payment within 21 days of the sale award. The amount of the down payment will be calculated as shown in the Bond and Payment Schedule of this prospectus. Only cash may be used to meet this requirement.

8. Performance Security (1/11)

As guarantee of faithful performance, a cash bond, certificate of deposit, surety bond or irrevocable letter of credit (LOC) is required within 21 days of the sale award. The amount of the performance security is shown in the Bond and

Payment Schedule of this prospectus. If an LOC or surety is used, the coverage must extend for at least 6 months beyond the contract expiration.

9. Timber Sale Contract (7/18)

Additional conditions and requirements common to all timber sales are listed on the timber sale contract (R4031) and are available on line at www.michigan.gov/timber. Contact the Unit Manager for additional information or a sample contract. Within 21 days of the date of the award letter, the bidder must sign the contract and provide the required down payment, performance security, and verification of worker's disability compensation. The down payment and performance security shall be in accordance with the provisions of the timber sale contract, in the sums stated in this prospectus. If these actions are not taken, then the Bidder, the Bidder's corporation, and the corporation's principals may not be permitted to bid on State timber sales for a period of 3 months after the first offense, 6 months after the second offense, and 1 year after the third offense. An offense will only be counted against the Bidder for 5 years. In addition, the Bidder certifies that if awarded this contract, the Bidder will complete the timber sale contract in accordance with its terms and any modifications thereof including requirements to purchase, cut, and remove the included timber by the expiration date.

Payment Unit values in the State Forest Timber Sale Contract are calculated based on the advertised value of the Payment Unit as a percentage of the total advertised value of the contract. The advertised value of each Payment Unit is given in the Description of Timber by Payment Unit table on the Timber Sale Information page. For example, if the value of Payment Unit 1 is advertised as \$1,500 and the total Timber Sale value is advertised as \$10,000, the contract price for Payment Unit 1 will be 15% of the total bid price ($\$1,500/\$10,000 * 100$).

10. Disclaimer of Estimates and Bidder's Warranty of Inspection (7/16)

Before submitting this bid, the Bidder is advised and cautioned to inspect the sale area, review the requirements of the sale contract, and take other steps as may be reasonably necessary to ascertain the location, estimated volumes, construction estimates, and operating costs of the proposed sale. Failure to do so will not relieve the Bidder from responsibility for completing the contract.

The Bidder warrants that this bid is submitted solely on the basis of the Bidder's examination and inspection of the quality and quantity of the timber offered for sale and the Bidder's opinion of the value thereof and the costs of recovery. No reliance should be placed on the State of Michigan's estimates of timber quality, quantity or costs of recovery. Bidder further acknowledges that the State of Michigan: (i) expressly disclaims any warranty of fitness of timber for any purpose; (ii) offers this timber as is without any warranty of quality (merchantability) or quantity and (iii) expressly disclaims any warranty as to the quantity or quality of timber sold.

11. Certification and Chain-of-Custody (10/14)

Unless otherwise indicated in the contract under section 7 – Other Conditions of the Sale Specific Conditions & Requirements, the area encompassed by this timber sale is certified to the standards of the Forest Stewardship Council (FSC) - Certificate #SCS-FM/COC-00090N and the Sustainable Forestry Initiative (SFI) - Certificate #NSF-SFIS-5Y031-SF5. Forest products from this sale may be delivered to the mill as "FSC 100% and / or SFI certified" as long as the contractor hauling the forest products is chain-of-custody (COC) certified or covered under a COC certificate from the destination mill. The purchaser is responsible for maintaining COC after leaving the sale area.

12. Good Neighbor Authority (GNA) Requirements (7/16)

If the name of this timber sales contains the acronym GNA, it is authorized by the Good Neighbor Authority (GNA) and covered by various agreements between the U.S. Forest Service and the State. The timber sale occurs on federal land and the following conditions apply:

GNA contracts on US Forest Service land will not be awarded to purchasers on the Federal list of excluded parties. The System for Award Management (SAM) will be checked for active excluded parties prior to award of contract. In addition, the Bidder to whom award is made must complete an Assurance Regarding Felony Conviction or Tax Delinquent Status for Corporate Applicants (AD-3031).

13. Good Neighbor Authority (GNA) Requirements, con't (9/16)

Bidder certifies, by signing this bid form, that to the best of Bidder's knowledge that the following representations are accurate and complete.

- a. That the Bidder and its principals are not presently debarred, suspended, proposed for debarment, declared ineligible, or voluntary excluded from timber sales (covered transactions) by any Federal department or agency.
- b. That the Bidder and its principals have not within a 3-year period preceding this bid been convicted of or had a civil judgment rendered against them for commission of fraud or a criminal offense in connection with obtaining , attempting to obtain, or performing a public (Federal, State, or local) transaction or contract under a public transaction; violation of Federal or State antitrust statutes or commission of embezzlement, theft, forgery, bribery, falsification or destruction of records, making false statements, or receiving stolen property.
- c. That the Bidder and its principals are not presently indicted for or otherwise criminally or civilly charged by a governmental entity (Federal, State, or local) with commission of any of the offenses enumerated in paragraph b of this certification.
- d. That the Bidder and its principals have not within a 3-year period preceding this bid had one or more public transactions (Federal, State, or local) terminated for breach or default of a timber or forest product contract.

Bidders that cannot certify this requirement, in whole or in part, shall submit an explanation with their bid.

DAN EICHINGER
Director

TIMBER SALE INFORMATION

Hunt Creek and Blue Lake Aspen (54-004-21)

T29N, R03E, SEC. 20; T29N, R03E, SEC. 29; T29N, R03E, SEC. 30; T29N, R03E, SEC. 31.

Montmorency County (Advertised Price \$191,584.15)

SALE NOTE: All units of volume listed for this sale were estimated using the Inventory Manager computer program and the new Michigan taper model.

A recreation site such as a trail, pathway, or campground is within the sale area or the vicinity. Certain restrictions/specifications may be applicable including time restrictions.

A timber sale contract for this lump sum, sealed bid timber sale will be awarded to the responsible bidder offering the highest sealed bid price. All units of volume listed below were estimated using the Inventory Manager computer program and the new Michigan taper model. Bids must be at or above the following advertised price for each product and species:

<u>PRODUCTS & SPECIES</u>	<u>ESTIMATED UNITS*</u>	<u>ADVERTISED PRICE</u>
Sawtimber		
Basswood	10.3 MBF	\$ 52.00 / MBF
Beech	9.1 MBF	\$ 46.00 / MBF
Mixed Aspen	296.9 MBF	\$ 89.00 / MBF
Paper Birch	2.2 MBF	\$ 30.00 / MBF
Red Maple	19.6 MBF	\$ 48.00 / MBF
Red Oak	111.4 MBF	\$ 160.00 / MBF
Sugar Maple	39.9 MBF	\$ 258.00 / MBF
White Oak	2.4 MBF	\$ 89.00 / MBF
Pulpwood		
Balsam Fir	80 Cords	\$ 16.30 / Cord
Mixed Aspen	4,168 Cords	\$ 24.10 / Cord
Mixed Hardwood	1,203 Cords	\$ 18.90 / Cord
Mixed Oak	311 Cords	\$ 32.75 / Cord
N. White Cedar	14 Cords	\$ 13.75 / Cord

* The total volume is statistically estimated within plus (+) or minus (-) 4.07 percent. There are an estimated 6,766 cords on this timber sale, plus or minus 275 cords at the 95% confidence level. The estimated units are final and not subject to adjustment. Prospective bidders are urged to examine this timber and to make their own estimates of quantity and quality.

BOND AND PAYMENT SCHEDULE:

1. A bond in the amount of \$9,579.00 to insure faithful performance of the conditions of the contract will be deposited by the successful bidder within 21 days of the sale award.
2. Cutting in any sale or unit without the required advance payment would be considered a trespass.
3. Total payment must be paid in advance or according to the following schedule :
 - (a) Ten percent (10%) of the sale value must be paid within 21 days of the sale award.
 - (b) The 10% down payment will be credited towards the first unit cut.
 - (c) Payment for each of the following units must be made before cutting begins in that unit:

PAYMENT UNIT NUMBER	PERCENT OF TOTAL SALE VALUE
01	12.1%
02	17.0%
03	14.0%
04	9.9%
05	14.7%
06	15.9%
07	16.4%

4. If no cutting takes place, the 10% down payment will not be refunded.
5. Operations on the contract issued will terminate on 12/31/2024.

SALE STATISTICS

Volumes were calculated in cubic feet using the Michigan taper model. Cubic foot volume includes all wood inside bark for the product indicated. For display purposes, cubic feet were converted to cords and MBF using a simple conversion factor, e.g. 79 cubic feet per cord and 185 cubic feet per MBF. The cubic foot volumes are precise; the cords and MBF volumes are not. Cubic foot volume cannot be directly converted to cords or boards with precision.

SALE VOLUMES

The total estimated sale volume may not equal the sum of the species/products due to the nature of statistical calculations associated with double sampling methodology.

VOLUME			STATISTICAL RANGE IN CORDS	
TOTAL CUBIC FEET	TOTAL CORDS	PERCENT ERROR	MINIMUM	MAXIMUM
534,497	6,766	4.07%	6,490	7,041

VDU VOLUMES

A VDU is a Volume Determination Unit. Volumes and their associated statistics are calculated at the VDU level and summarized to the sale level. There is often a one to one relationship between a VDU and a Payment Unit, but not always, depending on the cruise design. Refer to the VDU TO PAYMENT UNIT table.

	VOLUME			RANGE IN CORDS	
VDU	TOTAL CUBIC FEET	TOTAL CORDS	PERCENT ERROR	MINIMUM	MAXIMUM
44	59,975	759	9.93%	684	835
61	247,412	3,132	6.49%	2,929	3,335
80	161,143	2,040	7.31%	1,891	2,189
81	65,967	835	9.80%	753	917
TOTAL:	534,497	6,766		6,256	7,275

VDU TO PAYMENT UNIT

When a VDU is associated with more than one Payment Unit (PU), the VDU volumes are assigned to the PU based on acres of the VDU within the PU.

VDU	VDU ACRES	PU	PU ACRES
44	19.2	4	19.2
61	77.2	5	24.2
		6	26.1
		7	26.9
80	49.2	2	27.1
		3	22.1
81	21.4	1	21.4
TOTAL:	167.0		167.0

DESCRIPTION OF TIMBER BY PAYMENT UNIT (PU)

PU	MARKET GROUP	PRODUCT	QUANTITY	UNIT	ACRES	ADVERTISE PRICE	
1	Mixed Aspen	Sawtimber	42.2	MBF	21.4	\$23,104.65	
	<i>B. T. Aspen</i>		17.0	<i>MBF</i>			
	<i>Quaking Aspen</i>		25.2	<i>MBF</i>			
	Red Maple		14.9	MBF			
	Red Oak		22.2	MBF			
	Balsam Fir		Pulpwood	44			Cords
	Mixed Aspen			477			Cords
	<i>B. T. Aspen</i>			199			<i>Cords</i>
	<i>Balsam Poplar</i>			14			<i>Cords</i>
	<i>Quaking Aspen</i>			264			<i>Cords</i>
	Mixed Hardwood			105			Cords
	<i>Red Maple</i>			93			<i>Cords</i>
	<i>Sugar Maple</i>			12			<i>Cords</i>
	Mixed Oak			27			Cords
	<i>Red Oak</i>			27			<i>Cords</i>
	2		Mixed Aspen	Sawtimber			51.2
<i>B. T. Aspen</i>		51.2	<i>MBF</i>				
Red Maple		1.5	MBF				
Red Oak		25.5	MBF				
White Oak		1.3	MBF				
Mixed Aspen		Pulpwood	851		Cords		
<i>B. T. Aspen</i>			690		<i>Cords</i>		
<i>Quaking Aspen</i>			161		<i>Cords</i>		
Mixed Hardwood			99		Cords		
<i>Paper Birch</i>			3		<i>Cords</i>		
<i>Red Maple</i>			88		<i>Cords</i>		
<i>Sugar Maple</i>			7		<i>Cords</i>		
<i>White Ash</i>			1		<i>Cords</i>		
Mixed Oak			49		Cords		
<i>Red Oak</i>			47		<i>Cords</i>		
<i>White Oak</i>		2	<i>Cords</i>				
3	Mixed Aspen	Sawtimber	41.7	MBF	22.1	\$26,750.30	
	<i>B. T. Aspen</i>		41.7	<i>MBF</i>			
	Red Maple		1.2	MBF			
	Red Oak		20.7	MBF			
	White Oak		1.1	MBF			
	Mixed Aspen		Pulpwood	695			Cords
	<i>B. T. Aspen</i>			564			<i>Cords</i>
	<i>Quaking Aspen</i>			131			<i>Cords</i>
	Mixed Hardwood			80			Cords
	<i>Paper Birch</i>			2			<i>Cords</i>
	<i>Red Maple</i>			72			<i>Cords</i>
	<i>Sugar Maple</i>			5			<i>Cords</i>
	<i>White Ash</i>			1			<i>Cords</i>
	Mixed Oak			40			Cords
	<i>Red Oak</i>			39			<i>Cords</i>
	<i>White Oak</i>		1	<i>Cords</i>			
4	Mixed Aspen	Sawtimber	14.8	MBF	19.2	\$18,931.30	
	<i>B. T. Aspen</i>		11.8	<i>MBF</i>			
	<i>Quaking Aspen</i>		3.0	<i>MBF</i>			
	Red Maple		2.0	MBF			
	Red Oak		5.7	MBF			
	Sugar Maple		4.6	MBF			
	Balsam Fir		Pulpwood	36			Cords
	Mixed Aspen			544			Cords
	<i>B. T. Aspen</i>			351			<i>Cords</i>

DESCRIPTION OF TIMBER BY PAYMENT UNIT (PU), CON'T

PU	MARKET GROUP	PRODUCT	QUANTITY	UNIT	ACRES	ADVERTISE PRICE	
4 con't	<i>Balsam Poplar</i>	<i>Pulpwood</i>	58	<i>Cords</i>			
	<i>Quaking Aspen</i>		135	<i>Cords</i>			
	Mixed Hardwood		74	<i>Cords</i>			
	<i>Paper Birch</i>		11	<i>Cords</i>			
	<i>Red Maple</i>		52	<i>Cords</i>			
	<i>Sugar Maple</i>		11	<i>Cords</i>			
	Mixed Oak		4	<i>Cords</i>			
	<i>Red Oak</i>		4	<i>Cords</i>			
	N. White Cedar		14	<i>Cords</i>			
	<i>N. White Cedar</i>		<i>Sawtimber</i>	5.4			<i>MBF</i>
	<i>N. White Cedar</i>	<i>Pulpwood</i>	3	<i>Cords</i>			
5	Basswood	<i>Sawtimber</i>	3.2	<i>MBF</i>	24.2	\$28,231.20	
	Beech		2.9	<i>MBF</i>			
	Mixed Aspen		46.1	<i>MBF</i>			
	<i>B. T. Aspen</i>		45.4	<i>MBF</i>			
	<i>Quaking Aspen</i>		0.7	<i>MBF</i>			
	<i>Paper Birch</i>		0.7	<i>MBF</i>			
	<i>Red Oak</i>		11.7	<i>MBF</i>			
	<i>Sugar Maple</i>		11.1	<i>MBF</i>			
	Mixed Aspen		<i>Pulpwood</i>	502			<i>Cords</i>
	<i>B. T. Aspen</i>			474			<i>Cords</i>
	<i>Quaking Aspen</i>			28			<i>Cords</i>
	Mixed Hardwood			265			<i>Cords</i>
	<i>American Elm</i>	2		<i>Cords</i>			
	<i>Basswood</i>	66		<i>Cords</i>			
	<i>Beech</i>	21		<i>Cords</i>			
	<i>Black Cherry</i>	3		<i>Cords</i>			
	<i>Ironwood</i>	2		<i>Cords</i>			
	<i>Paper Birch</i>	2		<i>Cords</i>			
	<i>Sugar Maple</i>	167		<i>Cords</i>			
	<i>White Ash</i>	2	<i>Cords</i>				
	Mixed Oak	60	<i>Cords</i>				
	<i>Red Oak</i>	60	<i>Cords</i>				
	6	Basswood	<i>Sawtimber</i>	3.5			<i>MBF</i>
Beech		3.1		<i>MBF</i>			
Mixed Aspen		49.7		<i>MBF</i>			
<i>B. T. Aspen</i>		49.0		<i>MBF</i>			
<i>Quaking Aspen</i>		0.7		<i>MBF</i>			
<i>Paper Birch</i>		0.7		<i>MBF</i>			
<i>Red Oak</i>		12.6		<i>MBF</i>			
<i>Sugar Maple</i>		11.9		<i>MBF</i>			
Mixed Aspen		<i>Pulpwood</i>		541	<i>Cords</i>		
<i>B. T. Aspen</i>				511	<i>Cords</i>		
<i>Quaking Aspen</i>				30	<i>Cords</i>		
Mixed Hardwood				286	<i>Cords</i>		
<i>American Elm</i>			2	<i>Cords</i>			
<i>Basswood</i>			71	<i>Cords</i>			
<i>Beech</i>			23	<i>Cords</i>			
<i>Black Cherry</i>			3	<i>Cords</i>			
<i>Ironwood</i>			2	<i>Cords</i>			
<i>Paper Birch</i>			2	<i>Cords</i>			
<i>Sugar Maple</i>			181	<i>Cords</i>			
<i>White Ash</i>		2	<i>Cords</i>				
Mixed Oak		65	<i>Cords</i>				
<i>Red Oak</i>		65	<i>Cords</i>				
7		Basswood	<i>Sawtimber</i>	3.6	<i>MBF</i>	26.9	\$31,329.90

DESCRIPTION OF TIMBER BY PAYMENT UNIT (PU), CON'T

PU	MARKET GROUP	PRODUCT	QUANTITY	UNIT	ACRES	ADVERTISE PRICE		
7 con't	Beech	Sawtimber	3.1	MBF				
	Mixed Aspen		51.2	MBF				
	<i>B. T. Aspen</i>		50.5	<i>MBF</i>				
	<i>Quaking Aspen</i>		0.7	<i>MBF</i>				
	Paper Birch		0.8	MBF				
	Red Oak		13.0	MBF				
	Sugar Maple		12.3	MBF				
	Mixed Aspen	Pulpwood	558	Cords				
	<i>B. T. Aspen</i>		527	<i>Cords</i>				
	<i>Quaking Aspen</i>		31	<i>Cords</i>				
	Mixed Hardwood		294	Cords				
	<i>American Elm</i>		3	<i>Cords</i>				
	<i>Basswood</i>		74	<i>Cords</i>				
	<i>Beech</i>		24	<i>Cords</i>				
	<i>Black Cherry</i>		2	<i>Cords</i>				
	<i>Ironwood</i>		2	<i>Cords</i>				
	<i>Paper Birch</i>		2	<i>Cords</i>				
	<i>Sugar Maple</i>		186	<i>Cords</i>				
	<i>White Ash</i>		1	<i>Cords</i>				
	Mixed Oak		66	Cords				
	<i>Red Oak</i>		66	<i>Cords</i>				
	TOTAL:			491.8	MBF			
	TOTAL:			5,776	Cords			

Sale Specific Conditions & Requirements

Sale Name: Hunt Creek and Blue Lake Aspen

Sale Number: 54-004-21 Seq#: 2

1 - Sale Area

1.2 - Boundaries

1.2.1 - Painted boundaries (9/19)

The sale boundary and Payment Unit boundaries are marked and identified by blue, red, and yellow paint. Exterior sale boundary lines against private are marked with blue paint. Exterior sale boundary lines against state are marked with red paint. Interior retention boundaries are marked with red paint; no harvesting activities may occur within these areas. Interior Payment Unit boundaries are marked with yellow paint, except for Payment Units 5-7 which use state forest roads as shown on the Timber Sale Map. The painted boundary line trees are not Included Timber and are to be protected. Yellow painted trees designating an interior Payment Unit boundary are only to be cut when all surrounding Payment Units have been paid.

2 - Timber Specifications

2.1 - Included Timber

2.1.1 - Clearcut unit(s) with unmerchantable trees (6/14)

Within Payment Unit(s) 1-7, cut all trees that are two (2) inches or more at DBH, except do not cut any white pine or red pine in Payment Units 1-4.

Note: See spec 5.2.4.4 - 'Dead and down creation' for instructions on orange marked trees.

3 - Payments

3.3 - Pre-measured Sales

3.3.4 - Dividing payment units (7/14)

Payment Unit(s) greater than \$25,000 may be divided at the request of the Purchaser and upon approval of the Unit Manager. Dividing Payment Units is a contract modification which requires a Timber Sale Contract Amendment. There will be only one division per Payment Unit.

3.4 - Damaged Timber

3.4.1 - Damaged timber (7/16)

General Condition and Requirement 3.4 Damaged Timber, defines liquidated damages for undesignated live merchantable trees which are cut or injured. No damage is acceptable to undesignated live merchantable trees. Within the Sale Area, if more than 5% of trees (> 4.5" DBH) within a specified area of the sale are damaged, liquidated damages will be assessed for all trees damaged. Rates will be in accordance with General Condition and Requirement 3.4 Damaged Timber.

4 - Transportation

4.1 - Construction

4.1.3 - Slash and earthen piles (8/04)

Piles or windrows of earth along roads and landings that have been widened or constructed shall be leveled. Slash from road maintenance or construction, including stumps, shall be chipped, utilized, or otherwise removed from the sale.

4.1.6 - Road construction (1/09)

Construction or improvements of existing roads shall be done in such a way as to minimize the environmental and visual impacts. Merchantable trees shall be cut and utilized unless otherwise directed. Non-merchantable trees shall be severed and laid flat on the ground. Slash shall be scattered, and not left in windrows and kept a minimum of 10 feet back from the road edge. Stumps shall be set upright, not left on edge, and be moved at least 10 feet away from the road edge. Disturbed soil shall be feathered into the woods and not left in berms or windrows.

4.1.7 - Road closure (10/11)

All new roads built into the sale must be blocked to vehicle traffic upon completion of the sale. Overgrown roads that are reopened shall be considered new roads. In general, this will require constructing a four (4') foot high berm of stumps and logs covered with earth. Stumps and brush must be placed along the remainder of the trail. These roads must be rendered

impassable to cars and trucks. Contact the sale administrator for specific details of design and placement.

4.2 - Maintenance

4.2.5 - Two wheel drive condition (2/04)

All existing trail roads on and adjacent to the sale area must be passable by two-wheel drive traffic for the duration of the sale.

4.4 - Access

4.4.3 - Access gate (12/08)

The access gates must be locked at the completion of each day unless otherwise approved by the Unit Manager or oil and gas representative. Contact the well operating company or the Atlanta office to obtain a key.

5 - Operations

5.1 - Notification

5.1.1 - Pre-sale conference (10/16)

A pre-sale conference between the Purchaser and sale administrator is required prior to beginning any operations to determine landing and road locations. The Unit Manager or his/her representative must be contacted at least 5 days in advance to schedule the conference.

5.1.3 - Well heads and natural gas pipelines (11/15)

The Purchaser is responsible for contacting the following lessees 30 days prior to operating equipment in the vicinity of well heads or natural gas pipelines. Gas wells are located within or adjacent to Payment Units 1 and 3-7.

Lambda Energy Resources LLC

12012 Wickchester Lane Houston, Texas 77079

Phone: 281-920-9595

Email: info@LambdaEnergyLLC.com)

5.1.4 - Post-sale conference (10/16)

A post-sale conference on site between the Purchaser and sale administrator is required 5 days prior to the completion of active logging operations to determine clean-up and repair of landings, road edges, and the fulfillment of other contract specifications.

5.1.6 - Utility R.O.W. (4/19)

It is the responsibility of the Purchaser to obtain permission from the utility company to utilize the powerline R.O.W. for operations. The powerline is located along the north sale boundary line of Payment Unit 1.

Presque Isle Electric and Gas Cooperative

Phone: 1-800-423-6634

Hours of Operation: Monday-Friday 8:00am-4:30pm)

5.2 - Conduct of Operations

5.2.2 - Hazard Trees/Snags

5.2.2.1 - Den trees (10/16)

Obvious hollow and/or den trees shall be protected and left standing unless they are a safety hazard.

5.2.3 - Operating Restrictions

5.2.3.5 - Oak wilt restriction (1/18)

Within Payment Unit(s) 1-3 and 5-7, unless changed by written agreement, cutting, skidding, hauling within the sale and brushing of access roads to the sale are not permitted during the period of April 15 to July 15. Operations may be allowed if specific steps are taken to prevent damaging uncut oak during the high risk period. Those steps may include completing all road brushing before April 15th and clearing a tree-length buffer along uncut oak cover before April 15th. This is necessary to reduce the spread of oak wilt. For more information, contact the Unit Manager or his/her representative.

5.2.3.11 - Coppice regeneration protection (4/10)

Timber harvesting in Payment Units 1-7 must be completed within 60 days of severing/cutting stem(s) to minimize damage to deciduous seedling regeneration. Any post-harvest operations, such as chipping, must be completed before sprouting of regeneration occurs. If it is anticipated that chipping will be delayed, then tops shall be carried to one central location or left unchipped. The Unit Manager or his/her representative may cease such operations if sprouting occurs before the operation is complete.

5.2.4 - Dead and Down Creation

5.2.4.4 - Dead and down creation, grouse (6/18)

To encourage grouse and other wildlife, in Payment Unit(s) 1-7, leave on-site all orange painted trees. These trees should be pushed over with the root ball still attached so the base of the tree is suspended off the ground. The crown of the fallen tree should be at or near ground level after it is pushed over. If it is impractical to push the trees over, they may be cut or partially cut and pushed over. Whenever possible, the tree stem should remain suspended off the ground.

5.2.31 - Landing locations (9/13)

Landing locations are shown on the Timber Sale Map. Landings must be confined to these designated sites unless otherwise authorized by the Unit Manager or his/her representative.

5.2.32 - Decking/landing restoration (9/13)

All decking and landing areas must have the surface area restored to a condition equal to or better than before. This is to ensure the proper regeneration of the stand. Wood debris, chips, and "cookies" from trimmings must be removed or scattered away from landing and loading areas and may not be windrowed on the edge.

5.2.38 - No decking against live trees (2/04)

Cut products may not be decked against unmarked or designated leave trees.

5.2.39 - ORV trail/route protection (4/18)

The Hunt Creek Motorcycle Trail is shown on the Timber Sale Map. Do not cut trees or damage posts with yellow ORV markers. All stumps within 5 feet of the trail must be cut flush with the ground. Maintain a 20-foot-wide slash, debris, and rut free zone daily using the ORV trail or route as the centerline. Do not run equipment down the ORV trail or route.

5.4 - Soil Protection

5.4.1 - Rutting restriction, general (7/16)

Operations are to cease immediately if equipment and weather conditions result in rutting of roads and/or skid trails which is 12 inches or greater in depth and 50 feet in length. The Unit Manager or his/her representative may restrict hauling and/or skidding if ruts exceed the specified depth. With the Unit Manager or his/her representative's approval, the Purchaser may return to the area when the risk of rutting has decreased.

5.4.2 - Skid trails (2/04)

Skid trails up and down slopes should be avoided. If however this is unavoidable, these trails will be left in a non-erodible condition using water bars, logs, and slash. Placing of slash on these skid trails while logging is ongoing may alleviate need for any further action. At the direction of the sale administrator, seed, fertilizer, and mulch may also be required.

5.8 - Protection of Endangered Species

5.8.5 - Protection of raptor nests (3/13)

All trees with raptor nests will be protected if found during harvesting operations. Notification will be made to the Unit Manager or his/her representative who will notify the Wildlife Biologist so an on-site evaluation and recommendation can be made, if necessary.

6 - Safety and Fire Prevention

6.2 - Signing

6.2.3 - Recreational trail posting (10/20)

The Purchaser is responsible for posting and maintaining caution signs on the Hunt Creek Motorcycle Trail prior to beginning operations. The trail must be posted at appropriate distances from the Sale Area to warn of logging activity and truck traffic at both ends of the trail. Signs must be removed when harvest operations are suspended or completed. The Purchaser will provide these signs.



TIMBER SALE MAP

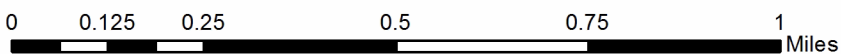
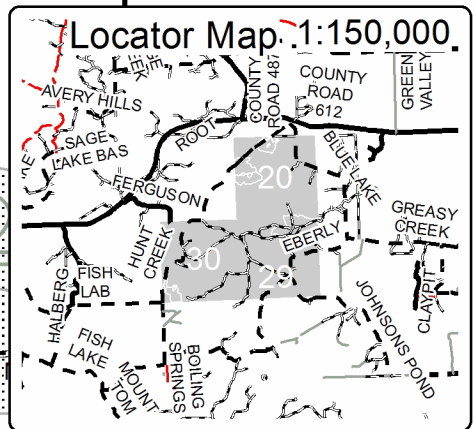
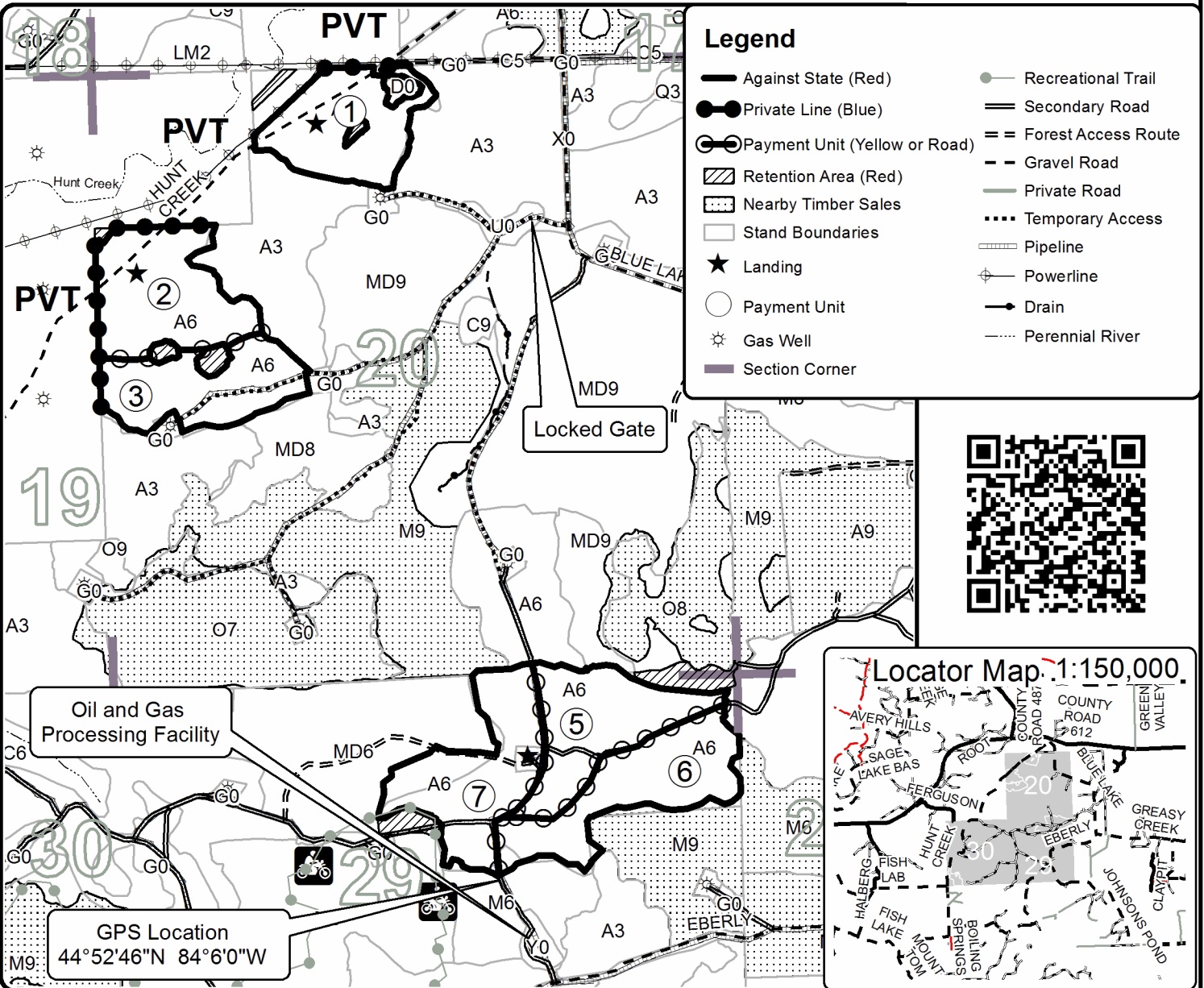
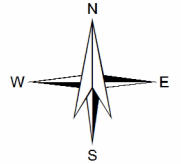
This information provided by authority of Part 525, 1994 PA 451, as amended.

Forest Management Unit Atlanta Management Unit		County Montmorency	Mapped By Coy	Date 04/19/2021	Page 1	of 2
Township 29N	Range 03E	Section(s) and Subdivision(s) 20-NENW,S2NW,NWNE,N2SW,S2SE 29-NENW,NE 30-NWSW,S2SW 31- NENW		Scale 1:15,840		

Cover Type				Density			
A = Aspen	H = Hemlock	N = Marsh	U = Upland Brush	0 = Non Stocked	5 = Pole Timber Medium		
B = Paper Birch	J = Jack Pine	O = Oak	UM = Upland Mixed	1 = Seedling Sapling Poor	6 = Pole Timber Well		
C = Cedar	L = Lowland Brush	P = Lowland Poplar	V = Bog or Marsh	2 = Seedling Sapling Medium	7 = Saw Timber Poor		
D = Treed Bog	LM = Lowland Mixed	Q = Mixed Swamp Conifer	W = White Pine	3 = Seedling Sapling Well	8 = Saw Timber Medium		
E = Swamp Hdwoods	M = Mpl, Bch, Brch	R = Red Pine	X = Non Stocked	4 = Pole Timber Poor	9 = Saw Timber Well		
F = Spruce Fir	MC = Mixed Conifer	S = Black Spruce	Z = Water				
G = Grass	MD = Mixed Deciduous	T = Tamarack					

PU	Acres	PU	Acres
1	21.4	5	24.2
2	27.1	6	26.1
3	22.1	7	26.9
4	19.2		

Hunt Creek and Blue Lake Aspen Compartment 16 167.0 Acres





TIMBER SALE MAP

This information provided by authority of Part 525, 1994 PA 451, as amended.

Sale Number	Year
54 - 004	21

Forest Management Unit Atlanta Management Unit	County Montmorency	Mapped By Coy	Date 04/19/2021	Page 2	of 2
Township 29N	Range 03E	Section(s) and Subdivision(s) 20-NENW,S2NW,NWNE,N2SW,S2SE 29-NENW,NE 30-NWSW,S2SW 31- NENW	Scale 1:15,840		

Cover Type

A = Aspen	H = Hemlock	N = Marsh	U = Upland Brush
B = Paper Birch	J = Jack Pine	O = Oak	UM = Upland Mixed
C = Cedar	L = Lowland Brush	P = Lowland Poplar	V = Bog or Marsh
D = Treed Bog	LM = Lowland Mixed	Q = Mixed Swamp Conifer	W = White Pine
E = Swamp Hdwoods	M = Mpl, Bch, Brch	R = Red Pine	X = Non Stocked
F = Spruce Fir	MC = Mixed Conifer	S = Black Spruce	Z = Water
G = Grass	MD = Mixed Deciduous	T = Tamarack	

Density

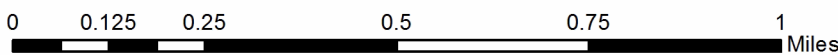
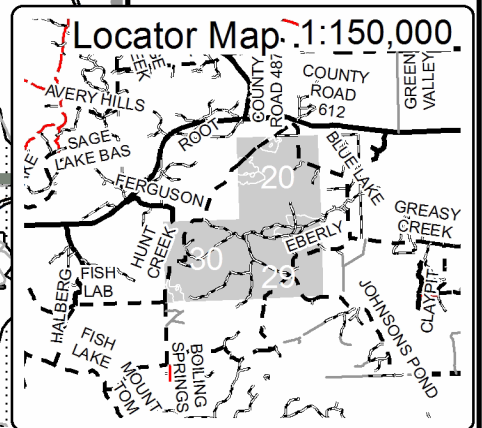
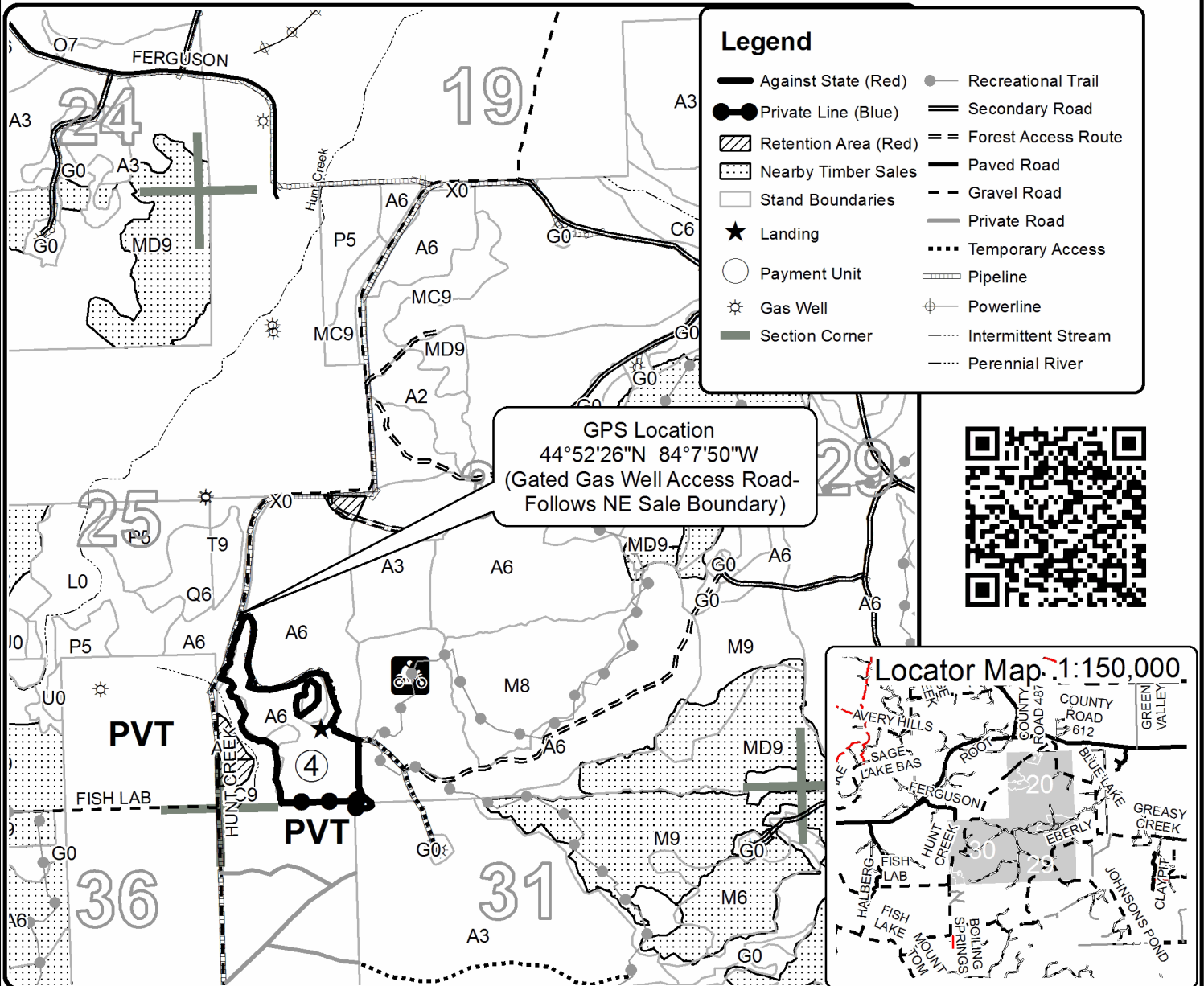
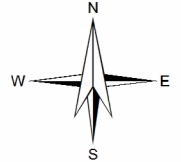
0 = Non Stocked	5 = Pole Timber Medium
1 = Seedling Sapling Poor	6 = Pole Timber Well
2 = Seedling Sapling Medium	7 = Saw Timber Poor
3 = Seedling Sapling Well	8 = Saw Timber Medium
4 = Pole Timber Poor	9 = Saw Timber Well

PU	Acres	PU	Acres
1	21.4	5	24.2
2	27.1	6	26.1
3	22.1	7	26.9
4	19.2		

Hunt Creek and Blue Lake Aspen

Compartment 16

167.0 Acres



TIMBER SALE INFORMATION

Anderbad Barrens Restoration (54-008-21)
 T29N, R01E, SEC. 5; T29N, R01E, SEC. 8.
 Montmorency County (Advertised Price \$14,553.65)

SALE NOTE: All units of volume listed for this sale were estimated using the Inventory Manager computer program and the new Michigan taper model.

A recreation site such as a trail, pathway, or campground is within the sale area or the vicinity. Certain restrictions/specifications may be applicable including time restrictions.

A timber sale contract for this lump sum, sealed bid timber sale will be awarded to the responsible bidder offering the highest sealed bid price. All units of volume listed below were estimated using the Inventory Manager computer program and the new Michigan taper model. Bids must be at or above the following advertised price for each product and species:

<u>PRODUCTS & SPECIES</u>	<u>ESTIMATED UNITS*</u>	<u>ADVERTISED PRICE</u>
Sawtimber		
Northern Pin Oak	27.5 MBF	\$ 84.00 / MBF
Red Oak	12.7 MBF	\$ 160.00 / MBF
Pulpwood		
Jack Pine	224 Cords	\$ 9.00 / Cord
Mixed Aspen	45 Cords	\$ 24.10 / Cord
Mixed Oak	107 Cords	\$ 32.75 / Cord
Red Maple	8 Cords	\$ 18.90 / Cord
Red Pine	88 Cords	\$ 38.40 / Cord
White Pine	6 Cords	\$ 12.75 / Cord

* The total volume is statistically estimated within plus (+) or minus (-) 10.48 percent. There are an estimated 603 cords on this timber sale, plus or minus 63 cords at the 95% confidence level. The estimated units are final and not subject to adjustment. Prospective bidders are urged to examine this timber and to make their own estimates of quantity and quality.

BOND AND PAYMENT SCHEDULE:

1. A bond in the amount of \$728.00 to insure faithful performance of the conditions of the contract will be deposited by the successful bidder within 21 days of the sale award.
2. Cutting in any sale or unit without the required advance payment would be considered a trespass.
3. Total payment must be paid in advance or according to the following schedule :
 - (a) Ten percent (10%) of the sale value must be paid within 21 days of the sale award.
 - (b) The 10% down payment will be credited towards the first unit cut.
 - (c) Payment for each of the following units must be made before cutting begins in that unit:

PAYMENT UNIT NUMBER	PERCENT OF TOTAL SALE VALUE
01	35.2%
02	19.9%
03	44.9%
4. If no cutting takes place, the 10% down payment will not be refunded.
5. Operations on the contract issued will terminate on 12/31/2025.

SALE STATISTICS

Volumes were calculated in cubic feet using the Michigan taper model. Cubic foot volume includes all wood inside bark for the product indicated. For display purposes, cubic feet were converted to cords and MBF using a simple conversion factor, e.g. 79 cubic feet per cord and 185 cubic feet per MBF. The cubic foot volumes are precise; the cords and MBF volumes are not. Cubic foot volume cannot be directly converted to cords or boards with precision.

SALE VOLUMES

The total estimated sale volume may not equal the sum of the species/products due to the nature of statistical calculations associated with double sampling methodology.

VOLUME		STATISTICAL RANGE IN CORDS		
TOTAL CUBIC FEET	TOTAL CORDS	PERCENT ERROR	MINIMUM	MAXIMUM
47,656	603	10.48%	540	666

VDU VOLUMES

A VDU is a Volume Determination Unit. Volumes and their associated statistics are calculated at the VDU level and summarized to the sale level. There is often a one to one relationship between a VDU and a Payment Unit, but not always, depending on the cruise design. Refer to the VDU TO PAYMENT UNIT table.

VDU	VOLUME		PERCENT ERROR	RANGE IN CORDS	
	TOTAL CUBIC FEET	TOTAL CORDS		MINIMUM	MAXIMUM
57	19,328	245	17.16%	203	287
84	14,728	186	21.29%	147	226
112	4,789	61	19.34%	49	72
284	8,811	112	20.48%	89	134
TOTAL:	47,656	603		487	719

VDU TO PAYMENT UNIT

When a VDU is associated with more than one Payment Unit (PU), the VDU volumes are assigned to the PU based on acres of the VDU within the PU.

VDU	VDU ACRES	PU	PU ACRES
57	19.0	1	19.0
84	12.8	3	12.8
112	12.4	1	12.4
284	12.8	2	12.8
TOTAL:	57.0		57.0

DESCRIPTION OF TIMBER BY PAYMENT UNIT (PU)

PU	MARKET GROUP	PRODUCT	QUANTITY	UNIT	ACRES	ADVERTISE PRICE			
1	Jack Pine	Pulpwood	194	Cords	31.4	\$5,125.20			
	<i>Jack Pine</i>	<i>Sawtimber</i>	6.3	<i>MBF</i>					
	<i>Jack Pine</i>	<i>Pulpwood</i>	181	<i>Cords</i>					
	Red Pine		88	Cords					
	<i>Red Pine</i>	<i>Sawtimber</i>	3.5	<i>MBF</i>					
	<i>Red Pine</i>	<i>Pulpwood</i>	81	<i>Cords</i>					
	2	Northern Pin Oak	Sawtimber	10.5			MBF	12.8	\$2,899.30
Red Oak			2.6	MBF					
Jack Pine		Pulpwood	29	Cords					
<i>Jack Pine</i>		<i>Sawtimber</i>	1.5	<i>MBF</i>					
<i>Jack Pine</i>		<i>Pulpwood</i>	26	<i>Cords</i>					
Mixed Aspen			23	Cords					
<i>B. T. Aspen</i>			6	<i>Cords</i>					
<i>Quaking Aspen</i>			17	<i>Cords</i>					
Mixed Oak			24	Cords					
<i>Northern Pin Oak</i>			21	<i>Cords</i>					
<i>Red Oak</i>			3	<i>Cords</i>					
3		Northern Pin Oak	Sawtimber	17.0	MBF	12.8	\$6,529.15		
		Red Oak		10.1	MBF				
	Jack Pine	Pulpwood	1	Cords					
	<i>Jack Pine</i>		1	<i>Cords</i>					
	Mixed Aspen		22	Cords					
	<i>Quaking Aspen</i>		22	<i>Cords</i>					
	Mixed Oak		83	Cords					
	<i>Northern Pin Oak</i>		59	<i>Cords</i>					
	<i>Red Oak</i>		24	<i>Cords</i>					
	Red Maple		8	Cords					
	White Pine		6	Cords					
	<i>White Pine</i>	<i>Sawtimber</i>	2.0	<i>MBF</i>					
	<i>White Pine</i>	<i>Pulpwood</i>	2	<i>Cords</i>					
TOTAL:			40.2	MBF					
TOTAL:			478	Cords					

Sale Specific Conditions & Requirements

Sale Name: Anderbad Barrens Restoration

Sale Number: 54-008-21 Seq#: 2

1 - Sale Area

1.2 - Boundaries

1.2.1 - Painted boundaries (9/19)

The sale boundary and Payment Unit boundaries are marked and identified by blue, red, and yellow paint. Exterior sale boundary lines against private property are marked with blue paint. Exterior sale boundary lines against state are marked with red paint. Andergood Road is an unpainted boundary against state along the northern edge of Payment Unit 1. Interior Payment Unit boundaries are marked with yellow paint. This boundary only exists between Payment Units 2 and 3. Retention patches are marked with red paint; no harvesting activities may occur within these areas. This painted boundary line trees are not Included Timber and are to be protected unless marked with orange paint. Yellow painted trees designating an interior Payment Unit boundary are only to be cut when all surrounding Payment Units have been paid.

2 - Timber Specifications

2.1 - Included Timber

2.1.2 - Clearcut unit(s) w/o unmerchantable trees (8/11)

Within Payment Unit(s) 3, cut all trees which meet minimum piece specifications in 2.2 Utilization.

2.1.7 - Leave tree marked unit(s) (6/14)

Within Payment Unit(s) 1, all trees with at least a single merchantable stick are designated for cutting, except species trees marked with yellow paint above and below stump height. Special protection trees identified in accordance with condition 3.4.2, within clearcutting unit boundaries, are not Included Timber and are to be protected. The Sale Area has experienced windthrow in late summer 2020 including damage to leave marked trees. Windthrown and fallen yellow marked trees are Included Timber.

Within Payment Unit(s) 2, all trees with at least a single merchantable stick are designated for cutting except species trees marked with green paint above and below stump height. Special protection trees identified in accordance with condition 3.4.2, within clearcutting unit boundaries, are not Included Timber and are to be protected.

2.2 - Utilization

2.2.2 - Chipping required (2/18)

The Sale Area must be chip harvested to facilitate future silvicultural activities (Payment Unit 3) and to reduce slash for prescribed burning (Payment Units 1 and 2). The Purchaser has the option to produce sawlogs or pulpwood bolts, but the remaining portion of the trees must be chipped and hauled. Products may be produced as roundwood and forwarded to decking areas in final product length, but the tops must be left intact and skidded to the landing for chipping to minimize the amount of residual slash. The requirement to retain approximately 1/6 to 1/3 of tree tops and limbs less than four inches in diameter is still applicable (G. C. & R. 2.2) in Payment Unit 3. The requirement to retain approximately 1/6 to 1/3 of tree tops and limbs less than four inches in diameter does not apply (G. C. & R. 2.2) in Payment Units 1 and 2. This is to prepare the site for prescribed burning.

2.2.3 - Stump heights (4/07)

Stump heights within the Sale Area shall not exceed 6 inches for all trees. This is to facilitate prescribed burning in Payment Units 1 and 2 and site preparation activities in Payment Unit 3.

3 - Payments

3.4 - Damaged Timber

3.4.1 - Damaged timber (7/16)

General Condition and Requirement 3.4 Damaged Timber, defines liquidated damages for undesignated live merchantable trees which are cut or injured. In addition, extreme care should be taken to avoid damage to tree seedlings and saplings. Within the Sale Area, if more than 50% of the tree seedlings or saplings (1/4" to 4.5" DBH) within a specified portion of the Sale Area are damaged, liquidated damages will be assessed at \$200 per acre for all acreage within that specified portion of the Sale Area that was damaged. No damage is acceptable to undesignated live merchantable trees. Within the Sale Area, if

more than 5% of trees (> 4.5" DBH) within a specified area of the sale are damaged, liquidated damages will be assessed for all trees damaged. Rates will be in accordance with General Condition and Requirement 3.4 Damaged Timber, or at a rate of \$100 per tree, whichever is greater.

3.4.2 - Special Protection Trees (4/14)

The Purchaser shall not cut live or dead special protection trees within cutting units or clearings. Special protection trees are marked with yellow paint in Payment Unit 1 and green paint in Payment Unit 2. If the Purchaser's operations have cut or damaged special protection trees through carelessness, the Purchaser shall pay \$100 as fixed, agreed and liquidated damages for each special protection tree cut or damaged. Such payment does not constitute ownership of the undesignated timber. Windthrown or fallen trees marked in yellow are Included Timber.

4 - Transportation

4.1 - Construction

4.1.6 - Road construction (1/09)

Improvements of existing roads shall be done in such a way as to minimize the environmental and visual impacts. Merchantable trees shall be cut and utilized unless otherwise directed. Non-merchantable trees shall be severed and laid flat on the ground. Slash shall be chipped, utilized, or otherwise removed from the sale. Stumps shall be set upright, not left on edge, and be moved at least 10 feet away from the road edge. Disturbed soil shall be feathered into the woods and not left in berms or windrows.

4.1.12 - No new roads (1/12)

No new roads will be permitted in any Payment Unit. All operations are limited to existing roads. Skid trails only will be allowed.

4.2 - Maintenance

4.2.2 - Fill material (4/07)

To maintain roads, fill material may be needed in areas where "holes" exist or may be expected to develop. This fill material should be placed before trucking begins. This fill material shall not contain clay or organic material.

4.2.5 - Two wheel drive condition (2/04)

All existing trail roads on and adjacent to the sale area must be passable by two-wheel drive traffic for the duration of the sale.

5 - Operations

5.1 - Notification

5.1.1 - Pre-sale conference (10/16)

A pre-sale conference between the Purchaser and sale administrator is required prior to beginning any operations in any Payment Unit to determine landing and road locations. The Unit Manager or his/her representative must be contacted at least 10 days in advance to schedule the conference.

5.1.3 - Well heads and natural gas pipelines (11/15)

The Purchaser is responsible for contacting the gas or pipeline company 30 days prior to operating equipment in the vicinity of well heads or natural gas pipelines. Contact Muskegon Operating Company, LLC at (989) 772-4900 and Trendwell Energy Corporation at (616) 866-5024.

5.1.4 - Post-sale conference (10/16)

A post-sale conference on site between the Purchaser and sale administrator is required prior to the completion of active logging operations to determine clean-up and repair of landings, road edges, and the fulfillment of other contract specifications.

5.2 - Conduct of Operations

5.2.1 - Slash

5.2.1.12 - Slash for prescribed burning (1/05)

To facilitate prescribed burning, slash shall be moved at least 10 feet inside the sale boundary. Slash cannot be piled or placed near residual trees. Additionally fallen snags should be pulled away from the dripline of green (Payment Unit 2) and yellow (Payment Unit 1) painted leave trees.

5.2.2 - Hazard Trees/Snags

5.2.2.1 - Den trees (10/16)

Obvious hollow and/or den trees shall be protected and left standing unless they are a safety hazard.

5.2.3 - Operating Restrictions

5.2.3.4 - Oak wilt restriction, no exceptions (1/18)

Within Payment Unit 2, cutting, skidding, hauling within the sale and brushing of access roads to the sale are not permitted during the period of April 15 to July 15. No exceptions will be granted. This is necessary to reduce the spread of oak wilt.

5.2.3.5 - Oak wilt restriction (1/18)

Within Payment Unit 3, unless changed by written agreement, cutting, skidding, hauling within the sale and brushing of access roads to the sale are not permitted during the period of April 15 to July 15. Operations may be allowed if specific steps are taken to prevent damaging uncut oak during the high risk period. Those steps may include completing all road brushing before April 15th and clearing a tree-length buffer along uncut oak cover before April 15th. This is necessary to reduce the spread of oak wilt. For more information, contact the Unit Manager or his/her representative.

5.2.3.6 - Bark beetle restriction (12/08)

In the event drought creates a high risk of pine bark beetle infestation, pine is not to be cut during the period March 1 through July 1, unless all portions of trees greater than two inches in diameter are removed from the sale area, reduced to chips, or treated to the satisfaction of the Unit Manager or his/her representative, within fifteen days of being severed from the stump. Pine log decks, pulpwood piles and treetops that are piled for chipping in the fall or winter within a 1/4 mile of susceptible sites must be removed before March 15. Residual slash must not be placed in piles or rows and must be spread over the site for quick drying. The Department of Natural Resources will exercise this specification if the risk of damage warrants.

5.2.3.11 - Coppice regeneration protection (4/10)

Timber harvesting in any Payment Unit must be completed before significant deciduous sprouting occurs in that Payment Unit to minimize damage to the new regeneration. Any post-harvest operations, such as chipping, must be completed before sprouting of regeneration occurs. If it is anticipated that chipping will be delayed, then tops shall be carried to one central location or left unchipped. The Unit Manager or his/her representative may cease such operations if sprouting occurs before the operation is complete.

5.2.32 - Decking/landing restoration (9/13)

All decking and landing areas must have the surface area restored to a condition equal to or better than before. This is to ensure the proper regeneration of the stand. Wood debris, chips, and "cookies" from trimmings must be removed or scattered away from landing and loading areas and may not be windrowed on the edge.

5.2.38 - No decking against live trees (2/04)

Cut products may not be decked against unmarked or designated leave trees.

5.2.40 - Pathway protection (10/10)

The Buttles Pathway is a hiking trail and is shown on the Timber Sale Map. Do not cut trees or damage posts with blue pathway markers. Maintain a 20-foot-wide slash, debris, and rut free zone daily, using the pathway as the centerline. Do not run equipment down the pathway. Skidding across the trail may only occur in locations approved by the sale administrator.

5.4 - Soil Protection

5.4.1 - Rutting restriction, general (7/16)

Operations are to cease immediately if equipment and weather conditions result in rutting of roads and/or skid trails which is 12 inches or greater in depth and 50 feet in length. The Unit Manager or his/her representative may restrict hauling and/or skidding if ruts exceed the specified depth. With the Unit Manager or his/her representative's approval, the Purchaser may return to the area when the risk of rutting has decreased.

5.8 - Protection of Endangered Species

5.8.5 - Protection of raptor nests (3/13)

All trees with raptor nests will be protected if found during harvesting operations. Notification will be made to the Unit

Manager or his/her representative who will notify the Wildlife Biologist so an on-site evaluation and recommendation can be made, if necessary.

6 - Safety and Fire Prevention

6.2 - Signing

6.2.3 - Recreational trail posting (10/20)

The Purchaser is responsible for posting and maintaining caution signs on Buttles Pathway prior to beginning operations. The trail must be posted at appropriate distances from the Sale Area to warn of logging activity and truck traffic at both ends of the trail. Signs must be removed when harvest operations are suspended or completed. The Purchaser will provide these signs.

7 - Other Conditions

7.5 - Loss

7.5.1 - Deteriorating timber (7/09)

The sale area has received damage from windthrow. The Purchaser should harvest the wood as soon as possible. The Department of Natural Resources is held free of responsibility of any further damage or deterioration due to delay in harvesting.

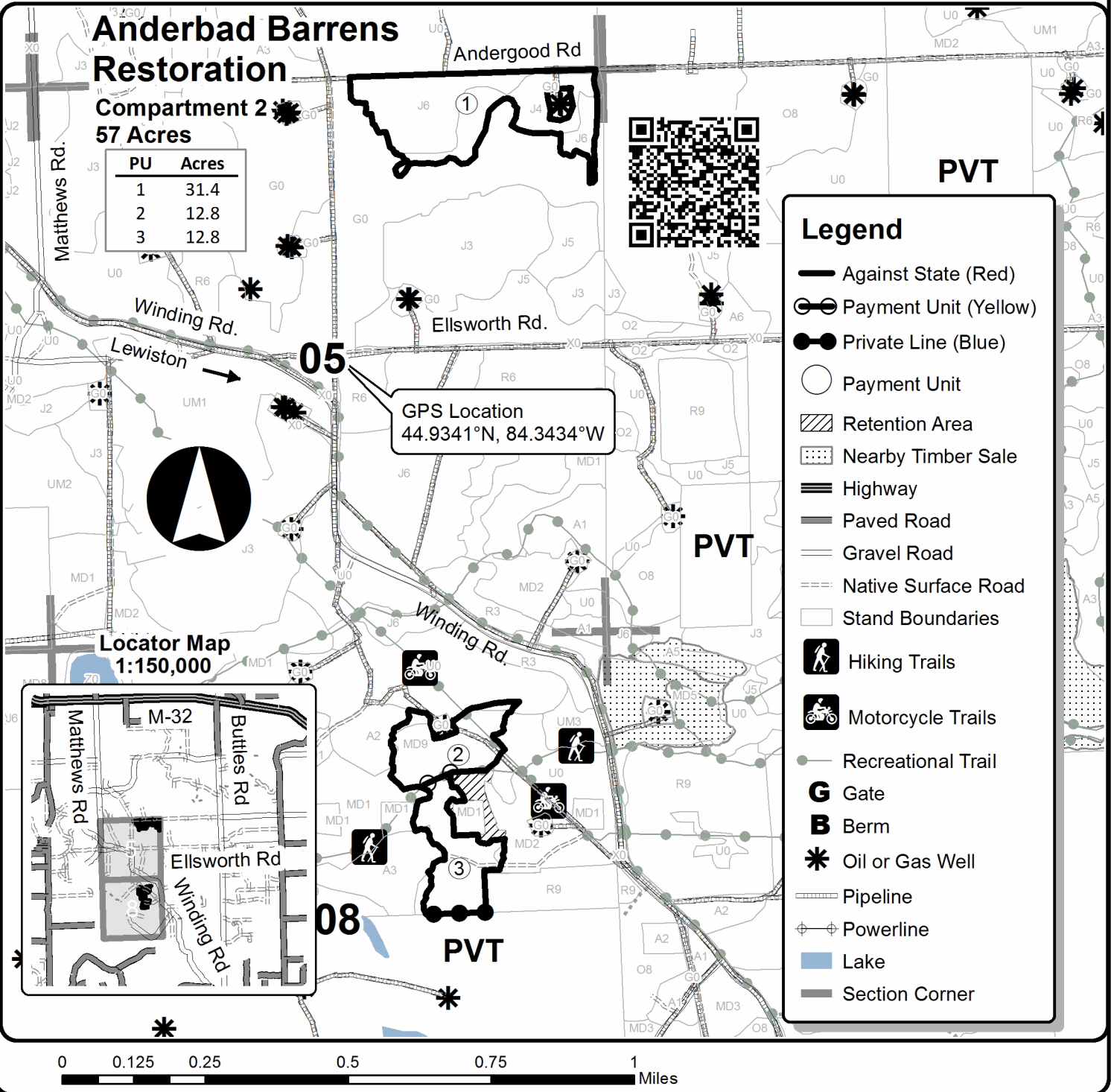


TIMBER SALE MAP

This information provided by authority of Part 525, 1994 PA 451, as amended.

Forest Management Unit Atlanta Management Unit		County Montmorency	Mapped By Natzke	Date 04/09/2021	Page 1	of 1
Township 29N	Range 01E	Section(s) and Subdivision(s) Sec. 5 N2NE, Sec. 8 N2NE, SWNE		Scale 1:15,840		

Cover Type				Density	
A = Aspen	H = Hemlock	N = Marsh	U = Upland Brush	0 = Non Stocked	5 = Pole Timber Medium
B = Paper Birch	J = Jack Pine	O = Oak	UM = Upland Mixed	1 = Seedling Sapling Poor	6 = Pole Timber Well
C = Cedar	L = Lowland Brush	P = Lowland Poplar	V = Bog or Marsh	2 = Seedling Sapling Medium	7 = Saw Timber Poor
D = Treed Bog	LM = Lowland Mixed	Q = Mixed Swamp Conifer	W = White Pine	3 = Seedling Sapling Well	8 = Saw Timber Medium
E = Swamp Hdwoods	M = Mpl, Bch, Brch	R = Red Pine	X = Non Stocked	4 = Pole Timber Poor	9 = Saw Timber Well
F = Spruce Fir	MC = Mixed Conifer	S = Black Spruce	Z = Water		
G = Grass	MD = Mixed Deciduous	T = Tamarack			



TIMBER SALE INFORMATION

5 EZ Pieces (54-010-21)

T29N, R03E, SEC. 19; T29N, R03E, SEC. 20; T29N, R03E, SEC. 21; T29N, R03E, SEC. 29; T29N, R03E, SEC. 30; T29N, R03E, SEC. 31; T29N, R03E, SEC. 32.

SALE NOTE: All units of volume listed for this sale were estimated using the Inventory Manager computer program and the new Michigan taper model.

A recreation site such as a trail, pathway, or campground is within the sale area or the vicinity. Certain restrictions/specifications may be applicable including time restrictions.

A timber sale contract for this lump sum, sealed bid timber sale will be awarded to the responsible bidder offering the highest sealed bid price. All units of volume listed below were estimated using the Inventory Manager computer program and the new Michigan taper model. Bids must be at or above the following advertised price for each product and species:

<u>PRODUCTS & SPECIES</u>	<u>ESTIMATED UNITS*</u>	<u>ADVERTISED PRICE</u>
Sawtimber		
B. T. Aspen	2.0 MBF	\$ 89.00 / MBF
Basswood	271.3 MBF	\$ 52.00 / MBF
Beech	44.2 MBF	\$ 46.00 / MBF
Red Oak	424.6 MBF	\$ 160.00 / MBF
Red Pine	2.6 MBF	\$ 119.00 / MBF
Sugar Maple	168.1 MBF	\$ 258.00 / MBF
Pulpwood		
B. T. Aspen	38 Cords	\$ 24.10 / Cord
Basswood	306 Cords	\$ 10.40 / Cord
Beech	427 Cords	\$ 18.90 / Cord
Ironwood	8 Cords	\$ 18.90 / Cord
Paper Birch	3 Cords	\$ 11.25 / Cord
Quaking Aspen	52 Cords	\$ 24.10 / Cord
Red Oak	346 Cords	\$ 32.75 / Cord
Red Pine	1 Cords	\$ 38.40 / Cord
Sugar Maple	542 Cords	\$ 18.90 / Cord
White Ash	17 Cords	\$ 18.90 / Cord
White Pine	14 Cords	\$ 12.75 / Cord

* The total volume is statistically estimated within plus (+) or minus (-) 5.25 percent. There are an estimated 3,959 cords on this timber sale, plus or minus 208 cords at the 95% confidence level. The estimated units are final and not subject to adjustment. Prospective bidders are urged to examine this timber and to make their own estimates of quantity and quality.

BOND AND PAYMENT SCHEDULE:

1. A bond in the amount of \$8,183.00 to insure faithful performance of the conditions of the contract will be deposited by the successful bidder within 21 days of the sale award.
2. Cutting in any sale or unit without the required advance payment would be considered a trespass.
3. Total payment must be paid in advance or according to the following schedule :
 - (a) Ten percent (10%) of the sale value must be paid within 21 days of the sale award.
 - (b) The 10% down payment will be credited towards the first unit cut.
 - (c) Payment for each of the following units must be made before cutting begins in that unit:

PAYMENT UNIT NUMBER	PERCENT OF TOTAL SALE VALUE
01	14.8%
02	17.2%
03	11.9%
04	11.1%
05	13.5%
06	2.6%
07	16.1%
08	12.8%

4. If no cutting takes place, the 10% down payment will not be refunded.
5. Operations on the contract issued will terminate on 12/31/2025.

SALE STATISTICS

Volumes were calculated in cubic feet using the Michigan taper model. Cubic foot volume includes all wood inside bark for the product indicated. For display purposes, cubic feet were converted to cords and MBF using a simple conversion factor, e.g. 79 cubic feet per cord and 185 cubic feet per MBF. The cubic foot volumes are precise; the cords and MBF volumes are not. Cubic foot volume cannot be directly converted to cords or boards with precision.

SALE VOLUMES

The total estimated sale volume may not equal the sum of the species/products due to the nature of statistical calculations associated with double sampling methodology.

VOLUME			STATISTICAL RANGE IN CORDS	
TOTAL CUBIC FEET	TOTAL CORDS	PERCENT ERROR	MINIMUM	MAXIMUM
312,778	3,959	5.25%	3,751	4,167

VDU VOLUMES

A VDU is a Volume Determination Unit. Volumes and their associated statistics are calculated at the VDU level and summarized to the sale level. There is often a one to one relationship between a VDU and a Payment Unit, but not always, depending on the cruise design. Refer to the VDU TO PAYMENT UNIT table.

VDU	VOLUME			RANGE IN CORDS	
	TOTAL CUBIC FEET	TOTAL CORDS	PERCENT ERROR	MINIMUM	MAXIMUM
22	39,838	504	9.72%	455	553
35	139,695	1,768	8.63%	1,616	1,921
56	32,920	417	9.04%	379	454
59	89,133	1,128	10.86%	1,006	1,251
68	11,192	142	23.74%	108	175
TOTAL:	312,778	3,959		3,564	4,355

VDU TO PAYMENT UNIT

When a VDU is associated with more than one Payment Unit (PU), the VDU volumes are assigned to the PU based on acres of the VDU within the PU.

VDU	VDU ACRES	PU	PU ACRES
22	53.4	2	53.4
35	43.6	3	14.2
		4	13.3
		5	16.1
		56	28.4
59	31.4	7	17.5
		8	13.9
68	7.6	6	7.6
TOTAL:	164.4		164.4

DESCRIPTION OF TIMBER BY PAYMENT UNIT (PU)

PU	MARKET GROUP	PRODUCT	QUANTITY	UNIT	ACRES	ADVERTISE PRICE
1	Basswood	Sawtimber	3.2	MBF	28.4	\$24,139.75
	Beech		1.7	MBF		
	Red Oak		103.0	MBF		
	Sugar Maple		14.9	MBF		
	Basswood	Pulpwood	3	Cords		
	Beech		27	Cords		
	Red Oak		85	Cords		
	Sugar Maple		13	Cords		
2	B. T. Aspen	Sawtimber	2.0	MBF	53.4	\$28,449.35
	Basswood		1.6	MBF		
	Beech		1.4	MBF		
	Red Oak		120.3	MBF		
	Red Pine		2.6	MBF		
	Sugar Maple		15.1	MBF		
	B. T. Aspen		Pulpwood	1		
	Basswood	2		Cords		
	Beech	2		Cords		
	Quaking Aspen	7		Cords		
	Red Oak	111		Cords		
	Red Pine	1		Cords		
	Sugar Maple	30		Cords		
	White Pine	14	Cords			
3	Basswood	Sawtimber	74.6	MBF	14.2	\$19,429.65
	Beech		11.2	MBF		
	Red Oak		15.5	MBF		
	Sugar Maple		31.0	MBF		
	Basswood	Pulpwood	68	Cords		
	Beech		79	Cords		
	Ironwood		1	Cords		
	Quaking Aspen		13	Cords		
	Red Oak		7	Cords		
	Sugar Maple		89	Cords		
	White Ash		6	Cords		
4	Basswood	Sawtimber	69.9	MBF	13.3	\$18,198.25
	Beech		10.5	MBF		
	Red Oak		14.5	MBF		
	Sugar Maple		29.0	MBF		
	Basswood	Pulpwood	63	Cords		
	Beech		74	Cords		
	Ironwood		1	Cords		
	Quaking Aspen		13	Cords		
	Red Oak		7	Cords		
	Sugar Maple		83	Cords		
	White Ash		5	Cords		
5	Basswood	Sawtimber	84.6	MBF	16.1	\$22,026.90
	Beech		12.6	MBF		
	Red Oak		17.5	MBF		
	Sugar Maple		35.2	MBF		
	Basswood	Pulpwood	77	Cords		
	Beech		90	Cords		
	Ironwood		1	Cords		
	Quaking Aspen		15	Cords		
	Red Oak		8	Cords		
	Sugar Maple		101	Cords		
	White Ash		6	Cords		
	6		Basswood	Sawtimber		

DESCRIPTION OF TIMBER BY PAYMENT UNIT (PU), CON'T

PU	MARKET GROUP	PRODUCT	QUANTITY	UNIT	ACRES	ADVERTISE PRICE
6 con't	Red Oak	Sawtimber	4.1	MBF		
	Sugar Maple		5.6	MBF		
	Basswood	Pulpwood	26	Cords		
	Beech		35	Cords		
	Paper Birch		3	Cords		
	Quaking Aspen		4	Cords		
	Red Oak		4	Cords		
	Sugar Maple		6	Cords		
7	Basswood	Sawtimber	12.6	MBF	17.5	\$26,319.85
	Beech		3.8	MBF		
	Red Oak		83.4	MBF		
	Sugar Maple		20.8	MBF		
	B. T. Aspen	Pulpwood	21	Cords		
	Basswood		37	Cords		
	Beech		67	Cords		
	Ironwood		2	Cords		
	Red Oak		69	Cords		
	Sugar Maple		123	Cords		
8	Basswood	Sawtimber	10.0	MBF	13.9	\$20,913.55
	Beech		3.0	MBF		
	Red Oak		66.3	MBF		
	Sugar Maple		16.5	MBF		
	B. T. Aspen	Pulpwood	16	Cords		
	Basswood		30	Cords		
	Beech		53	Cords		
	Ironwood		3	Cords		
	Red Oak		55	Cords		
	Sugar Maple		97	Cords		
	TOTAL:			912.8		
TOTAL:			1,754	Cords		

Sale Specific Conditions & Requirements

Sale Name: 5 EZ Pieces

Sale Number: 54-010-21 Seq#: 2

1 - Sale Area

1.2 - Boundaries

1.2.1 - Painted boundaries (9/19)

The sale boundary and Payment Unit boundaries are marked and identified by red and yellow paint. Exterior sale boundary lines against state are marked with red paint. Interior Payment Unit boundaries are marked with yellow paint. Retention patches are marked with red paint; no harvesting activities may occur within these areas. The painted boundary line trees are not Included Timber and are to be protected unless marked with orange paint. Yellow painted trees designating an interior Payment Unit boundary are only to be cut when all surrounding Payment Units have been paid, except in the case of Payment Unit 6. Yellow painted trees surrounding Payment Unit 6 are protected and are not Included Timber.

2 - Timber Specifications

2.1 - Included Timber

2.1.1 - Clearcut unit(s) with unmerchantable trees (6/14)

Within Payment Unit(s) 2-5 and 7-8, cut all trees that are two (2) inches or more at DBH.

2.1.7 - Leave tree marked unit(s) (6/14)

Within Payment Unit(s) 1 and 6, cut all trees that are two (2) inches or more at DBH, except trees marked with green or yellow paint above and below stump height. These are special protection trees identified in accordance with condition 3.4.2, within clearcutting unit boundaries, are not Included Timber and are to be protected.

2.2 - Utilization

2.2.2 - Chipping required (2/18)

All Payment Units must be chip harvested to facilitate subsequent planting operations. The Purchaser has the option to produce sawlogs or pulpwood bolts, but the remaining portion of the trees must be chipped and hauled. Products may be produced as roundwood and forwarded to decking areas in final product length, but the tops must be left intact and skidded to the landing for chipping to minimize the amount of residual slash. If market conditions limit the practicality of chipping, tops and slash must be arranged in a way that will not inhibit future planting operations, as directed by the sale administrator.

Conditions that satisfy this modification require:

- trees greater than 4" DBH must be cut to a 2" top or smaller;
- sub-merchantable trees and hardwood limbs 4" or greater where they attach to the stem, must be cut/reduced to 4-foot lengths or smaller;
- slash must be evenly dispersed throughout the Payment Unit and not be more than 2-feet high.

The requirement to retain approximately 1/6 to 1/3 of tree tops and limbs less than four inches in diameter is still applicable (G. C. & R. 2.2).

2.2.3 - Stump heights (4/07)

Stump heights within Payment Unit(s) 1-8 shall not exceed 6 inches for all trees. This is to facilitate planting operations.

3 - Payments

3.4 - Damaged Timber

3.4.2 - Special Protection Trees (4/14)

The Purchaser shall not cut live or dead special protection trees within cutting units or clearings. Special protection trees are marked above and below stump height with yellow paint in Payment Unit 1, and green or yellow paint in Payment Unit 6. If the Purchaser's operations have cut or damaged special protection trees through carelessness, the Purchaser shall pay \$200 as fixed, agreed and liquidated damages for each special protection tree cut or damaged. Such payment does not constitute ownership of the undesignated timber.

4 - Transportation

4.1 - Construction

4.1.3 - Slash and earthen piles (8/04)

Piles or windrows of earth along roads and landings that have been widened or constructed shall be leveled. Slash from road maintenance or construction, including stumps, shall be chipped and hauled from the sale.

4.1.4 - Timber removed for construction (12/09)

Trees cut or damaged in the process of pre-approved road, landing or skid trail construction will be decked in an area separate from other Designated Timber and not removed until measured by the sale administrator. Payment will be made at the specified Purchase Unit Price. If not included in the contract, the Purchaser will pay for the species or product at the average sold price for Michigan's northern lower peninsula.

4.1.6 - Road construction (1/09)

Construction or improvements of existing roads shall be done in such a way as to minimize the environmental and visual impacts. Merchantable trees shall be cut and utilized unless otherwise directed. Non-merchantable trees shall be severed and laid flat on the ground. Slash shall be chipped, utilized or otherwise removed from the sale. Stumps shall be set upright, not left on edge, and be moved at least 10 feet away from the road edge. Disturbed soil shall be feathered into the woods and not left in berms or windrows.

4.1.7 - Road closure (10/11)

All new roads built into the sale must be blocked to vehicle traffic upon completion of the sale. Overgrown roads that are reopened shall be considered new roads. In general, this will require constructing a four (4') foot high berm of stumps and logs covered with earth. Stumps and brush may be placed along the remainder of the trail. Contact the sale administrator for specific details of design and placement.

4.2 - Maintenance

4.2.2 - Fill material (4/07)

To maintain roads, fill material may be needed in areas where "holes" exist or may be expected to develop. This fill material should be placed before trucking begins. The fill material must be inorganic material such as cobbles or crushed rock and must not contain clay.

4.2.5 - Two wheel drive condition (2/04)

All existing trail roads on and adjacent to the sale area must be passable by two-wheel drive traffic for the duration of the sale.

5 - Operations

5.1 - Notification

5.1.1 - Pre-sale conference (10/16)

A pre-sale conference between the Purchaser and sale administrator is required prior to beginning any operations to determine landing and road locations. The Unit Manager or his/her representative must be contacted in advance to schedule the conference.

5.1.3 - Well heads and natural gas pipelines (11/15)

The Purchaser is responsible for contacting the gas or pipeline company 30 days prior to operating equipment in the vicinity of well heads or natural gas pipelines. Contact Lambda Energy Resources at 832-779-8799 or 281-920-9595 or Merit Energy Company at 972-701-8377 between the hours of 9 A.M. and 5 P.M. CST.

5.1.4 - Post-sale conference (10/16)

A post-sale conference on site between the Purchaser and sale administrator is required prior to the completion of active logging operations to determine clean-up and repair of landings, road edges, and the fulfillment of other contract specifications.

5.2 - Conduct of Operations

5.2.1 - Slash

5.2.1.10 - No slash in openings (5/10)

No brush or logging debris is to be left in the gas well opening which is indicated by an asterisk on the Timber Sale Map. Any damage to the opening shall be repaired according to specifications of the Unit Manager or his/her representative.

5.2.2 - Hazard Trees/Snags

5.2.2.1 - Den trees (10/16)

Obvious hollow and/or den trees shall be protected and left standing unless they are a safety hazard.

5.2.3 - Operating Restrictions

5.2.3.1 - Operating restrictions (9/11)

Within Payment Unit(s) 1 and 3-8 cutting, skidding, and hauling are not permitted between April 1 and June 15. This restriction is because steep slopes throughout the sale and the potential for soil damage and erosion.

5.2.3.4 - Oak wilt restriction, no exceptions (1/18)

Within Payment Unit(s) 1 and 6, cutting, skidding, hauling within the sale and brushing of access roads to the sale are not permitted during the period of April 15 to July 15. No exceptions will be granted. This is necessary to reduce the spread of oak wilt.

5.2.3.5 - Oak wilt restriction (1/18)

Within Payment Unit(s) 2-5, 7 and 8, unless changed by written agreement, cutting, skidding, hauling within the sale and brushing of access roads to the sale are not permitted during the period of April 15 to July 15. Operations may be allowed if specific steps are taken to prevent damaging uncut oak during the high risk period. Those steps may include completing all road brushing before April 15th and clearing a tree-length buffer along uncut oak cover before April 15th. This is necessary to reduce the spread of oak wilt. For more information, contact the Unit Manager or his/her representative.

5.2.3.11 - Coppice regeneration protection (4/10)

Timber harvesting in any Payment Unit must be completed before significant deciduous sprouting occurs in that Payment Unit to minimize damage to the new regeneration. Remove all severed merchantable timber to the landing prior to sprouting. Any post-harvest operations, such as chipping, forwarding, or skidding must be completed before regeneration sprouting occurs. If it is anticipated that these activities will be delayed, then tops, roundwood, or drags shall be carried to one central location or left in place in the harvest unit. The Unit Manager or his/her representative may cease such operations if sprouting occurs before the operation is complete. The Unit Manager or his/her representative may cease such operations if sprouting occurs before the operation is complete.

5.2.22 - Operating Caution

5.2.22.1 - Operating caution (6/11)

It is recommended, but not required, that within Payment Unit(s) 1 and 2, cutting, skidding, and hauling occur during leaf off conditions. The reason for the recommendation is because of a dense advanced deciduous understory which otherwise would diminish the visibility of marked leave trees in Payment Unit 1 and Payment Unit boundaries.

5.2.32 - Decking/landing restoration (9/13)

All decking and landing areas must have the surface area restored to a condition equal to or better than before. This is to ensure the proper regeneration of the stand. Wood debris, chips, and "cookies" from trimmings must be removed or scattered away from landing and loading areas and may not be windrowed on the edge.

5.2.38 - No decking against live trees (2/04)

Cut products may not be decked against unmarked or designated leave trees.

5.2.39 - ORV trail/route protection (4/18)

The Hunt Creek Motorcycle Trail is an ORV trail or route and is shown on the Timber Sale Map. Trees with yellow ORV markers shall be cut off above the markers and at least 5 feet above ground. All stumps within 5 feet of the trail must be cut flush with the ground. All stumps within 5 feet of the trail must be cut off at least 5 feet above ground level. Maintain a 20-foot-wide slash, debris, and rut free zone daily using the ORV trail or route as the centerline. Do not run equipment down the ORV trail or route. Skidding across the trail or route may only occur in locations approved by the sale administrator.

5.4 - Soil Protection

5.4.1 - Rutting restriction, general (7/16)

Operations are to cease immediately if equipment and weather conditions result in rutting of roads and/or skid trails which is 12 inches or greater in depth and 50 feet in length. The Unit Manager or his/her representative may restrict hauling and/or skidding if ruts exceed the specified depth. With the Unit Manager or his/her representative's approval, the Purchaser may return to the area when the risk of rutting has decreased.

5.4.3 - Erosion control (12/08)

Skid trails or haul roads may require erosion control structures or berms per direction of the Unit Manager or his/her representative.

5.8 - Protection of Endangered Species

5.8.5 - Protection of raptor nests (3/13)

All trees with raptor nests will be protected if found during harvesting operations. Notification will be made to the Unit Manager or his/her representative who will notify the Wildlife Biologist so an on-site evaluation and recommendation can be made, if necessary.

6 - Safety and Fire Prevention

6.2 - Signing

6.2.3 - Recreational trail posting (10/20)

The Purchaser is responsible for posting and maintaining caution signs on the Hunt Creek Motorcycle Trail prior to beginning operations. The trail must be posted at appropriate distances from the Sale Area to warn of logging activity and truck traffic at both ends of the trail. Signs must be removed when harvest operations are suspended or completed. The Purchaser will provide these signs.



TIMBER SALE MAP

This information provided by authority of Part 525, 1994 PA 451, as amended.

Sale Number	Year
54 - 010	21

Forest Management Unit Atlanta Management Unit	County Montmorency	Mapped By Natzke	Date 06/05/2021	Page 1	of 1
Cruised By Coy, Natzke					

Township 29N	Range 03E	Section(s) and Subdivision(s) Sec. 19 SESE; 20 NWSW, S2SW, E2SE; 21 W2SW; 29 SWNW, SWSW; 31 NENE; 32 NWNW	Scale 1:15,840
-----------------	--------------	---	-------------------

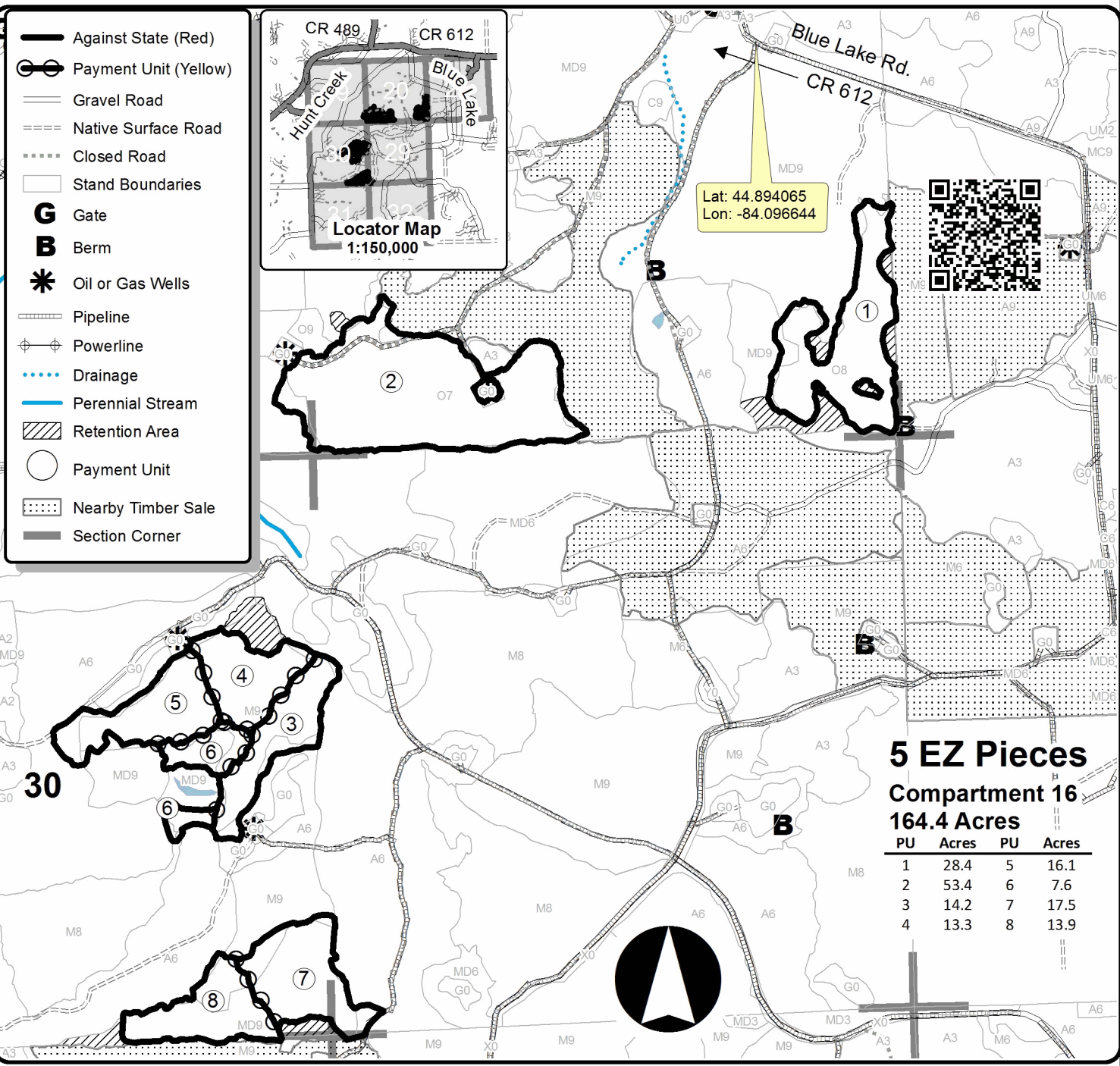
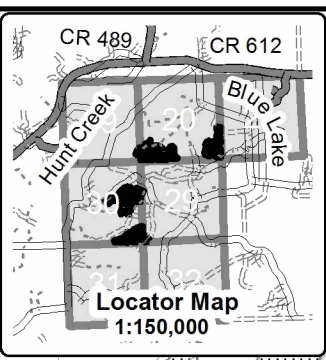
Cover Type

A = Aspen	H = Hemlock	N = Marsh	U = Upland Brush
B = Paper Birch	J = Jack Pine	O = Oak	UM = Upland Mixed
C = Cedar	L = Lowland Brush	P = Lowland Poplar	V = Bog or Marsh
D = Treed Bog	LM = Lowland Mixed	Q = Mixed Swamp Conifer	W = White Pine
E = Swamp Hdwoods	M = Mpl, Bch, Brch	R = Red Pine	X = Non Stocked
F = Spruce Fir	MC = Mixed Conifer	S = Black Spruce	Z = Water
G = Grass	MD = Mixed Deciduous	T = Tamarack	

Density

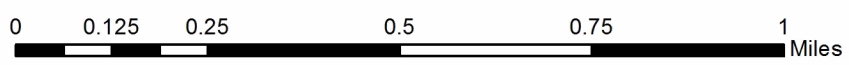
0 = Non Stocked	5 = Pole Timber Medium
1 = Seedling Sapling Poor	6 = Pole Timber Well
2 = Seedling Sapling Medium	7 = Saw Timber Poor
3 = Seedling Sapling Well	8 = Saw Timber Medium
4 = Pole Timber Poor	9 = Saw Timber Well

- Against State (Red)
- Payment Unit (Yellow)
- Gravel Road
- Native Surface Road
- Closed Road
- Stand Boundaries
- G** Gate
- B** Berm
- Oil or Gas Wells
- Pipeline
- Powerline
- Drainage
- Perennial Stream
- Retention Area
- Payment Unit
- Nearby Timber Sale
- Section Corner



5 EZ Pieces
Compartment 16
164.4 Acres

PU	Acres	PU	Acres
1	28.4	5	16.1
2	53.4	6	7.6
3	14.2	7	17.5
4	13.3	8	13.9



TIMBER SALE INFORMATION

Pine Party (54-012-21)

T32N, R01E, SEC. 27; T32N, R01E, SEC. 28.

Montmorency County (Advertised Price \$158,997.30)

SALE NOTE: All units of volume listed for this sale were estimated using the Inventory Manager computer program and the new Michigan taper model.

A timber sale contract for this lump sum, sealed bid timber sale will be awarded to the responsible bidder offering the highest sealed bid price. All units of volume listed below were estimated using the Inventory Manager computer program and the new Michigan taper model. Bids must be at or above the following advertised price for each product and species:

<u>PRODUCTS & SPECIES</u>	<u>ESTIMATED UNITS*</u>	<u>ADVERTISED PRICE</u>
Sawtimber		
Red Pine	850.7 MBF	\$ 119.00 / MBF
Pulpwood		
Jack Pine	112 Cords	\$ 9.00 / Cord
Quaking Aspen	8 Cords	\$ 24.10 / Cord
Red Pine	1,473 Cords	\$ 38.40 / Cord

* The total volume is statistically estimated within plus (+) or minus (-) 5.73 percent. There are an estimated 3,608 cords on this timber sale, plus or minus 207 cords at the 95% confidence level. The estimated units are final and not subject to adjustment. Prospective bidders are urged to examine this timber and to make their own estimates of quantity and quality.

BOND AND PAYMENT SCHEDULE:

1. A bond in the amount of \$7,950.00 to insure faithful performance of the conditions of the contract will be deposited by the successful bidder within 21 days of the sale award.
2. Cutting in any sale or unit without the required advance payment would be considered a trespass.
3. Total payment must be paid in advance or according to the following schedule :
 - (a) Ten percent (10%) of the sale value must be paid within 21 days of the sale award.
 - (b) The 10% down payment will be credited towards the first unit cut.

(c) Payment for each of the following units must be made before cutting begins in that unit:

PAYMENT UNIT NUMBER	PERCENT OF TOTAL SALE VALUE
01	58.0%
02	38.6%
03	3.4%

4. If no cutting takes place, the 10% down payment will not be refunded.
5. Operations on the contract issued will terminate on 12/31/2024.

SALE STATISTICS

Volumes were calculated in cubic feet using the Michigan taper model. Cubic foot volume includes all wood inside bark for the product indicated. For display purposes, cubic feet were converted to cords and MBF using a simple conversion factor, e.g. 79 cubic feet per cord and 185 cubic feet per MBF. The cubic foot volumes are precise; the cords and MBF volumes are not. Cubic foot volume cannot be directly converted to cords or boards with precision.

SALE VOLUMES

The total estimated sale volume may not equal the sum of the species/products due to the nature of statistical calculations associated with double sampling methodology.

VOLUME		STATISTICAL RANGE IN CORDS		
TOTAL CUBIC FEET	TOTAL CORDS	PERCENT ERROR	MINIMUM	MAXIMUM
285,053	3,608	5.73%	3,401	3,815

VDU VOLUMES

A VDU is a Volume Determination Unit. Volumes and their associated statistics are calculated at the VDU level and summarized to the sale level. There is often a one to one relationship between a VDU and a Payment Unit, but not always, depending on the cruise design. Refer to the VDU TO PAYMENT UNIT table.

VDU	VOLUME		PERCENT ERROR	RANGE IN CORDS	
	TOTAL CUBIC FEET	TOTAL CORDS		MINIMUM	MAXIMUM
13	169,848	2,150	6.04%	2,020	2,280
14	106,055	1,342	11.79%	1,184	1,501
111	9,149	116	25.17%	87	145
TOTAL:	285,053	3,608		3,291	3,926

VDU TO PAYMENT UNIT

When a VDU is associated with more than one Payment Unit (PU), the VDU volumes are assigned to the PU based on acres of the VDU within the PU.

VDU	VDU ACRES	PU	PU ACRES
13	69.8	1	65.4
		2	1.7
		3	2.7
14	52.8	1	0.2
		2	52.2
		3	0.4
111	11.5	2	0.1
		3	11.4
TOTAL:	134.1		134.1

DESCRIPTION OF TIMBER BY PAYMENT UNIT (PU)

PU	MARKET GROUP	PRODUCT	QUANTITY	UNIT	ACRES	ADVERTISE PRICE
1	Red Pine	Sawtimber	514.9	MBF	65.6	\$92,155.10
	Jack Pine	Pulpwood	18	Cords		
	Jack Pine	Sawtimber	1.2	MBF		
	Jack Pine	Pulpwood	16	Cords		
	Red Pine		800	Cords		
2	Red Pine	Sawtimber	310.2	MBF	54.0	\$61,422.80
	Jack Pine	Pulpwood	1	Cords		
	Jack Pine	Sawtimber	0.1	MBF		
	Jack Pine	Pulpwood	1	Cords		
	Quaking Aspen		8	Cords		
Red Pine		633	Cords			
3	Red Pine	Sawtimber	25.6	MBF	14.5	\$5,410.40
	Jack Pine	Pulpwood	92	Cords		
	Jack Pine	Sawtimber	12.2	MBF		
	Jack Pine	Pulpwood	68	Cords		
	Red Pine		40	Cords		
TOTAL:			850.7	MBF		
TOTAL:			1,592	Cords		

Sale Specific Conditions & Requirements

Sale Name: Pine Party

Sale Number: 54-012-21 Seq#: 2

1 - Sale Area

1.2 - Boundaries

1.2.1 - Painted boundaries (9/19)

The sale boundary and Payment Unit boundaries are marked and identified by red and yellow paint. Exterior sale boundary lines against state are marked with red paint. Retention patches are marked with green paint; no harvesting activities may occur within these areas. Interior Payment Unit boundaries are marked with yellow paint. The painted boundary line trees are not included timber. Yellow painted trees designating an interior Payment Unit boundary are only to be cut when all surrounding Payment Units have been paid.

2 - Timber Specifications

2.1 - Included Timber

2.1.1 - Clearcut unit(s) with unmerchantable trees (6/14)

Within Payment Unit(s) 1-3, cut all trees that are two (2) inches or more at DBH.

2.2 - Utilization

2.2.3 - Stump heights (4/07)

Stump heights within the Sale Area shall not exceed 6 inches for all trees. This is to facilitate future prescribed burning operations.

3 - Payments

3.3 - Pre-measured Sales

3.3.4 - Dividing payment units (7/14)

Payment Unit(s) greater than \$ 25,000 may be divided at the request of the Purchaser and upon approval of the Unit Manager. Dividing Payment Units is a contract modification which requires a Timber Sale Contract Amendment. There will be only one division per Payment Unit.

4 - Transportation

4.1 - Construction

4.1.3 - Slash and earthen piles (8/04)

Piles or windrows of earth along roads and landings that have been widened or constructed shall be leveled. Slash from road maintenance or construction, including stumps, shall be dispersed throughout the sale.

4.1.6 - Road construction (1/09)

Improvements of existing roads shall be done in such a way as to minimize the environmental and visual impacts. Merchantable trees shall be cut and utilized unless otherwise directed. Non-merchantable trees shall be severed and laid flat on the ground. Slash shall be scattered, and not left in windrows and kept a minimum of 50 feet back from the road edge. Stumps shall be set upright, not left on edge, and be moved at least 50 feet away from the road edge. Disturbed soil shall be feathered into the woods and not left in berms or windrows.

4.1.7 - Road closure (10/11)

Overgrown roads that are reopened shall be considered new roads. In general, this will require constructing a four (4') foot high berm of stumps and logs covered with earth. These roads must be rendered impassable to cars and trucks. Contact the sale administrator for specific details of design and placement.

4.1.12 - No new roads (1/12)

No new roads will be permitted in any Payment Unit. All operations are limited to existing roads. Skid trails only will be allowed.

4.2 - Maintenance

4.2.5 - Two wheel drive condition (2/04)

All existing trail roads on and adjacent to the sale area must be passable by two-wheel drive traffic for the duration of the sale.

5 - Operations

5.1 - Notification

5.1.1 - Pre-sale conference (10/16)

A pre-sale conference on site between the Purchaser and sale administrator is required prior to beginning to determine landing locations. The Unit Manager or his/her representative must be contacted at least 5 days in advance to schedule the conference.

5.1.4 - Post-sale conference (10/16)

A post-sale conference on site between the Purchaser and sale administrator is required 5 days prior to the completion of active logging operations to determine clean-up and repair of landings, road edges, and the fulfillment of other contract specifications.

5.2 - Conduct of Operations

5.2.1 - Slash

5.2.1.8 - Slash height (12/08)

No slash or tree tops may exceed 24 inches in height.

5.2.3 - Operating Restrictions

5.2.3.6 - Bark beetle restriction (12/08)

In the event drought creates a high risk of pine bark beetle infestation, pine is not to be cut during the period March 1 through July 1, unless all portions of trees greater than two inches in diameter are removed from the sale area, reduced to chips, or treated to the satisfaction of the Unit Manager or his/her representative, within fifteen days of being severed from the stump. Pine log decks, pulpwood piles and treetops that are piled for chipping in the fall or winter within a 1/4 mile of susceptible sites must be removed before March 15. Residual slash must not be placed in piles or rows and must be spread over the site for quick drying. The Department of Natural Resources will exercise this specification if the risk of damage warrants.

5.2.32 - Decking/landing restoration (9/13)

All decking and landing areas must have the surface area restored to a condition equal to or better than before. This is to ensure the proper regeneration of the stand. Wood debris, chips, and "cookies" from trimmings must be removed or scattered away from landing and loading areas and may not be windrowed on the edge.

5.2.38 - No decking against live trees (2/04)

Cut products may not be decked against unmarked or designated leave trees.

5.4 - Soil Protection

5.4.1 - Rutting restriction, general (7/16)

Operations are to cease immediately if equipment and weather conditions result in rutting of roads and/or skid trails which is 12 inches or greater in depth and 50 feet in length. The Unit Manager or his/her representative may restrict hauling and/or skidding if ruts exceed the specified depth. With the Unit Manager or his/her representative's approval, the Purchaser may return to the area when the risk of rutting has decreased.

5.8 - Protection of Endangered Species

5.8.5 - Protection of raptor nests (3/13)

All trees with raptor nests will be protected if found during harvesting operations. Notification will be made to the Unit Manager or his/her representative who will notify the Wildlife Biologist so an on-site evaluation and recommendation can be made, if necessary.

6 - Safety and Fire Prevention

6.2 - Signing

6.2.1 - Road posting (10/20)

The Purchaser is responsible for posting and maintaining caution signs on forest roads prior to beginning operations. The road must be posted approximately 350 feet from the Sale Area to warn of logging activity and truck traffic. Signs must be removed when harvest operations are suspended or completed. The Purchaser will provide these signs.



TIMBER SALE MAP

This information provided by authority of Part 525, 1994 PA 451, as amended.

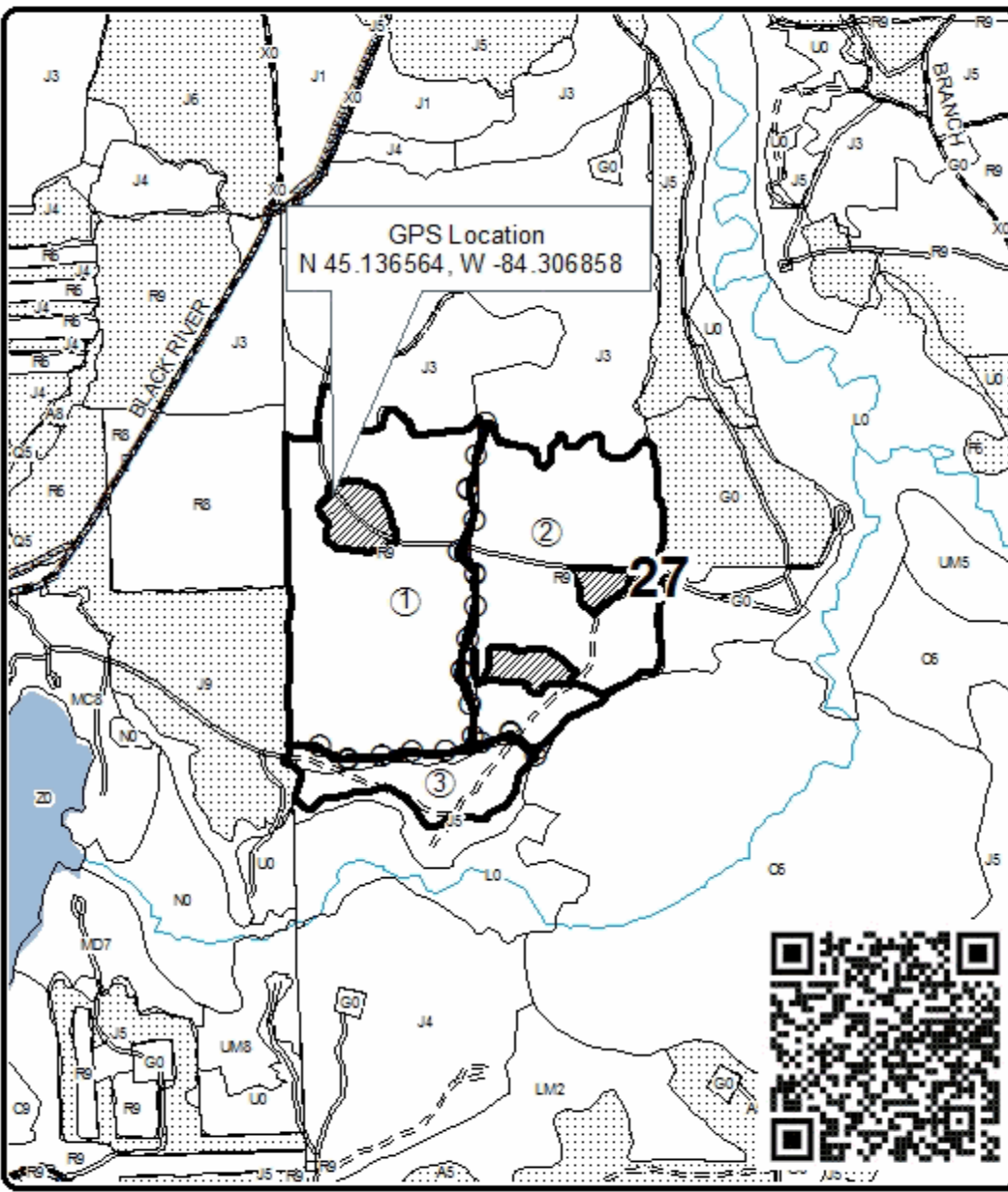
Sale Number	Year
54-012	21

Forest Management Unit Atlanta	County Montmorency	Mapped By Doug Tyran	Date 07/30/2021	Page 1	of 1
Township 32N	Range 01E	Section(s) and Subdivision(s) 27: NWNW, S1/2NW, SWNE, SW 28: NESE	Scale 1:15,840		

Cover Type				Density			
A = Aspen	H = Hemlock	N = Marsh	U = Upland Brush	0 = Non Stocked	5 = Pole Timber Medium		
D = Paper Birch	J = Jack Pine	O = Oak	UM = Upland Mixed	1 = Seedling Sapling Poor	6 = Pole Timber Well		
C = Cedar	L = Lowland Brush	P = Lowland Poplar	V = Bog or Marsh	2 = Seedling Sapling Medium	7 = Saw Timber Poor		
D = Treed Bog	LM = Lowland Mixed	Q = Mixed Swamo Conifer	W = White Pine	3 = Seedling Sapling Well	8 = Saw Timber Medium		
E = Swamp Hdwoods	M = Mpl. Dec. Dec.	R = Red Pine	X = Non Stocked	4 = Pole Timber Poor	9 = Saw Timber Well		
F = Spruce Fir	MC = Mixed Conifer	S = Black Spruce	Z = Water				
G = Grass	MD = Mixed Deciduous	T = Tamarack					

PU	Acres
1	65.6
2	54.0
3	14.5

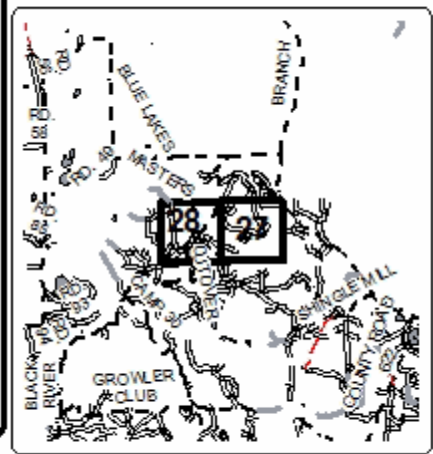
Pine Party Compartment 060 134.1 Acres



Legend

- Against State (Red)
- Payment Unit (Yellow)
- Retention Area (Green)
- Stand Boundaries
- Nearby Timber Sales
- Lakes and Rivers
- Primary Forest Road
- Secondary Forest Road
- Forest Access Route
- Paved Road
- Gravel Road
- County Road - Seasonal
- Private

Locator Map
1:200,000



Pine Party (54-012-21)
T32N, R01E, SEC. 27; T32N, R01E, SEC. 28; Montmorency COUNTY

In response to the notice of sale to be held 10:00 a.m. (local time) on June 7, 2022, I am hereby submitting my sealed bid (firm offer) for the following forest products to be cut. Bids for individual species must be at or above the advertised price. All non-responsive bid forms may be rejected.

<u>PRODUCTS & SPECIES</u>	<u>ESTIMATED VOLUME*</u>	<u>ADVERTISED PRICE</u>	<u>BID PRICE/UNIT</u>
Sawtimber			
Red Pine	850.7 MBF	\$ 119.00/MBF	\$ _____
Pulpwood			
Jack Pine	112 Cords	\$ 9.00/Cord	\$ _____
Quaking Aspen	8 Cords	\$ 24.10/Cord	\$ _____
Red Pine	1,473 Cords	\$ 38.40/Cord	\$ _____

*The volumes are statistically estimated within plus (+) or minus (-) 5.73 percent at 95% confidence level. These estimated volumes are final and not subject to adjustment. Prospective bidders are urged to examine this timber and to make their own estimates of quantity and quality.

I understand that any or all bids may be rejected. All bids must be signed and all bid items must be bid or the bid form may be rejected. I also understand that consideration and awarding a contract will be based upon my past performance and ability to complete the contract based upon equipment and staffing subject to my control.

FEDERAL ID: _____ - _____ or SOCIAL SECURITY NUMBER: _____ - _____ - _____

Company or individual bidding: _____

Company representative's name: _____

Address: _____

City: _____ State: _____ Zip: _____

IF AVAILABLE, PLEASE PLACE THE PERSONALIZED LABEL FROM YOUR PROSPECTUS IN THE ABOVE BOX.

Individual or company representative's signature: _____ Date: _____

Phone number : _____ Email (optional): _____

THE WINNING BIDDER MUST COMPLETE THE VERIFICATION OF WORKER'S DISABILITY COMPENSATION ACT COMPLIANCE (ON REVERSE SIDE IF DOUBLE SIDED) WITHIN 21 DAYS OF SALE AWARD DATE



TIMBER SALE VERIFICATION OF WORKER'S DISABILITY COMPENSATION ACT COMPLIANCE

As required by Act 317, P.A. 1969 (Worker's Compensation) and
Part 5 of Act 451 of 1994, as amended.

FOR DEPARTMENT USE ONLY	
Sale Number (XX - XXX - XX - XX)	
Forest Management Unit:	

VERIFICATION OF WORKER'S DISABILITY COMPENSATION ACT COMPLIANCE

- This verification must be completed and submitted within 21 days of contract award and prior to the issuance of the timber sale contract.
- In addition, if boxes 2B or 2C are checked, then Notice of Exclusion or Certificate of Insurance must be submitted within twenty-one (21) days of the contract award and prior to the issuance of the timber sale contract.
- All information must be typed or printed except for written signatures.

Please Check Appropriate Categories:

1. My business is organized as (you **must** check one of the boxes below):
 - A. Sole Proprietorship (individual)
 - B. Partnership
 - C. Corporation
2. You **must** check one of the boxes below:
 - A. I certify my business is a sole proprietorship and it has no employees but the sole proprietor. I am not subject to the Worker's Compensation Laws.
 - B. I certify my business has satisfied its obligation to the Worker's Compensation Act through the use of an approved Notice of Exclusion (BWC-337, Rev. 5/96). I will provide a copy of the Notice of Exclusion within 21 days of the contract award. (For questions or a copy of the BWC-337, please call the Worker's Compensation Bureau at 517-322-1195).
 - C. I certify my business has a Worker's Compensation Policy. I will provide an original Certificate of Insurance within twenty-one (21) days of the contract award.
3. If you have checked item 2(A) or 2(B), you **must** indicate the number of **both** full-time and part-time employees, other than yourself, including family members and active partners (if none, you must enter "0").

_____ Full-time Employees

_____ Part-time Employees

Name of Business		Federal ID (or) Social Security No.	
Address		Telephone ()	
City	State	ZIP	

I hereby certify that the above information is true and correct. I agree to notify the Michigan DNR of any changes that occur in factors affecting my coverage during any of my present and future operations.

Signature of Owner or Authorized Representative

Title

Date

Please complete the "SEALED BID" information on the next page

Hunt Creek and Blue Lake Aspen (54-004-21)
T29N, R03E, SEC. 20; T29N, R03E, SEC. 29; T29N, R03E, SEC. 30; T29N, R03E,

In response to the notice of sale to be held 10:00 a.m. (local time) on June 7, 2022, I am hereby submitting my sealed bid (firm offer) for the following forest products to be cut. Bids for individual species must be at or above the advertised price. All non-responsive bid forms may be rejected.

<u>PRODUCTS & SPECIES</u>	<u>ESTIMATED VOLUME*</u>	<u>ADVERTISED PRICE</u>	<u>BID PRICE/UNIT</u>
Sawtimber			
Basswood	10.3 MBF	\$ 52.00/MBF	\$ _____
Beech	9.1 MBF	\$ 46.00/MBF	\$ _____
Mixed Aspen	296.9 MBF	\$ 89.00/MBF	\$ _____
Paper Birch	2.2 MBF	\$ 30.00/MBF	\$ _____
Red Maple	19.6 MBF	\$ 48.00/MBF	\$ _____
Red Oak	111.4 MBF	\$ 160.00/MBF	\$ _____
Sugar Maple	39.9 MBF	\$ 258.00/MBF	\$ _____
White Oak	2.4 MBF	\$ 89.00/MBF	\$ _____
Pulpwood			
Balsam Fir	80 Cords	\$ 16.30/Cord	\$ _____
Mixed Aspen	4,168 Cords	\$ 24.10/Cord	\$ _____
Mixed Hardwood	1,203 Cords	\$ 18.90/Cord	\$ _____
Mixed Oak	311 Cords	\$ 32.75/Cord	\$ _____
N. White Cedar	14 Cords	\$ 13.75/Cord	\$ _____

*The volumes are statistically estimated within plus (+) or minus (-) 4.07 percent at 95% confidence level. These estimated volumes are final and not subject to adjustment. Prospective bidders are urged to examine this timber and to make their own estimates of quantity and quality.

I understand that any or all bids may be rejected. All bids must be signed and all bid items must be bid or the bid form may be rejected. I also understand that consideration and awarding a contract will be based upon my past performance and ability to complete the contract based upon equipment and staffing subject to my control.

FEDERAL ID: _____ - _____ or SOCIAL SECURITY NUMBER: _____ - _____ - _____

Company or individual bidding: _____

Company representative's name: _____

Address: _____

City: _____ State: _____ Zip: _____

IF AVAILABLE, PLEASE PLACE THE PERSONALIZED LABEL FROM YOUR PROSPECTUS IN THE ABOVE BOX.

Individual or company representative's signature: _____ Date: _____

Phone number : _____ Email (optional): _____

THE WINNING BIDDER MUST COMPLETE THE VERIFICATION OF WORKER'S DISABILITY COMPENSATION ACT COMPLIANCE (ON REVERSE SIDE IF DOUBLE SIDED) WITHIN 21 DAYS OF SALE AWARD DATE



FOR DEPARTMENT USE ONLY	
Sale Number (XX - XXX - XX - XX)	
Forest Management Unit:	

TIMBER SALE VERIFICATION OF WORKER'S DISABILITY COMPENSATION ACT COMPLIANCE

As required by Act 317, P.A. 1969 (Worker's Compensation) and
Part 5 of Act 451 of 1994, as amended.

- VERIFICATION OF WORKER'S DISABILITY COMPENSATION ACT COMPLIANCE**
- This verification must be completed and submitted within 21 days of contract award and prior to the issuance of the timber sale contract.
 - In addition, if boxes 2B or 2C are checked, then Notice of Exclusion or Certificate of Insurance must be submitted within twenty-one (21) days of the contract award and prior to the issuance of the timber sale contract.
 - All information must be typed or printed except for written signatures.

Please Check Appropriate Categories:

1. My business is organized as (you **must** check one of the boxes below):
 - A. Sole Proprietorship (individual)
 - B. Partnership
 - C. Corporation
2. You **must** check one of the boxes below:
 - A. I certify my business is a sole proprietorship and it has no employees but the sole proprietor. I am not subject to the Worker's Compensation Laws.
 - B. I certify my business has satisfied its obligation to the Worker's Compensation Act through the use of an approved Notice of Exclusion (BWC-337, Rev. 5/96). I will provide a copy of the Notice of Exclusion within 21 days of the contract award. (For questions or a copy of the BWC-337, please call the Worker's Compensation Bureau at 517-322-1195).
 - C. I certify my business has a Worker's Compensation Policy. I will provide an original Certificate of Insurance within twenty-one (21) days of the contract award.
3. If you have checked item 2(A) or 2(B), you **must** indicate the number of **both** full-time and part-time employees, other than yourself, including family members and active partners (if none, you must enter "0").

_____ Full-time Employees

_____ Part-time Employees

Name of Business		Federal ID (or) Social Security No.	
Address		Telephone ()	
City	State	ZIP	

I hereby certify that the above information is true and correct. I agree to notify the Michigan DNR of any changes that occur in factors affecting my coverage during any of my present and future operations.

Signature of Owner or Authorized Representative

Title

Date

Please complete the "SEALED BID" information on the next page

Anderbad Barrens Restoration (54-008-21)
T29N, R01E, SEC. 5; T29N, R01E, SEC. 8; Montmorency COUNTY

In response to the notice of sale to be held 10:00 a.m. (local time) on June 7, 2022, I am hereby submitting my sealed bid (firm offer) for the following forest products to be cut. Bids for individual species must be at or above the advertised price. All non-responsive bid forms may be rejected.

<u>PRODUCTS & SPECIES</u>	<u>ESTIMATED VOLUME*</u>	<u>ADVERTISED PRICE</u>	<u>BID PRICE/UNIT</u>
Sawtimber			
Northern Pin Oak	27.5 MBF	\$ 84.00/MBF	\$ _____
Red Oak	12.7 MBF	\$ 160.00/MBF	\$ _____
Pulpwood			
Jack Pine	224 Cords	\$ 9.00/Cord	\$ _____
Mixed Aspen	45 Cords	\$ 24.10/Cord	\$ _____
Mixed Oak	107 Cords	\$ 32.75/Cord	\$ _____
Red Maple	8 Cords	\$ 18.90/Cord	\$ _____
Red Pine	88 Cords	\$ 38.40/Cord	\$ _____
White Pine	6 Cords	\$ 12.75/Cord	\$ _____

*The volumes are statistically estimated within plus (+) or minus (-) 10.48 percent at 95% confidence level. These estimated volumes are final and not subject to adjustment. Prospective bidders are urged to examine this timber and to make their own estimates of quantity and quality.

I understand that any or all bids may be rejected. All bids must be signed and all bid items must be bid or the bid form may be rejected. I also understand that consideration and awarding a contract will be based upon my past performance and ability to complete the contract based upon equipment and staffing subject to my control.

FEDERAL ID: ____ - ____ - ____ or SOCIAL SECURITY NUMBER: ____ - ____ - ____

Company or individual bidding: _____

Company representative's name: _____

Address: _____

City: _____ State: _____ Zip: _____

IF AVAILABLE, PLEASE PLACE THE PERSONALIZED LABEL FROM YOUR PROSPECTUS IN THE ABOVE BOX.

Individual or company representative's signature: _____ Date: _____

Phone number : _____ Email (optional): _____

THE WINNING BIDDER MUST COMPLETE THE VERIFICATION OF WORKER'S DISABILITY COMPENSATION ACT COMPLIANCE (ON REVERSE SIDE IF DOUBLE SIDED) WITHIN 21 DAYS OF SALE AWARD DATE



FOR DEPARTMENT USE ONLY
Sale Number (XX - XXX - XX - XX)
Forest Management Unit:

TIMBER SALE VERIFICATION OF WORKER'S DISABILITY COMPENSATION ACT COMPLIANCE

*As required by Act 317, P.A. 1969 (Worker's Compensation) and
Part 5 of Act 451 of 1994, as amended.*

VERIFICATION OF WORKER'S DISABILITY COMPENSATION ACT COMPLIANCE

- This verification must be completed and submitted within 21 days of contract award and prior to the issuance of the timber sale contract.
- In addition, if boxes 2B or 2C are checked, then Notice of Exclusion or Certificate of Insurance must be submitted within twenty-one (21) days of the contract award and prior to the issuance of the timber sale contract.
- All information must be typed or printed except for written signatures.

Please Check Appropriate Categories:

1. My business is organized as (you **must** check one of the boxes below):
 - A. Sole Proprietorship (individual)
 - B. Partnership
 - C. Corporation
2. You **must** check one of the boxes below:
 - A. I certify my business is a sole proprietorship and it has no employees but the sole proprietor. I am not subject to the Worker's Compensation Laws.
 - B. I certify my business has satisfied its obligation to the Worker's Compensation Act through the use of an approved Notice of Exclusion (BWC-337, Rev. 5/96). I will provide a copy of the Notice of Exclusion within 21 days of the contract award. (For questions or a copy of the BWC-337, please call the Worker's Compensation Bureau at 517-322-1195).
 - C. I certify my business has a Worker's Compensation Policy. I will provide an original Certificate of Insurance within twenty-one (21) days of the contract award.
3. If you have checked item 2(A) or 2(B), you **must** indicate the number of **both** full-time and part-time employees, other than yourself, including family members and active partners (if none, you must enter "0").

_____ Full-time Employees

_____ Part-time Employees

Name of Business		Federal ID (or) Social Security No.	
Address		Telephone ()	
City	State	ZIP	

I hereby certify that the above information is true and correct. I agree to notify the Michigan DNR of any changes that occur in factors affecting my coverage during any of my present and future operations.

Signature of Owner or Authorized Representative

Title

Date

Please complete the "SEALED BID" information on the next page

5 EZ Pieces (54-010-21)

T29N, R03E, SEC. 19; T29N, R03E, SEC. 20; T29N, R03E, SEC. 21; T29N, R03E,

In response to the notice of sale to be held 10:00 a.m. (local time) on June 7, 2022, I am hereby submitting my sealed bid (firm offer) for the following forest products to be cut. Bids for individual species must be at or above the advertised price. All non-responsive bid forms may be rejected.

<u>PRODUCTS & SPECIES</u>	<u>ESTIMATED VOLUME*</u>	<u>ADVERTISED PRICE</u>	<u>BID PRICE/UNIT</u>
Sawtimber			
B. T. Aspen	2.0 MBF	\$ 89.00/MBF	\$ _____
Basswood	271.3 MBF	\$ 52.00/MBF	\$ _____
Beech	44.2 MBF	\$ 46.00/MBF	\$ _____
Red Oak	424.6 MBF	\$ 160.00/MBF	\$ _____
Red Pine	2.6 MBF	\$ 119.00/MBF	\$ _____
Sugar Maple	168.1 MBF	\$ 258.00/MBF	\$ _____
Pulpwood			
B. T. Aspen	38 Cords	\$ 24.10/Cord	\$ _____
Basswood	306 Cords	\$ 10.40/Cord	\$ _____
Beech	427 Cords	\$ 18.90/Cord	\$ _____
Ironwood	8 Cords	\$ 18.90/Cord	\$ _____
Paper Birch	3 Cords	\$ 11.25/Cord	\$ _____
Quaking Aspen	52 Cords	\$ 24.10/Cord	\$ _____
Red Oak	346 Cords	\$ 32.75/Cord	\$ _____
Red Pine	1 Cords	\$ 38.40/Cord	\$ _____
Sugar Maple	542 Cords	\$ 18.90/Cord	\$ _____
White Ash	17 Cords	\$ 18.90/Cord	\$ _____
White Pine	14 Cords	\$ 12.75/Cord	\$ _____

*The volumes are statistically estimated within plus (+) or minus (-) 5.25 percent at 95% confidence level. These estimated volumes are final and not subject to adjustment. Prospective bidders are urged to examine this timber and to make their own estimates of quantity and quality.

I understand that any or all bids may be rejected. All bids must be signed and all bid items must be bid or the bid form may be rejected. I also understand that consideration and awarding a contract will be based upon my past performance and ability to complete the contract based upon equipment and staffing subject to my control.

FEDERAL ID: _____ or SOCIAL SECURITY NUMBER: _____

Company or individual bidding: _____

Company representative's name: _____

Address: _____

City: _____ State: _____ Zip: _____

IF AVAILABLE, PLEASE PLACE THE PERSONALIZED LABEL FROM YOUR PROSPECTUS IN THE ABOVE BOX.

Individual or company representative's signature: _____ Date: _____

Phone number : _____ Email (optional): _____

THE WINNING BIDDER MUST COMPLETE THE VERIFICATION OF WORKER'S DISABILITY COMPENSATION ACT COMPLIANCE (ON REVERSE SIDE IF DOUBLE SIDED) WITHIN 21 DAYS OF SALE AWARD DATE



FOR DEPARTMENT USE ONLY
Sale Number (XX - XXX - XX - XX)
Forest Management Unit:

TIMBER SALE VERIFICATION OF WORKER'S DISABILITY COMPENSATION ACT COMPLIANCE

*As required by Act 317, P.A. 1969 (Worker's Compensation) and
Part 5 of Act 451 of 1994, as amended.*

VERIFICATION OF WORKER'S DISABILITY COMPENSATION ACT COMPLIANCE

- This verification must be completed and submitted within 21 days of contract award and prior to the issuance of the timber sale contract.
- In addition, if boxes 2B or 2C are checked, then Notice of Exclusion or Certificate of Insurance must be submitted within twenty-one (21) days of the contract award and prior to the issuance of the timber sale contract.
- All information must be typed or printed except for written signatures.

Please Check Appropriate Categories:

1. My business is organized as (you **must** check one of the boxes below):
 - A. Sole Proprietorship (individual)
 - B. Partnership
 - C. Corporation

2. You **must** check one of the boxes below:
 - A. I certify my business is a sole proprietorship and it has no employees but the sole proprietor. I am not subject to the Worker's Compensation Laws.
 - B. I certify my business has satisfied its obligation to the Worker's Compensation Act through the use of an approved Notice of Exclusion (BWC-337, Rev. 5/96). I will provide a copy of the Notice of Exclusion within 21 days of the contract award. (For questions or a copy of the BWC-337, please call the Worker's Compensation Bureau at 517-322-1195).
 - C. I certify my business has a Worker's Compensation Policy. I will provide an original Certificate of Insurance within twenty-one (21) days of the contract award.

3. If you have checked item 2(A) or 2(B), you **must** indicate the number of **both** full-time and part-time employees, other than yourself, including family members and active partners (if none, you must enter "0").

_____ Full-time Employees _____ Part-time Employees

Name of Business		Federal ID (or) Social Security No.	
Address		Telephone ()	
City	State	ZIP	

I hereby certify that the above information is true and correct. I agree to notify the Michigan DNR of any changes that occur in factors affecting my coverage during any of my present and future operations.

Signature of Owner or Authorized Representative

_____ Date

Please complete the "SEALED BID" information on the next page