



**DEPARTMENT OF NATURAL RESOURCES
STATE OF MICHIGAN
TIMBER SALE PROSPECTUS #7073**

SCHEDULED SALE DATE AND TIME: 10:00 a.m. (local time) on August 16, 2022.

LOCATION: ATLANTA MGMT UNIT, 13501 M 33, ATLANTA, MI 49709.

PROSPECTUS NOTE: The bidder is advised to inspect the sale area and review the location, estimated volumes, operating costs and contract terms of proposed sales. Please be aware that some landowners may request 60 days or more notice for access across their land.

Notice is hereby given that bids will be received by the Unit Manager, ATLANTA MANAGEMENT UNIT, for certain timber on the following described lands:

Low Intensity Red Pine (54-015-21) / T35N, R03E, SEC. 35, NESE,S1/2SE.

T35N, R03E, SEC. 36, SW,SWSE.

Presque Isle County, Advertised Price \$131,620.75, 75.4 Acres, Red Pine, Red Oak.

SALE NOTE: All units of volume listed for this sale were estimated using the Inventory Manager computer program and the new Michigan taper model.

A recreation site such as a trail, pathway, or campground is within the sale area or the vicinity. Certain restrictions/specifications may be applicable including time restrictions.

Plains Hwy Aspen (54-026-21) / T35N, R03E, SEC. 36, NENW,S1/2NW,W1/2NE,NESW,NWSE.

Presque Isle County, Advertised Price \$61,310.30, 38.7 Acres, Red Oak, Aspen.

SALE NOTE: All units of volume listed for this sale were estimated using the Inventory Manager computer program and the new Michigan taper model.

Molski Bridge Mix (54-027-21) / T33N, R05E, SEC. 28, SWSW.

T33N, R05E, SEC. 29, NWNW,S1/2NW,NENE,SWNE,SW,SE.

Presque Isle County, Advertised Price \$232,642.70, 223.9 Acres, Hardwood, Aspen.

SALE NOTE: All units of volume listed for this sale were estimated using the Inventory Manager computer program and the new Michigan taper model.

Rainy River Mix (54-028-21) / T35N, R02E, SEC. 16, N1/2NW,N1/2NE.

T35N, R02E, SEC. 18, SENE,NESE.

T35N, R02E, SEC. 4, N1/2NW,NWNE.

T35N, R02E, SEC. 9, SESW,NWSE,S1/2SE.

Presque Isle County, Advertised Price \$193,640.15, 129.5 Acres, Red Pine, Hardwood.

SALE NOTE: All units of volume listed for this sale were estimated using the Inventory Manager computer program and the new Michigan taper model.

Corner in the Swamp Mix (54-029-21) / T33N, R02E, SEC. 16, N1/2NW.

T33N, R02E, SEC. 8 , S1/2NW,N1/2SW.

T33N, R02E, SEC. 9 , SENW,SWNE,NWSW,S1/2SW,SE.

Presque Isle County, Advertised Price \$370,488.60, 174.1 Acres, Aspen, White Pine.

SALE NOTE: All units of volume listed for this sale were estimated using the Inventory Manager computer program and the new Michigan taper model.

BID INSTRUCTIONS (VER. 07/02/2018):

1. Scheduled Bid Location, Date, and Time (2/11)

Bids must be received by the Unit Manager, ATLANTA OFFICE, 13501 M 33, ATLANTA, MI 49709, no later than 10:00 a.m. (local time) on August 16, 2022. For further information concerning this sale, contact Cody Stevens at 989-785-4251 extension 5240.

2. Bidder's Qualifications (5/16)

Purchaser shall obtain workers compensation insurance to cover claims under Michigan's Worker's Disability Compensation Act of 1969 or similar employee benefit act of any other state applicable to an employee. If all or part of a timber sale was prepared by a private contractor, the contractor and that contractor's company are not permitted to bid on the timber sale contract. Bids will not be accepted from individuals or companies appearing on the DNR/FRD No-Bid List. This list contains the names of purchasers who previously failed to execute a contract within 21-days or who have a history of poor performance.

3. Preparation of Sealed Bids (5/16)

Bid Forms may be completed online thru Michigan DNR Timber Sale Online Bidding (OLB) at www.michigan.gov/timberbidding or by completing the hardcopy Bid Form found in the Timber Sale Prospectus. Hardcopy Bid Forms shall be manually signed in ink. Registration in OLB is considered your 'signature' for all bids submitted thru that system. Bid prices must be entered for each species and product in the Bid Price column for all material subject to bidding and all fill-in blanks must be completed. If erasures or other changes appear on the hardcopy Bid Form, each erasure or change must be initialed by the person signing the bid.

4. Submission of Sealed Bids (5/16)

Bid forms may be obtained from the Unit Manager or thru OLB. Bids may be submitted hardcopy or thru OLB. All hardcopy bids must be submitted on the bid form and in an envelope clearly identified as described in this section. NOTE: Only one bid form per bid envelope. Sealed bids must be submitted to the Unit office designated in the prospectus and must be submitted at or prior to the time established in the prospectus. The envelope should show on the outside (a) the sale name or number and (b) the date and time of bid opening, as shown in the prospectus. Bids received after the time specified in the sale prospectus are late bids and will be rejected.

It is possible for a bidder to submit multiple bids on a single sale. For example, a bid may be submitted hardcopy and a bid may be submitted thru OLB. Or, two bidders from the same company could both submit bids on the same sale. If this were to happen, the State would accept all bids received and award the contract accordingly. All bidding and contractual requirements would apply to all bids received.

5. Public Opening of Sealed Bids (7/16)

If conditions permit, the sealed bids will be publicly opened and posted at the time and place set in the prospectus.

If a bidder, present at a bid opening, has submitted bids on more than one sale, that bidder may withdraw their unopened bid envelopes or announce the withdrawal of their online bid after being declared the successful bidder on one sale.

6. Award of Contract (1/11)

Award of the contract will be made to the Bidder whose bid, conforming to the prospectus, is most advantageous to the State of Michigan on the basis of total value at rates bid for the estimated quantities. The State reserves the right to reject any bid or waive any minor irregularity in bids received. A written award mailed (or otherwise furnished) to the successful Bidder shall be deemed to result in a binding contract without further action by either party.

7. Down Payment (1/11)

The Bidder to whom award is made must make a down payment within 21 days of the sale award. The amount of the down payment will be calculated as shown in the Bond and Payment Schedule of this prospectus. Only cash may be used to meet this requirement.

8. Performance Security (1/11)

As guarantee of faithful performance, a cash bond, certificate of deposit, surety bond or irrevocable letter of credit (LOC) is required within 21 days of the sale award. The amount of the performance security is shown in the Bond and

Payment Schedule of this prospectus. If an LOC or surety is used, the coverage must extend for at least 6 months beyond the contract expiration.

9. Timber Sale Contract (7/18)

Additional conditions and requirements common to all timber sales are listed on the timber sale contract (R4031) and are available on line at www.michigan.gov/timber. Contact the Unit Manager for additional information or a sample contract. Within 21 days of the date of the award letter, the bidder must sign the contract and provide the required down payment, performance security, and verification of worker's disability compensation. The down payment and performance security shall be in accordance with the provisions of the timber sale contract, in the sums stated in this prospectus. If these actions are not taken, then the Bidder, the Bidder's corporation, and the corporation's principals may not be permitted to bid on State timber sales for a period of 3 months after the first offense, 6 months after the second offense, and 1 year after the third offense. An offense will only be counted against the Bidder for 5 years. In addition, the Bidder certifies that if awarded this contract, the Bidder will complete the timber sale contract in accordance with its terms and any modifications thereof including requirements to purchase, cut, and remove the included timber by the expiration date.

Payment Unit values in the State Forest Timber Sale Contract are calculated based on the advertised value of the Payment Unit as a percentage of the total advertised value of the contract. The advertised value of each Payment Unit is given in the Description of Timber by Payment Unit table on the Timber Sale Information page. For example, if the value of Payment Unit 1 is advertised as \$1,500 and the total Timber Sale value is advertised as \$10,000, the contract price for Payment Unit 1 will be 15% of the total bid price ($\$1,500/\$10,000 * 100$).

10. Disclaimer of Estimates and Bidder's Warranty of Inspection (7/16)

Before submitting this bid, the Bidder is advised and cautioned to inspect the sale area, review the requirements of the sale contract, and take other steps as may be reasonably necessary to ascertain the location, estimated volumes, construction estimates, and operating costs of the proposed sale. Failure to do so will not relieve the Bidder from responsibility for completing the contract.

The Bidder warrants that this bid is submitted solely on the basis of the Bidder's examination and inspection of the quality and quantity of the timber offered for sale and the Bidder's opinion of the value thereof and the costs of recovery. No reliance should be placed on the State of Michigan's estimates of timber quality, quantity or costs of recovery. Bidder further acknowledges that the State of Michigan: (i) expressly disclaims any warranty of fitness of timber for any purpose; (ii) offers this timber as is without any warranty of quality (merchantability) or quantity and (iii) expressly disclaims any warranty as to the quantity or quality of timber sold.

11. Certification and Chain-of-Custody (10/14)

Unless otherwise indicated in the contract under section 7 – Other Conditions of the Sale Specific Conditions & Requirements, the area encompassed by this timber sale is certified to the standards of the Forest Stewardship Council (FSC) - Certificate #SCS-FM/COC-00090N and the Sustainable Forestry Initiative (SFI) - Certificate #NSF-SFIS-5Y031-SF5. Forest products from this sale may be delivered to the mill as "FSC 100% and / or SFI certified" as long as the contractor hauling the forest products is chain-of-custody (COC) certified or covered under a COC certificate from the destination mill. The purchaser is responsible for maintaining COC after leaving the sale area.

12. Good Neighbor Authority (GNA) Requirements (7/16)

If the name of this timber sales contains the acronym GNA, it is authorized by the Good Neighbor Authority (GNA) and covered by various agreements between the U.S. Forest Service and the State. The timber sale occurs on federal land and the following conditions apply:

GNA contracts on US Forest Service land will not be awarded to purchasers on the Federal list of excluded parties. The System for Award Management (SAM) will be checked for active excluded parties prior to award of contract. In addition, the Bidder to whom award is made must complete an Assurance Regarding Felony Conviction or Tax Delinquent Status for Corporate Applicants (AD-3031).

13. Good Neighbor Authority (GNA) Requirements, con't (9/16)

Bidder certifies, by signing this bid form, that to the best of Bidder's knowledge that the following representations are accurate and complete.

- a. That the Bidder and its principals are not presently debarred, suspended, proposed for debarment, declared ineligible, or voluntary excluded from timber sales (covered transactions) by any Federal department or agency.
- b. That the Bidder and its principals have not within a 3-year period preceding this bid been convicted of or had a civil judgment rendered against them for commission of fraud or a criminal offense in connection with obtaining , attempting to obtain, or performing a public (Federal, State, or local) transaction or contract under a public transaction; violation of Federal or State antitrust statutes or commission of embezzlement, theft, forgery, bribery, falsification or destruction of records, making false statements, or receiving stolen property.
- c. That the Bidder and its principals are not presently indicted for or otherwise criminally or civilly charged by a governmental entity (Federal, State, or local) with commission of any of the offenses enumerated in paragraph b of this certification.
- d. That the Bidder and its principals have not within a 3-year period preceding this bid had one or more public transactions (Federal, State, or local) terminated for breach or default of a timber or forest product contract.

Bidders that cannot certify this requirement, in whole or in part, shall submit an explanation with their bid.

DAN EICHINGER
Director

TIMBER SALE INFORMATION

Low Intensity Red Pine (54-015-21)
 T35N, R03E, SEC. 35; T35N, R03E, SEC. 36.
 Presque Isle County (Advertised Price \$131,620.75)

SALE NOTE: All units of volume listed for this sale were estimated using the Inventory Manager computer program and the new Michigan taper model.

A recreation site such as a trail, pathway, or campground is within the sale area or the vicinity. Certain restrictions/specifications may be applicable including time restrictions.

A timber sale contract for this lump sum, sealed bid timber sale will be awarded to the responsible bidder offering the highest sealed bid price. All units of volume listed below were estimated using the Inventory Manager computer program and the new Michigan taper model. Bids must be at or above the following advertised price for each product and species:

<u>PRODUCTS & SPECIES</u>	<u>ESTIMATED UNITS*</u>	<u>ADVERTISED PRICE</u>
Sawtimber		
Red Pine	778.2 MBF	\$ 122.00 / MBF
Pulpwood		
Red Oak	13 Cords	\$ 36.50 / Cord
Red Pine	835 Cords	\$ 43.25 / Cord
White Pine	6 Cords	\$ 15.35 / Cord

* The total volume is statistically estimated within plus (+) or minus (-) 9.08 percent. There are an estimated 2,639 cords on this timber sale, plus or minus 240 cords at the 95% confidence level. The estimated units are final and not subject to adjustment. Prospective bidders are urged to examine this timber and to make their own estimates of quantity and quality.

BOND AND PAYMENT SCHEDULE:

1. A bond in the amount of \$6,581.00 to insure faithful performance of the conditions of the contract will be deposited by the successful bidder within 21 days of the sale award.
2. Cutting in any sale or unit without the required advance payment would be considered a trespass.
3. Total payment must be paid in advance or according to the following schedule :
 - (a) Ten percent (10%) of the sale value must be paid within 21 days of the sale award.
 - (b) The 10% down payment will be credited towards the first unit cut.
 - (c) Payment for each of the following units must be made before cutting begins in that unit:

PAYMENT UNIT NUMBER	PERCENT OF TOTAL SALE VALUE
01	84.8%
02	15.2%

4. If no cutting takes place, the 10% down payment will not be refunded.
5. Operations on the contract issued will terminate on 12/31/2024.

SALE STATISTICS

Volumes were calculated in cubic feet using the Michigan taper model. Cubic foot volume includes all wood inside bark for the product indicated. For display purposes, cubic feet were converted to cords and MBF using a simple conversion factor, e.g. 79 cubic feet per cord and 185 cubic feet per MBF. The cubic foot volumes are precise; the cords and MBF volumes are not. Cubic foot volume cannot be directly converted to cords or boards with precision.

SALE VOLUMES

The total estimated sale volume may not equal the sum of the species/products due to the nature of statistical calculations associated with double sampling methodology.

VOLUME		STATISTICAL RANGE IN CORDS		
TOTAL CUBIC FEET	TOTAL CORDS	PERCENT ERROR	MINIMUM	MAXIMUM
208,499	2,639	9.08%	2,399	2,879

VDU VOLUMES

A VDU is a Volume Determination Unit. Volumes and their associated statistics are calculated at the VDU level and summarized to the sale level. There is often a one to one relationship between a VDU and a Payment Unit, but not always, depending on the cruise design. Refer to the VDU TO PAYMENT UNIT table.

VDU	VOLUME		PERCENT ERROR	RANGE IN CORDS	
	TOTAL CUBIC FEET	TOTAL CORDS		MINIMUM	MAXIMUM
55	174,061	2,203	10.39%	1,974	2,432
60	34,438	436	16.32%	365	507
TOTAL:	208,499	2,639		2,339	2,939

VDU TO PAYMENT UNIT

When a VDU is associated with more than one Payment Unit (PU), the VDU volumes are assigned to the PU based on acres of the VDU within the PU.

VDU	VDU ACRES	PU	PU ACRES
55	33.8	1	33.8
60	41.6	2	41.6
TOTAL:	75.4		75.4

DESCRIPTION OF TIMBER BY PAYMENT UNIT (PU)

PU	MARKET GROUP	PRODUCT	QUANTITY	UNIT	ACRES	ADVERTISE PRICE
1	Red Pine	Sawtimber	679.5	MBF	33.8	\$111,605.10
	Red Oak	Pulpwood	9	Cords		
	<i>Red Oak</i>		9	<i>Cords</i>		
	Red Pine		654	Cords		
	White Pine		6	Cords		
	<i>White Pine</i>	<i>Sawtimber</i>	2.2	<i>MBF</i>		
2	<i>White Pine</i>	<i>Pulpwood</i>	2	<i>Cords</i>	41.6	\$20,015.65
	Red Pine	Sawtimber	98.7	MBF		
	Red Oak	Pulpwood	4	Cords		
	<i>Red Oak</i>	<i>Sawtimber</i>	1.5	<i>MBF</i>		
	<i>Red Oak</i>	<i>Pulpwood</i>	1	<i>Cords</i>		
	Red Pine		181	Cords		
TOTAL:			778.2	MBF		
TOTAL:			854	Cords		

Sale Specific Conditions & Requirements

Sale Name: Low Intensity Red Pine

Sale Number: 54-015-21 Seq#: 2

1 - Sale Area

1.2 - Boundaries

1.2.1 - Painted boundaries (9/19)

The sale boundaries are marked and identified by red paint. Exterior sale boundary lines against state are marked with red paint. The painted boundary line trees are not Included Timber and are to be protected unless marked with orange paint.

2 - Timber Specifications

2.1 - Included Timber

2.1.1 - Clearcut unit(s) with unmerchantable trees (6/14)

Within Payment Unit(s) 1, cut all trees that are two (2) inches or more at DBH.

2.1.3 - Cut tree marked unit(s) (12/08)

Within Payment Unit(s) 2, trees are designated for cutting when marked with orange paint above and below stump height, regardless of merchantability.

2.2 - Utilization

2.2.2 - Chipping required (2/18)

Payment Unit 1 must be chip harvested to facilitate subsequent planting operations. The Purchaser has the option to produce sawlogs or pulpwood bolts, but the remaining portion of the trees must be chipped and hauled. If market conditions limit the practicality of chipping, chipping is not required if the following conditions are met:

- Trees greater than 4 inches DBH must be cut to a 2-inch top or smaller.
- Sub-merchantable trees, and hardwood limbs 4-inches or greater where they attach to the stem, are to be cut/reduced to 4-foot lengths.
- Slash must be evenly dispersed throughout the Sale Area, and not be more than 2-feet high.

In all cases harvesting operations must allow for subsequent planting operations, as determined by the sale administrator. The requirement to retain approximately 1/6 to 1/3 of tree tops and limbs less than four inches in diameter is still applicable.

2.2.3 - Stump heights (4/07)

Stump heights within Payment Unit 1 shall not exceed 6 inches for all trees. This is to facilitate planting operations.

3 - Payments

3.3 - Pre-measured Sales

3.3.4 - Dividing payment units (7/14)

Payment Unit(s) 1 may be divided at the request of the Purchaser and upon approval of the Unit Manager. Dividing Payment Units is a contract modification which requires a Timber Sale Contract Amendment. There will be only one division per Payment Unit.

4 - Transportation

4.1 - Construction

4.1.6 - Road construction (1/09)

Improvements of existing roads shall be done in such a way as to minimize the environmental and visual impacts. Merchantable trees shall be cut and utilized unless otherwise directed. Non-merchantable trees shall be severed and laid flat on the ground. Slash shall be scattered, and not left in windrows and kept a minimum of 10 feet back from the road edge. Stumps shall be set upright, not left on edge, and be moved at least 10 feet away from the road edge. Disturbed soil shall be feathered into the woods and not left in berms or windrows.

4.1.7 - Road closure (10/11)

Overgrown roads that are reopened must be blocked to vehicle traffic upon completion of the sale. In general, this will require constructing a four (4') foot high berm of stumps and logs covered with earth. Contact the sale administrator for

specific details of design and placement.

4.1.12 - No new roads (1/12)

No new roads will be permitted in any Payment Unit. All operations are limited to existing roads. Skid trails only will be allowed.

4.2 - Maintenance

4.2.5 - Two wheel drive condition (2/04)

All existing trail roads on and adjacent to the sale area must be passable by two-wheel drive traffic for the duration of the sale.

5 - Operations

5.1 - Notification

5.1.1 - Pre-sale conference (10/16)

A pre-sale conference on site between the Purchaser and sale administrator is required prior to beginning any operations. The Unit Manager or his/her representative must be contacted at least 5 days in advance to schedule the conference.

5.1.4 - Post-sale conference (10/16)

A post-sale conference on site between the Purchaser and sale administrator is required 5 days prior to the completion of active logging operations to determine clean-up and repair of landings, road edges, and the fulfillment of other contract specifications.

5.2 - Conduct of Operations

5.2.3 - Operating Restrictions

5.2.3.3 - Bark slippage restriction (3/09)

Within Payment Unit(s) 2, unless changed by written agreement, cutting and skidding are not permitted during the period of April 15 to July 15. This restriction is because of bark slippage.

5.2.3.4 - Oak wilt restriction, no exceptions (1/18)

Within Payment Unit(s) 2 cutting, skidding, hauling within the sale and brushing of access roads to the sale are not permitted during the period of April 15 to July 15. No exceptions will be granted. This is necessary to reduce the spread of oak wilt. This specification is also necessary due to bark slippage. See Specification 5.2.3.3 for more information.

5.2.3.5 - Oak wilt restriction (1/18)

Within Payment Unit(s) 1 unless changed by written agreement, cutting, skidding, hauling within the sale and brushing of access roads to the sale are not permitted during the period of April 15 to July 15. Operations may be allowed if specific steps are taken to prevent damaging uncut oak during the high risk period. Those steps may include completing all road brushing before April 15th and clearing a tree-length buffer along uncut oak cover before April 15th. This is necessary to reduce the spread of oak wilt. For more information, contact the Unit Manager or his/her representative.

5.2.3.6 - Bark beetle restriction (12/08)

In the event drought creates a high risk of pine bark beetle infestation, pine is not to be cut during the period March 1 through July 1, unless all portions of trees greater than two inches in diameter are removed from the sale area, reduced to chips, or treated to the satisfaction of the Unit Manager or his/her representative, within fifteen days of being severed from the stump. Pine log decks, pulpwood piles and treetops that are piled for chipping in the fall or winter within a 1/4 mile of susceptible sites must be removed before March 15. Residual slash must not be placed in piles or rows and must be spread over the site for quick drying. The Department of Natural Resources will exercise this specification if the risk of damage warrants.

5.2.32 - Decking/landing restoration (9/13)

All decking and landing areas must have the surface area restored to a condition equal to or better than before. This is to ensure the proper regeneration of the stand. Wood debris, chips, and "cookies" from trimmings must be removed or scattered away from landing and loading areas and may not be windrowed on the edge.

5.2.38 - No decking against live trees (2/04)

Cut products may not be decked against unmarked or designated leave trees.

5.2.41 - Snowmobile trail protection (9/11)

Snowmobile trails are located both north and south of the Sale Area, off Silver Creek Road and Tonkey Highway. Do not cut or damage posts with orange trail markers or traffic control signs. If either trail is used, it must be maintained and restored to a condition equal to or better than before the sale. If the trail road is to be used for hauling during the snowmobile season, then a snow-covered base must be left on the trail. Maintain a 20-foot-wide slash, debris, and rut free zone daily using the snowmobile trail as the centerline.

5.4 - Soil Protection

5.4.1 - Rutting restriction, general (7/16)

Operations are to cease immediately if equipment and weather conditions result in rutting of roads and/or skid trails which is 12 inches or greater in depth and 50 feet in length. The Unit Manager or his/her representative may restrict hauling and/or skidding if ruts exceed the specified depth. With the Unit Manager or his/her representative's approval, the Purchaser may return to the area when the risk of rutting has decreased.

6 - Safety and Fire Prevention

6.2 - Signing

6.2.1 - Road posting (10/20)

The Purchaser is responsible for posting and maintaining caution signs on state forest roads prior to beginning operations. The road must be posted approximately 200 feet from the Sale Area to warn of logging activity and truck traffic. Signs must be removed when harvest operations are suspended or completed. The Purchaser will provide these signs.

6.2.2 - Snowmobile trail posting (10/20)

The Purchaser is responsible for posting and maintaining caution signs on the snowmobile trail prior to beginning operations during the snowmobile season (approximately December 1 to March 31). The trail must be posted at appropriate distances from the Sale Area to warn of logging activity and truck traffic. Signs must be removed when harvest operations are suspended or completed. The Purchaser will provide these signs.



TIMBER SALE MAP

This information provided by authority of Part 525, 1994 PA 451, as amended.

Sale Number	Year
54-015	21

Forest Management Unit Atlanta	County Presque Isle	Mapped By Doug Tyrant	Date 09/28/2021	Page 1	of 1
Township 35N	Range 03E	Section(s) and Subdivision(s) 35: NESE, S1/2SE 36: SW, SWSE	Scale 1:15,840		

Cover Type				Density	
A = Aspen	H = Hemlock	N = Marsh	U = Upland Brush	0 = Non Stocked	5 = Pole Timber Medium
D = Paper Birch	J = Jack Pine	O = Oak	UM = Upland Mixed	1 = Seedling Sapling Poor	6 = Pole Timber Well
C = Cedar	L = Lowland Brush	P = Lowland Poplar	V = Bog or Marsh	2 = Seedling Sapling Medium	7 = Saw Timber Poor
D = Tread Bog	LM = Lowland Mixed	Q = Mixed Swamo Conifer	W = White Pine	3 = Seedling Sapling Well	8 = Saw Timber Medium
E = Swamp Hdwoods	M = Mpl. Dec. Dec	R = Red Pine	X = Non Stocked	4 = Pole Timber Poor	9 = Saw Timber Well
F = Spruce Fir	MC = Mixed Conifer	S = Black Spruce	Z = Water		
G = Grass	MD = Mixed Deciduous	T = Tamarack			

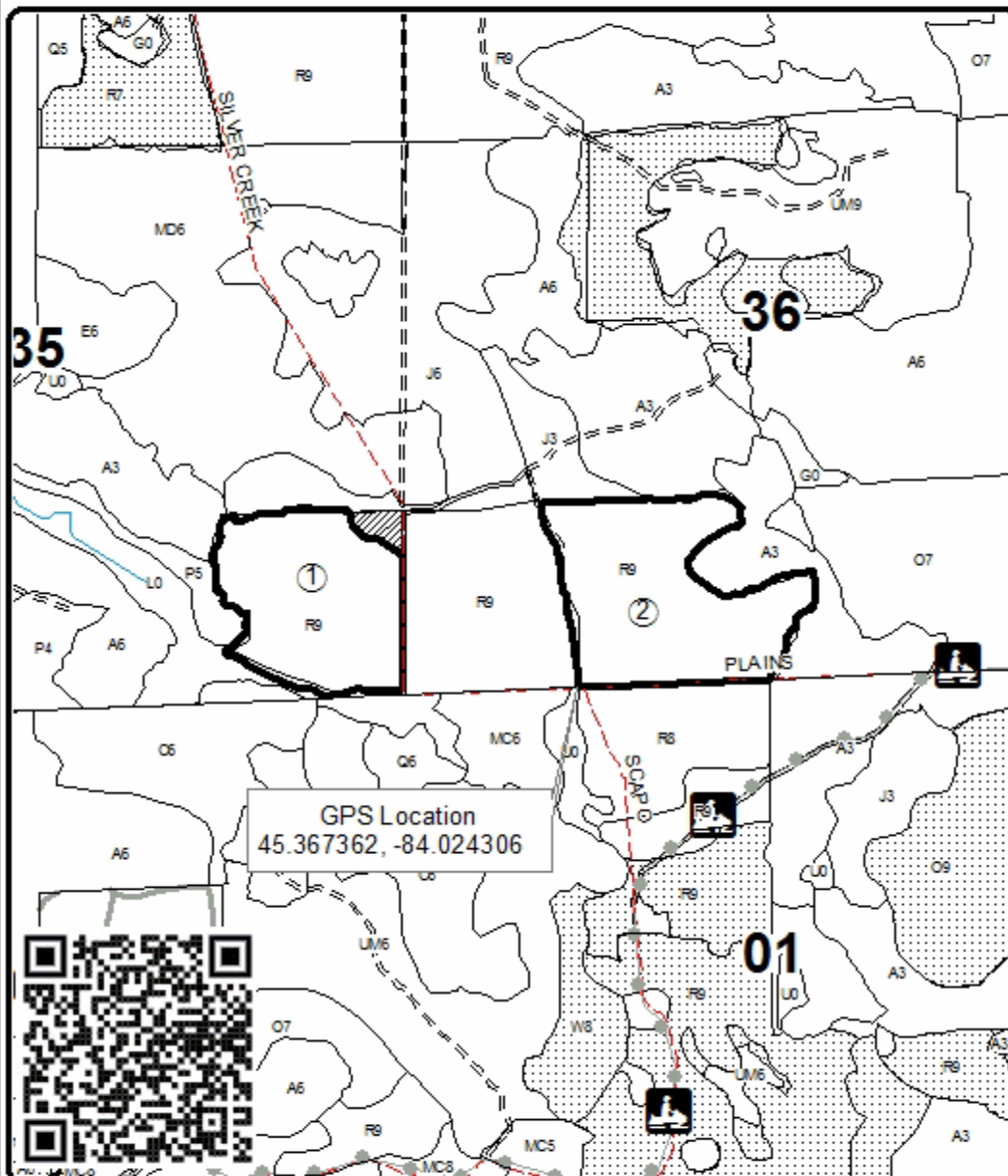
PU Acres

1	33.8
2	41.6

Low Intensity Red Pine

Compartment 151

75.4 Acres

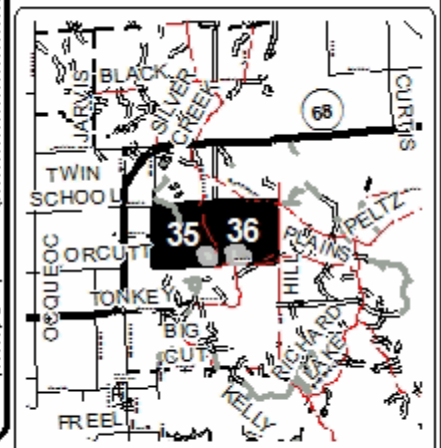


Legend

- Against State (Red)
- Nearby Timber Sales
- Stand Boundaries
- Lakes and Rivers
- Primary Forest Road
- Secondary Forest Road
- Forest Access Route
- Paved Road
- Gravel Road
- County Road - Seasonal
- Private
- Payment Unit Label

Locator Map

1:200,000



TIMBER SALE INFORMATION

Plains Hwy Aspen (54-026-21)

T35N, R03E, SEC. 36.

Presque Isle County (Advertised Price \$61,310.30)

SALE NOTE: All units of volume listed for this sale were estimated using the Inventory Manager computer program and the new Michigan taper model.

A timber sale contract for this lump sum, sealed bid timber sale will be awarded to the responsible bidder offering the highest sealed bid price. All units of volume listed below were estimated using the Inventory Manager computer program and the new Michigan taper model. Bids must be at or above the following advertised price for each product and species:

<u>PRODUCTS & SPECIES</u>	<u>ESTIMATED UNITS*</u>		<u>ADVERTISED PRICE</u>
Sawtimber			
B. T. Aspen	52.0	MBF	\$ 91.00 / MBF
Red Oak	163.8	MBF	\$ 153.00 / MBF
Red Pine	65.0	MBF	\$ 122.00 / MBF
Pulpwood			
B. T. Aspen	355	Cords	\$ 24.60 / Cord
Jack Pine	19	Cords	\$ 9.25 / Cord
Mixed Hardwood	60	Cords	\$ 19.20 / Cord
Red Oak	309	Cords	\$ 36.50 / Cord
Red Pine	47	Cords	\$ 43.25 / Cord
White Pine	14	Cords	\$ 15.35 / Cord

* The total volume is statistically estimated within plus (+) or minus (-) 7.32 percent. There are an estimated 1,472 cords on this timber sale, plus or minus 108 cords at the 95% confidence level. The estimated units are final and not subject to adjustment. Prospective bidders are urged to examine this timber and to make their own estimates of quantity and quality.

BOND AND PAYMENT SCHEDULE:

1. A bond in the amount of \$3,066.00 to insure faithful performance of the conditions of the contract will be deposited by the successful bidder within 21 days of the sale award.
2. Cutting in any sale or unit without the required advance payment would be considered a trespass.
3. Total payment must be paid in advance or according to the following schedule :
 - (a) Ten percent (10%) of the sale value must be paid within 21 days of the sale award.
 - (b) The 10% down payment will be credited towards the first unit cut.
 - (c) Payment for each of the following units must be made before cutting begins in that unit:

PAYMENT UNIT NUMBER	PERCENT OF TOTAL SALE VALUE
01	19.9%
02	42.1%
03	38.0%
4. If no cutting takes place, the 10% down payment will not be refunded.
5. Operations on the contract issued will terminate on 12/31/2024.

SALE STATISTICS

Volumes were calculated in cubic feet using the Michigan taper model. Cubic foot volume includes all wood inside bark for the product indicated. For display purposes, cubic feet were converted to cords and MBF using a simple conversion factor, e.g. 79 cubic feet per cord and 185 cubic feet per MBF. The cubic foot volumes are precise; the cords and MBF volumes are not. Cubic foot volume cannot be directly converted to cords or boards with precision.

SALE VOLUMES

The total estimated sale volume may not equal the sum of the species/products due to the nature of statistical calculations associated with double sampling methodology.

VOLUME		STATISTICAL RANGE IN CORDS		
TOTAL CUBIC FEET	TOTAL CORDS	PERCENT ERROR	MINIMUM	MAXIMUM
116,300	1,472	7.32%	1,364	1,580

VDU VOLUMES

A VDU is a Volume Determination Unit. Volumes and their associated statistics are calculated at the VDU level and summarized to the sale level. There is often a one to one relationship between a VDU and a Payment Unit, but not always, depending on the cruise design. Refer to the VDU TO PAYMENT UNIT table.

VDU	VOLUME		PERCENT ERROR	RANGE IN CORDS	
	TOTAL CUBIC FEET	TOTAL CORDS		MINIMUM	MAXIMUM
80	116,300	1,472	7.32%	1,364	1,580
TOTAL:	116,300	1,472		1,364	1,580

VDU TO PAYMENT UNIT

When a VDU is associated with more than one Payment Unit (PU), the VDU volumes are assigned to the PU based on acres of the VDU within the PU.

VDU	VDU ACRES	PU	PU ACRES
80	38.7	1	7.7
		2	16.3
		3	14.7
TOTAL:	38.7		38.7

DESCRIPTION OF TIMBER BY PAYMENT UNIT (PU)

PU	MARKET GROUP	PRODUCT	QUANTITY	UNIT	ACRES	ADVERTISE PRICE
1	B. T. Aspen	Sawtimber	10.3	MBF	7.7	\$12,174.70
	Red Oak		32.6	MBF		
	Red Pine		12.9	MBF		
	B. T. Aspen	Pulpwood	71	Cords		
	Jack Pine		4	Cords		
	Mixed Hardwood		12	Cords		
	<i>Red Maple</i>	<i>Sawtimber</i>	<i>0.3</i>	<i>MBF</i>		
	<i>Red Maple</i>	<i>Pulpwood</i>	<i>11</i>	<i>Cords</i>		
	Red Oak		61	Cords		
	Red Pine		9	Cords		
	White Pine		3	Cords		
	2	B. T. Aspen	Sawtimber	21.9		
Red Oak			69.0	MBF		
Red Pine			27.4	MBF		
B. T. Aspen		Pulpwood	149	Cords		
Jack Pine			8	Cords		
Mixed Hardwood			25	Cords		
<i>Red Maple</i>		<i>Sawtimber</i>	<i>0.5</i>	<i>MBF</i>		
<i>Red Maple</i>		<i>Pulpwood</i>	<i>24</i>	<i>Cords</i>		
Red Oak			131	Cords		
Red Pine			20	Cords		
White Pine			6	Cords		
3		B. T. Aspen	Sawtimber	19.8	MBF	14.7
	Red Oak		62.2	MBF		
	Red Pine		24.7	MBF		
	B. T. Aspen	Pulpwood	135	Cords		
	Jack Pine		7	Cords		
	Mixed Hardwood		23	Cords		
	<i>Red Maple</i>	<i>Sawtimber</i>	<i>0.5</i>	<i>MBF</i>		
	<i>Red Maple</i>	<i>Pulpwood</i>	<i>22</i>	<i>Cords</i>		
	Red Oak		117	Cords		
	Red Pine		18	Cords		
	White Pine		5	Cords		
	TOTAL:			280.8	MBF	
TOTAL:			804	Cords		

Sale Specific Conditions & Requirements

Sale Name: Plains Hwy Aspen

Sale Number: 54-026-21 Seq#: 1

1 - Sale Area

1.2 - Boundaries

1.2.1 - Painted boundaries (9/19)

The sale boundary and Payment Unit boundaries are marked and identified by red and yellow paint. Exterior sale boundary lines against state are marked with red paint. Interior Payment Unit boundaries are marked with yellow paint, except for Payment Units 1 and 2 which are separated by a state forest road as shown on the Timber Sale Map. The painted boundary line trees are not Included Timber and are to be protected. Yellow painted trees designating an interior Payment Unit boundary are only to be cut when all surrounding Payment Units have been paid. The state forest road Payment Unit divide can only be crossed when the surrounding Payment Units have been paid.

2 - Timber Specifications

2.1 - Included Timber

2.1.1 - Clearcut unit(s) with unmerchantable trees (6/14)

Within Payment Unit(s) 1-3, cut all trees that are two (2) inches or more at DBH.

Note: See spec 5.2.4.4 - 'Dead and down creation' for instructions on orange marked trees.

4 - Transportation

4.1 - Construction

4.1.3 - Slash and earthen piles (8/04)

Piles or windrows of earth along roads and landings that have been widened or constructed shall be leveled. Slash from road maintenance or construction, including stumps, shall be chipped, utilized, or otherwise removed from the sale.

4.1.6 - Road construction (1/09)

Construction or improvements of existing roads shall be done in such a way as to minimize the environmental and visual impacts. Merchantable trees shall be cut and utilized unless otherwise directed. Non-merchantable trees shall be severed and laid flat on the ground. Slash shall be scattered, and not left in windrows and kept a minimum of 10 feet back from the road edge. Stumps shall be set upright, not left on edge, and be moved at least 10 feet away from the road edge. Disturbed soil shall be feathered into the woods and not left in berms or windrows.

4.1.7 - Road closure (10/11)

All new roads built into the sale must be blocked to vehicle traffic upon completion of the sale. Overgrown roads that are reopened shall be considered new roads. In general, this will require constructing a four (4') foot high berm of stumps and logs covered with earth. Stumps and brush must be placed along the remainder of the trail. These roads must be rendered impassable to cars and trucks. Contact the sale administrator for specific details of design and placement.

4.2 - Maintenance

4.2.5 - Two wheel drive condition (2/04)

All existing trail roads on and adjacent to the sale area must be passable by two-wheel drive traffic for the duration of the sale.

5 - Operations

5.1 - Notification

5.1.1 - Pre-sale conference (10/16)

A pre-sale conference between the Purchaser and sale administrator is required prior to beginning any operations to determine landing and road locations. The Unit Manager or his/her representative must be contacted at least 5 days in advance to schedule the conference.

5.1.4 - Post-sale conference (10/16)

A post-sale conference on site between the Purchaser and sale administrator is required 5 days prior to the completion of

active logging operations to determine clean-up and repair of landings, road edges, and the fulfillment of other contract specifications.

5.2 - Conduct of Operations

5.2.2 - Hazard Trees/Snags

5.2.2.1 - Den trees (10/16)

Obvious hollow and/or den trees shall be protected and left standing unless they are a safety hazard.

5.2.3 - Operating Restrictions

5.2.3.5 - Oak wilt restriction (1/18)

Within Payment Unit(s) 1-3, unless changed by written agreement, cutting, skidding, hauling within the sale and brushing of access roads to the sale are not permitted during the period of April 15 to July 15. Operations may be allowed if specific steps are taken to prevent damaging uncut oak during the high risk period. Those steps may include completing all road brushing before April 15th and clearing a tree-length buffer along uncut oak cover before April 15th. This is necessary to reduce the spread of oak wilt. For more information, contact the Unit Manager or his/her representative.

5.2.3.11 - Coppice regeneration protection (4/10)

Timber harvesting in Payment Units 1-3 must be completed within 60 days of severing/cutting stem(s) to minimize damage to deciduous regeneration. Any post-harvest operations, such as chipping, must be completed before sprouting of regeneration occurs. If it is anticipated that chipping will be delayed, then tops shall be carried to one central location or left unchipped. The Unit Manager or his/her representative may cease such operations if sprouting occurs before the operation is complete.

5.2.4 - Dead and Down Creation

5.2.4.4 - Dead and down creation, grouse (6/18)

To encourage grouse and other wildlife, in Payment Unit(s) 1-3, leave on-site all orange painted trees. These trees should be tipped over with the root ball still attached so the base of the tree is suspended off the ground. The crown of the fallen tree should be at or near ground level after it is pushed over. If it is impractical to push the trees over, they may be cut or partially cut and pushed over. Whenever possible, the tree stem should remain suspended off the ground.

5.2.31 - Landing locations (9/13)

Landing locations are shown on the Timber Sale Map. Landings must be confined to these designated sites unless otherwise authorized by the Unit Manager or his/her representative.

5.2.32 - Decking/landing restoration (9/13)

All decking and landing areas must have the surface area restored to a condition equal to or better than before. This is to ensure the proper regeneration of the stand. Wood debris, chips and "cookies" from trimmings must be removed or scattered away from landing and loading areas and may not be windrowed on the edge.

5.2.38 - No decking against live trees (2/04)

Cut products may not be decked against unmarked or designated leave trees.

5.2.41 - Snowmobile trail protection (9/11)

The snowmobile trail is shown on the Timber Sale Map. Do not cut or damage posts with orange trail markers or traffic control signs. If the trail is used, it must be maintained and restored to a condition equal to or better than before the sale. The road maintenance/restoration must be done prior to December 1. If the trail is used for hauling, it must be graded to the satisfaction of the Unit Manager or his/her representative prior to December 1. If the trail road is to be used for hauling during the snowmobile season, then a snow-covered base must be left on the trail. The snowmobile trail may only be crossed at right angles. Maintain a 20-foot-wide slash, debris, and rut free zone daily using the snowmobile trail as the centerline. No decking of forest products will be permitted along the snowmobile trail.

5.4 - Soil Protection

5.4.1 - Rutting restriction, general (7/16)

Operations are to cease immediately if equipment and weather conditions result in rutting of roads and/or skid trails which is 12 inches or greater in depth and 50 feet in length. The Unit Manager or his/her representative may restrict hauling and/or skidding if ruts exceed the specified depth. With the Unit Manager or his/her representative's approval, the Purchaser may

return to the area when the risk of rutting has decreased.

5.4.2 - Skid trails (2/04)

Skid trails up and down slopes should be avoided. If however this is unavoidable, these trails will be left in a non-erodible condition using water bars, logs, and slash. Placing of slash on these skid trails while logging is ongoing may alleviate need for any further action. At the direction of the sale administrator, seed, fertilizer, and mulch may also be required.

5.8 - Protection of Endangered Species

5.8.5 - Protection of raptor nests (3/13)

All trees with raptor nests will be protected if found during harvesting operations. Notification will be made to the Unit Manager or his/her representative who will notify the Wildlife Biologist so an on-site evaluation and recommendation can be made, if necessary.



TIMBER SALE MAP

This information provided by authority of Part 525, 1994 PA 451, as amended.

Forest Management Unit Atlanta Management Unit	County Presque Isle	Mapped By Coy	Date 04/19/2021	Page 1	of 1
Township 35N	Range 03E	Section(s) and Subdivision(s) 36-NENW,S1/2NW,W1/2NE,NESW,NWSE	Scale 1:15,840		

Cover Type				Density	
A = Aspen	H = Hemlock	N = Marsh	U = Upland Brush	0 = Non Stocked	5 = Pole Timber Medium
B = Paper Birch	J = Jack Pine	O = Oak	UM = Upland Mixed	1 = Seedling Sapling Poor	6 = Pole Timber Well
C = Cedar	L = Lowland Brush	P = Lowland Poplar	V = Bog or Marsh	2 = Seedling Sapling Medium	7 = Saw Timber Poor
D = Treed Bog	LM = Lowland Mixed	Q = Mixed Swamp Conifer	W = White Pine	3 = Seedling Sapling Well	8 = Saw Timber Medium
E = Swamp Hdwoods	M = Mpl, Bch, Brch	R = Red Pine	X = Non Stocked	4 = Pole Timber Poor	9 = Saw Timber Well
F = Spruce Fir	MC = Mixed Conifer	S = Black Spruce	Z = Water		
G = Grass	MD = Mixed Deciduous	T = Tamarack			

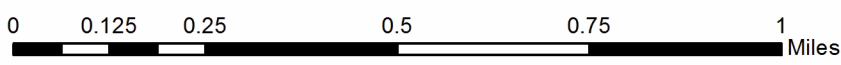
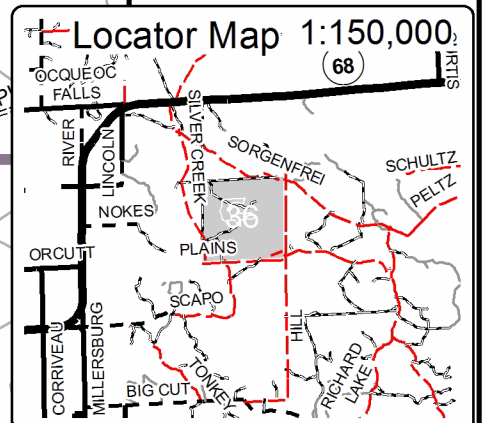
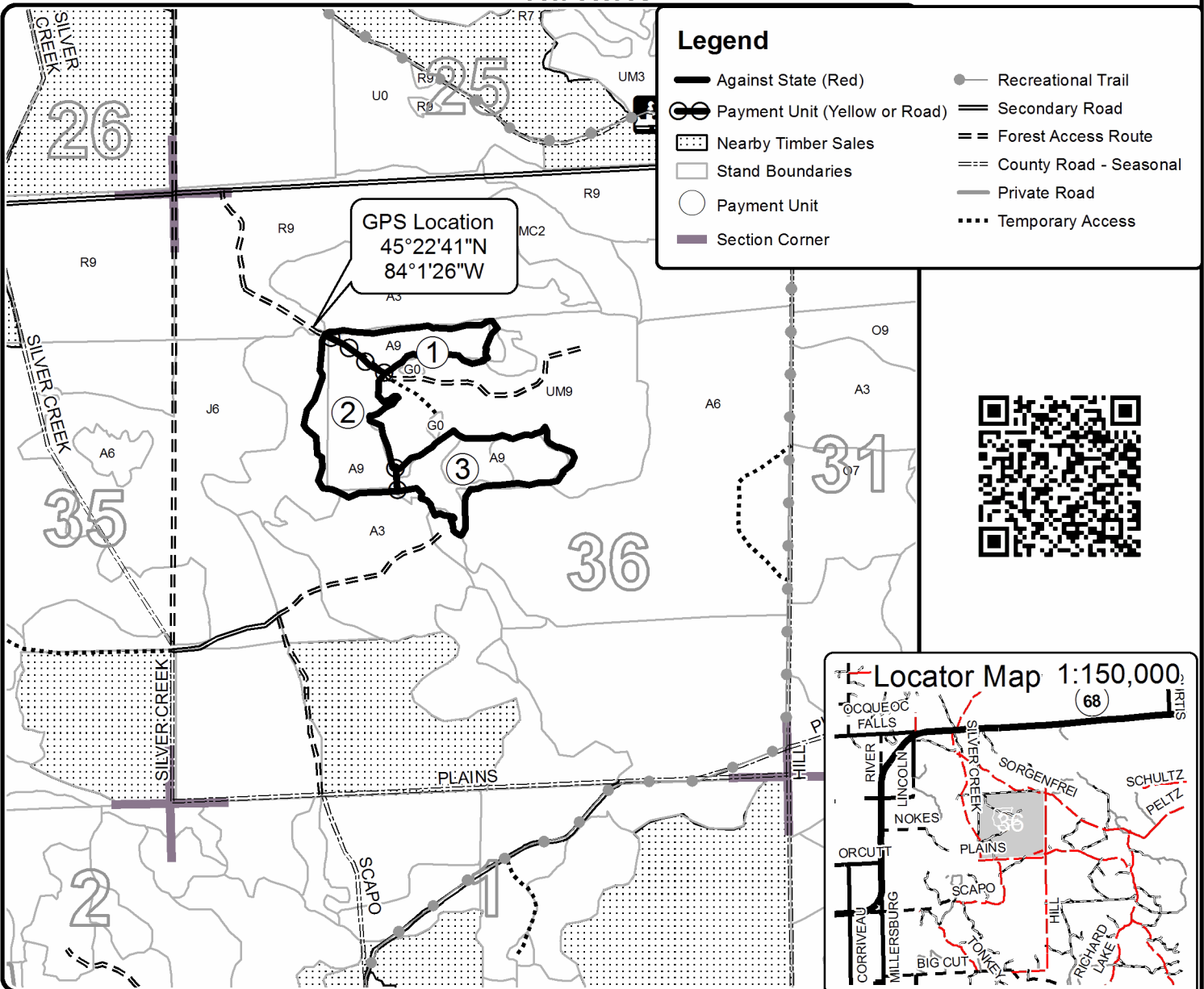
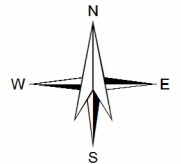
PU Acres

1	7.7
2	16.3
3	14.7

Plains HWY Aspen

Compartment 151

38.7 Acres



TIMBER SALE INFORMATION

Molski Bridge Mix (54-027-21)
T33N, R05E, SEC. 28; T33N, R05E, SEC. 29.
Presque Isle County (Advertised Price \$232,642.70)

SALE NOTE: All units of volume listed for this sale were estimated using the Inventory Manager computer program and the new Michigan taper model.

A timber sale contract for this lump sum, sealed bid timber sale will be awarded to the responsible bidder offering the highest sealed bid price. All units of volume listed below were estimated using the Inventory Manager computer program and the new Michigan taper model. Bids must be at or above the following advertised price for each product and species:

<u>PRODUCTS & SPECIES</u>	<u>ESTIMATED UNITS*</u>	<u>ADVERTISED PRICE</u>
Sawtimber		
Basswood	107.4 MBF	\$ 60.00 / MBF
Beech	52.6 MBF	\$ 52.00 / MBF
Mixed Aspen	443.9 MBF	\$ 107.00 / MBF
Paper Birch	9.7 MBF	\$ 45.00 / MBF
Red Maple	155.1 MBF	\$ 55.00 / MBF
Sugar Maple	73.7 MBF	\$ 276.00 / MBF
Pulpwood		
Balsam Fir	321 Cords	\$ 18.90 / Cord
Black Spruce	7 Cords	\$ 8.95 / Cord
Mixed Aspen	2,390 Cords	\$ 29.05 / Cord
Mixed Hardwood	3,133 Cords	\$ 22.65 / Cord
N. White Cedar	7 Cords	\$ 19.50 / Cord

* The total volume is statistically estimated within plus (+) or minus (-) 4.34 percent. There are an estimated 7,941 cords on this timber sale, plus or minus 345 cords at the 95% confidence level. The estimated units are final and not subject to adjustment. Prospective bidders are urged to examine this timber and to make their own estimates of quantity and quality.

BOND AND PAYMENT SCHEDULE:

1. A bond in the amount of \$11,632.00 to insure faithful performance of the conditions of the contract will be deposited by the successful bidder within 21 days of the sale award.
2. Cutting in any sale or unit without the required advance payment would be considered a trespass.
3. Total payment must be paid in advance or according to the following schedule :
 - (a) Ten percent (10%) of the sale value must be paid within 21 days of the sale award.
 - (b) The 10% down payment will be credited towards the first unit cut.
 - (c) Payment for each of the following units must be made before cutting begins in that unit:

PAYMENT UNIT NUMBER	PERCENT OF TOTAL SALE VALUE
01	5.9%
02	12.6%
03	10.0%
04	7.2%
05	11.5%
06	11.2%
07	15.8%
08	19.8%
09	2.4%
10	3.6%

4. If no cutting takes place, the 10% down payment will not be refunded.
5. Operations on the contract issued will terminate on 12/31/2024.

SALE STATISTICS

Volumes were calculated in cubic feet using the Michigan taper model. Cubic foot volume includes all wood inside bark for the product indicated. For display purposes, cubic feet were converted to cords and MBF using a simple conversion factor, e.g. 79 cubic feet per cord and 185 cubic feet per MBF. The cubic foot volumes are precise; the cords and MBF volumes are not. Cubic foot volume cannot be directly converted to cords or boards with precision.

SALE VOLUMES

The total estimated sale volume may not equal the sum of the species/products due to the nature of statistical calculations associated with double sampling methodology.

VOLUME			STATISTICAL RANGE IN CORDS	
TOTAL CUBIC FEET	TOTAL CORDS	PERCENT ERROR	MINIMUM	MAXIMUM
627,368	7,941	4.34%	7,596	8,287

VDU VOLUMES

A VDU is a Volume Determination Unit. Volumes and their associated statistics are calculated at the VDU level and summarized to the sale level. There is often a one to one relationship between a VDU and a Payment Unit, but not always, depending on the cruise design. Refer to the VDU TO PAYMENT UNIT table.

	VOLUME			RANGE IN CORDS	
VDU	TOTAL CUBIC FEET	TOTAL CORDS	PERCENT ERROR	MINIMUM	MAXIMUM
3	17,785	225	19.43%	181	269
4	286,085	3,621	7.41%	3,353	3,890
13	20,413	258	15.40%	219	298
15	36,711	465	21.37%	365	564
16	32,895	416	14.66%	355	477
18	131,918	1,670	8.96%	1,520	1,819
20	7,712	98	36.20%	62	133
58	22,473	284	15.96%	239	330
59	43,934	556	10.40%	498	614
87	27,442	347	9.33%	315	380
TOTAL:	627,368	7,941		7,109	8,774

VDU TO PAYMENT UNIT

When a VDU is associated with more than one Payment Unit (PU), the VDU volumes are assigned to the PU based on acres of the VDU within the PU.

VDU	VDU ACRES	PU	PU ACRES
3	19.5	9	19.5
4	75.6	6	16.4
		7	26.3
		8	32.9
13	15.9	10	15.9
15	13.0	4	13.0
16	11.6	5	11.6
18	48.5	2	25.3
		3	20.2
		4	3.0
20	6.9	10	6.9
58	6.8	1	6.8
59	15.9	5	13.3
		6	2.6
87	10.2	1	10.2
TOTAL:	223.9		223.9

DESCRIPTION OF TIMBER BY PAYMENT UNIT (PU)

PU	MARKET GROUP	PRODUCT	QUANTITY	UNIT	ACRES	ADVERTISE PRICE	
1	Basswood	Sawtimber	13.9	MBF	17.0	\$13,782.50	
	Beech		4.2	MBF			
	Mixed Aspen		9.3	MBF			
	<i>B. T. Aspen</i>		3.3	<i>MBF</i>			
	<i>Quaking Aspen</i>		6.0	<i>MBF</i>			
	Paper Birch		3.0	MBF			
	Red Maple		24.6	MBF			
	Sugar Maple		2.6	MBF			
	Balsam Fir		Pulpwood	102			Cords
	Black Spruce			7			Cords
	Mixed Aspen			49			Cords
	<i>B. T. Aspen</i>			14			<i>Cords</i>
	<i>Quaking Aspen</i>			35			<i>Cords</i>
	Mixed Hardwood			270			Cords
	<i>Basswood</i>			36			<i>Cords</i>
	<i>Beech</i>	19		<i>Cords</i>			
	<i>Paper Birch</i>	28		<i>Cords</i>			
	<i>Red Maple</i>	122		<i>Cords</i>			
	<i>Sugar Maple</i>	65	<i>Cords</i>				
	2	Basswood	Sawtimber	8.1			MBF
Mixed Aspen		52.5		MBF			
<i>B. T. Aspen</i>		18.9		<i>MBF</i>			
<i>Quaking Aspen</i>		33.6		<i>MBF</i>			
Paper Birch		1.6		MBF			
Red Maple		1.5		MBF			
Sugar Maple		7.1		MBF			
Balsam Fir		Pulpwood		40	Cords		
Mixed Aspen				607	Cords		
<i>B. T. Aspen</i>				78	<i>Cords</i>		
<i>Quaking Aspen</i>				529	<i>Cords</i>		
Mixed Hardwood				114	Cords		
<i>American Elm</i>				2	<i>Cords</i>		
<i>Basswood</i>				3	<i>Cords</i>		
<i>Black Cherry</i>				2	<i>Cords</i>		
<i>Green Ash</i>			8	<i>Cords</i>			
<i>Ironwood</i>			1	<i>Cords</i>			
<i>Paper Birch</i>		2	<i>Cords</i>				
<i>Red Maple</i>		41	<i>Cords</i>				
<i>Sugar Maple</i>		55	<i>Cords</i>				
N. White Cedar	4	Cords					
3	Basswood	Sawtimber	6.5	MBF	20.2	\$23,372.75	
	Mixed Aspen		42.0	MBF			
	<i>B. T. Aspen</i>		15.1	<i>MBF</i>			
	<i>Quaking Aspen</i>		26.9	<i>MBF</i>			
	Paper Birch		1.3	MBF			
	Red Maple		1.2	MBF			
	Sugar Maple		5.7	MBF			
	Balsam Fir		Pulpwood	32			Cords
	Mixed Aspen			485			Cords
	<i>B. T. Aspen</i>			62			<i>Cords</i>
	<i>Quaking Aspen</i>	423		<i>Cords</i>			
	Mixed Hardwood	90		Cords			
	<i>American Elm</i>	2	<i>Cords</i>				
	<i>Basswood</i>	2	<i>Cords</i>				
	<i>Black Cherry</i>	1	<i>Cords</i>				
<i>Green Ash</i>	7	<i>Cords</i>					

DESCRIPTION OF TIMBER BY PAYMENT UNIT (PU), CON'T

PU	MARKET GROUP	PRODUCT	QUANTITY	UNIT	ACRES	ADVERTISE PRICE
3 con't	<i>Ironwood</i>	<i>Pulpwood</i>	1	<i>Cords</i>		
	<i>Paper Birch</i>		1	<i>Cords</i>		
	<i>Red Maple</i>		32	<i>Cords</i>		
	<i>Sugar Maple</i>		44	<i>Cords</i>		
	N. White Cedar		3	<i>Cords</i>		
4	Basswood	Sawtimber	1.0	MBF	16.0	\$16,808.45
	Mixed Aspen		23.8	MBF		
	<i>B. T. Aspen</i>		19.8	<i>MBF</i>		
	<i>Quaking Aspen</i>		4.0	<i>MBF</i>		
	Paper Birch		0.2	MBF		
	Red Maple		15.6	MBF		
	Sugar Maple		0.8	MBF		
	Balsam Fir	Pulpwood	39	<i>Cords</i>		
	Mixed Aspen		267	<i>Cords</i>		
	<i>B. T. Aspen</i>		106	<i>Cords</i>		
	<i>Quaking Aspen</i>		161	<i>Cords</i>		
	Mixed Hardwood		204	<i>Cords</i>		
	<i>Basswood</i>		2	<i>Cords</i>		
	<i>Green Ash</i>		1	<i>Cords</i>		
	<i>Ironwood</i>		2	<i>Cords</i>		
	<i>Paper Birch</i>		54	<i>Cords</i>		
	<i>Red Maple</i>		120	<i>Cords</i>		
	<i>Sugar Maple</i>		25	<i>Cords</i>		
5	Mixed Aspen	Sawtimber	55.4	MBF	24.9	\$26,824.75
	<i>B. T. Aspen</i>		52.3	<i>MBF</i>		
	<i>Quaking Aspen</i>		3.1	<i>MBF</i>		
	Red Maple		6.8	MBF		
	Sugar Maple		17.9	MBF		
	Balsam Fir	Pulpwood	94	<i>Cords</i>		
	Mixed Aspen		193	<i>Cords</i>		
	<i>B. T. Aspen</i>		118	<i>Cords</i>		
	<i>Quaking Aspen</i>		75	<i>Cords</i>		
	Mixed Hardwood		362	<i>Cords</i>		
	<i>Basswood</i>		10	<i>Cords</i>		
	<i>Beech</i>		23	<i>Cords</i>		
	<i>Ironwood</i>		3	<i>Cords</i>		
	<i>Red Maple</i>		126	<i>Cords</i>		
	<i>Sugar Maple</i>		200	<i>Cords</i>		
6	Basswood	Sawtimber	8.4	MBF	19.0	\$26,050.35
	Beech		6.6	MBF		
	Mixed Aspen		59.3	MBF		
	<i>B. T. Aspen</i>		59.3	<i>MBF</i>		
	Paper Birch		0.6	MBF		
	Red Maple		22.2	MBF		
	Sugar Maple		10.5	MBF		
	Balsam Fir	Pulpwood	3	<i>Cords</i>		
	Mixed Aspen		170	<i>Cords</i>		
	<i>B. T. Aspen</i>		167	<i>Cords</i>		
	<i>Quaking Aspen</i>		3	<i>Cords</i>		
	Mixed Hardwood		429	<i>Cords</i>		
	<i>Basswood</i>		13	<i>Cords</i>		
	<i>Beech</i>		127	<i>Cords</i>		
	<i>Paper Birch</i>		10	<i>Cords</i>		
	<i>Red Maple</i>		185	<i>Cords</i>		
	<i>Sugar Maple</i>		94	<i>Cords</i>		
7	Basswood	Sawtimber	13.5	MBF	26.3	\$36,722.20

DESCRIPTION OF TIMBER BY PAYMENT UNIT (PU), CON'T

PU	MARKET GROUP	PRODUCT	QUANTITY	UNIT	ACRES	ADVERTISE PRICE	
7 con't	Beech	Sawtimber	10.6	MBF			
	Mixed Aspen		84.8	MBF			
	<i>B. T. Aspen</i>		84.8	<i>MBF</i>			
	Paper Birch		1.0	MBF			
	Red Maple		35.6	MBF			
	Sugar Maple		11.2	MBF			
	Balsam Fir		Pulpwood	5			Cords
	Mixed Aspen			246			Cords
	<i>B. T. Aspen</i>			246			<i>Cords</i>
	Mixed Hardwood			616			Cords
	<i>Basswood</i>			18			<i>Cords</i>
	<i>Beech</i>			196			<i>Cords</i>
	<i>Paper Birch</i>			17			<i>Cords</i>
	<i>Red Maple</i>			294			<i>Cords</i>
<i>Sugar Maple</i>	91	<i>Cords</i>					
8	Basswood	Sawtimber	16.9	MBF	32.9	\$45,904.80	
	Beech		13.3	MBF			
	Mixed Aspen		106.3	MBF			
	<i>B. T. Aspen</i>		106.3	<i>MBF</i>			
	Paper Birch		1.3	MBF			
	Red Maple		44.6	MBF			
	Sugar Maple		14.0	MBF			
	Balsam Fir		Pulpwood	6			Cords
	Mixed Aspen			307			Cords
	<i>B. T. Aspen</i>			307			<i>Cords</i>
	Mixed Hardwood			769			Cords
	<i>Basswood</i>			22			<i>Cords</i>
	<i>Beech</i>			245			<i>Cords</i>
	<i>Paper Birch</i>			21			<i>Cords</i>
<i>Red Maple</i>	367	<i>Cords</i>					
<i>Sugar Maple</i>	114	<i>Cords</i>					
9	Basswood	Sawtimber	17.0	MBF	19.5	\$5,556.25	
	Beech		14.8	MBF			
	Paper Birch		0.7	MBF			
	Red Maple		1.2	MBF			
	Sugar Maple		3.2	MBF			
	Mixed Hardwood		Pulpwood	123			Cords
	<i>Basswood</i>			20			<i>Cords</i>
	<i>Beech</i>			59			<i>Cords</i>
	<i>Paper Birch</i>			6			<i>Cords</i>
	<i>Red Maple</i>			4			<i>Cords</i>
	<i>Sugar Maple</i>			34			<i>Cords</i>
10	Basswood	Sawtimber	22.1	MBF	22.8	\$8,353.60	
	Beech		3.1	MBF			
	Mixed Aspen		10.5	MBF			
	<i>B. T. Aspen</i>		10.5	<i>MBF</i>			
	Red Maple		1.8	MBF			
	Sugar Maple		0.7	MBF			
	Mixed Aspen		Pulpwood	66			Cords
	<i>B. T. Aspen</i>			31			<i>Cords</i>
	<i>Quaking Aspen</i>			35			<i>Cords</i>
	Mixed Hardwood			156			Cords
	<i>Basswood</i>			29			<i>Cords</i>
	<i>Beech</i>			10			<i>Cords</i>
	<i>Red Maple</i>			2			<i>Cords</i>
	<i>Sugar Maple</i>			115			<i>Cords</i>

TOTAL:	842.4	MBF
--------	-------	-----

TOTAL:	5,858	Cords
--------	-------	-------

Sale Specific Conditions & Requirements

Sale Name: Molski Bridge Mix

Sale Number: 54-027-21 Seq#: 1

1 - Sale Area

1.2 - Boundaries

1.2.1 - Painted boundaries (9/19)

The sale boundary and Payment Unit boundaries are marked and identified by blue, red, and purple paint. Exterior sale boundary lines against private are marked with blue paint. Exterior sale boundary lines against state are marked with red paint. Interior retention boundaries are marked with red paint; no harvesting activities may occur within these areas. Interior Payment Unit boundaries are marked with purple paint. The painted boundary line trees are not Included Timber and are to be protected. Purple painted trees designating an interior Payment Unit boundary are only to be cut when all surrounding Payment Units have been paid. Do not cut any purple painted trees adjacent to cut tree marked units.

2 - Timber Specifications

2.1 - Included Timber

2.1.1 - Clearcut unit(s) with unmerchantable trees (6/14)

Within Payment Unit(s) 1-8, cut all trees that are two (2) inches or more at DBH, except do not cut any white pine or hemlock in Payment Unit 6-8. Also, do not cut any red pine, white pine, cedar, or hemlock in Payment Unit 4.

As shown on the Timber Sale Map, additional timber may be available for cutting west from the Payment Unit 1 sale boundary line to private property if a survey has been completed. This additional timber must be decked separately at the landing for scaling and volumes will be invoiced using contract prices. No cutting of additional timber will be allowed until the new sale boundary along private has been designated/painted.

Note: See spec 5.2.4.7 - 'Dead and down creation' for instructions on orange marked trees.

2.1.3 - Cut tree marked unit(s) (12/08)

Within Payment Unit(s) 9 and 10, all trees are designated for cutting when marked with orange paint above and below stump height, regardless of merchantability. Cut all beech, except those trees marked with pink paint. Also, cut all aspen in the portion (~ 7-acre area) of Payment Unit 10 that borders private property.

As shown on the Timber Sale Map, additional timber may be available for cutting east and north from the Payment Unit 9 sale boundary line to private property if a survey has been completed. This additional timber must be decked separately at the landing for scaling and volumes will be invoiced using contract prices. No cutting of additional timber will be allowed until trees are marked for cutting with orange paint and the new sale boundary along private has been designated/painted.

2.1.11 - Description of timber note (2/04)

Note that this sale was previously sold and not entirely cut. Disregard yellow paint in all Payment Units and green paint in clearcut Payment Units 4-8. Disregard the Payment Unit 4 interior red paint present. Ensure that designated trees are cut or left according to sale specifications.

2.2 - Utilization

2.2.6 - Roundwood operation required (3/21)

The skidding of whole trees or tree segments with limbs attached is prohibited within Payment Unit(s) 2, 3, 9, and 10. All products must be produced as roundwood and forwarded to existing roads or landing areas in final product length.

3 - Payments

3.3 - Pre-measured Sales

3.3.4 - Dividing payment units (7/14)

Payment Unit(s) may be divided at the request of the Purchaser and upon approval of the Unit Manager. Dividing Payment Units is a contract modification which requires a Timber Sale Contract Amendment. Payment Units valued over \$25,000 may be divided. There will be only one division per Payment Unit.

3.4 - Damaged Timber

3.4.1 - Damaged timber (7/16)

General Condition and Requirement 3.4 Damaged Timber, defines liquidated damages for undesignated live merchantable trees which are cut or injured.

No damage is acceptable to undesignated live merchantable trees. Within the Sale Area, if more than 5% of trees (> 4.5" DBH) within a specified area of the sale are damaged, liquidated damages will be assessed for all trees damaged. Rates will be in accordance with General Condition and Requirement 3.4 Damaged Timber.

4 - Transportation

4.1 - Construction

4.1.2 - Stream crossings, specific (3/11)

A permanent bridge was recently installed (location on Timber Sale Map) and it must be crossed to gain access to Payment Units 2-4 and 10. All damage to the bridge or crossing must be repaired to an equal or better condition.

4.1.3 - Slash and earthen piles (8/04)

Piles or windrows of earth along roads and landings that have been widened or constructed shall be leveled. Slash from road maintenance or construction, including stumps, shall be chipped, utilized, or otherwise removed from the sale.

4.1.6 - Road construction (1/09)

Construction or improvements of existing roads shall be done in such a way as to minimize the environmental and visual impacts. Merchantable trees shall be cut and utilized unless otherwise directed. Non-merchantable trees shall be severed and laid flat on the ground. Slash shall be scattered, and not left in windrows and kept a minimum of 10 feet back from the road edge. Stumps shall be set upright, not left on edge, and be moved at least 10 feet away from the road edge. Disturbed soil shall be feathered into the woods and not left in berms or windrows.

The access road, as shown on the Timber Sale Map, in from the west to Payment Unit 1 is prone to rutting. It is required that 3-inch limestone be placed in road stretches needing reinforcement before any hauling occurs to prevent major forest road rutting. Additional 3-inch limestone or other acceptable fill will need to be placed within road stretches south of the newly installed bridge to Payment Units 2-4 and along the adjacent Payment Unit 6 access road to prevent significant rutting.

4.1.7 - Road closure (10/11)

All new roads built into the sale must be blocked to vehicle traffic upon completion of the sale. Overgrown roads that are reopened shall be considered new roads. In general, this will require constructing a four (4') foot high berm of stumps and logs covered with earth. Stumps and brush must be placed along the remainder of the trail. These roads must be rendered impassable to cars and trucks. Contact the sale administrator for specific details of design and placement.

4.2 - Maintenance

4.2.5 - Two wheel drive condition (2/04)

All existing trail roads on and adjacent to the sale area must be passable by two-wheel drive traffic for the duration of the sale.

5 - Operations

5.1 - Notification

5.1.1 - Pre-sale conference (10/16)

A pre-sale conference between the Purchaser and sale administrator is required prior to beginning any operations to determine landing and road locations. The Unit Manager or his/her representative must be contacted at least 5 days in advance to schedule the conference.

5.1.4 - Post-sale conference (10/16)

A post-sale conference on site between the Purchaser and sale administrator is required 5 days prior to the completion of active logging operations to determine clean-up and repair of landings, road edges, and the fulfillment of other contract specifications.

5.2 - Conduct of Operations

5.2.2 - Hazard Trees/Snags

5.2.2.1 - Den trees (10/16)

Obvious hollow and/or den trees shall be protected and left standing unless they are a safety hazard.

5.2.3 - Operating Restrictions

5.2.3.1 - Operating restrictions (9/11)

Within Payment Unit(s) 1-4 and 10, it is recommended that cutting, skidding, and hauling occur during dry summer or frozen winter conditions. This restriction is to protect soils from receiving unnecessary damage from rutting.

5.2.3.3 - Bark slippage restriction (3/09)

Within Payment Unit(s) 9 and 10, unless changed by written agreement, cutting and skidding are not permitted during the period of April 15 to July 15. This restriction is because of bark slippage.

5.2.3.11 - Coppice regeneration protection (4/10)

Timber harvesting in Payment Units 1-8 must be completed within 60 days of severing/cutting stem(s) to minimize damage to deciduous regeneration. Any post-harvest operations, such as chipping, must be completed before sprouting of regeneration occurs. If it is anticipated that chipping will be delayed, then tops shall be carried to one central location or left unchipped. The Unit Manager or his/her representative may cease such operations if sprouting occurs before the operation is complete.

5.2.4 - Dead and Down Creation

5.2.4.7 - Dead and down creation: hare, grouse, deer and other species (5/15)

To improve horizontal cover habitat for snowshoe hare, grouse, deer, and other species, the Purchaser is to push over all orange painted trees in Payment Units 2-5 and 7-8. These trees should be tipped over with the root ball still attached so the base of the tree is suspended off the ground. The crown of the fallen tree should be at or near ground level after it is pushed over. If it is impractical to push the trees over, they may be cut or partially cut and pushed over.

5.2.31 - Landing locations (9/13)

Landing locations are shown on the Timber Sale Map. Landings must be confined to these designated sites unless otherwise authorized by the Unit Manager or his/her representative.

5.2.32 - Decking/landing restoration (9/13)

All decking and landing areas must have the surface area restored to a condition equal to or better than before. This is to ensure the proper regeneration of the stand. Wood debris, chips, and "cookies" from trimmings must be removed or scattered away from landing and loading areas and may not be windrowed on the edge.

5.2.38 - No decking against live trees (2/04)

Cut products may not be decked against unmarked or designated leave trees.

5.3 - Stream Protection

5.3.1 - Operating near stream (7/04)

No tracked or wheeled vehicles shall be operated within 50 feet of streams, except at an approved crossing.

5.4 - Soil Protection

5.4.1 - Rutting restriction, general (7/16)

Operations are to cease immediately if equipment and weather conditions result in rutting of roads and/or skid trails which is 12 inches or greater in depth and 50 feet in length. The Unit Manager or his/her representative may restrict hauling and/or skidding if ruts exceed the specified depth. With the Unit Manager or his/her representative's approval, the Purchaser may return to the area when the risk of rutting has decreased.

5.8 - Protection of Endangered Species

5.8.5 - Protection of raptor nests (3/13)

All trees with raptor nests will be protected if found during harvesting operations. Notification will be made to the Unit Manager or his/her representative who will notify the Wildlife Biologist so an on-site evaluation and recommendation can be made, if necessary.



TIMBER SALE MAP

This information provided by authority of Part 525, 1994 PA 451, as amended.

Sale Number	Year
54 - 027	21

Forest Management Unit Atlanta Management Unit	County Presque Isle	Mapped By Coy	Date 08/25/2021	Page 1	of 1
Cruised By Coy					

Township 33N	Range 05E	Section(s) and Subdivision(s) 28-SWSW 29-NWNW,S2NW,NENE,SWNE,SW,SE	Scale 1:15,840
-----------------	--------------	---	-------------------

Cover Type

A = Aspen	H = Hemlock	N = Marsh	U = Upland Brush
B = Paper Birch	J = Jack Pine	O = Oak	UM = Upland Mixed
C = Cedar	L = Lowland Brush	P = Lowland Poplar	V = Bog or Marsh
D = Treed Bog	LM = Lowland Mixed	Q = Mixed Swamp Conifer	W = White Pine
E = Swamp Hdwoods	M = Mpl, Bch, Brch	R = Red Pine	X = Non Stocked
F = Spruce Fir	MC = Mixed Conifer	S = Black Spruce	Z = Water
G = Grass	MD = Mixed Deciduous	T = Tamarack	

Density

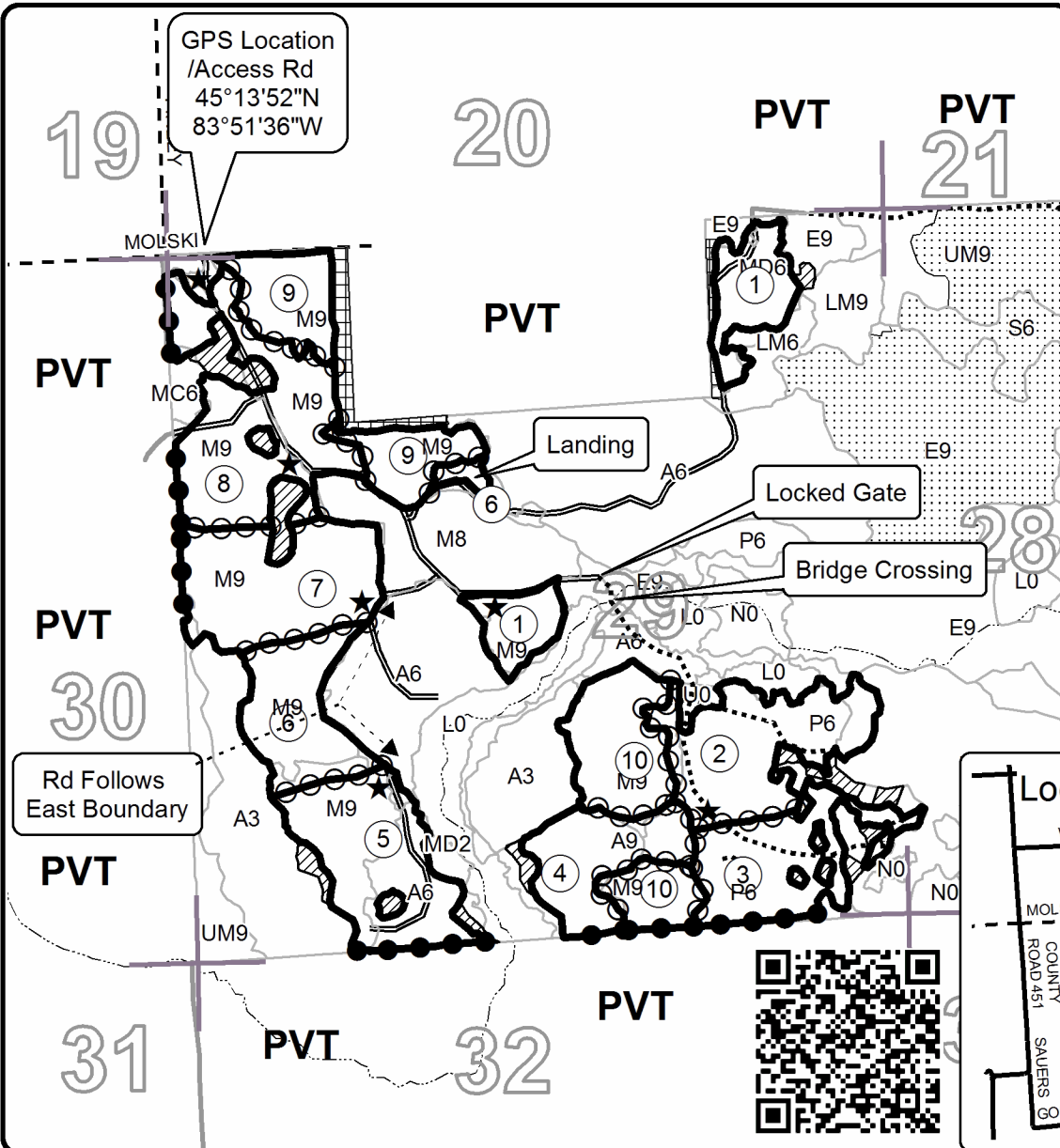
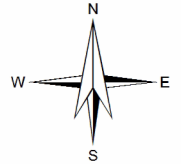
0 = Non Stocked	5 = Pole Timber Medium
1 = Seedling Sapling Poor	6 = Pole Timber Well
2 = Seedling Sapling Medium	7 = Saw Timber Poor
3 = Seedling Sapling Well	8 = Saw Timber Medium
4 = Pole Timber Poor	9 = Saw Timber Well

PU	Acres	PU	Acres
1	17.0	6	19.0
2	25.3	7	26.3
3	20.2	8	32.9
4	16.0	9	19.5
5	24.9	10	22.8

Molski Bridge Mix

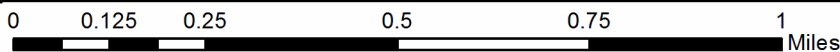
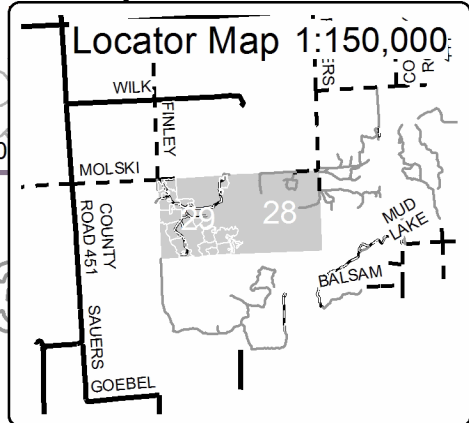
Compartment 131

223.9 Acres



Legend

- Against State (Red)
- Private Line (Blue)
- Payment Unit (Purple)
- Retention Area (Red)
- Stand Boundaries
- Potential Additional Timber
- Nearby Timber Sales
- Landing
- Payment Unit
- Secondary Road
- Gravel Road
- Private Road
- Temporary Access
- Perennial River
- Section Corner



TIMBER SALE INFORMATION

Rainy River Mix (54-028-21)

T35N, R02E, SEC. 16; T35N, R02E, SEC. 18; T35N, R02E, SEC. 4; T35N, R02E, SEC. 9.
Presque Isle County (Advertised Price \$193,640.15)

SALE NOTE: All units of volume listed for this sale were estimated using the Inventory Manager computer program and the new Michigan taper model.

A timber sale contract for this lump sum, sealed bid timber sale will be awarded to the responsible bidder offering the highest sealed bid price. All units of volume listed below were estimated using the Inventory Manager computer program and the new Michigan taper model. Bids must be at or above the following advertised price for each product and species:

<u>PRODUCTS & SPECIES</u>	<u>ESTIMATED UNITS*</u>	<u>ADVERTISED PRICE</u>
Sawtimber		
B. T. Aspen	3.7 MBF	\$ 115.00 / MBF
N. White Cedar	60.6 MBF	\$ 42.00 / MBF
Red Maple	1.0 MBF	\$ 59.00 / MBF
Red Oak	159.0 MBF	\$ 195.00 / MBF
Red Pine	356.7 MBF	\$ 155.00 / MBF
Sugar Maple	1.6 MBF	\$ 297.00 / MBF
White Oak	22.1 MBF	\$ 113.00 / MBF
White Pine	131.6 MBF	\$ 81.00 / MBF
Pulpwood		
Balsam Fir	185 Cords	\$ 20.35 / Cord
Jack Pine	41 Cords	\$ 11.80 / Cord
Mixed Aspen	617 Cords	\$ 31.30 / Cord
Mixed Hardwood	201 Cords	\$ 24.40 / Cord
Mixed Oak	409 Cords	\$ 46.45 / Cord
Mixed Spruce	107 Cords	\$ 9.65 / Cord
N. White Cedar	376 Cords	\$ 21.00 / Cord
Red Pine	550 Cords	\$ 55.10 / Cord
White Pine	204 Cords	\$ 19.55 / Cord

* The total volume is statistically estimated within plus (+) or minus (-) 7.42 percent. There are an estimated 4,329 cords on this timber sale, plus or minus 322 cords at the 95% confidence level. The estimated units are final and not subject to adjustment. Prospective bidders are urged to examine this timber and to make their own estimates of quantity and quality.

BOND AND PAYMENT SCHEDULE:

1. A bond in the amount of \$9,682.00 to insure faithful performance of the conditions of the contract will be deposited by the successful bidder within 21 days of the sale award.
2. Cutting in any sale or unit without the required advance payment would be considered a trespass.
3. Total payment must be paid in advance or according to the following schedule :
 - (a) Ten percent (10%) of the sale value must be paid within 21 days of the sale award.
 - (b) The 10% down payment will be credited towards the first unit cut.
 - (c) Payment for each of the following units must be made before cutting begins in that unit:

PAYMENT UNIT NUMBER	PERCENT OF TOTAL SALE VALUE
01	13.8%
02	17.2%
03	33.8%
04	27.2%
05	8.0%
4. If no cutting takes place, the 10% down payment will not be refunded.
5. Operations on the contract issued will terminate on 12/31/2024.

SALE STATISTICS

Volumes were calculated in cubic feet using the Michigan taper model. Cubic foot volume includes all wood inside bark for the product indicated. For display purposes, cubic feet were converted to cords and MBF using a simple conversion factor, e.g. 79 cubic feet per cord and 185 cubic feet per MBF. The cubic foot volumes are precise; the cords and MBF volumes are not. Cubic foot volume cannot be directly converted to cords or boards with precision.

SALE VOLUMES

The total estimated sale volume may not equal the sum of the species/products due to the nature of statistical calculations associated with double sampling methodology.

VOLUME			STATISTICAL RANGE IN CORDS	
TOTAL CUBIC FEET	TOTAL CORDS	PERCENT ERROR	MINIMUM	MAXIMUM
342,019	4,329	7.42%	4,008	4,651

VDU VOLUMES

A VDU is a Volume Determination Unit. Volumes and their associated statistics are calculated at the VDU level and summarized to the sale level. There is often a one to one relationship between a VDU and a Payment Unit, but not always, depending on the cruise design. Refer to the VDU TO PAYMENT UNIT table.

	VOLUME			RANGE IN CORDS	
VDU	TOTAL CUBIC FEET	TOTAL CORDS	PERCENT ERROR	MINIMUM	MAXIMUM
3	224,774	2,845	10.85%	2,536	3,154
10	43,975	557	13.29%	483	631
35	39,772	503	8.44%	461	546
138	8,315	105	11.55%	93	117
139	17,334	219	10.54%	196	243
239	7,849	99	8.79%	91	108
TOTAL:	342,019	4,329		3,860	4,799

VDU TO PAYMENT UNIT

When a VDU is associated with more than one Payment Unit (PU), the VDU volumes are assigned to the PU based on acres of the VDU within the PU.

VDU	VDU ACRES	PU	PU ACRES
3	80.1	3	44.3
		4	35.8
10	22.7	2	22.7
35	15.1	1	15.1
138	3.7	5	3.7
139	5.3	5	5.3
239	2.6	5	2.6
TOTAL:	129.5		129.5

DESCRIPTION OF TIMBER BY PAYMENT UNIT (PU)

PU	MARKET GROUP	PRODUCT	QUANTITY	UNIT	ACRES	ADVERTISE PRICE				
1	Red Maple	Sawtimber	1.0	MBF	15.1	\$26,654.35				
	Red Oak		66.7	MBF						
	Red Pine		12.6	MBF						
	White Pine		11.5	MBF						
	Balsam Fir		Pulpwood	2			Cords			
	Jack Pine			41			Cords			
	Mixed Aspen			65			Cords			
	<i>B. T. Aspen</i>			65			Cords			
	Mixed Hardwood			8			Cords			
	<i>Red Maple</i>			8			Cords			
	Mixed Oak			149			Cords			
	<i>Red Oak</i>			149			Cords			
	Red Pine			13			Cords			
	White Pine			16			Cords			
2	Red Oak	Sawtimber	78.3	MBF	22.7	\$33,401.25				
	Red Pine		14.0	MBF						
	White Oak		22.1	MBF						
	White Pine		2.8	MBF						
	Mixed Hardwood		Pulpwood	2			Cords			
	<i>Red Maple</i>			2			Cords			
	Mixed Oak			246			Cords			
	<i>Red Oak</i>			158			Cords			
	<i>White Oak</i>			88			Cords			
	Red Pine			21			Cords			
	White Pine			31			Cords			
3	N. White Cedar	Sawtimber		33.5	MBF	44.3	\$65,390.80			
	Red Pine			180.0	MBF					
	White Pine		64.9	MBF						
	Balsam Fir		Pulpwood	95	Cords					
	Mixed Aspen			178	Cords					
	<i>B. T. Aspen</i>			123	Cords					
	<i>Quaking Aspen</i>			55	Cords					
	Mixed Hardwood			59	Cords					
	<i>Paper Birch</i>			28	Cords					
	<i>Red Maple</i>			23	Cords					
	<i>Sugar Maple</i>			8	Cords					
	Mixed Spruce			56	Cords					
	<i>Black Spruce</i>			34	Cords					
	<i>White Spruce</i>			22	Cords					
	N. White Cedar			208	Cords					
	Red Pine			285	Cords					
	White Pine		65	Cords						
	4		N. White Cedar	Sawtimber	27.1			MBF	35.8	\$52,760.30
			Red Pine		145.4			MBF		
White Pine		52.4	MBF							
Balsam Fir		Pulpwood	76		Cords					
Mixed Aspen			143		Cords					
<i>B. T. Aspen</i>			99		Cords					
<i>Quaking Aspen</i>			44		Cords					
Mixed Hardwood			47		Cords					
<i>Paper Birch</i>			23		Cords					
<i>Red Maple</i>			18		Cords					
<i>Sugar Maple</i>			6		Cords					
Mixed Spruce			45		Cords					
<i>Black Spruce</i>			28		Cords					
<i>White Spruce</i>			17		Cords					

DESCRIPTION OF TIMBER BY PAYMENT UNIT (PU), CON'T

PU	MARKET GROUP	PRODUCT	QUANTITY	UNIT	ACRES	ADVERTISE PRICE				
4 con't	N. White Cedar	Pulpwood	168	Cords						
	Red Pine		230	Cords						
	White Pine		53	Cords						
5	B. T. Aspen	Sawtimber	3.7	MBF	11.6	\$15,433.45				
	Red Oak		14.0	MBF						
	Red Pine		4.7	MBF						
	Sugar Maple	1.6	MBF							
	Balsam Fir	Pulpwood	12	Cords						
	Mixed Aspen		231	Cords						
	<i>B. T. Aspen</i>		231	<i>Cords</i>						
	Mixed Hardwood		85	Cords						
	<i>Beech</i>		3	<i>Cords</i>						
	<i>Paper Birch</i>		34	<i>Cords</i>						
	<i>Red Maple</i>		3	<i>Cords</i>						
	<i>Sugar Maple</i>		45	<i>Cords</i>						
	Mixed Oak		14	Cords						
	<i>Red Oak</i>		14	<i>Cords</i>						
	Mixed Spruce		6	Cords						
	<i>White Spruce</i>		6	<i>Cords</i>						
	Red Pine		1	Cords						
	White Pine		39	Cords						
	TOTAL:			736.3			MBF			
	TOTAL:			2,690			Cords			

Sale Specific Conditions & Requirements

Sale Name: Rainy River Mix

Sale Number: 54-028-21 Seq#: 1

1 - Sale Area

1.2 - Boundaries

1.2.1 - Painted boundaries (9/19)

The sale boundary and Payment Unit boundaries are marked and identified by blue, red, and yellow paint. Exterior sale boundary lines against private are marked with blue paint. Exterior sale boundary lines against state are marked with red paint. The east boundary of Payment Unit 3 is M-211 as shown on the Timber Sale Map. The south and southeast boundary portions of Payment Unit 3 and 4 are the forest road and the power line as shown on the Timber Sale Map. Interior Payment Unit boundaries are marked with yellow paint. The painted boundary line trees are not Included Timber and are to be protected. Yellow painted trees designating an interior Payment Unit boundary are only to be cut when all surrounding Payment Units have been paid.

2 - Timber Specifications

2.1 - Included Timber

2.1.1 - Clearcut unit(s) with unmerchantable trees (6/14)

Within Payment Unit(s) 1-5, cut all trees that are two (2) inches or more at DBH.

Note: See spec 5.2.4.7 - 'Dead and down creation' for instructions on orange marked trees.

2.1.9 - Harvest exception (12/08)

Do not cut any hemlock trees in Payment Unit 3 and 4 other than those that are necessary to remove in order to operate within the sale area. Every effort must be made to preserve the existing hemlock and to leave an intact stand upon sale completion. All cut hemlock shall be piled separately by products and scaled in the woods unless other scaling arrangements are agreed to by the Unit Manager or his/her representative. Stumpage price for hemlock shall be \$50.00 per cord for posts and pulpwood, and \$100.00 per cord for bolts and sawlogs.

2.2 - Utilization

2.2.3 - Stump heights (4/07)

Stump heights within Payment Units 1-5 shall not exceed 6 inches for all trees. This is to facilitate future silvicultural activities. A written waiver of this requirement may be obtained if wet summer weather makes winter logging necessary.

3 - Payments

3.3 - Pre-measured Sales

3.3.4 - Dividing payment units (7/14)

Payment Unit(s) may be divided at the request of the Purchaser and upon approval of the Unit Manager. Dividing Payment Units is a contract modification which requires a Timber Sale Contract Amendment. Payment Units valued over \$25,000 may be divided. There will be only one division per Payment Unit.

4 - Transportation

4.1 - Construction

4.1.3 - Slash and earthen piles (8/04)

Piles or windrows of earth along roads and landings that have been widened or constructed shall be leveled. Slash from road maintenance or construction, including stumps, shall be chipped, utilized, or otherwise removed from the sale.

4.1.6 - Road construction (1/09)

Construction or improvements of existing roads shall be done in such a way as to minimize the environmental and visual impacts. Merchantable trees shall be cut and utilized unless otherwise directed. Non-merchantable trees shall be severed and laid flat on the ground. Slash shall be scattered, and not left in windrows and kept a minimum of 10 feet back from the road edge. Stumps shall be set upright, not left on edge, and be moved at least 10 feet away from the road edge. Disturbed soil shall be feathered into the woods and not left in berms or windrows.

4.1.7 - Road closure (10/11)

All new roads built into the sale must be blocked to vehicle traffic upon completion of the sale. Overgrown roads that are reopened shall be considered new roads. In general, this will require constructing a four (4') foot high berm of stumps and logs covered with earth. Stumps and brush must be placed along the remainder of the trail. These roads must be rendered impassable to cars and trucks. Contact the sale administrator for specific details of design and placement.

4.2 - Maintenance

4.2.5 - Two wheel drive condition (2/04)

All existing trail roads on and adjacent to the sale area must be passable by two-wheel drive traffic for the duration of the sale.

4.3 - Public Right-of-Way

4.3.1 - MDOT R-O-W (11/14)

The Michigan Department of Transportation (MDOT) must be contacted prior to harvesting timber within the MDOT right-of-way.

5 - Operations

5.1 - Notification

5.1.1 - Pre-sale conference (10/16)

A pre-sale conference between the Purchaser and sale administrator is required prior to beginning any operations to determine landing and road locations. The Unit Manager or his/her representative must be contacted at least 5 days in advance to schedule the conference.

5.1.4 - Post-sale conference (10/16)

A post-sale conference on site between the Purchaser and sale administrator is required 5 days prior to the completion of active logging operations to determine clean-up and repair of landings, road edges, and the fulfillment of other contract specifications.

5.1.6 - Utility R.O.W. (4/19)

It is the responsibility of the Purchaser to obtain permission from the utility company to utilize the power line R.O.W. for operations. Contact Presque Isle Electric and Gas Cooperative (Phone: 1-800-423-6634 & Hours of Operation: Monday-Friday 8:00am-4:30pm).

5.2 - Conduct of Operations

5.2.2 - Hazard Trees/Snags

5.2.2.1 - Den trees (10/16)

Obvious hollow and/or den trees shall be protected and left standing unless they are a safety hazard.

5.2.3 - Operating Restrictions

5.2.3.5 - Oak wilt restriction (1/18)

Within Payment Unit(s) 1-5 unless changed by written agreement, cutting, skidding, hauling within the sale and brushing of access roads to the sale are not permitted during the period of April 15 to July 15. Operations may be allowed if specific steps are taken to prevent damaging uncut oak during the high risk period. Those steps may include completing all road brushing before April 15th and clearing a tree-length buffer along uncut oak cover before April 15th. This is necessary to reduce the spread of oak wilt. For more information, contact the Unit Manager or his/her representative.

5.2.3.11 - Coppice regeneration protection (4/10)

Timber harvesting in Payment Units 1-3 must be completed within 60 days of severing/cutting stem(s) to minimize damage to deciduous regeneration. Any post-harvest operations, such as chipping, must be completed before sprouting of regeneration occurs. If it is anticipated that chipping will be delayed, then tops shall be carried to one central location or left unchipped. The Unit Manager or his/her representative may cease such operations if sprouting occurs before the operation is complete.

5.2.4 - Dead and Down Creation

5.2.4.7 - Dead and down creation: hare, grouse, deer and other species (5/15)

To improve horizontal cover habitat for snowshoe hare, grouse, deer, and other species, the Purchaser is to push over trees marked with orange paint in Payment Unit 5. These trees should be tipped over with the root ball still attached so the base of the tree is suspended off the ground. The crown of the fallen tree should be at or near ground level after it is pushed over.

5.2.32 - Decking/landing restoration (9/13)

All decking and landing areas must have the surface area restored to a condition equal to or better than before. This is to ensure the proper regeneration of the stand. Wood debris, chips, and "cookies" from trimmings must be removed or scattered away from landing and loading areas and may not be windrowed on the edge.

5.2.38 - No decking against live trees (2/04)

Cut products may not be decked against unmarked or designated leave trees.

5.4 - Soil Protection

5.4.1 - Rutting restriction, general (7/16)

Operations are to cease immediately if equipment and weather conditions result in rutting of roads and/or skid trails which is 12 inches or greater in depth and 50 feet in length. The Unit Manager or his/her representative may restrict hauling and/or skidding if ruts exceed the specified depth. With the Unit Manager or his/her representative's approval, the Purchaser may return to the area when the risk of rutting has decreased.

5.8 - Protection of Endangered Species

5.8.5 - Protection of raptor nests (3/13)

All trees with raptor nests will be protected if found during harvesting operations. Notification will be made to the Unit Manager or his/her representative who will notify the Wildlife Biologist so an on-site evaluation and recommendation can be made, if necessary.



TIMBER SALE MAP

This information provided by authority of Part 525, 1994 PA 451, as amended.

Forest Management Unit Atlanta Management Unit	County Presque Isle	Mapped By Michaud and Fenton	Date 09/29/2021	Page 1	of 3
Cruised By Michaud and Fenton					

Township 35N	Range 02E	Section(s) and Subdivision(s) 4 - N1/2NW,NWNE	Scale 1:15,840
-----------------	--------------	--	-------------------

Cover Type

A = Aspen	H = Hemlock	N = Marsh	U = Upland Brush
B = Paper Birch	J = Jack Pine	O = Oak	UM = Upland Mixed
C = Cedar	L = Lowland Brush	P = Lowland Poplar	V = Bog or Marsh
D = Treed Bog	LM = Lowland Mixed	Q = Mixed Swamp Conifer	W = White Pine
E = Swamp Hdwoods	M = Mpl, Bch, Brch	R = Red Pine	X = Non Stocked
F = Spruce Fir	MC = Mixed Conifer	S = Black Spruce	Z = Water
G = Grass	MD = Mixed Deciduous	T = Tamarack	

Density

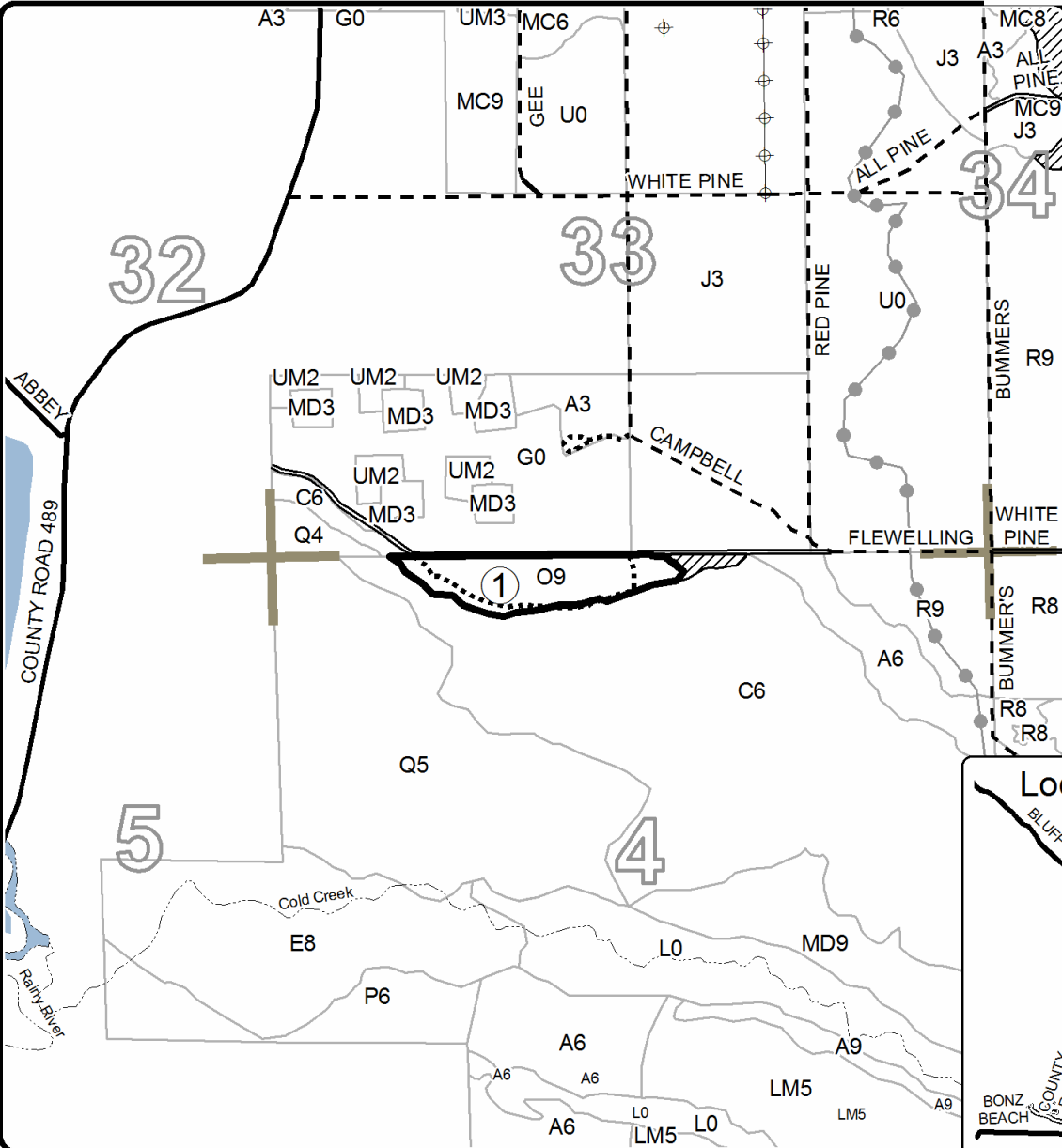
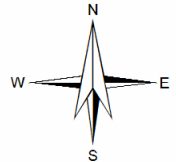
0 = Non Stocked	5 = Pole Timber Medium
1 = Seedling Sapling Poor	6 = Pole Timber Well
2 = Seedling Sapling Medium	7 = Saw Timber Poor
3 = Seedling Sapling Well	8 = Saw Timber Medium
4 = Pole Timber Poor	9 = Saw Timber Well

PU	Acres
1	15.1
2	22.7
3	44.3
4	35.8
5	11.6

Rainy River Mix

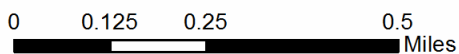
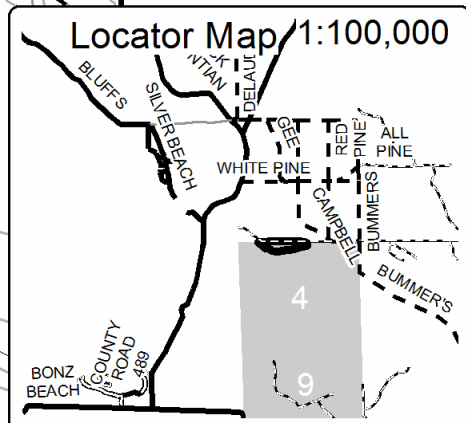
Compartment 145

129.5 Acres



Legend

- Against State (Red)
- Retention Area (Red)
- Stand Boundaries
- Lakes
- Payment Unit
- Recreational Trail
- Secondary Road
- Paved Road
- Gravel Road
- Powerline
- Temporary Access
- Powerline
- Perennial River
- Section Corner





TIMBER SALE MAP

This information provided by authority of Part 525, 1994 PA 451, as amended.

Forest Management Unit Atlanta Management Unit	County Presque Isle	Mapped By Fenton	Date 09/29/2021	Page 3	of 3
Township 35N	Range 02E	Section(s) and Subdivision(s) 18- SENE,NESE	Scale 1:15,840		

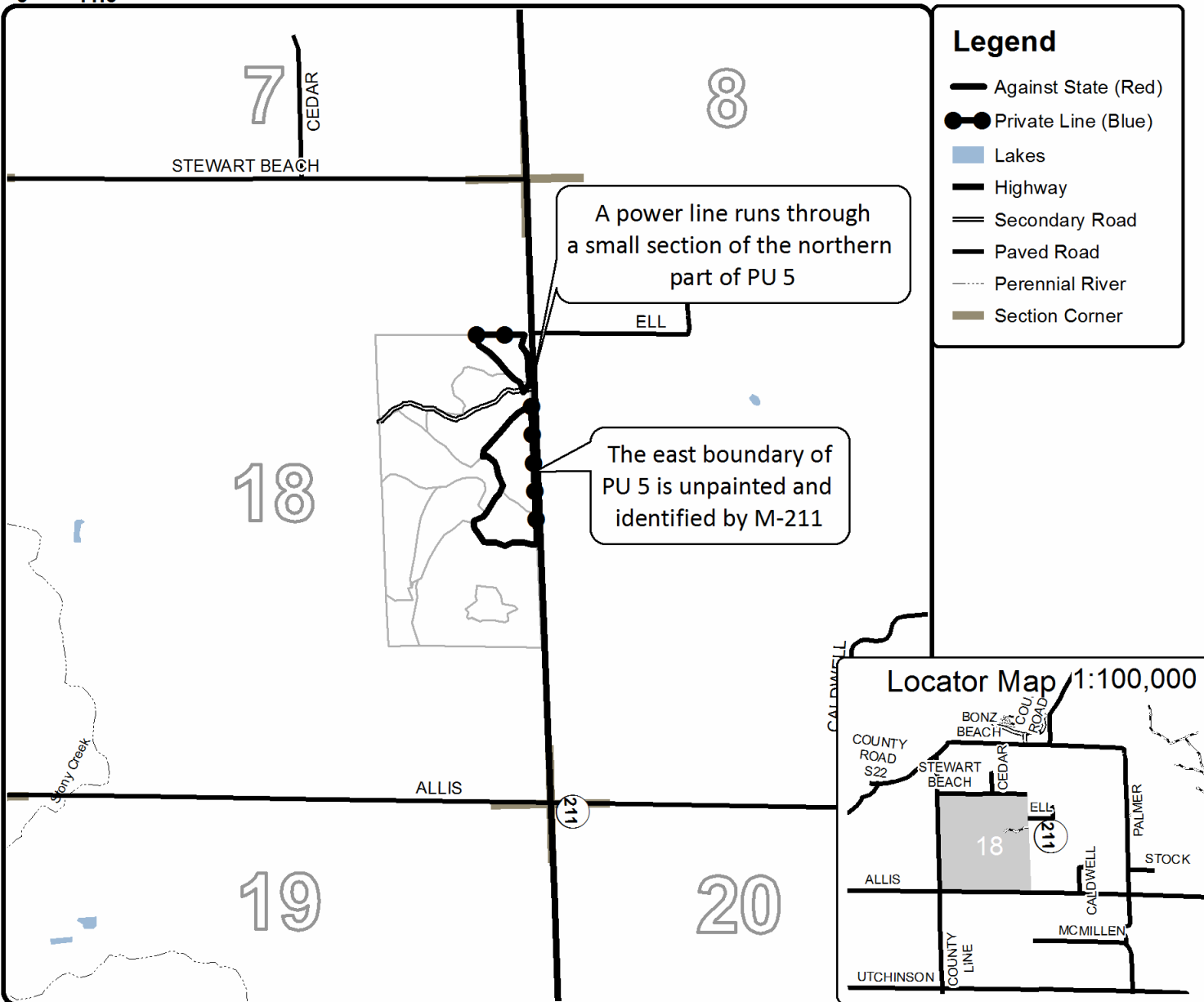
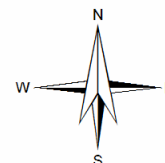
Cover Type				Density	
A = Aspen	H = Hemlock	N = Marsh	U = Upland Brush	0 = Non Stocked	5 = Pole Timber Medium
B = Paper Birch	J = Jack Pine	O = Oak	UM = Upland Mixed	1 = Seedling Sapling Poor	6 = Pole Timber Well
C = Cedar	L = Lowland Brush	P = Lowland Poplar	V = Bog or Marsh	2 = Seedling Sapling Medium	7 = Saw Timber Poor
D = Treed Bog	LM = Lowland Mixed	Q = Mixed Swamp Conifer	W = White Pine	3 = Seedling Sapling Well	8 = Saw Timber Medium
E = Swamp Hdwoods	M = Mpl, Bch, Brch	R = Red Pine	X = Non Stocked	4 = Pole Timber Poor	9 = Saw Timber Well
F = Spruce Fir	MC = Mixed Conifer	S = Black Spruce	Z = Water		
G = Grass	MD = Mixed Deciduous	T = Tamarack			

PU	Acres
1	15.1
2	22.7
3	44.3
4	35.8
5	11.6

Rainy River Mix

Compartment 145

129.5 Acres





TIMBER SALE MAP

This information provided by authority of Part 525, 1994 PA 451, as amended.

Forest Management Unit Atlanta Management Unit	County Presque Isle	Mapped By Michaud and Fenton	Date 09/29/2021	Page 2	of 3
Cruised By Michaud and Fenton					

Township 35N	Range 02E	Section(s) and Subdivision(s) 9 - SESW,NWSE,S1/2SE 16 - N1/2NW,N1/2NE	Scale 1:15,840
-----------------	--------------	--	-------------------

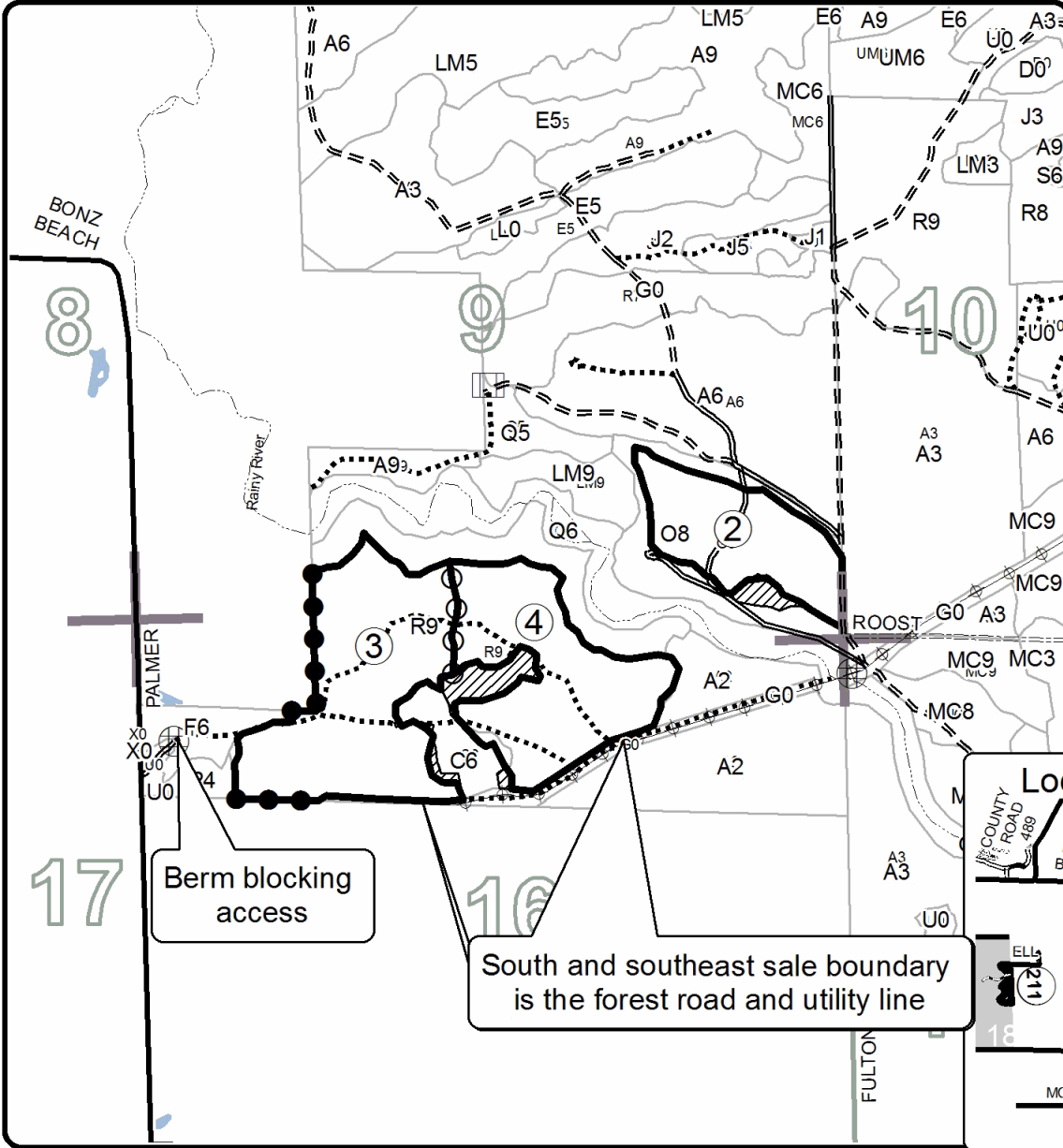
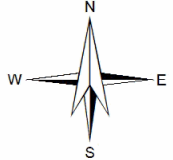
Cover Type				Density			
A = Aspen	H = Hemlock	N = Marsh	U = Upland Brush	0 = Non Stocked	5 = Pole Timber Medium		
B = Paper Birch	J = Jack Pine	O = Oak	UM = Upland Mixed	1 = Seedling Sapling Poor	6 = Pole Timber Well		
C = Cedar	L = Lowland Brush	P = Lowland Poplar	V = Bog or Marsh	2 = Seedling Sapling Medium	7 = Saw Timber Poor		
D = Treed Bog	LM = Lowland Mixed	Q = Mixed Swamp Conifer	W = White Pine	3 = Seedling Sapling Well	8 = Saw Timber Medium		
E = Swamp Hdwoods	M = Mpl, Bch, Brch	R = Red Pine	X = Non Stocked	4 = Pole Timber Poor	9 = Saw Timber Well		
F = Spruce Fir	MC = Mixed Conifer	S = Black Spruce	Z = Water				
G = Grass	MD = Mixed Deciduous	T = Tamarack					

PU	Acres
1	15.1
2	22.7
3	44.3
4	35.8
5	11.6

Rainy River Mix

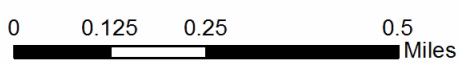
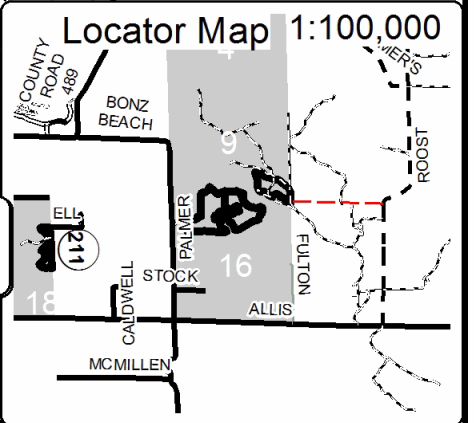
Compartment 145

129.5 Acres



Legend

- Against State (Red)
- Private Line (Blue)
- Payment Unit (Yellow)
- ▨ Retention Area (Red)
- Stand Boundaries
- Lakes
- Payment Unit
- Secondary Road
- == Forest Access Route
- Paved Road
- County Road - Seasonal
- Private Road
- ⚡ Powerline
- ⋯ Temporary Access
- ⚡ Powerline
- ⋯ Perennial River
- Section Corner



TIMBER SALE INFORMATION

Corner in the Swamp Mix (54-029-21)

T33N, R02E, SEC. 16; T33N, R02E, SEC. 8; T33N, R02E, SEC. 9.
Presque Isle County (Advertised Price \$370,488.60)

SALE NOTE: All units of volume listed for this sale were estimated using the Inventory Manager computer program and the new Michigan taper model.

A timber sale contract for this lump sum, sealed bid timber sale will be awarded to the responsible bidder offering the highest sealed bid price. All units of volume listed below were estimated using the Inventory Manager computer program and the new Michigan taper model. Bids must be at or above the following advertised price for each product and species:

<u>PRODUCTS & SPECIES</u>	<u>ESTIMATED UNITS*</u>		<u>ADVERTISED PRICE</u>
Sawtimber			
Mixed Aspen	128.1	MBF	\$ 112.00 / MBF
N. White Cedar	6.8	MBF	\$ 41.00 / MBF
Paper Birch	8.7	MBF	\$ 47.00 / MBF
Red Maple	74.3	MBF	\$ 57.00 / MBF
Red Oak	203.8	MBF	\$ 189.00 / MBF
Red Pine	931.1	MBF	\$ 151.00 / MBF
White Pine	881.9	MBF	\$ 79.00 / MBF
Pulpwood			
Balsam Fir	288	Cords	\$ 19.80 / Cord
Mixed Aspen	1,807	Cords	\$ 30.40 / Cord
Mixed Hardwood	1,002	Cords	\$ 23.70 / Cord
N. White Cedar	79	Cords	\$ 20.40 / Cord
Red Pine	194	Cords	\$ 53.50 / Cord
White Pine	308	Cords	\$ 18.95 / Cord
White Spruce	24	Cords	\$ 9.35 / Cord

* The total volume is statistically estimated within plus (+) or minus (-) 5.94 percent. There are an estimated 8,739 cords on this timber sale, plus or minus 520 cords at the 95% confidence level. The estimated units are final and not subject to adjustment. Prospective bidders are urged to examine this timber and to make their own estimates of quantity and quality.

BOND AND PAYMENT SCHEDULE:

1. A bond in the amount of \$18,524.00 to insure faithful performance of the conditions of the contract will be deposited by the successful bidder within 21 days of the sale award.
2. Cutting in any sale or unit without the required advance payment would be considered a trespass.
3. Total payment must be paid in advance or according to the following schedule :
 - (a) Ten percent (10%) of the sale value must be paid within 21 days of the sale award.
 - (b) The 10% down payment will be credited towards the first unit cut.
 - (c) Payment for each of the following units must be made before cutting begins in that unit:

PAYMENT UNIT NUMBER	PERCENT OF TOTAL SALE VALUE
01	23.0%
02	10.7%
03	16.6%
04	10.4%
05	17.5%
06	21.8%
4. If no cutting takes place, the 10% down payment will not be refunded.
5. Operations on the contract issued will terminate on 12/31/2024.

SALE STATISTICS

Volumes were calculated in cubic feet using the Michigan taper model. Cubic foot volume includes all wood inside bark for the product indicated. For display purposes, cubic feet were converted to cords and MBF using a simple conversion factor, e.g. 79 cubic feet per cord and 185 cubic feet per MBF. The cubic foot volumes are precise; the cords and MBF volumes are not. Cubic foot volume cannot be directly converted to cords or boards with precision.

SALE VOLUMES

The total estimated sale volume may not equal the sum of the species/products due to the nature of statistical calculations associated with double sampling methodology.

VOLUME			STATISTICAL RANGE IN CORDS	
TOTAL CUBIC FEET	TOTAL CORDS	PERCENT ERROR	MINIMUM	MAXIMUM
690,391	8,739	5.94%	8,220	9,259

VDU VOLUMES

A VDU is a Volume Determination Unit. Volumes and their associated statistics are calculated at the VDU level and summarized to the sale level. There is often a one to one relationship between a VDU and a Payment Unit, but not always, depending on the cruise design. Refer to the VDU TO PAYMENT UNIT table.

VDU	VOLUME		PERCENT ERROR	RANGE IN CORDS	
	TOTAL CUBIC FEET	TOTAL CORDS		MINIMUM	MAXIMUM
11	92,434	1,170	16.75%	974	1,366
15	58,518	741	14.89%	630	851
42	21,480	272	9.44%	246	298
47	260,165	3,293	9.28%	2,988	3,599
50	26,796	339	12.50%	297	382
51	184,678	2,338	14.18%	2,006	2,669
52	18,829	238	40.00%	143	334
80	27,492	348	19.61%	280	416
TOTAL:	690,391	8,739		7,564	9,914

VDU TO PAYMENT UNIT

When a VDU is associated with more than one Payment Unit (PU), the VDU volumes are assigned to the PU based on acres of the VDU within the PU.

VDU	VDU ACRES	PU	PU ACRES
11	14.0	1	14.0
15	9.3	1	9.3
42	7.2	4	7.2
47	78.2	4	18.9
		5	35.4
		6	23.9
50	6.3	2	1.5
		3	4.8
51	43.2	2	5.7
		3	19.4
		5	2.8
		6	15.3
52	6.3	2	6.3
80	9.6	2	9.6
TOTAL:	174.1		174.1

DESCRIPTION OF TIMBER BY PAYMENT UNIT (PU)

PU	MARKET GROUP	PRODUCT	QUANTITY	UNIT	ACRES	ADVERTISE PRICE	
1	Mixed Aspen	Sawtimber	23.9	MBF	23.3	\$85,002.85	
	<i>B. T. Aspen</i>		23.9	<i>MBF</i>			
	N. White Cedar		6.8	MBF			
	Paper Birch		8.7	MBF			
	Red Maple		11.0	MBF			
	Red Oak		4.8	MBF			
	Red Pine		286.0	MBF			
	White Pine		308.8	MBF			
	Balsam Fir		Pulpwood	187			Cords
	Mixed Aspen			16			Cords
	<i>B. T. Aspen</i>			16			<i>Cords</i>
	Mixed Hardwood			103			Cords
	<i>Paper Birch</i>			17			<i>Cords</i>
	<i>Red Maple</i>			79			<i>Cords</i>
	<i>Red Oak</i>			7			<i>Cords</i>
	N. White Cedar			46			Cords
	Red Pine			71			Cords
	White Pine			61			Cords
2	Mixed Aspen	Sawtimber	31.9	MBF	23.1	\$39,762.45	
	<i>B. T. Aspen</i>		31.9	<i>MBF</i>			
	Red Maple		9.1	MBF			
	Red Oak		1.9	MBF			
	Red Pine		100.1	MBF			
	White Pine		82.6	MBF			
	Balsam Fir		Pulpwood	44			Cords
	Mixed Aspen			310			Cords
	<i>B. T. Aspen</i>			310			<i>Cords</i>
	Mixed Hardwood			76			Cords
	<i>Red Maple</i>			67			<i>Cords</i>
	<i>Red Oak</i>			9			<i>Cords</i>
	Red Pine			22			Cords
White Pine	21	Cords					
3	Red Maple	Sawtimber	13.9	MBF	24.2	\$61,365.00	
	Red Oak		6.5	MBF			
	Red Pine		227.1	MBF			
	White Pine		171.0	MBF			
	Balsam Fir		Pulpwood	16			Cords
	Mixed Aspen			234			Cords
	<i>B. T. Aspen</i>			234			<i>Cords</i>
	Mixed Hardwood			60			Cords
	<i>Red Maple</i>			29			<i>Cords</i>
	<i>Red Oak</i>			31			<i>Cords</i>
	Red Pine			34			Cords
White Pine	46	Cords					
4	Mixed Aspen	Sawtimber	22.0	MBF	26.1	\$38,646.50	
	<i>B. T. Aspen</i>		16.7	<i>MBF</i>			
	<i>Quaking Aspen</i>		5.3	<i>MBF</i>			
	Red Maple		9.8	MBF			
	Red Oak		44.6	MBF			
	Red Pine		32.2	MBF			
	White Pine		54.2	MBF			
	Balsam Fir		Pulpwood	32			Cords
	Mixed Aspen			363			Cords
	<i>B. T. Aspen</i>			290			<i>Cords</i>
	<i>Quaking Aspen</i>			73			<i>Cords</i>
	Mixed Hardwood			208			Cords

DESCRIPTION OF TIMBER BY PAYMENT UNIT (PU), CON'T

PU	MARKET GROUP	PRODUCT	QUANTITY	UNIT	ACRES	ADVERTISE PRICE				
4 con't	<i>Paper Birch</i>	<i>Pulpwood</i>	6	<i>Cords</i>						
	<i>Red Maple</i>		156	<i>Cords</i>						
	<i>Red Oak</i>		46	<i>Cords</i>						
	N. White Cedar		8	<i>Cords</i>						
	Red Pine		11	<i>Cords</i>						
	White Pine		34	<i>Cords</i>						
	White Spruce		6	<i>Cords</i>						
5	Mixed Aspen	Sawtimber	30.0	MBF	38.2	\$64,837.35				
	<i>B. T. Aspen</i>		20.1	<i>MBF</i>						
	<i>Quaking Aspen</i>		9.9	<i>MBF</i>						
	Red Maple		12.5	MBF						
	Red Oak		84.5	MBF						
	Red Pine		76.8	MBF						
	White Pine		91.2	MBF						
	Balsam Fir		Pulpwood	3			<i>Cords</i>			
	Mixed Aspen			519			<i>Cords</i>			
	<i>B. T. Aspen</i>			505			<i>Cords</i>			
	<i>Quaking Aspen</i>			14			<i>Cords</i>			
	Mixed Hardwood			314			<i>Cords</i>			
	<i>Red Maple</i>			226			<i>Cords</i>			
	<i>Red Oak</i>			88			<i>Cords</i>			
	N. White Cedar			15			<i>Cords</i>			
	Red Pine			19			<i>Cords</i>			
	White Pine			68			<i>Cords</i>			
	White Spruce	11		<i>Cords</i>						
	6	Mixed Aspen		Sawtimber			20.3	MBF	39.2	\$80,874.45
		<i>B. T. Aspen</i>					13.6	<i>MBF</i>		
<i>Quaking Aspen</i>		6.7	<i>MBF</i>							
Red Maple		18.0	MBF							
Red Oak		61.5	MBF							
Red Pine		208.9	MBF							
White Pine		174.1	MBF							
Balsam Fir		Pulpwood	6		<i>Cords</i>					
Mixed Aspen			365		<i>Cords</i>					
<i>B. T. Aspen</i>			356		<i>Cords</i>					
<i>Quaking Aspen</i>			9		<i>Cords</i>					
Mixed Hardwood			241		<i>Cords</i>					
<i>Red Maple</i>			172		<i>Cords</i>					
<i>Red Oak</i>			69		<i>Cords</i>					
N. White Cedar			10		<i>Cords</i>					
Red Pine			37		<i>Cords</i>					
White Pine			78		<i>Cords</i>					
White Spruce			7	<i>Cords</i>						
TOTAL:			2,234.7	MBF						
TOTAL:			3,702	Cords						

Sale Specific Conditions & Requirements

Sale Name: Corner in the Swamp Mix

Sale Number: 54-029-21 Seq#: 2

1 - Sale Area

1.2 - Boundaries

1.2.1 - Painted boundaries (9/19)

The sale boundary and Payment Unit boundaries are marked and identified by blue, red, and yellow paint. Exterior sale boundary lines against private are marked with blue paint. Exterior sale boundary lines against state are marked with red paint except for the western edge of Payment Unit 1, which is unpainted and follows M-33 as shown on the Timber Sale Map. Interior Payment Unit boundaries are marked with yellow paint. The painted boundary line trees are not Included Timber and are to be protected. Yellow painted trees designating an interior Payment Unit boundary are only to be cut when all surrounding Payment Units have been paid.

2 - Timber Specifications

2.1 - Included Timber

2.1.1 - Clearcut unit(s) with unmerchantable trees (6/14)

Within Payment Unit(s) 1-6, cut all trees that are two (2) inches or more at DBH.

Note: See spec 5.2.4.7 - 'Dead and down creation' for instructions on orange marked trees.

2.2 - Utilization

2.2.3 - Stump heights (4/07)

Stump heights within Payment Units 1-3 & 6 shall not exceed 6 inches for all trees. This is to facilitate future silvicultural activities. A written waiver of this requirement may be obtained if wet summer weather makes winter logging necessary.

2.2.6 - Roundwood operation required (3/21)

The skidding of whole trees or tree segments with limbs attached is prohibited within Payment Unit 1. All products must be produced as roundwood and forwarded to existing roads or landing areas in final product length. Trees must be harvested with in-woods processor (feller bunching harvester will not be allowed to protect the sensitive soils around the stream.

3 - Payments

3.3 - Pre-measured Sales

3.3.4 - Dividing payment units (7/14)

Payment Unit(s) may be divided at the request of the Purchaser and upon approval of the Unit Manager. Dividing Payment Units is a contract modification which requires a Timber Sale Contract Amendment. Payment Units valued over \$25,000 may be divided. There will be only one division per Payment Unit.

3.4 - Damaged Timber

3.4.1 - Damaged timber (7/16)

General Condition and Requirement 3.4 Damaged Timber, defines liquidated damages for undesignated live merchantable trees which are cut or injured.

No damage is acceptable to undesignated live merchantable trees. Within the Sale Area, if more than 5% of trees (> 4.5" DBH) within a specified area of the sale are damaged, liquidated damages will be assessed for all trees damaged. Rates will be in accordance with General Condition and Requirement 3.4 Damaged Timber.

4 - Transportation

4.1 - Construction

4.1.3 - Slash and earthen piles (8/04)

Piles or windrows of earth along roads and landings that have been widened or constructed shall be leveled. Slash from road maintenance or construction, including stumps, shall be chipped, utilized, or otherwise removed from the sale.

4.1.6 - Road construction (1/09)

Construction or improvements of existing roads shall be done in such a way as to minimize the environmental and visual impacts. Merchantable trees shall be cut and utilized unless otherwise directed. Non-merchantable trees shall be severed and laid flat on the ground. Slash shall be scattered, and not left in windrows and kept a minimum of 10 feet back from the road edge. Stumps shall be set upright, not left on edge, and be moved at least 10 feet away from the road edge. Disturbed soil shall be feathered into the woods and not left in berms or windrows.

4.1.7 - Road closure (10/11)

All new roads built into the sale must be blocked to vehicle traffic upon completion of the sale. Overgrown roads that are reopened shall be considered new roads. In general, this will require constructing a four (4') foot high berm of stumps and logs covered with earth. Stumps and brush must be placed along the remainder of the trail. These roads must be rendered impassable to cars and trucks. Contact the sale administrator for specific details of design and placement.

4.2 - Maintenance

4.2.5 - Two wheel drive condition (2/04)

All existing trail roads on and adjacent to the sale area must be passable by two-wheel drive traffic for the duration of the sale.

4.3 - Public Right-of-Way

4.3.2 - County R-O-W (12/06)

The county must be contacted prior to harvesting in the county road R-O-W. This applies to Payment Unit 1 and M-33 for a driveway permit.

5 - Operations

5.1 - Notification

5.1.1 - Pre-sale conference (10/16)

A pre-sale conference between the Purchaser and sale administrator is required prior to beginning any operations to determine landing and road locations. The Unit Manager or his/her representative must be contacted at least 5 days in advance to schedule the conference.

5.1.4 - Post-sale conference (10/16)

A post-sale conference on site between the Purchaser and sale administrator is required 5 days prior to the completion of active logging operations to determine clean-up and repair of landings, road edges, and the fulfillment of other contract specifications.

5.2 - Conduct of Operations

5.2.2 - Hazard Trees/Snags

5.2.2.1 - Den trees (10/16)

Obvious hollow and/or den trees shall be protected and left standing unless they are a safety hazard.

5.2.3 - Operating Restrictions

5.2.3.5 - Oak wilt restriction (1/18)

Within Payment Unit(s) 1-6, unless changed by written agreement, cutting, skidding, hauling within the sale and brushing of access roads to the sale are not permitted during the period of April 15 to July 15. Operations may be allowed if specific steps are taken to prevent damaging uncut oak during the high risk period. Those steps may include completing all road brushing before April 15th and clearing a tree-length buffer along uncut oak cover before April 15th. This is necessary to reduce the spread of oak wilt. For more information, contact the Unit Manager or his/her representative.

5.2.3.6 - Bark beetle restriction (12/08)

In the event drought creates a high risk of pine bark beetle infestation, pine is not to be cut during the period March 1 through July 1, unless all portions of trees greater than two inches in diameter are removed from the sale area, reduced to chips, or treated to the satisfaction of the Unit Manager or his/her representative, within fifteen days of being severed from the stump. Pine log decks, pulpwood piles and treetops that are piled for chipping in the fall or winter within a 1/4 mile of susceptible sites must be removed before March 15. Residual slash must not be placed in piles or rows and must be spread over the site for quick drying. The Department of Natural Resources will exercise this specification if the risk

of damage warrants.

5.2.3.11 - Coppice regeneration protection (4/10)

Timber harvesting in Payment Units 2-6 must be completed within 60 days of severing/cutting stem(s) to minimize damage to deciduous regeneration. Any post-harvest operations, such as chipping, must be completed before sprouting of regeneration occurs. If it is anticipated that chipping will be delayed, then tops shall be carried to one central location or left unchipped. The Unit Manager or his/her representative may cease such operations if sprouting occurs before the operation is complete.

5.2.4 - Dead and Down Creation

5.2.4.7 - Dead and down creation: hare, grouse, deer and other species (5/15)

To improve horizontal cover habitat for snowshoe hare, grouse, deer, and other species, the Purchaser is to push over trees marked with orange paint once the Payment Unit is cut. These trees should be tipped over with the root ball still attached so the base of the tree is suspended off the ground. The crown of the fallen tree should be at or near ground level after it is pushed over. Trees that are too large to be pushed over may be hinged or partially severed to be able push them over.

5.2.17 - Timber Mats and Interlocking Composite Mats (10/20)

Some roads or skid trails may require extra protection such as that afforded by timber mats, interlocking composite mats, or another approved system. Approximately 160 feet of road or trail will need extra protection at locations shown on the Timber Sale Map. If available, mats may be borrowed from the DNR. A Timber Sale Contract Supplement will be used to document the Purchaser's use of the DNR's mats. Contact the sale administrator regarding availability and pick-up. Timber mats are available from various field offices. Composite mats are only available from the Grayling field office and the Marquette ICC. The Purchaser is responsible for picking up and hauling the mats to and from the site. The composite mats will require DNR staff onsite for installation and removal. Contact the sale administrator to schedule at least 30 days before desired install/removal date. All mats must be cleaned prior to drop off. This may include, but is not limited to, power washing and brushing to remove mud and debris. A charge of \$700.00 per timber mat and \$2,000.00 per composite mat will be assessed for all damaged or non-returned mats. Damage for the crane/timber mats is defined as three or more broken cants. Damage for the composite mats is defined as cracked or broken mats. All EGLE BMPs shall be followed. Any activity except for the crossing is prohibited within 100 feet of the stream. Permits for the crossing shall be obtained by the state.

5.2.32 - Decking/landing restoration (9/13)

All decking and landing areas must have the surface area restored to a condition equal to or better than before. This is to ensure the proper regeneration of the stand. Wood debris, chips, and "cookies" from trimmings must be removed or scattered away from landing and loading areas and may not be windrowed on the edge.

5.2.38 - No decking against live trees (2/04)

Cut products may not be decked against unmarked or designated leave trees.

5.4 - Soil Protection

5.4.1 - Rutting restriction, general (7/16)

Operations are to cease immediately if equipment and weather conditions result in rutting of roads and/or skid trails which is 12 inches or greater in depth and 50 feet in length. The Unit Manager or his/her representative may restrict hauling and/or skidding if ruts exceed the specified depth. With the Unit Manager or his/her representative's approval, the Purchaser may return to the area when the risk of rutting has decreased.

5.4.2 - Skid trails (2/04)

Skid trails up and down slopes should be avoided. If however this is unavoidable, these trails will be left in a non-erodible condition using water bars, logs, and slash. Placing of slash on these skid trails while logging is ongoing may alleviate need for any further action. At the direction of the sale administrator, seed, fertilizer, and mulch may also be required.

5.8 - Protection of Endangered Species

5.8.5 - Protection of raptor nests (3/13)

All trees with raptor nests will be protected if found during harvesting operations. Notification will be made to the Unit Manager or his/her representative who will notify the Wildlife Biologist so an on-site evaluation and recommendation can be made, if necessary.



TIMBER SALE MAP

This information provided by authority of Part 525, 1994 PA 451, as amended.

Forest Management Unit Atlanta Management Unit		County Presque Isle	Mapped By Fenton	Date 11/12/2021	Page 1	of 2
Township 33N	Range 02E	Section(s) and Subdivision(s) 08-S1/2NW,N1/2SW 09-SENW,SWNE,NWSW,S1/2SW,SE 16-N1/2NW		Scale 1:7,920		

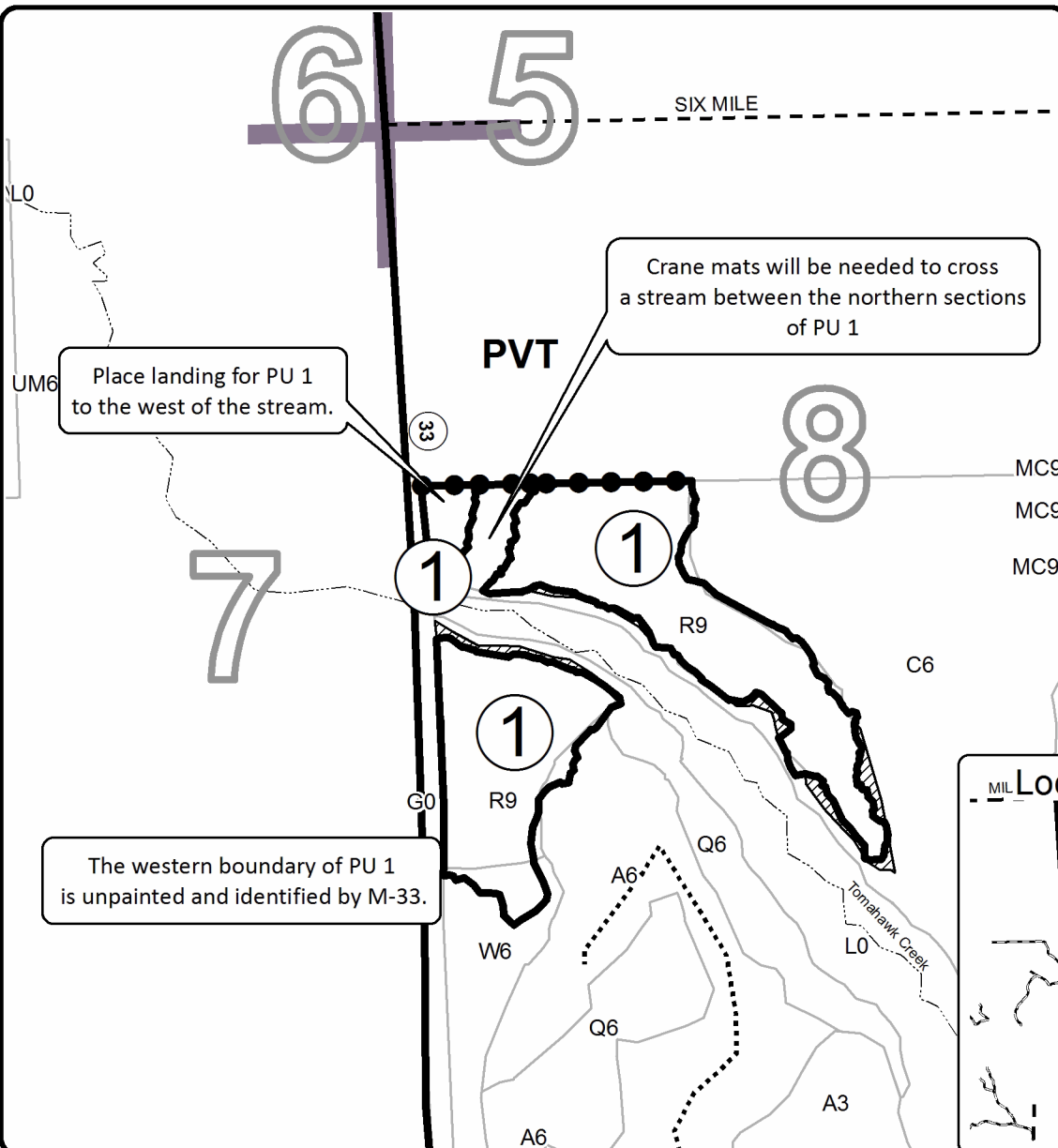
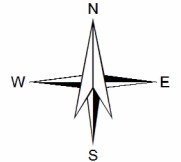
Cover Type				Density			
A = Aspen	H = Hemlock	N = Marsh	U = Upland Brush	0 = Non Stocked	5 = Pole Timber Medium		
B = Paper Birch	J = Jack Pine	O = Oak	UM = Upland Mixed	1 = Seedling Sapling Poor	6 = Pole Timber Well		
C = Cedar	L = Lowland Brush	P = Lowland Poplar	V = Bog or Marsh	2 = Seedling Sapling Medium	7 = Saw Timber Poor		
D = Treed Bog	LM = Lowland Mixed	Q = Mixed Swamp Conifer	W = White Pine	3 = Seedling Sapling Well	8 = Saw Timber Medium		
E = Swamp Hdwoods	M = Mpl, Bch, Brch	R = Red Pine	X = Non Stocked	4 = Pole Timber Poor	9 = Saw Timber Well		
F = Spruce Fir	MC = Mixed Conifer	S = Black Spruce	Z = Water				
G = Grass	MD = Mixed Deciduous	T = Tamarack					

PU	Acres	PU	Acres
1	23.3	5	38.2
2	23.1	6	39.2
3	24.2		
4	26.1		

Corner in the Swamp Mix

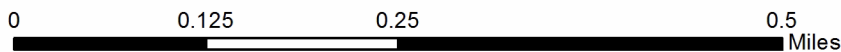
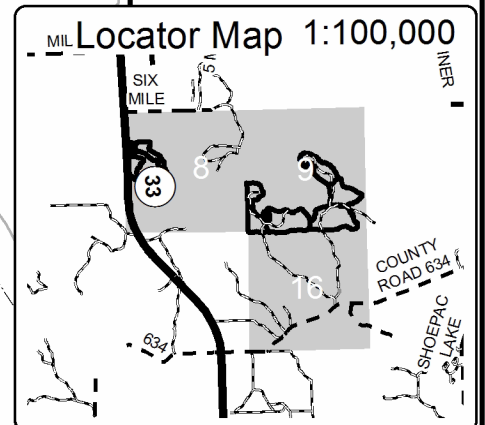
Compartment 117

174.1 Acres



Legend

- Against State (Red)
- Private Line (Blue)
- ▨ Retention Area (Red)
- Stand Boundaries
- Payment Unit
- Highway
- - Gravel Road
- ⋯ Temporary Access
- ⋯ Perennial River
- Section Corner





TIMBER SALE MAP

This information provided by authority of Part 525, 1994 PA 451, as amended.

Forest Management Unit Atlanta Management Unit	County Presque Isle	Mapped By Fenton	Date 11/12/2021	Page 2	of 2
Township 33N	Range 02E	Section(s) and Subdivision(s) 08-S1/2NW,N1/2SW 09-SE,SWNE,NWSW,S1/2SW,SE 16-N1/2NW	Scale 1:15,840		

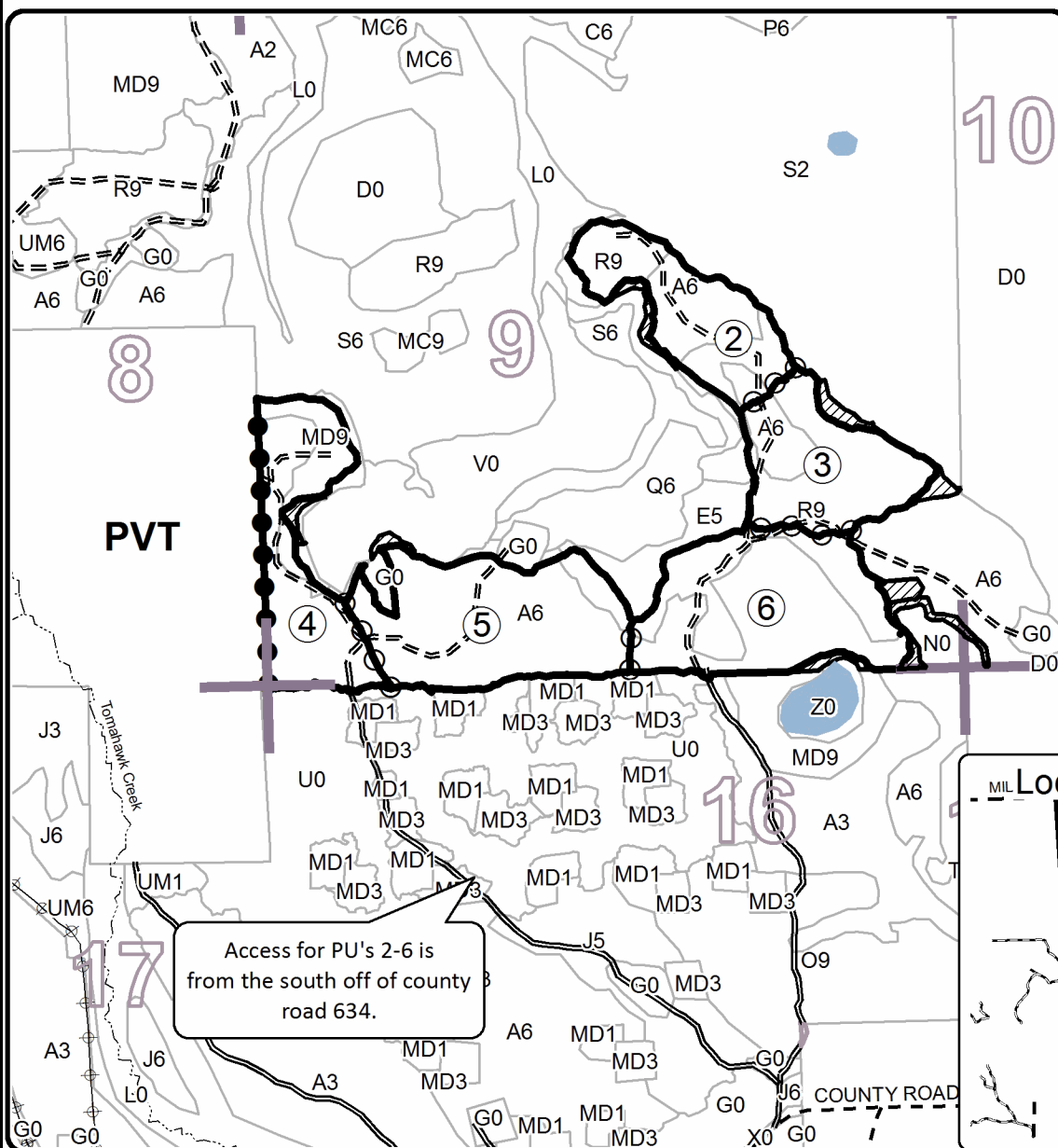
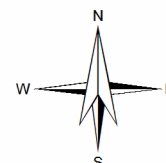
Cover Type				Density			
A = Aspen	H = Hemlock	N = Marsh	U = Upland Brush	0 = Non Stocked	5 = Pole Timber Medium		
B = Paper Birch	J = Jack Pine	O = Oak	UM = Upland Mixed	1 = Seedling Sapling Poor	6 = Pole Timber Well		
C = Cedar	L = Lowland Brush	P = Lowland Poplar	V = Bog or Marsh	2 = Seedling Sapling Medium	7 = Saw Timber Poor		
D = Treed Bog	LM = Lowland Mixed	Q = Mixed Swamp Conifer	W = White Pine	3 = Seedling Sapling Well	8 = Saw Timber Medium		
E = Swamp Hdwoods	M = Mpl, Bch, Brch	R = Red Pine	X = Non Stocked	4 = Pole Timber Poor	9 = Saw Timber Well		
F = Spruce Fir	MC = Mixed Conifer	S = Black Spruce	Z = Water				
G = Grass	MD = Mixed Deciduous	T = Tamarack					

PU	Acres	PU	Acres
1	23.3	5	38.2
2	23.1	6	39.2
3	24.2		
4	26.1		

Corner in the Swamp Mix

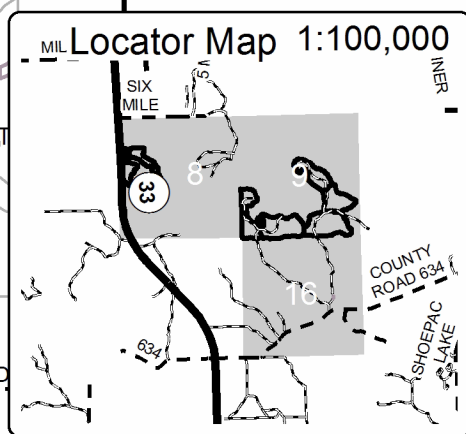
Compartment 117

174.1 Acres

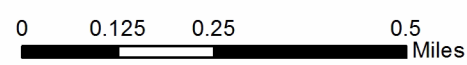


Legend

- Against State (Red)
- Private Line (Blue)
- Payment Unit (Yellow)
- ▨ Retention Area (Red)
- Stand Boundaries
- Lakes
- Payment Unit
- == Secondary Road
- == Forest Access Route
- - Gravel Road
- Private Road
- ▨ Pipeline
- ⊕ Powerline
- ⊕ Pipeline
- ⊕ Powerline
- ⋯ Perennial River
- Section Corner



Access for PU's 2-6 is from the south off of county road 634.



Plains Hwy Aspen (54-026-21)
T35N, R03E, SEC. 36; Presque Isle COUNTY

In response to the notice of sale to be held 10:00 a.m. (local time) on August 16, 2022, I am hereby submitting my sealed bid (firm offer) for the following forest products to be cut. Bids for individual species must be at or above the advertised price. All non-responsive bid forms may be rejected.

<u>PRODUCTS & SPECIES</u>	<u>ESTIMATED VOLUME*</u>	<u>ADVERTISED PRICE</u>	<u>BID PRICE/UNIT</u>
Sawtimber			
B. T. Aspen	52.0 MBF	\$ 91.00/MBF	\$ _____
Red Oak	163.8 MBF	\$ 153.00/MBF	\$ _____
Red Pine	65.0 MBF	\$ 122.00/MBF	\$ _____
Pulpwood			
B. T. Aspen	355 Cords	\$ 24.60/Cord	\$ _____
Jack Pine	19 Cords	\$ 9.25/Cord	\$ _____
Mixed Hardwood	60 Cords	\$ 19.20/Cord	\$ _____
Red Oak	309 Cords	\$ 36.50/Cord	\$ _____
Red Pine	47 Cords	\$ 43.25/Cord	\$ _____
White Pine	14 Cords	\$ 15.35/Cord	\$ _____

*The volumes are statistically estimated within plus (+) or minus (-) 7.32 percent at 95% confidence level. These estimated volumes are final and not subject to adjustment. Prospective bidders are urged to examine this timber and to make their own estimates of quantity and quality.

I understand that any or all bids may be rejected. All bids must be signed and all bid items must be bid or the bid form may be rejected. I also understand that consideration and awarding a contract will be based upon my past performance and ability to complete the contract based upon equipment and staffing subject to my control.

FEDERAL ID: ____ - ____ - ____ or SOCIAL SECURITY NUMBER: ____ - ____ - ____

Company or individual bidding: _____

Company representative's name: _____

Address: _____

City: _____ State: _____ Zip: _____

IF AVAILABLE, PLEASE PLACE THE PERSONALIZED LABEL FROM YOUR PROSPECTUS IN THE ABOVE BOX.

Individual or company representative's signature: _____ Date: _____

Phone number : _____ Email (optional): _____

THE WINNING BIDDER MUST COMPLETE THE VERIFICATION OF WORKER'S DISABILITY COMPENSATION ACT COMPLIANCE (ON REVERSE SIDE IF DOUBLE SIDED) WITHIN 21 DAYS OF SALE AWARD DATE



FOR DEPARTMENT USE ONLY	
Sale Number (XX - XXX - XX - XX)	
Forest Management Unit:	

TIMBER SALE VERIFICATION OF WORKER'S DISABILITY COMPENSATION ACT COMPLIANCE

As required by Act 317, P.A. 1969 (Worker's Compensation) and
Part 5 of Act 451 of 1994, as amended.

VERIFICATION OF WORKER'S DISABILITY COMPENSATION ACT COMPLIANCE

- This verification must be completed and submitted within 21 days of contract award and prior to the issuance of the timber sale contract.
- In addition, if boxes 2B or 2C are checked, then Notice of Exclusion or Certificate of Insurance must be submitted within twenty-one (21) days of the contract award and prior to the issuance of the timber sale contract.
- All information must be typed or printed except for written signatures.

Please Check Appropriate Categories:

1. My business is organized as (you **must** check one of the boxes below):
 - A. Sole Proprietorship (individual)
 - B. Partnership
 - C. Corporation
2. You **must** check one of the boxes below:
 - A. I certify my business is a sole proprietorship and it has no employees but the sole proprietor. I am not subject to the Worker's Compensation Laws.
 - B. I certify my business has satisfied its obligation to the Worker's Compensation Act through the use of an approved Notice of Exclusion (BWC-337, Rev. 5/96). I will provide a copy of the Notice of Exclusion within 21 days of the contract award. (For questions or a copy of the BWC-337, please call the Worker's Compensation Bureau at 517-322-1195).
 - C. I certify my business has a Worker's Compensation Policy. I will provide an original Certificate of Insurance within twenty-one (21) days of the contract award.
3. If you have checked item 2(A) or 2(B), you **must** indicate the number of **both** full-time and part-time employees, other than yourself, including family members and active partners (if none, you must enter "0").

_____ Full-time Employees

_____ Part-time Employees

Name of Business		Federal ID (or) Social Security No.	
Address		Telephone ()	
City	State	ZIP	

I hereby certify that the above information is true and correct. I agree to notify the Michigan DNR of any changes that occur in factors affecting my coverage during any of my present and future operations.

Signature of Owner or Authorized Representative

Title

Date

Please complete the "SEALED BID" information on the next page

Molski Bridge Mix (54-027-21)
T33N, R05E, SEC. 28; T33N, R05E, SEC. 29; Presque Isle COUNTY

In response to the notice of sale to be held 10:00 a.m. (local time) on August 16, 2022, I am hereby submitting my sealed bid (firm offer) for the following forest products to be cut. Bids for individual species must be at or above the advertised price. All non-responsive bid forms may be rejected.

<u>PRODUCTS & SPECIES</u>	<u>ESTIMATED VOLUME*</u>	<u>ADVERTISED PRICE</u>	<u>BID PRICE/UNIT</u>
Sawtimber			
Basswood	107.4 MBF	\$ 60.00/MBF	\$ _____
Beech	52.6 MBF	\$ 52.00/MBF	\$ _____
Mixed Aspen	443.9 MBF	\$ 107.00/MBF	\$ _____
Paper Birch	9.7 MBF	\$ 45.00/MBF	\$ _____
Red Maple	155.1 MBF	\$ 55.00/MBF	\$ _____
Sugar Maple	73.7 MBF	\$ 276.00/MBF	\$ _____
Pulpwood			
Balsam Fir	321 Cords	\$ 18.90/Cord	\$ _____
Black Spruce	7 Cords	\$ 8.95/Cord	\$ _____
Mixed Aspen	2,390 Cords	\$ 29.05/Cord	\$ _____
Mixed Hardwood	3,133 Cords	\$ 22.65/Cord	\$ _____
N. White Cedar	7 Cords	\$ 19.50/Cord	\$ _____

*The volumes are statistically estimated within plus (+) or minus (-) 4.34 percent at 95% confidence level. These estimated volumes are final and not subject to adjustment. Prospective bidders are urged to examine this timber and to make their own estimates of quantity and quality.

I understand that any or all bids may be rejected. All bids must be signed and all bid items must be bid or the bid form may be rejected. I also understand that consideration and awarding a contract will be based upon my past performance and ability to complete the contract based upon equipment and staffing subject to my control.

FEDERAL ID: _____ or SOCIAL SECURITY NUMBER: _____

Company or individual bidding: _____

Company representative's name: _____

Address: _____

City: _____ State: _____ Zip: _____

IF AVAILABLE, PLEASE PLACE THE PERSONALIZED LABEL FROM YOUR PROSPECTUS IN THE ABOVE BOX.

Individual or company representative's signature: _____ Date: _____

Phone number : _____ Email (optional): _____

THE WINNING BIDDER MUST COMPLETE THE VERIFICATION OF WORKER'S DISABILITY COMPENSATION ACT COMPLIANCE (ON REVERSE SIDE IF DOUBLE SIDED) WITHIN 21 DAYS OF SALE AWARD DATE



FOR DEPARTMENT USE ONLY
Sale Number (XX - XXX - XX - XX)
Forest Management Unit:

TIMBER SALE VERIFICATION OF WORKER'S DISABILITY COMPENSATION ACT COMPLIANCE

*As required by Act 317, P.A. 1969 (Worker's Compensation) and
Part 5 of Act 451 of 1994, as amended.*

VERIFICATION OF WORKER'S DISABILITY COMPENSATION ACT COMPLIANCE

- This verification must be completed and submitted within 21 days of contract award and prior to the issuance of the timber sale contract.
- In addition, if boxes 2B or 2C are checked, then Notice of Exclusion or Certificate of Insurance must be submitted within twenty-one (21) days of the contract award and prior to the issuance of the timber sale contract.
- All information must be typed or printed except for written signatures.

Please Check Appropriate Categories:

1. My business is organized as (you **must** check one of the boxes below):
 - A. Sole Proprietorship (individual)
 - B. Partnership
 - C. Corporation

2. You **must** check one of the boxes below:
 - A. I certify my business is a sole proprietorship and it has no employees but the sole proprietor. I am not subject to the Worker's Compensation Laws.
 - B. I certify my business has satisfied its obligation to the Worker's Compensation Act through the use of an approved Notice of Exclusion (BWC-337, Rev. 5/96). I will provide a copy of the Notice of Exclusion within 21 days of the contract award. (For questions or a copy of the BWC-337, please call the Worker's Compensation Bureau at 517-322-1195).
 - C. I certify my business has a Worker's Compensation Policy. I will provide an original Certificate of Insurance within twenty-one (21) days of the contract award.

3. If you have checked item 2(A) or 2(B), you **must** indicate the number of **both** full-time and part-time employees, other than yourself, including family members and active partners (if none, you must enter "0").

_____ Full-time Employees

_____ Part-time Employees

Name of Business		Federal ID (or) Social Security No.	
Address		Telephone ()	
City	State	ZIP	

I hereby certify that the above information is true and correct. I agree to notify the Michigan DNR of any changes that occur in factors affecting my coverage during any of my present and future operations.

Signature of Owner or Authorized Representative

Title

Date

Please complete the "SEALED BID" information on the next page

Rainy River Mix (54-028-21)

T35N, R02E, SEC. 16; T35N, R02E, SEC. 18; T35N, R02E, SEC. 4; T35N, R02E,

In response to the notice of sale to be held 10:00 a.m. (local time) on August 16, 2022, I am hereby submitting my sealed bid (firm offer) for the following forest products to be cut. Bids for individual species must be at or above the advertised price. All non-responsive bid forms may be rejected.

<u>PRODUCTS & SPECIES</u>	<u>ESTIMATED VOLUME*</u>	<u>ADVERTISED PRICE</u>	<u>BID PRICE/UNIT</u>
Sawtimber			
B. T. Aspen	3.7 MBF	\$ 115.00/MBF	\$ _____
N. White Cedar	60.6 MBF	\$ 42.00/MBF	\$ _____
Red Maple	1.0 MBF	\$ 59.00/MBF	\$ _____
Red Oak	159.0 MBF	\$ 195.00/MBF	\$ _____
Red Pine	356.7 MBF	\$ 155.00/MBF	\$ _____
Sugar Maple	1.6 MBF	\$ 297.00/MBF	\$ _____
White Oak	22.1 MBF	\$ 113.00/MBF	\$ _____
White Pine	131.6 MBF	\$ 81.00/MBF	\$ _____
Pulpwood			
Balsam Fir	185 Cords	\$ 20.35/Cord	\$ _____
Jack Pine	41 Cords	\$ 11.80/Cord	\$ _____
Mixed Aspen	617 Cords	\$ 31.30/Cord	\$ _____
Mixed Hardwood	201 Cords	\$ 24.40/Cord	\$ _____
Mixed Oak	409 Cords	\$ 46.45/Cord	\$ _____
Mixed Spruce	107 Cords	\$ 9.65/Cord	\$ _____
N. White Cedar	376 Cords	\$ 21.00/Cord	\$ _____
Red Pine	550 Cords	\$ 55.10/Cord	\$ _____
White Pine	204 Cords	\$ 19.55/Cord	\$ _____

*The volumes are statistically estimated within plus (+) or minus (-) 7.42 percent at 95% confidence level. These estimated volumes are final and not subject to adjustment. Prospective bidders are urged to examine this timber and to make their own estimates of quantity and quality.

I understand that any or all bids may be rejected. All bids must be signed and all bid items must be bid or the bid form may be rejected. I also understand that consideration and awarding a contract will be based upon my past performance and ability to complete the contract based upon equipment and staffing subject to my control.

FEDERAL ID: _____ or SOCIAL SECURITY NUMBER: _____

Company or individual bidding: _____

Company representative's name: _____

Address: _____

City: _____ State: _____ Zip: _____

IF AVAILABLE, PLEASE PLACE THE PERSONALIZED LABEL FROM YOUR PROSPECTUS IN THE ABOVE BOX.

Individual or company representative's signature: _____ Date: _____

Phone number : _____ Email (optional): _____

THE WINNING BIDDER MUST COMPLETE THE VERIFICATION OF WORKER'S DISABILITY COMPENSATION ACT COMPLIANCE (ON REVERSE SIDE IF DOUBLE SIDED) WITHIN 21 DAYS OF SALE AWARD DATE



FOR DEPARTMENT USE ONLY
Sale Number (XX - XXX - XX - XX)
Forest Management Unit:

TIMBER SALE VERIFICATION OF WORKER'S DISABILITY COMPENSATION ACT COMPLIANCE

*As required by Act 317, P.A. 1969 (Worker's Compensation) and
Part 5 of Act 451 of 1994, as amended.*

VERIFICATION OF WORKER'S DISABILITY COMPENSATION ACT COMPLIANCE

- This verification must be completed and submitted within 21 days of contract award and prior to the issuance of the timber sale contract.
- In addition, if boxes 2B or 2C are checked, then Notice of Exclusion or Certificate of Insurance must be submitted within twenty-one (21) days of the contract award and prior to the issuance of the timber sale contract.
- All information must be typed or printed except for written signatures.

Please Check Appropriate Categories:

1. My business is organized as (you **must** check one of the boxes below):
 - A. Sole Proprietorship (individual)
 - B. Partnership
 - C. Corporation
2. You **must** check one of the boxes below:
 - A. I certify my business is a sole proprietorship and it has no employees but the sole proprietor. I am not subject to the Worker's Compensation Laws.
 - B. I certify my business has satisfied its obligation to the Worker's Compensation Act through the use of an approved Notice of Exclusion (BWC-337, Rev. 5/96). I will provide a copy of the Notice of Exclusion within 21 days of the contract award. (For questions or a copy of the BWC-337, please call the Worker's Compensation Bureau at 517-322-1195).
 - C. I certify my business has a Worker's Compensation Policy. I will provide an original Certificate of Insurance within twenty-one (21) days of the contract award.
3. If you have checked item 2(A) or 2(B), you **must** indicate the number of **both** full-time and part-time employees, other than yourself, including family members and active partners (if none, you must enter "0").

_____ Full-time Employees

_____ Part-time Employees

Name of Business		Federal ID (or) Social Security No.	
Address		Telephone ()	
City	State	ZIP	

I hereby certify that the above information is true and correct. I agree to notify the Michigan DNR of any changes that occur in factors affecting my coverage during any of my present and future operations.

Signature of Owner or Authorized Representative

Title

Date

Please complete the "SEALED BID" information on the next page

Corner in the Swamp Mix (54-029-21)
T33N, R02E, SEC. 16; T33N, R02E, SEC. 8; T33N, R02E, SEC. 9; Presque Isle

In response to the notice of sale to be held 10:00 a.m. (local time) on August 16, 2022, I am hereby submitting my sealed bid (firm offer) for the following forest products to be cut. Bids for individual species must be at or above the advertised price. All non-responsive bid forms may be rejected.

<u>PRODUCTS & SPECIES</u>	<u>ESTIMATED VOLUME*</u>	<u>ADVERTISED PRICE</u>	<u>BID PRICE/UNIT</u>
Sawtimber			
Mixed Aspen	128.1 MBF	\$ 112.00/MBF	\$ _____
N. White Cedar	6.8 MBF	\$ 41.00/MBF	\$ _____
Paper Birch	8.7 MBF	\$ 47.00/MBF	\$ _____
Red Maple	74.3 MBF	\$ 57.00/MBF	\$ _____
Red Oak	203.8 MBF	\$ 189.00/MBF	\$ _____
Red Pine	931.1 MBF	\$ 151.00/MBF	\$ _____
White Pine	881.9 MBF	\$ 79.00/MBF	\$ _____
Pulpwood			
Balsam Fir	288 Cords	\$ 19.80/Cord	\$ _____
Mixed Aspen	1,807 Cords	\$ 30.40/Cord	\$ _____
Mixed Hardwood	1,002 Cords	\$ 23.70/Cord	\$ _____
N. White Cedar	79 Cords	\$ 20.40/Cord	\$ _____
Red Pine	194 Cords	\$ 53.50/Cord	\$ _____
White Pine	308 Cords	\$ 18.95/Cord	\$ _____
White Spruce	24 Cords	\$ 9.35/Cord	\$ _____

*The volumes are statistically estimated within plus (+) or minus (-) 5.94 percent at 95% confidence level. These estimated volumes are final and not subject to adjustment. Prospective bidders are urged to examine this timber and to make their own estimates of quantity and quality.

I understand that any or all bids may be rejected. All bids must be signed and all bid items must be bid or the bid form may be rejected. I also understand that consideration and awarding a contract will be based upon my past performance and ability to complete the contract based upon equipment and staffing subject to my control.

FEDERAL ID: _____ - _____ or SOCIAL SECURITY NUMBER: _____ - _____ - _____

Company or individual bidding: _____

Company representative's name: _____

Address: _____

City: _____ State: _____ Zip: _____

IF AVAILABLE, PLEASE PLACE THE PERSONALIZED LABEL FROM YOUR PROSPECTUS IN THE ABOVE BOX.

Individual or company representative's signature: _____ Date: _____

Phone number : _____ Email (optional): _____

THE WINNING BIDDER MUST COMPLETE THE VERIFICATION OF WORKER'S DISABILITY COMPENSATION ACT COMPLIANCE (ON REVERSE SIDE IF DOUBLE SIDED) WITHIN 21 DAYS OF SALE AWARD DATE



FOR DEPARTMENT USE ONLY
Sale Number (XX - XXX - XX - XX)
Forest Management Unit:

TIMBER SALE VERIFICATION OF WORKER'S DISABILITY COMPENSATION ACT COMPLIANCE

*As required by Act 317, P.A. 1969 (Worker's Compensation) and
Part 5 of Act 451 of 1994, as amended.*

VERIFICATION OF WORKER'S DISABILITY COMPENSATION ACT COMPLIANCE

- This verification must be completed and submitted within 21 days of contract award and prior to the issuance of the timber sale contract.
- In addition, if boxes 2B or 2C are checked, then Notice of Exclusion or Certificate of Insurance must be submitted within twenty-one (21) days of the contract award and prior to the issuance of the timber sale contract.
- All information must be typed or printed except for written signatures.

Please Check Appropriate Categories:

1. My business is organized as (you **must** check one of the boxes below):
 - A. Sole Proprietorship (individual)
 - B. Partnership
 - C. Corporation

2. You **must** check one of the boxes below:
 - A. I certify my business is a sole proprietorship and it has no employees but the sole proprietor. I am not subject to the Worker's Compensation Laws.
 - B. I certify my business has satisfied its obligation to the Worker's Compensation Act through the use of an approved Notice of Exclusion (BWC-337, Rev. 5/96). I will provide a copy of the Notice of Exclusion within 21 days of the contract award. (For questions or a copy of the BWC-337, please call the Worker's Compensation Bureau at 517-322-1195).
 - C. I certify my business has a Worker's Compensation Policy. I will provide an original Certificate of Insurance within twenty-one (21) days of the contract award.

3. If you have checked item 2(A) or 2(B), you **must** indicate the number of **both** full-time and part-time employees, other than yourself, including family members and active partners (if none, you must enter "0").

_____ Full-time Employees

_____ Part-time Employees

Name of Business		Federal ID (or) Social Security No.	
Address		Telephone ()	
City	State	ZIP	

I hereby certify that the above information is true and correct. I agree to notify the Michigan DNR of any changes that occur in factors affecting my coverage during any of my present and future operations.

Signature of Owner or Authorized Representative

Title

Date

Please complete the "SEALED BID" information on the next page

Low Intensity Red Pine (54-015-21)
T35N, R03E, SEC. 35; T35N, R03E, SEC. 36; Presque Isle COUNTY

In response to the notice of sale to be held 10:00 a.m. (local time) on August 16, 2022, I am hereby submitting my sealed bid (firm offer) for the following forest products to be cut. Bids for individual species must be at or above the advertised price. All non-responsive bid forms may be rejected.

<u>PRODUCTS & SPECIES</u>	<u>ESTIMATED VOLUME*</u>	<u>ADVERTISED PRICE</u>	<u>BID PRICE/UNIT</u>
Sawtimber			
Red Pine	778.2 MBF	\$ 122.00/MBF	\$ _____
Pulpwood			
Red Oak	13 Cords	\$ 36.50/Cord	\$ _____
Red Pine	835 Cords	\$ 43.25/Cord	\$ _____
White Pine	6 Cords	\$ 15.35/Cord	\$ _____

*The volumes are statistically estimated within plus (+) or minus (-) 9.08 percent at 95% confidence level. These estimated volumes are final and not subject to adjustment. Prospective bidders are urged to examine this timber and to make their own estimates of quantity and quality.

I understand that any or all bids may be rejected. All bids must be signed and all bid items must be bid or the bid form may be rejected. I also understand that consideration and awarding a contract will be based upon my past performance and ability to complete the contract based upon equipment and staffing subject to my control.

FEDERAL ID: _____ - _____ or SOCIAL SECURITY NUMBER: _____ - _____ - _____

Company or individual bidding: _____

Company representative's name: _____

Address: _____

City: _____ State: _____ Zip: _____

IF AVAILABLE, PLEASE PLACE THE PERSONALIZED LABEL FROM YOUR PROSPECTUS IN THE ABOVE BOX.

Individual or company representative's signature: _____ Date: _____

Phone number : _____ Email (optional): _____

THE WINNING BIDDER MUST COMPLETE THE VERIFICATION OF WORKER'S DISABILITY COMPENSATION ACT COMPLIANCE (ON REVERSE SIDE IF DOUBLE SIDED) WITHIN 21 DAYS OF SALE AWARD DATE



FOR DEPARTMENT USE ONLY	
Sale Number (XX - XXX - XX - XX)	
Forest Management Unit:	

TIMBER SALE VERIFICATION OF WORKER'S DISABILITY COMPENSATION ACT COMPLIANCE

As required by Act 317, P.A. 1969 (Worker's Compensation) and
Part 5 of Act 451 of 1994, as amended.

VERIFICATION OF WORKER'S DISABILITY COMPENSATION ACT COMPLIANCE

- This verification must be completed and submitted within 21 days of contract award and prior to the issuance of the timber sale contract.
- In addition, if boxes 2B or 2C are checked, then Notice of Exclusion or Certificate of Insurance must be submitted within twenty-one (21) days of the contract award and prior to the issuance of the timber sale contract.
- All information must be typed or printed except for written signatures.

Please Check Appropriate Categories:

1. My business is organized as (you **must** check one of the boxes below):
 - A. Sole Proprietorship (individual)
 - B. Partnership
 - C. Corporation
2. You **must** check one of the boxes below:
 - A. I certify my business is a sole proprietorship and it has no employees but the sole proprietor. I am not subject to the Worker's Compensation Laws.
 - B. I certify my business has satisfied its obligation to the Worker's Compensation Act through the use of an approved Notice of Exclusion (BWC-337, Rev. 5/96). I will provide a copy of the Notice of Exclusion within 21 days of the contract award. (For questions or a copy of the BWC-337, please call the Worker's Compensation Bureau at 517-322-1195).
 - C. I certify my business has a Worker's Compensation Policy. I will provide an original Certificate of Insurance within twenty-one (21) days of the contract award.
3. If you have checked item 2(A) or 2(B), you **must** indicate the number of **both** full-time and part-time employees, other than yourself, including family members and active partners (if none, you must enter "0").

_____ Full-time Employees

_____ Part-time Employees

Name of Business		Federal ID (or) Social Security No.	
Address		Telephone ()	
City	State	ZIP	

I hereby certify that the above information is true and correct. I agree to notify the Michigan DNR of any changes that occur in factors affecting my coverage during any of my present and future operations.

Signature of Owner or Authorized Representative

Title

Date

Please complete the "SEALED BID" information on the next page