



**DEPARTMENT OF NATURAL RESOURCES
STATE OF MICHIGAN
TIMBER SALE PROSPECTUS #6985**

SCHEDULED SALE DATE AND TIME: 3:00 p.m. (local time) on June 29, 2022.

LOCATION: BALDWIN OFFICE, 2468 W 24TH STREET, BALDWIN, MI 49304.

PROSPECTUS NOTE: The bidder is advised to inspect the sale area and review the location, estimated volumes, operating costs and contract terms of proposed sales. Please be aware that some landowners may request 60 days or more notice for access across their land.

Notice is hereby given that bids will be received by the Unit Manager, CADILLAC MANAGEMENT UNIT, for certain timber on the following described lands:

North Manton Aspen (63-004-21) / T24N, R09W, SEC. 13, S1/2SW.

T24N, R09W, SEC. 22, NESE.

T24N, R09W, SEC. 23, NENE,SW.

T24N, R09W, SEC. 24, NW,N1/2SW.

Wexford County, Advertised Price \$85,576.75, 144.9 Acres, Aspen, White Pine.

SALE NOTE: All units of volume listed for this sale were estimated using the Inventory Manager computer program and the new Michigan taper model.

A recreation site such as a trail, pathway, or campground is within the sale area or the vicinity. Certain restrictions/specifications may be applicable including time restrictions.

Jeffs Far Reach Mix (63-012-21) / T22N, R05W, SEC. 11, S1/2SE.

T22N, R05W, SEC. 12, NW,NE,N1/2SW,SWSW,NWSE.

T22N, R05W, SEC. 13, N1/2SE.

T22N, R05W, SEC. 13, NWNW,S1/2NW,S1/2NE,N1/2SW.

T22N, R05W, SEC. 14, N1/2NE,SENE,W1/2SE.

Missaukee County, Advertised Price \$34,809.00, 218.0 Acres, Jack Pine, Red Pine.

SALE NOTE: All units of volume listed for this sale were estimated using the Inventory Manager computer program and the new Michigan taper model.

80 Aspen Mix (63-024-21) / T24N, R05W, SEC. 16, NWNW,S1/2NW,S1/2NE,NESW,N1/2SE.

T24N, R05W, SEC. 17, SENW,S1/2NE,NESW,N1/2SE.

Missaukee County, Advertised Price \$112,921.35, 176.7 Acres, Aspen, Hardwood.

SALE NOTE: All units of volume listed for this sale were estimated using the Inventory Manager computer program and the new Michigan taper model.

Raymond's Ridge Jack (63-030-21) / T22N, R05W, SEC. 13, SENW,SW.

T22N, R05W, SEC. 23, SENE,NESE.

T22N, R05W, SEC. 24, NW,NWSW.

Missaukee County, Advertised Price \$16,857.85, 104.0 Acres, Jack Pine, Hardwood.

SALE NOTE: All units of volume listed for this sale were estimated using the Inventory Manager computer program and the new Michigan taper model.

Seasonally wet access to Sale Area.

See sale spec 5.4.5 for information on saturated soils.

See sale spec 7.1.5 for information on deteriorating timber.

See sale spec 5.2.31 for information on landing locations.

See sale spec 4.1.12 about no new roads.

A recreation site such as a trail, pathway, or campground is within the sale area or the vicinity. Certain restrictions/specifications may be applicable including time restrictions.

BID INSTRUCTIONS (VER. 07/02/2018):

1. Scheduled Bid Location, Date, and Time (2/11)

Bids must be received by the Unit Manager, BALDWIN OFFICE, 2468 W 24th Street, Baldwin, MI 49304, no later than 3:00 p.m. (local time) on June 29, 2022. For further information concerning this sale, contact Joe Ventimglia at 231-878-0047 extension .

2. Bidder's Qualifications (5/16)

Purchaser shall obtain workers compensation insurance to cover claims under Michigan's Worker's Disability Compensation Act of 1969 or similar employee benefit act of any other state applicable to an employee. If all or part of a timber sale was prepared by a private contractor, the contractor and that contractor's company are not permitted to bid on the timber sale contract. Bids will not be accepted from individuals or companies appearing on the DNR/FRD No-Bid List. This list contains the names of purchasers who previously failed to execute a contract within 21-days or who have a history of poor performance.

3. Preparation of Sealed Bids (5/16)

Bid Forms may be completed online thru Michigan DNR Timber Sale Online Bidding (OLB) at www.michigan.gov/timberbidding or by completing the hardcopy Bid Form found in the Timber Sale Prospectus . Hardcopy Bid Forms shall be manually signed in ink. Registration in OLB is considered your 'signature' for all bids submitted thru that system. Bid prices must be entered for each species and product in the Bid Price column for all material subject to bidding and all fill-in blanks must be completed. If erasures or other changes appear on the hardcopy Bid Form, each erasure or change must be initialed by the person signing the bid.

4. Submission of Sealed Bids (5/16)

Bid forms may be obtained from the Unit Manager or thru OLB. Bids may be submitted hardcopy or thru OLB. All hardcopy bids must be submitted on the bid form and in an envelope clearly identified as described in this section. NOTE: Only one bid form per bid envelope. Sealed bids must be submitted to the Unit office designated in the prospectus and must be submitted at or prior to the time established in the prospectus. The envelope should show on the outside (a) the sale name or number and (b) the date and time of bid opening, as shown in the prospectus. Bids received after the time specified in the sale prospectus are late bids and will be rejected.

It is possible for a bidder to submit multiple bids on a single sale. For example, a bid may be submitted hardcopy and a bid may be submitted thru OLB. Or, two bidders from the same company could both submit bids on the same sale. If this were to happen, the State would accept all bids received and award the contract accordingly. All bidding and contractual requirements would apply to all bids received.

5. Public Opening of Sealed Bids (7/16)

If conditions permit, the sealed bids will be publicly opened and posted at the time and place set in the prospectus.

If a bidder, present at a bid opening, has submitted bids on more than one sale, that bidder may withdraw their unopened bid envelopes or announce the withdrawal of their online bid after being declared the successful bidder on one sale.

6. Award of Contract (1/11)

Award of the contract will be made to the Bidder whose bid, conforming to the prospectus, is most advantageous to the State of Michigan on the basis of total value at rates bid for the estimated quantities. The State reserves the right to reject any bid or waive any minor irregularity in bids received. A written award mailed (or otherwise furnished) to the successful Bidder shall be deemed to result in a binding contract without further action by either party.

7. Down Payment (1/11)

The Bidder to whom award is made must make a down payment within 21 days of the sale award. The amount of the down payment will be calculated as shown in the Bond and Payment Schedule of this prospectus. Only cash may be used to meet this requirement.

8. Performance Security (1/11)

As guarantee of faithful performance, a cash bond, certificate of deposit, surety bond or irrevocable letter of credit (LOC) is required within 21 days of the sale award. The amount of the performance security is shown in the Bond and

Payment Schedule of this prospectus. If an LOC or surety is used, the coverage must extend for at least 6 months beyond the contract expiration.

9. Timber Sale Contract (7/18)

Additional conditions and requirements common to all timber sales are listed on the timber sale contract (R4031) and are available on line at www.michigan.gov/timber. Contact the Unit Manager for additional information or a sample contract. Within 21 days of the date of the award letter, the bidder must sign the contract and provide the required down payment, performance security, and verification of worker's disability compensation. The down payment and performance security shall be in accordance with the provisions of the timber sale contract, in the sums stated in this prospectus. If these actions are not taken, then the Bidder, the Bidder's corporation, and the corporation's principals may not be permitted to bid on State timber sales for a period of 3 months after the first offense, 6 months after the second offense, and 1 year after the third offense. An offense will only be counted against the Bidder for 5 years. In addition, the Bidder certifies that if awarded this contract, the Bidder will complete the timber sale contract in accordance with its terms and any modifications thereof including requirements to purchase, cut, and remove the included timber by the expiration date.

Payment Unit values in the State Forest Timber Sale Contract are calculated based on the advertised value of the Payment Unit as a percentage of the total advertised value of the contract. The advertised value of each Payment Unit is given in the Description of Timber by Payment Unit table on the Timber Sale Information page. For example, if the value of Payment Unit 1 is advertised as \$1,500 and the total Timber Sale value is advertised as \$10,000, the contract price for Payment Unit 1 will be 15% of the total bid price ($\$1,500/\$10,000 * 100$).

10. Disclaimer of Estimates and Bidder's Warranty of Inspection (7/16)

Before submitting this bid, the Bidder is advised and cautioned to inspect the sale area, review the requirements of the sale contract, and take other steps as may be reasonably necessary to ascertain the location, estimated volumes, construction estimates, and operating costs of the proposed sale. Failure to do so will not relieve the Bidder from responsibility for completing the contract.

The Bidder warrants that this bid is submitted solely on the basis of the Bidder's examination and inspection of the quality and quantity of the timber offered for sale and the Bidder's opinion of the value thereof and the costs of recovery. No reliance should be placed on the State of Michigan's estimates of timber quality, quantity or costs of recovery. Bidder further acknowledges that the State of Michigan: (i) expressly disclaims any warranty of fitness of timber for any purpose; (ii) offers this timber as is without any warranty of quality (merchantability) or quantity and (iii) expressly disclaims any warranty as to the quantity or quality of timber sold.

11. Certification and Chain-of-Custody (10/14)

Unless otherwise indicated in the contract under section 7 – Other Conditions of the Sale Specific Conditions & Requirements, the area encompassed by this timber sale is certified to the standards of the Forest Stewardship Council (FSC) - Certificate #SCS-FM/COC-00090N and the Sustainable Forestry Initiative (SFI) - Certificate #NSF-SFIS-5Y031-SF5. Forest products from this sale may be delivered to the mill as "FSC 100% and / or SFI certified" as long as the contractor hauling the forest products is chain-of-custody (COC) certified or covered under a COC certificate from the destination mill. The purchaser is responsible for maintaining COC after leaving the sale area.

12. Good Neighbor Authority (GNA) Requirements (7/16)

If the name of this timber sales contains the acronym GNA, it is authorized by the Good Neighbor Authority (GNA) and covered by various agreements between the U.S. Forest Service and the State. The timber sale occurs on federal land and the following conditions apply:

GNA contracts on US Forest Service land will not be awarded to purchasers on the Federal list of excluded parties. The System for Award Management (SAM) will be checked for active excluded parties prior to award of contract. In addition, the Bidder to whom award is made must complete an Assurance Regarding Felony Conviction or Tax Delinquent Status for Corporate Applicants (AD-3031).

13. Good Neighbor Authority (GNA) Requirements, con't (9/16)

Bidder certifies, by signing this bid form, that to the best of Bidder's knowledge that the following representations are accurate and complete.

- a. That the Bidder and its principals are not presently debarred, suspended, proposed for debarment, declared ineligible, or voluntary excluded from timber sales (covered transactions) by any Federal department or agency.
- b. That the Bidder and its principals have not within a 3-year period preceding this bid been convicted of or had a civil judgment rendered against them for commission of fraud or a criminal offense in connection with obtaining , attempting to obtain, or performing a public (Federal, State, or local) transaction or contract under a public transaction; violation of Federal or State antitrust statutes or commission of embezzlement, theft, forgery, bribery, falsification or destruction of records, making false statements, or receiving stolen property.
- c. That the Bidder and its principals are not presently indicted for or otherwise criminally or civilly charged by a governmental entity (Federal, State, or local) with commission of any of the offenses enumerated in paragraph b of this certification.
- d. That the Bidder and its principals have not within a 3-year period preceding this bid had one or more public transactions (Federal, State, or local) terminated for breach or default of a timber or forest product contract.

Bidders that cannot certify this requirement, in whole or in part, shall submit an explanation with their bid.

DAN EICHINGER
Director

TIMBER SALE INFORMATION

North Manton Aspen (63-004-21)

T24N, R09W, SEC. 13; T24N, R09W, SEC. 22; T24N, R09W, SEC. 23; T24N, R09W, SEC. 24.

Wexford County (Advertised Price \$85,576.75)

SALE NOTE: All units of volume listed for this sale were estimated using the Inventory Manager computer program and the new Michigan taper model.

A recreation site such as a trail, pathway, or campground is within the sale area or the vicinity. Certain restrictions/specifications may be applicable including time restrictions.

A timber sale contract for this lump sum, sealed bid timber sale will be awarded to the responsible bidder offering the highest sealed bid price. All units of volume listed below were estimated using the Inventory Manager computer program and the new Michigan taper model. Bids must be at or above the following advertised price for each product and species:

<u>PRODUCTS & SPECIES</u>	<u>ESTIMATED UNITS*</u>	<u>ADVERTISED PRICE</u>
Sawtimber		
Mixed Aspen	365.5 MBF	\$ 73.00 / MBF
Red Maple	44.4 MBF	\$ 53.00 / MBF
Red Oak	12.4 MBF	\$ 131.00 / MBF
Red Pine	17.3 MBF	\$ 74.00 / MBF
White Pine	182.5 MBF	\$ 52.00 / MBF
Pulpwood		
Balsam Fir	50 Cords	\$ 7.70 / Cord
Jack Pine	48 Cords	\$ 8.70 / Cord
Mixed Aspen	1,974 Cords	\$ 17.15 / Cord
Mixed Hardwood	206 Cords	\$ 13.75 / Cord
Mixed Oak	49 Cords	\$ 20.25 / Cord
Red Pine	5 Cords	\$ 32.95 / Cord
White Pine	489 Cords	\$ 11.25 / Cord

* The total volume is statistically estimated within plus (+) or minus (-) 5.81 percent. There are an estimated 4,210 cords on this timber sale, plus or minus 245 cords at the 95% confidence level. The estimated units are final and not subject to adjustment. Prospective bidders are urged to examine this timber and to make their own estimates of quantity and quality.

BOND AND PAYMENT SCHEDULE:

1. A bond in the amount of \$4,279.00 to insure faithful performance of the conditions of the contract will be deposited by the successful bidder within 21 days of the sale award.
2. Cutting in any sale or unit without the required advance payment would be considered a trespass.
3. Total payment must be paid in advance or according to the following schedule :
 - (a) Ten percent (10%) of the sale value must be paid within 21 days of the sale award.
 - (b) The 10% down payment will be credited towards the first unit cut.
 - (c) Payment for each of the following units must be made before cutting begins in that unit:

PAYMENT UNIT NUMBER	PERCENT OF TOTAL SALE VALUE
01	8.8%
02	12.2%
03	36.9%
04	42.1%

4. If no cutting takes place, the 10% down payment will not be refunded.
5. Operations on the contract issued will terminate on 09/30/2024.

SALE STATISTICS

Volumes were calculated in cubic feet using the Michigan taper model. Cubic foot volume includes all wood inside bark for the product indicated. For display purposes, cubic feet were converted to cords and MBF using a simple conversion factor, e.g. 79 cubic feet per cord and 185 cubic feet per MBF. The cubic foot volumes are precise; the cords and MBF volumes are not. Cubic foot volume cannot be directly converted to cords or boards with precision.

SALE VOLUMES

The total estimated sale volume may not equal the sum of the species/products due to the nature of statistical calculations associated with double sampling methodology.

VOLUME			STATISTICAL RANGE IN CORDS	
TOTAL CUBIC FEET	TOTAL CORDS	PERCENT ERROR	MINIMUM	MAXIMUM
332,590	4,210	5.81%	3,965	4,455

VDU VOLUMES

A VDU is a Volume Determination Unit. Volumes and their associated statistics are calculated at the VDU level and summarized to the sale level. There is often a one to one relationship between a VDU and a Payment Unit, but not always, depending on the cruise design. Refer to the VDU TO PAYMENT UNIT table.

	VOLUME			RANGE IN CORDS	
VDU	TOTAL CUBIC FEET	TOTAL CORDS	PERCENT ERROR	MINIMUM	MAXIMUM
32	31,598	400	23.39%	306	494
44	44,761	567	15.54%	479	655
65	256,231	3,243	6.42%	3,035	3,452
TOTAL:	332,590	4,210		3,820	4,600

VDU TO PAYMENT UNIT

When a VDU is associated with more than one Payment Unit (PU), the VDU volumes are assigned to the PU based on acres of the VDU within the PU.

VDU	VDU ACRES	PU	PU ACRES
32	13.3	1	13.3
44	25.2	2	25.2
65	106.4	3	49.8
		4	56.6
TOTAL:	144.9		144.9

DESCRIPTION OF TIMBER BY PAYMENT UNIT (PU)

PU	MARKET GROUP	PRODUCT	QUANTITY	UNIT	ACRES	ADVERTISE PRICE
1	Mixed Aspen	Sawtimber	26.2	MBF	13.3	\$7,556.55
	<i>B. T. Aspen</i>		26.2	<i>MBF</i>		
	Red Maple		3.9	MBF		
	Red Oak		1.9	MBF		
	Balsam Fir	Pulpwood	30	Cords		
	Mixed Aspen		214	Cords		
	<i>B. T. Aspen</i>		214	<i>Cords</i>		
	Mixed Hardwood		73	Cords		
	<i>Black Cherry</i>		24	<i>Cords</i>		
	<i>Red Maple</i>		49	<i>Cords</i>		
	Mixed Oak		14	Cords		
	<i>White Oak</i>	<i>Sawtimber</i>	2.9	<i>MBF</i>		
	<i>Red Oak</i>	<i>Pulpwood</i>	5	<i>Cords</i>		
	<i>White Oak</i>		3	<i>Cords</i>		
2	Mixed Aspen	Sawtimber	18.5	MBF	25.2	\$10,481.85
	<i>B. T. Aspen</i>		18.5	<i>MBF</i>		
	Balsam Fir	Pulpwood	14	Cords		
	Mixed Aspen		462	Cords		
	<i>B. T. Aspen</i>		462	<i>Cords</i>		
	Mixed Hardwood		36	Cords		
	<i>Red Maple</i>		36	<i>Cords</i>		
	Mixed Oak		11	Cords		
	<i>Red Oak</i>		11	<i>Cords</i>		
	White Pine		34	Cords		
3	Mixed Aspen	Sawtimber	150.1	MBF	49.8	\$31,574.60
	<i>B. T. Aspen</i>		6.4	<i>MBF</i>		
	<i>Quaking Aspen</i>		143.7	<i>MBF</i>		
	Red Maple		19.0	MBF		
	Red Oak		4.9	MBF		
	Red Pine		8.1	MBF		
	White Pine		85.4	MBF		
	Balsam Fir	Pulpwood	3	Cords		
	Jack Pine		22	Cords		
	<i>Jack Pine</i>	<i>Sawtimber</i>	2.2	<i>MBF</i>		
	<i>Jack Pine</i>	<i>Pulpwood</i>	18	<i>Cords</i>		
	Mixed Aspen		607	Cords		
	<i>B. T. Aspen</i>		40	<i>Cords</i>		
	<i>Quaking Aspen</i>		567	<i>Cords</i>		
	Mixed Hardwood		45	Cords		
	<i>Black Cherry</i>		5	<i>Cords</i>		
	<i>Red Maple</i>		40	<i>Cords</i>		
	Mixed Oak		11	Cords		
	<i>Red Oak</i>		8	<i>Cords</i>		
	<i>White Oak</i>		3	<i>Cords</i>		
	Red Pine		2	Cords		
	White Pine		213	Cords		
	4	Mixed Aspen	Sawtimber	170.7		
<i>B. T. Aspen</i>			7.3	<i>MBF</i>		
<i>Quaking Aspen</i>			163.4	<i>MBF</i>		
Red Maple			21.5	MBF		
Red Oak			5.6	MBF		
Red Pine			9.2	MBF		
White Pine			97.1	MBF		
Balsam Fir		Pulpwood	3	Cords		
Jack Pine			26	Cords		
<i>Jack Pine</i>		<i>Sawtimber</i>	2.5	<i>MBF</i>		

DESCRIPTION OF TIMBER BY PAYMENT UNIT (PU), CON'T

PU	MARKET GROUP	PRODUCT	QUANTITY	UNIT	ACRES	ADVERTISE PRICE
4 con't	<i>Jack Pine</i>	<i>Pulpwood</i>	21	<i>Cords</i>		
	Mixed Aspen		691	<i>Cords</i>		
	<i>B. T. Aspen</i>		46	<i>Cords</i>		
	<i>Quaking Aspen</i>		645	<i>Cords</i>		
	Mixed Hardwood		52	<i>Cords</i>		
	<i>Black Cherry</i>		6	<i>Cords</i>		
	<i>Red Maple</i>		46	<i>Cords</i>		
	Mixed Oak		13	<i>Cords</i>		
	<i>Red Oak</i>		10	<i>Cords</i>		
	<i>White Oak</i>		3	<i>Cords</i>		
	Red Pine		3	<i>Cords</i>		
	White Pine		242	<i>Cords</i>		
TOTAL:			622.1	MBF		
TOTAL:			2,821	Cords		

Sale Specific Conditions & Requirements

Sale Name: North Manton Aspen

Sale Number: 63-004-21 Seq#: 2

1 - Sale Area

1.2 - Boundaries

1.2.1 - Painted boundaries (9/19)

The sale boundary and Payment Unit boundaries are marked with red and blue paint. Timber type edge will be used for interior portion of Payment Units 3 and 4 where mature aspen meets recent aspen regeneration (Marked as A3 on Timber Sale Map). Exterior sale boundary lines against private property are marked with blue paint. Exterior sale boundary lines against state are marked with red paint. Interior Payment Unit boundaries separating Payment Unit 3 and 4 will be 47 1/2 road. Retention patches are marked with red paint; no harvesting activities may occur within these areas (See Timber Sale Map for locations). The painted boundary line trees are not Included Timber and are to be protected.

2 - Timber Specifications

2.1 - Included Timber

2.1.1 - Clearcut unit(s) with unmerchantable trees (6/14)

Within Payment Unit(s) 2-4, cut all trees that are three (3) inches or more at DBH, except white pine that is 3 inches or less at DBH which should be protected as much as practical during sale operations. In addition, leave any green marked trees if present in these Payment Units. A retention island is present in Payment Unit 2 and is marked in red paint as shown on the Timber Sale Map.

2.1.2 - Clearcut unit(s) w/o unmerchantable trees (8/11)

Within Payment Unit(s) 1, cut all trees which meet minimum piece specifications in 2.2 Utilization, except leave all white pine regardless of merchantability. As well leave retention island marked in red and shown on Timber Sale Map.

3 - Payments

3.3 - Pre-measured Sales

3.3.4 - Dividing payment units (7/14)

Payment Unit(s) 3 and 4 may be divided at the request of the Purchaser and upon approval of the Unit Manager. Dividing Payment Units is a contract modification which requires a Timber Sale Contract Amendment. There will be only one division per Payment Unit.

4 - Transportation

4.1 - Construction

4.1.1 - Stream crossings, general (3/11)

All stream crossing structures will be temporary and therefore, shall be provided by the Purchaser, and must be removed upon completion of the sale. All permits for stream crossings will be provided by the DNR. In Payment Unit 2, the DNR has current plans to build new bridges over small streams on the snowmobile trail in upcoming years, but the exact timeframe is not known. If not in place by time of the sale, temporary crossings will be required to cross small streams as current bridges are too weak to support log trucks or skidder traffic.

4.1.12 - No new roads (1/12)

No new roads will be permitted in any Payment Unit. All operations are limited to existing roads. Skid trails only will be allowed.

4.2 - Maintenance

4.2.5 - Two wheel drive condition (2/04)

All existing trail roads on and adjacent to the sale area must be passable by two-wheel drive traffic for the duration of the sale.

5 - Operations

5.1 - Notification

5.1.1 - Pre-sale conference (10/16)

A pre-sale conference on site between the Purchaser and sale administrator is required prior to beginning any operations. The Unit Manager or his/her representative must be contacted at least 3 days in advance to schedule the conference.

5.1.4 - Post-sale conference (10/16)

A post-sale conference on site between the Purchaser and sale administrator is required 3 days prior to the completion of active logging operations to determine clean-up and repair of landings, road edges, and the fulfillment of other contract specifications.

5.2 - Conduct of Operations

5.2.1 - Slash

5.2.1.10 - No slash in openings (5/10)

No brush or logging debris is to be left in the maintained wildlife opening which is indicated by G0 on the Timber Sale Map. This applies to Payment Units 1 and 3. Any damage to the opening shall be repaired according to specifications of the Unit Manager or his/her representative.

5.2.3 - Operating Restrictions

5.2.3.11 - Coppice regeneration protection (4/10)

Timber harvesting in any Payment Unit must be completed before significant aspen sprouting occurs in that Payment Unit to minimize damage to the new regeneration.

5.2.4 - Dead and Down Creation

5.2.4.4 - Dead and down creation, grouse (6/18)

To encourage grouse and other wildlife, in Payment Unit(s) 1-4, leave one, 10" diameter or larger log-length (8 foot minimum) piece on the ground for every 4 acres. These trees will be evenly scattered throughout the Payment Unit, preferably at least two chains from any roads, two-tracks, or trails open to vehicles.

5.2.39 - ORV trail/route protection (4/18)

The ORV trail or route runs through Payment Unit 4 and is shown on the Timber Sale Map. Do not cut trees or damage posts with yellow ORV markers. All stumps within 5 feet of the trail must be cut flush with the ground. Maintain a 20-foot-wide slash, debris, and rut free zone daily using the ORV trail or route as the centerline. Do not run equipment down the ORV trail or route. Skidding across the trail or route may only occur in locations approved by the sale administrator.

5.2.41 - Snowmobile trail protection (9/11)

The snowmobile trail runs through all Payment Units of this sale and is shown on the Timber Sale Map. Do not cut or damage posts with orange trail markers or traffic control signs. If the trail is used, it must be maintained and restored to a condition equal to or better than before the sale. If the trail road is to be used for hauling during the snowmobile season, then a snow-covered base must be left on the trail. The snowmobile trail may only be crossed at right angles. Maintain a 20-foot-wide slash, debris, and rut free zone daily using the snowmobile trail as the centerline. No decking of forest products will be permitted along the snowmobile trail. All stumps within 20 feet of the snowmobile trail must be cut at ground level. In addition, any trees cut within 5 feet of the trail must have the stumps removed and be disposed of according to the direction of the Unit Manager or his/her representative.

5.2.43 - Opening protection (2/21)

No activities are permitted in openings marked on the Timber Sale Map with the letter "G". Any damage to the openings shall be repaired according to specifications of the Unit Manager or his/her representative. This spec refers to wildlife opening in Payment Unit 1 and edge of Payment Unit 3.

6 - Safety and Fire Prevention

6.2 - Signing

6.2.2 - Snowmobile trail posting (10/20)

The Purchaser is responsible for posting and maintaining caution signs on snowmobile trail prior to beginning operations during the snowmobile season (approximately December 1 to March 31). The trail must be posted at appropriate distances from the

Sale Area to warn of logging activity and truck traffic. Signs must be removed when harvest operations are suspended or completed. The Purchaser will provide these signs.

6.2.3 - Recreational trail posting (10/20)

The Purchaser is responsible for posting and maintaining caution signs on the ORV trails in Payment Unit 4 prior to beginning operations. The trail must be posted at appropriate distances from the Sale Area to warn of logging activity and truck traffic at both ends of the trail. Signs must be removed when harvest operations are suspended or completed. The Purchaser will provide these signs.



TIMBER SALE MAP

This information provided by authority of Part 525, 1994 PA 451, as amended.

Sale Number	Year
63-004-21-01	21

Forest Management Unit	County	Mapped By	Date	Page	of
Cadillac	Wexford	Ventimiglia	05/17/21	1	1
Township	Range	Section(s) and Subdivision(s)	Scale		
24N	09W	Section 23 and 24 various	1:15,840		

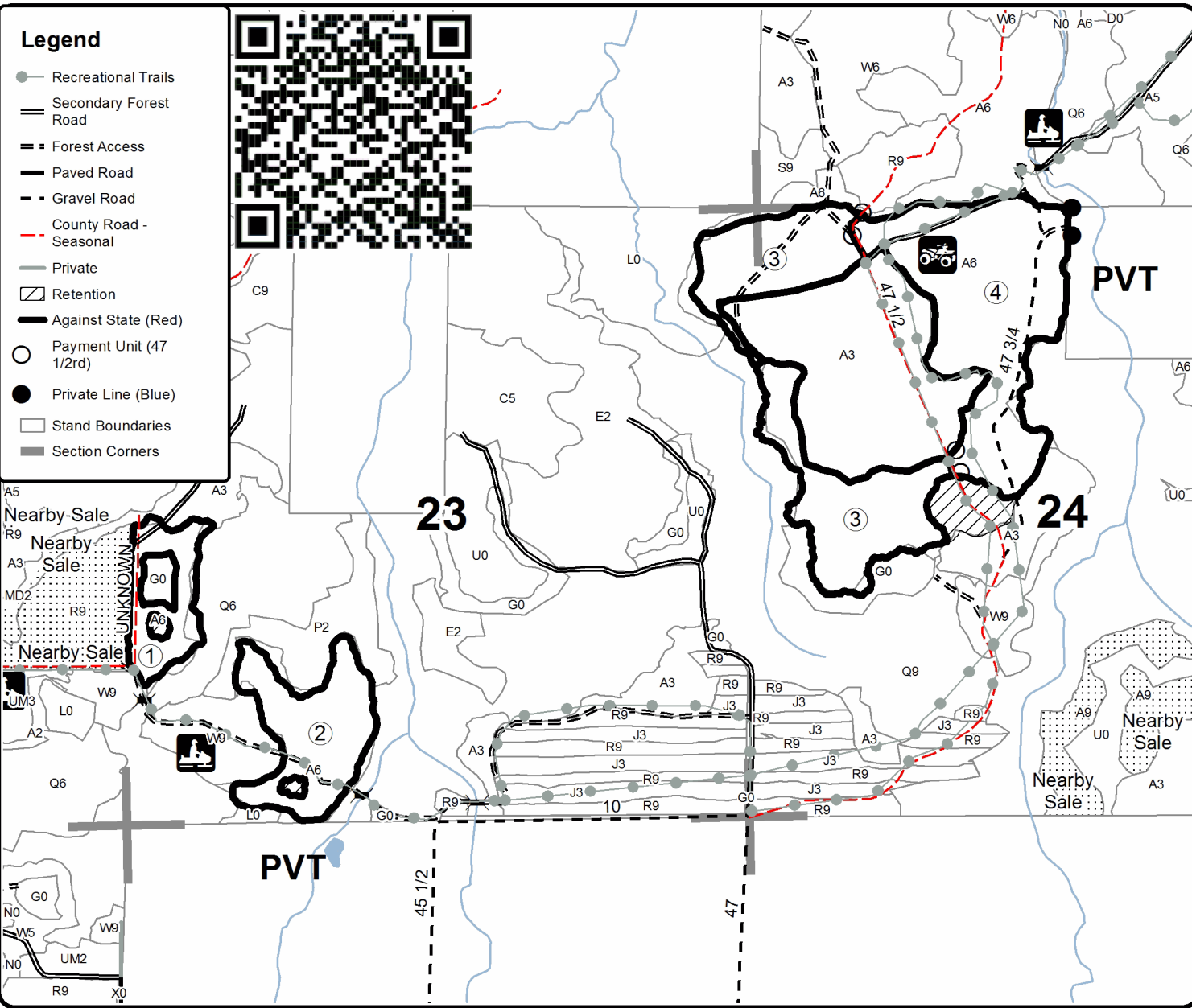
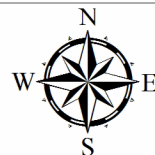
Cover Type				Density	
A = Aspen	H = Hemlock	N = Marsh	U = Upland Brush	0 = Non Stocked	5 = Pole Timber Medium
B = Paper Birch	J = Jack Pine	O = Oak	UM = Upland Mixed	1 = Seedling Sapling Poor	6 = Pole Timber Well
C = Cedar	L = Lowland Brush	P = Lowland Poplar	V = Bog or Marsh	2 = Seedling Sapling Medium	7 = Saw Timber Poor
D = Treed Bog	LM = Lowland Mixed	Q = Mixed Swamp Conifer	W = White Pine	3 = Seedling Sapling Well	8 = Saw Timber Medium
E = Swamp Hdwoods	M = Mpl, Bch, Brch	R = Red Pine	X = Non Stocked	4 = Pole Timber Poor	9 = Saw Timber Well
F = Spruce Fir	MC = Mixed Conifer	S = Black Spruce	Z = Water		
G = Grass	MD = Mixed Deciduous	T = Tamarack			

PU	Acres	PU	Acres
1	13.3	4	56.6
2	25.2		
3	49.8		

North Manton Aspen

Compartment 138

144.9 Acres



TIMBER SALE INFORMATION

Jeffs Far Reach Mix (63-012-21)

T22N, R05W, SEC. 11; T22N, R05W, SEC. 12; T22N, R05W, SEC. 13; T22N, R05W, SEC. 14.
Missaukee County (Advertised Price \$34,809.00)

SALE NOTE: All units of volume listed for this sale were estimated using the Inventory Manager computer program and the new Michigan taper model.

A timber sale contract for this lump sum, sealed bid timber sale will be awarded to the responsible bidder offering the highest sealed bid price. All units of volume listed below were estimated using the Inventory Manager computer program and the new Michigan taper model. Bids must be at or above the following advertised price for each product and species:

<u>PRODUCTS & SPECIES</u>	<u>ESTIMATED UNITS*</u>	<u>ADVERTISED PRICE</u>
Sawtimber		
Jack Pine	253.4 MBF	\$ 11.00 / MBF
Quaking Aspen	51.4 MBF	\$ 44.00 / MBF
Red Pine	193.9 MBF	\$ 45.00 / MBF
White Pine	84.2 MBF	\$ 31.00 / MBF
Pulpwood		
Black Cherry	19 Cords	\$ 8.25 / Cord
Jack Pine	1,931 Cords	\$ 5.25 / Cord
Mixed Aspen	205 Cords	\$ 10.30 / Cord
Red Maple	105 Cords	\$ 8.25 / Cord
Red Pine	191 Cords	\$ 19.80 / Cord
White Pine	203 Cords	\$ 6.75 / Cord

* The total volume is statistically estimated within plus (+) or minus (-) 4.04 percent. There are an estimated 4,000 cords on this timber sale, plus or minus 162 cords at the 95% confidence level. The estimated units are final and not subject to adjustment. Prospective bidders are urged to examine this timber and to make their own estimates of quantity and quality.

BOND AND PAYMENT SCHEDULE:

1. A bond in the amount of \$3,481.00 to insure faithful performance of the conditions of the contract will be deposited by the successful bidder within 21 days of the sale award.
2. Cutting in any sale or unit without the required advance payment would be considered a trespass.
3. Total payment must be paid in advance or according to the following schedule :
 - (a) Ten percent (10%) of the sale value must be paid within 21 days of the sale award.
 - (b) The 10% down payment will be credited towards the first unit cut.
 - (c) Payment for each of the following units must be made before cutting begins in that unit:

PAYMENT UNIT NUMBER	PERCENT OF TOTAL SALE VALUE
01	46.1%
02	20.8%
03	11.3%
04	1.5%
05	9.5%
06	10.8%
4. If no cutting takes place, the 10% down payment will not be refunded.
5. Operations on the contract issued will terminate on 09/30/2025.

SALE STATISTICS

Volumes were calculated in cubic feet using the Michigan taper model. Cubic foot volume includes all wood inside bark for the product indicated. For display purposes, cubic feet were converted to cords and MBF using a simple conversion factor, e.g. 79 cubic feet per cord and 185 cubic feet per MBF. The cubic foot volumes are precise; the cords and MBF volumes are not. Cubic foot volume cannot be directly converted to cords or boards with precision.

SALE VOLUMES

The total estimated sale volume may not equal the sum of the species/products due to the nature of statistical calculations associated with double sampling methodology.

VOLUME			STATISTICAL RANGE IN CORDS	
TOTAL CUBIC FEET	TOTAL CORDS	PERCENT ERROR	MINIMUM	MAXIMUM
315,983	4,000	4.04%	3,838	4,162

VDU VOLUMES

A VDU is a Volume Determination Unit. Volumes and their associated statistics are calculated at the VDU level and summarized to the sale level. There is often a one to one relationship between a VDU and a Payment Unit, but not always, depending on the cruise design. Refer to the VDU TO PAYMENT UNIT table.

	VOLUME			RANGE IN CORDS	
VDU	TOTAL CUBIC FEET	TOTAL CORDS	PERCENT ERROR	MINIMUM	MAXIMUM
1	169,851	2,150	5.53%	2,031	2,269
2	106,591	1,349	7.36%	1,250	1,449
3	39,541	501	9.44%	453	548
TOTAL:	315,983	4,000		3,734	4,265

VDU TO PAYMENT UNIT

When a VDU is associated with more than one Payment Unit (PU), the VDU volumes are assigned to the PU based on acres of the VDU within the PU.

VDU	VDU ACRES	PU	PU ACRES
1	104.1	1	104.1
2	87.0	2	54.0
		3	29.2
		4	3.8
3	26.9	5	12.6
		6	14.3
TOTAL:	218.0		218.0

DESCRIPTION OF TIMBER BY PAYMENT UNIT (PU)

PU	MARKET GROUP	PRODUCT	QUANTITY	UNIT	ACRES	ADVERTISE PRICE
1	Jack Pine	Sawtimber	141.4	MBF	104.1	\$16,056.60
	Quaking Aspen		51.4	MBF		
	Red Pine		35.2	MBF		
	White Pine		32.9	MBF		
	Black Cherry	Pulpwood	19	Cords		
	Jack Pine		1,170	Cords		
	Mixed Aspen		192	Cords		
	<i>Quaking Aspen</i>		192	Cords		
	Red Maple		68	Cords		
	<i>Red Maple</i>		68	Cords		
	Red Pine		12	Cords		
	White Pine		83	Cords		
2	Jack Pine	Sawtimber	69.2	MBF	54.0	\$7,251.20
	Red Pine		56.9	MBF		
	Jack Pine	Pulpwood	450	Cords		
	Mixed Aspen		7	Cords		
	<i>Quaking Aspen</i>		7	Cords		
	Red Maple		18	Cords		
	<i>Red Maple</i>		18	Cords		
	Red Pine		68	Cords		
3	Jack Pine	Sawtimber	37.4	MBF	29.2	\$3,924.95
	Red Pine		30.7	MBF		
	Jack Pine	Pulpwood	243	Cords		
	Mixed Aspen		4	Cords		
	<i>Quaking Aspen</i>		4	Cords		
	Red Maple		10	Cords		
	<i>Red Maple</i>		10	Cords		
	Red Pine		37	Cords		
4	Jack Pine	Sawtimber	4.9	MBF	3.8	\$509.15
	Red Pine		4.0	MBF		
	Jack Pine	Pulpwood	32	Cords		
	Red Maple		1	Cords		
	<i>Red Maple</i>		1	Cords		
	Red Pine		5	Cords		
5	Jack Pine	Sawtimber	0.2	MBF	12.6	\$3,295.10
	Red Pine		31.4	MBF		
	White Pine		24.0	MBF		
	Jack Pine	Pulpwood	17	Cords		
	Mixed Aspen		1	Cords		
	<i>B. T. Aspen</i>		1	Cords		
	Red Maple		3	Cords		
	<i>Red Maple</i>	Sawtimber	0.7	MBF		
	<i>Red Maple</i>	Pulpwood	2	Cords		
	Red Pine		32	Cords		
White Pine		56	Cords			
6	Jack Pine	Sawtimber	0.3	MBF	14.3	\$3,772.00
	Red Pine		35.7	MBF		
	White Pine		27.3	MBF		
	Jack Pine	Pulpwood	19	Cords		
	Mixed Aspen		1	Cords		
	<i>B. T. Aspen</i>		1	Cords		
	Red Maple		5	Cords		
	<i>Red Maple</i>	Sawtimber	0.9	MBF		
	<i>Red Maple</i>	Pulpwood	3	Cords		
	Red Pine		37	Cords		
	White Pine		64	Cords		

TOTAL:	582.9	MBF
--------	-------	-----

TOTAL:	2,654	Cords
--------	-------	-------

Sale Specific Conditions & Requirements

Sale Name: Jeffs Far Reach Mix

Sale Number: 63-012-21 Seq#: 1

1 - Sale Area

1.2 - Boundaries

1.2.1 - Painted boundaries (9/19)

The sale boundaries are marked and identified by red paint. Exterior sale boundary lines against state are marked with red paint. The painted boundary line trees are not Included Timber and are to be protected unless marked with orange paint.

2 - Timber Specifications

2.1 - Included Timber

2.1.1 - Clearcut unit(s) with unmerchantable trees (6/14)

Within Payment Unit(s) 1-4, cut all trees that are two (2) inches or more at DBH.

2.1.3 - Cut tree marked unit(s) (12/08)

Within Payment Unit(s) 5, all trees are designated for cutting when marked with orange paint above and below stump height, regardless of merchantability. In addition, cut all white pine trees that are ten (10) inches or more at DBH.

2.1.4 - Designated timber unit(s) (6/17)

Within Payment Unit(s) 6, all red pine trees that are ten (10) inches or more at DBH designated for cutting. In addition, all jack pine trees are designated for cutting, which meet minimum piece specifications in 2.2 - Utilization.

2.2 - Utilization

2.2.4 - Skidding length (2/14)

Within Payment Units 5 and 6, skidding of lengths over 17 feet is permissible if the timber sale administrator approves the method and machinery used. If at any point damage exceeds specification 3.4.1, all the remaining wood must be skid in lengths less than 17 feet.

3 - Payments

3.3 - Pre-measured Sales

3.3.4 - Dividing payment units (7/14)

Payment Unit(s) may be divided at the request of the Purchaser and upon approval of the Unit Manager. Dividing Payment Units is a contract modification which requires a Timber Sale Contract Amendment.

4 - Transportation

4.1 - Construction

4.1.5 - Culverts (5/14)

Roads may require the installation of culverts for cross drainage or at natural drainage-ways. If culverts are determined to be needed by Purchaser or sale administrator, their size and placement must be approved by the sale administrator, and they shall be installed prior to hauling. The culverts shall be new, corrugated metal or plastic gauge. If culverts are removed, fill shall be removed from wetland soils as specified. Soils shall be maintained and left in a non-erodible condition, with water bars, seed, fertilizer, mulch, and slash installed as directed by the sale administrator and as specified in the BMP manual. Stream crossing permits, if needed, will be obtained by the Purchaser.

4.1.6 - Road construction (1/09)

Construction of new roads or improvements of existing roads shall be done in such a way as to minimize the environmental and visual impacts. Merchantable trees shall be cut and utilized unless otherwise directed. Non-merchantable trees shall be severed and laid flat on the ground. Slash shall be scattered, and not left in windrows and kept a minimum of 10 feet back from the road edge. Stumps shall be set upright, not left on edge, and be moved at least 10 feet away from the road edge. Disturbed soil shall be feathered into the woods and not left in berms or windrows.

4.1.7 - Road closure (10/11)

All new roads built into the sale must be blocked to vehicle traffic upon completion of the sale. Overgrown roads that are reopened shall be considered new roads. In general, this will require constructing a four (4') foot high berm of stumps and logs covered with earth. These roads must be rendered impassable to cars and trucks. Contact the sale administrator for specific details of design and placement.

4.1.11 - Permits (2/12)

The Purchaser will secure any necessary stream crossing permits that may be required.

4.2 - Maintenance

4.2.2 - Fill material (4/07)

To maintain roads, fill material may be needed in areas where "holes" exist or may be expected to develop. This fill material should be placed before trucking begins. Contact the sale administrator regarding the availability of onsite sand or gravel from adjacent State-owned lands.

5 - Operations

5.2 - Conduct of Operations

5.2.2 - Hazard Trees/Snags

5.2.2.1 - Den trees (10/16)

Obvious hollow and/or den trees shall be protected and left standing unless they are a safety hazard.

5.2.3 - Operating Restrictions

5.2.3.1 - Operating restrictions (9/11)

Within Payment Unit(s) 1-6, unless changed by written agreement, cutting, skidding, and hauling are limited to the period of the year during which frozen ground conditions persist and as approved by the sale administrator. This restriction is because of extensive areas of sensitive soils and high-water table.

5.2.17 - Timber Mats and Interlocking Composite Mats (10/20)

Some roads or skid trails may require extra protection such as that afforded by timber mats, interlocking composite mats, or another approved system. If available, mats may be borrowed from the DNR. A Timber Sale Contract Supplement will be used to document the Purchaser's use of the DNR's mats. Contact the sale administrator regarding availability and pick-up. The Purchaser is responsible for picking up and hauling the mats to and from the site. The composite mats will require DNR staff onsite for installation and removal. Contact the sale administrator to schedule at least 30 days before desired install/removal date. All mats must be cleaned prior to drop off. This may include, but is not limited to, power washing and brushing to remove mud and debris. A charge of \$700.00 per timber mat and \$2,000.00 per composite mat will be assessed for all damaged or non-returned mats. Damage for the crane/timber mats is defined as three or more broken cants. Damage for the composite mats is defined as cracked or broken mats.

5.2.38 - No decking against live trees (2/04)

Cut products may not be decked against unmarked or designated leave trees.

5.4 - Soil Protection

5.4.1 - Rutting restriction, general (7/16)

Operations are to cease immediately if equipment and weather conditions result in rutting of roads and/or skid trails which is 12 inches or greater in depth and 50 feet in length. The Unit Manager or his/her representative may restrict hauling and/or skidding if ruts exceed the specified depth. With the Unit Manager or his/her representative's approval, the Purchaser may return to the area when the risk of rutting has decreased.

5.4.6 - Wet area protection (5/10)

No harvesting operations, including skidding and felling, are to take place within any vernal pond areas or drainages. Care must be taken by the Purchaser to identify and avoid operating in these areas of the timber sale.

5.8 - Protection of Endangered Species

5.8.5 - Protection of raptor nests (3/13)

All trees with raptor nests will be protected if found during harvesting operations. Notification will be made to the Unit Manager or his/her representative who will notify the Wildlife Biologist so an on-site evaluation and recommendation can be

made, if necessary.



Sale Number	Year
63-012	2021

TIMBER SALE MAP

This information provided by authority of Part 525, 1994 PA 451, as amended.

Forest Management Unit Cadillac / Manton	County Missaukee	Mapped By M. Edison	Date 9/24/2021	Page 1	of 1
Township 22N	Range 5W	Section(s) and Subdivision(s) 11, 12, 13, 14	Cruised By Upper Michigan Land Management		Scale 1:31,680

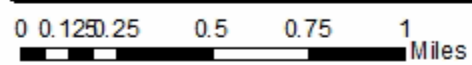
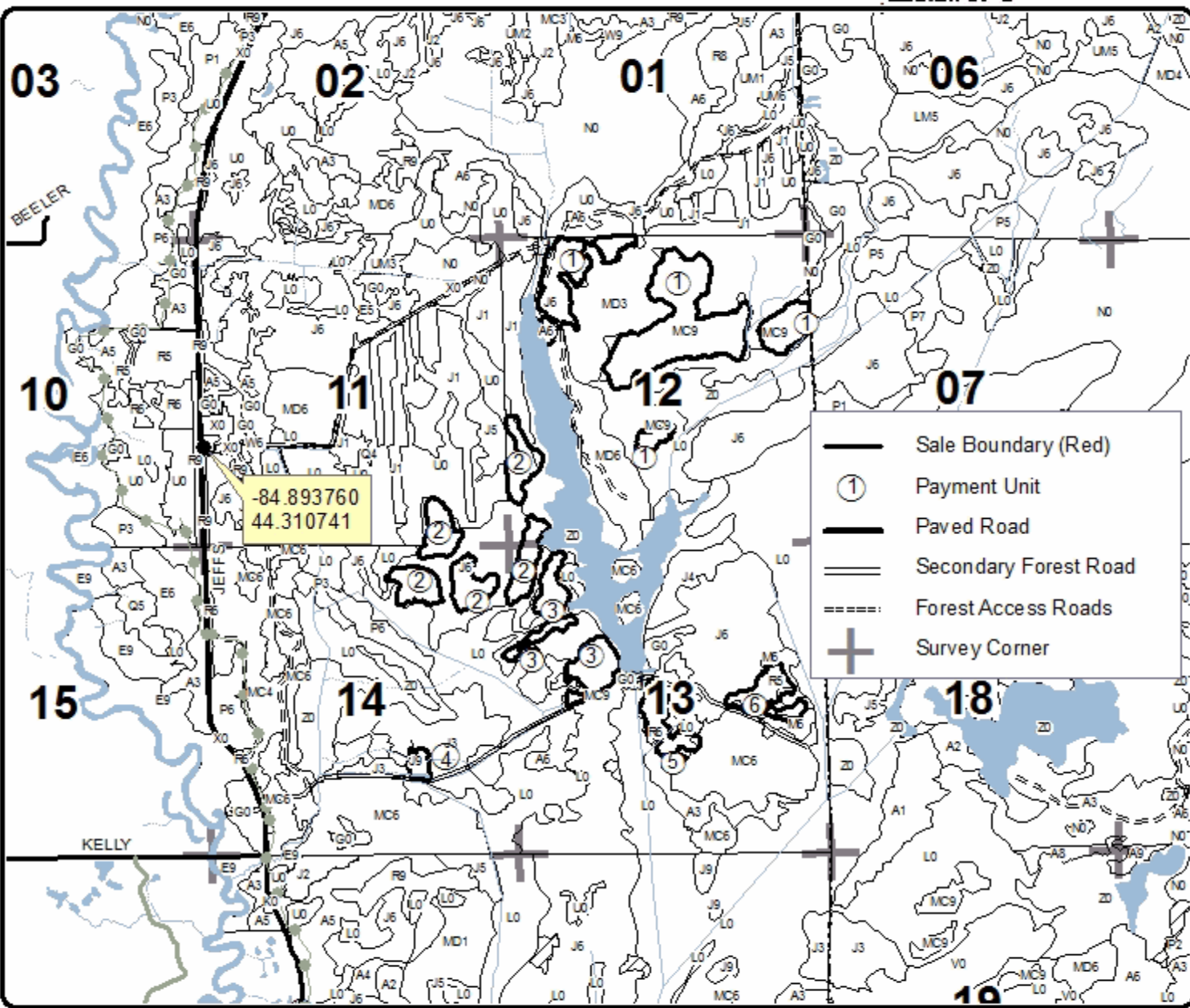
Cover Type				Density	
A = Aspen	H = Hemlock	N = Marsh	U = Upland Brush	0 = Non Stocked	5 = Pole Timber Medium
B = Paper Birch	J = Jack Pine	O = Oak	UM = Upland Mixed	1 = Seeding Sapling Poor	6 = Pole Timber Well
C = Cedar	L = Lowland Brush	P = Lowland Poplar	V = Bog or Marsh	2 = Seeding Sapling Medium	7 = Saw Timber Poor
D = Treed Bog	LM = Lowland Mixed	Q = Mixed Swamp Conifer	W = White Pine	3 = Seeding Sapling Well	8 = Saw Timber Medium
E = Swamp Hardwoods	M = Mpl. Ech. Birch	R = Red Pine	X = Non Stocked	4 = Pole Timber Poor	9 = Saw Timber Well
F = Spruce Fir	MC = Mixed Conifer	S = Black Spruce	Z = Water		
G = Creas	MD = Mixed Deciduous	T = Tamarack			

PU	Acres	PU	Acres
1	104.1	4	3.8
2	54.0	5	12.6
3	29.2	6	14.3

Jeffs Far Reach Mix

Compartment 95

218 Acres



TIMBER SALE INFORMATION

80 Aspen Mix (63-024-21)

T24N, R05W, SEC. 16; T24N, R05W, SEC. 17.
Missaukee County (Advertised Price \$112,921.35)

SALE NOTE: All units of volume listed for this sale were estimated using the Inventory Manager computer program and the new Michigan taper model.

A timber sale contract for this lump sum, sealed bid timber sale will be awarded to the responsible bidder offering the highest sealed bid price. All units of volume listed below were estimated using the Inventory Manager computer program and the new Michigan taper model. Bids must be at or above the following advertised price for each product and species:

<u>PRODUCTS & SPECIES</u>	<u>ESTIMATED UNITS*</u>	<u>ADVERTISED PRICE</u>
Sawtimber		
Black Cherry	55.2 MBF	\$ 133.00 / MBF
Mixed Aspen	241.1 MBF	\$ 81.00 / MBF
Paper Birch	2.8 MBF	\$ 28.00 / MBF
Red Maple	63.7 MBF	\$ 58.00 / MBF
Red Oak	15.1 MBF	\$ 145.00 / MBF
Red Pine	257.7 MBF	\$ 82.00 / MBF
White Pine	7.2 MBF	\$ 57.00 / MBF
Pulpwood		
Balsam Fir	53 Cords	\$ 8.45 / Cord
Black Cherry	94 Cords	\$ 15.10 / Cord
Jack Pine	60 Cords	\$ 9.60 / Cord
Mixed Aspen	1,967 Cords	\$ 18.85 / Cord
Mixed Oak	98 Cords	\$ 22.30 / Cord
Paper Birch	23 Cords	\$ 10.85 / Cord
Red Maple	490 Cords	\$ 15.10 / Cord
Red Pine	120 Cords	\$ 36.25 / Cord
White Pine	392 Cords	\$ 12.35 / Cord

* The total volume is statistically estimated within plus (+) or minus (-) 6.02 percent. There are an estimated 4,563 cords on this timber sale, plus or minus 275 cords at the 95% confidence level. The estimated units are final and not subject to adjustment. Prospective bidders are urged to examine this timber and to make their own estimates of quantity and quality.

BOND AND PAYMENT SCHEDULE:

1. A bond in the amount of \$9,034.00 to insure faithful performance of the conditions of the contract will be deposited by the successful bidder within 21 days of the sale award.
2. Cutting in any sale or unit without the required advance payment would be considered a trespass.
3. Total payment must be paid in advance or according to the following schedule :
 - (a) Ten percent (10%) of the sale value must be paid within 21 days of the sale award.
 - (b) The 10% down payment will be credited towards the first unit cut.
 - (c) Payment for each of the following units must be made before cutting begins in that unit:

PAYMENT UNIT NUMBER	PERCENT OF TOTAL SALE VALUE
01	34.0%
02	31.0%
03	28.2%
04	6.8%
4. If no cutting takes place, the 10% down payment will not be refunded.
5. Operations on the contract issued will terminate on 09/30/2024.

SALE STATISTICS

Volumes were calculated in cubic feet using the Michigan taper model. Cubic foot volume includes all wood inside bark for the product indicated. For display purposes, cubic feet were converted to cords and MBF using a simple conversion factor, e.g. 79 cubic feet per cord and 185 cubic feet per MBF. The cubic foot volumes are precise; the cords and MBF volumes are not. Cubic foot volume cannot be directly converted to cords or boards with precision.

SALE VOLUMES

The total estimated sale volume may not equal the sum of the species/products due to the nature of statistical calculations associated with double sampling methodology.

VOLUME			STATISTICAL RANGE IN CORDS	
TOTAL CUBIC FEET	TOTAL CORDS	PERCENT ERROR	MINIMUM	MAXIMUM
360,487	4,563	6.02%	4,288	4,838

VDU VOLUMES

A VDU is a Volume Determination Unit. Volumes and their associated statistics are calculated at the VDU level and summarized to the sale level. There is often a one to one relationship between a VDU and a Payment Unit, but not always, depending on the cruise design. Refer to the VDU TO PAYMENT UNIT table.

	VOLUME			RANGE IN CORDS	
VDU	TOTAL CUBIC FEET	TOTAL CORDS	PERCENT ERROR	MINIMUM	MAXIMUM
2	27,262	345	8.91%	314	376
15	333,225	4,218	6.48%	3,945	4,491
TOTAL:	360,487	4,563		4,259	4,867

VDU TO PAYMENT UNIT

When a VDU is associated with more than one Payment Unit (PU), the VDU volumes are assigned to the PU based on acres of the VDU within the PU.

VDU	VDU ACRES	PU	PU ACRES
2	15.2	4	15.2
15	161.5	1	59.0
		2	53.7
		3	48.8
TOTAL:	176.7		176.7

DESCRIPTION OF TIMBER BY PAYMENT UNIT (PU)

PU	MARKET GROUP	PRODUCT	QUANTITY	UNIT	ACRES	ADVERTISE PRICE	
1	Black Cherry	Sawtimber	18.4	MBF	59.0	\$38,409.35	
	Mixed Aspen		88.0	MBF			
	<i>B. T. Aspen</i>		54.6	<i>MBF</i>			
	<i>Quaking Aspen</i>		33.4	<i>MBF</i>			
	Paper Birch		1.1	MBF			
	Red Maple		23.3	MBF			
	Red Oak		5.5	MBF			
	Red Pine		94.1	MBF			
	Balsam Fir		Pulpwood	15			Cords
	Black Cherry			32			Cords
	Jack Pine			22			Cords
	Mixed Aspen			613			Cords
	<i>B. T. Aspen</i>			292			<i>Cords</i>
	<i>Quaking Aspen</i>			321			<i>Cords</i>
	Mixed Oak			27			Cords
	<i>Bl/R/Hybrid Oak</i>			8			<i>Cords</i>
	<i>Red Oak</i>			15			<i>Cords</i>
	<i>White Oak</i>			4			<i>Cords</i>
	Paper Birch			8			Cords
	Red Maple			168			Cords
	Red Pine			44			Cords
White Pine	141	Cords					
2	Black Cherry	Sawtimber	16.8	MBF	53.7	\$34,996.35	
	Mixed Aspen		80.2	MBF			
	<i>B. T. Aspen</i>		49.7	<i>MBF</i>			
	<i>Quaking Aspen</i>		30.5	<i>MBF</i>			
	Paper Birch		0.9	MBF			
	Red Maple		21.2	MBF			
	Red Oak		5.0	MBF			
	Red Pine		85.7	MBF			
	Balsam Fir		Pulpwood	13			Cords
	Black Cherry			29			Cords
	Jack Pine			20			Cords
	Mixed Aspen			558			Cords
	<i>B. T. Aspen</i>			266			<i>Cords</i>
	<i>Quaking Aspen</i>			292			<i>Cords</i>
	Mixed Oak			25			Cords
	<i>Bl/R/Hybrid Oak</i>			8			<i>Cords</i>
	<i>Red Oak</i>			14			<i>Cords</i>
	<i>White Oak</i>			3			<i>Cords</i>
	Paper Birch			8			Cords
	Red Maple			154			Cords
	Red Pine			40			Cords
White Pine	128	Cords					
3	Black Cherry	Sawtimber	15.3	MBF	48.8	\$31,841.10	
	Mixed Aspen		72.9	MBF			
	<i>B. T. Aspen</i>		45.2	<i>MBF</i>			
	<i>Quaking Aspen</i>		27.7	<i>MBF</i>			
	Paper Birch		0.8	MBF			
	Red Maple		19.2	MBF			
	Red Oak		4.6	MBF			
	Red Pine		77.9	MBF			
	Balsam Fir		Pulpwood	12			Cords
	Black Cherry			27			Cords
	Jack Pine			18			Cords
	Mixed Aspen			508			Cords

DESCRIPTION OF TIMBER BY PAYMENT UNIT (PU), CON'T

PU	MARKET GROUP	PRODUCT	QUANTITY	UNIT	ACRES	ADVERTISE PRICE
3 con't	<i>B. T. Aspen</i>	<i>Pulpwood</i>	242	<i>Cords</i>		
	<i>Quaking Aspen</i>		266	<i>Cords</i>		
	Mixed Oak		23	Cords		
	<i>Bl/R/Hybrid Oak</i>		7	<i>Cords</i>		
	<i>Red Oak</i>		13	<i>Cords</i>		
	<i>White Oak</i>		3	<i>Cords</i>		
	Paper Birch		7	Cords		
	Red Maple		140	Cords		
	Red Pine		36	Cords		
	White Pine		117	Cords		
4	Black Cherry	Sawtimber	4.7	MBF	15.2	\$7,674.55
	White Pine		7.2	MBF		
	Balsam Fir	Pulpwood	13	Cords		
	Black Cherry		6	Cords		
	Mixed Aspen		288	Cords		
	<i>B. T. Aspen</i>		288	<i>Cords</i>		
	Mixed Oak		23	Cords		
	<i>Bl/R/Hybrid Oak</i>		23	<i>Cords</i>		
	Red Maple		28	Cords		
	White Pine		6	Cords		
TOTAL:			642.8	MBF		
TOTAL:			3,297	Cords		

Sale Specific Conditions & Requirements

Sale Name: 80 Aspen Mix

Sale Number: 63-024-21 Seq#: 1

1 - Sale Area

1.2 - Boundaries

1.2.1 - Painted boundaries (9/19)

The sale boundary and Payment Unit boundaries are marked and identified by red and yellow paint. Exterior sale boundary lines against state are marked with red paint. Interior Payment Unit boundaries are marked with yellow paint. Retention patches are marked with red paint; no harvesting activities may occur within these areas. The painted boundary line trees are not Included Timber and are to be protected unless marked with orange paint. Yellow painted trees designating an interior Payment Unit boundary are only to be cut when all surrounding Payment Units have been paid.

2 - Timber Specifications

2.1 - Included Timber

2.1.1 - Clearcut unit(s) with unmerchantable trees (6/14)

Within Payment Unit(s) 1-4, cut all trees that are two (2) inches or more at DBH, except do not cut any white pine that are twenty-four (24) inches or more at DBH or marked with green paint.

3 - Payments

3.3 - Pre-measured Sales

3.3.4 - Dividing payment units (7/14)

Payment Unit(s) 1-4 may be divided at the request of the Purchaser and upon approval of the Unit Manager. Dividing Payment Units is a contract modification which requires a Timber Sale Contract Amendment.

4 - Transportation

4.1 - Construction

4.1.12 - No new roads (1/12)

No new roads will be permitted in any Payment Unit. All operations are limited to existing roads. Skid trails only will be allowed.

4.2 - Maintenance

4.2.5 - Two wheel drive condition (2/04)

All existing trail roads on and adjacent to the sale area must be passable by two-wheel drive traffic for the duration of the sale.

5 - Operations

5.1 - Notification

5.1.3 - Well heads and natural gas pipelines (11/15)

The Purchaser is responsible for contacting the gas or pipeline company 30 days prior to operating equipment in the vicinity of well heads or natural gas pipelines. Contact Missaukee Oil & Gas Company LLC at (231) 878-7156. Written permission is required before harvest operations begin and must be submitted to the Unit Manager.

5.2 - Conduct of Operations

5.2.2 - Hazard Trees/Snags

5.2.2.1 - Den trees (10/16)

Obvious hollow and/or den trees shall be protected and left standing unless they are a safety hazard.

5.2.32 - Decking/landing restoration (9/13)

All decking and landing areas must have the surface area restored to a condition equal to or better than before. This is to

ensure the proper regeneration of the stand. Wood debris, chips, and "cookies" from trimmings must be removed or scattered away from landing and loading areas and may not be windrowed on the edge.

5.2.37 - No decking areas (12/08)

No decking is allowed within 50 feet of well or pipeline sites without permission of the pipeline company and the Unit Manager or his/her representative.

5.2.38 - No decking against live trees (2/04)

Cut products may not be decked against unmarked or designated leave trees.

5.4 - Soil Protection

5.4.1 - Rutting restriction, general (7/16)

Operations are to cease immediately if equipment and weather conditions result in rutting of roads and/or skid trails which is 12 inches or greater in depth and 50 feet in length. The Unit Manager or his/her representative may restrict hauling and/or skidding if ruts exceed the specified depth. With the Unit Manager or his/her representative's approval, the Purchaser may return to the area when the risk of rutting has decreased.

5.8 - Protection of Endangered Species

5.8.5 - Protection of raptor nests (3/13)

All trees with raptor nests will be protected if found during harvesting operations. Notification will be made to the Unit Manager or his/her representative who will notify the Wildlife Biologist so an on-site evaluation and recommendation can be made, if necessary.

6 - Safety and Fire Prevention

6.2 - Signing

6.2.1 - Road posting (10/20)

The Purchaser is responsible for posting and maintaining caution signs on sale associated roads prior to beginning operations. The road must be posted approximately 200 feet from the Sale Area to warn of logging activity and truck traffic. Signs must be removed when harvest operations are suspended or completed. The Purchaser will provide these signs.



TIMBER SALE MAP

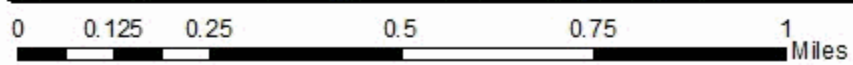
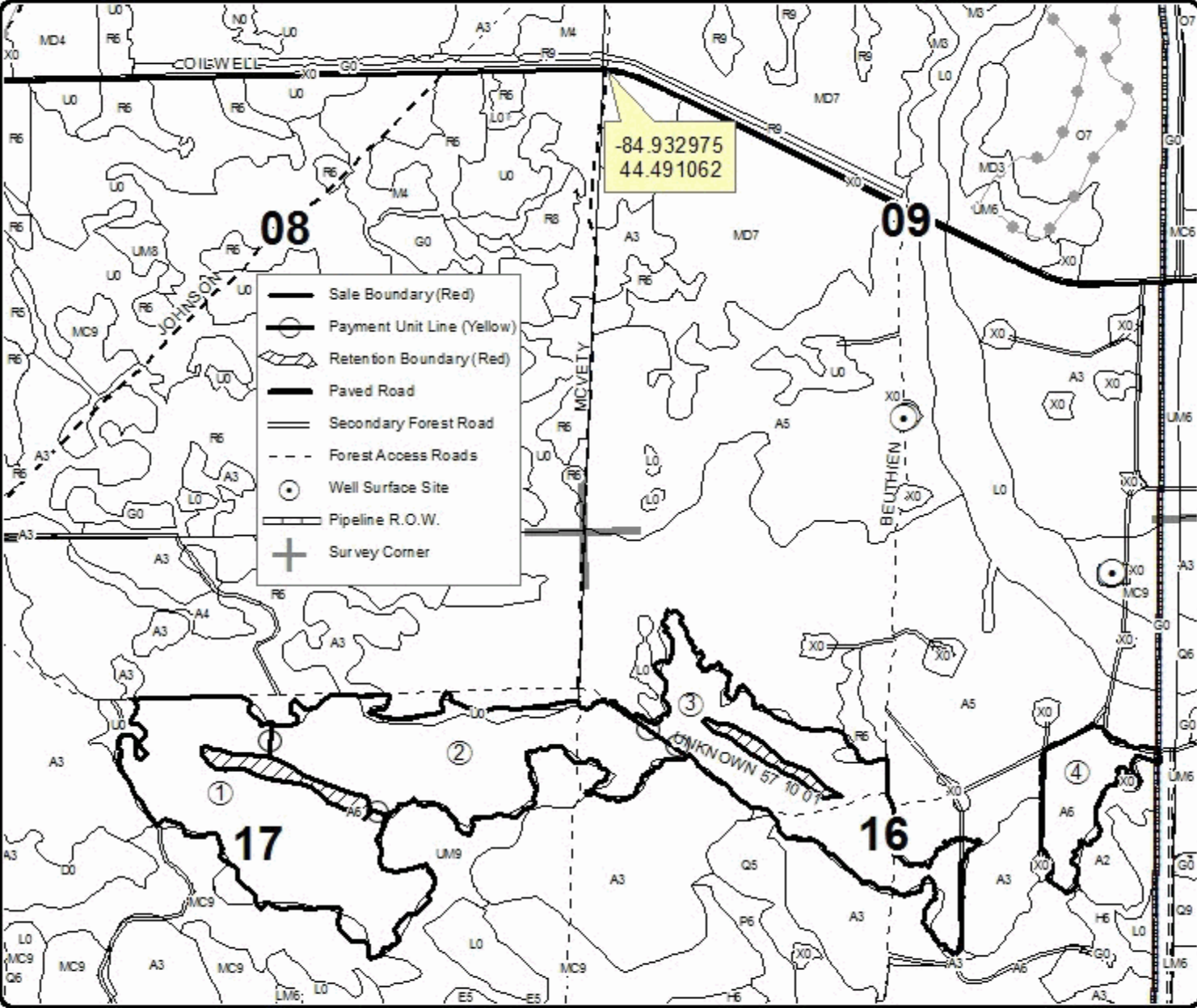
This information provided by authority of Part 525, 1994 PA 451, as amended.

Forest Management Unit Cadillac / Manton	County Missaukee	Mapped By M. Edison	Date 9/24/2021	Page 1	of 1
Township 24N	Range 5W	Section(s) and Subdivision(s) 16 NWNW, S1/2NW, S1/2NE, NESW, N1/2SE 17 SENW, S1/2NE, NESW, N1/2SE	Scale 1:15,840		

Cover Type				Density	
A = Aspen	H = Hemlock	N = Marsh	U = Upland Brush	0 = Non Stocked	5 = Pole Timber Medium
B = Paper Birch	J = Jack Pine	O = Oak	UM = Upland Mixed	1 = Seeding Sapling Poor	6 = Pole Timber Well
C = Cedar	L = Lowland Brush	P = Lowland Poplar	V = Bog or Marsh	2 = Seeding Sapling Medium	7 = Saw Timber Poor
D = Treed Bog	LM = Lowland Mixed	Q = Mixed Swamp Conifer	W = White Pine	3 = Seeding Sapling Well	8 = Saw Timber Medium
E = Swamp Hardwoods	M = Mpl. Ech. Birch	R = Red Pine	X = Non Stocked	4 = Pole Timber Poor	9 = Saw Timber Well
F = Spruce Fir	MC = Mixed Conifer	S = Black Spruce	Z = Water		
G = Cress	MD = Mixed Deciduous	T = Tamarack			

PU	Acres	PU	Acres
1	59	4	15.2
2	53.7		
3	48.8		

80 Aspen Mix
Compartment 80
176.7 Acres



TIMBER SALE INFORMATION

Raymond's Ridge Jack (63-030-21)
T22N, R05W, SEC. 13; T22N, R05W, SEC. 23; T22N, R05W, SEC. 24.
Missaukee County (Advertised Price \$16,857.85)

SALE NOTE: All units of volume listed for this sale were estimated using the Inventory Manager computer program and the new Michigan taper model.

Seasonally wet access to Sale Area.

See sale spec 5.4.5 for information on saturated soils.

See sale spec 7.1.5 for information on deteriorating timber.

See sale spec 5.2.31 for information on landing locations.

See sale spec 4.1.12 about no new roads.

A recreation site such as a trail, pathway, or campground is within the sale area or the vicinity. Certain restrictions/specifications may be applicable including time restrictions.

A timber sale contract for this lump sum, sealed bid timber sale will be awarded to the responsible bidder offering the highest sealed bid price. All units of volume listed below were estimated using the Inventory Manager computer program and the new Michigan taper model. Bids must be at or above the following advertised price for each product and species:

<u>PRODUCTS & SPECIES</u>	<u>ESTIMATED UNITS*</u>	<u>ADVERTISED PRICE</u>
Sawtimber		
Jack Pine	217.1 MBF	\$ 15.00 / MBF
Pulpwood		
BI/R/Hybrid Oak	16 Cords	\$ 16.20 / Cord
Jack Pine	1,877 Cords	\$ 6.95 / Cord
Red Maple	27 Cords	\$ 11.00 / Cord

* The total volume is statistically estimated within plus (+) or minus (-) 9.46 percent. There are an estimated 2,419 cords on this timber sale, plus or minus 229 cords at the 95% confidence level. The estimated units are final and not subject to adjustment. Prospective bidders are urged to examine this timber and to make their own estimates of quantity and quality.

BOND AND PAYMENT SCHEDULE:

1. A bond in the amount of \$843.00 to insure faithful performance of the conditions of the contract will be deposited by the successful bidder within 21 days of the sale award.
2. Cutting in any sale or unit without the required advance payment would be considered a trespass.
3. Total payment must be paid in advance or according to the following schedule :
 - (a) Ten percent (10%) of the sale value must be paid within 21 days of the sale award.
 - (b) The 10% down payment will be credited towards the first unit cut.

(c) Payment for each of the following units must be made before cutting begins in that unit:

PAYMENT UNIT NUMBER	PERCENT OF TOTAL SALE VALUE
01	30.8%
02	33.3%
03	35.9%

4. If no cutting takes place, the 10% down payment will not be refunded.
5. Operations on the contract issued will terminate on 09/30/2025.

SALE STATISTICS

Volumes were calculated in cubic feet using the Michigan taper model. Cubic foot volume includes all wood inside bark for the product indicated. For display purposes, cubic feet were converted to cords and MBF using a simple conversion factor, e.g. 79 cubic feet per cord and 185 cubic feet per MBF. The cubic foot volumes are precise; the cords and MBF volumes are not. Cubic foot volume cannot be directly converted to cords or boards with precision.

SALE VOLUMES

The total estimated sale volume may not equal the sum of the species/products due to the nature of statistical calculations associated with double sampling methodology.

VOLUME			STATISTICAL RANGE IN CORDS	
TOTAL CUBIC FEET	TOTAL CORDS	PERCENT ERROR	MINIMUM	MAXIMUM
191,078	2,419	9.46%	2,190	2,648

VDU VOLUMES

A VDU is a Volume Determination Unit. Volumes and their associated statistics are calculated at the VDU level and summarized to the sale level. There is often a one to one relationship between a VDU and a Payment Unit, but not always, depending on the cruise design. Refer to the VDU TO PAYMENT UNIT table.

	VOLUME			RANGE IN CORDS	
VDU	TOTAL CUBIC FEET	TOTAL CORDS	PERCENT ERROR	MINIMUM	MAXIMUM
31	191,078	2,419	9.46%	2,190	2,648
TOTAL:	191,078	2,419		2,190	2,648

VDU TO PAYMENT UNIT

When a VDU is associated with more than one Payment Unit (PU), the VDU volumes are assigned to the PU based on acres of the VDU within the PU.

VDU	VDU ACRES	PU	PU ACRES
31	104.0	1	32.1
		2	34.5
		3	37.4
TOTAL:	104.0		104.0

DESCRIPTION OF TIMBER BY PAYMENT UNIT (PU)

PU	MARKET GROUP	PRODUCT	QUANTITY	UNIT	ACRES	ADVERTISE PRICE
1	Jack Pine	Sawtimber	67.0	MBF	32.1	\$5,198.05
	BI/R/Hybrid Oak	Pulpwood	5	Cords		
	<i>BI/R/Hybrid Oak</i>	<i>Sawtimber</i>	<i>0.8</i>	<i>MBF</i>		
	<i>BI/R/Hybrid Oak</i>	<i>Pulpwood</i>	<i>3</i>	<i>Cords</i>		
	Jack Pine		579	Cords		
	Red Maple		8	Cords		
	<i>Red Maple</i>	<i>Sawtimber</i>	<i>2.2</i>	<i>MBF</i>		
	<i>Red Maple</i>	<i>Pulpwood</i>	<i>4</i>	<i>Cords</i>		
2	Jack Pine	Sawtimber	72.0	MBF	34.5	\$5,606.05
	BI/R/Hybrid Oak	Pulpwood	6	Cords		
	<i>BI/R/Hybrid Oak</i>	<i>Sawtimber</i>	<i>0.9</i>	<i>MBF</i>		
	<i>BI/R/Hybrid Oak</i>	<i>Pulpwood</i>	<i>4</i>	<i>Cords</i>		
	Jack Pine		623	Cords		
	Red Maple		9	Cords		
	<i>Red Maple</i>	<i>Sawtimber</i>	<i>2.3</i>	<i>MBF</i>		
	<i>Red Maple</i>	<i>Pulpwood</i>	<i>4</i>	<i>Cords</i>		
3	Jack Pine	Sawtimber	78.1	MBF	37.4	\$6,069.95
	BI/R/Hybrid Oak	Pulpwood	6	Cords		
	<i>BI/R/Hybrid Oak</i>	<i>Sawtimber</i>	<i>0.9</i>	<i>MBF</i>		
	<i>BI/R/Hybrid Oak</i>	<i>Pulpwood</i>	<i>4</i>	<i>Cords</i>		
	Jack Pine		675	Cords		
	Red Maple		10	Cords		
	<i>Red Maple</i>	<i>Sawtimber</i>	<i>2.5</i>	<i>MBF</i>		
	<i>Red Maple</i>	<i>Pulpwood</i>	<i>5</i>	<i>Cords</i>		
TOTAL:			217.1	MBF		
TOTAL:			1,921	Cords		

Sale Specific Conditions & Requirements

Sale Name: Raymond's Ridge Jack

Sale Number: 63-030-21 Seq#: 1

1 - Sale Area

1.2 - Boundaries

1.2.1 - Painted boundaries (9/19)

The sale boundary and Payment Unit boundaries are marked and identified by red and yellow paint. Exterior sale boundary lines against state are marked with red paint. Interior Payment Unit boundaries are marked with yellow paint. Retention patches are marked with red paint; no harvesting activities may occur within these areas. The painted boundary line trees are not Included Timber and are to be protected. Yellow painted trees designating an interior Payment Unit boundary are only to be cut when all surrounding Payment Units have been paid.

2 - Timber Specifications

2.1 - Included Timber

2.1.1 - Clearcut unit(s) with unmerchantable trees (6/14)

Within Payment Unit(s) 1-3, cut all trees that are two (2) inches or more at DBH, except red pine and white pine.

3 - Payments

3.4 - Damaged Timber

3.4.1 - Damaged timber (7/16)

General Condition and Requirement 3.4 Damaged Timber, defines liquidated damages for undesignated live merchantable trees which are cut or injured. In addition, extreme care should be taken to avoid damage to pine seedlings and saplings. Within the Sale Area, if more than 10% of pine seedlings or saplings (1/4" to 4.5" DBH) within a specified portion of the Sale Area are damaged, liquidated damages will be assessed at \$100 per acre for all acreage within that specified portion of the Sale Area that was damaged.

No damage is acceptable to undesignated live merchantable trees. Within the Sale Area, if more than 5% of trees (> 4.5" DBH) within a specified area of the sale are damaged, liquidated damages will be assessed for all trees damaged. Rates will be in accordance with General Condition and Requirement 3.4 Damaged Timber.

4 - Transportation

4.1 - Construction

4.1.12 - No new roads (1/12)

No new roads will be permitted in any Payment Unit. All operations are limited to existing roads. Skid trails only will be allowed.

4.2 - Maintenance

4.2.1 - Hauling restriction (12/08)

Hauling may be restricted on forest roads by the Unit Manager or his/her representative. The restriction may occur during spring break up or wet weather conditions.

5 - Operations

5.2 - Conduct of Operations

5.2.1 - Slash

5.2.1.11 - Slash for reforestation (3/21)

To facilitate reforestation, the Sale Area shall be left with slash evenly distributed. Bunched tops within the cutting area shall be broken up and scattered. Stumps shall be cut low to the ground. Processing sites shall not be left with a compacted layer of slash; tops from these sites shall be hauled back into the cut area and scattered.

5.2.3 - Operating Restrictions

5.2.3.1 - Operating restrictions (9/11)

Within Payment Unit(s) 1-3, unless changed by written agreement, cutting, skidding, and hauling are limited to the periods of June 15 to October 15 and from December 1 to April 15. This restriction is because seasonally saturated soils.

5.2.17 - Timber Mats and Interlocking Composite Mats (10/20)

Some roads or skid trails may require extra protection such as that afforded by timber mats, interlocking composite mats, or another approved system. If available, mats may be borrowed from the DNR. A Timber Sale Contract Supplement will be used to document the Purchaser's use of the DNR's mats. Contact the sale administrator regarding availability and pick-up. Timber mats are available from various field offices. Composite mats are only available from the Grayling field office and the Marquette ICC. The Purchaser is responsible for picking up and hauling the mats to and from the site. The composite mats will require DNR staff onsite for installation and removal. Contact the sale administrator to schedule at least 30 days before desired install/removal date. All mats must be cleaned prior to drop off. This may include, but is not limited to, power washing and brushing to remove mud and debris. A charge of \$700.00 per timber mat and \$2,000.00 per composite mat will be assessed for all damaged or non-returned mats. Damage for the crane/timber mats is defined as three or more broken cants. Damage for the composite mats is defined as cracked or broken mats.

5.2.31 - Landing locations (9/13)

Recommended landing areas are at the north end of Payment Unit 1 adjacent to the state forest road. Landings must be confined to these designated sites unless otherwise authorized by the Unit Manager or his/her representative.

5.2.32 - Decking/landing restoration (9/13)

All decking and landing areas must have the surface area restored to a condition equal to or better than before. This is to ensure the proper regeneration of the stand. Wood debris, chips, and "cookies" from trimmings must be removed or scattered away from landing and loading areas and may not be windrowed on the edge.

5.4 - Soil Protection

5.4.1 - Rutting restriction, general (7/16)

Operations are to cease immediately if equipment and weather conditions result in rutting of roads which is 6 inches or greater in depth and 50 feet in length. In addition, operations are to cease immediately if equipment and weather conditions result in rutting on skid trails which is 12 inches or greater in depth and 50 feet in length. The Unit Manager or his/her representative may restrict hauling and/or skidding if ruts exceed the specified depth. With the Unit Manager or his/her representative's approval, the Purchaser may return to the area when the risk of rutting has decreased.

5.4.5 - Soil caution (11/04)

Care must be taken to minimize soil damage due to saturated soil conditions.

6 - Safety and Fire Prevention

6.2 - Signing

6.2.2 - Snowmobile trail posting (10/20)

The Purchaser is responsible for posting and maintaining caution signs on snowmobile trail LP 6-7 prior to beginning operations during the snowmobile season (approximately December 1 to March 31). The trail must be posted at appropriate distances from the Sale Area to warn of logging activity and truck traffic. Signs must be removed when harvest operations are suspended or completed. The Purchaser will provide these signs.

7 - Other Conditions

7.2 - Extensions

7.2.5 - Weather related extension (1/13)

If weather conditions during the operating period of this contract prevent harvesting, this sale may qualify for a weather related extension. If approved, the normal extension fee would be waived. To qualify, there must be a documented attempt each year to harvest in the difficult portion of the sale.

7.5 - Loss

7.5.1 - Deteriorating timber (7/09)

The sale area has received damage from windthrow and jack pine budworm. The Purchaser should harvest the wood as soon as possible. The Department of Natural Resources is held free of responsibility of any further damage or deterioration due to

delay in harvesting.



TIMBER SALE MAP

This information provided by authority of Part 525, 1994 PA 451, as amended.

Sale Number	Year
63 - 030	21

Forest Management Unit Cadillac	County Missaukee	Mapped By Scott Shooltz	Date 09/30/2021	Page 1	of 1
Township 22N	Range 05W	Section(s) and Subdivision(s) Sections: 13, 23, 24 Subdivisions: Various	Scale 1:15,840		

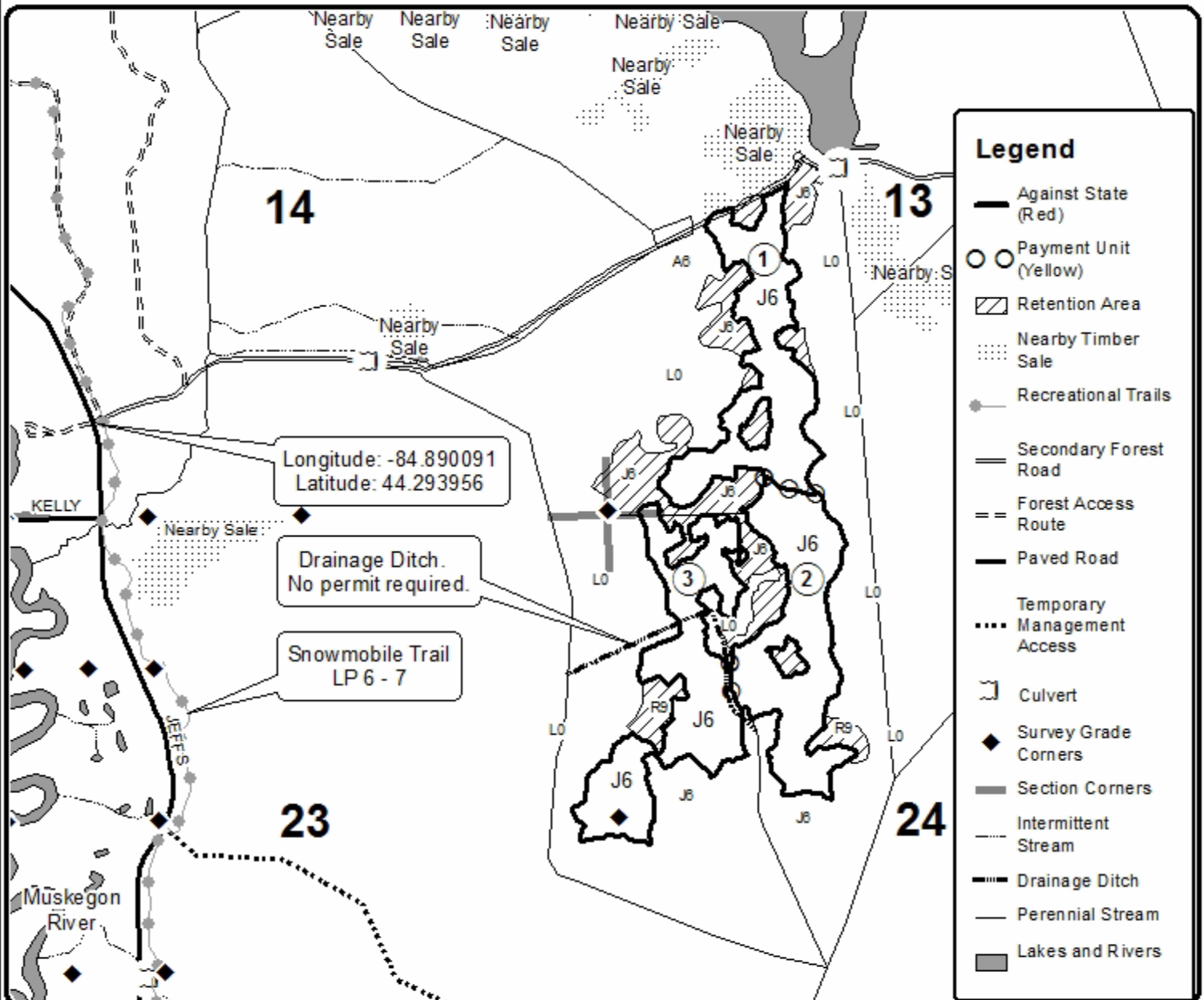
Cover Type				Density	
A = Aspen	H = Hemlock	N = Marsh	U = Upland Brush	0 = Non Stocked	5 = Pole Timber Medium
B = Paper Birch	J = Jack Pine	O = Oak	UM = Upland Mixed	1 = Seeding Sapling Poor	6 = Pole Timber Well
C = Cedar	L = Lowland Brush	P = Lowland Poplar	V = Bog or Marsh	2 = Seeding Sapling Medium	7 = Saw Timber Poor
D = Treed Bog	LM = Lowland Mixed	Q = Mixed Swamp Conifer	W = White Pine	3 = Seeding Sapling Well	8 = Saw Timber Medium
E = Swamp Hardwoods	M = Mpl. Ech. Birch	R = Red Pine	X = Non Stocked	4 = Pole Timber Poor	9 = Saw Timber Well
F = Spruce Fir	MC = Mixed Conifer	S = Black Spruce	Z = Water		
G = Creas	MD = Mixed Deciduous	T = Tamarack			

PU	Acres
1	32.1
2	34.5
3	37.4

Raymond's Ridge Jack

Compartment 95 & 96

104 Acres



80 Aspen Mix (63-024-21)
T24N, R05W, SEC. 16; T24N, R05W, SEC. 17; Missaukee COUNTY

In response to the notice of sale to be held 3:00 p.m. (local time) on June 29, 2022, I am hereby submitting my sealed bid (firm offer) for the following forest products to be cut. Bids for individual species must be at or above the advertised price. All non-responsive bid forms may be rejected.

<u>PRODUCTS & SPECIES</u>	<u>ESTIMATED VOLUME*</u>	<u>ADVERTISED PRICE</u>	<u>BID PRICE/UNIT</u>
Sawtimber			
Black Cherry	55.2 MBF	\$ 133.00/MBF	\$ _____
Mixed Aspen	241.1 MBF	\$ 81.00/MBF	\$ _____
Paper Birch	2.8 MBF	\$ 28.00/MBF	\$ _____
Red Maple	63.7 MBF	\$ 58.00/MBF	\$ _____
Red Oak	15.1 MBF	\$ 145.00/MBF	\$ _____
Red Pine	257.7 MBF	\$ 82.00/MBF	\$ _____
White Pine	7.2 MBF	\$ 57.00/MBF	\$ _____
Pulpwood			
Balsam Fir	53 Cords	\$ 8.45/Cord	\$ _____
Black Cherry	94 Cords	\$ 15.10/Cord	\$ _____
Jack Pine	60 Cords	\$ 9.60/Cord	\$ _____
Mixed Aspen	1,967 Cords	\$ 18.85/Cord	\$ _____
Mixed Oak	98 Cords	\$ 22.30/Cord	\$ _____
Paper Birch	23 Cords	\$ 10.85/Cord	\$ _____
Red Maple	490 Cords	\$ 15.10/Cord	\$ _____
Red Pine	120 Cords	\$ 36.25/Cord	\$ _____
White Pine	392 Cords	\$ 12.35/Cord	\$ _____

*The volumes are statistically estimated within plus (+) or minus (-) 6.02 percent at 95% confidence level. These estimated volumes are final and not subject to adjustment. Prospective bidders are urged to examine this timber and to make their own estimates of quantity and quality.

I understand that any or all bids may be rejected. All bids must be signed and all bid items must be bid or the bid form may be rejected. I also understand that consideration and awarding a contract will be based upon my past performance and ability to complete the contract based upon equipment and staffing subject to my control.

FEDERAL ID: ____ - ____ - ____ or SOCIAL SECURITY NUMBER: ____ - ____ - ____

Company or individual bidding: _____

Company representative's name: _____

Address: _____

City: _____ State: _____ Zip: _____

IF AVAILABLE, PLEASE PLACE THE PERSONALIZED LABEL FROM YOUR PROSPECTUS IN THE ABOVE BOX.

Individual or company representative's signature: _____ Date: _____

Phone number : _____ Email (optional): _____

THE WINNING BIDDER MUST COMPLETE THE VERIFICATION OF WORKER'S DISABILITY COMPENSATION ACT COMPLIANCE (ON REVERSE SIDE IF DOUBLE SIDED) WITHIN 21 DAYS OF SALE AWARD DATE



FOR DEPARTMENT USE ONLY
Sale Number (XX - XXX - XX - XX)
Forest Management Unit:

TIMBER SALE VERIFICATION OF WORKER'S DISABILITY COMPENSATION ACT COMPLIANCE

*As required by Act 317, P.A. 1969 (Worker's Compensation) and
Part 5 of Act 451 of 1994, as amended.*

VERIFICATION OF WORKER'S DISABILITY COMPENSATION ACT COMPLIANCE

- This verification must be completed and submitted within 21 days of contract award and prior to the issuance of the timber sale contract.
- In addition, if boxes 2B or 2C are checked, then Notice of Exclusion or Certificate of Insurance must be submitted within twenty-one (21) days of the contract award and prior to the issuance of the timber sale contract.
- All information must be typed or printed except for written signatures.

Please Check Appropriate Categories:

1. My business is organized as (you **must** check one of the boxes below):
 - A. Sole Proprietorship (individual)
 - B. Partnership
 - C. Corporation

2. You **must** check one of the boxes below:
 - A. I certify my business is a sole proprietorship and it has no employees but the sole proprietor. I am not subject to the Worker's Compensation Laws.
 - B. I certify my business has satisfied its obligation to the Worker's Compensation Act through the use of an approved Notice of Exclusion (BWC-337, Rev. 5/96). I will provide a copy of the Notice of Exclusion within 21 days of the contract award. (For questions or a copy of the BWC-337, please call the Worker's Compensation Bureau at 517-322-1195).
 - C. I certify my business has a Worker's Compensation Policy. I will provide an original Certificate of Insurance within twenty-one (21) days of the contract award.

3. If you have checked item 2(A) or 2(B), you **must** indicate the number of **both** full-time and part-time employees, other than yourself, including family members and active partners (if none, you must enter "0").

_____ Full-time Employees

_____ Part-time Employees

Name of Business		Federal ID (or) Social Security No.	
Address		Telephone ()	
City	State	ZIP	

I hereby certify that the above information is true and correct. I agree to notify the Michigan DNR of any changes that occur in factors affecting my coverage during any of my present and future operations.

Signature of Owner or Authorized Representative

Title

Date

Please complete the "SEALED BID" information on the next page

Jefferies Far Reach Mix (63-012-21)
T22N, R05W, SEC. 11; T22N, R05W, SEC. 12; T22N, R05W, SEC. 13; T22N,

In response to the notice of sale to be held 3:00 p.m. (local time) on June 29, 2022, I am hereby submitting my sealed bid (firm offer) for the following forest products to be cut. Bids for individual species must be at or above the advertised price. All non-responsive bid forms may be rejected.

<u>PRODUCTS & SPECIES</u>	<u>ESTIMATED VOLUME*</u>	<u>ADVERTISED PRICE</u>	<u>BID PRICE/UNIT</u>
Sawtimber			
Jack Pine	253.4 MBF	\$ 11.00/MBF	\$ _____
Quaking Aspen	51.4 MBF	\$ 44.00/MBF	\$ _____
Red Pine	193.9 MBF	\$ 45.00/MBF	\$ _____
White Pine	84.2 MBF	\$ 31.00/MBF	\$ _____
Pulpwood			
Black Cherry	19 Cords	\$ 8.25/Cord	\$ _____
Jack Pine	1,931 Cords	\$ 5.25/Cord	\$ _____
Mixed Aspen	205 Cords	\$ 10.30/Cord	\$ _____
Red Maple	105 Cords	\$ 8.25/Cord	\$ _____
Red Pine	191 Cords	\$ 19.80/Cord	\$ _____
White Pine	203 Cords	\$ 6.75/Cord	\$ _____

*The volumes are statistically estimated within plus (+) or minus (-) 4.04 percent at 95% confidence level. These estimated volumes are final and not subject to adjustment. Prospective bidders are urged to examine this timber and to make their own estimates of quantity and quality.

I understand that any or all bids may be rejected. All bids must be signed and all bid items must be bid or the bid form may be rejected. I also understand that consideration and awarding a contract will be based upon my past performance and ability to complete the contract based upon equipment and staffing subject to my control.

FEDERAL ID: _____ or SOCIAL SECURITY NUMBER: _____

Company or individual bidding: _____

Company representative's name: _____

Address: _____

City: _____ State: _____ Zip: _____

IF AVAILABLE, PLEASE PLACE THE PERSONALIZED LABEL FROM YOUR PROSPECTUS IN THE ABOVE BOX.

Individual or company representative's signature: _____ Date: _____

Phone number : _____ Email (optional): _____

THE WINNING BIDDER MUST COMPLETE THE VERIFICATION OF WORKER'S DISABILITY COMPENSATION ACT COMPLIANCE (ON REVERSE SIDE IF DOUBLE SIDED) WITHIN 21 DAYS OF SALE AWARD DATE



FOR DEPARTMENT USE ONLY	
Sale Number (XX - XXX - XX - XX)	
Forest Management Unit:	

**TIMBER SALE
VERIFICATION OF WORKER'S DISABILITY
COMPENSATION ACT COMPLIANCE**

*As required by Act 317, P.A. 1969 (Worker's Compensation) and
Part 5 of Act 451 of 1994, as amended.*

VERIFICATION OF WORKER'S DISABILITY COMPENSATION ACT COMPLIANCE

- This verification must be completed and submitted within 21 days of contract award and prior to the issuance of the timber sale contract.
- In addition, if boxes 2B or 2C are checked, then Notice of Exclusion or Certificate of Insurance must be submitted within twenty-one (21) days of the contract award and prior to the issuance of the timber sale contract.
- All information must be typed or printed except for written signatures.

Please Check Appropriate Categories:

- My business is organized as (you **must** check one of the boxes below):
 - Sole Proprietorship (individual)
 - Partnership
 - Corporation
- You **must** check one of the boxes below:
 - I certify my business is a sole proprietorship and it has no employees but the sole proprietor. I am not subject to the Worker's Compensation Laws.
 - I certify my business has satisfied its obligation to the Worker's Compensation Act through the use of an approved Notice of Exclusion (BWC-337, Rev. 5/96). I will provide a copy of the Notice of Exclusion within 21 days of the contract award. (For questions or a copy of the BWC-337, please call the Worker's Compensation Bureau at 517-322-1195).
 - I certify my business has a Worker's Compensation Policy. I will provide an original Certificate of Insurance within twenty-one (21) days of the contract award.
- If you have checked item 2(A) or 2(B), you **must** indicate the number of **both** full-time and part-time employees, other than yourself, including family members and active partners (if none, you must enter "0").

_____ Full-time Employees

_____ Part-time Employees

Name of Business		Federal ID (or) Social Security No.	
Address		Telephone ()	
City	State	ZIP	

I hereby certify that the above information is true and correct. I agree to notify the Michigan DNR of any changes that occur in factors affecting my coverage during any of my present and future operations.

Signature of Owner or Authorized Representative

Title

Date

Please complete the "SEALED BID" information on the next page

Raymond's Ridge Jack (63-030-21)
T22N, R05W, SEC. 13; T22N, R05W, SEC. 23; T22N, R05W, SEC. 24; Missaukee

In response to the notice of sale to be held 3:00 p.m. (local time) on June 29, 2022, I am hereby submitting my sealed bid (firm offer) for the following forest products to be cut. Bids for individual species must be at or above the advertised price. All non-responsive bid forms may be rejected.

<u>PRODUCTS & SPECIES</u>	<u>ESTIMATED VOLUME*</u>	<u>ADVERTISED PRICE</u>	<u>BID PRICE/UNIT</u>
Sawtimber			
Jack Pine	217.1 MBF	\$ 15.00/MBF	\$ _____
Pulpwood			
Bl/R/Hybrid Oak	16 Cords	\$ 16.20/Cord	\$ _____
Jack Pine	1,877 Cords	\$ 6.95/Cord	\$ _____
Red Maple	27 Cords	\$ 11.00/Cord	\$ _____

*The volumes are statistically estimated within plus (+) or minus (-) 9.46 percent at 95% confidence level. These estimated volumes are final and not subject to adjustment. Prospective bidders are urged to examine this timber and to make their own estimates of quantity and quality.

I understand that any or all bids may be rejected. All bids must be signed and all bid items must be bid or the bid form may be rejected. I also understand that consideration and awarding a contract will be based upon my past performance and ability to complete the contract based upon equipment and staffing subject to my control.

FEDERAL ID: _____ - _____ or SOCIAL SECURITY NUMBER: _____ - _____ - _____

Company or individual bidding: _____

Company representative's name: _____

Address: _____

City: _____ State: _____ Zip: _____

IF AVAILABLE, PLEASE PLACE THE PERSONALIZED LABEL FROM YOUR PROSPECTUS IN THE ABOVE BOX.

Individual or company representative's signature: _____ Date: _____

Phone number : _____ Email (optional): _____

THE WINNING BIDDER MUST COMPLETE THE VERIFICATION OF WORKER'S DISABILITY COMPENSATION ACT COMPLIANCE (ON REVERSE SIDE IF DOUBLE SIDED) WITHIN 21 DAYS OF SALE AWARD DATE



FOR DEPARTMENT USE ONLY	
Sale Number (XX - XXX - XX - XX)	
Forest Management Unit:	

TIMBER SALE VERIFICATION OF WORKER'S DISABILITY COMPENSATION ACT COMPLIANCE

As required by Act 317, P.A. 1969 (Worker's Compensation) and
Part 5 of Act 451 of 1994, as amended.

VERIFICATION OF WORKER'S DISABILITY COMPENSATION ACT COMPLIANCE

- This verification must be completed and submitted within 21 days of contract award and prior to the issuance of the timber sale contract.
- In addition, if boxes 2B or 2C are checked, then Notice of Exclusion or Certificate of Insurance must be submitted within twenty-one (21) days of the contract award and prior to the issuance of the timber sale contract.
- All information must be typed or printed except for written signatures.

Please Check Appropriate Categories:

1. My business is organized as (you **must** check one of the boxes below):
 - A. Sole Proprietorship (individual)
 - B. Partnership
 - C. Corporation
2. You **must** check one of the boxes below:
 - A. I certify my business is a sole proprietorship and it has no employees but the sole proprietor. I am not subject to the Worker's Compensation Laws.
 - B. I certify my business has satisfied its obligation to the Worker's Compensation Act through the use of an approved Notice of Exclusion (BWC-337, Rev. 5/96). I will provide a copy of the Notice of Exclusion within 21 days of the contract award. (For questions or a copy of the BWC-337, please call the Worker's Compensation Bureau at 517-322-1195).
 - C. I certify my business has a Worker's Compensation Policy. I will provide an original Certificate of Insurance within twenty-one (21) days of the contract award.
3. If you have checked item 2(A) or 2(B), you **must** indicate the number of **both** full-time and part-time employees, other than yourself, including family members and active partners (if none, you must enter "0").

_____ Full-time Employees

_____ Part-time Employees

Name of Business		Federal ID (or) Social Security No.	
Address		Telephone ()	
City	State	ZIP	

I hereby certify that the above information is true and correct. I agree to notify the Michigan DNR of any changes that occur in factors affecting my coverage during any of my present and future operations.

Signature of Owner or Authorized Representative

Title

Date

Please complete the "SEALED BID" information on the next page

North Manton Aspen (63-004-21)
T24N, R09W, SEC. 13; T24N, R09W, SEC. 22; T24N, R09W, SEC. 23; T24N,

In response to the notice of sale to be held 3:00 p.m. (local time) on June 29, 2022, I am hereby submitting my sealed bid (firm offer) for the following forest products to be cut. Bids for individual species must be at or above the advertised price. All non-responsive bid forms may be rejected.

<u>PRODUCTS & SPECIES</u>	<u>ESTIMATED VOLUME*</u>	<u>ADVERTISED PRICE</u>	<u>BID PRICE/UNIT</u>
Sawtimber			
Mixed Aspen	365.5 MBF	\$ 73.00/MBF	\$ _____
Red Maple	44.4 MBF	\$ 53.00/MBF	\$ _____
Red Oak	12.4 MBF	\$ 131.00/MBF	\$ _____
Red Pine	17.3 MBF	\$ 74.00/MBF	\$ _____
White Pine	182.5 MBF	\$ 52.00/MBF	\$ _____
Pulpwood			
Balsam Fir	50 Cords	\$ 7.70/Cord	\$ _____
Jack Pine	48 Cords	\$ 8.70/Cord	\$ _____
Mixed Aspen	1,974 Cords	\$ 17.15/Cord	\$ _____
Mixed Hardwood	206 Cords	\$ 13.75/Cord	\$ _____
Mixed Oak	49 Cords	\$ 20.25/Cord	\$ _____
Red Pine	5 Cords	\$ 32.95/Cord	\$ _____
White Pine	489 Cords	\$ 11.25/Cord	\$ _____

*The volumes are statistically estimated within plus (+) or minus (-) 5.81 percent at 95% confidence level. These estimated volumes are final and not subject to adjustment. Prospective bidders are urged to examine this timber and to make their own estimates of quantity and quality.

I understand that any or all bids may be rejected. All bids must be signed and all bid items must be bid or the bid form may be rejected. I also understand that consideration and awarding a contract will be based upon my past performance and ability to complete the contract based upon equipment and staffing subject to my control.

FEDERAL ID: ____ - ____ - ____ or SOCIAL SECURITY NUMBER: ____ - ____ - ____

Company or individual bidding: _____

Company representative's name: _____

Address: _____

City: _____ State: _____ Zip: _____

IF AVAILABLE, PLEASE PLACE THE PERSONALIZED LABEL FROM YOUR PROSPECTUS IN THE ABOVE BOX.

Individual or company representative's signature: _____ Date: _____

Phone number : _____ Email (optional): _____

THE WINNING BIDDER MUST COMPLETE THE VERIFICATION OF WORKER'S DISABILITY COMPENSATION ACT COMPLIANCE (ON REVERSE SIDE IF DOUBLE SIDED) WITHIN 21 DAYS OF SALE AWARD DATE



FOR DEPARTMENT USE ONLY	
Sale Number (XX - XXX - XX - XX)	
Forest Management Unit:	

TIMBER SALE VERIFICATION OF WORKER'S DISABILITY COMPENSATION ACT COMPLIANCE

As required by Act 317, P.A. 1969 (Worker's Compensation) and
Part 5 of Act 451 of 1994, as amended.

VERIFICATION OF WORKER'S DISABILITY COMPENSATION ACT COMPLIANCE

- This verification must be completed and submitted within 21 days of contract award and prior to the issuance of the timber sale contract.
- In addition, if boxes 2B or 2C are checked, then Notice of Exclusion or Certificate of Insurance must be submitted within twenty-one (21) days of the contract award and prior to the issuance of the timber sale contract.
- All information must be typed or printed except for written signatures.

Please Check Appropriate Categories:

1. My business is organized as (you **must** check one of the boxes below):
 - A. Sole Proprietorship (individual)
 - B. Partnership
 - C. Corporation
2. You **must** check one of the boxes below:
 - A. I certify my business is a sole proprietorship and it has no employees but the sole proprietor. I am not subject to the Worker's Compensation Laws.
 - B. I certify my business has satisfied its obligation to the Worker's Compensation Act through the use of an approved Notice of Exclusion (BWC-337, Rev. 5/96). I will provide a copy of the Notice of Exclusion within 21 days of the contract award. (For questions or a copy of the BWC-337, please call the Worker's Compensation Bureau at 517-322-1195).
 - C. I certify my business has a Worker's Compensation Policy. I will provide an original Certificate of Insurance within twenty-one (21) days of the contract award.
3. If you have checked item 2(A) or 2(B), you **must** indicate the number of **both** full-time and part-time employees, other than yourself, including family members and active partners (if none, you must enter "0").

_____ Full-time Employees

_____ Part-time Employees

Name of Business		Federal ID (or) Social Security No.	
Address		Telephone ()	
City	State	ZIP	

I hereby certify that the above information is true and correct. I agree to notify the Michigan DNR of any changes that occur in factors affecting my coverage during any of my present and future operations.

Signature of Owner or Authorized Representative

Title

Date

Please complete the "SEALED BID" information on the next page