



**DEPARTMENT OF NATURAL RESOURCES  
STATE OF MICHIGAN**

**TIMBER SALE PROSPECTUS #6933**

SCHEDULED SALE DATE AND TIME: 8:30 a.m. (local time) on October 20, 2021.

LOCATION: CRYSTAL FALLS MGMT UNIT, 1420 US 2 WEST, CRYSTAL FALLS, MI 49920.

PROSPECTUS NOTE: The bidder is advised to inspect the sale area and review the location, estimated volumes, operating costs and contract terms of proposed sales. Please be aware that some landowners may request 60 days or more notice for access across their land.

Notice is hereby given that bids will be received by the Unit Manager, CRYSTAL FALLS MANAGEMENT UNIT, for certain timber on the following described lands:

Doan's Lakes Mix (12-008-21) / T44N, R30W, SEC. 10, SWSW.

T44N, R30W, SEC. 13, N1/2NW.

T44N, R30W, SEC. 14, S1/2NW,NE,SW,SWSE.

T44N, R30W, SEC. 15, N1/2NW,SE,SW,NWNE,N1/2SW,SESW.

T44N, R30W, SEC. 15, SE.

Dickinson County, Advertised Price \$90,184.65, 207.4 Acres, Aspen, Hardwood.

SALE NOTE: All units of volume listed for this sale were estimated using the Inventory Manager computer program and the new Michigan taper model.

Access may be through private land.

Edey Lake Mix (12-009-21) / T44N, R30W, SEC. 21, NWNE,N1/2SW.

T44N, R30W, SEC. 22, E1/2NE,NESW,S1/2SW,SWSE.

T44N, R30W, SEC. 23, SWNW.

Dickinson County, Advertised Price \$71,704.60, 153.2 Acres, Aspen, Hardwood.

SALE NOTE: All units of volume listed for this sale were estimated using the Inventory Manager computer program and the new Michigan taper model.

Access may be through private land.

Reservoir Mix (12-058-21) / T44N, R31W, SEC. 22, SENE.

T44N, R31W, SEC. 23, NW,N1/2SW.

Iron County, Advertised Price \$54,700.35, 84.2 Acres, Jack Pine, Red Pine.

SALE NOTE: All units of volume listed for this sale were estimated using the Inventory Manager computer program and the new Michigan taper model.

Access may be through private land.

Olson Creek Mix (12-059-21) / T43N, R33W, SEC. 7 , NWNW,S1/2NW,NWSW.

T43N, R34W, SEC. 12, NENE,S1/2NE,W1/2SE.

Iron County, Advertised Price \$50,636.35, 95.9 Acres, Aspen, Hardwood.

SALE NOTE: All units of volume listed for this sale were estimated using the Inventory Manager computer program and the new Michigan taper model.

Access may be through private land.

## BID INSTRUCTIONS (VER. 07/02/2018):

### 1. Scheduled Bid Location, Date, and Time (2/11)

Bids must be received by the Unit Manager, CRYSTAL FALLS OFFICE, 1420 US 2 West, Crystal Falls, MI 49920, no later than 8:30 a.m. (local time) on October 20, 2021. For further information concerning this sale, contact Dan McNamee at 906-875-6622.

### 2. Bidder's Qualifications (5/16)

Purchaser shall obtain workers compensation insurance to cover claims under Michigan's Worker's Disability Compensation Act of 1969 or similar employee benefit act of any other state applicable to an employee. If all or part of a timber sale was prepared by a private contractor, the contractor and that contractor's company are not permitted to bid on the timber sale contract. Bids will not be accepted from individuals or companies appearing on the DNR/FRD No-Bid List. This list contains the names of purchasers who previously failed to execute a contract within 21-days or who have a history of poor performance.

### 3. Preparation of Sealed Bids (5/16)

Bid Forms may be completed online thru Michigan DNR Timber Sale Online Bidding (OLB) at [www.michigan.gov/timberbidding](http://www.michigan.gov/timberbidding) or by completing the hardcopy Bid Form found in the Timber Sale Prospectus. Hardcopy Bid Forms shall be manually signed in ink. Registration in OLB is considered your 'signature' for all bids submitted thru that system. Bid prices must be entered for each species and product in the Bid Price column for all material subject to bidding and all fill-in blanks must be completed. If erasures or other changes appear on the hardcopy Bid Form, each erasure or change must be initialed by the person signing the bid.

### 4. Submission of Sealed Bids (5/16)

Bid forms may be obtained from the Unit Manager or thru OLB. Bids may be submitted hardcopy or thru OLB. All hardcopy bids must be submitted on the bid form and in an envelope clearly identified as described in this section. NOTE: Only one bid form per bid envelope. Sealed bids must be submitted to the Unit office designated in the prospectus and must be submitted at or prior to the time established in the prospectus. The envelope should show on the outside (a) the sale name or number and (b) the date and time of bid opening, as shown in the prospectus. Bids received after the time specified in the sale prospectus are late bids and will be rejected.

It is possible for a bidder to submit multiple bids on a single sale. For example, a bid may be submitted hardcopy and a bid may be submitted thru OLB. Or, two bidders from the same company could both submit bids on the same sale. If this were to happen, the State would accept all bids received and award the contract accordingly. All bidding and contractual requirements would apply to all bids received.

### 5. Public Opening of Sealed Bids (7/16)

If conditions permit, the sealed bids will be publicly opened and posted at the time and place set in the prospectus.

If a bidder, present at a bid opening, has submitted bids on more than one sale, that bidder may withdraw their unopened bid envelopes or announce the withdrawal of their online bid after being declared the successful bidder on one sale.

### 6. Award of Contract (1/11)

Award of the contract will be made to the Bidder whose bid, conforming to the prospectus, is most advantageous to the State of Michigan on the basis of total value at rates bid for the estimated quantities. The State reserves the right to reject any bid or waive any minor irregularity in bids received. A written award mailed (or otherwise furnished) to the successful Bidder shall be deemed to result in a binding contract without further action by either party.

### 7. Down Payment (1/11)

The Bidder to whom award is made must make a down payment within 21 days of the sale award. The amount of the down payment will be calculated as shown in the Bond and Payment Schedule of this prospectus. Only cash may be used to meet this requirement.

### 8. Performance Security (1/11)

As guarantee of faithful performance, a cash bond, certificate of deposit, surety bond or irrevocable letter of credit (LOC) is required within 21 days of the sale award. The amount of the performance security is shown in the Bond and

Payment Schedule of this prospectus. If an LOC or surety is used, the coverage must extend for at least 6 months beyond the contract expiration.

#### 9. Timber Sale Contract (7/18)

Additional conditions and requirements common to all timber sales are listed on the timber sale contract (R4031) and are available on line at [www.michigan.gov/timber](http://www.michigan.gov/timber). Contact the Unit Manager for additional information or a sample contract. Within 21 days of the date of the award letter, the bidder must sign the contract and provide the required down payment, performance security, and verification of worker's disability compensation. The down payment and performance security shall be in accordance with the provisions of the timber sale contract, in the sums stated in this prospectus. If these actions are not taken, then the Bidder, the Bidder's corporation, and the corporation's principals may not be permitted to bid on State timber sales for a period of 3 months after the first offense, 6 months after the second offense, and 1 year after the third offense. An offense will only be counted against the Bidder for 5 years. In addition, the Bidder certifies that if awarded this contract, the Bidder will complete the timber sale contract in accordance with its terms and any modifications thereof including requirements to purchase, cut, and remove the included timber by the expiration date.

Payment Unit values in the State Forest Timber Sale Contract are calculated based on the advertised value of the Payment Unit as a percentage of the total advertised value of the contract. The advertised value of each Payment Unit is given in the Description of Timber by Payment Unit table on the Timber Sale Information page. For example, if the value of Payment Unit 1 is advertised as \$1,500 and the total Timber Sale value is advertised as \$10,000, the contract price for Payment Unit 1 will be 15% of the total bid price ( $\$1,500/\$10,000 * 100$ ).

#### 10. Disclaimer of Estimates and Bidder's Warranty of Inspection (7/16)

Before submitting this bid, the Bidder is advised and cautioned to inspect the sale area, review the requirements of the sale contract, and take other steps as may be reasonably necessary to ascertain the location, estimated volumes, construction estimates, and operating costs of the proposed sale. Failure to do so will not relieve the Bidder from responsibility for completing the contract.

The Bidder warrants that this bid is submitted solely on the basis of the Bidder's examination and inspection of the quality and quantity of the timber offered for sale and the Bidder's opinion of the value thereof and the costs of recovery. No reliance should be placed on the State of Michigan's estimates of timber quality, quantity or costs of recovery. Bidder further acknowledges that the State of Michigan: (i) expressly disclaims any warranty of fitness of timber for any purpose; (ii) offers this timber as is without any warranty of quality (merchantability) or quantity and (iii) expressly disclaims any warranty as to the quantity or quality of timber sold.

#### 11. Certification and Chain-of-Custody (10/14)

Unless otherwise indicated in the contract under section 7 – Other Conditions of the Sale Specific Conditions & Requirements, the area encompassed by this timber sale is certified to the standards of the Forest Stewardship Council (FSC) - Certificate #SCS-FM/COC-00090N and the Sustainable Forestry Initiative (SFI) - Certificate #NSF-SFIS-5Y031-SF5. Forest products from this sale may be delivered to the mill as "FSC 100% and / or SFI certified" as long as the contractor hauling the forest products is chain-of-custody (COC) certified or covered under a COC certificate from the destination mill. The purchaser is responsible for maintaining COC after leaving the sale area.

#### 12. Good Neighbor Authority (GNA) Requirements (7/16)

If the name of this timber sales contains the acronym GNA, it is authorized by the Good Neighbor Authority (GNA) and covered by various agreements between the U.S. Forest Service and the State. The timber sale occurs on federal land and the following conditions apply:

GNA contracts on US Forest Service land will not be awarded to purchasers on the Federal list of excluded parties. The System for Award Management (SAM) will be checked for active excluded parties prior to award of contract. In addition, the Bidder to whom award is made must complete an Assurance Regarding Felony Conviction or Tax Delinquent Status for Corporate Applicants (AD-3031).

#### 13. Good Neighbor Authority (GNA) Requirements, con't (9/16)

Bidder certifies, by signing this bid form, that to the best of Bidder's knowledge that the following representations are accurate and complete.

- a. That the Bidder and its principals are not presently debarred, suspended, proposed for debarment, declared ineligible, or voluntary excluded from timber sales (covered transactions) by any Federal department or agency.
- b. That the Bidder and its principals have not within a 3-year period preceding this bid been convicted of or had a civil judgment rendered against them for commission of fraud or a criminal offense in connection with obtaining , attempting to obtain, or performing a public (Federal, State, or local) transaction or contract under a public transaction; violation of Federal or State antitrust statutes or commission of embezzlement, theft, forgery, bribery, falsification or destruction of records, making false statements, or receiving stolen property.
- c. That the Bidder and its principals are not presently indicted for or otherwise criminally or civilly charged by a governmental entity (Federal, State, or local) with commission of any of the offenses enumerated in paragraph b of this certification.
- d. That the Bidder and its principals have not within a 3-year period preceding this bid had one or more public transactions (Federal, State, or local) terminated for breach or default of a timber or forest product contract.

Bidders that cannot certify this requirement, in whole or in part, shall submit an explanation with their bid.

DAN EICHINGER  
Director



# TIMBER SALE INFORMATION

## Doan's Lakes Mix (12-008-21)

T44N, R30W, SEC. 10; T44N, R30W, SEC. 13; T44N, R30W, SEC. 14; T44N, R30W, SEC. 15.

Dickinson County (Advertised Price \$90,184.65)

SALE NOTE: All units of volume listed for this sale were estimated using the Inventory Manager computer program and the new Michigan taper model.

Access may be through private land.

A timber sale contract for this lump sum, sealed bid timber sale will be awarded to the responsible bidder offering the highest sealed bid price. All units of volume listed below were estimated using the Inventory Manager computer program and the new Michigan taper model. Bids must be at or above the following advertised price for each product and species:

<u>PRODUCTS &amp; SPECIES</u>	<u>ESTIMATED UNITS*</u>	<u>ADVERTISED PRICE</u>
<b>Sawtimber</b>		
Basswood	2.1 MBF	\$ 43.00 / MBF
Paper Birch	72.5 MBF	\$ 31.00 / MBF
Red Maple	73.9 MBF	\$ 73.00 / MBF
Red Pine	49.7 MBF	\$ 73.00 / MBF
Sugar Maple	1.5 MBF	\$ 129.00 / MBF
<b>Pulpwood</b>		
Balsam Fir	156 Cords	\$ 7.20 / Cord
Jack Pine	61 Cords	\$ 13.75 / Cord
Mixed Aspen	3,177 Cords	\$ 17.40 / Cord
Mixed Hardwood	1,324 Cords	\$ 10.95 / Cord
Mixed Spruce	367 Cords	\$ 7.50 / Cord
Red Pine	186 Cords	\$ 22.25 / Cord

\* The total volume is statistically estimated within plus (+) or minus (-) 3.62 percent. There are an estimated 5,497 cords on this timber sale, plus or minus 199 cords at the 95% confidence level. The estimated units are final and not subject to adjustment. Prospective bidders are urged to examine this timber and to make their own estimates of quantity and quality.

### **BOND AND PAYMENT SCHEDULE:**

1. A bond in the amount of \$6,313.00 to insure faithful performance of the conditions of the contract will be deposited by the successful bidder within 21 days of the sale award.
2. Cutting in any sale or unit without the required advance payment would be considered a trespass.
3. Total payment must be paid in advance or according to the following schedule :
  - (a) Ten percent (10%) of the sale value must be paid within 21 days of the sale award.
  - (b) The 10% down payment will be credited towards the first unit cut.
  - (c) Payment for each of the following units must be made before cutting begins in that unit:

PAYMENT UNIT NUMBER	PERCENT OF TOTAL SALE VALUE
01	24.2%
02	13.3%
03	17.4%
04	23.5%
05	10.7%
06	10.9%

4. If no cutting takes place, the 10% down payment will not be refunded.
5. Operations on the contract issued will terminate on 06/30/2024.

### **SALE STATISTICS**

Volumes were calculated in cubic feet using the Michigan taper model. Cubic foot volume includes all wood inside bark for the product indicated. For display purposes, cubic feet were converted to cords and MBF using a simple conversion factor, e.g. 79 cubic feet per cord and 185 cubic feet per MBF. The cubic foot volumes are precise; the cords and MBF volumes are not. Cubic foot volume cannot be directly converted to cords or boards with precision.

## SALE VOLUMES

The total estimated sale volume may not equal the sum of the species/products due to the nature of statistical calculations associated with double sampling methodology.

VOLUME			STATISTICAL RANGE IN CORDS	
TOTAL CUBIC FEET	TOTAL CORDS	PERCENT ERROR	MINIMUM	MAXIMUM
434,287	5,497	3.62%	5,298	5,697

## VDU VOLUMES

A VDU is a Volume Determination Unit. Volumes and their associated statistics are calculated at the VDU level and summarized to the sale level. There is often a one to one relationship between a VDU and a Payment Unit, but not always, depending on the cruise design. Refer to the VDU TO PAYMENT UNIT table.

	VOLUME			RANGE IN CORDS	
VDU	TOTAL CUBIC FEET	TOTAL CORDS	PERCENT ERROR	MINIMUM	MAXIMUM
4	178,725	2,262	5.84%	2,130	2,394
9	12,158	154	14.98%	131	177
15	9,008	114	28.01%	82	146
28	40,576	514	12.03%	452	575
36	75,763	959	9.56%	867	1,051
47	17,046	216	27.46%	157	275
52	3,820	48	4.44%	46	51
54	101,580	1,286	6.61%	1,201	1,371
72	6,006	76	6.60%	71	81
74	3,307	42	40.77%	25	59
<b>TOTAL:</b>	<b>447,990</b>	<b>5,671</b>		<b>5,162</b>	<b>6,180</b>

## VDU TO PAYMENT UNIT

When a VDU is associated with more than one Payment Unit (PU), the VDU volumes are assigned to the PU based on acres of the VDU within the PU.

VDU	VDU ACRES	PU	PU ACRES
4	83.3	1	53.8
		2	29.5
9	11.5	5	11.5
15	7.7	6	7.7
28	13.0	5	6.2
		6	6.8
36	32.3	3	32.3
47	7.9	6	7.9
52	4.0	4	4.0
54	37.8	4	37.8
72	3.6	4	3.6
74	6.3	5	6.3
<b>TOTAL:</b>	<b>207.4</b>		<b>207.4</b>



**DESCRIPTION OF TIMBER BY PAYMENT UNIT (PU)**

PU	MARKET GROUP	PRODUCT	QUANTITY	UNIT	ACRES	ADVERTISE PRICE
1	Paper Birch	Sawtimber	22.8	MBF	53.8	\$21,832.20
	Red Maple		26.1	MBF		
	Balsam Fir	Pulpwood	46	Cords		
	Mixed Aspen		782	Cords		
	<i>Quaking Aspen</i>		782	<i>Cords</i>		
	Mixed Hardwood		368	Cords		
	<i>Paper Birch</i>		141	<i>Cords</i>		
	<i>Red Maple</i>		219	<i>Cords</i>		
	<i>Sugar Maple</i>		8	<i>Cords</i>		
	Mixed Spruce		167	Cords		
	<i>Black Spruce</i>		135	<i>Cords</i>		
	<i>White Spruce</i>		32	<i>Cords</i>		
	2	Paper Birch	Sawtimber	12.5		
Red Maple			14.3	MBF		
Balsam Fir		Pulpwood	25	Cords		
Mixed Aspen			429	Cords		
<i>Quaking Aspen</i>			429	<i>Cords</i>		
Mixed Hardwood			202	Cords		
<i>Paper Birch</i>			77	<i>Cords</i>		
<i>Red Maple</i>			120	<i>Cords</i>		
<i>Sugar Maple</i>			5	<i>Cords</i>		
Mixed Spruce			92	Cords		
<i>Black Spruce</i>			74	<i>Cords</i>		
<i>White Spruce</i>			18	<i>Cords</i>		
3		Paper Birch	Sawtimber	3.0	MBF	32.3
	Red Maple		7.3	MBF		
	Balsam Fir	Pulpwood	37	Cords		
	Mixed Aspen		781	Cords		
	<i>B. T. Aspen</i>		8	<i>Cords</i>		
	<i>Balsam Poplar</i>		9	<i>Cords</i>		
	<i>Quaking Aspen</i>		764	<i>Cords</i>		
	Mixed Hardwood		102	Cords		
	<i>Black Cherry</i>		21	<i>Cords</i>		
	<i>Paper Birch</i>		49	<i>Cords</i>		
	<i>Red Maple</i>		32	<i>Cords</i>		
	Mixed Spruce		18	Cords		
	<i>Black Spruce</i>		9	<i>Cords</i>		
	<i>White Spruce</i>		9	<i>Cords</i>		
4	Paper Birch	Sawtimber	21.0	MBF	45.4	\$21,180.90
	Red Maple		26.2	MBF		
	Sugar Maple		1.5	MBF		
	Balsam Fir	Pulpwood	48	Cords		
	Jack Pine		8	Cords		
	Mixed Aspen		692	Cords		
	<i>B. T. Aspen</i>		306	<i>Cords</i>		
	<i>Quaking Aspen</i>		386	<i>Cords</i>		
	Mixed Hardwood		492	Cords		
	<i>Black Cherry</i>		6	<i>Cords</i>		
	<i>Paper Birch</i>		135	<i>Cords</i>		
	<i>Red Maple</i>		311	<i>Cords</i>		
	<i>Sugar Maple</i>		40	<i>Cords</i>		
	Mixed Spruce		72	Cords		
	<i>White Spruce</i>		72	<i>Cords</i>		
5	Red Pine	Sawtimber	38.8	MBF	24.0	\$9,642.65
	Jack Pine	Pulpwood	25	Cords		
	Mixed Aspen		155	Cords		

**DESCRIPTION OF TIMBER BY PAYMENT UNIT (PU), CON'T**

PU	MARKET GROUP	PRODUCT	QUANTITY	UNIT	ACRES	ADVERTISE PRICE
5 con't	<i>B. T. Aspen</i>	<i>Pulpwood</i>	8	<i>Cords</i>		
	<i>Quaking Aspen</i>		147	<i>Cords</i>		
	Mixed Hardwood		15	<i>Cords</i>		
	<i>Black Cherry</i>		5	<i>Cords</i>		
	<i>Red Maple</i>		10	<i>Cords</i>		
	Mixed Spruce		9	<i>Cords</i>		
	<i>Black Spruce</i>		9	<i>Cords</i>		
	Red Pine		159	<i>Cords</i>		
6	Basswood	Sawtimber	2.1	MBF	22.4	\$9,817.40
	Paper Birch		13.2	MBF		
	Red Pine		10.9	MBF		
	Jack Pine	Pulpwood	28	<i>Cords</i>		
	Mixed Aspen		338	<i>Cords</i>		
	<i>B. T. Aspen</i>		113	<i>Cords</i>		
	<i>Quaking Aspen</i>		225	<i>Cords</i>		
	Mixed Hardwood		145	<i>Cords</i>		
	<i>Basswood</i>		4	<i>Cords</i>		
	<i>Black Cherry</i>		2	<i>Cords</i>		
	<i>Paper Birch</i>		56	<i>Cords</i>		
	<i>Red Maple</i>		80	<i>Cords</i>		
	<i>Sugar Maple</i>		3	<i>Cords</i>		
	Mixed Spruce		9	<i>Cords</i>		
	<i>Black Spruce</i>		9	<i>Cords</i>		
	Red Pine		27	<i>Cords</i>		
	TOTAL:			199.7		
TOTAL:			5,271	Cords		

## Sale Specific Conditions & Requirements

**Sale Name: Doan's Lakes Mix**

**Sale Number: 12-008-21 Seq#: 1**

### 1 - Sale Area

#### 1.2 - Boundaries

##### 1.2.1 - Painted boundaries (9/19)

The sale boundary and Payment Unit boundaries are marked and identified by blue and red paint. Exterior sale boundary lines against private property are marked with blue paint. Exterior sale boundary lines against state are marked with red paint. Interior Payment Unit boundaries are marked with red slashes. The painted boundary line trees are not Included Timber and are to be protected. Trees painted with red slashes, designating an interior Payment Unit boundary, are only to be cut when all surrounding Payment Units have been paid.

### 2 - Timber Specifications

#### 2.1 - Included Timber

##### 2.1.1 - Clearcut unit(s) with unmerchantable trees (6/14)

Within Payment Unit(s) 1-4 and the aspen portion of Payment Unit 6, cut all aspen and mixed hardwood trees that are two (2) inches or more at DBH. In addition, cut all spruce, balsam, tamarack, and jack pine with two or more pulpwood sticks. Do not cut aspen and birch marked with green paint, oak, black ash, elm, cedar, hemlock, red pine, or white pine.

##### 2.1.3 - Cut tree marked unit(s) (12/08)

Within Payment Unit(s) 5 and the hardwood and pine portions of Payment Unit 6, all trees are designated for cutting when marked with orange paint above and below stump height, regardless of merchantability. In addition to trees marked with orange paint, cut all aspen with one or more pulpwood sticks.

#### 2.2 - Utilization

##### 2.2.11 - Chipping restriction (9/14)

If chipping occurs on this sale, then no woody debris present on the ground at the start of the sale may be chipped. In addition, brush or chips may not be stored or stockpiled on-site for more than 60 days past the sale expiration date. Residual chip depth may not exceed 4 inches.

### 4 - Transportation

#### 4.1 - Construction

##### 4.1.4 - Timber removed for construction (12/09)

Trees cut or damaged in the process of pre-approved road, landing or skid trail construction will be decked in an area separate from other Designated Timber and not removed until measured by the sale administrator. Payment will be made at the specified Purchase Unit Price.

##### 4.1.5 - Culverts (5/14)

Roads may require the installation of culverts for cross drainage or at natural drainage-ways. If culverts are needed in these locations, their placement will be specified by the sale administrator, and they shall be installed prior to hauling. The culverts shall be new, corrugated metal or plastic gauge. Culverts will be a minimum of 18 inches in diameter and 24 feet in length.

##### 4.1.6 - Road construction (1/09)

Construction of new roads or improvements of existing roads shall be done in such a way as to minimize the environmental and visual impacts. Merchantable trees shall be cut and utilized unless otherwise directed. Non-merchantable trees shall be severed and laid flat on the ground. Slash shall be scattered, and not left in windrows and kept a minimum of 10 feet back from the road edge. Stumps shall be set upright, not left on edge, and be moved at least 10 feet away from the road edge. Disturbed soil shall be feathered into the woods and not left in berms or windrows.

##### 4.1.7 - Road closure (10/11)

All new roads built into the sale must be blocked to vehicle traffic upon completion of the sale. Overgrown roads that are reopened shall be considered new roads. In general, this will require constructing a four (4') foot high berm of stumps and logs covered with earth. Contact the sale administrator for specific details of design and placement.

## 4.2 - Maintenance

### 4.2.3 - Road maintenance (8/13)

The following road maintenance is required: Within 60 days of completion of hauling, or if no hauling occurs for 60 days, the road must be maintained and graded. This includes cleaning of drainage areas, grading, crowning, and filling with gravel, if necessary. Damages will be assessed if grading/repair does not occur. All roads must be brought back to a condition of as good or better than before the timber sale. Roads must be maintained during logging operations to allow for vehicle travel.

## 4.4 - Access

### 4.4.2 - Alternate route on private property (2/04)

It is the Purchaser's responsibility to obtain access across private land for any routes other than the route shown on the Timber Sale Map.

## 5 - Operations

### 5.1 - Notification

#### 5.1.7 - Railroad R.O.W. (3/16)

Railroad Company owns a 100' wide strip of land adjacent to this timber sale and to their railroad tracks. Permission to cross tracks will be needed to access Payment Unit 6 from the north. Please contact railroad company for permission and other details.

### 5.2 - Conduct of Operations

#### 5.2.1 - Slash

##### 5.2.1.8 - Slash height (12/08)

No slash or tree tops may exceed 36 inches in height.

#### 5.2.3 - Operating Restrictions

##### 5.2.3.5 - Oak wilt restriction (1/18)

Within this timber sale, unless changed by written agreement, cutting, skidding, hauling within the sale and brushing of access roads to the sale are not permitted during the period of April 15 to July 15. Operations may be allowed if specific steps are taken to prevent damaging uncut oak during the high risk period. Those steps may include completing all road brushing before April 15th and clearing a tree-length buffer along uncut oak cover before April 15th. This is necessary to reduce the spread of oak wilt. For more information, contact the Unit Manager or his/her representative.

#### 5.2.22 - Operating Caution

##### 5.2.22.1 - Operating caution (6/11)

It is recommended, but not required, that within Payment Unit(s) 5 and 6, cutting and skidding occur during dry summer or frozen winter conditions. The reason for the recommendation is because of wet soils and possible barking of residual trees.

#### 5.2.38 - No decking against live trees (2/04)

Cut products may not be decked against unmarked or designated leave trees.

### 5.4 - Soil Protection

#### 5.4.1 - Rutting restriction, general (7/16)

Operations are to cease immediately if equipment and weather conditions result in rutting of roads and/or skid trails which is 12 inches or greater in depth and 50 feet in length. The Unit Manager or his/her representative may restrict hauling and/or skidding if ruts exceed the specified depth. With the Unit Manager or his/her representative's approval, the Purchaser may return to the area when the risk of rutting has decreased.

### 5.8 - Protection of Endangered Species

#### 5.8.5 - Protection of raptor nests (3/13)

All trees with raptor nests will be protected if found during harvesting operations. Notification will be made to the Unit Manager or his/her representative who will notify the Wildlife Biologist so an on-site evaluation and recommendation can be

made, if necessary.

5.8.8 - Protected species, other (2/12)

Within Payment Unit(s) 5 and 6, the harvesting time period may be altered if loons are found nesting on Floodwood Lake or Silver Lake. Critical nesting period is April 15 through August 15.

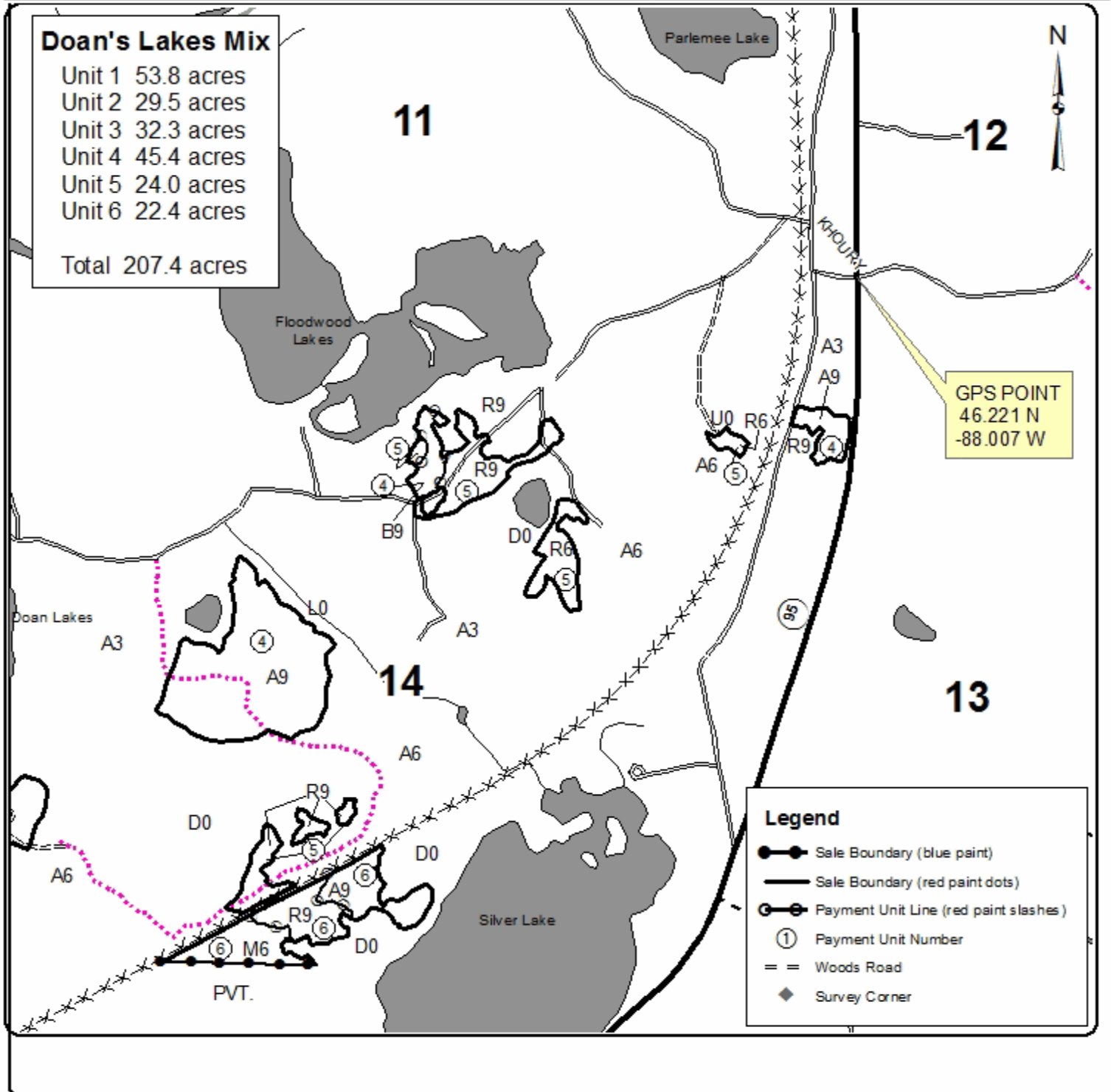


# TIMBER SALE MAP

This information provided by authority of Part 525, 1994 PA 451, as amended.

Forest Management Unit Crystal Falls	County Dickinson	Mapped By Scott Sebero	Date 07/07/2021	Page 2	of 2
Township 44N	Range 30W	Section(s) and Subdivision(s) 10 SWSW 13 N1/2NW 14 S1/2NW,NE SW,SWS 15 SE,N1/2NW,SE,NW,NWNE,N1/2SW,SESW	Scale 4 inches = 1 mile		
Cruised By Scott Sebero					

Cover Type				Density	
A = Aspen	H = Hemlock	N = Marsh	U = Upland Brush	0 = Non Stocked	5 = Pole Timber Medium
B = Paper Birch	J = Jack Pine	O = Oak	UM = Upland Mixed	1 = Seeding Sapling Poor	6 = Pole Timber Well
C = Cedar	L = Lowland Brush	P = Lowland Poplar	V = Bog or Marsh	2 = Seeding Sapling Medium	7 = Saw Timber Poor
D = Treed Bog	LM = Lowland Mixed	Q = Mixed Swamp Conifer	W = White Pine	3 = Seeding Sapling Well	8 = Saw Timber Medium
E = Swamp Hdwoods	M = Mpl, Bch, Bch	R = Red Pine	X = Non Stocked	4 = Pole Timber Poor	9 = Saw Timber Well
F = Spruce Fir	MC = Mixed Conifer	S = Black Spruce	Z = Water		
G = Grass	MD = Mixed Deciduous	T = Tamarack			





### TIMBER SALE MAP

This information provided by authority of Pari 525, 1994 PA 451, as amended.

Forest Management Unit Crystal Falls	County Dickinson	Mapped By Scott Sebero	Date 07/07/2021	Page 1	of 2
Township 44N	Range 30W	Section(s) and Subdivision(s) 10 SWSW 13 N1/2NW 14 S1/2NW,NE SW,SWN 15 SE,N1/2NW,SE,NW,NWNE,N1/2SW,SESW	Scale 4 inches = 1 mile		
		Cruised By Scott Sebero			

#### Cover Type

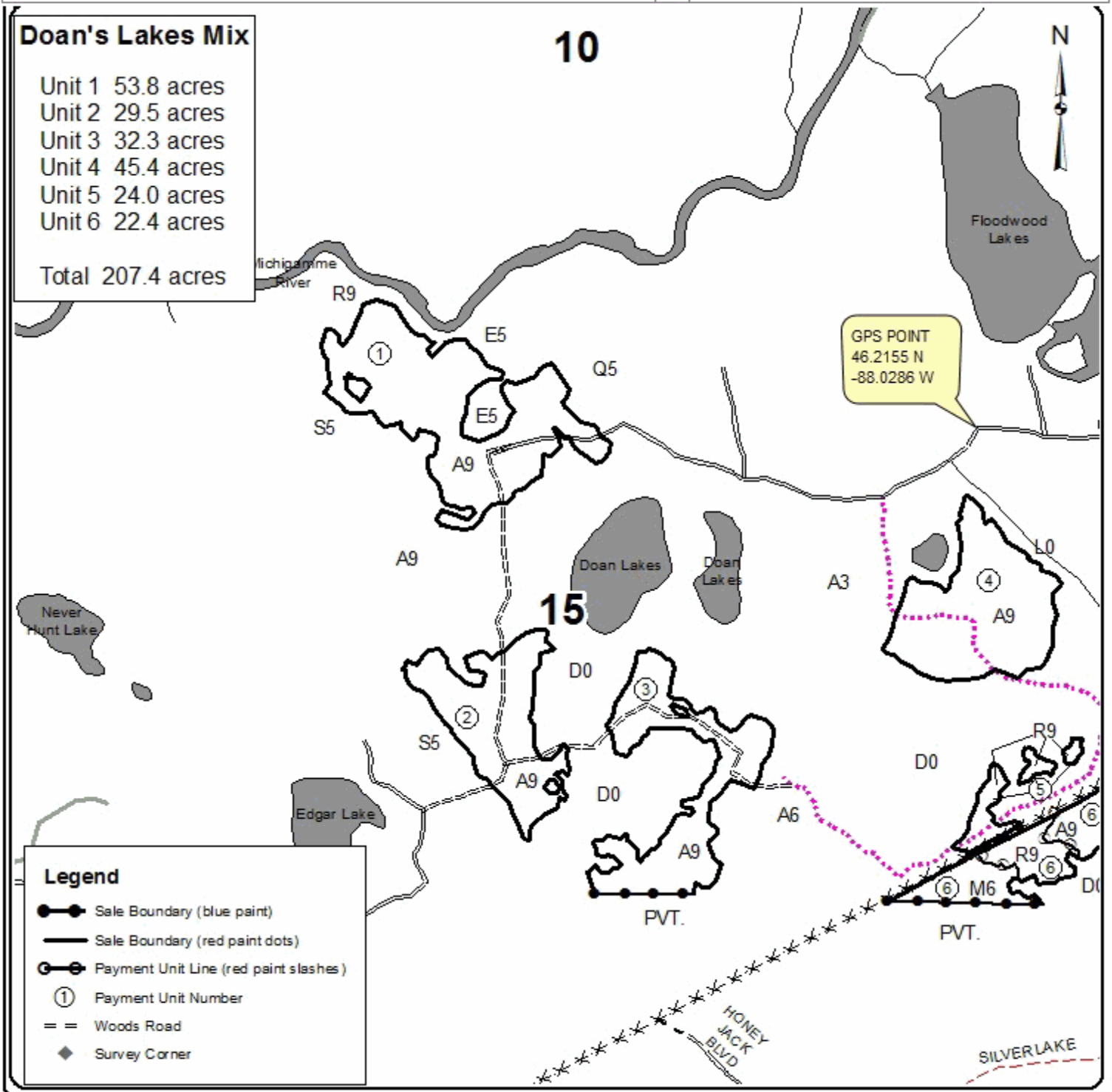
A = Aspen	H = Hemlock	N = Marsh	U = Upland Brush
B = Paper Birch	J = Jack Pine	O = Oak	UM = Upland Mixed
C = Cedar	L = Lowland Brush	P = Lowland Poplar	V = Bog or Marsh
D = Treed Bog	LM = Lowland Mixed	Q = Mixed Swamp Conifer	W = White Pine
E = Swamp Hdwoods	M = Mpl, Bch, Bich	R = Red Pine	X = Non Stocked
F = Spruce Fir	MC = Mixed Conifer	S = Black Spruce	Z = Water
G = Grass	MD = Mixed Deciduous	T = Tamarack	

#### Density

0 = Non Stocked	5 = Pole Timber Medium
1 = Seeding Sapling Poor	6 = Pole Timber Well
2 = Seeding Sapling Medium	7 = Saw Timber Poor
3 = Seeding Sapling Well	8 = Saw Timber Medium
4 = Pole Timber Poor	9 = Saw Timber Well

#### Doan's Lakes Mix

- Unit 1 53.8 acres
- Unit 2 29.5 acres
- Unit 3 32.3 acres
- Unit 4 45.4 acres
- Unit 5 24.0 acres
- Unit 6 22.4 acres
- Total 207.4 acres







## TIMBER SALE INFORMATION

### Edey Lake Mix (12-009-21)

T44N, R30W, SEC. 21; T44N, R30W, SEC. 22; T44N, R30W, SEC. 23.  
Dickinson County (Advertised Price \$71,704.60)

SALE NOTE: All units of volume listed for this sale were estimated using the Inventory Manager computer program and the new Michigan taper model.

Access may be through private land.

A timber sale contract for this lump sum, sealed bid timber sale will be awarded to the responsible bidder offering the highest sealed bid price. All units of volume listed below were estimated using the Inventory Manager computer program and the new Michigan taper model. Bids must be at or above the following advertised price for each product and species:

<u>PRODUCTS &amp; SPECIES</u>	<u>ESTIMATED UNITS*</u>	<u>ADVERTISED PRICE</u>
Sawtimber		
Basswood	20.0 MBF	\$ 53.00 / MBF
Paper Birch	36.9 MBF	\$ 38.00 / MBF
Red Maple	5.7 MBF	\$ 89.00 / MBF
Sugar Maple	11.1 MBF	\$ 158.00 / MBF
Pulpwood		
Balsam Fir	78 Cords	\$ 8.80 / Cord
Black Spruce	46 Cords	\$ 9.15 / Cord
Mixed Aspen	2,828 Cords	\$ 21.25 / Cord
Mixed Hardwood	410 Cords	\$ 13.40 / Cord
Tamarack	60 Cords	\$ 4.75 / Cord

\* The total volume is statistically estimated within plus (+) or minus (-) 4.28 percent. There are an estimated 3,429 cords on this timber sale, plus or minus 147 cords at the 95% confidence level. The estimated units are final and not subject to adjustment. Prospective bidders are urged to examine this timber and to make their own estimates of quantity and quality.

### **BOND AND PAYMENT SCHEDULE:**

1. A bond in the amount of \$5,019.00 to insure faithful performance of the conditions of the contract will be deposited by the successful bidder within 21 days of the sale award.
2. Cutting in any sale or unit without the required advance payment would be considered a trespass.
3. Total payment must be paid in advance or according to the following schedule :
  - (a) Ten percent (10%) of the sale value must be paid within 21 days of the sale award.
  - (b) The 10% down payment will be credited towards the first unit cut.
  - (c) Payment for each of the following units must be made before cutting begins in that unit:

PAYMENT UNIT NUMBER	PERCENT OF TOTAL SALE VALUE
01	6.3%
02	15.5%
03	16.7%
04	15.4%
05	46.1%

4. If no cutting takes place, the 10% down payment will not be refunded.
5. Operations on the contract issued will terminate on 06/30/2024.

### **SALE STATISTICS**

Volumes were calculated in cubic feet using the Michigan taper model. Cubic foot volume includes all wood inside bark for the product indicated. For display purposes, cubic feet were converted to cords and MBF using a simple conversion factor, e.g. 79 cubic feet per cord and 185 cubic feet per MBF. The cubic foot volumes are precise; the cords and MBF volumes are not. Cubic foot volume cannot be directly converted to cords or boards with precision.

## SALE VOLUMES

The total estimated sale volume may not equal the sum of the species/products due to the nature of statistical calculations associated with double sampling methodology.

VOLUME			STATISTICAL RANGE IN CORDS	
TOTAL CUBIC FEET	TOTAL CORDS	PERCENT ERROR	MINIMUM	MAXIMUM
270,864	3,429	4.28%	3,282	3,576

## VDU VOLUMES

A VDU is a Volume Determination Unit. Volumes and their associated statistics are calculated at the VDU level and summarized to the sale level. There is often a one to one relationship between a VDU and a Payment Unit, but not always, depending on the cruise design. Refer to the VDU TO PAYMENT UNIT table.

	VOLUME			RANGE IN CORDS	
VDU	TOTAL CUBIC FEET	TOTAL CORDS	PERCENT ERROR	MINIMUM	MAXIMUM
14	123,472	1,563	6.60%	1,460	1,666
19	17,437	221	18.09%	181	261
20	46,258	586	9.90%	528	644
23	43,330	548	13.71%	473	624
53	44,308	561	8.05%	516	606
68	7,274	92	15.21%	78	106
<b>TOTAL:</b>	<b>282,078</b>	<b>3,571</b>		<b>3,235</b>	<b>3,906</b>

## VDU TO PAYMENT UNIT

When a VDU is associated with more than one Payment Unit (PU), the VDU volumes are assigned to the PU based on acres of the VDU within the PU.

VDU	VDU ACRES	PU	PU ACRES
14	51.5	5	51.5
19	22.2	1	22.2
20	21.6	3	21.6
23	35.4	2	35.4
53	20.0	4	20.0
68	2.5	3	2.5
<b>TOTAL:</b>	<b>153.2</b>		<b>153.2</b>

**DESCRIPTION OF TIMBER BY PAYMENT UNIT (PU)**

PU	MARKET GROUP	PRODUCT	QUANTITY	UNIT	ACRES	ADVERTISE PRICE			
1	Basswood	Sawtimber	0.8	MBF	22.2	\$4,511.25			
	Red Maple		1.7	MBF					
	Mixed Aspen	Pulpwood	183	Cords					
	<i>B. T. Aspen</i>		23	<i>Cords</i>					
	<i>Quaking Aspen</i>		160	<i>Cords</i>					
	Mixed Hardwood		32	Cords					
	<i>Basswood</i>		11	<i>Cords</i>					
	<i>Red Maple</i>		6	<i>Cords</i>					
	<i>Sugar Maple</i>		15	<i>Cords</i>					
	2	Basswood	Sawtimber	19.2			MBF	35.4	\$11,146.60
Paper Birch			12.3	MBF					
Sugar Maple			5.8	MBF					
Balsam Fir		Pulpwood	16	Cords					
Mixed Aspen			316	Cords					
<i>B. T. Aspen</i>			176	<i>Cords</i>					
<i>Balsam Poplar</i>			20	<i>Cords</i>					
<i>Quaking Aspen</i>			120	<i>Cords</i>					
Mixed Hardwood			141	Cords					
<i>Basswood</i>			30	<i>Cords</i>					
<i>Paper Birch</i>			38	<i>Cords</i>					
<i>Sugar Maple</i>			73	<i>Cords</i>					
3		Balsam Fir	Pulpwood	42	Cords	24.1	\$11,961.20		
		Black Spruce		46	Cords				
	Mixed Aspen		482	Cords					
	<i>Quaking Aspen</i>		482	<i>Cords</i>					
	Mixed Hardwood		48	Cords					
	<i>Black Cherry</i>		4	<i>Cords</i>					
	<i>Red Maple</i>		44	<i>Cords</i>					
	Tamarack		60	Cords					
4	Paper Birch	Sawtimber	24.6	MBF	20.0	\$11,070.45			
	Sugar Maple		5.3	MBF					
	Balsam Fir	Pulpwood	20	Cords					
	Mixed Aspen		341	Cords					
	<i>B. T. Aspen</i>		120	<i>Cords</i>					
	<i>Balsam Poplar</i>		59	<i>Cords</i>					
	<i>Quaking Aspen</i>		162	<i>Cords</i>					
	Mixed Hardwood		140	Cords					
	<i>Paper Birch</i>		107	<i>Cords</i>					
	<i>Red Maple</i>		10	<i>Cords</i>					
	<i>Sugar Maple</i>		23	<i>Cords</i>					
5	Red Maple	Sawtimber	4.0	MBF	51.5	\$33,015.10			
	Mixed Aspen	Pulpwood	1,506	Cords					
	<i>B. T. Aspen</i>		91	<i>Cords</i>					
	<i>Balsam Poplar</i>		32	<i>Cords</i>					
	<i>Quaking Aspen</i>		1,383	<i>Cords</i>					
	Mixed Hardwood		49	Cords					
	<i>Black Cherry</i>		27	<i>Cords</i>					
	<i>Paper Birch</i>		13	<i>Cords</i>					
	<i>Red Maple</i>		9	<i>Cords</i>					
	TOTAL:			73.7			MBF		
TOTAL:			3,422	Cords					

# Sale Specific Conditions & Requirements

**Sale Name: Edey Lake Mix**

**Sale Number: 12-009-21 Seq#: 1**

## 1 - Sale Area

### 1.2 - Boundaries

#### 1.2.1 - Painted boundaries (9/19)

The sale boundary and Payment Unit boundaries are marked and identified by blue and red paint. Exterior sale boundary lines against private property are marked with blue paint. Exterior sale boundary lines against state are marked with red paint. Interior Payment Unit boundaries are marked with red slashes. The painted boundary line trees are not Included Timber and are to be protected. Trees painted with red slashes, designating an interior Payment Unit boundary, are only to be cut when all surrounding Payment Units have been paid.

## 2 - Timber Specifications

### 2.1 - Included Timber

#### 2.1.1 - Clearcut unit(s) with unmerchantable trees (6/14)

Within Payment Unit(s) 3-5, cut all aspen and mixed hardwood trees that are two (2) inches or more at DBH, except oak or apple. In addition, cut all spruce, balsam, tamarack, and jack pine with two or more pulpwood sticks.

#### 2.1.3 - Cut tree marked unit(s) (12/08)

Within Payment Unit(s) 1 and 2, all trees are designated for cutting when marked with orange paint above and below stump height, regardless of merchantability. In addition to trees marked with orange paint, cut all aspen with two or more pulpwood sticks, unless marked with green paint.

### 2.2 - Utilization

#### 2.2.11 - Chipping restriction (9/14)

If chipping occurs on this sale, then no woody debris present on the ground at the start of the sale may be chipped. In addition, brush or chips may not be stored or stockpiled on-site for more than 60 days past the sale expiration date. Residual chip depth may not exceed 4 inches.

## 3 - Payments

### 3.3 - Pre-measured Sales

#### 3.3.4 - Dividing payment units (7/14)

Payment Unit(s) 5 may be divided at the request of the Purchaser and upon approval of the Unit Manager. Dividing Payment Units is a contract modification which requires a Timber Sale Contract Amendment. There will be only one division per Payment Unit.

## 4 - Transportation

### 4.2 - Maintenance

#### 4.2.3 - Road maintenance (8/13)

The following road maintenance is required: Within 60 days of completion of hauling, or if no hauling occurs for 60 days, the road must be maintained and graded. This includes cleaning of drainage areas, grading, crowning, and filling with gravel, if necessary. Damages will be assessed if grading/repair does not occur. This spec applies to all haul roads.

### 4.4 - Access

#### 4.4.1 - Private property access (3/11)

Permission for access across private land is the responsibility of the Purchaser.

## 5 - Operations

### 5.2 - Conduct of Operations

#### 5.2.1 - Slash

#### 5.2.1.8 - Slash height (12/08)

No slash or tree tops may exceed 36 inches in height.

#### 5.2.3 - Operating Restrictions

##### 5.2.3.3 - Bark slippage restriction (3/09)

Within Payment Unit(s) 1 and 2, unless changed by written agreement, cutting and skidding are not permitted during the period of April 15 to July 15. This restriction is because of bark slippage.

#### 5.2.22 - Operating Caution

##### 5.2.22.1 - Operating caution (6/11)

It is recommended, but not required, that within Payment Unit(s) 3, cutting and skidding occur during dry summer or frozen winter conditions. The reason for the recommendation is because of the wet tamarack stand which is part of the Payment Unit.

#### 5.4 - Soil Protection

##### 5.4.1 - Rutting restriction, general (7/16)

Operations are to cease immediately if equipment and weather conditions result in rutting of roads and/or skid trails which is 12 inches or greater in depth and 50 feet in length. The Unit Manager or his/her representative may restrict hauling and/or skidding if ruts exceed the specified depth. With the Unit Manager or his/her representative's approval, the Purchaser may return to the area when the risk of rutting has decreased.

#### 5.8 - Protection of Endangered Species

##### 5.8.5 - Protection of raptor nests (3/13)

All trees with raptor nests will be protected if found during harvesting operations. Notification will be made to the Unit Manager or his/her representative who will notify the Wildlife Biologist so an on-site evaluation and recommendation can be made, if necessary.

##### 5.8.8 - Protected species, other (2/12)

Within Payment Unit(s) 1, the harvesting time period may be altered if nesting loons are found on Edey Lake. Critical nesting period is April 15 through August 15.

### 6 - Safety and Fire Prevention

#### 6.2 - Signing

##### 6.2.1 - Road posting (10/20)

The Purchaser is responsible for posting and maintaining caution signs on all roads in areas that have active harvest operations prior to beginning operations. The road must be posted at appropriate distances from the Sale Area to warn of logging activity and truck traffic. Signs must be removed when harvest operations are suspended or completed. The Purchaser will provide these signs.



# TIMBER SALE MAP

This information provided by authority of Par 525, 1994 PA 451, as amended.

Sale Number	Year
12-009	2021

Forest Management Unit Crystal Falls	County Dickinson	Mapped By Scott Sebero	Date 07/12/2021	Page 1	of 2
Township 44N	Range 30W	Section(s) and Subdivision(s) 21 NWNE, N1/2SW 22 E1/2NE, NESW, S1/2SW, SWSE 23 SWNW	Scale 4 inches = 1 mile		

### Cover Type

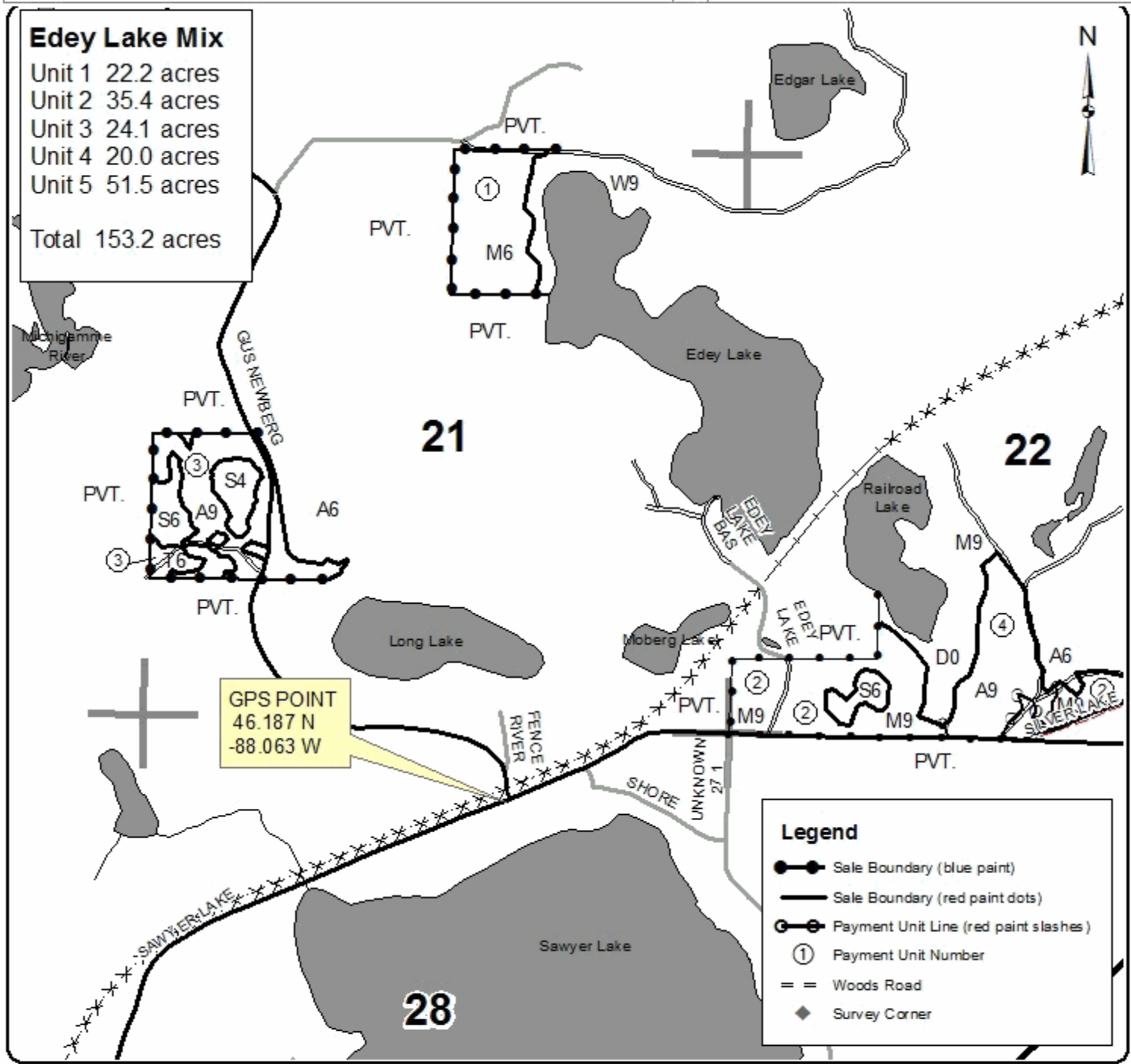
A = Aspen	H = Hemlock	N = Marsh	U = Upland Brush
B = Paper Birch	J = Jack Pine	O = Oak	UM = Upland Mixed
C = Cedar	L = Lowland Brush	P = Lowland Poplar	V = Bog or Marsh
D = Tread Bog	LM = Lowland Mixed	Q = Mixed Swamp Conifer	W = White Pine
E = Swamp Hdwoods	M = Mpl, Bch, Bich	R = Red Pine	X = Non Stocked
F = Spruce Fir	MC = Mixed Conifer	S = Black Spruce	Z = Water
G = Grass	MD = Mixed Deciduous	T = Tamarack	

### Density

0 = Non Stocked	5 = Pole Timber Medium
1 = Seeding Sapling Poor	6 = Pole Timber Well
2 = Seeding Sapling Medium	7 = Saw Timber Poor
3 = Seeding Sapling Well	8 = Saw Timber Medium
4 = Pole Timber Poor	9 = Saw Timber Well

## Edey Lake Mix

- Unit 1 22.2 acres
- Unit 2 35.4 acres
- Unit 3 24.1 acres
- Unit 4 20.0 acres
- Unit 5 51.5 acres
- Total 153.2 acres



Legend	
	Sale Boundary (blue point)
	Sale Boundary (red paint dots)
	Payment Unit Line (red paint slashes)
	Payment Unit Number
	Woods Road
	Survey Corner



### TIMBER SALE MAP

This information provided by authority of Par 525, 1994 PA 451, as amended.

Forest Management Unit Crystal Falls	County Dickinson	Mapped By Scott Sebero	Date 07/12/2021	Page 2	of 2
Township 44N	Range 30W	Section(s) and Subdivision(s) 21 NWNE,N1/2SW 22 E1/2NE,NESW,S1/2SW,SWSE 23 SWNW	Scale 4 inches = 1 mile		

#### Cover Type

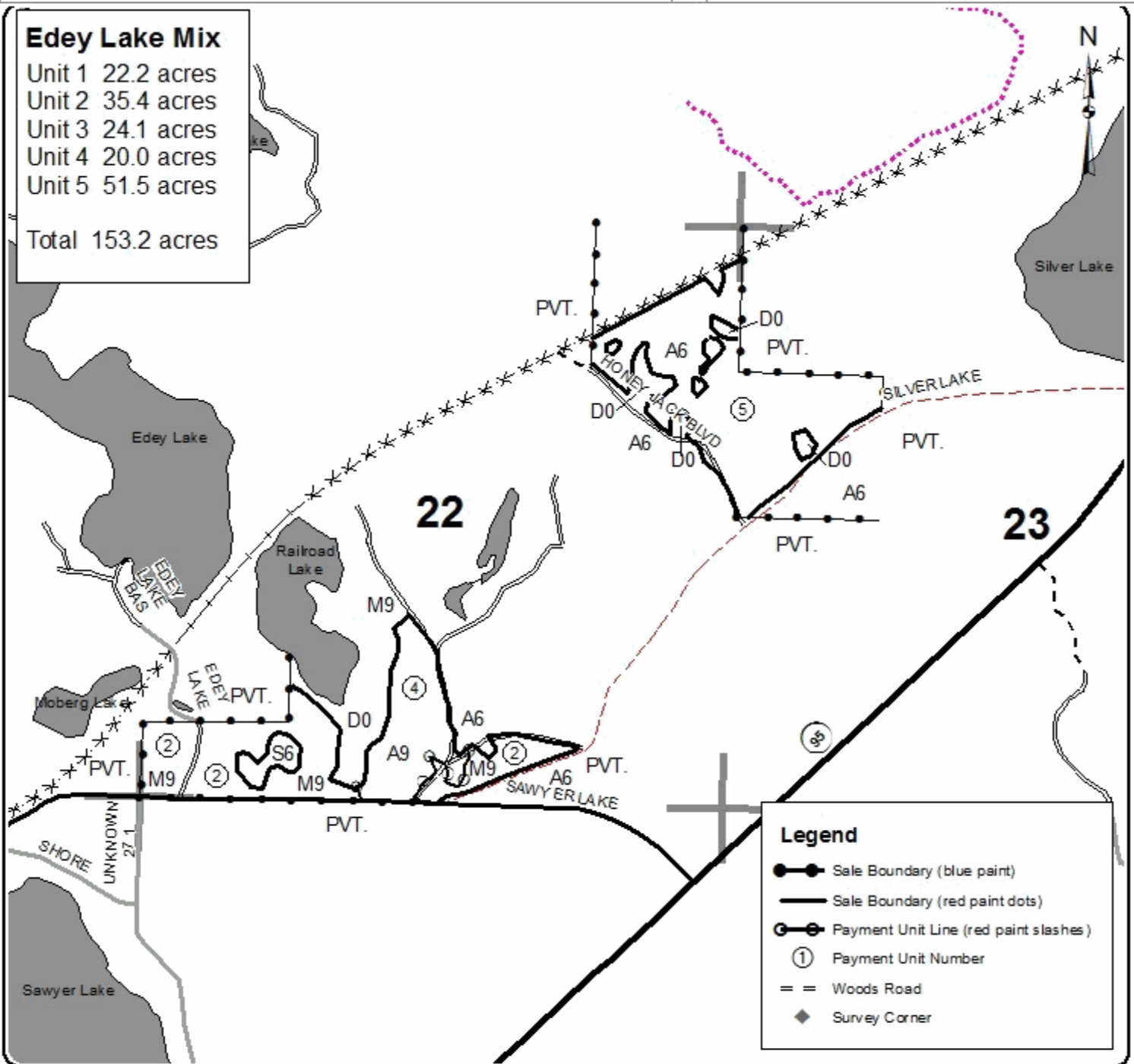
A = Aspen	H = Hemlock	N = Marsh	U = Upland Brush
B = Paper Birch	J = Jack Pine	O = Oak	UM = Upland Mixed
C = Cedar	L = Lowland Brush	P = Lowland Poplar	V = Bog or Marsh
D = Treed Bog	LM = Lowland Mixed	Q = Mixed Swamp Conifer	W = White Pine
E = Swamp Hdwoods	M = Mpl, Bch, Bich	R = Red Pine	X = Non Stocked
F = Spruce Fir	MC = Mixed Conifer	S = Black Spruce	Z = Water
G = Grass	MD = Mixed Deciduous	T = Tamarack	

#### Density

0 = Non Stocked	5 = Pole Timber Medium
1 = Seeding Sapling Poor	6 = Pole Timber Well
2 = Seeding Sapling Medium	7 = Saw Timber Poor
3 = Seeding Sapling Well	8 = Saw Timber Medium
4 = Pole Timber Poor	9 = Saw Timber Well

### Edey Lake Mix

- Unit 1 22.2 acres
- Unit 2 35.4 acres
- Unit 3 24.1 acres
- Unit 4 20.0 acres
- Unit 5 51.5 acres
- Total 153.2 acres



#### Legend

- Sale Boundary (blue paint)
- Sale Boundary (red paint dots)
- Payment Unit Line (red paint slashes)
- Payment Unit Number
- Woods Road
- Survey Corner





## TIMBER SALE INFORMATION

### Reservoir Mix (12-058-21)

T44N, R31W, SEC. 22; T44N, R31W, SEC. 23.  
Iron County (Advertised Price \$54,700.35)

SALE NOTE: All units of volume listed for this sale were estimated using the Inventory Manager computer program and the new Michigan taper model.

Access may be through private land.

A timber sale contract for this lump sum, sealed bid timber sale will be awarded to the responsible bidder offering the highest sealed bid price. All units of volume listed below were estimated using the Inventory Manager computer program and the new Michigan taper model. Bids must be at or above the following advertised price for each product and species:

<u>PRODUCTS &amp; SPECIES</u>	<u>ESTIMATED UNITS*</u>	<u>ADVERTISED PRICE</u>
Sawtimber		
Red Pine	304.7 MBF	\$ 73.00 / MBF
Pulpwood		
Balsam Fir	47 Cords	\$ 7.20 / Cord
Jack Pine	935 Cords	\$ 13.75 / Cord
Mixed Hardwood	204 Cords	\$ 10.95 / Cord
Quaking Aspen	657 Cords	\$ 17.40 / Cord
Red Pine	232 Cords	\$ 22.25 / Cord
White Spruce	58 Cords	\$ 7.50 / Cord

\* The total volume is statistically estimated within plus (+) or minus (-) 5.65 percent. There are an estimated 2,815 cords on this timber sale, plus or minus 159 cords at the 95% confidence level. The estimated units are final and not subject to adjustment. Prospective bidders are urged to examine this timber and to make their own estimates of quantity and quality.

### **BOND AND PAYMENT SCHEDULE:**

1. A bond in the amount of \$3,829.00 to insure faithful performance of the conditions of the contract will be deposited by the successful bidder within 21 days of the sale award.
2. Cutting in any sale or unit without the required advance payment would be considered a trespass.
3. Total payment must be paid in advance or according to the following schedule :
  - (a) Ten percent (10%) of the sale value must be paid within 21 days of the sale award.
  - (b) The 10% down payment will be credited towards the first unit cut.
  - (c) Payment for each of the following units must be made before cutting begins in that unit:
 

PAYMENT UNIT NUMBER	PERCENT OF TOTAL SALE VALUE
01	13.4%
02	86.6%
4. If no cutting takes place, the 10% down payment will not be refunded.
5. Operations on the contract issued will terminate on 06/30/2024.

### **SALE STATISTICS**

Volumes were calculated in cubic feet using the Michigan taper model. Cubic foot volume includes all wood inside bark for the product indicated. For display purposes, cubic feet were converted to cords and MBF using a simple conversion factor, e.g. 79 cubic feet per cord and 185 cubic feet per MBF. The cubic foot volumes are precise; the cords and MBF volumes are not. Cubic foot volume cannot be directly converted to cords or boards with precision.

### **SALE VOLUMES**

The total estimated sale volume may not equal the sum of the species/products due to the nature of statistical calculations associated with double sampling methodology.

VOLUME		STATISTICAL RANGE IN CORDS		
TOTAL CUBIC FEET	TOTAL CORDS	PERCENT ERROR	MINIMUM	MAXIMUM
222,416	2,815	5.65%	2,656	2,975

**VDU VOLUMES**

A VDU is a Volume Determination Unit. Volumes and their associated statistics are calculated at the VDU level and summarized to the sale level. There is often a one to one relationship between a VDU and a Payment Unit, but not always, depending on the cruise design. Refer to the VDU TO PAYMENT UNIT table.

VDU	VOLUME		PERCENT ERROR	RANGE IN CORDS	
	TOTAL CUBIC FEET	TOTAL CORDS		MINIMUM	MAXIMUM
15	39,989	506	15.47%	428	584
37	176,631	2,236	6.02%	2,101	2,370
<b>TOTAL:</b>	<b>216,620</b>	<b>2,742</b>		<b>2,529</b>	<b>2,955</b>

**VDU TO PAYMENT UNIT**

When a VDU is associated with more than one Payment Unit (PU), the VDU volumes are assigned to the PU based on acres of the VDU within the PU.

VDU	VDU ACRES	PU	PU ACRES
15	20.5	1	20.5
37	63.7	2	63.7
<b>TOTAL:</b>	<b>84.2</b>		<b>84.2</b>

**DESCRIPTION OF TIMBER BY PAYMENT UNIT (PU)**

PU	MARKET GROUP	PRODUCT	QUANTITY	UNIT	ACRES	ADVERTISE PRICE
1	Balsam Fir	Pulpwood	18	Cords	20.5	\$7,342.35
	Jack Pine		231	Cords		
	Mixed Hardwood		46	Cords		
	<i>Paper Birch</i>		17	<i>Cords</i>		
	<i>Red Maple</i>		29	<i>Cords</i>		
	Quaking Aspen		197	Cords		
	White Spruce		14	Cords		
2	Red Pine	Sawtimber	304.7	MBF	63.7	\$47,358.00
	Balsam Fir	Pulpwood	29	Cords		
	Jack Pine		704	Cords		
	Mixed Hardwood		158	Cords		
	<i>Black Cherry</i>		8	<i>Cords</i>		
	<i>Paper Birch</i>		52	<i>Cords</i>		
	<i>Red Maple</i>		98	<i>Cords</i>		
	Quaking Aspen		460	Cords		
	Red Pine		232	Cords		
	White Spruce		44	Cords		
TOTAL:			304.7	MBF		
TOTAL:			2,133	Cords		

## Sale Specific Conditions & Requirements

**Sale Name: Reservoir Mix**

**Sale Number: 12-058-21 Seq#: 1**

### 1 - Sale Area

#### 1.2 - Boundaries

##### 1.2.1 - Painted boundaries (9/19)

The sale boundary and Payment Unit boundaries are marked and identified by blue and red paint. Exterior sale boundary lines against private property are marked with blue paint. Exterior sale boundary lines against state are marked with red paint.

Interior Payment Unit boundaries are marked with red slashes. The painted boundary line trees are not Included Timber and are to be protected. Trees marked with red slashes designating an interior Payment Unit boundary are only to be cut when all surrounding Payment Units have been paid.

### 2 - Timber Specifications

#### 2.1 - Included Timber

##### 2.1.1 - Clearcut unit(s) with unmerchantable trees (6/14)

Within Payment Unit(s) 1 and 2, cut all aspen and mixed hardwood trees that are two (2) inches or more at DBH, except oak. In addition, cut all spruce, balsam, and jack pine with one or more pulpwood stick. Within Payment Unit 1, do not cut red or white pine, cedar, or hemlock. Within Payment Unit 2, all red pine with one stick or more will be cut, except those marked with green paint. Do not cut white pine, cedar, or hemlock.

#### 2.2 - Utilization

##### 2.2.3 - Stump heights (4/07)

Stump heights within the Sale Area shall not exceed 12 inches for trees greater than 10 inches at DBH and 4 inches for trees smaller than 10 inches at DBH. This is to facilitate better scarification.

##### 2.2.10 - No chipping tops and limbs (8/16)

Within Payment Unit(s) 1 and 2, chipping of the bole, 2-inches in diameter or greater, is allowed. Chipping of limbs or portions of the tree less than 2-inches in diameter is not permitted. Limbs and the remaining top must be left on site and scattered.

### 4 - Transportation

#### 4.4 - Access

##### 4.4.1 - Private property access (3/11)

Permission for access across private land is the responsibility of the Purchaser.

### 5 - Operations

#### 5.2 - Conduct of Operations

##### 5.2.1 - Slash

##### 5.2.1.8 - Slash height (12/08)

No slash or tree tops may exceed 36 inches in height.

#### 5.4 - Soil Protection

##### 5.4.1 - Rutting restriction, general (7/16)

Operations are to cease immediately if equipment and weather conditions result in rutting of roads and/or skid trails which is 12 inches or greater in depth and 50 feet in length. The Unit Manager or his/her representative may restrict hauling and/or skidding if ruts exceed the specified depth. With the Unit Manager or his/her representative's approval, the Purchaser may return to the area when the risk of rutting has decreased.



# TIMBER SALE MAP

This information provided by authority of Par 525, 1994 PA 451, as amended.

Sale Number	Year
12 - 058	2021

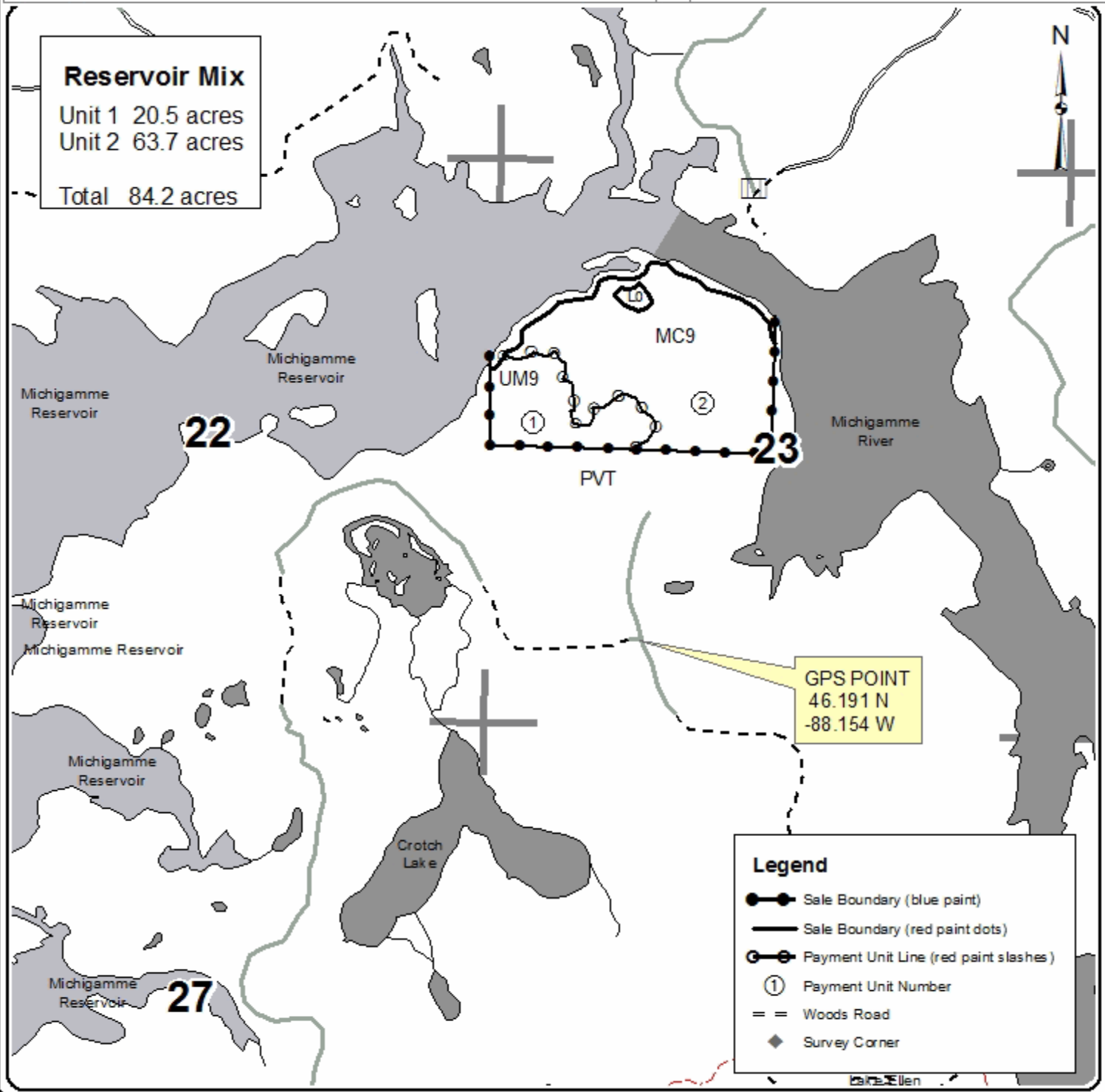
Forest Management Unit Crystal Falls	County Iron	Mapped By Scott Sebero	Date 05/27/2021	Page 1	of 1
Township 44N	Range 31W	Section(s) and Subdivision(s) SEC. 22 SENE; SEC. 23 NW, N1/2SW	Scale 4 inches = 1 mile		
		Cruised By Scott Sebero			

### Cover Type

A = Aspen	H = Hemlock	N = Marsh	U = Upland Brush
B = Paper Birch	J = Jack Pine	O = Oak	UM = Upland Mixed
C = Cedar	L = Lowland Brush	P = Lowland Poplar	V = Bog or Marsh
D = Tread Bog	LM = Lowland Mixed	Q = Mixed Swamp Conifer	W = White Pine
E = Swamp Hdwoods	M = Mpl, Bch, Bich	R = Red Pine	X = Non Stocked
F = Spruce Fir	MC = Mixed Conifer	S = Black Spruce	Z = Water
G = Grass	MD = Mixed Deciduous	T = Tamarack	

### Density

0 = Non Stocked	5 = Pole Timber Medium
1 = Seeding Sapling Poor	6 = Pole Timber Well
2 = Seeding Sapling Medium	7 = Saw Timber Poor
3 = Seeding Sapling Well	8 = Saw Timber Medium
4 = Pole Timber Poor	9 = Saw Timber Well



## TIMBER SALE INFORMATION

Olson Creek Mix (12-059-21)  
T43N, R33W, SEC. 7; T43N, R34W, SEC. 12.  
Iron County (Advertised Price \$50,636.35)

SALE NOTE: All units of volume listed for this sale were estimated using the Inventory Manager computer program and the new Michigan taper model.

Access may be through private land.

A timber sale contract for this lump sum, sealed bid timber sale will be awarded to the responsible bidder offering the highest sealed bid price. All units of volume listed below were estimated using the Inventory Manager computer program and the new Michigan taper model. Bids must be at or above the following advertised price for each product and species:

<u>PRODUCTS &amp; SPECIES</u>	<u>ESTIMATED UNITS*</u>	<u>ADVERTISED PRICE</u>
Sawtimber		
Basswood	18.6 MBF	\$ 68.00 / MBF
Paper Birch	1.4 MBF	\$ 48.00 / MBF
Red Maple	15.8 MBF	\$ 114.00 / MBF
Sugar Maple	24.6 MBF	\$ 201.00 / MBF
Pulpwood		
Balsam Fir	145 Cords	\$ 11.15 / Cord
Mixed Aspen	1,221 Cords	\$ 27.05 / Cord
Mixed Hardwood	458 Cords	\$ 17.05 / Cord
White Spruce	9 Cords	\$ 11.65 / Cord

\* The total volume is statistically estimated within plus (+) or minus (-) 6.22 percent. There are an estimated 1,868 cords on this timber sale, plus or minus 116 cords at the 95% confidence level. The estimated units are final and not subject to adjustment. Prospective bidders are urged to examine this timber and to make their own estimates of quantity and quality.

**BOND AND PAYMENT SCHEDULE:**

1. A bond in the amount of \$3,545.00 to insure faithful performance of the conditions of the contract will be deposited by the successful bidder within 21 days of the sale award.
2. Cutting in any sale or unit without the required advance payment would be considered a trespass.
3. Total payment must be paid in advance or according to the following schedule :
  - (a) Ten percent (10%) of the sale value must be paid within 21 days of the sale award.
  - (b) The 10% down payment will be credited towards the first unit cut.
  - (c) Payment for each of the following units must be made before cutting begins in that unit:

PAYMENT UNIT NUMBER	PERCENT OF TOTAL SALE VALUE
01	29.5%
02	41.0%
03	29.5%
4. If no cutting takes place, the 10% down payment will not be refunded.
5. Operations on the contract issued will terminate on 06/30/2024.

**SALE STATISTICS**

Volumes were calculated in cubic feet using the Michigan taper model. Cubic foot volume includes all wood inside bark for the product indicated. For display purposes, cubic feet were converted to cords and MBF using a simple conversion factor, e.g. 79 cubic feet per cord and 185 cubic feet per MBF. The cubic foot volumes are precise; the cords and MBF volumes are not. Cubic foot volume cannot be directly converted to cords or boards with precision.

**SALE VOLUMES**

The total estimated sale volume may not equal the sum of the species/products due to the nature of statistical calculations associated with double sampling methodology.

VOLUME		STATISTICAL RANGE IN CORDS		
TOTAL CUBIC FEET	TOTAL CORDS	PERCENT ERROR	MINIMUM	MAXIMUM
147,534	1,868	6.22%	1,751	1,984

**VDU VOLUMES**

A VDU is a Volume Determination Unit. Volumes and their associated statistics are calculated at the VDU level and summarized to the sale level. There is often a one to one relationship between a VDU and a Payment Unit, but not always, depending on the cruise design. Refer to the VDU TO PAYMENT UNIT table.

VDU	VOLUME		PERCENT ERROR	RANGE IN CORDS	
	TOTAL CUBIC FEET	TOTAL CORDS		MINIMUM	MAXIMUM
10	40,102	508	9.89%	457	558
17	114,333	1,447	7.80%	1,334	1,560
<b>TOTAL:</b>	<b>154,435</b>	<b>1,955</b>		<b>1,792</b>	<b>2,118</b>

**VDU TO PAYMENT UNIT**

When a VDU is associated with more than one Payment Unit (PU), the VDU volumes are assigned to the PU based on acres of the VDU within the PU.

VDU	VDU ACRES	PU	PU ACRES
10	54.3	1	54.3
17	41.6	2	24.2
		3	17.4
<b>TOTAL:</b>	<b>95.9</b>		<b>95.9</b>

**DESCRIPTION OF TIMBER BY PAYMENT UNIT (PU)**

PU	MARKET GROUP	PRODUCT	QUANTITY	UNIT	ACRES	ADVERTISE PRICE	
1	Basswood	Sawtimber	18.6	MBF	54.3	\$14,954.75	
	Paper Birch		1.4	MBF			
	Red Maple		10.2	MBF			
	Sugar Maple		22.9	MBF			
	Mixed Aspen		Pulpwood	102			Cords
	<i>B. T. Aspen</i>			64			<i>Cords</i>
	<i>Quaking Aspen</i>			38			<i>Cords</i>
	Mixed Hardwood			299			Cords
	<i>Basswood</i>			34			<i>Cords</i>
	<i>Black Cherry</i>			3			<i>Cords</i>
	<i>Paper Birch</i>			2			<i>Cords</i>
	<i>Red Maple</i>			44			<i>Cords</i>
	<i>Sugar Maple</i>			211			<i>Cords</i>
	<i>Yellow Birch</i>			5			<i>Cords</i>
2	Red Maple	Sawtimber	3.3	MBF	24.2	\$20,750.20	
	Sugar Maple		1.0	MBF			
	Balsam Fir		Pulpwood	84			Cords
	Mixed Aspen			651			Cords
	<i>B. T. Aspen</i>			3			<i>Cords</i>
	<i>Balsam Poplar</i>			5			<i>Cords</i>
	<i>Quaking Aspen</i>			643			<i>Cords</i>
	Mixed Hardwood			92			Cords
	<i>Basswood</i>			9			<i>Cords</i>
	<i>Black Cherry</i>			10			<i>Cords</i>
	<i>Ironwood</i>			2			<i>Cords</i>
	<i>Red Maple</i>			29			<i>Cords</i>
	<i>Sugar Maple</i>		42	<i>Cords</i>			
	White Spruce		5	Cords			
3	Red Maple	Sawtimber	2.3	MBF	17.4	\$14,931.40	
	Sugar Maple		0.7	MBF			
	Balsam Fir		Pulpwood	61			Cords
	Mixed Aspen			468			Cords
	<i>B. T. Aspen</i>			2			<i>Cords</i>
	<i>Balsam Poplar</i>			3			<i>Cords</i>
	<i>Quaking Aspen</i>			463			<i>Cords</i>
	Mixed Hardwood			67			Cords
	<i>Basswood</i>			6			<i>Cords</i>
	<i>Black Cherry</i>			8			<i>Cords</i>
	<i>Ironwood</i>			1			<i>Cords</i>
	<i>Red Maple</i>			21			<i>Cords</i>
	<i>Sugar Maple</i>		31	<i>Cords</i>			
	White Spruce		4	Cords			
TOTAL:			60.4	MBF			
TOTAL:			1,833	Cords			

## Sale Specific Conditions & Requirements

Sale Name: Olson Creek Mix

Sale Number: 12-059-21 Seq#: 1

### 1 - Sale Area

#### 1.2 - Boundaries

##### 1.2.1 - Painted boundaries (9/19)

The sale boundary and Payment Unit boundaries are marked and identified by blue and red paint. Exterior sale boundary lines against private property are marked with blue paint. Exterior sale boundary lines against state are marked with red paint. Interior Payment Unit boundaries are marked with red slashes. Trees marked with red slashes, designating an interior Payment Unit boundary, are only to be cut when all surrounding Payment Units have been paid.

### 2 - Timber Specifications

#### 2.1 - Included Timber

##### 2.1.1 - Clearcut unit(s) with unmerchantable trees (6/14)

Within Payment Unit(s) 2 and 3, cut all aspen and mixed hardwood trees that are two (2) inches or more at DBH, except oak. Cut all spruce and balsam with two or more pulpwood sticks. Do not cut red or white pine, cedar, or hemlock.

##### 2.1.3 - Cut tree marked unit(s) (12/08)

Within Payment Unit(s) 1, all trees are designated for cutting when marked with orange paint above and below stump height, regardless of merchantability. In addition to trees marked with orange paint, cut all aspen with one or more pulpwood sticks.

### 4 - Transportation

#### 4.1 - Construction

##### 4.1.2 - Stream crossings, specific (3/11)

The Olson Creek crossing will require the installation of a temporary bridge. This installation will be performed in accordance with the specifications on the appropriate permits which shall be provided by the DNR.

#### 4.2 - Maintenance

##### 4.2.3 - Road maintenance (8/13)

The following road maintenance may be needed on road under management easement: Limbing or removing trees, grading, and leveling road. Easement is 25 feet wide from centerline of road. All road maintenance must stay within that distance unless permission is given to go wider.

#### 4.4 - Access

##### 4.4.1 - Private property access (3/11)

Permission for access across private land is the responsibility of the Purchaser. The current road to access most of this timber sale is across private land.

##### 4.4.3 - Access gate (12/08)

The access gate must be locked at all times.

##### 4.4.4 - Restricted access (10/05)

The State of Michigan has a management easement across private land from Paulson Road to Olson Creek. The State will work with private land owner and logger to make sure this section of road is maintained while the timber sale is ongoing.

### 5 - Operations

#### 5.2 - Conduct of Operations

##### 5.2.1 - Slash

##### 5.2.1.8 - Slash height (12/08)

No slash or tree tops may exceed 36 inches in height.



### 5.2.3 - Operating Restrictions

#### 5.2.3.3 - Bark slippage restriction (3/09)

Within Payment Unit(s) 1, unless changed by written agreement, cutting and skidding are not permitted during the period of April 15 to July 15. This restriction is because of bark slippage.

#### 5.2.38 - No decking against live trees (2/04)

Cut products may not be decked against unmarked or designated leave trees.

### 5.4 - Soil Protection

#### 5.4.1 - Rutting restriction, general (7/16)

Operations are to cease immediately if equipment and weather conditions result in rutting of roads and/or skid trails which is 12 inches or greater in depth and 50 feet in length. The Unit Manager or his/her representative may restrict hauling and/or skidding if ruts exceed the specified depth. With the Unit Manager or his/her representative's approval, the Purchaser may return to the area when the risk of rutting has decreased.

### 5.8 - Protection of Endangered Species

#### 5.8.5 - Protection of raptor nests (3/13)

All trees with raptor nests will be protected if found during harvesting operations. Notification will be made to the Unit Manager or his/her representative who will notify the Wildlife Biologist so an on-site evaluation and recommendation can be made, if necessary.



# TIMBER SALE MAP

This information provided by authority of Par 525, 1994 PA 451, as amended.

Sale Number	Year
12-059	2021

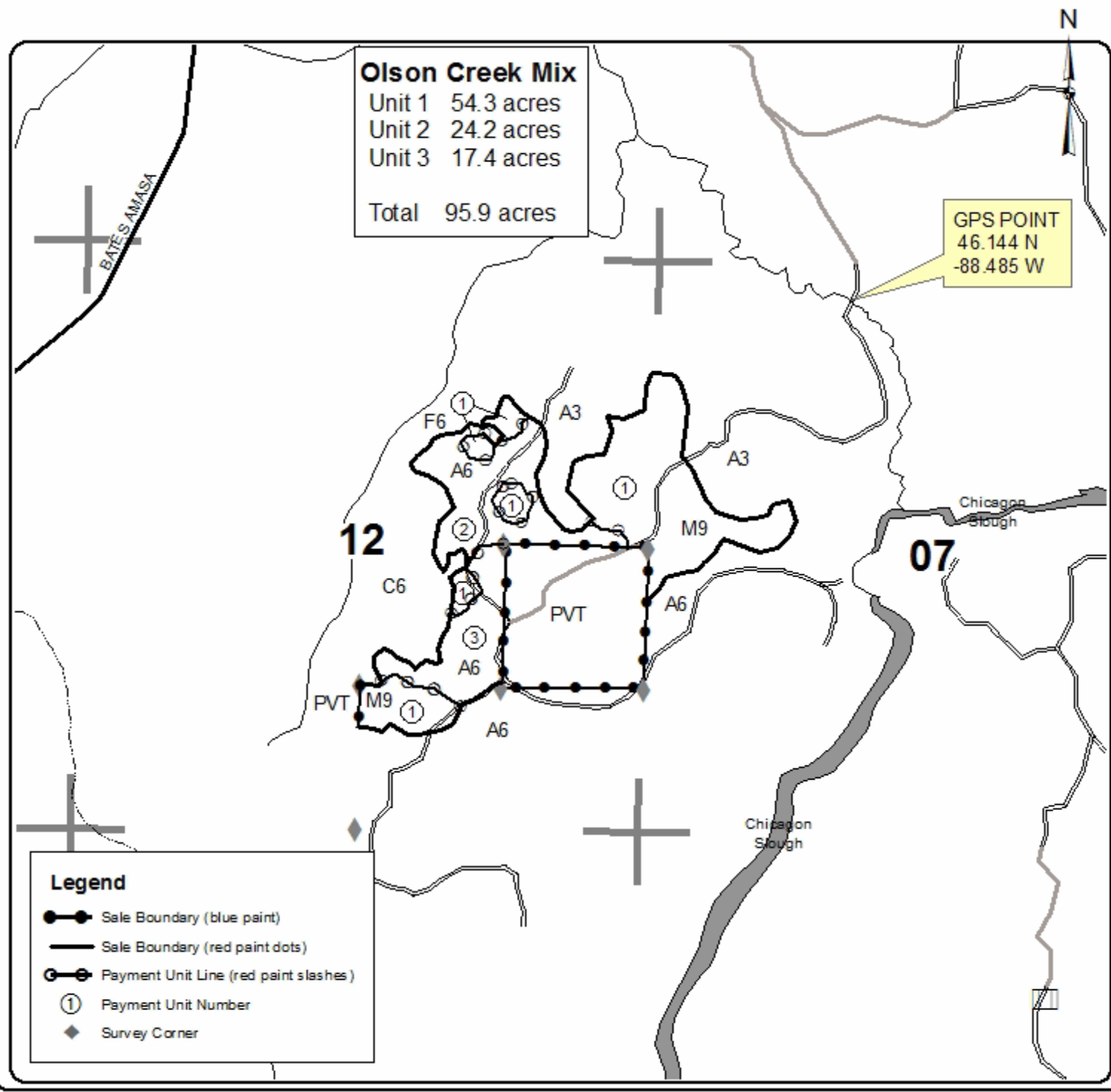
Forest Management Unit Crystal Falls	County Iron	Mapped By Scott Sebero	Date 06/03/2021	Page 1	of 1
Township 43N	Range 33W 34W	Section(s) and Subdivision(s) 7 NWNW, S1/2NW, NWSW 12 NENE, S1/2NE, W1/2SE	Cruised By Scott Sebero		
Scale 4 inches = 1 mile					

### Cover Type

A = Aspen	H = Hemlock	N = Marsh	U = Upland Brush
B = Paper Birch	J = Jack Pine	O = Oak	UM = Upland Mixed
C = Cedar	L = Lowland Brush	P = Lowland Poplar	V = Bog or Marsh
D = Treed Bog	LM = Lowland Mixed	Q = Mixed Swamp Conifer	W = White Pine
E = Swamp Hdwoods	M = Mpl, Bch, Bich	R = Red Pine	X = Non Stocked
F = Spruce Fir	MC = Mixed Conifer	S = Black Spruce	Z = Water
G = Grass	MD = Mixed Deciduous	T = Tamarack	

### Density

0 = Non Stocked	5 = Pole Timber Medium
1 = Seeding Sapling Poor	6 = Pole Timber Well
2 = Seeding Sapling Medium	7 = Saw Timber Poor
3 = Seeding Sapling Well	8 = Saw Timber Medium
4 = Pole Timber Poor	9 = Saw Timber Well



Reservoir Mix (12-058-21)  
T44N, R31W, SEC. 22; T44N, R31W, SEC. 23; Iron COUNTY

In response to the notice of sale to be held 8:30 a.m. (local time) on October 20, 2021, I am hereby submitting my sealed bid (firm offer) for the following forest products to be cut. Bids for individual species must be at or above the advertised price. All non-responsive bid forms may be rejected.

<u>PRODUCTS &amp; SPECIES</u>	<u>ESTIMATED VOLUME*</u>	<u>ADVERTISED PRICE</u>	<u>BID PRICE/UNIT</u>
Sawtimber			
Red Pine	304.7 MBF	\$ 73.00/MBF	\$ _____
Pulpwood			
Balsam Fir	47 Cords	\$ 7.20/Cord	\$ _____
Jack Pine	935 Cords	\$ 13.75/Cord	\$ _____
Mixed Hardwood	204 Cords	\$ 10.95/Cord	\$ _____
Quaking Aspen	657 Cords	\$ 17.40/Cord	\$ _____
Red Pine	232 Cords	\$ 22.25/Cord	\$ _____
White Spruce	58 Cords	\$ 7.50/Cord	\$ _____

\*The volumes are statistically estimated within plus (+) or minus (-) 5.65 percent at 95% confidence level. These estimated volumes are final and not subject to adjustment. Prospective bidders are urged to examine this timber and to make their own estimates of quantity and quality.

I understand that any or all bids may be rejected. All bids must be signed and all bid items must be bid or the bid form may be rejected. I also understand that consideration and awarding a contract will be based upon my past performance and ability to complete the contract based upon equipment and staffing subject to my control.

FEDERAL ID: \_\_\_\_\_ or SOCIAL SECURITY NUMBER: \_\_\_\_\_  
 Company or individual bidding: \_\_\_\_\_  
 Company representative's name: \_\_\_\_\_  
 Address: \_\_\_\_\_  
 City: \_\_\_\_\_ State: \_\_\_\_\_ Zip: \_\_\_\_\_

IF AVAILABLE, PLEASE PLACE THE PERSONALIZED LABEL FROM YOUR PROSPECTUS IN THE ABOVE BOX.

Individual or company representative's signature: \_\_\_\_\_ Date: \_\_\_\_\_  
Phone number : \_\_\_\_\_ Email (optional): \_\_\_\_\_

**THE WINNING BIDDER MUST COMPLETE THE VERIFICATION OF WORKER'S DISABILITY COMPENSATION ACT COMPLIANCE (ON REVERSE SIDE IF DOUBLE SIDED) WITHIN 21 DAYS OF SALE AWARD DATE**



FOR DEPARTMENT USE ONLY	
Sale Number (XX - XXX - XX - XX)	
Forest Management Unit:	

## TIMBER SALE VERIFICATION OF WORKER'S DISABILITY COMPENSATION ACT COMPLIANCE

As required by Act 317, P.A. 1969 (Worker's Compensation) and  
Part 5 of Act 451 of 1994, as amended.

### VERIFICATION OF WORKER'S DISABILITY COMPENSATION ACT COMPLIANCE

- This verification must be completed and submitted within 21 days of contract award and prior to the issuance of the timber sale contract.
- In addition, if boxes 2B or 2C are checked, then Notice of Exclusion or Certificate of Insurance must be submitted within twenty-one (21) days of the contract award and prior to the issuance of the timber sale contract.
- All information must be typed or printed except for written signatures.

Please Check Appropriate Categories:

1. My business is organized as (you **must** check one of the boxes below):
  - A.  Sole Proprietorship (individual)
  - B.  Partnership
  - C.  Corporation
2. You **must** check one of the boxes below:
  - A.  I certify my business is a sole proprietorship and it has no employees but the sole proprietor. I am not subject to the Worker's Compensation Laws.
  - B.  I certify my business has satisfied its obligation to the Worker's Compensation Act through the use of an approved Notice of Exclusion (BWC-337, Rev. 5/96). I will provide a copy of the Notice of Exclusion within 21 days of the contract award. (For questions or a copy of the BWC-337, please call the Worker's Compensation Bureau at 517-322-1195).
  - C.  I certify my business has a Worker's Compensation Policy. I will provide an original Certificate of Insurance within twenty-one (21) days of the contract award.
3. If you have checked item 2(A) or 2(B), you **must** indicate the number of **both** full-time and part-time employees, other than yourself, including family members and active partners (if none, you must enter "0").

\_\_\_\_\_ Full-time Employees

\_\_\_\_\_ Part-time Employees

Name of Business		Federal ID (or) Social Security No.	
Address		Telephone (       )	
City	State	ZIP	

*I hereby certify that the above information is true and correct. I agree to notify the Michigan DNR of any changes that occur in factors affecting my coverage during any of my present and future operations.*

\_\_\_\_\_  
Signature of Owner or Authorized Representative

\_\_\_\_\_  
Title

\_\_\_\_\_  
Date

Please complete the "SEALED BID" information on the next page

Olson Creek Mix (12-059-21)  
T43N, R33W, SEC. 7; T43N, R34W, SEC. 12; Iron COUNTY

In response to the notice of sale to be held 8:30 a.m. (local time) on October 20, 2021, I am hereby submitting my sealed bid (firm offer) for the following forest products to be cut. Bids for individual species must be at or above the advertised price. All non-responsive bid forms may be rejected.

<u>PRODUCTS &amp; SPECIES</u>	<u>ESTIMATED VOLUME*</u>	<u>ADVERTISED PRICE</u>	<u>BID PRICE/UNIT</u>
<b>Sawtimber</b>			
Basswood	18.6 MBF	\$ 68.00/MBF	\$ _____
Paper Birch	1.4 MBF	\$ 48.00/MBF	\$ _____
Red Maple	15.8 MBF	\$ 114.00/MBF	\$ _____
Sugar Maple	24.6 MBF	\$ 201.00/MBF	\$ _____
<b>Pulpwood</b>			
Balsam Fir	145 Cords	\$ 11.15/Cord	\$ _____
Mixed Aspen	1,221 Cords	\$ 27.05/Cord	\$ _____
Mixed Hardwood	458 Cords	\$ 17.05/Cord	\$ _____
White Spruce	9 Cords	\$ 11.65/Cord	\$ _____

\*The volumes are statistically estimated within plus (+) or minus (-) 6.22 percent at 95% confidence level. These estimated volumes are final and not subject to adjustment. Prospective bidders are urged to examine this timber and to make their own estimates of quantity and quality.

I understand that any or all bids may be rejected. All bids must be signed and all bid items must be bid or the bid form may be rejected. I also understand that consideration and awarding a contract will be based upon my past performance and ability to complete the contract based upon equipment and staffing subject to my control.

FEDERAL ID: \_\_\_\_ - \_\_\_\_ - \_\_\_\_ or SOCIAL SECURITY NUMBER: \_\_\_\_ - \_\_\_\_ - \_\_\_\_

Company or individual bidding: \_\_\_\_\_

Company representative's name: \_\_\_\_\_

Address: \_\_\_\_\_

City: \_\_\_\_\_ State: \_\_\_\_\_ Zip: \_\_\_\_\_

IF AVAILABLE, PLEASE PLACE THE PERSONALIZED LABEL FROM YOUR PROSPECTUS IN THE ABOVE BOX.

Individual or company representative's signature: \_\_\_\_\_ Date: \_\_\_\_\_

Phone number : \_\_\_\_\_ Email (optional): \_\_\_\_\_

**THE WINNING BIDDER MUST COMPLETE THE VERIFICATION OF WORKER'S DISABILITY COMPENSATION ACT COMPLIANCE (ON REVERSE SIDE IF DOUBLE SIDED) WITHIN 21 DAYS OF SALE AWARD DATE**



FOR DEPARTMENT USE ONLY	
Sale Number (XX - XXX - XX - XX)	
Forest Management Unit:	

## TIMBER SALE VERIFICATION OF WORKER'S DISABILITY COMPENSATION ACT COMPLIANCE

As required by Act 317, P.A. 1969 (Worker's Compensation) and  
Part 5 of Act 451 of 1994, as amended.

### VERIFICATION OF WORKER'S DISABILITY COMPENSATION ACT COMPLIANCE

- This verification must be completed and submitted within 21 days of contract award and prior to the issuance of the timber sale contract.
- In addition, if boxes 2B or 2C are checked, then Notice of Exclusion or Certificate of Insurance must be submitted within twenty-one (21) days of the contract award and prior to the issuance of the timber sale contract.
- All information must be typed or printed except for written signatures.

Please Check Appropriate Categories:

1. My business is organized as (you **must** check one of the boxes below):
  - A.  Sole Proprietorship (individual)
  - B.  Partnership
  - C.  Corporation
2. You **must** check one of the boxes below:
  - A.  I certify my business is a sole proprietorship and it has no employees but the sole proprietor. I am not subject to the Worker's Compensation Laws.
  - B.  I certify my business has satisfied its obligation to the Worker's Compensation Act through the use of an approved Notice of Exclusion (BWC-337, Rev. 5/96). I will provide a copy of the Notice of Exclusion within 21 days of the contract award. (For questions or a copy of the BWC-337, please call the Worker's Compensation Bureau at 517-322-1195).
  - C.  I certify my business has a Worker's Compensation Policy. I will provide an original Certificate of Insurance within twenty-one (21) days of the contract award.
3. If you have checked item 2(A) or 2(B), you **must** indicate the number of **both** full-time and part-time employees, other than yourself, including family members and active partners (if none, you must enter "0").

\_\_\_\_\_ Full-time Employees

\_\_\_\_\_ Part-time Employees

Name of Business		Federal ID (or) Social Security No.	
Address		Telephone (       )	
City	State	ZIP	

*I hereby certify that the above information is true and correct. I agree to notify the Michigan DNR of any changes that occur in factors affecting my coverage during any of my present and future operations.*

\_\_\_\_\_  
Signature of Owner or Authorized Representative

\_\_\_\_\_  
Title

\_\_\_\_\_  
Date

Please complete the "SEALED BID" information on the next page

Doan's Lakes Mix (12-008-21)

T44N, R30W, SEC. 10; T44N, R30W, SEC. 13; T44N, R30W, SEC. 14; T44N,

In response to the notice of sale to be held 8:30 a.m. (local time) on October 20, 2021, I am hereby submitting my sealed bid (firm offer) for the following forest products to be cut. Bids for individual species must be at or above the advertised price. All non-responsive bid forms may be rejected.

<u>PRODUCTS &amp; SPECIES</u>	<u>ESTIMATED VOLUME*</u>	<u>ADVERTISED PRICE</u>	<u>BID PRICE/UNIT</u>
<b>Sawtimber</b>			
Basswood	2.1 MBF	\$ 43.00/MBF	\$ _____
Paper Birch	72.5 MBF	\$ 31.00/MBF	\$ _____
Red Maple	73.9 MBF	\$ 73.00/MBF	\$ _____
Red Pine	49.7 MBF	\$ 73.00/MBF	\$ _____
Sugar Maple	1.5 MBF	\$ 129.00/MBF	\$ _____
<b>Pulpwood</b>			
Balsam Fir	156 Cords	\$ 7.20/Cord	\$ _____
Jack Pine	61 Cords	\$ 13.75/Cord	\$ _____
Mixed Aspen	3,177 Cords	\$ 17.40/Cord	\$ _____
Mixed Hardwood	1,324 Cords	\$ 10.95/Cord	\$ _____
Mixed Spruce	367 Cords	\$ 7.50/Cord	\$ _____
Red Pine	186 Cords	\$ 22.25/Cord	\$ _____

\*The volumes are statistically estimated within plus (+) or minus (-) 3.62 percent at 95% confidence level. These estimated volumes are final and not subject to adjustment. Prospective bidders are urged to examine this timber and to make their own estimates of quantity and quality.

I understand that any or all bids may be rejected. All bids must be signed and all bid items must be bid or the bid form may be rejected. I also understand that consideration and awarding a contract will be based upon my past performance and ability to complete the contract based upon equipment and staffing subject to my control.

FEDERAL ID: \_\_\_\_\_ or SOCIAL SECURITY NUMBER: \_\_\_\_\_

Company or individual bidding: \_\_\_\_\_

Company representative's name: \_\_\_\_\_

Address: \_\_\_\_\_

City: \_\_\_\_\_ State: \_\_\_\_\_ Zip: \_\_\_\_\_

IF AVAILABLE, PLEASE PLACE THE PERSONALIZED LABEL FROM YOUR PROSPECTUS IN THE ABOVE BOX.

Individual or company representative's signature: \_\_\_\_\_ Date: \_\_\_\_\_

Phone number : \_\_\_\_\_ Email (optional): \_\_\_\_\_

**THE WINNING BIDDER MUST COMPLETE THE VERIFICATION OF WORKER'S DISABILITY COMPENSATION ACT COMPLIANCE (ON REVERSE SIDE IF DOUBLE SIDED) WITHIN 21 DAYS OF SALE AWARD DATE**



FOR DEPARTMENT USE ONLY	
Sale Number (XX - XXX - XX - XX)	
Forest Management Unit:	

## TIMBER SALE VERIFICATION OF WORKER'S DISABILITY COMPENSATION ACT COMPLIANCE

As required by Act 317, P.A. 1969 (Worker's Compensation) and  
Part 5 of Act 451 of 1994, as amended.

### VERIFICATION OF WORKER'S DISABILITY COMPENSATION ACT COMPLIANCE

- This verification must be completed and submitted within 21 days of contract award and prior to the issuance of the timber sale contract.
- In addition, if boxes 2B or 2C are checked, then Notice of Exclusion or Certificate of Insurance must be submitted within twenty-one (21) days of the contract award and prior to the issuance of the timber sale contract.
- All information must be typed or printed except for written signatures.

Please Check Appropriate Categories:

1. My business is organized as (you **must** check one of the boxes below):
  - A.  Sole Proprietorship (individual)
  - B.  Partnership
  - C.  Corporation
2. You **must** check one of the boxes below:
  - A.  I certify my business is a sole proprietorship and it has no employees but the sole proprietor. I am not subject to the Worker's Compensation Laws.
  - B.  I certify my business has satisfied its obligation to the Worker's Compensation Act through the use of an approved Notice of Exclusion (BWC-337, Rev. 5/96). I will provide a copy of the Notice of Exclusion within 21 days of the contract award. (For questions or a copy of the BWC-337, please call the Worker's Compensation Bureau at 517-322-1195).
  - C.  I certify my business has a Worker's Compensation Policy. I will provide an original Certificate of Insurance within twenty-one (21) days of the contract award.
3. If you have checked item 2(A) or 2(B), you **must** indicate the number of **both** full-time and part-time employees, other than yourself, including family members and active partners (if none, you must enter "0").

\_\_\_\_\_ Full-time Employees

\_\_\_\_\_ Part-time Employees

Name of Business		Federal ID (or) Social Security No.	
Address		Telephone (       )	
City	State	ZIP	

*I hereby certify that the above information is true and correct. I agree to notify the Michigan DNR of any changes that occur in factors affecting my coverage during any of my present and future operations.*

\_\_\_\_\_  
Signature of Owner or Authorized Representative

\_\_\_\_\_  
Title

\_\_\_\_\_  
Date

Please complete the "SEALED BID" information on the next page



Edey Lake Mix (12-009-21)

T44N, R30W, SEC. 21; T44N, R30W, SEC. 22; T44N, R30W, SEC. 23; Dickinson

In response to the notice of sale to be held 8:30 a.m. (local time) on October 20, 2021, I am hereby submitting my sealed bid (firm offer) for the following forest products to be cut. Bids for individual species must be at or above the advertised price. All non-responsive bid forms may be rejected.

<u>PRODUCTS &amp; SPECIES</u>	<u>ESTIMATED VOLUME*</u>	<u>ADVERTISED PRICE</u>	<u>BID PRICE/UNIT</u>
<b>Sawtimber</b>			
Basswood	20.0 MBF	\$ 53.00/MBF	\$ _____
Paper Birch	36.9 MBF	\$ 38.00/MBF	\$ _____
Red Maple	5.7 MBF	\$ 89.00/MBF	\$ _____
Sugar Maple	11.1 MBF	\$ 158.00/MBF	\$ _____
<b>Pulpwood</b>			
Balsam Fir	78 Cords	\$ 8.80/Cord	\$ _____
Black Spruce	46 Cords	\$ 9.15/Cord	\$ _____
Mixed Aspen	2,828 Cords	\$ 21.25/Cord	\$ _____
Mixed Hardwood	410 Cords	\$ 13.40/Cord	\$ _____
Tamarack	60 Cords	\$ 4.75/Cord	\$ _____

\*The volumes are statistically estimated within plus (+) or minus (-) 4.28 percent at 95% confidence level. These estimated volumes are final and not subject to adjustment. Prospective bidders are urged to examine this timber and to make their own estimates of quantity and quality.

I understand that any or all bids may be rejected. All bids must be signed and all bid items must be bid or the bid form may be rejected. I also understand that consideration and awarding a contract will be based upon my past performance and ability to complete the contract based upon equipment and staffing subject to my control.

FEDERAL ID: \_\_\_\_ - \_\_\_\_ - \_\_\_\_ or SOCIAL SECURITY NUMBER: \_\_\_\_ - \_\_\_\_ - \_\_\_\_

Company or individual bidding: \_\_\_\_\_

Company representative's name: \_\_\_\_\_

Address: \_\_\_\_\_

City: \_\_\_\_\_ State: \_\_\_\_\_ Zip: \_\_\_\_\_

IF AVAILABLE, PLEASE PLACE THE PERSONALIZED LABEL FROM YOUR PROSPECTUS IN THE ABOVE BOX.

Individual or company representative's signature: \_\_\_\_\_ Date: \_\_\_\_\_

Phone number : \_\_\_\_\_ Email (optional): \_\_\_\_\_

**THE WINNING BIDDER MUST COMPLETE THE VERIFICATION OF WORKER'S DISABILITY COMPENSATION ACT COMPLIANCE (ON REVERSE SIDE IF DOUBLE SIDED) WITHIN 21 DAYS OF SALE AWARD DATE**



FOR DEPARTMENT USE ONLY	
Sale Number (XX - XXX - XX - XX)	
Forest Management Unit:	

# TIMBER SALE VERIFICATION OF WORKER'S DISABILITY COMPENSATION ACT COMPLIANCE

As required by Act 317, P.A. 1969 (Worker's Compensation) and  
Part 5 of Act 451 of 1994, as amended.

## VERIFICATION OF WORKER'S DISABILITY COMPENSATION ACT COMPLIANCE

- This verification must be completed and submitted within 21 days of contract award and prior to the issuance of the timber sale contract.
- In addition, if boxes 2B or 2C are checked, then Notice of Exclusion or Certificate of Insurance must be submitted within twenty-one (21) days of the contract award and prior to the issuance of the timber sale contract.
- All information must be typed or printed except for written signatures.

Please Check Appropriate Categories:

1. My business is organized as (you **must** check one of the boxes below):
  - A.  Sole Proprietorship (individual)
  - B.  Partnership
  - C.  Corporation
2. You **must** check one of the boxes below:
  - A.  I certify my business is a sole proprietorship and it has no employees but the sole proprietor. I am not subject to the Worker's Compensation Laws.
  - B.  I certify my business has satisfied its obligation to the Worker's Compensation Act through the use of an approved Notice of Exclusion (BWC-337, Rev. 5/96). I will provide a copy of the Notice of Exclusion within 21 days of the contract award. (For questions or a copy of the BWC-337, please call the Worker's Compensation Bureau at 517-322-1195).
  - C.  I certify my business has a Worker's Compensation Policy. I will provide an original Certificate of Insurance within twenty-one (21) days of the contract award.
3. If you have checked item 2(A) or 2(B), you **must** indicate the number of **both** full-time and part-time employees, other than yourself, including family members and active partners (if none, you must enter "0").

\_\_\_\_\_ Full-time Employees

\_\_\_\_\_ Part-time Employees

Name of Business		Federal ID (or) Social Security No.	
Address		Telephone (       )	
City	State	ZIP	

*I hereby certify that the above information is true and correct. I agree to notify the Michigan DNR of any changes that occur in factors affecting my coverage during any of my present and future operations.*

\_\_\_\_\_  
Signature of Owner or Authorized Representative

\_\_\_\_\_  
Title

\_\_\_\_\_  
Date

Please complete the "SEALED BID" information on the next page