



**DEPARTMENT OF NATURAL RESOURCES
STATE OF MICHIGAN**

TIMBER SALE PROSPECTUS #6943

SCHEDULED SALE DATE AND TIME: 8:30 a.m. (local time) on January 12, 2022.

LOCATION: CRYSTAL FALLS MGMT UNIT, 1420 US 2 WEST, CRYSTAL FALLS, MI 49920.

PROSPECTUS NOTE: The bidder is advised to inspect the sale area and review the location, estimated volumes, operating costs and contract terms of proposed sales. Please be aware that some landowners may request 60 days or more notice for access across their land.

Notice is hereby given that bids will be received by the Unit Manager, CRYSTAL FALLS MANAGEMENT UNIT, for certain timber on the following described lands:

Pine Express Plus (12-010-21) / T43N, R29W, SEC. 4 , SENW,S1/2NE,N1/2SE.

T44N, R29W, SEC. 32, W1/2NW,N1/2NE,SWNE,SW,SE.

Dickinson County, Advertised Price \$125,074.50, 250.1 Acres, Red Pine, Jack Pine.

SALE NOTE: All units of volume listed for this sale were estimated using the Inventory Manager computer program and the new Michigan taper model.

- See sale spec 5.2.3.1 for information on harvesting restrictions during snowmobile season.

- See sale spec 4.4.1 for information on access to sale through private land

A recreation site such as a trail, pathway, or campground is within the sale area or the vicinity. Certain restrictions/specifications may be applicable including time restrictions. Access may be through private land.

Simon Says (12-011-21) / T41N, R29W, SEC. 16, S1/2NW,SWNE,SW.

T41N, R29W, SEC. 17, SENW,S1/2NE,N1/2SW,SWSW,NWSE.

T41N, R29W, SEC. 18, W1/2SE.

T41N, R29W, SEC. 19, NWNE.

T41N, R29W, SEC. 21, N1/2NW.

Dickinson County, Advertised Price \$92,918.35, 132.5 Acres, Aspen, Red Oak.

SALE NOTE: All units of volume listed for this sale were estimated using the Inventory Manager computer program and the new Michigan taper model.

- See sale spec 5.2.3.4 and 5.2.3.5 for restrictions due to oak wilt.

- See sale spec 5.2.41 for information on protecting snow mobile trail.

A recreation site such as a trail, pathway, or campground is within the sale area or the vicinity. Certain restrictions/specifications may be applicable including time restrictions.

BID INSTRUCTIONS (VER. 07/02/2018):

1. Scheduled Bid Location, Date, and Time (2/11)

Bids must be received by the Unit Manager, CRYSTAL FALLS OFFICE, 1420 US 2 West, Crystal Falls, MI 49920, no later than 8:30 a.m. (local time) on January 12, 2022. For further information concerning this sale, contact Dan McNamee at 906-875-6622.

2. Bidder's Qualifications (5/16)

Purchaser shall obtain workers compensation insurance to cover claims under Michigan's Worker's Disability Compensation Act of 1969 or similar employee benefit act of any other state applicable to an employee. If all or part of a timber sale was prepared by a private contractor, the contractor and that contractor's company are not permitted to bid on the timber sale contract. Bids will not be accepted from individuals or companies appearing on the DNR/FRD No-Bid List. This list contains the names of purchasers who previously failed to execute a contract within 21-days or who have a history of poor performance.

3. Preparation of Sealed Bids (5/16)

Bid Forms may be completed online thru Michigan DNR Timber Sale Online Bidding (OLB) at www.michigan.gov/timberbidding or by completing the hardcopy Bid Form found in the Timber Sale Prospectus. Hardcopy Bid Forms shall be manually signed in ink. Registration in OLB is considered your 'signature' for all bids submitted thru that system. Bid prices must be entered for each species and product in the Bid Price column for all material subject to bidding and all fill-in blanks must be completed. If erasures or other changes appear on the hardcopy Bid Form, each erasure or change must be initialed by the person signing the bid.

4. Submission of Sealed Bids (5/16)

Bid forms may be obtained from the Unit Manager or thru OLB. Bids may be submitted hardcopy or thru OLB. All hardcopy bids must be submitted on the bid form and in an envelope clearly identified as described in this section. NOTE: Only one bid form per bid envelope. Sealed bids must be submitted to the Unit office designated in the prospectus and must be submitted at or prior to the time established in the prospectus. The envelope should show on the outside (a) the sale name or number and (b) the date and time of bid opening, as shown in the prospectus. Bids received after the time specified in the sale prospectus are late bids and will be rejected.

It is possible for a bidder to submit multiple bids on a single sale. For example, a bid may be submitted hardcopy and a bid may be submitted thru OLB. Or, two bidders from the same company could both submit bids on the same sale. If this were to happen, the State would accept all bids received and award the contract accordingly. All bidding and contractual requirements would apply to all bids received.

5. Public Opening of Sealed Bids (7/16)

If conditions permit, the sealed bids will be publicly opened and posted at the time and place set in the prospectus.

If a bidder, present at a bid opening, has submitted bids on more than one sale, that bidder may withdraw their unopened bid envelopes or announce the withdrawal of their online bid after being declared the successful bidder on one sale.

6. Award of Contract (1/11)

Award of the contract will be made to the Bidder whose bid, conforming to the prospectus, is most advantageous to the State of Michigan on the basis of total value at rates bid for the estimated quantities. The State reserves the right to reject any bid or waive any minor irregularity in bids received. A written award mailed (or otherwise furnished) to the successful Bidder shall be deemed to result in a binding contract without further action by either party.

7. Down Payment (1/11)

The Bidder to whom award is made must make a down payment within 21 days of the sale award. The amount of the down payment will be calculated as shown in the Bond and Payment Schedule of this prospectus. Only cash may be used to meet this requirement.

8. Performance Security (1/11)

As guarantee of faithful performance, a cash bond, certificate of deposit, surety bond or irrevocable letter of credit (LOC) is required within 21 days of the sale award. The amount of the performance security is shown in the Bond and

Payment Schedule of this prospectus. If an LOC or surety is used, the coverage must extend for at least 6 months beyond the contract expiration.

9. Timber Sale Contract (7/18)

Additional conditions and requirements common to all timber sales are listed on the timber sale contract (R4031) and are available on line at www.michigan.gov/timber. Contact the Unit Manager for additional information or a sample contract. Within 21 days of the date of the award letter, the bidder must sign the contract and provide the required down payment, performance security, and verification of worker's disability compensation. The down payment and performance security shall be in accordance with the provisions of the timber sale contract, in the sums stated in this prospectus. If these actions are not taken, then the Bidder, the Bidder's corporation, and the corporation's principals may not be permitted to bid on State timber sales for a period of 3 months after the first offense, 6 months after the second offense, and 1 year after the third offense. An offense will only be counted against the Bidder for 5 years. In addition, the Bidder certifies that if awarded this contract, the Bidder will complete the timber sale contract in accordance with its terms and any modifications thereof including requirements to purchase, cut, and remove the included timber by the expiration date.

Payment Unit values in the State Forest Timber Sale Contract are calculated based on the advertised value of the Payment Unit as a percentage of the total advertised value of the contract. The advertised value of each Payment Unit is given in the Description of Timber by Payment Unit table on the Timber Sale Information page. For example, if the value of Payment Unit 1 is advertised as \$1,500 and the total Timber Sale value is advertised as \$10,000, the contract price for Payment Unit 1 will be 15% of the total bid price ($\$1,500/\$10,000 * 100$).

10. Disclaimer of Estimates and Bidder's Warranty of Inspection (7/16)

Before submitting this bid, the Bidder is advised and cautioned to inspect the sale area, review the requirements of the sale contract, and take other steps as may be reasonably necessary to ascertain the location, estimated volumes, construction estimates, and operating costs of the proposed sale. Failure to do so will not relieve the Bidder from responsibility for completing the contract.

The Bidder warrants that this bid is submitted solely on the basis of the Bidder's examination and inspection of the quality and quantity of the timber offered for sale and the Bidder's opinion of the value thereof and the costs of recovery. No reliance should be placed on the State of Michigan's estimates of timber quality, quantity or costs of recovery. Bidder further acknowledges that the State of Michigan: (i) expressly disclaims any warranty of fitness of timber for any purpose; (ii) offers this timber as is without any warranty of quality (merchantability) or quantity and (iii) expressly disclaims any warranty as to the quantity or quality of timber sold.

11. Certification and Chain-of-Custody (10/14)

Unless otherwise indicated in the contract under section 7 – Other Conditions of the Sale Specific Conditions & Requirements, the area encompassed by this timber sale is certified to the standards of the Forest Stewardship Council (FSC) - Certificate #SCS-FM/COC-00090N and the Sustainable Forestry Initiative (SFI) - Certificate #NSF-SFIS-5Y031-SF5. Forest products from this sale may be delivered to the mill as "FSC 100% and / or SFI certified" as long as the contractor hauling the forest products is chain-of-custody (COC) certified or covered under a COC certificate from the destination mill. The purchaser is responsible for maintaining COC after leaving the sale area.

12. Good Neighbor Authority (GNA) Requirements (7/16)

If the name of this timber sales contains the acronym GNA, it is authorized by the Good Neighbor Authority (GNA) and covered by various agreements between the U.S. Forest Service and the State. The timber sale occurs on federal land and the following conditions apply:

GNA contracts on US Forest Service land will not be awarded to purchasers on the Federal list of excluded parties. The System for Award Management (SAM) will be checked for active excluded parties prior to award of contract. In addition, the Bidder to whom award is made must complete an Assurance Regarding Felony Conviction or Tax Delinquent Status for Corporate Applicants (AD-3031).

13. Good Neighbor Authority (GNA) Requirements, con't (9/16)

Bidder certifies, by signing this bid form, that to the best of Bidder's knowledge that the following representations are accurate and complete.

- a. That the Bidder and its principals are not presently debarred, suspended, proposed for debarment, declared ineligible, or voluntary excluded from timber sales (covered transactions) by any Federal department or agency.
- b. That the Bidder and its principals have not within a 3-year period preceding this bid been convicted of or had a civil judgment rendered against them for commission of fraud or a criminal offense in connection with obtaining , attempting to obtain, or performing a public (Federal, State, or local) transaction or contract under a public transaction; violation of Federal or State antitrust statutes or commission of embezzlement, theft, forgery, bribery, falsification or destruction of records, making false statements, or receiving stolen property.
- c. That the Bidder and its principals are not presently indicted for or otherwise criminally or civilly charged by a governmental entity (Federal, State, or local) with commission of any of the offenses enumerated in paragraph b of this certification.
- d. That the Bidder and its principals have not within a 3-year period preceding this bid had one or more public transactions (Federal, State, or local) terminated for breach or default of a timber or forest product contract.

Bidders that cannot certify this requirement, in whole or in part, shall submit an explanation with their bid.

DAN EICHINGER
Director

TIMBER SALE INFORMATION

Pine Express Plus (12-010-21)
 T43N, R29W, SEC. 4; T44N, R29W, SEC. 32.
 Dickinson County (Advertised Price \$125,074.50)

SALE NOTE: All units of volume listed for this sale were estimated using the Inventory Manager computer program and the new Michigan taper model.

- See sale spec 5.2.3.1 for information on harvesting restrictions during snowmobile season.
- See sale spec 4.4.1 for information on access to sale through private land

A recreation site such as a trail, pathway, or campground is within the sale area or the vicinity. Certain restrictions/specifications may be applicable including time restrictions. Access may be through private land.

A timber sale contract for this lump sum, sealed bid timber sale will be awarded to the responsible bidder offering the highest sealed bid price. All units of volume listed below were estimated using the Inventory Manager computer program and the new Michigan taper model. Bids must be at or above the following advertised price for each product and species:

| <u>PRODUCTS & SPECIES</u> | <u>ESTIMATED UNITS*</u> | <u>ADVERTISED PRICE</u> |
|-------------------------------|-------------------------|-------------------------|
| Sawtimber | | |
| Red Pine | 442.3 MBF | \$ 89.00 / MBF |
| Pulpwood | | |
| Balsam Fir | 130 Cords | \$ 6.45 / Cord |
| Jack Pine | 1,079 Cords | \$ 23.85 / Cord |
| Mixed Hardwood | 407 Cords | \$ 12.60 / Cord |
| Mixed Spruce | 92 Cords | \$ 8.30 / Cord |
| Quaking Aspen | 1,053 Cords | \$ 20.75 / Cord |
| Red Pine | 1,119 Cords | \$ 27.40 / Cord |
| White Pine | 60 Cords | \$ 12.25 / Cord |

* The total volume is statistically estimated within plus (+) or minus (-) 4.74 percent. There are an estimated 4,906 cords on this timber sale, plus or minus 233 cords at the 95% confidence level. The estimated units are final and not subject to adjustment. Prospective bidders are urged to examine this timber and to make their own estimates of quantity and quality.

BOND AND PAYMENT SCHEDULE:

1. A bond in the amount of \$10,006.00 to insure faithful performance of the conditions of the contract will be deposited by the successful bidder within 21 days of the sale award.
2. Cutting in any sale or unit without the required advance payment would be considered a trespass.
3. Total payment must be paid in advance or according to the following schedule :
 - (a) Ten percent (10%) of the sale value must be paid within 21 days of the sale award.
 - (b) The 10% down payment will be credited towards the first unit cut.
 - (c) Payment for each of the following units must be made before cutting begins in that unit:

| PAYMENT UNIT NUMBER | PERCENT OF TOTAL SALE VALUE |
|---------------------|-----------------------------|
| 01 | 10.5% |
| 02 | 12.5% |
| 03 | 25.8% |
| 04 | 24.8% |
| 05 | 2.9% |
| 06 | 5.0% |
| 07 | 6.9% |
| 08 | 11.6% |
4. If no cutting takes place, the 10% down payment will not be refunded.
5. Operations on the contract issued will terminate on 06/30/2025.

SALE STATISTICS

Volumes were calculated in cubic feet using the Michigan taper model. Cubic foot volume includes all wood inside bark for the product indicated. For display purposes, cubic feet were converted to cords and MBF using a simple conversion factor, e.g. 79 cubic feet per cord and 185 cubic feet per MBF. The cubic foot volumes are precise; the cords and MBF volumes are not. Cubic foot volume cannot be directly converted to cords or boards with precision.

SALE VOLUMES

The total estimated sale volume may not equal the sum of the species/products due to the nature of statistical calculations associated with double sampling methodology.

| VOLUME | | | STATISTICAL RANGE IN CORDS | |
|------------------|-------------|---------------|----------------------------|---------|
| TOTAL CUBIC FEET | TOTAL CORDS | PERCENT ERROR | MINIMUM | MAXIMUM |
| 387,539 | 4,906 | 4.74% | 4,673 | 5,138 |

VDU VOLUMES

A VDU is a Volume Determination Unit. Volumes and their associated statistics are calculated at the VDU level and summarized to the sale level. There is often a one to one relationship between a VDU and a Payment Unit, but not always, depending on the cruise design. Refer to the VDU TO PAYMENT UNIT table.

| | VOLUME | | | RANGE IN CORDS | |
|---------------|------------------|--------------|---------------|----------------|--------------|
| VDU | TOTAL CUBIC FEET | TOTAL CORDS | PERCENT ERROR | MINIMUM | MAXIMUM |
| 1 | 37,649 | 477 | 16.36% | 399 | 555 |
| 2 | 59,330 | 751 | 13.62% | 649 | 853 |
| 3 | 99,137 | 1,255 | 8.86% | 1,144 | 1,366 |
| 4 | 68,562 | 868 | 9.49% | 786 | 950 |
| 5 | 43,775 | 554 | 13.91% | 477 | 631 |
| 8 | 72,700 | 920 | 11.42% | 815 | 1,025 |
| TOTAL: | 381,153 | 4,825 | | 4,269 | 5,381 |

VDU TO PAYMENT UNIT

When a VDU is associated with more than one Payment Unit (PU), the VDU volumes are assigned to the PU based on acres of the VDU within the PU.

| VDU | VDU ACRES | PU | PU ACRES |
|---------------|--------------|----|--------------|
| 1 | 16.2 | 1 | 16.2 |
| 2 | 27.8 | 2 | 27.8 |
| 3 | 32.2 | 3 | 32.2 |
| 4 | 66.7 | 4 | 66.7 |
| 5 | 69.1 | 5 | 13.4 |
| | | 6 | 23.3 |
| | | 7 | 32.4 |
| 8 | 38.1 | 8 | 38.1 |
| TOTAL: | 250.1 | | 250.1 |

DESCRIPTION OF TIMBER BY PAYMENT UNIT (PU)

| PU | MARKET GROUP | PRODUCT | QUANTITY | UNIT | ACRES | ADVERTISE PRICE |
|---------------------|---------------------|-----------|-----------|-------|-------|-----------------|
| 1 | Red Pine | Sawtimber | 24.5 | MBF | 16.2 | \$13,142.85 |
| | Jack Pine | Pulpwood | 123 | Cords | | |
| | Mixed Spruce | | 6 | Cords | | |
| | <i>Black Spruce</i> | | 6 | Cords | | |
| | Quaking Aspen | | 28 | Cords | | |
| | Red Pine | | 270 | Cords | | |
| | 2 | Red Pine | Sawtimber | 11.6 | | |
| Jack Pine | | Pulpwood | 167 | Cords | | |
| Mixed Hardwood | | | 147 | Cords | | |
| <i>Paper Birch</i> | | | 141 | Cords | | |
| <i>Red Maple</i> | | | 6 | Cords | | |
| Mixed Spruce | | | 4 | Cords | | |
| <i>White Spruce</i> | | | 4 | Cords | | |
| Quaking Aspen | | | 366 | Cords | | |
| Red Pine | | | 43 | Cords | | |
| 3 | Red Pine | Sawtimber | 69.9 | MBF | 32.2 | \$32,289.30 |
| | Jack Pine | Pulpwood | 763 | Cords | | |
| | Mixed Spruce | | 10 | Cords | | |
| | <i>White Spruce</i> | | 10 | Cords | | |
| | Quaking Aspen | | 172 | Cords | | |
| | Red Pine | | 141 | Cords | | |
| | White Pine | | 29 | Cords | | |
| | 4 | Red Pine | Sawtimber | 230.2 | | |
| Mixed Hardwood | | Pulpwood | 14 | Cords | | |
| <i>Paper Birch</i> | | | 14 | Cords | | |
| Red Pine | | | 362 | Cords | | |
| White Pine | | | 31 | Cords | | |
| 5 | Red Pine | Sawtimber | 20.6 | MBF | 13.4 | \$3,607.05 |
| | Jack Pine | Pulpwood | 5 | Cords | | |
| | Mixed Hardwood | | 3 | Cords | | |
| | <i>Paper Birch</i> | | 3 | Cords | | |
| | Red Pine | | 59 | Cords | | |
| 6 | Red Pine | Sawtimber | 35.8 | MBF | 23.3 | \$6,258.65 |
| | Jack Pine | Pulpwood | 9 | Cords | | |
| | Mixed Hardwood | | 5 | Cords | | |
| | <i>Paper Birch</i> | | 5 | Cords | | |
| | Red Pine | | 102 | Cords | | |
| 7 | Red Pine | Sawtimber | 49.7 | MBF | 32.4 | \$8,688.50 |
| | Jack Pine | Pulpwood | 12 | Cords | | |
| | Mixed Hardwood | | 7 | Cords | | |
| | <i>Paper Birch</i> | | 7 | Cords | | |
| | Red Pine | | 142 | Cords | | |
| 8 | Balsam Fir | Pulpwood | 130 | Cords | 38.1 | \$14,451.95 |
| | Mixed Hardwood | | 231 | Cords | | |
| | <i>Black Ash</i> | | 8 | Cords | | |
| | <i>Paper Birch</i> | | 119 | Cords | | |
| | <i>Red Maple</i> | | 104 | Cords | | |
| | Mixed Spruce | | 72 | Cords | | |
| | <i>White Spruce</i> | | 72 | Cords | | |
| | Quaking Aspen | | 487 | Cords | | |
| | TOTAL: | | | 442.3 | | |
| TOTAL: | | | 3,940 | Cords | | |

Sale Specific Conditions & Requirements

Sale Name: Pine Express Plus

Sale Number: 12-010-21 Seq#: 1

1 - Sale Area

1.2 - Boundaries

1.2.1 - Painted boundaries (9/19)

The sale boundary and Payment Unit boundaries are marked and identified by blue, red, and yellow paint. Exterior sale boundary lines against private property are marked with blue paint. Exterior sale boundary lines against state are marked with red paint. Interior Payment Unit boundaries are marked with yellow paint. The painted boundary line trees are not Included Timber and are to be protected unless marked with orange paint. Yellow painted trees designating an interior Payment Unit boundary are only to be cut when all surrounding Payment Units have been paid.

2 - Timber Specifications

2.1 - Included Timber

2.1.1 - Clearcut unit(s) with unmerchantable trees (6/14)

Within Payment Unit(s) 2, 3, and 8, cut all trees that are two (2) inches or more at DBH, except in Payment Units 2 and 8, retain all cedar, white pine, and red pine.

2.1.3 - Cut tree marked unit(s) (12/08)

Within Payment Unit(s) 1 and 4-7, all trees are designated for cutting when marked with orange paint above and below stump height, regardless of merchantability. In addition, within Payment Unit 1 all other species are to be cut.

2.2 - Utilization

2.2.3 - Stump heights (4/07)

Stump heights within Payment Unit(s) 3 shall not exceed 6 inches for all trees. This is to facilitate planting operations.

2.2.4 - Skidding length (2/14)

Skidding of unlimbed tops or lengths over 17 feet is not permissible in Payment Units 1 and 4-7.

3 - Payments

3.3 - Pre-measured Sales

3.3.4 - Dividing payment units (7/14)

Payment Unit(s) may be divided at the request of the Purchaser and upon approval of the Unit Manager. Dividing Payment Units is a contract modification which requires a Timber Sale Contract Amendment. There will be only one division per Payment Unit.

4 - Transportation

4.1 - Construction

4.1.6 - Road construction (1/09)

Construction of new roads or improvements of existing roads shall be done in such a way as to minimize the environmental and visual impacts. Merchantable trees shall be cut and utilized unless otherwise directed. Non-merchantable trees shall be severed and laid flat on the ground. Slash shall be scattered, and not left in windrows and kept a minimum of 10 feet back from the road edge. Stumps shall be set upright, not left on edge, and be moved at least 10 feet away from the road edge. Disturbed soil shall be feathered into the woods and not left in berms or windrows.

4.1.11 - Permits (2/12)

The Purchaser will secure any necessary private road permits that may be required. Keweenaw Land Company will require a permit and bond.

4.2 - Maintenance

4.2.1 - Hauling restriction (12/08)

Hauling may be restricted on forest roads by the Unit Manager or his/her representative. The restriction may occur during spring break up or any prolonged wet weather conditions.

4.2.4 - Grading (10/16)

For completion of the sale, state forest roads must be graded. In general, this will require a road grader or bulldozer to shape up the roads after forest products have been hauled off site. This includes cleaning of drainage areas, grading, crowning, and filling with gravel, if necessary. The grading equipment to be used must be approved by the Unit Manager or his/her representative.

4.4 - Access

4.4.1 - Private property access (3/11)

Permission for access across private land has been obtained by the DNR. However, a permit and bond are still required to cross Keweenaw Land Association roads. Please contact Jay Flynn at KLA at (906) 364-3777. Roads across additional private landowner will be required to be maintained at same or better condition as prior to beginning any operation.

5 - Operations

5.2 - Conduct of Operations

5.2.3 - Operating Restrictions

5.2.3.1 - Operating restrictions (9/11)

Within Payment Unit(s) 2-7, unless changed by written agreement, cutting, skidding, and hauling are not permitted during the snowmobile season, generally December 1 to March 31. This restriction is to reduce snowmobile use conflict.

5.2.3.3 - Bark slippage restriction (3/09)

Within Payment Unit(s) 1 and 4-7, unless changed by written agreement, cutting and skidding are not permitted during the period of April 1 to July 15. This restriction is because of bark slippage.

5.2.32 - Decking/landing restoration (9/13)

All decking and landing areas must have the surface area restored to a condition equal to or better than before. This is to ensure the proper regeneration of the stand. Wood debris, chips, and "cookies" from trimmings must be removed or scattered away from landing and loading areas and may not be windrowed on the edge.

5.2.38 - No decking against live trees (2/04)

Cut products may not be decked against unmarked or designated leave trees.

5.2.41 - Snowmobile trail protection (9/11)

The Two Mile Creek Road is a snowmobile trail and is shown on the Timber Sale Map. Do not cut or damage posts with orange trail markers or traffic control signs. If the trail is used, it must be maintained and restored to a condition equal to or better than before the sale. If the trail is used for hauling, it must be graded to the satisfaction of the Unit Manager or his/her representative prior to December 1. If the trail road must be used for hauling during the snowmobile season, then a snow-covered base must be left on the trail. Maintain a 20-foot-wide slash, debris, and rut free zone daily using the snowmobile trail as the centerline. No decking of forest products will be permitted along the snowmobile trail. All stumps within 20 feet of the snowmobile trail must be cut at ground level.

5.4 - Soil Protection

5.4.1 - Rutting restriction, general (7/16)

Operations are to cease immediately if equipment and weather conditions result in rutting of roads and/or skid trails which is 12 inches or greater in depth and 50 feet in length. The Unit Manager or his/her representative may restrict hauling and/or skidding if ruts exceed the specified depth. With the Unit Manager or his/her representative's approval, the Purchaser may return to the area when the risk of rutting has decreased.

6 - Safety and Fire Prevention

6.2 - Signing

6.2.1 - Road posting (10/20)

The Purchaser is responsible for posting and maintaining caution signs on Two Mile Creek Road and Nature Trail Road prior to beginning operations. The road must be posted at appropriate distances from the Sale Area to warn of logging activity and

truck traffic. Signs must be removed when harvest operations are suspended or completed. The Purchaser will provide these signs.

6.2.2 - Snowmobile trail posting (10/20)

The Purchaser is responsible for posting and maintaining caution signs on Two Mile Creek Road/Trail #5 prior to beginning operations during the snowmobile season (approximately December 1 to March 31). The trail must be posted at appropriate distances from the Sale Area to warn of logging activity and truck traffic. Signs must be removed when harvest operations are suspended or completed. The Purchaser will provide these signs.



TIMBER SALE MAP

This information provided by authority of Part 525, 1994 PA 451, as amended.

| | |
|-------------|------|
| Sale Number | Year |
| 010 | 2021 |

| | | | | | |
|-------------------------------|---------------|----------------|--------|------|----|
| Forest Management Unit | County | Mapped By | Date | Page | of |
| Crystal Falls Management Unit | Dickinson Co. | Debbie Goupell | 8/9/21 | 2 | 2 |
| Cruised By | | | | | |
| Debbie Goupell | | | | | |

| | | | |
|----------|-------|---|----------|
| Township | Range | Section(s) and Subdivision(s) | Scale |
| 43,44N | 29W | 44-29W Sec 32: all except SENW 43-29W Sec 4: S1/2NE, SENW,N1/2SE | 1:15,840 |

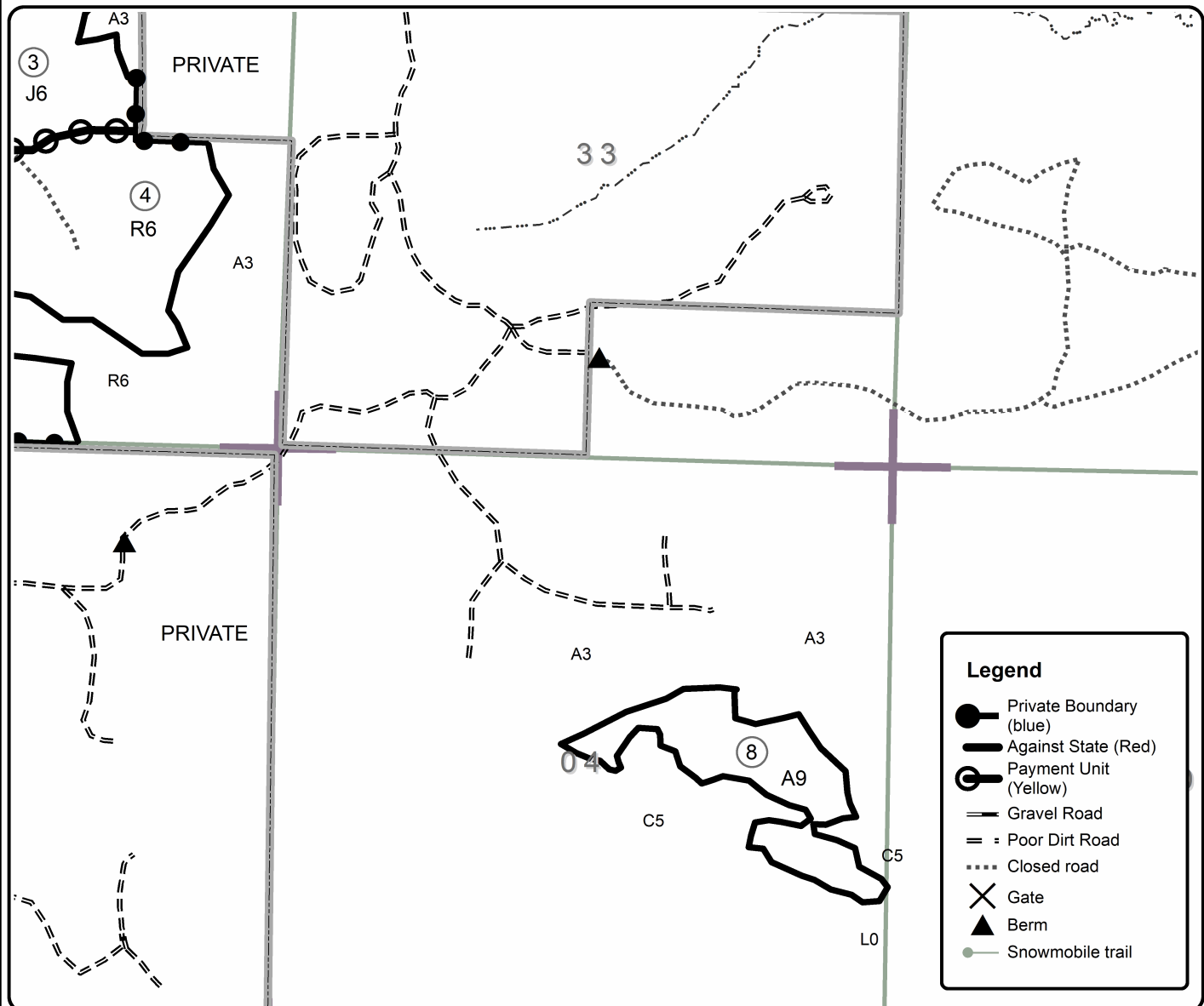
| Cover Type | | | | Density | |
|-------------------|----------------------|-------------------------|-------------------|-----------------------------|------------------------|
| A = Aspen | H = Hemlock | N = Marsh | U = Upland Brush | 0 = Non Stocked | 5 = Pole Timber Medium |
| B = Paper Birch | J = Jack Pine | O = Oak | UM = Upland Mixed | 1 = Seedling Sapling Poor | 6 = Pole Timber Well |
| C = Cedar | L = Lowland Brush | P = Lowland Poplar | V = Bog or Marsh | 2 = Seedling Sapling Medium | 7 = Saw Timber Poor |
| D = Treed Bog | LM = Lowland Mixed | Q = Mixed Swamp Conifer | W = White Pine | 3 = Seedling Sapling Well | 8 = Saw Timber Medium |
| E = Swamp Hdwoods | M = Mpl, Bch, Brch | R = Red Pine | X = Non Stocked | 4 = Pole Timber Poor | 9 = Saw Timber Well |
| F = Spruce Fir | MC = Mixed Conifer | S = Black Spruce | Z = Water | | |
| G = Grass | MD = Mixed Deciduous | T = Tamarack | | | |

| Unit | Acres | Unit | Acres |
|------|-------|------|-------|
| 1 | 16.2 | 5 | 13.4 |
| 2 | 27.8 | 6 | 23.3 |
| 3 | 32.2 | 7 | 32.4 |
| 4 | 66.7 | 8 | 38.1 |

Pine Express Plus

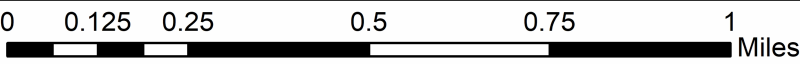
Compartment 42

250.1 Acres



Legend

- Private Boundary (blue)
- Against State (Red)
- Payment Unit (Yellow)
- Gravel Road
- Poor Dirt Road
- Closed road
- Gate
- Berm
- Snowmobile trail





TIMBER SALE MAP

This information provided by authority of Part 525, 1994 PA 451, as amended.

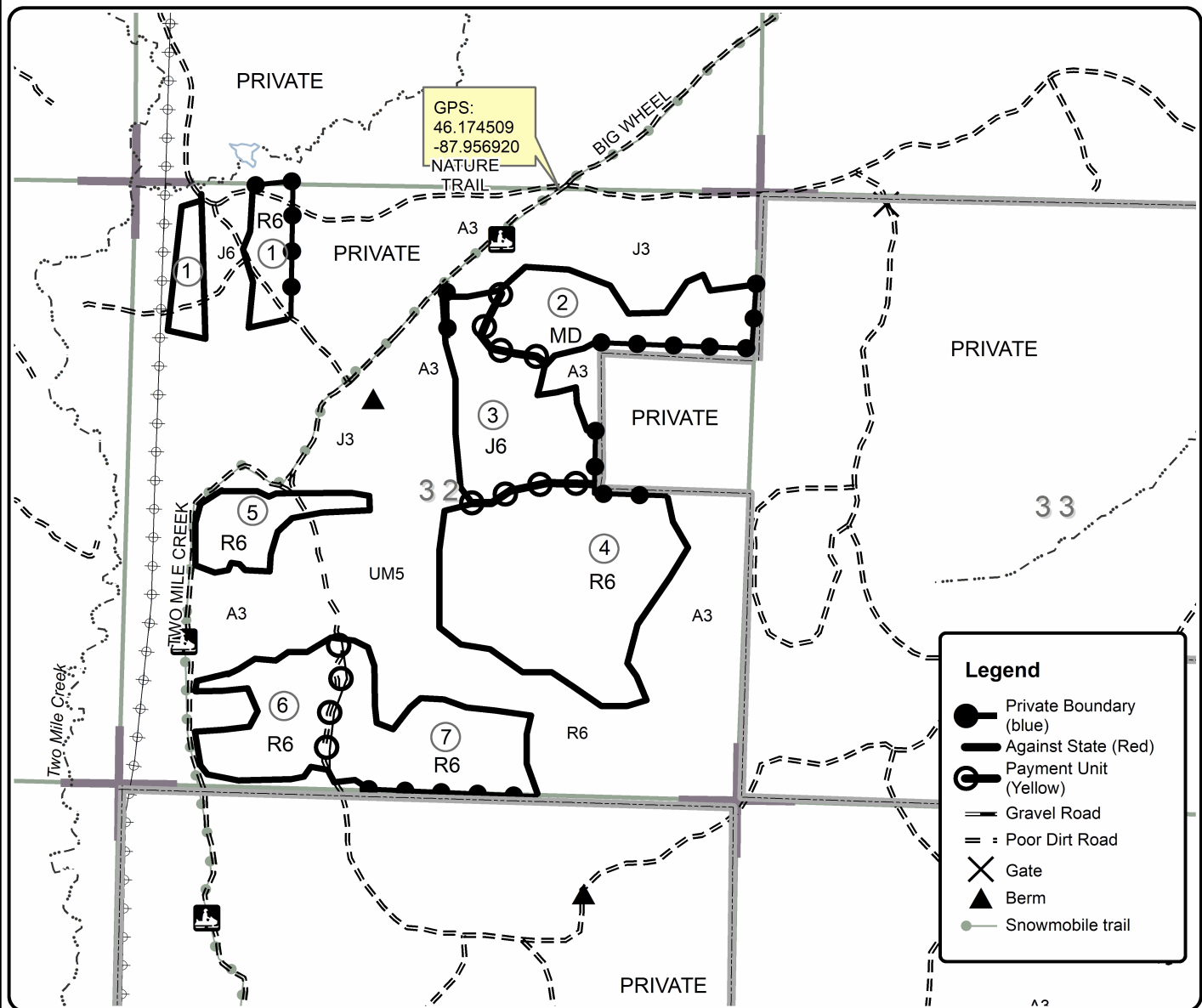
| | |
|-------------|------|
| Sale Number | Year |
| 010 | 2021 |

| | | | | | |
|-----------------------------------|---------------|--------------------------------|----------|------|----|
| Forest Management Unit | County | Mapped By | Date | Page | of |
| Crystal Falls Management Unit | Dickinson Co. | Debbie Goupell | 8/9/21 | 1 | 2 |
| Township | Range | Section(s) and Subdivision(s) | Scale | | |
| 43,44N | 29W | 44-29W Sec 32: all except SENW | 1:15,840 | | |
| 43-29W Sec 4: S1/2NE, SENW,N1/2SE | | | | | |

| Cover Type | | | | Density | |
|-------------------|----------------------|-------------------------|-------------------|-----------------------------|------------------------|
| A = Aspen | H = Hemlock | N = Marsh | U = Upland Brush | 0 = Non Stocked | 5 = Pole Timber Medium |
| B = Paper Birch | J = Jack Pine | O = Oak | UM = Upland Mixed | 1 = Seedling Sapling Poor | 6 = Pole Timber Well |
| C = Cedar | L = Lowland Brush | P = Lowland Poplar | V = Bog or Marsh | 2 = Seedling Sapling Medium | 7 = Saw Timber Poor |
| D = Treed Bog | LM = Lowland Mixed | Q = Mixed Swamp Conifer | W = White Pine | 3 = Seedling Sapling Well | 8 = Saw Timber Medium |
| E = Swamp Hdwoods | M = Mpl, Bch, Brch | R = Red Pine | X = Non Stocked | 4 = Pole Timber Poor | 9 = Saw Timber Well |
| F = Spruce Fir | MC = Mixed Conifer | S = Black Spruce | Z = Water | | |
| G = Grass | MD = Mixed Deciduous | T = Tamarack | | | |

| Unit | Acres | Unit | Acres |
|------|-------|------|-------|
| 1 | 16.2 | 5 | 13.4 |
| 2 | 27.8 | 6 | 23.3 |
| 3 | 32.2 | 7 | 32.4 |
| 4 | 66.7 | 8 | 38.1 |

Pine Express Plus Compartment 42 250.1 Acres



Legend

- Private Boundary (blue)
- Against State (Red)
- Payment Unit (Yellow)
- Gravel Road
- Poor Dirt Road
- Gate
- Berm
- Snowmobile trail

TIMBER SALE INFORMATION

Simon Says (12-011-21)

T41N, R29W, SEC. 16; T41N, R29W, SEC. 17; T41N, R29W, SEC. 18; T41N, R29W, SEC. 19; T41N, R29W, SEC. 21.
Dickinson County (Advertised Price \$92,918.35)

SALE NOTE: All units of volume listed for this sale were estimated using the Inventory Manager computer program and the new Michigan taper model.

- See sale spec 5.2.3.4 and 5.2.3.5 for restrictions due to oak wilt.

- See sale spec 5.2.41 for information on protecting snow mobile trail.

A recreation site such as a trail, pathway, or campground is within the sale area or the vicinity. Certain restrictions/specifications may be applicable including time restrictions.

A timber sale contract for this lump sum, sealed bid timber sale will be awarded to the responsible bidder offering the highest sealed bid price. All units of volume listed below were estimated using the Inventory Manager computer program and the new Michigan taper model. Bids must be at or above the following advertised price for each product and species:

| <u>PRODUCTS & SPECIES</u> | <u>ESTIMATED UNITS*</u> | <u>ADVERTISED PRICE</u> |
|-------------------------------|-------------------------|-------------------------|
| Sawtimber | | |
| Red Maple | 9.6 MBF | \$ 89.00 / MBF |
| Red Oak | 159.7 MBF | \$ 93.00 / MBF |
| Sugar Maple | 4.3 MBF | \$ 152.00 / MBF |
| Pulpwood | | |
| Balsam Fir | 19 Cords | \$ 6.45 / Cord |
| Jack Pine | 11 Cords | \$ 23.85 / Cord |
| Mixed Aspen | 3,339 Cords | \$ 20.75 / Cord |
| Mixed Hardwood | 291 Cords | \$ 12.60 / Cord |
| Red Oak | 258 Cords | \$ 11.30 / Cord |
| White Spruce | 37 Cords | \$ 8.30 / Cord |

* The total volume is statistically estimated within plus (+) or minus (-) 5.74 percent. There are an estimated 4,179 cords on this timber sale, plus or minus 240 cords at the 95% confidence level. The estimated units are final and not subject to adjustment. Prospective bidders are urged to examine this timber and to make their own estimates of quantity and quality.

BOND AND PAYMENT SCHEDULE:

1. A bond in the amount of \$7,433.00 to insure faithful performance of the conditions of the contract will be deposited by the successful bidder within 21 days of the sale award.
2. Cutting in any sale or unit without the required advance payment would be considered a trespass.
3. Total payment must be paid in advance or according to the following schedule :
 - (a) Ten percent (10%) of the sale value must be paid within 21 days of the sale award.
 - (b) The 10% down payment will be credited towards the first unit cut.
 - (c) Payment for each of the following units must be made before cutting begins in that unit:

| PAYMENT UNIT NUMBER | PERCENT OF TOTAL SALE VALUE |
|---------------------|-----------------------------|
| 01 | 7.2% |
| 02 | 25.4% |
| 03 | 13.6% |
| 04 | 49.3% |
| 05 | 4.5% |

4. If no cutting takes place, the 10% down payment will not be refunded.

5. Operations on the contract issued will terminate on 06/30/2025.

SALE STATISTICS

Volumes were calculated in cubic feet using the Michigan taper model. Cubic foot volume includes all wood inside bark for the product indicated. For display purposes, cubic feet were converted to cords and MBF using a simple conversion factor, e.g. 79 cubic feet per cord and 185 cubic feet per MBF. The cubic foot volumes are precise; the cords and MBF volumes are not. Cubic foot volume cannot be directly converted to cords or boards with precision.

SALE VOLUMES

The total estimated sale volume may not equal the sum of the species/products due to the nature of statistical calculations associated with double sampling methodology.

| VOLUME | | | STATISTICAL RANGE IN CORDS | |
|------------------|-------------|---------------|----------------------------|---------|
| TOTAL CUBIC FEET | TOTAL CORDS | PERCENT ERROR | MINIMUM | MAXIMUM |
| 330,124 | 4,179 | 5.74% | 3,939 | 4,419 |

VDU VOLUMES

A VDU is a Volume Determination Unit. Volumes and their associated statistics are calculated at the VDU level and summarized to the sale level. There is often a one to one relationship between a VDU and a Payment Unit, but not always, depending on the cruise design. Refer to the VDU TO PAYMENT UNIT table.

| | VOLUME | | | RANGE IN CORDS | |
|---------------|------------------|--------------|---------------|----------------|--------------|
| VDU | TOTAL CUBIC FEET | TOTAL CORDS | PERCENT ERROR | MINIMUM | MAXIMUM |
| 8 | 26,289 | 333 | 23.78% | 254 | 412 |
| 30 | 48,745 | 617 | 15.12% | 524 | 710 |
| 31 | 69,832 | 884 | 11.49% | 782 | 986 |
| 42 | 177,473 | 2,246 | 8.08% | 2,065 | 2,428 |
| 45 | 17,409 | 220 | 26.45% | 162 | 279 |
| TOTAL: | 339,747 | 4,301 | | 3,787 | 4,814 |

VDU TO PAYMENT UNIT

When a VDU is associated with more than one Payment Unit (PU), the VDU volumes are assigned to the PU based on acres of the VDU within the PU.

| VDU | VDU ACRES | PU | PU ACRES |
|---------------|--------------|----|--------------|
| 8 | 17.2 | 1 | 17.2 |
| 30 | 17.4 | 3 | 17.4 |
| 31 | 29.5 | 2 | 29.5 |
| 42 | 59.6 | 4 | 59.6 |
| 45 | 8.8 | 5 | 8.8 |
| TOTAL: | 132.5 | | 132.5 |

DESCRIPTION OF TIMBER BY PAYMENT UNIT (PU)

| PU | MARKET GROUP | PRODUCT | QUANTITY | UNIT | ACRES | ADVERTISE PRICE | | | | |
|--------------------|----------------------|-----------|--------------------|--------------|-------|-----------------|--------------|--------------|------|-------------|
| 1 | Balsam Fir | Pulpwood | 2 | Cords | 17.2 | \$6,694.85 | | | | |
| | Mixed Aspen | | 315 | Cords | | | | | | |
| | <i>B. T. Aspen</i> | | 10 | <i>Cords</i> | | | | | | |
| | <i>Balsam Poplar</i> | | 9 | <i>Cords</i> | | | | | | |
| | <i>Quaking Aspen</i> | | 296 | <i>Cords</i> | | | | | | |
| | Mixed Hardwood | | 3 | Cords | | | | | | |
| | <i>Paper Birch</i> | | 3 | <i>Cords</i> | | | | | | |
| | White Spruce | | 13 | Cords | | | | | | |
| 2 | Red Maple | Sawtimber | 9.6 | MBF | 29.5 | \$23,581.45 | | | | |
| | Red Oak | | 159.7 | MBF | | | | | | |
| | Sugar Maple | | 4.3 | MBF | | | | | | |
| | Mixed Aspen | Pulpwood | 97 | Cords | | | | | | |
| | <i>B. T. Aspen</i> | | <i>Sawtimber</i> | 3.0 | | | <i>MBF</i> | | | |
| | <i>B. T. Aspen</i> | | <i>Pulpwood</i> | 91 | | | <i>Cords</i> | | | |
| | Mixed Hardwood | | 182 | Cords | | | | | | |
| | <i>Paper Birch</i> | | 11 | <i>Cords</i> | | | | | | |
| | <i>Red Maple</i> | | 75 | <i>Cords</i> | | | | | | |
| | <i>Sugar Maple</i> | | 96 | <i>Cords</i> | | | | | | |
| | Red Oak | | 258 | Cords | | | | | | |
| | 3 | | Mixed Aspen | Pulpwood | | | 593 | Cords | 17.4 | \$12,607.15 |
| | | | <i>B. T. Aspen</i> | | | | 593 | <i>Cords</i> | | |
| Mixed Hardwood | | 24 | Cords | | | | | | | |
| <i>Red Maple</i> | | 10 | <i>Cords</i> | | | | | | | |
| <i>Sugar Maple</i> | | 14 | <i>Cords</i> | | | | | | | |
| 4 | Balsam Fir | Pulpwood | 6 | Cords | 59.6 | \$45,826.50 | | | | |
| | Jack Pine | | 11 | Cords | | | | | | |
| | Mixed Aspen | | 2,151 | Cords | | | | | | |
| | <i>B. T. Aspen</i> | | 594 | <i>Cords</i> | | | | | | |
| | <i>Quaking Aspen</i> | | 1,557 | <i>Cords</i> | | | | | | |
| | Mixed Hardwood | | 55 | Cords | | | | | | |
| | <i>Red Maple</i> | | 55 | <i>Cords</i> | | | | | | |
| | White Spruce | | 24 | Cords | | | | | | |
| 5 | Balsam Fir | Pulpwood | 11 | Cords | 8.8 | \$4,208.40 | | | | |
| | Mixed Aspen | | 183 | Cords | | | | | | |
| | <i>Balsam Poplar</i> | | 8 | <i>Cords</i> | | | | | | |
| | <i>Quaking Aspen</i> | | 175 | <i>Cords</i> | | | | | | |
| | Mixed Hardwood | | 27 | Cords | | | | | | |
| | <i>Paper Birch</i> | | 19 | <i>Cords</i> | | | | | | |
| | <i>Red Maple</i> | | 8 | <i>Cords</i> | | | | | | |
| TOTAL: | | | 173.6 | MBF | | | | | | |
| TOTAL: | | | 3,955 | Cords | | | | | | |

Sale Specific Conditions & Requirements

Sale Name: Simon Says

Sale Number: 12-011-21 Seq#: 1

1 - Sale Area

1.2 - Boundaries

1.2.1 - Painted boundaries (9/19)

The sale boundary and Payment Unit boundaries are marked and identified by blue, red, and yellow paint. Exterior sale boundary lines against private property are marked with blue paint. Exterior sale boundary lines against state are marked with red paint. Interior Payment Unit boundaries are marked with yellow paint. The painted boundary line trees are not Included Timber and are to be protected unless marked with orange paint. Yellow painted trees designating an interior Payment Unit boundary are only to be cut when all surrounding Payment Units have been paid.

2 - Timber Specifications

2.1 - Included Timber

2.1.1 - Clearcut unit(s) with unmerchantable trees (6/14)

Within Payment Unit(s) 1 and 3-5, cut all trees that are two (2) inches or more at DBH, except oak, red pine, white pine, cedar, and hemlock. In addition, within Payment Unit 4, do not cut spruce and fir 1 stick or less.

In Payment Unit 2, cut all trees two (2) inches or more at DBH, except red pine, white pine, cedar, and hemlock.

3 - Payments

3.3 - Pre-measured Sales

3.3.4 - Dividing payment units (7/14)

Payment Unit(s) 4 may be divided at the request of the Purchaser and upon approval of the Unit Manager. Dividing Payment Units is a contract modification which requires a Timber Sale Contract Amendment. There will be only one division per Payment Unit.

4 - Transportation

4.1 - Construction

4.1.6 - Road construction (1/09)

Construction of new roads or improvements of existing roads shall be done in such a way as to minimize the environmental and visual impacts. Merchantable trees shall be cut and utilized unless otherwise directed. Non-merchantable trees shall be severed and laid flat on the ground. Slash shall be scattered, and not left in windrows and kept a minimum of 10 feet back from the road edge. Stumps shall be set upright, not left on edge, and be moved at least 5 feet away from the road edge. Disturbed soil shall be feathered into the woods and not left in berms or windrows.

4.1.7 - Road closure (10/11)

All new roads built into the sale and currently blocked roads must be blocked to vehicle traffic upon completion of the sale. In general, this will require constructing a four (4') foot high berm of stumps and logs covered with earth. Contact the sale administrator for specific details of design and placement.

4.2 - Maintenance

4.2.1 - Hauling restriction (12/08)

Hauling may be restricted on forest roads by the Unit Manager or his/her representative. The restriction may occur during spring break up or possibly snowmobile season.

4.2.4 - Grading (10/16)

For completion of the sale, state forest roads must be graded. In general, this will require a road grader or bulldozer to shape up the roads after forest products have been hauled off site. This includes cleaning of drainage areas, grading, crowning, and filling with gravel, if necessary. The grading equipment to be used must be approved by the Unit Manager or his/her representative.

5 - Operations

5.2 - Conduct of Operations

5.2.3 - Operating Restrictions

5.2.3.4 - Oak wilt restriction, no exceptions (1/18)

Within Payment Unit(s) 2 and 3, cutting and skidding within the sale and brushing of access roads to the sale are not permitted during the period of April 15 to July 15. No exceptions will be granted. This is necessary to reduce the spread of oak wilt.

5.2.3.5 - Oak wilt restriction (1/18)

Within Payment Unit(s) 4 unless changed by written agreement, cutting, skidding, hauling within the sale and brushing of access roads to the sale are not permitted during the period of April 15 to July 15. Operations may be allowed if specific steps are taken to prevent damaging uncut oak during the high risk period. Those steps may include completing all road brushing before April 15th and clearing a tree-length buffer along uncut oak cover before April 15th. In addition, the Purchaser should take extreme care in other Payment Units and along roads to avoid damage to residual oak during this time period or Purchaser may be asked to leave. This is necessary to reduce the spread of oak wilt. For more information, contact the Unit Manager or his/her representative.

5.2.32 - Decking/landing restoration (9/13)

All decking and landing areas must have the surface area restored to a condition equal to or better than before. This is to ensure the proper regeneration of the stand. Wood debris, chips, and "cookies" from trimmings must be removed or scattered away from landing and loading areas and may not be windrowed on the edge.

5.2.41 - Snowmobile trail protection (9/11)

The South Pond Road is a snowmobile trail and is shown on the Timber Sale Map. Do not cut or damage posts with orange trail markers or traffic control signs. If the trail is used, it must be maintained and restored to a condition equal to or better than before the sale. The road maintenance/restoration must be done prior to December 1. If the trail road is to be used for hauling during the snowmobile season, then a snow-covered base must be left on the trail. Maintain a 20-foot-wide slash, debris, and rut free zone daily using the snowmobile trail as the centerline. Signs must be posted along trail to advise of logging activity.

5.4 - Soil Protection

5.4.1 - Rutting restriction, general (7/16)

Operations are to cease immediately if equipment and weather conditions result in rutting of roads and/or skid trails which is 12 inches or greater in depth and 50 feet in length. The Unit Manager or his/her representative may restrict hauling and/or skidding if ruts exceed the specified depth. With the Unit Manager or his/her representative's approval, the Purchaser may return to the area when the risk of rutting has decreased.

6 - Safety and Fire Prevention

6.2 - Signing

6.2.1 - Road posting (10/20)

The Purchaser is responsible for posting and maintaining caution signs on haul routes prior to beginning operations. The road must be posted at appropriate distances from the Sale Area to warn of logging activity and truck traffic. Signs must be removed when harvest operations are suspended or completed. The Purchaser will provide these signs.



TIMBER SALE MAP

This information provided by authority of Part 525, 1994 PA 451, as amended.

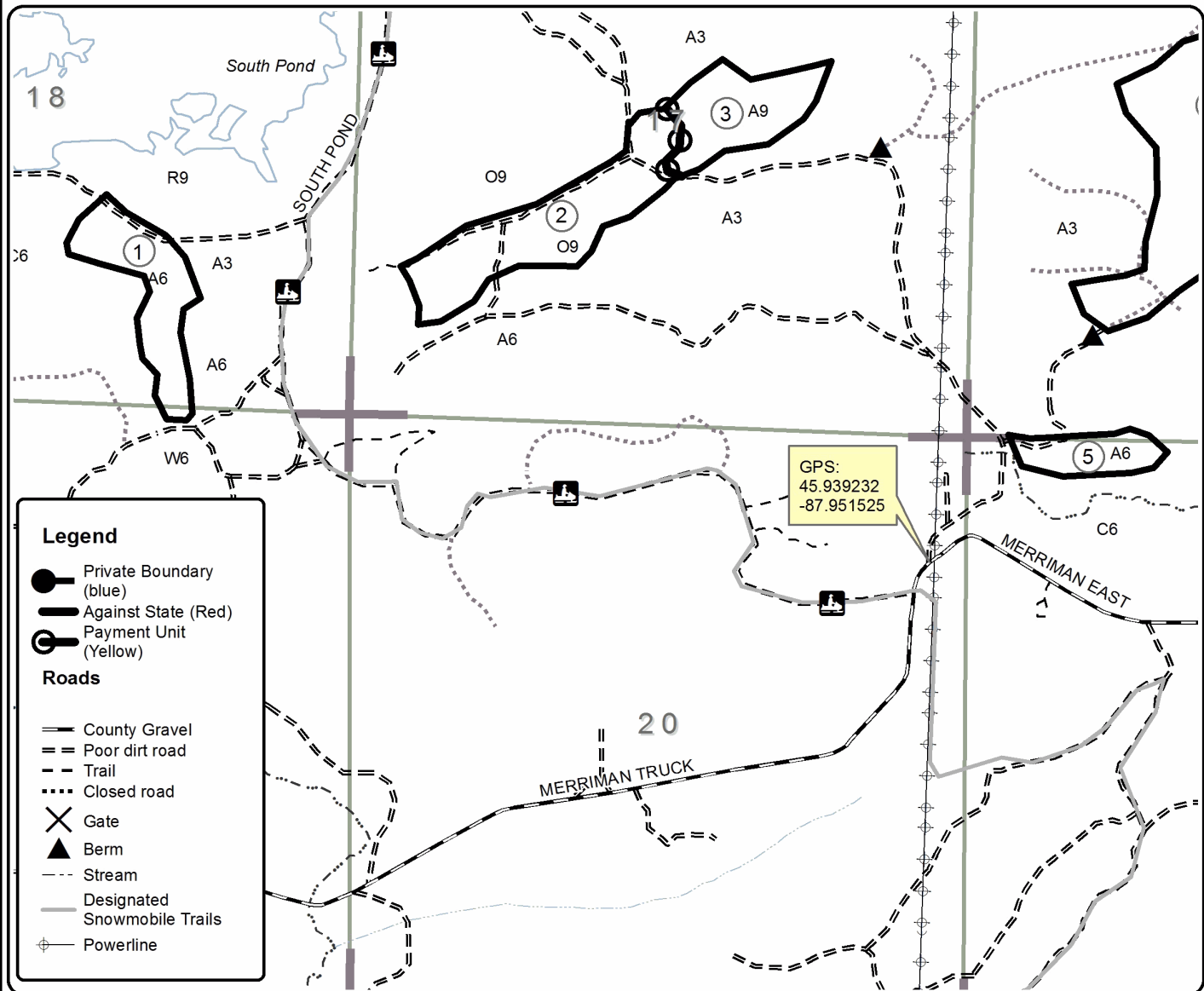
| | |
|-------------|------|
| Sale Number | Year |
| 011 | 2021 |

| | | | | | |
|---|-------------------------|--|-------------------|-----------|---------|
| Forest Management Unit Crystal Falls Management Unit | County Dickinson Co. | Mapped By Debbie Goupell | Date 8/27/21 | Page 1 | of 2 |
| Township 41N | Range 29/30W | Section(s) and Subdivision(s) Sec 16: SW1/4,S1/2NW,SWNE Sec 17: S1/2NE,SENW,NWSE,SW1/4 Sec 18: W1/2SE Sec 19: NWNE Sec 21: N1/2NW | Scale 1:15,840 | | |

| Cover Type | | | | Density | |
|-------------------|----------------------|-------------------------|-------------------|-----------------------------|------------------------|
| A = Aspen | H = Hemlock | N = Marsh | U = Upland Brush | 0 = Non Stocked | 5 = Pole Timber Medium |
| B = Paper Birch | J = Jack Pine | O = Oak | UM = Upland Mixed | 1 = Seedling Sapling Poor | 6 = Pole Timber Well |
| C = Cedar | L = Lowland Brush | P = Lowland Poplar | V = Bog or Marsh | 2 = Seedling Sapling Medium | 7 = Saw Timber Poor |
| D = Treed Bog | LM = Lowland Mixed | Q = Mixed Swamp Conifer | W = White Pine | 3 = Seedling Sapling Well | 8 = Saw Timber Medium |
| E = Swamp Hdwoods | M = Mpl, Bch, Brch | R = Red Pine | X = Non Stocked | 4 = Pole Timber Poor | 9 = Saw Timber Well |
| F = Spruce Fir | MC = Mixed Conifer | S = Black Spruce | Z = Water | | |
| G = Grass | MD = Mixed Deciduous | T = Tamarack | | | |

| Unit | Acres |
|------|-------|
| 1 | 17.2 |
| 2 | 29.5 |
| 3 | 17.4 |
| 4 | 59.6 |
| 5 | 8.8 |

Simon Says Compartment 80 132.5 Acres

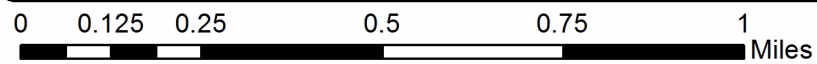


Legend

- Private Boundary (blue)
- Against State (Red)
- Payment Unit (Yellow)

Roads

- County Gravel
- Poor dirt road
- Trail
- Closed road
- Gate
- Berm
- Stream
- Designated Snowmobile Trails
- Powerline





TIMBER SALE MAP

This information provided by authority of Part 525, 1994 PA 451, as amended.

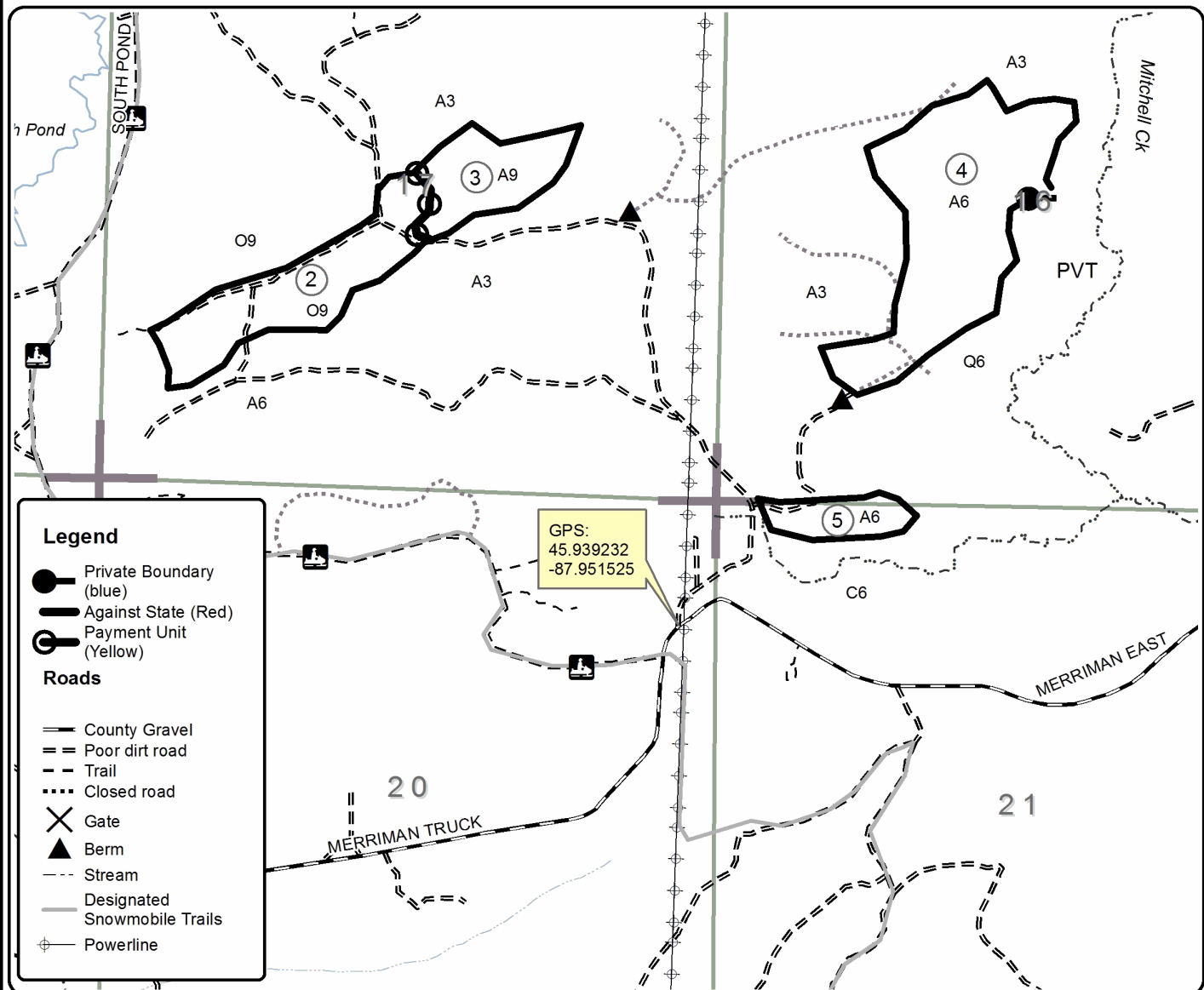
| | |
|-------------|------|
| Sale Number | Year |
| 011 | 2021 |

| | | | | | |
|-------------------------------|---------------|--|----------|------|----|
| Forest Management Unit | County | Mapped By | Date | Page | of |
| Crystal Falls Management Unit | Dickinson Co. | Debbie Goupell | 8/27/21 | 2 | 2 |
| Township | Range | Section(s) and Subdivision(s) | Scale | | |
| 41N | 29/30W | Sec 16: SW1/4, S1/2NW, SWNE Sec 17: S1/2NE, SENW, NWSE, SW1/4 Sec 18: W1/2SE Sec 19: NWNE Sec 21: N1/2NW | 1:15,840 | | |

| Cover Type | | | | Density | |
|-------------------|----------------------|-------------------------|-------------------|-----------------------------|------------------------|
| A = Aspen | H = Hemlock | N = Marsh | U = Upland Brush | 0 = Non Stocked | 5 = Pole Timber Medium |
| B = Paper Birch | J = Jack Pine | O = Oak | UM = Upland Mixed | 1 = Seedling Sapling Poor | 6 = Pole Timber Well |
| C = Cedar | L = Lowland Brush | P = Lowland Poplar | V = Bog or Marsh | 2 = Seedling Sapling Medium | 7 = Saw Timber Poor |
| D = Treed Bog | LM = Lowland Mixed | Q = Mixed Swamp Conifer | W = White Pine | 3 = Seedling Sapling Well | 8 = Saw Timber Medium |
| E = Swamp Hdwoods | M = Mpl, Bch, Brch | R = Red Pine | X = Non Stocked | 4 = Pole Timber Poor | 9 = Saw Timber Well |
| F = Spruce Fir | MC = Mixed Conifer | S = Black Spruce | Z = Water | | |
| G = Grass | MD = Mixed Deciduous | T = Tamarack | | | |

| Unit | Acres |
|------|-------|
| 1 | 17.2 |
| 2 | 29.5 |
| 3 | 17.4 |
| 4 | 59.6 |
| 5 | 8.8 |

Simon Says Compartment 80 132.5 Acres

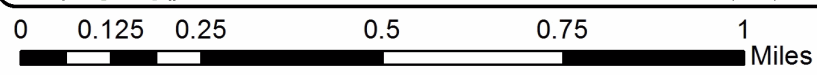


Legend

- Private Boundary (blue)
- Against State (Red)
- Payment Unit (Yellow)

Roads

- County Gravel
- - - Poor dirt road
- ... Trail
- · · · Closed road
- X Gate
- ▲ Berm
- - - Stream
- Designated Snowmobile Trails
- + Powerline



Pine Express Plus (12-010-21)
T43N, R29W, SEC. 4; T44N, R29W, SEC. 32; Dickinson COUNTY

In response to the notice of sale to be held 8:30 a.m. (local time) on January 12, 2022, I am hereby submitting my sealed bid (firm offer) for the following forest products to be cut. Bids for individual species must be at or above the advertised price. All non-responsive bid forms may be rejected.

| <u>PRODUCTS & SPECIES</u> | <u>ESTIMATED VOLUME*</u> | <u>ADVERTISED PRICE</u> | <u>BID PRICE/UNIT</u> |
|-------------------------------|--------------------------|-------------------------|-----------------------|
| Sawtimber | | | |
| Red Pine | 442.3 MBF | \$ 89.00/MBF | \$ _____ |
| Pulpwood | | | |
| Balsam Fir | 130 Cords | \$ 6.45/Cord | \$ _____ |
| Jack Pine | 1,079 Cords | \$ 23.85/Cord | \$ _____ |
| Mixed Hardwood | 407 Cords | \$ 12.60/Cord | \$ _____ |
| Mixed Spruce | 92 Cords | \$ 8.30/Cord | \$ _____ |
| Quaking Aspen | 1,053 Cords | \$ 20.75/Cord | \$ _____ |
| Red Pine | 1,119 Cords | \$ 27.40/Cord | \$ _____ |
| White Pine | 60 Cords | \$ 12.25/Cord | \$ _____ |

*The volumes are statistically estimated within plus (+) or minus (-) 4.74 percent at 95% confidence level. These estimated volumes are final and not subject to adjustment. Prospective bidders are urged to examine this timber and to make their own estimates of quantity and quality.

I understand that any or all bids may be rejected. All bids must be signed and all bid items must be bid or the bid form may be rejected. I also understand that consideration and awarding a contract will be based upon my past performance and ability to complete the contract based upon equipment and staffing subject to my control.

FEDERAL ID: ____ - ____ - ____ or SOCIAL SECURITY NUMBER: ____ - ____ - ____

Company or individual bidding: _____

Company representative's name: _____

Address: _____

City: _____ State: _____ Zip: _____

IF AVAILABLE, PLEASE PLACE THE PERSONALIZED LABEL FROM YOUR PROSPECTUS IN THE ABOVE BOX.

Individual or company representative's signature: _____ Date: _____

Phone number : _____ Email (optional): _____

THE WINNING BIDDER MUST COMPLETE THE VERIFICATION OF WORKER'S DISABILITY COMPENSATION ACT COMPLIANCE (ON REVERSE SIDE IF DOUBLE SIDED) WITHIN 21 DAYS OF SALE AWARD DATE



| | |
|----------------------------------|--|
| FOR DEPARTMENT USE ONLY | |
| Sale Number (XX - XXX - XX - XX) | |
| Forest Management Unit: | |

TIMBER SALE VERIFICATION OF WORKER'S DISABILITY COMPENSATION ACT COMPLIANCE

As required by Act 317, P.A. 1969 (Worker's Compensation) and
Part 5 of Act 451 of 1994, as amended.

VERIFICATION OF WORKER'S DISABILITY COMPENSATION ACT COMPLIANCE

- This verification must be completed and submitted within 21 days of contract award and prior to the issuance of the timber sale contract.
- In addition, if boxes 2B or 2C are checked, then Notice of Exclusion or Certificate of Insurance must be submitted within twenty-one (21) days of the contract award and prior to the issuance of the timber sale contract.
- All information must be typed or printed except for written signatures.

Please Check Appropriate Categories:

1. My business is organized as (you **must** check one of the boxes below):
 - A. Sole Proprietorship (individual)
 - B. Partnership
 - C. Corporation
2. You **must** check one of the boxes below:
 - A. I certify my business is a sole proprietorship and it has no employees but the sole proprietor. I am not subject to the Worker's Compensation Laws.
 - B. I certify my business has satisfied its obligation to the Worker's Compensation Act through the use of an approved Notice of Exclusion (BWC-337, Rev. 5/96). I will provide a copy of the Notice of Exclusion within 21 days of the contract award. (For questions or a copy of the BWC-337, please call the Worker's Compensation Bureau at 517-322-1195).
 - C. I certify my business has a Worker's Compensation Policy. I will provide an original Certificate of Insurance within twenty-one (21) days of the contract award.
3. If you have checked item 2(A) or 2(B), you **must** indicate the number of **both** full-time and part-time employees, other than yourself, including family members and active partners (if none, you must enter "0").

_____ Full-time Employees

_____ Part-time Employees

| | | | |
|------------------|-------|-------------------------------------|--|
| Name of Business | | Federal ID (or) Social Security No. | |
| Address | | Telephone () | |
| City | State | ZIP | |

I hereby certify that the above information is true and correct. I agree to notify the Michigan DNR of any changes that occur in factors affecting my coverage during any of my present and future operations.

Signature of Owner or Authorized Representative

Title

Date

Please complete the "SEALED BID" information on the next page

Simon Says (12-011-21)

T41N, R29W, SEC. 16; T41N, R29W, SEC. 17; T41N, R29W, SEC. 18; T41N,

In response to the notice of sale to be held 8:30 a.m. (local time) on January 12, 2022, I am hereby submitting my sealed bid (firm offer) for the following forest products to be cut. Bids for individual species must be at or above the advertised price. All non-responsive bid forms may be rejected.

| <u>PRODUCTS & SPECIES</u> | <u>ESTIMATED VOLUME*</u> | <u>ADVERTISED PRICE</u> | <u>BID PRICE/UNIT</u> |
|-------------------------------|--------------------------|-------------------------|-----------------------|
| Sawtimber | | | |
| Red Maple | 9.6 MBF | \$ 89.00/MBF | \$ _____ |
| Red Oak | 159.7 MBF | \$ 93.00/MBF | \$ _____ |
| Sugar Maple | 4.3 MBF | \$ 152.00/MBF | \$ _____ |
| Pulpwood | | | |
| Balsam Fir | 19 Cords | \$ 6.45/Cord | \$ _____ |
| Jack Pine | 11 Cords | \$ 23.85/Cord | \$ _____ |
| Mixed Aspen | 3,339 Cords | \$ 20.75/Cord | \$ _____ |
| Mixed Hardwood | 291 Cords | \$ 12.60/Cord | \$ _____ |
| Red Oak | 258 Cords | \$ 11.30/Cord | \$ _____ |
| White Spruce | 37 Cords | \$ 8.30/Cord | \$ _____ |

*The volumes are statistically estimated within plus (+) or minus (-) 5.74 percent at 95% confidence level. These estimated volumes are final and not subject to adjustment. Prospective bidders are urged to examine this timber and to make their own estimates of quantity and quality.

I understand that any or all bids may be rejected. All bids must be signed and all bid items must be bid or the bid form may be rejected. I also understand that consideration and awarding a contract will be based upon my past performance and ability to complete the contract based upon equipment and staffing subject to my control.

FEDERAL ID: ____ - ____ - ____ or SOCIAL SECURITY NUMBER: ____ - ____ - ____

Company or individual bidding: _____

Company representative's name: _____

Address: _____

City: _____ State: _____ Zip: _____

IF AVAILABLE, PLEASE PLACE THE PERSONALIZED LABEL FROM YOUR PROSPECTUS IN THE ABOVE BOX.

Individual or company representative's signature: _____ Date: _____

Phone number : _____ Email (optional): _____

THE WINNING BIDDER MUST COMPLETE THE VERIFICATION OF WORKER'S DISABILITY COMPENSATION ACT COMPLIANCE (ON REVERSE SIDE IF DOUBLE SIDED) WITHIN 21 DAYS OF SALE AWARD DATE



TIMBER SALE VERIFICATION OF WORKER'S DISABILITY COMPENSATION ACT COMPLIANCE

As required by Act 317, P.A. 1969 (Worker's Compensation) and
Part 5 of Act 451 of 1994, as amended.

| FOR DEPARTMENT USE ONLY | |
|----------------------------------|--|
| Sale Number (XX - XXX - XX - XX) | |
| Forest Management Unit: | |

VERIFICATION OF WORKER'S DISABILITY COMPENSATION ACT COMPLIANCE

- This verification must be completed and submitted within 21 days of contract award and prior to the issuance of the timber sale contract.
- In addition, if boxes 2B or 2C are checked, then Notice of Exclusion or Certificate of Insurance must be submitted within twenty-one (21) days of the contract award and prior to the issuance of the timber sale contract.
- All information must be typed or printed except for written signatures.

Please Check Appropriate Categories:

1. My business is organized as (you **must** check one of the boxes below):
 - A. Sole Proprietorship (individual)
 - B. Partnership
 - C. Corporation
2. You **must** check one of the boxes below:
 - A. I certify my business is a sole proprietorship and it has no employees but the sole proprietor. I am not subject to the Worker's Compensation Laws.
 - B. I certify my business has satisfied its obligation to the Worker's Compensation Act through the use of an approved Notice of Exclusion (BWC-337, Rev. 5/96). I will provide a copy of the Notice of Exclusion within 21 days of the contract award. (For questions or a copy of the BWC-337, please call the Worker's Compensation Bureau at 517-322-1195).
 - C. I certify my business has a Worker's Compensation Policy. I will provide an original Certificate of Insurance within twenty-one (21) days of the contract award.
3. If you have checked item 2(A) or 2(B), you **must** indicate the number of **both** full-time and part-time employees, other than yourself, including family members and active partners (if none, you must enter "0").

_____ Full-time Employees

_____ Part-time Employees

| | | | |
|------------------|-------|-------------------------------------|--|
| Name of Business | | Federal ID (or) Social Security No. | |
| Address | | Telephone () | |
| City | State | ZIP | |

I hereby certify that the above information is true and correct. I agree to notify the Michigan DNR of any changes that occur in factors affecting my coverage during any of my present and future operations.

Signature of Owner or Authorized Representative

Title

Date

Please complete the "SEALED BID" information on the next page