



**DEPARTMENT OF NATURAL RESOURCES  
STATE OF MICHIGAN**

**TIMBER SALE PROSPECTUS #7029**

SCHEDULED SALE DATE AND TIME: 3:00 p.m. (local time) on April 19, 2022.

LOCATION: ESCANABA MGMT UNIT, 6833 HWY'S 2, 41 & M-35, GLADSTONE, MI 49837.

PROSPECTUS NOTE: The bidder is advised to inspect the sale area and review the location, estimated volumes, operating costs and contract terms of proposed sales. Please be aware that some landowners may request 60 days or more notice for access across their land.

Notice is hereby given that bids will be received by the Unit Manager, ESCANABA MANAGEMENT UNIT, for certain timber on the following described lands:

Pop Up Hardwood (33-021-22) / T35N, R25W, SEC. 11, NWNW.

T35N, R25W, SEC. 2 , N1/2NW, SENW, NWNW.

T36N, R25W, SEC. 35, S1/2SE.

Menominee County, Advertised Price \$28,634.95, 105.0 Acres, Hardwood, Aspen.

SALE NOTE: All units of volume listed for this sale were estimated using the Inventory Manager computer program and the new Michigan taper model.

Camo Camper SBW (33-022-22) / T35N, R25W, SEC. 1 , N1/2NE, NWSW, S1/2SW.

T35N, R25W, SEC. 12, W1/2NW.

Menominee County, Advertised Price \$16,873.40, 75.8 Acres, Hardwood, Spruce/Fir/Tamarack.

SALE NOTE: All units of volume listed for this sale were estimated using the Inventory Manager computer program and the new Michigan taper model.

## BID INSTRUCTIONS (VER. 07/02/2018):

### 1. Scheduled Bid Location, Date, and Time (2/11)

Bids must be received by the Unit Manager, ESCANABA OFFICE, 6833 Hwy's 2, 41 & M-35, Gladstone, MI 49837, no later than 3:00 p.m. (local time) on April 19, 2022. For further information concerning this sale, contact Eric Thompson at 906-789-8231.

### 2. Bidder's Qualifications (5/16)

Purchaser shall obtain workers compensation insurance to cover claims under Michigan's Worker's Disability Compensation Act of 1969 or similar employee benefit act of any other state applicable to an employee. If all or part of a timber sale was prepared by a private contractor, the contractor and that contractor's company are not permitted to bid on the timber sale contract. Bids will not be accepted from individuals or companies appearing on the DNR/FRD No-Bid List. This list contains the names of purchasers who previously failed to execute a contract within 21-days or who have a history of poor performance.

### 3. Preparation of Sealed Bids (5/16)

Bid Forms may be completed online thru Michigan DNR Timber Sale Online Bidding (OLB) at [www.michigan.gov/timberbidding](http://www.michigan.gov/timberbidding) or by completing the hardcopy Bid Form found in the Timber Sale Prospectus. Hardcopy Bid Forms shall be manually signed in ink. Registration in OLB is considered your 'signature' for all bids submitted thru that system. Bid prices must be entered for each species and product in the Bid Price column for all material subject to bidding and all fill-in blanks must be completed. If erasures or other changes appear on the hardcopy Bid Form, each erasure or change must be initialed by the person signing the bid.

### 4. Submission of Sealed Bids (5/16)

Bid forms may be obtained from the Unit Manager or thru OLB. Bids may be submitted hardcopy or thru OLB. All hardcopy bids must be submitted on the bid form and in an envelope clearly identified as described in this section. NOTE: Only one bid form per bid envelope. Sealed bids must be submitted to the Unit office designated in the prospectus and must be submitted at or prior to the time established in the prospectus. The envelope should show on the outside (a) the sale name or number and (b) the date and time of bid opening, as shown in the prospectus. Bids received after the time specified in the sale prospectus are late bids and will be rejected.

It is possible for a bidder to submit multiple bids on a single sale. For example, a bid may be submitted hardcopy and a bid may be submitted thru OLB. Or, two bidders from the same company could both submit bids on the same sale. If this were to happen, the State would accept all bids received and award the contract accordingly. All bidding and contractual requirements would apply to all bids received.

### 5. Public Opening of Sealed Bids (7/16)

If conditions permit, the sealed bids will be publicly opened and posted at the time and place set in the prospectus.

If a bidder, present at a bid opening, has submitted bids on more than one sale, that bidder may withdraw their unopened bid envelopes or announce the withdrawal of their online bid after being declared the successful bidder on one sale.

### 6. Award of Contract (1/11)

Award of the contract will be made to the Bidder whose bid, conforming to the prospectus, is most advantageous to the State of Michigan on the basis of total value at rates bid for the estimated quantities. The State reserves the right to reject any bid or waive any minor irregularity in bids received. A written award mailed (or otherwise furnished) to the successful Bidder shall be deemed to result in a binding contract without further action by either party.

### 7. Down Payment (1/11)

The Bidder to whom award is made must make a down payment within 21 days of the sale award. The amount of the down payment will be calculated as shown in the Bond and Payment Schedule of this prospectus. Only cash may be used to meet this requirement.

### 8. Performance Security (1/11)

As guarantee of faithful performance, a cash bond, certificate of deposit, surety bond or irrevocable letter of credit (LOC) is required within 21 days of the sale award. The amount of the performance security is shown in the Bond and

Payment Schedule of this prospectus. If an LOC or surety is used, the coverage must extend for at least 6 months beyond the contract expiration.

#### 9. Timber Sale Contract (7/18)

Additional conditions and requirements common to all timber sales are listed on the timber sale contract (R4031) and are available on line at [www.michigan.gov/timber](http://www.michigan.gov/timber). Contact the Unit Manager for additional information or a sample contract. Within 21 days of the date of the award letter, the bidder must sign the contract and provide the required down payment, performance security, and verification of worker's disability compensation. The down payment and performance security shall be in accordance with the provisions of the timber sale contract, in the sums stated in this prospectus. If these actions are not taken, then the Bidder, the Bidder's corporation, and the corporation's principals may not be permitted to bid on State timber sales for a period of 3 months after the first offense, 6 months after the second offense, and 1 year after the third offense. An offense will only be counted against the Bidder for 5 years. In addition, the Bidder certifies that if awarded this contract, the Bidder will complete the timber sale contract in accordance with its terms and any modifications thereof including requirements to purchase, cut, and remove the included timber by the expiration date.

Payment Unit values in the State Forest Timber Sale Contract are calculated based on the advertised value of the Payment Unit as a percentage of the total advertised value of the contract. The advertised value of each Payment Unit is given in the Description of Timber by Payment Unit table on the Timber Sale Information page. For example, if the value of Payment Unit 1 is advertised as \$1,500 and the total Timber Sale value is advertised as \$10,000, the contract price for Payment Unit 1 will be 15% of the total bid price ( $\$1,500/\$10,000 * 100$ ).

#### 10. Disclaimer of Estimates and Bidder's Warranty of Inspection (7/16)

Before submitting this bid, the Bidder is advised and cautioned to inspect the sale area, review the requirements of the sale contract, and take other steps as may be reasonably necessary to ascertain the location, estimated volumes, construction estimates, and operating costs of the proposed sale. Failure to do so will not relieve the Bidder from responsibility for completing the contract.

The Bidder warrants that this bid is submitted solely on the basis of the Bidder's examination and inspection of the quality and quantity of the timber offered for sale and the Bidder's opinion of the value thereof and the costs of recovery. No reliance should be placed on the State of Michigan's estimates of timber quality, quantity or costs of recovery. Bidder further acknowledges that the State of Michigan: (i) expressly disclaims any warranty of fitness of timber for any purpose; (ii) offers this timber as is without any warranty of quality (merchantability) or quantity and (iii) expressly disclaims any warranty as to the quantity or quality of timber sold.

#### 11. Certification and Chain-of-Custody (10/14)

Unless otherwise indicated in the contract under section 7 – Other Conditions of the Sale Specific Conditions & Requirements, the area encompassed by this timber sale is certified to the standards of the Forest Stewardship Council (FSC) - Certificate #SCS-FM/COC-00090N and the Sustainable Forestry Initiative (SFI) - Certificate # NSF-SFIS-5Y031-SF5. Forest products from this sale may be delivered to the mill as "FSC 100% and / or SFI certified" as long as the contractor hauling the forest products is chain-of-custody (COC) certified or covered under a COC certificate from the destination mill. The purchaser is responsible for maintaining COC after leaving the sale area.

#### 12. Good Neighbor Authority (GNA) Requirements (7/16)

If the name of this timber sales contains the acronym GNA, it is authorized by the Good Neighbor Authority (GNA) and covered by various agreements between the U.S. Forest Service and the State. The timber sale occurs on federal land and the following conditions apply:

GNA contracts on US Forest Service land will not be awarded to purchasers on the Federal list of excluded parties. The System for Award Management (SAM) will be checked for active excluded parties prior to award of contract. In addition, the Bidder to whom award is made must complete an Assurance Regarding Felony Conviction or Tax Delinquent Status for Corporate Applicants (AD-3031).

#### 13. Good Neighbor Authority (GNA) Requirements, con't (9/16)

Bidder certifies, by signing this bid form, that to the best of Bidder's knowledge that the following representations are accurate and complete.

- a. That the Bidder and its principals are not presently debarred, suspended, proposed for debarment, declared ineligible, or voluntary excluded from timber sales (covered transactions) by any Federal department or agency.
- b. That the Bidder and its principals have not within a 3-year period preceding this bid been convicted of or had a civil judgment rendered against them for commission of fraud or a criminal offense in connection with obtaining , attempting to obtain, or performing a public (Federal, State, or local) transaction or contract under a public transaction; violation of Federal or State antitrust statutes or commission of embezzlement, theft, forgery, bribery, falsification or destruction of records, making false statements, or receiving stolen property.
- c. That the Bidder and its principals are not presently indicted for or otherwise criminally or civilly charged by a governmental entity (Federal, State, or local) with commission of any of the offenses enumerated in paragraph b of this certification.
- d. That the Bidder and its principals have not within a 3-year period preceding this bid had one or more public transactions (Federal, State, or local) terminated for breach or default of a timber or forest product contract.

Bidders that cannot certify this requirement, in whole or in part, shall submit an explanation with their bid.

DAN EICHINGER  
Director

## TIMBER SALE INFORMATION

### Pop Up Hardwood (33-021-22)

T35N, R25W, SEC. 11; T35N, R25W, SEC. 2; T36N, R25W, SEC. 35.  
Menominee County (Advertised Price \$28,634.95)

SALE NOTE: All units of volume listed for this sale were estimated using the Inventory Manager computer program and the new Michigan taper model.

A timber sale contract for this lump sum, sealed bid timber sale will be awarded to the responsible bidder offering the highest sealed bid price. All units of volume listed below were estimated using the Inventory Manager computer program and the new Michigan taper model. Bids must be at or above the following advertised price for each product and species:

<u>PRODUCTS &amp; SPECIES</u>	<u>ESTIMATED UNITS*</u>	<u>ADVERTISED PRICE</u>
<b>Sawtimber</b>		
Basswood	10.9 MBF	\$ 31.00 / MBF
Beech	3.8 MBF	\$ 29.00 / MBF
Green Ash	91.8 MBF	\$ 30.00 / MBF
Paper Birch	4.6 MBF	\$ 55.00 / MBF
Red Maple	74.3 MBF	\$ 76.00 / MBF
Sugar Maple	24.2 MBF	\$ 129.00 / MBF
White Ash	5.1 MBF	\$ 34.00 / MBF
Yellow Birch	24.7 MBF	\$ 24.00 / MBF
<b>Pulpwood</b>		
Balsam Fir	70 Cords	\$ 9.95 / Cord
Mixed Aspen	114 Cords	\$ 16.15 / Cord
Mixed Hardwood	1,074 Cords	\$ 11.55 / Cord
N. White Cedar	45 Cords	\$ 8.65 / Cord
White Spruce	33 Cords	\$ 9.50 / Cord

\* The total volume is statistically estimated within plus (+) or minus (-) 8.21 percent. There are an estimated 1,276 cords on this timber sale, plus or minus 105 cords at the 95% confidence level. The estimated units are final and not subject to adjustment. Prospective bidders are urged to examine this timber and to make their own estimates of quantity and quality.

### **BOND AND PAYMENT SCHEDULE:**

1. A bond in the amount of \$1,432.00 to insure faithful performance of the conditions of the contract will be deposited by the successful bidder within 21 days of the sale award.
2. Cutting in any sale or unit without the required advance payment would be considered a trespass.
3. Total payment must be paid in advance or according to the following schedule :
  - (a) Ten percent (10%) of the sale value must be paid within 21 days of the sale award.
  - (b) The 10% down payment will be credited towards the first unit cut.
  - (c) Payment for each of the following units must be made before cutting begins in that unit:
 

PAYMENT UNIT NUMBER	PERCENT OF TOTAL SALE VALUE
01	31.8%
02	22.5%
03	25.6%
04	6.0%
05	14.1%
4. If no cutting takes place, the 10% down payment will not be refunded.
5. Operations on the contract issued will terminate on 06/30/2025.

### **SALE STATISTICS**

Volumes were calculated in cubic feet using the Michigan taper model. Cubic foot volume includes all wood inside bark for the product indicated. For display purposes, cubic feet were converted to cords and MBF using a simple conversion factor, e.g. 79 cubic feet per cord and 185 cubic feet per MBF. The cubic foot volumes are precise; the cords and MBF volumes are not. Cubic foot volume cannot be directly converted to cords or boards with precision.

## SALE VOLUMES

The total estimated sale volume may not equal the sum of the species/products due to the nature of statistical calculations associated with double sampling methodology.

VOLUME			STATISTICAL RANGE IN CORDS	
TOTAL CUBIC FEET	TOTAL CORDS	PERCENT ERROR	MINIMUM	MAXIMUM
100,824	1,276	8.21%	1,171	1,381

## VDU VOLUMES

A VDU is a Volume Determination Unit. Volumes and their associated statistics are calculated at the VDU level and summarized to the sale level. There is often a one to one relationship between a VDU and a Payment Unit, but not always, depending on the cruise design. Refer to the VDU TO PAYMENT UNIT table.

	VOLUME			RANGE IN CORDS	
VDU	TOTAL CUBIC FEET	TOTAL CORDS	PERCENT ERROR	MINIMUM	MAXIMUM
4	32,324	409	17.60%	337	481
5	81,743	1,035	9.48%	937	1,133
7	7,645	97	15.11%	82	111
18	21,711	275	13.55%	238	312
<b>TOTAL:</b>	<b>143,423</b>	<b>1,815</b>		<b>1,593</b>	<b>2,037</b>

## VDU TO PAYMENT UNIT

When a VDU is associated with more than one Payment Unit (PU), the VDU volumes are assigned to the PU based on acres of the VDU within the PU.

VDU	VDU ACRES	PU	PU ACRES
4	27.1	3	27.1
5	42.3	1	24.7
		2	17.6
7	11.5	4	11.5
18	24.1	5	24.1
<b>TOTAL:</b>	<b>105.0</b>		<b>105.0</b>

**DESCRIPTION OF TIMBER BY PAYMENT UNIT (PU)**

PU	MARKET GROUP	PRODUCT	QUANTITY	UNIT	ACRES	ADVERTISE PRICE
1	Green Ash	Sawtimber	31.4	MBF	24.7	\$9,076.45
	Red Maple		34.9	MBF		
	Yellow Birch	14.4	MBF			
	Balsam Fir	Pulpwood	2	Cords		
	Mixed Aspen		5	Cords		
	<i>Quaking Aspen</i>		5	<i>Cords</i>		
	Mixed Hardwood		436	Cords		
	<i>Basswood</i>		4	<i>Cords</i>		
	<i>Black Ash</i>		148	<i>Cords</i>		
	<i>Green Ash</i>		86	<i>Cords</i>		
	<i>Paper Birch</i>		8	<i>Cords</i>		
	<i>Red Maple</i>		131	<i>Cords</i>		
	<i>Yellow Birch</i>		59	<i>Cords</i>		
	2	Green Ash	Sawtimber	22.4		
Red Maple		24.8		MBF		
Yellow Birch		10.3	MBF			
Balsam Fir		Pulpwood	2	Cords		
Mixed Aspen			3	Cords		
<i>Quaking Aspen</i>			3	<i>Cords</i>		
Mixed Hardwood			310	Cords		
<i>Basswood</i>			2	<i>Cords</i>		
<i>Black Ash</i>			106	<i>Cords</i>		
<i>Green Ash</i>			62	<i>Cords</i>		
<i>Paper Birch</i>			5	<i>Cords</i>		
<i>Red Maple</i>			93	<i>Cords</i>		
<i>Yellow Birch</i>			42	<i>Cords</i>		
3		Beech	Sawtimber	3.8	MBF	27.1
	Green Ash	4.9		MBF		
	Paper Birch	2.1	MBF			
	Red Maple	3.6	MBF			
	Sugar Maple	19.8	MBF			
	Balsam Fir	Pulpwood	35	Cords		
	Mixed Aspen		99	Cords		
	<i>Balsam Poplar</i>		45	<i>Cords</i>		
	<i>Quaking Aspen</i>		54	<i>Cords</i>		
	Mixed Hardwood		131	Cords		
	<i>Basswood</i>		5	<i>Cords</i>		
	<i>Beech</i>		13	<i>Cords</i>		
	<i>Green Ash</i>		28	<i>Cords</i>		
	<i>Paper Birch</i>		16	<i>Cords</i>		
	<i>Red Maple</i>		6	<i>Cords</i>		
	<i>Sugar Maple</i>	60	<i>Cords</i>			
	<i>Yellow Birch</i>	3	<i>Cords</i>			
	N. White Cedar	42	Cords			
	White Spruce	33	Cords			
	4	Basswood	Sawtimber	6.5	MBF	
Green Ash		5.0		MBF		
Paper Birch		2.5	MBF			
Red Maple		4.7	MBF			
Sugar Maple		1.9	MBF			
Balsam Fir		Pulpwood	1	Cords		
Mixed Hardwood			52	Cords		
<i>Basswood</i>			3	<i>Cords</i>		
<i>Black Ash</i>			7	<i>Cords</i>		
<i>Green Ash</i>			6	<i>Cords</i>		
<i>Ironwood</i>			1	<i>Cords</i>		

**DESCRIPTION OF TIMBER BY PAYMENT UNIT (PU), CON'T**

PU	MARKET GROUP	PRODUCT	QUANTITY	UNIT	ACRES	ADVERTISE PRICE			
4 con't	<i>Paper Birch</i>	<i>Pulpwood</i>	4	<i>Cords</i>					
	<i>Red Maple</i>		13	<i>Cords</i>					
	<i>Sugar Maple</i>		18	<i>Cords</i>					
	N. White Cedar		3	<i>Cords</i>					
5	Basswood	Sawtimber	4.4	MBF	24.1	\$4,040.40			
	Green Ash		28.1	MBF					
	Red Maple		6.3	MBF					
	Sugar Maple		2.5	MBF					
	White Ash		5.1	MBF					
	Balsam Fir		Pulpwood	30			<i>Cords</i>		
	Mixed Aspen			7			<i>Cords</i>		
	<i>Balsam Poplar</i>			7			<i>Cords</i>		
	Mixed Hardwood			145			<i>Cords</i>		
	<i>Basswood</i>	7		<i>Cords</i>					
	<i>Black Ash</i>	2		<i>Cords</i>					
	<i>Green Ash</i>	38		<i>Cords</i>					
	<i>Red Maple</i>	34		<i>Cords</i>					
	<i>Sugar Maple</i>	54		<i>Cords</i>					
	<i>White Ash</i>	8	<i>Cords</i>						
	<i>Yellow Birch</i>	2	<i>Cords</i>						
	TOTAL:			239.4			MBF		
	TOTAL:			1,336			Cords		



# Sale Specific Conditions & Requirements

**Sale Name: Pop Up Hardwood**

**Sale Number: 33-021-22 Seq#: 1**

## 1 - Sale Area

### 1.2 - Boundaries

#### 1.2.1 - Painted boundaries (9/19)

The sale boundary and Payment Unit boundaries are marked and identified by blue, red, and yellow paint. Exterior sale boundary lines against private property are marked with blue paint. Exterior sale boundary lines against state are marked with red paint. Interior Payment Unit boundaries are marked with yellow paint. The painted boundary line trees are not Included Timber and are to be protected unless marked with orange paint. Yellow painted trees designating an interior Payment Unit boundary are only to be cut when all surrounding Payment Units have been paid for.

## 2 - Timber Specifications

### 2.1 - Included Timber

#### 2.1.2 - Clearcut unit(s) w/o unmerchantable trees (8/11)

Within Payment Unit(s) 1 and 2, cut all trees which meet minimum piece specifications in 2.2 Utilization; except do not cut hemlock and cedar. In addition, do not cut trees marked with green paint.

#### 2.1.3 - Cut tree marked unit(s) (12/08)

Within Payment Unit(s) 3-5, all trees are designated for cutting when marked with orange paint above and below stump height, regardless of merchantability.

In addition, within Payment Unit 3, cut all merchantable aspen, balm, balsam fir, and spruce.

#### 2.1.9 - Harvest exception (12/08)

Do not cut any cedar trees within Payment Units 1 and 2 other than those that are necessary to remove in order to operate within the sale area. Every effort must be made to preserve the existing cedar and to leave an intact stand upon sale completion. All cut cedar shall be piled separately by products and scaled in the woods unless other scaling arrangements are agreed to by the Unit Manager or his/her representative. Stumpage price for cedar shall be \$45.00 per cord.

### 2.2 - Utilization

#### 2.2.4 - Skidding length (2/14)

Skidding of unlimbed tops or lengths over 17 feet is not permissible within Payment Units 3-5.

#### 2.2.7 - Uncut designated trees (2/04)

Liquidated damages of \$5.00 per tree will be assessed for every marked tree not cut.

## 3 - Payments

### 3.3 - Pre-measured Sales

#### 3.3.4 - Dividing payment units (7/14)

Payment Unit(s) \$18,000 in value or greater may be divided at the request of the Purchaser and upon approval of the Unit Manager. Dividing Payment Units is a contract modification which requires a Timber Sale Contract Amendment. There will be only one division per Payment Unit.

## 4 - Transportation

### 4.1 - Construction

#### 4.1.8 - Road work (1) (8/07)

The following road work is required: the Purchaser must haul and spread a minimum of 120 cubic yards of gravel on the access road running through Payment Unit 5. The exact locations will be identified during the pre-sale meeting. This roadwork must be completed prior to any hauling from Payment Unit 5. Gravel is available from a state pit located at the east end of the South Fox Road.

### 4.2 - Maintenance

#### 4.2.1 - Hauling restriction (12/08)

Hauling may be restricted on forest roads by the Unit Manager or his/her representative. The restriction may occur during spring break up or during other wet weather conditions.

#### 4.2.4 - Grading (10/16)

For completion of the sale, state forest roads must be graded. In general, this will require a road grader or bulldozer to shape up the roads after forest products have been hauled off site. This includes cleaning of drainage areas, grading, crowning, and filling with gravel, if necessary. The grading equipment to be used must be approved by the Unit Manager or his/her representative.

### 4.4 - Access

#### 4.4.1 - Private property access (3/11)

Permission for access across private land is the responsibility of the Purchaser. To access Payment Units 1-4, the best access is through private property either from the north or southwest. Otherwise, the Purchaser must extend the existing road that runs through Payment Unit 5 and heads north. This option will require more roadwork, which could include hauling more gravel and possibly installing culverts. Contact Dan 906-399-0879 or Dustin 906-399-1828 for the landowner information.

## 5 - Operations

### 5.2 - Conduct of Operations

#### 5.2.3 - Operating Restrictions

##### 5.2.3.1 - Operating restrictions (9/11)

Within Payment Unit(s) 1 and 2, cutting and skidding are limited to the period of December 1 to March 31, unless there is an extended dry or frozen period, and the sale administrator allows harvesting during that time period. There is a portion of each Payment Unit that could be harvested during a dry summer. This restriction is because of some low wet ground within each Payment Unit.

##### 5.2.3.3 - Bark slippage restriction (3/09)

Within Payment Unit(s) 3-5, cutting and skidding are not permitted during the period of April 15 to July 15. This restriction is because of bark slippage.

## 7 - Other Conditions

### 7.5 - Loss

#### 7.5.1 - Deteriorating timber (7/09)

The sale area has received damage from the spruce budworm. The emerald ash borer is also in the vicinity of this sale. The Purchaser should harvest the wood as soon as possible. The Department of Natural Resources is held free of responsibility of any further damage or deterioration due to delay in harvesting.



Sale Number	Year
33-021	22

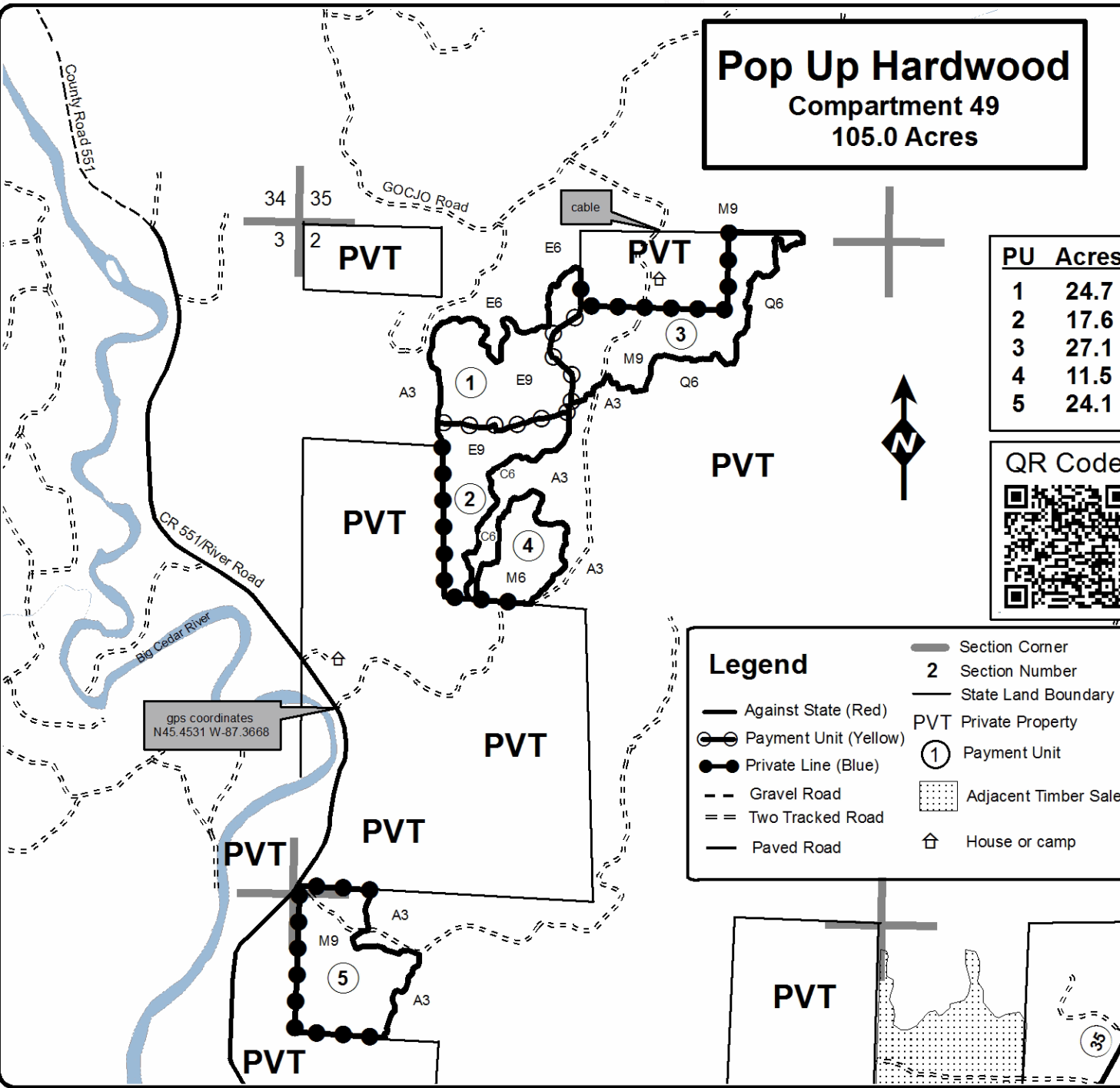
# TIMBER SALE MAP

This information provided by authority of Part 525, 1994 PA 451, as amended.

Forest Management Unit	County	Mapped By	Date	Page	of
Escanaba Management Unit	Menominee County	Beudo	11/18/2021	1	1
		Cruised By			
		Salter, Beudo			

Township	Range	Section(s) and Subdivision(s)	Scale
35N 36N	25W	35N: Sec 2 - N1/2NW, SENW, NWNE; Sec 11 - NWNW. 36N: Sec 35 - S1/2SE.	1:15,840

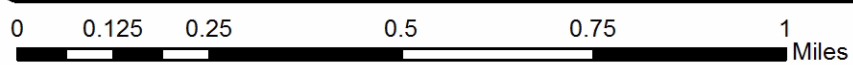
Cover Type				Density	
A = Aspen	H = Hemlock	N = Marsh	U = Upland Brush	0 = Non Stocked	5 = Pole Timber Medium
B = Paper Birch	J = Jack Pine	O = Oak	UM = Upland Mixed	1 = Seedling Sapling Poor	6 = Pole Timber Well
C = Cedar	L = Lowland Brush	P = Lowland Poplar	V = Bog or Marsh	2 = Seedling Sapling Medium	7 = Saw Timber Poor
D = Treed Bog	LM = Lowland Mixed	Q = Mixed Swamp Conifer	W = White Pine	3 = Seedling Sapling Well	8 = Saw Timber Medium
E = Swamp Hdwoods	M = Mpl, Bch, Brch	R = Red Pine	X = Non Stocked	4 = Pole Timber Poor	9 = Saw Timber Well
F = Spruce Fir	MC = Mixed Conifer	S = Black Spruce	Z = Water		
G = Grass	MD = Mixed Deciduous	T = Tamarack			



PU	Acres
1	24.7
2	17.6
3	27.1
4	11.5
5	24.1



Legend	
	Section Corner
	Section Number
	State Land Boundary
	PVT Private Property
	Payment Unit
	Adjacent Timber Sale
	House or camp
	Payment Unit
	Gravel Road
	Two Tracked Road
	Paved Road





## TIMBER SALE INFORMATION

Camo Camper SBW (33-022-22)  
 T35N, R25W, SEC. 1; T35N, R25W, SEC. 12.  
 Menominee County (Advertised Price \$16,873.40)

SALE NOTE: All units of volume listed for this sale were estimated using the Inventory Manager computer program and the new Michigan taper model.

A timber sale contract for this lump sum, sealed bid timber sale will be awarded to the responsible bidder offering the highest sealed bid price. All units of volume listed below were estimated using the Inventory Manager computer program and the new Michigan taper model. Bids must be at or above the following advertised price for each product and species:

<u>PRODUCTS &amp; SPECIES</u>	<u>ESTIMATED UNITS*</u>	<u>ADVERTISED PRICE</u>
<b>Sawtimber</b>		
Basswood	7.3 MBF	\$ 31.00 / MBF
Green Ash	20.0 MBF	\$ 30.00 / MBF
Paper Birch	30.9 MBF	\$ 55.00 / MBF
Red Maple	9.7 MBF	\$ 76.00 / MBF
Sugar Maple	6.6 MBF	\$ 129.00 / MBF
White Ash	8.7 MBF	\$ 34.00 / MBF
<b>Pulpwood</b>		
Balsam Fir	128 Cords	\$ 9.95 / Cord
Mixed Hardwood	504 Cords	\$ 11.55 / Cord
Mixed Spruce	251 Cords	\$ 9.50 / Cord
N. White Cedar	40 Cords	\$ 8.65 / Cord
Quaking Aspen	83 Cords	\$ 16.15 / Cord
Red Pine	7 Cords	\$ 45.10 / Cord
White Pine	51 Cords	\$ 19.25 / Cord

\* The total volume is statistically estimated within plus (+) or minus (-) 5.81 percent. There are an estimated 935 cords on this timber sale, plus or minus 54 cords at the 95% confidence level. The estimated units are final and not subject to adjustment. Prospective bidders are urged to examine this timber and to make their own estimates of quantity and quality.

### **BOND AND PAYMENT SCHEDULE:**

1. A bond in the amount of \$844.00 to insure faithful performance of the conditions of the contract will be deposited by the successful bidder within 21 days of the sale award.
2. Cutting in any sale or unit without the required advance payment would be considered a trespass.
3. Total payment must be paid in advance or according to the following schedule :
  - (a) Ten percent (10%) of the sale value must be paid within 21 days of the sale award.
  - (b) The 10% down payment will be credited towards the first unit cut.
  - (c) Payment for each of the following units must be made before cutting begins in that unit:
 

PAYMENT UNIT NUMBER	PERCENT OF TOTAL SALE VALUE
01	15.1%
02	7.5%
03	20.1%
04	9.9%
05	21.5%
06	25.9%
4. If no cutting takes place, the 10% down payment will not be refunded.
5. Operations on the contract issued will terminate on 06/30/2025.

### **SALE STATISTICS**

Volumes were calculated in cubic feet using the Michigan taper model. Cubic foot volume includes all wood inside bark for the product indicated. For display purposes, cubic feet were converted to cords and MBF using a simple conversion factor, e.g. 79 cubic feet per cord and 185 cubic feet per MBF. The cubic foot volumes are precise; the cords and MBF volumes are not. Cubic foot volume cannot be directly converted to cords or boards with precision.

## SALE VOLUMES

The total estimated sale volume may not equal the sum of the species/products due to the nature of statistical calculations associated with double sampling methodology.

VOLUME			STATISTICAL RANGE IN CORDS	
TOTAL CUBIC FEET	TOTAL CORDS	PERCENT ERROR	MINIMUM	MAXIMUM
73,902	935	5.81%	881	990

## VDU VOLUMES

A VDU is a Volume Determination Unit. Volumes and their associated statistics are calculated at the VDU level and summarized to the sale level. There is often a one to one relationship between a VDU and a Payment Unit, but not always, depending on the cruise design. Refer to the VDU TO PAYMENT UNIT table.

	VOLUME			RANGE IN CORDS	
VDU	TOTAL CUBIC FEET	TOTAL CORDS	PERCENT ERROR	MINIMUM	MAXIMUM
24	17,442	221	18.20%	181	261
27	4,678	59	15.68%	50	69
28	17,974	228	9.52%	206	249
40	10,207	129	17.21%	107	151
43	47,029	595	5.94%	560	631
<b>TOTAL:</b>	<b>97,330</b>	<b>1,232</b>		<b>1,103</b>	<b>1,361</b>

## VDU TO PAYMENT UNIT

When a VDU is associated with more than one Payment Unit (PU), the VDU volumes are assigned to the PU based on acres of the VDU within the PU.

VDU	VDU ACRES	PU	PU ACRES
24	8.4	1	8.4
27	6.1	2	6.1
28	14.2	3	14.2
40	8.5	4	8.5
43	38.6	5	17.5
		6	21.1
<b>TOTAL:</b>	<b>75.8</b>		<b>75.8</b>

**DESCRIPTION OF TIMBER BY PAYMENT UNIT (PU)**

PU	MARKET GROUP	PRODUCT	QUANTITY	UNIT	ACRES	ADVERTISE PRICE
1	Paper Birch	Sawtimber	2.0	MBF	8.4	\$2,554.10
	Balsam Fir	Pulpwood	61	Cords		
	Mixed Hardwood		37	Cords		
	<i>Green Ash</i>		28	<i>Cords</i>		
	<i>Paper Birch</i>		5	<i>Cords</i>		
	<i>Red Maple</i>		4	<i>Cords</i>		
	Mixed Spruce		77	Cords		
	<i>White Spruce</i>		77	<i>Cords</i>		
	Quaking Aspen		42	Cords		
2	Basswood	Sawtimber	3.4	MBF	6.1	\$1,265.00
	Sugar Maple		4.4	MBF		
	White Ash		8.7	MBF		
	Mixed Hardwood	Pulpwood	24	Cords		
	<i>Basswood</i>		7	<i>Cords</i>		
	<i>Sugar Maple</i>		6	<i>Cords</i>		
	<i>White Ash</i>		11	<i>Cords</i>		
	Mixed Spruce		2	Cords		
	<i>White Spruce</i>		2	<i>Cords</i>		
3	Basswood	Sawtimber	3.9	MBF	14.2	\$3,399.10
	Green Ash		2.1	MBF		
	Sugar Maple		2.2	MBF		
	Balsam Fir	Pulpwood	14	Cords		
	Mixed Hardwood		59	Cords		
	<i>Balsam Poplar</i>		7	<i>Cords</i>		
	<i>Basswood</i>		4	<i>Cords</i>		
	<i>Black Ash</i>		2	<i>Cords</i>		
	<i>Green Ash</i>		25	<i>Cords</i>		
	<i>Ironwood</i>		1	<i>Cords</i>		
	<i>Red Maple</i>		3	<i>Cords</i>		
	<i>Sugar Maple</i>		17	<i>Cords</i>		
	Mixed Spruce		53	Cords		
	<i>White Spruce</i>		53	<i>Cords</i>		
	N. White Cedar		19	Cords		
	Quaking Aspen		9	Cords		
	Red Pine		7	Cords		
White Pine		51	Cords			
4	Green Ash	Sawtimber	0.7	MBF	8.5	\$1,665.40
	Paper Birch		3.0	MBF		
	Red Maple		3.2	MBF		
	Balsam Fir	Pulpwood	2	Cords		
	Mixed Hardwood		83	Cords		
	<i>Balsam Poplar</i>		3	<i>Cords</i>		
	<i>Black Ash</i>		35	<i>Cords</i>		
	<i>Green Ash</i>		25	<i>Cords</i>		
	<i>Paper Birch</i>		15	<i>Cords</i>		
	<i>Red Maple</i>		3	<i>Cords</i>		
	<i>Yellow Birch</i>		2	<i>Cords</i>		
	Mixed Spruce		8	Cords		
	<i>Black Spruce</i>		6	<i>Cords</i>		
	<i>White Spruce</i>		2	<i>Cords</i>		
N. White Cedar		21	Cords			
5	Green Ash	Sawtimber	7.8	MBF	17.5	\$3,626.35
	Paper Birch		11.7	MBF		
	Red Maple		2.9	MBF		
	Balsam Fir	Pulpwood	23	Cords		
	Mixed Hardwood		137	Cords		

**DESCRIPTION OF TIMBER BY PAYMENT UNIT (PU), CON'T**

PU	MARKET GROUP	PRODUCT	QUANTITY	UNIT	ACRES	ADVERTISE PRICE
5 con't	<i>Balsam Poplar</i>	<i>Pulpwood</i>	19	<i>Cords</i>		
	<i>Black Ash</i>		28	<i>Cords</i>		
	<i>Green Ash</i>		51	<i>Cords</i>		
	<i>Paper Birch</i>		34	<i>Cords</i>		
	<i>Red Maple</i>		5	<i>Cords</i>		
	Mixed Spruce		50	Cords		
	<i>White Spruce</i>		50	<i>Cords</i>		
	Quaking Aspen		15	Cords		
6	Green Ash	Sawtimber	9.4	MBF	21.1	\$4,363.45
	Paper Birch		14.2	MBF		
	Red Maple		3.6	MBF		
	Balsam Fir	Pulpwood	28	Cords		
	Mixed Hardwood		164	Cords		
	<i>American Elm</i>		1	<i>Cords</i>		
	<i>Balsam Poplar</i>		22	<i>Cords</i>		
	<i>Black Ash</i>		33	<i>Cords</i>		
	<i>Green Ash</i>		62	<i>Cords</i>		
	<i>Paper Birch</i>		40	<i>Cords</i>		
	<i>Red Maple</i>		6	<i>Cords</i>		
	Mixed Spruce		61	Cords		
	<i>White Spruce</i>		61	<i>Cords</i>		
	Quaking Aspen		17	Cords		
	TOTAL:			83.2		
TOTAL:			1,064	Cords		



# Sale Specific Conditions & Requirements

**Sale Name: Camo Camper SBW**

**Sale Number: 33-022-22 Seq#: 1**

## 1 - Sale Area

### 1.2 - Boundaries

#### 1.2.1 - Painted boundaries (9/19)

The sale boundary and Payment Unit boundaries are marked and identified by blue, red, and yellow paint. Exterior sale boundary lines against private property are marked with blue paint. Exterior sale boundary lines against state are marked with red paint. Interior Payment Unit boundaries are marked with yellow paint. Retention patches are marked with red paint; no harvesting activities may occur within these areas. The painted boundary line trees are not Included Timber and are to be protected unless marked with orange paint. Yellow painted trees designating an interior Payment Unit boundary are only to be cut when all surrounding Payment Units have been paid for.

## 2 - Timber Specifications

### 2.1 - Included Timber

#### 2.1.2 - Clearcut unit(s) w/o unmerchantable trees (8/11)

Within Payment Unit(s) 1 and 3-6, cut all trees which meet minimum piece specifications in 2.2 Utilization, with the following exceptions.

- Within Payment Unit 1, do not cut hemlock and cedar;
- Within Payment Units 3 and 4, do not cut hemlock. In addition, do not cut trees marked with green paint;
- Within Payment Units 5 and 6, do not cut hemlock and cedar. In addition, do not cut trees marked with green paint.

#### 2.1.3 - Cut tree marked unit(s) (12/08)

Within Payment Unit(s) 2, all trees are designated for cutting when marked with orange paint above and below stump height, regardless of merchantability.

#### 2.1.9 - Harvest exception (12/08)

Do not cut any cedar trees in Payment Units 1, 5, and 6, other than those that are necessary to remove in order to operate within the sale area. Every effort must be made to preserve the existing cedar and to leave an intact stand upon sale completion. All cut cedar shall be piled separately by products and scaled in the woods unless other scaling arrangements are agreed to by the Unit Manager or his/her representative. Stumpage price for cedar within Payment Units 1, 5, and 6, shall be \$45.00 per cord.

#### 2.1.15 - Hazard trees near roads (11/20)

Cut and remove all standing dead trees within 100 feet of the cleared portion of M-35. These trees may be utilized or must be scattered back into the Sale Area.

### 2.2 - Utilization

#### 2.2.4 - Skidding length (2/14)

Skidding of unlimbed tops or lengths over 17 feet is not permissible within Payment Units 1, 2, 5, and 6.

## 3 - Payments

### 3.3 - Pre-measured Sales

#### 3.3.4 - Dividing payment units (7/14)

Payment Unit(s) \$18,000 in value and greater may be divided at the request of the Purchaser and upon approval of the Unit Manager. Dividing Payment Units is a contract modification which requires a Timber Sale Contract Amendment. There will be only one division per Payment Unit.

## 4 - Transportation

### 4.1 - Construction

#### 4.1.8 - Road work (1) (8/07)

The following road work is required: the Purchaser must haul and spread a minimum of 100 cubic yards of gravel on the

access road into Payment Units 1-3. All road work must be completed prior to any hauling from Payment Units 1-3. Gravel is available from a state pit located about 8 miles from the sale on the North Fox Road.

#### 4.2 - Maintenance

##### 4.2.1 - Hauling restriction (12/08)

Hauling may be restricted on forest roads by the Unit Manager or his/her representative. The restriction may occur during spring breakup or during other wet weather conditions.

##### 4.2.4 - Grading (10/16)

For completion of the sale, state forest roads must be graded. In general, this will require a road grader or bulldozer to shape up the roads after forest products have been hauled off site. This includes cleaning of drainage areas, grading, crowning, and filling with gravel, if necessary. The grading equipment to be used must be approved by the Unit Manager or his/her representative.

#### 4.3 - Public Right-of-Way

##### 4.3.1 - MDOT R-O-W (11/14)

The Michigan Department of Transportation (MDOT) must be contacted prior to harvesting timber within the MDOT right-of-way. The Purchaser must contact Dan Kari with MDOT at 906-875-6644, a minimum of two weeks prior to harvesting Payment Unit 3.

#### 4.4 - Access

##### 4.4.1 - Private property access (3/11)

Permission for access across private land is the responsibility of the Purchaser. The best access into Payment Units 5 and 6 is through private property. There are two different options. The Purchaser may also extend the access road going to Payment Unit 4 through state land, south down to Payment Unit 5. Contact Dan 906-399-0879 or Dustin 906-399-1828 for the landowners contact information.

### 5 - Operations

#### 5.1 - Notification

##### 5.1.6 - Utility R.O.W. (4/19)

It is the responsibility of the Purchaser to obtain permission from the utility company to utilize the power line R.O.W. for operations.

#### 5.2 - Conduct of Operations

##### 5.2.3 - Operating Restrictions

###### 5.2.3.1 - Operating restrictions (9/11)

Within Payment Unit(s) 4-6, cutting and skidding are limited to the period of December 1 to March 31, unless there is an extended dry or frozen period, and the sale administrator allows harvesting during that period. At least half of each Payment Unit could be harvested during a dry summer. This restriction is because of some low wet ground within each Payment Unit.

###### 5.2.3.3 - Bark slippage restriction (3/09)

Within Payment Unit(s) 2, unless changed by written agreement, cutting and skidding are not permitted during the period of April 15 to July 15. This restriction is because of bark slippage.

#### 5.8 - Protection of Endangered Species

##### 5.8.5 - Protection of raptor nests (3/13)

All trees with raptor nests will be protected if found during harvesting operations. Notification will be made to the Unit Manager or his/her representative who will notify the Wildlife Biologist so an on-site evaluation and recommendation can be made, if necessary.

### 7 - Other Conditions

#### 7.5 - Loss

7.5.1 - Deteriorating timber (7/09)

The sale area has received damage from the spruce budworm and the emerald ash borer has been identified near the sale. The Purchaser should harvest the wood as soon as possible. The Department of Natural Resources is held free of responsibility of any further damage or deterioration due to delay in harvesting.



Sale Number	Year
33-022	22

# TIMBER SALE MAP

This information provided by authority of Part 525, 1994 PA 451, as amended.

Forest Management Unit	County	Mapped By	Date	Page	of
Escanaba Management Unit	Menominee County	Beudo	11/30/2021	1	1
Township	Range	Section(s) and Subdivision(s)	Scale		
35N	25W	Sec 1 - N1/2NE, NWSW, S1/2SW; Sec 12 - W1/2NW.	1:15,840		

Cover Type				Density	
A = Aspen	H = Hemlock	N = Marsh	U = Upland Brush	0 = Non Stocked	5 = Pole Timber Medium
B = Paper Birch	J = Jack Pine	O = Oak	UM = Upland Mixed	1 = Seedling Sapling Poor	6 = Pole Timber Well
C = Cedar	L = Lowland Brush	P = Lowland Poplar	V = Bog or Marsh	2 = Seedling Sapling Medium	7 = Saw Timber Poor
D = Treed Bog	LM = Lowland Mixed	Q = Mixed Swamp Conifer	W = White Pine	3 = Seedling Sapling Well	8 = Saw Timber Medium
E = Swamp Hdwoods	M = Mpl, Bch, Brch	R = Red Pine	X = Non Stocked	4 = Pole Timber Poor	9 = Saw Timber Well
F = Spruce Fir	MC = Mixed Conifer	S = Black Spruce	Z = Water		
G = Grass	MD = Mixed Deciduous	T = Tamarack			

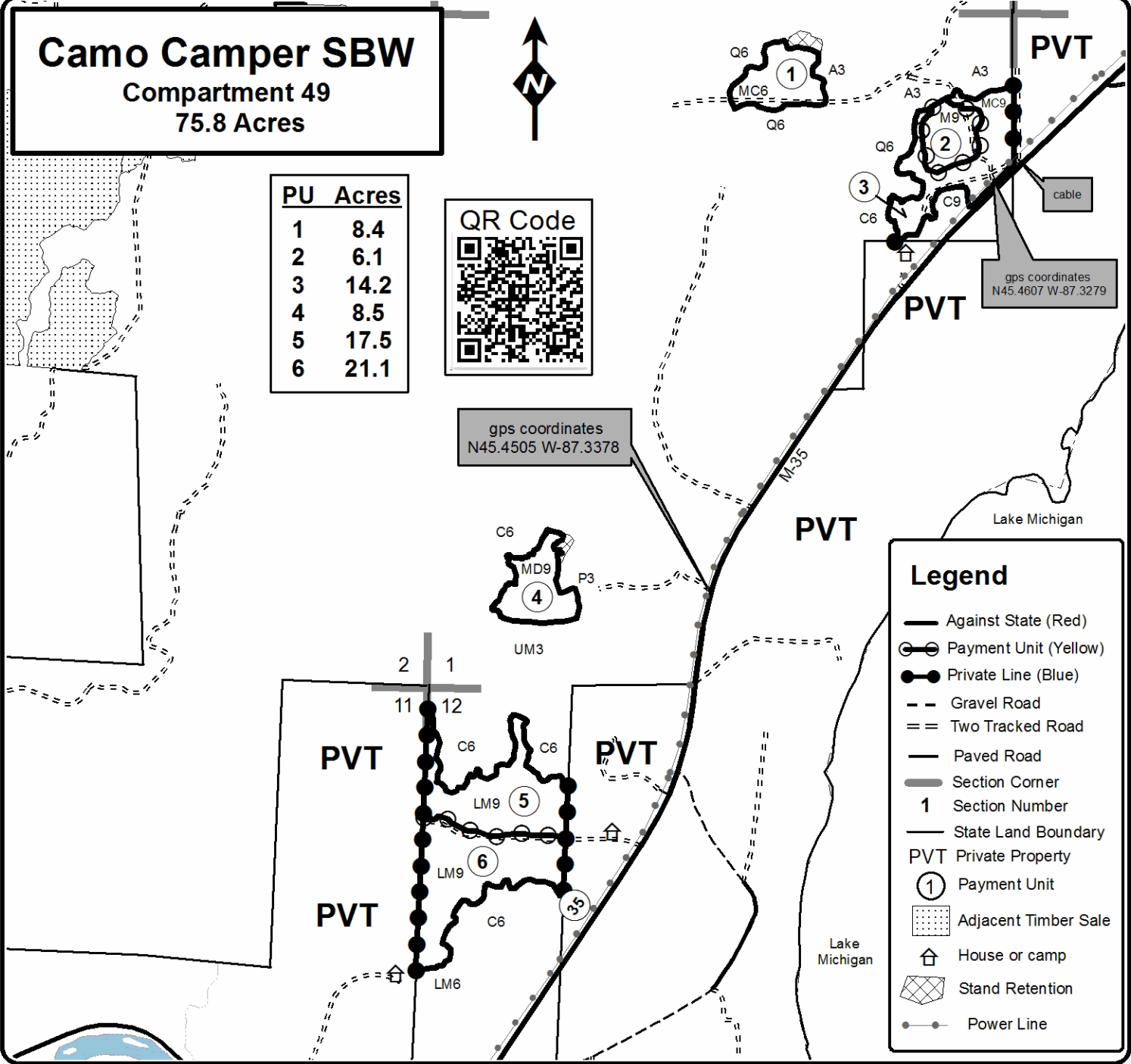
**Camo Camper SBW**  
**Compartment 49**  
**75.8 Acres**

PU	Acres
1	8.4
2	6.1
3	14.2
4	8.5
5	17.5
6	21.1



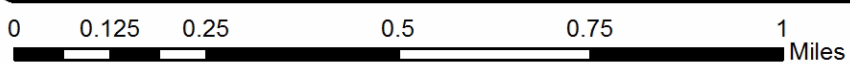
gps coordinates  
 N45.4505 W-87.3378

gps coordinates  
 N45.4607 W-87.3279



**Legend**

- Against State (Red)
- ⊙ Payment Unit (Yellow)
- Private Line (Blue)
- - Gravel Road
- = = Two Tracked Road
- Paved Road
- Section Corner
- 1 Section Number
- State Land Boundary
- PVT Private Property
- ⊙ Payment Unit
- ▨ Adjacent Timber Sale
- ⌂ House or camp
- ▧ Stand Retention
- Power Line



Pop Up Hardwood (33-021-22)

T35N, R25W, SEC. 11; T35N, R25W, SEC. 2; T36N, R25W, SEC. 35; Menominee

In response to the notice of sale to be held 3:00 p.m. (local time) on April 19, 2022, I am hereby submitting my sealed bid (firm offer) for the following forest products to be cut. Bids for individual species must be at or above the advertised price. All non-responsive bid forms may be rejected.

<u>PRODUCTS &amp; SPECIES</u>	<u>ESTIMATED VOLUME*</u>	<u>ADVERTISED PRICE</u>	<u>BID PRICE/UNIT</u>
<b>Sawtimber</b>			
Basswood	10.9 MBF	\$ 31.00/MBF	\$ _____
Beech	3.8 MBF	\$ 29.00/MBF	\$ _____
Green Ash	91.8 MBF	\$ 30.00/MBF	\$ _____
Paper Birch	4.6 MBF	\$ 55.00/MBF	\$ _____
Red Maple	74.3 MBF	\$ 76.00/MBF	\$ _____
Sugar Maple	24.2 MBF	\$ 129.00/MBF	\$ _____
White Ash	5.1 MBF	\$ 34.00/MBF	\$ _____
Yellow Birch	24.7 MBF	\$ 24.00/MBF	\$ _____
<b>Pulpwood</b>			
Balsam Fir	70 Cords	\$ 9.95/Cord	\$ _____
Mixed Aspen	114 Cords	\$ 16.15/Cord	\$ _____
Mixed Hardwood	1,074 Cords	\$ 11.55/Cord	\$ _____
N. White Cedar	45 Cords	\$ 8.65/Cord	\$ _____
White Spruce	33 Cords	\$ 9.50/Cord	\$ _____

\*The volumes are statistically estimated within plus (+) or minus (-) 8.21 percent at 95% confidence level. These estimated volumes are final and not subject to adjustment. Prospective bidders are urged to examine this timber and to make their own estimates of quantity and quality.

I understand that any or all bids may be rejected. All bids must be signed and all bid items must be bid or the bid form may be rejected. I also understand that consideration and awarding a contract will be based upon my past performance and ability to complete the contract based upon equipment and staffing subject to my control.

FEDERAL ID: \_\_\_\_\_ - \_\_\_\_\_ or SOCIAL SECURITY NUMBER: \_\_\_\_\_ - \_\_\_\_\_ - \_\_\_\_\_

Company or individual bidding: \_\_\_\_\_

Company representative's name: \_\_\_\_\_

Address: \_\_\_\_\_

City: \_\_\_\_\_ State: \_\_\_\_\_ Zip: \_\_\_\_\_

IF AVAILABLE, PLEASE PLACE THE PERSONALIZED LABEL FROM YOUR PROSPECTUS IN THE ABOVE BOX.

Individual or company representative's signature: \_\_\_\_\_ Date: \_\_\_\_\_

Phone number : \_\_\_\_\_ Email (optional): \_\_\_\_\_

**THE WINNING BIDDER MUST COMPLETE THE VERIFICATION OF WORKER'S DISABILITY COMPENSATION ACT COMPLIANCE (ON REVERSE SIDE IF DOUBLE SIDED) WITHIN 21 DAYS OF SALE AWARD DATE**



<b>FOR DEPARTMENT USE ONLY</b>
Sale Number (XX - XXX - XX - XX)
Forest Management Unit:

## TIMBER SALE VERIFICATION OF WORKER'S DISABILITY COMPENSATION ACT COMPLIANCE

*As required by Act 317, P.A. 1969 (Worker's Compensation) and  
Part 5 of Act 451 of 1994, as amended.*

### VERIFICATION OF WORKER'S DISABILITY COMPENSATION ACT COMPLIANCE

- This verification must be completed and submitted within 21 days of contract award and prior to the issuance of the timber sale contract.
- In addition, if boxes 2B or 2C are checked, then Notice of Exclusion or Certificate of Insurance must be submitted within twenty-one (21) days of the contract award and prior to the issuance of the timber sale contract.
- All information must be typed or printed except for written signatures.

Please Check Appropriate Categories:

1. My business is organized as (you **must** check one of the boxes below):
  - A.  Sole Proprietorship (individual)
  - B.  Partnership
  - C.  Corporation
2. You **must** check one of the boxes below:
  - A.  I certify my business is a sole proprietorship and it has no employees but the sole proprietor. I am not subject to the Worker's Compensation Laws.
  - B.  I certify my business has satisfied its obligation to the Worker's Compensation Act through the use of an approved Notice of Exclusion (BWC-337, Rev. 5/96). I will provide a copy of the Notice of Exclusion within 21 days of the contract award. (For questions or a copy of the BWC-337, please call the Worker's Compensation Bureau at 517-322-1195).
  - C.  I certify my business has a Worker's Compensation Policy. I will provide an original Certificate of Insurance within twenty-one (21) days of the contract award.
3. If you have checked item 2(A) or 2(B), you **must** indicate the number of **both** full-time and part-time employees, other than yourself, including family members and active partners (if none, you must enter "0").

\_\_\_\_\_ Full-time Employees

\_\_\_\_\_ Part-time Employees

Name of Business		Federal ID (or) Social Security No.	
Address		Telephone (       )	
City	State	ZIP	

*I hereby certify that the above information is true and correct. I agree to notify the Michigan DNR of any changes that occur in factors affecting my coverage during any of my present and future operations.*

\_\_\_\_\_  
Signature of Owner or Authorized Representative

\_\_\_\_\_  
Title

\_\_\_\_\_  
Date

**Please complete the "SEALED BID" information on the next page**

Camo Camper SBW (33-022-22)  
T35N, R25W, SEC. 1; T35N, R25W, SEC. 12; Menominee COUNTY

In response to the notice of sale to be held 3:00 p.m. (local time) on April 19, 2022, I am hereby submitting my sealed bid (firm offer) for the following forest products to be cut. Bids for individual species must be at or above the advertised price. All non-responsive bid forms may be rejected.

<u>PRODUCTS &amp; SPECIES</u>	<u>ESTIMATED VOLUME*</u>	<u>ADVERTISED PRICE</u>	<u>BID PRICE/UNIT</u>
<b>Sawtimber</b>			
Basswood	7.3 MBF	\$ 31.00/MBF	\$ _____
Green Ash	20.0 MBF	\$ 30.00/MBF	\$ _____
Paper Birch	30.9 MBF	\$ 55.00/MBF	\$ _____
Red Maple	9.7 MBF	\$ 76.00/MBF	\$ _____
Sugar Maple	6.6 MBF	\$ 129.00/MBF	\$ _____
White Ash	8.7 MBF	\$ 34.00/MBF	\$ _____
<b>Pulpwood</b>			
Balsam Fir	128 Cords	\$ 9.95/Cord	\$ _____
Mixed Hardwood	504 Cords	\$ 11.55/Cord	\$ _____
Mixed Spruce	251 Cords	\$ 9.50/Cord	\$ _____
N. White Cedar	40 Cords	\$ 8.65/Cord	\$ _____
Quaking Aspen	83 Cords	\$ 16.15/Cord	\$ _____
Red Pine	7 Cords	\$ 45.10/Cord	\$ _____
White Pine	51 Cords	\$ 19.25/Cord	\$ _____

\*The volumes are statistically estimated within plus (+) or minus (-) 5.81 percent at 95% confidence level. These estimated volumes are final and not subject to adjustment. Prospective bidders are urged to examine this timber and to make their own estimates of quantity and quality.

I understand that any or all bids may be rejected. All bids must be signed and all bid items must be bid or the bid form may be rejected. I also understand that consideration and awarding a contract will be based upon my past performance and ability to complete the contract based upon equipment and staffing subject to my control.

FEDERAL ID: \_\_\_\_\_ or SOCIAL SECURITY NUMBER: \_\_\_\_\_

Company or individual bidding: \_\_\_\_\_

Company representative's name: \_\_\_\_\_

Address: \_\_\_\_\_

City: \_\_\_\_\_ State: \_\_\_\_\_ Zip: \_\_\_\_\_

IF AVAILABLE, PLEASE PLACE THE PERSONALIZED LABEL FROM YOUR PROSPECTUS IN THE ABOVE BOX.

Individual or company representative's signature: \_\_\_\_\_ Date: \_\_\_\_\_

Phone number : \_\_\_\_\_ Email (optional): \_\_\_\_\_

**THE WINNING BIDDER MUST COMPLETE THE VERIFICATION OF WORKER'S DISABILITY COMPENSATION ACT COMPLIANCE (ON REVERSE SIDE IF DOUBLE SIDED) WITHIN 21 DAYS OF SALE AWARD DATE**



FOR DEPARTMENT USE ONLY	
Sale Number (XX - XXX - XX - XX)	
Forest Management Unit:	

## TIMBER SALE VERIFICATION OF WORKER'S DISABILITY COMPENSATION ACT COMPLIANCE

As required by Act 317, P.A. 1969 (Worker's Compensation) and  
Part 5 of Act 451 of 1994, as amended.

### VERIFICATION OF WORKER'S DISABILITY COMPENSATION ACT COMPLIANCE

- This verification must be completed and submitted within 21 days of contract award and prior to the issuance of the timber sale contract.
- In addition, if boxes 2B or 2C are checked, then Notice of Exclusion or Certificate of Insurance must be submitted within twenty-one (21) days of the contract award and prior to the issuance of the timber sale contract.
- All information must be typed or printed except for written signatures.

Please Check Appropriate Categories:

1. My business is organized as (you **must** check one of the boxes below):
  - A.  Sole Proprietorship (individual)
  - B.  Partnership
  - C.  Corporation
2. You **must** check one of the boxes below:
  - A.  I certify my business is a sole proprietorship and it has no employees but the sole proprietor. I am not subject to the Worker's Compensation Laws.
  - B.  I certify my business has satisfied its obligation to the Worker's Compensation Act through the use of an approved Notice of Exclusion (BWC-337, Rev. 5/96). I will provide a copy of the Notice of Exclusion within 21 days of the contract award. (For questions or a copy of the BWC-337, please call the Worker's Compensation Bureau at 517-322-1195).
  - C.  I certify my business has a Worker's Compensation Policy. I will provide an original Certificate of Insurance within twenty-one (21) days of the contract award.
3. If you have checked item 2(A) or 2(B), you **must** indicate the number of **both** full-time and part-time employees, other than yourself, including family members and active partners (if none, you must enter "0").

\_\_\_\_\_ Full-time Employees

\_\_\_\_\_ Part-time Employees

Name of Business		Federal ID (or) Social Security No.	
Address		Telephone (       )	
City	State	ZIP	

*I hereby certify that the above information is true and correct. I agree to notify the Michigan DNR of any changes that occur in factors affecting my coverage during any of my present and future operations.*

\_\_\_\_\_  
Signature of Owner or Authorized Representative

\_\_\_\_\_  
Title

\_\_\_\_\_  
Date

Please complete the "SEALED BID" information on the next page