



**DEPARTMENT OF NATURAL RESOURCES
STATE OF MICHIGAN
TIMBER SALE PROSPECTUS #7111**

SCHEDULED SALE DATE AND TIME: 3:00 p.m. (local time) on September 26, 2022.

LOCATION: ESCANABA MGMT UNIT, 6833 HWY'S 2, 41 & M-35, GLADSTONE, MI 49837.

PROSPECTUS NOTE: The bidder is advised to inspect the sale area and review the location, estimated volumes, operating costs and contract terms of proposed sales. Please be aware that some landowners may request 60 days or more notice for access across their land.

Notice is hereby given that bids will be received by the Unit Manager, ESCANABA MANAGEMENT UNIT, for certain timber on the following described lands:

Thirty One Second time (33-002-22) / T37N, R25W, SEC. 33, SW.

Menominee County, Advertised Price \$6,188.35, 28.4 Acres, N White Cedar, Spruce/Fir/Tamarack.

SALE NOTE: All units of volume listed for this sale were estimated using the Inventory Manager computer program and the new Michigan taper model.

Hidden Finn Saw (33-028-22) / T36N, R28W, SEC. 1 , N1/2NW,NWNE.

T36N, R28W, SEC. 2 , N1/2NW,SENW,N1/2NE.

T36N, R28W, SEC. 3 , NENW,NWNE,S1/2NE.

T37N, R28W, SEC. 35, SESW,SESE.

T37N, R28W, SEC. 36, SWSE.

Menominee County, Advertised Price \$16,282.60, 106.6 Acres, Spruce/Fir/Tamarack, Hardwood.

SALE NOTE: All units of volume listed for this sale were estimated using the Inventory Manager computer program and the new Michigan taper model.

CCC Grade Hardwood (33-029-22) / T34N, R25W, SEC. 4 , E1/2NW.

T34N, R25W, SEC. 5 , NENW,W1/2NE.

T35N, R25W, SEC. 33, SESW.

Menominee County, Advertised Price \$20,857.15, 72.2 Acres, Hardwood, Spruce/Fir/Tamarack.

SALE NOTE: All units of volume listed for this sale were estimated using the Inventory Manager computer program and the new Michigan taper model.

BID INSTRUCTIONS (VER. 07/02/2018):

1. Scheduled Bid Location, Date, and Time (2/11)

Bids must be received by the Unit Manager, ESCANABA OFFICE, 6833 Hwy's 2, 41 & M-35, Gladstone, MI 49837, no later than 3:00 p.m. (local time) on September 26, 2022. For further information concerning this sale, contact Eric Thompson at 906-789-8231.

2. Bidder's Qualifications (5/16)

Purchaser shall obtain workers compensation insurance to cover claims under Michigan's Worker's Disability Compensation Act of 1969 or similar employee benefit act of any other state applicable to an employee. If all or part of a timber sale was prepared by a private contractor, the contractor and that contractor's company are not permitted to bid on the timber sale contract. Bids will not be accepted from individuals or companies appearing on the DNR/FRD No-Bid List. This list contains the names of purchasers who previously failed to execute a contract within 21-days or who have a history of poor performance.

3. Preparation of Sealed Bids (5/16)

Bid Forms may be completed online thru Michigan DNR Timber Sale Online Bidding (OLB) at www.michigan.gov/timberbidding or by completing the hardcopy Bid Form found in the Timber Sale Prospectus. Hardcopy Bid Forms shall be manually signed in ink. Registration in OLB is considered your 'signature' for all bids submitted thru that system. Bid prices must be entered for each species and product in the Bid Price column for all material subject to bidding and all fill-in blanks must be completed. If erasures or other changes appear on the hardcopy Bid Form, each erasure or change must be initialed by the person signing the bid.

4. Submission of Sealed Bids (5/16)

Bid forms may be obtained from the Unit Manager or thru OLB. Bids may be submitted hardcopy or thru OLB. All hardcopy bids must be submitted on the bid form and in an envelope clearly identified as described in this section. NOTE: Only one bid form per bid envelope. Sealed bids must be submitted to the Unit office designated in the prospectus and must be submitted at or prior to the time established in the prospectus. The envelope should show on the outside (a) the sale name or number and (b) the date and time of bid opening, as shown in the prospectus. Bids received after the time specified in the sale prospectus are late bids and will be rejected.

It is possible for a bidder to submit multiple bids on a single sale. For example, a bid may be submitted hardcopy and a bid may be submitted thru OLB. Or, two bidders from the same company could both submit bids on the same sale. If this were to happen, the State would accept all bids received and award the contract accordingly. All bidding and contractual requirements would apply to all bids received.

5. Public Opening of Sealed Bids (7/16)

If conditions permit, the sealed bids will be publicly opened and posted at the time and place set in the prospectus.

If a bidder, present at a bid opening, has submitted bids on more than one sale, that bidder may withdraw their unopened bid envelopes or announce the withdrawal of their online bid after being declared the successful bidder on one sale.

6. Award of Contract (1/11)

Award of the contract will be made to the Bidder whose bid, conforming to the prospectus, is most advantageous to the State of Michigan on the basis of total value at rates bid for the estimated quantities. The State reserves the right to reject any bid or waive any minor irregularity in bids received. A written award mailed (or otherwise furnished) to the successful Bidder shall be deemed to result in a binding contract without further action by either party.

7. Down Payment (1/11)

The Bidder to whom award is made must make a down payment within 21 days of the sale award. The amount of the down payment will be calculated as shown in the Bond and Payment Schedule of this prospectus. Only cash may be used to meet this requirement.

8. Performance Security (1/11)

As guarantee of faithful performance, a cash bond, certificate of deposit, surety bond or irrevocable letter of credit (LOC) is required within 21 days of the sale award. The amount of the performance security is shown in the Bond and

Payment Schedule of this prospectus. If an LOC or surety is used, the coverage must extend for at least 6 months beyond the contract expiration.

9. Timber Sale Contract (7/18)

Additional conditions and requirements common to all timber sales are listed on the timber sale contract (R4031) and are available on line at www.michigan.gov/timber. Contact the Unit Manager for additional information or a sample contract. Within 21 days of the date of the award letter, the bidder must sign the contract and provide the required down payment, performance security, and verification of worker's disability compensation. The down payment and performance security shall be in accordance with the provisions of the timber sale contract, in the sums stated in this prospectus. If these actions are not taken, then the Bidder, the Bidder's corporation, and the corporation's principals may not be permitted to bid on State timber sales for a period of 3 months after the first offense, 6 months after the second offense, and 1 year after the third offense. An offense will only be counted against the Bidder for 5 years. In addition, the Bidder certifies that if awarded this contract, the Bidder will complete the timber sale contract in accordance with its terms and any modifications thereof including requirements to purchase, cut, and remove the included timber by the expiration date.

Payment Unit values in the State Forest Timber Sale Contract are calculated based on the advertised value of the Payment Unit as a percentage of the total advertised value of the contract. The advertised value of each Payment Unit is given in the Description of Timber by Payment Unit table on the Timber Sale Information page. For example, if the value of Payment Unit 1 is advertised as \$1,500 and the total Timber Sale value is advertised as \$10,000, the contract price for Payment Unit 1 will be 15% of the total bid price ($\$1,500/\$10,000 * 100$).

10. Disclaimer of Estimates and Bidder's Warranty of Inspection (7/16)

Before submitting this bid, the Bidder is advised and cautioned to inspect the sale area, review the requirements of the sale contract, and take other steps as may be reasonably necessary to ascertain the location, estimated volumes, construction estimates, and operating costs of the proposed sale. Failure to do so will not relieve the Bidder from responsibility for completing the contract.

The Bidder warrants that this bid is submitted solely on the basis of the Bidder's examination and inspection of the quality and quantity of the timber offered for sale and the Bidder's opinion of the value thereof and the costs of recovery. No reliance should be placed on the State of Michigan's estimates of timber quality, quantity or costs of recovery. Bidder further acknowledges that the State of Michigan: (i) expressly disclaims any warranty of fitness of timber for any purpose; (ii) offers this timber as is without any warranty of quality (merchantability) or quantity and (iii) expressly disclaims any warranty as to the quantity or quality of timber sold.

11. Certification and Chain-of-Custody (10/14)

Unless otherwise indicated in the contract under section 7 – Other Conditions of the Sale Specific Conditions & Requirements, the area encompassed by this timber sale is certified to the standards of the Forest Stewardship Council (FSC) - Certificate #SCS-FM/COC-00090N and the Sustainable Forestry Initiative (SFI) - Certificate #NSF-SFIS-5Y031-SF5. Forest products from this sale may be delivered to the mill as "FSC 100% and / or SFI certified" as long as the contractor hauling the forest products is chain-of-custody (COC) certified or covered under a COC certificate from the destination mill. The purchaser is responsible for maintaining COC after leaving the sale area.

12. Good Neighbor Authority (GNA) Requirements (7/16)

If the name of this timber sales contains the acronym GNA, it is authorized by the Good Neighbor Authority (GNA) and covered by various agreements between the U.S. Forest Service and the State. The timber sale occurs on federal land and the following conditions apply:

GNA contracts on US Forest Service land will not be awarded to purchasers on the Federal list of excluded parties. The System for Award Management (SAM) will be checked for active excluded parties prior to award of contract. In addition, the Bidder to whom award is made must complete an Assurance Regarding Felony Conviction or Tax Delinquent Status for Corporate Applicants (AD-3031).

13. Good Neighbor Authority (GNA) Requirements, con't (9/16)

Bidder certifies, by signing this bid form, that to the best of Bidder's knowledge that the following representations are accurate and complete.

- a. That the Bidder and its principals are not presently debarred, suspended, proposed for debarment, declared ineligible, or voluntary excluded from timber sales (covered transactions) by any Federal department or agency.
- b. That the Bidder and its principals have not within a 3-year period preceding this bid been convicted of or had a civil judgment rendered against them for commission of fraud or a criminal offense in connection with obtaining , attempting to obtain, or performing a public (Federal, State, or local) transaction or contract under a public transaction; violation of Federal or State antitrust statutes or commission of embezzlement, theft, forgery, bribery, falsification or destruction of records, making false statements, or receiving stolen property.
- c. That the Bidder and its principals are not presently indicted for or otherwise criminally or civilly charged by a governmental entity (Federal, State, or local) with commission of any of the offenses enumerated in paragraph b of this certification.
- d. That the Bidder and its principals have not within a 3-year period preceding this bid had one or more public transactions (Federal, State, or local) terminated for breach or default of a timber or forest product contract.

Bidders that cannot certify this requirement, in whole or in part, shall submit an explanation with their bid.

DAN EICHINGER
Director

TIMBER SALE INFORMATION

Thirty One Second time (33-002-22)
 T37N, R25W, SEC. 33.
 Menominee County (Advertised Price \$6,188.35)

SALE NOTE: All units of volume listed for this sale were estimated using the Inventory Manager computer program and the new Michigan taper model.

A timber sale contract for this lump sum, sealed bid timber sale will be awarded to the responsible bidder offering the highest sealed bid price. All units of volume listed below were estimated using the Inventory Manager computer program and the new Michigan taper model. Bids must be at or above the following advertised price for each product and species:

<u>PRODUCTS & SPECIES</u>	<u>ESTIMATED UNITS*</u>	<u>ADVERTISED PRICE</u>
Sawtimber		
Paper Birch	4.6 MBF	\$ 48.00 / MBF
Sugar Maple	3.5 MBF	\$ 130.00 / MBF
Pulpwood		
Balsam Fir	53 Cords	\$ 9.80 / Cord
Black Spruce	98 Cords	\$ 10.10 / Cord
Mixed Hardwood	111 Cords	\$ 13.25 / Cord
N. White Cedar	266 Cords	\$ 5.85 / Cord
Quaking Aspen	62 Cords	\$ 15.75 / Cord

* The total volume is statistically estimated within plus (+) or minus (-) 31.39 percent. There are an estimated 637 cords on this timber sale, plus or minus 200 cords at the 95% confidence level. The estimated units are final and not subject to adjustment. Prospective bidders are urged to examine this timber and to make their own estimates of quantity and quality.

BOND AND PAYMENT SCHEDULE:

1. A bond in the amount of \$309.00 to insure faithful performance of the conditions of the contract will be deposited by the successful bidder within 21 days of the sale award.
2. Cutting in any sale or unit without the required advance payment would be considered a trespass.
3. Total payment must be paid in advance or according to the following schedule :
 - (a) Ten percent (10%) of the sale value must be paid within 21 days of the sale award.
 - (b) The 10% down payment will be credited towards the first unit cut.
 - (c) Payment for each of the following units must be made before cutting begins in that unit:

PAYMENT UNIT NUMBER	PERCENT OF TOTAL SALE VALUE
01	52.0%
02	3.9%
03	44.1%
4. If no cutting takes place, the 10% down payment will not be refunded.
5. Operations on the contract issued will terminate on 06/30/2026.

SALE STATISTICS

Volumes were calculated in cubic feet using the Michigan taper model. Cubic foot volume includes all wood inside bark for the product indicated. For display purposes, cubic feet were converted to cords and MBF using a simple conversion factor, e.g. 79 cubic feet per cord and 185 cubic feet per MBF. The cubic foot volumes are precise; the cords and MBF volumes are not. Cubic foot volume cannot be directly converted to cords or boards with precision.

SALE VOLUMES

The total estimated sale volume may not equal the sum of the species/products due to the nature of statistical calculations associated with double sampling methodology.

VOLUME		STATISTICAL RANGE IN CORDS		
TOTAL CUBIC FEET	TOTAL CORDS	PERCENT ERROR	MINIMUM	MAXIMUM
50,300	637	31.39%	437	837

VDU VOLUMES

A VDU is a Volume Determination Unit. Volumes and their associated statistics are calculated at the VDU level and summarized to the sale level. There is often a one to one relationship between a VDU and a Payment Unit, but not always, depending on the cruise design. Refer to the VDU TO PAYMENT UNIT table.

VDU	VOLUME		PERCENT ERROR	RANGE IN CORDS	
	TOTAL CUBIC FEET	TOTAL CORDS		MINIMUM	MAXIMUM
45	1,931	24	119.29%	5	54
46	21,970	278	46.09%	150	406
48	26,398	334	55.00%	150	518
TOTAL:	50,300	637		296	978

VDU TO PAYMENT UNIT

When a VDU is associated with more than one Payment Unit (PU), the VDU volumes are assigned to the PU based on acres of the VDU within the PU.

VDU	VDU ACRES	PU	PU ACRES
45	2.0	2	2.0
46	14.2	3	14.2
48	12.2	1	12.2
TOTAL:	28.4		28.4

DESCRIPTION OF TIMBER BY PAYMENT UNIT (PU)

PU	MARKET GROUP	PRODUCT	QUANTITY	UNIT	ACRES	ADVERTISE PRICE
1	Paper Birch	Sawtimber	3.3	MBF	12.2	\$3,217.80
	Sugar Maple		3.5	MBF		
	Balsam Fir	Pulpwood	20	Cords		
	Black Spruce		20	Cords		
	Mixed Hardwood		79	Cords		
	<i>Green Ash</i>		61	<i>Cords</i>		
	<i>Paper Birch</i>		4	<i>Cords</i>		
	<i>Red Maple</i>		7	<i>Cords</i>		
	<i>Sugar Maple</i>		3	<i>Cords</i>		
	<i>Yellow Birch</i>		4	<i>Cords</i>		
	N. White Cedar		174	Cords		
	Quaking Aspen		9	Cords		
	2	Black Spruce	Pulpwood	24		
3	Paper Birch	Sawtimber	1.3	MBF	14.2	\$2,728.15
	Balsam Fir	Pulpwood	33	Cords		
	Black Spruce		54	Cords		
	Mixed Hardwood		32	Cords		
	<i>Green Ash</i>		5	<i>Cords</i>		
	<i>Paper Birch</i>		5	<i>Cords</i>		
	<i>Red Maple</i>		22	<i>Cords</i>		
	N. White Cedar		92	Cords		
	Quaking Aspen		53	Cords		
	TOTAL:			8.1		
TOTAL:			590	Cords		

Sale Specific Conditions & Requirements

Sale Name: Thirty One Second time

Sale Number: 33-002-22 Seq#: 1

1 - Sale Area

1.2 - Boundaries

1.2.1 - Painted boundaries (9/19)

The sale boundary and Payment Unit boundaries are marked and identified by blue, red, and yellow paint. Exterior sale boundary lines against private property are marked with blue paint. Exterior sale boundary lines against state are marked with red paint. Interior Payment Unit boundaries are marked with yellow paint. Yellow painted trees designating an interior Payment Unit boundary are only to be cut when all surrounding Payment Units have been paid.

2 - Timber Specifications

2.1 - Included Timber

2.1.1 - Clearcut unit(s) with unmerchantable trees (6/14)

Within Payment Unit(s) 1-3, cut all trees that are three (3) inches or more at DBH, except do not cut any trees marked with green paint. The green painted leave trees are within Payment Units 1 and 3.

4 - Transportation

4.1 - Construction

4.1.5 - Culverts (5/14)

Roads may require the installation of culverts for cross drainage or at natural drainage-ways. If culverts are needed in these locations, their placement will be specified by the sale administrator, and they shall be installed prior to hauling. The culverts shall be new, corrugated metal or plastic gauge. Culverts will be a minimum of 18 inches in diameter and 24 feet in length. If culverts are removed, fill shall be removed from wetland soils as specified. Soils shall be maintained and left in a non-erodible condition, with water bars, seed, fertilizer, mulch, and slash installed as directed by the sale administrator and as specified in the BMP manual. Stream crossing permits, if needed, will be obtained by the DNR.

4.1.6 - Road construction (1/09)

Construction of new roads or improvements of existing roads shall be done in such a way as to minimize the environmental and visual impacts. Merchantable trees shall be cut and utilized unless otherwise directed. Non-merchantable trees shall be severed and laid flat on the ground. Slash shall be scattered, and not left in windrows and kept a minimum of 10 feet back from the road edge. Stumps shall be set upright, not left on edge, and be moved at least 10 feet away from the road edge. Disturbed soil shall be feathered into the woods and not left in berms or windrows.

4.2 - Maintenance

4.2.2 - Fill material (4/07)

To maintain roads, fill material may be needed in areas where "holes" exist or may be expected to develop. This fill material should be placed before trucking begins. Contact the sale administrator regarding the availability of onsite sand or gravel from adjacent State-owned lands.

4.2.4 - Grading (10/16)

For completion of the sale, state forest roads must be graded. In general, this will require a road grader or bulldozer to shape up the roads after forest products have been hauled off site. This includes cleaning of drainage areas, grading, crowning, and filling with gravel, if necessary. The grading equipment to be used must be approved by the Unit Manager or his/her representative.

4.4 - Access

4.4.2 - Alternate route on private property (2/04)

It is the Purchaser's responsibility to obtain access across private land for any routes other than the route shown on the Timber Sale Map.

5 - Operations

5.2 - Conduct of Operations

5.2.3 - Operating Restrictions

5.2.3.1 - Operating restrictions (9/11)

Within Payment Unit(s) 1-3, cutting, skidding, and hauling are limited to the period of December 1 to March 31, unless there is an extended dry or frozen period, and the sale administrator allows harvesting during that period. This restriction is because of low wet ground within the Payment Units.

5.4 - Soil Protection

5.4.1 - Rutting restriction, general (7/16)

Operations are to cease immediately if equipment and weather conditions result in rutting of roads and/or skid trails which is 12 inches or greater in depth and 50 feet in length. The Unit Manager or his/her representative may restrict hauling and/or skidding if ruts exceed the specified depth. With the Unit Manager or his/her representative's approval, the Purchaser may return to the area when the risk of rutting has decreased.



TIMBER SALE MAP

This information provided by authority of Part 525, 1994 PA 451, as amended.

Sale Number	Year
33-002	22

Forest Management Unit	County	Mapped By	Racine	Date	Page	of
ESCANABA	Menominee	Cruised By	Reger	07/25/22	1	1
Township	Range	Section(s) and Subdivision(s)	Scale			
37N	25W	SECTION 33 SW	1:15,840			

Cover Type				Density	
A = Aspen	H = Hemlock	N = Marsh	U = Upland Brush	0 = Non Stocked	5 = Pole Timber Medium
B = Paper Birch	J = Jack Pine	O = Oak	UM = Upland Mixed	1 = Seedling Sapling Poor	6 = Pole Timber Well
C = Cedar	L = Lowland Brush	P = Lowland Poplar	V = Bog or Marsh	2 = Seedling Sapling Medium	7 = Saw Timber Poor
D = Treed Bog	LM = Lowland Mixed	Q = Mixed Swamp Conifer	W = White Pine	3 = Seedling Sapling Well	8 = Saw Timber Medium
E = Swamp Hdwoods	M = Mpl, Bch, Brch	R = Red Pine	X = Non Stocked	4 = Pole Timber Poor	9 = Saw Timber Well
F = Spruce Fir	MC = Mixed Conifer	S = Black Spruce	Z = Water		
G = Grass	MD = Mixed Deciduous	T = Tamarack			

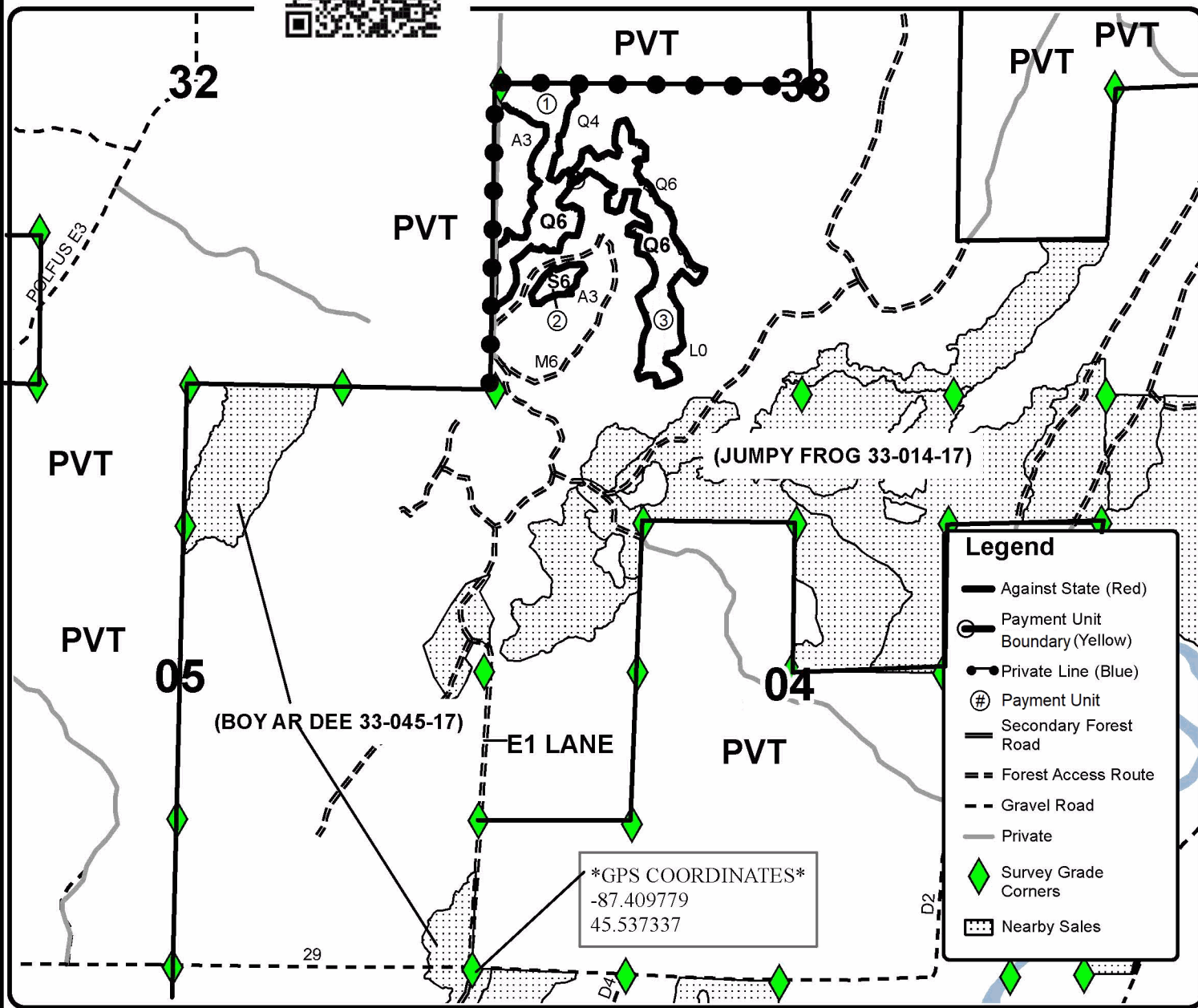
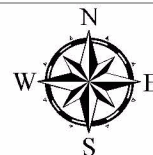
PU	Acres
1	12.2
2	2
3	14.2



Thirty One Second Time

Compartment 36

28.4 Acres



Legend

- Against State (Red)
- Payment Unit Boundary (Yellow)
- Private Line (Blue)
- ⊕ Payment Unit
- Secondary Forest Road
- - Forest Access Route
- - Gravel Road
- Private
- ◆ Survey Grade Corners
- ▨ Nearby Sales

GPS COORDINATES
 -87.409779
 45.537337

TIMBER SALE INFORMATION

Hidden Finn Saw (33-028-22)

T36N, R28W, SEC. 1; T36N, R28W, SEC. 2; T36N, R28W, SEC. 3; T37N, R28W, SEC. 35; T37N, R28W, SEC. 36.
Menominee County (Advertised Price \$16,282.60)

SALE NOTE: All units of volume listed for this sale were estimated using the Inventory Manager computer program and the new Michigan taper model.

A timber sale contract for this lump sum, sealed bid timber sale will be awarded to the responsible bidder offering the highest sealed bid price. All units of volume listed below were estimated using the Inventory Manager computer program and the new Michigan taper model. Bids must be at or above the following advertised price for each product and species:

<u>PRODUCTS & SPECIES</u>	<u>ESTIMATED UNITS*</u>	<u>ADVERTISED PRICE</u>
Sawtimber		
Basswood	3.6 MBF	\$ 27.00 / MBF
Paper Birch	0.4 MBF	\$ 48.00 / MBF
Red Maple	1.8 MBF	\$ 122.00 / MBF
Red Oak	16.7 MBF	\$ 78.00 / MBF
Sugar Maple	0.5 MBF	\$ 130.00 / MBF
Pulpwood		
Balsam Fir	42 Cords	\$ 9.80 / Cord
Mixed Aspen	171 Cords	\$ 15.75 / Cord
Mixed Hardwood	303 Cords	\$ 13.25 / Cord
Mixed Spruce	208 Cords	\$ 10.10 / Cord
N. White Cedar	217 Cords	\$ 5.85 / Cord
Red Oak	33 Cords	\$ 14.50 / Cord
Red Pine	3 Cords	\$ 24.95 / Cord
Tamarack	258 Cords	\$ 8.95 / Cord
White Pine	94 Cords	\$ 13.05 / Cord

* The total volume is statistically estimated within plus (+) or minus (-) 13.82 percent. There are an estimated 1,407 cords on this timber sale, plus or minus 194 cords at the 95% confidence level. The estimated units are final and not subject to adjustment. Prospective bidders are urged to examine this timber and to make their own estimates of quantity and quality.

BOND AND PAYMENT SCHEDULE:

1. A bond in the amount of \$814.00 to insure faithful performance of the conditions of the contract will be deposited by the successful bidder within 21 days of the sale award.
2. Cutting in any sale or unit without the required advance payment would be considered a trespass.
3. Total payment must be paid in advance or according to the following schedule :
 - (a) Ten percent (10%) of the sale value must be paid within 21 days of the sale award.
 - (b) The 10% down payment will be credited towards the first unit cut.
 - (c) Payment for each of the following units must be made before cutting begins in that unit:

PAYMENT UNIT NUMBER	PERCENT OF TOTAL SALE VALUE
01	3.6%
02	9.3%
03	14.2%
04	9.1%
05	19.0%
06	13.1%
07	16.7%
08	4.0%
09	1.7%
10	9.3%

4. If no cutting takes place, the 10% down payment will not be refunded.
5. Operations on the contract issued will terminate on 09/30/2025.

SALE STATISTICS

Volumes were calculated in cubic feet using the Michigan taper model. Cubic foot volume includes all wood inside bark for the product indicated. For display purposes, cubic feet were converted to cords and MBF using a simple conversion factor, e.g. 79 cubic feet per cord and 185 cubic feet per MBF. The cubic foot volumes are precise; the cords and MBF volumes are not. Cubic foot volume cannot be directly converted to cords or boards with precision.

SALE VOLUMES

The total estimated sale volume may not equal the sum of the species/products due to the nature of statistical calculations associated with double sampling methodology.

VOLUME			STATISTICAL RANGE IN CORDS	
TOTAL CUBIC FEET	TOTAL CORDS	PERCENT ERROR	MINIMUM	MAXIMUM
111,149	1,407	13.82%	1,213	1,601

VDU VOLUMES

A VDU is a Volume Determination Unit. Volumes and their associated statistics are calculated at the VDU level and summarized to the sale level. There is often a one to one relationship between a VDU and a Payment Unit, but not always, depending on the cruise design. Refer to the VDU TO PAYMENT UNIT table.

VDU	VOLUME			RANGE IN CORDS	
	TOTAL CUBIC FEET	TOTAL CORDS	PERCENT ERROR	MINIMUM	MAXIMUM
10	4,970	63	65.96%	21	104
11	10,778	136	32.14%	93	180
20	15,564	197	35.10%	128	266
24	11,638	147	31.53%	101	194
25	28,464	360	31.47%	247	474
31	8,179	104	34.66%	68	139
34	14,779	187	39.47%	113	261
35	2,967	38	75.01%	9	66
40	1,347	17	57.29%	7	27
41	12,463	158	68.52%	50	266
TOTAL:	111,149	1,407		837	1,977

VDU TO PAYMENT UNIT

When a VDU is associated with more than one Payment Unit (PU), the VDU volumes are assigned to the PU based on acres of the VDU within the PU.

VDU	VDU ACRES	PU	PU ACRES
10	4.2	1	4.2
11	15.4	2	15.4
20	13.6	3	13.6
24	9.4	4	9.4
25	18.6	5	18.6
31	17.7	6	17.7
34	10.3	7	10.3
35	2.9	8	2.9
40	1.5	9	1.5
41	13.0	10	13.0
TOTAL:	106.6		106.6

DESCRIPTION OF TIMBER BY PAYMENT UNIT (PU)

PU	MARKET GROUP	PRODUCT	QUANTITY	UNIT	ACRES	ADVERTISE PRICE
1	Mixed Hardwood	Pulpwood	6	Cords	4.2	\$585.90
	<i>Red Maple</i>		6	<i>Cords</i>		
	Mixed Spruce		15	Cords		
	<i>Black Spruce</i>		15	<i>Cords</i>		
	N. White Cedar		20	Cords		
	Tamarack		12	Cords		
	White Pine		10	Cords		
2	Mixed Aspen	Pulpwood	5	Cords	15.4	\$1,515.45
	<i>Balsam Poplar</i>		5	<i>Cords</i>		
	Mixed Hardwood		17	Cords		
	<i>Black Ash</i>		14	<i>Cords</i>		
	<i>Paper Birch</i>		3	<i>Cords</i>		
	Mixed Spruce		56	Cords		
	<i>Black Spruce</i>		56	<i>Cords</i>		
	Tamarack		43	Cords		
White Pine	20	Cords				
3	Balsam Fir	Pulpwood	4	Cords	13.6	\$2,306.95
	Mixed Aspen		14	Cords		
	<i>Balsam Poplar</i>		3	<i>Cords</i>		
	<i>Quaking Aspen</i>		11	<i>Cords</i>		
	Mixed Hardwood		42	Cords		
	<i>Black Ash</i>		36	<i>Cords</i>		
	<i>Paper Birch</i>		3	<i>Cords</i>		
	<i>Red Maple</i>		3	<i>Cords</i>		
	Mixed Spruce		84	Cords		
	<i>Black Spruce</i>		84	<i>Cords</i>		
	Red Pine		3	Cords		
	Tamarack		8	Cords		
White Pine	38	Cords				
4	Balsam Fir	Pulpwood	13	Cords	9.4	\$1,484.85
	Mixed Aspen		12	Cords		
	<i>Balsam Poplar</i>		12	<i>Cords</i>		
	Mixed Hardwood		67	Cords		
	<i>Black Ash</i>		50	<i>Cords</i>		
	<i>Paper Birch</i>		7	<i>Cords</i>		
	<i>Red Maple</i>		10	<i>Cords</i>		
	Mixed Spruce		9	Cords		
	<i>Black Spruce</i>		9	<i>Cords</i>		
	Tamarack		11	Cords		
	White Pine		7	Cords		
5	Red Oak	Sawtimber	0.6	MBF	18.6	\$3,108.25
	Balsam Fir	Pulpwood	4	Cords		
	Mixed Hardwood		41	Cords		
	<i>Black Ash</i>		35	<i>Cords</i>		
	<i>Red Maple</i>		5	<i>Cords</i>		
	<i>Sugar Maple</i>		1	<i>Cords</i>		
	Mixed Spruce		33	Cords		
	<i>Black Spruce</i>		33	<i>Cords</i>		
	N. White Cedar		144	Cords		
	Red Oak		1	Cords		
Tamarack	144	Cords				
6	Basswood	Sawtimber	2.4	MBF	17.7	\$2,139.20
	Red Oak		13.3	MBF		
	Sugar Maple		0.5	MBF		
	Mixed Hardwood	Pulpwood	46	Cords		
	<i>Basswood</i>		8	<i>Cords</i>		

DESCRIPTION OF TIMBER BY PAYMENT UNIT (PU), CON'T

PU	MARKET GROUP	PRODUCT	QUANTITY	UNIT	ACRES	ADVERTISE PRICE	
6 con't	<i>Ironwood</i>	<i>Pulpwood</i>	1	<i>Cords</i>			
	<i>Red Maple</i>		4	<i>Cords</i>			
	<i>Sugar Maple</i>		14	<i>Cords</i>			
	<i>White Ash</i>		19	<i>Cords</i>			
	Red Oak		25	Cords			
7	Red Oak	Sawtimber	2.3	MBF	10.3	\$2,718.55	
	Balsam Fir	Pulpwood	19	Cords			
	Mixed Aspen		125	Cords			
	<i>Balsam Poplar</i>		2	<i>Cords</i>			
	<i>Quaking Aspen</i>		123	<i>Cords</i>			
	Mixed Spruce		6	Cords			
	<i>White Spruce</i>		6	<i>Cords</i>			
	N. White Cedar		5	Cords			
	Red Oak		5	Cords			
	White Pine		17	Cords			
8	Paper Birch		Sawtimber	0.4	MBF	2.9	\$644.20
	Red Maple	Pulpwood	1.8	MBF			
	Balsam Fir		1	Cords			
	Mixed Aspen		10	Cords			
	<i>Balsam Poplar</i>		7	<i>Cords</i>			
	<i>Quaking Aspen</i>		3	<i>Cords</i>			
	Mixed Hardwood		16	Cords			
	<i>Black Ash</i>		3	<i>Cords</i>			
	<i>Paper Birch</i>		3	<i>Cords</i>			
	<i>Red Maple</i>		10	<i>Cords</i>			
	White Pine		2	Cords			
	9		Basswood	Sawtimber	1.2		
Red Oak			Pulpwood	0.5	MBF		
Mixed Hardwood		13		Cords			
<i>Basswood</i>		5		<i>Cords</i>			
<i>Sugar Maple</i>		7		<i>Cords</i>			
<i>White Ash</i>		1		<i>Cords</i>			
Red Oak		2		Cords			
10	Balsam Fir	Pulpwood		1	Cords	13.0	\$1,506.60
	Mixed Aspen		5	Cords			
	<i>Balsam Poplar</i>		2	<i>Cords</i>			
	<i>Quaking Aspen</i>		3	<i>Cords</i>			
	Mixed Hardwood		55	Cords			
	<i>Black Ash</i>		13	<i>Cords</i>			
	<i>Paper Birch</i>		32	<i>Cords</i>			
	<i>Red Maple</i>		10	<i>Cords</i>			
	Mixed Spruce		5	Cords			
	<i>Black Spruce</i>		5	<i>Cords</i>			
	N. White Cedar		48	Cords			
	Tamarack		40	Cords			
	TOTAL:			23.0	MBF		
TOTAL:			1,329	Cords			

Sale Specific Conditions & Requirements

Sale Name: Hidden Finn Saw

Sale Number: 33-028-22 Seq#: 1

1 - Sale Area

1.2 - Boundaries

1.2.1 - Painted boundaries (9/19)

The sale boundary and Payment Unit boundaries are marked and identified by blue, red, and yellow paint. Exterior sale boundary lines against private property are marked with blue paint. Exterior sale boundary lines against state are marked with red paint. Interior Payment Unit boundaries are marked with yellow paint. Retention patches are marked with red paint; no harvesting activities may occur within these areas. The painted boundary line trees are not Included Timber and are to be protected unless marked with orange paint. Yellow painted trees designating an interior Payment Unit boundary are only to be cut when all surrounding Payment Units have been paid for.

2 - Timber Specifications

2.1 - Included Timber

2.1.1 - Clearcut unit(s) with unmerchantable trees (6/14)

Within Payment Unit(s) 1-5 and 7-10, cut all trees that are three (3) inches or more at DBH, except the following:

- Within Payment Unit's 2 and 4, do not cut cedar.
- Within Payment Unit 3, do not cut cedar and oak.
- Within Payment Units 7 and 9, do not cut trees marked with green paint.
- Within Payment Unit 8, do not cut cedar or trees marked with green paint.
- Within Payment Unit 10, only cut those cedar less than nine (9) inches at DBH.

2.1.3 - Cut tree marked unit(s) (12/08)

Within Payment Unit(s) 6, all trees are designated for cutting when marked with orange paint above and below stump height, regardless of merchantability.

2.1.9 - Harvest exception (12/08)

Do not cut any cedar trees within Payment Units 2-4, and 8, other than those that are necessary to remove in order to operate within the sale area. Every effort must be made to preserve the existing cedar and to leave an intact stand upon sale completion. All cut cedar shall be piled separately by products and scaled in the woods unless other scaling arrangements are agreed to by the Unit Manager or his/her representative. Stumpage price for cedar shall be \$45.00 per cord.

2.2 - Utilization

2.2.4 - Skidding length (2/14)

Skidding of unlimbed tops or lengths over 17 feet is not permissible within Payment Units 2 and 6.

3 - Payments

3.3 - Pre-measured Sales

3.3.4 - Dividing payment units (7/14)

Payment Unit(s) \$18,000 in value or greater may be divided at the request of the Purchaser and upon approval of the Unit Manager. Dividing Payment Units is a contract modification which requires a Timber Sale Contract Amendment. There will be only one division per Payment Unit.

4 - Transportation

4.1 - Construction

4.1.8 - Road work (1) (8/07)

The following road work is required: the Purchaser must haul and spread 140 cubic yards of gravel onto the Jones Trail. There are several small blow-outs that will require some gravel, to haul the wood out. All road work must be done, prior to any wood being hauled from Payment Units 4-10. Gravel is available from a state pit, located off G-18. The state pit is approximately four miles from the Sale Area.

4.2 - Maintenance

4.2.1 - Hauling restriction (12/08)

Hauling may be restricted on forest roads by the Unit Manager or his/her representative. The restriction may occur during spring break up or during other wet weather conditions.

4.2.4 - Grading (10/16)

For completion of the sale, state forest roads must be graded. In general, this will require a road grader or bulldozer to shape up the roads after forest products have been hauled off site. This includes cleaning of drainage areas, grading, crowning, and filling with gravel, if necessary. The grading equipment to be used must be approved by the Unit Manager or his/her representative.

5 - Operations

5.2 - Conduct of Operations

5.2.3 - Operating Restrictions

5.2.3.1 - Operating restrictions (9/11)

Within Payment Unit(s) 1, 2, 4, 5, 8 and 10, cutting and skidding are limited to the period of December 1 to March 31, unless there is an extended dry or frozen period, and the sale administrator allows harvesting during that period of time. This restriction is because of some low wet ground within each of the Payment Units.

5.2.3.3 - Bark slippage restriction (3/09)

Within Payment Unit(s) 6, unless changed by written agreement, cutting and skidding are not permitted during the period of April 15 to July 15. This restriction is because of bark slippage.

5.2.22 - Operating Caution

5.2.22.1 - Operating caution (6/11)

It is recommended, but not required, that within Payment Unit(s) 3, cutting and skidding occur during dry summer or frozen winter conditions. The reason for the recommendation is because of some low wet areas within the Payment Unit. The best access into this Payment Unit, is through private property to the south. If this Payment Unit is accessed through private property, most of the Payment Unit could be harvested during a dry summer. Access would be off Deacon Lane.

6 - Safety and Fire Prevention

6.2 - Signing

6.2.1 - Road posting (10/20)

The Purchaser is responsible for posting and maintaining caution signs on Jones Trail prior to beginning operations. The road must be posted at appropriate distances from the Sale Area to warn of logging activity and truck traffic. Signs must be removed when harvest operations are suspended or completed. The Purchaser will provide these signs.

7 - Other Conditions

7.5 - Loss

7.5.1 - Deteriorating timber (7/09)

The sale area has received damage from the eastern larch beetle and the spruce budworm. The eastern larch beetle has already caused some tamarack mortality within the lowland stands. The balsam fir has been defoliated by the spruce budworm. The Purchaser should harvest the wood as soon as possible. The Department of Natural Resources is held free of responsibility of any further damage or deterioration due to delay in harvesting.



TIMBER SALE MAP

This information provided by authority of Part 525, 1994 PA 451, as amended.

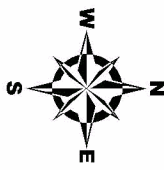
Forest Management Unit	Escanaba Management Unit	County	Manistee County	Maped By	Beauldo	Date	7/19/2022	Page	1	of	1	Sale Number	33-028	Year	22
Township	36N	Range	28W	Section(s) and Subdivision(s)	36N: Sec 1 - N1/2NW, NWNE; Sec 2 - N1/2NW, Scale Sec 36 - SWSE	Cruised By	Salter, Beauldo					Scale	1:15,840		

Cover Type

- A = Aspen
- B = Paper Birch
- C = Cedar
- D = Tread Bog
- E = Swamp Hdwoods
- F = Spruce Fir
- G = Grass
- H = Hemlock
- J = Jack Pine
- L = Lowland Brush
- LM = Lowland Mixed
- M = Mpi, Bch, Birch
- MC = Mixed Conifer
- MD = Mixed Deciduous
- N = Marsh
- O = Oak
- P = Lowland Poplar
- Q = Mixed Swamp Conifer
- R = Red Pine
- S = Black Spruce
- T = Tamarack
- U = Upland Brush
- UM = Upland Mixed
- V = Bog or Marsh
- W = White Pine
- X = Non Stocked
- Z = Water

Density

- 0 = Non Stocked
- 1 = Seeding Sapling Poor
- 2 = Seeding Sapling Medium
- 3 = Seeding Sapling Well
- 4 = Pole Timber Poor
- 5 = Pole Timber Medium
- 6 = Pole Timber Well
- 7 = Saw Timber Poor
- 8 = Saw Timber Medium
- 9 = Saw Timber Well



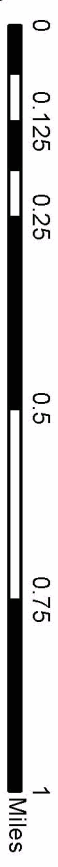
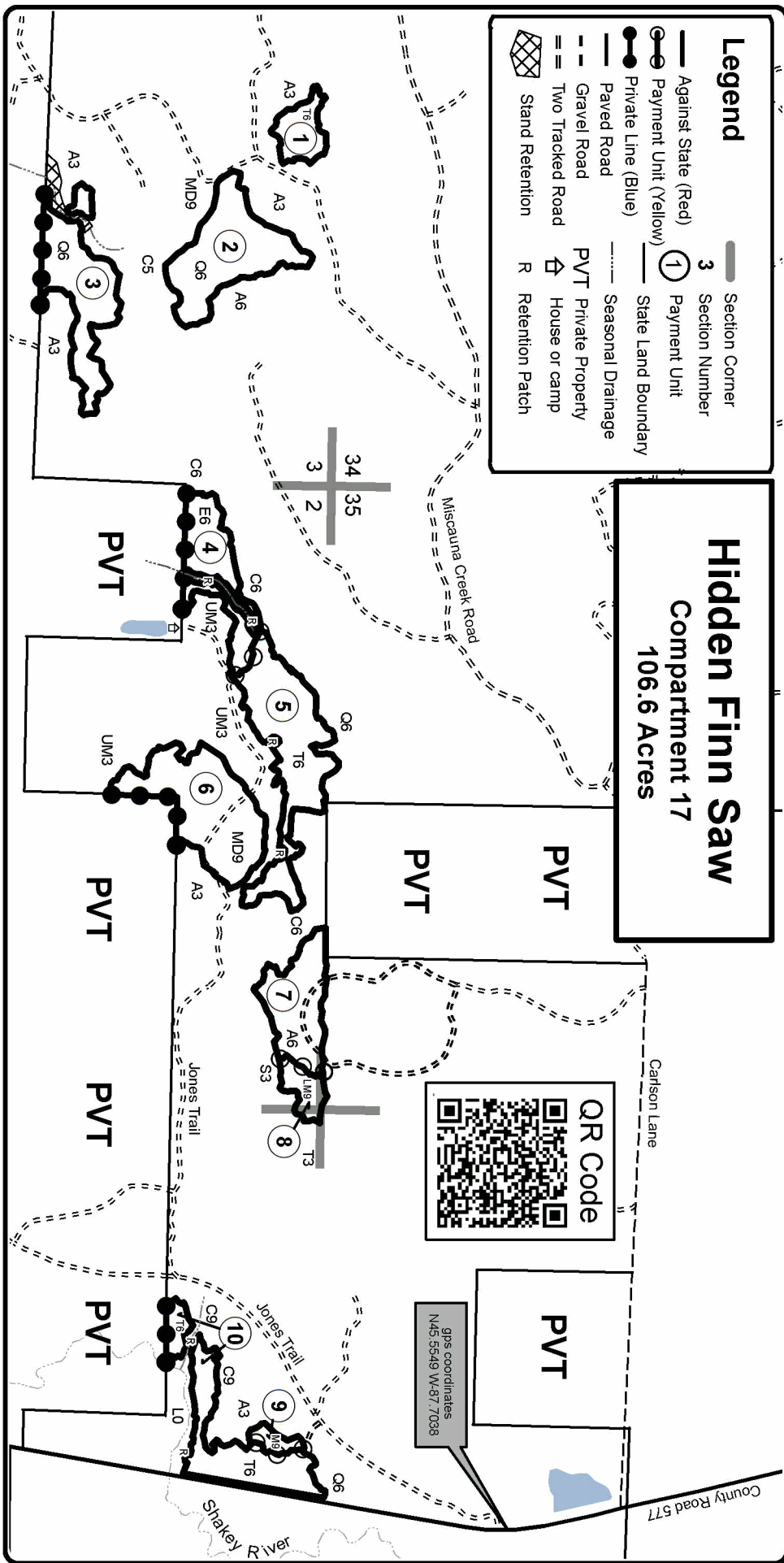
Legend

- Section Corner
- 3 Section Number
- ① Payment Unit
- State Land Boundary
- Paved Road
- Gravel Road
- Two Tracked Road
- ⊠ Stand Retention
- Seasonal Drainage
- PVT Private Property
- ⊠ House or camp
- R Retention Patch

Hidden Finn Saw
Compartment 17
106.6 Acres



gps coordinates
 N45 55.49 W-87 7038



PU	Acres	PU	Acres
1	4.2	6	17.7
2	15.4	7	10.3
3	13.6	8	2.9
4	9.4	9	1.5
5	18.6	10	13.0

TIMBER SALE INFORMATION

CCC Grade Hardwood (33-029-22)

T34N, R25W, SEC. 4; T34N, R25W, SEC. 5; T35N, R25W, SEC. 33.
Menominee County (Advertised Price \$20,857.15)

SALE NOTE: All units of volume listed for this sale were estimated using the Inventory Manager computer program and the new Michigan taper model.

A timber sale contract for this lump sum, sealed bid timber sale will be awarded to the responsible bidder offering the highest sealed bid price. All units of volume listed below were estimated using the Inventory Manager computer program and the new Michigan taper model. Bids must be at or above the following advertised price for each product and species:

<u>PRODUCTS & SPECIES</u>	<u>ESTIMATED UNITS*</u>	<u>ADVERTISED PRICE</u>
Sawtimber		
Basswood	2.4 MBF	\$ 70.00 / MBF
Red Maple	34.9 MBF	\$ 156.00 / MBF
Sugar Maple	9.5 MBF	\$ 165.00 / MBF
Yellow Birch	0.6 MBF	\$ 32.00 / MBF
Pulpwood		
Balsam Fir	38 Cords	\$ 12.45 / Cord
Mixed Aspen	31 Cords	\$ 20.00 / Cord
Mixed Hardwood	726 Cords	\$ 16.90 / Cord
White Spruce	23 Cords	\$ 12.85 / Cord

* The total volume is statistically estimated within plus (+) or minus (-) 10.86 percent. There are an estimated 906 cords on this timber sale, plus or minus 98 cords at the 95% confidence level. The estimated units are final and not subject to adjustment. Prospective bidders are urged to examine this timber and to make their own estimates of quantity and quality.

BOND AND PAYMENT SCHEDULE:

1. A bond in the amount of \$1,043.00 to insure faithful performance of the conditions of the contract will be deposited by the successful bidder within 21 days of the sale award.
2. Cutting in any sale or unit without the required advance payment would be considered a trespass.
3. Total payment must be paid in advance or according to the following schedule :
 - (a) Ten percent (10%) of the sale value must be paid within 21 days of the sale award.
 - (b) The 10% down payment will be credited towards the first unit cut.
 - (c) Payment for each of the following units must be made before cutting begins in that unit:

PAYMENT UNIT NUMBER	PERCENT OF TOTAL SALE VALUE
01	43.3%
02	22.2%
03	34.5%
4. If no cutting takes place, the 10% down payment will not be refunded.
5. Operations on the contract issued will terminate on 09/30/2025.

SALE STATISTICS

Volumes were calculated in cubic feet using the Michigan taper model. Cubic foot volume includes all wood inside bark for the product indicated. For display purposes, cubic feet were converted to cords and MBF using a simple conversion factor, e.g. 79 cubic feet per cord and 185 cubic feet per MBF. The cubic foot volumes are precise; the cords and MBF volumes are not. Cubic foot volume cannot be directly converted to cords or boards with precision.

SALE VOLUMES

The total estimated sale volume may not equal the sum of the species/products due to the nature of statistical calculations associated with double sampling methodology.

VOLUME		STATISTICAL RANGE IN CORDS		
TOTAL CUBIC FEET	TOTAL CORDS	PERCENT ERROR	MINIMUM	MAXIMUM
71,590	906	10.86%	808	1,005

VDU VOLUMES

A VDU is a Volume Determination Unit. Volumes and their associated statistics are calculated at the VDU level and summarized to the sale level. There is often a one to one relationship between a VDU and a Payment Unit, but not always, depending on the cruise design. Refer to the VDU TO PAYMENT UNIT table.

VDU	VOLUME		PERCENT ERROR	RANGE IN CORDS	
	TOTAL CUBIC FEET	TOTAL CORDS		MINIMUM	MAXIMUM
23	26,239	332	18.26%	272	393
33	45,351	574	14.16%	493	655
TOTAL:	71,590	906		764	1,048

VDU TO PAYMENT UNIT

When a VDU is associated with more than one Payment Unit (PU), the VDU volumes are assigned to the PU based on acres of the VDU within the PU.

VDU	VDU ACRES	PU	PU ACRES
23	28.1	1	28.1
33	44.1	2	17.2
		3	26.9
TOTAL:	72.2		72.2

DESCRIPTION OF TIMBER BY PAYMENT UNIT (PU)

PU	MARKET GROUP	PRODUCT	QUANTITY	UNIT	ACRES	ADVERTISE PRICE
1	Basswood	Sawtimber	2.4	MBF	28.1	\$9,035.35
	Red Maple		19.6	MBF		
	Sugar Maple	9.5	MBF			
	Balsam Fir	Pulpwood	21	Cords		
	Mixed Aspen		3	Cords		
	<i>Quaking Aspen</i>		3	<i>Cords</i>		
	Mixed Hardwood		232	Cords		
	<i>Basswood</i>		14	<i>Cords</i>		
	<i>Beech</i>		5	<i>Cords</i>		
	<i>Black Ash</i>		3	<i>Cords</i>		
	<i>Green Ash</i>		21	<i>Cords</i>		
	<i>Ironwood</i>		3	<i>Cords</i>		
	<i>Red Maple</i>		114	<i>Cords</i>		
	<i>Sugar Maple</i>	68	<i>Cords</i>			
	<i>White Ash</i>	4	<i>Cords</i>			
2	Red Maple	Sawtimber	6.0	MBF	17.2	\$4,626.90
	Yellow Birch		0.2	MBF		
	Balsam Fir	Pulpwood	7	Cords		
	Mixed Aspen		11	Cords		
	<i>Balsam Poplar</i>		11	<i>Cords</i>		
	Mixed Hardwood		193	Cords		
	<i>Black Ash</i>		18	<i>Cords</i>		
	<i>Green Ash</i>		137	<i>Cords</i>		
	<i>Paper Birch</i>		9	<i>Cords</i>		
	<i>Red Maple</i>		25	<i>Cords</i>		
	<i>Yellow Birch</i>		4	<i>Cords</i>		
	White Spruce		9	Cords		
3	Red Maple	Sawtimber	9.3	MBF	26.9	\$7,194.90
	Yellow Birch		0.4	MBF		
	Balsam Fir	Pulpwood	10	Cords		
	Mixed Aspen		17	Cords		
	<i>Balsam Poplar</i>		17	<i>Cords</i>		
	Mixed Hardwood		301	Cords		
	<i>Black Ash</i>		27	<i>Cords</i>		
	<i>Green Ash</i>		215	<i>Cords</i>		
	<i>Paper Birch</i>		15	<i>Cords</i>		
	<i>Red Maple</i>		39	<i>Cords</i>		
	<i>Yellow Birch</i>		5	<i>Cords</i>		
	White Spruce		14	Cords		
TOTAL:			47.4	MBF		
TOTAL:			818	Cords		

Sale Specific Conditions & Requirements

Sale Name: CCC Grade Hardwood

Sale Number: 33-029-22 Seq#: 1

1 - Sale Area

1.2 - Boundaries

1.2.1 - Painted boundaries (9/19)

The sale boundary and Payment Unit boundaries are marked and identified by blue, red, and yellow paint. Exterior sale boundary lines against private property are marked with blue paint. Exterior sale boundary lines against state are marked with red paint. Interior Payment Unit boundaries are marked with yellow paint. Retention patches are marked with red paint; no harvesting activities may occur within these areas. The painted boundary line trees are not Included Timber and are to be protected. Yellow painted trees designating an interior Payment Unit boundary are only to be cut when all surrounding Payment Units have been paid for.

2 - Timber Specifications

2.1 - Included Timber

2.1.2 - Clearcut unit(s) w/o unmerchantable trees (8/11)

Within Payment Unit(s) 2 and 3, cut all trees which meet minimum piece specifications in 2.2 Utilization except cedar and hemlock. In addition, do not cut trees marked with green paint.

2.1.3 - Cut tree marked unit(s) (12/08)

Within Payment Unit(s) 1, all trees are designated for cutting when marked with orange paint above and below stump height, regardless of merchantability.

In addition, cut all balsam fir and ironwood greater than three (3) inches at DBH.

2.1.9 - Harvest exception (12/08)

Do not cut any cedar trees other than those that are necessary to remove in order to operate within the sale area. Every effort must be made to preserve the existing cedar and to leave an intact stand upon sale completion. All cut cedar shall be piled separately by products and scaled in the woods unless other scaling arrangements are agreed to by the Unit Manager or his/her representative. Stumpage price for cedar shall be \$45.00 per cord.

2.2 - Utilization

2.2.4 - Skidding length (2/14)

Skidding of unlimbed tops or lengths over 17 feet is not permissible within the sale.

3 - Payments

3.3 - Pre-measured Sales

3.3.4 - Dividing payment units (7/14)

Payment Unit(s) \$18,000 in value or greater may be divided at the request of the Purchaser and upon approval of the Unit Manager. Dividing Payment Units is a contract modification which requires a Timber Sale Contract Amendment. There will be only one division per Payment Unit.

4 - Transportation

4.2 - Maintenance

4.2.1 - Hauling restriction (12/08)

Hauling may be restricted on forest roads by the Unit Manager or his/her representative. The restriction may occur during spring break up or during other wet weather conditions.

4.2.3 - Road maintenance (8/13)

The following road maintenance may be needed: the access road along the western edge of Payment Unit 1 and the CCC Grade, back to Payment Units 2 and Payment Unit 3 will both need to be improved, to allow trucking during non-frozen conditions. Both roads will need to be leveled and they each have areas that will require some gravel if used during the summer months. Overall, both roads are in good condition, they just need some maintenance. Gravel is available from a state

pit near the Hayward Lake Access Site. This pit is about 5 miles from the sale, off the Hayward Lake Road.

4.2.4 - Grading (10/16)

For completion of the sale, state forest roads must be graded. In general, this will require a road grader or bulldozer to shape up the roads after forest products have been hauled off site. This includes cleaning of drainage areas, grading, crowning, and filling with gravel, if necessary. The grading equipment to be used must be approved by the Unit Manager or his/her representative.

5 - Operations

5.2 - Conduct of Operations

5.2.3 - Operating Restrictions

5.2.3.3 - Bark slippage restriction (3/09)

Within Payment Unit(s) 1, unless changed by written agreement, cutting and skidding are not permitted during the period of April 15 to July 15. This restriction is because of bark slippage.

5.2.22 - Operating Caution

5.2.22.1 - Operating caution (6/11)

It is recommended, but not required, that within Payment Unit(s) 2 and 3, cutting, skidding, and hauling occur during dry summer or frozen winter conditions. The reason for the recommendation is because of some low wet ground within each Payment Unit and on the access road. The ideal time to cut these Payment Units is late June through early September during the driest part of the summer. There still might be some lower areas, that may require winter harvesting.

6 - Safety and Fire Prevention

6.2 - Signing

6.2.1 - Road posting (10/20)

The Purchaser is responsible for posting and maintaining caution signs on Cherry Ridge Road prior to beginning operations. The road must be posted at appropriate distances from the Sale Area to warn of logging activity and truck traffic. Signs must be removed when harvest operations are suspended or completed. The Purchaser will provide these signs.

7 - Other Conditions

7.5 - Loss

7.5.1 - Deteriorating timber (7/09)

The sale area has received damage from the emerald ash borer. The Purchaser should harvest the wood as soon as possible. The Department of Natural Resources is held free of responsibility of any further damage or deterioration due to delay in harvesting. Some ash mortality is occurring on the southern edge of Payment Unit 3.



TIMBER SALE MAP

This information provided by authority of Part 525, 1994 PA 451, as amended.

Forest Management Unit		County	Mapped By	Date	Page of	
Escanaba Management Unit		Menominee County	Beudo	7/27/2022	1	1
Township	Range	Section(s) and Subdivision(s)		Scale		
34N 35N	25W	34N: Sec 4 - E1/2NW; Sec 5 - NENW, W1/2NE. 35N: Sec 33 - SESW.		1:15,840		

Cover Type				Density	
A = Aspen	H = Hemlock	N = Marsh	U = Upland Brush	0 = Non Stocked	5 = Pole Timber Medium
B = Paper Birch	J = Jack Pine	O = Oak	UM = Upland Mixed	1 = Seedling Sapling Poor	6 = Pole Timber Well
C = Cedar	L = Lowland Brush	P = Lowland Poplar	V = Bog or Marsh	2 = Seedling Sapling Medium	7 = Saw Timber Poor
D = Treed Bog	LM = Lowland Mixed	Q = Mixed Swamp Conifer	W = White Pine	3 = Seedling Sapling Well	8 = Saw Timber Medium
E = Swamp Hdwoods	M = Mpl, Bch, Brch	R = Red Pine	X = Non Stocked	4 = Pole Timber Poor	9 = Saw Timber Well
F = Spruce Fir	MC = Mixed Conifer	S = Black Spruce	Z = Water		
G = Grass	MD = Mixed Deciduous	T = Tamarack			

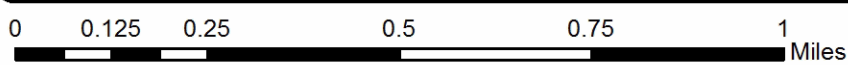
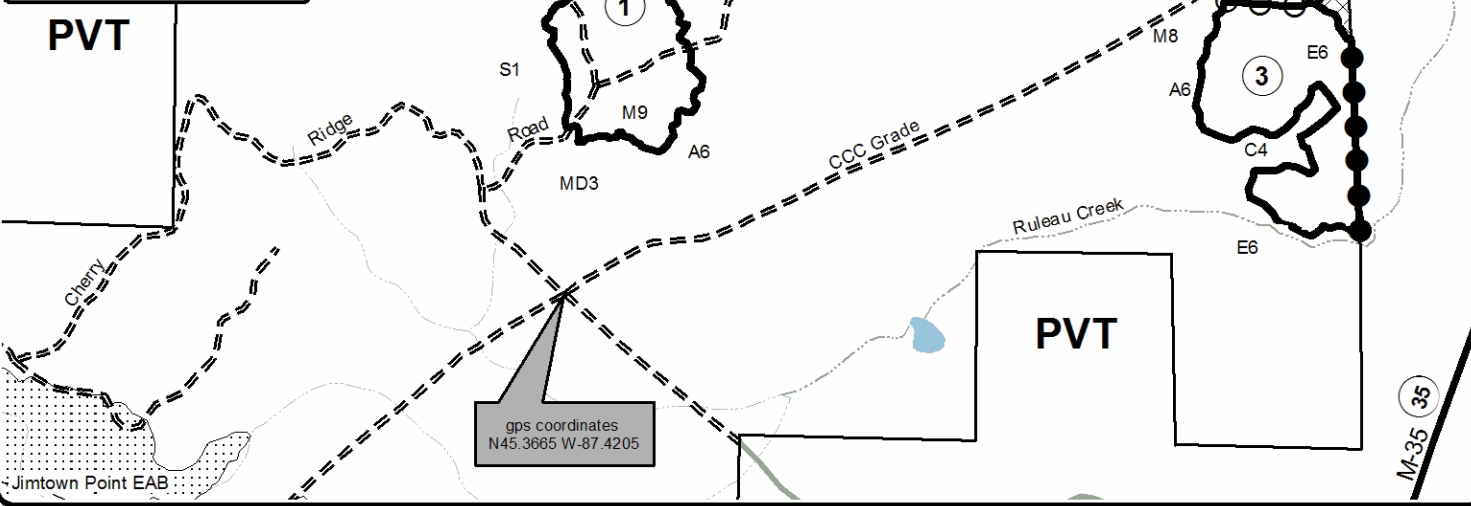
PU	Acres
1	28.1
2	17.2
3	26.9

CCC Grade Hardwood
Compartment 60
72.2 Acres



Legend

- Against State (Red)
- Payment Unit (Yellow)
- Private Line (Blue)
- Paved Road
- = = Two Tracked Road
- Section Corner
- 4 Section Number
- ① Payment Unit
- State Land Boundary
- PVT Private Property
- R Retention Patch
- Stand Retention
- Adjacent Timber Sale
- Seasonal Drainage



Thirty One Second time (33-002-22)
T37N, R25W, SEC. 33; Menominee COUNTY

In response to the notice of sale to be held 3:00 p.m. (local time) on September 26, 2022, I am hereby submitting my sealed bid (firm offer) for the following forest products to be cut. Bids for individual species must be at or above the advertised price. All non-responsive bid forms may be rejected.

<u>PRODUCTS & SPECIES</u>	<u>ESTIMATED VOLUME*</u>	<u>ADVERTISED PRICE</u>	<u>BID PRICE/UNIT</u>
Sawtimber			
Paper Birch	4.6 MBF	\$ 48.00/MBF	\$ _____
Sugar Maple	3.5 MBF	\$ 130.00/MBF	\$ _____
Pulpwood			
Balsam Fir	53 Cords	\$ 9.80/Cord	\$ _____
Black Spruce	98 Cords	\$ 10.10/Cord	\$ _____
Mixed Hardwood	111 Cords	\$ 13.25/Cord	\$ _____
N. White Cedar	266 Cords	\$ 5.85/Cord	\$ _____
Quaking Aspen	62 Cords	\$ 15.75/Cord	\$ _____

*The volumes are statistically estimated within plus (+) or minus (-) 31.39 percent at 95% confidence level. These estimated volumes are final and not subject to adjustment. Prospective bidders are urged to examine this timber and to make their own estimates of quantity and quality.

I understand that any or all bids may be rejected. All bids must be signed and all bid items must be bid or the bid form may be rejected. I also understand that consideration and awarding a contract will be based upon my past performance and ability to complete the contract based upon equipment and staffing subject to my control.

FEDERAL ID: _____ or SOCIAL SECURITY NUMBER: _____

Company or individual bidding: _____

Company representative's name: _____

Address: _____

City: _____ State: _____ Zip: _____

IF AVAILABLE, PLEASE PLACE THE PERSONALIZED LABEL FROM YOUR PROSPECTUS IN THE ABOVE BOX.

Individual or company representative's signature: _____ Date: _____

Phone number : _____ Email (optional): _____

THE WINNING BIDDER MUST COMPLETE THE VERIFICATION OF WORKER'S DISABILITY COMPENSATION ACT COMPLIANCE (ON REVERSE SIDE IF DOUBLE SIDED) WITHIN 21 DAYS OF SALE AWARD DATE



FOR DEPARTMENT USE ONLY
Sale Number (XX - XXX - XX - XX)
Forest Management Unit:

TIMBER SALE VERIFICATION OF WORKER'S DISABILITY COMPENSATION ACT COMPLIANCE

*As required by Act 317, P.A. 1969 (Worker's Compensation) and
Part 5 of Act 451 of 1994, as amended.*

VERIFICATION OF WORKER'S DISABILITY COMPENSATION ACT COMPLIANCE

- This verification must be completed and submitted within 21 days of contract award and prior to the issuance of the timber sale contract.
- In addition, if boxes 2B or 2C are checked, then Notice of Exclusion or Certificate of Insurance must be submitted within twenty-one (21) days of the contract award and prior to the issuance of the timber sale contract.
- All information must be typed or printed except for written signatures.

Please Check Appropriate Categories:

1. My business is organized as (you **must** check one of the boxes below):
 - A. Sole Proprietorship (individual)
 - B. Partnership
 - C. Corporation
2. You **must** check one of the boxes below:
 - A. I certify my business is a sole proprietorship and it has no employees but the sole proprietor. I am not subject to the Worker's Compensation Laws.
 - B. I certify my business has satisfied its obligation to the Worker's Compensation Act through the use of an approved Notice of Exclusion (BWC-337, Rev. 5/96). I will provide a copy of the Notice of Exclusion within 21 days of the contract award. (For questions or a copy of the BWC-337, please call the Worker's Compensation Bureau at 517-322-1195).
 - C. I certify my business has a Worker's Compensation Policy. I will provide an original Certificate of Insurance within twenty-one (21) days of the contract award.
3. If you have checked item 2(A) or 2(B), you **must** indicate the number of **both** full-time and part-time employees, other than yourself, including family members and active partners (if none, you must enter "0").

_____ Full-time Employees

_____ Part-time Employees

Name of Business		Federal ID (or) Social Security No.	
Address		Telephone ()	
City	State	ZIP	

I hereby certify that the above information is true and correct. I agree to notify the Michigan DNR of any changes that occur in factors affecting my coverage during any of my present and future operations.

Signature of Owner or Authorized Representative

Title

Date

Please complete the "SEALED BID" information on the next page

Hidden Finn Saw (33-028-22)

T36N, R28W, SEC. 1; T36N, R28W, SEC. 2; T36N, R28W, SEC. 3; T37N, R28W,

In response to the notice of sale to be held 3:00 p.m. (local time) on September 26, 2022, I am hereby submitting my sealed bid (firm offer) for the following forest products to be cut. Bids for individual species must be at or above the advertised price. All non-responsive bid forms may be rejected.

<u>PRODUCTS & SPECIES</u>	<u>ESTIMATED VOLUME*</u>	<u>ADVERTISED PRICE</u>	<u>BID PRICE/UNIT</u>
Sawtimber			
Basswood	3.6 MBF	\$ 27.00/MBF	\$ _____
Paper Birch	0.4 MBF	\$ 48.00/MBF	\$ _____
Red Maple	1.8 MBF	\$ 122.00/MBF	\$ _____
Red Oak	16.7 MBF	\$ 78.00/MBF	\$ _____
Sugar Maple	0.5 MBF	\$ 130.00/MBF	\$ _____
Pulpwood			
Balsam Fir	42 Cords	\$ 9.80/Cord	\$ _____
Mixed Aspen	171 Cords	\$ 15.75/Cord	\$ _____
Mixed Hardwood	303 Cords	\$ 13.25/Cord	\$ _____
Mixed Spruce	208 Cords	\$ 10.10/Cord	\$ _____
N. White Cedar	217 Cords	\$ 5.85/Cord	\$ _____
Red Oak	33 Cords	\$ 14.50/Cord	\$ _____
Red Pine	3 Cords	\$ 24.95/Cord	\$ _____
Tamarack	258 Cords	\$ 8.95/Cord	\$ _____
White Pine	94 Cords	\$ 13.05/Cord	\$ _____

*The volumes are statistically estimated within plus (+) or minus (-) 13.82 percent at 95% confidence level. These estimated volumes are final and not subject to adjustment. Prospective bidders are urged to examine this timber and to make their own estimates of quantity and quality.

I understand that any or all bids may be rejected. All bids must be signed and all bid items must be bid or the bid form may be rejected. I also understand that consideration and awarding a contract will be based upon my past performance and ability to complete the contract based upon equipment and staffing subject to my control.

FEDERAL ID: _____ or SOCIAL SECURITY NUMBER: _____

Company or individual bidding: _____

Company representative's name: _____

Address: _____

City: _____ State: _____ Zip: _____

IF AVAILABLE, PLEASE PLACE THE PERSONALIZED LABEL FROM YOUR PROSPECTUS IN THE ABOVE BOX.

Individual or company representative's signature: _____ Date: _____

Phone number : _____ Email (optional): _____

THE WINNING BIDDER MUST COMPLETE THE VERIFICATION OF WORKER'S DISABILITY COMPENSATION ACT COMPLIANCE (ON REVERSE SIDE IF DOUBLE SIDED) WITHIN 21 DAYS OF SALE AWARD DATE



FOR DEPARTMENT USE ONLY
Sale Number (XX - XXX - XX - XX)
Forest Management Unit:

TIMBER SALE VERIFICATION OF WORKER'S DISABILITY COMPENSATION ACT COMPLIANCE

*As required by Act 317, P.A. 1969 (Worker's Compensation) and
Part 5 of Act 451 of 1994, as amended.*

VERIFICATION OF WORKER'S DISABILITY COMPENSATION ACT COMPLIANCE

- This verification must be completed and submitted within 21 days of contract award and prior to the issuance of the timber sale contract.
- In addition, if boxes 2B or 2C are checked, then Notice of Exclusion or Certificate of Insurance must be submitted within twenty-one (21) days of the contract award and prior to the issuance of the timber sale contract.
- All information must be typed or printed except for written signatures.

Please Check Appropriate Categories:

1. My business is organized as (you **must** check one of the boxes below):
 - A. Sole Proprietorship (individual)
 - B. Partnership
 - C. Corporation

2. You **must** check one of the boxes below:
 - A. I certify my business is a sole proprietorship and it has no employees but the sole proprietor. I am not subject to the Worker's Compensation Laws.
 - B. I certify my business has satisfied its obligation to the Worker's Compensation Act through the use of an approved Notice of Exclusion (BWC-337, Rev. 5/96). I will provide a copy of the Notice of Exclusion within 21 days of the contract award. (For questions or a copy of the BWC-337, please call the Worker's Compensation Bureau at 517-322-1195).
 - C. I certify my business has a Worker's Compensation Policy. I will provide an original Certificate of Insurance within twenty-one (21) days of the contract award.

3. If you have checked item 2(A) or 2(B), you **must** indicate the number of **both** full-time and part-time employees, other than yourself, including family members and active partners (if none, you must enter "0").

_____ Full-time Employees

_____ Part-time Employees

Name of Business		Federal ID (or) Social Security No.	
Address		Telephone ()	
City	State	ZIP	

I hereby certify that the above information is true and correct. I agree to notify the Michigan DNR of any changes that occur in factors affecting my coverage during any of my present and future operations.

Signature of Owner or Authorized Representative

Title

Date

Please complete the "SEALED BID" information on the next page

CCC Grade Hardwood (33-029-22)

T34N, R25W, SEC. 4; T34N, R25W, SEC. 5; T35N, R25W, SEC. 33; Menominee

In response to the notice of sale to be held 3:00 p.m. (local time) on September 26, 2022, I am hereby submitting my sealed bid (firm offer) for the following forest products to be cut. Bids for individual species must be at or above the advertised price. All non-responsive bid forms may be rejected.

<u>PRODUCTS & SPECIES</u>	<u>ESTIMATED VOLUME*</u>	<u>ADVERTISED PRICE</u>	<u>BID PRICE/UNIT</u>
Sawtimber			
Basswood	2.4 MBF	\$ 70.00/MBF	\$ _____
Red Maple	34.9 MBF	\$ 156.00/MBF	\$ _____
Sugar Maple	9.5 MBF	\$ 165.00/MBF	\$ _____
Yellow Birch	0.6 MBF	\$ 32.00/MBF	\$ _____
Pulpwood			
Balsam Fir	38 Cords	\$ 12.45/Cord	\$ _____
Mixed Aspen	31 Cords	\$ 20.00/Cord	\$ _____
Mixed Hardwood	726 Cords	\$ 16.90/Cord	\$ _____
White Spruce	23 Cords	\$ 12.85/Cord	\$ _____

*The volumes are statistically estimated within plus (+) or minus (-) 10.86 percent at 95% confidence level. These estimated volumes are final and not subject to adjustment. Prospective bidders are urged to examine this timber and to make their own estimates of quantity and quality.

I understand that any or all bids may be rejected. All bids must be signed and all bid items must be bid or the bid form may be rejected. I also understand that consideration and awarding a contract will be based upon my past performance and ability to complete the contract based upon equipment and staffing subject to my control.

FEDERAL ID: ____ - ____ - ____ or SOCIAL SECURITY NUMBER: ____ - ____ - ____

Company or individual bidding: _____

Company representative's name: _____

Address: _____

City: _____ State: _____ Zip: _____

IF AVAILABLE, PLEASE PLACE THE PERSONALIZED LABEL FROM YOUR PROSPECTUS IN THE ABOVE BOX.

Individual or company representative's signature: _____ Date: _____

Phone number : _____ Email (optional): _____

THE WINNING BIDDER MUST COMPLETE THE VERIFICATION OF WORKER'S DISABILITY COMPENSATION ACT COMPLIANCE (ON REVERSE SIDE IF DOUBLE SIDED) WITHIN 21 DAYS OF SALE AWARD DATE



FOR DEPARTMENT USE ONLY
Sale Number (XX - XXX - XX - XX)
Forest Management Unit:

TIMBER SALE VERIFICATION OF WORKER'S DISABILITY COMPENSATION ACT COMPLIANCE

*As required by Act 317, P.A. 1969 (Worker's Compensation) and
Part 5 of Act 451 of 1994, as amended.*

VERIFICATION OF WORKER'S DISABILITY COMPENSATION ACT COMPLIANCE

- This verification must be completed and submitted within 21 days of contract award and prior to the issuance of the timber sale contract.
- In addition, if boxes 2B or 2C are checked, then Notice of Exclusion or Certificate of Insurance must be submitted within twenty-one (21) days of the contract award and prior to the issuance of the timber sale contract.
- All information must be typed or printed except for written signatures.

Please Check Appropriate Categories:

1. My business is organized as (you **must** check one of the boxes below):
 - A. Sole Proprietorship (individual)
 - B. Partnership
 - C. Corporation

2. You **must** check one of the boxes below:
 - A. I certify my business is a sole proprietorship and it has no employees but the sole proprietor. I am not subject to the Worker's Compensation Laws.
 - B. I certify my business has satisfied its obligation to the Worker's Compensation Act through the use of an approved Notice of Exclusion (BWC-337, Rev. 5/96). I will provide a copy of the Notice of Exclusion within 21 days of the contract award. (For questions or a copy of the BWC-337, please call the Worker's Compensation Bureau at 517-322-1195).
 - C. I certify my business has a Worker's Compensation Policy. I will provide an original Certificate of Insurance within twenty-one (21) days of the contract award.

3. If you have checked item 2(A) or 2(B), you **must** indicate the number of **both** full-time and part-time employees, other than yourself, including family members and active partners (if none, you must enter "0").

_____ Full-time Employees

_____ Part-time Employees

Name of Business		Federal ID (or) Social Security No.	
Address		Telephone ()	
City	State	ZIP	

I hereby certify that the above information is true and correct. I agree to notify the Michigan DNR of any changes that occur in factors affecting my coverage during any of my present and future operations.

Signature of Owner or Authorized Representative

Title

Date

Please complete the "SEALED BID" information on the next page