



**DEPARTMENT OF NATURAL RESOURCES  
STATE OF MICHIGAN**

**TIMBER SALE PROSPECTUS #6922**

SCHEDULED SALE DATE AND TIME: 9:00 a.m. (local time) on November 3, 2021.

LOCATION: GAYLORD MGMT UNIT, 1732 WEST M 32, GAYLORD, MI 49735.

PROSPECTUS NOTE: Effective immediately all bid openings for the Gaylord Management Unit (Gaylord Field Office and Indian River Field Office) will be held at the Gaylord Field Office regardless of sale location within the unit. All payments and contract executions will now be handled through the Gaylord Field Office. The Indian River Field Office will no longer accept payments or hard paper copies of timber sale bids. Payments for all contracts, use permits, bonds, etc. should be sent to the Gaylord Field Office.

The bidder is advised to inspect the sale area and review the location, estimated volumes, operating costs and contract terms of proposed sales. Please be aware that some landowners may request 60 days or more notice for access across their land.

Thundering Hardwoods (52-014-21) / T33N, R05W, SEC. 15, SWSE.  
T33N, R05W, SEC. 22, NENW,NWNE,E1/2SE.  
T33N, R05W, SEC. 23, SWNW,N1/2SW,SWSW.  
T33N, R05W, SEC. 26, N1/2NW.

Charlevoix County, Advertised Price \$130,084.05, 92.5 Acres, Hardwood, Aspen.

SALE NOTE: All units of volume listed for this sale were estimated using the Inventory Manager computer program and the new Michigan taper model.

See sale spec 5.2.3.5 for Oak wilt restrictions.

A recreation site such as a trail, pathway, or campground is within the sale area or the vicinity. Certain restrictions/specifications may be applicable including time restrictions.

Hawkeye Mix (52-015-21) / T33N, R05W, SEC. 26, SWNW,SW.  
T33N, R05W, SEC. 27, SWNE,SE.  
T33N, R05W, SEC. 34, N1/2NE.

Charlevoix County, Advertised Price \$110,812.30, 115.7 Acres, Hardwood, Aspen.

SALE NOTE: All units of volume listed for this sale were estimated using the Inventory Manager computer program and the new Michigan taper model.

Do the Evolution HDWDS (52-016-21) / T30N, R06W, SEC. 6 , NW,SWNE.  
T30N, R07W, SEC. 1 , E1/2NE.  
T31N, R06W, SEC. 31, SESW,SWSE.

Antrim County, Advertised Price \$127,415.75, 131.0 Acres, Hardwood, Sugar Maple.

SALE NOTE: All units of volume listed for this sale were estimated using the Inventory Manager computer program and the new Michigan taper model.

Nice timber on steep terrain. Long skids.

See sale spec 4.4.1 for information on private property access.

Access may be through private land.

## BID INSTRUCTIONS (VER. 07/02/2018):

### 1. Scheduled Bid Location, Date, and Time (2/11)

Bids must be received by the Unit Manager, GAYLORD OFFICE, 1732 West M 32, Gaylord, MI 49735, no later than 9:00 a.m. (local time) on November 3, 2021. For further information concerning this sale, contact Lucas Merrick at 989-732-3541 extension 5440.

### 2. Bidder's Qualifications (5/16)

Purchaser shall obtain workers compensation insurance to cover claims under Michigan's Worker's Disability Compensation Act of 1969 or similar employee benefit act of any other state applicable to an employee. If all or part of a timber sale was prepared by a private contractor, the contractor and that contractor's company are not permitted to bid on the timber sale contract. Bids will not be accepted from individuals or companies appearing on the DNR/FRD No-Bid List. This list contains the names of purchasers who previously failed to execute a contract within 21-days or who have a history of poor performance.

### 3. Preparation of Sealed Bids (5/16)

Bid Forms may be completed online thru Michigan DNR Timber Sale Online Bidding (OLB) at [www.michigan.gov/timberbidding](http://www.michigan.gov/timberbidding) or by completing the hardcopy Bid Form found in the Timber Sale Prospectus. Hardcopy Bid Forms shall be manually signed in ink. Registration in OLB is considered your 'signature' for all bids submitted thru that system. Bid prices must be entered for each species and product in the Bid Price column for all material subject to bidding and all fill-in blanks must be completed. If erasures or other changes appear on the hardcopy Bid Form, each erasure or change must be initialed by the person signing the bid.

### 4. Submission of Sealed Bids (5/16)

Bid forms may be obtained from the Unit Manager or thru OLB. Bids may be submitted hardcopy or thru OLB. All hardcopy bids must be submitted on the bid form and in an envelope clearly identified as described in this section. NOTE: Only one bid form per bid envelope. Sealed bids must be submitted to the Unit office designated in the prospectus and must be submitted at or prior to the time established in the prospectus. The envelope should show on the outside (a) the sale name or number and (b) the date and time of bid opening, as shown in the prospectus. Bids received after the time specified in the sale prospectus are late bids and will be rejected.

It is possible for a bidder to submit multiple bids on a single sale. For example, a bid may be submitted hardcopy and a bid may be submitted thru OLB. Or, two bidders from the same company could both submit bids on the same sale. If this were to happen, the State would accept all bids received and award the contract accordingly. All bidding and contractual requirements would apply to all bids received.

### 5. Public Opening of Sealed Bids (7/16)

If conditions permit, the sealed bids will be publicly opened and posted at the time and place set in the prospectus.

If a bidder, present at a bid opening, has submitted bids on more than one sale, that bidder may withdraw their unopened bid envelopes or announce the withdrawal of their online bid after being declared the successful bidder on one sale.

### 6. Award of Contract (1/11)

Award of the contract will be made to the Bidder whose bid, conforming to the prospectus, is most advantageous to the State of Michigan on the basis of total value at rates bid for the estimated quantities. The State reserves the right to reject any bid or waive any minor irregularity in bids received. A written award mailed (or otherwise furnished) to the successful Bidder shall be deemed to result in a binding contract without further action by either party.

### 7. Down Payment (1/11)

The Bidder to whom award is made must make a down payment within 21 days of the sale award. The amount of the down payment will be calculated as shown in the Bond and Payment Schedule of this prospectus. Only cash may be used to meet this requirement.

### 8. Performance Security (1/11)

As guarantee of faithful performance, a cash bond, certificate of deposit, surety bond or irrevocable letter of credit (LOC) is required within 21 days of the sale award. The amount of the performance security is shown in the Bond and

Payment Schedule of this prospectus. If an LOC or surety is used, the coverage must extend for at least 6 months beyond the contract expiration.

#### 9. Timber Sale Contract (7/18)

Additional conditions and requirements common to all timber sales are listed on the timber sale contract (R4031) and are available on line at [www.michigan.gov/timber](http://www.michigan.gov/timber). Contact the Unit Manager for additional information or a sample contract. Within 21 days of the date of the award letter, the bidder must sign the contract and provide the required down payment, performance security, and verification of worker's disability compensation. The down payment and performance security shall be in accordance with the provisions of the timber sale contract, in the sums stated in this prospectus. If these actions are not taken, then the Bidder, the Bidder's corporation, and the corporation's principals may not be permitted to bid on State timber sales for a period of 3 months after the first offense, 6 months after the second offense, and 1 year after the third offense. An offense will only be counted against the Bidder for 5 years. In addition, the Bidder certifies that if awarded this contract, the Bidder will complete the timber sale contract in accordance with its terms and any modifications thereof including requirements to purchase, cut, and remove the included timber by the expiration date.

Payment Unit values in the State Forest Timber Sale Contract are calculated based on the advertised value of the Payment Unit as a percentage of the total advertised value of the contract. The advertised value of each Payment Unit is given in the Description of Timber by Payment Unit table on the Timber Sale Information page. For example, if the value of Payment Unit 1 is advertised as \$1,500 and the total Timber Sale value is advertised as \$10,000, the contract price for Payment Unit 1 will be 15% of the total bid price ( $\$1,500/\$10,000 * 100$ ).

#### 10. Disclaimer of Estimates and Bidder's Warranty of Inspection (7/16)

Before submitting this bid, the Bidder is advised and cautioned to inspect the sale area, review the requirements of the sale contract, and take other steps as may be reasonably necessary to ascertain the location, estimated volumes, construction estimates, and operating costs of the proposed sale. Failure to do so will not relieve the Bidder from responsibility for completing the contract.

The Bidder warrants that this bid is submitted solely on the basis of the Bidder's examination and inspection of the quality and quantity of the timber offered for sale and the Bidder's opinion of the value thereof and the costs of recovery. No reliance should be placed on the State of Michigan's estimates of timber quality, quantity or costs of recovery. Bidder further acknowledges that the State of Michigan: (i) expressly disclaims any warranty of fitness of timber for any purpose; (ii) offers this timber as is without any warranty of quality (merchantability) or quantity and (iii) expressly disclaims any warranty as to the quantity or quality of timber sold.

#### 11. Certification and Chain-of-Custody (10/14)

Unless otherwise indicated in the contract under section 7 – Other Conditions of the Sale Specific Conditions & Requirements, the area encompassed by this timber sale is certified to the standards of the Forest Stewardship Council (FSC) - Certificate #SCS-FM/COC-00090N and the Sustainable Forestry Initiative (SFI) - Certificate #NSF-SFIS-5Y031-SF5. Forest products from this sale may be delivered to the mill as "FSC 100% and / or SFI certified" as long as the contractor hauling the forest products is chain-of-custody (COC) certified or covered under a COC certificate from the destination mill. The purchaser is responsible for maintaining COC after leaving the sale area.

#### 12. Good Neighbor Authority (GNA) Requirements (7/16)

If the name of this timber sales contains the acronym GNA, it is authorized by the Good Neighbor Authority (GNA) and covered by various agreements between the U.S. Forest Service and the State. The timber sale occurs on federal land and the following conditions apply:

GNA contracts on US Forest Service land will not be awarded to purchasers on the Federal list of excluded parties. The System for Award Management (SAM) will be checked for active excluded parties prior to award of contract. In addition, the Bidder to whom award is made must complete an Assurance Regarding Felony Conviction or Tax Delinquent Status for Corporate Applicants (AD-3031).

#### 13. Good Neighbor Authority (GNA) Requirements, con't (9/16)

Bidder certifies, by signing this bid form, that to the best of Bidder's knowledge that the following representations are accurate and complete.

- a. That the Bidder and its principals are not presently debarred, suspended, proposed for debarment, declared ineligible, or voluntary excluded from timber sales (covered transactions) by any Federal department or agency.
- b. That the Bidder and its principals have not within a 3-year period preceding this bid been convicted of or had a civil judgment rendered against them for commission of fraud or a criminal offense in connection with obtaining , attempting to obtain, or performing a public (Federal, State, or local) transaction or contract under a public transaction; violation of Federal or State antitrust statutes or commission of embezzlement, theft, forgery, bribery, falsification or destruction of records, making false statements, or receiving stolen property.
- c. That the Bidder and its principals are not presently indicted for or otherwise criminally or civilly charged by a governmental entity (Federal, State, or local) with commission of any of the offenses enumerated in paragraph b of this certification.
- d. That the Bidder and its principals have not within a 3-year period preceding this bid had one or more public transactions (Federal, State, or local) terminated for breach or default of a timber or forest product contract.

Bidders that cannot certify this requirement, in whole or in part, shall submit an explanation with their bid.

DAN EICHINGER  
Director

## TIMBER SALE INFORMATION

### Thundering Hardwoods (52-014-21)

T33N, R05W, SEC. 15; T33N, R05W, SEC. 22; T33N, R05W, SEC. 23; T33N, R05W, SEC. 26.  
Charlevoix County (Advertised Price \$130,084.05)

SALE NOTE: All units of volume listed for this sale were estimated using the Inventory Manager computer program and the new Michigan taper model.

See sale spec 5.2.3.5 for Oak wilt restrictions.

A recreation site such as a trail, pathway, or campground is within the sale area or the vicinity. Certain restrictions/specifications may be applicable including time restrictions.

A timber sale contract for this lump sum, sealed bid timber sale will be awarded to the responsible bidder offering the highest sealed bid price. All units of volume listed below were estimated using the Inventory Manager computer program and the new Michigan taper model. Bids must be at or above the following advertised price for each product and species:

<u>PRODUCTS &amp; SPECIES</u>	<u>ESTIMATED UNITS*</u>	<u>ADVERTISED PRICE</u>
Sawtimber		
B. T. Aspen	137.0 MBF	\$ 37.00 / MBF
Basswood	127.0 MBF	\$ 40.00 / MBF
Beech	33.5 MBF	\$ 45.00 / MBF
Red Maple	12.2 MBF	\$ 71.00 / MBF
Red Oak	29.5 MBF	\$ 80.00 / MBF
Sugar Maple	241.8 MBF	\$ 344.00 / MBF
Pulpwood		
B. T. Aspen	388 Cords	\$ 14.55 / Cord
Basswood	196 Cords	\$ 6.60 / Cord
Mixed Hardwood	1,611 Cords	\$ 15.15 / Cord
Red Oak	82 Cords	\$ 8.25 / Cord

\* The total volume is statistically estimated within plus (+) or minus (-) 4.83 percent. There are an estimated 3,589 cords on this timber sale, plus or minus 174 cords at the 95% confidence level. The estimated units are final and not subject to adjustment. Prospective bidders are urged to examine this timber and to make their own estimates of quantity and quality.

### **BOND AND PAYMENT SCHEDULE:**

1. A bond in the amount of \$6,504.00 to insure faithful performance of the conditions of the contract will be deposited by the successful bidder within 21 days of the sale award.
2. Cutting in any sale or unit without the required advance payment would be considered a trespass.
3. Total payment must be paid in advance or according to the following schedule :
  - (a) Ten percent (10%) of the sale value must be paid within 21 days of the sale award.
  - (b) The 10% down payment will be credited towards the first unit cut.
  - (c) Payment for each of the following units must be made before cutting begins in that unit:

PAYMENT UNIT NUMBER	PERCENT OF TOTAL SALE VALUE
01	35.1%
02	27.8%
03	37.1%

4. If no cutting takes place, the 10% down payment will not be refunded.
5. Operations on the contract issued will terminate on 12/31/2024.

### **SALE STATISTICS**

Volumes were calculated in cubic feet using the Michigan taper model. Cubic foot volume includes all wood inside bark for the product indicated. For display purposes, cubic feet were converted to cords and MBF using a simple conversion factor, e.g. 79 cubic feet per cord and 185 cubic feet per MBF. The cubic foot volumes are precise; the cords and MBF volumes are not. Cubic foot volume cannot be directly converted to cords or boards with precision.

## SALE VOLUMES

The total estimated sale volume may not equal the sum of the species/products due to the nature of statistical calculations associated with double sampling methodology.

VOLUME			STATISTICAL RANGE IN CORDS	
TOTAL CUBIC FEET	TOTAL CORDS	PERCENT ERROR	MINIMUM	MAXIMUM
283,558	3,589	4.83%	3,416	3,763

## VDU VOLUMES

A VDU is a Volume Determination Unit. Volumes and their associated statistics are calculated at the VDU level and summarized to the sale level. There is often a one to one relationship between a VDU and a Payment Unit, but not always, depending on the cruise design. Refer to the VDU TO PAYMENT UNIT table.

	VOLUME			RANGE IN CORDS	
VDU	TOTAL CUBIC FEET	TOTAL CORDS	PERCENT ERROR	MINIMUM	MAXIMUM
61	27,339	346	10.29%	310	382
69	50,312	637	10.71%	569	705
97	193,988	2,456	5.99%	2,308	2,603
<b>TOTAL:</b>	<b>271,638</b>	<b>3,438</b>		<b>3,188</b>	<b>3,689</b>

## VDU TO PAYMENT UNIT

When a VDU is associated with more than one Payment Unit (PU), the VDU volumes are assigned to the PU based on acres of the VDU within the PU.

VDU	VDU ACRES	PU	PU ACRES
61	8.0	1	8.0
69	15.7	1	15.7
97	68.8	2	29.5
		3	39.3
<b>TOTAL:</b>	<b>92.5</b>		<b>92.5</b>

**DESCRIPTION OF TIMBER BY PAYMENT UNIT (PU)**

PU	MARKET GROUP	PRODUCT	QUANTITY	UNIT	ACRES	ADVERTISE PRICE	
1	B. T. Aspen	Sawtimber	50.2	MBF	23.7	\$45,667.95	
	Basswood		32.0	MBF			
	Beech		17.4	MBF			
	Red Oak		3.9	MBF			
	Sugar Maple		96.3	MBF			
	B. T. Aspen		Pulpwood	183			Cords
	Basswood			47			Cords
	Mixed Hardwood			350			Cords
	<i>Beech</i>			24			<i>Cords</i>
	<i>Sugar Maple</i>			326			<i>Cords</i>
	Red Oak			4			Cords
2	B. T. Aspen	Sawtimber	37.2	MBF	29.5	\$36,200.90	
	Basswood		40.7	MBF			
	Beech		6.9	MBF			
	Red Maple		5.2	MBF			
	Red Oak		11.0	MBF			
	Sugar Maple		62.4	MBF			
	B. T. Aspen		Pulpwood	88			Cords
	Basswood			64			Cords
	Mixed Hardwood			541			Cords
	<i>Beech</i>			168			<i>Cords</i>
	<i>Ironwood</i>			15			<i>Cords</i>
	<i>Red Maple</i>			27			<i>Cords</i>
	<i>Sugar Maple</i>			331			<i>Cords</i>
	Red Oak			33			Cords
3	B. T. Aspen	Sawtimber	49.6	MBF	39.3	\$48,215.20	
	Basswood		54.3	MBF			
	Beech		9.2	MBF			
	Red Maple		7.0	MBF			
	Red Oak		14.6	MBF			
	Sugar Maple		83.1	MBF			
	B. T. Aspen		Pulpwood	117			Cords
	Basswood			85			Cords
	Mixed Hardwood			720			Cords
	<i>Beech</i>			224			<i>Cords</i>
	<i>Ironwood</i>			19			<i>Cords</i>
	<i>Red Maple</i>			37			<i>Cords</i>
	<i>Sugar Maple</i>			440			<i>Cords</i>
	Red Oak			45			Cords
TOTAL:			581.0	MBF			
TOTAL:			2,277	Cords			

# Sale Specific Conditions & Requirements

**Sale Name: Thundering Hardwoods**

**Sale Number: 52-014-21 Seq#: 1**

## 1 - Sale Area

### 1.2 - Boundaries

#### 1.2.1 - Painted boundaries (9/19)

The sale boundary and Payment Unit boundaries are marked and identified by blue and red paint in addition to an unpainted road. Exterior sale boundary lines against private property are marked with blue paint. Exterior sale boundary lines against state are marked with red paint. Interior Payment Unit boundaries identified by Holms Road (unpainted). Retention patches are marked with red paint; no harvesting activities may occur within these areas. The painted boundary line trees are not Included Timber and are to be protected.

## 2 - Timber Specifications

### 2.1 - Included Timber

#### 2.1.1 - Clearcut unit(s) with unmerchantable trees (6/14)

Within Payment Unit(s) 1-3, cut all trees that are two (2) inches or more at DBH, except the white pine in Payment Unit 1.

## 3 - Payments

### 3.3 - Pre-measured Sales

#### 3.3.4 - Dividing payment units (7/14)

Payment Unit(s) may be divided at the request of the Purchaser and upon approval of the Unit Manager. Dividing Payment Units is a contract modification which requires a Timber Sale Contract Amendment.

## 4 - Transportation

### 4.1 - Construction

#### 4.1.3 - Slash and earthen piles (8/04)

Piles or windrows of earth along roads and landings that have been widened or constructed shall be leveled. Slash from road maintenance or construction, including stumps, shall be dispersed throughout the sale.

#### 4.1.6 - Road construction (1/09)

Construction of new roads or improvements of existing roads shall be done in such a way as to minimize the environmental and visual impacts. Merchantable trees shall be cut and utilized unless otherwise directed. Non-merchantable trees shall be severed and laid flat on the ground. Slash shall be scattered, and not left in windrows and kept a minimum of 10 feet back from the road edge. Stumps shall be set upright, not left on edge, and be moved at least 10 feet away from the road edge. Disturbed soil shall be feathered into the woods and not left in berms or windrows.

#### 4.1.7 - Road closure (10/11)

All new roads built into the sale must be blocked to vehicle traffic upon completion of the sale. Overgrown roads that are reopened shall be considered new roads. In general, this will require constructing a four (4') foot high berm of stumps and logs covered with earth. Stumps and brush must be placed along the remainder of the trail. These roads must be rendered impassable to cars and trucks. Contact the sale administrator for specific details of design and placement.

## 5 - Operations

### 5.1 - Notification

#### 5.1.1 - Pre-sale conference (10/16)

A pre-sale conference on site between the Purchaser and sale administrator is required prior to beginning any operations to determine landing and road locations. The Unit Manager or his/her representative must be contacted at least 5 days in advance to schedule the conference.

#### 5.1.4 - Post-sale conference (10/16)

A post-sale conference on site between the Purchaser and sale administrator is required 5 days prior to the completion of



active logging operations to determine clean-up and repair of landings, road edges, and the fulfillment of other contract specifications.

## 5.2 - Conduct of Operations

### 5.2.1 - Slash

#### 5.2.1.8 - Slash height (12/08)

No slash or tree tops may exceed 36 inches in height.

### 5.2.2 - Hazard Trees/Snags

#### 5.2.2.1 - Den trees (10/16)

Obvious hollow and/or den trees shall be protected and left standing unless they are a safety hazard.

### 5.2.3 - Operating Restrictions

#### 5.2.3.5 - Oak wilt restriction (1/18)

Within Payment Unit(s) 1-3, unless changed by written agreement, cutting, skidding, hauling within the sale and brushing of access roads to the sale are not permitted during the period of April 15 to July 15. Operations may be allowed if specific steps are taken to prevent damaging uncut oak during the high risk period. Those steps may include completing all road brushing before April 15th and clearing a tree-length buffer along uncut oak cover before April 15th. This is necessary to reduce the spread of oak wilt. For more information, contact the Unit Manager or his/her representative.

#### 5.2.32 - Decking/landing restoration (9/13)

All decking and landing areas must have the surface area restored to a condition equal to or better than before. This is to ensure the proper regeneration of the stand. Wood debris, chips, and "cookies" from trimmings must be removed or scattered away from landing and loading areas and may not be windrowed on the edge.

#### 5.2.38 - No decking against live trees (2/04)

Cut products may not be decked against unmarked or designated leave trees.

#### 5.2.41 - Snowmobile trail protection (9/11)

The snowmobile trail (Holms Road) is shown on the Timber Sale Map. Do not cut or damage posts with orange trail markers or traffic control signs. If the trail is used for hauling, it must be graded to the satisfaction of the Unit Manager or his/her representative prior to December 1. If the trail road is to be used for hauling during the snowmobile season, then a snow-covered base must be left on the trail. The snowmobile trail may only be crossed at right angles. Maintain a 20-foot-wide slash, debris, and rut free zone daily using the snowmobile trail as the centerline. No decking of forest products will be permitted along the snowmobile trail during snowmobile season. All stumps within 2 feet of the snowmobile trail must be cut at ground level.

## 5.4 - Soil Protection

### 5.4.1 - Rutting restriction, general (7/16)

Operations are to cease immediately if equipment and weather conditions result in rutting of roads and/or skid trails which is 12 inches or greater in depth and 50 feet in length. The Unit Manager or his/her representative may restrict hauling and/or skidding if ruts exceed the specified depth. With the Unit Manager or his/her representative's approval, the Purchaser may return to the area when the risk of rutting has decreased.

### 5.4.2 - Skid trails (2/04)

Skid trails up and down slopes should be avoided. If however this is unavoidable, these trails will be left in a non-erodible condition using water bars, logs, and slash. Placing of slash on these skid trails while logging is ongoing may alleviate need for any further action. At the direction of the sale administrator, seed, fertilizer, and mulch may also be required.

### 5.4.3 - Erosion control (12/08)

Skid trails or haul roads may require erosion control structures or berms per direction of the Unit Manager or his/her representative.

### 5.4.4 - Slope protection (9/19)

Skid trails and roads on slopes shall be water barred with slash and stumps as soon as use is complete to prevent erosion.

## 5.8 - Protection of Endangered Species

#### 5.8.5 - Protection of raptor nests (3/13)

All trees with raptor nests will be protected if found during harvesting operations. Notification will be made to the Unit Manager or his/her representative who will notify the Wildlife Biologist so an on-site evaluation and recommendation can be made, if necessary.

### **6 - Safety and Fire Prevention**

#### 6.2 - Signing

##### 6.2.1 - Road posting (10/20)

The Purchaser is responsible for posting and maintaining caution signs on Holms Road prior to beginning operations. The road must be posted at appropriate distances from the Sale Area to warn of logging activity and truck traffic. Signs must be removed when harvest operations are suspended or completed. The Purchaser will provide these signs.

##### 6.2.2 - Snowmobile trail posting (10/20)

The Purchaser is responsible for posting and maintaining caution signs on the snowmobile trail (also Holms Road) prior to beginning operations during the snowmobile season (approximately December 1 to March 31). The trail must be posted at appropriate distances from the Sale Area to warn of logging activity and truck traffic. Signs must be removed when harvest operations are suspended or completed. The Purchaser will provide these signs.



# TIMBER SALE MAP

This information provided by authority of Part 525, 1994 PA 451, as amended.

Sale Number	Year
52 - 014	21

Forest Management Unit Gaylord	County Charlevoix	Mapped By Matt Foster	Date 6/25/2021	Page 1	of 1
Township 33N	Range 05W	Section(s) and Subdivision(s) Sec15:SWSE; Sec22:NENW,NWNE,E1/2SE; Sec23:SWNW, N1/2SW,SWSW; Sec26:N1/2NW	Scale 1:15,840		
Cruised By Matt Foster					

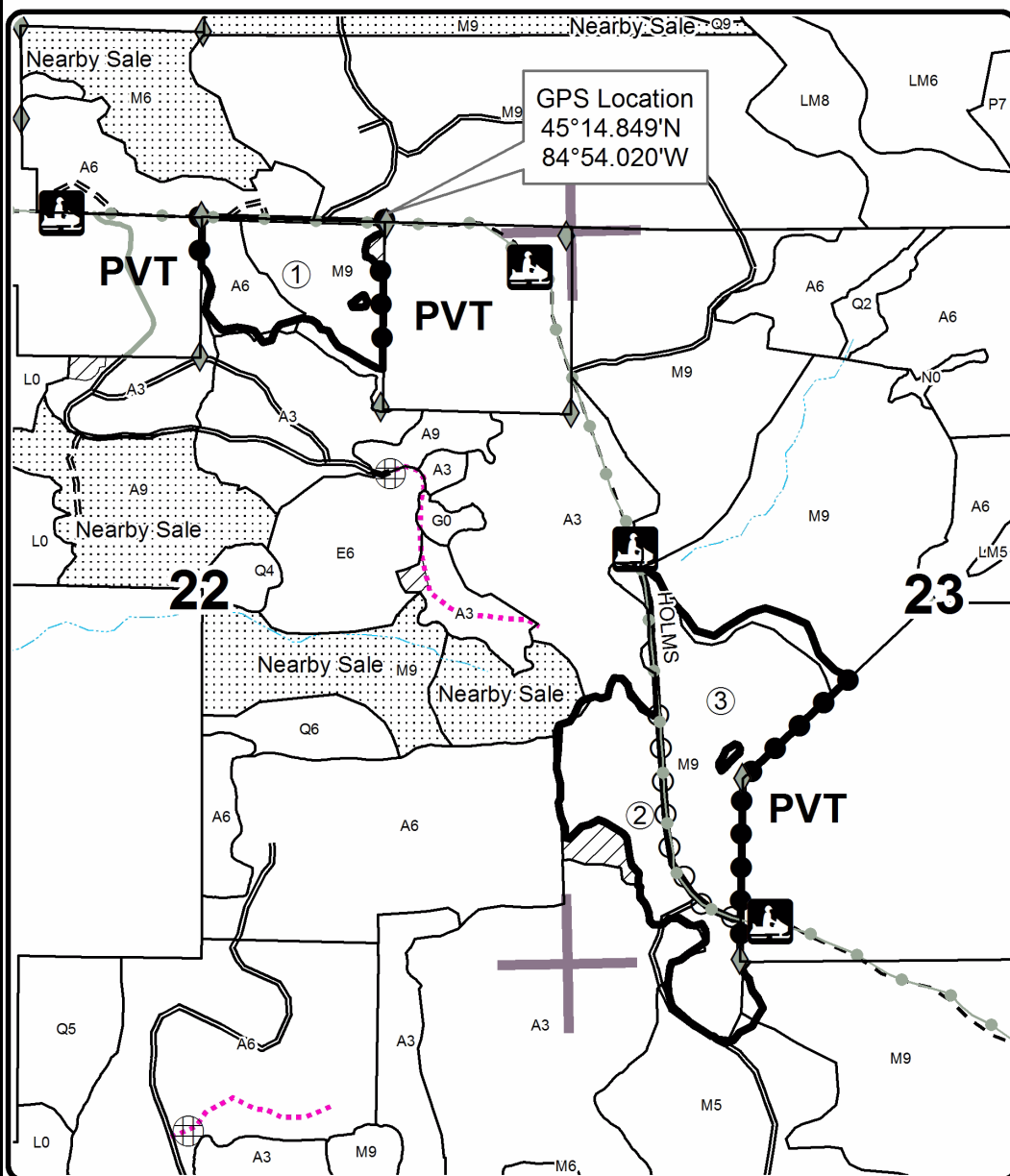
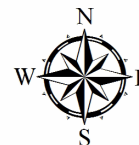
Cover Type				Density	
A = Aspen	H = Hemlock	N = Marsh	U = Upland Brush	0 = Non Stocked	5 = Pole Timber Medium
B = Paper Birch	J = Jack Pine	O = Oak	UM = Upland Mixed	1 = Seedling Sapling Poor	6 = Pole Timber Well
C = Cedar	L = Lowland Brush	P = Lowland Poplar	V = Bog or Marsh	2 = Seedling Sapling Medium	7 = Saw Timber Poor
D = Treed Bog	LM = Lowland Mixed	Q = Mixed Swamp Conifer	W = White Pine	3 = Seedling Sapling Well	8 = Saw Timber Medium
E = Swamp Hdwoods	M = Mpl, Bch, Brch	R = Red Pine	X = Non Stocked	4 = Pole Timber Poor	9 = Saw Timber Well
F = Spruce Fir	MC = Mixed Conifer	S = Black Spruce	Z = Water		
G = Grass	MD = Mixed Deciduous	T = Tamarack			

PU	Acres
1	23.7
2	29.5
3	39.3

## Thundering Hardwoods

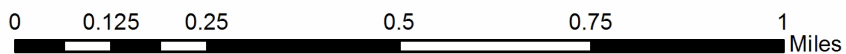
### Compartment 39

92.5 Acres



### Legend

- Sale Boundary (Red)
- Payment Unit (unpainted road)
- Private Line (Blue)
- Retention Area (Red)
- Stand Boundaries
- Recreational Trail
- Field Grade Corners
- Secondary Forest Road
- Forest Access Route
- Gravel Road
- Private
- Temporary Management Access
- Nearby Timber Sales
- Section Corners
- Berms





## TIMBER SALE INFORMATION

### Hawkeye Mix (52-015-21)

T33N, R05W, SEC. 26; T33N, R05W, SEC. 27; T33N, R05W, SEC. 34.  
Charlevoix County (Advertised Price \$110,812.30)

SALE NOTE: All units of volume listed for this sale were estimated using the Inventory Manager computer program and the new Michigan taper model.

A timber sale contract for this lump sum, sealed bid timber sale will be awarded to the responsible bidder offering the highest sealed bid price. All units of volume listed below were estimated using the Inventory Manager computer program and the new Michigan taper model. Bids must be at or above the following advertised price for each product and species:

PRODUCTS & SPECIES	ESTIMATED UNITS*	ADVERTISED PRICE
<b>Sawtimber</b>		
Basswood	97.3 MBF	\$ 44.00 / MBF
Beech	64.1 MBF	\$ 50.00 / MBF
Mixed Aspen	168.6 MBF	\$ 41.00 / MBF
Red Maple	31.6 MBF	\$ 78.00 / MBF
Sugar Maple	151.8 MBF	\$ 378.00 / MBF
<b>Pulpwood</b>		
Basswood	265 Cords	\$ 7.25 / Cord
Mixed Aspen	834 Cords	\$ 16.00 / Cord
Mixed Hardwood	1,261 Cords	\$ 16.70 / Cord
Red Oak	27 Cords	\$ 9.05 / Cord

\* The total volume is statistically estimated within plus (+) or minus (-) 5.09 percent. There are an estimated 3,507 cords on this timber sale, plus or minus 179 cords at the 95% confidence level. The estimated units are final and not subject to adjustment. Prospective bidders are urged to examine this timber and to make their own estimates of quantity and quality.

### **BOND AND PAYMENT SCHEDULE:**

1. A bond in the amount of \$5,541.00 to insure faithful performance of the conditions of the contract will be deposited by the successful bidder within 21 days of the sale award.
2. Cutting in any sale or unit without the required advance payment would be considered a trespass.
3. Total payment must be paid in advance or according to the following schedule :
  - (a) Ten percent (10%) of the sale value must be paid within 21 days of the sale award.
  - (b) The 10% down payment will be credited towards the first unit cut.
  - (c) Payment for each of the following units must be made before cutting begins in that unit:
 

PAYMENT UNIT NUMBER	PERCENT OF TOTAL SALE VALUE
01	32.1%
02	15.0%
03	17.6%
04	35.3%
4. If no cutting takes place, the 10% down payment will not be refunded.
5. Operations on the contract issued will terminate on 12/31/2023.

### **SALE STATISTICS**

Volumes were calculated in cubic feet using the Michigan taper model. Cubic foot volume includes all wood inside bark for the product indicated. For display purposes, cubic feet were converted to cords and MBF using a simple conversion factor, e.g. 79 cubic feet per cord and 185 cubic feet per MBF. The cubic foot volumes are precise; the cords and MBF volumes are not. Cubic foot volume cannot be directly converted to cords or boards with precision.

### **SALE VOLUMES**

The total estimated sale volume may not equal the sum of the species/products due to the nature of statistical calculations associated with double sampling methodology.

VOLUME		STATISTICAL RANGE IN CORDS		
TOTAL CUBIC FEET	TOTAL CORDS	PERCENT ERROR	MINIMUM	MAXIMUM
277,067	3,507	5.09%	3,328	3,686

**VDU VOLUMES**

A VDU is a Volume Determination Unit. Volumes and their associated statistics are calculated at the VDU level and summarized to the sale level. There is often a one to one relationship between a VDU and a Payment Unit, but not always, depending on the cruise design. Refer to the VDU TO PAYMENT UNIT table.

VDU	VOLUME		PERCENT ERROR	RANGE IN CORDS	
	TOTAL CUBIC FEET	TOTAL CORDS		MINIMUM	MAXIMUM
48	113,715	1,439	7.54%	1,331	1,548
55	27,870	353	11.63%	312	394
143	26,704	338	13.28%	293	383
184	101,245	1,282	9.47%	1,160	1,403
<b>TOTAL:</b>	<b>269,533</b>	<b>3,412</b>		<b>3,096</b>	<b>3,728</b>

**VDU TO PAYMENT UNIT**

When a VDU is associated with more than one Payment Unit (PU), the VDU volumes are assigned to the PU based on acres of the VDU within the PU.

VDU	VDU ACRES	PU	PU ACRES
48	50.9	2	23.1
		3	27.8
55	13.5	1	13.2
		2	0.3
143	11.2	1	11.2
184	40.1	4	40.1
<b>TOTAL:</b>	<b>115.7</b>		<b>115.7</b>

**DESCRIPTION OF TIMBER BY PAYMENT UNIT (PU)**

PU	MARKET GROUP	PRODUCT	QUANTITY	UNIT	ACRES	ADVERTISE PRICE	
1	Basswood	Sawtimber	39.6	MBF	24.4	\$35,594.20	
	Beech		10.1	MBF			
	Mixed Aspen		36.6	MBF			
	<i>B. T. Aspen</i>		5.5	<i>MBF</i>			
	<i>Quaking Aspen</i>		31.1	<i>MBF</i>			
	Red Maple		9.0	MBF			
	Sugar Maple		67.5	MBF			
	Basswood	Pulpwood	36	Cords			
	Mixed Aspen		37	Cords			
	<i>B. T. Aspen</i>		5	<i>Cords</i>			
	<i>Quaking Aspen</i>		32	<i>Cords</i>			
	Mixed Hardwood		286	Cords			
	<i>Beech</i>		19	<i>Cords</i>			
	<i>Black Cherry</i>		7	<i>Cords</i>			
	<i>Ironwood</i>		6	<i>Cords</i>			
	<i>Red Maple</i>		16	<i>Cords</i>			
	<i>Sugar Maple</i>		238	<i>Cords</i>			
2	Basswood	Sawtimber	6.0	MBF	23.4	\$16,569.70	
	Beech		1.0	MBF			
	Mixed Aspen		34.9	MBF			
	<i>B. T. Aspen</i>		34.6	<i>MBF</i>			
	<i>Quaking Aspen</i>		0.3	<i>MBF</i>			
	Red Maple		0.2	MBF			
	Sugar Maple		16.2	MBF			
	Basswood	Pulpwood	20	Cords			
	Mixed Aspen		348	Cords			
	<i>B. T. Aspen</i>		197	<i>Cords</i>			
	<i>Quaking Aspen</i>		151	<i>Cords</i>			
	Mixed Hardwood		178	Cords			
	<i>American Elm</i>		<i>Sawtimber</i>	0.6	<i>MBF</i>		
	<i>American Elm</i>		<i>Pulpwood</i>	2	<i>Cords</i>		
	<i>Beech</i>		5	<i>Cords</i>			
	<i>Black Cherry</i>		3	<i>Cords</i>			
	<i>Ironwood</i>		8	<i>Cords</i>			
	<i>Red Maple</i>		12	<i>Cords</i>			
	<i>Sugar Maple</i>		139	<i>Cords</i>			
<i>White Ash</i>	8	<i>Cords</i>					
3	Basswood	Sawtimber	7.3	MBF	27.8	\$19,456.15	
	Beech		0.9	MBF			
	Mixed Aspen		41.7	MBF			
	<i>B. T. Aspen</i>		41.7	<i>MBF</i>			
	Sugar Maple		18.7	MBF			
	Basswood		Pulpwood	23			Cords
	Mixed Aspen			418			Cords
	<i>B. T. Aspen</i>	237		<i>Cords</i>			
	<i>Quaking Aspen</i>	181		<i>Cords</i>			
	Mixed Hardwood	207		Cords			
	<i>American Elm</i>	<i>Sawtimber</i>		0.7	<i>MBF</i>		
	<i>American Elm</i>	<i>Pulpwood</i>		3	<i>Cords</i>		
	<i>Beech</i>	5		<i>Cords</i>			
	<i>Black Cherry</i>	3		<i>Cords</i>			
	<i>Ironwood</i>	10		<i>Cords</i>			
	<i>Red Maple</i>	14	<i>Cords</i>				
	<i>Sugar Maple</i>	162	<i>Cords</i>				
<i>White Ash</i>	9	<i>Cords</i>					
4	Basswood	Sawtimber	44.4	MBF	40.1	\$39,175.55	

**DESCRIPTION OF TIMBER BY PAYMENT UNIT (PU), CON'T**

PU	MARKET GROUP	PRODUCT	QUANTITY	UNIT	ACRES	ADVERTISE PRICE	
4 con't	Beech	Sawtimber	52.1	MBF			
	Mixed Aspen		55.4	MBF			
	<i>B. T. Aspen</i>		55.4	<i>MBF</i>			
	Red Maple		22.4	MBF			
	Sugar Maple		49.4	MBF			
	Basswood		Pulpwood	186	Cords		
	Mixed Aspen			31	Cords		
	<i>B. T. Aspen</i>			31	<i>Cords</i>		
	Mixed Hardwood			589	Cords		
	<i>Beech</i>			107	<i>Cords</i>		
	<i>Ironwood</i>	14		<i>Cords</i>			
	<i>Red Maple</i>	119	<i>Cords</i>				
	<i>Sugar Maple</i>	349	<i>Cords</i>				
	Red Oak		27	Cords			
	<i>Red Oak</i>	<i>Sawtimber</i>	5.3	<i>MBF</i>			
	<i>Red Oak</i>	<i>Pulpwood</i>	16	<i>Cords</i>			
TOTAL:			513.4	MBF			
TOTAL:			2,386	Cords			



# Sale Specific Conditions & Requirements

**Sale Name: Hawkeye Mix**

**Sale Number: 52-015-21 Seq#: 1**

## 1 - Sale Area

### 1.2 - Boundaries

#### 1.2.1 - Painted boundaries (9/19)

The sale boundary and Payment Unit boundaries are marked and identified by blue, red, and yellow paint. Exterior sale boundary lines against private property are marked with blue paint. Exterior sale boundary lines against state are marked with red paint. Interior Payment Unit boundaries are marked with yellow paint. Retention patches are marked with red paint, no harvesting activities may occur within these areas. The painted boundary line trees are not Included Timber and are to be protected. Yellow painted trees designating an interior Payment Unit boundary are only to be cut when all surrounding Payment Units have been paid.

## 2 - Timber Specifications

### 2.1 - Included Timber

#### 2.1.1 - Clearcut unit(s) with unmerchantable trees (6/14)

Within Payment Unit(s) 1-4, cut all trees that are two (2) inches or more at DBH.

## 3 - Payments

### 3.3 - Pre-measured Sales

#### 3.3.4 - Dividing payment units (7/14)

Payment Unit(s) may be divided at the request of the Purchaser and upon approval of the Unit Manager. Dividing Payment Units is a contract modification which requires a Timber Sale Contract Amendment.

## 4 - Transportation

### 4.1 - Construction

#### 4.1.3 - Slash and earthen piles (8/04)

Piles or windrows of earth along roads and landings that have been widened or constructed shall be leveled. Slash from road maintenance or construction, including stumps, shall be dispersed throughout the sale.

#### 4.1.6 - Road construction (1/09)

Construction of new roads or improvements of existing roads shall be done in such a way as to minimize the environmental and visual impacts. Merchantable trees shall be cut and utilized unless otherwise directed. Non-merchantable trees shall be severed and laid flat on the ground. Slash shall be scattered, and not left in windrows and kept a minimum of 10 feet back from the road edge. Stumps shall be set upright, not left on edge, and be moved at least 10 feet away from the road edge. Disturbed soil shall be feathered into the woods and not left in berms or windrows.

#### 4.1.7 - Road closure (10/11)

All new roads built into the sale must be blocked to vehicle traffic upon completion of the sale. Overgrown roads that are reopened shall be considered new roads. In general, this will require constructing a four (4') foot high berm of stumps and logs covered with earth. Stumps and brush must be placed along the remainder of the trail. These roads must be rendered impassable to cars and trucks. Contact the sale administrator for specific details of design and placement.

### 4.2 - Maintenance

#### 4.2.4 - Grading (10/16)

For completion of the sale, state forest roads must be graded. In general, this will require a road grader or bulldozer to shape up the roads after forest products have been hauled off site. This includes cleaning of drainage areas, grading, crowning, and filling with gravel, if necessary. The grading equipment to be used must be approved by the Unit Manager or his/her representative.

## 5 - Operations

## 5.1 - Notification

### 5.1.1 - Pre-sale conference (10/16)

A pre-sale conference on site between the Purchaser and sale administrator is required prior to beginning any operations to determine landing and road locations. The Unit Manager or his/her representative must be contacted at least 5 days in advance to schedule the conference.

### 5.1.4 - Post-sale conference (10/16)

A post-sale conference on site between the Purchaser and sale administrator is required 5 days prior to the completion of active logging operations to determine clean-up and repair of landings, road edges, and the fulfillment of other contract specifications.

## 5.2 - Conduct of Operations

### 5.2.1 - Slash

#### 5.2.1.8 - Slash height (12/08)

No slash or tree tops may exceed 36 inches in height.

### 5.2.2 - Hazard Trees/Snags

#### 5.2.2.1 - Den trees (10/16)

Obvious hollow and/or den trees shall be protected and left standing unless they are a safety hazard.

### 5.2.32 - Decking/landing restoration (9/13)

All decking and landing areas must have the surface area restored to a condition equal to or better than before. This is to ensure the proper regeneration of the stand. Wood debris, chips, and "cookies" from trimmings must be removed or scattered away from landing and loading areas and may not be windrowed on the edge.

### 5.2.38 - No decking against live trees (2/04)

Cut products may not be decked against unmarked or designated leave trees.

## 5.4 - Soil Protection

### 5.4.1 - Rutting restriction, general (7/16)

Operations are to cease immediately if equipment and weather conditions result in rutting of roads and/or skid trails which is 12 inches or greater in depth and 50 feet in length. The Unit Manager or his/her representative may restrict hauling and/or skidding if ruts exceed the specified depth. With the Unit Manager or his/her representative's approval, the Purchaser may return to the area when the risk of rutting has decreased.

### 5.4.2 - Skid trails (2/04)

Skid trails up and down slopes should be avoided. If however this is unavoidable, these trails will be left in a non-erodible condition using water bars, logs, and slash. Placing of slash on these skid trails while logging is ongoing may alleviate need for any further action. At the direction of the sale administrator, seed, fertilizer, and mulch may also be required.

### 5.4.3 - Erosion control (12/08)

Skid trails or haul roads may require erosion control structures or berms per direction of the Unit Manager or his/her representative.

### 5.4.4 - Slope protection (9/19)

Skid trails and roads on slopes shall be water barred with slash and stumps as soon as use is complete to prevent erosion.

## 5.8 - Protection of Endangered Species

### 5.8.3 - Red shoulder hawk or goshawk (2/16)

In the event that an active red shoulder hawk or goshawk nest is found, the contract may be amended to protect the nest site until the nest is determined to be inactive. The value of the trees in this excluded area will be refunded or credited to the Purchaser. The nest will be buffered with a five-chain radius (eight acre) protection area, centered on the nest tree, in which there will be no cutting or new roads constructed. Avoid human disturbance, including loading and skidding, in the protection area.

An additional zone of five chains (ten chains centered on the active nest tree) will be established in which there is no

management activity from March 15 to July 15. Limit biomass harvesting and chipping operations within this ten-chain zone, retain the maximum one-third of residues per the Woody Biomass Harvesting Guidelines (Michigan DNR 2010). Nests determined to be inactive will be protected with a one-chain no-harvest buffer.

#### 5.8.5 - Protection of raptor nests (3/13)

All trees with raptor nests will be protected if found during harvesting operations. Notification will be made to the Unit Manager or his/her representative who will notify the Wildlife Biologist so an on-site evaluation and recommendation can be made, if necessary.

## **6 - Safety and Fire Prevention**

### 6.2 - Signing

#### 6.2.1 - Road posting (10/20)

The Purchaser is responsible for posting and maintaining caution signs on Romaniak Road prior to beginning operations. The road must be posted at appropriate distances from the Sale Area to warn of logging activity and truck traffic. Signs must be removed when harvest operations are suspended or completed. The Purchaser will provide these signs.



# TIMBER SALE MAP

This information provided by authority of Part 525, 1994 PA 451, as amended.

Sale Number	Year
52 - 015	21

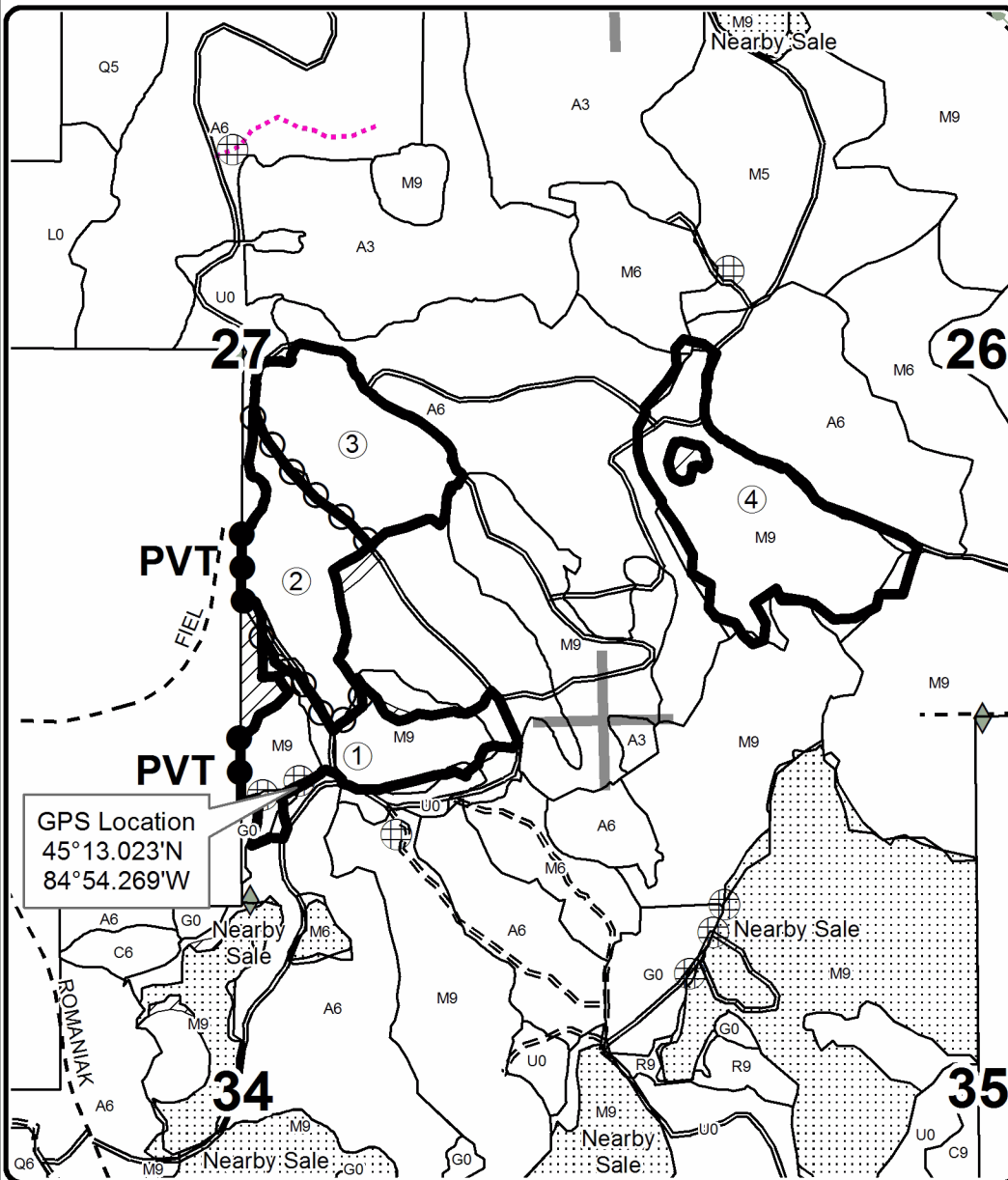
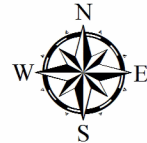
Forest Management Unit Gaylord	County Charlevoix	Mapped By Matt Foster	Date 7/13/2021	Page 1	of 1
Cruised By Matt Foster, Zach Crew					

Township 33N	Range 05W	Section(s) and Subdivision(s) Sec 26:SWNW, SW1/4; Sec 27:SWNE, SE; Sec 34:N1/2NE	Scale 1:15,840
-----------------	--------------	---	-------------------

Cover Type				Density			
A = Aspen	H = Hemlock	N = Marsh	U = Upland Brush	0 = Non Stocked	5 = Pole Timber Medium		
B = Paper Birch	J = Jack Pine	O = Oak	UM = Upland Mixed	1 = Seedling Sapling Poor	6 = Pole Timber Well		
C = Cedar	L = Lowland Brush	P = Lowland Poplar	V = Bog or Marsh	2 = Seedling Sapling Medium	7 = Saw Timber Poor		
D = Treed Bog	LM = Lowland Mixed	Q = Mixed Swamp Conifer	W = White Pine	3 = Seedling Sapling Well	8 = Saw Timber Medium		
E = Swamp Hdwoods	M = Mpl, Bch, Brch	R = Red Pine	X = Non Stocked	4 = Pole Timber Poor	9 = Saw Timber Well		
F = Spruce Fir	MC = Mixed Conifer	S = Black Spruce	Z = Water				
G = Grass	MD = Mixed Deciduous	T = Tamarack					

PU	Acres
1	24.4
2	23.4
3	27.8
4	40.1

## Hawkeye Mix Compartment 39 115.7 Acres

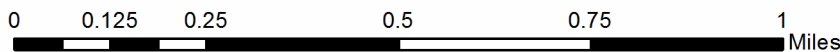


GPS Location  
45°13.023'N  
84°54.269'W

### Legend

- Sale Boundary (Red)
- Payment Unit (Yellow)
- Private Line (Blue)
- Retention Area (Red)
- Stand Boundaries
- Recreational Trail
- Field Grade Corners
- Secondary Forest Road
- Forest Access Route
- Gravel Road
- Temporary Management Access
- Nearby Timber Sales
- Section Corners
- Berms

Avenza Map QR Code



## TIMBER SALE INFORMATION

Do the Evolution HDWDS (52-016-21)

T30N, R06W, SEC. 6; T30N, R07W, SEC. 1; T31N, R06W, SEC. 31.  
Antrim County (Advertised Price \$127,415.75)

SALE NOTE: All units of volume listed for this sale were estimated using the Inventory Manager computer program and the new Michigan taper model.

Nice timber on steep terrain. Long skids.

See sale spec 4.4.1 for information on private property access.

Access may be through private land.

A timber sale contract for this lump sum, sealed bid timber sale will be awarded to the responsible bidder offering the highest sealed bid price. All units of volume listed below were estimated using the Inventory Manager computer program and the new Michigan taper model. Bids must be at or above the following advertised price for each product and species:

<u>PRODUCTS &amp; SPECIES</u>	<u>ESTIMATED UNITS*</u>	<u>ADVERTISED PRICE</u>
<b>Sawtimber</b>		
Basswood	268.9 MBF	\$ 44.00 / MBF
Beech	4.5 MBF	\$ 50.00 / MBF
Black Cherry	4.7 MBF	\$ 134.00 / MBF
Quaking Aspen	6.2 MBF	\$ 41.00 / MBF
Red Maple	47.9 MBF	\$ 78.00 / MBF
Sugar Maple	264.5 MBF	\$ 378.00 / MBF
Yellow Birch	1.7 MBF	\$ 35.00 / MBF
<b>Pulpwood</b>		
Basswood	203 Cords	\$ 7.25 / Cord
Mixed Hardwood	541 Cords	\$ 16.70 / Cord
Quaking Aspen	12 Cords	\$ 16.00 / Cord

\* The total volume is statistically estimated within plus (+) or minus (-) 7.01 percent. There are an estimated 2,228 cords on this timber sale, plus or minus 156 cords at the 95% confidence level. The estimated units are final and not subject to adjustment. Prospective bidders are urged to examine this timber and to make their own estimates of quantity and quality.

### **BOND AND PAYMENT SCHEDULE:**

1. A bond in the amount of \$6,371.00 to insure faithful performance of the conditions of the contract will be deposited by the successful bidder within 21 days of the sale award.
2. Cutting in any sale or unit without the required advance payment would be considered a trespass.
3. Total payment must be paid in advance or according to the following schedule :
  - (a) Ten percent (10%) of the sale value must be paid within 21 days of the sale award.
  - (b) The 10% down payment will be credited towards the first unit cut.
  - (c) Payment for each of the following units must be made before cutting begins in that unit:
 

PAYMENT UNIT NUMBER	PERCENT OF TOTAL SALE VALUE
01	22.6%
02	23.1%
03	18.9%
04	35.4%
4. If no cutting takes place, the 10% down payment will not be refunded.
5. Operations on the contract issued will terminate on 12/31/2024.

### **SALE STATISTICS**

Volumes were calculated in cubic feet using the Michigan taper model. Cubic foot volume includes all wood inside bark for the product indicated. For display purposes, cubic feet were converted to cords and MBF using a simple conversion factor, e.g. 79 cubic feet per cord and 185 cubic feet per MBF. The cubic foot volumes are precise; the cords and MBF volumes are not. Cubic foot volume cannot be directly converted to cords or boards with precision.

## SALE VOLUMES

The total estimated sale volume may not equal the sum of the species/products due to the nature of statistical calculations associated with double sampling methodology.

VOLUME			STATISTICAL RANGE IN CORDS	
TOTAL CUBIC FEET	TOTAL CORDS	PERCENT ERROR	MINIMUM	MAXIMUM
176,015	2,228	7.01%	2,072	2,384

## VDU VOLUMES

A VDU is a Volume Determination Unit. Volumes and their associated statistics are calculated at the VDU level and summarized to the sale level. There is often a one to one relationship between a VDU and a Payment Unit, but not always, depending on the cruise design. Refer to the VDU TO PAYMENT UNIT table.

	VOLUME			RANGE IN CORDS	
VDU	TOTAL CUBIC FEET	TOTAL CORDS	PERCENT ERROR	MINIMUM	MAXIMUM
6	154,326	1,953	7.01%	1,817	2,090
<b>TOTAL:</b>	<b>154,326</b>	<b>1,953</b>		<b>1,817</b>	<b>2,090</b>

## VDU TO PAYMENT UNIT

When a VDU is associated with more than one Payment Unit (PU), the VDU volumes are assigned to the PU based on acres of the VDU within the PU.

VDU	VDU ACRES	PU	PU ACRES
6	131.0	1	29.6
		2	30.3
		3	24.8
		4	46.3
<b>TOTAL:</b>	<b>131.0</b>		<b>131.0</b>

**DESCRIPTION OF TIMBER BY PAYMENT UNIT (PU)**

PU	MARKET GROUP	PRODUCT	QUANTITY	UNIT	ACRES	ADVERTISE PRICE
1	Basswood	Sawtimber	60.8	MBF	29.6	\$28,793.00
	Beech		1.0	MBF		
	Black Cherry		1.1	MBF		
	Quaking Aspen		1.4	MBF		
	Red Maple		10.8	MBF		
	Sugar Maple		59.8	MBF		
	Yellow Birch		0.4	MBF		
	Basswood		Pulpwood	46		
	Mixed Hardwood	121		Cords		
	<i>Beech</i>	2		<i>Cords</i>		
	<i>Red Maple</i>	20		<i>Cords</i>		
	<i>Sugar Maple</i>	99		<i>Cords</i>		
	Quaking Aspen		3	Cords		
2	Basswood	Sawtimber	62.2	MBF	30.3	\$29,481.25
	Beech		1.0	MBF		
	Black Cherry		1.1	MBF		
	Quaking Aspen		1.4	MBF		
	Red Maple		11.1	MBF		
	Sugar Maple		61.2	MBF		
	Yellow Birch		0.4	MBF		
	Basswood		Pulpwood	47		
	Mixed Hardwood	125		Cords		
	<i>Beech</i>	2		<i>Cords</i>		
	<i>Red Maple</i>	21		<i>Cords</i>		
	<i>Sugar Maple</i>	102		<i>Cords</i>		
	Quaking Aspen		3	Cords		
3	Basswood	Sawtimber	50.9	MBF	24.8	\$24,123.40
	Beech		0.9	MBF		
	Black Cherry		0.9	MBF		
	Quaking Aspen		1.2	MBF		
	Red Maple		9.1	MBF		
	Sugar Maple		50.1	MBF		
	Yellow Birch		0.3	MBF		
	Basswood		Pulpwood	38		
	Mixed Hardwood	102		Cords		
	<i>Beech</i>	2		<i>Cords</i>		
	<i>Red Maple</i>	17		<i>Cords</i>		
	<i>Sugar Maple</i>	83		<i>Cords</i>		
	Quaking Aspen		2	Cords		
4	Basswood	Sawtimber	95.0	MBF	46.3	\$45,018.10
	Beech		1.6	MBF		
	Black Cherry		1.6	MBF		
	Quaking Aspen		2.2	MBF		
	Red Maple		16.9	MBF		
	Sugar Maple		93.4	MBF		
	Yellow Birch		0.6	MBF		
	Basswood		Pulpwood	72		
	Mixed Hardwood	193		Cords		
	<i>Beech</i>	4		<i>Cords</i>		
	<i>Black Cherry</i>	2		<i>Cords</i>		
	<i>Red Maple</i>	31		<i>Cords</i>		
	<i>Sugar Maple</i>	155		<i>Cords</i>		
	<i>Yellow Birch</i>	1		<i>Cords</i>		
	Quaking Aspen		4	Cords		
TOTAL:			598.4	MBF		

TOTAL:	756 Cords
--------	-----------



# Sale Specific Conditions & Requirements

**Sale Name: Do the Evolution HDWDS**

**Sale Number: 52-016-21 Seq#: 1**

## 1 - Sale Area

### 1.2 - Boundaries

#### 1.2.1 - Painted boundaries (9/19)

The sale boundary and Payment Unit boundaries are marked and identified by blue, red, and yellow paint. Exterior sale boundary lines against private property are marked with blue paint. Exterior sale boundary lines against state are marked with red paint. Interior Payment Unit boundaries are marked with yellow paint. Areas that are too steep to operate equipment were left unmarked during sale prep. The painted boundary line trees are not Included Timber and are to be protected unless marked with orange paint. Yellow painted trees designating an interior Payment Unit boundary are only to be cut when all surrounding Payment Units have been paid.

## 2 - Timber Specifications

### 2.1 - Included Timber

#### 2.1.3 - Cut tree marked unit(s) (12/08)

Within Payment Unit(s) 1-4, all trees are designated for cutting when marked with orange paint above and below stump height, regardless of merchantability. Also, regeneration gaps are marked with timber teal paint (Chevron faces inside the gap, a slash faces out.) Inside these gaps cut all trees 2 inches and up at DBH.

#### 2.1.11 - Description of timber note (2/04)

Note that Mixed Hardwood pulp includes beech, sugar maple, red maple, yellow birch, and black cherry.

### 2.2 - Utilization

#### 2.2.4 - Skidding length (2/14)

Skidding of lengths over 17 feet is permissible if the timber sale administrator approves the method and machinery used. If at any point damage exceeds specification 3.4.1, all the remaining wood must be skid in lengths less than 17 feet.

## 3 - Payments

### 3.3 - Pre-measured Sales

#### 3.3.4 - Dividing payment units (7/14)

Payment Unit(s) may be divided at the request of the Purchaser and upon approval of the Unit Manager. Dividing Payment Units is a contract modification which requires a Timber Sale Contract Amendment. There will be only one division per Payment Unit.

### 3.4 - Damaged Timber

#### 3.4.1 - Damaged timber (7/16)

General Condition and Requirement 3.4 Damaged Timber, defines liquidated damages for undesignated live merchantable trees which are cut or injured. In addition, extreme care should be taken to avoid damage to tree seedlings and saplings. Within the Sale Area, if more than 50% of the tree seedlings or saplings (1/4" to 4.5" DBH) within a specified portion of the Sale Area are damaged, liquidated damages will be assessed at \$1,000 per acre for all acreage within that specified portion of the Sale Area that was damaged.

No damage is acceptable to undesignated live merchantable trees. Within the Sale Area, if more than 10 % of trees (> 4.5" DBH) within a specified area of the sale are damaged, liquidated damages will be assessed for all trees damaged. Rates will be in accordance with General Condition and Requirement 3.4 Damaged Timber.

## 4 - Transportation

### 4.1 - Construction

#### 4.1.3 - Slash and earthen piles (8/04)

Piles or windrows of earth along roads and landings that have been widened or constructed shall be leveled. Slash from road

maintenance or construction, including stumps, shall be dispersed throughout the sale.

#### 4.1.4 - Timber removed for construction (12/09)

Trees cut or damaged in the process of pre-approved road, landing or skid trail construction will be decked in an area separate from other Designated Timber and not removed until measured by the sale administrator. Payment will be made at the specified Purchase Unit Price.

#### 4.1.6 - Road construction (1/09)

Construction of new roads or improvements of existing roads shall be done in such a way as to minimize the environmental and visual impacts. Merchantable trees shall be cut and utilized unless otherwise directed. Non-merchantable trees shall be severed and laid flat on the ground. Slash shall be scattered, and not left in windrows and kept a minimum of 10 feet back from the road edge. Stumps shall be set upright, not left on edge, and be moved at least 10 feet away from the road edge. Disturbed soil shall be feathered into the woods and not left in berms or windrows.

#### 4.1.7 - Road closure (10/11)

All new roads built into the sale must be blocked to vehicle traffic upon completion of the sale. Overgrown roads that are reopened shall be considered new roads. In general, this will require constructing a four (4') foot high berm of stumps and logs covered with earth. Stumps and brush must be placed along the remainder of the trail. These roads must be rendered impassable to cars and trucks. Contact the sale administrator for specific details of design and placement.

### 4.2 - Maintenance

#### 4.2.4 - Grading (10/16)

For completion of the sale, state forest roads must be graded. In general, this will require a road grader or bulldozer to shape up the roads after forest products have been hauled off site. This includes cleaning of drainage areas, grading, crowning, and filling with gravel, if necessary. The grading equipment to be used must be approved by the Unit Manager or his/her representative.

#### 4.2.5 - Two wheel drive condition (2/04)

All existing trail roads on and adjacent to the sale area must be passable by two-wheel drive traffic for the duration of the sale.

### 4.4 - Access

#### 4.4.1 - Private property access (3/11)

Permission for access across private land is the responsibility of the Purchaser. Should the Purchaser desire to cross private land, a copy of the written permission from the private land-owner may be required by the DNR.

## 5 - Operations

### 5.2 - Conduct of Operations

#### 5.2.1 - Slash

##### 5.2.1.8 - Slash height (12/08)

No slash or tree tops may exceed 36 inches in height.

##### 5.2.1.13 - Dispose of slash as directed (12/05)

Slash is to be disposed of as directed by the sale administrator.

#### 5.2.2 - Hazard Trees/Snags

##### 5.2.2.1 - Den trees (10/16)

Obvious hollow and/or den trees shall be protected and left standing unless they are a safety hazard.

#### 5.2.3 - Operating Restrictions

##### 5.2.3.3 - Bark slippage restriction (3/09)

Within Payment Unit(s) 1-4, unless changed by written agreement, cutting and skidding are not permitted during the period of April 15 to July 15. This restriction is because of bark slippage.

##### 5.2.32 - Decking/landing restoration (9/13)

All decking and landing areas must have the surface area restored to a condition equal to or better than before. This is to

ensure the proper regeneration of the stand. Wood debris, chips, and "cookies" from trimmings must be removed or scattered away from landing and loading areas and may not be windrowed on the edge.

#### 5.2.38 - No decking against live trees (2/04)

Cut products may not be decked against unmarked or designated leave trees.

### 5.4 - Soil Protection

#### 5.4.1 - Rutting restriction, general (7/16)

Operations are to cease immediately if equipment and weather conditions result in rutting of roads and/or skid trails which is 12 inches or greater in depth and 50 feet in length. The Unit Manager or his/her representative may restrict hauling and/or skidding if ruts exceed the specified depth. With the Unit Manager or his/her representative's approval, the Purchaser may return to the area when the risk of rutting has decreased.

#### 5.4.2 - Skid trails (2/04)

Skid trails up and down slopes should be avoided. If however this is unavoidable, these trails will be left in a non-erodible condition using water bars, logs, and slash. Placing of slash on these skid trails while logging is ongoing may alleviate need for any further action. At the direction of the sale administrator, seed, fertilizer, and mulch may also be required.

#### 5.4.3 - Erosion control (12/08)

Skid trails or haul roads may require erosion control structures or berms per direction of the Unit Manager or his/her representative.

#### 5.4.4 - Slope protection (9/19)

Skid trails and roads on slopes shall be water barred with slash, stumps, and/or clean straw bales native to the area as soon as use is complete to prevent erosion.

### 5.8 - Protection of Endangered Species

#### 5.8.5 - Protection of raptor nests (3/13)

All trees with raptor nests will be protected if found during harvesting operations. Notification will be made to the Unit Manager or his/her representative who will notify the Wildlife Biologist so an on-site evaluation and recommendation can be made, if necessary.

## 6 - Safety and Fire Prevention

### 6.2 - Signing

#### 6.2.1 - Road posting (10/20)

The Purchaser is responsible for posting and maintaining caution signs on M-66 prior to beginning operations. The road must be posted at appropriate distances from the Sale Area to warn of logging activity and truck traffic. Signs must be removed when harvest operations are suspended or completed. The Purchaser will provide these signs.



# TIMBER SALE MAP

This information provided by authority of Part 525, 1994 PA 451, as amended.

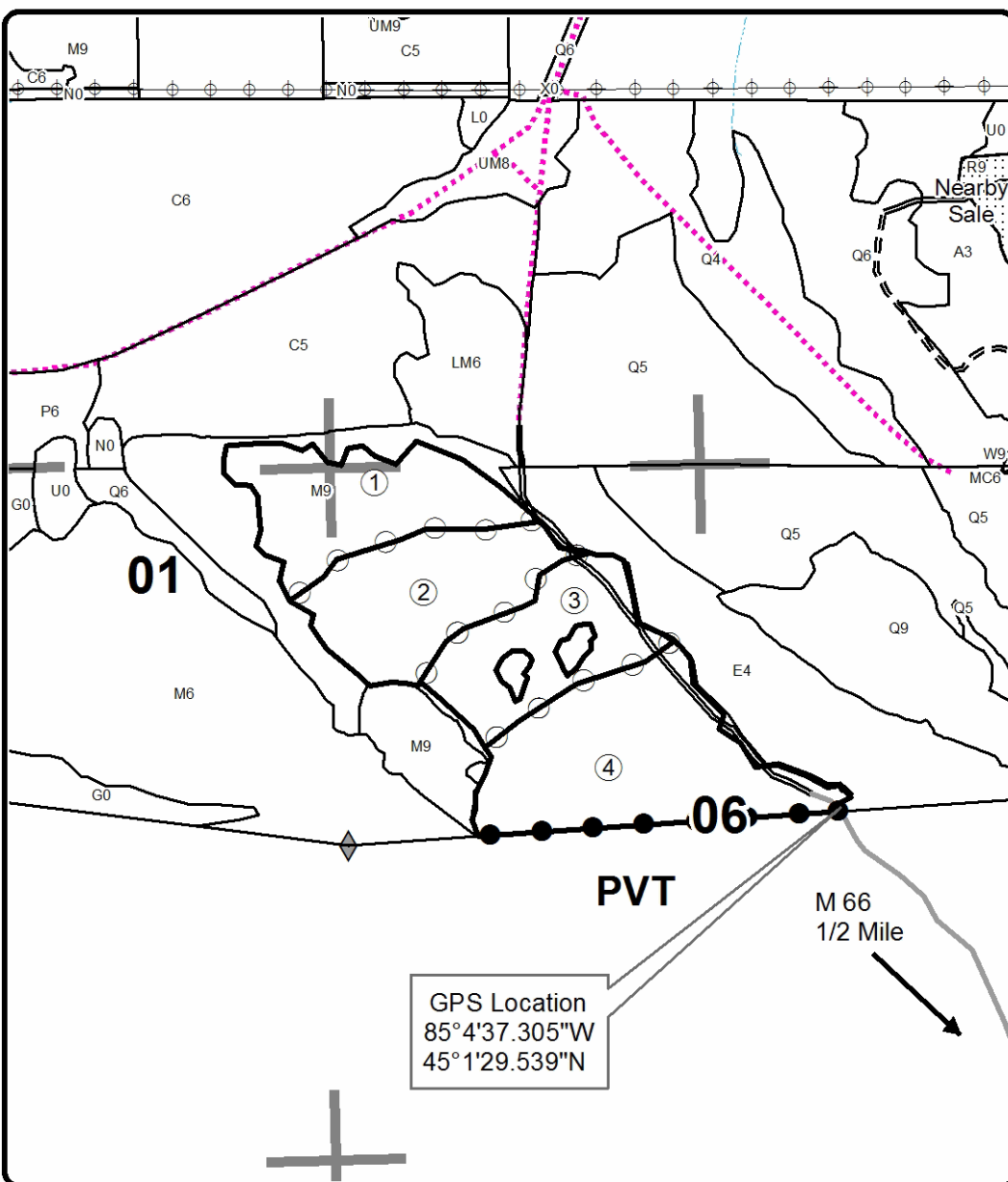
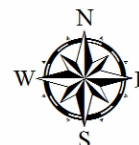
Forest Management Unit Gaylord	County Antrim	Mapped By Zach Crew	Date 07/28/2021	Page 1	of 1
Township 30N, 31N	Range 06W, 07W	Section(s) and Subdivision(s) 6 - NW, SWNE; 1 - E1/2NE; 31 - SESW, SWSE	Scale 1:15,840		
Cruised By Zach Crew					

Cover Type				Density	
A = Aspen	H = Hemlock	N = Marsh	U = Upland Brush	0 = Non Stocked	5 = Pole Timber Medium
B = Paper Birch	J = Jack Pine	O = Oak	UM = Upland Mixed	1 = Seedling Sapling Poor	6 = Pole Timber Well
C = Cedar	L = Lowland Brush	P = Lowland Poplar	V = Bog or Marsh	2 = Seedling Sapling Medium	7 = Saw Timber Poor
D = Treed Bog	LM = Lowland Mixed	Q = Mixed Swamp Conifer	W = White Pine	3 = Seedling Sapling Well	8 = Saw Timber Medium
E = Swamp Hdwoods	M = Mpl, Bch, Brch	R = Red Pine	X = Non Stocked	4 = Pole Timber Poor	9 = Saw Timber Well
F = Spruce Fir	MC = Mixed Conifer	S = Black Spruce	Z = Water		
G = Grass	MD = Mixed Deciduous	T = Tamarack			

PU	Acres	PU	Acres
1	29.6	4	46.3
2	30.3		
3	24.8		

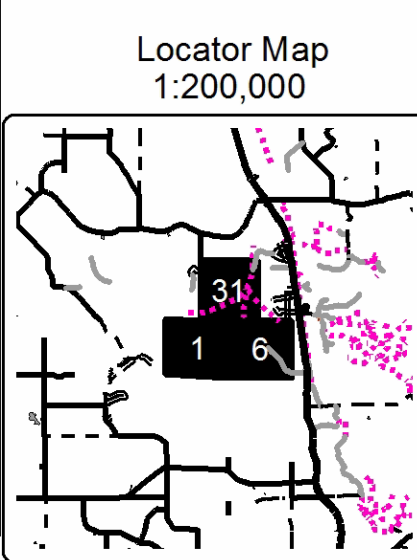
## Do the Evolution HDWDS

Compartment 054  
131 Acres



### Legend

- Stand Boundaries
- Field Grade Corners
- Secondary Forest Road
- Forest Access Route
- Private
- Temporary Management Access
- Intermittent Stream
- Perennial River
- Retention Area
- Against State (Red)
- Payment Unit (Yellow)
- Private Line (Blue)
- Nearby Timber Sales
- Section Corners



Thundering Hardwoods (52-014-21)

T33N, R05W, SEC. 15; T33N, R05W, SEC. 22; T33N, R05W, SEC. 23; T33N,

In response to the notice of sale to be held 9:00 a.m. (local time) on November 3, 2021, I am hereby submitting my sealed bid (firm offer) for the following forest products to be cut. Bids for individual species must be at or above the advertised price. All non-responsive bid forms may be rejected.

<u>PRODUCTS &amp; SPECIES</u>	<u>ESTIMATED VOLUME*</u>	<u>ADVERTISED PRICE</u>	<u>BID PRICE/UNIT</u>
<b>Sawtimber</b>			
B. T. Aspen	137.0 MBF	\$ 37.00/MBF	\$ _____
Basswood	127.0 MBF	\$ 40.00/MBF	\$ _____
Beech	33.5 MBF	\$ 45.00/MBF	\$ _____
Red Maple	12.2 MBF	\$ 71.00/MBF	\$ _____
Red Oak	29.5 MBF	\$ 80.00/MBF	\$ _____
Sugar Maple	241.8 MBF	\$ 344.00/MBF	\$ _____
<b>Pulpwood</b>			
B. T. Aspen	388 Cords	\$ 14.55/Cord	\$ _____
Basswood	196 Cords	\$ 6.60/Cord	\$ _____
Mixed Hardwood	1,611 Cords	\$ 15.15/Cord	\$ _____
Red Oak	82 Cords	\$ 8.25/Cord	\$ _____

\*The volumes are statistically estimated within plus (+) or minus (-) 4.83 percent at 95% confidence level. These estimated volumes are final and not subject to adjustment. Prospective bidders are urged to examine this timber and to make their own estimates of quantity and quality.

I understand that any or all bids may be rejected. All bids must be signed and all bid items must be bid or the bid form may be rejected. I also understand that consideration and awarding a contract will be based upon my past performance and ability to complete the contract based upon equipment and staffing subject to my control.

FEDERAL ID: \_\_\_\_\_ - \_\_\_\_\_ or SOCIAL SECURITY NUMBER: \_\_\_\_\_ - \_\_\_\_\_ - \_\_\_\_\_

Company or individual bidding: \_\_\_\_\_

Company representative's name: \_\_\_\_\_

Address: \_\_\_\_\_

City: \_\_\_\_\_ State: \_\_\_\_\_ Zip: \_\_\_\_\_

IF AVAILABLE, PLEASE PLACE THE PERSONALIZED LABEL FROM YOUR PROSPECTUS IN THE ABOVE BOX.

Individual or company representative's signature: \_\_\_\_\_ Date: \_\_\_\_\_

Phone number : \_\_\_\_\_ Email (optional): \_\_\_\_\_

**THE WINNING BIDDER MUST COMPLETE THE VERIFICATION OF WORKER'S DISABILITY COMPENSATION ACT COMPLIANCE (ON REVERSE SIDE IF DOUBLE SIDED) WITHIN 21 DAYS OF SALE AWARD DATE**



FOR DEPARTMENT USE ONLY	
Sale Number (XX - XXX - XX - XX)	
Forest Management Unit:	

# TIMBER SALE VERIFICATION OF WORKER'S DISABILITY COMPENSATION ACT COMPLIANCE

As required by Act 317, P.A. 1969 (Worker's Compensation) and  
Part 5 of Act 451 of 1994, as amended.

## VERIFICATION OF WORKER'S DISABILITY COMPENSATION ACT COMPLIANCE

- This verification must be completed and submitted within 21 days of contract award and prior to the issuance of the timber sale contract.
- In addition, if boxes 2B or 2C are checked, then Notice of Exclusion or Certificate of Insurance must be submitted within twenty-one (21) days of the contract award and prior to the issuance of the timber sale contract.
- All information must be typed or printed except for written signatures.

Please Check Appropriate Categories:

1. My business is organized as (you **must** check one of the boxes below):
  - A.  Sole Proprietorship (individual)
  - B.  Partnership
  - C.  Corporation
2. You **must** check one of the boxes below:
  - A.  I certify my business is a sole proprietorship and it has no employees but the sole proprietor. I am not subject to the Worker's Compensation Laws.
  - B.  I certify my business has satisfied its obligation to the Worker's Compensation Act through the use of an approved Notice of Exclusion (BWC-337, Rev. 5/96). I will provide a copy of the Notice of Exclusion within 21 days of the contract award. (For questions or a copy of the BWC-337, please call the Worker's Compensation Bureau at 517-322-1195).
  - C.  I certify my business has a Worker's Compensation Policy. I will provide an original Certificate of Insurance within twenty-one (21) days of the contract award.
3. If you have checked item 2(A) or 2(B), you **must** indicate the number of **both** full-time and part-time employees, other than yourself, including family members and active partners (if none, you must enter "0").

\_\_\_\_\_ Full-time Employees

\_\_\_\_\_ Part-time Employees

Name of Business		Federal ID (or) Social Security No.	
Address		Telephone (       )	
City	State	ZIP	

*I hereby certify that the above information is true and correct. I agree to notify the Michigan DNR of any changes that occur in factors affecting my coverage during any of my present and future operations.*

\_\_\_\_\_  
Signature of Owner or Authorized Representative

\_\_\_\_\_  
Title

\_\_\_\_\_  
Date

Please complete the "SEALED BID" information on the next page

Hawkeye Mix (52-015-21)

T33N, R05W, SEC. 26; T33N, R05W, SEC. 27; T33N, R05W, SEC. 34; Charlevoix

In response to the notice of sale to be held 9:00 a.m. (local time) on November 3, 2021, I am hereby submitting my sealed bid (firm offer) for the following forest products to be cut. Bids for individual species must be at or above the advertised price. All non-responsive bid forms may be rejected.

<u>PRODUCTS &amp; SPECIES</u>	<u>ESTIMATED VOLUME*</u>	<u>ADVERTISED PRICE</u>	<u>BID PRICE/UNIT</u>
<b>Sawtimber</b>			
Basswood	97.3 MBF	\$ 44.00/MBF	\$ _____
Beech	64.1 MBF	\$ 50.00/MBF	\$ _____
Mixed Aspen	168.6 MBF	\$ 41.00/MBF	\$ _____
Red Maple	31.6 MBF	\$ 78.00/MBF	\$ _____
Sugar Maple	151.8 MBF	\$ 378.00/MBF	\$ _____
<b>Pulpwood</b>			
Basswood	265 Cords	\$ 7.25/Cord	\$ _____
Mixed Aspen	834 Cords	\$ 16.00/Cord	\$ _____
Mixed Hardwood	1,261 Cords	\$ 16.70/Cord	\$ _____
Red Oak	27 Cords	\$ 9.05/Cord	\$ _____

\*The volumes are statistically estimated within plus (+) or minus (-) 5.09 percent at 95% confidence level. These estimated volumes are final and not subject to adjustment. Prospective bidders are urged to examine this timber and to make their own estimates of quantity and quality.

I understand that any or all bids may be rejected. All bids must be signed and all bid items must be bid or the bid form may be rejected. I also understand that consideration and awarding a contract will be based upon my past performance and ability to complete the contract based upon equipment and staffing subject to my control.

FEDERAL ID: \_\_\_\_ - \_\_\_\_ - \_\_\_\_ or SOCIAL SECURITY NUMBER: \_\_\_\_ - \_\_\_\_ - \_\_\_\_

Company or individual bidding: \_\_\_\_\_

Company representative's name: \_\_\_\_\_

Address: \_\_\_\_\_

City: \_\_\_\_\_ State: \_\_\_\_\_ Zip: \_\_\_\_\_

IF AVAILABLE, PLEASE PLACE THE PERSONALIZED LABEL FROM YOUR PROSPECTUS IN THE ABOVE BOX.

Individual or company representative's signature: \_\_\_\_\_ Date: \_\_\_\_\_

Phone number : \_\_\_\_\_ Email (optional): \_\_\_\_\_

**THE WINNING BIDDER MUST COMPLETE THE VERIFICATION OF WORKER'S DISABILITY COMPENSATION ACT COMPLIANCE (ON REVERSE SIDE IF DOUBLE SIDED) WITHIN 21 DAYS OF SALE AWARD DATE**



<b>FOR DEPARTMENT USE ONLY</b>
Sale Number (XX - XXX - XX - XX)
Forest Management Unit:

## TIMBER SALE VERIFICATION OF WORKER'S DISABILITY COMPENSATION ACT COMPLIANCE

*As required by Act 317, P.A. 1969 (Worker's Compensation) and  
Part 5 of Act 451 of 1994, as amended.*

### VERIFICATION OF WORKER'S DISABILITY COMPENSATION ACT COMPLIANCE

- This verification must be completed and submitted within 21 days of contract award and prior to the issuance of the timber sale contract.
- In addition, if boxes 2B or 2C are checked, then Notice of Exclusion or Certificate of Insurance must be submitted within twenty-one (21) days of the contract award and prior to the issuance of the timber sale contract.
- All information must be typed or printed except for written signatures.

Please Check Appropriate Categories:

1. My business is organized as (you **must** check one of the boxes below):
  - A.  Sole Proprietorship (individual)
  - B.  Partnership
  - C.  Corporation
2. You **must** check one of the boxes below:
  - A.  I certify my business is a sole proprietorship and it has no employees but the sole proprietor. I am not subject to the Worker's Compensation Laws.
  - B.  I certify my business has satisfied its obligation to the Worker's Compensation Act through the use of an approved Notice of Exclusion (BWC-337, Rev. 5/96). I will provide a copy of the Notice of Exclusion within 21 days of the contract award. (For questions or a copy of the BWC-337, please call the Worker's Compensation Bureau at 517-322-1195).
  - C.  I certify my business has a Worker's Compensation Policy. I will provide an original Certificate of Insurance within twenty-one (21) days of the contract award.
3. If you have checked item 2(A) or 2(B), you **must** indicate the number of **both** full-time and part-time employees, other than yourself, including family members and active partners (if none, you must enter "0").

\_\_\_\_\_ Full-time Employees

\_\_\_\_\_ Part-time Employees

Name of Business		Federal ID (or) Social Security No.	
Address		Telephone (       )	
City	State	ZIP	

*I hereby certify that the above information is true and correct. I agree to notify the Michigan DNR of any changes that occur in factors affecting my coverage during any of my present and future operations.*

\_\_\_\_\_  
Signature of Owner or Authorized Representative

\_\_\_\_\_  
Title

\_\_\_\_\_  
Date

**Please complete the "SEALED BID" information on the next page**



Do the Evolution HDWDS (52-016-21)  
T30N, R06W, SEC. 6; T30N, R07W, SEC. 1; T31N, R06W, SEC. 31; Antrim

In response to the notice of sale to be held 9:00 a.m. (local time) on November 3, 2021, I am hereby submitting my sealed bid (firm offer) for the following forest products to be cut. Bids for individual species must be at or above the advertised price. All non-responsive bid forms may be rejected.

<u>PRODUCTS &amp; SPECIES</u>	<u>ESTIMATED VOLUME*</u>	<u>ADVERTISED PRICE</u>	<u>BID PRICE/UNIT</u>
<b>Sawtimber</b>			
Basswood	268.9 MBF	\$ 44.00/MBF	\$ _____
Beech	4.5 MBF	\$ 50.00/MBF	\$ _____
Black Cherry	4.7 MBF	\$ 134.00/MBF	\$ _____
Quaking Aspen	6.2 MBF	\$ 41.00/MBF	\$ _____
Red Maple	47.9 MBF	\$ 78.00/MBF	\$ _____
Sugar Maple	264.5 MBF	\$ 378.00/MBF	\$ _____
Yellow Birch	1.7 MBF	\$ 35.00/MBF	\$ _____
<b>Pulpwood</b>			
Basswood	203 Cords	\$ 7.25/Cord	\$ _____
Mixed Hardwood	541 Cords	\$ 16.70/Cord	\$ _____
Quaking Aspen	12 Cords	\$ 16.00/Cord	\$ _____

\*The volumes are statistically estimated within plus (+) or minus (-) 7.01 percent at 95% confidence level. These estimated volumes are final and not subject to adjustment. Prospective bidders are urged to examine this timber and to make their own estimates of quantity and quality.

I understand that any or all bids may be rejected. All bids must be signed and all bid items must be bid or the bid form may be rejected. I also understand that consideration and awarding a contract will be based upon my past performance and ability to complete the contract based upon equipment and staffing subject to my control.

FEDERAL ID: \_\_\_\_\_ - \_\_\_\_\_ or SOCIAL SECURITY NUMBER: \_\_\_\_\_ - \_\_\_\_\_ - \_\_\_\_\_

Company or individual bidding: \_\_\_\_\_

Company representative's name: \_\_\_\_\_

Address: \_\_\_\_\_

City: \_\_\_\_\_ State: \_\_\_\_\_ Zip: \_\_\_\_\_

IF AVAILABLE, PLEASE PLACE THE PERSONALIZED LABEL FROM YOUR PROSPECTUS IN THE ABOVE BOX.

Individual or company representative's signature: \_\_\_\_\_ Date: \_\_\_\_\_

Phone number : \_\_\_\_\_ Email (optional): \_\_\_\_\_

**THE WINNING BIDDER MUST COMPLETE THE VERIFICATION OF WORKER'S DISABILITY COMPENSATION ACT COMPLIANCE (ON REVERSE SIDE IF DOUBLE SIDED) WITHIN 21 DAYS OF SALE AWARD DATE**

