



**DEPARTMENT OF NATURAL RESOURCES
STATE OF MICHIGAN**

TIMBER SALE PROSPECTUS #7030

SCHEDULED SALE DATE AND TIME: 9:00 a.m. (local time) on February 25, 2022.

LOCATION: GAYLORD MGMT UNIT, 1732 WEST M 32, GAYLORD, MI 49735.

PROSPECTUS NOTE: All bid openings for the Gaylord Management Unit (Gaylord Field Office and Indian River Field Office) will be held at the Gaylord Field Office regardless of sale location within the unit. All payments and contract executions will now be handled through the Gaylord Field Office. The Indian River Field Office will no longer accept payments or hard paper copies of timber sale bids. Payments for all contracts, use permits, bonds, etc. should be sent to the Gaylord Field Office.

The bidder is advised to inspect the sale area and review the location, estimated volumes, operating costs and contract terms of proposed sales. Please be aware that some landowners may request 60 days or more notice for access across their land.

Bigfoot Red Pine (52-105-21) / T36N, R05W, SEC. 19, SESE.

T36N, R05W, SEC. 29, NWNW.

T36N, R05W, SEC. 30, NENE.

T36N, R05W, SEC. 31, E1/2NW, E1/2SW, W1/2SE.

Emmet County, Advertised Price \$96,996.95, 69.3 Acres, Red Pine, Hardwood.

SALE NOTE: All units of volume listed for this sale were estimated using the Inventory Manager computer program and the new Michigan taper model.

See sale spec 5.2.3.14 for operating restrictions due to Heterobasidion Root Disease (HRD)

Tea Kettle Mix (52-107-21) / T36N, R05W, SEC. 20, S1/2NW, N1/2SW.

T36N, R05W, SEC. 31, NENW.

Emmet County, Advertised Price \$73,746.60, 39.4 Acres, Hardwood, Aspen.

SALE NOTE: All units of volume listed for this sale were estimated using the Inventory Manager computer program and the new Michigan taper model.

- See sale spec 5.2.40 for information on hiking/biking trail protection requirements.

- The snowmobile trail provides access to Payment Unit 2, see sale spec 5.2.41 for information on use and protection.

Coffee Pot Mix (52-116-21) / T36N, R01W, SEC. 20, SESW.

T36N, R01W, SEC. 28, SW.

T36N, R01W, SEC. 33, W1/2NW.

Cheboygan County, Advertised Price \$59,342.15, 105.6 Acres, Aspen, White Pine.

SALE NOTE: All units of volume listed for this sale were estimated using the Inventory Manager computer program and the new Michigan taper model.

- See sale spec 4.3.1 for MDOT requirements.
- See sale spec 2.1.1 for harvest and retention requirements.
- See sale spec 5.2.3.4 for restriction due to oak wilt.
- See sale spec 6.2.3 for recreational trail requirements.

Microwave Mixed Pine (52-117-21) / T36N, R01W, SEC. 28, S1/2NW,SWNE,NWSW,NWSE.

Cheboygan County, Advertised Price \$57,099.30, 62.0 Acres, Red Pine, Jack Pine.

SALE NOTE: All units of volume listed for this sale were estimated using the Inventory Manager computer program and the new Michigan taper model.

- See sale spec 5.2.3.4 for information on oak wilt restrictions.
- See sale spec 2.2.3 for information on stump height requirements.
- See sale spec 2.2.2 for information on chipping requirements.
- See sale spec 5.2.40 for information on trail protection requirements.

BID INSTRUCTIONS (VER. 07/02/2018):

1. Scheduled Bid Location, Date, and Time (2/11)

Bids must be received by the Unit Manager, GAYLORD OFFICE, 1732 West M 32, Gaylord, MI 49735, no later than 9:00 a.m. (local time) on February 25, 2022. For further information concerning this sale, contact Lucas Merrick at 989-732-3541 extension 5440.

2. Bidder's Qualifications (5/16)

Purchaser shall obtain workers compensation insurance to cover claims under Michigan's Worker's Disability Compensation Act of 1969 or similar employee benefit act of any other state applicable to an employee. If all or part of a timber sale was prepared by a private contractor, the contractor and that contractor's company are not permitted to bid on the timber sale contract. Bids will not be accepted from individuals or companies appearing on the DNR/FRD No-Bid List. This list contains the names of purchasers who previously failed to execute a contract within 21-days or who have a history of poor performance.

3. Preparation of Sealed Bids (5/16)

Bid Forms may be completed online thru Michigan DNR Timber Sale Online Bidding (OLB) at www.michigan.gov/timberbidding or by completing the hardcopy Bid Form found in the Timber Sale Prospectus. Hardcopy Bid Forms shall be manually signed in ink. Registration in OLB is considered your 'signature' for all bids submitted thru that system. Bid prices must be entered for each species and product in the Bid Price column for all material subject to bidding and all fill-in blanks must be completed. If erasures or other changes appear on the hardcopy Bid Form, each erasure or change must be initialed by the person signing the bid.

4. Submission of Sealed Bids (5/16)

Bid forms may be obtained from the Unit Manager or thru OLB. Bids may be submitted hardcopy or thru OLB. All hardcopy bids must be submitted on the bid form and in an envelope clearly identified as described in this section. NOTE: Only one bid form per bid envelope. Sealed bids must be submitted to the Unit office designated in the prospectus and must be submitted at or prior to the time established in the prospectus. The envelope should show on the outside (a) the sale name or number and (b) the date and time of bid opening, as shown in the prospectus. Bids received after the time specified in the sale prospectus are late bids and will be rejected.

It is possible for a bidder to submit multiple bids on a single sale. For example, a bid may be submitted hardcopy and a bid may be submitted thru OLB. Or, two bidders from the same company could both submit bids on the same sale. If this were to happen, the State would accept all bids received and award the contract accordingly. All bidding and contractual requirements would apply to all bids received.

5. Public Opening of Sealed Bids (7/16)

If conditions permit, the sealed bids will be publicly opened and posted at the time and place set in the prospectus.

If a bidder, present at a bid opening, has submitted bids on more than one sale, that bidder may withdraw their unopened bid envelopes or announce the withdrawal of their online bid after being declared the successful bidder on one sale.

6. Award of Contract (1/11)

Award of the contract will be made to the Bidder whose bid, conforming to the prospectus, is most advantageous to the State of Michigan on the basis of total value at rates bid for the estimated quantities. The State reserves the right to reject any bid or waive any minor irregularity in bids received. A written award mailed (or otherwise furnished) to the successful Bidder shall be deemed to result in a binding contract without further action by either party.

7. Down Payment (1/11)

The Bidder to whom award is made must make a down payment within 21 days of the sale award. The amount of the down payment will be calculated as shown in the Bond and Payment Schedule of this prospectus. Only cash may be used to meet this requirement.

8. Performance Security (1/11)

As guarantee of faithful performance, a cash bond, certificate of deposit, surety bond or irrevocable letter of credit (LOC) is required within 21 days of the sale award. The amount of the performance security is shown in the Bond and

Payment Schedule of this prospectus. If an LOC or surety is used, the coverage must extend for at least 6 months beyond the contract expiration.

9. Timber Sale Contract (7/18)

Additional conditions and requirements common to all timber sales are listed on the timber sale contract (R4031) and are available on line at www.michigan.gov/timber. Contact the Unit Manager for additional information or a sample contract. Within 21 days of the date of the award letter, the bidder must sign the contract and provide the required down payment, performance security, and verification of worker's disability compensation. The down payment and performance security shall be in accordance with the provisions of the timber sale contract, in the sums stated in this prospectus. If these actions are not taken, then the Bidder, the Bidder's corporation, and the corporation's principals may not be permitted to bid on State timber sales for a period of 3 months after the first offense, 6 months after the second offense, and 1 year after the third offense. An offense will only be counted against the Bidder for 5 years. In addition, the Bidder certifies that if awarded this contract, the Bidder will complete the timber sale contract in accordance with its terms and any modifications thereof including requirements to purchase, cut, and remove the included timber by the expiration date.

Payment Unit values in the State Forest Timber Sale Contract are calculated based on the advertised value of the Payment Unit as a percentage of the total advertised value of the contract. The advertised value of each Payment Unit is given in the Description of Timber by Payment Unit table on the Timber Sale Information page. For example, if the value of Payment Unit 1 is advertised as \$1,500 and the total Timber Sale value is advertised as \$10,000, the contract price for Payment Unit 1 will be 15% of the total bid price ($\$1,500/\$10,000 * 100$).

10. Disclaimer of Estimates and Bidder's Warranty of Inspection (7/16)

Before submitting this bid, the Bidder is advised and cautioned to inspect the sale area, review the requirements of the sale contract, and take other steps as may be reasonably necessary to ascertain the location, estimated volumes, construction estimates, and operating costs of the proposed sale. Failure to do so will not relieve the Bidder from responsibility for completing the contract.

The Bidder warrants that this bid is submitted solely on the basis of the Bidder's examination and inspection of the quality and quantity of the timber offered for sale and the Bidder's opinion of the value thereof and the costs of recovery. No reliance should be placed on the State of Michigan's estimates of timber quality, quantity or costs of recovery. Bidder further acknowledges that the State of Michigan: (i) expressly disclaims any warranty of fitness of timber for any purpose; (ii) offers this timber as is without any warranty of quality (merchantability) or quantity and (iii) expressly disclaims any warranty as to the quantity or quality of timber sold.

11. Certification and Chain-of-Custody (10/14)

Unless otherwise indicated in the contract under section 7 – Other Conditions of the Sale Specific Conditions & Requirements, the area encompassed by this timber sale is certified to the standards of the Forest Stewardship Council (FSC) - Certificate #SCS-FM/COC-00090N and the Sustainable Forestry Initiative (SFI) - Certificate #NSF-SFIS-5Y031-SF5. Forest products from this sale may be delivered to the mill as "FSC 100% and / or SFI certified" as long as the contractor hauling the forest products is chain-of-custody (COC) certified or covered under a COC certificate from the destination mill. The purchaser is responsible for maintaining COC after leaving the sale area.

12. Good Neighbor Authority (GNA) Requirements (7/16)

If the name of this timber sales contains the acronym GNA, it is authorized by the Good Neighbor Authority (GNA) and covered by various agreements between the U.S. Forest Service and the State. The timber sale occurs on federal land and the following conditions apply:

GNA contracts on US Forest Service land will not be awarded to purchasers on the Federal list of excluded parties. The System for Award Management (SAM) will be checked for active excluded parties prior to award of contract. In addition, the Bidder to whom award is made must complete an Assurance Regarding Felony Conviction or Tax Delinquent Status for Corporate Applicants (AD-3031).

13. Good Neighbor Authority (GNA) Requirements, con't (9/16)

Bidder certifies, by signing this bid form, that to the best of Bidder's knowledge that the following representations are accurate and complete.

- a. That the Bidder and its principals are not presently debarred, suspended, proposed for debarment, declared ineligible, or voluntary excluded from timber sales (covered transactions) by any Federal department or agency.
- b. That the Bidder and its principals have not within a 3-year period preceding this bid been convicted of or had a civil judgment rendered against them for commission of fraud or a criminal offense in connection with obtaining , attempting to obtain, or performing a public (Federal, State, or local) transaction or contract under a public transaction; violation of Federal or State antitrust statutes or commission of embezzlement, theft, forgery, bribery, falsification or destruction of records, making false statements, or receiving stolen property.
- c. That the Bidder and its principals are not presently indicted for or otherwise criminally or civilly charged by a governmental entity (Federal, State, or local) with commission of any of the offenses enumerated in paragraph b of this certification.
- d. That the Bidder and its principals have not within a 3-year period preceding this bid had one or more public transactions (Federal, State, or local) terminated for breach or default of a timber or forest product contract.

Bidders that cannot certify this requirement, in whole or in part, shall submit an explanation with their bid.

DAN EICHINGER
Director

TIMBER SALE INFORMATION

Bigfoot Red Pine (52-105-21)

T36N, R05W, SEC. 19; T36N, R05W, SEC. 29; T36N, R05W, SEC. 30; T36N, R05W, SEC. 31.

Emmet County (Advertised Price \$96,996.95)

SALE NOTE: All units of volume listed for this sale were estimated using the Inventory Manager computer program and the new Michigan taper model.

See sale spec 5.2.3.14 for operating restrictions due to Heterobasidion Root Disease (HRD)

A timber sale contract for this lump sum, sealed bid timber sale will be awarded to the responsible bidder offering the highest sealed bid price. All units of volume listed below were estimated using the Inventory Manager computer program and the new Michigan taper model. Bids must be at or above the following advertised price for each product and species:

<u>PRODUCTS & SPECIES</u>	<u>ESTIMATED UNITS*</u>	<u>ADVERTISED PRICE</u>
Sawtimber		
B. T. Aspen	12.5 MBF	\$ 44.00 / MBF
Basswood	3.3 MBF	\$ 50.00 / MBF
Black Cherry	15.2 MBF	\$ 111.00 / MBF
Red Pine	842.4 MBF	\$ 84.00 / MBF
Sugar Maple	17.2 MBF	\$ 376.00 / MBF
White Pine	8.4 MBF	\$ 36.00 / MBF
Pulpwood		
B. T. Aspen	14 Cords	\$ 17.50 / Cord
Mixed Hardwood	182 Cords	\$ 16.50 / Cord
Red Pine	375 Cords	\$ 36.65 / Cord
White Pine	4 Cords	\$ 17.95 / Cord

* The total volume is statistically estimated within plus (+) or minus (-) 5.83 percent. There are an estimated 2,618 cords on this timber sale, plus or minus 153 cords at the 95% confidence level. The estimated units are final and not subject to adjustment. Prospective bidders are urged to examine this timber and to make their own estimates of quantity and quality.

BOND AND PAYMENT SCHEDULE:

1. A bond in the amount of \$4,850.00 to insure faithful performance of the conditions of the contract will be deposited by the successful bidder within 21 days of the sale award.
2. Cutting in any sale or unit without the required advance payment would be considered a trespass.
3. Total payment must be paid in advance or according to the following schedule :
 - (a) Ten percent (10%) of the sale value must be paid within 21 days of the sale award.
 - (b) The 10% down payment will be credited towards the first unit cut.
 - (c) Payment for each of the following units must be made before cutting begins in that unit:

PAYMENT UNIT NUMBER	PERCENT OF TOTAL SALE VALUE
01	20.1%
02	21.9%
03	24.9%
04	18.5%
05	14.6%

4. If no cutting takes place, the 10% down payment will not be refunded.
5. Operations on the contract issued will terminate on 06/30/2025.

SALE STATISTICS

Volumes were calculated in cubic feet using the Michigan taper model. Cubic foot volume includes all wood inside bark for the product indicated. For display purposes, cubic feet were converted to cords and MBF using a simple conversion factor, e.g. 79 cubic feet per cord and 185 cubic feet per MBF. The cubic foot volumes are precise; the cords and MBF volumes are not. Cubic foot volume cannot be directly converted to cords or boards with precision.

SALE VOLUMES

The total estimated sale volume may not equal the sum of the species/products due to the nature of statistical calculations associated with double sampling methodology.

VOLUME			STATISTICAL RANGE IN CORDS	
TOTAL CUBIC FEET	TOTAL CORDS	PERCENT ERROR	MINIMUM	MAXIMUM
206,822	2,618	5.83%	2,465	2,771

VDU VOLUMES

A VDU is a Volume Determination Unit. Volumes and their associated statistics are calculated at the VDU level and summarized to the sale level. There is often a one to one relationship between a VDU and a Payment Unit, but not always, depending on the cruise design. Refer to the VDU TO PAYMENT UNIT table.

	VOLUME			RANGE IN CORDS	
VDU	TOTAL CUBIC FEET	TOTAL CORDS	PERCENT ERROR	MINIMUM	MAXIMUM
27	63,284	801	10.69%	715	887
29	13,435	170	11.79%	150	190
31	80,603	1,020	8.83%	930	1,110
32	30,201	382	15.25%	324	441
TOTAL:	187,522	2,374		2,120	2,628

VDU TO PAYMENT UNIT

When a VDU is associated with more than one Payment Unit (PU), the VDU volumes are assigned to the PU based on acres of the VDU within the PU.

VDU	VDU ACRES	PU	PU ACRES
27	22.6	1	11.6
		2	11.0
29	4.5	1	1.7
		2	2.8
31	29.3	3	16.8
		4	12.5
32	12.9	5	12.9
TOTAL:	69.3		69.3

DESCRIPTION OF TIMBER BY PAYMENT UNIT (PU)

PU	MARKET GROUP	PRODUCT	QUANTITY	UNIT	ACRES	ADVERTISE PRICE
1	B. T. Aspen	Sawtimber	6.4	MBF	13.3	\$19,501.35
	Black Cherry		5.7	MBF		
	Red Pine		130.8	MBF		
	Sugar Maple		6.5	MBF		
	White Pine		4.3	MBF		
	B. T. Aspen	Pulpwood	6	Cords		
	Mixed Hardwood		48	Cords		
	<i>Black Cherry</i>		2	<i>Cords</i>		
	<i>Sugar Maple</i>		46	<i>Cords</i>		
	Red Pine		111	Cords		
White Pine	2	Cords				
2	B. T. Aspen	Sawtimber	6.1	MBF	13.8	\$21,269.80
	Black Cherry		9.5	MBF		
	Red Pine		126.7	MBF		
	Sugar Maple		10.7	MBF		
	White Pine		4.1	MBF		
	B. T. Aspen	Pulpwood	8	Cords		
	Mixed Hardwood		65	Cords		
	<i>Black Cherry</i>		2	<i>Cords</i>		
	<i>Sugar Maple</i>		63	<i>Cords</i>		
	Red Pine		106	Cords		
White Pine	2	Cords				
3	Basswood	Sawtimber	1.9	MBF	16.8	\$24,133.65
	Red Pine		255.0	MBF		
	Mixed Hardwood	Pulpwood	1	Cords		
	<i>Basswood</i>		1	<i>Cords</i>		
Red Pine	71	Cords				
4	Basswood	Sawtimber	1.4	MBF	12.5	\$17,927.10
	Red Pine		189.7	MBF		
	Mixed Hardwood	Pulpwood	1	Cords		
	<i>Basswood</i>		1	<i>Cords</i>		
	Red Pine		52	Cords		
5	Red Pine	Sawtimber	140.2	MBF	12.9	\$14,165.05
	Mixed Hardwood		67	Cords		
	<i>Sugar Maple</i>	67	<i>Cords</i>			
	Red Pine	35	Cords			
TOTAL:			899.0	MBF		
TOTAL:			575	Cords		

Sale Specific Conditions & Requirements

Sale Name: Bigfoot Red Pine

Sale Number: 52-105-21 Seq#: 1

1 - Sale Area

1.2 - Boundaries

1.2.1 - Painted boundaries (9/19)

The sale boundary and Payment Unit boundaries are marked and identified by red and yellow paint. Exterior sale boundary lines adjacent to state-owned lands are marked with red paint. Interior Payment Unit boundaries are marked with yellow paint. Two timber retention areas are located adjacent to Payment Units 1 and 4, outside the harvest area boundary, and shown on the Timber Sale Map. No harvesting activities or equipment may operate within these areas. The painted boundary line trees are not Included Timber and are to be protected unless marked with orange paint. Yellow painted trees designating an interior Payment Unit boundary are only to be cut when all surrounding Payment Units have been paid.

2 - Timber Specifications

2.1 - Included Timber

2.1.1 - Clearcut unit(s) with unmerchantable trees (6/14)

Within Payment Unit(s) 1-5, cut all trees that are two (2) inches or more at DBH, except white pine greater than 24" at DBH, and any incidental oak or hemlock.

2.2 - Utilization

2.2.3 - Stump heights (4/07)

Stump heights within the Sale Area shall not exceed 6 inches for all trees. Stumps within 10' of the designated snowmobile trail need to be cut as flush to the ground as possible.

2.2.8 - Utilization and removal (5/14)

All products meeting standards set forth in General Condition and Requirement 2.2 - Utilization must be removed from the Sale Area. Retain on site between 1/6 and 1/3 of the slash from harvested trees (tree tops and limbs less than four inches in diameter). This is because of post-harvest biomass retention requirements.

3 - Payments

3.3 - Pre-measured Sales

3.3.4 - Dividing payment units (7/14)

Payment Unit(s) may be divided at the request of the Purchaser and upon approval of the Unit Manager. Dividing Payment Units is a contract modification which requires a Timber Sale Contract Amendment. The contract modification must be completed in writing and signed before harvest activities can begin. There will be only one division per Payment Unit.

4 - Transportation

4.1 - Construction

4.1.3 - Slash and earthen piles (8/04)

Piles or windrows of earth along roads and landings that have been widened or constructed shall be leveled. Slash from road maintenance or construction, including stumps, shall be dispersed throughout the sale.

4.1.6 - Road construction (1/09)

Construction of new roads or improvements of existing roads shall be done in such a way as to minimize the environmental and visual impacts. Merchantable trees shall be cut and utilized unless otherwise directed. Non-merchantable trees shall be severed and laid flat on the ground. Slash shall be scattered, and not left in windrows and kept a minimum of 10 feet back from the road edge. Stumps shall be set upright, not left on edge, and be moved at least 10 feet away from the road edge. Disturbed soil shall be feathered into the woods and not left in berms or windrows.

4.1.7 - Road closure (10/11)

All new roads built into the sale must be blocked to vehicle traffic upon completion of the sale. In general, this will require constructing a four (4') foot high berm of stumps and logs covered with earth.

4.2 - Maintenance

4.2.5 - Two wheel drive condition (2/04)

All existing trail roads on and adjacent to the sale area must be passable by two-wheel drive traffic for the duration of the sale.

5 - Operations

5.1 - Notification

5.1.1 - Pre-sale conference (10/16)

A pre-sale conference between the Purchaser and sale administrator is required prior to beginning any operations to determine landing and road locations.

5.2 - Conduct of Operations

5.2.1 - Slash

5.2.1.1 - Slash within sale area (9/16)

No trees are to be felled outside the sale area and all slash is to be kept at least 10 feet back from the red paint line. If sale boundary lines are along a public road or highway, then slash must be removed 50' from these lines per General Condition & Requirement 5.2.1.

5.2.2 - Hazard Trees/Snags

5.2.2.1 - Den trees (10/16)

Obvious hollow and/or den trees shall be protected and left standing unless they are a safety hazard.

5.2.3 - Operating Restrictions

5.2.3.6 - Bark beetle restriction (12/08)

In the event drought creates a high risk of pine bark beetle infestation, pine is not to be cut during the period March 1 through July 1, unless all portions of trees greater than two inches in diameter are removed from the sale area, reduced to chips, or treated to the satisfaction of the Unit Manager or his/her representative, within fifteen days of being severed from the stump. Pine log decks, pulpwood piles and treetops that are piled for chipping in the fall or winter within a 1/4 mile of susceptible sites must be removed before March 15. Residual slash must not be placed in piles or rows and must be spread over the site for quick drying. The Department of Natural Resources will exercise this specification if the risk of damage warrants.

5.2.3.14 - heterobasidion root disease (HRD) (3/21)

This plantation is at risk of infection by the root rot fungus, *Heterobasidion irregulare*. To prevent the spread of this disease, cutting operations within Payment Unit(s) 1-5 are restricted to the period of January 1st through February 28th. Cutting may only occur outside this period with written permission of the Unit Manager or with the application of a preventative pesticide. Consultation with a forest health specialist will determine if cutting can occur prior to January 1 without pesticide application, dependent upon current and forecasted snow cover. Cellu-Treat and RotStop C are currently the only EPA registered products available in the United States for the control of *Heterobasidion*. Both products are a water-soluble powder that must be applied to the stump, in accordance with the product label. Dye must be added to these products to provide visible evidence of adequate coverage. Application of these pesticides requires licensing by the Michigan Department of Agriculture and Rural Development. All applicators are required to: provide to the Sale Administrator notification of application per requirements in 40 CFR 170.120; and document and provide to the Sale Administrator annually, by December 31 and prior to closure of sale, the volume of product used and acres treated.

5.2.32 - Decking/landing restoration (9/13)

All decking and landing areas must have the surface area restored to a condition equal to or better than before. This is to ensure the proper regeneration of the stand. Wood debris, chips, and "cookies" from trimmings must be removed or scattered away from landing and loading areas and may not be windrowed on the edge.

5.2.40 - Pathway protection (10/10)

The hiking/biking trail and is shown on the Timber Sale Map. Do not damage posts with trail markers. Maintain a 20-foot-wide slash, debris, and rut free zone daily, using the trail as the centerline. Do not run equipment down the trail.

Skidding across the trail may only occur in locations approved by the sale administrator.

5.2.41 - Snowmobile trail protection (9/11)

The designated snowmobile trail is shown on the Timber Sale Map. Do not cut or damage posts with orange trail markers or traffic control signs. The road maintenance/restoration must be done prior to December 1. When the trail is used for hauling during the snowmobile season, a snow-covered base must be left on the trail. The trail must be maintained daily during the snowmobile season to keep a 20-foot-wide zone free from slash and rutting, using the snowmobile trail as the centerline. No decking of forest products will be permitted along the snowmobile trail. All stumps within 10 feet of the snowmobile trail must be cut at ground level.

5.4 - Soil Protection

5.4.1 - Rutting restriction, general (7/16)

Operations are to cease immediately if equipment and weather conditions result in rutting of roads which is 12 inches or greater in depth and 50 feet in length. The Unit Manager or his/her representative may restrict hauling and/or skidding if ruts exceed the specified depth. With the Unit Manager or his/her representative's approval, the Purchaser may return to the area when the risk of rutting has decreased.

5.8 - Protection of Endangered Species

5.8.5 - Protection of raptor nests (3/13)

All trees with raptor nests will be protected if found during harvesting operations. Notification will be made to the Unit Manager or his/her representative who will notify the Wildlife Biologist so an on-site evaluation and recommendation can be made, if necessary.

6 - Safety and Fire Prevention

6.2 - Signing

6.2.1 - Road posting (10/20)

The Purchaser is responsible for posting and maintaining caution signs on W. Brutus and Bigfoot Roads prior to beginning operations. The road must be posted at appropriate distances from the Sale Area to warn of logging activity and truck traffic. Signs must be removed when harvest operations are suspended or completed. The Purchaser will provide these signs.

6.2.3 - Recreational trail posting (10/20)

The Purchaser is responsible for posting and maintaining caution signs on the hiking/biking trails prior to beginning operations. The trail must be posted at appropriate distances from the Sale Area to warn of logging activity and truck traffic at both ends of the trail. Signs must be removed when harvest operations are suspended or completed. The Purchaser will provide these signs.



TIMBER SALE MAP

This information provided by authority of Part 525, 1994 PA 451, as amended.

Sale Number	Year
52-105-21	2021

Forest Management Unit GAYLORD - NORTH	County EMMET	Mapped By STACKS	Date 07/06/21	Page 1	of 2
Township T36N	Range ROS	Section(s) and Subdivision(s) 29 NWNW; 30 NENE; 31 E1/2NW, E1/2SW	Cruised By STACKS		

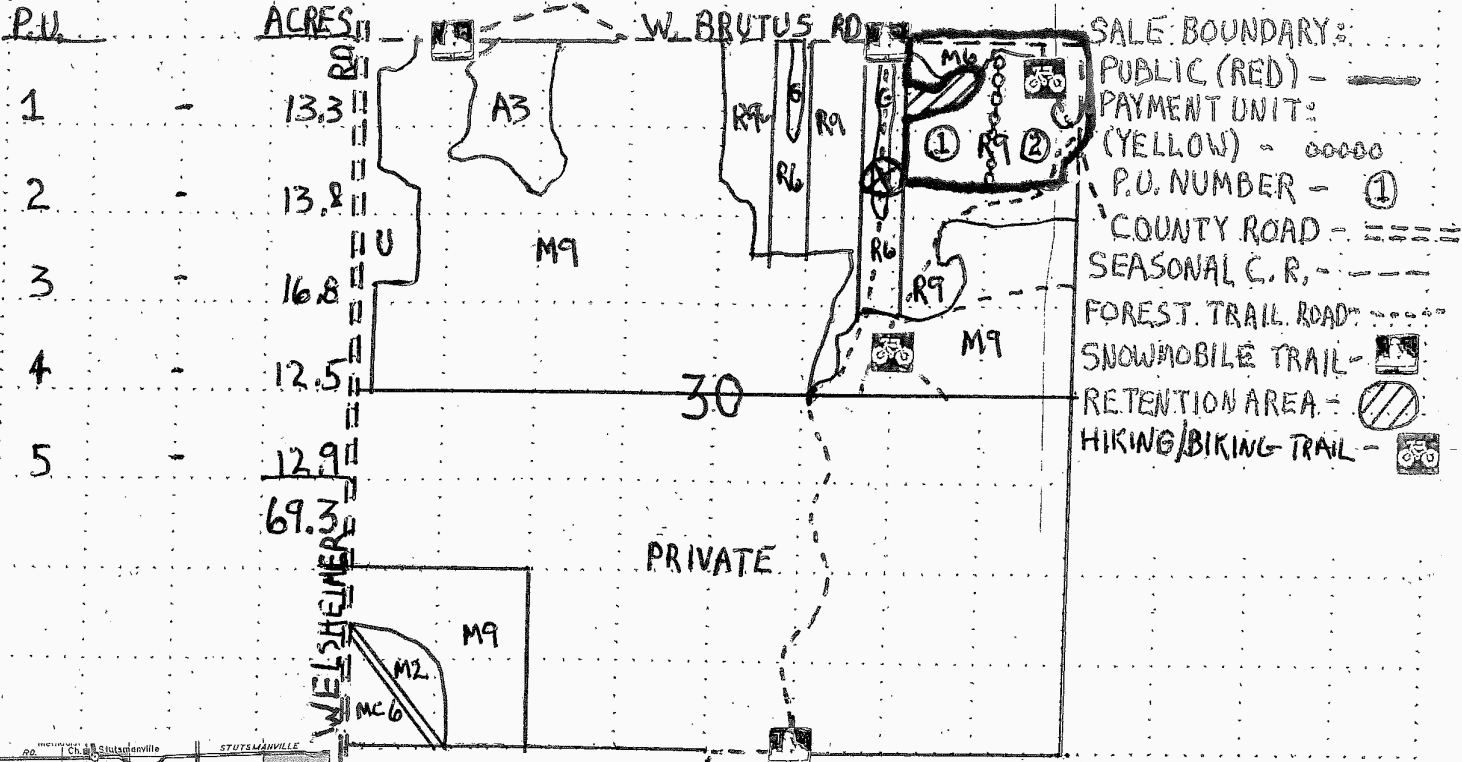
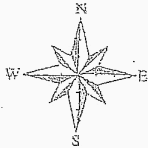
Cover Type				Density	
A = Aspen	J = Jack Pine	O = Oak	U = Upland Brush	0 = Non Stocked	5 = Pole Timber Medium
B = Paper Birch	K = Rock	P = Lowland Poplar	UM = Upland Mix Forest	1 = Seedling Sapling Poor	6 = Pole Timber Well
C = Cedar	L = Lowland Brush	Q = Mixed Swamp Conifer	V = Bog or Marsh	2 = Seedling Sapling Medium	7 = Saw Timber Poor
D = Treed Bog	LM = Lowland Mix Forest	R = Red Pine	W = White Pine	3 = Seedling Sapling Well	8 = Saw Timber Medium
E = Swamp Hardwoods	M = Maple, Beech, Birch	S = Black Spruce	X = Non Stocked	4 = Pole Timber Poor	9 = Saw Timber Well
F = Spruce/Fir	MC = Mixed Conifer	T = Tamarack	Y = Sand		
G = Grass	MD = Mixed Deciduous		Z = Water		
H = Hemlock	N = Marsh				

COMPARTMENT 112

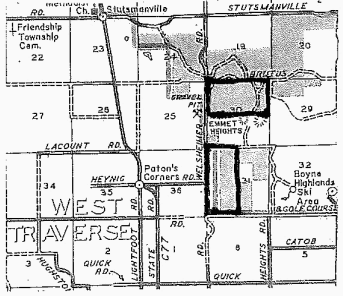
BIGFOOT RED PINE

EMMET COUNTY

69.3 ACRES



- SALE BOUNDARY: ———
- PUBLIC (RED) ———
- PAYMENT UNIT: (YELLOW) - 00000
- P.U. NUMBER - ①
- COUNTY ROAD - = = = = =
- SEASONAL C.R. - - - - -
- FOREST TRAIL ROAD - ·····
- SNOWMOBILE TRAIL - [Icon]
- RETENTION AREA - [Icon]
- HIKING/BIKING TRAIL - [Icon]



⊗ - 84.96092
45.490740



TIMBER SALE MAP

This information provided by authority of Part 525, 1994 PA 451, as amended.

Sale Number	Year
52-105-21	2021
Date	Page of
07/06/21	2 2

Forest Management Unit GAYLORD-NORTH	County EMMET	Mapped By STACKS
Township T.36N	Range R.05W	Cruised By STACKS
Section(s) and Subdivision(s) 29 NWNW, 30 NENE, 31 E½NW, E½SW		

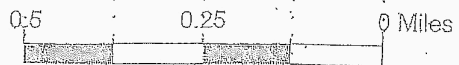
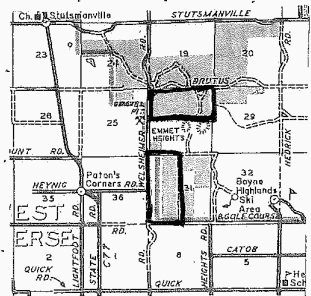
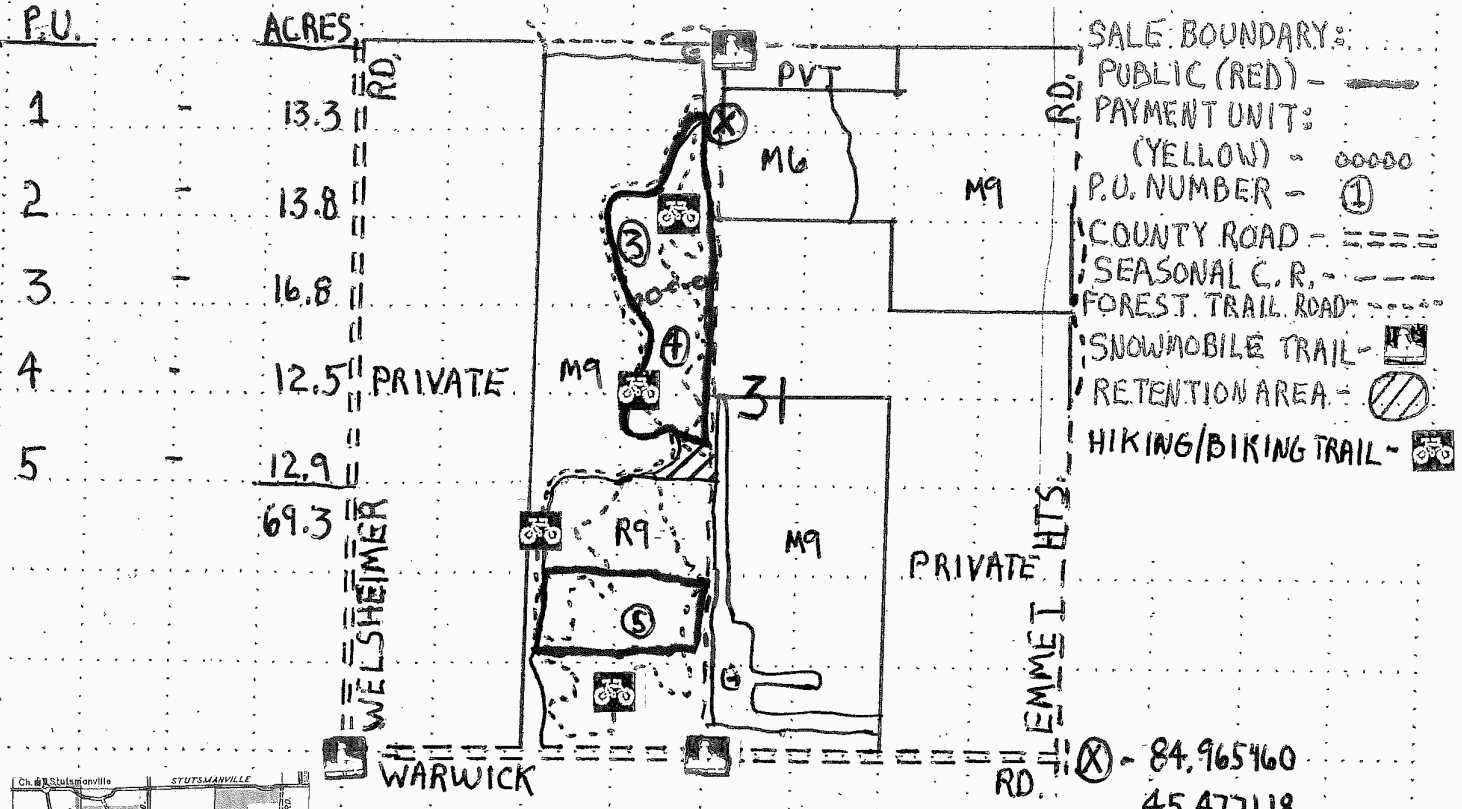
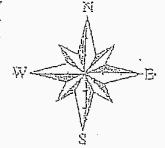
Cover Type				Density	
A = Aspen	J = Jack Pine	O = Oak	U = Upland Brush	0 = Non Stocked	5 = Pole Timber Medium
B = Paper Birch	K = Rock	P = Lowland Poplar	UM = Upland Mix Forest	1 = Seedling Sapling Poor	6 = Pole Timber Well
C = Cedar	L = Lowland Brush	Q = Mixed Swamp Conifer	V = Bog or Marsh	2 = Seedling Sapling Medium	7 = Saw Timber Poor
D = Tread Bog	LM = Lowland Mix Forest	R = Red Pine	W = White Pine	3 = Seedling Sapling Well	8 = Saw Timber Medium
E = Swamp Hardwoods	M = Maple, Beech, Birch	S = Black Spruce	X = Non Stocked	4 = Pole Timber Poor	9 = Saw Timber Well
F = Spruce/Fir	MC = Mixed Conifer	T = Tamarack	Y = Sand		
G = Grass	MD = Mixed Deciduous		Z = Water		
H = Hemlock	N = Marsh				

COMPARTMENT 112

BIGFOOT RED PINE

EMMET COUNTY

69.3 ACRES



TIMBER SALE INFORMATION

Tea Kettle Mix (52-107-21)

T36N, R05W, SEC. 20; T36N, R05W, SEC. 31.
Emmet County (Advertised Price \$73,746.60)

SALE NOTE: All units of volume listed for this sale were estimated using the Inventory Manager computer program and the new Michigan taper model.

- See sale spec 5.2.40 for information on hiking/biking trail protection requirements.

- The snowmobile trail provides access to Payment Unit 2, see sale spec 5.2.41 for information on use and protection.

A timber sale contract for this lump sum, sealed bid timber sale will be awarded to the responsible bidder offering the highest sealed bid price. All units of volume listed below were estimated using the Inventory Manager computer program and the new Michigan taper model. Bids must be at or above the following advertised price for each product and species:

<u>PRODUCTS & SPECIES</u>	<u>ESTIMATED UNITS*</u>	<u>ADVERTISED PRICE</u>
Sawtimber		
B. T. Aspen	200.4 MBF	\$ 44.00 / MBF
Basswood	7.9 MBF	\$ 50.00 / MBF
Beech	19.6 MBF	\$ 51.00 / MBF
Red Maple	49.2 MBF	\$ 79.00 / MBF
Sugar Maple	118.6 MBF	\$ 376.00 / MBF
Pulpwood		
B. T. Aspen	105 Cords	\$ 17.50 / Cord
Mixed Hardwood	801 Cords	\$ 16.50 / Cord

* The total volume is statistically estimated within plus (+) or minus (-) 9.50 percent. There are an estimated 1,907 cords on this timber sale, plus or minus 181 cords at the 95% confidence level. The estimated units are final and not subject to adjustment. Prospective bidders are urged to examine this timber and to make their own estimates of quantity and quality.

BOND AND PAYMENT SCHEDULE:

1. A bond in the amount of \$3,687.00 to insure faithful performance of the conditions of the contract will be deposited by the successful bidder within 21 days of the sale award.
2. Cutting in any sale or unit without the required advance payment would be considered a trespass.
3. Total payment must be paid in advance or according to the following schedule :
 - (a) Ten percent (10%) of the sale value must be paid within 21 days of the sale award.
 - (b) The 10% down payment will be credited towards the first unit cut.

(c) Payment for each of the following units must be made before cutting begins in that unit:

PAYMENT UNIT NUMBER	PERCENT OF TOTAL SALE VALUE
01	60.8%
02	39.2%

4. If no cutting takes place, the 10% down payment will not be refunded.
5. Operations on the contract issued will terminate on 06/30/2025.

SALE STATISTICS

Volumes were calculated in cubic feet using the Michigan taper model. Cubic foot volume includes all wood inside bark for the product indicated. For display purposes, cubic feet were converted to cords and MBF using a simple conversion factor, e.g. 79 cubic feet per cord and 185 cubic feet per MBF. The cubic foot volumes are precise; the cords and MBF volumes are not. Cubic foot volume cannot be directly converted to cords or boards with precision.

SALE VOLUMES

The total estimated sale volume may not equal the sum of the species/products due to the nature of statistical calculations associated with double sampling methodology.

VOLUME		STATISTICAL RANGE IN CORDS		
TOTAL CUBIC FEET	TOTAL CORDS	PERCENT ERROR	MINIMUM	MAXIMUM
150,665	1,907	9.50%	1,726	2,088

VDU VOLUMES

A VDU is a Volume Determination Unit. Volumes and their associated statistics are calculated at the VDU level and summarized to the sale level. There is often a one to one relationship between a VDU and a Payment Unit, but not always, depending on the cruise design. Refer to the VDU TO PAYMENT UNIT table.

VDU	VOLUME		PERCENT ERROR	RANGE IN CORDS	
	TOTAL CUBIC FEET	TOTAL CORDS		MINIMUM	MAXIMUM
35	91,947	1,164	12.33%	1,020	1,307
42	42,084	533	12.78%	465	601
TOTAL:	134,031	1,697		1,485	1,908

VDU TO PAYMENT UNIT

When a VDU is associated with more than one Payment Unit (PU), the VDU volumes are assigned to the PU based on acres of the VDU within the PU.

VDU	VDU ACRES	PU	PU ACRES
35	29.2	1	29.2
42	10.2	2	10.2
TOTAL:	39.4		39.4

DESCRIPTION OF TIMBER BY PAYMENT UNIT (PU)

PU	MARKET GROUP	PRODUCT	QUANTITY	UNIT	ACRES	ADVERTISE PRICE
1	B. T. Aspen	Sawtimber	163.2	MBF	29.2	\$44,855.10
	Basswood		2.3	MBF		
	Beech		16.4	MBF		
	Red Maple		38.3	MBF		
	Sugar Maple		63.2	MBF		
	B. T. Aspen		Pulpwood	67		
	Mixed Hardwood	531		Cords		
	<i>Basswood</i>	9		<i>Cords</i>		
	<i>Beech</i>	72		<i>Cords</i>		
	<i>Paper Birch</i>	11		<i>Cords</i>		
	<i>Red Maple</i>	76	<i>Cords</i>			
<i>Sugar Maple</i>	363	<i>Cords</i>				
2	B. T. Aspen	Sawtimber	37.2	MBF	10.2	\$28,891.50
	Basswood		5.6	MBF		
	Beech		3.2	MBF		
	Red Maple		10.9	MBF		
	Sugar Maple		55.4	MBF		
	B. T. Aspen		Pulpwood	38		
	Mixed Hardwood	270		Cords		
	<i>Basswood</i>	37		<i>Cords</i>		
	<i>Beech</i>	14		<i>Cords</i>		
	<i>Red Maple</i>	12		<i>Cords</i>		
	<i>Sugar Maple</i>	207	<i>Cords</i>			
TOTAL:			395.7	MBF		
TOTAL:			906	Cords		

Sale Specific Conditions & Requirements

Sale Name: Tea Kettle Mix

Sale Number: 52-107-21 Seq#: 1

1 - Sale Area

1.2 - Boundaries

1.2.1 - Painted boundaries (9/19)

The sale boundary and Payment Unit boundaries are marked and identified by red and yellow paint. Exterior sale boundary lines adjacent to state-owned land are marked with red paint. Interior Payment Unit boundaries are marked with yellow paint. The painted boundary line trees are not Included Timber and are to be protected unless marked with orange paint. Yellow painted trees designating an interior Payment Unit boundary are only to be cut when all surrounding Payment Units have been paid.

2 - Timber Specifications

2.1 - Included Timber

2.1.1 - Clearcut unit(s) with unmerchantable trees (6/14)

Within Payment Unit(s) 1 and 2, cut all trees that are two (2) inches or more at DBH except incidental oak, hemlock, and white pine.

2.2 - Utilization

2.2.8 - Utilization and removal (5/14)

All products meeting standards set forth in General Condition and Requirement 2.2 - Utilization must be removed from the Sale Area. Retain on site between 1/6 and 1/3 of the slash from harvested trees (tree tops and limbs less than four inches in diameter). This is because of biomass retention guidelines.

3 - Payments

3.3 - Pre-measured Sales

3.3.4 - Dividing payment units (7/14)

Payment Unit(s) 1 and 2 may be divided at the request of the Purchaser and upon approval of the Unit Manager. Dividing Payment Units is a contract modification which requires a Timber Sale Contract Amendment. There will be only one division per Payment Unit. The Contract Amendment must be signed and received before harvest operations can begin.

4 - Transportation

4.1 - Construction

4.1.3 - Slash and earthen piles (8/04)

Piles or windrows of earth along roads and landings that have been widened or constructed shall be leveled. Slash from road maintenance or construction, including stumps, shall be dispersed throughout the Sale Area.

4.1.6 - Road construction (1/09)

Construction of new roads or improvements of existing roads shall be done in such a way as to minimize the environmental and visual impacts. Merchantable trees shall be cut and utilized unless otherwise directed. Non-merchantable trees shall be severed and laid flat on the ground. Slash shall be scattered, and not left in windrows and kept a minimum of 10 feet back from the road edge. Stumps shall be set upright, not left on edge, and be moved at least 10 feet away from the road edge. Disturbed soil shall be feathered into the woods and not left in berms or windrows.

4.1.7 - Road closure (10/11)

All new roads built into the sale must be blocked to vehicle traffic upon completion of the sale. Overgrown roads that are reopened shall be considered new roads. In general, this will require constructing a four (4') foot high berm of stumps and logs covered with earth. These roads must be rendered impassable to cars and trucks.

4.2 - Maintenance

4.2.5 - Two wheel drive condition (2/04)

All existing trail roads on and adjacent to the sale area must be passable by two-wheel drive traffic for the duration of the sale.

5 - Operations

5.1 - Notification

5.1.1 - Pre-sale conference (10/16)

A pre-sale conference between the Purchaser and sale administrator is required prior to beginning any operations to determine landing and road locations.

5.2 - Conduct of Operations

5.2.1 - Slash

5.2.1.1 - Slash within sale area (9/16)

No trees are to be felled outside the sale area and all slash is to be kept at least 10 feet back from the red paint line. If sale boundary lines are along a public road or highway, then slash must be removed 50' from these lines per General Condition & Requirement 5.2.1.

5.2.2 - Hazard Trees/Snags

5.2.2.1 - Den trees (10/16)

Obvious hollow and/or den trees shall be protected and left standing unless they are a safety hazard.

5.2.4 - Dead and Down Creation

5.2.4.1 - Dead and down creation, marked trees (10/13)

To benefit ruffed grouse and other wildlife, in Payment Unit(s) 1 and 2, all trees marked with a band of pink paint must be left until all merchantable timber has been cut and taken to the landing. At that time, they are to be felled and left intact on the ground. These trees will serve as ruffed grouse drumming logs and have been removed from the timber tally.

5.2.29 - Shrub protection (1/20)

Do not cut or damage hawthorn, witch-hazel, dogwood, or junberry. These woody-shrub plants are highly beneficial to various wildlife species.

5.2.32 - Decking/landing restoration (9/13)

All decking and landing areas must have the surface area restored to a condition equal to or better than before. This is to ensure the proper regeneration of the stand. Wood debris, chips, and "cookies" from trimmings must be removed or scattered away from landing and loading areas and may not be windrowed on the edge. Stumps will be removed from the landing area and dispersed back into the Sale Area or used in berms. Piles of topsoil will need to be spread out as evenly as possible.

5.2.40 - Pathway protection (10/10)

The hiking/biking trails are shown on the Timber Sale Map. Do not cut trees or damage posts with pathway markers. Maintain a 20-foot-wide slash, debris, and rut free zone daily, using the pathway as the centerline. Do not run equipment down the pathway. Skidding across the trail may only occur in locations approved by the sale administrator.

5.2.41 - Snowmobile trail protection (9/11)

The designated snowmobile trail is shown on the Timber Sale Map. Do not cut or damage posts with orange trail markers or traffic control signs. If the trail is used during the non-snowmobile season, it must be maintained and restored to a condition equal to or better than before the sale. The final road maintenance/restoration must be done prior to December 1, making it in a condition suitable for trail grooming. The snowmobile trail may not be used for any timber sale operations from December 1 to March 31. Maintain a 20-foot-wide slash, debris, and rut free zone daily using the snowmobile trail as the centerline. All stumps within 20 feet of the snowmobile trail must be cut at ground level.

5.4 - Soil Protection

5.4.1 - Rutting restriction, general (7/16)

Operations are to cease immediately if equipment and weather conditions result in rutting of roads which is 12 inches or greater in depth and 50 feet in length. The Unit Manager or his/her representative may restrict hauling and/or skidding if ruts exceed the specified depth. With the Unit Manager or his/her representative's approval, the Purchaser may return to the area when the risk of rutting has decreased.

5.8 - Protection of Endangered Species

5.8.5 - Protection of raptor nests (3/13)

All trees with raptor nests will be protected if found during harvesting operations. Notification will be made to the Unit Manager or his/her representative who will notify the Wildlife Biologist so an on-site evaluation and recommendation can be made, if necessary.

6 - Safety and Fire Prevention

6.2 - Signing

6.2.1 - Road posting (10/20)

The Purchaser is responsible for posting and maintaining caution signs on Bigfoot Road prior to beginning operations. The road must be posted at appropriate distances from the Sale Area to warn of logging activity and truck traffic. Signs must be removed when harvest operations are suspended or completed. The Purchaser will provide these signs.

6.2.3 - Recreational trail posting (10/20)

The Purchaser is responsible for posting and maintaining caution signs on the hiking/biking trail prior to beginning operations. The trail must be posted at appropriate distances from the Sale Area to warn of logging activity and truck traffic at both ends of the trail. Signs must be removed when harvest operations are suspended or completed. The Purchaser will provide these signs.



TIMBER SALE MAP

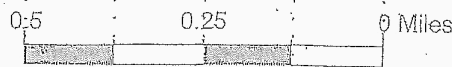
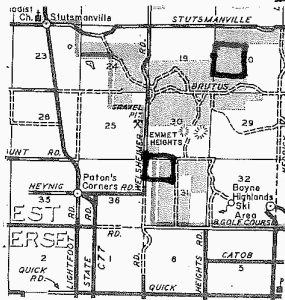
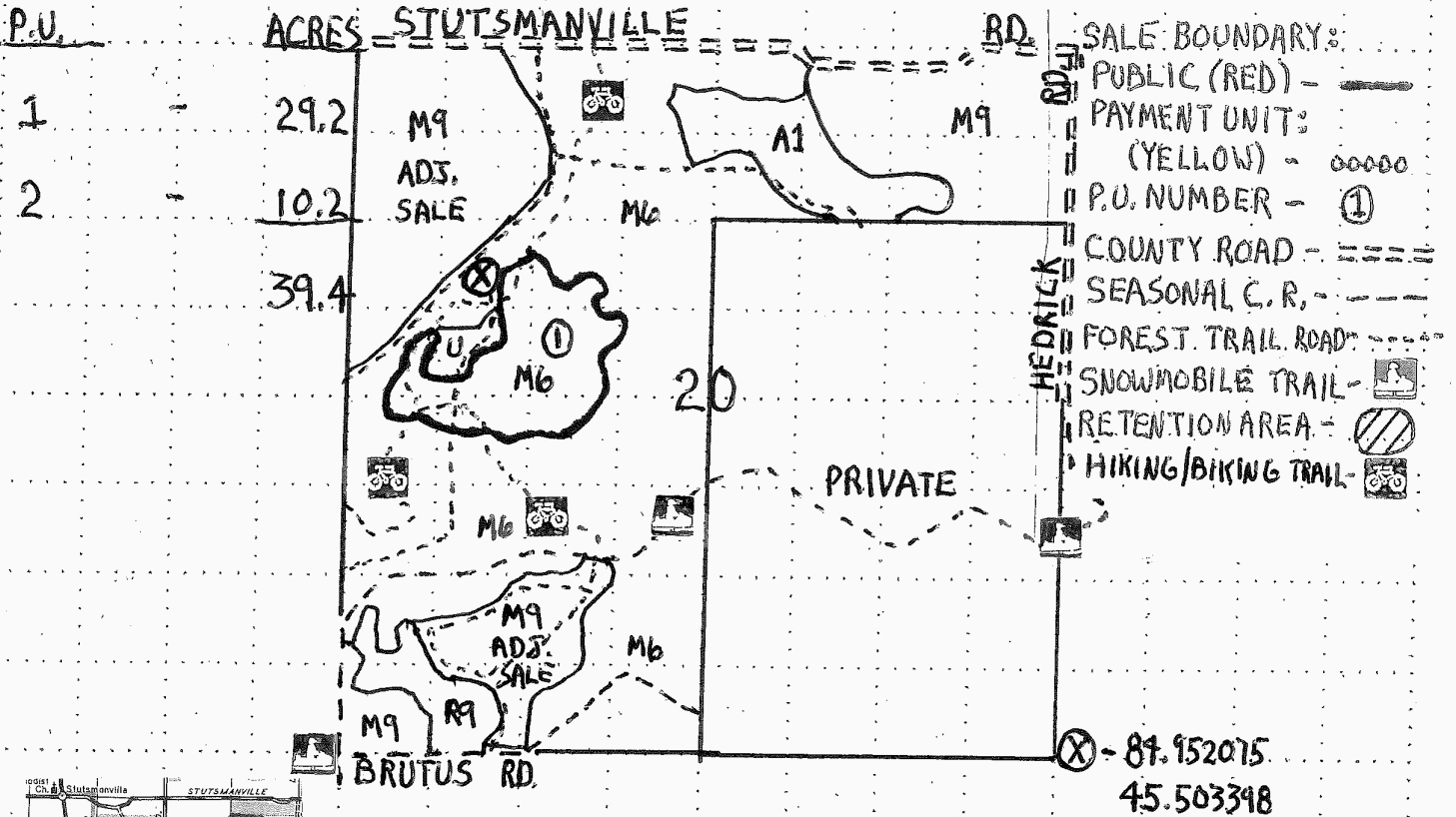
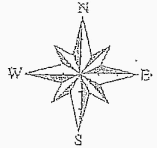
This information provided by authority of Part 525, 1994 PA 451, as amended.

Sale Number	Year
52-107-21	2021

Forest Management Unit GAYLORD - NORTH	County EMMET	Mapped By STACKS	Date 07/09/21	Page 1	of 2
Township T36N	Range R05W	Section(s) and Subdivision(s) 20 S 1/2 NW, N 1/2 SW, 31 NENW			

Cover Type				Density	
A = Aspen	J = Jack Pine	O = Oak	U = Upland Brush	0 = Non Stocked	5 = Pole Timber Medium
B = Paper Birch	K = Rock	P = Lowland Poplar	UM = Upland Mix Forest	1 = Seedling Sapling Poor	6 = Pole Timber Well
C = Cedar	L = Lowland Brush	Q = Mixed Swamp Conifer	V = Bog or Marsh	2 = Seedling Sapling Medium	7 = Saw Timber Poor
D = Treed Bog	LM = Lowland Mix Forest	R = Red Pine	W = White Pine	3 = Seedling Sapling Well	8 = Saw Timber Medium
E = Swamp Hardwoods	M = Maple, Beech, Birch	S = Black Spruce	X = Non Stocked	4 = Pole Timber Poor	9 = Saw Timber Well
F = Spruce/Fir	MC = Mixed Conifer	T = Tamarack	Y = Sand		
G = Grass	MD = Mixed Deciduous		Z = Water		
H = Hemlock	N = Marsh				

COMPARTMENT 112 **TEA KETTLE MIX**
EMMET COUNTY
39.4 ACRES





TIMBER SALE MAP

This information provided by authority of Part 525, 1994 PA 451, as amended.

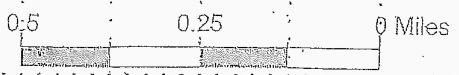
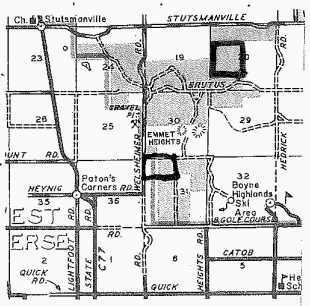
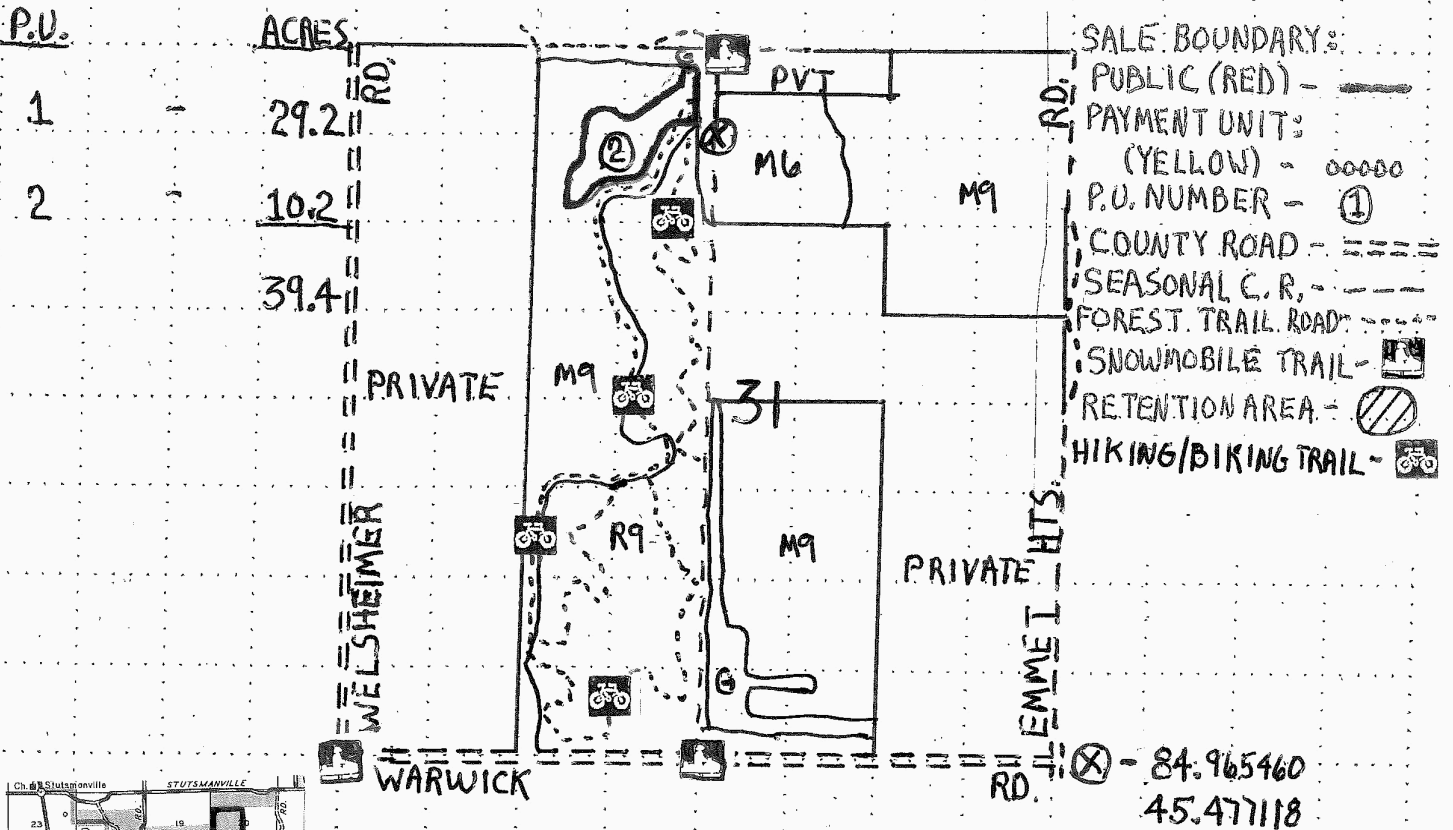
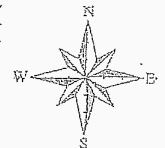
Forest Management Unit GAYLORD-NORTH		County EMMET	Mapped By STACKS	Sale Number 52-107-21	Year 2021
Township T 36N		Range R 05W	Cruised By STACKS	Date 07/09/21	Page of 2 2
Section(s) and Subdivision(s) 20 S 1/2 NW, N 1/2 SW, 31 NENW					
Cover Type			Density		
A = Aspen	J = Jack Pine	O = Oak	U = Upland Brush	0 = Non Stocked	5 = Pole Timber Medium
B = Paper Birch	K = Rock	P = Lowland Poplar	UM = Upland Mix Forest	1 = Seedling Sapling Poor	6 = Pole Timber Well
C = Cedar	L = Lowland Brush	Q = Mixed Swamp Conifer	V = Bog or Marsh	2 = Seedling Sapling Medium	7 = Saw Timber Poor
D = Tread Bog	LM = Lowland Mix Forest	R = Red Pine	W = White Pine	3 = Seedling Sapling Well	8 = Saw Timber Medium
E = Swamp Hardwoods	M = Maple, Beech, Birch	S = Black Spruce	X = Non Stocked	4 = Pole Timber Poor	9 = Saw Timber Well
F = Spruce/Fir	MC = Mixed Conifer	T = Tamarack	Y = Sand		
G = Grass	MD = Mixed Deciduous		Z = Water		
H = Hemlock	N = Marsh				

COMPARTMENT 112

TEA KETTLE MIX

EMMET COUNTY

39.4 ACRES



TIMBER SALE INFORMATION

Coffee Pot Mix (52-116-21)

T36N, R01W, SEC. 20; T36N, R01W, SEC. 28; T36N, R01W, SEC. 33.
Cheboygan County (Advertised Price \$59,342.15)

SALE NOTE: All units of volume listed for this sale were estimated using the Inventory Manager computer program and the new Michigan taper model.

- See sale spec 4.3.1 for MDOT requirements.
- See sale spec 2.1.1 for harvest and retention requirements.
- See sale spec 5.2.3.4 for restriction due to oak wilt.
- See sale spec 6.2.3 for recreational trail requirements.

A timber sale contract for this lump sum, sealed bid timber sale will be awarded to the responsible bidder offering the highest sealed bid price. All units of volume listed below were estimated using the Inventory Manager computer program and the new Michigan taper model. Bids must be at or above the following advertised price for each product and species:

<u>PRODUCTS & SPECIES</u>	<u>ESTIMATED UNITS*</u>	<u>ADVERTISED PRICE</u>
Sawtimber		
B. T. Aspen	351.2 MBF	\$ 44.00 / MBF
Jack Pine	17.1 MBF	\$ 35.00 / MBF
Quaking Aspen	39.4 MBF	\$ 44.00 / MBF
Red Maple	15.4 MBF	\$ 79.00 / MBF
Red Pine	91.4 MBF	\$ 84.00 / MBF
White Pine	18.2 MBF	\$ 36.00 / MBF
Pulpwood		
Balsam Fir	16 Cords	\$ 16.70 / Cord
Jack Pine	83 Cords	\$ 16.55 / Cord
Mixed Aspen	602 Cords	\$ 17.50 / Cord
Mixed Hardwood	384 Cords	\$ 16.50 / Cord
Red Oak	60 Cords	\$ 19.65 / Cord
Red Pine	148 Cords	\$ 36.65 / Cord
White Pine	384 Cords	\$ 17.95 / Cord

* The total volume is statistically estimated within plus (+) or minus (-) 7.25 percent. There are an estimated 2,872 cords on this timber sale, plus or minus 208 cords at the 95% confidence level. The estimated units are final and not subject to adjustment. Prospective bidders are urged to examine this timber and to make their own estimates of quantity and quality.

BOND AND PAYMENT SCHEDULE:

1. A bond in the amount of \$2,967.00 to insure faithful performance of the conditions of the contract will be deposited by the successful bidder within 21 days of the sale award.
2. Cutting in any sale or unit without the required advance payment would be considered a trespass.
3. Total payment must be paid in advance or according to the following schedule :
 - (a) Ten percent (10%) of the sale value must be paid within 21 days of the sale award.
 - (b) The 10% down payment will be credited towards the first unit cut.
 - (c) Payment for each of the following units must be made before cutting begins in that unit:

PAYMENT UNIT NUMBER	PERCENT OF TOTAL SALE VALUE
01	4.9%
02	18.3%
03	28.9%
04	23.6%
05	24.3%
4. If no cutting takes place, the 10% down payment will not be refunded.
5. Operations on the contract issued will terminate on 06/30/2025.

SALE STATISTICS

Volumes were calculated in cubic feet using the Michigan taper model. Cubic foot volume includes all wood inside bark for the product indicated. For display purposes, cubic feet were converted to cords and MBF using a simple conversion factor, e.g. 79 cubic feet per cord and 185 cubic feet per MBF. The cubic foot volumes are precise; the cords and MBF volumes are not. Cubic foot volume cannot be directly converted to cords or boards with precision.

SALE VOLUMES

The total estimated sale volume may not equal the sum of the species/products due to the nature of statistical calculations associated with double sampling methodology.

VOLUME			STATISTICAL RANGE IN CORDS	
TOTAL CUBIC FEET	TOTAL CORDS	PERCENT ERROR	MINIMUM	MAXIMUM
226,878	2,872	7.25%	2,664	3,080

VDU VOLUMES

A VDU is a Volume Determination Unit. Volumes and their associated statistics are calculated at the VDU level and summarized to the sale level. There is often a one to one relationship between a VDU and a Payment Unit, but not always, depending on the cruise design. Refer to the VDU TO PAYMENT UNIT table.

VDU	VOLUME		PERCENT ERROR	RANGE IN CORDS	
	TOTAL CUBIC FEET	TOTAL CORDS		MINIMUM	MAXIMUM
37	114,188	1,445	8.48%	1,323	1,568
38	45,566	577	10.37%	517	637
69	10,449	132	38.64%	81	183
83	46,554	589	22.00%	460	719
TOTAL:	216,757	2,744		2,381	3,107

VDU TO PAYMENT UNIT

When a VDU is associated with more than one Payment Unit (PU), the VDU volumes are assigned to the PU based on acres of the VDU within the PU.

VDU	VDU ACRES	PU	PU ACRES
37	54.4	3	30.0
		4	24.4
38	22.4	2	22.4
69	9.9	1	9.9
83	18.9	5	18.9
TOTAL:	105.6		105.6

DESCRIPTION OF TIMBER BY PAYMENT UNIT (PU)

PU	MARKET GROUP	PRODUCT	QUANTITY	UNIT	ACRES	ADVERTISE PRICE
1	B. T. Aspen	Sawtimber	21.1	MBF	9.9	\$2,915.10
	Jack Pine		2.9	MBF		
	Red Pine		8.2	MBF		
	Jack Pine	Pulpwood	26	Cords		
	Mixed Aspen		9	Cords		
	<i>B. T. Aspen</i>		9	<i>Cords</i>		
	Mixed Hardwood		28	Cords		
	<i>Paper Birch</i>		20	<i>Cords</i>		
	<i>Red Maple</i>		8	<i>Cords</i>		
	Red Pine		4	Cords		
2	B. T. Aspen	Sawtimber	48.6	MBF	22.4	\$10,881.60
	White Pine		18.2	MBF		
	Jack Pine	Pulpwood	26	Cords		
	Mixed Aspen		303	Cords		
	<i>B. T. Aspen</i>		303	<i>Cords</i>		
	Mixed Hardwood		32	Cords		
	<i>Red Maple</i>		32	<i>Cords</i>		
	Red Pine		19	Cords		
	White Pine		63	Cords		
	3	B. T. Aspen	Sawtimber	106.7		
Jack Pine			7.8	MBF		
Quaking Aspen			21.7	MBF		
Red Maple			8.5	MBF		
Red Pine			19.8	MBF		
Balsam Fir		Pulpwood	9	Cords		
Jack Pine			17	Cords		
Mixed Aspen			120	Cords		
<i>B. T. Aspen</i>			69	<i>Cords</i>		
<i>Quaking Aspen</i>			51	<i>Cords</i>		
Mixed Hardwood			75	Cords		
<i>Paper Birch</i>			20	<i>Cords</i>		
<i>Red Maple</i>			55	<i>Cords</i>		
Red Oak			33	Cords		
Red Pine			36	Cords		
White Pine			177	Cords		
4	B. T. Aspen	Sawtimber	86.7	MBF	24.4	\$13,980.90
	Jack Pine		6.4	MBF		
	Quaking Aspen		17.7	MBF		
	Red Maple		6.9	MBF		
	Red Pine		16.1	MBF		
	Balsam Fir	Pulpwood	7	Cords		
	Jack Pine		14	Cords		
	Mixed Aspen		99	Cords		
	<i>B. T. Aspen</i>		57	<i>Cords</i>		
	<i>Quaking Aspen</i>		42	<i>Cords</i>		
	Mixed Hardwood		61	Cords		
	<i>Paper Birch</i>		16	<i>Cords</i>		
	<i>Red Maple</i>		45	<i>Cords</i>		
	Red Oak		27	Cords		
	Red Pine		29	Cords		
	White Pine		144	Cords		
5	B. T. Aspen	Sawtimber	88.1	MBF	18.9	\$14,393.10
	Red Pine		47.3	MBF		
	Mixed Aspen	Pulpwood	71	Cords		
	<i>B. T. Aspen</i>		71	<i>Cords</i>		
	Mixed Hardwood		188	Cords		

DESCRIPTION OF TIMBER BY PAYMENT UNIT (PU), CON'T

PU	MARKET GROUP	PRODUCT	QUANTITY	UNIT	ACRES	ADVERTISE PRICE
5 con't	<i>Red Maple</i>	<i>Pulpwood</i>	153	<i>Cords</i>		
	<i>Sugar Maple</i>		35	<i>Cords</i>		
	Red Pine		60	Cords		
TOTAL:			532.7	MBF		
TOTAL:			1,677	Cords		

Sale Specific Conditions & Requirements

Sale Name: Coffee Pot Mix

Sale Number: 52-116-21 Seq#: 1

1 - Sale Area

1.2 - Boundaries

1.2.1 - Painted boundaries (9/19)

The sale boundary and Payment Unit boundaries are marked and identified by blue, red, and yellow paint. Exterior sale boundary lines adjacent to private property are marked with blue paint. Exterior sale boundary lines adjacent to state-owned land are marked with red paint. Interior Payment Unit boundaries are marked with yellow paint. Retention areas are marked with red paint; no harvesting activities may occur within these areas. The painted boundary line trees are not Included Timber and are to be protected unless marked with orange paint. Yellow painted trees designating an interior Payment Unit boundary are only to be cut when all surrounding Payment Units have been paid.

2 - Timber Specifications

2.1 - Included Timber

2.1.1 - Clearcut unit(s) with unmerchantable trees (6/14)

Within Payment Unit(s) 1-5, cut all trees that are two (2) inches or more at DBH with the following exceptions:

- Within Payment Units 1 and 2, do not cut any oak trees and any red pine or white pine marked with a band of green paint;
- Within Payment Units 3-5, do not cut any oak marked with a band of green paint and any red pine or white pine 20" or larger at DBH;
- Within Payment Units 1-5, do not cut hemlock or any 26" or larger at DBH, these will be left unharvested as single tree retention.

2.2 - Utilization

2.2.8 - Utilization and removal (5/14)

All products meeting standards set forth in General Condition and Requirement 2.2 - Utilization must be removed from the Sale Area. Retain on site between 1/6 and 1/3 of the slash from harvested trees (tree tops and limbs less than four inches in diameter). This is because biomass retention requirements.

3 - Payments

3.3 - Pre-measured Sales

3.3.4 - Dividing payment units (7/14)

Payment Unit(s) 1-5 may be divided at the request of the Purchaser and upon approval of the Unit Manager. Dividing Payment Units is a contract modification which requires a Timber Sale Contract Amendment. There will be only one division per Payment Unit. No harvest activities may occur until the Purchaser-signed contract amendment has been received.

4 - Transportation

4.1 - Construction

4.1.3 - Slash and earthen piles (8/04)

Piles or windrows of earth along roads and landings that have been widened or constructed shall be leveled. Slash from road maintenance or construction, including stumps, shall be dispersed throughout the Sale Area, chipped/utilized, or otherwise removed from the sale.

4.1.6 - Road construction (1/09)

Construction of new roads or improvements of existing roads shall be done in such a way as to minimize the environmental and visual impacts. Merchantable trees shall be cut and utilized unless otherwise directed. Non-merchantable trees shall be severed and laid flat on the ground. Slash shall be scattered, and not left in windrows and kept a minimum of 10 feet back from the road edge. Stumps shall be set upright, not left on edge, and be moved at least 10 feet away from the road edge. Disturbed soil shall be feathered into the woods and not left in berms or windrows.

4.1.7 - Road closure (10/11)

All new roads built into the sale must be blocked to vehicle traffic upon completion of the sale. Overgrown roads that are reopened shall be considered new roads. In general, this will require constructing a four (4') foot high berm of stumps and logs covered with earth.

4.2 - Maintenance

4.2.5 - Two wheel drive condition (2/04)

All existing trail roads on and adjacent to the sale area must be passable by two-wheel drive traffic for the duration of the sale.

4.3 - Public Right-of-Way

4.3.1 - MDOT R-O-W (11/14)

The Michigan Department of Transportation (MDOT) must be contacted prior to harvesting timber within the MDOT right-of-way.

5 - Operations

5.1 - Notification

5.1.1 - Pre-sale conference (10/16)

A pre-sale conference between the Purchaser and sale administrator is required prior to beginning any operations to discuss contract specifications and to determine landing and road locations.

5.2 - Conduct of Operations

5.2.1 - Slash

5.2.1.1 - Slash within sale area (9/16)

No trees are to be felled outside the sale area and all slash is to be kept at least 10 feet back from the red paint line. If sale boundary lines are along a public road or highway, then slash must be removed 50' from these lines per General Condition & Requirement 5.2.1.

5.2.2 - Hazard Trees/Snags

5.2.2.1 - Den trees (10/16)

Obvious hollow and/or den trees shall be protected and left standing unless they are a safety hazard.

5.2.3 - Operating Restrictions

5.2.3.4 - Oak wilt restriction, no exceptions (1/18)

Within Payment Unit(s) 1-5, cutting, skidding, hauling within the sale and brushing of access roads to the sale are not permitted during the period of April 15 to July 15. No exceptions will be granted. This is necessary to reduce the spread of oak wilt.

5.2.29 - Shrub protection (1/20)

Do not cut or damage hawthorn, witch-hazel, dogwood, or juneberry. These woody-shrub plants are highly beneficial to various wildlife species.

5.2.32 - Decking/landing restoration (9/13)

All decking and landing areas must have the surface area restored to a condition equal to or better than before. This is to ensure the proper regeneration of the stand. Wood debris, chips, and "cookies" from trimmings must be removed or scattered away from landing and loading areas and may not be windrowed on the edge. Stumps will be removed from the landing area and placed back in the Sale Area away from the landing. Piles of topsoil will need to be spread out evenly.

5.4 - Soil Protection

5.4.1 - Rutting restriction, general (7/16)

Operations are to cease immediately if equipment and weather conditions result in rutting of roads which is 12 inches or greater in depth and 50 feet in length. The Unit Manager or his/her representative may restrict hauling and/or skidding if ruts exceed the specified depth. With the Unit Manager or his/her representative's approval, the Purchaser may return to the area when the risk of rutting has decreased.

5.8 - Protection of Endangered Species

5.8.5 - Protection of raptor nests (3/13)

All trees with raptor nests will be protected if found during harvesting operations. Notification will be made to the Unit Manager or his/her representative who will notify the Wildlife Biologist so an on-site evaluation and recommendation can be made, if necessary.

6 - Safety and Fire Prevention

6.2 - Signing

6.2.1 - Road posting (10/20)

The Purchaser is responsible for posting and maintaining caution signs on M-33, Deveraux Lake Road, and Merchant Road prior to beginning operations. The road must be posted at appropriate distances from the Sale Area to warn of logging activity and truck traffic. Signs must be removed when harvest operations are suspended or completed. The Purchaser will provide these signs.

6.2.3 - Recreational trail posting (10/20)

The Purchaser is responsible for posting and maintaining caution signs on the designated equestrian/hiking/biking trail prior to beginning operations. The trail must be posted at appropriate distances from the Sale Area to warn of logging activity and truck traffic at both ends of the trail. Signs must be removed when harvest operations are suspended or completed. The Purchaser will provide these signs.



TIMBER SALE MAP

This information provided by authority of Part 525, 1994 PA 451, as amended.

Sale Number	Year
52-116-21	2021
Date	Page of
09/21/21	2 2

Forest Management Unit GAYLORD-NORTH	County CHEBOYGAN	Mapped By STACKS
Township T36N	Range ROIW	Cruised By STACKS
Section(s) and Subdivision(s) 20 SE SW; 28 SW 1/4; 33 W 1/2 NW		

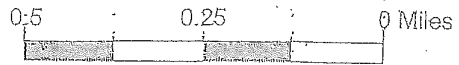
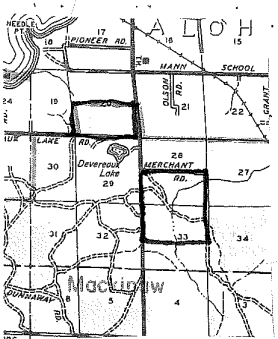
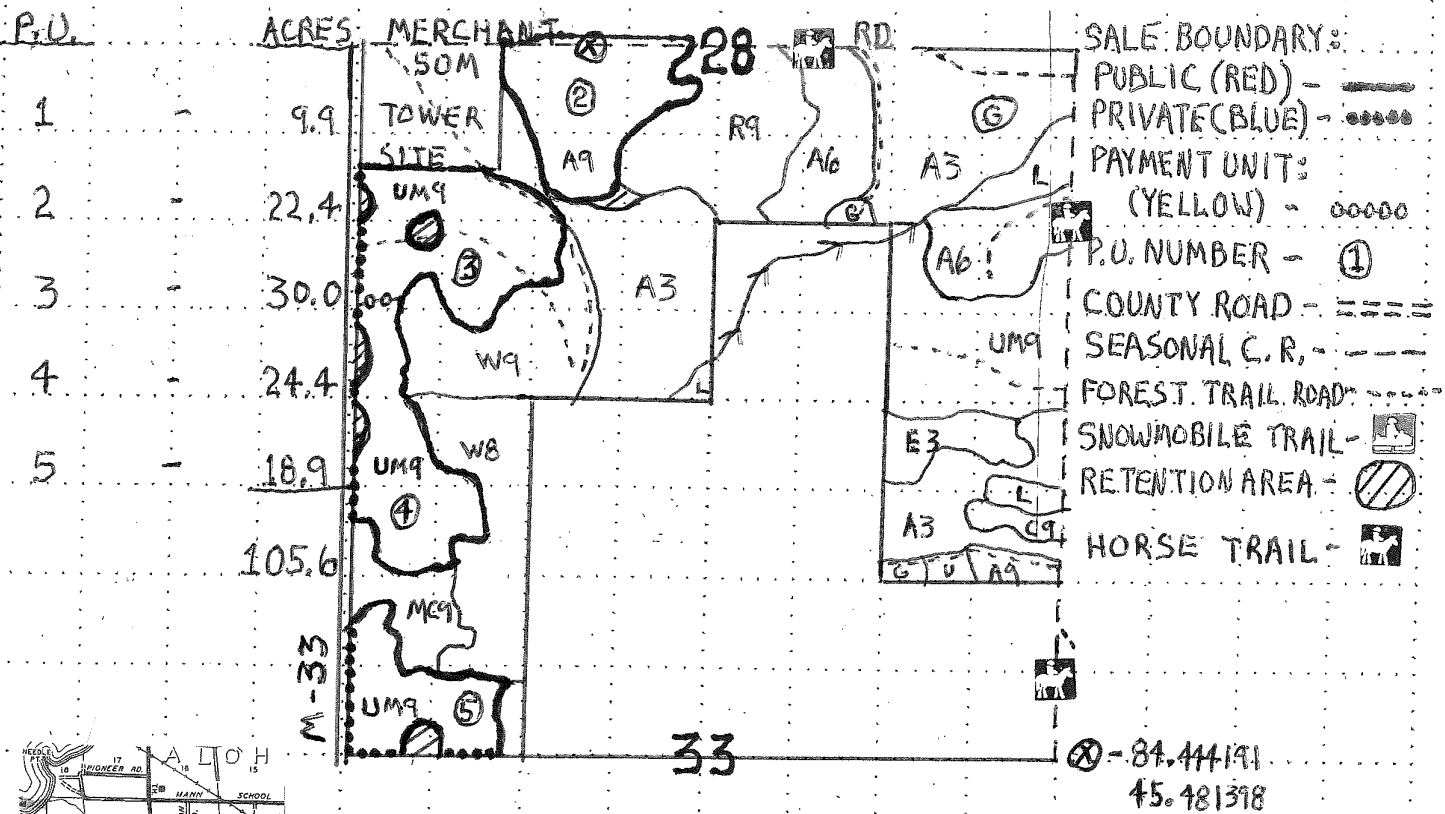
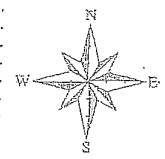
Cover Type				Density	
A = Aspen	J = Jack Pine	O = Oak	U = Upland Brush	0 = Non Stocked	5 = Pole Timber Medium
B = Paper Birch	K = Rock	P = Lowland Poplar	UM = Upland Mix Forest	1 = Seedling Sapling Poor	6 = Pole Timber Well
C = Cedar	L = Lowland Brush	Q = Mixed Swamp Conifer	V = Bog or Marsh	2 = Seedling Sapling Medium	7 = Saw Timber Poor
D = Treed Bog	LM = Lowland Mix Forest	R = Red Pine	W = White Pine	3 = Seedling Sapling Well	8 = Saw Timber Medium
E = Swamp Hardwoods	M = Maple, Beech, Birch	S = Black Spruce	X = Non Stocked	4 = Pole Timber Poor	9 = Saw Timber Well
F = Spruce/Fir	MC = Mixed Conifer	T = Tamarack	Y = Sand		
G = Grass	MD = Mixed Deciduous		Z = Water		
H = Hemlock	N = Marsh				

COMPARTMENT 179

COFFEE POT MIX

CHEBOYGAN COUNTY

105.6 ACRES





TIMBER SALE MAP

This information provided by authority of Part 525, 1994 PA 451, as amended.

Sale Number	Year
52-116-21	2021
Date	Page of
09/21/21	1 2

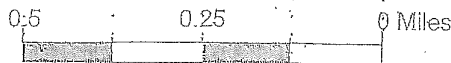
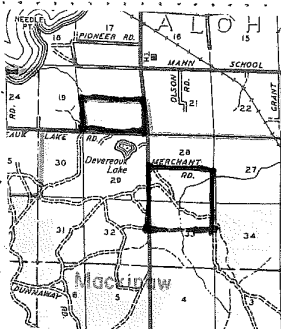
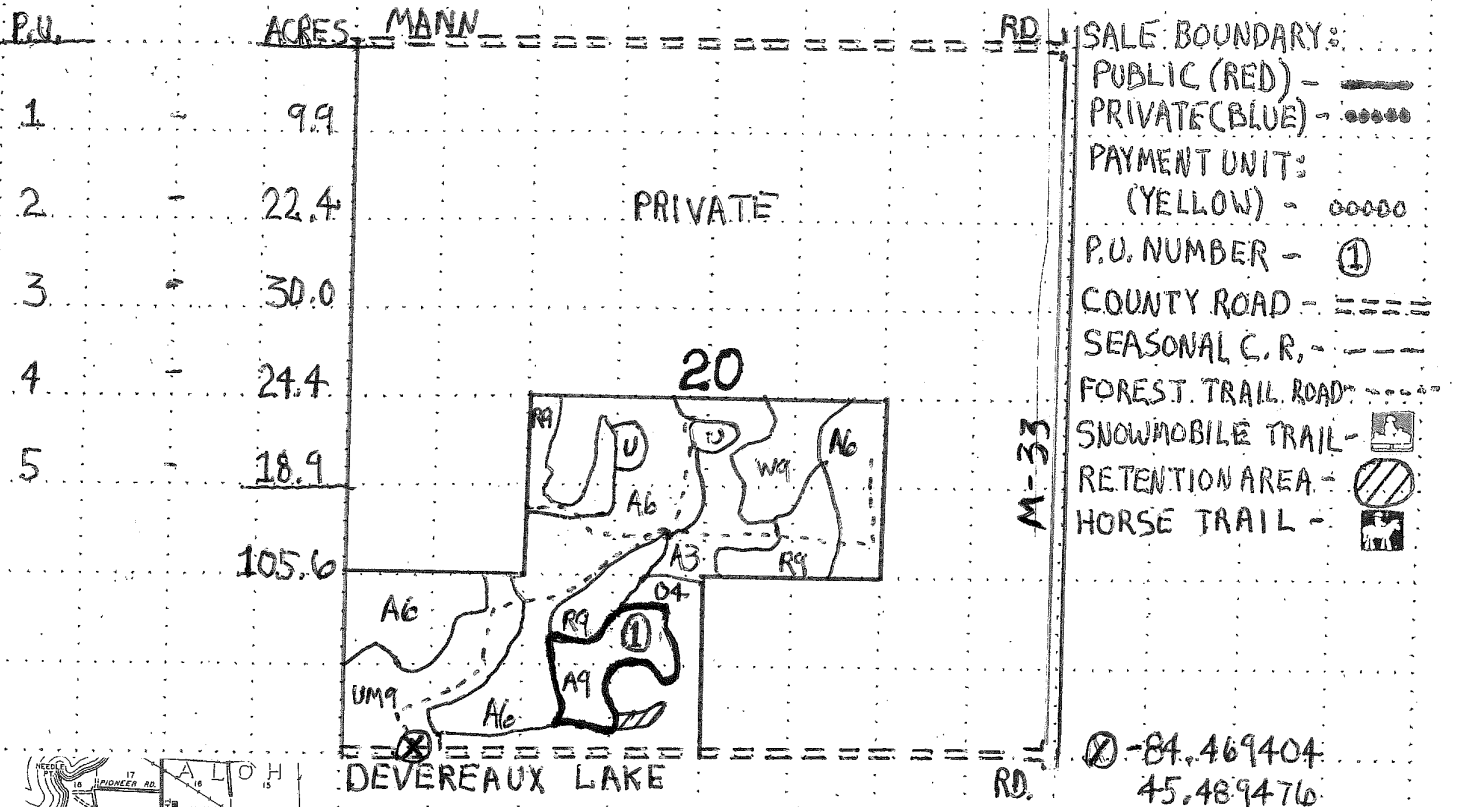
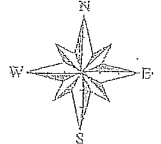
Forest Management Unit GAYLORD - NORTH	County CHEBOYGAN	Mapped By STACKS	Date 09/21/21
Township T36N	Range R01W	Cruised By STACKS	Page of 1 2
Section(s) and Subdivision(s) 20 SESW; 28 SW 1/4; 33 W 1/2 NW			
Cover Type		Density	
A = Aspen B = Paper Birch C = Cedar D = Treed Bog E = Swamp Hardwoods F = Spruce/Fir G = Grass H = Hemlock	J = Jack Pine K = Rock L = Lowland Brush LM = Lowland Mix Forest M = Maple, Beech, Birch MC = Mixed Conifer MD = Mixed Deciduous N = Marsh	O = Oak P = Lowland Poplar Q = Mixed Swamp Conifer R = Red Pine S = Black Spruce T = Tamarack	U = Upland Brush UM = Upland Mix Forest V = Bog or Marsh W = White Pine X = Non Stocked Y = Sand Z = Water
0 = Non Stocked 1 = Seedling Sapling Pool 2 = Seedling Sapling Medium 3 = Seedling Sapling Well 4 = Pole Timber Poor		5 = Pole Timber Medium 6 = Pole Timber Well 7 = Saw Timber Pool 8 = Saw Timber Medium 9 = Saw Timber Well	

COMPARTMENT 179

COFFEE POT MIX

CHEBOYGAN COUNTY

105.6 ACRES



TIMBER SALE INFORMATION

Microwave Mixed Pine (52-117-21)
 T36N, R01W, SEC. 28.
 Cheboygan County (Advertised Price \$57,099.30)

SALE NOTE: All units of volume listed for this sale were estimated using the Inventory Manager computer program and the new Michigan taper model.

- See sale spec 5.2.3.4 for information on oak wilt restrictions.
- See sale spec 2.2.3 for information on stump height requirements.
- See sale spec 2.2.2 for information on chipping requirements.
- See sale spec 5.2.40 for information on trail protection requirements.

A timber sale contract for this lump sum, sealed bid timber sale will be awarded to the responsible bidder offering the highest sealed bid price. All units of volume listed below were estimated using the Inventory Manager computer program and the new Michigan taper model. Bids must be at or above the following advertised price for each product and species:

<u>PRODUCTS & SPECIES</u>	<u>ESTIMATED UNITS*</u>	<u>ADVERTISED PRICE</u>
Sawtimber		
B. T. Aspen	33.2 MBF	\$ 44.00 / MBF
Red Oak	18.9 MBF	\$ 63.00 / MBF
Red Pine	253.2 MBF	\$ 84.00 / MBF
Scotch Pine	6.6 MBF	\$ 24.00 / MBF
White Pine	18.7 MBF	\$ 36.00 / MBF
Pulpwood		
B. T. Aspen	142 Cords	\$ 17.50 / Cord
Jack Pine	242 Cords	\$ 16.55 / Cord
Red Maple	34 Cords	\$ 16.50 / Cord
Red Oak	28 Cords	\$ 19.65 / Cord
Red Pine	638 Cords	\$ 36.65 / Cord
Scotch Pine	48 Cords	\$ 11.95 / Cord
White Pine	44 Cords	\$ 17.95 / Cord

* The total volume is statistically estimated within plus (+) or minus (-) 6.22 percent. There are an estimated 1,881 cords on this timber sale, plus or minus 117 cords at the 95% confidence level. The estimated units are final and not subject to adjustment. Prospective bidders are urged to examine this timber and to make their own estimates of quantity and quality.

BOND AND PAYMENT SCHEDULE:

1. A bond in the amount of \$2,855.00 to insure faithful performance of the conditions of the contract will be deposited by the successful bidder within 21 days of the sale award.
2. Cutting in any sale or unit without the required advance payment would be considered a trespass.
3. Total payment must be paid in advance or according to the following schedule :
 - (a) Ten percent (10%) of the sale value must be paid within 21 days of the sale award.
 - (b) The 10% down payment will be credited towards the first unit cut.
 - (c) Payment for each of the following units must be made before cutting begins in that unit:

PAYMENT UNIT NUMBER	PERCENT OF TOTAL SALE VALUE
01	35.4%
02	35.7%
03	28.9%
4. If no cutting takes place, the 10% down payment will not be refunded.
5. Operations on the contract issued will terminate on 06/30/2025.

SALE STATISTICS

Volumes were calculated in cubic feet using the Michigan taper model. Cubic foot volume includes all wood inside bark for the product indicated. For display purposes, cubic feet were converted to cords and MBF using a simple conversion factor, e.g. 79 cubic feet per cord and 185 cubic feet per MBF. The cubic foot volumes are precise; the cords and MBF volumes are not. Cubic foot volume cannot be directly converted to cords or boards with precision.

SALE VOLUMES

The total estimated sale volume may not equal the sum of the species/products due to the nature of statistical calculations associated with double sampling methodology.

VOLUME			STATISTICAL RANGE IN CORDS	
TOTAL CUBIC FEET	TOTAL CORDS	PERCENT ERROR	MINIMUM	MAXIMUM
148,622	1,881	6.22%	1,764	1,998

VDU VOLUMES

A VDU is a Volume Determination Unit. Volumes and their associated statistics are calculated at the VDU level and summarized to the sale level. There is often a one to one relationship between a VDU and a Payment Unit, but not always, depending on the cruise design. Refer to the VDU TO PAYMENT UNIT table.

	VOLUME			RANGE IN CORDS	
VDU	TOTAL CUBIC FEET	TOTAL CORDS	PERCENT ERROR	MINIMUM	MAXIMUM
26	34,491	437	11.99%	384	489
30	51,611	653	11.92%	575	731
76	39,619	502	10.69%	448	555
80	19,463	246	14.83%	210	283
TOTAL:	145,185	1,838		1,617	2,058

VDU TO PAYMENT UNIT

When a VDU is associated with more than one Payment Unit (PU), the VDU volumes are assigned to the PU based on acres of the VDU within the PU.

VDU	VDU ACRES	PU	PU ACRES
26	15.6	2	15.6
30	19.2	1	12.4
		2	6.8
76	17.5	3	17.5
80	9.7	1	9.7
TOTAL:	62.0		62.0

DESCRIPTION OF TIMBER BY PAYMENT UNIT (PU)

PU	MARKET GROUP	PRODUCT	QUANTITY	UNIT	ACRES	ADVERTISE PRICE	
1	B. T. Aspen	Sawtimber	26.7	MBF	22.1	\$20,212.90	
	Red Oak		7.4	MBF			
	Red Pine		60.8	MBF			
	Scotch Pine	6.6	MBF				
	B. T. Aspen	Pulpwood	30	Cords			
	Jack Pine		72	Cords			
	Red Maple		7	Cords			
	Red Oak		14	Cords			
	Red Pine		286	Cords			
	Scotch Pine		48	Cords			
	White Pine		8	Cords			
2	B. T. Aspen	Sawtimber	6.5	MBF	22.4	\$20,411.95	
	Red Oak		11.5	MBF			
	Red Pine		61.3	MBF			
	White Pine	6.8	MBF				
	B. T. Aspen	Pulpwood	17	Cords			
	Jack Pine		160	Cords			
	Red Maple		12	Cords			
	Red Oak		14	Cords			
	Red Pine		285	Cords			
	White Pine		8	Cords			
3	Red Pine	Sawtimber	131.1	MBF	17.5	\$16,474.45	
	White Pine		11.9	MBF			
	B. T. Aspen	Pulpwood	95	Cords			
	Jack Pine		10	Cords			
	Red Maple		15	Cords			
	Red Pine		67	Cords			
	White Pine		28	Cords			
TOTAL:			330.6	MBF			
TOTAL:			1,176	Cords			

Sale Specific Conditions & Requirements

Sale Name: Microwave Mixed Pine

Sale Number: 52-117-21 Seq#: 2

1 - Sale Area

1.2 - Boundaries

1.2.1 - Painted boundaries (9/19)

The sale boundary and Payment Unit boundaries are marked and identified by blue, red, and yellow paint. Exterior sale boundary lines adjacent to private property are marked with blue paint. Exterior sale boundary lines adjacent to state-owned property are marked with red paint. Interior Payment Unit boundaries are marked with yellow paint. Timber retention areas are marked with red paint; no harvesting activities may occur within these areas. The painted boundary line trees are not Included Timber and are to be protected. Yellow painted trees designating an interior Payment Unit boundary are only to be cut when all surrounding Payment Units have been paid.

2 - Timber Specifications

2.1 - Included Timber

2.1.1 - Clearcut unit(s) with unmerchantable trees (6/14)

Within Payment Unit(s) 1 and 2, cut all trees that are two (2) inches or more at DBH. Within Payment Unit 3, cut all trees that are two (2) inches or more at DBH, except any incidental 26"+ DBH trees, or hemlock (regardless of size) that will be left unharvested as individual retention trees. Also, several unharvested timber retention areas are found within the sale boundaries and are shown on the Timber Sale Map. Do not operate harvest equipment within these designated areas.

2.2 - Utilization

2.2.2 - Chipping required (2/18)

Payment Unit's 1 and 2 must be chip harvested to facilitate subsequent planting operations. If market conditions limit the practicality of chipping, tops and slash must be arranged in a way that will not inhibit future planting operations, as directed by the sale administrator. A chipping exemption can be obtained if proposed operations are determined to be suitable for planting by reforestation staff. This exemption must be granted in writing. The requirement to retain approximately 1/6 to 1/3 of tree tops and limbs less than four inches in diameter does not apply (G. C. & R. 2.2). This is because post-harvest cultivation activities.

2.2.3 - Stump heights (4/07)

Stump heights within Payment Units 1 and 2 shall not exceed 6 inches for all trees. This is to facilitate post-harvest planting operations.

3 - Payments

3.3 - Pre-measured Sales

3.3.4 - Dividing payment units (7/14)

Payment Unit(s) may be divided at the request of the Purchaser and upon approval of the Unit Manager. Dividing Payment Units is a contract modification which requires a Timber Sale Contract Amendment. The signed contract amendment must be received before harvest operations may begin. There will be only one division per Payment Unit.

4 - Transportation

4.1 - Construction

4.1.3 - Slash and earthen piles (8/04)

Piles or windrows of earth along roads and landings that have been widened or constructed shall be leveled. Slash from road maintenance or construction, including stumps, shall be dispersed throughout the sale.

4.1.6 - Road construction (1/09)

Construction of new roads or improvements of existing roads shall be done in such a way as to minimize the environmental and visual impacts. Merchantable trees shall be cut and utilized unless otherwise directed. Non-merchantable trees shall be severed and laid flat on the ground. Slash shall be scattered, and not left in windrows and kept a minimum of 10 feet back

from the road edge. Stumps shall be set upright, not left on edge, and be moved at least 10 feet away from the road edge. Disturbed soil shall be feathered into the woods and not left in berms or windrows.

4.1.7 - Road closure (10/11)

All new roads built into the sale must be blocked to vehicle traffic upon completion of the sale. Overgrown roads that are reopened shall be considered new roads. In general, this will require constructing a four (4') foot high berm of stumps and logs covered with earth. Contact the sale administrator for specific details of design and placement.

4.2 - Maintenance

4.2.5 - Two wheel drive condition (2/04)

All existing trail roads on and adjacent to the sale area must be passable by two-wheel drive traffic for the duration of the sale.

5 - Operations

5.1 - Notification

5.1.1 - Pre-sale conference (10/16)

A pre-sale conference between the Purchaser and sale administrator is required prior to beginning any operations to discuss cutting specs and to determine landing and road locations.

5.2 - Conduct of Operations

5.2.1 - Slash

5.2.1.1 - Slash within sale area (9/16)

No trees are to be felled outside the sale area and all slash is to be kept at least 10 feet back from the red and/or blue paint line. If sale boundary lines are along a public road or highway, then slash must be removed 50' from these lines per General Condition & Requirement 5.2.1.

5.2.1.11 - Slash for reforestation (3/21)

Within the Payment Unit(s) 1 and 2, chipping is encouraged as it is the most effective and efficient way to mitigate slash for reforestation. Other tactics to mitigate slash for site preparation would need to be approved by the Unit Manager or his/her representative. Liquidated damages may be assessed at \$250 per acre if it is determined that slash mitigation was inadequate, and mastication is needed for the DNR to conduct site preparation for planting.

5.2.2 - Hazard Trees/Snags

5.2.2.1 - Den trees (10/16)

Obvious hollow and/or den trees shall be protected and left standing unless they are a safety hazard.

5.2.3 - Operating Restrictions

5.2.3.4 - Oak wilt restriction, no exceptions (1/18)

Within Payment Unit(s) 1-3, cutting, skidding, hauling within the sale and brushing of access roads to the sale are not permitted during the period of April 15 to July 15. No exceptions will be granted. This is necessary to reduce the spread of oak wilt.

5.2.3.6 - Bark beetle restriction (12/08)

In the event drought creates a high risk of pine bark beetle infestation, pine is not to be cut during the period March 1 through July 1, unless all portions of trees greater than two inches in diameter are removed from the sale area, reduced to chips, or treated to the satisfaction of the Unit Manager or his/her representative, within fifteen days of being severed from the stump. Pine log decks, pulpwood piles and treetops that are piled for chipping in the fall or winter within a 1/4 mile of susceptible sites must be removed before March 15. Residual slash must not be placed in piles or rows and must be spread over the site for quick drying. The Department of Natural Resources will exercise this specification if the risk of damage warrants.

5.2.32 - Decking/landing restoration (9/13)

All decking and landing areas must have the surface area restored to a condition equal to or better than before. This is to ensure the proper regeneration of the stand. Wood debris, chips, and "cookies" from trimmings must be removed or scattered away from landing and loading areas and may not be windrowed on the edge.

5.2.40 - Pathway protection (10/10)

The Midland to Mackinaw horse trail is shown on the Timber Sale Map. Do not cut trees or damage posts with blue pathway markers. Maintain a 20-foot-wide slash, debris, and rut free zone daily, using the pathway as the centerline.

5.4 - Soil Protection

5.4.1 - Rutting restriction, general (7/16)

Operations are to cease immediately if equipment and weather conditions result in rutting of roads which is 12 inches or greater in depth and 50 feet in length. The Unit Manager or his/her representative may restrict hauling and/or skidding if ruts exceed the specified depth. With the Unit Manager or his/her representative's approval, the Purchaser may return to the area when the risk of rutting has decreased.

5.8 - Protection of Endangered Species

5.8.5 - Protection of raptor nests (3/13)

All trees with raptor nests will be protected if found during harvesting operations. Notification will be made to the Unit Manager or his/her representative who will notify the Wildlife Biologist so an on-site evaluation and recommendation can be made, if necessary.

6 - Safety and Fire Prevention

6.2 - Signing

6.2.1 - Road posting (10/20)

The Purchaser is responsible for posting and maintaining caution signs on M-33 and Merchant Road prior to beginning operations. The road must be posted at appropriate distances from the Sale Area to warn of logging activity and truck traffic. Signs must be removed when harvest operations are suspended or completed. The Purchaser will provide these signs.

6.2.3 - Recreational trail posting (10/20)

The Purchaser is responsible for posting and maintaining caution signs on the Midland to Mackinaw horse trail prior to beginning operations. The trail must be posted at appropriate distances from the Sale Area to warn of logging activity and truck traffic at both ends of the trail. Signs must be removed when harvest operations are suspended or completed. The Purchaser will provide these signs.



TIMBER SALE MAP

This information provided by authority of Part 525, 1994 PA 451, as amended.

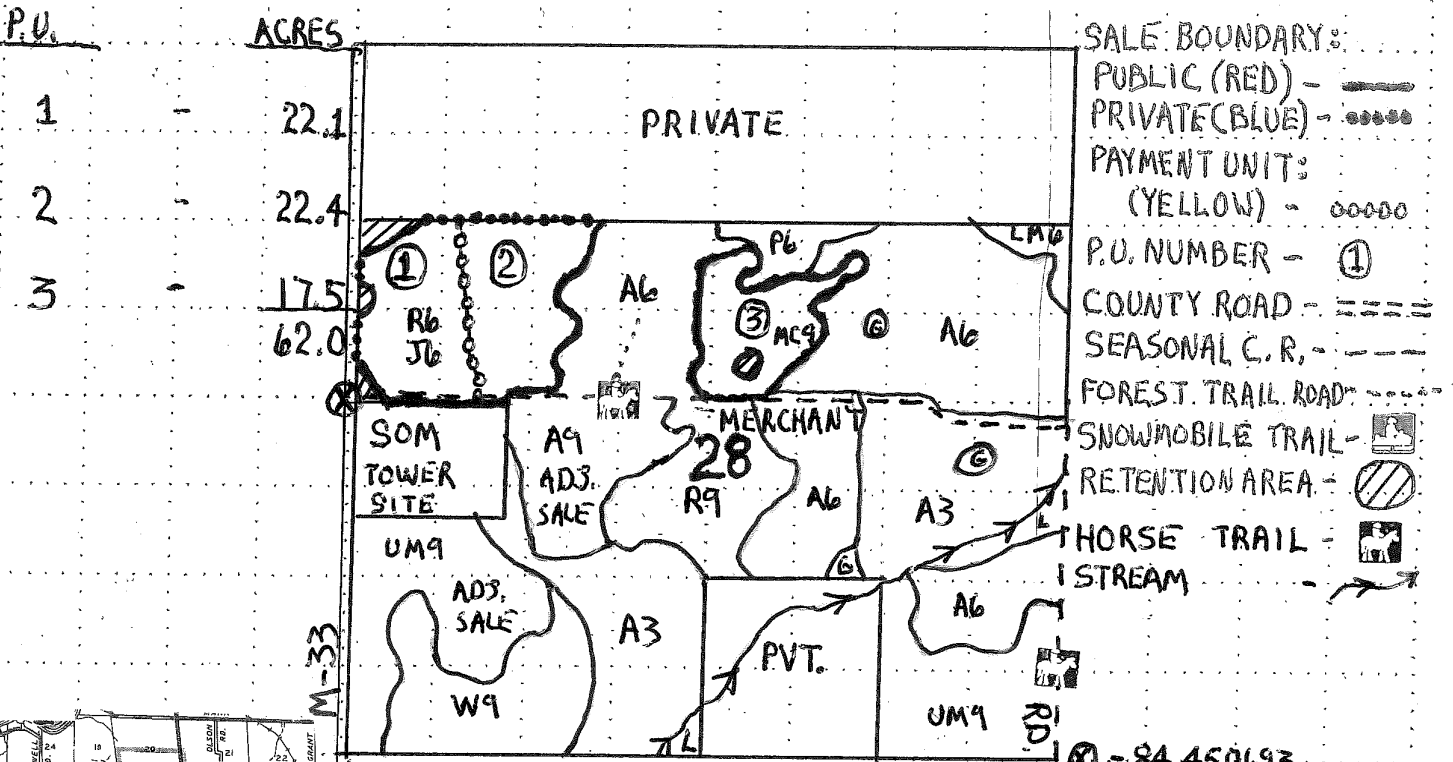
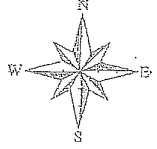
Sale Number	Year
52-117-21	2021

Forest Management Unit GAYLORD-NORTH	County CHEBOYGAN	Mapped By STACKS
Township T36N	Range RO1W	Cruised By STACKS
Section(s) and Subdivision(s) 28 S 1/2 NW, SWNE, NWSW, NWSE		

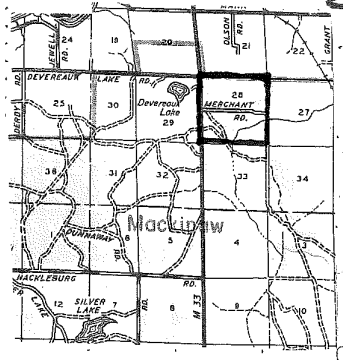
Date	Page	of
09/03/21	1	1

Cover Type				Density			
A = Aspen	J = Jack Pine	O = Oak	U = Upland Brush	0 = Non Stocked	5 = Pole Timber Medium		
B = Paper Birch	K = Rock	P = Lowland Poplar	UM = Upland Mix Forest	1 = Seedling Sapling Poor	6 = Pole Timber Well		
C = Cedar	L = Lowland Brush	Q = Mixed Swamp Conifer	V = Bog or Marsh	2 = Seedling Sapling Medium	7 = Saw Timber Poor		
D = Tread Bog	LM = Lowland Mix Forest	R = Red Pine	W = White Pine	3 = Seedling Sapling Well	8 = Saw Timber Medium		
E = Swamp Hardwoods	M = Maple, Beech, Birch	S = Black Spruce	X = Non Stocked	4 = Pole Timber Poor	9 = Saw Timber Well		
F = Spruce/Fir	MC = Mixed Conifer	T = Tamarack	Y = Sand				
G = Grass	MD = Mixed Deciduous		Z = Water				
H = Hemlock	N = Marsh						

COMPARTMENT: 179 MICROWAVE MIXED PINE
 CHEBOYGAN COUNTY
 62 ACRES



① - 84.450693
 45.481589



Bigfoot Red Pine (52-105-21)

T36N, R05W, SEC. 19; T36N, R05W, SEC. 29; T36N, R05W, SEC. 30; T36N,

In response to the notice of sale to be held 9:00 a.m. (local time) on February 25, 2022, I am hereby submitting my sealed bid (firm offer) for the following forest products to be cut. Bids for individual species must be at or above the advertised price. All non-responsive bid forms may be rejected.

<u>PRODUCTS & SPECIES</u>	<u>ESTIMATED VOLUME*</u>	<u>ADVERTISED PRICE</u>	<u>BID PRICE/UNIT</u>
Sawtimber			
B. T. Aspen	12.5 MBF	\$ 44.00/MBF	\$ _____
Basswood	3.3 MBF	\$ 50.00/MBF	\$ _____
Black Cherry	15.2 MBF	\$ 111.00/MBF	\$ _____
Red Pine	842.4 MBF	\$ 84.00/MBF	\$ _____
Sugar Maple	17.2 MBF	\$ 376.00/MBF	\$ _____
White Pine	8.4 MBF	\$ 36.00/MBF	\$ _____
Pulpwood			
B. T. Aspen	14 Cords	\$ 17.50/Cord	\$ _____
Mixed Hardwood	182 Cords	\$ 16.50/Cord	\$ _____
Red Pine	375 Cords	\$ 36.65/Cord	\$ _____
White Pine	4 Cords	\$ 17.95/Cord	\$ _____

*The volumes are statistically estimated within plus (+) or minus (-) 5.83 percent at 95% confidence level. These estimated volumes are final and not subject to adjustment. Prospective bidders are urged to examine this timber and to make their own estimates of quantity and quality.

I understand that any or all bids may be rejected. All bids must be signed and all bid items must be bid or the bid form may be rejected. I also understand that consideration and awarding a contract will be based upon my past performance and ability to complete the contract based upon equipment and staffing subject to my control.

FEDERAL ID: _____ - _____ or SOCIAL SECURITY NUMBER: _____ - _____ - _____

Company or individual bidding: _____

Company representative's name: _____

Address: _____

City: _____ State: _____ Zip: _____

IF AVAILABLE, PLEASE PLACE THE PERSONALIZED LABEL FROM YOUR PROSPECTUS IN THE ABOVE BOX.

Individual or company representative's signature: _____ Date: _____

Phone number : _____ Email (optional): _____

THE WINNING BIDDER MUST COMPLETE THE VERIFICATION OF WORKER'S DISABILITY COMPENSATION ACT COMPLIANCE (ON REVERSE SIDE IF DOUBLE SIDED) WITHIN 21 DAYS OF SALE AWARD DATE



TIMBER SALE VERIFICATION OF WORKER'S DISABILITY COMPENSATION ACT COMPLIANCE

As required by Act 317, P.A. 1969 (Worker's Compensation) and
Part 5 of Act 451 of 1994, as amended.

FOR DEPARTMENT USE ONLY	
Sale Number (XX - XXX - XX - XX)	
Forest Management Unit:	

VERIFICATION OF WORKER'S DISABILITY COMPENSATION ACT COMPLIANCE

- This verification must be completed and submitted within 21 days of contract award and prior to the issuance of the timber sale contract.
- In addition, if boxes 2B or 2C are checked, then Notice of Exclusion or Certificate of Insurance must be submitted within twenty-one (21) days of the contract award and prior to the issuance of the timber sale contract.
- All information must be typed or printed except for written signatures.

Please Check Appropriate Categories:

1. My business is organized as (you **must** check one of the boxes below):
 - A. Sole Proprietorship (individual)
 - B. Partnership
 - C. Corporation
2. You **must** check one of the boxes below:
 - A. I certify my business is a sole proprietorship and it has no employees but the sole proprietor. I am not subject to the Worker's Compensation Laws.
 - B. I certify my business has satisfied its obligation to the Worker's Compensation Act through the use of an approved Notice of Exclusion (BWC-337, Rev. 5/96). I will provide a copy of the Notice of Exclusion within 21 days of the contract award. (For questions or a copy of the BWC-337, please call the Worker's Compensation Bureau at 517-322-1195).
 - C. I certify my business has a Worker's Compensation Policy. I will provide an original Certificate of Insurance within twenty-one (21) days of the contract award.
3. If you have checked item 2(A) or 2(B), you **must** indicate the number of **both** full-time and part-time employees, other than yourself, including family members and active partners (if none, you must enter "0").

_____ Full-time Employees

_____ Part-time Employees

Name of Business		Federal ID (or) Social Security No.	
Address		Telephone ()	
City	State	ZIP	

I hereby certify that the above information is true and correct. I agree to notify the Michigan DNR of any changes that occur in factors affecting my coverage during any of my present and future operations.

Signature of Owner or Authorized Representative

Title

Date

Please complete the "SEALED BID" information on the next page

Tea Kettle Mix (52-107-21)
T36N, R05W, SEC. 20; T36N, R05W, SEC. 31; Emmet COUNTY

In response to the notice of sale to be held 9:00 a.m. (local time) on February 25, 2022, I am hereby submitting my sealed bid (firm offer) for the following forest products to be cut. Bids for individual species must be at or above the advertised price. All non-responsive bid forms may be rejected.

<u>PRODUCTS & SPECIES</u>	<u>ESTIMATED VOLUME*</u>	<u>ADVERTISED PRICE</u>	<u>BID PRICE/UNIT</u>
Sawtimber			
B. T. Aspen	200.4 MBF	\$ 44.00/MBF	\$ _____
Basswood	7.9 MBF	\$ 50.00/MBF	\$ _____
Beech	19.6 MBF	\$ 51.00/MBF	\$ _____
Red Maple	49.2 MBF	\$ 79.00/MBF	\$ _____
Sugar Maple	118.6 MBF	\$ 376.00/MBF	\$ _____
Pulpwood			
B. T. Aspen	105 Cords	\$ 17.50/Cord	\$ _____
Mixed Hardwood	801 Cords	\$ 16.50/Cord	\$ _____

*The volumes are statistically estimated within plus (+) or minus (-) 9.50 percent at 95% confidence level. These estimated volumes are final and not subject to adjustment. Prospective bidders are urged to examine this timber and to make their own estimates of quantity and quality.

I understand that any or all bids may be rejected. All bids must be signed and all bid items must be bid or the bid form may be rejected. I also understand that consideration and awarding a contract will be based upon my past performance and ability to complete the contract based upon equipment and staffing subject to my control.

FEDERAL ID: _____ or SOCIAL SECURITY NUMBER: _____

Company or individual bidding: _____

Company representative's name: _____

Address: _____

City: _____ State: _____ Zip: _____

IF AVAILABLE, PLEASE PLACE THE PERSONALIZED LABEL FROM YOUR PROSPECTUS IN THE ABOVE BOX.

Individual or company representative's signature: _____ Date: _____

Phone number : _____ Email (optional): _____

THE WINNING BIDDER MUST COMPLETE THE VERIFICATION OF WORKER'S DISABILITY COMPENSATION ACT COMPLIANCE (ON REVERSE SIDE IF DOUBLE SIDED) WITHIN 21 DAYS OF SALE AWARD DATE



TIMBER SALE VERIFICATION OF WORKER'S DISABILITY COMPENSATION ACT COMPLIANCE

As required by Act 317, P.A. 1969 (Worker's Compensation) and
Part 5 of Act 451 of 1994, as amended.

FOR DEPARTMENT USE ONLY	
Sale Number (XX - XXX - XX - XX)	
Forest Management Unit:	

VERIFICATION OF WORKER'S DISABILITY COMPENSATION ACT COMPLIANCE

- This verification must be completed and submitted within 21 days of contract award and prior to the issuance of the timber sale contract.
- In addition, if boxes 2B or 2C are checked, then Notice of Exclusion or Certificate of Insurance must be submitted within twenty-one (21) days of the contract award and prior to the issuance of the timber sale contract.
- All information must be typed or printed except for written signatures.

Please Check Appropriate Categories:

1. My business is organized as (you **must** check one of the boxes below):
 - A. Sole Proprietorship (individual)
 - B. Partnership
 - C. Corporation
2. You **must** check one of the boxes below:
 - A. I certify my business is a sole proprietorship and it has no employees but the sole proprietor. I am not subject to the Worker's Compensation Laws.
 - B. I certify my business has satisfied its obligation to the Worker's Compensation Act through the use of an approved Notice of Exclusion (BWC-337, Rev. 5/96). I will provide a copy of the Notice of Exclusion within 21 days of the contract award. (For questions or a copy of the BWC-337, please call the Worker's Compensation Bureau at 517-322-1195).
 - C. I certify my business has a Worker's Compensation Policy. I will provide an original Certificate of Insurance within twenty-one (21) days of the contract award.
3. If you have checked item 2(A) or 2(B), you **must** indicate the number of **both** full-time and part-time employees, other than yourself, including family members and active partners (if none, you must enter "0").

_____ Full-time Employees

_____ Part-time Employees

Name of Business		Federal ID (or) Social Security No.	
Address		Telephone ()	
City	State	ZIP	

I hereby certify that the above information is true and correct. I agree to notify the Michigan DNR of any changes that occur in factors affecting my coverage during any of my present and future operations.

Signature of Owner or Authorized Representative

Title

Date

Please complete the "SEALED BID" information on the next page

Coffee Pot Mix (52-116-21)

T36N, R01W, SEC. 20; T36N, R01W, SEC. 28; T36N, R01W, SEC. 33; Cheboygan

In response to the notice of sale to be held 9:00 a.m. (local time) on February 25, 2022, I am hereby submitting my sealed bid (firm offer) for the following forest products to be cut. Bids for individual species must be at or above the advertised price. All non-responsive bid forms may be rejected.

<u>PRODUCTS & SPECIES</u>	<u>ESTIMATED VOLUME*</u>	<u>ADVERTISED PRICE</u>	<u>BID PRICE/UNIT</u>
Sawtimber			
B. T. Aspen	351.2 MBF	\$ 44.00/MBF	\$ _____
Jack Pine	17.1 MBF	\$ 35.00/MBF	\$ _____
Quaking Aspen	39.4 MBF	\$ 44.00/MBF	\$ _____
Red Maple	15.4 MBF	\$ 79.00/MBF	\$ _____
Red Pine	91.4 MBF	\$ 84.00/MBF	\$ _____
White Pine	18.2 MBF	\$ 36.00/MBF	\$ _____
Pulpwood			
Balsam Fir	16 Cords	\$ 16.70/Cord	\$ _____
Jack Pine	83 Cords	\$ 16.55/Cord	\$ _____
Mixed Aspen	602 Cords	\$ 17.50/Cord	\$ _____
Mixed Hardwood	384 Cords	\$ 16.50/Cord	\$ _____
Red Oak	60 Cords	\$ 19.65/Cord	\$ _____
Red Pine	148 Cords	\$ 36.65/Cord	\$ _____
White Pine	384 Cords	\$ 17.95/Cord	\$ _____

*The volumes are statistically estimated within plus (+) or minus (-) 7.25 percent at 95% confidence level. These estimated volumes are final and not subject to adjustment. Prospective bidders are urged to examine this timber and to make their own estimates of quantity and quality.

I understand that any or all bids may be rejected. All bids must be signed and all bid items must be bid or the bid form may be rejected. I also understand that consideration and awarding a contract will be based upon my past performance and ability to complete the contract based upon equipment and staffing subject to my control.

FEDERAL ID: _____ or SOCIAL SECURITY NUMBER: _____

Company or individual bidding: _____

Company representative's name: _____

Address: _____

City: _____ State: _____ Zip: _____

IF AVAILABLE, PLEASE PLACE THE PERSONALIZED LABEL FROM YOUR PROSPECTUS IN THE ABOVE BOX.

Individual or company representative's signature: _____ Date: _____

Phone number : _____ Email (optional): _____

THE WINNING BIDDER MUST COMPLETE THE VERIFICATION OF WORKER'S DISABILITY COMPENSATION ACT COMPLIANCE (ON REVERSE SIDE IF DOUBLE SIDED) WITHIN 21 DAYS OF SALE AWARD DATE



TIMBER SALE VERIFICATION OF WORKER'S DISABILITY COMPENSATION ACT COMPLIANCE

As required by Act 317, P.A. 1969 (Worker's Compensation) and
Part 5 of Act 451 of 1994, as amended.

FOR DEPARTMENT USE ONLY	
Sale Number (XX - XXX - XX - XX)	
Forest Management Unit:	

VERIFICATION OF WORKER'S DISABILITY COMPENSATION ACT COMPLIANCE

- This verification must be completed and submitted within 21 days of contract award and prior to the issuance of the timber sale contract.
- In addition, if boxes 2B or 2C are checked, then Notice of Exclusion or Certificate of Insurance must be submitted within twenty-one (21) days of the contract award and prior to the issuance of the timber sale contract.
- All information must be typed or printed except for written signatures.

Please Check Appropriate Categories:

1. My business is organized as (you **must** check one of the boxes below):
 - A. Sole Proprietorship (individual)
 - B. Partnership
 - C. Corporation
2. You **must** check one of the boxes below:
 - A. I certify my business is a sole proprietorship and it has no employees but the sole proprietor. I am not subject to the Worker's Compensation Laws.
 - B. I certify my business has satisfied its obligation to the Worker's Compensation Act through the use of an approved Notice of Exclusion (BWC-337, Rev. 5/96). I will provide a copy of the Notice of Exclusion within 21 days of the contract award. (For questions or a copy of the BWC-337, please call the Worker's Compensation Bureau at 517-322-1195).
 - C. I certify my business has a Worker's Compensation Policy. I will provide an original Certificate of Insurance within twenty-one (21) days of the contract award.
3. If you have checked item 2(A) or 2(B), you **must** indicate the number of **both** full-time and part-time employees, other than yourself, including family members and active partners (if none, you must enter "0").

_____ Full-time Employees

_____ Part-time Employees

Name of Business		Federal ID (or) Social Security No.	
Address		Telephone ()	
City	State	ZIP	

I hereby certify that the above information is true and correct. I agree to notify the Michigan DNR of any changes that occur in factors affecting my coverage during any of my present and future operations.

Signature of Owner or Authorized Representative

Title

Date

Please complete the "SEALED BID" information on the next page

Microwave Mixed Pine (52-117-21)
T36N, R01W, SEC. 28; Cheboygan COUNTY

In response to the notice of sale to be held 9:00 a.m. (local time) on February 25, 2022, I am hereby submitting my sealed bid (firm offer) for the following forest products to be cut. Bids for individual species must be at or above the advertised price. All non-responsive bid forms may be rejected.

<u>PRODUCTS & SPECIES</u>	<u>ESTIMATED VOLUME*</u>	<u>ADVERTISED PRICE</u>	<u>BID PRICE/UNIT</u>
Sawtimber			
B. T. Aspen	33.2 MBF	\$ 44.00/MBF	\$ _____
Red Oak	18.9 MBF	\$ 63.00/MBF	\$ _____
Red Pine	253.2 MBF	\$ 84.00/MBF	\$ _____
Scotch Pine	6.6 MBF	\$ 24.00/MBF	\$ _____
White Pine	18.7 MBF	\$ 36.00/MBF	\$ _____
Pulpwood			
B. T. Aspen	142 Cords	\$ 17.50/Cord	\$ _____
Jack Pine	242 Cords	\$ 16.55/Cord	\$ _____
Red Maple	34 Cords	\$ 16.50/Cord	\$ _____
Red Oak	28 Cords	\$ 19.65/Cord	\$ _____
Red Pine	638 Cords	\$ 36.65/Cord	\$ _____
Scotch Pine	48 Cords	\$ 11.95/Cord	\$ _____
White Pine	44 Cords	\$ 17.95/Cord	\$ _____

*The volumes are statistically estimated within plus (+) or minus (-) 6.22 percent at 95% confidence level. These estimated volumes are final and not subject to adjustment. Prospective bidders are urged to examine this timber and to make their own estimates of quantity and quality.

I understand that any or all bids may be rejected. All bids must be signed and all bid items must be bid or the bid form may be rejected. I also understand that consideration and awarding a contract will be based upon my past performance and ability to complete the contract based upon equipment and staffing subject to my control.

FEDERAL ID: ____ - ____ - ____ or SOCIAL SECURITY NUMBER: ____ - ____ - ____

Company or individual bidding: _____

Company representative's name: _____

Address: _____

City: _____ State: _____ Zip: _____

IF AVAILABLE, PLEASE PLACE THE PERSONALIZED LABEL FROM YOUR PROSPECTUS IN THE ABOVE BOX.

Individual or company representative's signature: _____ Date: _____

Phone number : _____ Email (optional): _____

THE WINNING BIDDER MUST COMPLETE THE VERIFICATION OF WORKER'S DISABILITY COMPENSATION ACT COMPLIANCE (ON REVERSE SIDE IF DOUBLE SIDED) WITHIN 21 DAYS OF SALE AWARD DATE



FOR DEPARTMENT USE ONLY	
Sale Number (XX - XXX - XX - XX)	
Forest Management Unit:	

TIMBER SALE VERIFICATION OF WORKER'S DISABILITY COMPENSATION ACT COMPLIANCE

As required by Act 317, P.A. 1969 (Worker's Compensation) and
Part 5 of Act 451 of 1994, as amended.

VERIFICATION OF WORKER'S DISABILITY COMPENSATION ACT COMPLIANCE

- This verification must be completed and submitted within 21 days of contract award and prior to the issuance of the timber sale contract.
- In addition, if boxes 2B or 2C are checked, then Notice of Exclusion or Certificate of Insurance must be submitted within twenty-one (21) days of the contract award and prior to the issuance of the timber sale contract.
- All information must be typed or printed except for written signatures.

Please Check Appropriate Categories:

1. My business is organized as (you **must** check one of the boxes below):
 - A. Sole Proprietorship (individual)
 - B. Partnership
 - C. Corporation
2. You **must** check one of the boxes below:
 - A. I certify my business is a sole proprietorship and it has no employees but the sole proprietor. I am not subject to the Worker's Compensation Laws.
 - B. I certify my business has satisfied its obligation to the Worker's Compensation Act through the use of an approved Notice of Exclusion (BWC-337, Rev. 5/96). I will provide a copy of the Notice of Exclusion within 21 days of the contract award. (For questions or a copy of the BWC-337, please call the Worker's Compensation Bureau at 517-322-1195).
 - C. I certify my business has a Worker's Compensation Policy. I will provide an original Certificate of Insurance within twenty-one (21) days of the contract award.
3. If you have checked item 2(A) or 2(B), you **must** indicate the number of **both** full-time and part-time employees, other than yourself, including family members and active partners (if none, you must enter "0").

_____ Full-time Employees

_____ Part-time Employees

Name of Business		Federal ID (or) Social Security No.	
Address		Telephone ()	
City	State	ZIP	

I hereby certify that the above information is true and correct. I agree to notify the Michigan DNR of any changes that occur in factors affecting my coverage during any of my present and future operations.

Signature of Owner or Authorized Representative

Title

Date

Please complete the "SEALED BID" information on the next page