



**DEPARTMENT OF NATURAL RESOURCES
STATE OF MICHIGAN**

TIMBER SALE PROSPECTUS #7051

SCHEDULED SALE DATE AND TIME: 9:00 a.m. (local time) on May 3, 2022.

LOCATION: GAYLORD MGMT UNIT, 1732 WEST M 32, GAYLORD, MI 49735.

PROSPECTUS NOTE: All bid openings for the Gaylord Management Unit (Gaylord Field Office and Indian River Field Office) will be held at the Gaylord Field Office regardless of sale location within the unit. All payments and contract executions will now be handled through the Gaylord Field Office. The Indian River Field Office will no longer accept payments or hard paper copies of timber sale bids. Payments for all contracts, use permits, bonds, etc. should be sent to the Gaylord Field Office.

The bidder is advised to inspect the sale area and review the location, estimated volumes, operating costs and contract terms of proposed sales. Please be aware that some landowners may request 60 days or more notice for access across their land.

Kashmir Red Pine (52-102-22) / T34N, R03W, SEC. 19, SWSE.

T34N, R03W, SEC. 30, N1/2NE, SENE, E1/2SE.

T34N, R03W, SEC. 31, NENW, N1/2NE.

Cheboygan County, Advertised Price \$207,987.00, 104.4 Acres, Red Pine, Hardwood.

SALE NOTE: All units of volume listed for this sale were estimated using the Inventory Manager computer program and the new Michigan taper model.

See sale spec 2.2.2 for information on chipping requirements.

See sale spec 2.2.3 for information on stump heights.

See sale spec 5.2.41 for information on hauling on snowmobile trail restrictions.

Potential break-up sale adjacent to Wolverine Road.

A recreation site such as a trail, pathway, or campground is within the sale area or the vicinity. Certain restrictions/specifications may be applicable including time restrictions.

Stutsmanville Hardwood (52-112-21) / T36N, R05W, SEC. 19, SESW, S1/2SE.

T36N, R05W, SEC. 20, N1/2NW, SWNW, NESW, S1/2SW.

T36N, R05W, SEC. 29, NWNW.

T36N, R05W, SEC. 30, NENW, NWNE, SWSW.

Emmet County, Advertised Price \$180,493.10, 127.7 Acres, Hardwood, Sugar Maple.

SALE NOTE: All units of volume listed for this sale were estimated using the Inventory Manager computer program and the new Michigan taper model.

See sale spec 5.2.40, 5.2.41, and 6.2.3 for information on recreational trail requirements.

In addition, the private landowner adjacent to Payment Unit 6 is interested in a selection harvest on his property. Please contact Lucas Merrick, Tricia St. Pierre, or Shannon Harrig for the landowner's contact information.

A recreation site such as a trail, pathway, or campground is within the sale area or the vicinity. Certain restrictions/specifications may be applicable including time restrictions.

Tower Rd. Red Pine (52-114-20) / T36N, R05W, SEC. 1 , E1/2SW,SWSE.

T36N, R05W, SEC. 12, N1/2NE.

T36N, R05W, SEC. 13, SWSW.

Emmet County, Advertised Price \$151,724.95, 78.1 Acres, Red Pine.

SALE NOTE: - See sale spec 5.2.3.14 for Heterobasidion root disease (HRD) cutting restrictions.

- See sale spec 5.2.41 for snowmobile trail date restrictions.

A recreation site such as a trail, pathway, or campground is within the sale area or the vicinity.
Certain restrictions/specifications may be applicable including time restrictions.

BID INSTRUCTIONS (VER. 07/02/2018):

1. Scheduled Bid Location, Date, and Time (2/11)

Bids must be received by the Unit Manager, GAYLORD OFFICE, 1732 West M 32, Gaylord, MI 49735, no later than 9:00 a.m. (local time) on May 3, 2022. For further information concerning this sale, contact Lucas Merrick at 989-732-3541 extension 5440.

2. Bidder's Qualifications (5/16)

Purchaser shall obtain workers compensation insurance to cover claims under Michigan's Worker's Disability Compensation Act of 1969 or similar employee benefit act of any other state applicable to an employee. If all or part of a timber sale was prepared by a private contractor, the contractor and that contractor's company are not permitted to bid on the timber sale contract. Bids will not be accepted from individuals or companies appearing on the DNR/FRD No-Bid List. This list contains the names of purchasers who previously failed to execute a contract within 21-days or who have a history of poor performance.

3. Preparation of Sealed Bids (5/16)

Bid Forms may be completed online thru Michigan DNR Timber Sale Online Bidding (OLB) at www.michigan.gov/timberbidding or by completing the hardcopy Bid Form found in the Timber Sale Prospectus. Hardcopy Bid Forms shall be manually signed in ink. Registration in OLB is considered your 'signature' for all bids submitted thru that system. Bid prices must be entered for each species and product in the Bid Price column for all material subject to bidding and all fill-in blanks must be completed. If erasures or other changes appear on the hardcopy Bid Form, each erasure or change must be initialed by the person signing the bid.

4. Submission of Sealed Bids (5/16)

Bid forms may be obtained from the Unit Manager or thru OLB. Bids may be submitted hardcopy or thru OLB. All hardcopy bids must be submitted on the bid form and in an envelope clearly identified as described in this section. NOTE: Only one bid form per bid envelope. Sealed bids must be submitted to the Unit office designated in the prospectus and must be submitted at or prior to the time established in the prospectus. The envelope should show on the outside (a) the sale name or number and (b) the date and time of bid opening, as shown in the prospectus. Bids received after the time specified in the sale prospectus are late bids and will be rejected.

It is possible for a bidder to submit multiple bids on a single sale. For example, a bid may be submitted hardcopy and a bid may be submitted thru OLB. Or, two bidders from the same company could both submit bids on the same sale. If this were to happen, the State would accept all bids received and award the contract accordingly. All bidding and contractual requirements would apply to all bids received.

5. Public Opening of Sealed Bids (7/16)

If conditions permit, the sealed bids will be publicly opened and posted at the time and place set in the prospectus.

If a bidder, present at a bid opening, has submitted bids on more than one sale, that bidder may withdraw their unopened bid envelopes or announce the withdrawal of their online bid after being declared the successful bidder on one sale.

6. Award of Contract (1/11)

Award of the contract will be made to the Bidder whose bid, conforming to the prospectus, is most advantageous to the State of Michigan on the basis of total value at rates bid for the estimated quantities. The State reserves the right to reject any bid or waive any minor irregularity in bids received. A written award mailed (or otherwise furnished) to the successful Bidder shall be deemed to result in a binding contract without further action by either party.

7. Down Payment (1/11)

The Bidder to whom award is made must make a down payment within 21 days of the sale award. The amount of the down payment will be calculated as shown in the Bond and Payment Schedule of this prospectus. Only cash may be used to meet this requirement.

8. Performance Security (1/11)

As guarantee of faithful performance, a cash bond, certificate of deposit, surety bond or irrevocable letter of credit (LOC) is required within 21 days of the sale award. The amount of the performance security is shown in the Bond and

Payment Schedule of this prospectus. If an LOC or surety is used, the coverage must extend for at least 6 months beyond the contract expiration.

9. Timber Sale Contract (7/18)

Additional conditions and requirements common to all timber sales are listed on the timber sale contract (R4031) and are available on line at www.michigan.gov/timber. Contact the Unit Manager for additional information or a sample contract. Within 21 days of the date of the award letter, the bidder must sign the contract and provide the required down payment, performance security, and verification of worker's disability compensation. The down payment and performance security shall be in accordance with the provisions of the timber sale contract, in the sums stated in this prospectus. If these actions are not taken, then the Bidder, the Bidder's corporation, and the corporation's principals may not be permitted to bid on State timber sales for a period of 3 months after the first offense, 6 months after the second offense, and 1 year after the third offense. An offense will only be counted against the Bidder for 5 years. In addition, the Bidder certifies that if awarded this contract, the Bidder will complete the timber sale contract in accordance with its terms and any modifications thereof including requirements to purchase, cut, and remove the included timber by the expiration date.

Payment Unit values in the State Forest Timber Sale Contract are calculated based on the advertised value of the Payment Unit as a percentage of the total advertised value of the contract. The advertised value of each Payment Unit is given in the Description of Timber by Payment Unit table on the Timber Sale Information page. For example, if the value of Payment Unit 1 is advertised as \$1,500 and the total Timber Sale value is advertised as \$10,000, the contract price for Payment Unit 1 will be 15% of the total bid price ($\$1,500/\$10,000 * 100$).

10. Disclaimer of Estimates and Bidder's Warranty of Inspection (7/16)

Before submitting this bid, the Bidder is advised and cautioned to inspect the sale area, review the requirements of the sale contract, and take other steps as may be reasonably necessary to ascertain the location, estimated volumes, construction estimates, and operating costs of the proposed sale. Failure to do so will not relieve the Bidder from responsibility for completing the contract.

The Bidder warrants that this bid is submitted solely on the basis of the Bidder's examination and inspection of the quality and quantity of the timber offered for sale and the Bidder's opinion of the value thereof and the costs of recovery. No reliance should be placed on the State of Michigan's estimates of timber quality, quantity or costs of recovery. Bidder further acknowledges that the State of Michigan: (i) expressly disclaims any warranty of fitness of timber for any purpose; (ii) offers this timber as is without any warranty of quality (merchantability) or quantity and (iii) expressly disclaims any warranty as to the quantity or quality of timber sold.

11. Certification and Chain-of-Custody (10/14)

Unless otherwise indicated in the contract under section 7 – Other Conditions of the Sale Specific Conditions & Requirements, the area encompassed by this timber sale is certified to the standards of the Forest Stewardship Council (FSC) - Certificate #SCS-FM/COC-00090N and the Sustainable Forestry Initiative (SFI) - Certificate #NSF-SFIS-5Y031-SF5. Forest products from this sale may be delivered to the mill as "FSC 100% and / or SFI certified" as long as the contractor hauling the forest products is chain-of-custody (COC) certified or covered under a COC certificate from the destination mill. The purchaser is responsible for maintaining COC after leaving the sale area.

12. Good Neighbor Authority (GNA) Requirements (7/16)

If the name of this timber sales contains the acronym GNA, it is authorized by the Good Neighbor Authority (GNA) and covered by various agreements between the U.S. Forest Service and the State. The timber sale occurs on federal land and the following conditions apply:

GNA contracts on US Forest Service land will not be awarded to purchasers on the Federal list of excluded parties. The System for Award Management (SAM) will be checked for active excluded parties prior to award of contract. In addition, the Bidder to whom award is made must complete an Assurance Regarding Felony Conviction or Tax Delinquent Status for Corporate Applicants (AD-3031).

13. Good Neighbor Authority (GNA) Requirements, con't (9/16)

Bidder certifies, by signing this bid form, that to the best of Bidder's knowledge that the following representations are accurate and complete.

- a. That the Bidder and its principals are not presently debarred, suspended, proposed for debarment, declared ineligible, or voluntary excluded from timber sales (covered transactions) by any Federal department or agency.
- b. That the Bidder and its principals have not within a 3-year period preceding this bid been convicted of or had a civil judgment rendered against them for commission of fraud or a criminal offense in connection with obtaining , attempting to obtain, or performing a public (Federal, State, or local) transaction or contract under a public transaction; violation of Federal or State antitrust statutes or commission of embezzlement, theft, forgery, bribery, falsification or destruction of records, making false statements, or receiving stolen property.
- c. That the Bidder and its principals are not presently indicted for or otherwise criminally or civilly charged by a governmental entity (Federal, State, or local) with commission of any of the offenses enumerated in paragraph b of this certification.
- d. That the Bidder and its principals have not within a 3-year period preceding this bid had one or more public transactions (Federal, State, or local) terminated for breach or default of a timber or forest product contract.

Bidders that cannot certify this requirement, in whole or in part, shall submit an explanation with their bid.

DAN EICHINGER
Director

TIMBER SALE INFORMATION

Kashmir Red Pine (52-102-22)
 T34N, R03W, SEC. 19; T34N, R03W, SEC. 30; T34N, R03W, SEC. 31.
 Cheboygan County (Advertised Price \$207,987.00)

SALE NOTE: All units of volume listed for this sale were estimated using the Inventory Manager computer program and the new Michigan taper model.

See sale spec 2.2.2 for information on chipping requirements.

See sale spec 2.2.3 for information on stump heights.

See sale spec 5.2.41 for information on hauling on snowmobile trail restrictions.

Potential break-up sale adjacent to Wolverine Road.

A recreation site such as a trail, pathway, or campground is within the sale area or the vicinity. Certain restrictions/specifications may be applicable including time restrictions.

A timber sale contract for this lump sum, sealed bid timber sale will be awarded to the responsible bidder offering the highest sealed bid price. All units of volume listed below were estimated using the Inventory Manager computer program and the new Michigan taper model. Bids must be at or above the following advertised price for each product and species:

<u>PRODUCTS & SPECIES</u>	<u>ESTIMATED UNITS*</u>	<u>ADVERTISED PRICE</u>
Sawtimber		
Basswood	114.4 MBF	\$ 47.00 / MBF
Black Cherry	5.7 MBF	\$ 86.00 / MBF
Mixed Aspen	26.2 MBF	\$ 46.00 / MBF
Red Maple	18.8 MBF	\$ 77.00 / MBF
Red Pine	1,954.7 MBF	\$ 86.00 / MBF
Sugar Maple	5.5 MBF	\$ 376.00 / MBF
Pulpwood		
Mixed Aspen	180 Cords	\$ 17.70 / Cord
Mixed Hardwood	606 Cords	\$ 16.55 / Cord
Red Pine	434 Cords	\$ 37.05 / Cord

* The total volume is statistically estimated within plus (+) or minus (-) 6.08 percent. There are an estimated 5,683 cords on this timber sale, plus or minus 346 cords at the 95% confidence level. The estimated units are final and not subject to adjustment. Prospective bidders are urged to examine this timber and to make their own estimates of quantity and quality.

BOND AND PAYMENT SCHEDULE:

1. A bond in the amount of \$10,399.00 to insure faithful performance of the conditions of the contract will be deposited by the successful bidder within 21 days of the sale award.
2. Cutting in any sale or unit without the required advance payment would be considered a trespass.
3. Total payment must be paid in advance or according to the following schedule :
 - (a) Ten percent (10%) of the sale value must be paid within 21 days of the sale award.
 - (b) The 10% down payment will be credited towards the first unit cut.
 - (c) Payment for each of the following units must be made before cutting begins in that unit:

<u>PAYMENT UNIT NUMBER</u>	<u>PERCENT OF TOTAL SALE VALUE</u>
01	20.4%
02	28.6%
03	9.5%
04	13.2%
05	12.7%
06	15.6%
4. If no cutting takes place, the 10% down payment will not be refunded.
5. Operations on the contract issued will terminate on 06/30/2025.

SALE STATISTICS

Volumes were calculated in cubic feet using the Michigan taper model. Cubic foot volume includes all wood inside bark for the product indicated. For display purposes, cubic feet were converted to cords and MBF using a simple conversion factor, e.g. 79 cubic feet per cord and 185 cubic feet per MBF. The cubic foot volumes are precise; the cords and MBF volumes are not. Cubic foot volume cannot be directly converted to cords or boards with precision.

SALE VOLUMES

The total estimated sale volume may not equal the sum of the species/products due to the nature of statistical calculations associated with double sampling methodology.

VOLUME			STATISTICAL RANGE IN CORDS	
TOTAL CUBIC FEET	TOTAL CORDS	PERCENT ERROR	MINIMUM	MAXIMUM
448,982	5,683	6.08%	5,338	6,029

VDU VOLUMES

A VDU is a Volume Determination Unit. Volumes and their associated statistics are calculated at the VDU level and summarized to the sale level. There is often a one to one relationship between a VDU and a Payment Unit, but not always, depending on the cruise design. Refer to the VDU TO PAYMENT UNIT table.

VDU	VOLUME			RANGE IN CORDS	
	TOTAL CUBIC FEET	TOTAL CORDS	PERCENT ERROR	MINIMUM	MAXIMUM
12	86,979	1,101	15.14%	934	1,268
15	113,083	1,431	5.04%	1,359	1,504
21	49,798	630	13.87%	543	718
23	134,499	1,703	10.95%	1,516	1,889
115	47,936	607	28.92%	431	782
TOTAL:	432,295	5,472		4,784	6,160

VDU TO PAYMENT UNIT

When a VDU is associated with more than one Payment Unit (PU), the VDU volumes are assigned to the PU based on acres of the VDU within the PU.

VDU	VDU ACRES	PU	PU ACRES
12	20.4	1	20.4
15	22.7	2	22.7
21	12.8	4	12.8
23	38.0	5	17.0
		6	21.0
115	10.5	3	10.5
TOTAL:	104.4		104.4

DESCRIPTION OF TIMBER BY PAYMENT UNIT (PU)

PU	MARKET GROUP	PRODUCT	QUANTITY	UNIT	ACRES	ADVERTISE PRICE
1	Basswood	Sawtimber	27.4	MBF	20.4	\$42,437.05
	Red Maple		12.0	MBF		
	Red Pine		408.5	MBF		
	Mixed Hardwood	Pulpwood	122	Cords		
	<i>Basswood</i>		10	Cords		
	<i>Black Cherry</i>		13	Cords		
	<i>Red Maple</i>		89	Cords		
	<i>Sugar Maple</i>		10	Cords		
	Red Pine		83	Cords		
2	Black Cherry	Sawtimber	5.7	MBF	22.7	\$59,359.35
	Mixed Aspen		2.8	MBF		
	<i>Quaking Aspen</i>		2.8	MBF		
	Red Pine	Pulpwood	614.4	MBF		
	Mixed Aspen		31	Cords		
	<i>Quaking Aspen</i>		31	Cords		
	Mixed Hardwood		19	Cords		
	<i>Black Cherry</i>		6	Cords		
	<i>Red Maple</i>		13	Cords		
	Red Pine		136	Cords		
3	Basswood	Sawtimber	29.2	MBF	10.5	\$19,788.10
	Red Pine		160.1	MBF		
	Mixed Aspen	Pulpwood	118	Cords		
	<i>Quaking Aspen</i>		118	Cords		
	Mixed Hardwood		74	Cords		
	<i>Basswood</i>		10	Cords		
	<i>Sugar Maple</i>		64	Cords		
	Red Pine		36	Cords		
4	Red Pine	Sawtimber	268.0	MBF	12.8	\$27,550.10
	Sugar Maple		5.5	MBF		
	Mixed Aspen	Pulpwood	13	Cords		
	<i>B. T. Aspen</i>		13	Cords		
	Mixed Hardwood		19	Cords		
	<i>Red Maple</i>		14	Cords		
	<i>Sugar Maple</i>		5	Cords		
	Red Pine		51	Cords		
5	Basswood	Sawtimber	25.9	MBF	17.0	\$26,324.40
	Mixed Aspen		10.5	MBF		
	<i>B. T. Aspen</i>		10.5	MBF		
	Red Maple	Pulpwood	3.0	MBF		
	Red Pine		225.3	MBF		
	Mixed Aspen		8	Cords		
	<i>B. T. Aspen</i>		8	Cords		
	Mixed Hardwood		167	Cords		
	<i>Basswood</i>		9	Cords		
	<i>Beech</i>		43	Cords		
	<i>Red Maple</i>		49	Cords		
	<i>Sugar Maple</i>		66	Cords		
Red Pine	57	Cords				
6	Basswood	Sawtimber	31.9	MBF	21.0	\$32,528.00
	Mixed Aspen		12.9	MBF		
	<i>B. T. Aspen</i>		12.9	MBF		
	Red Maple	Pulpwood	3.8	MBF		
	Red Pine		278.4	MBF		
	Mixed Aspen		10	Cords		
	<i>B. T. Aspen</i>		10	Cords		
	Mixed Hardwood		205	Cords		

DESCRIPTION OF TIMBER BY PAYMENT UNIT (PU), CON'T

PU	MARKET GROUP	PRODUCT	QUANTITY	UNIT	ACRES	ADVERTISE PRICE
6 con't	<i>Basswood</i>	<i>Pulpwood</i>	10	<i>Cords</i>		
	<i>Beech</i>		53	<i>Cords</i>		
	<i>Red Maple</i>		60	<i>Cords</i>		
	<i>Sugar Maple</i>		82	<i>Cords</i>		
	Red Pine		71	Cords		
TOTAL:			2,125.3	MBF		
TOTAL:			1,220	Cords		

Sale Specific Conditions & Requirements

Sale Name: Kashmir Red Pine

Sale Number: 52-102-22 Seq#: 1

1 - Sale Area

1.2 - Boundaries

1.2.1 - Painted boundaries (9/19)

The sale boundary and Payment Unit boundaries are marked and identified by red and yellow paint. Exterior sale boundary lines adjacent to state-owned property are marked with red paint. Interior Payment Unit boundaries are marked with yellow paint. The painted boundary line trees are not Included Timber and are to be protected unless marked with orange paint. Yellow painted trees designating an interior Payment Unit boundary are only to be cut when all surrounding Payment Units have been paid.

2 - Timber Specifications

2.1 - Included Timber

2.1.1 - Clearcut unit(s) with unmerchantable trees (6/14)

Within Payment Unit(s) 1-6, cut all trees that are two (2) inches or more at DBH, except any incidental oak or hemlock.

2.2 - Utilization

2.2.2 - Chipping required (2/18)

Within Payment Units 1-6, the tops of all trees not processed into utility poles or 100" lengths must be chip harvested to facilitate subsequent planting operations. If market conditions limit the practicality of chipping, tops and slash must be arranged in a way that will not inhibit future planting operations, as directed by the sale administrator. A chipping exemption can be obtained if proposed operations are determined to be suitable for planting by reforestation staff. This exemption must be granted in writing. The requirement to retain approximately 1/6 to 1/3 of tree tops and limbs less than four inches in diameter does not apply (G. C. & R. 2.2). This is because of post-harvest cultivation activities.

2.2.3 - Stump heights (4/07)

Stump heights within Payment Unit(s) 1-6 shall not exceed 6 inches for all trees. This is to facilitate post-harvest planting operations.

3 - Payments

3.3 - Pre-measured Sales

3.3.4 - Dividing payment units (7/14)

Payment Unit(s) may be divided at the request of the Purchaser and upon approval of the Unit Manager. Dividing Payment Units is a contract modification which requires a Timber Sale Contract Amendment. The signed contract amendment must be received before harvest operations may begin. There will be only one division per Payment Unit.

4 - Transportation

4.1 - Construction

4.1.3 - Slash and earthen piles (8/04)

Piles or windrows of earth along roads and landings that have been widened or constructed shall be leveled. Slash from road maintenance or construction, including stumps, shall be dispersed throughout the sale.

4.1.6 - Road construction (1/09)

Construction of new roads or improvements of existing roads shall be done in such a way as to minimize the environmental and visual impacts. Merchantable trees shall be cut and utilized unless otherwise directed. Non-merchantable trees shall be severed and laid flat on the ground. Slash shall be scattered, and not left in windrows and kept a minimum of 10 feet back from the road edge. Stumps shall be set upright, not left on edge, and be moved at least 10 feet away from the road edge. Disturbed soil shall be feathered into the woods and not left in berms or windrows.

4.1.7 - Road closure (10/11)

All new roads built into the sale must be blocked to vehicle traffic upon completion of the sale. Overgrown roads that are

reopened shall be considered new roads. In general, this will require constructing a four (4') foot high berm of stumps and logs covered with earth. Contact the sale administrator for specific details of design and placement.

4.2 - Maintenance

4.2.5 - Two wheel drive condition (2/04)

All existing trail roads on and adjacent to the sale area must be passable by two-wheel drive traffic for the duration of the sale.

5 - Operations

5.1 - Notification

5.1.1 - Pre-sale conference (10/16)

A pre-sale conference between the Purchaser and sale administrator is required prior to beginning any operations to discuss cutting specs and to determine landing and road locations.

5.2 - Conduct of Operations

5.2.1 - Slash

5.2.1.1 - Slash within sale area (9/16)

No trees are to be felled outside the sale area and all slash is to be kept at least 10 feet back from the red paint line. If sale boundary lines are along a public road or highway, then slash must be removed 50' from these lines per General Condition & Requirement 5.2.1.

5.2.2 - Hazard Trees/Snags

5.2.2.1 - Den trees (10/16)

Obvious hollow and/or den trees shall be protected and left standing unless they are a safety hazard.

5.2.3 - Operating Restrictions

5.2.3.6 - Bark beetle restriction (12/08)

In the event drought creates a high risk of pine bark beetle infestation, pine is not to be cut during the period March 1 through July 1, unless all portions of trees greater than two inches in diameter are removed from the sale area, reduced to chips, or treated to the satisfaction of the Unit Manager or his/her representative, within fifteen days of being severed from the stump. Pine log decks, pulpwood piles and treetops that are piled for chipping in the fall or winter within a 1/4 mile of susceptible sites must be removed before March 15. Residual slash must not be placed in piles or rows and must be spread over the site for quick drying. The Department of Natural Resources will exercise this specification if the risk of damage warrants.

5.2.4 - Dead and Down Creation

5.2.4.1 - Dead and down creation, marked trees (10/13)

In Payment Unit's 3-5, all trees marked with green paint must be left standing until all merchantable timber has been cut and taken to the landing. At that point, the green-marked trees are to be felled across the timber sale boundary line into the adjacent hardwood stand and left intact on the ground to function as potential pine marten habitat.

5.2.4.3 - Dead and down creation, dead trees (6/07)

Except as provided for in General Condition and Requirement 5.2.2, no dead trees, standing or down, are to be cut, skidded, or processed.

5.2.32 - Decking/landing restoration (9/13)

All decking and landing areas must have the surface area restored to a condition equal to or better than before. This is to ensure the proper regeneration of the stand. Wood debris, chips, and "cookies" from trimmings must be removed or scattered away from landing and loading areas and may not be windrowed on the edge.

5.2.41 - Snowmobile trail protection (9/11)

The designated snowmobile trail is shown on the Timber Sale Map. Do not cut or damage posts with orange trail markers or traffic control signs. If the trail is used for skidding or hauling during the non-snowmobile season, it must be maintained and restored to a condition equal to or better than before harvest operations began. The trail must be in a condition suitable for

grooming prior to December 1. In Payment Units 1-6, the snowmobile trail may not be used for skidding or hauling from December 1 to April 1 to prevent potential hazards between trail users and harvest equipment/logging trucks. Maintain a 20-foot-wide slash, debris, and rut free zone daily using the snowmobile trail as the centerline. All stumps within 10 feet of the snowmobile trail must be cut at ground level. Warning signs should be posted on the trail to warn users of any potential felling/cutting that may be taking place adjacent to the trail.

5.4 - Soil Protection

5.4.1 - Rutting restriction, general (7/16)

Operations are to cease immediately if equipment and weather conditions result in rutting of roads which is 12 inches or greater in depth and 50 feet in length. The Unit Manager or his/her representative may restrict hauling and/or skidding if ruts exceed the specified depth. With the Unit Manager or his/her representative's approval, the Purchaser may return to the area when the risk of rutting has decreased.

5.8 - Protection of Endangered Species

5.8.5 - Protection of raptor nests (3/13)

All trees with raptor nests will be protected if found during harvesting operations. Notification will be made to the Unit Manager or his/her representative who will notify the Wildlife Biologist so an on-site evaluation and recommendation can be made, if necessary.

6 - Safety and Fire Prevention

6.2 - Signing

6.2.1 - Road posting (10/20)

The Purchaser is responsible for posting and maintaining caution signs on Wolverine, Watson, and Little Weber Lake Roads prior to beginning operations. The road must be posted at appropriate distances from the Sale Area to warn of logging activity and truck traffic. Signs must be removed when harvest operations are suspended or completed. The Purchaser will provide these signs.



TIMBER SALE MAP

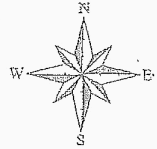
This information provided by authority of Part 525, 1994 PA 451, as amended.

Sale Number	Year
52-102-22	2022

Forest Management Unit GAYLORD - NORTH	County CHEBOYGAN	Mapped By STACKS	Date 11/12/22	Page 1	of 1
Township T34N	Range R03W	Section(s) and Subdivision(s) 19SWSE, 30N½NE, SENE, E½SE, 31N½NE, NENW			
Cover Type			Density		
A = Aspen	J = Jack Pine	O = Oak	U = Upland Brush	0 = Non Stocked	5 = Pole Timber Medium
B = Paper Birch	K = Rock	P = Lowland Poplar	UM = Upland Mix Forest	1 = Seedling Sapling Poor	6 = Pole Timber Well
C = Cedar	L = Lowland Brush	Q = Mixed Swamp Conifer	V = Bog or Marsh	2 = Seedling Sapling Medium	7 = Saw Timber Poor
D = Tread Bog	LM = Lowland Mix Forest	R = Red Pine	W = White Pine	3 = Seedling Sapling Well	8 = Saw Timber Medium
E = Swamp Hardwoods	M = Maple, Beech, Birch	S = Black Spruce	X = Non Stocked	4 = Pole Timber Poor	9 = Saw Timber Well
F = Spruce/Fir	MC = Mixed Conifer	T = Tamarack	Y = Sand		
G = Grass	MD = Mixed Deciduous		Z = Water		
H = Hemlock	N = Marsh				

COMPARTMENT 144

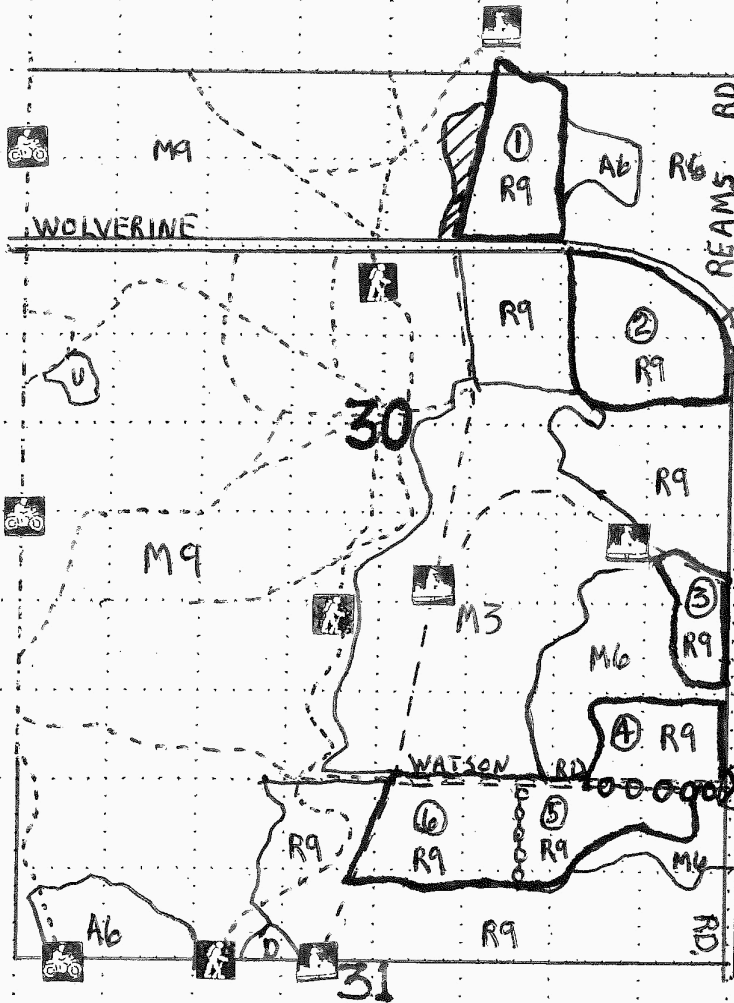
KASHMIR RED PINE



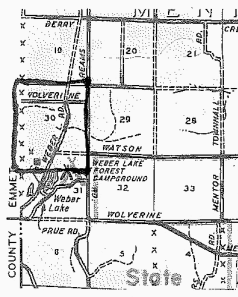
P.U. ACRES CHEBOYGAN COUNTY

1	-	20.4	
2	-	22.7	
3	-	10.5	M9
4	-	12.8	WOLVERINE
5	-	17.0	
6	-	21.0	
		104.4	

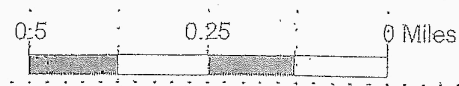
104.4 ACRES



- SALE BOUNDARY: ———
- PUBLIC (RED) - ———
- PAYMENT UNIT: (YELLOW) - 00000
- P.U. NUMBER - ①
- COUNTY ROAD - - - - -
- SEASONAL C. R. - - - - -
- FOREST TRAIL ROAD - - - - -
- SNOWMOBILE TRAIL -
- RETENTION AREA -
- HIKING TRAIL -
- CYCLE TRAIL -



① - 84.712340
45.303640



TIMBER SALE INFORMATION

Stutsmanville Hardwood (52-112-21)

T36N, R05W, SEC. 19; T36N, R05W, SEC. 20; T36N, R05W, SEC. 29; T36N, R05W, SEC. 30.
Emmet County (Advertised Price \$180,493.10)

SALE NOTE: All units of volume listed for this sale were estimated using the Inventory Manager computer program and the new Michigan taper model.

See sale spec 5.2.40, 5.2.41, and 6.2.3 for information on recreational trail requirements.

In addition, the private landowner adjacent to Payment Unit 6 is interested in a selection harvest on his property. Please contact Lucas Merrick, Tricia St. Pierre, or Shannon Harrig for the landowner's contact information.

A recreation site such as a trail, pathway, or campground is within the sale area or the vicinity. Certain restrictions/specifications may be applicable including time restrictions.

A timber sale contract for this lump sum, sealed bid timber sale will be awarded to the responsible bidder offering the highest sealed bid price. All units of volume listed below were estimated using the Inventory Manager computer program and the new Michigan taper model. Bids must be at or above the following advertised price for each product and species:

<u>PRODUCTS & SPECIES</u>	<u>ESTIMATED UNITS*</u>	<u>ADVERTISED PRICE</u>
Sawtimber		
Basswood	102.9 MBF	\$ 47.00 / MBF
Beech	36.9 MBF	\$ 48.00 / MBF
Black Cherry	1.7 MBF	\$ 86.00 / MBF
Mixed Aspen	69.5 MBF	\$ 46.00 / MBF
Red Maple	18.7 MBF	\$ 77.00 / MBF
Sugar Maple	370.7 MBF	\$ 376.00 / MBF
White Ash	12.2 MBF	\$ 63.00 / MBF
Yellow Birch	1.8 MBF	\$ 36.00 / MBF
Pulpwood		
Basswood	198 Cords	\$ 9.00 / Cord
Mixed Aspen	82 Cords	\$ 17.70 / Cord
Mixed Hardwood	1,550 Cords	\$ 16.55 / Cord

* The total volume is statistically estimated within plus (+) or minus (-) 6.14 percent. There are an estimated 3,345 cords on this timber sale, plus or minus 206 cords at the 95% confidence level. The estimated units are final and not subject to adjustment. Prospective bidders are urged to examine this timber and to make their own estimates of quantity and quality.

BOND AND PAYMENT SCHEDULE:

1. A bond in the amount of \$9,025.00 to insure faithful performance of the conditions of the contract will be deposited by the successful bidder within 21 days of the sale award.
2. Cutting in any sale or unit without the required advance payment would be considered a trespass.
3. Total payment must be paid in advance or according to the following schedule :
 - (a) Ten percent (10%) of the sale value must be paid within 21 days of the sale award.
 - (b) The 10% down payment will be credited towards the first unit cut.
 - (c) Payment for each of the following units must be made before cutting begins in that unit:

PAYMENT UNIT NUMBER	PERCENT OF TOTAL SALE VALUE
01	20.6%
02	11.1%
03	21.7%
04	24.2%
05	5.9%
06	16.5%
4. If no cutting takes place, the 10% down payment will not be refunded.
5. Operations on the contract issued will terminate on 06/30/2025.

SALE STATISTICS

Volumes were calculated in cubic feet using the Michigan taper model. Cubic foot volume includes all wood inside bark for the product indicated. For display purposes, cubic feet were converted to cords and MBF using a simple conversion factor, e.g. 79 cubic feet per cord and 185 cubic feet per MBF. The cubic foot volumes are precise; the cords and MBF volumes are not. Cubic foot volume cannot be directly converted to cords or boards with precision.

SALE VOLUMES

The total estimated sale volume may not equal the sum of the species/products due to the nature of statistical calculations associated with double sampling methodology.

VOLUME			STATISTICAL RANGE IN CORDS	
TOTAL CUBIC FEET	TOTAL CORDS	PERCENT ERROR	MINIMUM	MAXIMUM
264,223	3,345	6.14%	3,139	3,550

VDU VOLUMES

A VDU is a Volume Determination Unit. Volumes and their associated statistics are calculated at the VDU level and summarized to the sale level. There is often a one to one relationship between a VDU and a Payment Unit, but not always, depending on the cruise design. Refer to the VDU TO PAYMENT UNIT table.

VDU	VOLUME		PERCENT ERROR	RANGE IN CORDS	
	TOTAL CUBIC FEET	TOTAL CORDS		MINIMUM	MAXIMUM
14	43,041	545	13.19%	473	617
36	42,251	535	14.79%	456	614
37	95,470	1,208	10.34%	1,083	1,333
38	48,515	614	13.85%	529	699
39	12,436	157	20.98%	124	190
TOTAL:	241,713	3,060		2,666	3,454

VDU TO PAYMENT UNIT

When a VDU is associated with more than one Payment Unit (PU), the VDU volumes are assigned to the PU based on acres of the VDU within the PU.

VDU	VDU ACRES	PU	PU ACRES
14	25.9	6	25.9
36	22.4	4	22.4
37	45.5	1	29.6
		2	15.9
38	24.6	3	24.6
39	9.3	5	9.3
TOTAL:	127.7		127.7

DESCRIPTION OF TIMBER BY PAYMENT UNIT (PU)

PU	MARKET GROUP	PRODUCT	QUANTITY	UNIT	ACRES	ADVERTISE PRICE
1	Basswood	Sawtimber	38.4	MBF	29.6	\$37,250.20
	Beech		11.1	MBF		
	Mixed Aspen		28.0	MBF		
	<i>Quaking Aspen</i>		28.0	<i>MBF</i>		
	Sugar Maple		68.6	MBF		
	White Ash		4.7	MBF		
	Basswood		Pulpwood	66		
	Mixed Aspen	20		Cords		
	<i>Quaking Aspen</i>	20		<i>Cords</i>		
	Mixed Hardwood	398		Cords		
	<i>Beech</i>	76		<i>Cords</i>		
	<i>Ironwood</i>	38		<i>Cords</i>		
	<i>Sugar Maple</i>	268		<i>Cords</i>		
	<i>White Ash</i>	16	<i>Cords</i>			
2	Basswood	Sawtimber	20.7	MBF	15.9	\$19,990.55
	Beech		5.9	MBF		
	Mixed Aspen		15.0	MBF		
	<i>Quaking Aspen</i>		15.0	<i>MBF</i>		
	Sugar Maple		36.8	MBF		
	White Ash		2.6	MBF		
	Basswood		Pulpwood	36		
	Mixed Aspen	11		Cords		
	<i>Quaking Aspen</i>	11		<i>Cords</i>		
	Mixed Hardwood	213		Cords		
	<i>Beech</i>	41		<i>Cords</i>		
	<i>Ironwood</i>	20		<i>Cords</i>		
	<i>Sugar Maple</i>	144		<i>Cords</i>		
	<i>White Ash</i>	8	<i>Cords</i>			
3	Basswood	Sawtimber	27.3	MBF	24.6	\$39,161.55
	Sugar Maple		85.0	MBF		
	Basswood	Pulpwood	71	Cords		
	Mixed Hardwood		319	Cords		
	<i>Beech</i>		36	<i>Cords</i>		
	<i>Sugar Maple</i>		283	<i>Cords</i>		
4	Basswood	Sawtimber	7.2	MBF	22.4	\$43,505.80
	Beech		8.0	MBF		
	Black Cherry		1.7	MBF		
	Mixed Aspen		2.6	MBF		
	<i>B. T. Aspen</i>		2.6	<i>MBF</i>		
	Sugar Maple		100.0	MBF		
	White Ash		2.7	MBF		
	Basswood	Pulpwood	5	Cords		
	Mixed Aspen		2	Cords		
	<i>B. T. Aspen</i>		2	<i>Cords</i>		
	Mixed Hardwood		282	Cords		
	<i>Beech</i>		64	<i>Cords</i>		
	<i>Black Cherry</i>		9	<i>Cords</i>		
	<i>Sugar Maple</i>		208	<i>Cords</i>		
<i>White Ash</i>	1	<i>Cords</i>				
5	Basswood	Sawtimber	7.7	MBF	9.3	\$10,721.75
	Sugar Maple		23.5	MBF		
	White Ash		2.2	MBF		
	Basswood	Pulpwood	16	Cords		
	Mixed Hardwood		75	Cords		
	<i>Beech</i>		9	<i>Cords</i>		
	<i>Sugar Maple</i>		63	<i>Cords</i>		

DESCRIPTION OF TIMBER BY PAYMENT UNIT (PU), CON'T

PU	MARKET GROUP	PRODUCT	QUANTITY	UNIT	ACRES	ADVERTISE PRICE
5 con't	<i>White Ash</i>	<i>Pulpwood</i>	3	<i>Cords</i>		
6	Basswood	Sawtimber	1.6	MBF	25.9	\$29,863.25
	Beech		11.9	MBF		
	Mixed Aspen		23.9	MBF		
	<i>Quaking Aspen</i>		23.9	<i>MBF</i>		
	Red Maple		18.7	MBF		
	Sugar Maple		56.8	MBF		
	Yellow Birch		1.8	MBF		
	Basswood	Pulpwood	4	Cords		
	Mixed Aspen		49	Cords		
	<i>Quaking Aspen</i>		49	<i>Cords</i>		
	Mixed Hardwood		263	Cords		
	<i>Beech</i>		47	<i>Cords</i>		
	<i>Red Maple</i>		38	<i>Cords</i>		
	<i>Sugar Maple</i>		175	<i>Cords</i>		
	<i>Yellow Birch</i>		3	<i>Cords</i>		
TOTAL:			614.4	MBF		
TOTAL:			1,830	Cords		

Sale Specific Conditions & Requirements

Sale Name: Stutsmanville Hardwood

Sale Number: 52-112-21 Seq#: 2

1 - Sale Area

1.2 - Boundaries

1.2.1 - Painted boundaries (9/19)

The sale boundary and Payment Unit boundaries are marked and identified by blue, red, and yellow paint. Exterior sale boundary lines against private property are marked with blue paint. Exterior sale boundary lines against state are marked with red paint. Interior Payment Unit boundaries are marked with yellow paint. The painted boundary line trees are not Included Timber and are to be protected unless marked with orange paint.

2 - Timber Specifications

2.1 - Included Timber

2.1.3 - Cut tree marked unit(s) (12/08)

Within Payment Unit(s) 1-6, all trees are designated for cutting when marked with orange paint above and below stump height, regardless of merchantability. All beech and ash are designated for cutting unless marked with green paint. In Payment Unit 6, also cut all aspen. Within the patches marked with teal paint, cut all trees 2" at DBH and greater.

2.2 - Utilization

2.2.6 - Roundwood operation required (3/21)

The skidding of whole trees or tree segments with limbs attached is prohibited. All products must be produced as roundwood and forwarded to existing roads or landing areas in final product length. Trees must be harvested with in-woods processor (feller bunching harvester will not be allow) to retain existing understory.

3 - Payments

3.3 - Pre-measured Sales

3.3.4 - Dividing payment units (7/14)

Payment Unit(s) 1-4 and 6 may be divided at the request of the Purchaser and upon approval of the Unit Manager. Dividing Payment Units is a contract modification which requires a Timber Sale Contract Amendment. There will be only one division per Payment Unit.

3.4 - Damaged Timber

3.4.1 - Damaged timber (7/16)

General Condition and Requirement 3.4 Damaged Timber, defines liquidated damages for undesignated live merchantable trees which are cut or injured. No damage is acceptable to undesignated live merchantable trees. Within the Sale Area, if more than 5% of trees (> 4.5" DBH) within a specified area of the sale are damaged, liquidated damages will be assessed for all trees damaged. Rates will be in accordance with General Condition and Requirement 3.4 Damaged Timber.

4 - Transportation

4.1 - Construction

4.1.3 - Slash and earthen piles (8/04)

Piles or windrows of earth along roads and landings that have been widened or constructed shall be leveled. Slash from road maintenance or construction, including stumps, shall be dispersed throughout the sale.

4.1.4 - Timber removed for construction (12/09)

Trees cut or damaged in the process of pre-approved road, landing or skid trail construction will be decked in an area separate from other Designated Timber and not removed until measured by the sale administrator. Payment will be made at the specified Purchase Unit Price.

4.1.7 - Road closure (10/11)

All new roads built into the sale must be blocked to vehicle traffic upon completion of the sale. In general, this will require

constructing a four (4') foot high berm of stumps and logs covered with earth. All stumps from road building and landing construction must be reserved to block any newly constructed roads upon completion of the sale. These stumps must be scattered along the road system to prohibit vehicular movement. Contact the sale administrator for specific details of design and placement.

4.2 - Maintenance

4.2.5 - Two wheel drive condition (2/04)

All existing trail roads on and adjacent to the sale area must be passable by two-wheel drive traffic for the duration of the sale.

5 - Operations

5.1 - Notification

5.1.1 - Pre-sale conference (10/16)

A pre-sale conference on site between the Purchaser and sale administrator is required prior to beginning any operations to determine landing and road locations. The Unit Manager or his/her representative must be contacted at least 3 days in advance to schedule the conference.

5.2 - Conduct of Operations

5.2.2 - Hazard Trees/Snags

5.2.2.1 - Den trees (10/16)

Obvious hollow and/or den trees shall be protected and left standing unless they are a safety hazard.

5.2.3 - Operating Restrictions

5.2.3.3 - Bark slippage restriction (3/09)

Within Payment Unit(s) 1-6, unless changed by written agreement, cutting and skidding are not permitted during the period of April 15 to July 15. This restriction is because of bark slippage.

5.2.38 - No decking against live trees (2/04)

Cut products may not be decked against unmarked or designated leave trees.

5.2.40 - Pathway protection (10/10)

The North Country Trail is a biking, hiking, horse trail and is shown on the Timber Sale Map. Do not cut trees or damage posts with blue pathway markers. Within Payment Units 3-5 there are user created biking trails which will need to be identified and protected. Maintain a 20-foot-wide slash, debris, and rut free zone daily, using the pathways as the centerline. Do not run equipment down the pathways. Skidding across the trails may only occur in locations approved by the sale administrator.

5.2.41 - Snowmobile trail protection (9/11)

The snowmobile trail is shown on the Timber Sale Map. Do not cut or damage posts with orange trail markers or traffic control signs. If the trail is used, it must be maintained and restored to a condition equal to or better than before the sale. If the trail is used for hauling, it must be graded to the satisfaction of the Unit Manager or his/her representative prior to December 1. The snowmobile trail may not be used for any timber sale operations from December 1 to March 31. The snowmobile trail may only be crossed at right angles. Maintain a 20-foot-wide slash, debris, and rut free zone daily using the snowmobile trail as the centerline. All stumps within 10 feet of the snowmobile trail must be cut at ground level.

5.4 - Soil Protection

5.4.1 - Rutting restriction, general (7/16)

Operations are to cease immediately if equipment and weather conditions result in rutting of roads and/or skid trails which is 12 inches or greater in depth and 50 feet in length. The Unit Manager or his/her representative may restrict hauling and/or skidding if ruts exceed the specified depth. With the Unit Manager or his/her representative's approval, the Purchaser may return to the area when the risk of rutting has decreased.

5.8 - Protection of Endangered Species

5.8.5 - Protection of raptor nests (3/13)

All trees with raptor nests will be protected if found during harvesting operations. Notification will be made to the Unit Manager or his/her representative who will notify the Wildlife Biologist so an on-site evaluation and recommendation can be made, if necessary.

6 - Safety and Fire Prevention

6.2 - Signing

6.2.3 - Recreational trail posting (10/20)

The Purchaser is responsible for posting and maintaining caution signs on the North Country Trail prior to beginning operations. The trail must be posted at appropriate distances from the Sale Area to warn of logging activity and truck traffic at both ends of the trail. Signs must be removed when harvest operations are suspended or completed. The Purchaser will provide these signs.



TIMBER SALE MAP

This information provided by authority of Part 525, 1994 PA 451, as amended.

Forest Management Unit GFMU - Indian River Field Office	County Emmet	Mapped By Harig	Date 6/29/2021	Page 1	of 2
Township 36N	Range 05W	Section(s) and Subdivision(s) 19: S1/2SE, SESW 20: N1/2NW,SWNW,NESW,S1/2SW 29: NWNW 30: NENW,NWNE,SWSW	Scale 1:15,840		

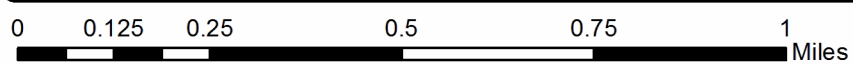
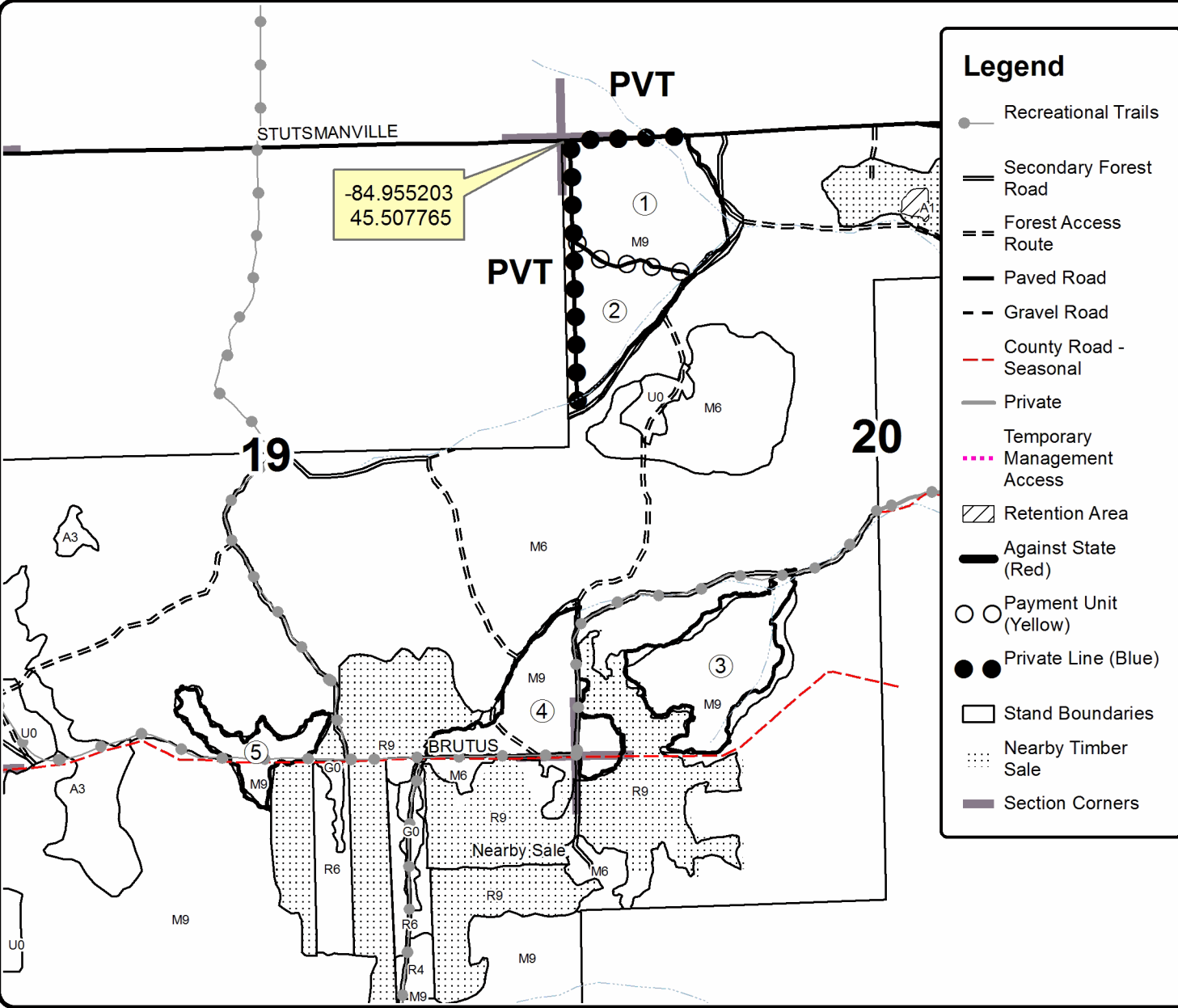
Cover Type				Density	
A = Aspen	H = Hemlock	N = Marsh	U = Upland Brush	0 = Non Stocked	5 = Pole Timber Medium
B = Paper Birch	J = Jack Pine	O = Oak	UM = Upland Mixed	1 = Seedling Sapling Poor	6 = Pole Timber Well
C = Cedar	L = Lowland Brush	P = Lowland Poplar	V = Bog or Marsh	2 = Seedling Sapling Medium	7 = Saw Timber Poor
D = Treed Bog	LM = Lowland Mixed	Q = Mixed Swamp Conifer	W = White Pine	3 = Seedling Sapling Well	8 = Saw Timber Medium
E = Swamp Hdwoods	M = Mpl, Bch, Brch	R = Red Pine	X = Non Stocked	4 = Pole Timber Poor	9 = Saw Timber Well
F = Spruce Fir	MC = Mixed Conifer	S = Black Spruce	Z = Water		
G = Grass	MD = Mixed Deciduous	T = Tamarack			

PU	Acres	PU	Acres
1	29.6	4	22.4
2	15.9	5	9.3
3	24.6	6	25.9

Stutsmanville Hardwood

Compartment 112

127.7 Acres





Sale Number	Year
52-112	21

TIMBER SALE MAP

This information provided by authority of Part 525, 1994 PA 451, as amended.

Forest Management Unit	County	Mapped By	Date	Page	of
GFMU - Indian River Field Office	Emmet	Harif	6/29/2021	2	2
Township	Range	Section(s) and Subdivision(s)	Scale		
36N	05W	19: S1/2SE, SESW 20: N1/2NW,SWNW,NESW,S1/2SW 29: NWNW 30: NENW,NWNE,SWSW	1:15,840		

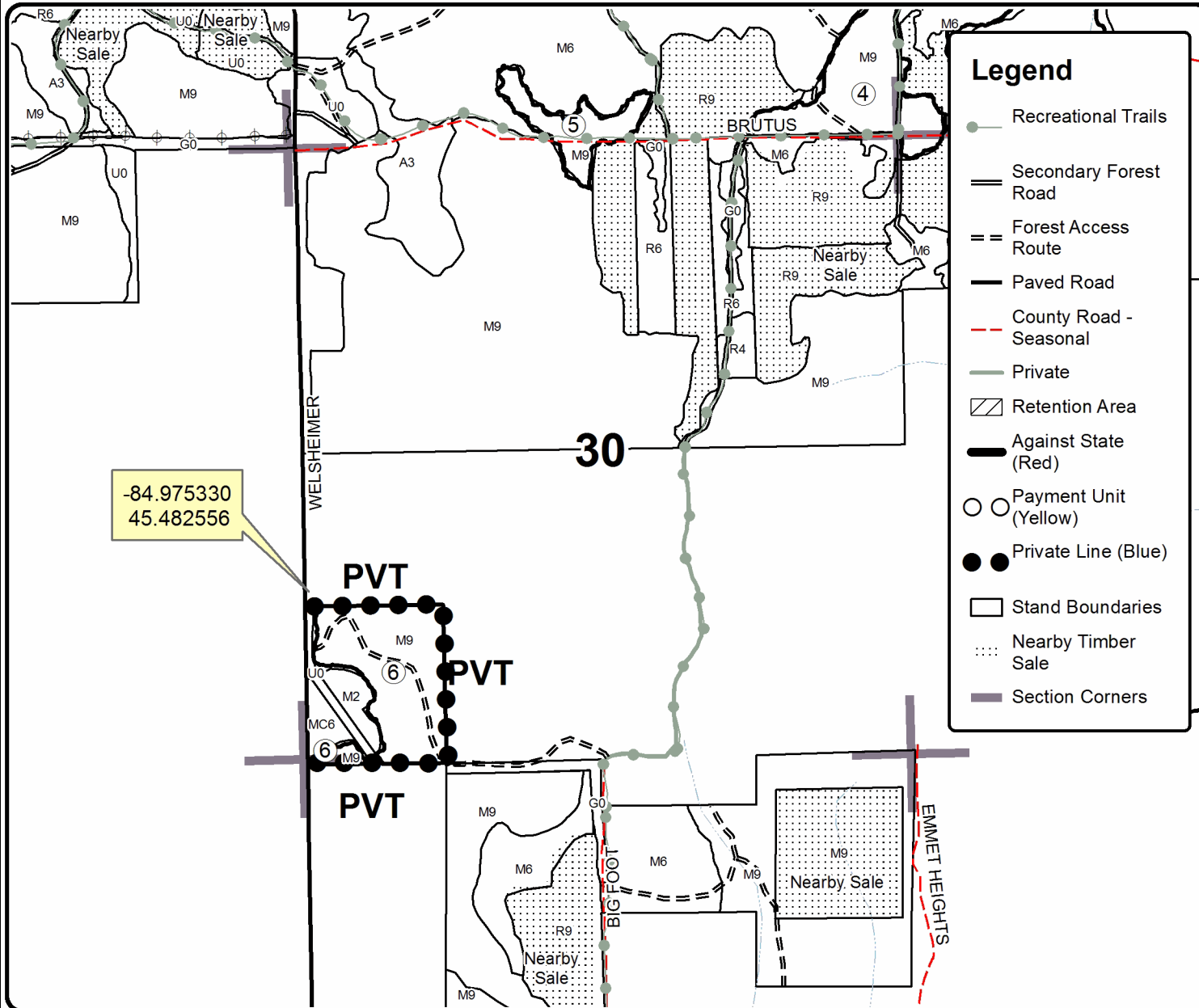
Cover Type				Density	
A = Aspen	H = Hemlock	N = Marsh	U = Upland Brush	0 = Non Stocked	5 = Pole Timber Medium
B = Paper Birch	J = Jack Pine	O = Oak	UM = Upland Mixed	1 = Seedling Sapling Poor	6 = Pole Timber Well
C = Cedar	L = Lowland Brush	P = Lowland Poplar	V = Bog or Marsh	2 = Seedling Sapling Medium	7 = Saw Timber Poor
D = Treed Bog	LM = Lowland Mixed	Q = Mixed Swamp Conifer	W = White Pine	3 = Seedling Sapling Well	8 = Saw Timber Medium
E = Swamp Hdwoods	M = Mpl, Bch, Brch	R = Red Pine	X = Non Stocked	4 = Pole Timber Poor	9 = Saw Timber Well
F = Spruce Fir	MC = Mixed Conifer	S = Black Spruce	Z = Water		
G = Grass	MD = Mixed Deciduous	T = Tamarack			

PU	Acres	PU	Acres
1	29.6	4	22.4
2	15.9	5	9.3
3	24.6	6	25.9

Stutsmanville Hardwood

Compartment 112

127.7 Acres



TIMBER SALE INFORMATION

Tower Rd. Red Pine (52-114-20)
 T36N, R05W, SEC. 1; T36N, R05W, SEC. 12; T36N, R05W, SEC. 13.
 Emmet County (Advertised Price \$151,724.95)

SALE NOTE: - See sale spec 5.2.3.14 for Heterobasidion root disease (HRD) cutting restrictions.

- See sale spec 5.2.41 for snowmobile trail date restrictions.

A recreation site such as a trail, pathway, or campground is within the sale area or the vicinity. Certain restrictions/specifications may be applicable including time restrictions.

A timber sale contract for this lump sum, sealed bid timber sale will be awarded to the responsible bidder offering the highest sealed bid price. All units of volume listed below were estimated using the T-Sale computer program and our traditional volume equations. Bids must be at or above the following advertised price for each product and species:

<u>PRODUCTS & SPECIES</u>	<u>ESTIMATED UNITS*</u>	<u>ADVERTISED PRICE</u>
Sawtimber		
Red Pine	1,344.2 MBF	\$ 86.00 / MBF
Pulpwood		
Red Pine	975 Cords	\$ 37.05 / Cord

* The total volume is statistically estimated within plus (+) or minus (-) 15.86 percent. There are an estimated 3,664 cords on this timber sale, plus or minus 581 cords at the 95% confidence level. The estimated units are final and not subject to adjustment. Prospective bidders are urged to examine this timber and to make their own estimates of quantity and quality.

BOND AND PAYMENT SCHEDULE:

1. A bond in the amount of \$7,586.00 to insure faithful performance of the conditions of the contract will be deposited by the successful bidder within 21 days of the sale award.
2. Cutting in any sale or unit without the required advance payment would be considered a trespass.
3. Total payment must be paid in advance or according to the following schedule :
 - (a) Ten percent (10%) of the sale value must be paid within 21 days of the sale award.
 - (b) The 10% down payment will be credited towards the first unit cut.
 - (c) Payment for each of the following units must be made before cutting begins in that unit:

<u>PAYMENT UNIT NUMBER</u>	<u>PERCENT OF TOTAL SALE VALUE</u>
01	27.5%
02	12.9%
03	14.5%
04	15.7%
05	29.4%

4. If no cutting takes place, the 10% down payment will not be refunded.
5. Operations on the contract issued will terminate on 06/30/2025.

SALE STATISTICS

SALE VOLUMES

<u>VOLUME</u>		<u>PERCENT ERROR</u>	<u>STATISTICAL RANGE IN CORDS</u>	
<u>TOTAL CUBIC FEET</u>	<u>TOTAL CORDS</u>		<u>MINIMUM</u>	<u>MAXIMUM</u>
289,418	3,664	15.86%	3,082	4,245

VDU VOLUMES

A VDU is a Volume Determination Unit. Volumes and their associated statistics are calculated at the VDU level and summarized to the sale level. There is often a one to one relationship between a VDU and a Payment Unit, but not always, depending on the cruise design. Refer to the VDU TO PAYMENT UNIT table.

VDU	VOLUME		PERCENT ERROR	RANGE IN CORDS	
	TOTAL CUBIC FEET	TOTAL CORDS		MINIMUM	MAXIMUM
8	204,136	2,584	12.65%	2,257	2,911
39	85,288	1,080	15.02%	917	1,242
TOTAL:	289,424	3,664		3,175	4,153

VDU TO PAYMENT UNIT

When a VDU is associated with more than one Payment Unit (PU), the VDU volumes are assigned to the PU based on acres of the VDU within the PU.

VDU	VDU ACRES	PU	PU ACRES
8	60.3	1	23.5
		2	11.0
		3	12.4
		4	13.4
39	17.8	5	17.8
TOTAL:	78.1		78.1

DESCRIPTION OF TIMBER BY PAYMENT UNIT (PU)

PU	MARKET GROUP	PRODUCT	QUANTITY	UNIT	ACRES	ADVERTISE PRICE
1	Red Pine	Sawtimber	367.0	MBF	23.5	\$41,676.65
	Red Pine	Pulpwood	273	Cords		
2	Red Pine	Sawtimber	171.8	MBF	11.0	\$19,517.20
	Red Pine	Pulpwood	128	Cords		
3	Red Pine	Sawtimber	193.6	MBF	12.4	\$21,984.80
	Red Pine	Pulpwood	144	Cords		
4	Red Pine	Sawtimber	209.2	MBF	13.4	\$23,771.00
	Red Pine	Pulpwood	156	Cords		
5	Red Pine	Sawtimber	402.6	MBF	17.8	\$44,775.30
	Red Pine	Pulpwood	274	Cords		
TOTAL:			1,344.2	MBF		
TOTAL:			975	Cords		

Sale Specific Conditions & Requirements

Sale Name: Tower Rd. Red Pine

Sale Number: 52-114-20 Seq#: 3

1 - Sale Area

1.2 - Boundaries

1.2.1 - Painted boundaries (9/19)

The sale boundary and Payment Unit boundaries are marked and identified by blue, red, and yellow paint. Exterior sale boundary lines adjacent to private property are marked with blue paint. Exterior sale boundary lines adjacent to state-owned property are marked with red paint. Interior Payment Unit boundaries are marked with yellow paint. Timber retention areas are marked with red paint and shown on the map; no harvesting activities may occur within these areas. The painted boundary line trees are not Included Timber and are to be protected. Yellow painted trees designating an interior Payment Unit boundary are only to be cut when all surrounding Payment Units have been paid.

2 - Timber Specifications

2.1 - Included Timber

2.1.1 - Clearcut unit(s) with unmerchantable trees (6/14)

Within Payment Unit(s) 1-4, cut all trees that are two (2) inches or more at DBH located within the strips of red pine sawtimber (approximately 12"+DBH), except oak and hemlock. Do not operate harvest equipment or cut any trees located in the strips of red pine poletimber (approximately 2"-8"DBH). Within Payment Unit 5, cut all trees two (2) inches or more at DBH, except oak and hemlock.

2.2 - Utilization

2.2.3 - Stump heights (4/07)

Stump heights within the Sale Area shall not exceed 6 inches for all trees.

2.2.8 - Utilization and removal (5/14)

All products meeting standards set forth in General Condition and Requirement 2.2 - Utilization must be removed from the Sale Area. Retain on site between 1/6 and 1/3 of the slash from harvested trees (tree tops and limbs less than four inches in diameter). This is because forest certification biomass retention requirements.

3 - Payments

3.3 - Pre-measured Sales

3.3.4 - Dividing payment units (7/14)

Payment Unit(s) may be divided at the request of the Purchaser and upon approval of the Unit Manager. Dividing Payment Units is a contract modification which requires a Timber Sale Contract Amendment. The contract modification must be completed in writing, with signatures, before harvest activities can begin. There will be only one division per Payment Unit.

4 - Transportation

4.1 - Construction

4.1.3 - Slash and earthen piles (8/04)

Piles or windrows of earth along roads and landings that have been widened or constructed shall be leveled. Slash from road maintenance or construction, including stumps, shall be dispersed throughout the Sale Area.

4.1.6 - Road construction (1/09)

Construction of new roads or improvements of existing roads shall be done in such a way as to minimize the environmental and visual impacts. Merchantable trees shall be cut and utilized unless otherwise directed. Non-merchantable trees shall be severed and laid flat on the ground. Slash shall be scattered, and not left in windrows and kept a minimum of 10 feet back from the road edge. Stumps shall be set upright, not left on edge, and be moved at least 10 feet away from the road edge. Disturbed soil shall be feathered into the woods and not left in berms or windrows.

4.1.7 - Road closure (10/11)

All new roads built into the sale must be blocked to vehicle traffic upon completion of the sale. In general, this will require

constructing a four (4') foot high berm of stumps and logs covered with earth. Contact the sale administrator for specific details of design and placement.

4.2 - Maintenance

4.2.5 - Two wheel drive condition (2/04)

All existing trail roads on and adjacent to the sale area must be passable by two-wheel drive traffic for the duration of the sale.

5 - Operations

5.1 - Notification

5.1.1 - Pre-sale conference (10/16)

A pre-sale conference between the Purchaser and sale administrator is required prior to beginning any operations to discuss contract specs and to determine landing and road locations.

5.2 - Conduct of Operations

5.2.1 - Slash

5.2.1.1 - Slash within sale area (9/16)

No trees are to be felled outside the sale area and all slash is to be kept at least 10 feet back from the red and blue paint line. If sale boundary lines are along a public road or highway, then slash must be removed 50' from these lines per General Condition & Requirement 5.2.1.

5.2.2 - Hazard Trees/Snags

5.2.2.1 - Den trees (10/16)

Obvious hollow and/or den trees shall be protected and left standing unless they are a safety hazard.

5.2.3 - Operating Restrictions

5.2.3.1 - Operating restrictions (9/11)

Within Payment Unit(s) 1-5, unless changed by written agreement, skidding and hauling are not permitted on the designated snowmobile trail from December 1 to April 1 except and administrator designated skidding/forwarding crossings. This restriction is to prevent potential hazards between logging equipment/trucks and snowmobiles.

5.2.3.6 - Bark beetle restriction (12/08)

In the event drought creates a high risk of pine bark beetle infestation, pine is not to be cut during the period March 1 through July 1, unless all portions of trees greater than two inches in diameter are removed from the sale area, reduced to chips, or treated to the satisfaction of the Unit Manager or his/her representative, within fifteen days of being severed from the stump. Pine log decks, pulpwood piles and treetops that are piled for chipping in the fall or winter within a 1/4 mile of susceptible sites must be removed before March 15. Residual slash must not be placed in piles or rows and must be spread over the site for quick drying. The Department of Natural Resources will exercise this specification if the risk of damage warrants.

5.2.3.14 - heterobasidion root disease (HRD) (3/21)

This plantation is at risk of infection by the root rot fungus, Heterobasidion irregulare. To prevent the spread of this disease, cutting operations within Payment Unit(s) 1-5 are restricted to the period of January 1st through February 28th. Cutting may only occur outside this period with written permission of the Unit Manager or with the application of a preventative pesticide. Consultation with a forest health specialist will determine if cutting can occur prior to January 1 without pesticide application, dependent upon current and forecasted snow cover. Cellu-Treat and RotStop C are currently the only EPA registered products available in the United States for the control of Heterobasidion. Both products are a water-soluble powder that must be applied to the stump, in accordance with the product label. Dye must be added to these products to provide visible evidence of adequate coverage. Application of these pesticides requires licensing by the Michigan Department of Agriculture and Rural Development. All applicators are required to: provide to the Sale Administrator notification of application per requirements in 40 CFR 170.120; and document and provide to the Sale Administrator annually, by December 31 and prior to closure of sale, the volume of product used and acres treated.

5.2.32 - Decking/landing restoration (9/13)

All decking and landing areas must have the surface area restored to a condition equal to or better than before. This is to ensure the proper regeneration of the stand. Wood debris, chips, and "cookies" from trimmings must be removed or scattered away from landing and loading areas and may not be windrowed on the edge.

5.2.41 - Snowmobile trail protection (9/11)

The designated snowmobile trail is shown on the Timber Sale Map. Do not cut or damage posts with orange trail markers or traffic control signs. No logging trucks or harvest equipment will be allowed on the trail from December 1 to April 1 except at designated skidding/forwarding crossings. If the trail is used during the non-winter months, it must be maintained and restored to a condition equal to or better than before the sale prior to December 1. Maintain a 20-foot-wide slash, debris, and rut free zone daily using the snowmobile trail as the centerline. No decking of forest products will be permitted along the snowmobile trail. All stumps within 10 feet of the snowmobile trail must be cut at ground level.

5.4 - Soil Protection

5.4.1 - Rutting restriction, general (7/16)

Operations are to cease immediately if equipment and weather conditions result in rutting of roads which is 12 inches or greater in depth and 50 feet in length. The Unit Manager or his/her representative may restrict hauling and/or skidding if ruts exceed the specified depth. With the Unit Manager or his/her representative's approval, the Purchaser may return to the area when the risk of rutting has decreased.

5.8 - Protection of Endangered Species

5.8.5 - Protection of raptor nests (3/13)

All trees with raptor nests will be protected if found during harvesting operations. Notification will be made to the Unit Manager or his/her representative who will notify the Wildlife Biologist so an on-site evaluation and recommendation can be made, if necessary.

6 - Safety and Fire Prevention

6.2 - Signing

6.2.1 - Road posting (9/09)

The Purchaser is responsible for posting and maintaining caution signs on Tower, N. Ayr, N. Conway, and E. Stutsmanville Roads prior to beginning operations. The road must be posted at appropriate distances from the Sale Area to warn of logging activity and truck traffic. Signs must be removed when harvest operations are suspended or completed. The Purchaser will provide these signs.

6.2.3 - Recreational trail posting (2/10)

The Purchaser is responsible for posting and maintaining caution signs on designated snowmobile trail, which is shown on the Timber Sale Map, prior to beginning operations. The trail must be posted at appropriate distances from the Sale Area to warn of logging activity and truck traffic at both ends of the trail. Signs must be removed when harvest operations are suspended or completed. The Purchaser will provide these signs.



TIMBER SALE MAP

This information provided by authority of Part 525, 1994 PA 451, as amended.

Sale Number	Year
52-114-20	2020

Forest Management Unit	County	Mapped By	Date	Page	of
GAYLORD - NORTH	EMMET	STACKS	02/03/2022	1	2
Township	Range	Section(s) and Subdivision(s)	Cruised By		
T36N	R05W	1 E 1/2 SW, SWSE; 12 N 1/2 NE; 13 SWSW	STACKS		

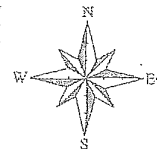
Cover Type				Density	
A = Aspen	J = Jack Pine	O = Oak	U = Upland Brush	0 = Non Stocked	5 = Pole Timber Medium
B = Paper Birch	K = Rock	P = Lowland Poplar	UM = Upland Mix Forest	1 = Seedling Sapling Poor	6 = Pole Timber Well
C = Cedar	L = Lowland Brush	Q = Mixed Swamp Conifer	V = Bog or Marsh	2 = Seedling Sapling Medium	7 = Saw Timber Poor
D = Treed Bog	LM = Lowland Mix Forest	R = Red Pine	W = White Pine	3 = Seedling Sapling Well	8 = Saw Timber Medium
E = Swamp Hardwoods	M = Maple, Beech, Birch	S = Black Spruce	X = Non Stocked	4 = Pole Timber Poor	9 = Saw Timber Well
F = Spruce/Fir	MC = Mixed Conifer	T = Tamarack	Y = Sand		
G = Grass	MD = Mixed Deciduous		Z = Water		
H = Hemlock	N = Marsh				

COMPARTMENT 116

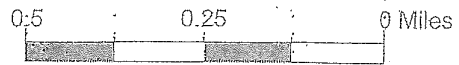
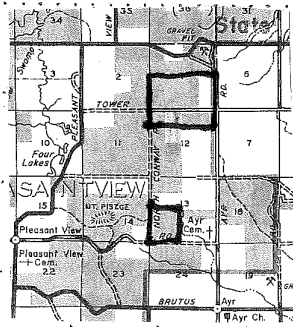
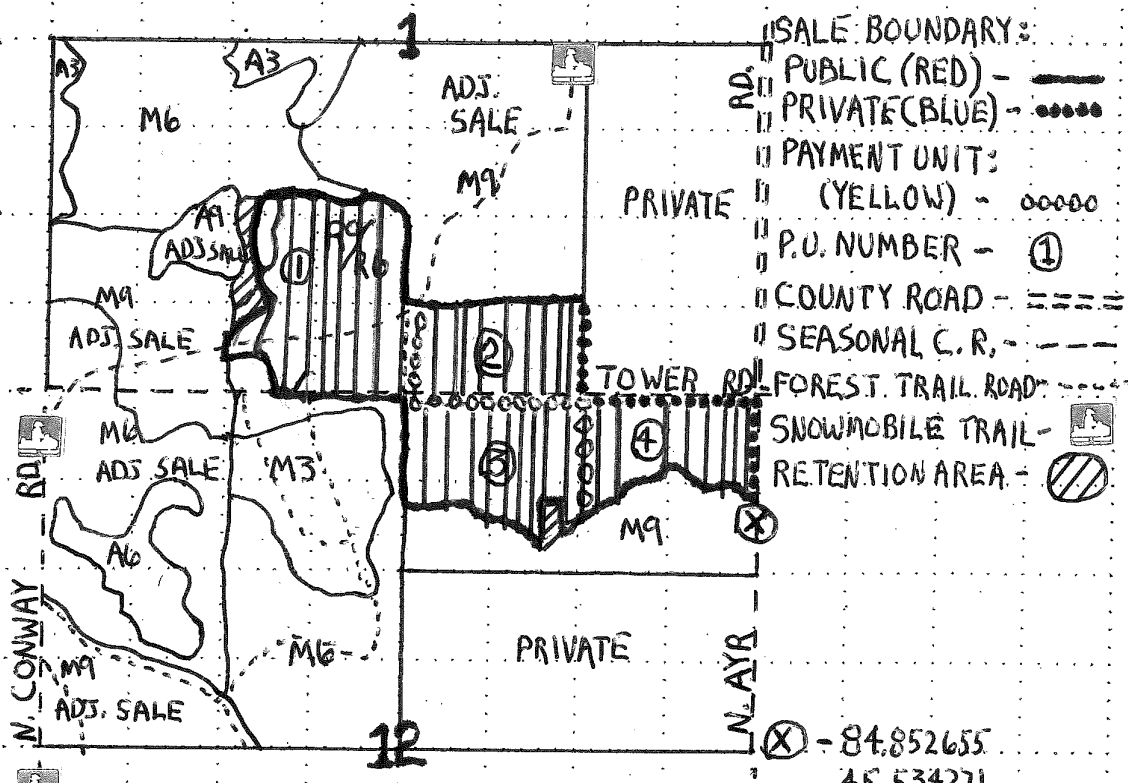
TOWER RD. RED PINE

78.1 ACRES

EMMET COUNTY



P.U.	ACRES
1	23.5
2	11.0
3	12.4
4	13.4
5	17.8
	<u>78.1</u>





TIMBER SALE MAP

This information provided by authority of Part 525, 1994 PA 451, as amended.

Sale Number	Year
52-114-20	2020

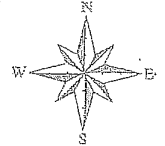
Forest Management Unit GAYLORD - NORTH	County EMMET	Mapped By STACKS	Date 02/03/2022	Page 2	of 2
Township T36N	Range R05W	Section(s) and Subdivision(s) 1 E 1/2 SW, SWSE; 12 N 1/2 NE; 13 SWSW			
Cover Type			Density		
A = Aspen B = Paper Birch C = Cedar D = Treed Bog E = Swamp Hardwoods F = Spruce/Fir G = Grass H = Hemlock	J = Jack Pine K = Rock L = Lowland Brush LM = Lowland Mix Forest M = Maple, Beech, Birch MC = Mixed Conifer MD = Mixed Deciduous N = Marsh	O = Oak P = Lowland Poplar Q = Mixed Swamp Conifer R = Red Pine S = Black Spruce T = Tamarack	U = Upland Brush UM = Upland Mix Forest V = Bog or Marsh W = White Pine X = Non Stocked Y = Sand Z = Water	0 = Non Stocked 1 = Seedling Sapling Poor 2 = Seedling Sapling Medium 3 = Seedling Sapling Well 4 = Pole Timber Poor	5 = Pole Timber Medium 6 = Pole Timber Well 7 = Saw Timber Poor 8 = Saw Timber Medium 9 = Saw Timber Well

COMPARTMENT 116

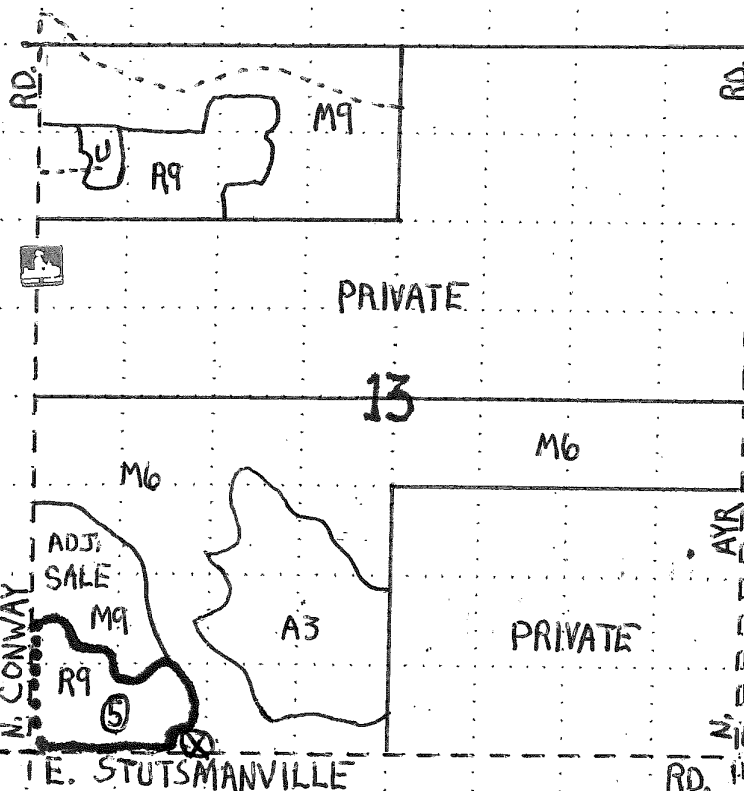
TOWER RD. RED PINE

78.1 ACRES

EMMET COUNTY

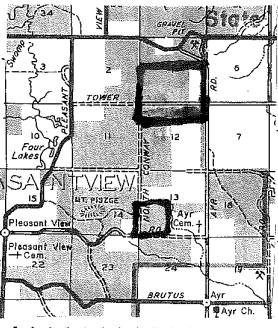


P.U.	ACRES
1	23.5
2	11.0
3	12.4
4	13.4
5	17.8
	<u>78.1</u>



- "SALE BOUNDARY:
 - " PUBLIC (RED) - ———
 - " PRIVATE (BLUE) - ———
- " PAYMENT UNIT:
 - " (YELLOW) - 00000
- " P.U. NUMBER - ①
- " COUNTY ROAD - =====
- " SEASONAL C. R. - - - - -
- " FOREST TRAIL ROAD - - - - -
- " SNOWMOBILE TRAIL -
- " RETENTION AREA -

⊗ - 84.268137
45.507299



Kashmir Red Pine (52-102-22)

T34N, R03W, SEC. 19; T34N, R03W, SEC. 30; T34N, R03W, SEC. 31; Cheboygan

In response to the notice of sale to be held 9:00 a.m. (local time) on May 3, 2022, I am hereby submitting my sealed bid (firm offer) for the following forest products to be cut. Bids for individual species must be at or above the advertised price. All non-responsive bid forms may be rejected.

<u>PRODUCTS & SPECIES</u>	<u>ESTIMATED VOLUME*</u>	<u>ADVERTISED PRICE</u>	<u>BID PRICE/UNIT</u>
Sawtimber			
Basswood	114.4 MBF	\$ 47.00/MBF	\$ _____
Black Cherry	5.7 MBF	\$ 86.00/MBF	\$ _____
Mixed Aspen	26.2 MBF	\$ 46.00/MBF	\$ _____
Red Maple	18.8 MBF	\$ 77.00/MBF	\$ _____
Red Pine	1,954.7 MBF	\$ 86.00/MBF	\$ _____
Sugar Maple	5.5 MBF	\$ 376.00/MBF	\$ _____
Pulpwood			
Mixed Aspen	180 Cords	\$ 17.70/Cord	\$ _____
Mixed Hardwood	606 Cords	\$ 16.55/Cord	\$ _____
Red Pine	434 Cords	\$ 37.05/Cord	\$ _____

*The volumes are statistically estimated within plus (+) or minus (-) 6.08 percent at 95% confidence level. These estimated volumes are final and not subject to adjustment. Prospective bidders are urged to examine this timber and to make their own estimates of quantity and quality.

I understand that any or all bids may be rejected. All bids must be signed and all bid items must be bid or the bid form may be rejected. I also understand that consideration and awarding a contract will be based upon my past performance and ability to complete the contract based upon equipment and staffing subject to my control.

FEDERAL ID: ____ - ____ - ____ or SOCIAL SECURITY NUMBER: ____ - ____ - ____

Company or individual bidding: _____

Company representative's name: _____

Address: _____

City: _____ State: _____ Zip: _____

IF AVAILABLE, PLEASE PLACE THE PERSONALIZED LABEL FROM YOUR PROSPECTUS IN THE ABOVE BOX.

Individual or company representative's signature: _____ Date: _____

Phone number : _____ Email (optional): _____

THE WINNING BIDDER MUST COMPLETE THE VERIFICATION OF WORKER'S DISABILITY COMPENSATION ACT COMPLIANCE (ON REVERSE SIDE IF DOUBLE SIDED) WITHIN 21 DAYS OF SALE AWARD DATE



FOR DEPARTMENT USE ONLY	
Sale Number (XX - XXX - XX - XX)	
Forest Management Unit:	

TIMBER SALE VERIFICATION OF WORKER'S DISABILITY COMPENSATION ACT COMPLIANCE

As required by Act 317, P.A. 1969 (Worker's Compensation) and
Part 5 of Act 451 of 1994, as amended.

VERIFICATION OF WORKER'S DISABILITY COMPENSATION ACT COMPLIANCE

- This verification must be completed and submitted within 21 days of contract award and prior to the issuance of the timber sale contract.
- In addition, if boxes 2B or 2C are checked, then Notice of Exclusion or Certificate of Insurance must be submitted within twenty-one (21) days of the contract award and prior to the issuance of the timber sale contract.
- All information must be typed or printed except for written signatures.

Please Check Appropriate Categories:

1. My business is organized as (you **must** check one of the boxes below):
 - A. Sole Proprietorship (individual)
 - B. Partnership
 - C. Corporation
2. You **must** check one of the boxes below:
 - A. I certify my business is a sole proprietorship and it has no employees but the sole proprietor. I am not subject to the Worker's Compensation Laws.
 - B. I certify my business has satisfied its obligation to the Worker's Compensation Act through the use of an approved Notice of Exclusion (BWC-337, Rev. 5/96). I will provide a copy of the Notice of Exclusion within 21 days of the contract award. (For questions or a copy of the BWC-337, please call the Worker's Compensation Bureau at 517-322-1195).
 - C. I certify my business has a Worker's Compensation Policy. I will provide an original Certificate of Insurance within twenty-one (21) days of the contract award.
3. If you have checked item 2(A) or 2(B), you **must** indicate the number of **both** full-time and part-time employees, other than yourself, including family members and active partners (if none, you must enter "0").

_____ Full-time Employees

_____ Part-time Employees

Name of Business		Federal ID (or) Social Security No.	
Address		Telephone ()	
City	State	ZIP	

I hereby certify that the above information is true and correct. I agree to notify the Michigan DNR of any changes that occur in factors affecting my coverage during any of my present and future operations.

Signature of Owner or Authorized Representative

Title

Date

Please complete the "SEALED BID" information on the next page

Stutsmanville Hardwood (52-112-21)
T36N, R05W, SEC. 19; T36N, R05W, SEC. 20; T36N, R05W, SEC. 29; T36N,

In response to the notice of sale to be held 9:00 a.m. (local time) on May 3, 2022, I am hereby submitting my sealed bid (firm offer) for the following forest products to be cut. Bids for individual species must be at or above the advertised price. All non-responsive bid forms may be rejected.

<u>PRODUCTS & SPECIES</u>	<u>ESTIMATED VOLUME*</u>	<u>ADVERTISED PRICE</u>	<u>BID PRICE/UNIT</u>
Sawtimber			
Basswood	102.9 MBF	\$ 47.00/MBF	\$ _____
Beech	36.9 MBF	\$ 48.00/MBF	\$ _____
Black Cherry	1.7 MBF	\$ 86.00/MBF	\$ _____
Mixed Aspen	69.5 MBF	\$ 46.00/MBF	\$ _____
Red Maple	18.7 MBF	\$ 77.00/MBF	\$ _____
Sugar Maple	370.7 MBF	\$ 376.00/MBF	\$ _____
White Ash	12.2 MBF	\$ 63.00/MBF	\$ _____
Yellow Birch	1.8 MBF	\$ 36.00/MBF	\$ _____
Pulpwood			
Basswood	198 Cords	\$ 9.00/Cord	\$ _____
Mixed Aspen	82 Cords	\$ 17.70/Cord	\$ _____
Mixed Hardwood	1,550 Cords	\$ 16.55/Cord	\$ _____

*The volumes are statistically estimated within plus (+) or minus (-) 6.14 percent at 95% confidence level. These estimated volumes are final and not subject to adjustment. Prospective bidders are urged to examine this timber and to make their own estimates of quantity and quality.

I understand that any or all bids may be rejected. All bids must be signed and all bid items must be bid or the bid form may be rejected. I also understand that consideration and awarding a contract will be based upon my past performance and ability to complete the contract based upon equipment and staffing subject to my control .

FEDERAL ID: _____ or SOCIAL SECURITY NUMBER: _____

Company or individual bidding: _____

Company representative's name: _____

Address: _____

City: _____ State: _____ Zip: _____

IF AVAILABLE, PLEASE PLACE THE PERSONALIZED LABEL FROM YOUR PROSPECTUS IN THE ABOVE BOX.

Individual or company representative's signature: _____ Date: _____

Phone number : _____ Email (optional): _____

THE WINNING BIDDER MUST COMPLETE THE VERIFICATION OF WORKER'S DISABILITY COMPENSATION ACT COMPLIANCE (ON REVERSE SIDE IF DOUBLE SIDED) WITHIN 21 DAYS OF SALE AWARD DATE

Tower Rd. Red Pine (52-114-20)
T36N, R05W, SEC. 1; T36N, R05W, SEC. 12; T36N, R05W, SEC. 13; Emmet

In response to the notice of sale to be held 9:00 a.m. (local time) on May 3, 2022, I am hereby submitting my sealed bid (firm offer) for the following forest products to be cut. Bids for individual species must be at or above the advertised price. All non-responsive bid forms may be rejected.

<u>PRODUCTS & SPECIES</u>	<u>ESTIMATED VOLUME*</u>	<u>ADVERTISED PRICE</u>	<u>BID PRICE/UNIT</u>
Sawtimber			
Red Pine	1,344.2 MBF	\$ 86.00/MBF	\$ _____
Pulpwood			
Red Pine	975 Cords	\$ 37.05/Cord	\$ _____

*The volumes are statistically estimated within plus (+) or minus (-) 15.86 percent at 95% confidence level. These estimated volumes are final and not subject to adjustment. Prospective bidders are urged to examine this timber and to make their own estimates of quantity and quality.

I understand that any or all bids may be rejected. All bids must be signed and all bid items must be bid or the bid form may be rejected. I also understand that consideration and awarding a contract will be based upon my past performance and ability to complete the contract based upon equipment and staffing subject to my control .

FEDERAL ID: ____ - ____ - ____ or SOCIAL SECURITY NUMBER: ____ - ____ - ____

Company or individual bidding: _____

Company representative's name: _____

Address: _____

City: _____ State: _____ Zip: _____

IF AVAILABLE, PLEASE PLACE THE PERSONALIZED LABEL FROM YOUR PROSPECTUS IN THE ABOVE BOX.

Individual or company representative's signature: _____ Date: _____

Phone number : _____ Email (optional): _____

THE WINNING BIDDER MUST COMPLETE THE VERIFICATION OF WORKER'S DISABILITY COMPENSATION ACT COMPLIANCE (ON REVERSE SIDE IF DOUBLE SIDED) WITHIN 21 DAYS OF SALE AWARD DATE



FOR DEPARTMENT USE ONLY	
Sale Number (XX - XXX - XX - XX)	
Forest Management Unit:	

TIMBER SALE VERIFICATION OF WORKER'S DISABILITY COMPENSATION ACT COMPLIANCE

As required by Act 317, P.A. 1969 (Worker's Compensation) and
Part 5 of Act 451 of 1994, as amended.

VERIFICATION OF WORKER'S DISABILITY COMPENSATION ACT COMPLIANCE

- This verification must be completed and submitted within 21 days of contract award and prior to the issuance of the timber sale contract.
- In addition, if boxes 2B or 2C are checked, then Notice of Exclusion or Certificate of Insurance must be submitted within twenty-one (21) days of the contract award and prior to the issuance of the timber sale contract.
- All information must be typed or printed except for written signatures.

Please Check Appropriate Categories:

1. My business is organized as (you **must** check one of the boxes below):
 - A. Sole Proprietorship (individual)
 - B. Partnership
 - C. Corporation
2. You **must** check one of the boxes below:
 - A. I certify my business is a sole proprietorship and it has no employees but the sole proprietor. I am not subject to the Worker's Compensation Laws.
 - B. I certify my business has satisfied its obligation to the Worker's Compensation Act through the use of an approved Notice of Exclusion (BWC-337, Rev. 5/96). I will provide a copy of the Notice of Exclusion within 21 days of the contract award. (For questions or a copy of the BWC-337, please call the Worker's Compensation Bureau at 517-322-1195).
 - C. I certify my business has a Worker's Compensation Policy. I will provide an original Certificate of Insurance within twenty-one (21) days of the contract award.
3. If you have checked item 2(A) or 2(B), you **must** indicate the number of **both** full-time and part-time employees, other than yourself, including family members and active partners (if none, you must enter "0").

_____ Full-time Employees

_____ Part-time Employees

Name of Business		Federal ID (or) Social Security No.	
Address		Telephone ()	
City	State	ZIP	

I hereby certify that the above information is true and correct. I agree to notify the Michigan DNR of any changes that occur in factors affecting my coverage during any of my present and future operations.

Signature of Owner or Authorized Representative

Title

Date

Please complete the "SEALED BID" information on the next page